



LINDENWOOD
UNIVERSITY

DIGEST

EMPLOYEE NEWSLETTER

February 15, 2023

CAMPUS-WIDE NEWS BROUGHT STRAIGHT TO **YOUR INBOX.**

GOOD MORNING

LINDENWOOD LIONS!

Join Us for Employee Appreciation Week!



Employee Appreciation Day is March 3, and we want to celebrate you! Join the wellness team in Stumberg Hall on Friday, March 3 from 1-3 p.m. for treats, refreshments, photo opportunities, and giveaways!

LATEST NEWS

[Read Campus News](#)

STAY CONNECTED

[Join LindenConnect](#)

We also will have daily raffle prize winners! Fill out this quick and easy [form](#) to be entered into the raffle. One winner will be selected each day. Click [here](#) to see the prizes!



Multifactor Authentication Change

On February 27, Microsoft is enabling a new method to accept Push Notifications from your authenticator application. When a user responds to an MFA (Multi Factor Authentication) push notification using the Authenticator app, they will be presented with a number. The number needs to be typed into the app to complete the approval.

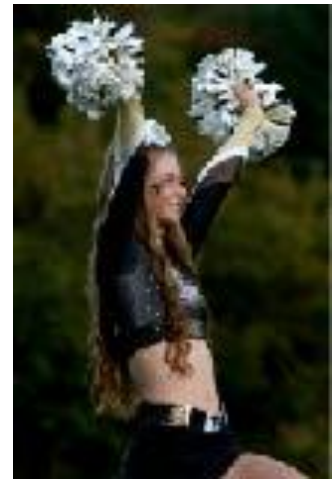
Unfortunately, Apple Watch will no longer be supported for Multi-Factor Authentication. We recommend you uninstall the Microsoft Authenticator Apple Watch app because you must approve notifications on your phone.

Lion Pride Giveaway Winners

Congratulations to our Lion Pride Giveaway winners, who were nominated by their colleagues for outstanding school spirit, caring for peers and students, and embodying Q2 in their work!

- Sara Bagley
- Hunter Davis
- Dominic Dolce
- Jennifer Fraser
- Emilie Johnson
- Elaine Ragland
- Chrissy Sachs
- Jennifer Tadsen
- Kathi Vosevich

Watch the Digest for more giveaways throughout the semester. And, be sure to wear your Lindenwood colors every Friday for Lion Pride Friday!





Announcing Employee Resource Groups at Lindenwood

We would like to announce the kickoff of **Employee Resource Groups** at Lindenwood. ERGs provide a catalyst for faculty and staff to get engaged and contribute to the Universities overall DEI efforts to attract and retain a diverse workforce and to foster an inclusive culture. This also aligns to our strategy of Adapt, Build and Engage. DEI is embedded in our Adapt pillar.

Q2 Moments

Katie Zingg is such a knowledgeable, helpful, and kind professional. Many of us have worked with her recently and noticed her diligence and friendly customer service with everyone she encounters. She is a great addition to the LU community and Athletics department. Thank you, Katie, for your time and help with the behind-the-scenes work with our volunteers and communication needs. Your knowledge and experience have truly helped with the transition, and we appreciate you!

Cindy Lane is so friendly, accommodating, and willing to help others. I recently connected her with a new adjunct and I know Cindy will show her more than I ever could on Canvas. I call her the Canvas guru! I am so grateful for her expertise paired with kindness! She has such a sense of empathy for those who don't quite understand the intricacies of the IT world. She sends videos and so many tips to help. We are really blessed to have her here.

[Submit Your Q2 Moment](#)

LINDENWOOD
UNIVERSITY
LEARNING ACADEMY

CDI - Anti-Racist Workshop
February 16, 10-11:30 a.m.

Online

This interactive workshop will review current events regarding anti-racism and decolonization, along with the harms of racism and colonialism. Training participants will discover campus resources and anti-racist strategies to apply what they learned to their environment.

Register

Culture Connection: Diving Into LU's Culture for New Employees - Cohort 6 **Every Thursday, January 26-March 2** **Lindenwood Learning Academy, LARC 009 and Online**

Culture Connection is a six-week Professional Learning Community hosted by the Learning Academy designed for employees new to Lindenwood who started working during or after September 2022. This session focuses on Teamwork.

Register

CDI - Implicit Bias **February 16, 11 a.m.-1 p.m.** **Lindenwood Learning Academy, LARC 009**

This interactive training session is designed to define implicit bias; demonstrate common forms of implicit bias and their potential impact on the University community; provide applicable resources on campus; and allow participants to examine their own assumptions and privileges.

Register

Adult Heartsaver CPR AED First Aid **February 16, 1-4 p.m.** **Lindenwood Cultural Center, Room 109**

This training is open to Lindenwood University faculty, adjunct faculty, staff, and students. There is a \$20 cost per person to be certified.

The Heartsaver Adult First Aid with CPR & AED course teaches how to manage illness, injuries, and cardiac arrest before professional help arrives. Content taught in the Heartsaver Adult First Aid with CPR & AED Course includes:

- General first aid principles

CDI - Courageous Conversations: Demystifying the LGBTQ Community **February 16, 2-3:30 p.m.** **Center for Diversity and Inclusion** **Spellmann Center Room 3085**

"Courageous Conversations" provides an opportunity for faculty and staff to have an open, facilitated dialogue about topics that impact real career and life experiences. We will discuss challenges, opportunities and successes related to a variety of things from which we can learn from each other, become more empathetic, and identify actionable ways to create a more inclusive environment for our entire campus community.

- Adult medical and injury emergencies
- Critical concepts of high-quality adult CPR
- Use of an automated external defibrillator (AED)
- Relief of choking for the adult

Successful completion of this course requires successfully demonstrating competency performing the following skills:

- Removing Protective Gloves
- Finding the Problem
- Using an Epinephrine Pen
- Controlling Bleeding and Bandaging
- 1 Rescuer Adult CPR (includes mouth to mask and AED use)

[Register](#)

Please come prepared to have an engaging and productive conversation.

[Register](#)

Signature Assignments

**February 16, 2-3 p.m. and 3-4 p.m.
Lindenwood Learning Academy, LARC 009
and Online**

Signature assignments are assignments we use in the classroom to assess our outcomes. In this workshop, we will take the assignments we are already implementing and ask the questions: How does this assess my course outcomes, program outcomes, and graduate attributes? How does this align to rubrics? Or do rubrics need to be developed? What makes my assignment signature? How could this assignment be scaffolded with other courses in my program? Join us as we ask and work through these questions and learn more about using signature assignments in our courses!

[Register](#)

Artificial Intelligence in the Classroom: Exploring Innovative Approaches to Enhance Pedagogy

**February 16, 1-2 p.m.
Online**

James Hutson and Daniel Plate will meet weekly to discuss new developments in Artificial Intelligence and innovative pedagogical approaches to those developments. LU faculty and staff are welcome to join these discussions.

[Register](#)

ChatGPT and the Future of College Writing: Handling Plagiarism Concerns

**February 17, 11 a.m.-noon
Lindenwood Learning Academy, LARC 009
and Online**

This workshop aims to provide educators with an introduction to ChatGPT, a powerful language model developed by OpenAI, and its potential applications in the classroom. Understandably, teachers have concerns about misuse of this tool, in particular its potential for plagiarism that cannot be detected with the usual tools. This workshop will review the problems, as well as possibilities offered by ChatGPT, offer strategies for faculty to prevent plagiarism, demonstrate tools to help detect bot-written documents, and suggestions for how to teach with, rather than against, this new web tool (this abstract was, in its first draft, written by ChatGPT).

This session is for anyone who wants to develop better plagiarism prevention strategies, as well as anyone who is curious about the potential of this new tool for written communication. Dr. Elizabeth Fleitz is the facilitator.

[Register](#)

Make Blue Hats for #HatNotHate - Stand Up to Bullying

**February 19, 3-5 p.m., February 22, 6-8 p.m.
Lindenwood Learning Academy, LARC 009**

#HatNotHate is an anti-bullying initiative for K-12 students across the country. During the month of October (National Bullying Prevention Month) participating schools get an all-school assembly (in person or virtual) from #HatNotHate educators and each student receives a handmade knit or crochet blue hat to reinforce that we all can and should spread kindness! Last year, #HatNotHate collected over 65,000 hats and, this year, the Lindenwood community has an opportunity to join in the work.

At hat making sessions, we will have knitting looms, crochet hooks or knitting needles for you to borrow for making blue hats.

Yarn will be provided (while supplies last) and finished hats will be collected.

[Register](#)

Enhancing Cognitive Complexity in CLOS and Assessments

**February 21, 1-2 p.m.
Online**

Betsy Melick and Robyne Elder will facilitate this interactive workshop on increasing the level of cognitive complexity in course learning objectives and setting rigorous standards for learning. This workshop will address needs for cognitive complexity, according to both the Graduate Attributes and RISE Project. We also will work on aligning major assessments with

CDI - Making Diversity, Equity and Inclusion a Reality, Part 2

**February 22, 9-11 a.m.
Online**

This session is a continuation of "Making Diversity, Equity, and Inclusion a Reality Part 1." Please complete Part 1 before attending Part 2.

learning objectives and designing authentic assessments. This workshop applies to all learning modalities and correlates to the RISE Pillar of Rigor.

Register

Register

2023 Retention Retreat

February 22, 1-3 p.m.

Online

Please join us for the annual Retention Retreat! This two-hour retreat will include one 30-minute general session and two 45-minute breakout sessions. Breakout topics will include Retention Initiatives for Traditional Students, Retention Initiatives for Post-Traditional and Online Students, Course Design for Student Retention, and Equity in Retention. Each breakout session is offered twice during the retreat.

When you register for this course, **don't forget to register for the general session that begins at 1 p.m., one breakout session that begins at 1:30 p.m. and one breakout session that starts at 2:15 p.m.**

Register

Google Level 1 Training

February 22, 7-9:30 p.m.

LARC 117

Certified Google Trainer, Dr. Tina Lauer, Instructional Technology Specialist at St Charles School District and Lindenwood School of Education Adjunct Instructor, will host a Google Level 1 Training. Dr. Lauer will guide you through a hands-on workshop that will teach you the ins and outs of Google, as you prepare for your Google Level 1 exam.

This event is free of charge to all LU students, staff, and faculty.

Familiarity with Google Tools is essential for the LindenTeach Internship and the Student Teaching Experience for College of Education and Human Services students. If students obtain Google Level 1 Certification, they will have an automatic advantage in both courses and have an important assignment accomplished. **A laptop is required for this session.**

Register



SPRING SEMESTER HOURS

LARC/LIBRARY SERVICES

- Monday- Thursday: 8 a.m. - 10 p.m.
- Friday: 8 a.m. - 5 p.m.
- Saturday: 10 a.m. - 3 p.m.
- Sunday: 2 -10 p.m.

EVANS COMMONS REC CENTER

- Monday - Friday: 6 a.m. - 9 p.m.
- Saturday - Sunday: 11 a.m. - 4 p.m.

LU BOX OFFICE

- Tuesday-Friday: 12 – 4 p.m.
- Saturday: 10 a.m.–2 p.m.
- Sunday-Monday: Closed

STARBUCKS

- Monday - Friday: 7 a.m. - 5 p.m.
- Saturday: Closed
- Sunday: 2 - 9 p.m.

BOYLE FAMILY GALLERY

- Tuesday-Thursday: 12 – 5 p.m.
- Open during Theater and Black Box performances



Lindenwood University | www.lindenwood.edu



Marketing and Communications | 209 S. Kingshighway St., St. Charles, MO 63301

[Unsubscribe phuffman@lindenwood.edu](#)

[Update Profile](#) | [Constant Contact Data Notice](#)

Sent by ludigest@lindenwood.edu powered by



Try email marketing for free today!