

shakespeare's

A
Midsummer
Night's
Dream



april 24 to may 10

the lindenwood colleges theatre
department — st. charles mo.

**THE LINDENWOOD COLLEGES
DEPARTMENT OF THEATRE ARTS**

Presents

**A Midsummer Night's
Dream**

Directed by Fred Goodson

Stage Management by Mariko Ishii

Assistant Directed by Susan Farwell

Scenic Design by Stephanie Young

Lighting Design by Stephanie Young

Costume Design by Nancy Hills

Choreography by Judith Grothe

Assistant Stage Management by Karima Zhiri

Names of the actors

Theseus, Duke of Athens	Jeffrey L. Osborn
Egeus, father to Hermia	Doug Mayer
Lysander, beloved of Hermia.....	Craig Van Tassel
Demetrius, suitor to Hermia, approved by Egeus	Ed Cating
Philostrate, Master of the Revels to Theseus	Mitchell Spiro
Peter Quince, a carpenter; Prologue in the interlude	Lee Henry
Nick Bottom, a weaver; Pyramus in the same	William G. Burger
Francis Flute, a bellows-mender; Thisby in the same	Randy Messersmith
Tom Snout, a tinker; Wall in the same	Paul Engelhardt
Snug, a joiner; Lion in the same	James Gaspard
Robin Starveling, a tailor; Moonshine in the same	Bill Tobias
Hippolyta, Queen of the Amazons, betrothed to Theseus	Pamela Ross
Hermia, daughter to Egeus, in love with Lysander.....	Susan Doyle
Helena, in love with Demetrius	Dayle Skore
Oberon, King of the Fairies	Tom T. Skore
Titania, Queen of the Fairies	Chris Banholzer
Puck, or Robin Goodfellow	Calvin Ward
Peaseblossom, fairy	Susan Hutton
Cobweb, fairy	Kristan Schmidt
Moth, fairy	Debbie Wilcox
Mustardseed, fairy	Kathy James
Attendant to Theseus	George Brown
Changeling Boy.....	Kierstan Bass

Musicians

Anne Brewster
Lela Dawkins

Nirund Surapak
Lisa M. Venezia

The action occurs in the palace of Duke Theseus and a wood nearby.

A MIDSUMMER NIGHT'S DREAM will be interrupted by one 15 minute intermission.

Story of the Play

Theseus, a noble duke, is about to marry Hippolyta. He commands Philostrate, his Master of Revels, to arrange celebrations.

To Theseus comes Egeus, with his daughter Hermia. She and Lysander are in love, but Egeus favors a rival suitor, Demetrius, as his son-in-law. The Duke orders Hermia either to obey her father's wish or to enter a convent. Instead, Hermia and Lysander decide to elope that night. Demetrius learns of their flight from Helena, who is in love with him but coldly rejected.

Bottom, the Weaver, and his friends meet to prepare a play-the Tragedy of Pyramus and Thisbe-to be performed after the wedding of the Duke and Hippolyta.

Oberon, King of the Fairies, has quarreled with Titania, his Queen, over the possession of a changeling boy, whom Titania refuses to relinquish. Oberon orders Puck to gather a plant whose juice has a magical property: squeezed on the eyes of someone asleep it will cause him to fall in love with the first creature he sees when he wakes up. Oberon uses the juice on Titania; and also tells Puck to use it on Demetrius to reconcile him to Helena and so arrange the pairing-off of the lovers.

But all four lovers are now in the woods, and Puck, mistaking Lysander for Demetrius, squeezes the juice on his eyes. When Lysander wakes up, the first creature he sees is Helena, with whom he promptly falls in love. The situation now, therefore, is that Lysander loves Helena, Helena loves Demetrius, Demetrius loves Hermia, and Hermia loves Lysander, but none of their loves is requited.

Bottom and his friends meet to rehearse their play. Bottom's head is changed by Puck into that of an ass and he is the first creature that Titania sees when she wakes up. Her love for him is rapturous; Oberon is delighted about Titania, but is concerned about the lovers and tells Puck to use the juice again. He does: first on Demetrius, so that both he and Lysander are in love with Helena and the women believe the men are making fun of them; then Puck lifts the spell from Lysander, whose love for Hermia returns, and the four lovers are thus paired-off happily, with the Duke's blessing. The spell is also lifted from Titania, who is appalled at the sight of Bottom and reconciled with Oberon.

Bottom, himself again, rejoins his friends to act their play at the celebration of the Duke's wedding. Hermia and Lysander, and Helena and Demetrius, are also married.

*This production based on the text of the first quarto (1600) as published by **The Pelican Shakespeare.***





Tom and Dayle Skore

Guest Artists

Their special sharing begins at home and extends to the theatre. At home both have special pets: Tom's — a ten year old German Shepherd named Laurie; Dayle's — a former orphan Sheltie names Bridget. Professionally, Tom and Dayle have had the good fortune of working together as guest artists on several college campuses as well as performing together in a number of professional companies throughout the country.

Both teach; both direct; both perform. Finding a special pleasure in sharing their profession, nothing pleases the Skore's more than to be performing in the same production.

"To heighten the romance and magic of A MIDSUMMER NIGHT'S DREAM, we moved the setting to the land of the Arabian Nights: Persia. The court is brightly colored and highly patterned, reflecting the opulence of the Persian world. As we move into the forest, we are transported into the world of dreams: of light and translucence and silvery sound. The fairies are able to gambol freely in the forests, observing the plight of lowly mortals. To move from one world to the other, we abstracted the use of an act curtain, transforming it into the outsize Oriental fans."

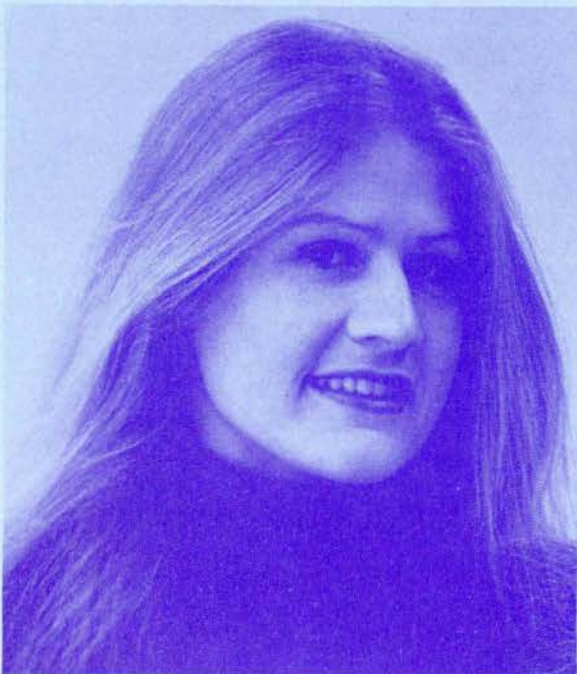
Stephanie Young, Set and Lighting Designer



"The land of Persia was selected as the environment for the production. The romantic fantasy of The Tales of the Arabian Nights with all its colors, textures and scents seemed to provide an appropriate starting place for the costumes. Other specific influences were the designs of Leon Bakst and selected Art Nouveau prints.

The court is a world of brocades, satins, and chiffons; of harem trousers, turbans, and veils. The mechanicals, on the other hand, reflect the rough hewn working-class elements of Persian Society. The fairies become a translucent organic version of the court. These elements were blended together to compliment a story that hovers between dream and reality."

Nancy Hills, Costume Designer



FRIENDS OF THE THEATRE

Persons interested in participating in Lindenwood Theatre's volunteer friends, please call Anne Pals at 946-3666 for more information.

BACKERS & PATRONS OF THE THEATRE

Backers

Dr. & Mrs. Justus P. Kretzmann
Charles Dickherber
Larry and Dorothy Doyle
Ken and Myra Bass
Jim & Ruth Ann McGee

Bonita & Douglas Dillard
Dr. & Mrs. Alfred Schuetz
M. Catherine Hinchey
Mr. & Mrs. Patrick Browne

Marion K. Sullivan
Judy Singleton
Mr. and Mrs. Paul Boswell
Dr. & Mrs. Paul Rother
Lonnie G. Hicks
Carole E. Krahn
T. Donald & Teresa Moore
Merry Sue Schmidt
Donna Sellers

Patrons

William & Suzanne Ferzacca
Mary Ann & Bob Grothe

THE LINDENWOOD COLLEGES ADMISSIONS OFFICE

Welcomes you to the 1980-81 Theatre Productions. For information and assistance in enrolling in academic programs please contact admissions at 946-9612 Ext. 213 or visit our office in Butler Hall.

THEATRE POLICIES

- Ticket Information** Call 724-2004 or 946-6812 Ext. 252 (Toll free from St. Louis). Ticket Office hours are 10:00 a.m. till Curtain on days of performance. Prices are \$4.00, \$5.00, \$6.00. No exchange or refunds on paid single tickets. Season ticket holders may exchange tickets. (See Below)
- School Matinee** Teachers! For any and all matinee information please contact Pam Ross at 946-6912 Ext. 342.
- Subscribers Only** We will be happy to exchange season subscription tickets provided they are returned to the Box Office by 5:00 p.m. on the day before the date on the ticket you wish to exchange. Please call the Ticket Office for specific exchange information.

No smoking, eating, or drinking is allowed in the Jelkyl Theatre at any time.

Refreshments and Souvenirs are available in the main lobby.

No photography or recording equipment allowed in the Theatre during Performance.

Latecomers will be seated at the discretion of the house manager.