



Jan. 26, 2018

Today's Headlines

Updated 2018 Tax Withholding Tables

As you may know, the federal government passed new tax reform legislation last month. This has resulted in new tax tables that will affect employees' paychecks. The new withholding tables have just been released by the IRS and reflect the increase in the standard deduction, repeal of personal exemption and changes in tax rates and brackets. Workday updated the tax tables in the payroll system on Friday, January 19, 2018. This will mean that non-exempt and student workers will notice the changes in tax withholding on their 1/26/18 check. Exempt employees will start off with their January 2018 checks being withheld at the new tax rates.

The new tables are designed to work with the Forms W-4 that workers have already filed with their employers to claim withholding allowances. This will minimize the burden on taxpayers and employers. Employees do not have to do anything at this time. For people with simpler tax situations, the new tables are designed to produce the correct amount of tax withholding. The revisions are also aimed at avoiding over- and under-withholding of tax as much as possible. To help people determine their withholding, the IRS is revising the withholding tax calculator on IRS.gov. The IRS anticipates this calculator should be available by the end of February. Taxpayers are encouraged to use the calculator to adjust their withholding once it is released.

The IRS is also working on revising the Form W-4. The calculator and new Form W-4 can be used by employees who wish to update their withholding in response to the new law or changes in their personal circumstances in 2018, and by workers starting a new job. Until a new Form W-4 is issued, employees and employers should continue to use the 2017 Form W-4.

Lindenwood Mail Security

Protecting our network and the personal information of our students and employees are vital to the successful operation of the University. Lindenwood IT has implemented Lindenwood Email Security, a TrendMicro hosted email security quarantine software designed to identify and block questionable emails. Questionable emails are sent to a personal quarantine inbox. You can access your quarantined emails by selecting the LU Security icon on your desktop. We recommend taking a few minutes to scan the quarantined message to ensure that the Lindenwood Mail Security has not caught legitimate email. We are currently developing security awareness resources; further information will be forthcoming.

Faculty Colloquium Series March 5

The Spring 2018 Faculty Colloquium Series is March 5 from 3-4:30 p.m. in

LARC 343. Please see the [flier](#) and the [abstracts](#) for more information.

Dissertation Defense

Doctoral Candidate: Emilee S. Schnefke

Chairperson: Dr. Lynda Leavitt

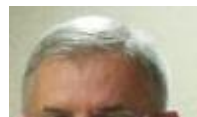
Title: “A Mixed-Methods Study on Emotional and Social Intelligence and Grit in Graduate Students at a Private Four-Year University”

Date: Friday March 9, 2018

Time: 9 a.m.

Place: Roemer 208

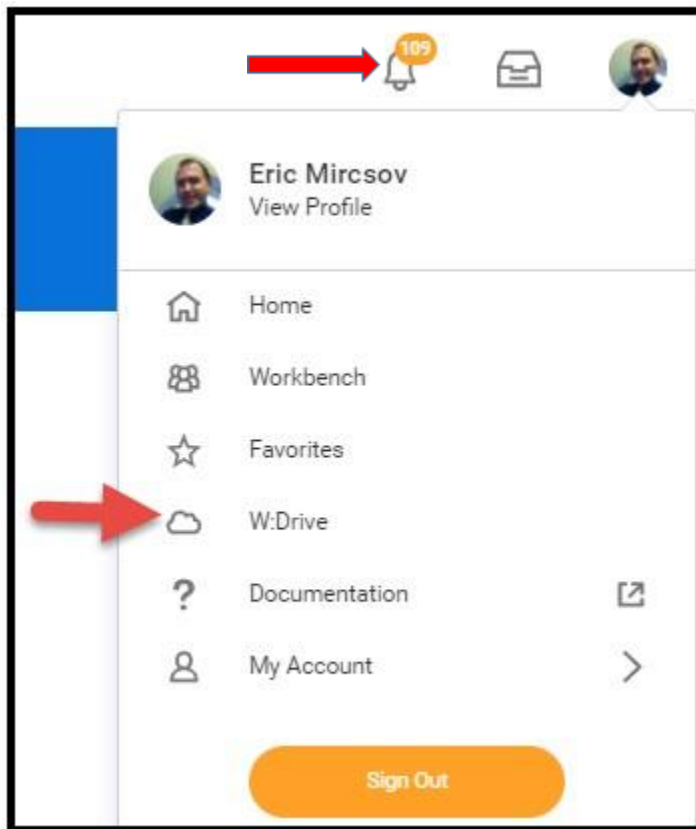
Congratulations!



Roger Ellis, dean in the Plaster School of Business and Entrepreneurship, was recently elected chairman of the St. Charles County Planning and Zoning Commission.

Electronic Versions of the 2017 W-2s Now Available in Workday.

To access your forms, click on the 'Pay' worklet and choose Tax Documents under the My Statements menu. If your form does not automatically pop up after the processing window disappears you can find it on your W:drive in Workday or in your notifications.



Paper copies of the W-2s will be mailed to the home address on file.

If you have any questions please reach out to the payroll office at 636-949-4971.

Recent Editions

[The Digest archive](#)

Events and Deadlines

- **Through Feb. 16:** “Connections” Exhibition, Boyle Family Gallery
- **Through April 4:** [Academic Technology Services Workshops](#)
- **Jan. 27:** [Wynonna and The Big Noise](#) 8 p.m. Lindenwood Theater
- **Feb. 2:** *Entrepreneurial Mindset Event* featuring Professor David Yeung, 1-3 p.m., Dunseth Auditorium
- **Feb. 3:** [Jr. Lynx Spirit Camp](#)
- **Feb. 7:** [Adjunct Instructor Fair \(RSVP\)](#)
- **Feb. 13-17:** [The Cripple of Inishmaan](#)
- **Feb. 16:** [Student Research Conference faculty nomination deadline](#)
- **Feb. 22:** [Career and Internship Fair](#)
- **Feb. 22-24:** [Winter Dance Concert](#)
- **Feb. 24:** [Broadway Live](#)
- **Feb. 27-28:** [Spring Music Series](#)
- **March 3:** [Spring Music Series](#)
- **March 6:** [Spring Music Series](#)
- **March 7:** Wellness Speaker Series: Managing Change, 11 am – noon
- **March 7:** Full Faculty Meeting, AB Leadership Room, 3-4:30 p.m.
- **March 15:** [Deadline for Faculty Award nominations](#)
- **March 20:** [Student Research Conference Submission Deadline](#)
- **April 11:** Wellness Speaker Series: Preventing Job Burnout, 11 am – noon
- **April 25:** Full Faculty Meeting, AB Leadership Room, 3-4:30 p.m.