

LINDENWOOD
DIGEST
CAMPUS NEWS & EVENTS
ST, CHARLES, MO

Today's Headlines

May 3, 2019

Years of Service Awards Available for Pick-up

This week years of service awards were handed out at the all staff and faculty meetings. If you were invited to attend because you achieved one of your benchmark years but were not able to attend, please email Mariah Gove at mgove@lindenwood.edu to receive your pin!

You May be Eligible for Compensation Through The Faculty Student Scholarship Committee

Faculty members who teach a course whose primary purpose is to engage in undergraduate research with a student maybe eligible for compensation through the Faculty Student Scholarship Committee. In order for your course to qualify as a research course, it needs to include the following components: collaboration between student and faculty, grade received for work, originality, level 30000 or above, scalable benchmarks, and some form of presentation or accessibility to the larger campus community. Faculty receive 0.20 hours of deployment, or \$300 per student in such courses. If you believe you are teaching a resource course and it has not already been designated as such, and you are interested in applying for this designation, please contact Mike Ibele at MIbele@lindenwood.edu or Amy Estlund at aestlund@lindenwood.edu

Smooches From Pooches, Plus BBQ! - Join Us May 7!

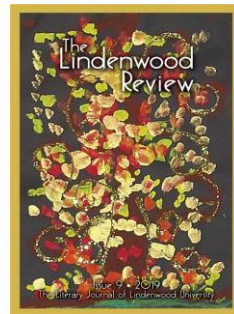
Join us on May 7 from 11 a.m. to 2 p.m. for some smooches from pooches and your favorite barbecue!

A donation of \$5 or more to the APA will give you the opportunity to wear jeans that day, earn Well Bucks, AND have your name entered in a drawing for a wellness prize! Please see the [flyer](#) for more details!

Nagel's BBQ will host this annual event at the Julie Mueller Pavilion on the quad! Click [here](#) for the menu.

The Lindenwood Review Issue 9 - Available Now!

Issue 9 of The Lindenwood Review literary journal is now available. This issue features the Flash Nonfiction Contest winner and honorable mentions, along with fiction, personal essays, and poetry. Faculty and staff who would like a copy can email Beth Mead at bmead@lindenwood.edu. Issue 9 details can be viewed [here](#).



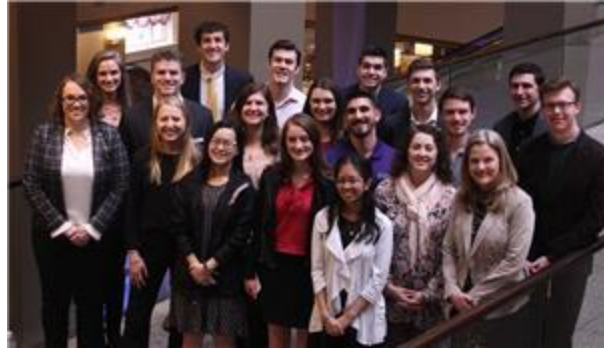
International Festival - May 5



Join Student Involvement and Student Life & Diversity in their Inaugural Spring International Festival. The event is this Sunday, May 5, from 1-5 p.m. on Evans Commons Lawn. There will be student booths, food inspired by various countries, and various performers. To end the afternoon, we will crown the first Mr. and Miss International! If you have any questions, please contact Ethan Miller at EMiller1@lindenwood.edu.

Plaster School of Business Professors Featured at ISI Conference held in Fort Worth

Professors Rachel Ferguson and Tawni Hunt Ferrarini were featured speakers at a conference organized by the Intercollegiate Studies Institute (ISI) in Fort Worth, Texas. The conference, titled “On Markets and Morality,” brought together students from around the country to meet and discuss issues with professors and other students.



Ferguson, a professor of managerial philosophy in the Plaster School of Business and Entrepreneurship and the director of the Hammond Institute’s Liberty & Ethics Center, spoke about “Hume’s Theory of Property Rights: A Classical Liberalism that Embraces our Sociality.” Ferrarini, the Plaster Professor of Economic Education in the Plaster School and the director of the School of Education’s Economic Education Center, spoke on “Government vs. Free Markets: The Battle.”

Ferguson and Ferrarini made such positive impressions that both were invited to speak at a future ISI conference at Princeton University. For more *News and Happenings* from the Hammond Institute for Free Enterprise, visit our [web page](#) or call 636-627-2915.

Dr. Bethany Alden-Rivers Named Associate VP for Institutional Effectiveness



Beginning July 1, 2019, Dr. Bethany Alden-Rivers will assume the role of associate vice president for institutional effectiveness at Lindenwood University in St. Charles, Mo. She will replace Dr. David Wilson, who is retiring at the end of June after five years in the role.

Alden-Rivers is currently associate provost for academic effectiveness and student success at Southeast Missouri State University. She has also served as assistant vice president for teaching and learning at Utah Valley University and as head of learning and teaching development for policy and practice at the University of Northampton in the U.K. and has held a number of other leadership and management positions in higher education going back

to 2002.

“Dr. David Wilson has been key to the establishment of a culture of continuous improvement at Lindenwood,” said Dr. Marilyn Abbott, provost and vice president for academic affairs at Lindenwood. “Dr. Alden-Rivers has a breadth and depth of experience that will be invaluable as we continue on this path.”

Alden-Rivers earned a Ph.D. in student learning, assessment, and performance from the Institute of Educational Technology at The Open University in the U.K. She has lead assessment, teaching and learning, and accreditation efforts at universities in the U.S. and the U.K. She is also a peer reviewer for the Higher Learning Commission.

“I am honored and excited to join the Lindenwood community,” Alden-Rivers said. “There are great things happening with assessment and continuous improvement at Lindenwood, and I am thrilled to join in this work. To join an institution with such a solid focus on institutional effectiveness is a very special opportunity for me.”

Alden-Rivers and her husband, David, have two daughters, Josephine and Ruby.

Staff Administrator Training - May 22 & 23



STAFF ADMINISTRATOR TRAINING

WE WILL REVIEW EVALUATION CYCLES AND CORRECTIVE ACTION PLAN MANAGEMENT.
ALL ADMINISTRATORS ARE ENCOURAGED TO ATTEND ONE OF THE FOLLOWING SESSIONS:

<i>Saint Charles</i>		<i>Belleville</i>
MAY 22ND 9:00 - 10:00 A.M.	MAY 23RD 2:00 - 3:00 P.M.	MAY 28TH 9:00 - 10:00 A.M. & 1:00 - 2:00 P.M.
WHERE: LARC Room 9		WHERE: FEVER CONFERENCE ROOM

Please click here or scan the QR code to RSVP to a training.

Learning Academy
LINDENWOOD UNIVERSITY

Penny Race for Charity

2019 Penny Race

Penny race for charity starts Monday! How far will your change go?

April 29 – May 17



How does it work?

Earn **positive points** for your team by putting pennies in your team's bank.

1 penny = 1 point
10 pennies = 10 points

Sabotage other teams with **negative points** by putting all other coins and paper money in their banks.

1 dollar = -100 points 1 nickel = -5 points

The winning team will receive a pizza party lunch and get to choose the charity from a list of charities!

For more information, Contact Monica Seiter, Staff Council chair, at mseiter@lindenwood.edu or 636-949-4971.

Instructions for the May Commencement Ceremonies

Friday, May 10 - Family Arena

- Gates open at 5:30 p.m.
- Arrive by 6:15 p.m.
- Enter Gate 4 – proceed to the service elevator down one floor to the dock area
- Pick up your name card – proceed to locker room B for the dressing area if needed then go to the line-up area in the lobby. You will stand in line according to the line-up number printed on your name card (top left-hand corner) and the number sign taped to the lobby floor.
- Ceremony will begin at 7 p.m.

Saturday, May 11 - Family Arena

- Gates open at 8:30 a.m.
- Arrive by 9:15 a.m.
- Enter Gate 4 – proceed to the service elevator down one floor to the dock area
- Pick up your name card – proceed to locker room B for the dressing area if needed then go to the line-up area in the lobby. You will stand in line according to the line-up number printed on your name card (top left-hand corner) and the

number sign taped to the lobby floor.
-Ceremony will begin at 10 a.m.

Saturday, May 11 - Family Arena

-Gates open at 1:30 p.m.
-Arrive by 2:15 p.m.
-Enter Gate 4 – proceed to the service elevator down one floor to the dock area
-Pick up your name card – proceed to locker room B for the dressing area if needed then go to the line-up area in the lobby. You will stand in line according to the line-up number printed on your name card (top left-hand corner) and the number sign taped to the lobby floor.
-Ceremony will begin at 3 p.m.

Learning Academy - Upcoming Workshops

Learning Academy


LINDENWOOD UNIVERSITY

May 3 - May 16

- May 3 • WOW! Podcast with Dr. Lauren McCoy
- May 7 • Pooches at the Pavilion
• Operations Q2
• Library & Writing Center Q2
- May 14 • Operations Block 1 Q2
- May 15 • Operations Block 2 Q2
- May 16 • Fiscal Affairs Q2
• Health Sciences Q2
• Humanities Q2
• Belleville Faculty Q2

Learning Communities

- Whistling Vivaldi – Stephanie Afful
- Service Learning – Julie Turner
- Technology in Teaching – Brittany Weiss



[Click here for more information & to RSVP](#)

Due Date for Final Grades

The deadline for full-length spring semester, second half semester, and spring MBA II final grades to be entered into canvas is May 14 at 5 p.m. IT will pull the grades from canvas and upload into cams on May 15. Please enter all special grades (AH, I, N or AF) in your faculty portals by the May 14 deadline. The attachment explains how to enter special grades into faculty portals.

Definitions of Special Grades:

AF: This grade is given when a student stops attending a particular class prior to the published deadline (March 29 for full-length and April 22 for second half and MBA II) to receive a grade of W but does not withdraw from the course. The grade of AF is treated as a grade of F in the calculation of the students grade point average.

N: A grade of N is assigned when a student appears on the roster but NEVER attended the course. Students should receive a never attend grade if they do not complete any assignments for online courses. Once verified, the course will be dropped from the record and will not be listed on the student's transcript.

I: A grade of I (incomplete) is given at the end of a term for incomplete coursework due to exceptional circumstances beyond the student's control, such as an extended illness, hospitalization, or death of a close relative requiring absence from a class for a significant period of time. When assigning an incomplete grade, the professor should consider whether the student is capable of successfully completing the course. Incompletes should be offered only toward the end of the term for students who are, at the time, successfully completing the coursework.

A grade of I (incomplete) must be resolved prior to the end of the subsequent term; otherwise, the incomplete automatically becomes an F. Any request to extend the time needed to resolve the grade of incomplete must be submitted to the office of academic services no later than two weeks before the date the grade is due. Requests will then be sent to the appropriate school dean and the associate provost to be considered for approval.

See the special grade flow chart [here](#).
See [instructions](#) for entering special grades.

Adjunct Instructor Conference - May 31



Assessment Tip of the Week

Closing the Loop: An Example from the Belleville Campus
(May 3, 2019)

Guest Contributor: Dr. Scott Shreve, Associate Professor of Biology-Belleville

Part of the mission of Lindenwood University is to enhance the future lives of students through “professional preparatory experiences”. Dr. Lindy Rossow and Dr. Chris Fahs of the Exercise Science program at the Belleville campus realized that they were getting a lot of students in their offices asking about career options with a degree in exercise science. When they put together a new assessment plan, the first program learning outcome they listed was that their students would demonstrate readiness for their first jobs in the field, and demonstrate a knowledge of exercise science career options. To support this learning outcome, they structured the Foundations in Exercise Science course to include on a near weekly basis outside speakers to talk with the class about different career options in the exercise science field. The speakers have included physical therapists, occupational therapists, chiropractors, personal trainers, and gym owners.

To assess student learning in this area, they ask students in the Foundations class to rate their knowledge of the exercise science-related careers. They also ask the same question to senior students in the required internship class. As a result of the focus on showing students concrete examples of exercise science degrees in action, 91% of students in the Foundations course rated their knowledge of exercise science-related careers as “excellent”. By the senior year, all internship students rated their knowledge as “excellent”. Through the exercise science program, students now see the possible range of professional

experiences as they begin the major, and by the time they graduate, they have had professional preparatory experiences of their own.

Questions? Contact SShreve@lindenwood.edu or x6046.

Assessment Tips of the Week are archived on the Assessment Website – see the homepage of the Website at www.lindenwood.edu/assessment)

David Wilson
Chief Assessment Officer
(636) 949-4737 DWilson@lindenwood.edu
Memorial Arts Building 102

Summer Hours - Beginning May 11

Evans Commons Rec Center & Third Floor Track Summer Hours

Weekdays 8:00 A.M.—5:00 P.M.

Weekends CLOSED

*All guests will be asked to leave the facility 15 minutes prior to the scheduled closing.

-Campus Recreation Staff

LINDENWOOD
REAL EXPERIENCE. REAL SUCCESS.

LINDENWOOD UNIVERSITY
CAMPUS
RECREATION



Finals Week Hours

Evans Commons Rec Center & Third Floor Track Finals Week Hours

May 4-5 (Saturday-Sunday)	10:00 A.M.-10:00 P.M.
May 6-10 (Monday-Friday)	7:00 A.M.-9:00 P.M.
May 11-12 (Saturday-Sunday)	CLOSED

*All guests will be asked to leave the facility 15 minutes prior to the scheduled closing.

-Campus Recreation Staff

LINDENWOOD
REAL EXPERIENCE. REAL SUCCESS.

LINDENWOOD UNIVERSITY
CAMPUS
RECREATION

SPECIAL LIBRARY HOURS FOR FINALS!
April 28 - May 9

Sunday	2:00 p.m. - 2:00 a.m.
Monday through Thursday	7:30 a.m. - 2:00 a.m.
Friday	7:30 a.m. - 8:00 p.m.
Saturday	9:30 a.m. - 10:00 p.m.

The Media Center and Gaming Lab will still close at midnight.
The classrooms will close at 10:30 p.m. Monday - Thursday.

FINALS
WE'LL BE THERE FOR YOU

Upcoming Events and Deadlines

- May 10-11 - [Graduate and Undergraduate Commencement](#)
-

- May 15 - Assessment Summit "Engaging Students, Present and Future"
Scheidt Center, 9 a.m.
-

- May 15-17 - Assessment Days
-

- May 23 - Deadline for Nominations - Assessment Champion Awards, 2018-2019,
[submit nominations](#) to JBergmann@lindenwood.edu
-

- June 15 - Annual Assessment reports due from all academic programs, co-curricular programs, and administrative units
-

[See the full list of upcoming events](#)

Submit Information to the Digest

To have your listing appear in the Digest, email your submission to LUDigest@lindenwood.edu by noon on the day prior to send-out. The Digest is sent every Tuesday and Friday morning. Information submitted past the deadline may not be included in that edition but will appear in the following one. Please note, all entries to the Digest are subject to editing prior to running.

209 S. Kingshighway
St. Charles, MO 63301

To learn why you received this and how to remove yourself from the list, see [Privacy Policy](#)
[Review / edit information about you](#) | [Unsubscribe](#)



Generated by

[Learn more](#)