

LINDENWOOD

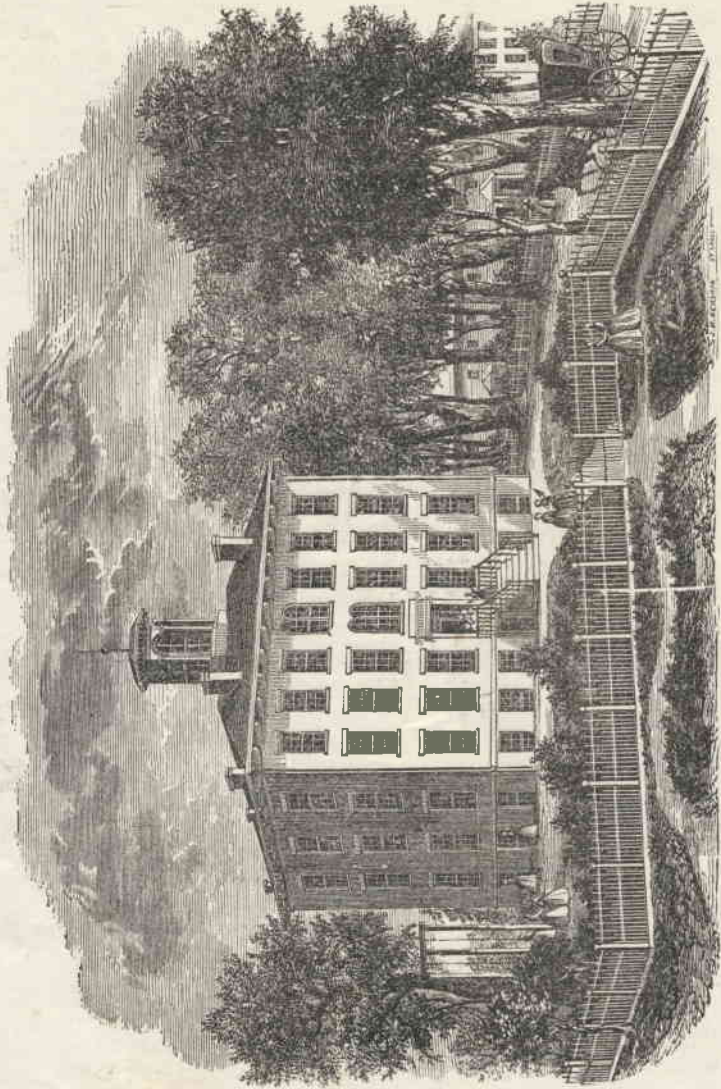
FEMALE COLLEGE,

Saint Charles, Missouri.

—♦♦—
UNDER THE CARE OF THE PRESBYTERY OF ST. LOUIS.
—♦♦—

CALENDAR, SESSION OF 1864-5.

September 21st - 24th, Examination and classification of new students.
September 27th, Regular recitations begin.
December 23d - January 2d, Christmas recess.
January 30th, Semi-annual examination.
February 6th, Second Term begins.
April 20th - 20th, Spring recess.
June 18th - 22d, Annual examination and closing exercises.



LINDENWOOD FEMALE COLLEGE.

Board of Directors.

S. S. WATSON, - - - - -	PRESIDENT.
J. H. ALEXANDER, - - - - -	SECRETARY.
B. A. ALDERSON, - - - - -	TREASURER.
REV. S. J. P. ANDERSON, D. D.,	REV. J. A. PAIGE,
REV. S. B. MCPHEETERS, D. D.,	REV. J. F. FENTON,
REV. J. H. BROOKES,	REV. N. W. CALHOON,
REV. R. P. FARRIS,	HON. ARCHIBALD GAMBLE,
J. J. JOHNS,	HON. JUDGE A. KING,
WILLIAM P. GIBBS,	ROBERT H. PARKS.

* Faculty.

THOMAS P. BARBOUR, A. M., PRESIDENT.
MISS MARY PROVINCES, A. B.,
MISS ASENATH P. WALDO, A. M.,
MISS BELLE WALDO,
MISS M. LOUISE ATWOOD,
MRS. J. R. BARBOUR.

*Three vacancies have yet to be filled.

Course of Study.

Elocution — Wilson's Series of Readers; Kidd's Elocution.

Rhetoric and Criticism — Boyd's Elements; Kames' Elements of Criticism; "Task;" "Night Thoughts;" "Seasons;" "Spectator;" Shakspeare; "Paradise Lost;" Selections from English Classics.

Geography — Cornell's Primary, Intermediate and Grammar School; Eschenburg's Classical; Guyot's Earth and Man.

History — Parley's Common School; — Rome; Students' Rome; Student's Greece; Lord's Modern; Guizot's Civilization; Schlegel's Literature.

Mathematics — Colburn's Intellectual; Colburn's Applications; Loomis' Algebra; Geometry; Conic Sections; Trigonometry and Surveying.

Natural Sciences — Well's Philosophy; Well's Chemistry; Gray's "How Plants Grow," and "Lessons;" Hooker's Physiology; Chamber's Zoology; Hitchcock's Geology; Herschel's Astronomy.

Metaphysics — Hedge's Logic; Alexander's Moral Science; Haven's Intellectual Philosophy.

English Language — Kerl's Elementary and Comprehensive Grammars; Spalding's English Literature.

Latin Language — Bullion's Grammar; Cæsar; Brooke's Ovid; Virgil; Cicero; Tacitus; De Arte Poetica.

Greek Language — Bullion's Grammar; Anabasis; Memorabilia; Herodotus; Pastoral Poets; Homer; New Testament.

French Language — Fasquelle's Grammar and Reader; Telemaque; Picciola; Corinne; Racine; Moliere.

German Language — Woodbury's Grammar and Reader; Schiller; Goethe.

Sabbath Course — Bible; Nevin's Antiquities; Coleman's Atlas; Kitto's Palestine; Pearson's Infidelity; Buchanan's Atheism; Alexander's Evidences; Tulloch's Theism; Wharey's Church History.

Orthography and Penmanship are pursued till the close of the Preparatory Course.

The above course of study is designed to afford a thorough, liberal, and accomplished Christian education. The standard, though high, is not above the attainment of any intelligent and industrious student; nor has it embraced more than is requisite to the thorough and liberal education of Woman. That she is incapable of a comprehensive and substantial education, is a notion long since exploded. While all cannot attain it, there are those to whom such an opportunity is a privilege and a triumph. For them we would throw wide open the door of knowledge.

Organization.

The plan of the College embraces four departments: Primary, Preparatory, Collegiate, and Fine Arts.

The Primary and Preparatory departments include two classes each; the Collegiate, four. Each class will ordinarily require one year.

The department of Fine Arts, embracing classes in vocal and instrumental music, drawing, painting in oil, water colors and crayon, and needle-work, plain and ornamental, is not restricted as to time—students entering the classes and progressing according to proficiency.

Distinctions.

Three certificates of distinction are awarded to each class for the three highest grades of general scholarship; and one each for the highest grade in Department, Punctuality, and Composition.

The distinctions for general scholarship were awarded at the close of the last session, to the following young ladies, viz:

- 1st Distinction* — Miss DELIA A. GIBBS*, St. Charles.
 “ CLEM. COLE†, Chester, Ills.,
 “ IVANORA JOHNSON‡, Collinsville, Ills.,
 “ ANGIE FARRIS||, St. Charles,
 “ MARY POORIE||, “
 “ KATE VENABLE||, “
- 2d Distinction* — Miss MARY C. FERGUSON*, St. Charles,
 “ ALICE E. BOALL*, “
 “ CARRIE L. APPERSON†, Louisville, Ky.,
 “ LIZZIE JOHNS†, St. Charles,
 “ MISSOURI POST||, St. Louis Co., Mo.,
 “ BERTHA GATZWEILER||, St. Charles.
- 3d Distinction* — Miss JOSIE PROVINES*, St. Charles,
 “ MARY E. DAVIS†, Pike Co., Mo.,
 “ KATE L. JAMISON‡, St. Charles,
 “ FANNIE STUART||, “
 “ SOPHIA BORGHMAN||, “

Degrees.

LINDENWOOD COLLEGE confers upon its graduates two honorary degrees: Mistress of English Literature, and Mistress of Arts. The former is conferred upon those completing the course, exclusive of the Languages; the latter upon those completing the full course.

* Sophomore Class. † Freshman Class. ‡ Sub-Freshman Class. || Third Class.

Conditions of Admission.

Students having matriculated are in all cases required to remain till the close of the session; and in case of withdrawal, no deduction will be made for the unexpired term, protracted illness excepted, unless there has been a special contract to that effect at the time of matriculation.

No student's name will appear upon the roll, nor she be admitted to any recitation till all her bills are arranged.

Young ladies are allowed two correspondents beside their immediate families, both of whom must be chosen with the approbation of the parents. Parents in addressing their daughters will please endorse their names upon the envelope.

Boarding pupils are required to furnish napkins, napkin ring and towels; a pair each of sheets and slips; a comfort, or pair of blankets; an umbrella, and a pair of high overshoes; all of which must be legibly marked with the owner's name.

Location, &c.

The College is located in the suburbs of the city of St. Charles — one hour's ride from St. Louis, and connected by river and rail with all parts of the State. The grounds are spacious, and, in natural beauty, are hardly surpassed in the West. A more charming or refreshing retreat can hardly be found, than the cool, shady recesses of their Linden groves. In point of health and accessibility, it is almost unequaled.

The building, a large and commodious edifice, is refitting for the ensuing session, and will afford accommodations for about sixty boarders.

Discipline.

Appealing to the higher instincts of our nature, and the plain teachings of God's word, we shall endeavor to excite our pupils to the discharge of all their duties, by all those motives that should influence us as rational and responsible beings. Should any pupil be found insensible to such discipline, she will be required to withdraw from the institution. Prompt and cheerful obedience to every regulation will be rigidly exacted.

Expenses.—Boarding Pupils.

Tuition and Board (including furnished room, fuel, washing and lights,) per Collegiate year.....	\$240 00
Instruction on Piano, with use of Instrument	60 00
Lessons in Drawing.....	30 00
“ Painting—water colors	30 00
“ “ oil	50 00
Instruction in Embroidery	20 00

Tuition.—Day Pupils.

Tuition, Collegiate Department, per year.....	\$60 00
“ Sub-Freshman Class.....	50 00
“ Third Class	40 00
“ Other Class	30 00
Ornamental Branches.....	as above.

Books, stationery, music, drawing and painting materials will be furnished at the College, at St. Louis prices, *for cash*.

Bills payable, one-half in advance, balance 1st of February.

A deduction of ten per cent. will be made where the whole amount is paid at time of entering.