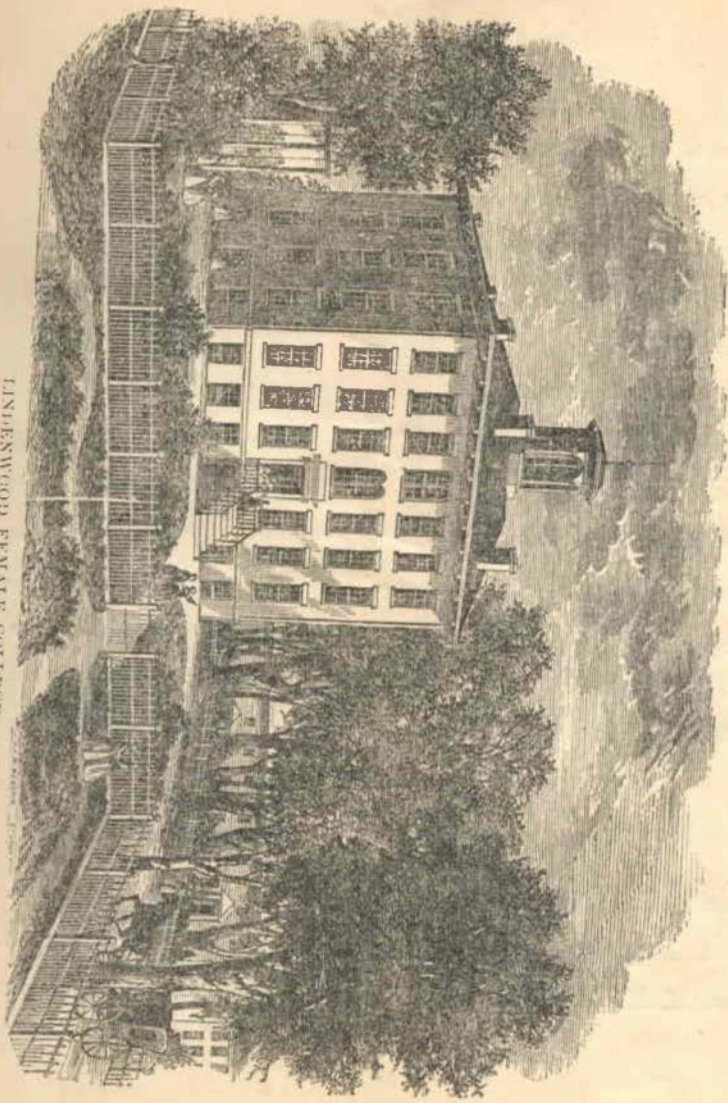


Lindenwood Female College,

©.1871.©

SAINT CHARLES, MO.

LINCOLNWOOD FEMALE COLLEGE.



SPENCER, PRINTER, 120 MARKET STREET, ST. LOUIS, MO.

BOARD OF DIRECTORS.

HON. S. S. WATSON,	St. Charles, Mo.
REV. S. J. NICCOLLS, D. D.,	St. Louis, Mo.
REV. CHAS. A. DICKEY,	St. Louis, Mo.
B. A. ALDERSON,	St. Charles, Mo.
N. REED,	St. Charles, Mo.
REV. J. R. WARNER,	Kirkwood, Mo.
DAVID KEITH,	St. Louis, Mo.
REV. ROBT. IRWIN,	Kansas City, Mo.
REV. H. H. ALLEN,	St. Charles, Mo.
JNO. ORRICK,	St. Charles, Mo.
Dr. D. W. FERGUSON,	St. Charles, Mo.
J. J. JOHNS,	St. Charles, Mo.
WILLIAM GIBBS,	St. Charles, Mo.

OFFICERS OF THE BOARD.

HON. S. S. WATSON,	PRESIDENT.
B. A. ALDERSON, Esq.,	TREASURER.
REV. H. H. ALLEN,	SECRETARY.

FACULTY.

President,
AND PROFESSOR OF MENTAL AND MORAL SCIENCE.

REV. D. A. WILSON, Vice President,
AND PROFESSOR OF ANCIENT LANGUAGES AND LITERATURE.

LADY PRINCIPAL.

PROFESSOR OF MATHEMATICS.

ASSISTANT TEACHER OF MATHEMATICS.

MISS MARTHA D. DOLE,
PROFESSOR OF NATURAL SCIENCE.

PROFESSOR OF ENGLISH LANGUAGE AND LITERATURE.

MISS MARY W. SNYDER,
ASSISTANT TEACHER OF ENGLISH LANGUAGE AND LITERATURE, AND HISTORY.

PROFESSOR OF MODERN LANGUAGES.

MISS FRANCIS M. ALVORD,
PRINCIPAL OF MUSICAL DEPARTMENT.

TEACHER OF MUSIC.

TEACHER OF PAINTING, DRAWING AND NEEDLE-WORK.

REV. CHAS. A. DICKEY,
LECTURER ON EVIDENCES OF CHRISTIANITY.

REV. S. J. NICCOLLS, D. D.,
LECTURER ON SOCIAL SCIENCE.

REV. J. R. WARNER,
LECTURER ON ANCIENT HISTORY.

REV. H. H. ALLEN,
LECTURER ON BIBLICAL GEOGRAPHY AND ANTIQUITIES.

A. T. BUCHANAN, A. M. *M. D.*
LECTURER ON PHYSIOLOGY AND HYGIENE.

PRINCIPAL OF PRIMARY DEPARTMENT.

MRS. ANNA P. KEITH,
MATRON.

LINDENWOOD FEMALE COLLEGE,

Founded by the generous gift of the late GEORGE C. SIBLEY and his wife, Mrs. MARY EASTON SIBLEY, and now under the care of the Synod of Missouri, is designed to furnish to young women a thorough and well-proportioned Christian education. Its aim is to give to women a complete and liberal culture, and so to fit her eminently for her appropriate and important duties in the Family, the Church, the School, the Social Circle, and the pursuits of Literature and Art to which her tastes and circumstances may incline her. In accomplishing this object, it offers many and great advantages in its location, grounds, buildings, Boarding Department, Faculty, Course of Instruction and Endowment.

ITS LOCATION

Is just without the limits of the City of St. Charles, near the confluence of the Missouri and Mississippi, and within an hour by rail of St. Louis, the great City of the West. Thus situated, it is at once retired and easy of access, by river and rail, from every direction. The locality, also in respect of health is all that could be desired.

THE GROUNDS,

Embracing upwards of twenty acres, crown the high lands overlooking both rivers, and command a prospect varied and beautiful. Ample for purposes of recreation, they are equally adapted to refine the taste.

THE BUILDINGS

Are large and commodious, heated by furnaces and lighted with gas, and have recently been put in thorough repair. The rooms are unusually large and well ventilated, and newly furnished in keeping with the appointments and aims of the College. An additional Hall is now in process of erection.

THE BOARDING DEPARTMENT

Is independent of any private interest, and is provided with a diet generous in quantity and quality, under the direction of an efficient and accomplished matron. Vegetables and fruits in variety and abundance, produced on the grounds, are furnished in their season fresh and without stint, as in a thrifty and well-ordered country home.

THE COURSE OF INSTRUCTION

Is broad, systematic and thorough, embracing in due proportion that which strengthens and adorns. Conservative of the tried and time-honored methods of the past, it seeks at the same time to keep step with the progress of the present. Elementary studies must be thoroughly mastered as a condition precedent to the taking up of the more advanced. In the higher branches of art and science, rigorous adherence to any particular routine of study is not required, due regard being paid to the aptitudes, ages, objects and circumstances of the pupil. In this way, all are kept fully occupied; while none are hurried and none hindered.

THE FACULTY,

At present, as will be observed in the schedule, is not full. It will be enlarged, however, by the beginning of the next school-year; and be increased from time to time as fast and as far as the aims proposed for the College may require.

ENDOWMENT.

In order to secure a large and able Faculty, and to release the tuition in the various departments from dependence upon the pupils, as well as to bring the rates within the means of a greater number, the College is now in the successful progress of endowment. For this fund upwards of \$40,000 have already been secured, and it is proposed to increase it immediately to at least \$100,000. With the income of this amount judiciously invested to supplement the the ordinary receipts from board and tuition, it is the hope of the directors soon to realize the object contemplated by the College.

DEPARTMENTS.

The College embraces three Departments—Primary, Preparatory and Collegiate.

THE PRIMARY DEPARTMENT

Is designed for the accommodation of local patrons and embraces the rudimentary studies of an English education, Reading, Writing, Geography, Arithmetic and Vocal culture.

PREPARATORY DEPARTMENT.

Candidates for admission to this Department are required to possess such acquaintance with elementary studies as to enable them, ordinarily, to complete the course in one year.

THE COLLEGIATE DEPARTMENT

Embraces two Courses—the Classical and the Scientific, between which the pupils, or their parents or guardians may choose. Either Course, it is believed, will secure favorable results; but provision is made that any one desiring it may have the full benefit of both in a Post-graduate Course. Art Studies, not embraced in the regular Course, may be pursued simultaneously, as far as consistent with the ability and taste of the pupil.

COURSES OF STUDY.

PREPARATORY COURSE.

FIRST SESSION.

READING AND VOCAL EXERCISES.
ARITHMETIC, (complete.)
ENGLISH GRAMMAR.
HISTORY.
LATIN, (begun.)
COMPOSITION.

SECOND SESSION.

ENGLISH GRAMMAR, (completed.)
PHYSICAL GEOGRAPHY.
ALGEBRA, (begun.)
HISTORY.
LATIN.
COMPOSITION.

COLLEGE COURSE.

CLASSICAL COURSE.

Freshman Year.

FIRST SESSION.

LATIN.
GREEK.
ALGEBRA, (completed.)
ANCIENT AND BIBLICAL GEOGRAPHY.
OUTLINES OF GENERAL HISTORY.
COMPOSITION.

SECOND SESSION.

LATIN.
GREEK.
GEOMETRY.
ENGLISH—Exercises in Grammatical Analysis.

Sophomore Year.

FIRST SESSION.

LATIN.
GREEK.
TRIGONOMETRY.
ENGLISH—Rhetoric; Composition.

SECOND SESSION.

LATIN.
GREEK.
ANALYTICAL GEOMETRY and CALCULUS.
ENGLISH—Exercises in Etymology and Synonyms; Composition.

SCIENTIFIC COURSE.

Freshman Year.

FIRST SESSION.

FRENCH.
GERMAN.
ALGEBRA, (completed.)
ANCIENT AND BIBLICAL GEOGRAPHY.
OUTLINES OF GENERAL HISTORY.
COMPOSITION.

SECOND SESSION.

FRENCH.
GERMAN.
GEOMETRY.
BOTANY.
ENGLISH—Exercises in Analysis.

Sophomore Year.

FIRST SESSION.

FRENCH.
GERMAN.
TRIGONOMETRY.
GEOLOGY AND MINERALOGY.
ENGLISH—Rhetoric; Composition.

SECOND SESSION.

FRENCH.
GERMAN.
ANALYTICAL GEOMETRY and CALCULUS.
ZOOLOGY.
ENGLISH—Exercises in Etymology and Synonyms; Composition.

COURSE OF STUDY—Continued.

CLASSICAL COURSE.

*Junior Year.

FIRST SESSION.

LATIN.
GREEK OR FRENCH.
NATURAL PHILOSOPHY.
GEOLOGY.
LOGIC AND POLITICAL ECONOMY.
ENGLISH—Lectures on History of the English Language.

*In the Junior and Senior Years, each student will elect, subject to the approval of the Faculty, such studies laid down, as she may be able to pursue with profit. The Studies omitted may be taken up in a Post-graduate Course.

SECOND SESSION.

LATIN.
GREEK, OR FRENCH.
NATURAL PHILOSOPHY, (completed.)
PHYSIOLOGY.
PHYSICAL GEOGRAPHY, (Lectures.)
ENGLISH LITERATURE.

FIRST SESSION.

GREEK, OR FRENCH.
MENTAL PHILOSOPHY.
CHEMISTRY.
ASTRONOMY, (begun.)
ANATOMY.
BUTLER'S ANALYSIS.
EVIDENCES OF CHRISTIANITY, (Lectures.)

SECOND SESSION.

MORAL PHILOSOPHY.
ASTRONOMY, (completed.)
CRITICISM.
LANGUAGES—Latin, Greek and French.
SOCIAL SCIENCE, (Lectures.)

SCIENTIFIC COURSE.

*Junior Year.

FIRST SESSION.

FRENCH.
GERMAN.
NATURAL PHILOSOPHY.
ASTRONOMY.
LOGIC AND POLITICAL ECONOMY.
ENGLISH—Lectures on History of the English Language.

SECOND SESSION.

FRENCH.
GERMAN.
NATURAL PHILOSOPHY.
ASTRONOMY, (completed.)
ANATOMY.
ENGLISH LITERATURE.

SENIOR YEAR.

FIRST SESSION.

MENTAL PHILOSOPHY.
CHEMISTRY.
ASTRONOMY, (Pierce's Spherical, begun.)
BUTLER'S ANALOGY.
EVIDENCES OF CHRISTIANITY, (Lectures.)

SECOND SESSION.

MORAL PHILOSOPHY.
ASTRONOMY, (Pierce's Spherical, completed.)
CRITICISM.
LANGUAGES—German or French.
SOCIAL SCIENCE, (Lectures.)

EXTRA-COLLEGIATE, OR ART STUDIES.

In addition to the regular Course, as given above, ample provision is made for instructions in Instrumental and Vocal Music, Drawing and Painting, and Fancy Needle-work.

THE COLLEGE FAMILY

Is under the direction of the Lady Principal, aided by the resident lady teachers, and under the supervision of the President. The Lady Principal is charged with the duty of receiving students on their first arrival, of assigning them rooms and room-mates, and of exercising a general maternal supervision over their personal habits, manners and moral welfare.

THE GOVERNMENT

Will be conformed to that of the Christian family, in which, under the teachings of the Bible, the conscience will be made to regulate the conduct. A sense of Christian propriety, courtesy and habits of self control will be cultivated, as the best elements of character and preparation for the duties and trials of after-life.

THE ACADEMIC YEAR

Contains forty weeks, beginning in the early part of September, and closing about the middle of June. A short recess occurs at the winter holidays.

CALENDAR, 1871—72.

CLOSING EXERCISES,	- - - - -	June 28th.
COLLEGE OPENS,	- - - - -	Sept. 12th.
WINTER HOLIDAYS BEGIN,	- - - - -	Dec. 23d.
“ “ END,	- - - - -	Jan. 2d.
FIRST SESSION ENDS,	- - - - -	Feb. 14th.
SECOND “ BEGINS,	- - - - -	Feb. 15th.
CLOSING EXERCISES,	- - - - -	June 16th.
COLLEGE OPENS,	- - - - -	Sept. 13th.

EXPENSES.

BOARDING, per session, (including fuel and light,)	\$100 00.
TUITION, per session, Primary Department,	15 00.
“ “ (when not on Scholarship) Prep. Dep.	20 00.
“ “ “ “ Fresh. Yr.	22 50.
“ “ “ “ Soph. Yr.	25 00.
“ “ “ “ Jun. Yr.	30 00.
“ “ “ “ Sen. Yr.	32 50.

EXTRA-COLLEGIATE, OR ART STUDIES.

PIANO, (with use of instrument,) per session,	- \$30 00.
PRIVATE LESSONS IN VOCAL MUSIC,	“ - 25 00.
DRAWING AND CRAYON, (each,)	“ - 15 00.
PAINING, (Water Colors,)	“ - 25 00.
“ (Oil,)	“ - 25 00.
WASHING, per doz.	“ - 75.

No extra charge for ancient and modern Languages. All bills are payable, one-half in advance, and the balance at the close of each session.

No pupil will be received for less than one term, and no deductions will be made for absence or withdrawal before the close of the term, except in case of sickness.

Towels, napkins, napkin ring, fork and spoon are to be furnished by each pupil. Each young lady should come provided with an umbrella and overshoes. All articles of clothing should be carefully marked with the owner's name in full.

The Institution will offer favorable terms to the daughters of ministers.

CORRESPONDENCE.

For further information, letters may be addressed to

Rev. D. A. WILSON,

Vice President and Resident Professor.

