

Mock Political Convention Convenes Here April 7



LINDEN BARK

VOLUME 40

LINDENWOOD COLLEGE, ST. CHARLES, MO., THURSDAY, MARCH 24, 1960

NUMBER 10

GROUND BROKEN FOR NEW DORMITORY

Political Clubs Ready Campus For Convention

Young Republicans and Democrats from political clubs all over the United States will mass on campus Apr. 7-9 for Lindenwood's fourth mock convention.

Delegates from ten states, totaling 100, will represent ten colleges. Invitations went out to colleges in November and by last week mail was flowing heavily with many colleges indicating they would send representatives. It is expected that through the coming weeks more colleges will notify Lindenwood of their intention to send delegates.

College delegates of both parties will hear keynote speeches by Richard Bolling, Democratic congressman from Kansas City, and George Abbott, Republican chief councilman for the Department of the Interior. Their addresses are scheduled for Saturday morning, Apr. 9.

Registration begins in Roemer Hall at 10 a.m. Thursday, Apr. 7. After showing credentials the delegates will proceed to their party headquarters to receive meal tickets, lodging notices, name tags, and information about the convention. The general session for both Democrats and Republicans begins at 4 p.m. the same day.

Party Headquarters for the Democrats are in the Library Club Room which will be decorated in traditional red, white, and blue. Sibley Club Room. Party Headquarters for Republicans will also undergo extensive decorating.

The convention, which will be run as nearly like a national political convention as possible, will be presided over by the presidents of Young Republicans and Young Democrats on campus, until a permanent chairman is chosen by colleges' delegates. Carole Elam heads Young Democrats, Judy Winburn, Young Republicans. Elections will probably take place at the first combined meeting of each party.

Calls to order, election of permanent officers, election of committees, committee reports, and nomination of candidates for national president and vice president will fill other convention time.

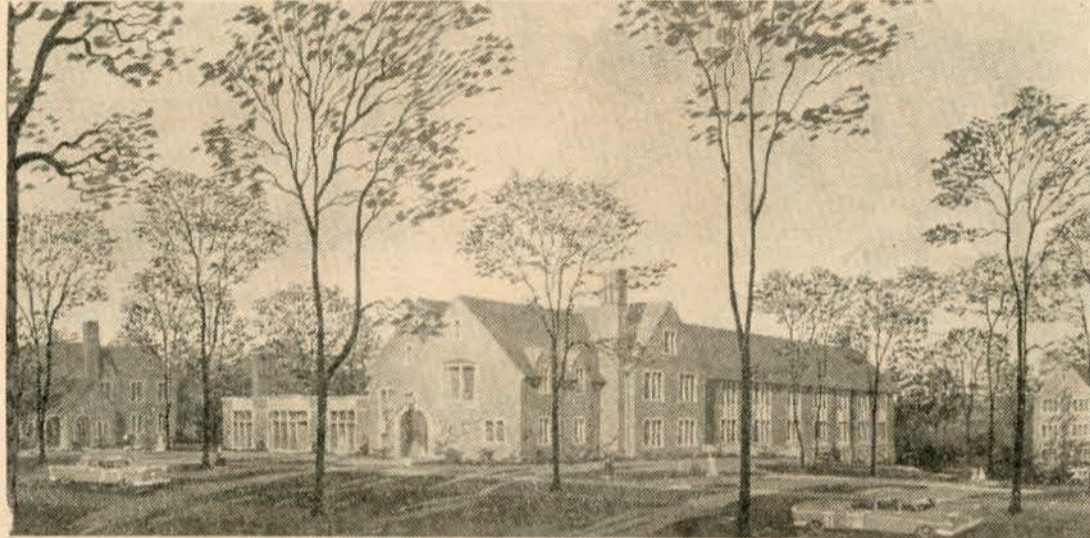
Each college may send five voting delegates to the convention. The number of votes to which a dele-

(Continued on page 3)

'Gridiron' Scheduled To Be Staged April 12

"Gridiron," Press Club's annual take-off on faculty and administration, will be presented on Tuesday, Apr. 12 at 8:15 p.m. in Roemer Auditorium.

The "Gridiron" is written annually by members of the Press Club. The cast will be composed of Lindenwood students selected by the writing committee, headed by Gay Pauly.



McCluer Hall

Residence Hall, Ready in 1961, Will House 88

Groundbreaking and construction of Lindenwood's new dormitory, McCluer Hall, has begun, Board President Howard I. Coung announced.

At a Mar. 5 meeting, the Board of Directors authorized a St. Louis firm to proceed immediately with the construction of a residence hall which will house 88 students.

Located in a grove of trees northeast of Irwin Hall facing Butler Way, across from the Health Center, the dormitory will be styled along the same general lines of buildings already constructed on the campus. The floor plan will be similar to that of Irwin and Cobbs Halls. The new building is expected to be ready for occupancy in the fall of 1961.

Named for McCluers

A motion was enthusiastically and unanimously adopted by the Board of Directors last October to name the new dormitory McCluer Hall, "in recognition of the distinguished service which President and Mrs. Franc L. McCluer have given and are giving the College."

For several months members of a Long Range Planning Committee have been giving consideration to the development of Lindenwood for the next quarter-century and beyond. The committee consists of 21 members from the faculty, administration, Board of Directors and the past and present presidents of the Alumnae Association. After discussions last winter, they agreed on the following:

1. That the character of the College as a Christian institution, as a liberal arts college, and as a relatively small college should be maintained.
2. That in some areas, such as education, religious education, radio and television, home

(Continued on page 6)

75 Students Begin Change On Constitution

Approximately 75 delegates met last Tuesday to begin a revision of Lindenwood's constitution, stated Joan Meyer, acting president of the student body.

The revision will be done on a workshop or convention idea in order to get good representation from the entire campus. Terry Ross and Marilyn Moes will act as committee co-chairmen for the convention.

The revised constitution will be completed before the end of the school year. When written and amended properly, it shall be read to the student body and will then be voted upon.

Dr. Homer Clevenger, chairman of the history and government department, will act as parliamentarian for the convention. Both Dr. Clevenger and Dr. Franc L. McCluer are registered parliamentarians, having served previously in similar capacities. Dr. Clevenger will advise the delegates on parliamentary procedure.

Delegates include presidents of campus organizations, Student Council members, representatives from each dormitory, house presidents, and class presidents. Dormitory delegates were elected on the basis of one delegate per twenty students.

Spring Holiday Begins Tomorrow

Buses, trains, cars and planes will carry 500 anxious ladies away from campus tomorrow when the annual ten-day Spring (?) Vacation begins at noon.

Most students will be going home to mama's cooking, but some plan trips to the Sunny South—Florida and California—to melt frozen Missouri toes.

The vacation, which occurs early this year, lasts until Monday, Apr. 4, at noon. All students are expected to return in time for Monday afternoon classes.

Anne Leedy Chosen to Direct Honor Board for Next Year

Ann Leedy, junior elementary education major from Vincennes, Indiana, has been elected chairman of the Honor Board for the coming year. She defeated Nell McGee and Launa Sturgess in Tuesday's election.

Ann feels that "although the honor system is comparatively new

tration.

The Honor Board determines whether there has been a violation of Lindenwood honor rules and, if so, gives discipline. The chairman investigates different sides of the story and presents it to the board in an objective manner.

Colhecon Represented At Missouri University

Carol Webster and Jean Todd represented Colhecon, home economics club on campus, at the spring convention of the Missouri College Home Economics Clubs at Columbia, Mo., on March 18-19. The students stayed on the Missouri University campus.

Highlighting the convention was the installation of officers and a senior service on Mar. 18. The students also attended meetings and toured the campus.



Anne Leedy

on the Lindenwood campus, it has grown to be as much of her as Mrs. Sibley's ghost. We must not take it for granted, however. Being new, our honor system still needs some improvements, and I should like to see them come about."

At Lindenwood, the Irwin resident holds an Honor Scholarship and is a student waitress. She is a member of the Honor Board, vice president of the Student Education Association, a member of Alpha Lambda Delta, and vice president of the junior class.

Ann will head the board composed of two representatives from the junior and senior classes, the student body president, Dr. John Moore, a representative from the faculty, and Miss Mary Lichtler, representative from the adminis-

Sixteen Students Awarded President's Scholarships

Sixteen students have received the President's Scholarships for having the highest scholastic ratings in their respective classes. President Franc L. McCluer presented the awards in Student Assembly on Mar. 15. The scholarships vary according to classes with freshmen getting \$200, sophomores \$250, and juniors \$300, to be applied to next year's tuition. Day students will receive half the amount prescribed.

For the first time, six scholarships were awarded to freshmen with a perfect four point average. They were Loanne Boysko, Judith Patterson, Mary Speer, Katherine Tuepker, Constance Wolter, and Sharon Worley.

Sophomores were Mary Hughes

McCue, Brenda Ebeling, Celeste Heithecker, Martha Skaer, and Caroline Drane.

Juniors receiving scholarships were Nancy Ordelleide, June Tavlin, Sally Seifert, Gay Pauly, and Marjorie Faeth.

Cobbs Hall won recognition for the third consecutive year as the dormitory with the highest scholastic rating, with a 2.885 overall average. The cup, which is awarded annually, will be kept by Cobbs permanently for winning it three years straight. A new cup will be awarded next year.

The day students won second place honors with a 2.815 average.

Be Politically Awake

The intricacies of politics tend to mean very little to the average Lindenwood college student, because we feel it doesn't directly affect our own private little "island" of campus activities.

When scanning the newspapers and hearing news broadcasts, we are aware of the various events taking place in our government, probably because of their explosive qualities. Yet, on the whole we lack interest in the problems that are so vitally important to our future as United States citizens.

Shortly, we will be among the citizens who comprise the voting public. When that time comes, will we be able to take our places as responsible members of society who objectively place representatives into each phase of our government? If we are to realize the significance of our actions as voters, then a great deal more ground work must be laid to start off intelligently.

The year 1960 stands out in importance as a national election year. In November we elect our President, members of Congress, and other important officials. This is a good time for all of us to dig into the field of politics and take a look at the various candidates and their platforms. And then in due time deciding which ones merit support.

On our own campus, we will have a chance to participate actively in the political field through the mock convention being held the first part of April. We can learn the procedures on a smaller scale and become acquainted with working politics. If all of us take advantage of the opportunity laid before us, we will undoubtedly be better citizens of the future.

What we can gain from this first-hand experience will be a good foundation for our future participation in governmental affairs, be it civic or national. Learning now can save us a costly mistakes in the future.

Let's Be Realistic

"I go to Lindenwood. What of it?"

"I go to Lindenwood College for Women located in St. Charles, Missouri. It's the *oldest* and *finest* girl's school west of the Mississippi."

Let's face it, people, it's either one way or the other. For some reason there seems to be a concentrated effort to picture Lindenwood as either heaven or hell.

Well, it's neither one, and it's really about time that we all grew up and realized that the same thing we said to Eisenhower a couple of issues ago applies to us. No more is Lindenwood a world of black and white or good or bad than is "the world outside."

Lindenwood is a school with many good points, and also some bad ones. Can't we accept it as such? Every time a prospective sets foot on this campus, she passes from faction to faction, one saying it's black and another saying it's white.

No, this campus is not crawling with darling boys waiting with baited breath to take out a girl who's never dated in her life. It's immaterial that she won't accept blind dates, go out with anyone under six feet tall, and that she prefers the Greek-god type who drives a '67 car, has the clothes of a Brooks brother, the manners of an Emily Post, the charm of a presidential candidate, the mind of an Einstein, and the love and devotion for her that would have made Romeo look like an amateur.

Yes, this campus is a wonderful place to get an education. Academically, Lindenwood is rated among the top schools of the country, but it's not Oxford, Yale, and Harvard rolled into one. Our faculty is excellent; happily, it is also human.

The facilities and food are good but Dr. McCluer is not Conrad Hilton running a hotel for our pleasure; Mr. Fontaine is not Escoffier managing a restaurant where he cooks to order for each student.

If students come here for an *education*, they have the right to demand and expect an education which presents both sides of learning, all aspects of society, and every way of living.

If the faculty is here to *educate*, it has the right and duty to stimulate young minds, not merely to train them; to guide thinking, not to force thoughts; and to help and understand youth, not to push and strive for middle-aged graduates who have learned by memory rather than experience.

Perhaps someday we'll know. We'll know what it's like to say, "I go to Lindenwood. I go there by choice, for you see I like its good qualities and understand its faults. Life presents inadequacies, too, you know, and I want to like life on a realistic basis."

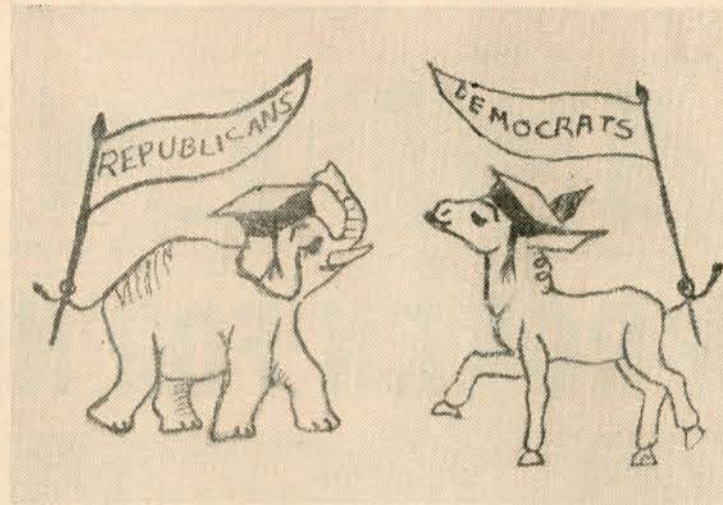
People, *please*. Lindenwood has many merits. We don't have to apologize for it. Let Lindenwood stand alone on its own merits and worth; we think it'll do just fine.

Member Associated Collegiate Press
Member Missouri College Newspaper Association

Editors Beverly Bohne, Jan Rollins
Associate Editor Jane Ely
Feature Editor Judy Sutera
Photographer Susan Wood
Business Manager Kay Fellabaum

Published every two weeks during the school year by the Journalism Students of Lindenwood College, St. Charles, Missouri. Subscription price: \$1.50 a year.

Friends Before The Battle



Outside LC

5 Western Powers Introduce New Disarmament Veto Plan; Satellite Signals from Space

A new disarmament plan has been introduced by five Western powers to create an international group powerful enough to eventually veto a nation's military budget.

Gradually the world would disarm to the point where only enough force would remain to keep internal order. This objective is to be reached in three stages.

The proposals will be introduced at the East-West Arms Conference being held in the Palace of Nations, Geneva, Switzerland.

Signals To Earth

Signals have been picked up from America's Pioneer V satellite approximately 1,000,000 miles from the earth.

The space craft is well established in its orbit around the sun, according to officials.

Proposals Turned Down

Two proposals by President Eisenhower in the civil rights bill were rejected in the House.

They consisted of a 15-member commission to assure Negroes employment rights on government contract jobs and to grant federal aid to communities or states in the

process of desegregating schools.

Re-schedules Paris Trip

Premier Khrushchev has re-scheduled his proposed two-weeks visit to France postponed because of influenza.

The trip, now three days shorter, will include a tour of the French provinces, a three-day stay in Paris, and world problem discussions with President Charles De Gaulle.

Transportation Control

A proposal for the loosening of government control over airlines, railroads, and other forms of transportation was formulated by the Commerce Department.

With the new freedom, some companies would lose subsidies and consequently pay more for federal services.

Elected Fourth Time

Syngman Rhee, 84, was reelected to his fourth four-year term as President of South Korea in a protested election.

Eleven persons were killed in the election aftermath.

Rhee won by more than the required one-third of the nation's voters in his victory.

All Bark and No Bite

Better Vocabulary Advocated By Sal; Emmy H. Tells All

With Junior English exams over for a while now, many suffering juniors see the need for a better vocabulary. Sally Sayle has already started working on hers, and has some interesting words that should be included in every Lindenwood Lady's vocabulary:

- ABODE: a wooden plank.
- A BOOT: approximately.
- BECKON: meat from a pig, often eaten with aigs for brake-fuss.
- CALLER: part of a shirt that goes around the neck.
- HARMONY: cooked grits.
- MINUET: you and I have dined.
- POET: to transfer a liquid, i.e., "poet from the pitcher to the glass."
- RAH CHAIR: where you are at.
- SANE: speaking, i.e., "I can hardly hear what he's sane."

So many people are running for office these days that we wonder if there is going to be anyone left on campus to vote.

Remember the ballot printed in the last *Bark*? The ballots returned to us were not really representative of the student body. We don't blame the readers for not wanting to cut up the *Bark* either—this is to our honor. But, if you still would like to snip out the ballot and fill it out—please return it to the journalism room.—it's not too late.

Dott Langridge caused quite a stir at the last mixer with Kay Fellabaum's dime store diamond ring. Seems she told Emmy Hunter that she was engaged, "in strictest confidence," and in two minutes flat everyone was congratulating her. MORAL: Never tell Emmy anything!

Congratulations to Jane Tibbals, our new SCA president. We know you will do a good job next year, Jane, and we are behind you all the way . . . (And that's not in strictest confidence.)

B.D.

Linden Leaves Whisper

Tea Bags Boast Only Leaves on Campus; Snow Everywhere but No Water to Drink

Amidst the gentle falling of (ugh) snowflakes, the *Bark* goes to press. The only leaves around here seem to be the ones in the tea bags.

Because of a break in a water main, many Lindenwood ladies had dirty hair last Wednesday, to say nothing of teeth, faces, etc. However, some energetic souls shoveled a wastebasket full of snow and let it melt on their radiators. What wonders the human mind can produce!

St. Patrick's Day came and went with the wearing of the usual green skirts, sweaters, dresses, and tights. The most novel St. Pat's gift that we heard of was both practical and appropriate—a green stamp.

With the cancellation of the tri-academy concert came the more disappointing cancellation to LC'ers of the tri-academy dance which was to be held on campus. The army doesn't seem to have any planes available to transport the cadets. If we'd only known before the WUS auction, we probably could've raised enough to at least "helicopt"

them here.

The choir members have left for their annual tour. Here's hoping that they find some warmer weather than we have here.

Speaking of warmer weather, a trip to the greenhouse will convince any skeptic that flowers still do grow. The jonquils and hyacinths are really beautiful and fragrant.

From all sneak preview information, the "Gridiron" Show is going to be lots of fun. The writers are pounding out witty lines and the committees are functioning (?) according to latest rumor.

Well, happy vacation! I think I'll hibernate for the rest of the winter. It may last all spring.

L.S.

ALD Initiates 27 Freshmen

Formal initiation of 27 members of Alpha Lambda Delta, national freshmen women's scholastic fraternity, was held Monday evening at 7:30 in the women's lounge of the chapel. Dean Paulena Nickell was hostess and served refreshments after the meeting.

Nicole Johnson, president of honorary organization, was given a gavel guard for her pin by the membership. Pins and national certificates were presented to new members.

The custom is that the initiation be held in Dean Nickell's home,

but this year the 62 members on campus were too many to enjoy her hospitality. In appreciation of her interest and co-operation with Alpha Lambda Delta, Dean Nickell, an honorary member of the fraternity, was presented with flowers.

Other honorary members of the Lindenwood faculty and administration are Dr. Elizabeth Dawson, Mrs. Paul Christianson, Miss Lula Clayton Beale, Miss Mary Lichliter, Dr. Alice Parker, and Dr. Marion Dawson, who serves as adviser to the fraternity.

Highlight Coming Mock Convention



Making plans for the 1960 mock convention are Mr. VanBibber, Dr. Moore, Carol Elam, Judy Winburn, and Dr. Clevenger.

Republicans Name 20 Convention Delegates

Twenty delegates will represent Lindenwood's Young Republicans at the mock convention. Officers of the club, Judy Winburn, Linda Janson, Georgia Wood, Sue Allerder, and heads of convention committees, Nancy Babb, Margie Bassnett, Linda Markuly, Barbara Kasper, Margie Ward, and Kathy Tuepker are delegates automatically. The following members have been voted permanent delegates: Janie Adams, Judie Davis, Judy Guthrie, Kay Klinker, Betty Owens, Gay Pauly, Terry Ross, Linda Spradlin, Mary Speer, and Ann Tolbert.

Each four delegates are entitled to one vote when nominating and voting for various officers.

* * *

Colleges Represented At Spring Political Meet

The following colleges and universities will send delegates to the Intercollegiate Political Convention: Arkansas State College, State College, Ark. (five R. five D.) Concordia College, Moorhead, Minn. (five D.) Culver Stockton College, Canton, Mo. (five R. five D.) Friends University, Wichita, Kans. (two R. five D.) Illinois Wesleyan University, Bloomington, Ill. (five D. five R.) Maryville College, St. Louis, Mo. (three R., two D.) Memphis State University, Memphis, Tenn. (five R.) Milliken University, Decatur, Ill. (five R., five D.) Park College, Parkville, Ill. (five R., five D.) Monmouth College, Monmouth, Ill. (two R.) St. Ambrose College, Davenport, Ia. (five R., five D.)

Phone in your order
Fast Delivery Service

RA 4-6878

SUPPER CLUB

A. Covilli C. Sasso
Steaks Pizza
Sandwiches Chicken



2012 W. Clay

Straight from
the oven to you —
Delicious Pasteries

COTTAGE BAKERIES

141 N. MAIN
&
1924 W. CLAY



Foods of All Nations Featured At IRC Sponsored Dinner Scheduled for Sunday, April 24

International students will pool their culinary skills to provide food from all the countries represented on Lindenwood's campus at an International Relations Club dinner on Sunday, Apr. 24.

Each international student at Lindenwood will cook a dish typical of her country. The food will be served smorgasbord style in Fellowship Hall of the chapel.

To provide the international atmosphere, an exhibition of typical articles from each country will be arranged, and entertainment of folk dancing, singing, and instrumental music will be provided by the students.

Mitzi Anderson, president of the IRC, announced that the deadline for reservations for the dinner is Apr. 14, or as soon as 100 people have made reservations. Tickets will be sold for \$1.00 and can be obtained from an assigned person in each dorm. The following girls will sell tickets: Margarita Tsinanopoulou in Sibley, Kathy Tuepker in Butler, Ann Toldert in Niccolls, Margaret Odell in Ayres, Marion Van Horn in Cobbs, and Nancy Babb in

State Teachers College, Valley City, No. Dak. (three R., three D.) Sterling College, Sterling, Kans. (five R., five D.) Wayne State, Detroit, Mich. (five R., two D.)

Irwin. Profit from the dinner is to be used for a charitable project to be chosen by IRC members.



For the
Perfect Gift
it's a
Picture
From
KISTER STUDIO
508 JEFFERSON

MOCK CONVENTION

(Continued from page 1)

gation is entitled will be determined by the enrollment of the college it represents. Cost for each delegate is \$8.00.

Those colleges with over 1000 students will be given one extra vote for each 1000 students. Voting will be by colleges and universities represented by delegates in person or by proxy.

Final rules governing the convention will be adopted by the convention at the time of organization. Lindenwood is entitled to twenty delegates from each political club, but only five votes.

In past years the mock conventions have always accurately predicted the nominations made by the national conventions. At the last convention in 1956, 200 delegates, from 42 colleges represented 11 states.

* * *

Students, Faculty Work To Ready Convention

Over 100 Lindenwood students and faculty will take active part in the mock convention. Committees, officers, convention delegates, and sponsors of both Young Republicans and Young Democrats have been working on various facets of the intercollegiate political meeting since November. They will continue working and planning until and during the convention.

Dr. Homer Clevenger, general chairman of the convention, Dr. John B. Moore, and Prof. Bremen Van Bibber, sponsors to the Young Democrats and Young Republicans, respectively, have been on constant call to work on details of the convention.

The Student-Faculty Working Committee, consisting of Miss Mary Lichter, Dr. Eugene Conover, Harry Hendren, Dr. Franc McCluer, Miss Marguerite Odell, and repre-

sentatives from both political clubs and the League of Women Voters, are planning receptions, decorations, lighting, social activities, and housing.

The League of Women Voters' main activities are the addressing of invitations, keeping charts of college delegates up to date and answering the telephone in the Guidance Office.

KCLC will feature a panel discussion the Tuesday before the convention. Other radio and television spots are being reserved for announcements and recording of speeches by the keynote speakers.

* * *

Young Democrats Elect 20 Representatives

Twenty delegates will represent the Young Democrats of Lindenwood at the Mock Convention. Officers of the club, Carole Elam, Nell McGee, Wanda Wear, Jean Dulaney, heads of convention committees, Sharon Walker, Sara Ann Smith, and Mary Lou Reed, representative to the working committee, are automatically delegates. Voted to represent the club are Pat Morris, Jane Ely, Emelda Harra, Freda Miller, Patsy Mays, Ann Maddox, Margaret Thiebes, Martha Ritter, Jan Rollins, Sally Sicks, and Ginny Vanice. Each four delegates will have one vote at the convention, making a total of five votes cast for Lindenwood Young Democrats.

* * *

The
Wise Bird
Goes to
AHMANN'S
for
School Supplies
Magazines • Film

Statistic!

The other day our vice president in charge of good news announced that someone, somewhere, enjoys Coke 58 million times a day. You can look at this 2 ways:

Either we've got an incredibly thirsty individual on our hands. Or Coca-Cola is the best-loved sparkling drink in the world.

We lean to the latter interpretation.

BE REALLY REFRESHED

Bottled under authority of The Coca-Cola Company by

THE COCA-COLA BOTTLING COMPANY OF ST. LOUIS



"COKE" IS A REGISTERED TRADE-MARK, COPYRIGHT 1957 THE COCA-COLA COMPANY.

Drama Captures Emotions As Classmates Face War

by Beverly Bohne

For a few moments darkness shut out the audience from its surroundings, but suddenly the room filled with light and happiness as Olga Kirinski (Marylynn Overmann) opened the play, "Letters to Lucerne."

The stage in Fellowship Hall was transformed into a familiar world, a girl's school near Lucerne, Switzerland, during the summer of 1939. Olga was anxiously awaiting the arrival of Hans (Steve Kardaleff) with whom she was deeply in love. The war had begun. Hans was coming to say good bye.

It was customary for the girls to read their letters together in the evening before going to bed—it was at this time specially that Erna (Charlotte McRee), who was Hans' sister, was looked up to by the others, that is, until the war began.

Gradually the scene changed

from love to hate and suspicion. Erna was a German, and because of this she lost her so-called friends, Bingo Hill (Becky Ann West), Sally Jackson (Susan Schmitkins), Marion Curwood (Julie Bottoroff), and Felice Renoir (Freda Miller).

Eyes smoldered with hate as letters full of patriotism were read aloud. The school mistress, Caroline Hunter, played by Betty Darnall; and a beloved teacher, Gretchen Linder, portrayed by Judy Ann Letson, tried in vain to correct the situation.

One day Olga received news that her parents had been killed by the Germans. Olga's eyes, welling with tears of sorrow, were met by Erna's sympathetic eyes. Detestment for Erna filled the eyes of her classmates.

The drama ended with Erna reading a letter from her parents which told of Hans' death. Because of his deep love for Olga he had crashed his plane before dropping a bomb on Warsaw, Poland, Olga's home.

The characterization in "Letters to Lucerne" was tremendous. Even though Gustave, Douglas Hume, and Margarethe, Rachel Amado, had minor parts, their quaint Swiss behavior compelled me to love them and chuckle just a little to myself. It was unfortunate that Charlotte McKee's name was omitted from the program for indeed she was the star. I felt alone and defeated just as she did, and I cried when she cried. The play conveyed, with great impact, the war's tragic engulfment of the innocent.

Congratulations to the staff, cast, and the director, Marilyn Wilson, for a memorable production.

Bright Yellow Bird Lands in Snow

"It won't come today, not in this weather." "Golly that snow is really coming down."

It was last Saturday afternoon right after lunch when suddenly . . . "My gosh, Caroline, what's that awful racket out there?" "It's coming; it's coming!" "Hey, Pat, come look."

With a rush, students crowded around the window straining their eyes to search the sky through the tree tops. "Come on; let's go outside. This I must see."

With jackets, scarves and mittens thrown on, they barreled out of Irwin into a fury of snow. "Hurry, you all; it's going to land on the golf course any minute."

"Here it comes." "Good grief those egg beaters cause a mild cyclone; hang on!" "Whew!"

In a matter of seconds Susan Drozda and Roberta de la Torre climbed out of a bright yellow helicopter after a fifteen minute flight from Lambert Airport. Their eyes sparkled with excitement as they plowed their way bootless through several inches of snow.

Their classmates hung out of Niccolls' windows hailing them toward dry ground and yelling "How was it?" "Tremendous, wonderful, and marvelous" were the only words to describe their exciting adventure. "The visibility is still remarkable up there because you're not very far off the ground," commented Sue.

The two Niccolls' freshmen had bid \$41 at the World University Service Auction for a helicopter ride donated by Mrs. Helen Boyd Ostroff. Carl Hempel, president of Hempel Helicopter and Air Taxi Service Inc., and one of his young pilots personally took the girls for the joy ride.



Susan Drozda and Roberta de la Torre climb out of helicopter after a fifteen minute flight from Lambert Airport.

Anthropologist Speaks at L C; Lectures on Modern Morals

"We should go back to the instruction of nineteenth-century morals," declared Dr. Jules Henry, anthropologist and professor at Washington University, who spoke here Mar. 10. "We will also have to go a little backwards in our industrial and commercial life in order to be able to achieve the necessary moral living." A large group of faculty members and students attended Dr. Henry's program of lecture and question and answer session in the Library Club Room.

In connection with the title of his talk, Dr. Henry started by pointing out that most people think that an anthropologist's work lies mainly in the study of primitive people in jungles. He explained that this is an important field of research for an anthropologist, whose studies deal with the culture of people. Dr. Henry said that he, like many modern anthropologists, has turned his attention to the appraisal of the culture of the people living in a "modern society of higher civilization."

"My jungle days are over," he

declared, and went on to say that since the TV quiz show falsities, he has been especially interested in the moral orientation of the American personality and the study of the "moral climate of our times."

After conducting a survey where he asked thousands of high-school boys and girls what they thought of the TV quiz shows story, Dr. Henry indicated that he was disappointed to find that too few thought that such cheating was definitely and entirely wrong. Far too many answers were confused mixtures of justification and condemnation.

His conclusion was that the rapidly expanding industry which produces an increased number of products is the cause for so many falsities, especially in the business of advertising, which lower the moral standards. Also, he thought, parents and schools are not putting enough emphasis on the instruction of moral principles.

Questions and discussions with the listening group concluded the program.

We Have Them —

- Boudoir Chests
- Milk Glass Lamps
- Potted Plants
- School Supplies

MATTINGLY'S

205 N. MAIN ST.

ST. CHARLES



Get in focus
See

A Wide Selection of FRAMES AND CASES

at

ST. CHARLES OPTICAL CO.

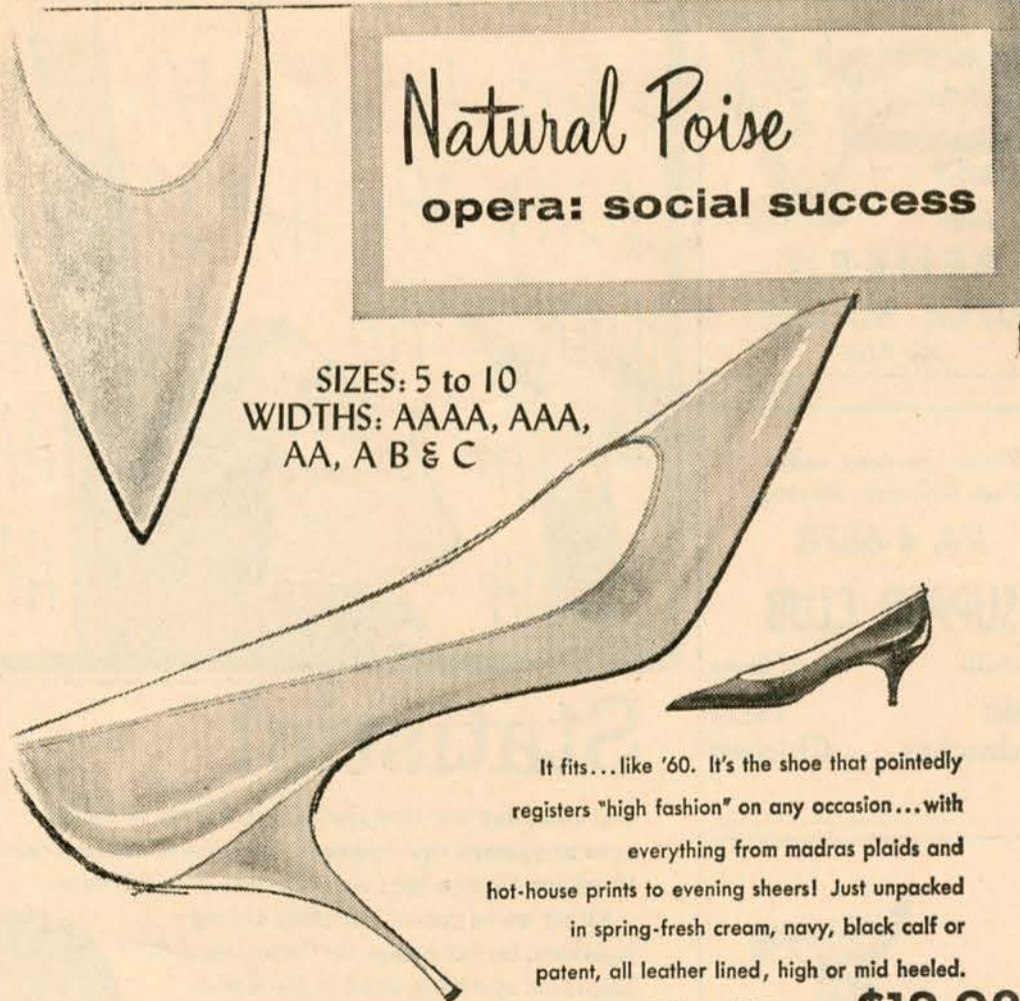
114 N. Main

RA 4-2570

Natural Poise

opera: social success

SIZES: 5 to 10
WIDTHS: AAAA, AAA,
AA, A B & C



It fits... like '60. It's the shoe that pointedly registers "high fashion" on any occasion... with everything from madras plaids and hot-house prints to evening sheers! Just unpacked in spring-fresh cream, navy, black calf or patent, all leather lined, high or mid heeled. As seen in Harper's Bazaar. **\$12.98**

THE FAMOUS SHOE DEPT.

311 N. Main St.

St. Charles, Mo.



For
Sandler's of Boston
IT'S

Charlie's Shoe Store

323 N. Main

Open a Charge Account
at CHARLIE'S

Former Television Performer To Speak on Physical Fitness

A popular former entertainer on the Dave Garroway "Today" TV show, Miss Bonnie Prudden, will visit Lindenwood as a lecturer on Apr. 19. Miss Prudden is nationally acclaimed in the field of physical fitness.

During her day on campus, Miss Prudden will conduct a physical fitness workshop from 1:30 p.m. to 2:30 p.m. She will also teach the 3 o'clock physical fitness class. Both sessions are open for participation to the student body. The recommended dress is shorts or leotards and no shoes or socks. At convocation that evening, Miss Prudden will give a demonstration lecture.

Interested in the fitness of the American people, Miss Prudden conducts lectures, workshops, and research throughout the country. She and Dr. Hans Kraus, a noted



Bonnie Prudden

researcher on physical fitness, authored a paper which reported the inferior physical state of American children as compared with the European children. The report, sent to President Eisenhower, led to the establishment of the President's Council for Youth Fitness of which

Beta Chi Plans Spring Events

Beta Chi has a full schedule preparing for initiation and its annual horse show on May Weekend, related Jan Walker, president.

Riding tryouts will be held Apr. 6, starting at 4 p.m. and continuing after dinner. Written tests will be given at 11 a.m., Apr. 17. New members of Beta Chi will be informed of their membership on Sunday, Apr. 10. Initiation will be held on Monday and Tuesday, Apr. 11 and 12. A dinner at Golf View Inn on Apr. 12 will culminate initiation activities.

At 3 p.m. on Friday, Apr. 8, tryouts for the square dance will be held. On Monday, Apr. 18, practice for the May Weekend horse show will begin, Jan said.

She announced that riding intramurals will be held on Saturday, Apr. 9.

BROSS BROTHERS
RECORD SHOP

Latest in Modern Records

Complete line of STEREO - albums

208 N. MAIN RA 4-1939

Miss Prudden is an active member. Miss Prudden is best remembered for her performance on the Garroway show where she demonstrated exercises to early-morning calisthenic enthusiasts. In 1958, Miss Prudden received an honorary degree of Master of Humanities from Springfield College.

Her activities consist of mountain-climbing, frequent exercising, and skiing. She is the only woman to be awarded the Eastern Amateur Ski Association Safety Award. In White Plains, N.Y., she founded the Institute for Physical Fitness which conducts classes for people from two to 80.

Miss Prudden says, "Unless physical fitness programs are stressed throughout the U.S., the Russians will be so ahead of us physically we'll never have a chance."

PAD To Hostess

Members of Pi Alpha Delta, honorary classics fraternity, will be hostesses at a tea given for the faculty in the Fine Arts Building parlor.

The tea will be given at 3 o'clock Sunday afternoon, Apr. 10. All members of the faculty are invited to attend.

Rocket Expert Speaks at Convo, Describes Missiles, Spacemen

"Either the United States or Russia will put men on the moon before the end of the '60s," stated Dr. G. Edward Pendray in a convocation address to Lindenwood students and other St. Charles citizens, who included many space minded teen-age boys, Mar. 9 in Roemer Auditorium. The subject of his speech was "The Conquest of Space."

Dr. Pendray, one of the country's foremost rocket experts and founder of the American Rocket Society, emphasized that we must overtake the Russians for in an international race the United States cannot afford to be second because of the technological and military importance of possession.

After giving a description of the mechanics of different types of rockets and their history, Dr. Pendray discussed the possibilities of a trip to the moon. The main problem in such a venture is the gravitational pull of the earth, he explained. Nevertheless, he expressed the belief that "either we or the Russians will put men on the moon before the end of the '60s."

The next step will be the colonization of the moon, he stated, and added that preparations are already being made. Dr. Pendray believes that this will be possible within 25 years after the landing.

The moon will become a launching pad for expeditions to Mars and Venus because the earth satel-

Choir Swings Through South On Spring Trip

McGeehee High School in McGeehee, Ark., and the First Presbyterian Church of Pine Bluff, Ark., will hear the Lindenwood College choir today.

The group, which started its journey Mar. 22, performed in Poplar Bluff, Mo., and in the First Presbyterian church of Blytheville, Ark., the same day. Yesterday the choir gave three performances: in Treadwell High School and in the Technical High School of Memphis, Tenn., and in the First Presbyterian Church of Clarksdale, Miss.

Soloists in the choir are Betsy Alves, Lynn Arnold, Beverly Boxell, Beth Bricker, Karen Cloward, Donna Davis, Sherry Hayes, Shirley Lee, Joan Leiper, Patty Perkins, Linda Street, Margaret Thiebes, and Sally Tibbals.

The group will return tomorrow night after performing in Malvern High School in Malvern, Ark., the North Little Rock High School, and the First Presbyterian Church in North Little Rock, Ark.

The same program as that presented during the trip will be given for Lindenwood students at the LC chapel on Apr. 10, except for the ensemble singing by the Choralaires. The Choralaires will present a special program later in the year.

lite is smaller and has less gravitational force than the earth, he predicted.

Dr. Pendray described the Atlas, the most powerful rocket now in existence in the United States, and discussed plans for the Saturn, a four-stage rocket now being developed.

The main obstacle of a flight to the moon is the testing that the rocket must undergo. "Each rocket contains more than 100,000 parts, and every one of them must work perfectly," he explained. He added that another hindrance is the return trip to the earth.

Dr. Pendray closed his speech by predicting that a woman may well be the first to travel to the moon "because women have a better homing instinct and could probably find a way back."

For
Hallmark Studio Cards
Costume Jewelry
Small Gifts
come to
PLAIN and FANCY
1930 W. Clay RA 4-3674

good things to EAT at
OSTMANN MARKET

139 North Kingshighway



Speaking of Sports

Fontbonne, Webster, Harris Crush LC Basketball Team



Pictured at a crucial moment in a game with Webster College are members of Lindenwood's basketball team.

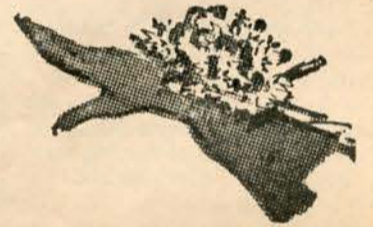
The basketball teams of Fontbonne, Webster, and Harris charged over Lindenwood's court this month and returned home with victories as the season came to a close Friday, Mar. 18.

On Mar. 3 it was Fontbonne over Lindenwood, 23-20. Estelle Kennedy was high point man with a total of six points. Officials for the game were Shirley Sohrmann, referee, and E. Starck, umpire.

On Mar. 10, after a 30 minute delay due to navigation difficulties, the Webster team finally arrived and the game began. Ushering the first points of the game, Estelle got the LC team over the first hump. Marline Severin, point pace-setter, scored 20 points in the game. Barbara Brockgreitens ran second with eleven points. Shirley Sohrmann was the referee and Jackie Schapp, the umpire. Lindenwood was defeated 47-36.

LC served cokes and cookies to the guest teams after the games.

WIRE FLOWERS
HOME EARLY
FOR EASTER!
BUSE'S FLOWER AND GIFT SHOP
400 Clay
RA 4-0148



FLOWERS TELEGRAPHED ANYWHERE!

TRUMP CLEANERS



Pick Up and Deliver
Book Store
200 N. KINGSHIGHWAY
1 Block North of Campus
RA 4-6100

Come in and Browse Around
LATEST STYLES
IN
Junior Fashions



Dependable Prompt Service
Take a cab . . . A
St. Charles
YELLOW CAB
CALL
RAndolph 4-1234

CALL
RA 4-9682
for
QUICK DELIVERY
from

ER-VEL'S

Chicken Charcoal Steaks
Salads Pizza
Minimum rate for Delivery \$2.50

Open Sundays 430 Clay St.

Sayle Enters Best Dressed Competition



Sally Sayle, Lindenwood's nominee for the nationwide Glamour contest, models for picture entries.

NEW BUILDING

(Continued from page 1)

economics, and office management, vocational courses should be provided. 3. That a small church college like Lindenwood should be prepared to receive additional students in the decade ahead. "The implications of this third conclusion," stated President McCluer, "have been given careful consideration. It is clear that there will be a substantial increase in the number of students enrolled in colleges and universities in America," he said. "A conservative estimate of the extent to which this increase will affect liberal arts colleges in Missouri indicates that schools which enrolled 7480 students in 1955 may expect to have 9400 in 1965, and 11,000 by 1970. These figures are based on a study sponsored by the colleges and universities in Missouri," Dr. McCluer said.

Larger Student Body

"The unanimous feeling of the members of the Planning Committee is that Lindenwood can take an additional 75 to 100 students without destroying the character of the College in which we know one another and have an effective student honor system of government," he stated. "If this view is correct," he continued, "at a time when there

June Tavlin Named To YWCA Post

June Tavlin, an Irwin junior, has been elected co-chairman of the Missouri District YWCA for 1960-61. June, who will act as co-ordinator of the YWCA in the district level, is replacing Nancy Babb, her roommate. She was selected by representatives of the colleges in the Missouri district at the spring conference held on Mar. 11-12 at Missouri University.

This summer, June plans to attend the Regional conference held in Estes Park, Colo., and as part of her duties take charge of the district meeting. "At this time we decide our plans for the following year, and talk over the problems in our own local Y," she explained. Along with these activities, she will attend any local regional meetings as a representative of the Missouri district.

is likely to be great over-crowding in colleges, Lindenwood would seem to be obligated to provide for an increase in attendance if it is able to do so." A study of facilities indicated that such an increase could be met without an additional academic building, and not more than two or three additional teachers. It would be necessary, however, to provide another dormitory. The Board of Directors therefore employed Architect Kenneth E. Wischmeyer who submitted specifications for the residence hall. The structural engineer is Neal J. Campbell, and the mechanical engineers are Crawford & Witts and Van & Visres.

Brookes Wins Second Music Contest; McJunkin Accompanies Piano Concert

Mary Elizabeth Brookes, 17-year-old sophomore from Canada, won another piano contest Mar. 12, one sponsored by the Men's Music Club of Winnipeg, Canada. This is the second large scale concert Mary Elizabeth won in a three weeks' interval. The previous one in Toronto, Canada, won her the Toronto Kiwanis Club cash scholarship. Betty McJunkin, of Ponca City, Okla., another Lindenwood pianist, accompanied Mary Elizabeth, and played the second piano in the Khachaturian Piano Concerto played by the young winner. Last week-end Mary Elizabeth

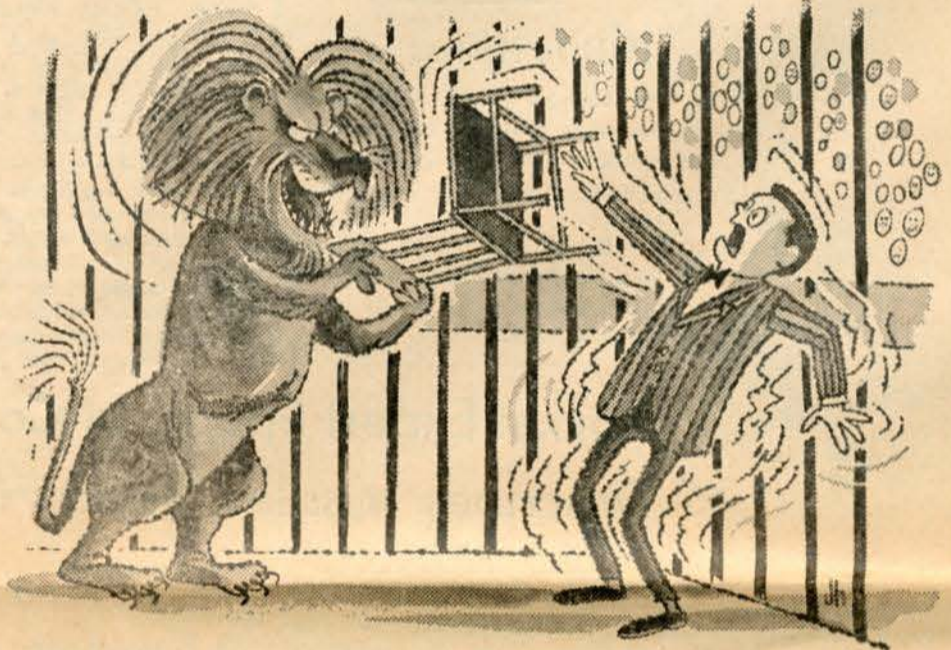
was in Canada again to perform in the recital at Winnipeg auditorium Mar. 21. It is one of the largest auditoriums in Canada and seats 4000 people. As a result of this honor, Mary Elizabeth may be playing with the Winnipeg Symphony Orchestra under the direction of Victor Feldbill. During spring vacation she will go to Ponca City with Betty. Both of them will perform in a concerto recital there on March 29. Mary Elizabeth said "It is open to the public. "Anyone who will be around there at that time is cordially invited."

Sewing To Suit YOUR Needs Mrs. M. E. Stephenson RA 4-5176

AAA TV Welcome Lindenwood Guests MONARCH MOTEL 3 MILES WEST Of Lindenwood College on By-Pass 40 and Interstate 70 RA 4-3717

Do You Think for Yourself?

(TAKE A CRACK AT THESE QUESTIONS AND SEE IF YOU CONNECT*)



If you were offered a high-paying summer job as an animal trainer, would you (A) insist on small animals? (B) ask for pay in advance? (C) find out why professionals won't take the job?

A B C



"Time heals all wounds" is a statement (A) denounced by antiseptic manufacturers; (B) as true as "Time wounds all heels"; (C) that means your mind can build its own scar tissue.

A B C



In traffic, when a driver behind you blows his horn, do you (A) go and sock him? (B) wonder what's wrong? (C) hope it'll settle his nerves?

A B C



When a pal bends your ear about why his filter cigarette is best, do you listen most to (A) his chatter about how good it tastes—regardless of how it filters? (B) his remark that the filter must be good because it's new? (C) his comments that both really good filtration and real tobacco taste are important?

A B C



Familiar pack or crush-proof box.

Before you buy your next pack of cigarettes, take a moment to think about what you really want. Most men and

The Man Who Thinks for Himself Knows — ONLY VICEROY HAS A THINKING MAN'S FILTER—A SMOKING MAN'S TASTE!

©1960, Brown & Williamson Tobacco Corp.



FRIDAY, March 25 thru Monday, Mar. 28

In Technicolor

James Garner in CASH McCALL with Natalie Wood

&

Julie London

NIGHT OF THE QUARTER MOON

with

John Drew Barrymore

Tue-Wed-Thurs March 29-30-31

Howard Keel in FLOODS OF FEAR

also

Richard Widmark in BACKLASH

with Donna Reed

starts Fri. Apr. 1

Walt Disney's SLEEPING BEAUTY

and

Jock Mahoney in LAST OF THE FAST GUNS



it comes to Ice Cream the Best is at

The ST. CHARLES DAIRY Benton and Clay