

Lindenwood University

Digital Commons@Lindenwood University

University Documents

Lindenwood Documents, Booklets,
Miscellaneous

1910

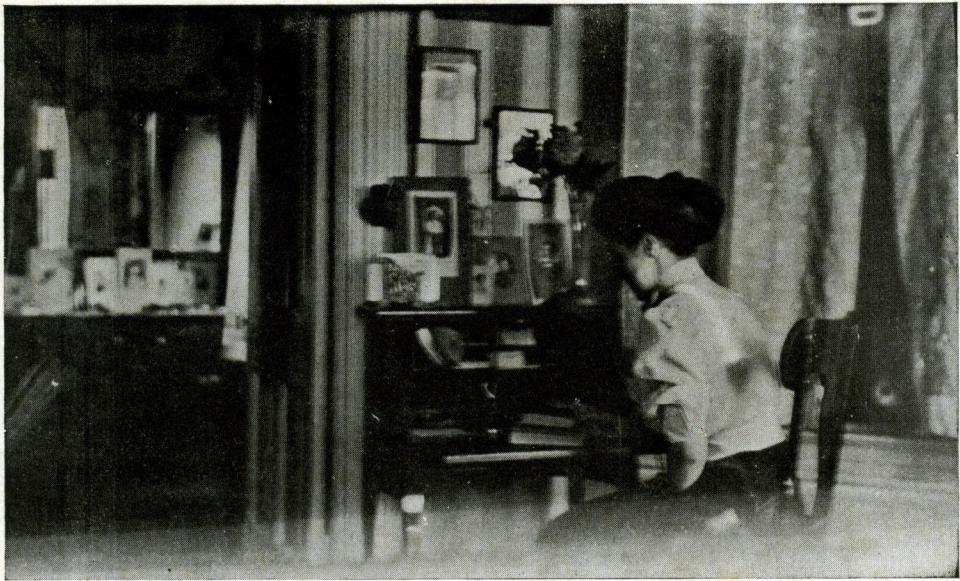
1910 Lindenwood College Calendar

Thomas J. Campbell

Follow this and additional works at: https://digitalcommons.lindenwood.edu/university_docs



Part of the [History Commons](#)



1910

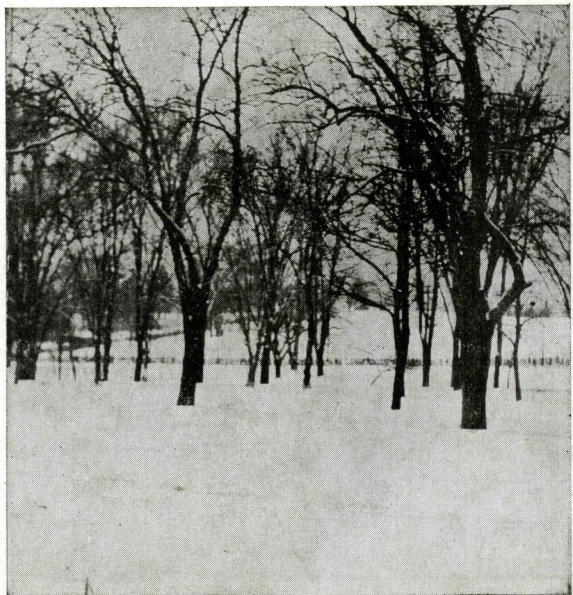
PROPERTY OF
ST. CHARLES COUNTY
HISTORICAL SOCIETY

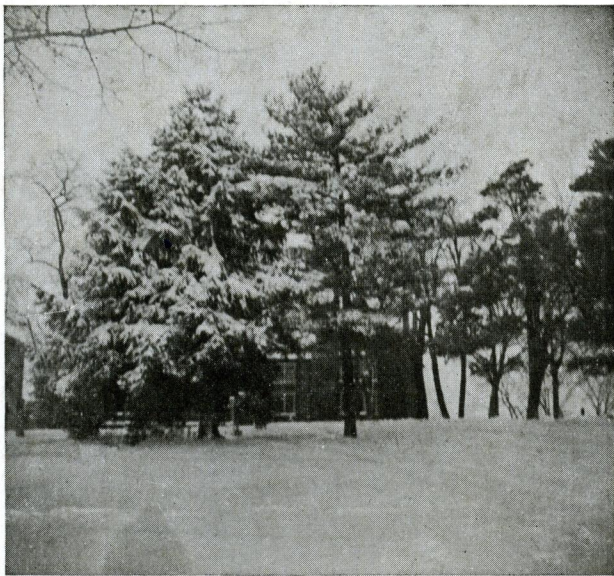
January

S	-	2	-9	16	23	30
M	-	3	10	17	24	31
T	-	4	11	18	25	--
W	-	5	12	19	26	--
T	-	6	13	20	27	--
F	-	7	14	21	28	--
S	1	8	15	22	29	--

February

S	-	-6	13	20	27
M	-	-7	14	21	28
T	1	-8	15	22	--
W	2	-9	16	23	--
T	3	10	17	24	--
F	4	11	18	25	--
S	5	12	19	26	--





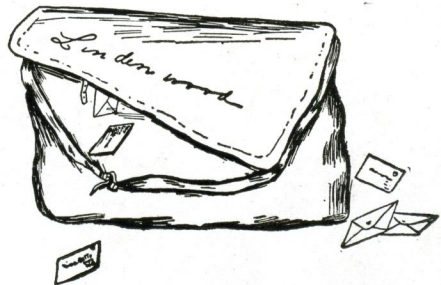
March

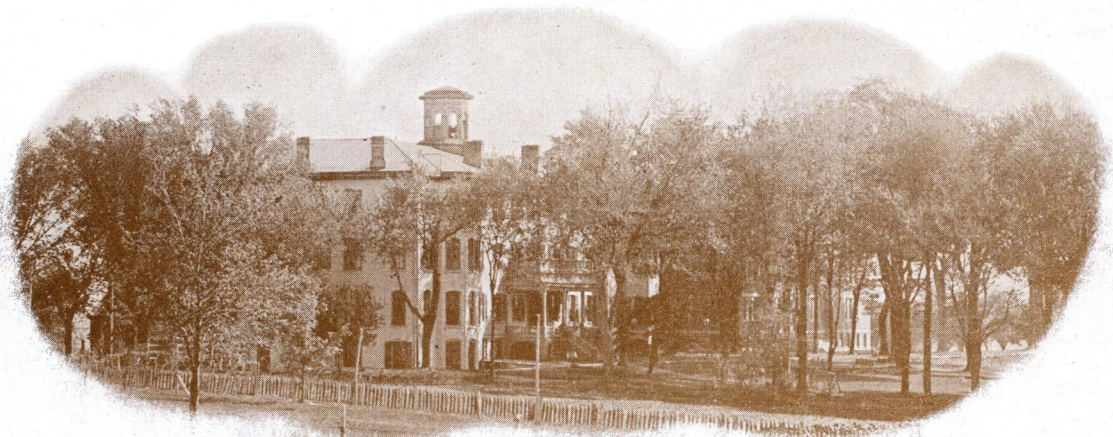
S	-	6	13	20	27
M	-	7	14	21	28
T	1	8	15	22	29
W	2	9	16	23	30
T	3	10	17	24	31
F	4	11	18	25	--
S	5	12	19	26	--

PROPERTY OF
ST. CHARLES COUNTY
HISTORICAL SOCIETY

April

S	-	3	10	17	24
M	-	4	11	18	25
T	-	5	12	19	26
W	-	6	13	20	27
T	-	7	14	21	28
F	1	8	15	22	29
S	2	9	16	23	30





May

S	1	-8	15	22	29
M	2	-9	16	23	30
T	3	10	17	24	31
W	4	11	18	25	--
T	5	12	19	26	--
F	6	13	20	27	--
S	7	14	21	28	--

PROPERTY OF
ST. CHARLES COUNTY
HISTORICAL SOCIETY

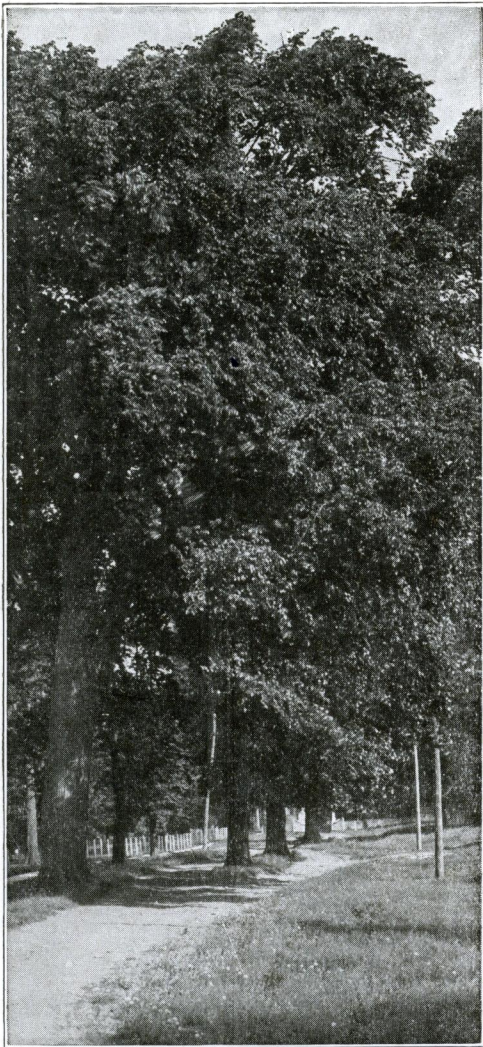
June

S	-	-5	12	19	26
M	-	-6	13	20	27
T	-	-7	14	21	28
W	1	-8	15	22	29
T	2	-9	16	23	30
F	3	10	17	24	--
S	4	11	18	25	--



July

S	-	3	10	17	24	31
M	-	4	11	18	25	--
T	-	5	12	19	26	--
W	-	6	13	20	27	--
T	-	7	14	21	28	--
F	-	1	8	15	22	29
S	-	2	9	16	23	30



August

S	-	-7	14	21	28
M	1	-8	15	22	29
T	2	-9	16	23	30
W	3	10	17	24	31
T	4	11	18	25	--
F	5	12	19	26	--
S	6	13	20	27	--

PROPERTY OF
ST. CHARLES COUNTY
HISTORICAL SOCIETY





September

S	-	4	11	18	25
M	-	5	12	19	26
T	-	6	13	20	27
W	-	7	14	21	28
T	1	8	15	22	29
F	2	9	16	23	30
S	3	10	17	24	--



PROPERTY OF
ST. CHARLES COUNTY
HISTORICAL SOCIETY



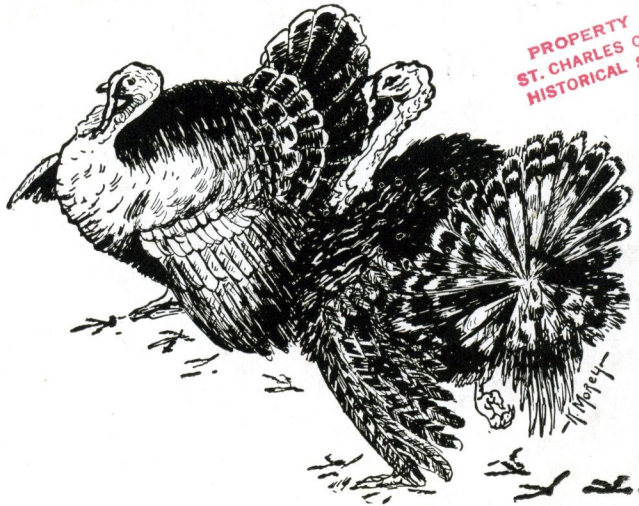
October

S	-	2	9	16	23	30
M	-	3	10	17	24	31
T	-	4	11	18	25	--
W	-	5	12	19	26	--
T	-	6	13	20	27	--
F	-	7	14	21	28	--
S	1	8	15	22	29	--



November

S	-	-6	13	20	27
M	-	-7	14	21	28
T	1	-8	15	22	29
W	2	-9	16	23	30
T	3	10	17	24	--
F	4	11	18	25	--
S	5	12	19	26	--



PROPERTY OF
ST. CHARLES COUNTY
HISTORICAL SOCIETY



December

S	-	-4	11	18	25
M	-	-5	12	19	26
T	-	-6	13	20	27
W	-	-7	14	21	28
T	1	-8	15	22	29
F	2	-9	16	23	30
S	3	10	17	24	31