

Lindenwood University

Digital Commons@Lindenwood University

University Documents

Lindenwood Documents, Booklets,
Miscellaneous

1955

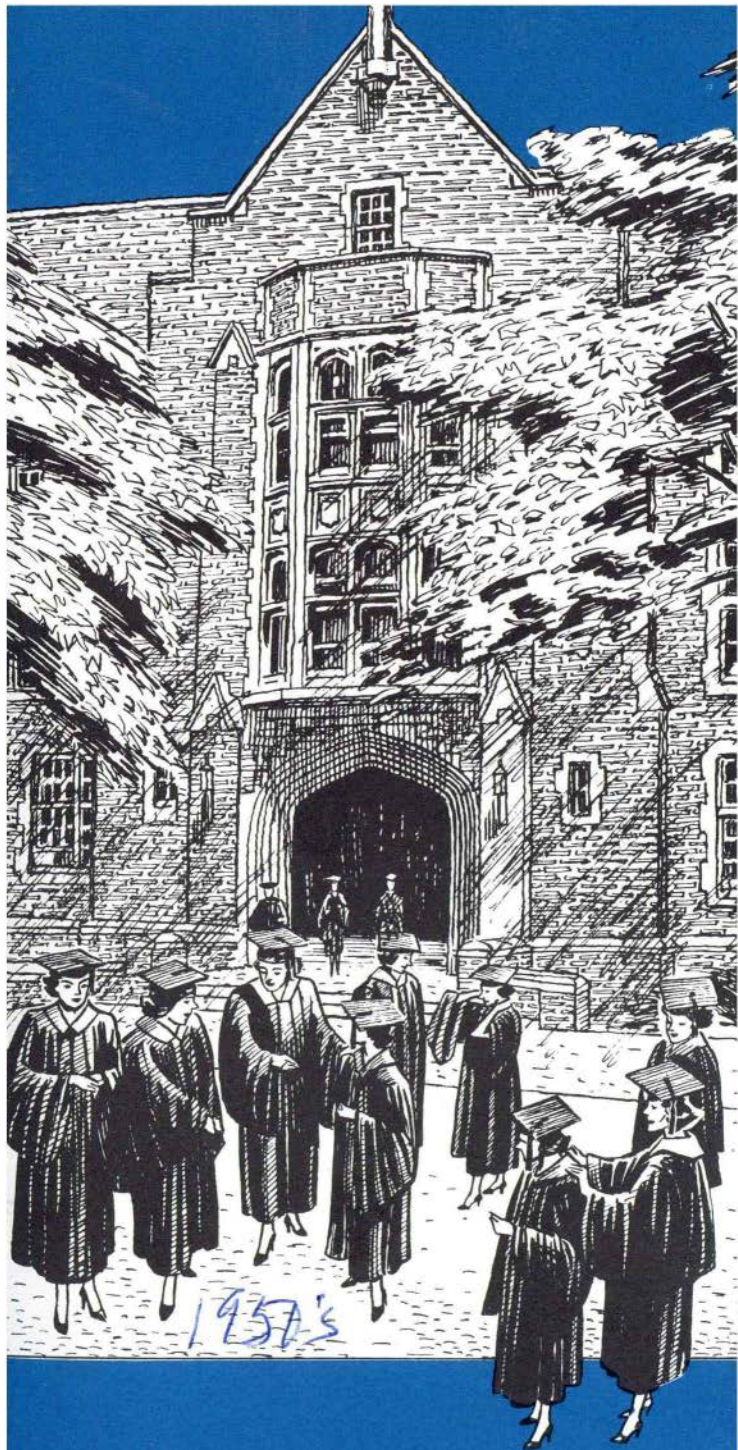
Lindenwood College Promotional Pamphlet

Lindenwood College

Follow this and additional works at: https://digitalcommons.lindenwood.edu/university_docs



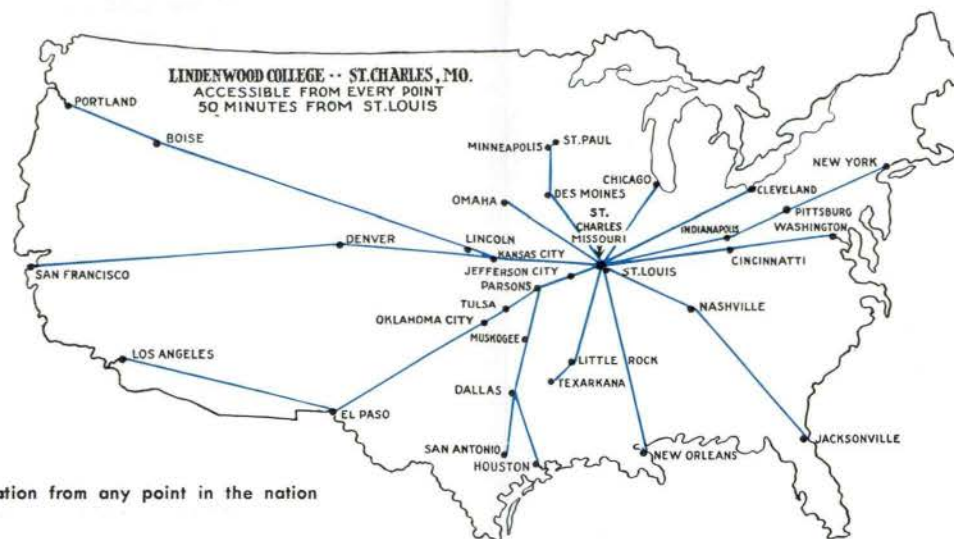
Part of the [History Commons](#)



**LINDENWOOD
COLLEGE**

LINDENWOOD - ITS LOCATION

St. Charles is an historic city of 25,000. The cultural and recreational advantages of St. Louis are just twenty miles from campus. Lambert Air Port is six miles distant.



Excellent transportation from any point in the nation

From St. Louis to:

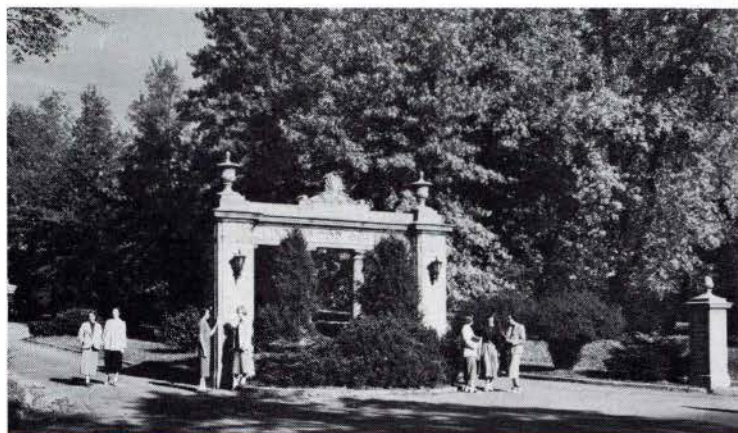
1—Portland, Ore.	2,154	9—Dallas, Tex.	667	16—Oklahoma City, Okla.	548	24—Cincinnati, Ohio	342
2—San Francisco	2,141	10—Omaha, Neb.	460	18—Little Rock, Ark.	365	25—Cleveland, Ohio	538
3—Los Angeles	1,872	11—Lincoln, Neb.	475	19—Texarkana, Tex.	520	26—Nashville, Tenn.	324
4—Boise, Idaho	1,687	12—Kansas City, Kans.	258	20—New Orleans, La.	705	27—Pittsburg, Pa.	600
5—Denver, Colo.	870	13—Jefferson City, Mo.	129	21—Minneapolis-St. Paul	568	29—Washington, D. C.	811
6—El Paso, Tex.	1,228	15—Tulsa, Okla.	428	22—Des Moines, Iowa	346	30—New York, N. Y.	957
7—San Antonio, Tex	942			23—Indianapolis, Ind.	240	31—Jacksonville, Fla.	906
8—Houston, Tex.	809						

Greetings

from Lindenwood College, St. Charles, Missouri, — twenty miles from St. Louis. Lindenwood has much to offer to any young woman who wishes to acquire an education of superior quality. This brochure seeks to present some facts about the college.



President and Mrs. Franc L. McCluer



LINDENWOOD - ITS PRESENT AND PAST

The beauty of Lindenwood's campus greets you as you enter through the Main Gate. On the campus of one hundred thirty-seven acres of rolling lawns and majestic trees you will find seven dormitories, a library of over 44,000 volumes, an academic building containing class rooms and laboratories, a Fine Arts building for the study of music, art, and radio and television, a Chapel for Religious Education and a pre-school laboratory, and other buildings for gymnasium, swimming pool, and riding stables, also athletic fields for outdoor sports.

Major George C. and Mary Easton Sibley founded Lindenwood in 1827. Graduates and present students revere traditions developed in more than a century and a quarter.

This college is basically concerned with a liberal education. Four standard degrees are offered.

LINDENWOOD - ITS STUDENT BODY

The following States and several Foreign Countries are represented in the 1960-'61 student body:

Alabama
Arkansas
California
Connecticut
Dist. of Columbia
Florida
Georgia
Hawaii
Idaho
Illinois
Indiana
Iowa

Kansas
Kentucky
Maine
Massachusetts
Michigan
Minnesota
Missouri
Montana
Nebraska
New Jersey
New Mexico
New York

Ohio
Oklahoma
Pennsylvania
South Dakota
Tennessee
Texas
Utah
Virginia
Washington
Wisconsin
International Students

LINDENWOOD- ITS PHILOSOPHY

The primary purpose of higher education must be to discover and release the powers of individual men and women. The liberal arts curriculum provides the central core of study in the pursuit of this purpose at Lindenwood.



Mary F. Lichliter, M.A., Director of Guidance and Placement

The unique abilities and interests of individual students are measured here. On the basis of these findings the counseling program helps each student in the choice of a field of study. Opportunities for independent study are given to gifted and superior students.

A serious effort is made to lead each student to:

1. Understand herself.
2. Think logically.
3. Understand her social and physical environment.
4. Know her own language and literature and have some knowledge of other cultures.
5. Evaluate her civilization in the light of its historical development.
6. Accept and fulfill her responsibility as a citizen and homemaker.
7. Sustain her life with moral and spiritual ideals and religious faith.

LINDENWOOD- ITS PEOPLE

Lindenwood's Faculty of fifty-five men and women is devoted to personalized instruction. The faculty-student ratio is ONE to TEN. Among the faculty members one-third of them have achieved education's highest degree — a doctorate. A competent and devoted faculty make this a place distinguished by the quality of its teaching. The most important period of your early life will be your college years. Teaching is communication; here, it is done in small classes where students and instructors are friends. Lindenwood is a dependable college for your four undergraduate years.



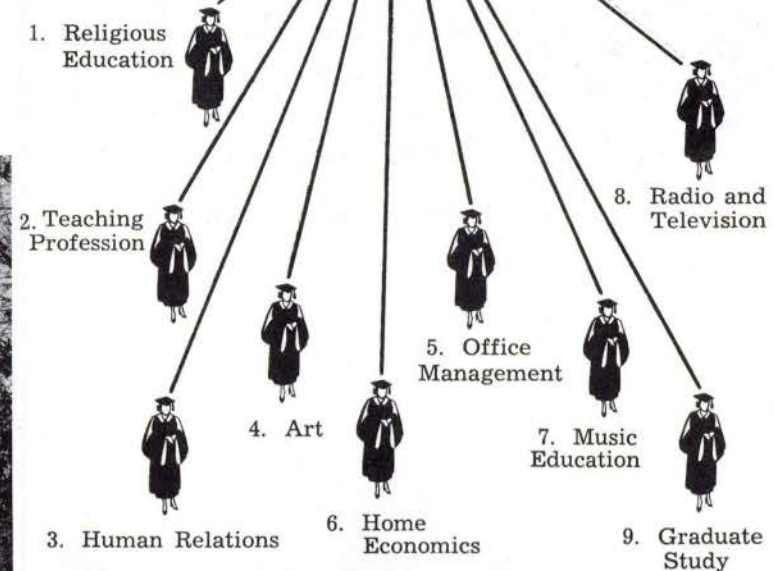
LINDENWOOD- ITS PROGRAM

The details of Lindenwood's program cannot be spelled out in an introductory brochure. Two quotations will indicate its worth:

"Knowledge is gained, convictions are formed, friendships are extended, and life's plans are made." Kay Anderson Corl, a graduate.

"A student does not attain maturity by arriving at her twenty-first birthday. Maturity comes as the product of learning, of faith, and of responsible participation in community life.

F. L. McCluer, President.



LINDENWOOD- ITS FIELDS OF PREPARATION

As you go into your life's work Lindenwood's preparation sustains you.

BACHELOR OF ARTS	Psychology	Physical Education and Recreation
Art	Religion	Office Management
Biological Science	Religious Education	Church Secretary
Chemistry	Sociology	Legal Secretary
Classics	Speech	Medical Secretary
Economics	Theatre, Radio and Television	BACHELOR OF MUSIC
English, including Journalism	BACHELOR OF SCIENCE	Piano
History and Government	Education	Organ
Human Relations	Elementary Secondary	Voice
Mathematics	Home Economics	Violin
Modern Languages	Clothing	Orchestral Instrument
French, Spanish, German	Foods	BACHELOR OF MUSIC EDUCATION
Music	Vocational*	Music Education
Philosophy	Medical Technology**	
	Nursing Science***	

***In cooperation with Deaconess Hospital

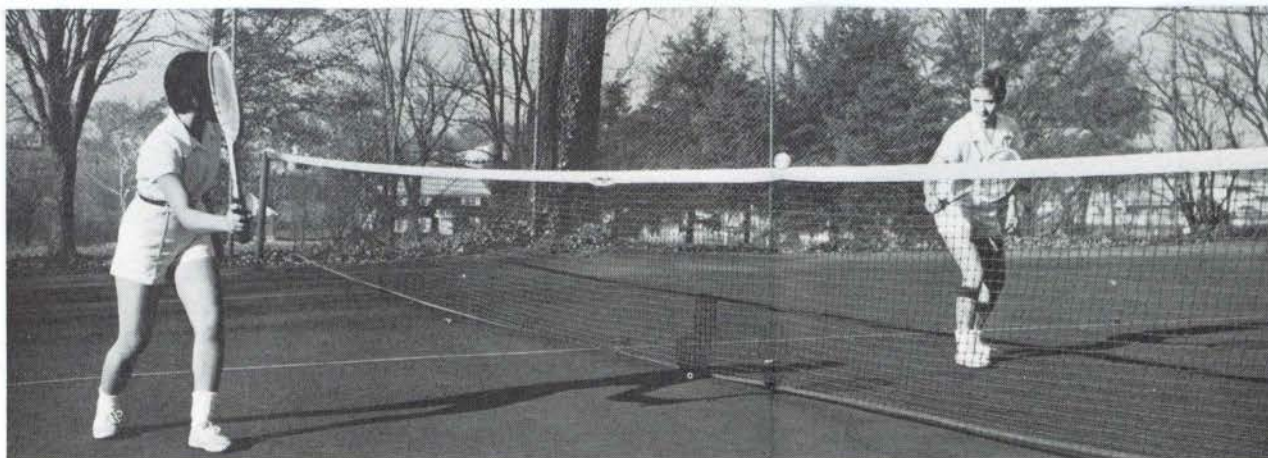
**In cooperation with Barnes Hospital or other approved Schools of Medical Technology.

*Including requirements for Teaching in Smith-Hughes Vocational High Schools.

LINDENWOOD-

ITS LIFE AND ACTIVITIES

The Lindenwood community is one where faculty, administration and students are ready to extend friendship to you, ready to share knowledge and experiences, and ready to accept you as a worthy member. Campus life is filled with activities;—educational, cultural, social, recreational and athletic. On the campus of this college young women are given the invaluable experience of responsibility in government within the dormitories and in the honor system.



Tennis is one of several sports which you may learn



As your knowledge expands microscopic details verify it



A visit in the home of Dr. and Mrs. Franc L. McCluer



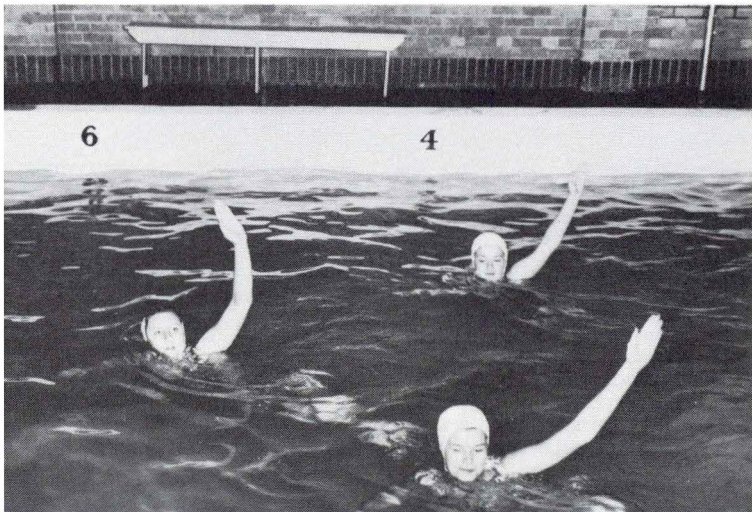
Modern dance for grace, poise and artistic expression

Between classes we meet in the Tea Room





An after dinner bridge game in my room



How about a dip in the pool?

In class we learn the theory
—In the Laboratory we see
it happen



We learn what makes
the mind function



LINDENWOOD-

ITS QUALITIES OF DISTINCTION

SELECTIVE — Each applicant must rank in the upper fifty per cent of her graduating class and present acceptable scores on a nationally recognized entrance test.

RESPECTED — Its strong academic program has gained repute throughout this nation and in foreign countries.

PERSONALIZED — Each of four degrees signifies its possessor has some competence in that knowledge respected by educated people, and has specific training in one or several of the twenty-eight courses of instruction offered here.

REASONABLY PRICED — Lindenwood charges \$1800. for all necessary services, including board and room, tuition, student activities, concert and lecture series, and the private study of music. This price represents only a portion of the sum the college spends per student each year. Remaining costs are made up from endowment earnings, and gifts of alumnae and friends. Scholarships and self-help may further reduce a parent's costs.

SELF-DIRECTED — Each student subscribes to Lindenwood's Honor System, directed by students and implemented by Student Government which sets a high tone for social and academic conduct.

CHURCH-RELATED — Lindenwood is Presbyterian in background with members of all faiths welcomed. It is small enough to know you and to care about you.

ADMISSIONS STAFF



Wm. F. McMurry, Director
Mrs. Dorothy R. Farrell, Mo. and Ark.
Mrs. Charlotte S. Young, Kan. and Neb.
Theodore J. Pinckney, Okla. and Tex.

Dr. B. B. Branstetter, Ia., N. & S. Dak., Minn.
Mrs. Grace M. Hatch, Mich., No. Ill., No. Ind., No. O., Wis.
Mrs. Eve B. Maile, Tenn., Ky., So. Ohio, No. Ga., No. Ala.
Edwin A. Saye III., Ind., St. Louis Co.

There are many strong colleges in America. Lindenwood is one of them. We believe it is worthy of your careful consideration. You may request the services of our Admissions Counselors. You and your parents are invited to visit us by appointment. Please fill in and return the enclosed card so we can become better acquainted.

Wm. F. McMurry, Director of Admissions

FURTHER INFORMATION IS AVAILABLE BY WRITING The Director of Admissions, Lindenwood College, St. Charles, Missouri

Publicity (1950's)