



Vol. 4, Issue 6

Thursday, November 17, 1988

## Inside

Oingo Boingo  
concert review  
page 2

Ladies take 3rd in  
Regionals  
page 3

# Soviets Delayed

by Jim Herries  
LindenWorld editor

Problems with the Soviet airline Aeroflot have altered plans for a Soviet delegation's visit to Lindenwood. Instead of staying at the St. Charles campus in January 1989, the Soviet undergraduate students from Azerbaijan University will arrive in September that year or later.

"I think the whole thing is pretty disappointing," said Ron Watermon, originator of the Lindenwood Soviet Exchange Program.

Watermon received word from the Citizens Exchange Council (CEC) Nov. 8 that the Soviets are unable to visit Lindenwood College early next year because they can't get airline tickets to the United States on Aeroflot, the state airline. Rector Mamedov of Azerbaijan State University sent a telex to the CEC with the bad news.

Stephany Brown, senior program coordinator at the CEC, told Watermon that other universities in the United States have been similarly stood up for the same reason. One school was notified just four days before the Soviets were due. Increased Soviet travel to the United States is blamed for the limited seating on international Aeroflot flights, and students have low priority.

"I guess the Soviets don't have a Carl Icahn," said Watermon. "But the way I see it is you can't rush peace and mutual understanding." Based on ticket availability, the Soviets suggested September 1989 as a possibility for rescheduling.

Watermon said the Lindenwood delegation's March 1989 visit to Azerbaijan State University should not be affected by this development. He noted however, that one big problem now is that several of the students currently in charge of the program will graduate before the Soviets come, including himself.

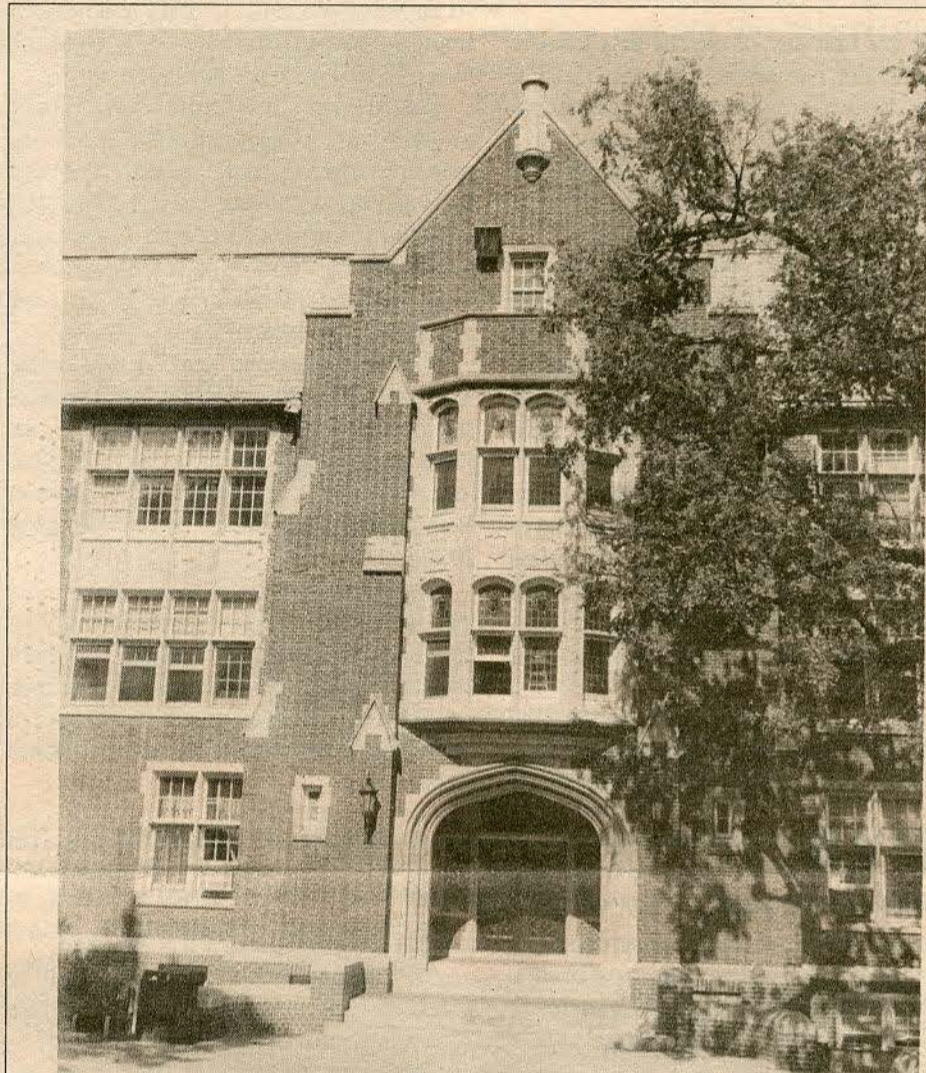
"I was looking forward to being there and seeing people's faces when they're here," he said. A tentative schedule for the Soviet delegation had just been drawn up when word of the delay came. Plans to visit the Arch, Leonard Slatkin and the St. Louis Symphony, Forest Park, a hockey Blues game, and local businesses are on hold until a new date can be agreed upon through proper channels.

"It's like starting all over," said Watermon. While the current group of students planning the various elements of the entire exchange program will continue to work on the March and September visits, Watermon is already planning for their successors.

"I'm hoping to groom a new group of students to take over what was started," said Watermon. He said early next semester a meeting will be held on campus to find out who wants to be involved with the exchange in any capacity.

Watermon said there is potential for the program to lose its original purpose and vision due to student turnover. A board of advisers is being formed consisting of business and entertainment figures to help retain the original purpose of the program. Edward

see Soviets, page 2



INSIDE: Roemer hall is one of the prettier buildings on campus--see story on page two about one aspect of Roemer everyone deals with but few know about. (LindenWorld photo by Jim Herries)

# Tuition: Keeping the College Doors Open

by Teresa Butler  
LindenWorld editor

(Part two of a three-part series on the college's financial predicament)

In an effort to get Lindenwood financially healthy again, the college is attempting to build-up the cash flow from its main supplier—students.

Close to 80 percent of revenue for the college comes from tuition and is therefore very important in getting the college out of debt, said President James I. Spainhower. The college is boosting its efforts to bring in additional revenue by increasing the number of students and raising tuition rates.

Spainhower said that lately the college has been paying a lot of attention to both day and evening admissions. He said the college saw a 13 percent increase this year in total enrollment, and residential numbers were also up

which helps bring an additional income.

"We've beefed up our staffs in both areas," Spainhower said. The college has also been spending more money on advertising and expanding the recruiting area. He added that the college now has a full-time recruiter in Chicago and a part-time recruiter in Kansas.

In addition to increasing the number of students attending the college, Spainhower said the college will also be charging more in tuition.

"Tuition increases are vital to keeping the college out of debt," Spainhower said. "The college has to get sound financially again and we have to bite the bullet and increase tuition." He added that the yearly increases will stay at the national average which is 6 to 8 percent.

Last year, the college saw an 8.3 percent increase in tuition from \$5,680 a year to  
see Tuition, page 2

## KCLC, LSG Sponsor Toy Drive

by Barb Johnson  
LindenWorld Staff

With Christmas approaching, Lindenwood's KCLC-FM is working with the Lindenwood Student Government (LSG) and the Mid Rivers Movers and Shakers to sponsor a toy drive centered on the theme "Share the Spirit of Christmas."

Coinciding with this theme will be a Christmas walk and food drive for the needy.

"We want to stress the Christmas spirit through the Christmas walk, food drive, and toy drive," said Ron Watermon, LSG president and KCLC news director. The Christmas Walk is scheduled for Sunday, Dec. 4 from 4-7 p.m.

An all-campus decorating day is planned for Tuesday, Nov. 29 on campus. LSG will be seeking students to help decorate the buildings, offices, and ten Christmas trees.

Though not in competition with Toys for Tots, this project was designed to reach needy families in the St. Charles County who may be overlooked by other such programs.

"We're excited to be involved with helping the community," said Watermon.

This is the third consecutive year that KCLC has conducted a toy drive. It started in 1986 to help those who had been victimized by the flood waters of the Missouri river that fall. The efforts of KCLC, the LSG, and the Mid Rivers Movers and Shakers, a chapter of the Missouri Extension Homemakers Association, will continue to help those who have recently suffered a tragedy.

"It has been vary successful before, but I think it will do a lot better this year because of planning ahead and the student involvement of LSG," said Watermon.

Toys will be collected in three ways.  
see Toys, page 2



# Entertainment

## Climbing the Steps of Higher Education

by Kathy Sullivan  
LindenWorld writer

On my first day of classes as a Lindenwood student, I found out that I was in terrible shape. After having worked all summer sitting down and trying to heal a sprained hip, I was in no way prepared to face Roemer Hall.

It had stairs! Lots of them, I found out as I made my way to third floor classes.

Being in pain from the sprained muscle, I tried everything I could to keep my mind off of it while I climbed. Since it was 8 a.m. and my mind was as yet unfocusable, I resorted to counting the stairs. I quickly noticed that the flights didn't have the same number of steps.

At first I thought I counted wrong, but when I climbed them again, I found out that not one of the flights on the southeast end of the building near the library had the same number of steps. So I then tried the other side to see what I would find. Almost the only thing that matched was the total number of steps.

At the southeast end of Roemer, the first flight has 13 steps leading from the basement to the first landing and six steps lead to the

first floor. From there, the flights have eight, 11, 10 and nine steps leading to the third floor. At the northwest end, the first flight has nine steps, the second 10, followed by eight, 11, nine and 10. No one seems to know why.

Lindenwood Librarian Jean Taylor found a book "The Newer Lindenwood" which was written by alum Lucinda Templin. The book indicated that architects had some difficulty in building Roemer because the campus is 20 feet higher than Watson Street. She also surmised that the ceilings may be higher from one floor to the next.

Former librarian and keeper of the Lindenwood archives, Mary Ambler, had the same suggestion, but she too didn't know why the stairs were built the way they were. She did indicate that the main entrance to Roemer Hall faced Watson Street when it was built in 1924.

Ambler also stated that the remnants of that entrance can be seen as an arched window near the floor in one of the first floor offices. She said that Roemer, at that time, was the only classroom building and housed everything from home economics to science classrooms.

## Toys

continued from page 1

Some new and used toys in good condition will be collected at various sites in the county. Local stores will also be donating toys, and money collected will also be spent on new toys.

St. Joseph's Hospital, Hospital West in Lake Saint Louis, St. Peter's City Hall, St. Charles County Courthouse, and O'Fallon City Hall are the locations of drop-off barrels for residents to place toys they wish to donate.

Local schools are also holding "Share the Spirit" week in which students will bring a new or like-new toy. Several local stores are also involved. Walmart will provide a "Giving Tree" for customers to purchase a gift for

a needy child and deposit it at Walmart.

After the toys are collected, tokens will be issued to chosen families to "shop" at the "Share the Spirit of Christmas" site.

Cannisters or large garbage cans are needed for use at the drop-off sites. Donations, toys and volunteers to take shifts at the shopping site are also needed.

If you know of a family that should be on the list or a church that would like to be involved in this project, contact KCLC at 949-2000 Ext. 262 before Nov. 18.

Names will still be accepted after this date but would be preferred before for planning purposes.

## Tuition

continued from page 1

\$6,150 this year. Vice President of Finance and Director of Capital Projects, Ken Musbach, said the college will not know how much tuition will increase next year until after the budget is completed in January.

Spainhower said that Lindenwood's tuition is very low on the scale comparatively to other four year private schools. He said that just about all of the private schools in St. Louis charge more.

"We are very competitive and we intend to remain that way," he said. Tuition increases will not rise above the national average just to get the college financially healthy again, Spainhower said. He added that raising tuition too much will tend to hurt the college more than help it by driving away students.

"We want to make sure that we don't cut off our nose to spite our face," he said. Tuition levels will have to remain at an acceptable

level to present students.

However, present students have mixed views on tuition increases. Student Ron Crawford said tuition increases to him are very painful. "I'd hate to see it go up again after the current increase," he said. "If it goes up again, I'm going to be immensely depressed."

Senior Ted Pruitt said, "Every student you talk to is going to say that tuition is too high and everyone you talk to in administration is going to say that it could be higher. So as a student, I think it's too high."

Pruitt also said that his answer might have been different if he was rich and had a lot of money or if he felt that he was getting what he paid for in tuition. "I think that the reason people keep paying it is because they feel that the small college advantages make it worth it."

## Oingo Boingo Live

by LaVon Boothby  
Guest reviewer

Once again it was concert time. I had won a pair of tickets from KCLC to see Oingo Boingo at Mississippi Nights.

When I arrived at Mississippi Nights I was surprised at all of the people there. I had only been to Mississippi Nights once before to see Camper Van Beethoven and it wasn't as crowded. I wasn't aware that Oingo Boingo had such a big following in the St. Louis area.

The place was packed elbow to elbow. I could barely see the band. The only thing I could think of for the first 20 minutes into the concert was that I wished I was taller.

I was calmly listening to the band belt out their songs from their latest live album when a sudden push from the rear shoved me into the middle of the floor. From there on it was defensive dancing. I was in what is known at "the pit" in concert terms.

I was shoved, kicked, pinched, my feet were stepped on, my hair was pulled and any sense of bearing I had when I came into the

concert was now drowned in sweat.

At this point, I wasn't concerned with wanting to be taller, listening to the band, or even seeing the band. I just wanted to stay alive. Fortunately I lucked out. I got shoved all the way to the front of the stage.

At the front of the stage all I could do was stare at the lead singer, Danny Elfman. He was the only person in my range of sight anyway.

Elfman was a madman on the stage—screaming lyrics, dancing wildly, and smiling sadistically. He wasn't nice looking or even trying to be sexual but he was.

I found that listening to Oingo Boingo in concert and listening to Oingo Boingo recorded were two entirely different experiences. The recordings are insipid by comparison. Their music is supposed to be animated visually which the band does with ease. A mere recording doesn't capture the raw energy the band has in a live performance.

Oingo Boingo played from 8 til 10 that evening, with two encores lasting until 10:30.

## Soviets

continued from page 1

Balog, faculty adviser, will also provide key help during the transitions between student leadership.

The original goal of the program is to pro-

mote mutual understanding and easing of tensions to lower barriers for successful dialogue on all issues, including arms reduction, according to Watermon.



Possible LC Presidential Candidate?



News & Features Editor  
Teresa Butler

Copy & Layout Editor  
Jim Herries

Reporters  
John Batts, Teresa Butler, Joycelyn Davis, Denise Durbin, Tricia Frazer, Jim Herries, Barb Johnson, Kathy Sullivan

Photographers  
Ron Crawford, Jim Herries,

Accountant  
Sherri Grothaus

Adviser  
Marcia Zaraza Guckes

The LindenWorld is published bi-weekly by Lindenwood College students, financed by advertising revenue and funds recommended by the Lindenwood Student Government. The opinions expressed herein reflect those of its editorial staff and not necessarily those of the college. Letters to the editor are strongly encouraged. The LindenWorld box is 722.



# Women's Soccer

## Ladies Finish 3rd in Regionals

by John Batts  
LindenWorld staff

The Lindenwood Lady Lions soccer squad finally completed their season on Nov. 12, ending on a good note with a win to take home third place in Regional competition.

The Lady Lions ended the regular season during the last week in October, posting a regular season record of 13-1-2. Because of the team's undefeated record throughout its conference, the Lady Lions were allowed to host the District competition.

"I felt really good about the first game on Friday, Nov. 4," said coach Debbie Kehm. "We outscored the opponents 6-0. The second game, however, I didn't feel as comfortable with. Missouri Valley, our opponents that game, watched us play a great first half, and then totally break up and allow them to basically dominate the second half."

That District Championship game did end in a victory against MO Valley, and the Lady Lions progressed to Regional competition.

At Regionals, the Lady Lions were seeded second, and played Wilmington for entrance to the final game and a possible shot at national competition.

Unfortunately for the Lady Lions, the bid for the team to go to nationals ended in their first game. The ladies played Wilmington and lost in overtime by a score of 3-2.

"I won't lie at all - I was disappointed. We had a few things going against us, including an injury to one of our key players, Jannette



**LISTEN UP:** Coach Debbie Kehm (to the right) talks over the 1st half performance of the Lady Lions during their match against Kansas City's Park College. The team went on to tally five more goals en route to the first of two district playoff wins. Below right, Lindenwood's Jill Holmstrom scores on a breakaway in the Park College contest. (LindenWorld photo by Jim Herries)

Krook. But for the most part, those are just excuses. We were not playing consistently; we just didn't have it that game," Kehm said.

Coach Kehm said that she thought the team had the talent to go on to national competition, especially after their performance against last year's reigning champions, Berry College, in which the team played to a 1-1 tie.

"We lost the regionals, unfortunately, but I am pleased for the most part of the season. The disappointment came really because our lack of consistency came back to haunt us. But, like I said, I am pleased with the season; the girls worked together as a unit for the most part on the field, and they got along off the field."

Siena Heights went on the defeat Wilmington in the finals by a score of 2-1 in overtime to advance to the national competition.

The Lady Lions finished their season with an overall record, including post season games, of 16-2-2 - the most games the team has won in the history of women's soccer at Lindenwood.

"As a last, but definitely not least, comment I would like to say thank you to Angie Sorbello and Jill Holmstrom for all the hard work. We will miss seeing you on the field and on campus," said Coach Kehm. Both graduate this year.



**CONFLICT OF INTERESTS:** Tracy Thompson (4) and another Lady Lion challenge Park College's goalkeeper during Lindenwood's 6-0 win. (LindenWorld photo by Jim Herries)



# SUBWAY

If Styrofoam Has Got Your Bored  
Try The Fresh Alternative Menu Board

Valid at  
505 Droste Road  
St. Charles

**723-7821**

Open late  
night!  
7 Days a  
Week



# Sports

## Basketball Programs Leap to Life

by Joycelyn Davis  
LindenWorld writer

The 1988-89 Lindenwood men's basketball team is actively working at becoming a strong competitive team.

Art Siebels, from Hillsboro, Mo., has coached at Festus High school for four years, and also served as head coach and athletic director for Columbia College.

The Lions have coaching help from a former Lion whose jersey #41 has been retired: Earl Austin. Austin holds the record for most points scored in Lindenwood's history and serves as assistant coach.

Along with the new head coach come new players: Keith Avery, Chad Bolser, Morrice Jackson, Tim Marshall, Joe Niblock, Julius Rankins, Tan Sonkson, and Mike Stiphison. All eight players are freshmen.

The returning athletes are Chris Sonson and co-captains Tim Turner and Todd Davis.

Later in the season, Mark Hurd, a transfer student from SIU-E will join the promising team.

Because there are only three returning athletes, a new coach and 10 new players, much work is needed before the team gets.

Siebels has a positive outlook for the team, but he feels that his players' small size is a major obstacle, though their quickness is an asset.

Siebels said he was "pleasantly surprised" with the talent on the team, and he felt that with time victories will start to roll in.

"I am pleased with the improvement of the team so far," Siebels said. "We have a lot of uphill battles to face this season, including the

### MEN

*Sat	11/5	Columbia College	Columbia, MO	7:30
Tues	11/8	SANFORD BROWN	St. Charles, MO	7:30
Fri/Sat	11/11-12	Mid-Missouri Shootout	Fulton, MO	TBA
Th-Sat	11/17-19	Show-Me Conference Tournament	Missouri Baptist	TBA
Tues	11/22	Webster University	Webster Groves	7:30
Fri/Sat	11/25-26	Greenville Tournament	Greenville, IL	TBA
Thurs	12/1	Maryville College	St. Louis, MO	7:30
Sat	12/3	Oakland City College	Oakland City, IN	3:00
*Mon	12/5	Harris-Stowe State College	St. Louis, MO	7:30
Wed	12/7	GREENVILLE COLLEGE	St. Charles, MO	7:30
Fri/Sat	12/9-10	McKendree Tournament	Lebanon, IL	TBA
Fri/Sat	1/6-7	Pittsburg State Tournament	Pittsburg, KS	TBA
Sun	1/22	Missouri Valley	Marshall, MO	4:00
*Tues	1/24	Missouri Baptist	St. Louis, MO	7:30
*Thurs	1/26	HARRIS-STOWE STATE COLLEGE	St. Charles, MO	7:30
Sat	1/28	Parks College	Cahokia, IL	3:00
Mon	1/30	MARYVILLE COLLEGE	St. Charles, MO	7:30
*Thurs	2/2	MISSOURI BAPTIST	St. Charles, MO	7:30
*Sat	2/4	Hannibal LaGrange	Hannibal, MO	7:30
*Tues	2/7	Fontbonne College	Clayton, MO	8:00
*Fri	2/10	COLUMBIA COLLEGE	St. Charles, MO	7:30
*Sat	2/11	HANNIBAL LAGRANGE	St. Charles, MO	7:30
Wed	2/15	PARKS COLLEGE	St. Charles, MO	7:30
Mon	2/20	Blackburn College	Carlinville, IL	7:30
Sat	2/25	Greenville College	Greenville, IL	7:30
*Mon	02/27	FONTBONNE COLLEGE	St. Charles, MO	7:30

ALL HOME GAMES PLAYED AT  
ST. CHARLES HIGH SCHOOL

\*SHOW-ME COLLEGIATE CONFERENCE

### WOMEN

Mon	11/14	CENTRAL METHODIST	St. Charles, MO	6:30
Th-Sat	11/17-19	Conference Tourney	St. Louis, MO	7:00
Tues	11/22	UMSL	St. Louis, MO	6:30
Wed	11/30	WILLIAM WOODS	St. Charles, MO	6:30
Sat	12/3	Rolla	Rolla, MO	5:30
*Mon	12/5	Harris-Stowe	St. Louis, MO	5:30
Thurs	12/8	Greenville	Greenville, IL	7:30
Sat	12/10	Evangel	Springfield, MO	2:00
Mon	1/9	PRINCIPIA	St. Charles, MO	7:30
*Wed	1/11	FONTBONNE	St. Charles, MO	6:30
Fri	1/13	PARK COLLEGE	St. Charles, MO	7:00
Mon	1/16	MARYVILLE	St. Charles, MO	7:00
Sat	1/21	Park College	Parkville, MO	2:00
Sun	1/22	Central Methodist	Fayette, MO	3:00
*Mon	1/23	Missouri Baptist	St. Louis, MO	5:30
Wed	1/25	MCKENDREE	St. Charles, MO	6:30
Sat	1/28	Judson College	U.M.S.L.	12:00
Tue	1/31	MCMURRAY	St. Charles, MO	6:30
*Wed	2/1	HARRIS-STOWE	St. Charles, MO	7:00
*Tue	2/7	Fontbonne	St. Louis, MO	6:00
*Thurs	2/9	MISSOURI BAPTIST	St. Charles, MO	6:30
Fri/Sat	2/10-11	Central Methodist Tournament	TBA	
Mon	2/13	Maryville	St. Louis, MO	7:00
Fri	2/17	McKendree	Lebanon, IL	7:00
Sat	2/18	OZARKS	St. Charles, MO	7:00
Mon	2/20	GREENVILLE	St. Charles, MO	6:30
Tues	2/21	William Woods	Fulton, MO	7:00

ALL HOME GAMES PLAYED AT  
ST. CHARLES HIGH SCHOOL

\*SHOW-ME COLLEGIATE CONFERENCE

lack of experience the team faces. Six of the top eight players are freshmen this year, but I feel happy with the caliber of athletes who were recruited this year."

The season opened Nov. 5 in Columbia against Siebels' former employer, Columbia College. While the Lions lost that contest, they downed Sanford Brown Business College in the first home game of the year - one of the few home games the Lions will have this season.

"One thing we will definitely have to overcome as a team is the lack of 'home field ad-

vantage' we have this season. Of 41 games during the regular season, only 9 of those games will be at home," Siebels said.

All home games are played at St. Charles High school.

The entire conference as a whole has improved in talent and ability, according to Siebels, and out of six teams in the Lions' conference, the Lions are seeded fifth presently. Even with all the cards stacked against the Lions' team, Coach Siebels is optimistic about the team's future and progress throughout the season.

The Lindenwood College women's basketball team returns for what it hopes to be its best season yet.

The Lady Lions return from their most successful season in the history of the college's basketball program. Coach Ed Harris expects this year to be even better.

Returning this year are seniors Lila Witte, Melissa Donnelly, and Charlotte Farmer. Juniors Courtney Austin, Joycelyn Davis, Tricia Frazer, Michelle Fehlig, and Kristen Wixson are also back on the 88-89 squad.

The summer was good to recruiting. Coach Harris added four new players to the Lady Lions. Allyson Bean, Krista Wright, Jamie Hensley, and Jodie Douglas are new to the team. Wright and Douglas come from Germany.

Witte and Austin have been a strong force on the inside game. The bench provides strong support for the starting five.

"I'm really pleased with the talent of the team as a unit this season. We had some excellent recruiting over the summer for what we had to offer incoming players," Harris said.

Harris told the team early on that there is a chance for them to go far. The top of the conference certainly isn't out of reach if the team works together and gets along, according to Harris.

"One goal that I think the team will be able to meet by the end of the season is getting to the top of the conference. At present, we are seeded last in our conference, and I feel that we have the talent to at least win the conference tournament."

## Advance Resume and Writing Service

1017 S. Fifth  
St. Charles, MO

- \*\*\* Competitive Resumes
- \*\*\* Career Counseling
- \*\*\* Student Discounts

946-4050

## Classifieds

### Job Opportunities

Market research firm in Westport area seeks reliable and articulate individuals to

conduct research surveys. Sophomores and above \$5.00/hr. Contact Joann M. Alexander 469-7373.

Full time and Part time positions now available at the **Limited Express and Express Man.** Send resume and/or application to: West County Express, 31 West County Center, St. Louis, MO 63131. (966-0690), or The

Mid Rivers Express, Mid Rivers Mall Drive, St. Peters, MO 63376. (278-8850)

### Jobs In Australia!

Immediate Opening for Men and Women. \$11,000 to \$60,000. Construction, Manufacturing, Secretarial Work, Nurses, Engineering, Sales. Hundreds of Jobs listed. Call Now! 206-736-7000

Share a house with two females. Half block from college. Full kitchen, laundry facilities provided plus other extras. Price Negotiable. Non-smoker preferred. Call 344-5223 day, 949-9234 night.

Personals accepted here!

5 cents a word--put something in the last issue before Christmas! Dec. 2 deadline