

Visit the new Special Features section to read about LUTV's first live coverage of an away football game.

Page 6 ►



Famous musician Chuck Berry performs an exclusive LU concert Oct. 1. Check out the Entertainment section for the story.

◀ Page 8

LINDENWOOD

The Lindenwood's Student Newspaper

Legacy

Volume 5, Number 4

www.lindenlink.com

Oct. 5, 2011

Retail items cut from meal plan



Students wait in line during breakfast hours at the Lone Wolf Coffee shop in Butler library. "Retail items" are no longer included in the meal plan.

By **Natasha Sakovich**
Editor-in-Chief

Several new features were added to this year's meal plan, with choices like having meals at the Evans Commons, getting food as part of the meal plan at Lone Wolf Coffee stores and the use of Flex Points.

As of Monday, Sept. 26, students were notified of a few new changes regarding their food options on campus. An email was sent to all

Lindenwood students on Friday, Sept. 23, which stated the changes would go into effect on Sept. 26. Changes include what

items can be purchased as part of the meal plan versus what can be purchased with only Flex Points or cash/credit at the Evans Commons

"The program was designed to provide a nutritional and whole meal, not just drinks."

-Ralph Pfremmer

affected by the new policies. For a complete list of changes and to know what can or cannot be purchased with the meal plan, please

see the graphic box included on Page 12. Most notably, one of the main changes is that students are no longer able to purchase choices that are considered "retail items" with their meal plan. These include Starbucks coffees, energy drinks and Naked juices.

Please see *Meals*, Page 12

cafe and the two Lone Wolf Coffee shops. The Spellmann Center cafeteria and Grab-n-Go are not affected by the new policies.

Check out Page 5 for an editorial related to the new meal plan changes.

LU works to keep the campus lit

By **Christine Hoffmann**
News Editor

When the sun sets over Lindenwood's campus, the sidewalks become illuminated by street lights and spotlights on buildings. Though many dark areas still exist, the school is in the process of installing more pole lights to increase student safety.

In the past year, 23 pole lights have been installed in campus housing.

Joyce Norman, director of the business service center, said more lights are in the works for the back portion of campus.

This includes the Evans Commons, the Frisbee golf

course and the areas behind many of the older dorms. Older lighting fixtures will also be replaced by brighter, more energy efficient bulbs.

LSGA President Dan Bedell said he has seen the school add many lights to the campus in the past four years.

The student government has helped in bringing awareness of lighting needs to the administration.

"[Lighting] is less of a concern than it was three years ago," Bedell said.

"The concern now is the maintenance of the lighting. The lights are in place, but they're not on."

Please see *Lights*, Page 3



A student makes use of the new furniture on the third floor of the Spellmann Center. Many buildings and dorms also received some new furniture.

Furniture gives LU new look

By **Clare Behrmann**
Staff Reporter

Students find something new at Lindenwood every time they turn around. Most recently, the university added new furniture in the Spellmann Center.

"I was given the assignment to acquire those items," said Michelle Giessman, director of housing. "I noticed that a few of the leather couches were a little worn, so I requested additional items for the Spellmann Center."

Vice President of Student Development John Oldani said that the original idea

came during Homecoming week a couple of years ago.

"We rented tables and chairs for the Homecoming Dance, and before the furniture was returned, students were using tables and chairs for studying and meeting in groups," Oldani said.

Some of the dorms also got an upgrade. "Blanton, Calvert Rogers, Rauch, Flowers, Mathews, Pfremmer, Parker, Cobbs and Irwin all got new furniture," Giessman said. "The decision was based on need."

Most notably, though, has been the furniture in the Spellmann Center, just



Several new chairs sit after being delivered to the third floor of Spellmann.

outside the computer lab on the third floor. So far the students seem to be enjoying the new addition.

"It makes it easier to work in groups," said junior Rebecca Schriener.

Please see *New*, Page 12

Man attacks LU student

By **Christine Hoffmann**
News Editor

A 22-year-old female student was assaulted on campus while walking away from the Newman Center, near the Spirit Shoppe, after dark on Tuesday, Sept. 20.

A man grabbed the woman behind the Auto Zone parking lot and threw her to the ground. She was able to escape when a passing car scared the attacker away.

Please see *Assault*, Page 3

See Page 3 for a related story on a dorm intrusion by an unknown male at Irwin Hall

Lindenwood campus speed limit: Do you know what it is?



A car slows at the yield sign near Harmon and Butler Hall.

By **Kenny Gerling**
Senior Writer

The established speed limit on Lindenwood's campus is 15 mph. However, a problem could be that without reading the Student Handbook, students may never know what it is.

The university does not have any signs posted indicating the speed limit, though Director of Security Kurt Smith said it is something he has looked into.

The Student Handbook says, "The speed limit on campus is 15 mph and

will be closely monitored by public safety personnel. Numerous violations will result in a loss of driving privileges on campus."

Despite the Handbook's listed punishments assigned for speeders, the university currently does not have the tools needed to enforce the limit.

Smith said that although Lindenwood has a 24-hour security team, it lacks a dedicated, commissioned police officer to ticket violators.

"It is difficult from a strategic standpoint to get an officer to come over and

monitor that since we are a private university," Smith said.

He explained that it is something he plans to investigate further as the university continues to expand.

According to Smith, the university does not have a set fine for speed limit violations.

Security does not frequently receive complaints from students about speeders.

Please see *Limit*, Page 3

Check out Page 5 for an editorial regarding this story.

Big-time band to appear

By **Natasha Sakovich**
Editor-in-Chief

With big radio hits like “Hey There Delilah,” “1, 2, 3, 4” and “Rhythm of Love,” the Plain White T’s have traveled across the country performing these music chart-topping songs. On Friday, Oct. 14, the band will make a stop at Lindenwood as part of its “Wonders of the Younger” album tour.

As part of LU’s Homecoming week festivities, the Friday night concert will also feature three different bands to open the show. The Summer Set, The Downtown Fiction and Allison Park will kick off the show at 7 p.m. in the Hunter football stadium, but fans can begin entering the stadium when gates are set to open at 6 p.m.

The Campus Activity Board (CAB) has put many months of preparation into this event, with plans beginning during last spring. The Plain White T’s were confirmed to be coming to



LU in early August.

CAB member Amandine Deligny, junior, said, “They are a big name and a rising band, so we thought everyone would know them and enjoy the band because they know their songs.”

Another reason the band was chosen is that they will already be on tour during the Oct. 14 date. “If they are on tour or not is a big factor in our budget considerations,” Deligny said. “Since they were on tour

already, it was easier to fit in our budget.”

Students will be able to obtain one free ticket with their Lindenwood ID, and any additional tickets can be purchased for \$15. This is a different arrangement than last year’s Homecoming concert featuring the bands Switchfoot and The Almost, where students were able to get two free tickets with their IDs. “It’s actually in the contract with Plain White T’s and the opening acts that students can only get one ticket for free,” Deligny said. “Also, we can’t have it be free for everyone or else we wouldn’t be able to afford it.”

Deligny said that the \$15 price is still a good deal, as “most of their other shows in this tour cost \$30 per ticket. This is a really great price, too, to see four different bands.”

Student reception is mixed regarding the upcoming concert. Please see **Concert**, Page 12



Legacy archive photo
President Evans and his wife Lois ride in a red VW car during last year’s Homecoming parade that featured several floats and cars.

Homecoming will ‘Blaze the Trail Westward’

By **Anna Schiele**
Staff Reporter

Lindenwood University has been “Blazing the Trail Westward” since 1827, and it plans to continue that movement in the celebration of this year’s Homecoming week during Oct. 10-15.

This year, Homecoming is centered around Lindenwood’s growth, as the university welcomes students, parents and alumni to join in the celebration of the newest campus addition, the Evans Commons, all while celebrating the heritage of the university.

Events for students start Monday, Oct. 10, in the afternoon at the Commons with an organization fair. The fair allows organizations on campus to present themselves to the student body, inviting them to join the groups and participate in games and sports.

Wednesday night will feature the second annual Lip Syncing Dance Contest in the Commons Gym at 7 p.m. It is the newest and most anticipated Homecoming tradition. The songs and dances will focus around the “Blazing the Trail Westward” theme, and individuals are invited to watch the student organization groups battle for first place in the competition.

All week long, banners made by various student organizations will be displayed outside of Commons, and the winner of the banner competition will be announced Thursday night at the pep rally in the Commons Gym. Judging for the student banners is conducted by President Evans and executive administrators.

Please see **Homecoming**, Page 12

What’s happening in the world

By **Kari Madden**
Contributing Writer

College students are notorious for not knowing what is going on in the world around them. Ironically, these students make up a huge part of the world population, one that is historically very influential.

Let’s not get left behind. Here are only some of the “must-knows” that have happened around the world re-

cently. Be informed and have opinions on these topics; let’s help break the ignorance stereotype for college students everywhere.

The Power of Social Networks: Dictators have historically hidden behind censorship and social oppression to maintain power, but social networks are opening communication pathways and organizing the masses, despite government efforts to prevent this.

What has been coined as the “Arab Spring” began from one successful revolution in Tunisia last December. Egypt then forced its dictator, Hosni Mubarak, to step down several months later. The wave continued throughout the region, causing Morocco to alter its constitution and also causing extreme unrest in Yemen, Bahrain and Syria.

The world spotlight has been on Libya ever since

NATO decided to help the rebel forces fight against their ruler, Muammar Gadhafi, in order to protect innocent civilians.

However, much speculation was raised on why the Western countries only focused on Libya when other countries, specifically Syria, have been taking brutal action against protestors, killing hundreds of their citizens weekly.

Please see **World**, Page 12

Future lawyers do mock trials on new LU team

By **Jessica Brasher**
Staff Reporter



Legacy photo by Alysha Miller
Professor Jennifer Lorentz leads the first mock trial team meeting in MAB.

Among the new additions to Lindenwood student organizations is a new trial team. The trial team is for students interested in learning how to perform a mock trial.

The group will be confined to Lindenwood this year, since it is the first year for the team.

“It will be competitive,” said trial team coach Professor Jennifer Lorentz.

Students have to try out for positions. The team will consist of 8 to 12 members. Students who do not make the trial team can still be involved as witnesses

“This is an amazing experience.”
-Jennifer Lorentz

and such. “I would never turn someone away,” Lorentz said.

This year’s tryouts have already taken place, but the team could always use student volunteers to participate and see what the trial team is all about.

The trial team is not just for criminal justice majors; however, students must be a member of the Criminal Justice Student Association.

“Trial team is looking for people who

are willing to work, interested in a commitment and hopefully some natural talent,” Lorentz said.

“I can teach all the law stuff, opening statements, closing arguments, but I cannot give students an interest for the trial team.”

The trial team hopes to perform a mock trial for students to be able to watch sometime this year. Also the trial team hopes to make it to the National level next year.

“This is an amazing experience,” Lorentz said. “It is frightening and overwhelming, but it’s also exciting. I know that the students are going to love it.”

Ronald J. Brockmeyer **Nicholas Brockmeyer**

BROCKMEYER LAW OFFICES

Speeding tickets
Traffic cases
Criminal cases
DWI's

Over **35 years** of Experience

121 N. 5th Street
St. Charles, MO 63301
636 946 0960
brockmeyerlaw@yahoo.com

www.BrockmeyerLaw.com

Lindenwood Night Every Wednesday!
after 10 p.m.

1/2 price Bowling Any time

O.T. HILL'S ST. CHARLES LANES

2187 First Capitol Drive
(636) 949-0311

Lights

Continued from Page 1

Two light poles in the Linden Lodge parking lot haven't functioned for almost a month because the power line was accidentally cut by a worker who was pouring a new sidewalk.

"It's not something we can fix on our own," said Terry Russell, dean of students, during the last Student Forum event.

"Ameren needs to come out to fix them."

Groups of lights may not work after a power outage or power surge because the loss of electricity, even for a second, turns off the timers that control the lights.

"Whenever we lose power, they have to go around and change the timers everywhere on campus," Norman said.

"A maintenance person has an average of four buildings to keep track of."

The most common cause for dark areas is simply from burned out bulbs or dim lights.

Campus security and maintenance routinely check for expired light bulbs. Students are encouraged to report bro-



The old side of campus, near Ayers, Sibley and Nicolls Halls, has some areas that remain fairly dark at night. Legacy photo by Alysha Miller

ken lights to the maintenance department.

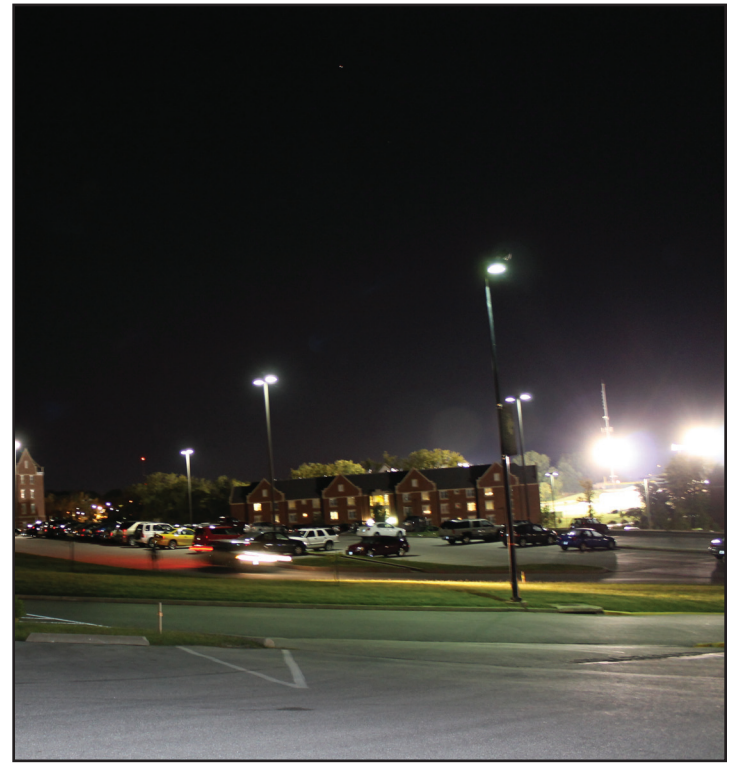
The security office is also willing to accept suggestions for places that need more light fixtures.

"If they pass it along, we can make it better," said Head of Security Kurt Smith.

Besides adding more light fixtures, the university plans to install emergency phones

throughout the campus.

Be sure to read the next issue of the *Legacy* for more information about the upcoming emergency phone project.



The new side of campus, near Blanton, Rauch and Calvert Rodgers dorms, looks well-lit at night with plenty of illumination from pole lights. Legacy photo by Christie Blecher

Assault

Continued from Page 1

"Within minutes, we had security and police cars at the scene," said Director of Security Kurt Smith. "She did not suffer any injuries and did not require medical attention."

St. Charles police received the call at 8:30 p.m., which was 15 minutes after the incident took place. "We have an investigator on it who will stay in contact with the victim," said Detective Sergeant Todd Wilson of the St. Charles Police Department.

The victim was unable to describe her attacker other than identifying his gender. Anyone who may have witnessed the attack or has information about it should contact the St. Charles Police Department.

Wilson said although students should be aware of their surroundings after dark, excessive caution isn't necessary.

"We're investigating it as an isolated incident," Wilson said. "There's no reason for the campus to be on lock down."

Unknown intruder makes his way into Irwin Hall

By Alex Jahncke
Managing Editor

On Friday, Sept. 16, a 19 to 22 year old unknown male made his way into Irwin Hall and started pushing residents around while looking for a student.

"We are classifying it as an unlawful entry," said Director of Security Kurt Smith. "There were no signs of forced entry. I'm not sure if he had a key or not."

The young man made his way into Irwin around 11:30 p.m. where he showed signs of being intoxicated. He started shouting at the students at the front desk and started up the stairs.

Girls that were in their rooms heard screaming and banging. "Speaking in my 20 years with the law, this was probably due to high levels of intoxication," Smith said.

He made it all the way to the fourth floor of the dorm where he was stopped by the

"Our main responsibility is the safety of the students here at Lindenwood."

-Kurt Smith

Resident Director and Resident Assistants.

They attempted to talk him down, but he was still shouting. "He was very hands on. At a few points I saw him push the RD, and he also pushed another student against the wall," said a resident of Irwin Hall, who wishes to remain anonymous. "I jumped in and pulled him away from the RD."

Both campus security and the St. Charles Police Department came to defuse the situation. Reports were made, and the intruder was arrested and taken away.

"Much like the police department, in an incident like this we try to asses the situation. We try to figure out

what happened and who was involved," Smith said.

"Our main responsibility is the safety of the students here at Lindenwood."

This is an ongoing investigation, so it is unclear who the person was and why he was here. They do know that the offender was not an LU student. Smith pointed out that even though this happened, he assures that he and his team work tirelessly to help prevent it.

"This type of crime can happen on any university," he said. "I'm not going to say it will never happen again, but I have a team of 15 officers that work diligently to keep this campus safe."

Limit

Continued from Page 1

Regardless, there have been talks of posting signs along certain parts of campus such as on John Weber Dr., the West Clay entrance and in front of Roemer.

Speed bumps play a small roll in traffic control. Smith said, though disliked by some students, they serve a strategic purpose to deter speeders.

"As we continue to grow, it is important that we look at all the factors to keep students safe," Smith said.

"The key thing is people need to be aware of their surroundings."

ALLIN'S DINER

636-946-5556

130 N. Kingshighway

New Hours:

Mon - Sat 5:30 am - 4 pm

Sunday 5:30 am - 2 pm

10% Discount
for LU Students

What's the Buzz?

Now On Campus: Six New Restaurants

Italian Deli, Pasta, and Pizza
including Roasted Vegetable,
Five Cheese, & Meatlover's

From an Espresso Shot to a
Tall Iced Mocha, Coffee, Muffins,
and Sweet Cravings

Wok Exhibition Cooking,
Pacific Rim, Contemporary Eastern,
Stir Fry, Bowls, Noodles

Fresh & Marinated Vegetables
& Fruits, Vegan, Organic,
Reduced Fat

Hamburgers, Grilled Cheese
Sandwiches, Hot Dogs, French Fries,
Chicken Sandwiches

South of the Border Cuisine,
Tex Mex, Southwestern Grill,
Burritos, 'dillas, Salads

Brought to You By:

Check Them Out at the
Evans Commons Dining Hall

www.foodman.com



By Scott Criscione
Contributing Writer

He Said/She Said

How to lose a guy/girl in less than 10 days



By Holly Hoechstebach
Editorial Editor

All aboard! Crazy Train is leaving for Singleton, New South Wales. Ladies, ladies, ladies. I love you guys, I really do.

But as a man with many girls as friends, as well as a man with many guy friends with girlfriends, I get to see the crazy things you all do not just to your man but to yourselves.

All the time I see what looks like normal girls turn out to be just as crazy as any character Jim Carey plays in the movies.

Some of you wonder, "Why don't men like me?" or "What did I do wrong that sent him running to the hills?"

Well ladies, sit down, stop texting and let me tell you how you lose us men.

I use my friend who we will call Fred, and his ex, Derpina.

When he finally dumped her I was so happy. I use to hate some of the things she would (and some of you) do.

My favorite was how when Fred would say goodbye, she'd keep talking for hours.

Goodbye means wrap it up. I'm hanging up; don't call back just to talk...you know what I sound like.

Likewise, why do I have to call you every day? I see you in person all the time.

I'll call you to say good night or something if I didn't see you, but if you want to spend hours just talking or hearing me breathe, I'll text you I'm dumping you.

I HaVe The Best BOYFRAANN Ever! ... And now you're single. I'm in college.

I speak and write real words, so should you.

I have a lot of girls that are friends. I have plenty of guy friends.

Don't come forcing your way into my circle, that takes time.

Also, don't dictate who I can't hang out with. If the guy/girl is a drug dealer, fair enough, but if they're just my friends, let it go.

They are MY friends who could eventually become your friends as well, kind of

like toothbrushes. Some things you just don't share.

Continuing on the topic of friends and some universal facts about men, it's a fact that men love sports.

Fact.

Men like video games and chilling with their boys.

Fact.

Men love when women complain about how they (men) watch sports and play stupid video games and hang with their loser friends.

False.

I don't want to see you 24/7 to be honest. That whole too much of a good thing is a bad thing, and yes, it applies here too. Go be social and have friends. I sure as heck am.

I find it odd when girls have types of boys they date. Really?

Such as the "oh, I only date guys over 21" or the "I only date [insert race here]." So if a guy is perfect for you and doesn't qualify, you just shut him down? That's why none of your boyfriends work.

Just a quick definition for you; insanity: to repeat the same process and expect different results.

Relationships are a two way street. You must give and take but understand that there is no exact perfect person for you.

On a serious note, trust and honesty are two big factors in a relationship, but before you can love another, you have to love yourself.

After all, if you aren't happy with you, then how can you be happy with someone else?

And finally, ladies, one thing I notice is that many of you complain about where all the good guys are at, or as Paula Cole once sang, "Where have all the cowboys gone?" You left them in the friend zone.

Words of wisdom ladies, she who meets her man at a bar, they won't go far. She who meets her man while they are friends, will be together in the end.

Welcome to the game of life. Now pick your career: an orange-skinned, fist pumping Tan Co. bro, a mentally unstable prowler/madman, a highly-delusional, dysfunctional alcoholic or a third grade drop-out whose vocabulary begins and ends with "yo."

Guys, do you ever think about why you can't keep a girlfriend and wonder "where did things go wrong?" Well, congratulations! You can now find out all the answers. The following are based on true events.

It's understandable to cry during a tear-jerker movie like *The Notebook* or if someone died; however, it's another story if you start bawling about who we hung out with or why our guy friend texted us "hey." No, we don't like him just because we responded with "hey what's up."

Common courtesy should be applied. Let me tell you, there's nothing a girl likes more than you opening the car door or walking her to her door or even waiting until she's inside. It's also understood if you ask us on a date, you are responsible for driving, which means driving to and from the location. Getting intoxicated on the date and puking all over the street will ensure two things: recklessness and no second date.

Sincerely asking us what we did that day is sweet. Grilling us as if we were under investigation isn't. It's called dating, not doing an interview for an article, so I shouldn't have to answer who, what, where, when and why. My response: "You should look into a career with the FBI."

Respect is the key in any type of relationship. Jokingly/intentionally calling a girl any derogatory name is not acceptable. You are supposed to care and respect the person you're with. If you don't, why are you dating the person?

This also applies to comments such as "I'd hit that" or "look at that [insert insulting word here], she totally wants me."

If we are out with you, chances are we aren't scanning the room for other guys. If you accuse us of staring at other guys, who we didn't even notice, that's a sign we should start looking because maybe you're the one looking for guys.

Be aware of the distinct differences between us and one of your buddies. While talking to a girl, "yo," "dude," "gurrllll" or "peace out" should not be included. Speaking correctly and understandably is also ideal, considering we are in college. Then again, it's nice to have a good laugh.

Example, "Real talk: I might just do something really stupid to dis kid Devin who is my sis's ex-bf; if he don't know when to stay in check! On my mother."

If you're looking to impress a girl, overbragging and uttering absurd things is not going to do it. Example: "Yeah I go to the gym nine times a week; why do you think I'm so yoked?" or "The amount of partying and raging I do with my bros...it's ridiculous."

Also, any fascination with the "New World Order" conspiracy theory or "tin-foil hats" (which I know nothing about) is too outlandish. If someone tries to explain this to you, I wouldn't walk, I'd run.

It's true that we love attention, but calling 20 times a day and pestering us to put off our homework falls in a different category. I have a life; maybe you should look into getting one.

If you still feel neglected though and seriously want to get your girl to notice you, stalk her (sarcasm). Don't stop after you analyze her Facebook. Drive around her subdivision, park someplace close but out of sight and wait. If you get caught, accuse her of being distrustful and say you were just "calling people to make plans."

In the end it all comes down to this: If people say your life resembles Charlie Sheen and you believe your "wiiiiinning" in reality, you're actually losing and should make a U-turn at the closest intersection in the game of life...and go back to college.

Letter to the Editor:

Grace Abaffé,
I want to commend you on both of your editorials in the *Legacy* this week.

I appreciate your feedback about LUL 101 and FYE, and I will take your comments into consideration.

It is wonderful to see a first year student involved with the *Legacy*.

In response to your other editorial, the Office of First

Year Programs was designed to assist first year students with all of their questions and needs.

To this end, if a first year student has a question, please have them contact us.

We will find the correct answer for the student. For more information, students should contact 636-949-4728.

-Shane Williamson, dean of First Year Programs

Want your voice heard?
Email your feedback to the *Legacy* at: journalism@lindenwood.edu.
It just may show up in the next issue!

Letter to the Editor:

Hello,
I just wanted to react quickly to the editorial written by Sarah Ball on the social media policy of LU.

The rule cited doesn't say "we will kick out every student that doesn't agree with LU." Many students would probably be kicked out if it was the case! The rule talks about "defaming the University, its students, faculty and staff." I don't think the freedom of speech is negated here. It's one thing to show

your displeasure, but it's another thing to bash on someone/something and be really harsh about it.

I understand that everyone has their opinion, and I totally respect that.

But there are ways to express a displeasure, and I do not think cursing out on a teacher on Facebook is a great way to do it.

I actually do agree with some of what you're saying; we have our freedom of speech and can express

it on Facebook or whatever. But defaming the school or a teacher is just not right.

And I am pretty sure this doesn't apply only to our school and that public defamation is condemned in many other schools, businesses or elsewhere.

On another note, I think *The Legacy* is doing a great job so far this year.

I find the articles more interesting than last year. Thanks guys for your work!
-Amandine Deligny, junior

Current Events Ledger

What's your worst dating experience?

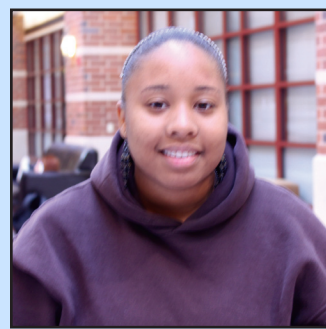
"Going out to dinner and having my card decline so the girl had to pay."

—Joe D'Amico, senior



"Going on a date with a guy who was obsessed with my roommate."

—Arkia Simmons, senior



"We went out to dinner but there was no conversation so it was awkward."

—Danielle Torry, freshman



"My homecoming date's father took me to Dairy Queen to have a talk about driving safely and respecting his daughter."

—Jon Nettles, junior



"I went on a date to the movies and my ex-bf was there."

—Elise Schmidt, freshman



"My date didn't have a car so I had to drive everywhere and drive him home."

—Eleni Madison, senior

The Answer Woman posts speed limit

Raise your hand if you know the speed limit on campus. No one? Yeah, neither did I.

Unless you've read your handy-dandy Student Handbook, you're kind of in the dark about the speed limit on campus here at Lindenwood.

Why is that, you may ask. Well, it's because there are no speed limit signs on campus. Now, I don't drive through campus on a regular basis, so I was unaware of this issue until someone mentioned it.

Looking back now, I realize it's true. It was sort of like a "Hit me in the head, I need a V-8 juice" kind of moment. I was surprised I had been so oblivious to this fact.

We have crosswalk signs, stop signs and handicapped parking signs but no speed limit signs.

Why is this? I heard a rumor that it was because they would "clutter the campus," and LU administration may feel that we should already know the speed limit from reading the Student Handbook.

After getting in contact with Kurt Smith, director of security on campus, he said that he is actually looking into getting speed limit signs.

Smith also said the problem that security has is enforcing the speed limit because they

are not a police department. LU is not exactly able to have cops parked around campus to catch speeders, so what is a school to do?

The best thing they can do is put up speed limit signs and hope that drivers on campus follow the rules.

Smith said, "I believe speed limit signs on campus may at least make everyone a little more aware of driving cautiously on campus."

So, there you have it. Yes, we should have speed limit signs on campus so at least we are aware of how fast we should or should not drive.

I believe LU is not to blame, though. Clearly, the Director of Security makes a great point.

How is a school supposed to make sure we go the speed limit? Hire cops of their own? Have security personnel stationed throughout campus?

And would they be able to actually hand out tickets for speeding? These are many of the questions that arise with this simple issue.

Page 52 of the Student Handbook states clearly that "The speed limit on campus is 15 mph and will be closely monitored by public safety personnel."

Numerous violations will result in loss of driving privileges on campus."



Grace Abaffe



Courtesy photo

The size difference of Lone Wolf Cafe smoothies in the Evans Commons is evident, with the largest one being what was served during the first few weeks and the smaller one being the current reduced size of smoothies. Even though the size was reduced, the price remains the same for the smaller size.

Some students are upset by lower quality, quantity of food

The Evans Commons cafeteria and Lone Wolf cafes have implemented some significant changes to their meal plan policies.

The administration, dining services and business office concluded that it was necessary to make these changes in order to maintain meal plan costs, as well as making the meals more whole and nutritious.

It started with the smoothies at the Lone Wolf cafes. This popular treat among students was cut down by a significant amount, without even the slightest decrease in price.

My first thought after hearing of this dramatic change was that they must have added some secret ingredient.

Why else would they implement such a dramatic change? I had to try one to satisfy my curiosity, so I took my hard earned money over to the Evans Commons.

I exchanged my three plus dollars for a mango smoothie. Judging from the small size, I figured this had to be the best smoothie I was ever going to have.

I was wrong. The smoothie didn't even taste like mango. It was more like watered down sugar water and wasn't even made with real fruit, just a syrupy smoothie mix.

It almost instantly made me sick to my stomach. For the same price, I could have gotten a high quality smoothie at Smoothie King. Even the smoothies at McDonalds are of a higher standard.

There have also been other changes to the dining plan at the Evans Commons cafeteria and the Lone Wolf coffee shops.

Naked Juices, that were once included in the 19 meal dining plan, are now sold as a retail item.

Granola bars have also increased greatly in price. I understand that students were abusing the privilege and buying five drinks instead of food, but couldn't there be a compromise like allowing students to only purchase one of these drinks or retail items per meal that would be included in their plan?

These are some of the healthier options that the cafeteria has to offer, yet students have to spend extra money for them.

The meal plan encourages the burritos, chips and soda products over more nutritious options.

Overall changes to the dining plan seem to be more directed towards profit, rather than what the students want or need.

In the end, we pay for it, so our opinion should hold a little more weight.



Andrew Ebers

Reaching out can make a difference

Last week I got the very unfortunate news that Mike Matthes, an old friend of mine, had taken his own life. When I found this out it really shook me up.

Mike was my first friend I had when I switched schools in third grade.

We were friends until we moved on to middle school. From then on we never really talked much; we just went separate ways. It was really hard to receive this news, so I can not even begin to imagine what it must have done to his family.

Too many times we hear these types of stories. It is so sad that someone could be so lonely that they feel they

have no where else to turn.

Why am I telling you this? No, I am not looking to write a sob story.

Instead, I am reaching out to those in need. I want to reach out to anyone that may need it because everyone matters.

So today if you read this and you feel there is no one that will listen, I am here to tell you otherwise. I swear to you there are people that care.

There are hotlines and counselors that will listen. I know how hard it is to ask for

help, but I want you to know that I will also be there for you. It does not matter if I know you or not; I promise I will do anything in my power to help.

No matter what, we are all people, and we are all important. Anyone can email me at anytime at aad-amfoote52@aol.com, and I will listen.

And to everybody else, please stop and think about the people around you. If you see someone that looks like they need a helping hand, then offer it. There is too

much bullying around and not enough caring.

We, as a society, need to be less self-centered, and we need to look after the ones around us. We need to become more united and look out for everyone.

I'd like to end by telling Mike that I'm sorry we lost contact over the years. As I write this it brings tears to my eyes because I have to think about you being gone.

My one blessing in the last year was getting to see you come into my gas station everyday. It comes with a heavy heart to have to say goodbye.

I'll never forget the times we had on the playground back in third grade. I'll miss you man...goodbye.



Alex Jahncke

The Legacy
 Spellmann Center 3095/3100
 209 S. Kingshighway
 St. Charles, Mo. 63301
 Telephone: (636) 949-4336
 Email: journalismlab@lindenwood.edu

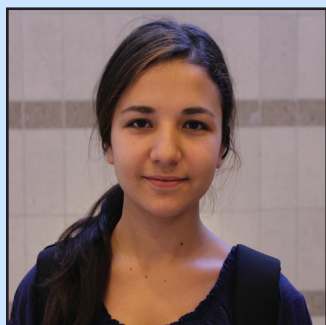
The Staff:
Editor-in-Chief: Natasha Sakovich
Managing Editor: Alex Jahncke
News Editor: Christine Hoffmann
Editorial Editor: Holly Hoechstebach
Co-Entertainment Editors: Melissa Maddox and Mikayla Francese
Sports Editor: Deborah Starr
Senior Writer: Kenny Gerling
Photo Editor: Alysha Miller
Cartoonist/ Ad Designer: Wes Murrell
Ad Manager: Melissa Simon
Faculty Adviser: Tom Pettit

Current Events Ledger

What do you think of the new meal plan options?

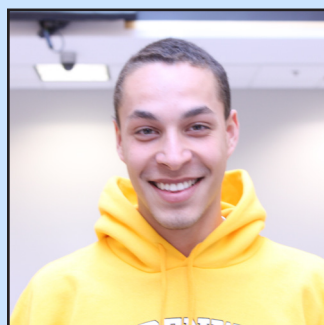
"I go to Spellmann because I can drink juice instead of soda."

—Fidan Talishinskaya, freshman



"I don't like the food at Evans; they need more stuff."

—Ibrian Ledezma, freshman



"Evans isn't great, but it's a step up from Spellmann."

—Cody Schwahn, freshman



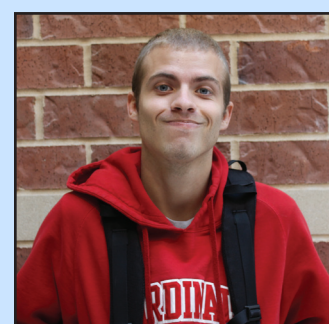
"I'm okay with the changes."

—Mark Mirth, freshman



"I used to get the fruit drinks but now I don't."

—Tim Smith, junior



"It's ridiculous, and if they're truly concerned they should offer healthier options."

—Jake Harris, super senior

LUTV hits milestone, broadcasts first road game

By Katie Schuler
Contributing Writer

On Sept. 24, LUTV reached a major milestone. The student-run television station broadcasted its first live athletic event on the road in Lindenwood history.

About 12 members of the LUTV staff traveled to Rolla, MO to broadcast the football game between the Lindenwood Lions and the Missouri University of Science & Technology Miners. The Miners picked up the win on the field, but the broadcast of the game itself was definitely a personal victory for everyone involved at LUTV.

LUTV has been covering athletic events on campus for years, but this is the first time the station has ever attempted to broadcast a game over the air hundreds of miles away from the school grounds. LUTV Operations Director Edward Voss said that the university has been in support of this project since the beginning, and it has been in the works for quite a while.

"We spoke with members of the broadcast and television production community concerning equipment choices that would reflect systems found in the field," Voss said. "The result was a professional installation with state of the art high definition equipment."

LUTV Production Manager Greg Shufeldt was the

only other staff member to accompany Voss to the game. The rest of the LUTV crew was made up of communication students. Some went down a day in advance to begin setting up the equipment, while the others followed that Saturday morning. The crew brought a satellite truck to Rolla, as well as numerous cameras and editing equipment. The actual broadcast

of the game only lasted a few hours, but the amount of work put into getting it on the airwaves offered a great training opportunity for the students involved.

"The trip was definitely an interesting experience," said graduate

student Steve Heineman. "It was nice to not only get out of the studio but also out of town to cover something for LUTV. A lot of students don't get to see away games, so it's pretty cool to give them the opportunity."

Malcolm Jason, junior, said, "It was a lot of work but probably the coolest experience of my college career. College is supposed to prepare us for the real world, and the trip definitely did."

In addition to this first time for live broadcasting of an away game, LUTV also broadcasted the Lindenwood football game on Oct. 1 from the University of South Dakota.

"It was a lot of work but probably the coolest experience of my college career. College is supposed to prepare us for the real world, and the trip definitely did."

—Malcolm Jason
senior



Legacy photos by Maria Souza (Top) LUTV producer Ed Voss helps shoot the game on Saturday, Sept. 24, for LUTV's first live away game coverage. (Left middle) The Lions battle it out against the Miners during their first game against the Missouri S & T college. (Left bottom) Another LUTV member watches the monitors in the truck during filming for the entire game. (Bottom right) The small production staff brought their own satellite truck and equipment to cover the game. (Right middle) A member of the LUTV staff sets up a camera during all of the pregame production.



ROTC prepares students for leadership

By Rachel Harrison
Contributing Writer

ROTC—what is it? Many students ask that same general question, and most ROTC students would sort of smile and answer, “It’s a whole lot of something.”

So, here is the answer to all questions on what exactly the ROTC is at LU. ROTC is a program for the military. Each branch has one, and the one here at Lindenwood is Army sponsored. Meaning after four years here at Lindenwood, students will become contracted with the Army for an additional four years.

ROTC students can take classes for leadership if they want to, but by sophomore year, students should be contracted. Some ROTC cadets come already contracted in their freshmen year based on scholarships from high school.

Lindenwood’s ROTC unit is based from the nearby Washington University in St. Louis. They are a Platoon, not a full Battalion. They are one out of nine other Platoons here in Saint Louis.

University of Missouri-Saint Louis, Missouri Baptist University and Saint Louis University are just some of the colleges that the Gateway Battalion works with.

As a whole, the Battalion has over 93 cadets from



Several ROTC students from the Gateway Battalion work with LU cheerleaders to carry the massive U.S. flag onto the football field for the game on Sept. 10, to commemorate 9/11. Legacy photo by Rachel Harrison

all of the schools. For the past few weeks, ROTC has been focusing mostly on Field Training Exercises (FTX.) FTX happened Sept. 23-25, and for the weekend, Cadets worked as a team to build leadership skills, participated in rope courses and weapons training as well as building relationships through the Battalion. ROTC will have three more FTX throughout the school year.

Lindenwood’s ROTC will also be focusing on Color Guard events, rifle training



ROTC students help unfold the flag that covered the entire football field. Legacy photo by Rachel Harrison

and the Military Ball hosted during the spring semester.

If anyone is interested in joining ROTC, don’t hesitate to come to their classroom in the LUCC building located further down First

Capitol Drive off the main campus.

To contact the Gateway Battalion, give them a call at 314-935-5537 or visit their website at www.rotc.wustl.edu.



LU ROTC student Chase Huggins stretches during morning practice. Legacy photo by Rachel Harrison

New degree designation rewards community service

JEOPARDY! Community Service Style	
How many hours are needed?	500
May pay be recieved for service?	No
When must service be completed?	During the time a student is enrolled
Are work and learn hours counted?	No
Can family members supervise service?	No

Legacy graphic by Branden Swyers

By Erin Ellerbrock
Contributing Writer

Students with a heart for community service can now get an official form of credit for their hard work.

As of last year, Lindenwood University is offering a community service designation on the transcripts of students who have done at least 500 hours of logged service.

Some restrictions apply on what counts as community service, but those in the program said they haven’t had trouble getting all the hours they need.

Senior Dana Porter volun-

teers her time at the Campus YMCA and has done most of her service hours there. “Anytime I come to the Campus Y house, there’s something to do,” Porter said.

“I was scared of the 500 hours at first.”

Anyone can participate in the community service program, and logging hours is very simple.

“We use OrgSync to upload hours,” said Professor Julie Turner, chair of non-profit administration.

“There’s no need to sign up anywhere. You just log onto the website and start

tracking hours.”

Participants believe that, while a lot of hours go into receiving this designation on their transcripts, all the hard work will help them get ahead.

“Community service goes a long way as far as field experience,” said Caitlyn Wood, a non-profit major.

“I think that goes for every major. Having field experience gives you a boost.”

There are plenty of on-campus organizations through which students can complete their service hours.

The Campus YMCA and

the fraternity Alpha Phi Omega both deal heavily with community service.

“I would like to see students embrace community service throughout their lives and see that it’s important to give back,” Turner said.

Along with the designation on students’ transcripts, reaching the goal of 500 hours also means the students can wear special cords at graduation and have a mention when they walk across the stage, too.

“To me, community service means I left knowing that I did something,” Porter said.

Sushi Ai

15% off any purchase
to Lindenwood students and staff.
Just show your student ID.

Located at Bogey Hills Plaza
2009 Zumbahl Rd. St Charles MO 63303
Phone number: 636-949-8888

Scottish & Farfray by Wes Murrell



Legacy photo by Alysha Miller

(From left) President Evans, Lois Evans, Chuck Berry and Joe Edwards pose for the camera.

Chuck Berry shows LU his support

By Mikayla Francese
Co-Entertainment Editor

Rock legend Chuck Berry brought “that old time of rock and roll” to Lindenwood on Saturday night as he lifted the audience’s spirits by singing his greatest hits and spreading a home-style atmosphere to the Scheidegger center.

“I feel right at home here,” Berry said. “The violet lights around me are the same color as my room when I was young.”

And home is right where Berry was.

Berry grew up in the city of Ladue, just outside of St. Louis.

He kept his business close to home by keeping his home in his business. His son is the lead guitarist in his band, while his daughter plays the harmonica and is the lead vocalist.

By producing hits like “Maybellene,” “Memphis” and “Let it Rock,” Berry has made the name for himself as the “father of rock and roll.” He contributed to the many leaders in our country in the 1960s and 70s who bridged the gap between blacks and whites in America.

“He’s always been interested in helping people,” said Joe Edwards, Berry’s good friend of 30 years.

Berry did just that when he started a schol-

arship program at Lindenwood for students of music.

“He wants to contribute to the community and help others get an education,” Edwards said.

Berry also does this by playing at the Blueberry Hill in the Loop near downtown St. Louis. Since Edwards is the owner of Blueberry Hill, he invited Berry to entertain and spread his music at the establishment.

“In 1996, Chuck said he wanted to perform at a place that resembled somewhere he first started out,” Edwards said.

Now, people come from all over the world to watch Berry play at the restaurant.

The concert on Saturday reiterated the fact that Berry has a big heart.

The audience welcomed Berry with a standing ovation as he started to entertain. Berry highlighted his music by wearing a red sequined shirt and black pants to match. He sang his greatest hits as the audience sang along, and at the end of the night, Berry gave the audience a night to remember.

Berry brought people on stage to dance along to his song “Let it Rock.” It was his final number for a night filled with exhilarating rock and roll.

For more information on upcoming shows at the Scheidegger center, visit www.lindenwood.edu/center.

Drum major shines as leader

By Jessica Brasher
Staff Reporter

Lindenwood University senior, Amanda Turner, is one of the drum majors in the University’s marching band. In the band, drum majors are like student directors.

Right out of high school, Turner joined the Air Force.

After realizing that it just “was not for me,” she decided to go to University of Missouri St. Louis (UMSL).

After a semester at UMSL, she decided, “UMSL was not me either; I was just going to get a job at QuickTrip.”

Shortly after the semester at UMSL, Turner ran into her old high school band director, who is now at Lindenwood.

“Mr. Curtis gave me Lindenwood’s address and told me to bring my trumpet to the rehearsal and we would figure it out.”

Lindenwood ended up being the perfect fit.

Turner marched in the band for her first year. After gaining seniority, she auditioned for the drum major position, and she got it.

“Lindenwood was looking to build the band and knew I would take the position seriously.”

Turner has been playing since she was eight years old. She started with drums, then the trumpet in middle school, and in high school Turner played bass in the jazz band.

“Band is what brought me to Lindenwood and what kept me here,” she said.

In the University’s band there are about 125 members. “The band is like one giant family of people that really

keep you going.”

The band as a whole practices Monday, Wednesday and Friday from 12:30 to 1:50 p.m. As for Turner, she said, “If I think that I need to practice more, then I will do that separately.”

Turner will graduate in December and plans to return to the Air Force to do therapy for Air Force members.

Right now, she is double majoring in social work and psychology and is currently doing her practicum at the American Red Cross.

Be sure to look for the LU marching band at their next performance: Homecoming.

Please see Page 12 for a photo of Turner in action.



Amanda Turner



Courtesy of www.silc.ku.edu (Left) and www.timesunion.com (Right) (Left) The Flamenco dancers show off their moves. (Right) Two Flamenco dancers share an intimate dance.

Gypsies to heat up the stage

By Brittany Velasco
Staff Reporter

On Oct. 7 in the J. Scheidegger Center for the Arts, the stage in the Bezemes Family Theater will heat up as the Compania Flamenca Jose Porcel presents “Gypsy Fire.”

This fast paced dancing show will include a variety of flamenco dancers, musicians and vocal soloists. The dances are influenced by the oldest form of flamenco from Andalusia located in Southern Spain. By keeping the dances as pure and close to their oldest and most traditional form, the goal of the show is to highlight the style of traditional flamenco and the customs of the Andalusian people. The show is called “Gypsy Fire” to illustrate the immense in-

fluence the gypsy people had on this style of dance. The show will bring this type of dance to life for audiences of all ages through their colorful costumes, impressive technique and infectious gypsy beat.

“Gypsy Fire” will also feature world-renowned flamenco dancer Jose Porcel. Porcel started dancing Andalusian folkloric dances and flamenco at the age of 13 in the cultural centers in Valencia, Spain. He made his professional debut in 1989 with the Ballet de Valencia and over the years proceeded to tour around the world with various companies and shows leading up to the launch of this seasons “Gypsy Fire.”

Be sure to check out Compania Flamenca Jose Porcel: “Gypsy Fire” Oct. 7 at 8 p.m.

The Folks Next Door

By Melissa Maddox
Co-Entertainment Editor

Last weekend, the Lindenwood University Theater Department opened its fall season with their production of “The Folks Next Door.”

“Folks Next Door” tells the

story of an average family, the Roberts, who moved out to the country to get away from the hustle and bustle of the city; however, their peace and quiet is ruined when they find out that the President of the United States will be moving in next door.

While there wasn’t much of

a plot, the audience was kept entertained by the comedy of all the quirky tourists coming in and out of scenes.

The support of an on-stage family made this classic sitcom show hold true to its family ideals and left everyone with a happy mood as they exited the theater.

Gingham's
HOMESTYLE RESTAURANT

Open 24 Hours Wi-Fi Available

10% Discount for Lindenwood Students

Breakfast, Lunch, Dinner Served All Day

My Take

Blowout helps Lions with task at hand

Well, we are five weeks into the season, and the Lions are a respectable 3-2 but are on a two game losing streak. That is not to mention the fact that they just lost their most recent game 30-0. I'll bet that a few of you out there are looking at this loss in disgust. Well, the truth is it was probably for the best.

I for one actually am kind of glad we had this big loss. I love the Lions, and as we all know, this year is meant for one thing: to make the transition to the NCAA. I think we are doing a fantastic job. I mean sure we had a huge loss, but that is going to happen. It is better we get those things out of the way now so we can learn from it and correct it for next year.

It's really important to look at this two game slide from a positive viewpoint. The first thing you have to look at is the team we just played. The University of South Dakota is a NCAA Division I team, and we actually did some pretty great things against them.

No, the offense did not make a huge impact, but they also did not force themselves into any stupid turnovers. They just simply could not move the ball. That is some-

thing they will look at in film and fix.

The defense put up a good fight accounting for six sacks, upping their total to 19 sacks on the year. They stopped the Coyotes offense a lot and held a few drives to just field goals.

Like I said before, they can learn a lot from this. It shows that LU is not invincible. There is still a lot to learn with a young team like this. I think we get too used to the fact that we were way too good for the NAIA.



Alex Jahncke
Managing Editor

We tend to forget what a real football season is like. Let's face it, we were spoiled. I love the team we have; they are very capable. It's just going to take time to adjust to the switch.

I talked to quarterback John Uribe over the weekend, and he brought up something very important. They have proved that they can hang with the new opponents. They beat two NCAA teams in the first three weeks. They just have to work out the kinks.

I am really excited for what next year has to bring. We will have the rest of this year to find out what we need to do to really compete. Then we can really start our campaign for an NCAA title.



Legacy photo by Maria Souza

Defensive back Christian Golder and linebacker Dillon Hawkins make a tackle on Missouri S & T's wide receiver after making a catch during their game on Sept. 24. The lions went on to lose by the score of 19-13. The Lions will face Texas A&M University-Kingsville this Saturday.

Lions lose to South Dakota 30-0

By Alex Jahncke
Managing Editor

After a quick 3-0 start, the Lions have found themselves in a bit of a rut. Saturday they fell to the University of South Dakota Coyotes, marking their second loss in a row.

"We came out as a team, but things just didn't go our way," said quarterback John Uribe. "We need to go back to film and fix things we got wrong."

The game started off with a stalemate until late in the first quarter when the Coyotes capped of a long drive with a three yard touchdown run followed by a 40 yard field goal. The Lions regained composure in the second quarter, but still allowed another field goal to

make it 13-0 going into the half.

The Coyotes continued their dominance, adding 10 more points in the third quarter and a touchdown in the fourth, sealing the Lions fate with a score of 30-0.

"We just need to take this as a learning experience," Uribe said. "It's important to move one game at a time and better prepare ourselves."

The offense had trouble moving the ball all day. They ended with negative

10 rushing yards and only 157 passing yards. Quarterback John Uribe was also sacked a season high of seven times.

The defense, on the other hand, continued their stellar season with five sacks and six tackles for losses.

They now have 19 sacks on the season. The loss also ended the Lions 99 game streak of games without being shutout.

"The offense has to pull it together and that starts with me," Uribe said. "We are doing good things, we just

need to work hard with the scout team and help out the defense."

This was the second game in a row that the Lions played without star running back Denodus O'Bryant.

The Lions are continuing to adjust to the switch to the NCAA. Uribe feels the team is doing just fine.

"I feel like we are adjusting fine," he said. "We are improving on some things and giving it all we have. We proved we can compete; now we have no margin for error."

The Lions are now 3-2 on the season and 2-2 against NCAA opponents.

Their next game will be this Saturday at 7 p.m. where they will travel to Texas to take on the Texas A&M University-Kingsville Javelians.

We've Arrived



Higher Quality Products
Freshly Prepared

Speedy Delivery
Order Online!
www.Picklemans.com

Hours 10am-10pm Daily

Dierberbg's Plaza
2041 Zumbahl Road
St. Charles, MO 63303
(636) 946-9000



Toasted SANDWICHES



Really Good SOUPS



Fresh CHOPPED SALADS



Thin Crust PIZZAS



Intramurals



Courtesy photo by T.C. Brown
On Tuesday, Sept. 27, the Canam Cougars became the champions of the Volleyball Intramural season. (Top row, from left) Brad Blair, Adam Salisbury, Joshua Johns, Jordan Johns. (Bottom row, from left) Ashley Niehaus, Nicole Whitaker, Emily Nelson. The name "Canam" refers to the team consisting of Canadians and Americans.

Women's golf champ talks about success

By Deborah Starr
Sports Editor

"Practice makes perfect" may be a cliché saying, but for some, it rings true. For Julieta Rotzinger, practicing hard every day pays off in the end. A leader on the LU women's golf team, Rotzinger knows what it means to put in the time to become good, but she also sees the benefits.

On Sept. 9, Rotzinger won the first tournament of the year with a final score of 156, a whole six shots ahead of the second place winner. While she trailed by two shots on the first day, she was able to come in on day two and recover.

"I was practicing a lot, and when I did not do well on the first day, I was mad," Rotzinger said. "But on the second day I did better. I worked so hard that I think I deserved to win."

From Puebla, Mexico, this is Rotzinger's second season at LU. She picked up her first golf club when she was eight and has not been able to put it down since.

"When I was little there was a summer camp where there was tennis, golf and swimming," Rotzinger said. "I really liked golf so I started to play. I like the sport because at the end, the score that counts is your own. If you do badly, it is your fault."

With two tournaments down and three left this semester, Rotzinger has some goals she would like to achieve. "I really want to be in the top three in each tournament," she said.

Majoring in mass communications, Rotzinger said she enjoys reporting and working on TV. She worked on a TV show back home and said, "If I don't become a professional golfer, I guess I will work on TV."



Julieta Rotzinger

Lady Lions golf team seems far from the norm

By Steve Runge
Staff Reporter

There is nothing like turning on the television on a nice, easy weekend and watching a little PGA or LPGA golf.

The birds are usually chirping, there is normally a nice breeze one way or the other and the tone of the announcer's voice is soothing enough to put just about anyone to sleep. Picture perfect golf: that's what it's all about, right?

The reality of being on a university golf team couldn't be more different. When Women's Golf Coach Abby Weber was asked about having such a cush job, she laughed and said, "Yeah, right."

"We have some 80 degree days here and there," Weber said, "but those days are few and far between. You might see a football or baseball game get rained out, but you'll never see a golf tournament called due to rain."

When it comes to toughness, Weber called her team just as tough as they come. She recalled a recent trip to Evansville, Indiana for the Screaming Eagles Classic.

"It was a stormy mess. The round was called on Saturday due to lightning, and we only got about five rounds in," Weber said. "The following day, our team hit the greens at 5 a.m., and played about 30 holes in the pouring rain to finish out the tournament. I am very proud of each one

of our golfers for really sticking it out."

Weber described the competition as a little different than traditional college sports. She said instead of playing one school against the other, they would play against anywhere from 8 to 18 teams at once. The Ladies Golf Team has fared well so far this year. They took second place at the William Jewell Invitational on the weekend of Sept. 8 out of six teams. They took fifteenth

out of 18 teams during the aforementioned monsoon of 2011 in Evansville over the weekend of Sept. 18. The team has three more tournaments where they will play at Shawnee, Oklahoma on Oct. 3-4, and Nashville, Tennessee on Oct. 10-11. They will finish out the fall season at home where they will host the Lindenwood Invitational over the weekend of Oct. 21.

Coach Weber said the golfing talent across the nation is very rich. She said she has

the privilege to meet with recruiters during the off-season to focus on candidates with both golfing talent and strong academic skills.

"Fall golf is a lot of fun, but I am really looking forward to this spring," Weber said. "Either way, we have a very talented team that I and the university are very proud of."

For more on the Lindenwood ladies golf team, check them out under the ladies sports tab at the athletics link on www.lindenwood.edu.

You need insurance, We make it easy!®

The Right Coverage

The Right Price

Call Us Today!



Proud supporter of
Lindenwood University!

Steven J. Lang
President



Local | Independent | Trusted
(636) 229-7000
www.langinsurance.com

Lang Insurance Service

Trusted Choice®

Health ■ Auto ■ Home ■ Life ■ Business

Women's Soccer



Emily Winshel attempts to maintain control of the ball after it was thrown in to her while a Rockhurst defender tries to steal the ball. On Tuesday, Sept. 27 the Lady Lions took on the Rockhurst University Hawks at home. They lost the game 1-0, making their record 4-2-2. The game was tied 0-0 until a second-half goal by the Hawks. Their next home game will be at 5:30 p.m. on Oct. 5 against the Park University Pirates.

Legacy photo by Deborah Starr

Cycling team is ready to ride

By Russ Hendricks
Staff Reporter

Lance Armstrong, Tour De France, tight fitting uniforms and yellow silicone bracelets with the motto "LIVESTRONG" embedded in them are some of the things students might think of when they hear about cycling.

It is an intense sport but different from most typical sports such as baseball, football or basketball. What most people don't understand, though, is how cycling works.

"There are two seasons," said cyclist Kurt Tweedy of LU's cycling team. "Road season in the spring and mountain bike/cyclo cross season in the fall." Tweedy expressed that more riders compete during the road season in the spring than those who compete in the mountain bike season.

"Cycling is definitely more of a team sport rather than an individual sport," Tweedy said. "The team works together to get one cyclist from their team across the finish line first. The cyclists will ride together in a pack to protect the rider they have chosen to carry on the last leg of the race and across the finish line."

A typical race can be as many as 60 miles, and being injured during a race is not rare. Tweedy, who has had his fair share of accidents, shared that he has seen many cycling accidents that ended with rides to the hospital.

It is by no means a sport that anyone can just decide to pick up. LU's cycling team competes at the Division 1 level against schools such as Purdue, University of Missouri, University of Illinois and many other big name schools. LU's team is ranked one of the best in the division. Tweedy, who is on the team for his second year, speaks for his teammates when he said their goal is to win conference, place well and hopefully win nationals. "My personal goal for this year is to win nationals," Tweedy said.

With the team being led by Head Coach Chris Mileski and his years of experience with cycling, mixed with the riders LU has recruited to be on the team, this year looks promising for the LU cycling team.

"Cycling is definitely more of a team sport rather than an individual sport."

-Kurt Tweedy

Ladies hockey takes on NCAA

By Deborah Starr
Sports Editor

With a majority of the sports at LU going NCAA Division II, the women's ice hockey team is taking a step beyond that by playing their entire season against only NCAA Division I schools. Last year the team was a part of the American Collegiate Hockey Association (ACHA), but this year, it is raising the bar.

While LU will be playing NCAA Division I schools, this

does not mean that the team itself is a Division I team. It is independent and therefore not in a league but can play whichever schools LU chooses. A few games will be played against ACHA schools, but they will be exhibition games and will not count towards the overall record.

Vince O'Mara, the women's ice hockey head coach, is very excited to be playing so competitively. "Being at the highest level, the challenge and the opportunity all excite me," he said.

Even though this step is indeed a giant leap for the school, the team understands that this season will be experimental. Sam Redick, a sophomore left wing from Alaska, is excited for the season but also expects to have to put in a lot of work.

"This season, as a program, we are actually being challenged," Redick said. "It's going to take a lot more work to do well this year."

The LU women's ice hockey team is using this year as a rebuilding season. Four-

teen of the 24 players are freshmen.

There are pros and cons to having such a young team, and O'Mara said, "It's kind of hard because no one has ever been at this level. We don't have anyone to lead by example because even the returners have never been here. With this many rookies we have a really good base to build with."

O'Mara added by saying, "Our ultimate goal is to develop into a legitimate Division I school."

We Deliver To All Lindenwood Dorm Buildings!







IMO'S
PIZZA

Imo's St. Charles
2160 First Capitol Dr.
St. Charles, MO
Delivery • Dine In • Carry Out.

DIG INTO CLASS AND THESE HOT IMO'S DEALS!

- 1 LARGE, 2 TOPPING PIZZA
Only \$9.99! No Limit
- 1 XTRA-LARGE, 1 TOPPING PIZZA & WINGS Only \$17.95!
- 10% OFF ANY REGULAR PRICE ITEM! (See Menu On Back)

636/946/5040

Order online at www.imospizza.com

20 CHICKEN WINGS, HOT OR BBQ Only \$12.50

Coupon valid for Lindenwood Staff and Students
Expiration 12/31/11

1 XTRA-LARGE, 1 TOPPING PIZZA & WINGS Only \$17.95!

Coupon valid for Lindenwood Staff and Students
Expiration 12/31/11

LARGE 2 TOPPING PIZZA ONLY \$9.99

Coupon valid for Lindenwood Staff and Students
Expiration 12/31/11

ST. LOUIS TOASTED RAVIOLI 10 PIECE W/ MEAT SAUCE ONLY \$5.75

Coupon valid for Lindenwood Staff and Students
Expiration 12/31/11

New

Continued from Page 1

"It makes it easier to work in general."

The goal is to not only create a learning environment, but a social one as well.

"You can see them out the Legacy office windows, studying, chatting, sleeping, eating and just hanging out," Giessman said.

"Students are studying and in work groups while others are sitting together socializing," Oldani said. "Both are positive results."

Schriener did say, however,

there is one downside to the absence of some of the couches with the addition of more tables. "It takes out some of the relaxing properties of Spellmann," she said.

"The furniture is of good quality, and we expect to get good use from it."

-John Oldani

get good use from it," Oldani said. "It all depends on how people treat it."

As far as Giessman is concerned, she said, "I hope it lasts until I retire."

Expect to see new furniture in Matthews, Parker and Cobbs Halls soon.

Continued from Page 2

Friday afternoon will feature "The Lions Provide" student blood drive in The Connection in the Spellmann Center from 10 a.m. until 2 p.m., while parent and alumni registration begins at 1 p.m. in the Hyland Arena. After registering, parents and alumni are invited to take a historic bus tour of the Lindenwood campus before the dedication and reception of the Commons at 5 p.m.

Options of events that night include watching *Diva*, part of the Lindenwood Film Series, in the Young Hall Auditorium, enjoying a Hall of Fame dinner or attending this year's Homecoming concert. The concert will feature the

"The Wild West-themed Homecoming dance, which starts at 8 p.m. on Saturday in the Evans Commons cafeteria, will wrap up the week for students."

Plain White T's, The Somerset, Downtown Fiction and Allison Park.

The Saturday, Oct. 15, festivities will start off with the Race to Be King 5K Walk/Run to support the Disabled Athletes Sports Association and will be followed with the annual Homecoming and Reunion Parade.

The parade will begin at Young Hall and will travel

downtown before ending at J. Scheidegger Center for the Arts.

This year's parade will include a gun salute and feature Chevrolet Corvettes.

After the parade, parents and alumni will be able to pick up their barbecue luncheon and lion football game tickets before enjoying lunch and pregame activities or touring the Lindenwood

campus dorms as they await the game.

As Homecoming week draws to a close, the Film Series will present *Ikiru* at 7 p.m. in Young Hall, and the J. Scheidegger Center for the Arts will host The National Acrobats of the People's Republic of China performance at 8 p.m.

The Wild West-themed Homecoming dance will wrap up the week for students, starting at 8 p.m. in the Commons cafeteria.

For more information about all of the Homecoming events, visit www.lindenwood.edu/homecoming or contact the Student Life and Leadership office at 636-949-4983.

World

Continued from Page 2

After months of fighting in Libya, the rebel forces took over the capital, Tripoli.

However, Gadhafi was nowhere to be found in the city, and with his claim to "fight until the end," there is still worry of continued violence despite the rebel victory.

And to think that all this started with young college-aged people, simply speaking out and rallying together via social networks such as Facebook and Twitter, has to make students pay a bit of attention.

CNN has even used amateur YouTube videos filmed from cell phones as its "official breaking footage."

The Debt, in Perspective: To put this craziness called the U.S. debt into perspective, just add eight zeros to the end of these numbers to get the actual federal amounts.

<u>Total annual income:</u>	\$21,700
<u>Amount of money spent:</u>	\$38,200
<u>Amount of new debt:</u>	\$16,500
<u>Previous debt:</u>	\$142,710
<u>Amount cut from budget:</u>	\$385

Does anyone know that this debt doesn't even include the Social Security or Medicare payments it has to make to its citizens each year?

Where is that money going to come from? Now decide if more tax cuts are necessary or if the government should continue spending.

As far as Europe's Debt Crisis is concerned, Greece, Portugal, Ireland, Italy and Spain have all been on the verge

"Over 40,000 people have died from the war. How much is the U.S. to blame?"

of economic failures, credit reductions and financial bailouts from the European Union (EU).

But with Greece, Portugal and Ireland being the worst of the five, how far is the EU willing to go and what will it mean for the future of the EU?

If the world economy is worried about the U.S. credit and debt, what will happen when the Euro crashes? Think about it.

Other "must-knows" to remember:

The U.S. Neighbor's Drug War - The drug war in Mexico has escalated to new heights, when 52 people were killed in a casino in Monterrey a few weeks ago.

Since 2006, over 40,000 people have died from the war. How much is the U.S. to blame? Where there is a demand, there is a supply.

The newest addition - South Sudan has officially been recognized as the world's 196th country after decades of ethnic and political conflict with the northern Republic of Sudan.

Famine in the Horn of Africa - More than 12 million people are in danger of severe starvation in Ethiopia, Kenya, Somalia and Djibouti from the worst drought in 60 years. This will no doubt have long lasting effects on the region's development.

"Worst attacks since WWII" - Over 76 people were massacred in Norway in July because of one man's disagreement with his country's new "multicultural" values.

Norway has stated that they will react by only being more open to immigrants and their cultures.

Continued from Page 2

Senior Nick Dorland is looking forward to the Plain White T's coming to campus. "I like them, but I'm not sure yet if I'm going. I was really stoked when Switchfoot came last year, but when I went it really bothered me to see so many kids getting out of hand."

Nathan Coursey, senior, said, "I'm looking forward to it. I was more excited about the Switchfoot concert last year, but that's just because I enjoy their music more."

The Plain White T's are still expected to bring in a big crowd, though, as "Hey There Delilah" went platinum in 2007 and had two Grammy nominations. Their hit "1, 2, 3, 4" also turned platinum in 2009, from the album "Big Bad World."

"We definitely expect another great turnout this year," Deligny said. "Last year, we had about 3,000 people attend with Switchfoot, and even more are expected this year."



Legacy photo by Jonathan Garrison
Amanda Turner leads the band in the Lindenwood football stadium.

Meals

Java 101 (Spellmann Coffee Shop)

Breakfast: Bulk yogurt, breakfast value juice, small milk, bagel with cream cheese, pastry, muffin, donut, scone and coffee.

Lunch: One sandwich, one bag of chips or whole fruit, and one fountain beverage or small milk.

Dinner: One sandwich, one bag of chips, one whole fruit, and one fountain beverage or small milk.

Java 201 (Butler Library Coffee Shop)

Breakfast: Bulk yogurt, breakfast value juice, small milk, bagel with cream cheese, pastry, muffin, donut, scone and coffee.

Lunch: One sandwich, one bag of chips or whole fruit, and one bottled Pepsi product or Aquafina bottled water or small milk.

Dinner: One sandwich, one bag of chips, one whole fruit, and one bottled Pepsi product or Aquafina bottled water or small milk.* *When the fountain soda is installed mid-December, this will replace the bottled Pepsi or Aquafina.

Evans Commons Dining Hall

Breakfast: Bulk yogurt, breakfast value juice, small milk, bagel with cream cheese, pastry, muffin, donut, scone and coffee.

Lunch: One entrée, one side, and one fountain beverage or small milk.

Dinner: One entrée, one side, soup or salad bar, and one fountain beverage or small milk.

Spellmann Dining Hall No change

These combos are just examples. You are able to spend your Value of \$5 for Breakfast, \$7 for Lunch, and \$9 for Dinner on any Food Service Kitchen produced items, including Grab 'n Go sandwiches, sides and desserts.

Items that are not included in the Meal Plan: Any bottled beverage, hummus, yogurt, and granola bars. *These items are available for purchase with Flex Dollars, cash, or credit.*

This graphic shows the options of what exactly students can purchase in the Spellmann cafeteria, Evans Commons cafeteria and the two Lone Wolf shops with their meal plan or with flex points and cash or credit.

Continued from Page 1

As per the new policy, students may use Flex points or cash/credit to purchase these choices.

Ralph Pffremmer, founder and CEO of the Pfoodman company that provides meal services for Lindenwood, said that the changes were necessary to keep the meal plan prices the same for students. "We have to regulate the special retail items and must keep the meal plan in accordance with what is affordable to all students," Pffremmer said. "Retail items are of a higher cost, and they must be marked differently than the other items or else prices would increase for the overall meal plan."

The allotted 19 meals per

week, included in the student meal plan, are designed to cover only food service items such as combo meals, Pffremmer said. Specialty drinks like Starbucks coffees and energy drinks are not considered to fall under this category.

Pffremmer said that the issue came up because students were using their allotted meals to buy just retail items.

"Students were purchasing three Muscle Milks or three Starbucks coffees instead of food," Pffremmer said. "The program was designed to provide a nutritional and whole meal, not just drinks."

Before this policy took effect, students could be seen throughout the day caring

out three or even five drinks like Naked juices and energy drinks from the Commons cafeteria or the Lone Wolf Coffee shops. "[Being

able to purchase these drinks as part of the meal plan] was quickly being abused, and the administration realized they needed to draw a line," Pffremmer said. "These items that were being purchased more frequently are the most expensive, so fees would have had to go up for the meal plan if

we kept it this way."

Students will still be able to purchase items that fit with their meal plan in the Lone Wolf shops or the Commons

for breakfast, lunch and dinner. Being able to purchase full meals, included in the meal plan price for breakfast, lunch or dinner, at the Lone Wolf Coffee shops in the Spellmann Center or Butler Library has been one of the other big changes that occurred this semester, which students are definitely using.

"Being able to purchase these drinks as part of the meal plan was quickly being abused."

-Ralph Pffremmer