

1999 Report Card

Lindenwood University Education Division

Dr. Larry Doyle

Dean - Education Division

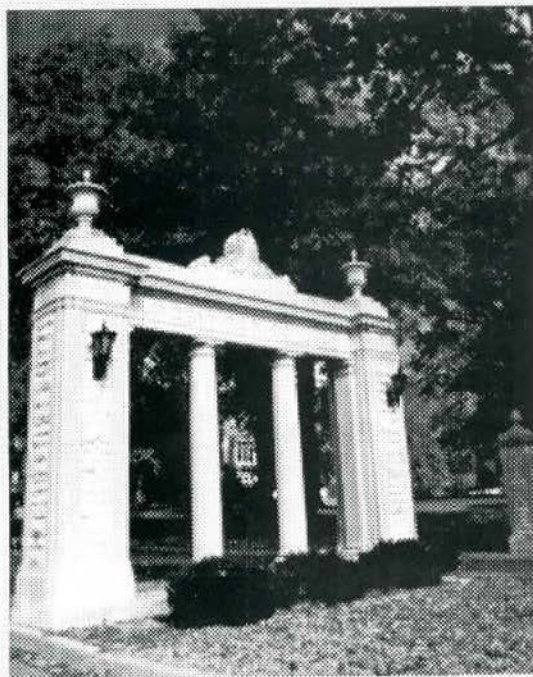
A message from the Dean...

Dear Colleagues,

The Outstanding Schools Act requires public reporting of information by Missouri public school districts on an annual basis. While there is no such obligation placed on colleges and universities, it seems appropriate to me that the Education Division should regularly report to our public (students, school district employers, and the community) on how well we are doing in the preparation of beginning teachers and the professional development of practicing teachers.



Larry Doyle



The following pages contain the LU Education Division's "1999 Report Card." If you have questions or need further clarification, please contact me.

Sincerely,

A handwritten signature in cursive script that reads "Larry Doyle".

Larry Doyle
Dean

Education Division
314-916-1905

Our Students



The Lindenwood University Education Division annually serves almost 800 undergraduate students who are pursuing initial teacher certification. The undergraduate enrollment in the division has increased at an annual rate of approximately 20% in each of the past five years. At the graduate level, over 1,500 teachers are pursuing a master's degree in either Education or

Educational Administration. We have seen a rapid growth in graduate program enrollment through our extended site locations, which has made coursework available to teachers in a location of close proximity to their job. In addition, another 2000 teachers take education coursework annually, although not directly involved in a degree program. Altogether, the Education Division last year served over 4,000 educators in credit course offerings.

Our Graduates

Last year the Education Division graduated about 120 new teachers. Another 30 students who already possessed bachelor's degrees completed initial teacher certification coursework with us. Most go to work in school districts in our immediate service region. About 250 teachers annually earn a master's degree in either the Master of Arts in Education or Educational Administration. Degrees awarded within the Education Division have climbed steadily from 47 graduates in 1990 to over 350 in 1998.





Joe Bordeaux

Our Certification Areas

Lindenwood University Education Division is authorized by the Missouri DESE to recommend certification in 26 initial teacher certification areas and five advanced certification areas.

Dr. Joe Bordeaux is the division's Certification Officer and works with school districts and students to process appropriate certification requests. He can be reached at 314-949-4842.

Baccalaureate Programs

Early Childhood (PK-3)

Elementary (1-6)

Middle School (5-9)

Language Arts

Mathematics

Science

Social Studies

Business Education

Secondary:

Art (K-12)

Business Education (9-12)

English (9-12)

Foreign Language: (K-12)

French

Spanish

Health (K-12)

Mathematics (9-12)

Music: Instrumental (K-12)

Music: Vocal (K-12)

Physical Education (K-12)

Social Studies (9-12)

Speech/Theatre (9-12)

Special Education:

Early Childhood (P-K)

Behavioral Disordered (K-12)

Cross Categorical (K-12)

Learning Disabled (K-12)

Mentally Handicapped (K-12)

Unified Science: Biology (9-12)

Unified Science: Chemistry (9-12)

Advanced Programs

Counselor (K-12)

Gifted (K-12)

Principal (K-12)

School Psychological Examiner (K-12)

Special Reading (K-12)

Our Assessment Process

Formal admission to the teacher education program at Lindenwood University requires the completion of at least four courses in the Education Division, a grade point average of at least 2.5, and successful completion of all five components of the College Basic Academic Skills Examination. The C-BASE requires mastery of subject matter in five areas: reading, writing, mathematics, science, and social studies. Only after passage of the C-BASE can students proceed with further coursework in the Education Division.

At the time of graduation and prior to certification, prospective teachers must successfully complete the National Teacher Examination. This examination tests students on knowledge related to professional teaching of subject matter. Over the past four years, Lindenwood students have had a passing rate in excess of 95% on the National Teachers Examination.

Our Accreditation

The Lindenwood University Education Division is approved by the Missouri Department of Elementary and Secondary Education to deliver both initial and advanced coursework leading to Missouri teacher certification. In addition, the Education Division is a member of the Teacher Education Accreditation Council, a voluntary association that accredits teacher education programs throughout the United States. The University is also accredited by the Commission on Institutions of Higher Education of the North Central Association of Colleges and Schools.

Our Faculty

The Lindenwood University Education Division faculty all have extensive and recent experience in the elementary and secondary school settings. We pride ourselves on the practical experiences we bring to the classroom. All possess doctorates and have regular continuing contact with public schools through supervision of practicum students, student teachers, workshop presentations, and collaborative efforts with elementary and secondary schools. The faculty and their specific area of expertise are listed below.



Larry Doyle



Roger Deppe

Dr. Rick Boyle – Associate Dean / Education Administration
Dr. Roger Deppe – Elementary / Secondary Education
Dr. John Dougherty – Middle School / Education Administration
Dr. Larry Doyle – Dean / Education Administration
Dr. Janet Fever – Elementary / Special Education
Dr. Kenneth Johnson – Middle School / Secondary Education
Dr. Virginia Kaminski – Elementary / Secondary Education
Dr. Patricia Moore – Early Childhood / Elementary Education
Dr. Rebecca Paganos – Special Education
Dr. Laura Rutter – Health / Physical Education
Dr. Jann Weitzel – Secondary Education
Dr. Gail Worrell – Secondary / Education Administration



Rick Boyle



Janet Fever

Our full-time faculty is supported by the efforts of 47 adjunct faculty members who teach coursework in which they have specific expertise. The adjunct faculty bring unique backgrounds and very current information to students in their classes.



Patricia Moore



Laura Rutter



John Dougherty



Rebecca Paganos



Jann Weitzel



Kenneth Johnson



Gail Worrell



Virginia Kaminski

Our Curriculum

The Lindenwood University Education Division prides itself on the practical nature of the teacher education program. Coursework is designed to relate to the practical tasks that teachers perform in the classroom. Field experiences are a critical part of the program, with at least three practica assignments required of every student prior to the student teaching assignment. The student teaching assignment is a 16-week, full-day obligation, with students placed in at least two different settings involving different grade levels and cooperating teachers. Secondary education majors must complete all requirements for a major in the primary teaching field for which they will be certified.

Physical Education

The Physical Education Department is a part of the Education Division. More than 250 students pursue degrees in Teaching, Sports Management, and/or Athletic Training. All instructors possess advanced degrees and coach in addition to their teaching duties. Physical Education instructors and their coaching assignments include:

Randy Biggerstaff	Athletic Training/Physical Education
Dan Dieringer	Physical Education/Football & Track
Mike Gardner	Physical Education/Football
Tim Johnson	Physical Education/Football
Dan Kratzer	Sports Management/Football & A.D.
Dale Ribble	Sports Management/Basketball
Dave Witter	Physical Education/Basketball & Volleyball

Our Cooperative Credit Program

Lindenwood University has cooperative arrangements with numerous school districts, state agencies, and professional associations. We support professional development activities sponsored by those organizations. About 2,500 teachers annually benefit from these cooperative credit arrangements. More information is available from Dean Larry Doyle at 314-916-1905.

Our Locations

The Lindenwood University Education Division teaches coursework at 15 sites throughout Missouri. While most of the undergraduate coursework and about half the graduate coursework is taught on the main campus in St. Charles, Missouri, over 600 graduate students also take coursework at one or more of the following locations:

Hazelwood School District	Mehlville School District
Fox School District	Missouri Valley College
Francis Howell School District	Northwest School District
Ft. Zumwalt School District	Parkway School District
Hannibal School District	Riverview School District
Kemper Junior College	Rockwood School District
Wentzville School District	Special School District
Ferguson-Florissant School District	

Information on specific extended sites is available from Director of Program Development John Feely at 314-916-1904.

Cooperative Credit Program

Partial list of Participants

Brentwood School District
Cooperating School Districts
Ferguson-Florissant School District
Francis Howell School District
Hazelwood School District
Missouri Association of Secondary School Principals
Missouri Association of School Librarians
Missouri Botanical Garden
Missouri Department of Conservation
Missouri Department of Education
Missouri Gifted Association
Missouri Middle School Association
Missouri School for the Blind
Missouri State Teachers Association
Mid Rivers Tech Prep Consortium
National Peer Helpers Association
Network for Educational Development
Northwest R-1 School District
Orchard Farm School District
Performance Learning Systems
Pattonville School District
Regional Center for Educational Technology
Riverview Gardens School District
Rockwood School District
St. Charles School District
St. Louis School District
St. Louis Science Center
State Fair Community College
The Educational Edge
The Learning Center

Statement of Principles

We believe in a high-quality system of K-12 public education that is free and appropriate to all Missourians. We also value the diversity of opportunities provided through the existence of a strong network of private and parochial schools.

We believe in the premise of local control of education. We think decisions regarding policy, programs, and procedures are best made by local school boards, administrators, and teachers with a minimum of constraint by state and national agencies.

We believe that, of all the roles thrust on K-12 education, the primary task of schools is to provide all students with a rigorous academic program that ensures mastery of basic skills.

We believe in the worth of every youngster, without regard to gender, race, or creed, and view education as a means by which all children can progress to their highest level of opportunity, limited only their own ability and initiative.

We believe that institutions involved in the preparation of Missouri's teachers should be given the flexibility to develop a variety of programs to meet the diverse needs of the state's school districts. The ultimate measure of the success of the teacher preparation program is seen in the competency demonstrated by its graduates.

A message from the President...

Dear Friends,

For over 170 years, Lindenwood University has provided outstanding educational opportunities for the citizens of east-central Missouri. The past ten years have been especially rewarding, as we have seen our student population grow from about 800 students to over 8,000 students in that period. We are proud of this fine institution, its top-quality faculty, and its excellent students.

Today, the University is successful because we remain true to the mission and values set forth by founders Mary and George Sibley in 1827.



We are especially proud of our Education Division. Our teacher education graduates are among the strongest academically in the entire university. Our Education Division faculty bring to the classrooms extensive backgrounds as practicing teachers and administrators in the elementary and secondary school setting. We have very fine cooperation with the school districts in our region, and are committed to serving those schools in any way possible.

I believe the most accurate barometer of our success relates to how well our graduates do in their chosen careers. We continue to hear stories from employers about graduates armed with a first-class education, but who also have the confidence and independence that make them successful in their career field.

Our Education Division has shown remarkable growth because it is committed to helping prospective and practicing teachers be the best they can be. We want to be of service to the educators and school districts in our region. Please call on us when we can be of assistance to you.

Sincerely,

A handwritten signature in dark ink, appearing to read "Dennis C. Spellmann". The signature is fluid and cursive.

Dennis C. Spellmann
President