

The
Linden Leaflet

A
SHOPPING
GUIDE



IT IS UP TO
YOU
TO PATRONIZE THESE
ADVERTISERS

Who, by Their Patronage,
Have Helped to Make
Possible

YOUR

1929 "Linden Leaves"

THE SHOPPING GUIDE

Why don't you take a look
Inside your shopping book
Before you go a-prancing off to town?
It will tell you where to shop,
Where to get your soda pop,
And where to have a good time all around.

There are heaps of stores to try
And heaps of things to buy,
When the month's allowance still has not been spent.
There are places, too, to eat,
Down there on old Main street,
When on feast and jollity alone you're bent.

It tells you where to buy
Every single school supply;
And all sorts of little knicker-knacks and notions;
And it tells you where to go
Saturday night to see a show,
When you want to exercise all your emotions.

If on Saturday you're intending
In St. Louis to be spending,
Put the book into your purse; it isn't wide.
You'll be mighty glad to use it—
Be careful and don't lose it;
It's a very handy little Shopping Guide.



CARNIVAL

VOGUE BOOT SHOP

is the place where we buy our
VOGUE SHORT VAMP FOOTWEAR



TAILLEUR



LYRIC

THAT IS WHY THEY LOOK SO NICE
AND FEEL SO COMFORTABLE

MAIL
ORDERS
FILLED

VOGUE
BOOT SHOP

CATALOG
SENT ON
REQUEST

Short Vamp Shoes Exclusively
615 LOCUST STREET

St. Charles Savings Bank

CAPITAL, SURPLUS AND PROFITS

OVER

300,000 DOLLARS

RESOURCES NEAR

TWO MILLION DOLLARS

The Bank of Safety and Service

ST. CHARLES

MISSOURI

Who is it that has a full line of Cosmetics?

Who is it that makes the Best Sundaes?

Who is it that calls your Taxi for you?

Who is it that has given forty years of
Exceptional Service?

Of Course, It Is

Charles E. Meyers

DRUG STORE

FOR THE

“Home Beautiful”

WALLPAPER

deserves the chief credit
for many a charming
interior

WALLPAPER WORKS
WONDERS

HENRY BROEKER

*Decorating—Wallpaper
Painting*

103 NORTH MAIN ST. ST. CHARLES, MO.



EFFICIENT NOISE

Use the right
medium to
play your pub-
licity music.

THE
BANNER-
NEWS

ST. CHARLES, MISSOURI

YOU CAN TRUST THEM TO US

Pechtern
Cleaning Company

PHONE 1000

216 N. SECOND ST.

ST. CHARLES, MO.

UNION SAVINGS BANK

The Old Solid Bank of

ST. CHARLES, MO.

Organized 1870

TOTAL RESOURCES

\$1,600,000.00

J. F. RAUCH	<i>Presiden</i>
H. H. STEED	<i>Vice-President</i>
GUS. H. WILKE	<i>Cashier</i>
EDW. SCHNEDLER	<i>Assistant Cashier</i>
O. I. RAUCH	<i>Assistant Cashier</i>

YOUR NEEDS

Can be better supplied
at our store — as to

*Style, Quality, Price, and
Dependability*



with your purchases as an extra Saving on
the money you spend—and give \$2.50 in
MERCHANDISE or \$2.00 in CASH for
your filled books of STAMPS

SEE OUR ASSORTMENT OF

COATS
DRESSES
SILK HOSE
LINGERIE
HATS
PURSES

“QUEEN QUALITY”
SHOES
GLOVES
UNDERWEAR
KIMONOS
PERFUMES

A. R. HUNING DRY GOODS CO.
ST. CHARLES, MO.

New Strand Theatre

ST. CHARLES, MO.

Pictures run directly in St. Charles
after the first-class theatres in St. Louis

SYNCHRONIZED MUSIC AND
TALKIES

Very Best of
COMEDIES! NOVELTIES!
NEWS REELS!

Come to the Show!
Eat Candy and Popcorn!
Have a Big, Jolly Time!

Pictures for Friday and Saturday nights and
Saturday matinees selected especially with
the idea of pleasing the LINDENWOOD GIRLS

HINDERELLA AND THE JEWELLED CLIPPER

Hinderella was a poor little Freshman! One day when little Hinderella was down on her dimpled knees cleaning up for an Almighty Sophomore, she looked up and saw what she knew was her heart's last beat—God's gift to the overstuffed furniture. Now, at the same moment, Benny Burney Murad (nicknamed so because he was so nonchalant when he was lit) caught sight of Hinderella, and his heart "faw down and go boom!" And so, lo and behold, next Sunday night in vespers saw Hinderella and Benny Burney Murad sitting high up in the balcony. Hinderella had asked her Fairy Godmother if Benny Burney might not come for a while. Hinderella almost didn't get to have the date at all, for when her F. G. told her that Benny would have to leave at ten o'clock, she said, "Good godmother, can't he stay longer than that?" After vespers they hied themselves away to a swing, for they liked that much better than the parlors, where the Almighty Sophs were watching this affair with green eyes.

So, oft in the stilly night, they strayed under the lindens, and before very long Benny's little jeweled clipper had come to rest under Hinderella's throbbing dress. At Benny's I-love-you—what-kind-of-an-apartment-will-you-have line, Hinderella demurely dropped her lustrous green eyes. Just as Benny climbed over the swing to pick them up for her, a faint tinkling sound came to her ears. Ten bells!! Jumping off the swing, she ran toward her domicile. At the same time, (Ingersoll), the little jeweled clipper, took a tumble and fell among the dewdrops where a stray moonbeam happened to light upon it, and Benny's love warbling ceased.

Who could the perfectly wonderful girl have been? Benny nearly drove the Brothers nuts trying to remember. He said he was positive he could tell her by the holes in her dress where the clipper had been pinned.

Continued on Page 38

REDUCING

Reducing! What a college life can do
To slender figures! What a tragic fate
It is, to watch those curvey curves curve more
As each day passes. Whose the pen can tell
Those quaking qualms that shake the heart, afraid
To beat for fear of popping straining snaps?
What price reduction? Who can list the trials
Of healthy, chubby maids who "look so well";
Whose year at school has "so agreed with them";
Who struggle, puff, and pull to get those frocks
O'er hips too broad, on waists a trifle thick?
As Christmas time draws near, Miss Walter finds
Attendance at the breakfasts failing fast. At lunch
And dinner, bread is seldom used, while beans,
Potatoes, butter, even pie, are scorned.
Poor girls! We're glad this fasting time is short,
For this we know is true in every case,
The shape is ended long ago, perhaps,
But woe is me, the appetite lingers on!

It takes a tree five years to produce nuts;
And college does it in four.
Some of our chapel speakers do it in an hour.

I pass up the sweets—Those who diet.
Have you a little "fairy" in your home—Marjorie
Smith and Bernice Sandage.

The Flying Cloud—Charlotte Lehrack at the
dances.

Keep that school-girl complexion—Lucie May
Sharon.

99.44% pure—Lil.

You just know she wears 'em—Pope, Cole, Dick,
and Larabee.

Body by Fisher—Margie Bright.

What a whale of a difference a few years make—
stepping aside for faculty.

Children cry for me—Males.

EDWIN DENKER

Florist

The Man Who Helps

LINDENWOOD

"Say It With Flowers"

400 CLAY STREET

PHONE 175

PHONE 840

JOS. A. BOTTANI

Contractor for

REINFORCED CONCRETE, STONE
and GRANITOID WORK

532 N. BENTON AVE. ST. CHARLES, MO.

“QUALITY PRINTING”

BOTTANI PRINTERY

F. N. BOTTANI
Proprietor

120 N. SECOND STREET ST. CHARLES, MO.

Goldette Bloomers

DARINGLY SHORT
GOLDETTES

Just the style and length
youth demands to be in keep-
ing with present-day trends.

Both beauty and comfort
are combined in Goldette
Patented design and match-
less fabrics.

Prices from \$1.00 and up.

WILLBRAND'S

FOR BENEFIT OF
FRESHMEN

Flippy Maxwell is not
flippant.

Bullion is not soup.

Bright is not luminous.

Catherine is not either,
but Orr.

Hardy is not less
bright; she is Albright.

Elizabeth is not the
kernel; she's the Hull.

Mary Ellen is not su-
perstitious because she's
Lucke.

WE ARE PROUD
of our reputation for serving
the public with the best

GROCERIES *and*
FRESH MEATS

At Low Prices

THE PROGRESS MERCANTILE
COMPANY

308 NORTH MAIN STREET

Buy

CHAMBERLIN METAL WEATHER
STRIPS

CHAMBERLIN
METAL WEATHER
STRIP CO.

St. Louis, Mo.

BENEATH THE LEAVES OF LIN



Some maidens laugh, and often sigh,
And friendships sweet begin;
While winter passes summer by,
Beneath the leaves of Lin.

Bells beckon to reluctant feet,
And bid them come within;
And damsels fly to vacant seats—
They laugh, those leaves of Lin.

Soft sunshine filters through their green,
And plays on sunny hair;
Sunshine, seeking just to gleam,
It comes and nestles there.

Hands clasp, eyes meet, hearts understand,
And hopes live on within,
When things are not like they were planned,
Beneath the leaves of Lin.

So much is theirs to see beneath,
As days and nights begin;
Will they their secrets ever breathe?
The whispering leaves of Lin.

KATHERINE SEYMOUR.



The fire loss on the
"Margaret Hall"
building of Linden-
wood College,
which burned in
September, 1928,
was adjusted and
paid through the
office of

W. H. MARKHAM
& Co.
*General
Insurance*

CALL CENTRAL 0100
ST. LOUIS

MIKE'S *Drug Store*

HOME-MADE CANDY
KODAKS
and
SPORTING GOODS

Buy at

MIKE'S
He's Your Friend

DENKER BAKING CO.

FANCY BAKING

We specialize in those
unusual, difficult - to -
bake delicacies that
add so much distinction
to a repast.

But we don't overlook
those plainer, more
substantial things for
every day.

107 N. MAIN STREET
923 N. 2ND STREET

ST. CHARLES, MISSOURI

BUELL'S STYLE SHOP

LADIES' EXCLUSIVE
READY-TO-WEAR
and
MILLINERY

BUELL'S

*The Dress Shop
for*
LINDENWOOD GIRLS

The NEW STATESMEN

The electric light and power industry has consistently extended the usefulness of its service, while materially reducing its rates. This reduction meant a saving in 1927 of five hundred million dollars to domestic consumers alone.

It was Locke, the great economist and philosopher, who wrote, "The purpose of business is to keep a man occupied for the prosperity of the Commonwealth."

Locke's definition of business is being applied today as never before. The engineer and the scientist have become the statesmen of a new state that is industrial in form and economic in purpose.

In its contribution to the general well-being of the public, it is doubtful if any industry in the history of the world has rendered a greater service than the Electrical Industry.

That America today enjoys living advantages approached by no other country is due in no small measure to the fact that American manufacturers and workmen have at their command more electric power than is available to all the rest of the world.

UNION ELECTRIC LIGHT AND POWER COMPANY

HENRY REEVES
Local Manager

HUNLETH

MUSIC CO.
514-516 LOCUST ST.
THE LARGEST MUSIC HOUSE IN ST. LOUIS

C. W. ALLEY

PRINTING, ENGRAVING
and STATIONERY

204 N. Third Street
ST. LOUIS

CHESTNUT 7674

*Ladies' Popular Priced
Novelties*

NEW

CINDERELLA
SHOE STORE

5969 EASTON AVENUE
CABANY 6992

M. A. SPECTOR, *Prop.*

"The Gift Shop"

MILTON E.
MEYER

JEWELER

Expert Repairing

WILBUR L.
CARPENTER

Barber

SIXTH AND JEFFERSON

WEST END
MARKET

NESSLAGE & KOHLENHOEFER

GROCERIES, MEATS
CONFECTIONS AND
HOT LUNCH

PHONE 480

ST. CHARLES, MISSOURI

BRUNS' SHOE
SHOP

QUALITY SHOE
REPAIRING

Quick Service

The Building Department Store of St. Charles

H. G. RAUGH LUMBER CO.

MAIN AND CLARK STREETS

AUSTIN S. FOX

*HEATING and
PLUMBING*



STEAM, HOT WATER
and
VACUUM HEATING



WATERWORKS AND
ELECTRIC LIGHTING
FOR COUNTRY HOMES



PHONE 99

ST. CHARLES, MO.



2730
Cherokee

3116
S. Grand

5959
EASTON
AVE.

*The Leading Newspaper
of St. Charles*

THE DAILY
COSMOS-
MONITOR

COMPLETE
JOB PRINTING
DEPARTMENT



*Best Work at Reasonable
Prices*

Headquarters
for

S N A P P Y
SPORTWEAR



WEIL'S
PALACE
CLOTHING
CO.

St. Charles, Mo.

BUSY BEE
CAFE

No. 1

408 N. 2ND ST.

OPEN ALL NIGHT

Phone 605

When you don't
eat here we BOTH
LOSE

TOM GALANOS
Proprietor

BUSY BEE
CAFE

No. 2

1176 W. CLAY ST.

U. S. HIGHWAY
No. 40

Phone 602



ST. LOUIS, MO.

A Smart Young Girls' Shop
Where

LINDENWOOD
STUDENTS

Are ALWAYS Welcome

*Make OUR Store Your Meeting Place
When You Come To Town*



A MOST COMPLETE LINE OF APPAREL
AWAITS YOUR INSPECTION

SHOES	\$4.85 to \$12.50
MILLINERY	\$5.00 to \$25.00
DRESSES	\$10.00 to \$79.50
COATS	\$18.00 to \$195.00

ST. CHARLES
DAIRY COMPANY'S

Ice Cream

*Fancy Brick and Bulk Ice Cream
For Every Occasion*



A HEALTH FOOD

GIRLS, LET'S ALL MEET AT THE
BUNGALOW—AUTO—CAMP
RESTAURANT

Oh! Their Food is So Delicious. Come,
Let's Try It

LOCATION—ONLY HALF BLOCK FROM OUR SCHOOL

Leston's
Mayonnaise

A NEW DELICIOUS
FLAVOR

Manufacturers of

QUALITY
FOODS

LESTON
CO.

ST. LOUIS

CLARK-SPRAGUE
PRINTING CO.

Direct Advertising
Planned and Produced



"A Friendly Doorway"
1901 LOCUST STREET
SAINT LOUIS

SAVE MONEY BY BUYING YOUR
DRY GOODS, RUGS *and* SHOES

AT ·
Kuhlmann's

324 NORTH MAIN ST. ST. CHARLES, MO.

SCHNEDLER
BROS.

FINE MEATS

Best of Service

ST. CHARLES, MISSOURI

HACKMANN
LUMBER CO.

106 NORTH MAIN

ST. CHARLES, MO.

FACSIMILE LETTER
COMPANY

LETTERS—ADDRESSING
MIMEOGRAPHING
PRINTING

720 Olive Street
ST. LOUIS MISSOURI

START RIGHT !

When you go to house-
keeping, be sure to
order

STANARD'S

ROYAL PATENT
FLOUR

U-SAN-O
"THE PERFECT CLEANER"
and
N-S-P QUALITY PRODUCTS

Manufactured by

National Sanitary
Products Co.
ST. LOUIS, Mo.

STEINBRINKER'S

*Furniture Dealers
and Undertakers*

305 NORTH MAIN
ST. CHARLES, MISSOURI

Central American
Coffee & Spice Co.

Coffee Roasters and
Blenders for Restau-
rants, Hotels, Cafes,
Clubs, Cafeterias and
Institutions

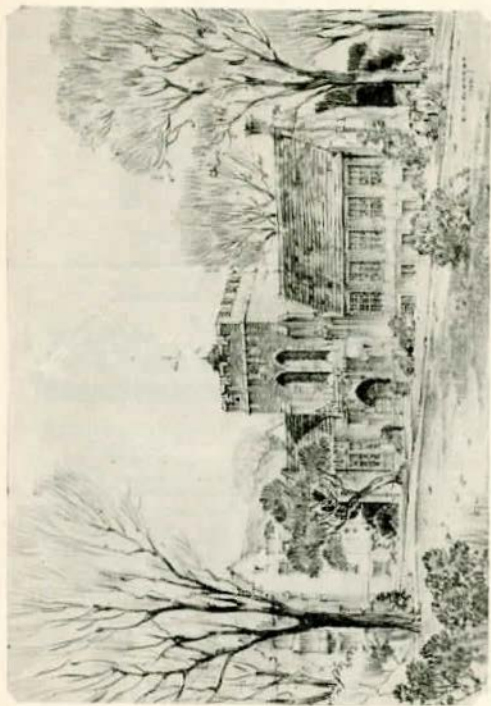
5522 VIRGINIA AVENUE
ST. LOUIS

FRANK F. AHMANN

Dealer in

News, Books, Stationery,
School Books and Sup-
plies, Blank Books, Office
Supplies, Sporting Goods,
Tobacco

223 NORTH MAIN STREET
ST. CHARLES, MISSOURI



New Lindenwood Library, La Beaume & Klein, Architects, St. Louis, Mo.

PHONE GARFIELD 1420

THE ST. LOUIS COSTUME CO.

Theatrical Costumers and Wig Makers

507 N. BROADWAY

COSTUMES FOR PLAYS AND PAGEANTS

WALLENBROCK'S

PURE FOOD AND FRUIT STORE

105 N. Main

Wonderful Baked Ham
Home-baked Potato Chips
Chase and Sanborn's Coffees
Delicious Fruits.

always at

WALLENBROCK'S

H. B. KIENKER DRUGS

Two Leading Stores

TOILETRIES, STATIONERY,
Prescriptions a Specialty

Main & Clay 2nd & Morgan
Phone 74-W Phone 505-W

ST. CHARLES, MISSOURI

A. RUTH, JR.

Photographer

2ND & JEFFERSON STS.

PHOTOGRAPHS—

FRAMES—

KODAK FINISHING

MAXIMUM SMARTNESS AT
MINIMUM COST

WONDERFUL SHOES

AT \$5 and \$6

420 N. Sixth 714 Washington
6118 Easton at Wellston

Good Things for Your
Lunch at the

ST. CHARLES BAKERY CO.

132 S. MAIN ST.

PIES CAKES PASTRY

When you add to the interior of your home, Curtis Woodwork features, French doors, a breakfast room, book-cases, a dining-room cabinet, a fireplace mantel, and the like, it just adds at least fifty per cent to the general attractiveness of your home.

C. J. HARRIS
LUMBER CO.

ST. CHARLES, MISSOURI

Driver—Your fare from Union Station to Lindenwood is \$8.75.

Arkansas Girls—Back up to \$2.00, please. That's all we've got.

"The Dominant Store of St. Charles"

NATIONAL DOLLAR STORES

5¢ to \$1.00 MERCHANDISE

218 N. MAIN ST.

ST. CHARLES, MO.

HALLOWE'EN NIGHT

I am Mrs. Sibley's ghost,
Never wandering from my post.
Girls have come—and gone away;
Lived their brief, full college day;
I have watched and seen them grow,
I know more than ghosts should know.
I have seen the good, the bad;
I have known the happy, sad;
Many times I have not slept,
When my ideals were not kept.
A hundred years I've watched my post,
I am yon Mrs. Sibley's ghost.
But, hark! I hear the organ playing;
It's I who plays, they all are saying.

T H E

Sid Whiting Studios

GRAND AT WASHINGTON

OLIVE AT PENDLETON

ST. LOUIS, MO.

The Photography for the
1929 LINDEN LEAVES
was done by the Whiting Studio
on Olive Street

Operators

SID WHITING BURREL ROGERS

The
1929 LINDEN LEAVES

*Is an example of better
Annual Designing and
Engraving as executed
by*

CENTRAL
ENGRAVING
CO.

114 NORTH SEVENTH ST.
ST. LOUIS, MO.



CREATORS *of*
PRIZE-WINNING
ANNUALS

Demand "Centralized" Service!

This Linden Leaflet

... and ...

Your Linden Leaves

Were born "with silver
spoons in their mouths"
—for from their incep-
tion it was ordained that
they would be printed
and bound by

The

HUGH STEPHENS PRESS

Builders of "KRAFT BUILT" School Annuals

JEFFERSON CITY, MISSOURI

EDITOR'S NOTE

Just for a bit of spice to add variety and what-not to our "Shopping Guide," we add from this point on, a section which we are calling "The Sap from the Linden." We add this Sap from our tappings about the campus for your entertainment and approval.

We sincerely hope you enjoy all that is recorded in this section, for we, the Editors, have tried hard to make a book that you will enjoy reading and looking through, as well as one that will give you an idea of where in St. Charles and St. Louis to stop and shop. These advertisers are the ones who have made the 1929 Linden Leaves possible, and the Editors would sincerely appreciate your mentioning the Linden Leaves when you patronize them. We appreciate their support, and they will appreciate ours.

Sincerely,

THE EDITORS.

PEOPLE WHO ANNOY US

Girls who talk about their dates that were or are to be.

Those who carry brief-cases and look important.

Profs. who quiz before and after holidays or parties.

She who possesses that insidious thing.

The half-wit who sings the first bar of a new song and hums the rest.

The one who pops her gum in the library.

People who have done all their Shakespeare outside reading.

She who goes away every week-end and makes as good grades as the girl who stays on the campus and digs.

She who always gets mail.

Girls who sport fraternity pins.

Pollyannas.

Those who always have so much to do.

The "Beautiful Friendships."

College life is quite complex,
Sometimes it makes us nervous wrecks,
Study a lot and play lots more,
Working all the time;
Thinking more than e'er before,
Eating on a dime.
But what we all can't comprehend—
Gaining pounds does *never* end!

VOCABULARY

- "The thing is"— An expression used when beginning an explanation. Accent on the second syllable.
Derivation—Flippy Maxwell.
- "She don't wanna" An expression in the third person, referring to the first person, and carried to all sorts of situations, such as "she don't wanna go to breakfast," etc. Accent on third syllable.
Derivation—Lucie May Sharon.

VOCABULARY (Continued)

- "And as I say"— An expression denoting emphasis. Accent on first syllable. Derivation—Dean Gipson.
- "And now the last verse"— An expression similar to the ringing of the ten-o'clock bell releasing study hall. Accent on the fourth syllable. Derivation—Dr. Roemer.

MEN !

Men are what women marry. They have two hands, two feet, and, sometimes, two accomplishments, but never more than one bright idea at a time.

Men may be divided into three classes: bachelors, husbands, and widowers. A bachelor is a mass of obstinacy surrounded by suspicion. Husbands are of three kinds: prizes, surprises, and consolation prizes. Widowers are neither husbands, nor bachelors, but a combination of both.

If you flatter a man, you frighten him to death, and if you don't, he thinks your taste is bad.

If you believe him in everything, he soon tires of you, and if you are cynical, he gets disgusted.

If you wear gay colors, rouge, and a "faddy" hat, it embarrasses him to take you out; and if you dress very plainly, he stares all evening at a girl in gay colors, rouge, and a "faddy" hat.

If you are silly, he longs for some one with brains, and if you're intellectual, you are a bore.

If you are popular, he is jealous, and if you aren't, he hesitates to associate with you.

Just how can you please "these men?" Are they worth the worry they seem to require?

L— Lessons
I — I cards
N— Never again
D— Dates
E — Eating
N— Nothing
W— Weight
O — Oh, gee
O — Oh, gosh
D— Downtown

HINDERELLA AND THE JWELED CLIPPER

(Continued from Page 10)

Wires between the two metropolises buzzed with excitement, and every girl on the campus tried to make Benny think the holes on her dress were the ones where the j. c. had been pinned. Benny knew better, however.

Hinderella, hearing about all the jab-jab, dropped her books, put on her evening dress of the night before, and did a Russian dance to the telephone. It wasn't long before Benny did a flying tackle and bear hug, shouting, "At last, my little chameleon. My heart is lacerated to the core."

From then on they lived scrappily in a little apartment built for two.

Ruthie: What have you got there, Marge?

Margie: Some insect powder.

Ruthie: Good Heavens! You aren't going to commit suicide, are you?

Edythe: I want to go to Europe to finish my education.

Joanne: Where do you want to begin it?

Good Jokes Around the Campus

Marion Pope's Diamond.

The Cadet and the Farmer.

The "Derson" Sisters—Ann, and Hen.

Mary Celeste.

Ruth's sunburn powder.

Teddy and Margaret Janeway.

Lot of other things it won't do to mention.

WHERE SYLVIA STOPS AND SHOPS



Clark-Sprague Printing Co.
C. W. Alley Printing Co.
C. A. Copple
St. Charles Dairy Co.
La Beaume & Klein
Leston Co.
Hackmann Lumber Co.
Austin S. Fox
A. Ruth, Jr.
Henry Broecker
Charles E. Meyers Drug Store
Bruns Shoe Shop
Rechtern Cleaning Co.
Schnedler Brothers
West End Market
Buell's Style Shop
Mike's Drug Store
H. G. Rauch Lumber Co.
Edwin Denker, Florist
Weil's Palace Clothing Co.
Huning Dry Goods Co.
Ahmann News Stand
Steinbrinker Furniture Co.
Progress Mercantile Co.
Kuhlmann Dry Goods Co.
New Cinderella Shoe Store
Levy Shoe Co.
First National Bank
St. Charles Savings Bank
Union Savings Bank
Union Electric Light and Power
Co.

Jos. A. Bottani
Cosmos-Monitor
Myles
St. Charles Banner-News
Wilbur L. Carpenter, Barber
Denker's Bake Shop
St. Louis Costume Co.
Chamberlin Metal Weather
Strip Co.
Stanard-Tilton Milling Co.
National Sanitary Products Co.
W. H. Markham Life Insurance
Co.
Central American Coffee &
Spice Co.
Facsimile Letter Co.
Milton E. Meyer
Willbrand's Dry Goods
H. B. Kienker, Drugs
St. Charles Bakery
C. J. Harris Lumber Co.
Hunleth Music Co.
Busy Bee Cafe
F. N. Bottani Printery
Vogue Boot Shop
Wallenbrock's Grocery
National Dollar Stores
Huette's Shoe Stores
Sid Whiting Studios
New Strand Theatre

