

Despite a long weather delay, Lions football obliterates Evangel University 68-7.



Page 5 ►



The Lady Lions look to capture their sixth consecutive regular season conference title.

◀ Page 7

The **Legacy** Lindenwood's Student Newspaper

Volume 4, Number 2

www.lulegacy.com

Sept. 8, 2010

# LU costs increase by 2.3%

Change was posted for students in 2010 online catalogs, Evans says

By **Abby Buckles**  
Staff Reporter

Students may have noticed a 2.3 percent spike in numbers while paying for their fall semester.

From the 2010 spring semester to this fall semester, room and board increased \$75 from \$3,350 to \$3,425. In addition, tuition increased \$150 from \$6,480 to \$6,630. This results in a total increase of \$450 per year, making a total jump from \$20,300 to \$20,750 annually. This price includes tuition, room/board and all other fees.

President James Evans said Lindenwood's expenses for student services, utili-

ties, campus operations and personnel increased nearly 3 percent last year.

Because of this, an increase in student's costs was discussed and approved by Lindenwood's Board of Directors.



Evans

"In order to sustain services and quality at the present level, we had to increase tuition by a small amount, 2.3 percent, compared to the national average tuition increase at private universities of around 4.5 percent," Evans said.

The changes were made accessible to students in the spring via the online university catalogs, where tuition rates are listed.

Please see **Costs**, Page 8

## Facts and Figures

LU revenue from tuition, board and fees:

2008	2009
\$120,748,308	\$126,696,297

Scholarship funds allocated to students:

2008	2009
\$30,580,055	\$28,365,954

Lindenwood 2009 annual report

# Cuts to Bright Flight, Access Mo. increase student payments

By **Kenny Gerling**  
Staff Reporter

State financial aid to students at public and private universities decreased this year after Gov. Jay Nixon approved cuts to need-based and merit-based programs designed to make college more affordable.

Lindenwood University officials, who helped organize protests of the potential cuts last spring, still are trying to determine how the cuts to Access Missouri and Bright Flight will affect students and future enrollments.

The cuts, hotly disputed for months in Jefferson City and at campuses across the state, were part of a larger Nixon administration

effort to trim \$350 million more on top of the \$500 million already severed from the state's budget.

Total funding for Access Missouri was slashed from \$83 million to \$33 million, with the cuts taking place immediately. The maximum grant for a student attending a private institution like Lindenwood decreased from \$3,590 in 2009 to \$1,900 this year.

The Missouri Office of Higher Education Loan Authority (MOHELA) set aside \$30 million of its funds specifically to assist students affected by the reductions to Access Missouri, bringing total funding to around \$60 million.

Bright Flight was cut from \$16 million to \$12 million.



Legacy photo by Lauren Kastendieck  
Financial Counselor Nenad Todorovic advises freshman Janel Zsaretti.

The amount awarded to students was simultaneously reduced from \$2,000 to \$1,500.

For the 2009-10 year, before the cuts were finalized, Lindenwood received \$212,000 from Bright Flight and \$4,899,938 from Access Missouri. During that time 111 students received Bright Flight, while Access Missouri had 1,647 recipients on campus, according to Lindenwood's Financial Aid Office.

The Missouri Department

of Higher Education (MDHE) said Access Missouri is "a need-based program designed to provide a simplified financial aid process, provide predictable, portable awards and increase access to [a student's] school of choice."

MDHE describes Bright Flight as a merit-based program aimed to encourage top performing high school students to continue their education in Missouri.

Please see **Aid**, Page 8

# Enrollment breaks record

By **Natasha Sakovich**  
Managing Editor

More than 5,000 daytime undergraduate students on campus broke the Lindenwood enrollment record on the first day of class, Aug. 23.

With a record-breaking number of students on campus, inevitably questions arise as to whether or not any additional parking and housing will be made available to accommodate the increase.

Lindenwood just acquired 200 additional housing spaces for men, with the recent purchase of the Days Inn turned "Linden Lodge," to help with the increase.

No other plans are currently in the works to in-

crease housing, said Julie Mueller, vice president of operations and finance.

As far as parking is concerned, "There is a new parking lot in the works for the main campus," Mueller said.

"It will be across from the welcome center adjacent to the older part of First Capitol."

Mueller said that construction will begin on the lot as soon as the city of St. Charles grants approval for

the project.

"We're not sure when it can begin because it all depends on when the city says

we have the go-ahead," Mueller said.

For some students, the construction cannot begin soon enough.

"I got here really early for my class, and I've still been searching 10 minutes just to find a parking spot," said senior Kelly Schmid, who commutes to Lindenwood every day.

Overcrowding problems could occur as Lindenwood enrollment continues to grow each semester.

However, Chris Duggan, Lindenwood public relations officer, said, "President Evans has put a cap on the growth of the school so problems like not having enough parking and housing don't happen."

Dean of Day Admissions Joe Parisi said that one of the reasons student enrollment continues to grow is the university's generous financial aid policy.

"We helped students matriculate to Lindenwood this year by awarding \$10.1 million in merit and need based aid from the office of admissions," Parisi said.

Please see **Record**, Page 8

# Lou Brock Classic to benefit athletes

By **Holly Hoechstebach**  
Staff Reporter

The 18th Annual Lou Brock Classic will be held Sept. 27 at the Bogey Hills Country Club to benefit athletic scholarships at Lindenwood.

Having helped other organizations in the past, this will be the first year for Lindenwood athletes to benefit from the Lou Brock Classic.

Brock, a retired St. Louis Cardinals outfielder and Hall of Famer, is a close friend of the university, and Lindenwood's baseball/softball complex is named after him. He is a St. Charles resident, along with his wife Jackie, who is a member of Linden-

wood's Board of Directors.

This event is one of St. Charles' most exclusive golf tournaments. Brock, his wife, past and present Cardinals and other professional athletes are expected to participate.

The tournament is \$300 per player or \$1,000 for a team of four. The cost includes 18 holes of golf, lunch and an awards dinner. Special contests include Hole-in-One, Closest to the Pin and "Chip off the Ol' Brock."

For a non-golfing dinner guest, the cost is \$50. Following the tournament, a Lindenwood fashion design show will take place that afternoon hosted by Jackie Brock.

Please see **Brock**, Page 8



Photo courtesy of upi.com

Jim Morris and Dennis Quaid pose together for the premiere of the 2002 movie 'The Rookie,' where Quaid portrays Morris's rise to baseball fame.

## 'The Rookie' to start LU 'Series'

By **Andrea Scott**  
Staff Reporter

Lindenwood annually hosts an Academic Speaker Series, where speakers come to the school and talk about accomplishments, encouraging students to set goals.

This year's first presenter is Jim "The Rookie" Morris, who will speak on Sept. 14 at 7 p.m. in the J. Scheidger Center for the Arts.

Morris is a former major league pitcher whose sensational career is portrayed in the movie "The Rookie," directed by John Lee Hancock.

Morris became a major league pitcher at the age of 35.

In his presentation, his subject is "Never Give Up on A Dream," discussing his belief to continue his career and inspire students. LU professors David Knotts, Deb Hopkins and Gail Johnston will also present "A Glimpse at the Environmental Impact on the Oil Spill in the Gulf of Mexico."

This will take place on Oct. 5 at 7 p.m. in the Anheuser-Busch Leadership Room.

Other speakers, such as Navy SEAL/Rhodes

Scholar Eric Greitens and Roboticist/Inventor James McLurkin will also make presentations.

"We try to make our speakers as diverse as possible, so that one particular speaker may be of interest to one crowd and the other speakers to other crowds," said Paul Huffman, university archivist.

All of the events last for an hour and are free to the public.

This is the third year of the Speaker Series, and school faculty/students are given the opportunity to suggest who should speak.

"Suggestions by faculty and students are submitted to school officials ... and an anonymous vote is then delivered to President Evans, and he finalizes who will come," Huffman said.

The program has been successful, with a range of 100 to 200 people attending in recent years.

"This program is important to students because it helps students to be exposed to different topics, with people that they are not acquainted with, who could possibly help and inspire in their learning," Huffman said.

## Lindenwood will host 5K 'Optimist' run

By **Ibukunoluwa Oluwakemi Tunbi**  
Contributing Writer

Lindenwood University will sponsor the Third 5K Run or Fun Walk/Run event, which will take place on campus Sept. 25.

The event, which begins and ends at the LU track, will have participants run or walk to raise funds for providing support to children with cancer and their families, as well as awareness to help find a cure for the number one childhood killer disease today.

The organizers of the event, The St. Charles Optimist Club have put together 3 types of races which participants can choose from. The 5K competitive run, the 5K fun run/walk, and the 1 mile fun run/walk can be signed up for on the organizers website before the day of the race.

A representative of the organization, Shelly Reuther said that everybody is welcome to participate in the event for an individual fee of \$20 and \$50 for each household.

Registration for racers would also take place on the day of the race commencing by 8:30 a.m. with the Competitive Run billed to start by 9:30 a.m. and the Fun Run starting by 9:45 a.m. The first three winners of the three races would receive awards at the end of the race. All Racers would receive

race packets and tee shirts with the names of the sponsors printed on it.

Supporters and sponsors of the event include Lindenwood University, New frontier Bank, First State Bank, St. Charles Adult Education, Councilman Jerry Reese of Ward 6, Baue Funeral Homes, Gaffney's Sports, Incredible Pizza and Lifeguard Unlimited amongst others.

A number of activities have been put in place to create awareness for the event with articles in the local newspapers, fliers sent out and information about the event put being put on the Fleet Feet Calendar.

Plans are being made also to meet with the St. Charles School District to challenge schools in the district to engage students in helping with fund raising towards finding a cure and awareness for childhood Cancer.

The school with the highest funds raised would have the class of the student fund raiser go out for Pizza. Racers can also have family and friends fill out pledge forms with donations going towards the event.

All proceeds from the St. Charles Optimist Club 5K run/walk would go to St. Louis Children's Hospital, The Leukemia & Lymphoma Society and also go to support the Optimist International Childhood Cancer campaign.

## Administration hires 31 full-time professors to cover course load

By **Matt Korn**  
Entertainment Editor

Over the summer, Lindenwood increased its faculty numbers by hiring new full-time and adjunct professors.

"When we made the course load modification for professors last year, we had to hire more professors to help compensate," Dean of Faculty Richard Boyle said.

Last spring, full time professors' course loads were reduced from five classes to four. The 31 new full-time professors were hired to help cover that reduction.

Along with the addition of full time professors, more adjunct professors have also been added to the university. "An adjunct professor is an indi-

vidual that teaches classes here at Lindenwood, that doesn't have a full or part-time status. They're not really individual contractors, but they don't have a full or part-time status either," Boyle said.

Lindenwood employs 600 adjunct professors in total – spread out across its 12 campuses, Boyle said. The St. Charles main campus is home to 100 adjunct professors.

All adjunct professors are held to at or near the same standard as full time professors, Boyle said.

"They are all required to have a master's degree in the field they want to teach in. Doctorate degrees are preferred, but the minimum requirement is a master's degree," Boyle said.

Boyle said the Business and Humani-

ties departments have the largest number of adjunct professors.

Although adjunct professors do not have full or part time status with the university, they are allowed to apply for open positions as they become available.

"The adjunct professors really have a great opportunity to impress us.

"If one were to perform well and then apply for an open position, they would be a serious contender," Boyle said.

"But that doesn't mean we consider only adjunct professors for open positions. We look at top candidates from outside the university."

"Our goal is to hire the very best professors possible, period. Our students deserve it."



Legacy photo by Lauren Kastendieck

Adjunct professor Thomas Wheatley teaches "Survey of Professional Media." Wheatley represents one of LU's 600 employed adjunct professors.

## LU receives multiple awards

By **Samantha Werbiski**  
International Editor

Lindenwood University made magazine headlines twice in 2010 when it was named as one of the "Best Colleges to Work For" as well as a "Military Friendly" school.

The Chronicle's survey evaluated faculty and staff satisfaction at its institution.

According to the Chronicle's Web site, the 2010 survey included responses from "about 43,000 professors, administrators, and staff members from 275 colleges [who] were asked to agree or disagree with statements such as 'senior leadership shows a genuine interest in the well-being of faculty, administration, and staff.'"

While 97 schools formed part of the first list, only the top 15 percent of institutions

earned the "military friendly" recognition.

Likewise, Lindenwood's two-year "military friendly" streak is attributed to staff dedicated to visiting and recruiting servicemen and women as well as scholarship opportunities such as the public service scholarship.

Lindenwood offers a Military Science major and minor, an ROTC program and a full-time staff for these students.

These individuals are "a little bit older, more mature, and might be in a different stage of life" than the rest of the student population, said

Mike Elam, Lindenwood's military recruiter and counselor.

This helps bring diversity to the already diverse student body, Elam said.

"Their leadership and everything they've put into their service is something we honor here," said Joseph Parisi, dean of day admissions.

**"Their leadership... and honor is something we honor here."**

—**Joseph Parisi**  
Dean of day admissions

**Lindenwood Students Hair Cuts \$12**

come visit... WE SERVE ANY TYPE OF HAIR

**2176 First Capitol Dr.  
In St. Charles, MO 63301**

**Walk-Ins Welcomed!  
Barber shop  
& Beauty Salon**

**636.946.7171**

**Monday-Saturday  
Open at 10am**

**Hair Cuts Starting at \$12**

# Transportation problems start to pile up

Like every weekend, I sat down to catch up on some Clint Eastwood (the baddest action man of the 70's western movies (my version of American history 101).

Not only had I forgotten about my ton of homework, but I was amazed at how fast horse wagons run.

At probably 26 mph, the wagon would still be efficient to get you to class early if you did not have any other means of transportation.

This is the predicament students at the Linden Lodge face.

A legitimate issue is one of students having to foot from the Men's lodging, formerly known as the Day's Inn, to campus.

Students without cars, bikes or even jet-packs have been mismatched into off-campus housing, and solutions to accommodate their dilemma are yet to take effect.

Even for the few who hoped to switch their rooms in the 'inn' with whoever in the dorms were told by the Student Development office – switches were not possible at the moment.

But Terry Russell, the Dean of Students, was quick to school me on the van that was initially acquired to quell the lack of parking and also ferried students to various destinations.

In the fall 2009, a 15 passenger van was rented from Enterprise Car Rental to pick up students from the Scheidegger parking lot to the quad by Roemer Hall.

Unfortunately, this program was scrapped only after three weeks because a

total of nine or less students were actually using these services.

Surely there were other options; the Students Activities office had the capacity to rent out bicycles.

Although, as of last week,



Adrian Kweli

I was told the bicycles were available but in poor condition and had to be repaired. When I asked how long this would take

“a couple of weeks,” was the answer.

I believe such a resource should have been taken care of during the summer, so that once the semester begun, it would be available to the students.

One might propose that these fellows carpool or get rides from dorm mates.

So if one has evening classes, and can only get a ride in the morning, he might just spend all day watching funny Youtube videos.

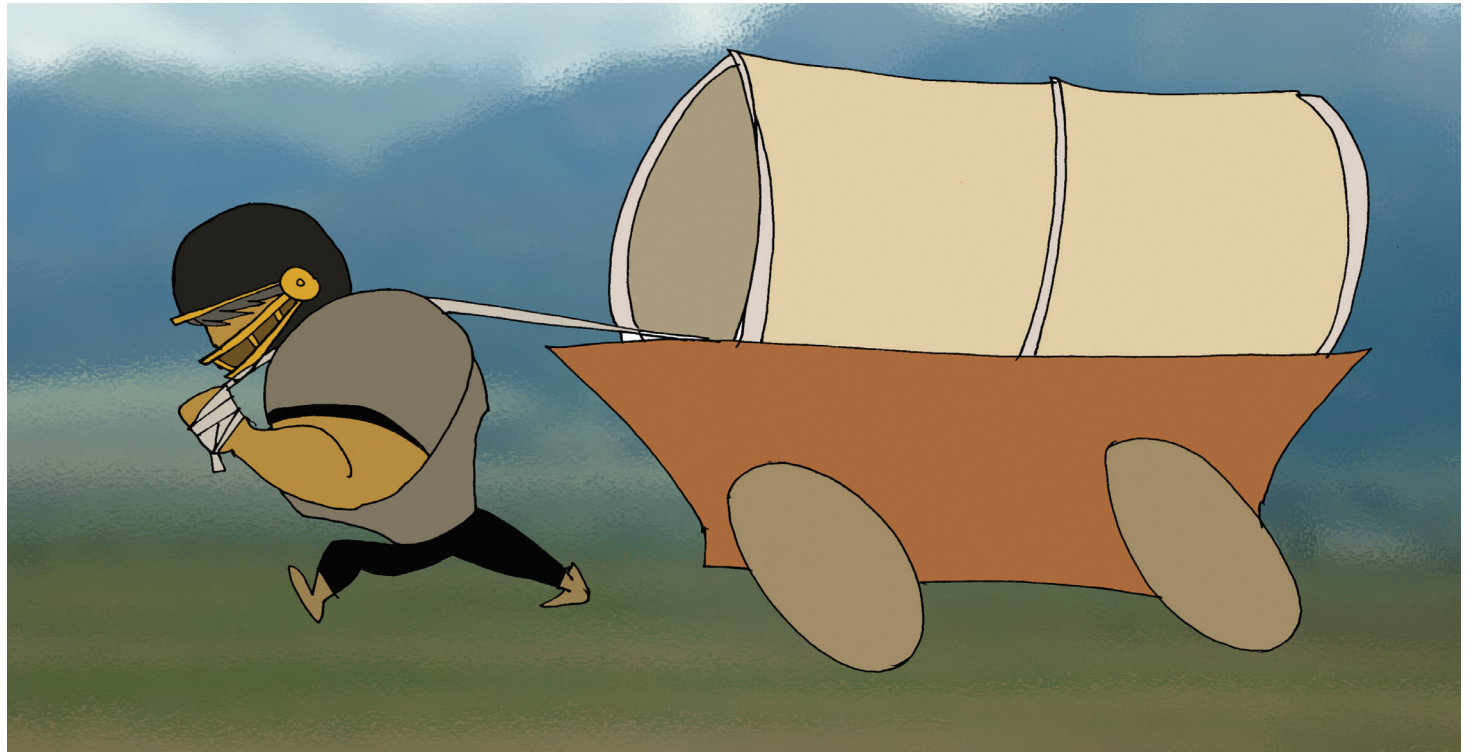
There is also the habit of students applying late and the only space available is off-campus. The same probably pester our dear Mrs. Michelle Geissman to grant their every wish.

My solution; mention the need for a personal means of transportation for certain dorms on the application form.

That way, not only will room allocation be logical but also on personal preference.

I believe if given a chance, some resident students with cars would not mind switching to the lodge.

The distance of off campus housing should also be mentioned on the housing application.



# Overcrowding hinders student experience

With 5,000-plus students, including commuters, occupying the Lindenwood campus, many students have been put on a waiting list for housing. School started Aug. 23, and a week into the semester students who are supposed to be residents still

have not heard whether or not they will have a place to live on campus. While the school continues to grow, housing continues to be a problem. This results in students not being placed in a dorm until September or sleeping in the hallways and lobbies of the dorms. Maybe the students should just be given a box and told to go find a place to sleep.

This is my first semester at LU so I was trying to give the benefit of the doubt that maybe I am on the waiting list because I am a freshman or because I registered late. However, even students that registered last spring are still having housing issues. While the school is trying to alleviate the housing problem with the opening of the

new Linden Lodge, there is still not enough room for students who wish to be residents. They have been told that they are a resident but they don't have a permanent Lindenwood address.

College is suppose to be a time for students to get out

of their parent's house, do things on their own and experience life. It's hard to accomplish that when they have no place to call their own except their room at their parents house.

Don't get me wrong, I am not saying that LU shouldn't grow and continue to accepting more students, but maybe the housing department should have considered a very strict number of students that they admit as residents on campus, or simply build more dorms. Most freshmen want to live on campus and experience the whole college experience that they have heard so much about since they were younger. The easy solution to the housing dilemma would be to build more dorms.



Lauren Skinner

*The Legacy*  
 Spellmann Center 3095/3100  
 209 S. Kingshighway  
 St. Charles, Mo. 63301  
 Telephone: (636) 949-4336  
 E-mail: journalismlab@lindenwood.edu

**The Staff:**  
**Editor-in-Chief:** Micah Woodard  
**Managing Editor:** Natasha Sakovich  
**Photo Editor:** Lauren Kastendieck  
**Entertainment Editor:** Matt Korn  
**International Editor:** Samantha Werbiski  
**Sports Editor:** Alex Jahnce  
**Opinion Editor:** Reggie Noble  
**Staff:** Kenny Gerling, Issa David, Abby Buckles, Alysha Miller, Christie Blecher, Melissa Simon, Holly Hoechstebach, Andrea Scott, Lauren Skinner, Shelby Hernandez, Sarah Fritsche  
**Web Editor:** M.E. Brown  
**Cartoonist:** Wes Murrell  
**Ad Manager:** Chris Bennett  
**Faculty Advisor:** Tom Pettit

# Access Mo. quickly shows effects to student population

\$845.00. This is what the reduction in Missouri Access Grant money has cost this writer. Let me repeat; \$845.00.

Now, to some students, the simple solution to this a subtle swipe of their parents credit card, but I would venture to say that this would put most students at Lindenwood in a bind.

Last year Missouri Access grants were cut by 22%, but for students like myself and others, they saw more than a 22% hit to their funding.

This cut in funding has affected more than 1,400 Lindenwood students who receive funding from Missouri Access.

Previously the max one could receive from the grant was \$3,590.

That cap has been reduced to \$1,900 for students at private colleges and universities such as Lindenwood.

Higher ups claim that an influx of students attending college and a downturn in the economy are a couple of the reasons for the reduction in Missouri Access funding.

If this were true, then why was the cap raised for public Missouri institutions?

Why not raise the amount public institutions to the level private institutions were

receiving? This would make affording tuition more feasible for both parties.

This was simply a matter of public colleges feeling it was unfair that they were receiving less money.

Why would they not have complained about the disparity in fund disbursement when the program started in 2007?

It appears as though the difference in funds wasn't a problem until the country entered a recession. I repeat; \$845.00

Governor Jay Nixon stated in March subsidizing private school students' education is "a luxury that Missouri tax payers can no longer afford, in our opinion."

When did education become a luxury? Why would the state of Missouri not want to invest in it's future, whether they were at private institutions or not?

Working parents of private school students are tax payers as well, and part of their tax money goes to subsidize public institution students' education in many more ways than Missouri Access.

I repeat; \$845.00. Governor Nixon, and all of those who were for Missouri Access cuts, are you listening?



Reggie Noble

# Current Events Corner

How has the increase in student population affected you?

*"One word: Parking."*  
 —Addison Todd



*"I am a freshman, so it hasn't affected me ... yet."*  
 —Natalie Ruiz



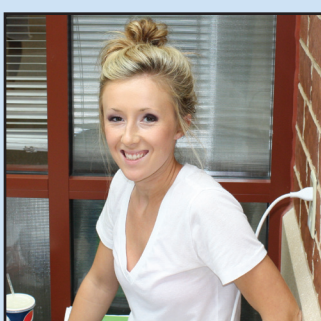
*"I have to eat early now. If not, it's impossible to find a seat in the cafe."*  
 —Valentia Baena



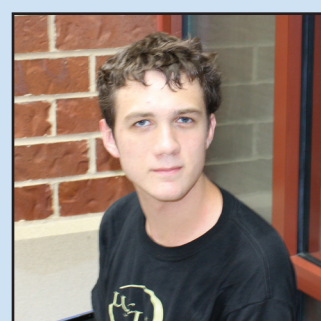
*"There are more people to interact with."*  
 —Tim Schmidt



*"The major thing I have noticed is that it's really hard to park anymore."*  
 —Allie Edwards



*"It hasn't affected me much because I'm new."*  
 —Andrew Lapusha



# Scottish & Farfray by Wes Murrell



# 'Steel Magnolias' kicks off the fall

By **Melissa Maddox**  
Staff Reporter

This weekend will bring some excitement to the J. Scheidegger Center for the Arts; the first university production of the semester will open Sept. 9: "Steel Magnolias."

"Steel Magnolias" is a play that tells the story of six Louisiana women through their comings and goings at a beauty parlor, where the motto is "There's no such thing as natural beauty!"

The story of these women takes the audi-

ence over the course of several years and the important events that shape their lives.

The only place the audience sees is the beauty parlor the women hang out in with each scene occurring at a different place in time. The main focus is the character Shelby, who gets married and

goes about starting a family, despite living

**The actresses do an amazing job keeping their energy high and their characters realistic.**

friends and neighbors offer humor and comfort as time passes and life goes on.

with diabetes.

M'Lynn, Shelby's mother, tries to get Shelby to think further about her decisions than she does and help her daughter in any way possible.

Truvy, the owner of the beauty parlor and three more of their

Not very much happens in this story, the time line jumps forward at the start of each new scene and it sounds like it can be confusing as to what is going on and how much time has passed.

However, if the audience pays attention, they will never get lost. The actresses do such an amazing job keeping their energy high and their characters realistic that even the somewhat dull parts of the script pass before the audience has time to realize that nothing important is happening.

Please see *Magnolias*, Page 8



By **Adrian Kweli**  
Contributing Writer

The phrase 'legalize marijuana' either puts a smile on the faces of young adults or a frown on that of PTA and Tea Party members. Although its Latin name is Cannabis, it goes by several aliases, such as reefer and the popular "weed," and it has literally grown to be the most consumed 'soft drug' by both young and old adults, not only in North America but across the world.

Before settling down to advocate its legalization, I wondered if the trippy laws of Holland could be adapted by the United States. Introduced in the 80s to curb the growing number of heroin addicts and "their dirty syringe syndrome," the Dutch government voted on a tolerance policy for marijuana, labeling it as a soft drug. They distinguished narcotics like heroin, cocaine and any others as 'hard drugs.' They made the point that because of its regulated access, marijuana did not prove to be a gateway drug, nor did it significantly increase urban crime. Not surprisingly, there have been annual increases of tourists ever since; Amsterdam's rich culture, medieval buildings, classical art and legal prostitution are such attractions.

They stated that a different ap-

proach to the Prohibition Act (which gave way to organized crime) and President Nixon's "War on drugs" of the 1970's was needed in order to control a society's vice. In Holland, there are strong laws regulating quantities, sale and use of weed.

Driving under the influence of marijuana could be equated to driving under the influence of alcohol—and thus severely punishable. They could also prohibit sale to minors and anyone below 21 years. This can control who could access it. States could also have municipal bodies that hand out licenses to dispensaries and monitored-cultivators, giving them control over the quantity produced and operators.

The drug cartels in Mexico have waged war on their government and gang rivals, with casualties across the American border, too. These organizations and their violent activities have been fueled by the high demand of illegal drugs in suburban American neighborhoods. If we can grow it here, then we wouldn't have much of a border security issue, concerning drug trafficking.

Considering the street value of various quantities of marijuana, states stand to gain massive revenue in taxes. It is through process and sales tax that states have legalized medicinal marijuana on their turf.

By **Holly Hoechstebach**  
Staff Reporter

"I messed up my entire life because I got high. I lost my kids and wife because I got high. Now I'm sleeping on the sidewalk and I know why—cause I got high, cause I got high, cause I got high." American rapper Afroman obviously knows his way around a joint. Is this the type of person you want doing your taxes, driving a vehicle or teaching your children?

This November, California voters will decide on legalizing marijuana for recreational use. Several other states are also considering legalizing it. If passed, this would allow anyone 21 years and older to own up to one ounce of marijuana and even grow the crop in their backyards. The proposal would even be kind enough to ban smoking marijuana in public and around minors... what a relief.

As of today, 14 states and Washington D.C. have passed laws that legalize medical marijuana use. There is a difference between medical and recreational use. An economic recession is not an excuse and does not make it right to make a profit off drugs. Selling marijuana to the public might help bring in more money, but the real question here is which is more important: earning money off the taxes of marijuana or your own well-being? Marijuana or pot's main mind-



## Letter from the Editor

By **Matt Korn**

If I've learned one thing from my Editor-in-Chief and Managing Editor, it's that with every issue of *The Legacy*, we try to do something different to make it better. That is, of course, unless we're on an early deadline (like we are this week); then it just becomes one massive game of beat-the-clock.

Luckily, I have something important to talk about. There are a few changes that will hopefully be integrated into the page later this year, along with some changes we would appreciate your input on.

The most important change will hopefully follow in the next couple of weeks. Currently, we're looking into becoming a member of the St. Louis Critics Association, which will provide us with advanced screenings of the latest movies. Ultimately, this helps you by giving you a more timely and relevant review. We're also looking into the addition of a crossword puzzle on the entertainment page. What do you think? Email journalismlab@lindenwood.edu.

# ALLIN'S DINER

**636-946-5556**

**130 N. Kingshighway**

**New Hours:**

**Mon - Thur 5:30 am - 4 pm**

**Fri, Sat 5:30 am - 8 pm**

**Sunday 5:30 am - 2 pm**

## 10% Discount for LU Students

**Lindenwood Night Every Wednesday!**  
after 10 p.m.

## 1/2 price Bowling Anytime



**O.T. HILL'S ST. CHARLES LANES**

2187 First Capitol Drive  
(636) 949-0311



Dan Carlisle makes a tackle in the home opener against the Evangel Crusaders after waiting in a four hour weather delay. The Lions won 68-7.

Legacy photo by Christie Blecher

## Lions strike like lightning in home opener

By Alex Jahncke  
Sports Editor

The Lions football team played their first Thursday night game last week against the Evangel Crusaders. That was not their only first, though. It was also their first Friday game as well.

The game's official start time was 6 p.m., but after two and a half minutes the game was delayed due to lightning. Each time lightning struck they had to wait 30 minutes to restart the game.

After four hours of delay, they finally picked the game back up.

Before the delay, the Lions marched down the field with big plays to receivers Matt Bramow and Jamere Holland.

The Lions continued their drive at the 6-yard line. They did not waste any time, with Denodus O' Bryant scoring on a 6-yard run on the first play back.

The defense played strong too, holding Evangel's offense to a three and out. Three plays later, Lions quarterback Phillip Staback hooked up with Andrew Helmick for a 65-yard touchdown.

The game continued to

go from bad to worse for the Crusaders, as they left the first quarter trailing 21-0. The start of the second quarter was much of the same with running back Nate Orlando running in a short touchdown, making it 28-0. Evangel showed its first sign of life, getting a quick 13-yard pass followed by a 17-yard pass.

On the next play the Crusaders lobbed the ball up in the end zone, only to be picked off by Hakim Thomas, which put an end to the Crusaders most productive drive.

LU enacted some trickery, as Staback threw it to wide receiver Terrance Jackson behind the line of scrimmage, who launched it to Bramow for a 72-yard wide receiver pass.

They took the ball from the one-yard line and finished the drive in a hurry with a one-yard pass to Bramow for the touchdown.

The Lions continued to score, finishing the half

up 49-0. A big reason for the score was the offensive line.

"I was really impressed with the pass protection especially early on," Head Coach Patrick Ross said. "The offensive line was a big factor in the success of our offense."

In the second half, they benched Staback to prevent injury, but that did not slow the Lions. They stopped the Crusaders early.

When they got the ball back, David Ortega took over at quarterback and moved down the field in a hurry, only to find Bramow in the end zone for a 13-yard touchdown. Ortega would find Jackson for another one-play touchdown on the next drive, but that is when things slowed down for the Lions.

When they got the ball back, there was some miscommunication, and they muffed a backward pass. Whistles were blown and

the Lions thought it was a dead ball.

The Crusaders picked up the ball and walked it in for their first score of the night.

"I feel bad for the defense. I really do," said Ross. "We've been here seven seasons, and we haven't had a shut out yet. It looked like a good opportunity, but it gives us something to shoot for."

When they got the ball back, the Lions' third quarterback Tyler Jasin threw an interception.

The Lions answered back quickly, getting an interception of their own by Blake Conreaux, who returned it for a touchdown. That would be the last score of the night, with the Lions winning 68-7.

Everything for Lindenwood was firing on all cylinders. The offensive line played strong the whole game, as did the receivers and all four running backs they used. Something the Lions have this year is depth at every position.

"It's so nice to have depth," Staback said. "We can rotate receivers to where everyone is going to be fresh. That helps a lot."

The Lions will be back in action next week when they take on Central Methodist

## My Take

### What are sports coming to?

Ever since I was a little tyke, I have been a sports fan. It all started when I would collect hockey cards with my cousin Brett. We would spend hours with that. As an avid fan I would watch any game on TV, be it football, hockey or baseball. If it was on, I was watching it. When I got old enough, I started to actually play these sports I loved so much. I don't know if it was because I was naive, but sports were something that we did for fun. There were no fights or suspensions.

Then, when I was about 9 or 10, I remember watching a baseball game at my cousin's house. The St. Louis Cardinals were playing the San Diego Padres. Shawon Dunston was up to bat, and there was a wild pitch. The ball came inches from his head. It did not take Dunston long

to react and sprint towards the pitcher. I could not believe what I was seeing. Within seconds the benches were cleared. These athletes that were my heroes were acting like, well, kids.

That was the day I realized the competitive part of a sport overcomes the love for the sport. Well, it is 10 years later and nothing has changed. I woke up this morning and checked my e-mail. When I got to the AOL home page, I saw a headline that read: Tempers flair in Miami. I clicked the link just to find a video of Florida Marlin pitcher Chris Volstad charged by the Washington Nationals' Nyjer Morgan because of a wild pitch. And again, it took little time for the benches to clear and the game of baseball to become a mess.

Now the most interesting thing to note was that Morgan just got manhandled. He charged the mound but got nothing more than a clothesline from first baseman Gaby Sanchez. Even after all that, Morgan threw his hands in the air like he came out on top. I was at a loss for words. He was proud of that? He is paid millions to play baseball. Now in his defense, he was hit by a pitch earlier in the game, but does that really call for the charge?



Alex Jahncke  
Sports Editor

What these athletes forget is that they are national icons. Is it fair they are held to that standard? Probably not, but the fact of the matter is that they are. This incident came a month after the infamous brawl between the Cardinals and the Cincinnati Reds. The same brawl where Cardinals catcher Jason LaRue was savagely kicked by Reds pitcher Johnny Cueto, who incidentally was the starting pitcher. And what was Cueto's punishment? A mere

seven game suspension. In essence, he only missed one game because he is a starting pitcher. Five others received minor fines, and both managers had to miss two games.

This raises the question: Is enough being

done to prevent these altercations? The players get no more than a slap on the wrist. The fines that are given are next to nothing compared to the paychecks the players receive. In the end, what lessons are being taught? I know as a sports fanatic, I love the occasional hockey fight or the crash known as the big one in NASCAR, but there has to be a line drawn. This is not sports entertainment. I think that league commissioners need to have more of a grasp on their sport.

Instead of fining Marshal Faulk for the Bob n' Weave, perhaps they should have paid more attention to the real problems.

And perhaps the players that are in the midst of these altercations should think about that nine year old sports fan that loves to watch their childhood heroes.

Want to sound off about Lindenwood sports and have your thoughts published in a future edition? Contact us!

Perhaps the players should think about the 9-year old sports fan that loves to watch their hero.

## Game of the Week

On Sept. 10, the Lady Lions soccer squad will play at home against Southern Nazarene University. Start time will be 5 p.m. at Hunter Stadium.



The largest selection of  
Beer, Wine and Spirits  
in St. Charles county



4,000 Wines, 900+ Beers,  
Distilled Spirits, Hand Rolled Cigars,  
Beer Brewing Supplies, Wine Racks,  
Glassware, Gifts & much more.

**FRIAR TUCK**  
Beverage

S. Highway K, O'Fallon  
Highway K & Technology Drive, O'Fallon  
636-300-4300

www.friartuckonline.com

# Men's golf looks for 11th straight title

By Issa David  
Staff Reporter

The men's golf team will start the season on Sept. 7 in Lake of the Ozark, Missouri. The team will be looking for their 11th straight conference title. "We've won 12 conference championships in 13 years," Head Coach Roger Ellis said.

Three players are returning from the National team: Paul Colditz, Morgan Leigh and senior Richard Docherty. Docherty finished eighth overall in the tournament, which is the highest individual finish for a men's golf player.

"We have a strong nucleus coming back," Ellis said.

With the returning players and others, a top ten at Nationals is not out of the question. Several players to look out for this year are: Johnny Ingram, an incoming freshman from England, sophomore Brad Blair, Greg McAluty from Canada (freshman), Matt Lowen, the Sweden twins, who Ellis said, "showed some promise last year."

It will take some time for the international players to get used to the American golf courses. This will be "the crucial factor that changes," the outcome of a tournament. Courses can be flat, hilly, wide open, slow or fast. When the weather comes into play, no one knows how a course is going to play out.

The team does not practice together, as all the players practice on their own time. Come tournament time, they all meet. There are 30 players on the roster, but when LU makes the change to the NCAA, the roster will be cut down to 10 players.

In this part of the country seasonal inclement weather can pose a problem. This gives an advantage to those teams in the states where winter is not an issue. However, this has not been a problem for LU golf, as evidenced by the 10 straight conference championships and great national results.

"We have a lot of depth," Ellis said, as he is looking for another great season.



Courtesy photo from <http://blues.nhl.com/>



Courtesy Photo

Former Blues player Rick Zombo was named head coach of the Lions hockey team this offseason. He served as the top assistant coach for the past two seasons, helping lead them to back-to-back championships. He will take over for Derek Schaub, who was head coach for seven seasons.

## Former Blue named head coach

By Alex Jahncke  
Sports Editor

During the past offseason, the Lions ice hockey team made a huge change at the coaching position. They named former Blues player Rick Zombo as the new head coach of the program. Derek Schaub stepped down as coach to become the head coach of the men's lacrosse team on June 7. The slot was quickly filled by Zombo, who was named head coach only days later.

"I am very fortunate to have this opportunity. This is a great university that improves every year not only athletically, but academi-

cally as well," Zombo said.

Zombo has been the top assistant coach in the program the last two years, so the team will not be new to him. He helped lead them to back-to-back national championships over the past two seasons. Still, there are more important things to Zombo than just winning.

"Lead by example," Zombo said. "These students come here to get an education. They have the ability to play well on the ice, but they will stay on graduation pace. That's the most important thing. Then we can focus on winning another national championship."

Schaub did a lot for the

Lions, but Zombo is more than capable of taking over. He played 12 seasons in the National Hockey League (NHL), for the Detroit Red Wings, Boston Bruins and the St. Louis Blues. After retiring in 1996, he coached for Marquette High School and the Heartland Eagles in the United States Hockey League (USHL). As with any new coach, the team will have to adjust. Even though he has been in the system for two years, Zombo has a few things he would like to change.

"Every coach has their own ideas. There is a lot that needs to be changed, but this team is very capa-

ble," Zombo said. "We will start taking a major look at St. Louis local players."

Naming Zombo coach gives the team a familiar setting, and they will have an idea of what to expect. Although, Zombo said it goes both ways.

"It helps and hinders for me to become coach," he said. "I am familiar with the team, and the team is familiar with me. It hurts because as the assistant, I was the coach players could go to."

All in all it looks like this could be a good move for the Lions.

There will be a lot of adjusting for both the players and Zombo, but that will come in time.

## SCOREBOARD

### Men's Football

9/2 Evangel University (Mo.) W 68-7
9/11 Central Methodist University (Mo.) 6 p.m.
9/18 Missouri Valley College 6 p.m.
9/25 MidAmerica Nazarene University (Kan.) 6 p.m.
10/2 Avila University (Mo.) 6 p.m.
10/9 Baker University (Kan.) 1 p.m.
10/16 Culver-Stockton College (Mo.) 1:30 p.m.
10/30 Benedictine College (Kan.) 1 p.m.
11/6 Graceland University (Iowa) 1:30 p.m.
11/13 William Jewell College (Mo.) 1 p.m.

### HAAC Standings

School, Overall

Avila	0-0
Baker	0-0
Benedictine	0-0
Central Methodist	0-0
Culver-Stockton	0-0
Evangel	0-0
Graceland	0-0
Lindenwood	0-0
MidAmerica Nazarene	0-0
Missouri Valley	0-0
William Jewell	0-0

### Men's Basketball

Lion Pride Classic
11/5 McKendree University 8 p.m.
11/6 Southern Nazarene University (Okla.) 4 p.m.
11/12 Concordia Seminary 7 p.m.
11/16 Mid-Continent University (Ky.) 7 p.m.
11/20 Maryville University 2 p.m.
11/30 Missouri Baptist University 7 p.m.
12/2 Culver-Stockton College

(Mo.) 7:30 p.m.
12/4 Baker University (Kan.) 4 p.m.
12/9 Evangel University (Mo.) 7:30 p.m.
12/14 East-West University 7 p.m.
Robert Morris Classic
12/17 Robert Morris College 7:30 p.m.
12/18 Rocky Mountain College (Mont.) 2 p.m.
1/3 Central Bible College 7 p.m.
1/6 Missouri Valley College 7:30 p.m.
1/8 Graceland University (Iowa) 4 p.m.
1/10 Avila University (Mo.) 7:30 p.m.
1/13 Central Methodist University (Mo.) 7:30 p.m.
1/15 MidAmerica Nazarene University (Kan.) 4 p.m.
1/22 William Jewell College (Mo.) 4 p.m.
1/24 Benedictine College (Kan.) 7:30 p.m.
1/27 Culver-Stockton College (Mo.) 7:30 p.m.
1/29 Baker University (Kan.) 4 p.m.
2/3 Evangel University (Mo.) 7:30 p.m.
2/5 Benedictine College (Kan.) 4 p.m.
2/10 Missouri Valley College 7:30 p.m.
2/12 Graceland University (Iowa) 4 p.m.
2/14 Avila University (Mo.) 7:30 p.m.
2/17 Central Methodist University (Mo.) 7:30 p.m.
2/19 MidAmerica Nazarene University (Kan.) 4 p.m.
2/26 William Jewell College (Mo.) 4 p.m.
HAAC Tournament

### HAAC Standings

School, Record

Evangel	0-0
Benedictine	0-0
Avila	0-0
William Jewell	0-0
MidAmerica Nazarene	0-0
Baker	0-0
Lindenwood	0-0
Central Methodist	0-0
Graceland	0-0
Missouri Valley	0-0
Culver-Stockton	0-0

### Men's/Women's Bowling

10/2-3 40th Hammer Midwest Collegiate
10/16-17 Orange and Black Classic
10/30-31 Boilermaker Classic West
11/6-7 Brunswick Southern Classic
11/13-14 SI Elite Invitational
11/20-21 Knights Classic
11/26-27 Match Games
12/4-5 Leatherneck Classic
1/15-16 Hoinke Bearcat Classic
1/22-23 Blue and Gold Classic
1/29-30 Lindenwood Lions Shark/Chameleon Classic
2/5-6 McKendree Baker Challenge
2/19-20 Hoosier Classic
3/11 ITC Singles Sectional Qualifiers TBA
3/12-13 ITC Team Sectional Qualifier TBA
4/1-3 NAIA Showcase
4/20-23 USBC Intercollegiate Team National Championships

### Men's/Women's Cross Country

9/4 Washington University in St. Louis Early Bird 9:30 a.m.
9/11 Lindenwood University Classic
9/18 Maryville University Classic
10/2 Greater Louisville Classic
10/9 Southern Illinois University Edwardsville Border Wars
10/16 College Invitational
10/23 Southwestern College (Kan.)
NAIA Mid-States Classic
11/12 HAAC Championship
11/20 NAIA National Championship

### Men's/Women's Cycling

8/27- MWCCC MTB Race (Aug. 27-30)
8/28- Road Bike Gateway Cup
9/4- MWCCC MTB Race (Sept. 4-6)
9/11- MWCCC MTB Regional (Sept. 11-13)
9/13- MWCCC Cyclo Cross Race
9/18- MWCCC MTB Regional (Sept. 18-20)
9/19- MWCCC Cyclo Cross Race
9/24- USA Cycling Track Bike Collegiate Nationals (Sept. 24-24)
9/28- MWCCC Cyclo Cross Race
10/3- Mountain Bike Mizsou Regionals (Oct. 3-4)
10/11- MWCCC Cyclo Cross Race
10/15- USA Cycling Mountain Bike Collegiate Nationals (Oct. 15-18)
10/18- MWCCC Cyclo Cross Race (Oct. 18-19)
11/2- MWCCC Cyclo Cross Race
11/8- MWCCC Cyclo Cross Race
11/15- MWCCC Cyclo Cross Race
11/22- MWCCC Cyclo Cross Race
11/29- MWCCC Cyclo Cross Race
12/6- MWCCC Cyclo Cross Race MO Stat Championship
12/10- USA Cycling Cyclo Cross Collegiate Nationals (Dec. 10-13)

### Men's Hockey

10/1 Penn State University 9:15 p.m.
10/2 Penn State University 3:15 p.m.
10/3 Penn State University 11 a.m.
10/9 Michigan State University 12 p.m.
10/10 Michigan State University 10:45 a.m.
10/16 Robert Morris College (Ill.) 7:00 p.m.
10/17 Robert Morris College (Ill.) 12 p.m.
10/30 Grand Valley State University 7 p.m.
10/31 Grand Valley State University 12 p.m.
11/6 University of Michigan 7 p.m.
11/7 12:00 p.m. University of Michigan 12 p.m.
ACHA Showcase Tournament 11/12 - 11/14
11/20 Ohio State University 7 p.m.
11/21 Ohio State University 12 p.m.
12/4 Western Michigan University 7 p.m.
12/5 Western Michigan University 12 p.m.
1/8 Augsburg College 2 p.m.
1/9 Augsburg College 2 p.m.
1/14 University of Rhode Island 10:00 p.m.
1/15 University of Rhode Island 7 p.m.
1/16 University of Rhode Island 12 p.m.
1/22 University of Massachusetts

7 p.m.
1/23 University of Massachusetts 12 p.m.
1/29 Northern Michigan University
1/30 Northern Michigan University
2/4 Robert Morris College (Ill.)
2/5 Robert Morris College (Ill.)
2/11 - 2/27 CCHA Tournament
3/10 - 3/13 ACHA National Tournament

### CSCHL Standings

Eastern Michigan	0-0-0-0-0
Illinois	0-0-0-0-0
Iowa State	0-0-0-0-0
Kent State	0-0-0-0-0
Lindenwood	0-0-0-0-0
Michigan-Dearborn	0-0-0-0-0
Ohio	0-0-0-0-0
Robert Morris	0-0-0-0-0
Western Michigan	0-0-0-0-0

### Women's Ice Hockey

10/9- Robert Morris College (Ill.) 7 p.m.
10/10- Robert Morris College (Ill.) 7 p.m.
10/17- Michigan State University 7 p.m.
10/18- Michigan State University 12 p.m.
10/24- Western Michigan University 6 p.m.
10/25- Western Michigan University 12 p.m.
10/31- University of Michigan TBA
11/1- University of Michigan TBA
11/7- Grand Valley State University 7 p.m.
11/8- Grand Valley State University 12 p.m.
11/13- Bethel University 5 p.m.
11/14- College of St. Catherine 5 p.m.
11/19- Liberty University 9:20 p.m.
11/20- Liberty University 2 p.m.
11/21- University of Colorado 6 p.m.
11/22- University of Colorado 12 p.m.
12/5- Robert Morris College (Ill.) 7 p.m.
12/6- Robert Morris College (Ill.) 12 p.m.
1/6- University of Alaska Fairbanks 9:20 p.m.
1/7- University of Alaska Fairbanks 9:20 p.m.
1/12- University of Massachusetts 9 p.m.
1/13- University of Massachusetts 12 p.m.
1/15- University of Rhode Island 7 p.m.
1/16- University of Rhode Island 7 p.m.
1/17- University of Rhode Island 12 p.m.
1/22- Penn State University 7 p.m.
1/23- Penn State University 3:15 p.m.

### CCWHA Standings

W-L-T-OL-Points

Grand Valley	0-0-0-0-0
Lindenwood	0-0-0-0-0
Michigan State	0-0-0-0-0
Michigan	0-0-0-0-0

Northern Michigan	0-0-0-0-0
Ohio State	0-0-0-0-0
Western Michigan	0-0-0-0-0

### Men's Soccer

8/27 Bosnia Club (Scrimmage) 8 p.m.
8/28 Alumni Scrimmage 8 p.m.
8/30 Quincy (Scrimmage) 7:30 p.m.
9/5 Lee University (Tenn.) 3:30 p.m.
9/6 Lindsey Wilson College (Ky.) 3:30 p.m.
9/8 Park University (Mo.) 6 p.m.
9/10 Hannibal-LaGrange College (Mo.) 5 p.m.
9/15 Harris-Stowe State University (Mo.) 4 p.m.
9/17 Oakland City University 1:30 p.m.
9/18 Cumberland University (Tenn.) 1 p.m.
9/22 Columbia College (Mo.) 7 p.m.
9/25 MidAmerica Nazarene University (Kan.) 4:15 p.m.
9/29 Culver-Stockton College (Mo.) 4:15 p.m.
10/2 Avila University (Mo.) 2 p.m.
10/9 William Jewell College (Mo.) 7:15 p.m.
10/13 Missouri Baptist University 8 p.m.
10/16 Benedictine College (Kan.) 7 p.m.
10/17 Alumni Scrimmage 7 p.m.
10/23 Baker University (Kan.) 7:15 p.m.
10/27 Central Methodist University (Mo.) 7:15 p.m.
10/30 Graceland University (Iowa) 7:15 p.m.
11/2 Missouri Valley College 8:00 p.m.

### HAAC Standings

School, Overall

Avila	0-0
Baker	0-0
Benedictine	0-0
Central Methodist	0-0
Culver-Stockton	0-0
Graceland	0-0
Lindenwood	0-0
MidAmerica Nazarene	0-0
Missouri Valley	0-0
William Jewell	0-0

### Women's Soccer

8/28 Maryville University (Scrimmage) 6 p.m.
9/4 Saint Xavier University (Ill.) 2 p.m.
9/6 Trinity Christian College (Ill.) Palos 12 p.m.
9/10 Southern Nazarene University (Okla.) 5 p.m.
9/12 Illinois Institute of Technology 1 p.m.
9/15 Quincy University 6 p.m.
9/23 McKendree University 6 p.m.
9/25 MidAmerica Nazarene University 2 p.m.
9/29 Culver-Stockton College 2 p.m.
10/2 Avila University (Mo.) 12 p.m.
10/5 Bethel College (Tenn.) 2 p.m.
10/9 William Jewell College (Mo.) 5 p.m.
10/13 Missouri Baptist University 6 p.m.
10/16 Benedictine College (Kan.) 5 p.m.
10/19 Covenant College (Ga.) 1 p.m.
10/23 Baker University 5 p.m.

## Health Insurance Made Easy!

Your local Agency, serving the St. Charles Community for over 30 years!

### We offer Health Coverage for:

- Businesses
- Individuals without Group Coverage
- Independent Contractors
- COBRA / Alternative
- Self-Employed
- Dependents
- Students



Steven J. Lang, President

**Lang** Insurance Service  
Health Insurance Made Easy!<sup>®</sup>  
www.langinsurance.com  
(636) 229-7000

# NCAA-bound Lady Lions aiming to rebound

By Micah Woodard  
Editor-In-Chief

Sandwiched between last season's disappointing play-off departure and a highly anticipated 2012 jump to the NCAA, women's volleyball is focusing on capturing a sixth consecutive regular season conference title.

After accumulating a perfect 10-0 record in conference play (29-12 overall) last year, the Lady Lions were unexpectedly upset by Benedictine College in the second round of the Heart of America Athletic Conference (HAAC) tournament.

Junior middle hitter Katie Weber, a transfer student, said she has noticed the team's resolve to prevent a repeat of last year's playoffs. "Practices have been really intense and focused toward the goal of making it past that point," she said.

Head Coach Ron Young said injuries contributed to the loss. "There was a little [unexpected] change in the lineup," which threw the squad off its game, he said. However, the defeat also taught the team not to take anything for granted, which parlayed to a healthier "work-hard" attitude during practice – and carried over to matches. "This is one of the closest teams that I've ever had, as far as having that attitude," Young said.



Legacy photo by Alysha Miller

The Lady Lions hold a pregame huddle before their 3-0 victory over Hannibal-LaGrange on Sept. 1 at the Hyland Performance Arena.

With almost every 2009 starter returning and a strong freshman recruiting class, Young said there is healthy competition for every single position. "Players can't just settle in and think 'I'm the starter; I've got the spot,'" he said.

Weber said there are multiple talented women at every position. "We've made that clear," she said. "You have to prove you should be here and

should play."

Internal competition is particularly important for the team, which is slowly downsizing – due to the impending jump to NCAA Division II in 2012. Young said the program, which usually contains 42-45 athletes (including junior varsity squads), has been cut down to around 33. In addition, only one or two recruits will be added

next year to keep the team within NCAA regulations.

Young said he is excited about the appeal the NCAA status brings, stating that now Lindenwood can better reach out to "all of the athletes that used to thumb their nose at us because we are NAIA."

"We've contacted [juniors and seniors in high school] that we're really excited about."

Pending league approval, Lindenwood will compete in one of the toughest conferences in Division II, the MIAA, which has five schools ranked in the top 25 nationally. Despite the move, Young said the women's program will receive the same number of scholarships (whereas the men's team will see its number of scholarships halved).

Young said one benefit will be greater control over the delegation of scholarship money. In the NCAA, head coaches receive a set scholarship budget that they control. "There were some kids that got away that I wish I could've given some more money – but was restricted by the admissions policy," Young said.

A transfer from Division I Samford University, Weber said that the NCAA transition – and the subsequent loss of the junior varsity squads – will create even more internal competition as they face bigger, tougher schools.

Lindenwood began the 2010 season with some top competition as well – a west coast trip to San Diego, where they won two of four matches, including a 3-0 victory over No. 14 host Point Loma Nazarene University.

Young said there was added pressure because conference foe Baker University had defeated Point Loma in four games earlier in the tournament. The team's mentality was, "Baker beat this team, so we've gotta beat this team – and we've gotta do it in three," Young said. "We beat them with our defense, with our speed and our enthusiasm. ... That was something else."

Weber said, "Momentum was a big factor. We worked well as a team, [communicated] well, and we were excited about every point."

## SCOREBOARD

(Mo.) 5 p.m.  
10/30 Graceland University (Iowa)  
5 p.m.  
11/2 Missouri Valley College 6  
p.m.

### HAAC Standings

School, Overall

Avila	0-0
Baker	0-0
Benedictine	0-0
Central Methodist	0-0
Culver-Stockton	0-0
Graceland	0-0
Lindenwood	0-0
MidAmerica Nazarene	0-0
Missouri Valley	0-0
William Jewell	0-0

### Women's Field Hockey

8/28 Missouri State University L  
7-1  
8/29 University of Missouri L 4-2  
9/4 Hendrix College 1 p.m.  
9/5 DePauw University 1 p.m.  
9/11 Hendrix College 11 a.m.  
9/18 Wittenberg University 1 p.m.  
9/19 Trine University 1 p.m.  
9/25 Bellarmine University 11 a.m.  
9/26 Rhodes College 1 p.m.  
10/1 Ohio Wesleyan University 10  
a.m.  
10/3 Denison University 11 a.m.  
10/24 Bellarmine University 1 p.m.  
10/30 Trine University Angola, IN  
6 p.m.  
10/31 University of Missouri 1 p.m.

### Women's Volleyball

8/19 Alumni Scrimmage 7 p.m.  
8/21 HAAC Scrimmages  
8/23 Lindenwood Scrimmage  
Point Loma Nazarene Tournament  
8/27 Concordia University L 3-0

8/27 William Jessup University  
W 3-0  
8/28 Point Loma Nazarene Uni-  
versity W 3-0  
8/28 California Baptist University  
L 3-0  
9/1 Hannibal-LaGrange College  
(Mo.) W 3-0  
Columbia Tournament  
9/3 Wiley College (Texas) 3 p.m.  
9/3 Columbia College (Mo.) 7  
p.m.

9/4 Friends University (Kan.) 11  
a.m.  
9/4 University of Texas at Brown-  
sville 3 p.m.  
9/7 Central Methodist University  
7 p.m.  
Graceland Tournament  
9/10-11 Graceland Tournament  
9/14 Evangel University (Mo.)  
7:30 p.m.  
Olivet Nazarene Tournament  
9/17-18 Olivet Nazarene Tourna-  
ment Bourbonnais, IL  
Bellevue Tournament  
9/24-25 Bellevue Tournament  
9/28 Culver-Stockton College  
(Mo.) 7 p.m.  
Lindenwood Classic  
10/1 Baker University (Kan.) 7  
p.m.  
10/2 Columbia College (Mo.) 12  
p.m.  
10/2 Missouri Baptist University  
4 p.m.  
10/9 Benedictine College (Kan.)  
2:30 p.m.  
10/12 MidAmerica Nazarene Uni-  
versity 7 p.m.  
Lindenwood Invitational  
10/15 Avila University (Mo.) 3  
p.m.  
10/15-16 Lindenwood Invitational  
10/21 William Woods University  
(Mo.) 7 p.m.  
10/26 William Jewell College  
(Mo.) 7 p.m.

McKendree Tournament  
10/29-30 McKendree University  
11/2 Missouri Valley College 7:30  
p.m.  
11/3 Maryville University 7 p.m.  
HAAC Tournament  
11/6-13 HAAC Tournament

### HAAC Standings

School, Overall

Avila	0-0
Baker	0-0
Benedictine	0-0
Central Methodist	0-0
Culver-Stockton	0-0
Evangel	0-0
Graceland	0-0
Lindenwood	0-0
MidAmerica Nazarene	0-0
Missouri Valley	0-0
William Jewell	0-0

9/24-25 ITA Regional  
10/15-17 All Day ITA Small  
College Nationals Mobile, Ala.

### Women's Basketball

11/3 Lindenwood University-Bel-  
leville 6 p.m.  
11/6 Harris-Stowe State Univer-  
sity (Mo.) 2 p.m.  
11/9 McKendree University 7  
p.m.  
11/13 Missouri Baptist University  
6 p.m.  
11/18 Columbia College (Mo.) 7  
p.m.  
11/20 Harris-Stowe State University  
(Mo.) 12 p.m.  
11/23 Hannibal-LaGrange College  
(Mo.) 7 p.m.  
11/29 Fisk University 6 p.m.  
1/6 Missouri Valley College 5:30  
p.m.  
1/8 Graceland University (Iowa) 2

p.m.  
1/10 Avila University (Mo.) 5:30  
p.m.

1/13 Central Methodist University  
(Mo.) 5:30 p.m.  
1/15 MidAmerica Nazarene Uni-  
versity (Kan.) 2 p.m.  
1/20 Saint Louis College of Phar-  
macy (Mo.) 7 p.m.  
1/22 William Jewell College (Mo.)  
2 p.m.  
1/24 Benedictine College (Kan.)  
5:30 p.m.  
1/27 Culver-Stockton College (Mo.)  
5:30 p.m.  
1/29 Baker University (Kan.) 2 p.m.  
2/3 Evangel University (Mo.) 5:30  
p.m.  
2/5 Benedictine College (Kan.) 2  
p.m.  
2/7 Fisk University 7 p.m.  
2/10 Missouri Valley College 5:30  
p.m.  
2/12 Graceland University (Iowa)  
2 p.m.  
2/14 Avila University (Mo.) 5:30  
p.m.  
2/17 Central Methodist University  
(Mo.) 5:30 p.m.  
2/19 MidAmerica Nazarene Uni-  
versity (Kan.) 2 p.m.  
2/26 William Jewell College (Mo.)  
2 p.m.

### HAAC Standings

School, Record

Evangel	0-0
Benedictine	0-0
Avila	0-0
William Jewell	0-0
MidAmerica Nazarene	0-0
Baker	0-0
Lindenwood	0-0
Central Methodist	0-0
Graceland	0-0
Missouri Valley	0-0

Culver-Stockton 0-0

### Men's/Women's Table Tennis

9/18-19/2010 B a d g e r  
Open  
9/25-26/2010 LU Septem-  
ber Open  
10/9-10/2010 B e r n a r d  
Hock  
10/16/2010 C e l l u l o i d  
Shootout Open  
11/7/2010 NCTTA Re-  
gional Championship  
11/13-14/2010 H i g h l a n d  
Open  
2/5/2011 NCTTA Re-  
gional Championship  
2/19/2011 ACUI Re-  
gional Singles  
2/27-28/2011 ICC Califor-  
nia Open  
3/12-13/2011 LU March  
Open  
3/19-20/2011 Cary Cup  
Open  
4/14-17/2011 NCTTA Na-  
tional Championships  
4/23-24/2011 Saint Peters  
April Open

### Men's Tennis

9/10 HAAC Fall Tournament  
9/17 University of Illinois 3:30  
p.m.  
9/21 Maryville University 4  
p.m.  
9/24 ITA Regional  
10/15 ITA Small College Nation-  
als

### Women's Tennis

9/10-11 HAAC Fall Tournament  
9/17 University of Illinois 3:30  
p.m.  
9/22 Maryville University 4  
p.m.  
9/24-25 ITA Regional  
10/15-17 All Day ITA Small  
College Nationals Mobile, Ala.

### Mens Water Polo

9/3. Lyons Water Polo Club  
10:10 a.m.  
9/3 Vanguard University (Calif.)  
12:30 p.m.  
9/4 Mercyhurst College 1:00  
p.m.  
9/4 Northern Virginia Water  
Polo Club 4:45 p.m.  
9/5 Gannon University 10:30  
a.m.  
9/5 Riptides Water Polo Club  
2:25 p.m.  
Missouri Valley Regular Season  
Tournament  
9/18 Western Illinois University  
10:15 a.m.  
9/18 University of Missouri 3:40  
p.m.  
9/19 Miami University (OH)  
9:10 a.m.  
Miami (Ohio) Tournament  
Southern California Convergence  
Missouri Valley Regular Season  
Tournament  
10/16 Miami University (OH)  
1:15 p.m.  
10/16 Washington University in  
St. Louis 5:35 p.m.  
10/17 Saint Louis University  
11:20 a.m.  
Missouri Valley Division Cham-  
pionship  
CWPA Division I Collegiate  
Club Championship  
11/12-14/2010 Salt Lake City,  
Utah

Do you need to get the word out?

Advertise with **The Legacy!**

- Discounts for repeat advertisers and special prices for on-campus organizations!
- Easy and convenient way to promote!
- Design services available, or use your own ad!

For rates and more information, e-mail *The Legacy* at:  
[journalism@lindenwood.edu](mailto:journalism@lindenwood.edu)  
or stop by Spellmann 3095.

## Aid

*Continued From Page 1*

Though the numbers for this year are not yet available, the Financial Aid Office estimates that roughly \$1.5 million will no longer be available to Lindenwood students because of the cuts.

Lindenwood President James Evans said, "Changes in Access Missouri will have

two effects on Lindenwood: First, we will not receive as many applications from financially pressed students because many of them will assume that the reduction in aid makes private higher education unaffordable, which usually is not true. Second, in some cases, Lindenwood will need to absorb part of

**"In some cases, Lindenwood will need to absorb part of the reduction to help."**

—James Evans  
President

the reduction to help particular Access Missouri recipients continue their studies here."

Lori Bodi, director of financial aid, said cuts in education funding always are "a

hard pill to swallow. It hurts the students, but ... if the money's not there, the state can't make it. It's very unfortunate."

Evans compared the situation to the parable of the farmer who kills his goose that lays golden eggs: The farmer's short-term gain may cause nothing but future financial hardships.

"Similarly, the present state administration does not seem to realize that its college students are the source of the state's future financial well being," Evans said.

With potentially fewer college graduates, Evan said, Missouri would "benefit from fewer consumer dollars and tax monies in the coming years."

## Alpha Phi Omega to host events

By Alysha Miller  
Staff Photographer

Alpha Phi Omega, the co-ed service fraternity at Lindenwood, will be hosting its rush week beginning Sept. 7 through Sept. 12.

The festivities will begin with a meet and greet at 8 p.m. in the Connection as an opportunity for potential rushes to interact with active brothers of the chapter.

Other activities throughout the week include a nerf war in the quad Sept. 8 at 4 p.m. and a soldier supply drive on Sept. 11 with the locations yet to be determined.

The week will culminate with an initiation ceremony on Sept. 12 at 8 p.m. in the MAB.

For more information about APO and the rush week contact Kim Kaporis at kimkaporis@gmail.com.

## Costs

*Continued from Page 1*

"Our records show that Lindenwood's tuition increases have been below the national average nearly every year for the past decade," Evans said.

Rush Week  
Begins Sept. 7  
8 p.m.  
Connection

### The LindenHouse

Workers tend to the kitchen (top left) in the LindenHouse, the living quarters for James Evans and all future university presidents. Finishing of the interior rooms (bottom left) is in progress. Lion statues (right) were bought and flown in from Las Vegas to compliment the outside entrance to the LindenHouse, which is scheduled for completion later this fall.

*Legacy photos by Christie Blecher*

## Magnolias

*Continued from Page 4*

The set of the beauty parlor provides a believable surrounding for the audience to look at, with rich colors and interesting pieces and details.

All six of the actresses in this show have good volume and enunciation, which made them easy to hear and understand, even with their believable southern accents.

Emily Heitmeyer (Ouiser) stands out with the physicality she uses to portray an older woman. Everything from her posture, her walk and even her voice suggest she is really much older than she actually is.

Colleen Kelly (Shelby) and Becca Helms (M'Lynn) have a great mother-daughter relationship.

They feed off of each other in their bickering, which causes their char-

acters to connect on a deeper level, bringing their roles to life. Becca Helms (M'Lynn) truly gives the most to the show.

Her character goes through a rough emotional peak at the end of the second act, and the way she plays it makes it real.

It will be a challenge for any member of the audience not to be moved close to tears.

This show may not have much to offer in thrills and adventure, but it instead paints a vivid picture of life. It's not about the story or what happens – it's about friends and dealing with life.

Students can see "Steel Magnolias" Sept. 9-11 and 16-18 at 7:30 p.m. in the Bezemes Family Theater.

Two free tickets are given to students with a Lindenwood student ID.

## Record

*Continued from page 1*

Another appealing feature is "the facilities here at LU, [as they] are next to none," Parisi said.

"We are so fortunate to have top notch facilities in all facets of Lindenwood University."

Administration also attributes the continuous enrollment increase to the excellent education students receive at Lindenwood.

"I really think that the quality of education is what brings in more students each year," Mueller said.

"In fact, I'm hoping that it is mostly the quality of education that draws people here."

As of Aug. 27, the number of daytime undergraduate students totaled 4,918, slightly less than the first day number.

The new enrollment number is made up of 3,732 resident students and 1,186 commuters.

"Our total undergraduate enrollment number is pretty fluid until the last date to add or withdraw a class, which is Oct. 1," Duggan said.

## Brock

*Continued from Page 1*

For all event sponsors, a private celebrity dinner and auction will be held Sept. 26 at 6 p.m. at the J. Scheidegger Center for the Arts.

For registration, information on participating in the

four-person scramble or becoming a sponsor, contact Sarah Javier at (636) 949-4939 or sjavier@lindenwood.edu. For tickets to the fashion show, contact Jane Baum at (636) 949-4427 or jbaum@lindenwood.edu.

ask listen solve

# YOUR MONEY

ONLINE. ON YOUR WAY. ON YOUR CELL.

With myRewards Student Checking, you're always close to your money.

- Over 50 metro-area locations
- Over 100 metro-area ATMs
- Mobile Banking\* and Online Bill Pay
- Email Alerts

Apply today and get an Instant Issue Check Card you can use immediately.



314-746-8451

commercebank.com/students



call click come by

\*Your mobile carrier's text messaging and web access charges may apply. ask listen solve and call click come by are trademarks of Commerce Bancshares, Inc. © 2010 COMMERCE BANCSHARES, INC.