

THE

LINDENWOOD

CONNECTION

Vol. I, No. 4 Winter 1991 Issue
Penny Myers-Bryant ('83), Editor

Lindenwood College
Alumni Office 949-4903

REUNION REVISITED

by Nancy Calvert ('61)
Alumni Association President

You should have been there! If you didn't attend **Reunion 1990**, you missed a great opportunity to renew acquaintances with your classmates and your College.

The campus looks wonderful, and the increase in the residential population was a welcome sight. Every decade from 1930 was represented, with alumni from 35 classes, 18 states and Japan in attendance. We had tremendous faculty representation at the Saturday brunch, and rave reviews on the food in every instance.

President and Mrs. Spellmann hosted a number of events at the President's Home, and the variety of activities available to attendees appeared to be a crowd pleaser. There was something for everyone — no matter what class you were in.



Angela Bone, 1990

Former Classmates Freda Grace Miller ('63), Nancy Light LeDoux ('63), Ann Arnold Cotrell ('63) and Charlotte Saxe Oppenheimer ('62) take time out for a picture.



Angela Bone, 1990

Roxanna Young ('67) and Mary Ambler ('30) listen to Professor Jean Fields speaking at the Annual Meeting. Later in the day, Mary Ambler received the Sibley Inner Circle Award for dedicated service to Lindenwood.

The Alumni Board set out to plan a Reunion that addressed the suggestions of its broad constituencies, and from all reports, succeeded in doing just that.

Don't be concerned about not having a good time if you come alone to our Reunion. While it is nice to have your special group of friends to enjoy during the weekend, many of the alums who were alone in representing their class told us that they enjoyed the camaraderie of the entire group. There was as much togetherness available as anyone wanted, and it was fun to watch the generations relate at Reunion events.

Reunion 1991 is scheduled for October 11 through 13, and I hope you'll mark your calendar now and begin thinking about making plans to be with us. Your Alumni Board is again working hard to bring you an activity roster that meets your special needs. All you need to do is **be there!**



Angela Bone, 1990

Classmates Sue Riffe ('70) and Chris Kleinholz Dorgan ('70) get ready to have their picture taken.



Angela Bone, 1990

Dr. John Bornmann lecturing on the magic of superconductivity.

REUNION '91 OCTOBER 11TH - 13TH

Alumni News

RECORD BREAKING ENROLLMENT FOR FALL 1990

Fall enrollment figures at Lindenwood reached an all time high with 2805 students in the day, evening and accelerated programs.

Current enrollment is broken down into day programs with 961 students and the evening school with 1,844 students. According to John Guffey, Dean of Admissions and Financial Aid, the residential population has hit 650, the largest since 1972 when the campus housed 662 students. Director of Evening and Corporate Admissions, Marcia Parker, reported that the total number of new students in the evening programs increased by 442.

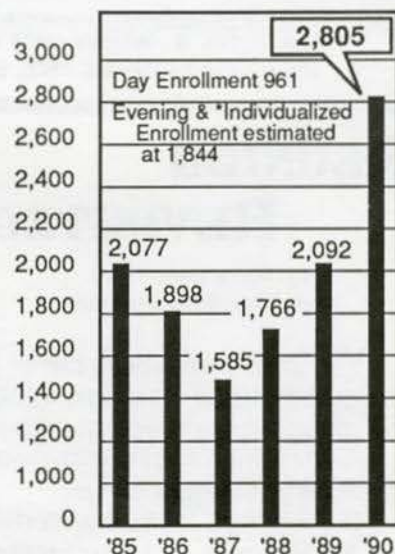
"We're excited about Lindenwood's progress and looking forward to a long future of serving students in a personal, nurturing environment," said President Spellmann. "Traditions of innovation and value-centered emphasis continue to work for Lindenwood's mission toward advanced educational excellence in our 163rd year." President Spellmann states that the College is maintaining its high quality academics through an increased faculty base and by recruiting students who display leadership ability, academic excellence and outstanding talent in their selected majors.

President Spellmann attributes the enrollment increases to a culmination of an aggressive advertising campaign, the willingness of corporations to reimburse students for their continuing education and to the new athletic programs. "But athletics are just one form of activity," President Spellmann said. "There's the yearbook, the band . . . Out of 650 residents, approximately 350 of them participated in some part of our intercollegiate sports program."

Lindenwood College has struggled financially but because of the steady increase in enrollment and the commitment to the College by the community, the future of Lindenwood looks bright. With the continued support of the alumni, faculty, staff, and friends of the College, we can ensure nothing but a bright and healthy future for Lindenwood.

LINDENWOOD COLLEGE

— Fall Enrollment —



* Lindenwood College of Individualized Education

Source: LINDENWOOD COLLEGE

— CLUB NEWS —

— St. Louis Club —

The St. Louis area alumni will be hosting its 8th annual fashion show at the Algonquin Golf Club in Webster Groves, Missouri on Saturday, March 2, 1991. The fashions will be provided by *DISTINCTIONS*, clothing for women, and *LOVE - N - STITCHES*, fashions for children. The clothing will be modeled by alumnae and their children and/or grandchildren. The ticket cost is \$20 and will include the luncheon, fashion show and entertainment by the Lindenwood jazz ensemble. Proceeds from the show will go towards a Lindenwood scholarship.

For more information or to order tickets, call Jeannie McDowell at (314) 434-8485.

— St. Charles Club —

On December 2, 1990 the St. Charles club held a holiday tabletop show during Lindenwood's annual Christmas Walk. Various civic organi-

zations along with alumni and friends displayed their formal ware for the holiday season. The club charged a \$3.00 admission with the proceeds going to help furnish the Butler Hall Student Center. In addition to the tabletop show, the club also sold wreaths made by the St. Charles club and members of the Foreign Culture, Biology and Education clubs. The total raised for the event was \$500.00

— Kansas City Club —

The Kansas City Alumni Club held their holiday luncheon Saturday, December 8, 1990 at the Indian Hills Country Club in Overland Park, Kansas. Shanon Athy Johnson ('64) served as the club's hostess for this annual event. Over thirty alumnae attended the luncheon including former Kansas City club scholarship recipient and new Alumni Board member Candace Myers Burchyett ('88). Prior to the lunch, alums were able to relax, sip wine and chat with old friends. The group then

moved on to enjoy an elegant lunch followed by a program given by several female members of the Shawnee Mission North High School Theatre Department. The luncheon concluded with an update on the College from Lindenwood's Alumni Relations Coordinator, Penny Myers-Bryant.

Southern — California Club —

The Southern California Club donated \$250 toward Lindenwood's 1990-91 annual fundraising campaign. The club currently meets every other month in a home of one of the members for a luncheon. Meetings are held in various cities throughout California including San Diego, Mission Viejo, Redondo Beach, Manhattan Beach, Westchester and Pacific Palisades. Meetings are scattered so that no one has to drive a tremendous distance. If anyone is interested in attending these meetings please contact club president Betty Ziegler at (619) 931-1770.

CLASS & FACULTY NOTES

CLASS NOTES

CLASS OF 1970

Mary Ann Black Steele: Mary Ann recently accepted a position as Assistant Professor of Special Education at Grand Canyon University in Phoenix, Arizona.

CLASS OF 1971

Sara Lynn Watts: On August 10, 1990, Sara received her Master of Arts degree from Northeast Missouri State University.

CLASS OF 1980

Karen Kohlstedt Rensink: Karen celebrated her birthday this year by giving birth to her third daughter, Catherine Diana, born May 2, 1990. Happy birthday Karen and Catherine!

CLASS OF 1983

Penny Myers-Bryant: Congratulations to Penny on the birth of her second son, Nathan Austin, on October 16, 1990.

CLASS OF 1984

Virginia Grady: Virginia has been appointed senior account executive for St. Louis Christian Hospital's mental health and recovery center.

CLASS OF 1985

Taunia Allen: Taunia recently received an Emmy award for Best Public Service Announcement, "KUTO Hotline/Life Crisis Center" for St. Louis KPLR Channel 11.

CLASS OF 1987

Kenneth B. Hines: Upon completion of the Coast Guard's Reserve Officer Candidate Indoctrination at Reserve Training Center in Yorktown, Virginia in October, Kenneth was commissioned to the rank of Ensign.

CLASS OF 1989

Roberta Holler: Ms. Holler, *Miss Tall St. Louis 1990*, finished 1st Runner-up in the Miss Tall International Pageant on Tuesday, July 3, 1990 during the Convention of

Tall Clubs International held in Brainerd, Minnesota. Roberta represented St. Louis and the State of Missouri as well as the St. Louis Tip Toppers.

CLASS OF 1990

Gonzo Terry: Congratulations to Gonzo and Deborah Litt on their marriage in August. Gonzo is president of Sasha Leasing, Inc. in Northbrook, Illinois.

FACULTY NOTES

Clifford Keizer: Mr. Keizer, professor of chemistry at Lindenwood from 1962-1964, has recently retired and is living in Socorro, New Mexico.

Carole Knight: Adjunct professor Knight recently was awarded a local Emmy. Carole received the award for best program in the performing arts category. She produced the program, "Concerto: The Whitaker Competition for Strings" for KETC Channel 9 (PBS) in St. Louis. Carole is a 1988 alum of the College.

WHAT'S NEW?!

We would like to know what's new in your life since leaving Lindenwood. Is there anything special you would like printed in the next Connection? Do you need to update us on a name change or new address? Please fill out the information below and send it back to us at your convenience.

Name _____ Class _____

Address _____

City _____ State _____ Zip _____

Phone _____ Business Phone _____

Employer _____

Title _____

What's New _____

Mail to: Lindenwood College; 209 S. Kingshighway; St. Charles, MO 63301-1695; ATT: Alumni Office

THE ARCHIVES

There is a unique place on the Lindenwood campus hidden away in the attic of the Library. This small room tucked away from the rest of the College is known as the Archives. Anything you ever wanted to know about Lindenwood is stored in files and boxes, recorded in books and manuscripts, preserved for future Lindenwood generations. The keepers of Lindenwood's history are two ladies with a passion for Lindenwood's rich history. They are Mary Ambler ('30) and Virginia Terry ('59). Just talking with them is like having a conversation with Mary Sibley herself. These two volunteers work every Monday cataloguing the College's history. Mary and Virginia also have the monumental responsibility of upkeeping the Sibley museum which has recently been moved from the first floor of Sibley Hall to Latzer Great Hall in the Memorial Arts Building. The museum houses many items left by the Sibley's and various faculty, staff and students throughout the past 163 years. The museum is arranged in chronological order beginning with George and Mary Sibley and ending with the current administration.

Mary and Virginia have recently begun a tremendous project. They have been trying to identify photos of Lindenwood students from as far back as the early 1900's. This is a task which they can't do alone and would be interested in anyone who would be willing to help identify these lost faces. They are also in search of yearbooks missing from their collection. Wanted are yearbooks from 1915, 1922, 1925, 1926, 1936, 1943 and 1987. Also, in 1926 an amusing doll was apparently sold on the campus called "Linde". She was a yellow and white doll, all legs and arms, with a coronet on her head. If you know of this doll, or know how to get one, Virginia and Mary would like to have her for the Sibley museum.

If you have any of these items or anything of historical relevance from your years at Lindenwood that you would be willing to donate to the museum, please call the Alumni office at (314) 949-4906 or write to Virginia and Mary in care of the College.

UNION ELECTRIC DONATES BUCKET TRUCK

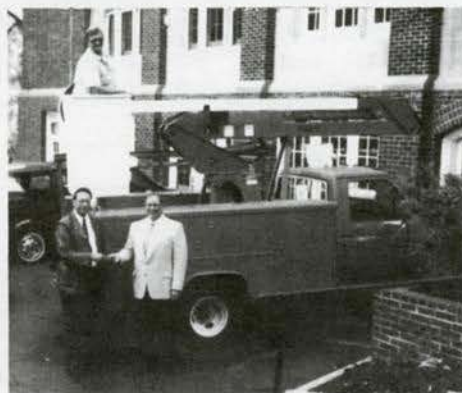
by Jeanne Malpiedi

Thanks to Dennis Ottolini and Union Electric, Lindenwood College can once again reach new heights.

This summer, the electric company donated a Ford cherry-picker (bucket truck) to the College. With the cherry-picker, the maintenance crew can repair parking lot and building lights, trim treetops, and hang Christmas lights and decorations.

"The truck will be extremely helpful in the exterior upkeep of the college," said President Dennis Spellmann. "The unique beauty of Lindenwood's campus is well known throughout the area. Through the generosity of college friends and alumni, we can continue to maintain that image," Spellmann added.

Ottolini, who is a member of Lindenwood's Board of Overseers, is the District Manager at Union Electric.



President Spellmann (left) with Dennis Ottolini and new cherry-picker (Maintenance Chief Dan Taylor in truck).



Angela Bone, 1990

Dorothy Neblett Fix ('55) speaking to fellow alums on "Sacred Sites and Inner Symbols: An Artists Vision."



Angela Bone, 1990

President Spellmann giving a "State of the College" address at Reunion's annual meeting.



ALUMNI DIRECTORY — CORRECTIONS —

In the recent publication of the Alumni Directory, incorrect information appeared for the following people. Corrections are:

Penny Myers-Bryant '83
2813 Westchester Court
St. Charles, MO 63303
(314) 947-4672

Robin Smith '75
#1 Memorial Drive
St. Louis, MO 63102
(314) 444-6368

We apologize for this inconvenience. If you have a correction or new information, please contact the Development/Alumni Office at Lindenwood College, 209 South Kingshighway, St. Charles, MO 63301-1695, or call (314) 949-4903. *Thank You!*



First row: Eleanor Mansfield, Emily Hay.
Second row: Jo An Lovins, Karen Prewitt,
Sally Miller, Sonja Lee.

SALLY MILLER PERDUE

There were no bands playing. No ticker tape parade. No onslaught of reporters waiting for her. But on November 2, 1990, fifty-six days and 1,193 miles later, Lindenwood alumna Sally Miller Perdue ('60) had finally realized her life long dream. . . to jog the Great Wall of China.

Perdue ran through deserts, walked across hills and crawled over mountains. She was deprived of food and water and had to survive on two suitcases filled with beef jerky, peanuts, fruit bits, Gatorade, Shakley energy bars and K-rations. And, if that weren't enough, she suffered chills and fever from pneumonia and exhaustion. "It was the most taxing and frustrating experience of my life, yet I would go back and do it again," Perdue said.

Sally had been fascinated with the Great Wall ever since seeing a photograph of it in her fourth grade geography book. "I became obsessed with it," she said. "I tried to learn as much as possible about it." The mystery surrounding the wall led her fascination. The fact that no one really knew what shape it was in. She said the wall also represents to her the best example of human effort. "Here is a wall that was built by hand and it's the only man-made thing that the astronauts could see from the moon," she said.

Perdue had several setbacks before being able to enter China. She began her quest in 1979, but was denied a visa until 1989. She was set to begin her expedition in August of that year until her main sponsor, PepsiCo, pulled out after Chinese troops massacred students in Tiananmen Square. Although the Chinese government gave her permission for the trip, officials later demanded \$87,000 to cover expenses for an escort. She refused to pay. This resulted in her being detained by the police several times along the wall. But a call from the U.S. Embassy or presenting the document showing the government's initial support of the trip was enough to get her released.

Sally averaged about 25 miles a day. According to Perdue, in places the wall was almost non-existent. Hampered by the fact that no two maps agreed, Sally got lost very easily. But with the aid of a compass she was able to get back on track.

Perdue endured desert, mountainous terrain and biting cold to complete the wall. Her only comfort was a tent and a sleeping bag, even in sub-freezing weather with snow on the ground. After four weeks on the wall, she caught pneumonia and was taken to Beijing for treatment. She would then spend only two or three nights on the wall, with the support of pack animals, and then return to Beijing to regain her strength.

On November 2, Perdue completed her journey. She said the whole experience was like a dream. "And at the end of the wall, I had to face reality. I was awake. The dream was wonderful, but I had to wake up." Despite all the hard times, Perdue said she was depressed when she left. Then she heard that archeologists discovered an unknown 700-mile extension on the eastern end. She plans to return someday and run that portion.

Perdue will begin a speaking tour in February, 1991, and hopes to make Lindenwood one of her stops. Although only attending Lindenwood for two years, Sally has fond memories. "I recall my two years at Lindenwood College with great emotion. Such a beautiful campus and such caring teachers," she said. "The food was absolutely fabulous — so much so, I gained 15 pounds my freshman year!"

When Sally was crowned Miss Arkansas in 1958, she found her commitments so great that it was impossible for her to return to school. Although unable to come back to Lindenwood, Perdue attributes much of her success in life to the College. "My years at Lindenwood definitely contributed to my achievements, my success as a person and my belief in my role as a woman."

LINDENWOOD

BRIGHTLY LIT FOR ANNUAL CHRISTMAS WALK

On Sunday, December 2, the Lindenwood campus was aglow for the holidays as she welcomed over 800 people to the College for the eighth annual Christmas Walk. The Lindenwood student government has traditionally put on this event to show off the campus during this beautiful season of the year. Open to friends of Lindenwood, this event is a walking tour of the campus with various College organizations performing in the campus buildings. Highlights of this year's walk included the performance of the Lindenwood Jazz Ensemble, a holiday table top show given by the St. Charles Alumni club and the appearance of Mr. and Mrs. Claus (alias President Spellmann and Lindenwood friend Carol Ross) who greeted the children with Christmas joy and candy canes! A fun time was had by young and old alike. Congratulations to the student government on a successful event!



Assistant Coach Jeff Driskill giving his players some words of wisdom during Reunion weekend's game. The Lion's finished the season with a record of 6-4.

Angela Bone, 1990



1991 MERIT AWARD NOMINATIONS

Nominations are being sought for this year's Alumni Merit Awards. These awards are annual presentations by the College's Alumni Board which cite outstanding Lindenwood alumni in three areas of accomplishment.

Awards for Professional Accomplishment, Volunteer Accomplishment and Service to Lindenwood will be presented at this year's commencement held on May 18th.

If you know of a deserving alum in one of these categories, please return the form below along with as much detailed information as possible on your nominee. Nominations should be in no later than March 15, 1991.



I would like to nominate the following alumna/alumnus for the 1991 Alumni Merit Award for

- Professional Accomplishment
 - Volunteer Accomplishment
 - Service to Lindenwood
- (circle one)

Name: _____

Maiden Name: _____

Address: _____

Class Year: _____

Reason For Nomination: _____

(attach sheet for additional information)

Return to:
Lindenwood College
209 S. Kingshighway
St. Charles, MO 63301-1695
ATT: Alumni Office

A Personal Message for You from President Spellmann

Dear Alumni,

We are grateful that in times of world-wide uncertainty, we can take pride in the certain accomplishments of your alma mater. With a dedicated, hard working faculty and staff, Lindenwood College now stands with its doors wide open to great possibilities for the future.

Your alma mater has moved into the 1990-91 academic year with the vigor and zest of a gazelle. Maintaining its graceful stature, Lindenwood College has confronted the formidable obstacles from physical plant renovations to an unstable financial footing.

As promised, the college's infrastructure has undergone significant improvements for renovated dormitories, a student activities center, and more. The academic integrity of the College has been reinforced with the addition of 25 full-time faculty members in a variety of disciplines. Moreover, the College has realized its need to insure the future with a now, fully funded, permanent endowment. And, the endowment funds are beginning to grow.

Be assured that we will continue to establish long-range plans to insure the next century for Lindenwood College. Together, we can realize the vision for the future, and restore and respect the magnificent legacy personified in Colonel Butler's, President Roemer's, and President McCluer's stately buildings. In addition, we will continue to serve the critical needs in higher education for the total development of each Lindenwood student.

And this is just the beginning. With your continued interest and support, Lindenwood can grow and prosper in the Sibleys' dream for educational excellence.

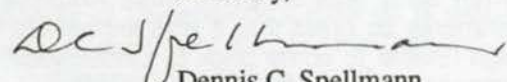
Your assistance through various alumni clubs, your individual gifts to the College, and your heartfelt concern for your prestigious alma mater continue to provide meaningful sustenance to our higher education mission.

Lindenwood's alumni are strong supporters. You have the stories of success that were first formed in your collegiate years. And you know how much it means to be educated in an environment with attentive professors who really care about your progress.

I invite you to help us strengthen the mission of Lindenwood College today, and affirm your commitment to the best liberal arts education in the Midwest. Dormitory space is filling fast, and we have every indication that by May resident halls may be at capacity for next fall. We value your letters of recommendation in support of new students for Lindenwood, so let us hear from you. Your written support and suggestions for Lindenwood College are greatly appreciated as we strive toward our important educational goals.

Best wishes for every happiness in 1991. And thank you, again, for the many ways you support Lindenwood College.

Sincerely,


Dennis C. Spellmann
President

IN MEMORIAM

- Class of 1912**
Bertha Smith Wheeler — April 1989
- Class of 1918**
Lucille Wilson Proctor — 1990
- Class of 1924**
Lucille Spalding — December 30, 1989
- Class of 1925**
Margaret Latimer Chastain — May 23, 1988
- Class of 1926**
Mary Elizabeth Arvin Erd — 1990
Lillian Richmond Harless — December 4, 1989
- Class of 1928**
Lucy Franklin Bridges — 1978
Ester Schumacher Tibbles — October 18, 1990
- Class of 1929**
Eugenia Owen Banks — January 8, 1990
Betty Crimm Sigley — August 2, 1989
Margaret Fagg Struthers — 1990
- Class of 1930**
Frances Reineke Burnett — January 25, 1990
- Class of 1931**
Alice Buffett — 1971
- Class of 1932**
Frances Tesdall Mowat — February 1990
- Class of 1935**
Ruth Coil — March 3, 1989
- Class of 1936**
Florence Wilson Guilford — January 31, 1986
- Class of 1937**
Mary Patterson Wilson — January 8, 1988
- Class of 1940**
Jane Sidebottom Alley — November 1990
Virginia Buff Myers — January 17, 1991
Betty Kelly Solfisburg — July 21, 1990
- Class of 1941**
June Goran Dulany — January 1991
Mildred Seymour Meler — 1989
- Class of 1943**
Adah Louise Parkinson Waterbury — May 21, 1989
- Class of 1946**
Honey Donohue Pitz — July 19, 1989
- Class of 1948**
Margaret Whitmer Cochran — August 26, 1990
- Class of 1949**
Shirley Gilliatt Schreiber — March 7, 1990
- Class of 1953**
Margaret Ann Eavey Moore — October 16, 1989
- Class of 1959**
Robinette Jean Ferguson Ellis — 1990
- Class of 1961**
Mary Ann Clark Newmen — September 20, 1989
- Class of 1970**
Pamela Bedford Bell Szabo — August 21, 1990
- Class of 1971**
Charles H. Bushnell, Jr. — January 6, 1991
- Class of 1982**
Todd Hornbuckle — 1990

ARTHUR GOODALL



March 19, 1898 -
November 13, 1990

Arthur S. Goodall, a member of Lindenwood's Board of Directors since 1938, died Tuesday, November 13, 1990 at his home in Ladue, Missouri.

Mr. Goodall served on the Board during the administrations of Presidents Roemer, Gage, McCluer, Brown, Spencer, Johns and Spainhower and as chairman of the buildings and grounds committee during the construction of Cobbs, McCluer, and Parker Halls, the college chapel, and the Howard I. Young Hall of Science. He was named Director Emeritus on January 5, 1969.

Mr. Goodall was a longtime supporter and friend of Lindenwood and was given an honorary Doctor of Humane Letters degree from the college in 1987.



Former Sibley Hall head resident Kathryn Hendren died in St. Charles, December 31, 1990. Mrs. Hendren was preceded in death by her husband, Harry, and her son Harry D. Hendren for whom Lindenwood's art gallery is named. Memorial donations may be made to the performing arts fund at Lindenwood.



Lindenwood friend Sylvia Souers died January 7, 1991 in St. Louis. Mrs. Souers was the wife of the late Rear Admiral Sidney Souers, U.S.N.R. who served on the College's Board of Overseers for many years.



Our sympathies to former Lindenwood psychology professor Judith McMahon on the death of her husband Frank B. McMahon Jr. Mr. McMahon, a psychology professor at Southern Illinois University at Edwardsville, died November 21, 1990 after a long illness.

ALUMNI T-SHIRTS FOR SALE

The Alumni Association is selling T-shirts to help raise money for next years Reunion. These short sleeve shirts say "Lindenwood Alumni" in bold lettering and have the school crest emblazoned in the middle. The shirt itself is gold with white lettering. The cost is \$10.

If you would like a shirt, send your check to:

LINDENWOOD COLLEGE

209 S. Kingshighway
St. Charles, MO 63303-1695
ATTN: Alumni Office

Please make your check out to Lindenwood College and you will be sent a large or x-large t-shirt (*please specify*). The supply is limited, so order now!

**We're Crankin' UP
for Phonathon '91!**



Dear Fellow Alum:

Together, our alumni are a strong Lindenwood Connection! And PHONATHON '91 gives us a chance to strengthen that link by increasing our stewardship on behalf of the College and affirming our commitment to maintaining independent, liberal arts education.

A staff member or volunteer will be calling soon, so please decide TODAY to strengthen your Lindenwood Connection.

Please make a generous gift or pledge in this year's PHONATHON.

THANKS SO MUCH!

Nancy Calvert ('61)
President, Alumni Association
and
Barry Freese ('75)
Volunteer Phonathon Chairman



LINDENWOOD
COLLEGE

209 S. Kingshighway
St. Charles, MO 63301-1695

Non-Profit Organization
U.S. Postage PAID
St. Charles, MO 63301
Permit No. 84

ADDRESS CORRECTION REQUESTED