

Lindenwood University

Digital Commons@Lindenwood University

Yearbooks

Lindenwood University Archives

1932

1931-1932 Linden Leaves

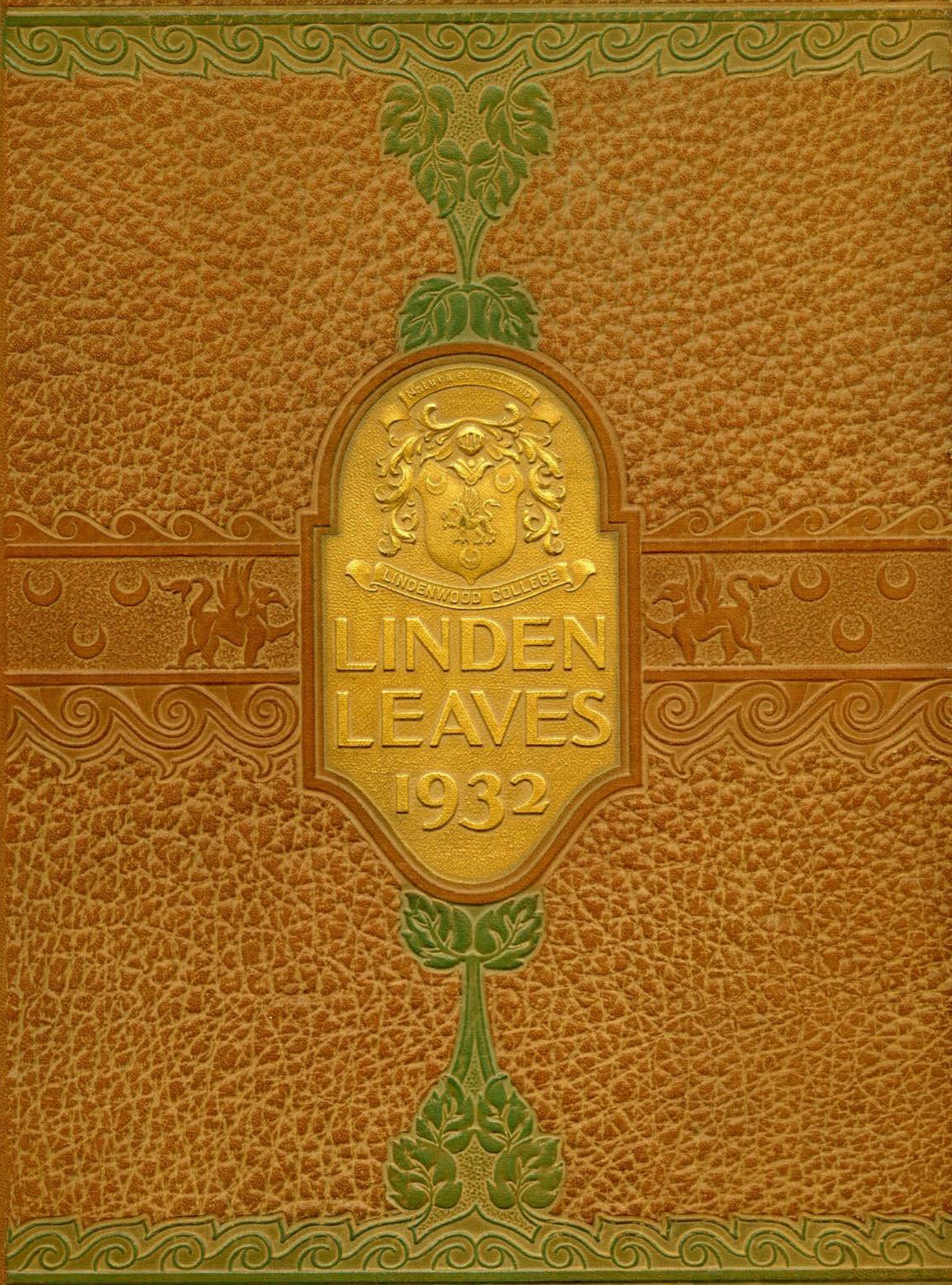
Lindenwood College

Follow this and additional works at: <https://digitalcommons.lindenwood.edu/yearbooks>

Recommended Citation

Lindenwood College, "1931-1932 Linden Leaves" (1932). *Yearbooks*. 54.
<https://digitalcommons.lindenwood.edu/yearbooks/54>

This Book is brought to you for free and open access by the Lindenwood University Archives at Digital Commons@Lindenwood University. It has been accepted for inclusion in Yearbooks by an authorized administrator of Digital Commons@Lindenwood University. For more information, please contact phuffman@lindenwood.edu.



MAINTA ET OCCURRIT

LINDENWOOD COLLEGE

LINDEN
LEAVES
1932

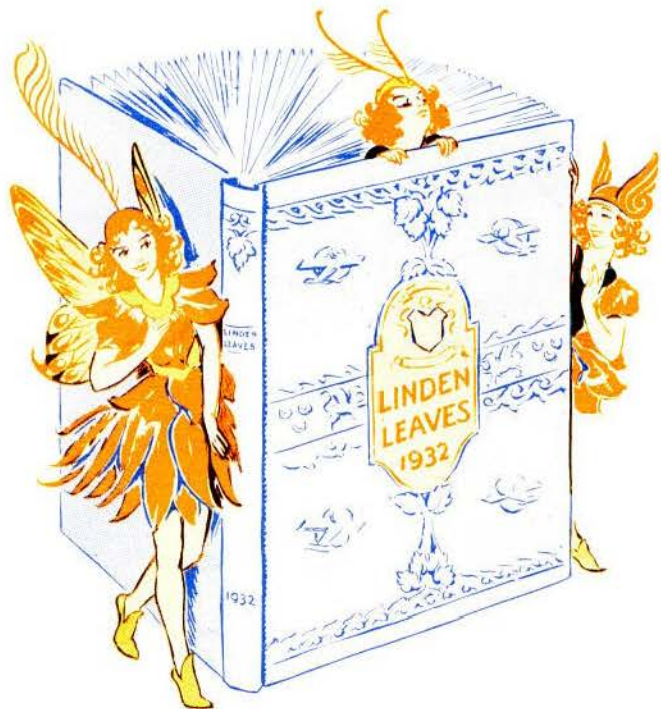


Ex Libris
LINDENWOOD COLLEGE

Founded by
MAJOR GEORGE C SIBLEY
and
MARY EASTON SIBLEY

1 8 2 7

The Gift of
Annual Board.





MANAGED BY

Jane E. Tomlinson

EDITOR-IN-CHIEF

Eleanor Eldredge

BUSINESS MANAGER



LINDEN LEAVES
1932



LINDENWOOD ST. CHARLES COLLEGE MISSOURI
MAKE BELIEVE NUMBER

LINDENWOOD HYMN



School of our mothers, in days of yore,
Goal of their fond ambitions long,
Within the portals of thy door,
Ideals were formed and wills made strong;
Thy honored rule was ever good—
Old Lindenwood, Old Lindenwood.

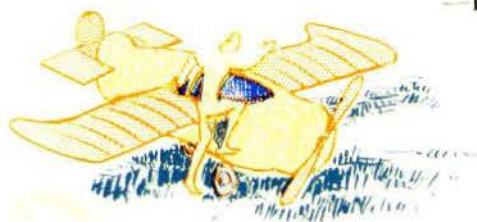
The tumult and the shouting dies,
The seniors year by year depart;
Still stands thy ancient edifice,
A stately and a noble pile;
With arched limbs of sacred wood—
'Round Lindenwood, Old Lindenwood.

Far called, old teachers pass away,
But new ones rise to take their place;
And all the pomp of yesterday
Goes on with but a change of face.
Few hearts but throb with kindly good
Toward Lindenwood, Old Lindenwood.

On girls that come and girls that go,
On all that walk beneath thy shade,
A heaven-sent gift wilt thou bestow:
A graceful and a gracious maid,
With brain for power and heart for good—
Old Lindenwood, Dear Lindenwood.

Amen.

—LOUISE CRANDALL.



DEDICATION



TO ONE whose kindly solicitude, spontaneous geniality, deep wisdom, and fidelity to Lindenwood's high purpose are esteemed by faculty and student body alike; whose tolerance, broad educational philosophy, and literary ability are outstanding; and whose value as an administrator and as a friend is paramount, to Dr. Alice E. Gipson, we dedicate this 1932 Linden Leaves.



PROLOGUE

WE PRESENT this 1932 Linden Leaves for that time when college days are past, to call up again for us those treasured memories of happy hours spent in work and play, to renew in heart and mind the spirit with which Lindenwood so fills us. It is our sincere hope that between the covers of this book among our Linden-leaf planes and air castles we've been able to capture some of that true spirit which we've known through our four golden years at Lindenwood.





OUTLINE

Views

Administration

Classes

Sports

Organizations

Features







VIEWS

VIEWS

WE TREASURE, not only the spiritual values of Lindenwood, but the architectural and natural beauties of our campus. Stately halls of brick, in Colonial and Gothic styles, are shaded from the mellow sunlight of late afternoon by the foliage of magnificent lindens, elms, oaks, and poplars. An expanse of soft green turf, attractive flower-beds, clumps of flowering shrubs, all unite for the harmonious whole that our campus may indeed be "a thing of beauty and a joy forever," with ever-increasing loveliness.



Roemer Hall





Margaret Leggatt Butler
Library





Irwin Hall



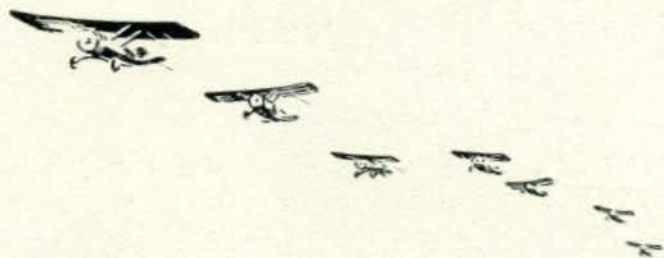


Sibley Hall



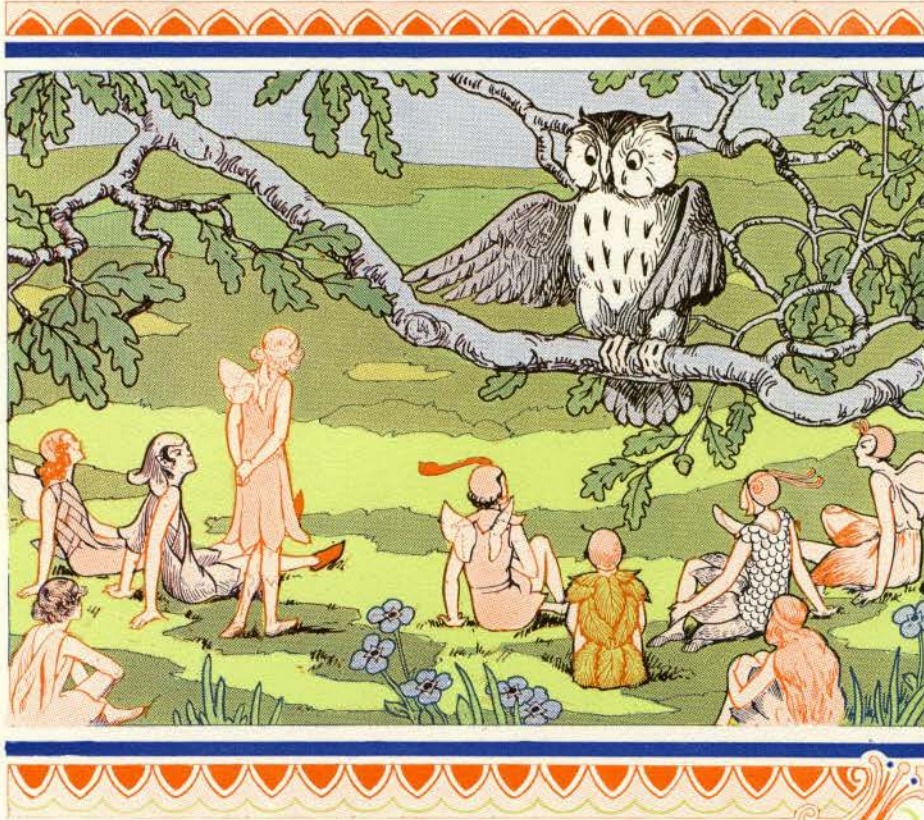


Sibley Way









ADMINISTRATION



BOARD OF DIRECTORS

OFFICERS OF THE BOARD

JOHN W. MACIVOR, D. D.	President
DAVID M. SKILLING, D. D.	Vice-President
GEORGE B. CUMMINGS	Secretary and Treasurer
THOMAS H. COBBS	Counsel

MEMBERS OF THE BOARD

Class of 1932

GEORGE B. CUMMINGS	852 Atlanta Ave.	Webster Groves
EMMET P. NORTH, M. D.	3511 Washington Ave.	St. Louis
B. KURT STUMBERG, M. D.	407 S. Sixth	St. Charles
JOHN T. GARRETT	6225 Westminster	St. Louis

Class of 1933

HARRY C. ROGERS, D. D.	1618 Linwood Blvd.	Kansas City
DAVID M. SKILLING, D. D.	226 Spring Road	Webster Groves
CHARLES TWEEDIE		Jefferson City
JOHN L. ROEMER, D. D.		St. Charles
LEE MONTGOMERY	711 West Sixth	Sedalia

Class of 1937

JOHN W. MACIVOR, D. D.	44 Kingsbury Place	St. Louis
CRAIG MACQUAID	President, United Bank and Trust Co. of St. Louis	St. Louis
THOMAS H. COBBS	6224 Waterman	St. Louis
GEORGE W. SUTHERLAND	445 Baker Ave.	Webster Groves
ARNOLD H. LOWE, D. D.	5666 Cabanne	St. Louis





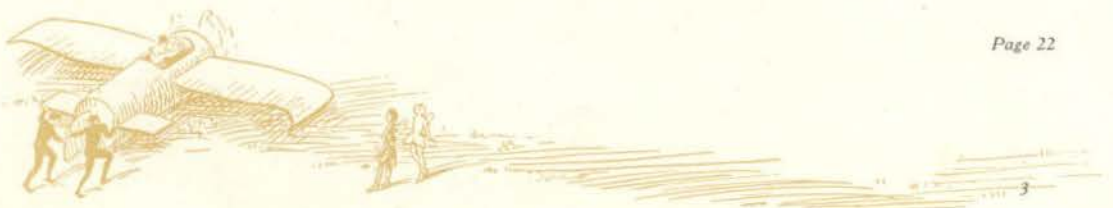
GREETINGS TO THE MANAGEMENT OF THE 1932 ANNUAL

TO EACH and everyone who gave of their time and energy to make Linden Leaves a superb production, the students and faculty extend their deepest appreciation. It is no small task to bring to a successful issue a book such as you now present to your Alma Mater. Only those engaged in its publication know the personal price paid in sacrificial service.

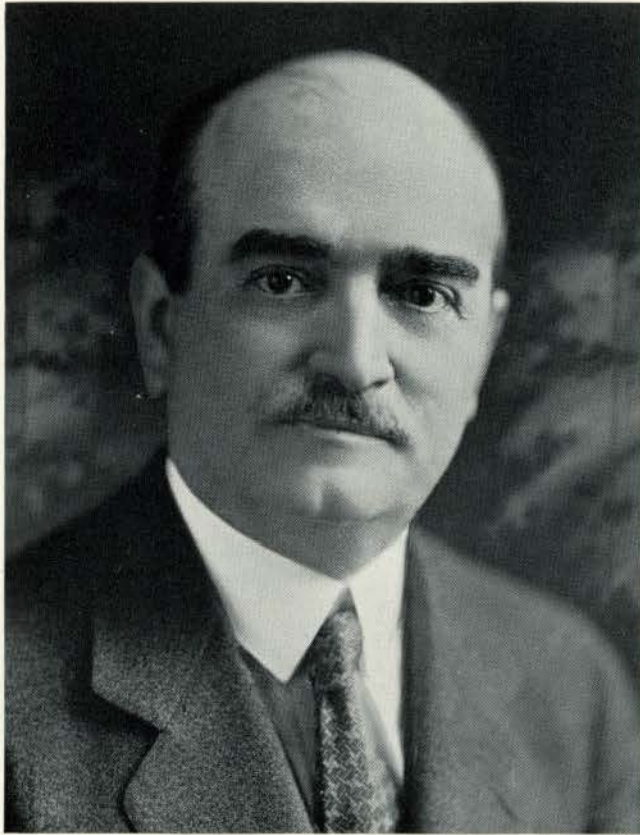
As the years go by, Lindenwood stands for the highest cultural development of young womanhood. The founders, Major and Mrs. George C. Sibley, wrote over its portals: "Education for a Useful Life." In all parts of the world where Lindenwood girls are to be found, and in every circle of life in which they move, the honest-to-goodness Lindenwood girl is inscribing in human deeds in the family, business, and social spheres, "The Useful Life."

The 1932 Linden Leaves is an added contribution to the history of the school. It will be treasured in the years to come for its splendid portrayal of the college life of its day and generation.

JOHN LINCOLN ROEMER



LINDEN LEAVES



DR. JOHN L. ROEMER
President



LINDEN LEAVES



MRS. JOHN L. ROEMER
Dean of Students



LINDEN LEAVES



ALICE E. GIPSON, A. B., Ph.D.
Dean of the College



FACULTY



KATE L. GREGG
A.B., Ph.D., University of Washington.
English

ALICE PARKER
B.S., M.A., University of Missouri.
English



FRANCÈS STUMBERG
A.B., Lindenwood College; M.A., University of Chicago.
English

ELIZABETH DAWSON
A.B., Cornell College; M.A., Columbia University.
English



ANNA WURSTER
B.S., M.S., Purdue University; Diplome Sorbonne, Paris; Certificate Université de L'Alliance Francaise, Paris; Medaille Alliance Francaise.
French

MARY TERHUNE
A.B., The Western College for Women; A.M., Columbia University; D.M.L., Middlebury College.
Modern Languages



HELENE M. EVERS
A.B., Washington University; M.A., University of Missouri; Ph.D., Bryn Mawr College.
Modern Languages

ANNA H. JENNINGS
A.B., M.A., University of Wisconsin; Graduate work, St. Louis University.
Modern Languages



KATHRYN HANKINS
A.B., B.S., M.A., University of Missouri.
Classical Languages and Literature

JULIA C. UNDERWOOD
Ph.B., University of Iowa.
Journalism



FACULTY

ELEANOR TUPPER

A.B., Brown University;
A.M., Clark University; Ph.
D., Clark University.

History and Geography

M. MARION MITCHELL

A.B., University of British
Columbia; M.A., Clark Uni-
versity.

History



RALPH T. CASE

A.B., Parsons College;
B.D., McCormick; Ph.D.,
University of Iowa.

Bible and Philosophy

RACHEL M. MORRIS

A.B., University of Illinois;
M.A., Northwestern Univer-
sity.

Psychology



JOSEPH C. DEWEY

B.S., M.A., University of
Minnesota; Ph.D., State Uni-
versity of Iowa.

Education

FLORENCE W. SCHAPER

B.S., M.A., University of
Missouri.

Sociology and Economics



MARY E. LEAR

A.B., B.S., M.A., Univer-
sity of Missouri.

Chemistry

LOIS KARR

A.B., Simpson College;
M.A., University of Wiscon-
sin.

Mathematics and Physics



BEULAH PEARL ENNIS

A.B., Illinois College;
Ph.D., Yale University.

Biology

HARRIET RUTHERFORD

A.B., M.S., University of
Illinois; Puget Sound Biologi-
cal Station; Pomona College
Biological Station.

Biological Science



FACULTY



LILLIAN J. ALLYN
Graduate of Rubican
School of Business.
Business

LYDIA A. JAHN
A.B., M.A., Ohio State Uni-
versity; University of Michi-
gan Biological Station; Franz
Theodore Stone Biological
Laboratory.

Biological Science



LUCILE CRACRAFT
Hardin College; B.S., Uni-
versity of Missouri; Graduate
work at Northwestern School
of Speech; Columbia Univer-
sity; Feagin School of Dra-
matic Art.

MARY M. GORDON
A.B., Transylvania Col-
lege; B.L.I., Emerson Col-
lege.

Oratory



RUTH ANDERSON
B.S., University of Illinois;
M.S., University of Missouri;
Graduate work, University of
Chicago.

ADA DYER TUCKER
B.S., Michigan State Col-
lege; M.A., Columbia Uni-
versity.

Domestic Art

Home Economics



MARIE E. REICHERT
Savage School for Physical
Education; B.S., Teachers
College, Columbia Univer-
sity.

Physical Education

MARGARET M. STOOKEY
B.S., Cornell College;
American College of Physical
Education; Columbia Uni-
versity; University of Wis-
consin; Chalif School of Dan-
cing; Denishawn School of
Dancing.

Physical Education

HORTENSE F. EGGMANN
B.A., University of Illinois;
Certificate in Library Science,
St. Louis Library School,
Graduate School, University
of Illinois Library School.

Assistant Librarian

MILDRED D. KOHLSTEDT
A.B., Northwestern Uni-
versity; M.A., University of
Illinois.

Librarian



FACULTY



JOHN THOMAS
M. B., M. M., Cincinnati Conservatory of Music; Pupil of Theodor Bohlmann, Dr. Edgar Stillman-Kelley, Mar-
cian Thalberg.
Dean of Music, Piano

ALICE A. LINNEMANN
B. L., Litt. D., Lindenwood College; Chicago Art Institute; University of California; Columbia University; University of Missouri; New York School of Fine and Applied Arts; Art Galleries of Europe.
Art



FRANCES B. CRISWELL
B. S., Northwest Missouri State Teachers College.
Public School Music and Voice

ESTHER RHODES
A. B., Smith College; Pupil of Thuel Burham, New York City; Teacher's Certificate, Utica Conservatory of Music.
Piano.



EVELYN TORRENCE
B. M., Kansas State College; Graduate Study, American Conservatory, Chicago; Pupil of Marjorie Schobel, Edwin Sayre, Mme. Karst, Karleton Hackett.
Voice

DORIS P. GIESELMAN
B. M., Bush Conservatory; Pupil of William P. Phillips, Charles W. Clark, Mme. Elsie Harthan Arendt, Arthur Middleton; Repertoire and Interpretation, Edgar Nelson; Theory, Edgar Brazzelton.
Voice

PAUL FRIESS
Pupil of Charles Galloway, Allan Bacon, Ottmar Moll, Rudolf Ganz; Organist and Accompanist for the Morning Choral-Apollo Clubs; Organist of Episcopal Church of St. Michael and St. George of St. Louis.
Organ

GERTRUDE ISIDOR
Artist Diploma, Postgraduate Diploma with distinction, Cincinnati Conservatory of Music; Pupil of Tirindelli, Albert Stoessel, Robert Perutz, George Leighton, Edgar Stillman-Kelley.
Violin and Theory

JOSEPH F. SKINNER
B. S., State Teachers College, Kirksville, Missouri.
Orchestra

EVA ENGLEHART
B. S., State Teachers College, Kirksville, Missouri; B. F. A., Oklahoma City University.
Piano



FACULTY



ANNA D. GAUSS
Secretary to the President

MARGARET G. SHELDRICK
B.B.A., Boston University;
Graduate work, Boston University.
Registrar and Economics



B. K. STUMBERG, M.D.
College Physician

EVA SAYRE
Resident Nurse



GUY C. MOTLEY, A.B.
College Secretary

ADELE K. BELDING
Assistant to Secretary



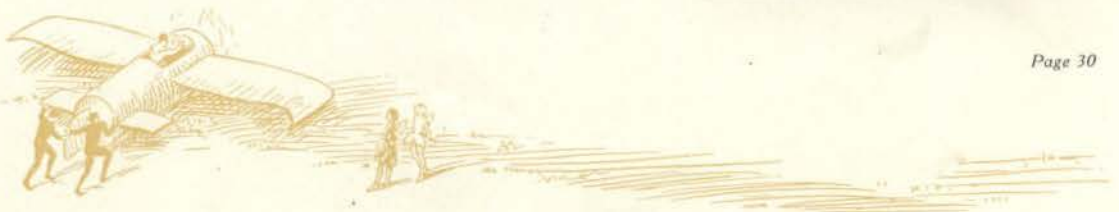
ETHEL B. COOK
Bursar

CORA WAYE
Assistant Bursar



HARRY P. ORDELHEIDE
*Superintendent of Buildings
and Grounds*

DOROTHY GEHLBACH
B. S., Lindenwood College
Secretary to Dean



FACULTY

MRS. ELIZABETH LEMASTER
Head of Nicolls Hall

MARY C. BLACKWELL
Head of Butler Hall



MRS. EFFIE L. ROBERTS
Head of Ayres Hall

MRS. J. W. WENGER
Head of Sibley Hall



MABEL CLEMENT
Manager of the Tea Room

EDNA HOUGH
Head of Irwin Hall



CORA V. WALTERS
Dietitian

ARABELLE FOSTER
Assistant Dietitian



ANNA JECK
Postmistress

DELPHIA HIRSH
Assistant Postmistress





Left to right—KELLEY, WOOD, GREER

STUDENT GOVERNMENT

THE BOARD

ANNA LOUISE KELLEY	<i>President</i>
ISABEL WOOD	<i>Vice-President</i>
SARAH LOUISE GREER	<i>Secretary-Treasurer</i>
MADELINE JOHNSON	<i>President of Y. W. C. A.</i>
MARY CHOWNING	<i>President of Butler Hall</i>
MARGARET JEAN WILHOIT	<i>President of Ayres Hall</i>
ALICE DENTON	<i>President of Irwin Hall</i>
LACLAIRE SCHMISSEUR	<i>President of Sibley Hall</i>
MARY JANE CARSON	<i>President of Niccolls Hall</i>





Left to right—SCHMISSEUR, CHOWNING, WILHOIT, DENTON

STUDENT GOVERNMENT

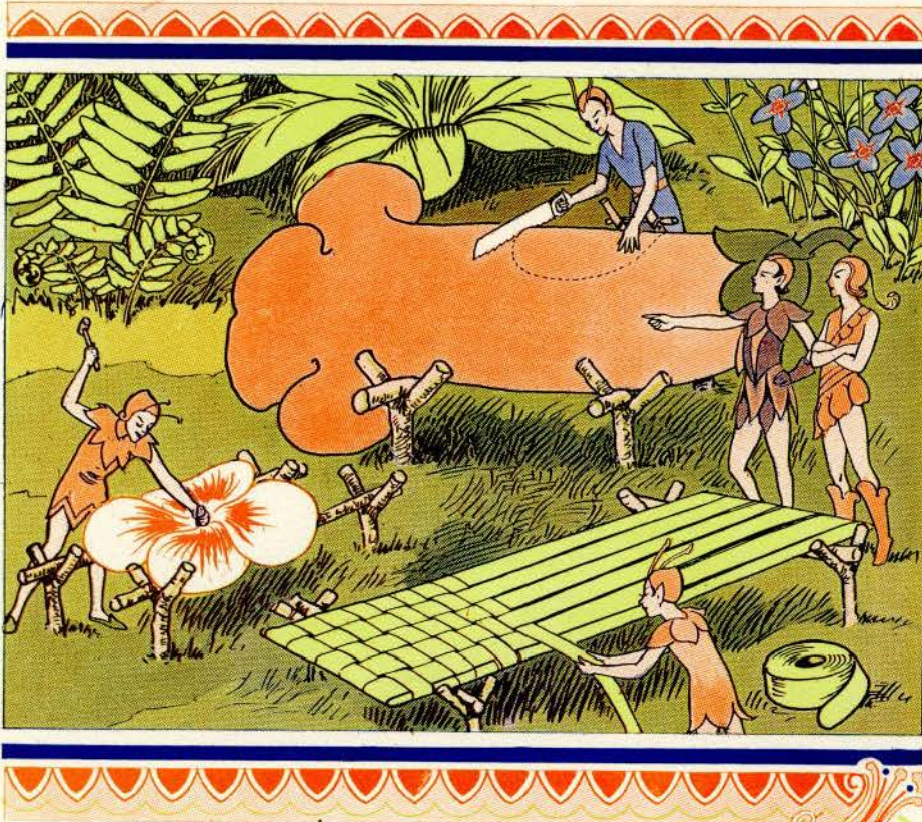
STUDENT government in the present form was established in 1926, when a constitution providing for a council elected by the student body was adopted. The President is chosen from the Senior Class, the Vice-President from the Junior Class, and the Secretary-Treasurer from the Sophomore Class.

The presidents of the five dormitories, with the President of Y. W. C. A. and the officers of the Student Government, sit as a governing board. This group has under its control all matters of campus life not academic or under the jurisdiction of the administration.

It is the purpose of this body to further self-government, to stimulate relations between faculty and students, and to uphold the highest standards of honor.







CLASSES

CLASSES

SEDATE seniors, jocund juniors, subtle sophomores, and fervent freshmen—they're here in photographic transcript from life, well-known, attractive faces radiating individuality and charm. Down through the years they will remain here, a permanent record of how they looked in the college year of 1932.





HAUCK

McKEEHAN

FRENCH

BRIAN

THE SENIOR CLASS

LOIS McKEEHAN	<i>President</i>
ELIZABETH FRENCH	<i>Vice-President</i>
LAURA HAUCK	<i>Secretary</i>
MAURINE BRIAN	<i>Treasurer</i>
MRS. JOHN L. ROEMER	<i>Sponsor</i>
MISS MARY GORDON	<i>Sponsor</i>

THE GRAND OLD CLASS

We are the grand old class of thirty-two;
 We're here to lead our school in all we do.
 Oh, Lindenwood, we sing our love for you!
 Oh, Lindenwood, we'll keep your colors brave and true!
 And when we work, we work, but when we play,
 We make them step around; we know the way.
 Lindenwood, we're all for you, only you—
 Lindenwood!





SENIOR CLASS

THE class of thirty-two has continued to live up to the high ideals set when its members started in college together four years ago, and further indicated when, as Sophomores, they chose the aeroplane as their class emblem. Now, as Seniors, they are ready to turn their backs upon their Alma Mater, where they have so profitably spent their last four years. It is time for them to win names for themselves and further glory for their college; to carry over into life those same ideals which the bright blue aeroplane has symbolized during their college days.

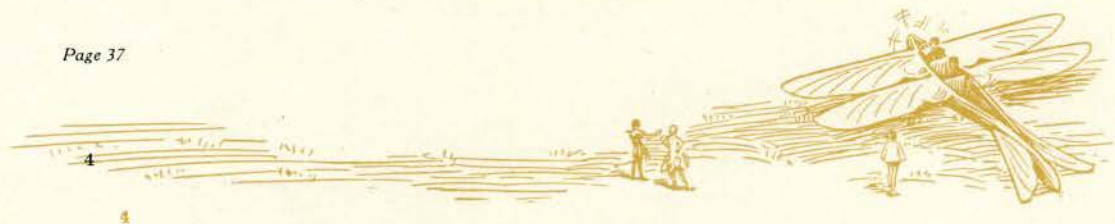
The talents found among the members of the class of thirty-two are indeed diversified. Within a few years it should have successful members in many different fields of activity. In literary pursuits, the teaching profession, the business world, the field of art, science, journalism, or in the art of homemaking, these girls are ready to take their places, and judging from the samples of their work here at Lindenwood, they will fill these places capably.

Aided by the understanding and sympathetic guidance of its sponsors, Mrs. John L. Roemer, and Miss Mary Gordon, head of the Department of Oratory, the Senior class plane has been successfully piloted for the third consecutive year by Lois McKeehan of Hot Springs, Arkansas. And that isn't all that Lois has done successfully, either. She is the president of Alpha Sigma Tau, the highest honorary society on the campus, and is an active member of Sigma Tau Delta, Pi Gamma Mu, and the Athletic Association. Besides all of her other campus activities, she has helped to guide a dormitory full of Freshmen through the trials and tribulations of their first year at college; and, just to prove that she is popular, she was elected for the second time as the popularity queen.

The other officers of the class are also outstanding and well-known figures on the campus. There is Elizabeth French helping her sister to keep the vice-presidencies all in the family. Elizabeth hails from Roswell, New Mexico, and just radiates true Western friendliness. Elizabeth is an important member of Lindenwood's business department, a member of the Commercial Club and president of the Western Club.

The secretary, Laura Hauck, from Greencastle, Indiana, and the treasurer, Maurine Brian, from Sumner, Illinois, are both outstanding in the Home Economics field. They are valuable members of the Home Economics Club and of the Triangle.

With such guidance and such officers to steer her through, why wouldn't the Senior plane run smoothly, as it surely has?



CLASS OF 1932



CHARLOTTE ANNE ABILDGAARD
Oxford, Kansas

An old English tea-set—gilt-edged books bound in morocco—goldenrod in late afternoon sun.

International Relations Club, '29, '30, '31, '32, Vice-President, '31, President, '32; League of Women Voters, '30, '31, '32, Secretary-Treasurer, '31, President, '32; Pi Gamma Mu, '31, '32, President, '32; Athletic Association, '31, '32; Beta Pi Theta, '31, '32; Kansas Club.



CLASS OF 1932



JANE BABCOCK
Moberly, Missouri

*Football games—a yellow chrysanthemum against brown tweed—
a crisp Saturday in autumn.*

Aloha Sigma Tau, '30, '31, '32, Secretary-Treasurer, '32;
Beta Pi Theta, '30, '31, '32, Alumnae Secretary, '32; Pi Alpha
Delta, '29, '30, '31, '32, Vice-President, '32; Athletic Association,
'30, '31, '32; League of Women Voters, '31, '32, Secretary-Treasurer,
'32; Missouri Club.



CLASS OF 1932



VIRGINIA BAKER
Falls City, Nebraska

*The fine cool sand of restless dunes—carved white jade and coral—
wisteria of shadowed blue.*

League of Women Voters, '32; Nebraska Club.



CLASS OF 1932



MARY LOUISE BOWLES
Perry, Oklahoma

*The cool bright glitter of crystals—soft candlelight on old damask—
an Easter lily, regal and fair.*

Athletic Association, '29, '30, '31, '32; Pi Gamma Mu, '32,
Secretary, '32; Lindenwood Sextet, '30, '31, '32; Y. W. C. A.
Cabinet, '32; Choral Club, '30, '31. Secretary, '30, '31; Choir, '30,
'31, '32, President, '32; Oklahoma Club.



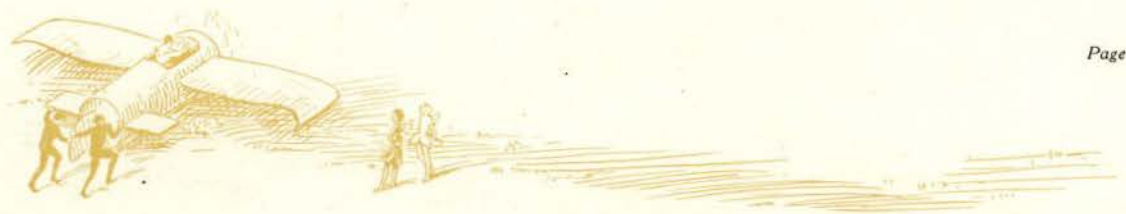
CLASS OF 1932



VERNA MARGARET BREDENBECK
St. Charles, Missouri

Crab-apple blossoms against ivory woodwork—a Dresden Shepherdess—pale-blue dotted swiss.

Triangle, '31, '32; Athletic Association, '30, '31, '32, Head of Hiking, '32; Home Economics Club, '29, '30, '31, '32; Missouri Club.



CLASS OF 1932



CAROLYN BREWER
Alexandria, Louisiana

*Southern magnolia blossoms—Mendelssohn's "Spring Song"
on Pipes o' Pan—a cool and shaded brook of silver-green.*

Triangle, '32; League of Women Voters, '32; Home Economics Club, '30, '31, '32; International Relations Club, '32; Athletic Association, '32; Dixie Club.



LINDEN LEAVES

CLASS OF 1932



MAURINE BRIAN
Sumner, Illinois

Sprigs of fragrant rosemary—a yellow voile frock with puff sleeves—bright uncut topaz.

Home Economics Club, '29, '30, '31, '32; Triangle, '31, '32; Class Treasurer, '32; Vice-President Student Board, '31; Illinois Club.



CLASS OF 1932



GLADYS ELZARYN CRUTCHFIELD
St. Charles, Missouri

*The subtle fragrance of white gardenias—a brilliant cadenza
from Liszt—a colonial silhouette of black onyx.*

Sigma Tau Delta, '32; Alpha Psi Omega, '31, '32; Commercial
Club, '31, '32; Debate Team, '32; Missouri Club.



LINDEN LEAVES

CLASS OF 1932



KATHARINE W. DAVIDSON
Marshalltown, Iowa

*Kreisler's "Caprice Venoise" on a broken heart-string under
a dull-red Romany moon—man asking his eternal "Why?"—amethyst.
Alpha Mu Mu, '30, '31, '32; Delta Phi Delta, '30, '31, '32,
Vice-President, '31; Athletic Association, '32; Iowa Club.*



CLASS OF 1932



ELEANOR ELDREDGE
Ottawa, Illinois

Dewy morning-glories—Grimm's Fairy Tales in a cosy window-seat—a cardinal's bright whistle from the distance.

Assistant Business Manager of Linden Leaves, '31, Business Manager of Linden Leaves, '32; Athletic Association, '29, '30, '31, '32; Vice-President of Y. W. C. A., '31; Y. W. C. A. Cabinet '32; League of Women Voters, '31, '32; International Relations Club, '30, '31, '32; Beta Pi Theta, '31, '32, Secretary, '32; Pi Gamma Mu, '31, '32; Illinois Club.



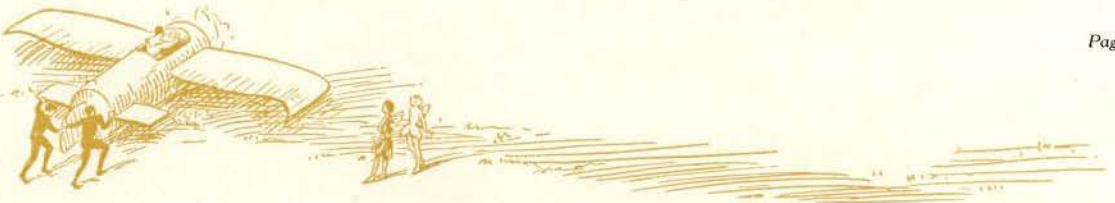
CLASS OF 1932



ELIZABETH FRENCH
Roswell, New Mexico

A white birch etched on dark blue—the intermittent gleam of summer fireflies—pale purple fleur-de-lys.

Mary Baldwin College, '29; Commercial Club, '30; Vice-President of Senior Class, '32; Athletic Association, '30, '31, '32; Linden Bark Staff, '32; League of Women Voters, '32; Western Club, '30, '31, '32, President, '32.



CLASS OF 1932



RUTH GIBBS
Las Vegas, New Mexico

House parties—syncopated rhythm—beaten silver on turquoise satin.

Commercial Club, '31, '32; League of Women Voters, '31, '32; Treasurer of Y. W. C. A., '32; Western Club, Treasurer, '31, '32.



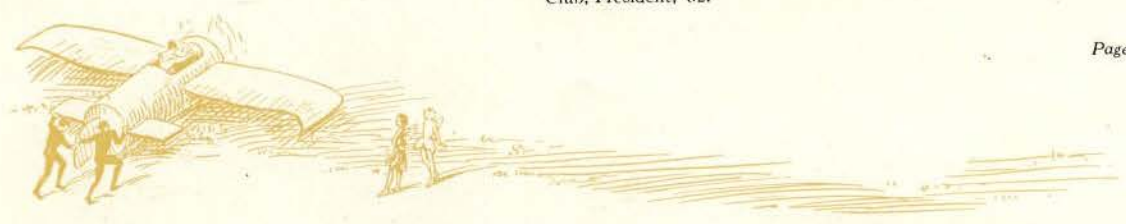
CLASS OF 1932



VIRGINIA GREEN
Belton, Missouri

*A willow mirrored in a frosty stream—apple-green wedgewood—
a copper amulet encrusted with carnelian.*

Pi Gamma Mu, '32; Triangle Club, '30, '31, '32, Vice-President, '31, President, '32; League of Women Voters, '30, '31, '32, Vice-President, '31, President, '32; Treasurer of Class, '31; Missouri Club, President, '32.



CLASS OF 1932



PEARL HART
Rawlins, Wyoming

*A cameo traced in old ivory—the mystery of a Kashmir love song—
lilies of the valley against dull ebony.*

Latin Club, '29; International Relations Club, '32; League of
Women Voters, '32; Linden Bark Staff, '32; Western Club.



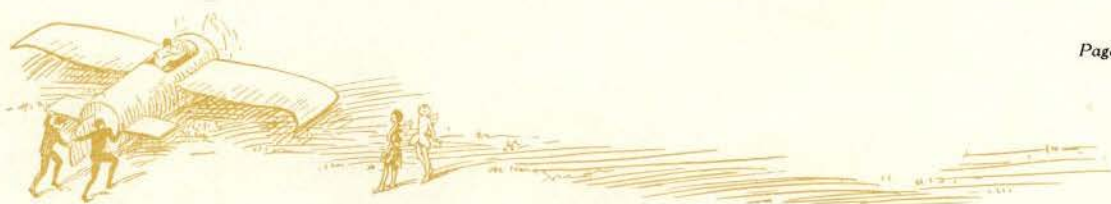
CLASS OF 1932



LAURA HAUCK
Greencastle, Indiana

*The cadence of a low, soft breeze at dusk—blue-checked gingham—
fragrant white lilacs after a spring rain.*

DePauw University, '29; Home Economics Club, '30, '31, '32;
Class Officer, '32; Triangle, '32; Athletic Association, '32; League
of Women Voters, '32; Eastern Club.



CLASS OF 1932



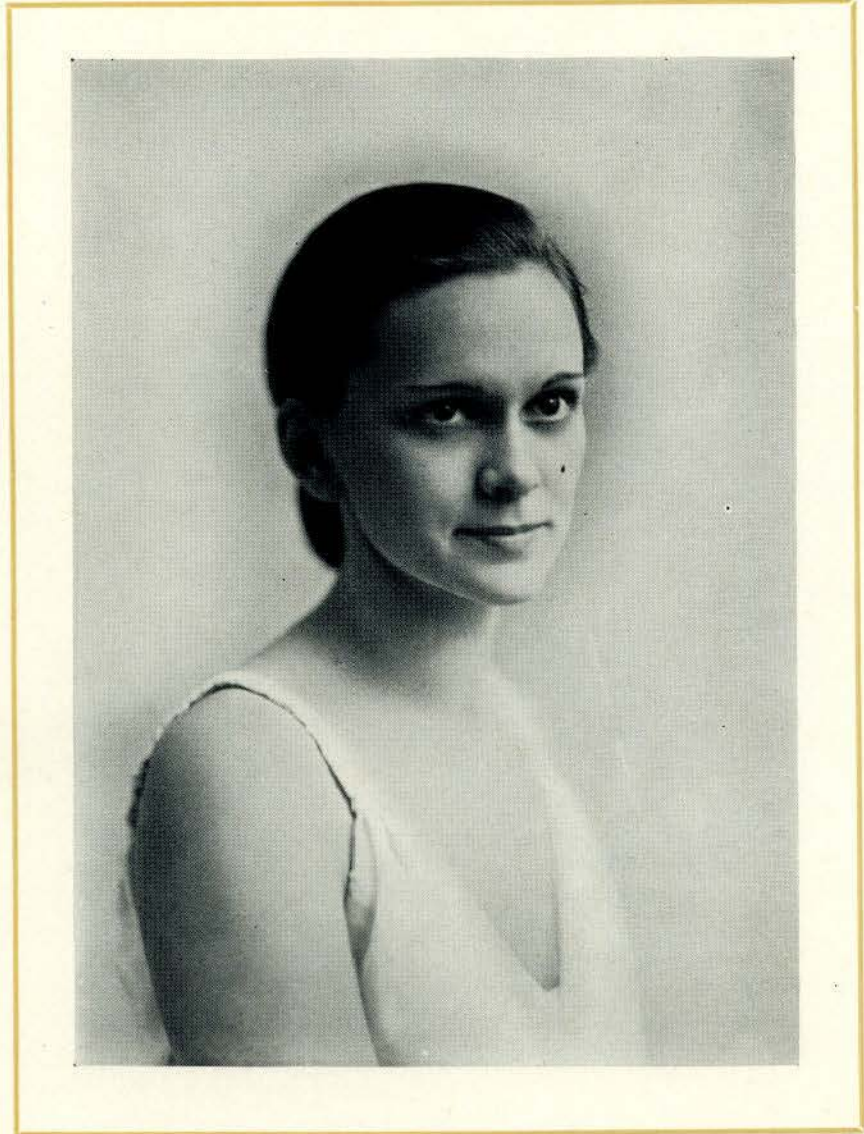
JENNIE JEFFERIS
Rock Springs, Wyoming

*Sturdy sage-brush against an azure prairie sky—an antique
green-gold chain—a fragile arabesque in stone.*

International Relations Club, '29, '30, '31, '32, Vice-President,
'31; League of Women Voters, '31; Western Club, Secretary, '31.



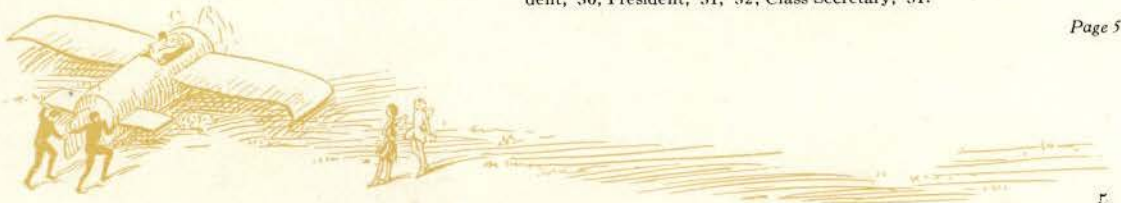
CLASS OF 1932



MADLINE JOHNSON
Michigan City, Indiana

*The slumbering fire of a Burmese ruby—staccato of castanets—
white plum petals shattered by a midsummer storm.*

Athletic Association, '29, '30, '31, '32, Treasurer, '29, Vice-President, '30, President, '31, Secretary, '32; Y. W. C. A. Cabinet, '31; President of Y. W. C. A., '32; Home Economics Club, '31, '32; League of Women Voters, '31, '32; Eastern Club, Vice-President, '30, President, '31, '32; Class Secretary, '31.



CLASS OF 1932



FRANCES E. KAYSER
Greenville, Illinois

A shell-pink Empire gown with ivory lace—a child who once believed in Peter Pan—a pool rippled by a jest.

Pi Alpha Delta, '29, '30, '31, '32, Secretary, '31, President, '32; Linden Bark Staff, '31; Editor-in-Chief of Linden Bark, '32; Alpha Sigma Tau, '31, '32; Sigma Tau Delta, '32, Secretary-Treasurer, '32; Beta Pi Theta, '32, Publicity Manager, '32; Athletic Association, '31, '32; League of Women Voters, '31, '32; Illinois Club.



CLASS OF 1932



ROSE KEILE
Muskogee, Oklahoma

Sunlight on 'dobe walls—dull reverberations from a Chinese temple gong—pine needles, crisp and pungent.

Athletic Association, '29, '30, '31, '32, President, '32; Y. W. C. A. Cabinet, '32; International Relations Club, '31, '32; League of Women Voters, '31, '32; Oklahoma Club, President, '31, '32.



CLASS OF 1932



ANNA LOUISE KELLEY
St. Louis, Missouri

Larkspur and Dorothy Perkins roses—sandal-wood inlaid with silver—a blue-green sea, white-capped.

Student Board, '30, '31, '32, President of Student Board, '32; Triangle, '30, '31, '32; Choir '29, '30; Athletic Association, '31, '32; League of Women Voters, '29, '30, '31, '32; International Relations Club, '30, '31, '32; Missouri Club; St. Louis Club.



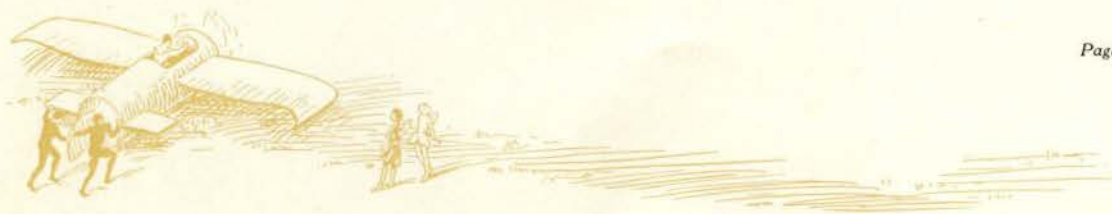
CLASS OF 1932



MARY FRANCES MCKEE
Benton, Illinois

Crisp pink taffeta with ruffles—the spring's first robin—fresh buttercups.

Choral Club, '29, '30; Orchestra, '29, '30, '31, '32; Choir, '32; Delta Phi Delta, '30, '31, '32; Illinois Club.



CLASS OF 1932



LOIS MCKEEHAN
Hot Springs, Arkansas

The dark splendor of red rambler roses—the winsome charm of Indian summer—a dinner ring of flawless emerald.

Vice-President of Class, '29; President of Class, '30, '31, '32; Alpha Sigma Tau, '30, '31, '32, Vice-President, '31, President, '32; Sigma Tau Delta, '30, '31, '32; Pi Gamma Mu, '31, '32, Secretary, '32; International Relations Club, '31, '32; Popularity Queen, '30, '32; Linden Bark Staff, '32; Athletic Association, '30, '31, '32; Dixie Club, President, '31.



CLASS OF 1932



FRANCES ELIZABETH NEFF
Kansas City, Missouri

Soft velvet ribbon of apple-green—a seed pearl necklace—sprays of delphinium and Queen Anne's lace.

Baker University, '29; Home Economics Club, '30, '31, '32; Triangle, '32; Pi Gamma Mu, '32; Missouri Club.



LINDEN

LEAVES

CLASS OF 1932



MARGARET OMOHUNDRO
St. Louis, Missouri

*Pond-lilies swathed in sunlight—white samite and cloth of gold—
the scent of purple heliotrope.*

Triangle, '31, '32; Missouri Club; St. Louis Club.



LINDEN LEAVES

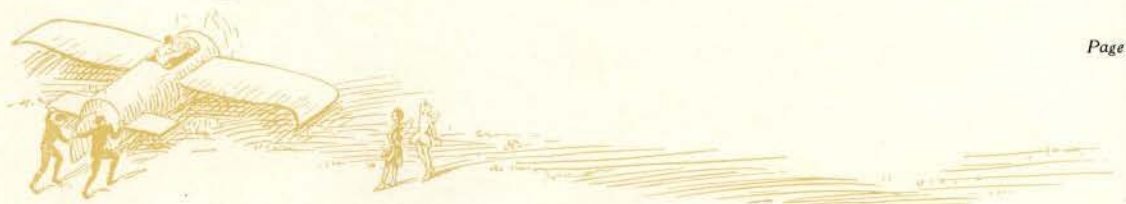
CLASS OF 1932



HELEN PRESS
St. Louis, Missouri

The slow languid murmur of dropping water—fall asters—the rustling of a moire portiere.

Washington University, '30; Elmhurst College, '31; St. Louis Club; Missouri Club.



CLASS OF 1932



NORMAN RINEHART
Camden, Arkansas

A satyr with wings—breaths of cool jasmine—a white moth in a starless night.

Kappa Pi, '31, '32, President, '32; Art Editor of Annual, '32; Linden Bark Staff, '32; Dixie Club.



LINDEN LEAVES

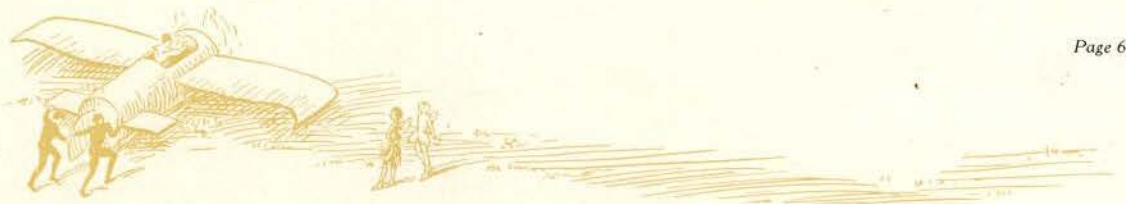
CLASS OF 1932



BARBARA RINGER
Pauls Valley, Oklahoma

Lavender hyacinths in the shade of dusk—a burnished pewter vase on a walnut console—dainty black lace mitts.

Home Economics Club, '29, '30, '31, '32; Oklahoma Club.



CLASS OF 1932



MARGARET ROSSY
San Antonio, Texas

Wine-colored velvet—a scimitar of Toledo steel, its hilt gem-studded—Nevins' "Venetian Love Song."
College of Industrial Arts, '29; Incarnate Word Convent, '30, '31.



LINDEN LEAVES

CLASS OF 1932



MIRIAM RUNNENBURGER
Harrisonville, Missouri

A chintz-covered wing chair—pale blue wood-violets—white dimity curtains puffed by an April morning wind.

Triangle, '32; Home Economics Club, '31, '32, Vice-President, '31, President, '32; League of Women Voters, '31, '32; Athletic Association, '30, '31, '32; Missouri Club, President, '31; Maid of Honor, '31.



CLASS OF 1932



MARGARET SCHABERG
St. Charles, Missouri

A pendant of carved ivory—the quiet strength of dogwood in early spring—a thrush's dulcet note.

Home Economics Club, '29, '30, '31, '32; Triangle, '31, '32; Missouri Club.



CLASS OF 1932



TEARLE M. SEILING
St. Charles, Missouri

A meadow lark at dawn—pale green iridescent glass—a fresh nosegay from an old-fashioned garden.

Alpha Mu Mu, '30, '31, '32, President, '32; Delta Phi Delta, '30, '31, '32, President, '31, '32; Choir, '30; Choral Club, '31, President, '31; Missouri Club.



CLASS OF 1932



MARIE SCHMUTZLER
Mansfield, Ohio

*A hand-woven paisley shawl—tall pink and white hollyhocks—
an inlay of mother-of-pearl.*

Triangle Club, '31, '32, Vice-President, '32; Linden Bark Staff, '32; League of Women Voters, '29, '31, '32; Pi Gamma Mu, '32; Eastern Club, Vice-President, '32.



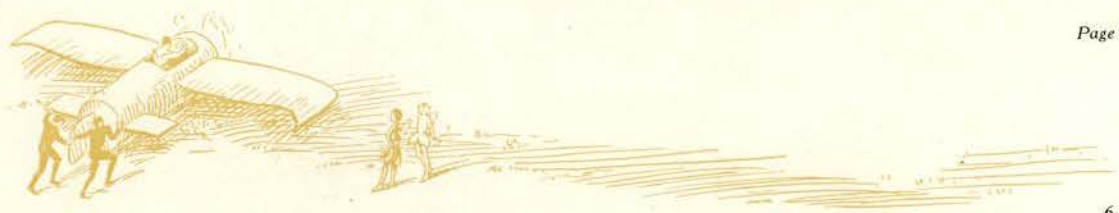
CLASS OF 1932



MARJORIE A. TAYLOR
Decatur, Illinois

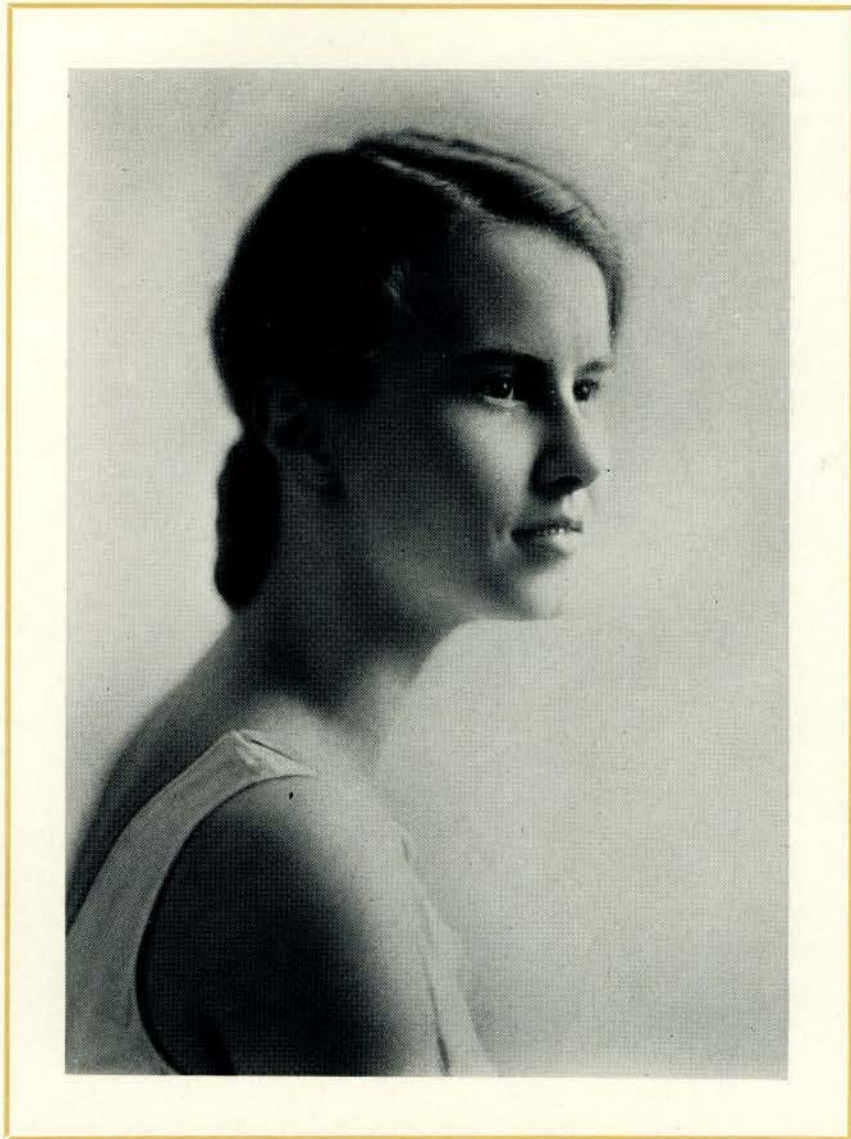
Puck and Ariel in one—Dvorak's "Humoresque" accelerando—a fisher for stars in the hour before dawn.

Athletic Association, '29, '30, '31, '32; Head of Golf, '32; International Relations Club, '31, '32; Alpha Psi Omega, '31, '32. Annual Staff, Feature Editor, '32; Linden Bark Staff, '30; Choir, '29; Debate Club, '32; Illinois Club.



LINDEN LEAVES

CLASS OF 1932



JANE E. TOMLINSON
Chillicothe, Ohio

*Gold-banded Haviland—the charm of Grainger “Country Gardens”
—rich sunlight through amber.*

Linden Leaves Staff, Assistant Editor-in-Chief, '31, Editor-in-Chief, '32; Art Club, '29, '30, '31, '32, President, '30, Treasurer, '31; Kappa Pi, '30, '31, '32, President, '31; Alpha Sigma Tau, '30, '31, '32, Secretary-Treasurer, '31; Sigma Tau Delta, '30, '31, '32, Secretary-Treasurer, '31; Pi Gamma Mu, '31, '32; House Representative, '29; Eastern Club.



LINDEN LEAVES

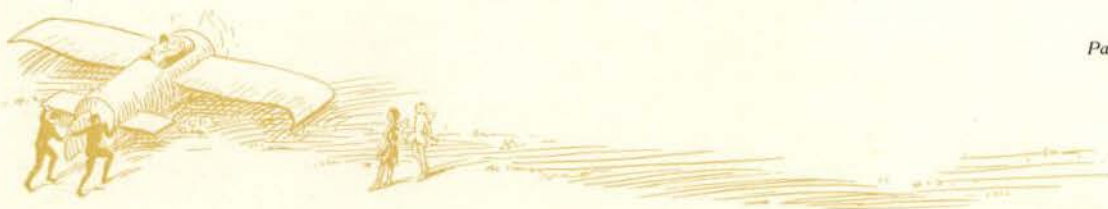
CLASS OF 1932



WILLA WATERS
Nevada, Missouri

*A scarf of tangerine and peacock-blue—a tarantella in B Minor—
a bronze medallion.*

Bethany College; Horner Conservatory; Missouri Club.



CLASS OF 1932



MARGARET JEAN WILHOIT
Kansas, Illinois

Viennese waltzes played on a rosewood harpsichord—a Victorian drawing-room—star-point light on a trellis of wisteria.

Alpha Sigma Tau, '30, '31, '32, President, '31; Sigma Tau Delta, '30, '31, '32, Vice-President, '31, President, '32; Beta Pi Theta, '30, '31, '32, Corresponding Secretary, '31, Vice-President, '32; Pi Gamma Mu, '31, '32; Student Board, '32; Debate Club, '32; League of Women Voters, '29; Athletic Association, '32; Literary Editor, *Linden Leaves*, '32; Choir, '29, '30, '31; Illinois Club.



CLASS OF 1932



LILLIAN WILKINSON
Bethany, Illinois

Prairie grass swayed by the wind—fine linen scented with lavender—pale evening primrose.

Choral Club, '31; International Relations Club, '31, '32; Illinois Club.



CLASS OF 1932

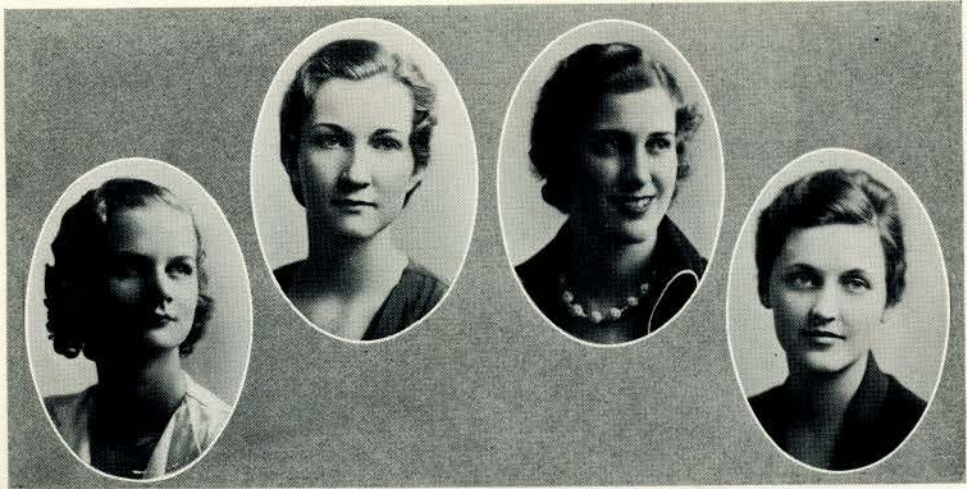


DOROTHY WINTER
Bicknell, Indiana

Yellow jonquils in a delft-blue bowl—a little girl practising scales—a pixie with querulous eyes.

Annual Staff, Organization Editor, '32; Beta Pi Theta, '30, '31, '32, Secretary, '31, President, '32; Sigma Tau Delta, '31, '32, Vice-President, '32; Alpha Sigma Tau, '30, '31, '32; Pi Gamma Mu, '31, '32, Alpha Psi Omega, '32; Eastern Club.





NITCHER

ENGLAND

HUNKER

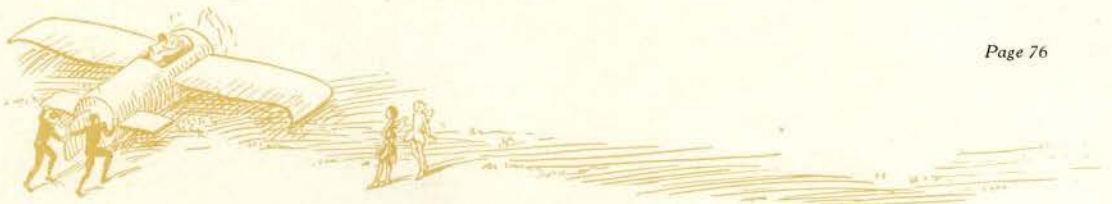
BAGNELL

THE JUNIOR CLASS

ELIZABETH ENGLAND	<i>President</i>
LILLIAN NITCHER	<i>Vice-President</i>
GRETCHEN HUNKER	<i>Secretary</i>
JANE BAGNELL	<i>Treasurer</i>
DR. KATE L. GREGG	<i>Sponsor</i>

THIRTY-THREE

We belong to thirty-three,
 Junior class are we;
 Proud and here to prove that we stand
 For everything that's good and grand.
 So, Lindenwood, we'll work for you,
 Cherish and honor forever,
 Proving that we'll always be
 The peppy class of thirty-three.





THE JUNIOR CLASS

"THE peppy class of thirty-three" has certainly proved itself to be that. Still maintaining that spirit of co-operation which they proved themselves to have through all the important activities of their Sophomore year, the Junior class acts as a body, and therein lies the secret of their great success in anything they undertake.

Among their important activities for this year, one of the outstanding things is the second leap year dance, which they joined the Student Board in giving. That there is rare artistic talent in the class was proven by the lovely Japanese garden effect which transformed the gym for that dance. On the seventh of May, they united with the Seniors to present a lovely picture on the campus in front of Sibley Hall, as, dressed in floating organdies, they danced around the May pole for the pleasure of the May queen and her court. Their most important affair, however, was the never-to-be-forgotten Prom, which they gave in honor of the departing Seniors.

Dr. Kate L. Gregg of the English department is the capable sponsor of this peppy class. The president of the class, Elizabeth England, is from Kirkwood, Missouri. She is known for her beauty as well as her executive ability. As maid of honor, she takes her place beside the May queen. Also, she is interested in the art of homemaking and is a valuable asset to the Home Economics club, besides being active in many other campus activities.

From Janesville, Wisconsin, comes the tall, blond, Lillian Nitcher, who is the vice-president of the class. Lillian is noted for her rare sense of humor, and is the humor editor of the Linden Leaves. She is an active member of the editorial staff of the Linden Bark, also.

Gretchen Hunker of Salisbury, Missouri, is the secretary. Gretchen is a member of Alpha Sigma Tau, Sigma Tau Delta, and Alpha Psi Omega. She is well-known for her dramatic ability and is capable of fine things in a literary way, too.

Jane Bagnell, the class treasurer, and one of the good reasons why the class of thirty-three is known as peppy, is from Nelson, Missouri. Jane is the president of the Y. W. C. A. and prominent in all campus activities.



CLASS OF 1933

JANE BAGNELL
Nelson, Missouri



TERESA BLAKE
St. Louis, Missouri



PHYLLIS BOMAN
Flint, Michigan



ANNA-MARIE BALSIGER
Kansas City, Missouri



MARY ETHEL BURKE
St. Charles, Missouri



ANNETTE CHAPMAN
Bethel, Maine



MARY CHOWNING
Madison, Missouri



MAURINE DAVIDSON
Hastings, Nebraska



MARTHA DUFFY
Trenton, Missouri



LINDEN LEAVES

CLASS OF 1933

ELIZABETH ENGLAND
Kirkwood, Missouri



HELEN EVERETT
Oelwein, Iowa



DOLORES FISHER
Shawnee, Oklahoma



ALBERTINA FLACH
Belleville, Illinois



MELBA GARRETT
Bigelow, Missouri



THELMA HARPE
Texarkana, Texas



MARGARET HOOVER
Trenton, Missouri



GRETCHEN HUNKER
Salisbury, Missouri



LINDEN LEAVES

CLASS OF 1933

VIRGINIA KECK
Blytheville, Arkansas



EVELYN KNIPPENBERG
St. Charles, Missouri



KATHRYN LEIBROCK
Nashville, Illinois



AUDREY MCANULTY
Independence, Kansas



MAURINE MCCLURE
St. Louis, Missouri



ARAMETHA MCFADDEN
Nevada, Missouri



MARGARET ETHEL MOORE
Trenton, Missouri



LILLIAN NITCHER
Janesville, Wisconsin



CLASS OF 1933

EUTHA OLDS
Amity, Arkansas



DORIS OXLEY
Poteau, Oklahoma



MILDRED REED
Benton, Illinois



ALICE ROWLAND
Plattsburg, Missouri



FLORENCE SCHNEDLER
St. Charles, Missouri



LILLIAN WEBB
St. Louis, Missouri



ISABELLE WOOD
Auxvasse, Missouri



MARJORIE WYCOFF
Garnett, Kansas





RIETH

MORGAN

FRENCH

MARSH

THE SOPHOMORE CLASS

HELEN MORGAN	<i>President</i>
MILDRED FRENCH	<i>Vice-President</i>
CATHARINE MARSH	<i>Secretary</i>
HELEN RIETH	<i>Treasurer</i>
MISS ALICE PARKER	<i>Sponsor</i>

STAND AND CHEER

Stand and cheer,
 The Sophs are coming in;
 Once they pledge,
 They stick through thick and thin;
 And when they play the game,
 They're mighty sure to win—
 So, hats off for nineteen thirty-four!



THE SOPHOMORE CLASS

"ROYALTY deserves a crown," said they, and put one on their jackets. But royalty did not choose to rest on its lindens—I mean on its laurels; wherefore the class that will graduate (we hope) in the year of our Lord nineteen hundred and thirty-four has made a bed for itself which is most comfortable to lie upon, although, of course, in the event that the bed did not suit, it would doubtless have been torn up and made over again. So much, then, for our noble lineage and achievements, for our perspicacity, our loyalty, and our diversity.

Helen Morgan (not the one who sings from piano-tops, but the one from Granite City, Illinois) is class president. It would be difficult to say which has benefited most by the connection—the class or Helen—such is the co-operation of the one and the executive ability of the other. This curly-headed cherub plays hockey, emotes on the stage, and serves as treasurer for the Athletic Association and the Illinois Club, with equal success.

Our vice-president is Mildred French from Roswell, New Mexico. These "Frenchies" certainly make charming vice-presidents.

Catharine Marsh, the secretary, is one of the convention from Omaha, Nebraska, a member of Sigma Tau Delta, Alpha Sigma Tau, and Kappa Pi.

Helen Rieth of Kirkwood, Missouri, is class treasurer. Head of hockey and captain of the Sophomore team, president of the St. Louis Club, secretary of Y. W. and an active member in A. A.

On November third, H. R. H., the president, before all the dignitaries of the Sophomore class, called the Freshmen to an extremely early morning court to answer some serious charges. Court convened on the quad within a circle of white-clad Sophomores. The quaking indicted ones (I suppose they were quaking—it's customary) complied with suitable grace and a certain appealing intelligence to all demands, having been found guilty of suppressed desires to sing, dance, and perform menial labors. Service with a smile is agreeable, but service with a cape is positively enchanting, particularly when the Walter Raleigh act is accompanied by a speech, "Before thee now, I humbly bow, Obviously green, I trow." The rime served as a goad to memory. For the enlightenment of the Freshmen, a skit written by Jane Laughlin was presented in chapel, and for their honor, the Sophomores gave a dance that night in the gym. This seems to be the place to remark that we proved our love for them by cutting out no less than twenty silhouette pictures and pasting them all over the wall.

The prom was truly a remarkable affair, both on account of the presence of creatures in tux, and the appearance of everyone's new spring formal. The responsibilities of royalty, I maintain, sat easily upon us.

Our thanks are gratefully extended to Miss Parker for having guided us through these two large events and the intermittent smaller ones, for having restrained our exuberance and revived our spirits when weary.



LINDEN LEAVES

CLASS OF 1934

GILDA ASHBY
La Grande, Oregon



WINIFRED BAINBRIDGE
Marion, Illinois

MYRA BEATTY
Kansas City, Missouri



MARGARET BLOUGH
St. Louis, Missouri

PHYLLIS BOYES
Libby, Montana



JUNE BRADBURY
Marshalltown, Iowa

LOIS BRAHAM
North Platte, Nebraska



MARY LOUISE BURCH
Carterville, Missouri

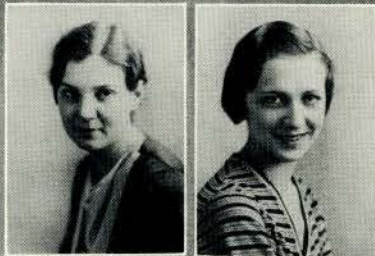
MARGARET CARTER
Carthage, Missouri



LINDEN LEAVES

CLASS OF 1934

HELEN CHAPMAN
McAlester, Oklahoma



MARY COWAN
Oklahoma City, Oklahoma



ALICE DENTON
Buller, Missouri



KATHRYN EGGEN
Sedan, Kansas



KATHERINE ERWIN
Newport, Arkansas



CAROLYN FRASHER
Des Moines, Iowa



MILDRED FRENCH
Roswell, New Mexico



MARGUERITE GILL
Kansas City, Missouri



SARAH LOUISE GREER
Denison, Texas



CLASS OF 1934

ESTHER GROVES
St. Joseph, Missouri



MARIETTA HANSEN
Chicago, Illinois



DOROTHY HAMACHER
Richmond, Missouri



HANNAH HARDIN
Anna, Illinois



BETTY HART
Kansas City, Missouri



MARY HEARD
Arkansas City, Kansas



THEO FRANCES HULL
Richmond, Virginia



MARY SUE JAMES
Joplin, Missouri



ELLEN JENNINGS
Kirkwood, Missouri



MADALINE JOHN
Chambersburg, Pennsylvania



LINDEN LEAVES

CLASS OF 1934

MARY HELEN KINGSTON
Denison, Texas



MINNA KRAKAUER
Chihuahua, Mexico



MILDRED KUHLMAN
California, Missouri



MATRED LEVENGOD
Elsberry, Missouri



MARTHA LOBB
Pontiac, Illinois



JACQUELINE McCULLOUGH
Jonesburg, Missouri



CATHARINE MARSH
Omaha, Nebraska



DORIS MARTIN
Moberly, Missouri



RUTH MARTIN
Benton, Illinois



MARGARET MELLOTT
Kansas City, Kansas



CLASS OF 1934

JUNE MESSNER
Charleston, West Virginia



MARGUERITE METZGER
Omaha, Nebraska



LUCILLE MILLER
East St. Louis, Illinois



HELEN MORGAN
Granite City, Illinois



MARIETTA NEWTON
Carthage, Missouri



NAOMI RATZ
St. Louis, Missouri



HELEN RIETH
Kirkwood, Missouri



MARGARET RINGER
Pauls Valley, Oklahoma



GRACE RITTER
St. Louis, Missouri



ROSINE SAXE
Monett, Missouri



CLASS OF 1934

LA CLAIRE SCHMISSEUR
Belleville, Illinois



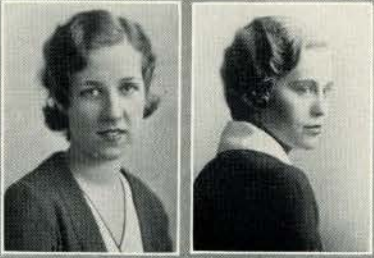
JANE TOBIN
Springfield, Illinois

ELSIE TUCKER
Lansing, Michigan



VIRGINIA TURNER
Gideon, Missouri

MAXINE WALLACE
Chicago, Illinois



NANCY WATSON
Camden, Arkansas

ROSLYN WEIL
St. Charles, Missouri



MARION WELCH
Herington, Kansas



CATHERINE WILLIAMS
Danville, Illinois





DAVIS

PRIEST

BRISCOE

STEELE

THE FRESHMAN CLASS

MARYE E. PRIEST	<i>President</i>
ANNE C. BRISCOE	<i>Vice-President</i>
ALICE RICE DAVIS	<i>Secretary</i>
MARJORIE STEELE	<i>Treasurer</i>
MISS MARIE REICHERT	<i>Sponsor</i>

FRESHIES

We are Freshies, green,
 And we'll back our team,
 At Lindenwood, dear Lindenwood.
 The haughty Sophomores
 Think us awful bores,
 At Lindenwood, dear Lindenwood.

All the Juniors and mighty Seniors
 Give us highbrow looks
 Of devastating scorn;
 But we Freshie girls,
 We'll just show the world—
 At Lindenwood, dear Lindenwood.





THE FRESHMAN CLASS

ALTHOUGH the Freshmen, class of thirty-five, modestly admit in one of their splendid class songs the fact of their vernal nature, the consensus of administration and upperclassmen is far more complimentary. A class whose members are gifted with such piquant charm, attractiveness, ingenuity, and talent, as is the Freshman class, can hardly be dismissed with the bare appellation: "Freshies green." However, as a prominent campus figure has said, green is the hue symbolic of vital growth, progress, and attainment. Little wonder that the Freshmen are envied their alert spontaneity.

The Freshmen made their initial advent to Lindenwood in September. Big Sisters helped to cure the pandemic nostalgia, and soon the Freshmen were making the rest of the student body sit up and take notice. Freshman Stunt Night at Y. W., their songs in the dining-room, the subtle beauty of their Hallowe'en queen, Addys Brown, and their splendid party, all united to establish an original and popular class.

The inherent good taste of the group is well illustrated in their choice of officers, with President Marye E. Priest of Oklahoma City, Oklahoma, with her debating and dramatic ability; Vice-President Anne C. Briscoe of the gifted pen, from Carrollton, Missouri; Secretary Alice Rice Davis of Richmond, Missouri, whom everyone likes, and as treasurer, charming Marjorie Steele of Webster Groves, Missouri. With this group of officers, plus the good fortune of such an admirable sponsor as Miss Reichert, what class could fail to be outstanding?

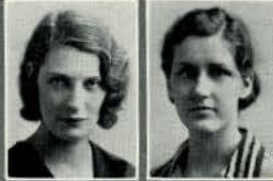
The Freshmen faithfully preserve the tradition of being the best-dressed girls on the campus. If you see a girl with flashing smile, eyes sparkling with rare good humor, who is dressed in smart sport clothes of the most recent vogue, the chances are that she is a Freshman.

The class of thirty-five demonstrated their athletic prowess by carrying away the honors of the hockey tournament, and by wholehearted participation in every contest that appeared. The Literary Supplement of the Linden Bark evidences their ability as writers; and recitals, debates, and plays depend to an important degree upon the talent of this group, which is the first to wear Freshmen sweaters. The Freshmen are worthy our admiration and pride; most certainly, their sister class is to be congratulated!



CLASS OF 1935

RUTH ADAMS



DRUSILLA ADEN

FLORINE ADKISSON



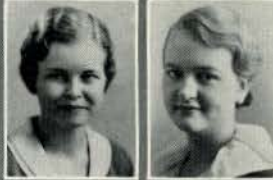
DOROTHY ALLEN

HAZEL AMLINGMEYER



INGRID ASPEGREN

ELIZABETH BARDWELL



GRACE BEARDSLEY

BARBARA BENNETT



ANNETTA BIALICK

MAXINE BISHOP



MILDRED BLOUNT

DOROTHY BOTTANI



ANNE BRISCOE



CLASS OF 1935

ADDYS BROWN



JEAN BROWNLEE

MAXINE BRUCE



DOROTHY BRUNSWICK

MARY BULPITT



KATHRYN BURKHART

ELIZABETH BURROWS



BARBARA BUTNER

MARION CARLSON



MADELINE CARR

LOUISE CAUTHERS



RUTH COOPER

ELIZABETH DARLING



ALICE RICE DAVIS



CLASS OF 1935

MARY JOSEPHINE DAVIS



HESTER DAY

MARY K. DEWEY



RUTH DIEHL

MAUDE ELIZABETH DORSETT



HELEN EDMISTON

MARY ERWIN



BARBARA EVERHAM

MARY FORD



ELEANOR FOSTER

ROSALIE GLENN



ALINE GRAHAM

MARY BELLE GRANT



HARRIETTE ANN GRAY

CLASS OF 1935

RUTH GREISZ



ETHELDA GROSS

JULIA GULLETT



SARAETTA HADAWAY

GERALDINE HAMBLIN



EDNA HARSHMAN

MARION HAUCK



ELEANOR HEAD

KATHERINE HENDERSON



MARY ELLEN HERNDON

ELIZABETH HITCH



NEVA HODGES

CARLENE HOLT



MARY HOME



LINDEN LEAVES

CLASS OF 1935

GEORGIA LEE JOHNSON



EVELYN KECK

ESTHER KELLEY



RUTH KELLEY

ELIZABETH KELLY



NANCY KEY

IRMA KLINGEL



PAULINE KOLB

VIRGINIA KROME



EVA MAE LIVERMORE

MARGARET LOVE



FRANCIS MCEVOY

MARY FRANCES MCGEORGE



ANNA KATHERINE MACGREGOR



CLASS OF 1935

PEGGY McKEEL



ELIZABETH McNEE

MILDRED McWILLIAMS



SUSAN JANE McWILLIAMS

MARGARET MOJONNIER



IRENE MOSELEY

MARY ELIZABETH MURDOCH



MADELINE NOON

MARIE NORD



ZELIA OWENS

HELEN PARK



NELDA MAE PARTY

VIRGINIA PEIRCE



ROSAMOND PENWELL



CLASS OF 1935

DOROTHY PETERSEN



HENRIETTA PETERSON

DOROTHY PLASS



VIRGINIA PORTER

SYBIL POWELL



MARYE ELIZABETH PRIEST

MILDRED PUCKETT



ROSA LEE ROCHE

BESSIE RODDIE



RUTH SCHAPER

VERL SCHAUMBURG



LOUISE SCHULTE

MARY ELLEN SHINN



KATHERINE SIMPSON



ELEANOR SMITH



CLASS OF 1935

VIRGINIA SODEMANN



JANE SPELLMAN

ALICE LOLA STANDEVEN



MARJORIE STEELE

EMMA JO SWANEY



ROBERTA TAPLEY

MARION TOBIN



LUCILLE TRIPPEL

CONSTANCE VENABLE



MARGARET WALKER

JANE WARNER



KATHRYN WILKINS

NOVETA WILKS



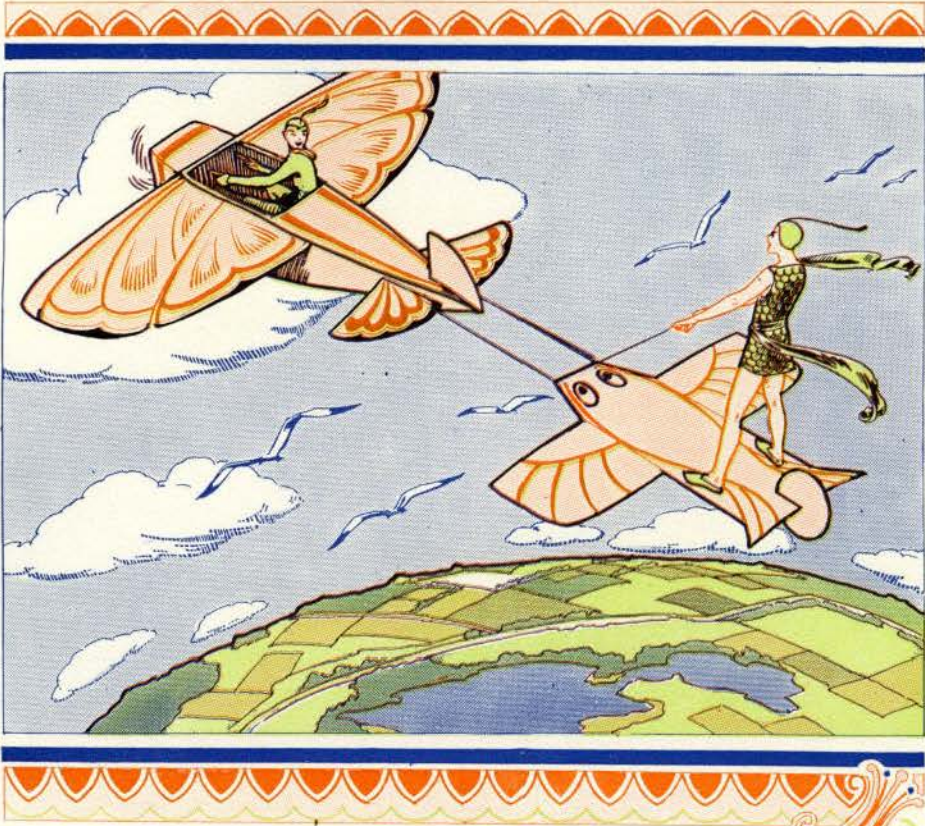
BETTY LEE WILSON



HELEN ZIMMERMAN







SPORTS



MISS REICHERT

MISS STOOKEY

COACHES

LINDENWOOD is indeed fortunate to have Miss Margaret Stookey as head of the physical education department, and with the inspiring assistance of Miss Marie Reichert and of the student assistants in the department, little wonder that this division of the college curriculum is outstanding and that the entire school takes pride in it.



JOHNSON

KEILE

EVERETT

RIETH





First row—ABILDGAARD, HAUCK, KAYSER, BREWER, E. FRENCH, MISS REICHERT, EVERETT, MORGAN, KEILE, JOHNSON, RIETH, MISS STOOKEY, HAAS, METZGER, RINGER, LIVERMORE, TAYLOR, ELDRIDGE
Second row—BURCH, CHAPPEL, HICKEY, DAVIDSON, BABCOCK, HULL, KINGSTON, WEBB, WHEELER, K. HULL, JOHN, WALLACE, THOMPSON, BROWNLEE, BARNES
Third row—NITCHER, GRAY, BURKE, BREDENBECK, HOLTGREWE, OWENS, WARNER, HIRSCH, GILL, ASHBY, WYCOFF, NEWTON, MCKEEHAN, M. RUNNENBURGER

LINDENWOOD COLLEGE ATHLETIC ASSOCIATION

OFFICERS

ROSE KEILE	<i>President</i>
HELEN EVERETT	<i>Vice-President</i>
MADLINE JOHNSON	<i>Secretary</i>
HELEN MORGAN	<i>Treasurer</i>

HEADS OF SPORTS

MARJORIE WYCOFF	<i>Posture</i>
MARGUERITE METZGER	<i>Swimming</i>
MARJORIE TAYLOR	<i>Golf</i>
VERNA BREDENBECK	<i>Hiking</i>
SHIRLEY HAAS	<i>Tennis</i>
HELEN RIETH	<i>Hockey</i>
LUCILLE CHAPPEL	<i>Basket Ball</i>
MARY ETHEL BURKE	<i>Track</i>
MADALINE JOHN	<i>Baseball</i>



Top row—EVERETT, BURKE, KEILE, WYCOFF, JOHNSON
Bottom row—JOHN, MORGAN, METZGER, RIETH, ELDREDGE

LINDENWOOD COLLEGE ATHLETIC ASSOCIATION

THE Lindenwood College Athletic Association is a member of the National Athletic Conference of American College Women, as well as the Women's Division, National Amateur Athletic Federation. As the largest and one of the most active organizations on the campus, the Association has as its purpose the development of a high standard of physical condition and skill, and the fostering of good sportsmanship. Membership requirements include the "Triple A" posture test, 125 athletic points, and a scholastic average of M.

Girls who earn specified numbers of points through active participation in such sports and activities as swimming, tennis, hockey, basket ball, baseball, track, golf, hiking, and solo dancing receive awards from the Association. For earning 600 points, the "L. C." is awarded; for 1,000 points, a large "L."

In addition to tournaments in all sports and enjoyable meetings, the Association sponsors a fall dance revue, a sport party, and a spring musical comedy, this year entitled, "Christina of Greenland."



ATHLETICS

THAT athletics play an important part in the life of every Lindenwood girl is evident from the interest shown in athletic meets of all kinds which are held for sports of every season.

On the golf course, the girls, dressed in their brightest sports regalia, present a picturesque scene as they drive their balls from one hole to the next in the late afternoon. Golf is one of our most attractive sports because it appeals to everyone, can be played alone or in groups, and is neither mild nor strenuous. Classes in this sport are offered in both the spring and fall, including instructions in drives and strokes in order to learn the game from a scientific point of view.

This year the sport is headed by the popular and excellent golfer, Sue Taylor. During the fall, she sponsored a golf test for those making points for the Athletic Association. As a part of the spring field day, an elimination tournament is held. Even the faculty compete, and it is an interesting and worthwhile contest.

When cool, windy days replace the sweltering heat of the summer, hockey steps in and claims its own. With the first announcements in chapel, girls from all classes and states dash to the hockey field. They grab their clubs, whack their neighbors over the knee, and the season's begun.

Helen Rieth, as head of hockey, had charge of the Round Robin Tournament between respective classes. The hockey season culminated in a grand climax on Thanksgiving morning. In spite of much snow and ice, two teams selected from the sister classes combatted for championship. The captain for the Freshman-Junior team was Helen Everett, and for the Sophomore-Senior team, Helen Rieth. It was a close game, but the Freshmen and Juniors were finally victorious, 7-5.

There is nothing more invigorating, nothing more soothing than a good swim, and swimming is one sport which can be indulged in all year around. Open pool adds spice to the swimmers, while classes add perfection of technique. The classes are graded into elementary, intermediate, advanced, and life-saving.





*Out for a love set . . . An
alley ball retrieved . . .
Pedal rhythm.*



ATHLETICS

The swimming pool in Butler gymnasium is steam-heated in wintertime. Adjoining the pool are adequate locker, shower, and dryer rooms.

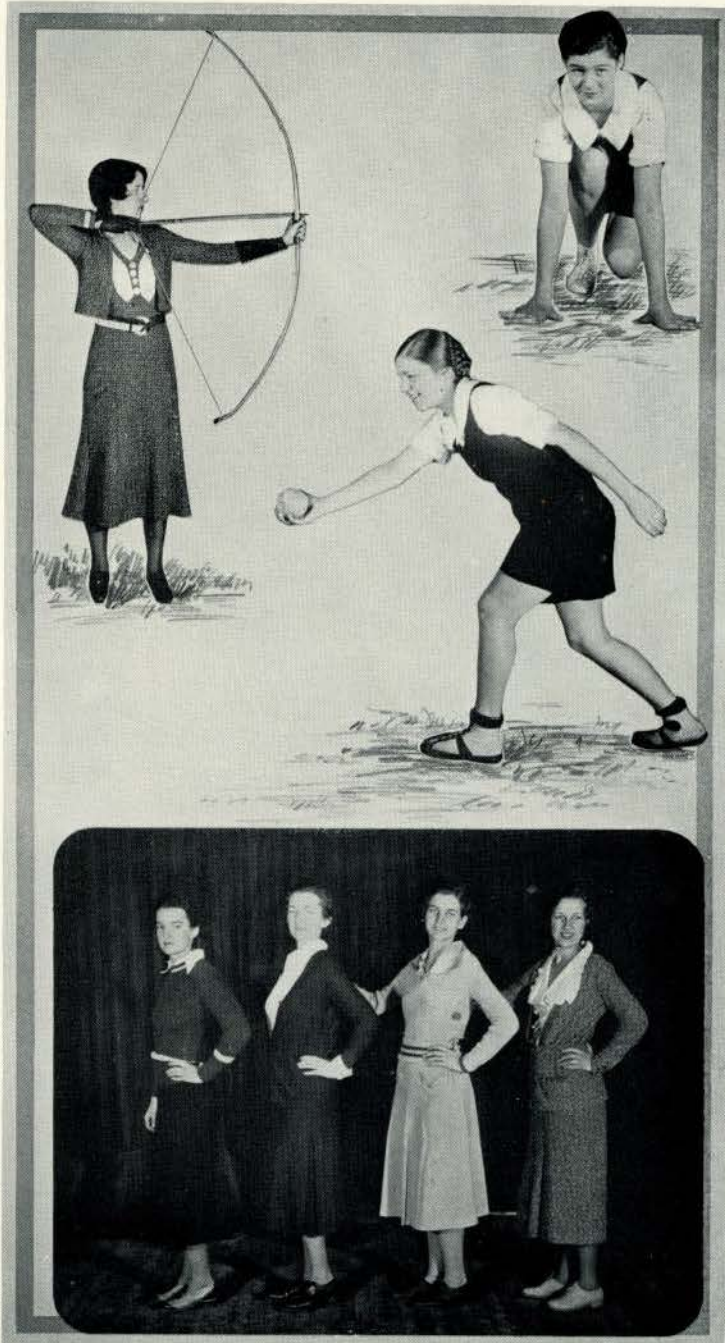
Marguerite Metzger, head of swimming, conducted a clever water carnival this year. It was really an interclass swimming meet attended by many girls who were invited to come reinforced with slickers and umbrellas. In all the events taking place the Freshman-Junior team competed with the Sophomore-Senior team. Some of the features were free-style, back stroke, breast stroke, and side stroke races, relays, diving contests, and novelty relays. All of these are self-explanatory with the exception of the last. In this novelty relay the contestant carried a pan the length of the pool without filling it with water, swam the length of the pool with a lighted candle, and then with newspapers which they read aloud, and lastly, pushed a balloon without using hands or feet. The Freshman-Junior team won this event. The Sophomore-Senior team won first place in the meet. Individual honors went to Margaret Carter, Marguerite Metzger, Barbara Everham, Jean Brownlee, and Marietta Newton.

Basket ball calls back our high school reminiscences with much gusto. The games we almost lost, those we had to win—they all return to haunt us, to spur us on to even greater triumphs. The sport was in the capable hands of Lucille Chappel this year. A large number responded to the call and developed much skill in the art of throwing goals, guarding, et cetera. The regular basket-ball season was preceded by an intensive study of the game in the various classes. Features to be emphasized in the game were stressed, thus giving the girls an excellent background. The pep which was exhibited culminated in the Round Robin tournament, composed of class teams. Each member of a team was awarded her numeral and one hundred points for the Athletic Association at the end of the season.

For the first time, a tournament among the dormitories was held this year. The captains were: Irwin, Shirley Haas; Nichols, Jean Brownlee; Sibley, Lucille Chappel; Butler, Helen Everett; Ayres, Helen Rieth.



LINDEN LEAVES



*On your mark! . . .
Shades of Robin Hood! . . .
Over the plate . . . "Perfect
posture, perfect posture, do
not slump!"*



ATHLETICS

If you want to see beautiful dancers in gorgeous costumes against picturesque backgrounds, just come to L. C. It offers them in all their forms—snappy tap and clogging dances, graceful natural dances, artistic toe ballet and charming folk rhythms. Clogging is of course very popular; in natural dancing, buoyancy, alacrity, and poise, as well as self-expression are stressed. Folk dancing gives a complete study from which the dances originated.

The dancing classes are organized to provide a wholesome form of exercise that will result in lightness with a well-poised and relaxed body. It develops self-expression through its natural program.

The dancers provided excellent programs for our parties but their first great project was the musical comedy, *Christina of Greenland*. The solo parts of this musical comedy were taken by Harriette Ann Gray and Dolores Fisher.

The next program was the May Day entertainment, given by the Juniors and Seniors. The girls wore their filmy organdies and chiffons of pastel shades, danced about the May pole, and crowned Lindenwood's May queen. It was beautiful.

The final display of dancing came in commencement week, when the annual pageant was presented.

Verna Bredenbeck, head of hiking this year, has not only made it worthwhile for those physically unable to enter into other more strenuous sports, but has, in addition, interested many others who like the vigorous fresh air and picturesque scenery.

For, as all Lindenwood girls know, St. Charles was the first capital of Missouri and is still intensely interesting. From the time it was a trading post when Indians provided the romantic setting; when Lewis and Clark went up the river, when Missouri was admitted into the Union; when Lindenwood was founded—until today it has played a thrilling role in history. There is scarcely a corner in or around it that does not have some historical interest.



LINDEN LEAVES



*Deuce again . . . An
Eaglet from the May Fete
. . . Sinking the putt . . .
Ground, sticks!*



ATHLETICS

Fifty points are given for hiking each semester, provided that eight hikes are taken. Admission to the Athletic Association requires that the applicant present one hundred and twenty-five points, fifty of these having been obtained by passing the Triple-A posture test.

Into the midst of Master Spring Fever's despotism comes that sport called "tennis"—just disrupting all his plans and purposes and robbing all his subjects. For who of gay Lindenwood can resist such a call? Its twelve splendid courts assume the strength of native urges and just won't be resisted.

This year, tennis is ruled by the small but firm Shirley Haas, who plays a faultless game. She gave tests to those wishing to make points for the Athletic Association and conducted class tournaments. Barbara Hirsch of the Freshman class; Susan Lischer and Edna Hickey of the Sophomore class; Helen Everett and Jane Bagnell of the Junior class, starred in this tournament.

The American game of baseball is certainly not omitted at Lindenwood. Madaline John is at the head of the sport this year. 'The game is taught scientifically in order to develop individual skill as well as good teamwork. The faculty versus student game was a great success for the faculty. Hamlet never spoke more truly when he said, "Frailty, thy name is woman." For against such strength as Dr. Case, from the Bible Department; Dr. Dewey, from the Education Department; and Mr. Ordelleide, Superintendent of Buildings and Grounds, Lindenwood didn't have a chance.

In the spring the interclass contests are well supported and afford much pleasure for all.

Track under the efficient management of Mary Ethel Burke held a very prominent place among the spring enterprises. The mass meet as participated under the ruling of the Woman's Division of the National Amateur Federation was an event in which all girls might participate. Under this ruling the class that had the greatest number entered stood the best chance, for the honors were awarded according to the class average rather than the individual competition.



LINDEN LEAVES



*Fore! . . . On her toes . . .
Batter up! . . . A Bull's-
Eye.*



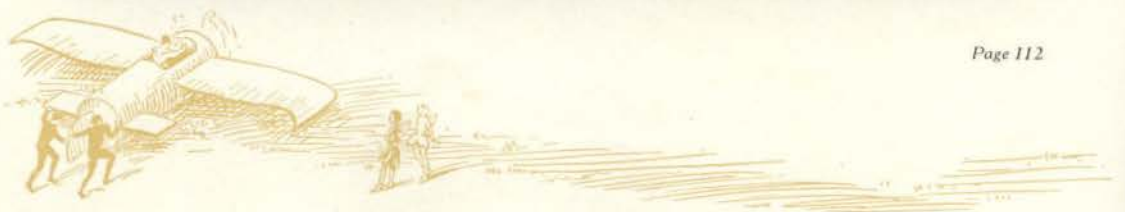
ATHLETICS

Scores were calculated on the basis of the average; one point was given for the average and three for the best display of skill. Individual points were totaled to make a team score. A local ruling, which made for group participation and which eliminated one person from winning the meet, was that a definite number from each class enter each event. Managed thus, the whole season was a success.

Archery, headed by Margaret Ringer, and taught by Miss Stookey, is popular both in the fall and spring. Although no tournaments were held for this sport, there were many exciting contests within the classes.

Primitive man used the bow and arrow in his struggle against nature. We have long since passed that point in civilization, but today there is a lively interest in the bow and arrow from the standpoint of sport alone. It is a suitable sport for women and has been developed in women's colleges throughout the country. From the physical standpoint, there is no form of exercise better suited to women. It strengthens every muscle of the body without danger of any of the injuries which are incidental to other sports. Lindenwood is fortunate in having excellent archery equipment.

Lindenwood girls are true athletes, and are capably guided in their love for sport by Miss Margaret Stookey, the head of the physical education department and her assistant, Miss Marie Reichert. Miss Stookey brings to the college advanced ideas on dancing, and under her direction many excellent dancing programs are produced throughout the year. Miss Reichert's interests center in swimming and the outdoor sports.



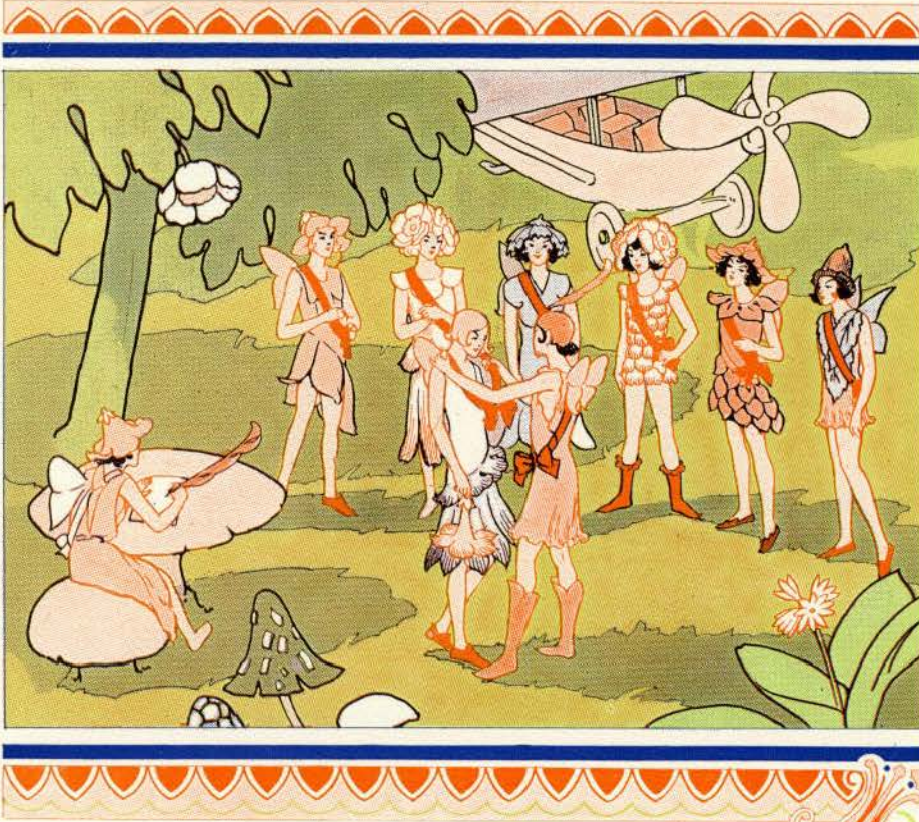
LINDEN LEAVES



*Poised for a basket . . .
A penalty bully stopped . . .
Ready for a hike.*







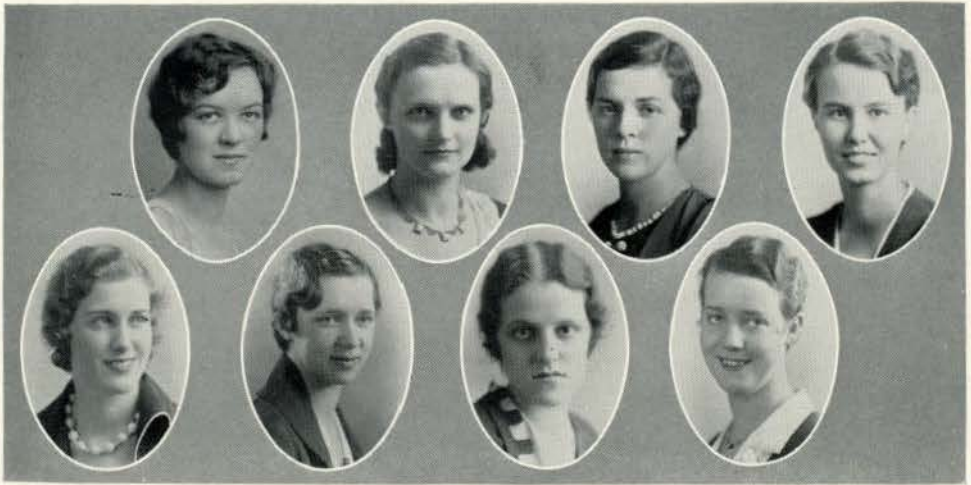
ORGANIZATIONS



ORGANIZATIONS

FRATERNITIES rewarding scholarship with honor; departmental clubs working toward worthy goals; State clubs with delightful companionship of girls from one's home state; five o'clock meetings with their valuable exchange of ideas, all contributing to the enrichment of experience and college life.





*Top row—BABCOCK, WINTER, WILHOIT, TOMLINSON
Bottom row—HUNKER, KAYSER, CHOWNING, MCKEEHAN*

ALPHA SIGMA TAU



OFFICERS

LOIS MCKEEHAN	<i>President</i>
MARY CHOWNING	<i>Vice-President</i>
JANE BABCOCK	<i>Secretary-Treasurer</i>

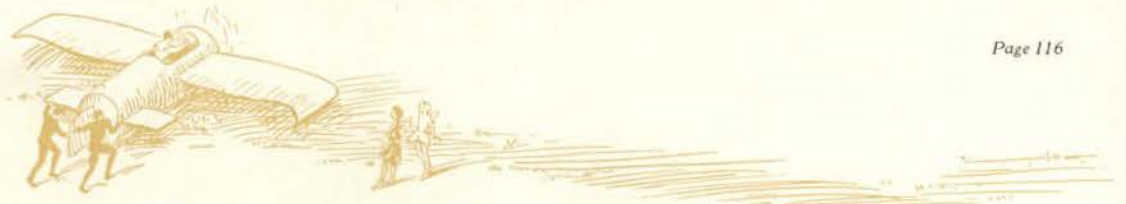
PLEDGES

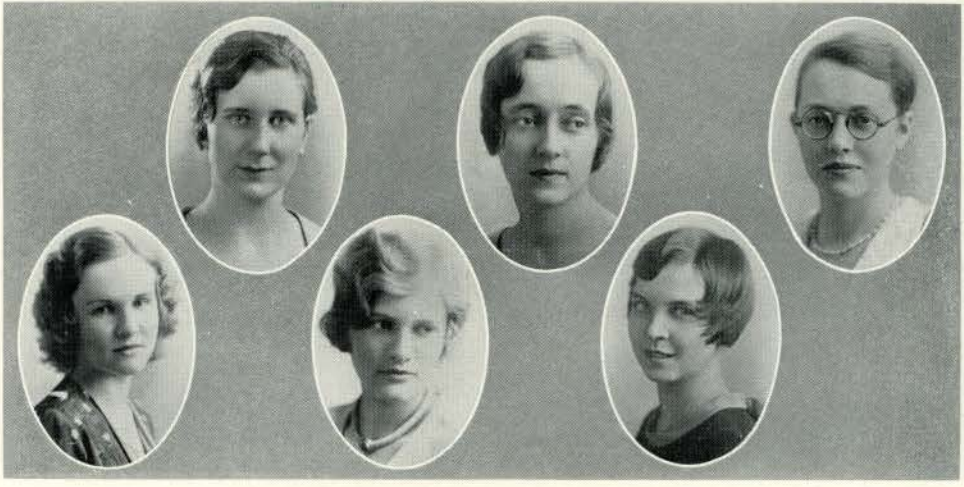
MARY LOUISE BURCH	SARAH LOUISE GREER	ERNA LOUISE KARSTEN
MARY ETHEL BURKE	BETTY HART	MARY JANE LAUGHLIN
MARY JEAN CLAPPER	THEO FRANCES HULL	CATHARINE MARSH
BETTY FAIR		ISABELLE WOOD

MEMBERS

LOIS MCKEEHAN	JANE TOMLINSON
MARY CHOWNING	GRETCHEN HUNKER
JANE BABCOCK	MARGARET JEAN WILHOIT
FRANCES KAYSER	DOROTHY WINTER

ALPHA SIGMA TAU, founded in 1922 to replace Phi Theta Kappa, the existing honorary society, is now Lindenwood's honorary literary organization. The qualifications for membership encourage a high standard of scholarship and a spirit of devotion to the ideals of the college. Alpha Sigma Tau is non-departmental, and membership in this organization is the highest honor which may come to any Lindenwood girl.





Top row—FISHER, SEILING, DAVIDSON
 Bottom row—HARPE, OXLEY, McANULTY

ALPHA MU MU



OFFICERS

TEARLE SEILING	President
DOLORES FISHER	Secretary
DORIS OXLEY	Treasurer
ELEANOR KRIECKHAUS	Corresponding Secretary

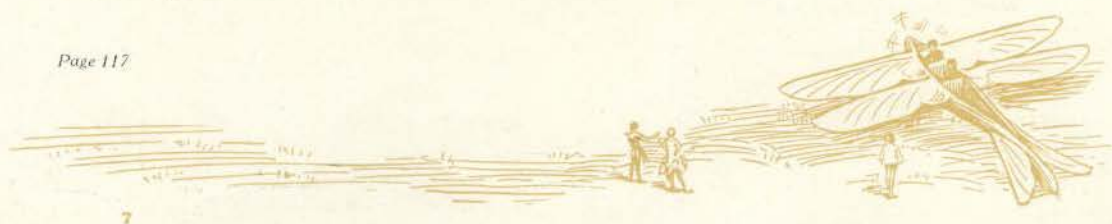
PLEDGES

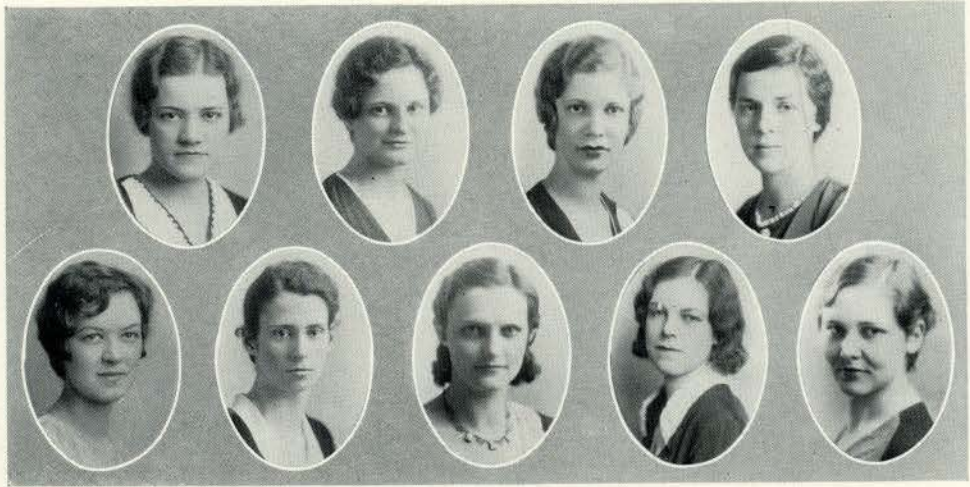
- ALICE DENTON
- MARGARET LOVE
- MILLICENT MUELLER

MEMBERS

- KATHARINE DAVIDSON
- ALBERTINA FLACH
- DOLORES FISHER
- THELMA HARPE
- EDITH KNOTTS
- ELEANOR KRIECKHAUS
- AUDREY McANULTY
- MAXINE NAMUR
- DORIS OXLEY
- TEARLE SEILING

ALPHA MU MU, the honorary music sorority, was founded May, 1918, by Dr. Leo Miller and Dr. and Mrs. Roemer. Eligibility for membership is based on unusual talent and ability, as well as loyalty to the standards of the College. The purpose of Alpha Mu Mu is to foster a greater love for music, to encourage its study, and to promote good fellowship among the students of the Music department.





Top row—ABILDGAARD, ELDREDGE, KECK, WILHOIT
 Bottom row—BABCOCK, BURKE, WINTER, FLACH, REED

BETA PI THETA



OFFICERS

DOROTHY WINTER	<i>President</i>
MARGARET JEAN WILHOIT	<i>Vice-President</i>
ELEANOR ELDREDGE	<i>Secretary</i>
VIRGINIA KECK	<i>Treasurer</i>
MARY ETHEL BURKE	<i>Corresponding Secretary</i>
MISS ANNA WURSTER	<i>Sponsor</i>

PLEDGES

MARY JEAN CLAPPER	MARY LOUISE BURCH	RUTH BAUM
ERNA KARSTEN	JANE LAUGHLIN	TERESA BLAKE
NELLE THOMAS	MARY HELEN KINGSTON	MARY SUE JAMES
FRANCES KAYSER		SARAH LOUISE GREER

MEMBERS

DOROTHY WINTER	ELEANOR ELDREDGE	ELEANOR KRIECKHAUS
JANE BABCOCK	VIRGINIA KECK	CHARLOTTE ABILDGAARD
MARGARET JEAN WILHOIT	MILDRED REED	MARY ETHEL BURKE
	ALBERTINA FLACH	

THETA XI chapter of Beta Pi Theta was chartered April, 1927. Its purpose is to foster high scholastic standards, an increased interest in French, and the progress of literary French and things cultural in America, through the travel, study, conversation, influence and ability of organized groups in universities and colleges.





Top row—TAYLOR, WINTER, BALSIGER, WYCOFF
 Bottom row—MARTIN, HUNKER, MILLER, CRUTCHFIELD

ALPHA PSI OMEGA



OFFICERS

GLADYS CRUTCHFIELD	President
ANNA-MARIE BALSIGER	Vice-President
GRETCHEN HUNKER	Secretary-Treasurer
MISS MARY GORDON	Sponsor

PLEDGES

LUCILE MILLER
 MARJORIE WYCOFF
 DOROTHY WINTER

MEMBERS

GLADYS CRUTCHFIELD
 ANNA-MARIE BALSIGER
 GRETCHEN HUNKER
 MARJORIE TAYLOR
 RUTH MARTIN
 MILDRED SHERMAN

THE Psi cast of Alpha Psi Omega, national dramatic fraternity, is one of the outstanding organizations on the campus. The high standards set for membership require that a girl meet the scholastic standard and have taken one leading part or several minor parts in college productions.

Recently, Alpha Psi Omega has sponsored the production of such plays as *Skidding*, *Belinda*, and *Ice-Bound*.





Top row—MARSH, GREER, CRUTCHFIELD, TOMLINSON
 Middle row—KAYSER, WINTER, HAMACHER
 Bottom row—BURKE, HUNKER, MCKEEHAN, WILHOIT

SIGMA TAU DELTA



OFFICERS

MARGARET JEAN WILHOIT	<i>President</i>
DOROTHY WINTER	<i>Vice-President</i>
FRANCES KAYSER	<i>Secretary-Treasurer</i>
MISS ALICE PARKER	<i>Sponsor</i>

PLEDGES

MARY LOUISE BURCH	PEARL HART	BETTY HART
THEO FRANCES HULL	NORMAN RINEHART	MARY COWAN
ELLA MCAOW	ESTHER GROVES	VIRGINIA STERLING
MARY SUE JAMES	MARIETTA HANSEN	MARGARET HILL

FACULTY MEMBERS

DR. ALICE E. GIPSON
 MISS ELIZABETH DAWSON
 DR. KATE L. GREGG
 MISS ALICE PARKER
 MISS FRANCES STUMBERG

MEMBERS NOT IN PICTURE

ERNA KARSTEN
 EDNA HICKEY

KAPPA BETA chapter of Sigma Tau Delta, national honorary English fraternity, has scholarship and literary skill as requirements for membership. It purposes the promotion of worthwhile reading and writing, and the fostering of fellowship among English majors and minors.





Left to right—RINEHART, FRASHER, BAINBRIDGE, TOMLINSON

KAPPA PI



OFFICERS

MARY NORMAN RINEHART	<i>President</i>
WINIFRED BAINBRIDGE	<i>Vice-President</i>
CAROLYN FRASHER	<i>Secretary-Treasurer</i>
DR. ALICE A. LINNEMANN	<i>Sponsor</i>

PLEDGES

MELBA GARRETT
 MARY JANE BOWER
 RUTH FARMLOE
 NEVA HODGES
 GERALDINE HAMBLIN
 MARY HOME
 CATHARINE MARSH
 ARAMETHA MCFADDEN
 BETTY PERSHALL
 VERL SCHAUMBERG

MEMBERS

MARY NORMAN RINEHART
 WINIFRED BAINBRIDGE
 CAROLYN FRASHER
 JANE TOMLINSON

HONORARY MEMBER

Mrs. PAUL DONNELLY

THE charter of Kappa chapter of Kappa Pi was granted Lindenwood, May, 1928. The purpose of this national honorary art fraternity is to form bodies of representative students to uphold the highest ideals of a liberal education, to provide means whereby those of artistic inclination may meet, to raise the standard of art among students, and to elect to membership only those of meritorious work.





*Top row—OXLEY, HADAWAY, SEILING
Bottom row—HARPE, KROME, FLACH, DAVIDSON*

DELTA PHI DELTA



OFFICERS

TEARLE SEILING	<i>President</i>
MAXINE NAMUR	<i>Secretary</i>
ALBERTINA FLACH	<i>Treasurer</i>
MISS FRANCES B. CRISWELL	<i>Sponsor</i>

PLEDGES

VIDA PATTEN
 BETSEY NEER
 VIRGINIA KROME
 SARAETTA HADAWAY
 BLANCH EDNA HESTWOOD
 DORIS OXLEY

MEMBERS

TEARLE SEILING
 THELMA HARPE
 MAXINE NAMUR
 MARY FRANCES MCKEE
 ALBERTINA FLACH
 KATHARINE DAVIDSON
 RUTH TUTHILL
 ALICE ROWLAND

DELTA PHI DELTA, the honorary public school music sorority at Lindenwood, was founded September, 1928. The purpose of this organization is to foster a greater love for music and to create enthusiasm for Public School Music as a profession. The activities of Delta Phi Delta are both varied and interesting.



LINDEN LEAVES



Top row—GROSS, ERWIN, BLAKE, HULL
 Middle row—NITCHER, OWENS, HUNKER, MILLER, SAXE
 Bottom row—McCULLOUGH, TUCKER, McClURE, KELLY

EL CIRCULO ESPANOL



OFFICERS

LILLIAN NITCHER	President
THEO FRANCES HULL	Vice-President
LUCILE MILLER	Secretary-Treasurer
MILDRED SHERMAN	Publicity Manager
DR. MARY TERHUNE	Sponsor

PLEDGES

MARTHA BAYLIS
 ROBERTA MCPHERSON
 BETTYE MOAN
 FLORENCE STOFFER
 MARY WILLIAMS

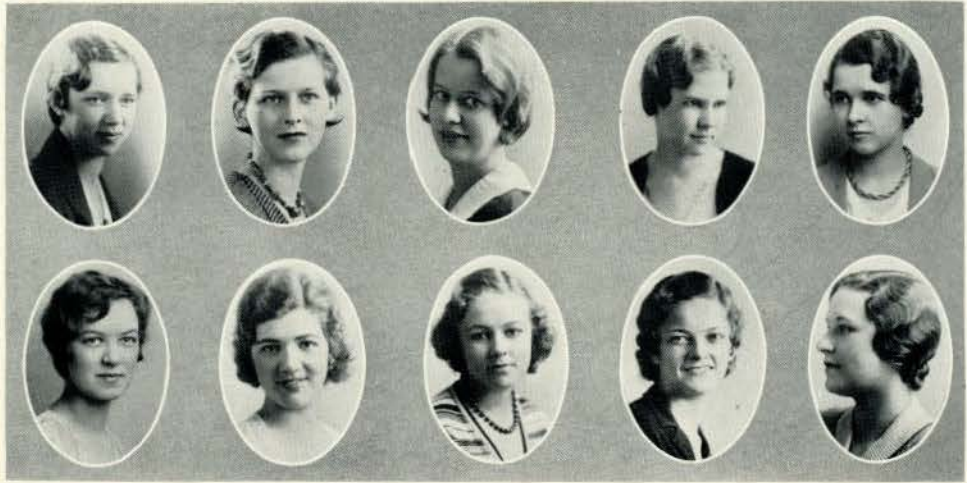
MEMBERS

LILLIAN NITCHER
 THEO FRANCES HULL
 LUCILE MILLER
 TERESA BLAKE
 GRETCHEN HUNKER
 ROSINE SAXE
 MARY ERWIN

ETHELDA GROSS
 MAURINE McCLURE
 ELSIE TUCKER
 ELIZABETH KELLY
 JACQUELINE McCULLOUGH
 ZELIA OWENS

EL CIRCULO ESPANOL was organized to create a center for Spanish interests. Its membership includes those girls doing exceptional work in Spanish and its purpose is to foster a greater knowledge of the Spanish language and an increased appreciation of Spanish culture.





Top row—KAYSER, MESSNER, SIMPSON, SPELLMAN, McWILLIAMS
Bottom row—BABCOCK, WARNER, HOLT, RINGER, ZIMMERMAN

PI ALPHA DELTA



OFFICERS

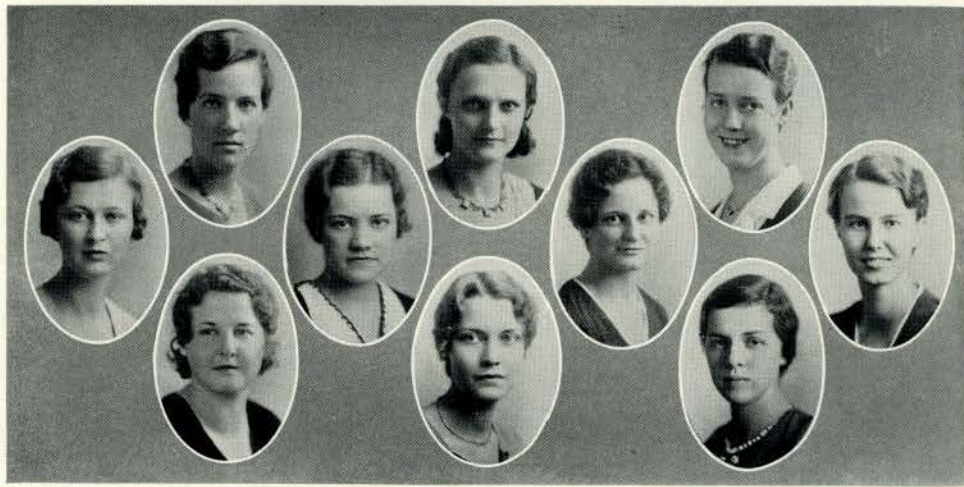
FRANCES KAYSER	<i>Principis</i>
JANE BABCOCK	<i>Aedilis</i>
JUNE MESSNER	<i>Scriba</i>
MISS KATHRYN HANKINS	<i>Sponsor</i>

MEMBERS

JANE BABCOCK	SUSAN JANE McWILLIAMS
EVELYN FOX	ALDA SCHIERDING
MARGARET HILL	KATHERINE SIMPSON
CARLENE HOLT	JANE SPELLMAN
FRANCES KAYSER	HELEN ZIMMERMAN
JUNE MESSNER	MARGARET RINGER
	(Associate Member)

PI ALPHA DELTA, the honorary Latin sorority, strives not only to determine the status but also to enhance the value of Latin for the student of the classics. A bi-weekly journal, *The Roman Tatler*, which is edited by Pi Alpha Delta, shows how widely classical material is used in our everyday life and literature.





Top row—GREEN, WINTER, MCKEEHAN
 Middle row—NEFF, ABILDGAARD, ELDREDGE, TOMLINSON
 Bottom row—SCHMUTZLER, BOWLES, WILHOIT

PI GAMMA MU



OFFICERS

- | | |
|--------------------------------|----------------------------|
| CHARLOTTE ABILDGAARD | <i>President</i> |
| MARY LOUISE BOWLES | <i>Vice-President</i> |
| LOIS MCKEEHAN | <i>Secretary-Treasurer</i> |

MEMBERS

- | | | |
|----------------------|------------------|-----------------------|
| CHARLOTTE ABILDGAARD | VIRGINIA GREEN | JANE TOMLINSON |
| MARY LOUISE BOWLES | LOIS MCKEEHAN | MARGARET JEAN WILHOIT |
| ELEANOR ELDREDGE | FRANCES NEFF | DOROTHY WINTER |
| | MARIE SCHMUTZLER | |

FACULTY MEMBERS

- | | | |
|---------------------|--------------------|-----------------------|
| DR. JOHN L. ROEMER | MR. GUY C. MOTLEY | MISS FLORENCE SCHAPER |
| DR. ALICE E. GIPSON | MISS RACHEL MORRIS | |

THE Missouri Delta chapter of Pi Gamma Mu, national honorary social science fraternity, was organized December, 1929. Members have at least Junior standing, a commendable scholastic record, and a requisite number of hours in social studies.

The purpose of Pi Gamma Mu is to inculcate the ideals of scholarship, scientific attitude, and social service in the study of social problems.





Top row—HART, BALSIGER, BURCH, WILHOIT, KEILE
 Middle row—LEIBROCK, PRIEST, CRUTCHFIELD, DORSETT
 Bottom row—NEWTON, TAYLOR, BLOUGH, WYCOFF, HULL

DEBATE CLUB



OFFICERS

KATHRYN LEIBROCK	<i>Chairman</i>
THEO FRANCES HULL	<i>Chairman</i>
MISS LUCILE CRACRAFT	<i>Sponsor</i>
DR. ELEANOR TUPPER	<i>Sponsor</i>

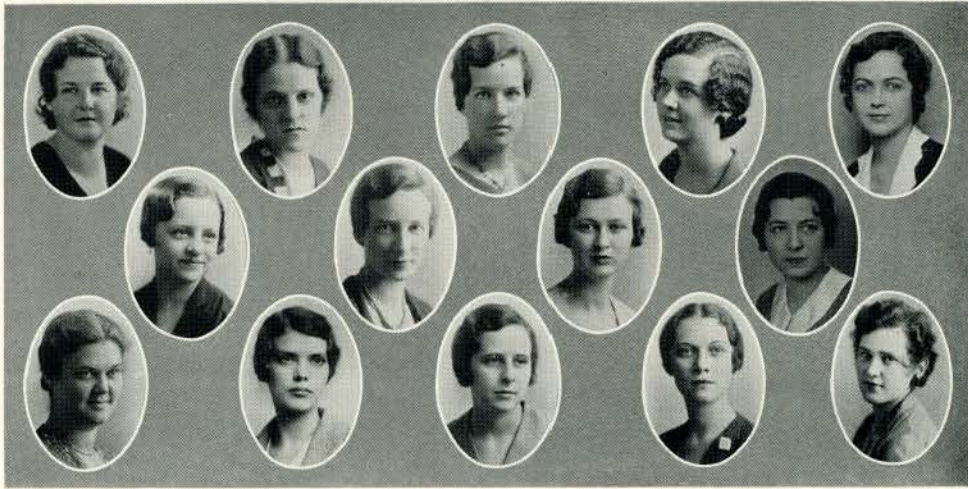
MEMBERS

HELEN M. BLOODWORTH	MARJORIE WYCOFF	MARGARET JEAN WILHOIT
MARY LOUISE BURCH	ANNA-MARIE BALSIGER	GLADYS CRUTCHFIELD
BETTY HART	MARGARET BLOUGH	MARJORIE TAYLOR
THEO FRANCES HULL	ELIZABETH COMBS	MARIETTA NEWTON
MARYE E. PRIEST	KATHRYN LEIBROCK	ELLA MCADOW
ELIZABETH WHEELER	ROSE KEILE	MAUDE DORSETT

THIS year has been an active one for the Debating Club. The purpose of the club is to develop and improve delivery and argument in public speaking. One hour of credit a semester is awarded to the members of the club.

In addition to debates held within the organization, inter-class and inter-collegiate debates are sponsored. The Senior team, Gladys Crutchfield and Rose Keile, were awarded the trophy in Inter-Class Debate. Affirmative and negative teams have debated the question of the centralized control of industry with Principia, the University of Wyoming, and Washington University.





Top row—SCHMUTZLER, CHOWNING, GREEN, BREDENBECK, HAUCK
 Middle row—KINGSTON, RUNNENBURGER, NEFF, BREWER
 Bottom row—KELLEY, SCHABERG, BRIAN, OMOHUNDRO, EVERETT

TRIANGLE CLUB



OFFICERS

VIRGINIA GREEN	<i>President</i>
MARIE SCHMUTZLER	<i>Vice-President</i>
JANE LAUGHLIN	<i>Secretary</i>
MARY HELEN KINGSTON	<i>Treasurer</i>

PLEDGES

NELLE THOMAS
 MARGARET THOMPSON
 HELEN RIETH

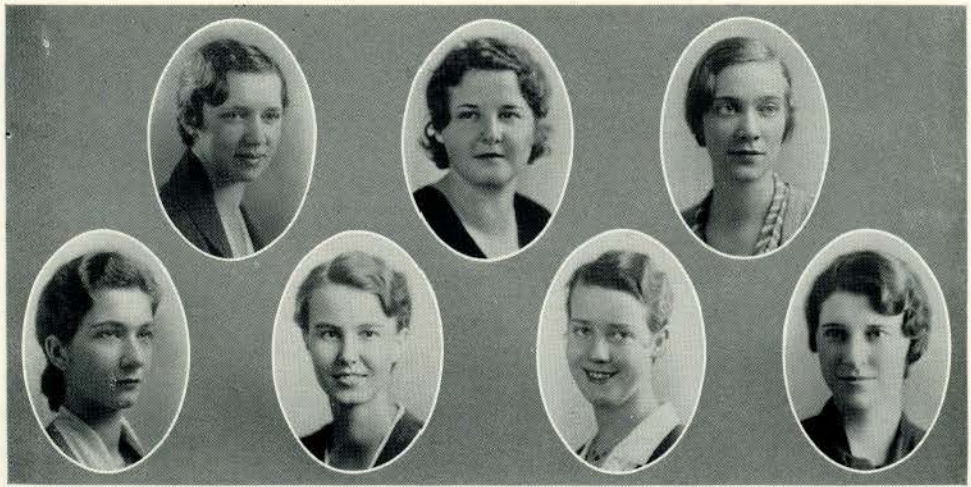
MEMBERS

VIRGINIA GREEN	FRANCES NEFF
MARIE SCHMUTZLER	HELEN EVERETT
MARY CHOWNING	BETTY FAIR
VERNA BREDENBECK	MIRIAM RUNNENBURGER
MARGARET SCHABERG	MARY HELEN KINGSTON
ANNA LOUISE KELLEY	JANE LAUGHLIN
CAROLYN BREWER	ELIZABETH VANCE
LAURA HAUCK	MARGARET OMOHUNDRO
MAURINE BRIAN	

TRIANGLE was founded in 1930 under the leadership of Miss Karr, Miss Lear, and Dr. Ennis, who continue to sponsor it. The purpose of this organization is to promote interest in biology, chemistry, and mathematics among the students of Lindenwood.



LINDEN LEAVES



Top row—KAYSER, SCHMUTZLER, FRENCH
Bottom row—RINEHART, TOMLINSON, MCKEEHAN, DUFFY

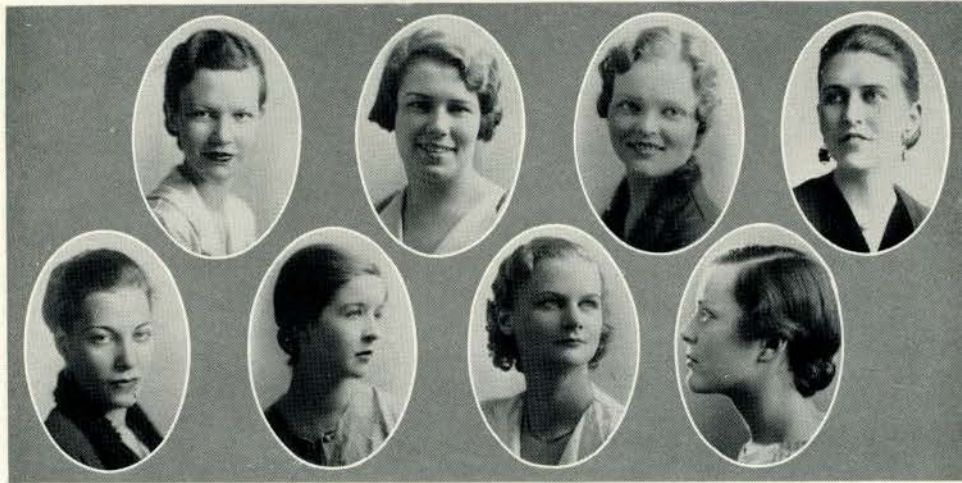
LINDEN BARK STAFF

Editor-In-Chief
FRANCES KAYSER

EDITORIAL STAFF

LOIS BRAHAM	LOIS MCKEEHAN
GLADYS CRUTCHFIELD	LILLIAN NITCHER
MARTHA DUFFY	EVELYN POLSKI
ELIZABETH FRENCH	MARY NORMAN RINEHART
SARAH LOUISE GREER	MARIE SCHMUTZLER
DOROTHY HAMACHER	JANE TOMLINSON
MARIETTA HANSEN	ROSLYN WEIL
PEARL HARTT	



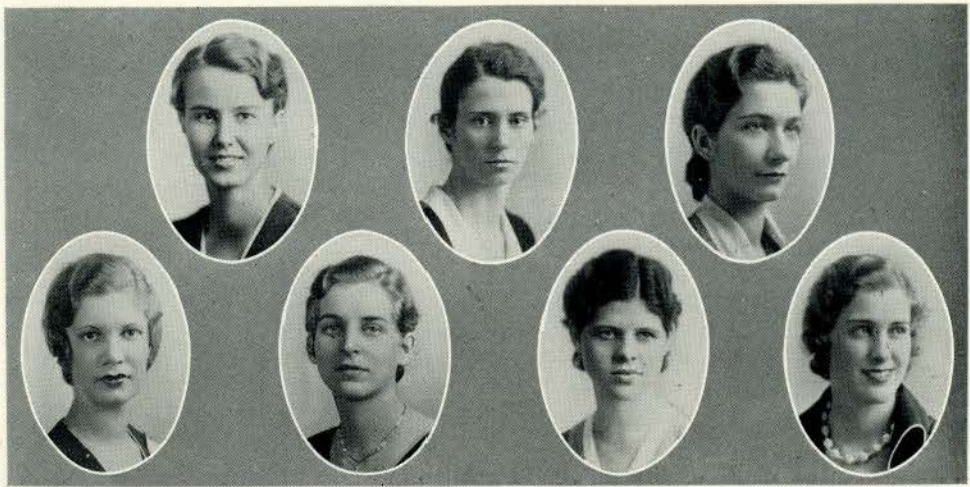


Top row—HARTT, HANSEN, HAMACHER, CRUTCHFIELD
Bottom row—WEIL, GREER, NITCHER, BRAHAM

LINDEN BARK STAFF

THE college newspaper, the Linden Bark, with its staff of fifteen journalists, is a weekly expression of campus news and viewpoints. Once a month a literary supplement is included in addition to news and features. Under the capable and sympathetic guidance of Mrs. Julia C. Underwood, Religious Editor of the St. Louis Globe-Democrat, the paper has met with deserved success.





Top row—TOMLINSON, BURKE, RINEHART
 Bottom row—KECK, WYCOFF, MORGAN, HUNKER

LINDEN LEAVES STAFF

JANE TOMLINSON	Editor
MARY ETHEL BURKE	Assistant Editor
ELEANOR ELDREDGE	Business Manager
MARJORIE WYCOFF	Assistant Business Manager
MARGARET JEAN WILHOIT	Literary Editor
GRETCHEN HUNKER	Assistant Literary Editor
LILLIAN NITCHER	Humor Editor
MARJORIE TAYLOR	Feature Editor
DOROTHY WINTER	Organization Editor
VIRGINIA KECK	Assistant Organization Editor
HELEN MORGAN	Assistant Organization Editor
RUTH COOPER	Assistant Organization Editor
MAUDE DORSETT	Assistant Organization Editor
MARY NORMAN RINEHART	Art Editor
WINIFRED BAINBRIDGE	Assistant Art Editor





Top row—ELDRIDGE, TAYLOR, COOPER, WILHOIT
Bottom row—NITCHER, WINTER, DORSETT, BAINBRIDGE

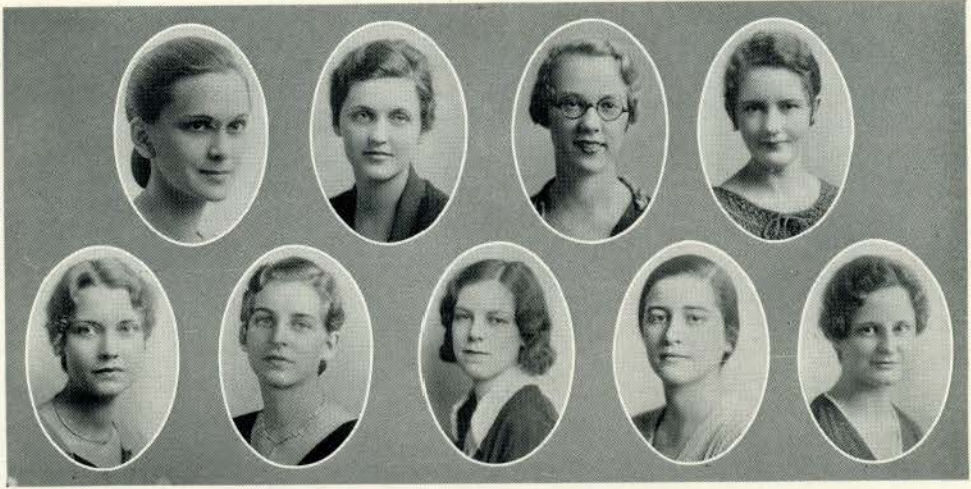
LINDEN LEAVES STAFF

IT HAS been the aim of the 1932 Linden Leaves not only to portray Lindenwood in all its charm and beauty, but to preserve memories of the life and companionship that are integral parts of our Alma Mater. If our ambitions for this yearbook have been achieved, it will serve as a vital record of a happy and useful year.

To the administration, the student body, the engraver, printer, and photographer, the Staff acknowledges its debt. Lacking the co-ordination of these important factors, this book could never have become a reality.

The Linden Leaves is a member of the National Scholastic Press Association, an organization to further the continual improvement of school publications. For a number of successive years the Linden Leaves has been awarded All-American rating, which places it among the best of its class. We of the Staff offer this volume to you, hopeful for your sincere approval.





Top row—JOHNSON, BAGNELL, RIETH, GIBBS
Bottom row—BOWLES, WYCOFF, FLACH, KEILE, ELDREDGE

Y. W. C. A.

OFFICERS

MADELINE JOHNSON	<i>President</i>
JANE BAGNELL	<i>Vice-President</i>
HELEN RIETH	<i>Secretary</i>
RUTH GIBBS	<i>Treasurer</i>

CABINET

MARY LOUISE BOWLES	<i>Social Chairman</i>
MARJORIE WYCOFF	<i>Publicity</i>
ALBERTINA FLACH	<i>Music</i>
ROSE KEILE	<i>Social Service</i>
ELEANOR ELDREDGE	<i>International Relations</i>

THE Y. W. C. A., which has as its ultimate aim the development of character and Christian womanhood, is one of Lindenwood's most valuable organizations. During the year it holds weekly meetings, sponsors the Big Sister movement, the Hallowe'en party, the Thanksgiving play, and social service work in the community.



LINDEN LEAVES



First row—KEEGAN, MCKEE, MUELLER, NEER, MISS GIESELMAN, PALMER, MCNEE, EGGEN, McANULTY, DORSETT
Second row—ROWLAND, HADAWAY, OXLEY, NEWTON, WISE, PATTEN, FISHER, NORD, TUTHILL, TAPLEY
Third row—WELCH, ZIMMERMAN, WOOD, COOPER, DAVIS, VANDERLUUR, FINLEY, WARNER
Fourth row—DEWEY, GROSS, BOWLES, DAVIS, EVERHAM, HESTWOOD, BLOODWORTH, DENTON, BURKLE, BENNISON, HARSHMAN

LINDENWOOD CHOIR

OFFICERS

MARY LOUISE BOWLES	<i>President</i>
ALICE DENTON	<i>Secretary</i>
JANE WARNER	<i>Treasurer</i>
DORIS OXLEY	<i>Accompanist</i>
MISS DORIS GIESELMAN	<i>Director</i>

UNDER the direction of Miss Doris Gieselman, the Choir furnishes music not only for the Vesper Services every Sunday night, but for such special occasions as Thanksgiving, Christmas, Easter, Mothers' Day, and Commencement. This group gives annual concerts, and at the request of St. Louis and St. Charles churches, sends its members to take part in their services.

Choir is organized as a curricular course, and, in the light of its contribution, is one of the most important groups on the campus.





First row—KROME, MELLOTT, BRAINARD, ROCHE, MURDOCH, JAMES, HAMACHER, EGGEN, LOVE, DAVIDSON, BURKHART, BLOUNT
 Second row—WATERS, STANDEVEN, BARDWELL, BARNES, KNOTTS, HESTWOOD, MR. SKINNER, CLAPPER, PETERSEN, CHASE, MCKEE, FLACH, NOON

LINDENWOOD ORCHESTRA

WITH Mr. Joseph F. Skinner, who is also supervisor of music in the St. Charles schools, as director, the Lindenwood Orchestra has admirably achieved its purpose to offer intensive training in sight reading and co-operative playing.

Orchestra is a curricular course; one hour of credit is given to each person enrolled. Each year the Orchestra gives two recitals, important events in the musical calendar of the College. The fact of its growing popularity may readily be recognized from the increased number of its members.





First row—GANAWAY, HILL, BREWER, ABILDGAARD, WOOD, DR. TUPPER, JEFFERIS, BLAKE, WHEELER, RITTER, KISTER, HAAS, ELDRIDGE
 Second row—A. L. KELLEY, BAGNELL, TAYLOR, HULL, DUFFY, KEILE, HARTT, MCKEEHAN, WEBB, HICKEY

INTERNATIONAL RELATIONS CLUB

OFFICERS

CHARLOTTE ABILDGAARD	President
JENNIE JEFFERIS	Vice-President
ISABEL WOOD	Secretary-Treasurer
DR. ELEANOR TUPPER	Sponsor

LINDENWOOD, through the International Relations Club, expresses its recognition of the closer relations between world nations of today. This organization, ably sponsored by Dr. Tupper, was formed under the auspices of the Carnegie Endowment for International Peace. It is of particular interest and value to the majors and minors in the history department, since it emphasizes a thoughtful study of the various phases of contemporary international problems.





First row—MOORE, CHAPMAN, HAUCK, KAYSER, BREWER, GREEN, DR. TUPPER, ABILDGAARD, BABCOCK, GIBBS, FRENCH, WILKS, MCKEEHAN, CARR, BLOUNT, ELDRIDGE, YOFFIE
Second row—HULL, A. L. KELLEY, TURNER, BAGNELI, ENGLAND, HUNKER, DUFFY, BALSIGER, EVERHAM, ERWIN, KEILE, McCLURE, WEBB, JOHNSON, M. RUNNENBURGER, JEFFERIS, NEWTON

LEAGUE OF WOMEN VOTERS

OFFICERS

CHARLOTTE ABILDGAARD	<i>President</i>
VIRGINIA GREEN	<i>Vice-President</i>
JANE BABCOCK	<i>Secretary-Treasurer</i>
DR. ELEANOR TUPPER	<i>Sponsor</i>

THE Lindenwood League of Women Voters, first organized in 1925, gained the rating of a major activity with its reorganization at the time of the first conference of the Missouri State League, held at Washington University in 1928. The purpose of this organization is to create a greater efficiency in government and an appreciation of the need of intelligent citizens. Delegates were sent from the local League to a conference held the second week of February at the University of Missouri.



First row—FURST, BREWER, TOBIN, HAUCK, SODEMANN, MISS ANDERSON, BEATTY, M. RUNNENBURGER, ENGLAND, MISS TUCKER, RUNNENBURGER, RUNNENBURGER, BEARDSLEY, PLASS
Second row—BURROWS, DARLING, FLEISCHBEIN, BACHMAN, GRAVES, BLACKMAN, JOHNSON, TUCKER, ERWIN, BREDENBECK, ACHELPOHL, MOJONNIER, BARDWELL
Third row—BILLINGTON, SCHISSEUR, KUBE, KECK, OLDS, PETERSON, HOOVER, TURNER, SNIDER, KLINGEL, MEINHOLTZ, BRIAN, FINLEY, NORD, RINGER, SCHABERG

HOME ECONOMICS CLUB

OFFICERS

MIRIAM RUNNENBURGER	<i>President</i>
ELIZABETH ENGLAND	<i>Vice-President</i>
MYRA BEATTY	<i>Secretary</i>
HANNAH HARDIN	<i>Treasurer</i>
MISS ADA TUCKER	<i>Sponsor</i>

THE Home Economics Club, an affiliated member of the American Home Economics Association and of the Missouri State Home Economics Association, is as old as the department itself. The purpose of this Club is to stimulate a higher degree of interest in home economics among Lindenwood students, and, judging from the popularity of the delightful meetings, and of the euthenics courses themselves, its aim is achieved.





First row—SCHIERDING, TRIPPEL, SCHULTE, JOHNSON, CAPLAN, CONNAUGHTON, CRUTCHFIELD, KRAKAUER, MISS ALLYN, WELLS, BOYES, KINGSTON, NOON, SCHNEDLER
Second row—LOSER, KISTER, HORAN, LEAMON, DAVIS, BLACKFORD, DAVIS, JOHNSON, ASHBY, BLAKE, BOWMAN, BULPITT, GIBBS

COMMERCIAL CLUB

OFFICERS

GLADYS CRUTCHFIELD	<i>President</i>
MADELINE CONNAUGHTON	<i>Vice-President</i>
MINNA KRAKAUER	<i>Secretary-Treasurer</i>
MISS LILLIAN J. ALLYN	<i>Sponsor</i>

THE Commercial Club, an organization which dates from the genesis of the department, has for members those girls who endeavor to make the business field more attractive and increase interest in business activities. It is gratifying to note that the influence of this organization on the campus is becoming wider and more important each year.



First row—MUELLER, STERLING, LEVENGOOD, HAMMER, SCHAPER, KLINGEL, KUHLMAN, BLOUGH, BRUCE, DIEHL, MECKFESSEL, MILLER, JAMES, GREEN, HAMACHER, SMITH, HAUSENBILLER, MCPHERSON, JENNINGS, M. FRENCH, GROVES, ROBERTSON, GRAY, WILKS, ELLIOTT, SEILING, KROME, BAUM, EHLENBECK, KELLEY

Second row—NEWTON, McCULLOUGH, BLACKMAN, McClURE, WEBB, HESTWOOD, SINCLAIR, FINLEY, NORD, PETERSEN, A. R. DAVIS, BEARDSLEY, J. THOMAS, ROWLAND

Third row—OMOHUNDRO, WEIL, BLOODWORTH, MOORE, McFADDEN, MOJONNIER, REMMERS, SWANEY, HERNDON, TAYLOR, BLOUNT, E. RUNNENBURGER

Fourth row—BLAKE, GRANT, HORAN, SODEMANN, PIERCE, CARR, GLENN, GROSS, TURNER, ENGLAND, BAGNELL, HOOVER, WOOD, DUFFY, GARRETT, SCHAUENBERG, WILLIAMS, BREDENBECK, HIRSCH, M. RUNNENBURGER, POWELL, DENTON, BARKER, BALSIGER, CRUTCHFIELD, LOVE, RUNNENBURGER, BISHOP, CHAPPEL, BURCH, BIALICK, BABCOCK, RIETH, MARTIN

MISSOURI CLUB

OFFICERS

VIRGINIA GREEN	President
RUTH KELLEY	Vice-President
SIDDY SMITH	Secretary-Treasurer

THE Missouri Club has the enviable distinction of being the largest State organization on the campus. This club, however, gains prestige not merely from the size of its membership, but from the quality of its personnel, for many outstanding campus characters are favorite daughters of Missouri. Its purpose is to foster acquaintanceships between girls of similar localities so that in the future they may have get-togethers of girls from the "Show Me" State.





First row—HAMMER, MILLER, DIEHL, MECKFESSEL, BIALICK, STERLING, ENGLAND, RIETH, WEBB, McCLURE, BEARDSLEY, KELLEY
Second row—BLOUGH, BLAKE, SCHAPER, SCHAUMBERG, SODEMANN, KLINGEL, MOJONNIER, REMMERS, OMOHUNDRO, JENNINGS

ST. LOUIS CLUB

OFFICERS

HELEN RIETH	<i>President</i>
ELIZABETH ENGLAND	<i>Vice-President</i>
VIRGINIA STERLING	<i>Secretary-Treasurer</i>

THE St. Louis Club, made up of all the St. Louis girls and those who come from the vicinity of St. Louis, has the distinction of being the only organization on the campus that is composed of members from a single city.

This group is a very active one, especially during vacations. Following their graduation, the members of St. Louis Club automatically become members of the St. Louis Alumnae Association.



First row—YOFFIE, DORSETT, EDMISTON, INGRAM, GANAWAY, BACHMAN, MEINTZ, MILLER, COOPER, EBY, PENWELL, VENABLE, TUTHILL, SPELLMAN, MCKEE, SIMPSON, MACGREGOR, BENNETT

Second row—ADEN, WALKER, HADAWAY, WILSON, WISE, KOLB, GRAVES, FARMLOE, THOMPSON, WALLACE, CRITES, BAINBRIDGE

Third row—TOBIN, MARTIN, WILLIAMS, PORTER, ALLEN, FLACH, BULPITT, KRIEKHAUS, BRUNSWICK, BURKHART, HEAD, BUTNER

Fourth row—AMLINGMEYER, WILHOIT, DEWEY, FLANNIGAN, HARSHMAN, HANSEN, MCEVOY, GULLETT

ILLINOIS CLUB

OFFICERS

RUTH COOPER	<i>President</i>
LUCILLE MILLER	<i>Vice-President</i>
HELEN MORGAN	<i>Secretary-Treasurer</i>

THE Illinois Club is another great organization on the Lindenwood campus made up of representatives from a great mid-western State. In size, this Club is second only to the Missouri Club. These girls are showing their allegiance to the Sucker State by making names for themselves in the activities of the college.





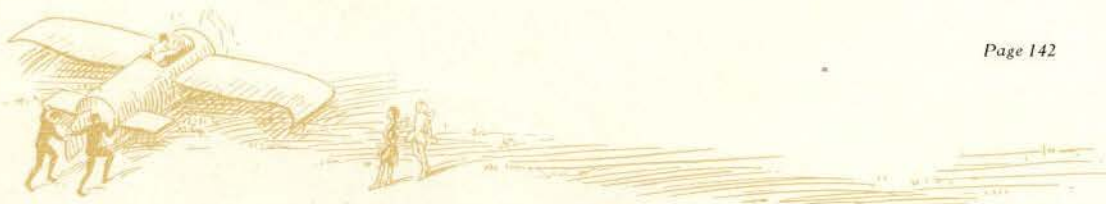
First row—EVERETT, HILL, FRASHER
 Second row—THOMPSON, BARNES, COMBS, STANDEVEN, BRADBURY, BURROWS

IOWA CLUB

OFFICERS

MARGARET HILL	<i>President</i>
CAROLYN FRASHER	<i>Vice-President</i>
HELEN EVERETT	<i>Secretary-Treasurer</i>

THE Hawkeye State is noted for more important products than tall corn, if one is to judge from the membership in Lindenwood's Iowa Club! Their number, though small, is mighty; without them, an indefinable essential of college life would be lacking.





First row—ABILDGAARD, MCNEE, WILKINS, WHEELER, KELLY, WYCOFF, ZIMMERMAN, JOHNSON, SMITH

Second row—WELCH, CAUTHERS, ADKISSON, KNOTTS, COX, HOME, HEARD, HOLT

KANSAS CLUB

OFFICERS

MARJORIE WYCOFF	<i>President</i>
ELIZABETH KELLY	<i>Vice-President</i>
ELIZABETH WHEELER	<i>Secretary-Treasurer</i>

FOR the duration of the academic year, these girls of the Kansas Club have forsaken the yellow and brown of the Sunflower State for the yellow and white of Lindenwood. With smiles as bright as their native skies, these Jayhawkers are representative of the best that Kansas can offer.



LINDEN LEAVES



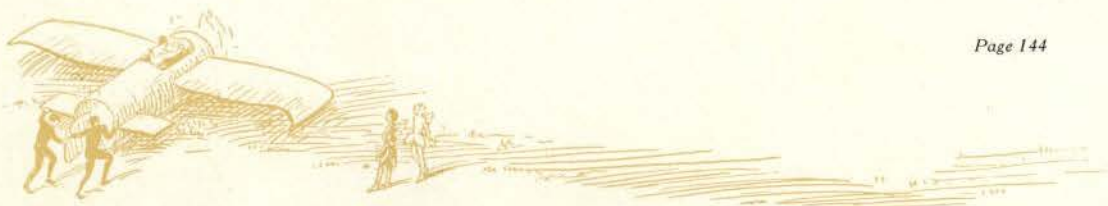
First row—PEIRCE, CARLSON, CHASE, OWENS, BRAHAM, DAVIDSON, LIVERMORE, BROWNLEE, METZGER
 Second row—PALMER, FISHBACK, PETERSON, SNIDER, HOLTGREWE, JENNINGS, SHERMAN, CONDON

NEBRASKA CLUB

OFFICERS

JEAN BROWNLEE	<i>President</i>
DOROTHY PORTER	<i>Vice-President</i>
JULIA BAIRD	<i>Secretary-Treasurer</i>

“WE’RE from good old Nebraska, the home of the girls true blue,” say these loyal members of Lindenwood’s Nebraska Club. They early proved worthy representatives of the Cornhusker State, and we are proud to have them with us.





First row—GRAHAM, WALKER, JOHNSON, TAPLEY, BOUTWELL
 Second row—LOSER, HOCKER, WARNER, KELLEY, MEINHOLTZ, MATTHEWS, ADAMS

COLORADO CLUB

OFFICERS

- ROBERTA TAPLEY *President*
- MARY HUDNALL *Vice-President*
- RUTH JOHNSON *Secretary-Treasurer*

THE Colorado Club, organized this year for the first time as a separate State Club, has the distinction of an All-Freshman membership. The Colorado delegation has proved a valuable asset to campus activities, and we sincerely welcome this group into our midst.





First row—ROCHE, S. J. MCWILLIAMS, HAUCK, DARLING, DAY, KEEGAN, KEILE, HOLCOMB, M. MCWILLIAMS, STOFFER, M. THOMAS, DAVIS
 Second row—M. RINGER, CARSON, PRIEST, B. RINGER, HITCH, BOWER, N. THOMAS, FORD, PUCKETT, BAYLIS, PATTEN, COWAN

OKLAHOMA CLUB

OFFICERS

ROSE KEILE	<i>President</i>
MILDRED KEEGAN	<i>Vice-President</i>
DOROTHY HOLCOMB	<i>Secretary-Treasurer</i>

WHAT a versatile State is Oklahoma, home of Choctaws, Osages, and Cherokees, but also of such outstanding pale-face maidens as are numbered in our Oklahoma Club! The representatives of the Sooner State, with their charming personalities and diversity of talent, are invariably making valuable contributions to the activities of the College. Lindenwood is indeed glad for such a delegation.





First row—JANES, RODDIE, HARPF, KINGSTON, GREER
Second row—KEY, M. K. WANDEL, SMITH, HODGES, FAWCETT, C. WANDEL

TEXAS CLUB

OFFICERS

THELMA HARPF	President
SARAH LOUISE GREER	Vice-President
BESSIE RODDIE	Secretary-Treasurer

LINDENWOOD is fortunate to have so many Blue Bonnet girls as ambassadors from the Lone Star State. The girls of the Texas Club are noted for their musical, artistic, and journalistic talent, and every member is an enthusiastic reminder of the land of the Panhandle and the Alamo.





First row—WATSON, GRAHAM, HULL, BOOTH, MOSELEY, K. ERWIN, V. KECK, BORNMAN, BARDWELL, McCULLOCH, HAAS, HULL
Second row—OLDS, MIDDLEBROOKS, DAVIS, FOSTER, RINEHART, MCKEEHAN, MITCHELL, JOHNSON, McGEORGE, VANCE, PARTY, HENDERSON

DIXIE CLUB

OFFICERS

VIRGINIA KECK	<i>President</i>
KATHERINE ERWIN	<i>Vice-President</i>
IRENE MOSELEY	<i>Secretary-Treasurer</i>

SOUTHERN beauty and charm are proverbial, and the members of Lindenwood's Dixie Club prove no exception to the rule; rather, they serve to strengthen such a view. What would Lindenwood be without these belles, born and bred south of the Mason-Dixon line, "away down South in Dixie"?



BRAINARD, LEAMON, BOYES, ASHBY, NITCHEL, BLACKFORD, BOMAN, TUCKER

NORTHERN CLUB

OFFICERS

- | | |
|-----------------|----------------------------|
| LILLIAN NITCHEL | <i>President</i> |
| PHYLLIS BOMAN | <i>Vice-President</i> |
| ELSIE TUCKER | <i>Secretary-Treasurer</i> |

"THE girls all come to Lindenwood from North, South, East and West," goes the College song, and this group hails from the first-mentioned point of the compass. The Northern Club includes girls from Michigan, Wisconsin, Oregon, and Montana, making a combination which is admittedly hard to surpass.





First row—FURST, JOHNSON, JOHN, CHAPMAN
 Second row—PLASS, HAUCK, E. KECK, STURGISS, TOMLINSON, MESSNER

EASTERN CLUB

OFFICERS

MADELINE JOHNSON	<i>President</i>
MARIE SCHMUTZLER	<i>Vice-President</i>
HELEN FURST	<i>Secretary</i>
MADALINE JOHN	<i>Treasurer</i>

THE girls whose home States lie east of Illinois make up the membership of the Eastern Club. They have answered the call of "Westward Ho!" and have come out to Missouri as representatives of Maine, West Virginia, Maryland, Indiana, Pennsylvania, and Ohio.



First row—NOON, HARTT, GIBBS, FRENCH, JEFFERIS, KRAKAUER
 Second row—MOAN, HAMBLIN, JOHNSON, KUBE, MURDOCH

WESTERN CLUB

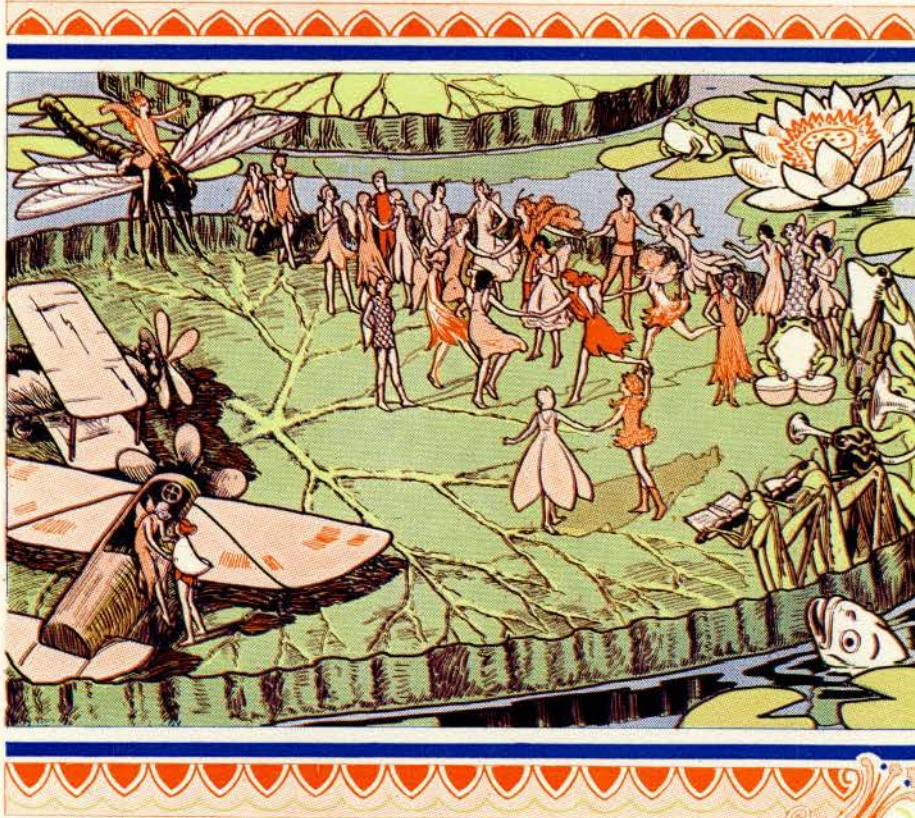
OFFICERS

ELIZABETH FRENCH	<i>President</i>
PEARL HARTT	<i>Vice-President</i>
JENNIE JEFFERIS	<i>Secretary</i>
RUTH GIBBS	<i>Treasurer</i>

THIS splendid group includes girls from New Mexico, Arizona, Wyoming, and even Old Mexico to make up the personnel of the Western Club. They come not only from "out where the West begins," but where the West is, beyond Kansas and Nebraska. To the life of our mid-western College, their varied backgrounds and personalities make an inestimable addition.







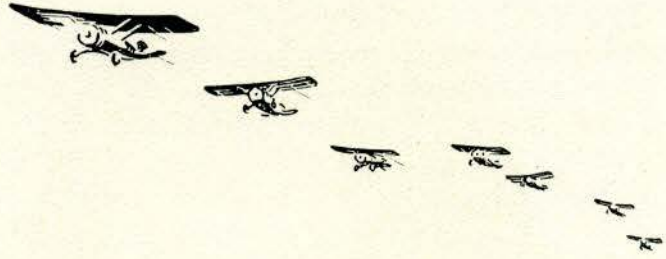
FEATURES

QUEENS

BEAUTY of face, charm of personality, integrity of character, have placed these four girls on the regal pedestal of queendom. As May Queen, Maid of Honor, Popularity Queen, and Hallowe'en Queen, these girls are outstanding. Hail, fairest of the fair!



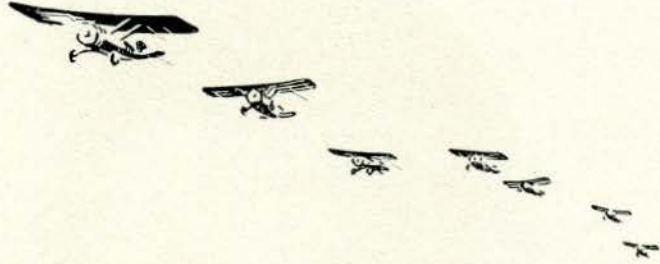
Hallowe'en Queen



ADDYS BROWN



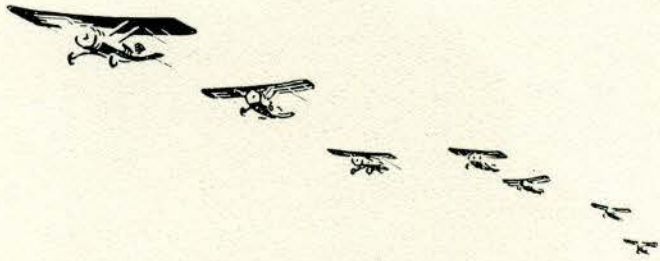
Popularity Queen



LOIS McKEEHAN



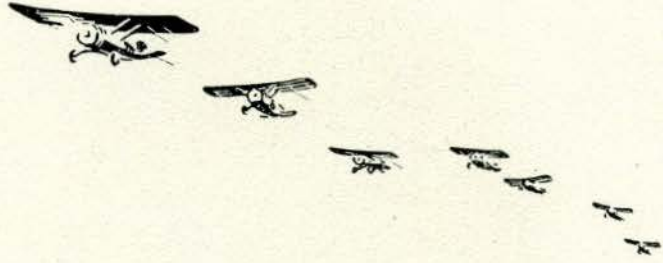
May Queen



JANE BABCOCK



Maid of Honor



ELIZABETH ENGLAND



SONNET X

Austere and self-sufficient as the trees
 In winter, stiffly braced against the sky,
 Whose branches stiffer grow, yet do not freeze
 From inner chill, I, too, refuse to die.
 There is a mighty recompense for those
 Who stand alone in shamelessness and pride.
 They hear the silent speaker when he throws
 To them a challenge, "Look, oh, look inside!
 Behold the dark and stuffy house of Man
 With door ajar but windows locked and barred.
 Regard how he has sat since Time began
 Because he could not see the night was starred."
 I run to hide my face against the moon.
 Inside that door, one could forget so soon!

—CATHARINE MARSH

TRIOLET

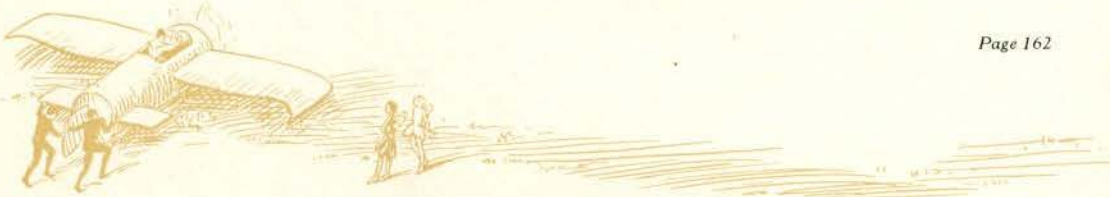
When first we loved I did not see
 That older loves meant more to you;
 That him you loved far more than me,
 When first we loved I did not see.
 Were not your sighs and tears to be
 A sign to me that you were true
 When first we loved? I did not see
 That older loves meant more to you.

—ELLA McADOW

SMOG

The city crawls on dragging knees and hands
 Along the slush-filled street and concrete walk;
 Upon its rounded shoulders it withstands
 The burden of a blanket of gray chalk.
 Black soot, and flying ashes from those fires
 That sputter, chortle, crack in rumbling roar
 In cellars under clubs, boudoirs, or spires,
 Or glow beyond some oaken study door.
 The faces of the passers-by are gray
 And snared with tiny, sooty flakes,
 Or blue and purple on a windy day
 When in the vicious gusts the plate-glass shakes.
 O God! Did not You know, could not You guess
 That winter would breathe only ugliness?

—SARAH LOUISE GREER



HAPPINESS

But where has it gone?
 I saw it just before me—
 Sparkling, enticing me
 To follow in the warm and dazzling rays
 It cast about as traps.
 And then at last,
 Almost unwilling,
 With a sob of rare deep joy
 And most exquisite peace, I grasped
 For just one perfect moment this rare jewel
 Within my pleading finger tips
 And played with it. And then in traitorous speed
 It flashed away to tempt another fool;
 And left the empty setting darker than before.

—MARY ETHEL BURKE

SHATTERED

I think perhaps some Master
 Has blown rolling clouds of glass,
 Which, crumbled by God's thunder,
 Lie shattered on the grass.

Maybe the ideal I had
 Was blown of glass too thin
 To withstand the faintest murmurings
 Of a jealous heart within.

—DOROTHY HAMACHER

SUMMER SUNSET

At our cabin on the river, watching the summer sunset at the end of the day is almost a sacred rite. We sit looking across the country watching the sun as it drops. The grass about us is on fire and the oaks turn as red as copper. There is a shimmer of gold on the brown river, and out in the stream the sand-bars glitter like glass. Light trembles in the willow thicket as if there were little flames dancing up and down. The breeze sinks to stillness and from afar off comes the plaintive note of a bird. There are no clouds in the gold-washed sky. The edge of the red disc rests only for a moment on the fields against the horizon, and even as we gasp at the beauty of the molten circle, the ball drops and drops until its red tip goes beneath the earth. The fields about us are dark, the river is calm, the sky grows pale, and we sit in silence for a moment.

—MARION CARLSON





ST. LOUIS BLUES

It is the strained, harsh, uneven rhythm of a woman far removed from country places. It is the rhythm of the child of the city unable to comprehend her longing for smooth fields to walk in, for brooks to wade in. It is the song of the low-down woman with laughter too loud, with eyes too bright, with hennaed hair shining. She is singing of dirty streets and dirty children; of her fields, the pavements; of her cow-paths, the hard gray sidewalks; of longing for the fire-glow; of wishing for the evening starlight. She is singing of the dust in her heart and the heavy smoke around her. She is singing the song of solitude, for she is lonely among her kind.

—BETTY HART

CAMELLIA

Pale celibate, immaculate,
In gaberdine of white, transparent waxed,
I see your halo of dim pollen gold.
The humid greenhouse serves as your retreat;
But Jesuit, Camelli, what benefit is yours
To gain ascetic orders at the price
Of homilies of love, a world of bittersweet
Outside?

—MARGARET JEAN WILHOIT

SOLILOQUY

My heart is tired of beating out the hours,
That I must live until this life is done.
The days grow long and silent now, until
Their sounds are only footfalls in the snow.
Soon night will close upon soft sound, a cloak
To cover up the ugly things that lie
In view to all who look to see them there.
Not seen by you who see a spark of light
Still burning with a feeble might against
The mist of sneer and glare that press it out.

—EDNA HICKEY

FANTASY

The golden fawns on the green and golden book-ends moved their sleek heads outward. The Grecian dancer with gracefully arched arms and hands stepped lightly from her pedestal between them to the desk below. Gaily with pointed toes she whirled her long, full, green and gold skirt first one way and then the other. All the time she smiled happily. Dancing past the Spanish and English Composition textbooks, she finally dropped in complete exhaustion before Carl Sandburg's *Smoke and Steel*, her outstretched hands imploring.

—MARY ELLEN CROWE



LINDEN LEAVES



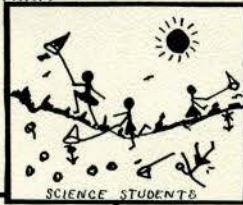
*Marge and Millicent
—Just a lowly Frosh
—Mail and more mail
—Nice background,
that library door!—
Elsie and Gretch.*



HUMOR



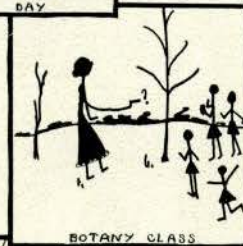
SENIOR PARTY



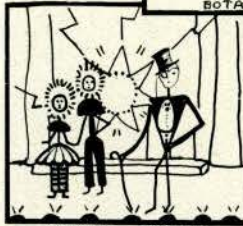
SCIENCE STUDENTS



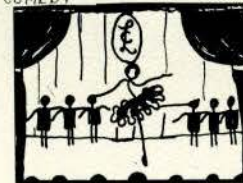
SOPHOMORE DAY



BOTANY CLASS



MUSICAL COMEDY



TOE BALLET

Humor Editor: "Do you know a good joke I could put in the annual?"

Virginia Baker: "No, I haven't heard one of those for years."

And aren't you glad that the great surplus they talk about is in wheat instead of spinach!

If you wondered why those cute little green caps stayed on the heads of our freshmen, a physicist would explain it by telling you they were kept on by vacuum pressure.

Heard on a Sunday night by a college man: "Be a good support and marry me."

And then there was the freshman who wanted to know what room this Prof. Spotzer had his class in.

Miss Parker: "This essay on your dog is exactly like your sister's."

The other Runnenburger: "It ought to be Ma'am; it is the same dog."

And then there was the Freshman who asked Dr. Gipson if she had ever heard of "Green Pastures."

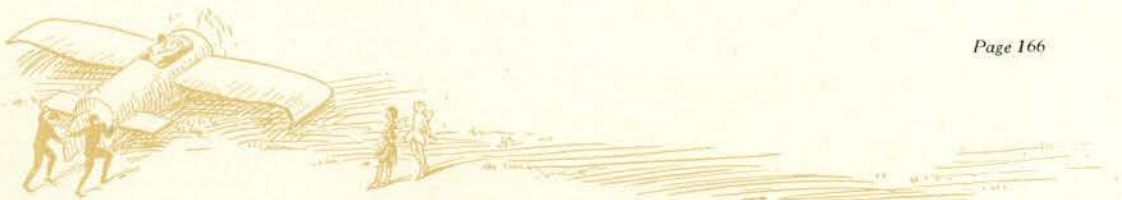
Who asked Miss Hough what time the bus came to take people to the city, in back of the Tea Room.

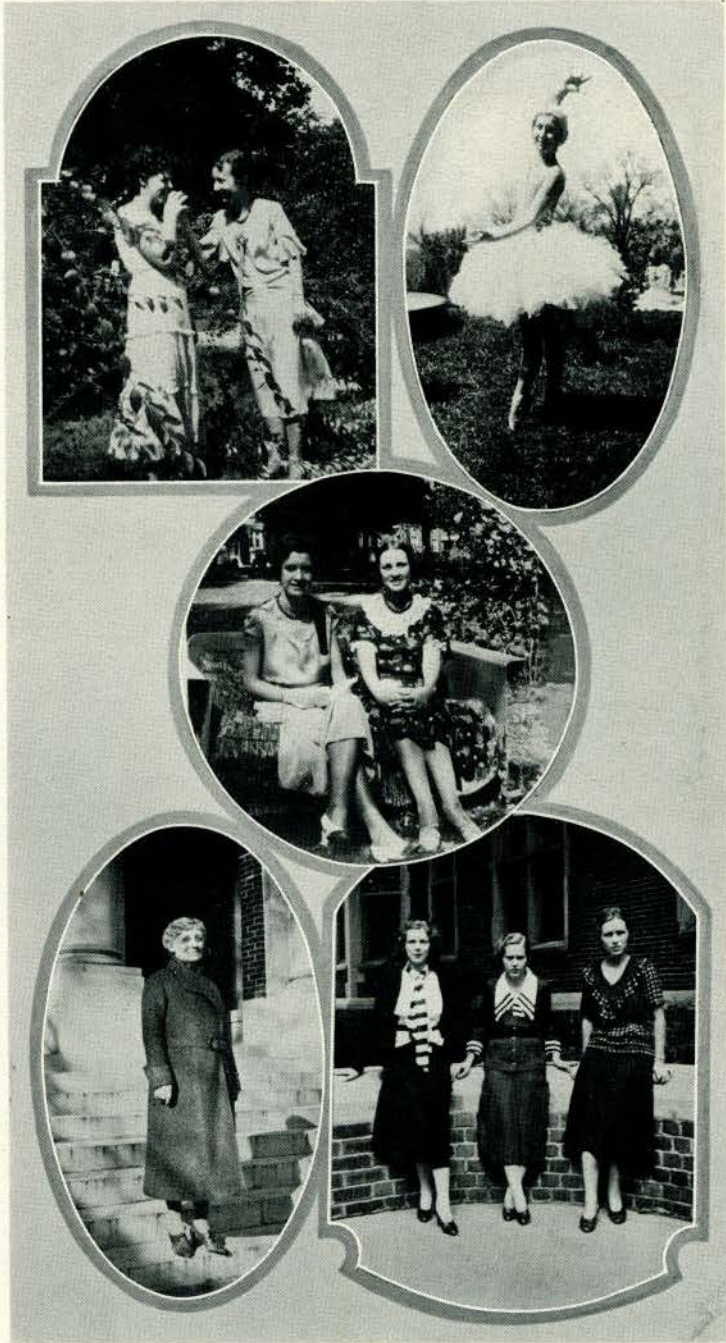
Who had the most gorgeous time in Wellston but couldn't find any of the big stores they talked about.

Who thought after she was twenty-one that no one could keep her from doing what she wanted to do on campus.

Little Freshman: "I know something I won't tell."

Sophomore: "You'll get over that after you've been here for awhile."

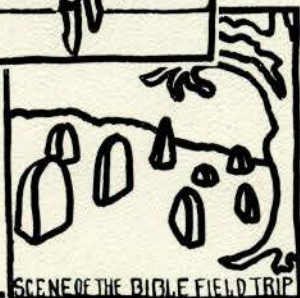




Sophomores registering joy—It's spring, tra la!—Perfect comfort—Mother LeMasters—A southern trio.



HUMOR



ODE TO A BLIND DATE AT A LEAP YEAR DANCE

You were paid for by a fool like me
And that is what I could never see.

Did you know that Glenn Jennings was late to Bible class one day, and when she found the classroom empty, she decided that Dr. Case had taken the class to the cemetery on a field trip!

Dr. Gregg, explaining mood: "Now for instance, take the sentence—Take the cow out of the barn.—What mood?"

Freshman: "The cow."

WITH APOLOGIES TO KIPLING

If you get an "E" in French and never
"crack a book,"

If with your room-mate you never fight,

If you get at least one letter every day,

If you are never broke at the end of the
month,

If you have never read Dorothy Parker
or College Humor,

If you have never been sh-h-hed by your
housemother,

If you like liver and bacon and spinach,

If you like getting ads in your mail box,

If you never eat at the tea-room,

If you like to get up for your eight o'clock,

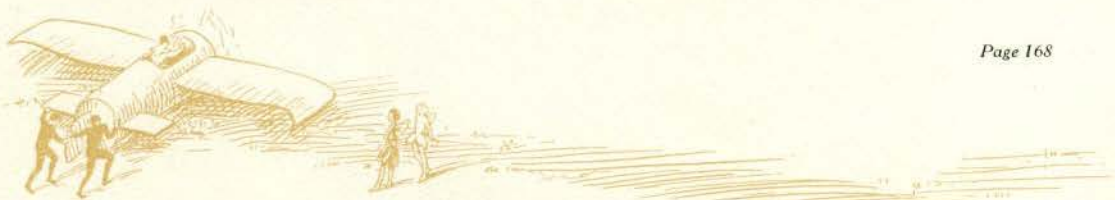
If all of these things, dear, you do,

I'd like to aim a gun at you.

And then there was the girl who bought the book "What All Men Want" just to see if they had her name in it right.

First labor man: "Thought you had a job in a shirt factory. Aren't you working today?"

Second man: "I do, but we are making night shirts this week."



LINDEN LEAVES

On Butler steps—H. R. H. Helen Morgan — Dr. Roemer with Court and Bobby—One Sunday afternoon—a crowd of Freshmen—a Sophomore exerting authority.

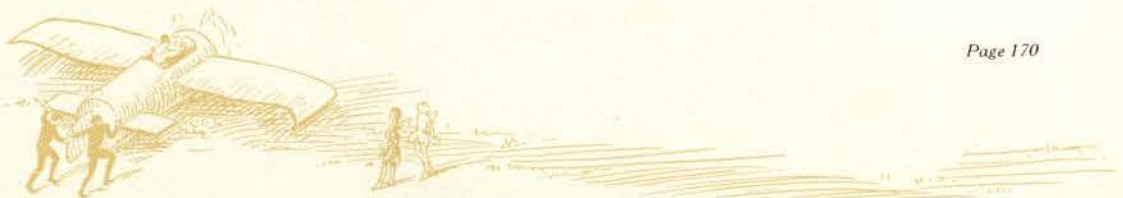


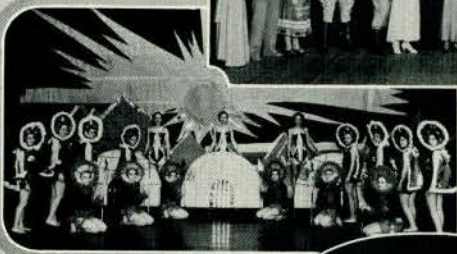
CALENDAR



WHEN EUGENIE CAME TO
LINDENWOOD

- Sept. 11. School starts, according to an old American custom. Too many Freshmen.
- Sept. 29. First edition of *The Bark* in P. O. boxes. Also three adds.
- Oct. 6. "Bobby," youngest canine friend of the campus, seriously ill. Sympathies extended.
- Oct. 22. Founder's Day celebration. Faculty-Student baseball game a success—for the Faculty.
- Oct. 31. Sophomore Day. Butler steps have their annual scrubbing, I trow.
- Nov. 11. A great personality in our midst, Channing Pollock. Autograph hounds in tireless pursuit.
- Nov. 20. Freshman dinner - dance. Unique? Rather!
- Nov. 23. Seniors win cup for talking. Final debate scores: Seniors, 100—Other classes, 0.
- Nov. 26. Thanksgiving Day. Wotta day! Grand food, dance and play.
- Dec. 11. Christmas play. Leap Year's coming!
- Dec. 12. Christmas party in dining room. Orchestra 'n' everything.
- Dec. 16. Ho Hum—another silly vacation.
- Jan 6. Happy vacation daze over.
- Jan. 25. Exams. Deep blue fog descending on campus.
- Feb. 1. New classes, new books, pencils sharpened, faces bright and shining.
- Feb. 6. Leap Year Dance. Starr Elton belle of the ball.
- Feb. 19. Musical Comedy, bah Jove. Rose Keile and her aviators stopped the show.
- Mar. 4. French, Spanish, and German plays given—not simultaneously.
- Mar. 12. History repeated. Second Leap Year Dance.
- April 9. Sophomore Prom. Others look on enviously.
- April 29. Four members of the Shakespeare class atwit. They haven't started their papers yet. Due tomorrow.
- May 6. May Day Festival. Juniors and Seniors frolicking on the green.
- May 14. Junior-Senior Prom. Gala event, Wot?
- May 30. Seniors cease frivolity. Tears are *so* becoming.
- June 1. Only six more days at L. C.—and a whole life to live. It isn't fair.
- June 4. Class Day. Commencement Play. (Pome).
- June 5. Baccalaureate Service. Solemn Seniors sigh sonorously.
- June 6. Commencement—or is it the end? You're asking *us*?





"Christina of Greenland," that A. A. musical comedy with all its clever dances and songs—and a splendid cast, bah Jove!



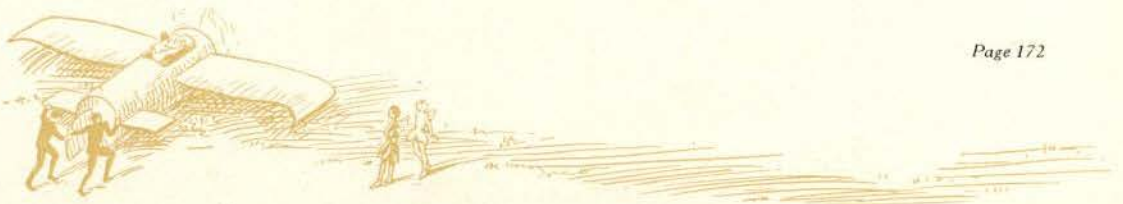


LINDEN LEAVES

IN RETROSPECT:

With the thought that this imperfect representation of the year gone by may evoke fond memories in your heart, we come to the close of this yearbook. As the 1932 Linden Leaves goes to press, the staff wishes to express its appreciation to the Board and to the student body for their hearty co-operation in the publication of this volume.

We also acknowledge the services of Central Engraving Company, Botz-Hugh Stephens Press, and the Sid Whiting Studios. These have helped to make your annual a success.



THE PATRONS OF LINDENWOOD COLLEGE

The Staff of the 1932 Linden Leaves extends its sincere appreciation to those patrons whose advertisements have made our book possible:

AHMAN NEWS STAND
 BANNER-NEWS CO.
 BOTTANI, CONTRACTOR
 BOTTANI PRINTERY
 BOTZ-HUGH STEPHENS PRESS
 BRAUFMAN'S STYLE SHOP
 BRUN'S SHOE SHOP
 BUNGALOW
 CENTRAL AMERICAN COFFEE CO.
 CENTRAL ENGRAVING CO.
 CLARK-SPRAGUE PRINTING CO.
 COSMOS-MONITOR
 DENKER'S BAKING CO.
 DENKER, FLORIST
 FIRST NATIONAL BANK
 GARLAND'S
 HACKMAN LUMBER CO.
 HARRIS LUMBER CO.
 HUETTE'S
 HUNING DRY GOODS CO.
 HUNLETH MUSIC CO.
 KUHLMAN'S DRY GOODS CO.
 LA BEAUME AND KLEIN, ARCHITECTS
 LINDENWOOD COLLEGE
 MELBA BEAUTY SHOP
 MEYER'S DRUG STORE
 NATIONAL SANITARY PRODUCTS CO.
 PALACE CLOTHING CO.
 PARKVIEW GARDENS
 PROGRESS MERCANTILE CO.
 RAUCH LUMBER CO.
 RECHTERN CLEANING CO.
 SCUDDERS-GALE GROCER CO.
 SHATTINGER MUSIC CO.
 ST. CHARLES BEAUTY SHOPPE
 ST. CHARLES DAIRY CO.
 ST. CHARLES LAUNDRY
 ST. CHARLES MUSIC HOUSE
 STAHLBEHL'S CLOTHING CO.
 STANDARD DRUG CO.
 STEINBRINKER FURNITURE CO.
 STRAND THEATRE
 TERMINAL CABS
 THRO CLOTHING CO.
 TIBBITTS-HEWITT GROCER CO.
 UNION ELECTRIC LIGHT AND POWER CO.
 UNION SAVINGS BANK
 WALLENBROCK'S PURE FOOD STORE
 WALTER'S JEWELRY STORE
 WEST END CONFECTIONERY
 WEST END TAXICAB CO.
 WHITING STUDIOS
 ZEISLER'S BOTTLING WORKS



PERSONAL INDEX

	Page		Page		Page
Abildgaard, Charlotte	38, 102, 118	Chowning, Mary	33, 78, 116	Gregg, Dr. Kate L.	26
Adams, Ruth	125, 135, 136, 143	Clapper, Mary Jean	134	Hadaway, Sarretta	95, 122, 133, 141
Achelpohl, Joanna	137	Clement, Mabel	31	Gross, Etheld	95, 123, 133, 139
Aden, Drusilla	92, 141	Combs, Elizabeth	142	Groves, Esther	86, 139
Adkisson, Florine	92, 143	Condon, Louise	144	Gullett, Julia	95, 141
Allen, Dorothy	92, 141	Connaughton, Madeline	138	Haas, Shirley	102, 135, 148
Allyn, Lillian J.	28, 138	Cook, Ethel B.	30	Hamacher, Dorothy	86, 120, 129, 134, 139
Amlingmeyer, Hazel	92, 141	Cooper, Ruth	93, 131, 133, 141	Hamblin, Geraldine	95, 151
Anderson, Ruth	28, 137	Cowan, Mary	85, 146	Hammer, Marjorie	139, 140
Ashby, Gilda	84, 102, 138, 149	Cox, Harriet	143	Hansen, Marietta	86, 129, 141
Aspegren, Ingrid	92	Cracraft, Lucille	28	Hankins, Kathryn	26
Babcock, Jane	39, 102, 116, 118, 124, 136, 139, 159	Criswell, Blanche	29	Hardin, Hannah	86
Bachman, Agnes	137, 141	Crites, Anita	141	Harpe, Thelma	79, 117, 122, 147
Bagnell, Jane	76, 78, 132, 135, 136, 139	Crutchfield, Gladys	45, 119, 120, 126, 129, 138, 139	Harshman, Edna	95, 133, 141
Bainbridge, Winifred	84, 121, 131, 141	Darling, Elizabeth	93, 137, 146	Hart, Betty	86, 126
Baird, Mary G.	139	Davidson, Katharine	46, 102, 117, 122, 134	Hartt, Pearl	51, 129, 135, 151
Baker, Virginia	40	Davidson, Maurine	78, 144	Hauck, Laura	36, 52, 102, 127, 136, 137, 150
Balsiger, Anna-Marie	78, 119, 126, 136, 139	Davis, Alice Rice	90, 93, 133, 138, 139	Hauck, Marion	95, 146
Bardwell, Elizabeth	92, 134, 137, 148	Davis, Catharine	138, 146	Hausenbuiller, Lucille	95, 141
Barker, Betty	139	Davis, Mary Jo	94, 133, 148	Head, Eleanor	95, 141
Barnes, Elaine	102, 134, 142	Dawson, Elizabeth	26	Heard, Mary	86, 143
Baum, Ruth	139	Day, Hester	94, 146	Henderson, Katherine	95, 148
Baylis, Martha	146	Denton, Alice	33, 85, 133, 139	Herndon, Mary Ellen	95, 139
Beardsley, Grace	92, 137, 139, 140	Dewey, Mary K.	94, 133, 141	Hestwood, Blanche Edna	133, 134, 139
Beatty, Myra	84, 137	Dewey, Dr. Jos C.	27	Hickey, Edna	102, 135
Belding, Adele K.	30	Diehl, Winifred	94, 139, 140	Hill, Margaret	105, 142
Bennett, Barbara	92, 141	Dorsett, Maude	94, 126, 131, 133, 141	Hirsch, Barbara	102, 139
Bennison, Charlotte	133	Duffy, Martha	78, 128, 135, 136, 139	Hirsch, Delphia	31
Bialick, Annetta	92, 139, 140	Eby, Betty	141	Hitch, Elizabeth	95, 146
Billington, Margaret	137	Edmiston, Helen	94, 141	Hocker, Gwendolyn	145
Bishop, Maxine	92, 139	Eggen, Kathryn	85, 133, 134	Hodges, Neva	95, 147
Blackford, Helen D.	138, 149	Egman, Hortense	28	Holcomb, Dorothy	146
Blackman, Catherine	137, 139	Ehlenbeck, Lillian	139	Holt, Carlene	95, 124, 143
Blackwell, Mary C.	31	Eldredge, Eleanor	47, 102, 103, 118, 125, 131, 132, 135, 136	Holtgrewe, Ella	102, 144
Blake, Teresa	78, 123, 135, 138, 139, 140	Elliott, Dorris	139	Home, Mary	95, 143
Bloodworth, Helen	133, 139	England, Elizabeth	76, 79, 136, 137, 139, 140, 151	Hoover, Margaret	79, 137, 139
Blough, Margaret	84, 126, 139, 140	Ennis, Beulah P.	27	Horan, Lillian	138, 139
Blount, Mildred	92, 134, 136	Erwin, Katherine	85, 136, 137, 148	Hough, Edna	31
Boman, Phyllis	78, 138, 149	Erwin, Mary	94, 123	Hull, Kathryn	102, 148
Booth, Julia	148	Everett, Helen	79, 101, 102, 103, 127, 142	Hull, Theo Frances	86, 102, 123, 135, 148
Bornman, Allie Mae	148	Everham, Barbara	94, 133, 136	Hunker, Gretchen	76, 79, 116, 119, 120, 123, 130, 136
Bottani, Dorothy	92	Evers, Dr. Helene	26	Ingram, Ruth	141
Routwell, Georgia L.	145	Farmiloe, Ruth	141	Isidor, Gertrude	29
Bower, Mary Jane	146	Fawcett, Josephine	147	James, Mary Sue	86, 134, 139
Bowles, Mary Louise	41, 125, 132, 133	Finley, Virginia	133, 137, 139	James, John Ann	147
Boyes, Phyllis	84, 138, 149	Fishbach, Dorothy	144	Jahn, Lydia A.	28
Bradbury, June	84, 142	Fisher, Dolores	79, 117, 133	Jeck, Anna	31
Braham, Lois	84, 129, 144	Flach, Albertina	79, 118, 122, 131, 134, 141	Jefferis, Jennie	53, 135, 136, 151
Brainard, Margaret	134	Flannigan, Mary	141	Jennings, Ellen	86, 139, 140
Bredenbeck, Verna	42, 102, 127, 137, 139	Fleischbein, Annette	137	Jennings, Anne H.	26
Brewer, Carolyn	43, 102, 127, 135, 136, 137	Ford, Mary	94, 146	John, Madaline	86, 102, 103, 150
Brian, Maurine	36, 127, 137	Foster, Arabelle	31	Johnsen, Evelyn	138, 151
Brink, Marie	44	Foster, Eleanor	94, 148	Johnson, Georgia Lee	96, 138, 148
Briscoe, Anne	90, 92	Frasher, Carolyn	85, 121, 142	Johnson, Helen	143
Brown, Addys	93, 155	French, Elizabeth	36, 48, 102, 128, 136, 151	Johnson, Madeline	54, 101, 102, 103, 132, 136, 137, 150
Brownlee, Jean	93, 102, 144	French, Mildred	82, 85	Johnson, Ruth	145
Bruce, Maxine	93, 139	Friess, Paul	29	Karr, Lois	27
Brunswick, Dorothy	93, 141	Furst, Helen	137, 150	Kayser, Frances	55, 102, 116, 120, 124, 128, 136
Bulpitt, Mary	93, 138, 141	Ganaway, Harriett	135, 141	Keck, Evelyn	96, 137, 150
Burch, Mary Louise	84, 102, 126, 139	Garrett, Melba	79, 139	Keck, Virginia	80, 118, 130, 148
Burke, Mary Ethel	78, 102, 103, 118, 120, 130, 139	Gauss, Anna D.	30	Keegan, Mildred	133, 146
Burkhart, Kathryn	93, 134, 141	Gehlbach, Dorothy	30	Kelle, Rose	56, 101, 102, 103, 126, 132, 135, 136, 146
Burkle, Ruth	133	Gieselman, Doris P.	29, 133	Kelley, Anna Louise	32, 57, 127, 135, 136
Burrows, Elizabeth	93, 137, 142	Gill, Marguerite	85, 102	Kelley, Esther	96, 145
Butner, Barbara	93, 141	Gipson, Dr. Alice E.	5, 25	Kelley, Ruth	96, 139, 140
Caplan, Jeanette	138	Glenn, Rosalie	94, 139	Kelly, Elizabeth	96, 123, 143
Carlson, Marion	93, 144	Gordon, Mary	28	Key, Nancy	96, 147
Carr, Madeline	93, 136, 139	Graham, Virginia	94, 148	Kingston, Mary Helen	87, 102, 127, 138, 147
Carson, Mary Jane	146	Grant, Mary Belle	94, 139	Kister, Agnes	135, 138
Carter, Margaret Ann	84	Graves, Mary Catherine	141	Klingel, Irma	96, 137, 139, 140
Case, Dr. Ralph	27	Gray, Harriette	94, 102, 139	Knippenberg, Evelyn	80
Cauthers, Louise	93, 143	Green, Virginia	50, 125, 127, 136, 139	Knotts, Edith	134, 143
Chapman, Annette	78, 136, 150	Greer, Sarah Louise	32, 85, 120, 139, 147		
Chapman, Helen	85				
Chappel, Lucile	102, 139				
Chase, Jeannette	134, 144				



PERSONAL INDEX

	Page		Page		Page
Kohlstedt, Mildred	28	Owens, Zelia	97, 102, 123, 144	Sterling, Virginia	139, 140
Kolb, Pauline	96, 141	Oxley, Doris	81, 117, 122, 133	Stoffer, Florence	146
Krakauer, Minna	87, 138, 151	Palmer, Dorothy	133, 144	Stokey, Margaret	28
Kriekhaus, Eleanor	141	Park, Helen	97	Sturgiss, Dorothea	150
Krome, Virginia	96, 122, 134, 139	Parker, Alice	26	Stumberg, Dr. B. K.	30
Kube, Alice	137, 151	Party, Nelda Mae	97, 148	Stumberg, Frances	26
Kuhlman, Mildred	87, 139	Patten, Vida	133, 146	Swaney, Emma Jo	99, 139
Leamon, Phyllis	138, 149	Peirce, Virginia	97, 144	Tapley, Roberta	99, 133, 145
Lear, Mary E.	27	Penwell, Rosamond	97, 141	Taylor, Marjorie	70, 102, 119, 126, 131, 135
Leibrock, Kathryn	80, 126	Petersen, Dorothy	98, 134, 139	Terhune, Dr. Mary	26
LeMaster, Mrs. Elizabeth	31	Plass, Dorothy	98, 137, 144	Thomas, Jane	139
Levengood, Matred	87, 139	Pierce, Patricia	139	Thomas, John	29
Linnemann, Dr. Alice E.	29	Pless, Dorothy	98, 137, 150	Thomas, Mary	146
Livermore, Eva Mae	96, 102, 144	Porter, Virginia Lee	98, 141	Thomas, Nell	146
Lobb, Martha	87	Powell, Sybil	98, 139	Thompson, Helen	102, 141
Lover, Gwendolyn	138, 145	Press, Helen	62	Thompson, Margaret	142
Love, Margaret	96, 134, 139	Priest, Mary E.	90, 98, 126, 146	Tobin, Jane	89, 137, 141
McAnulty, Audrey	80, 117, 133	Puckett, Mildred	98, 146	Tobin, Marion	99
McClure, Maurine	80, 123, 136, 139, 140	Ratz, Naomi	88	Tomlinson, Jane	71, 116, 120, 121, 125, 128, 130, 150
McCulloch, Mary	148	Reed, Mildred	81, 118	Torrence, Evelyn	29
McCullough, Jacqueline	87, 123, 139	Reichert, Marie	28	Trippel, Lucille	99, 138
McEvoy, Francis	96	Remmers, Pernis	139, 140	Tucker, Ada	28, 137
McFadden, Arametha	80, 139	Rhodes, Esther	29	Tucker, Elsie	89, 123, 137, 149
McGeorge, Mary Frances	96, 148	Rieth, Helen	82, 88, 101, 102, 103, 131, 139, 140	Tupper, Dr. Eleanor	27, 135, 136
MacGregor, Anna Katherine	96, 141	Rinehart, Mary Norman	63, 121, 128, 130, 148	Turner, Virginia	89, 136, 137, 139
McKee, Mary Frances	58, 133, 134, 141	Ringer, Barbara	64, 137, 146	Tuthill, Ruth	133, 141
McKeehan, Lois	36, 59, 102, 116, 120, 125, 128, 135, 136, 148, 157	Ringer, Margaret	88, 102, 124, 146	Underwood, Mrs. Julia	26
McKeel, Peggy	97	Ritter, Grace	88, 135	Vance, Elizabeth	148
McNee, Elizabeth	97, 133, 143	Roberts, Mrs. Effie L.	31	Vanderluur, Jacqueline	133
McPherson, Roberta	139	Robertson, Geraldine	130	Venable, Constance	99, 141
McWilliams, Mildred	97, 146	Roche, Rosa Lee	98, 134, 146	Walker, Margaret	99, 141
McWilliams, Susan Jane	97, 124, 146	Roddie, Bessie	98, 145	Walker, Willetta	145
Marsh, Catharine	82, 87, 120	Roemer, Dr. J. L.	23	Wallace, Maxine	89, 102, 141
Martin Doris	87, 139	Roemer, Mrs. J. L.	24	Walter, Cora V.	31
Martin, Ruth	87, 119, 141	Rossy, Margaret	65	Wandel, Constance	147
Mathews, Pauline	145	Rowland, Alice	81, 133, 139	Wandel, Mary Key	147
Meckfessel, Juanita	139, 140	Runnenburger, Elinor	137, 139	Warner, Jane	99, 102, 133, 145
Meinholtz, Lucille	137, 145	Runnenburger, Emily	137, 139	Waters, Willa	72, 134, 139
Meints, Clara Jane	141	Runnenburger, Miriam	66, 102, 127, 136, 137, 139	Watson, Nancy	89, 148
Mellott, Margaret	87, 134	Rutherford, Harriet	27	Waye, Cora	30
Messner, June	88, 150	Saxe, Rosine	88, 123	Webb, Lillian	81, 102, 135, 136, 139, 140
Metzger, Marguerite	88, 102, 103, 124, 144	Sayre, Eva	30	Weil, Roslyn	89, 129, 139
Middlebrook, Elizabeth	148	Schaberg, Margaret	67, 127, 137	Welch, Marion	89, 133, 143
Miller, Dorothy	139, 140	Schaper, Florence W.	27	Wells, Lois	138
Miller, Lucile	88, 119, 123, 139, 141	Schaper, Ruth	98, 140	Wenger, Mrs. J. W.	31
Mitchell, Lillian	148	Schaumburg, Verl.	98, 139, 140	Wheeler, Elizabeth	102, 135, 143
Mitchell, Marion M.	27	Schierding, Alda	138	Wilhoit, Margaret Jean	33, 73, 116, 141, 118, 120, 125, 126, 131
Moan, Bettye	151	Schmisseur, LaClaire	33, 89, 137	Wilkins, Kathryn	99, 143
Mojonnier, Margaret	97, 137, 139, 140	Schmutzler, Marie	69, 125, 127, 128	Wilkinson, Lillian	74
Moore, Margaret Ethel	80, 136, 139	Schnedler, Florence	81, 138	Wilks, Corrine	99, 136, 139
Moorgan, Helen	82, 88, 102, 103, 130	Schulte, Louise	98, 138	Williams, Catherine	89, 141
Morris, Rachel M.	27	Seiling, Tearle	68, 117, 122, 139	Williams, Mary	99, 141
Moseley, Irene	97, 148	Sheldrick, Margaret G.	30	Wilson, Betty	99, 141
Motley, Guy C.	30	Sherman, Mildred	144	Winter, Dorothy	75, 116, 118, 119, 120, 125, 131
Mueller, Millicent	133, 139	Shinn, Mary Ellen	98	Wise, Georgia	133, 141
Murdoch, Elizabeth	97, 134, 151	Simpson, Katherine	98, 124, 141	Wood, Hazel	133
Neer, Betsey	133	Sinclair, Mary Elizabeth	139	Wood, Isabelle	32, 81, 135, 139
Neff, Frances	60, 125, 127	Skinner, Joseph F.	29, 134	Wurster, Anna	26
Newton, Marietta	88, 102, 126, 133, 136, 139	Smith, Eleanor	98, 143	Wycoff, Marjorie	81, 102, 103, 119, 126, 130, 131, 143
Nitcher, Lillian	76, 80, 102, 123, 129, 131, 149	Smith, Rosemary	147	Yoffie, Hortense	136, 141
Noon, Madeline	97, 134, 138, 151	Smith, Siddy	139	Zimmerman, Helen	99, 124, 133, 143
Nord, Marie	97, 133, 137, 139	Snider, Rachel	137, 134		
Olds, Eutha	81, 137, 148	Sodemann, Virginia	99, 137, 139, 140		
Omoandro, Margaret	61, 127, 139, 140	Spellman, Jane	99, 124, 141		
Ordelheide, Harry P.	30	Standeven, Alice	99, 134, 142		
		Steele, Marjorie	90, 99		





