

THE

LINDENWOOD

CONNECTION

Vol. II, No. 4 December 1992 Issue

Lindenwood College
St. Charles, MO 63301

REUNION '92



**Marjorie
Abeling**



**Betty Jacoby
Gibson**



**Eileen Linsin
Lefferdink**



**Dorothy Mathias
Tuttle**

*Members of the Class of 1942 who
celebrated their 50-year Reunion on campus*

Representatives from 17 states and 35 classes participated in some facet of Reunion 1992. It was a particularly festive weekend because Homecoming and events for Parent's Weekend were occurring simultaneously.

The initial event during the weekend was John Wehmer's Retrospective Exhibit and reception sponsored by the Associates of the Fine Arts in the Hendren Gallery. It is customary that retiring members of the Art faculty present an exhibit to summarize their work over the years. While John retired at the end of the 1991-92 academic year, he chose to present his retrospective exhibit during Reunion Weekend. We thank him for that honor and for the years of service to the college and its students.

Following the reception, 22 of Lindenwood's finest alumni met members of the men's soccer squad for the First Annual Alumni Soccer game at Hunter Stadium. Special thanks to Vic Avellino for putting together the alumni team which represented classes from 1985-1992. (See article on page 12.) After the game, alums were welcomed

for an informal get-together at the Holiday Inn-West.

On Saturday, during the Annual Meeting held in Young Hall, President Dennis C. Spellmann presented a State of the College address, tribute was paid to those members of the Lindenwood alumni community who passed away during the year, and Marsha Parker, Executive Director of Alumni Relations offered a slide show about Lindenwood, past and present. On the stroll from Young Auditorium, alumni were asked to closely scrutinize the residence halls—each was decorated to welcome alumni and parents and in celebration of Homecoming. (The winner of the decorating contest was McCluer Hall!)

A highlight of every Reunion is the lucheon with our faculty guests. It is especially enjoyable because it is the time when we recognize members of our honored classes. This year, certificates and commemorative Lindenwood plates were presented to the four members of the Class of 1942 who came to celebrate their 50-year reunion. The Class of 1972 also received special recognition, not

Continued on page 2

LINDENWOOD CLOSE TO CAPACITY

The 1993-94 academic year is the fourth year of the Lindenwood plan to build up to 1,000 residential students. With a record residential enrollment this year of more than 900, it appears that the goal is definitely within reach.

In order to accommodate the increasing student population, Lindenwood has purchased Knight's Mobile Home Park, located just southwest of the college. The temporary alternate site has been named Lindenwood Village and provides housing, not only for male Lindenwood seniors and married couples, but current residents of the park. Lindenwood owns 14 of the 40 mobile homes in the complex. Student residents of Lindenwood Village are required to abide by the same rules and regulations that exist in the traditional residence halls.

The acquisition fits with the long-range plan of expanding our athletic facilities and building a new performing arts complex. The re-purchase of the 50 acres of back campus was also part of the long-range plan and offers additional options for residence halls, nature trails and, possibly, a memorial garden.

"We have a strong and impressive student body," said President Dennis C. Spellmann, "and we want to provide the best instructors, the best facilities and a first-rate campus environment." Spellmann continued, "We have one of the most beautiful college campuses in the United States to serve as our focal point. Any expansion necessitated by our growth will be done with an eye to our traditions and to fulfilling the needs of our students. We are proud of our success and believe the future holds even more promise."

LINDENWOOD AMONG TOP EMPLOYERS IN ST. CHARLES

Lindenwood College has a "major economic impact" on the St. Charles community. "We've come a long way from our difficult financial situation of a few years ago," said President Dennis C. Spellmann in a news conference held in May, 1992. "Lindenwood is now the fifth largest employer in the city with annual personnel costs of more than \$7 million and an annual budget of \$20 million," continued Spellmann.

In addition to the positive economic effect employees of the College create in the City of St. Charles, the College contributes to the fiscal health of the community by providing new consumers. The total student population of more than 3,700, which includes more than 900 residential students, provides support to the local economy hit hard by layoffs at McDonnell Douglas, ConTel and Citicorp.

Significant revenue has also been generated locally because of the nearly \$5 million spent in campus renovation. "When Lindenwood succeeds, so does St. Charles," concluded Spellmann.

Beck Heads Circle K International

James D. Beck, a 1990 graduate of Lindenwood College, is currently serving as president of Circle K International. Beck began his involvement with the leadership and service organization in 1988.

Over the years, Jim has held virtually every top local and district office with Circle K. He has also been the recipient of numerous awards and scholarships including the Kiwanis Renaissance Medal of Honor and the Lt. William C. Ewbank Memorial Scholarship.

Jim now attends Washington University School of Law where he has, once again, distinguished himself as an outstanding student and leader. He is named in *Who's Who Among American Law Students* and has received the Scholars in Law Award. Beck expects to complete his program at Washington University in May, 1993.

REUNION '92 Continued from page 1

only for celebrating their 20th "anniversary", but for having a contingent of 13 alums from Idaho to Maryland!

After lunch, everyone was invited to attend the Lions Homecoming football game. Of course, at halftime, fans were treated to performances by the Lions Marching Band, the Lindenwood Lion Line Dancers and the cheerleading squad. Because it was Homecoming, members of the court were also presented. During the game, it was not unusual to hear alums smilingly say, "I can't believe it!", referring to the vitality and enthusiasm exhibited by students, parents and friends of the College.

Events on Saturday evening began with a pre-theatre reception at Miss Aimee B's restaurant. The Lindenwood production of Brighton Beach Memoirs was a real treat. Afterwards, alums and friends once again gathered at the Holiday Inn to reminisce and continue to renew old acquaintances.

A light brunch on Sunday at the Memorial Arts Building capped the events of the weekend. The feeling of alums who spent time on campus during Reunion can best be summed up by a comment of Betty Jacoby Gibson: "I am so proud of the Lindenwood of today!"

REUNION '92 PARTICIPANTS

1930
Mary Ambler

1942*
Marjorie Abeling
Betty Jacoby Gibson
Eileen Linsin Lefferdink
Dorothy (Dee Jay) Mathias Tuttle

1943
Maurita Estes Stueck

1944
Elizabeth Mudd Rauch

1949
Folsta Bailey Gibbons

1956
Janet Lewis Riddle

1957*
Carol Kellogg Stoub

1961
Nancy Calvert

Continued on page 5

BIOLOGY STUDENTS PARTICIPATE IN STATE STUDY

Lindenwood students received exceptionally high marks from the Missouri Department of Conservation for their assistance in the Weldon Springs small mammal study. The purpose of the project was to trap and test small animals for evidence of radioactivity which may have infiltrated the environment from the former ammunitions production site in St. Charles County.

The students worked independently on the project but were supervised by members of the Conservation Department and LC faculty member Dr. Bill Bethel. Participants in the project included: Sheila Carusa, Cherie Mueller and Kerry Griffin (student team leaders), John Stringer, Shawn Bond, Trish McCracken, Dawnelle Watts, Rose Brown, John Herle, Modaser Abro, Rick Massman, Donna Mork, Jamie Hensley, Shelley Gibson, Scott Mueller and Lori Brock.



Students, parents, alumni and friends of the college attend Homecoming '92 activities at Harlen C. Hunter Stadium

SHEEHAN APPOINTED ASSISTANT SECRETARY AND TREASURER

Matt Sheehan has been appointed assistant secretary and treasurer for The Western Group, the nation's largest specialty contractor in the area of masonry and concrete restoration and new construction preventive waterproofing. Headquartered in St. Louis, the company was founded in 1915 and has 33 wholly owned offices nationwide with more than 1,700 employees.

Matt earned his accounting degree from Southwest Missouri State University and his MBA from Lindenwood.

FREESE TO HEAD DEVELOPMENT EFFORT

Lindenwood College President Dennis C. Spellmann announces the appointment of Barry W. Freese ('75) to the position of director of development for the College.



Freese is returning to Lindenwood after a stint as account manager and information systems analyst at GTE/ConTel in Wentzville, Missouri. He was an assistant dean of admissions at Lindenwood in the early eighties and has over a dozen years of experience in higher education.

"I'm very happy to be back at Lindenwood," said Freese. "The College has always been very special to me, and I'm proud to again be part of this historic institution."



Members of the Lindenwood Lions' Marching Band serenade Homecoming Queen Kristen Miller and her senior escort Tim Wilson

LINDENWOOD MARCHING BAND MAKES DEBUT

The Lions Marching Band made its debut on Saturday, September 19, during halftime of the Lindenwood vs. Southwest State football game at Harlen C. Hunter Stadium.

"Everyone was so excited and proud to be a part of this history-making event," said Robert Carter, director of bands and assistant professor of music at the College. "The enthusiasm level was high and everyone is committed to the program. Students want to look good for Lindenwood and themselves," Carter said.

Al Anderson, a senior music student, is coordinating drill design and Denise Alfred, sophomore, is featured twirler. The band sports black and gold uniforms and performances are accented by state-of-the-art marching percussion instruments.

At each presentation since the debut in September, the band has performed a

series of new routines. During halftime of the Homecoming game on October 3, members of the marching band and the Lion Line dance squad formed a heart through which members of the Homecoming Court processed.

The marching band is the latest addition to Lindenwood's growing band program which includes a Symphonic Band, Jazz Band and Pep Band. Smaller ensembles include a Jazz Combo, Woodwind Quintet, Saxophone Quartet, Brass Ensemble, Woodwind Trio and Percussion Ensemble.

"Lindenwood's music programs have just boomed over the past few years. We offer programs for students who wish to major in music, and for students who enjoy playing music as an extracurricular activity," said Carter.

EARLY COLLEGE START PROGRAM AVAILABLE TO HIGH SCHOOL STUDENTS

Lindenwood recently announced the creation of the Early College Start Program in which students in high school can earn college credit for taking advanced courses. The program serves as an educational partnership with selected area high schools and the College.

The program offers college credits for classes taught in high schools where educators have been specified "adjunct instructors" with Lindenwood.

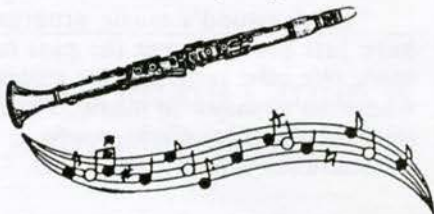
Secondary students may also choose to attend classes at the College and can enroll for up to nine credit hours per semester. Lindenwood awards credit for classes in a variety of subjects that include English, biology, psychology, foreign language, and math. "We want to assist high schools in establishing dual enrollment programs so students can get a head start on college," said Dr. Larry Doyle, professor of education at Lindenwood.

The College will provide tuition assistance to all high school students involved in the Early College Start Program. Participants will receive an official transcript stating the courses and credits awarded that will apply toward a degree from Lindenwood College. Credit may be transferable to other colleges and universities at their discretion.

LC STUDENTS CHOSEN FOR SYMPHONY'S YOUTH ORCHESTRA

Some of St. Louis' best young musicians have been named to the 1992-93 St. Louis Symphony's Youth Orchestra. LC students **Nikki Randolph** (violinist) and **Jason D. Pierson** (bassoonist) were selected from more than 230 auditioners. Randolph is also a recipient of a St. Charles Alumni Club scholarship.

According to David Loebel, the St. Louis Symphony's associate conductor and the Youth Orchestra's conductor and musical director, "The competition for positions was fierce. The caliber of the musicians goes up every year." The Youth Orchestra opened its season on November 14 and will perform again on February 28 and April 18 at 8:00 p.m., Powell Symphony Hall. Congratulations to Lindenwood's fine young musicians.



HILL JOINS MEDICAL CONSULTING STAFF

Timothy Hill ('89) recently joined the staff of Blanchette Management, a medical consulting firm in St. Charles, Missouri. His duties include physician practice administration for area health care facilities.

Tim is completing a fellowship with the George Warren Brown School of Social Work at Washington University and is a member of the Medical Group Management Association.

Campus Radio Station Pledge Drive A Success

Glen Cerny ('74), general manager of the campus radio station, KCLC 89.1 FM, reports that the fall membership drive was an overwhelming success. "We were extremely pleased to make 125% of our goal in this pledge drive. We have commitments from our listeners for \$6,500," said Cerny.

Part of the success can be attributed to the fact that the pledge period was extended to include weekend days. According to Cerny, "We program gospel music on Saturday and Sunday mornings, Christian rock on Saturday nights, and Blues on Sunday evenings. Listener support for these shows has always been strong, and we wanted to give them every opportunity to get involved in becoming a member."

Even though the successful fall campaign is over, you can become a member of KCLC at any time with a minimum pledge of \$30. KCLC also accepts business sponsorships at the \$250 or more level, which includes program underwriting. For more information, call (314) 949-4891.

Students Promote The Vote

Students at the College became actively involved in the political process by offering classmates, faculty and staff the opportunity to register to vote on campus. **Garrett Wood**, a graduate student in professional counseling from Aberdeen, South Dakota, spearheaded the registration drive. John Creer, dean of campus life, and five students (including Wood) were deputized to register voters in St. Charles County. According to Creer, "We provided the service to the entire St. Charles community as well as individuals affiliated with the school."

Students living on campus but from another state were eligible to register and vote in St. Charles County.

Kuberski Receives Baue Scholarship

Kimberly Kuberski, daughter of Lawrence and Nancy Kuberski of St. Peters, is the recipient of the 1992 David C. Baue Memorial Scholarship for Community Service.

The scholarship is awarded to an undergraduate student at Lindenwood College who takes an active part in student affairs. The student must be from the St. Charles area and hold at least a 3.0 grade point average. The Baue family created the award in cooperation with the St. Charles Jaycees.

Kuberski, a freshman at Lindenwood, plans to major in accounting and business administration. She is a graduate of Fort Zumwalt South High School, where she was named to the Honor Roll and received the Algebra Award. Kuberski also received the Girl Scout Gold Award and was active in peer counseling, student council, the Foreign Language Club and Students Against Drunk Driving (SADD). Kimberly played volleyball and was the manager for the varsity boys basketball and the junior varsity wrestling teams.

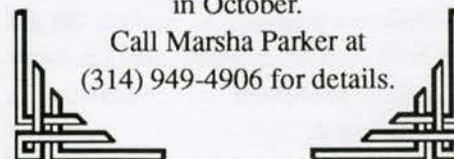
Kimberly's father, **Larry**, and brother, **Kevin**, are Lindenwood alumni.



DON'T MISS
KCLC-FM's
25th ANNIVERSARY
CELEBRATION AT
REUNION '93

Make plans to join alumni
and LC friends at the
KCLC-FM Silver
Anniversary Celebration
During Reunion '93
in October.

Call Marsha Parker at
(314) 949-4906 for details.



LINDENWOOD HELPS CREATE SMALL BUSINESS INCUBATOR

Early in 1993, the St. Charles County Small Business Incubator will begin offering managerial, technical, financial and clerical support services to fledgling entrepreneurs in St. Charles County. Lindenwood College Dean of Management, Oliver (Bo) Hagan, has been part of the team responsible for creating this invaluable resource. Hagan, former holder of the George Herzog Chair in Free Enterprise at Baldwin-Wallace College and recipient of the prestigious Entrepreneur of the Year Award by *INC Magazine/Arthur Young*,

serves as the SBI Director of the St. Charles County chapter of the Small Business Administration.

The incubator is also affiliated with the St. Charles County Economic Development Council, the St. Charles County Community College, the University of Missouri Extension Center, the University of Missouri Research Park, St. Louis University Small Business Development Center as well as other local economic development organizations.

Famed Photographer Speaks On Campus

Leonard Lee Rue, famed wildlife photographer, author, and lecturer appeared on the Lindenwood campus October 23, 1992, in a program co-sponsored by Anheuser-Busch, Krey Distributing and the St. Charles Parks and Recreation Board.

Chief Park Ranger Patrick Zarrick said, "Rue is the most published wildlife photographer in the world and his knowledge of deer in the wild is second to none." The program, based on Rue's best-selling book, *The Deer of North America*, consisted of a 90-minute slide show on the natural history of the white-tailed deer and was held in Young Auditorium. An extended question-and-answer session followed the presentation.

COLLEGE PRESIDENT ADDRESSES CHAMBER

Dennis C. Spellmann, president of Lindenwood College, was the guest speaker at the St. Charles Chamber of Commerce Economic Development Committee's meeting in August, 1992. His address focused on the college's future plans for partnerships in the local economy.

Spellmann was featured as the speaker because of the success Lindenwood officials have had in reestablishing the college to prominence. Members of the Chamber are also interested in exploring opportunities to cooperate with the college's representatives to enhance the economic, educational, cultural and recreational benefits to the community.

ROBBINS RECEIVES ROCHE ACHIEVEMENT AWARD

Suzanne Spalding Robbins ('57) has been named the recipient of the Roche President's Achievement Award for the fourth consecutive year. This is a national award for outstanding achievement in the pharmaceutical industry.

Suzanne earned her doctorate in pharmacy from Stanford University and serves on the public relations committee for both the Alabama Society of Hospital Pharmacists and the Alabama Pharmaceutical Association. She is active in local and national organizations in her discipline.

Hodge Joins Staff Of Fellowship of Christian Athletes

The Branch Rickey Chapter of the Fellowship of Christian Athletes (FCA) recently welcomed staff member, **Sterling Hodge ('91)**, as its newest Huddle Coordinator.

According to an article in the October 1992 FCA newsletter, Hodge's "enthusiasm, athletic experience, and a heart for students and coaches make Sterling a real asset to the FCA staff."

In addition to attending Lindenwood, Hodge attended the University of Illinois and played football for the Illini.

REUNION '92 PARTICIPANTS

Continued from page 2

1965
Mary Ann Messer Oelklaus
Ann Hodges Pals

1967*
Ruth Ann Meyer

1968
Glenda Raef Schaefer

1971
Mary Ann Collier
Jacque Hansbrough
Roberto Ruiz, Jr.
Helen Sims

1972*
Martha Raber Alford
Joann Kerns Brasich
Deborah Crouch
Basil (Bill) Fikaris
Cherie O'Brien Hanson
Louise Lysne Hanson
Ellen Hecht
Ann Dickgiesser Huntoon
Cathy Carr Kennedy
Jonetta (Jo) Tomcak Kurtz
Alys Baldwin McCalmont
Susan Reid Miller
Marion Taylor Ryan

1974
Glen Cerny
Charlotte Manges

Martin Sherman

1975
Brad Anderson
Barry Freese

1976
William Winer

1977*
James Carlucci
Ralph Heim

1981
Douglas Kelley

1982*
Corinne Harrison Hill
Karen Lumpe Kelley

1983
Penny Myers Bryant

1985
Vic Avellino
Chris Boschert
John Costello
Bob McKeon
Dave Toigo

1986
Tom Donovan
Tim Mahoney
Marc Schwering

1987*
Mike Baer
Dominic Condellire
Bob Herdler

Linda Meyer

1988
Candace Myers Burchyett

1990
John Brett
Jason Daniels
Randy Gardner
Keith Hansen
Scott Harman
Paul Koetting

1992
Alex Kanak
Kevin Kuberski
John Snipes

*denotes honored class

CALVERT, SHURE BROTHERS PROVIDE EQUIPMENT FOR KCLC

Thanks to the generosity of Nancy Calvert ('61), Director of Marketing Management for Shure Brothers Incorporated, students at KCLC are now using several state-of-the-art Shure microphones. Nancy, who also serves the College as President of the Alumni Board and a member of the Board of Directors, was herself a communications major at the college during the days of Martha Boyer.



Delta Zeta's first pledge class at Lindenwood College

STUDENT DESIGNS FOR SHAKESPEARE COMPANY

Kimo-James Munson, junior theatre major at Lindenwood, was selected as lighting designer for the St. Louis Shakespeare Company's production of *Julius Caesar*. *Riverfront Times* drama critic Harry Weber wrote in his July 15, 1992, column: "I ...admired Kimo-James' lighting design, particularly during the storm scene that dominated the play as Caesar's assassination is plotted."

Munson takes his academic work as seriously as he does his theatrical endeavors. According to Bryan Reeder, theatre director for the college, "Kimo is an excellent student, dedicated and extremely focused. He makes an outstanding contribution to the program and has a promising future in design."

In addition to creating lighting effects for the professional Shakespearean company, Kimo has also designed lights and sets for the Goldenrod Showboat and Lindenwood Downstage and Mainstage productions.

ALUMNA WINS SEAT IN LEGISLATURE

When the Missouri House of Representatives convenes in January 1993, the 14th District of St. Charles County will be represented by alumna **Lucinda (Cindy) Depping Ostmann** ('63). Cindy was a Republican candidate who won her seat in the recent November election.

A native of St. Charles County, this was Ostmann's first attempt at gaining a seat in the Missouri House though not the beginning of her service to the community. She served as a member of the Fort Zumwalt School Board for 12 years, and, in 1990, was a candidate for associate county commissioner.

Scott Receives Award for Outstanding Service

Judy Reeves Scott ('61) was recently cited as the Outstanding Staff member for Southeast Community College — Lincoln campus. Scott is the department secretary for the Business Occupations division. She was cited for her enthusiasm, professionalism and dedication to the effective operation of the division.

Sagarra Named Sports Editor

Susan E. Sagarra ('88), was recently named sports editor for the *Journal* newspapers of St. Charles County.

Sagarra served as assistant editor of sports for three years and also earned the position of sports editor of the *Warrenton Journal* before being elevated to her current post.

BIRKHEAD'S WORK PUBLISHED

Prentice-Hall has announced publication of the recently completed work of alumna **Patricia Wallace Birkhead** ('68). The book, titled *CLAST Clues to Success on the Two English Subtests* should be available sometime before the end of the year. Patricia is an instructor at Seminole Community College in Florida.

FORMER PAPPARAZZI EXHIBITS AT COLLEGE

A photographic exhibit entitled, "Eye," featuring the work of former papparazzi and Lindenwood College M.A. candidate **Allen Arpadi**, was on display in the Harry D. Hendren Gallery September 13-27.

Arpadi, an instructor at St. Louis Community College-Forest Park, spent time in New York taking photographs and editing a newsletter for collectors. Among his most notable portraits displayed in the Lindenwood exhibit were those of Woody Allen, I.F. Stone, Margaret Atwood, Robert Maplethorpe and Ronald Reagan.

Swedish Child Psychologist Revisits Campus

Dr. Pia Thorner Eresund ('58) took time on a recent visit to the United States, to visit Lindenwood's campus and present a lecture to students and faculty on her specialty, mother-infant relationships.

A child psychologist in Stockholm for 25 years before shifting her emphasis to the earliest developmental states, Eresund was in the U.S. to attend the fifth World Congress of Infant Psychiatry and Allied Disciplines.

Pia spent one year on campus as a Swedish exchange student. In the intervening years, she has often thought about the college. "It's always remained with me," she said.

TRICK-OR-CAN HELPS NEEDY

Ghosts, witches, warlocks, and goblins visited homes around St. Charles County for a charitable cause. The Lindenwood College Circle K Club held its annual Trick-or-Can event on Halloween.

Members collected canned goods to be given to a local not-for-profit agency which helps the needy.

Circle K is a community service organization as well as the largest collegiate service organization in the United States. The Lindenwood College Circle K Club is sponsored by the St. Charles Noonday Kiwanis Club.

CHAMPION TWIRLER AT HOME AT LC

Half time shows during the Lions' football games have a very special "spin"—they usually include a performance by Miss Majorette of Missouri, **Denise Alfred**. A sophomore at Lindenwood and member of the Sugarettes Show Production Corps, Denise won her title in April of this year.

Denise is ranked 26th worldwide for her twirling skills and recently placed 20th in the competition for the title Miss Majorette of America.

While her batons may be tossed sky high, she is a young lady who is very down-to-earth. She plans to compete until the age of 25 then apply for a judges license so she can remain involved with twirling. But her ultimate goal is to earn her degree in foreign languages at Lindenwood and, someday, work for an international company as an interpreter or tutor.



Faculty and alumnae from the classes of 1971 and 1972 reminisce at the annual luncheon

STUDENT SELECTED TO PLAY IN ROME

James Murray III, a second-year student at Lindenwood, has been selected as a section clarinetist of the Rome Festival Orchestra for the 1993 summer session in Rome, Italy.

It is quite an honor for a college sophomore to be included as a member of this musical ensemble. Individuals from all over the world must audition in person or submit a taped performance for consideration. The standards for the Rome Festival Orchestra require participants exhibit the highest level of talent and musicianship.

James, who studies clarinet at Lindenwood with Assistant Professor Robert Carter, is from St. Louis, Missouri.

Reinsfelder Helps Rawlings Strengthen NAIA Connection

Eric Reinsfelder, class of 1987, is proud to be serving as the product manager of inflated products for Rawlings Sporting Goods Company. In his position, Eric is responsible for the preparation and execution of marketing plans, forecasting, budgeting, price analysis and product presentations for Rawlings' basketballs and footballs.

Reinsfelder began working with Rawlings as a market analyst. In 1989, he was promoted to assistant product manager in apparel and co-designed the patented "Jammers" basketball warm-ups that are so popular with collegiate basketball teams across the nation.

As a basketball player and 1987 Male Athlete of the Year at Lindenwood, Eric is pleased to be working in an industry that can help him maintain his NAIA college affiliations. Rawlings has supplied the Official Football and Official Basketball of the NAIA since 1983.

MANAGING EDITOR OF DEFINITIVE LITERARY JOURNAL LC ALUM

According to Maggie Priess, children's librarian and director of public relations for the St. Charles City-County Library District, "The Hornbook is the most well-respected and frequently consulted journal for children's literature in the country." As managing editor, Lindenwood alumna **Kelly Ann Ault** ('87), is largely responsible for maintaining the integrity of this century-old publication.

The journal is published six times a year and includes articles written by acclaimed authors and other contributors as well as reviews of every children's book published in the United States.

Decision of the Heart: Alumna Returns to Reservation

According to the New Testament, "Where your treasure is there will your heart be also" (Luke XII, 34). **Dr. Rosemary Gaffney Webb** ('59) has found her "treasure" on the Rosebud Sioux Reservation in South Dakota.

In 1980-81, Rosemary worked as a consultant at a small tribal college and returned many times to visit over the years. Ten years later, she closed her private practice in Austin, Texas, and now serves as a clinical psychologist at the Indian Health Service Hospital on the reservation. Our best wishes to Rosemary for making what she calls a "decision of the heart."

CITICORP HONORS LINDENWOOD ALUMNA

Jean Schneider Gruber ('76) was recently awarded the Citicorp Success Fund Innovator Award. This award is presented annually to teachers who display outstanding methods in teaching. Jean's award-winning program was published in a resource guide and distributed to area schools for the 1992-93 academic year.

In Fall, 1991, Jean was the recipient of the Citicorp Adaptor Award in education. She currently teaches third grade at St. Catherine of Alexandria School in Riverview, Mo.



Students enjoying the Homecoming Dance.

Alumnus Affiliated With Paramount Communications

Matthew Schliesman ('86), formerly of Kings Entertainment, is now Manager of Show Operations for Paramount Parks, a wholly owned subsidiary of Paramount Communications, parent company of Paramount Pictures, Paramount Television, Madison Square Garden, Simon and Schuster, the New York Knicks, New York Rangers, etc.

According to Matt, it was a friendly take-over. "Kings Entertainment had long been looking for viable ways to grow and expand; Paramount had been looking for a way into the theme park business. This is an especially exciting prospect because Paramount is quickly developing plans to integrate movie and television product into the former Kings' parks." As Manager of Show Operations, Matt continues to oversee Entertainment Department operations, which include the productions, staff and talent for the Great America park near San Francisco.

UNION ELECTRIC AWARDS FIVE SCHOLARSHIPS

Union Electric has again awarded scholarships to five Lindenwood College students for the 1992-93 academic year.

James Comparato of St. Charles; **Joey Landwehr** of O'Fallon, Mo.; **Michael Nicholson** of Washington, Mo.; and, **Stephanie Garcia** of St. Peters, Mo. are recipients of scholarships for the second consecutive year. New student **Mary Bryant**, also of O'Fallon, received the scholarship for the first time. Bryant plans to major in public relations.

LANDWEHR MAKES PROFESSIONAL THEATRE DEBUT

The St. Louis Muny Theatre production of *South Pacific* was of special interest to members of the Lindenwood community because it marked the professional debut of **Joey Landwehr**, sophomore performing arts major at the College.

Of the several hundred Actor's Equity and non-Equity hopefuls to audition, Joey was one of 16 young singer-actor-dancers chosen to perform in this year's Muny chorus. In addition to *South Pacific*, which starred Howard Keel, Landwehr appeared in *The Wizard of Oz* and *George M*, featuring Joel Grey.

Joey, a resident of Ayres Hall, began singing when he was five years old and has performed with the Patt Holt Singers. Audiences have also enjoyed his work in a variety of roles on the Lindenwood stage.

STUDENT WINS SCHOLARSHIP FROM ARC

St. Peters, Missouri resident and Lindenwood College senior **Kelly Zahn** was selected by the St. Charles County Association for Retarded Citizens (ARC), as the 1992 recipient of the Mark M. Fitz Scholarship for her dedication to enriching the lives of the mentally disabled.

Zahn was awarded the scholarship from a group of over 30 applicants. She is currently employed with the St. Louis Chapter of ARC and majors in elementary and special education.

— FACULTY FOOTNOTES —

The **Alice Parker Memorial Lecture** for 1992 featured William L. Hungate, recently retired U.S. district court judge. Hungate also served for a number of years as a congressman from Missouri's 9th district. The title of his lecture was "Politics and Baseball: Many Plan and Few Understand." The lecture was sponsored by the Lindenwood chapter of the American Association of University Professors.

John Bell joined the Lindenwood Faculty as a visiting assistant professor of English for the 1992-93 academic year. Before coming to Lindenwood, Bell was a graduate instructor at Tulane University. He also taught at Loyola University of New Orleans and University of Missouri-Columbia. He holds a doctorate degree in literature from Tulane and a master's degree from UMC.

Lindenwood Associate Professor of Public Administration and International Business, **Joseph Cernik**, recently authored a chapter in *Social Justice: The Teachings of Catholics, Protestants, Jews and Muslims*, edited by James Horgan and Lucy Fuchs. Cernik's chapter, "The Bishops as Political Activists: The Pastoral Letter on War and Peace" is an examination of the Catholic bishops' pastoral letter.

The 1992 recipient of the Emerson Electric Excellence in Teaching Award is Lindenwood professor of education, **Jeanne M. Donovan**. Donovan, who holds a doctorate from George Peabody College, has been teaching at the College since 1978.

The Education Division of Lindenwood is also pleased to announce that **Dr. Larry M. Doyle** has joined the faculty. Past president and chief executive officer of Sanford-Brown Business College in St. Louis, Doyle also served as superintendent and CIO of the Fort Zumwalt and Wentzville School Districts in St. Charles County. In addition to membership in numerous professional organizations, Dr. Doyle also serves on the board of directors of Boatmen's Bank, the St. Charles County Heart Association and on the board of advisors for Doctor's Hospital in St. Charles County.

Instruction in the Humanities will be enhanced by the addition of **Dr. Cecilia Grenier** as assistant professor of English. Grenier, who comes to LC from Elizabethtown College, earned her

doctorate at State University of New York at Binghamton and a post-doctoral fellowship in the teaching of writing at Illinois State University. Fluent in French, Dr. Grenier is also an expert on African literature and made it a special area of study while teaching for the Peace Corps in West Africa.

New art instructor, (**Jon**) **Grant Hargate** is "really excited about teaching full-time at Lindenwood." Hargate believes that the "fabulous art facility and beautiful campus" provide a terrific environment for students in his discipline. Hargate holds a master of fine arts in painting from the University of Cincinnati and has been visiting artist at the University of Dayton and Cincinnati Art Academy. He has held exhibitions in Missouri, Ohio, New York, Indiana, Kentucky and Illinois.

Earlene J. Hill, adjunct faculty member at Lindenwood College is the source for an article entitled, "Live and Learn" in the July/August, 1992 issue of *Entrepreneurial Woman* magazine. The article discusses the education of women entrepreneurs.

According to Oliver Hagan, Dean of the Management Division at Lindenwood, "We're very lucky that **Gail Hoover** is coming to Lindenwood. With a doctorate major in finance, we'll be able to expand our courses for current students and have even more to offer new students in the discipline." Hoover is currently completing her doctorate of business education and administrative services at Northern Illinois University and received her Certificate of Public Accounting in the State of Illinois. Gail comes to Lindenwood from the College of St. Francis in Joliet, Illinois.

Rita Mayer now directs Lindenwood's retail marketing program. Mayer holds a doctorate in education from St. Louis University, a master's degree in clothing, textiles and retailing from Purdue University and a bachelor's from Fontbonne College. "I'm really pleased to be joining the division of management and the entire Lindenwood family," said Mayer. "I look forward to expanding the retail marketing degree into a leading business program."

The faculty and students of the Lindenwood College for Individualized Education (LCIE) program welcome

Marilyn Miller Patterson as assistant professor of professional and school counseling. Former assistant professor and chairperson of the gerontology department of California University of Pennsylvania, Patterson holds a doctorate and master's degree from Memphis State University.

Joining the Education Department of Lindenwood College is **Dr. Kathleen M. Schandl** as assistant professor of special education. She has taught graduate level courses at the Department of Educational Foundations and Research at Gallaudet University in Washington, D.C. and was the research coordinator for the Child Development Center there. Schandl holds a doctorate in special education administration with a focus on early childhood special education from Gallaudet University.

Dr. Michael C. Stein serves traditional and non-traditional students as assistant professor in the day program and in LCIE. Stein, who holds a doctorate from the University of Nebraska-Lincoln, teaches courses in sociology and related fields. Dr. Stein has received grants to do research for the Missouri Department of Mental Health, the United States Department of Education and the United States Bureau of the Census. He comes to Lindenwood from the University of Missouri-St. Louis. In September of this year, Dr. Stein presented a seminar entitled, "The Unintended Use of Public Spaces by a 'Marginal' Population." The focus of the program, which included a slide presentation, was the homeless and originated from his research for the Bureau of the Census.

Criminal Justice is a new program at Lindenwood College that helps prepare students for a variety of careers in law enforcement, prison administration, and juvenile and adult offender social services. **Rick M. Steinmann** has been added to the faculty to support this major. According to Dr. Ed Balog, dean of social sciences at Lindenwood, "...students are fortunate to be instructed by a person who has the broad experience of Rick Steinmann." Steinmann has taught at the University of Missouri-St. Louis, the University of Tampa, and Kentucky State University. He is active with professional organizations and serves as a member of the Academy of Criminal Justice Sciences, American Society of Criminology and the American Judicature Society.

NEW PROGRAM AT LINDENWOOD GIVES COMPETITIVE EDGE TO STUDENTS

Lindenwood College is leading the way among colleges and universities to provide current students and new graduates the competitive edge in the job market. The Talent Accomplishment Profile (TAP) program is a new approach to help students "tap" into their talents and become more well-rounded.

"TAP is a pro-active approach to student development and career placement," said Brian Watkins, director of TAP advising. "We have found that employers look for people who have work experience directly related to their fields of study. The key to success is involvement and experience."

There are three basic motives behind the TAP program: to increase involvement in on-campus activities; to increase involvement in off-campus activities in a student's chosen field; and, to increase vocational awareness.

Each student is encouraged to complete a TAP profile, which includes high school and college activities, accomplishments, awards and other interests. The college then develops a "talent transcript" for students to augment their traditional records of academic performance. Employers have a more three-dimensional view of the

student as a prospective employee. In the increasingly competitive job market, the Talent Transcript is intended to help make Lindenwood students more visible and give them the edge they need in the work force.

Other mini-programs have been created to supplement TAP. The Senior Countdown Seminars help students in their final year get a feel for how networking can help them and how they can get an edge on placement by setting themselves apart from graduates of other colleges. Seniors are also encouraged to take the Holland Self Directed Search to help them make the best career choices.

A significant corollary to TAP is the internship. Students are encouraged and assisted by Student Life staff to arrange opportunities off-campus in their fields of study, thus gaining contacts and experience to include in their Talent Transcript.

"We believe that Lindenwood students who participate in the TAP program will be much better prepared to face the day after graduation with self-confidence. Most of them will either have jobs waiting for them or networks established to help them locate positions quickly," said Watkins.

EXHIBITS

*Hendren Gallery
Fine Arts Building*

NOVEMBER 29-DECEMBER 19

"Recent Works by Contemporary Sculptors"
Sculpture Invitational

Reception: Sunday, November 29, 2-4 pm

JANUARY 10-29

"Young Artist and Their Teachers:
Selected Works from St. Charles County
and Area High Schools"

Reception: Sunday January 10, 2-4 pm

FEBRUARY 7-27

Dorothy Kaskowitz, David Kaskowitz and
Gloria Henderson

Reception: Sunday, February 7, 2-4 pm

MARCH 7-21

"Lindenwood College Art Faculty Exhibition:
Recent Works by Art Faculty Members"

Reception: Sunday March 7, 2-4 pm

MARCH 26-28

"Fourth Annual St. Charles
Counted Cross Stitch Show"
sponsored by Patches, Inc.

Reception: Sunday, March 28, 10-1 pm

APRIL 2-25

"Saunders Schultz: Painting, Drawings and
Three-Dimensional Objects"

"Joan Schultz: Photographic Compositions"

Reception: Sunday, April 2, 2-4 pm

April 29-May 19

"1993 Annual Lindenwood College
Student Art Exhibition"

Undergraduate BA, BFA and
Graduate Students"

Reception: Thursday, April 29, 4:30-6:30 pm

Lindenwood College
Fine Arts Building
St. Charles, MO 63301

Gallery Hours:

9-5, Mon.-Fri.;

1-4, Sat. & Sun.

(314) 949-4862

FIRST ANNUAL ALUMNI CAREER SYMPOSIUM PLANNED FOR FEBRUARY

On Thursday and Friday, February 11 and 12, the Lindenwood College Alumni Board will host a career symposium for students and alumni entitled, "Preparing for the Future—Professional Perspective of the 21st Century". The object is to provide students with **real life experiences and practical information** that can better equip them to meet the demands made on them when they leave the college, diploma in hand. The focus will be on **exploring career opportunities** that may be out of the mainstream.

The format selected for the symposium will feature alumni in seven disciplines. Members of the Alumni Board have taken responsibility for contacting alums working in one or more of the specified areas, asking them to participate. So far, the response by alumni has been outstanding. If you would like more information about attending the symposium or would like to be a presenter, please contact the appropriate alumna/alumnus or Marsha Parker in the

Alumni Office.

The program is a result of the number of requests made by current students interested in developing a stronger tie with

graduates. While we are happy to provide this service to Lindenwood's future alumni, all members of the Lindenwood community are invited to attend.

DISCIPLINES REPRESENTED AND ALUMNI CONTACTS

Arts	Marsha Parker	(314) 949-4906 (314) 723-9244 (h)
Communications	Brad Anderson	(414) 282-3275 (414) 529-2848 (h)
Computing	John Dooley	(217) 384-8591
Business	Jacque Hansbrough	(703) 818-5845 (703) 638-7785 (h)
Education	Mary Ann Collier	(908) 949-1935 (908) 658-3419 (h)
Law and Medicine	Mary Ann Collier	see above
Social Service	Mark Rudolph	(314) 947-7146

LC ALUMNI ASSOCIATION INTRODUCES JOB BANK USA

The Lindenwood College Alumni Association is pleased to introduce the establishment of a new relationship with JOB BANK USA, the country's premier recruitment database company.

JOB BANK USA is the first and foremost ALL PURPOSE recruiting resource in the USA. It is a state-of-the-art computerized database of prospective employees in ALL technical and professional fields, at ALL skill and management levels, across ALL industries, and in ALL regions of the country. This means that companies can use JOB BANK USA to fill virtually all of their open jobs. Because so many companies from across the country use JOB BANK USA to help with their recruitment needs, enrollment in the database is a great way to find a new job!

Lindenwood College alumni are eligible to enroll in the JOB BANK USA database for a full year for a discounted

price of only \$27.00. Furthermore, \$3.00 of each enrollment fee will be donated to the College. So, you can help yourself and your alma mater.

Enrollment in JOB BANK USA is not a guarantee of a job. It does, however, provide individuals some real and important advantages in their search for the best available job that's right for them.

And employers, special discounts are available to you, too, should you choose to use JOB BANK USA to fill positions within your organizations.

For more information about JOB BANK USA, or to receive a Data Base Enrollment form, contact JOB BANK USA at 1-(800) 296-1USA or your Alumni Office at (314) 949-4903.

Some of the companies that have used JOB BANK USA to find high caliber candidates for their open positions include:

Philip Morris Corp.
Marriott Corp.
American Savings Bank
Citgo Petroleum
GTE/Sylvania Lighting
IBM
Anheuser-Busch Inc.
Carnival Cruise Lines

MCI Corp.
Micron Technology
McDonalds Corp.
Best Foods Corp.
Swiss Bank Corp.
Ernst & Young
Budget Rent-A-Car
Snap-On Tool Corp.

Caterpillar/Solar Turbines
Hechinger Corp.
Trident Data Systems
Gannett Corp.
Humana Inc.
Maybelline, Inc.
Executive Learning

LINDENWOOD COLLEGE

1992-1993

Upcoming Offerings
Jelkyl Theatre

Call (314) 949-4966 for information

The Mystery of Edwin Drood a musical by Rupert Holmes

December 3, 4, 5, 10, 11, 12 8:00 p.m.
Matinees Dec. 5, 6, 11, 12 2:00 p.m.

The Elephant Man by Bernard Pomerance

February 25, 26, 27, March 4, 5, 6

Dance Alive: A Dance Concert A Mainstage Debut

April 15, 16, 17, 22, 23, 24



Students rehearsing for December production, *The Mystery of Edwin Drood*.

LC DANCER STUDIES WITH CHOREOGRAPHERS

Lindenwood sophomore **Gina Bond** recently traveled to Hollywood to study at the famed Joe Tremaine Dance Studio. While Gina was in Los Angeles, she had the chance to observe Marguerite Derricks, a choreographer and one of Madonna's backup dancers. She also took instruction from Liz Imperio, who directed and designed the dance numbers

for Gloria Estefan's "Into the Night" world tour.

Gina is a theatre major at Lindenwood and teaches ballet and jazz at Jane and Cathy's Dance Connection. She has been dancing for 15 years and will be choreographing and appearing in LC's December production of *The Mystery of Edwin Drood*.

ALUMNA NAMED TEACHER OF THE YEAR

Barbara Sue Widman Badgett ('65), a teacher at Air Academy High School, was named 1992 Enterprising Teacher of the Year by the Colorado Council on Economic Education (CCEE).

Badgett, who teaches economics and political science, has worked with CCEE in developing the economics course now used at Air Academy and has launched an economic public service program for teenagers called "Marketplace."

According to Mary Alice Campbell, CCEE's associate director, Badgett was chosen, not only because she met the academic and professional criteria, but because she "has a magical way with students."

Barbara's accomplishments were highlighted in the August 1992 issue of *Colorado Business Magazine*.

Alumni Soccer Team Takes the Field During Reunion

The 1992 Alumni Soccer All-Stars took the field on Friday night, October 2 during Reunion Weekend. Players from 1985-1992 distinguished themselves and enjoyed some friendly competition against members of this year's junior varsity team. The score was LC 3, All-stars 1.

Plans are already in the works to host alumni games against both the men's and women's teams in the 1993-94 school year. Any interested alumni should contact Marsha Parker in the Alumni Office by calling (314) 949-4906.

Alumni participating in this year's game were: **Vic Avellino, Mike Baer, Chris Boschert, John Brett, Dominic Condellire, John Costello, Jason Daniels, Tom Donovan, Randy Gardner, Keith Hansen, Scott Harman, Bob Herdler, Alex Kanak, Paul Koetting, Kevin Kuberski, Tim Mahoney, Bob McKeon, Bob Mertz, Ted Nauman, Marc Schwering, John Snipes, Dave Toigo.**

GO ON SAFARI WITH THE LIONS!!

MEN'S BASKETBALL

DAY	DATE	OPPONENT	SITE	TIME
THU	NOV 5	SANFORD BRN	HOME	7:30
Fri	Nov 13	Evangel	Away	7:30
Sat	Nov 14	Central Bible	Away	3:30
Wed	Nov 18	Missouri Valley	Away	7:30
Fri	Nov 20	Earlham Tourn	Away	TBA
Sat	Nov 21	Earlham Tourn	Away	TBA
Fri	Nov 27	Monmouth Classic	Away	TBA
Sat	Nov 28	Monmouth Classic	Away	TBA
Tue	Dec 1	Ball State	Away	7:30
Fri	Dec 4	Park	Away	7:30
Sat	Dec 5	Avila	Away	7:30
Wed	Dec 9	Missouri-St. Louis	Away	7:30
FRI	DEC 11	BAPTIST BIBLE	HOME	7:30
SAT	DEC 12	PARKS	HOME	7:30
Thu	Jan 7	Eureka	Away	7:30
SUN	JAN 10	ILL. INST TECH	HOME	3:00
Tue	Jan 12	Sanford Brown	Away	7:30
FRI	JAN 15	MONTANA TECH	HOME	7:30
THU	JAN 21	HARRIS-STOWE*	HOME	8:00
Sat	Jan 23	McKendree*	Away	7:30
Thu	Jan 28	Missouri Baptist*	Away	7:30
SAT	JAN 30	COLUMBIA*	HOME	7:30
THU	FEB 4	HANNIBAL-LAG*	HOME	7:30
Sat	Feb 6	Harris-Stowe*	Away	8:00
THU	FEB 11	MCKENDREE*	HOME	7:30
SAT	FEB 13	MO BAPTIST*	HOME	8:00
Thu	Feb 18	Columbia*	Away	7:30
Sat	Feb 20	Hannibal-Lag*	Away	7:30

* indicates Show-Me Collegiate Conference game

WOMEN'S BASKETBALL

DAY	DATE	OPPONENT	SITE	TIME
THU	NOV 12	MO VALLEY	HOME	7:30
Sat	Nov 14	John Brown	Away	3:00
Tue	Nov 17	Park	Away	5:30
Fri	Nov 20	Evangel Tourn	Away	TBA
Sat	Nov 21	Evangel Tourn	Away	TBA
TUE	NOV 24	LAMBUTH	HOME	6:30
TUE	DEC 1	ROCKHURST	HOME	7:00
THU	DEC 3	CENTRAL METH	HOME	7:00
Tue	Dec 8	Central Missouri	Away	5:30
Thu	Dec 10	Missouri-Rolla	Away	5:30
Sat	Dec 12	William Woods	Away	1:00
Thu	Dec 31	Berry#	Away	TBA
Fri	Jan 1	West Florida#	Away	TBA
Sun	Jan 3	Harding#	Away	TBA
FRI	JAN 8	QUINCY	HOME	7:30
TUE	JAN 12	C OF OZARKS	HOME	7:30
Thu	Jan 14	Brescia	Away	6:00
Sat	Jan 16	McKendree*	Away	7:00
TUE	JAN 19	MO BAPTIST*	HOME	7:30
THU	JAN 21	HARRIS-STOWE*	HOME	6:00
Sat	Jan 23	Rockhurst	Away	7:00
Thu	JAN 28	MCKENDREE*	HOME	7:30
Sat	Jan 30	Greenville	Away	2:00
Tue	Feb 2	Missouri Baptist*	Away	5:30
THU	FEB 4	WILLIAM WOODS	HOME	6:00
Sat	Feb 6	Harris-Stowe*	Away	5:30
Mon	Feb 8	Iowa Wesleyan	Away	7:00
WED	FEB 10	GREENVILLE	HOME	7:30
FRI	FEB 19	PARK	HOME	6:00

at West Florida Tournament

* indicates Show-Me Collegiate Conference game

WRESTLING

DAY	DATE	OPPONENT	SITE	TIME
Sat	Nov 7	Cardinal Takedn	Away	9:00 AM
Sat	Nov 14	CMSU Open	Away	9:00 AM
		Knox College	Away	4:00 PM
Fri	Nov 20	St. Louis Open	Away	6:30 PM
Sat	Nov 21	St. Louis Open	Away	9:00 AM
Sat	Nov 28	Oklahoma Open	Away	9:00 AM
Sat	Dec 5	Simpson Duals	Away	9:00 AM
		Olivet-Nazarene	Away	9:00 AM
TUE	DEC 8	MO VALLEY	HOME	7:30 PM
Sat	Dec 12	Mo Valley Open	Away	9:00 AM
		MacMurray	Away	9:00 AM
Tue	Dec 28	Sunshine Open	Away	TBA
Wed	Dec 29	Sunshine Open	Away	TBA
Fri	Jan 8	Midwest Classic	Away	9:00 AM
		Mich. St Open	Away	9:00 AM
Sat	Jan 9	Midwest Classic	Away	9:00 AM
Wed	Jan 13	Missouri Valley	Away	7:30 PM
Sat	Jan 16	Dana Invitational	Away	9:00 AM
		No Central Invitat	Away	9:00 AM
Fri	Jan 22	Wm Penn Quad	Away	4:30 PM
Sat	Jan 23	Simpson Invitat	Away	9:00 AM
		Elmhurst Invitat	Away	9:00 AM
Thu	Jan 28	Olivet-Nazarene	Away	6:30 PM
Sat	Feb 6	Tri-State Conf	Away	9:00 AM
		Concordia Tourn	Away	9:00 AM
Fri	Feb 12	District Tourn	Away	TBA
Sat	Feb 13	District Tourn	Away	TBA
Wed	Mar 3	NAIA Natl Tourn	Away	TBA

KCLC Broadcasts Local Games

In Fall 1992, the College radio station, KCLC-FM 89.1, broadcast local high school and Lindenwood College football games weekly. This series provided benefits to both the students and the community, alike. Students majoring in mass communication gained

valuable experience with the process of remote broadcasting and the citizens in the St. Louis/St. Charles metro area had the opportunity to hear the play-by-play of the Lindenwood Lions and their favorite high school teams.



INTERIM LC SPORTS FACILITY OPENS

A lease arrangement was finalized over the summer for Lindenwood College to be the sole occupant of the Bridgeton Sports Complex, located at 191 Rock Industrial Park in Bridgeton, Missouri. "We chose it for its availability, proximity to campus, and to satisfy a number of our needs," said **Steve Crotz**, Athletic Director of the college. "Of course, it's not a panacea. Our arrangement calls for a one-year lease or two if necessary." Plans are being formulated for the creation of a new sports complex to be operational on campus by 1995-96.

In addition to the new leased complex, Lindenwood has acquired the floor from the Kiel Auditorium in St. Louis. Larry Smith of the Kiel Partnership and Ron Fong of the City of St. Louis Development Corporation were instrumental in getting the floor.

Even though the sports complex is only temporary, it certainly solves some problems for the student-athletes. According to Crotz, students "...won't have to practice at 11:00 p.m. at 11 different facilities. This has an all-around benefit in terms of academics because the players will have more time to study, they won't have to practice at odd hours everyday."

Baseball: Post-Season Honors

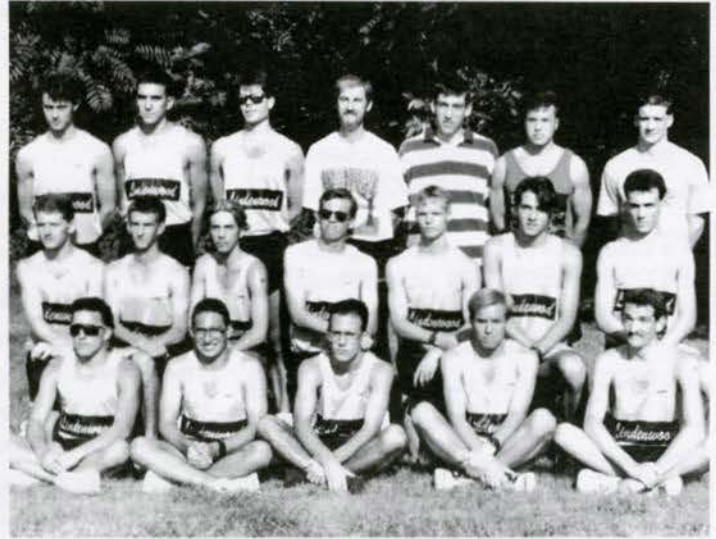
Four members of the Lions baseball team were named honorable-mention All-America selections by the national Association of Intercollegiate Athletics (NAIA) coaches association: pitcher **Jeff Reed**, catcher **Kevin Jones**, infielder **Scott Penning** and outfielder **Keith Venneman**. These four were also voted to the Show-Me Conference All-League team and the NAIA District squad. The Lions finished 34-20 and won the District 16 title.

Basketball (Men's): New Coach, New Court

New coach **Tommy Collins**, formerly assistant coach at NCAA Division I School Lamar and Division II Central Missouri State, certainly has enthusiasm for the sport. He's so excited about the prospects for the 1992-93 season, that he meets his players at 6:00 a.m. for drills and conditioning. According to Collins, "We have a good group that's willing to make the sacrifices necessary to win." Although Lindenwood doesn't have a player taller than 6 feet 3 inches, the Lions make up for the height with heart and hustle. An exciting crop of newcomers includes **Brandon Braswell**, a point guard from Southeast Missouri State. The Lions opened their season with a loss against an accomplished Sanford-Brown team. "Jitters," said Coach Collins "You won't see us suffer from those kind of nerves again."

Basketball (Women's): Coach Predicts Top Finish

The Lindenwood College women's basketball team is unanimously ranked at the top of the pre-season coaches poll. While Lady Lions coach, **Steve Crotz**, believes these polls don't mean a lot, this is the first time he ever announced to his team the way he voted. "We've got the experience and I feel strong about the way this group can play. Being the returning conference champions, people are going to be shooting at us. We're ready for that," said Crotz. Returning players from that championship season will be joined by **Michelle White**, St. Charles High School standout. White was the leading girls scorer in the Gateway Athletic Conference and, in fact, all of St. Charles County this past season. She was one of just three players, male or female, to go over the 500-point plateau. The Lions won their season home-opener against Missouri Valley College, 70-50.



Members of the nationally-ranked Lions Cross Country team.

Cross Country: Ranked 7th In Nation

A few weeks ago, the men's cross country team reached its highest national ranking ever by claiming the #7 spot in the NAIA poll. While both the men's and women's teams won their own Invitational very handily, the high spot for the men came when they topped nemesis Park College in the national rankings. Unfortunately, Park came on in the district championships to narrowly edge LC by a mere 5 points. Coach **Gary White**, however, is proud to be taking four Lindenwood runners to national competition in Kenosha, Wisconsin. National competitors include: **Rodger Knedel**, **Alan Schneider**, **Chris Rebello** and **Janel Teiken**. Unlike other sports, cross country athletes compete against runners from NAIA and NCAA Division I and II schools.

Football: LC Joins New Conference

Lindenwood College, currently a football independent, has joined the newly-created Mid-States Football Association. The association will be aligned and certified as an NAIA Division II football conference, effective with the 1994-95 football season. Eleven NAIA member institutions that are currently independents have signed an agreement to comprise the Mid-States Association. Lindenwood will compete as a member of the Mid-West League against **Findlay (Ohio)**, **Olivette Nazarene (Illinois)**, **St. Xavier (Illinois)**, **Taylor (Indiana)**, and **Trinity (Illinois)**. The Mid-East League will be composed of **Geneva (Pennsylvania)**, **Malone (Ohio)**, **Urbana (Ohio)**, and **Westminister (Pennsylvania)**. A 12th school, **Mount St. Joseph of Ohio** will be invited to join as a member of the Mid-East League.

As an independent, Lindenwood was forced to create schedules like they played this year against six nationally-ranked football powerhouses in NAIA Division II. "The record of 1-9 doesn't begin to tell how well we played, the experience we gained," said first-year head football coach **Jeff Driskill**. "We're young and hungry but ultimately the lack of experience and subsequent injuries take a toll, especially against teams like Southwest Minnesota State," said Driskill, "but I see a great future for the Lions in this new conference."

Special congratulations go out to junior running back **Jim Paddock**, for being named Offensive Player of the Week for the Midwest Region of the NAIA. Paddock scored three touchdowns in a 45-29 Lions victory over Panhandle State.



Members of the Lady Lions Soccer Team. The Lady Lions won the District and Regional Championships and competed in Taloma, Washington, for the 92-93 national title in November.

Soccer (Women's): Congratulate the District 16 and Regional Champs

There was no time to celebrate winning the District 16 Championship for the Lady Lions. They went straight to regional competition in Wichita, Kansas. This kind of intense schedule must agree with the Lady Lions who beat Incarnate Word 2-1 for the regional title. Lindenwood has long been a soccer powerhouse and hopes to finally win the national title after five tries in seven years.

Special congratulations go to several members of the team who have won District 16 recognition over the season. Named as Player of the Week were **Cynthia Hagen** and **Krista Niedenbach** (named twice this season). **Kris Tebbe** was named Goalkeeper of the Week for the week ending October 12.

Soccer (Men's): Impressive Season

Perched as high as seventh in the NAIA polls this season, the Lions defeated top-ranked John Brown College (Arkansas) to win a shot at the District 16 title. Unfortunately, the title game was against arch-rival Rockhurst College. In a game earlier this season, Lindenwood was narrowly defeated by this same team on LC home turf. According to coach **Thom Champion**, it's tough to beat a team with a "win-at-all-costs" attitude. Last year during a championship game against the "Rock", Lindenwood's goalie lost two teeth after being punched by a Rockhurst player. This year, Lindenwood at one time had five starters on the bench due to injuries inflicted during the game.

But there were definitely some highlights for the Lions this season, beginning with the first-place trophy in the University of Missouri—St. Louis tournament. Lindenwood defeated Northeast Missouri State and UMSL (both NCAA schools) to win the title. Congratulations are in order for junior **Terry Berhorst** who was named District 16 Player of the Week in early October. Congrats also to **Jamie Cay** and **Brett Barger** for earning All-Conference academic honors.

Softball: LC Star to Tour Europe

Kris Tebbe, a sophomore at Lindenwood, has been selected for the first National Association of Intercollegiate Athletics (NAIA) All-Star Softball Team to tour Europe in the summer of 1993. To be nominated for the European tour, the player must be a returning NAIA All-District or All-National Tournament player. **Each player must raise her own funds to cover the costs of the trip.** Tebbe plays first base for the Lady Lions and batted .457 last season with 140 at-bats. She led the team in fielding percentage with a .989 and received a series of All-District and All-Conference honors at the end of last season. Kris is also a member of the Lady Lions soccer team and was named Goalkeeper of the Week earlier in that season.

Volleyball: LC Students Named Academic All-Conference

Kudos to the following members of the Lady Lions volleyball team who were named Academic All-Conference players: **Nicole Harlan** (3.05 GPA), **Stacy Hargrove** (3.29), **Shelley Gibson** (3.13), and **Julie Larson** (3.46). Julie was also named District 16 Hitter of the Week during the regular season. Shelley Gibson is a St. Louis Alumni Club Scholarship holder.



Lindenwood to Host 1993 NAIA Championship

Lindenwood College will host the **1993 Women's Soccer National Championship**. The 10th annual event, featuring a six-team field, will be held November 22-26 at the St. Louis Soccer Park in Fenton.

"Lindenwood College is ecstatic about having the opportunity to host the championship series," said Steve Crotz, LC athletic director. "We are looking forward to staging an outstanding event for Lindenwood and the NAIA."

The Lady Lions have been represented in that tournament four of the past seven years and will compete again this year. Two third-place finishes have helped the College acquire a national reputation as a soccer power.

Games in the national tournament are traditionally played on natural grass fields. St. Louis Soccer Park has five competition fields plus a practice field and has served as the site for the Olympic Qualifying Games.

Class Notes

A few weeks after the June *Connection* was distributed, we heard from **Debbie Montgomery Schnedler** ('71). She called to tell us that **Helen Kinnell** ('16) was very much alive and living at the Valle Verde Health Center, 900 Calle de los Amigos, Santa Barbara, CA 93105. Miss Kinnell's death was erroneously reported to the Alumni Office. Our apologies to Helen and her family and our thanks to Debbie for correcting the record.

Students at Lindenwood from 1915-1920 might remember **Fredericka Priesmeyer**. She did her high school work here and attended college classes in 1920. A relative en route to Moberly, Missouri, to visit Fredericka stopped by the College and left with a gift copy of the booklet, *Reminiscences of Lindenwood College*. The former Miss Priesmeyer was so excited to receive the volume, she stayed up all night reading!

Best wishes to **Helen Rieth Taft** ('32). She and her husband recently celebrated their 54th wedding anniversary. Her daughter, Jill, is a teacher and son, Tim, is an orthopedic surgeon. The grandmother of three "lovely grandkids," Helen is a retired teacher and lives in Kirkwood, Missouri.

Please note the following change of address for **Helen M. Parks** ('51): 3263 Bishop Street, Cincinnati, OH 45220.

We also have a new address for **Caroline England Funk** ('52). She's moved from Lancaster to Columbia, Missouri. She can be reached at 1708 Woodrail Avenue. Don't forget the zip—65203-0946.

Same town, different domicile for **Jacquelyn Cheney Smith** ('53). Her new home is located at 10211 Rieder Road, Lebanon, IL 62254.

Jean Bordeaux Vigneault ('62) wants to keep LC friends and classmates up-to-date. She's teaching at an inner

city school in San Diego (all levels 9-12) and loves working with a racially diverse student population. Jean also owns and operates The Serenity Shop which offers books and gifts for members of the 12-step recovery community.

Another alumna, **Susan Berlemann** ('63) is also busy in southern California. As a staff member of Campus Crusade for Christ, Susan serves in the Executive Ministries division in Pasadena. She and her colleagues take the gospel to executives and professionals by hosting outreach dinner parties. She is also working with Chinese physicians in a similar program created by the Campus Crusade.

A special "hello" to **Kathryn Taylor Smith** ('63) who reports that she is "thoroughly enjoying" teaching 35 2nd graders at St. Mark School in Delray Beach, Florida. Kathryn is fortunate to visit often with Miss Lichleiter. Please give our best to "Miss L." when you see her.

Sarah Wells French ('64) sent us this great photo. According to Sarah, every few years, she and **Susan Finegold Laskin, Jean Burkland Udesen, Shannon Athy Johnson** and **Maccie Meyerhardt** gather to renew and revel in their "wonderful friendships". The group met this year in Vail, Colorado. The next gathering is set for Summer, 1994, in San Francisco. Long-lasting friendships like these are one of the best things about being an LC alum.

Better late than never. Congratulations to **Karen Hartong Lee** ('64). In 1988, Karen returned to college. She earned an M.S. in Clinical Psychology and then an Ed.S. in School Psychology. She really enjoys her work and would love to hear from classmates. I hope Karen will be pleased to learn that Lindenwood has one of the finest professional and school counselor programs in the State of Missouri.

Diane (DeeDee) Gridley Starke ('70) wants friends and classmates to know that she is "alive and well and living in Southern Alabama". After 13 years in the counseling field, DeeDee went to nursing school and is currently a rehabilitation nurse working with spinal cord injuries and orthopedic patients. Husband, Dennis (a former UMR Miner), is Vice-President of Operations for Benco Industries.

Marsha Hollander Parker ('71, '87) is very pleased to announce that she, husband Ron, and their menagerie of domestic animals have given up hard water and propane tanks for city life. After 13 years, the Parkers are finally living inside city limits. The new address is: 112 Woodlawn Court, St. Charles, MO 63301. Her phone number is: (314) 723-9244.

Rather than just moving a few miles, **Peggy Middents Pettit** ('71), really relocated. Peggy left Germantown, Tennessee, for the beauty of Aberdeen, South Dakota. She can be reached at 4056 Prairiewood Drive, 57401.

Continued on page 17

RESIDENCE HALL
DIRECTORS NEEDED!
Call John Creer at (314) 949-4984.



Friends from the Class of '64 (l to r) Susan Finegold Laskin, Jean Burkland Udesen, Shannon Athy Johnson, Maccie Meyerhardt and Sarah Wells.

**MASTER OF ARTS
in EDUCATIONAL
ADMINISTRATION
(elementary)
established at L.C.!**
Call (314) 949-4847
for more information.

Chuck Lackner ('73) has a new address, new phone number and increased responsibilities for Transwestern Publishing. His district now includes north and south Texas, Louisiana, Oklahoma and Kansas. Because of the importance of Transwestern's Houston market, he has relocated to 4303 Sherwood Lane, #3, Houston, TX 77092. Chuck also reports that Chumar and Gremlin have settled in and have two nice humans who take care of them while he is away.

Thanks to **Ruth Ritter Staggemeier ('73)** for sending her new address, too. It is: 906 Parc Forest Trail, St. Charles, MO 63303.

Glen Cerny reports some news he received via the LC "grapevine" about **Marc Cutright**. It seems that he is the Director of Communication of the University of Tennessee—Chattanooga campus. Congratulations, Marc. Martha Boyer would be proud.

It looks as if **Judith Light ('75)** has also found her way back to the city from Hollister, Missouri. Her new address is: 7G San Miguel, St. Charles, MO 63303.

Moms and dads in the St. Louis area, you can make your child's next birthday party a very special one by calling **Holly Hermann Gulick ('78)**. She and a partner have started a small business called Musical Moms. They entertain young children (ages 3-7) with guitars, percussion instruments and vocals. What a great idea.

The concept of lifelong learning was not wasted on Lindenwood alumnus, **Dale Harbison ('78)**. He is presently working towards his Masters in Safety Management. This busy guy is a

firefighter/paramedic/police officer for the City of Des Peres, Missouri and owns/operates Focus on You Photography. Dale reports he has a "great wife and two wonderful kids". Sounds like a rich and full life.

Speaking of full lives, the same is true for **Glenna Tehel Gaunt ('79)**. Recently hired by the Barton County Community College as a voice instructor, she continues to give private lessons to adults and children (ages 2-6). Glenna and Steve live on a farm in Great Bend, Kansas with their two children, Joann and J.T.

Congratulations to Kevin and **Laura Bridegan Curran ('84)** on the May 14th birth of their son, Michael Kevin Curran.

We are also pleased to announce the birth, on February 8th, of Michala-Carey Demars, daughter of **Leah Hollenberger ('84)**. This year has been a very special one for Leah. A public announcement she wrote and produced was nominated for a regional Emmy. Kudos!

Chris Boschert ('85) wants someone to talk to him "out of going back to grad school!" In spite of this dilemma, Chris reports he has a "good job...good office...good life...good girlfriend...and the family is fine." Chris is a senior marketing specialist for Edward D. Jones and Company.

Blue booties are in order for the new addition at 3753 Gumtree Lane in St. Louis. On June 20, **Eric and Brenda Eisenbeis Reinsfelder ('87 and '88)** became the proud parents of Kyle Charles.

It is no longer necessary to ask the question, "Eric Carlson, where are you?" His new address in Cincinnati is: 3646 D Brookshire Drive, 45209.

Continued success to **Elizabeth (Beth) Bodnam ('88)** who graduated from St. Louis University School of Law in 1991. Beth is doing bankruptcy work for the May Company.

Joe Arnold ('88, '89) is just a gypsy at heart. And it's a good thing, too. He is currently touring with the Nebraska

**OLDER STUDENT
SCHOLARSHIPS**
available at Lindenwood-
**50% tuition grant for adults
age 55 and older.**
Call Evening Admissions at
(314) 949-4930 to find out more.

Theatre Caravan based in Omaha. Last season, the troupe performed *A Christmas Carol* in St. Louis so Joe was able to take a little time to visit with family in Belleville, Illinois. Mail can be sent to the following address and will be forwarded to him on the road: Nebraska Theatre Caravan, 6915 Cass, Omaha, NE 68132.

Kyle Dennis and Mary Weber ('89, '91) recently announced their association in practice as Gateway Psychotherapy Associates. They focus on the outpatient treatment of eating disorders and the office is located in the Oxford Building in Clayton, Missouri.

Wishes for a long and happy life to **Grace Freels ('91)** who recently wed Michael J. Pyle. Grace is pursuing her Masters degree at Lindenwood, working and settling into her new life with Michael.

Best wishes are also in order for **Jill Miller ('91)** who became the bride of David Lawrence on October 17. Dr. Alan Meyers, assistant professor of religion at Lindenwood, co-officiated at the ceremony.

Angela Butz ('92) was wed on November 7, to Gregg Lammert. Long life and happiness.

Katie Crangle ('92) recently announced her engagement to Dave Montgomery. A June 27 wedding is planned.

October was a popular month for weddings! On October 16, **Rhonda Rushing ('90, '92)** married Ben G. Fischer in St. Charles. Rhonda is employed by Mastercard International.

— IN MEMORIAM —

Our thoughts and prayers are with the loved ones of the members of the Lindenwood family who have passed through this life. While our friends, classmates or colleagues may no longer live upon the Earth, they continue to live in our memories.

FRIENDS OF THE COLLEGE

Patricia Gardiner Baloun notified us of the death of **Dr. Siegmund A. E. Betz** in Cincinnati. He earned his bachelor's and master's degrees from the University of Cincinnati. In 1934, he was the youngest person to receive a doctorate from the university. Dr. Betz was a member of the English Department at Lindenwood College for 21 years.

In July of this year, we received a very touching letter from Sally Thielbar Quinnelly telling us of the death of **Anita Brown Croft**, psychology instructor at the College. The impact Mrs. Croft made on Sally and other students, was significant. Apparently, Nita's class in Marriage Psychology was quite innovative for its time. According to Sally, they "actually discussed birth control at a weekend conference with boys!" A copy of Anita Morrow Lindberg's *Gift from the Sea* was donated by Mrs. Quinnelly to the Butler Library in Mrs. Croft's memory.

For nearly 20 years, **Robert W. King** distinguished himself in the Business Administration Department at Lindenwood. During his tenure at the College, he served as chairman of the department, instructor, and as special advisor to international students. Bob passed away on August 6 and we offer our condolences to his fiancée, LC alumna Marla Kleine, Bob's mother and children. He will be missed. Family, friends and colleagues have established a scholarship in his name at the College.

Our sympathy to family and friends of art instructor and sculptor **John H. Pohlman** who died on August 5 after a long bout with cancer. John earned a bachelor's degree in fine arts from Webster University and a master's degree in the same discipline from Southern Illinois University at Edwardsville.

Graveside services were held in St. Charles for **DeWitt H. Smith**, former maintenance worker and custodian at the College. Mr. Smith passed away on October 4.

We are also saddened to inform the alumni community of the loss of **Rachel Morris Smith**. She was a psychology professor at the College in the early 1920's. She is survived by her husband, Ralph, and numerous nephews and nieces.

CLASSMATES AND FAMILY MEMBERS

Our sympathy to Mary McInnes Flowers ('48) on the loss of her mother, **Helen Stewart McInnes ('19)** in May, 1992. Mrs. McInnes was 92 years-old and attended Lindenwood in 1919.

Members of the Class of 1923 will mourn the loss of **Laura Elizabeth Cross** who died on February 7. Miss Cross certainly possessed that pioneering spirit. She earned her bachelor's degree at Lindenwood, a journalism degree from Columbia University in New York and her law degree from George Washington University. Miss Cross worked for the Library of Congress and was an attorney for the Army Corp of Engineers.

Mary Hardman Orgen ('29) passed from this life in November 1991.

We regret to inform you of the death of **Louise Geyer Eshleman ('32)**. Her husband, Harold, notified us that Louise was lost to him April 20, 1992.

The Class of 1932 will also mark the loss of another classmate, **Jean Betty Chamberlain Zanders** in March, 1992.

Mary Comstock Gray ('36) shared news of the death of her sister, **Dorothy Comstock Ricke (33')**, who passed away on April 14, 1992. Dorothy attended Lindenwood from 1929-1931. Our thoughts are with Mary and other members of the family.

Condolences are also offered to the family of **C. Louise Hoffman Howard ('37)** who died on May 13, 1992 in Cape Girardeau, Missouri.

Please extend your sympathy to Katherine Morton Nelson ('37) on the loss of her husband, **Roy**, in August. Katherine has moved from the farm where she and Roy lived for 47 years. She's now living in St. Joseph, Missouri. Her address is 1916 North 29th.

The Alumni Office was notified of the death of **Ruth Jane Allen ('39)**. Miss Allen was a resident of Washington, Indiana.

John K. Hilliard, husband of Jane Elizabeth Mauk Hilliard ('42), passed away on March 5, 1991, after a long illness. Although the last year has been a

difficult one, she has managed to keep busy with the P.E.O. sisterhood, D.A.R. and other organizations. Mrs. Hilliard said she "remembers most fondly" her days at Lindenwood and I am sure that she would welcome hearing from classmates.

"Unfortunately, I regret to inform you that my mother, **Margorie Young Walker ('43)** passed away on July 5, 1991....She loved her Lindenwood College days and reflected on the outstanding experiences that she had there." We thank Lee Walker, Margorie's son, for remembering her to Lindenwood.

We regret to inform the Lindenwood family of the loss of **Judith Johnston Unland ('43)**. She passed away April 4, 1992.

We recently learned of the death of **Marcia Ann Eaton Wall ('49)**. Marcia Ann was the beloved wife of William Wall for "38 years, 10 months." Our sympathy to Mr. Wall and other members of Marcia's family.

The last few months have been truly devastating for the family of **Robert H. Hyland, Jr.** Mr. Hyland was lost to them on March 5 and, July 16, **Patricia Sowle Hyland ('51)** died from complications of pulmonary disease. A funeral mass was celebrated at St. Anselms' at the Abbey. A memorial has been established at Lindenwood to commemorate the Hylands and their service to the College.

Our thoughts and prayers go out to Camilla McCluer Edwards ('53) on the death of her youngest daughter, **Melissa Jean Edwards**, in a traffic accident in July, 1992. Melissa was only 24 years-old. She is survived by Camilla, a sister, stepbrother and stepsister.

Members of the Class of 1960 will be saddened to learn of the death of **Virginia Ann Dierking Kelly**. Virginia passed away after a three-year battle with cancer.

Sympathy and support of the Lindenwood community go out to Barbara Clark ('63) on the loss of her husband, **Robert T. Clark, Jr.** in June, 1992. As chairman of the Greater St. Charles Convention and Visitors Commission, Bob was an active and well-respected member of the community. In honor of his passing, the City of St. Charles flew U.S., Missouri and city flags at half-mast. Memorial donations may be made to Lindenwood.

ENSURE LINDENWOOD'S FUTURE: REFER STUDENTS TO YOUR ALMA MATER

One of the best ways to ensure Lindenwood's future is to refer prospective students to the College. Post-secondary education is a big step for anyone, and there are so many options to consider. In many cases, it's difficult to get beyond the "hype" of colored brochures, big name professors (who probably don't teach), and the promise of extracurricular fun, to the real mission of a college or university.

You know what you're getting at Lindenwood. **You** are proof that Lindenwood stands, as it has since the days of the Sibleys, for quality, value-centered education of the **whole** person. You are the beneficiary of the supportive faculty, small classes, and pre-


professional opportunities unique to Lindenwood's students. Wouldn't it be great to help others also benefit from the Lindenwood experience?

Jerry Bladdick, director of undergraduate admissions, is available to meet with prospective students and their parents and tell them about the advantages of a Lindenwood education. But **you** are the best example. Your personal and professional successes speak volumes about the value of attending the oldest college west of the Mississippi. Please encourage your relatives, friends and colleagues to consider Lindenwood. It's a tough enough choice to make, and your recommendation will help them make

the right one.

Alums who have already completed their undergraduate degrees should also consider returning for graduate work and encourage their friends and colleagues to join them. An outstanding faculty in the MBA and the expanded choices in other areas of post-baccalaureate studies make Lindenwood the strongest option for those wishing to earn advanced degrees.

To refer a student or to get information, please call Jerry Bladdick at (314) 949-4949. He and his staff are waiting to give all those who inquire the personal attention they expect and deserve.



WHAT'S NEW?

209 S. Kingshighway St. Charles, MO 63301

We would like to know what's new in your life since leaving Lindenwood. Is there anything special you'd like printed in the next *Connection*? New address or phone? Name change? Please fill out the card below and return it to us at your convenience.

Name _____ (Maiden) _____ Class _____
Address _____
City _____ State _____ Zip _____
Home Phone _____ Business Phone _____
Employer _____ Title _____
What's new? _____

ALUMNI MERIT AWARD NOMINATIONS

The Alumni Merit Awards are given to honor alumni for Professional and Volunteer accomplishments and for Service to Lindenwood. Honorees are selected by the Alumni Board in February and the awards are presented at Commencement. Return your nominations on this form and include a single sheet listing your reasons for submitting the name(s) by February 1, 1993. Thanks

Professional Accomplishment _____
Volunteer Accomplishment _____
Service to Lindenwood _____

— CLUB NOTES —

DALLAS CLUB—NEW EDITION?

We have received inquiries from LC graduates in the Dallas-Fort Worth area about establishing an alumni club there. We all know Texas is noted for its distinguished alumni and we are happy to see enthusiasm for the College being generated in the state. If you are interested in participating in the establishment of an alumni club, are willing to plan events, or would like to be a member, please contact **Ann Fieber Hays** (*66) at 14110 Valley Creek Drive, Dallas, TX 75240. Ann's phone number is (214) 386-4383.

KANSAS CITY CLUB

Everyone is so busy that sometimes it's hard to get together. The President enjoyed his visit with club members in March and is enthusiastic about creating more interest among alums and prospective students in the area. Contact **Betty Leathers Ambrose** (913) 469-1274 or **Mary Adams** (913) 722-0910 for more information.

ST. CHARLES CLUB

New president, Penny Myers Bryant reports that the Mrs. Sibley's Attic Sale was, once again, a huge success. The addition of antique dealers under roof in Ayres Cafeteria was a terrific idea (and a profitable one, too). The Club uses the money generated each year to fund scholarships. This year, more than \$6,500 generated by the Sale assisted 7 students. The Pot Luck Dinner held at the President's house in

September to honor the scholarship recipients was a great success. Special thanks to President and Mrs. Spellmann for their hospitality. For more information about the Club, contact Penny at (314) 947-4672.

ST. LOUIS CLUB

Members of the St. Louis Club are busy making preparations for this year's Fashion Show, to be held at the Algonquin Country Club on Saturday, March 6. Attendees will be in for a special treat—the show will consist of all vintage clothes from 1900-1920. Put this event on your calendar and make plans to attend. For more information about the club or the fashion show, call **Jeanne Mattern McDowell** at (314) 434-8485. Remember, the money goes for a good cause—scholarships. Speaking of scholarship funds, special thanks to **Marian Taylor Ryan** and her husband, Ron, for representing the St. Louis Club at the St. Charles Jaycees Fourth of July celebration and the Festival of the Little Hills. They braved heat and record crowds to sell Quezel frozen products to help Lindenwood students.

SOUTHERN CALIFORNIA CLUB

Betty Ziegler and other members of the Club are preparing for their holiday meeting on December 19. They have invited Mrs. Sibley's great-great-grandnephew, Robert Easton, and his lovely wife, June, to be their guests. They would also like to invite all Lindenwood alums in the area to come and join them. For more information, please call Betty at (619) 931-1770.

Special thanks to the following contributors:

*Jeanne Malpiedi, Corina Pudil, Beau Giessman, Neil Brown,
Theresa Bishop, Heather Troudt, Matthew Vorst and Holly Brown*



LINDENWOOD
COLLEGE

209 S. Kingshighway
St. Charles, MO 63301-1695

Non-Profit
Organization
U.S. Postage

PAID
St. Charles, MO 63301
Permit No. 84

ADDRESS CORRECTION REQUESTED

100345
Ms. Virginia W. Terry
1436 Santa Anna Street
St. Charles, MO 63303-5102