

Lindenwood University

Digital Commons@Lindenwood University

Student Handbooks

Lindenwood Documents, Booklets,
Miscellaneous

1925

Lindenwood College Hand Book, 1925-1926

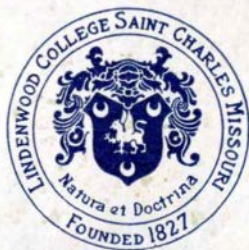
Lindenwood College

Follow this and additional works at: <https://digitalcommons.lindenwood.edu/student-hb>



Part of the Education Commons

1925/26



Students'
Hand Book

LINDENWOOD HAND BOOK



Lindenwood College
St. Charles,
Missouri

CALENDAR 1925

JANUARY							FEBRUARY							MARCH							APRIL																	
S	M	T	W	T	F	S	S	M	T	W	T	F	S	S	M	T	W	T	F	S	S	M	T	W	T	F	S											
-	-	-	-	1	2	3	4	5	6	7	8	9	10	11	12	13	14	15	16	17	18	19	20	21	22	23	24	25	26	27	28	29	30	31	-	-	-	
4	5	6	7	8	9	10	11	12	13	14	15	16	17	18	19	20	21	22	23	24	25	26	27	28	29	30	31	-	-	-	-	-	-	-	-	-		
11	12	13	14	15	16	17	18	19	20	21	22	23	24	25	26	27	28	29	30	31	-	-	-	-	-	-	-	-	-	-	-	-	-	-	-	-		
18	19	20	21	22	23	24	25	26	27	28	29	30	31	-	-	-	-	-	-	-	-	-	-	-	-	-	-	-	-	-	-	-	-	-	-	-		
25	26	27	28	29	30	31	-	-	-	-	-	-	-	-	-	-	-	-	-	-	-	-	-	-	-	-	-	-	-	-	-	-	-	-	-	-		
MAY							JUNE							JULY							AUGUST																	
-	-	-	-	-	1	2	3	4	5	6	7	8	9	10	11	12	13	14	15	16	17	18	19	20	21	22	23	24	25	26	27	28	29	30	31	-		
3	4	5	6	7	8	9	10	11	12	13	14	15	16	17	18	19	20	21	22	23	24	25	26	27	28	29	30	31	-	-	1	2	3	4	5	6	7	8
10	11	12	13	14	15	16	17	18	19	20	21	22	23	24	25	26	27	28	29	30	31	-	-	-	-	-	-	-	-	-	8	9	10	11	12	13	14	15
17	18	19	20	21	22	23	24	25	26	27	28	29	30	31	-	-	-	-	-	-	-	-	-	-	-	-	-	-	-	-	16	17	18	19	20	21	22	23
24	25	26	27	28	29	30	31	-	-	-	-	-	-	-	-	-	-	-	-	-	-	-	-	-	-	-	-	-	-	-	23	24	25	26	27	28	29	30
31	-	-	-	-	-	-	-	-	-	-	-	-	-	-	-	-	-	-	-	-	-	-	-	-	-	-	-	-	-	-	30	31	-	-	-	-	-	-
SEPTEMBER							OCTOBER							NOVEMBER							DECEMBER																	
-	-	1	2	3	4	5	6	7	8	9	10	11	12	13	14	15	16	17	18	19	20	21	22	23	24	25	26	27	28	29	30	31	-	-	-			
6	7	8	9	10	11	12	13	14	15	16	17	18	19	20	21	22	23	24	25	26	27	28	29	30	31	-	-	-	-	1	2	3	4	5	6	7	8	
13	14	15	16	17	18	19	20	21	22	23	24	25	26	27	28	29	30	31	-	-	-	-	-	-	-	-	-	-	-	8	9	10	11	12	13	14	15	
20	21	22	23	24	25	26	27	28	29	30	31	-	-	-	-	-	-	-	-	-	-	-	-	-	-	-	-	-	-	16	17	18	19	20	21	22	23	
27	28	29	30	-	-	-	-	-	-	-	-	-	-	-	-	-	-	-	-	-	-	-	-	-	-	-	-	-	-	23	24	25	26	27	28	29	30	

CALENDAR 1926

JANUARY							FEBRUARY							MARCH							APRIL																		
S	M	T	W	T	F	S	S	M	T	W	T	F	S	S	M	T	W	T	F	S	S	M	T	W	T	F	S												
-	-	-	-	-	1	2	3	4	5	6	7	8	9	10	11	12	13	14	15	16	17	18	19	20	21	22	23	24	25	26	27	28	29	30	31	-			
3	4	5	6	7	8	9	10	11	12	13	14	15	16	17	18	19	20	21	22	23	24	25	26	27	28	29	30	31	-	-	1	2	3	4	5	6	7	8	
10	11	12	13	14	15	16	17	18	19	20	21	22	23	24	25	26	27	28	29	30	31	-	-	-	-	-	-	-	-	-	8	9	10	11	12	13	14	15	
17	18	19	20	21	22	23	24	25	26	27	28	29	30	31	-	-	-	-	-	-	-	-	-	-	-	-	-	-	-	-	16	17	18	19	20	21	22	23	
24	25	26	27	28	29	30	31	-	-	-	-	-	-	-	-	-	-	-	-	-	-	-	-	-	-	-	-	-	-	-	23	24	25	26	27	28	29	30	
31	-	-	-	-	-	-	-	-	-	-	-	-	-	-	-	-	-	-	-	-	-	-	-	-	-	-	-	-	-	-	30	31	-	-	-	-	-	-	
MAY							JUNE							JULY							AUGUST																		
-	-	-	-	-	-	1	2	3	4	5	6	7	8	9	10	11	12	13	14	15	16	17	18	19	20	21	22	23	24	25	26	27	28	29	30	31			
2	3	4	5	6	7	8	9	10	11	12	13	14	15	16	17	18	19	20	21	22	23	24	25	26	27	28	29	30	31	-	-	1	2	3	4	5	6	7	8
9	10	11	12	13	14	15	16	17	18	19	20	21	22	23	24	25	26	27	28	29	30	31	-	-	-	-	-	-	-	-	-	8	9	10	11	12	13	14	15
16	17	18	19	20	21	22	23	24	25	26	27	28	29	30	31	-	-	-	-	-	-	-	-	-	-	-	-	-	-	-	16	17	18	19	20	21	22	23	
23	24	25	26	27	28	29	30	31	-	-	-	-	-	-	-	-	-	-	-	-	-	-	-	-	-	-	-	-	-	-	23	24	25	26	27	28	29	30	
30	31	-	-	-	-	-	-	-	-	-	-	-	-	-	-	-	-	-	-	-	-	-	-	-	-	-	-	-	-	-	30	31	-	-	-	-	-	-	
SEPTEMBER							OCTOBER							NOVEMBER							DECEMBER																		
-	-	-	1	2	3	4	5	6	7	8	9	10	11	12	13	14	15	16	17	18	19	20	21	22	23	24	25	26	27	28	29	30	31	-	-	-			
5	6	7	8	9	10	11	12	13	14	15	16	17	18	19	20	21	22	23	24	25	26	27	28	29	30	31	-	-	-	-	1	2	3	4	5	6	7	8	
12	13	14	15	16	17	18	19	20	21	22	23	24	25	26	27	28	29	30	31	-	-	-	-	-	-	-	-	-	-	-	8	9	10	11	12	13	14	15	
19	20	21	22	23	24	25	26	27	28	29	30	31	-	-	-	-	-	-	-	-	-	-	-	-	-	-	-	-	-	-	16	17	18	19	20	21	22	23	
26	27	28	29	30	-	-	-	-	-	-	-	-	-	-	-	-	-	-	-	-	-	-	-	-	-	-	-	-	-	-	23	24	25	26	27	28	29	30	
-	-	-	-	-	-	-	-	-	-	-	-	-	-	-	-	-	-	-	-	-	-	-	-	-	-	-	-	-	-	-	30	31	-	-	-	-	-	-	

COLLEGE CALENDAR

1925-1926

First Semester

- Tuesday, September 15—
Registration of students.
- Wednesday, September 16—
Registration of students.
- Thursday, September 17—
Registration of students.
- Friday, September 18—
Organization of classes.
- Friday, October 23—
Founders' Day.
- Thursday, November 26—
Thanksgiving Day.
- Friday, December 18, 12 M. to Tuesday,
January 5, 10 A.M.—Christmas holidays.
- Monday, January 25, through Thursday,
January 28—Mid-year examinations.
- Friday, January 29 and Saturday, January
30—Registration for second semester.

Second Semester

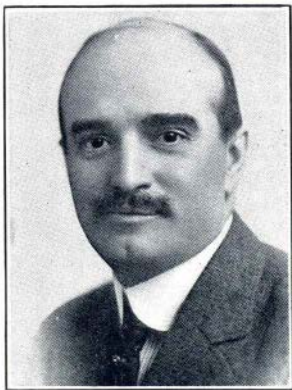
- Monday, February 1—
Organization of classes.
- Sunday, February 14—
Day of prayer for colleges.
- Wednesday, March 31, 12 M. to Tuesday,
April 6, 10 A. M.—Spring Vacation
- Tuesday, May 25, through Friday, May 28—
Final examinations.
- Saturday, May 29—
Spring festival.
- Sunday, May 30—
Baccalaureate sermon.
- Monday, May 31—
Class Day.
- Tuesday, June 1—
Commencement.

WORDS OF WELCOME FROM THE PRESIDENT

Students of 1925-1926, the President and Faculty welcome you to Lindenwood. You may feel "strange" when you first come. This will wear off with the cordial greetings of all with whom you come in contact. We offer you a home as well as a college education and we want you to be part of us. Be *friendly* and you will have friends. Be *faithful* and you will accomplish much. Be *honorable* in all your relations with students and faculty and you will be greatly benefited by your year's experience. The President and all connected with the college are here to help you help yourself to a larger vision of life.

Sincerely,

A handwritten signature in black ink, reading "John L. Raemer". The signature is written in a cursive style with a large, looping initial "J" and a distinct "L" before the surname "Raemer".



JOHN L. ROEMER, A. B., L. D. D., D. D.

President



MRS. JOHN L. ROEMER
Dean of Students

GREETINGS FROM THE DEAN OF STUDENTS

It gives me great pleasure to welcome you to Lindenwood College. May this year be the most successful so far in your life.

Choose your course wisely and thoughtfully, make the most of your opportunities, so that in the end there will be no regrets.

College days pass rapidly, and may we urge you to prepare to lead useful lives.

I shall be so glad to help you, if you will come to me and allow me to share in your daily life.

Hoping to meet you personally, I am,

Most sincerely yours,

Wm. John L. Roemer

GENERAL INFORMATION

History

Lindenwood College was founded in 1827 by Major and Mrs. George C. Sibley. In 1831, at the request of its founders, its management was transferred to the Presbytery of St. Louis. In 1853 the Presbytery of St. Louis transferred the appointment of Directors to the Synod of Missouri. The college is non-sectarian in its administration, thoroughly Christian in its ideals and purposes. It has been the recipient of generous benefactions from time to time which have enabled the present administration to place it in the Standard A class of four-year colleges conferring degrees. As member of the Missouri College Union and the North Central Association of Colleges and Universities the work done here is accepted by the best colleges and universities.

Buildings and Grounds

The campus embraces an area of 138 acres of choice land, the greater part of which is within the city of St. Charles. This gives our student body ample opportunity for exercise within the campus enclosure. St. Charles, the home of Lindenwood, is one of the most beautiful cities of 10,000 population in Missouri. Fifty minutes from St.

Charles is St. Louis, the metropolis of the State, accessible by rail and traction lines.

The buildings on the grounds are:

Educational and Administration—Roemer Hall.

Music Conservatory—Margaret Hall.

Dormitories—Butler, Jubilee, Sibley, Nicolls, Eastlick and Irwin Hall.

President's Home—The Gables.

Other Buildings—Tea Room, Sibley Cottage, The Lodge, Art Pottery, Central Heating Plant, Garage, Barn, Detention Hospital, Water Clarifying Plant.

Faculty

In addition to being your instructors in classes, the faculty are interested in you personally. One of the means which is taken to increase this interest both on the part of the faculty and the students is the system of assigning each student to a member of the faculty, who acts as her advisor. You are expected to go to her with any difficulties you may have or for any information which you want.

It is to your advantage to make your faculty advisor a friend through college. Call on all of the members of the faculty, even if you do not have classes with them. It will help you to know them, and they are

anxious to know you. After you have called, do not be afraid to go again, for they are always glad to see you.

All members of the faculty have office hours. Call on them while you are waiting for class.

Reports on Scholarship

Complete reports of deportment and scholarship are sent to parents twice each school year, as soon as possible after the close of each semester early in February and June.

At the close of each semester a complete report will also be sent to the principals of the schools who transferred the credits to Lindenwood. It is our desire to co-operate with them by keeping them informed of the progress of their former students.

Unexcused Absences

An unexcused absence on the day preceding or the day following a holiday will be counted as a double cut.

Students failing to meet their classes must obtain an excuse from Dean of Students before they may be excused.

Teachers are not permitted to issue excuses from classes and it is imperative for the Student to have a written excuse signed with pen and ink by the Dean of Students.

In the case of enforced absence from regular examinations, at the discretion of the Dean of the College, the work may be made up by special examination or otherwise, as she may determine. If the work is made up by special examination, this must be done at a time convenient to the instructor and the student, but must not interfere with regular class work.

Deliberate absence from examination gives no credit in the course and cannot be made up by special examination.

No student will be re-examined in a course in which she has failed.

Religious Culture

Religious culture is not overlooked. While the college is non-sectarian in matters of religion, it is insistent upon the knowledge of the Word of God and Christian training. Every student during freshman and sophomore years is required to take two semester hours in the study of the Bible each year.

Addresses are given during the year by ministers, missionaries and laymen, upon topics that will give the students a larger vision of the Christian World work. Chapel services are held each morning and Vespers Sunday evenings. The Young Women's Christian Association is a most effective organization in the development of the

religious life. Pastors of the city are given the names of young ladies who express denominational preference. Each student, after electing the church she prefers to attend is expected, unless excused by the Dean of Students, to attend the church of her choice every Sunday morning. Attendance at evening services in the Chapel is required. Many of our students engage in Christian service in the local churches and teach in the Sunday schools.

Chapel Exercises

All students are required to attend daily the regular chapel exercises at twelve o'clock. Attendance is also required at the Sunday evening service in the Auditorium.

The students are required to sit in the seats assigned to them by the President of the Student Council.

Vesper Services

Every Sunday evening, in the chapel, a religious service is held for all members of the college family. The service is short, and the music is furnished by the college choir.

PLACES YOU WILL WANT TO FIND

Post Office

The Post Office is located on the ground floor of Roemer Hall. A lock box is assigned to every student and a rental fee of fifty cents is required when you procure your key. In case of loss of key, another can be had at the same price. Only the box assigned to you is accessible for your mail.

The Post Office is conducted by a post-mistress and under the usual regulations. Packages may be mailed here, stamps bought, etc., as in any other post office. In each hall are mail boxes for outgoing mail, which is collected twice a day.

College Store

The College Store is located in the Post Office. Here general supplies of books, stationery, sheet music, ink, pencils, pen-nants, pillows, college jewelry, etc., may be obtained. **Cash must be paid for all articles purchased.**

College Bank

The college bank is located on the first floor of Roemer Hall. The cashier has regular hours, which are posted. Students

are urged to deposit their money here to insure safety. Carrying money about or leaving it in the rooms oftentimes leads to carelessness and loss. The college stands responsible only for money placed in its care. The bank is for "depositing," not *borrowing*. Checks drawn by students on their parents or guardians will not be honored except when written instructions for such privilege from parents or guardians are on file in the bank.

Tea Room

The students' Tea Room is a separate building just opposite the new administration building. It is open during the day for the use of students.

Library

The Library is located in the west end of Roemer Hall. It has been modernly equipped and is one of the handsomest library rooms in Missouri. Notice of its regulations will appear later in this book.

Class Rooms

All educational class rooms will be found in Roemer Hall. Music Studios in Margaret Hall.

THINGS YOU WILL WANT TO KNOW ABOUT

Dress

Extravagance in dress is discouraged. Students are requested to bring only the most serviceable clothing.

Expense Account

It is the firm conviction of the college authorities that students should be placed upon an allowance and be compelled to live within their income. It has been the experience of many schools that parents are too liberal with "spending money." The use of money is a most sacred obligation that must be learned by young ladies early or late in life. Keep your expense account down to the minimum of necessities. Learn the lesson that you must be guided by what you can afford, not by what others may do. The rich and the poor have equal standing at Lindenwood.

Business men of St. Louis offer prizes to girls who make out a budget at the opening of school, and whose expenses are kept within the budget.

Furniture

Each student's room is supplied with single bed, mattress, pillow, study table, chairs, bureau, closet or wardrobe. The windows are furnished with shades. Students must furnish curtains if desired. Each student is responsible for the care of her room, and *any injury done to furniture, rooms or building will be charged to the offender*. Tacks and nails must not be driven in the walls. Pasting pictures on the walls is prohibited.

Home Life

The college takes the place of the home while the student is in residence, and great care is taken to foster the spirit of the home. The greatest freedom consistent with the best interests of each is given. Each student is counselled with on matters pertaining to her welfare by the Dean of Students. Individual responsibility is encouraged and the spirit of co-operation and family fellowship taught. Each student is required to care for her own room. Neatness in housekeeping is credited. Prizes in each building are awarded to the ones having the highest grades at the end of the year.

Hospital

In case of sickness students are placed in the care of the college physician and a graduate nurse, who have charge of a well-equipped Hospital. Students are provided with the conveniences of the Hospital. Office consultation of the college physician during his office hours is free to the students. A nominal charge is made by the physician for other service. In case of serious sickness, requiring a private nurse or special attention of a physician, the student bears the additional expense.

Choir

You are urged to try out for the choir, if you have musical ability. Do not be afraid to try. One hour of college credit is allowed for choir work.

Choral Society

All voice students are required to belong to the Club and others may try out for places. This is an excellent opportunity to get musical training and to keep in touch with college life. Do not fail to join.

Two big Choral Concerts are given each year by the Society, and only regular attendants at the rehearsals are allowed to appear

COLLEGE ACTIVITIES YOU SHOULD BE INTERESTED IN

Y. W. C. A.

The object of this organization is the development of Christian character in its members and the prosecution of active Christian work among the women of the college.

The work of the Association is carried on by the members, assisted by the faculty advisors and the officers.

Membership is open to all students and members of the faculty. Regular meetings are held on Wednesday evenings.

The Christian Association wants you to feel this is a personal invitation to you to join. It is a growing and developing organization and will be better for your active cooperation and for your new ideas. Each girl should be able to find some phase of the work which will interest her.

The annual dues are one dollar, and the greater part of this goes toward maintenance.

Athletic Association

Every student is interested in some form of athletics. The college requires that every girl who is physically able take some

form of physical exercise. Classes in gymnasium work are arranged, also swimming, hockey, tennis, hiking, track and baseball. At the opening of the semester each girl is examined by the college physician, and then assigned to some form of gymnasium work by the director of the department.

To become a member of the Athletic Association, a specified number of points must be earned.

Information may be secured from the Director of Athletics.

Don't forget to try out for all teams and help your class to make a good showing. If you don't make the team, remember that you can help by being on the side lines. Loyal support on the part of the student body is just as necessary for a victory as to have a fine team which is fighting alone.

State Clubs

Membership open to all girls from their respective state. Object: to promote greater interest in, and loyalty to, the college.

Class Organizations

All classes have formal organizations, and every girl is supposed to identify herself with her own class and take part in the activities.

Dramatic Art Club

The purpose of this club is to create a greater interest in Dramatic Art. Members of the Oratory classes are eligible to membership. Election to membership is possible only after the student fulfills a specified number of requirements.

Full information may be secured from the Dean of the College.

Alpha Sigma Tau

An honorary literary society, which was founded in Lindenwood College in 1921. This new honor society, membership in which is based upon scholastic standing and general fitness, has been organized with eighteen charter members. Inasmuch as Lindenwood is now a four-year college, her membership in the old Phi Theta Kappa organization automatically ceased. The new society has been named Alpha Sigma Tau, and has very high standards.

Alpha Mu Mu

A musical society founded in Lindenwood College in 1918. It is to the music department what the Alpha Sigma Tau is to the college department. Its object is to promote a keener interest in, and greater en-

thusiam for, the study of music. Members of the music faculty and students who are specializing in music are eligible to membership. Election is based upon decided musical talent, application to study, and general fitness.

Didaskalion

An educational Society in the Department of Education for the further enlightenment along educational lines.

Euthenics Club

Organized to create a greater interest in the department of Household Arts.

WORDS OF ADMONITION AND WISDOM FOR NEW STUDENTS

Begin well. Remember, bad work for the first year handicaps you all the way through college.

Don't be discouraged if you have to wait in line for everything you want the first week. Make a complete list of everything you want at each place, so you need go through the agony only once. Keep cheerful!

Watch the Bulletin Boards.

Don't treat chapel as a social function. You will be disturbing to your neighbors, and, after all, they may want to hear.

Don't go in your neighbor's room when she is away. Something might be missing.

Don't use your roommate's belongings without asking for them.

Don't forget to write home often. Your letters are watched for, and time does not pass so rapidly for those who are home.

Don't play with one girl exclusively. There are 450 in College.

Don't cut "Gym." This department issues conditions.

Don't bring a dozen trunks to college. A few simple, becoming dresses are all you will need.

Send a note to someone who is sick. She will appreciate it and remember it long after you have forgotten the incident.

Don't borrow your friend's clothes. Keep your own individuality.

Set your ideals high and stick to them.

Get the Lindenwood Spirit. It makes your college life worth while.

Be true to what is expected of you by your family.

"A girl, like a nail, is of little use when she does not use her head."

Be prompt to meet all engagements. Being punctual is one of the best habits.

Have an object in your college life. "No quest, no conquest."

"Treat the campus and buildings as you would your own home." This is one test of real college spirit.

Attend your class meetings. You are responsible for the success of your class.

Learn the rules governing the college. It will save trouble and embarrassment later.

Remember that you are here for study. You will get more pleasure from your college life if you work faithfully.

Sign up for at least one form of athletics, and work hard at it.

"You are representing Lindenwood, be careful at all times to uphold her good name."

"In your attitude toward others be natural and sincere. Reserve and deference toward upperclassmen shows an appreciation of college traditions."

Never knock—help boost.

"Do your own work, by yourself. Do not let it accumulate till it is overwhelming. Do it as well as you can every day."

"Pay as you go. Do not borrow money. Decide what you will spend money on, and then say *No* when you cannot afford what you are asked to spend."

"Remember the value of a smile. Optimism is a real friend-maker."

"Never miss an opportunity to make a friend."

THE COLLEGE LIBRARY

The Library occupies one wing of the first floor of Roemer Hall. No expense has been spared in providing the best possible light and equipment.

The Loan Desk is found at the entrance and here all books must be charged and discharged whether for home use or for use in another part of the library. The card catalogue may be found in a cabinet of drawers near the Loan Desk.

Library Hours

The hours of the Library are posted as follows:

7:50 to 12:00 M.

1:00 to 5:30 P. M.

7:00 to 9:00 P. M.

Only students and members of the faculty are entitled to the use of the Library.

A registration list is kept at the Loan Desk. All new members of the college are expected to register in the Library and to read its rules before availing themselves of its privileges.

Rules Regarding the Loan of Books

RESTRICTION OF CIRCULATION.

During library hours books which are needed for class work are kept in the Library.

Books belonging to the classes named below may never be taken from the Library.

- (a) General periodicals, bound.
- (b) General reference books; *i. e.*, all encyclopedias, dictionaries, atlases and other books of reference.
- (c) Books in certain special collections, also books too rare or valuable to be loaned, and books whose circulation may for special reasons be restricted by the Librarian.

LOAN AND RENEWAL. — Fiction works of general literature, and other books not closely associated at the time with the work of any department, may be drawn for a period of two weeks. A book may be renewed for the same period of time. A student may draw three books at a time—two non-fiction and one fiction.

FINES.—Every book not returned or renewed within two weeks becomes subject to a fine of five cents a day. Students having unpaid fines are not expected to draw books from the Library. No student is at liberty to use another's name in drawing a book. Library books may not be taken to the Infirmary.

RESERVE BOOKS.—A reserve book *i. e.*, a book kept in the Library because needed for class work, may be taken out only

for the hours during which the Library is closed. Failure to return such books on time incurs a fine of ten cents for the first hour and twenty-five cents for each hour thereafter.

RESERVATION.—An engagement book is kept at the Loan Desk for reservation of books to be taken for the hours of closing. The reservations in this book are not charges. A book engaged in this way must be charged by the Loan Desk assistant before it may be taken from the Library. Students are expected to see that the books desired have not already been engaged by others.

CHARGING.—Every book taken from the Library must be charged at the Loan Desk. For failure to observe this rule the fine will be twenty-five cents for the first offense, and on repetition of this offense all Library privileges will be forfeited for one month.

RETURN OF BOOKS.—Every book taken from the Library must be returned at the Loan Desk, where the charge for it will be cancelled. Borrowers remain responsible for books as long as the books are charged to them.

RECALL OF BOOKS.—All books taken from the Library are subject to recall by the Librarian and must be returned immediately upon receipt of a recall notice.

Rules Regarding the Use of Books in the Library

Books should be used, as far as possible, near the shelves in which they belong. To avoid misplacement, all books should be left on the tables; never returned to the shelves.

Reserved books used only in the Library must be asked for and registered at the Loan Desk. Students are expected to return reserve books to the desk when through using them.

Reserved books may be held by a student only 1 hour at a time.

Ink, except in fountain pens, must *not* be used in the Library. Ink bottles must not be brought into the Library.

All are expected to co-operate in preserving quiet and order at all times, especially in entering and leaving the Library.

GOVERNMENT AND DISCIPLINE

The government is firm and kind. Such regulations as are absolutely necessary to the welfare of the students are made and enforced. The pupils are permitted to share in their own government to whatever extent their training fits them in the form of self-government in the matter of exercise and study hall. Our location permits a large degree of liberty to our students.

Individual and community responsibility rests upon the students. A Student Self-Government Association outlines the rules and regulations of student government under the supervision of the faculty. A handbook is printed, giving rules and information of discipline and government.

EACH STUDENT, UPON ENTRANCE, AUTOMATICALLY BECOMES A MEMBER OF THE ASSOCIATION.

Since it is the purpose to keep the atmosphere of the school wholesome and helpful, the faculty may dismiss at any time any student who may be exerting a harmful influence, or who may be found to be entirely out of sympathy with the tone and standard of the school, even though she has not committed any special act of insubordination.

Student Fee—The students have adopted in past years the custom of collecting from each student a fee of \$5.00 to be used in defraying all class expenses connected with the various student activities. Also a charge of \$1.00 is assessed every student for the work of the Y. W. C. A. Have \$6.00 added to your tuition check from home.

LINDENWOOD STUDENT ASSOCIATION

Constitution

Whereas, we, the students of Lindenwood College, desire to assume individual and community responsibility in the life and conduct of the college and thus to develop self-control and to promote loyalty, do hereby organize ourselves into a Student Association.

THE ACT OF ENROLLING AS A STUDENT MEANS THAT WE AGREE TO SUPPORT, ON OUR HONOR, THE CONSTITUTION AND BY-LAWS OF THE STUDENT ASSOCIATION.

Article I.—Name

This association shall be called the Lindenwood Student Association.

Article II.—Purpose

The purpose of this association shall be to control the management of all matters concerning the conduct of students in their college life that are strictly non-academic, that are not reserved to the jurisdiction of the faculty.

Article III.—Members

Section I. All students of Lindenwood College are subject to the operation of this constitution, and are, therefore, members of the association.

Section II. One-third of the members of the association shall constitute a quorum in all cases not otherwise provided for.

Article IV.—Legislative Department

The legislative power shall be vested in the association as a whole, all new measures to be approved by the Faculty Committee.

Article V.—Executive Department

Section I. 1. The executive power shall be vested in an Executive Council, which shall consist of the President, the Vice-President, the Secretary, the Treasurer and the Head Proctors of each residence hall. The Faculty Committee shall be ex-officio members.

2. The President and Vice-President shall be selected from the Senior Class and the Secretary and Treasurer from the Junior Class, except by special recommendation of the President of the college.

Section II. The Board of Proctors shall consist of the Head Proctors and the Assistant Proctors for each dormitory, and shall be appointed by the Executive Council.

Section III. A Committee consisting of the President of the college, the Faculty Advisory Committee and the representatives of the Student Council shall select the officers of the association.

Section IV. 1. The President of the Association shall call together and preside over all meetings of the association and of the Executive Board. Regular meetings of the board shall be held each week.

2. The Vice-President shall assume the duties of the President in the absence or at the request of the President.

3. The Secretary shall keep the minutes of the association and a list of its members, post notices of meetings, attend to the correspondence of the association, and act as Secretary of the Executive Board, keeping records of all its meetings, and submit a written report of all business.

4. The Treasurer shall care for the finances of the association. All expenditures shall be subject to the approval of the President, and an annual itemized report submitted to the association.

5. The Executive Council shall act in all matters not provided for by the association.

6. Each proctor shall inform the members of her corridor of such matters as shall be communicated to her by either the Student President, the Executive Council or the Head Proctor, who shall have general over-

sight over her building, and shall see that all Proctors are on duty. She shall hold weekly meetings of her Proctors.

Section V. Vacancies occurring in any office of this association shall be filled in the manner prescribed in Section III.

Article VI.—Judicial Department

Section I. The judicial power of this association shall be vested in the Executive Council with the right of appeal to the Discipline Committee.

Article VII.—Meetings

Section 1. Meetings may be called by the President at any time or by the written request of fifteen members.

Article VIII.—Amendments

Amendments must be first submitted to the Executive Council and Dean of Students.

Rules

I. All questions of order shall be decided by Roberts' "Rules of Order."

II. The students adopt a budget plan for the year for the College activities and in this they plan for the collection of the dues for such student activities throughout the year.

III. Except in cases of special emergency, notice of any proposed meeting shall be posted on the association bulletin board at least three days before the time appointed for the meeting.

IV. Student Rules. 1. Students are responsible for the observance of all regulations posted from time to time on the Student Association Bulletin Board.

GENERAL RULES

1. The Head of a building is in complete charge of the discipline and care of the building. All residents of the building are expected to co-operate with her.
2. All matters of discipline not within the jurisdiction of the Student Council will be in the hands of the Discipline Committee which includes the Dean of Students and the Heads of the buildings.
3. All matters of dismissal from the college will be in the hands of the President.
4. All academic questions will be in the hands of
President Roemer and Committee.
5. Quiet Hours—On week days quiet in halls and rooms must be maintained from 8 A. M. to 12 M.; 1 P. M. to 4

P. M.; 7:30 P. M. to 10 P. M. Quiet during these hours is necessary to give students preparing their lessons time to study.

On Sunday absolute quiet is required in all dormitories between 2 P. M. and 4 P. M. No visitors are allowed upon campus during these hours.

6. Visiting quietly during school hours is allowed, but in case of a single reprimand by the Head of the building, a member of the Faculty, Proctor, or member of the Council the student will be expected to report to the Council at once.
7. Rooms must be cleaned by 9 a. m.
8. No cooking in rooms. No electrical appliances allowed. Rooms are provided where electrical appliances may be used.
9. A fee of \$1.00 is to be paid to the Heads of the buildings for the use of electrical appliances.
10. Pressing rooms will be open daily from 1 to 5 p. m. and on Saturdays from 8 a. m. to 4 p. m.
11. Permissions to spend the night out of your room must be obtained from the Head of the building.
12. Guests must not be taken to the dining room unless previous arrangements have been made with the Dietitian.

13. Written permission from your parents to go to St. Louis must be on file with the Head of your building, who will give all week-end permissions.
14. Permission to go elsewhere must be obtained from the Dean of Students.
15. Students must be accompanied by chaperons to all evening concerts and entertainments.
16. Under no conditions will students be permitted to visit any hotels unless accompanied by a Chaperon.
17. All students are permitted to have callers from Friday after classes until Sunday at 10 p. m., except during Sunday quiet hours. Permission must be secured from the Head of the building.
18. Students are required to be on time at church.
19. Students must sign up with the Head Proctor of their building on leaving and returning.
20. Chapel, Vespers, Assembly Conduct.
 - (a) All students are requested to attend the Vesper Services of the college.

- (b) Absolute quiet and careful attention required at all services.
- (c) Quiet must be observed on entering Chapel.
- (d) Choir, as well as other students, must sit in their regular seats unless otherwise informed by the President of the Association.

21. All findings of the Student Council shall be read before the students.

22. The golf course will not be used after 6 p. m.

23. All students leaving the college campus must sign in the office of the Head of the building in which she resides on leaving and returning. All students must be at the college by 5:30 p. m.

24. College Schedule for the day:

Rising Bell.....	6:30 a. m.
Warning Bell.....	7:10 a. m.
Breakfast Bell.....	7:15 a. m.
First Hour.....	8:00 a. m.
Second Hour.....	9:00 a. m.
Third Hour.....	10:00 a. m.
Fourth Hour.....	11:00 a. m.
Chapel.....	12:00 noon
Lunch.....	12:20 p. m.
Fifth Hour.....	1:00 p. m.

Sixth Hour.....	2:00 p. m.
Seventh Hour.....	3:00 p. m.
Recreation.....	4:00 to 6:00 p. m.
Dinner.....	6:00 p. m.
Study Hour.....	7:30 to 10:00 p. m.
Recreation....	10:00 to 10:15 p. m.
Room Bell.....	10:15 p. m.
Light Bell.....	10:30 p. m.

25. The use of victrolas and ukeleles to be regulated by the Head of the building.
26. Absolutely no visiting is allowed during study hour. Permissions may be obtained from the Proctor for leaving the building for music practice or to go to the library. A permission slip must be obtained from the Proctor on your floor and must be presented to the Proctor of the building you are to visit. The same will be returned to the Proctor of your floor when you return.
Absolutely no visiting or studying in the practice rooms.
27. When the Head of a building is away permissions may be obtained from the office of the Dean of Students. Office hours of the Heads of the buildings are posted in each building.
28. The members of the Freshman class may go to St. Charles twice a week.

The members of the Sophomore class may go to St. Charles three times a week.

The members of the Junior class may go to St. Charles four times a week.

The members of the Senior class may go to St. Charles any day except Sunday.

29. Absolute quiet is to be maintained in the library during library hours, and any failure to observe this rule will result in the taking away of library privileges.
30. Excuses for absence from classes may be obtained from the Dean of Students.

RULES APPLYING TO MEMBERS OF THE SENIOR CLASS

1. Seniors may go to St. Louis any day provided it does not conflict with their classes.
2. They may go to St. Charles any hour from 8:00 A. M. to 5:30 P. M., if it does not conflict with their classes.
3. They will not be required to be present at meals on Saturday or Sunday, provided they sign the day before with the Head of their building.

RULES APPLYING TO MEMBERS OF THE JUNIOR CLASS

1. Juniors may go to St. Louis on Saturdays.
2. They will not be required to be present at meals on Saturday or Sunday, provided they sign, the day before, with the Head of their building.

RULES APPLYING TO MEMBERS OF THE SOPHOMORE CLASS

1. Sophomores may go to St. Louis once every two weeks.

RULES APPLYING TO MEM- BERS OF THE FRESHMAN CLASS, AND SPECIAL STUDENTS

1. NO visiting is allowed during study hour in the evening. Studying with another student must be done during the day. NO EXCEPTIONS are allowed to this rule.
2. Freshmen and Special Students may go to St. Louis once every three weeks.

LINDENWOOD SONGS

LINDENWOOD HYMN

School of our mothers, in days of yore,
Goal of their fond ambitions long.
Within the portals of thy door,
Ideals were formed and will made strong.
Thy honored rule was ever good,
Old Lindenwood, Old Lindenwood.

The tumult and the shouting dies,
The Seniors year by year depart;
Still stands thy ancient edifice,
A stately and a noble pile,
With arched limbs of sacred wood,
'Round Lindenwood, Old Lindenwood.

Far called, old teachers pass away,
But new ones rise to take their place;
And all the pomp of yesterday
Goes on with but a change of face.
Few hearts but throb with kindly good,
Toward Lindenwood, Old Lindenwood.

On girls that come, and girls that go,
On all that walk beneath thy shade,
A heaven-sent gift wilt thou bestow;
A graceful and a gracious maid.
With brain for power and heart for good,
Old Lindenwood, Dear Lindenwood.

Amen.

—Louise Crandall.

PRIZE SONG, 1917**Music by Miss Mildred Howard**

Of all the schools in all the world,
It's Lindenwood for me.
In play and work you'll find we're always
fair and square;
The girls and all the faculty show loyalty to
thee.
For mem'ries dear and friendship we will
ever care.
At Lindenwood we've lots of sports,
Our swimming stands the test,
Our hockey and our tennis, too,
Are full of lots of zest.
And when it comes to basket ball,
We're simply out of sight;
Oh, Lindenwood, we love you;
Yes, with *All Our Might*.

PRIZE SONG OF 1918

Words and Music by Marion Haire

Oh, the girls all come to Lindenwood,
From North, South, East and West,

For education
And 'sociation.

In everything we lead the rest;
We always come out best.

Co-operation!
Our reputation!

Fancy anybody going away—

They always stay if they come here a day;
So here's three cheers for the dear old school
Where the honor system is the rule.

Oh! Lindenwood, in all the years to be
Our hearts with love will overflow for thee,
You are dearest to our heart,
And with tears from you we'll part;
There's no place like home, you see,
But Lindenwood spells home to me.

PRIZE SONG OF 1919**Words and Music by Myrtle Smith**

You have heard of Smith and Vassar,
You have heard of Wellesley, too,
But Lindenwood's the college
Where the girls are all true blue,
Oh! Lindenwood, we're strong for you!
To white and yellow we are always true.
In music, sports and in our college work
We know that Lindenwood will never shirk.
And when it comes to our faculty—
Well, we have the very best!
Surely you are dear to us, oh Lindenwood,
And leader of the great Southwest.

PRIZE SONG OF 1920**Words and Music by Velma Pierce**

Oh Lindenwood, dear Lindenwood,
Our praises rise to thee,
And when we leave this lovely spot,
Thy splendor ne'er shall be forgot!
Thy memory to us shall cling
Years after this to thee we'll sing.
Thy truth and beauty give us cheer,
Our loyalty, you ne'er need fear
Oh lovely home, dear Lindenwood
To thee we sing!

PRIZE SONG OF 1921

Words by Julia Horner—Music by
Ailee Norris

Oh Lindenwood we're true,
And always we'll love you.
For in the years to be,
Mem'ries sweet will linger.
Our faculty we're sure
Is the best one can procure.
We students all will fight
For the yellow and the white.
Our voices raise to you, Lindenwood;
In truest praise to you, Lindenwood;
For you are of the best of colleges,
And loyal e'er we'll be,
In your defeat or sweet victory.
Long life to you we'll sing,
Always honor to you bring,
Lindenwood.

PRIZE SONG OF 1922

Words and Music by Julia M. Horner

'Tis for our college we do work and always
are alert—
We'll try our best to out-do the rest in sports
and college life—
'Twill be our aim to win all fame,
For one we hold most high—
And though we cross the ocean wide,
Our Loyalty is tied.

Chorus

O Lindenwood to you we sing,
Our Alma Mater Dear,
For in the years you'll hear our cheers,
Forgetfulness ne'er fear,
And when we go out in this world,
Our love for you will be unfurled,
O Lindenwood we are so true,
For always we'll love you.

PRIZE SONG OF 1923-24

**Words by Jessie Schaper—Music by
Alberta Shell**

'Neath the shade of massive lindens,
At the gateway of the West,
Stands our dear old Alma Mater,
Loved in ages, far the best.
Truth and honor, held the highest,
By our mothers loved and true,
Are the standards that surviveth,
Girls of Lindenwood, for you.
For your ideals and traditions,
For your colors, firm we stand,
Lindenwood, our Alma Mater,
Best in ages, of the land.

MELODY, "ILLINOIS LOYALTY."

We're loyal to you, Lindenwood;
We're yellow and white, Lindenwood.
 We know you can stand
 'Gainst the best in the land,
For your standard is grand, Lindenwood,
Rah! Rah!

Then on with your work, Lindenwood;
Not one girl will shirk, Lindenwood.
 Our school is our greatest pleasure;
 On girls, with great endeavor;
Three cheers for New Lindenwood!
Cha! he! Cha! haw!—Cha! he! haw! haw!
Lindenwood, Lindenwood, Rah! Rah! Rah!

LINDENWOOD GIRLS

We Lindenwood girls are there on looks,
And full of pep, you see;
We've said enough about ourselves,
So we'll mention the faculty.
They are a very brilliant set,
And order they preserve,
And sometimes we are forced to go,
Before the student board.

But firm we stand for you, Lindenwood;
Our hearts and hands for you, Lindenwood.
Our colors we unfurl
To wave for every girl.
You stand for the best that's in the land;
We sing our praise to you we love the best,
For you're the Leader of the West;
And our hearts will all be true,
When we wave farewell to you,
For we're White and Yellow, Lindenwood.

**MELODY, "MY HEIDELBERG, MY
HEIDELBERG."**

Here's to our fair, new Lindenwood;
Here's to the flag she flies;
Here's to the girls that boost for her;
 Their spirit never dies.
Here's to marguerites, so white;
 Here's to our colors true;
Here's to each daughter of old L. C. ;
 Lindenwood—here's to you!

Chorus:

Oh, Lindenwood, dear Lindenwood,
 Thy daughters sing thy praise!
That golden haze of student days
 Will linger 'round thy name.
And cherished be thy memory,
 Through all the coming years.
When far away that memory
 Will fill our eyes with tears.

MELODY, "STEIN SONG."

Oh, there's many a school and college
For years and years have stood;
But for fun and friends, and knowledge,
The best is Lindenwood.
Alma Mater is our glory,
Our greatest joy and pride;
And we'll sing to her the story,
As we stand here, side by side.

Chorus:

Oh, it's L. C. forever,
We're school-fellows here together;
We will sing her our praises,
We will sing for Lindenwood.

DEAR OLD LINDENWOOD

Here's from dear old Lindenwood,
Our College of wide renown;
You'll find it in grand old Missouri,
At the edge of St. Charles town.
Hail! To the White and the Yellow,
The Elms and the Lindens we love;
And for a grand, glorious future,
We look to the Power above.

FACULTY PRIZE SONG, 1923-24

**Words by Virginia Symms—Music by
Elizabeth Bates**

In the heart of our great country,
Under western skies of blue,
As a beacon light of knowledge
Stands our Alma Mater true.
'Neath her flag of gold and snowdrift
Bow her leafy sheltering trees,
Stretching arms of love and service
To inspire to nobler deeds.
Let us truly be the children
Of this mother grand and good.
Hail to thee, our Alma Mater,
Hail to thee, our Lindenwood.

LEADER OF THE WEST

"Mid the hills of old Missouri, there's a
school that's dear to me,
Where the mighty "Muddy Water" wanders
down toward the sea;
Standing there among the Lindens with her
open doors for all,
Lindenwood, to every daughter, sends out
this reverberate call:
"Give, oh, girls, of L. C. training,
To the world your very best;
And forevermore be faithful,
To the LEADER OF THE WEST."

And her daughters, 'tho they're scattered
from Los Angeles to Maine,
And from Idaho to Georgia, all take up the
loyal strain.
As they go about their duties in this busy
land today,
Be they teachers, wives, or artists, they,
responding, seem to say:
"We are striving, dear old L. C.,
To the world to give our best
And we'll evermore be faithful,
To the LEADER OF THE WEST."

—V. M. T. '17.

SCHEDULE
FIRST SEMESTER

A. M.	Monday	Tuesday	Wednesday	Thursday	Friday	Saturday
8						
9						
10						
11						
12						
P. M.						
1						
2						
3						
4						
5						

SCHEDULE
SECOND SEMESTER

A. M.	Monday	Tuesday	Wednesday	Thursday	Friday	Saturday
8						
9						
10						
11						
12						
P. M.						
1						
2						
3						
4						
5						

