

# The Lindenwood Colleges

1973



1974



1975



1976



The President's Report • 1974-76



---

**The cover illustrates an enrollment increase in The Lindenwood Colleges from 876 to 1612 students.**

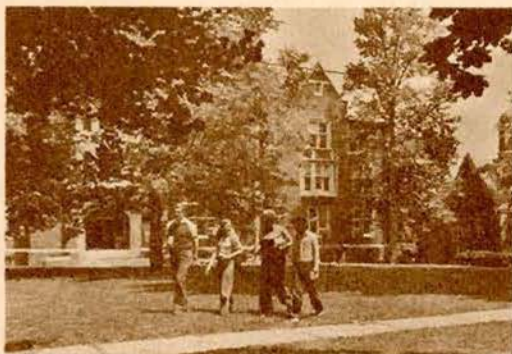
---

---

## **Table of Contents**

Letter to the Trustees	1
Asking Questions — Searching for Answers	2
Two Years in Review	4
Reports of the Deans	9
Lindenwood College for Women	10
Lindenwood College for Men	14
Lindenwood Evening College	18
Lindenwood College for Individualized Education	20
Report of the Vice President	23
Summary of Current Operating Funds, Fiscal Years 1975 and 1976, and Approved Budget, 1976-77	28
Financial Aid Awards	30
Appendix A — Recreation and Athletics	31
Appendix B — Personnel Changes: Faculty and Staff	32
Appendix C — Calendar of Events	34
Appendix D — Boards of The Lindenwood Colleges	36
Officers of The Colleges	37

---



## **To the Trustees of The Lindenwood Colleges:**

---

In the waning days of August, one of the national television network programs was entitled "Same Pomp, Different Circumstances," a comparison of a California high school class of 1953 with the class of 1976 from the same school. The program itself was interesting, but it was the program title that most struck my attention.

This first biennial report to the Board of Trustees is an effort to highlight for all who are interested in The Lindenwood Colleges the events, facts, ideas, and trends that have affected the institution over the past two years. The focus is of course on particular people and programs, the living and changing components of our community, but it also tries to place Lindenwood in a broader setting of educational issues and developments.

The Lindenwood faculty, students, and staff respect and even venerate the illustrious 150-year history of this institution. As we approach the Sesquicentennial celebrations of 1977, we believe we are still holding high the permanent values of personal excellence and public service, although "times are a-changin'." We hope that as you read, you will sense as we do, the same pomp, different circumstances.

William C. Spencer  
President, The Lindenwood Colleges

---

## Asking Questions – Searching for Answers

---

A Northwestern University dean recently wrote: “Few institutions have looked into the mirror and asked themselves the tough questions related to what makes them what they are. Are they any different from hundreds of other institutions?” The Lindenwood community is proud that in fact it is facing these tough questions, that it is reflecting penetratingly on the past, present, and future, and that it is determined to become and remain an academically dynamic and economically viable independent institution serving the public and its needs.

In the broadest sense, American higher education programs and institutions are unique. They have been and are presently copied by educators and national planners throughout the world. While it may be fashionable to tout the intellectually elite character of Oxford or Cambridge, to cite the historic lineage of Salamanca or Bologna or Berlin, to commend Moscow or Leningrad for phenomenal improvements in engineering, or to plead for people’s universities in developing nations, it is the uniqueness of the American model with its dynamism and diversity that has attracted the world’s primary attention. That uniqueness is rooted in the motivations of early pioneers to found colleges like Lindenwood to meet educational needs and to serve students that otherwise would lack opportunity. It was extended by visionary legislators who built the federal land-grant and state universities, and has been enriched in our time through a vast network of public community colleges. Today, however, that uniqueness of dynamism and diversity is



President William C. Spencer

---

**“Few institutions have looked into the mirror and asked themselves the tough questions related to what makes them what they are.”**

**William Ihlanfeldt**  
Dean of Admissions, Northwestern University

---

---

threatened. Diversity is being replaced as mass-handling techniques, favored by ever-enlarging state and federal bureaucracies and budgets, are given priority attention and support. Creative dynamism is giving way to innocuous standardization, conventional wisdom is replacing experimentation and innovation, and mediocrity is accepted with a shrug of the shoulders.

Intensifying the crises in higher education are economic pinches, beliefs that bigness and goodness are synonymous, conflicts over the economic and social value of higher education, and fears that changes, if made, will not improve the situation. The cumulative effects of these trends and other related facts, beliefs, and attitudes must be carefully calculated. Slowing down the dynamism of colleges and universities, with each replicating the other, and with all trying to serve all constituencies, will lose for America its leadership in higher education. Already many wonder about a City University of New York, once the star of municipal, free universities of outstanding academic excellence, that now requires only an eighth-grade reading level to graduate with a bachelor's degree.

Lindenwood is determined to protect and use its dynamism to explore new educational frontiers. This process starts by asking questions among ourselves and of others. What about the intelligent and often highly-motivated person who cannot or is simply unwilling to become educated through conventional classes, assignments, and exams? If someone thirty or forty or even sixty or seventy years old comes to us to be

educated, what do we say and do? If the community expresses a need for and an interest in vocational, technical and even the general education programs typical of a junior college, how does Lindenwood respond? It's so easy to justify and preserve the status quo. If some major hospitals in St. Louis ask us to provide basic science, social science, and humanities courses for their nurses, do we answer affirmatively or simply say that it's not our responsibility? Medical schools are training advanced specialists and conducting research on the frontiers of medical knowledge, but they are not producing many general practitioners to care for the masses of people with everyday health care needs. Should Lindenwood do anything about this pressing social and educational program; if so, what can be done, with whom, under what circumstances? Or, on a more modest level, what does one do if enrollment in foreign language courses declines but student interest in the cultures of other nations remains high? Or an appeal is made to Lindenwood to help Middle East students learn English; what is the appropriate response? These are a few of the hundreds of questions Lindenwood has tried to answer over these past two years.

Yes, we say to the Northwestern University dean, we are asking ourselves the tough questions, and we're also realistic in facing contemporary challenges. We respect and honor the past, we live confidently in the present, and we act courageously as we plan carefully for the future. ■

## Two Years in Review

---

The summer of 1974 was focused on two major issues: the selection of a new president, and the formulation of Lindenwood policy concerning the development of a community college in St. Charles. Solution of the first issue was reached on the arrival of Dr. William C. Spencer as the sixteenth President of The Lindenwood Colleges. He and Mrs. Spencer were formally greeted by the combined Boards on October 2, and the President assumed office on October 15. The community college issue was resolved by the Board of Control in July by adoption of a 15-point policy position supporting "cooperative involvement of Lindenwood in developing a St. Charles Community College with assertion to the community of the importance of private/public interaction."

During the fall and winter months of 1974-75 the Board, administration, and faculty worked on issues (reorganization, utilization of campus land and facilities, fund-raising, the community college, etc.) identified in a report prepared by outside consultants during August 1974. A special advisor to the President began work with a faculty committee to develop a new plan for individualized programs. Legal action was initiated to simplify Lindenwood's corporate structure. Financial operations were analyzed, new budgeting procedures were developed, and computerized accounting and reporting systems were expanded. In February 1975 the "cluster of colleges" concept was formalized; Lindenwood College for Women and Lindenwood College for Men were joined by Lindenwood Evening College. A new Master



of Business Administration program was created in the Evening College, recruitment of new faculty members was commenced, and applications for admission to the new MBA program to begin in September 1975 were processed. In July, Dr. John N. Bartholomew was appointed dean.

The North Central Association, the regional accrediting body for colleges and universities in this part of the United States, granted preliminary approval to Lindenwood's request to begin graduate programs on the master's degree level. In the late Spring of 1975 The Lindenwood College for Individualized Education (LC 4) was formally established, Dr. Craig R. Eisendrath was invited to become its first dean, and centers of LC 4 were established in St. Charles, St. Louis, Washington, D.C., and Santa Monica, California.

Commencement 1975 featured Dr. Armand C. Stalnaker, President and Chief Executive Officer of General American Life

---

Insurance Company and a member of Lindenwood's Board of Trustees, as principal speaker. Mrs. Rachel P. Stalnaker delivered the Baccalaureate address. Ms. Karen Glaser, Class of 1960, received the Alumnae Award of Merit at the Commencement Exercises, and 148 students received bachelor's degrees.

In June an affiliation agreement was worked out by Dean Patrick F. Delaney, Jr., with St. Luke's Hospital, St. Louis, to provide their School of Nursing with a range of courses in the basic sciences, social sciences, and humanities. This program was enlarged and expanded throughout the 1975-76 academic year.

During the summer of 1975 conversations and visits were arranged involving Lindenwood and the St. Louis Football Cardinals of the National Football League. Following many months of negotiations, a ten-year contract was signed in December establishing Lindenwood as the summer training home for the Cardinals. Immediately the construction of a new athletic field/amphitheatre began. As the field plans were developed other facilities designed to generate revenues (spectator seating, parking areas, concession stand, and radio and television broadcast quarters) were added. Further development of the site included plans to erect a covered riding arena to support the

---

**Lindenwood is determined to protect and use its dynamism to explore new educational frontiers.**

---

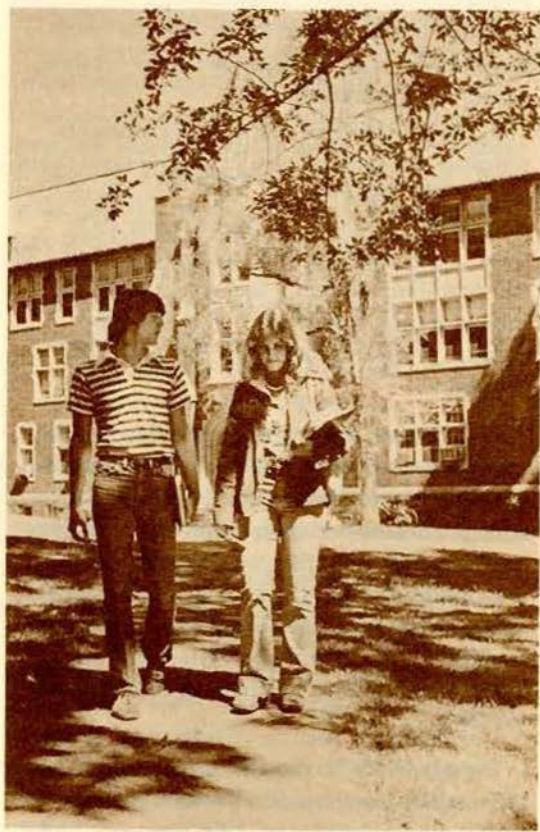
equitation programs. Even though the facilities were still under construction, the Cardinals prepared to live and practice on the campus during the summer of 1976.

In the Fall term of 1974, 1171 students enrolled at Lindenwood; in Spring term there were 1180. By Fall term 1975 the enrollment had grown to 1346. In Spring term 1976 there were 1584 students; these included 128 (50 graduate students) in the new College for Individualized Education, 74 in the new nursing program, and 53 in the new MBA program.

Also among this growing population were many women (nearly 30% of those enrolled in Lindenwood College for Women) whose college careers had been interrupted or who had decided, now that their families were reasonably independent, to work toward a college degree. Under Dean Doris Crozier's leadership, these women form a vital and fiercely enthusiastic segment of Lindenwood students.

During 1975-76 the Committee on Admissions continued to be selective in admitting new students; 13.6 percent of total applications were finally rejected by the Committee because of unsatisfactory academic preparation at the secondary school level. It will be necessary to continue these selective policies.

Early in the 1975-76 academic year, the North Central Association revisited the campus on its regular 10-year cycle, and with the assistance of Dr. James Hood, who had shepherded the faculty through a self-study,



---

**Two years is but a brief period in the long history of this institution, but these years have been unusually filled with growth and change.**

---

thoroughly examined all operations. Because Lindenwood had requested accreditation to offer graduate programs, the visiting team was especially interested in the new MBA and Lindenwood 4 programs which had been in operation only a few weeks, with first classes of 82 enrolled in LC 4 and 28 in the MBA. The Colleges fared well in these tests; later in the year (March 1976) Lindenwood was officially approved for both undergraduate and graduate study.

The administration and Board of Trustees spent many hours and weeks struggling with campus capital developments. Proposals for a major center (a multi-purpose student-sports-entertainment center) were developed, feasibility was assessed, substitute proposals were developed, and the evaluative process was repeated. Preliminary concepts for development of the north campus ("the farm") were analyzed. Ideas concerning modification and renovation of Cobbs, Butler, and Roemer Halls were proposed and plans were drawn. Detailed architectural work began on the new field/amphitheatre and on the final stages of development of Jelkyl Center for the Performing Arts (former Roemer Auditorium).

On the program side, a new center for the study of English as a second language was inaugurated with thirty students from Saudi Arabia. These students spent 25 hours a week under intensive language instruction, and joined regular Lindenwood classes when they had achieved required minimum standards in reading, writing, and speaking English. Following long deliberation the various



---

departments in the humanities and the arts, with Dean Crozier's assistance, reorganized themselves into only two departments to encourage greater academic cooperation and cross-disciplinary study. Dr. Howard A. Barnett led the development of a new program, called INSERVICE, that related a number of churches of all denominations to Lindenwood through various student internship projects in fields such as education, business, and the arts. Professor Barnett also conducted, under Lindenwood auspices, a highly successful weekly newspaper column, *Humanities Forum*, which appeared in many of the leading urban and rural newspapers in Missouri.

Perhaps the most exciting program during the 1975-76 academic year was developed by Dean Delaney in collaboration with Dr. John D. Vavra, Chief, Unit I Medicine, St. Louis City Hospital, and Professor of Medicine, Washington University School of Medicine, and with Dr. James W. Swift of St. Louis City Hospital, and former Assistant Professor in the division of Health Care and Consultant to Washington University School of Medicine. The proposal was to create an integrated five-year degree program of study in liberal arts and medicine with ever-increasing direct hospital/clinic experience culminating in an internship. This program, to be established with the collaboration of Washington University School of Medicine and the St. Louis City Hospitals, would prepare Health Associates to serve in inner city and rural areas where primary health care and services are needed. In the Spring of 1976 the

Educational Policies Committee, the faculty, and the Board of Control endorsed the program in principle and approved its further development.

As the end of the academic year approached preliminary plans for celebration of Lindenwood's Sesquicentennial during 1977 were formulated by Dr. B. Richard Berg, Lindenwood's Vice President. A Director of Development was selected and the nationally-recognized consultant firm of Brakeley, John Price Jones, Inc. was engaged to test the feasibility of and to help plan a capital fund drive for 1977. Plans to reinstitute Founders' Day celebrations in October 1976 were approved, and renewed efforts to collect current information on alumnae and alumni were undertaken.



---

Commencement 1976 brought together an all-time record number of 163 graduates with their families and friends. For the first time Lindenwood awarded graduate degrees; three received Master of Arts or Master of Science diplomas. Mr. Gene Maeroff, National Education Correspondent for *The New York Times*, presented the commencement address.

Two years is but a brief period in the long history of this institution, but these years have been unusually filled with growth and change. Prospects for 1976-78 are for continued growth. During the coming biennium, we will continue planning and working:

1. To balance the operating budget and dramatically increase financial support from alumni, friends, corporations, and foundations.



---

**“There is no such thing as a private college or university. Until we realize this, the financial crisis that now threatens American higher education cannot be resolved . . . virtually all ‘private’ institutions are open to the public, serve public needs, and are gravely influenced by public deliberations.”**

**John R. Silber**  
President, Boston University

---

2. To continue the growth and development of academic programs better to serve present students and to assist new individuals and groups not presently served.
  3. To support and strengthen faculty and staff personnel whose loyalty and dedication to Lindenwood over recent years has required great personal and professional sacrifices.
  4. To preserve and modernize our campus and its facilities to promote efficiency and cost-effectiveness, and to enhance the quality of living for all who reside, study, and work here.
  5. To capitalize on opportunities that become available to us to enrich and extend the educational mission of The Lindenwood Colleges. ■
-

# Reports of the Deans

---



**Dr. Patrick F. Delaney,**  
Lindenwood College for Men



**Dr. Doris Crozier,**  
Lindenwood College for Women



**Dr. John N. Bartholomew,**  
Lindenwood Evening College



**Dr. Craig R. Eisendrath,** Lindenwood College for  
Individualized Education

# Lindenwood College for Women

---

The last two years have been ones of consolidation and expansion in The Lindenwood College for Women.

## Continuing Education

While continuing to serve the traditional 18-22 year-old group of students, there has been an increasing awareness of the much larger group of women who wish, either to continue an interrupted college education, or to start going to college after their children are in school. A determined effort has been made to acquaint these women with the possibilities for their participation in higher education. This has been accomplished by summer all-day workshops, by on-going workshops throughout the academic year, and by conscious encouragement of their organization. In these workshops, topics such as: "How to Study"; "How to Write a Resume"; "Aptitude Tests," etc. are dealt with, both by members of our faculty and staff, and by visiting experts. At these women's monthly meetings, faculty members discuss with them career opportunities in their respective disciplines. It is interesting to note that this group of "Continuing Education" women comprises about 30% of the total enrollment of the College. It should be pointed out that this group has been incorporated into the regular academic program. No special classes have been initiated for them, nor any special personnel employed to serve them. Thus, we are more fully utilizing our academic resources.



## English as a Second Language

The last two years have seen the development of our ESL (English as a Second Language) center. Beginning with a group of students from Saudi Arabia in the fall of 1975, the program has been consolidated this year. The Center now has a Director, Margretta Webster, and two part-time instructors. Countries represented in this year's enrollment are: Saudi Arabia, Oman, Kuwait, Vietnam, Mexico, and Nigeria, for a total of thirty students. From inquiries received and advance registration, it seems safe to predict a continuing increase in the enrollment. Present plans are to seek to limit enrollment to a manageable number, probably never more than seventy-five, to maintain a good balance with American students.

## Enrollment

The enrollment of resident students has increased this year. They occupy three dormitories rather than four; this has resulted in much better utilization of our facilities.

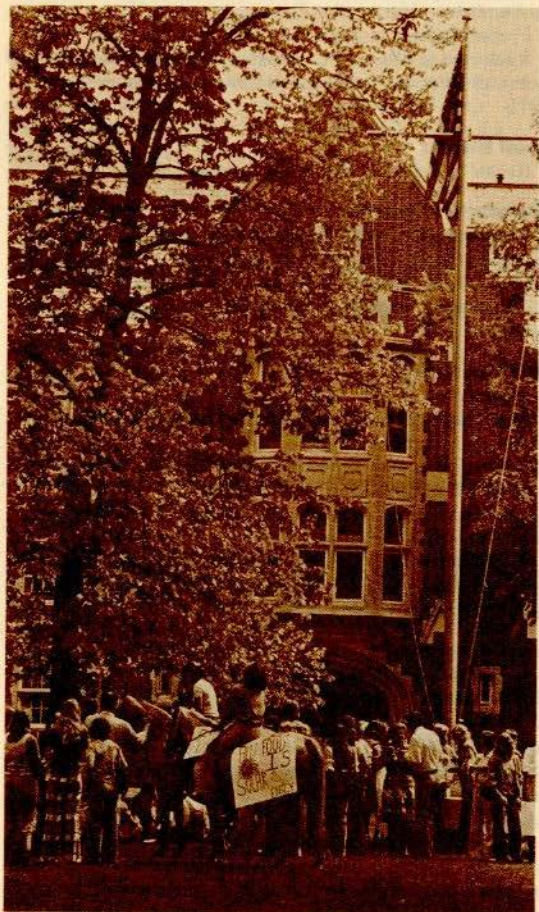
## Faculty

Perhaps the most exciting development in the Humanities Division has been its reorganization into two departments: The Department of Language, Literature, Philosophy and Religion, and the Department of Studio and Performing Arts. It is our belief that this will produce several desirable results: the elimination of two-person departments, the development of inter-disciplinary courses, and, most importantly, the strengthening of the liberal arts component in a Lindenwood education.

In Art, with the death of Mr. Hendren, we were faced with the decision of how best to continue expansion of this area. Two part-time instructors, one in sculpture and one in ceramics, have been employed to add to the three-dimensional offerings, an area in which strength was needed.

The completion of the Jelkyl Theatre has offered a decided stimulus to our Drama offerings. A new faculty member, a specialist in Stage Design and Lighting, has been added. This, combined with major capital improvements and additions to our theatre, has significantly strengthened our offerings in theatre.

The programs in radio have benefited greatly by the appointment of a faculty member with extensive and varied experience, not only in teaching radio and television courses, but also in actual station operation. The success of our graduates in this field is testimony to the success of the program.



# Faculty Honors – Lindenwood College for Women

---

## Honors, 1974-75

### Howard A. Barnett

Attended workshop on resourcing the church's needs in higher education at Montreat, North Carolina. Researched the feasibility of cooperative programs with religious organizations culminating in INSERVICE.

Collected and selected poems published by The Griffin under the title of *Amber Providence*, April, 1975.

Prepared grant proposal for newspaper column on the humanities — *Humanities Forum*.

Prepared grant proposal for visiting poet in April, 1975.

Reelected to Missouri Committee for the Humanities Board of Directors for a second three-year term in March, 1975.

### Groff Bittner

Recital in July with Soprano, Cynthia LaFata.

### Thomas W. Doherty

Article in French on "Andre Soares and Bach" (entitled "Soares et Bach") accepted for publication by Editions Minard, Paris, France. To be included in a book, *Soares et l'Allemagne (Soares and Germany)* to appear in the late fall of 1975.

### W. Dean Eckert

Exhibitions:

Annual Regional Exhibit, Quincy Art Center, Quincy, Illinois — November 1974

Mid-South Biennial, Brooks Memorial Gallery, Memphis, Tennessee — February and March 1975

Three-Man Lindenwood Faculty Exhibit, St. Charles Artists' Guild, St. Charles, Missouri — March 1975

Appointed Academic Director, Experiment in International Living, Independent Study Program to Japan, February to May, 1975.

### Louis Florimonte

Produced two plays in New York in October and November under a combined grant by the New York Council on the Arts and the National Endowment for the Arts. The plays were produced at THE ACTORS UNIT, 682 Sixth Avenue, New York. One of the plays, *SLAM!*, was reviewed by Edward Moran in *SHOW BUSINESS* magazine on November 14, 1974 as follows:

"Once in a very blue moon, a production comes along that edges perilously close to what theatre can be if energized by real talent and imagination. There's that rare and precious dramatic experience that raises you by the

hair of your head and draws you above the humdrum.

"*SLAM!* is at times like a swift clout to the gut, at times like a soothing massage, so palpable are the vigorous images that flow from the pen of Louis Florimonte. He's got what it takes to develop into a first-rate dramatist — such a virtuoso's feel for language is often not found in contemporary theatre . . ."

### Kenneth G. Greenlaw

Conducted concerts of The Lindenwood Colleges Concert Choir and the Lindenwood Singers, The Lindenwood Colleges Orchestra, and the St. Charles Choral Society and Orchestra many times, both on and off campus with appearances in Missouri, Illinois, Kansas, Oklahoma, Texas. Conducted choral groups on local television and on national CBS radio at Christmas.

### Esther L. Johnson

Conducted research in Speer Library at Princeton Theological Seminary on Modern Theology.

Completed two courses at Princeton Theological Seminary:

1. A Seminar on Soren Kierkegaard
2. Christian Ethics and Contemporary Problems

### Thomas W. Smith

Continued advanced study in Germany during June and July.

### John Wehmer

During the month of April exhibited twelve paintings, drawings, and glass constructions at the Artists' Guild Gallery, St. Charles, Missouri.

Exhibited twenty-five patchwork quilts in The Lindenwood Colleges gallery in an exhibition titled "Patchwork Quilts" sponsored jointly by Lindenwood and the Missouri State Council on the Arts.

### Robert G. White

Appointed to course advisory board of the Western Monroe County (New York) Occupational School — September, 1974.

Continued work toward Ph.D. after passing oral comprehensive examination in Department of Speech Communication at Bowling Green State University in Bowling Green, Ohio.

Continuing research on *Martin Block — Pioneer Radio Program Innovator*.

---

## Honors, 1975-76

### Howard A. Barnett

Served on the Board of Directors, Missouri Committee for the Humanities.

Was project director and principal columnist for *Humanities Forum*, a newspaper column funded by the National Endowment for the Humanities.

Wrote twenty-two columns and edited thirty-one columns for *Humanities Forum*. These columns appeared regularly in eighteen Missouri newspapers; a few appeared in four out-state newspapers.

Wrote the position paper for the Missouri Committee for the Humanities on preferred types of committee membership. This paper was sent to the Pell Committee of the U.S. Congress. In the authorization bill recently passed, the kind of membership approved was in accord with the position paper.

Chaired one of the reading sessions at the February meeting of the Missouri Philological Association at Southwest Missouri State University.

Chaired the Language Arts review team for the North Central accreditation of St. Charles High School in November of 1975.

### Groff Bittner

Is continuing work on the doctoral degree (D.M.A.).

### Doris Crozier

Was awarded an honorary degree (LHD) by The College of St. Joseph the Provider, Rutland, Vermont, at commencement exercises in May, 1976.

### W. Dean Eckert

Based on studies in the Orient, presented a series of three lectures on Oriental Arts and Cultures during Spring 1976 to the college community and the general public.

Acrylic painting, "The Double Ten," was accepted for the Ninth Annual Marietta College International Competitive Exhibition for Painting and Sculpture April 5 to May 17, 1976.

In April 1976 a color photograph, "Old Custodian, Plaosan Temple, Java," was accepted for the Missouri Photographers, 1976 exhibition. Later it was exhibited at the St. Louis Art Museum and is continuing to be shown in museums throughout Missouri.

### James H. Feely

Continuing research and study on Near and Far Eastern arts and literatures, particularly as they relate to Islam.

### Arthur L. Kanak

Lecture-demonstration to the American Art Alliance of St. Louis, February 1976.

Served as sole juror, St. Louis Artist's Guild Annual Painting, Drawing, Printmaking, and Craft Exhibition.

First prize in drawing, and honorable mention in painting, St. Charles Artist's Guild Annual Painting, Drawing, and Sculpture Exhibition.

Exhibited approximately 24 new works in faculty exhibit at The Lindenwood Colleges.

### Robert G. White

Conducted a seminar in March 1976 on various aspects of television production (in association with Professor Louis Florimonte and Professor Duane McGormley) for McDonnell-Douglas, St. Louis.

---

## Promotions, Sabbaticals, Tenure

---

Groff S. Bittner, Sabbatical, Fall 1974-75

W. Dean Eckert, Sabbatical, Fall and January, 1975-76

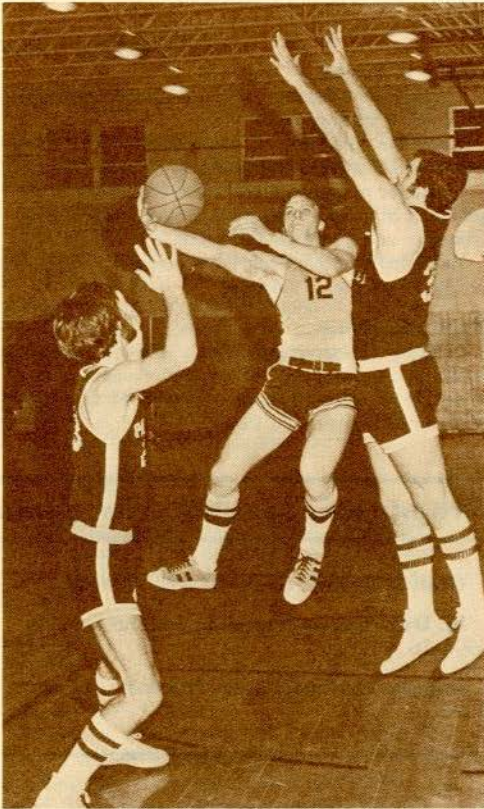
Anthony Perrone, Assistant Professor, Tenure, 1975-76

---



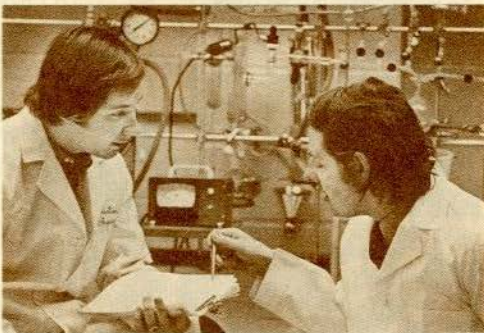
## Lindenwood College for Men

---



New programs were developed over the past two years by the Lindenwood College II Curriculum Committee: 1) programs for graduates of schools of x-ray technology such as Mallinckrodt Institute of Technology, 2) degree program for graduates of schools of hospital laboratory technique, such as Gradwohl, 3) a degree program for medical nurse practitioners, 4) degree programs for persons who have completed traffic management program.

The committee continues to work in reviewing practicum credit, exemption credit, field studies and internships for The Colleges. The committee reviewed several interesting applications. These included: 1) practicum credit for pilots and flight instructors, 2) practicum credit for experience in the Peace Corps, 3) practicum credit in hotel management, 4) practicum credit for work with Life Seekers, St. Louis Israel Expo '75, writing abilities, public relations work, work with the media. Students of The Lindenwood Colleges continue to be enrolled in important off-campus experiences. Field studies and internships provide practical application of subject matter.



### **Bachelor in Medicine**

Although the Bachelor in Medicine originated in the Lindenwood College II curriculum committee, the program has become an all-college effort. A joint committee consisting of staff members from St. Louis City Hospital, Washington University



Medical School and The Lindenwood Colleges, has been meeting in order to work out the details of the program. A general outline of the program has been established. Tasks to be outlined include: 1) accreditation by the AMA and state licensing, 2) publicizing the program, and 3) recruiting for the fall of 1977.

### **The Development of Off-Campus Programs**

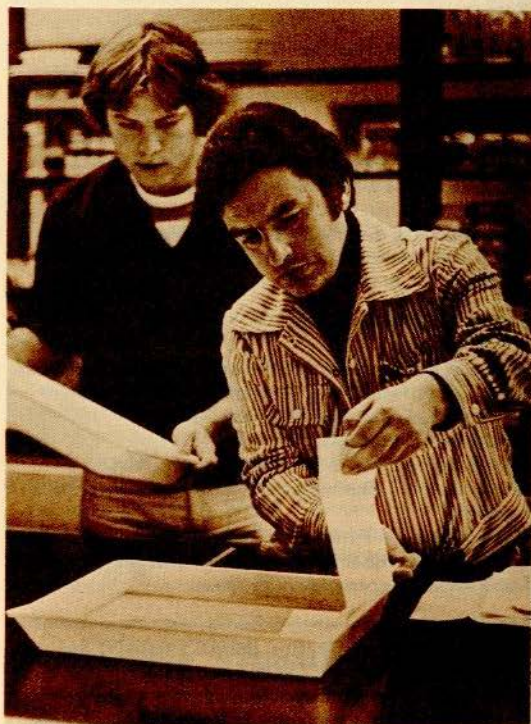
In 1975 Lindenwood entered into a contract whereby it would teach college level courses for the St. Luke's School of Nursing. This contract was renewed for the 1976-77 year. Approximately 78 School of Nursing students enroll for from 1 to 8 Lindenwood courses. We look forward to a pleasant and productive continuing relationship with St. Lukes. At the same time, we are working with St. Luke's Hospital to formulate a Bachelor's Degree in Nursing.

As our relationship with St. Louis City Hospital progresses, we will be teaching college-level courses at that institution. Currently we are teaching two courses at St. Louis City Hospital. One of these is "Seminar in Health and Human Values" as part of the Bachelor in Medicine program.

We are finding opportunities to teach education courses for various school districts. This year, we have taught graduate and undergraduate courses for Francis Howell School District and Ritenour School District.

### **The Development of Graduate Programs in Education**

During the fall term, 1976-77, The Lindenwood Colleges will be developing alternative programs of graduate study in education.



# Faculty Honors – Lindenwood College for Men

---

## Honors, 1974-75

### Virginia L. Carpenter

Selected for listing in WHO'S WHO OF AMERICAN WOMEN and OUTSTANDING EDUCATORS OF AMERICA.

Elected president of Beta Iota Chapter — Washington University — of Phi Delta Kappa (educational honorary). First woman president in Missouri.

First Woman delegate to Phi Delta Kappa District III Regional Conference (November 20-23, 1974) in Wichita, Kansas.

### Patrick F. Delaney, Jr.

Selected for listing in WHO'S WHO IN AMERICA.

### Joy Ebest

Awarded a plaque from the Krey Packing Company, KMOX Radio, and Concerned Black Citizens, in appreciation for work with inner city youth.

Invited by Child Center of Our Lady of Grace (school for emotionally disturbed children) to test their children's motor competencies and write prescriptions of motor activities to help each child.

### James D. Evans

Publications:

"The Lag Effect in Incidental Learning." Paper presented at the forty-seventh annual meeting of the Midwestern Psychological Association, Chicago, Illinois.

Activities in progress:

"The Spacing Effect in Free Recall as an Obligatory Phenomenon." *Psychological Reports*, submitted for review.

"Free Recall as a Function of Type of Study and Locust of Study Time: Further Evidence for a Rehearsal/Processing Distribution." Experiment in progress.

### Linda A. Nelson

Served as Project Director, IMPACT GRANT for EXPER SIM from the EXXON Foundation.

Member, American Psychological Association Committee on Undergraduate Education in Psychology.

### Steve Rukavina

Delivered paper at Spring Conference of St. Louis Suburban Teachers Association: "Individualized Instruction: Getting It Together."

### Dominic Soda

Completed a research paper on a combinatorial problem. Submitted the paper to *Discrete Mathematics*.

Found a simple proof of Laplace's Expansion of the Determinant which exploits the structure of a group acting on a set.

Began work on a book entitled "Mathematics and the Calculator," an attempt to show that many areas of mathematics can be made more easily accessible by the effective use of calculating devices.

### Sue Taylor

Secretary of Park Board, Brentwood, Mo. (appointed by Mayor)

### Richard Wier

Publications:

Book review of Richard Simeon, FEDERAL-PROVINCIAL DIPLOMACY: THE MAKING OF RECENT POLICY IN CANADA, *Journal of Commonwealth and Comparative Politics* (July, 1974), published by Institute of Commonwealth Studies, University of London, London, England.

Elected Senior Counselor and member of Executive Committee of Missouri State Political Science Association.

Appointed Chairman, Civil Service Board, City of Berkeley, Missouri, four-year term.

Coordinator, Airport Township, Election Campaign Spending Bill referendum, Missouri Citizens for Honest Government.

Selected for listing in WHO'S WHO IN THE MIDWEST.

Completed first year studies, St. Louis University School of Law.

### DeLores Williams

Preparing a manuscript for publication on the Spanish philosopher, José Ortega y Gasset: a reconstruction of Ortega's philosophical system of Vital Reason to serve as the conceptual framework for a reinterpretation of his political thought.

---

## Honors, 1975-76

### Daryl Anderson

Has begun a survey of the aquatic flora of St. Charles County. The culmination of the project could be a publication either through the Missouri Department of Conservation or the Missouri Botanical Gardens. The information will be of use in future flood plain studies in the area.

Lectures to area Garden Clubs on environmental issues.

### Joy Ebest

Developed academic program leading to planned B.S. in Animal Science (with Patrick F. Delaney, Jr., Ph.D., Chairman, Biology Department; Edward King, D.V.M., Droste Road Animal Clinic; and University of Missouri Veterinary School). Program waiting sanction from American Veterinary Association.

Participated in North Central Evaluation Team, McCluer High School North, Florissant, Missouri.

Organized regional meeting in St. Louis for directors of National Youth Sports Program.

Served on Health Committee for St. Charles County. Drafted, participated in public hearings, meetings with county judges, etc., in the formation of the first Health Department for St. Charles County and the first rabies control ordinance.

Consultant to Community Services Administration evaluating National Youth Sports Programs through the United States.

### James D. Evans

Conducted five experimental investigations of human memory and one experimental investigation in the psychology of perception.

Developed one grant proposal for instructional equipment.

Publications:

Evans, J.D., Good, S.M., Lintzenich, P., & Francis, N.C. Level of processing, type of processing, and the repetition effect in free recall. *Canadian Journal of Psychology*, 1975, 29, 327-339.

Evans, J.D. Spacing effect in free recall as an obligatory phenomenon. *Psychological Reports*, 1976, 38, 1321-1322.

Accepted for publication:

Evans, J.D. On the inconstant effects of study instructions. *American Journal of Psychology* (Scheduled to be published in 1977).

Submitted for publication:

Sandwith, M., and Evans, J.D. Taboo word norms. *Perceptual and Motor Skills*.

Jacoby, L.L., and Evans, J.D. Form of study and long-term retention effects of additional study time. *Bulletin of the Psychonomic Society*.

### Norman W. King

Investigated problems in pilot training, using the method of personal interviews with students in their initial flying training experience in the United States Air Force. Study attempted to determine both personal and training

program factors associated with failure to complete the course of flying training. Primary goal was to reduce the overall cost of flying training by better selection of pilot candidates and by more efficient training procedures.

Publications:

Eddowes, E.E., and King, N.W. *Self-perceived problems of student pilots eliminated from undergraduate pilot training*. AFHRL-TR-75-8, Williams Air Force Base, AZ. Flying Training Division, Air Force Human Resources Laboratory. July 1975.

King, N.W. and Eddowes, E.E. *Similarities and differences among superior, marginal, and eliminated undergraduate pilot training students*. AFHRL-TR-76-12, Williams Air Force Base, AZ. Flying Training Division, Air Force Human Resources Laboratory. May 1976.

### Linda A. Nelson

Serving on the Missouri Coordinating Board of Higher Education Master Planning Technical Committee (Programs and Services).

Spent the summer researching an MBA program to meet needs common to women students.

### Teresa J. Welch

National Science Foundation Science Faculty Fellow — September 1975 - June 1976.

Continuing research on "Humanizing Science Education: Some Implications of Educational and Psychological Research on Learning Science.

Wrote, produced, directed and appeared in television programs for KTVI — "What in the World Isn't Chemical?" — December 1975 - January 1976.

T.J. Welch and M.J. Welch, "Solution Chemistry of Carrier-free Indium," in *Radiopharmaceuticals*, G. Subramanian et al., eds. Society of Nuclear Medicine (1975) p. 73-75.

---

## Promotions, Sabbaticals, Tenure

---

**Daryl J. Anderson**, Assistant Professor, tenure, 1974-75

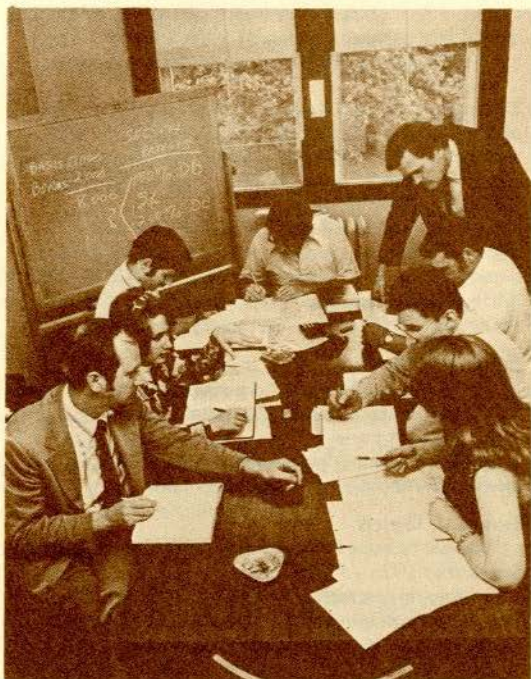
**Vincent T. Brescia**, Assistant Professor, tenure, 1974-75

**John Nichols**, Assistant Professor, tenure, 1975-76

**Richard A. Wier**, Assistant Professor, tenure, 1974-75; sabbatical, January and Spring 1975-76

## Lindenwood Evening College

---



At the beginning of the period covered by this report, there was an "Evening Division" managed by Dr. Elwood Miller as "Director," operating from space within the Business Administration Department on the second floor of Roemer. Since that time the evening division has become The Lindenwood Evening College. It has enjoyed an 86% growth through the two years (from 1969 seats in 1973-74 to 3670 seats in 1975-76).

New undergraduate programs available to evening students have been developed in the Administration of Justice, and in a combined Psychology and Business degree. The Studio

Arts have increased their offerings at night, trying to make it possible to earn a degree in that area. Photography has proved to be an attractive evening offering.

The major registration of evening college students continues to be in Business Administration. The program in that area has been streamlined some, reducing the listed courses where it was judged that there had been excessive division of subject matter. At the same time, requirements have been made more flexible, so that students have greater access to the range of courses that are offered.

The outstanding news for the Evening College is of course the development of the MBA degree. Two years ago this program was only a proposed contract with another institution under terms that were not all favorable to Lindenwood. The program, as presently constituted, has a scope, target constituency, and style which are consistent with the total Lindenwood philosophy and image. The program will not proliferate courses beyond the scale of our resources and it already has accumulated evidence of high credibility in the business community. At the end of its first year in operation, the MBA had enrolled about 60 students.

In June 1975, Dr. Elwood L. Miller resigned, and Dr. John N. Bartholomew of the Sociology Department became Dean of the Evening College.

We are working steadily to try to increase

access to the whole range of liberal arts resources for our evening students. This integration has been further enhanced in 1976 by the appointment of Ms. Cynthia Essenpreis, a 1974 graduate of Lindenwood College for Women, as Assistant to the Dean. Ms. Essenpreis, whose graduate work is in Mathematics at Syracuse University, completed both a Math and an English major at Lindenwood, and brings to her work a rich understanding of Lindenwood's resources and traditions.

These two years have been years of numerical and programatic growth, and they have also been a time of regularizing, making the Evening College more fully a part of the whole Lindenwood community.



### Honors, 1974-75

**John N. Bartholomew**

Participated in a program, sponsored by the CORO Foundation and funded by the National Endowment for the Humanities, on the topic: In Search of Regional Identity: The Humanistic Perspective.

**Linda Sullivan**

Passed the CPS Exam and granted the rating of Certified Professional Secretary.

Served as President of St. Charles Business and Professional Women's Club from May 1974, to May 1975.

Elected secretary of St. Louis Area Business Educators' Association.

---

### Promotions, Sabbaticals, Tenure

---

**John N. Bartholomew**, Associate Professor, tenure, 1974-75

**Bernard W. Weinrich**, promoted to Assistant Professor, 1974-75

---

### Honors, 1975-76

**John Bartholomew**

Feasibility Study, St. Charles County Junior College District (Mimeo, published Dec. 1975).

"A Sociological View of Authority in Religious Organization," accepted for publication in a volume edited by Jackson Carroll and James Wallace.

Review of "The Social Meanings of Religion" by William Newman, Summer 1975 issue of "Sociological Analysis."

**Cynthia Essenpreis**

Received Master of Science degree in mathematics from Syracuse University, Syracuse, New York.

**Linda Sullivan**

Secretary to St. Louis Area Business Educators' Association.

## Lindenwood College for Individualized Education

---



This new college is aimed at the working adult and emphasizes features which distinctly build upon the strengths of adult students. Students take responsibility for planning the main lines of their own academic programs; they work in integrated units of time, the trimester, rather than through courses; they go to school almost full time while simultaneously holding a full time job; they learn to learn from each other and to use resources in the community; they integrate their working experience and their studies; and, to the extent possible, they apply their learning in their working and family lives. The program, familiarly called Lindenwood 4, leads to undergraduate or Masters' degrees.

In the early months of 1975 a committee of Lindenwood faculty members led by Professor Boyd Morros worked with consultants to frame the program. In April the program was submitted to the faculty and to the Board of Trustees for approval. In June and July

centers opened in Washington, D.C., Santa Monica, California, and St. Charles, Missouri.

In September 1975 the three centers opened their first trimesters with a total enrollment of 82. The innovative nature of the program and the high motivation of students attracted academic and professional people of the highest quality. Some of these people, such as psychiatrists, psychologists, and business executives, took adjunct positions with Lindenwood 4 at rates of compensation considerably below what they could command in their professions. The aim of The College was to secure not only academically qualified faculty, but also faculty with immediate working experience in their fields.

In January 1976 Lindenwood 4 opened a new center in St. Louis' West End. This was a significant move; it represented the first time that Lindenwood had established a functioning center in St. Louis. Moreover, approximately fifty percent of the enrollment

## Report of the Voluntary Association Administration

---

was drawn from minority group populations. Because Lindenwood 4 was developed in part to provide opportunities for people who had not had an opportunity earlier in life to finish their college education, this addition to the student body was most welcomed.

During the 1975-76 year, Lindenwood 4 developed a number of new programs at the graduate level, and refined certain innovative methods for undergraduate education. The first specialized program was in Art Therapy, a five trimester offering which immediately won the approval of the American Art Therapy Association as the only accredited program in the Midwest. Working from this program as a base, Lindenwood 4 has been developing a wide range of therapy programs. With the cooperation of 48 leading psychologists, psychiatrists, and therapists, programs are being developed whereby students may be cross-credentialed in several areas such as Art Therapy, Marriage, Family and Child Counseling, and Gestalt Therapy. Graduates of these programs, to be named ACT (Active and Creative Therapies) will command a range of skills of significant benefit to their clients, and thus will be more employable in their respective fields. New master's level programs in Gerontology, Health Care Administration and Education are also in operation.

Lindenwood 4 has also developed a Master of Arts degree program in Voluntary Association Administration. This program, which provides professional training for people

working in voluntary associations, is one of the first of its kind in the country. The first students in the V.A.A.P. program will be enrolled in October 1976 in Washington, D.C.

At the undergraduate level, Lindenwood 4 has developed what has come to be called "the cluster group." This is a basic operating unit consisting of eight or fewer students and a faculty sponsor. The cluster groups meet weekly for no less than three hours and usually for five and six hours. They provide a vehicle for pursuing group objectives in a particular field as well as for a critical yet supportive body to consider the work of each member. This balance between group work and individual work is the most distinguishing feature of the undergraduate program.

The experiment thus far has been successful. However, the new College is being monitored carefully during its early development to provide the highest academic quality among its offerings, to insure its close integration and articulation with the other three Colleges and to assure the appointment of outstanding academic and administrative personnel.

---

**“ . . . We are willing to entertain the idea that people can learn the same things by different methods or in differing amounts of time . . . ”**

**K. Patricia Cross  
Senior Research Psychologist for  
Educational Testing Services**

---

## Faculty Honors – Lindenwood 4

---

### Honors, 1975-76

#### Pauline Eisendrath

"Active Imagination: A Separate Reality," accepted for publication in the *American Art Therapy Journal*.

"Androgyny in Relationship," paper presented at the Lindenwood 4 Summer Chautauqua, June 1976.

"Feminism: A Personal Experience in the Matriarchy," paper presented at the Women for Women Conference, The Lindenwood Colleges, May 1976.

"Two Ways of Knowing," paper presented at the Psychology Colloquium of Lindenwood 4, November 1975.

### Honors, 1974-75

#### Margaret A. McAllister

Conducted a self-study (involving Board members, faculty and students) of a two-year old university (University Without Walls).

Concluding a three-year research project on experimental higher education in the United States.

#### Richard Rickert

Preliminary research and writing on "Zen and the Dilemma of Revolution," part of a proposal to the National Endowment for Humanities.

#### John McClusky

Presented address on "Faculty as Influence Agents: Liberating and Non-Controlling Power?" Associated Colleges of the Midwest, November 1975 and Macalester College, May 1976.

Presided at general session of Division of Educational Affairs, American Political Science Association (A.P.S.A.) Meetings, September 1975 entitled "Conversations with

Scholars: Introducing Students to the Study of Politics."

Served as evaluator of A.P.S.A. undergraduate education programs.

Presented session on "Faculty Self-Evaluation through Peer Observation/Consultation," Associated Colleges of the Midwest, February 1976.

Presented paper on "The Role of Disciplinary Associations in Faculty Development," American Association of Higher Education Annual Meetings, Chicago, March 1976.

#### Publications:

"Beyond the Carrot and the Stick: Liberation and Power Without Control," in Warren G. Bennis, Robert Chin and Kenneth D. Benne, eds., *The Planning of Change* (New York: Holt, Rinehart and Winston, 1976). Also presented as paper at Midwest Political Science Association Meetings, May 1975, 52 pp.

*Hierarchy, Power, and Women in Educational Policy-Making*, co-authored with Florence Howe and Elizabeth Wilson (George Washington University: Institute for Educational Leadership, 1975)

"Power without Control: Exemplary Power and Intrinsic Rewards." Presented as paper at American Political Science Association Meetings, September 1975. 86 pp. Revised ms. to be submitted for journal publication, 1976. *Magnet and Other Alternative Schools as an Instrument to Reduce Racial Isolation and Provide Quality Education* (St. Louis: Danforth Foundation, 1976).

"Concerns of Faculty about the Teaching Profession," *Danforth Associate Newsletter*, Vol. XIX, No. 3 (February 1976).

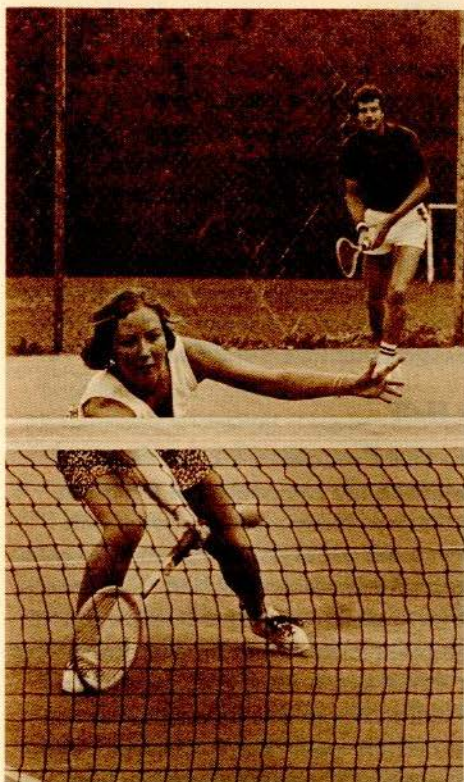
#### Sharon Rubin

Presented a paper, "The Discovery of Women at the World's Columbian Exposition," annual convention of the Popular Culture Association, Chicago: dealt with the role women played in planning and carrying out exhibits, including the Women's Building, at the Fair.



# Report of the Vice President

---



At the beginning of the 1975 calendar year, the responsibilities of the office of the Vice President were expanded to encompass general administrative support for all Lindenwood Colleges. This includes assisting the President with planning and implementation of all activities, providing support for the Deans of the colleges, and assuming specific responsibility for community and government relations.

## Staff

Rebuilding staff support in key areas has been an immediate priority. Professional managers were needed to strengthen the colleges' fund-raising programs, to develop publications and coordinate publicity, and to manage a physical plant that is now operating around the clock as well as year-round. Support services for both on-campus and off-campus academic programs required the development of new systems and procedures to accommodate new types of students and an adjunct faculty.



## Report of the Vice President

---

### Continued from previous page . . .

Glenda Partlow left an editorial position with The Bar Association of Metropolitan St. Louis to become Lindenwood's new manager of publications and information. R. Crane Smiley, from McKesson Robbins Corporation in Massachusetts, accepted appointment as Director of Administrative Services to begin in August 1976, and Philip Severin agreed to move from Antioch College in Ohio to become Lindenwood's new Director of Development and Alumni Affairs in September 1976.

In a reorganization of physical plant operations, Lloyd Moses was appointed Supervisor of Custodial Services and Dean Summers as Supervisor of Grounds, to join Charles Bushnell, Superintendent of Maintenance.

Mr. Severin's first major project will be the structuring of our Sesquicentennial Capital Fund Campaign. Mary Lichliter, who has served Lindenwood in many capacities, retired in June 1976 as Director of Alumni Affairs and Placement. Dorothy Barklage will continue Miss Lichliter's work as acting coordinator of both the alumni and placement programs.

A large increase in the number of students and in teaching staff of the colleges, additional federal reporting requirements, and the increased number of transactions being handled, necessitated an acceleration in the computerization of accounting systems under the leadership of Controller Fred Fisher.

### Physical Plant

Remodeling existing buildings to serve new functions has been the backbone of Lindenwood's construction program during the past two years. The addition of a new athletic playing field and amphitheater has remedied one need and accented another. A new gymnasium, student-center complex is still one of Lindenwood's major building needs and will be included as a major capital project in the Sesquicentennial Fund Campaign.

### Cobbs Hall

Cobbs Hall Conference Center has been improved with the remodeling of the living area into five modern meeting rooms with movable sound-proof partitions, and the entire building has been air conditioned. The terrace level of the building was remodeled to provide fully equipped locker room facilities for visiting and/or home teams using the new athletic field. The Tea Room was air conditioned, a covered outdoor patio was constructed, and a new professionally equipped laundry was added. These alterations, when added to the existing swimming pool and other features, provide Lindenwood with a superb facility to accommodate conventions and meetings of outside groups.

### Butler Hall

The transformation of Butler Hall from a small residence hall to an efficient and modern office building is nearing completion. The Admissions and Financial Aid Office, the Development Office, the Alumni and Place-

---

ment Office, and the Publications and Information Office have all been relocated on the first floor of Butler Hall. Faculty offices in the new Department of Language, Literature, Philosophy and Religion, along with the Department of Psychology, have been relocated on the upper floors of Butler Hall, freeing classroom space in Roemer Hall which had been used for faculty offices.

### **The Athletic Field/Amphitheater**

Lindenwood's new athletic field/amphitheater is nearing completion. The new field presents a combination of Windsor blue grass and rye growing in a bed of sand and sawdust 8 inches deep. The field is laced with a complete watering, feeding, and drainage line system which makes it possible to play on the field even after a heavy rain. The field is fully lighted and capable of supporting night-time television broadcasts. A concession stand containing public rest rooms, and housing the automatic control systems, is located at one end of the field. Seating is currently available for 5,000. A press, radio and television facility can handle all reporting and broadcasting needs. Parking will be available for 1,500 cars. It is anticipated that the new facility will be used for cultural events as well as for athletic contests.

### **Jelkyl Center for the Performing Arts**

The renovation of the Jelkyl Center for the Performing Arts has been completed with the addition of new dressing rooms, set construction room, theater offices, and a Green Room on the lower level of the theater

wing in Roemer Hall. Remodeling of the public rest rooms on each level of the theater was also accomplished with the proceeds of a bequest from Mr. Jelkyl. In the theater itself, a new movable stage surface was added providing additional flexibility to the performing area. A more complex theater lighting system will be installed as both a teaching tool and for performance in the fall of 1976.

### **The President's House**

The President's House on the campus has been opened up and redecorated to accommodate a larger number of college events and guests. Among the improvements is a new outdoor patio of natural brick on the northeast side of the house.

### **Community Relations**

The development of programs providing increased educational opportunities for area residents, especially in the Evening College and more recently in Lindenwood 4, has greatly strengthened ties between the campus and the community. Dean Bartholomew recently completed two terms on the City Council, and his seat was then won by Grace Nichols, currently serving as a part-time Assistant to the Registrar. Professor Hood continues to serve as a member of the City's Planning and Zoning Commission. Vice President Berg completed two terms on the Board of Directors of the St. Charles Chamber of Commerce, and this year was elected to membership on the Board of Directors of the

---

Industrial Development Corporation in St. Charles County, and Lay Advisory Board of St. Joseph Hospital. Mr. William Weber, formerly Director of Employee Relations for Metal Goods Division of Alcan Aluminum Corporation in St. Louis, has been retained by the colleges as a consultant in corporate relations. Mr. Weber also serves as a member of the St. Charles City School Board and as Chairman of the Education Committee of Growth, Inc. of St. Charles County, which is spearheading the drive to establish a public Junior College District in the County.

### **Relations with the Proposed Community College**

Dean Bartholomew and Vice President Berg serve as Lindenwood representatives to the Education Committee of Growth, Inc. and are working with the citizens of the County to ensure that Lindenwood's concerns are included in the development of the proposed district. The Missouri State Coordinating Board for Higher Education has approved the petition of the County for an election to consider establishing a Junior College District in St. Charles County. The Board will hold that election on Tuesday, April 5, 1977. Lindenwood's representatives to the Growth Education Committee have continued to work within the policy guidelines adopted by the Board of Directors.

It is our hope that candidates can be encouraged to run for positions as directors of the JCD who believe in the concept of utilizing

the available resources of existing educational institutions rather than constructing costly duplicative facilities and developing duplicative and competing programs. This cooperative philosophy is the current position of the Growth Education Committee, one that it seems willing to promote.

### **Federal Relations**

Lindenwood, along with most other institutions in American society, is being increasingly burdened with reporting requirements to a variety of federal and state agencies. To make sure that Lindenwood's interests are not overlooked, we have continued to be active in the Independent Colleges and Universities of Missouri and helped last year in the formation of the new National Association of Independent Colleges and Universities with headquarters in Washington, D.C. Vice President Berg, for a number of years, served the National Council of Independent Colleges and Universities, a part of the American Association of Colleges.

### **Fund Raising**

Gifts for current operations increased during the past two years by 42%. Total gift income during the 1973-74 fiscal year totaled \$120,131; for 1974-75, \$138,005; and for the year which ended June 15, 1976, \$171,789. Gifts and bequests for capital purposes during the past two years totaled an additional \$440,164.

---

## Some Recent Gifts

**Ross A. Jelkyl** — bequest of more than \$420,000 to complete the renovation of the theater, dressing rooms, and faculty offices in the Jelkyl Center for the Performing Arts in Roemer Hall, and to add to the endowment of the scholarship fund previously established in memory of his parents.

**Parents of a graduate of Lindenwood College for Men** — \$20,000 in unrestricted support to the annual fund.

**National Endowment for the Humanities** — \$18,000 to underwrite a statewide newspaper column *Humanities Forum*.

**Monticello College Foundation** — grants totaling \$16,000 for scholarship assistance to Monticello Scholars entering Lindenwood College for Women.

**The John M. Wolff Foundation** — unrestricted gifts totaling \$10,000 to assist in the educational program of the colleges.

**W.K. Kellogg Foundation** — \$8,000 to install a computer terminal in the Lindenwood Library providing access to a nationwide bibliographic network headquartered in Ohio.

**Monsanto Fund** — grants of \$5,000 each year to assist in the general educational program of the colleges.

**Arthur S. Goodall** — gifts of more than \$3,600 to the Nannie S. Goodall Scholarship Fund, bringing the total endowment of that fund to more than \$52,000.

## Lindenwood's Sesquicentennial

In 1977, Lindenwood will celebrate the 150th Anniversary of its founding. Preparations for the celebration are currently being planned by a committee of Board members, faculty, administration, students, and alumni. A calendar of events which has already been planned for the Sesquicentennial is as follows:

October 15, 1976 — Founders' Day

January 12, 1977 — Flag raising around the world

April 20 and 21, 1977 — Academic symposium

April 22 and 23, 1977 — Alumnae Sesquicentennial Reunions

June 1977 — Missouri River trek from Fort Osage to St. Charles

October 13, 1977 — Founders' Day

Concurrent with the celebration, Lindenwood will be conducting its first major capital fund campaign.

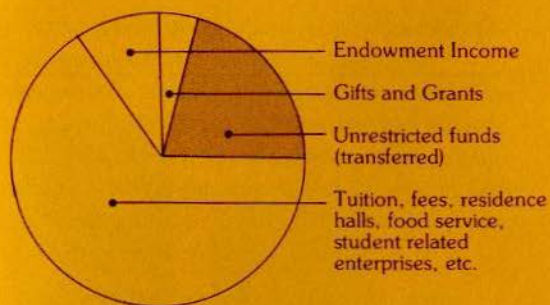


## Summary of Current Operating Funds, Fiscal Years 1975 and 1976, and Approved Budget, 1976-77

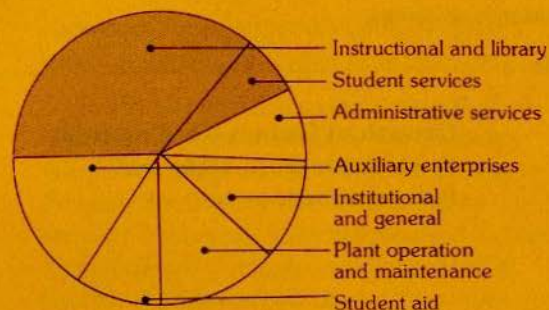
	1975 (actual)	1976 (actual)	1976-1977 (budget)
<b>Receipts</b>			
1. Tuition, fees, residence halls, food service, student related enterprises, etc.	\$1,981,055	\$2,636,119	\$3,429,000
2. Endowment income	256,775	296,642	165,000
3. Gifts and grants	138,005	171,789	200,000
4. Unrestricted funds transferred to current operations	622,205	352,239	89,791
<b>Totals</b>	<b>\$2,998,040</b>	<b>\$3,456,789</b>	<b>\$3,883,791</b>
<b>Expenditures</b>			
1. Instructional, including library	\$1,078,929	\$1,391,555	\$1,639,270
2. Student services	212,134	343,310	374,351
3. Administrative services	230,524	211,060	301,818
4. Institutional and general	323,881	330,753	340,652
5. Plant operation and maintenance	410,018	435,011	438,700
6. Student aid	273,908	234,259	275,000
7. Auxiliary enterprises	468,646	510,841	514,000
<b>Totals</b>	<b>\$2,998,040</b>	<b>\$3,456,789</b>	<b>\$3,883,791</b>

“ . . . A low tuition does not mean a low cost of education; it merely means that someone else, the taxpayer, is meeting the bills. A high tuition does not imply an undemocratic philosophy; it merely demonstrates that, where there is no Santa Claus, deficits are synonymous with bankruptcy . . . ”

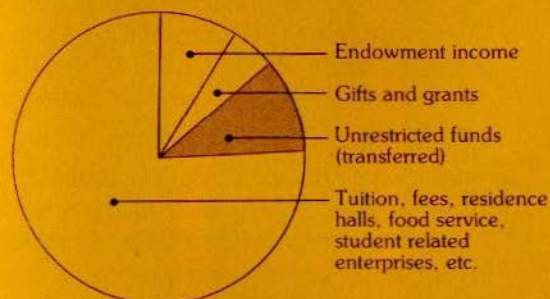
John R. Silber  
President, Boston University



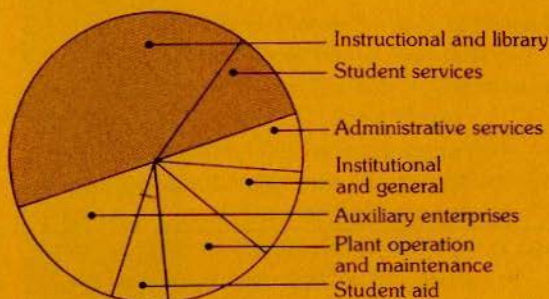
**1975 Receipts**



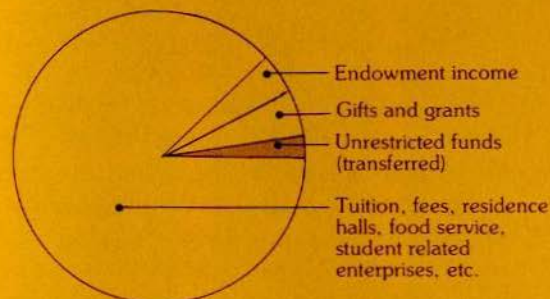
**1975 Expenditures**



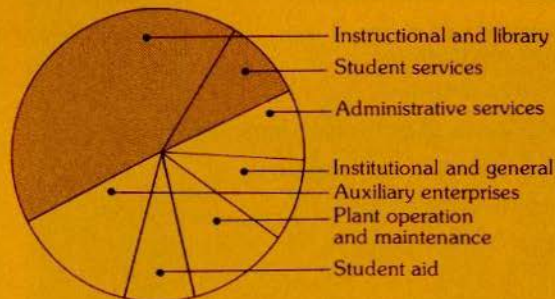
**1976 Receipts**



**1976 Expenditures**



**1977 Receipts**



**1977 Expenditures**

## Financial Aid Awards (Federal and State Funds)

Thousands of dollars

600

**Growth of financial aid awards  
to students from state and  
federal sources**

300

0

	1974-75 (actual)	1975-76 (actual)	1976-77 (estimate)	1977-78 projected
National Direct Student Loans	105,375	127,065	186,050	240,000
Supplementary Educational Opportunity Grants	23,335*	30,864*	10,709*	17,000*
College Work Studies	2,393	13,727	33,123	56,000
Total (Campus Based Federal Funds)	131,103	171,656	229,882	313,000
Basic Educational Opportunity Grants	16,838	43,014	85,170	89,870
Guaranteed Bank Loans	38,709	43,005	45,600	48,000
Missouri Student Grants	88,112	73,420	83,327	84,000
Total Federal & State	\$274,762	\$331,095	\$443,979	\$534,870



## Appendix A – Recreation and Sports

---

The athletic program at The Lindenwood Colleges affords interested students an opportunity to participate in team sports. The program is designed to foster healthy athletic competition, to enhance spirit and friendship, and to provide students with a beneficial extra-curricular activity. The athletic teams are open to all eligible full-time students.

Lindenwood is planning growth of the athletic program in accordance with increased student enthusiasm and athletic facilities. The Colleges will continue to join athletic conferences whose rules of eligibility closely resemble those of Lindenwood. This past year the men's athletic teams joined the Greater St. Louis Area Colleges Athletic Association.

Lindenwood conducts extramural sports in women's field hockey, women's volleyball, coed volleyball, women's gymnastics, women's slow pitch softball, and women's tennis. The men's college has four varsity athletic teams: soccer, baseball, basketball and tennis. Lindenwood also exhibits college-owned horses at horse shows throughout the state. Men and women students in 1975-76 went to San Antonio, Texas, to compete in the National Student Trap and Skeet Meet. Phi Epsilon Mu, an organization comprised of Physical Education majors, conducted in 1975, the first all-campus Olympics with approximately 200 participants. Ten students assisted in the Special Olympics sponsored by the Kennedy Foundation. In the future. The Colleges will be increasing the opportunities for students to participate in intramural sports activities. Various intramural

events, such as flag football and basketball, were conducted throughout the biennium.

For the seventh consecutive year The Colleges received in 1976, a government grant to conduct a National Youth Sports Program for 500 children of low income families. Professor Ebest has received awards from the Krey Packing Company, KMOX Radio, and Concerned Black Citizens in appreciation for her work with the inner-city youth.

The Lindenwood Horse Show is approved by the American Horse Show Association, and was nominated for the best horse show of the year by the Missouri Horse Show Association. Beta Chi, an organization comprised of students interested in horsemanship, raised more than \$2,800 toward the improvement of college riding facilities. A new covered, clear-span, 200' x 70' riding arena, with capacity for spectator seating, is under construction and will be completed by the end of 1976. ■



## Appendix B – Personnel Changes: Faculty and Staff

---

June 16, 1974 - June 15, 1975

### New Faculty and Administration

Steve B. Rukavina — Assoc. Prof. — Education — B.S., M.S., St. Cloud State College; Ed.D., Wayne State University;

Penelope Biggs — Assistant Professor — English — B.A., Radcliffe College; M.A., Ph.D., Washington University;

James Evans — Assistant Professor — Psychology — B.S., Geneva College; M.S., Ph.D., Iowa State University;

Anne Perry — Assistant Professor — Modern Languages — A.B., Randolph-Macon Women's College; M.A., Duke University; Ph.D., Washington University. Had been teaching part-time at Lindenwood.

Robert G. Wilke — Instructor — Communication Arts. B.A., University of Missouri — St. Louis; M.A., University of Missouri — Columbia.

Craig R. Eisendrath — Dean — Lindenwood College for Individualized Education (LC 4) — A.B., with General Honors, College of the University of Chicago; B.S., Georgetown University; Ph.D., Harvard University; Formerly on faculty of Harvard University, Northeastern University, and Massachusetts Institute of Technology; directed graduate program of Goddard College in regional center in Washington, D.C.

Boyd Morros — Faculty Administrator — Lindenwood 4 — St. Charles — B.A., M.A., Washington University; Came to Lindenwood in 1973 as an Assistant Professor in the Department of Education.

Richard Rickert — Faculty Administrator — Lindenwood 4 — Washington; B.A., Concordia Seminary; graduate study, Washington University; Ph.D., University of North Carolina. Formerly on faculty of Merrimack College, N. Andover, Massachusetts.

Margaret McAllister — Faculty Administrator — Lindenwood 4 — Santa Monica — B.A., Antioch College/West; M.A., Goddard College. Formerly on faculty of University Without Walls, and Coordinator, Los Angeles Developmental Project.

Patricia J. Delks — Librarian — A.B., Indiana University; M.S. in Library Science, Case Western Reserve. Prior to coming to Lindenwood was Reference Librarian at Smith College, Northampton, Massachusetts.

Nancy Johnson — Assistant Director — Campus School — B.A., Lindenwood College.

John N. Bartholomew — Dean of Lindenwood Evening College — B.A., Cornell University; B.D., Princeton Theological Seminary; Th.D., Princeton Theological Seminary. Prior to being appointed Dean of the Evening College was a full-time member of the Department of Sociology at Lindenwood. In addition to being Dean of the Evening College, Dr. Bartholomew is Chairman of the Department of Sociology.

William C. Spencer — President — B.A., Drew University; M.A., Ed.D., Columbia University. Formerly Associate Dean, Graduate School of Business, Columbia University; Special Assistant to the President, Columbia University; President, The Western College, Oxford, Ohio.

### Resignations

Elwood I. Miller, Dean of Evening College

Eugene Uram — Assistant Professor — Communications Arts

### Retirements

John B. Moore — Professor and Chairman, Department of Economics since 1950. Elected Professor Emeritus.

### Deaths

Erwin J. Gibson, Chief of Security, April 16, 1975. Had been at Lindenwood since 1970 when he founded the Lindenwood Security Department.

Harry Hendren, Professor and Chairman of Art, May 10, 1975. He had been a member of the Art Department for twenty-five years. At the May 16, 1975 joint meeting of the Boards, a motion was passed naming the main gallery in the Art Building "The Harry D. Hendren Gallery."

Robert Douglas Hume, Associate Professor Emeritus, January 9, 1975. He served in the Department of Speech, in charge of drama from 1947 until his retirement in 1972.

---

## June 16, 1975 - June 15, 1976

### New Faculty and Administration

Philip S. Borden — Professor and Chairman — Department of Business Administration; B.S., University of Kansas; M.B.A., D.C.S., Harvard Graduate School of Business Administration; Formerly Professor of Business Administration at the University of Arizona, Director of Case Research and Research Associate at Northwestern and Harvard Universities, President and Chief Operating Executive of Huber Homes.

Duane McGormley — Assistant Professor — Communications Arts — B.A., Case Western Reserve University; M.Div., Evangelical Theological Seminary; M.F.A., Case Western Reserve University.

Burton J. Nissing — Assistant Professor — Business Administration — B.S., B.A., University of Missouri; M.S.C., St. Louis University; doctoral candidate, St. Louis University, CPA; formerly on faculty of Southern Illinois University.

James D. Walter — Assistant Professor — Sociology — B.A., Kent State University; M.A., Indiana State University; Ph.D., Ohio State University. Formerly on faculty of Parkersburg Community College, Parkersburg, W. Va.

Robert G. White, Jr. — Assistant Professor — Communication Arts — B.A., Denison University; M.S., Indiana State University; Graduate Study, Bowling Green State University. Formerly with several radio and television stations and on faculty at SUNY, Brockport, N.Y. Ph.D. candidate.

Cynthia Essenpreis, Assistant to the Dean of Lindenwood Evening College — B.A., Lindenwood College for Women; M.A. Syracuse University.

Amy Basore — Admissions Counselor — B.A., Lindenwood College for Women.

Barry Freese — Admissions Counselor — B.A., Lindenwood College for Men.

Glenda Partlow — Manager of Publications and Publicity — B.A., Florida State University. Formerly in various public relations capacities for business firms, and Director of Publications, Bar Association of Metropolitan St. Louis.

Barton Gill — Programmer/Operator for Administrative Computer Services — B.S., Lindenwood College for Men.

Sharon Rubin — Faculty Administrator — Lindenwood 4, Washington — B.A., M.A., University of Chicago; Ph.D., University of Minnesota. On faculty of University of Minnesota, English and American Studies.

### Resignations

Steve B. Rukavina — Assoc. Prof. — Education

Burton Nissing — Asst. Prof. — Business Administration

Robert Palank — Asst. Prof. — Business Administration

Suzanne Taylor — Asst. Prof. — Physical Education

Thomas Smith — Assistant to Dean of Evening College

Bernard Weinrich — Assistant to Dean of Evening College.

### Retirements

Mary Lichliter — Came to Lindenwood in 1948 as Director of Student Guidance and Placement. She later was made Dean of Students, then Dean of Continuing Education and Career Planning, then Director of Alumnae Affairs and Placement. Upon retirement she was elected Dean Emeritus.

### Deaths

Marjorie Ann Banks, Associate Professor Emeritus, July 12, 1975. Associate Professor of Elementary Education at Lindenwood from 1960 until her retirement in 1970.

## Appendix C – Calendar of Events

---

### Calendar of Special Events, Concerts, Lectures and Recitals 1974-75

October 27, 1974 – Lindenwood Faculty (St. Louis Symphony Orchestra members) Woodwind Concert

October 26, November 2, November 9, November 16, November 23, December 7 and December 14, 1974 – Children's Film Festivals, a grant from the Camelot Fund of the Arts and Education Council of Greater St. Louis

November 11-15, 1974 – New York Dance Company – Gerda Zimmerman, Artist in Residence

November 17, 1974 – Washington University Woodwind Quintet featuring students from Washington University with Lindenwood student, Jennifer Henderson, soloist

November 19, 1974 – International Student Performance – Songs, folk dancing, and poetry from many different countries, Lindenwood's foreign students

November 23-24, 1974 – International Student Bazaar

November 24, 1974 – Baroque Concert – Jacob Berg and Richard Woodhams of the Lindenwood faculty (St. Louis Symphony Orchestra) and Willard Cobb, tenor

December 3-7, 1974 – Play – "The Hostage"

December 8, 1974 – Lindenwood Choir Christmas Vesper Program – Program of Renaissance and Baroque Christmas music, and sacred and secular carols sung with orchestra

February 9-15, 1975 – Black History Week

February 9, 1975 – Faculty (St. Louis Symphony Orchestra) Recital: Clarinetist Robert Coleman

February 12, 1975 – Mime Performance: Bert Houle and Sophie Wibaux

February 21, 1975 – Perfect Person Pageant

March 2, 1975 – Lindenwood Faculty (St. Louis Symphony Orchestra) Woodwind Quintet – Jacob Berg, Richard Woodhams, Robert Coleman, Robert Wisneskey, and Kenneth Schultz

March 4, 1975 – Alice Parker Memorial Lecture by Dr. William C. Spencer: "The Mirror and the Porthole"

March 5, 6, 7, 1975 – "An Evening of One-Act Plays" – Lindenwood students under the direction of John Heidger, SIU Edwardsville Theatre Department, guest director

March 13, 14, 15, 1975 – San Francisco Dance Workshop – Lecture and Workshops

March 19, 1975 – Lecture – Chalk Talk by Jerry Warshaw, children's book illustrator

April 11-12, 1975 – Parents' Weekend

April 12, 13, 14, 1975 – Theater – "The Unicorn, the Gorgon, and the Manticore," Lindenwood Concert Choir and 10-member dance troupe

April 15, 1976 – Lecture – "Music and Poetry," Charles O. Hartmann, visiting artist-in-residence, Poet and Professor of English, Washington University

April 25-26, 1975 – Installation of the President – Address: "Celebrating the Future" by President Spencer

–Mace (which includes objects from the college's history) was used for the first time

–Alumnae Clubs of St. Charles and St. Louis served as hostesses for the reception

–Horses, carriages, and antique automobiles were used for college tours

–A historic slide presentation was prepared by John B. Moore and T.W. Doherty

–Taking part in the installation were members of the alumnae, Boards, the student body, the administration, and faculty. Special guests included Mayor Frank B. Brockgreitens, Chancellor William H. Danforth of Washington University, and President Emeritus Franc L. McCluer

April 29, 1976 – Lecture – "Measurement and Control of Private Events, such as Biofeedback and ESP" Dr. Lawrence Simkins, Clinical Psychologist and Professor of Psychology and Director of Clinical Training at UMKC (under the Visiting Scientist Program of the American Psychological Association)

April 30, 1975 – Honors Convocation

May 23, 1975 – Baccalaureate – Speaker, Rachel Stalnaker

May 24, 1975 – Commencement – Speaker, Armand C. Stalnaker

---

## Calendar of Special Events, Concerts, Lectures and Recitals 1975-76

October 7, 1975 — First Saudi Arabian students arrive

October 16-18, 1975 — Play "The Madman and The Nun"

November 20, 1975 — International Student Performance — Songs and Folk dancing

November 22, 1975 — Evening College Banquet

December 7, 1975 — Lindenwood Choir Christmas Concert

January 29-31, 1976 — Play, "The Glass Menagerie"

February 15, 1976 — Dedication of Harry Hendren Gallery

March 7, 1976 — "An Evening of American Music," a woodwind quintet of faculty members who are also members of the St. Louis Symphony Orchestra

March 14, April 4, and April 25, 1976 — Lecture series

on Oriental Arts and Cultures by Professor W. Dean Eckert

March 17-19, 1976 — 5x2 Dance Company, Artists in Residence

April 9, 1976 — Cotillion

April 24-25, 1976 — Parents' Weekend

April 27, 1976 — Faculty Guitar Recital — Tom Strini

April 28, 1976 — Faculty Piano Recital — Groff Bittner

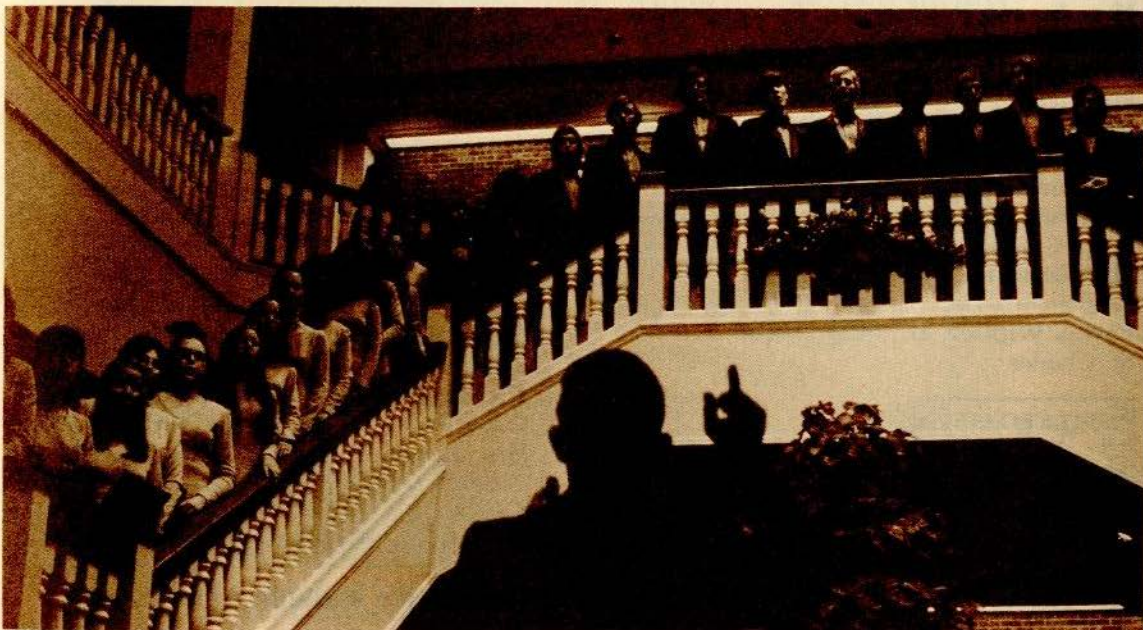
April 29-30, 1976 — Meredith Monk Dance Group,

Artists in Residence

May 5, 1976 — Honors Convocation

May 21, 1976 — Baccalaureate — Speaker, The Reverend Robert R. McGruther

May 22, 1976 — Commencement — Speaker, Gene Maeroff, National Education Correspondent, New York Times



## Appendix D – Boards of The Lindenwood Colleges

---

### Board of Directors

- George W. Brown**, Retired; former Chairman, Wagner Electric Co., St. Louis
- Mrs. Russell J. Crider**, Active in civic and educational affairs, St. Charles
- Mrs. Thomas S. Hall**, Active in civic and educational affairs, St. Louis
- Robert Hyland**, Regional Vice President, CBS, St. Louis
- Paul Knoblauch**  
President, First National Bank of St. Charles
- Walter L. Metcalfe, Jr.**, Attorney, Armstrong, Teasdale, Kramer & Vaughan, St. Louis
- Jefferson L. Miller**, Vice President, St. Louis Union Trust Company
- Mrs. Joseph Pulitzer, Jr.**, Former Curator of St. Louis Art Museum
- Roland T. Pundmann**, President, Pundmann-Ford, St. Charles
- Victoria Smith Tarleton**, Alumna, Washington, D.C.
- Armand C. Stalnak**, President and Chairman, General American Life Insurance Co., St. Louis
- Mrs. Dorothy Warner**, Alumna, Washington, D.C.
- Earl J. Wipfler, Jr., M.D.**, Surgeon, St. Charles



### Boards of Advisers and Overseers

- Mrs. K.K. Barton**, Alumna, Kansas City
- Larry Edwards**, Johns Manville Corp., Denver
- Mrs. Thomas W. Erwin, III**, Alumna, Ennis, Texas
- Mrs. James C. Hamill**, Alumna, Oklahoma City
- James W. Quillian**, Land management and investments, Oklahoma City
- David Q. Reed**, Attorney, Melvin L. Kodas, Kansas City
- Thomas R. Remington**, Attorney, Armstrong, Teasdale, Kramer & Vaughan, St. Louis
- Mrs. Warren McK. Shapleigh**, Active in civic and educational affairs, St. Louis
- Mrs. J.L. Smith**, Attorney; probate judge, Houston, Missouri

### Board of Directors – Life Members

- William H. Armstrong**, Attorney, Armstrong, Teasdale, Kramer & Vaughan, St. Louis
- John M. Black**, Retired; former Vice President for Operations, Southwestern Bell Telephone Co., Corona del Mar, California
- Arthur S. Goodall**, Investment Manager, St. Louis
- The Reverend W. Davidson McDowell, D.D.**, Pastor, Tokyo (Japan) Union Church
- Mrs. James A. Reed**, Alumna; Founder and Retired President of Nelly Don Co., Kansas City
- Mrs. Arthur Strockstrom**, Civic Leader, St. Louis
- Mrs. Horton Watkins**, Civic Leader, St. Louis

## Officers of The Colleges

---

**“We respect and honor the past, we live confidently in the present, and we act courageously as we plan carefully for the future.”**

**William C. Spencer**  
President, The Lindenwood Colleges

---

**William C. Spencer**, President  
**B. Richard Berg**, Vice President  
**Doris Crozier**, Dean of Lindenwood College for Women  
**Patrick F. Delaney**, Dean of Lindenwood College for Men  
**John N. Bartholomew**, Dean of Lindenwood Evening College  
**Craig R. Eisendrath**, Dean of Lindenwood College for Individualized Education



From left to right, Dean Eisendrath, Dean Delaney, President Spencer, Dean Crozier, Vice President Berg, and Dean Bartholomew.

---



**The Lindenwood Colleges**  
**Saint Charles, Missouri 63301**