

Lindenwood University

Digital Commons@Lindenwood University

---

Yearbooks

Lindenwood University Archives

---

1937

## 1936-1937 Linden Leaves

Lindenwood College

Follow this and additional works at: <https://digitalcommons.lindenwood.edu/yearbooks>

---

### Recommended Citation

Lindenwood College, "1936-1937 Linden Leaves" (1937). *Yearbooks*. 59.  
<https://digitalcommons.lindenwood.edu/yearbooks/59>

This Book is brought to you for free and open access by the Lindenwood University Archives at Digital Commons@Lindenwood University. It has been accepted for inclusion in Yearbooks by an authorized administrator of Digital Commons@Lindenwood University. For more information, please contact [phuffman@lindenwood.edu](mailto:phuffman@lindenwood.edu).



Linden  
Leaves



1937

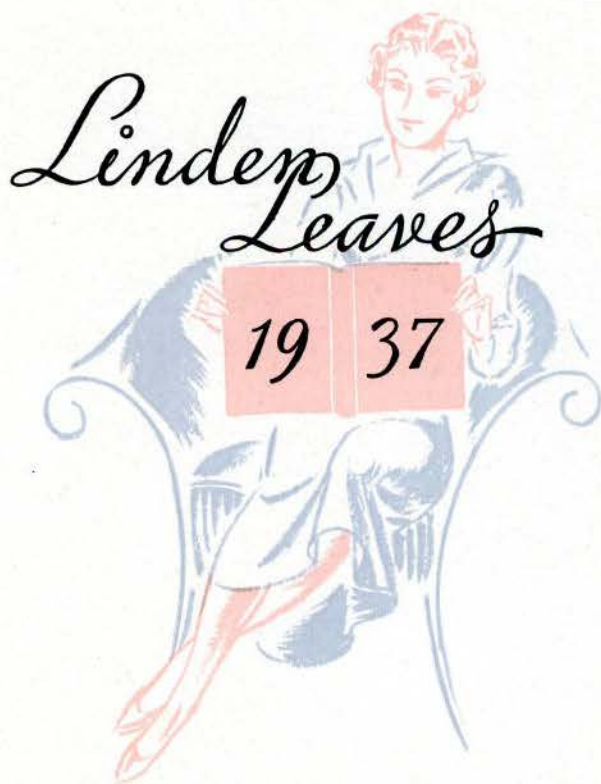




*Ex Libris*  
LINDENWOOD COLLEGE

*Founded by*  
MAJOR GEORGE C SIBLEY  
*and*  
MARY EASTON SIBLEY

1 8 2 7



Designed and Engraved by  
CENTRAL ENGRAVING COMPANY



Printing, Binding and Covers by  
MIDLAND PRINTING COMPANY



Photography by  
GERHARD SISTERS



Views by  
ALEXANDER PIAGET





# Lindenwood L

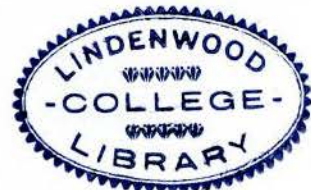
PUBLISHED BY THE STUDENTS OF *Lindenwood*





ALMA REITZ *Editor* • JOSEPHINE MILES *Bus. Mgr.*

*Limes*



*College* SAINT CHARLES, MISSOURI • 1937 •





# Introduction

WE PRESENT THIS 1937 LINDEN LEAVES TO YOU FOR THAT TIME WHEN LINDENWOOD DAYS ARE OVER, WHEN THE FRESH MEMORIES OF YOUR LIFE ON CAMPUS HAVE RECEDED. MAY IT RESTORE TREASURED THOUGHTS AND EVENTS IN YOUR LIFE HERE, AND EVER KEEP ALIVE THE SPIRIT OF THE LINDENWOOD OF TODAY » » » » » »





# Contents

Administration

Student Body


Queens

Organizations and Activities

This and That

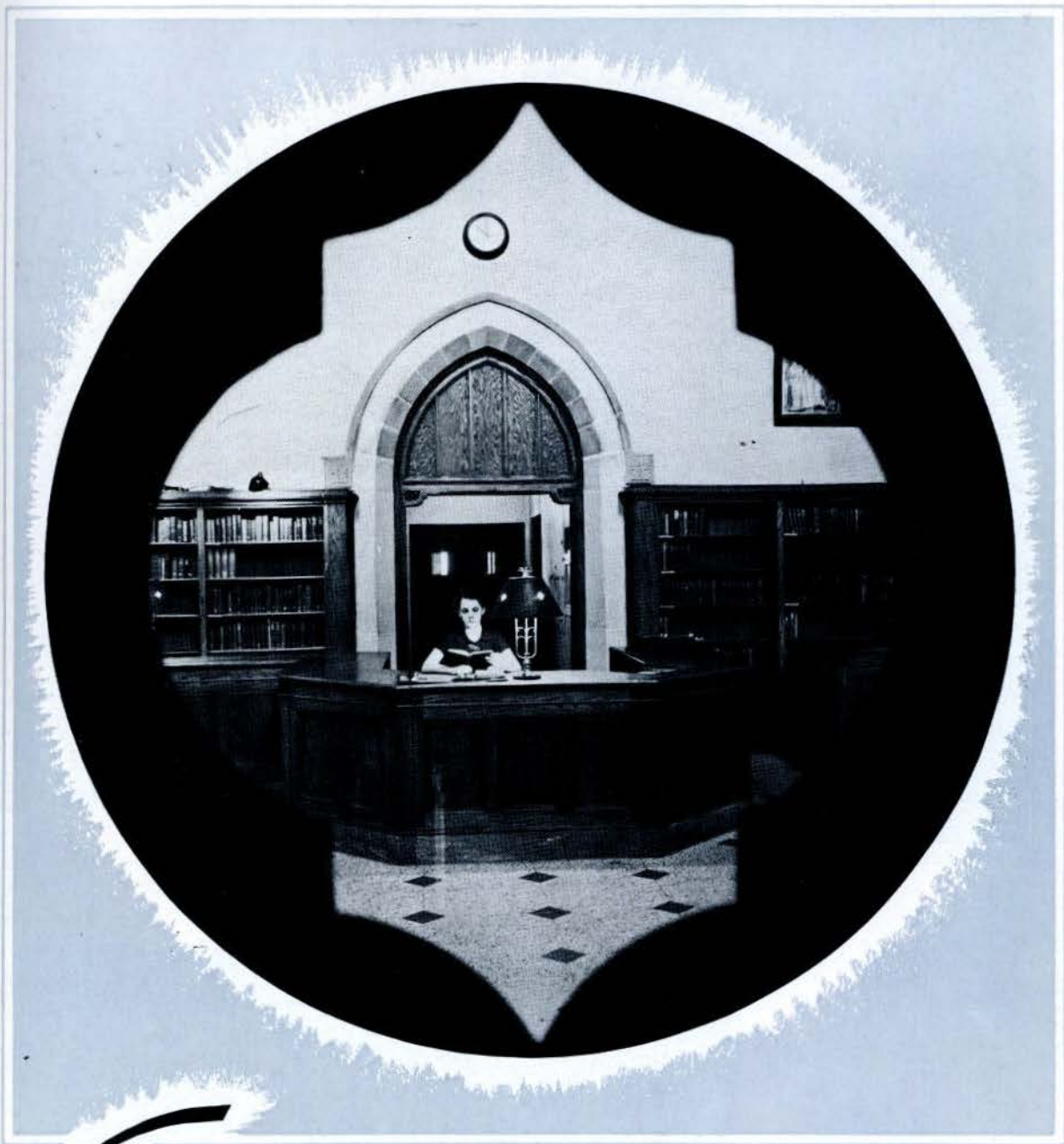
21170





To the faculty and  
administration the  
Linden Leaves Staff  
expresses gratitude  
for cooperation in  
this and in other  
activities.





Administration





## Dr. John L. Roemer

I always appreciate the opportunity of a foreword to the College Annual. The 1937 publication is worthy of the interest and support given by the students of Lindenwood College. Editors and Management have given their time and genius to make it a most creditable issue and they have succeeded to a remarkable degree.

With the appearance of the *Linden Leaves* of 1937 my heartiest appreciation of the efforts of Editors and Management goes forth in behalf of Faculty and Students.

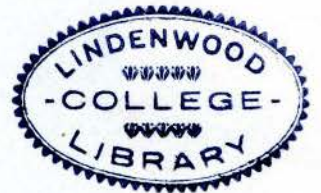
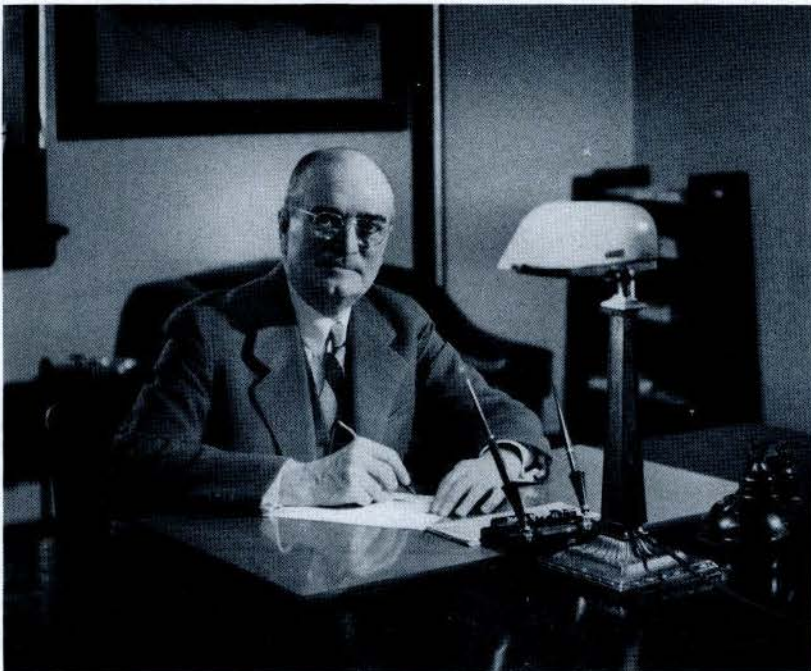
Lindenwood  
Gateway





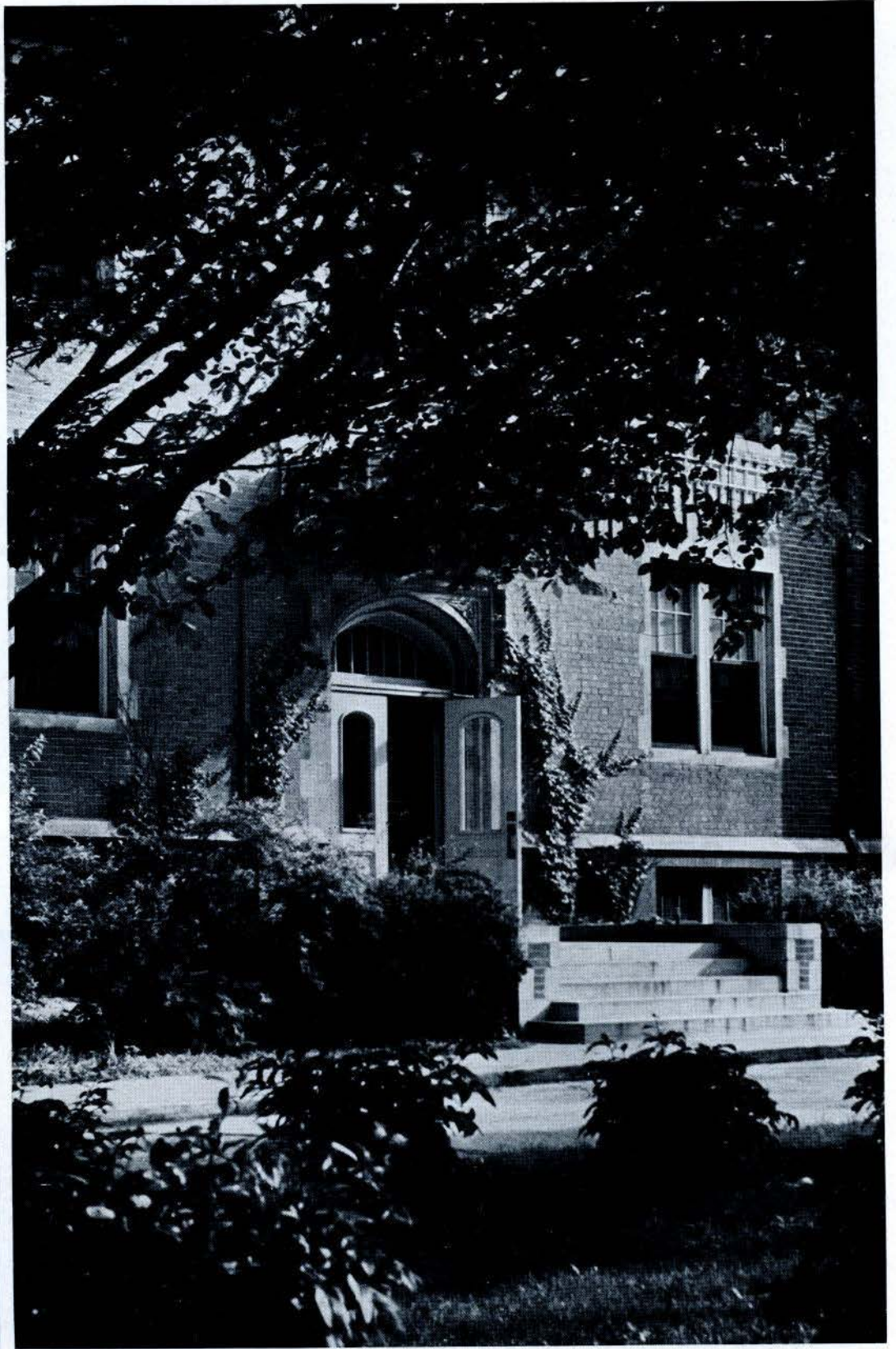
# Lindenwood College Ideals

For one hundred and ten years Lindenwood College has stood for the highest of ideals. Freshmen sense a striving for the fuller and higher meanings in life which give tone and roundness to Lindenwood personalities. Girls seek to plan and balance their lives in order that they may be of greater service to themselves and to their communities. Lindenwood urges her students to live every day while in college as well as to prepare for future days.



DR. JOHN L.  
ROEMER  
*In His Office*

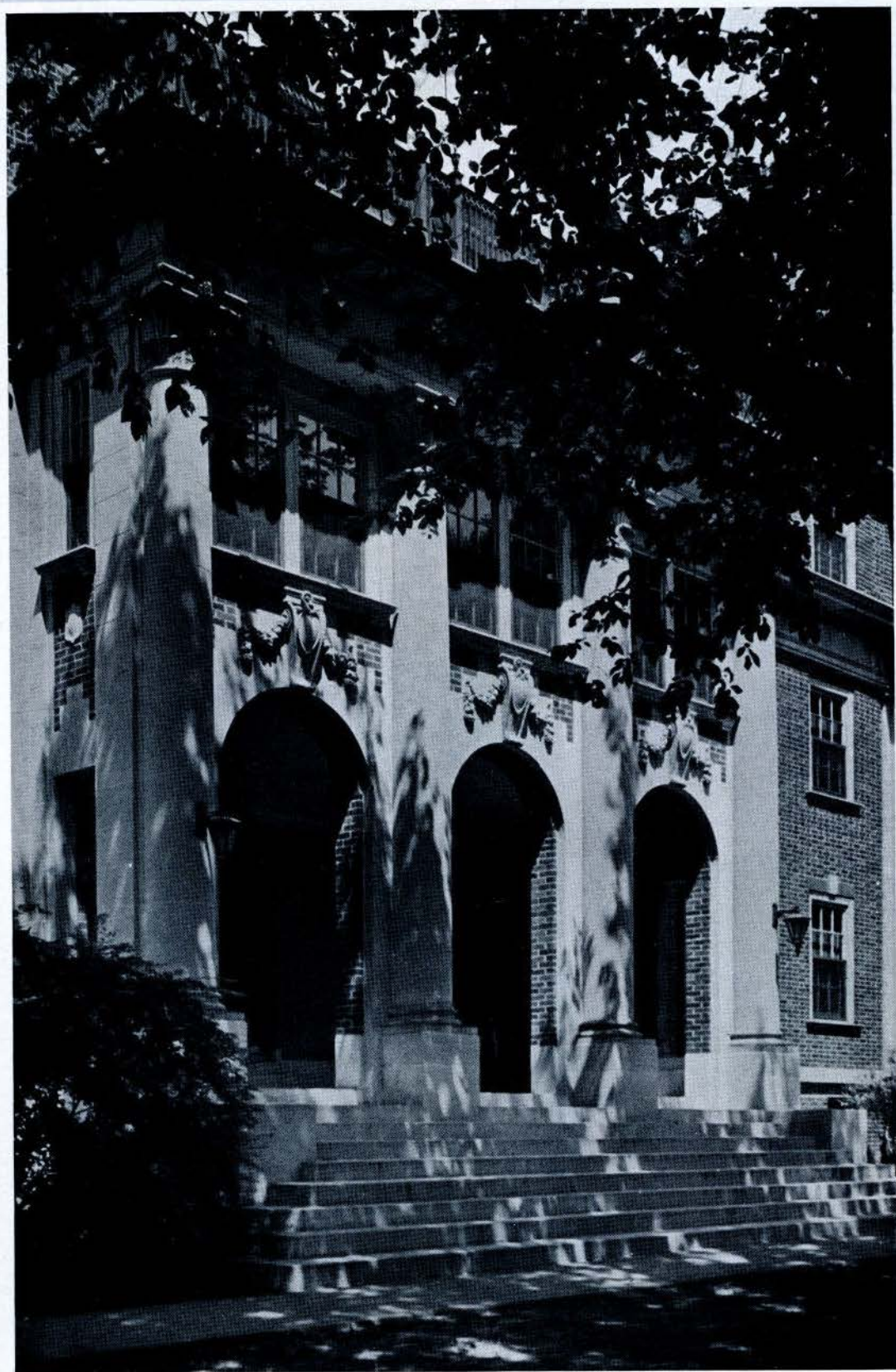




*Butler Hall*



*Niccolls Hall*





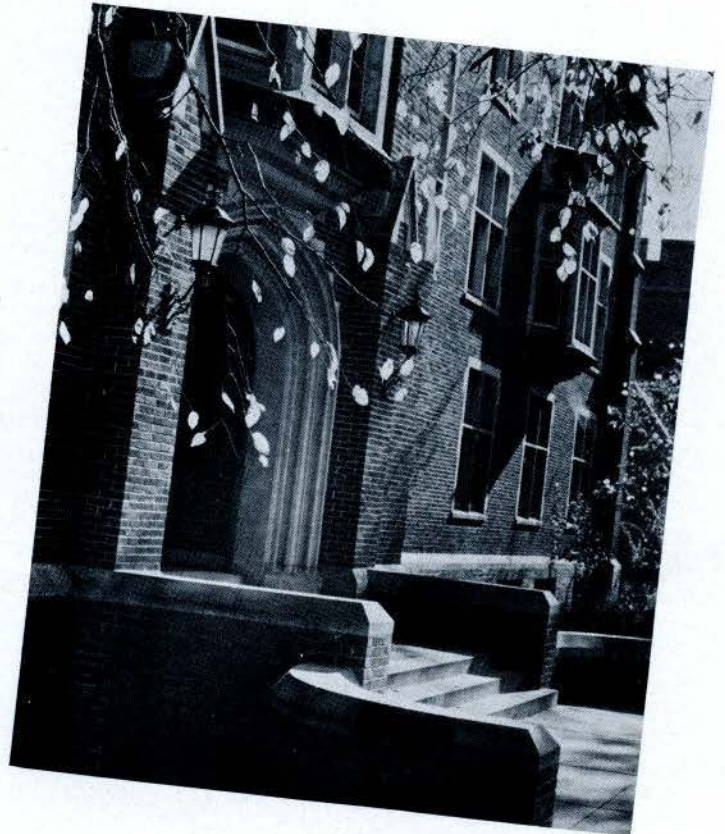


*Mrs. J. L.  
Roemer*

*Dean of Students*

It is always a great pleasure as "Dean of Women" to welcome the young ladies who come to Lindenwood College, and to have some part in their development for useful citizenship of these United States.

*Roemer  
Hall*

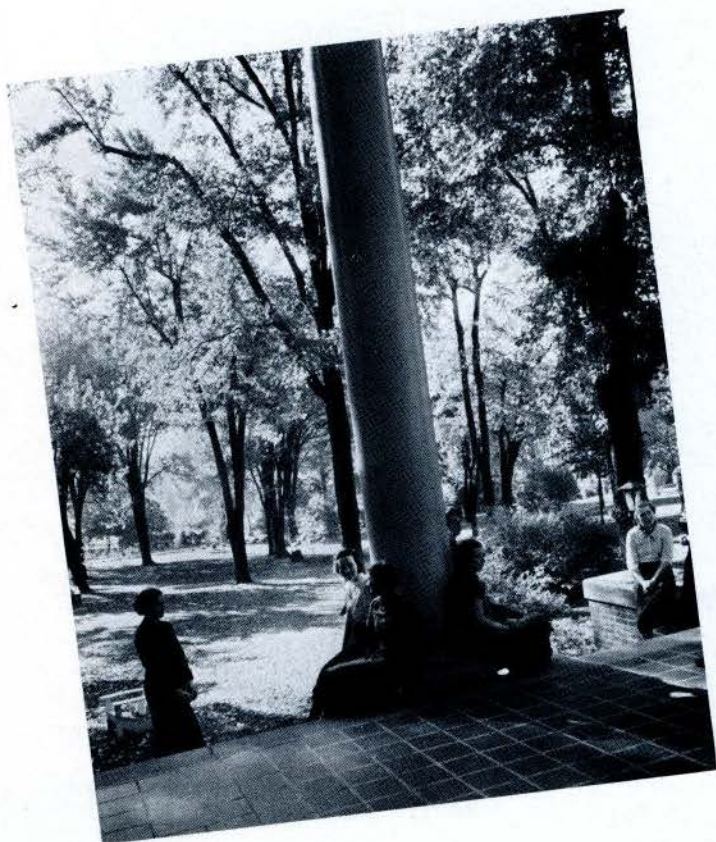




Dr. Alice E.  
Gipson

*Academic Dean*

As you, present day students, turn the pages of this Linden Leaves in years to come, it will be as if you were looking into a sort of kaleidoscope. Scenes recalling people, conversations, events will shift rapidly before your mind's eye. May all the colors in this kaleidoscope be lovely and the scenes beautiful, as memory carries you back to the days that were.



Sibley  
Hall





*Irwin Hall*





*Ayres Hall*



# Language Faculty



ALICE E. GIPSON  
A. B., Ph. D.  
*English*

The largest department in the college is the English department. Six hours of English literature and six hours of English composition are required for an A. B. Degree.

Composition, rhetoric, drama, poetry, the short story, the novel, the essay, and journalism are all emphasized. The journalism department, under the direction of Mrs. Underwood, edits the *Linden Bark*, the school newspaper, and the Lindenwood monthly bulletin.



KATE L. GREGG  
A. B., Ph. D.  
*English*

ALICE PARKER, A. B., M. A.  
*English—Leave of Absence*



SIEGMUND A. E. BETZ  
A. B., M. A., Ph. D.  
*English*



ELIZABETH DAWSON  
A. B., M. A.  
*English*



WINIFRED BURNS  
A. B., M. A.  
*English*







MARY TERHUNE  
A. B., M. A., D. M. L.  
*-Modern Languages*

Dr. Mary Terhune is the head of the foreign language department which offers French, Spanish, and German. Two years of one language are required for a degree. Mrs. Elise Moore is conducting a summer trip abroad this year in which French will be stressed.

Miss Kathryn Hankins offers both Greek and Latin, as well as many courses in classical literature, such as masterpieces of architecture and Greek mythology.



HELENE M. EVERS  
A. B., M. A., Ph. D.  
*Modern Languages*



KATHRYN HANKINS  
A. B., B. S., M. A.  
*Classical Languages*



JULIA C. UNDERWOOD  
Ph. B.  
*Journalism*



ANNA WURSTER  
B. S., M. S.  
*French*



ELISE MOORE  
A. B., M. A.  
*French*





# The Sciences and Mathematics



FLORENCE W. SCHAPER  
B. S., M. A., Ph. D.  
*Sociology and Economics*

Ten hours of science or six hours of mathematics and three of logic are required for graduation.

Teaching certificates can be obtained for any state in the department of education. Practice teaching is done in the St. Charles schools under the supervision of Dr. Garnett. Four hours of religious education are required for a Bachelor's degree. Miss Allyn is head of the business department.



RALPH T. CASE  
A. B., B. D., Ph. D.  
*Bible and Philosophy*



MARY S. BENSON  
A. B., M. A., Ph. D.  
*Economics and History*



WILMA J. PUGH  
A. B., Ma., Ph. D.  
*History and Geography*



RACHEL MORRIS  
A. B., M. A.  
*Sociology and Psychology*



LLOYD B. HARMON  
A. B., B. D., Ph. D.  
*Bible and Philosophy*





MARY E. LEAR  
A. B., B. S., M. A.  
*Chemistry*



LOIS KARR  
A. B., M. A.  
*Mathematics and Physics*

The science department consists of three divisions: the social sciences, the biological sciences, and the physical sciences. The subjects included in the department are sociology, economics, education, history, philosophy, botany, zoology, physics, and chemistry. During the year, students visit clinical hospitals, make gardens, and in the spring, they give a science show. The material included in this exhibition is that pertaining to the biological and physical sciences.



RAY L. GARNETT  
B. S., M. A., Ph. D.  
*Education*



YVONNE BAILEY  
A. B.  
*Biology*



MARION L. DAWSON  
A. B., M. S., Ph. D.  
*Biology*



MARY TALBOT  
B. S., M. A., Ph. D.  
*Biology*



LILLIAN ALLYN  
*Business*



# Fine Arts



JOHN THOMAS  
Mus. B., Mus. M.  
*Piano*

Mr. John Thomas, Dean of the School of Music, has obtained for Lindenwood membership in the National Association of Schools of Music. The department offers training in voice, violin, piano, organ, group singing, and band instruments.

Dr. Alice Linnemann is head of the art department, which offers courses in drawing, painting, theory of design, representation, and history of art.



ALICE LINNEMANN  
B. L., Litt. D.  
*Art*



PAUL FRIESS  
*Organ*



EVA ENGLEHART  
B. S., B. F. A.  
*Piano*



VIRGINIA SHRIMPSON  
B. M., B. F. A.  
*Piano*



GERTRUDE ISIDORE  
*Violin and Theory*







PEARL WALKER  
A. F., B. M., M. M.  
*Voice*

The speech and dramatics department, under the direction of Miss Gordon, offers training in public speaking and dramatic art and helps produce many plays throughout the year. A two-year diploma in speech is offered, for which an hour graduation recital is required. Private lessons are offered, and many Thursday morning assembly programs are given by students in this department.



MARY M. GORDON  
A. B., B. L. I.  
*Speech and Dramatics*



DORIS P. GIESELMAN  
B. M.  
*Voice*



LOIS M. BURKITT  
B. M.  
*Public School Music*



NINA JEWEL LEMEN  
B. S.  
*Speech and Dramatics*



ARLINE AEGERTER  
*Speech and Dramatics*





*Physical  
Education*

*Home  
Economics*



ADA DYER TUCKER  
B. S., M. A.  
*Home Economics*

Two hours a week of physical education are required of all freshmen and sophomores. The department offers instruction in sports and dancing, and during the year it sponsors tournaments and recitals. In addition to the gymnasium, facilities include a golf course, tennis courts, a hockey field, and a swimming pool.

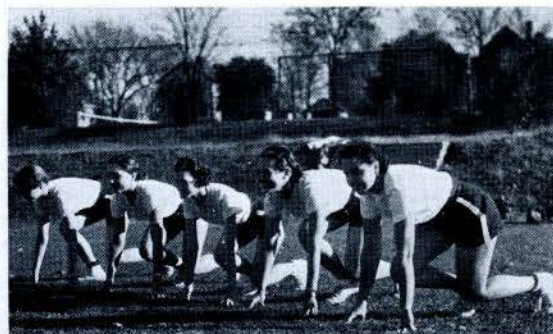
The home economics department offers courses in cooking, sewing, house planning, food buying, and textiles. Adequately furnished laboratories are located in Roemer Hall.



MARGARET M. STOOKEY  
B. S.  
*Physical Education*



RUTH ANDERSON  
B. S., M. A.  
*Home Economics*



MARIE REICHERT  
B. S.  
*Physical Education*



# Library and Infirmary



MILDRED KOHLSTEDT  
A. B., M. A.  
*Library Science*

The arched and panelled spaciousness of the Lindenwood library is as beautiful as it is conducive to studying. Huge, well-lighted tables provide ample space for the girls' studying. The library contains 20,500 books and new ones are being added constantly. Downstairs are the historical museum and the club rooms.

The college maintains its own infirmary where the girls are given careful attention and encouraged to guard their own health. Miss Eva Sayre is resident nurse here.



B. KURT STUMBERG  
M. D.  
*College Physician*



HORTENSE EGGMANN  
A. B.  
*Assistant Librarian*



E. J. CANTY  
M. D.  
*College Physician*



Bank  
Post  
Office



ETHEL B. COOK  
*Bursar*



DORA WAYE  
*Assistant Bursar*



LOUISE KRUSE  
*Tea Room*



Dining  
Room  
Tea Room



CORA V. WALTER  
*Dieltian*



ARABELLE FOSTER  
*Assistant Dieltian*

The tea room, dining room, and post office are regular contestants in a daily popularity contest which needs no advertising. Each place scores its point at its own special time.

The bank helps to keep our individual finances straight and serves us in numerous other ways.



HARRY P. ORDELHEIDE  
*Superintendent of Buildings and Grounds*



AMY MUTERT  
*College Post Office*



DELPHIA HIRSH  
*College Post Office*



# Secretaries

# Registrar

# Housemothers



GUY C. MOTLEY  
A. B.  
*Secretary of the College*



DOROTHY G. ORDELHEIDE  
B. S.  
*Registrar*



HELEN CULBERTSON  
*Assistant Secretary of the  
College*



VELDA WAGNER  
*Secretary to the Dean*



MRS. ZEISLER  
*Secretary to the President*

The very efficient corps of secretaries and regents of the college often make life easier, especially if special arrangements of any kind are necessary. Their duties are broad and varied and contribute no end to our general welfare and activities.

Mrs. Elizabeth LeMaster is housemother of Sibley Hall.



MISS EDNA HOUGH  
*Irwin Hall*



MISS MARY C.  
BLACKWELL  
*Buller Hall*

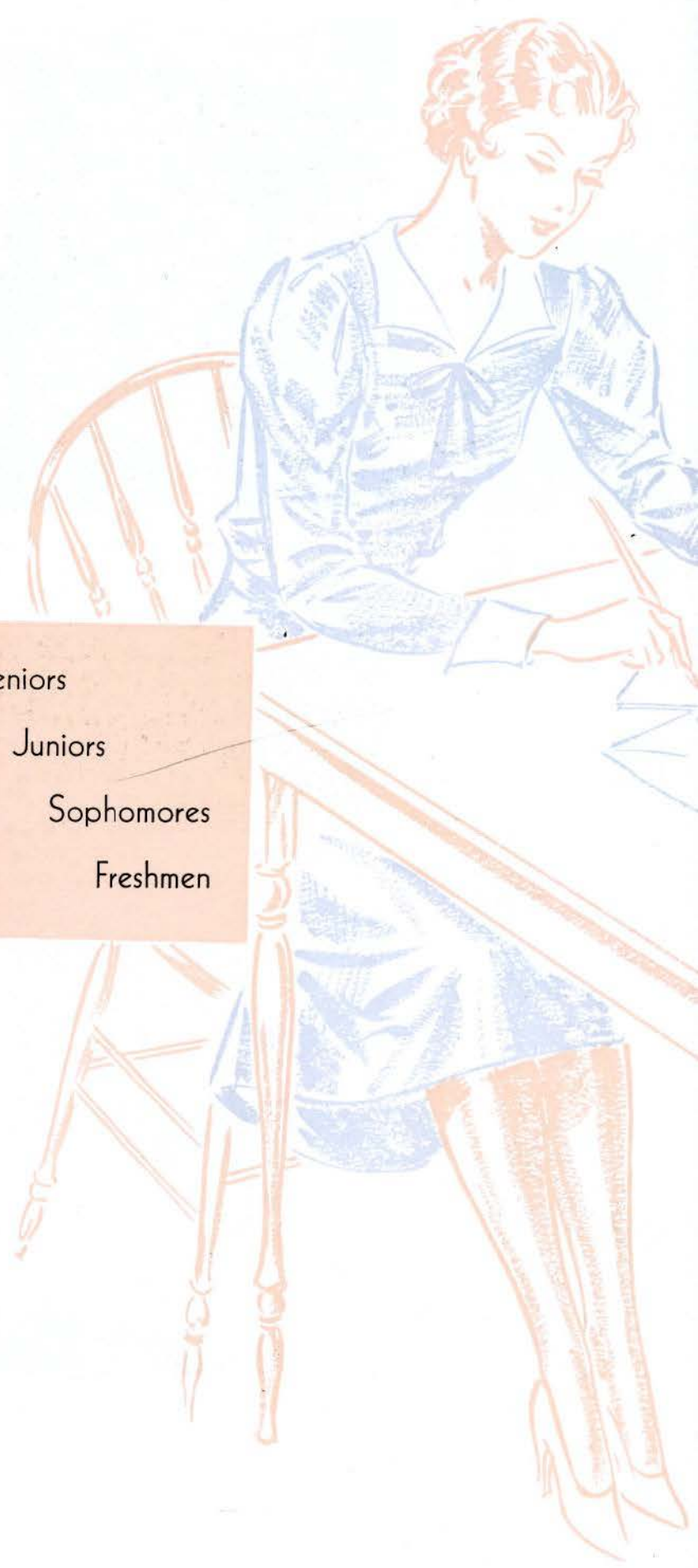


MRS. C. C. KELLY  
*Ayres Hall*



MRS. A. W. WILLCUTS  
*Nicolls Hall*



A blue-toned illustration of a woman with her hair styled in an updo, sitting at a table. She is wearing a long-sleeved, button-down dress with a bow at the waist and is looking down at a book or paper on the table. The chair is a classic wooden Windsor-style chair. The entire illustration is rendered in shades of blue and white.

Seniors  
Juniors  
Sophomores  
Freshmen







# *Among the Seniors*





# Senior Officers



CONSTANCE OSGOOD  
*President*



MARGARET KECK  
*Vice-President*



SUE JOHNSON  
*Secretary*



KATHRYN ACKERMAN  
*Treasurer*

All Lindenwood will remember one of the first big events of the school social season—the formal dinner dance given by the senior class for the entire school. Another occasion to remember was the “date dance” sponsored by the senior and junior classes together. For the faculty, whom they had come to know during their four years at Lindenwood, the seniors gave a lovely buffet supper.

Having entertained everyone else, it now became their privilege to be entertained. They helped themselves to a little bit of extra fun by taking a hayride and leave us to imagine the hilarious time.

Then came the delightful luncheon given by Dr. and Mrs. Roemer for the class. Later still, the juniors entertained at the “prom” and at a dinner party. For the May Fete, the seniors had the customary honor of choosing the May Queen from among their members.

The memories of these and other events of the past four years will live on.





Kathryn  
Hope  
Ackerman

KANSAS CITY, MISSOURI

*"Entire affection for all human kind."*

Pi Gamma Mu, '37  
Poetry Society, '36, '37; Secretary, '37  
Home Economics, '36, '37  
Athletic Association, '35  
League of Women Voters, '37  
Treasurer of Senior Class, '37  
Pi Alpha Delta, '37  
International Relations, '35  
Linden Leaves, '37  
Alpha Sigma Tau, '37

Mary  
Lucille  
Bacon

ANNA, ILLINOIS

*"I heard a thousand blended notes."*

Der Deutsche Verein, '35, '36  
International Relations, '37  
Illinois Club, '34





Madaline  
Chandler

TULSA, OKLAHOMA

*"As aptly, also, might be given  
a pencil to her hand."*

Linden Leaves, '34  
Kappa Pi, '37  
Oklahoma Club  
Art Club



Evelyn  
Rue  
Coker

DALLAS, TEXAS

*"What need of clamorous bells,  
or ribands gay?"*

Southern Club, '33  
Beta Pi Theta, '34  
Southern Methodist University,  
'35  
Y. W. C. A. Social Chairman, '37  
Home Economics Club, '37





Eleanor  
Hibbard

KAYCEE, WYOMING

*"Much done and much designed,  
and more desired."*

Student Board, '37  
Poetry Society, '35, '36, '37  
University of Wyoming, '36  
Home Economics Club, '35, '37  
Athletic Association, '33, '35  
Wyoming Club, '33  
Linden Leaves Literary Editor,  
'37

Ethel  
Marie  
Duebbert

MARTHASVILLE, MISSOURI

*"A pleasant music floats along  
the Mere."*

Central Wesleyan College, '34  
Choir, '35  
Orchestra, '35  
Athletic Association, '36, '37  
League of Women Voters, '37  
International Relations, '37  
Triangle Club, President, '37





Mary  
Marjorie  
Flickman

ST. LOUIS, MISSOURI

*"Earth has not anything to show  
more fair."*

Choir, '34, '35  
Orchestra, '34, '35  
Alpha Mu Mu, President, '35  
Tau Sigma, Treasurer, '35  
Mu Phi Epsilon, Secretary, '37  
May Queen Attendant, '36  
Popularity Queen, '37  
Class Pianist, '34, '35, '36, '37  
College Pianist, '35, '36, '37  
St. Louis Club



Dorothy  
Marie  
Ervin

BARTLESVILLE, OKLAHOMA

*"A star that shines dependent  
upon star."*

El Circulo Espanol, '34, '35  
Commercial Club, '35, '36  
Oklahoma Club  
Athletic Association, '36  
Musical Comedy, '35





*Katherine  
Morton*

ST. JOSEPH, MISSOURI

*"Harmonious thought, a soul by  
truth refined."*

Commercial Club, '35  
Secretary of Sophomore Class,  
'35

President of Junior Class, '36  
League of Women Voters, Vice-  
President, '37

Poetry Society, Treasurer, '36,  
'37

May Queen Attendant, '36

Pi Gamma Mu, '36, '37

Student Board, Vice-President,  
'36; President, '37

*Susan  
Jean  
Greer*

ST. LOUIS, MISSOURI

*"Well may'st thou halt—and gaze  
with brightening eye."*

Beta Pi Theta, Secretary, '36;  
President, '37

Pi Gamma Mu, Treasurer, '37

Alpha Sigma Tau, Treasurer,  
'36; President, '37

Der Deutsche Verein

St. Louis Club





# Josephine Miles

ST. JOSEPH, MISSOURI

*"The floating clouds their state  
shall lend  
To her; for her the willow bend."*

Art Club, Secretary, '35  
Home Economics Club, Vice-  
President, '36; President, '37  
Pi Alpha Delta, '36, '37  
Linden Leaves, '36, '37; Busi-  
ness Manager, '37  
Junior Class Secretary, '36  
Maid of Honor to May Queen,  
'36



# Sue Taliaferro Johnson

ROLLA, MISSOURI

*"The thought of her was like a  
flash of light."*

Athletic Association, '33, '36,  
'37; Secretary, '37  
Tau Sigma, '33, '36, '37; Secre-  
tary, '37  
Missouri School of Mines and  
Metals, '35  
Oklahoma A. and M., '35  
Senior Class Secretary, '37  
May Queen Attendant, '37





## Nancy Platt

ST. LOUIS, MISSOURI

*"And mildness, and spirit both  
forward and coy."*

Commercial Club, '35  
Home Economics Club, '37;  
Treasurer, '37  
Y. W. C. A. Cabinet, '37  
Student Board, '37  
Naiad Club, '35  
May Queen Attendant, '37  
St. Louis Club, '37; President

## Margaret Keck

BLYTHEVILLE, ARKANSAS

*"And vital feelings of delight  
Shall rear her form to stately  
height."*

International Relations, '34  
Arkansas Club, '34-'37  
Y. W. C. A. Secretary, '36;  
President, '37  
Vice-President of Senior Class,  
'37  
Student Board, '37



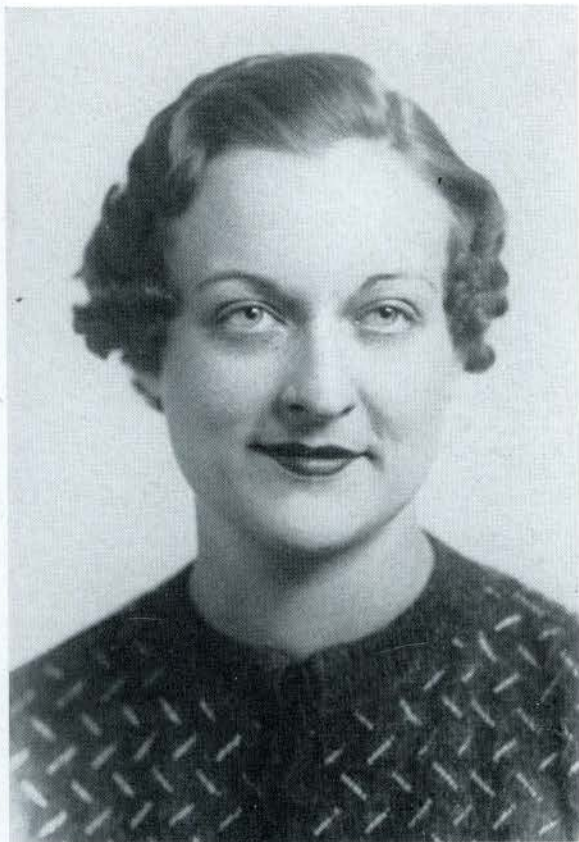


# Constance Osgood

KANSAS CITY, MISSOURI

*"Shall feel an overseeing power  
To kindle or restrain."*

Athletic Association, '33, '34,  
'35, '36  
Triangle Club, '34, '35, '36, '37  
Alpha Sigma Tau, '35, '36, '37  
Beta Pi Theta, '35, '36, '37  
Pi Gamma Mu, '35, '36, '37;  
President, '37  
Y. W. C. A. Cabinet, '34, '35,  
'36; Secretary, '35; Vice-Presi-  
dent, '36  
Linden Leaves, '36, '37; Organi-  
zation Editor, '37  
Student Board, '36  
President, Senior Class, '37



# Helen Keithley

O'FALLON, MISSOURI

*"Joyous as morning  
Thou art laughing and scorning."*

International Relations, '33  
Missouri Club, '34  
Central College, Fayette, Mo.  
St. Charles Club, '33, '34, '35,  
'36; President, '36





# Alma Reitz

ST. LOUIS, MISSOURI

*"And learning's solemn dignity,  
Yet wil's swift flash of light."*

Pi Alpha Delta, '34  
 Der Deutsche Verein, '34-'37;  
 Vice-President, '35; President,  
 '36  
 Sigma Tau Delta, '35, '36, '37;  
 Secretary, '36; President, '37  
 Pi Gamma Mu, '37  
 Alpha Sigma Tau, '35, '36, '37;  
 Vice-President, '36, '37  
 Poetry Society, '35, '36; Secre-  
 tary, '36  
 Choir  
 Linden Leaves, Assistant Busi-  
 ness Manager, '36; Editor-in-  
 Chief, '37  
 International Relations Club,  
 '35; Secretary, '35  
 St. Louis Club

# Erma Martin

IRONDALE, MISSOURI

*"Sad thoughts avaunt!—partake  
we their blithe cheer."*

University of Arizona, '36  
 Athletic Association  
 League of Women Voters  
 International Relations  
 Student Board, '37  
 Missouri Club  
 Pi Gamma Mu, '37



Mary  
Ruth  
Tyler

MALDEN, MISSOURI

*"The music in my heart I bore  
Long after it was heard no more."*

Missouri Club, '34  
Home Economics Club, '34  
League of Women Voters, '34-  
'37; State President, '36, '37  
International Relations, '34-'37;  
Vice-President, '36; President,  
'37  
Pi Gamma Mu, Vice-President,  
'36, '37  
Alpha Sigma Tau, '36, '37; Sec-  
retary and Treasurer, '37



Sarabelle  
Miller

OVERLAND, MISSOURI

*"And hers the silence and the calm  
Of mute insensate things."*

League of Women Voters, '35  
El Circulo Espanol, '36, '37  
St. Charles Club, '34, '37





*Wilda  
Wise*

SPARTA, MISSOURI

*"Her voice was blithe, her heart  
was light."*

Springfield Teachers' College,  
'34, '35, '36

Home Economics Club, '37; Sec-  
retary, '37

Pi Alpha Delta, '37

Missouri Club, '37

*Virginia  
Wilkerson*

HUGHESVILLE, MISSOURI

*"Oh, true of heart, of spirit gay."*

Missouri Club, '33

Treasurer of Junior Class, '36

Beta Pi Theta, Vice-President,  
'37

Home Economics Club, '37

Linden Leaves, '37

May Queen, '37



Clara  
Frances  
Weary

RICHMOND, MISSOURI

*"Now we are tired of boisterous  
joy."*

Linden Bark, '35, '36, '37



Anna  
Marie  
Kistner

BISMARCK, MISSOURI

*"And beauty born of murmuring  
sound  
Shall pass into her face."*

Choir, '34, '35

Orchestra, '34, '35, '36, '37;  
President, '37

Alpha Mu Mu, '35, '36

Mu Phi Epsilon, '35, '37; Secre-  
tary, '36; President, '37

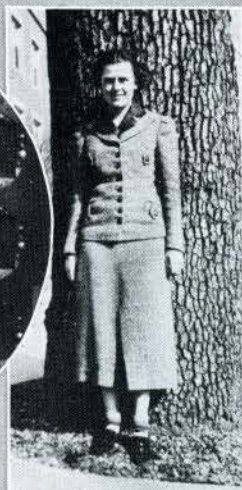
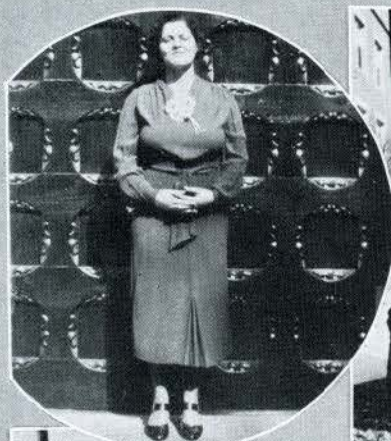
Vice-President of Junior Class,  
'36

Student Board, '37





# Among the Juniors



# Junior Officers



LAVERNE ROWE  
*President*



MARY ELIZABETH BAPTIST  
*Vice-President*



LOIS NULL  
*Secretary*



SUSAN SMITH  
*Treasurer*

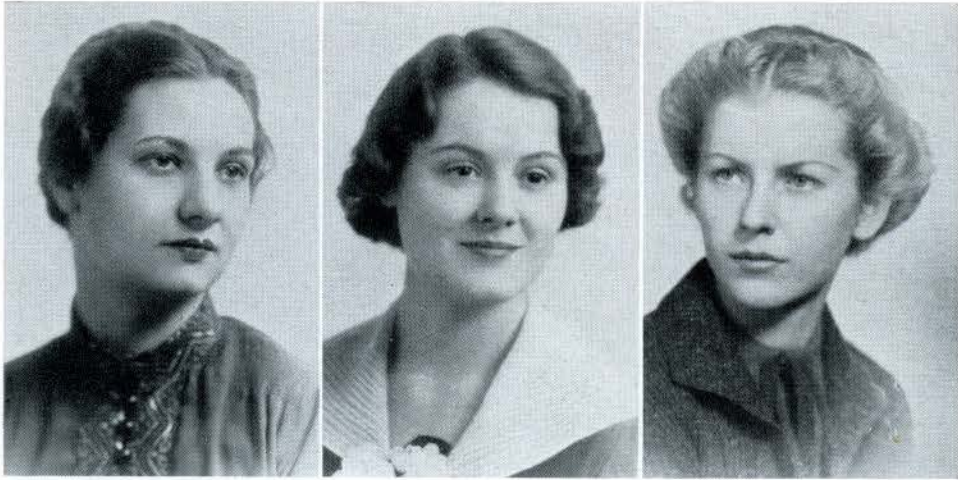
This year, the junior class has displayed remarkable ability as hostesses. To every junior class customarily falls the pleasant duty of acting as sister class to the freshmen and of having the younger class as guests for a formal tea.

With the senior class, the juniors gave a "date dance" for the entire school. Then, for the seniors, the juniors took the responsibility for the junior-senior "prom." It can certainly be predicted that this one will not soon be forgotten by those who participated. Their obligations were not yet quite fulfilled, for the same group entertained the seniors at a dinner party.

We find that the two upper classes have worked hand in hand even to the last, when the May Queen, being chosen from the senior class, was accompanied and crowned by her Maid of Honor, a junior.

At the close of a busy year, the junior class looks forward to the time when they will be Lindenwood's seniors.





J  
U  
N  
I  
O  
R  
S

LEONORA BLACKHURST  
*St. Charles, Mo.*

MELBA DEETS  
*Perry, Iowa*

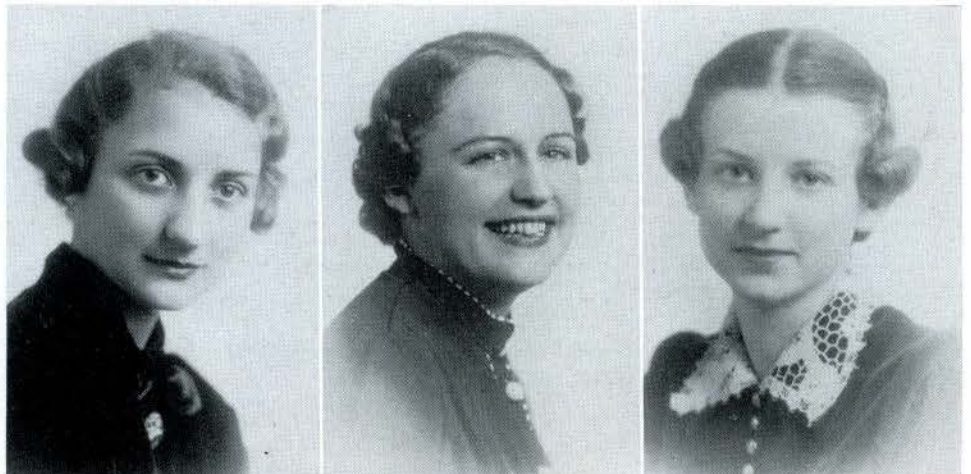
LA VERNE ROWE  
*Kirkwood, Mo.*



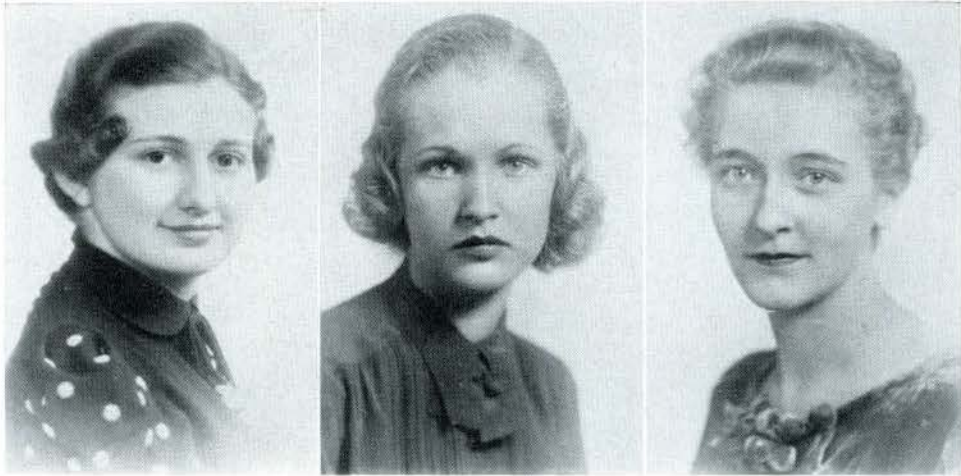
ROSE WILLNER  
*St. Charles, Mo.*

WINIFRED BETH TRAVIS  
*Amarillo, Texas*

MARY ELIZABETH BAPTIST  
*Shawnee, Okla.*



1  
9  
3  
7



SARA LEE AUERBACH  
*Ashley, N. Dakota*

ELEANOR FINLEY  
*St. Louis, Mo.*

SUSAN SMITH  
*Dayton, Ohio*



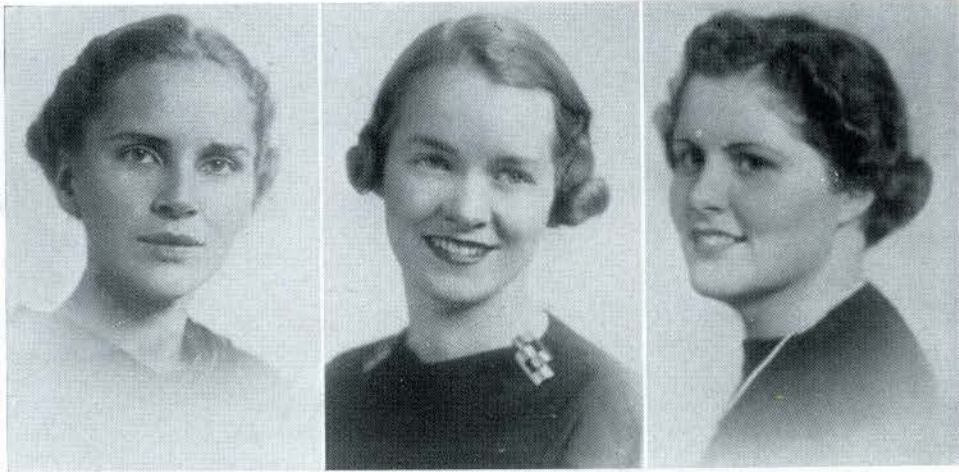
LAURA FRITZ  
*Wichita Falls, Texas*

CELSA GARZA  
*St. Charles, Mo.*

DOROTHY PARROTT  
*Sioux City, Ia.*







J  
U  
N  
I  
O  
R  
S

JENNIE VIE ANDERSON  
*Fort Dodge, Iowa*

GERTRUDE ANDERSON  
*Henning, Minn.*

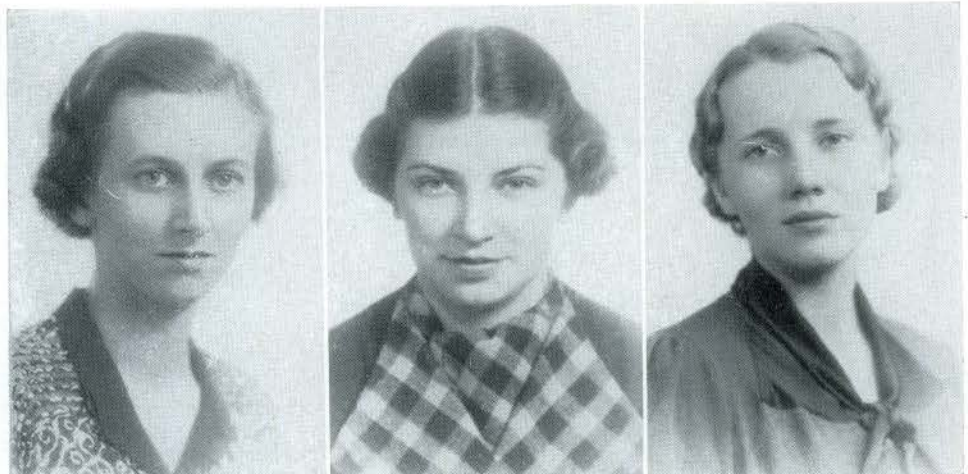
MARY ELIZABETH JOLLEY  
*Mexico, Mo.*



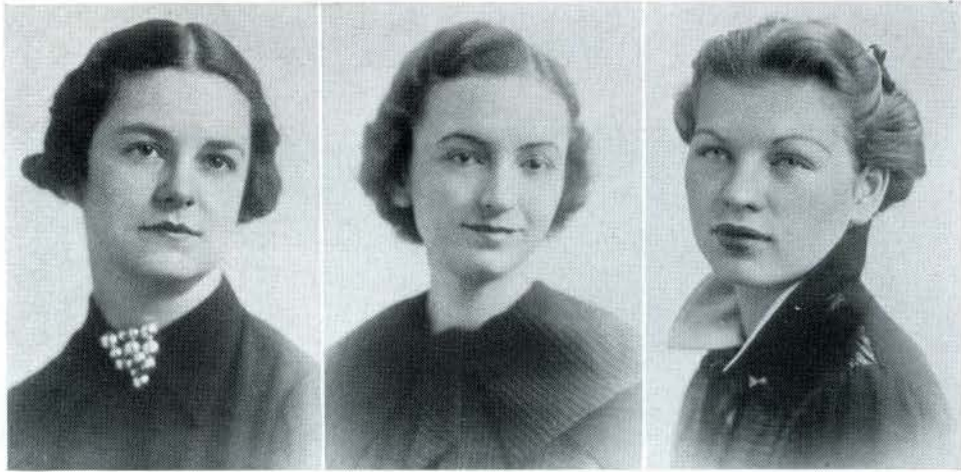
EFFIE REINEMER  
*Overland, Mo.*

LOIS NULL  
*St. Charles, Mo.*

MARGARET BEHBRENS  
*Gillespie, Ill.*



1  
9  
3  
7



BETTY WHITE  
*Marissa, Ill.*

MIRIAM McCORMICK  
*St. Charles, Mo.*

SUNNY LOHR  
*Kirkville, Mo.*



DORIS DANZ  
*Union, Mo.*

KATHRYN HILL  
*Council Bluffs, Iowa*

MARTHA ROBERTS  
*Chicago, Ill.*





# Among the Sophomores



# Sophomore Officers



SUE SONNENDAY  
*President*



BETTY BOLES  
*Vice-President*

2



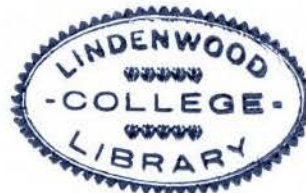
CHARLOTTE ANN YORK  
*Secretary*



MARY BUESCH  
*Treasurer*

It was a rollicking crowd of sophomores which went into St. Louis one Thursday morning early in the school year; they had the day to spend as they pleased. It was a somewhat worn, but no less joyful crowd which returned that night singing school songs, after having finished the day in St. Louis in fine style at the Chase Hotel.

The theme, "Pennies from Heaven," with real (cardboard) pennies falling and umbrellas turned upside down, enlivened the dance which the class gave for the entire school. But when a sophomore speaks of dances, she has one in mind above all others. Ask any "thirty-niner," ten years from now, what it is she remembers especially, and ten to one she'll mention the Sophomore "Prom." She'll have other things to mention, too, because wherever there is activity, there, too, are sophomores.







ETHEL BURGARD  
*Fayetteville, Ill.*

RUTH DENTON  
*Buller, Mo.*

MARY ANN LEE  
*Rushville, Ind.*

LOUISE BOWEN  
*Independence, Kan.*

LAVERNE LANGDON  
*Hornersville, Mo.*

BETTY JANE BURTON  
*Wheaton, Ill.*

JEANNETTE JACKSON  
*St. Louis, Mo.*

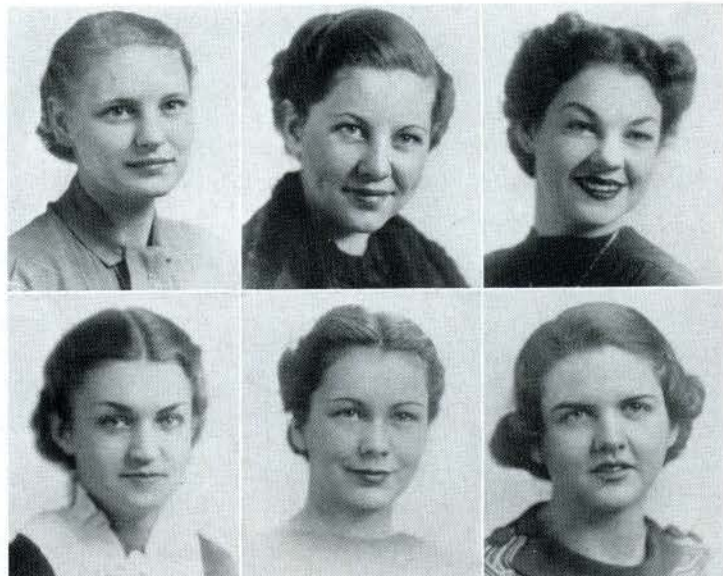
VIRGINIA WATT  
*Maryville, Mo.*

CATHERINE CLIFFORD  
*Champaign, Ill.*

CATHERINE SIEMER  
*Lawrenceville, Ill.*

HELEN McHUGH  
*Kewanee, Ill.*

ELEANOR BLAIR  
*Joplin, Mo.*



RUTH AUSTIN  
*Decatur, Ill.*

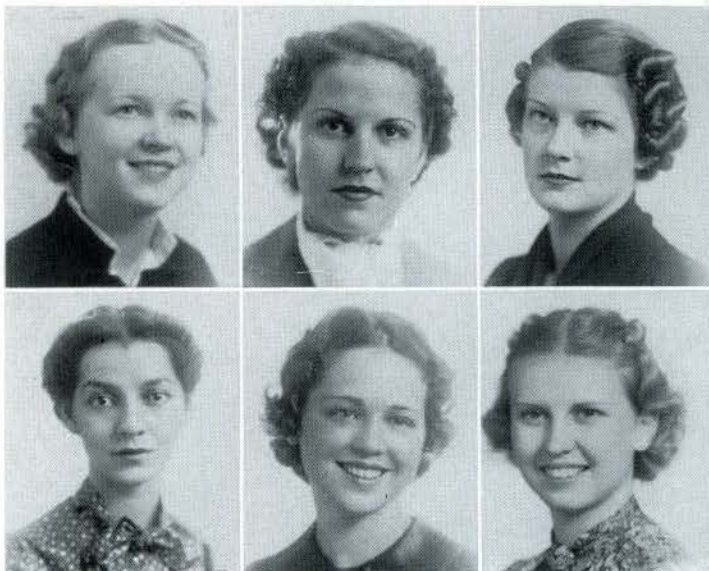
BETTY BOGENSCHUTZ  
*Oklahoma City, Okla.*

MARGARET ANN RICE  
*McAlester, Okla.*

MARTHA CREAMER  
*Kansas City, Mo.*

CLEO OCHSENBEIN  
*Terarkana, Ark.*

BABS LAWTON  
*Bartlesville, Okla.*



MAXINE MEYERS  
*Fremont, Nebr.*

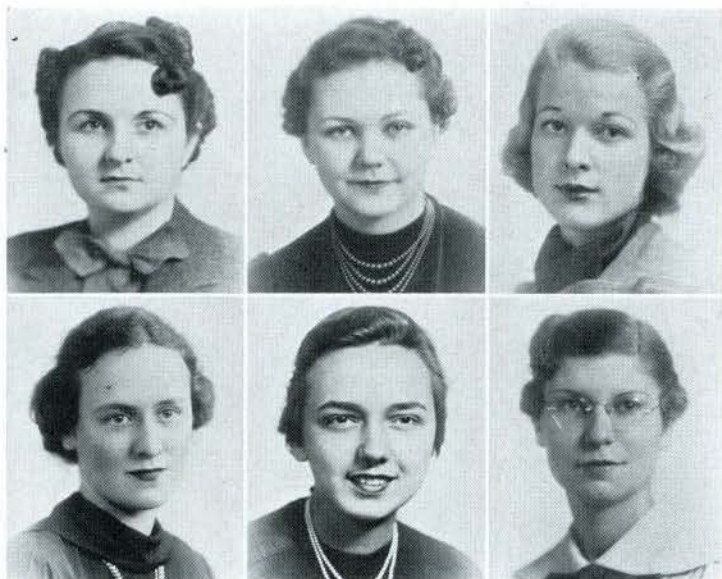
MARGARET CLOTHIER  
*Tulsa, Okla.*

MARY BUESCH  
*Belleville, Ill.*

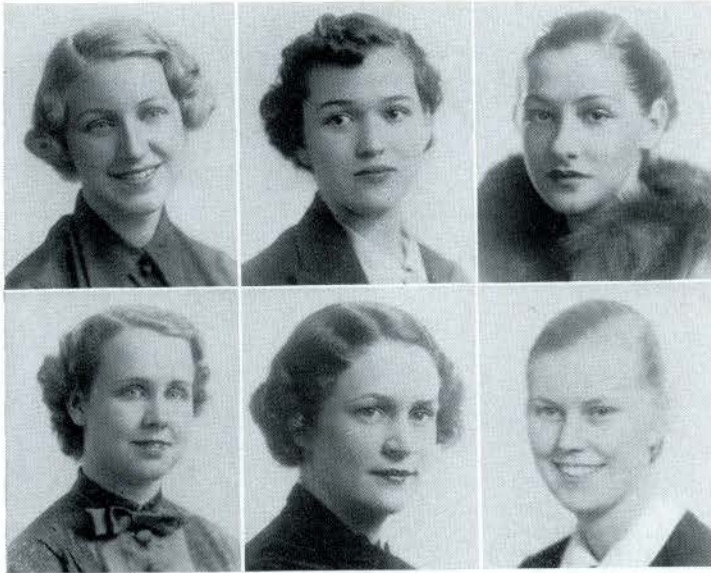
RUTH REINERT  
*St. Louis, Mo.*

MARIAN HULL  
*Washington, Mo.*

MARY AHMANN  
*St. Charles, Mo.*







MAXINE ELSNER  
*Joplin, Mo.*

JEAN ILLINGSWORTH  
*Pocatello, Idaho*

GERTIE ROSE LAMBERT  
*Holly Grove, Ark.*

MARJORIE SKINNER  
*Kansas City, Mo.*

PEARL LAWSON  
*Mt. Olive, Ill.*

MARGARET BURTON  
*Wheaton, Ill.*

ANN BAGNELL  
*Nelson, Mo.*

HELEN SEMPRES  
*Topeka, Kan.*

MARGARET THOMPSON  
*Laurenceville, Ill.*

VIRGINIA CARTER  
*Carthage, Mo.*

VIRGINIA MORSEY  
*Miami, Okla.*

AMY HETTELSATER  
*Kansas City, Mo.*



MAURINE POTLITZER  
*St. Joseph, Mo.*

LORRAINE PYLE  
*Haviland, Kan.*

MARY ROBERTS  
*Pocatello, Idaho*

EMILY JANE BUXTON  
*Joplin, Mo.*

SUZANNE EBY  
*Howard, Kan.*

KATHRYN MYERS  
*Springfield, Ill.*



JEANNETTE PARKER  
*Maroa, Ill.*

MARY SPAIN USREY  
*Blytheville, Ark.*

GWENDOLYN PAYNE  
*Wood River, Ill.*

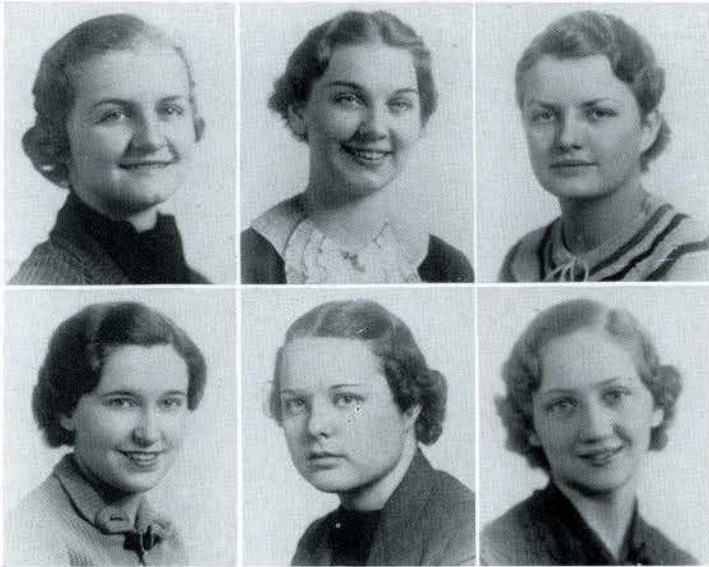
HELEN BANDY  
*Granite City, Ill.*

HELEN SCHELOSKY  
*Evansville, Ind.*

ELIZABETH DEMING  
*Oswego, Kan.*







ALICE BELDING  
*St. Charles, Mo.*

MARAJANE FRANCIS  
*Kansas City, Mo.*

MARTHA ANDERSON  
*Terarkana, Ark.*

MARGUERITE RAYMER  
*Effingham, Ill.*

HARRIETT PIPKIN  
*Helena, Ark.*

ALICE JONES  
*St. Charles, Mo.*

ROSEMARY WILLIAMS  
*Murphysboro, Ill.*

CHARLOTTE ANN YORK  
*Oklahoma City, Okla.*

BETTY BOLES  
*Fort Sill, Okla.*

MARGARET BARTHOLOMEW  
*Barry, Ill.*

ANITA WARDEN  
*Parsons, Kan.*

ZORA HORNER  
*Beatrice, Nebr.*



AMELIA ZIMMERMAN  
*Kendallville, Ind.*

RUTH ANN WILLOT  
*St. Charles, Mo.*

MARY ROUSH  
*Oakland City, Ind.*

ELEANOR ROODHOUSE  
*White Hall, Ill.*

MARY ELLIS  
*Muskogee, Okla.*

VIRGINIA SKERRY  
*Ottawa, Ill.*



RENE KISKADDEN  
*Wichita, Kan.*

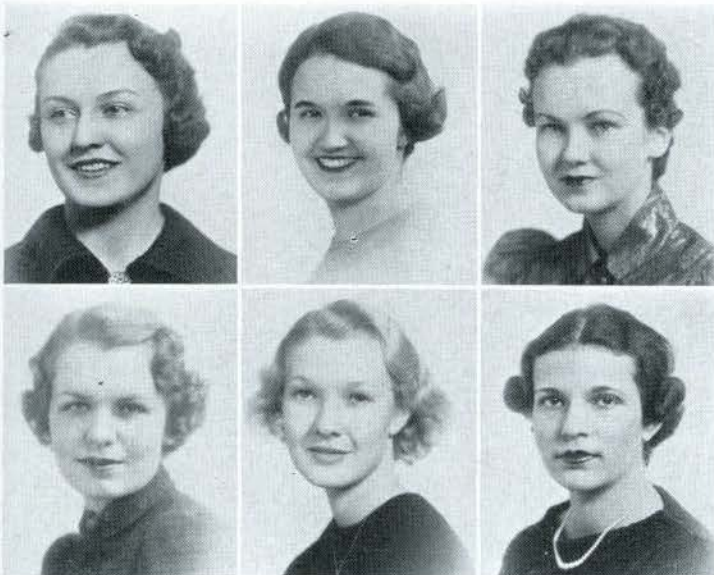
MARY JANE BRITTIN  
*Williamsville, Ill.*

MARY ALICE LIVINGSTON  
*Kingman, Kan.*

MARY ANN MYERS  
*Amarillo, Tex.*

NANCY PATTERSON  
*Kansas City, Kan.*

MARY MORTON WATTS  
*Jefferson City, Mo.*







MARY LOUISE WETZEL  
*Carthage, Mo.*

CHARLOTTE YOCUM  
*El Dorado, Ark.*

IMOGENE HINSCH  
*Rolla, Mo.*

MARY BOOKS  
*Bachelor, Mo.*

VIRGINIA DOUTHAT  
*Kansas City, Mo.*

HERMINE KLEIN  
*Joplin, Mo.*

MARGARET DEAN CRAIN  
*Paducah, Ky.*

GRACIA LOU ARNOLD  
*Kahoka, Mo.*

HELEN MARGARET DUHADWAY  
*Jerseyville, Ill.*

VIRGINIA NIEDNER  
*St. Charles, Mo.*

GRACE STEVENSON  
*Holdenville, Okla.*

SARA MARGARET WILLIS  
*Kankakee, Ill.*



CONCHITA SUTTON  
*Tampico, Mexico*

JEAN MCFARLAND  
*Dallas, Texas*



THELMA RISKE  
*St. Charles, Mo.*

MARGARET HULL  
*Anaconda, Montana*

VIRGINIA MCFARLAND  
*Kansas City, Mo.*



DOROTHY PATTERSON  
*Decatur, Ill.*

SUE SONNENDAY  
*St. Louis, Mo.*

DOROTHY GREEN  
*Oklahoma City, Okla.*

CATHERINE FOLTZ  
*Clinton, Ind.*

DOROTHY WAGNER  
*Palestine, Tex.*

JOYCE DAVIS  
*Sioux City, Iowa*

JANE GILL  
*Cherryvale, Kan.*

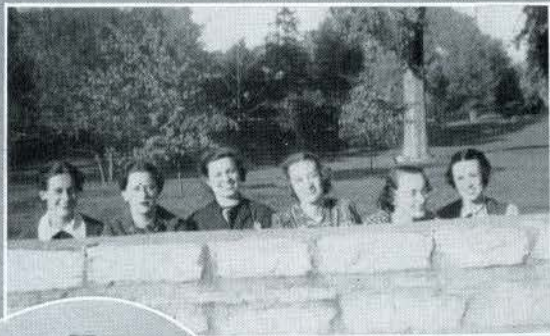
MARGARET WEPFER  
*St. Charles, Mo.*

RUTH PINNELL  
*Kansas, Ill.*





# Among the Freshmen



# Freshman Officers



JOYCE WORKS  
*President*



MARGUERITE DEARMONT  
*Vice-President*

2



BRICKEY CASEY  
*Secretary*



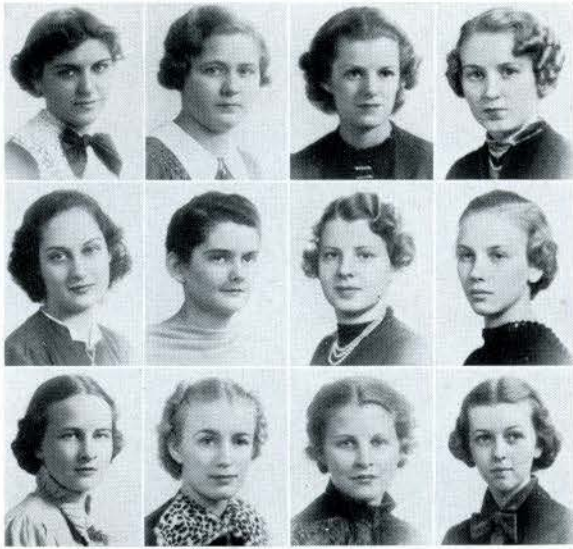
MARY INGALLS  
*Treasurer*

A new class, the largest that ever entered Lindenwood, began to make history of its own immediately. Freshman Day was instituted, a glorious day of intensive sightseeing. The wonders of Lambert Field, the Art Museum, Jefferson Memorial with the Lindbergh trophies, St. Louis Zoological Gardens with trained chimpanzees, Shaw's Garden, Memorial Plaza, Eads Bridge, and the Mississippi levee passed in rapid succession. Nor should an account of the day neglect mention of the unforgettable luncheon at the Kingsway Hotel.

In a few weeks came the song contest, when prizes were given by Dr. Roemer for the best three songs; after that there was the style show and the subsequent Hallowe'en Queen. Personal diaries and memory books will tell more about the date dance given by the freshmen in the spring of 1937.

Passing on we find a fitting climax to a glorious year when the class collected around a blazing campfire in Blanchette Park, singing songs and refreshing memories as the sparks flew upward.





GRACE GORDON

RUTH KAISER

MARGARET LOVE

CHARLOTTE DALIN

LOUISE HOLMAN

JUDITH ELKINS

MARIAN DAUDT

SUE SANDUSKY

NANCY RAUB

SARAH WILSON

JOYCE WORKS

ELOISE STELLE

DORIS ANN McREYNOLDS

PAULINE STURGIS

ROBERTA MUENTZER

JEAN COREY

LUCYL SHIRK

MILDRED JANE BRYANT

JEAN EDELEN

RUTH WILLIAMS

JACQUELYN LEACH

RUTH GORDON

DOLORES HASSAN

RUTH RUTHERFORD

LUCILLE ERICSON

DOROTHY DONOVAN

HELEN DALLMEYER

JANE BAILEY

BETTY ESCALANTE

JANET WARFIELD



AMELIA EDELIN

KAY THOMPSON

PATRICIA BOOMIS

GENE SIMCOX



GRACE LINDSEY

FLORENCE MURER

VIRGINIA BALLANCE

FRANCES ALEXANDER



ETHEL SILVER

CATHERINE CRAIG

FRANCES METZGER

CAROL DYCUS



JULIA LANE

JANE GRISWOLD

MARY MANGOLD

PEGGY ANN WOOD

MARTHA JANE REUBELT

LENA ROYBAL

CLYDE LABELLE ATHA

DORIS DEISENROTH

BETTY COLE

VIRGINIA STARKES

BARBARA CROWE

VIRGINIA-CLAIRE KIBLER

CORDELIA BUCK

CHRISTINE McDONALD

MOLLY GERHART

MARY ALICE COOGAN

BETTY CRAGIN

SUSANNA MARTIN







MILDRED DAVIS

MARY INGALLS

JUSTINE HANSEN

DAVID LAND

KAY UNFUG

CORINNE ZARTH

REBECCA COX

KATHRYN MAYER

JOSEPHINE CAMPBELL

VIRGINIA McQUERTER

MARGARET MEALER

ALMA MARTIN

MARGUERITE DEARMONT

MARY ALICE HARNISH

CATHERINE WAGNER

BETTY JANE HURWICH

BETTY LOU FOSTER

VIRGINIA MOORE

CORINNE PAULSEN

JEAN CALLAHAN

JANE MCBEE

LUCILLE VOSBURG

MARY BORON

FRANCES BRANDENBURG

HETTIE ANN GREEN

BETTY LEW LISHER

EVA ALLRED

CLOY SHELTON

CATHERINE ANN LADD

RUTH RUSH



JO ANN BARNETT

GWENDOLYN McMAINS

CAROLYN HUMPHREY

NINA JANE DAVIS

PHYLLIS CHALSTROM

SARAH NICCOLLS

BARBARA SCOTT

ALICE STEPHENS

SARA HURDIS

BETTY SMITH

VIRGINIA ERMELING

INA CULVER



BETTY LEE LEMLEY

MARY BENNER

GERALDINE HARRILL

VIRGINIA AYLESWORTH

JANE EICHMAN

LUCILLE GOCIO

MILDRED NIEDERGERKE

PAT MURPHY

ROSANNA VEACH

DOLLY JUNE BENNETT

JEAN STARR

JUDITH WADE

MARY KERN

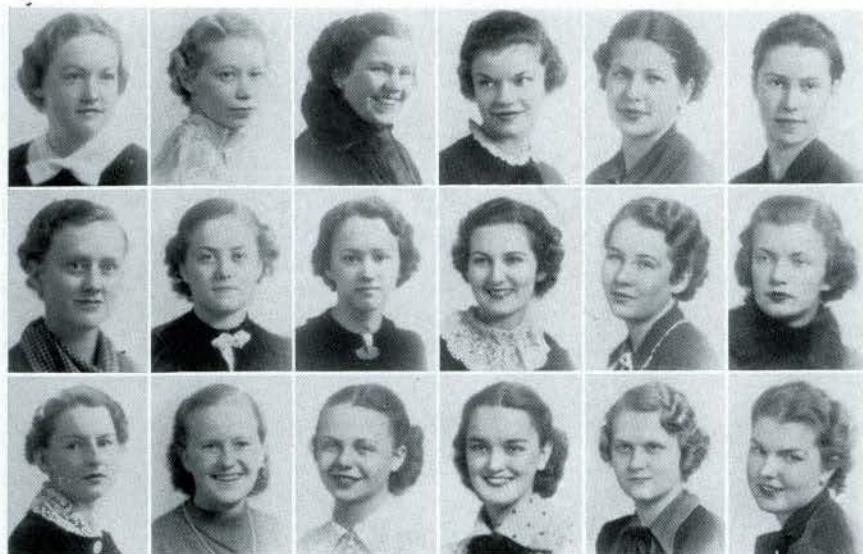
RUBY DREHMANN

GEORGIANNE THEIS

BEVERLY MAYHALL

RUTH STEPHENS

HELEN McLANE







MARY MAY SHULL

FREDA MAE RICH

JEAN SMILEY

MARGARET BRICKEY CASEY

HELEN NANCE

BETTY BILLS

MARGARET MACKU

ELEANOR DEE KAPS

DORA LOUISE KRUG

MIRIAM SELZ

FLORENCE MARIE COLUMBIA

JANE SIDEBOTTOM

MARY JEAN CARVER

ELIZABETH SIEGISMUND

BETTY RILEY

SUS-ANNA GLOVER

LESLIE ANN McCOLGIN

JEANNETTE KLITZKE

CHRISTINE LENTSCH

MARY LOUISE SPAULDING

MAXINE MANN

MARJORY PEABODY

BARBARA JOHNSTON

ROBINETTE SUTHERLAND

ELEANOR KLUGH

BERTHA VON UNWERTH

MARY ELIZABETH BELDEN

VINA MERRIFIELD

BILLIE CARTER

BETTY BURRIS



JUNE ROBINSON

MARDELL SEELEY

ROBERTA McEWEN

ELAINE KATZOFF

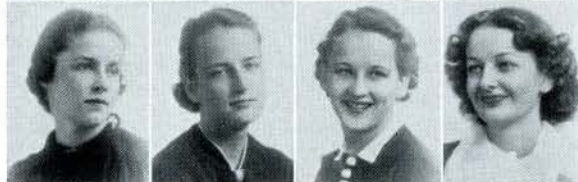


EDNA JEAN JOHNSON

MARY McCARROLL

VIRGINIA LEWIS

HARRIET HALL



PHYLLIS LYONS

KATHERINE STORMONT

MARTHA RISHER

HELEN SCHMUTZLER



CLARA REAGAN

ARLOUINE GOODJOHN

KATHLEEN PATTON

RUTH ETTIN

BETTY JOY KEITEL

LYRL AUSTIN

RUTH MERING

DORIS ROGERS

HELEN BRUNS

DOROTHY KNELL

ALINE DAY

ALICIA GARZA

ELOISE SCHRADER

CATHERINE DONNELL

ABIGAIL PIERCE

ROSELYNN JANEWAY

EDITH LOUISE GARRETT

BETTIE JEANNE McCLELLAND







HELEN HESTERLY

DORIS HENRY

BETTY HARPER

DOROTHY RINGER

ADELE MUEHLENPFORDT

MIRIAN SCHWARTZ

BETTY SEARS

JULIA KRELL

LOUISE O'KEEFE

MARTHA NORRIS

BEVERLY TURNER

JEAN DORNBLASER

ALICIA YOUNG

JANET JALONICK

MARTHA LOUISE MUNDAY

MARGARET JEANNE GASKILL

ELEANOR CAVERT

SYLVIA YAFFE

EDNA JEAN JOHNSON

HELEN BROWN

DELLA MAE NASH

WILMA SCHULTZ

LOUISE BENSON

MAXINE KINGSBURY

LOIS PENN

MARGARET STOOKEY

VIRGINIA LUPFER

MILDRED PFEGER

RUTH FRIEDMAN

PATRICIA MULLIGAN



MARY FRANCES BRADLEY

HELEN SHANK

MARGARET MACDONALD

JACQUELINE HOWARD



BETTY BRECK

HELEN HEARD

KATHARINE HAMPE

BETTY KELLEY



MIRIAM FOSTER

LOIS WARD

ANNA RUTH SEAMAN

EVELYN HEISER



MARY JANE RABON

ADA LEE WEBER

HERMONA ALLEN

BETTY BROWN

MARGARET MCCOID

SYLVIA DUBIEL

VIRGINIA HORNER

MARIAN STUMBERG

MARY LOUISE WHIPPS

DANA LEE HARNAGEL

GRACE HECKETHORN

VIOLET ROYBAL

MARY ELLEN DE MARO

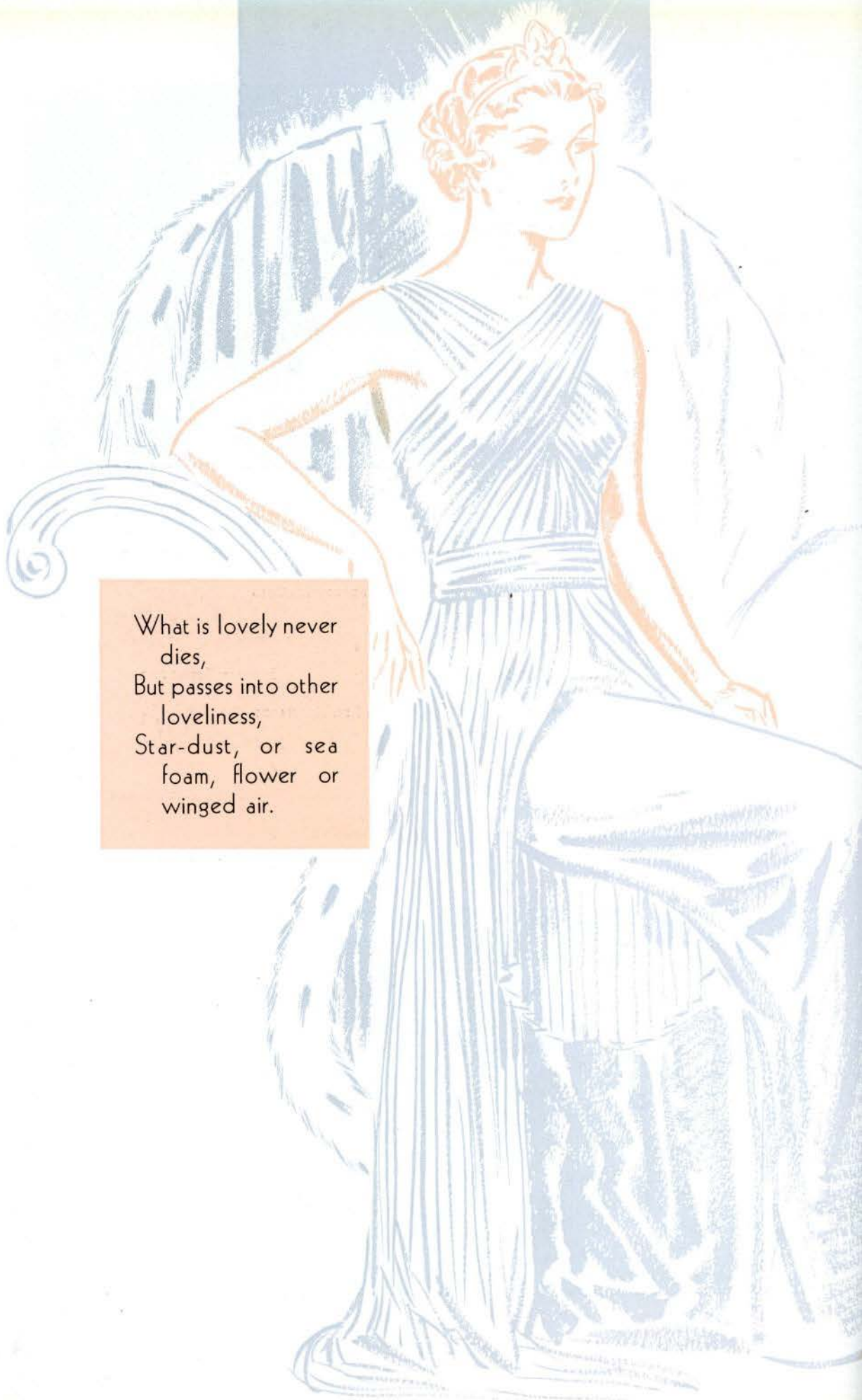
RUTH HARRINGTON

KATHRYN ASHLEY

SUZANNE ZEMPEL







What is lovely never  
dies,  
But passes into other  
loveliness,  
Star-dust, or sea  
foam, flower or  
winged air.



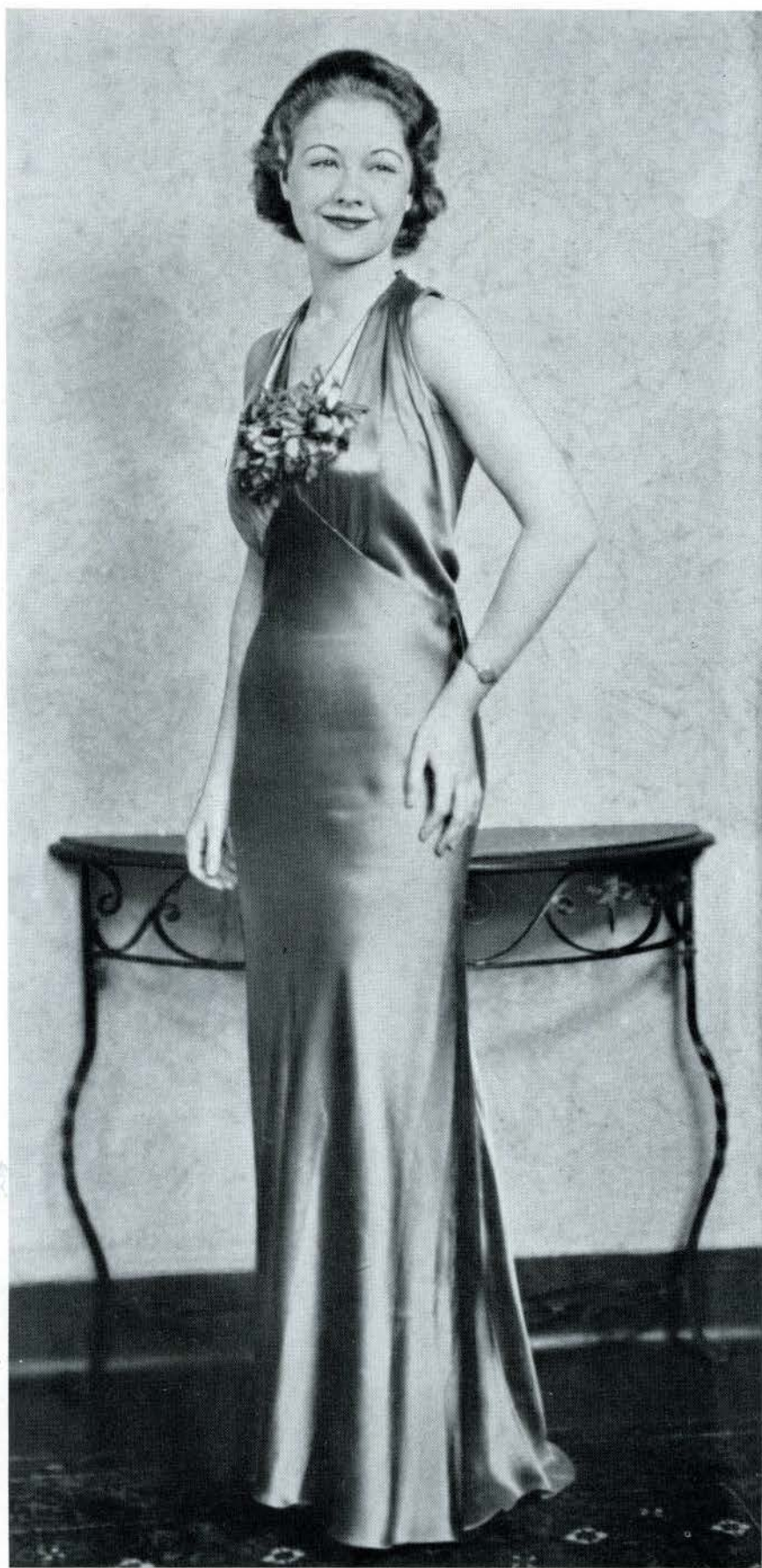
# Queens







*Doris McReynolds*  
HALLOWEEN QUEEN







*Marjorie Flickman*  
POPULARITY QUEEN







*La Verne Rowe*  
MAID OF HONOR TO MAY QUEEN



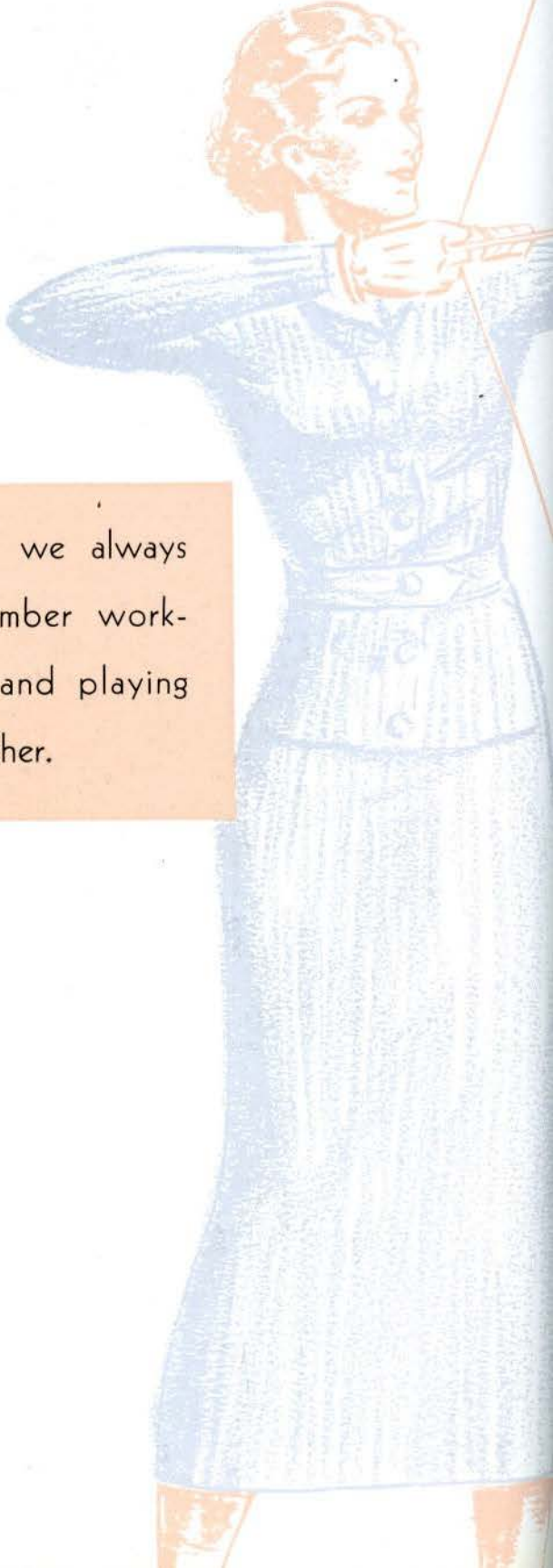




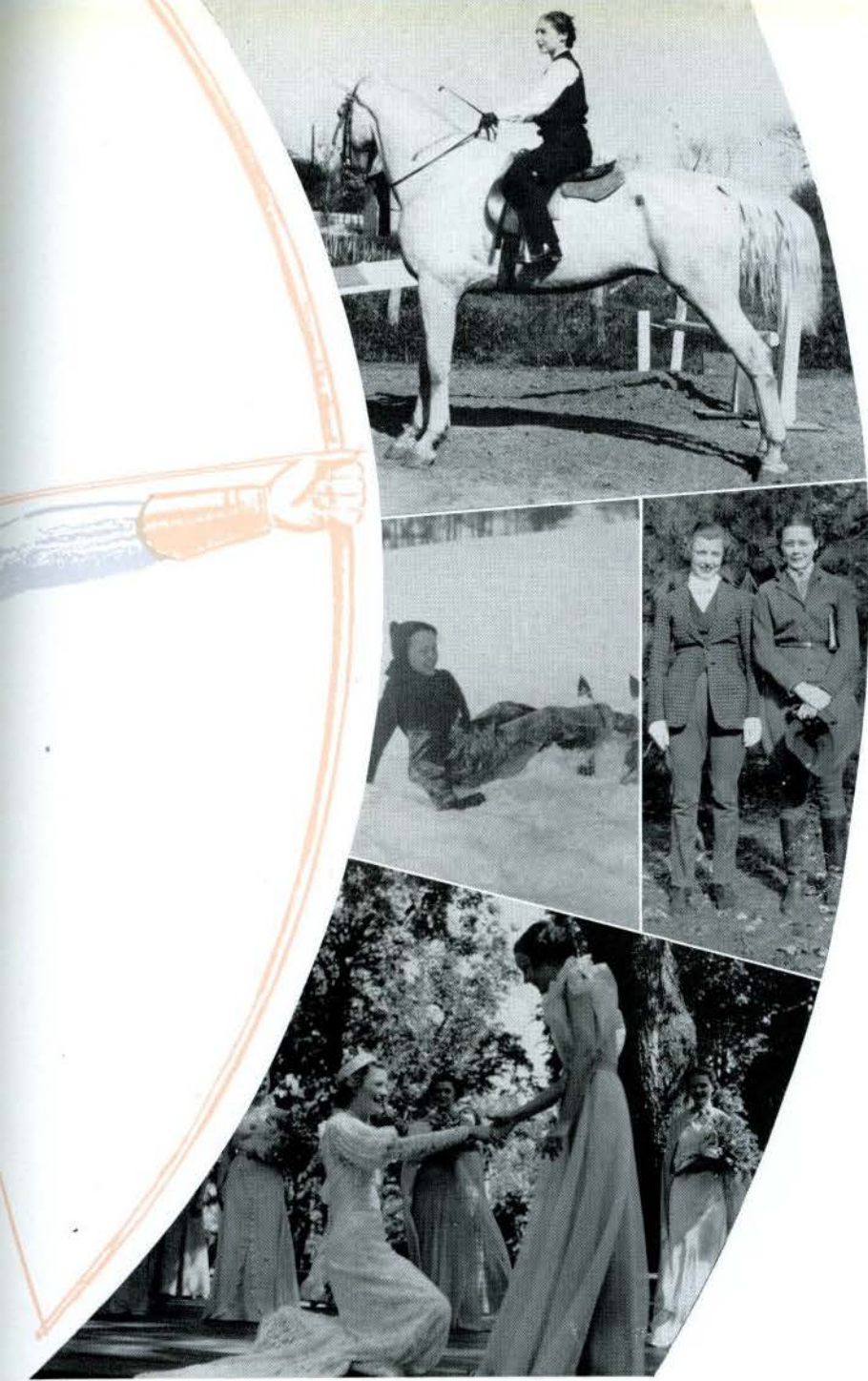
*Virginia Wilkerson*  
MAY QUEEN







May we always  
remember work-  
ing and playing  
together.



# Organizations and Activities



# Linden Leaves Staff



ALMA REITZ  
*Editor-in-Chief*



JOSEPHINE MILES  
*Business Manager*

VIRGINIA MORSEY  
*Literary Editor*



SUNNY LOHR  
*Snapshot Editor*



CONSTANCE OSGOOD  
*Organization Editor*



LOIS NULL  
*Assistant Editor*

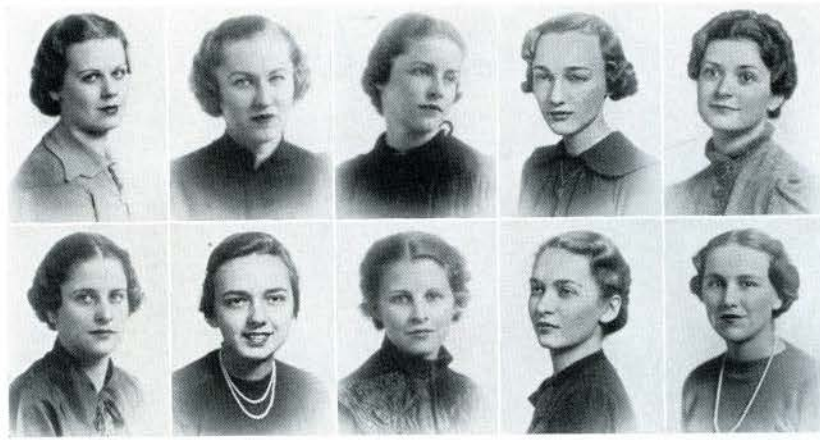


MIRIAM McCORMICK  
*Assistant Business  
Manager*



ELEANOR HIBBARD  
*Literary Editor*





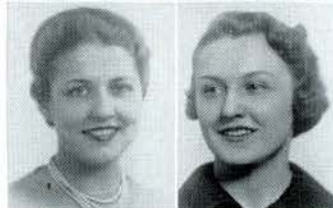
GRACIA LOU ARNOLD, ADELE MUEHLENPFORDT, HARRIET HALL, MARION STUMBERG, KATHRYN MAYER  
 JANE MONTGOMERY, MARIAN HULL, JOYCE WORKS, MARTHA REUBELT, ELEANOR ROODHOUSE  
 (*Assistant Organization Editors*)

MELBA DEETS



LAVERNE ROWE

SUE SONNENDAY  
*Humor Editor*



RENE KISKADDEN  
*Art Editor*

BETTY WHITE



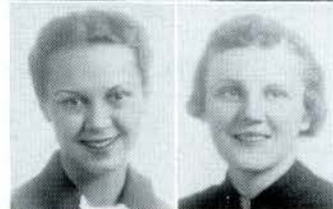
EMILY JANE BUXTON

KATHRYN ACKERMAN



HARRIET PIPKIN

VIRGINIA HORNER



VIRGINIA WILKERSON



# Student Board



KATHERINE MORTON  
*President*

JANE MONTGOMERY  
*Secretary*



SUSAN SMITH  
*Vice-President*



MARGARET KECK  
*Y. W. C. A. President*



NANCY PLATT  
*President of Irwin*



ANNA MARIE KISTNER  
*President of Sibley*



BELVA GOFF  
*President of Ayres*



ELEANOR HIBBARD  
*President of Nicolls*



ERMA MARTIN  
*President of Buller*



# Linden Bark



DOROTHY PARROTT  
*Editor*

Around lunch time, every two weeks, girls emerge from the post office hastily reading a few lines from the *Linden Bark*, our campus newspaper. The more literary-minded point with delight to interesting samples of student literary work; others find social happenings and campus gossip of greater interest.

ANN BAGNELL

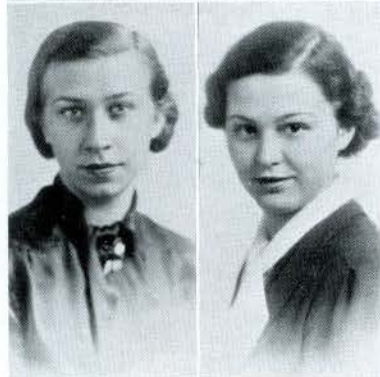
MAXINE ELSNER

GRACE STEVENSON



CLARA FRANCES WEARY

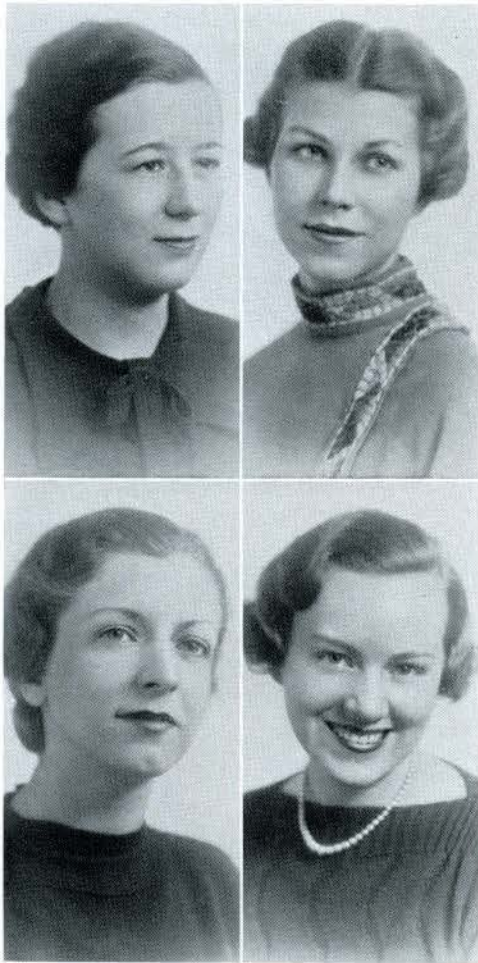
ETHEL BURGARD



ELIZABETH DEMING



# Alpha Sigma Tau



CONSTANCE OSGOOD

ALMA REITZ

SUSAN GREER

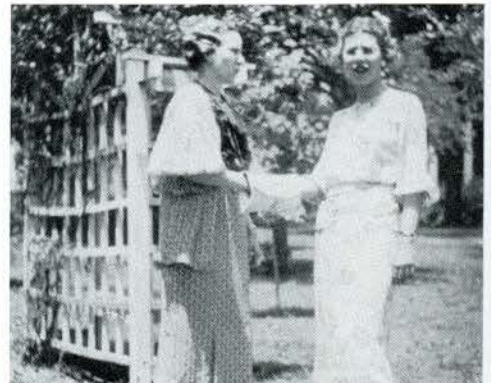
MARY RUTH TYLER

## *Second Semester Members*

VIRGINIA MORSEY	ROSEMARY WILLIAMS
LORRAINE PYLE	GRACIA LOU ARNOLD
GWENDOLYN PAYNE	RENE KISKADDEN
VIRGINIA NIEDNER	JEAN MCFARLAND
ELEANOR BLAIR	KATHRYN ACKERMAN
MARGARET	KATHRYN HILL
BARTHOLOMEW	ANN BAGNELL
MIRIAM McCORMICK	LOIS NULL

Alpha Sigma Tau, founded in 1922, is the honor society of the College of Arts and Sciences. Only a limited membership of the highest ranking students in the college is accepted, determined by grades and the approval of the faculty.

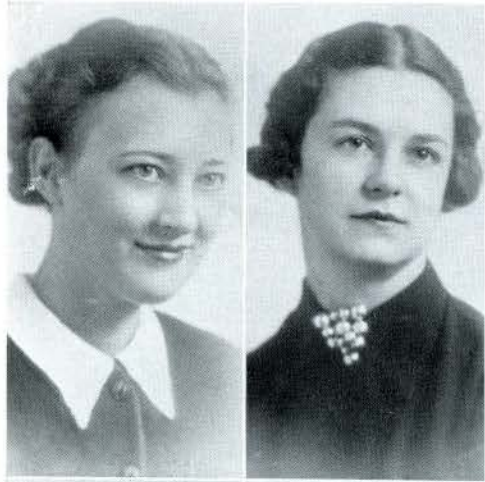
Each year Alpha Sigma Tau and Mu Phi Epsilon co-sponsor the Christmas party at which the announcement of the Popularity Queen is made. In the spring a formal tea is given for the entire faculty.



# Mu Phi Epsilon

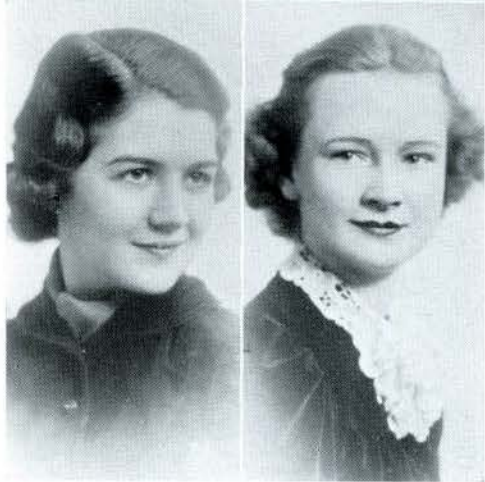
DORIS DANZ

BETTY WHITE



ANNA MARIE KISTNER

MARJORIE HICKMAN



LORRAINE SNYDER

Phi Theta is the local chapter of Mu Phi Epsilon, national honorary music sorority, open to outstanding junior and senior music students. Requirements for membership are high and the number of members is limited.

At the meetings, Mu Phi members study the lives and works of composers. They attempt to further musicianship and scholarship in music among students, and toward that end sponsor musicals in the spring. This year a delegate was sent to the national convention held in San Francisco.



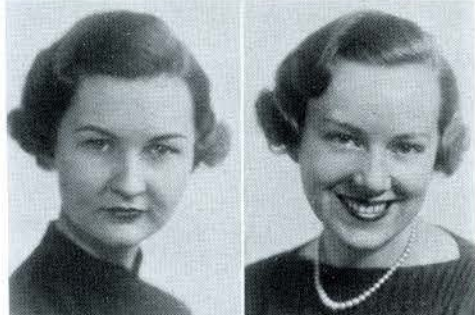


# Pi Gamma Mu



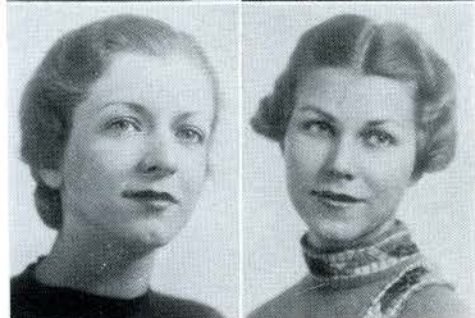
CONSTANCE OSGOOD

KATHERINE MORTON



KATHRYN ACKERMAN

MARY RUTH TYLER



SUSAN GREER

ALMA REITZ

## *Second Semester Members*

ERMA MARTIN

MIRIAM McCORMICK

SARA LEE AUERBACH

KATHRYN HILL

EVELYN COKER

Pi Gamma Mu, National Honorary Social Science Fraternity, attempts to foster a greater interest in social sciences on the campus and to study social problems as they loom today. Requirements for eligibility to Pi Gamma Mu are high.

Each year the organization gives a tea, inviting students who do outstanding work in the department. To the student, not a member of the fraternity, who achieves the most outstanding work in the field of social sciences during the year, Pi Gamma Mu awards a special medal.



# Y. W. C. A. Cabinet

JOYCE DAVIS

ROSEMARY WILLIAMS

EVELYN COKER

MARTHA ROBERTS

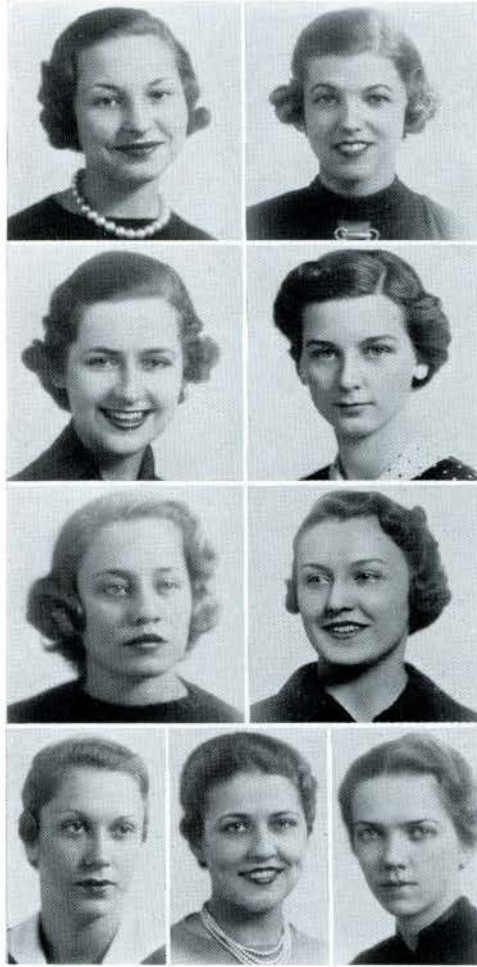
VIRGINIA DOUTHAT

RENE KISKADDEN

MARGARET KECK

SUE SONNENDAY

NANCY PLATT



RUTH PINNELL



All Lindenwood girls are members of the Y. W. C. A. campus organization. The weekly programs may include anything from a student stunt-night to a book review or a consideration of current problems.

The association sponsors the "Little Sister" movement, the Hallowe'en Party, at which the freshman queen is crowned, an all-college circus, a play, Thanksgiving and Christmas offerings for the poor, and a Spiritual Emphasis Week.



# Pi Alpha Delta



KATHRYN ACKERMAN

WILDA WISE

MARGARET BURTON

MARGUERITE RAYMER

JOSEPHINE MILES

MARY ELLIS

KATHRYN ASHLEY

LORRAINE PYLE

MARY ELIZABETH JOLLEY

GRACIA LOU ARNOLD

BETTY BURTON

ELIZABETH THORNTON

KATHRYN MAYER

Pi Alpha Delta maintains two kinds of membership: full membership is for those students who achieve superior standing in the study of Latin; associate membership is open to students who attain sufficient standing in English-Classical courses.

Each year Pi Alpha Delta gives a tea to which every member is privileged to invite two of her friends as guests.

The primary object of the club is to bring together, for a social hour, students who are interested in the classics.

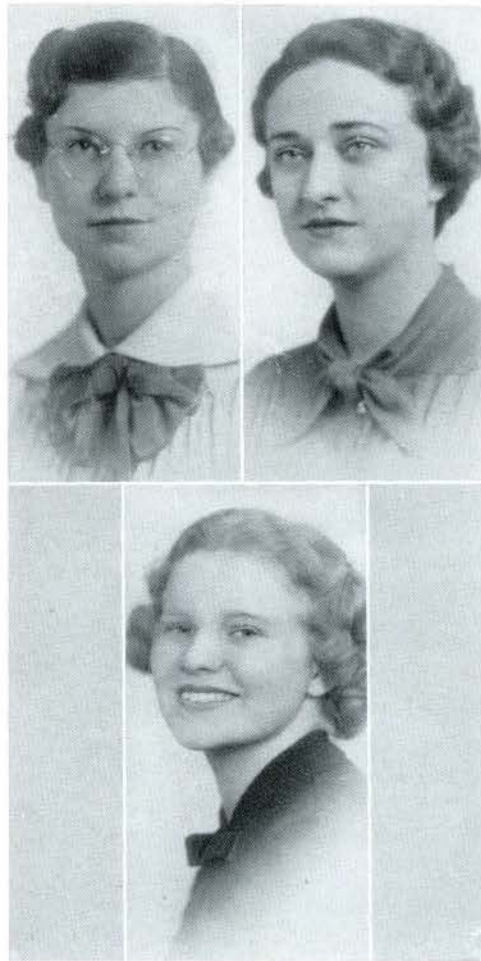


# Alpha Mu Mu

MARY AHMANN

RUTH PINNELL

SUZANNE EBY



## *Second Semester Members*

CORDELIA MAE BUCK

VIRGINIA BUFF

JANE GILL

MARGARET HULL

JEAN ILLINGSWORTH

RUTH REINERT

SYLVIA YAFFE

CHARLOTTE YOCUM

Members of Alpha Mu Mu, honorary fraternity for undergraduate music students, have taken part in various musical programs of the year. They have contributed to many of the recitals given this year and have appeared on special programs here and in St. Louis. In the meetings the organization discusses general phases of music. With Mu Phi Epsilon and Delta Phi Delta, Alpha Mu Mu helped plan and sponsor a Valentine Tea.





# Sigma Tau Delta



HELEN BANDY

MARGARET BARTHOLOMEW

MARGARET DEAN CRAIN

JANE BUXTON

ELEANOR BLAIR

BETTY BURTON

SUE SONNENDAY

VIRGINIA MORSEY

ALMA REITZ

HARRIET BRUCE

LAVERNE LANGDON

LORRAINE PYLE

ELEANOR ROODHOUSE

JOHNSIE FIOCK

JANET SAGE

Sigma Tau Delta, the professional national English fraternity, honors with membership students who are outstanding for proficiency and interest in literature and in creative writing. The society actively encourages the composition, the friendly criticism, and the publication of the original work of its members. A certain academic standard must be maintained in all work, but especially in English courses, if one hopes to hold membership.

Among the outstanding activities of Sigma Tau Delta are the sponsoring of a literary medal contest for freshmen and a tea for the same group.



# Kappa Pi

BETTY BOGENSCHUTZ

DOROTHY GREEN

HELEN SEMPRESZ

BETTY BOLES

GRACIA LOU ARNOLD

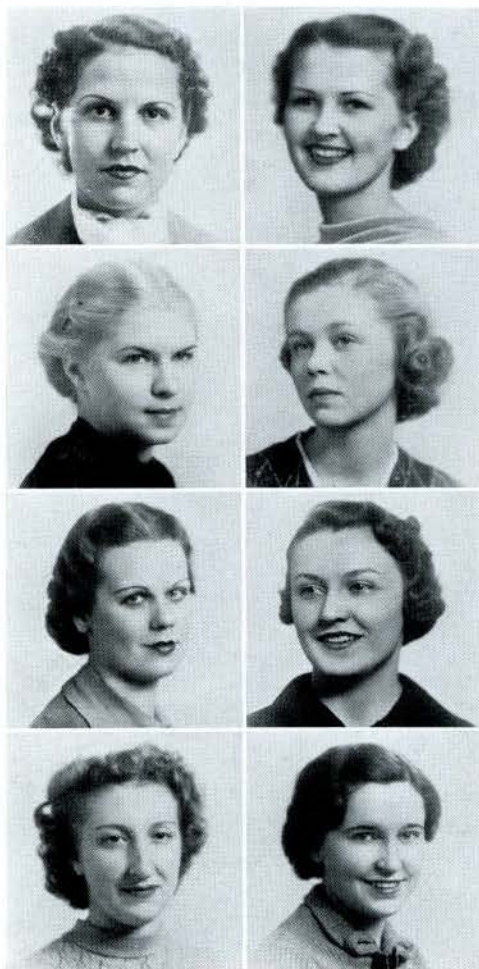
RENE KISKADDEN

MADALINE CHANDLER

MARGUERITE RAYMER

## *Pledges*

ADA LEE WEBER	ADELE MUEHLEMPFORDT
INA CULVER	ELIZABETH SIEGISMUND
GRACE GORDON	MARGARET STOOKEY
BARBARA JOHNSTON	NINA JANE DAVIS
DORA LOUISE KRUG	BERTHA VON UNWERTH
	EDNA JEAN JOHNSON



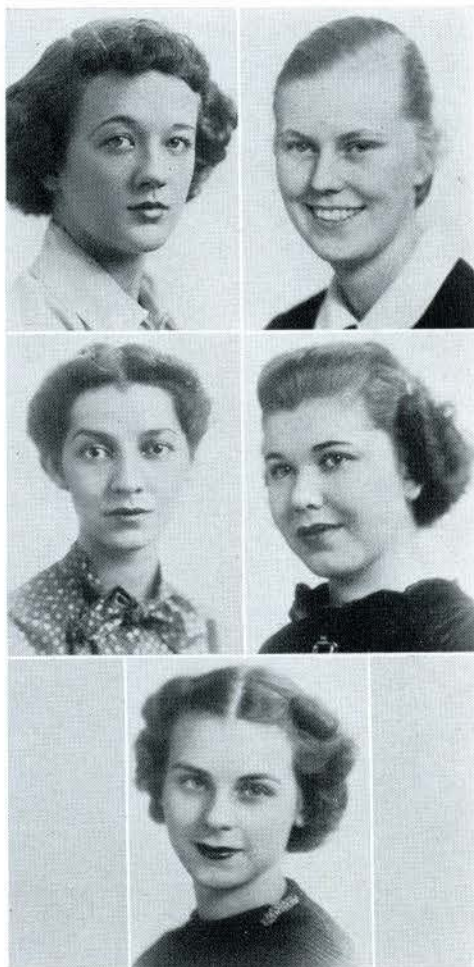
Those who bought Christmas cards designed and made in the Art Department may not have realized that they were aiding Kappa Pi, national honorary art fraternity, in increasing the Mary Easton Sibley Scholarship Fund. This sale is an annual project.

Art students who make an "S" in art courses, an "M" average in all other subjects, and who design and make a poster for the society, are invited to participate in the activities of Kappa Pi, which include, among other things, an outing in the spring.

Dr. Linnemann is the sponsor.



# Alpha Psi Omega



MARY ALICE HARNISH

MARGARET BURTON

BABS LAWTON

BETTIE JEANNE McCLELLAND

MARGARET ALOISE BARTHOLOMEW

Girls who have participated in dramatic productions at Lindenwood and who show marked talent along the dramatic line, are eligible for membership in Alpha Psi Omega, the national dramatic fraternity. Only the very best find themselves able to qualify completely. For this reason the size of the organization is small.

At Christmas this year Alpha Psi Omega presented "Craig's Wife" in an outstanding manner. The members also appear in other dramatic work in the course of a year.



# Beta Pi Theta

ANN BAGNELL

CONSTANCE OSGOOD

MARGARET BARTHOLOMEW

CHARLOTTE YOCUM

VIRGINIA MORSEY

JANE MONTGOMERY

HELEN MARGARET DUHADWAY

VIRGINIA WILKERSON

MARGARET ANN RICE

DEAN CRAIN

BETTY WHITE

MARTHA ROBERTS

SUSAN GREER

JOYCE DAVIS

SUSAN SMITH

RENE KISKADDEN

MARY LOUISE WETZEL

SARA MARGARET WILLIS

GWENDOLYN PAYNE

ELEANOR BLAIR

JOHNSIE FIOCK



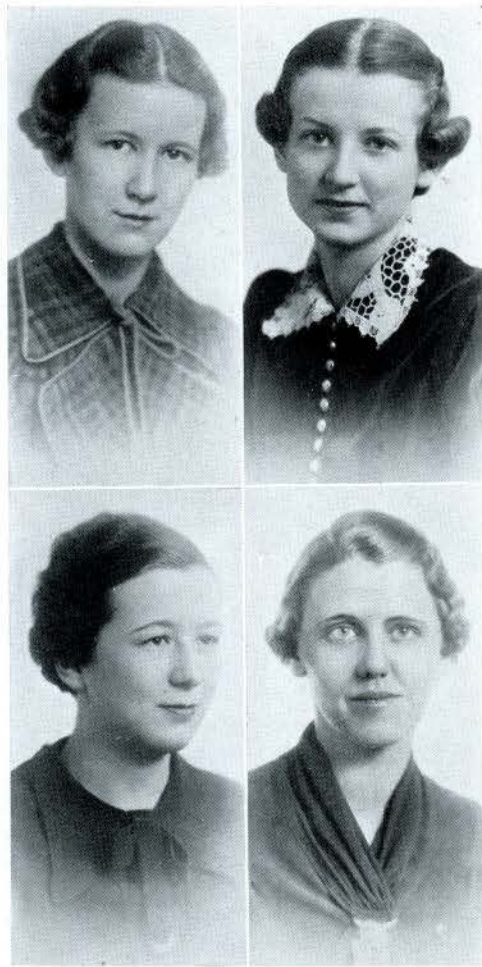
Theta Xi is the Lindenwood chapter of Beta Pi Theta, national honorary French fraternity.

In order to become a member, the French student is required to have an "S" average in French courses, and an "M" average in other subjects; she must write a five-hundred-word theme in French, read in French, a novel, a play, and a short story.

The programs of the club are varied and furnish additional opportunity for French students to speak the language that they study.



# Triangle Club



KATHRYN HILL

MARY ELIZABETH BAPTIST

CONSTANCE OSGOOD

ETHEL DUEBBERT

## *Second Semester Members*

LORRAINE PYLE

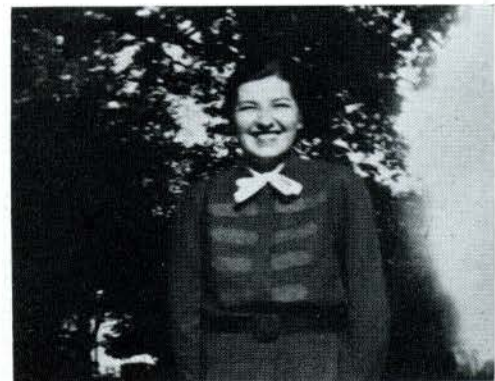
MARY ELIZABETH JOLLEY

SUNNY LOHR

EFFIE REINEMER

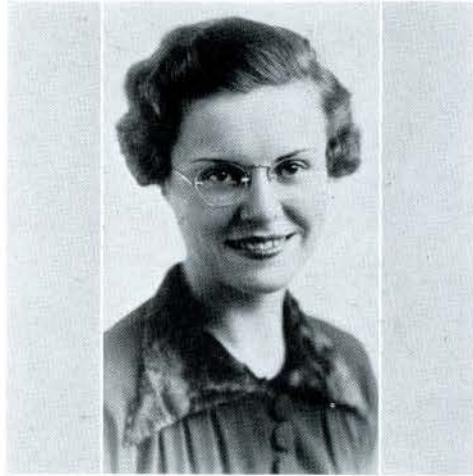
Students who have a grade of "S" in three semesters of work in one field of science, biological, physical, or mathematical, and who have an "M" average in other subjects, are eligible for membership in the Triangle Club.

Each year the organization sponsors a scientific project. Meetings are social in nature, and talks on topics of general interest to all the departments are given by student and faculty members.

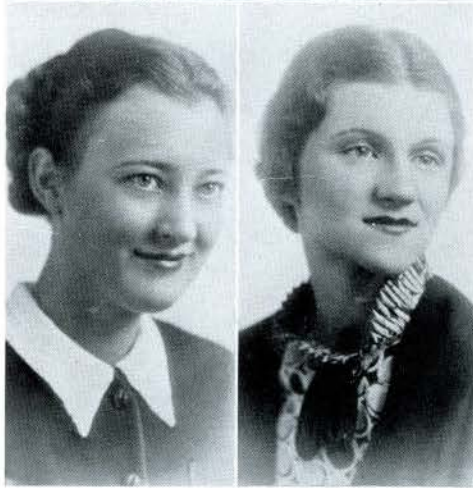


# Delta Phi Delta

MARGARET HULL



DORIS DANZ



JANE GILL

VIRGINIA BUFF

LORRAINE SNYDER

## *Pledges*

MARY BENNER	SUZANNE EBY
CORDELIA MAE BUCK	JENNIE VIE ANDERSON
CATHERINE CRAIG	CORNELLE DAVIS
RUTH REINERT	MARGARET ANN MCCOID

Those girls who have music problems, or who plan to teach music, find opportunities for discussion of these problems at the meetings of the honorary organization for members of the public school music department, Delta Phi Delta.

Along with other activities this year, Delta Phi Delta joined with Mu Phi Epsilon and Alpha Mu Mu in giving a Valentine Tea as well as a dinner.

The president for this year is Doris Danz.





# Tau Sigma



SUE JOHNSON

CHARLOTTE ANN YORK

CATHERINE CLIFFORD

MARGARET BARTHOLOMEW

BABS LAWTON

MARGARET THOMPSON

HELEN SEMPREZ

MARTHA ANDERSON

## *Second Semester Members*

LOIS PENN	DOROTHY VARNUM
JULIA LANE	CLYDE LABELLE ATHA
MOLLY GERHART	WILMA SCHULTZ
CHARLOTTE YOCUM	BETTY LU LISHER
LOUISE HARRINGTON	VIRGINIA HORNER
JEANNE DORNBLASER	BETTY FAXON
MARY JANE CARVER	DORA KRUG
ELIZABETH SIEGISMUND	MARY ELLEN DEMARO
CAROL LEE DYCUS	MARTHA JANE REUBELT
MARGARET A. MCCOID	VIRGINIA McQUERTER

"Go into your dance," says Tau Sigma, and the more modern the better. The organization tries to promote a knowledge and an interest in all forms of dancing. Each member finds her individuality called into play, for she is required to create original dances which she presents to the organization for criticism and improvement.

Tau Sigma members, this year, took outstanding parts in the musical comedy and participated in the May Fete as well.

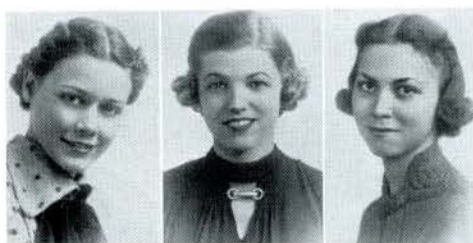


# El Circulo Espanol

KATHRYN WAGNER

ROSEMARY WILLIAMS

CONCHITA SUTTON



GRACE STEVENSON

MARGARET MACDONALD

MAURINE POTLITZER



JEAN MCFARLAND

SARABELLE MILLER

CELSA GARZA



ANN BAGNELL

ELEANOR ROODHOUSE



## *Second Semester Members*

VIRGINIA ERMELING	MARGARET JANE CLOTHIER
KATHLEEN PATTON	MARTHA LOU MUNDAY
LENA ROYBAL	MARTHA ROBERTS
VIOLET ROYBAL	JANE SIDEBOTTOM
BETTY BRECK	ETHEL SILVER
BETTY CRAGIN	SARA WILSON
RUTH MERING	SHIRLEY SPALDING
FRANCES METZGER	



The fact that the membership of El Circulo Espanol has included students from Hispanic America, has been an added incentive to the organization in carrying out a program which aims to stimulate interest in Spanish-speaking countries and to acquaint its members with Hispanic life and culture.

Dr. Mary Terhune is the sponsor of the honorary organization, membership in which is open to students who attain superior standing in Spanish courses.



# Der Deutsche Verein



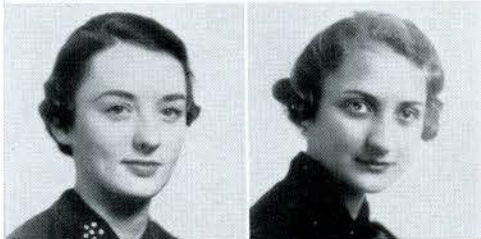
SUSAN GREER

MARIAN DAUDT



ALICE BELDING

ALMA REITZ



VIRGINIA CARTER

ROSE WILLNER



LEONORA BLACKHURST

MIRIAM McCORMICK

MARY BACON

VIOLA KOENIG

FRANCELINE PHILLIPS

Sprechen Sie Deutsch? If so, you are eligible to Der Deutsche Verein, the college organization for students interested in German. The jolliest meetings are a German Christmas Party at which both members and German students participate, and a spring outing which is held in May. A new feature, recently added to the meetings, is that each member, in answering roll call, gives in German some news item of interest for the organization.



# Home Economics Club

## ASSOCIATE MEMBERS

ARNOLD	DAVIS
BEASLEY	DUBIEL
BILLS	FINLEY
BOLES	FULLERTON
BRADLEY	GARZA
CROW	GOCIO
COKER	GOFF
HAYES	MACKU
JOHNSON	MARTIN
JOLLEY	McBEE
KLITZKE	McEWEN
LAMBERT	MERRIFIELD
LAWSON	PIPKIN
LEE	RAYMER
REAGAN	TESCHE
RISHER	VON UNWORTH
ROWE	WADE
SEMPREZ	WARD
SHANK	WEPFER
SHELTON	WILLIS
STORMONT	ZEMPEL



Active members—GERTRUDE ANDERSON, WILDA WISE, ELEANOR HIBBARD, NANCY PLATT, JOSEPHINE MILES



The Home Economics Club is affiliated with the National Home Economics Association. Active membership is based upon a required number of hours and high scholastic standing.

Activities of this organization include lectures, style shows, demonstrations, national projects, and a luncheon in St. Louis.

Five associate members became active the second semester: Kathryn Ackerman, Imogene Hinsch, Catherine Siemer, Virginia Wilkerson, and Rose Wilner.



# Poetry Society



BARBARA SCOTT

DOROTHY WAGNER

ETHEL BURGARD

JUNE ROBINSON

VIRGINIA MORSEY

ELEANOR HIBBARD

SUE SONNENDAY

HELEN BANDY

LAVERNE LANGDON

MARTHA EMERSON

BETTY FAXON

HARRIETT BRUCE

The Lindenwood College Poetry Society, a branch of the National Poetry Society, has for its aim the development of a fuller appreciation and a greater ability in the writing of poetry. Student poems have been printed in *College Verse*, the magazine of the national organization. Miss Dawson, the local sponsor, is also an editor of this national publication.



# Poetry Society

FRANCES LANE ALEXANDER

BETTIE JEANNE McCLELLAND

KATHRYN ACKERMAN

PATRICIA MULLIGAN

EVA ALLRED

MARTHA LOU MUNDAY

LOIS NULL

KATHERINE MORTON

JANET SAGE

JOHNSIE FIOCK



At the meetings this year, original poetry was read, criticized, and generally discussed. As one project the society sent a representative to a poetry conference at William Jewell College where some of the poetry produced in our local chapter won places on merit. Lois Null presides as chairman of the meetings, leading the discussions and urging everyone to write more and finer verse.



# Commercial Club



*First row*—BROWN, KINGSBURY, WENGER, STEPHENS, MCCOLGIN, DEISENROTH, ERVIN, BURTON, SMITH, KAISER, BROWN, MISS ALLYN

*Second row*—SIECK, JOHNSON, SEAMAN, DEMARO, MYERS, ALLRED, FOLTZ, GASKILL, ATHA, WEPFER, RISKE, PHILLIPS

*Third row*—FOSTER, MARTIN, KNELL, SELZ, EACHMAN, NIEDERGERKE, LAND, DALIN, PELEGER, LEACH, MCCORMICK, ANDERSON

*Fourth row*—GREEN, BRECK, MOORE, KEITEL, AUSTIN, CARTER, PAULSEN, RINGER, MORSEY, GARRETT, BARNETT

Those students who are concerned with business matters find a common interest in the Commercial Club, to which all members of the Commercial Department are eligible. A Bulletin board in the department and special research by the members keep the organization informed of new happenings in the business world.

The activities of the club this year included a Christmas Tea as well as a theater party in St. Louis.

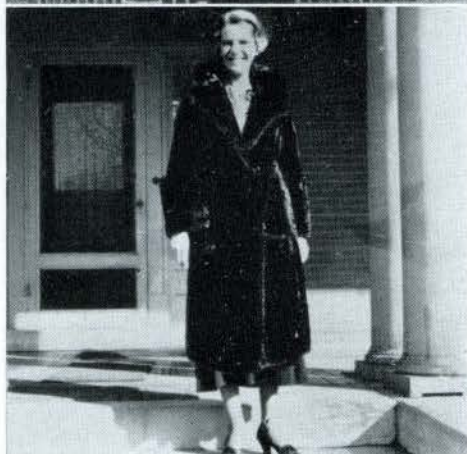
For this past year the officers were: Miriam McCormick, President; Susan Smith, Vice-President; Virginia Carter, Secretary-Treasurer.



# The Orchestra



Second row—DENTON, LUPFER, MAYER, McDONALD, BEHRENS, MCCOID, PYLE, NORRIS  
First row—CRAIG, BUFF, PRATHER, BOOMIS, HURDIS, SIEGISMUND, KISTNER, PHILLIPS, EBY,  
STEPHENS



Anyone who can play an instrument and who is interested in ensemble and orchestral work is eligible for membership in the orchestra.

During the year numerous concerts are sponsored, and in the spring concerts, the orchestra accompanies the soloists. All through the year the girls practice diligently twice a week to further their aim of co-ordinated work. Among other things during the year, the orchestra furnishes the music for the event of the spring, the May Fete.

Miss Isidor conducts the group.



# League of Women Voters International Relations Club



*Third row*—BACON, BRECK, GOODJOHN, THOMPSON, ELSNER, MYERS, BRITTIN, NIEDERGERKE, MORSEY, JURWICH, DUEBBERT, REINEMER, MCCORMICK  
*Second row*—TYLER, ACKERMAN, FRANCIS, KISKADDEN, BELDING, WAGNER, SKINNER, TRAVIS, WILLIAMS, DONNELL, DOUTHAT, MONTGOMERY  
*First row*—PUGH, MCCOLGIN, DONOVAN, AUERBACH, CRAGIN, HARNAGEL, WETZEL, BUXTON, WILSON, PAYNE, BLACKHURST, KAPS, MORTON, BENSON

Two organizations which are open to everyone on the campus are the League of Women Voters and the International Relations Club; both of them are branches of the national organizations.

The League, which is interested primarily in national political affairs, included among its activities this year a mock election at the time of the national presidential election. The state convention of college leagues assembled on Lindenwood campus the second weekend in February.

The Carnegie Endowment for International Peace sponsors the International Relations Club, the purpose of which is the stimulation of interest in all kinds of international affairs.



# The Choir



*Third row*—ATHA, SCHRADER, DuBIEL, O'KEEFE, COX, HULL, GOFF, DAVIS, SEARS, BUCK, KONIGSDORF, PATTERSON, BURTON, MCCORMICK, DREHMANN  
*Second row*—MCQUERTER, PINNELL, GAY, MEALER, ZEMPLE, DALIN, CARTER, MEYERS, YOCUM, BEHRENS, MAYHALL, HURDIS, NICHOLS, REINERT  
*First row*—FRANCIS, MERRIFIELD, JOHNSTON, HARNISH, JONES, FAXON, HULL, SHULL, BUFF, GILL, ILLINGSWORTH, STARR, BENNER, WATT, ANDERSON



The Lindenwood Choir, which has as its purpose the development of interest and efficiency in group singing, consists of a number of selected vocal students of the college. Sunday evening vesper services are made more beautiful through the lovely anthems that this group sings. During the year Miss Gieselman, the choir director, plans special concerts for Founders' Day, Christmas, Easter, and Commencement.

For this year, the officers of the choir are: Ruth Pinnell, President; Alice Jones, Vice-President; Jane Gill, Secretary; Eloise Schrader, Treasurer.



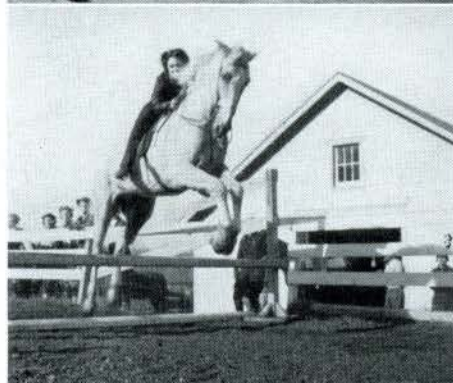
# Beta Chi



*First row*—BAGNELL, LOHR, HARPER, BOLES, BURGARD, ROUSH, RABON, HORNER, BUESCH  
*Second row*—CLIFFORD, MARTHA ROBERTS, FINLEY, ROWE, ELSNER, MISS REICHERT, MR. DAPRON, DAUDT, STUMBERG, MARY ROBERTS, FRITZ

The ambition of every girl interested in horses is to become a member of Beta Chi, honorary horsemanship organization, which sponsors such events as a fall and spring horse show, hay rides, sleighing parties, and breakfast rides. In order to become a member the rider must be able to put a horse through five gaits, jump three bars, saddle and bridle, and mount and dismount correctly.

This year, as well as in former years, some of the members of Beta Chi were successful in winning ribbons in the St. Louis fall and spring horse shows.



# Athletic Association



*First row*—HEINEMAN, KLITZKE, HARNAGEL, LANE, DENTON, NULL, MUNDAY, PEABODY, BARTHOLOMEW, SMITH, DORNBLASER, GERHART, STARR, FAXON, PAYNE, LEMLEY, STARKES, STOOKEY

*Second row*—MONTGOMERY, LUPFER, FINLEY, ROBERTS, BROWN, HARRILL, HILL, SEMPREZ, HURDIS, REUBELT, ANDERSON, THOMPSON, PENN, DAY

*Third row*—HANSEN, MORTON, ELKINS, ANDERSON, JOHNSON, ROUSH, DAUDT, LOHR, ELSNER, HURWICH, KEITEL, REINEMER, MORSEY, DREHMANN, HARPER

*Fourth row*—SIMCOX, BLAIR, BOOKS, CLIFFORD, YORK, COOGAN, REICHERT, YOUNG, BURTON, RINGER, BRANDENBURG, SCHULTZ, GOFF

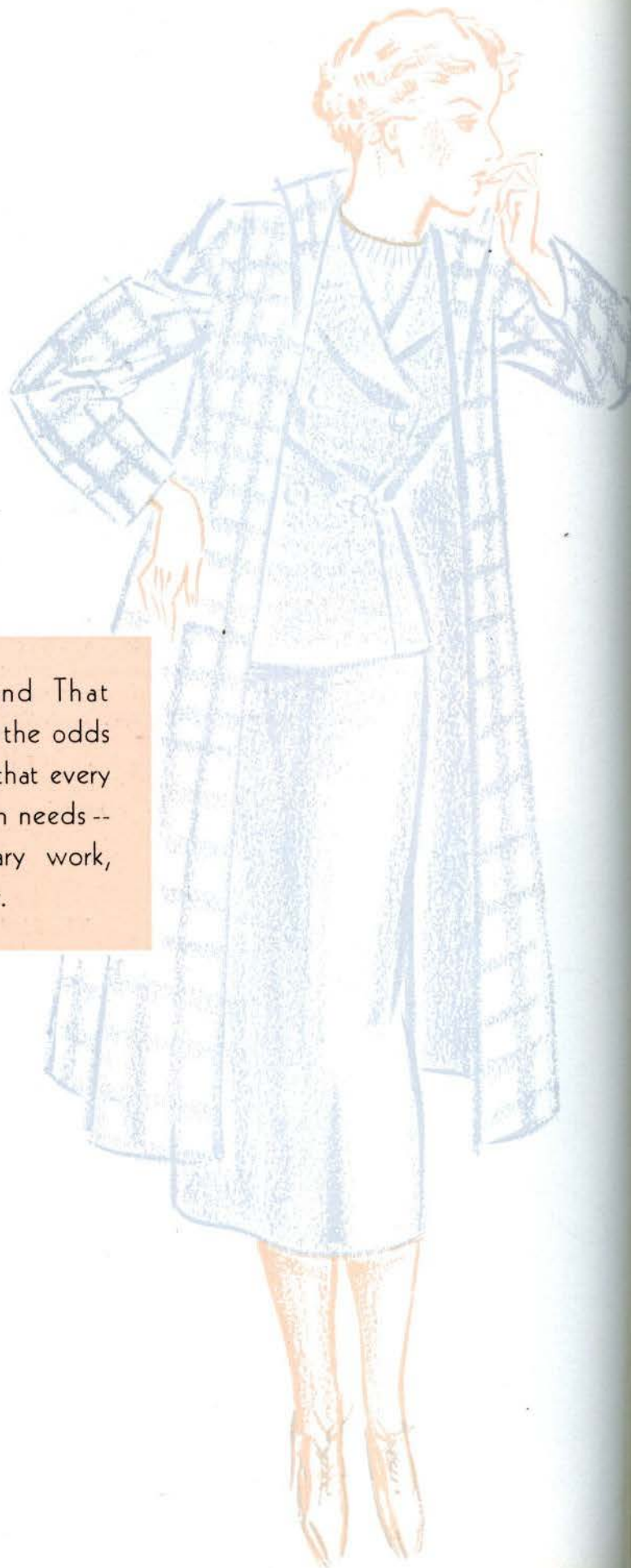


The Lindenwood Athletic Association membership is based upon a system of athletic points in hockey, golf, tennis, horseback riding, hiking, archery, baseball, basket ball, track, swimming and dancing.

In November, a Sports Day was held, when finals in archery, tennis and golf were played. A horse show was also held. Later came a basket ball tournament and track and swimming meets. The association sponsored a barn dance in the middle of the year, and in February, *The Charm School*, a musical comedy, was presented.



In This and That  
you'll find the odds  
and ends that every  
publication needs --  
ads, literary work,  
and humor.



BULLETINS

NOTICE



This and That



## *Tea Mosaics*

A crystal vase  
On snow-white lace  
On a teakwood table low.

A vermilion spark  
In a brown log's heart  
In an ancient fireplace glow.

A golden band  
On dark Steinway grand  
In a corner chameleon with light.

Small crafts of tea  
In their amber sea  
In a cup, blue-veined and white.

—EVA ALLRED

## *Query*

Only one life, God, to hear a flower,  
To see the wind, to touch a song?  
To kiss the night, to hold a star,  
To capture love, God—only one?

—HARRIET BRUCE

## *Lasting Beauty*

A Chinese Buddha carved from hardest jade  
Sits on his throne with still serenity;  
The calmness of his gaze will never fade,  
But will remain unto eternity.  
A Grecian urn, the lovely Parthenon  
Today are not things wholly of the past,  
So many mortal things, it's true, are gone,  
The Sphinx will keep its secret to the last.  
In nature's realm, we find a lovely tree,  
Bereft of leaves, but etched by frozen drops;  
The sky itself—expanse of azure sea  
Defies the artist's brush, above trees-top.  
Though ice may melt, jade crack, urns break, skies change,  
Ideas of beauty will increase in range.

—VIRGINIA MORSEY

## *Demise of a Pantheist*

"When the wind chants in the tall grasses, I'll come to you."  
Your words were quicksilver in the sultry, saffron dawn;  
While in the east beyond the dunes  
The waves leapt like tongues of flame  
And a thin moon swung high, dying.  
Since then, many moons have plunged into a picoted sea,  
And hour upon hour have I crouched, waiting,  
While the wind swirled in the striped grass.  
But you have not come. And, sometimes,  
While I kneel in the snarled shadows of the acacia trees,  
The green and white grass blades are a forest,  
And I am lost there, calling your name.  
A dun-colored ombrette mocks me  
And flies after me, spreading scalloped wings  
And screaming as I run through the labyrinth,  
Stumbling in the ephemeral light  
Of a curving swathe of moon, oblique in a morning sky.  
I am caught, suddenly, in a whirlpool of wind,  
While a voice laughs derisively and sings:  
"Many dreams ago, she of the desolate eyes  
Which knew no God save Pan,  
Promised to come to you when the wind  
Swept through the tall grasses.  
But, child, she never, never will."

—JOHNSIE FLOCK



## *Transgression*

High upon this rocky mountain cliff  
There may have reared  
A pawing, wind-blown stallion,  
Ever watchful for the safety  
Of his feeding herd.  
Or, perhaps, a shaggy mountain goat  
Once trod these hard and jagged rocks  
In search of one more tuft of waving grass.  
An Indian, shriven of all except necessity,  
May have poised himself upon this very ridge  
And touched off a precious arrow  
Straight into the feathery breast  
Of an idle, dallying fowl.

But I, alone,  
Have dared to carry  
Subtle imperfection  
To this proud, secluded spot.

—JANET SAGE

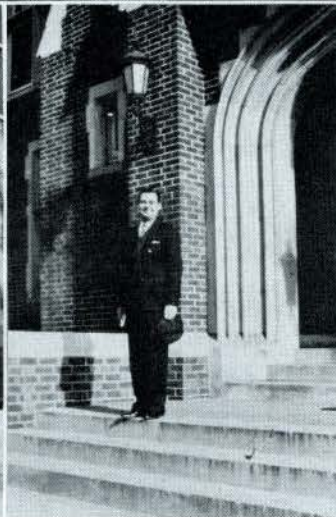
## *Consistency*

'Twas then I watched  
Clear, crystal beads of water  
Tremble ere they dropped  
At last  
From spongy moss  
Into the blue-green depths  
Below.

And now, I watch  
Blue, faltering fingers  
Tremble 'ere they loose  
At last  
Their feeble hold upon a door  
And slip, uncertainly,  
Into the murky, opaque depths  
Beyond.

—JANET SAGE

*And So . . .*







# *Lindenwood College*

ST. CHARLES, MISSOURI

---

*Founded, 1837*

---

LINDENWOOD is your college, not only during student days but long after college days are over. Keep in touch with your Alma Mater because she is anxious to serve you.



JOHN L. ROEMER

*President*



YOUR PATRONAGE  
DESERVES OUR CONSTANT  
EFFORT TO SERVE  
YOU BETTER

*Ice Cream*



**ST. CHARLES DAIRY  
COMPANY**

WATCHES—DIAMONDS—GIFTS—EXPERT WATCH REPAIRING

LINDENWOOD CREST JEWELRY

*Gifts That Last*

## WALTERS JEWEL SHOP

CLARA WALTERS

230 N. MAIN STREET

ST. CHARLES, MISSOURI

TELEPHONE 307W

## CLARELLA BEAUTY SHOP

*Your Satisfaction Is Our Ambition*

SCALP AND FACIAL TREATMENTS

PHONE 476

217 NORTH MAIN STREET

### THINGS WE CAN'T DO WITHOUT

Marian Hull and her poetry.

Ettin's "How ya, honey."

Warfield's nonchalance.

Clitz's good humor.

Biddy.

Platt's pencils.

Keck's ideas on marriage.

Miss Gordon's little flivver.

Dr. Garnett's stories.

The Kappa Alphas at Westminster.

Dr. Betz's asides.

## CHARLES E. MEYER'S

REXALL DRUGGIST

*Quality Has No Substitute*

We are agents for the leading toilet lines; also agents for Whitman and Martha Washington Chocolates, always fresh; and Weber's Ice Cream—none better anywhere.

WE AIM TO PLEASE YOU

YOU CAN LOOK YOUR BEST AT ALL TIMES IF YOU  
USE OUR CLEANING SERVICE

*Agency at*

LINDENWOOD POST OFFICE

## RICHTERN CLEANING CO.

216 NORTH SECOND STREET



WESTINGHOUSE APPLIANCES

**F. H. KISTER *and* COMPANY**

136 N. MAIN STREET

*Every House Needs Westinghouse*

THINGS WE CAN DO WITHOUT

Parrott's handkerchiefs.  
Rules against charging in the tearoom.  
Chipped beef.  
Cigarette bummers.  
Dottie Wagner losing her fraternity pin.  
Rowe's musical approach.  
Studying done in the tearoom for the teacher's benefit.  
Zarth's men.  
DuHadway's puns.  
J. Jackson's experiences.  
McCoid's wink.  
Lyon's giggling.

**AUSTIN S. FOX**

HEATING AND PLUMBING

STEAM, HOT WATER

*and*

VACUUM HEATING

TELEPHONE 99

ST. CHARLES, MISSOURI

VIOLINS  
GUITARS  
RADIOS

**HUNLETH**  
MUSIC CO.  
516 LOCUST ST.  
COMPLETE MUSIC HOUSE - - ST. LOUIS

SHEET MUSIC  
BAND  
INSTRUMENTS

—AND WITHOUT

Gossip in the Linden Bark.  
Bettie Hurwich's uncle.  
M. Burton's hair falling down her back.  
Montgomery twisting her hair.  
Indiana Club meetings.

GOOD LUCK!



**JOE GARAVELLI**

SAINT LOUIS

THE DAILY

**COSMOS-MONITOR**

MAKES A SPECIALTY OF FINE JOB PRINTING



*Best Work at Reasonable Rates*

**MARGARET LEGGAT BUTLER LIBRARY**

LINDENWOOD COLLEGE



**LA BEAUME and KLEIN**

*Architects*

ST. LOUIS



# STRAND THEATRE

FIRST-CLASS PICTURES

AFTER

FIRST-RUN PICTURES

IN

ST. LOUIS

## THE CHEMISTRY OF A WOMAN

Symbol—WO

Member of the human family.

Specific gravity—variable.

Molecular structure—exceedingly variable.

Occurrence—can be found wherever man exists.

Physical properties—all colors, sizes and shapes. Generally appears in disguised condition; natural surface rarely free from extraneous covering of textiles of film or grease and pigments. Melts rapidly when properly treated. Boils at nothing and may freeze at any moment. Ordinarily sweet, occasionally sour, and sometimes bitter.

Chemical properties—exceedingly volatile, highly inflammable, and dangerous in the hands of an inexperienced person. Possesses great affinity for gold, silver, platinum, and precious stones of all kinds. Reacts violently when let alone. Turns green when placed by a better appearing specimen. Ages rapidly.

## ANONYMOUS

### STEINBRINKER'S

*Furniture Dealers and Funeral Directors*

305 N. MAIN

ST. CHARLES, MO.

#### IMAGINE MIDDLE NAMES

Margaret (Then he went to Chicago) Stookey.  
Rosemary (It makes me so mad) Williams.  
Doris (Nobody loves me) Heineman.  
Conchita (I won't turn the radio off) Sutton.  
Helen (Studying is a waste of time) Clark.  
Anna Marie (I think I'll go practice, now) Kistner.  
Harriett (I'm going to lose twenty pounds) Pipkin.  
Jeannette (I always take a taxi) Parker.  
Jean (I wonder if copper's going up?) McFarland.  
Belva (So I told her!) Goff.  
Wilda (Whenever I was doing that) Wise.  
Lois (I've never been kissed) Welch.  
Johnsie (Of course, my mother doesn't approve) Fiock.  
Virginia (Those Phi Pi Parties!) Douthat.  
Mary (Have you got a cigarette?) Roberts.  
Zora (Ditto) Horner.  
Evelyn (I always go out to dinner) Coker.  
Virginia (Pigs always make me homesick) Wilkerson.  
Margaret (Yes, he's a dentist) Keck.  
Ann (Gone With the Wind) Bagnell.  
Winnie (Tweet, tweet) Travis.  
Biddy (Oh, I like it here) Null.  
Bobbie (I'm so busy) Meuntzer.

- BINDERS
- BLANK BOOKS
- LOOSE LEAF
- BOOKKEEPING SYSTEMS

### BANNER NEWS COMPANY

ST. CHARLES, MO.

*Printers—Publishers*



WHEN YOU NEED LUMBER, ROOFING, PLASTER, OR WOODWORK  
TRY

**C. J. HARRIS LUMBER COMPANY**

*"The Old Reliable"*

## **UNION SAVINGS BANK**

of ST. CHARLES, MISSOURI

*Organized in 1870*

OUR DEPOSITS ARE INSURED UNDER THE FEDERAL DEPOSIT  
INSURANCE PLAN

## **DENKER'S BAKING COMPANY**

923 N. SECOND STREET

A COMPLETE LINE OF  
BAKERY PRODUCTS

DECORATED CAKES

CAKES AND PASTRY

Mary (All men are silly) Buesch.  
Eleanor (I'm waiting for a phone call) Finley.  
LaVerne (Would you go out tonight?) Rowe.  
Maxine (What are you doing?) Meyers.  
Jane (So I sent his ring back) Gill.  
Beverly (I love him this week) Turner.  
Betty (Don't I look like Shirley Temple?) Escalante.  
Connie (I won't make an announcement) Osgood.  
Virginia (I think you're terrible) Aylesworth.  
Mary Spain (I'm a Democrat) Usrey.  
Dean (Kentucky—it's in the South) Crain.  
Clara (Let's go down to Shorty's) Weary.  
Maurine (I broke a blood vessel) Potlitzer.  
Mary Mo (I thought I'd die) Watts.  
Betty (He, he) Burton.  
Erma (When I was in Arizona) Martin.  
Shirley (I've got an important interview coming up) Spaulding.

**PRINTING • ENGRAVING**  
**EMBOSSING**



**BOTTANI PRINTERY**

F. N. BOTTANI

*Proprietor*

120 N. SECOND STREET

ST. CHARLES, MO.

**J. H. HACKMAN LUMBER COMPANY**

LUMBER AND BUILDERS'  
SUPPLIES

PHONE 806

106 N. MAIN STREET

ST. CHARLES, MO.

MAY WE SUGGEST???

Dr. (The volumes are there for your delectation) Gregg.  
Dr. (When I was in Spain) Terhune.  
Dr. (Suffice it to say) Garnett.  
Mr. (Dreadful !!!) Thomas.  
Mrs. (I'm going to scold you) LeMaster.  
Miss (I'm from Kentucky) Blackwell.  
Miss (I can talk like that, too) Gieselman.  
Miss (Oh !!!) Karr.  
Dr. (Now, as I say) Gipson.  
Miss (If you can, take Mental Hygiene) Morris.



# PARKVIEW GARDENS

BEN RAU

*Florist*

WE SPECIALIZE IN BOUQUETS AND  
CORSAGE WORK

*"As Near to Lindenwood  
As Your Phone"*



TELEPHONE 214

ST. CHARLES, MO.

You can always tell a freshman by her fresh, green country look,  
You can always tell a junior by her study and her book,  
You can always tell a senior by her mortar-board and such,  
And you can always tell a sophomore—but you can't tell her much.

## FRANK F. AHMANN

*Dealer in*

News, Books, Stationery, School Books and Supplies,  
Blank Books, Office Supplies, Seasonable Sporting Goods,  
Tobaccos, Cigars, Fine Pipes, and Smokers' Articles.

# FIRST NATIONAL BANK

*of* ST. CHARLES, MO.



J. A. SCHREIBER . . . . . *President*  
GEO. H. KUHLMAN . . . . . *Vice-President*  
A. J. MOERSCHER . . . . . *Cashier*

## DIRECTORS

JOSEPH A. BOTTANI                      GEORGE H. KUHLMAN  
CHARLES J. DAUDT                      DR. JOHN L. ROEMER  
CLARENCE T. HACKMANN              JOHN A. SCHREIBER  
DR. B. KURT STUMBERG



## TOTAL RESOURCES

\$2,600,000.00



*Member Federal Reserve System*

UNDER THE SUPERVISION OF THE UNITED STATES  
GOVERNMENT

MEMBER FEDERAL DEPOSIT INSURANCE CORPORATION



**EMULATING THE IDEALS INCULCATED BY THE FOUNDERS  
OF LINDENWOOD--AND SO ABLY CARRIED ON BY THEIR  
SUCCESSORS . . . .**

*Quality*

- 

*Service*

- 

*Satisfaction*

“TO CREATE FOR YOU A CITADEL OF  
HIGHER LEARNING”

---

---

*Braufmans and Hunings will continue their en-  
deavors to follow that example, by giving you  
two stores of the “Highest Ideals”—worthy of  
the patronage of you who attend Lindenwood.*

*Our Aim is to . . . .*

“BE YOUR FRIENDS — ALWAYS”

**HUNINGS**

**BRAUFMANS**

## *Gerhard Sisters . . .*

Winners of Blue Ribbon and Salon Honors. Photographers National Exhibition held in Chicago, August, 1936.

Your PHOTOGRAPH is something only YOU can give.



While you are about it, get a GOOD PICTURE.



If you have a faded photograph, or one that you cherish, let us restore, or copy it, and make something that will be a joy in your possession.



# GERHARD SISTERS

*Photographers*

3622 OLIVE STREET

ST. LOUIS, MISSOURI



## LITERARY TITLES

Twice Told Tales—or, Maxine Meyers Goes On a Diet.  
Call of the Wild—or, The Betas from Westminster Have Arrived.  
Paradise Lost—or, Spring Vacation Is Over.  
Up From Slavery—or, We've Just Been Graduated.  
Midsummer Night's Dream—or, I Thought I Passed That Test.  
As You Don't Like It—or, Food In the Dining Room.  
Love's Labor's Lost—or, Local Girl Does Not Make Good.  
Much Ado About Nothing—or, Why Do Your Homework?  
Return of the Native—or, Ethel-Gard Came Back.  
The Little Colonel—or, Miss Blackwell's Childhood.  
Elsie Dinsmore—or, Virginia Aylesworth Is With Us.  
The Shortest Way With the Dissenters—or, The Student Board Met  
on Monday Night.

EVERYTHING THAT'S "NEW" FOR THE COLLEGE GIRL IN WEARING APPAREL  
YOU WILL FIND AT ST. CHARLES' LARGEST AND MOST COMPLETE STORE

## THE FAMOUS

PHONE 340

311 N. MAIN STREET

ST. CHARLES, MISSOURI

Measure for Measure—or, Feud of the Dormitories.  
The Comedy of Errors—or, Dolly Fullerton Has a Date.  
An Experiment in Autobiography—or, M. Wepfer Has the Floor.  
The Way of a Transgressor—or, How It Feels to be Campussed.  
Gone With the Wind—or, He Got Away.  
Craig's Wife—or, N. Platt's Desire.  
Hardy Perennial—or, The Story of Bidly Null.  
And Fear Came Upon Every Soul—or, Final Exams Are Announced.  
Awake and Remember—or, Monday Morning Comes With a Bang.  
Stage Door—or, Nelson Eddy Gives a Concert.  
In Pursuit of Laughter—or, Dr. Garnett Conducts a Class.

## YELLOW CABS

TELEPHONE 133

ST. CHARLES

MISSOURI.

PHONE 362 FOR APPOINTMENT  
**MELBA BEAUTY SALON**

*Modern Equipment—Beauty Culture Specialists in All Its Branches*  
200 KINGSHIGHWAY ST. CHARLES, MO.

CURRENT LITERATURE

They Walk In the City—or, Lindenwood Girls Shop in St. Louis.  
Ladies of the Press—or, B. Hurwich Comes to College.  
Man, the Unknown—or, That's What They All Say.  
Great Laughter—or, Sutton Is Amused.  
Like Softest Music—or, Ruth Pinnell Speaks.  
Main Currents of American Thought—or, An Afternoon at the Tearoom.  
Young Love—or, Kemper Comes Up.

**STATION DUQUETTE**

*The HOLLYWOOD*

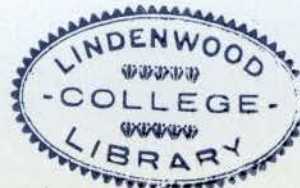
We cater to card parties and banquets. Arrangements can be made  
for private parties.

Honorable Estate—or, I Just Got a Fraternity Pin.  
Eyeless in Gaza—or, Who Went to Sleep in Class?  
All's Well That Ends Well—or, Kay Clifford Has a Diamond.  
Life Was Like That—or, I Just Got a Letter.  
Fair Company—or, We Have a Dinner Dance.  
New Faith for Old—or, I Met Him at a Date Dance.  
It Can't Happen Here—or, There's No Rest for the Wicked.  
Kid Millions—or, Jeannette Parker Rides Again.  
Live Alone and Like It—or, We Had Onions for Dinner.

**Palace**  
CLOTHING CO.

*featuring*

GOTHAM SILK HOSIERY, GORDON SPORTWEAR  
REAL SPORT RIDING HABITS





## *What Do You Think?*

Which of these two women is best performing her duty to her family? One works as hard as she can to do as much as she can every day. She unselfishly cooks, washes, irons, cleans, and sews, with little thought of herself, and she gets so tired she doesn't even feel like talking.

The other woman cuts her work short with electrical equipment. She does everything she can to make her work easy and make her home attractive. She spends time on herself. She goes out or entertains while her dinner is cooking in her electric range. She keeps up with the world and keeps young by being cheerful and companionable. She enjoys life and her family enjoys her.

*Electricity is so cheap, isn't it  
economy to use it for doing all  
kinds of housework?*



**UNION ELECTRIC**  
**LIGHT *and* POWER COMPANY**

HEADQUARTERS FOR  
LINDENWOOD CREST JEWELRY AND GIFTS  
**MILTON E. MEYER JEWELRY STORE**

**KUHLMANN'S**

READY-TO-WEAR — SHOES — DRY GOODS

324 NORTH MAIN STREET

ST. CHARLES, MISSOURI

**The Bruns Machine Company**

Everything in  
HARDWARE AND IMPLEMENTS  
For the Farm and Home

ST. CHARLES, MISSOURI

PHONE 989

***Campus Chatter***

Ann Linwood: Peggy, where *did* you get that *p-e-r-fectly precious* dress you wore to vespers? You looked *too, too* adorable, and it was *positively* disgusting the way your date kept looking at you . . . . fluffy be-ribboned, be-laced collars *just* do something to a man's heart!

Peggy Linden: *That's* the dress I told you I saw at Merry Marie's and just could not resist! And you should see that formal! Let's go down to St. Charles and stop in at the MERRY MARIE SHOP. They might have in some new formals. They get new things in *practically every day*. That's where I've been buying these crepe stockings, which spell hosiery economy.

**MERRY MARIE SHOP**

300 NORTH MAIN STREET

PHONE 756

ST. CHARLES, MO.



COMPLIMENTS  
OF  
**STAHLBEHL'S**

*"Good Shoes and Hosiery"*

220 NORTH MAIN STREET

**CLARK-SPRAGUE PRINTING COMPANY**

1901 LOCUST STREET

ST. LOUIS

MISSOURI

**Joseph A. Bottani**

*Contractor*

REINFORCED CONCRETE  
STONE

*and*

GRANITOID WORK

532 N. BENTON AVENUE  
ST. CHARLES MISSOURI

Dr. Garnett says that we say that the feeble-minded are in the minority because they aren't all there.

This is about as coherent as a remark made by Spainey after finishing a bridge game. She said, "We just made that by the skin of your teeth, didn't I"?

**U-SAN-O "The Perfect Cleaner"**

N-S-P QUALITY PRODUCTS

*Manufactured by*

**NATIONAL SANITARY PRODUCTS COMPANY**

217-219 N. SECOND

ST. LOUIS, MO.

ST. CHARLES BUILDING DEPARTMENT STORE

**H. G. RAUCH LUMBER COMPANY**

MAIN AND CLARK STREETS

The Home  
of  
Home-made  
Sweet  
Ice Cream

**Standard Drug Store**

*St. Charles' Most Complete Drug Store*

"MEET YOUR FRIENDS HERE"

Factor  
Cotys  
Hudnuts  
Armands  
Seventeen  
Boujous



