

Snow covered streets and cars were the norm on campus when classes were cancelled Feb. 1-2.

Page 8 ►



The jump to NCAA Division II will force men's volleyball to make some difficult decisions.

◀ Page 6

# LINDENWOOD

The Lindenwood's Student Newspaper

## Legacy

Volume 4, Number 10

www.lulegacy.com --- www.lindenlink.com \*NEW

Feb. 9, 2011

# Man, 29, is shot near LU housing

Incident was non-fatal, occurred in vicinity of men's housing in Powell Terrace

By **Kenny Gerling**  
Senior Writer

During J-Term, students received an e-mail from school administrators alerting them to a non-fatal shooting near campus.

The incident occurred Jan. 19 in the vicinity of Linden-

wood's Powell Terrace residential neighborhood, which serves as men's housing. It is located across First Capital Drive, away from the main academic buildings.

Scott Queen, director of Community and Public Relations said, "To my recollection, this is the first time that every-

one has been sent notifications of a non-weather related event."

Queen was in charge of sending the original e-mail.

According to the St. Louis Post-Dispatch, the incident occurred at a laundry facility on Forest Avenue. A

29-year-old man was shot three times, including once

in the face. Nicholes D. Cook, 19, was taken into custody shortly afterwards and charged with first degree assault. Two other individuals we also charged in connection with the crime.

"We were able, through good communication with the police department, to

learn that Lindenwood students were not threatened. So we chose not to send an emergency text," Queen said.

Queen said that Lindenwood receives direct advice from the St. Charles Police Department during such situations.

He said that they have a

"wonderful relationship," and the university uses this to help communicate essential information to students and quell potentially dangerous rumors.

"It was a very unfortunate, frightening and sad incident. Thankfully our students weren't in danger," Queen said.

## Sneak Peek



Legacy photo by Lauren Kastendieck

Workers serve samples from Wai Chai, one of the new cafeteria food brands, to those that came for the sneak peek of the Lindenwood Commons.

# LU provides glimpse of new caf

By **Matt Korn**  
Entertainment Editor

Last Saturday provided students, board members and other VIPs with an advanced peek inside the new LU Commons. Guests were treated to food samplings of the new food court style cafeteria, along with a guided tour of the facility by members of Lindenwood Student Activities.

The new cafeteria will be open to all students and feature Pfoodman's new line of cuisine. Recognizable brands such as Lone Wolf Coffee Company and Wild Thyme's Wellness Center will be joined by Wai Chai (Asian Stir Fry), Pepita's Burritos (Tex Mex), Di Pazzo Cucina (wood burning pizza) and Paradise Burger Grill (burgers).

Pfoodman President Ralph Pfremmer explained that the new food court system will be a la carte and work on a declining bal-



Legacy photo by Lauren Kastendieck

President James Evans delivers opening remarks to students and staff.

ance system.

Students will be allowed to select whatever they want from each station and then have it deducted from

their meal plan.

Before the tour, guests were brought into the dining area of the LU Commons to hear opening re-

marks from University President James Evans, Vice President of Student Development John Oldani, Director of Student Activities Kerry Cox and Vice Chairman of the board Ben Blanton.

"The mission of Lindenwood is students," Blanton said, looking around at the unfinished facility.

"When we built the PA [Hyland Performance Arena] in 1994, it was for the students. But it had offices and classrooms. When we built Spellmann Center ... it had the cafeteria and the Connection. It was for the students, but it has classrooms and offices too," Blanton said.

"And then you have the [Center for Fine and Performing Arts], which has everything. But, this building is 100 percent for students. Here's your 20 million dollar hangout; enjoy it."

Please see **Peek**, Page 8

# Snowstorms cancel two days of class

Administrators take several factors into account before deciding on cancellations

By **Kenny Gerling**  
Senior Writer

A massive winter storm that crippled much of the state caused Lindenwood to call off classes Feb 1-2.

Public Relations Coordinator

Chris Dug-

gan said that when cancelling classes, administrators take into account forecasts, road conditions and cancellations made by other universities.

After considering all the available information and taking into account fellow administrative opinions, the Provost Jann Weitzel makes a final decision.

Weitzel said, "First, we check the most recent weather and road reports. We also call our extended sites to determine the weather from Wentzville to Belleville and from Hazelwood to south St. Louis City."

"Each decision is carefully thought out before an announcement is made," Weitzel said.

Along with Lindenwood, many other universities – including St. Louis University and Washington University – cancelled

classes. The powerful storm covered streets in a thick layer of ice and sparked a rare blizzard warning for St. Charles County.

Please see **Snow**, Page 8

"Each decision is carefully thought out before an announcement is made."

—Jann Weitzel  
Provost

## Super Bowl



Legacy photo by Christie Blecher

A student grabs hot wings at a Super Bowl party in the Connection.

# ESPN RISE to feature top basketball high school prospects at Hyland

By **Issa David**  
Asst. Sports Editor

The ESPN highschool network ESPN RISE, McCluer North and Chaminade High School are coming Feb. 12 at 4 p.m. to the Hyland Performance Arena to highlight

two basketball players in the ESPN 100.

The ESPN 100 is a ranking system featuring the top 100 high school athletic prospects in the nation.

This was originally scheduled as a home game for McCluer North, but the school's

gym was getting overcrowded.

When school officials received word that ESPN RISE was nationally televising the game, McCluer North had to find a bigger gym.

They looked at several colleges in the area and decided

the Hyland Arena would be the best place to hold the game. They chose LU because it fit ESPN's needs for broadcasting the game. "This is wonderful exposure for Lindenwood University, locally and nationally," PR director Scott Queen said.

B.J. Young of McCluer North and Bradley Beal of Chaminade are the two players. Young is headed to the University of Arkansas, and Beal will attend the University of Florida.

Beal is a five-star prospect, ranked No. 7 in the ESPN 100.

He is also the No. 2 shooting guard in the country. ESPN gave him a 98 grade. Beal is a 6'3, 198 pound player who is a pure shooter and compares to future Hall of Fame Celtics guard Ray Allen, according to ESPN.

Please see **ESPN**, Page 8

# Study asks 'Is college too easy?'

By Sam Werbiski  
Opinions Editor

A student tracking study suggests that attending college may not be as educational as expected. The study was conducted between 2005 and 2007, and the results were published by Richard Arum of New York University and Josipa Roksa of the University of Virginia, co-authors of *Academically Adrift: Limited Learning on College Campuses*.

According to an article in the St. Louis Post-Dispatch, the research found that 45 percent of undergraduate students "[showed] no significant improvement in the key measures of critical thinking, complex reasoning and writing by the end of their sophomore years."

The study followed 2,300 students at 24 higher education institutions, which chose to remain anonymous. The students were asked to take a standardized exam during their first semester in fall of 2005 and then again at the end of their fourth semester as sophomores. The results showed that an average student would only "[score] seven percentage points higher" on the second exam.

Senior Erasmo Albaez, International student from Panama, believed he learned

much more in his last two years than his first two years in college.

"I didn't really learn much [in my first two years] besides my French and world history class," Albaez said. "Even the few business classes I took were too general ... I felt like most of the material was a reminder of everything I did in high school."

Senior Kristen Gunder agreed that learning was significantly higher within the past three semesters. She also claimed that exams, the basis for measuring learning, are somewhat flawed.

"All around, I feel like multiple choice questions are a raffle. They are 50-50, if you are able to narrow it down. Short answer ... and fill-in-the-blank [questions] require you to use your brain and help you with critical thinking," the mass communication major said.

Albaez, a Sports Management major, added that at as the semesters progress, professors do expect enhanced learning and skills.

"Most of the higher level business classes are taught differently [than introduction classes.] Professors expect both complex reasoning and critical thinking during class discussions, projects and presentations," Albaez said.



Legacy photo by Micah Woodard

A painter applies tape to the gold lines to fill in the remaining spot with black above the mail room and Work and Learn office in the Spellmann Center.

## Painting done 'to promote school spirit'

By Sarah Fritsche  
Staff Reporter

President James Evans wants to "promote school spirit" with a new color representation by painting black and gold decorative stripes in various buildings around the campus.

According to Chris Duggan in Public Relations, Lindenwood's school colors were white and yellow just a few years ago. Recently, the Board of Directors made the decision to change the colors to black and gold.

The first building to receive the new painted stripes was the Spellmann Center. The black and gold stripes can already be seen in the cafeteria. They will also be painted in classrooms in

all of the buildings.

According to Julie Mueller, vice president for operations and finance, this campus-wide project has no set deadline and will take as long as needed to complete the painting.

The project is different from the basic repainting that takes place on campus every several years.

This black and gold painting is more for decorative purposes, whereas the other painting covers the whole classroom and is for maintenance and upkeep purposes.

Evans hopes that the new painting will help students feel a sense of pride and respect for their school, while making the inside of the buildings more visually attractive.



Legacy photo by Christie Blecher

Another painter fills in the details on the third floor of the Spellmann Center for this project.

# LINDENWOOD STUDENTS, FACULTY & STAFF

Join NOW and take advantage of a **Special Membership Discount** to the St. Peters Rec-Plex

- It's all here – fitness classes, weights, gym, skating, swimming and more
- State-of-the-art equipment, indoor running track, weight and cardio rooms
- Adults-only locker rooms with sauna and steam



636.939.2FUN • stpetersmo.net

## Circle K promotes 'Teens for Jeans' campaign

By Holly Hoechstebach  
Staff Reporter

One out of three homeless people are under the age of 18. In an effort to take action, student organization Circle K organized a jeans drive on Lindenwood campus promoting the nationwide campaign, "Teens for Jeans."

Led by DoSomething.org and Aeropostale, Teens for Jeans donates gently used jeans to over 600 homeless shelters and charities across the United States and Canada. Over the past four years the program has donated one million jeans to the homeless.

The jeans collection began Jan. 31 on campus and will continue until Friday, Feb. 11.

"Boxes are set up in the career center and the student dorms," Circle K President Shannon Schultz said.

Circle K International is the largest student run organization in the world and is dedicated to providing community service to the surrounding area while instilling leadership and fellowship skills in its members.

Following Circle K's mission to make students responsible citizens and leaders with a lifelong commitment to service, Schultz thought a campus jeans drive would be a great way to help out teens in need.

Anyone who donates jeans will receive a 25 percent-off coupon for a brand new pair at Aeropostale for supporting the jean drive. Jeans will also be gladly accepted at any



Legacy photo by Christie Blecher

This decorated donation box located in the entryway of Blanton Hall held several pairs of blue jeans in it.

Aeropostale store until Feb. 13.

"Look for the donation boxes and Circle K members around campus to donate all unwanted jeans," Schultz said.

For more information, contact [www.do-something.org](http://www.do-something.org) or e-mail Shannon Schultz at [s.schultz37@yahoo.com](mailto:s.schultz37@yahoo.com).

## Sibley Day celebrates tradition with eye on future

By Tamara Freitas  
Staff Reporter

Lindenwood will celebrate its third annual Sibley Day Wednesday, Feb. 23, with a variety of activities and workshops across the main campus.

No formal classes are held on Sibley Day and the event is free and open to the Lindenwood community – students, faculty, staff and anyone interested.

The theme is Past to Present to Future, aimed at preserving and honoring the history of the university and

working toward its future. Organizers hope to increase student attendance by advertising earlier this year and planning more fun activities.

"The event is supposed to bring together community to broaden our knowledge outside of the classroom, to do some fun things, to get the enthusiasm up in the middle of February and to celebrate being at Lindenwood," said Professor Jennifer A. Firestone, chair of Sibley Day and a member of Faculty Council.

Sibley Day was launched in 2009 at the initiative of

President James Evans and the Faculty Council, along with the Lindenwood Student Government Association to get students involved. Free T-shirts designed by a student have become part of the tradition and are available through the Student Activities office. Students are also encouraged to submit workshop ideas by this Friday, Feb. 11.

"It will be great to have students involved, and this is to celebrate the past, the history of our school and where it is going," Firestone said.

# Miss Oklahoma reveals rewards of experiences

What's up, guys? My name is Morgan Woolard, and I am Miss Oklahoma USA 2010. In the fall of 2007, I attended Lindenwood University for my freshman year in college on a scholarship for winning Miss Oklahoma Teen USA 2006.

After placing first-runner up in the Miss USA Pageant in May, I spontaneously decided to come back to "The Wood" to finish my schooling with a degree in broadcast journalism.

I'm passionate about my faith, people, athletics, life and love. I simply enjoy all of life's adventures and any chance to make new friends, explore new places and experience new things. I've done a lot in my young life, met many fascinating people and experienced things I never would have imagined.

This semester, I'm excited to share some of these experiences and valuable life lessons learned with you.

This past year, I feel like I have really discovered who I am—and the woman I want to be. I think about the highs and the lows—every stepping stone, adversity, accomplishment, failure and feat that has led me to this point.

I feel like I've transformed over the past 12 months in a way I never would have otherwise. I'm the same Morgan I was a year ago, only a much more confident and much improved version of myself.

I've come to the realization that the beauty in beauty pageants—and life in general—is so

much more than what is visible to the naked eye. The real beauty—of this experience, or your college experience or any event life presents itself with—is your own personal journey in discovering what truly makes one beautiful in life.

I believe that beauty comes from the inside-out. In a pageant, only one girl walks away the winner. Only one girl leaves the night having been crowned "Most Beautiful." But I've realized it's not about locating the one true beauty AMONG us; it's about locating the true beauty WITHIN EACH of us. At the end of the day, beauty is NOT in the eye of the beholder. It is really in the eyes of the beheld.

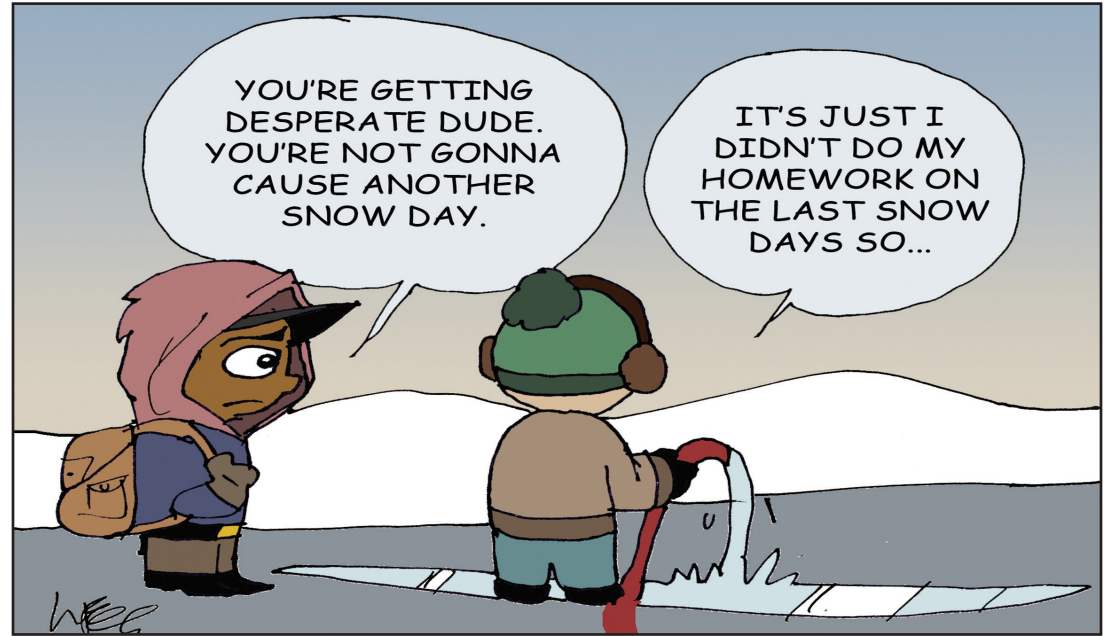


Morgan Woolard

From my personal experience, pageantry was full of self-discovery and self-improvement. Know that everything in life will inevitably be full of highs and lows. Determine what you have learned and use what you have learned to better yourself as a competitor or as a person.

My challenge today for you is to always take something positive from every experience you go through, even the negative experiences. A hummingbird always finds sweet things, while a vulture always finds dead things.

Remember that you're always going to find what you're looking for. This simple principle about the hummingbird and the vulture has changed my life. Because of it, I encourage you to look at your life and do the same.



# Don't let society fool you: Being single is a true gift

To couples and married folks, Valentine's Day holds special meaning. It's a glorious day where you express your mutual love in sincere, unexpected ways. Hearts glowing, love flowing -- mushy, gushy stuff.

But to single people, Feb. 14 has a completely different connotation -- often a negative one. Many singles label it "Singleness Awareness Day" -- the day when we are painfully reminded of our loneliness and suffering, all the time wishing and hoping to not participate in this particular holiday the next year.

But unlike most singles, I refer to Feb. 14 as "Singleness Appreciation Day" -- a time to contemplate its awesome aspects and be thankful.

Because being single is a gift -- not a curse.

There's a right way and a wrong way to handle "being single." The idea of intimate relations affects our thoughts and actions every day -- and staying positive is essential to keeping a healthy mindset.

It's easy to say it's a gift though, right? Well, I dare you to ask any married person and collect their thoughts! Singles enjoy many freedoms daily that would not exist if we were "on the other side."

I'm not arguing which situation is more advantageous. Neither side is necessarily "better." Each has its advantages and disadvantages, and both can be valuable to achieving your purpose on Earth. But there is one main perk to being single -- your attention isn't diverted or divided.

Ask a married person what he or she would do if single, and they just might already have a list written out. In marriage, there is an innate responsibility that you must hold to.

Your goals, dreams and

ambitions -- however noble they may be -- must play second fiddle to raising a family and accommodating needs. The added concerns of spouse and family can hamstring even your most positive efforts to improve the world.

Because you don't have to worry about pleasing your spouse, your focus can be centered on righteous endeavors. You may divert your time and attention to furthering advancement in the life of others.

For instance, you can volunteer at your church, assist faithful ministries or aid charities. But extra time isn't the only perk; don't forget about the added financial freedom. (And all the married people said Amen!)

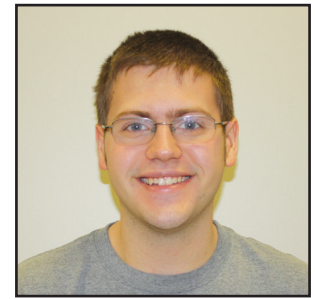
Being married, of course, isn't bad. One should never

avoid marriage because it can be inconvenient or remove freedoms. Such a lifelong commitment can be instrumental to personal growth in areas of selflessness, compassion and self-sacrifice. Many married couples have together achieved great things, complementing each other in every facet of life.

But if you're single, resist the natural feelings of dejection, loneliness and misery. Rather, recognize the unique opportunity you

have been afforded -- and live it to the fullest. Instead of pouring your paycheck into the search for a soul mate on Match.com, put it to good use. Rather than cruising for dates at the local pub every night, volunteer somewhere.

Who knows? God may have someone special waiting for you there.



Micah Woodard

# Campus lacks snow removal, clean roads

The worst storm to hit the St. Louis area since the snowstorm of 1982 occurred last week, giving us two full snow days.

Though snow is still a wonder and new aspect of life for me, I'm a senior and have seen the city covered in snow many times before. Each time I look out the window, it still surprises me to see the blankets of snow

temperatures don't re-freeze the mounds of ice and snow.

Students driving on campus Thursday morning, or Friday morning for that matter, were not greeted with clean roads and salted snow,



Samantha Werbiski

however. Layers of snow covered layers of sleet covering a thick layer of ice causing cars to sink from the weight and the tires to fruitlessly push forward with no

evident advancement except backwards.

If driving around campus was difficult, then walking from class to class was brutal. Treacherous winds, freezing temperatures, ice-covered concrete, and wearing shoes without enough traction made the five-minute walk from class to class seem to last the amount of an evening class. Trying not to plummet headfirst into a foot of snow proved more

problematic to handle than coursework at times.

Some snow removal and salt would have saved us a bit from that traumatic experience. I felt like a failure as I drove on the campus's sleek roads--after all, I do not have much practice when it comes to driving in these weather conditions. It took me almost three hours to get my car to back out, and when I returned to campus it took me almost half that time of kicking snow out of the way to plow the car back into a parking spot.

I understand that the amount of snow that has fallen is not easy to dispose of. There are vacant lots around the city newly decorated with several 7-foot mounds of snow. I also understand, but why can't the university simply hire a snow removal company to clean the campus a bit? At least then, the only thing we would have to worry about it is slipping on ice instead of wet shoes, freezing feet, and falling on our face.

# Current Events Ledger

## Do you enjoy Valentine's Day? Why or why not?

"I would enjoy it more if I were in a relationship, but I do enjoy the holiday with friends."

—Katelyn Bowman, freshman



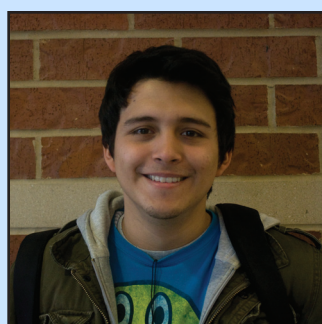
"I do if I have a Valentine. If not, then I don't really think about it."

—China Moore, sophomore



"If perhaps I was in a relationship, it would be great, but given I'm single, it's not exactly the most fun holiday."

—Katy Rutledge, sophomore



"Not really. It's just a strategical holiday to sell more cards and gifts. You should show love everyday, not just the 14th."

—Samuel Aguilar, freshman



"I don't like or dislike it. It's just another day. If it ain't putting no money in my pocket, it ain't important anyway."

—JR Bass, junior



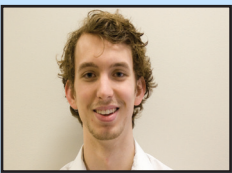
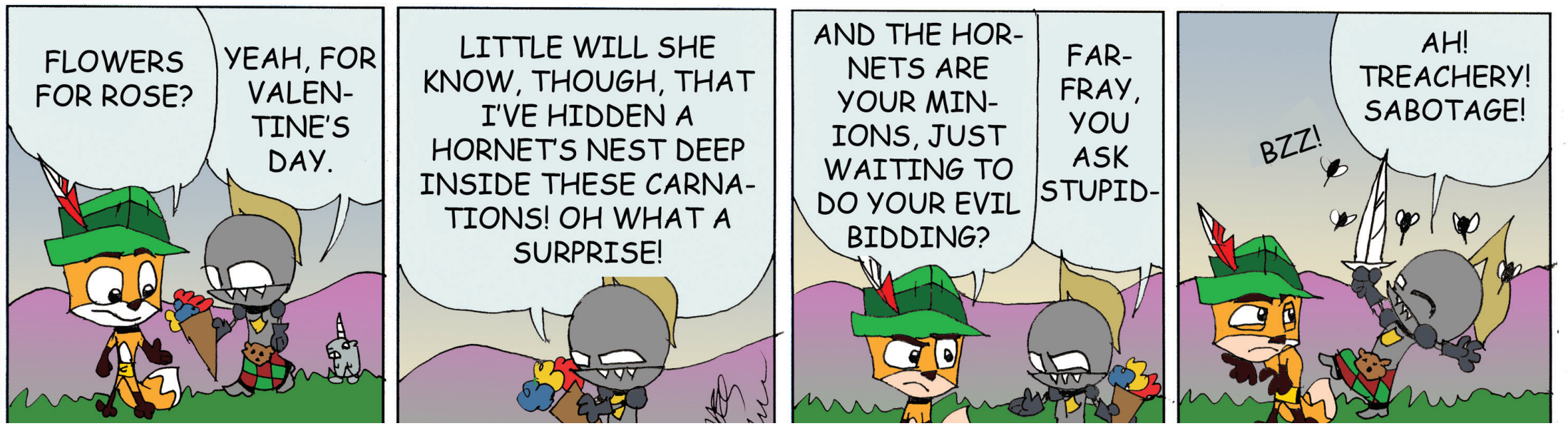
"Yeah, I have a good time. I always get a present, and it's always a good date."

—Colin Long, junior

**The Legacy**  
 Spellmann Center 3095/3100  
 209 S. Kingshighway  
 St. Charles, Mo. 63301  
 Telephone: (636) 949-4336  
 E-mail: journalismlab@lindenwood.edu

**The Staff:**  
**Editor-in-Chief:** Micah Woodard  
**Managing Editor:** Natasha Sakovich  
**Photo Editor:** Lauren Kastendieck  
**Entertainment Editor:** Matt Korn  
**Asst. Entertainment Editor:** Abby Buckles  
**Sports Editor:** Alex Jahncke  
**Asst. Sports Editor:** Issa David  
**Opinions Editor:** Samantha Werbiski  
**Senior Writer:** Kenny Gerling  
**Cartoonist/ Ad Designer:** Wes Murrell  
**Ad Manager:** Melissa Simon  
**Faculty Adviser:** Tom Pettit

# Scottish & Farfray by Wes Murrell



## He Said/She Said



### Valentine's Day- Is it a holiday for couples or girls?

By Matt Korn  
Entertainment Editor

Valentine's Day is a one-sided holiday.

That's right ladies, this is your holiday. Who gets the flowers, chocolate, balloons and stuffed animals with the doofy looks?

All the while, who is pressured by society to spend hundreds on one stupid day in February?

This may seem like an extremist opinion to the norm, or maybe even a stereotype that in most cases isn't true anymore. But I highly doubt it- Valentine's Day is a girl's holiday.

The following is an excerpt from an actual wall conversation on Facebook:

Person 1- "...no valentines for me.."

Person 2- "(y no Valentine's?"

Person 1- "because John doesn't really like valentine's day."

Person 2- "Well tell him

Vday is important to girls and if he wants to have another one with u he better make it special."

Read that last part twice, and then try to tell me it's not a girl's holiday.

There are those who believe there's a quid pro quo to Valentine's Day that makes the stereotype false: women get gifts, men get intimacy. I've had several girls tell me that.

So let me get this right: Valentine's Day is a day where females perform acts of intimacy in exchange for gifts, right? Gee that sounds familiar; in fact it sounds an awful lot like prostitution.

However, I digress. Valentine's Day is, and will always be a girl's holiday. Companies gear their commercials towards girl gifts and guys rack up large bills making sure their loved ones "feel" loved. So ladies, enjoy your day of chocolate and flowers.

To read more 'He Said-She Said,' check out: [www.lindenlink.com](http://www.lindenlink.com)

By Holly Hoechstenbach  
Staff Reporter

Flipping through newspaper ads the other day I noticed two things: jewelry stores promoting the sparkle and shine of Valentine's Day and numerous selections of lingerie, clearly a gift for him not her. Is Valentine's Day really about buying the "perfect" gift for your lady, or is it about expressing your feelings and spending time together?

Believe it or not, there are women out there that don't feel the need to be pampered with the typical flowers, teddy bears and boxes of chocolate on Valentine's Day. Yes, we do exist. Although I admit I enjoy flowers, stuffed animals and chocolates, this over-commercialized day is not all about gifts. Which is more significant: receiving your yearly V-Day rose or expressing love and affection through each other's company? Love itself is a gift and doesn't have a price tag.

When focusing on buying gifts, Valentine's Day can become something forced and fake. Spending time as a couple and doing something that both of you enjoy is what Valentine's Day is truly about. In today's society despite all the Valentine's Day generic gifts geared toward women, couples are using this day to make it special for both him and her. Eating dinner together, seeing a movie of both individuals' preference, watching a local band, going to a sports game or taking a walk in a park are just some examples.

One of the greatest feelings is telling your sweetie how much you appreciate and care about them. Ask any woman and 99 percent will agree. A current statistic shows that women like to give too on Valentine's Day. According to the U.S. Greeting Card Association, approximately 85 percent of all Valentine's Day cards are purchased by women. Surprising, isn't it?

## Guy's guide to success on V-Day

By Abby Buckles  
Asst. Entertainment Editor

Valentine's Day is less than a week away. Give it a few days, and guys will probably remember and begin panicking because they've failed to make plans. Or they forgot to buy their special someone that stereotypical bouquet of a dozen red roses, useless

different.

Instead of relying on Hallmark to do the thinking, how about purchasing a blank card and writing a personal heartfelt message inside.

If you have a little extra time on your hands, it would be even better to pick up a pack of blank cards or "thank you's" and write a personal

note to her in each. For example: I remember when... Thank you for... I love you because... etc. Write 31 of them so she'll be reminded every day for an entire month just how special she is to you. Then sign, seal and tie together with a ribbon.

**Guys, Walmart loves you - you're easy marketing targets and believe we actually have use for that stuff. Save your money because surprise, surprise - here's what we'd like to receive instead.**

60-inch teddy bear or that big 'ole heart-shaped box of chocolates. Guys, don't do it. Coming from a woman, possibly less needy than others, it's a waste. We don't want that ridiculous heart-holding frog or that obnoxious singing and dancing stuffed puppy.

Guys, Walmart loves you. You're easy marketing targets, and believe we actually have use for that stuff. Save your money because surprise, surprise - here's what we'd like to receive instead.

Sure flowers are nice, but that's an easy given.

Then there's dinner reservations at a fancy, white tablecloth restaurant which is again nice.

Then there's the long-term girlfriends that expect jewelry, but as unbelievable as it may sound it's not a must. None of these are musts.

Yes, there are some girls out there that prefer these things. But for those that don't, how about something

bon. If this sounds like it's dripping with cheese, you're right. But we women love that kind of stuff.

Try framing a special photo of the two of you. Get brownie points if you go the extra mile and decorate the frame.

Instead of going to a fancy dinner and letting someone else do the cooking, try making the meal yourself complete with candles.

It's been said that handmade gifts are the most thoughtful. Make it personal, and I can almost guarantee it will bring a smile to her face or reduce her to tears - either way, it's a good sign. Congratulations, you just scored big.

## Valentine's Day Word Search

- CANDY
- COMMERCIAL
- CUPID
- FLOWERS
- HEART
- ENGAGEMENT

Q D E E E J H B R S O S C P K  
 T F F R F N O E R G W C A Y R  
 K H J L C G G E A E N O N L Q  
 Q Z G G Q A W A E R Q O D V U  
 V G D Z Y O S T G A T P Y K M  
 F C W L L K H S C E S T S T H  
 Q O S F J E A U A Q M B E F P  
 E M U G A G P V H M Q E A J Q  
 C M Y R S I N G L E F M N J R  
 N E T I D I J J P Y W F C T I  
 A R A Z O D K X X C Y F H E D  
 M C E V O L P N R I B I U K Z  
 O I L D R M H W A Z K V H Z B  
 R A Y X H V B W D R R Q X G L  
 W L E N I T N E L A V X M J T

- LOVE
- ROMANCE
- MASSACRE
- SINGLE
- SWEETHEART
- VALENTINE

**Lloyd and Harry's** HOME OF THE 99¢ 1/2 LB BURGER

40¢ BUFFALO WINGS & PEEL & EAT SHRIMP  
 KITCHEN OPEN DAILY 11AM - 10PM  
 full menu!

LIVE DJ 5 NIGHTS  
 LIVE MUSIC SUNDAYS & THURSDAYS

MONDAY FEBRUARY 14  
 SWEETHEARTS & SINGLES PARTY  
 DJ TREAS  
 GIVEAWAYS & SPECIALS

facebook.com/lloydandharrys

LLOYD & HARRY'S 208 N. MAIN ST. ST. CHARLES

# J-Term kicks off 'Study Abroad' for LU students

By Andrea Scott  
Staff Writer

**COSTA RICA** – “Pura vida!” Everything is all good! That’s a phrase that started 2011 off right for some Lindenwood scholars.

Eighteen Lindenwood students joined Professor Nancy Cloutier-Davis on Jan. 12 for a two-week excursion to Costa Rica.

The first four days, the group visited the town of Puerto Viejo and the Bribri tribe indigenous territory, learned to make Afro Caribbean meals, toured the Refuge Vida Silvestre Gandoca Manzanillo and the Chauita National Park.

Senior Jasmun Moorehead, an exercise science major, said, “I really enjoyed meeting indigenous people and seeing how they live differently from the people in Heredia [where the group eventually settled for studies].”

Students observed many different animals, places and people while hiking for several hours and even walking through a raging river.

The students felt that it was

worth it, though, when they reached the beautiful waterfall at the end of the hike.

After touring the southwestern part of Costa Rica, the students traveled to Heredia to go to school and visit more historical sites.

They explored the Poas Volcano National Park, the La Paz Cataratas Waterfall Gardens and a coffee plantation.

Students focused on Costa Rican culture and values and its differences from American society.

Senior Arista White senior said, “I learned about life outside of the U.S. ...

**“I don’t want to go home. I am happy I am able to stay here for 15 weeks, and I recommend this trip to everyone. This is a once-in-a-lifetime opportunity - trust me, it is worth it.”**

*-Dana Porter  
Sophomore*

about other aspects of the country, such as the agriculture, economy and the people.”

Six of the 18 students and Cloutier-Davis returned to Lindenwood by the end of J-Term, and 12 stayed to participate in the semester abroad program. Those

students will go to school five days of the week and live with a Costa Rican family.

Later in the semester the students will have classes in Samara, visit Nicaragua and other historical places dur-



Legacy photo by Andrea Scott

Lindenwood students waded up to their knees in Cost Rican waters during a two-week excursion during J-Term led by professor Nancy Cloutier-Davis.

ing their 15 weeks in the program.

Sophomore and Spanish major Dana Porter said, “I love everything about Costa Rica. I don’t want to go home. I am happy I am able to stay here for 15 weeks, and I recommend this trip to everyone. This is a once-in-a-lifetime opportunity—trust me it is worth it.”

For more information about the Study Abroad Spanish Program, contact Cloutier-Davis at NCloutierDavis@lindenwood.edu



Legacy photo by Andrea Scott

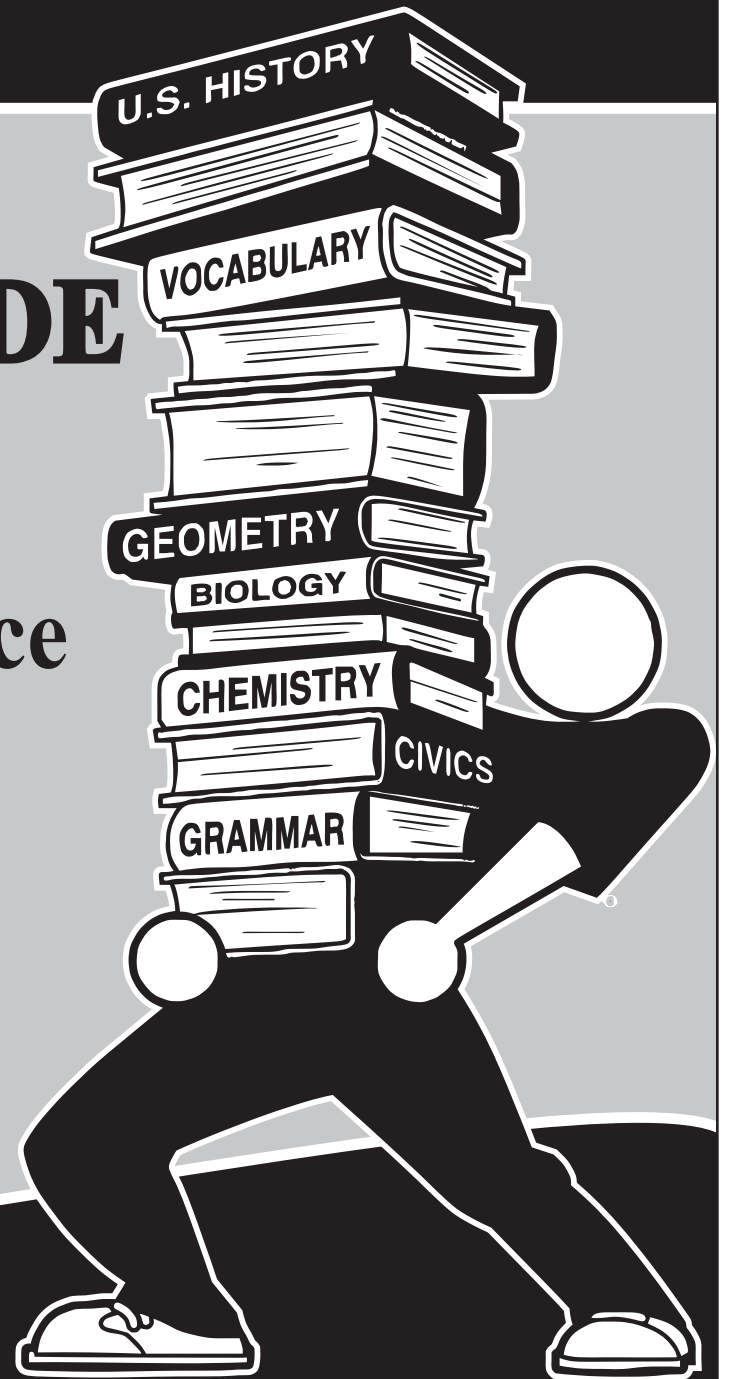
A Costa Rican waterfall rages in the forest. Students explored several different historic sites during the trip.

# BOOK-X-CHANGE

**NEW**

**RENT BUY SELL TRADE**

- Renting... Cheaper than buying
- The right book for the right price
- Great return policy
- Run by students for students
- Cheap. Fast. Easy



**(636) 949-2422**

**WWW.LUTEXTBOOKS.COM**



Legacy Photo by Adrian Kweli

The men's volleyball team celebrates after beating Hope International University Friday at their home tournament, the Lindenwood Invitational. The Lions closed out the tournament Saturday, undefeated at 4-0. They will travel to play Siena Heights University this Saturday, Feb. 12.

# MIAA sets up 2012 football

By Issa David  
Asst. Sports Editor

The Mid-America Intercollegiate Athletics Association (MIAA) revealed the football schedules for 2012-2015.

The Lindenwood Lions will play their first game in MIAA on Sept. 1, 2012 at Lincoln University located in Jefferson City. The first home game for the Lions is Sept. 8, 2012 against Southwest Baptist (Bolivar, MO).

"It's definitely a great conference, so it is exciting for us to go in there and compete against the best division II teams in the country," Head Coach Patrick Ross said.

In 2012, the MIAA will expand to 16 teams. In that year, an 11 game schedule where all of the opponents are MIAA schools will play out.

No team will play more than two home games in a row and the schedule will remain the same for two years. Therefore, in 2012 and 2013, the Lions will face the same opponents, but the location is going to be different. The Lions will not play non-conference teams until at least the end of the 2015 season.

The Lions will play five home games and five away games every year until 2015. The 11 game will be the rivalry game which will rotate home and away every

year. Therefore, the Lions can have six home games and five away games and vice versa.

The MIAA gave each team a rival based on similarities and location. Truman State is the rival for the Lions. LU will play Truman on Nov. 10, 2012 in Kirksville. In 2013, Truman State will come to St. Charles on Nov. 16. Both of these games will be the last game of the season. "Its gonna be good to get a chance to play them year in and year out," Ross said.

It is possible for two or more teams to win the MIAA since not all the teams will play each other. The Lions are not sure if they are going to the playoffs in 2012. "2012 is still up in the air," Ross said.

In 2011, the Lions will play be a mix of NAIA and D-2. They will face six D-2 opponents: Texas A&M Kingsville, U of Central of Oklahoma (MIAA School), Missouri S&T, St. Josephs from Indiana, Tarleton State University from Texas, and Northern Colorado. "There is no opportunity for post-season play in 2011," Ross said.

This is because of NCAA rules. The NCAA does not allow transition schools postseason play in their first year. Ross said their style of play and recruiting would remain the same.

**"It's definitely a great conference, so it is exciting for us to go in there and compete against the best division II teams in the country."**

—Patrick Ross  
Head Coach

# NCAA forces difficult decisions

By Micah Woodard  
Editor-In-Chief

LU men's volleyball will be forced to make several sacrifices before the squad can make the jump to NCAA Division II next season.

Because of NCAA regulations, the Lions will have to cut the program to 24 members, a 33 percent decrease from its current 36-player team (including varsity and junior varsity).

Of the 36 members, only seven are seniors, and Head Coach Ron Young said the team will add one or two more freshman recruits.

Meaning the team must cut roughly six or seven players after the 2011 season.

"At the beginning of year, I basically told everyone that this is what's

coming ... No matter what team you're on, it's a tryout to be in the program in the future because of the direction we're going," Young said. "Every day is an evaluation day."

In addition, the JV squad will eventually dissolve, and the program's number of full scholarships it may award will be decreased from eight to 4.5.

Despite the inevitable downsizing, Young said the Lions are focusing solely on the 2011 campaign, and a recent hot streak supports his statement.

"If it's on their mind, it's not visible," Young said. "Every day, it's preparing for the next opponent. Daily, we are looking at where we are as a team - what improvements we've gotta make."

The Lions are currently 6-5 after sweeping the annual Lindenwood Invitational held last weekend at the Hyland Performance Arena. Young said the tournament created several head-to-head matchups that will have great impact on the national rankings.

The sweep included a victory over St. Ambrose University, which entered the tournament as No. 2.

Before the tournament started, Young said the Lions viewed the Invitational as a means to "right the ship" after a dismal 2-5 start.

Young attributed the slow start to a failure to preserve leads. "We're letting stuff get away," he said. "Some of it is unlucky; some of it is unforced errors on our part."

The Lions are working toward their final MAMVIC conference tournament, scheduled for April 1-2 in Hannibal, Mo. Young said the decisions on who to cut won't be made until after the season - when final evaluations occur.

"There will be some hard decisions to make here in the future," Young said.

**"No matter what team you're on, it's a tryout to be in the program in the future because of the direction we're going."**

—Ron Young  
Head Coach

# My Take: Men's hockey heading for yet another great finish, on the way to fourth straight

As we near the end of the Lion's ice hockey season, I can't help but be impressed.

Yes after winning back to back championships and proving they are actually this good, I am still in awe with what they are accomplishing.

I recently had an offer to talk on a podcast for Ohio University hockey, and I have to tell you it was one of the hardest things I have had to do. No, not because I had stage fright. No, it was

simply because it was hard not to come off cocky talking about Lions hockey.

I examined the stats really well before the podcast and they really are just unheard of. The Lions recently ended a 17 game win-streak. At the beginning of January they suffered only their second loss of the season, and already they are back on an eight game win-streak.

The Lions are being lead by senior Cory Spradling. He leads the team in goals

with 30 and is second in assists with 30. This guy is ridiculous, but he has a lot of help with the endless talent on the team. I could go on and on, but I'll just mention one more name...goal-

tender Robi Cavallari. With a 19-2 record, Cavallari is the glue that holds this team together. He has a 2.13 goals against average, and a shutout so far this season.



Alex Jahncke  
Sports Editor

Of course anything can happen in the playoffs, and it will be interesting to see the outcome.

The Central States Collegiate Hockey League (CSCHL) tournament will start on Feb. 18 in Bensenville, IL.

I can't wait for the action to start. The Lions have adjusted really well to their new coach Rick Zombo, and I would love to see the Blues alumni take LU to their third championship in a row.

## You Need Insurance, We Make It Easy!

- Superior Coverage
- Top Notch Service
- High Customer Satisfaction
- Serving Businesses and Individuals in St. Charles County for over 30 years



Steven J. Lang, President

**Lang** Insurance Service (636) 229-7000  
Insurance Made Easy!® www.langinsurance.com

Health ▪ Auto ▪ Home ▪ Life ▪ Business

# Free Tanning for Students

1069 Salon + Tan Studio  
**FREE TANNING AND \$1 TANS 4-DAY SPECIAL\***  
Monday Feb. 14 - Thursday, Feb. 17  
\*For Lindenwood University Students, Faculty & Employees

**FREE** tanning for all **NEW** customers  
\$1 tans for all **EXISTING** customers

**EYEWEAR REQUIRED**  
Bring yours or purchase one at 1069 Salon for \$6

**1069 Salon + Tan Studio**  
1069 First Capitol Drive, St. Charles, MO  
Phone: 636-947-1069  
Salon hours: 11am-4pm Mon  
10am-8pm Tues-Thurs  
10am-4pm Fri  
10am-3pm Sat

# Schaub back in the saddle

By Issa David  
Asst. Sports Editor

The 2011 men's lacrosse team begins its season today at home against Fontbonne University.

The season was supposed to start on Feb. 4, but due to the winter storm, they had to cancel. The games against Texas State University, Southern Methodist University, and the University of Texas were the cancelled Feb. 4-6 games. Makeup dates are yet to be determined.

Derek Schaub returned to coach lacrosse after leaving in 2003 to coach men's ice hockey. Schaub helped start the lacrosse program in 2003.

Schaub led roller hockey to a 40-1 overall record and two national titles in 2002 and 2003. In 2003 he led lacrosse to a conference championship and won first place in the GRLC Division B Tournament.

After one year coaching lacrosse, he started another program in men's ice hockey. In the last seven years, Schaub went 217-57-3, with two national titles in 2009 and 2010. No matter what sport Schaub coached, "a lot of things are very similar whether it is hockey or lacrosse."

Lacrosse had continued success when Schaub left. Troy Hood took over and led the team to a 103-39 overall

record with five conference tournaments and five national tournaments. Hood left to pursue other careers.

Now Schaub is back coaching the program he started. "The overall talent level has increased dramatically [since 2003]," Schaub said.

The team has four seniors: Mike Mertzluft, Josh Arras, Greg Wisniewski, and Tyler Davis. "It is always going to be an adjustment when you have a new coach," Schaub said.

**"The overall talent level has increased dramatically."**

—Derek Schaub  
Head Coach

Arras, Josh McKay, Dan Strike and Tyler Davis are the four captains. There is "pretty good balance between the four," Schaub said.

Lacrosse is not part of the NAIA.

They play in the Men's Collegiate Lacrosse Association (MCLA). The conference is "gonna be the key for us this year, [we have a] very busy schedule," Schaub said.

The team will be playing MCLA opponents and Division two opponents as they transition to Division two. The MIAA does not accept lacrosse as a sport. Lacrosse is looking for another conference or to go independent. Schaub said going independent is the last resort for the program.

Lacrosse will face six division two opponents: Illinois State University, University of Missouri-Columbia, Purdue University, Indiana University of Illinois, and University of Wisconsin.

## Lions basketball still on top



The Lindenwood Lions Basketball team competed in their annual Blackout game last Thursday against Evangel University. The Lions lost in a close game by the score of 76-74. It was only the Lions third loss of the season, and they are first in the Heart of America Athletics conference. There are only six games left in the regular season. The HAAC Tournament will begin Mar. 3.

## Lady Lions playoff ready

By Alex Jahncke  
Sports Editor

The women's hockey team will travel to Kalamazoo, MI this weekend to take part in the Central Collegiate Womens Hockey Association (CCWHA) tournament. They are 23-2-2 this season and are working their way to a hopeful fourth championship in a row. They are just coming off a sweep over their long time rivals Robert Morris College, which will add a boost of confidence going into the tournament.

Our whole team is really clicking," said captain Lisa Moreau. "We are physically fit and are working well together as a team, passing and scoring."

There have been many

highlights to the season, including winning the American Collegiate Hockey Association (ACHA) tournament in Chicago, IL back in November. Two weeks ago they shut out Northern Michigan 30-0 and 11-0 in a two game series.

Even with the recent success, they have their work cut out for them. Michigan State University and the University of Massachusetts

have been the only teams to take down the defending champions and will be a tough test heading into the playoffs.

**"We want to win every single game. That's it, we want to win, but every team has their ties and losses and that's where we really learn."**

—Lisa Moreau  
Senior

The return of goalie Rebecca Bernet has been a huge help this season, but she is not the only one to step it up. According to Moreau, sophomore Bret Lobreau has really come into her own.

"We saw it in her last year, but she has really grown as a

leader as well as a player. It is really cool to see growth in teammates," Moreau said.

One of the reasons the Lady Lions have had so much success is because of their drive and determination. Their willingness to do whatever it takes is the result of hating to lose, but with few losses they take away everything they can.

"We want to win every single game," Moreau said. "That's it, we want to win, but every team has their ties and their losses. That is where we really learn."

The Lady Lions will play in the CCWHA tournament this weekend. Then they will wrap up regular season play against the University of Wisconsin the following weekend. The ACHA National Tournament will start on Thursday, Mar. 10.

## SCOREBOARD

### Womens Ice Hockey

10/9- Robert Morris College (Ill.) W 2-0  
10/10- Robert Morris College (Ill.) W 6-1  
10/17- Michigan State University W 2-0  
10/18- Michigan State University 12 p.m.  
10/24- Western Michigan University 6 p.m.  
10/25- Western Michigan University 12 p.m.  
10/31- University of Michigan TBA  
11/1- University of Michigan TBA  
11/7- Grand Valley State University 7 p.m.  
11/8- Grand Valley State University 12 p.m.  
11/13- Bethel University 5 p.m.  
11/14- College of St. Catherine 5 p.m.  
11/19- Liberty University 9:20 p.m.  
11/20- Liberty University 2 p.m.

11/21- University of Colorado 6 p.m.  
11/22- University of Colorado 12

### Mens Basketball

Lion Pride Classic  
11/5 McKendree University 8 p.m.  
11/6 Southern Nazarene University (Okla.) 4 p.m.  
11/12 Concordia Seminary 7 p.m.  
11/16 Mid-Continent University (Ky.) 7 p.m.  
11/20 Maryville University 2 p.m.  
11/30 Missouri Baptist University 7 p.m.  
12/2 Culver-Stockton College (Mo.) 7:30 p.m.  
12/4 Baker University (Kan.) 4 p.m.  
12/9 Evangel University (Mo.) 7:30 p.m.  
12/14 East-West University 7 p.m.  
Robert Morris Classic  
12/17 Robert Morris College 7:30 p.m.  
12/18 Rocky Mountain College (Mont.) 2 p.m.  
1/3 Central Bible College 7 p.m.  
1/6 Missouri Valley College 7:30

p.m.  
1/8 Graceland University (Iowa) 4 p.m.  
1/10 Avila University (Mo.) 7:30 p.m.  
1/13 Central Methodist University (Mo.) 7:30 p.m.  
1/15 MidAmerica Nazarene University (Kan.) 4 p.m.  
1/22 William Jewell College (Mo.) 4 p.m.  
Opinions Editor:  
1/24 Benedictine College (Kan.) 7:30 p.m.  
1/27 Culver-Stockton College (Mo.) 7:30 p.m.  
1/29 Baker University (Kan.) 4 p.m.  
2/3 Evangel University (Mo.) 7:30 p.m.  
2/5 Benedictine College (Kan.) 4 p.m.

### Mens Volleyball

1/7 Ball State University L 3-0  
1/14 Quincy University W 3-1  
1/15 Alumni Match  
1/21 Lewis University L 3-0  
1/22 Loyola University Chicago 3-1  
1/25 Missouri Valley College W 3-1  
1/28 Park University L 3-2  
1/29 Graceland University L 3-1  
Lindenwood Invitational  
2/4 St. Xavier University W 3-0  
2/4 Hope International University W 3-0  
2/5 Clarke College W 3-0  
2/5 St. Ambrose University W 3-2  
2/8 Hannibal-LaGrange College 2/12 Siena Heights University (Mich.) 1:00 p.m.  
2/12 Cardinal Stritch University (Wis.) 3:00 p.m.  
2/15 Missouri Baptist University 7:30 p.m.  
2/20 Graceland University (Iowa) 3:30 p.m.  
2/22 Grand Canyon University 6:00 p.m.  
2/24 California Baptist University 7:00 p.m.  
2/25 California Baptist University 7:00 p.m.  
2/26 Hope International University (Calif.) 7:00 p.m.  
3/1 Missouri Baptist University

7:30 p.m.  
3/5 Johnson & Wales University (Colo.) 9:30 a.m.  
3/6 Johnson & Wales University (Colo.) 1:00 p.m.  
3/8 Park University (Mo.) 3:00 p.m.  
3/9 Missouri Valley College 7:30 p.m.  
Park Tournament  
3/18 Park Tournament  
3/19 Park Tournament  
3/22 Hannibal-LaGrange College (Mo.) 7:00 p.m.  
3/24 Quincy University 7:00 p.m.  
4/1 MAMVIC Tournament  
4/14 NAIA National Tournament

### Mens/Womens Bowling

10/2-3 40th Hammer Midwest Collegiate  
10/16-17 Orange and Black Classic  
10/30-31 Boilermaker Classic West  
11/6-7 Brunswick Southern Classic  
11/13-14 SI Elite Invitational  
11/20-21 Knights Classic  
11/26-27 Match Games  
12/4-5 Leatherneck Classic  
1/15-16 Hoinke Bearcat Classic  
1/22-23 Blue and Gold Classic  
1/29-30 Lindenwood Lions Shark/Chameleon Classic  
2/5-6 McKendree Baker Challenge  
2/19-20 Hoosier Classic  
3/11 ITC Singles Sectional Qualifiers TBA  
3/12-13 ITC Team Sectional Qualifier TBA  
4/1-3 NAIA Showcase  
4/20-23 USBC Intercollegiate Team National Championships

### Womens Basketball

11/3 Lindenwood University-Belleleville 6 p.m.  
11/6 Harris-Stowe State University (Mo.) 2 p.m.  
11/9 McKendree University 7 p.m.  
11/13 Missouri Baptist University 6 p.m.  
11/18 Columbia College (Mo.) 7 p.m.  
11/20 Harris-Stowe State University (Mo.) 12 p.m.  
11/23 Hannibal-LaGrange College

(Mo.) 7 p.m.  
11/29 Fisk University 6 p.m.  
1/6 Missouri Valley College 5:30 p.m.  
1/8 Graceland University (Iowa) 2 p.m.  
1/10 Avila University (Mo.) 5:30 p.m.  
1/13 Central Methodist University (Mo.) 5:30 p.m.  
1/15 MidAmerica Nazarene University (Kan.) 2 p.m.  
1/20 Saint Louis College of Pharmacy (Mo.) 7 p.m.  
1/22 William Jewell College (Mo.) 2 p.m.  
1/24 Benedictine College (Kan.) 5:30 p.m.  
1/27 Culver-Stockton College (Mo.) 5:30 p.m.  
1/29 Baker University (Kan.) 2 p.m.  
2/3 Evangel University (Mo.) 5:30 p.m.  
2/5 Benedictine College (Kan.) 2 p.m.  
2/7 Fisk University 7 p.m.  
2/10 Missouri Valley College 5:30 p.m.  
2/12 Graceland University (Iowa) 2 p.m.  
2/14 Avila University (Mo.) 5:30 p.m.  
2/17 Central Methodist University (Mo.) 5:30 p.m.  
2/19 MidAmerica Nazarene University (Kan.) 2 p.m.  
2/26 William Jewell College (Mo.) 2 p.m.

### Roller Hockey

10/22 University of Missouri - St. Louis W 9-0  
10/23 Missouri S & TW 8-1  
10/24 Illinois State University W 11-1  
11/5 Saint Louis University W 10-0  
11/6 Missouri State University W 6-4  
11/6 Saint Louis College of Pharmacy (Mo.) W 10-0  
11/6 St. Charles Community College W 12-3  
11/7 Maryville University W 12-2  
11/13 Truman State University W 10-0  
11/14 Southeast Missouri State University W 10-0  
11/14 St. Louis Community College-Meramec W 10-0

1/29 Western Illinois University 1:00 p.m.  
1/29 Southern Illinois University 3:00 p.m.  
1/30 University of Illinois 11:00 am

### Mens Hockey

9/24 Davenport University (Mich.) W 3-2 SO  
9/25 Davenport University (Mich.) L 2-3  
10/1 University of Central Oklahoma W 6-2  
10/2 University of Central Oklahoma W 5-1  
10/8 Oklahoma University W 3-2  
10/9 Oklahoma University W 7-2  
10/22 Indiana University W 8-0  
10/23 Indiana University W 7-1  
10/29 Kent State University W 4-3  
10/30 Kent State University W 11-0  
11/5 Oklahoma University W 5-4  
11/6 Oklahoma University W 8-3  
11/12 University of Illinois W 6-3  
11/13 University of Illinois W 4-1  
11/19 Arizona State University W 7-2  
11/20 Arizona State University W 7-3  
12/3 Iowa State University 7:30 p.m.  
12/4 Iowa State University 8:00 p.m.  
1/7 University of Illinois 7:30 p.m.  
1/8 University of Illinois 4:00 p.m.  
1/14 Robert Morris College (Ill.) 7:30 p.m.  
1/15 Robert Morris College (Ill.) 4:00 p.m.  
1/21 University of Central Oklahoma 7:30 p.m.  
1/22 University of Central Oklahoma 4:00 p.m.  
1/28 Ohio University 7:30 p.m.  
1/29 Ohio University 7:30 p.m.  
2/4 Indiana University 7:30 p.m.  
2/5 Indiana University 4:00 p.m.  
2/11 Iowa State University 7:30 p.m.  
2/12 Iowa State University 4:00 p.m.

**ALLIN'S  
DINER**

**636-946-5556**

**130 N. Kingshighway**

**New Hours:**

**Mon - Thur 5:30 am - 4 pm**  
**Fri, Sat 5:30 am - 8 pm**  
**Sunday 5:30 am - 2 pm**

**10% Discount  
for LU Students**



Legacy photo by Natasha Sakovich

Three students, like many seen across campus Feb. 1-2, attempt to get their car out of the mass of snow enclosing their car in its spot near Cobbs.

## Snow

Continued From Page 1

Unlike during J-Term when a snow day forced students to attend class an extra day, the university does not require days to be made up during the normal semester.

“The main issue is that at no time does the university want to put anyone in any danger,” Weitzel said.

“We made the best decision that we can with the information available at the time.”



Legacy photo by Natasha Sakovich

Senior Chandra Wood (above) navigates the ice and snow covered steps of Niccolls Hall. Icicles (left) hang from a dorm sign after the storm.

## Peek

Continued from Page 1

Apart from the cafeteria, the 119,000 square foot building will feature three basketball courts, a multipurpose court for activities like roller hockey, a fitness center that will offer classes on Zumba, Spinning and Yoga.

Features will also include lounge areas, a game room, two cinema rooms (that can be converted into one), a music room (iPod and vinyl compatible) and suites for

both LSGA and the Campus Activity Board (CAB).

The building will also be the new home of Student Life and Leadership, along with intramural sports.

Cox said the facility will not be officially opened until this fall.

“We may have another opportunity to take students through it again in May, but the building itself isn’t scheduled for completion until June,” Cox said.

## ESPN

Continued from Page 1

Beal is hard to stop due to his basketball smarts.

He has an excellent shooting range, and Beal will not force things but can take over a game if needed, according to ESPN.

Beal considered going to Kansas and Illinois, among others but chose Florida. The university of Missouri-Columbia (Mizzou) was not in his top five schools.

He was the 2010 Gatorade Player of the Year in Missouri and has a wingspan of 78 inches.

Young is a point guard who is five-star, grade 97 player who is ranked No. 21 in the ESPN 100. He is ranked No. 4 at point guard. Young is 6’3 and 170 pounds and is a major scorer, according to ESPN.

He beats defenders regularly with a tremendous first step. Young will gamble at times and must learn to slow

down and use his great speed smartly, according to ESPN.

Young considered Indiana and Baylor, among others, but chose Arkansas. Mizzou was not in his top five either.

LU basketball will play Graceland at 7 p.m. (women) and 9 p.m. (men), so the Hyland Arena will have three games on Feb. 12. “We will have a quick turnaround,” Queen said.

The season record for McCluer North is 20-1 and 19-0 for Chaminade. “The two high schools have done a wonderful job of promoting the contest,” Queen said.

Tip-off for the ESPN RISE game is at 4 p.m. at the Hyland Performance Arena, and tickets are only available through McCluer North High School. General admission is five dollars, and all-inclusive seating is 20 dollars.

Tickets must be purchased in person. For more information, call 314-506-9234.

NO Monthly Service Charges  
 UNLIMITED Check Writing  
 NO Per-Check Fees  
 FREE VISA Check Card  
 FREE Internet Banking  
 FREE e-Statements  
 FREE Check orders  
 FREE Checking  
 FREE Bill Pay  
 FREE Online Banking  
 28,000 FREE ATMs  
 NO Minimum Balance  
 NO Monthly Service Charges  
 NO Per-Check Fees  
 FREE VISA Check Card  
 FREE Internet Banking  
 UNLIMITED check writing  
 FREE e-Statements  
 FREE Check orders  
 FREE Checking  
 FREE Bill Pay  
 FREE Online Banking  
 28,000 FREE ATMs  
 NO Minimum Balance  
 NO Monthly Service Charges  
 FREE Checking  
 FREE Bill Pay  
 FREE Online Banking  
 28,000 FREE ATMs  
 NO Minimum Balance  
 NO Monthly Service Charges  
 NO Per-Check Fees  
 FREE VISA Check Card  
 FREE Internet Banking  
 UNLIMITED Check Writing  
 FREE e-Statements  
 FREE Check orders  
 FREE Checking  
 FREE Bill Pay  
 FREE Online Banking  
 FREE Checking  
 FREE Bill Pay  
 FREE Online Banking  
 28,000 FREE ATM Machines  
 NO minimum balance

## Music to your ears?



636-916-8300 | [www.TheBetterWaytoBank.org](http://www.TheBetterWaytoBank.org)

1550 Country Club Plaza, St. Charles  
 (located in front of Country Club Apartments, off of Hwy. 94)



Now on to the fine print. This offer is exclusive to new College Checking account holders only. To be eligible for College Checking, you must be between the ages of 18 and 23. To become a member of 1st Financial Federal Credit Union you must live, work, worship, attend school, or regularly conduct business in the following geographic areas: City of St. Louis, St. Louis County, St. Charles County. See credit union for additional qualifications. Giveaway subject to change. Account must be opened before March 31, 2011. Credit Unions are not-for-profit financial cooperatives. Which means that when you become a member, you become an owner. You can make the decisions concerning how your money is handled. It's just one more way that 1st Financial is the Better Way To Bank.