

Lindenwood University

Digital Commons@Lindenwood University

Yearbooks

Lindenwood University Archives

1938

1937-1938 Linden Leaves

Lindenwood College

Follow this and additional works at: <https://digitalcommons.lindenwood.edu/yearbooks>

Recommended Citation

Lindenwood College, "1937-1938 Linden Leaves" (1938). *Yearbooks*. 60.
<https://digitalcommons.lindenwood.edu/yearbooks/60>

This Book is brought to you for free and open access by the Lindenwood University Archives at Digital Commons@Lindenwood University. It has been accepted for inclusion in Yearbooks by an authorized administrator of Digital Commons@Lindenwood University. For more information, please contact phuffman@lindenwood.edu.



Linden Leaves
1938



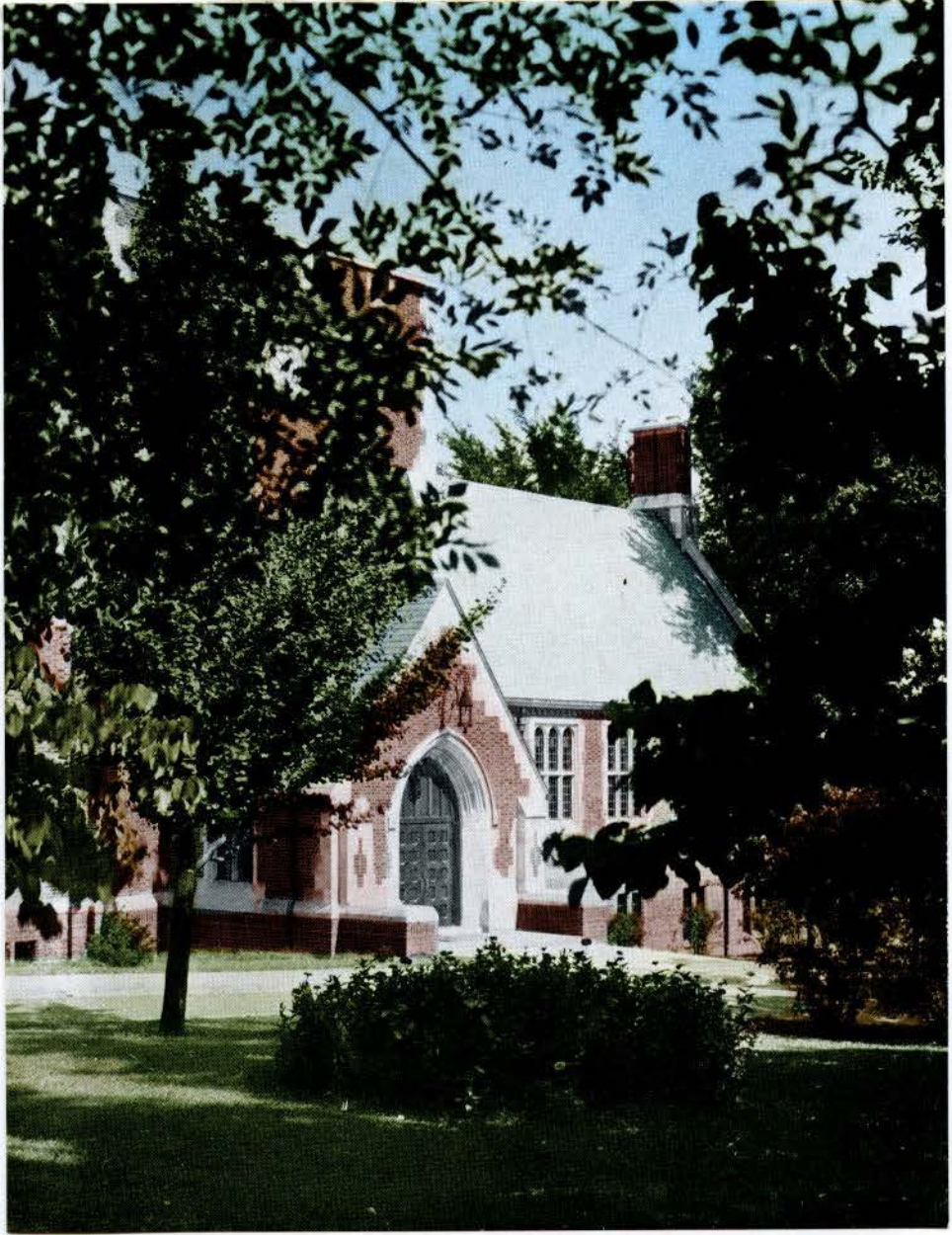
Ex Libris
LINDENWOOD COLLEGE

Founded by
MAJOR GEORGE C SIBLEY
and
MARY EASTON SIBLEY

1 8 2 7

Linden Leaves

1938



THE LIBRARY

LOIS NULL, *Editor*

SUE SONNENDAY, *Business Manager*



*Published by the
Students of*

**LINDENWOOD COLLEGE
SAINT CHARLES, MISSOURI**

1 9 3 8



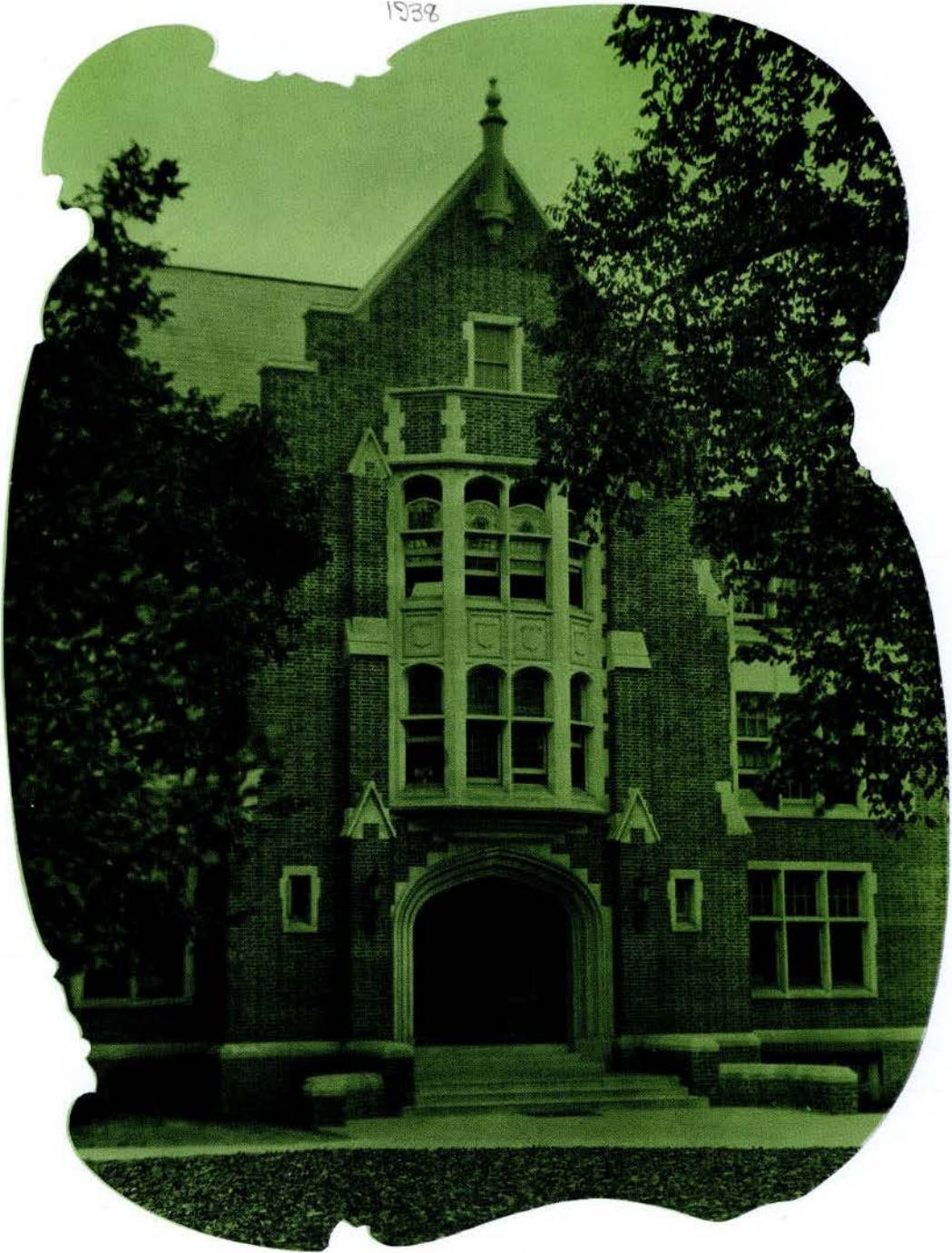


INTRODUCTION

With this 1938 Linden Leaves we give you a typical day at Lindenwood College, and it is our hope that in some way we have captured the spirit of our campus life.

The ideals and traditions of Lindenwood have made an impression upon you, but those little every day incidents that really make college life stand out may at times fade from your memory. May this Linden Leaves then help you to recall your part in life at Lindenwood.

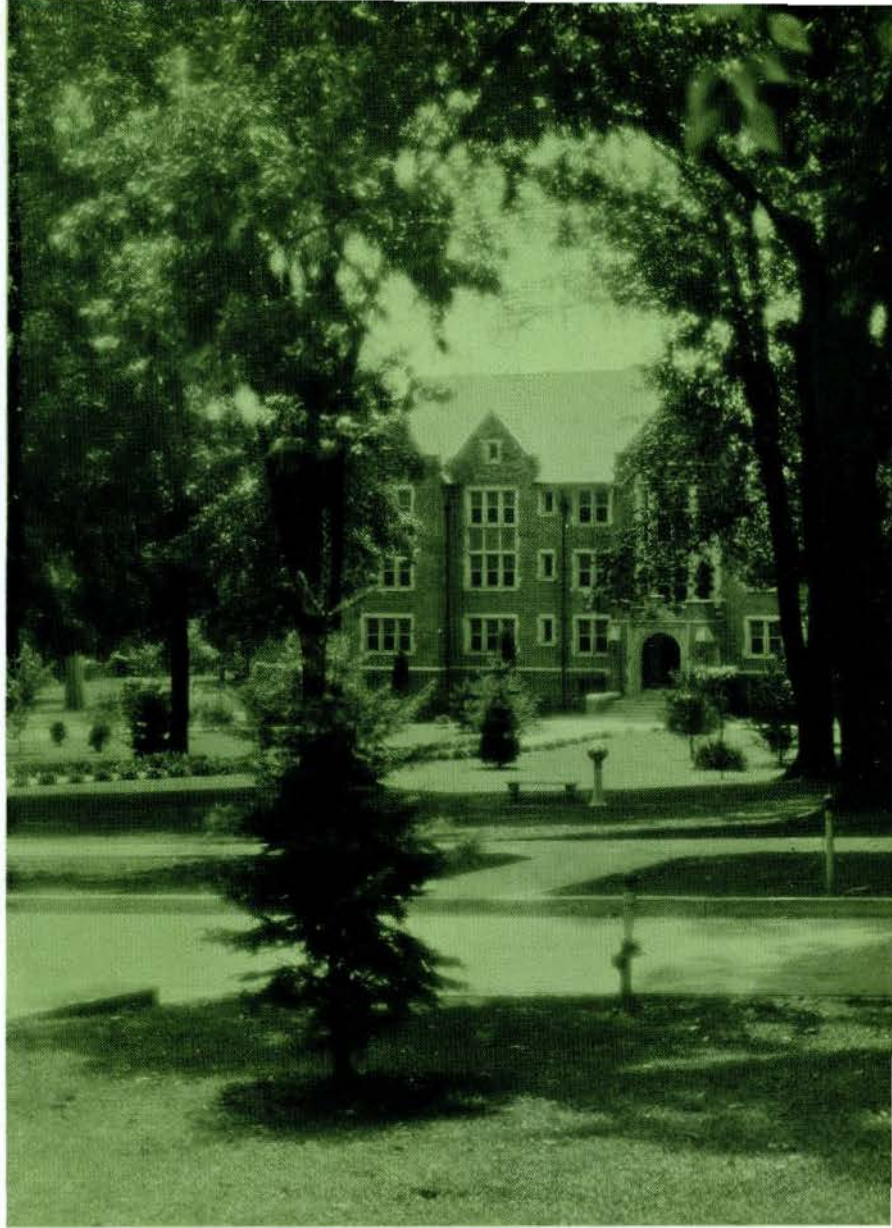
3786
1938



C O N T E N T S

M O R N I N G
A F T E R N O O N
E V E N I N G

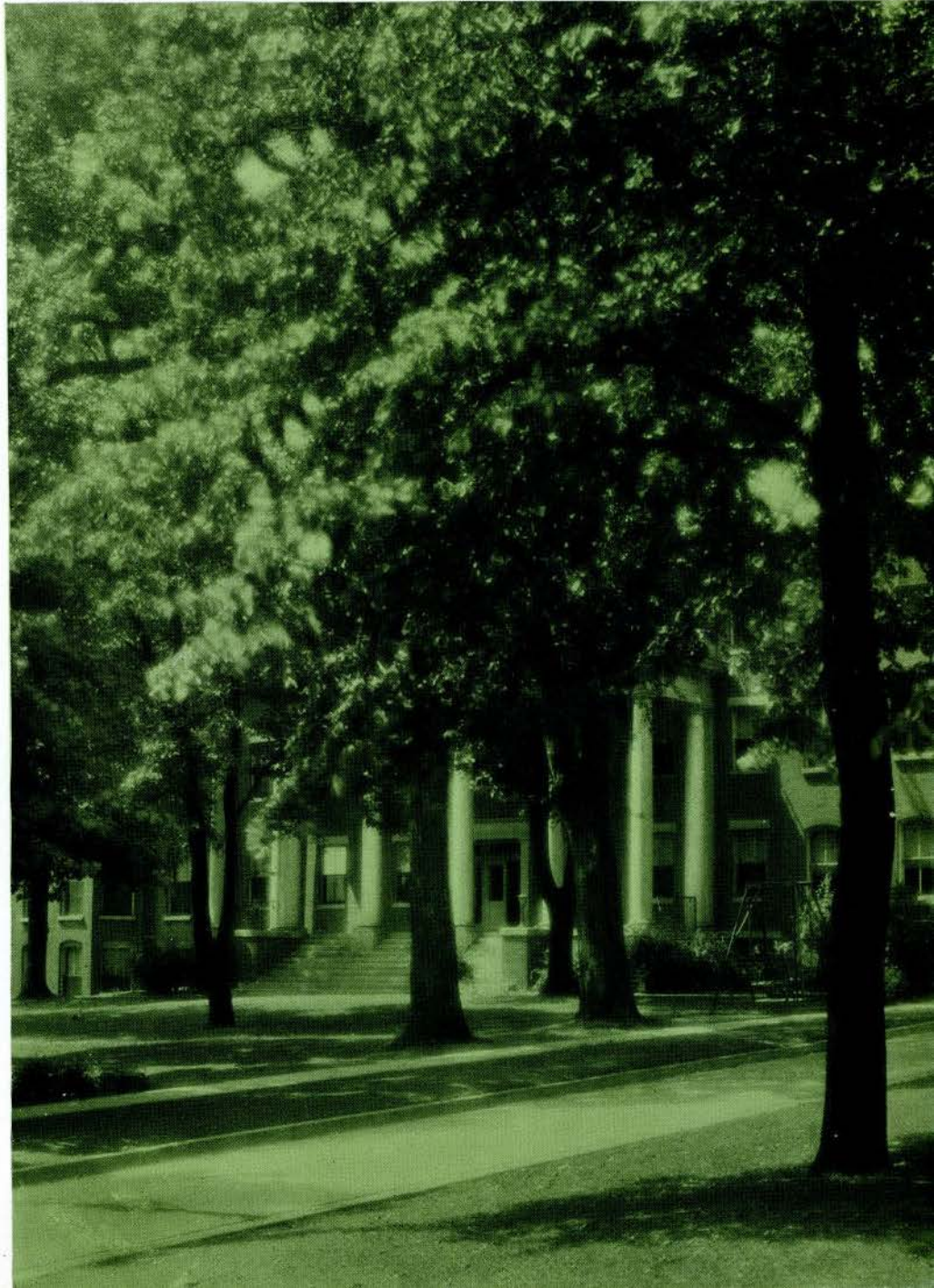
21947



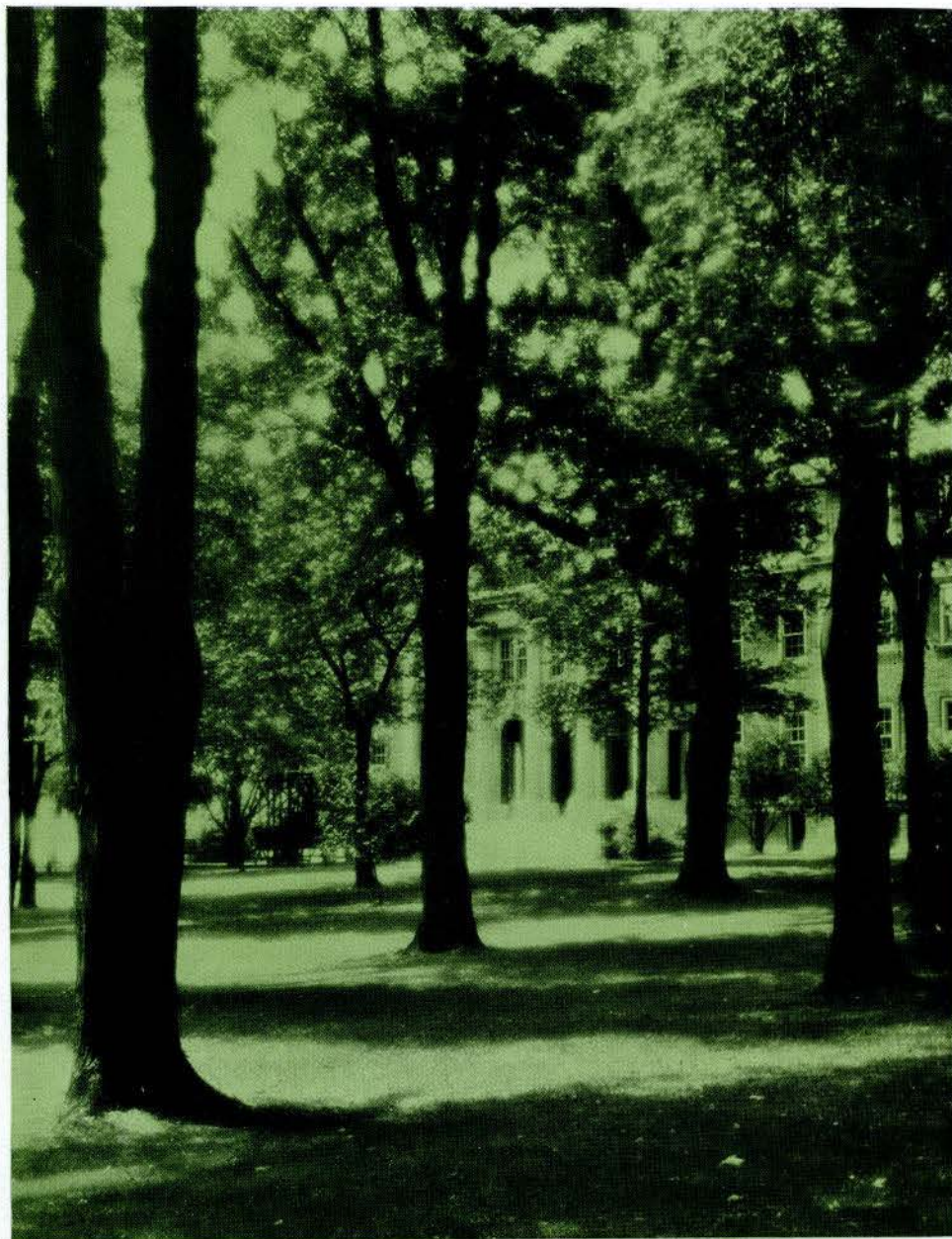
IRWIN HALL

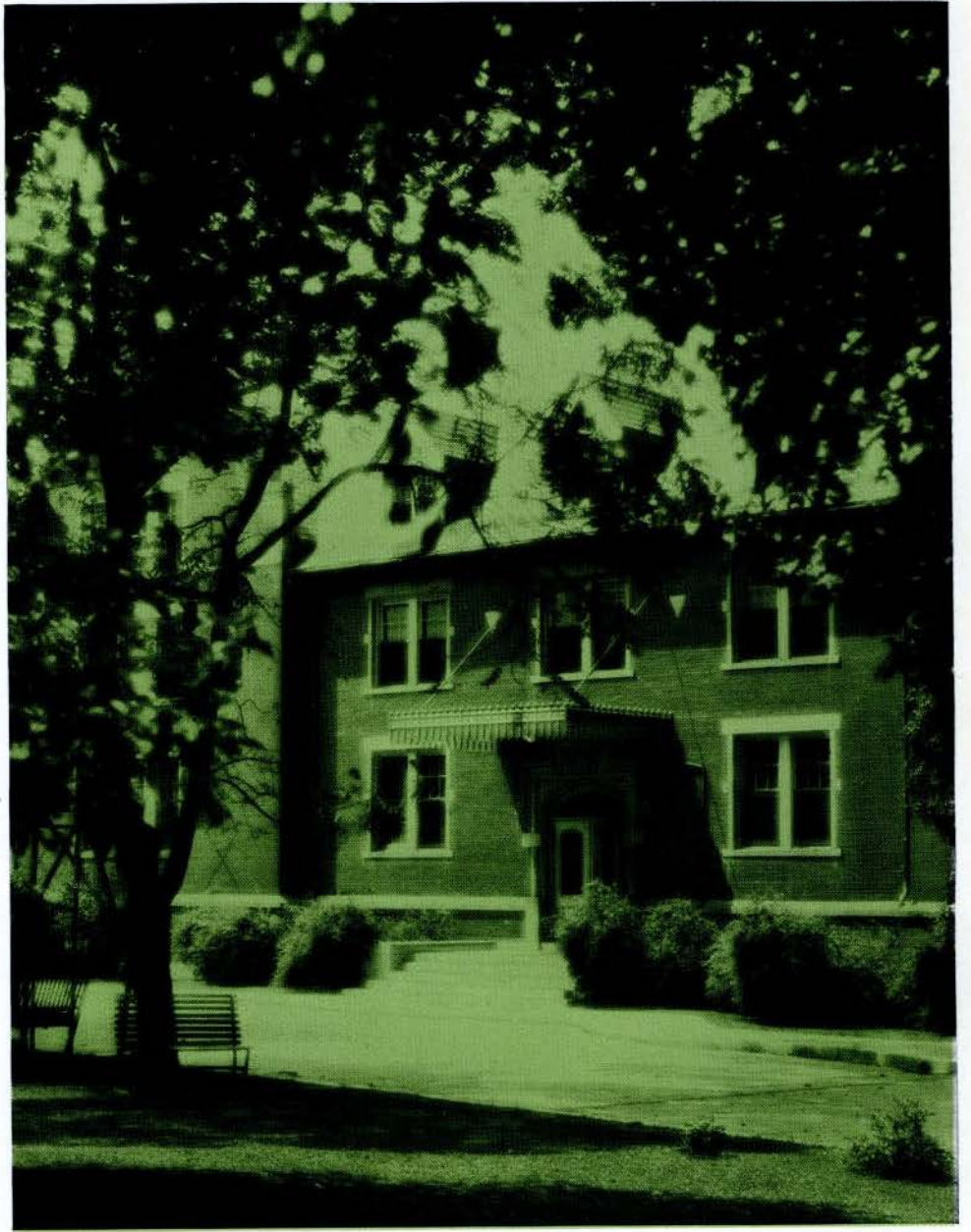


SIBLEY HALL

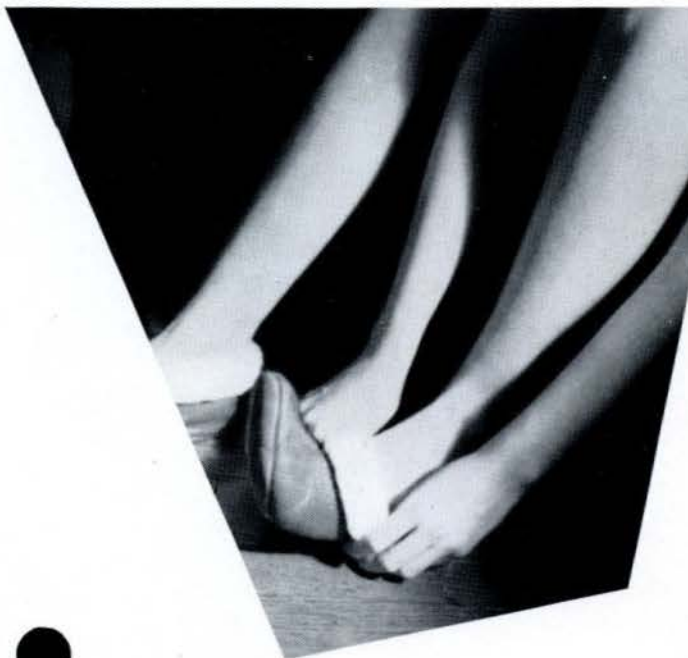


NICCOLLS HALL



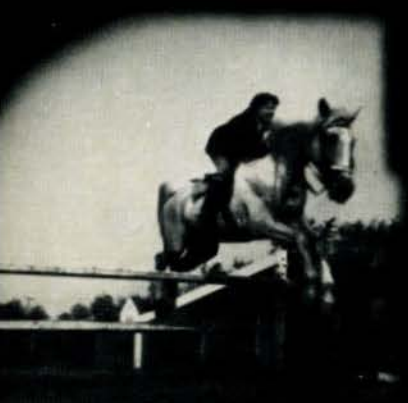


AYRES HALL



Morning

The bell — yawns — bedroom
slippers — mad rush for break-
fast tables — 8 o'clocks — faculty
conferences — more classes — and
chapel!





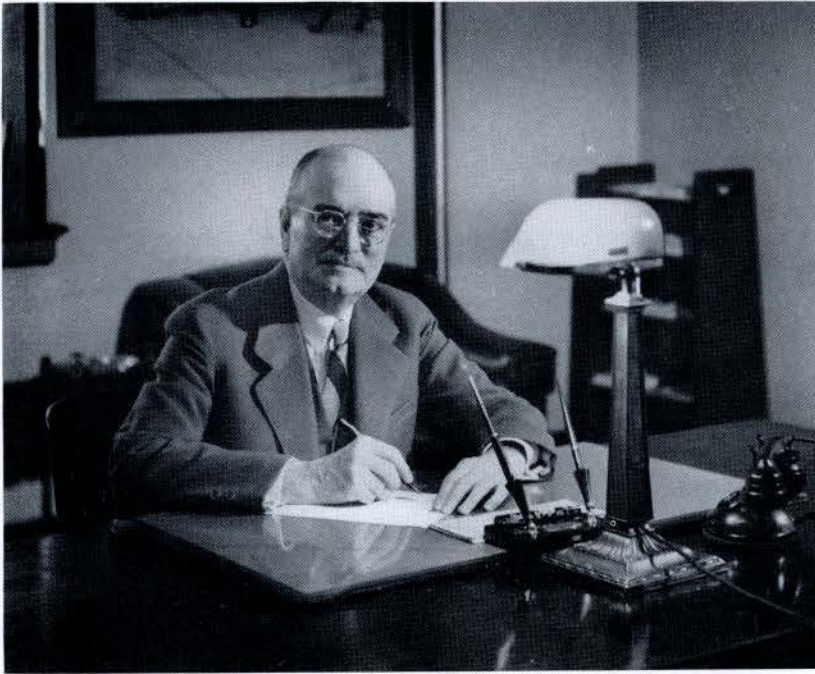
A DAY BEGINS AT LINDENWOOD

Get ready for school, Mimi! . . . A little posing between classes . . .
 This auto be a good picture . . . Is that you, Dottie? . . . Sonnenday
 goin' to town . . . Smith, the home-body . . . Kitchen Kuties Cutting
 Kapers (and kake, perhaps?) . . . Ready for a morning hike . . .
 Little camera lassie . . . Aren't we dressed up?



Butler Beauties waiting for something . . . The gateway to knowledge . . . Reading Morrison's notes, Irish? . . . Came the dawn and Hull gets up at 10:00 . . . Spalding with background of chums . . . Those Irwin freshies looking very amused . . . Tearoom Toppers . . . Harper gazing into the distance—what can she be thinking of? . . . Queenie laboring in the lab. . . Rabon and Roberts romping in the ring.



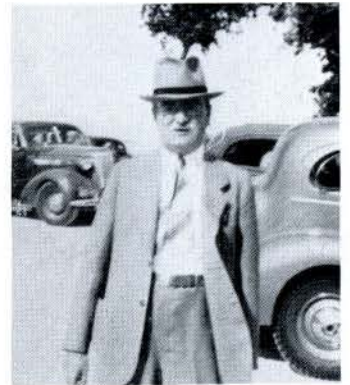


DR. JOHN L. ROEMER
President of Lindenwood College

1938 greetings to Linden Leaves
as it makes its bow to the public.

With the fidelity of all the staff
responsible for its publication and
the hearty support of the students,
the present issue is assured a royal
welcome.

J. L. ROEMER



Dr. Roemer enjoys the picnic



MRS. JOHN L. ROEMER
Dean of Student Administration

“Let each bright day carry away
Its one little burden of sorrow,
Or you will miss half the bliss
That comes in the light of to-
morrow.”

May your lives be filled with
happiness and fidelity.

MRS. ROEMER



Mrs. Roemer in her office





DR. ALICE E. GIPSON
Dean of Instruction

To the students of Lindenwood College:

The years will pass quickly after your college days are over. Regardless, however, of how quickly they may pass, and regardless of how many of the events of your college life may be entirely forgotten or seem unimportant as they retreat into the dim past, I hope that the study that you did here and our endeavor to help you make for yourself "Patterns for Living" may prove for you among the really worthwhile experiences of life.

ALICE E. GIPSON, Ph.D.



The grades are out!

The speech and dramatics department offers training in public speaking and dramatic art and helps produce many plays throughout the year. A two-year diploma in speech is offered, for which an hour graduation recital is required. Private lessons are offered, and many Thursday morning assembly programs are given by students in this department.

The art department offers courses in drawing, painting, theory of design, representation, history of art, and commercial art.



ALICE LINNEMANN
B. L., Litt. D.
Art

LILLIAN RASMUSSEN
Art

MARY M. GORDON
A. B., B. L. I.
Speech and Dramatics

NINA JEWEL LEMEN
B. S.
Speech and Dramatics

ARLINE AEGERTER
Speech and Dramatics



The Departments of Speech and Art

The Language Department

The largest department in the college is the English department. Six hours of English Literature and six hours of English composition are required for an A. B. Degree.

Composition, rhetoric, drama, poetry, the short story, the novel, the essay, and journalism are all emphasized. The journalism department, under the direction of Mrs. Underwood, edits the *Linden Bark*, the school newspaper, and the Lindenwood monthly bulletin.

Basis for membership into Sigma Tau Delta, the national English honor society, and the National Poetry Society is on the score of original work written by students in the college. Much of this is the work of students in the routine work of their English classes.



ALICE E. GIPSON
A. B., Ph. D.
English

KATE L. GREGG
A. B., Ph. D.
English

SIEGMUND A. E. BETZ
A. B., M. A., Ph. D.
English

ELIZABETH DAWSON
A. B., M. A.
English

WINIFRED BURNS
A. B., M. A.
English

ALICE PARKER
A. B., M. A.
English—Leave of Absence



MARY TERHUNE
A. B., M. A., D. M. L.
Modern Languages

HELENE M. EVERS
A. B., M. A., Ph. D.
Modern Languages

KATHRYN HANKINS
A. B., B. S., M. A.
Classical Languages

ANNA WURSTER
B. S., M. S.
French

JULIA C. UNDERWOOD
Ph. B.
Journalism

ELSIE MOORE
A. B., M. A.
French



The foreign language department offers French, Spanish, and German. Two years of one language are required for a degree. Mrs. Elsie Moore is conducting a summer trip abroad this year in which French will be stressed.

Miss Kathryn Hankins offers both Greek and Latin, as well as many courses in classical literature, such as masterpieces of architecture and Greek mythology.

The Language Department

The Departments of



MARY E. LEAR
A. B., B. S., M. A.
Chemistry



LOIS KARR
A. B., M. A.
Mathematics and Physics



YVONNE BAILEY
A. B.
Biology



MARION L. DAWSON
A. B., M. S., Ph. D.
Biology



MARY TALBOT
B. S., M. A., Ph. D.
Biology



LILLIAN ALLYN
Business



RUTH M. HEIKES
B. S., M. S.
Business

The science departments consist of three divisions: The social sciences, the biological sciences, and the physical sciences. The subjects included in the departments are sociology, economics, education, history, philosophy, botany, zoology, physics, and chemistry. During the year, students visit clinical hospitals, make gardens, and, in the Spring, give a science show. The material included in this exhibition is that pertaining to the biological and physical sciences.



Sciences and Mathematics



Ten hours of science or six hours of mathematics and three of logic are required for graduation.

Teaching certificates can be obtained for any state in the department of education. Practice teaching is done in the St. Charles schools under the supervision of Dr. Garnett. Four hours of religious education are required for a Bachelor's degree.



FLORENCE W. SCHAPER
B. S., M. A., Ph. D.
Sociology and Economics



MARY S. BENSON
A. B., M. A., Ph. D.
Economics and History



HENRY L. WILSON
A. B., M. A.
Economics and English



RAY L. GARNETT
B. S., M. A., Ph. D.
Education



WILMA J. PUGH
A. B., M. A., Ph. D.
History and Geography



RACHEL MORRIS
A. B., M. A.
Sociology and Psychology



LLOYD B. HARMON
A. B., B. D., Ph. D.
Bible and Philosophy



EVA ENGELHART
B. S., B. F. A.
Piano

JOHN THOMAS
Mus. B., Mus. M.
Piano

PAUL FRIESS
Organ

VIRGINIA SHRIMPTON
B. M., B. F. A.
Piano

PEARL WALKER
A. F., B. M., M. M.
Voice

DORIS P. GIESELMAN
B. M.
Voice

LOIS M. BURKITT
B. M.
Public School Music

GERTRUDE ISIDOR
Violin and Theory

The Department of Music

The music department offers training in voice, violin, piano, organ, group singing, and band instruments.

The department increases yearly.





MARIE REICHERT
B. S.
Physical Education



MARGARET M. STOOKEY
B. S.
Physical Education

The Department of Physical Education

Two hours a week of physical education are required of all freshmen and sophomores. The department offers instruction in sports and dancing, and during the year it sponsors tournaments and recitals. In addition to the gymnasium, facilities include a golf course, tennis courts, a hockey field, a swimming pool, and horseback riding.



The Department of Home Economics

The home economics department offers courses in cooking, sewing, house planning, food buying, and textiles. Adequately furnished laboratories are located in Roemer Hall.

RUTH ANDERSON
B. S., M. A.
Home Economics

ADA DYER TUCKER
B. S., M. A.
Home Economics

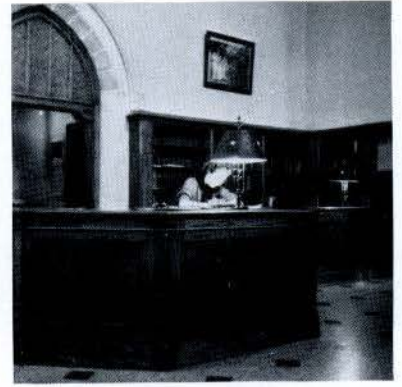




MILDRED KOHLSTEDT
A. B., M. A.
Library Science



HORTENSE EGGMANN
A. B.
Assistant Librarian



The arched and panelled spaciousness of the Lindenwood library is as beautiful as it is conducive to studying. Huge, well-lighted tables provide ample space for the girls' studying. The library contains 21,700 books and new ones are being added constantly. Downstairs are the historical museum and the club rooms.

The Library



The Infirmary

The college maintains its own infirmary where the girls are given careful attention and encouraged to guard their own health. Miss Eva Sayre is resident nurse here.



B. KURT STRUMBERG
M. D.
College Physician

E. J. CANTY
M. D.
College Physician



Housemothers



MRS. C. C. KELLY
Ayres Hall



MRS. ELIZABETH LEMASTER
Sibley Hall



MISS MARY C. BLACKWELL
Butler Hall



MISS EDNA HOUGH
Irwin Hall



MRS. A. W. WILLCUTS
Nicolls Hall

House Presidents



Administration



GUY C. MOTLEY
A. B.
Secretary of the College

Mr. Motley's numerous duties include: Helping the girls with their tickets and luggage; reserving seats and chartering busses for plays and concerts in St. Louis; publishing the annual bulletin; and securing new students for Lindenwood.

Mrs. Ordelheide arranges courses so that they will be available to a large number of girls. She manages registration in the fall and at mid-year, and also checks to see that every girl is working toward the degree or certificate she hopes to receive.



DOROTHY G. ORDELHEIDE
B. S.
Registrar



ETHEL B. COOK
Bursar



DORA WAYE
Assistant Bursar

Miss Cook and Miss Waye at the College Bank help the girls keep their individual finances straight. They also do much of the school buying and help make arrangements for parties, dinners, and picnics.

Miss Walter and Miss Foster plan the meals in the dining room. They supervise a large group of waitresses, waiters, and cooks. They are always glad to help plan refreshments for parties.



CORA V. WALTER
Dietitian



ARABELLE FOSTER
Assistant Dietitian

Administration

Many secretaries and assistants help make life at Lindenwood more comfortable.



HARRY P. ORDELHEIDE
Superintendent of Buildings and Grounds



MRS. ZEISLER
Secretary to the President



VELDA WAGNER
Secretary to the Dean



HELEN CULBERTSON
Assistant Secretary of the College



LOUISE KRUSE
Tea Room



DELPHIA HIRSH
College Post Office



AMY MUTERT
College Post Office



SENIORS

Leo Blackhurst . . . Verda Roberts . . . Sunny Lohr . . . Susie
 Smith . . . Totsy Mills . . . Lady Fritz . . . Rose Willner . . .
 LoVella Hurst . . . Gertrie Davis . . . Lola Prather . . . Sister Null . . .
 5-Spot Finley . . . Nate Auerbach . . . Miss O'White . . . Prex Rowe
 . . . Sammy Lott . . . Doris Danz . . . Minnie Mouse Baptist . . . Joll
 Jolley . . . Chimp Scroggin . . . Hank Behrens.

Senior Officers

SUE SMITH *President*
MARY BETH BAPTIST *Vice-president*
LOIS NULL *Secretary*
ROSE WILLNER *Treasurer*



WILLNER BAPTIST
NULL SMITH

The senior class has had a grand year—socially and scholastically. Various classmates have been honored with memberships in the honorary fraternities and as is the custom, the May Fete centered around a lovely senior queen.

Our first social event of the year was a dinner dance for the administration and student body, and later we entertained at a date dance. It was our privilege to be hostesses to the faculty at a buffet supper on April 8. Then there was Sneak Day!!!

We are indebted to Dr. and Mrs. Roemer for a lovely luncheon shortly before Commencement, and to the juniors for a grand dinner and an even more memorable “prom”. With all these events and more to enliven our memories of our college years, we shall never forget Lindenwood—nor do we want to be forgotten.

The Senior Class



SARA LEE AUERBACH

Edwardsville, Illinois

Major: Education

Was president of Pi Gamma Mu, both secretary and treasurer of the League, vice-president of the St. Charles Club, and member of Beta Pi Theta, International Relations Club, Y. W. Cabinet. You'll find her around the Education office or doing research down in the St. Charles schools. We hear that she is determined to be a teacher, and we're certain that she will make a good one. Only wish we all could go home every week-end.

LEONORA BLACKHURST

St. Charles, Missouri

Major: English

One of the local girls whose quiet charm and ready smile have won her a place in the hearts of all L. C. students. She's got that ability to make one feel that everything is "tops". Was president of Der Deutsche Verein (an able one, too, with a lot of experience—St. Charles is a German community, you know), secretary-treasurer of the St. Charles Club, and a member of the orchestra and the International Relations Club.





MARY BETH BAPTIST

Shawnee, Oklahoma

Major: Mathematics

Was secretary-treasurer, and then president of the Triangle Club, president of the Oklahoma Club, vice-president of her class both as a junior and a senior, and a member of El Circulo Espanol, and the International Relations Club. As a junior she was an attendant to the May Queen. She is prominent as a golfer (you'll find her picture in the viewbook) and a staunch advocate of keeping up with the latest books.



MARGARET H. BEHRENS

Gillespie, Illinois

Major: Education

Came to our campus for her junior and senior years after attending MacMurray College at Jacksonville, Illinois, where she was a member of the orchestra, Glee Club and Kappa Sigma Theta. We've learned to love her and are glad she kept up her music by being in the orchestra and choir at L. C. As a senior she was chosen for vice-president of the Student Board. Quite an honor! We're going to miss your charming personality, Margaret.



The Senior Class

The Senior Class



CORNEILLE DAVIS

Lyon, Mississippi

Major: Music

Tall and merry and unconcerned, she came to us her junior year from Mississippi, where she was a member of the French Club and the Bach Society. Here she became a member of Delta Phi Delta, the Public School Music Fraternity. You'll see her at symphony every Saturday night or in the tea room, laughing her way joyously through an independent life and talking all the time. We still think your hair is red, Corneille.

LAURA FRITZ

Wichita Falls, Texas

Major: English

Laura ("Lady" to all of Lindenwood) is that attractive girl with the black hair and low voice. The ease and skill she exhibits when riding a horse has for three years made her a valuable member of Beta Chi, the riding club. In 1937 she was vice-president of the Texas Club. That same year her class chose her as a junior attendant to the May Queen, an honor which she well deserved and a place which she filled gracefully.





LOVELLA DEE HURST
University City, Missouri
Major: Sociology

Lovella is another one of our St. Louis girls. She is a member of the League of Women Voters, and also the Home Economics Club. We congratulate her on being admitted to the Poetry Society; her talent is one of which anyone should indeed be proud, because so few of us can boast of that ability. We have often wondered what the tea room would do without you, Lovella, or for that matter, what you would do without the tea room.



MARY ELIZABETH JOLLEY
Mexico, Missouri
Major: Chemistry

Was president and vice-president of Pi Alpha Delta, and an active member of the Triangle Club, League of Women Voters, International Relations Club, Home Economics Club and Choir. She has also taken part in several of the dramatic productions. Her constant companions were knitting needles and yarn with the result that numerous pairs of bright-colored angora mittens have appeared on campus this winter.



The Senior Class

The Senior Class



DORIS A. DANZ

Union, Missouri

Major: Public School Music

Has been president of Alpha Mu Mu and Delta Phi Delta, treasurer of Mu Phi Epsilon and an active member of the orchestra, choir, and International Relations Club. Here's a girl with plenty of talent (piano and pipe organ) and an irresistible manner that would get her places with her music if it weren't for an architect. We were almost as happy about it as you were when you came back after Christmas.

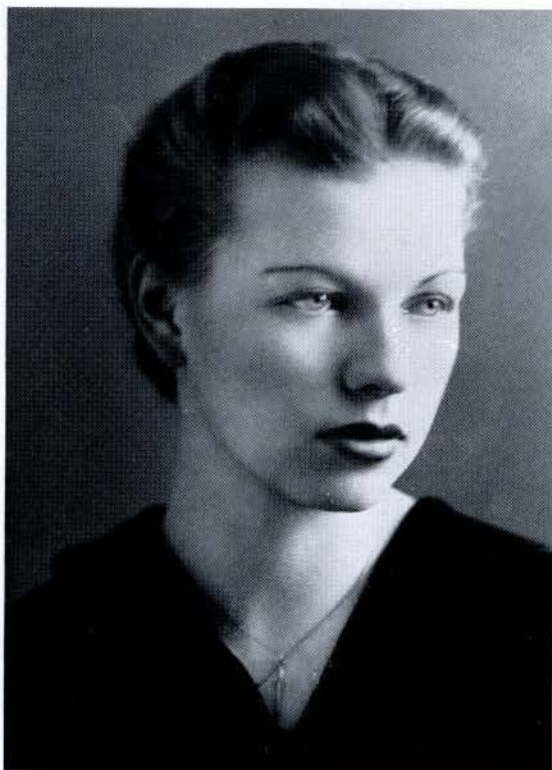
MARTHA LA HUE LOTT

Webb City, Missouri

Major: Home Economics

Martha took her first two years' work here and her junior year at Southwest Missouri State Teachers College, but 1937 found her right back where she belonged. As a Freshman she joined the International Relations Club; then she turned her attentions to the choir, the Athletic Association, and finally to the Home Economics Club. Is a well-balanced girl, who works and plays with equal (well, almost) enthusiasm.





SUNNY LOHR

Kirkville, Missouri

Major: Biological Science

One of those unusual girls who completes a four-year course in three and one-half years. She is a member of the Triangle Club, serving as its secretary and treasurer this year, the Athletic Association, Beta Chi, and was snapshot editor of the Linden Leaves in 1936-37. Her amazing vitality and gay good humor in all situations astonish even the most vigorous of us. Where do you get it, Sunny? Could it be from that big appetite?



GLADYS VERNITA PLOEGER

Marthasville, Missouri

Major: Education

Has only been to Lindenwood one year but we've seen a lot of her. Before coming to our campus she attended Teachers College at Warrensburg, Missouri, and the University of Missouri at Columbia. Gladys has also had some practical experience in teaching. We're glad she came to Lindenwood to complete her course, and we're sure she will meet with success immediately, for that teaching experience will come in handy.



The Senior Class

The Senior Class



LOIS MARGARET NULL
St. Charles, Missouri
Major: Education

Hail to our Editor-in-chief of the Linden Leaves! She was president of the Poetry Society and the St. Charles Club, treasurer and Head of Hockey in W. A. A., secretary of her class both as a junior and a senior, and an active member of Alpha Sigma Tau, Pi Gamma Mu, Beta Pi Theta and Sigma Tau Delta. How did you do it all? These activities speak for themselves, and we want you to know that with all of us at L. C. you're "tops."

EFFIE VIRGINIA REINEMER
Overland, Missouri
Major: Biological Science

Has been vice-president and president of the Athletic Association, and an active member in the Triangle Club, International Relations Club, League of Women Voters, and St. Louis Club. Effie Mae was a whiz at basket ball and hockey, and what about those riding lessons? Someone said, "That gal's got everything." We agree, and we're more than sorry that she had to finish in January and leave us. We needed her pep and personality.





LOLA C. PRATHER
Bardslow, Kentucky
Major: Psychology

Although she has been with us only two years, she is as close to us as any of the other seniors. Her pre-Lindenwood training was at Nazareth Convent at Nazareth, Ky., where she was active in music and dramatic circles. Besides joining the Dramatic Club and the Science Club she was a member of the orchestra, choir, the Music Club, and directed a dance orchestra all her own. And how she blows that trumpet!



JANET SCROGGIN
Oak, Nebraska
Major: Chemistry

Janet has attended Lindenwood seven semesters, the other one being spent at the University of Nebraska. Her varied range of interests have included the International Relations Club, the League of Women Voters, the Athletic Association, Der Deutsche Verein, the Home Economics Club, and the Triangle Club. Janet's unusual beauty is matched only by the choice of her gorgeous clothes.



The Senior Class

The Senior Class



MARTHA V. ROBERTS

La Grange, Illinois

Major: French

That brown-eyed, quietly gay girl we see at the stables and in horse shows; daily she is garbed in riding habit ready for her favorite sport. What could be more natural than that she be president of Beta Chi? She is also an officer of Beta Pi Theta, a member of El Circulo Espanol, and has been both president and vice-president of Y. W. C. A. Besides these activities she is a member of the Student Board this year.

SUE SMITH

Dayton, Ohio

Major: French

Little, but Oh, my—! President of the senior class, treasurer of the junior class, twice a member of the Student Board, president of Irwin, twice an officer of Beta Pi Theta, president and vice-president of the Commercial Club, member of the Home Economics Club, and Who's Who in American Colleges and Universities, She has had responsibilities galore. She has also been chosen a senior attendant to the May Queen.





MARIAN THOMPSON

Wichita, Kansas

Major: Social Science

Miss Thompson has known Lindenwood longer than most of our seniors because she has returned for her senior year after an absence of several years. This year she is assisting Mrs. Willcuts, the regent of Nicolls Hall. Her first years here she became a member of Alpha Mu Mu, while in 1938 she joined the ranks of Pi Gamma Mu, the social science fraternity. We are glad that she and her friendly charm have returned to us.



BETTY ELLEN WHITE

Marissa, Illinois

Major: English

Has served as secretary and vice-president of Beta Pi Theta, recording secretary of Mu Phi Epsilon, and was an active member of the International Relations Club. Betty is one of those who comes out in the end with a diploma in Piano as well as an A. B. We don't see how she does it. Here's a girl that's always ready, willing, and able, and we certainly envy those two months in Europe last summer.



The Senior Class

The Senior Class



LAVERNE ROWE

Kirkwood, Missouri

Major: Home Economics

Hail to our Student Board President and May Queen! We're proud of you. And it's been this way all four years, for she has been Hallowe'en Queen, maid of honor to the Popularity Queen and May Queen, served as vice-president of her class as a freshman and president as a junior, and was an active member of W. A. A., choir, Beta Chi, and the Home Economics Club. This year she is listed in Who's Who in American Colleges and Universities. She has the unique ability of being an S. B. member and retaining her friends.

ELEANOR FINLEY

St. Louis, Missouri

Major: Home Economics

"Ellie" is famous for her beauty and for going home every week-end. She has long been a member of Beta Chi, acting as its vice-president in her junior year and riding consistently in horse shows. Besides being a member of the Athletic Association, International Relations Club, Home Economics Club, and the Art Club, she was an attendant to the Hallowe'en Queen in 1934, and the Sophomore attendant to the May Queen in 1936.





ROSE S. WILLNER
St. Charles, Missouri

Major: Home Economics.

Has been president of the Home Economics Club, secretary-treasurer of Der Deutsche Verein, treasurer of her class as a senior, and was an active member of the Triangle Club and the St. Charles Club. Rose is another one of these town girls who has managed to participate so actively in all L. C. activities—one who can always be depended upon. She is one swell girl with plenty of ability.



MARY LOUISE MILLS
Muskogee, Oklahoma

Major: English

While at Lindenwood "Totsy" has been a member of the League of Women Voters, the Home Economics Club, the Nature Study Club, is the advertising and business manager of the Linden Bark. At Oklahoma A. and M. she was Redskin Beauty Queen and a maid of honor to the Engineering Queen, besides being active in dancing, dramatics, athletics, and several other things. That's not bad for such a little girl (all of three feet tall).



The Senior Class



JUNIORS

H. M. DuHadway . . . Marcey Anderson . . . Packy McFarland . . .
 Daisy Patterson . . . Dodie Wagner . . . Jeannette Jackson . . . Suzy Eby
 . . . V. Carter . . . Gwen, Mary, and Little Hull . . . M. A. Fowler . . .
 Bird-brain Belden . . . Steiner Sonnenday . . . Mary Roberts and Doogie
 Horner . . . Rosie Williams . . . Jerce Davis . . . Potzie Potlitzer . . .
 M. Jane Brittin . . . Alice Belding . . . Big Hull.

Junior Officers

JEAN MCFARLAND *President*
MAURINE POTLITZER *Vice-president*
ROSEMARY WILLIAMS *Secretary*
ALICE BELDING *Treasurer*



BELDING, MCFARLAND, WILLIAMS, POTLITZER

With many of its former members and several new students, the junior class opened its year of activity playing hostess to the sister freshmen at a formal tea which was given on two afternoons, due to the large group entertained.

Soon after the Christmas holidays, the juniors gave a date dance with the much discussed Tyrolean winter scenes and artificial snowballs as decorations. Then, for the grand climax of an already big year, the class worked long and tirelessly for the most elaborate affair of the season—the junior-senior “prom”. The gym was converted into a shimmering silver flower garden. Not content to stop activity there, the class entertained the seniors at a dinner party.

Though the class has done much socially, it has not overlooked its serious purpose and eagerly anticipates next year when its members will be Lindenwood’s seniors.



MARY AHMANN
St. Charles, Mo.

MARTHA ANDERSON
Texarkana, Ark.

MARY ELIZABETH BELDEN
Newington, Conn.

MARY JANE BRITTIN
Williamsville, Ill.

VIRGINIA ANN CARTER
Carthage, Mo.

EILEEN CONNELL
Kansas City, Kans.

The Junior Class



The Junior Class



ALICE BELDING
St. Charles, Mo.

MARY BROOKS
Bachelor, Mo.

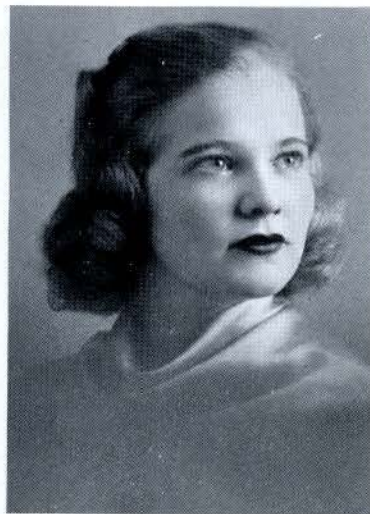
JOHNSIE M. FIOCK
St. Charles, Mo.

DOROTHY FULLERTON
Lincoln, Ill.

MARGARET HULL
Anaconda, Mont.

JEANNETTE JACKSON
Wentzville, Mo.





HELEN MARGARET DUHADWAY
Jerseyville, Ill.

SUZANNE EBY
Howard, Kans.

MARY ANN FOWLER
Kirksville, Mo.

MARAJANE FRANCIS
Kansas City, Mo.

JANE GILL
Cherryvale, Kans.

WANDA IRMA GOTTL
St. Louis, Mo.

The Junior Class



The Junior Class



DOROTHY ROSS LAWHON
North Little Rock, Ark.

GWENDOLYN PAYNE
Wood River, Ill.

NANCY PATTERSON
Kansas City, Kans.

MAURINE H. POLITZER
St. Joseph, Mo.

SARA SORGENFREI
Chicago, Ill.

VIRGINIA STERN
Little Rock, Ark.



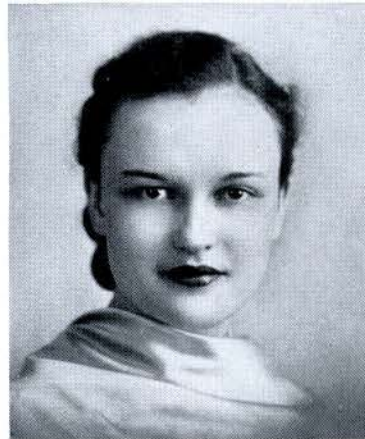


MARY FRANCES HAWKINS
Springfield, Mo.

ZORA S. HORNER
Beatrice, Nebr.

MARIAN HULL
Washington, Mo.

JEAN C. MCFARLAND
Dallas, Texas



IMOGENE HINSCH
Rolla, Mo.

ALICE JONES
St. Charles, Mo.

HELEN F. PLETZ
St. Charles, Mo.



The Junior Class



RUTH REINERT RAU
St. Louis, Mo.

DOROTHY WAGNER
Houston, Texas

SUE SONNENDAY
St. Louis, Mo.

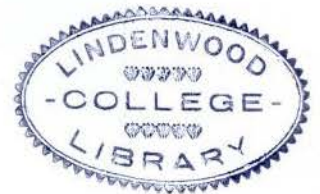
SARA MARGARET WILLIS
Kankakee, Ill.



MARY E. ROBERTS
Pocatello, Idaho

ROSEMARY WILLIAMS
Murphysboro, Ill.

RUTH ANN WILLOTT
St. Charles, Mo.



The Junior Class





SOPHOMORES -

"All you want to do is dance" . . . Faxon beams for the camera . . . Young and Ettin watch the chapel-goers . . . Alma abandons basket ball for a quiet afternoon . . . Dr. Hurdis finds the great out-of-doors conducive to hard work . . . Pat and Brickey read letters—'Nuff said! . . . McCoid says, "Who me, Butch?" . . . Hattie and Bobbie institute their own rush week . . . Paulsen surveying our bee-youtiful campus . . . Julia chuckles at something—better tell us, Lane . . . Clubby chats after chapel . . . Is there really, Marty? . . . The sign says Lindenwood—1827, folks . . . Sara Watts leaving . . . Four pictures of joy . . . Daudt waiting for a horse . . . three prominent sophies.

Sophomore Officers

KAY WAGNER	<i>President</i>
BETTY FAXON	<i>Vice-president</i>
BRICKEY CASEY	<i>Secretary</i>
BETTY LEE LEMLEY	<i>Treasurer</i>



FAXON, CASEY, WAGNER, LEMLEY

This year the class of 1940 has added another page to its never-to-be-forgotten history. The sophomores have settled down to do some fine work of which they are justly proud.

The activity of the year was opened by a date dance for the entire school on November 20. The autumn of the year and the month of November supplied a timely theme for the joyous affair.

There was a second chance for the sophomores to show their ability as hostesses when they sponsored another date dance for the student body on March 5. The nautical motif carried out in blue and white made a fitting background for the gaiety and many-colored dresses.

The climax of the year was the sophomore prom—the first real prom for this lively class. It will long be cherished and remembered.

The Sophomore Class



Top row

VIRGINIA A. AYLESWORTH
Chicago, Ill.

DOROTHY BLUE
Albuquerque, N. Mex.

PATRICIA BOOMIS
Independence, Kans.



Second row

MARY ELIZABETH BORUM
Blytheville, Ark.

HELEN L. BROWN
Mexico, Mo.

HELEN ROSE BRUNS
St. Charles, Mo.



Third row

MILDRED JANE BRYANT
Harlan, Ky.

MARGARET BRICKEY CASEY
Potosi, Mo.

DOROTHY G. CORZINE
Assumption, Ill.



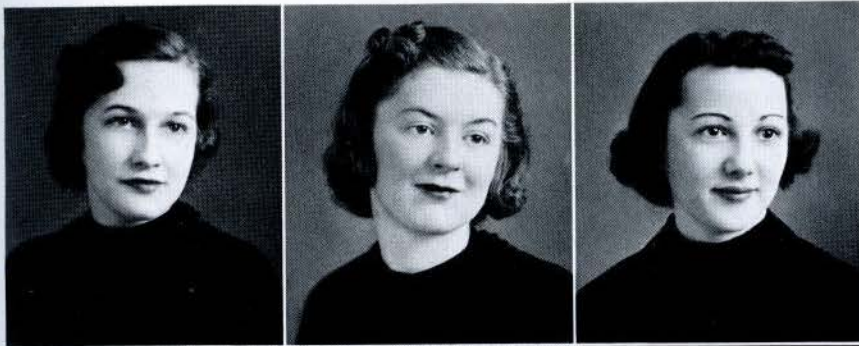
Fourth row

NINA JANE DAVIS
Newcastle, Ind.

MARGUERITE DEARMONT
St. Louis, Mo.

ELEANOR DENNIS
Ft. Leavenworth, Kans.

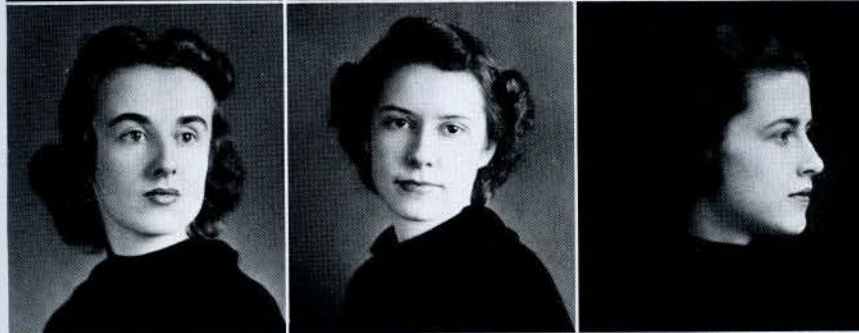




Top row
CATHERINE PAGE DONNELL
Crystal City, Mo.

EVELYN DULEN
Los Angeles, Calif.

RUTH ETTIN
Harlen, Ky.



Second row
BETTY FAXON
Winnetka, Ill.

LUCILLE GOCIO
Bentonville, Ark.

HARRIET HALL
Michigan City, Ind.



Third row
BETTY HARPER
Des Moines, Iowa

EVELYN HEISER
Hannibal, Mo.

GRACE HECKETHORNE
Ardmore, Okla.



Fourth row
BARBARA NAN JOHNSTON
Rocky Ford, Colo.

ELEANOR DEE KAPS
Denver, Colo.

BETTY KELLY
Aurora, Ill.



The Sophomore Class

The Sophomore Class

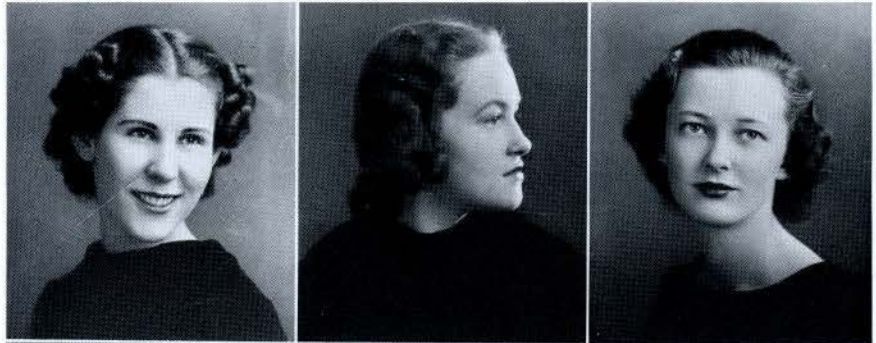


Top row

DOROTHY ANN KNELL
Carthage, Mo.

BETTY LEE LEMLEY
Russellville, Ark.

JEANETTE LLOYD
Chicago, Ill.



Second row

MARY ELIZABETH MANGOLD
Burlington, Iowa

ALMA L. MARTIN
Irondale, Mo.

KATHRYN L. MAYER
Indianapolis, Ind.



Third row

HELEN NANCE
Webb City, Mo.

DELLA MAY NASH
Cedar Rapids, Iowa

DOROTHY JANE NIEMAN
St. Louis, Mo.

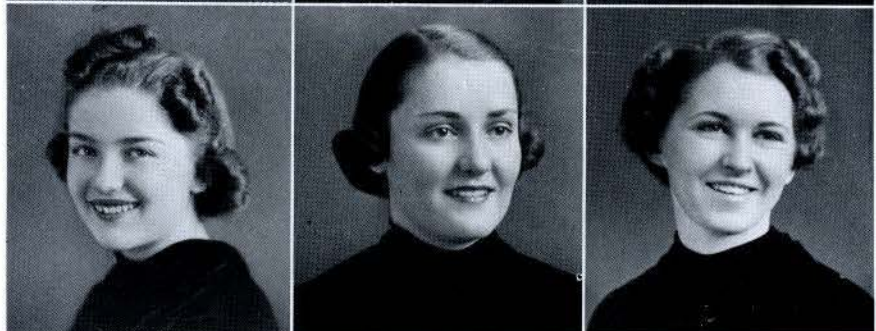


Fourth row

ELIZABETH ANN OLSON
Ada, Okla.

E. CORRINE PAULSEN
Omaha, Nebr.

MARJORIE PEABODY
Ft. Leavenworth, Kans.





Top row

LOIS M. PENN
Des Moines, Iowa

PAULINE PODESCHI
Taylorville, Ill.

DOROTHY A. RINGER
Pauls Valley, Okla.

Second row

AVIS SAUNDERS
Dodge City, Kans.

ANNA RUTH SEAMAN
Ardmore, Okla.

JEANETTE SERDINSKI
Sioux City, Iowa

Third row

ROBINETTE SUTHERLAND
Laurel, Nebr.

LUCILE VOSBURG
Gilman, Iowa

KATHRYN WAGNER
Eldorado, Kans.

Fourth row

LOIS WARD
Libertyville, Ill.

ADA LEE WEBER
St. Charles, Mo.

PEGGY ANN WOOD
Denver, Colo.



The Sophomore Class

The Sophomore Class



Top row

KATHRYN ASHLEY
Melbourne, Ark.

BETTY BARNEY
Kearney, Nebr.

MARY ELIZABETH BENNER
Anna, Ill.



Second row

FRANCES R. BRANDENBURG
Pineville, Ky.

CORDELIA MAE BUCK
Little Rock, Ark.

KATHRYN M. CRAIG
Louisville, Ill.



Third row

MARION DAUDT
St. Charles, Mo.

MILDRED DAVIS
McAlester, Okla.

DORIS V. DEISENROTH
St. Charles, Mo.



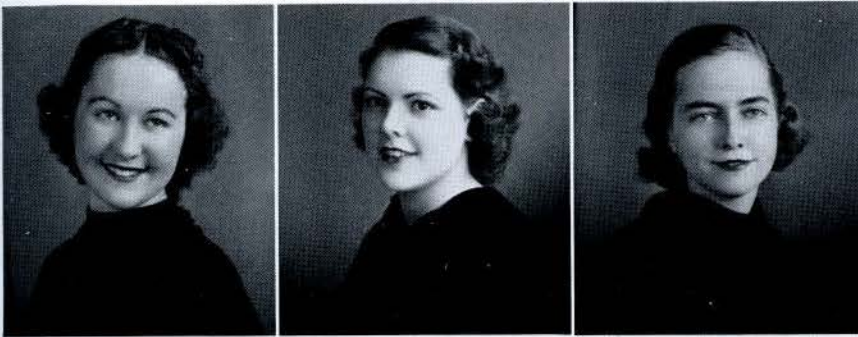
Fourth row

RUBY DREHMANN
St. Louis, Mo.

JUDITH LELIA ELKINS
Mt. Carmel, Ill.

BETTE LU FOSTER
Keokuk, Iowa





Top row

PEGGY GARDEN
Hutchinson, Kans.

MARGARET JEANNE GASKILL
Shawnee, Okla.

MARGARET JANE GRISWOLD
Litchfield, Ill.



Second row

NAN C. HARRIS
Wilburton, Okla.

VIRGINIA HORNER
Beatrice, Nebr.

JACQUELINE HOWARD
Harlan, Ky.



Third row

SARA B. HURDIS
Ft. Leavenworth, Kans.

ROSELYNN JANEWAY
Eufaula, Okla.

BETTY JOY KEITEL
Denver, Colo.



Fourth row

JEANETTE KLITZKE
Hammond, Ind.

JULIA A. LANE
Omaha, Nebr.

MARY McCARROLL
Walnut Ridge, Ark.



The Sophomore Class



The Sophomore Class

Top row

MARGARET ANNE MCCOID
Niotaze, Kans.

LESLIE ANN MCCOLGIN
Joplin, Mo.

HELEN JANE MCCRACKIN
Hutchinson, Kans.



Second row

CHRISTINE McDONALD
Washington, Mo.

ROBERTA D. McEWEN
Hammond, Ind.

HELEN McLANE
Shelbyville, Ind.

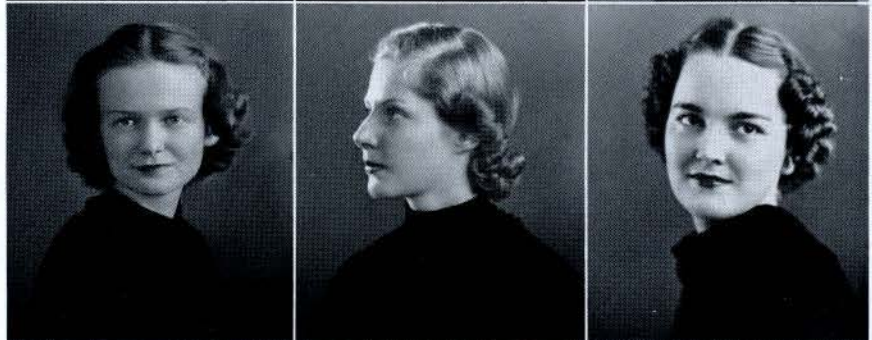


Third row

MARGARET E. MACDONALD
Caldwell, Kans.

PATRICIA F. MATTHEWS
Farmington, Mo.

BEVERLY H. MAYHALL
Harlan, Ky.



Fourth row

MARTHA LOU MUNDAY
Dayton, Ohio

FLORENCE MURER
Granite City, Ill.

SARA WATTS NICKOLS
Glasgow, Ky.



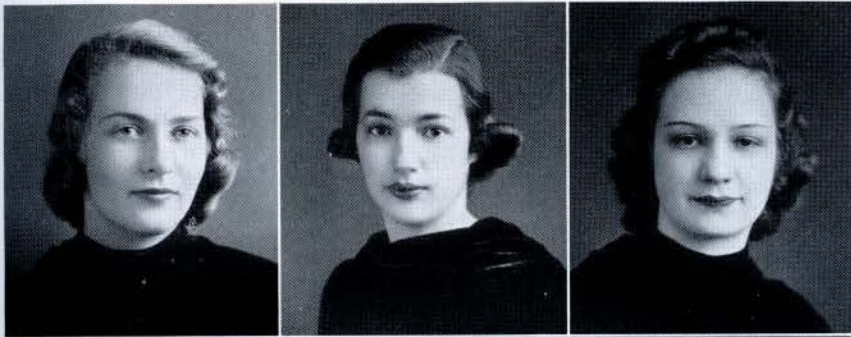
Fifth row

MARY KERN
Little Rock, Ark.

MILDRED FAYE NIEDERGERKE
St. Louis, Mo.

MARY JANE RABON
Tulsa, Okla.



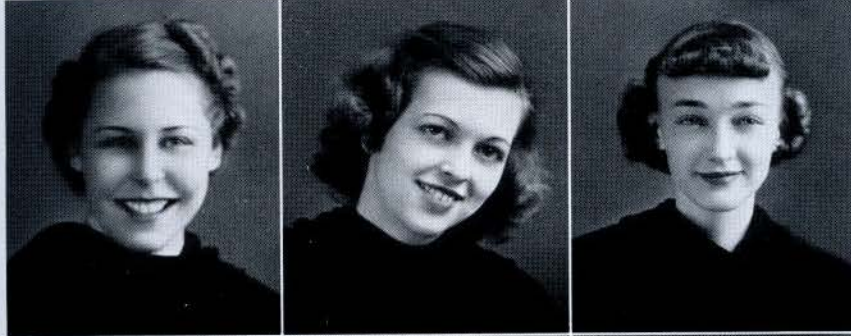


Top row

MARTHA JANE REUBELT
Eufaula, Okla.

BETTY RILEY
Lilbourn, Mo.

HELEN MARTHA SHANK
St. Louis, Mo.



Second row

LUCYL SHIRK
Oklahoma City, Okla.

ELOISE STELLE
Mt. Vernon, Ill.

MARION F. STUMBERG
St. Charles, Mo.



Third row

GEORGIANNE THEIS
Dodge City, Kans.

KATHRYN THOMPSON
Memphis, Tenn.

JUDITH WADE
Nashville, Tenn.



Fourth row

JOYCE WORKS
Humboldt, Kans.

ALICIA YOUNG
Arkadelphia, Ark.

CORINNE F. ZARTH
Hammond, Ind.



Fifth row

REBECCA LOU COX
Pauls Valley, Okla.

CHARLOTTE L. DALIN
Ottumwa, Iowa

SUZANNE M. ZEMPEL
Lewistown, Ill.

The Sophomore Class



Freshmen Council

This year the Freshman Class followed a different procedure in selecting class officers. Because the class was so large, it was decided to let a council govern for several months until the girls became acquainted with each other better.

Representatives were chosen by each Hall in proportion to the number of freshmen girls in that particular Hall.

Later on, the officers were chosen and the council now supplements their work.



Seated: JANE HILL, Ayles Hall; IMOGENE STROH, Niccolls Hall; ANNE BEARD, Irwin Hall; MARY DILLON, Niccolls; DOROTHY SPIVEY, Ayles; HELEN HALDANE, Butler; JAYLEEN RENIKER, Niccolls.
Standing: JEANNE HIRSCH, Irwin; JEAN HUMPHREYS, Sibley; CHAROLYN BAKER, Irwin; BETTY VIEREGG, Niccolls; MARY SELBY, Butler; JANE BLACK, Ayles; JUNE JORDAN, Niccolls.

Freshmen Officers

MARY DILLON *President*
DOROTHY SPIVEY *Vice-president*
ANNE BEARD *Secretary and Treasurer*



SPIVEY, DILLON, BEARD

Each girl in the Freshman Class in the fall of 1937 had the desire in her heart to make good at whatever she undertook, to make new and lasting acquaintances, and to spend a year of happiness in the college of her choice.

Unknown faces of girls became familiar at the ever-to-be-remembered picnic held at the Country Club at the first of the year. The Freshman Class has had many very enjoyable experiences. Girls from many states meeting together have enjoyed hay-rides, picnics, dances, and other forms of entertainment throughout the year.

Founders' Day proved to be a success through the class songs that were sung and applauded. After a colorful style show, a Hallowe'en Queen was selected and reigned over a dance given in her honor.

The class hopes for another year just as successful.



The Freshman Class

Top row

MARY E. ACHARD
 BETTY LOU AKERS
 SHIRLEY R. ALPERN
 IRENE ALTHEIDE
 JEAN F. ANDERSON
 LORRAINE L. ANDERSON

Third row

THEODORA M. BAUGHAM
 ALICE C. BEAKLEY
 ANNE RHEA BEARD
 MARYLINN BEARDSLEE
 JOANNE BELTZER
 IRMA ARLENE BENNETT

Second row

MILDRED E. ANDERSON
 MARTHA JEANNE ATKINSON
 BETTY HAMILTON AUGUR
 JANE AUSTIN
 ANNETTE AVGERINOS
 MARY ANN BATES

Fourth row

JESSIE LEONORI BENSON
 JOY BERANEK
 FRANCES BOENKER
 MARY CATHERINE BOOTH
 KATHLEEN BOTTANI
 KATHRYN BREWER

The Freshman Class

Top row

BETTY ANN BROWN
JOHNNIE LOU BROWN
OPAL MAXINE BUCKLEW
RUTH DOLORES BURSON
FRANCES R. KAMP
BETTE SUE CANTRELL

Third row

VIRGINIA COTE
HELEN CRIDER
BARBARA DALE
MARTHA E. DENIOUS
BETTY JANE DEW
DONNA LOU DEWEES

Second row

MARGARET RUTH CARDEN
MARJORY ANNA CARROLL
CAROLINE SUE CHANTRY
BETTY CLARK
JUNE COATS
MAXINE L. COOPER

Fourth row

HELEN DONDANVILLE
M. MAXINE DUKES
PHYLLIS ELAINE DURBAHN
MARY VIRGINIA EKBERG
JANET EVANS
NORMA AYLEEN EWING





The Freshman Class

Top row

RAE GENE FEARING
ELIZABETH ANNE FIELD
MARY RUTH FLOREY
PATRICIA A. FOWLER
VIRGINIA L. FROMAN
MARY LOU FUGATE

Third row

ELEANOR JUNE HARSH
MARGARET GIBSON HART
LOIS VIRGINIA HAUSCH
MARGARET ESTELLE HAYS
FRANCES EVELYN HICKEY
JEANNE D. HIRSCH

Second row

JUNE GORAN
BARBARA GRAY
MARY ANN GREEN
HELEN HALDANE
ANNA LOUISE HANSEN
VIRGINIA LOIS HANSEN

Fourth row

JUNE ELIZABETH HORSTMAYER
MARGARET HURST
MARGARET ALLENE ISBELL
PATSY LEE IVEY
SARA ELIZABETH JEFFERSON
ELIZABETH BEE JOHNSTON

Top row

JUNE JORDAN
PAULINE KEEHNER
DOROTHY KEYES
JANE KNUDSON
PEARL L. LAMMERS
MARY ELLEN LANE

Third row

BONNER JANE LINDSEY
LILLIAN McDONALD
HATTIE VEIGH McFARLAND
JANET McKAY
JEAN McLAUGHLIN
NANCY SEVIER MADDEN

The Freshman Class

Second row

MARY JEAN LAUVETZ
MARTHA LAWLER
MARY VIRGINIA LAY
DOROTHY GRACE LEACH
LILLIAN ANNE LEAIRD
MARCELLA LEWIS

Fourth row

MARJORIE KATHLEEN MANGRUM
CHARLOTTE MARTIN
MARY FRANCES MEISTER
VIRGINIA A. MERING
HELEN MEYER
JOSEPHINE MILLER





The Freshman Class

Top row

ROSEMARY MILLER
 JAYNE HAYES MILTEER
 MARJORIE ANN MORGAN
 MAVIS NELLE MOTLEY
 REVA KATHRYN MURPHY
 BETTY NEWLON

Third row

SARAH C. PHILLIPS
 JANE RABER
 GERALDINE RASDAL
 ANN RAYBURN
 DOROTHY A. FRANKLIN RHEA
 MARY JO RHINE

Second row

BETTY JANE NICHOLS
 ALMA JANE OSBORN
 LAURABEALL C. PARKINSON
 ELIZABETH JANE PARRISH
 MARILYN PATTERSON
 VIVIAN M. PETERSEN

Fourth row

EVELYN JUNE RICKABAUGH
 KATHRYN ELLIS SALYER
 BETTY JEAN SCHROEDER
 MARY S. SELBY
 DOROTHY SEYMOUR
 MARY ELIZABETH SHANNON

Top row

BETTY JANE SILCOTT
HARRIET SMALL
VIELLA SMERLING
PHYLLIS JUNE SMITH
DOROTHY MARIE SPIVEY
ROSE STACY

Third row

MARGARET HELEN THOMAS
SIBYL THOMAS
MARJORIE TOWNSEND
KATHRYN GRACE TRESMOTT
MARTHA ANN TRUMAN
MARY MILDRED TRUMBO

The Freshman Class

Second row

MARY HELEN ST. CLAIR
MOILA STRICKLER
IMOGENE COVERT STROH
MAXINE JUNE TANKE
MILDRED JEAN TANKE
E. JANE THOMAS

Fourth row

CHARLOTTE TUCKER
AILEEN VANDIVER
JOAN VOIGT
WINIFRED VROOMAN
AGNES ANN WAGNER
DOROTHY E. WALSH





The Freshman Class

Top row

BARBARA JEAN ADAMS
 MAMI LOU ALBERTSON
 MARY ELIZABETH ANDERSON
 CHAROLYN BAKER
 MARGARET BARTON
 MARY BESS BEATY

Third row

VIRGINIA ALICE CASEY
 CARRIE HARRIET CATES
 FANNY CHAPPELL
 ALBERTA CHEANEY
 NELLIE CLONTS
 WILMA CONNER

Second row

JOANNA JOSEPHINE BENECKE
 LYNNE NELL BERNARD
 VIRGINIA JANE BLACK
 RACHEL E. BRITAIN
 JO ANNE BRYAN
 DOROTHY ELIZABETH CANTRELL

Fourth row

JEAN CONSIDINE
 LUCY LEE COX
 MARY ANN COX
 MINNIE JO CURTIS
 HARRIET DALTON
 MARY MAURINE DILLON

Top row

VERA JEAN DOUTHAT
MARY JEAN DUHADWAY
MARJORIE JANE ECKER
MARGARET EDGINGTON
PEGGY RUTH ELSON
BERNADETTE FEHLMAN

Third row

JEAN HAHN
MIMI HANNA
FRANCES HANSON
THEORA HENKLE
JANE ELIZABETH HILL
RUTH MARLYN HOECK

The Freshman Class

Second row

PATRICIA FLEMING
MARY LOUISE FOWLER
CATHERINE JOYCE GANSSE
MARY ELLEN GITTINGER
PAULINE GRAY
DOROTHY E. GROTE

Fourth row

ELIZABETH HOLLEY
GENEVIEVE HORSWELL
JEAN MAURINE HUMPHREYS
CAROLINE L. IRISH
AUDREY KAPLAN
BETTY JANE KELLOWAY





Top row

IMOGENE KINCAID
 DOROTHY KNAUS
 JANE ARDELE LARSEN
 BETTY JANE LAWS
 JEANNETTE LEE
 RACHEL FRANCES LEWIS

Third row

FRANCES L. PERLATTI
 BETTY JEAN PETERSON
 MARY LOUISE PRUET
 ELAINE JOSEPHINE REID
 JAYLEEN RENIKER
 CATHERINE ROSS

Second row

LILLIAN L. LITWIN
 KATHERINE JANE LOVITT
 MERILYNN MACFARLAND
 MARGORIE NORTON
 BETTY JANE OSTERMEIER
 SARAH E. PENNINGTON

Fourth row

BERNADYNE RUBINS
 KATHRYN RUESTER
 EMILY GRANT RYAN
 MARGARET C. SANDOE
 EMILY SCHERAGO
 GERTRUDE LOUISE SCHMIDT



The Freshman Class

Top row

CONSTANCE SCHWARZKOPF
RUTH ELISE SHANKS
HELEN LOUISE SHEPHARD
KATHLEEN C. STORRS
RHODA ANN THROCKMORTON
IRENE TSVETKOV

Third row

EVELYN E. WAXENBERG
MARTHA LUCILE WEBER
JANE MARGARET WEBSTER
MIRIAM WEDEKING
GERI L. WEISS
LOUISE ALLENE WILKS

The Freshman Class

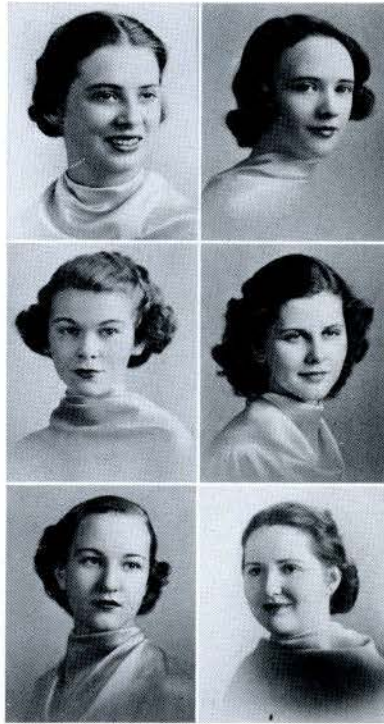
Second row

BETTY JANE VIEREGG
EDITH ELIZABETH VINCIL
PEGGY JEAN VINCIL
LOUISE WALKER
ELEANOR FRANCES WATSON
NATHALIE V. WATTS

Fourth row

SALLY GRACE WILLETT
ELIZABETH ANN WILSON
URNA MILDRED WILSON
WANNETTE W. WOLFE
KATHERINE E. WRIGHT
FRANCES ELLEN YEARICK





Top row

EVELYN ALENE BRADLEY
ELIZABETH ANNE ENGLISH

Second row

NANCY HOPKINS
ZOE ELIZABETH HUGHETT

Third row

JEAN PARCELLS
MILDRED SEYMOUR



The
Freshman
Class

Lindenwood Who's Who



SUE SMITH

LOIS NULL



LAVERNE ROWE

JEAN McFARLAND



SUE SONNENDAY



For the past two years Lindenwood has had five representatives in the recently initiated publication, "Who's Who Among Students in American Universities and Colleges."

Students are nominated on these essential qualities: character, scholarship, leadership in extra-curricular activities, and possibility of future usefulness to business and society.

The book, containing a complete biography of each student, is described by H. Pettus Randall, Editor, as a way in which "deserving students will be brought before the business world, which annually recruits young men and women from the college ranks."



Afternoon

Still more classes — club meetings
— baseball practice — cokes in
the tea room — trips to town
with stops at the Bright Spot —
open pool — teas — and musical
recitals!





AFTERNOON AT LINDENWOOD

A fire drill and Sue a little false alarmed . . . "Really?" says Miss Penn . . . Curbstone Cuties . . . "And what do you think of the foundation plantings, girls?" . . . Mimi, who's your chum? . . . Stop, Look, and Listen . . . Looks kinda good, Parrish . . . Dee Manion graces our greenhouse . . . A-shopping we will go . . . Shades of Sibley.





Tea for two . . . Irish crossing her bridges when she comes to them . . . Baroness Lohr "ads" her little bit . . . Gwen thinking about the annual and being very cheerful about it all . . . The call of the wild . . . Who forgot her horse? . . . Just one of the many kinds of court- ing . . . Mimi really has the support of her friends.

Linden Leaves Staff



Seated: HULL, WILLIAMS, DUHADWAY, SONNENDAY, REUBELT, BLACK, NULL, KLITZKE, BRITAIN, BATES, SHANNON, DILLON, HALDANE.

Standing: DEARMONT, DAVIS, WEBER, CURTIS, PAYNE, HALL, McDONALD.

In answer to the often asked question: "What do all the girls on *that* annual staff do?", we give this explanation:

The editor lost the most sleep because she had the job of keeping the staff busy, overseeing the picture-taking, getting the book together and sending all the copy to the printer.

The business manager competed on the loss of sleep, wondering if the business men would advertise; hoping that girls would order annuals and after they had ordered them, make prompt payments; and worrying over the budget.

Alice Belding, assistant business manager, helped with local advertising.

The two literary editors, Gwen Payne and Helen DuHadway, selected the literary supplement and wrote the senior biographies.



Linden Leaves Staff



LOIS NULL
Editor-in-chief



SUE SONNENDAY
Business Manager

Rosemary Williams, organization editor, collected the information about the various clubs on campus and also acted as chairman of the assistant organization editors from each class. Betty White, assistant from the Senior Class, encouraged every senior to have her picture taken. Dottie Wagner was equally as successful with the juniors. The sophomore assistants were Marguerite Dearmont, Harriet Hall, Martha Jane Reubelt, and Marion Stumberg. From the Freshman Class were Mary Elizabeth Shannon, Mary Bates, Minnie Jo Curtis, Helen Haldane, June Jordan, Mary Anderson, Pauline Keehner, Mary Dillon, Rachel Britain, and Jane Black.

Ada Lee Weber and Nina Jane Davis, art editors, helped plan the book and criticised it from the artistic point of view.

Christine McDonald and Jeanette Klitzke are responsible for most of the snapshots. Marian Hull gave us the humor.

Dr. Gipson served as sponsor and gave many helpful suggestions.



Student Board

This governing body consists of a president, a vice-president, and a secretary, selected from the student body. Also acting on the board are the president of the Y. W. C. A. and the presidents of all the halls.

The Student Board wishes to thank Dr. and Mother Roemer, Dean Gipson, the administration, the faculty, the house-mothers, and the students for their hearty cooperation throughout the year.

OFFICERS

President LAVERNE ROWE
Vice-president MARGARET BEHRENS
Secretary MARY JANE BRITTIN



Seated: LAVERNE ROWE, MARY JANE BRITTIN, MARTHA ROBERTS, SUE SMITH, VIRGINIA ANN CARTER, BETTY HARPER
Standing: MARGARET BEHRENS, FRANCES R. BRANDENBURG, MARGARET JEANNE GASKILL

Linden Bark

Editor-in-chief AVIS SAUNDERS
Advertising Manager MARY LOUISE MILLS
Sponsor MRS. UNDERWOOD

The Linden Bark with its staff of eight journalists is the bi-weekly expression of the Lindenwood viewpoints and opinions. It contains news, editorials, feature stories, and literary supplements; this year the staff has ably recorded the events of importance that have occurred on the campus as well as the interesting things that have happened to students outside of school. Under the guidance of Mrs. Julia C. Underwood, religious editor of the St. Louis Globe-Democrat, the class has been most successful.



Seated: DOROTHY LAWHON, BETTY BARNEY, DOROTHY RINGER, MARAJANE FRANCES, MARY KERN, MARY LOUISE MILLS
Standing: AVIS SAUNDERS, MARION DAUDT

Alpha Sigma Tau



JEAN MCFARLAND, HELEN MARGARET DUHADWAY, ALICE BELDING, GWENDOLYN PAYNE, ROSEMARY WILLIAMS, JOHNSIE FIOCK, LOIS NULL

OFFICERS

President JEAN MCFARLAND
Vice-president ALICE BELDING
Secretary-Treasurer JOHNSIE FIOCK

SECOND SEMESTER MEMBERS

MARY BELDEN	JULIA LANE
MARION DAUDT	CHRISTINE McDONALD
BETTY FAXON	MARTHA LOU MUNDAY
JANE GRISWOLD	SUE SONNENDAY
EVELYN HEISER	LUCILE VOSBURG
SARA HURDIS	DOROTHY WAGNER
KATHRYN WAGNER	

Alpha Sigma Tau, founded in 1922, is the honor society of the College of Arts and Sciences. Only a limited membership of the highest ranking students in the college is accepted, this being determined by their grades and the approval of the faculty.

Each year Alpha Sigma Tau and Mu Phi Epsilon co-sponsor the Christmas party at which the announcement of the Linden Leaves Popularity Queen is made. In the spring, a formal tea is given for the entire faculty by Alpha Sigma Tau.

Mu Phi Epsilon



BETTY WHITE, ALICE BELDING, ALICE JONES, MARY AHMANN, SUZANE EBY, DORIS DANZ



Phi Theta is the local chapter of Mu Phi Epsilon, national honorary music sorority open to outstanding junior and senior music students. Requirements for membership are high, and the number of members is limited.

At the meetings, Mu Phi members study the lives and works of composers, illustrating with appropriate programs. They attempt to further musicianship and scholarship in music among students, and toward that end sponsor musicals. This year a delegate was sent to the national convention held in Chicago.

OFFICERS

<i>President</i>	MILDRED CLARKE DENNING
<i>Vice-president</i>	ALICE BELDING
<i>Secretary</i>	BETTY WHITE
<i>Treasurer</i>	DORIS DANZ
<i>Corresponding Secretary</i>	SUZANNE EBY
<i>Historian</i>	MARY AHMANN
<i>Chaplain</i>	ALICE JONES

SECOND SEMESTER MEMBERS

MARGARET HULL
RUTH REINERT RAU

Y. W. C. A. Cabinet



Seated: GWENDOLYN PAYNE, MARTHA ROBERTS, ROSELYNN JANEWAY, SARA LEE AUERBACH
Standing: JUDITH WADE, CATHERINE PAGE DONNELL, SUE SONNENDAY

CABINET

President MARTHA ROBERTS
Vice-president CATHERINE DONNELL
Secretary GWENDOLYN PAYNE
Treasurer ROSELYN JANEWAY

Chairman of Social Service Committee
 SUE SONNENDAY

Chairman of International Relations
 SARA LEE AUERBACH

Chairman of Social Committee
 JUDITH WADE

Chairman of Music
 MARGARET HULL

Chairman of Faculty Advisors
 DR. TERHUNE

When a student enters the college she automatically becomes a member of the Y. W. C. A.

At the weekly meetings, the organization has a diversity of programs including faculty and student participants, lectures, book reviews, current event discussions.

The Y. W. C. A. sponsors the "Little Sister" movement and the Hallowe'en party at which the freshman queen is crowned. Aside from its social activities, the Y. W. has a philanthropic and religious function in the Thanksgiving and Christmas offerings for the poor and spiritual emphasis week during Lent.

Kappa Pi

Kappa Pi, the national art society is open to all art students who make an "S" in art courses, an "M" average in all other subjects, and who design and make a poster for the society. The activities include, among other things, an outing in the spring.

Those who bought Christmas cards designed and made in the Art Department may not have realized that they were aiding Kappa Pi, national honorary art fraternity, in increasing the Mary Easton Sibley Scholarship Fund. This sale is an annual project.

Kappa Chapter is the Lindenwood chapter of Kappa Pi.

OFFICERS

President ADA LEE WEBER
Vice-president NINA JANE DAVIS
Secretary-Treasurer BARBARA NAN JOHNSTON
Sponsor DR. ALICE A. LINNEMANN
Faculty Member LILLIAN RASMUSSEN
Honorary Member MRS. JAMES REED
(Nelly Don)

PLEDGES

ELEANOR KAPS EVELYN RICKABAUGH
MARTHA LAWLER DOROTHY SEYMOUR
JEANNETTE LEE SARA SORGENFREI
M. MACFARLAND GEORGIANNE THEIS
REVA MURPHY EDITH VINCIL
ELIZABETH PARRISH LOUISE WILKS
SUZANNE ZEMPEL



ADA LEE WEBER, NINA JANE DAVIS, BARBARA NAN JOHNSTON

Pi Gamma Mu

The Missouri Delta Chapter of Pi Gamma Mu, Social Science Fraternity, attempts to foster a greater interest in social sciences on the campus and to study social problems as they loom today. Requirements for eligibility to Pi Gamma Mu are high.

Each year the organization gives a tea, inviting students who do outstanding work in the departments of social science. To the student, not a member of the fraternity, who achieves the most outstanding work in the field of social sciences during the year, Pi Gamma Mu awards a special medal. In February, the organization sponsored a movie, "What's In a Dress?"

OFFICERS

President SARA LEE AUERBACH
Vice-president MARY BELDEN
Secretary-Treasurer MARION THOMPSON

SECOND SEMESTER MEMBERS

MARY BELDEN
ALICE BELDING
JEAN MCFARLAND
DOROTHY WAGNER
MARION THOMPSON



EVELYN COKER, SUE SONNENDAY, SARA LEE AUERBACH, LOIS NULL

Triangle Club

OFFICERS

President MARY BETH BAPTIST
Vice-president JANET SCROGGIN
Secretary-Treasurer SUNNY LOHR
Sponsor DR. TALBOT

NEW MEMBERS

MARY ANN FOWLER
EVELYN HEISER
GWENDOLYN PAYNE
ROSE WILLNER

Students who have a grade of "S" in three semesters of work in one field of science—biological, physical, or mathematical—and who have an "M" average in other subjects, are eligible for membership in the Triangle Club.

Each year the organization sponsors a scientific project. Meetings are social in nature, and talks on topics of general interest to all the departments are given by student and faculty members.



EFFIE REINEMER, MARY ELIZABETH JOLLEY, SUNNY LOHR, MARY BETH BAPTIST, JANET SCROGGIN

Sigma Tau Delta



Seated: GWENDOLYN PAYNE, ROSEMARY WILLIAMS, JOHNSIE FIOCK, JULIA LANE, JEAN MCFARLAND, MARGARET MACDONALD

Standing: MARION DAUDT, SUE SONNENDAY, DR. BETZ, LOIS NULL, HELEN PLETZ, HELEN MARGARET DUHADWAY



OFFICERS

<i>President</i>	JOHNSIE FIOCK
<i>Vice-president</i>	SUE SONNENDAY
<i>Secretary</i>	JULIA LANE
<i>Treasurer</i>	MARION DAUDT
<i>Sponsor</i>	DR. BETZ

NEW MEMBERS

CHRISTINE McDONALD
JOSEPHINE TRICE
LUCILE VOSBURG

Sigma Tau Delta, the professional national English fraternity, honors with membership students who are outstanding for proficiency and interest in literature and in creative writing. Candidates for membership must maintain a high academic standard in all work, but especially in English courses.

The society actively encourages the composition, the friendly criticism, and the publication of original work, by its members. Among the outstanding activities of Sigma Tau Delta are the sponsoring of a literary tea and a medal contest for freshmen.

Alpha Psi Omega



BETTY FAXON, MARIAN HULL



Girls who have participated in dramatic productions at Lindenwood and who show marked talent along the dramatic line, are eligible for membership in Alpha Psi Omega, the national dramatic fraternity. Only the very best find themselves able to qualify completely. For this reason the size of the organization is small.

The most recent productions of Alpha Psi Omega have been *Little Women*, which was enthusiastically received, and the Irish comedy, "Is Life Worth Living?"

OFFICERS

<i>President</i>	JOYCE DAVIS
<i>Secretary-Treasurer</i>	MARIAN HULL
<i>Sponsor</i>	MISS GORDON

PLEDGES

CHAROLYN BAKER	G. HORSWELL
MARGARET BARTON	MARY E. JOLLEY
THEODORA BAUGHAM	M. MACFARLAND
BARBARA DALE	MARY L. PRUET
HELEN DONDANVILLE	C. SCHWARZKOPF
RAEGENE FEARING	EVELYN WAXENBERG
NAN HARRIS	JANE WEBSTER
MARGARET HAYS	SALLY WILLETT

Pi Alpha Delta



Seated: KATHRYN SALYER, MARJORY CARROLL, KATHRYN MAYER, MARY ELIZABETH JOLLEY, FRANCES HICKEY
Standing: KATHRYN ASHLEY, PEGGY ELSON, HARRIET SMALL, BETTY NICHOLS



Pi Alpha Delta maintains two kinds of membership: full membership is for those students who achieve superior standing in the study of Latin; associate membership is open to students who attain sufficient standing in English Classical courses.

Each year Pi Alpha Delta gives a tea to which every member is privileged to invite two of her friends as guests.

The primary object of the club is to bring together, for a social hour, students who are interested in the classics.

OFFICERS

<i>President</i>	MARY ELIZABETH JOLLEY
<i>Vice-president</i>	KATHRYN MAYER
<i>Secretary-Treasurer</i>	KATHRYN ASHLEY
<i>Sponsor</i>	MISS HANKINS

ASSOCIATE MEMBERS

BARBARA NAN JOHNSTON
MARTHA MUNDAY
LOIS PENN
VIRGINIA STERN
JOSEPHINE TRICE
ADA LEE WEBER

Beta Pi Theta



Seated: SARA LEE AUERBACH, BETTY WHITE, LOIS NULL, HELEN MARGARET DUHADWAY, MARTHA MUNDAY, ROSEMARY WILLIAMS, SUE SMITH
Standing: HELEN ROSE BRUNS, JOHNSIE FIOCK, CHRISTINE McDONALD, MARY JANE RABON, MARTHA ROBERTS, GWENDOLYN PAYNE, MARION STUMBERG

OFFICERS

<i>President</i>	HELEN DUHADWAY
<i>Vice-president</i>	BETTY WHITE
<i>Secretary</i>	GWENDOLYN PAYNE
<i>Treasurer</i>	JOHNSIE FIOCK
<i>Publicity Director</i>	MARTHA ROBERTS
<i>Parliamentarian</i>	SUE SMITH
<i>Sentinel</i>	SARA WILLIS
<i>Sponsor</i>	MISS WURSTER

OTHER MEMBERS

LOIS PENN
 VIRGINIA STERN
 SARA WILLIS

Theta Xi is the Lindenwood chapter of Beta Pi Theta, national honorary French fraternity.

In order to become a member, the French student is required to have an "S" average in French courses, and an "M" average in other subjects; she must write a five-hundred-word theme in French, read and report on a French novel, play, and short story, and memorize fifty lines of French poetry.

The purpose of Beta Pi Theta is to advance an interest in French literature and culture in America. Toward this ideal are directed the programs of the club.

Alpha Mu Mu



CORDELIA BUCK

OFFICERS

President CORDELIA BUCK
Vice-president BEVERLY MAYHALL

NEW MEMBER

BEVERLY MAYHALL

PLEDGES

MARY BOOTH
VERA JEAN DOUTHAT
BERNADETTE FEHLMAN
RUTH HOECK
NELLE MOTLEY
DOROTHY NIEMAN
SARAH PHILLIPS
RUTH SHANKS

Members of Alpha Mu Mu, honorary fraternity for freshman and sophomore music students, have taken part in various musical programs of the year. They have contributed to many of the recitals given this year and have appeared on special programs here and in St. Louis.

In their meetings, the organization discusses general phases of music. With Mu Phi Epsilon and Delta Phi Delta, Alpha Mu Mu helped plan and sponsor a Valentine Tea.



Tau Sigma

The Lindenwood chapter of Tau Sigma, the Dance Sorority, has had an exceedingly active and interesting year. The annual Founders' Day Dance Program brought to the organization several talented pledges who have helped us in the composition of original dance forms. February 12, nine members attended a symposium at Monticello College where we took a lesson under Hanya Holm of New York City, and were privileged to present a fifteen-minute program before her in the afternoon. That evening she and her group demonstrated their own vigorous, beautiful technique. We returned, impressed and inspired. March 12, we danced in another symposium at University City.

OFFICERS

<i>President</i>	BETTY FAXON
<i>Vice-president</i>	MARTHA JANE REUBELT
<i>Secretary</i>	LOIS PENN
<i>Treasurer</i>	JULIA LANE
<i>Sponsor</i>	MARGARET MANTLE STOOKEY



Back row: WINIFRED VROOMAN, ADA LEE WEBER, VI ELLA SMERLING, CHRISTINE McDONALD, CHARLOTTE DALIN, IMOGENE KINCAID
Second row: RUTH ETTIN, MARY JEAN LAUVETZ, BETTY LEE LEMLEY, SALLY WILLETT, MARTHA ATKINSON, BETTY NEWLON, LORRAINE ANDERSON
First row: LESLIE ANN MCCOLGIN, MARTHA ANDERSON, MARTHA JANE REUBELT, BETTY FAXON, JULIA LANE, LOIS PENN, VIRGINIA HORNER

Delta Phi Delta



MARGARET HULL, MARY AHMANN, DORIS DANZ, RUTH REINERT RAU, MARY BENNER, KATHRYN CRAIG

Those girls who have music problems, or who plan to teach music, find opportunities for discussion of these problems at the meetings of the honorary organization for members of the public school music department, Delta Phi Delta.

Along with other activities this year, Delta Phi Delta joined with Mu Phi Epsilon and Alpha Mu Mu in giving a Valentine Tea as well as a dinner.

The organization attended Music Educators National Conference in St. Louis, March 27-April 1.

OFFICERS

<i>President</i>	DORIS DANZ
<i>Vice-president</i>	MARGARET HULL
<i>Secretary</i>	CORDELIA BUCK
<i>Sponsor</i>	MRS. BURKITT

OTHER MEMBER

CORNEILLE DAVIS

PLEDGES

IRENE ALTHEIDE	MARGARET ISBELL
HELEN CRIDER	PEARL LAMMERS
BERNADETTE FEHLMAN	NELLE MOTLEY
MARY LOU FUGATE	DOROTHY NIEMAN
MIMI HANNA	DOROTHY RHEA
RUTH HOECK	WANNETTE WOLFE

El Circulo Espanol



Third row: EVANS, POTLITZER, KEEHNER, KNELL, LINDSEY, WEBER, CARDEN, AUSTIN, LEACH, DEWESS, BROWN
Second row: GRISWOLD, MCFARLAND, WAGNER, WILLIAMS, MUNDAY, PLETZ, HELEN DUHADWAY
First row: ROBERTS, MCKAY, MARY JEAN DUHADWAY, BRUNS, MACDONALD



OFFICERS

President ROSEMARY WILLIAMS
Vice-president MARTHA MUNDAY
Secretary-Treasurer KATHRYN WAGNER
Sponsor DR. TERHUNE

OTHER MEMBERS

JEAN ANDERSON
BETTY JANE LAWS

The aim of this organization is to stimulate interest in Spanish-speaking countries and to acquaint its members with Hispanic life and culture.

Through the cooperation of a splendid group of girls and with the aid of its sponsor, Dr. Mary Terhune, El Circulo Espanol has had an interesting and profitable year.

Membership is open to those students who attain superior standing in Spanish courses.

Der Deutsche Verein

OFFICERS

President LEONORA BLACKHURST
Vice-president MARION DAUDT
Secretary-Treasurer ROSE WILLNER
Sponsor DR. EVERS

OTHER MEMBERS

MARGARET BARTON
MARY LAUVETZ

Sprechen Sie Deutsch? If so, and if you have S in German and not below M in other courses you are eligible to Der Deutsche Verein, the college organization for students interested in German. The jolliest meetings are a German Christmas party at which both members and German students participate, and a spring outing which is held in May. A new feature of the organization is that each member, in answering roll call, gives in German some news item of interest for the organization. Activities include talks on German customs, and of course, always German songs.



Seated: ROSE WILLNER, ALICE BELDING, LEONORA BLACKHURST, LUCILE VOSBURG, MARION DAUDT
Standing: JANET SCROGGIN, JOYCE GANSSLE, KATHRYN RUESTER

Home Economics Club

The Home Economics Club is affiliated with the National Home Economics Association. Active membership is based upon a required number of hours and high scholastic standing.

Activities of this organization include lectures, style shows, demonstrations, and a luncheon in St. Louis.

The active members for this year were: Imogene Hinsch, Sara Margaret Willis, Rose Willner, Mildred Davis, Estelle Hayes, Martha Lott, Alma Martin, LaVerne Rowe, Helen Martha Shank, Sue Smith, Suzanne Zempel and Lois Ward. The picture includes both the active and the associate members.

OFFICERS

First Semester

<i>President</i>	ROSE WILLNER
<i>Vice-president</i>	IMOGENE HINSCH
<i>Secretary</i>	LUCILLE GOCIO
<i>Treasurer</i>	SARA WILLIS

Second Semester

<i>President</i>	ROSE WILLNER
<i>Vice-president</i>	SARA WILLIS
<i>Secretary</i>	LUCILLE GOCIO
<i>Treasurer</i>	HELEN SHANK
<i>Sponsors</i>	MISS ANDERSON MISS TUCKER



Back row: HAYS, GORAN, VANDIVER, AVGERINOS, HINSCH, McEWEN, FULLERTON, WILLNER, LINDSEY, ROWE, WILKS
Third row: SCHWARZKOPF, HANSEN, HAUSCH, KNUDSON, MISS TUCKER, MISS ANDERSON, MARTIN, GOCIO, ZEMPEL, PETERSEN, FINLEY
Second row: SCHROEDER, LOTT, PATTERSON, SORGENFREI, WILLIS, KNAUS, WARD, HARSH, FLOREY, SHANK
First row: BARNEY, KLITZKE, SMITH, LAWLER, STROH, DAVIS

Poetry Society



Seated: DR. BETZ, DR. HARMON, LOIS NULL, MISS DAWSON
Standing: NADEANE SNYDER, JOHNSIE FIOCK, SALLY WILLETT, SUE SONNENDAY, LOVELLA HURST, MARTHA LOU MUNDAY

The Lindenwood College Poetry Society has for its aim the development of a fuller appreciation of and a greater ability in the writing of poetry. Student poems have been printed in *College Verse*, the magazine of the national organization. Miss Dawson, the local sponsor, is also an editor of this national publication.

At the meetings this year, original poetry was read, criticised, and generally discussed. The members are greatly interested in the poetry of students of other colleges and in the work of great poets of both past and present which they consider and for which they attempt to develop powers of evaluation. The chairman leads the discussions and urges everyone to write more and finer verse.

OFFICERS

<i>President</i>	JOHNSIE FIOCK
<i>Secretary</i>	BETTY FAXON
<i>Treasurer</i>	MARTHA MUNDAY
<i>Sponsor</i>	MISS DAWSON

OTHER MEMBERS

FRANCES LANE ALEXANDER
 BETTY FAXON
 GERALDINE RASDAL
 ELOISE STELLE
 CORINNE ZARTH

NEW MEMBERS

MARION HULL
 CHRISTINE McDONALD
 FLORENCE MURER
 SARAH PHILLIPS

Beta Chi

OFFICERS

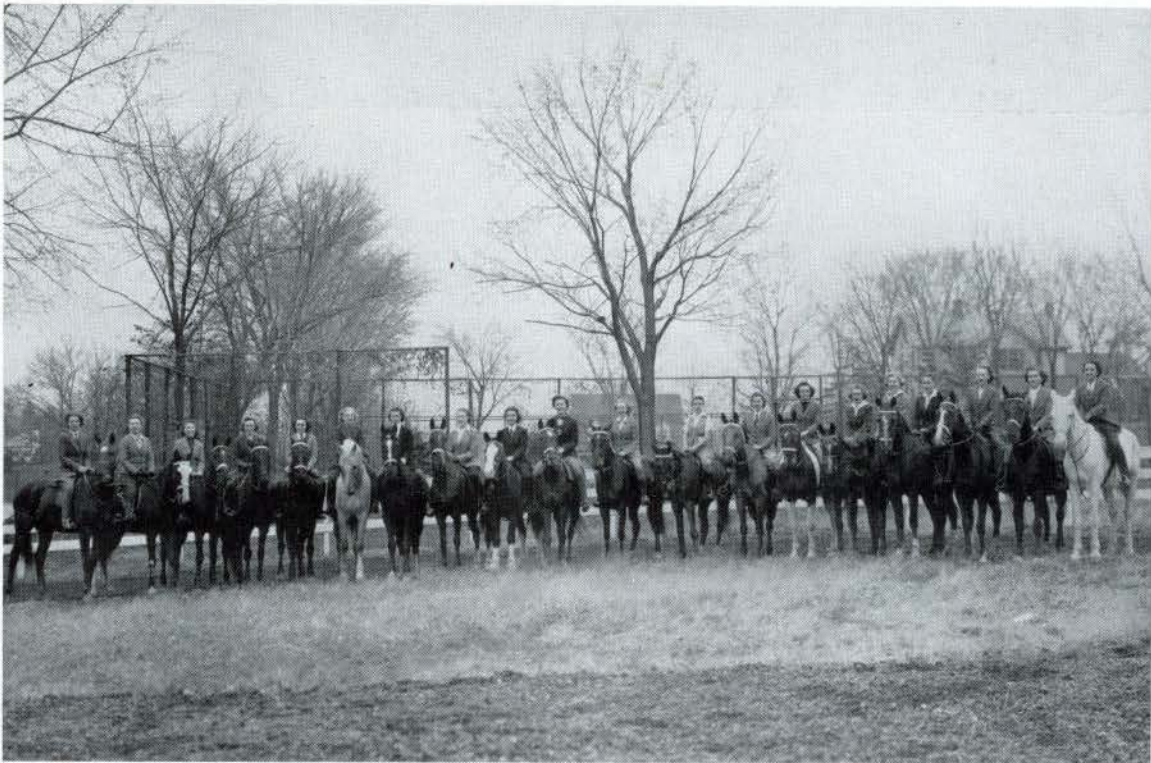
<i>President</i>	MARTHA ROBERTS
<i>Vice-President</i>	MARION DAUDT
<i>Secretary-Treasurer</i>	MARY ROBERTS
<i>Sponsor</i>	MISS REICHERT



Every girl interested in riding has the ambition to become a member of Beta Chi, honorary horsemanship organization. In order to become a member, the rider must be able to saddle and bridle a horse, to mount and dismount, to put a horse through five gaits, and to jump three feet in good form.

Beta Chi sponsors a Fall and Spring horse show, hayrides, sleighing parties, and breakfast rides.

This year, as well as in former years, some of the members of Beta Chi were successful in winning ribbons in the St. Louis Fall and Spring horse shows.



DAUDT, LOHR, MCFARLAND, IRISH, PENN, PETERSEN, ROBERTS (MARTHA), RASDAL, HARPER, RABON, ROBERTS (MARY), HORNER, BRANDENBURG, OSBURN, FINLEY, ROWE, FRITZ, STUMBERG, CHEANEY, BOTTANI

Choir



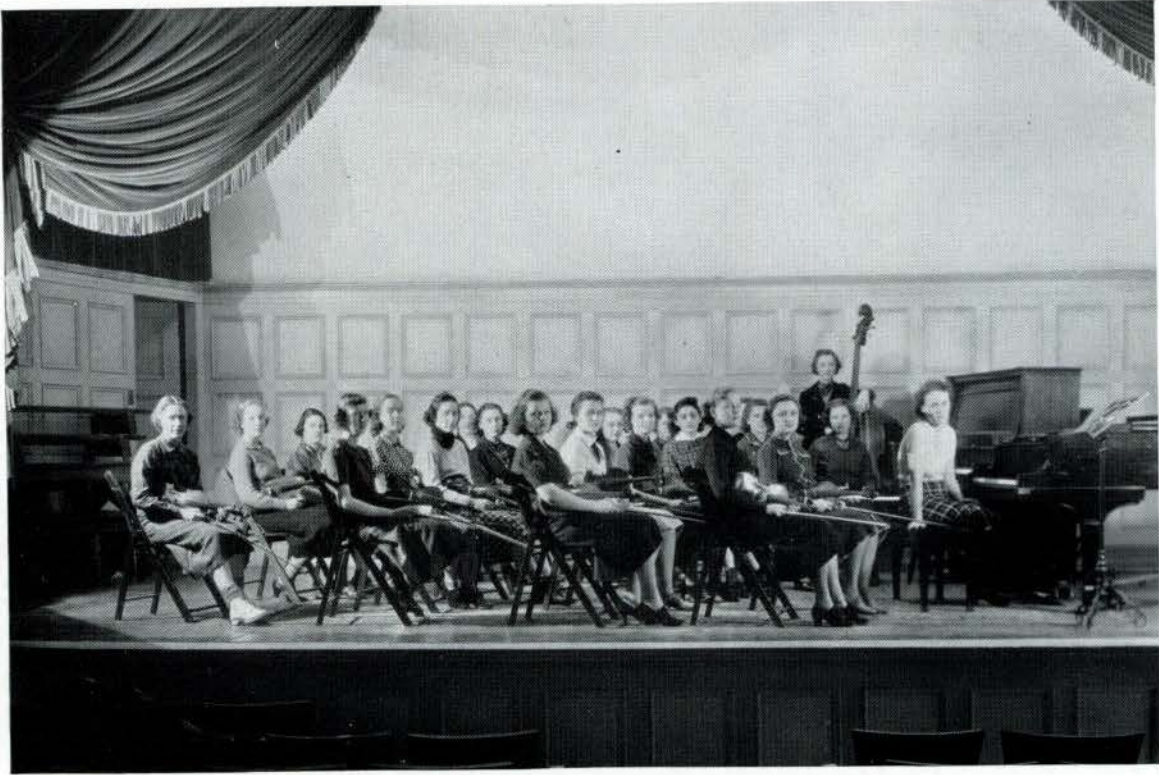
Left back row: COX, HALDANE, SUTHERLAND, NICKOLS, BUCKLEW, DOUTHAT
Third row: ALTHEIDE, FOWLER, WOLFE, EDGINGTON, JOHNSTON (ELIZABETH), IVEY
Second row: PATTERSON, THOMPSON, MAYHALL, HAUSCH, GASKILL, GARDEN, STORRS
First row: ROGERS, MOTLEY, BENNER, SEELEY, HILL, JONES, BUCK (*Pianist*)
Right back row: BEHRENS, SMALL, HOECK, NIEMAN, STRICKLER, WATSON
Third row: REID, BROWN, DREHMANN, DALIN, RHEA, MILLER
Second row: FUGATE, JORDAN, RUESTER, WEDEKING, KELLOWAY, DILLON, DAVIS
First row: MORGAN, LEE, BENSON, HANNA, CRAIG, HAYS, JOHNSTON (BARBARA)



The Lindenwood Choir, which has as its purpose the development of interest and efficiency in group singing, consists of a number of selected vocal students of the college. Sunday evening vesper services are made more beautiful through the lovely anthems that this group sings. During the year Miss Gieselman, the choir director, plans special concerts for Founders' Day, Christmas, Easter, and Commencement.

Elaine Reid and Mary Benner served as librarians for the choir this year.

Orchestra



LAY, PARCELLS, ST. CLAIR, AKERS, KNAUS, BATES, ISBELL, CRIDER
BROWN, McDONALD, EVANS, MCCOID, ECKER, LAUVETZ, BOOMIS, EBY
BOOTH, KATZ, DANZ, RAU
BAKER, BEAKLEY are new members this semester.

Anyone who can play an instrument and who is interested in ensemble and orchestral work is eligible for membership in the orchestra.

During the year numerous concerts are sponsored, and in the spring concerts the orchestra accompanies the soloists. All through the year the girls practice diligently twice a week to further their aim of co-ordinated work. Among other things during the year, the orchestra furnishes the music for the event of the spring, the May Fete.

Miss Isidor conducts the group.



International Relations Club League of Women Voters



Back row: BRANDENBURG, SMERLING, REINEMER, SHANNON, BRADLEY
Second row: PAYNE, DREHMANN, JANEWAY, DR. BENSON, DR. PUGH, THOMPSON, WEDEKING, AUERBACH
First row: MCCOLGIN, CRAIG, JEAN ANDERSON, MANGRUM, IVEY, TRESCOTT

OFFICERS OF INTERNATIONAL RELATIONS

<i>President</i>	RUBY DREHMANN
<i>Vice-president</i>	JEAN ANDERSON
<i>Secretary</i>	ROSELYNN JANEWAY
<i>Treasurer</i>	VIRGINIA FROMAN

OFFICERS OF THE LEAGUE

<i>President</i>	KATHRYN THOMPSON
<i>Vice-president</i>	LESLIE ANN MCCOLGIN
<i>Secretary</i>	SARA LEE AUERBACH
<i>Treasurer</i>	FRANCES BRANDENBURG
<i>Sponsors</i>	DR. BENSON DR. PUGH

The Carnegie Endowment for International Peace sponsors the International Relations Club, the purpose of which is the stimulation of interest in all kinds of international affairs.

The League, which is interested primarily in national political affairs, based its programs for the year on the Food, Drug and Cosmetic Bill and its proposed amendments.

This organization sent delegates to the state convention at William Woods College in Fulton, Missouri.

Both organizations are open to everyone on the campus.

Commercial Club

The Commercial Club has had a very active and successful year on campus, enjoying one of the largest memberships of any organization. It is open to all students in Business.

Our social events of the year included five meetings, one of which was a formal tea given for the students of business and those of the administration connected with the commercial activities.

OFFICERS

<i>President</i>	SUE SMITH
<i>Vice-president</i>	VIRGINIA CARTER
<i>Secretary-Treasurer</i>	HELEN BROWN
<i>Sponsor</i>	MISS ALLYN
<i>Publicity</i>	RUTH SEAMAN



Back row: DURBAHN, NIEDERGERKE, KEITEL, VIAREGG, YEARICK, CORZINE, CARTER, KNELL, WILSON, STACY
Third row: KERN, BROWN (JOHNNIE LOU), PAULSEN, PATTERSON, RINGER, BERNARD, MISS ALLYN, DALIN, LARSEN, BREWER, AYLESWORTH, SEAMAN, RYAN
Second row: CLONTS, NORTON, HALL, BELTZER, GARDEN, KAPLAN, MANGRUM, COX, CONNOR, CHANTRY, ANDERSON, VINCIL
First row: GROTE, MCCOLGIN, SMITH, DEISENROTH, FIELDS, EWING, BERANEK, BROWN (HELEN), PODESCHI, MORGAN

Athletic Association



Back row: BOOKS, MARTIN, TUCKER, BRADLEY, SHANNON, CRIDER, SMERLING, VOSBURG, AUGUR, RILEY, YOUNG, JANEWAY, LOVITT, ASHLEY, SAUNDERS, HARPER
Third row: GRAY, LAMLEY, PAYNE, KLITZKE, FAYON, MARY ANDERSON, BURSON, THOMAS, GREEN, PEABODY, WEDEKING, LANE, STUMBERG, DAUDT, LAWLER, NULL
Second row: REINEMER, MARTHA ANDERSON, HURDIS, REUBELT, DENIOUS, MILDRED ANDERSON, ST. CLAIR, VOIGT, BOTTANI, PENN, GANSSELE
First row: DREHMANN, THOMPSON, THEIS, BRANDENBURG, CLARK, NEWLON

OFFICERS

<i>President</i>	MARY BOOKS
<i>Vice-president</i>	GWEN PAYNE
<i>Secretary</i>	FRANCES BRANDENBURG
<i>Treasurer</i>	MARTHA JANE REUBELT
<i>Sponsors</i>	MISS STOOKEY MISS REICHERT

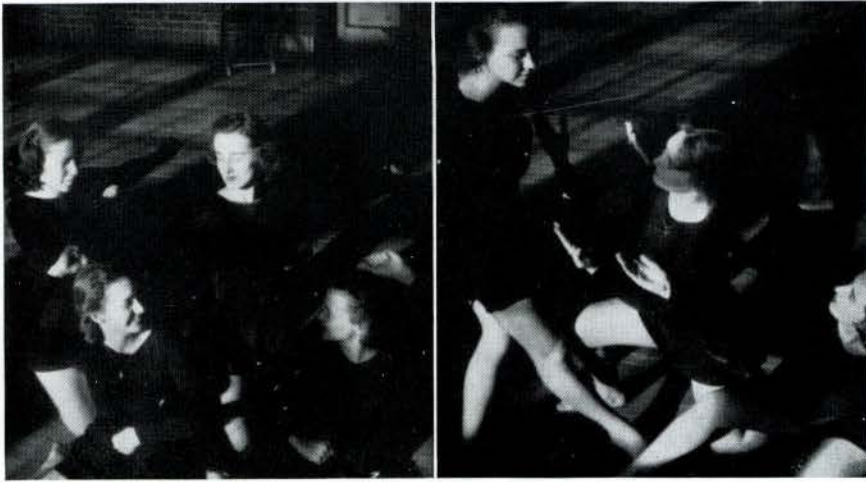


The Lindenwood Athletic Association membership is based on a system of points earned in golf, tennis, riding, archery, basket ball, hiking, posture, swimming and dancing.

In November the association sponsored a "big apple" dance for the entire school.

Interest ran high in all the tournaments: tennis, golf, archery and basket ball. A swimming meet was held in the spring. The members who excelled in sports went to Columbia, Mo., in April to participate in the annual sports day held at the University of Missouri.

Modern Dancing



A Few Sports





Evening

Parties and dances — lectures —
bull sessions — feeds — shows, es-
pecially on Tuesday and Wednes-
day — hours in the library — lights
out — to bed — shhhhhh!





EVENING AT LINDENWOOD



● *Jean McFarland*
POPULARITY QUEEN



Mary Jean DuHadway



HALLOWE'EN _ QUEEN





La Verne Rowe



MAY QUEEN







● *Jean McFarland*

MAID OF HONOR
TO
MAY QUEEN



ATTENDING THE MAY QUEEN

SENIORS

SUE SMITH

MARTHA ROBERTS

JUNIORS

VIRGINIA CARTER

SARA MARGARET WILLIS

SOPHOMORES

JOSEPHINE TRICE

MARTHA JANE REUBELT

FRESHMEN

DOROTHY RHEA

ELAINE REID



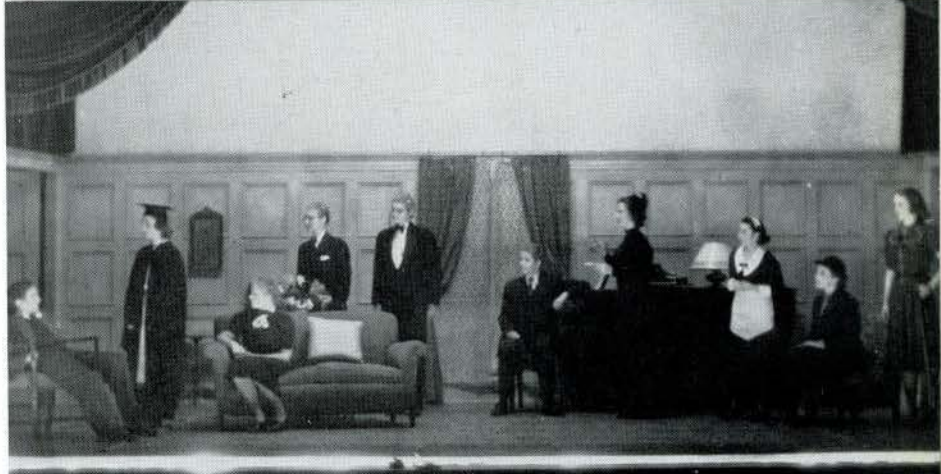
DRAMATICS AT LINDENWOOD

IS LIFE WORTH LIVING?

with

MARIAN HULL

GENEVIEVE HORSWELL



LADY OF LETTERS

with

BETTY FAXON

SALLY WILLETT



IS LIFE WORTH LIVING?



Literary Supplement

SUMMER NOCTURNE

The moon was a golden fish-hook
Hung in a lavender sea,
But all it caught was a seaweed cloud,
While the starfish laughed with glee.

And Sleep, in a boat of cobweb dreams,
Came floating through the mist,
And moored his bark to a lotus bud
That a luna moth had kissed.

And then, on his tiny, silent feet,
He danced along a breeze,
And bent his fairy head to hear
All the intimate whispers of leaves.

And a drop of dew was a toy balloon,
As it shone in the fireflies' light,
And a pixie bathed in the soft perfume
Of a flower that opened at night.

—FRANCES LANE ALEXANDER



FEBRUARY THE SECOND

All morning and afternoon the sky wore gray. Unclad trees standing pencil-slim etched the winter sky. Dead grass filled with fallen leaves crawled the land and over the hill. No shadows lived this day. Yet, in later hours, coral streaks broke the western edges, to let me know that the sun was shining, somewhere!

—SARAH PHILLIPS

HEADACHE

Beat, beat, beat!—a hundred midget carpenters hammered on my head. Wrinkling my forehead, I attempted to alleviate those stabbing blows, to crush those workmen. It was a useless effort, however, for those small men only wielded their tools more harshly in their incessant task. My head swayed heavily—to the right, to the left, backward, forward. Yet, it certainly could not be my head, for this thing clung to my shoulders as though fastened loosely by chains which I longed to part—anything to dismiss those cruel, persistent toilers, to end my terrible torment.

—VIRGINIA MERING



CHILD IN BLUE

Down the lane came a very small child, walking happily along and singing under her breath. Her small, starched blue gingham dress stuck out all around so that she measured more from side to side than she did from top to bottom. Her soft curls, the color of buttercup yellow, were brushed in little fat sausage rolls all over her head. Her tiny slippered feet barely touched the ground as she moved along in little hops and skips. I saw only her silky curls tied with the large blue bow swaying rhythmically to the light movement of her small, lithe body as she disappeared over the hill.

—GENEVIEVE HORSWELL



OLD MAN

Squinting his small eyes into wrinkled slits, the old man contemplated the passing automobile reflectively. As if the sight were none too gratifying, he reached for a stick lying near him on the curb, spat skillfully into the gutter, and flicking the blade of his knife with a tentative thumb, resumed his whittling.

—NADEANE SNYDER



CANDLE FLAME

Tonight I am watching the blaze of my little candle, standing military-fashion, upright, straight. Now, silent and still, its filmy halo throws out a vague green-yellow brilliancy. The tip of the flame lances the encompassing darkness as it climbs forever upward. Now a strong breeze puffing through my window whiffs it over. Like an angry elf it dances, struggling fiercely to maintain its upright course. It staggers like a human being who is bucking a firm wind—tottering, reeling. The breeze dies. My little candle flame sways once more and rises again, strong and triumphant.

—JEAN HAHN

PRECEPTS OF THE WISE

I saw a pond
Bordered with catalpa blooms
Like burst popcorn
In white starch fluffiness
Or mislaid party hats
Of dancing fairies.

I saw a drop of dew
Or perhaps it was a tear
Resting quite gently
On a jagged, earth-green leaf
Reflecting the whole world
In perfect miniature.

I saw a quilted spider
Tufted fat with cruel, steel eyes,
And thin string legs concealing strength
Squatting in front of a pearl-gray mesh
Soft silken thread
A deceiving death.

Insignificant beauty
Dissolved only by design,
Incessant, and yet futile:
Obscure precepts of the wise.
All this in dusky shadows—
Destitute of light.

—ELOISE STELLE



CONCENTRATION

Her electric black hair, thrust impatiently back from her forehead, just touched the soft collar of her flirt-blue dress. With the thin, pale fingers of one hand, she impatiently pushed a uniquely carved locket back and forth along the slender gold chain encircling her neck. Planting troubled eyes upon the harmony sheet in front of her, she maneuvered a pencil deliberately and repeatedly over a thickening treble clef, with well-modeled fingertips. Occasionally the girl became motionless—with the exception of her eyes, which roved unseeing over the objects on the desk. Once she changed her position, ran her tongue over thin, nervous lips, and sighed audibly.

—MARY JEAN DUHADWAY

FROM A STUBBLE FIELD

Absorbed in the unfamiliar world about me, I stumbled on unexperienced feet over the frosty, unplowed clods that lay, unturned to Iowa's October air, in the lowlands behind my new home. I sank upon a stump some hundred yards from our homely, screened back-door, and surveyed the town, dwindled to its "city-limits" on the slope above. Our house, identical with those on either side of it, loomed large and white and bewindowed against the great drooping elms. Loops of tangled barbed wire hung between the crumbling old fence posts picketing the dying garden at the foot of our steps. A drove of zinnias still flamed there, and lemon-colored chrysanthemums drooped their whiskers nonchalantly in the wind that shaved them closer every day. I like to hear that wind, young and strong after its long summer sleep. It swirled and rustled among lifting colored leaves piled in the woods on my right, and spat boldly at a thread of smoke that twisted above a burning heap. The cloud-wisps tossed low in the path of it, and to the left the wind detector on the court house spire spun around undecidedly against the ice-blue sky, like an unsettled compass needle. To me, who had lived among streetcars and rectangular skyscrapers, this practical red-brick tower, rising through the ever-present elm branches, was like a cathedral where thrifty farmers worshipped the state with taxes, hard and honestly earned. Naturally, it was situated on Main Street, where everyone within a three-mile radius could see the great face of the town clock registering the time of day. The hands were on the hour when I glanced at them, and I waited for the slow, ringing toll that I had grown to know would come. It struck four times, and I shifted on the stump to watch for the afternoon Chicago-bound that would flash by on the I. C. tracks a half-mile behind me. It would whistle long and low, and six short hours later it would thunder into Union Station; but I would be like the smoke-haze, left behind in an unplowed field where yellow corn-ears lay among the stubble and a cowbird hopped one-footed from kernel to kernel.

—MARYLINN BEARDSLEE



PETITION

And if, then, as you say, I must have quiet,
Ah, let it be the quiet of slow tides;
The calm of interswirling mists—
The hour that follows sundown. Let it be
The dark serenity of pines long dead
And feathering the sky. The quiet birth
Of moons, which let me see alone
Without reproach. The silence, too,
Composed of mingling flames held soft
Within the opal's curve. These things,
My dear, and not the quiet conflict, now,
Between my eager soul and me here in this room.

—JOHNSIE FIOCK



COLORED STARS

I opened my eyes and stared at the wallpaper on the ceiling above my head. Tiny blue, gray, silver, and pink stars swarmed over a creamy background. One group, a bit larger than the others, chased the smallest group around in circles. Now, the blues followed the group diagonally across the ceiling. Now, the silver ones hop-scotched over the pink ones parallel with the edge of my bed. For a second the gray color dominated the others; but then, it magically lessened its vividness. Silver gleamed brightly, completely dominating gray. I began to count the figures starting in the corner near my head, but each star jumped just before I reached it. I became dizzy and closed my eyes again.

—SARA JEFFERSON



AUTUMN LANDSCAPE

I stood at the top of a hill and looked below me onto the rolling ground which dipped gradually for nearly three hundred yards and rose again in the same manner across the dim valley. I could see no sun. Smoke stretched upward from a pile of burning leaves; the crisp, pleasant smell was all about me. Through a grove of thin, bare trees the smoke hung like a transparent gray veil. It drifted westward over the lowland, a narrow, coiling streak driven on by a slight breeze. The hour was early evening.

—BARBARA GRAY

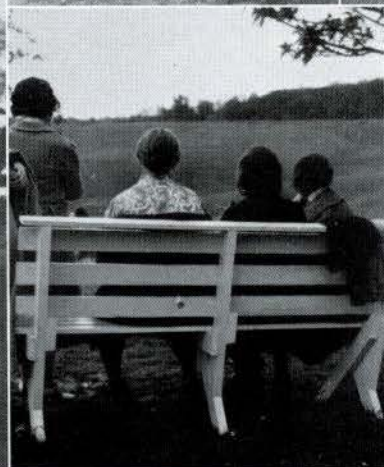


CONVERSATIONS IN A PARK

Biscuit clouds embossed on drapes of gray,
Shivering elm leaves
Falling like soot drops from city chimneys;
Quilt blocks of blood-colored paper
Beneath crinkled branch-fingers.
Our words rehearsed on this curtained stage
Are river thoughts with under currents;
Coiling, churning
Below immovable barriers of steel secrecy:
They lead to crowfoot paths
And separately meander,
Heavy with thickening sediments
To their reunion in mauve seas.

—CORINNE ZARTH





Is there anything more fun than a picnic? . . . Gwen still cheering for the annual . . . And how the freshies love it (the picnic and, we hope, the annual) . . . Surely the faculty is not discussing international affairs on a day like this . . . Fun! . . . What can Mr. Motley be so interested in? . . . And here he is again—isn't he the life of the party? . . . A fairway to spend an afternoon (Don't mind Christine's pun) . . . Mayer is really downing the contents of that bottle



STILL THE PICNIC!

To quote Miss Hocker, "Oo-o-o-h!" . . . Dr. Betz must have just punned terrifically . . . And Dr. Garnett doesn't hate picnics, either . . . Riley about to go into a Highland Fling . . . More of the faculty keeping posted on picnic news . . . Army brats with their cameras . . . Can it be that Lemley is studying? . . . Mr. M. and Frank supervising things in general . . . Fowler and Garden doing right by the foodstuffs . . . Our athletic lassies desert the game for the lunch—and who blames them?

WHAT OUR FACULTY IS NOTED FOR:

Dr. Shaper—Brookings Institute.
Miss Stookey—Hats.
Miss Reichert—E. P.
Madam Moore—her bus service.
Miss Gieselman—her laugh.
Mrs. Burkitt—her earrings.
Dr. Evers—her briefcase.
Dr. Talbot—bouquets.
Mr. Friess—sense of humor.
Miss Lear—patience.
Miss Hankins—classics.

AND THEY SAY:

Miss Isidor—You girls make me so nervous.
Dr. Garnett—Remember the story about—
Miss Burns—That just burns me up!
Miss Morris—Those you can't read just scan.
Dr. Roemer—Is anyone here conscious?
Dr. Benson—By and large—
Dr. Dawson—Cutting is obnoxious.
Mr. Wilson—Let me explain again how I grade.
Miss Walker—I'm in good voice today.
Dr. Terhune—Go away; you have a cold

"SHE" WOULD HAVE "MAXEY" IF SHE HAD THESE TRAITS:

Figure—Carolyn McCormick.
Hair—Virginia Aylesworth
Eyes—Josephine Trice
Nose—Eleanor Finley
Skin—Martha Lott
Hands—Lois Penn
Feet and legs—Dottie Wagner
Mouth—Jane Raber
Teeth—Sue Sonnenday
Voice—Marian Hull
Friendliness—June Jordan
Generosity—Doogie Horner
Poise—Janet Scroggins
Tact—Jean McFarland
Appeal—Mary Roberts
Efficiency—Lois Null
Diligence—Helen Pletz
Ability to have fun—Maurine Potlitzer
Listening ability—Helen M. DuHadway
Sense of humor—Grass Harper
Sweetness—Louise Walker

LINDENWOOD COLLEGE

Founded 1827

ST. CHARLES, MISSOURI

You know, the Spirit of Lindenwood is very deeply expressed in two letters that came to the desk this afternoon, one from an L. C. girl living in Fort Worth, Texas, who has recently been talked out of her name, and the other from a Lindenwood alumna in Kansas who has a daughter in Lindenwood now. The spirit of both letters is this: WE SURELY APPRECIATE HEARING FROM LINDENWOOD AND MORE AND MORE, AS THE YEARS GO BY, ARE HAPPY FOR THE DAYS WE HAD THERE.

So, may your yearbook recall many times pleasant memories, and may you remember all through your life that the service of Lindenwood is yours.

JOHN L. ROEMER, *President*

YOUR PATRONAGE
DESERVES OUR CONSTANT
EFFORT TO SERVE
YOU BETTER

Ice Cream



**ST. CHARLES DAIRY
COMPANY**

AUSTIN S. FOX

HEATING AND PLUMBING

STEAM AND HOT WATER

HEATING

and

OIL BURNERS, STOKERS

TELEPHONE 99

ST. CHARLES, MISSOURI

With All My Heart—or, How We Hate Chipped Beef
And When I Tell Them—or, Part of the Housemother's Scoldings
My Little Fraternity Pin—or, Sunny Got Some Blue Fostoria
Temptation—or, Others Get Away With It
Heart of Stone—or, Teachers Hand in Grades
Scared—or, Finals Are Here Again
Whispers in the Dark—or, Why Do Lights Go Out at 11:00?
You Can't Pull the Wool Over My Eyes—or, Dottie Wagner Knits a Sweater
So Rare—or, Good Food in the Dining Room
True Confession—or, Student Board Meets
Two Bouquets—or, Dr. Dawson Gets Her Greenhouse
Little Man, YOU'VE Had a Busy Day—or, Bentley Dates a Lindenwood Girl

YELLOW CABS

—
TELEPHONE 133
—

ST. CHARLES

MISSOURI

Sid Himself

**Is Handling Our Photographs
and We Are More Than Satisfied**

ANNUAL STAFF



SID WHITING

Nationally-Known Photographer

4322 OLIVE STREET

ST. LOUIS, MISSOURI

GOOD LUCK!
JOE GARAVELLI

5701 DeBALIVER

SAINT LOUIS

THEY'RE SMART
THEY'RE WELL-
DRESSED

*These Lindenwood
Girls Shop
at the*



DRESSES
COATS
MILLINERY
LINGERIE
HOSE
BAGS
SWEATERS
SKIRTS

FOR DATES, FOR CAMPUS WEAR, FOR SUNDAY,
FOR PLAYING, FOR GOING TO THE CITY

MERRY MARIE SHOP

"If It's Stylish, We Have It"

LA VOGUE BEAUTY SHOP

NEAR THE CAMPUS

MARGARET SCHIERDING

JOSEPH A. BOTTANI

CONTRACTOR

Reinforced Concrete and Granitoid Work

532 N. BENTON AVENUE

ST. CHARLES, MISSOURI

MARGARET LEGGAT BUTLER LIBRARY

LINDENWOOD COLLEGE

LA BEAUME AND KLEIN

Architects

ST. LOUIS

FIRST NATIONAL BANK

of ST. CHARLES, MO.



J. A. SCHREIBER *President*
GEO. H. KUHLMAN *Vice-President*
A. J. MOERSCHEL *Cashier*

DIRECTORS

JOSEPH A. BOTTANI GEORGE H. KUHLMAN
CHARLES J. DAUDT DR. JOHN L. ROEMER
CLARENCE T. HACKMANN JOHN A. SCHREIBER
DR. B. KURT STUMBERG



TOTAL RESOURCES

\$2,600,000.00



Member Federal Reserve System

UNDER THE SUPERVISION OF THE UNITED STATES
GOVERNMENT

MEMBER FEDERAL DEPOSIT INSURANCE CORPORATION

WHEN YOU NEED LUMBER, ROOFING, PLASTER, OR WOODWORK
TRY

C. J. HARRIS LUMBER COMPANY

"The Old Reliable"



TASTY FOOD IN A TASTEFUL
ATMOSPHERE



WHEN LINDENWOOD GOES OUT
TO DINNER, IT'S

ARRANGEMENTS CAN BE MADE
FOR PRIVATE PARTIES

THE HOLLYWOOD

Owned and Operated by JACK WHITE, Formerly Chef-Steward at Chase Hotel

UNION SAVINGS BANK

of ST. CHARLES, MISSOURI

ORGANIZED IN 1870

Our Deposits Are Insured Under the Federal Deposit Insurance Plan

Colonel (Why?) Sherago
Martie Bell (Can your most beautiful girl go out?) Baum
Mary Elizabeth (I'm cutting class) Jolley
Christine (That's my favorite song) McDonald
Lois (I got an M) Null
Gwen (I got an M, too) Payne
Marian (For vhy?) Hull

VIOLINS
GUITARS
RADIOS

**HUNLETH MUSIC
COMPANY**

SHEET MUSIC
BAND
INSTRUMENTS



“Printing by Midland”

Those three words carry a great load of significance. They not only indicate that the finished product is correct in form, lastingly beautiful and perfect in detail; but they also signify a vast background of intensive, intelligent service, based upon long experience. In the Midland office and plant largely the same youngish personnel which serves 1938 yearbook staffs served the staffs of twenty years ago. Rich in experience, they keep abreast of the times.

MIDLAND PRINTING COMPANY
J e f f e r s o n C i t y , M i s s o u r i

DENKER'S BAKING COMPANY

923 N. SECOND STREET

A COMPLETE LINE OF
BAKERY PRODUCTS

DECORATED CAKES

CAKES AND PASTRY

Dee (Listen to this letter) Manion
Cordelia (Listen to this letter) Buck
Betts (I'm going to drown my sorrows) Olson
Kay (How long did you study for that test?) Mayer
Ruthie (I'm through being flunkie) Ettin
Dr. (Goodspeed's translation) Harmon
Corneille (I think I'm going to die) Davis
Mary Elizabeth (I disagree with you) Belden
Sue (Ain't that gleeful?) Sonnenday
Corrinne (I have an English Conference) Zarth
Lillian (I shop at Saks 5th Avenue) Litwin
Nannie (So I got his pin) Hopkins
Mary (Play the Dipsy-Doodle) Dillon
Jackie (Does he come from a good family?) Morrison
Mary (I. B. S.) Fowler
Eleanor (My roomie's so silly) Kaps
Doogie (Jack makes me so mad!) Horner
Mary (He's just my Bill) Roberts
Martha (I'll show him my braces) Lott
Helen Margaret (Oh, I'm on a diet) DuHadway
Betty (Could I go out with my parents?) Brown
Jean (Oh, I'm an artist) McFarland
Sue (I have a date tonight) Eby
Mary Jane (Chuckle, chuckle) Brittin
Johnsie (I know I flunked it) Fiock
Virginia (Shhhhhhh—h-h) Carter
Margaret (I'm so confused) Macdonald

EVERYTHING THAT'S "NEW" FOR THE COLLEGE GIRL IN WEARING APPAREL YOU
WILL FIND AT ST. CHARLES' LARGEST AND MOST COMPLETE STORE

THE FAMOUS

PHONE 340

311 N. MAIN STREET

ST. CHARLES, MO.

- BINDERS
- BLANK BOOKS
- LOOSE LEAF
- BOOKKEEPING SYSTEMS

BANNER NEWS COMPANY

ST. CHARLES, MO.
Printers—Publishers



A COMPLETE LINE OF
 CREST JEWELRY

For over twenty years we have furnished Lindenwood Girls with Jewelry and Gifts.

May we show you
 our selection?

MILTON E. MEYER

The Jeweler

Next Door to "Braufmans"

Betty (I'm not interested in that line of work) Faxon
 Rosemary (May I borrow a match?) Williams
 Dottie (I've just planned my house) Wagner

CHARLES E. MEYER'S

REXALL DRUGGIST

Quality Has No Substitute

We are agents for the leading toilet lines; also agents for Whitman and Martha Washington Chocolates, always fresh; and Weber's Ice Cream—none better anywhere.

WE AIM TO PLEASE YOU

AMERICAN LADY *and* TOPMOST FOODS

There are grades and gradings. But the grade of foods you buy packed under American Lady and Topmost Brand is the best we can procure. Perhaps superlatives are out of place in describing such quality. Rather, let us say, that for American Lady and Topmost Foods there is only one meaning to this "select" grading. Only one high quality standard for these foods, maintained by men organized to see that under these brands you buy the best in their judgment of fine foods.

Distributed by

GENERAL GROCER COMPANY

ST. LOUIS, MO.

'Tain't Necessarily So—or, My, the gossip!
I'se a Muggin'—or, Rabon Comes Back from Christmas Vacation
There's a Lull in My Life—or, Why Didn't I Go Away for the Week-end?
The Scene Changes—or, Books in a Changing World
It's Been So Long—or, Why Doesn't My Allowance Come?
I Love You Truly—or, Dee Manion Has Another Date
The Moon Got in My Eyes—or, My Blind Date was Awfully Cute!
My Old Kentucky Home—or, Mary Anne Fowler
Dark Eyes—or, Betty Sue Cantrell Comes Back from Chicago
There's Something About a Soldier(?)—or, Gertie Schmidt Adopts Kemper
Stein Song—or, the Phi Pis Descend
School of Our Mothers—or, Where's Bittie?
Nice Work If You Can Get It—or, Martha Lott Goes to the City
Ten Pretty Girls—or, the Court of the May Queen
What Can the Matter Be—or, I Got a Very Small White Card
Always and Always—or, Golden Rod Eggs
Goody-Goody—or, Friday Afternoon

DENNING RADIO SHOP

WE SELL THEM — WE SERVICE THEM

129 N. MAIN

PHONE 1100

AFTER GRADUATION—WHAT?

You can put aside your French,
Lay your Latin on the bench;
Classes will no longer be a bore.
Swap your ancient ologies,
For new "kitchenologies";
You won't need these lessons any more.

You must learn to cook and sew,
Bake a pie and roll out dough;
Don't let fallen biscuits "get you down."
When cooking just use DURKEE'S,
In cakes or pies or turkeys;
DURKEE'S makes food tasty, light and brown.

DURKEE'S MARGARINE

Tastes Twice as Good



FINE FOR FRYING
FINE FOR BAKING

FINE FOR COOKING
FINE FOR TABLE
USE

DURKEE FAMOUS FOODS

3702 IRON STREET

CHICAGO, ILLINOIS

COMPLIMENTS

OF

FLOYD REEVE'S ELECTRIC APPLIANCE STORE

WE REPAIR EVERYTHING
ELECTRICAL

136 N. MAIN STREET

PHONE 443

COLLEGE CENSUS

Number of girls in school	420
Number of girls who date every week-end (Sympathy extended to Sue and Dottie)	418
Number of girls in school	420
Number of girls who frequent the tea room (Counting Junior and Cotton)	422
Number of girls in school	420
Number of girls who get kissed on the porch (‘Nuff said)	420
Number of girls in school	420
Number of girls who drink Coca-Cola (Ain’t it common?)	420
Number of girls in school	420
Number of girls who go to church every Sunday (I ain’t tellin’ who)	420
Number of girls in school	420
Number of girls who are in love “with the boy back home” (At least, it’s a good story)	420
Number of girls in school	420
Number of girls who get to bed at 11:00 (No insinuations at the bridge tournament)	416
Number of girls in school	420
Number of girls who borrow their roommate’s clothes (What are roommates for, anyway?)	420
Number of girls in school	420
Number of girls who get “special deliveries” (Dee Manion has begun to rent hers to her more unfortunate friends.)	408
Number of girls in school	420
Number of girls who strive to be sophisticated (In case you don’t recognize it, that’s a crack at the Freshmen.)	150
Number of girls in school	420
Number of girls who have been campused (To you, Lady Fritz, goes our glass orchid)	15
Number of girls in school	420
Number of girls who change their coiffeur every week (Dolly changes hers twice a week)	421

KUHLMANN'S

READY-TO-WEAR — SHOES — DRY GOODS

324 NORTH MAIN STREET

ST. CHARLES, MISSOURI

HERE YOU WILL HAVE THE SATISFACTION THAT CAREFUL
CLEANING GIVES



RECHTERN CLEANING COMPANY

216 NORTH SECOND STREET

134 S. MAIN

PHONE 64

ST. CHARLES BAKERY

We Specialize in Wedding and Birthday Cakes

FANCY PASTRIES

HON-E-CREAM BREAD

PRINTING • ENGRAVING

EMBOSSING



BOTTANI PRINTERY

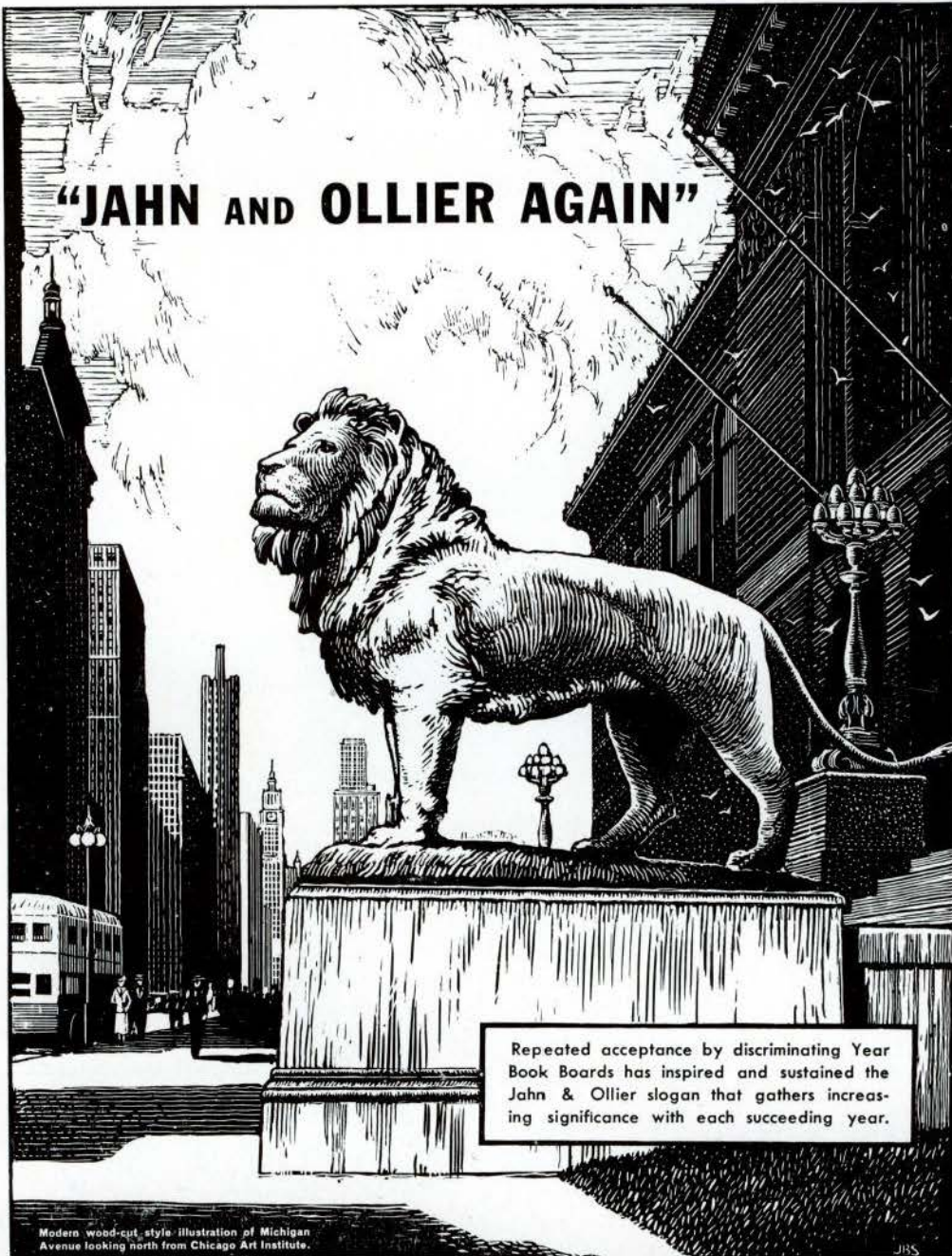
F. N. BOTTANI

Proprietor

120 N. SECOND STREET

ST. CHARLES, MO.

"JAHN AND OLLIER AGAIN"



Repeated acceptance by discriminating Year Book Boards has inspired and sustained the Jahn & Ollier slogan that gathers increasing significance with each succeeding year.

Modern wood-cut style illustration of Michigan Avenue looking north from Chicago Art Institute.

JAHN & OLLIER ENGRAVING CO.

817 West Washington Blvd., Chicago, Ill. - Telephone MONroe 7080

Commercial Artists, Photographers and Makers of Fine Printing Plates for Black and Colors

ST. CHARLES BUILDING DEPARTMENT STORE

H. G. RAUCH LUMBER COMPANY

MAIN AND CLARK STREETS



Walters Jewel Shop

GIFTS THAT LAST

Make this shop your gift headquarters—
gifts for all occasions and for
each member of the family.

We Mail and Deliver

230 N. MAIN STREET

JEWELRY LAMPS
PRINTS POTTERY CLOCKS

THINGS WE CAN'T DO WITHOUT

LaVerne Rowe
Helen Margaret's absent-mindedness
Dr. Benson's sense of humor
Millie Jo's readings
Dolly's understanding
Rosemary's asides
Miss Gordon's accent
Joyce
Lott's interpretations
Dottie Wagner's critical sense
Mary's Bill
Sunny's advice
Christine's mail

The Bruns Machine Company

Everything in
HARDWARE AND IMPLEMENTS
For the Farm and Home

ST. CHARLES, MISSOURI

PHONE 989

THE DAILY

COSMOS-MONITOR

MAKES A SPECIALTY OF FINE JOB PRINTING



Best Work at Reasonable Rates

MEET YOU
AT

STANDARD DRUG STORE

WHERE FRIENDS
MEET FRIENDS

BUSY BEE BETTER
CANDIES

NEXT DOOR TO WOOLWORTH'S

COLLEGE SERVICE
TWICE DAILY

49c to \$1.50 lb.

. . . . Better because
they are fresh. Refrigerated
Candy Dept.



. . . . Our cosmetic
department is complete. Stop in and get
acquainted.

HOME-MADE SWEET
CREAM

ICE CREAM
FRESH DAILY

FOUNTAIN SERVICE
TOASTED SANDWICHES

*You'll Like Our
Booths*

Joyce (Not very funny) Davis
Minnie Joe (Turn in my suit, coach) Curtis
Jane (Isn't she silly) Black
Genevieve (Hi, darlin') Horswell
Betty (O) White
Flossie (Rosie, geeve to me de glasses) Murer
Dolly (Warren's coming) Fullerton
LaVerne (Girls, take any seat) Rowe

FRANK F. AHMANN

Dealer in

News, Books, Stationery, School Books and Supplies, Blank
Books, Office Supplies, Seasonable Sporting Goods, Tobaccos,
Cigars, Fine Pipes, and Smokers' Articles

IN LIFE'S BACKGROUND . *What?*

Home, of course, but what kind of a home? We'll say that it is the ideal home . . . and this does not have the slightest reference to cost or location. It is ideal because it is a place of comfort, with a cheerful, harmonious, smooth-running atmosphere. A place which one "feels" as well as sees. In this ideal home there is a spirit of love, consideration, helpfulness and understanding. There is ease and freedom, because the work goes along smoothly

and quickly with the aid of modern electrical workers. An electric range, refrigerator, food mixer, toaster, percolator, etc., take care of the food question. An electric washer, ironer, sweeper, etc., do the heavy work. There are plenty of electric lamps to add beauty and cheer. Electricity does everything possible to make the home pleasant for everyone. This is the kind of home that one really enjoys.

*Electricity does so much and costs so little
that everyone should make use of it.*

UNION ELECTRIC COMPANY

Once in Awhile—or, Man on Campus
That Old Feeling—or, We Sing in the Dining Hall
Beautiful Lady in Blue—or, Mary Roberts Has a Date
Kitten on the Keys—or, Alice Jones Plays the Piano
Night and Day—or, Sue Speaks of Stephen
Thanks for the Memories—or, Christine Goes Into Mourning
My Heart is Taking Lessons—or, Zarth Comes to College
Never in a Million Years—or, We Get Free Sundays
Wake Up and Live—or, Breakfast is Served at 7:30
On the Sentimental Side—or, We Have Spiritual Emphasis Week
Blue Hawaii—or, Olson's at Lindenwood
Let's Face the Music and Dance—or, Faxon Refuses Alpha Psi Omega
Time on My Hands—or, Thursday Morning Chapel
Down the Old Ox Road—or, Corneille Won't Tell
Remember Me?—or, The Usual Empty Mailbox
An Old Flame Never Dies—or, Who Says So?
Study in Brown—or, John Mason Hits the Campus
Melancholy Baby—or, Pat Fleming Takes Chemistry
I'm Getting Sentimental Over You—or, Seniors' Last Days at Lindenwood
Here Lies Love—or, 331 Sibley
Mad About the Boy—or, Nan Hopkin vs. Martie Bell Baum
Love Walked In—or, the Strolling of Dogs in Chapel
Goodnight, Angel—or, Sibley Porch on Sunday Night

PARKVIEW GARDENS

BEN RAU

Florist

WE SPECIALIZE IN BOUQUETS AND
CORSAGE WORK

*"As Near to Lindenwood
As Your Phone"*



TELEPHONE 214

ST. CHARLES, MO.

THINGS WE COULD DO WITH

12:00 permission
Doghouses
A spotless Bark
More teachers like Dr. Betz
Men
Less Kemper invasions
Cut-rate price on stamps
Bargain days at the tea room
More Sonnendays
Less playing in the dining room
Less independence on the part of the Freshmen
More of Mary Beth's remarks
More basic honesty
Huzzahs for Dr. Roemer
Less griping
More Horse shows on the chapel stage
Sarah Hurdis' knowledge of plants
New clock at the library
Soda fountain in the tea room
More good gals like the president of the T. G. I. F. Club
(Note—Marian Hull received this office purely on merit and efficiency.)

LINDENWOOD'S FAVORITE SPOT FOR
SPORTS WEAR AND MEN'S GIFTS

The Palace
CLOTHING CO.

Since 1889 St. Charles' Leading Men's Store

FROM A FRIEND

CLARK-SPRAGUE PRINTING COMPANY

1901 LOCUST STREET

ST. LOUIS

MISSOURI

THINGS WE CAN DO WITHOUT

Corneille's problem-child attitude
Mary Jane Rabon's independence
Big apple jackets
Our football game cheer

Irwin's tribe of yellers
Kemper boys in tea room
Sandy's shouting
Mrs. Rau's brilliance

SISLER NELSON SPORTING GOODS CO.

WHOLESALE AND RETAIL

1102 LOCUST STREET—LOUDERMAN BUILDING

St. Louis, Mo.

A CONVENIENT PLACE TO SHOP

PARSONS

LIMITED PRICE VARIETY STORE

WE SPECIALIZE IN 5c TO \$1.00 MERCHANDISE

KNOWN AS

THE GOLDEN RULE STORE

"Our Greatest Desire is to Serve You Best"

AND WITHOUT—

Jeannette Jackson's opinion

Johnsie Fiock's acquiescence

Deadlines on annual copy

U-SAN-O *"The Perfect Cleaner"*

N-S-P QUALITY PRODUCTS

Manufactured by

NATIONAL SANITARY PRODUCTS COMPANY

217-219 N. SECOND

ST. LOUIS, MO.

STRAND THEATER

FIRST-CLASS PICTURES

AFTER

FIRST-RUN PICTURES

IN

ST. LOUIS

PHONE 362 FOR APPOINTMENT
MELBA BEAUTY SALON

Modern Equipment—Beauty Culture Specialists in All Its Branches

200 KINGSHIGHWAY

ST. CHARLES, MO.



You'll Always Receive Pleasant,
Courteous Service
at the

KROGER STORES

153 MAIN STREET
507 N. KINGSHIGHWAY
911 2ND STREET
516 CLAY

CARRYING A COMPLETE LINE OF GROCERIES, FRESH FRUITS AND
VEGETABLES, AND FRESH MEATS

Eleanor (Whistle while you work) Watson
Sunny (Mac's coming down) Lohr
Dr. (Where's the anti-aircraft division?) Betz
Betty Sue (He used to go with my sister) Cantrell
Shirley (I'll get you a date) Spaulding
Totsy (Here comes Rachael) Mills
Margaret (I'm so sick of school) Behrens
Miss (When I was at Northwestern) Lemon
Lady (They can't do this to me) Fritz

COMPLIMENTS OF

STAHBEHL'S

"GOOD SHOES AND HOSIERY"

220 NORTH MAIN STREET

J. H. HACKMAN LUMBER COMPANY

LUMBER AND BUILDERS'
SUPPLIES

PHONE 806

106 N. MAIN STREET

ST. CHARLES, MO.



Huning's

CONGRATULATIONS—SENIORS!
for a task well done. To you is extended our heartfelt wishes for success in all your endeavors.

And to those of you who have brightened our stores with your presence — we are glad to have met you—and we sincerely hope to have the pleasure of serving you next year.

Braufman's



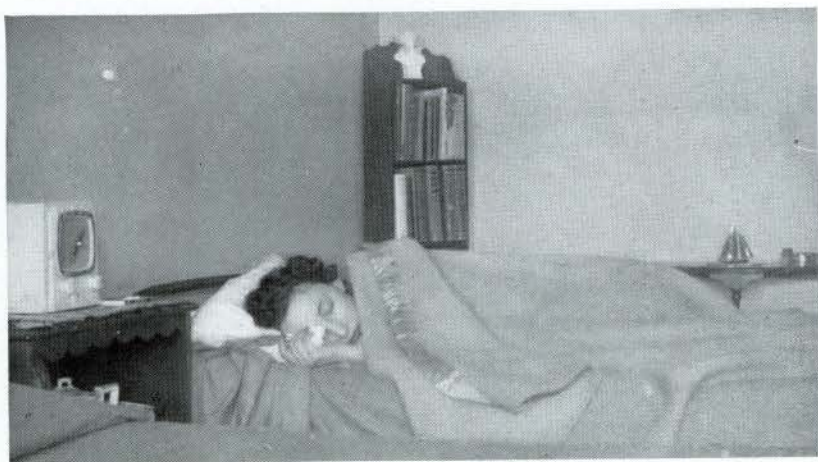
FINANCIAL STATEMENT OF THE 1938 LINDEN LEAVES

OUT COME

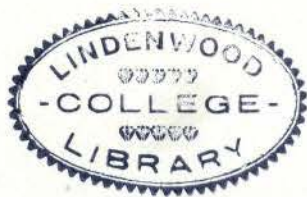
Printing.....	\$.50
New shoes for the editor and business manager.....	37.50
Advertising.....	.60
Postage stamps.....	115.25
Doctor's bill for Sonnenday's breakdown.....	55.00
Engraving.....	.35
Dates with Melvin and Stephen.....	81.48
Weekly trips to St. Louis.....	450.00
Work on typewriter.....	750.00
Remodeling annual office.....	.25
Farewell party for overworked staff:	
Favors.....	75.00
Refreshments.....	34.50
Tomato juice.....	3.50
Aspirins.....	2.00
Miscellaneous.....	1,786.48
	\$3,412.41

INCOME

Sale of annuals.....	\$9.00
Advertising.....	1.25
Rebates from photographers.....	125.00
Printer's knockdown.....	1,049.50
To keep off the black list.....	200.00
Reform movements.....	98.76
Miscellaneous:	
Inheritances.....	600.00
Donations.....	216.24
	\$2,209.75
Deficit.....	\$1,202.66



And So To Bed



Designed and Engraved by
JAHN & OLLIER ENGRAVING
COMPANY

♦

Printing, Binding and Cover by
MIDLAND PRINTING COMPANY

♦

Photographs by
SID WHITING STUDIOS

