

Lindenwood University

Digital Commons@Lindenwood University

Yearbooks

Lindenwood University Archives

1943

1942-1943 Linden Leaves

Lindenwood College

Follow this and additional works at: <https://digitalcommons.lindenwood.edu/yearbooks>

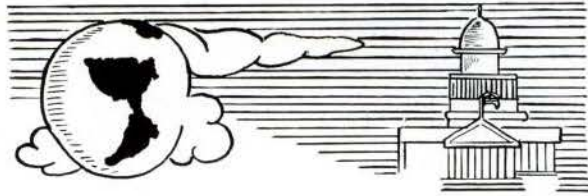
Recommended Citation

Lindenwood College, "1942-1943 Linden Leaves" (1943). *Yearbooks*. 45.
<https://digitalcommons.lindenwood.edu/yearbooks/45>

This Book is brought to you for free and open access by the Lindenwood University Archives at Digital Commons@Lindenwood University. It has been accepted for inclusion in Yearbooks by an authorized administrator of Digital Commons@Lindenwood University. For more information, please contact phuffman@lindenwood.edu.

LINDEN LEAVES
NINETEEN · FORTY · THREE





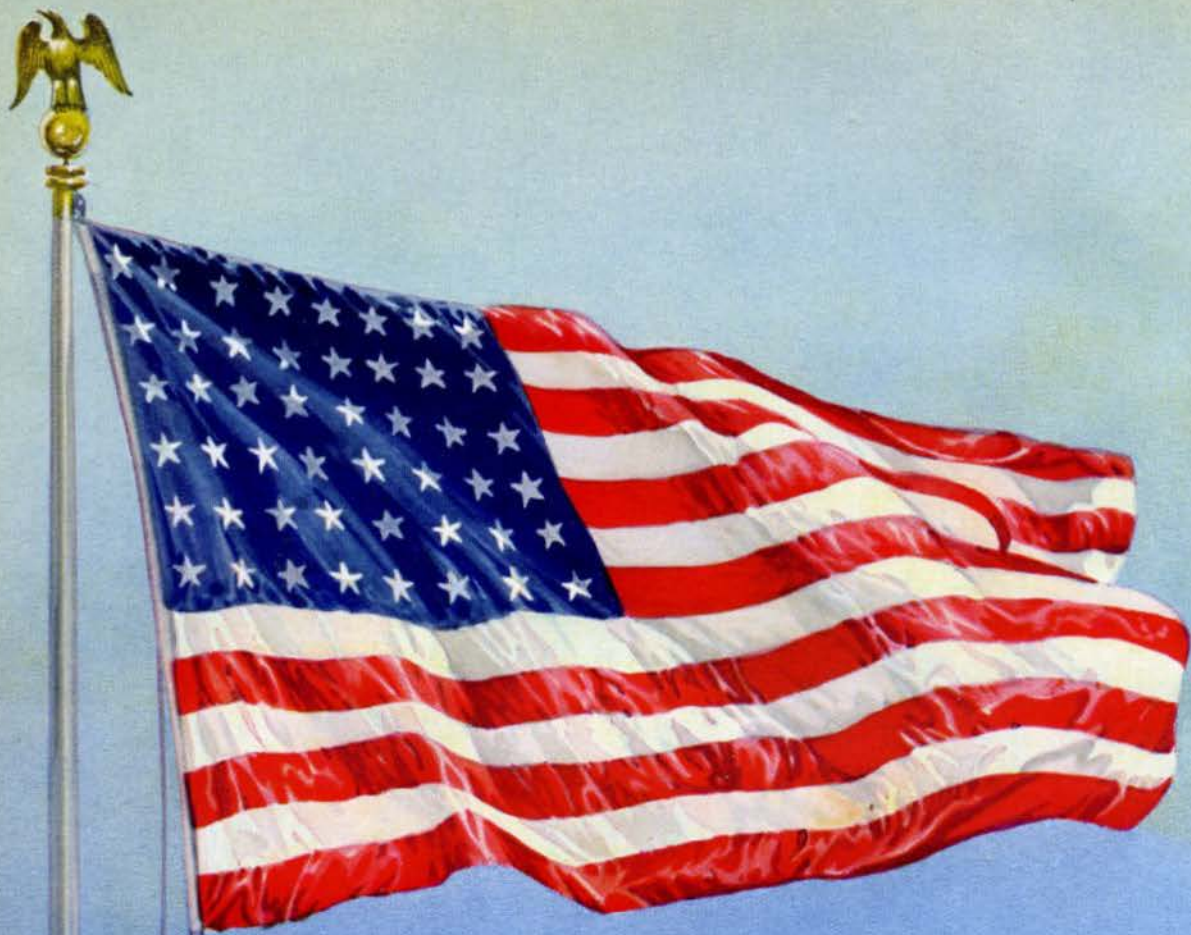
LINDEN-LEAVES



1943



Editor *Ruth Margot Haines*
Business Manager *Jeanne Harmon*
Advertising Manager *Beverly Wescott*

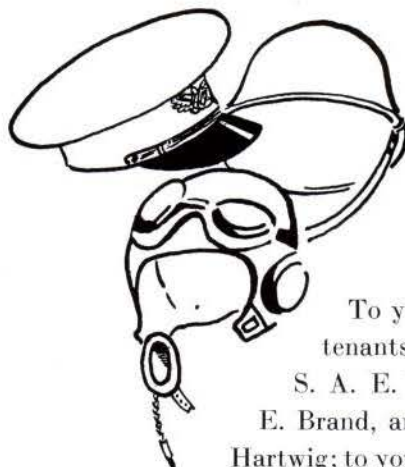


"I pledge allegiance to the flag of the United States of America and to the Republic for which it stands, one Nation indivisible, with liberty and justice for all"



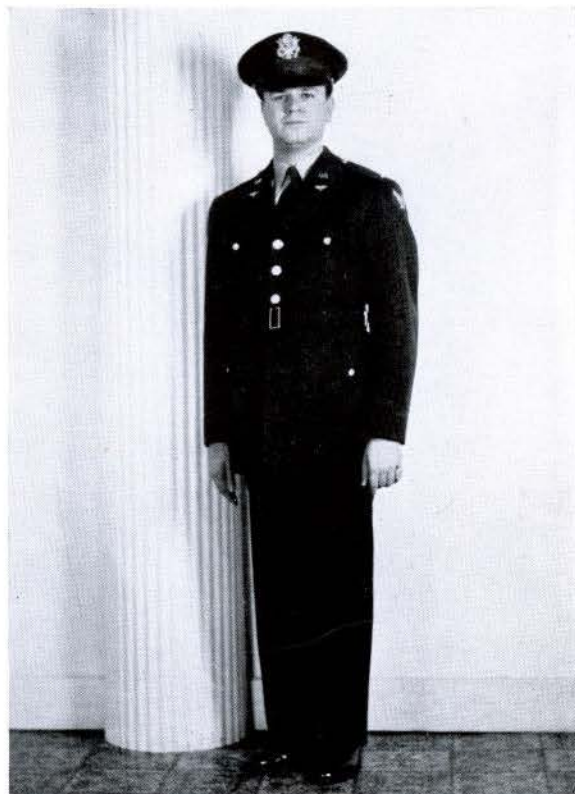


LIEUTENANT JOHN STINE, U. S. N.
Tucson, Arizona



To you, Lieutenants J. Stine, S. A. E. Betz, R. E. Brand, and H. A. Hartwig; to you, Second Officer Grace Stevenson, who ferries Spitfires in England; to all our Lindenwood men and women who are now in the service or are planning to go in—

LIEUTENANT SIEGMUND A. E. BETZ, U. S. A.
Coffeyville, Kansas



to you we dedicate this yearbook with every wish for your good fortune and success in fighting for the ideals which make possible the college you represent. While you take care of front line duties, we remain to carry on here, endeavoring to make you as proud of *our* efforts as we are of yours. It is an honor to dedicate to you the 1943 *Linden Leaves*.

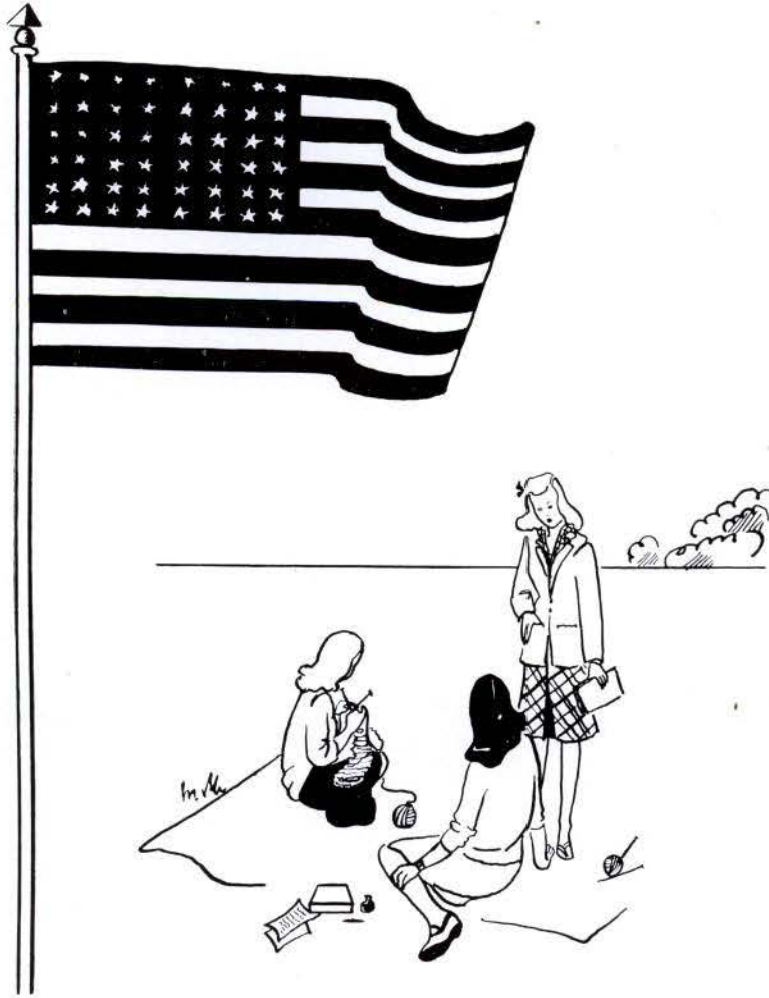
—THE ANNUAL STAFF



LIEUTENANT RALPH E. BRAND, U. S. A.
Miami, Florida



LIEUTENANT HELLMUT A. HARTWIG, U. S. A.
Brooklyn, New York



BENEATH THE BANNERS

To you, students of Lindenwood College, we present this yearbook—your record of 1943. 1943! Significant in all its connotations—War! Defense! Rationing! U. S. O.! War Bonds!—and, yes—lieutenant's bars, and silver wings. For you to accept now, but to cherish always, we give you the *Linden Leaves* of '43.



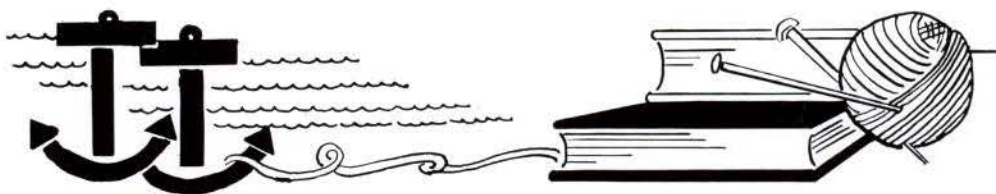
Faculty Red Cross Knitters

Second Officer
GRACE STEVENSON, ATAW



BETTY GRAY PROCTOR, WAAC





CONTENTS

ADMINISTRATION AND
FACULTY

STUDENTS

ORGANIZATIONS

COURTS—FEATURES



FACULTY



DR. HARRY MOREHOUSE GAGE

President

Lindenwood College



DR. ALICE E. GIPSON
Dean
Lindenwood College



DR. FLORENCE W. SCHAPER
Director of
Student Guidance and Personnel



MR. GUY C. MOTLEY
Assistant to the President
Lindenwood College

F A C U L T Y



MAUDE BEAMER
A.B., B.S., A.M., Ph.D.
English

LOIS MANNING BURKITT
B.M.
Public School Music

JANET L. COULSON
B.M., B.M.E., M.M.
Piano

FRANCES BENGE
Ph.B., B.Mus., M.A., Ph.D.
Modern Languages

CHARLES C. CLAYTON
B.J.
Journalism

MRS. AUSTIN E. DAILY
Riding

JESSIE S. BERNARD
A.B., M.A., Ph.D.
Sociology

HOMER CLEVINGER
B.S., M.A., Ph.D.
History and Government

M. ELIZABETH DAWSON
A.B., M.A.
English



MARION LUCILE DAWSON
A.B., M.S., Ph.D.
Biological Science

GERTRUDE ANNE ESTEROS
B.S., M.A.
Home Economics

PAUL FRIESS
Artist
Organ

DOROTHY DEACH
B.S., M.S.
Physical Education

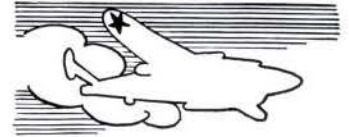
WILHELMINA M. FEEMSTER
A.B., A.M., Ph.D.
History

RAYMOND LOREN GARNETT
Ph.D.
Education

EVA ENGLEHART DOUGLAS
B.S., B.F.A., Mus.M.
Piano

OCTAVIA K. FREES
A.B., M.A.
Speech and Dramatics

DORIS GIESELMAN
B.M.
Voice



F A C U L T Y



ALICE E. GIPSON
A.B., Ph.D.
English

KATE LEILA GREGG
A.B., Ph.D.
English

GERTRUDE ISIDOR
Artist
Violin and Theory

MARY MCKENZIE GORDON
A.B., B.L.I., M.A.
Speech and Dramatics

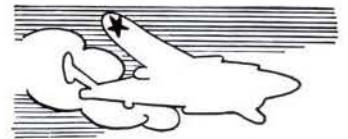
KATHRYN HANKINS
A.B., B.S., M.A.
*Classical Languages and
Literature*

LOIS KARR
A.B., M.A.
Mathematics and Physics

CAROLYN S. GRAY
A.B., B.S., M.A.
Chemistry

LLOYD B. HARMON
A.B., D.B., Ph.D.
Bible and Philosophy

ABE KESSLER
St. Louis Symphony
Orchestra
Cello



JOHN F. KIBURZ
Artist
Flute and Piccolo

GAIL WYCOFF MARTIN
F.F.A., M.F.A.
Art

ALICE PARKER
B.S., M.A., Ph.D.
English

MILDRED D. KOHLSTEDT
A.B., M.A.
Library Science

MARY I. MORISON
B.S.
Physical Education

LILLIAN RASMUSSEN
A.B.
Art

MARY E. LEAR
A.B., B.S., M.A.
Chemistry

RACHEL M. MORRIS
A.B., M.A.
Sociology and Psychology

FLORENCE W. SCHAPER
B.S., M.A., Ph.D.
Sociology

F A C U L T Y



MARY ALPHA SHEAHAN
A.B.
Business

MARY TALBOT
B.S., M.A., Ph.D.
Biological Science

ELEANOR R. TURSHIN
B.S.
Business

JOSEPH F. SKINNER
B.S.
Orchestral Instruments

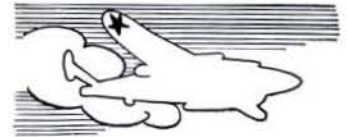
MARY TERHUNE
A.B., M.A., D.M.L.
Modern Languages

KAREN ELIZABETH VAN
LISSEL
A.B., M.A.
Speech and Dramatics

FERN E. STAGGS
B.S., M.A.
Home Economics

JOHN THOMAS
Mus.B., Mus.M., Ph.D.
Piano

PEARL WALKER
A.B., M.M., M.A.
Voice



HELEN L. WARD
B.S., M.S., Ph.D.
Biological Science

ANNA WURSTER
B.S., M.S.
French

MRS. MINNA ARENDS
Head Resident Sibley Hall

MRS. ADELE K. BELDING
Assistant Secretary

MRS. HELEN CULBERTSON
BESTE
*Secretary to Director of Student
Guidance and Personnel*

MRS. MARY ELLEN JACOB
*Assistant Director of Student
Guidance and Personnel,
Head Resident Niccolls Hall*

MARY LOUISE BLACK
Dietitian

HELEN ROSE BRUNS
Recorder

E. J. CANTY, M.D.
Assistant College Physician

F A C U L T Y



ETHEL B. COOK
Bursar

HORTENSE F. EGGMAN
Assistant Librarian

ARABELLE FOSTER
Dielitian

DELPHIA HIRSCH
Postmistress

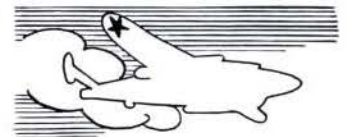
MABEL HOLT
*Assistant Head Resident
Nicolls Hall*

LOUISE KRUSE
Tea Room Manager

MILDRED McMICAN
Secretary to the Academic Dean

GUY C. MOTLEY
*Assistant to the President,
College Secretary*

ANNA L. MOTTINGER
Head Resident Irwin Hall



HARRY P. ORDELHEIDE
*Superintendent, Department of
Buildings and Grounds*

MRS. MARY W. O'REAR
Head Resident Buller Hall

EVA SAYRE
Head of the Infirmary

MRS. LILLIAN SIEDHOFF
In College Secretary's Office

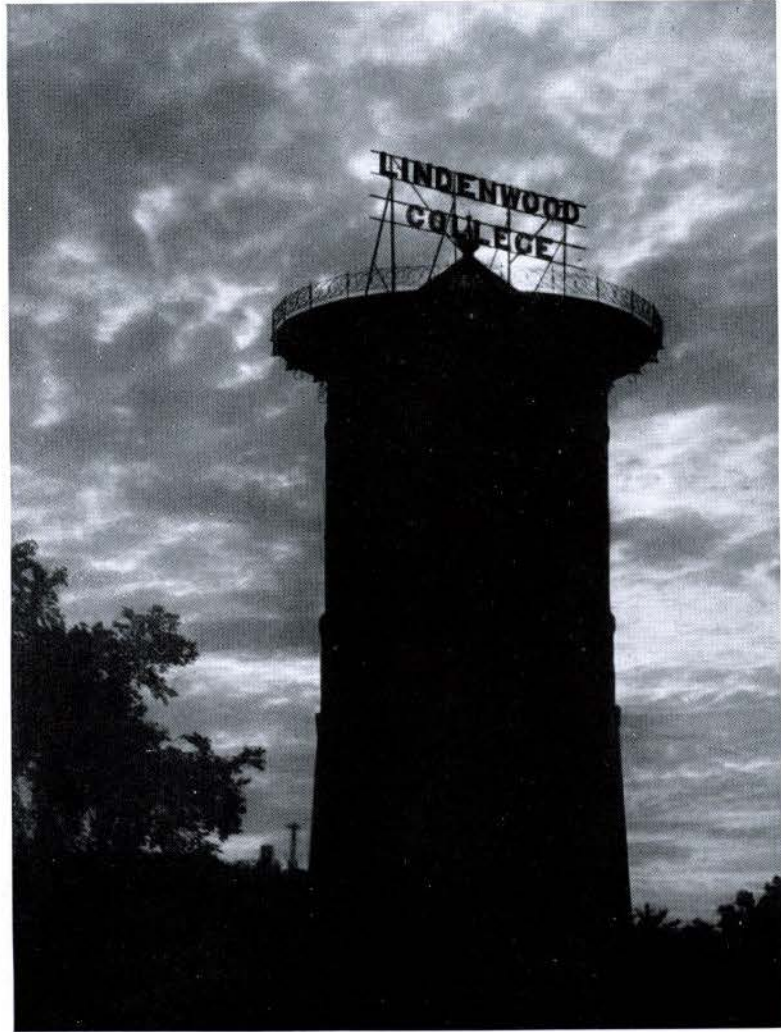
MRS. I. J. STANLEY
Head Resident Ayres Hall

B. KURT STUMBERG, M.D.
College Physician

MRS. AMY WAGNER
Postmistress

CORA WAYE
Assistant Bursar

MRS. AGNES ZEISLER
Secretary to the President



THE OLD WATER TOWER _____



STUDENTS



ROEMER HALL



THOMAS, BINDLEY, B. PROCTOR

President
BETTY GRAY PROCTOR

Vice-President
JANET THOMAS

Secretary-Treasurer
CAROL BINDLEY

SENIOR CLASS OFFICERS

We are the same girls who capered through South American dances four years ago on May Day, we solemn Seniors in our caps and gowns, thinking of the responsibilities that rush on to meet us as the days go by.

Those first two were the dancing, singing, gay, oblivious years . . . our merry mixer, dances to the music of Bob Zurke and Harry James . . . hearty singing in the dining room—carefree songs—“Billy,” and “The Music Goes Round ‘n Round” for Dr. Roemer . . . rollicking days when the wind blew our hair and the sun burned our noses as we went on picnics to the Country Club and on riverboat excursions . . . pictures on our desks of college men in tweeds, and fraternity pins on our sweaters.

There was a war in the world even then, but it was not our war. Not until we were half-way through college did it come to the U. S. A., to us at Lindenwood. And the scenes shifted.

No longer was our physical education devoted to the glorification of our May Queen. It was for health and strength, for country and for victory. The lads with whom we used to dance now flew bombers at night, and the songs we sang were for them—“He Wears a Pair of Silver Wings,” and “God Bless America.” Instead of tripping down the stairs in new red shoes to meet our dates, we dashed off to end a busy day with war classes—radio technique, engineering drafting, personnel management. The pictures on our desks wore uniforms, and our sweaters flashed with wings.

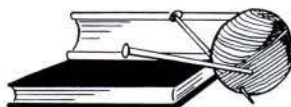
But we do not lament. We are glad to make sacrifices, to do what we can—and we know there is much we can do. That is why our faces are thoughtful above our academic gowns. We feel prepared. We are proud to leave Lindenwood *on the alert!*

CORL, KAY ANDERSON
Major . . . Economics and Advertising
Degree . . . B. A.
Fort Worth, Texas

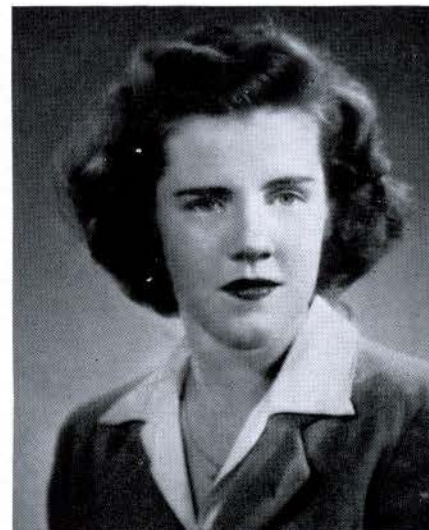
BANTA, DORIS JEAN
Major . . . History and English
Degree . . . B. A.
Jefferson City, Missouri

ANDERSON, LOIS
Major . . . Public School Music
Degree . . . B. M.
Bartlesville, Oklahoma

BICKLE, BARBARA
Major . . . Biological Science
Degree . . . B. A.
Chicago, Illinois



SENIORS 1943





SENIORS 1943



BINDLEY, CAROL H.
Major . . . Economics
Degree . . . B. A.
Chicago Heights, Illinois

BURCHARD, CORALEE
Major . . . Public School Music
Degree . . . B. M.
Willow Springs, Missouri

BLUMEYER, ESTELLE GEISEL
Major . . . History and Biological Science
Degree . . . B. A.
St. Louis, Missouri

BURGE, MONA JOYCE
Major . . . Economics and Business
Degree . . . B. S.
St. Charles, Missouri

CARAKER, VENECA ADELAIDE
Major . . . Biological Science
Degree . . . B. A.
Olmsted, Illinois

CROSBY, GLORIA
Major . . . Home Economics
Degree . . . B. S.
Batesville, Arkansas

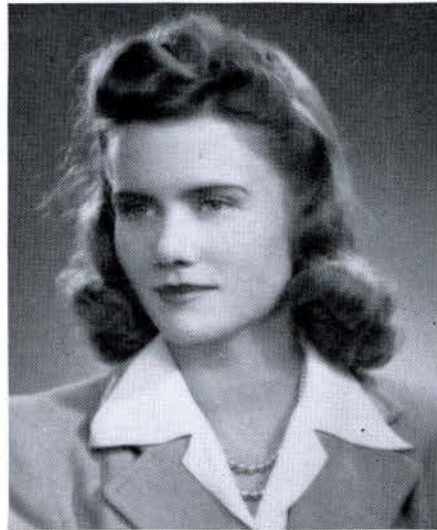
COOK, JUANITA RUTH
Major . . . Home Economics
Degree . . . B. S.
Flat River, Missouri

EBERSPACHER, RENA ELAINE
Major . . . Piano
Degree . . . B. M.
Pana, Illinois

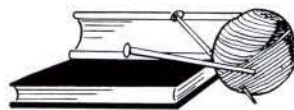


SENIORS 1943





SENIORS 1943



FARRILL, ESTHER MARRION
Major . . . Organ
Degree . . . B. M.
Taylorville, Illinois

GAMBILL, PHYLLIS MARIE
Major . . . English and French
Degree . . . B. A.
Centralia, Illinois

GIERSE, BETTE
Major . . . Public School Music
Degree . . . B. M.
Poplar Bluff, Missouri

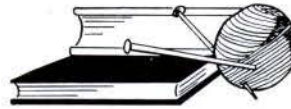
GRAHAM, JEAN KIRKLAND
Major . . . Spanish
Degree . . . B. A.
Ann Arbor, Michigan

GREER, BERTIE
Major . . . Piano
Degree . . . B. M.
Hazard, Kentucky

HAINES, RUTH MARGOT
Major . . . Chemistry
Degree . . . B. A.
Rivermines, Missouri

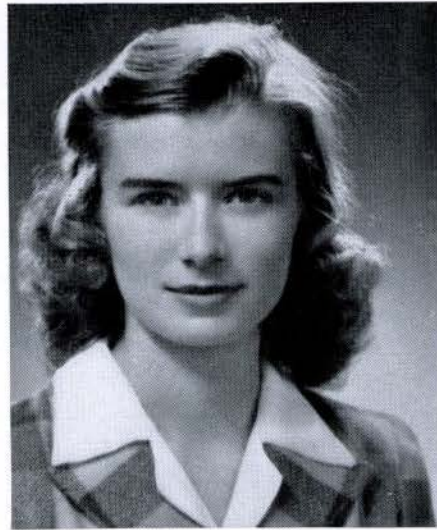
HARMON, DOROTHY JEANNE
Major . . . Mathematics
Degree . . . B. A.
St. Charles, Missouri

ISELL, DOROTHY HELEN
Major . . . Cello
Degree . . . B. M.
Herculaneum, Missouri

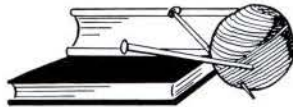


SENIORS 1943





SENIORS 1943



LEWIS, JERRE
Major . . . Home Economics
Degree . . . B. S.
Lincoln, Nebraska

MART, ERVA
Major . . . English
Degree . . . B. A.
Elsie, Nebraska

LINDSAY, PEGGY
Major . . . Spanish and English
Degree . . . B. A.
Foreman, Arkansas

MEREDITH, JANE LAVERRA
Major . . . Chemistry
Degree . . . B. A.
Orlando, Florida

MYERS, BETTY
Major . . . Sociology
Degree . . . B. A.
Kirksville, Missouri

PALMER, GLORIA OMOHUNDRO
Major . . . Education
Degree . . . B. S.
Elsberry, Missouri

OTT, ROENA LYDIA
Major . . . Biological Science
Degree . . . B. A.
St. Charles, Missouri

PARKINSON, ADAH LOUISE
Major . . . Art
Degree . . . B. A.
Mt. Carmel, Illinois

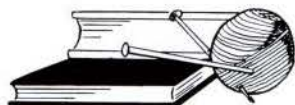


SENIORS 1943





SENIORS 1943



PROCTOR, BETTY GRAY
Major . . . Biological Science
Degree . . . B. A.
Sullivan, Missouri

ROSE, VIRGINIA RUTH
Major . . . Biological Science
Degree . . . B. A.
La Grange, Illinois

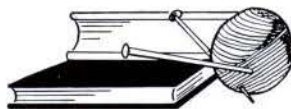
REAM, MARY JEAN
Major . . . English
Degree . . . B. A.
Peru, Illinois

SAGE, BEY
Major . . . Biological Science
Degree . . . B. A.
Augusta, Kansas

SCHOEN, BETTY ANNE
Major . . . Elementary Education
Degree . . . B. A.
Blirstown, Iowa

SCHUDDE, FRANCES
Major . . . Piano
Degree . . . B. M.
San Diego, California

THOMAS, JANET LLEWELLYN
Major . . . Education
Degree . . . B. S.
Omaha, Nebraska

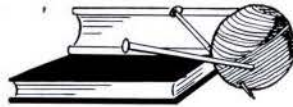


SENIORS 1943





SENIORS 1943



VEACH, VIRGINIA
Major . . . English
Degree . . . B. A.
Vienna, Illinois

WONDER, ALICE LOUISE
Major . . . History
Degree . . . B. A.
Marshalltown, Iowa



RUTH M. HAINES
Editor, Linden Leaves



PEGGY LINDSAY
Literary Editor, Linden Leaves

CORL, KAY ANDERSON

3 plays; Art Club; Sophomore Class Vice-President '40-'41; Student Council Vice-President '41-'42; Y. W. C. A. Vice-President '41-'42; International Relations Club Vice-President '41-'42; Missouri Women's Athletic Association President '41-'42; *Who's Who* '41-'42; Popularity Court '41-'42 and '42-'43; Army Brats; Press Club; Kappa Pi.

ANDERSON, LOIS

Alpha Mu Mu; Tau Sigma President '42-'43; Delta Phi Delta Treasurer '42-'43; Mu Phi Epsilon; Future Teachers of America; Popularity Court '42-'43; Choir.

BANTA, DORIS JEAN

Beta Pi Theta; Sigma Tau Delta; Athletic Association; Poetry Society Secretary '40-'41 and '41-'42; Alpha Sigma Tau Vice-President '41-'42; International Relations Club President '41-'42; Junior Class Vice-President '41-'42; Y. W. C. A. Council '41-'42; *Who's Who* '41-'42 and '42-'43; Student Council President '42-'43; Pi Gamma Mu President '42-'43; May Court '42-'43.

BAUSKE, VIRGINIA

Home Economics Club; League of Women Voters; Art Club; Future Teachers of America; Athletic Association; International Relations Club; Poetry Society; Press Club Secretary '42-'43.

BICKLE, BARBARA

Alpha Sigma Tau; Triangle Club Treasurer '41-'42 and President '42-'43.

BINDLEY, CAROL H.

Poetry Society; Tau Sigma; Home Economics Club; Encore Club; Art Club; Press Club; El Circulo Espanol; Senior Class Secretary-Treasurer '42-'43; Y. W. C. A. Council '42-'43; May Court '39-'40 and '41-'42; Popularity Court '41-'42 and '42-'43; Hallowe'en Court '39-'40.

BLUMEYER, ESTELLE GEISEL

Triangle Club; Athletic Association; Sociology Club; International Relations Club; Career Conference General Chairman '42-'43.

BURCHARD, CORALEE

Orchestra 4 years; Alpha Mu Mu; Delta Phi Delta Secretary-Treasurer '40-'41 and President '41-'42 and '42-'43; Miniature Melodists; Mu Phi Epsilon Recording Secretary '41-'42 and '42-'43; Future Teachers of America Secretary-Treasurer '42-'43.

BURGE, MONA JOYCE

Commercial Club; Pi Gamma Mu; Poetry Society Secretary '42-'43; Day Students' Club Vice-President '42-'43; Sigma Tau Delta Vice-President '42-'43; May Court '42-'43.



JEANNE HARMON
Business Manager, Linden Leaves



BEVERLY WESCOTT (Junior)
*Advertising Manager,
Linden Leaves*

CARAKER, VENECA ADELAIDE

Alpha Sigma Tau, Triangle Club, Press Club, Sigma Tau Delta Secretary '41-'42 and '42-'43; *Linden Leaves* Senior Editor '42-'43; Beta Pi Theta President '42-'43; Poetry Society.

COOK, JUANITA RUTH

Orchestra '41-'42; Home Economics Club; Future Teachers of America.

CROSBY, GLORIA

Triangle Club; Home Economics Club; Encore Club; *Linden Leaves* Staff '41-'42.

EBERSPACHER, RENA ELAINE

Alpha Mu Mu; *Linden Leaves* Staff '39-'40; Poetry Society; Y. W. C. A. Council '40-'41; Mu Phi Epsilon Corresponding Secretary '41-'42 and '42-'43; Popularity Court '42-'43; Future Teachers of America; Residence Council; Choir.

FARRILL, ESTHER MARRION

Linden Leaves Staff '40-'41 and '41-'42; Alpha Mu Mu Secretary-Treasurer '39-'40; Orchestra Treasurer '40-'41; Choir 3 years; Der Deutsche Verein; Mu Phi Epsilon Treasurer '41-'42, President '42-'43.

GAMBILL, PHYLLIS MARIE

Beta Pi Theta; Future Teachers of America.

GIERSE, BETTE

Encore Club; Choir 3 years; Delta Phi Delta Vice-President '40-'41 and '42-'43; Residence Council '40-'41 and '42-'43; Future Teachers of America.

GRAHAM, JEAN KIRKLAND

Triangle Club; League of Women Voters; International Relations Club; Army Brats Secretary-Treasurer '42-'43; *Who's Who* '42-'43.

GREER, BERTIE

Encore Club; Beta Pi Theta; Mu Phi Epsilon Historian '42-'43.

HAINES, RUTH MARGOT

Der Deutsche Verein; Alpha Sigma Tau; Sigma Tau Delta; Press Club; Athletic Association Secretary '40-'41, Treasurer '41-'42; Poetry Society Treasurer '41-'42; Y. W. C. A. Council '41-'42; Junior Class President '41-'42; Triangle Club Secretary '42-'43; Popularity Court '41-'42 and '42-'43; May Court '41-'42; May Queen '42-'43; *Linden Leaves* Assistant Editor '41-'42 and Editor '42-'43; *Who's Who* '41-'42 and '42-'43.



JANET THOMAS
President Y. W. C. A.



DORIS JEAN BANTA
President Student Council

HARMON, DOROTHY JEANNE

Future Teachers of America; Triangle Club President '41-'42; Alpha Sigma Tau Vice-President '42-'43; Day Students' Club Secretary-Treasurer '41-'42 and '42-'43; Business Manager *Linden Leaves* '42-'43; *Who's Who* '42-'43; Press Club.

ISELL, DOROTHY HELEN

Encore Club; Alpha Mu Mu; Orchestra President '41-'42 and '42-'43; Miniature Melodists; Mu Phi Epsilon Historian '41-'42, Vice-President '42-'43.

LEWIS, JERRE

International Relations Club; Athletic Association; Freshman Council; Future Teachers of America; Home Economics Club.

LINDSAY, PEGGY

International Relations Club; Residence Council '41-'42; Alpha Sigma Tau; Pi Gamma Mu Award Winner '40-'41; El Circulo Espanol Vice-President '40-'41 and President '41-'42 and '42-'43; Sigma Tau Delta Vice-President '41-'42 and President '42-'43; Der Deutsche Verein President '41-'42; Press Club; *Who's Who* '42-'43; Popularity Court '42-'43; *Linden Leaves* Staff '41-'42, Literary Editor '42-'43.

MART, ERVA

Future Teachers of America; Sociology Club; League of Women Voters; Orchestris.

MEREDITH, JANE LAVERRA

Art Club; Encore Club; Triangle Club Secretary '40-'41; Der Deutsche Verein President '42-'43; Alpha Sigma Tau President '42-'43; Beta Pi Theta Secretary '42-'43.

MYERS, BETTY

Linden Leaves Staff '40-'41 and '41-'42; Future Teachers of America; League of Women Voters President '41-'42; Pi Gamma Mu Secretary-Treasurer '42-'43; Alpha Sigma Tau Secretary-Treasurer '42-'43; Beta Pi Theta Treasurer '41-'42 and '42-'43; International Relations Club Vice-President '42-'43; Sociology Club; Alpha Kappa Delta of Washington University; *Who's Who* '42-'43.

PALMER, GLORIA OMOHUNDRO

Future Teachers of America; International Relations Club.

OTT, ROENA LYDIA

Encore Club; Triangle Club; Day Students Club President.



ADAH LOUISE PARKINSON
Art Editor, Linden Leaves



JANE MEREDITH
President Alpha Sigma Tau

PARKINSON, ADAH LOUISE

Encore Club; Tau Sigma; Art Club
Treasurer '40-'41; Pi Alpha Delta;
Kappa Pi Vice-President '42-'43; Press
Club; *Who's Who* '42-'43; Y. W. C. A.
Council '42-'43; Student Council Senior
Representative '42-'43.

PROCTOR, BETTY GRAY

Junior Class Secretary-Treasurer '41-
'42; Senior Class President '42-'43; Stu-
dent Council Vice-President '42-'43;
Y. W. C. A. Treasurer '42-'43; *Who's
Who* '42-'43; Popularity Queen '42-'43.

REAM, MARY JEAN

Beta Pi Theta; Athletic Association.

ROSE, VIRGINIA RUTH

Home Economics Club; Future Teachers
of America; Triangle Club; Athletic
Association Secretary '42-'43.

SAGE, BEY

Triangle Club; Alpha Sigma Tau.

SCHOEN, BETTY ANNE

Future Teachers of America; Interna-
tional Relations Club; Sigma Tau Delta;
Pi Gamma Mu.

SHUDDE, FRANCES

Alpha Mu Mu; Orchestra; Y. W. C. A.
Council '42-'43; Mu Phi Epsilon Treas-
urer '42-'43.

THOMAS, JANET LLEWELLYN

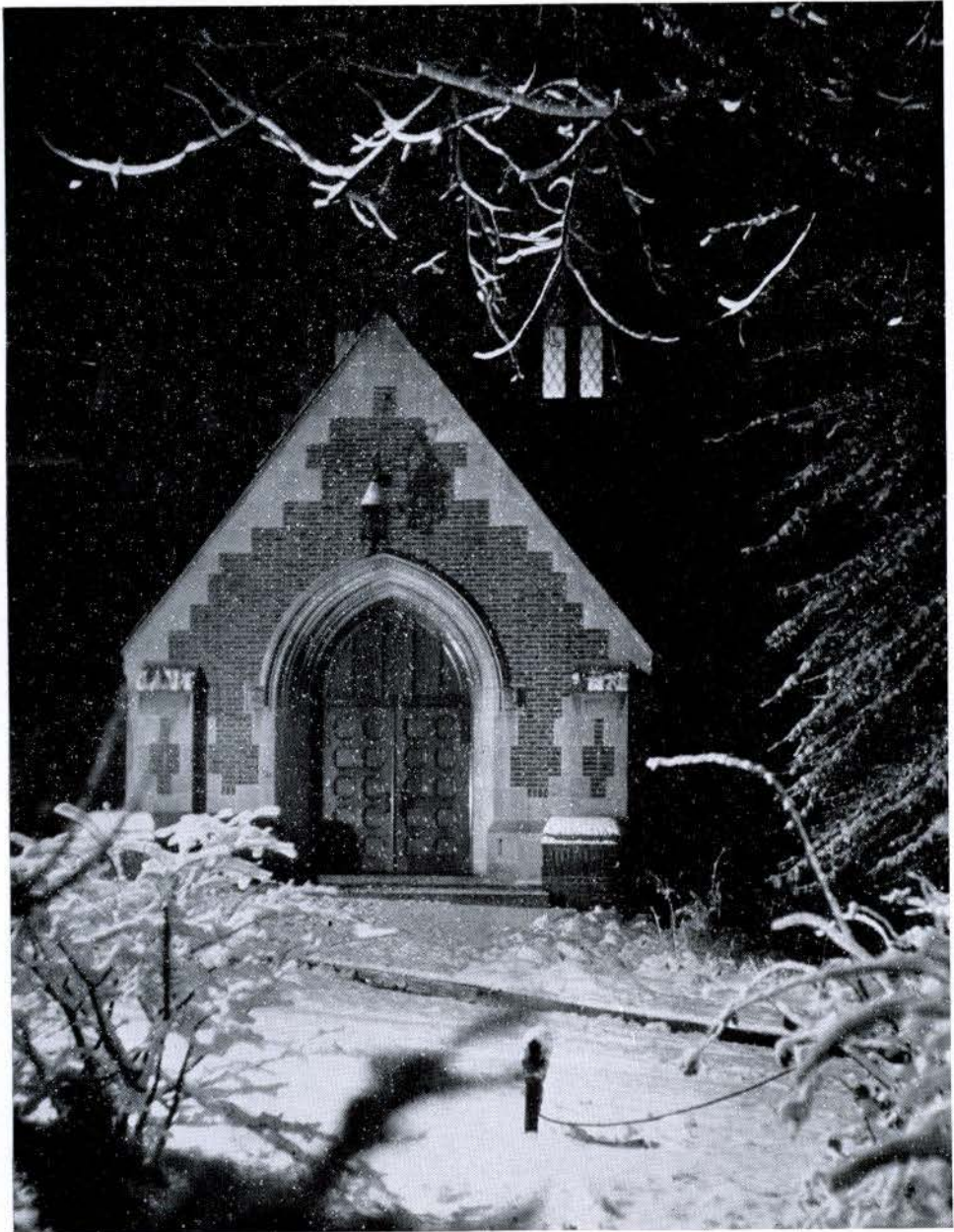
Art Club, Encore Club; Future Teachers
of America; Kappa Pi Vice-President
'41-'42 and President '42-'43; Senior
Class Vice-President '42-'43; Y. W. C. A.
President '42-'43; Residence Council
'41-'42; Popularity Court '42-'43; *Who's
Who* '42-'43.

VEACH VIRGINIA

Encore Club; May Court '41-'42; Future
Teachers of America.

WONDER, ALICE LOUISE

Orchestra; Miniature Melodists; Ter-
rapin.



LIBRARY _____

JUNIOR CLASS OFFICERS

Dear Linden Leaves,

This year we juniors have stressed the college girl's part in the war. During the War Conference we were bold enough to suggest that instruction be given in repairing automobiles and driving tractors. We did our share of knitting, rolling bandages, and buying defense stamps.

One day, just to be nice, we complimented the freshmen and ourselves with yellow and white daisy corsages and credit slips for the tea room. Since none of our favorite men could take time out from the war for a Junior-Senior Prom, we entertained the seniors with a "hen" party. Even though we didn't have men, we did have fun.

On May Day, Sarah Dearmont, maid of honor, Virginia Donovan, and Florence Barry represented us in the annual festival celebrating the crowning of our May Queen.

To add excitement to our year, our sponsor became "the former Miss Eva Englehart." We presented Mrs. Douglas with a rawhide bag and our best wishes for her future happiness.

This, then, was the year 1943, dear Annual, and we are looking ahead eagerly to the next year when there will be no doubt in anyone's mind about *who's who* on the Lindenwood campus.

THE JUNIOR CLASS

BECK, BARRY, WESCOTT



President
FLORENCE BARRY

Vice-President
MARY LUCILLE BECK

Secretary-Treasurer
BEVERLY WESCOTT



MARtha ABEND

DOROTHY MAE BAILEY

FLORENCE ELLEN BARRY

MARY LUCILLE BECK

MARY ELIZABETH BLACKHURST

BARBARA BURNETT

SHIRLEY COHEN

PATRICIA ROSE DEPUY

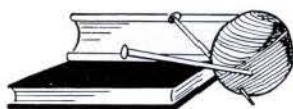
HELEN CATHERINE DEVINE

VIRGINIA LOUISE DONOVAN

FREDA MARIE EBERSPACHER

MARtha ANN ENGLAND

JUNIOR CLASS



CAROLYN ENGLISH

VIRGINIA LEE FLY

SHIRLEY JEANNE GOODMAN

EMELYNE BESS GUMM

GRACE EARLINE GRAY

DRUZELLA MARIE HANSEW





MARY ELIZABETH HERD

RUTH ELIZABETH HEYDEN

DEBORAH HIGBEE

JO ANNE HOLLY

FLORENCE STUART HOLMAN

CARRIE LEE LANEY

LELL GOODIN LEWIS

DOROTHY JEAN LUTTON

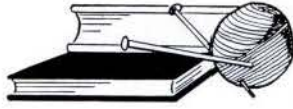
LOUISE BICKETT MALLORY

RUTH PAINTER

PEARL MARIE PAYNE

CAROLYN LINSAY PLATT

JUNIOR CLASS



IRMA MAE SCHAEFER

JANET ELIZABETH SCHAEFER

PATRICIA ANN SILKWOOD

BARBARA WAYE

BEVERLY ANNE WESCOTT

FRANCES WHERRY

MARGARET ELAINE WORKMAN

BETTY LEE ZEIGLER





FINE ARTS BUILDING _____



BUTLER HALL



BAYLISS, P. PROCTOR, WATERS, MAY, HESS, PATE, JACKSON, K. DAVIS, T. GRAHAM, M. MORGAN, KINNEY

SOPHOMORE CLASS COUNCIL

They tell us we are the wildest class on campus. We have fun crashing freshman parties, going into the city over the week-end, and having feasts in the dark.

Planning the Senior Party was great sport. It took us hours to think up

strange and far-away places on the campus where we could hide the hints for the treasure hunt. Betty Waters, Peg Proctor, Lynn Jackson, Mary Pate, and Dottie May really wore themselves out hiding those bits of paper which led to Saving Stamps.

It was the Sophomore Class, also, that had dinner at the Statler Hotel and then spent a hilarious two hours with "Junior Miss." The dinner was delicious with steak and all the trimmings—just before meat rationing too; and the play put ideas in our heads.

This has been a good year, but we are anxious to be really upperclassmen, sit upstairs in chapel, and benignly smile down upon next year's "sophs."

THE SOPHOMORES

SOPHOMORE CLASS OFFICERS

JACKSON, MAY, P. PROCTOR



President

PEGGY PROCTOR

Vice-President

LYNN JACKSON

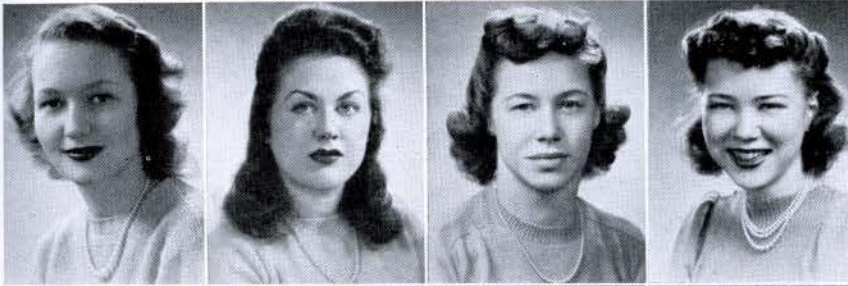
Secretary-Treasurer

DOROTHY MAY

SOPHOMORES 1943

KINTA ABADIE	PATRICIA BARTLETT	CATHERINE BISHOP	VIRGINIA BROWN	DOREEN CHAPMAN
LEA ALEXANDER	BARBARA BASTRON	CAROLYN BOERSTLER	SARAH BURKS	FLORENCE CLAIR
CARMELLA ALIOTTA	MINOTA BAYLISS	JEAN BOWLSBY	MARY LEE CAMPBELL	LYNN DARBY
HELEN BARTLETT	JESSIE BEAN	HELLEN BOYD	AMY LOU CHAILLAND	KATHERINE DAVIS

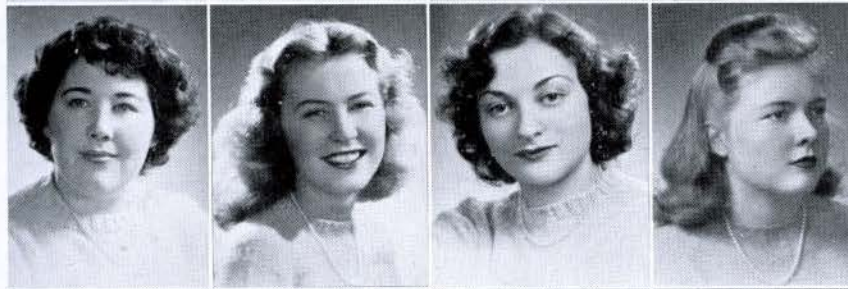




SARAH DEARMONT
SHIRLEY DUNKER
FRANCES ELEANOR FELLOWS
ALICE GABBERT



MARY LOU GILLETTE
VIRGINIA GILREATH
BETTY GLADFELTER
CATHRYN GRAHAM



TWILLA GRAHAM
MARJORIE GREEN
MARIAN GUDDER
MARY ELLEN HAYS



DOROTHY HEIMROD
DOROTHY HESS
JANICE HOHTANZ
MARJORIE IRWIN



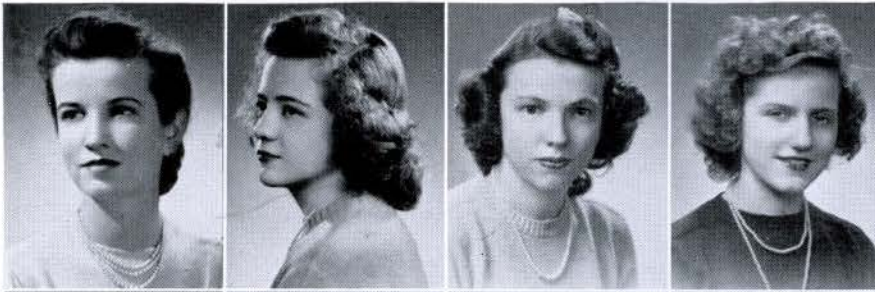
LYNN JACKSON
EDNA-MARY JACOBSON
MARY LEE JOHNS
HELEN JOHNSON

SOPHOMORES 1943

SOPHOMORES 1943

EARLEEN JONES	ANNE LEVERENZ	JEAN McMURRY	LADY LAVENIA MORGAN	JERRY OPPENHEIMER
MARIAN KINNEY	LUCILE LINCOLN	DOROTHY MAY	MARIAN MORGAN	SYBIL OSBURN
CLARA LANDBERG	JAMIE LOGAN	MARY MAYES	JEAN ESTHER MORRIS	MARY PATE
VERA LANGENBACHER	DOROTHY LOWE	NANCY MOORE	MARY LEE NICHOLSON	JO ANN PERSON





DIXIE POYNTER
 PEGGY PROCTOR
 EARLENE RANSOM
 ELNOR RITTER



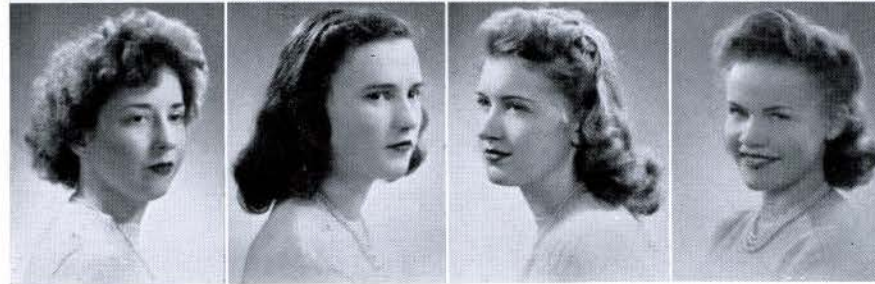
RUTH RITTER
 LOUISE PANKEY ROOKE
 ELOISE ROWLAND
 ELIZABETH RYCHENER



HOPE RYDER
 SHIRLEY ANN RYDER
 BETTY JEAN SCHROER
 JACQUELINE SCHWAB



JOANNE SEIP
 DOROTHY SHAEFFER
 BELLE SIROTA
 DORIS SMITHSON



HELEN SPROWL
 MARJORIE STEVENSON
 JEAN STEWART
 JANE SWALLEY

SOPHOMORES 1943

SOPHOMORES 1943

NANCY TAPP	ELLEN WADLEY	DONALEE WEHRLE		
HARRIET TAYLOR	ALYCE WARD	MARY LOUISE WEITZ	KATHLEEN WILLIAMS	JULIA YANCEY
CELIA TUCKER	BETTY JANE WATERS	BARBARA WERTZ	POLLY WOOLSEY	NADINE ZIERN
PHYLLIS VERPLOGG				





NICCOLLS HALL



Seated: TRIMBLE, PAPIN, RUTLEDGE, J. DePUY, L. EBERSPACHER, PYLE, BLUE
Standing: ALLEN, HANNIS, BARNGROVER

FRESHMAN COUNCIL

In September there we were, just another group of the proverbially green freshmen. We had trunks of new clothes—very collegiate, the salesladies assured us; but still we felt rather “high school-ish.” Then our big Sisters stepped in, and we soon had that feeling of belonging. The moonlight wiener roast in the shadow of the Lindenwood tower brought realization of college dreams, and homesickness yielded to college spirit.

For a month we were kept busy with schedules, entrance tests, new roommates, and “gab” sessions. In October the upper-classmen informed us that the Hallowe’en Court was to have a freshman queen. The honor and crown

came to rest upon the head of Queen Harriet Scruby. Her attendants, Margot Overmyer and Loma Greenwell, and ten maids completed this court of regal beauty.

With very little discussion and no debate, we began plans for our Freshman Mixer. After much buying, borrowing, and pressing of formals, we were all “set” except for one item—a date. The problem was solved when we invited the Lambert Field cadets to be our guests. Not only did we have a “super” dance, but not many weeks later several girls were wearing gold navy “wings.”

With all our energy and just enough talent, we wanted to do something con-

structive for the war effort. After the college war council approved our plans for the sponsoring of stamp and bond sales, we went to work with determination, salesmanship, and red, white and blue crepe paper. Freshmen rushed about with a money box in one hand and a stamp sheet in the other. For several weeks we cajoled everyone on campus to "Buy a stamp or bond." We were not surprised when we surpassed our goal of \$1,200.

We recuperated from mid-term finals just in time to catch a good case of spring fever. Our May Day celebration startled us from this tranquil lull, and we revived enough to congratulate warmly our Freshman May Day attendants.

We are looking forward to September when we shall return to Lindenwood too sophisticated to remember our freshman experiences.

THE FRESHMAN CLASS

FRESHMAN CLASS OFFICERS

PAPIN, RUTLEDGE, TRIMBLE, LEGGE



President
CAROLYN TRIMBLE
Vice-President
MARILOU RUTLEDGE
Secretary
NANCY PAPIN
Treasurer
KATHRYN LEGGE



MARY LOUISE ALFORD	BARBARA ARANOFF	TERRESSA AULD	BETTY JUNE BALDWIN
RITA MAE ALLEN	GAYLE ARMSTRONG	ELOISE BAIM	
ESTHER BARCLAY	KATHRYN BARNGROVER	YVONNE BATES	MARY ELLEN BENNETT
RUTH LOIS BARQUIST	MARGARET BARTLE	ROBERTA RUTH BEDELL	
DORIS BENTZINGER	JANICE BLAKESLEE	BARBARA BLUHM	MARJORIE BRANCH
GERALDINE BIGGER	SUSAN BLUE	HELEN BOWMAN	
MARY MARGARET BRINKMAN	GLORIA JUNE BRUCE	DORIS BURGER	BEVERLY BUSER
INA CLAIRE BROCK	NORMA BUELL	RUTH BURLEY	
JO-ANN BUTTERS	RUTH COLLEEN CAULLEY	PHYLLIS CHAFFIN	HARRIETT CHANTRY
MARIANNA CARTER	MARGARET CHACE	CAROL CHAMBERLAIN	

1943 FRESHMAN

1943 FRESHMAN

KEITHANN CHAPMAN	MARILYN CHILD	ELIZABETH ANN CLARK	LAURA COAD
ADELE CHEEK	FLORENCE CHRISTOPHER	MARJORIE CLARKE	
BETTE COLE	JULI CONGER	LEXINA CONWAY	OLGA JUANITA CREECH
DOROTHY COLLITON	PATRICIA CONRAD	VIRGINIA ANN CORNELL	
REBA CROWDER	ESTHER MARIE DALBY	DOROTHY DAVIES	MARTHA ANN DAVIS
BARBARA CUSHMAN	BETTY JAYNE DANEMAN	ELIZABETH JEAN DAVIS	
MARTHINA DEFRIECE	JOYCE ANN DEPUY	AUDREY JEAN DEVOE	SHIRLEY DIEKMANN
MARGARET DEMAND	ELLEN DESMARE	DOROTHY JEANNE DICKEY	
MARY JEAN DODD	ARNITA LOIS DRISKILL	SHIRLEY EAGLE	LOUISE EBERSPACHER
HELEN LOUISE DONOHUE	HELEN DAY DUFF	FRANCES EASTWOOD	





ROSALIE EDDY	EVA JOAN EMONS	DOROTHY JEANNE FALLS	MARY MARGARET FLETCHER
JOAN ELSON	MARION ELLEN ERLANDSON	DONNA FELGER	
VIRGINIA FLOREY	PATRICIA FORAN	NANCY GAMBILL	ANN GARWOOD
BETTY JAYNE FOLKER	BILLIE V. FOUTS	JANE LOUISE GARRETT	
BETTY LEA GILES	MARIAN THELMA GOLDSMITH	SONYA GOULDEN	LOMA GREENWELL
MARTHA JANE GITTINGER	ANN GOTTLIEB	LYNN GRAY	
PHYLLIS GREENWOOD	EMMA LOU HANNIS	MARY ELIZABETH HARDY	CAROLYN HEMPELMAN
SHIRLEY GROSS	MARIAN HARDTKE	MARY GENE HEAD	
FLORENCE HERSH	MARY CELESTE HIRSCH	JACQUELINE HOLSINGER	MARRYLYN HOOVER
CHARLOTTE HILL	GRACE CAROLYN HIRST	ALTHEA HOOPER	

1943 FRESHMAN

1943 FRESHMAN

PEGGY LOU HORNADAY	HARRIETTE HUDSON	VENITA JEAN HUFF	MARGARET HUMPHREYS
EVALOU HUBBELL	SARALEE HUFF	CLAUDEEN HUMES	
NANCY INGWERSON	JEAN IRWIN	JANE LOUISE JOHNSON	MARY RUTH KERLEY
VASHTI IOBE	BARBARA GAILE JOHNSON	MARION JO JORDAN	
ANNE KING	NANCY KNOTT	SARAH LAROWE	KATHRYN LEGGE
MARY ELLEN KNAPP	PEARL MARIE KRUG	PATRICIA LATHEROW	
CAROLINE LEVY	JOANNE LIEBERMANN	JEAN ELIZABETH LOHR	JEANETTE MCCRACKEN
FRANCES LEWIS	GERALDINE LOGAN	GLORIA MCCARRICK	
JANE MCGREDE	JANE MCLEAN	BARBARA MANBECK	MARY LOUISE MAYER
VIRGINIA MCINTYRE	MARJORIE MAINES	JAYNN MANN	





RUTHE MEYER	VIRGINIA MOEHLINKAMP	MONTELLE MOORE	MARY FRANCES MORGAN
BETTY MILLER	VIRGINIA MOERSCHEL	EMMA LEE MORGAN	
DORIS ANNE MUEHLENBECK	EDITH ANN MULLINS	JANE MURPHY	MARY ANN NESBITT
ELOISE MULLENDORE	EILEEN MURPHY	NANCY JANE NAGL	
JANET NEUSTADT	ROSEMARY NISSLEY	SHIRLEE NOBLE	MARGARET OVERMYER
DOROTHY NIEDNER	MARTHA JEAN NOBLE	MAXINE EVELYN NORRIS	
VERLEE OYER	MARGARET PARKER	INEZ PASS	JEAN PAULSON
NANCY PAPIN	MARY ANN PARKER	PATSY RUTH PAYNE	
POLLY PERCIVAL	MARJORIE PHILLIS	PATRICIA ANN POWELL	GLENDORA MELBA RAASCH
MARY LOUISE PETERSON	MARY RUTH PLATT	VIRGINIA LEE PYLE	

1943 FRESHMAN

1943 FRESHMAN

MARGARET JOANNE RAE	EDNA ADELAIDE RATTAN	DOROTHY LOUISE REED	MARJORY ROBERTS
FLORA BARBARA RANDERSON	KATHRYN RECORD	NANCY JANE REICHARD	
SALLY ROBERTSON	BETTY ANN ROUSE	ELIZABETH JANE RUNGE	MARILOU RUTLEDGE
MARYLIN LOUISE ROBISON	VIRGINIA ROZYSKI	SOPHIA RUSSELL	
MERRYL KEITH RYAN	SUZANNE SCATES	DORIS MARIE SCHNEIDER	ROZELLE SCHWARTZ
JOY SALOMON	JUNE LORRAINE SCHATZMANN	RUTH SCHROEDER	
HARRIET SCRUBY	BARBARA SHIREY	JO CLETA SIMPSON	NORMA ELIZABETH SNYDER
MARY LYNN SEIP	EVELYN SIGLER	ARDATH NELL SMITH	
HELEN JOAN STAHL	HILDAGARDE STANZE	BETTY RENEE STOERY	JANE STUART
MARY STANTON	BARBARA STEBERG	KATHRYN STRUMPELL	





MYONNE STUEBER	GLORIA LEE SWINEHART	MARJORIE TANNER
WANDA MADALOU SWIGER	MARY ELIZABETH TABOR	DOLORES THOMURE
RUTH TITUS	CAROLYN TRIMBLE	MARY ELLEN TWITTY
PATRICIA TOBIN	MARA TURNER	BETTY MARIE ULLERY
DORIS VANECEK	JOYCE ELOISE VESTAL	ADA WAELDER
MARIE LOUISE VAN OSTVEEN	MARTHA VIAR	
PATRICIA WALDRON	HELEN WALKER	ELSIE LOUISE WALLERSTEDT
BONNIE JEAN WALKER	NANCY JANE WALLACE	

1943 FRESHMAN

1943 FRESHMAN

PATRICIA WALSH	DOROTHY ANN WAYLAND	BETTY WHEELER
FRANCES WATLINGTON	LORRAINE WESTFALL	JACQUELINE ANN WHITEHEAD
HELEN VIRGINIA WHITTEN	FRANCES WILEY	ANNA MARY WILLIAMS
ANNA MARJORIE WILDE	MABEL WILKINS	JEANETTE WILLIAMS
RUBY KATHERINE WILSON	MARTHA ANNE WINGATE	BETTY ANN WRIGHT
RUTH VIRGINIA WILSON	SHIRLEY RUTH WISE	
MYRTUS WRIGHT	REBECCA YODER	HARRIET ZOLLINGER
GERALDINE MARIE WRINKLE	PATRICIA ANN YOUMANS	





BUTLER WAY



ORGANIZATIONS

STUDENT COUNCIL

The Student Council—that's the gang that kept you toeing the line with regulations and ultimatums. They are the gals you hid from if you wore socks on Sunday, and they constituted the official conscience that kept you going to chapel and vespers.

But all their activities were not as ominous. Remember the first date dance of the year? The Council claims the credit for that as well as for the U.S.O. party for the boys from Jefferson Barracks. Student chapel and vesper programs evolved from their deliberations, as did the bean soup suppers, and drives for the Red Cross.

OFFICERS

<i>President</i>	DORIS BANTA
<i>Vice-President</i>	BETTY G. PROCTOR
<i>Secretary-Treasurer</i>	FLORENCE BARRY
<i>Senior Representative</i>	ADAH LOUISE PARKINSON
<i>Junior Representative</i>	VIRGINIA DONOVAN
<i>Sophomore Representatives</i>	VIRGINIA GILREATH DOROTHY HEIMROD
<i>Freshmen Representatives</i>	PATSY POWELL KAY BARNGROVER
<i>Residence Council</i>	MARY PATE

Seated: PATE, B. PROCTOR, BARRY, DONOVAN, PARKINSON
Standing: HEIMROD, GILREATH, BANTA, BARNGROVER, POWELL





Seated: WOOLSEY, HIGBEE, ROOKE, PERCIVAL, HOHTANZ, LANEY, CONWAY, RUTLEDGE, N. MOORE, LATHEROW, R. EBERSPACHER
Standing: REICHARD, GIERSE, BOERSTLER, PATE, GREENWELL, BIGGER, M. F. MORGAN

RESIDENCE COUNCIL

We were elected to the almost impossible task of making Lindenwood girls both happy and quiet. It was our responsibility to see that lights were out and that no procrastinator was sitting out in the hall cramming for a test after eleven o'clock. We tried to be firm and unbending and still keep our friends.

But we did realize the need for relaxation. On special Fridays and during those tense exam weeks, we held "Fun Hours" in the club rooms. All of the jitterbugs, bridge players, and the downright hungry, joined us and had lots of noisy fun.

We were patriotic, too. WAAC and WAVE officials spent some of our "Fun

Hours" with us and talked with would-be WAACs and WAVEs. We collected old hose to be used in the making of parachutes.

RESIDENCE HALL PRESIDENTS

Irwin Hall—DEBBY HIGBEE
 Niccolls Hall—MARILOU RUTLEDGE
 Sibley Hall—JANICE HOTANZ
 Ayres Hall—POLLY WOOLSEY
 Butler Hall—BETTY GIERSE

RESIDENCE COUNCIL OFFICERS

President MARY PATE
Secretary-Treasurer JANICE HOTANZ



BINDLEY, SHUDE, PARKINSON, B. PROCTOR, DEARMONT, WESCOTT, THOMAS

Y. W. C. A. CABINET

"Bev—my word—it's good to see you again!"

"J. T.—old girl—here's your little sister. She's confused and lost already!"

Thus started the activities of the Y. W. for this year. The Style Show in October, featuring the Freshman Beauty Queen candidates, and, later in the month, the crowning of Harriet Scruby, our Hallowe'en Queen, were the highlights of our fall activities.

The project which kept us busy after the snow started falling was the dressing of Christmas dolls for the children of Markham Memorial.

In March came Spiritual Emphasis Week, which started off with Dr. Hamp-

ton Adam's address at Vespers and ended with an informative and thought-provoking Symposium conducted by three prominent outside speakers — Father William McGucken of St. Louis University, Rabbi Julius Gordon of Shaare Emeth Synagogue, and Dean Sydney Sweet of Christ Church Cathedral.

OFFICERS

<i>President</i>	JANET THOMAS
<i>Vice-President</i>	BEVERLY WESCOTT
<i>Secretary</i>	SARAH DEARMONT
<i>Treasurer</i>	BETTY PROCTOR
<i>Sponsor</i>	DR. MARY TERHUNE



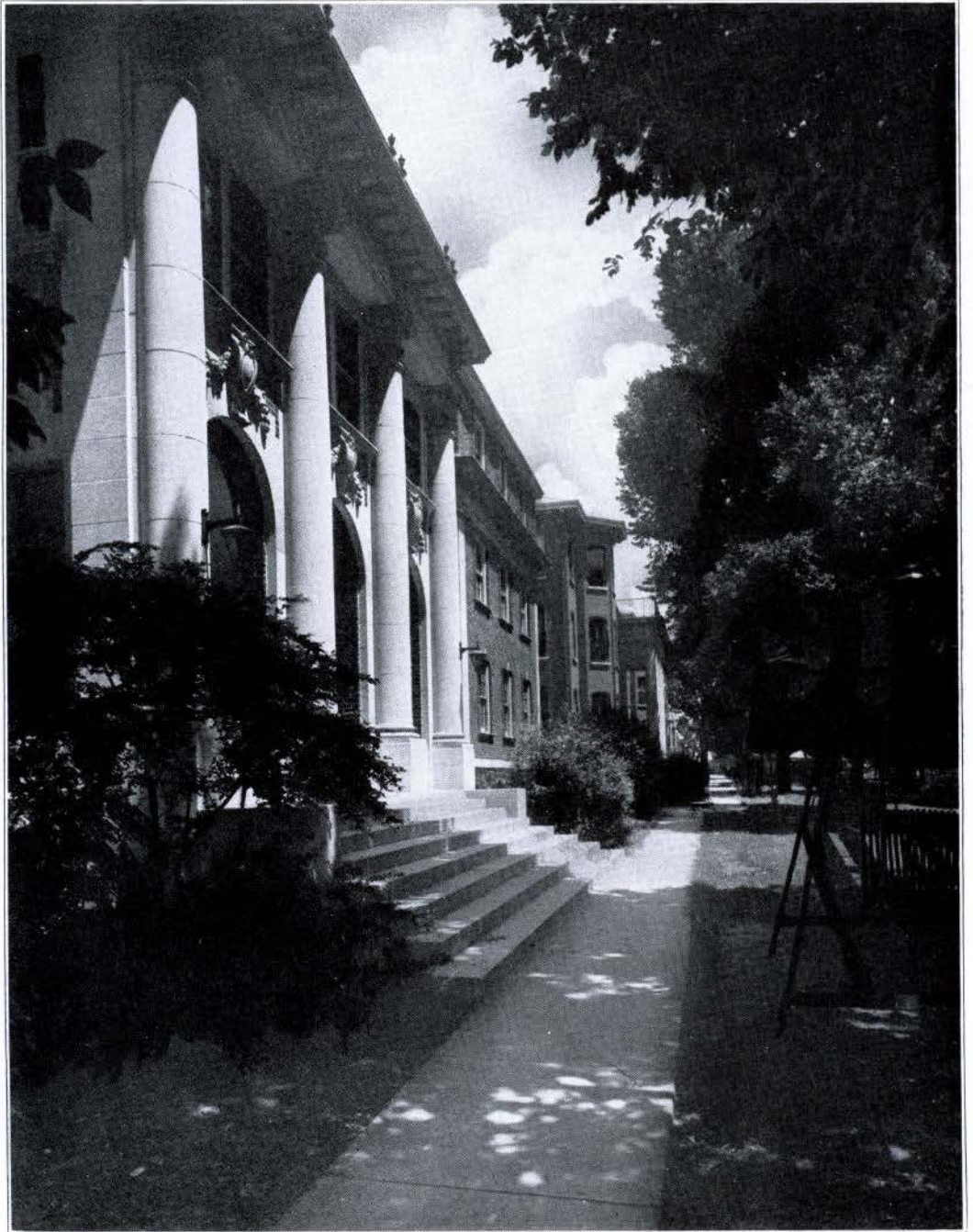
Seated: BANTA, MYERS, PARKINSON, HARMON, THOMAS, B. PROCTOR
 Standing: HAINES, GRAHAM, LINDSAY

WHO'S WHO

The publication, *Who's Who Among Students in American Universities and Colleges*, is sponsored by 600 colleges and universities which endeavor to give recognition to those students who are outstanding in scholarship, in leadership, and in qualifications necessary for entrance into the business world. Short biographies of the students chosen from different colleges and universities appear in the book. Lindenwood proudly presents to you nine seniors who have achieved this honor for 1942-43:

Doris Jean Banta, president of the Student Council and of Pi Gamma Mu, national social science fraternity; and Ruth Margot Haines, editor of the *Linden Leaves* and secretary of Triangle Club, honorary science club, (these two

students were also listed in the *Who's Who* for 1941-42); Jean Graham, secretary of the Army Brats and member of Triangle Club; Jeanne Harmon, vice-president of Alpha Sigma Tau, honorary liberal arts society, and business manager of the *Linden Leaves*; Peggy Lindsay, president of El Circulo Espanol, honorary Spanish club, and literary editor of the *Linden Leaves*; Betty Myers, treasurer of Pi Gamma Mu, of Alpha Sigma Tau, and of Beta Pi Theta, honorary French fraternity; Adah Louise Parkinson, vice-president Kappa Pi, national honorary art fraternity, and art editor of *Linden Leaves*; Betty Gray Proctor, president of Senior Class, and vice-president of the Student Council; and Janet Thomas, president of Y. W. C. A. and of Kappa Pi.



SIBLEY HALL _____



First Row: MAINES, STAHL

Second Row: OPPENHEIMER, D. SHAEFFER, PERSON, ZIERN, L. MORGAN

Third Row: HUDSON, TAYLOR, MULLENDORE, PERCIVAL

ALPHA MU MU

Alpha Mu Mu (the "Kitty Club") began the year with a prospective Heifetz, a sure-enough Rachmaninoff, and our pledge, a future Shostakovitch.

They divided the offices as follows:

President, LADY MORGAN

Vice-President, HARRIETTE TAYLOR

Secretary-Treasurer, JERRY OPPENHEIMER

Oh yes—the pledge? NADINE ZIERN.

These artists held a series of singularly unimportant meetings devoted to the study of musicology. The serious social life of the organization began in October with the Tri-Sorority tea, for

which the other two music sororities on campus kindly helped defray expenses. Just after examinations, seven girls reported to Roemer Auditorium on February twenty-seventh for a check-up in recital form. There were no apparent signs of petrification, for the members beat it out in traditional Alpha Mu manner. We celebrated the advent of Spring by retiring to the ovens, where we consumed an incredible amount of food. To give the apple a higher polish, we gave the faculty a luncheon. Even our benevolent sponsor, Dr. John Thomas (Dr. T to us), said quote, Most commendable, unquote.



J. E. MORRIS, WADLEY, BECK

ALPHA PSI OMEGA

We are the potential Katherine Hepburns, Katherine Cornells, and Ethel Barrymores. You can find us nervously dabbing on makeup, hurriedly pulling on our costumes, and prayerfully crossing our fingers before the curtain goes up. After the play is over, we feel greatly relieved, forget all the tiresome rehearsal, and itch to get started again.

Jean Esther forgets about the nights she sat in the hall after lights to memorize lines, and Ellen becomes wistful over how much she would like to play a woman's part just once.

Thanksgiving night we presented the comedy, "George Washington Slept

Here" and surprised the faculty with our sophistication. In February we entertained at a tea and rushed in Dan Cupid for Valentine's Day. For our spring play we gave "Charles and Mary," a psychology major's delight. Our commencement play, well directed as always, was rather admirably enacted, we admit.

PLEDGES

PEGGY PROCTOR
MINOTA BAYLISS

Sponsor, MISS MARY M. GORDON

ALPHA SIGMA TAU

After struggling through three grueling semesters of work in an effort to maintain an S or E average as a requirement for attaining her dream of membership in Alpha Sigma Tau, the Lindenwood girl is somewhat appalled to learn that her work is just beginning. She now has to maintain her average in order to continue in the organization. But even the most studious of the group leaves her books occasionally to present the Popularity Queen, entertain the faculty at a tea, or sell tickets to a motion picture.

The organization this year has provided two scholarships for the School

of the Ozarks, to enable their protegee, Betty Lord, to attend high school.

Programs for the year consisted largely of interesting reports by faculty members—Dr. Alice Parker, Dr. Homer Clevenger, and Miss Karen Van Lissel.

OFFICERS

President JANE MEREDITH
Vice-President . . . JEANNE HARMON
Secretary-Treasurer . . . BETTY MYERS
Sponsor DR. MARION DAWSON
Honorary Sponsor DR. ALICE E. GIPSON

First Row: WESCOTT, GRAY, C. PLATT, BLACKHURST, JACKSON, MEREDITH, CARAKER

Second Row: WERTZ, L. LEWIS, HAINES, PATE, BANTA, HARMON, KINNEY

Third Row: J. SEIP, VERPLOEG, BASTRON, WADLEY, BICKLE, SAGE, GOODMAN, MYERS, LINDSAY, LANDBERG





First Row: ZEIGLER, LYNCH, SIROTA, BANTA, KINNEY, MYÉRS, GAMBILL, REAM, OPPENHEIMER
Second Row: WESCOTT, GRAY, WADLEY, CARAKER
Third Row: HARMON, GREER, MEREDITH

BETA PI THETA

"Allons, enfants de la patrie,
 Le jour de gloire est arrive!"

White dresses, blindfolds, robe-clad officers, flags, and fleurs-de-lis increase the impressiveness of the ritual which adds new members to Beta Pi Theta. At our Christmas meeting Marian Kinney told us of Noel in France while we ate palatable yule logs. Bertie Greer, in her enthusiastic manner, reviewed Barris' *Charles de Gaulle*. Jerry Oppenheimer combined her music with French for a report on French folk songs of Louisiana.

A highlight of the year's activities was a joint meeting with the International Relations Club at which M. Henri de Lecluse of St. Louis was a guest speaker. Regretfully we said "au revoir" at our "pique-nique."

OFFICERS

<i>President</i>	. . .	ADELAIDE CARAKER
<i>Vice-President</i>	. . .	JEANNE HARMON
<i>Secretary</i>	. . .	JANE MEREDITH
<i>Treasurer</i>	. . .	BETTY MYERS
<i>Sponsor</i>	. . .	MISS ANNA WURSTER

DER DEUTSCHE VEREIN

Do you know what "Stinktief" means? Can you sing "Stille Nacht, Heilige Nacht"? Did you guzzle root-beer last December in the Library Club Room and play Bingo at the same time to the count of "ein," "zehn"? If so, there's no doubt about it—you are a member of Der Deutsche Verein!

The annual Christmas party started the year. It was at this meeting that Ruth Haines read "Tannenbaum," and Peg Lindsay gave an account of German customs and celebrations. For further details, see either Dr. Alice Parker or

Miss Anna Wurster—they felt most patriotic as they walked away with a ten-cent defense stamp book.

Naturally the year would not have been complete without a picnic. May found us crunching potato chips, and spilling mustard on our new slacks. Don't you wish you'd taken German?

OFFICERS

President . . . JANE MEREDITH
Secretary-Treasurer HELEN BARTLETT
Vice-President . ELIZABETH RYCHENER

B. JOHNSON, MOELHLENKAMP, HAINES, MEREDITH, FARRILL, CARTER, LEVY, RYCHENER, LINDSAY



DELTA PHI DELTA

Are you interested in teaching music in the public schools? If you are a good musician, and show any aptitude in imparting your knowledge, Delta Phi Delta is looking for you. So get out your piccolo, grab a baton, exercise your vocal chords, and join us in our efforts to learn how to carry on musical programs in the public schools.

Our most important activity for the past year was our "Victory Sing," in which our three seniors—Lois Anderson, Bette Gierse, and Coralee Burchard—

with the help of the other members, led the entire student body in the singing of a variety of songs new and old, with interesting variations and stage effects.

OFFICERS

<i>President</i>	. . .	CORALEE BURCHARD
<i>Vice-President</i>	. . .	BETTE GIERSE
<i>Secretary</i>	. . .	DOROTHY SHAEFFER
<i>Treasurer</i>	. . .	LOIS ANDERSON
<i>Reporter</i>	. . .	NADINE ZIERN
<i>Sponsor</i>	. . .	MRS. LOIS BURKITT

Front Row: E. L. MORGAN, LOHR, PERSON, PERCIVAL, ENGLAND, GIERSE

Back Row: WILEY, STAHL, DONOVAN, BURCHARD, ZIERN, GUDDER, L. ANDERSON, D. SHAEFFER, MULLENDORE





First Row (top to bottom): C. PLATT, L. LEWIS, I. SCHAEFER, YOUMANS, HARDTKE, STEVENSON, GOTTLIEB, STANZE
Second Row: DODD, K. CHAPMAN, TRIMBLE, HANNIS, VERPLOEG, J. SEIP, M. MORGAN, HEYDEN
Third Row: BLUE, ROBERTSON, VIAR, ARANOFF, CAMPBELL, HEIMROD, CROWDER, BUTTERS, LINDSAY
Standing: DEVINE, WERTZ, BUSER, MCLEAN, HOHTANZ, RAASCH, TANNER, BOWLSBY, HERD, REICHARD

EL CIRCULO ESPAÑOL

"Buenos dias, amiga! Como esta usted?" "Muy bien, gracias, yusted?" These are a few of the phrases casually tossed through the air by the glib-tongued members of El Circulo Espanol.

In the autumn, we took into our congenial group more linguists of the future. The warmth of their fellowship gave further charm to our informal meeting, where we discussed everything from the good-neighbor policy to the poetry of the old "romancero." Dr. Mary Terhune, our sponsor, gave such a delightful review of *The Days of Ophelia* that we all yearned to go to Mexico to see Ophelia and her friends for ourselves. From con-

temporary Mexico, we journeyed back to fifteenth-century Spain at our next meeting, to study ancient ballads and legends. Spanish music, featuring De Falla, was the keynote of the following meeting. To wind up our year, we had one last get-together, and it was then that we said to all our friends, "Hasta la vista!"

OFFICERS

President . . . PEGGY LINDSAY
Vice-President . . . JO-ANN BUTTERS
Secretary-Treasurer . . . BARBARA WERTZ
Sponsor . . . DR. MARY TERHUNE

HOME ECONOMICS CLUB

Number 000001. Yes, I was drafted. The Home Economics Club started the year off with a bugle call for a typical canteen truck mess. It was, however, no time until we forgot our military tactics and talents, and changed from khaki right into sequins to entertain the guests of the department—the National Field Secretary of A. H. E. A., Miss Gladys Wycoff from Washington, D. C.; Mme. Helene Lyolene, an independent designer, and Miss Beulah Spilsbery of the Nelly Don Company of Kansas City.

We shall always remember our annual breakfast. Those waffles, oozing honey-butter, were an artistic creation and in our memories can never fade.

We spent many of our evenings in the cooking laboratory, thinking up new

candy recipes and sticking popcorn balls together so that we could make our contribution to the Foreign Fellowship Fund.

We were even so practical as to have mending hours on Friday afternoons in the clothing laboratory to fix up those sagging hems, vanished snaps, and gapolis. Indispensable, we domestic gals! We hope we are!

OFFICERS

President DEBBY HIGBEE
Vice-President DONALEE WEHRLE
Secretary-Treasurer PEARL PAYNE
Sponsor MISS GERTRUDE ESTEROS

First Row: SIMPSON, DONOHUE, COOK, CROSBY, GLADFELTER, NICHOLSON, PEARL PAYNE
Second Row: JACOBSON, MUEHLENBECK, J. STUART, TAPP, DAVIES, BLUHM, F. LEWIS, WALLACE, BURGER
Third Row: STANTON, MACINTYRE, HIGBEE, WEHRLE, SCHWAB, BEAN
Back Row: SNYDER, J. LEWIS, WORKMAN, BRINKMAN, RANDERSON, BENTZINGER, BARCLAY, E. MURPHY, L. EBERSPACHER, HANSEW, J. MURPHY, AULD





KAPPA PI

First Row: ROOKE, LEVERENZ, WOOLSEY, PATE
Second Row: FORAN, J. SEIP, ROBERTS, R. MEYER, THOMURE, THOMAS,
 POYNTER, CORL
Third Row: ZIERN, PARKINSON

Have you seen girls in paint-dabbed smocks modeling class figures, designing dresses, tediously working on charcoal designs and posters, or coming to dinner with a smudge of paint on their noses? They are probably members of Kappa Pi.

In December they turned their artistic minds toward the intriguing new fashions. As they munched popcorn and sipped cokes, Miss Lillian Rasmussen, their fashion expert, told them about the latest clothes innovations.

After Christmas Adah Louise Parkinson demonstrated for them her expertness at turning out silk screen prints.

Spring found them spending many extra hours over drawing boards and

easels, getting things finished for the annual exhibit.

Perhaps next year, if you have the flair for drawing, wield a brush with that certain touch, or have clever ideas in design, you will be one of them.

OFFICERS

President JANET THOMAS
Vice-President ADAH LOUISE PARKINSON
Corresponding Secretary
and Historian ANN LEVERENZ
Treasurer KAY ANDERSON CORL
Recording Secretary JODY SEIP
Sponsor MISS LILLIAN RASMUSSEN



MU PHI EPSILON

First Row: FARRILL, DONOVAN, BURCHARD
Second Row: R. EBERSPACHER, ENGLAND, BAILEY, ISBELL
Third Row: L. ANDERSON, SHUDDE, GREER

An H. N. (Higher Nonsense) degree was awarded to each guest at the Phi Theta Patrons' Party in December when the theme was "A College Career in One Night." The patrons and patronesses—all of whom graduated *cum laude*—were: Dr. and Mrs. H. M. Gage, Dr. and Mrs. John Thomas, Mr. and Mrs. Paul Friess, Mr. and Mrs. Matthew Gauss.

Last October Mu Phi Epsilon joined the music faculty in entertaining the new members of the music department with a tea.

As a climax to the year's activities they gave their annual Vesper Program in Roemer Auditorium on a Sunday evening in March. The topic for the occasion was "In Wartime—Music?"

Vocal solos and group singing illustrated the point that music *is* necessary to everyone during a period of world crisis.

The music majors of Phi Theta, besides appearing on numerous student programs, presented four piano recitals, one voice recital, one 'cello recital, and one organ recital.

OFFICERS

<i>President</i>	ESTHER FARRILL
<i>Vice-President</i>	DOROTHY ISBELL
<i>Secretary</i>	CORALEE BURCHARD
<i>Treasurer</i>	FRANCES SHUDDE
<i>Historian</i>	MARGARET GREER
<i>Chaplain</i>	MARTHA ANN ENGLAND
<i>Warden</i>	LOIS ANDERSON
<i>Sponsor</i>	EVA E. DOUGLAS

PARKINSON
 GOODMAN
 PATE
 POYNTER
 BOERSTLER



PI ALPHA DELTA

We are the scholars who have fun discussing the comparative virtues of Homer and Virgil, sighing over Catallus' love life, or perusing the philosophy of Horace.

Occasionally we leave the fascination and charm of the ancient Romans to entertain our friends. Before Christmas, we were hostesses to the freshmen interested in the classics. Red, white, and green candles and sprigs of mistletoe gave our table a holiday look. Virginia Donovan sang "Ave Maria" in Latin, and Frances Shudde played appropriate classical music.

Dr. Wilhelmina Feemster taught us much about Roman history and showed

us her collection of ancient coins. At a later meeting, Miss Kathryn Hankins reviewed Lloyd C. Douglass' *The Robe* so ably that we all wanted to neglect our assignments for some extra-curricular reading.

To end the year, we again entertained with a spring tea, our biggest event of the year, and our farewell to our fellow classic enthusiasts until next fall.

OFFICERS

President . . . CAROLYN BOERSTLER
Secretary . . . SHIRLEY GOODMAN
Sponsor . . . MISS KATHRYN HANKINS



PI GAMMA MU

First Row: C. PLATT, BANTA, BURGE, GOODMAN
Second Row: GRAY, HIGBEE, BLACKHURST, SCHOEN
Third Row: L. LEWIS, B. MYERS

Sociologists worrying over population trends, psychologists pondering mental disease, economists insisting upon free trade, education students puzzling over what to teach Germany, historians smugly comparing present with past, philosophers calmly and serenely reasoning out the relationship of man to God and nature—all these may be present at any meeting of Pi Gamma Mu. Most informal, this club gives everybody a chance to voice his opinion.

Student members, un-awed, challenge and question such dignified fellow-

members as Dr. Harry Morehouse Gage, Dr. Florence Schaper, Dr. R. L. Garnett, Dr. Lloyd Harmon, Dr. Homer Clevenger, and Miss Rachel Morris.

OFFICERS

President LOUISE OLSON (1st semester)
 DORIS BANTA (2nd semester)
Vice-President DORIS BANTA (1st semester)
Secretary-Treasurer . . . BETTY MYERS
Sponsor . . . RACHEL M. MORRIS

SIGMA TAU DELTA

Sincerity, Truth, Design—these three aims bind together twenty-six students and faculty members who are interested in writing and reading good literature. Imagine these persons circled around Dr. Kate Gregg as she gives them the highlights of *The Raft* or around Dr. Maude Beamer who reveals astonishing relationships between English and Latin. The consensus of opinion concerning the shamrock tea was that it ranked among the year's best. Guests were majors and minors in English and freshmen who rated special recognition. In spite of the often-heard "I've gotta write a theme! Darn it!" coming from the freshmen, some of them actually like to write. To

encourage this rare inclination Sigma Tau Delta sponsors each year a creative writing contest.

How can anyone who has experienced an annual Sigma Tau Delta picnic forget our sponsor's brave stand against the enraged property-owner, Peg Lindsay's mud bath, Addie Caraker's carbon-coated marshmallows, or Miss Elizabeth Dawson's capabilities as a fire-maker?

OFFICERS

<i>President</i>	PEGGY LINDSAY
<i>Vice-President</i>	JOYCE BURGE
<i>Secretary</i>	ADELAIDE CARAKER
<i>Treasurer</i>	SHIRLEY GOODMAN
<i>Sponsor</i>	DR. ALICE PARKER

Front Row: KINNEY, J. SEIP, TAYLOR, BANTA, WERTZ, SCHOEN, LANDBERG, WADLEY

Back Row: BURGE, M. MORGAN, BLACKHURST, STEVENSON, JACKSON, CARAKER, MORRIS, LINDSAY, HAINES, GOODMAN





First Row: COHEN, SAGE, JACKSON, BLUMEYER, BARRY, HAINES, WERTZ, HEYDEN, GRAY, BICKLE
Second Row: C. PLATT, SILKWOOD, E. RITTER, R. RITTER, HIGBEE, ROSE, OTT, CROSBY, WESCOTT
Third Row: MEREDITH, HARMON, DEVINE, WAYE, MALLORY, HEIMRGD, GRAHAM, CARAKER

1943

TRIANGLE CLUB

Zip! Flash! Those figures clad in "once-white" laboratory coats who dash by you on the stairway of Roemer Hall on their way to H. F. M. S. (Haven For Mad Scientists) are Triangle Club members. They are the girls who concoct messes in test tubes and investigate the innards of grasshoppers or orchids.

Meetings of this group are characterized by such exclamations as: "That report wasn't a bit dull!" or "You learn so much at these meetings!" Mrs. Ramsey Lammers, the former Dorothy Keyes, returned to tell of her experiences as a research chemist at Barnes Hospital in St. Louis. Jane Meredith gave an account of her own "brewing" here on

campus—a study of "percrystallization." The "Newton" of the club, Jeanne Harmon, explained successfully "How to Interpret Graphs." Dr. Mary Talbot gave a brief summary of her extensive research on the ant.

OFFICERS

<i>President</i>	. . .	BARBARA BICKLE
<i>Vice-President</i>	. . .	GLORIA STUNKEL (1st semester)
<i>Vice-President</i>	. . .	JANE MEREDITH (2nd semester)
<i>Secretary</i>	. . .	RUTH HAINES
<i>Treasurer</i>	. . .	BEY SAGE
<i>Sponsor</i>	. . .	MISS LOIS KARR



LIBRARY TOWER



IRWIN HALL



D. DAVIES, ROUSE, CORL, SCRUBY, OVERMYER, J. GRAHAM, DALBY, LANDBERG, DICKEY, NISSLEY

ARMY BRATS

If your father is an Army officer—whether a hard bitten regular or a new reserve—you are an Army Brat and proud of it. The Lindenwood Chapter of this national organization was founded this year, its constitution drawn up, and the charter signed at an early meeting. At this same meeting we put our heads together and decided on a project to make the school more conscious of the different branches of the Army and to acquaint the girls with the insignia of various divisions. We managed to secure the current events bulletin board to present our information, and Kay A.

Corl busied herself with artistic drawings of the insignia.

Although most people think the Army Brats are a unique species, we are much like any other organization. We have a president, Dorothy Dickey; a vice-president, Helen Wells; a secretary-treasurer, Jean Graham; and Kay Corl is our reporter to the Bark. Charter members include our officers and Rosemary Nissley, Esther Dalby, Hope Ryder, Margot Overmyer, Dorothy Davies, Betty Ann Rouse, and Harriet Scruby.

ATHLETIC ASSOCIATION

"Sibley challenges Irwin," was the cry heard at the beginning of the fall baseball season. From then on, "We challenge you," was more frequently heard than "Let's go to the Tea Room."

Before the winter-meets with MacMurray and Maryville, the hockey and riding teams practiced diligently for weeks. Cold winds and a frozen field were hardly noticed by the hockey maidens bent on victory.

After these successful meets, we all put on our jeans and checked shirts for a gala time at the annual barn dance sponsored by the Athletic Association.

Tri-school meets with MacMurray and Monticello tested the swimmers' jack-knife dives and Australian crawls, the basketball players' goal-making ability, the archers' talents in hitting the gold section of the target, and the golfers' putting skill.

OFFICERS

<i>President</i>	. . .	BARBARA BURNETT
<i>Vice-President</i>	. . .	KAY A. CORL
<i>Secretary</i>	. . .	VIRGINIA ROSE
<i>Treasurer</i>	. . .	JANET SCHAEFER
<i>Sponsors</i>	. . .	MISS DOROTHY DEACH MISS MARY MORISON

Left Group—Top to Bottom: ROOKE, BOWLSBY, LIEBERMAN, CLAIR, DARBY, CORL, BAYLISS, SILKWOOD, L. LEWIS, CHAFFIN
Top Row: T. GRAHAM, PEARL PAYNE, ROSE, HEMPELMAN, RUTLEDGE, DEARMONT, BLUMEYER
Diagonal—Top to Bottom: HAINES, WESCOTT, JACKSON, HESS, STEVENSON, PAPIN, CHAILLAND, VERPLOGE
Right Group—Top to Bottom: POWELL, KNAPP, ROUSE, BAUSKE, A. WILLIAMS, LANDBERG, WEHRLE, J. STEWART, PATE, REAM
Bottom Row: SCHWARTZ, BARRY, COLLITON, BURNETT





RUTLEDGE, PAPIN, HIGBEE, BUTTERS, BARNGROVER, BARRY, HARDY, BURNETT

RIDING TEAM

What was that you just passed? The scuffed boots and crop? Without a doubt it's a member of the riding team. Any day, any time, you can find most of the members at the stables practicing for their meets with Monticello, Mac-Murray, and Maryville Colleges. And what a difference when they go to a show! The hard-worn habits are replaced by snappy gray ones, and the scuffed boots are as gleaming and shining as the results of the meets.

The riding team was organized for the first time this year, with Barbara Burnett as our Captain and Business Manager. We wish it all the success in the future that it has had in its first year of existence.

MEMBERS

JO-ANN BUTTERS
 FLORENCE BARRY
 BETTY HARDY
 NANCY PAPIN
 MARILOU RUTLEDGE
 KAY BARNGROVER
 LOUISE OLSON (graduated)
 BARBARA BURNETT—Captain and Business Manager

NEW MEMBERS

MARJORIE STEVENSON
 GAYLE ARMSTRONG

Sponsor . . . MRS. AUSTIN E. DAILY

CHILDREN'S THEATER OF THE AIR

“‘Good Morning, boys and girls! This is your Story Lady.’ This morning we are going to visit a rehearsal of the Children’s Theater of the Air conducted by members of the Lindenwood College radio speech class, who are rehearsing the ‘Bremen Town Musicians.’ The theme has just been concluded by Lady Morgan. Miss Octavia K. Frees is giving Minota Bayliss her cue. Minota is trying to imitate a donkey, but is interrupted by the mourn of a hound—Florence Clair. The whimpering cry

we just heard was Ellen Wadley, unbelievably a toothless old cat. Jean Bowsby is stepping up to the microphone to crow lustily. Now we see three robbers, Carol Bindley, Marjorie Irwin, and Freda Eberspacher, running from a house as they hear these frightful sounds.

The rehearsal is over. Miss Octavia K. Frees gives her comments and criticisms. The cast is now ready to go to KFUCO for their eleven o’clock broadcast.”

BINDLEY, BOWLSBY, M. IRWIN, CLAIR, BAYLISS, WADLEY, L. MORGAN, F. EBERSPACHER



CHOIR

Clothed in robes of blue and gold, the forty-five girls who are members of the Lindenwood Vesper Choir march down the center aisle of Roemer Auditorium every Sunday evening, their blended voices producing sweet harmony.

The two outstanding programs of the year were, of course, the cantatas. For the Christmas service, the choir sang Handel's "Messiah"; for Easter, "Peni-

tence, Pardon, and Peace." These two occasions have become Lindenwood traditions.

OFFICERS

President . . . VIRGINIA DONOVAN
Vice-President . . . SHIRLEY WISE
Secretary . . . DOROTHY BAILEY
Director . . . MISS DORIS GIESELMAN

First Row: SIGLER, ZOLLINGER, WATTLINGTON, BAILEY, DONOVAN, I. SCHAEFER, FLY, PERCIVAL, MISS GIESELMAN
Second Row: GUDDER, LOHR, REED, BASTRON, HOOPER, MORRIS, E. L. MORGAN, CORNELL, HEIMROD
Third Row: PERSON, TOBIN, MAINES, YOUMANS, DUFF, SCRUBY, H. BARTLETT, D. SHAEFFER
Fourth Row: HIRST, INGWERSON, DE FRIECE, HARDY, EASTWOOD, V. J. HUFF, CROWDER, BOERSTLER



COMMERCIAL CLUB

"Budgets, letters, adding machines"—Yes, you guessed it! The Commercial Club is on the go, as usual. We business-minded lasses take our ambitions seriously. Why shouldn't we? It is high time that we settled, once and for all, that old misconception that female heads are generally empty ones.

But don't misunderstand us—life is more than business. One of our gayest parties for the year was held in the gym where members of the club took a dip in the pool, danced to the music of the nickelodeon, attempted to keep their balance on roller skates, or just had a general good time eating.

On April first, the club sponsored a style show for the entire school. The final event of the year was a picnic down by the ovens—particularly thrilling because of the unusual abundance of cokes.

OFFICERS

President DOROTHY MAY
Vice-President LYNN DARBY
Secretary-Treasurer CARRIE LEE LANEY
Reporter JEAN McMURRAY
Sponsor MISS ELEANOR TURSHIN

First Row: KRUG, ZOLLINGER, LANEY, YANCEY, BOWMAN, CAMPBELL, STEBERG, H. RYDER, BISHOP, SIGLER
Second Row: BAIM, RYCHENER, SIROTA, ROWLAND, DIEKMANN, THOMURE, DARBY, BALDWIN, McMURRY, HEIMROD, GREEN, BASTRON
Third Row: SCRUBY, BURLEY, COAD, MAYER, ROBISON, BUELL, HARDY, BATES, WRINKLE, HUBBELL, NORRIS, PHILLIS
Fourth Row: GREENWOOD, TRIMBLE, MILLER, BIGGER, FLETCHER, MUEHLENBECK, HOLSINGER, VANECEK, CHRISTOPHER, ROZYSKI, FELGER, MCCrackEN





First Row: EAGLE, HARDTKE, P. PROCTOR, VERPLOEG, E. RITTER, R. RITTER, CROSBY, GREEN, WEHRLE, PAPIN, DICKEY, PATE
Second Row: FELGER, M. WILLIAMS, EMONS, ROBINSON, LANEY, MEREDITH, GRAY, WAYE, DAVIES
Third Row: M. SEIP, ALLEN, TUCKER, J. LOGAN, BLUHM, ENGLAND, N. MOORE, N. GAMBILL, J. DEPUY, BARN-GROVER
Fourth Row: BINDLEY, THOMAS, BLACKHURST, OTT, HEMPELMAN, STEVENSON, BAIM, M. A. PARKER, CLARK, POYNTER, LEVERENZ
Fifth Row: DEARMONT, J. JOHNSON, SWALLEY, MOERSCHEL, WHERRY, KINNEY, GIERSE, GREER, FLOREY, L. EBER-SPACHER, F. EBERSPACHER, BUSHER

ENCORE CLUB

We Encore Club members are lively girls who follow in the footsteps of those who came before us. Although our club is only four years old, we have a roll of over eighty members.

Our activities for the year have been quite varied. On Founder's Day we served as official hostesses to campus guests. To help stabilize morale we collected, mounted, and sent crossword puzzles to Jefferson Barracks for convalescent soldiers. Our greatest pleasure came from the gratitude of an elderly woman, and from an impoverished

family with seven children when we gave them Thanksgiving baskets bulging with food. And we won't forget the fun we had in the fall at our "come-as-you-are" party, or the all-school bonfire we sponsored in April.

OFFICERS

President . SARAH LEE DEARMONT
Vice-President . . . PEGGY PROCTOR
Secretary-Treasurer . KAY BARNGROVER
Sponsor . . . MISS KATHRYN HANKINS

FUTURE TEACHERS OF AMERICA

If you are one of those inspired students who has heard the call and plans to enter the teaching profession, you'll find sympathetic friends in your aspirations for helping mankind, in the F. T. A. We have violent panel discussions on educational problems; we have gay times when we join the army of civilian registrars and help the local schools with rationing of sugar, gasoline, and processed foods.

At our meetings we have occasional guest speakers such as Mr. Blackhurst,

Superintendent of the St. Charles Public Schools, and Mrs. Lois Burkitt, head of the Department of Public School Music of Lindenwood.

OFFICERS

President . . . BARBARA BURNETT
Vice-President . . .
MARY ELIZABETH BLACKHURST
Secretary-Treasurer CORALEE BURCHARD
Librarian FREDA MARIE EBERSPACHER
Sponsor . . . DR. R. L. GARNETT

First Row: BLACKHURST, GIERSE

Second Row: GUMM, OPPENHEIMER, NICHOLSON, HESS, HANNA, R. EBERSPACHER, GAMBILL, DONOVAN, F. EBERSPACHER, GUDDER, PALMER, HARMON, FLY

Third Row: ROSE, SILKWOOD, PEARL PAYNE, BARRY, FELLOWS, BURNETT, G. GRAY, LANEY, ZEIGLER, GILLETTE, SCHOEN, M. IRWIN, J. LEWIS, MALLORY, J. STEWART, GILBREATH

Fourth Row: L. ANDERSON, LUTTON, MYERS, THOMAS, MART, ENGLAND, BECK, HANSHEW, POPE, COOK, BAUSKE, BURCHARD

Members not in Picture: HOLLY, H. JOHNSON, MAYES, I. SCHAEFER, VEACH



INTERNATIONAL RELATIONS CLUB

Panels, lectures, quizzes—these constitute the programs of the International Relations Club. One of the outstanding features of the year was our sponsoring of Sherwood Eddy. A close second in interest was the Institute of International Understanding. Members of the Sociology department contributed a scorching panel discussion, and two faculty members, Dr. Frances Bengé and Dr. Lloyd Harmon provided fine stimulus for interesting discussions in their lectures to us.

The latest news developments are eagerly pounced upon and discussed from every angle by the members. These war-mongers are watched over by the eagle-eye of our chief, Dr. Homer Clevenger, whose relentless interest has sifted the wheat from the chaff.

OFFICERS

President . . . BEVERLY WESCOTT
Vice-President . . . BETTY MYERS
Secretary-Treasurer VIRGINIA GILREATH
Sponsor . . . DR. HOMER CLEVENGER

Left, top to bottom: B. MYERS, SIROTA, GILREATH, COLLITON, CONROD, WESCOTT, BANTA
Sitting, first row: STEBERG, WEHRLE, TUCKER, SCHWAB, DICKEY, MORRIS, HEYDEN, SEIP, PATE, LEVERENZ, McMURRY, CLAIR, LANDBERG, GREEN, T. GRAHAM
Second row: HEIMROD, VERPLOEG, KINNEY, GOODMAN, HESS, JACKSON, J. GRAHAM, ROUSE, SILKWOOD, L. LEWIS, CHAILLAND, DABBY, MOERSCHEL, WALLERSTEDT
Middle group: TITUS, WADLEY, HERD, C. PLATT, BOWLSBY, M. A. PARKER, CHACE
Right group: BLUE, TOBIN, BUTTERS, J. STEWART, MURPHY, LEVY



LEAGUE OF WOMEN VOTERS

If you intend to be a constructive citizen of the United States, if you want to vote the right politicians into office, and if you want to get the best bills passed, you probably are a member of the League. This group always endeavors to put its influential word in all the proper places. To prove that we are world-minded, we have sponsored English and American propaganda movies and have taken charge of Red-Cross sewing and bandage rolling on campus this year. We managed to prove our superior knowledge of current

events by trouncing the International Relations Club in a quiz program.

If you want to pool your ideas, and if you like honest discussions, this is the group that will stimulate your thinking.

OFFICERS

President JANET SCHAEFER
Vice-President SHIRLEY GOODMAN
Secretary RUTH HEYDEN
Sponsor MISS WILHELMINA FEEMSTER

First row: SIROTA, BASTRON, SILKWOOD

Second row: COLLITON, GOODMAN, J. STEWART, HEYDEN, J. MURPHY, WESCOTT, L. LEWIS, DODD, J. DEPUY, SCHATZMAN, RAASCH

Third row: BOYD, LEVY, J. GRAHAM





BECK, CORL, BINDLEY, JOHNS, BAUSKE, GUMM

LINDEN BARK

The *Linden Bark* of 1942-43 can boast of everything that any nationally known newspaper has, except a foreign correspondent, but Gertie's letters to Cuthbert, her man in the army, fill in the gap.

Other main features in the *Bark* include the recordings of Lindenwood's participation in the civilian defense programs, the Hall of Fame, which honors campus leadership, and of course, those famous little Gremlins and Vatchferbs to keep the students well informed on the latest collegiate do's and dont's.

Besides these regular bi-monthly features, we again have on our favorite list the Romeo Contest—the winning

Romeo being selected by members of the *Mademoiselle* staff.

Whatever huzzas, or maybe curses, fall upon the April Fool issue may be directed to the editors of the *Bark*.

Each issue of the *Bark* has a new editor so that by the end of the year the crew is well seasoned by their experiences gained while working at the *Cosmos Monitor* in St. Charles.

The *Linden Bark* is a member of the Missouri College Newspaper Association, and in the last two years has been fortunate enough to win prizes with its feature stories.



OPPENHEIMER, TAYLOR, BURCHARD, ISBELL, BROCK, GABBERT, BLUE

MINIATURE MELODISTS

Sweet strains of music, furnished by the Miniature Melodists, fill the dining room on various and special occasions, adding much to the pleasure of meal-time.

Hattie, Susan, and Coralee swing out on "Deep Purple" at our February formal dinner. Eddy Duchin, commonly

known about campus as little "Opp," does a bit of improvising while Alice interrupts with passages "a la Benny Goodman." Ina takes the saxophone part and Dottie, the leader, plunks out the bass on her 'cello.

Our theme song after each program expresses a desire—"I'll See You Again."

THE LINDENWOOD COLLEGE ENSEMBLE

Time: Mondays and Wednesdays.

There goes the four-o'clock bell! We make a dash for our musical instruments—instruments of all shapes and dimensions. We head toward the Fine Arts Building. We take our violins, clarinets, and trumpets out of their cases until our array of wood winds, percussions, brasses, and strings is completely assembled. Then Jerry sounds A (440), and everyone commences to tune her instrument.

Attention! Miss Isidor raps the conductor's stand sharply with her baton,

and we're off for another bi-weekly rehearsal. The results? We joined the choir in presenting the annual Christmas concert and gave a spring concert with Dorothy Isbell, violin soloist, and Jerry Oppenheimer, piano soloist, as highlights of the program.

OFFICERS

President DOROTHY ISBELL
Director MISS GERTRUDE ISIDOR
Librarian HARRIET TAYLOR

First Row: ISBELL, TAYLOR, BURCHARD, BLUE, NESBITT, RYAN
Second Row: ISIDOR, OPPENHEIMER, BROCK, GABBERT, OYER, BUELL, STAHL, DeVOE, RUBY WILSON, A. WILLIAMS, RUTH WILSON, HUMPHREYS, HIRST





First Row: HARMON, C. PLATT, WELSH, LEVERENZ, STANTON, CARAKER

Second Row: GOODMAN, ROUSE, TANNER, HAINES, E. MURPHY, MULLENDORE, LINDSAY, TITUS, L. LEWIS, PARKINSON, RUSSELL, HANSHEW, GUMM, WADLEY, MALLORY, POYNTER, WESCOTT, TOBIN, SWALLEY

LINDEN LEAVES STAFF

"Annual sale today!"

That announcement frequently made in student meeting and in the dining room meant that thirty girls were putting their "noses to the grindstone" compiling a record of Lindenwood College for 1943. Indicative of the year, the book had to be stripped of some of the former luxuries—padded cover, unnecessary pages, and color—to meet the rising cost of materials. Nevertheless, there was no economy or stinting on long gruelling hours of hard work put in by the staff:

Faculty Advisor . DR. KATE L. GREGG

Editor . RUTH HAINES

Assistants: ADELAIDE CARAKER,
CAROLYN PLATT, CAROLYN BOER-
STLER, EILEEN MURPHY

Business Manager . JEANNE HARMON

Assistants: CARRIE LANEY, LELL
LEWIS

Advertising Manager BEVERLY WESCOTT

Assistants: EMMY GUMM, JANE
SWALLEY, BETTY ANN ROUSE,
MARY STANTON

Literary Editor . PEGGY LINDSAY

Assistants: SHIRLEY GOODMAN,
ELLEN WADLEY

Photographic Editor . LOUISE MALLORY

Assistants: DRUZELLA HANSHEW,
BILLIE V. FOUTS, RUTH TITUS,
SOPHIA RUSSELL, MARJORIE TAN-
NER

Art Editor . ADAH LOUISE PARKINSON

Assistants: DIXIE POYNTER, ANN
LEVERENZ

Organization: PATRICIA WALSH,

REBA CROWDER, PATRICIA TOBIN,
ELOISE MULLENDORE, PAT FORAN,
BETTY WATERS

But they are only the compilers of a record of *you*—students of Lindenwood College. This is it—your *Linden Leaves* of 1943!



First Row: GUMM, OPPENHEIMER, L. MORGAN, GOODMAN, CARAKER, MOEHLENKAMP, BANTA, M. IRWIN, BINDLEY, SCHWARTZ, R. EBERSPACHER, HANNA, FLY, SIROTA
Second Row: HAINES, BURGE, BAYLISS, KINNEY, POYNTER, BAUSKE, CORNELL, ZIERN, BROWN, M. MORGAN, WADLEY, MALLORY

POETRY SOCIETY

Doris, Joyce, and Marge, drifting into the Club Room early, leaf through the exhibit of works by Stephen Vincent Benet. Ginny hurriedly straightens the "Poetry Corner." Addie and Lou decide on which tray to use for punch glasses.

The meeting begins with Ellen's review of Benet's life, followed by Joyce's analysis of a recent pamphlet evaluating the importance of poetry in war time. After a statistical report about which printing company will do the best work most cheaply for the book we plan to publish, we read our original poetry. Ginny summarizes Paul

Engle's criticism of her poem with, "He said to make every line as crisp as my "Two steel taps breaking the minutes against the floor."

Miss Dawson ends the meeting with a plea for more original poetry, and every member leaves the meeting promising to find a good last line for that last poem she started.

OFFICERS

<i>President</i>	. . .	EMMY GUMM
<i>Secretary</i>	. . .	JOYCE BURGE
<i>Treasurer</i>	. . .	SHIRLEY GOODMAN
<i>Sponsor</i>	. . .	MISS ELIZABETH DAWSON

PRESS CLUB

Hail to the newcomer at Lindenwood! An ambitious group of scribblers got together on November 30, 1942, and organized a new society which we promptly tagged the "Press Club."

Our twenty-seven charter members are those girls who make up the staffs of the *Linden Bark* and the *Linden Leaves*. Chief among our aims is the encouragement and development of the journalistic talent. To help achieve this aim a contest was held for the best journalistic writing.

And meetings? They are informal and chatty. The big event of the year for us was a tour of the *Globe-Democrat* plant.

With pride we present the:

OFFICERS

<i>President</i>	LOUISE MALLORY
<i>Vice-President</i>	EMMY GUMM
<i>Secretary</i>	VIRGINIA BAUSKE
<i>Sponsor</i>	MR. CHARLES CLAYTON

First Row: RUSSELL, WALSH, ROUSE, CROWDER, BINDLEY, GOODMAN, CARAKER, GUMM, BAUSKE, WARD
Second Row: LANEY, HANSEW, BECK, TANNER, STANTON, E. MURPHY, TOBIN, JOHNS
Third Row: MALLORY, TITUS, C. PLATT, PARKINSON, L. LEWIS, LINDSAY, HARMON, WESCOTT, HAINES, CORL, WADLEY





Facing Right—First Row: Rulledge, Hempelman
Second Row: S. Ryder, Rooke, Lieberman, Lutton
Facing Left—First Row: CONRAD, SALOMON, KRUG
Second Row: R. Meyer, Gabbert, Busher, Dickey
Third Row: SILKWOOD, Wertz, L. Anderson.
Facing Front—First Row: Darby, Powell
Second Row: OYER, Barry
Third Row: SCRUBY

(Names in italics are members of Tau Sigma, others are members of Orchesis)

TAU SIGMA AND ORCHESIS

Members of Tau Sigma, devotees of beauty and grace in the dance, spent two evenings each week in the gymnasium perfecting their techniques and creating new routines. Girls who lumbered around campus with their weight on their heels suddenly became light as air when they danced.

Tau Sigma gave a spring recital in which the various dances of the American war periods from the Revolution to the present time were presented.

Orchesis is the new organization on campus for modern dancers only. Tau

Sigma includes modern and all other types of dancing.

OFFICERS OF TAU SIGMA

President LOIS ANDERSON
Vice-President FLORENCE BARRY
Secretary-Treasurer
 DOROTHY JEAN LUTTON
Sponsor MISS MARY MORISON

OFFICERS OF ORCHESIS

President HARRIET SCRUBY
Vice-President CAROLYN HEMPELMAN
Secretary-Treasurer MARA TURNER
Sponsor MISS MARY MORISON



In the Water: LANDBERG, BUTTERS, ERLANDSON, FORAN
Sitting: BAIM, MULLINS, BARRY, COLLITON, LIEBERMAN, HORNADAY, DANEMAN
On Board: HEMPELMAN
Standing: WONDER, CHRISTOPHER, McLEAN, SNYDER, CORL, RUTLEDGE, PERCIVAL, HESS

TERRAPIN

Dive right in, girls! The water is fine. If you like to swim, to dive, to participate in formations, you are probably in Terrapin. Wasn't the swimming meet with MacMurray and Monticello fun—and wasn't Carolyn Hempelman superb in the diving? I liked the way Flo Barry came through in the hundred-yard crawl, too.

Miss Morrison's formations for the water pageant certainly made us look

like trained aquacade girls—especially with such finishing touches as underwater lights. That's all for now, I'll see you at the pool next year. Splash!

OFFICERS

President . . . MARION ERLANDSON
Vice-President . . . JO-ANN BUTTERS
Secretary . . . EDITH ANN MULLINS
Sponsor . . . MISS MARY MORRISON



QUEENS



Popularity Court

The Queen.....	MISS BETTY GRAY PROCTOR
Attendants to the Queen.....	MISS CAROL BINDLEY
	MISS FLORENCE BARRY



Hallowe'en Court

The Queen.....	MISS HARRIET SCRUBY
Attendants to the Queen.....	MISS LOMA GREENWELL
	MISS MARGARET OVERMEYER



May Court

Freshman Attendants to the Queen MISS KATHRYN BARNGROVER
MISS SOPHIA RUSSELL



May Court

Sophomore Attendants to the Queen.....MISS BETTY WATERS
MISS JACQUELINE SCHWAB



May Court

Junior Attendants to the Queen MISS VIRGINIA DONOVAN
MISS FLORENCE BARRY



May Court

Senior Attendants to the Queen.....MISS JOYCE BURGE
MISS DORIS JEAN BANTA



May Court

Maid of Honor to the Queen.....MISS SARAH DEARMONT



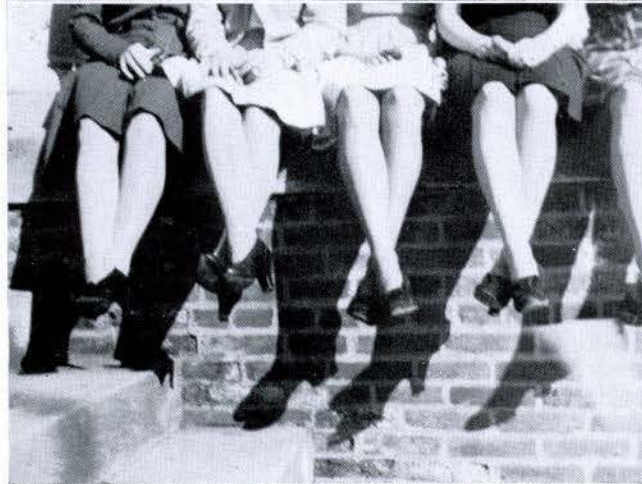
May Court
THE QUEEN
MISS RUTH MARGOT HAINES



Titus hits the books . . . Gabbing incorporated . . . Rec Room—or Wreck Room? . . . Caught again, eh, Ginny? . . . Wellesley of the West—of course . . . Time: 3:00 A.M.—Am. Lit. Term Paper due—period! . . . I must have my eyes examined . . . Hi! Pres! . . . Step on it girls . . . It can't be exam time—you're too happy, Bickle!



A tasty pretzel, eh, Martha Ann? . . . A dance is barn . . . Jivin' jeans . . . Roll out the barrel . . . Prize pickin's . . . Camouflage . . . Hey, here are the Hallo'een fun-producers . . . Student bodies dancing . . . It's a great world! . . . Her regal Majesty—The Freshman Queen!



Sue Beck—pert as heck! . . . Margo, are you looking for that army bomber? . . . Must be Saturday! . . . Ziegfield, here we come! . . . Squash! . . . DePuy, Gambill, DePuy—where is Gambil!? . . . Sophomore Sibleyites having a whee of a lime!



Saturday slacks and smiles . . . Church, a tea, or only a date, Pal? . . . Just relaxing . . . No pushing, please . . . Nancy, Nancy, and Jeanie—three Ayres-ites . . . Oh, yes, here's the missing Gambill . . . Log rolling? . . . Cheesecake de luz . . . Cuddlesome cuties . . . Aw, shucks, it can't be that bad!



Musicians all . . . The "Kaption Kid" gives up on this one . . . For the duration? . . . Then came the snow; then came the snow men . . . Step right up . . . Well, hello there! . . . It's funny to everyone but Joan . . . "The Tea House Technicians" . . . Four freshies.



We'll show 'em . . . Give a gal a horse she can ride . . . Ninth inning coming up . . . The pride 'n joy of Lindenwood Female Seminary . . . Down to Niccolls for a joy-ride . . . Yes, but who's the eleventh one—the shadow?



Whose canary did you swallow, "May Haw"? . . . Hooray for our Navy Day Float! . . . Do you s'pose they really did go in—on Sunday? . . . Please, Mrs. O'Rear, let us take your picture . . . Teeth . . . Jeanie and Teenie . . . Don't sit on the ground in Missouri 'til March, girls! . . . Lady, Peg, and their January heart beat . . . Four on the rail . . . Nice, Billie, so awfully nice!



The Freshman President . . . Ya get ten years or life? . . . Where's that taxi? . . . A penny for your thoughts . . . Jimmy's Jeep . . . It's too nice to go inside . . . Lou and Ellen—Sunday afternoon . . . Gals who are pals . . . Regimented femininity—our WAVE guest . . . Make up your mind, Billie—Army or Navy?



ROEMER HALL

LINDENWOOD COLLEGE

Founded 1827

ST. CHARLES, MISSOURI



In these trying times the students and faculty of Lindenwood are looking for strong things to cling to, that our institutions which were born of sacrifice may continue. We are looking to the mountain, we are looking to the sturdy oak trees of hundred of years, we are looking to the beckoning lindens which bid us go forward, and we are looking to the heritage left us by hundreds of men and women who have preceded us in the building of Lindenwood. We have faith in the future.



HARRY MOREHOUSE GAGE

President



**YOUR BADGE IS A THING OF BEAUTY AND
SHOULD BE A JOY FOREVER!**

The traditions of a century old school cannot be erased by time, and the beauty of your Lambda Chi Badge is as enduring as the traditions of your school. Your Lambda Chi Badge is wrought entirely of gold and set with only genuine perfectly matched Oriental whole pearls—a badge in keeping with all of the fine things that Lindenwood College stands for.

Manufactured by

COLLEGE SHOP

317 N. 11TH STREET

ST. LOUIS, MISSOURI

HUNLETH
MUSIC CO.
514-516 LOCUST ST.
MOST COMPLETE MUSIC HOUSE IN ST. LOUIS

-
- ◆ **Binders**
 - ◆ **Blank Books**
 - ◆ **Loose Leaf**
 - ◆ **Bookkeeping Systems**

BANNER NEWS COMPANY

ST. CHARLES, MO.

Printers - Publishers

HERE YOU HAVE THE SATISFACTION THAT CAREFUL
CLEANING GIVES

RECHTERN CLEANING COMPANY

216 NORTH SECOND STREET
PHONE 1000

G A S

SERVES YOU BETTER
THROUGH MODERN GAS APPLIANCES

ST. CHARLES GAS COMPANY

212 NORTH MAIN STREET

A CONVENIENT PLACE TO SHOP

THE GOLDEN RULE STORE

(PARSONS VARIETY STORES CO., INCORPORATED, *Proprietors*)

WE SPECIALIZE IN 5c TO \$1.00 MERCHANDISE

DRY GOODS DEPT.

CURTAINS
TABLE SCARFS
TOWELS
YARNS
YARD MATERIALS
LINGERIE
HOSIERY

DRUG SUNDRY DEPT.

KLEENEX
CREAMS
LOTIONS
FACE POWDERS
NAIL POLISH
STATIONERY
GREETING CARDS

HOUSE WARES DEPT.

CHINAWARE
GLASSWARE
TABLE CUTLERY
FANCY POTTERY
BOOK ENDS
PICTURES
ELECTRIC LAMPS

A LARGE ASSORTMENT OF FRESH CANDY

THE DAILY
COSMOS-MONITOR

Makes a Specialty of Fine Job Printing
BEST WORK AT REASONABLE RATES

PHOENIX
HOSIERY

The Palace
CLOTHING CO.

SPORTS
WEAR

YELLOW CABS

TELEPHONE

1 3 3

ST. CHARLES

MISSOURI

COMPLIMENTS OF

L. BRUCKER

STOVES *and* HARDWARE

SISLER HUMMEL SPORTING GOODS CO.

WHOLESALE AND RETAIL

Golf—Archery—Tennis—Badminton—School Sweaters and Jackets

1114 LOCUST ST.

CHESTNUT 2998

ST. LOUIS, MO.

PIANOS
JULIUS BAUER
SHATTINGER
KRANICH & BACH

MAIN 2408

SHATTINGER'S
PIANOS - MUSIC
331-339 ARCADE BLDG.
8TH. & OLIVE STS.

SHEET MUSIC
POPULAR
CLASSICAL
PUBLISHERS

THRO'S

CLOTHING FOR MEN AND BOYS

St. CHARLES, MISSOURI

COMPLIMENTS OF

Leston Food Products Co.

7111 MANCHESTER AVENUE

St. LOUIS, MISSOURI

ST. CHARLES MUSIC HOUSE

RECORDS — INSTRUMENTS — SHEET MUSIC
GIFTS — NOVELTIES

230 N. MAIN

PHONE 225-J

COMPLIMENTS OF

J. C. PENNEY COMPANY

MAIN STREET

St. CHARLES, MISSOURI

COMPLIMENTS OF
MILTON E. MEYER JEWELRY STORE
ST. CHARLES, MO.

COMPLIMENTS OF A FRIEND

BUSE'S FLOWER SHOP

400 CLAY

Flowers for all occasions

PHONE 148

WE TELEGRAPH FLOWERS

In St. Louis - -

YOU'LL FIND A WARM WELCOME AT POPE'S

Friendly, efficient employees will help you select a delicious meal . . . Prepared according to Pope's famous recipes in gleaming white kitchens by cheerful women cooks.

P O P E ' S

TWO LARGE CAFETERIAS

DOWNTOWN

804 WASHINGTON AVENUE
(Thru to St. Charles)

3 Cafeteria Counters—2 Floors, Seating 546
Open 6:30 A. M. to 8 P. M. Daily and Sundays

MIDTOWN

3538 WASHINGTON AVENUE
(Just East of Grand)

Large Cafeteria Counter—2 Floors, Seating 344
Open 11 A. M. to 8 P. M. Daily and Sundays

YOUR PATRONAGE
DESERVES OUR CONSTANT
EFFORT TO SERVE
YOU BETTER

ICE CREAM



ST. CHARLES DAIRY
COMPANY



PRINCESS DAIRY STORE
1030 CLAY STREET

JOE GARAVELLI'S

5701 DE GIVERVILLE AVENUE

SAINT LOUIS

Lindenwood's Favorite St. Louis Rendezvous

KUHLMANN'S

READY-TO-WEAR — SHOES — DRY GOODS

324 NORTH MAIN STREET

ST. CHARLES, MISSOURI

La Vogue Beauty Shop

SOUTH SIDE OF THE CAMPUS

PHONE 1075

BOTTANI PRINTERY

F. N. BOTTANI

Proprietor



**Printing - Engraving
Embossing**



120 N. SECOND STREET

ST. CHARLES, MISSOURI

PARKVIEW GARDENS



BEN RAU

Florist



CORSAGES AND BOUQUETS

ARE

“AS NEAR TO LINDENWOOD AS YOUR PHONE”



TELEPHONE 214

Flowers Telegraphed

Opposite Blanchette Park

St. Charles, Mo.

Compliments of

F. W. WOOLWORTH COMPANY

ST. CHARLES, MISSOURI

J. H. Hackman Lumber Company

LUMBER AND BUILDERS'
SUPPLIES

Phone 806

106 N. Main Street

St. Charles, Mo.

1852

DACEY & COMPANY, INC.

1942

WHOLESALE DISTRIBUTORS

1201-1211 North Broadway

Central 7125-7126

90 Years of Service in St. Louis

AHMANN'S NEWS STAND

CIGARS and TOBACCO

NEWS, BOOKS, STATIONERY, and SPORTING GOODS

ST. CHARLES, MO.

223 NO. MAIN

PARKER BROS

MACHINE & ELECTRIC CO.

920 CLAY STREET

ST. CHARLES, MISSOURI

We Repair Anything Electrical or Mechanical

KISTER STUDIO

PORTRAIT - PHOTOGRAPHY - COMMERCIAL

Phone 1287

508 Jefferson Street

St. Charles, Mo.

Brides to Be

The joy of knowing
your *Wedding Announcements*
are correct in every detail
will be yours, when you
come to the shop where
they are made . . .

WILL ECKER & CO.
ENGRAVING AND
FINE PRINTING
414 NORTH 12TH Blvd.
OPPOSITE HOTEL JEFFERSON
SINCE 1913

FOR THOSE
Sizzling
Hamburgers

try the

BRIGHT SPOT

PHONE 937

112 CLAY

Denker's Baking Company

A COMPLETE LINE OF
BAKERY PRODUCTS

ST. CHARLES, MISSOURI

923 N. SECOND STREET

Meadow Gold - Dairy Products

MILK

BUTTER

CHEESE

ICE CREAM

ST. LOUIS

ASSURE VICTORY ♦ BUY WAR BONDS

ON NIGHTS "OFF CAMPUS"

A GOOD SHOW

GET THE

STRAND

HABIT!



New Strand and Roxy Theatres

ST. CHARLES, MISSOURI

Supplying the Large Consumer with the BEST
Since 1874

J. F. CONRAD GROCER CO.

Saint Louis

The Loveliest Fabrics for All Wear
WOOLS - SILKS - DELUXE RAYONS - COTTONS - LINENS - LACES

315 North 10th St.



St. Louis

Compliments of

THE UNION SAVINGS BANK OF ST. CHARLES

Organized 1870

MEMBER FEDERAL RESERVE DEPOSIT INSURANCE CORPORATION
and
MEMBER OF FEDERAL RESERVE SYSTEM

VOGT BROS. POULTRY FARM

Conditioned Poultry of All Kinds

Gallaher and Lindenwood Aves.
St. Charles, Mo.

Branches: University City, Mo., and Normandy, Mo.

CLARK-SPRAGUE PRINTING COMPANY

1901 Locust Street
ST. LOUIS, MISSOURI

DENNING RADIO AND APPLIANCE CO.

ST. CHARLES
RECORDS - RADIOS - PHONOGRAPHS

ARTIST COLORS

For
Schools and Colleges

DRAWING AND PAINTING
MATERIALS

F. WEBER CO.

705 Pine St.

St. Louis, Mo.



JACCARD'S
Saint Louis
Mermod-Jaccard-King Jewelry Co.



Your Headquarters for

CLASS RINGS, PINS, TROPHIES, AND MEDALS

Locust at Ninth • **MERMOD-JACCARD-KING** • MAin 3975



THE VESTAL SEAL

ON FLOOR MAINTENANCE PRODUCTS

It is your assurance that you are using the finest material known
for preserving and beautifying all types of floors.

LOOK AT THE FLOORS

IN LINDENWOOD

Their beauty and serviceability are
the result of using Vestal products for
many years. Notice particularly the
PYRA-SEAL finished gymnasium
floor.

Vestal Chemical Laboratories Inc.

4963 MANCHESTER

ST. LOUIS, MO.

FIRST NATIONAL BANK

of ST. CHARLES, MO.



CHARLES J. DAUDT *President*
GEORGE H. KUHLMAN *Vice-President*
A. J. MOERSCHEL *Cashier*
W. C. BORGELT *Assistant Cashier*



DIRECTORS

JOSEPH A. BOTTANI	GEORGE H. KUHLMAN
CHARLES J. DAUDT	DR. AUGUST WESTERFELD
CLARENCE T. HACKMANN	DR. B. KURT STUMBERG
A. J. MOERSCHEL	



TOTAL RESOURCES

\$3,250,000.00



MEMBER FEDERAL RESERVE SYSTEM

Under the Supervision of the United States Government

MEMBER FEDERAL DEPOSIT INSURANCE CORPORATION

FOR LETTERHEADS
that
"CLICK"

Letterhead and Check Corporation of America

Formerly Isler-Tompsett Lithographing Co.

2940 Benton St.

St. Louis

Phone Newstead 1543

Manufacturers

GRIFFIN & CO., Inc.

Importers

EXTRACTS, BAKER'S SUNDRIES, GELATINES,
COFFEES, TEAS, COCOA, JELLY POWDER

Office and Laboratories

4919 Washington Blvd.

Phone F0rest 2477

St. Louis, Mo.

"C." WALTER ALLEY
for Good Printing

Dependable Service for 33 Years

123 N. Third St.

Saint Louis, Mo.

**S CHAPPE'S
W E E T
H O P**

1507 CLAY

PHONE 1214

Haase's

IMPORTERS - PACKERS - MANUFACTURERS

of

QUALITY FOODS

JOSEPH A. BOTTANI

CONTRACTOR

Reinforced Concrete and Granitoid Work

532 N. Benton Avenue

St. Charles, Missouri

RAPID ENGRAVING CO.

Advertising Building

1627 Locust St.

ST. LOUIS, MO.

Garfield 1592

On Shopping Tours

VISIT ST. LOUIS' MOST ATTRACTIVE WOMEN'S STORE,

Selling Quality Footwear Fashions Exclusively Since 1918

VOGUE BOOT SHOP

615 Locust Street

St. Louis, Missouri

HOSIERY

BAGS

BEST WISHES OF

THE CAMPUS CONFECTIONARY

Next to St. Charles High School

Phone 230

L. V. AUSTERSCHMIDT

ICE - ORIENT COAL - BUILDING MATERIAL

Conco Stokers

Phone 62

400 N. Main Street

LA BEAUME and KLEIN

ARCHITECTS

St. Louis

BRAUFMAN'S

Congratulations, Seniors

You've done a fine job. Your record at Lindenwood—whether academic, musical or social—will be an achievement to look back on with great pride.

We are pleased . . . if we have helped in any way to make your stay here pleasant. We hope to see you again.

HUNING'S

PAUL J. REINERT

The Rexall Store

Quality Has No Substitute

We are agents for the leading toilet lines; also agents for Whitman
Chocolates, always fresh; and Weber's Ice Cream—
none better anywhere.

WE AIM TO PLEASE YOU

Phone 285

St. Charles Building Department Store

H. G. RAUCH LUMBER COMPANY

Main and Clark Streets

TAINTER
115 N. MAIN **DRUG** PHONE 291

CAB CONFECTIONARY

401 N. 2nd

Phone 133

PATRONIZE YOUR ADVERTISERS

RUTH HAINES—*Editor*

JEANNE HARMON—*Business Manager*

BEVERLY WESCOTT—*Advertising Manager*

FOR VICTORY



**BUY ANOTHER
WAR BOND TODAY!**

Contributed by a friend of Lindenwood College

C. F. DIECKMAN STUDIO



Quite modestly, we feel that we can boast of the class pictures, organization groups, and beauty section of the 1943 LINDEN LEAVES, for Mr. C. F. Dieckman has done unusually fine work, making the book outstanding in photography.



RUTH MARGOT HAINES

Editor

JEANNE HARMON

Business Manager

BEVERLY WESCOTT

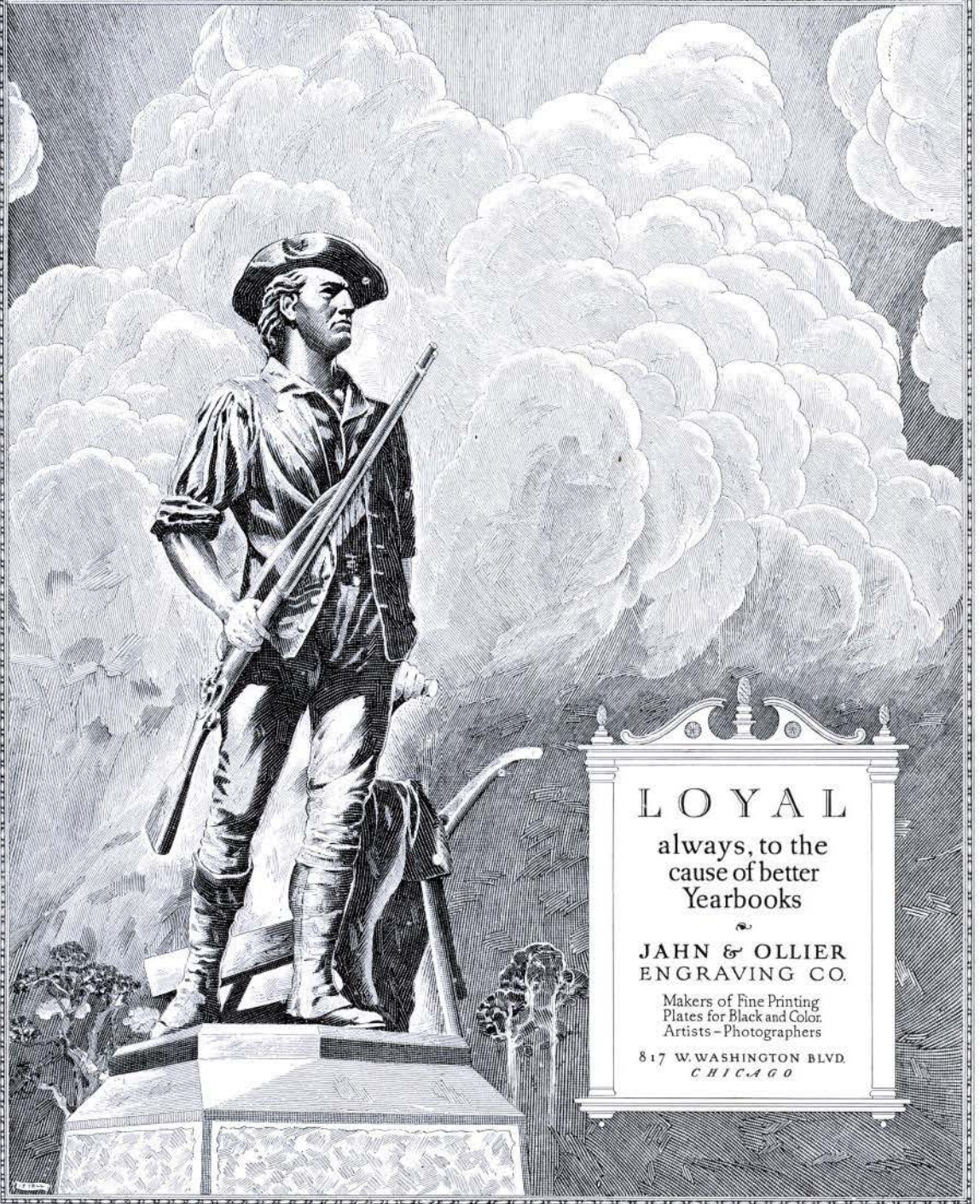
Advertising Manager



319 DeBALIVIERE

ST. LOUIS, MO.

JAHN & OLLIER AGAIN



LOYAL

always, to the
cause of better
Yearbooks

JAHN & OLLIER
ENGRAVING CO.

Makers of Fine Printing
Plates for Black and Color.
Artists - Photographers

817 W. WASHINGTON BLVD.
CHICAGO

You Need Not Give Up

GOOD TASTE

In the coming months and years all of us will give up, temporarily, more and more of the fine quality to which we have become accustomed.

But this does not mean that we need relinquish our sense of good taste. It simply means that we must exercise greater ingenuity in the *selection* and *use* of the materials and facilities at our disposal.

In printing it means that paper and materials will be limited in quality and variety, and there will be fewer new type faces developed. Thus, the true art of the capable printer will become more important; his superiority will be emphasized by the ingenuity with which he creates works of beauty in spite of these limitations.

In selection, arrangement and spacing of type; in painstaking presswork; and in artful combination of available papers, inks and materials, the capable printer will find the means to inspire a greater demand for his services among those who appreciate finer things.

MID-STATE PRINTING COMPANY

Printers, Binder and Cover-Makers for School Yearbooks

JEFFERSON CITY, MISSOURI

STUDENT INDEX

	Page
Abadie, Kinta Rita, Aruba, Netherlands, W. I.	48
Abend, Martha, Kansas City, Mo.	40
Alexander, Mina Lea, Dallas, Texas	48
Alford, Mary Louise, Lincoln, Nebr.	56
Aliotta, Carmella, Chicago, Ill.	48
Allen, Rita May, Vandalia, Ill.	54, 56, 93
Anderson, Lois, Bartlesville, Okla.	24, 34, 76, 80, 94, 96, 103
Aranoff, Barbara Rae, Highland Park, Ill.	56, 77
Armstrong, Gayle, Roswell, New Mexico	56
Auld, Terressa, Tulsa, Okla.	56, 78
Bailey, Dorothy Mae, Hiawatha, Kans.	40, 80, 91
Baim, Eloise, Pine Bluff, Ark.	56, 92, 93, 104
Baldwin, Betty Jane, Fremont, Nebr.	56, 92
Banta, Doris Jean, Jefferson City, Mo.	24, 34, 36, 66, 69, 73, 74, 82, 83, 95, 101, 111
Barclay, Esther, Webster Groves, Mo.	56, 78
Bargquist, Ruth Lois, Chicago, Ill.	56
Barngrover, Kathryn, Cedar Rapids, Iowa	54, 56, 66, 89, 93, 108
Barry, Florence, Chicago, Ill.	39, 40, 66, 84, 88, 89, 94, 103, 104, 107, 110
Bartle, Margaret, Kansas City, Mo.	56
Bartlett, Helen, Wheaton, Ill.	48, 91
Bartlett, Patricia, Ottumwa, Iowa	48
Bastron, Barbara, Ottumwa, Iowa	48, 73, 91, 92, 96
Bates, Yvonne, Dayton, Ohio	56, 92
Bauske, Virginia, Des Plaines, Ill.	34, 88, 94, 97, 101, 102
Bayliss, Minota, Wauwatosa, Wis.	46, 48, 88, 90, 101
Bean, Jessie Lee, Golconda, Ill.	48, 78
Beck, Mary Lucille, Nowata, Okla.	39, 40, 72, 94, 97, 102
Bedell, Roberta, Marion Ind.	56
Bennett, Mary Ellen, Chicago, Ill.	56
Bentzinger, Doris, St. Louis, Mo.	56, 78
Bickle, Barbara, Chicago, Ill.	24, 34, 73, 84
Bigger, Geraldine, Indianapolis, Ind.	56, 67, 92
Bindley, Carol, Chicago Heights, Ill.	23, 25, 34, 68, 90, 93, 97, 101, 102, 107
Bishop, Catherine, Winona, Kans.	48, 92
Blackhurst, Mary Elizabeth, St. Charles, Mo.	40, 73, 82, 83, 93, 94
Blakeslee, Janice Adele, Fremont, Nebr.	56
Blue, Susan, Flora, Ind.	54, 56, 77, 95, 98, 99
Bluhm, Barbara, Peoria, Ill.	56, 78, 93
Blumeyer, Estelle, St. Louis, Mo.	25, 34, 84, 88
Boerstler, Carolyn, Henryetta, Okla.	48, 67, 81, 91
Bowlsby, Helen Jean, Waterloo, Iowa	48, 77, 88, 90, 95
Bowman, Helen, St. Louis, Mo.	56, 92
Boyd, Hellen, Marion, Ill.	48, 96
Branch, Marjorie Elma, Little Rock, Ark.	56
Brinkman, Mary, Rolfe, Iowa	56, 78
Brock, Ina Claire, Pawnee, Okla.	56, 98, 99
Brown, Virginia Frances, Texarkana, Texas	48, 101
Bruce, Gloria June, Mt. Vernon, Ill.	56
Buell, Norma, Cumberland, Ky.	56, 92, 99
Burchard, Coralee, Willow Springs, Mo.	25, 34, 76, 80, 94, 98, 99
Burge Joyce, St. Charles, Mo.	25, 34, 82, 83, 101, 111
Burger, Doris Ann, Manitowoc, Wis.	56, 78
Burks, Sarah Jane, Mound City, Mo.	48
Burley, Ruth, Lebanon, Mo.	56, 92
Burnett, Barbara, Aurora, Ill.	40, 88, 89, 94
Busher, Beverly Elaine, Decatur, Ill.	56, 77, 93, 103
Butters, Jo-Ann, Des Moines, Iowa	56, 77, 89, 95, 104
Campbell, Mary Lee, Galveston, Texas	48, 77, 92
Caraker, Adelaide, Olmsted, Ill.	26, 35, 73, 74, 83, 84, 100, 101, 102
Carter, Marianna, Wichita, Kans.	56, 75
Caulley, Ruth Colleen, Detroit, Mich.	56
Chace, Margaret, Texarkana, Ark.	56, 95
Chaffin, Phyllis Rae, Tulsa, Okla.	56, 88
Chailland, Amy Lou, Kennett, Mo.	48, 88, 95
Chamberlain, Carol Louise, Omaha, Nebr.	56
Chantry, Harriett Ann, Oklahoma City, Okla.	56
Chapman, Doreen Dayle, Flossmoor, Ill.	48
Chapman, Keithann, Dallas, Texas	57, 77
Cheek, Adele Merle, Omaha, Nebr.	57
Child, Marilyn Hughes, Hutchinson, Kans.	57
Christopher, Florence, University City, Mo.	57, 92, 104
Clair, Florence, Rothville, Mo.	48, 88, 95, 90
Clark, Elizabeth, Bristol, Tenn.	57, 93
Clarke, Marjorie, Centralia, Ill.	57

STUDENT INDEX—Continued

	Page
Coad, Laura, Omaha, Nebr.....	57, 92
Cohen, Shirley, Chicago, Ill.....	40, 84
Cole, Bette, Corinne, Newton, Kans.....	57
Colliton, Dorothy Ann, St. Louis, Mo.....	57, 88, 95, 96, 104
Conger, Juli, Wilmette, Ill.....	57
Conrad, Patricia, Crete, Nebr.....	57, 95, 103
Conway, Lexina, Tulsa, Okla.....	57, 67
Cook, Juanita, Flat River, Mo.....	26, 35, 78, 94
Corl, Kathryn Anderson, Fort Worth, Texas.....	24, 34, 79, 80, 87, 88, 97, 102, 104
Cornell, Virginia Ann, Lexington, Ky.....	57, 91, 101
Creech, Juanita, Cumberland, Ky.....	57
Crosby, Gloria, Batesville, Ark.....	26, 35, 78, 84, 93
Crowder, Reba, Grinnel, Iowa.....	57, 77, 91, 102
Cushman, Barbara Mae, Terre Haute, Ind.....	57
Dalby, Esther, St. Louis, Mo.....	57, 87
Daneman, Betty Jayne, Dayton, Ohio.....	57, 104
Darby, Mary Lynn, Essex, Mo.....	48, 88, 92, 95, 103
Davies, Dorothy Jean, Madison, Wis.....	57, 78, 87, 93
Davis, Elizabeth Jean, Creston, Iowa.....	57
Davis, Katherine, Charleston, Mo.....	46, 48
Davis, Martha Ann, Creston, Iowa.....	57
Dearmont, Sarah Lee, St. Louis, Mo.....	49, 68, 88, 93, 112
DeFriece, Marthina, Bristol, Tenn.....	57, 91
DeMand, Margaret, Wichita, Kans.....	57
DePuy, Joyce Ann, Rockford, Mich.....	54, 57, 93, 96
DePuy, Patricia, Rockford, Mich.....	40
DesMare, Ellen, St. Joseph, Mo.....	57
Devine, Helen, Kirkwood, Mo.....	40, 77, 84
DeVoe, Audrey, Waterloo, Iowa.....	57, 99
Dickey, Dorothy Jeanne, Columbus, Ga.....	57, 87, 93, 95, 101, 103
Dickmann, Shirley Barbara, Chicago, Ill.....	57, 92
Dodd, Mary Jean, Dallas, Texas.....	57, 77, 96
Donohue, Helen Louise, Manitowoc, Wis.....	57, 78
Donovan, Virginia, Omaha, Nebr.....	40, 66, 76, 80, 91, 94, 110
Driskill, Arnita Lois, Paducah, Ky.....	57
Duff, Helen, Oakland, Ill.....	57, 91
Dunker, Shirley, St. Louis, Mo.....	49
Eagle, Shirley, Little Rock, Ark.....	57, 93
Eastwood, Frances, Grayville, Ill.....	57, 91
Eberspacher, Frieda Marie, Pana, Ill.....	40, 90, 93, 94
Eberspacher, Louise Irene, Pana, Ill.....	54, 57, 78, 93
Eberspacher, Rena Elaine, Pana, Ill.....	26, 35, 67, 80, 94, 101, 105
Eddy, Rosalie, Mexico, Mo.....	58
Elson, Joan, Vinton, Iowa.....	58
Emons, Eva Joan, Alton, Ill.....	58, 93
England, Martha Ann, Festus, Mo.....	40, 76, 80, 93, 94
Erlandson, Marion Ellen, Shaker Heights, Ohio.....	58, 104
English, Carolyn, Lafayette, Ind.....	41
Falls, Dorothy Jeanne, Oklahoma City, Okla.....	58
Farrill, Esther, Taylorville, Ill.....	27, 35, 75, 80
Felger, Donna, Norfolk, Nebr.....	58, 92, 93
Fellows, Frances Eleanor, Elmhurst, Ill.....	49, 94
Fletcher, Mary Margaret, Topeka, Kans.....	58, 92
Florey, Virginia Joy, Amarillo, Texas.....	58, 93
Fly, Virginia Lee, Grayville, Ill.....	41, 91, 94, 101
Folker, Betty, Garden City, Mich.....	58
Foran, Mary Patricia, Dallas, Texas.....	58, 79, 104
Fouts, Billie V., Hazard, Ky.....	58
Gabbert, Alice, Ashland, Kans.....	49, 98, 99, 103
Gambill, Nancy, Centralia, Ill.....	58, 93
Gambill, Phyllis, Centralia, Ill.....	27, 35, 74, 94
Garrett, Jane, Robertson, Mo.....	58
Garwood, Mary Agnes (Ann), Stonington, Ill.....	58
Gierse, Bette, Poplar Bluff, Mo.....	27, 35, 67, 76, 93, 94
Giles, Betty Lea, Marion, Ill.....	58
Gillette, Mary Lou, St. Peters, Mo.....	49, 94
Gilreath, Virginia, Kellogg, Iowa.....	49, 66, 94, 95
Gittinger, Martha Jane, Tulsa, Okla.....	58
Gladfelter, Elizabeth, Ottawa, Ill.....	49, 78
Goldsmith, Marian Thelma, Mattoon, Ill.....	58
Goodman, Shirley, Toledo, Ohio.....	41, 73, 81, 82, 83, 95, 96, 100, 101, 102
Gottlieb, Ann, Perry, Okla.....	58, 77

STUDENT INDEX—Continued

	Page
Goulden, Sonya, Indianapolis, Ind.	58
Graham, Cathryn, Wichita Falls, Texas	49
Graham, Jean, Ann Arbor, Mich.	27, 35, 69, 84, 87, 95, 96
Graham, Twilla, Brownfield, Texas	46, 49, 88, 95
Gray, Grace Earline, St. Charles, Mo.	41, 73, 74, 82, 84, 93, 94
Gray, Lynn, Aurora, Ill.	58
Green, Marjorie, Oklahoma City, Okla.	49, 92, 93, 95
Greenwell, Loma, Dallas, Texas	58, 67, 106
Greenwood, Phyllis, Ottumwa, Iowa	58, 92
Greer, Margaret Elberta, Hazard, Ky.	28, 35, 74, 80, 93
Gross, Shirley, Saline, Kans.	58
Gudder, Marian, Centralia, Ill.	49, 76, 91, 94
Gumm, Emelyne, Wichita, Kans.	41, 94, 97, 100, 101, 102
Haines, Ruth Margot, Rivermines, Mo.	28, 34, 35, 69, 73, 75, 83, 84, 88, 100, 101, 102, 113
Hanna, Mimi, Independence, Kans.	94, 101
Hannis, Emma Lou, Tulsa, Okla.	54, 58, 77
Hanshew, Druzella, Noblesville, Ind.	41, 78, 94, 100, 102
Hardtke, Marian Ruth, Barrington, Ill.	58, 77, 93
Hardy, Mary Elizabeth, Texarkana, Texas	58, 89, 91, 92
Harmon, Jeanne, St. Charles, Mo.	21, 28, 35, 69, 73, 74, 84, 89, 94, 100, 102
Hays, Mary Ellen, Jackson, Tenn.	49
Head, Mary Gene, Hobbs, New Mex.	58
Heimrod, Dorothy, Omaha, Nebr.	49, 66, 77, 84, 91, 92, 95
Hempelmann, Carolyn, Des Moines, Iowa	58, 88, 93, 103, 104
Herd, Mary Elizabeth, Houston, Texas	42, 77, 95
Hersh, Florence, Topeka, Kans.	58
Hess, Dorothy, Sioux City, Iowa	46, 49, 88, 94, 95, 104
Heyden, Ruth E., Evansville, Ind.	42, 77, 84, 95, 96
Higbee, Debby, Eureka, Kans.	42, 67, 78, 82, 84, 89
Hill, Charlotte, Kansas City, Mo.	58
Hirsch, Mary Celeste, St. Charles, Mo.	58
Hirst, Grace Carolyn, Jefferson City, Mo.	58, 91, 99
Holtanz, Margaret Janice, Des Moines, Iowa	41, 67, 77
Holly, Jo Anne, Palestine, Texas	42, 94
Holman, Florence, Texarkana, Ark.	42
Holsinger, Jacqueline, River Forest, Ill.	58, 92
Hooper, Althea, Topeka, Kans.	58, 91
Hoover, Harrylyn, Dyersburg, Tenn.	58
Hornaday, Peggy Lou, Des Moines, Iowa	59, 104
Hubbell, Evalou, Stroud, Okla.	59, 92
Hudson, Harriette Louise, Brownsville, Tenn.	59, 71
Huff, Saralee, Omaha, Nebr.	59
Huff, Venita Jean, Hazard, Ky.	59, 91
Humes, Clauden, Sapulpa, Okla.	51
Humphreys, Margaret, Oilton, Okla.	59, 99
Ingwerson, Nancy, Denver, Colo.	59, 91
Iobe, Vashti Kathryn, Tulsa, Okla.	59
Irwin, Esther Jean, Oklahoma City, Okla.	59
Irwin, Marjorie, Pueblo, Colo.	49, 90, 94, 101
Isbell, Dorothy, Herculaneum, Mo.	28, 36, 80, 98, 99
Jackson, Mary Lynn, Blytheville, Ark.	46, 47, 49, 73, 83, 84, 88, 95
Jacobson, Edna-Mary, Grand Haven, Mich.	49, 78
Johns, Mary Lee, Metropolis, Ill.	49, 97, 102
Johnson, Barbara Gaile, Eudora, Kans.	59, 75
Johnson, Helen, Macksville, Kans.	49, 94
Johnson, Jane Louise, South Bend, Ind.	59, 93
Jones, Earleen, Brownfield, Texas	50
Jordon, Marion, Wichita Falls, Texas	59
Kerley, Mary Ruth, Golconda, Ill.	59
King, Sarah Anne, Waco, Texas	59
Kinney, Marian, Houston, Texas	46, 50, 73, 74, 83, 93, 95, 101
Knapp, Mary Ellen, Downers Grove, Ill.	59, 88
Knott, Nancy, Plymouth, Ind.	59
Krug, Pearl Marie, Paducah, Ky.	59, 92, 103
Landberg, Clara Mae, Fort Thomas, Ky.	50, 73, 83, 87, 88, 95, 104
Langenbacher, Vera, St. Charles, Mo.	50
Laney, Carrie Lee, Camden, Ark.	42, 67, 92, 93, 94, 102
LaRowe, Sarah, St. Charles, Mo.	59
Latherow, Patricia, Quincy, Ill.	59, 67
Legge, Ruth Kathryn, Fremont, Nebr.	55, 59
Leverenz, Charlotte Anne, Michigan City, Ind.	50, 79, 93, 95, 100
Levy, Caroline, Armonk, N. Y.	59, 75, 95, 96
Lewis, Ida Frances, Benton, Ill.	59, 78

STUDENT INDEX—Continued

	Page
Lewis, Jerre Virginia, Lincoln, Nebr.	29, 36, 78, 94
Lewis, Lell, Elizabethtown, Ky.	42, 73, 77, 82, 88, 95, 96, 100, 102
Liebermann, Jo Anne, Joliet, Ill.	59, 88, 103, 104
Lincoln, Frances Lucile, Texarkana, Texas	50
Lindsay, Peggy, Foreman, Ark.	29, 34, 36, 69, 73, 75, 77, 83, 100, 102
Logan, Geraldine, Texarkana, Texas	59, 93
Logan, Jamie Caryl, Silver Creek, Nebr.	50
Lohr, Jean, Litchfield, Ill.	59, 76, 91
Lowe, Dorothy, Sioux City, Iowa	50
Lutton, Dorothy Jean, Bartlesville, Okla.	42, 94, 103
Lynch, Jehanne, El Paso, Texas	74
McCarrick, Gloria Barbara, Robstown, Texas	59
McCracken, Jeannette, Attica, Ind.	59, 92
McGrede, Jane, Sulphur Springs, Texas	59
McLean, Jane, East St. Louis, Ill.	59, 77, 104
McMurray, Jean, Oklahoma City, Okla.	50, 92, 95
Maines, Marjorie, Tulsa, Okla.	59, 71, 91
Mallory, Louise Bickett, Western Springs, Ill.	42, 84, 94, 100, 101, 102
Manbeck, Barbara, Des Moines, Iowa	59
Mann, Jaynn, W. Roxbury, Mass.	59
Mart, Erva Earle, Elsie, Nebr.	29, 94
May, Dorothy, Evanston, Ill.	46, 47, 50
Mayer, Mary, Omaha, Nebr.	59, 92
Mayes, Mary, Elsberry, Mo.	50, 94
Meredith, Jane Laverra, Orlando, Fla.	29, 36, 37, 73, 74, 75, 84, 93
Meyer, Ruthe Corinne, Houston, Texas	60, 79, 103
Miller, Betty, Pine Bluff, Ark.	50, 92
Moehlenkamp, Virginia, St. Charles, Mo.	60, 75, 101
Moerschel, Virginia, St. Charles, Mo.	60, 93, 95
Moore, Montelle, Mexico, Mo.	60
Moore, Nancy, Rison, Ark.	50, 67, 91, 93
Morgan, Emma Lee, Camden, Ark.	60, 76, 91
Morgan, Lady, Stanford, Ky.	50, 71, 90, 101
Morgan, Marian, Huntington, Ind.	46, 50, 77, 83, 101
Morgan, Mary Frances, Oklahoma City, Okla.	60, 67
Morris, Jean Esther, Lima, Ohio	50, 72, 83, 91, 95
Muehlenbeck, Doris, Saginaw, Mich.	60, 78, 92
Mullendore, Eloise, Hominy, Okla.	60, 71, 76, 100
Mullins, Edith, Atlantic, Iowa	60, 104
Murphy, Eileen, Mt. Vernon, Ill.	60, 78, 100, 102
Murphy, Margaret Jane, Northboro, Iowa	60, 78, 95, 96
Myers, Betty, Kirksville, Mo.	30, 36, 69, 73, 74, 82, 94, 95
Nagl, Nancy Jane, Omaha, Nebr.	60
Nesbitt, Mary Ann, Miami, Okla.	60, 99
Neustadt, Janet, Evansville, Ind.	60
Nicholson, Mary Lee, Fairfield, Ill.	50, 78, 94
Niedner, Carolyn, St. Charles, Mo.	60
Nissley, Rosemary, Chico, Calif.	60, 87
Noble, Martha, Jean, Wichita Falls, Texas	60
Noble, Shrilee, Stuttgart, Ark.	60
Norris, Maxine, Marion, Ill.	60, 92
Oppenheimer, Jerry, Chariton, Iowa	50, 71, 74, 94, 98, 99, 101
Osburn, Sybil, Dallas, Texas	50
Ott, Roena, St. Charles, Mo.	30, 36, 84, 93
Overmyer, Margaret, Pine Bluff, Ark.	60, 87, 106
Oyer, Verlee, Marion, Kans.	60, 99, 103
Painter, Ruth, Lafayette, Ind.	42
Palmer, Gloria Omohundro, Elsberry, Mo.	30, 36, 94
Papin, Nancy, Kirkwood, Mo.	54, 55, 60, 88, 89, 93
Parker, Margaret, Oklahoma City, Okla.	60
Parker, Mary Ann, St. Charles, Mo.	60, 93, 95
Parkinson, Adah Louise, Mt. Carmel, Ill.	30, 36, 37, 66, 68, 69, 71, 81, 100, 102
Pass, Inez, Chicago, Ill.	60
Pate, Mary, Sulohur Springs, Texas	46, 50, 67, 73, 79, 81, 88, 93, 95
Paulson, Jean, Cedar Rapids, Iowa	60
Payne, Patsy Ruth, Wichita Falls, Texas	60
Payne, Pearl, Omaha, Nebr.	42, 78, 88, 94
Percival, Polly, Des Moines, Iowa	60, 67, 71, 76, 91, 104
Person, Jo Ann, Hugo, Okla.	50, 71, 76, 91
Peterson, Margaret Louise, Kansas City, Mo.	60
Phillis, Marjorie, Paintsville, Ky.	60, 92
Platt, Carolyn, Jefferson City, Mo.	42, 73, 77, 82, 84, 95, 100, 102
Platt, Mary Ruth, Massena, Iowa	60

STUDENT INDEX—Continued

	Page
Pope, Audrey, Clayton, Mo.	94
Powell, Patricia, Sulphur, Okla.	60, 66, 88, 103
Poynter, Dixie, North Kansas City, Mo.	51, 79, 81, 93, 100, 101
Proctor, Betty Gray, Sullivan, Mo.	5, 23, 31, 36, 66, 67, 69, 107
Proctor, Peggy, Sullivan, Mo.	46, 47, 51, 93
Pyle, Virginia, Wray, Colo.	54, 60
Raasch, Glendora, Norfolk, Nebr.	60, 77, 96
Rae, Margaret, Aruba, Netherlands, W. I.	61
Randerson, Flora, Malvern, Iowa	61, 78
Ransom, Earlene, Norfolk, Nebr.	51
Rattan, Adelaide, Memphis, Tenn.	61
Ream, Mary Jean, Peru, Ill.	31, 37, 74, 88
Record, Kathryn, Dallas, Texas	61
Reed, Dorothy, Eldon, Mo.	61, 91
Reichard, Jane, Tulsa, Okla.	61, 67, 77
Ritter, Elnor, St. Charles, Mo.	51, 84, 93
Ritter, Ruth, St. Charles, Mo.	51, 84, 93
Roberts, Marjory, La Porte, Ind.	61, 79
Robertson, Sally, Winnetka, Ill.	61, 77
Robison, Marilyn, Augusta, Ill.	61, 92, 93
Rooke, Louise Pankey, La Grange, Tenn.	51, 67, 79, 88, 103
Rose, Virginia, La Grange, Ill.	31, 37, 84, 88, 94
Rouse, Betty Anne, Waterloo, Iowa	61, 87, 88, 95, 100, 102
Rowland, Eloise, Caruthersville, Mo.	51, 92
Rozyski, Virginia, Camden, Ark.	61, 92
Runge, Betty Jane, St. Charles, Mo.	61
Russell, Sophia, Warrensburg, Mo.	61, 99, 100, 102, 108
Rutledge, Marilou, Dallas, Texas	54, 55, 61, 67, 88, 89, 103, 104
Ryan, Merryl Keith, Bolivar, Mo.	61, 99
Rychener, Elizabeth Anne, Memphis, Tenn.	51, 75, 92
Ryder, Hope, Ft. Riley, Kans.	51, 92
Ryder, Shirley, Hibbing, Minn.	51, 103
Sage, Harriet (Bey), Augusta, Kans.	31, 37, 73, 84
Salomon, Joy, Shorewood, Wis.	61, 103
Scates, Suzanne, Topeka, Kans.	61
Schaefer, Irma, Jefferson City, Mo.	43, 77, 91
Schaefer, Janet, Omaha, Nebr.	43, 94
Schatzmann, June, St. Louis County, Mo.	61, 96
Schneider, Doris Marie, St. Louis, Mo.	61
Schoen, Betty, Blairstown, Iowa	32, 37, 82, 83, 94
Schroeder, Ruth, Webster Groves, Mo.	61
Schroer, Betty Jean, St. Charles, Mo.	51
Schwab, Jacqueline, Oklahoma City, Okla.	51, 78, 95, 109
Schwartz, Rozelle, Shaker Heights, Ohio.	61, 88, 101
Scruby, Harriet, Omaha, Nebr.	61, 87, 91, 92, 103, 106
Seip, Joanne, Plymouth, Ind.	51, 73, 77, 79, 83, 95
Seip, Mary Lynn, Plymouth, Ind.	61, 93
Shaeffer, Dorothy, Herrin, Ill.	51, 71, 76, 91
Shirey, Barbara, Waterloo, Iowa	61
Shudde, Frances, San Diego, Calif.	32, 37, 68, 80
Sigler, Evelyn, Jonesboro, Ark.	61, 91, 92
Silkwood, Patricia Ann, Centralia, Ill.	43, 84, 88, 94, 95, 96, 103
Simpson, Jo Cleta, Oklahoma City, Okla.	61, 78
Sirota, Belle, Davenport, Iowa	51, 74, 92, 95, 96, 101
Smith, Ardath Nell, Sallisaw, Okla.	61
Smithson, Doris B., Lake Bluff, Ill.	51
Snyder, Norma Elizabeth, Lawrenceville, Ill.	61, 78, 104
Sprowl, Helen, Princeton, Ind.	51
Stahl, Helen Joan, Bellevue, Ohio.	61, 71, 76, 99
Stanton, Mary Julia, Rushville, Mo.	61, 78, 99, 100, 102
Stanze, Hildagarde, St. Louis, Mo.	61, 77
Steberg, Barbara, Omaha, Nebr.	61, 92, 95
Stevenson, Marjorie, Holdenville, Okla.	51, 77, 83, 88, 93
Stewart, Dorothy Jean, Tulsa, Okla.	51, 88, 94, 95, 96
Stoery, Betty Renee, Estherville, Iowa	61
Strumpell, Kathryn Elaine, Sumner, Iowa	61
Stuart, Jane, Shattuck, Okla.	61, 78
Stueber, Myonne, Little Rock, Ark.	62
Swalley, Jane, St. Charles, Mo.	51, 93, 100, 101
Swiger, Wanda Madalou, Clarksburg, W. Va.	62
Swinehart, Gloria, Waterloo, Iowa	62
Tabor, Mary Elizabeth, Checotah, Okla.	62
Tanner, Marjorie Ann, Jefferson City, Mo.	62, 77, 100, 102

STUDENT INDEX—Continued

	Page
Tapp, Nancy, Denver, Colo.	52, 78
Taylor, Harriett L., Sidney, Nebr.	52, 71, 83, 98, 99
Thomas, Janet, Omaha, Nebr.	23, 32, 36, 37, 68, 69, 79, 93, 94
Thomure, Dolores, Bonne Terre, Mo.	62, 79, 92
Titus, Ruth, Great Bend, Kans.	62, 95, 100, 102
Tobin, Patricia, Vinton, Iowa.	62, 91, 95, 99, 100, 102
Trimble, Carolyn Conway, Hope, Ark.	54, 55, 62, 77, 92
Tucker, Celia Louise, Texarkana, Texas.	52, 93, 95
Turner, Mara, Clayton, Mo.	62
Twitty, Mary Ellen, Tulsa, Okla.	62
Ullery, Betty Marie, South Bend, Ind.	62
Vanecek, Doris, Omaha, Nebr.	62, 92
Van Ostveen, Marie, Owensboro, Ky.	62
Veach, Virginia, Vienna, Ill.	33, 37, 94
Verploeg, Phyllis, Pella, Iowa.	52, 73, 77, 88, 93, 95
Vestal, Joyce Eloise, North Little Rock, Ark.	62
Viar, Martha L., Steele, Mo.	62, 77
Wadley, Ellen, Little Rock, Ark.	52, 72, 73, 74, 83, 90, 95, 100, 101, 102
Waelder, Ada, Wichita Falls, Texas.	62
Waldron, Pat, Oak Park, Ill.	62
Walker, Bonnie Jean, Lawton, Okla.	62
Walker, Helen, Pensacola, Fla.	62
Wallace, Nancy, Oak Park, Ill.	62, 78
Wallerstedt, Elsie Louise, Waco, Texas.	62, 95
Walsh, Patricia, Clayton, Mo.	63, 99, 100, 102
Ward, Alyce, Paintsville, Ky.	52, 102
Waters, Betty Jane, Chicago, Ill.	46, 52, 109
Watlington, Frances, Texarkana, Texas.	63, 91
Waye, Barbara, St. Charles, Mo.	43, 84, 93
Wayland, Dorothy Ann, Shawnee, Okla.	63
Wehrle, Donalee, Eureka, Mo.	52, 78, 88, 93, 95
Weitz, Mary Louise, Morris, Ill.	52
Wertz, Barbara, Evansville, Ind.	52, 73, 77, 83, 84, 103
Wescott, Beverly, Omaha, Nebr.	35, 39, 43, 68, 73, 74, 84, 88, 93, 95, 96, 100, 102
Westfall, Lorraine, Chicago, Ill.	63
Wheeler, Betty Deane, Paintsville, Ky.	63
Wherry, Frances, Arlington, Va.	43, 93
Whitehead, Jacqueline Ann, Amarillo, Texas.	63
Whitten, Helen Virginia, Kansas City, Mo.	63
Wilde, Anna Marjorie, Dallas, Texas.	63
Wiley, Frances Alyce, Tulsa, Okla.	63, 76
Wilkins, Mabel, St. Charles, Mo.	63
Williams, Anna Mary, Paintsville, Ky.	63, 88, 93, 99
Williams, Jeannette, Springfield, Mo.	63
Williams, Kathleen, Paintsville, Ky.	52
Wilson, Ruby, Valley Center, Kans.	63, 99
Wilson, Ruth, Valley Center, Kans.	63, 99
Wingate, Martha, Amarillo, Texas.	63
Wise, Shirley Ruth, Dallas, Texas.	63
Wonder, Alice (Bunny), Marshalltown, Iowa.	33, 37, 104
Woolsey, Polly, Lakewood, Ohio.	52, 67, 79
Workman, Elaine, Minneapolis, Minn.	43, 78
Wright, Betty Ann, Robertson, Mo.	63, 101
Wright, Myrtus Garber, St. Charles, Mo.	63
Wrinkle, Geraldine, Oklahoma City, Okla.	63, 92
Yahr, Helen, Beeville, Texas.	63
Yancey, Julia, Liberty, Mo.	52, 92
Yoder, Rebecca, Roswell, New Mexico.	63
Youmans, Patricia Ann, Poteau, Okla.	63, 77, 91
Zeigler, Betty Lee, Blue Mound, Ill.	43, 74, 94
Ziern, Nadine, Clayton, Mo.	52, 71, 73, 76, 79, 101
Zollinger, Harriet, Canton, Ohio.	63, 91, 92

