



Lindenwood
College

its profile...

its people...



Above:
ROEMER HALL—Contains the administrative and business offices, the auditorium, faculty offices, classrooms, laboratories, bank, bookstore, and post office.

Front Cover:
LINDENWOOD COLLEGE GATEWAY—The entrance to a way of life and learning.

“ *It is the object of learning, not only
to satisfy the curiosity and perfect
the spirits of individual men, but
also to advance civilization.* **”**

Woodrow Wilson

PROFILE

OF LINDENWOOD COLLEGE

1960-61

STUDENT ENROLLMENT

536 young women from 35 states plus 11 international students, making a total of 547.

Religious Preference: Presbyterian, 177; Methodist, 104; Episcopal, 53; Lutheran, 53; Baptist, 39; United Church of Christ, 32; Catholic, 27; Christian, 25; totaling 510. The other 37 are from 10 other denominations and faiths, including Christian Science, Church of Christ, Jewish, and Unitarian.

CURRICULUM

Departments: 19—offering 21 majors

Degrees Offered:

- Bachelor of Arts
- Bachelor of Science
- Bachelor of Music
- Bachelor of Music Education

Special Programs Available:

- Religious Education
- Human Relations
- Vocational Home Economics
- Academic Work for Nursing Science
- Academic Work for Medical Technology
- Washington Semester
- Junior Year Abroad
- Special Studies—Superior Students

FACULTY

Fifty-six—53 full time and 3 part time; faculty members hold degrees from at least 52 colleges and universities in the United States; 6 hold degrees from foreign colleges and universities.

Accreditation

Accredited and approved by the North Central Association of Colleges and Secondary Schools, Missouri State Department of Education, and American Association of University Women. The college is a member of the Association of American Colleges and of the American Council on Education.

Library

Number of volumes: 40,600

Church Affiliation

Lindenwood is a privately supported liberal arts college for women. The directors of Lindenwood College are elected by the Synod of Missouri of The United Presbyterian Church in the U.S.A. The college receives financial support from the United Presbyterian Board of Christian Education and from the Synod of Missouri.

THE PHYSICAL PLANT

The Lindenwood College campus covers an area of 136 acres on one of the high elevations of the city of Saint Charles, Missouri. The campus is unusually beautiful with its well-spaced brick buildings and extensive lawns shaded by lovely trees. Although the plant and equipment are considered completely functional, Lindenwood's facilities (as in most other fine colleges) must still be expanded to meet *ideal* requirements.

STUDENT INCOME AND COLLEGE COSTS 1959-60

Income

From tuition, residence hall-dining room charges, and student-related enterprises.. \$ 814,297.34

Expenditures

Includes all the costs incurred in operating the college 1,199,257.02

Cost and Income on a Per Student Basis

COST of instruction and residence hall-dining room charges	2,337.00
INCOME from tuition, residence hall-dining room charges, and student related enterprises	1,587.00
SUBSIDY provided by endowment income, gifts, and grants	750.00

Lindenwood College uses all endowment income, gifts, and grants to meet expenditures. A number of projects and programs designed to enrich the service and the work of the college are being held up and cannot be started until additional sources of income are available. *Lindenwood needs more income, increased gifts, and a broader base of support.*

PROFILE

***A LINDENWOOD GRADUATE, 1949-1958**

Based on replies to a questionnaire, a composite picture can be shown of what happens to the Lindenwood graduate over a three-, five-, nine-and-ten-year period. By 1959

- 67 percent had married, of whom
41 percent were "working wives";
- 45 percent either were teaching in 1959 or had taught;
- 57 percent were or had been employed in nonteaching positions since graduation;
- 24 percent of the total respondents were in or had attended graduate school;
58 percent of these had either scholarships or assistantships;

Three of the respondents earned a Woodrow Wilson Fellowship grant; a considerable number received teaching assistantships directly upon graduation from college.

That these students on the whole had a consistent and considered sense of direction is shown by the fact that 95 percent of them continued their undergraduate major on the graduate level. Most of the degrees they sought were master of arts or master of science degrees, and several continued to work toward a Ph.D.

**Compiled by Mary F. Lichliter, Director of Guidance and Placement*

The Board of Directors

The character of a college is the product of its principal objectives and clearly defined policies. Faculties and administrative officers will share in the formulation of these policies, but the determination of fundamental objectives is the responsibility of the Board of Directors. The vigor and the promise of permanence found in the history of a college are in a large measure the results of the work of its board.

The educational, business, and financial policies of Lindenwood College are determined by a distinguished and expert Board of Directors. This board is composed of men and women who are leaders in the professions, business, education, and civic and charitable enterprises.



President of the Board of Directors
HOWARD I. YOUNG

President of the American Zinc, Lead and Smelting Company and its subsidiary companies, general offices, St. Louis, Missouri.

During World War II served with distinction on the War Production Board and other important government war agencies; during the Korean War, served as Deputy Administrator of the important Defense Materials Procurement Agency.

Director, Southwestern Bell Telephone Company, Mercantile Trust Company, Baltimore & Ohio Railroad Company, General American Life Insurance Company, and John Wood Industries, Limited; Vice-President and Director, Y.M.C.A.; Director, Washington University, American Mining Congress, American Zinc Institute, and Associated Industries of Missouri; holds membership in other professional and business organizations.

For many years an Elder in the Presbyterian Church; Chairman, Board of Trustees, Second Presbyterian Church, St. Louis.

Vice-President of the Board of Directors
PHILIP J. HICKEY

Superintendent of Instruction, Board of Education, St. Louis Public School System, since 1942; an educator with 20 years' prior service in various official capacities for the Board of Education; received his B.A. and M.A. from University of Wisconsin; Doctor of Laws degrees from Lindenwood College, the University of Missouri, and Washington University; has held and is presently holding important offices in the field of education; widely affiliated with civic and cultural groups; on board of directors of most of the youth organizations in St. Louis; Elder in the Presbyterian Church; Trustee, Second Presbyterian Church, St. Louis.



Vice-President of the Board of Directors
MRS. HORTON WATKINS

B.A., Vassar College; Phi Beta Kappa; volunteer work in mental testing in St. Louis Juvenile Court, Probation Department, and in Washington University Clinics; president of International Institute of St. Louis and the Community School Association; board member in the fields of children's aid and service; president of Women's Division of the St. Louis Academy of Science; honorary degree of Doctor of Humanities, Lindenwood College, 1960.



Secretary and Treasurer of the Board of Directors
WILLIAM H. ARMSTRONG

A.B., Missouri University; L.L.B., Harvard University Law School; member of law firm of Armstrong, Teasdale, Roos, Kramer, & Vaughan; board member of regional chapter and chairman, St. Louis Region, American Red Cross; director, American Insurance Company and affiliated companies, A. B. Chance Co., Hubbell Metals, Inc., and Security-Mutual Bank & Trust Co.; formerly on the vestry of Church of St. Michael and St. George, St. Louis.





RUSSELL L. DEARMONT,

Member of the Board

Chairman of the Board, Missouri Pacific Railroad; Director, Southwestern Bell Telephone Co., Texas & Pacific Railway, Association of American Railroads, and Terminal Railroad Association of St. Louis; member, American Bar Association; member or board member of many civic, character-building, and religious organizations; Elder in the Presbyterian Church; member, Second Presbyterian Church, St. Louis.



ARTHUR S. GOODALL,

Member of the Board and Chairman of Buildings and Grounds Committee

B.S., Washington University; formerly president of Goodall & Company; former treasurer, Board of Endowment Fund Trustees, St. Louis Presbytery; has served on Lindenwood Board since 1937; member of First Presbyterian Church, St. Louis.



THE REVEREND

W. DAVIDSON McDOWELL,

Member of the Board

A.B., Missouri Valley College; Th.B., Princeton Theological Seminary; D.D., Missouri Valley College and Park College; past president and now member of Executive Board of Metropolitan Church Federation; trustee of St. Luke's Hospital; member of the Board of Overseers, Missouri Valley College; chairman or committee member of many church-related groups.



R. WESLEY MELLOW, *Member of the Board*

president of Liberty Foundry Co. and vice-president of Falmouth Investment Co.; World War I Artillery Lieutenant with service in France; has held offices in Ladue Chapel, the St. Louis Presbytery, the Board of National Missions, United Presbyterian Church, U.S.A., Metropolitan Church Federation, St. Louis Altenheim, and The Old Folks Home; Elder in the Presbyterian Church.

MRS. JAMES A. REED (Nell Quinlan),

Member of the Board

An alumna of Lindenwood; widow of United States Senator James A. Reed; founder of Nelly Don, Inc., Dress Manufacturers; member of Kansas City, Missouri, School Board; only woman member of Midwest Research Institute, Kansas City, Missouri.



RAY E. ROWLAND, *Member of the Board*

B.S., University of Wisconsin; president, Ralston Purina Co. and affiliated companies, St. Louis; director, Mercantile Trust Co., Wabash Railroad Co., New Jersey, Indiana and Illinois Railroad, Hussman Refrigerator Co., Transit Casualty Co.; active in character-building and civic organizations; trustee, Webster Hills Methodist Church and Methodist Children's Home of Missouri.



THE REVEREND W. SHERMAN SKINNER,

Member of the Board

A.B., Colgate University; Th.B. and Th.M., Princeton Theological Seminary; honorary degrees of D.D., Temple University and Lafayette College; the radio and television preacher on "The Protestant Hour" over KSD, KSD-TV, St. Louis; board member, Board of Christian Education, United Presbyterian Church in the U.S.A., and Westminster College; trustee, Princeton Theological Seminary.



ADMIRAL SIDNEY S. SOUERS,

Member of the Board and Chairman of the Finance Committee

Chairman and chief executive officer, General American Life Insurance Co., St. Louis; chairman of the board and executive committee, National Linen Service Co., Atlanta, Georgia; director of St. Louis Insurance Corporation, Transit Casualty Co., Coca-Cola Bottling Co. (Hannibal), and McDonnell Aircraft Corporation; trustee, George Washington University; board member, Westminster College; holds memberships in military, government, and civic organizations; Elder in Presbyterian Church; trustee, Second Presbyterian Church, St. Louis; decorated for outstanding service in World War II.





MRS. ARTHUR STOCKSTROM (Gladys Tyson), *Member of the Board* and Chairman of Dormitories Committee

Graduate of Beaver College with further study at Johns Hopkins and Columbia Universities; past president and presently member, Advisory Commission, Planned Parenthood Association; in 1958 awarded honorary degree of Doctor of Humanities by Lindenwood College; a devoted civic and cultural leader in various organizations; an Episcopalian.



MRS. DAVID W. HOPKINS (Esther Saunders), *Member of the Advisory Board*

B.A., Lindenwood College; president, Fortnightly Musical Club, St. Joseph; board member, Civic Music League; soloist, First Presbyterian Church, St. Joseph; soloist, 1933-36, Westminster Presbyterian Church in St. Louis.



GEORGE W. JOHNS, *Member of the Advisory Board*

A.B., Denver University; vice-president and general merchandise manager, T. A. Chapman and Co., Milwaukee; connected with Dry Goods and Department Stores in Denver, St. Louis, Los Angeles, and Milwaukee; a Presbyterian.

MRS. LEO J. VOGT (Grace Gupton), *Member of the Board*

A member in the Webster Groves Presbyterian Church and a devoted church worker; officer or board member, St. Louis Presbyterial Society; Board of Foreign Missions of The United Presbyterian Church in the U.S.A., and Church World Service; former member, Board of Education, School District of Webster Groves.

SIDNEY M. STUDDT,

Member of the Advisory Board

Commercial and Industrial Construction, Real Property Management, and Investment Business; offices — Clayton, St. Louis County, Missouri; member, executive committee, and director, First National Bank, Clayton; member, St. Louis County Real Estate Board and related organizations; Elder, Presbyterian Church; trustee, Central Presbyterian Church.



THE REVEREND
GEORGE E. SWEAZEY,

Member of the Advisory Board

B.A., Westminster College; B.D., Princeton Theological Seminary; M.A., Princeton University; Ph.D., University of Berlin; Minister, Webster Groves Presbyterian Church; board member, Westminster College and Princeton Theological Seminary.



MRS. ROBERT R. WRIGHT (Janet Steedman),

Member of the Advisory Board

An alumna of Lindenwood College; activities include volunteer work at St. Luke's Hospital; board member, Y.W.C.A.; member, Wednesday Club and Garden Club; active in church work, First Presbyterian Church, St. Louis.



The Role of Administration

Dr. Franc L. McCluer is President of Lindenwood College. As President he alone is responsible for the internal management of the College. In order that the College may function effectively in all its activities, he delegates responsibilities in these principal areas of administration:

Academic Programs
Religious Education
Business, Finance, Plant and Grounds
Student Affairs
Admissions
Registration
Development
Public Relations

Thus the total responsibility is divided and delegated to qualified persons serving in administrative capacities.



FRANC L. McCLUER, *President of the College*

Lindenwood's President, Franc L. McCluer, is one of the distinguished college presidents in America. His energy and dedication to the cause of higher education have contributed to the fine reputation which Lindenwood College enjoys in the field of senior women's colleges. Dr. McCluer was host to Winston Churchill when he gave his "Iron Curtain" address at Westminster College in Fulton, Missouri, in 1946. (Dr. McCluer was President of that institution at the time.) Dr. McCluer was a member of the Missouri State Constitutional Convention of 1943 and directed the campaign for the adoption of the new constitution in 1945. He has served on important national boards and commissions in the field of education, as well as on state and regional committees.

Dr. McCluer received his A.B. and M.A. from Westminster College; his Ph.D. from the University of Chicago. He was awarded L.L.D. by his alma mater, by Washington University, and by Waynesburg College.

Dr. McCluer is an Elder in the United Presbyterian Church in the U.S.A. and was Moderator of the Synod of Missouri, Presbyterian Church, U.S., in 1939-1940.

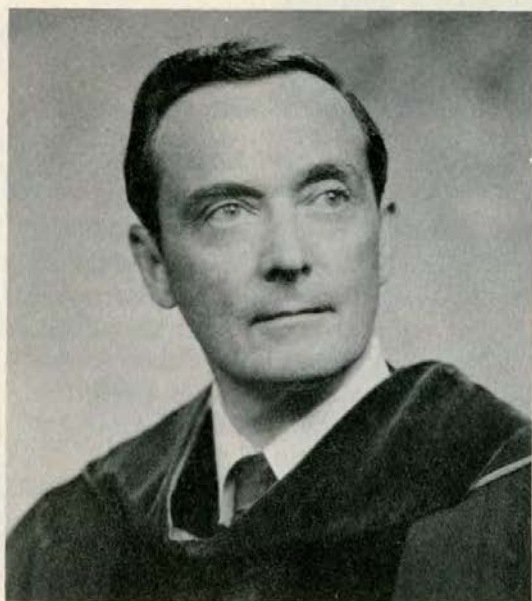


DONALD M. MACKENZIE, *Dean of the College*

Lindenwood's dean of the college is an experienced educator and administrator. Dr. Mackenzie holds an A.B. from Park College, and an M.A. and a Ph.D. in higher education from the University of Chicago. He has served as director of student personnel and professor at Dakota Wesleyan University (South Dakota); as registrar and professor at Frances Shimer College (Illinois); and as dean at Blackburn College (Illinois).

He was staff director for the Illinois Commission on Higher Education in Chicago. For the three years prior to coming to Lindenwood he was Associate Secretary of the Commission on Colleges and Universities of the North Central Association of Colleges and Secondary Schools, and Assistant Director of its Leadership Training Project. During this time he also taught a course in higher education at the University of Chicago. For the past 15 years he has served as an examiner for the North Central Association.

In addition to these responsibilities, Dr. Mackenzie has for ten years served as a consultant for a number of liberal arts colleges in the Midwest. He has also directed surveys of colleges for the Synods of Oklahoma, Kansas, and Missouri of The United Presbyterian Church in the U.S.A., as well as for the Synod of Arkansas of the Presbyterian Church in the U.S. He is an Elder in the Presbyterian Church.



THE REVEREND C. EUGENE CONOVER, *Dean of the Chapel*

Lindenwood's dean of the chapel is chairman of the department of Philosophy and Religion.

Dr. Conover holds an A.B. degree from the College of Wooster, having graduated magna cum laude. He received his B.D. degree from Union Theological Seminary and his A.M. degree and Ph.D. degree from the University of Cincinnati. He is a member of Phi Beta Kappa.

Dr. Conover formerly held pastorates in Cincinnati and for nine years was Presbyterian University pastor at Miami University, Oxford, Ohio. He has taught religion and philosophy at Miami University and Western College, Ohio; at Blackburn College, Illinois; and since 1948 at Lindenwood College.

Dr. Conover is past president of the National Association of Biblical Instructors, Midwestern Section. His presidential address before the annual meeting of the Missouri Philosophical Association in October, 1960, was entitled, "The Role of the Philosopher Concerning Convictions." He has appeared before professional societies and has made contributions to professional group publications, his latest articles appearing in *The Journal of Bible and Religion* (July 1960) and *The Christian Century* (January 1961). He is giving a series of lectures in 1961 on moral education, which he hopes to publish later in book form. He is active in St. Charles civic affairs, and is the founder and past president of the St. Charles Community Council.

ROBERT C. COLSON, *Business Manager*

B.S., Central Missouri State College; Graduate Study, University of Missouri.

A strong college must have efficient and competent management of its business affairs in order that it be operated without confusion and waste. A long and varied service with the college, beginning in 1928, prepared Mr. Colson for his appointment as Business Manager in 1949. He and his staff are continuing to make significant contributions to the strength of the college.



**MARY F. LICHLITER,
*Director of Guidance and Placement***

A.B., Wellesley College; M.A., University of Chicago; prior to coming to Lindenwood in 1948, was General Secretary, Student Y.W.C.A., Ohio State and Wellesley College; Social Director, Neuro-Psychiatric Institute; Dean and Instructor, Lasell Junior College; Educational Guidance Service, St. Louis; Dean of Women, Drury College; Assistant Director of Counseling Service, Boston University; delegate to World Student Christian Conference, Switzerland; has traveled extensively in Europe, Scandinavian countries, the Mediterranean, the Balkans, and the Near East.

WILLIAM F. G. McMURRY,
Director of Admissions

A.B., Culver-Stockton College; B.F.A., University of Oklahoma; Graduate work, University of Chicago and the University of Oklahoma; prior to coming to Lindenwood as Admissions Counselor, was teacher, Superintendent of Schools and faculty member in Missouri schools and military academy.



LULA CLAYTON BEALE, Registrar

A.B., Murray State College; M.A., Peabody College; prior to coming to Lindenwood, taught in public schools, Murray, Kentucky, for 23 years; in addition to duties as Registrar, is Instructor, part-time, in Education.



FRED H. DOENGES,
Director of the Development Fund Program

A retired insurance company executive; as a volunteer worker, has had considerable experience in promotional and fund-raising work.



HELLEN BOYD OSTROFF (Mrs. Harold H.),
Director of Public Relations and Alumnae Secretary

A.A., Lindenwood College; course work, Missouri University and Washington University; professional affiliations include American Newspaper Guild, American College Public Relations Association, and Business and Professional Women.



The Role of the Faculty of Lindenwood College

Lindenwood College was incorporated by Special Act of the Missouri Legislature on February 24, 1853. Its charter commits it "to educate young women to become enlightened and useful members of the community." For more than a century Lindenwood College has emphasized the value of a liberal education for women. The great influence of women in all areas of human life challenges the college to provide them with a liberal education of the highest order.

The basic purpose of a liberal education is to provide the opportunity for these young women to acquire the knowledge and understanding necessary to recognize and to discharge the personal and social responsibilities of life to the full extent of their ability.

Educated women become the teachers in the home, the churches, the schools, and increasingly in the colleges. The professions (science, medicine, law) are turning to them as the nation's unused potential to meet manpower needs.

Higher education becomes the story of a teacher *teaching*, making the teachers the most essential resource required for good education.

Lindenwood's ability to educate these young women for their responsibilities is her most important contribution.

Faculty Achievements

In addition to their college, religious, and civic responsibilities, faculty members of Lindenwood College are asked to share in certain areas of educational work of benefit to schools and school districts in the St. Charles and St. Louis areas. These faculty members willingly accept these invitations, and appear on panels and participate in workshops; some act as consultants and others as members of evaluating committees. Some also actively participate in the North Central District Conferences held by the U. S. Department of Education.

Selections shown are illustrative of some of the other activities of the Lindenwood faculty:

In March, 1961, a Lindenwood Music Department faculty member will appear as soloist with the New York Philharmonic Orchestra in Carnegie Hall.

A new book *Exchange Teacher*, available in March, 1961, is the work of one of the faculty.

Two members of the faculty have exhibited their works and won awards at such art centers as the Provincetown Art Festival, the Kansas City Art Institute, the Denver and St. Louis Art Museums, and the St. Louis Artists' Guild.

Another member assumed duties on January 9, 1961, as an Exchange Teacher at Bishop Otter College, England.

Under a Ford Foundation grant, a member of the English Department conducts a television course for college students over St. Louis Educational Television Station KETC.

Another member of the faculty has co-authored *Where Rivers Meet*, a book on the history of Missouri.

Numerous contributions on educational subjects continue to be made to magazines and publications, authored by the talented Lindenwood faculty.

Faculty Achievements

At Lindenwood

the college exists that teachers may teach. All that is done in providing buildings, equipment, and endowment is done to provide opportunity for a faculty to serve students. The most important experience a student may have is found in the classroom. The quality of the faculty determines the quality of a college. Lindenwood is proud of its faculty members; they have been primarily responsible for the excellence of the scholastic achievements of the Lindenwood students.

The Lindenwood College Faculty

Academic Year 1960-61

SOPHIE PAYNE ALSTON, *Professor, Home Economics, and Chairman of the Department*
1952

B.S., Mississippi State College for Women; M.A., University of Chicago; Graduate work, George Peabody College for Teachers, Columbia University, Iowa State College.



GRAZINA ONA AMONAS, *Associate Professor, Physical Education*
1954

B.A., Physical Training College, Kaunas Lithuania; Licentiate (M.A.) in Philosophy, University of Kaunas; Diploma L'Alliance Francaise, Paris, France. Study at Medauschule, Logeschule, and Bodeschule, in Germany; Naas, Sweden; Martha Graham School of Contemporary Dance; Connecticut College School of Dance.



FRANK T. ARMSTRONG, JR., *Instructor, History and Government*
1957

A.B., Westminster College; M.A., University of Missouri.





MARJORIE ANN BANKS, *Associate Professor, Education* 1960

B.S., Southeast Missouri State College; M.A., Washington University; Graduate work, Washington University, University of Missouri, Marshall College.



MARY JEAN BARTHOLOMEW, *Assistant Professor, Religion* 1957

A.B., Macalester College; M.A., McCormick Theological Seminary.



HUGO JOHN BAUER, *Associate Professor, Modern Languages* 1947

A.B., Elmhurst College; M.A., Northwestern University; Graduate work, Washington University.



S. LOUISE BEASLEY, *Professor, Mathematics, and Chairman of the Department* 1949

B.S., Southwest Missouri State College; M.A., University of Missouri; M.Ed., George Peabody College for Teachers; Graduate work, Teachers College, Columbia University.



HELEN D. BEDON, *Professor, Chemistry, and Chairman of the Department* 1960

A.B., Meredith College; M.A., University of North Carolina; Ph.D., Cornell University.

PATRICIA BENKMAN (*Mrs. Ozan Marsh*),
Resident Pianist, Music 1957

B.M., San Francisco State College; Graduate study,
Cornell University with Egon Petri; Advanced study
with Marcel Maas and Isabelle Vengerova.



MARTHA MAY BOYER, *Professor, Speech* 1946

B.A., Maryville College; M.A., University of Wisconsin;
Graduate work, Ohio State University, Wash-
ington University.



SUE C. BRIZIUS (*Mrs. J. A.*), *Instructor,
Office Management* 1960

B.S., Louisiana State University.



MARY L. CHRISTIANSON (*Mrs. C. Paul*),
Instructor, English 1959

B.A., University of Illinois; M.A., State University
of Iowa; Phi Beta Kappa.



HOMER CLEVINGER, *Professor, History and
Government*, and Chairman of the Department
1941

B.S. Ed., Central Missouri State Teachers College;
M.A., Peabody College for Teachers; Ph.D., Univer-
sity of Missouri.





ROBERT A. CRUCE, *Assistant Professor, Music*
1952
B.A., Hendrix College; M.M., University of Michigan.



ELIZABETH DAWSON, *Professor, English, and
Chairman of the Department* 1927
A.B., Cornell College; M.A., Columbia University;
Ph.D., State University of Iowa; Phi Beta Kappa.



LYNN BECK DILLON (*Mrs. Dwight M.*),
Instructor part-time, English 1960
A.B., Washington University; Graduate work, Wash-
ington University; Phi Beta Kappa.



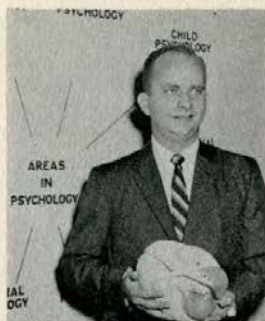
THOMAS W. DOHERTY, *Associate Professor,
Modern Languages* 1950
B.A., Westminster College; M.A., Middlebury Col-
lege; Certificat de Prononciation Francaise, Institut
de Phonetique, Paris; Diplôme de Littérature Fran-
caise Contemporaine, Sorbonne, Paris; D.M.L.,
Middlebury College.



HORTENSE F. EGGMANN, *Assistant Librarian*
1931
A.B., University of Illinois; Certificate of Librarian-
ship, St. Louis Library School; Graduate Work, Uni-
versity of Illinois Library School, Columbia Univer-
sity School of Library Service.

WILLIAM C. ENGRAM, *Professor, Psychology,*
and Chairman of the Department 1954

A.B., Washington University; M.A., University of
Missouri; Graduate work, University of Missouri.



JAMES H. FEELY, *Assistant Professor, English*
1958

A.B., Northwestern College; M.A., Northwestern
University; Graduate work, Washington University.



MITZI ANNE FENN, *Instructor, Physical Edu-*
cation 1959

B.S., M.A., Texas Woman's University.



HELEN P. GOULDNER (*Mrs. Alvin W.*)* *Asso-*
ciate Professor, Sociology, and Chairman of
the Department 1959

A.B., College of Puget Sound; M.Ed., University of
Washington; Ph.D., University of California in Los
Angeles.



CAROLYN S. GRAY, *Associate Professor, Chem-*
istry 1942

A.B., B.S., M.A., University of Missouri.



*on leave of absence 1961-62



J. WALTER GRUNDHAUSER, *Associate Professor, Biological Science* 1946

B.S., B.A., Southeast Missouri State College; Metallurgical Laboratory of the University of Chicago, Manhattan Project; Ph.D., St. Louis University.



HARRY D. HENDREN, *Associate Professor, Art, and Chairman of the Department* 1950

A.B., Murray State College, M.A., Ohio State University.



VIRGINIA WINHAM HOUSE, (*Mrs. Carl*), *Associate Professor, Music* 1946

B.Mus., Nashville Conservatory of Music; M.Mus., Cincinnati Conservatory; Study with Lawrence Goodman, Eduard Loessel, Sevrin Eisenberger, Gari Shelton, and William Schatzkamer.



JEANNE HARMON HUESEMANN (*Mrs. Theodore J.*), *Instructor, Mathematics* 1957

A.B., Lindenwood College.



ROBERT DOUGLAS HUME, *Associate Professor, Speech* 1947

A.B., University of California; M.A., University of North Carolina; Graduate, Maria Ouspenskaya Studio of Dramatic Art.

GERTRUDE ISIDORE, Professor, Music 1925

Artist Diploma, Post Graduate Diploma with Distinction, Cincinnati Conservatory of Music; Pupil of Tirindelli, Albert Stoessel, Robert Perutz, George Leighton, Edgar Stillman-Kelly; Violin and Theory, American Conservatory, Fontainebleau, France; Musicology, Marion Bauer, Cincinnati Conservatory of Music.



ARTHUR L. KANAK, Associate Professor and Artist in Residence, Art 1953

A.B., M.F.A., State University of Iowa; Graduate work in painting, drawing, and prints, State University of Iowa.



KENNETH V. KINCHELOE, Professor, Music, and Chairman of the Department 1959

B.Mus., University of Michigan; M. Mus., University of Michigan; D.Mus., Chicago Musical College.



MILDRED D. KOHLSTEDT, Librarian 1931

A.B., Northwestern University; M.A., University of Illinois.



MARGARET LINDSAY*, Associate Professor, Home Economics 1948

A.B., College of Emporia; A.M., University of Chicago; Graduate work, Columbia University, University of Minnesota, Iowa State University, Penland Handicraft School, Oregon State, Miami University, Ecole Guerre Labigne, Paris, France.



*Exchange Teacher, Bishop Otter College in England, second semester, academic year 1960-61



OZAN MARSH, *Concert Pianist in Residence, Music* 1957

Cum Laude, Fontainebleau School (France); Graduate study, Cornell University with Egon Petri; European study with Emil Sauer and Robert Casadesu. Appearances with New York Philharmonic, San Francisco, Indianapolis, St. Louis, and Boston Symphony orchestras.



JULIET KEY MCCRORY, *Associate Professor, Speech, and Chairman of the Department* 1943

B.S., University of Alabama; Ph.M., University of Wisconsin; Graduate work, Columbia University, University of Southern California.



JOHN B. MOORE, *Professor, Economics, and Chairman of the Department* 1950

A.B., Westminster College; M.A., University of Missouri; Graduate work, University of Michigan; Ph.D., University of Missouri.



FERN PALMER, (*Mrs. Groff Bittner*), *Instructor, Physical Education* 1957

B.S., Lindenwood College.



ALICE PARKER, *Professor, English* 1928

B.S., M.A., University of Missouri; Honorary Fellow, Graduate School, and Ph.D., Yale University.

FRANKLIN E. PERKINS, *Instructor part-time,
Music* 1959

B.A., Juniata College; M.Sa.Mus., Union Theological
Seminary; Pupil of Catherine Crosier, Hugh Porter,
John Huston, Alec Wyton.



EMMA PURNELL, *Associate Professor, Office
Management, and Chairman of the Depart-
ment* 1955

B.A., M.A., Washington University.



MARION DAWSON RECHTERN, *Professor,
Biological Science* 1936

A.B., University of Wisconsin; M.S., Northwestern
University; Ph.D., Cornell University; Phi Beta
Kappa.



MILTON F. REHG, *Associate Professor, Music*
1946

B.M., Eureka College; B.A., M.A., Columbia Univer-
sity; Pupil of Fraser Gange and Frank LaForge;
Piano with Oscar Wagner of Juilliard School of
Music; Student at University of Munich; Operatic
repertoire with Gerhard Husch of the Berlin State
Opera.



PHYLLIS P. RICE (Mrs. Doyle K.), *Assistant
Professor, English* 1959

A.B., Arkansas Polytechnic College; M.A., Univer-
sity of Arkansas; Graduate work, University of
Illinois.





DOROTHY ROSS, Professor, Physical Education, and Chairman of the Department 1946

B.S., Central Missouri State College; M.A., Colorado State College of Education; Graduate work, Indiana University.



AGNES SIBLEY, Associate Professor, English 1943

B.A., M.A., University of Oklahoma; Ph.D., Columbia University.



LANORE SOGARD, Instructor, Psychology, and Director of Nursery School 1960

B.S., Iowa State University; Graduate work, University of Tennessee; M.S., Kansas State University.



ALLEGRA SWINGEN, Associate Professor, Music 1946

B. Mus., M.Mus., Chicago Musical College.



MARY TALBOT, Professor, Biological Science, and Chairman of the Department 1936

B.S., Denison University; M.A., Ohio State University; Ph.D., University of Chicago; Stone Biological Laboratory; Michigan Biological Laboratory.

MARY TERHUNE, *Professor, Modern Languages*, and Chairman of the Department

1926

A.B., Western College; M.A., Columbia University; D.M.L., Middlebury College; Diploma de Suficiencia, Centro de Estudios Historicos, Madrid; Graduate work, Universite de Grenoble, France, and Buenos Aires, Argentina.



WILLIAM WEST THOMAS, *Instructor, Philosophy and Religion*

1960

B.A., Washington and Lee University; B.D., Yale University; Graduate work, Duke University.



HAZEL M. TOLIVER, *Professor, Classics*, and Chairman of the Department

1957

B.A., M.A., University of Arkansas; Ph.D., State University of Iowa.



BREMEN VAN BIBBER, *Professor, Education*, and Chairman of the Department

1951

B.S., Southeast Missouri State College; M.Ed., University of Missouri; Graduate work, University of Missouri, Washington University.



IRENE VAN BIBBER (*Mrs. Bremen*), *Assistant Professor, Home Economics*

1953

B.S., Southeast Missouri State College; M.Ed., University of Missouri; Graduate work, Colorado State College of Education, Cornell University.





PEARL WALKER, *Professor, Music* 1934

A.B., University of Illinois; M.M., Chicago Musical College; M.A., Columbia University Teachers College Professional Diploma; Pupil of Herbert Witherspoon, Bernard Taylor, Conrad von Bos; European study (4 years); Juilliard School of Music.



HARRIET COWLES WALLER (Mrs. W. E.),
Instructor, Modern Languages 1958

A.B., Vassar College; Diplôme d'études, University of Montpellier, France; A.M., University of Chicago.



JOHN H. WEHMER, *Instructor, Art* 1959

B.F.A., Washington University; Graduate work, University of Illinois.

"Lindenwood has exceptional faculty morale and co-operation. As a group we are proud of each other, glad of each other's successes. This is not just a matter of correct professional etiquette. We come to know each other pretty well and, though we are happily diverse in interests and temperament and background, we maintain a harmonious emotional climate. Since we are human, there are touchy spots occasionally, but these are met with understanding and forbearance."

From a letter to Dr. McCluer written by Dr. Alice Parker.

Education is a Process

The heart of the educational process is the teacher. The production time for a good college teacher is a matter of years and can only be developed from the top levels of ability and preparation. Educational institutions reach the summit of greatness only by long and arduous efforts. And education is an increasing-cost industry—expenditures per student on a constant dollar basis have risen substantially over the years. Today educational facilities provided for the students are *more extensive and expensive*.

Education is one of the few products that sells for less than it costs. The combined income from tuition fees and endowments is not enough to absorb the cost of educating the student. The deficiency can be made up only through *increases in tuition*, and by *additions to the endowment*, and through *increases in the number and amount of gifts*.

In the years ahead, some increase in tuition may be indicated—but if these increases approach or reach a level sufficient to pay the full costs of operation, they break faith with the private donors who have contributed to the endowment funds in order to provide education at less than cost.

Largely because of low tuition charges, faculty salaries have not kept pace with the salary levels in business and industry. Dedicated faculties throughout the whole field of higher education have existed on low salaries in order that the student be given a good education.

In order to induce qualified persons to enter the teaching profession, salary levels must be raised.

Lindenwood, like most colleges today, feels the squeeze between income and outgo and faces the necessity of increases in faculty salaries, the total of which represents the most important cost in higher education.

Lindenwood College is dedicated to continued excellence in education. This price is high and will inevitably rise. Even so, Lindenwood cannot settle for wasteful ineffectiveness of educational mediocrity. Lindenwood College will continue to give the best education it can to the ablest students it can find.

Visitors to the college are welcome, and guides are available. The administrative offices in Roemer Hall are open Monday through Friday from 8:30 a.m. to 4:30 p.m., and by appointment until noon on Saturday.

Address all communications to:

LINDENWOOD COLLEGE
SAINT CHARLES, MISSOURI

"If we work upon marble, it will perish. If we work upon brass, time will efface it. If we rear temples, they will crumble to dust. But if we work upon men's immortal minds, if we imbue them with high principles, with the just fear of God and love of their fellow men, we engrave on those tablets something which no time can efface, and which will brighten and brighten to all eternity."

Daniel Webster
Speech at Faneuil Hall, 1852



Above: **MARGARET LEGGAT BUTLER LIBRARY**

**LILLIE P. ROEMER FINE ARTS BUILD-
ING**—*Music and Art studios and classrooms;
KCLC, the Lindenwood radio broadcasting
station.*

