

Lindenwood University

Digital Commons@Lindenwood University

Yearbooks

Lindenwood University Archives

1945

1944-1945 Linden Leaves

Lindenwood College

Follow this and additional works at: <https://digitalcommons.lindenwood.edu/yearbooks>

Recommended Citation

Lindenwood College, "1944-1945 Linden Leaves" (1945). *Yearbooks*. 47.
<https://digitalcommons.lindenwood.edu/yearbooks/47>

This Book is brought to you for free and open access by the Lindenwood University Archives at Digital Commons@Lindenwood University. It has been accepted for inclusion in Yearbooks by an authorized administrator of Digital Commons@Lindenwood University. For more information, please contact phuffman@lindenwood.edu.

1945



Ex Libris
LINDENWOOD COLLEGE

Founded by
MAJOR GEORGE C SIBLEY
and
MARY EASTON SIBLEY

1 8 2 7

The Gift of
Lindenwood College
Annual Staff
1945

LINDEN LEAVES

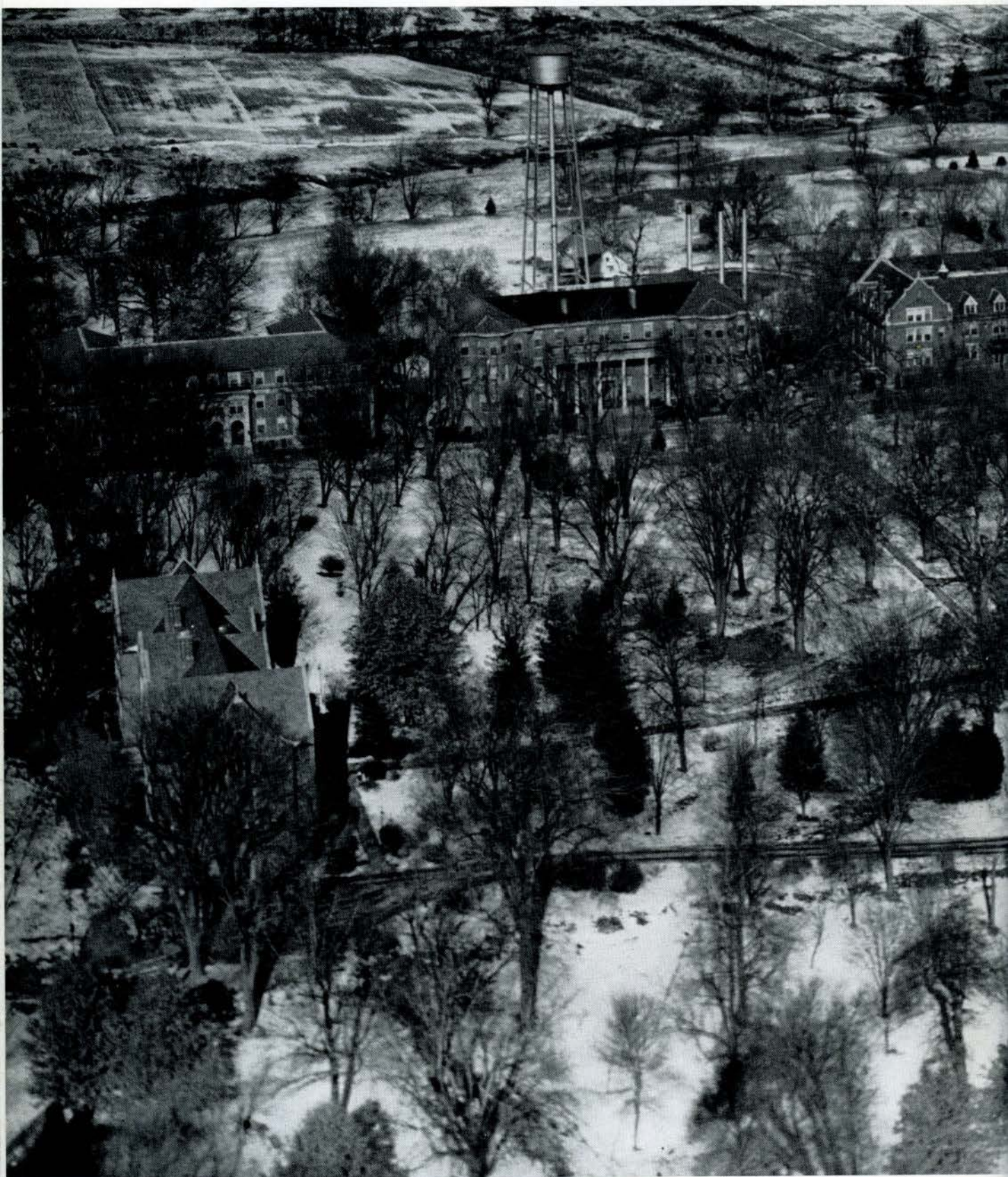
378L

1945



EDITOR-IN-CHIEF CLARA MAE LANDBERG
BUSINESS MANAGER LYNN JACKSON
ADVERTISING MANAGER DOROTHY HEIMROD

29733

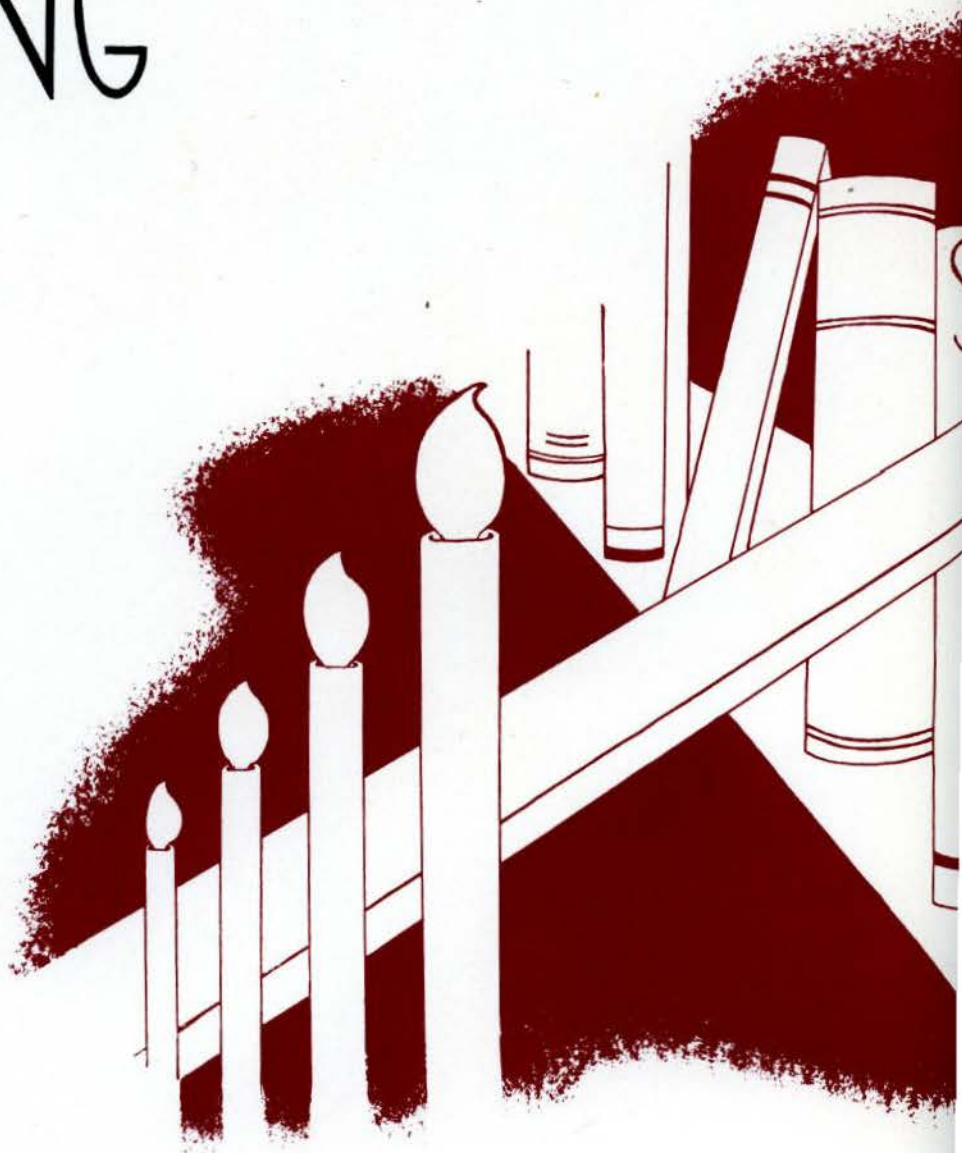


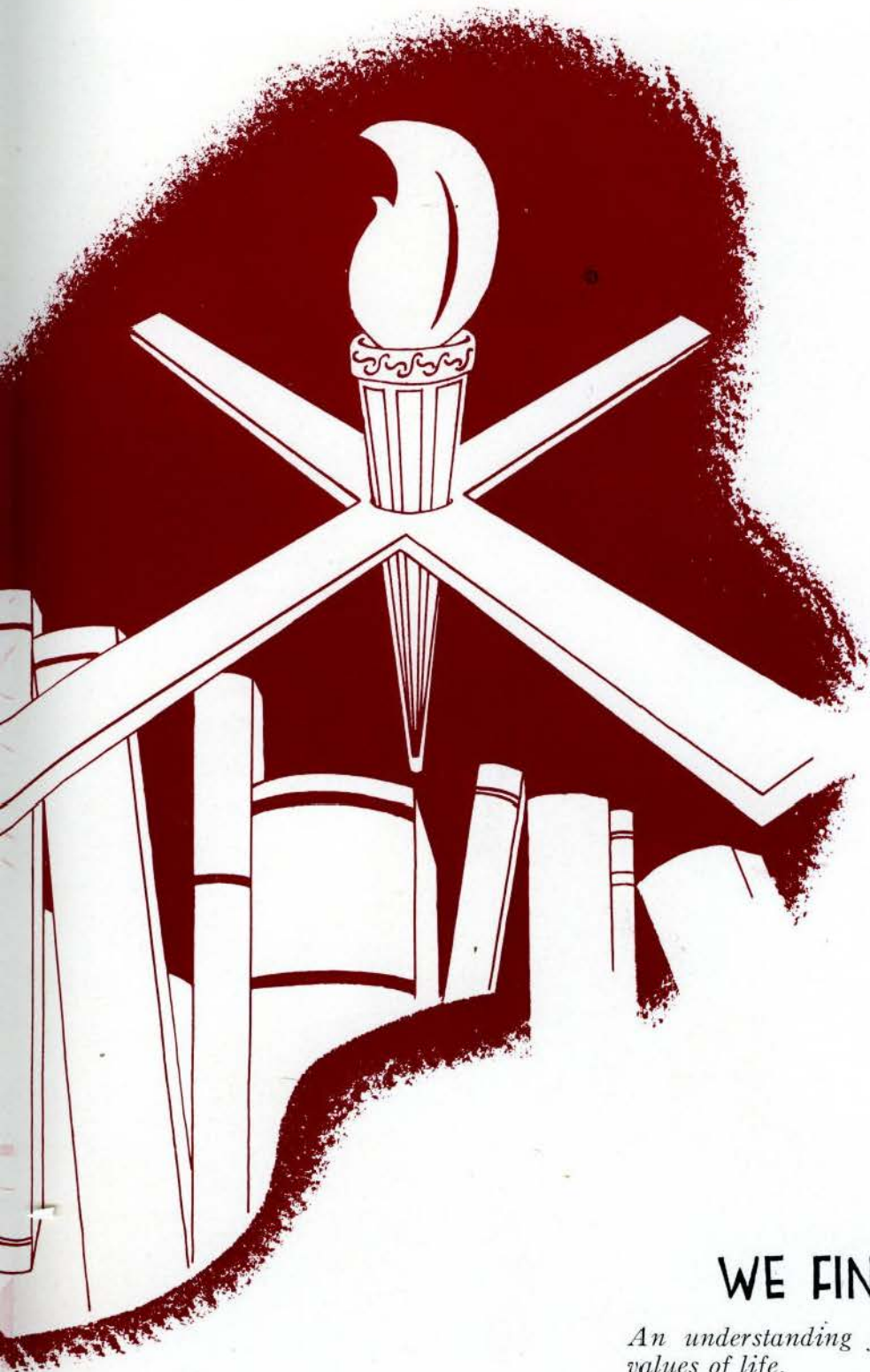
LINDENWOOD



FROM THE SKY

LINDENWOOD LIVING



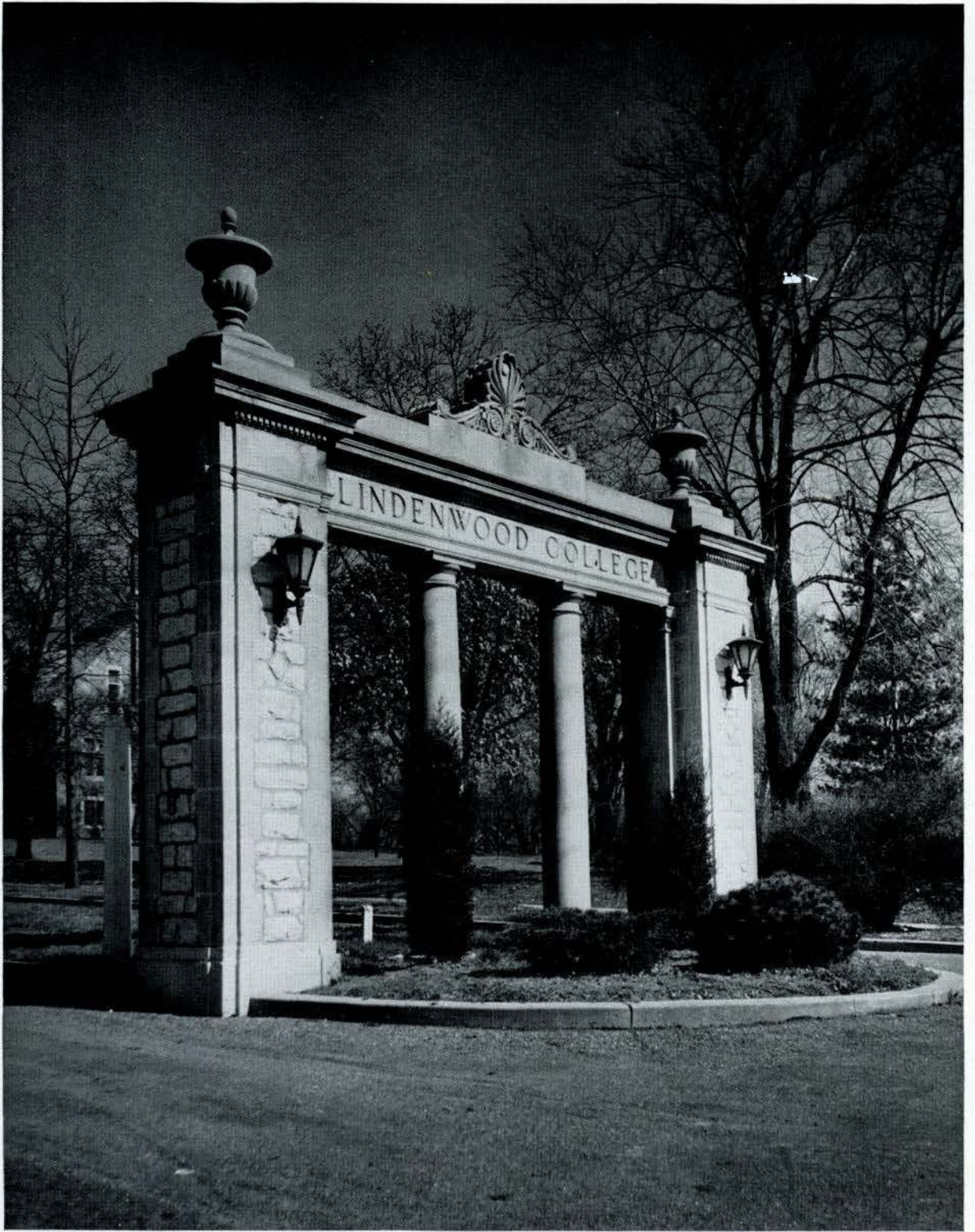


WE FIND HERE

An understanding faith in the spiritual values of life.

The application of our knowledge to the making of a better world for ourselves and succeeding generations.

A consideration for others through gracious and refined personalities.



LINDENWOOD GATES



CONTENTS

ADMINISTRATION AND FACULTY

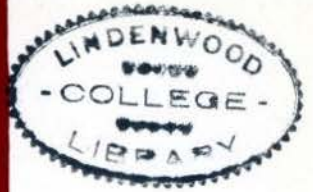
STUDENTS

ORGANIZATIONS, ACTIVITIES, COURTS

CAMPUS

ADMINISTRATION
AND
FACULTY





WE LOOK TO YOU

To direct our Lindenwood Living into more useful and constructive channels.

To help us utilize our training in assuming international responsibility.

To expand our cultural, spiritual, and intellectual lives.



DR. HARRY MOREHOUSE GAGE
President
Lindenwood College



DR. ALICE E. GIPSON
Dean
Lindenwood College



DR. MARIE FINGER
Director of Student Guidance and Personnel



MISS MARY MILLER
Assistant Director of Student Guidance and Personnel



MR. GUY C. MOTLEY
Assistant to the President
Lindenwood College



MISS ETHEL B. COOK
Bursar
Lindenwood College

FACULTY



GRACE G. ALBRECHT
A.B., M.C.S.
Commercial Subjects

JESSIE S. BERNARD
A.B., M.A., Ph.D.
Sociology

L. L. BERNARD
B.S., A.B., Ph.D.
Sociology

LOIS MANNING BURKITT
B.M.
Public School Music

CHARLES C. CLAYTON
B.J.
Journalism

HOMER CLEVINGER
B.S., M.A., Ph.D.
History and Government

JANET COULSON
B.M., B.M.E., M.M.
Piano

ELIZABETH DAWSON
A.B., M.A., Ph.D.
English

MARION LUCILE DAWSON
A.B., M.S., Ph.D.
Biological Science

FACULTY



MAUDE LEE DORSEY
B.S., M.S.
Home Economics

WILHELMINA FEEMSTER
A.B., A.M., Ph.D.
History

DORIS P. GIESELMAN
B.M.
Voice

EVA ENGLEHART DOUGLAS
B.S., B.F.A., Mus.M.
Piano

PAUL FRIESS
Artist
Organ

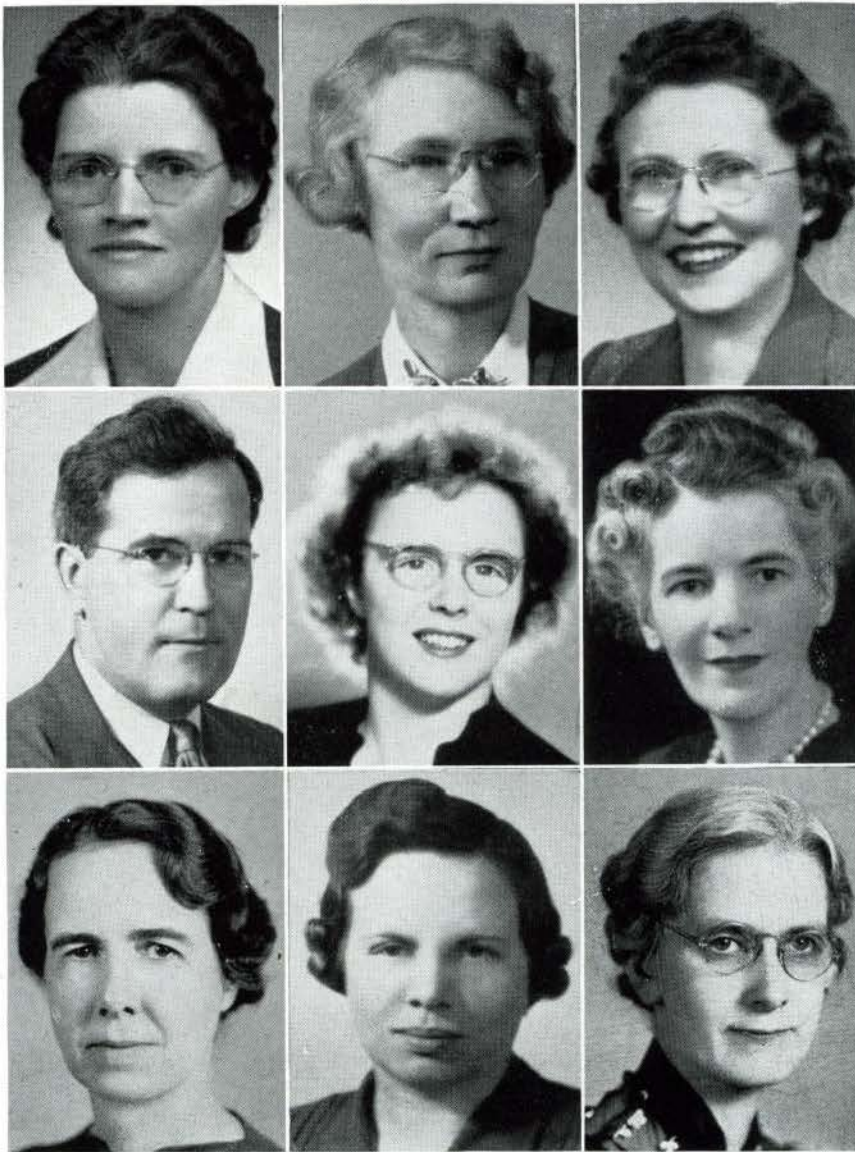
ALICE E. GIPSON
A.B., Ph.D.
English

WILLIAM EICKHORST
B.S., M.A.
Modern Languages

RAYMOND L. GARNETT
Ph.D.
Education

MARY MCKENZIE GORDON
A.B., B.L.I., M.A.
Speech and Dramatics

FACULTY



CAROLYN S. GRAY
A.B., B.S., M.A.
Chemistry

KATE L. GREGG
A.B., Ph.D.
English

KATHRYN HANKINS
A.B., B.S., M.A.
Classical Languages and Literature

LLOYD B. HARMON
A.B., D.B., Ph.D.
Bible and Philosophy

ELIZABETH ISAACS
A.B., M.A.
English

GERTRUDE ISIDOR
Artist
Violin and Theory

LOIS KARR
A.B., M.A.
Mathematics and Physics

MILDRED D. KOHLSTEDT
A.B., M.A.
Library Science

MARY E. LEAR
A.B., B.S., M.A.
Chemistry

FACULTY



MADAME HELENE LYOLENE
Visiting Consultant in Design

MARY ELIZABETH McCOY
A.B.
Physical Education

JULIET KEY McCRORY
B.S., Ph.M.
Speech

FLETCHER GUY McMURRY
A.B., B.F.A.
Music

RACHEL M. MORRIS
A.B., M.A.
Sociology and Psychology

CHARLES R. ORR
A.B., M.A.
Speech

ALICE PARKER
B.S., M.A., Ph.D.
English

LILLIAN RASMUSSEN
A.B.
Art

KAREN RUGAARD
A.B.
Home Economics

FACULTY



ELVA JANE SEAVEY
B.A., M.A.
Art

MARY ALPHA SHEAHAN
A.B., M.A.
Commercial Subjects

AGNES SIBLEY
B.A., M.A.
English

FERN STAGGS
B.S., M.A.
Home Economics

MARY TALBOT
B.S., M.A., Ph.D.
Biological Science

MARY TERHUNE
A.B., M.A., D.M.L.
Modern Languages

JOHN THOMAS
Mus.B., Mus.M., Ph.D.
Piano

MARGUERITE VER KRUZEN
A.B., M.S.
Physical Education

PEARL WALKER
A.B., M.M., M.A.
Voice

FACULTY



LILLIAN WERNDLÉ
A.B., M.S.
Biological Science

ANNA WURSTER
B.S., M.S.
French

HELEN LOUISE YOUNG
A.B.
Riding

MRS. MINNA ARENDS
Head Resident Sibley Hall

MRS. ADELE K. BELDING
Assistant Secretary

LEOLA BURFORD
Assistant Dietitian

GEORGE A. WORKS
Consultant

HORTENSE F. EGGMAN
Assistant Librarian

ARABELLE FOSTER
Dietitian

FACULTY



ELIZABETH J. HALL
Secretary to Director of Student
Guidance and Personnel

MILDRED HERCULES
Secretary to Accounting
Department

DELPHIA HIRSCH
Postmistress

MABEL HOLT
Head Resident Niccolls Hall

ANNA L. MOTTINGER
Head Resident Irwin Hall

HARRY P. ORDELHEIDE
Superintendent, Department of
Buildings and Grounds

MRS. MARY O'REAR
Head Resident Butler Hall

EVA SAYRE
Head of the Health Center

MRS. LILLIAN SIEDHOFF
In College Secretary's Office

FACULTY



MRS. I. J. STANLEY
Head Resident Ayres Hall

DR. F. J. TAINTER
College Physician

MRS. AMY WAGNER
Postmistress

CORA WAYE
Assistant Bursar

MRS. AGNES ZEISLER
Secretary to the President

ESTEEN LINHOFF
Tea Room Manager

STUDENT COUNCIL

The Student Council, organized in 1940, has been successful in promoting the welfare of the students through wise and efficient leadership. This representative group realizes that wholesome Lindenwood Living can emerge only through democratic self-government.

This year, in addition to their official activities, the Student Council sponsored several "Open House Hours" in the Library Club Room. The group gave Christmas presents to the Lindenwood Family, participated in the Book Exchange and the World Student Service Fund, sponsored a Red Cross canteen service at Smart Field, and entertained the entire student body with an enjoyable spring party.

The Student Council has the appreciation of all Lindenwood girls for its responsible administration of their affairs.

OFFICERS

President—JACQUELINE SCHWAB
Vice-President—ELIZABETH FRANKE
Secretary-Treasurer—PEGGY PROCTOR
Senior Representative—HELEN BARTLETT
Junior Representative—MARY RUTH PLATT
Sophomore Representatives—DORIS JONES
CELESTE SALVO
Freshmen Representatives—PAT LLOYD
JOANNE SWANSON
Residence Council Representative—RUTH NEEF

Seated: Salvo, Neef, Swanson, Schwab, Lloyd
Standing: D. Jones, Bartlett, Proctor, Franke, Platt





First row: Hempelman, J. Crawford, Wertz, Jacobson, Neef, Gilreath, Nathan, Latherow, Heob
 Second row: Woolsey, Pierson, Battenfield, B. Moore, Budge, P. Evans, Roark, Marts, Eastwood, Young

RESIDENCE COUNCIL

The Residence Council administers efficient, democratic, and intelligent supervision of the dormitories at Lindenwood. Through this council the Personnel staff, the Student Council, and other administrative organizations make suggestions for the students' campus living.

Student welfare has been improved through open discussions of dormitory problems and through promotion of democratic and thoughtful relations in the halls and on campus. The students also make their wishes known to the administration through this agency.

The Residence Council has helped promote college spirit by sponsoring various activities

such as "Fun Hours" during examination week and coke parties in the spring.

RESIDENCE COUNCIL OFFICERS

President RUTH NEEF
 Secretary . . . EDNA-MARY JACOBSON

RESIDENCE HALL PRESIDENTS

Ayres Hall—POLLY WOOLSEY
 Butler Hall—RUTH NEEF
 Irwin Hall—JOANNE CRAWFORD
 Nicolls Hall—BETTY JANE MOORE
 Sibley Hall—MARTHANN YOUNG
 Senior Hall—MARJORIE ALLEN
 (1st semester)
 VIRGINIA GILREATH
 (2nd semester)

Y. W. C. A. COUNCIL

Through the Y. W. C. A., the Christian association on campus, members emphasize the need for religious living in college. The meetings this year consisted of interesting and thought-provoking panels, forums, and addresses of guest speakers. Dr. Mulford Sibley of the University of Illinois spoke on "A Christian Peace," and Paul Harris spent a day at the college discussing Christianity and international relationships.

The Y. W. C. A. also sponsored many important campus activities throughout the year. To adjust the freshmen to campus life, they again promoted the Big-Little Sister program under the direction of Dorothy Heimrod. At Thanksgiving the Lindenwood girls took up a collection which was given by the Y. W. C. A. to Markham Memorial, Farmington Orphanage, Missouri School for the Blind, The School of the Ozarks, and the Red Cross. As a Christmas project the Y. W. C. A. had a doll contest, the entries of

which were given to Markham Memorial. During the Lenten season the organization planned for the presentation of sacred music at each Friday chapel service. With the significance of Spiritual Emphasis Week defined in its theme, "Religion and the World Order," the Y. W. C. A. sponsored a symposium at a March Vesper program consisting of Rabbi Isserman, Father Wade, and Dr. Frank Hall.

The social activities of the Y. W. C. A. included a formal tea given in January and a street supper and bonfire sing in May.

OFFICERS

President—VIRGINIA GILREATH
Vice-President—DONALEE WEHRLE
Secretary—RUTH NEEF
Treasurer—MINOTA BAYLISS
Sponsor—MISS RACHEL MORRIS

First row: Wehrle, Gilreath, Bayliss, Neef

Second row: Heimrod, Rozyskie, E. Murphy, Wertz, Schroer, Hudson, McLean



SENIORS





WE SEE AHEAD

A confused and disordered world demanding the foresight of youth.

The necessity for testing and proving our Lindenwood ideals.

Our opportunity to participate in international affairs through the channels opened by Lindenwood Living.



Seated: Proctor, Wertz
Standing: J. Crawford, Jackson

SENIOR CLASS OFFICERS

After four years of college life we seniors feel more adequately prepared to accept the responsibilities of the future. No longer can we look forward to a certain and planned course of action. We now begin to realize that we must use our own initiative and acquired skills in determining our plans as international citizens.

Memorable occasions throughout our years of Lindenwood Living have been many and varied, with Miss Janet Coulson as our able

sponsor. As freshmen we recognized the need for assisting in the civilian defense plans of the college by sponsoring defense recreation classes. Not forgetting our social activities, we provided the Hallowe'en Court and selected our attendants to the May Queen. Our sophomore year included such outstanding events as the treasure hunt for the seniors, our sister class, and our dinner at the Statler Hotel followed by the enjoyable play, "Junior Miss," at the American

Theater. Promotion to the junior class widened and increased our interests, activities, and academic duties on the campus. Social highlights of that year were our barn dance entertainment for the freshmen, our class party in St. Louis, consisting of dinner and the musical play, "Porgy and Bess," and finally our luncheon for the seniors.

Throughout these years we have always been looking forward to our senior year which now seems to us the most outstanding. We shall always "remember" our formal dance and buffet supper in the Library Club Room with service men from Scott Field as our guests; the sophomores' treat of an enjoyable theater party; our "skip day" which provided fun but fatigue for all of us; the faculty party where we relived the days of the Charlie Chaplin movies; the traditional senior street supper and carnival; our class day assembly when we "willed" and "bequeathed"

to the juniors our most valued possessions; the festive May Day program with Jacqueline Schwab, our class member, as the Queen, attended by our seniors, Marjorie Green and Betty Roark; and finally our senior assembly when we "pinned" our class ribbons on the junior successors, completely and entirely surrendering our senior rank and title. Commencement activities climaxed and concluded four years of happy associations, profitable experiences, and pleasant memories of Lindenwood Living.

OFFICERS

President—BARBARA WERTZ

Vice-President—PEGGY PROCTOR

Secretary—JOANNE CRAWFORD

Treasurer—LYNN JACKSON

Sponsor—MISS JANET COULSON

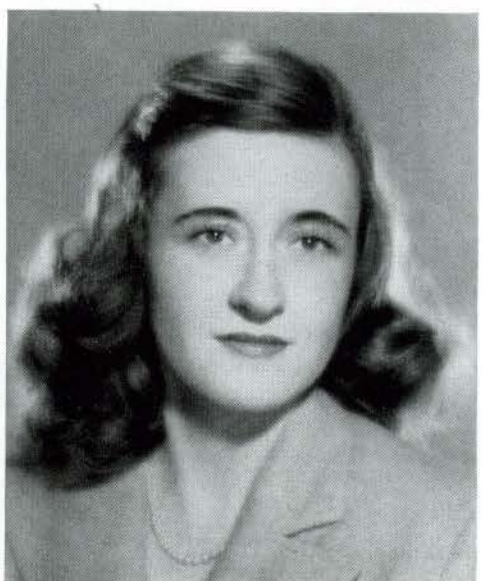
ALDRIDGE, MARY LETHA
Major—Elementary Education
Degree—B.S.
Evansville, Indiana

BAYLISS, MINOTA MARGUERITE
Major—Speech, English
Degree—B.A.
Wauwatosa, Wisconsin

BARTLETT, HELEN
Major—Physical Education
Degree—B.S.
Wheaton, Illinois

CRAWFORD, JOANNE MARSHALL
Major—Sociology
Cedar Rapids, Iowa

SENIORS 1945





SENIORS 1945

GILLETTE, MARY LOU
Major—Elementary Education
Degree—B.S.
O'Fallon, Missouri

GREEN, MARJORIE ELIZABETH
Major—Psychology
Degree—B.S.
Oklahoma City, Oklahoma

GILREATH, VIRGINIA
Major—Elementary Education
Degree—B.S.
Kellogg, Iowa

HEIMROD, DOROTHY
Major—Psychology, Sociology
Degree—B.A.
Omaha, Nebraska

JACKSON, MARY LYNN
Major—Psychology
Degree—B.A.
Blytheville, Arkansas

LANDBERG, CLARA MAE
Major—Chemistry
Degree—B.A.
Ft. Thomas, Kentucky

JACOBSON, EDNA-MARY
Major—Home Economics
Degree—B.S.
Grand Haven, Michigan

MITTON, MARY SHIRLEY
Major—Economics, Psychology
Degree—B.A.
East Tawas, Michigan

SENIORS 1945





SENIORS 1945

MOORE, DOROTHY JANE
Major—Economics
Degree—B.S.
Ralls, Texas

NICKELL, FLORENCE CLAIR
Major—Psychology, Sociology
Rothville, Missouri

NEEF, RUTH JOANNE
Major—Psychology
Degree—B.S.
Omaha, Nebraska

PAINTER, RUTH ALMIRA
Major—Art
Degree—B.A.
West Lafayette, Indiana

PROCTOR, PEGGY ATWATER
Major—Sociology
Degree—B.A.
Sullivan, Missouri

RANSOM, EARLENE
Major—History
Degree—B.A.
Norfolk, Nebraska

RITTER, ELNOR
Major—Biological Science
Degree—B.A.
St. Charles, Missouri

ROARK, BETTY FRANCES
Major—Voice, Theory of Music
Degree—B.M.
Tulsa, Oklahoma

SENIORS 1945





SENIORS 1945

SCHENK, MARIE LOUISE
Major—Elementary Education
Degree—B.S.
Kirkwood, Missouri

SCHROER, BETTY JEAN
Major—Sociology, Psychology
Degree—B.A.
St. Charles, Missouri

SCHWAB, JACQUELINE
Major—Home Economics
Degree—B.S.
Oklahoma City, Oklahoma

SHAEFFER, DOROTHY ELLEN
Major—Public School Music
Degree—B.M.
Herrin, Illinois

STANZE, HILDAGARDE
Major—Spanish, History
Degree—B.A.
St. Louis, Missouri

SWEET, VERA LANGENBACHER
Major—Sociology
Degree—B.A.
St. Louis, Missouri

WATLINGTON, FRANCES EDITH
Major—Elementary Education, History
Degree—B.S.
Texarkana, Texas

WEHRLE, DONALEE
Major—Home Economics
Degree—B.S.
Eureka, Missouri

SENIORS 1945





SENIORS 1945

WERTZ, BARBARA JEANNE
Major—Biological Science
Degree—B.A.
Evansville, Indiana

YOUNG, MARTHANN
Major—Biological Science
Degree—B.A.
Marion, Iowa

WOOLSEY, POLLY ELISE
Major—Art
Degree—B.A.
Lakewood, Ohio

ZIERN, NADINE
Major—Art
Degree—B.A.
St. Louis, Missouri

Not Pictured:
GALLAGHER, GERALDINE
Major—Elementary Education
Degree—B.S.
St. Louis, Missouri



ALDRIDGE, MARY LETHA

Indiana Club; Future Teachers of America, Vice-President '44-'45; League of Women Voters; International Relations Club; Baptist Student Union.

BARTLETT, HELEN

Der Deutsche Verein, Treasurer '41-'42, Secretary-Treasurer '42-'43, Athletic Association, Vice-President '43-'44, Secretary '45; Terrapin; Future Teachers of America; Illinois Club; Press Club; Popularity Court '43-'44; *Linden Leaves* Staff '44-'45; two school plays; Student Council Representative '44-'45.

BAYLISS, MINOTA MARGUERITE

Beta Chi; Athletic Association; Sophomore Class Council; Poetry Society, President '44-'45; Alpha Psi Omega, Vice-President '43-'45; six school plays; Student Counselor; Children's Theater of the Air; Advisory Council on Religion; Y. W. C. A. Council, Treasurer '44-'45.

CRAWFORD, JOANNE MARSHALL

International Relations Club; Irwin Hall President '44-'45; Residence Council '44-'45; Senior Class Secretary.

GALLAGHER, GERALDINE

International Relations Club; Future Teachers of America.



GILLETTE, MARY LOU

El Circulo Espanol; League of Women Voters; Day Students, President '44-'45; Future Teachers of America, Secretary '44-'45; Alpha Sigma Tau.

GILREATH, VIRGINIA

Residence Council '41-'42, '44-'45; Athletic Association; Student Council Representative '42-'44; International Relations Club, Secretary-Treasurer '42-'43; Future Teachers of America; Press Club; *Linden Leaves* Staff '43-'45; Red Cross Board '44-'45; Student Counselor; Advisory Council on Religion; Student Activities Committee; Sociology Club; Popularity Court '44-'45; Y. W. C. A. Council, President '44-'45; *Who's Who in Colleges* '44-'45.

GREEN, MARJORIE ELIZABETH

Encore Club; Oklahoma Club; International Relations Club; Advisory Council on Religion; Commercial Club, President '44-'45; Sociology Club; Red Cross Board, Treasurer '44-'45; Press Club, President '44-'45; Student Counselor; *Linden Leaves* Staff '44-'45; Popularity Court '44-'45; May Court Attendant '43-'45.

HEIMROD, DOROTHY

International Relations Club, President '43-'44; Commercial Club, Vice-President '43-'44; Nebraska Club; Sociology Club; *El Circulo Espanol*; Triangle Club, Treasurer '44-'45; Student Council Representative '42-'43; Popularity Court '42-'43; Maid of Honor '44-'45; Y. W. C. A. Council '43-'45; Advisory Council on Religion; Press Club; Student Counselor; Chairman of Big-Little Sister Organization '44-'45; *Linden Leaves* Staff '43-'44; Advertising Manager '44-'45.



JACKSON, MARY LYNN

Sigma Tau Delta, President '43; Alpha Sigma Tau; Triangle Club, Secretary-Treasurer '43-'44; Athletic Association; International Relations Club; Sophomore Class Vice-President; Junior Class Vice-President; Y. W. C. A. Council, Vice-President '43-'44; Advisory Council on Religion; Pi Gamma Mu, Secretary-Treasurer '44-'45; Residence Council, Vice-President '43-'44; Press Club; Beta Chi; Student Counselor; Sociology Club; Alpha Kappa Delta; Senior Class Treasurer; Maid of Honor to May Queen '43-'44; *Linden Leaves* Staff '43-'44, Business Manager '44-'45; Popularity Court, Maid of Honor '43-'44, Queen '44-'45.

JACOBSON, EDNA-MARY

Home Economics Club; *Linden Leaves* Staff '42-'43; Press Club; International Relations Club; *Linden Bark*; Residence Council, Secretary '44-'45.

LANDBERG, CLARA MAE

Alpha Sigma Tau, Secretary-Treasurer '43-'44; Sigma Tau Delta; Athletic Association, Treasurer '43-'44; Terrapin; International Relations Club, Secretary-Treasurer '43-'44; Y. W. C. A. Council, Secretary '43-'44; Sociology Club; Advisory Council on Religion; Press Club; *Der Deutsche Verein*; Triangle Club; Student Counselor; Army Brats, President '43-'44; Popularity Court '44-'45; Pi Gamma Mu; *Linden Leaves* Staff '43-'44, Editor '44-'45; *Who's Who in Colleges* '44-'45.

MITTON, MARY SHIRLEY

El Circulo Espanol.

MOORE, DOROTHY JANE

Commercial Club; International Relations Club; League of Women Voters; Pi Gamma Mu.

NEEF, RUTH JOANNE

League of Women Voters; Sigma Tau Delta; Commercial Club; Y. W. C. A. Council, Secretary '44-'45; Advisory Council on Religion; Butler Hall President '44-'45; Residence Council, President '44-'45; Pi Gamma Mu; Popularity Court '44-'45.

NICKELL, FLORENCE CLAIR

El Circulo Espanol; Athletic Association, Secretary '44-'45; International Relations Club, Secretary-Treasurer '44-'45; Y. W. C. A. Council '44-'45; Advisory Council on Religion; Student Counselor; Red Cross Board '44-'45.

PAINTER, RUTH ALMIRA

League of Women Voters; Future Teachers of America; Indiana Club, President '44-'45.



STANZE, HILDAGARDE

Triangle Club; Pi Alpha Delta; Alpha Sigma Tau; Pi Gamma Mu; International Relations Club; *El Cirulo Espanol*, President '44-'45.

SWEET, VERA LANGENBACHER

Home Economics Club; Encore Club; *El Circulo Espanol*; Pi Gamma Mu; Alpha Kappa Delta.

WATLINGTON, FRANCES EDITH

Future Teachers of America; Alpha Sigma Tau; Pi Gamma Mu.

WEHRLE, DONALEE

Encore Club, President '43-'44; Home Economics Club, Vice-President '42-'43, Secretary-Treasurer '43-'44, President '44-'45; Athletic Association; Student Counselor; Future Teachers of America; International Relations Club; Sociology Club; Residence Council '43-'44; Press Club; Junior Class President; Y. W. C. A. Council '43-'44, Vice-President '44-'45; Advisory Council on Religion; Student Clubs of Missouri Home Economics Association, Secretary '44-'45; *Linden Leaves* Staff '43-'45; Red Cross Board, Chairman '44-'45; Popularity Court '43-'45.

WERTZ, BARBARA JEANNE

El Circulo Espaol, Secretary-Treasurer '42-'43; Tau Sigma; Sigma Tau Delta, Treasurer '43-'44; Alpha Sigma Tau; Encore Club; Press Club; Triangle Club; Indiana Club, President '43-'44; *Linden Leaves* Staff '43-'44; Sigma Iota Chi Scholarship '43-'44; Y. W. C. A. Council '44-'45; Residence Council '44-'45; Popularity Court '44-'45; Senior Class President; *Who's Who in Colleges* '44-'45.

WOOLSEY, POLLY ELISE

International Relations Club; League of Women Voters; Athletic Association; Residence Council '42-'43; Popularity Court '43-'44; Ayres Hall President '42-'43, '44-'45; *Linden Leaves* Staff '41-'42, Art Editor '44-'45; Kappa Pi, President '44-'45.

YOUNG, MARTHANN

Poetry Society; League of Women Voters; Sibley Hall President '44-'45; Residence Council '44-'45.

ZIERN, NADINE

Residence Council '41-'42; Alpha Mu Mu; Delta Phi Delta; Poetry Society; Choir, Vice-President '44-'45; Kappa Pi, Secretary '44-'45.

JUNIORS





WE NOW PREPARE

To apply the essentials of Lindenwood Living to our everyday lives.

To meet the problems which confront us with more complete understanding.

To assume the responsibilities of Lindenwood leadership.

JUNIOR CLASS OFFICERS

With the completion of another year we juniors have realized that a college education is not only an asset but also a responsibility. Only through the utilization of our past experiences and training will we be prepared to fulfill our duties as members of the senior class and meet the problems of the future.

With Mr. Fletcher McMurry as our sponsor we have participated in numerous activities throughout the year. We entertained the freshmen in the gym with a coke-and-popcorn party where we danced, sang, and watched amusing skits. We proved our ability as successful hostesses by inviting a group of service men from Scott Field to our annual class party at which

Joan Emons, the mistress of ceremonies, introduced an interesting school-talent show. Our party for the seniors this year included a luncheon at the Statler Hotel and a play at the American Theater.

Montelle Moore represented us as the Maid of Honor to the May Queen, and Betty Jayne Daneman and Joan Emons were our attendants.

OFFICERS

President—MONTELLE MOORE
Vice-President—NANCY PAPIN
Secretary-Treasurer—PAT LATHEROW
Sponsor—MR. FLETCHER McMURRY

Latherow, M. Moore, Papin





ALLEN, RITA MAE

BOUTIN, ALICE ANN

DANEMAN, BETTY JAYNE

dePUY, JOYCE ANN

EAKIN, MARIAN

EASTWOOD, NELL FRANCES

EBERSPACHER, LOUISE IRENE

ELSON, JOAN CLAIRE

JUNIORS 1945

JUNIORS 1945

EMONS, JOAN

FOREMAN, JACKIE

FRANKE, ELIZABETH

GARRETT, JANE LOUISE

GARVIN, JO ANNE

GRAY, ELAINE

HARDIN, ANN PEYTON

HAYNES, ROSA NELL

HEAD, MARY GENE

HEMPELMAN, CAROLYN ELISE





HEOB, DOROTHY

HOBART, PATRICIA LOUISE

HUDSON, HARRIET

KILBURY, ELIZABETH

KING, PEGGY MARIE

KINKADE, MARGARET JANE

KIRK, ELIZABETH ANN

LATHEROW, PATRICIA

LEVY, CAROLINE

LOHR, ELIZABETH JEAN

JUNIORS 1945

JUNIORS 1945

McDONALD, MARY JEANNE

McLEAN, JANE TAYLOR

MITCHELL, VIRGINIA

MOEHLENKAMP, VIRGINIA

MOERSCHEL, VIRGINIA

MOODY, BETTYE LOUISE

MOORE, MONTELLE ELIZABETH

MORGAN, EMMA LEE





MULLINS, EDITH ANN

MURPHY, FAYETTA EILEEN

MURPHY, MARY ELIZABETH

NATHAN, MARY LEE

PAPIN, NANCY BROWN

PARKER, MARY ANN

PAULSON, JEAN LENORA

PETERSON, MARYE LOUISE

JUNIORS 1945

JUNIORS 1945

PLATT, MARY RUTH

RHODES, BETTY

ROBISON, MARILYN

ROUSE, BETTY ANN

ROZYSKIE, VIRGINIA GENEVIEVE

RUNGE, BETTY

RYAN, MERRYL KEITH

SCHATZMAN, JUNE LORRAINE





SHERMAN, SARITA

STAHL, HELEN JOAN

SZILAGYI, MARIE ANNA

TITUS, RUTH LOUISE

ULLERY, BETTY MARIE

WAGNER, MARION GOELLNER

WASHBURN, MARY GWENDOLYN

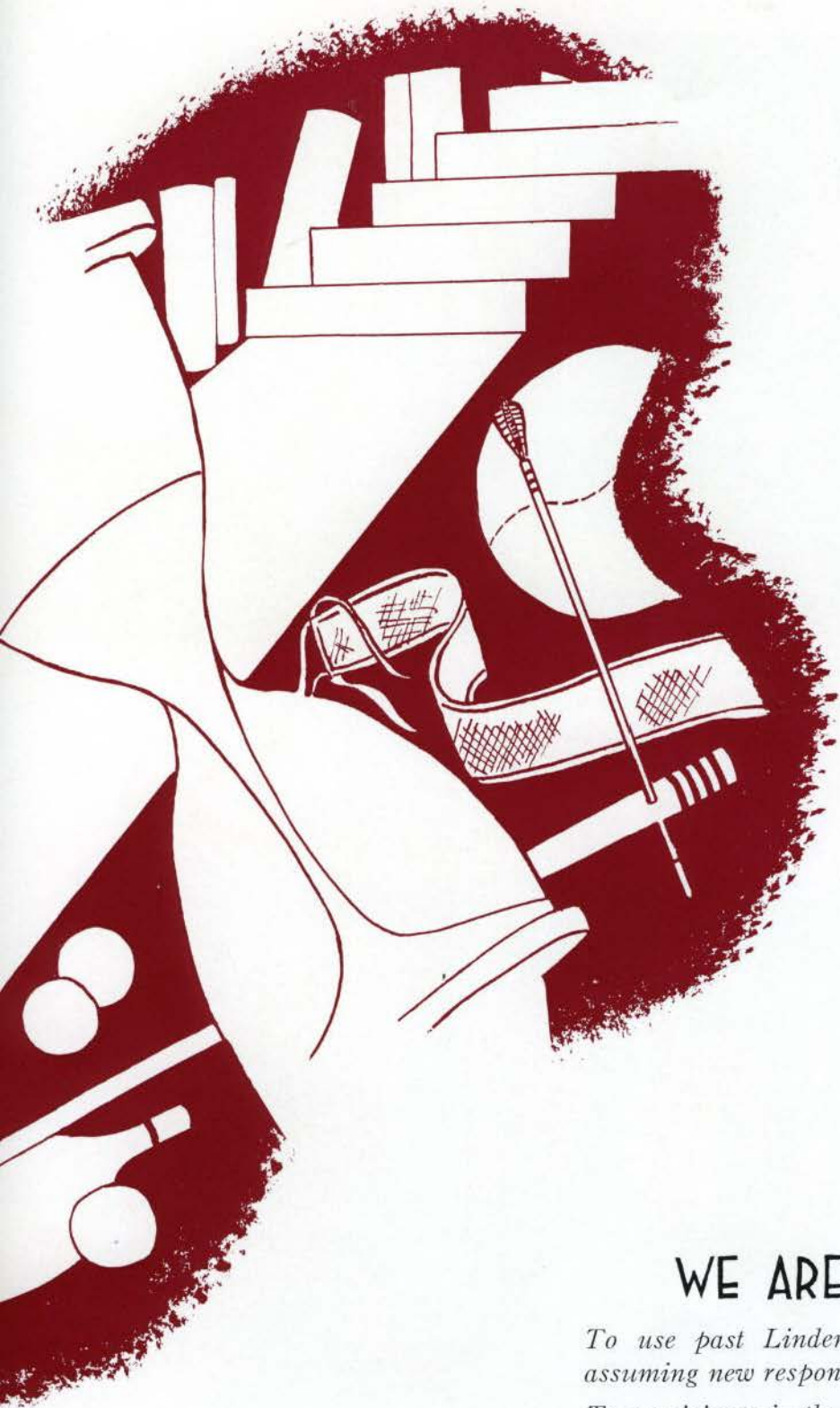
WOOD, DOROTHY ANN

NOT PICTURED: BRINKMAN, MARY MARGARET; CLARK, ELIZABETH ANN; HIRSCH, MARY
CELESTE; MEEKS, MARY ELSIE; STOERY, ELIZABETH RENEE; TABOR, MARY ELIZABETH;
WARNER, MARJORIE JUNE; WILKINS, MABEL.

JUNIORS 1945

SOPHOMORES





WE ARE READY

To use past Lindenwood experiences in assuming new responsibilities.

To participate in the many group activities now available for us.

To practice Lindenwood Living through cooperation and good fellowship.



Seated: Langenbacher, Owen
Standing: R. Stevenson, McGraw, Morrow, Bruce, Sagness, Filling

SOPHOMORE CLASS COUNCIL

Throughout our two years at Lindenwood we sophomores have become aware of the need for an improvement and betterment in Lindenwood Living. This task cannot be accomplished unless we are willing to assume our responsibilities, cooperate with each other, and promote individual initiative. Our experiences have prepared us to perform these duties with an enthusiasm and determination that shall prove our abilities as upperclassmen.

Under the sponsorship of Miss Grace Albrecht we have enjoyed a very busy year. In November we donned our raincoats and hats to see St. Charles High School play a very damp but exciting football game. In keeping with the Lindenwood tradition, we serenaded the entire campus at Christmas time and climaxed our evening of carolling with a midnight lunch in the tea room. In spite of a February blizzard we appeared in our formals at Scott Field for a gay

evening of dancing. The soldiers proved themselves excellent hosts, and they enthusiastically received the singing of Rosemary Dron and Betty Hunter. We entertained the seniors, our sister class, with a theater party in March followed by refreshments in the Library Club Room.

At the May Day Festival we were proud to have our classmates, Emily Berry and Leone Flaniken, attend the Queen.

OFFICERS

President—NANCY OWEN

Vice-President—LOVETRA LANGENBACHER

Secretary-Treasurer—RUTH STEVENSON

Sponsor—MISS GRACE ALBRECHT

SOPHOMORE CLASS OFFICERS

Left to right: Langenbacher, Owen, R. Stevenson



SOPHOMORES 1945

Anderson, Minnie

Arnold, Lois Ann

Bass, Erle Dean

Bennett, Mary Helen

Berry, Emily Alice

Blattner, Virginia Wood

Brown, Miriam Eleanor

Bruce, Deloris Ann

Buckley, Barbara

Callahan, Ann Patricia

Carlton, Marion Yvonne

Case, Virginia M. L.

Cashman, Lenora Majoree

Chicotsky, Sonja

Clark, Jeanne M.

Clark, Marian Jean





Combs, Carol Bird

De Croes, Kathleen Mae

DeHaven, Phyllis

Dorton, Sara Lou

Dron, Rosemary

Fields, June Yvonne

Filling, Gwyned

Finrock, Alta

Flaniken, Mary Leone

Fox, Elizabeth

Fuller, Susan

Gaston, Mary Carolyn

Geary, Patsy Jo

Gilpin, Betty Mae

Gnaegy, Dorothy Jane

Goodin, Florence Marie

SOPHOMORES 1945

SOPHOMORES 1945

Gray, Melba Lee

Hachtmeyer, Lois

Heckman, Arline Louise

Hedrick, Eleanor Ann

Heller, Barbara Jean

Herd, Virginia Margaret

Hill, Maridee

Hill, Martha Ray

Hilligoss, Carolyn

Hirshman, Alice Jean

Hoffman, Annette

Horowitz, Janet Mae

Horton, Jo Lea

Horvath, Helen

Hughes, F. Carolyn

Hulson, Jo Anne





Hunter, Betty Lu

Iles, Otilie Elise

Isbell, Marie Elenore

Jenkins, Daphne Joy

Jirka, Mariella Cermak

Johnson, Colleen

Jones, Doris Blanche

Kendall, Margaret Ann

Ketterman, Patricia

Kimbrough, Alice Fenton

Kirkbride, Parham (Pary)

Knight, Elizabeth Celeste

Kobe, Phyllis Marjorie

Kronenberg, Irene Julia

LaBarre, Elizabeth Jane

Landrum, Adelene

SOPHOMORES 1945

SOPHOMORES 1945

Langenbacher, Lovetra

Lehman, Dorothy Elizabeth

Leverenz, Barbara Norma

Liebermann, Jo Anne

Little, Julia Marguerite

Loerke, Betty Jean

Long, Keltah Cofer

Love, Phyllis Ann

Lynn, Anna Louise

McGraw, Elizabeth Louise

McIlvaine, Betty Jo

McKinney, Margaret

McNeill, Janice

Macy, Gweneth

Mangum, Marilyn Patton

Marshall, Margaret Ruth





Matthews, Sarah Jane

Maxwell, Phyllis Ann

Mercer, Mary Lou

Miller, Doris

Milroy, Jean Alice

Mitchell, Sally

Mohme, Bonnie Jean

Moore, Patricia Ann

Morrow, Mary Helen

Oak, Betty Belle

Owen, Mary Nancy

Park, Barbara

Patterson, Jane Ann

Pemberton, Katherine Louise

Pendarvis, Marian

Prentice, Suzanne

SOPHOMORES 1945

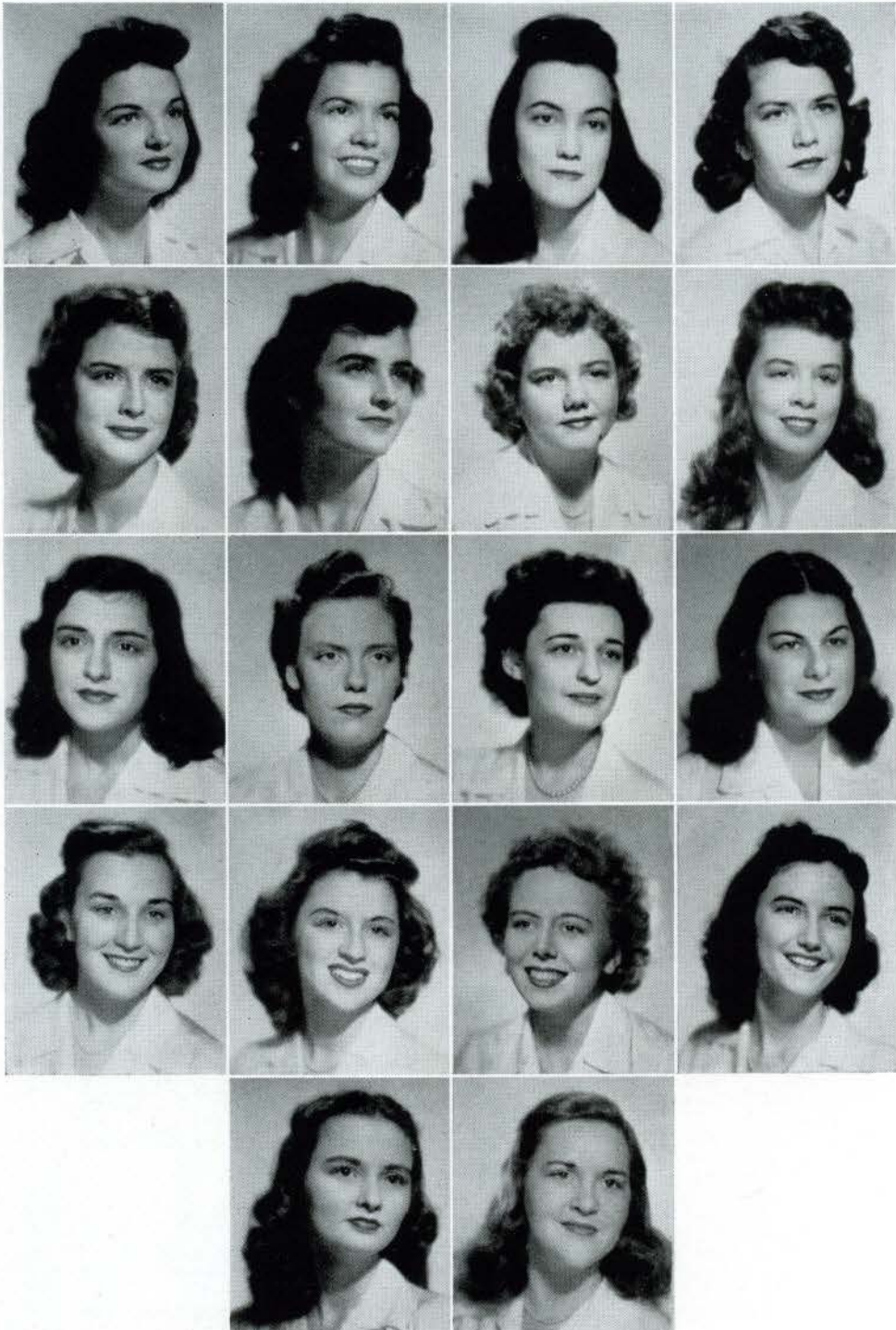
SOPHOMORES 1945

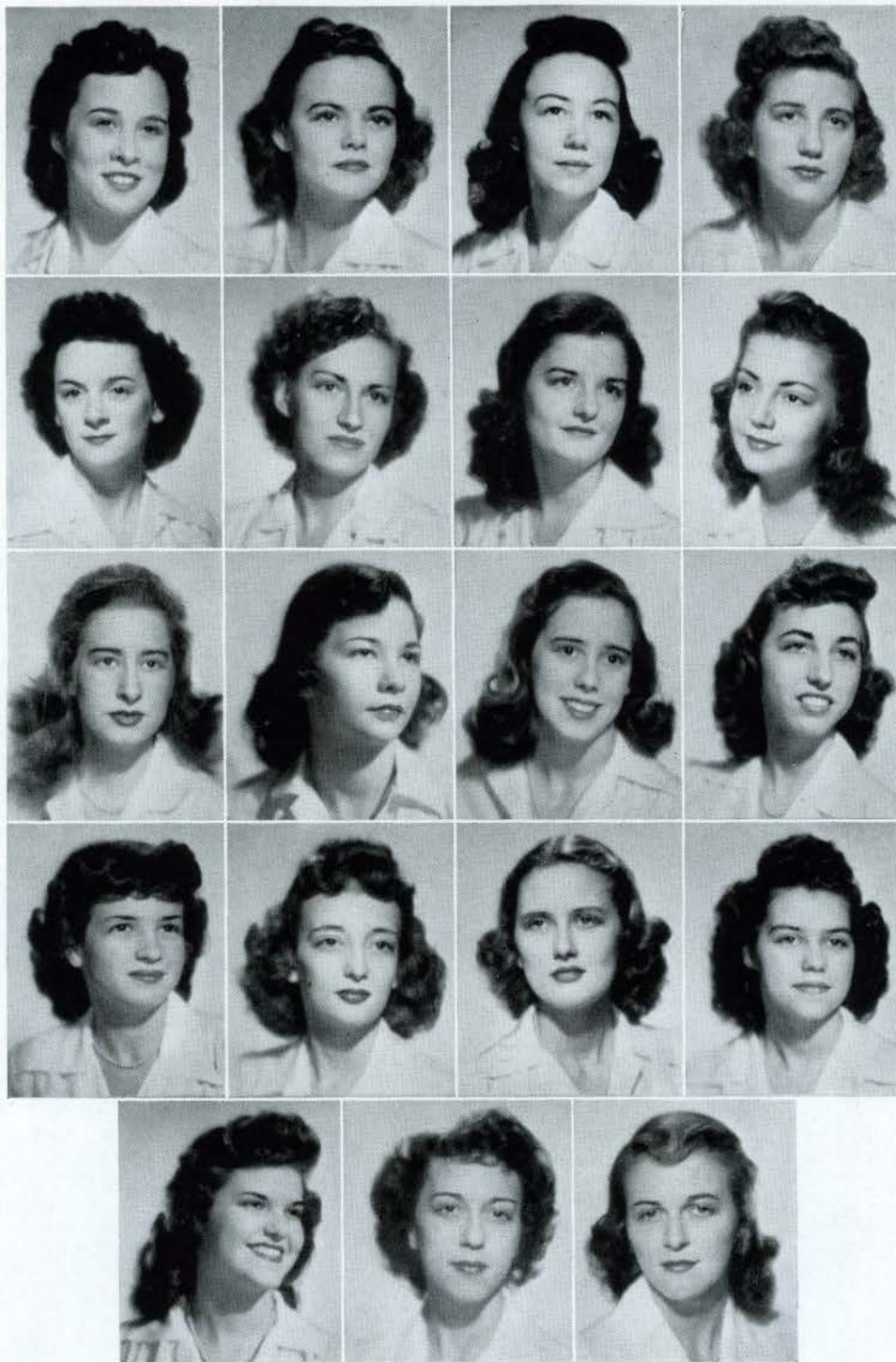
Ramsey, Mary Lucille
 Roberts, Carolyn Beth
 Salvo, Celeste Rose
 Sieck, Geraldine

Reeves, Mary Frances
 Robinson, Joyce Vivian
 Sawyer, Eloise McLaran
 Sneyd, Mary Lou
 Stokes, Kathrine Marie.

Reynolds, Winifred Edna
 Rode, Georgia Ann
 Settle, Joann
 Stevenson, Ellen Blaine
 Sturner, Jeanne

Riedel, Shirley Anne
 Sagness, Shirley Lea
 Shroder, Joanne Louise
 Stevenson, Ruth





Swenson, Wanda Jeanne
 Thompson, Helen M.
 Tuttle, Paddy
 Wexner, Barbara Mina
 Williams, Mary Louise

Swilley, Mary Medora
 Thread, Kathleen Virginia
 Vineyard, Marilyn
 Whitford, Jacqueline
 Wilson, Ada Jane

Temple, Suzanne
 Tillman, Mary Helen
 Waye, Ruth
 Willbrand, Kathryn Gail
 Wood, Mary Lou

Thomas, Sally
 Tower, Phyllis Jane
 Welshons, Mary Ruth
 Willbrand, Phoebe

Not Pictured: Rock, Jacqueline Palmer

SOPHOMORES 1945

FRESHMEN





WE BEGIN

To unite the various personalities of our class through understanding.

To adapt ourselves to the complexity of Lindenwood Living.

To prepare ourselves for future campus life.



First row: Carroll, Boschert, Budge, Griffiths, Wilson
Second row: Record, Gilliam, S. Berry, Crabbe, Harvey, Kerr
Not pictured: Margaret Eberhardt

FRESHMAN CLASS COUNCIL

With our eyes on a distant goal, we Freshmen, with the aid of our Big Sisters, Student Counselors, and capable sponsor, Dr. Marion Dawson, have tried to adjust ourselves to the complexity of college life. New faces, new opportunities, new activities—such things we had to meet and understand before we could adapt ourselves as college women. Our orientation week introduced us to campus living and prepared us for both the academic and social life at Lindenwood.

It was our privilege to choose the Hallowe'en Queen and her Court, who were introduced at a style show. Alice Christiansen was crowned as our Hallowe'en Queen with Joanne Patton and Mary Ann Wood as her attendants at a colorful dance. In January we treated ourselves to a Pinafore Party, and a month later we invited the entire school to a Valentine dinner with a program provided by our class. On the night of March 16th, the entire class, two hundred and

thirty of us, went by bus and street car to a magnificent showing of the Ice-Capades at the Arena in St. Louis. In appreciation of our sister class, we invited the juniors to be our guests at the movies and concluded our year's activities with a spring picnic.

At the annual May Fete we were happy to select Margaret Eberhardt and Mary Ann Wood as our attendants to the Queen.

OFFICERS

President—LOUISE KERR

Vice-President—MARGARET EBERHARDT

Secretary-Treasurer—SUE BERRY

Sponsor—DR. MARION DAWSON

FRESHMAN CLASS OFFICERS

Kerr, S. Berry
Not pictured: Margaret Eberhardt





- First row: Adams, Ann; Allcock, Betty Marie; Allison, Roberta Margaret; Anderson, Janet Mae; Ashland, Marcia Jean; Baim, Dolores
- Second row: Bancroft, Lucy Jane; Barnes, Anna Frances; Battenfield, Velta Eudene; Baughman, Donna Jeanne; Beard, Mary Jane; Beazley, Virginia Elizabeth
- Third row: Bebb, Katherine Florence; Bedell, Colleen; Benschmidt, Helyn Louise; Benson, Marjorie Ann; Berry, Suzanne; Bettinger, Beverly Ann
- Fourth row: Blair, Harriet Ann; Blakey, Linda L.; Blankenbaker, Norma Jean; Blassingame, Betty Jean; Blomeyer, Barbara; Blood, Jane Alan
- Fifth row: Bohrer, Joan Louise; Bomer, Margaret Ruth; Boomer, Dolores Blanche; Booth, Marybeth; Boschert, Mary Dean; Bovis, Georgann Elizabeth

FRESHMEN 1945

FRESHMEN 1945

- First row: Bowman, Carol Hope; Boyt, Shirley L.; Brazel, Peggy Lou; Brice, Carolyn Strong; Brown, Barbara Ann; Brown, Janet Paisley
- Second row: Budge, Lila Lee; Bullock, Jane; Burba, June; Burch, Betty Joy; Butcher, Beverly Ann; Carroll, Barbara Jane
- Third row: Carter, Edith Jane; Catlett, Beverly Virginia; Christiansen, Alice Marie; Churchill, Billie Frances; Clawson, Frances Louise; Colglazier, Patricia
- Fourth row: Confer, Nancy Ann; Connet, Mary Jane; Cook, Milrene; Coombs, Margot Lavon; Coons, Carolyn Mae; Cordts, Barbara Jean
- Fifth row: Crabbe, Martha Janet; Cramblit, Sally; Crawford, Betty Joan; Czarlinsky, Betty Jane; Dana, Nancy Jeanne; Davidson, Lois Elaine





- First row: Davidson, Martha Jean; Davis, Theodora M.; Decker, Jane Kathryn; dePuy, Barbara; Ditson, Helen Elizabeth; Douglas, Joan Litchfield
- Second row: Eberhardt, Margaret; Edmiston, Doris Dean; Ellis, Sybil Elizabeth; Evans, Jane Patricia; Evans, Rosalie Ann; Finck, Kathleen
- Third row: Fisher, Charlotte Lorene; Fisher, Dolores Mae; Ford, Martha Jean; Francis, Allene Marie; Froelich, Edwena Aileen; Fulton, Jackie Jane
- Fourth row: Gaines, Earline June; Ganssle, Margaret Ann; Gezel, Janet Roseberry; Gibson, Martha Ann; Gilliam, Dorothy; Gordon, June Florence
- Fifth row: Graybill, Helen Gene; Griffiths, Ida Jane; Groce, Margaret Lee; Grosskruger, Electa Jean; Hansen, Delores Jean; Harvey, Jacqueline Ruth

FRESHMEN 1945

FRESHMEN 1945

- First row: Hays, Elaine; Hegewald, Dorothy Ann; Hendrickson, Clara Wayne; Hixon, Suzanne Bearden; Hughes, Alice; Hunnicutt, Barbara Ann
- Second row: Hurst, Barbara Jean; Jenkins, Patricia Ann; Johnson, Kathryn Simms; Jones, Florence Baird; Kahl, Melba Irene; Kane, Carol Lee
- Third row: Kelly, Marcia Lee; Kelso, Enid Lucille; Kennedy, Maydee; Kern, Nancy Hardy; Kerr, Louise Barthdow; Kirtley, Abbie Sarah
- Fourth row: Klaholt, Gloria; Kolocotronis, Henrietta J.; Landberg, Mary Lou; Lange, Elizabeth Dale; Lange, Marjorie D.; Lant, Helen Loraine
- Fifth row: Latshaw, Sarah; Leeper, Elizabeth; Lewis, Katherine Corrinne; Lierk, Shirley Ann; Little, Barbara Ann; Littrell, Betty Earle





- First row: Lloyd, Patricia Elizabeth; Locke, June; Loftin, Iva Lynn; Lomison, Virginia; Luckman, Lettie Jane; McInnes, Mary Stewart
- Second row: Marsh, Mary Carolyn; Marshall, Lois Roberta; Martin, Betty Marie; Marts, Mary Jane; Mathews, Helen; Mayhall, Marthella Blevine
- Third row: Meredith, Betty Ann; Merx, Merlyn Pauline; Meyer, Lois; Miller, Janet; Miller, Mary Jane; Million, Mary Ann
- Fourth row: Moen, Marjorie Ann; Monroe, Dorothy Ann; Moore, Barbara; Moore, Betty Jane; Morrill, Jacquelyn Iona; Murphy, Patricia
- Fifth row: Murray, Margaret; Neff, Miriam Louise; Neuman, Catherine Graves; Nichols, Ann; Norwood, Billie Jean; Oleson, Katherine Rae

FRESHMEN 1945

FRESHMEN 1945

- First row: Oliver, Marjorie Joan; Olson, Norma Ione; Osborn, Adele; Ostmann, Ladeen; Pacatte, Betty Jean; Parker, Esther Mae
- Second row: Parkin, Virginia; Patton, Joanne Moss; Paul, Julie Ann; Payne, Coy Elizabeth; Peart, Edythe Jean; Phillips, Genelle
- Third row: Pierson, Mary Ann; Poling, Patricia Louise; Porter, Prudence Elizabeth; Poston, Betty Jane; Priest, Dannie Jane; Pruet, Mary Katherine
- Fourth row: Reagan, Phylis Joanne; Record, Helen Virginia; Renner, Audrey Lou; Richard, Sharon Rose; Ritter, Louise J.; Roberts, Dorothy
- Fifth row: Roberts, Jean Ann; Robinson, Martha Jane; Romann, Audrey; Roseberry, Cyrilka Birdell; Rotty, Helen Louise; Sandmann, Dorothy Leota





- First row: Satterfield, Dorothy Lee; Schafer, Joan Marie; Schatzman, Lois Joan; Schoremoyer, Cynthia; Sebastian, Jeane Elizabeth; Sickler, Mary Ann
- Second row: Simon, Earleen Duel; Sims, Dorothy Jean; Smith, Irva Miller; Smith, Patricia; Smith, Shirley; Stahlhut, Melva Matilda
- Third row: Staley, Mary Lou; Steele, Marjorie Claire; Stegall, Virginia Sue; Steinke, Virginia Ann; Stemm, Marjorie Bernell; Stephens, Betty Lee
- Fourth row: Stevens, Carolyn; Stickler, Patsy Jean; Stonebrook, Ver Jean; Swanson, Joanne; Swiger, Constance June; Swisher, Betty Jean
- Fifth row: Tanenbaum, Frances; Tiernan, Nancy; Townsend, Beverly; Trantum, Nancy Louise; Treadway, Martha Ann; Trenchard, Dorothy Marilyn

FRESHMEN 1945

FRESHMEN 1945

First row: Turner, Louise; Van Hoose, Lettrice Joy; Viertel, Willie Mae; Walker, Mary Jane; Washburn, Mary Alice; Weieneth, Edna

Second row: Wetzler, Joan; Weyenberg, Normalee; Wheeler, Helen Martyn; White, Wilma Lou; Whitmer, Margaret Yoland; Wiesner, Dorothy Jean

Third row: Wilber, Marilyn K.; Williams, Winifred; Williamson, Rosemary; Willoughby, Cornelia; Willson, Phyllis; Wilson, Jessie Evelyn

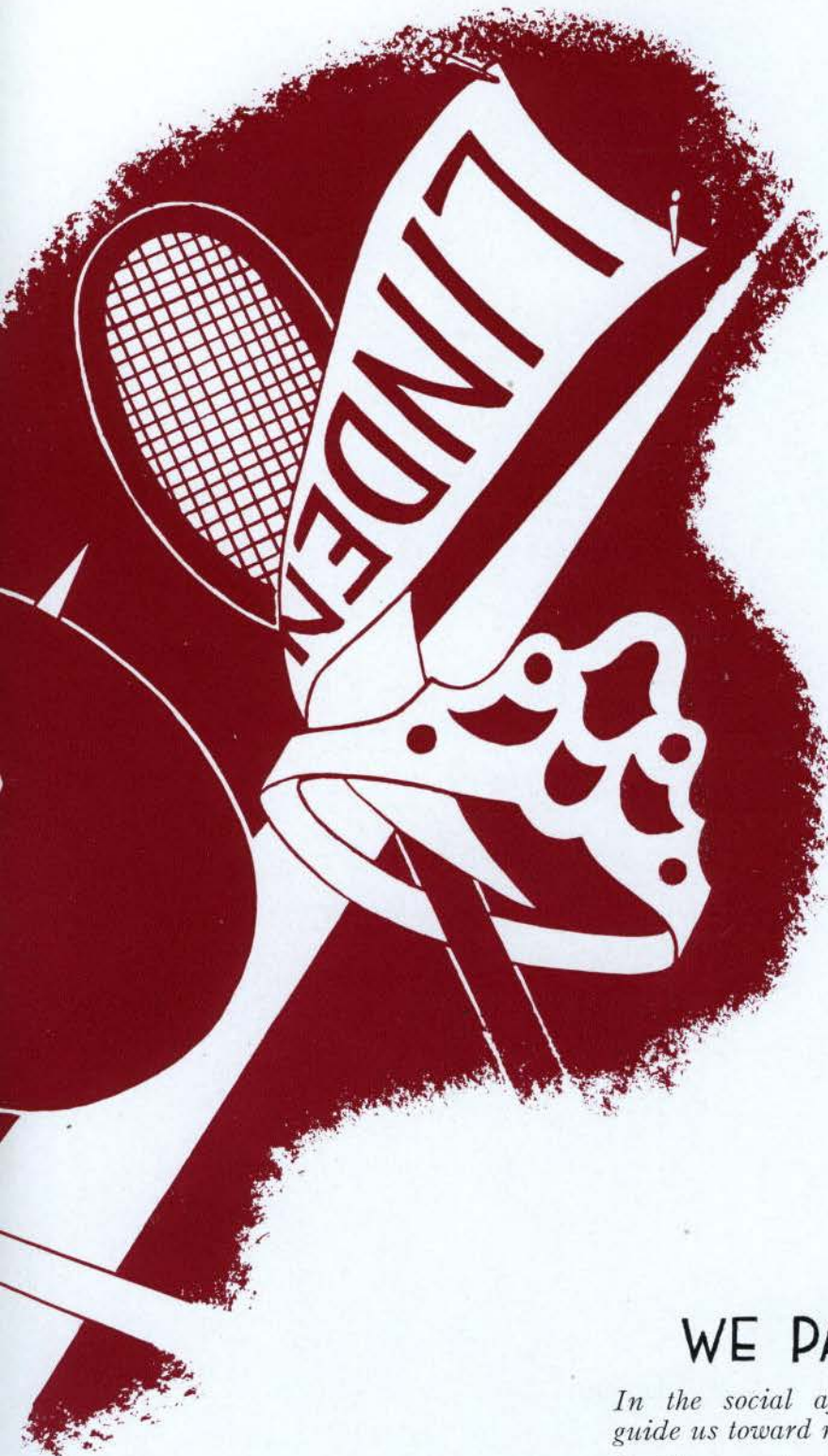
Fourth row: Wood, Mary Ann; Wright, Barbara Jeanne; Zeidner, Helen Louise; Zoellner, Phyllis

Not Pictured: Brown, Eleanor Lee; Lindsay, Betty; Nelson, Jean; Patterson, Martha Jane; Stumberg, Lucette Ann



ORGANIZATIONS
ACTIVITIES
COURTS





WE PARTICIPATE

In the social affairs on campus which guide us toward more gracious living.

In the organizations which strengthen our faith in the spiritual and intellectual aspects of life.

In the activities which endow us with the fundamental principles of Lindenwood Living.

THE INTELLECTUAL, THE SPIRITUAL, AND THE SOCIAL ASPECTS OF LINDENWOOD LIVING ACHIEVE A HAPPY SYNTHESIS THROUGH OUR CAMPUS ORGANIZATIONS. INTELLIGENT AND HONEST PARTICIPATION ENABLE US TO SHARE SIMILAR INTERESTS WITH OUR FRIENDS. STIMULATING LECTURES AND DISCUSSIONS PROVIDE THE BASIS FOR THE ATTAINMENT AND APPLICATION OF NEW INFORMATION AND KNOWLEDGE. HONORS CONFERRED THROUGH MEMBERSHIP ARE CHERISHED AS REAL TRIUMPHS IN LINDENWOOD LIVING.



First row: Wertz, Gilreath, Schwab
 Second row: C. Landberg, Schroer
 Not pictured: M. Allen

WHO'S WHO



Who's Who Among Students in American Universities and Colleges, a publication sponsored by 600 American colleges and universities, gives honor and recognition for the merit and accomplishment of the student. Only those have been chosen impartially for this honor who have the outstanding qualifications of character, scholarship, leadership in extracurricular activities, and the promise of usefulness to business and society in later life. Lindenwood is proud of its six students who have attained this national recognition.

Our honor representatives this year are: Marjorie Allen, president of Pi Gamma Mu,

honorary social science fraternity, and president of Senior Hall; Virginia Gilreath, president of the Y. W. C. A. and a member of the Residence Council; Clara Mae Landberg, editor of the *Linden Leaves* and Student Counselor; Betty Jean Schroer, president of Alpha Sigma Tau, honorary Liberal Arts society, and literary editor of the *Linden Leaves*; Jacqueline Schwab, president of the Student Council and Vice-Chairman of the Red Cross Board; Barbara Wertz, president of the Senior Class and a member of the Y. W. C. A. Council.

ALPHA PSI OMEGA

Students who have participated in major dramatic productions may become members of Alpha Psi Omega, Lindenwood's national honorary dramatic art fraternity. This year the club members gave two major productions, the first being the Christmas play, *The Cradle Song*, and the Commencement play, *Outward Bound*. Alpha Psi Omega also sponsored two student productions this year entitled *The Fighting Littles* and *Kind Lady*.

Social activities for the year included picnics in October and May, a tea for the faculty, administration, and speech students in November, and two initiation dinners.

OFFICERS

President—BETTY ANN ROUSE
Vice-President—MINOTA BAYLISS
Secretary-Treasurer—PEGGY PROCTOR
Sponsor—MISS MARY GORDON



Seated: Rouse

Standing, left to right: Salvo, McLean, Proctor, Maxwell, Geary, Bayliss, Love, Loerke





Kneeling: Long, Loerke, R. Stevenson, Park, Moehlenkamp, Filling, Wilkins, Pendarvis, M. Parker, Jackson, C. Landberg
 Second row: Gilpin, Wertz, Paulson, Levy, Schroer, E. Murphy, Swilley, Eakin, Gillette, Horvath, Welshons, Tillman, Watlington, McGraw
 Third row: Milroy, Kendall, Szilagyi, Blattner, Stanze, Kirk, McLean, Langenbacher, Buckley, G. Willbrand, J. Schatzman

ALPHA SIGMA TAU



Membership in Alpha Sigma Tau is the highest scholastic honor Lindenwood confers upon students in the College of Arts and Sciences. Besides academic achievement, Alpha Sigma Tau upholds high ethical standards.

The activities for the year have been many and varied. The group has maintained a scholarship for a student at the School of the Ozarks. At the first meeting Dr. Elizabeth Dawson gave a very interesting lecture on Robert Sherwood, the dramatist. Miss Gertrude Isidor in her talk, "Traditions and Transition in Music," presented much musical information along with some beautiful records. After the initiation of new members in February, a student forum was held concerning

the use of college training in the professional world. Other programs consisted of a talk by Dr. Mary Talbot on the "Social Life of Ants" and a reading by Miss Mary McKenzie Gordon.

After presenting an impressive vesper program in April, Alpha Sigma Tau closed its year by sponsoring the annual Baccalaureate tea at Commencement.

OFFICERS

President—BETTY JEAN SCHROER
 Vice-President—EILEEN MURPHY
 Secretary-Treasurer—CAROLINE LEVY
 Sponsor—DR. ALICE PARKER
 Honorary Sponsor—DR. ALICE E. GIPSON



First row: D. Wood, Prentice, Szilagyi, Hulson, Tillman
 Second row: Wexner, Kilbury, Kirk, Kinkade, Carlton, Tuttle, Pendarvis, Bass

BETA PI THETA



Membership in the Theta Xi chapter of Beta Pi Theta, the national honorary French fraternity, requires students to maintain high scholastic averages and to apply knowledge to creative French projects.

Student participation in programs throughout the year included talks by Miss JoAnne Hulson, Miss Betty Kirk, and Miss Marian Pendarvis on French holiday customs, and a discussion by Miss Marie Szilagyi about her stay in Switzerland. Monsieur Philippe Melville, a Parisian now studying at Purdue University, addressed the club in March concerning "French Women in the War Effort" and "France Looks Ahead." A

French movie at the Art Theater in St. Louis climaxed the year's activities.

The Beta Pi Theta award to the Freshman with the highest scholastic record in the department was presented this year to Miss Katherine Bebb of Muskogee, Oklahoma.

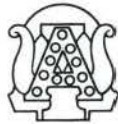
OFFICERS

President—ELIZABETH KILBURY
 Vice-President—MARY TILLMAN
 Secretary—MARIE SZILAGYI
 Treasurer—DOROTHY ANN WOOD
 Sponsor—MISS ANNA WURSTER



First row: Brice, Blassingame, D. Jones, Connet
 Second row: Million, Bomer, Pemberton, Blankenbaker
 Third row: Mayhall, Ziern, Stokes, C. Johnson, Lohr, Shaeffer, Gilliam, Hansen

DELTA PHI DELTA



Delta Phi Delta enlarged its membership this year by uniting with Alpha Mu Mu, formerly the honorary music fraternity for underclassmen. A new constitution was written to incorporate the purposes of the combined fraternities, who encourage a greater appreciation of music.

Delta Phi Delta, together with Mu Phi Epsilon, gave a fall tea for all of the students majoring in music. A dinner in St. Louis was held followed by an evening at the symphony with Yehudi Menuhin as the guest artist. Later in the year a

convocation with the theme, "Thirty Minutes with Stephen Foster," was presented by the members of the group.

OFFICERS

President—DOROTHY SHAEFFER
 Vice-President—JEAN LOHR
 Secretary—KATHERINE STOKES
 Treasurer—COLLEEN JOHNSON
 Publicity—NADINE ZIERN
 Sponsor—MRS. LOIS M. BURKITT



Standing, left to right: C. Landberg, Waye, Hegewald, Kirk, Bloed, P. Mócre, E. Parker, Kendall, Long, Payne, Horvath
 Sitting: Settle, Sherman, Moehlenkamp, G. Willbrand, Levy, Beazley, Booth, Bovis

DER DEUTSCHE VEREIN



An interest in the German language, literature, and traditions led to the formation of Lindenwood's *Der Deutsche Verein*. Knowledge of the German language received in the classroom is transferred to the *Verein* meetings where all conversation is in German.

A shadow play entitled *Ein Student vom Paradies* by Hans Sachs was presented at the November meeting. The Christmas party, an outstanding event of the *Verein*, was held in the Library Club Room where German carols and readings furnished entertainment for members and their guests.

The members, at the February meeting, enjoyed a survey of German music which included works by Ludwig Von Beethoven, Richard Strauss, Richard Wagner and others.

OFFICERS

President—GAIL WILLBRAND
 Vice-President—PEGGY KENDALL
 Secretary—KELTAH LONG
 Treasurer—RUTH WAYE
 Sponsor—MR. WILLIAM EICKHORST

EL CIRCULO ESPANOL

El Circulo Espanol promotes and stimulates interest in spoken Spanish through numerous programs during the year. This year the club was honored by a distinguished guest speaker, Senor Ernesto Montenegro from Chile, who spoke on the United States' relations with Latin America.

At the informal meetings girls organized panel discussions on present day problems with Latin America. Colored slides of Mexico were shown to the members at one meeting, while another program consisted of Spanish records illustrating the Latins' preference in music. Hildegarde Stanze spoke on her summer school

work in Spanish, and Patricia Hobart, Betty Kilbury, and Virginia Herd entertained with talks on their trips to Mexico.

Each year *El Circulo Espanol* presents a Pan-American Day program to celebrate that occasion.

OFFICERS

President—HILDEGARDE STANZE
Vice-President—MARY M. SWILLEY
Secretary-Treasurer—VIRGINIA HERD
Sponsor—DR. MARY TERHUNE



First row: Eakin, Herd, Zeidner, Fields, Bohrer, Wilkins, W. Williams, Edmiston, Stanze, McLean
Second row: Temple, Buckley, Thompson, M. Marshall, Hixon, Swanson, Salvo, Beard, Phillips, Groszkruger, Ashland, Gillette, M. Parker
Third row: Boutin, Hachtmeyer, Stonebrook, Pruet, McKinney, Graybill, Stegall, Littrell, Oleson, Hobart, J. Clark, Hill
Fourth row: Thomas, Swilley, Williamson, Ganssle, Goodin, Lierk, Combs, Baughman
Fifth row: Owen, Filling, Willson, Oak, Trantum, Boschert, V. Mitchell, Renner
Sixth row: Sweet, Kelso, Stahlhut, Gaston, J. Patterson, Walker, Hurst
Last row: M. Landberg, Richard, Wood, Langenbacher, De Croes, P. Evans, Blair, Kern, Trenchard, L. Schatzman, Szilagyi, Fox



HOME ECONOMICS CLUB

The Home Economics Club offers its members an opportunity for responsibility and intelligent leadership in this field. The organization fosters international goodwill by means of contacts with students of other nations through a fellowship fund and provides social, business, and professional experiences through the various aspects of club life.

The program calendar for this year included a report of the national convention by the student representative, Montelle Moore; the traditional Christmas breakfast for the administration; a student discussion on "When Johnny Comes Marching Home;" a Valentine party; a St.

Patrick's program planned by the initiates; the dyeing of Easter eggs for the children at Markham Memorial; and participation in the Vocational Conference Week. The organization's activities closed with a dinner honoring the seniors.

OFFICERS

President—DONALEE WEHRLE
Vice-President—LOUISE EBERSPACHER
Secretary-Treasurer—JO LEA HORTON
Publicity—MONTELLE MOORE
Sponsor—MISS FERN STAGGS



First row: Horton, Wehrle, Eberspacher, Latherow, Locke, D. Roberts, C. Roberts, Swenson, Daneman
Second row: Iles, M. Clark, Oliver, Foreman, Sagness, B. Lehman, D. Monroe, Thread, Pacatte, McInnes, P. Evans, Titus, Jacobson, Schwab
Third row: Wiesner, Wilber
Fourth row: Elson, M. Moore, Stephens, A. Hughes, Neuman, L. Ritter, Rotty, Adams, Mercer, Nichols, I. Smith





Left to right: Woolsey, J. Robinson, E. Murphy, Filling, Hirshman, Ziern, Reeves

KAPPA PI



Membership in Kappa Pi is collegiate recognition for art students who have attained a high scholastic standing. Several times throughout the year Kappa Pi has sponsored "Play Days"—afternoons in which people not enrolled in art classes may express themselves with paint, clay, chalk, and charcoal.

During the year, Kappa Pi members went to St. Louis where they visited the American Painting Exhibition at the Art Museum, the New Cathedral, and an exhibition of Lyonel Feininger's work at the Book Shop. In the spring the pledges and members exhibited their work in Roemer Hall.

At an informal tea in November, Kappa Pi entertained students enrolled in the art department and members of the art and home economics faculties. A formal tea for the faculty and administration concluded the year's activities.

OFFICERS

President—POLLY WOOLSEY
 Vice-President—EILEEN MURPHY
 Secretary—NADINE ZIERN
 Treasurer—ALICE HIRSHMAN
 Sponsor—MISS JANE SEAVEY

MU PHI EPSILON

The highest honor Lindenwood music students may achieve is membership in Mu Phi Epsilon, the national honorary music fraternity, which is based upon the student's character, scholarship, and musical talent.

Mu Phi Epsilon together with Delta Phi Delta gave a fall tea honoring all new music majors. The fraternity in cooperation with the art and literary departments exchanged programs during the course of the year. In addition to the spring vesper recital, the members provided

entertainment for the St. Charles Rotary Club and the Eastern Star Chapter. The group also planned a reception for the members of the St. Louis chapter of the fraternity.

OFFICERS

President—DOROTHY SHAEFFER
Secretary—HARRIETTE HUDSON
Treasurer—BETTY ROARK
Sponsor—MISS GERTRUDE ISIDOR



Seated: Tabor, Shaeffer, Hudson

Standing: C. Johnson, Lohr, Pemberton, Stokes, D. Jones





Seated: Milroy, Hirsch, B. Little, Lant, Harvey, Benson

Standing: M. Little, Schroer, Stanze, Swilley, Blattner, Reeves, Gnaegy, S. Berry, Kelly

PI ALPHA DELTA



Pi Alpha Delta, the honorary classical society at Lindenwood, endeavors to further the study of the classical languages and their literatures. Membership is open to students meeting high scholastic requirements in Latin and other classical courses.

In addition to regular meetings of the year, Pi Alpha Delta entertained all members of the classical department in the fall. During the

second semester a formal tea was given for the club members and their friends.

OFFICERS

President—VIRGINIA BLATTNER

Vice-President—MARY SWILLEY

Secretary-Treasurer—MARY REEVES

Sponsor—MISS KATHRYN HANKINS



First row: Levy, Jackson

Second row: Watlington, Eakin, C. Landberg, Stanze, M. Parker, D. Moore, McKinney, Neef, Schatzman, Schroer, Wilkins, E. Murphy, McLean

PI GAMMA MU



Pi Gamma Mu, the national honorary social science fraternity, encourages its members to assume a scientific attitude toward all social problems through its motto, "Ye shall know the truth and the truth shall make you free." Students in sociology, government, economics, history, and psychology realize that by correlating their knowledge, social questions may more easily be solved. Each year an award of five dollars is given to any student in the college for distinguished work in the social sciences.

The program for the year consisted of the initiation of new members in October; a panel discussion by Caroline Levy, Marian Wagner, and Betty Schroer in December on current economic problems; and a talk by Mr. Charles C. Clayton on "Peacetime Military Training" at our April meeting. Some of the members attended a meeting of Alpha Kappa Delta, the

nationally recognized sociological society, in St. Louis at the home of Dr. Jensen, Washington University professor, who analyzed the problem of socialized medicine.

During the second semester a tea was given for all of the majors and minors in social science, and a spring picnic was enjoyed as the closing event of the year's activities.

OFFICERS

- President—
 MARJORIE ALLEN (1st semester)
 CAROLINE LEVY (2nd semester)
- Vice-President—
 CAROLINE LEVY (1st semester)
 MARIAN WAGNER (2nd semester)
- Secretary-Treasurer—LYNN JACKSON
- Sponsor—DR. JESSIE BERNARD

SIGMA TAU DELTA

Sigma Tau Delta, the national honorary English fraternity, encourages creative writing and promotes interest in the literary leaders of all ages. To become members, students must be either majors or minors in English, must publish about a thousand words of original composition, and must make a high grade average.

The juniors and seniors majoring in English were guests at a festive Christmas party. Freshmen and sophomores with high marks in English were similarly honored at a tea given for them

in April. Again this spring Sigma Tau Delta sponsored the annual literary contest for the student body. The fraternity's social activities ended with a May picnic.

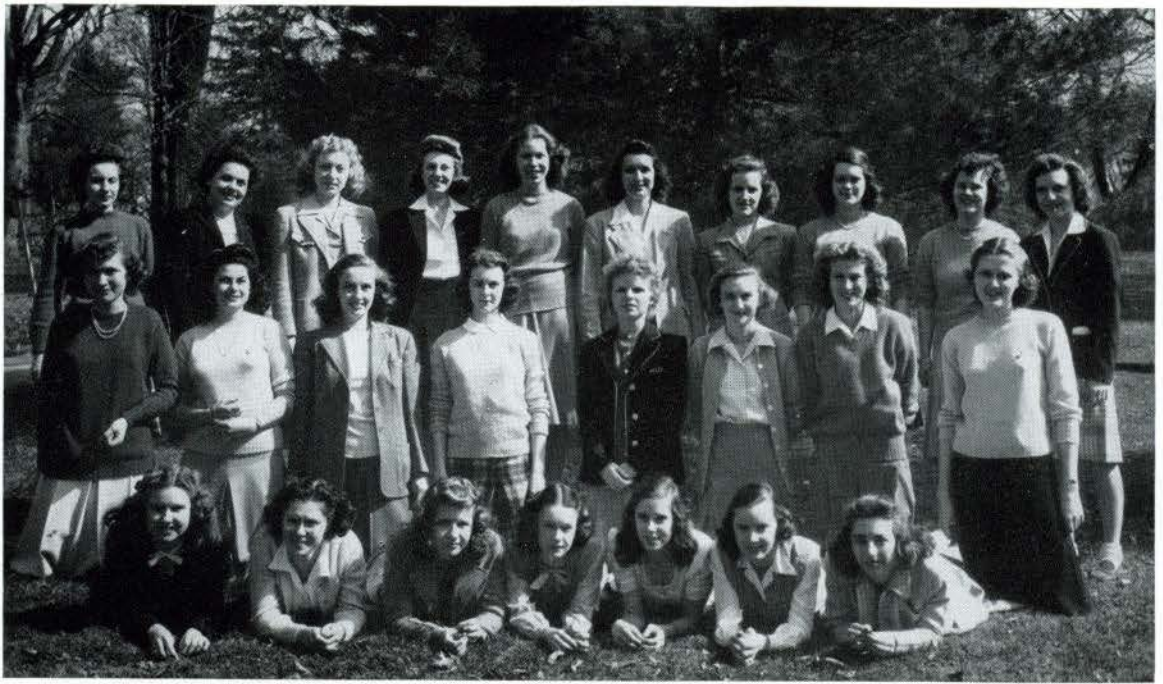
OFFICERS

President—JANE McLEAN
Vice-President—VIRGINIA MOEHLENKAMP
Secretary—EILEEN MURPHY
Treasurer—MARY ANN PARKER
Sponsor—DR. ALICE PARKER



First row: Wertz, Leverenz, Salvo, Geary, Moehlenkamp, Neef, Tabor, McLean, Rouse
Second row: Sherman, Gilpin, Boutin, Levy, Blattner, M. Hill, Hirshman
Third row: Buckley, M. Parker, Wilkins, Horvath, Langenbacher, Hachtmeyer, G. Willbrand, McGraw, Fields, Emons, E. Murphy, C. Landberg, Loerke





First row: Kendall, Milroy, Long, Gilpin, Waye, Latherow, Welshons
 Second row: Kirk, Shroder, Paulson, Moehlenkamp, Pendarvis, Hempelman, De Croes, G. Willbrand
 Third row: Wertz, Heimrod, Stanze, M. Murphy, McLean, J. Schatzman, E. Ritter, J. Patterson, C. Landberg, Jackson

TRIANGLE CLUB



The Triangle Club gives Lindenwood students an opportunity to further their interest in science. Membership is gained by advanced scholastic standing in science courses.

Activities of this year included an orientation program in which Dr. Talbot discussed the biological camps set up over the country for summer study. At the second meeting Miss Beverly Wescott from Barnes Hospital talked on biochemical research; later in the year, a movie was shown on the history of mathematics. At the

last meeting Barbara Wertz gave a book review, and prizes were awarded for the best verses relating to each division of the sciences. A picnic at the ovens completed the year's calendar.

OFFICERS

President—ELNOR RITTER
 Vice-President—JEAN PAULSON
 Secretary—VIRGINIA MOEHLKAMP
 Treasurer—DOROTHY HEIMROD
 Sponsor—MISS MARY E. LEAR

AMERICAN RED CROSS

The Lindenwood Red Cross Unit is a member of the St. Charles County Chapter of the American Red Cross. In the present national emergency students are eager to participate in many of the war activities that the Red Cross sponsors. These activities include the preparation of surgical dressings, knitting, sewing, and also becoming a blood donor. Special courses are offered in First Aid, Home Service, Disaster Preparedness, Home Nursing, Water Front Safety, Dietitian's Aide, Nutrition, and Canteen Corps. Nineteen students who are taking the Nurse's Aide training will serve in the St. Joseph's Hospital in St. Charles. A capping service was held for those completing their work before the end of the school year.

At a combined meeting of the Red Cross and Y. W. C. A., Miss Kathryn Horton, a Red Cross

Overseas Staff Assistant, discussed the work done by her group during the Italian Campaign.

In the annual Red Cross Drive the all-campus contributions exceeded the anticipated goal. After such programs Lindenwood students realize that the Red Cross offers them the opportunity for active participation in the war effort.

OFFICERS

Chairman—DONALEE WEHRLE
Vice-Chairman—JACQUELINE SCHWAB
Secretary—MARY ANN PARKER
Treasurer—MARJORIE GREEN
Sponsors—DR. MARIE FINGER
DR. ALICE PARKER
*MISS HELEN ELY

*College Unit Chairman of American Red Cross.

First row: Daneman, Wehrle, Gilreath
Second row: Fox, Schwab, M. Parker, Schroer
Third row: Levy, Green, Proctor, M. Clark
Fourth row: J. Robinson, Horton, Hudson, R. Stevenson





First row: Zeidner, K. Johnson, Welshons, Park, Mercer, Bullock, C. Landberg
 Second row: I. Smith, Warner, M. Landberg, Bettinger, Patton, Osborn, Szilagy

ARMY BRATS

The daughters of Army men are especially companionable because their fathers are all participating in this great war. The purpose of the Army Brats is to bring these girls closer together so that they may discuss Army life, analyze current news, and familiarize their fellow students with the army insignia and service ribbons.

This year the Army Brats pasted pictures and explanations of the various service ribbons and stripes on the bulletin board in Roemer Hall.

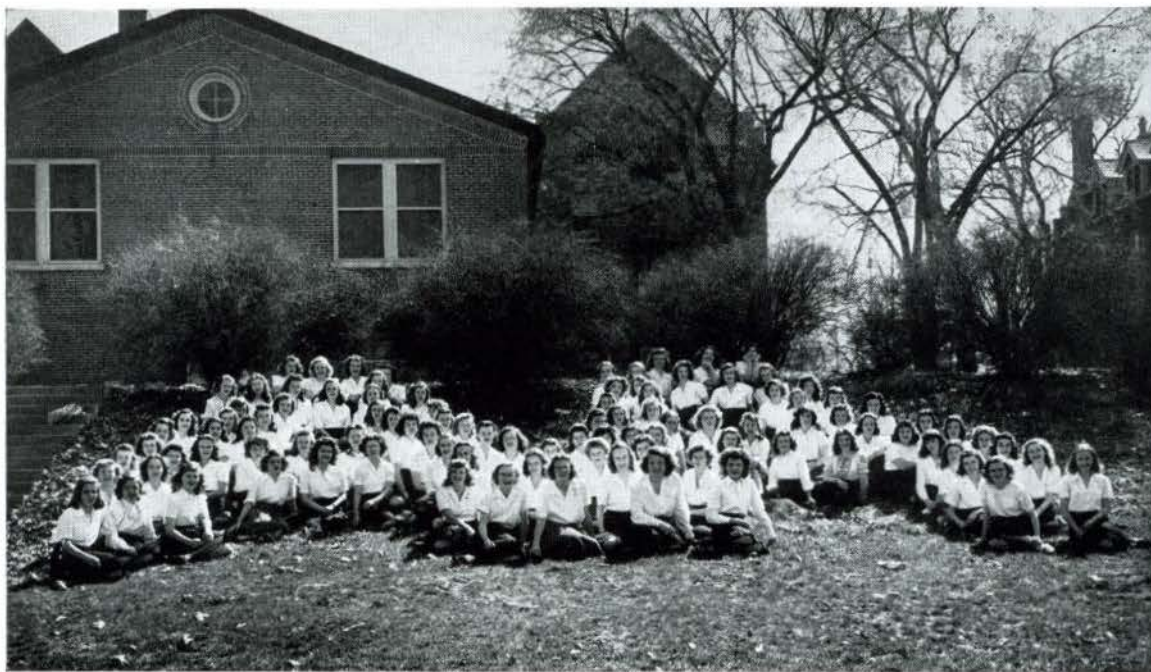
A picnic at the ovens followed by a hayride provided a pleasant ending for the year.

OFFICERS

President—BARBARA PARK

Vice-President—MARY LOU MERCER

Secretary-Treasurer—MARY WELSHONS



Extreme left: First row: Szilagyi, Poling, Moen, Steele, J. Davidson, Iles, Runge
 Second row: Franke, M. Landberg, Whitmer, Kennedy, R. Evans, Park, E. Gray, Bovis
 Third row: Elson, M. Clark, Mohme, Jackson, Langenbacher, Gaines
 Left horizontal bar: Cashman, Nathan, Flaniken, Warner, Sturner, Milroy
 Center right: First row: Hempelman, Daneman, Wilsen, Latherow, Kerr, Crabbe, S. Matthews, Waye, Sebastian, Kilbury, Townsend
 Second row: Gund, M. Moore, Steinke, Morrow, M. Brown, M. Anderson, McIlvaine, Horowitz, Kelly, Ashland, Kern, Owen
 Center left: First row: Bartlett, Schroer, E. Berry, Liebermann, Fields, Boutin, Bowman, Murray, Brinkman, Stoery, Jirka
 Second row: Papin, Rouse, M. Williams, Ramsey, Kimbrough, Wood, Sickler, Leeper, Burba, Emons, Weyenberg
 Right horizontal bar: Rode, King, Hulson, Wexner, Rock, Butcher
 Extreme right: First row: Platt, Hill, Tillman, Garvin, Kelso, Willson, Hardin, Renner, Bancroft, Viertel, McLean
 Second row: Mullins, Geary, Fox, De Croes, S. Smith, Allison, R. Stevenson, C. Stevens, Roseberry, J. Roberts, Gilreath

ATHLETIC ASSOCIATION

With the largest membership in its history, the Athletic Association has this year stimulated good fellowship and sportsmanship as well as physical efficiency by promoting greater interest and participation in individual and group sports. All members passed certain tests in various sports accompanied by the required number of practice hours.

In addition to their sports' meets, intramural, and interscholastic activities, the A. A. members sponsored a Freshman Party. They also held a Sadie Hawkins' Party for the entire school after

the Christmas holidays. Their annual award banquet was held in the spring at which many members received letters or numerals for their outstanding athletic ability.

OFFICERS

President—JEANNETTE GUND
 Vice-President—CAROLYN HEMPELMAN
 Secretary—HELEN BARTLETT
 Treasurer—NANCY PAPIN
 Intramural Chairman—MARY RUTH PLATT
 Sponsor—MISS MARGUERITE VER KRUZEN

BETA CHI

Beta Chi was formed to promote interest among students in riding and to instruct them in techniques of good horsemanship. Members of this organization show their ability to control horses skillfully, to ride gracefully, and to apply their knowledge of animal psychology to their riding.

The Riding Team of Beta Chi sponsored competitive meets between the first and sub-team throughout the year. In the fall these riders with guests from Monticello College at Godfrey,

Illinois, gave a horse show on our campus. The efforts of these girls qualified them to enter the St. Louis Spring Horse Show.

A long supper ride in the spring ended a year of pleasant companionship and happy riding.

OFFICERS

President—NANCY PAPIN

Secretary-Treasurer—MARIE SZILAGYI

Sponsor—MISS HELEN YOUNG

First row: Kirk, Hardin, Papin, Sims, Szilagyi, Emons, Thomas, Brinkman, Jackson, Hulson

Second row: Horowitz, Kern, Boyt, R. Stevenson, Blair, P. Evans, Wexner, Garvin, Boutin, Hempelman





Left to right: Hilligoss, G. Washburn, Brice, Loerke, Brinkman, Dron, Franke, Prentice, Chicotsky, Geary

CHILDREN'S THEATER OF THE AIR

The Children's Theater of the Air affords students of the Radio Production Class an opportunity to gain valuable experience in radio work, and at the same time, provides interesting and exciting entertainment for children.

Under the direction of C. Richard Orr, the class continued its Saturday broadcasts over Station KFJO, St. Louis. The series of original scripts entitled "The Bunnies of Flufftail Town" was written by the members of Dr. Alice Parker's Radio Writing Class and was produced for Lindenwood's audience of the air. Carolyn

Hilligoss's original Christmas play, *Joseph and Mary* was presented for the chapel audience, and an additional script, "The Kitten Who Wanted a Name" by Janet Brown, was produced in April.

The radio group sponsored a Lindenwood U. S. O. program, "Something for the Boys," which was presented in March at the St. Louis Y. M. C. A. and at Scott Field.

Director—C. RICHARD ORR

Accompanist—CAROLYN BRICE



First row: Connet, Sandman, Stickler, Blankenbaker, Kane, C. Fisher, D. Jortes, G. Washburn, Tillman, Wexner
 Second row: Kolocotronis, Million, Bomer, Brazel, C. Stevens, Miss Gieselman, Leverenz, Swiger, Morrill, Heckman, Payne, C. Johnson
 Third row: Lohr, Sickler, Nichols, Horvath, Landrum, Kirkbride, Benschmidt, Tiernan, Gilliam, Latshaw, Blomeyer
 Fourth row: Hansen, Gibson, Sawyer, Ziern, Lierk, H. Mathews, Wetzler, M. Brown, Crabbe, Blood, Meyer
 Left side row: Pemberton, Brice, Stokes
 Right side row: Shaeffer, Kilbury, Fox

CHOIR

The choir brings to us sacred music and inspiration through participation in Lindenwood religious services. Under the direction of Miss Doris Gieselman, this organization prepares anthems for vesper programs and gives three concerts a year.

In keeping with the Christmas spirit, the choir presented the traditional Christmas carols and Handel's "Messiah" before the holidays. At the vesper service on Palm Sunday the choir sang "Gallia" by Gounod. This spring the choir

furnished the accompaniment for the May Day festivities and provided the special music for the Baccalaureate services.

OFFICERS

President—BETTY ROARK
 Vice-President—NADINE ZIERN
 Secretary-Treasurer—DORIS JONES
 Librarians—JOANNE SWANSON
 JANET CRABBE
 Director—MISS DORIS GIESELMAN

COMMERCIAL CLUB

The Commercial Club, a campus organization sponsored by the business department, had its social as well as professional side this year.

An interesting project of the club was its trip through the Missouri Pacific Railroad's office in St. Louis, where students were given first-hand knowledge of business techniques. During Vocational Conference Week, Miss Audrey Bartington spoke about opportunities open to the college girl in the Goodyear Aircraft Corporation at Akron, Ohio. Of particular interest to the Commercial Club was the Vocational Conference's opening address, given by Miss Margaret Hickey, Chairman of the Women's Advisory

Committee of the War Manpower Commission and principal of Miss Hickey's School for Secretaries in St. Louis. "Business Machines," a film, was presented at one of the group's meetings.

A scavenger hunt, a tea for the faculty, and a picnic at Forest Park Highlands were included in the organization's social activities.

OFFICERS

President—MARJORIE GREEN

Vice-President—MARY LEE NATHAN

Secretary-Treasurer—SALLY MATTHEWS

Sponsor—MISS MARY SHEAHAN

First row: Gezel, Phillips, Fulton, Froelich, Head, Cashman, M. Marshall, D. Moore, Liebermann

Second row: Kennedy, Catlett, Macy, McIlvaine, Sturner, Hill, Wood

Third row: Allcock, Griffiths, Thompson, Boschert, Moody, D. Miller

Fourth row: Heimrod, McNeill, Ramsey, Nathan, Matthews, Finck, Weyenberg, M. Brown, Francis

Fifth row: Gnaegy, Green, Budge

Sixth row: Swisher, Ford, S. Smith, Neef



ENCORE CLUB

Members of the Encore Club are girls who have had some relative attend Lindenwood College. Their purpose is of a dual nature—to foster the tradition of the college and to make Lindenwood truly a "school of our mothers." On Founders' Day, which commemorates the work of George Champlin Sibley and his wife, Mary Easton Sibley, the Encore girls fulfilled some of their objectives by acting as gracious hostesses to all alumnae and other guests.

Their activities for the year included a tea for the administration, faculty, and student body,

and, later in the year, a party for the club members and their friends. Their project for the year was outfitting one Merchant Marine ship with a complete library, the books being donated by the members.

OFFICERS

President—ELIZABETH FRANKE

Vice-President—JOYCE de PUY

Sponsor—MISS KATHRYN HANKINS

First row: J. de Puy, Franke

Second row: Adams, B. Little, Bebb, Blood, M. Robinson, Nathan, Coombs, Green, Papin, Waye, Heckman, Goodin

Third row: Boschert, Rotty, L. Ritter, S. Berry, Paul, Ellis, Allen, Brice, Emons, Hempelman, Tillman, R. Stevenson, Pemberton

Fourth row: E. Parker, Kelly, M. Parker, M. Landberg, McDonald, Proctor, Gnaegy, Steele, Bohrer, Mercer, Stumberg

Fifth row: Sebastian, Kern, Mayhall, E. Ritter, Runge, McInnes, Kendall, E. Berry, Ganssle

Sixth row: Blakey, Marsh, L. Schatzman

Last row: Moerschel, M. Gray, Wertz, B. de Puy, B. Clark, Langenbacher, Sagness, M. Marshall, Owen, Eberspacher, Wehrle



FUTURE TEACHERS OF AMERICA

Students in education courses who plan to make teaching their profession are eligible for membership in Future Teachers of America. This organization acquaints these prospective teachers with problems relative to their future profession.

Activities for the year began with the address of Dr. Charles Lee of Washington University who spoke to the group on "Education and World Peace." In February Dr. Kate Gregg gave a book review of "Separate Star," a novel by Loula Grace Erdman dealing with the numer-

ous problems confronting the novice school-teacher. During the year members held various forum discussions, and in the spring, Future Teachers gave its annual tea for all of the St. Charles' teachers.

OFFICERS

President—MARY ANN PARKER
Vice-President—MARY ALDRIDGE
Secretary—MARY LOU GILLETTE
Treasurer—PHYLLIS KOBE
Sponsor—DR. R. L. GARNETT

First row, seated: King, Emons, J. de Puy, B. de Puy, Riedel, E. Murphy, M. Murphy, Ullery
Second row, seated: M. Gray, Schenk, Painter, Morgan, Gallagher, Gilreath
First row, standing: M. Marshall, Kobe, McGraw, Stahl, Aldridge, B. Clark, Lohr, Gund, Hirsch, Watlington, Allen, Wehrle, Schwab
Second row, standing: Landrum, Garrett, Moerschel, M. Parker, Ritter, Runge, Franke, McDonald





First row: Riedel, De Croes, Langenbacher, D. Jones, J. Roberts
 Second row: Trenchard, Beard, Isbell, Romann, Hixon, Milroy, Poston
 Third row: McGraw, Blair, Stephens, Treadway, Finck, Colglazier, Bohrer, White, J. Schatzman
 Fourth row: Ramsey, Titus, Booth, L. Schatzman, Blood, Graybill, Ryan
 Fifth row: Mayhall, Reynolds, E. Berry, B. Marshall, Martin, Bartlett
 Sixth row: Swisher, Meredith, Coombs, Dana, Morrill, Stahl, Long

INSTRUMENTAL ASSOCIATION

This year a new organization has been added to boost school morale as well as to provide band and orchestral music of good quality—the Lindenwood College Instrumental Association. It furnishes entertainment for school functions and civic organizations, provides an opportunity for girls to participate actively in the joy of making good music, and familiarizes its members with fine music literature for orchestras and bands. Some fifty students who have the ability to play a band or orchestral instrument and to read music of moderate difficulty have become members of one or several of the branches of this association—orchestra, symphonic band, swing band, and marching band.

Symphonic band concerts were presented in November and in February, and an orchestra concert was given April 11. This year an orchestral accompaniment added to the beauty of the choir's presentation of "The Messiah."

Sports events and civic occasions were highlighted with the performance of the marching band. The band also furnished the music for our annual May Fete.

On December 1st the Instrumental Association gave an all-school party in which a clever floor-show was the main feature of the evening.

OFFICERS

President—LOVETRA LANGENBACHER
 President of Orchestral Division—
 DORIS JONES
 President of Swing Band—
 KATHLEEN DeCROES
 Vice-President—SHIRLEY RIEDEL
 Librarians—COY ELIZABETH PAYNE
 JEAN ROBERTS
 Sponsor—MR. F. G. McMURRY

INTERNATIONAL RELATIONS CLUB

Postwar planning for the student's place in domestic and international affairs furnishes the stimulus for the International Relations Club.

This year's activities began with a panel discussion given by the 19th Century European History Class on the problems confronting the winners of a World War. This was based on a comparison of problems solved at the Congress of Vienna in 1815 with those needing solution after this war. At a joint meeting with the League of Women Voters, Dr. Lee of Washington University spoke on "Education and World Peace". The class in History of the Far East presented a panel about the United States' interests in that territory.

A highlight of the year's program was a series of pictures and a forum discussion furnished by the Mexican Consulate in St. Louis. The final program presented an investigation of the occupational opportunities for women in the Foreign Service of the United States.

OFFICERS

President—JANE McLEAN

Vice-President—BETTY KILBURY

Secretary-Treasurer—FLORENCE C. NICKELL
(1st semester)

EILEEN MURPHY
(2nd semester)

Sponsor—DR. HOMER CLEVINGER

First row: McLean, E. Murphy, Kilbury, C. Roberts, Wehrle, Head, Loerke, Love
Second row: M. Parker, Peterson, Gilreath, Franke, Green, Rock
Third row: Elson, Aldridge, Garvin, J. Crawford, Schwab, Long, Levy
Fourth row: Foreman, Swenson, M. Moore, Jacobson, Rode
Fifth row: Boutin, Gund, D. Jenkins, McGraw, Gallagher, Hulson
Sixth row: R. Stevenson, Thomas, Goodin, D. Wood, J. Schatzman, M. Murphy, Shroder
Seventh row: D. Moore, McDonald, Stanze, Hobart, Rouse
Eighth row: Jackson, Heimrod, De Croes, C. Landberg, Riedel





First row: Salvo, Buckley, Boutin, Filling, Chicotsky, Wexner, Loerke, Love, McLean, E. Gray

Second row: Mohme, M. Clark, Langenbacher, Thomas, Swanson, Peterson, Garvin, Weieneth, Mangum, L. Schatzman, Gibson

Third row: M. Murphy, Owen, Griffiths, Tannenbaum, Ditson

Fourth row: D. Jenkins, R. Stevenson, Aldridge, Young, McDonald, Kirkbride, Baim, Adams, Stahlhut, Sawyer, Ashland

Fifth row: Kimbrough, Gordon, Hill, Rode, Hulson, M. Parker, Painter, Gillette, E. Stevenson, Horvath, Blood, Wheeler, Hobart

Sixth row: McGraw, C. Roberts, Swenson, Gund, Sebastian, Foreman, Horton

Vertical, first row, left to right: Head, D. Moore, McNeill, Edmiston, Grosskruger, Franke, E. Murphy, Kilbury, Elson

Vertical, second row, left to right: Goodin, J. Schatzman, Levy

LEAGUE OF WOMEN VOTERS

The League of Women Voters proposes to train Lindenwood students for leadership in the political affairs of tomorrow. A worthwhile project of the League this year was its collection of books for servicemen in prison camps and for students of oppressed nations throughout the world. The November meeting consisted of a lively panel discussion of the coming election, stressing the necessity of choosing an internationally-minded Senate.

Several Lindenwood members attended the twenty-fifth birthday dinner of the League at the Hotel Statler in St. Louis. The national president, Miss Anna L. Strauss, was guest speaker at this meeting. In January, Dr. Alice Parker dis-

cussed the practical application of the principles of the Dumbarton Oaks' Conference. The League cooperated with the County Committee by conducting a telephone campaign for the February election for the adoption of the new Missouri constitution.

OFFICERS

President—ALICE BOUTIN
 Vice-President—CELESTE SALVO
 Secretary—LOVETRA LANGENBACHER
 Treasurer—RUTH STEVENSON
 Sponsor—DR. WILHELMINA FEEMSTER

LINDEN BARK

The *Linden Bark*, under the direction of Mr. Charles C. Clayton, editorial writer of the *Globe Democrat* is published bi-monthly by the members of the journalism class. In 1944, the *Linden Bark* was accepted into the Associated Collegiate Press, a high honor among college newspapers.

Regular features of the college paper are "Gracie Gremlin", a cunning little sprite who offers her advice and suggestions to all readers; the "Hall of Fame" which features outstanding students; and "Molly Freshman's Diary", a resume of a freshman's activities and opinions of college

life. Two of the most interesting articles of the paper are the "Bark Barometer of Campus Opinions", a poll taken on current-day problems, and the literary supplement of creative writing from the English classes. The April Fool edition poked fun at Lindenwood's postwar plans and lampooned the faculty in the traditional manner. The annual Romeo contest was judged this year by Miss Ella Raines of Hollywood fame.

The editors of the *Linden Bark* again this year made their annual visit to the *Globe Democrat* building, preceded by dinner at the Castilla.

Seated: Elson, Park, Jacobson, Gilpin, Wexner, M. Clark, Head
Standing: Ryan, Latherow, Titus, Maxwell, McLean, McDonald



LINDEN LEAVES STAFF



Left to right: Dorothy Heimrod, Advertising Manager; Carol Landberg, Editor; Betty Jean Schroer, Literary Editor; Lynn Jackson, Business Manager

The *Linden Leaves* Staff of 1945 has produced an annual which represents for us Lindenwood Living in its three major aspects, the social, spiritual, and intellectual. This year we have become increasingly aware of the responsibilities that college women will have to assume as mature citizens. The belief that college principles and aims to-day should be correlated with international living has guided us in our work throughout the year.

We express our sincere appreciation and thanks to many persons who have been extremely cooperative and helpful during this year's work. Our gratitude is due Mr. Fred Bassman of the Mid-State Printing Company for his valuable suggestions and information in the preparation and arrangement of the contents of the annual. We appreciate the assistance given to us by Mr. George McClarey of the Jahn and Ollier Engraving Company, and we recognize the fine photography of Mr. Don Carlos, Mr. Carlos Piaget, and Mr. Albert Kister. We are especi-

ally indebted to our faculty advisors, Miss Elizabeth Isaacs, Miss Grace G. Albrecht, and Miss Lillian Rasmussen. Their cooperation and constructive advice not only simplified and improved our work but made it more enjoyable for everyone.

This year we again provided the students with an opportunity to elect the Popularity Queen and her Court. At a dinner in March, Lynn Jackson was crowned as the Queen; Elizabeth Franke and Dorothy Heimrod were designated as her Maids of Honor, and ten other upperclassmen comprised her Court. A short reception for the Queen and her Court was held after dinner in Ayres Parlor.

Endeavoring to uphold the traditions of Lindenwood College, we, the staff members, present to you the 1945 edition of the *Linden Leaves*. We hope that this annual will always serve as a memorable and cherished record of your Lindenwood Living.

LINDEN LEAVES STAFF

ANNUAL STAFF—1945

Faculty Advisors—MISS ELIZABETH ISAACS
MISS GRACE G. ALBRECHT
MISS LILLIAN RASMUSSEN

Literary Editor—BETTY JEAN SCHROER

Assistants: BARBARA PARK
HELEN HORVATH

Editor-in-Chief—CLARA MAE LANDBERG

Assistants: CAROLINE LEVY
VIRGINIA MOEHLINKAMP
MARJORIE ALLEN

Art Editor—POLLY WOOLSEY

Assistant: EILEEN MURPHY

Business Manager—LYNN JACKSON

Assistants: KATHLEEN DE CROES
RITA MAE ALLEN
ANN HARDIN

Photography—DONALEE WEHRLE

VIRGINIA GILREATH
HELEN BARTLETT

Advertising Manager—DOROTHY HEIMROD

Assistants: JANE McLEAN
BETTY ANN ROUSE
LOVETRA LANGENBACHER
SALLY CRAMBLIT

Organization—MARJORIE GREEN

BETTY FOX
DOROTHY SHAEFFER
ALICE HIRSHMAN
SARITA SHERMAN

First row: Hirshman, Levy, E. Murphy, McLean, Rouse, Gilreath, Wehrle, Green, Moehlenkamp

Second row: Horvath, Allen, Schroer, Heimrod, C. Landberg, Jackson, Woolsey, Fox, Park, Sherman

Third row: Shaeffer, Bartlett, De Croes, Langenbacher, Cramblit



POETRY SOCIETY

The Poetry Society at Lindenwood is organized for those members of the student body and faculty who are interested in verse writing and criticism. Members were selected in the annual contest held in the fall. Jane Blood, writer of the prize winning poem, received honorary membership.

Programs at each meeting are planned to further interest and enjoyment in poetry among college women, to criticize one another's poems during informal discussions, and to become

better informed on the techniques of poetry writing in general. The club entertained student and faculty guests at a spring tea.

OFFICERS

President—MINOTA BAYLISS

Vice-President—PHYLLIS MAXWELL

Secretary—MARIE SZILAGYI

Treasurer—BARBARA PARK

Sponsor—DR. ELIZABETH DAWSON

First row: Maxwell, Park, Bayliss

Second row: Szilagyi, Hoffman, Hill, G. Willbrand, Ganssle, J. Brown

Third row: Mohlenkamp, Young, Ziern, Geary, M. Parker, Warner, Long, E. Parker, Blood, Lant





First row: Ryan, Jacobson, Elson, M. Clark, Park, Gilpin, Wertz, Latherow, Allen

Second row: Schroer, E. Murphy, Wehrle, Gilreath, Shaeffer, Green, Wexner, Moehlenkamp, Head, Levy, Rouse, McLean

Third row: Fox, Hardin, Langenbacher, Titus, De Croes

Fourth row: Jackson, C. Landberg, Cramblit, Heimrod, McDonald

PRESS CLUB

The Press Club consists of all the members of the *Linden Leaves* and *Linden Bark* staffs. This group brings about a closer cooperation between the staffs of the two college publications and maintains a high standard of creative writing by sponsoring a contest for the best journalistic writing.

On February 28th, the Press Club held its annual Gridiron Dinner. Between the courses parodies, skits, and take-offs on campus person-

alities were presented. At the March meeting Miss Mina Sennott, editor of an industrial magazine, *Bemistory*, discussed the journalistic opportunities for college women.

OFFICERS

President—MARJORIE GREEN

Vice-President—DOROTHY SHAEFFER

Secretary-Treasurer—BARBARA WEXNER

Sponsor—MR. CHARLES CLAYTON



Seated: Mangum, Bovis, Wexner, McIlvaine, Shroder, Sturner, Ryan, Lieblermann
 Kneeling: Iles, Allison
 Standing: Emons, Zeidner, Hill, Hempelman, Szilagyi, Papin, Burch, Butcher, Thomas, Love, Loerke, Rouse, Franke

TAU SIGMA

Tau Sigma, the honorary dance fraternity, is organized to study the dance in its relation to the accompanying arts of music, drama, and design. Through programs and meetings the club promotes a general interest in the art of dancing.

In the spring, Tau Sigma gave a recital in which the members through interpretive dancing presented "Lindenwood, Past and Present." Throughout the year, members participated in floor shows, parties, and entertainment for other

clubs or organizations. Honoring the May Queen and her court on May Day was Tau Sigma's most outstanding performance of the year.

OFFICERS

President—CAROLYN HEMPELMAN
 Vice-President—MARIE SZILAGYI
 Secretary—MARIDEE HILL
 Treasurer—NANCY PAPIN
 Sponsor—MISS MARY ELIZABETH McCOY



First row: Gund, G. Willbrand, Crabbe, Swanson, Mullins, Hardin, M. Brown, J. Wilson, Hoffman
Second row: C. Stevens, Murray, Hulson, Bancroft, Viertel

TERRAPIN

Good fellowship and sportsmanship as well as high physical efficiency are stimulated by participation in individual and group swimming through Terrapin, the honorary aquatics society.

Three times weekly, members serve as life guards and instructors during "open pool" which they sponsor. In March, Terrapin presented an original water pageant entitled "Join the Navy." Highlights of the program were the formations

in which the technique of rhythmical swimming was used. The numbers included interpretations of Hawaii, India, and Ireland.

OFFICERS

President—EDITH ANN MULLINS
Vice-President—ANN HARDIN
Secretary-Treasurer—JOANNE SWANSON
Co-sponsors—MISS MARY E. McCOY
MISS MARGUERITE VER KRUZEN



HALLOWE'EN COURT

The Queen

MISS ALICE CHRISTIANSEN

Attendants to the Queen

MISS JOANNE PATTON

MISS MARY ANN WOOD



POPULARITY COURT

The Queen

MISS LYNN JACKSON

The Attendants

{ MISS ELIZABETH FRANKE
{ MISS DOROTHY HEIMROD



MAY COURT

Freshman Attendants to the Queen

{ MISS MARY ANN WOOD
{ MISS MARGARET EBERHARDT



MAY COURT

Sophomore Attendants to the Queen

{MISS EMILY BERRY
{MISS LEONE FLANIEN



MAY COURT

Junior Attendants to the Queen

{MISS BETTY DANEMAN
{MISS JOAN EMONS



MAY COURT

Senior Attendants to the Queen

{MISS MARJORIE GREEN
{MISS BETTY ROARK



MAY COURT

Maid of Honor to the Queen

MISS MONTELLE MOORE

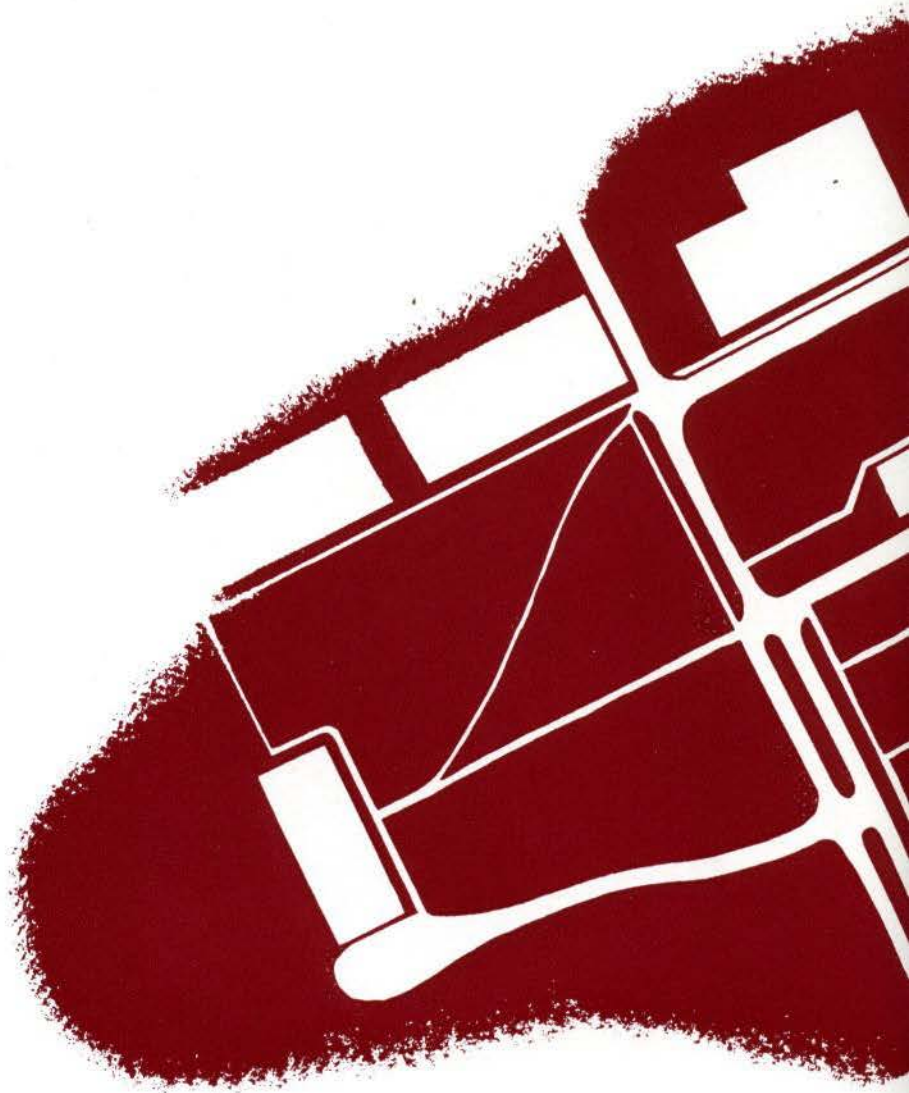


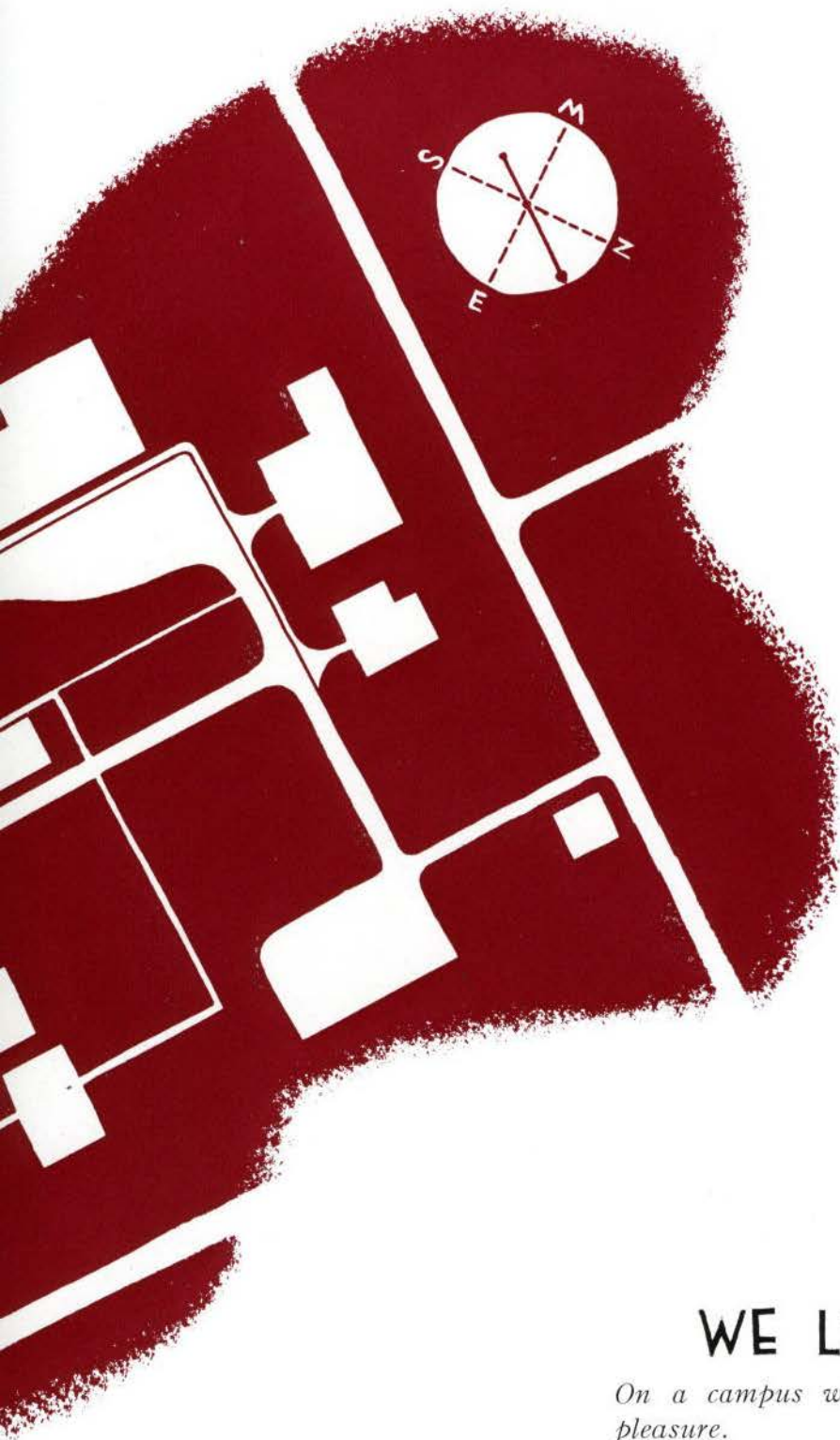
MAY COURT

THE QUEEN

MISS JACQUELINE SCHWAB

CAMPUS





WE LIVE HERE

*On a campus whose beauty is constant
pleasure.*

In friendship and mutual understanding.

*With democratic principles symbolizing
Lindenwood Living.*



ROEMER HALL



FINE ARTS BUILDING



SIBLEY HALL



SENIOR HALL



IRWIN HALL



BUTLER HALL



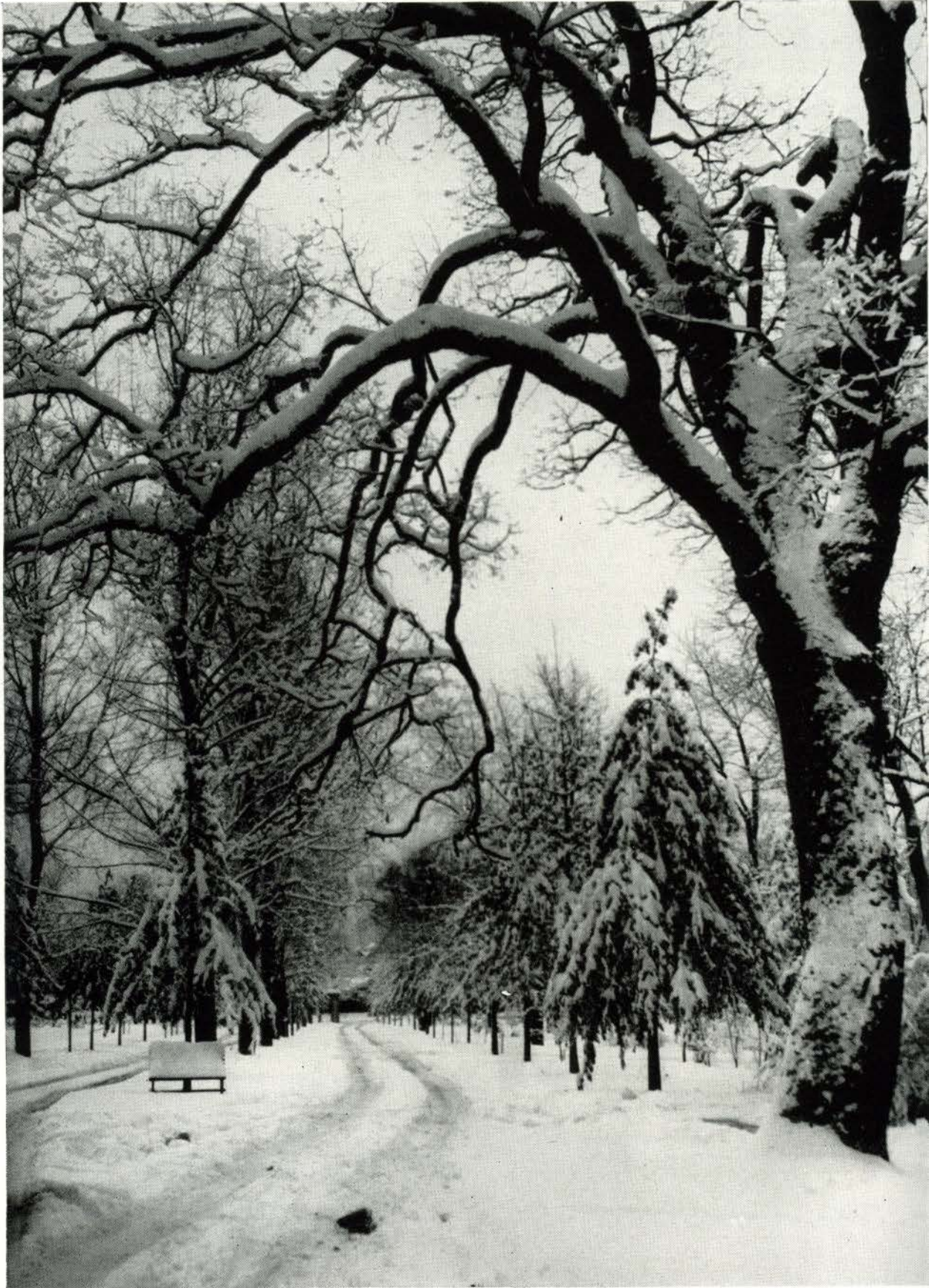
AYRES HALL

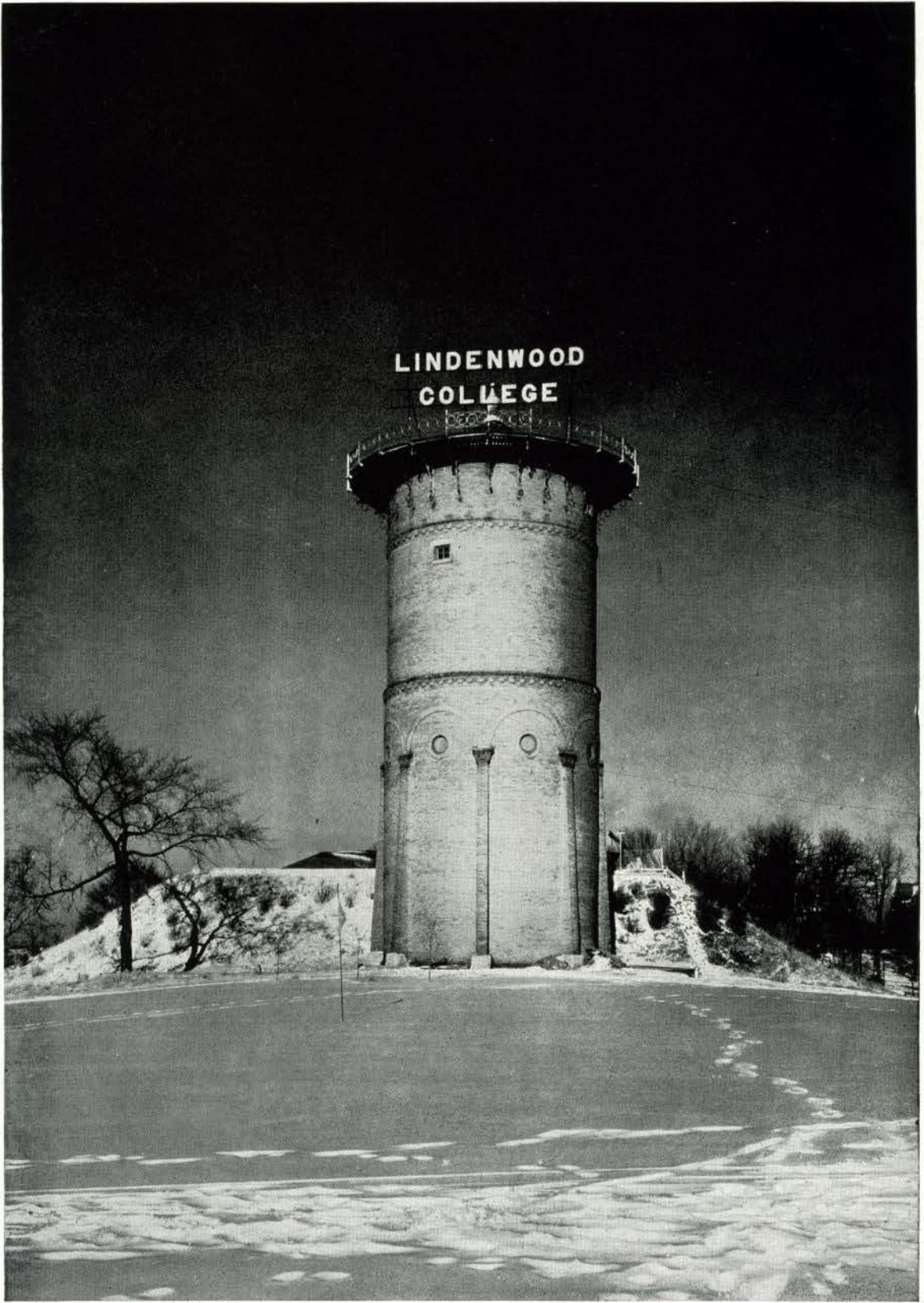


NICCOLLS HALL



LIBRARY TOWER





THE LINDENWOOD TOWER



POPULARITY COURT 1945

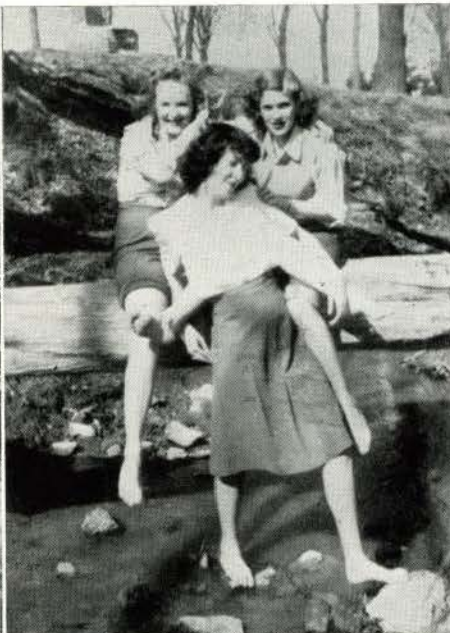
MAC'S MERRY MAIDS



Ipana ad . . . Hockey Hotshots . . . Happy, girls? . . . Hoosier Club—1945 Style . . . A Woman's Window . . . Cuddle Up a Little Closer, Ginny . . . Waitin' on the Wall . . . Truckin' . . . Seniors are we!



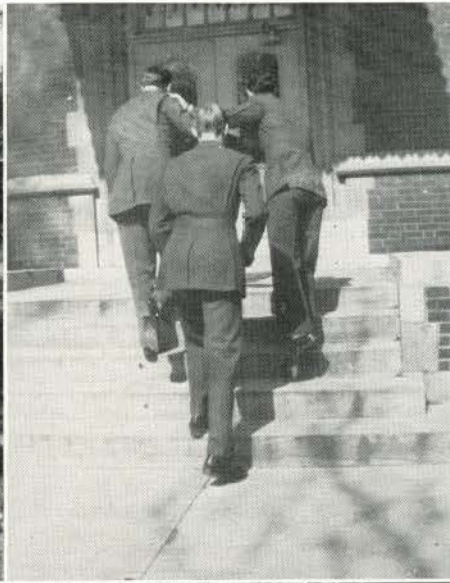
Irwin Quintet . . . What a Week-end!—Pere Marquette Field Trip . . . Chilly, Gert? . . .
Senior Christmas Dance . . . Missouri Military, Here We Come! . . . Winter Wonderland, Brrrr
. . . Miss Chaperon and Crew . . . Sibley Are We!



Goin' my way . . . Loggin' Around . . . Who is Which? . . . The Ring's the thing . . . On the Courts . . . Swing Time . . . Before and After . . . Shoeless and Fancy-Free!



'Snow fun or is it? . . . Queen of the Ball . . . Tarzan and Company . . . Apple Polishing . . .
Snow time play time . . . Horse Play . . . Shootin' high!



Best foot forward! . . . Late for your date? . . . Heimrod—personality plus! . . . They shoot to win . . . Half-dozen playtime gals . . . In or out? In or out? . . . Schroer and Jackson bullying . . . From "deep in the heart of Texas."



The Lindenwood Mustang . . . Indulging in Kickapoo Joy Juice . . . Refugees from Dog Patch . . .
With Parisienne Chic . . . Hallowe'en's Awaited Moment . . . Swing your partner!

LINDENWOOD COLLEGE

Founded 1827

ST. CHARLES, MO.

*W*ell over one hundred of our Lindenwood women are in the armed services of our country. Lindenwood women now enrolled in this historic college have a deep sense of obligation and determination to meet the challenge of the days ahead of us.

They work hard with the complete feeling of faithfulness to our country and to our men and women who are now serving us that we may preserve Lindenwood and the homes of Lindenwood's students.



HARRY MOREHOUSE GAGE

President

RAPID ENGRAVING COMPANY

Advertising Building

1627 Locust St.

ST. LOUIS, MO.

Garfield 1592



THE VESTAL SEAL

ON FLOOR MAINTENANCE PRODUCTS

It is your assurance that you are using the finest material known for preserving and beautifying all types of floors.

LOOK AT THE FLOORS IN LINDENWOOD

Their beauty and serviceability are the result of using Vestal products for many years. Notice particularly the PYRA-SEAL finished gymnasium floor.

Vestal Chemical Laboratories, Inc.

4963 MANCHESTER

ST. LOUIS, MO.

COMPLIMENTS OF

J. C. PENNEY COMPANY

MAIN STREET

ST. CHARLES, MISSOURI

Compliments of

RONNOCO COFFEE

GAS

SERVES YOU BETTER
THROUGH MODERN GAS APPLIANCES

ST. CHARLES GAS COMPANY

212 NORTH MAIN STREET

ARTISTS COLORS

For
Schools and Colleges

DRAWING AND PAINTING MATERIALS

F. WEBER COMPANY

705 PINE ST. •

ST. LOUIS, MO.

HERE YOU HAVE THE SATISFACTION THAT CAREFUL
CLEANING GIVES

RECHTERN CLEANING COMPANY

216 NORTH SECOND STREET

PHONE 1000

"C." WALTER ALLEY

for GOOD PRINTING

Dependable Service for 33 Years

123 N. THIRD STREET

SAINT LOUIS, MISSOURI

BOTTANI PRINTERY

F. N. BOTTANI

Proprietor



PRINTING • ENGRAVING

EMBOSSING



120 N. SECOND STREET

ST. CHARLES, MISSOURI

DENNING RADIO COMPANY

RADIO — RECORD

Headquarters

ON SHOPPING TOURS

VISIT ST. LOUIS' MOST ATTRACTIVE WOMEN'S STORE

Selling Quality Footwear Fashions Exclusively Since 1918

VOGUE BOOT SHOP

615 Locust Street

St. Louis, Missouri

HOSIERY

BAGS

PARKVIEW GARDENS

BEN RAU, Florist

CORSAGES AND BOUQUETS

ARE

"AS NEAR TO LINDENWOOD AS YOUR PHONE"

TELEPHONE 214



Flowers Telegraphed

Opposite Blanchette Park

ST. CHARLES, MISSOURI

MAIN 2408

<p>PIANOS JULIUS BAUER DECKER & SON SHATTINGER</p>	<p>SHATTINGER'S PIANOS - MUSIC 331-335 ARCADE BLDG. 8TH. & OLIVE STS.</p>	<p>SHEET MUSIC POPULAR CLASSICAL PUBLISHERS</p>
--	--	---

Missouri Coal and Appliance Co.
 GREEN MARKED COAL

420 N. MAIN
 ST. CHARLES
 PHONE 440

DENKER'S BAKING COMPANY

GOLDEN CRUST BREAD, ROLLS
 and
 COFFEE CAKE

ST. CHARLES, MISSOURI

923 N. SECOND STREET

LESTON COMPANY

HI. 8411

7111 Manchester

BUY AND SELL LESTON
 QUALITY FOODS



**Quality Remains Long After
 Price is Forgotten**

Mayonnaise, Dressing,
 Worcestershire Sauce,
 Barbecue Sauce, Mustard,
 Honey, Extracts
 and Marshmallow
 Creme.

Brides to Be

The joy of knowing
 your *Wedding Announcements*
 are correct in every detail
 will be yours, when you
 come to the shop where
 they are made

WILL ECKER & CO.
 ENGRAVING AND
 FINE PRINTING
 414 NORTH 12TH BLVD.
OPPOSITE HOTEL JEFFERSON

SINCE 1913

JOSEPH A. BOTTANI

CONTRACTOR

Reinforced Concrete and Granitoid Work

532 N. BENTON AVENUE

ST. CHARLES, MISSOURI

COMPLIMENTS OF
**THE UNION SAVINGS BANK
OF ST. CHARLES**

Organized 1870

MEMBER FEDERAL RESERVE DEPOSIT INSURANCE CORPORATION

and

MEMBER OF FEDERAL RESERVE SYSTEM

KISTER STUDIO

PORTRAIT - PHOTOGRAPHY - COMMERCIAL

Phone 1287

508 Jefferson Street

St. Charles, Mo.

SISLER HUMMEL SPORTING GOODS COMPANY

WHOLESALE AND RETAIL

Golf—Archery—Tennis—Badminton—School Sweaters and Jackets

1114 LOCUST ST.

CHESTNUT 2998

ST. LOUIS, MO.

SCHAPPE'S
WEET
HOP

1507 CLAY

PHONE 1214

AHMANN'S NEWS STAND

CIGARS and TOBACCO

NEWS, BOOKS, STATIONERY, and SPORTING GOODS

ST. CHARLES, MO.

223 N. MAIN

- BOOKKEEPING SYSTEMS
- BLANK BOOKS
- LOOSE LEAF
- BINDERS



BANNER NEWS COMPANY

ST. CHARLES, MO.

Printers ♦ Publishers

1	Dacy & Company, Inc. - - Wholesale Distributors	1
8	FRESH FRUIT AND VEGETABLES—HORSERADISH ROOTS	9
5	Serving Clubs, Hotels, Institutions, Restaurants, Retail Grocers	4
2	1201-1211 N. Broadway 93 YEARS IN SERVICE CE. 7125-7126	5

A CONVENIENT PLACE TO SHOP

THE GOLDEN RULE STORE

(PARSONS VARIETY STORES CO., Incorporated, Proprietors)

We Specialize in 5c to \$5.00 Merchandise, Dry Goods, Notions, Drug Sundries,
House Ware and Other Staple Merchandise

A LARGE ASSORTMENT OF FRESH CANDY

L. V. AUSTERSCHMIDT

ICE - ORIENT COAL - BUILDING MATERIAL
CONCO STOKERS

Phone 62

400 N. Main Street

BRAUFMAN'S

Congratulations, Seniors . . .

You've done a fine job. Your record at Lindenwood—whether academic, musical or social—will be an achievement to look back on with great pride.

We are pleased . . . if we have helped in any way to make your stay here pleasant. We hope to see you again.

HUNING'S

CLARK-SPRAGUE PRINTING CO.

1901 LOCUST STREET
ST. LOUIS, MISSOURI

Compliments of

F. W. WOOLWORTH & COMPANY

ST. CHARLES, MISSOURI

THRO'S

CLOTHING FOR MEN AND BOYS

ST. CHARLES, MISSOURI



YOUR BADGE IS A THING OF BEAUTY AND
SHOULD BE A JOY FOREVER!

The traditions of a century-old school cannot be erased by time, and the beauty of your Lambda Chi Badge is as enduring as the traditions of your school. Your Lambda Chi Badge is wrought entirely of gold and set with only genuine perfectly matched Oriental whole pearls—a badge in keeping with all of the fine things that Lindenwood College stands for.

Manufactured by

COLLEGE SHOP

317 N. 11TH STREET

ST. LOUIS, MISSOURI

Manufacturers **GRIFFIN & COMPANY, Inc.** Importers

EXTRACTS, BAKER'S SUNDRIES, GELATINES,
COFFEES, TEAS, COCOA, JELLY POWDER

Phone FOrest 2477

ST. LOUIS, MISSOURI

Office and Laboratories—4919 Washington Blvd.

BEST WISHES OF

THE CAMPUS CONFECTIONERY

Next to St. Charles High School

Phone 230

YOUR PATRONAGE
DESERVES OUR CONSTANT
EFFORT TO SERVE
YOU BETTER

ICE CREAM



ST. CHARLES DAIRY
COMPANY

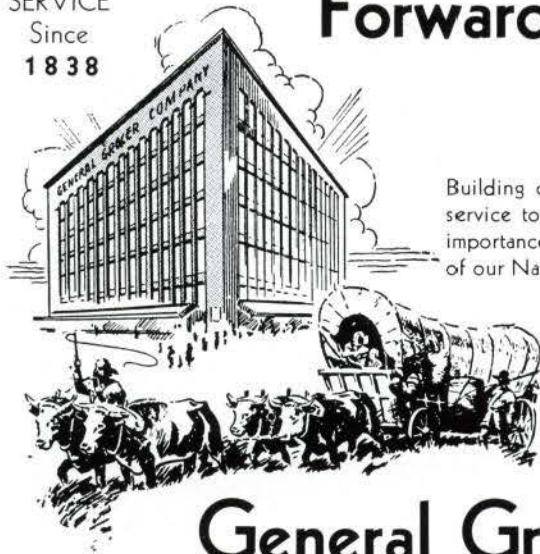


PRINCESS DAIRY STORE

1030 CLAY STREET

QUALITY
SERVICE

Since
1838



Forward with AMERICA

Building constantly, for a greater Nation, and a greater service to retail grocers, with a new conception of the importance of nutrition as allied to the health and defense of our Nation.

That is why, for over a hundred years, General Grocer Company has continued forward, with America, now geared to the National Emergency of War, and readily assisting in all branches of defense related to the foods industry.

General Grocer Co. IN ST. LOUIS, MISSOURI

AMERICAN LADY or TOPMOST LIKE FRESH FOODS
MANHATTAN COFFEE . . . COBCUT CORN

MUEHLING PACKING COMPANY

6210 Easton Avenue

30 YEARS WELLSTON'S QUALITY FOODSTORE
WHOLESALE—RETAIL

DELIVERY

Phone Mu1238

Supplying the Large Consumer with the BEST
Since 1874

J. F. CONRAD GROCER CO. SAINT LOUIS

FOR LETTERHEADS
that
"CLICK"

Letterhead and Check Corporation of America

Formerly Isler-Tompsett Lithographing Co.

2940 BENTON ST.

ST. LOUIS

PHONE NEWSTEAD 1543

ST. CHARLES MUSIC HOUSE

RECORDS — INSTRUMENTS — SHEET MUSIC
GIFTS — NOVELTIES

230 N. MAIN

PHONE 225-J

COMPLIMENTS OF

PEACOCK SHOE SHOP

815 LOCUST ST.

ST. LOUIS, MO.

VOGT BROS. POULTRY FARM

CONDITIONED POULTRY OF ALL KINDS

Gallaher and Lindenwood Aves.

ST. CHARLES, MISSOURI

Branches: University City, Mo., and Normandy, Mo.

Compliments of

MILTON E. MEYER JEWELRY STORE

ST. CHARLES, MO.

J. H. Hackman Lumber Company

LUMBER AND BUILDERS'
SUPPLIES

106 N. MAIN STREET

ST. CHARLES, MO.

Phone 806

ON NIGHTS OFF CAMPUS—
A GOOD SHOW!



NEW STRAND and ROXY THEATRES

ST. CHARLES, MISSOURI

Haase's

IMPORTERS - PACKERS - MANUFACTURERS
of
QUALITY FOODS

PARKER BROTHERS

MACHINE & ELECTRIC CO.

920 CLAY STREET

ST. CHARLES, MISSOURI

We Repair Anything Electrical or Mechanical

L. BRUCKER STOVE & HARDWARE CO.

302 N. Main Street - Telephone 161

**BUY
U. S. WAR BONDS**

VICTORY WILL BE SOON

Your St. Charles' Druggists Welcome You

•
SERVICE DRUG

STANDARD DRUG

TAINTER DRUG

REXALL DRUG

•
SEE YOUR ST. CHARLES' DRUGGIST
for
"SERVICE WITH A SMILE"

ST. CHARLES BUILDING DEPARTMENT STORE

H. G. RAUCH LUMBER COMPANY

MAIN AND CLARK STREETS

With the Compliments of a
Friend of Lindenwood College



FIRST NATIONAL BANK

of ST. CHARLES, MO.



CHARLES J. DAUDT	President
GEO. H. KUHLMAN	Vice-President
A. J. MOERSCHEL	Cashier
LEE I. WHITE	Assistant Cashier
W. C. BORGELT	Assistant Cashier



DIRECTORS

JOSEPH A. BOTTANI	GEORGE H. KUHLMAN
CHARLES J. DAUDT	DR. AUGUST WESTERFIELD
CLARENCE T. HACKMANN	LOUIS WILKE
A. J. MOERSCHEL	



TOTAL RESOURCES

\$5,300,000



MEMBER FEDERAL RESERVE SYSTEM

Under the Supervision of the United States Government

MEMBER FEDERAL DEPOSIT INSURANCE CORPORATION

BUSE'S FLOWER SHOP

400 CLAY

Flowers for all occasions

PHONE 148

WE TELEGRAPH FLOWERS

PHOENIX
HOSIERY



SPORTS
WEAR

"The Laundry Does It Best"

ST. CHARLES LAUNDRY

MAIN STREET, ST. CHARLES

PHONE 136

PATRONIZE YOUR ADVERTISERS

CAROL LANDBERG
Editor

DOROTHY HEIMROD
Advertising Manager

MARY LYNN JACKSON
Business Manager

YELLOW CABS

TEL. 133

ST. CHARLES

MISSOURI

COMPLIMENTS
OF A
FRIEND



LINDENWOOD CHAPEL

LA BEAUME & KLEIN, ARCHITECTS

WE CAN FIX YOUR TYPEWRITER

Missouri Typewriter Exchange

PHONE 62

CHARLES RICHARDS, *Manager*
WENTZVILLE, MISSOURI

THE DAILY

COSMOS-MONITOR

Makes a Specialty of Fine Job Printing
BEST WORK AT REASONABLE RATES

CARLOS PHOTOS

942 Spanish Court

Wilmette, Ill.

•

We wish to thank both Mr. Carlos and Kay Idler for their kind assistance in making this a better annual through their fine photography on the individual pictures.

•

CAROL LANDBERG, Editor
LYNN JACKSON, Business Manager
DOROTHY HEIMROD, Advertising Manager

The Linden Leaves Staff wishes to extend
its sincerest thank you and
appreciation to

KRATZ FIELD

for their contribution of the aerial photo
of the campus

The pictures of the organizations, some of the campus scenes, and the 1945 Court pictures are all from the Studio of Mr. Carlos Piaget. We are proud of these pictures, and feel that their superior quality speaks for itself.

The LINDEN LEAVES Staff

PIAGET, Photographers

3800 West Pine

ST. LOUIS, MISSOURI

There is Courage Here, Too

No medals, but sincerest congratulations to you who have had the courage to fight through overwhelming discouragements to produce and finance a yearbook in this year of 1945!

You needed no compulsion but *your own determination* to hold on to this one phase of American college life, to preserve it for those who might have been here to take part in it and who will be glad you had the grit to carry on.

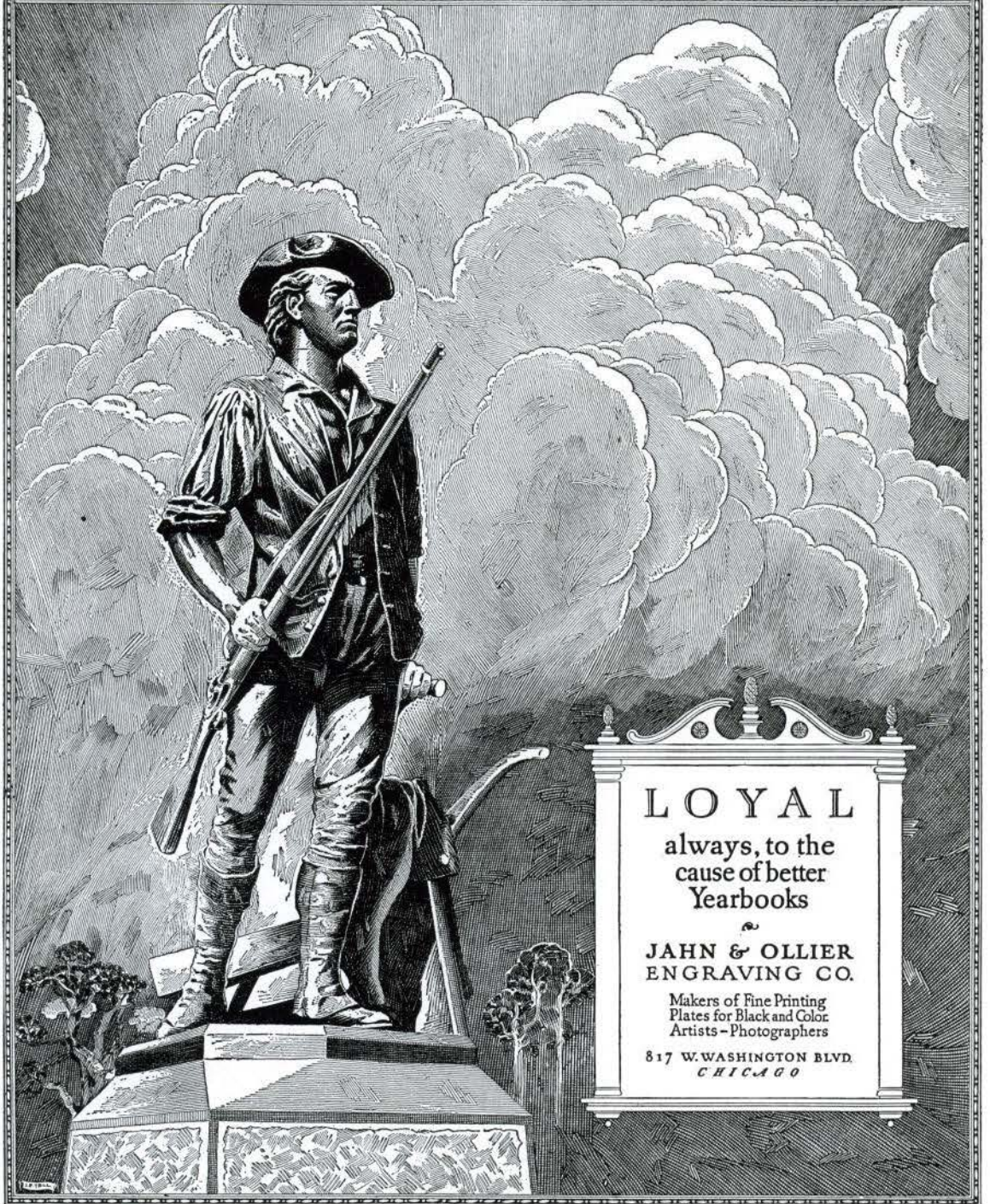
This is the kind of courage we admire as much as any other. And we are glad we have been able to help you, as much as we could, "to build with broken tools" this chronicle of student and faculty life.

MID-STATE PRINTING COMPANY

Printers, Binders and Cover-Makers for School Yearbooks

JEFFERSON CITY, MISSOURI

"JAHN & OLLIER AGAIN"



LOYAL

always, to the
cause of better
Yearbooks

JAHN & OLLIER
ENGRAVING CO.

Makers of Fine Printing
Plates for Black and Color
Artists - Photographers

817 W. WASHINGTON BLVD.
CHICAGO

STUDENT INDEX

STUDENT INDEX

Adams, Ann, Carrollton, Missouri	70, 88, 102, 106
Aldridge, Mary, Evansville, Indiana	32, 103, 105, 106
Allcock, Betty Marie, Paducah, Kentucky	70, 101
Allen, Rita Mae, Vandalia, Illinois	47, 102, 103, 109, 111
Allison, Roberta M., Tulsa, Oklahoma	70, 97, 112
Anderson, Janet Mae, San Antonio, Texas	70
Anderson, Minnie, Oilton, Oklahoma	58, 97
Arnold, Lois Ann, Des Moines, Iowa	58
Ashland, Marcia Jean, Clear Lake, Iowa	70, 87, 97, 106
Baim, Dolores, Pine Bluff, Arkansas	70, 106
Bancroft, Lucy Jane, Cuba, Missouri	70, 97, 113
Barnes, Anna Frances, Beaver Dam, Kentucky	70
Bartlett, Helen M., Wheaton, Illinois	25, 32, 97, 104, 109
Bass, Erle Dean, El Dorado, Arkansas	58, 84
Battenfield, Velta E., Whiteface, Texas	26, 70
Baughman, Donna, Chariton, Iowa	70, 87
Bayliss, Minota M., Wauwatosa, Wisconsin	27, 32, 82, 110
Beard, Jane, Herculaneum, Missouri	70, 87, 104
Beazley, Virginia E., Salina, Kansas	70, 86
Bebb, Katherine F., Muskogee, Oklahoma	70, 102
Bedell, Colleen, Cedar Rapids, Iowa	70
Bennett, Mary Helen, Springfield, Illinois	58
Benscheidt, Helyn L., Hutchinson, Kansas	70, 100
Benson, Marjorie Ann, Omaha, Nebraska	70, 91
Berry, Emily, Kansas City, Missouri	58, 97, 102, 104, 117
Berry, Sue, Berwyn, Illinois	68, 69, 70, 91, 102
Bettinger, Beverly Ann, Monmouth, Illinois	70, 96
Blair, Harriet Ann, Springfield, Missouri	70, 87, 98, 104
Blakey, Linda L., Paris, Missouri	70, 102
Blankenbaker, Norma Jean, Kirkwood, Missouri	70, 85, 100
Blassingame, Betty J., McAlester, Oklahoma	70, 85
Blattner, Virginia W., Mexico, Missouri	58, 83, 91, 93
Blomeyer, Barbara, Caruthersville, Missouri	70, 100
Blood, Jane Alan, Mt. Carmel, Illinois	70, 86, 100, 102, 104, 106, 110
Bohrer, Joan Louise, West Plains, Missouri	70, 87, 102, 104
Bomer, Margaret R., Poplar Bluff, Missouri	70, 85, 100
Boomer, Dolores B., Whiting, Indiana	70
Booth, Mary Beth, Sharpsville, Indiana	70, 86, 104
Boschert, Mary Dean, St. Charles, Missouri	68, 70, 87, 101, 102
Boutin, Alice Ann, Cape Girardeau, Missouri	47, 87, 93, 97, 98, 105, 106
Bovis, Georgann, Elizabethtown, Kentucky	70, 86, 97, 112
Bowman, Carol Hope, Omaha, Nebraska	71, 97
Boyt, Shirley L., Des Moines, Iowa	71, 98
Brazel, Peggy Lou, Bartlesville, Oklahoma	71, 100
Brice, Carolyn S., McAlester, Oklahoma	71, 85, 99, 100, 102
Brinkman, Mary Margaret, Rolfe, Iowa	97, 98, 99
Brown, Barbara Ann, Houston, Texas	71
Brown, Eleanor Lee, Kansas City, Missouri	71, 110
Brown, Janet Paisley, Ferguson, Missouri	58, 97, 100, 101, 113
Brown, Miriam E., Trenton, Missouri	56, 58
Bruce, Ann, Mt. Vernon, Illinois	58, 83, 87, 93, 106
Buckley, Barbara, Hayti, Missouri	26, 68, 71, 101
Budge, Lila Lee, St. John, Kansas	71, 96
Bullock, Jane, Fort Worth, Texas	71, 97
Burba, June, Hodgenville, Kentucky	71, 112
Burch, Betty Joy, Jefferson City, Missouri	71, 97, 112
Butcher, Beverly Ann, Great Bend, Kansas	71, 97, 112
Callahan, Ann Patricia, Effingham, Illinois	58
Carlton, Yvonne, Mt. Carmel, Illinois	58, 84
Carroll, Barbara Jane, Independence, Missouri	68, 71
Carter, Edith Jane, Dallas, Texas	71
Case, Virginia M. L., Saginaw, Michigan	58
Cashman, Majoree, Chicago, Illinois	58, 97, 101
Catlett, Beverly, Oklahoma City, Oklahoma	71, 101
Chicotsky, Sonja, Fort Worth, Texas	58, 99, 106
Christiansen, Alice M., Omaha, Nebraska	71, 114
Churchill, Billie F., Sedalia, Missouri	71
Clark, Elizabeth, Arlington, Tennessee	102, 103
Clark, Jeanne M., Fort Dodge, Iowa	58, 87
Clark, Marian Jean, St. Joseph, Missouri	58, 88, 95, 97, 106, 107, 111
Clawson, Frances Louise, Louisiana, Missouri	71
Colglazier, Patricia, St. John, Kansas	71, 104
Combs, Carol Bird, Parsons, Kansas	59, 87

STUDENT INDEX—Continued

Confer, Nancy Ann, Tulsa, Oklahoma	71
Connet, Mary Jane, McAlester, Oklahoma	71, 85, 100
Cook, Milrene, Camden, Arkansas	71
Coombs, Margot Lavon, Joplin, Missouri	71, 102, 104
Coons, Carolyn Mae, Sioux City, Iowa	71
Cordts, Barbara Jean, Manhattan, Kansas	71
Crabbe, Janet, Cedar Rapids, Iowa	68, 71, 97, 100, 113
Cramblit, Sally, Ottumwa, Iowa	71, 109, 111
Crawford, Betty Joan, Hutchinson, Kansas	71
Crawford, Joanne, Cedar Rapids, Iowa	26, 30, 32, 105
Czarlinsky, Betty Jane, Jefferson City, Missouri	71
Dana, Nancy Jean, Highland Park, Illinois	71, 104
Daneman, Betty Jayne, Dayton, Ohio	47, 88, 95, 97, 118
Davidson, Lois Elaine, Mason City, Iowa	71, 97
Davidson, Martha Jean, Clarinda, Iowa	72
Davis, Theodora M., Cedar Rapids, Iowa	72
Decker, Jane Kathryn, Topeka, Kansas	72
DeCroes, Kathleen, Peoria, Illinois	59, 87, 94, 97, 104, 105, 109, 111
DeHaven, Phyllis Ann, Fort Wayne, Indiana	59
dePuy, Barbara, Rockford, Michigan	72, 102, 103
dePuy, Joyce Ann, Rockford, Michigan	47, 102, 103
Ditson, Helen E., Joplin, Missouri	72, 106
Dorton, Sara Lou, Paintsville, Kentucky	59
Douglas, Joan L., Shaker Heights, Ohio	72
Dron, Rosemary, Madison, Illinois	59, 99
Eakin, Marian, Decatur, Illinois	47, 83, 87, 92
Eastwood, Nell Frances, Grayville, Illinois	26, 47
Eberhardt, Margaret, Salina, Kansas	72, 116
Eberspacher, Louise I., Pana, Illinois	47, 88, 102
Edmiston, Doris Dean, Lawrence, Kansas	72, 87, 106
Ellis, Sybil, Little Rock, Arkansas	72, 102
Elson, Joan Claire, Vinton, Iowa	47, 88, 97, 105, 106, 107, 111
Emons, Joan, Alton, Illinois	48, 93, 97, 98, 102, 103, 112, 118
Evans, Jane Patricia, Mission, Texas	26, 72, 88, 87, 98
Evans, Rosalie Ann, Emerson, Iowa	72, 97
Fields, June Yvonne, San Antonio, Texas	59, 87, 93, 97
Filling, Gwyned, St. Charles, Missouri	56, 59, 83, 87, 89, 106
Finck, Kathleen, St. Charles, Missouri	72, 101, 104
Finrock, Alta, Dayton, Ohio	59
Fisher, Charlotte, Glidden, Iowa	72, 100
Fisher, Dolores M., Miami, Oklahoma	72
Flaniken, Mary L., Memphis, Tennessee	59, 97, 117
Ford, Martha Jean, Tulsa, Oklahoma	72, 101
Foreman, Jackie, Little Rock, Arkansas	48, 88, 105, 106
Fox, Betty, Pine Bluff, Arkansas	59, 87, 95, 97, 100, 109, 111
Francis, Allene M., St. Joseph, Missouri	72, 101
Franke, Elizabeth, Webster Groves, Missouri	25, 48, 97, 99, 102, 103, 105, 106, 112, 115
Froelich, Edwena A., Evansville, Indiana	72, 101
Fuller, Susan, Peoria, Illinois	59
Fulton, Jackie Jane, Oklahoma City, Oklahoma	72, 101
Gaines, Earline June, Miami, Oklahoma	72, 97
Gallagher, Geraldine, St. Louis, Missouri	103, 105
Ganssle, Margaret Ann, Salina, Kansas	72, 87, 102, 110
Garrett, Jane Louise, Robertson, Missouri	48, 103
Garvin, Jo Anne, Waterloo, Iowa	48, 97, 98, 105, 106
Gaston, Mary Carolyn, North Little Rock, Arkansas	59, 87
Geary, Patsy Jo, Oklahoma City, Oklahoma	59, 82, 93, 97, 99, 110
Gezel, Janet Roseberry, Sterling, Illinois	72, 101
Gibson, Martha Ann, Great Bend, Kansas	72, 100, 106
Gillette, Mary Lou, O'Fallon, Missouri	33, 83, 87, 106
Gilliam, Dorothy, Chattanooga, Tennessee	68, 72, 85, 100
Gilpin, Betty, Kansas City, Missouri	59, 83, 93, 94, 107, 111
Gilreath, Virginia, Kelllogg, Iowa	26, 27, 33, 81, 95, 97, 103, 105, 109, 111
Gnaegy, Dorothy Jane, Webster Groves, Missouri	59, 91, 101, 102
Goodin, Florence, Charleston, Missouri	59, 87, 102, 105, 106
Gordon, June, Chicago, Illinois	72, 106
Gray, Elaine, University City, Missouri	48, 97, 102, 106
Gray, Melba Lee, St. Charles, Missouri	60, 103
Graybill, Helen Gene, Great Falls, Montana	72, 87, 104
Green, Marjorie E., Oklahoma City, Oklahoma	33, 95, 101, 102, 105, 109, 111, 119
Griffiths, Ida Jane, Kansas City, Missouri	68, 72, 101, 106

STUDENT INDEX—Continued

Groce, Margaret Lee, St. Charles, Missouri	72
Groszkruger, Electa J., Belle Plaine, Iowa	72, 87, 106
Gund, Jeannette J., St. Louis, Missouri	97, 103, 105, 106, 113
Hatchmeyer, Lois, St. Charles, Missouri	60, 87, 93
Hansen, Delores Jean, Omaha, Nebraska	72, 86, 100
Hardin, Ann, New Albany, Indiana	48, 97, 98, 111, 113
Harvey, Jacqueline R., Springfield, Illinois	68, 72, 91
Haynes, Rosa Nell, Selmer, Tennessee	48
Hays, Elaine, St. Charles, Missouri	73
Head, Mary Gene, Hobbs, New Mexico	48, 101, 105, 106, 107, 111
Heckman, Arline, St. Louis, Missouri	60, 100, 102
Hedrick, Eleanor Anne, Buckner, Missouri	60
Hegewald, Dorothy Ann, New Albany, Indiana	73, 85
Heimrod, Dorothy, Omaha, Nebraska	27, 33, 94, 101, 105, 108, 109, 111, 115
Heller, Barbara Jean, Montpelier, Ohio	60
Hempelmann, Carolyn, Des Moines, Iowa	26, 48, 94, 97, 98, 102, 112
Hendrickson, Clara W., Independence, Missouri	73
Heob, Dorothy June, Evansville, Indiana	26, 49
Herd, Virginia, Houston, Texas	60, 87
Hill, Maridee, State Center, Iowa	60, 87, 93, 97, 101, 106, 110, 112
Hill, Martha Ray, DeValls Bluff, Arkansas	60
Hilligoss, Carolyn, Shelbyville, Indiana	60, 99
Hirsch, Mary Celeste, St. Charles, Missouri	91, 103
Hirshman, Alice Jean, Bedford, Ohio	60, 89, 93, 109
Hixon, Suzanne B., Ash Grove, Missouri	73, 87, 104
Hobart, Patricia L., Independence, Missouri	49, 87, 105, 106
Hoffman, Annette, Trenton, Missouri	60, 110, 113
Horowitz, Janet, Oak Park, Illinois	60, 97, 98
Horton, Jo Lea, Tulsa, Oklahoma	60, 88, 95, 106
Horvath, Helen, St. Charles, Missouri	60, 83, 86, 93, 100, 106, 109
Hudson, Harriette L., Brownsville, Tennessee	27, 49, 90, 95, 106
Hughes, Alice L., Cedar Rapids, Iowa	73, 88
Hughes, Carolyn, Des Moines, Iowa	60
Hulsen, JoAnne, Keokuk, Iowa	60, 84, 97, 98, 105, 113
Hunnicut, Barbara Ann, Rockville, Indiana	73
Hunter, Betty Lu, Kansas City, Missouri	61
Hurst, Barbara Jean, Normal, Illinois	73, 87
Iles, Otilie E., Davenport, Iowa	61, 88, 97, 112
Isbell, Marie E., Herculaneum, Missouri	61, 104
Jackson, Mary Lynn, Blytheville, Arkansas	30, 34, 83, 92, 94, 97, 98, 105, 108, 109, 111, 115
Jacobson, Edna-Mary, Grand Haven, Michigan	26, 34, 88, 105, 107, 111
Jenkins, Daphne Joy, Oklahoma City, Oklahoma	61, 105, 106
Jenkins, Patricia A., Sioux City, Iowa	73
Jirka, Mariella Cermak, River Forest, Illinois	61, 97
Johnson, Colleen, Caldwell, Kansas	61, 85, 90, 100
Johnson, Kathryn, Dallas, Texas	73, 96
Jones, Doris, Fort Worth, Texas	25, 61, 85, 90, 100, 104
Jones, Florence B., Grinnell, Iowa	73
Kahl, Melba I., New Albany, Indiana	73
Kane, Carol Lee, East St. Louis, Illinois	73, 100
Kelly, Marcia, Wichita Falls, Texas	73, 91, 97, 102
Kelso, Enid L., Grand Island, Nebraska	73, 87, 97
Kendall, Peggy, Granite City, Illinois	71, 83, 86, 94, 102
Kennedy, Bobby, Paducah, Kentucky	73, 97, 101
Kern, Nancy H., Waterloo, Illinois	73, 87, 97, 98, 102
Kerr, Louise B., Elkhart, Indiana	68, 69, 73, 97
Ketterman, Pat J., Independence, Kansas	61
Kilbury, Elizabeth M., Little Rock, Arkansas	49, 84, 97, 100, 105, 106
Kimbrough, Alice, Halls, Tennessee	61, 97, 106
King, Peggy Marie, Wichita, Kansas	49, 97, 103
Kinkade, Margaret, Tahlequah, Oklahoma	49, 84
Kirk, Elizabeth Ann, Omaha, Nebraska	49, 83, 84, 86, 94, 98
Kirkbride, Pary, Independence, Kansas	61, 100, 106
Kirtley, Abbie Sarah, St. Joseph, Missouri	73
Klaholt, Gloria J., Springfield, Illinois	73
Knight, Elizabeth C., Little Rock, Arkansas	61
Kobe, Phyllis, Cedar Rapids, Iowa	61, 103
Kolocotronis, Henriette, St. Louis, Missouri	73, 100
Kronenberg, Irene Julia, Cleveland Heights, Ohio	61

STUDENT INDEX—Continued

LaBarre, Betty Jane, Algona, Iowa	61
Landberg, Clara M., Ft. Thomas, Kentucky	34, 81, 83, 86, 92, 93, 94, 96, 105, 108, 109, 111
Landberg, Mary Lou, Ft. Thomas, Kentucky	73, 87, 96, 97, 102
Landrum, Adelene, Newport, Arkansas	61, 100, 103
Lange, Dale, Sioux City, Iowa	73
Lange, Marjorie, Dubuque, Iowa	73
Langenbacher, Lovetra, St. Charles, Missouri	56, 57, 62, 83, 87, 93, 97, 102, 104, 106, 109, 111
Lant, Helen, Evansville, Indiana	73, 91, 110
Latherow, Patricia, Elgin, Illinois	26, 46, 49, 88, 94, 97, 107, 111
Latshaw, Sarah, Caruthersville, Missouri	73, 100
Leeper, Elizabeth, Plymouth, Indiana	73, 97
Lehman, Betty (Dorothy), Chicago, Illinois	62, 88
Leverenz, Barbara N., Michigan City, Indiana	62, 93, 100
Levy, Caroline, New York City	49, 83, 86, 92, 93, 95, 105, 106, 109, 111
Lewis, Katherine C., N. Kansas City, Missouri	73
Liebermann, Jo Ann, Joliet, Illinois	62, 97, 101, 112
Lierk, Shirley, Omaha, Nebraska	73, 87, 100
Little, Barbara Ann, West Liberty, Iowa	73, 91, 102
Little, Marguerite, West Liberty, Iowa	62, 91
Littrell, Betty, St. Charles, Missouri	73, 87
Lloyd, Patricia E., Ponca City, Oklahoma	25, 74
Locke, June, Paducah, Kentucky	74, 88
Loerke, Betty Jean, Ottumwa, Iowa	62, 82, 83, 93, 99, 105, 106, 112
Loftin, Iva Lynn, Waco, Texas	74
Lohr, Elizabeth Jean, Litchfield, Illinois	49, 85, 90, 100, 103
Lomison, Virginia, Waterloo, Iowa	74
Long, Keltah, Elizabethtown, Kentucky	62, 83, 86, 94, 104, 105, 110
Love, Phyllis Ann, Des Moines, Iowa	62, 82, 105, 106, 112
Luckman, Lettie, Jackson, Tennessee	74
Lynn, Anna Louise, Checotah, Oklahoma	62
McDonald, Mary Jean, Washington, Missouri	50, 102, 103, 105, 106, 107, 111
McGraw, Louise, Sturgis, Kentucky	56, 62, 83, 93, 103, 104, 105, 106
McIlvaine, Betty Jo, Indianapolis, Indiana	62, 97, 101, 112
McInnes, Mary Stewart, Boulder, Colorado	74, 88, 102
McKinney, Margaret, Baxter Springs, Kansas	62, 87, 92
McLean, Jane Taylor, East St. Louis, Illinois	27, 50, 82, 83, 87, 92, 93, 94, 97, 105, 106, 107, 109, 111
McNeill, Janice, North Little Rock, Arkansas	62, 101, 106
Macy, Gwen, Sully, Iowa	62, 101
Mangum, Marilyn, Greenville, Tennessee	62, 106, 112
Marsh, Mary Carolyn, Paris, Missouri	74, 102
Marshall, Bobbie, Butler, Missouri	74, 104
Marshall, Margaret, Fairfield, Illinois	62, 87, 101, 102, 103
Martin, Betty, Fort Smith, Arkansas	74, 104
Marts, Mary Jane, Hutchinson, Kansas	26, 74
Mathews, Helen M., Middletown, Ohio	74, 100
Mathews, Sarah, Dayton, Ohio	63, 97, 101
Maxwell, Phyllis, Mt. Vernon, Illinois	63, 82, 107, 110
Mayhall, Marthella, Harlan, Kentucky	74, 85, 102, 104
Mercer, Mary Lou, Okmulgee, Oklahoma	63, 88, 96, 102
Meredith, Betty Ann, Joplin, Missouri	74, 104
Merx, Meryln, St. Charles, Missouri	74
Meyer, Lois, Elyria, Ohio	74, 100
Miller, Doris E., Kansas City, Missouri	63
Miller, Janet, Indianapolis, Indiana	74
Miller, Mary Jane, Collinsville, Illinois	74
Million, Mary Ann, McAlester, Oklahoma	74, 85, 100
Milroy, Jean Alice, Vinton, Iowa	63, 83, 91, 94, 97, 104
Mitchell, Sally Lou, Oklahoma City, Oklahoma	63
Mitchell, Virginia, El Dorado, Arkansas	50, 87
Mitton, Mary Shirley, East Tawas, Michigan	34
Moehlenkamp, Virginia, St. Charles, Missouri	50, 83, 86, 93, 94, 109, 110, 111
Moen, Marjorie Ann, Cedar Rapids, Iowa	74, 97
Moerschel, Virginia, St. Charles, Missouri	50, 102, 103
Mohme, Bonnie Jean, University City, Missouri	63, 97, 106
Monroe, Dorothy Ann, Louisiana, Missouri	74, 88
Moody, Bettye, Mt. Vernon, Missouri	50
Moore, Barbara, Topeka, Kansas	74
Moore, Betty Jane, Salina, Kansas	26, 74
Moore, Dorothy Jane, Ralls, Texas	35, 92, 101, 104, 105, 106
Moore, Montelle, Mexico, Missouri	46, 50, 88, 97, 105, 120
Moore, Patricia Ann, Topeka, Kansas	63, 86
Morgan, Emma Lee, Camden, Arkansas	50, 103
Morrill, Jacquelyn, Albert Lea, Minnesota	74, 100, 104

STUDENT INDEX—Continued

Morrow, Mary Helen, Johnson City, Tennessee	56, 63, 97
Mullins, Edith Ann, Atlantic, Iowa	51, 97, 113
Murphy, Eileen, Mt. Vernon, Illinois	27, 51, 83, 89, 92, 93, 103, 105, 106, 109, 111
Murphy, Mary Elizabeth, San Angelo, Texas	51, 94, 103, 105, 106
Murphy, Patty, Oklahoma City, Oklahoma	74
Murray, Margaret, Oklahoma City, Oklahoma	74, 97, 113
Nathan, Mary Lee, Wichita, Kansas	26, 51, 97, 101, 102
Neef, Ruth, Omaha, Nebraska	25, 26, 27, 35, 92, 93, 101
Neff, Miriam, Adel, Iowa	74
Neuman, Catherine G., Paducah, Kentucky	74, 88
Nichols, Ann, Council Bluffs, Iowa	74, 88, 100
Nickell, Florence Clair, Rothville, Missouri	35
Norwood, Billie Jean, Evansville, Indiana	74
Oak, Betty Belle, La Crosse, Indiana	63, 87
Oleson, Katherine R., Dows, Iowa	74, 87
Oliver, Marjorie J., Salina, Kansas	75, 88
Olson, Norma Lone, Waterloo, Iowa	75
Osborn, Adele, New Orleans (Algiers), Louisiana	75, 96
Ostmann, Ladeen, St. Charles, Missouri	75
Owen, Nancy, Kansas City, Missouri	56, 57, 63, 87, 97, 102, 106
Pacatte, Betty, St. Charles, Missouri	75, 88
Painter, Ruth Almira, West Lafayette, Indiana	35, 103, 106
Papin, Nancy, Kirkwood, Missouri	46, 51, 97, 98, 102, 112
Park, Barbara, Kansas City, Missouri	63, 83, 96, 97, 107, 109, 110, 111
Parker, Esther Mae, St. Charles, Missouri	75, 86, 102, 110
Parker, Mary Ann, St. Charles, Missouri	51, 83, 87, 92, 93, 95, 102, 103, 105, 106, 110
Parkin, Virginia, Tulsa, Oklahoma	75
Patterson, Jane Ann, Cascade, Iowa	63, 87, 94
Patton, Joanne, Omaha, Nebraska	75, 96, 114
Paul, Julie Ann, Waterloo, Iowa	75, 102
Paulson, Jean, Cedar Rapids, Iowa	51, 83, 94
Payne, Coy Elizabeth, Council Bluffs, Iowa	75, 86, 100
Pearl, Edythe Jean, Davenport, Iowa	75
Pemberton, Katherine, Hot Springs, Arkansas	63, 85, 90, 100, 102
Pendarvis, Marian, River Forest, Illinois	63, 83, 84, 94
Peterson, Marye Louise, Kansas City, Missouri	51, 105, 106
Phillips, Genelle, St. Charles, Missouri	75, 87, 101
Pierson, Mary Ann, Pender, Nebraska	26, 75
Platt, Mary Ruth, Messena, Iowa	25, 52, 97
Poling, Patricia L., Evansville, Indiana	75, 97
Porter, Prudence E., Terrell, Texas	75
Poston, Betty Jane, Hobart, Oklahoma	75, 104
Prentice, Suzanne, Tulsa, Oklahoma	63, 84, 99
Priest, Dannie Jane, Fort Worth, Texas	75
Proctor, Peggy A., Sullivan, Missouri	25, 30, 36, 82, 95, 102
Pruet, Mary Katherine, Oklahoma City, Oklahoma	75, 87
Ramsey, Lucille, Parma, Missouri	64, 97, 101, 104
Ransom, Earlene, Norfolk, Nebraska	36
Reagan, Joanne, Little Rock, Arkansas	75
Record, Helen, Dallas, Texas	68, 75
Reeves, Mary, El Dorado, Arkansas	64, 89, 91
Renner, Audrey Lou, Dayton, Ohio	75, 87, 97
Reynolds, Winifred E., Neosho, Missouri	64, 104
Rhodes, Betty Lou, Fort Smith, Arkansas	52
Richard, Sharon Rose, New Albany, Indiana	75, 87
Riedel, Shirley Anne, Boulder, Montana	64, 103, 104, 105
Ritter, Elnor, St. Charles, Missouri	36, 94, 102, 103
Ritter, Louise, St. Charles, Missouri	75, 88, 102
Roark, Betty Frances, Tulsa, Oklahoma	26, 36, 119
Roberts, Carolyn B., Kansas City, Missouri	64, 88, 105, 106
Roberts, Dorothy G., Chester, Illinois	75, 88
Roberts, Jean Ann, Farragut, Iowa	75, 97, 104
Robinson, Joyce V., Ottumwa, Iowa	64, 89, 95
Robinson, Martha Jane, Maryville, Missouri	75, 102
Robison, Marilyn, Augusta, Illinois	52
Rock, Jacqueline, Oglesby, Illinois	97, 105
Rode, Georgia Ann, St. Louis Co., Missouri	64, 97, 105, 106
Romann, Audrey, Granite City, Illinois	75, 104
Roseberry, Cyrilka B., Wichita, Kansas	75, 97
Rotty, Helen Louise, St. Louis, Missouri	75, 88, 102
Rouse, Betty Ann, Waterloo, Iowa	52, 82, 93, 97, 105, 109, 111, 112

STUDENT INDEX—Continued

Rozyskie, Virginia G., Camden, Arkansas	27, 52
Runge, Betty, St. Charles, Missouri	52, 97, 102, 103
Ryan, Merryl Keith, Bolivar, Missouri	52, 104, 107, 111, 112
Sagness, Shirley Lea, Breckenridge, Minnesota	56, 64, 88, 102
Salvo, Celeste, Crystal City, Missouri	25, 64, 82, 87, 93, 106
Sandmann, Dorothy Leota, Loveland, Colorado	75, 100
Satterfield, Dorothy L., Canton, Ohio	76
Sawyer, Eloise, St. Louis, Missouri	64, 100, 106
Schafer, Joan M., Evansville, Indiana	76
Schatzman, June, St. Louis Co., Missouri	52, 83, 92, 104, 105, 106
Schatzman, Lois, St. Louis Co., Missouri	76, 87, 102, 104, 106
Schenk, Marie Louise, Kirkwood, Missouri	37, 103
Schoremoyer, Cynthia, Fort Worth, Texas	76
Schroer, Betty Jean, St. Charles, Missouri	27, 37, 81, 83, 91, 92, 95, 97, 108, 109, 111
Schwab, Jacqueline, Oklahoma City, Oklahoma	25, 37, 81, 88, 95, 103, 105, 121
Sebastian, Jeanne E., Cuba, Missouri	76, 97, 102, 106
Settle, Joann, Richmond, Missouri	64, 86
Shaeffer, Dorothy Ellen, Herrin, Illinois	37, 85, 90, 100, 109, 111
Sherman, Sarita, Chicago, Illinois	53, 86, 93, 109
Shroder, Joanne Louise, Memphis, Tennessee	64, 94, 105, 112
Sickler, Mary Ann, Lee's Summit, Missouri	76, 97, 100
Sieck, Geraldine, St. Charles, Missouri	64
Simon, Earleen D., Oklahoma City, Oklahoma	76
Sims, Dorothy J., St. Louis, Missouri	76, 98
Smith, Irva, Manhattan, Kansas	76, 88, 96
Smith, Patsy, Chariton, Iowa	76
Smith, Shirley, McPherson, Kansas	76, 97, 101
Sneyd, Mary Lou, Galveston, Texas	64
Stahl, Helen Joan, Bellevue, Ohio	53, 103, 104
Stahlhut, Melva, Edwardsville, Illinois	76, 87, 106
Staley, Mary Lou, Dallas, Texas	76
Stanze, Hildegard, St. Louis, Missouri	38, 83, 87, 91, 92, 94, 105
Steele, Marjorie C., Malvern, Iowa	76, 97, 102
Stegall, Virginia Sue, Hannibal, Missouri	76, 87
Steinke, Virginia Ann., Olmsted Falls, Ohio	76, 97
Stemm, Marjorie, E. St. Louis, Illinois	76
Stephens, Betty Lee, Ashland, Kansas	76, 88, 104
Stevens, Carolyn, Dallas, Texas	76, 97, 100, 102
Stevenson, Ellen B., Chicago, Illinois	64, 106
Stevenson, Ruth, Holdenville, Oklahoma	56, 57, 64, 83, 95, 97, 98, 102, 105, 106
Stickler, Patsy Jean, Paragould, Arkansas	76, 100
Stoery, Betty, Estherville, Iowa	97
Stokes, Katherine M., Crockett, Texas	64, 85, 90, 100
Stonebrook, VerJean, Eldora, Iowa	76, 87
Stumberg, Lucette, Austin, Texas	102
Sturner, Jeanne, Chicago, Illinois	64, 97, 101, 112
Swanson, Joanne, St. Louis, Missouri	25, 76, 87, 106, 113
Sweet, Vera Langenbacher, St. Charles, Missouri	38, 87
Swenson, Jeanne, Morganville, Kansas	65, 88, 105, 106
Swiger, Constance, Clarksburg, W. Virginia	76, 100
Swilley, Mary Medora, El Dorado, Arkansas	65, 83, 87, 91
Swisher, Betty Jean, Louisiana, Missouri	76, 101, 104
Szilagyi, Marie Anna, Dallas, Texas	53, 83, 84, 87, 96, 97, 98, 110, 112
Tabor, Betty, Checotah, Oklahoma	90, 93
Tanenbaum, Frances, Greenville, Texas	76, 106
Temple, Suzanne, Texarkana, Arkansas	65, 87
Thomas, Sally, Joplin, Missouri	65, 87, 98, 105, 106, 112
Thompson, Helen M., Michigan City, Indiana	65, 87
Thread, Kathleen, Albion, Illinois	65, 88
Tierman, Nancy Beck, Kansas City, Missouri	76, 100
Tillman, Mary Helen, Pawhuska, Oklahoma	65, 83, 84, 97, 100, 102
Titus, Ruth Louise, Great Bend, Kansas	53, 88, 104, 107, 111
Tower, Phyllis, Greenville, Michigan	65
Townsend, Beverly, Jackson, Tennessee	76, 97
Trantum, Nancy Louise, Kansas City, Kansas	76, 87
Treadway, Martha Ann., Mt. Sterling, Kentucky	76, 104
Trenchard, Dorothy M., Hardin, Missouri	76, 87, 104
Turner, Louise, Marion, Kentucky	77
Tuttle, Paddy, St. Charles, Missouri	65, 84
Ullery, Betty Marie, South Bend, Indiana	53, 103

STUDENT INDEX—Continued

VanHoose, Lettrice Joy, Paintsville, Kentucky	77
Viertel, Willie Mae, Lamine, Missouri	77, 97, 113
Vineyard, Marilyn, Wichita, Kansas	65
Wagner, Marian Goellner, St. Charles, Missouri	53
Walker, Mary Jane, Franklin, Tennessee	77, 87
Warner, Marjorie, Denver, Colorado	96, 97, 110
Washburn, Mary Alice, Hastings, Iowa	77
Washburn, Mary Gwen, Beaver Dam, Kentucky	53, 99, 100
Watlington, Frances E., Texarkana, Texas	38, 83, 92, 103
Waye, Ruth, St. Charles, Missouri	65, 86, 94, 97, 102
Wehrle, Donalee, Eureka, Missouri	27, 38, 88, 95, 102, 103, 105, 109, 111
Weieneth, Edna, Glenville, Minnesota	77, 106
Welshons, Mary Ruth, Blytheville, Arkansas	65, 83, 94, 96
Wertz, Barbara, Evansville, Indiana	26, 27, 30, 39, 81, 83, 93, 94, 102, 111
Wetzler, Joan, Wilwaukee, Wisconsin	77, 100
Wexner, Barbara Mina, Houston, Texas	65, 84, 97, 98, 100, 106, 107, 111, 112
Weyenberg, Normalee, Glenvil, Nebraska	77, 97, 101
Wheeler, Helen, Paintsville, Kentucky	77, 106
White, Wilma L., Carmi, Illinois	77, 104
Whitford, Jacqueline, Dawson Springs, Kentucky	65
Whitmer, Margaret Y., Wichita, Kansas	77, 97
Wiesner, Dorothy, Fort Madison, Iowa	77
Wilber, Marilyn K., Decatur, Illinois	77
Wilkins, Mabel, St. Charles, Missouri	83, 87, 92, 93
Willbrand, Gail, Chester, Illinois	65, 83, 86, 93, 94, 110, 113
Willbrand, Phoebe Ann, St. Charles, Missouri	65
Williams, Mary Louise, Kansas City, Missouri	65, 97
Williams, Winifred, St. Charles, Missouri	77, 87
Williamson, Rosemary, Jackson, Tennessee	77, 87
Willoughby, Cornelia, Hillsboro, Illinois	77
Willson, Phyllis, Tulsa, Oklahoma	77, 87, 97
Wilson, Jane, McLeansboro, Illinois	65
Wilson, Jessie Evelyn, Loudon, Tennessee	68, 77, 97, 113
Wood, Dorothy Ann, Little Rock, Arkansas	53, 84, 105
Wood, Mary Ann, Eldora, Iowa	77, 87, 114, 116
Wood, Mary Lou, Dayton, Ohio	65, 97, 101
Woolsey, Polly, Lakewood, Ohio	26, 39, 89, 109
Wright, Barbara Jeanne, Holton, Kansas	77
Young, Marthann, Marion, Iowa	26, 39, 106, 110
Zeidner, Helen Louise, Columbus, Ohio	77, 87, 96, 112
Ziern, Nadine B., Clayton, Missouri	39, 85, 89, 100, 110
Zoellner, Phyllis, Mountain View, Oklahoma	77



