

Lindenwood University

Digital Commons@Lindenwood University

Yearbooks

Lindenwood University Archives

1952

1951-1952 Linden Leaves

Lindenwood College

Follow this and additional works at: <https://digitalcommons.lindenwood.edu/yearbooks>

Recommended Citation

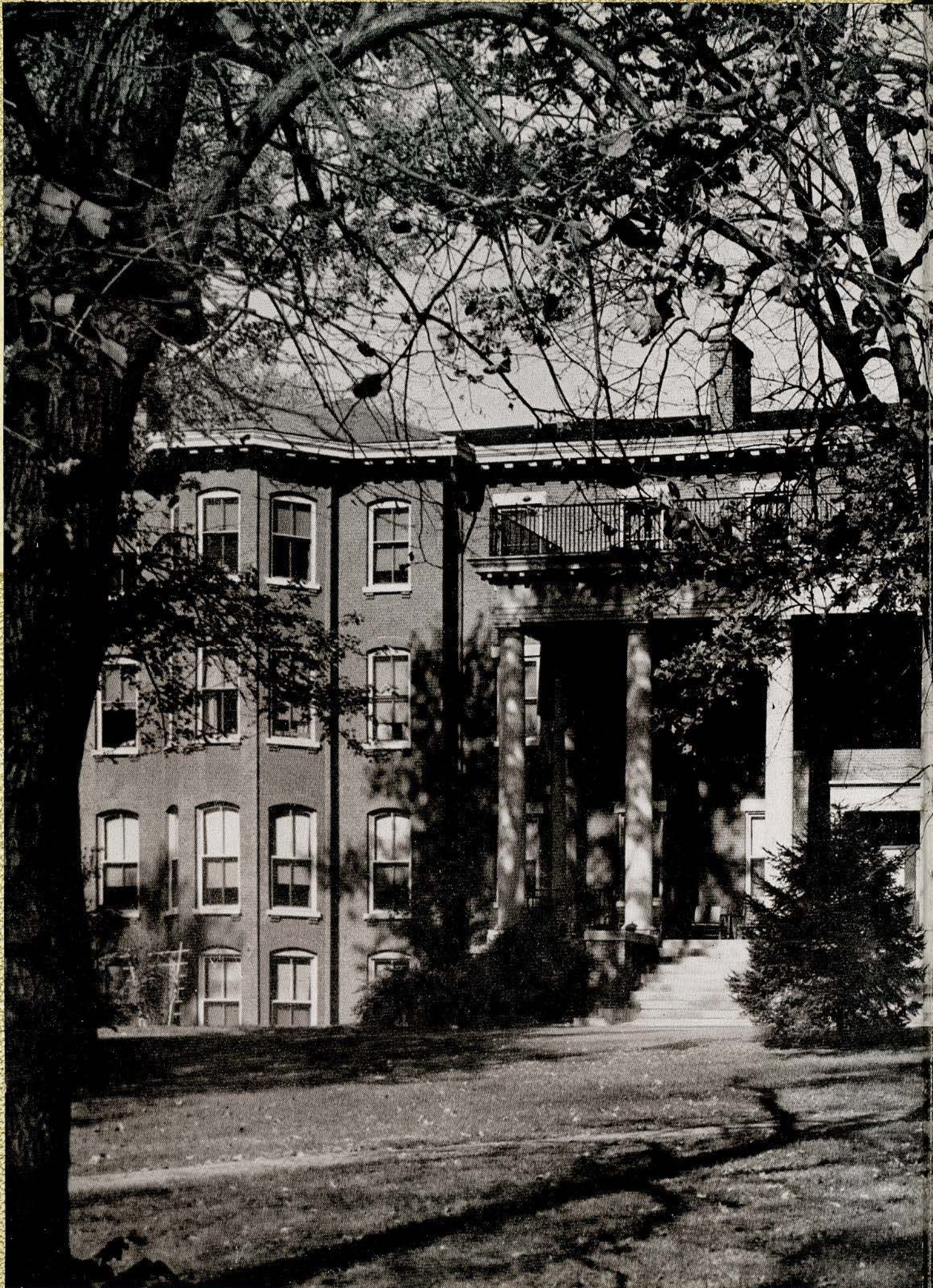
Lindenwood College, "1951-1952 Linden Leaves" (1952). *Yearbooks*. 34.
<https://digitalcommons.lindenwood.edu/yearbooks/34>

This Book is brought to you for free and open access by the Lindenwood University Archives at Digital Commons@Lindenwood University. It has been accepted for inclusion in Yearbooks by an authorized administrator of Digital Commons@Lindenwood University. For more information, please contact phuffman@lindenwood.edu.

LINDEN LEAVES

1827 - 1952







Linden Leaves

1952

<i>Editor-in-Chief</i>	BONNIE LOU HOLT
<i>Business Manager</i>	WILLENE GROVE
<i>Literary Editor</i>	BARBARA LUCHSINGER
<i>Art Editor</i>	JOANNE BUCK
<i>Organization Manager</i>	CAROLINE ENGLAND
<i>Advertising Manager</i>	LOIS DEISENROTH

Annual Publication of the Students of
LINDENWOOD COLLEGE, ST. CHARLES, MISSOURI

Engraving by Central Engraving Company
St. Louis, Missouri

Printing and binding by Mid-State Printing Company
Jefferson City, Missouri

Photography by Herb Weitman and Albert Kister

Lindenwood Hymn

School of our mothers, in days of yore,
Goal of their fond ambitions long;
Within the portals of thy door,
Ideals were formed and wills made strong.



Still stands thy ancient edifice
A stately and noble pile,
With arched limbs of sacred wood
'Round Lindenwood, Old Lindenwood.



Few hearts but throb with kindly good
Toward Lindenwood, Old Lindenwood,
On girls that come, and girls that go,
On all that walk beneath thy shade;

A heaven-sent gift thou bestow,
A graceful and gracious maid,
With brains for power and heart for good—
Old Lindenwood, Dear Lindenwood.

In 1814, Major George Sibley bought a tract

Dedication

To

Major and Mrs. George Sibley

Your small piano seemed so out of place
When first you brought it to this western land;
You would not put aside your eastern ways
Your clothes were fussy, furbelowed, and grand.
“I’ll go there with my husband,” you had said.
That did not mean the past would stay behind
But rather on this linden hill you led
Your own campaign to better womankind.
To Lindenwood your name now represents
A life of courage and the force of dreams,
A century and a quarter’s evidence
That young women can grow and learn by means
Of Christian training, leadership, and friends
To reap constructive living’s dividends.

of land and called it “Linden Wood.”

Yesterday



MARY EASTON SIBLEY



MAJOR GEORGE SIBLEY

1827-1878

There, two years later, his sixteen-year-old bride



To her, goes credit not only for the founding

Administration - Faculty

*Sitting primly at her desk she plans
Far more than any daily class commands;
For as her spidery writing fills the page
She oft times rests her quill, stops to engage
In dreams that reach beyond her century
Of lindens, crinoline girls and faculty.*



of Lindenwood, but also for its survival.

Administration



FRANC L. McCLUER, Ph.D.
President of the College

Sincerest greetings and best wishes to the students of Lindenwood College. May "the Lord . . . preserve thy going out and thy coming in from this time forth."

F. L. McCLUER

Vivacious and intrepid, she went East alone

Administration



EUNICE C. ROBERTS, Ph.D.
Dean of the College

Greetings to all, and to the class of 1952
special good wishes for happy years ahead filled
with satisfying achievement.

EUNICE C. ROBERTS

and collected \$4,000 to insure her academy

Administration



ROBERT C. COLSON
Business Manager

of one more year's operation.

Administration



MARY F. LICHLITER
Director
Student Guidance and Placement

By 1831, the school's status had improved

Administration



WILLIAM FLETCHER McMURRY
Director of Admissions

VIOLA HACKMAN GERDEMAN
LILLIAN SIEDHOFF

*In Office of Director of Admissions and
Alumnae Office*

BETTIE B. WIMBERLY

Secretary to the Director of Admissions



enough to provide for a log dormitory.

Administration



IRENE VAN BIBBER
Registrar



HATTIE KOLB *Bookkeeper*
CORAYE *Chief Accountant*
AGNES ZEISLER *Secretary to Business Manager*

To keep Linden Wood growing, Mrs. Sibley traveled

Administration



MARY BRYANT, *Alunnae Secretary and
Director of Public Relations*

PATRICIA STEWART *Secretary to the Registrar*
MARY DEAN WILMES, *Secretary to the Dean of the College*
MARY E. YONKER *Secretary to the President*



LIV USTAD, *Secretary to Director of Guidance*
BETTY WINTER, *Assistant to Director of Guidance*

in her carriage, "The Ship of Zion,"

Faculty

History



Homer Clevenger, Dorothy Williams



Robert G. Schmidt, John B. Moore

Sociology- Economics

and interviewed prospective students.

Faculty



Mathematics

Louise Beasley

Physical Science

Carolyn S. Gray, Mary E. Lear



Marion Dawson, Mary Talbot, Walter Grundhauser

Biology

Then in 1865, she saw the laying

Faculty

Psychology



Anita Brown Croft, Rachel M. Morris



Mildred C. Hillestad

Secretarial Science

of the corner-stone for the first permanent building.

Faculty



Allegra Swingen, George V. Doren, Milton Rehg, Virginia L. Winham,
Paul Friess

Music



Seated: Lois Barker, Gertrude Isidor
Standing: Pearl Walker, John Thomas

Her school established, her interests widened.

Faculty

Home Economics



Miriam Houston, Margaret Lindsay

Not pictured: Mme. H. Lyolene

Mildred Kohlstedt, Hortense F. Eggmann



Library Staff

A crusader for women's rights,

Faculty



Journalism

CHARLES C. CLAYTON

Classical Languages, Literature

SIEGMUND A. E. BETZ

ALICE PARKER

English

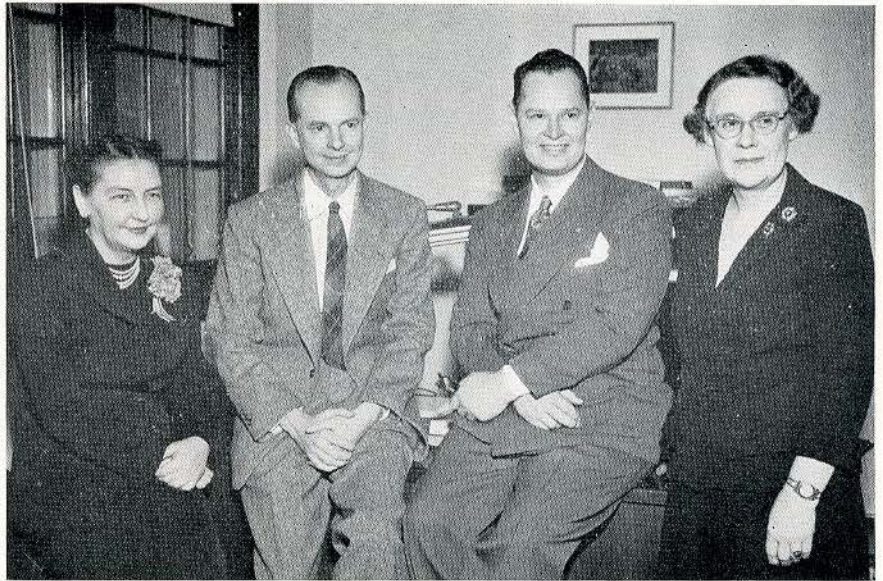
Elizabeth Dawson, Dorothy Ely, Alice Parker, Siegmund A. E. Betz, Marjorie Hiller



she campaigned with Susan B. Anthony

Faculty

Modern Languages



Eunice C. Roberts, Thomas W. Doherty, Hugo John Bauer, Mary Terhune

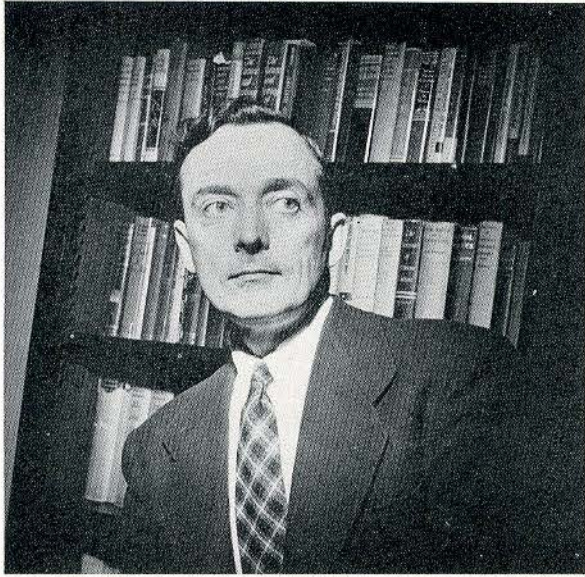


Art

Harry D. Hendren, Elizabeth Watts, John R. Middents

and for recreation, wrote light verses.

Faculty



C. EUGENE CONOVER

Bible and Philosophy

Martha May Boyer, Juliet McCrory, Robert Douglas Hume

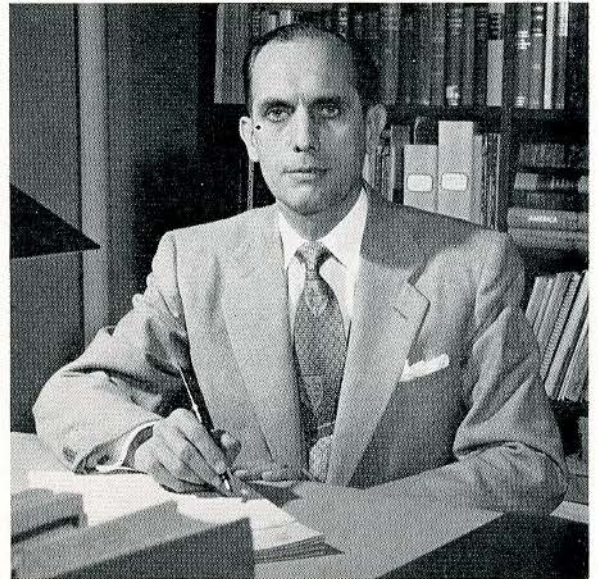


Speech

One of these, a ballad entitled,

Faculty

Education



BREMEN VAN BIBBER

Physical Education



Dorothy Ross, Martha E. Reese, Marguerite Ver Kruzen,
Helen Egelhoff (not shown)

"Clear the Way, Aunt Mary's Coming,"



Infirmiry Staff

Lola Breitenstein, E. J. Canty, M.D., Agretha M. Hall



Dietitians

Julia Keithley, Arabelle Foster, Bessie Lawson

was an especial favorite of her girls.

Buildings, Grounds



HARRY P. ORDELHEIDE

Post Office Staff



ANNA MAE WELSH
Assistant in Bookstore

AMY MUTERT WAGNER
Manager of College Post Office and Bookstore

JUNE PURGAHN
In Office of Superintendent of Buildings and Grounds

In 1860, she witnessed Sibley Hall's dedication

SIBLEY HALL



Bearing the name of Lindenwood's founders, Sibley Hall combines the old and the new. Its girls watch for Mrs. Sibley's ghost on Halloween night, but for the rest of the year look at television during their spare moments. Ruth Beutler is hall president. Her staff consists of Grett Bartenbach, Charlene Smith, Alice Vignocchi, and Joyce Fleet.



HAZELLE GARRISON, Head Resident

It has since acquired two wings and a front porch:



COBBS HALL

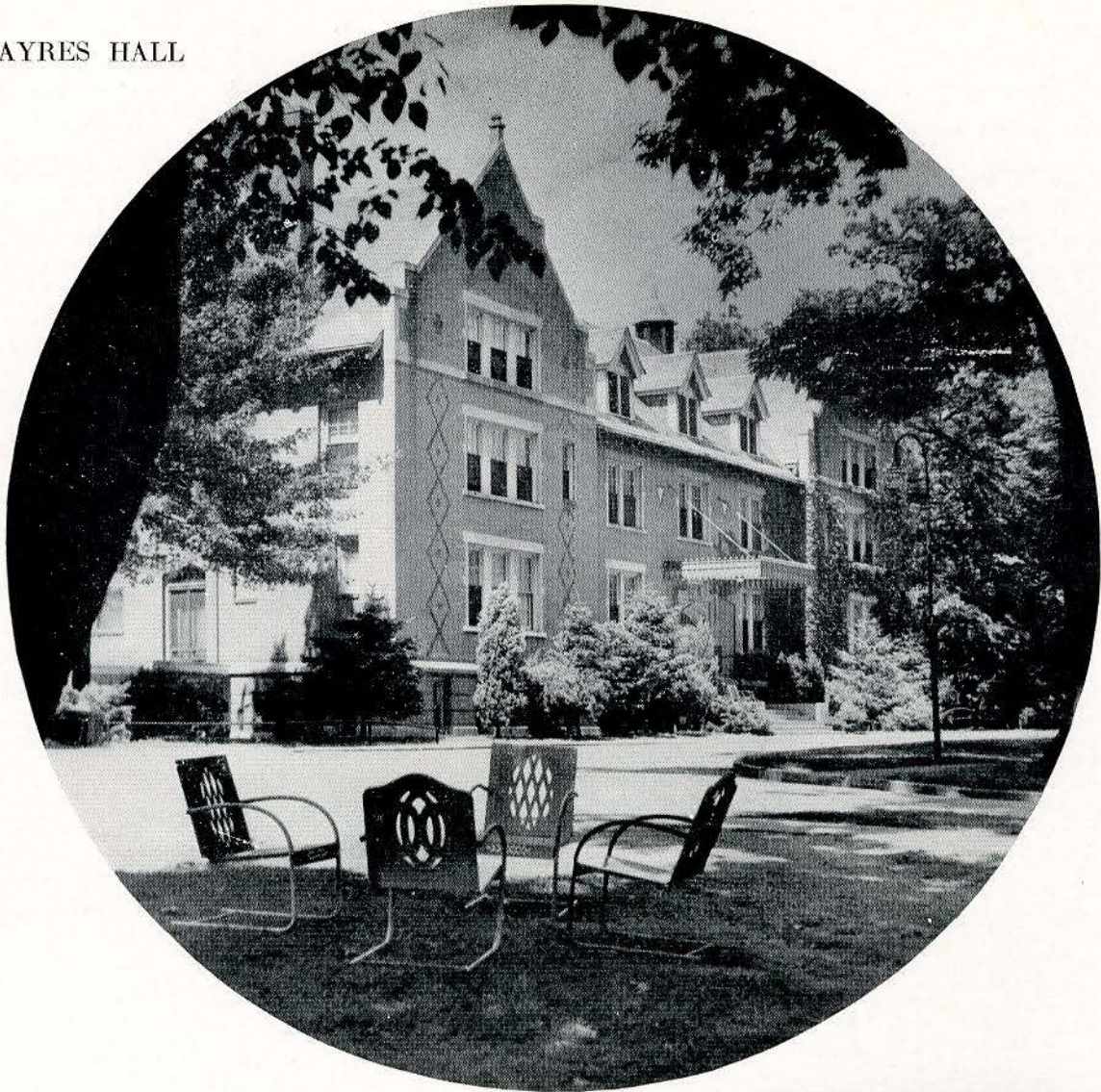


LUCILLE VICK, *Head Resident*

Cobbs is the newest dormitory on campus. In its colorful parlor, Lindenwood traditions that began in a log cabin are carried on in a 1952 setting. We know Cobbs girls for both their friendliness and their participation in college activities. Carolyn White is dorm president, with Arlene Krueel, Ann Goodall, Judy Anderson, Eunice Sheley, and Romaine Gibson serving on her staff.

Quite a contrast to modernistic Cobbs, 1950.

AYRES HALL



Although primarily a freshman dorm, Ayres Hall is popular with the entire campus. In its dining room we meet for quick lunches, formal dinners, and candle-light celebrations. Ayres' president is Priscilla Lord. Its representatives on the Student Council and the Judiciary Board are Elizabeth Severson and Dorothy Neblett, respectively.



ARTRUDE S. BARTON
Head Resident

1908 saw the building of Jubilee (Ayres) Hall.

BUTLER HALL



BETTY WINTER, *Head Resident*



Gala parties and midnight oil both have their places in this almost entirely senior dorm. As far as the rest of the campus is concerned, Butler's gym is especially attractive, being the scene of carefully planned dances and hurried-up-come-as-you-are parties. Cynthia Ricklin is hall president. On her staff are Joanna Rhodus, Maxine Davis, Carol Romann, and Patsy Fields.

Butler's dedication came six years later,

IRWIN HALL

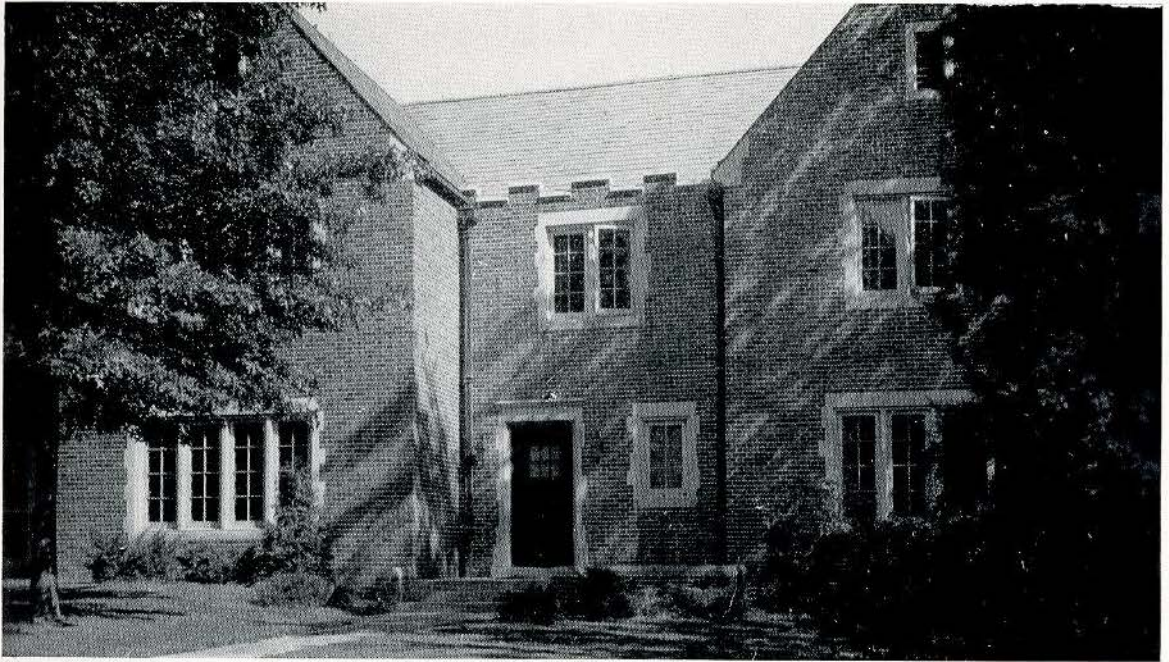


ANNA MOTTINGER
Head Resident

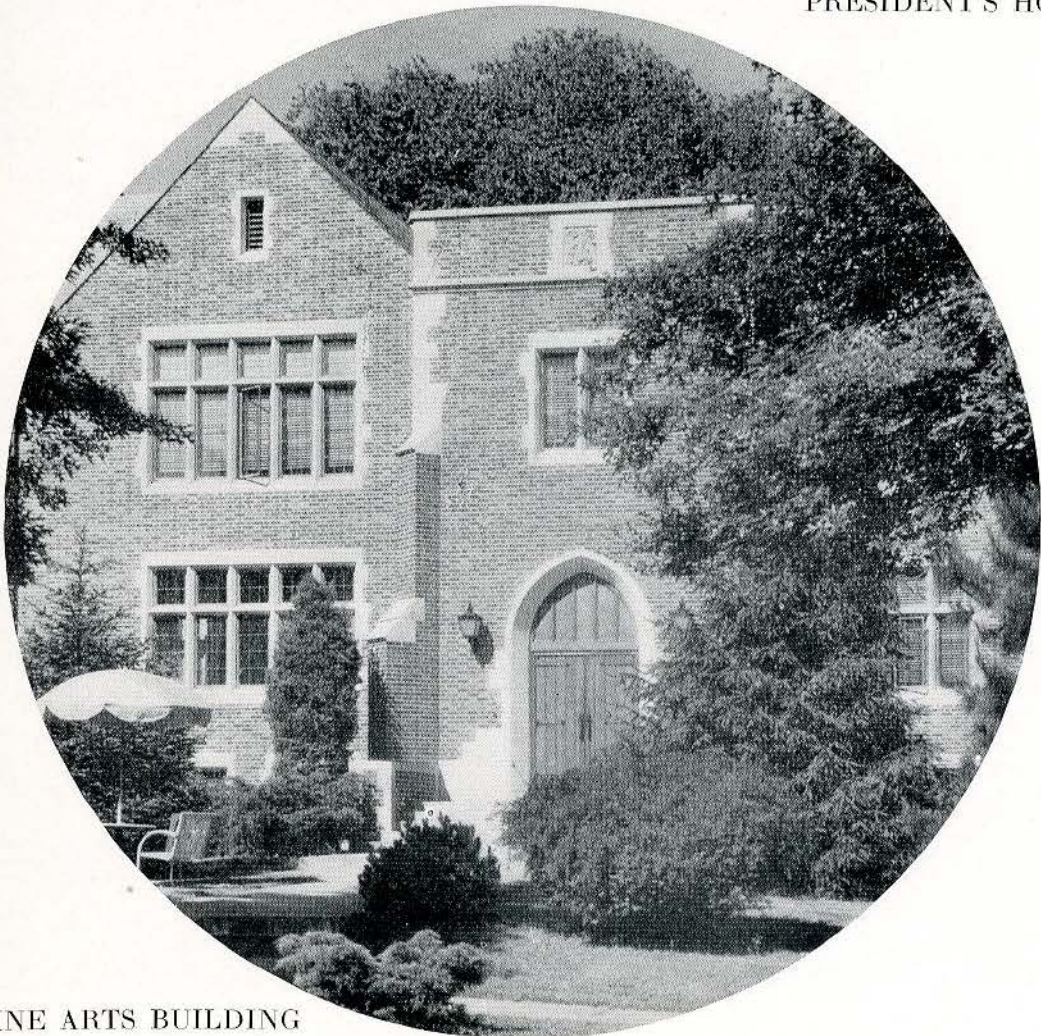
“Down in the valley,” but not the “valley so low,” for Irwin girls play as hard as they study. Around their fireplace or in the swings on the lawn, they carry on an L. C. tradition of hospitality. Hall president is Barbara Burcham. Staff members are Mary Nell Van Bibber, Margaret Pfoff, Barbara Smith, Caroline England, and Helen Roberts.



And in 1924, Irwin was the new hall.

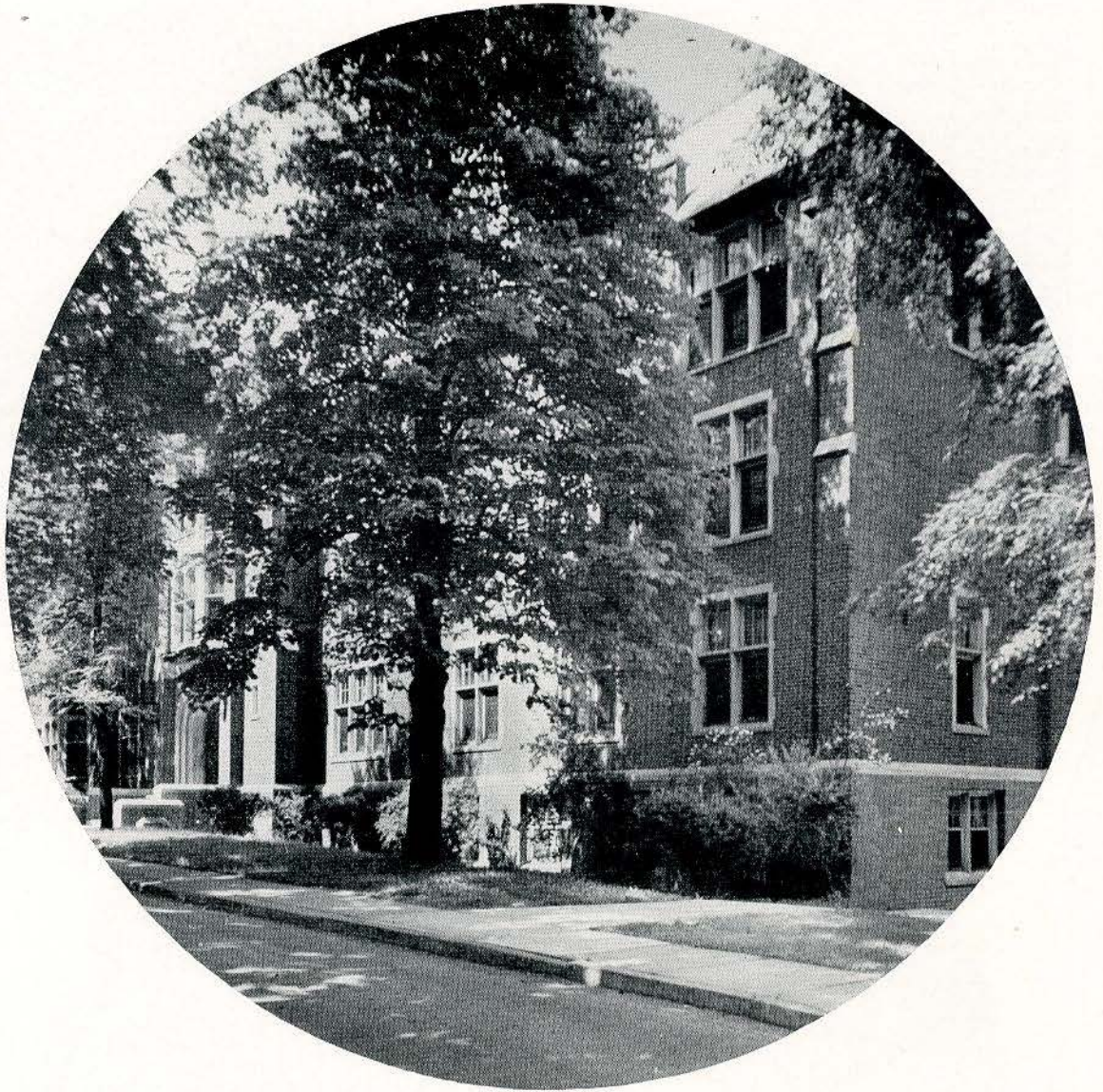


PRESIDENT'S HOME



FINE ARTS BUILDING

Since 1860, new buildings have appeared regularly.



ROEMER HALL

but there have been other changes now visible only in records.



LIBRARY



INFIRMARY

In 1918, the Lindenwood Board of Directors



voted to establish a four year

Classes

*In our L. C., what a change!
To make a picture, you arrange
Flowers, then paint just what you see.
Not knowing that modern school's decree
Will, in each class, tell you to fashion
Your very own interpretation.*



curriculum for the college.

Senior Class



Joy Hellwig Hausman, Patsy Fields, Jean Rice, Carol Romann

President: JOY HAUSMAN
Vice-President: PATSY FIELDS
Secretary: JEAN RICE
Treasurer: CAROL ROMANN
Sponsors: DR. BETZ, MR. HUME

REMEMBER

*Remember the days you've spent here,
Remember when you're away,
Remember the friends you've made here
And don't forget to come back some day;
Remember the old traditions
And promise to be true.
For you all belong to Lindenwood
And Lindenwood belongs to you!*

Seniors

Sharlene Agerter

B.A., History

West Concord, Minnesota

League of Women Voters '48-'52; International Relations Club '48-'52; Athletic Association '48-'52; College Orchestra '48-'52; KCLC Staff '48-'52; Linden Bark Staff '49-'52; Press Club '49-'52; Alpha Epsilon Rho '48-'52; Democratic Club '52; Washington Semester '50; KCLC Advertising Manager '50-'51; KCLC Station Manager '51-'52; Advertising Manager of Linden Bark '51-'52; Intramural Chairman of Athletic Association '51-'52; President of Alpha Epsilon Rho '51-'52; Dean's Honor Roll '50-'52; Basketball, Volleyball, and Softball Teams '50-'52.



Charline Armstrong

B.S.E., Business Education

Dell, Arkansas

Choir '48-'49; Commercial Club '51-'52, Vice-President '51-'52; Future Teachers of America '51-'52; Athletic Association '48-'49.



Ruth M. Beutler

B.S., Physical Education

Hinsdale, Illinois

Athletic Association '48-'52, President '51-'52; Press Club '50-'51; KCLC Engineer '50-'51; Volleyball Team '48-'52; Basketball Team '48-'52; Softball Team '48-'52; Hockey Team '48-'52; Student Council '49-'50; Judiciary Board '49-'50; Sibley House President '51-'52; Junior Class Vice-President '50-'51; Popularity Court '52.



Seniors



Barbara Bond

B.S., Education

Paragould, Arkansas

Future Teachers of America '49-'52; Ayres Hall Staff '49; League of Women Voters '51-'52; University of Arkansas '50-'51.



Laurie Bowman

B.A., English

Seminole, Oklahoma

Athletic Association, Treasurer '49-'50; Sophomore Class Treasurer '49-'50; Beta Chi, Vice-President '49-'50; Poetry Society '49-'52; Linden Leaves Staff '49-'50; Modern Language Club, Vice-President '50-'51; Associate Member of Pi Alpha Delta '51-'52; Washington Semester '50; Student Council '48-'49, Vice-President '51-'52; Griffin Staff '50-'52; Dean's Honor Roll '50-'52; Who's Who in American Colleges and Universities '52; Popularity Court Queen '52.



Joanne Ruth Buck

B.A., Art

East St. Louis, Illinois

Beta Chi '49-'52; Athletic Association '49-'50; Modern Language Club '49-'52; Spanish Vice-President '50-'51; Kappa Pi '49-'52, Secretary '50-'51, President '51-'52; Pi Alpha Mu '51-'52; Alpha Sigma Tau '51-'52; Press Club '51-'52; Art Editor of Griffin '50-'51; Linden Leaves Staff '50-'51; Art Editor of Linden Leaves '51-'52; Dean's Honor Roll '49-'52.



In 1921, she received the B.S. Degree. . . .

Barbara Burcham

B.M.E., Public School Music

Doniphan, Missouri

Future Teachers of America '48-'52, Treasurer '49-'50; Delta Theta '49-'52, President '49-'50; Mu Phi Epsilon '50-'52, President '51-'52; Irwin Hall President '51-'52; Associate Member of Alpha Sigma Tau '52; Choir '48-'52, Vice-President '50-'51; Junior Class Treasurer '50-'51; Dean's Honor Roll '49-'52; Popularity Court '52.

Nancy Darnall

B.A., Biology

Illioopolis, Illinois

Encore Club '48-'52, Vice-President '50-'51; Modern Language Club '48-'51; Future Teachers of America '50-'52, President '51-'52; Press Club '50-'51; Triangle Club '50-'52; Secretary-Treasurer '51-'52; Linden Leaves Staff '50-'51; Young Republicans Club '48-'52; Dean's Honor Roll '51-'52; Nelly Don Honorable Mention '48.

Lois Jean Deisenroth

B.A., Chemistry

St. Charles, Missouri

Encore Club '48-'52; Pi Alpha Delta '49-'52, Secretary-Treasurer '49-'50; Alpha Lambda Delta, President '49-'50; Triangle Club '49-'52; Alpha Sigma Tau '50-'52, President '50-'51; Day Students Club '50-'52, Secretary-Treasurer '50-'51, President '51-'52; Advertising Manager of Linden Leaves '51-'52; President's Scholarships '49-'51; Who's Who in American Colleges and Universities '52.



Seniors



Barbara Lee Ebeling

B.S., General Business

St. Charles, Missouri

KCLC Staff '49-'52; Commercial Club '50-'52, Secretary-Treasurer '51-'52; Choir '51-'52; League of Women Voters '51-'52; International Relations Club '51-'52; Day Students Club '48-'52, Secretary-Treasurer '51-'52; Press Club '50-'52; Linden Bark '51-'52; Linden Leaves Staff '51-'52; Young Democrats Club Secretary '51-'52.

Elizabeth Elliot

B.A., Biology

Hollis, Long Island

Modern Language Club '48-'52; League of Women Voters '50-'52, Vice-President '50-'51, Secretary '51-'52; International Relations Club '48-'52; Colhecon '50-'52; Athletic Association '48-'52; Beta Chi '49-'52, Secretary-Treasurer '50-'52; Riding Team '50-'52, Manager '51-'52; Young Republicans Club '50-'52; Linden Leaves Staff '52; Photography Club '50-'51.



Caroline England

B.M.E., Music Education

Festus, Missouri

Mu Phi Epsilon '49-'52, Vice-President '51-'52; Delta Theta '49-'52; Alpha Lambda Delta '49-'50, Vice-President '49-'50; Alpha Sigma Tau '49-'52; Student Council '50-'51; Future Teachers of America '49-'52, Secretary '50-'51; Instrumental Association '48-'52, Vice-President '49-'50; Organization Manager of Linden Leaves '51-'52; Who's Who in American Colleges and Universities '51-'52; Dean's Honor Roll '48-'52; President's Scholarship '49-'50.



Dr. A.V.C. Schenck, 1856-1862, was the first.

Seniors

Marilyn J. Fawley

B.S., Home Economics

Oak Park, Illinois

Colhecon '48-'52; Future Teachers of America '49-'52; Choir '48-'49; Athletic Association '51-'52; Home Management Residence '51-'52; Colhecon President '51-'52; Dean's Honor Roll '48-'49.

Patsy Fields

Vice-President

B.S., Elementary Education

Whitesburg, Kentucky

Lindenwood Sextet '49-'52; Future Teachers of America '50-'52; Choir '48-'52; Judiciary Board '50-'51; Student Christian Association, Song Leader '51-'52; Butler House Staff '51-'52; Progress Prize in Voice '48-'49, Senior Class Vice-President '51-'52.

Joyce Fleet

B.S., Physical Education

Houston, Texas

Student Council '49-'50, '51-'52; Judiciary Council '50-'51; Future Teachers of America '51-'52; Junior Class Secretary '50-'51; May Court '49-'52; Dean's Honor Roll '52; Sibley Hall Staff '49-'52; Hockey Team, Basketball Team, Softball Team, Volleyball Team; Popularity Court '50, '52.



Seniors



Willene Grove

B.S., General Business

Wood River, Illinois

International Relations Club '48-'49; League of Women Voters '48-'49; Commercial Club '49-'52; Alpha Sigma Tau '52; Judiciary Board '51-'52; Butler Hall Staff '51-'52; Business Manager of Linden Leaves '51-'52; Dean's Honor Roll '48-'52.



Kathleen Hartzog

B.M.E., Public School Music

St. Louis, Missouri

Encre Club '49-'52; Delta Theta '49-'52; Modern Language '49-'50.



Joy Hellwig Hausman

President

B.A., Speech

Chesterfield, Missouri

May Court '49-'52; Popularity Court '50-'52; Secretary Alpha Psi Omega '50-'51; President Alpha Psi Omega '51-'52; President of Junior Class '50-'51; President of Senior Class '51-'52; House Staff (Nicolls) '48-'49; Dean's Honor Roll '49, '52. Plays: "The Lover," "Blythe Spirit," "Cradle Song" (Director), "The Whirlwind Passeth," "Everyman," "The Lady's Not for Burning," "Antigone."



his three years' service as president.

Bonita Lou Holt

B.A., *Psychology and Sociology*

St. Louis, Missouri

Athletic Association '48-'52; Modern Language Club '48-'52; French Vice-President '48-'49; Orchesis '49-'52, Honorary President '51; Press Club '50-'52, Treasurer '51; International Relations Club '48-'49; Organization Manager of Linden Leaves '50-'51; Editor of Linden Leaves '51-'52; "Antigone" '52; Chairman of Republican Headquarters '52; Permanent Credentials Committee '52; Permanent Secretary of Republican Convention '52; Dean's Honor Roll '50-'52; St. Louis Alumnae Club Scholarship '48-'52; Butler House Staff '49-'50.

Nancy Hudson

Wooster, Ohio

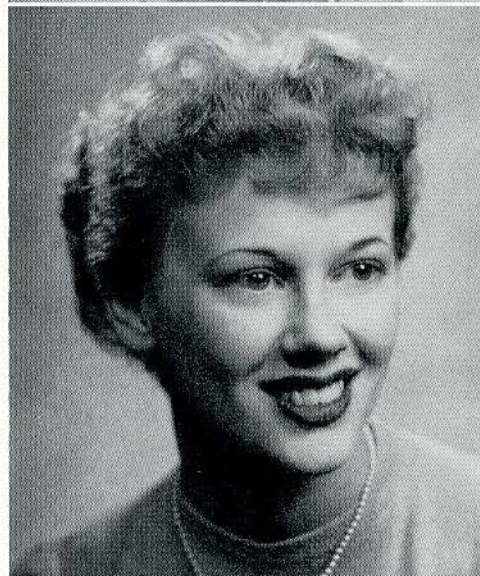
Athletic Association; Beta Chi; Encore Club; Future Teachers of America.

Joan Kirchherr

B.A., *History and English*

Warsaw, Illinois

League of Women Voters '49-'52; International Relations Club '49-'52; Athletic Association '49-'52; Press Club '51-'52; Linden Bark Staff '51-'52; Young Democrats Club '52; Vice-President of League of Women Voters '51-'52; Chairman of Democratic Headquarters '52; Dean's Honor Roll '50-'51; Washington Semester '50-'51.



Seniors



Kathryn Lewellen

B.A., Chemistry and Biology

DeWitt, Missouri

Alpha Sigma Tau '50-'52, Secretary '50-'51, Vice-President '51-'52; Triangle '50-'52, Treasurer '50-'51; Athletic Association '48-'52; Colhecon '51-'52; Modern Language Club '48-'50; Instrumental Association '49-'50; President's Scholarship '51.

Barbara Luchsinger

B.A., English

Dix, Illinois

International Relations Club '48-'52, Secretary '49-'50; League of Women Voters '50-'52, President '50-'51; Modern Language Club '48-'52; Future Teachers of America '48-'52; Encore Club '48-'52; Ayres Hall Staff '49-'50; Pi Alpha Mu '49-'52, Secretary-Treasurer '51-'52; Vice-President '51-'52; Poetry Society '51-'52; Dean's Honor Roll '50-'52; Pi Alpha Delta '51-'52; Literary Editor of Linden Leaves '51-'52; Press Club '51-'52; Assistant Staff of Griffin '51-'52.



Wilma Ruth McGuire

B.A., English

Ashland, Kentucky

Press Club '51-'52; Alpha Sigma Tau '52; Poetry Society '50-'52, Secretary-Treasurer '51-'52; Pi Alpha Mu '50-'52, President '51-'52; Assistant Editor of Griffin '51-'52; Young Republican Club; Dean's Honor Roll '50-'52.



Bettegene Nebesnick

B.A., Psychology

Benld, Illinois

Young Republicans Club '50-'52; League of Women Voters '51-'52; Modern Language Club '48-'50; Pi Alpha Delta (Associate) '51-'52; Athletic Association '50-'51; Nelly Don Illustrating Award; Residence Staff '50-'51; Dean's Honor Roll '51-'52.



Janet Neilson Monniq Jr.

B.A., Chemistry

Oklahoma City, Oklahoma

Poetry Society, Secretary; Modern Language Club, Vice-President; Student Christian Association, Treasurer; Triangle Club; Alpha Sigma Tau; Athletic Association; Alpha Lambda Delta.



Shirley Price

B.S., Secretarial Science

Belleville, Illinois

Modern Language Club '48-'52; Colhecon '50-'52; Linden Leaves Staff '50-'52; Linden Bark Staff '51-'52; Press Club '50-'52; Pi Alpha Delta '51-'52; Commercial Club '50-'52.



Seniors



Virginia Ratcliff

B.M.E., Public School Music

Jaspar, Texas

Choir Accompanist '49-'52; Associate Member of Alpha Sigma Tau '50-'52; Future Teachers of America '49-'52, Treasurer '50-'51; Young Democrats Club '51-'52; Mu Phi Epsilon '49-'52, Treasurer '50-'51, Secretary '51-'52; Delta Theta '49-'52, President '50-'51; Judiciary Board '50-'51, President '50-'51; Student Christian Association, President '51-'52; Irwin Hall Staff '50-'51; Piano Diploma Recital '51; Organ Diploma Recital '52; Dean's Honor Roll '49-'52; Who's Who in American Colleges and Universities '52; Popularity Court '52.

Jeane Rice

Secretary

B.S., Elementary Education

Paris, Missouri

League of Women Voters '46-'48, '50-'52; International Relations Club '47-'48; Future Teachers of America '46-'48, '50-'52, Vice-President '51-'52; Colhecon '51-'52; Young Democrats Club '51-'52; Missouri Club '46-'48; Senior Class Secretary '51-'52; Irwin House Staff '50-'51; A.A. Degree '48; Sixty-Hour State Certificate in Elementary Education.



Cynthia Ricklin

B.A., Sociology

Brooklyn, New York

Alpha Psi Omega, Treasurer '52; Press Club '49-'52; KCLC Staff '49-'52; League of Women Voters '51-'52; Lindenwood Theatre of the Air '51-'52; Young Democrats Club '51-'52; Butler Hall President '51-'52; Dean's Honor Roll '51-'52.



his five years as college president.

Seniors

Joanna Rhodus

B.S., Education

Mexico, Missouri

Choir '48-'52; Press Club '50-'52; Linden Leaves Staff '50-'52; Future Teachers of America '50-'52; Butler Hall Staff '51-'52; Student Council '51-'52.

Lorraine Klockenbrink Rogers

B.S., Home Economics

Kirkwood, Missouri

Press Club, President; Linden Leaves Staff, Organization Manager; Home Economics Club; Alpha Sigma Tau.

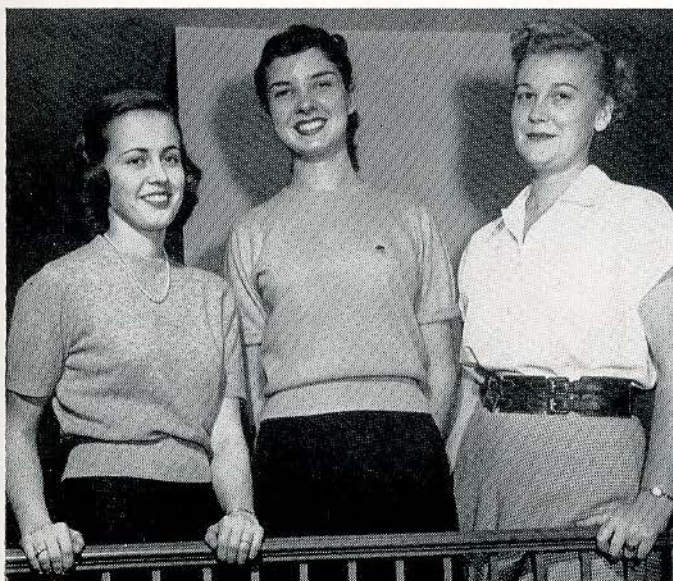
Carol Ruth Romann

Treasurer

B.M.E., Public School Music

Granite City, Illinois

Mu Phi Epsilon '49-'52; Warden '51-'52; Delta Theta '49-'52, Treasurer '50-'51, Instrumental Association '48-'52, President '48-'49; Future Teachers of America '49-'52; Alpha Sigma Tau (Associate) '51-'52; Butler Hall Staff '51-'52; Senior Class Treasurer '52; Valentine Queen '50; Popularity Court '51; May Queen '52.



Seniors



Nancy Anne Starzl

B.S., Biological Science

Le Mars, Iowa

Griffin Business Manager '51-'52; Student Council '49-'52; Judiciary Board '50-'51; Secretary of Judiciary Board '50-'51; Poetry Society '49-'52; President of Poetry Society '50-'51; Modern Language Club '49 Dean's Honor Roll '48-'52; Triangle Club '50-'52; Who's Who in American Colleges '51-'52; Freshman Counsellor '51-'52; Popularity Court '50-'52; Young Republican Club '51-'52.



Mary Jo Struckmann

St. Charles Missouri

First semester student only; Future Teachers of America.

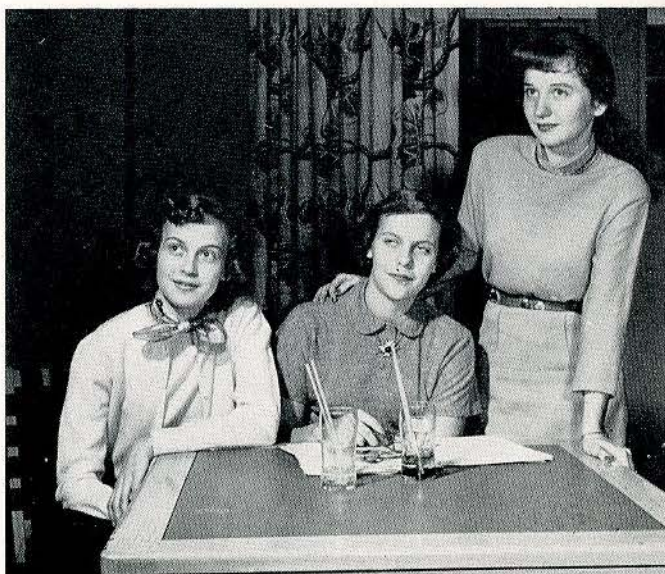


Beverly Stukenbroeker

B.M., Public School Music

St. Charles, Missouri

Mu Phi Epsilon '49-'52, Vice-President '50-'51, Treasurer '51-'52; Delta Theta '50-'52, President '51-'52, Secretary '50-'51; Alpha Sigma Tau '50-'52; Secretary-Treasurer '51-'52; Choir '48-'52, Treasurer '50-'51, President '51-'52; Future Teachers of America '51-'52; Lindenwood Sextet '48-'52; Dean's Honor Roll '48-'52; President's Scholarship '50-'52.



Barbara Sutton

B.M.E., Music Education

St. Charles, Missouri

Alpha Lambda Delta, Secretary '49-'50; Alpha Sigma Tau '49-'52, President '51-'52; Alpha Epsilon Rho '49-'50; Mu Phi Epsilon '49-'50, Secretary '50-'51, Historian '51-'52; Future Teachers of America '51-'52; Music Director of KCLC '49-'50; Delta Theta '48-'52, Secretary '49-'50; President's Scholarships '49-'51; Music Theory Award for Underclassmen '50; Dean's Honor Roll '48-'52; Sigma Tau Delta Freshman Silver Medal '49.



Eleanor Trefz

B.A., Economics

Pueblo, Colorado

Sophomore Class President; Modern Language Club President; International Relations Club; Young Republicans Club; Alpha Lambda Delta; Alpha Sigma Tau; Student Council President '51-'52; Washington Semester '50-'51; Who's Who in American Colleges and Universities '51-'52; Dean's Honor Roll; President's Scholarship.



Junior Class



President: JANICE BLEVINS

Vice-President: ALICE WALTHALL

Secretary: PHYLLIS LAUX

Treasurer: NELL CULVER

Sponsor: MISS MORRIS

PHYLLIS LAUX, ALICE WALTHALL, JANICE BLEVINS, NELL CULVER



JENNIE WHITSELL, CAROLYN WHITE, CARMEN ZARRAGA

Lindenwood's only woman president.

Juniors

DIANE DICKE, JACQUELYN CHENEY, LAVONE BURTON



NELL CULVER, MARLENE CZARLINSKY, CATHERINE HOLMES



MAXINE DAVIS, PANSYETTA GLASER, BETTY MONTGOMERY



CAMILLA MCCLUER, PHYLLIS LAUX, JEAN KNOX, MARY KIRCHHERR

During her administration, on June 5, 1878, the college received

Juniors



JOYCE OMOHUNDR0, PEGGY PENNELL, CAROL MAHAN, MAR-
LENE OPITZ
MONA LOU HAND, ANN GOODALL, LORRAINE HACKMANN



JOAN WARD, NADA SUE ROBERSON, ALICE
WALTHALL

its first large cash gift toward endowment,

Juniors



JOAN BLESSING, GRET BARTENBACH, JANICE BLEVINS



DEANA IZENBERG, MARY LOU STUBBS, MARY BETH BANTA, RITA
MCGEE, ESTELLE SWANSON

*Washington
Semester*

a \$10,000 bequest from Judge S. S. Watson.

Sophomore Class



President: CONNIE GORDON

Vice-President: JOAN BUCKNER

Secretary: MARILYN CRAW

Treasurer: PATTY BOOTHE

Sponsors: MISS VER KRUZEN, MR.
VAN BIBBER

JOAN BUCKNER, MARILYN CRAW, CONNIE GORDON, PATTY BOOTHE

BETSY NEVINS, PAT PRINSTER, MARIAN STOERKER, SALLY
THIELBAR, EVA PAPPAS

POLLY MOORE, MARY PAPIN, ANNETTE GROLOCK, SERITA
HUMPHNER



But thirteen days later, on June 20,

Sophomores



ANJE ZINN, JOAN WADE, CHARLEEN SMITH, SUE
ANN NULL



ANN FRAZIER, JANE AMSDEN, ARLEEN BECKER, SHARON
BROWN, SUK HUN CHAN

CAROLYN SMITH, JEAN BUCKNER, CAR-
MINE HILL, JANICE MINNICK, PATSY
KEITH



L.C. mourned the death of its founder, Mrs. Sibley.

Sophomores



BETTE BAER, FRANCES BENNETT, KAY
CARLON, BARBARA ANN BIENER

PAULA MOORE, VI MOSKOFF, PENNY TODSEN

MARJORIE CUNNINGHAM, INGRID GETREU, SUE WESSEL,
BEVERLY TRESKOTT



In 1880, Dr. Robert Irwin began

Sophomores



HELEN ROBERTS, JEAN GOMEL, RUTH WEBER, CAROLYN KAISER, KATHY VANSTON



MARY NELL VAN BIBBER, JURHEE JENSEN, YU-CHEN LI, JEANETTE HESTER, SANDY LUNAK

MARGARET PFOFF, MARIE SELLEN-SCHUETTER, JANE MEYER, ARLINE KRUEL, BARBARA REED



his thirteen years as president.

Sophomores

ROMAIN GIBSON, RHEA KAHRE, JO JUNE DEWEESE, BARBARA HARSHBARGER, PATRICIA GLEESON



SANDRA SNIDER, BARBARA STERN, ANITA MARSHALL, JULIE RICHARDS, NANCY SEIGALL



JOANN FILLING, JEANNE ELLIS, ELOISE FRANKLIN, JEANETTE BARNES, NANCY BOERGERHOFF



SALLY SIEMSEN, SARA SAHLI, MARY KAY PINGKNEY, EUNICE SHELEY, BEVERLY LETT

Following him were Dr. W. S. Knight, 1893-98,

Freshman Class

President: SUE ELLIOTT
Vice-President: JILL GINGELL
Secretary-Treasurer: SYLVIA SEAY
Sponsor: MISS HILLER

SYLVIA SEAY, JILL GINGELL, SUE ELLIOTT



DEANE KEETON, BONNIE WHITE, MALIZA WILSON, ASTRID CASTRO, JACKIE MEYER, CAROL WEHRLI

DOLORES KISS, SHIRLEY MUSICK, JUNE KIEHNA, PAT WHITE



and Dr. M. H. Reaser, 1898-1903.

Freshmen

First Row: DOROTHY PROFRACK, IRENE KERN, SALLY HOSKINS, ALBERTA JOHNSON

Second Row: CYNTHIA HIGGINS, ELIZABETH GLEBE



First Row: BARBARA BARTON, BEVERLY BAIM, ANN GILBERT, LINDA GARRETT

Second Row: MAUREEN GUGGISBERG, SUE FOLEY



Standing: RUSSELL BIRD, JENNY BARTON

Sitting: DOROTHY BOUTIN, PEGGY ALCORN, JUDY ANDERSON, SUZANNE ANDERSON



Left to Right: LOUISE GROBER, ELSA DREYER, CHERIE GOLDBLATT, ROSEMARY DYSART, JACKIE DAGENDORFER, RUE CAMPBELL

From 1903 to 1913, Dr. G. F. Ayres was college president.

Freshmen

Seated Left: MARTIE PORTER, MARILYN MILLS, CARA JEAN McCLELLAND

Seated Right: BETTY McHATTEN, MARY LOU MERRILL, CAROLYN NEILSON

Seated: JUDY BROWN, SANDRA BALDERSON, GLORIA BURSEY

Standing: JAN BIRCH, JAN BOWERS, MARY ALICE BRUNS



Left to Right: CAROLYN COLE, BETTY ANN DEAN, ROSALYN FIELDS, JAN DAVIS, DORIS ANN BEAUMAR, KAY COLLINS

Left to Right: AUDREY DIETRICH, ANNIE LOU COWAN, BUNNY DeCAMP, JANE EDWARDS, DEANE DETTMAN, SUZANNE ELLIOTT

Under Dr. Roemer, 1914-1941, the college

Freshmen

First Row: JANICE LEONARD, PATSY EIDSON

Second Row: SUE JANE HUGHES, CYNTHIA CREEL, HARRIET BROWN, CAROL MCGAUGHEY, JILL GINGELL



First Row: BETTY DALTON, CAROL HODGE

Second Row: BETTY WINDSOR, SUE NORTON, PAT McDONALD, FRANCES GREENE



Standing: JOAN MURPHY, MARY ANN BERNER, BETTY ANN WHITAKER, SHARON McDOW, JACKIE OWENS, JOY GARNHOLZ



Left to right: BETSY SEVERSON, MARY ANN THIELECKE, ANNE LANCASTER, DESTA VANDIVER, JACKIE REGOT

underwent an extensive building program.

Freshmen

First Row: MARLENE EITMAN, DARLA EDWARDS, JANICE GORDON
Second Row: ANNABELLE GWINN, JULIANNE FARRIS, NORMA GIBSON



First Row: JANE PERRY, BETTY MOORE, ELEANOR MAUZE
Second Row: JOAN MANESS, MARGERY NULL, PAT PETERSON



Seated: NANCY MUELLER, CYNTHIA MURPHY, HARRIET QUINN
Standing: MAXINE MENKE, ARLENE MILLS, MOLLY PETERSON



First Row: PAT CARSON, MARGARET CONARD, DANICE CHEATHAM
Second Row: ZILPHA CURTIN, MARGIE BOYER, PEGGY BARBER

Dr. Gage's progressive leadership was brief but effective.

Freshmen

First Row: SALLY SNELLING, SYLVIA SEAY, CISSY ROBERTS
Second Row: LAVON RANKIN, CAROL WOLTER

Seated: RHEA WILSON, ALICE VIGNOCCHI
Standing: PAT WILKERSON, BARBARA WILLIAMSON, MARIAN WILSON, MARILYN WAHL



ROSE MARIE DANZ, BERYL GOUY, THIL VAN DER HAAGEN,
 PAT LEU, DOROTHY NEBLETT

KATHLEEN WHARTON, REBECCA WHITE, WINNIE TAYLOR,
 SARA DUTCHER, CAROL WEIDMAN, BARBARA WARREN

And Dr. Franc L. McCluer

Freshmen

JEAN THIERY, JOAN SPENCER, ANN SIDWELL, DOROTHY KAMP,
MILDRED TERRELL, BARBARA SMITH

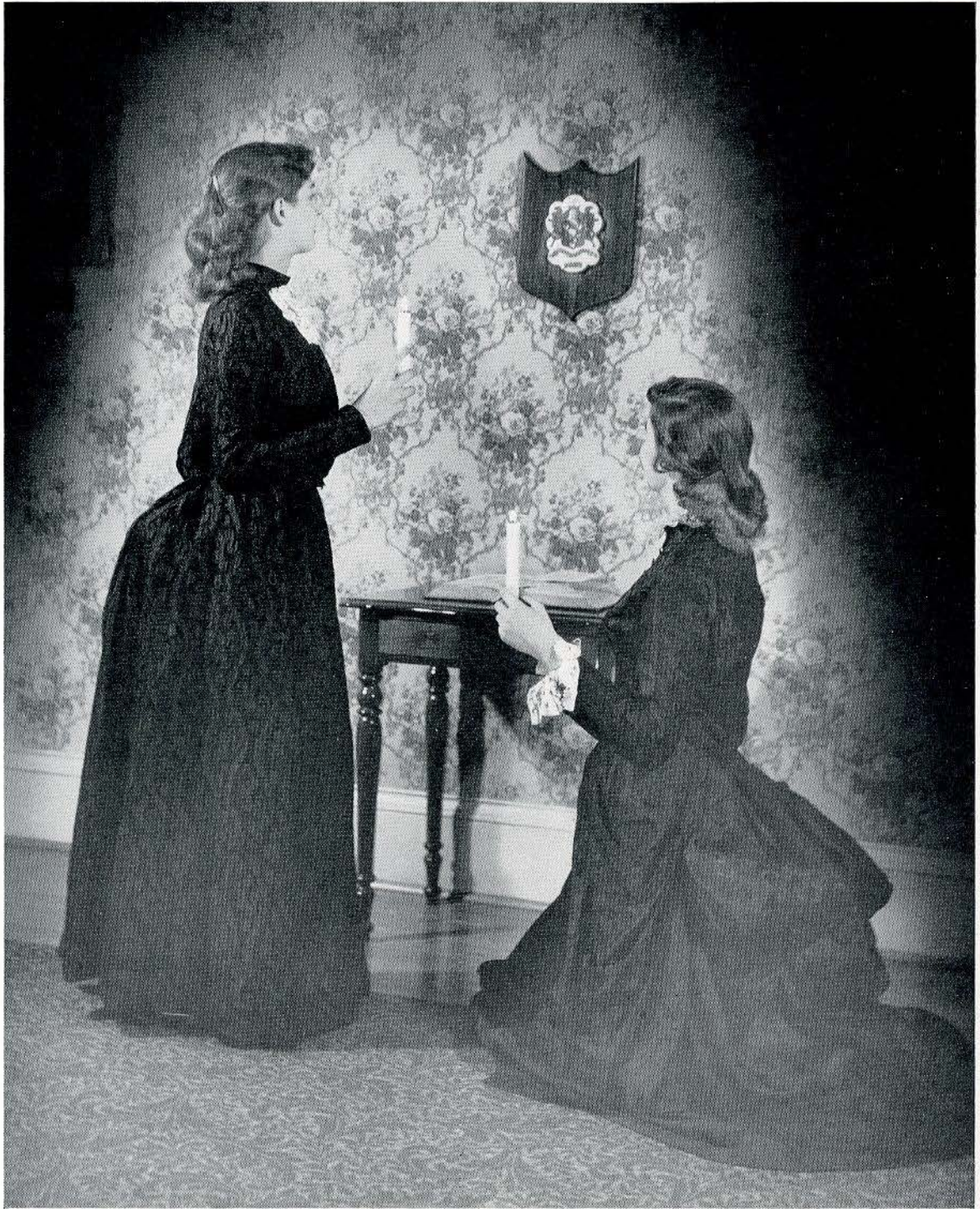
CAROL SUE RICHMOND, LOUISE SWAIN, CAROL TOLLY, CAROL
LEE SAMUEL, BARBARA SHUTTLEWORTH, CHARLOTTE
SEEHORN



SUE KENNEDY, CAROLYN LOVETT, BEVERLY LAMPERT
PRISCILLA LORD

CISSY HURLEY, ANN LINDSEY, NEDRA SMALLWOOD, HELEN
SHIRLEY HARRIS, BEVERLY SMOCK

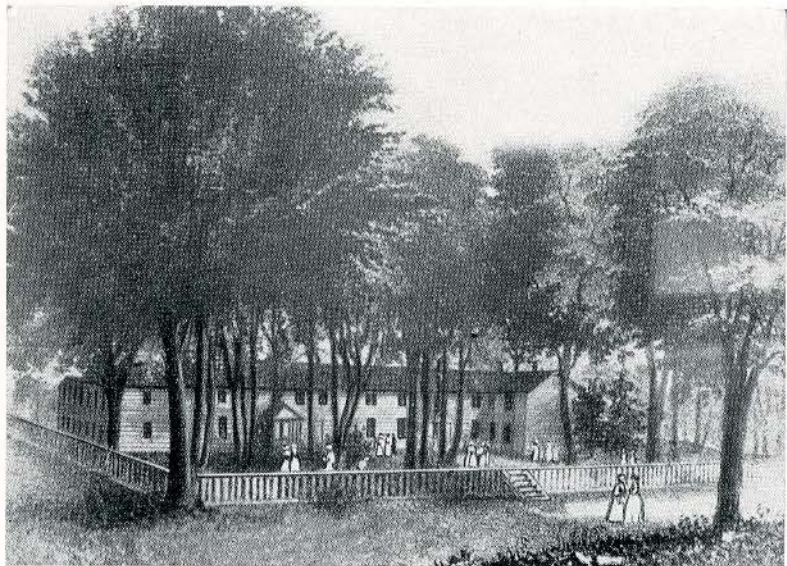
“bulleted” to Lindenwood in 1947.



"This study hall life

Activities

*Mystery and awe surround
A pledge by candle-light;
Friendships form and hopes grow strong
As the flame burns bright.*



hurts worse than a knife."

Student Council, Judiciary Board

Since its introduction in September, 1916, the purpose of Lindenwood's Student Government Program has been to teach the principles of satisfactory campus living. The Council, which serves as a link between faculty and student body, consists of representatives from each class and each dormitory. Advancing social activities as well as government, it plans the school's dances, parties, and informal get-togethers.

OFFICERS

President: ELEANOR TREFZ
Vice-President: LAURIE BOWMAN
Secretary-Treasurer: BETH BANTA

Seated: Goodall, A., Holmes, K., Keeton, D., Trefz, E., Bowman, L., Smith, C., Van Bibber, M.
Second Row: Ploff, M., Zarraga, C., Severson, B., Maness, J., Grove, W., Pinckney, M., Krueel, A., Starzl, N., Rhodus, J.
Not Pictured: Fleet, J.



And so, an early year book

Student Christian Association

OFFICERS

President: VIRGINIA RATCLIFF

Vice-President: GRET BARTENBACK

Secretary: CONNIE GORDON

Treasurer: ANN GOODALL

Christian Faith Chairman: VON BURTON

Social Responsibility Chairman: NELL
CULVER

Program Chairman: ARLEEN BECKER

Recreational Chairman: CAROLYN SMITH

Fellowship Chairman: NADA ROBerson

Music Chairman: PATSY FIELDS

Publicity: JU RHEE JENSEN

Every member of the student body is, by virtue of her enrollment, a member of the Student Christian Association. Because it does include every Lindenwood girl, the S.C.A. has always been one of the most active clubs on campus. One of its first large undertakings was a 1912 project, the sponsoring of a chapel in a district near St. Louis. Since then, it has furthered such movement as the campaign for the World Students Service Fund, and the College's annual Religious Emphasis Week.

First Row: Becker, A., Smith, C., Roberson, N.

Second Row: Ratcliff, V., Goodall, A.

Third Row: Gordon, C., Fields, P., Jensen, J., Burton, V.

Not Pictured: Bartenbach, G.



shows that "The school of our mothers"

Who's Who



First Row: Deisenroth, L., Ratcliff, V., England, C.
Second Row: Starzl, N., Trefz, E., Bowman, L.

The students who comprise the membership of Who's Who Among Students in American Colleges and Universities are those who excel in character, scholarship, and leadership in extracurricular activities. They have also indicated potential usefulness to business and society. These six students will appear in Who's Who, a national publication that gives recognition for superiority in all phases of college life.

was anything but a prim institution.

Triangle

OFFICERS

President: JEAN KNOX
 Vice-President: ANN FRAZIER
 Secretary-Treasurer: NANCY DARNALL
 Sponsor: MISS LOUISE BEASLEY

Alpha Psi Omega

OFFICERS

President: JOY HAUSMAN
 Secretary: ARLEEN BECKER
 Treasurer: CYNTHIA BECKER
 Sponsors: DOUGLAS HUME, JULIET MCCRORY

Alpha Epsilon

Rho

OFFICERS

President: SHARLENE AGERTER
 Vice-President: DEANA IZENBERG
 Secretary-Treasurer: ALICE WALTHALL
 Historian: NELL CULVER
 Sponsor: MISS MARTHA BOYER



First Row: Darnall, N., Knox, J., Frazier, A.
 Second Row: Disenroth, L., Bartenback, G., Humphner, S.
 Not Pictured: Starzl, N., Ellis, J., Lewellen, K., Li, Y.,
 Richards, J., Hester, J.

Alpha Psi Omega

Left: Hume, D., Hausman, J., McCrory, J., Betz, S.

Alpha Epsilon Rho

First Row: Nevins, B., Moore, P., Walthall, A.
 Second Row: Sheley, E., Agarter, S., Culver, N.



In the early days, literary clubs took precedence

Pi Alpha Mu

First Row: DeWeese, J., Luchsinger, B., McGuire, W., Pennel, P., Buck, J.

Second Row: Frazier, A., Cheney, J., Mahan, C., Smith, C., Barnes, J., Becker, A.

Not Pictured: Banta, B., McGee, R., Blevins, J., Gleeson, P., McCluer, C.



First Row: Mahan, C., Cheney, J., Trescott, B., McGuire, W., DeWeese, J.

Second Row: Luchsinger, B., Bowman, L., Johnson, A., Severson, B., Warren, B., Snelling, S., Becker, A., Starzl, N., Wade, J.

Pi Alpha Mu

OFFICERS

President: WILMA MCGUIRE
Vice-President: BARBARA LUCHSINGER
Secretary-Treasurer: PEGGY PENNELL
Sponsor: DR. SIEGMUND BETZ

Poetry Society

OFFICERS

President: BEVERLY TRESCOTT
Vice-President: JACQUELYN CHENEY
Secretary-Treasurer: WILMA MCGUIRE
Sponsor: DR. ELIZABETH DAWSON

and the meetings must have been lively:

Left: Buck, J., McCluer, C., Kirchherr, M.
Not Pictured: McGee, R., Critchfield, C., Jensen, J., Hill, C.



Kappa Pi

Kappa Pi is a national art fraternity claiming those students who maintain an average of B in their art courses and a C average in other subjects.

KAPPA PI OFFICERS

President: JOANNE BUCK
Vice-President: MARY KIRCHHERR
Secretary: CAMILLA McCLUER
Social Chairman: RITA MCGEE
Sponsor: MR. HARRY HENDREN

Pi Alpha Delta

Students who have a B average or above in their classics courses are eligible for membership in Pi Alpha Delta.

PI ALPHA DELTA OFFICERS

President: CAMILLA McCLUER
Vice-President: SANDRA BALDERSON
Secretary-Treasurer: MARTHA JANE EVANS
Sponsor: DR. SIEGMUND BETZ

First Row: Stern, B., Evans, J., McCluer, C., Balderson, S., Merrill, M.
Second Row: Czarlinsky, M., Deisenroth, L., Luchsinger, B., Dettman, D.



one enterprising secretary wrote,

Alpha Sigma Tau

Alpha Sigma Tau is an honor society that claims only the highest ranking upperclass students. This club was formed to take the place of Phi Theta Kappa, an organization that existed when Lindenwood was a junior college. Having as its aim the furthering of scholastic achievement, Alpha Sigma Tau sponsors an annual white elephant sale, the proceeds from which are sent to a deserving student at the School of the Ozarks.

OFFICERS

President: BARBARA SUTTON

Vice-President: KATHRYN LEWELLEN

Secretary-Treasurer: BEVERLY STUKEN-
BROEKER

Sponsor: DR. EUGENE CONOVER

Seated: Ratcliff, V., Lewellen, K., Sutton, B., Stukenbroeker, B., Deisenroth, L.

Back Row: Trefz, E., Burcham, B., England, C., Neilson, J., Rogers, L., Pennel, P., Cheney, J., Romann, C., Buck, J., McCluer, C.



"We have shuddered and grown cold

Alpha Lambda Delta

OFFICERS

President: ARLEEN BECKER
Secretary: BEVERLY TRECSCOTT
Treasurer: CAROLYN SMITH
Sponsor: DR. ALICE PARKER

Alpha Lambda Delta is a national scholastic honor society open to first semester freshmen whose grade point averages are 3.5 or above. First semester sophomores who maintained a cumulative average of 3.5 or over are also eligible for membership. While the purpose of this club is to encourage scholastic achievement among freshmen, it serves the entire campus through the lectures which it sponsors.

Seated: Hester, J., Smith, C., Becker, A., Trecscott, B.
Second Row: Evans, M., Franklin, E., Chan, S., Van Bibber, M.
Not Pictured: Stoerker, M.



at the horrible compositions of Poe."

KCLC



Seated: Agarter, S., Becker, A., Culver, N., Sheley, E.

Back Row: Nevins, B., Walthall, A.

Not Pictured: Izenberg, D.

Personnel, First Row: Gordon, C., Buckner, J., Moore, P., Nevins, B., Ebeling, B., Agarter, S., Wilson, M., Moskoff, V., Stigall, N., Walthall, A., Becker, A., Culver, N., Sheley, E., Fields, P., Taylor, W., Kieth, P., Cole, C., McGaughey, C., Burse, G.

Second Row: Buckner, J., Gilbert, A., Anderson, J., Vignocchi, A., Higgins, C., Deane, B., Berner, M., Campbell, R., Kern, I., Lord, P., DeCamp, B., Beaumar, D., Merrill, M., Garnholz, J., Kahre, R., Ricklin, C., Holmes, K., Minnick, J.

STAFF

Station Manager: SHARLENE AGARTER

Program Director: NELL CULVER

Continuity Director: EUNICE SHELEY

Production Director: DEANA IZENBERG

Publicity and Education Director: ALICE
WALTHALL

Advertising Manager: ARLEEN BECKER

Engineering Chief: BETSY NEVINS

The KCLC staff and personnel consist of the directors that plan the programs and the crew that produces them.

These young women were not only readers,

International Relations Club

League of Women Voters

Both the International Relations Club and the League of Women Voters help to create student interest in government. Open to everyone interested in world affairs, they were especially active during this spring's political conventions.

OFFICERS

President: JACQUELYN CHENEY
Vice-President: JILL GINGELL
Secretary: JOYCE OMOHUNDRO
Treasurer: TIL VAN DER HAAGEN
Sponsor: DR. DOROTHY WILLIAMS

OFFICERS

President: KATHRYN HOLMES
Vice-President: JOAN KIRCHHERR
Secretary: ELIZABETH ELLIOTT
Treasurer: ZILPHA CURTIN
Sponsor: DR. HOMER CLEVINGER

First Row: Montgomery, B., Holmes, K., Barton, J., McClelland, C., Burse, G., Conrad, M., Leonard, J., Hughes, S., Farris, J.

Second Row: Getreu, I., Gingell, J., Cheney, J., Van der Haagen, T., Omohundro, J., Elliott, B., Luchsinger, B.

Third Row: Wade, J., Neblett, D., Spenser, J., Wahl, M., Czarlinsky, M., Castro, A., Bennett, F., Higgins, C., Meyer, J., Glebe, B., Reed, B., Gleeson, P., Kirchherr, M., Agarter, C., Kirchherr, J., Ebeling, B., Collins, K.

Fourth Row: Lindsay, A., Chen, S., Li, Y., Neilson, C.

First Row: Harris, S., Edison, P., Elliott, B., Kirchherr, J., Holmes, K., Curtin, Z., Jensen, J., Wade, J.

Second Row: Agarter, S., Reed, B., Gleeson, P., Terrell, M., Edwards, J., Collins, K.

Third Row: Ferris, J., Mauze, E., Sidwell, A., Spenser, J., Bowers, J., Marshall, A., Stigall, N., Wilson, M., McClelland, C., Eitman, M., Luchsinger, B., Opitz, M.

Fourth Row: Sey, S., Johnson, A., Snyder, S., Campbell, R., Maness, J., Merrill, M., Anderson, S., Mueller, N., Castro, A., Czarlinsky, M., Bond, B., Blessing, J., Filling, J., Hackman, L., Regot, J., Bruns, M., Montgomery, B., Ebeling, B., Cunningham, M.

Fifth Row: Cowan, A., Kirchherr, M., Burse, G., Lindsay, A., Minnick, J., Conrad, M., Neilson, C., Fields, R.



but also politicians.



Seated: Holt, B., Danz, R., Craw, M., Filling, J., DeWeese, J., Kaiser, C., Barnes, J., Gleason, P.
Second Row: Neblett, D., Quinn, H., Alcorn, P., Jensen, J., Wade, J., McClelland, C., Hill, C., Kern, I.
Third Row: Maness, J., Cheatham, D., Jones, J., Johnson, A., Severson, B., Null, M., Smith, C., Moore, P.,
 Bennett, F., Neilsen, C., Smith, C., Kirchherr, M., Buck, J., Higgins, C., Price, S., Keeton, D.
Fourth Row: Castro, A., Gingell, J., Meyer, J., Van der Haagen, T., Gethreau, I.

Modern Language Club

The Modern Language Society, an honorary organization, seeks to further international understanding.

OFFICER

President: JO DEWEESE
Spanish Vice-President: JANETTE BARNES
German Vice-President: MARILYN CRAW
French Vice-President: JOANN FILLING
Secretary-Treasurer: PAT GLEESON
Sponsor: DR. MARY TERHUNE

Commercial Club

The Commercial Club helps its members to understand the problems of the "white collar girl."

OFFICERS

President: EVA PAPPAS
Vice-President: CHARLENE ARMSTRONG
Secretary-Treasurer: BARBARA EBELING
Sponsor: MISS MILDRED HILLESTAD

First Row: Williamson, B., Smock, B., Terrell, M., Edwards, D., Seay, S., Prinster, P.
Second Row: Meyer, J., Marshal, A., Stigall, N., Armstrong, C., Pappas, E., Ebeling, B., Gingell, J.,
 Tolly, C.
Third Row: Bohn, B., Davis, M., Montgomery, B., Roberts, H., Price, S., Grove, W., Wade, J., Maness, J.,
 Brown, S., Zarraga, C., Kamp, D.
Not Pictured: Profrock, D.



The International Relations was one



First Row: England, C., Rhodus, J., Burcham, B., Bond, B., Roberson, N., Conrad, M., Wilson, M., Eitman, M.
Second Row: Hudson, N., White, C., Walthall, A., Darnall, N., Rice, J., Blessing, J., McCluer, C., Bruns, M.
Third Row: Ratcliff, V., Pfoff, M., Cunningham, M., Marshal, A., Boergerhoff, N., Romann, C., Ward, J., Lowe, P., Czarlinsky, M., Sutton, B., Van Bibber, M., Davis, M., Stuckenbroeker, B., Fields, P., Wessel, S., Luchsinger, B., Hackmann, L., Montgomery, B.
Fourth Row: Burton, V., Glazer, P., Pennel, P., Siemssen, S., Dicke, D., Omohundro, J., Fawley, M.

Future Teachers of America

OFFICERS

President: NANCY DARNALL
Vice-President: JEANE RICE
Secretary: JOAN BLESSING
Treasurer: ALICE WALTHALL
Sponsor: MR. BREMEN VAN BIBBER

Encore Club

OFFICERS

President: NANCY MUELLER
Vice-President: JOAN SPENCER
Secretary-Treasurer: ROSI DANZ
Sponsor: MISS DOROTHY ELY

First Row: Creel, C., Farris, J., Barton, J., Cheatham, D., Richmond, S., Roberts, H. Campbell, R., Baim, B.
Second Row: McClelland, C., Marshall, A., Danz, R., Spencer, J., Mueller, N., Tolly, C., Darnall N., Zarraga, C.
Third Row: Barnes, J., Anderson, J., Murphy, C., Regot, J., Opitz, M., Boyer, M., Hackman, L., Filling, J., Hartzog, K., Blessing, J., Gomel, J., Cowan, A., Null, M., Stuckenbroeker, B., Deisenroth, L., Whitsell, J., Kaiser, C., White, B.



Athletic organizations were also popular,



Orchesis

OFFICERS

President:

First Semester, BONITA HOLT

Second Semester, PRISCILLA LORD

Secretary-Treasurer:

MARY ANN TODSEN

Sponsor: MISS MARTHA REESE

First Row: Smith, B., Holt, B., Null, M.

Second Row: Gordon, J., Lord, P., Garnholz, J., Todsens, M., Moore, P.

Not Pictured: Smith, C., Keeton, D., Leu, P.



Terrapin

OFFICERS

President: NADA SUE ROBERSON

Secretary-Treasurer:

MARIAN STOECKER

Sponsors: MISS MARTHA REESE and MISS DOROTHY ROSS

First Row: Moore, P., Roberts, C., Guggisberg, M., Roberson, N., Stoerker, M., Boutin, D., Garnholz, J.

Second Row: Bird, R., Null, M., Neilson, C., Wade, J., Swain, L., Baim, B.

Not Pictured: Banta, B., Swanson, E., Amsden, J.



Beta Chi

OFFICERS

President: JOYCE GLAUBER

Vice-President: PHYLLIS LAUX

Secretary: ELIZABETH ELLIOTT

Sponsor: MISS ROSEMARY EGELHOFF

First Row: Mills, M., Thiery, J., Glauber, J., Elliott, E., Roberson, N.

Second Row: Ward, J., Hudson, N., Boutin, D., Omohundro, J., Hodge, C., Murphy, C., Buck, J., Vignocchi, A., Wessell, S.

of the first clubs on campus,

Athletic Association

OFFICERS

President: RUTH WEBER

Vice-President: MARY KIRCHHERR

Secretary: MARIAN STOERKER

Treasurer: RUTH WEBER

Sponsor: MISS MARGO VER KRUZEN

Not only one of the largest but also one of the most active clubs on campus, the Athletic Association promotes both intra and extra-mural competition. One of the oldest of L. C.'s organizations, its girls played on March 6, 1912, their first game with an outside school. Although the white middies and blue bloomers that the team wore then are a far cry from the perky blouses and brief shorts of today's A. A., the club's purpose has always been the same: the furthering of good fellowship through an interest in sports.

First Row: Campbell, R., Taylor, W., Roberts, S., Johnson, A., Sheley, E., Agerter, S., Beutler, R., Kirchherr, M., Stoerker, M., Roberson, N., Williamson, B., Curtin, Z.

Second Row: Brown, S., Sahli, S., Wade, J., Anderson, S., McClelland, C., Gingell, J., Van der Haagen, T., Cunningham, M., Frazier, A., Amsden, J., Collins, K., Spencer, J., Filling, J., Marshal, A., Null, M.

Third Row: Swain, L., Wolter, C., Ward, J., Davis, M., Neilsen, C., Hodge, C., Reed, B., Garhnolz, J., Vignocchi, A., Holt, B., White, R., Fawley, M., Kirchherr, J., Baim, B., Brown, H., Beaumar, D., Leonard, J., Berner, M., Eitman, M.



with fencing being a favorite sport.



Mu Phi Epsilon

OFFICERS

- President:*
BARBARA BURCHAM
- Vice-President:*
CAROLINE ENGLAND
- Recording Secretary:*
PEGGY PENNELL
- Corresponding Secretary:*
VIRGINIA RATCLIFF
- Treasurer:*
BEVERLY STUKENBROEKER
- Historian:*
BARBARA SUTTON
- Warden:*
CAROL ROMANN
- Chaplain:*
BEVERLY TRESMOTT
- Sponsor:*
MISS GERTRUDE ISIDOR



Delta Theta

OFFICERS

- President:*
BEVERLY STUKENBROEKER
- Vice-President:*
BEVERLY TRESMOTT
- Secretary:*
SUZANNE WESSEL
- Treasurer:*
SARA SAHLI
- Sponsor:*
MRS. BARKER



Instrumental Association

Front Row: Pennell, P., Burcham, B., England, C. *Second Row:* Ratcliff, V., Stuckenbroeker, B., Romann, C., Sutton, B., Trescott, B.

First Row: Sahli, S., Stukenbroeker, B., Trescott, B., Wessel, S. *Second Row:* Burcham, B., Romann, C., England, C. *Third Row:* Pfoff, M., Null, S., Ratcliff, V., Pennell, P., Franklin, E., Burton, V., Boergerhoff, N., Sutton, B.

First Row: Bruns, M., Kern, I., Cowan, A., De Camp, B., Eidson, P. *Second Row:* Gwinn, A., Wilson, M., Collins, K. *Third Row:* Romann, C., England, C. *Fourth Row:* Fields, R., Wahl, M., Sutton, B., Glazer, P., Hartzog, K., Franklin, E., Danz, R. M., Kirchherr, M., Bursey, G., Kennedy, S.

Always a school for musicians,

Choir

CHOIR OFFICERS

President: BEVERLY STUKENBROEKER

Secretary: ALICE WALTHALL

Sponsor: MILTON REHG

This year, sixty-seven girls have met the requirements for choir membership by showing that they have both good singing voices and sight reading ability. Under the direction of Mr. Milton Rehg, this organization has provided anthems for Sunday Vesper Services, sung at college concerts, and participated in nationwide radio broadcasts. In addition to the choir, the music department has three other organizations. Mu Phi Epsilon and Delta Theta are honor societies, requiring their members to be either music majors or minors, and to have a grade point average of B. The Instrumental Association gives concerts periodically and at Easter presents a joint recital with the choir.

First Row: Glazer, P., Barber, P., Gilbert, A., Murphy, C., Ratcliff, V., Pinckney, M., Lett, B., Snelling, S., Evans, M., Jensen, J., Trescott, B., Smith, B.

Second Row: Wilson, M., Whittaker, B., Hill, C., Hughes, S., Dagendorfer, J., Gleeson, P., Anderson, J., DeCamp, B., Lampert, B., Hester, J., Richards, J., Hartzog, K.

Third Row: Lofstrom, C., Smith, C., Fields, P., Stukenbroeker, B., Sahli, S., Seay, S., Manness, J., Deane, B., Cunningham, M., Beaumar, D., Peterson, P., Ebeling, B., Dysart, R., Brown, J.

Fourth Row: McClelland, C., Foley, S., Null, S., Burcham, B., Collins, K., Eitman, M., Rhodus, J., Keeton, D., Samuel, C., Birch, J., Wessel, S., Elliott, S., Kaiser, C., Boergerhoff, N., Sheley, E.



Lindenwood had an early choir of eight girls.



Sellenschuetter, M., Ebeling, B., Lancaster, A., Opitz, M., Regot, J., Blessing, J., Montgomery, B., McCluer, C., Bruns, M., Holmes, C., Lett, B.

Day Students

In past years, XYZ clubs, whose purpose it was to combat homesickness, flourished on the Lindenwood campus. But the Day Students were one group who had no need for this organization. Living in or near St. Charles, these girls participate in both college and home life. Their "dormitory" is Roemer basement, and their prowess in both sports and studies proves that "home cookin'" is indeed beneficial.

OFFICERS

President: LOIS DEISENROTH
Student Council Representative: CATHERINE HOLMES
Secretary-Treasurer: BARBARA EBELING
Sponsor: DR. CLEVINGER

And every student used to belong

Colhecon



First Row: Price, S., Todson, P., Pappas, E., Fawley, M., Kirchherr, M., Brown, S.
Second Row: Brown, H., Rice, J., Smallwood, N., White, B., Porter, M., Tolly, C.
Third Row: Elliott, B., Quinn, H., Edwards, J., Richmond, S., Jones, J., Lovett, C., Boyer, E., Zarraga, C.
Fourth Row: Gwinn, A., Edwards, D., Swain, L., Gibson, N., Menke, M., Wilson, N., Snider, S.
Fifth Row: Roberts, S., Neilson, J., Rogers, L., Smith, C., Lewellen, K., Beiner, B.

OFFICERS

President: MARILYN FAWLEY
Vice-President: MARY ANN TODSON
Secretary: MARY KIRCHHERR
Treasurer: EVA PAPPAS
Sponsors: MISS MARGARET LINDSAY and
MRS. HOUSTON

“Colhecon” (College Home ECONOMics) is affiliated with the National Home Economics Association as one of its ten professional departments. “Colhecon’s” aims are to bring home economics students closer together, give knowledge and practice in self-initiated groups, and work out a true vision of home ec. Members plan their meetings in such a way as to develop professional attitudes and increase interest in the many fields of home economics. This year, the home management house has given the future home-makers an excellent opportunity to apply their course material.

to her own state's club.



Left: Bowman, L., Reed, B., Pennel, P., DeWeese, J.,
McGuire, W., Luchsinger, B.

Not Pictured: McGaughey, Carol

Left: Kirchherr, J., Culver, N., Price, S., Agerter, S.,
Amsden, J., Ebeling, B.

Griffin

Editor: JO JUNE DEWEESE

Business Manager: PEGGY PENNEL

Art Director: BARBARA REED

Assistant Editors: LAURIE BOWMAN
WILMA MCGUIRE
BARBARA LUCHSINGER
CAROL MCGAUGHEY

Faculty Advisor: MISS MARJORIE HILLER

Linden Bark

Business Manager: SHARLENE AGERTER

Staff: JOAN KIRCHHERR
NELL CULVER
SHIRLEY PRICE
SHARLENE AGERTER
JANE AMSDEN
BARBARA EBELING

Faculty Advisor: MR. CHARLES C. CLAYTON

The first college publication,

Press Club

OFFICERS

President: JO RHODUS

Vice-President: VI MOSKOFF

Secretary: MONA LOU HAND

Treasurer: CAROL MAHAN

Sponsor: MR. CHARLES CLAYTON

When deadlines come due, it is not difficult to spot the highly imaginative and perhaps slightly berserk members of press club. They enter their organization through a weird initiation ceremony and then go from the sublime to the ridiculous as they create literary editions and grid-iron dinners. Students from creative writing classes, the poetry society, and the publications staffs are eligible to become press club members.

Seated: Wade, J., Ricklin, C., Holmes, K., Holt, B., Moore, P., McGuire, W.

Second Row: Buckner, J., Kirchherr, M., Bursley, G., Mahan, C., Rhodus, J., Moskoff, V., Ebeling, B., Wilson, M., Buckner, J.

Third Row: Stigall, N., Agerter, S., Buck, J., Keith, P., Kirchherr, J., McGaughey, C., Price, S., Davis, M., Sheley, E., DeWeese, J., Cunningham, M., Luchsinger, B., Gordon, C.

Fourth Row: Reed, B., Minnick, J., Kahre, R., Merrill, M.

Not Pictured: Amsden, J., Becker, A., Connelly, B., Culver, N., Gibson, R., Hand, M., Richards, J., Laux, P.



"The Experiment," appeared in 1845.

Linden Leaves Board



Arranging picture taking schedules in the fall, editing copy during the "long winter months," and finally assembling the annual in the spring, this group spends most of its school year in company with the yearbook. But by working separately and with the staff, and then meeting at regular intervals in the "tower room," the Linden Leaves Board finally manages to complete its publication and send it to the printer.

Editor-in-Chief: BONNIE LOU HOLT
Business Manager: WILLENE GROVE
Advertising Manager: LOIS DEISENROTH
Art Editor: JOANNE BUCK
Literary Editor: BARBARA LUDCHSINGER
Organization Manager: CAROLINE ENGLAND

1903 was the publication date

Linden Leaves Staff



First Row: Gleeson, P., Buck, J., Luchsinger, B., Roberts, H., Davis, M., Rhodus, J., McCluer, C.
Second Row: Price, S., Deisenroth, L., England, C., Holt, B., Grove, W., Ebeling, B., Hester, J.
Not Pictured: Elliott, B., Omohundro, J.

Editorial

BONNIE LOU HOLT, *Editor*

Business

WILLENE GROVE, *Manager*

Advertising

LOIS DEISENROTH, *Manager*

Art

JOANNE BUCK, *Head*
CAMILLA McCLUER

Literary

BARBARA LUCHSINGER, *Head*
PAT GLEESON

Organization

CARRIE ENGLAND

Photography

MAXINE DAVIS

Sponsor

MISS DOROTHY ELY

Typists

SHIRLEY PRICE
JOYCE OMOHUNDRO

of the first Linden Leaves.



In May, 1923, the college honored

Courts

*"A perfect Woman, nobly planned,
To warn, to comfort, and command;
And yet a Spirit still, and bright
With something of angelic light."*



Miss Louise Lockhart, the queen

Popularity Court

Grett Bartenbach, Mary Lou Stubbs, Jane Amsden, Barbara Burcham, Nancy Starzl, Virginia Ratcliff, Laurie Bowman, Joy Hausman, Ruth Beutler, Nada Sue Roberson, Joyce Fleet, Nell Culver, Beth Banta



of the first Lindenwood Court.

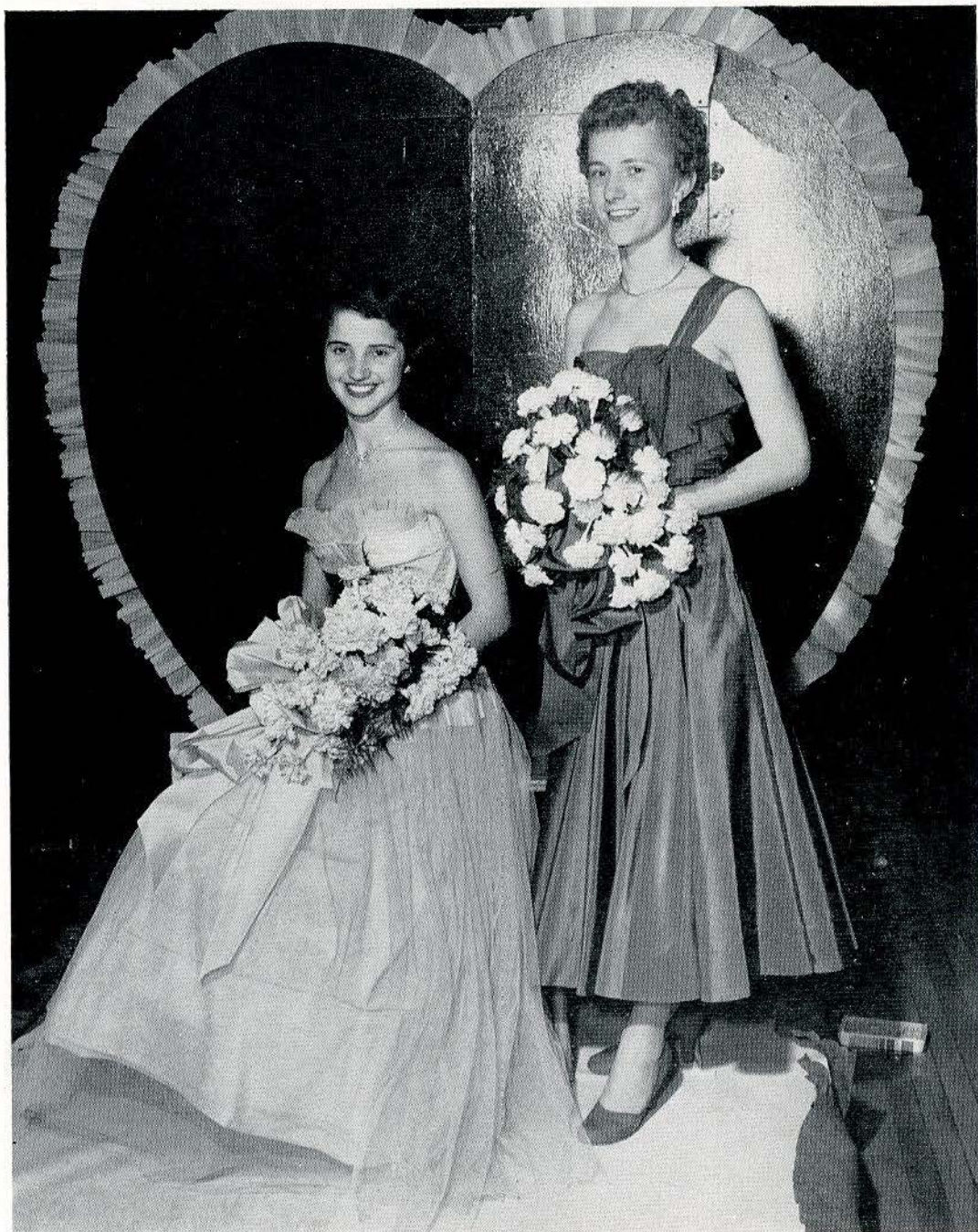
Popularity Queen



LAURIE BOWMAN

Since then, additions have appeared

Valentine Court Attendants



PATTY BOOTH, JOANN FILLING

in both academic and social life.

Valentine Queen



CAROL DEARING

A growing interest in world affairs

Harvest Court

First Row: Creel, C., Garnholz, J., Regot, J.

Second Row: Roberts, M., Dalton, B., Dysart, R., Quin, H., Hurley, S., Sidwell, A., Johnson, A., Anderson, J., Peterson, P., Leonard, J., Brown, H.



has produced annual conferences



Harvest Queen

ANN SIDWELL

to discuss current problems.

May Court



Freshman Attendants

BARBARA WILLIAMSON, ELEANOR MAUZE

and has promoted full scale campaigns.



Sophomore Attendants

CONNIE GORDON, ARLINE KRUEL

In 1948 and again in 1952,



Junior Attendants

MARY LOU STUBBS, JANICE BLEVINS

Lindenwood invited colleges and universities



Senior Attendants

JOYCE FLEET, JOY HAUSMAN

from throughout the United States



Maid of Honor

ALICE WALTHALL

to attend its political conventions.



May Queen

CAROL ROMANN

And so, from 1816 to 1952,



May Day Snaps



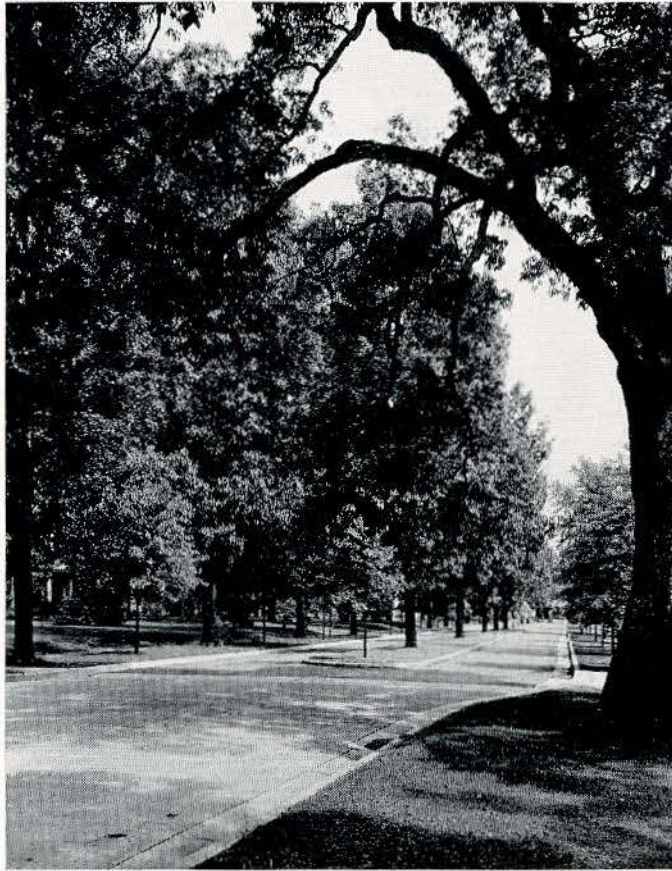
Snaps

Mrs. Sibley's "female academy" has developed

Convention Snaps



into a college that produces



Congratulations to the students of Lindenwood College on this yearbook. Your college hopes that it has served you well during your student days and it is eager to be of further service to you wherever you are in the years ahead.

LINDENWOOD COLLEGE

ST. CHARLES, MISSOURI

“enlightened and useful” members of society.”

PATRONIZE YOUR ADVERTISERS

Editor
BONNIE HOLT

Business Manager
WILLENE GROVE

Advertising Manager
LOIS DEISENROTH



Distinction in Yearbooks is earned by intense application of the skills and experience which have been accumulated over many years of actual production. Thirty years of such specialization, plus an earnest desire to excel, show their mark in Mid-State yearbook productions.

Along with the *Linden Leaves*, one of Mid-State's fine productions is this *1951 Lucky Bag*, of United States Naval Academy, Annapolis, Maryland. The 1953 edition also will be our production.

MID-STATE
Printing Company
JEFFERSON CITY, MISSOURI

COMPLIMENTS OF

Allen Foods, Inc.

St. Louis, Mo.

LASCO Brand Foods for All Occasions

GAS

SERVES YOU BETTER

THROUGH MODERN GAS APPLIANCES

ST. CHARLES GAS CORPORATION

212 NORTH MAIN STREET

MISSOURI COAL AND APPLIANCE COMPANY

G. E. RADIO AND T.V.

G. E. HOME APPLIANCES

FURNITURE

PHONE 440

GREEN MARKED COAL
420 N. MAIN

ST. CHARLES

COMPLIMENTS OF

J. C. PENNEY COMPANY

MAIN STREET

ST. CHARLES, MISSOURI

YOUR ST. CHARLES DRUGGISTS

REXALL DRUG—213 N. MAIN

SERVICE DRUG—SECOND & MORGAN STS.

TAINTER DRUG—115 N. MAIN

STANDARD DRUG—116 N. MAIN

Serving Lindenwood for Many Years

**WE ARE ALWAYS HAPPY
TO SERVE YOU**

COMPLIMENTS

OF

YELLOW CAB

401 N. SECOND STREET

ST. CHARLES, MO.

YOUR PATRONAGE
DESERVES OUR CONSTANT
EFFORT TO SERVE YOU BETTER

GRADE "A"
DAIRY PRODUCTS



ST. CHARLES DAIRY
COMPANY

COSMOS-MONITOR

Serving the Community

Since 1836

PARKVIEW GARDENS

As Near to Lindenwood as Your Telephone

1925 RANDOLPH

PHONE 214

We Telegraph Flowers

COMPLIMENTS OF

TRUMP CLEANERS

200 N. KINGSHIGHWAY

PHONE 2140

1 BLOCK NORTH OF CAMPUS

SALES

ROYAL — VICTOR

SERVICE

MISSOURI TYPEWRITER EXCHANGE

RENTALS AND REBUILDING

FRANK D. HAGAN, *Manager*

WENTZVILLE, MO'



AHMANN'S NEWS STAND

CIGARS and TOBACCO
NEWS, BOOKS, STATIONERY, SPORTING GOODS

St. CHARLES, Mo.

223 N. MAIN

EDMUND C. BURKE, Plumber and Heating Contractor

STOKERS AND OIL BURNERS

PHONE 162

ST. CHARLES, MO.

COMPLIMENTS OF

The Famous

"For Fashions of Distinction"

311 NORTH MAIN

ST. CHARLES, MO.



On the Alert!

Our plants and personnel
are meeting the nation's needs . . .
in essential rolling stock for America's Railroads
and even now in material
for our growing defense program
A.C.F. is ready to do its job
in whatever the future may hold.
American Car and Foundry Company, New York
Chicago • St. Louis • Washington • Cleveland
Philadelphia • Pittsburgh • San Francisco.

**CAR BUILDERS TO
AMERICA'S RAILROADS**

A.C.F.

SHATTINGER MUSIC CO.

Music for Use in
WORKSHIP, EDUCATION, ENTERTAINMENT
331 ARCADE BLDG. MAIN 2408 8TH & OLIVE STS.
ST. LOUIS 1, MO.

ARTIST MATERIALS
CAMERA AND PHOTOGRAPHIC SUPPLIES

BADER'S

1112 LOCUST ST. ST. LOUIS, MO.

VESTAL

4963 MANCHESTER AVE.



Incorporated

ST. LOUIS 10, MISSOURI

ON FLOOR MAINTENANCE
PRODUCTS

Is your assurance that the finest material
known for preserving and beautifying
all types of floors is being used.

VESTAL INCORPORATED

4963 MANCHESTER ST. LOUIS, MO.



Your badge is a thing of beauty and should be a joy forever!

The traditions of a century-old school cannot be erased by time, and the beauty of your Lambda Chi Badge is as enduring as the traditions of your school. Your Lambda Chi Badge is wrought entirely of gold and set with only genuine perfectly matched Oriental whole pearls—a badge in keeping with all of the fine things that Lindenwood College stands for.

COLLEGE SHOP

317 N. 11TH STREET *Now in Our Ninety-Ninth Year* ST. LOUIS, MISSOURI

LAUNDERERS OF FINE LINENS AND WEARING APPAREL

—QUALITY DRY CLEANING—

ST. CHARLES LAUNDRY, INC.

830 S. MAIN STREET PHONE ST. CHARLES 136

ENJOY LIFE

Eat Out More Often

J. F. CONRAD GROCER CO.

SAINT LOUIS

SINCE 1874

GROSS CHANDELIER COMPANY

St. Louis, Mo.

Designers and Manufacturers of Lighting Fixtures

SINCE 1908

ROYAL PAPERS, INC.

2021 DELMAR BLVD.

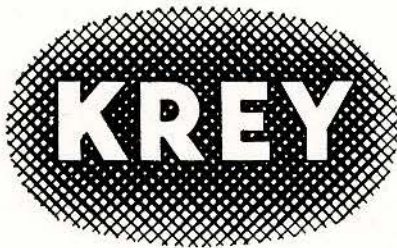
ST. LOUIS, MO.

KREY PACKING COMPANY

Famous Meat Products

Since 1882

KREY ON THE
LABEL



QUALITY ON THE
TABLE

May we take this occasion to express our gratitude to the students and faculty of Lindenwood College for patronizing our products throughout the year . . .

GELATIN DESSERTS—PUDDING POWDERS—PRESERVES—JELLIES—APPLE BUTTER

GRIFFIN & COMPANY

ST. LOUIS 8, MISSOURI

FOREST 2477

STOVES
HARDWARE
BOTTLED GAS
PAINTS AND OILS

THE BRUNS MACHINE CO.

222-224 NORTH MAIN STREET
ST. CHARLES, MO.

FARM SUPPLIES
WATER SYSTEMS
WASHING MACHINES
ELECTRIC APPLIANCES

BANNER NEWS COMPANY

ST. CHARLES, MO.

PRINTERS

PUBLISHERS

KISTER STUDIO

508 JEFFERSON STREET
ST. CHARLES

CONGRATULATIONS TO THE GRADUATES

FROM

ATLAS JEWELERS

COTTAGE BAKERY

"Party Cakes a Specialty"

211 NORTH SECOND STREET

ST. CHARLES, MO.

BRAUFMAN'S

Congratulations Seniors

You've done a fine job. Your record at Lindenwood—whether academic, musical or social—will be an achievement to look back on with great pride.

We are pleased . . . if we have helped in any way to make your stay here pleasant. We hope to see you again.

HUNING'S

RECHTERN CLEANING CO.

216 NORTH 2ND STREET

ST. CHARLES, MO.

THE RECORD BAR

AND

DENNING RADIO

DENNING RADIO CO.

112 N. MAIN ST.

PHONE 80

ST. CHARLES, MO.

HACKMANN-BAUE, INC.

HOME FURNISHINGS

301 TO 307 No. MAIN ST.

ST. CHARLES, MO.

BOTTANI PRINTERY

F. N. BOTTANI

Proprietor

ESTABLISHED 1919

COMMERCIAL PRINTING

120 N. SECOND STREET

ST. CHARLES, MISSOURI

FIRST NATIONAL BANK

of ST. CHARLES, MO.

CHARLES J. DAUDT	<i>President</i>
JOSEPH A. BOTTANI	<i>Vice-President</i>
LEE I. WHITE	<i>Cashier</i>
W. C. BORGELT	<i>Assistant Cashier</i>

DIRECTORS

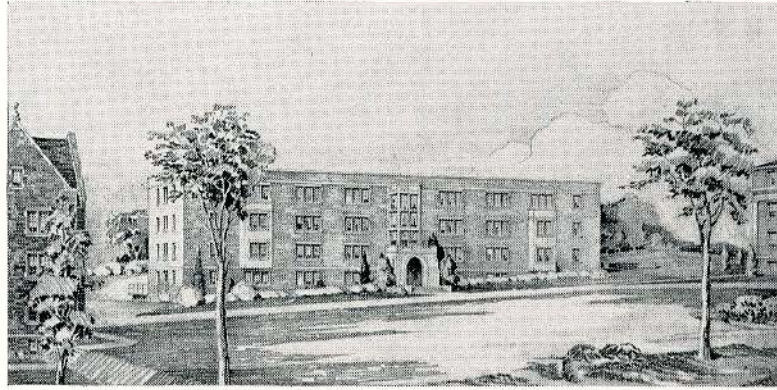
JOSEPH A. BOTTANI	PERCY G. SCHAEFER
CHARLES J. DAUDT	DR. AUGUST WESTERFIELD
HENRY J. ROTHER	LOUIS WILKE
LEE I. WHITE	

ESTABLISHED IN
1863

MEMBER FEDERAL RESERVE SYSTEM

Under the Supervision of the United States Government

MEMBER FEDERAL DEPOSIT INSURANCE CORPORATION



COBBS HALL

LA BEAUME AND UNLAND

ARCHITECTS

St. Louis, Mo.

Heartiest Congratulations

*... with best wishes
for your success
and happiness*



THE QUALITY COALS



BELL & ZOLLER COAL COMPANY

RAILWAY EXCHANGE BUILDING, ST. LOUIS 1, MISSOURI • BELL BUILDING, CHICAGO 1, ILLINOIS

Another Book

by

CENTRAL



CENTRAL ENGRAVING COMPANY

114 N. SEVENTH STREET

ST. LOUIS 1, MISSOURI

CLARK-SPRAGUE PRINTING CO.

1901 LOCUST STREET

ST. LOUIS, MISSOURI

COMPLIMENTS OF

LAWRENCE J. MEISEL CO.

Distributors of LAWN and GARDEN SUPPLIES and EQUIPMENT

444 S. BRENTWOOD BLVD.

CLAYTON 5, Mo.

DINING CAR COFFEE

for

DISCRIMINATING PEOPLE

810 CLARK AVE. ST. LOUIS 2, Mo.



BROWN-HORNSEY *Printing Corporation*

Printers of the "New" View Book

701 HENRY STREET

ALTON, ILLINOIS

PHONE 3-7749

A Convenient Place to Shop . . .

THE GOLDEN RULE STORE

MATTINGLY BROS. STORES CO.

ST. CHARLES, MO.

We Specialize in 5c to \$5.00 Merchandise—Dry Goods, Notions,
Drug Sundries, Stationery, Gift Items, Houseware and
Other Staple Merchandise

RAUCH LUMBER & GROCER CO.

GENERAL OFFICE

ST. CHARLES, MISSOURI

RETAIL YARDS

ST. CHARLES — KIRKWOOD — WASHINGTON
MARTHASVILLE—ROBERTSON—MOSCOW MILLS

Wholesale Grocer

ST. CHARLES, MISSOURI

“YOU ARE ALWAYS WELCOME AT A RAUCH LUMBER YARD”

BUSE'S FLOWER SHOP

400 CLAY

ARTISTRY IN FLOWERS

PHONE 148

WE TELEGRAPH FLOWERS

VOGT BROS. POULTRY FARM

CONDITIONED POULTRY OF ALL KINDS

GALLAHER AND LINDENWOOD AVENUES
ST. CHARLES, MISSOURI

Branches: UNIVERSITY CITY, MO., and NORMANDY, MO.

H. J. ROTHER

JOHN WETTER

HACKMANN LUMBER COMPANY

LUMBER — PAINTS — HARDWARE

PHONE 806

106 N. MAIN STREET

ST. CHARLES, MO.

**ON NIGHTS OFF CAMPUS—
A GOOD SHOW**



STRAND *and* ROXY THEATRES

ST. CHARLES, MISSOURI

Student Directory

- Agerter, Sharlene Ruth, West Concord, Minn., 37, 71, 76, 77, 81, 86, 87
- Akeroyd, Teresa (Mrs. E. T.), St. Charles, Mo.
- Alcorn, Etoile Margaret, San Antonio, Tex., 60, 78
- Amsden, Jane, Webster City, Iowa, 55, 81, 86, 92
- Anderson, Judy, Liberty, Missouri, 60, 76, 79, 83, 96
- Anderson, Suzanne, Malden, Mo., 60, 77, 81
- Armstrong, Charline, Dell, Ark., 37, 78
- Baer, Bette Ann, Grand Island, Nebr., 56
- Baim, Beverly Kathryn, Pine Bluff, Ark., 60, 79, 80, 81
- Balderson, Sandra Ann, Wamego, Kans., 61, 73
- Banta, Mary Beth, Arcadia, Mo., 53, 92
- Barber, Peggy, Haleyville, Ala., 63, 83
- Barnes, Janette, Beaver Dam, Ky., 58, 72, 78, 79
- Bartenbach, Grett, Grand Island, Nebr., 53, 69, 71, 92
- Barton, Barbara Ann, El Dorado, Ark., 60
- Barton, Jenny Lou, Mt. Pleasant, Mich., 60, 79
- Beumar, Doris Ann, Le Roy, Ill., 61, 76, 81, 83
- Becker, Arleen, Memphis, Tenn., 55, 69, 72, 75, 76
- Bennett, Frances Ann, Mt. Vernon, Ill., 56, 77, 78
- Berner, Mary Ann, Richmond Heights, Mo., 62, 76, 81
- Beutler, Ruth Marie, Hinsdale, Ill., 37, 81, 92
- Biener, Barbara Ann, University City, Mo., 56, 85
- Birch, Jeanette Anne, Rosiclare, Ill., 61, 83
- Bird, Russell Jean, Greenville, Mich., 60, 80
- Blessing, Joan, St. Charles, Mo., 53, 77, 79
- Blevins, Janice, Cumberland, Ky., 50, 53, 100
- Boergerhoff, Nancy Claire, Hinsdale, Ill., 58, 79, 82, 83
- Bond, Barbara, Paragould, Ark., 38, 77, 78, 79
- Boothe, Patty Rae, Sweetwater, Tex., 54, 94
- Boutin, Dorothy Louise, Cape Girardeau, Mo., 60, 80
- Bowers, Janet, Marshalltown, Iowa, 61, 77
- Bowman, Laurie Ann, Seminole, Okla., 38, 68, 70, 72, 86, 92, 93
- Boyer, Margaret Ann, Burr Oak, Mich., 63, 79, 85
- Brown, Harriet, El Dorado, Kans., 62, 81, 85, 96
- Brown, Judy, Glenwood, Iowa, 61, 83
- Brown, Sheron Lee, Madisonville, Ky., 55, 78, 81, 85
- Bruns, Mary Alice, St. Charles, Mo., 61, 77, 79, 81
- Buck, Joanne Ruth, East St. Louis, Ill., 58, 72, 73, 74, 80, 87, 88, 89
- Buckner, Jean, Sioux City, Iowa, 55, 76, 87
- Buckner, Joan, Sioux City, Iowa, 54, 76, 87
- Burcham, Barbara, Doniphan, Mo., 39, 74, 79, 82, 85, 92
- Burse, Mildred Gloria, Grand Rapids, Mich., 61, 76, 77, 82, 87
- Burton, Lavone, Princeton, W. Va., 51, 69, 79
- Campbell, Rue, Dallas, Tex., 60, 76, 79, 81
- Carlson, Kay, Oskaloosa, Iowa, 56
- Castro, Astrid, Ponce, Puerto Rico, 59, 77
- Chan, Suk Hun, Seremban, Negri, Sembilan, 55, 75, 77
- Cheatham, Danice, Robinson, Ill., 63, 78, 79
- Cheney, Jacquelyn Julia, Linn Creek, Mo., 51, 72, 74, 77
- Cole, Carolyn, Des Moines, Iowa, 61, 76
- Collins, Kay, Tullahoma, Tenn., 61, 77, 81, 82, 83
- Connelley, Betty Jean, Webster Groves, Mo.
- Conrad, Margaret Ellen, Lucas, Iowa, 63, 77, 79
- Cowan, Annie Lou, Maitland, Mo., 61, 77, 79, 82
- Craw, Marilyn Ailene, New Castle, Ind., 54, 78
- Creel, Cynthia, Parsons, Kans., 62, 79, 96
- Critchfield, Cora Lee, Tecumseh, Nebr.
- Culver, Nell Lyon, Halls, Mo., 50, 51, 69, 71, 76, 86, 92
- Cunningham, Marjorie L., Kirkwood, Mo., 56, 77, 79, 81, 83, 87
- Curtin, Zilpha, Omaha, Nebr., 63, 77, 81
- Czarlinsky, Marlene J., Kansas City, Mo., 51, 73, 77, 79
- Dagendorfer, Jacquelyn Ann, Norfolk, Nebr., 60, 83
- Dalton, Betty Leona, Edina, Mo., 62, 96
- Danz, Rose Marie, Union, Mo., 64, 78, 79
- Darnall, Nancy J., Illiopolis, Ill., 39, 71, 79
- Davis, Edith Maxine, Lanikai, P.O. Oahu, T.H., 51, 78, 79, 81, 87, 89
- Davis, Janice, Burlington, Iowa, 61
- Dean, Betty Anne, Amarillo, Tex., 61, 76, 83
- Dearing, Carol, Cadet, Mo., 95
- DeCamp, Elba (Bunny), Newton, Iowa, 61, 76, 82, 83
- Deisenroth, Lois, St. Charles, Mo., 39, 70, 71, 73, 74, 79, 88, 89
- Dettmann, Deane, Belvidere, Ill., 61, 73
- DeWeese, Jo June, Hugo, Okla., 58, 72, 78, 86, 87
- Dicke, Diane, Downers Grove, Ill., 51, 79
- Dietrich, Audrey Ann, Danville, Ill., 61
- Dreyer, Elsa Maxwell, Texarkana, Ark., 60
- Dutcher, Sara, Iowa City, Iowa, 64
- Dysart, Rosemary Anne, Webster Groves, Mo., 60, 83, 96
- Ebeling, Barbara Lee, St. Charles, Mo., 40, 76, 77, 78, 83, 86, 87, 89
- Edwards, Darla Deane, Sapulpa, Okla., 63, 78, 85
- Edwards, Jane Lewis, Crossville, Tenn., 61, 77, 85
- Eidson, Patsy Lee, Ironton, Mo., 62, 77, 82
- Eitmann, Marlene, Waterloo, Ill., 63, 79, 81, 83
- Elliott, Elizabeth, Hollis, N. Y., 40, 77, 80, 85

- Elliott, Suzanne, Alva, Okla., 59, 61, 83
 Ellis, Carol Jeanne, St. Charles, Mo., 58
 England, Caroline, Festus, Mo., 40, 70, 74, 79, 82, 88, 89
 Evans, Martha Jane, Malden, Mo., 73, 75, 83
 Farris, Julianne, Indianapolis, Ind., 63, 77, 79
 Fawley, Marilyn Jean, Oak Park, Ill., 41, 79, 81, 85
 Fields, Patsy Ann, Whitesburg, Ky., 36, 41, 69, 76, 79, 82, 83
 Fields, Rosalyn Wise, New Castle, Ind., 61
 Filling, Joann, St. Charles, Mo., 58, 77, 78, 79, 81, 94
 Fleet, Joyce, Houston, Tex., 41, 92, 101
 Foley, Sue Elyse, Eufaula, Okla., 60, 83
 Franklin, Eloise Ann, Toulon, Ill., 58, 75, 82
 Frazier, Ann, Stigler, Okla., 55, 71, 72, 81
 Garnholz, Joy Darlene, Maplewood, Mo., 62, 76, 80, 81, 96
 Garrett, Linda Bell, El Dorado, Ark., 60
 Getreu, Ingrid, Styria, Austria, 56, 77
 Gibson, Norma Jo, Elsberry, Mo., 63, 85
 Gibson, Romain Louise, Kansas City, Mo., 58
 Gilbert, Ann, Memphis, Tenn., 60, 76, 83
 Gingell, Jill, London, England, 59, 62, 77, 78, 81
 Glaser, Pansyetta, St. Louis, Mo., 51, 79, 82, 83
 Glauber, Joyce W., Shaker Heights, Ohio, 80
 Glebe, Elizabeth Anne, Lawrenceville, Ill., 60, 77
 Gleeson, Patricia, Wahoo, Nebr., 58, 77, 78, 83, 89
 Goldblatt, Cherie Joy, Chicago, Ill., 60
 Gomel, Carlotta Jean, Fairfax, Mo., 57, 79
 Goodall, Mary Ann, Omaha, Nebr., 52, 68, 69
 Gordon, Constance, Poplar Bluff, Mo., 54, 69, 76, 87, 99
 Gordon, Janice Kay, Edwardsville, Ill., 63, 80
 Gouy, Mary Beryl, Hot Springs, Ark., 64
 Grober, Louise Evelyn, Clarksdale, Miss., 60
 Grolock, Annette, Ladue, Mo., 54
 Grove, Willene, Wood River, Ill., 42, 68, 78, 88, 89
 Guggisberg, Maureen, Parkersburg, Iowa, 60, 80
 Gwinn, Kathryn Annabelle, Crystal City, Mo., 63, 82, 85
 Hackmann, Lorraine, St. Charles, Mo., 52, 77, 79
 Hachtmeyer, Illomay, St. Charles, Mo.
 Hand, Mona Lou, Nevada, Mo., 52
 Harris, Helen Shirley, Hugo, Okla., 65, 77
 Harshbarger, Barbara Ann, O'Fallon, Mo., 58
 Hartzog, Kathleen, St. Louis, Mo., 42, 79, 82, 83
 Hausman, Joy Hellwig, Chesterfield, Mo., 36, 42, 71, 92, 101
 Hester, Catherine Jeanette, Russellville, Ala., 57, 75, 83, 89
 Higgins, Cynthia Kathryn, Indianapolis, Ind., 60, 76, 77
 Hill, Carmine Lacy, Sparta, Tenn., 55, 78, 83
 Hobgood, Ann, Monticello, Ark.
 Hodge, Audrie Carol, Moweaqua, Ill., 62, 80, 81
 Holmes, Catherine, St. Charles, Mo., 51, 68, 76, 77, 87
 Holt, Bonita Lou, St. Louis, Mo., 43, 78, 80, 81, 87, 88, 89
 Hoskins, Sally Lou, Mt. Vernon, Ill., 60
 Hudson, Nancy J., Wooster, Ohio, 43, 79, 80
 Hughes, Sue Jane, El Dorado, Kans., 62, 77, 83
 Humphner, Serita, River Forest, Ill., 54, 71
 Hurley, Sissy, Newport, Ark., 65, 96
 Izenberg, Deana H., Paterson, N. J., 53, 71
 Jensen, JuRhee, Oklahoma City, Okla., 57, 69, 77, 78, 83
 Johnson, Alberta, Paola, Kans., 60, 72, 78, 81, 96
 Jones, Jane Ellen, Robinson, Ill., 78, 85
 Kahre, Rhea, Peru, Ind., 58, 76, 87
 Kaiser, Carolyn Jo., Ottawa, Kans., 57, 78, 79, 83
 Kamp, Dorothy, Oklahoma City, Okla., 65, 78
 Keeton, Deane Ellen, Kansas City, Mo., 59, 68, 83
 Keith, Patsy Ruth, McGehee, Ark., 55, 76, 87
 Kennedy, Susan Anne, Newport, Tenn., 65, 82
 Kern, Irene, Vincennes, Ind., 60, 76, 78, 82
 Kichna, June M., Steeleville, Ill., 59
 Kirchherr, Joan, Warsaw, Ill., 43, 73, 77, 81, 86, 87
 Kirchherr, Mary Lucille, Warsaw, Ill., 51, 77, 81, 82, 85, 87
 Kiss, Dolores Bernice, Chicago, Ill., 59
 Knox, Jean Allyn, Elmhurst, Ill., 51, 71
 Kruel, Arline, Washington, Mo., 57, 68, 99
 Lampert, Beverly Flo, Fremont, Nebr., 65, 83
 Lancaster, Anne, St. Charles, Mo., 62
 Laux, Phyllis, Sikeston, Mo., 50, 51
 Leonard, Janice King, El Dorado, Kans., 62, 77, 81, 96
 Leu, Patricia Ruth, Nameoki, Ill., 64
 Lewellen, Kathryn, DeWitt, Mo., 44, 74, 85
 Li, Yu-Chen, Paris, France, 57, 77
 Lindsey, Anna Louise, Cabool, Mo., 65, 77
 Lord, Priscilla, Peoria, Ill., 65, 76, 80
 Lovett, Carolyn, Starr City, Ark., 65, 85
 Lowe, Patricia, St. Charles, Mo., 79
 Luchsinger, Barbara Beth, Dix, Ill., 44, 72, 73, 77, 79, 86, 87, 88, 89
 Lunak, Sandra Ann, West Chicago, Ill., 57
 Lett, Beverly, St. Charles, Mo., 58, 83

- McClelland, Cara Jean, Oklahoma City, Okla., 61, 77, 78, 79, 81, 83
- McCluer, Camilla, Cottleville, Mo., 51, 73, 74, 79, 89
- McDonald, Patty, Scottsbluff, Nebr., 62
- McGaughey, Carol Jo, Harrison, Ark., 62, 76, 87
- McGee, Rita, Mt. Pulaski, Ill., 53
- McGuire, Wilma Ruth, Ashland, Ky., 44, 72, 86, 87
- McHatton, Betty, Marissa, Ill., 61
- Mahan, Carol Ann, Ashland, Ky., 52, 72, 87
- Maness, Joan Ardell, Sapulpa, Okla., 63, 68, 77, 78, 83
- Marshall, Anita Vivian, Fairfield, Ill., 58, 77, 78, 79, 81
- Mauze, Eleanor, San Antonio, Tex., 63, 77, 98
- Menke, Maxine, Bancroft, Iowa, 62, 85
- Merrell, Mary Lu, Glen Ellyn, Ill., 61, 73, 76, 77, 87
- Meyer, Jacqueline, Gironde, France, 59
- Meyer, Jane Irene, Wood River, Ill., 57, 77, 78
- Mills, Arlene, Central City, Iowa, 63
- Mills, Marilyn, Danville, Ill., 61, 80
- Minnick, Janice, Kansas City, Mo., 55, 76, 77, 87
- Montgomery, Betty, St. Charles, Mo., 51, 77, 78, 79
- Moore, Betty Carol, Kirkwood, Mo., 63
- Moore, Paula Lou, Oklahoma City, Okla., 56, 71, 76, 80, 87
- Moore, Priscilla Jane (Polly), Ann Arbor, Mich., 54, 78, 80
- Moskoff, Violet, Zeigler, Ill., 56, 76, 87
- Mueller, Nancy Lee, Lincoln, Nebr., 63, 77, 79
- Murphy, Cynthia, Fremont, Nebr., 63, 79, 80, 83
- Murphy, Joan E., Avon, Ill., 62
- Musick, Shirley, Chicago, Ill., 59
- Nebesnick, Bettegene, Benld, Ill., 45
- Neblett, Dorothy Helen, Lacarne, Ohio, 64, 77, 78
- Neilson, Janet, Oklahoma City, Okla., 45, 74, 77, 78, 85
- Nevins, Betsy, Kenilworth, Ill., 54, 71, 76
- Nielson, Carolyn, Kansas City, Mo., 61, 80, 81
- Norton, Suzanne Ruth, Otter Lake, N. Y., 62
- Null, Margery Pamela, Wichita, Kans., 63, 78, 79, 80, 81
- Null, Sue Ann, Muncie, Ind., 55, 82, 83
- Omohundro, Joyce, Elsberry, Mo., 52, 77, 79, 80
- Opitz, Marlene, St. Charles, Mo., 52, 79
- Owens, Jackie, Oklahoma City, Okla., 62
- Pappas, Eva, Pine Bluff, Ark., 54, 78, 85
- Papin, Mary Elizabeth, Kirkwood, Mo., 54
- Pennel, Peggy Lee, Covington, Tenn., 52, 72, 74, 79
- Perry, Jane Elizabeth, Kirkwood, Mo., 63
- Peterson, Molly Jane, Wichita, Kans., 63
- Peterson, Pat Marie, Fort Dodge, Iowa, 63, 83, 96
- Pfaff, Margaret Jean, Rochelle, Ill., 57, 68, 79
- Pinckney, Mary Kathryn, Lebanon, Mo., 58, 68
- Porter, Martha, Oskaloosa, Iowa, 61, 85
- Price, Shirley D'Laurel, Belleville, Ill., 45, 78, 85, 86, 87, 89
- Prinster, Patricia Adela, St. Charles, Mo., 54, 78
- Profrock, Dorothy Ann, Springfield, Ill., 60
- Quin, Harriett, Clarksville, Tenn., 63, 78, 85, 96
- Rankin, LaVon, Spalding, Nebr., 64
- Ratcliff, Virginia, Jasper, Tex., 46, 69, 70, 74, 79, 82, 83, 92
- Reed, Barbara Lou, Carlisle, Iowa, 57, 77, 81, 86, 87
- Regot, Jacqueline, St. Charles, Mo., 62, 77, 79, 96
- Rhodus, Joanna, Mexico, Mo., 47, 68, 79, 83, 87, 89
- Rice, Jeane, Paris, Mo., 36, 47, 79, 85
- Richards, Julie Ann, Oklahoma City, Okla., 58, 83
- Richmond, Carol Sue, Advance, Mo., 65, 79, 85
- Ricklin, Cynthia, Brooklyn, N. Y., 46, 76, 87
- Roberson, Nada Sue, Mexico, Mo., 52, 69, 79, 80, 81, 92
- Roberts, Helen Sara, Nowata, Okla., 57, 78, 79, 89
- Roberts, Mary Elizabeth (Sissy), Franklin, Tenn., 64, 80, 81, 85, 96
- Rogers, Lorraine, Kirkwood, Mo., 47, 74, 85
- Romann, Carol Ruth, Granite City, Ill., 36, 47, 79, 82, 103
- Sahli, Sara Joy, Amarillo, Tex., 58, 81, 82, 83
- Samuel, Carile, Papillion, Nebr., 65, 83
- Schmidt, Benita (Bonnie), St. Charles, Mo.
- Seay, Sylvia Jane, Sapulpa, Okla., 59, 64, 78, 83
- Seehorn, Charlotte Rhea, Newport, Tenn., 65
- Sellenschuetter, Marie, St. Charles, Mo., 57
- Severson, Elizabeth Jean (Betsy), Madison, Wis., 62, 68, 72, 78
- Sheley, Eunice, Alton, Ill., 58, 71, 76, 81, 83, 87
- Shuttleworth, Barbara Lou, Jennings, Mo., 65
- Sidwell, Ann, Pampa, Tex., 65, 77, 96, 97
- Siemssen, Sally, Omaha, Nebr., 58, 79
- Singleton, Caroline, Trenton, Tenn.
- Smallwood, Nedra, Bedford, Ind., 65, 85
- Smith, Barbara Jean, Joplin, Mo., 65, 80, 83
- Smith, Carolyn Ann, Hopkinsville, Ky., 55, 69, 72, 75, 78
- Smith, Melba Charleen, Malden, Mo., 55, 68, 83, 85
- Smock, Beverly, Oklahoma City, Okla., 65, 78
- Snelling, Sally, Wahoo, Nebr., 64, 72, 83
- Snider, Sandra, Borger, Tex., 58, 85
- Spencer, Joan, Nebraska City, Nebr., 65, 77, 79, 81
- Starzl, Nancy Anne, LeMars, Iowa, 48, 68, 70, 72, 92

- Stern, Barbara Ann, Wahpeton, N. D., 58, 73
 Stigall, Nancy Ann, Chicago, Ill., 58, 76, 77, 78, 87
 Stoerker, Marian, St. Charles, Mo., 54, 80, 81
 Struckmann, Mary Jo, St. Charles, Mo., 48
 Stubbs, Mary Lou, St. Joseph, Mo., 53, 92, 100
 Stukenbroecker, Beverly Jean, St. Charles, Mo., 43, 74, 79, 82, 83
 Sutton, Barbara, St. Charles, Mo., 49, 74, 79, 82
 Swain, Irene Louise, St. Louis, Mo., 65, 80, 81, 85
 Swanson, Estelle Ann, St. Louis, Mo., 53
- Tansey, Paulette, Chicago, Ill.
 Taylor, Winifred, Hinsdale, Ill., 64, 76, 81
 Terrell, Mildred Pickett, Paducah, Ky., 65, 77, 78
 Thielbar, Sally, Columbus, Miss., 54
 Thielecke, Mary Ann, Webster Groves, Mo., 62
 Thiery, Jean, Indianapolis, Ind., 65, 80
 Todsén, Mary Ann, Mexico, Mo., 56, 80, 85
 Tolly, Carol, Decatur, Ill., 65, 78, 79, 85
 Trefz, Eleanor Ruth, Pueblo, Colo., 49, 68, 70, 74
 Trescott, Beverly Mae, Elsberry, Mo., 56, 72, 75, 82, 83
- VanBibber, Mary Nell, St. Charles, Mo., 57, 68, 75, 79
 Van der Haagen, Thil, Amsterdam, Holland, 64, 77, 81
 Vandiver, Desta Marie, Kennett, Mo., 62
 Vanston, Katherine A., Kirkwood, Mo., 57
 Vignocchi, Alice, Highwood, Ill., 64, 76, 80, 81
- Wade, Joan Keller, Tulsa, Okla., 55, 72, 77, 78, 80, 81, 87
 Wahl, Marilyn Jo Anne, Arcola, Ill., 64, 77, 82
 Walthall, Alice, Cleveland Heights, Ohio, 50, 52, 71, 79, 102
 Ward, Joan R., Illiopolis, Ill., 52, 79, 80, 81
 Warren, Barbara Jane, Huntingburg, Ind., 64, 72
 Weber, Ruth Anne, Sappington, Mo., 57
 Wehrli, Carol Elizabeth, Casper, Wyo., 59
 Wessel, Suzanne Buor, New London, Iowa, 56, 79, 80, 82, 83
 Wharton, Kathleen, El Dorado, Ark., 64
 Whitaker, Betty Ann, Clarkton, Mo., 62, 83
 White, Bonnie, Springfield, Mo., 59, 79, 85
 White, Carolyn, West Point, Miss., 50, 79
 White, Patricia, Chicago, Ill., 59
 White, Rebecca (Chigger), Franklin, Tenn., 64, 81
 Whitsell, Jennie Louise, St. Joseph, Mo., 50, 79
 Wideman, Carol Kathryn, Alton, Ill., 64
 Wilkerson, Patsy Ann, Joplin, Mo., 64
 Williamson, Barbara Jean, Oklahoma City, Okla. 64, 78, 81, 98
 Wilson, Maliza, Readland, Ark., 59, 76, 77, 79, 82, 87
 Wilson, Marian Elizabeth, Auburn, Iowa, 64, 83
 Wilson, Norma Rhea, Helena, Ark., 64, 85
 Windsor, Betty, Worthington, Minn., 62
 Wolter, Carol Jean, St. Charles, Mo., 64, 81
- Zarraga, Carmen, Havana, Cuba, 50, 68, 78, 79, 85
 Zinn, Anje, Milwaukee, Wis., 55





