

Lindenwood University

Digital Commons@Lindenwood University

Yearbooks

Lindenwood University Archives

1953

1952-1953 Linden Leaves

Lindenwood College

Follow this and additional works at: <https://digitalcommons.lindenwood.edu/yearbooks>

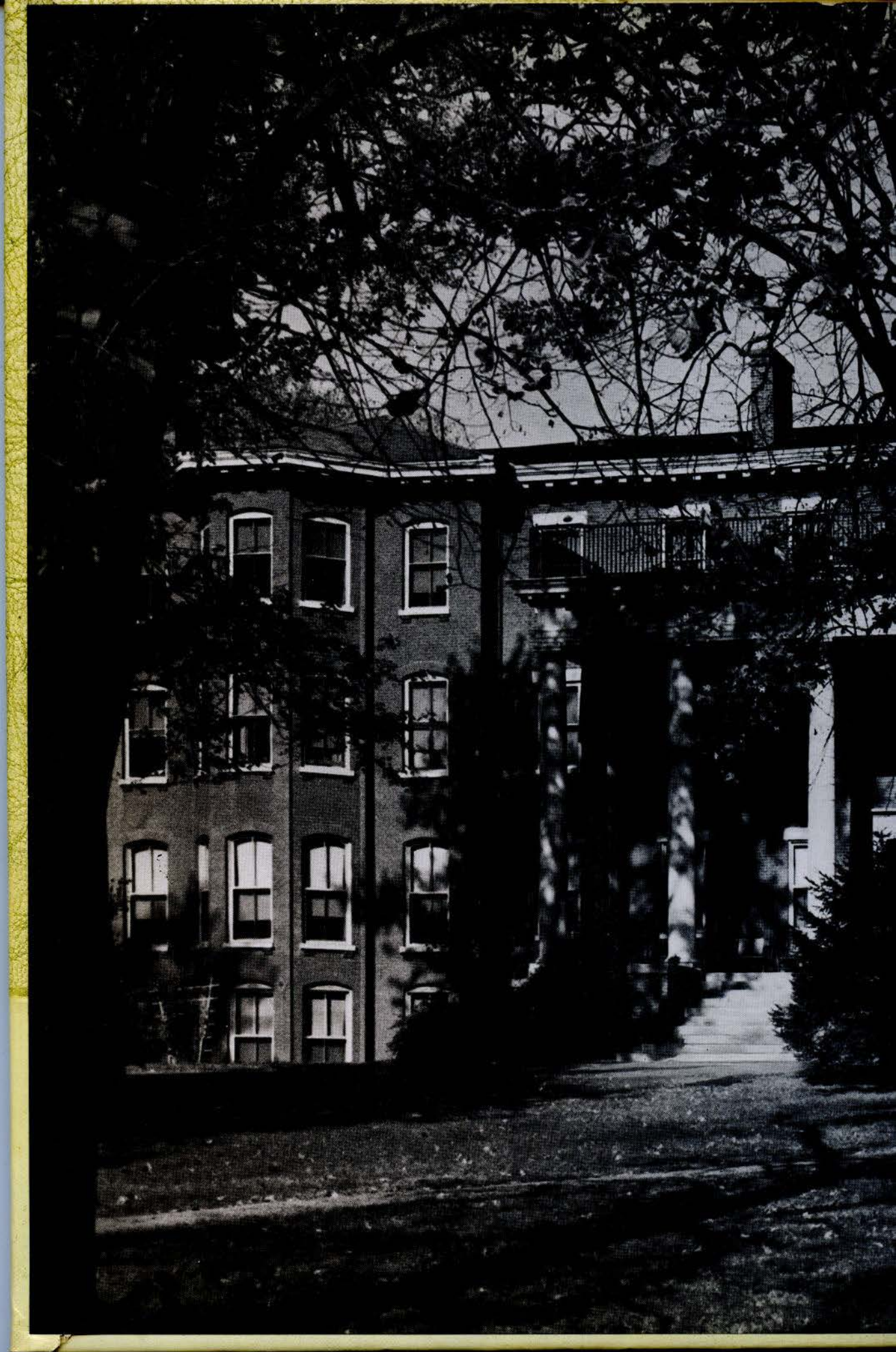
Recommended Citation

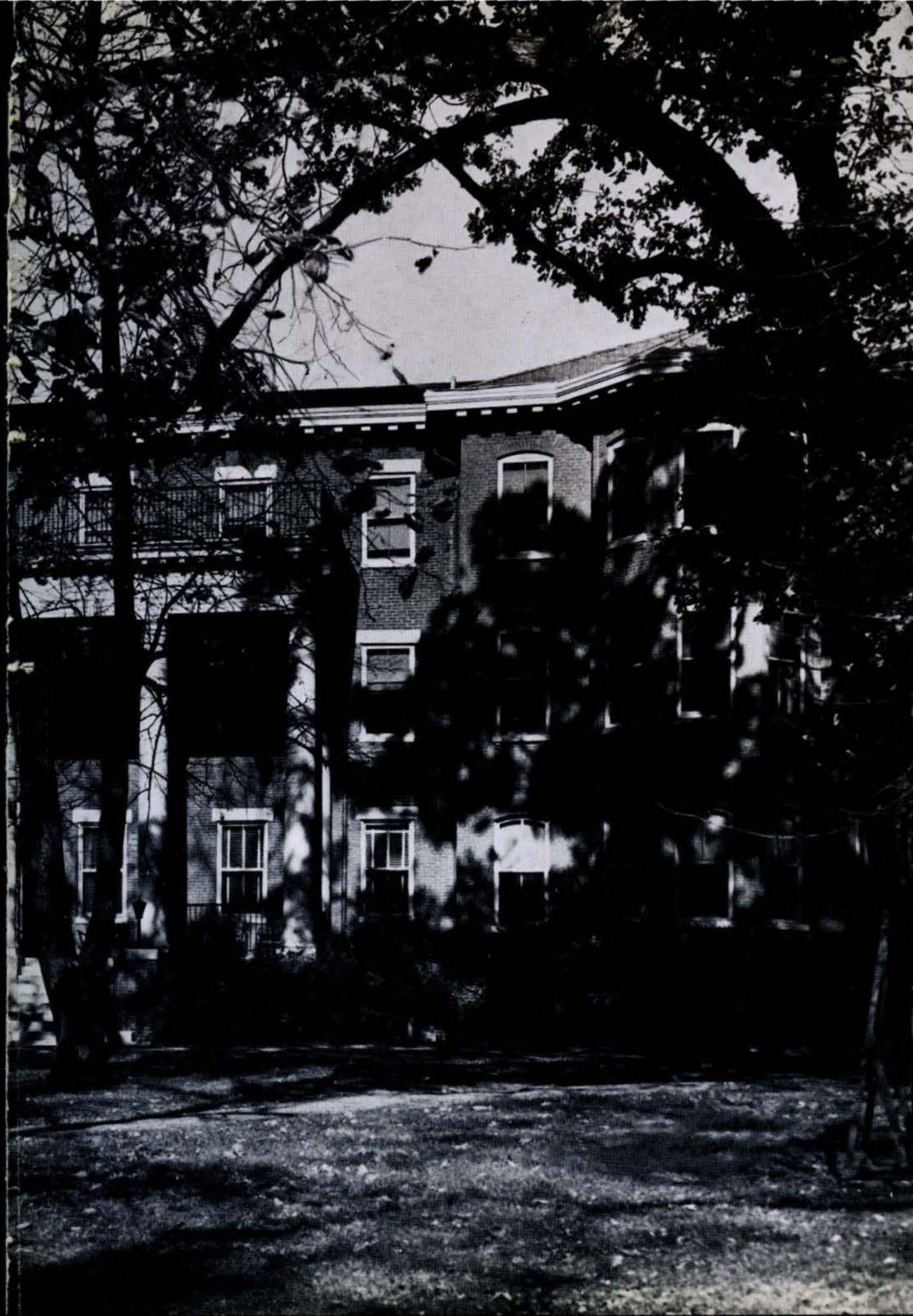
Lindenwood College, "1952-1953 Linden Leaves" (1953). *Yearbooks*. 35.
<https://digitalcommons.lindenwood.edu/yearbooks/35>

This Book is brought to you for free and open access by the Lindenwood University Archives at Digital Commons@Lindenwood University. It has been accepted for inclusion in Yearbooks by an authorized administrator of Digital Commons@Lindenwood University. For more information, please contact phuffman@lindenwood.edu.



LINDEN LEAVES





Linden Leaves

1953

<i>Editor-in-Chief</i>	PATRICIA GLEESON
<i>Business Manager</i>	ANITA MARSHALL
<i>Literary Editor</i>	JO JUNE DEWEESE
<i>Art Editor</i>	CAMILLA MCCLUER
<i>Organization Manager</i>	MARY NELL VAN BIBBER
<i>Advertising Manager</i>	JOAN BLESSING

Annual Publication of the Students of
LINDENWOOD COLLEGE, ST. CHARLES, MISSOURI

Engraving by CENTRAL ENGRAVING COMPANY
St. Louis, Missouri

Printing and binding by MID-STATE PRINTING COMPANY
Jefferson City, Missouri

Photography by HERB WEITMAN and ALBERT KISTER

Through the Arches

Old, old trees

Cast tall shadows

Along the paths we go,

Shadows flickering

Over strong stone arches

That train our thoughts

To sun and the sky.

And we stand in the shadow

That ours may grow so straight . . .

Linden trees throw long shadows

However dark the day,

And we shall stand in their shade

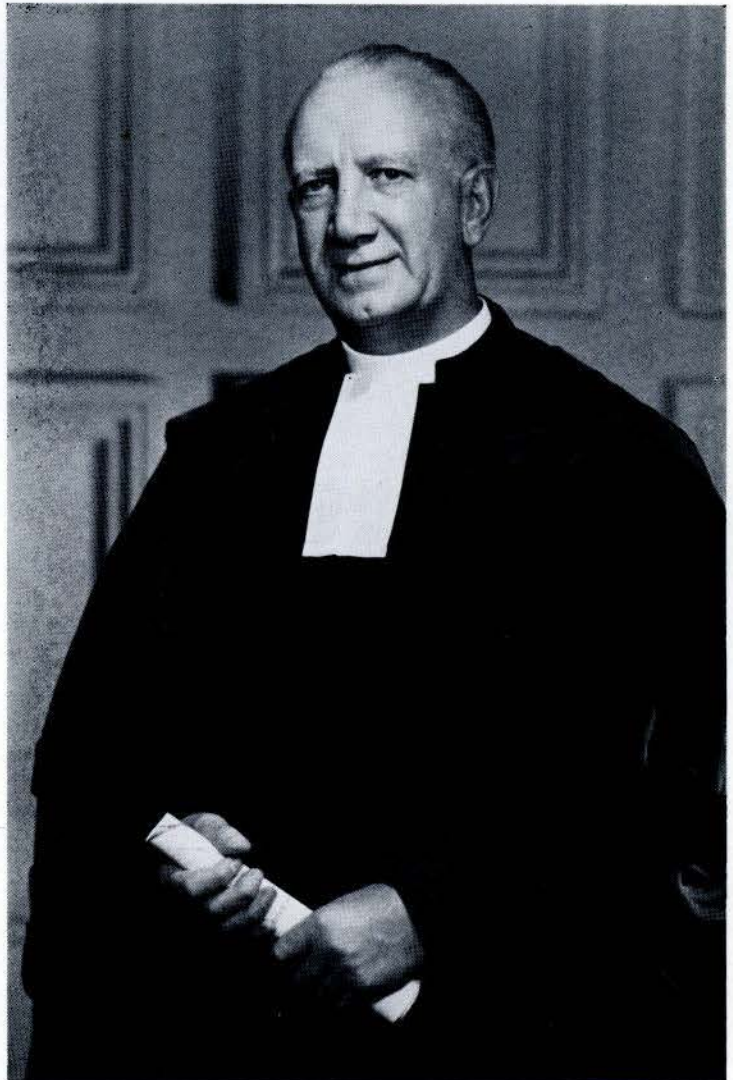
Whatever paths we go.

Dedication

We linger
As under the lindens
To hear his words,
Deep-rooted and
Seeking the sky,
And will go on
Wiser for having
Listened to eternity.
From here
Our paths stretch out
To compass points
And there is
No turning back.
But we will
Hear his words
Again on the wind
From the past,
“Grow strong, grow
Straight, stand tall.”

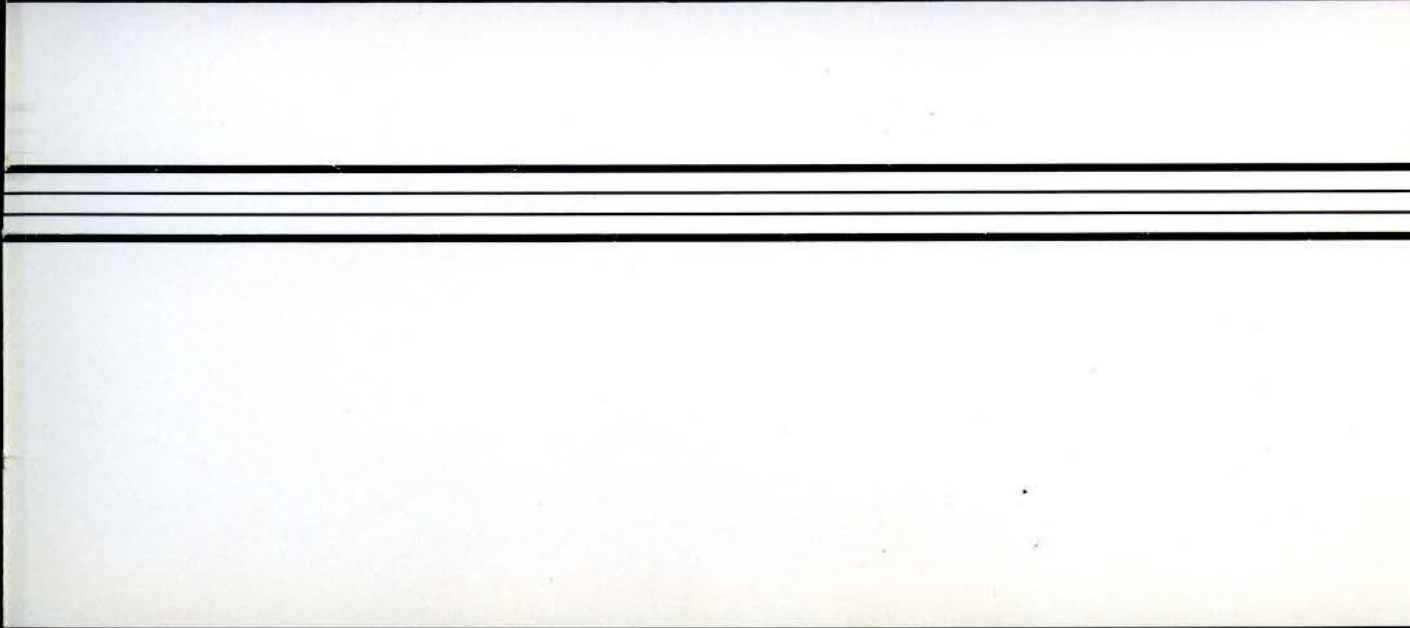
to

Dr. James W. Clarke



Faculty and Administration

Their lives curve upward
As the arch we stand beneath,
And we look through the open door
That, standing on the verge of knowledge,
We may see clear light, sharp-outlined
By the old, stone arch.



Administration



FRANC L. MCCLUER, Ph.D.
President of the College

It is a pleasure to wish success and happiness to one's friends—especially when these friends are qualified to achieve success and deserve happiness. I have that pleasure now in greeting the Seniors of 1953. Best wishes to each of you always.

Sincerely,

F. L. MCCLUER, *President*

Administration

To the members of the Class of 1953, as you leave the campus, we of the administration and faculty send with you our good wishes for the coming years. Your four years at Lindenwood have given you resources for a full life. Remember always that your community deserves leadership and guidance from you—a well educated college woman.

PAULENA NICKELL.



PAULENA NICKELL, Ph.D.
Dean of the College



Administration

"The budget won't allow it."

ROBERT C. COLSON
Business Manager

"You seem to be overdrawn again."

HATTIE KOLB *Bookkeeper*
CORA WAYE *Chief Accountant*
AGNES ZEISLER *Secretary to Business Manager*



Administration

"Surely there's a job for you somewhere!"

MARY F. LICHLITER

Director

Student Guidance and Placement



"According to the calendar . . ."

LIV UDSTAD *Secretary to Director of Guidance*

DOROTHY MATTHEWS *Social Director*

LULA CLAYTON BEALE *Assistant to Director of Guidance*

Administration

WILLIAM FLETCHER McMURRY
Director of Admissions



"Let's see . . . you have a little sister . . ."



"It's spring again, Tweet! Tweet!"

BETTIE B. WIMBERLY
Secretary to the Director of Admissions

CARRIE M. CHARLES
In office of Director of Admissions

LILLIAN SIEDHOFF
Secretary to the Director of Admissions

Administration

"If you'll just fill out these little blanks . . ."

IRENE VAN BIBBER
Registrar



"We're busy right now. Put it on the desk."

MARY E. YONKER . . . *Secretary to the President*
LOU ELLEN HOFFMAN . . . *Secretary to the Registrar*
MARY DEAN WILMES . . . *Secretary to the Dean of the College*



Administration

MARY BRYANT
*Alumnae Secretary and Director
of Public Relations*

*"What are your hometown
papers?"*

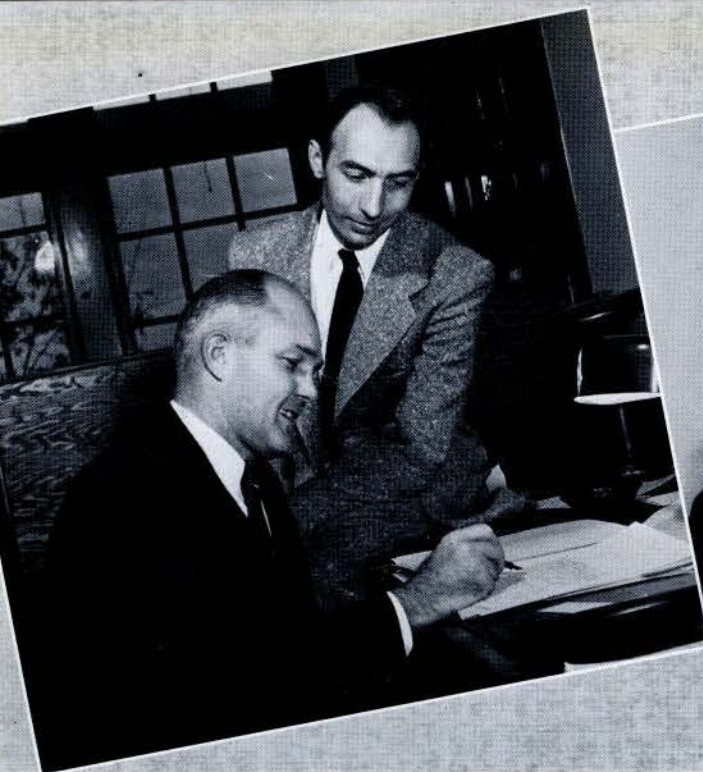


JOANNE OLSON
*Secretary to the Director of
Public Relations*

"It isn't in the files."

Roemer Hall





JOHN B. MOORE, ROBERT G. SCHMIDT



HOMER CLEVINGER, DOROTHY WILLIAMS

Sociology - Economics

"Statistics prove . . ."

History

"Wailin' for '56"

Art

Form follows function . . . fast!"

Faculty



JOHN R. MIDDENTS, HARRY D. HENDREN, MILDRED FISCHER

Faculty

Music

ALLEGRA SWINGEN, VIRGINIA L. WINHAM,
GERTRUDE ISIDOR, JOHN THOMAS

*"Count, Now—one-un, two-oo,
thre-ee!"*



PEARL WALKER, PAUL FRIESS, ROBERT
CRUCE, MILTON REHG

"You have to have the feel of it."



Faculty



LOUISE BEESLEY

Mathematics

"Let's play around with these figures."

Biology

"Pollenization! We-l-l!"

MARION DAWSON, MARY TALBOT, WALTER GRUNDHAUSER



CAROLYN S. GRAY, MARY E. LEAR



Physical Science

"Oops! another hole in the floor!"

Faculty



ELIZABETH DAWSON, DOROTHY ELY, ALICE PARKER, SIEGMUND A. E. BETZ, MARJORIE HILLER



CHARLES C. CLAYTON

English

Trite! Triler!! Trilest!!!

Classical Languages, Literature

SIEGMUND A. E. BETZ, ALICE PARKER

Journalism

"Pica, please!"

"Latin, queen of tongues."—Ben Jonson

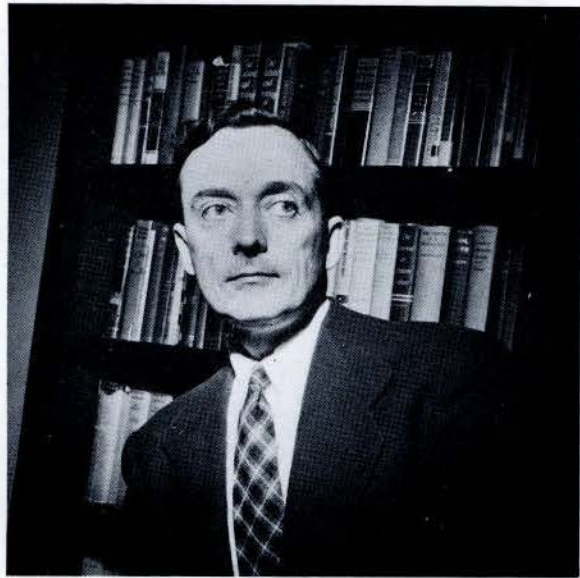
Faculty



ANITA BROWN CROFT, RACHEL M. MORRIS

Psychology

"I'm mad, you're mad, we're all mad."



C. EUGENE CONOVER

Philosophy

Life among the prophets.

Religion

"Explain existentialism in less than fifty words, please."



THEODORE A. GILL
Dean of the Chapel

Faculty

Speech

"Speak pre-cisely in standard English!"

JULIET MCCRORY, ROBERT DOUGLAS HUME,
MARTHA MAY BOYER



Library

*"If you don't know the author,
what's the color of the book?"*

HORTENSE F. EGGMAN, MILDRED KOHLSTEDT



Secretarial Science



ROSETTA PALMER, CHARLOTTE CLUTTERBUCK

"No mind is infallible—be sure to write it down."

Faculty Modern Language



MARY TERHUNE, THOMAS W. DOHERTY, HUGO BAUER

*"An F? Das ist Schade, Seniorita,
mais c'est la vie!"*



SOPHIE PAYNE ALSTON, MARGARET LINDSAY

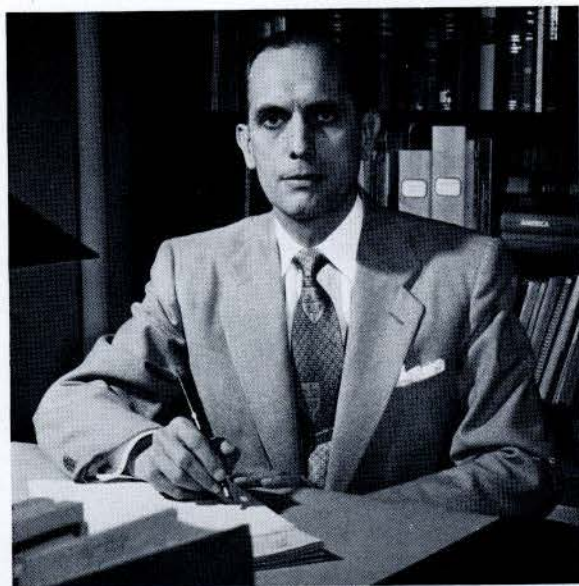
Home Economics

"The way to the heart is via a steak."

Faculty

Education

"Wednesday—today's the day. (You know what!)"



BREMEN VAN BIBBER



DORA ARNEY, DOROTHY ROSS, MARGUERITE VER KRUIZEN

Physical Education

"It's PHYSICAL EDUCATION, not P.E."

Infirmmary Staff



LOLA BREITENSTEIN, JESSIE R. JONES, E. J. CANTY, M.D.

"Try to get some rest, dear."



Post Office Staff

"No, the mail is not up."

ANNA MAE WELSH

Assistant in Bookstore

AMY MUTERT WAGNER

*Manager of College Post Office and
Bookstore*

JUNE PURGAHN

*In Office of Superintendent of Buildings
and Grounds*

Buildings, Grounds



CHARLES H. BUSHNELL

"I'll make a note of it."

Tea Room Staff

*"Who ordered cheeseburgers and a
Hendren Special?"*

There's no name on the slip . . ."

DORIS ORF, EDNA BROOKS, EVELYN EBELING.

Food Service Staff

"And what's wrong with this meal?"

JULIA KEITHLEY, BESSIE LAWSON, CARL HOUSE



Irwin Hall



The Irwin girls are, as always, "hard to beat." Whether at an informal dorm party, in the reception line at a formal tea or simply enjoying the spring air in one of the swings that surround the dorm, Irwin-ites carry on the Lindenwood tradition of friendliness. Irwin's president this year is Phyllis Laux, and serving as members on her staff are Zilpha Curtin, Jean Knox, Peggy Knupp, Sissy Roberts, and Irene Kern.

HAIZELLE GARRISON
Head Resident

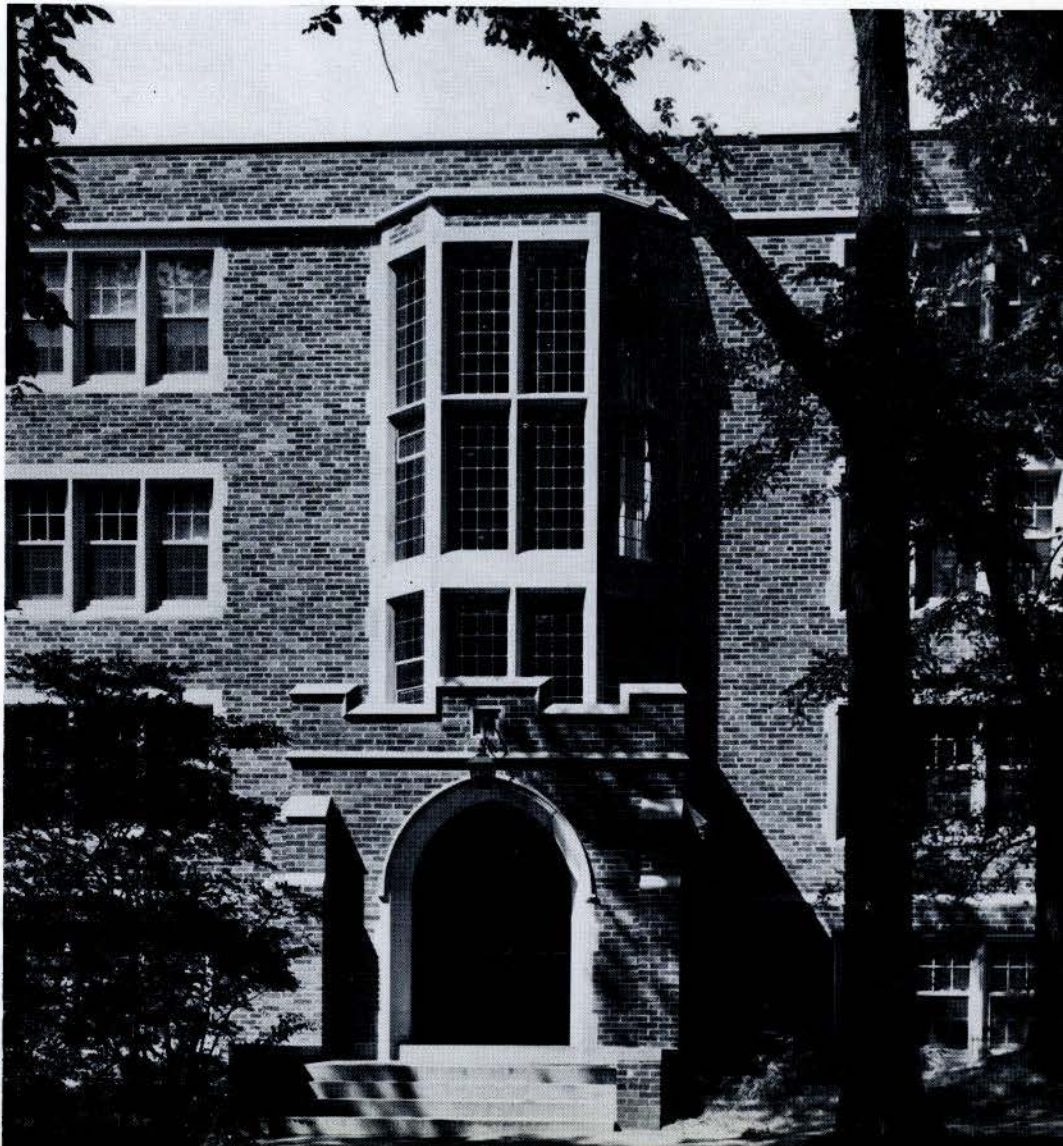




LUCILLE VICK
Head Resident

Now in its fourth year of existence, Cobbs Hall is fast becoming known for the scholarship of its residents. Second on the list of scholarship ratings, Cobbs girls are also active in every college activity. Despite hard work, Cobbs girls may often be found enjoying a hand of bridge in Cobbs' colorful tea room. Paula Moore is dorm president with Harriet Quin, Janey Noel, Penny Todsén, Betty Moore, Patt Wilkerson, Sue Elliott, and Susie Anderson on her staff.

Cobbs Hall



Sibley Hall



The oldest building on campus, Sibley Hall is carrying on the Lindenwood tradition of high scholastic standards by winning this year, for the second time, the President's Scholarship Cup. The haunt of Mrs. Sibley's ghost on Hallowe'en, it is a popular spot for television "ghosts" during the rest of the year. Diane Dicke is hall president and her staff consists of Beth Glebe, Peggy Pennel, Carol Hodge, and Margaret Bittman.



FRANCES MCKINNEY JONES
Head Resident

Niccolls Hall



HELEN M. CALVERT
Head Resident

Once again Niccolls Hall echoes to the sound of freshmen feet. Here Lindenwood's class of '56 is learning to work and play together, as have countless other classes. Resounding to the notes of many an earnest musician, the walls in Niccolls also catch the laughter of the ever popular midnight party. Priscilla Lord is house president and serving as her staff are Betsy Severson, Susan Kennedy, Mary Dunn, Naida Treadway, Ruth Kluck, and JoAnne Enloe.



Butler Hall

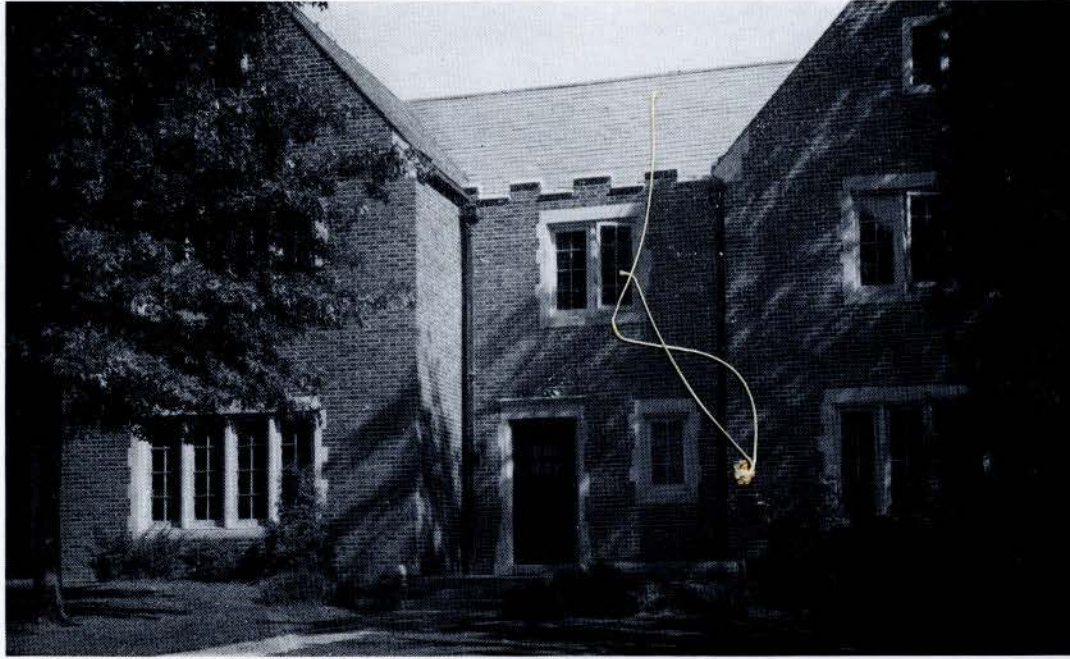


Passing by Butler at night, the freshman is likely to be impressed by its many lights, indicating the studiousness of its hard-working seniors. These lights are, however, just as likely to be an indication of a party given by the seniors, who play as hard as they work. Butler's gym is the setting for both formal dances and helter-skelter surprise parties. Maxine Davis is hall president. On her staff are Nancy Lee, Deana Izenberg, Romain Gibson, Jane Crandall, Sue Norton, and Alice Vignocchi.



LULA CLAYTON BEALE
Head Resident

President's Home



Home Management House



Classes

All paths, however winding,
Lead at last to this doorway
Where the thoughts of great men
Flood cobwebbed corners of our minds
With the antiseptic light of morning,
Dispelling the shadows of a clouded night.
What is there to fear when we know
The worst and best of human history,
And learn that for every bad,
There are a thousand goods?
And when we last pass beneath this arch,
We shall go out with confident step,
Unafraid to face the new day.



Senior Class

MARY ELIZABETH BANTA

B.A., History and Government and English
Arcadia, Missouri

Encore Club, '49-'53; Terrapin, '49-'51; Press Club, '50-'51; League of Women Voters, '49-'53, Vice-President, '49-'50; Young Republicans Club, '49-'53, President, '51-'52; Modern Language Club, '49-'50; Alpha Lambda Delta, '49-'52; Alpha Sigma Tau, '51-'53; Pi Alpha Mu, '50-'53; Linden Leaves Staff, '50-'51; Student Council, Secretary-Treasurer, '51-'52, President, '52-'53; Freshman Class Vice-President, '49-'50; Sophomore Class President, '50-'51; Valentine Court, '51; President's Scholarship, '49-'52; Washington Semester, '51; Who's Who in American Colleges, '52-'53; Dean's Honor Roll, '49-'53; Popularity Court, '52.



GRETCHEN BARTENBACH

B.A., Biological Science
Grand Island, Nebraska

Student Council Vice-President, '52-'53; Judiciary Board, '51-'52; Triangle, '51-'53; Terrapin, '49-'53, President, '50-'51; Beta Chi, '51-'53; Athletic Association, '49-'53; Basketball team, '49-'53; Volleyball team, '49-'51; Hockey team, '49-'51; Softball team, '49-'53; Student Christian Association, '50-'51, Vice-President, '51-'52; Modern Language Club, '50-'52; Sibley House Staff, '51-'52; Freshman Class President, '49-'50; Who's Who in American Colleges, '52-'53; Popularity Court, '52; Dean's Honor Roll, '51-'52.

JOAN BLESSING

B.S., Elementary Education and Psychology
St. Charles, Missouri

Advertising Manager of Linden Leaves, '52-'53; Future Teachers of America, '49-'53, Secretary, '52; Athletic Association, '49-'53; League of Women Voters, '51-'53; Encore Club, '49-'53; Young Republicans' Club, '52-'53; Dean's Honor Roll, '51-'53.





LAVONE BURTON
B.S., Elementary Education
Princeton, West Virginia

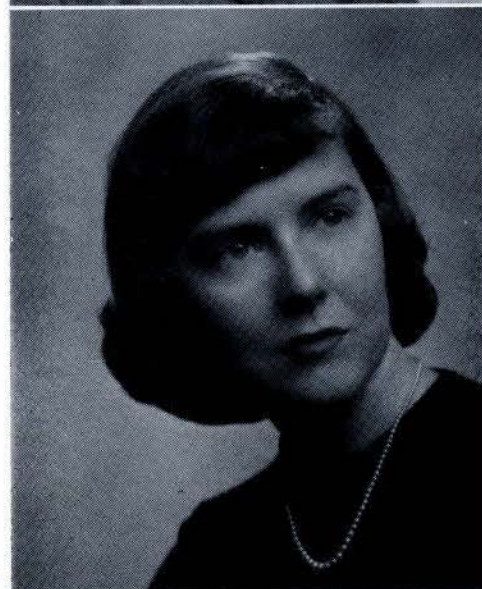
Press Club, '52-'53; Choir, '49-'51; Delta Theta, '49-'52; Encore Club, '49-'53; Future Teachers of America, '50-'53; Modern Language Club, '49-'51; League of Women Voters, '51-'53; Young Democrats Club, '51-'53; KCLC Staff, '51-'53; Alpha Epsilon Rho, '52-'53; Student Christian Association, '50-'53, Vice-President, '50-'51, President, '52-'53; International Relations Club, '52-'53; Dean's Honor Roll, '51-'53; Voice Diploma Recital, '52.

JACQUELINE CHENEY
B.A., English and History
Linn Creek, Missouri

Alpha Lambda Delta; Alpha Sigma Tau, Vice-President; International Relations Club; Poetry Society; Pi Alpha Mu.

BETTY CONNELLEY
B.A., Sociology
Webster Groves, Missouri

Commercial Club, '52-'53; Press Club, '51-'53.



Seniors

NELL CULVER
B.A., *Speech*
St. Joseph, Missouri

Alpha Lambda Delta, '50-'51; Alpha Sigma Tau, '51-'53, Secretary, '52-'53; League of Women Voters, '51-'53; International Relations Club, '52-'53; Junior Class Treasurer, '51-'52; Student Christian Association, '51-'53, Vice-President, '52-'53; KCLC Staff, '49-'51, Program Director, '51-'52, Station Manager, '52-'53; Young Democrats Club President, '51-'52; Alpha Epsilon Rho, '50-'53, Vice-President, '52-'53; Modern Language Club, '49-'53; Press Club, '50-'53; Choir, '49-'51; Linden Bark, '51-'53; Who's Who in American Colleges, '52-'53; Popularity Court, '52; Dean's Honor Roll, '49-'53; President's Scholarship, '50-'52.



MAXINE DAVIS
B.S., *Physical Education*
Honolulu, Hawaii

Athletic Association, '48-'50, '51-'53, Freshman Representative, '48-'49; League of Women Voters, '51-'53; Future Teachers of America, '51-'53; Linden Leaves Staff, '51-'52; KCLC Staff, '51-'53, Intercollegiate Broadcasting System representative, '51-'52; Press Club, '51-'53; Butler Hall President, '52-'53; Commercial Club, '51-'53; Young Republicans Club, '51-'53; Alpha Epsilon Rho, '52-'53.

MARLENE CZARLINSKY
B.A., *History and Government, and English*
Kansas City, Missouri

Athletic Association, '49-'53, Intramural Chairman, '53; Poetry Society, '52-'53; Press Club, '52-'53; Encore Club, '49-'51; Pi Alpha Delta, '51-'52; Modern Language Club, '49-'51; International Relations Club, '49-'53, Treasurer, '52-'53; League of Women Voters, '51-'53; Young Democrats Club, '51-'53, President, '52-'53; Future Teachers of America, '51-'53; Hockey team, Basketball team, Softball team, Volleyball team, Badminton team, '49-'53; Dean's Honor Roll, '52-'53.





DIANE DICKE
B.A., *Modern Languages*
Downers Grove, Illinois

Modern Language Club, '49-'53; Future Teachers of America, '51-'53; Judiciary Board, '50-'51; Nicolls Hall Staff, '50-'51; Sibley Hall President, '52-'53; Dean's Honor Roll, '50-'52.

LORRAINE HACKMANN
B.S., *Elementary Education and Psychology*
St. Charles, Missouri

Encore Club, '49-'53; League of Women Voters, '51-'53; Young Republicans Club, '51-'53; Future Teachers of America, '49-'53; Day Students Club, '49-'53, Student Council Representative, '52-'53; Linden Leaves Staff, '52-'53; Dean's Honor Roll, '52-'53.

MARILYN HOFFMAN
B.S., *Elementary Education*
Sioux City, Iowa

Choir, '49-'53, President, '52-'53; Sextet, '49-'50; KCLC Staff, '49-'51, Assistant Music Director, '50-'51; Young Republicans Club, '49-'53; League of Women Voters, '49-'53; Future Teachers of America, '50-'53; Press Club, '50-'53; Linden Leaves Staff, '52-'53; Encore Club, '49-'53; International Relations Club, '49-'53.



Seniors

ODETTE LUCIE COCUSSE
Haute Tarne, France

International Relations Club, '52-'53; Poetry Society, '52-'53.

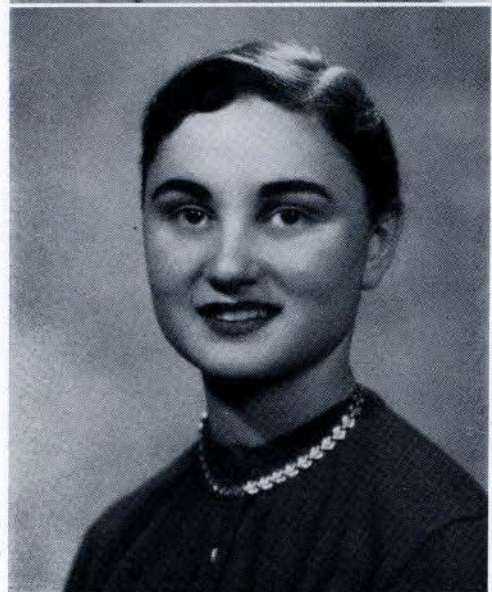


DEANA IZENBERG
B.A., Speech
Paterson, New Jersey

Alpha Epsilon Rho, '51-'53, Vice-President, '51-'52, President, '52-'53; Press Club, '51-'53, Sergeant-at-Arms, '52-'53; Student Council, '52-'53; International Relations Club, '52-'53; Young Republicans Club, '52-'53; League of Women Voters, '52-'53; Alpha Psi Omega, '52-'53; KFUC Children's Theatre, '50-'51; Play productions, '51-'53; KCLC Staff, '51-'53, Production Director, '51-'52, Continuity Director, '52-'53, May Court, '50-'53; Dean's Honor Roll; Washington Semester, '51-'52.

MARY KIRCHHERR
B.A., Art
Warsaw, Illinois

Kappa Pi, '49-'53, Publicity Chairman, '50-'51, Vice-President, '51-'52; Modern Language Club, '49-'53, President, '52-'53; Athletic Association, '49-'53, Vice-President, '51-'52; Colhecon, '50-'52, Secretary, '51-'52; League of Women Voters, '49-'52; Young Democrats Club, '51-'52; International Relations Club, '49-'52; Encore Club, '49-'51; Press Club, '50-'53; Orchestra, '49-'53, Librarian, '49-'50; KCLC Staff, '50-'53, Advertising Staff, '52-'53; Nelly Don Fashion Illustration, third prize, '50; Nelly Don Dress Design, second prize, '51; Dean's Honor Roll, '50-'53; Griffin Cover Contest, first prize, '50.





JEAN KNOX

B.A., Biology and Psychology
Elmhurst, Illinois

Beta Chi, '49-'50; KCLC Staff; Press Club, '49-'51; Triangle Club, '50-'53, President, '51-'52; Irwin House Staff, '50-'51, '52-'53; Judiciary Board Chairman, '52-'53.

JANICE BLEVINS LANGE

B.S., Home Economics
Cumberland, Kentucky

Modern Language Club; Young Republicans Club; Pi Alpha Mu Secretary-Treasurer, '52-'53; Colhecon President, '52-'53; Junior Class President, '51-'52; Senior Class Secretary, '52-'53; Valentine Queen, '51; May Court, '51-'53; Dean's Honor Roll.

PHYLLIS LAUX

B.A., Psychology
Sikeston, Missouri

Beta Chi, '50-'53, Vice-President and Social Chairman, '51-'52; Press Club, '50-'53; KCLC Personnel, '50-'51; Lindenwood Horse Show, '50-'51; Irwin Hall President, '52-'53; Junior Class Secretary, '51-'52.



Seniors

CAMILLA McCLUER
B.A., Art
Cottleville, Missouri

Pi Alpha Delta, '50-'53, President, '51-'52, Secretary, '52-'53; Alpha Lambda Delta, '50-'51; Encore Club, '49-'51; Alpha Sigma Tau, '51-'53; Pi Alpha Mu, '52-'53; Kappa Pi, '51-'53, Secretary-Treasurer, '51-'52; Future Teachers of America, '51-'53; Linden Leaves Art Editor, '52-'53; Linden Leaves Staff, '51-'52; Dean's Honor Roll, '49-'53.



RITA MCGEE
B.A., Art
Mt. Pulaski, Illinois

Alpha Lambda Delta, '49-'51; Pi Alpha Mu, '50-'53, President, '52-'53; Alpha Sigma Tau, '51-'53; Kappa Pi, '50-'53, Social Chairman, '51-'52, President, '52-'53; Poetry Society, '52-'53; Young Republicans Club, '50-'53; Choir, '49-'51; Athletic Association, '49-'51; League of Women Voters, '52-'53; College Orchestra, '49-'50; President's Scholarship, '51-'52; Dean's Honor Roll, '49-'53; Washington Semester, '51-'52.

MARY LOU STUBBS McLEOD
A.B., Human Relations
Fort Lauderdale, Florida

Student Christian Association, Social Responsibility Chairman, '52-'53; Sophomore Class Treasurer, '50-'51; Young Republicans Club, '52-'53; Washington Semester, '51-'52; Popularity Court, '52; Harvest Court, '49-'51; May Court, '50-'52, May Queen, '53; Freshman Counsellor, '52-'53.





CAROL MAHAN
A.B., English
Ashland, Kentucky

Poetry Society, '51-'53, President, '52-'53; Pi Alpha Mu, '51-'53; Griffin Editor, '52-'53; Press Club, Treasurer, '51-'52; Future Teachers of America, '52-'53; Dean's Honor Roll, '51-'53; Poetry Society Contest Prize, '51-'52.

BETTYE MONTGOMERY
B.S., Business Education
Hutchinson, Kansas

Young Democrats Club, '52-'53; League of Women Voters, '51-'53; International Relations Club, '51-'53; Commercial Club, '51-'53; Future Teachers of America, '51-'53; Press Club, '52-'53; Linden Leaves Staff, '52-'53.

JANE ANN NOEL
B.S., Elementary Education
Paris, Missouri

Future Teachers of America, '49-'51, '52-'53; Cobbs House Staff, '52-'53; Judiciary Board, '52-'53; Linden Bark Business Manager, '52-'53; Press Club, '52-'53.



Seniors

MIN HI OH
B.A., *English*
Seoul, Korea

International Relations Club, '52-'53.

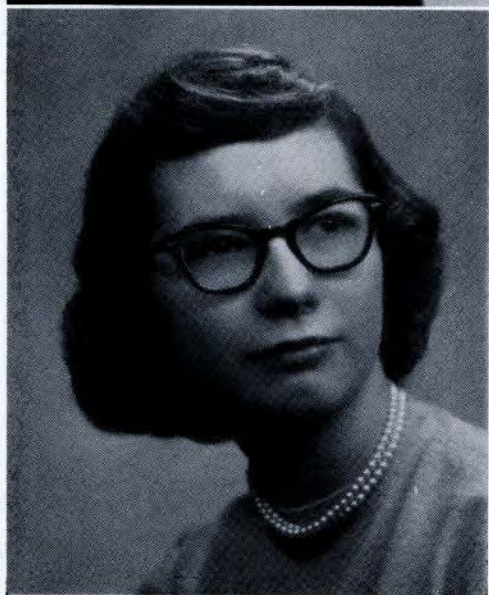
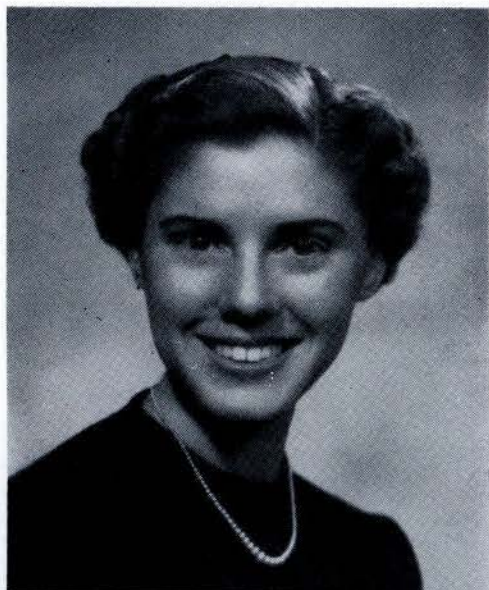


MARLENE OPITZ CARPENTER
B.A., *Art*
St. Charles, Missouri

Kappa Pi, '52-'53; Day Students' Club, '49-'53, President, '52-'53; Encore Club, '49-'50; Dean's Honor Roll.

PEGGY PENNEL
B.M., *Piano*
Covington, Tennessee

Delta Theta, '49-'52; Mu Phi Epsilon, '50-'53, Recording Secretary, President; Alpha Sigma Tau, '51-'53, President, '52-'53; Judiciary Board, '52-'53; Griffin Staff, '50-'52, Business Manager; Future Teachers of America, '51-'52; Pi Alpha Mu, '50-'52, Secretary-Treasurer; KFYO Children's Theatre Organist, '52-'53; Choir, '49-'50, '51-'52; President's Scholarship, '51-'52; Presser Scholarship, '51-'52; Mu Phi Epsilon Award, '50; Dean's Honor Roll, '49-'53.





NADA SUE ROBERSON
B.S., Physical Education
Mexico, Missouri

Student Christian Association, Treasurer, '50-'51, Fellowship Chairman, '51-'52; Future Teachers of America, '51-'53; Beta Chi, '51-'53; Terrapin, '50-'53, President, '51-'52; Colhecon, '52-'53; Athletic Association, '49-'53, Board member '51-'53; Hockey team, '50-'53; Volleyball team, '50-'53, Basketball team, '50-'53, Softball team, '50-'53; Sophomore Class Vice-President, '50-'51; Valentine Court, '51; Popularity Court, '52; Senior Class President, '52-'53; Dean's Honor Roll, '51-'53.

EMILY STOTLAR
B.S., History and Education
Marion, Illinois

Athletic Association; Future Teachers of America; Judiciary Board, '52-'53; Butler House Staff, '52-'53.

ESTELLE SWANSON
B.A., Sociology
St. Louis, Missouri

Student Council, '49-'51, '52-'53; Student Christian Association Cabinet, '50-'51; Athletic Association, '49-'51; Terrapin, '49-'52; International Relations Club, '51-'53; Young Republicans Club, Secretary, '52-'53; Washington Semester, '51-'52.



Seniors

JOYCE OMOHUNDRO

A.B., History and Government
Elsberry, Missouri

Encore Club, '48-'49; Beta Chi, '49-'50, '51-'52; Modern Language Club, '48-'49; International Relations Club, '48-'49, '51-'53, Secretary, '51-'52; Future Teachers of America, '51-'53; Dean's Honor Roll, '49-'50, '51-'52; Lindenwood Horse Show Reserve Champion, '52.



MICHIKO TAKAKI

B.A., English and History
Tokyo, Japan

International Relations Club, '52-'53, Vice-President, '52-'53; Poetry Society, '52-'53; Pi Alpha Mu, '52-'53.

MAATHILDE VAN DER HAAGEN

B.A., Art
The Hague, Zuid Holland, Netherlands

International Relations Club, '51-'53, Treasurer; Athletic Association, '51-'53, Publicity Chairman; Modern Language Club, '51-'53; Kappa Pi, '52-'53; Poetry Society, '52-'53; Hockey team, '52-'53; Butler House Staff, '51-'52; Dean's Honor Roll, '51-'53; Who's Who in American Colleges, '52-'53.



ALICE WALTHALL TAYLOR
B.S., *Elementary Education*
Cleveland Heights, Ohio

Choir Secretary, '50-'51; Colhecon, '52-'53; Future Teachers of America, '49-'53, Treasurer, '51-'52; KCLC Program Director, '52-'53, Intercollegiate Broadcasting System representative, '51-'52; Alpha Epsilon Rho, '50-'53, Historian, '52-'53, Secretary, '51-'52; Freshman Class Secretary, '49-'50; Junior Class Vice-President, '51-'52; Student Council Secretary-Treasurer, '52-'53; Dean's Honor Roll, '51-'53; May Court Maid of Honor, '53.

CAROLYN WHITE
B.S., *Elementary Education*
New Orleans, Louisiana

Future Teachers of America, '50-'53, President, '52-'53; Young Republicans Club, '51-'53; League of Women Voters, '51-'53; Colhecon, '50; Choir, '50; Dean's Honor Roll, '51-'53; Cobbs Hall President, '51-'52; Senior Class Vice-President, '52-'53.



Class Song--1953

Raise your voices and sing forever after
Shout to the rafters in praise of '53.
Friends together, there's nothing we can't weather,
Merry you will find us wherever we may be.
Your halls will remind us
Of joys left behind us;
Still loyal you'll find us
When we are far away.
So here's to our college, the ivy halls of knowledge,
May Lindenwood remember the class of '53.

Raise your glasses—we'll sing of famous classes
None to surpass us—in fame renowned are we,
Fortune has found us, together she has bound us;
We shall be immortal—go down in history.
Remember our days here,
The friendships we hold dear;
More cherished with each year
When we are far away.
So here's to our college, the ivy halls of knowledge,
May Lindenwood remember the class of '53.



Rita McGee, *treasurer*; Nada Sue Roberson; *president*; Carolyn White, *vice-president*; Jan Lange, *secretary*.

Sponsors: Mr. Harry Hendren, Miss Rachel Morris.

Fine Arts Building



The Fine Arts Building, dedicated to the memory of Mrs. Lillie P. Roemer, is used not only as a class building for students of the fine arts, but is also the scene of formal receptions of the college. These events are held in its reception rooms which are furnished with period pieces that reflect Lindenwood's long history. In a scholastic capacity, the Fine Arts Building houses music, art and radio departments. Music and art instruction is given in first, second and third floor studios, while station KCLC operates from the first floor radio department.

Junior Class



CAROLINE SINGLETON, *Treasurer*; SANDRA SNIDER, *President*,
JEANETTE HESTER, *Secretary*; MARY ANN TODSEN, *Vice-President*.

Sponsors: DR. THEODORE GILL, DR. SIEGMUND BETZ.

SERITA HUMPHNER, BEVERLY LETT, ARLINE KRUEL.

MARY NELL VAN BIBBER, RUTH WEBER, MARGARET TAYLOR.



Juniors



MARIAN STOERKER, BARBARA HOWARD, ILLOMAY HACHTMEYER.

FRANCES HABATHIER, JEANNE ELLIS, ROMAIN GIBSON.

PAULA MOORE, MARGARET PFOFF, SUE ANN NULL.



Juniors



PAT GLEESON, JANIE EVANS, SUK HUN CHAN.



WASHINGTON SEMESTER

CORA LEE CRITCHFIELD, JO JUNE DEWEESE,
JULIE RICHARDS, ANN FRAZIER, EUNICE SHELEY.
Not pictured: MARY KAY PINCKNEY.



ANITA MARSHALL, SANDRA LUNAK, YO-CHEN LI.

Infirmmary



Library

Sophomore Class



ROSE MARIE DANZ, *Secretary*; ROSEMARY DYSART, *President*; SUE NORTON, *Vice-President*; IRENE KERN, *Treasurer*.

Sponsors: MISS MILDRED FISCHER, MR. ROBERT CRUCE.

PATT WILKERSON, CAROL WOLTER, RHEA WILSON, BARBARA SHUTTLEWORTH, CAROL WIDEMAN.

MILDRED JARMAN, JULIE FARRIS, DEANNE DETTMAN, JANE EDWARDS, MARY ALICE BRUNS.



Sophomores



CAROLYN NEILSON, JACKIE REGOT, MARILYN MILLS, MARY LU MERRELL, NANCY MUELLER, GEREAN MILLMAN.

HARRIET QUIN, BETSY SEVERSON, DEANE KEETON, JILL TURNER, MARY ELIZABETH ROBERTS.

ROSALYN FIELDS, JAN BIRCH, SALLY HOSKINS, CAROLYN LOVETT, BETH GLEBE, ANN GRAY.





SALLY SNELLING, ARLENE MILLS, BARBI SMITH, BENITA SCHMIDT, JEAN THIERY.



CAROL HODGE, BETTY McHATTON, PATRICIA WHITE, PATRICIA JANAK, YVONNE JONES.

CYNTHIA MURPHY, ELEANOR MAUZE, DORIS BEAUMAR, JAN DAVIS, BETTY MOORE, ALICE VIGNOCCHI.



Sophomores

KAY COLLINS, ZILPHA CURTIN, JACKIE DAGENDORFER,
BETTY ANN DEAN, MARGARET CONRAD.



SUZANNE ELLIOT, GLORIA BURSEY, MARLENE EITMANN,
WINIFRED TAYLOR, ANN GILBERT.



ANN HOBGOOD, LOUISE GROBER, ASTRID CASTRO, PRIS-
CILLA LORD, ANNE LANCASTER, DOROTHY BOUTIN.

Sophomores



MAXINE MENKE, CARILE SAMUEL, MOLLY PETERSON, MARIE CLAIRE HELMLINGER, CHARLOTTE SEEHORN.



JUDITH ANDERSON, SUZANNE ANDERSON, DOROTHY NEBLETT, NANCY MOE, PEGGY BARBER, NURAN BAYDAN.

Sophomores



MARY ANN THIELECKE, SUSAN KENNEDY, JANICE GORDON, DELORES KISS.



SECOND SEMESTER STUDENTS

SALLY BUCHANAN, MARY JO ROUSE, CAROL STILLWELL, BETTY MALCOLM,
RILEY GRAVES, MARGARET MARSHALL.

Freshmen Class



SONDRA BECK, CLARITA SOMMERS, CYNTHIA DAWSON.



STELLA SIGGELKOW, BARBARA FOWLER, SUE PARKER, ELAINE WHITNELL.

CELIA BAY, *Treasurer*; JANE LEONARD, *Secretary*; ELIZABETH SCHNURR, *President*; BETSY BARTON, *Vice-President*.

Sponsors: DR. DOROTHY WILLIAMS, DR. HOMER CLEVINGER.



Freshmen

EDEN BIRD, BARBARA BININGER, ANN BREWSTER, SUSAN BERRY,
JOHNNA BLANTON, MARGARET BITTMAN.



MARGERY CRABBE, MARY ANN COOPER, ANN CARLISLE, BAR-
BARA CHIDESTER, MARA CHRISTENSEN.



LUCY CROSS, PENELOPE CREIGHTON, SUSAN CUNNINGHAM, JANE
CRANDALL, CAROLYN CROUCH.



JANET ELSE, MARIE DE BASIO, MARY FRANCES DAVIS, STARLIN
EDWARDS, NANCY DAVIS, DONNA DRURY.

Freshmen

JANE PETTIGREW, MARGARET KREUNEN, PAT POWERS, LEONA WALLIN, MERICA SHAWVER, JOAN PERKINS, BARBARA ROWE.



JANE WOOD, JANE STUTSMAN, CAROLYN STUART, JOANNE REED, CHARLENE REICH, VIRGINIA WOODMAN.



BROWNIE WINKLER, JUNE SUDIK, LOU ANN WOODMANSEE, MARILYN SMITH, JUDY WOODSON, REBECCA WALKER.



ANN STEEL, BEVERLY SMITH, CAROLYN HUNTER, MARY LOU THAYER, JANET YOUNG, NANCY WALLACE.

Freshmen

SHARON VANCE, PAT ZIMMERMAN, BARBARA SCHWEPPE, MARY WELTY, PATSY WATERFIELD, DOROTHY THOMAS.

NAIDA TREADWAY, TAMARA WILSON, ELIZABETH SCHNURR, PAT UEHLING, PAT WEBER, BEVERLY RANDALL.



ANN SMITH, JENNELLE TODSEN, ANN THOMAS, BETTY TOWNSEND, MARY JEAN MATTINGLY, MARY ANN WALKER, MARGOT SMITH.

PEARL KURMAN, JANE LACY, JANYTH STEMMERICH, ANN ROBERTSON, SALLY KAY, MARTHA MCDUGALL, MARY MUNRO.

Freshmen

JOANNE ENLOE, MARGARET EMMERT, JEAN FARRIS, MARY ENLOE, BETTY FELLOWS, NANCY ELWOOD.



FLORIDA GARLAND, JUDITH GLOVER, JOY GILL, BARBARA GIVENS, MARY JANE GILHULA, GINGER FRYE.



JEAN GRATIGNY, KAREN HAGSTROM, HARRIET GRABER, GAIL GROSS, JEAN GRAY, GEORGIA HAHN.



MARILYN HEBERLEE, KATHY HALE, BEVERLY HARRINGTON, JOAN FOX, ANN HARPER.

Freshmen

MARTHA HINSEN, JEAN HENDRICKS, CHARLOTTE HENDRICKS,
SAMMIE HENRY, BARBARA HIEBERT, MARTHA HODGES.



FRANCES HOUSER, CAROLE KAVANAUGH, SHIRLEY JOYNER,
ALLISON HOLMGREEN, ELIZABETH HUNTER, JEAN JOHNSON.



ELLEN KEBL, MARY KIRCH, ELAINE KAVELER, PEGGY KNUPP,
SALLY LAKIN, KATHY KOLOCOTRONIS.



JANE LEONARD, JANET LEE, RUTH KLUCK, JANET LEWIS,
SANDRA LAZARUS, DONNA LUGLAN.

Freshmen

SHIRLEY KITE, NANCY LEE, NANCY MCDANIEL, JOAN MCCLUNEY, JACQUELYN LYERLY.



MARIAN MARSHALL, PHYLLIS MEADOWS, RUTH MEAD, MARY ANN McMULLEN, SUE MCFARLAND, JUDITH RIGGS.



LOIS MONTGOMERY, SHIRLEY PARNAS, SUE MORTON, MARILYN MITCHELL, RUTH SCHOENE, CAROL MOSELER.



JOYCE MURPHEY, JEANIE RULE, PATSY OTTINGER, CHARLOTTE NEFF, JUNE OLANDER, JOYCE NEEDHAM.

Freshmen

JEAN ATCHASON, DIANE AYER, CAROLE ANDERLITCH, IRIS ALTROGGE, CAROL ARCHER, MARY ANN ARRINGTON.



BARBARA BELLWS, PHYLLIS ANN BEALL, ELIZABETH BELL, CELIA BEY, CAROLYN BECKWITH, BARBARA BAUER.



FLORENCE ANDERSON, MARTHA BEARD, NANCY ALVIS, ELIZABETH BARTON, BARBARA BALLARD, HARRIET ALLEN.



CAROL FITZROY, MARY DUNN, NANNIEARLE SANDERS, JOAN DOLE, CAROLYN FORBES.

Activities

And we work,
Each with the other,
That we may move
Out of our own shadows
And be strong
As are these ancient columns,
As the trees
That are tall and straight
From having grown together
As we will grow.



Student Council, Judiciary Board

Lindenwood is proud of its remarkably independent student council, whose functioning is in accord with views held by the student body. Initiated in 1916, the council is the instrument through which student government operates. The council, a link between faculty and student body, consists of representatives from each class and each dormitory. The executive board is chosen by school-wide

elections. Attempting to improve campus living, the 1952-53 council informed the student body of the responsibilities of an honor system, paving the way toward eventual institution of such a system on the Lindenwood campus. Among successful social activities which the council sponsored was an all school open house in the fall.

Front row: Z. Curtin, G. Bartenbach, Vice-President; J. Knox, M. Banta, President; A. Taylor, Secretary-Treasurer; A. Kruel. Second row: S. Kennedy, S. Kay, H. Quin, J. Noel, P. Pennel, D. Izenberg, M. McLeod, Freshman Counselor; E. Severson, L. Hackmann, D. Keeton.



Student Christian Association

Every member of the student body is, by virtue of her enrollment, a member of the Student Christian Association. One of the most active groups on campus, S.C.A. has a senior cabinet of upperclassmen and keeps close contact with the freshmen through the junior cabinet, made up of and elected by freshmen.

From its first large undertaking, the sponsoring of a chapel near St. Louis in 1912,

S.C.A. has continued in Christian service. Members of Lindenwood's S.C.A. are proud to be among the top contributors to the World Student Service Fund through the successful annual auction and bean suppers. S.C.A. made the college's annual Religious Emphasis Week more meaningful by initiating this year a school-wide open discussion on religious problems submitted by students and discussed by various members of the faculty.

Front row: E. Mauze, *Secretary*; L. Burton, *President*; N. Culver, *Vice-President*; J. Hester, *Treasurer*. *Second row:* Chairmen—R. Weber, *Program*; D. Neblett, *Publicity*; A. Gilbert, *Song Leader*; P. Barber, *Song Leader*; M. McLeod, *Social Responsibilities*; A. Kruel, *World Student Service Fund*; M. Van Bibber, *Recreation*; M. Pfoff, *Conference*. *Sponsors:* Dr. Eugene Conover, Miss Rachel Morris, Miss Juliet McCrory.



Who's Who

Each year Lindenwood seniors are honored by selection for the national edition of *Who's Who Among Students in American Colleges and Universities*. The 1952-53 edition of this directory included four Lindenwood students: Mary Beth Banta, president of the Lindenwood student body; Grett Bartenbach,

vice-president of the Student Council; Nell Culver, station manager of KCLC, and Thil Van der Haagen, a foreign student from the Netherlands. These students were chosen by a national committee for their merit in character, scholarship, leadership and potentiality for future success.

T. Van der Haagen, N. Culver, G. Bartenbach, M. Banta.





Front row: N. Culver, Vice-President; D. Izenberg, President; A. Taylor, Historian. Second row: L. Bruton, M. Davis, A. Vignocchi, G. Bursey, R. Danz, D. Beaumar, J. Davis, I. Kern. Sponsor: Miss Martha Boyer. Not pictured: E. Sheley, Secretary-Treasurer.

Alpha Epsilon Rho

L. C. students having an average of B in two radio courses and a C average in their other courses are eligible to join Alpha Epsilon Rho, a nationally affiliated organization which

encourages and recognizes outstanding radio achievement among college students. The club activities include the sponsoring of an annual radio clinic and an open house.

Alpha Psi Omega

Alpha Psi Omega is the national honorary dramatic fraternity, whose honors are not merely bestowed but earned by hopeful thespians. A number of hours in production work, several major roles and a comprehensive interview and reading are necessary before a pledge may become initiated into Alpha Psi Omega. The fraternity, which produces one play annually, chose *The Heiress* as this year's dramatic production.



P. Moore, S. Elliott, President; E. Sheley, N. Culver. Sponsor: Mr. Douglas Hume.



Front row: P. Gleeson, J. Lange, *Secretary*; R. McGee, *President*; M. Banta. *Second row:* C. Mahan, C. McCluer, J. Cheney.
Sponsor: Dr. Siegmund Betz.

Pi Alpha Mu

Pi Alpha Mu is a local fraternity on Lindenwood's campus which honors those English majors and minors who have distinctive records in this field. Existing to foster an interest in literature among all students, Pi Alpha Mu makes an important contribution toward this end through the Freshman Writing Contest which it sponsors each year.

Poetry Society

Lindenwood's Poetry Society holds an annual contest each fall and selects its members on the basis of poetry submitted or a critical perception of poetry. Its goal is to encourage the writing of poetry, to develop critical ability in

reading and writing poems, and to foster an appreciation for poetry. Meetings are in the form of monthly workshops, and the members hold a tea and picnic each spring.

Front row: S. Snelling, B. Harrington, M. Arrington, C. Mahan, *President*; B. Glebe, *Secretary-Treasurer*; J. Blanton, P. Waterfield. *Second row:* D. Luglan, N. McDaniel, B. Bininger, D. Neblett, M. Czarlinsky, J. Cheney, E. Severson, T. Van der Haagen, C. Crouch, D. Keaton. *Sponsor:* Dr. Elizabeth Dawson. *Not pictured:* R. Gibson, *Vice-President* (first sem.); J. De Weese, *Vice-President* (second sem.).



Pi Alpha Delta

Members of Pi Alpha Delta, students of the classics, prove by their activities that Latin is not dead. Among their activities is the popular Roman dinner when Lindenwoodites are togaed in bedsheets. An honorary organization for those enrolled in the classics, this club is open to those who have a B average or above in such courses.



B. Harrington, M. Czarlinsky, M. Merrell, *President*; D. Dettman, *Vice-President*; C. McCluer, *Secretary*. *Sponsor*: Dr. Siegmund Betz. *Not pictured*: M. Evans, *Treasurer*.

Kappa Pi

Students who have an average of B in their art courses and a C average in their other subjects are eligible to become members of Kappa Pi, national art fraternity. Members sell and

rent prints or pictures to students and faculty in an effort to further appreciation of art. An annual art weekend is sponsored by this club each spring, highlighting the year's activities.

Front row: J. Anderson, M. Merrell. *Second row*: R. McGee, *President*; D. Neblett, *Vice-President*; C. McCluer, M. Carpenter, M. Kirchherr, B. Severson, T. Van der Haagen. *Sponsor*: Mr. Harry Hendren. *Not pictured*: J. Thiery, *Secretary-Treasurer*.



Alpha Sigma Tau

Alpha Sigma Tau serves in a capacity similar to that of Alpha Lambda Delta. As Alpha Lambda Delta honors freshmen students, so Alpha Sigma Tau acclaims upper-classmen with high cumulative averages. Associate membership in this organization is based on a cumulative average of 3.25 to 3.5

while a 3.5 average for four consecutive semesters is required for full membership. A small but select group, Alpha Sigma Tau sponsors a White Elephant Sale on campus each year, the proceeds of which go toward a scholarship for use at the School of the Ozarks in southeastern Missouri.

Front row: P. Gleeson, J. Cheney, *Vice-President*; P. Pennel, *President*; N. Culver, *Secretary-Treasurer*; M. Van Bibber. *Second row:* M. Stoerker, J. Hester, M. Banta, Y. Li, S. Chan, R. McGee, C. McCluer. *Sponsors:* Dr. Eugene Conover, Dr. Elizabeth Dawson.



Alpha Lambda Delta

Membership in Alpha Lambda Delta, national scholastic honor society, is restricted to the few honored freshmen whose grade point averages are 3.5 or above. The purpose of the organization is to honor scholarship, and thus indirectly to stimulate the pursuit of knowledge and directly to encourage schol-

arship on the Lindenwood campus. By sponsoring a convocation in which a lecturer of prominence appears, the organization serves the entire student body. This year, Alpha Lambda Delta also sponsored a project to raise money for the Ethel B. Cook fund for students of other lands on campus.

S. Kennedy, *Secretary*; B. Shuttleworth, D. Neblett, *Vice-President*; D. Keeton, *President*; D. Beaumar. *Sponsor*: Dr. Alice Parker. *Not pictured*: M. Thielecke, *Treasurer*.





Front row: N. Moe, M. Conrad, *Secretary*; Z. Curtin, *President*; M. Evans, *Vice-President*; M. Dunn, *Treasurer*; A. Vignocchi, N. Mueller. *Second row:* J. Gray, R. Danz, M. Bruns, B. Harrington, R. Schoene, B. Montgomery, S. Anderson, R. Gibson, R. Dysart, M. Bittman. *Third row:* S. Snelling, J. Dagendorfer, P. Todsén, M. Hoffman, J. Farris, M. Eitmann, A. Marshall, S. Lunak, D. Izenberg. *Fourth row:* E. Mauzé, B. Moore, C. Murphy, B. Dean, M. Czarlinsky, M. Davis, B. Banta, C. White, P. Gleeson, C. Neilson, N. Culver, J. Davis, G. Bursey, D. Boutin, S. Kennedy, D. Ayer, J. Blanton, M. Davis, C. Anderlitch, P. Beall. *Fifth row:* P. Janak, S. Lazarus, E. Hunter, V. Burton, M. Smith, M. Kreunan, B. Rowe, A. Castro, D. Beaumar, M. Kirch. *Sponsor:* Dr. Homer Clevenger.

League of Women Voters

The League of Women Voters on the L.C. campus is a national and state affiliated organization with membership open to all interested students. It is a non-partisan club that seeks to arouse interest in the processes of government and tries to give practical experience in an organization such as will be found in any community.

Four meetings are held annually, during which various speakers appear. These meetings vary from a Political Convention to the conducting of a straw ballot on campus. The club takes every opportunity to actively support elections in local areas and to promote unbiased political data.



Front row: D. Izenberg, M. Czarlinsky, *Treasurer*; M. Takaki, *Vice-President*; R. Gibson, *President*; E. Mauzé, *Secretary*; N. Mueller. *Second row:* J. Todsén, S. Snelling, J. Lee, M. Hoffman, J. Farris, Z. Curtin, R. Dysart, C. Murphy, J. Evans, M. Conrad. *Third row:* N. Moe, B. Montgomery, P. Gleeson, N. Culver, O. Cocusse, N. Baydan, B. Bauer, C. Neilson, M. Helmlinger, J. Lacy, S. Norton, C. Stuart. *Fourth row:* S. Lazarus, C. Fitzroy, E. Hunter, V. Burton, M. Smith, J. Gray, A. Castro, M. Oh. *Sponsor:* Dr. Dorothy Williams.

International Relations Club

International Relations Club is open to all L.C. students who are interested in government and international relations. This national organization of unlimited membership strives to create a greater interest in current affairs both in our government and in our international problems. It tries to send as many members as possible to various conferences which center around these interests.

The busy members enjoy many activities such as the sponsoring of an annual spring conference to which delegates from nearby universities are invited. The I.R.C. invites a speaker to appear before the student body to speak on a subject of current interest or relate a personal experience in the field of international relations to world problems.

KCLC



STAFF: N. Culver, *Station Manager*; I. Kern, *Head Engineer*; V. Burton, *Music Director*; A. Taylor, *Program Director*; M. Davis, *IBS Representative*; D. Izenberg, *Continuity Director*. Not pictured: E. Sheley, *Production Director*; M. Kirchherr, *Advertising Manager*.

PERSONNEL: *Front row*: A. Taylor, D. Izenberg, N. Culver, M. Davis, V. Burton, I. Kern. *Second row*: J. Todsen, I. Altrogge, L. Cross, M. Bittman, B. Bellows, G. Bursey, J. Murphey, R. Danz, D. Beaumar. *Third row*: E. Mauzé, S. Norton, A. Vignocchi, S. Hoskins, N. McDaniel, M. Harper, M. Smith, B. Rowe, S. Morton, J. Davis, K. Hale, M. Peterson, M. Smith, A. Castro, M. Menke, S. Roberts.

KCLC, Lindenwood's radio station, is a member of the Intercollegiate Broadcasting System. Partially supported by advertising revenue, the station seeks to offer the students practical experience in radio. The staff and personnel consist of directors, who plan the programs, and crews, who produce them. KCLC

is completely student-operated with faculty supervision only. The weekly schedule is composed of two hour programs five nights a week. It offers a wide variety of entertainment including drama, interviews, disc jockey shows, and news. It is currently sponsoring an experiment in television through the use of movie cameras.

Colhecon

Colhecon is active in bringing home economics students closer together by working out potential problems of home life and giving actual practice to student groups. Closely connected with Colhecon is the Home Management House which gives future home-makers the opportunity to practice course material. Under the direction of Miss Margaret Lindsay, four girls experience actual problems during a semester of budgeting, planning and preparing meals, and using household equipment.

Modern Language Club

Composed of students with a B average in a language course, the Modern Language Club seeks to further international understanding by the study of modern languages. This organization holds several parties during the year commemorating holidays and customs of foreign countries, and brings speakers of other lands to the campus during the year that the members' understanding of other peoples may be widened.

Front row: B. Schweppe, M. Thayer, M. Heberlee, N. Elwood, M. Mattingly, C. Neff, J. Stemmerich, G. Frye. *Second row:* D. Drury, F. Haberthier, S. Snelling, J. Dagendorfer, S. Snider, *Secretary-Treasurer*; P. Todsén, *Vice-President*; J. Lange, *President*; A. Taylor, A. Marshall, M. McDougall, L. Cross. *Third row:* N. Wilson, *Social Chairman*; B. McHatton, J. Farris, B. Smith, J. Lewis, B. Bininger, J. Davis, S. Henry, M. Menke, *Publicity Chairman*; J. Wood, B. Townsend, S. Kay, S. Lakin, N. Wallace, M. Emmert, C. Fitzroy. *Sponsor:* Miss Margaret Lindsay.



Front row: D. Ayer, N. Culver, P. Moore, G. Bursey. *Second row:* C. Neilson, *French Vice-President*; C. Seehorn, *German Vice-President*; A. Castro, *Spanish Vice-President*; M. Kirchherr, *President*; S. Kennedy, *Secretary*; D. Beaumar, *Treasurer*. *Third row:* S. Lakin, P. Creighton, N. Lee, S. Kite, S. Cunningham, N. Baydan, J. Lee, C. Dawson, J. Gray, C. Hunter, C. Anderlitch. *Fourth row:* J. Houser, M. Stoerker, E. Hunter, M. Kirch, M. Oh, N. McDaniel, P. Waterfield, C. Kavanaugh. *Sponsor:* Dr. Mary Terhune.



Front row: M. Conrad, *Treasurer*; M. Eitmann, *Secretary*; C. White, *President*; M. Pfoff, *Vice-President*. *Second row:* E. Kebl, M. De Basio, R. Kluck, H. Allen, C. Murphy, A. Holmgreen, A. Harper, M. Gilhula, G. Millman, M. Taylor, M. Peterson, M. Van Bibber, S. Snider, J. Crandall. *Third row:* J. Noel, I. Hachtmeyer, M. Bruns, M. Hoffman, N. Wilson, B. Smith, P. Wilkerson, A. Mills. *Fourth row:* B. Moore, B. Montgomery, C. Wideman, A. Marshall, A. Taylor, D. Dicke, J. Gray, B. Randall, B. Hiebert, S. Vance, J. Dole, N. Moe, V. Burton, M. Czarlinsky, M. McLeod, B. Townsend, D. Kiss, R. Dysart, B. Chidester. *Fifth row:* J. Birch, S. Anderson, E. Mauzé, C. Samuel, M. Davis, K. Hagstrom, B. Dean, Z. Curtin, M. Stoerker, C. Wolter, J. Blessing, C. McCluer, L. Hackman, M. Smith, E. Stotlar. *Sponsor:* Mr. Bremen Van Bibber.

Future Teachers of America

Future Teachers of America, as its name implies, is composed of all students interested in teaching as a profession. It is a national organization and all members are affiliated with the NEA and the MSTA through their publications. The club's meetings include talks of interest to prospective teachers by educational leaders.

Such speakers give different aspects of problems of and methods used in the teaching profession. Once a year in the spring, the group gives a tea for the St. Charles teachers, many of whom have acted as advisors to girls who practice-teach in the St. Charles schools.

Triangle Club

The Triangle Club is an honorary organization for students majoring in the field of chemistry, biology, or mathematics. A B average after the completion of three semester courses is necessary for membership. The purpose of the club is to stimulate and encourage interest in the field of science. Annual activities include a picnic and various field trips.



Front row: J. Ellis, S. Humphner, *Secretary-Treasurer*; Y. Li, *President*; J. Hester, *Vice-President*. Second row: J. Knox, G. Bartenbach. Sponsor: Dr. Mary Talbot.

Commercial Club

The clacking of the typewriters reminds one of the Commercial Club, organized for those students who are taking a minimum of two subjects in the Secretarial Science Department. The Commercial Club helps its members to understand the problems of the "white collar

girl." The club gives a faculty tea at the beginning of each year. Several speakers of interest to commercial students are brought to the campus during the year, and, to gain practical experience, club members make field trips to several offices in St. Louis.



Front row: M. Mattingly, M. Jarman, *Secretary*; B. Montgomery, *President*; P. Zimmerman, *Vice-President*; S. Chan, *Treasurer*; L. Grober, B. Schweppe. Second row: R. Weber, J. Edwards, M. Roberts, J. Todsén, H. Quin, M. Davis, A. Marshall. Sponsors: Miss Charlotte Clutterbuck, Miss Rosetta Palmer.

Encore Club

Encore Club is composed of girls proudly acclaiming sisters, mothers, grandmothers, cousins, and even great-grandmothers, who have attended Lindenwood in past years. The club participates in many worthwhile activities. They are hostesses at Founders' Day and class reunions, where they meet

acquaintances of their relatives who were L.C. girls. Two of the club's favorite activities are giving a Christmas basket to some needy family and taking several children from the Missouri Baptist Orphans' Home to the zoo.

Front row: A. Smith, B. Bellows, *Vice-President*; R. Danz, *Secretary*; N. Mueller, *President*; K. Kolocotronis. *Second row:* J. Todsén, N. Alvis, M. Hoffman, S. Lazarus, M. McMullen, J. Elser, C. Murphy, D. Boutin, D. Ayer. *Third row:* E. Mauzé, J. Fox, J. Lacy, B. Bauer, M. Banta, S. Morton, V. Burton, M. Davis, A. Marshall, J. Farris, B. Moore. *Fourth row:* J. Edwards, M. Kirch, B. Fellows. *Sponsor:* Mrs. Mary Bryant.



Day Students

The non-resident students of Lindenwood are small in number but mighty in activity. They are keen competition for any dorm during intramurals, and are vitally interested in all campus activities. The day-students' lounge is a popular gathering place for be-

tween-class "gab sessions," and here these girls and their resident-student friends find many items to discuss concerning campus and world events. The day students' prowess in both sports and studies proves that "home cookin'" is indeed beneficial.

Front row: G. Gross, B. Lett, Secretary-Treasurer; M. Carpenter, President; L. Hackmann, Student Council Representative. Second row: I. Hachtmeyer, B. Harrington, A. Lancaster, J. Regot, C. McCluer, M. Bruns, B. Schmidt. Sponsor: Dr. Homer Clevenger. Not pictured: B. Howard, Vice-President.





Front row: S. Cunningham, J. Crandall, J. Perkins, A. Gilbert, A. Hobgood, D. Beaumar, E. Schnurr, J. Elser, R. Schoene, B. Harrington, D. Kiss. *Second row:* G. Hahn, A. Carlisle, P. Lord, E. Kebl, M. Merrell, M. Peterson, J. Murphey, P. Gleeson, M. Shawver, R. Dysart, S. Snelling, M. Conrad. *Third row:* S. Beck, M. Smith, D. Thomas, I. Altrogge, B. Randall, B. Dean, W. Taylor, *Secretary:* B. Lett, A. Brewster, B. Barton, J. Edwards, J. Dagendorfer, C. Reich, L. Montgomery. *Fourth row:* J. Lyerly, P. Barber, *Treasurer:* S. Kennedy, M. Eitmann, F. Habathier, P. Beall, E. Mauzé, M. Pfoff, J. Lacy, M. Marshall, J. Fox, M. Hoffman, *President:* S. Berry, B. Givens, J. Gray. *Sponsor:* Mr. Milton Rehg. *Not pictured:* S. Null, *Vice-President.*

Choir

Under the direction of Mr. Milton Rehg, music professor, Lindenwood's choir sings at college concerts, St. Charles civic affairs and provides music for Lindenwood's weekly vesper services. Requirements for membership are proficiency in sight-reading and a good singing voice. Out of the sixty girls who met the requirements for membership this year, thirty

have been chosen on the basis of loyalty to the choir and scholastic standing, for a concert tour this April. Of its many contributions to campus life, among the most outstanding this year have been the Christmas Vesper Concert and the Spring Concert, sung with the St. Charles Male Chorus.

Mu Phi Epsilon

One of the many honors given music majors on campus is that of being invited to join Mu Phi Epsilon, national music sorority. Election to the club is made on the basis of scholarship, musicianship, character and faculty approval. This year the girls have given a Vespers' recital, a patrons' party, and a tea for music majors. Mu Phi Epsilon also sponsors receptions for returning alumnae who give recitals on campus.



Front row: C. Samuel, S. Null, *Warden*; P. Pennel, *President*; M. Ploff, *Treasurer*. Second row: A. Gilbert, R. Dysart, *Secretary*. Sponsor: Miss Gertrude Isidor.

Instrumental Association

This organization, as its name indicates, is an association composed of those students who play some instrument in the college orchestra. Unlike meetings of most clubs, those of the Instrumental Association are strictly business—rehearsals for concerts which the orchestra gives

for the student body. Some members of the Instrumental Association work with the choir on special numbers, but the club's most ambitious performance as a group is Lindenwood's annual Spring Concert.

Front row: R. Fields, L. Cross, E. Kaveler, D. Beaumar, M. Kirchherr. Second row: E. Kebl, P. Barber, Mr. Cruce, *Sponsor*; C. Samuel, R. Kluck.





Orchesis

Front row: B. Smith, *President*; J. Murphey.

Second row: S. Beck, J. Johnson, S. Edwards, G. Millman, M. McMullen, S. Cunningham, S. Lakin, K. Kolocotronis.

Third row: J. Gordon, S. Elliott, N. Elwood, M. Marshall, D. Boutin.

Sponsor: Mrs. Dora Arney.

Not pictured: P. Todsén, *Secretary-Treasurer*.



Terrapin

Front row: S. McFarland, B. Ballard, S. Lakin, N. Roberson, *President*; M. Arrington, C. Reich, A. Holmgreen, P. Ottinger.

Second row: J. Woodson, D. Boutin, P. Creighton, C. Hunter, G. Millman, S. Cunningham, E. Schnurr, A. Smith, M. Roberts, *Secretary-Treasurer*.

Sponsors: Mrs. Dora Arney, Miss Dorothy Ross.

Not pictured: M. Stoerker, *Vice-President*.



Beta Chi

Front row: S. Norton, *Vice-President*; S. Humphner, *President*; M. Mills, *Secretary-Treasurer*; J. Thiery.

Second row: D. Boutin, S. Kay, C. Murphy, I. Kern, G. Hahn, C. Hodge, E. Severson, J. Enloe.

Sponsor: Miss Helen Egelhoff.

Athletic Association

The Athletic Association, Beta Chi, Terrapin, and Orchesis are all clubs affiliated with the Physical Education Department.

A.A. is open to all students interested in stimulating fellowship in sports and in promoting physical efficiency. In compliance with these aims, it presents annual awards for athletic achievements, and sponsors intramural games between the dorms, as well as inter-collegiate sports with local colleges in the area.

Beta Chi's membership consists of riding students who pass a test of horsemanship which is displayed at the annual horse show in late spring.

Terrapin members must be advanced swimmers who, in addition to the instructors' class for life-saving, organize and produce the famous Water Pageant each year.

Orchesis is for modern dancing enthusiasts, their chief project being a dance concert.

Front row: A. Vignocchi, *Social Chairman*; M. Eitmann, *Acting Secretary*; R. Weber, *Vice-President*; M. Czarlinsky, *Intramural Chairman*; M. Van der Haagen, *Publicity Chairman*. *Second row:* J. Todsen, M. Arrington, M. Roberts, I. Kern, J. Leonard, E. Hunter, S. Lazarus, S. Anderson, J. Edwards, M. Bittman. *Third row:* M. Harper, N. Lee, P. Creighton, J. Sudik, C. Moseler, M. Mattingly, M. Walker, M. Hodges, B. Ballard, A. Smith, C. Neilson, M. McMullen. *Fourth row:* S. Norton, S. McFarland, N. Moe, N. Elwood, Z. Curtin, D. Luglan, N. Alvis, J. Enloe, J. Gray, B. Bellows, A. Holmgreen. *Sponsors:* Miss Margurite Ver Kruzen, Mrs. Dora Arney, Miss Dorothy Ross. *Not pictured:* M. Stoerker, *President*; C. Wolter, *Treasurer*; A. Frazier, *Secretary*.





Front row: M. Marshall, J. Wood, M. Emmert, K. Kolocotronis, N. Culver, B. Montgomery, J. Blanton. *Second row:* P. Meadows, Y. Jones, B. Dean, A. Smith, *Treasurer;* M. Czarlinsky, *President;* E. Mauzé, *Vice-President;* S. Snelling, *Secretary;* M. Eitmann, M. Menke, A. Gilbert. *Third row:* J. Atchason, J. Farris, K. Hale, L. Grober, J. Young, M. Conrad, M. Merrill, L. Burton, A. Mills, S. Kennedy, S. Anderson, N. Wilson. *Sponsor:* Dr. John Moore.

Young Democrats Club

The Young Democrats Club, which is nationally associated, was established for the purpose of creating and furthering interest in the Democratic ideals and principles of government. It is open for membership to all L.C. students. The organization is composed of girls who take an active part in all local parties by their attendance at rallies and by

helping in the distribution of literature. The club cooperates in the Presidential mock election and helps in the straw balloting done on campus. It seeks to acquaint girls with the voting procedures, and also tries to stress the great importance of the part women play in politics.

Young Republicans Club

The Young Republicans Club on the Lindenwood campus has as its purpose the stimulation of interest in a young college group in national and local politics and government. This is done with the idea of creating better citizenship and therefore, a truer democracy as a result of school activities in this field. It seeks to stress the importance

of activity in politics after the student has taken a place in her community.

Open to all girls interested, the Young Republicans limit their activities to studying local politics and engaging in a project to study government, such as their participation in National Republican Party activities in election year.

Front row: A. Brewster, C. Hendricks, B. Randall, P. Janek, D. Kiss, M. Todsén, P. Gleeson, M. Van Bibber.
Second row: A. Marshall, J. Lee, C. Fitzroy, I. Altrogge, C. Murphy, N. Mueller, N. Elwood, D. Izenberg, M. Dunn, S. Lakin. *Third row:* A. Taylor, R. Dysart, C. Crouch, B. Schweppe, J. Dagendorfer, J. Cheney, *President;* M. Crabbe, M. Banta, Z. Curtin, M. Mattingly, M. Hoffman, M. Davis. *Fourth row:* M. Davis, R. Fields, M. Smith, B. Harrington, D. Lugan, F. Habathier, M. Cooper, J. Hendricks, D. Beaumar, J. Elser, M. Hodges, S. Henry, J. Gray, C. Bay, B. Smith, P. Wilkerson, H. Quin, J. Farris, B. McHatton, S. Lunak. *Fifth row:* D. Ayer, B. Givens, N. Moe, S. Norton, H. Allen, E. Severson, E. Hunter, M. Bittman, M. McDougall, J. Birch, J. Davis, R. Weber. *Not pictured:* E. Swanson, *Secretary-Treasurer.* *Sponsor:* Dr. Siegmund Betz.





D. Neblett, C. Mahan, *Editor*; E. Severson, *Business Manager*. *Sponsor*: Miss Marjorie Hiller. *Not pictured*: J. DeWeese, *Assistant Editor*.

Griffin

The Griffin staff seeks to encourage the development of writing ability and to develop an appreciation for and an understanding of good literature. The yearly project consists in the publication of a literary annual in which students' writings, both prose and poetry, are presented to the student body. Faculty writing is also included in this magazine.

Linden Bark

The Linden Bark staff, members of the Associated Collegiate Press, publishes a six-page paper every two weeks during the school year. These bi-monthly publications comprise twelve annual issues. Work on the *Linden Bark* is open to all students, but the group is usually made up of all journalism majors and students interested in radio work, English, and subjects in allied fields.

The busy members on the newspaper staff assist in the annual gridiron dinner, and make a yearly trip into St. Louis to visit newspaper buildings and tour the city morgue. The Romeo contest each spring is sponsored by the *Linden Bark*. This contest consists of sending photographs of favorite Romeos to a Hollywood actress who selects six as the most representative beaux.



N. Culver, D. Beaumar, J. Davis, A. Vignocchi, S. Hoskins, J. Noel, G. Bursey. *Sponsor*: Mr. Charles C. Clayton.



Front row: S. Hoskins, M. Merrell, Secretary; A. Castro, President; G. Bursey, Treasurer; D. Izenberg, Sergeant-at-Arms; P. Gleeson. Second row: J. Davis, R. Fields, B. Dean, S. Snelling, M. Menke, M. Hoffman, M. Cooper, B. Montgomery. Third row: A. Vignocchi, S. Norton, A. Marshall, J. Todsens, R. Danz, V. Burton, N. Culver, M. Harper, J. Noel, M. Smith, M. Kirchherr, D. Beaumar, M. Czarlinsky, J. Blanton, K. Hale, P. Waterfield, R. Weber. Sponsor: Mr. Charles C. Clayton. Not pictured: P. Moore, Vice-President.

Press Club

The Press Club, which has as its purpose the stimulation of interest in a better national press, is open for membership to all eligible students from the creative writing classes, the publications staffs, the poetry society, and the staff of KCLC.

After a highly unusual and unique initiation ceremony, the busy members' activities include originating literary editions, making pilgrimages into St. Louis to visit places of interest. In the late spring this organization holds an annual picnic. The Press Club also sponsors the annual Gridiron Dinner.



A. Marshall, *Business Manager*; C. McCluer, *Art Editor*; J. Blessing, *Advertising Manager*; M. Van Bibber, *Organization Manager*; P. Gleeson, *Editor*. Not pictured: J. DeWeese, *Literary Editor*.

Linden Leaves Board

Through most of Lindenwood's academic year, the Linden Leaves Board and its staff spend spare moments arranging picture-taking schedules, writing, typing and editing copy. During the final hectic days before the printer's deadline, these girls eat, sleep, and dream of yearbooks. But by working separately and with its staff and spending long

hours in the mysterious tower room while others are sound asleep, the '53 board finally managed to complete its publication, and one day early this April a haggard messenger from the Linden Leaves flung her copy on the printer's desk—finished! We hope you like the results.

Linden Leaves Staff

EDITORIAL

PATRICIA GLEESON, *Editor*

BUSINESS

ANITA MARSHALL, *Manager*

JANE EDWARDS

ADVERTISING

JOAN BLESSING, *Manager*

LORRAINE HACKMANN

ART

CAMILLA MCCLUER, *Head*

ILLOMAY HACHTMEYER

LITERARY

JO JUNE DEWEESE, *Head*

DEANE KEETON

NANCY MCDANIEL

BETTY MOORE

ORGANIZATION

MARY NELL VAN BIBBER, *Manager*

RUTH WEBER

TYPISTS

MARY JEAN MATTINGLY

MILDRED JARMAN

SPONSORS

MISS DOROTHY ELY

MISS CHARLOTTE CLUTTERBUCK

MR. JOHN MIDDENTS

Front row: A. Marshall, M. Van Bibber, B. Montgomery, P. Gleeson, M. Hoffman, L. Hackmann, L. Grober.
Second row: R. Weber, C. McCluer, I. Hachtmeyer, M. Jarman, M. Mattingly, J. Edwards.



Queens and Courts

Reaping the harvest of friendship

They stand tall in beauty

On the steps of the present

With the light of Lindenwood

Behind them and the world

Before.



Harvest Court

Front row: B. Smith, N. Lee, K. Kolocotronis, N. Sanders, B. Bellows, M. McDougall.

Second row: L. Cross, M. Marshall, A. Harper, *Second Maid*; J. Fox, *Queen*; S. McFarland, *First Maid*; S. Beck, G. Gross.



*Harvest
Queen*

Joan Fox





VALENTINE COURT
ATTENDANTS

*Patt
Wilkinson*

*Rose
Marie
Danz*

*Valentine
Queen*

*Judy
Anderson*





May Court

FRESHMAN
ATTENDANTS

*Elizabeth
Schnurr*

*Mary
Welty*

May Court

SOPHOMORE
ATTENDANTS

*Mildred
Jarman*

*Deane
Keeton*





May Court

JUNIOR
ATTENDANTS

*Paula
Moore*

*Mary Nell
Van Bibber*

May Court

SENIOR
ATTENDANTS

*Jan Blevins
Lange*

*Deana
Izenberg*





May Court

MAID OF HONOR

*Patricia
Gleeson*

*May
Queen*

*Mary Lou
Stubbs
McLeod*



Snaps

Midnight snack

*Most Valuable Player in
the Finger Bowl Game!*

Tiny tots



Was it worth it?

The lull before the storm

*No, it's not the
Easter Parade!*



That takes the cake.

Sleepytime gal!

Sweet dreams!



All legs, no brains.

Finger Bowl Queen of '52.

"Cheese!"



Is she blushing??

Party, party!





Mean widdle kid!

"Ready for a second piece?"

Hard day?



Who says college is a snap?

The '49ers

Ann and Ferdinand



No rest for the wicked.

Barbi was a bad girl!

"Tell the boys hello."



Movin' in!?

"Prime Minister" Beall

Dead-End Kids!



Ship ahoy!

"It's beddy-bye time!"

Student Directory

- Allen, Harriet Rae, Lexington, Nebr., 63, 78, 87
- Altrogge, Iris Jean, Mexico, Mo., 63, 76, 82, 87
- Alvis, Nancy, Mexico, Mo., 63, 80, 85
- Anderlitch, Carole, Fort Worth, Tex., 63, 74, 77
- Anderson, Florence G., Nashville, Tenn., 63
- Anderson, Judy, Liberty, Mo., 54, 71, 97
- Anderson, Suzanne, Malden, Mo., 54, 74, 78, 85, 86
- Archer, Carol A., Springfield, Ill., 63
- Arrington, Mary Ann, Russellville, Ark., 63, 70, 84, 85
- Atchason, Shirley Jeanne, Springfield, Ill., 63, 86
- Ayer, Diane, Keokuk, Iowa, 63, 74, 77, 80, 87
- Ballard, Barbara, Nashville, Tenn., 63, 84, 85
- Banta, Mary Beth, Arcadia, Mo., 32, 66, 68, 70, 72, 74, 80
- Barber, Peggy, Haleyville, Ala., 54, 67, 82, 83
- Bartenbach, Grett, Grand Island, Nebr., 32, 66, 68, 79
- Barton, Betsy Crenshaw, Memphis, Tenn., 56, 63, 82
- Bauer, Barbara A., Arlington, Va., 63, 75, 80
- Bay, Celia, Albia, Iowa, 56, 63
- Baydan, Nuran, Alsancak, Izmir, Turkey, 54, 77
- Beall, Phyllis Annette, Malden, Mo., 63, 74, 82
- Beard, Martha Agnes, Hillsboro, Tex., 63
- Beaumar, Doris Ann, LeRoy, Ill., 52, 69, 73, 74, 75, 76, 77, 82, 83, 87, 88, 89
- Beck, Sondra Jean, Sikeston, Mo., 56, 82, 94
- Beckwith, Carolyn, Cape Girardeau, Mo., 63
- Bell, Elizabeth Mahan, Blytheville, Ark., 63
- Bellows, Barbara, Winnetka, Ill., 63, 76, 80, 85, 94
- Berry, Susan, Oklahoma City, Okla., 57, 82
- Bininger, Barbara Ann, Kansas City, Mo., 57, 70, 77
- Birch, Jeanette Anne, Rosiclare, Ill., 51, 78, 87
- Bird, Eden, Finley, Tenn., 57
- Bittman, Margaret, Perry, Okla., 57, 74, 76, 85, 87
- Blanton, Johnna, Pershing, Okla., 57, 70, 74, 86, 89
- Blessing, Joan Alice, St. Charles, Mo., 32, 78, 90
- Boutin, Dorothy Louise, Cape Girardeau, Mo., 53, 74, 80, 84
- Brewster, Ann, El Dorado, Ark., 57, 82, 87
- Bruns, Mary Alice, St. Charles, Mo., 50, 74, 78, 81
- Buchanan, Sally, Western Springs, Ill., 55
- Bursey, Mildred Gloria, Grand Rapids, Mich., 53, 74, 76, 77, 88, 89
- Burton, Lavone H., Princeton, West Va., 33, 67, 69, 74, 75, 76, 78, 80, 86, 89
- Carlisle, Ann, Petersburg, Ind., 57, 82
- Carpenter, Marlene Opitz, St. Charles, Mo., 40, 71, 81
- Castro, Astrid Ponce, Puerto Rico, 53, 74, 75, 76, 77, 89
- Chan, Suk Hun, Seremban, Negri Sembilan, Malaya, 48, 55, 72, 79
- Chaney, Jacquelyn Julia, Linn Creek, Mo., 33, 70, 72, 87
- Chidester, Barbara Leah, Sikeston, Mo., 57, 78
- Christensen, Mara Lloyd, Webster Groves, Mo., 57
- Cocusse, Odette, Hte-Marne, France, 36, 75
- Collins, Kay, Tullahoma, Tenn., 53
- Connelley, Betty, Webster Groves, Mo., 33
- Conrad, Margaret Ellen, Lucas, Iowa, 53, 74, 75, 78, 82, 86
- Cooper, Mary Ann, Sapulpa, Okla., 57, 87, 89
- Crabbe, Alice Margery, Eagle Grove, Iowa, 57, 87
- Crandall, Jane, Richmond Heights, Mo., 57, 78, 82
- Creighton, Penelope, Nashville, Tenn., 57, 77, 84, 85
- Critchfield, Cora Lee, Tecumseh, Nebr., 55
- Cross, Lucy Ann, DeSoto, Mo., 57, 76, 77, 83, 94
- Crouch, Carolyn Carr, Elizabethton, Tenn., 57, 70, 87
- Culver, Nell Lyon, Halls, Mo., 34, 67, 68, 69, 72, 74, 75, 76, 77, 86, 88, 89
- Cunningham, Susan, Caruthersville, Mo., 57, 77, 82, 84
- Curtin, Zilpha, Cincinnati, Ohio, 53, 66, 74, 75, 78, 85, 87
- Czarlinsky, Marlene Joan, Kansas City, Mo., 34, 70, 71, 74, 75, 78, 85, 86, 89
- Dagendorfer, Jacquelyn Ann, Norfolk, Nebr., 53, 74, 77, 82, 87
- Danz, Rose Marie, Union, Mo., 50, 69, 74, 76, 80, 89, 96
- Davis, Edith Maxine, Oahu, T.H., 34, 69, 74, 76, 78, 87
- Davis, Janice, Burlington, Iowa, 52, 69, 74, 76, 77, 87, 88, 89
- Davis, Mary Frances, Burlington, Iowa, 57, 74, 80, 87
- Davis, Nancy, Fort Worth, Tex., 57
- Dawson, Cynthia Ann, Marked Tree, Ark., 56, 77
- Dean, Betty Anne, Amarillo, Tex., 53, 74, 78, 82, 86, 89
- DeBasio, Marie, Sappington, Mo., 57, 78
- Dettmann, Deane, Belvidere, Ill., 50, 71
- DeWeese, Jo June, Hugo, Okla., 55
- Dicke, Diane, Downers Grove, Ill., 35, 78
- Dole, Joan, Mattoon, Ill., 63, 78
- Drury, Donna Mae, Gillespie, Ill., 57, 77
- Dunn, Mary Elise, Hutchinson, Kans., 63, 74, 87
- Dysart, Rosemary, Webster Groves, Mo., 50, 74, 75, 78, 82, 83, 87
- Edwards, Jane Lewis, Crossville, Tenn., 50, 79, 80, 82, 85, 91
- Edwards, Starlin Ann, Kirkwood, Mo., 57

Student Directory

Eitmann, Marlene, Waterloo, Ill., 53, 74, 78, 82, 85, 86
 Elliott, Suzanne, Alva, Okla., 53, 69
 Ellis, Carol Jeanne, St. Charles, Mo., 47, 79
 Elser, Janet Childs, Augusta, Ga., 57, 80, 82, 87
 Elwood, Nancy Lee, Russellville, Ark., 60, 77, 85, 87
 Emmert, Margaret, Tulsa, Okla., 60, 77, 86
 Enloe, JoAnne, Riverside, Ill., 60, 84, 85
 Enloe, Mary Nan, Fort Worth, Tex., 60
 Evans, Martha Jane, Malden, Mo., 48, 55, 74, 75

Farris, Jean Elizabeth, Indianapolis, Ind., 60, 86
 Farris, Julianne, Indianapolis, Ind., 50, 74, 75, 77, 80, 87
 Fellows, Betty Jean, Elmhurst, Ill., 60, 80
 Fields, Rosalyn Wise, New Castle, Ind., 51, 83, 87, 89
 FitzRoy, Carol Sue, Normandy, Mo., 63, 75, 77, 87
 Forbes, Carolyn, Dallas, Tex., 63
 Fowler, Barbara, Nevada, Mo., 56
 Fox, Joan Louise, Gashland, Mo., 60, 80, 82, 94, 95
 Frazier, Ann, Stigler, Okla., 55
 Freeto, Jeanne Louise, Pittsburg, Kans.
 Frye, Ginger, Fort Smith, Ark., 60, 77

Garland, Florida, Baton Rouge, La., 60
 Gibson, Romain, Kansas City, Mo., 47, 74, 75
 Gilbert, Ann, Memphis, Tenn., 53, 67, 82, 83, 86
 Gilhula, Mary Jane, Grand Rapids, Mich., 60, 78
 Gili, Joy M. M., Carlyle, Ill., 60
 Givens, Barbara Dee, Paris, Ill., 60, 82, 87
 Glebe, Elizabeth Anne, Lawrenceville, Ill., 51, 70
 Gleeson, Patricia, Wahoo, Nebr., 48, 55, 70, 72, 74, 75, 82, 87, 89, 90, 91, 102
 Glover, Judy Ann, Park Ridge, Ill., 60
 Gordon, Janice Kay, Edwardsville, Ill., 55
 Graber, Harriett, Dexter, Mo., 60
 Gratigny, Jean, Dallas, Tex., 60
 Graves, Riley, Corinth, Miss., 55
 Gray, Jean, Rockwell City, Iowa, 60, 74, 75, 77, 78, 82, 85
 Grober, Louise Evelyn, Clarksdale, Miss., 53, 79, 86, 91
 Gross, Abigail, St. Charles, Mo., 60, 81, 94

Habathier, Frances Jane, Creve Coeur, Mo., 47, 77, 82, 87
 Hachtmeyer, Illomay, St. Charles, Mo., 47, 78, 81, 91
 Hackmann, Lorraine C., St. Charles, Mo., 35, 66, 78, 81, 91
 Hagstrom, Anne Karen, East Grand Rapids, Mich., 60, 78
 Hahn, Georgia Dell, Kirkwood, Mo., 60, 82, 84
 Hale, Kathy, Oklahoma City, Okla., 60, 76, 86, 89

Harper, Marianne, Mexico, Mo., 60, 76, 78, 85, 89, 94
 Harrington, Beverly, St. Charles, Mo., 60, 70, 71, 74, 81, 82, 87
 Heberlee, Marilyn Ruth, Spearville, Kans., 60, 77
 Helmlinger, Marie Claire, Strasbourg, France, 54, 75
 Hendricks, Charlotte, Sarnia, Ontario, Canada, 61, 87
 Hendricks, Jean, Sarnia, Ontario, Canada, 61, 87
 Henry, Sammie Sue, Breckenridge, Mo., 61, 77, 87
 Hester, Jeanette, Russellville, Ala., 46, 67, 72, 79
 Hiebert, Barbara, Wichita, Kans., 61, 78
 Higgins, Cynthia Kathryn, Indianapolis, Ind.
 Hinsen, Martha Ann, Kansas City, Mo., 61
 Hobgood, Ann, Monticello, Ark., 53, 82
 Hodge, Carol, Moweaqua, Ill., 52, 84
 Hodges, Margaret Ann, Crossville, Tenn., 61, 85, 87
 Hoffman, Marilyn, Sioux City, Iowa, 35, 74, 75, 78, 80, 82, 87, 89, 91
 Holmgreen, Allison, San Antonio, Tex., 61, 78, 84, 85
 Hoskins, Sally Lou, Mt. Vernon, Ill., 51, 76, 88, 89
 Houser, Frances Joanne, Paducah, Ky., 61, 77
 Howard, Barbara Harshbarger, O'Fallon, Mo., 47
 Humphner, Serita, River Forest, Ill., 46, 79, 84
 Hunter, Carolyn, Nashville, Tenn., 58, 77, 84
 Hunter, Elizabeth Page, Earlham, Iowa, 61, 74, 75, 77, 85, 87
 Izenberg, Deana H., Paterson, N. J., 36, 66, 69, 74, 75, 76, 87, 89, 101
 Janak, Patricia Jean, Crystal Lake, Ill., 52, 74, 87
 Jarman, Mildred, Nashville, Tenn., 50, 79, 91, 99
 Johnson, Martha Jean, Nashville, Tenn., 61
 Jones, Yvonne, Altus, Okla., 52, 86
 Joyner, Shirley, Helena, Ark., 61
 Kavanaugh, Carole Eileen, Fort Worth, Tex., 61, 77
 Kaveler, Elaine Ann, Tulsa, Okla., 61, 83
 Kay, Sally Ann, Tyler, Tex., 59, 66, 77, 84
 Kebl, Nancy Ellen, Liberty, Ind., 61, 78, 82, 83
 Keeton, Deane Ellen, Kansas City, Mo., 51, 66, 70, 73, 99
 Kennedy, Susan Anne, Newport, Tenn., 55, 66, 73, 74, 77, 82, 86
 Kern, Irene, Vincennes, Ind., 50, 69, 76, 84, 85
 Kirch, Mary Cochrane, Keokuk, Iowa, 61, 74, 77, 80
 Kirchherr, Mary, Warsaw, Ill., 36, 71, 77, 83, 89
 Kiss, Dolores Bernice, Chicago, Ill., 54, 78, 82, 87
 Kite, Shirley, Dallas, Tex., 62, 77
 Kluck, Ruth I., Richland, Nebr., 61, 78, 83

Student Directory

Knox, Jean Allyn, Elmhurst, Ill., 37, 66, 79
 Knupp, Peggy Earle, Sikeston, Mo., 61
 Kolocotronis, Kathy, St. Louis, Mo., 61, 80, 86, 94
 Kreunen, Margaret Mary, Memphis, Tenn., 58, 74
 Kruel, Arline, Washington, Mo., 46, 66, 67
 Kurman, Pearl, Milwaukee, Wis., 59
 Lacy, Jane, Lawton, Okla., 59, 75, 80, 82
 Lakin, Sally, LaSalle, Ill., 61, 77, 84, 87
 Lancaster, Anne, St. Charles, Mo., 53, 81
 Lange, Janice Blevins, St. Charles, Mo., 37, 44, 70, 77, 101
 Laux, Phyllis, Sikeston, Mo., 37
 Lazarus, Sandra Jo, Canton, Ohio, 61, 74, 75, 80, 85
 Lee, Janet, Louisville, Ky., 61, 75, 77, 87
 Lee, Nancy K., Madison, Wis., 62, 77, 85, 94
 Leonard, Jane, Fort Worth, Tex., 56, 61, 85
 Lett, Beverly June, St. Charles, Mo., 46, 81, 82
 Lewis, Helen Janet, Sikeston, Mo., 61, 77
 Li, Yu-Chen, Paris, France, 48, 55, 72, 79
 Lord, Priscilla, Peoria, Ill., 53, 82
 Lovett, Carolyn, Starr City, Ark., 51
 Luglan, Donna, Eldora, Iowa, 61, 70, 85, 87
 Lunak, Sandra Ann, West Chicago, Ill., 48, 55, 74, 87
 Lyerly, Jacquelyn J., St. Louis, Mo., 62, 82

 McCluer, Camilla, Cottleville, Mo., 38, 70, 71, 72, 78, 81, 90, 91
 McCluney, Litha Joan, Warrensburg, Mo., 62
 McDaniel, Nancy Kay, Fort Worth, Tex., 62, 70, 76, 77
 McDonald, Patty, Scottsbluff, Nebr.,
 McDougall, Martha Ann, Kirkwood, Mo., 59, 77, 87, 94
 McFarland, Sue, Dallas, Tex., 62, 84, 85, 94
 McGee, Rita, Mount Pulaski, Ill., 38, 44, 70, 71, 72
 McHatton, Betty, Marissa, Ill., 52, 77, 87
 McLeod, Mary Lou Stubbs, Fort Lauderdale, Fla., 38, 66, 67, 78, 103
 McMullen, Mary Ann, Stella, Nebr., 62, 80, 85

 Mahan, Carol Anne, Ashland, Ky., 39, 70, 88
 Malcolm, Betty Lou, Sikeston, Mo., 55
 Marshall, Anita Vivian, Fairfield, Ill., 48, 55, 74, 77, 78, 79, 80, 87, 89, 90, 91
 Marshall, Margaret, Nashville, Tenn., 55
 Marshall, Marian, Richmond Heights, Mo., 62, 82, 86, 94
 Mattingly, Mary Jean, Estancia, New Mex., 59, 77, 79, 85, 87, 91
 Mauze, Eleanor, San Antonio, Tex., 52, 67, 74, 75, 76, 78, 80, 82, 86

Mead, Ruth Ann, Kansas City, Mo., 62
 Meadows, Phyllis Anita, Kellerton, Iowa, 62, 86
 Menke, Maxine, Bancroft, Iowa, 54, 76, 77, 86, 89
 Merrell, Mary Lu, Glen Ellyn, Ill., 51, 71, 82, 86, 89
 Millman, Gerean Yvonne, Kansas City, Mo., 51, 78, 84
 Mills, Arlene, Central City, Iowa, 52, 78, 86
 Mills, Marilyn, Danville, Ill., 51, 84
 Mitchell, Marilyn Jean, Mexico, Mo., 62
 Moe, Nancy Therese, Madison, Wis., 54, 74, 75, 78, 85, 87
 Montgomery, Bettye, South Hutchinson, Kans., 39, 74, 75, 78, 79, 86, 89, 91
 Montgomery, Lois Ellen, Kewanee, Ill., 62, 82
 Moore, Betty Carol, Kirkwood, Mo., 52, 74, 78, 80
 Moore, Paula Lou, Oklahoma City, Okla., 47, 69, 77, 100
 Morton, Susan Elizabeth, Newburgh, Ind., 62, 76, 80
 Moseler, Carol, St. Charles, Mo., 62, 85
 Mueller, Nancy Lee, Lincoln, Nebr., 51, 74, 75, 80, 87
 Munro, Mary, San Angelo, Tex., 59
 Murphey, Joyce, San Angelo, Tex., 62, 76, 82
 Murphy, Cynthia, Fremont, Nebr., 52, 74, 75, 78, 80, 84, 87

 Neblett, Dorothy Helen, Lancaster, Pa., 54, 67, 70, 71, 73, 88
 Needham, Joyce Ann, Glenwood, Iowa, 62
 Neff, Charlotte, River Forest, Ill., 62, 77
 Neilson, Carolyn, Kansas City, Mo., 51, 74, 75, 77, 85
 *Noel, Janey, Paris, Mo., 39, 66, 78, 88, 89
 Norton, Suzanne Ruth, Otter Lake, N. Y., 50, 75, 76, 84, 85, 87, 89
 Null, Sue Ann, Muncie, Ind., 47, 83

 Oh, Min Hi, Seoul, Korea, 40, 75, 77
 Olander, June, Chicago, Ill., 62
 Omohundro, Joyce, Elsberry, Mo., 43
 Ottinger, Patsy Ann, Oklahoma City, Okla., 62, 84

 Parker, Sue Alice, Topeka, Kans., 56
 Parnas, Shirley, St. Louis, Mo., 62
 Pennel, Peggy Lee, Covington, Tenn., 40, 66, 72, 83
 Perkins, Anita Joan, Manila, Ark., 58, 82
 Peterson, Molly Jane, Wichita, Kans., 54, 76, 78, 82
 Pettigrew, Jane Marie, Cape Girardeau, Mo., 58
 Pfoff, Margaret Jean, Rochelle, Ill., 47, 67, 78, 82, 83
 Pinckney, Mary Kay, Lebanon, Mo.,
 Powers, Patricia Alberta, Wichita, Kans., 58

 Quin, Harriet, Clarksville, Tenn., 51, 66, 79, 87

Student Directory

- Randall, Beverly Joyce, Cobden, Ill., 59, 78, 82, 87
 Reed, Joanne Faye, Rockville, Ind., 58
 Regot, Jacqueline, St. Charles, Mo., 51, 81
 Reich, Charlene, Chicago, Ill., 58, 82, 84
 Richards, Julie, Oklahoma City, Okla., 55
 Riggs, Judith Ann, Oklahoma City, Okla., 62
 Roberson, Nada Sue, Mexico, Mo., 41, 44, 84
 Roberts, Mary Elizabeth, Franklin, Tenn., 51, 76, 79, 84, 85
 Robertson, Ann, Joplin, Mo., 59
 Rouse, Mary Jo, Malden, Mo., 55
 Rowe, Barbara Elaine, Memphis, Tenn., 58, 74, 76
 Rule, Jeanie, Sapulpa, Okla., 62
- Samuel, Carile, Papillion, Nebr., 54, 78, 83
 Sanders, Nannearle, Athens, Tex., 63, 94
 Schmidt, Benita Leona, St. Charles, Mo., 52, 81
 Schnurr, Elizabeth, Otho, Iowa, 56, 59, 82, 84, 98
 Schoene, Ruth, St. Charles, Mo., 62, 74, 79, 82
 Schweppe, Barbara Ann, Fort Scott, Kans., 59, 77, 87
 Seehorn, Charlotte Rhea, Newport, Tenn., 54, 77
 Severson, Elizabeth Jean, Madison, Wis., 51, 66, 70, 71, 84, 87, 88
 Shawver, Merica, Oklahoma City, Okla., 58, 82
 Sheley, Eunice, Alton, Ill., 55, 69
 Shuttleworth, Barbara Lou, Jennings, Mo., 50, 73
 Siggelkow, Stella Ann, McHenry, Ill., 56
 Singleton, Caroline, Trenton, Tenn., 46
 Smith, Ann Douglas, Magnolia, Ark., 59, 80, 84, 85, 86
 Smith, Barbara Jean, Joplin, Mo., 52, 78, 87
 Smith, Beverly Jane, Nashville, Tenn., 58, 77, 94
 Smith, Margot Evans, Minneapolis, Minn., 59, 74, 75, 76, 78, 82, 87
 Smith, Marilyn, San Angelo, Tex., 58, 76, 89
 Snelling, Sally, Wahoo, Nebr., 52, 70, 74, 75, 77, 82, 86, 89
 Snider, Sandra, Borger, Tex., 46, 71, 78
 Sommers, Clarita, San Antonio, Tex., 56
 Steel, Anne, Conway, Ark., 58
 Stemmerich, Janyth, Affton, Mo., 59, 77
 Stillwell, Carol, Alton, Ill., 55
 Stoerker, Marian, St. Charles, Mo., 47, 72, 77, 78
 Stotlar, Emily Lou, Marion, Ill., 41, 78
 Stuart, Mary Carolyn, St. Louis, Mo., 58, 75
 Stutsman, Jane, Nashville, Ill., 58
 Sudik, June, Sentinel, Okla., 58, 85
 Swanson, Estelle Ann, St. Louis, Mo., 41
- Takaki, Michiko, Tokyo, Japan, 42, 75
 Taylor, Alice Walthall, Cleveland Heights, Ohio, 43, 66, 69, 76, 77, 78, 87
 Taylor, Margaret Anne, Venice, Calif., 46, 78
 Taylor, Winifred, Hinsdale, Ill., 53, 82
 Thayer, Mary Lou, Wilmette, Ill., 58, 77
 Thieiecke, Mary Ann, Little Rock, Ark., 55
 Thiery, Jean, Indianapolis, Ind., 52, 84
 Thomas, Dorothy Estella, Johnson City, Tenn., 59, 82
 Thomas, Rhoda Anne, Springfield, Ill., 59
 Todsén, Mary Ann, Mexico, Mo., 46, 74, 77, 87
 Todsén, Velma Jennelle, Mexico, Mo., 59, 75, 76, 79, 80, 85, 89
 Townsend, Betty, Sac City, Iowa, 59, 77, 78
 Treadway, Naida Jane, Mt. Sterling, Ky., 59
 Turner, Jil, Putney, England, 51
- Uehling, Patricia, Lyons, Nebr., 59
- Van Bibber, Mary Nell, St. Charles, Mo., 46, 67, 72, 78, 87, 90, 91, 100
 Vance, Sharon Lee, Paris, Ill., 59, 78
 Van der Haagen, Thil, Amsterdam, Holland, 42, 68, 70, 71, 85
 Vignocchi, Alice, Highwood, Ill., 52, 69, 74, 76, 85, 88, 89
- Walker, Mary Ann, Sikeston, Mo., 59, 85
 Walker, Mary Rebecca, Fort Stockton, Tex., 58
 Wallace, Nancy Kay, Oak Park, Ill., 58, 77
 Wallin, Leona Nadine, Tilden, Nebr., 58
 Warterfield, Patricia R., Nashville, Tenn., 59, 70, 77, 89
 Weber, Patricia Montroy, Dallas, Tex., 59
 Weber, Ruth Anne, Sappington, Mo., 46, 67, 79, 85, 87, 89, 91
 Welty, Mary Louise, Topeka, Kans., 59, 98
 White, Carolyn, West Point, Miss., 43, 44, 74, 78
 White, Patricia, Chicago, Ill., 52
 Whitnell, Elaine, Chicago, Ill., 56
 Wideman, Carol, Alton, Ill., 50, 78
 Wilkerson, Patsy Ann, Joplin, Mo., 50, 78, 87, 96
 Wilson, Norma Rhea, Helena, Ark., 50, 77, 78, 86
 Wilson, Tamara, Ladue, Mo., 59
 Winkler, Brownie Carol, Dale, Ind., 58
 Wolter, Carol, St. Charles, Mo., 50, 78
 Wood, Jane, Eldora, Iowa, 58, 77, 86
 Woodman, Virginia Lee, Grand Rapids, Mich., 58
 Woodmansee, Lou Ann, Oklahoma City, Okla., 58
 Woodson, Judy Lupton, Fort Worth, Tex., 58, 84
- Young, Janet Faye, Cedar Rapids, Iowa, 58, 86
- Zimmerman, Patricia Louise, Hopkins, Minn., 59, 79



Congratulations to the students of Lindenwood College on this yearbook. Your college hopes that it has served you well during your student days and it is eager to be of further service to you wherever you are in the years ahead.

LINDENWOOD COLLEGE

ST. CHARLES, MISSOURI

PATRONIZE YOUR ADVERTISERS

Editor
PAT GLEESON

Business Manager
ANITA MARSHALL

Advertising Manager
JOAN BLESSING

COMPLIMENTS OF

LAWRENCE J. MEISEL CO.

Distributors of LAWN and GARDEN SUPPLIES and EQUIPMENT
444 S. BRENTWOOD BLVD. CLAYTON 5, Mo.

KREY PACKING COMPANY

Famous Meat Products
Since 1882

KREY ON THE
LABEL



QUALITY ON THE
TABLE

SHATTINGER MUSIC CO.

HAS WHATEVER YOU WANT IN
MUSIC

For free catalog write

Shattinger Music Co.

331 ARCADE BLDG.

PHONE MA2408

ST. LOUIS 1, Mo.

WHEN IN BUSINESS

A Good Service To

REMEMBER

WILMES LINEN SERVICE

JE5312

4350 FINNEY AVE.

ST. LOUIS, Mo.

BRAUFMAN'S

Congratulations Seniors

You've done a fine job. Your record at Lindenwood—whether academic, musical or social—will be an achievement to look back on with great pride.

We are pleased . . . if we have helped in any way to make your stay here pleasant. We hope to see you again.

HUNING'S

CLARK-SPRAGUE PRINTING CO.

1901 LOCUST STREET

ST. LOUIS, MISSOURI

LAUNDERERS OF FINE LINENS AND WEARING APPAREL

—QUALITY DRY CLEANING—

ST. CHARLES LAUNDRY, INC.

830 S. MAIN STREET

PHONE ST. CHARLES 136

ROYAL PAPERS, INC.

2021 DELMAR BLVD.

ST. LOUIS, MO.

THE LEADING ART SUPPLY
HOUSE OF THE
SOUTHWEST

*Complete Camera
Department*

BADER'S

1112 LOCUST ST.

St. Louis 1, Mo.



BROWN-HORNSEY

Printing Corporation

Printers of the "New" View Book

701 HENRY STREET

ALTON, ILLINOIS

PHONE 3-7749

FIRST NATIONAL BANK

of ST. CHARLES, MO.

CHARLES J. DAUDT	<i>President</i>
JOSEPH A. BOTTANI	<i>Vice-President</i>
LEE I. WHITE	<i>Cashier</i>
W. C. BORGELT	<i>Assistant Cashier</i>
PAUL H. KNOBLAUCH	<i>Assistant Cashier</i>
RUSSEL KANSTEINER	<i>Assistant Cashier</i>
GLENNON DEBRECHT	<i>Assistant Cashier</i>
CLARICE POWERS	<i>Assistant Cashier</i>

CAPITAL \$250,000.00

SURPLUS \$250,000.00

DIRECTORS

JOSEPH A. BOTTANI

PERCY G. SCHAEFER

CHARLES J. DAUDT

DR. AUGUST WESTERFIELD

HENRY J. ROTHER

LOUIS WILKE

LEE I. WHITE

ESTABLISHED IN

1863

MEMBER FEDERAL RESERVE SYSTEM

Under the Supervision of the United States Government

MEMBER FEDERAL DEPOSIT INSURANCE CORPORATION

Heartiest Congratulations

*...with best wishes
for your success
and happiness*



THE QUALITY COALS



BELL & ZOLLER COAL COMPANY

RAILWAY EXCHANGE BUILDING, ST. LOUIS 1, MISSOURI

● BELL BUILDING, CHICAGO 1, ILLINOIS



COBBS HALL

LA BEAUME AND UNLAND

ARCHITECTS

ST. LOUIS, MO.

Another Book

by

CENTRAL



CENTRAL ENGRAVING COMPANY

114 N. SEVENTH STREET

ST. LOUIS 1, MISSOURI



Your badge is a thing of beauty and should be a joy forever!

The traditions of a century-old school cannot be erased by time, and the beauty of your Lambda Chi Badge is as enduring as the traditions of your school. Your Lambda Chi Badge is wrought entirely of gold and set with only genuine perfectly matched Oriental whole pearls—a badge in keeping with all of the fine things that Lindenwood College stands for.

COLLEGE SHOP

317 N. 11TH STREET

Now in Our One-Hundredth Year

ST. LOUIS, MISSOURI

May we take this occasion to express our gratitude to the students and faculty of Lindenwood College for patronizing our products throughout the year

GELATIN DESSERTS—PUDDING POWDERS—PRESERVES—JELLIES—APPLE BUTTER

GRIFFIN & COMPANY

ST. LOUIS 8, MISSOURI

FOREST 2477

COMPLIMENTS OF

J. C. PENNEY COMPANY

MAIN STREET

ST. CHARLES, MISSOURI



Distinction in Yearbooks is earned by intense application of the skills and experience which have been accumulated over many years of actual production. Thirty years of such specialization, plus an earnest desire to excel, show their mark in Mid-State yearbook productions.

Along with the *Linden Leaves*, one of Mid-State's fine productions is this 1957 *Lucky Bag*, of United States Naval Academy, Annapolis, Maryland. The 1953 and 1954 editions also will be our production.

MID-STATE
Printing Company

JEFFERSON CITY, MISSOURI

ENJOY LIFE . . . EAT OUT MORE OFTEN

J. F. CONRAD GROCER CO.

ST. LOUIS, MO.

RECHTERN CLEANING CO.

216 NORTH 2ND STREET

ST. CHARLES, MO.

BOTTANI PRINTERY

F. N. BOTTANI

Proprietor

ESTABLISHED 1919

COMMERCIAL PRINTING

120 N. SECOND STREET

ST. CHARLES, MISSOURI

**WE ARE ALWAYS HAPPY
TO SERVE YOU**

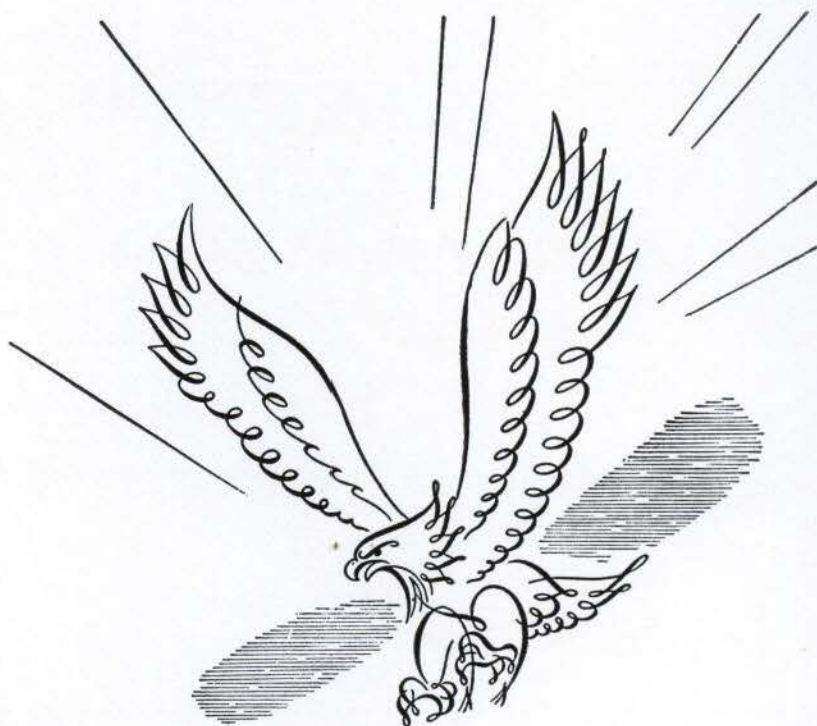
COMPLIMENTS

OF

YELLOW CAB

401 N. SECOND STREET

ST. CHARLES, MO.



On the Alert!

Our plants and personnel
are meeting the nation's needs . . .
in essential rolling stock for America's Railroads
and even now in material
for our growing defense program
A.C.F. is ready to do its job
in whatever the future may hold.
American Car and Foundry Company, New York
Chicago • St. Louis • Washington • Cleveland
Philadelphia • Pittsburgh • San Francisco.

**CAR BUILDERS TO
AMERICA'S RAILROADS**

A.C.F.

STOVES
HARDWARE
BOTTLED GAS
PAINTS AND OILS

THE BRUNS MACHINE CO.

222-224 NORTH MAIN STREET
ST. CHARLES, MO.

FARM SUPPLIES
WATER SYSTEMS
WASHING MACHINES
ELECTRIC APPLIANCES

BANNER NEWS COMPANY

ST. CHARLES, MO.

PRINTERS

PUBLISHERS

KISTER STUDIO

508 JEFFERSON STREET
ST. CHARLES

CONGRATULATIONS TO THE GRADUATES

FROM

ATLAS JEWELERS

COTTAGE BAKERY

"Party Cakes a Specialty"

211 NORTH SECOND STREET

ST. CHARLES, MO.

A Convenient Place to Shop . . .

THE GOLDEN RULE STORE

MATTINGLY BROS. STORES CO.

ST. CHARLES, MO.

We Specialize in 5c to \$5.00 Merchandise—Dry Goods, Notions,
Drug Sundries, Stationery, Gift Items, Houseware and
Other Staple Merchandise

RAUCH LUMBER & GROCER CO.

GENERAL OFFICE

ST. CHARLES, MISSOURI

RETAIL YARDS

ST. CHARLES — KIRKWOOD — WASHINGTON
MARTHASVILLE—ROBERTSON—MOSCOW MILLS

Wholesale Grocer

ST. CHARLES, MISSOURI

“YOU ARE ALWAYS WELCOME AT A RAUCH LUMBER YARD”

BUSE'S FLOWER SHOP

400 CLAY

ARTISTRY IN FLOWERS

PHONE 148

WE TELEGRAPH FLOWERS

VOGT BROS. POULTRY FARM

CONDITIONED POULTRY OF ALL KINDS

GALLAHER AND LINDENWOOD AVENUES
ST. CHARLES, MISSOURI

Branches: UNIVERSITY CITY, MO., and NORMANDY, MO.

H. J. ROTHER

JOHN WETTER

HACKMANN LUMBER COMPANY

LUMBER — PAINTS — HARDWARE

PHONE 806

106 N. MAIN STREET

ST. CHARLES, MO.

**ON NIGHTS OFF CAMPUS—
A GOOD SHOW**

•

STRAND *and* ROXY THEATRES

ST. CHARLES, MISSOURI

MISSOURI COAL AND APPLIANCE COMPANY

G. E. RADIO AND T.V.

G. E. HOME APPLIANCES

FURNITURE

PHONE 440

GREEN MARKED COAL
420 N. MAIN

ST. CHARLES

AHMANN'S NEWS STAND

CIGARS and TOBACCO
NEWS, BOOKS, STATIONERY, SPORTING GOODS

ST. CHARLES, MO.

223 N. MAIN

EDMUND C. BURKE, Plumber and Heating Contractor

STOKERS AND OIL BURNERS

PHONE 162

ST. CHARLES, MO.

COMPLIMENTS OF

The Famous

"For Fashions of Distinction"

311 NORTH MAIN

ST. CHARLES, MO.

COSMOS-MONITOR

*Serving the Community
Since 1836*

PARKVIEW GARDENS

As Near to Lindenwood as Your Telephone

1925 RANDOLPH

We Telegraph Flowers

PHONE 214

COMPLIMENTS OF

TRUMP CLEANERS

200 N. KINGSHIGHWAY

1 BLOCK NORTH OF CAMPUS

PHONE 2140

SALES

ROYAL — VICTOR

SERVICE

MISSOURI TYPEWRITER EXCHANGE

RENTALS AND REBUILDING

FRANK D. HAGAN, *Manager*

WENTZVILLE, MO.

YOUR PATRONAGE
DESERVES OUR CONSTANT
EFFORT TO SERVE YOU BETTER

GRADE "A"
DAIRY PRODUCTS



**ST. CHARLES DAIRY
COMPANY**

GAS

SERVES YOU BETTER
THROUGH MODERN GAS APPLIANCES

ST. CHARLES GAS CORPORATION

212 NORTH MAIN STREET

The Record Bar

Sheet Music

Denning Radio

Repair our Specialty

112 N. MAIN

80

PHONES

1100

Seniors of '53, we wish you
happy days ahead. Keep L. C.
informed of your whereabouts
and activities.

The Staff

