

Lindenwood University

Digital Commons@Lindenwood University

Yearbooks

Lindenwood University Archives

1954

1953-1954 Linden Leaves

Lindenwood College

Follow this and additional works at: <https://digitalcommons.lindenwood.edu/yearbooks>

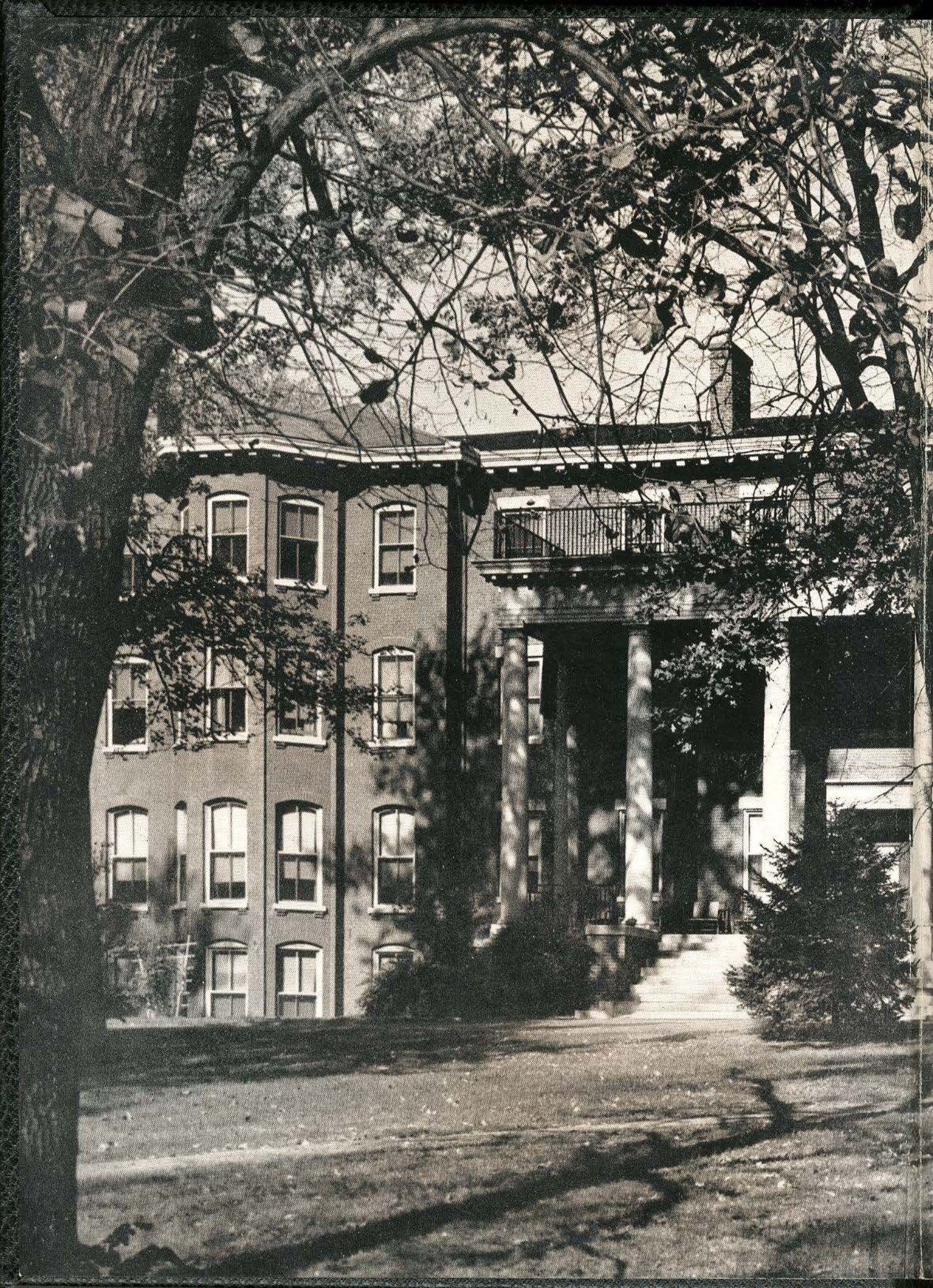
Recommended Citation

Lindenwood College, "1953-1954 Linden Leaves" (1954). *Yearbooks*. 36.
<https://digitalcommons.lindenwood.edu/yearbooks/36>

This Book is brought to you for free and open access by the Lindenwood University Archives at Digital Commons@Lindenwood University. It has been accepted for inclusion in Yearbooks by an authorized administrator of Digital Commons@Lindenwood University. For more information, please contact phuffman@lindenwood.edu.



LINDEN LEAVES







1954

Linden Leaves

Board

<i>Editor-in-Chief</i>	MARY NELL VAN BIBBER
<i>Business Manager</i>	JANE EDWARDS
<i>Literary Editor</i>	DEANE DETTMANN
<i>Art Editor</i>	ILLOMAY HACHTMEYER
<i>Organization Manager</i>	RUTH WEBER
<i>Advertising Manager</i>	BEVERLY HARRINGTON

Annual Publication of the Students of
LINDENWOOD COLLEGE, ST. CHARLES, MISSOURI

Engraving by CENTRAL ENGRAVING COMPANY
St. Louis, Missouri

Printing and Binding by Von Hoffmann Press Inc.
Jefferson City, Missouri

Photography by HERB WEITMAN *and* ALTA QUAST

Students of Lindenwood Pass Through a Gateway . . .

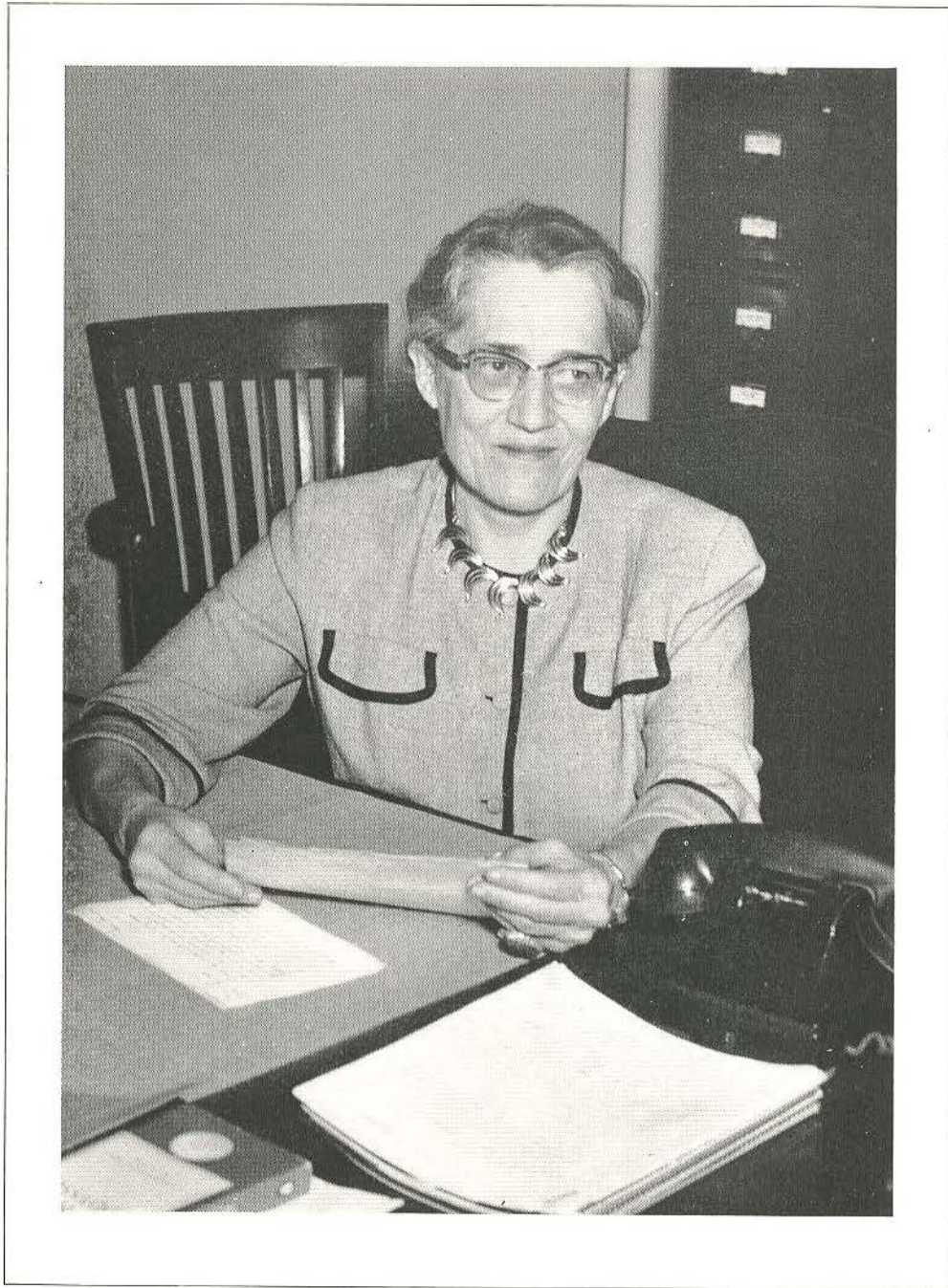
The faculty and administration—the foundation of this gateway—serve as guideposts, ever-willing to encourage through firm and constant example.

The students accept their guidance, while they find in their fellow-students the friendship and encouragement from within that come through living, working, and learning together.

Activities add meaning and shape to the gateway—an opportunity to apply knowledge acquired in the classroom.

To be finished, the gateway demands ornamentation. Here is found the beauty which, combined with function, completes the structure.

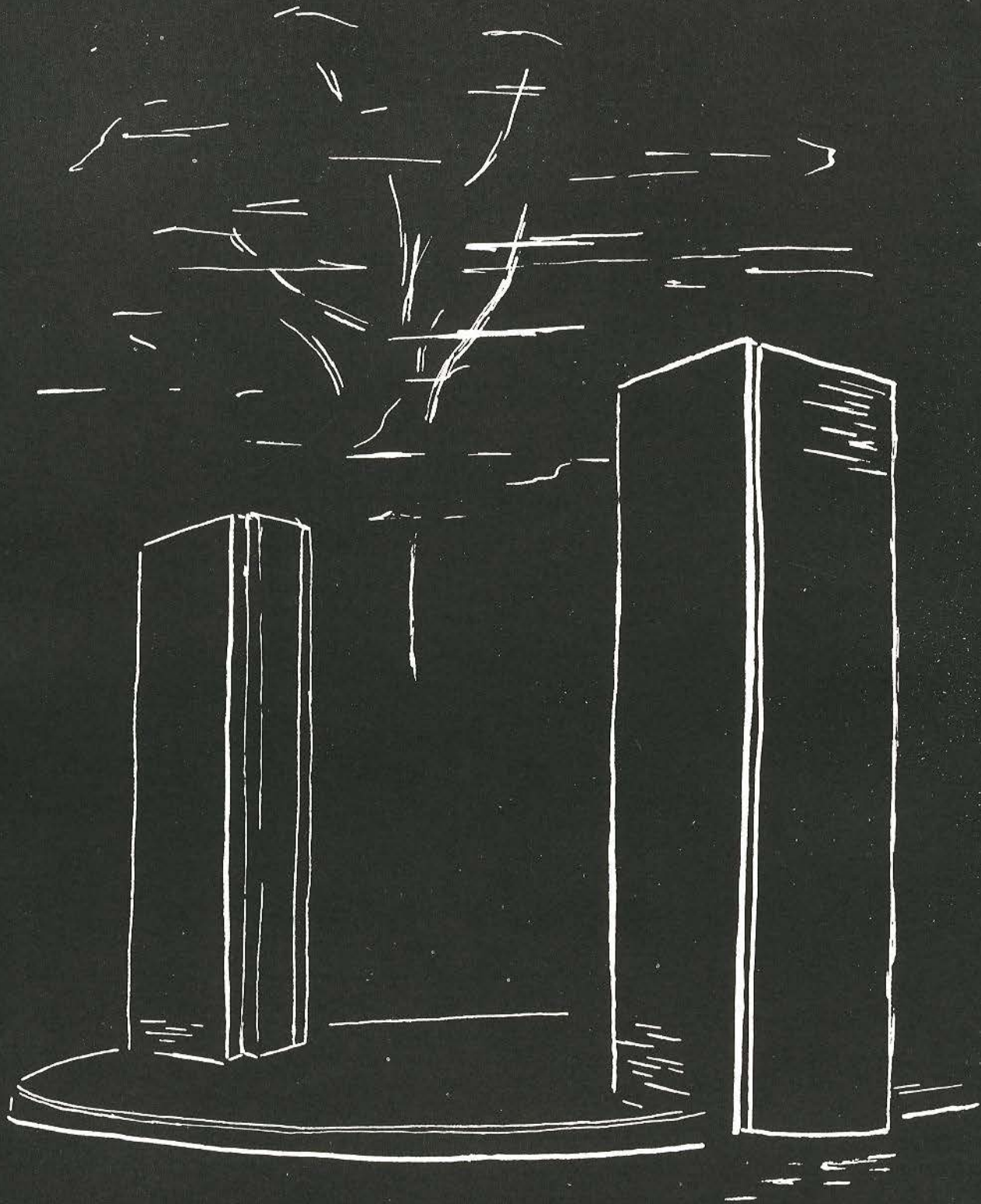
Its wholeness symbolizes strength, utility, and beauty. These three symbolize the richness and the unity in the life of Lindenwood.



Dedication to Dr. Alice Parker

A representative
of understanding and wisdom . . .

A challenge to become as she—
constant and unwavering
in the search for truth



Guideposts to the privilege and to the reward of education—

Endowed with sincere and earnest desire to open the way for a worthy life.

Faculty and Administration

Administration



FRANC L. McCLUER, Ph.D.
President of the College

To the class of 1951

Congratulations to each of you! May your strength be as your days and may wisdom direct your footsteps, for "Her ways are ways of pleasantness and all her paths are peace."

F. L. McCLUER

Administration

OUR GOOD wishes go with the class of 1954. You and your home life will be enriched by your experiences at Lindenwood College. May you face your community problems with clear thinking and a spirit of usefulness, and may you always keep your horizons worldwide.

PAULENA NICKELL
Dean of the College

(This was written in the harbor of Formosa.)



PAULENA NICKELL, Ph.D.
Dean of the College



ROBERT C. COLSON
Business Manager

Sir Colson, grand master of
Budget,
An expert who won't ever
fudge it.

He watches those leaves
Like the cuffs of his
sleeves—

Sir Colson, grand master of
Budget.

Administration



HATTIE KOLB—*Bookkeeper*
CORAWAYE—*Chief Accountant*
AGNES ZEISLER—*Secretary to Business Manager*

There is a director of guidance
In whom students place their
confidence.

Her name is Lichliter,
She's really a fighter;
She helps bid their problems
good riddance.



MARY F. LICHLITER
Director Student Guidance and Placement



LIV USTAD—*Secretary to Director of Guidance*
DOROTHY MATTHEWS—*Social Director*

Administration

This man is in charge of admissions;
He speaks oft of L. C.'s traditions.

His name is McMurry—
Causes students to hurry
When he tells of travel conditions.



WILLIAM FLETCHER McMURRY
Director of Admissions



BETTIE B. WIMBERLY
Secretary to the Director of Admissions

CARRIE M. CHARLES
In Office of Director of Admissions

LILLIAN SIEDHOFF
Secretary to the Director of Admissions

Administration



Our registrar, Miss L. C. Beale,
Sends transcripts with Linden-
wood seal.

She registers lasses,
In all of their classes,
And helps them stay on even
keel.

LULU CLAYTON BEALE
Registrar

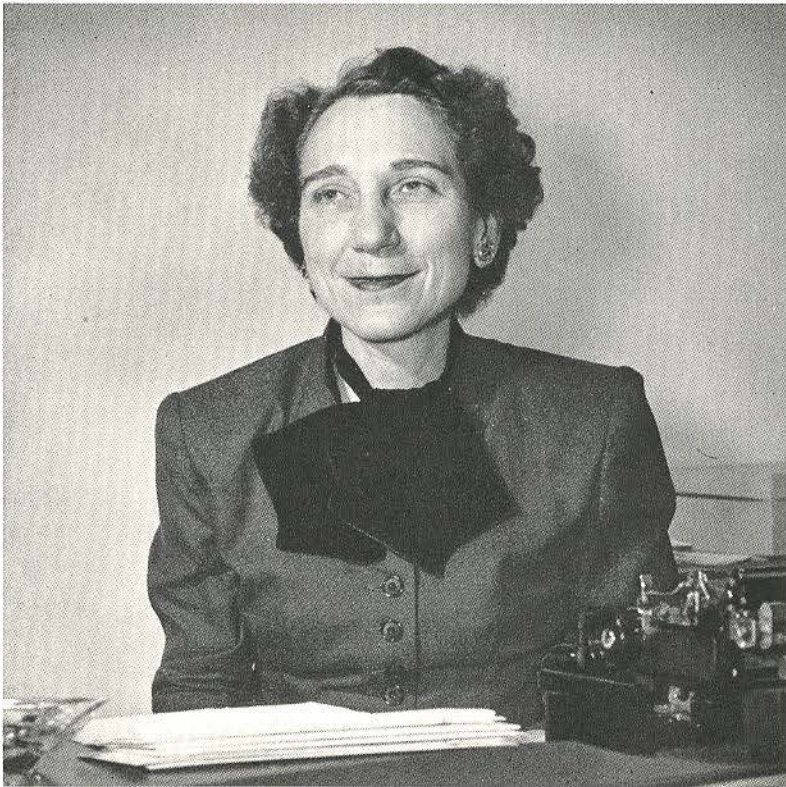


Administration

MARY HENDERSON
Secretary to the Dean of the College

JEAN BARKLAGE
Secretary to the Registrar

MARY YONKER
Secretary to the President



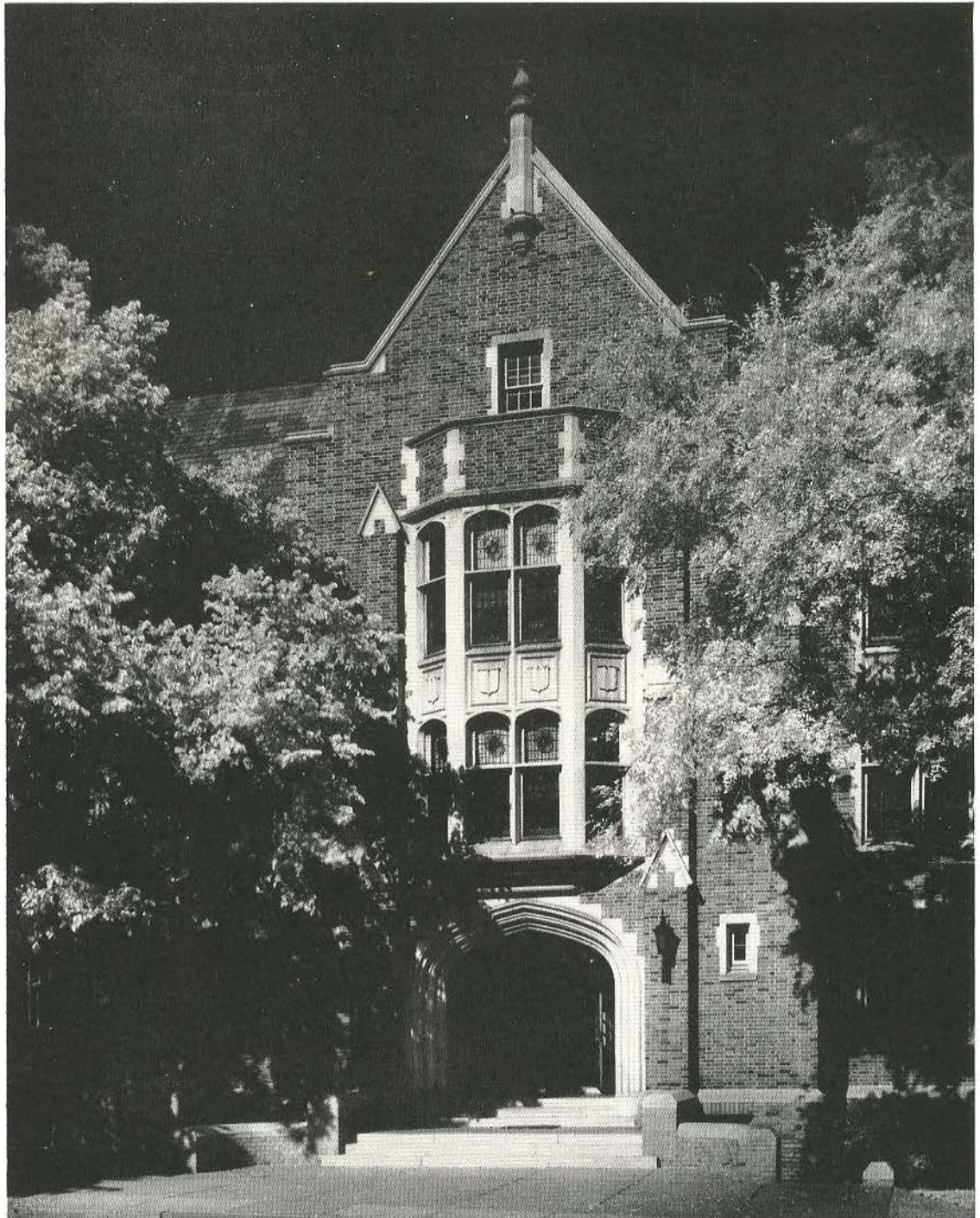
Director of public relations,
Informer of L. C. sensations—
Keeps up on "who's whos"
In all home town news,
Mrs. Bryant, of public relations.

MARY BRYANT
Alumnae Secretary and Director of Public Relations

Administration



JOANNE OLSON
Secretary to the Director of Public Relations



ROEMER HALL

This building is dedicated
to the cause for which
Lindenwood College
was founded.

"The Christian Education
of Young Women."

This tablet presented by:
The St. Louis
Lindenwood College Club
A.D. 1922

Sociology-Economics



JOHN B. MOORE, ROBERT G. SCHMIDT

There was an instructor named Moore,
Whose hangout was on second floor.
In the Tea Room he'd sit
With a fellow named Schmidt
And drink coffee in cups by the score.

History

There was a department of history
Whose secrets are all kept a mystery—
Till Dorothy and Homer
Start teaching in Roemer
Said secrets turn into sophistry.



HOMER CLEVINGER, DOROTHY WILLIAMS



HARRY D. HENDREN, MILDRED FISCHER, ARTHUR KANAK

Art

Kanak! Kanak!! "Who is
there?"
Two guys and a gal sans long
hair!
"I'm in a big rush—
Hendren's taken my
brush—"
Cried Fischer, "My canvass is
bare!"

Faculty

Music

Fine Arts where the music is great,
There you'll find the dignified eight.
When they start to tune-up,
They play till the moon's up,
And continue till next day at eight.



Front row: ROBERT A. CRUCE, MILTON REHG
Second row: WAYNE BALCH, PEARL WALKER

Faculty



ALLEGRA SWINGEN, VIRGINIA L. HOUSE,
GERTRUDE ISIDOR, JOHN THOMAS

Biology



MARION DAWSON, MARY TALBOT, WALTER GRUNDHAUSER

Dressed in lab coats so stylish and graceful,
Of formalin you'll get a faceful.
Just ask Mr. G.
'Bout a bird or a bee,
Drs. T., D., and G. keep your days full.

Physical Science

'Twas on a fine day back in May
When we heard a scream from Miss Gray:
"On, Miss Lear, do come here—
This'll be a short year
Cuz the lab—just blew thataway!"



CAROLYN S. GRAY, MARY E. LEAR



LOUISE BEASLEY

Mathematics

Pi-Delta-triangle—mathematical—
Cylindrically square problematical—
"But Miss B, can't you see
It's just too deep for me—
My mind just is not analytical."

Faculty

Journalism



MARY BRYANT

News-writing, they say, is an art,
And Mrs. Bryant takes this to heart.
Though studied "below,"
All certainly know
That the teacher perfected the art.

Classical Languages, Literature

SIEGMUND A. E. BETZ, ALICE PARKER

Achilles of old and Sophocles, too,
Had problems galore, the old and the new.
But poor Dr. Betz,
L. C. he upsets
With tales from the classics—true?

English

Sonnets, odes, lyrics, or free
verse,
Prose or poetry — elongated,
terse.
Parker, Dawson, and Sib-
ley,
Betz, Littleton, Ely
Vow "be bop" a present-day
curse.

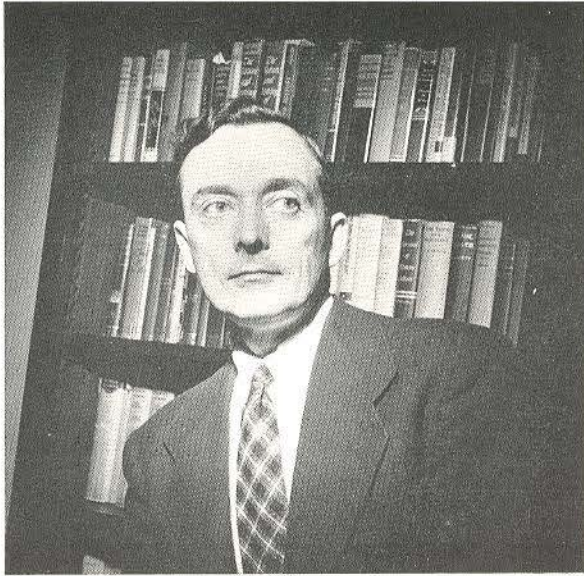


Faculty

Page 19

Front row: ELIZABETH DAWSON, DOROTHY ELY, ALICE PARKER
Second row: AGNES SIBLEY, BETTY JACK LITTLETON, SIEGMUND A. E. BETZ

Philosophy



C. EUGENE CONOVER

Professor and doctor, philosopher, too,
A scholar of logic—can all this be true
Of Dr. Conover?
Why, yes, and moreover,
His courses are patterned to stimulate you.



THEODORE A. GILL
Dean of Chapel

Psychology

There was a young woman named Rachel,
When questioned on matters quite factual—
The cause of psychosis,
Effects of neurosis—
For info referred to her satchel.



ANITA CROFT, RACHEL M. MORRIS

Religion

An eminent theologian named Gill
Says "J, P, D, and E fill the Bill."
"If you know nothing more,
Just remember these four,"
Advises the eminent T. Gill.

Faculty

Speech

A course in speech is imminent—
Six hours to be competent.
The reason why
We must comply
Is to better our diction—evident?



JULIET MCCRORY, ROBERT DOUGLAS HUME, MARTHA MAY BOYER



HORTENSE F. EGGMAN, MILDRED KOHLSTEDT

Library

There once were two finders of facts
Who frequented the depths of the stacks,
Where they kept all the books
From Christie's to Koch's,
Those capable finders of facts.

Faculty

Modern Language



MARY TERHUNE, THOMAS W. DOHERTY, HUGO BAUER

Modern languages is a department
That is eager for proper deportment.
Vous etes or tu es
You hope and you pray;
Which to use—a matter important.

Secretarial Science

Two ladies who typed with great ease
Were really whiz-bangs on the keys,
Said Miss Bettie B.
As she watched our Miss C.—
“And with rock on her hand—such ease!”



BETTIE B. WIMBERLY, CHARLOTTE CLUTTERBUCK



IRENE VAN BIBBER, MARGARET LINDSAY, SOPHIE PAYNE ALSTON

Home Economics

“Man must work from sun to sun,
But woman’s work is never done.”
The home econ. girls
Can well twist their curls
As they realize that this is much fun.

Faculty



BREMEN VAN BIBBER

Education

To please Mr. Bremen Van Bibber
Is to some a primary endeavor,
It's those whose vocation
Is child education
Who know Mr. Bremen Van Bibber.

Physical Education

For exercise strenuous or mild
Which everyone needs here, my child,
For credit or fun,
Come on, everyone,
For exercise strenuous or mild.



DORIS ZOELLNER, DOROTHY ROSS, MARGUERITE VER KRUZEN

Faculty



Health Center

You're not feeling well Sunday night,
And Monday's prospects aren't bright?
So you're sure you're quite ill—
Take a bumble-bee pill,
And we'll see how you feel Friday night!



Post Office Staff

In boxes for letters and mail
We look for these things without fail.
If you find nothing there
You may go on a tear—
But boxes are empty, sans mail.

Top picture: E. J. CANTY, M.D., CAROL NULL, R.N., LOLA BREITENSTEIN, R.N.

Bottom picture: RAE SHORT, AMY M. WAGNER, JUNE PURGAIN.

Buildings, Grounds

Our campus so neat and so green
Is one that we're proud to have seen.
The crew for the grounds
And the buildings around
Help keep our surroundings so clean.

Tea Room Staff

This wonderful habit of eating
Is constant and calls for repeating.
House and Brooks understand
The business at hand,
And our need to be constantly eating.



CHARLES H. BUSHNELL

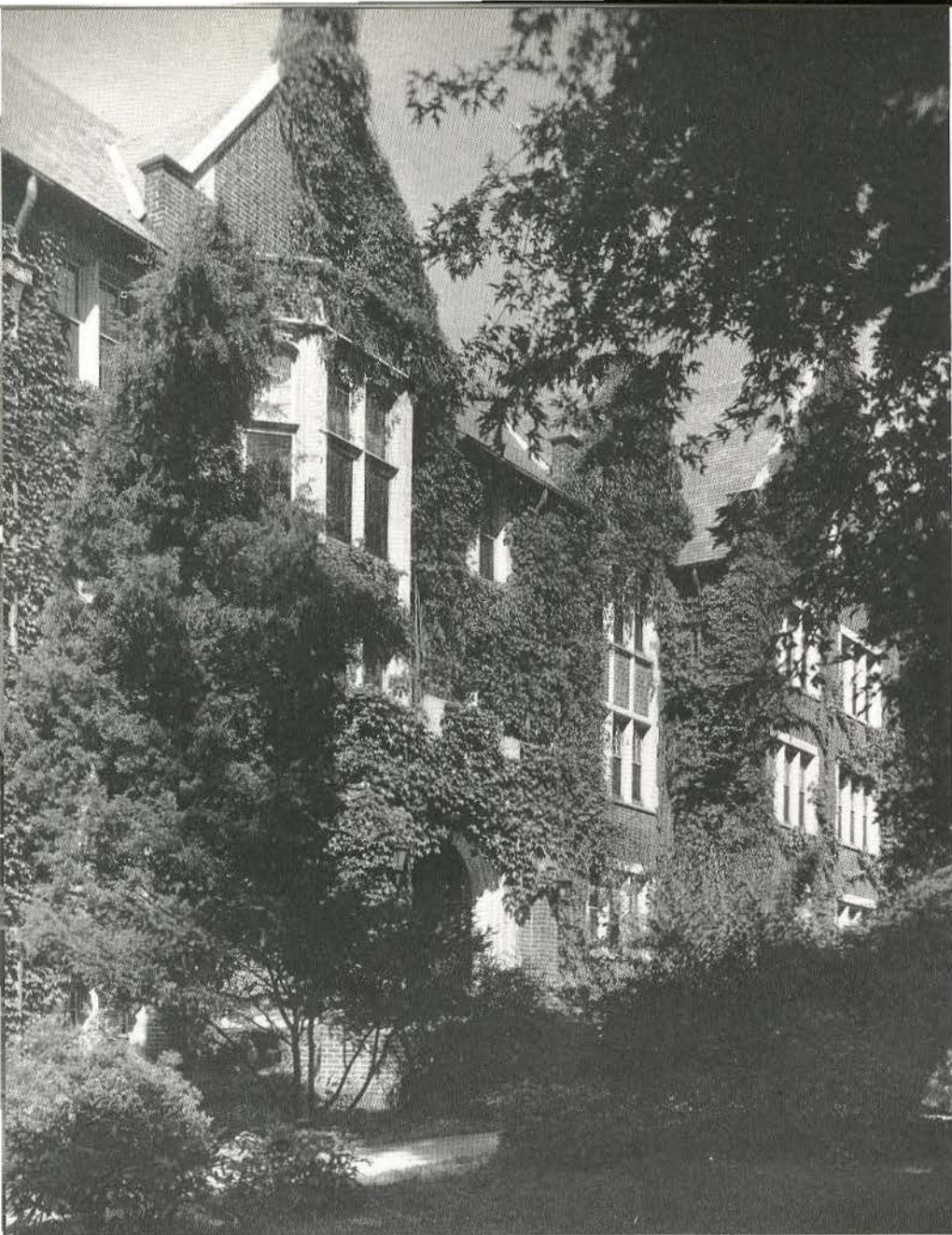
Food Service Staff



DORIS ORF, EDNA BROOKS, SALLY DRILLER



JULIA KEITHLY, CARL HOUSE



Irwin Hall

to the cherished memory of
REV. ROBERT IRWIN, D.D.
President of Lindenwood College
1880-1893
and
MRS. KATE IRWIN
his loving and devoted helpmate
this tablet is presented by
the students of their administration
whose lives they molded and enriched
1927



HELEN M. CALVERT
Head Resident

Cobbs Hall

Named in honor of
THOMAS HARPER COBBS
for distinguished service
as Counsel and
member Board of Directors

Dedicated
November twenty-first
1949



LUCILLE VICK
Head Resident



Sibley Hall



This building named in honor
of
MAJOR GEORGE C. SIBLEY
and his wife
MARY EASTON SIBLEY
Founders of Lindenwood College
1827



FRANCES MCKINNEY JONES
Head Resident



HELEN M. BUCKNER
Head Resident

Niccolls Hall

Erected
in
memory of
REV. SAMUEL JACK NICCOLLS, D.D.
by
his friend
James Gay Butler
1916



Butler Hall



In honor of
COLONEL JAMES GAY BUTLER
Lindenwood's Beloved Benefactor
1840-1916



Page 30

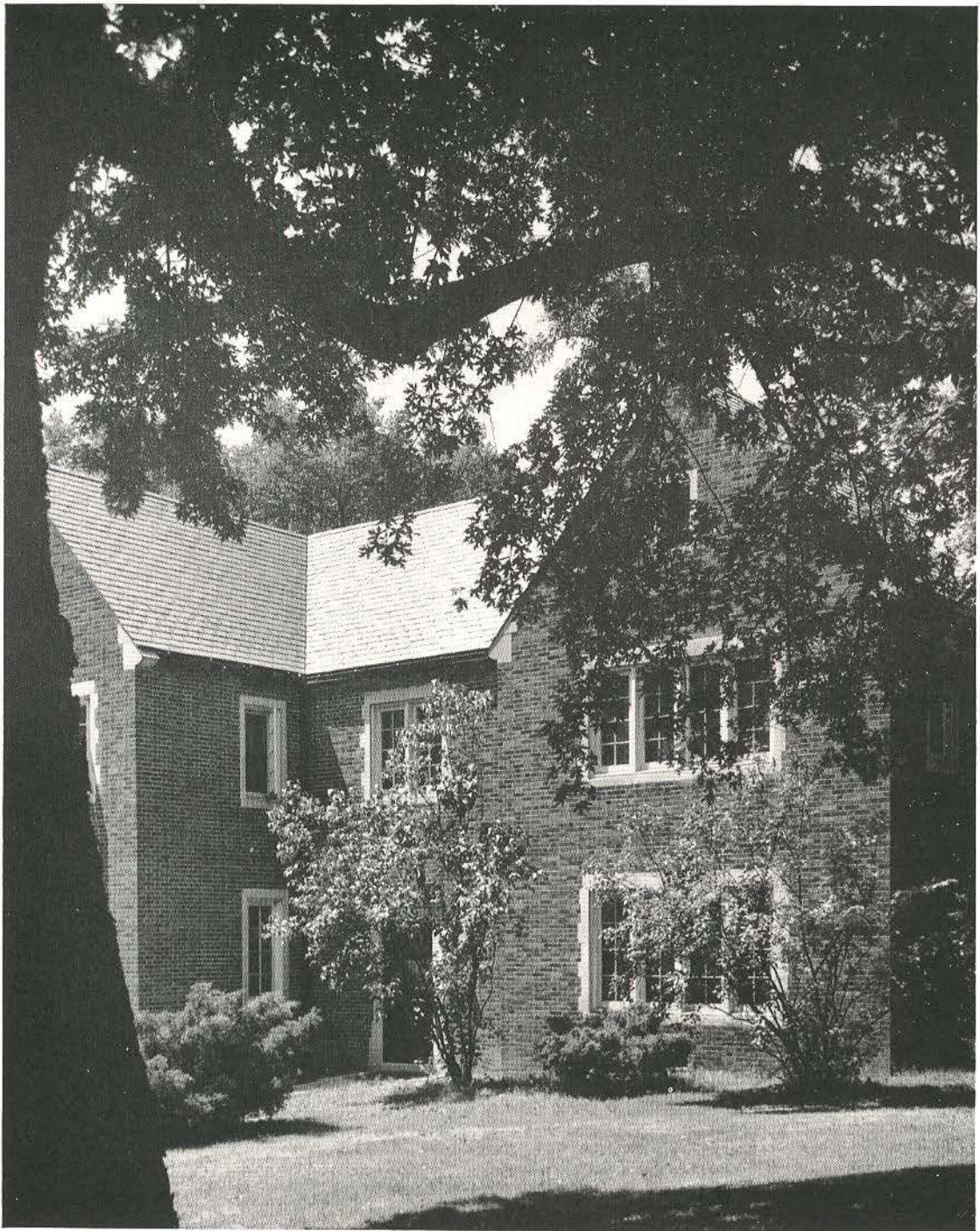
LULA CLAYTON BEALE
Head Resident



Library

Fine Arts Building



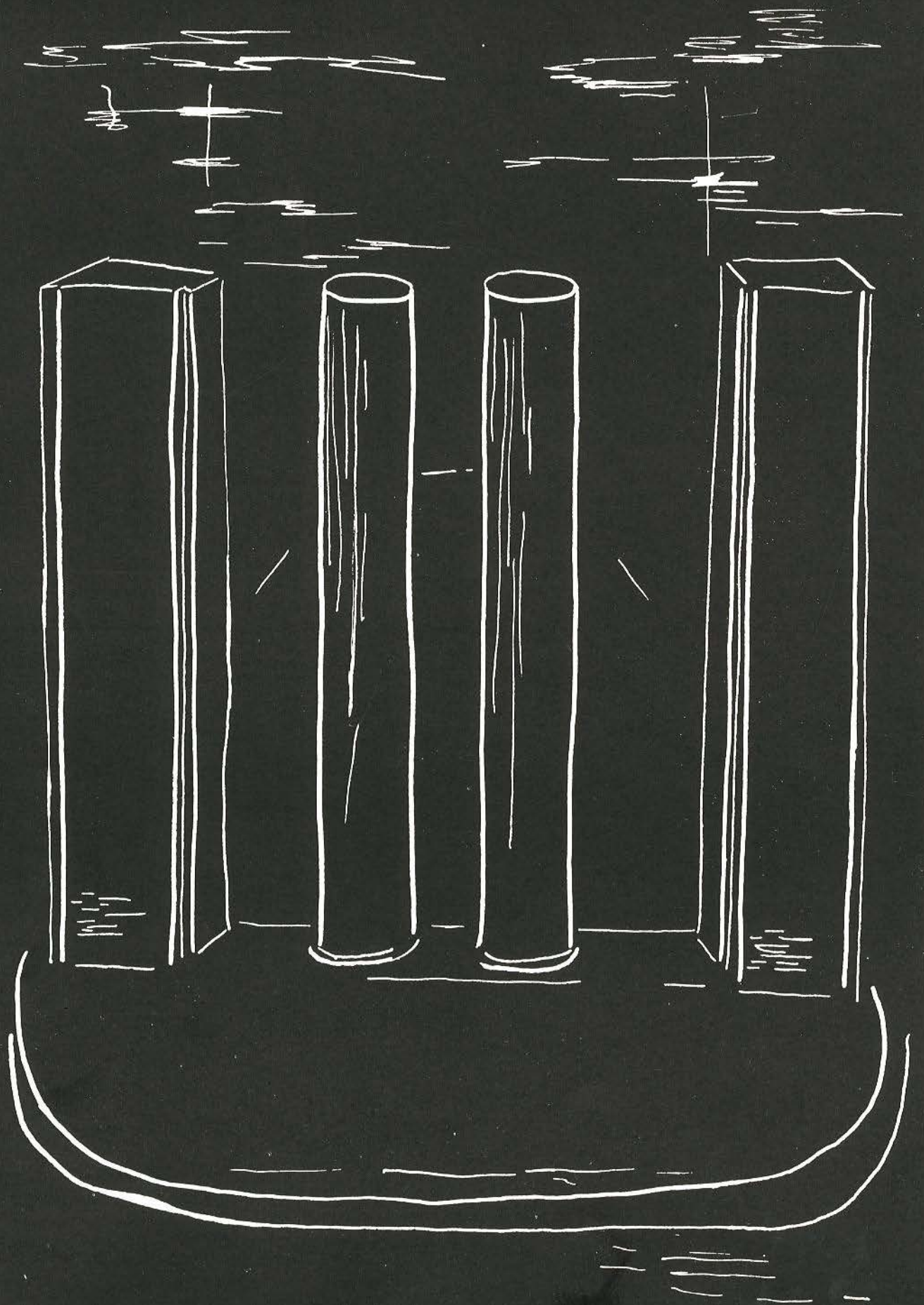


President's Home

Health Center



Home Management House



The friendship that enables growth—
Encouragement from within.

Classes



MARGARET AHDRENS



SUK HUN CHAN



CORA LEE CRITCHFIELD



JO JUNE DEWEESE



CAROL JEANNE ELLIS



MARTHA JANE EVANS

Seniors

MARGARET ANN AHRENS

B.S., Home Economics

St. Charles, Missouri

Student Council, '53-'54; Day Students' Club, '53-'54; Colleen, '53-'54; Encore Club, '53-'54.

SUK HUN CHAN

B.S., General Business

Seremban, Malaya

Alpha Sigma Tau, '53-'54, Vice-President, '53-'54; Alpha Lambda Delta, '51-'52; Commercial Club, '52-'53, Treasurer, '52-'53; Dean's Honor Roll, '50-'54.

CORA LEE CRITCHFIELD

B.A., Art

Tecumseh, Nebraska

Judiciary Board, '53-'54; Chairman of Freshman Counselors, '53-'54; Pi Alpha Delta, '51-'54, Secretary-Treasurer, '51-'52; Kappa Pi, '51-'54; Alpha Sigma Tau, '52-'54; Alpha Lambda Delta, '51-'53; International Relations Club, '52-'54, President, '52-'53; Young Republicans, '52-'54; Dean's Honor Roll, '50-'54; Washington Semester, '52; Who's Who in American Colleges and Universities, '53-'54.

JO JUNE DE WEESE

B.A., English

Hugo, Oklahoma

Butler Hall President, '53-'54; Poetry Society, '50-'54, President, '53-'54; Pi Alpha Mu, '51-'54; Alpha Sigma Tau, '52-'54; Modern Language Club, '50-'53, President, '51-'52; League of Women Voters, '52-'53; Young Democrats, '52-'54; International Relations Club, '51-'52; Griffin Staff, '50-'54, Assistant Editor, '50-'51, '52-'54, Editor, '51-'52; Literary Editor of Linden Leaves, '52-'53; Press Club, '52-'53; Dean's Honor Roll, '50-'53; Pi Alpha Mu Writing Award, '51; Spahmer Award, '53; Washington Semester, '52; Who's Who in American Colleges and Universities, '53-'54; Woodrow Wilson Fellowship, '51.

CAROL JEANNE ELLIS

B.A., Chemistry

St. Charles, Missouri

Alpha Sigma Tau, '53-'54; Day Students' Club, '51-'54; Triangle Club, '52-'54; Beta Chi, '51-'52; Dean's Honor Roll, '51-'54.

MARTHA JANE EVANS

B.A., Biology

Malden, Missouri

Alpha Sigma Tau, '53-'54, Secretary-Treasurer, '53-'54; Alpha Lambda Delta, '51-'52; Pi Alpha Delta, '51-'54, Secretary-Treasurer, '52-'54; Triangle Club, '53-'54; Future Teachers of America, '53-'54; Choir, '51-'52; Choir Tour, '51; League of Women Voters, '51-'53, Vice-President, '52-'53; Young Democrats, '51-'53; International Relations Club, '51-'53; Dean's Honor Roll, '51-'54.





ANN FRAZIER



PATRICIA GLEESON



FRANCES JANE
HABERTIER



ELOMAY HACHTMEYER



MARIE CLAIRE
HELMLINGER



JEANETTE HESTER

Seniors

ANN FRAZIER

B.A., Mathematics
Stigler, Oklahoma

Student Council, '50-'51, President, '53-'54; Junior Class Treasurer, '52-'53; Niccolls Hall President, '50-'51; Pi Alpha Mu, '50-'52; Alpha Sigma Tau, '52-'54; Triangle Club, '50-'54, Treasurer, '51-'52; Modern Language Club, '50-'52; Delta Nu, '52-'54; Choir, '50-'51; Athletic Association, '51-'54, Secretary, '52-'53; Basketball Team, '50-'54, Captain, '53-'54; Dean's Honor Roll, '50-'54; Washington Semester, '52; Who's Who in American Colleges and Universities, '53-'54.

PATRICIA GLEESON

B.A., Psychology
Wahoo, Nebraska

Student Council, Vice-President, '53-'54; Alpha Sigma Tau, '52-'54; Pi Alpha Mu, '50-'54; Delta Nu, President, '53-'54; Modern Language Club, '50-'52, Secretary, '51-'52; Choir, '50-'53; League of Women Voters, '50-'53; Young Republicans, '52-'53; International Relations Club, '50-'52; Linden Leaves Staff, '51-'52, Editor, '52-'53; Dean's Honor Roll, '50-'54; President's Scholarship, '53; May Court, Maid of Honor, '53; Who's Who in American Colleges and Universities, '53-'54.

FRANCES HABERTHIER

B.S., Home Economics
Creve Coeur, Missouri

Colhecon, '52-'54, Secretary, '53-'54; Young Republicans, '52-'53; Dean's Honor Roll, '52-'53.

ILLOMAY HACHTMEYER

B.A., Art
St. Charles, Missouri

Pi Alpha Delta, '50-'54; Day Students' Club, '50-'54, President, '53-'54; Future Teachers of America, '52-'54; League of Women Voters, '51-'52; Linden Leaves Staff, '52-'53, Art Editor, '53-'54; Dean's Honor Roll Honorable Mention, '53-'54.

MARIE CLAIRE HELMLINGER

B.A., History and Government
Strasbourg, France

Modern Language Club, '52-'54; International Relations Club, '52-'54; Beta Chi Club, '52-'53.

JEANETTE HESTER

B.A., Biology
Russellville, Alabama

Secretary of Junior Class, '52-'53; Sibley Hall President, '53-'54; Student Christian Association Treasurer, '52-'53; Alpha Sigma Tau, '52-'54; Alpha Lambda Delta, '50-'52, Vice-President, '51-'52, Senior Advisor, '53-'54; Triangle Club, '51-'54, Vice-President, '52-'53, President, '53-'54; Modern Language Club, '52-'54; Delta Nu, '53-'54; Choir, '52-'53; Linden Leaves Staff, '51-'52; Dean's Honor Roll, '50-'54; President's Scholarship, '50-'53; Who's Who in American Colleges and Universities, '53-'54.





SERITA HUMPINER



ARLINE KRUEEL



BEVERLY LETT



YU-CHEN LI



SANDRA LUNAK



ANITA MARSHALL

Seniors

SERITA CLAUDE HUMPHNER

B.A., Biology

River Forest, Illinois

Judiciary Board, Secretary, '53-'54; Triangle Club, '51-'54; Secretary-Treasurer, '52-'53; Future Teachers of America, '53-'54; Delta Nu, '53-'54; Beta Chi, '50-'53, President, '52-'53; Dean's Honor Roll Honorable Mention, '53.

AIRLINE KRUEL

B.S., Home Economics and Business Economics

Washington, Missouri

Student Council, '52-'53; Senior Class Secretary, '53-'54; Cobbs Hall House Staff, '52-'53; Student Christian Association Cabinet, '51-'54, Conference Chairman, '51-'52, Christian Faith Chairman, '52-'53, Fellowship Chairman, '53-'54; Colhecon, '51-'54, President, '53-'54; Instrumental Association, '51-'52; League of Women Voters, '51-'54; Young Republicans, '51-'54; May Court, '52.

BEVERLY LETT

B.A., Art

St. Charles, Missouri

Kappa Pi, Secretary-Treasurer, '53-'54; Day Students' Club, '50-'54, Secretary-Treasurer, '52-'53, Vice-President, '53-'54; Future Teachers of America, '53-'54; Choir, '50-'52, Choir Tours, '50-'52; Athletic Association, '51-'54.

YU-CHEN LI

B.A., Biology and Chemistry

Peiping, China

Alpha Sigma Tau, '52-'54, President, '53-'54; Triangle Club, '51-'54, President, '52-'53; Modern Language Club, '50-'51-'53-'54; Delta Nu, '53-'54; International Relations Club, '50-'54; Athletic Association, '50-'54; Dean's Honor Roll, '51-'54; Westminster Shorter Catechism College Scholarship, '50-'51; President's Scholarship, '53-'54.

SANDRA ANN LUNAK

B.A., Psychology

West Chicago, Illinois

Niccolls Hall Staff, '53; Delta Nu, Secretary, '53-'54; League of Women Voters, '50-'54; Young Republicans, '50-'54; International Relations Club, '51-'54; Dean's Honor Roll, '53-'54.

ANITA MARSHALL

B.S., General Business

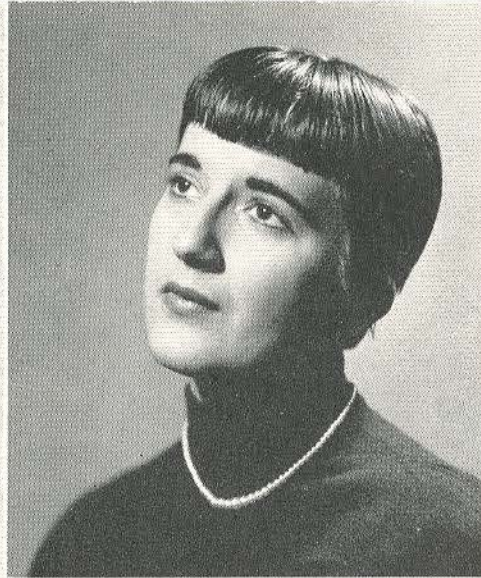
Fairfield, Illinois

Senior Class Vice-President, '53-'54; Niccolls Hall Staff, '53; Colhecon, '52-'53; Commercial Club, '50-'53; Future Teachers of America, '51-'54; Encore Club, '50-'54; Delta Nu, '53-'54; League of Women Voters, '51-'54, Vice-President, '53-'54; Young Republicans, '51-'54; Athletic Association, '50-'53; Business Manager of Linden Leaves, '52-'53; Press Club, '52-'54; Dean's Honor Roll, '53-'54.





PAULA MOORE



SUE NULL



MARY KAY PINCKNEY



MARGARET PFOFF
RESCHITZ



JULIE RICHARDS



EUNICE SBELEY

Seniors

PAULA LOU MOORE

B.A., Speech

Oklahoma City, Oklahoma

Cobbs Hall President, '52-'54; Alpha Psi Omega, '52-'54, President, '53-'54; KCLC, '50-'52; KFUC Children's Show, '52-'53; Alpha Epsilon Rho, '51-'54; Pi Alpha Mu, '52-'54; Modern Language Club, '52-'54; Choir, '53-'54; Young Republicans, '50-'51; Orchestis, '51-'53; Press Club, '51-'54; Dean's Honor Roll, '51-'54; May Court, '53, Queen, '54; Play Productions; Who's Who in American Colleges and Universities, '53-'54.

SUE ANN NULL

B.M., Voice

Muncie, Indiana

Modern Language Club, '50-'53; Delta Theta, '50-'52; Mu Phi Epsilon, '51-'54, Warden, '52-'53, Vice-President, '53-'54; Dean's Honor Roll, '51-'54; St. Louis Opera Guild Scholarship to study in St. Louis Opera Theatre, '52-'54; Appearances in St. Louis Opera Workshop, '52-'54; Winner, St. Louis Young Artists Contest, '53.

MARY KATHRYN PINCKNEY

B.A., Speech

Lebanon, Missouri

Student Council, '51-'52; Alpha Psi Omega, '52-'54, Vice-President, '53-'54; KCLC Personnel, '53-'54; Alpha Epsilon Rho, '54; Modern Language Club, '50-'52; Future Teachers of America, '53-'54; Choir, '50-'52; Young Republicans, '52-'54; Press Club, '51-'54; Dean's Honor Roll, '50-'51, '52-'54; Play Productions; Washington Semester, '52.

MARGARET PFOFF RESCHETZ

B.S., Music Education

Rochelle, Illinois

Judiciary Board Secretary, '51-'52; Irwin Hall Staff, '51-'52; Student Christian Association, '50-'51, Conference Chairman, '52-'53, President, '53-'54; Future Teachers of America, '51-'54, Vice-President, '52-'53; Choir, '50-'54; Delta Theta, '51-'52; Mu Phi Epsilon, '51-'54, Treasurer, '52-'54; Orchestra, '50-'51; Dean's Honor Roll, '51-'54.

JULIE RICHARDS

B.A., Speech

Oklahoma City, Oklahoma

Student Council, '53; Sibley Hall House Staff, '53; KCLC, '50-'54, Staff, '52-'54, Program Director, '53-'54; Alpha Epsilon Rho, '52-'54, Secretary, '53-'54; Speech Choir, '51-'52; Triangle Club, '51-'54; Modern Language Club, '50-'51; Choir, '50-'52, Choir Tours, '51-'52; Press Club, '51-'53; Dean's Honor Roll, '51-'53; Play Productions, '52-'54; Washington Semester, '52.

EUNICE MARIE SHELLEY

B.A., Radio and Television, and Dramatics

Alton, Illinois

House Staff, Nicolls, '50-'51, Cobbs Staff, '51-'52; Alpha Psi Omega, Secretary-Treasurer, '52-'54; KCLC Staff, '51-'54, Continuity Director, '51-'52, Production Director, '52-'53, Station Manager, '53-'54; KFUC Children's Show, '51-'52; Alpha Epsilon Rho, '52-'54, Vice-President, '52-'53, President, '53-'54; Pi Alpha Mu, '52-'54; Modern Language, '50-'51; Future Teachers of America, '53-'54; Choir, '50-'52; Young Republicans, '51-'54; Athletic Association, '50-'52, Publicity Chairman, '51-'52; Press Club, '51-'54; Dean's Honor Roll, '50-'54; Play Productions, '50-'54; Washington Semester, '52-'53.





SANDRA SNIDER



MARIAN STOERKER



MARY ANN TOLSEN



MARY NELL VAN BIBBER



RUTH WEBER

Seniors

SANDRA SNIDER

B.A., Speech

Borger, Texas

Junior Class President, '52-'53; Senior Class President, '53-'54; Nicolls Hall Staff, '53; Student Christian Association Recreation Chairman, '53-'54; Alpha Psi Omega, '54; Colhecon, '51-'53, Secretary-Treasurer, '52-'53; Future Teachers of America, '52-'54; League of Women Voters, '51-'52; Young Democrats, '51-'52; Play Productions.

MARIAN LOUISE STOERKER

B.S., Physical Education

St. Charles, Missouri

Alpha Sigma Tau, '52-'54; Alpha Lambda Delta, '51-'52; Triangle Club, '53-'54; Modern Language Club, '52-'53; Future Teachers of America, '52-'54; Encore Club, '50-'51; Athletic Association, '50-'54, Secretary, '51-'52, President, '52-'54, Team Sports, '50-'54; Orchesis, '53-'54; Terrapin, '50-'53, Secretary, '51-'52; Dean's Honor Roll, '50-'54; President's Scholarship, '51-'52; Who's Who in American Colleges and Universities, '53-'54.

MARY ANN TODSEN

B.S., Home Economics

Mexico, Missouri

Student Council, '53-'54; Junior Class Vice-President, '52-'53; Cobbs Hall House Staff, '52-'53; Colhecon, '50-'54, Vice-President, '51-'53; Future Teachers of America, '53-'54; League of Women Voters, '52-'53; Young Republicans, '52-'53; Orchesis, '51-'53, Secretary-Treasurer, '52-'53; Dean's Honor Roll, '52-'53; Honorable Mention in Nelly Don Contest, '51.

MARY NELL VAN BIBBER

B.S., Elementary Education

St. Charles, Missouri

Student Council, '51-'52; Freshman Class Vice-President, '50-'51; Student Christian Association Recreational Chairman, '52-'53; Alpha Sigma Tau, '52-'54; Alpha Lambda Delta, '51-'52; Future Teachers of America, '51-'54; Choir, '52; Young Republicans, '52-'53; Linden Leaves, '52-'54, Organization Manager, '52-'53, Editor, '53-'54; Dean's Honor Roll, '50-'54; President's Scholarship, '53; May Court, '53-'54; Who's Who in American Colleges and Universities, '53-'54.

RUTH WEBER

B.S., General Business

Sappington, Missouri

Judiciary Board Chairman, '53-'54; Nicolls Hall Staff President, '53; Student Christian Association Program Chairman, '52-'53; Commercial Club, '51-'53; Young Republicans, '52-'54; Athletic Association, '50-'53, Treasurer, '51-'52, Vice-President, '52-'53; Linden Leaves Staff, '52-'54, Organization Manager, '53-'54; Press Club, '52-'54; Dean's Honor Roll, '52-'54; May Court, '53-'54.





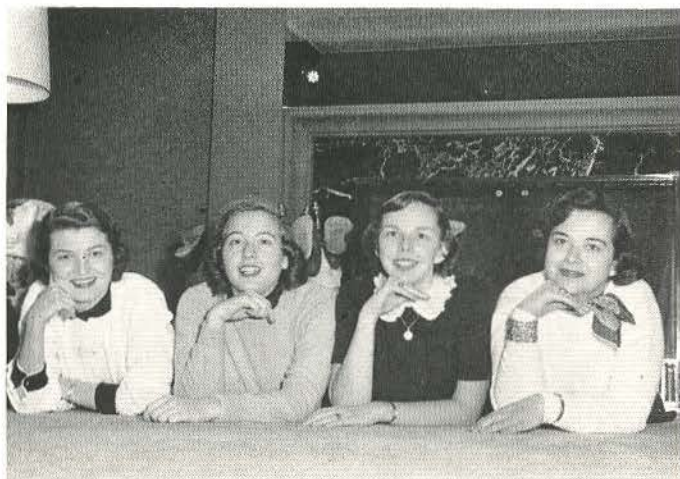
Front row: CYNTHIA MURPHY, PEGGY BARBER, ROSEMARY DYSART, MOLLY PETERSON.

Second row: NANCY MOE, ESTHER SMITH, JACQUELINE REGOT.

Third row: LINDA WALL, SUZANNE NORTON, KAY COLLINS JORDAN, CYNTHIA HIGGINS, ASTRID CASTRO.

Fourth row: CHARLOTTE SEEHORN, RILEY GRAVES, DORIS BEAUMAR.

Not Pictured: CARLE SAMUEL, MARY ANN THIELECKE.



Junior

CLASS OFFICERS

CAROLYN LOVETT, *Treasurer*; SUSAN KENNEDY,
Vice-President; ZILPHA CURTIN, *Secretary*;
 MARILYN MILLS, *President*.

Sponsors: THEODORE A. GILL, HARRY HENDREN.



Front row: MARY LU MERBELL, DEANE DETTMANN, JANICE GORDON, JANE EDWARDS.
Second row: CAROL WOLTER, PATRICIA JANAK, BARBARA SHUTTLEWORTH.
Third row: JANICE DAVIS, CAROL WIDEMAN, ELIZABETH GLEBE, NURAN BAYDAN, MARGARET TAYLOR.
Fourth row: DOROTHY NEBLETT, DOLORES KISS, JENNY BARTON, BARBI SMITH, PATT WILKERSON.

Class

WASHINGTON SEMESTER STUDENTS

Front row: DEANE KEETON, ROSALYN FIELDS, BETTY MOORE, ELEANOR MAUZE.
Second row: ELIZABETH SEVERSON, SUZANNE ANDERSON, GLORIA BURSEY.



Sophomores

JENNELLE TODSEN, *Treasurer*; NANCY ALVIS, *Vice-President*; CELIA BAY, *President*; JACQUELINE LYERLY, *Secretary*.

Sponsors: DOROTHY WILLIAMS, ARTHUR KANAK.

Front row: CAROL STILLWELL, MARTHA HINSEN, RUTH MEAD HAMRICK.

Second row: MARJORIE BERGHEIM, PAT MILLER, BROWNIE WINKLER.

Front row: MARILYN MITCHELL, JEAN FARRIS, MARY GILHULA.

Second row: JANET YOUNG, SHIRLEY PARNAS.

Front row: NANCY MCDANIEL, SAMMIE SUE HENRY, ELAINE KAVELER.

Second row: BETTY TOWNSEND, SALLY LAKIN, MARY KIRCH.





JANE LEONARD, JEANIE RULE, VIRGINIA WOODMAN, BETTY MALCOLM, CAROLYN STUART, JANE LACY.

NANCY SCHWARTZ, SUSAN MORTON RITT, JAN MEIERHOFF, SUZANNE BROOKS, JANE STUTSMAN.

JUNE OLANDER, WILMA WALKER, MARY ANN WALKER, BEVERLY RANDALL, ELAINE WHITNELL.

Front row: BARBARA ROWE, JANETH STEMMERICH,
Second row: DIANE AYER, NANCY WALLACE, JOANNE ENLOE, ELIZABETH HUNTER.

Sophomores



Front row: BEVERLY BALDWIN, BARBARA BALLARD, MARY ANN ARRINGTON, PENNY CREIGHTON.
Second row: BARBARA BAUER, BARBARA BININGER, BEVERLY HARRINGTON.



Front row: CHARLOTTE HENDRICKS, CAROLE KAVANAUGH, MARILYN HEBERLEE, JO HOUSER.
Second row: JEAN HENDRICKS, BARBARA HIEBERT.

Sophomores

Front row: BARBARA BELLOWS, MARA CHRISTENSEN.
Second row: SALLY BUCHANAN, SUSAN CUNNINGHAM, EDEN BIRD, BARBARA CHIDESTER, SONDRA BECK.

Front row: STARLIN EDWARDS, CAROL FITZROY, NANCY ELWOOD, JOAN FOX DIXON.
Second row: BETTY FELLOWS, JANET ELSEY, MARIE DeBASIO.





PHYLLIS MEADOWS, JANET LEWIS, ANN SMITH, LIZABETH SCHNURR, MARY LOU THAYER, JOYCE NEEDHAM.



Front row: BARBARA FOWLER, JEAN GRAY.
Second row: IRIS ALTROGGE, MARGARET BITTMAN, NAIDA TREADWAY.
Third row: DONNA DRURY, ANN CARLISLE.

Sophomores

Front row: GEORGIA HAHN, NANCY BARKWELL.
Second row: JUDITH GLOVER, KATHY HALE, HARRIET GRABER, FLORIDA GARLAND, CYNTHIA DAWSON.

JUNE SUDIK, NANCY LEE, PATRICIA ZIMMERMAN, MARIAN MARSHALL, KATHY KOLOCOTRONIS, JANET LEE.

Not Pictured: ELLEN KEBL, CAROL MOSELER, MARY MUNRO.



Freshmen

Front row: TILLIE MICHELETTO, *President;* WILLA GLEESON, *Secretary.*

Second row: JANIS HYDE, *Treasurer;* MARGUERITE TERRELL, *Vice-President.*

Sponsors: MARGUERITE VER KRUZEN, JULIET MCCROBY.

Front row: DOROTHY MILLER, GLORIA HORNADAY, BARBARA BEHRING.

Second row: MARY RUTH JONES, NANCY WHITESIDE, CLAUDETTE LEACHMAN.

Front row: DARLENE GEORGE, MARCIA MITTELSTADT, DONNA FITZROY.

Second row: ANN-CABLE YOUNG, KAREN GOODRICH, SARAH THOMPSON.

Front row: JOANN JACOBS, JOSEPHINE YOUNG, MARILYN MCLEOD, MARGARET WRIGHT.

Second row: ANNE ARTHURS, EMILE SONNEMAN.





SANCY HAMILTON, MARTHA HOAGLIN, SUSAN LONGSTRETH,
ROBERTA REINBOLD, SALLY LEFLER, EVELYN ITALIANO,
VIRGELENE HUFFMAN.

Front row: JEANNE MEAGHER, RUTH PHELPS, MARY KAY
THEOBALD, CAROLYN MORE.

Second row: VERA ANN McMULLIN, ELIZABETH MASON,
INGE NORGAARD.

MARELLA GORE, MARIAM FEBBIN, PAT OWEN, GWEN
DOBYNS, ALIANA LEWIS, ANN MOORE.

MARGARET DOUMANY, DELORES DAVIS, JUDITH EHRETT,
SALLY FORD, WILLA GLEESON, MARY LILLIAN COOK.

Freshmen



CONSTANCE RICHARDS, ANN SAWYER, MARY MARTIN,
CAROL LEE KNIGHT, SHARON SMYTHE, MARY LU
TRACEWELL.



Front row: TALVA JENNINGS, NORMA THOMPSON,
Second row: NITA STEED, PHYLLIS STEINMETZ, VIRGINIA
ROBY, ANGENIETA ANNE VAN DER DUSSEN.

Freshmen

Front row: JANE BRADY, JUDITH CHENAULT.
Second row: BARBARA CARTER, CHARLOTTE CALENE,
PAMELA HUTCHINSON.
Third row: NANCY AULT, JOAN BLEVINS.

Front row: JUDY REED, ANN HAYS.
Second row: VIRGINIA STREET, ANN CLINE, VIRGINIA
DAVIS, SUE WAYMAN, SUZANNE SPALDING.



Freshmen

*Alice Prouty, Ann Hogan, Barbara Schumacher,
Camille McEachern, Pat Poulos, Anne Vieaux.*



Front row: Sandra Roberts, Charlotte Taft.

Second row: Martha Stoecker, Janet Petersen, Janis Rice, Judith Smith.



*First row: Janey Price, Mary Jo Schell.
Second row: Julia Swanson, Anne Hess, Gail Langworthy.*



Shirley Laue, Nancy Lovejoy, Jane Johnson, Marilyn Broadway, Peggy Honeycutt, Carole Linhart.

Freshmen

Front row: KAY WEBB, SONDRA WENSEL, CHARLOTTE WEEMAN.

Second row: KATHLEEN McDERMOTT, ELEANOR DAY, CAROL MOORHEAD, SUSIE RICHARDS.

Front row: SHIRLEY JONES, SYBIL JONES, ELIZABETH YOUNG.

Second row: CYNTHIA HANCOCK, ANN WOOD, KATHLEEN GERHOLD, JUDITH FITTRO.

Front row: HELEN CALLISON, JANE BOWMAN, JUNE SCHMIDT.

Second row: CAROL HOLLISTER, JANE PEBBLES, CAROLYN LADD.

Front row: GLADYS SARAZAN.

Second row: TILLIE MICHELETTO, KAY SHERWOOD, MARGUERITE TERRELL.

Third row: DORRIS SHANKLIN, MARIAN KASPER.





Front row: MARTHA REEDY, PATRICIA MEYER.
Second row: ELIZABETH HARLAND, MARLYS McCULLOUGH, NANCY McCORD, SUE DAUGHERTY.

ELEANOR LEFTWICH, JOAN BIGGS, WANDA POWERS, GAIL GIVENS, CAROL KELLOGG, SUE DAHLER.

Front row: JANE GRAHAM, PATRICIA DAVIS.
Second row: BARBARA GREENWOOD, ANNE GRIFFIN.
Third row: NANCY ROOD, OLGA SOLIS, JACQUELYN DETHMERS.

JULIE MARR, SUNNY OBERT, ANNE ASHCRAFT, JULIE KARSTEN, SANDRA BARTUNEK, MARILYN MOTLEY, JOANN BOND.

Freshmen



Front row: GLENDA PORTER, MARCIA HEINZELMAN,
PATTILOU PUCKETT, ANN ZOTOS, JAN McMINN.



Front row: PATRICIA SULLINS, ELLEN STOVER, HARRIET
SCHMIDT, EVA ANN ORNDORFF, GWEN RYTER, SHIRLEY
SALLEE.

Freshmen

Front row: JANIS HYDE, JEANNE SHADE.

Second row: KATHLEEN MCGILVARY, MARILYN NICHOLAS,
MARGARET MORRIS, JUDITH MISSEY.

Front row: JULIA RASMUSSEN, JACQUELYN KEEN, BETTY
ECKLER, NANCY GRAVES.

Second row: BETTY LAMASTER, CYNTHIA COATSWORTH,
SHIRLEY GOOCH.





NORMA EDDY, VALERIE MARK, JOANNE PETEFISH, SUSAN SHIRLEY, VIRGINIA MORGAN, JOANN GODDART.



Front row: EUGENIA PATTERSON, RUTH HARTLEY, PATRICIA RUTH MILLER.
Second row: SHIRLEY NOLTA, SHIRLEY HOMRA, BARBARA GELMAN.

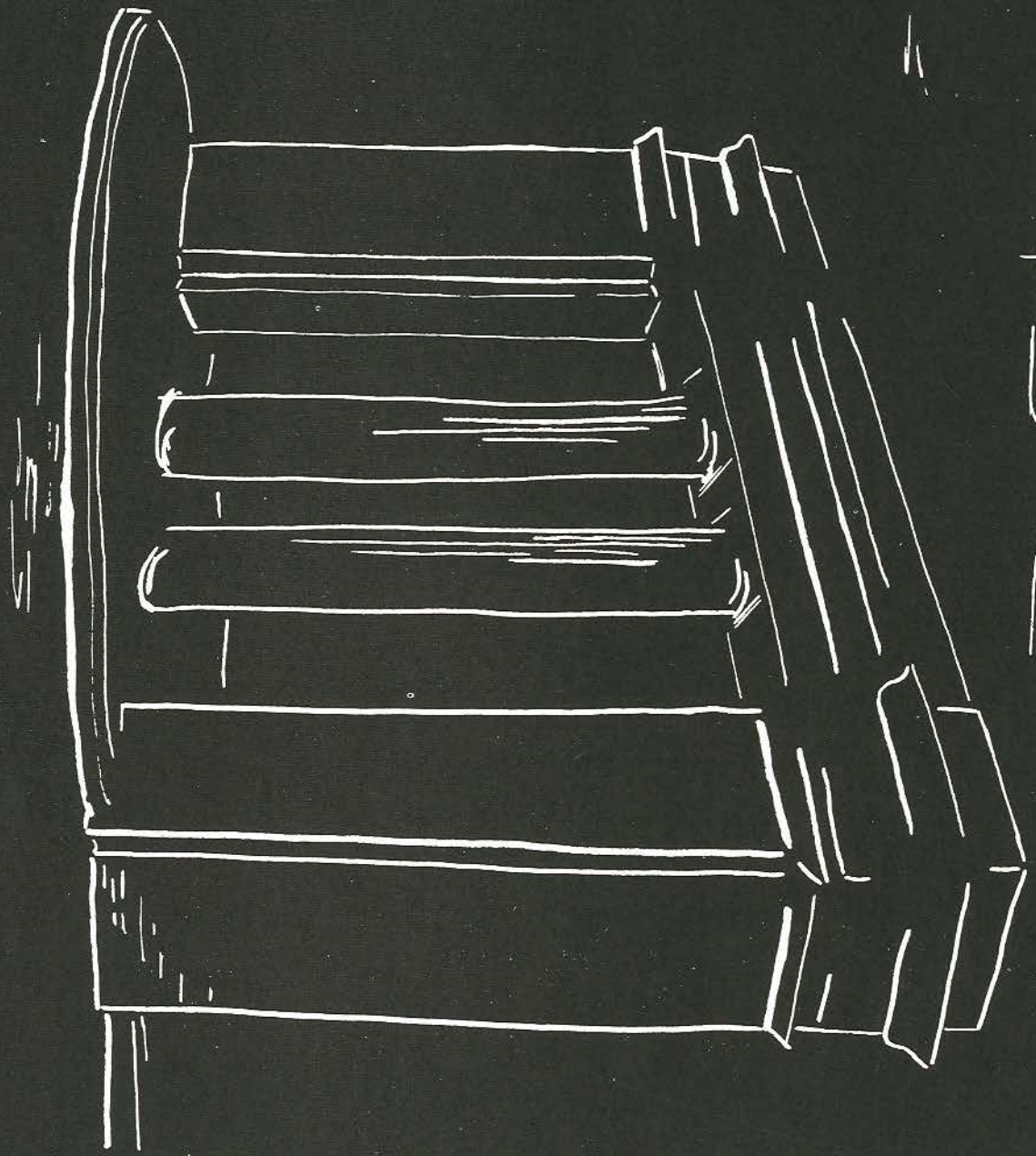
Freshmen

JOAN MYERS, CHLOE BURTON, MARILYN ZIMMERMANN, MARJORIE MCPHERSON, CAROL RATJEN, ANNE TURNER.

Second Semester Students

Front row: STELLA SIGGELKOW, JEANETTE STEPHAN.
Second row: SHIRLEY HOLCOMB, UTE RUDOLF.
Third row: ANNA LEE EDMONDS, CAROLYN SMITH, BONNIE KNOCK.





The shaping that comes through application—
the light that comes with purpose.

Satisfaction in its realization.

Activities

Student Council, Judiciary Board

The voice of the student body . . .
effective organization . . .
dynamic, capable, alert.

Preparation for active, purposeful
community living . . . "the shaping
that comes through application."

Front row: P. Gleeson, *Vice-President*; A. Frazier, *President*; C. Bay, R. Weber, *Judiciary Board Chairman*.

Second row: J. Richards, B. Shuttleworth, C. Lovett, M. Ahrens, M. Todsén.

Third row: M. Marshall, C. Critchfield, J. Hendricks, C. Hendricks, S. Humphner.

Not pictured: B. Severson, *Secretary-Treasurer*.



Student Christian Association

Christian fellowship—
the privilege and the reward of all.

Guided Christian living . . .

Giving—spiritual, material:
international, national, local—
World Service Fund, Y.M.C.A., Y.W.C.A.,
Markham Memorial Church . . .

Worship—vespers, chapel, devotionals,
fellowship groups, discussion groups.

Emphasis on religion—
“Christ—the Hope of the World.”

Front row: R. Dysart, *Treasurer*; N. Alvis, *Secretary*; M. Reschetz, *President*; P. Barber, *Vice-President*.

Second row: S. Suider, *Recreation*; J. Edwards, *Social Responsibilities*; B. Binninger, *Conference*; M. Marshall, *Song Leader*.

Third row: V. Woodman, *Publicity*; D. Dettmann, *Christian Faith Chairman*; A. Krueel, *Fellowship Chairman*; A. Smith, *Publicity*.

Sponsors: Miss Juliet McCrory, Miss Rachel Morris, Dr. Eugene Conover, Dr. T. Gill.



Who's Who

National recognition of the outstanding and unique . . .

An honor to those admirable in character,
superior in scholarship, excellent in leadership—
those who exemplify Lindenwood at its best.

Front row: C. Critchfield, A. Frazier, J. De Weese.

Second row: M. Van Bibber, M. Stoerker, P. Gleeson, J. Hester, P. Moore.



Alpha Psi Omega

The art of drama—
expression of reality
through make-believe.



Alpha Epsilon Rho

Radio—
a need of the modern world . . .
Refined to an art
through craftsmanship.

P. Moore, President; M. Pinckney, Vice-President; E. Sheley, Secretary-Treasurer.

Sponsors: Miss Juliet McCrory, Mr. Robert Hume.

Front row: J. Richards, Secretary-Treasurer; E. Sheley, President; D. Beaumar.

Second row: P. Moore, M. Bittman, K. Hale, J. Gordon, J. Davis.

Not Pictured: G. Bursey, Vice-President.

Sponsor: Miss Martha May Boyer.





Front row: M. Taylor, M. Merrell, *President:* M. Evans, *Secretary-Treasurer:* D. Deltmann, *Vice-President.*
Second row: J. Young, C. More, S. Lefler, C. Critchfield.
Sponsor: Dr. Siegmund Betz.

Pi Alpha Delta

Appreciation of the glory,
 the beauty, the vitality
 of the classical past

Poetry Society

Fulfillment of a personal need
 to create through words

Front row: B. Carter, M. Arrington, J. DeWeese, *President:* J. Elser, *Secretary-Treasurer:* C. Burton.
Second row: P. Steinmetz, C. Richards, D. Neblett, N. Baydan, B. Gelman, P. Owen, N. McDaniel, G. Langworthy.
Not pictured: C. Kavanaugh, *Vice-President.*
Sponsor: Miss Betty Littleton.



Pi Alpha Mu

Apprenticeship
to masters
of the world's literature



Kappa Pi

Creative art . . .
Tangible expression
through line, color,
form, texture



Top Picture

Front row: P. Wilkerson, Secretary-Treasurer; D. Beaumar, President; M. Thielecke, Vice-President.

Second row: P. Moore, M. Merrell, P. Gleeson, J. DeWeese, E. Sheley.

Sponsor: Dr. Betz.

Bottom Picture

Front row: A. Smith, M. Arrington, V. Woodman.

Second row: B. Lett, Secretary-Treasurer; M. Merrell, President; C. Critchfield.

Third row: S. Cunningham, N. Wallace, J. Glover, J. Barton, D. Neblett.

Sponsor: Mr. Harry Hendren.



*J. Houser, Secretary; S. Ritt, President; M. DeBasio, Treasurer.
Not pictured: A. Smith, Vice-President.
Sponsor: Dr. Elizabeth Dawson.*

Alpha Lambda Delta

To encourage and reward
freshman leaders
in scholarship.

Alpha Sigma Tau

The honor that is the due
of continued fine scholarship.

*Front row: M. Van Bibber, S. Chan, Vice-President; Y. Li, President; M. Evans, Secretary-Treasurer; J. DeWeese.
Second row: S. Kennedy, J. Ellis, D. Beaumar, J. Hester, P. Gleeson, J. Edwards, C. Critchfield, D. Neblett, A. Frazier.
Sponsor: Dr. Eugene Conover.*



KCLC

Extension
of classroom principles
to practical application

Radio—
source of education
and entertainment



J. Gordon, Advertising Manager; M. Bittman, Head Engineer; J. Richards, Program Director; J. Barton, Promotion and Public Relations Director; J. Davis, Traffic Director; E. Sheley, Station Manager; K. Hale, Chief Announcer; M. L. Merrell, Music Director; D. Beaumar, Continuity Director.

Front row: M. Pinckney, C. Kellogg, A. Hess, B. Rowe, J. Enloe, W. Gleeson, B. Hiebert, G. Porter, V. Roby, C. Hendricks, A. Lewis, B. Gelman, A. Sawyer, C. Richards.

Second row: C. Ratjen, R. Dysart, J. Reed, B. Carter, A. Ashcraft, B. Greenwood, C. Leachman, J. Gray, M. Martin, N. Ault, M. Doumany, S. Laue, N. Rood, P. Puckett, J. Goodart, C. Bay.





Front row: M. Ahrens, *Student Council Representative*; B. Lett, *Vice-President*; I. Hachtmeyer, *President*; J. Regot, *Secretary-Treasurer*.

Second row: B. Eckler, M. Stoerker, B. Harrington.

Not pictured: C. Moseler, C. Ellis, C. Moorhead, C. Wolter, M. Burch, O. Patterson, E. Smith.

Sponsor: Dr. Homer Clevenger.

Front row: C. FitzRoy, B. Townsend, F. Habertier, A. Kruel, D. Drury, S. Richards.

Second row: S. Hamilton, M. DeBasio, S. Edwards, J. Lewis, M. Christensen, S. Henry, S. Sallee, J. Davis.

Third row: C. Hendricks, C. Hollister, J. Peebles, M. Schell, C. Lovett, J. Goodart, J. Schmidt, M. Martin, Eleanor Leftwich, J. Smith, S. Wensel, M. Heberlee, J. Chenault, B. Baldwin, J. Stemmerich, C. Taft.

Fourth row: S. Buchanan, M. Thayer, J. Edwards, P. Meadows, C. Stillwell, R. Reinbold, S. Smythe, E. Stover, N. Schwartz, G. Hornaday, M. Ahrens, J. Karsten.

Sponsor: Miss Margaret Lindsay.

Day Students

An energetic, active group
of good students
and good friends—

The people to know . . .

Colhecon

Efficient home management—

To make home-makers
of "just housewives"



Triangle

The triangle
representing
mathematics, biology, chemistry—
science and the scientific



Modern Language

A knowledge of one or more
of the languages spoken
in today's world—

The mark of a well-educated person

Front row: C. Seehorn, *Vice-President:* S. Kennedy, *Secretary:* J. Hester, *President:* E. Glebe, *Treasurer.*

Second row: A. Frazier, B. Winkler, J. Evans, S. Humphner, Y. Li, J. Richards, C. Wolter, D. Dettmann, C. Ellis.

Sponsor: Miss Mary Lear.

Front row: N. Baydan, M. Kirch, *Spanish Vice-President;* D. Beaumar, *President;* C. Kavanaugh, *German Vice-President;* S. Cunningham, *French Vice-President;* C. Dawson.

Second row: C. Bay, E. Hunter, D. Ayer, S. Ritt, J. Lee, N. McDaniel, A. Castro, J. Gray, P. Moore.

Sponsor: Dr. Mary Terhune.





Top Picture

Front row: B. Lett, D. Kiss, *Secretary*; P. Wilkerson, *President*; C. Wideman, *Vice-President*; M. Van Bibber, M. Stoerker.
Second row: I. Hachtmeyer, L. Wall, J. Regot, A. Marshall, R. Dysart, M. Todsén, S. Snider, M. Peterson.
Third row: F. Haberthier, J. Evans, E. Sheley, N. Moe, B. Smith, J. Barton, M. Pinckney, M. Reschetz, C. Samuel.
Not pictured: K. Jordon, *Treasurer*.

Bottom Picture

Front row: C. Hancock, A. Zotos, B. Randall, M. Heberlee, J. Lewis, C. Ladd.
Second row: S. Bartunek, M. Mittelstadt, S. Thompson, S. Smythe, I. Altrogee, B. Townsend, B. Malcolm, K. McDermott.
Third row: C. FitzRoy, D. Ayer, S. Longstreth, P. Meadows, J. Gray, C. Burton, C. Kellogg, C. Linhart, B. Hiebert, B. Binger, R. Hamrick, M. Jones, M. Gore.
Fourth row: M. Zimmermann, J. Keen, J. Brady, W. Walker, D. Drury, S. Buchanan, J. Needham, E. Patterson, P. Miller.
Sponsor: Mr. Bremen Van Bibber.

Future Teachers of America

A way to a life
 as well as a living —
 a life that is responsible,
 a life that is satisfying,
 a life that is rewarding

Capable teachers
 directing curious minds
 to the eternal truths

Encore Club

Lindenwood's fine past
represented in the sisters,
daughters, and grand-daughters
of former students and graduates

Delta Nu

Concerning life and living . . .
Understanding the individual . . .
Knowing oneself

Top Picture

Front row: J. Petefish, B. Townsend, *Secretary;* A. Smith, *President;* B. Bauer, *Vice-President;* M. Terrell, *Treasurer;* S. Richards.

Second row: S. Longstreth, B. Carter, C. More, A. Marshall, J. Elser, S. Sallee, C. Murphy.

Third row: N. Alys, A. Cline, J. Blevins, J. Todsén, K. Kolocotronis, M. Kirch, D. Ayer, J. Edwards, J. Barton, H. Callison, J. Marr.

Fourth row: J. Dethmers, W. Gleeson, J. Biggs, E. Day, J. Smith, P. Puckett, A. Hays, H. Schmidt, A. Sawyer, B. LaMaster.

Sponsor: Mrs. Mary Bryant.

Bottom Picture

Front row: S. Chan, P. Gleeson, *President;* S. Lunak, *Secretary;* N. Baydan, *Treasurer;* R. Graves.

Second row: A. Frazier, Z. Curtin, B. Glebe, S. Humphner, C. Seehorn, M. Merrell, Y. Li, J. Hester, A. Marshall, P. Janak.

Sponsor: Miss Rachel Morris.





Choralaires

Small in number—
Magnificent in song

Front row: S. Nolta, M. Stoecker, M. Martin, M. Peterson, M. Doumany.
Second row: M. Marshall, I. Altrogge, P. Barber, Mr. Balch, D. FitzRoy, S. Dahler, R. Dysart.
Sponsor: Mr. Wayne Balch.

Choir

The beauty of song—
an experience of gaiety . . .
a sense of grace . . .
a feeling of beauty

Front row: J. Elser, M. Stoecker, N. Steed, S. Beck, B. Randall, J. Ehrett, M. Casper, R. Dysart, K. Sherwood, R. Graves, S. Buchanan, D. Kiss.
Second row: E. Kebl, S. Nolta, D. FitzRoy, T. Micheletto, M. Martin, P. Barber, M. Reschetz, M. Marshall, J. Biggs, J. Chenault, J. Goodart, A. Hays, S. Thompson.
Third row: S. Smythe, C. Calene, M. Peterson, M. Mittelstadt, J. Lyerly, C. Taft, J. Fox Dixon, B. Carter, C. More, J. Rasmussen, A. Ashcraft, B. Eckler, P. Moore.
Fourth row: B. Harrington, N. Wallace, W. Gleeson, B. Malcolm, J. Hyde, M. Gore, C. Ratjen, J. Dethmers, K. Eddy, P. Hutchinson, A. Carlisle, E. Orndorff, A. Sawyer, N. Ault.
Sponsor: Mr. Milton Rehg.



Instrumental Association

Working together
to reproduce
the inspiration
and thoughts
of the masters
Music without words . . .



Mu Phi Epsilon

An honor to those
whose abilities and interest
guide them to study,
enable them to interpret
the art familiar
to all mankind



Top Picture

Front row: C. Samuel, Wanda Powers, R. Cruce, B. Eckler, V. Huffman.

Second row: C. Linhart, R. Dysart, J. Karsten.

Third row: K. McGilvary, E. Kaveler.

Fourth row: C. Steinmetz, E. Kebl, C. Richards.

Sponsor: Mr. R. Cruce.

Bottom Picture

Front row: S. Parnas, *Secretary*; R. Dysart, *President*; M. Reschetz, *Treasurer*.

Second row: C. Samuel, I. Altrogge, J. Lyerly, M. Peterson, B. Randall, M. Marshall.

Not pictured: S. Null, *Vice-President*.

Sponsor: Miss Gertrude Isidor.



Front row: C. Richards, J. Hyde, N. Moe, N. McDaniel, *Secretary:* A. Marshall, *Vice-President:* C. More, P. Janak, D. Kiss, A. Kruel.
Second row: B. Gelman, N. Whiteside, V. Mark, A. Ashcraft, H. Schmidt, M. McLeod, C. Ratjen, C. Murphy, M. Mills, J. Lee.
Third row: E. Stover, S. Leller, M. Zimmermann, B. Harland, P. Meadows, J. Gray, K. Kolocotronis, J. Todsén, M. Jones, M. Thayer, C. Bay, J. Needham, M. Taylor, J. Young, J. Davis, Z. Curtin, J. Stemmerich, A. Castro, D. Beaumar.
Fourth row: D. Ayer, P. Honeycutt, E. Hunter, C. Hendricks, E. Patterson, W. Gleeson, G. Ryter, E. Orndorff, V. Davis, B. Carter, A. Turner, E. Mason, S. Lunak, J. Brady.
Not pictured: R. Fields, *President.*
Sponsor: Dr. Homer Clevenger.

League of Women Voters

A national organization
 for community-conscious women—

those with an active interest
 in government,
 those who stimulate fellow citizens
 to take advantage of their rights
 and to accept the responsibilities
 of citizenship.

Women—
 citizens and voters
 today and tomorrow.



Front row: R. Hamrick, S. Thompson, J. Lacy, *Treasurer:* D. Neblett, *President:* N. Baydan, *Vice-President:* W. Gleeson, *Secretary:* C. More.
Second row: M. Mittelstadt, M. Nicholas, K. Hale, B. Randall, B. Hiebert, M. Zimmermann, P. Honeycutt, V. Mark.
Third row: C. FitzRoy, D. Beaumar, G. Langworthy, G. Ryter, C. Richards, C. McEachern, A. Prouty, M. Peterson, S. Leller, J. Todsén, J. Ehrett, A. Castro, D. George, I. Norgaard, C. Stuart, C. Ladd, E. Glebe, C. Samuel.
Fourth row: C. Critchfield, J. Schmidt, J. Brady, J. Lee, C. Stillwell, A. Lewis, R. Reinbold, A. van der Dussen.
Sponsor: Dr. Dorothy Williams.

International Relations Club

The World,
 its peoples,
 their cultures—

Variabilities brought into focus,
 similarities made evident through association.

The need for a sense of unity—
 the harmony fostered by understanding.



Front row: J. Todsén, *Secretary*; J. Keen, A. Smith, Z. Curtin, *Treasurer*; M. Stoerker, *President*; C. Wolter, *Intramural Chairman*; C. Dawson, *Social Co-Chairman*; J. Endoe, *Social Co-Chairman*; M. Arrington, *Publicity*.

Second row: S. Norton, J. Houser, K. Gerhold, K. Goodrich, M. Martin, N. Baydan, J. Rice, P. Honeycutt, M. Zimmermann, C. Burton, S. Wayman, J. Peebles, J. Lacy, C. Ladd.

Third row: E. Hunter, J. Gray, N. Ault, S. Laue, N. Elwood, N. Lee, B. Bellows, B. Ballard, P. Creighton, G. Sarazan, M. Bittman, N. Moe.

Sponsor: Miss Ver Krusen.



Athletic Association

The lesson of working together
by playing together . . .

Lasting friendships,
Time well spent,
Activity with purpose,
Coordination of the body as well as
within the group.

Orchesis

Front row: S. Cunningham, J. Gordon, K. Kolocotronis, *President;* S. Brooks, M. Marshall, *Secretary-Treasurer.*

Second row: P. Miller, J. Karsten, M. Stoerker.

Third row: R. Hamrick, M. Cook, N. Elwood.

Not pictured: S. Lakin, *Vice-President.*
Sponsor: Miss Doris Zoellner.



Terrapin

Front row: P. Creighton, S. Laue, J. Hyde, *Vice-President;* M. Walker, B. Fowler, L. Schnurr, *President;* M. Arrington, A. Smith, *Secretary-Treasurer.*

Second row: N. Barkwell, S. Wensel, S. Cunningham, C. Linhart, C. Burton, P. Hutchinson, B. Ballard, C. Wolter.

Sponsor: Miss Doris Zoellner.



The mastery of swimming,
the perfection of dance

grace . . .

style . . .

interpretation . . .

beauty . . .



Front row: J. Hyde, S. Homra, M. Zimmermann, H. Schmidt, C. More, J. Brady.

Second row: B. Gelman, N. Whiteside, P. Honeycutt, *Vice-President*; J. Young, M. Taylor, G. Porter, A. Prouty.

Third row: A. Arthur, A. Cline, W. Gleeson, *Secretary-Treasurer*; P. Meadows, K. Kolocotronis, M. Jones, A. Castro, Y. Davis, C. McEachern, A. Turner.

Fourth row: R. Hartley, M. Christensen, S. Edwards, E. Patterson, A. Wood, S. Spalding, K. Hale.

Not pictured: P. Barber, *President*; P. Creighton, *Publicity Chairman*.

Young Democrats

Effective and valuable workers
now and of the future.

Learning today,
acting purposefully tomorrow,
the principles and ideals
of those who have gone before,
assimilated and upheld by
those who will carry on.

Young Republicans

Careful consideration,
formulation of political ideals
after weighing of all sides.

Ready to be active tomorrow
in the party
chosen today.

Front row: M. Heberlee, C. Bay, C. Hendricks, M. McLeod, A. Ashcraft, C. Ratjen, A. Kruel, C. Murphy, N. Moe, D. Kiss.

Second row: C. Richards, M. Tracewell, J. Blevens, N. Ault, S. Laue, M. Martin, S. Henry, P. Wilkerson, B. Weber, P. Janak, J. Stemmerich, D. Beaumar.

Third row: E. Stover, G. Ryter, A. Zotos, B. Harland, A. Marshall, S. Lunak, W. Powers, D. Davis.

Fourth row: S. Longstreth, J. Ehrett, V. Mark, C. FitzRoy, B. Randall, S. Lefler, J. Gray, J. Todsén, M. Heinzelman, M. Thayer, J. Needham, J. Davis, F. Haberthier, M. Mills, B. Hiebert, S. Sallee, Z. Curtin, J. Elser, M. Pinckney, K. McDermott, B. Smith, E. Sheley.

Fifth row: M. DeBasio, I. Altrogge, *Vice-President*; M. Kirch, E. Hunter, D. Ayer, N. McDaniel, P. Puckett, *Secretary-Treasurer*; J. Rasmussen, B. Carter, J. Petefish, E. Orndorff, J. Barton, J. Lee, C. Stillwell.

Not pictured: S. Norton, *President*.





M. Van Bibber, *Editor*; R. Weber, *Organization Manager*.



L. Hachtmeyer, *Art Editor*; J. Edwards, *Business Manager*;
B. Harrington, *Advertising Manager*; D. Dettmann,
Literary Editor.

Linden Leaves Board and Staff

J. Hendricks, B. Shuttleworth, J. Needham, V. Woodman,
P. Wilkerson.

Sponsors: Miss Dorothy Ely, Miss Charlotte Clutterbuck,
Miss Mildred Fischer.



The summary of a full and busy year;
a presentation of the highlights.

A chronicle for those in the future;
a reminiscence for those who experienced
the recordings.

An album of pictures—

The autograph of Lindenwood.

Griffin

The finest
of the year's
creative work
by the best
of the creative.



Linden Bark

The thoughts and activities
put forth to many.

A necessity for a democratic
organization.



Press Club

Conciseness through complete
understanding,
clarity through mastery of words.

Presentation of ideas to be read by all.



Top Picture

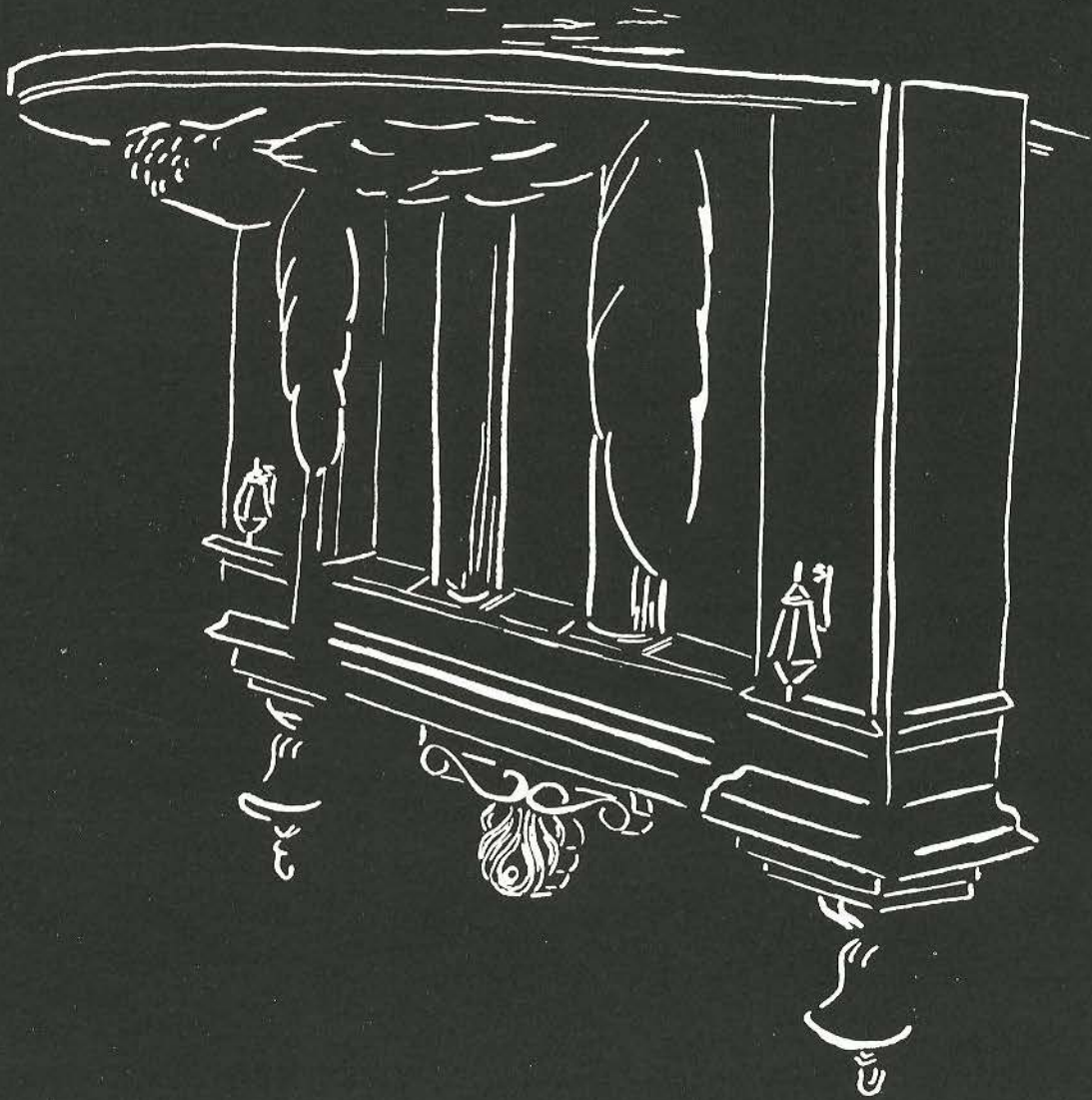
*D. Neblett, Editor; J. DeWeese, Assistant Editor; M. Arrington, Assistant Editor,
Sponsor: Dr. A. Sibley.*

Middle Picture

*Front row: A. McMullin, M. Tracewell, L. Schnurr, D. George, M. Arrington.
Second row: D. Beaumar, J. Gordon, K. Hale, P. Miller, J. Marr, V. Mark.
Sponsor: Mrs. Mary Bryant.*

Bottom Picture

*Front row: D. Beaumar, President; K. Hale, Treasurer; J. Todsén, Secretary.
Second row: A. McMullin, M. Tracewell, D. George, M. Arrington.
Third row: V. Mark, A. Marshall, J. Gordon, M. Pinckney, P. Wilkerson, J. Davis,
J. Marr, P. Miller, A. Castro, R. Weber.
Sponsor: Mrs. Mary Bryant.*



The joy in pageantry—
the adornment which completes.

Queens and Courts



Harvest Queen

Mary Lillian Cook

Harvest Court



Sitting: CAROL MOORHEAD, JANET PETERSEN, NANCY MCCORD, VIRGINIA ROBY, SUZANNE SPALDING, SUE DAHLER, GLENDA PORTER, PAT DAVIS.

Standing: CHARLOTTE TAFT, TILLIE MICHLETTO, *Second Maid:* MARY LILLIAN COOK, *Queen:* SYBIL JONES, *First Maid:* BETTY LOU LAMASTER.



Valentine Court

Marian Marshall

FIRST MAID

Kathy Kolocotronis

SECOND MAID

Valentine Queen

Virginia Woodman





May Court

FRESHMAN ATTENDANTS

Sue Dahler

Delores Davis

May Court

SOPHOMORE ATTENDANTS

Ann Smith

Mary Kirch





May Court

JUNIOR ATTENDANTS

Nancy Moe

Rosemary Dysart

May Court
SENIOR ATTENDANTS

Ruth Weber

*Mary Nell
Van Bibber*





May Court

MAID OF HONOR

Eleanor Mauzé

May Queen

Paula Moore





Saint or sinner . . .

We've been working
on the railroad—

Down the road apiece—

How much was that doggie
in the window?

Lazy bones . . .

Joss, Joss, Jossin'
along—

P. S. I love you . . .

Wonderful, wasn't it?

Stairway to the stars

Slaughter on 10th
Avenue . . .

Three little maids from
school

Snaps

Snaps

How'd ya like to
spoon with me?

Papa, won't you dance
with me . . .

Hail, hail—
the gang's all here—

It's a lovely day
today . . .

I'll be seeing you—

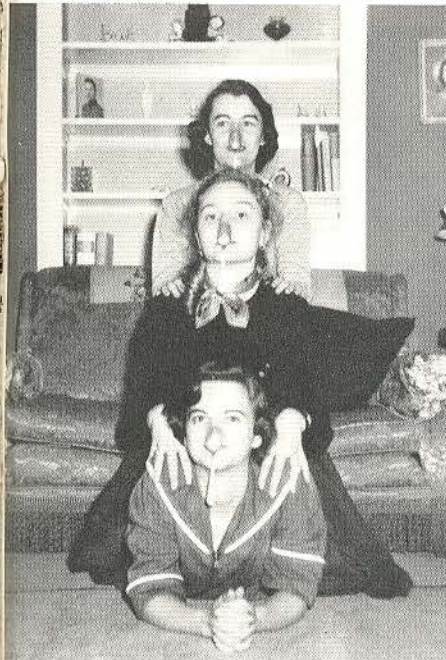
Tramp,
tramp,
tramp—

Nine more days till
vacation—

Where, oh, where
are the silly,
silly sophomores?

Somebody stole my gal—
That's what they call it—
hockey—

Stranger in paradise . . .





Come on to my house—

. . . and the livin'
is easy . . .

Oh, how I hate to get
up in the morning . . .
D.C.

Santa, Baby . . .

It takes two to tango—

I'm walking behind
you . . .

These foolish things—

Snaps

Snaps

But Baby—it's cold
outside—

Turnabout, boom, boom—

Me and my teddy-bear—

The goblins 'll get
ya if ya don't watch
out . . .

A very merry un-
birthday—

Dreaming of a white
Christmas . . .

Strike up the band—

Parties make the world
go 'round . . .

Funny-face—

3 D -- eep.

Button up your
overcoat—



Student Directory

Ahrens, Margaret Ann, St. Charles, Mo., 36, 37, 62, 70.
Altrogge, Iris Jean, Mexico, Mo., 51, 72, 74, 75, 81.
Alyis, Nancy, Mexico, Mo., 48, 63, 73.
Anderson, Suzanne, Malden, Mo., 47.
Arrington, Mary Ann, Russellville, Ark., 50, 66, 67, 78, 79, 83.
Arthurs, Anne, Cotton Plant, Ark., 52, 80.
Ashcraft, Martha Anne, Nashville, Tenn., 57, 69, 74, 76, 81.
Ault, Nancy Joan, Grosse Pointe Woods, Mich., 51, 69, 74, 78, 81.
Ayer, Diane, Keokuk, Iowa, 49, 71, 72, 73, 76, 81.

Baldwin, Beverly Anne, Manitowoc, Wis., 50, 70.
Ballard, Barbara, Nashville, Tenn., 50, 78, 79.
Barber, Peggy, Haleyville, Ala., 46, 63, 74.
Barkwell, Nancy Ann, Grand Rapids, Mich., 51, 79.
Barton, Jenny Lou, Mt. Pleasant, Mich., 47, 67, 69, 72, 73, 81.
Bartunek, Sandra Ann, Knoxville, Iowa, 57, 72.
Bauer, Barbara A., Arlington, Va., 50, 73.
Bay, Celia, Albia, Iowa, 48, 62, 69, 71, 76, 81.
Baydan, Nuran, Alsancak, Izmir, Turkey, 47, 66, 71, 73, 77, 78.
Beaumar, Doris Ann, LeRoy, Ill., 46, 67, 68, 69, 71, 76, 77, 81, 83.
Beck, Sondra Jean, Sikeston, Mo., 50, 74.
Behring, Barbara Ann, Albert Lea, Minn., 52.
Bellows, Barbara, Winnetka, Ill., 50, 78.
Bergheim, Marjorie E., Boulder, Colo., 48.
Biggs, Joan Kay, Columbus, Nebr., 57, 73, 74.
Bininger, Barbara Ann, Kansas City, Mo., 50, 63, 72.
Bird, Eden, Finley, Tenn., 50.
Bittman, Margaret, Perry, Okla., 51, 65, 69, 78.
Blevins, Joan, Cumberland, Ky., 54, 73, 81.
Bond, Joann, North Little Rock, Ark., 57.
Bowman, Jane Evans, Sikeston, Mo., 56.
Brady, Jane, McMinnville, Tenn., 54, 72, 76, 77, 80.
Broadway, Marilyn, Wichita Falls, Tex., 55.
Brooks, Suzanne Gene, Fremont, Nebr., 49, 79.
Buchanan, Sally, Western Springs, Ill., 50, 70, 72, 74.
Burch, Marjorie B., St. Charles, Mo.
Burse, Gloria, Grand Rapids, Mich., 47.
Burton, Mary Chloe, Ft. Worth, Tex., 59, 66, 72, 78, 79.

Calene, Charlotte Mae, Mansfield, Ohio, 54.
Callison, Helen Mildred, Smithville, Mo., 56, 73.
Carlisle, Ann, Petersburg, Ind., 51, 74.
Carter, Barbara Ann, McMinnville, Tenn., 54, 66, 69, 73, 74, 76, 81.
Castro, Astrid, Ponce, Puerto Rico, 46, 71, 76, 77, 80, 83.
Chan, Suk Hun, Seremban, Negri Sembilan, Malaya, 36, 37, 68, 73.
Chenault, Judith Ann, Joplin, Mo., 54, 70, 74.
Chidester, Barbara Leah, Sikeston, Mo., 50.
Christensen, Mara Lloyd, Webster Groves, Mo., 50, 70, 80.
Cline, Ann Mason, Carrollton, Ky., 54, 73, 74, 80.
Coatsworth, Cynthia Anne, Mexico, Mo., 58.
Cook, Mary Lillian, McMinnville, Tenn., 53, 79, 86, 87.
Creighton, Penelope Bates, Nashville, Tenn., 50, 78, 79.
Critchfield, Cora Lee, Tecumseh, Nebr., 36, 37, 62, 64, 66, 67, 68, 77.
Cunningham, Susan, Caruthersville, Mo., 50, 67, 71, 79.
Curtin, Zilpha, Cincinnati, Ohio, 46, 73, 76, 78, 81.

Dahler, Sue, St. Louis, Mo., 57, 74, 87, 90.
Daugherty, Janet Sue, Syracuse, Kans., 57.
Davis, Delores, Salem, Ill., 53, 81, 90.
Davis, Janice, Burlington, Iowa, 47, 65, 69, 70, 76, 81, 83.
Davis, Patricia Madge, Dallas, Tex., 57, 87.
Davis, Virginia, Ft. Smith, Ark., 54, 76, 80.
Dawson, Cynthia Ann, Marked Tree, Ark., 51, 71, 78.
Day, Eleanor, Missouri Valley, Iowa, 56, 73.
DeBasio, Marie, Sappington, Mo., 50, 68, 70, 81.
Dethmers, Jacquelyn, Albert Lea, Minn., 57, 73, 74.
Dettmann, Deane, Belydere, Ill., 47, 63, 66, 71, 82.
DeWeese, Jo June, Hugo, Okla., 36, 37, 64, 66, 67, 68, 83.
Dixon, Joan Fox, Gashland, Mo., 50, 74.
Dobyns, Gwen, Stigler, Okla., 53.
Doumany, Margaret Lee, McAlester, Okla., 53, 69.
Drury, Donna Mae, Gillespie, Ill., 51, 70, 72.
Dysart, Rosemary, Webster Groves, Mo., 46, 63, 69, 72, 74, 75, 92.

Eckler, Betty Lee, St. Charles, Mo., 58, 70, 74, 75.
Eddy, Norma Karen, Wamego, Kans., 59, 74.
Edmonds, Anna Lee, Indianapolis, Ind., 59.
Edwards, Jane Lewis, Crossville, Tenn., 47, 63, 68, 70, 73, 82.
Edwards, Starlin Ann, Kirkwood, Mo., 50, 70, 80.
Ehrett, Judith Ann, Grand Rapids, Mich., 53, 74, 77, 81.
Ellis, Carol Jeanne, St. Charles, Mo., 36, 37, 68, 71.
Elser, Janet Childs, Augusta, Ga., 50, 66, 73, 74, 81.
Elwood, Nancy Lee, Russellville, Ark., 50, 78, 79.
Enloe, Jo Anne, Riverside, Ill., 49, 69, 78.
Evans, Martha Jane, Malden, Mo., 36, 37, 66, 68, 71, 72.

Farris, Jean, Indianapolis, Ind., 48.
Fellows, Betty Jean, Elmhurst, Ill., 50.
Ferrin, Miriam Maria, Oklahoma City, Okla., 53.
Fields, Rosalyn Wise, New Castle, Ind., 47.
Fittro, Judith Ann, Pana, Ill., 56.
FitzRoy, Carol Sue, Normandy, Mo., 50, 70, 72, 77, 81.
FitzRoy, Donna Marie, Normandy, Mo., 52, 74.
Ford, Sally Ann, Kirkwood, Mo., 53.
Fowler, Barbara, Nevada, Mo., 51, 79.
Frazier, Ann, Stigler, Okla., 38, 39, 62, 68, 71, 73.

Garland, Florida, Baton Rouge, La., 51.
Gelman, Barbara June, Oak Park, Ill., 59, 66.
George, Darlene, Moline, Ill., 52, 69, 76, 77, 80, 83.
Gerhold, Kathleen, Columbus, Nebr., 56, 78.
Gillhula, Mary Jane, Grand Rapids, Mich., 48.
Givens, Gail Dixon, Henderson, Ky., 57.
Glebe, Elizabeth Anne, Lawrenceville, Ill., 47, 71, 73, 77.
Gleeson, Patricia, Wahoo, Nebr., 38, 39, 62, 64, 67, 68, 73.
Gleeson, Willa, Wahoo, Nebr., 52, 53, 69, 73, 74, 76, 78, 80.
Glover, Judy Ann, Park Ridge, Ill., 51, 67.
Gooch, Shirley, Evansville, Ind., 58.
Goodart, Jo Ann, Columbus, Ohio, 59, 69, 70, 74.
Goodrich, Karen Knowlton, Santa Rita, N. M., 52, 78.
Gordon, Janice Kay, Edwardsville, Ill., 47, 65, 69, 79.
Gore, Marella, Paducah, Ky., 53, 72, 74.
Graber, Harriett, Dexter, Mo., 51.
Graham, Jane Arlyn, Memphis, Tenn., 57.
Graves, Nancy, Corinth, Miss., 58.
Graves, Riley, Corinth, Miss., 46, 73, 74.

Student Directory

- Gray, Jean Elizabeth, Rockwell City, Iowa, 51, 69, 71, 72, 76, 78, 81.
Greenwood, Barbara Ann, Bartlesville, Okla., 57, 69.
Griffin, Anne, Dallas, Tex., 57.
- Haberthier, Frances Jane, Creve Coeur, Mo., 38, 39, 70, 72, 81.
Haachtmeyer, Illomay, St. Charles, Mo., 38, 39, 70, 72, 82.
Hahn, Georgia Dell, Kirkwood, Mo., 51.
Hale, Kathy, Oklahoma City, Okla., 51, 65, 69, 77, 80, 83.
Hamilton, Nancy Ann, Mattoon, Ill., 53, 70.
Hamrick, Ruth Mead, Kansas City, Mo., 48, 72, 77, 79.
Hancock, Cynthia Jane, Harrisburg, Ill., 56, 72.
Harland, Elizabeth Claire, Ironton, Mo., 57, 76, 81.
Harrington, Beverly, St. Charles, Mo., 50, 70, 74, 82.
Hartley, Ruth Ann, Des Moines, Iowa, 59, 80.
Hays, Anne, Glenwood, Iowa, 54, 73, 74.
Heberlee, Marilyn Ruth, Spearville, Kans., 50, 70, 72, 81.
Heinzelman, Marcia, Webster Groves, Mo., 58, 81.
Helmlinger, Marie Claire, Strasbourg, France, 38, 39.
Hendricks, Charlotte, Sarnia, Ontario, Canada, 50, 62, 69, 70, 76, 81.
Hendricks, Jean, Sarnia, Ontario, Canada, 50, 62, 82.
Henry, Sammie Sue, Breckenridge, Mo., 48, 70, 81.
Hess, Anne, Cedar Rapids, Iowa, 55, 69.
Hester, Jeanette, Russellville, Ala., 38, 39, 64, 68, 71, 73.
Hiebert, Barbara, Wichita, Kans., 50, 69, 72, 77, 81.
Higgins, Cynthia Kathryn, Indianapolis, Ind., 46.
Hinsen, Martha Ann, Kansas City, Mo., 48.
Hoaglin, Martha, Mt. Pleasant, Iowa, 53.
Hogan, Ann, San Angelo, Tex., 55.
Hollister, Carrol Jean, Dallas, Tex., 56, 70.
Homra, Shirley Jean, Fulton, Ky., 59, 80.
Holcomb, Shirley Jean, St. Louis, Mo., 59.
Honeycutt, Peggy Juanita, Gallatin, Tenn., 55, 76, 77, 78, 80.
Hornaday, Gloria, St. Joseph, Mo., 52, 70.
Houser, Joanne, Paducah, Ky., 50, 68.
Huffman, Virgelene Aurilia, Bismarck, Mo., 53, 75.
Humphiner, Serita, River Forest, Ill., 40, 41, 62, 71, 73.
Hunter, Elizabeth Page, Earlham, Iowa, 49, 71, 76, 78, 81.
Hutchinson, Pamela, Arkansas City, Kans., 54, 74, 79.
Hyde, Janis Mae, El Dorado, Ark., 52, 58, 74, 76, 79, 80.
- Italiano, Evelyn, Collinsville, Ill., 53.
- Jacobs, Joann, St. Louis, Mo., 52.
Janak, Patricia Jean, Crystal Lake, Ill., 47, 73, 76, 81.
Jennings, Talva Jean, Sapulpa, Okla., 54.
Johnson, Vesta Jane, Affton, Mo., 55.
Jones, Mary Ruth, Dallas, Tex., 52, 72, 76, 80.
Jones, Shirley Grace, San Marino, Calif., 56.
Jones, Sybil Irene, South Pasadena, Calif., 56, 87.
Jordan, Kay Collins, Tullahoma, Tenn., 46.
- Karsten, Julie Ann, Wichita, Kans., 57, 70, 75.
Kasper, Marian Louise, Kansas City, Mo., 56, 74.
Kavanaugh, Carole Eileen, Ft. Worth, Tex., 50, 66, 71.
Kaveler, Elaine Ann, Tulsa, Okla., 48, 75.
Kebl, Nancy Ellen, Liberty, Ind., 74, 75.
Keen, Jacqueline Ann, Knightstown, Ind., 58, 72, 78.
Keeton, Deane Ellen, Kansas City, Mo., 47.
- Kellogg, Carol, Amarillo, Tex., 57, 69, 72.
Kennedy, Susan Anne, Newport, Tenn., 46, 68, 70.
Kirch, Mary Cochrane, Keokuk, Iowa, 48, 71, 73, 81, 91.
Kiss, Dolores Bernice, Chicago, Ill., 47, 72, 74, 76, 81.
Knight, Carol Lee, Ft. Smith, Ark., 54.
Knock, Bonnie A., Parkersburg, Iowa, 59.
Kolocotronis, Kathy, St. Louis, Mo., 51, 73, 76, 79, 80, 88.
Kruel, Arline, Washington, Mo., 40, 41, 63, 70, 76, 81.
- Lacy, Jane, Lawton, Okla., 49, 77, 78.
Ladd, Carolyn, Pueblo, Colo., 56, 72, 77, 78.
Lakin, Sally, LaSalle, Ill., 48, 79.
LaMaster, Betty Lou, Houston, Tex., 58, 73, 87.
Langworthy, Gail Katherine, Palestine, Ill., 55, 66, 77.
Laue, Shirley Jean, Des Moines, Iowa, 55, 69, 78, 79.
Leachman, Claudette G., Stillwater, Okla., 52, 69.
Lee, Janet, Louisville, Ky., 51, 71, 76, 77, 81.
Lee, Nancy, Madison, Wis., 51, 78.
Lefler, Sally, Glendale, Mo., 53, 66, 76, 77, 81.
Leftwich, Eleanor Louise, Hughesville, Mo., 57.
Leonard, Jane, Ft. Worth, Tex., 49.
Lett, Beverly, St. Charles, Mo., 40, 41, 67, 70, 72.
Lewis, Aliana, Panama City, Panama, 53, 69, 77.
Lewis, Helen Janet, Sikeston, Mo., 51, 70, 72.
Li, Yu-Chen, Paris, France, 40, 41, 68, 71, 73.
Linhart, Carole Louise, St. Louis, Mo., 55, 72, 75, 79.
Longstreth, Susan, Wabash, Ind., 53, 72, 73, 81.
Lovejoy, Nancy Ann, Ponca City, Okla., 55.
Lovett, Carolyn, Star City, Ark., 46, 52, 70.
Lunak, Sandra Ann, West Chicago, Ill., 40, 41, 73, 76, 81.
Lyerly, Jacqueline J., St. Louis, Mo., 48, 74, 75.
- McCord, Nancy Jo, Camden, Ark., 57, 87.
McCullough, Marlys, Oklahoma City, Okla., 57.
McDaniel, Nancy, Ft. Worth, Tex., 48, 66, 71, 76, 81.
McDermott, Kathleen Ann, St. Louis, Mo., 56, 72, 81.
McEachern, Camille, Vivian, La., 55, 77, 80.
McGilvary, Kathleen Esther, Edwardsville, Ill., 58, 75.
McLeod, Marilyn Charlotte, Salem, Mo., 52, 76, 81.
McMinn, Jan Lenore, Oklahoma City, Okla., 58.
McMullin, Vera Ann, Sullivan, Ill., 53, 83.
McPherson, Marjorie Joan, Ames, Iowa, 59.
- Malcolm, Betty Lou, Sikeston, Mo., 49, 72.
Mark, Valerie Gail, Grand Rapids, Mich., 59, 76, 77, 81, 83.
Marr, Julie Morgan, Omaha, Nebr., 57, 73, 83.
Marshall, Anita Vivian, Fairfield, Ill., 40, 41, 72, 73, 81, 83.
Marshall, Marian, Richmond Heights, Mo., 51, 62, 63, 74, 75, 76, 79, 88.
Martin, Mary Elizabeth, Prescott, Ariz., 54, 69, 70, 74, 78, 81.
Mason, Elizabeth K., McMinnville, Tenn., 53, 76.
Mauze, Eleanor, San Antonio, Tex., 47, 94.
Meadows, Phyllis Anita, Kellerton, Iowa, 51, 71, 72, 76, 80.
Meagher, Jeanne, Oklahoma City, Okla., 53.
Meierhoff, JoAnn, Kansas City, Mo., 49.
Merrell, Mary Lu, Glen Ellyn, Ill., 47, 66, 67, 69, 73.
Meyer, Patricia Lou, Dallas, Tex., 57, 79.
Micheletto, Tillie Jean, Collinsville, Ill., 52, 56, 74, 87.
Miller, Dorothy Marie, Kansas City, Mo., 52.
Miller, Patricia Alice, Marshall, Ill., 48.
Miller, Patricia Ruth, Dallas, Tex., 59, 72, 83.

Student Directory

- Mills, Marilyn, Danville, Ill., 46, 76, 81.
Missey, Judith Ann, Glen Ellyn, Ill., 58.
Mitchell, Marilyn, Mexico, Mo., 48.
Mittelstadt, Marcia Jane, Laurel, Nebr., 52, 72, 74, 77.
Moe, Nancy Therese, Madison, Wis., 46, 72, 76, 78, 81, 92.
Moore, Ann Stafford, Wewoka, Okla., 53.
Moore, Betty Carol, Kirkwood, Mo., 47.
Moore, Paula Lou, Oklahoma City, Okla., 42, 43, 64, 65, 67, 71, 74, 95.
Moorhead, Carol Jean, O'Fallon, Mo., 56, 87.
More, Carolyn, Harlan, Iowa, 53, 66, 73, 74, 76, 77, 80.
Morgan, Virginia, Centralia, Ill., 59.
Morris, Margaret, Austin, Tex., 58.
Moseler, Carol, St. Charles, Mo.
Motley, Marilyn Sue, Oklahoma City, Okla., 57.
Munro, Mary, San Angelo, Tex.
Murphy, Cynthia, Fremont, Nebr., 46, 73, 76, 81.
Myers, Joan Neihart, Linton, Ind., 59.
- Neblett, Dorothy Helen, Norfolk, Va., 47, 66, 67, 68, 77, 83.
Needham, Joyce Ann, Glenwood, Iowa, 51, 72, 76, 81, 82.
Nicholas, Marilyn, Oklahoma City, Okla., 58, 77, 81.
Nolta, Shirley Ann, Mt. Vernon, Ill., 59, 74.
Norgaard, Inge, Terring, Denmark, 53, 77.
Norton, Suzanne Ruth, Otter Lake, N. Y., 46, 78.
Null, Sue Ann, Muncie, Ind., 42, 43.
- Obert, Sunny, Waterloo, Iowa, 57.
Olander, June Ann, Chicago, Ill., 49.
Orndorff, Eva Ann, Mattoon, Ill., 58, 74, 76, 81.
Owen, Patricia, Oklahoma City, Okla., 53, 66.
- Parnas, Shirley, St. Louis, Mo., 48, 75.
Patterson, Eugenia, Longview, Tex., 59, 72, 76, 80.
Patterson, Olive Faye, St. Charles, Mo.
Peebles, Jane Thomas, New Orleans, La., 56, 70, 78.
Petefish, Joanne Elizabeth, Ladue, Mo., 59, 73, 81.
Petersen, Janet Eulalia, St. Joseph, Mo., 55, 87.
Peterson, Molly Jane, Wichita, Kans., 46, 72, 74, 75, 77.
Phelps, Ruth Jean, Kankakee, Ill., 53.
Pinckney, Mary Kay, Lebanon, Mo., 42, 43, 65, 69, 72, 81, 83.
Porter, Glenda Lou, Longview, Tex., 58, 69, 80, 87.
Poulos, Pat, Dallas, Tex., 55.
Powers, Wanda, Mt. Vernon, Ill., 57, 75.
Price, Janey, Oklahoma City, Okla., 55.
Prouty, Alice Lynn, Lubbock, Tex., 55, 77, 80.
Puckett, Patti, Amarillo, Tex., 58, 69, 73, 81.
- Randall, Beverly Joyce, Cobden, Ill., 49, 72, 74, 75, 77, 81.
Rasmussen, Julia Emilie, Grand Rapids, Mich., 58, 74, 81.
Ratjen, Carol Luise, Park Forest, Ill., 59, 69, 74, 76, 81.
Regot, Jacqueline, St. Charles, Mo., 46, 70, 72.
Reed, Judy, Stanford, Mont., 54, 69.
Reedy, Martha, Oklahoma City, Okla., 57.
Reinbold, Roberta Ruth, Belleville, Ill., 53, 70, 77.
Reschetz, Margaret Pfoff, Rochelle, Ill., 42, 43, 63, 72, 74, 75.
Rice, Janis Louise, El Paso, Ill., 55, 78.
Richards, Constance, West Plains, Mo., 54, 66, 69, 75, 76, 77, 81.
Richards, Julie, Oklahoma City, Okla., 42, 43, 62, 65, 69, 71.
- Richards, Susie, Oklahoma City, Okla., 56, 70, 73.
Ritt, Susan Elizabeth Morton, Newburg, Ind., 49, 68, 71.
Roberts, Sandra Celeste, Greenwood, Ark., 55.
Roby, Virginia Ann, Madison, Wis., 54, 69, 87.
Rood, Nancy Helen, Butte, Mont., 57, 69.
Rowe, Barbara Elaine, Memphis, Tenn., 49, 69.
Rudolf, Ute, Belleville, Ill., 59.
Rule, Jeanie, Sapulpa, Okla., 49.
Ryter, Gwendolyn, St. Louis, Mo., 58, 76, 77, 81.
- Sallee, Shirley Rae, Chillicothe, Mo., 58, 70, 73, 81.
Samuel, Carile, Papillion, Nebr., 72, 75, 77.
Sarazan, Gladys Louise, Ft. Worth, Tex., 56, 78.
Sawyer, Ann Milner, Caruthersville, Mo., 54, 69, 73, 74.
Schell, Mary Jo, Des Moines, Iowa, 55, 70.
Schmidt, Harriet Elaine, New Braunfels, Tex., 58, 73, 76, 80.
Schmidt, June, Evansville, Ind., 56, 70, 77.
Schmurr, Lisabeth, Otho, Iowa, 51, 79, 83.
Schumacher, Barbara Ann, Sedalia, Mo., 55.
Schwartz, Nancy Joan, St. Joseph, Mo., 49, 70.
Seehorn, Charlotte Rhea, Newport, Tenn., 46, 71, 73.
Severson, Elizabeth Jean, Madison, Wis., 47.
Shade, Jeanne Sandra, Hays, Kans., 58.
Shanklin, Dorris, Elkton, Ky., 56.
Sheley, Eunice, Alton, Ill., 42, 43, 65, 67, 69, 72, 81.
Sherwood, Kay, Wichita, Kans., 56, 74.
Shirley, Susan Kay, Nashville, Ill., 59.
Shuttleworth, Barbara Lou, Jennings, Mo., 47, 62, 82.
Siggelkow, Stella, McHenry, Ill., 59.
Smith, Ann Douglas, Magnolia, Ark., 51, 63, 67, 73, 78, 79, 91.
Smith, Barbara Jean, Joplin, Mo., 47, 72, 81.
Smith, Carolyn, Ft. Worth, Tex., 59.
Smith, Esther Mehalick, St. Louis, Mo., 46.
Smith, Judith Elinor, Magnolia, Ark., 55, 70, 73.
Smith, Patricia, Greenville, Ill.
Smythe, Sharon, Bartlesville, Okla., 54, 70, 72, 74.
Snider, Sandra, Borger, Tex., 44, 45, 63, 72.
Solis, Olga Valverde, Mexico, D. F., 57.
Sonneman, Emile Roberta, Fayetteville, Ark., 52.
Spalding, Suzanne, Sheffield, Ala., 54, 80, 87.
Steed, Nita, Amarilla, Tex., 54, 74.
Steinmetz, Phyllis Ann, Hammond, Ind., 54, 66, 75.
Stemmerich, Janyth, Alton, Mo., 49, 70, 76, 81.
Stephan, Jeanette, Wichita, Kans., 59.
Stillwell, Carol, Alton, Ill., 48, 70, 77, 81.
Stoecker, Martha, Webster Groves, Mo., 55, 71.
Stoerker, Marian, St. Charles, Mo., 44, 45, 64, 70, 72, 78, 79.
Stover, Ellen Louise, Grand Rapids, Mich., 58, 70, 76, 81.
Street, Virginia Owens, Graham, Tex., 54.
Stuart, Mary Carolyn, St. Louis, Mo., 49, 77.
Stutsman, Jane, Nashville, Ill., 49.
Sudik, June, Sentinel, Okla., 51.
Sullins, Patricia Jane, Overland, Mo., 58.
Swanson, Julia Marie, Ottumwa, Iowa, 55.
- Taft, Charlotte Sue, Dyersburg, Tenn., 55, 70, 74, 87.
Taylor, Margaret Anne, Venice, Calif., 47, 66, 76, 80.
Terrell, Marguerite, Paducah, Ky., 52, 56, 73.
Thayer, Mary Lou, Wilmette, Ill., 51, 70, 76, 81.

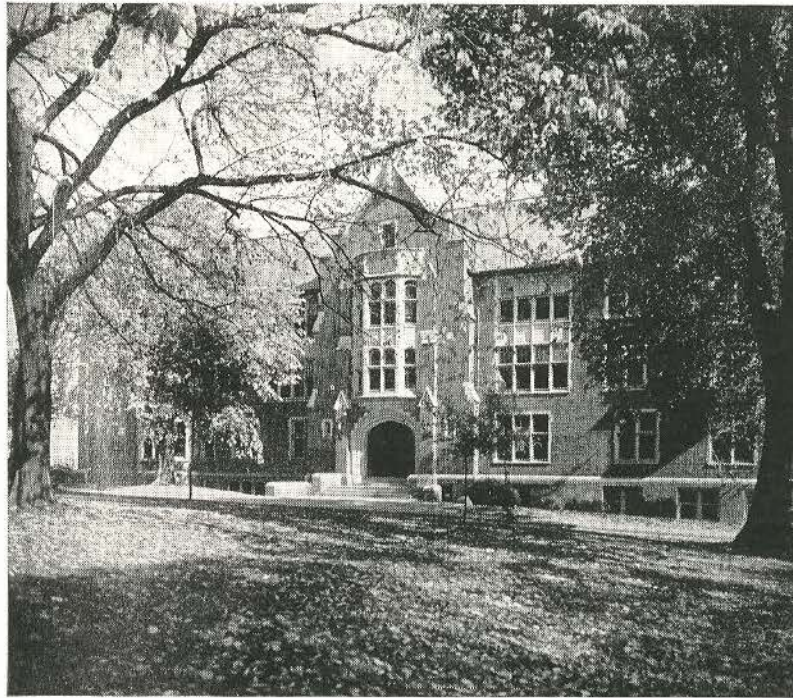
Student Directory

- Theobald, Mary Kay, Grayson, Ky., 53.
Thielecke, Mary Ann, Little Rock, Ark., 67.
Thompson, Norma Jean, Estancia, N. M., 54.
Thompson, Sarah Ann, Estherville, Iowa, 52, 72, 74, 77.
Todsén, Jennelle, Mexico, Mo., 48, 73, 76, 77, 78, 81, 83.
Todsén, Mary Ann, Mexico, Mo., 44, 45, 62, 72.
Townsend, Betty, Sac City, Iowa, 48, 70, 72, 73.
Tracewell, Mary Lu, Oklahoma City, Okla., 54, 81, 83.
Treadway, Naida Jane, Mt. Sterling, Ky., 51.
Turner, Anne Marie, Rockwell City, Iowa, 59, 76.
- Van Bibber, Mary Nell, St. Charles, Mo., 44, 45, 64, 68,
72, 82, 93.
Van der Dussen, Angenieta Anne, South Holland, Holland,
54, 77.
Vieaux, Anne, Dallas, Tex., 55.
- Wall, Linda Mae, Owosso, Mich., 46, 72.
Walker, Mary Ann, Sikeston, Mo., 49, 79.
Walker, Wilma Lois, Farmington, Mo., 49, 72.
Wallace, Nancy, Oak Park, Ill., 49, 67, 74.
Wayman, Sue, Ft. Worth, Tex., 54, 78.
Webb, Kay Craven, Dallas, Tex., 56.
- Weber, Ruth Anne, Sappington, Mo., 44, 45, 62, 81, 82,
83, 93.
Weeman, Charlotte, Ft. Worth, Tex., 56.
Wensel, Sondra Susan, Des Moines, Iowa, 56, 70, 79.
Whiteside, Nancy Ruth, Sapulpa, Okla., 52, 76, 80.
Whitnell, Elaine, Chicago, Ill., 49.
Wideman, Carol, Alton, Ill., 47, 72.
Wilkerson, Patsy Ann, Joplin, Mo., 47, 67, 72, 81, 82, 83.
Winkler, Brownie Carol, Dale, Ind., 48, 71.
Wolter, Carol, St. Charles, Mo., 47, 71, 78, 79.
Wood, Ann, Florence, Ala., 56, 80.
Woodman, Virginia Lee, Grand Rapids, Mich., 49, 63,
67, 82, 89.
Wright, Margaret Ann, Gary, Ind., 52.
- Young, Anne-Cable Wilson, Sherman, Tex., 52.
Young, Elizabeth B., Jackson, Tenn., 56.
Young, Janet Faye, Cedar Rapids, Iowa, 48, 66, 76, 80.
Young, Josephine Ann, East Grand Rapids, Mich., 52.
- Zimmerman, Patricia Louise, Hopkins, Minn., 51.
Zimmermann, Marilyn Jeanine, St. Louis, Mo., 59, 72, 76,
77, 78, 80.
Zotos, Ann, Alton, Mo., 58, 72, 81.

1954 Linden Leaves Sponsors

The following friends of Lindenwood College have helped make possible the publication of this issue of the LINDEN LEAVES by their financial assistance:

MR. THORLEY ALDERSON
MR. ARTHUR C. BAUE
MISS AIMEE M. L. BECKER
MR. AND MRS. FRANCIS C. BECKER
MR. STEPHEN BLACKHURST
MR. JOSEPH BOKOR AND MR. ROBERT C. FISCHER
DR. EUGENE J. CANTY
MR. ROBERT COLSON
DR. RUSSELL J. CRIDER
DR. VERNON DUNGAN
MR. HOWARD S. ELLIS
MR. HENRY FUERHOFF
MR. MATTHEW J. GAUSS
MR. CHARLES W. HAFFER
DR. F. L. HARRINGTON
MR. AND MRS. ROY KEITHLY
MISS RUTH N. LAWING
PRESIDENT FRANC L. McCLUER
MR. PAUL F. NIEDNER
MR. ROBERT V. NIEDNER
MR. ED J. PUNDMANN
MR. FRANK B. RAUCH, SR.
MR. CHARLES RICHARDS
DR. H. C. RITTER
MR. W. M. WARD
MR. LEE I. WHITE
MR. SAUL WOLFF



Congratulations to the students of Lindenwood College on this yearbook. Your college hopes that it has served you well during your student days and it is eager to be of further service to you wherever you are in the years ahead.

LINDENWOOD COLLEGE

ST. CHARLES, MISSOURI

A Convenient Place to Shop . . .

THE GOLDEN RULE STORE

MATTINGLY BROS. STORES CO.

ST. CHARLES, MO.

We Specialize in 5c to \$5.00 Merchandise—Dry Goods, Notions,
Drug Sundries, Stationery, Gift Items, Houseware and
Other Staple Merchandise

CLASS OF '54:

Congratulations and
sincere good wishes to
each of you



THE QUALITY COALS



BELL & ZOLLER COAL COMPANY

RAILWAY EXCHANGE BUILDING, ST. LOUIS 1, MISSOURI

BELL BUILDING, CHICAGO 1, ILLINOIS

Another Book

by

CENTRAL



CENTRAL ENGRAVING COMPANY

114 N. SEVENTH STREET

ST. LOUIS 1, MISSOURI

**STRAND
THEATRE**

**ON NIGHTS
OFF
CAMPUS**

ST. CHARLES, MO.



YELLOW CAB



401 N. SECOND ST.

ST. CHARLES, MO.



Your badge is a thing of beauty and should be a joy forever!

The traditions of a century-old school cannot be erased by time, and the beauty of your Lambda Chi Badge is as enduring as the traditions of your school. Your Lambda Chi Badge is wrought entirely of gold and set with only genuine perfectly matched Oriental whole pearls—a badge in keeping with all of the fine things that Lindenwood College stands for.

COLLEGE SHOP

317 N. 11TH STREET

Now in Our One-Hundredth Year

ST. LOUIS, MISSOURI

MOE'S PLACE

wants to thank you for your patronage

during the year

BEST OF WISHES

PROP. MOE FISCHBACH

COMPLIMENTS OF

DSHOTTY

HOME OF FAMOUS BRANDS

300 N. MAIN ST. CHARLES, MISSOURI

CONGRATULATIONS

from the

ST. CHARLES AUTOMOBILE DEALERS

BEN'S AUTO SALES
BRUCKER MOTOR SALES
PUNDMANN MOTOR CO.
ST. CHARLES MOTOR CO.
TRAVIS SERVICE CO.
WARDLAW MOTOR CO.
WILKE MOTORS, INC.

COMPLIMENTS

CHESTER B. FRANZ INC.

COMPLIMENTS OF

The Famous

"For Fashions of Distinction"

311 NORTH MAIN ST. CHARLES, MO.

SHATTINGER MUSIC CO.

HAS WHATEVER YOU WANT IN
MUSIC

For free catalog write

Shattinger Music Co.

331 ARCADE BLDG.

PHONE MA2408

ST. LOUIS 1, MO.

CLARK-SPRAGUE PRINTING CO.

1901 LOCUST STREET

ST. LOUIS, MISSOURI

KREY PACKING COMPANY

Quality Meat Products Since 1882

BEEF — PORK — VEAL — LAMB

SMOKED MEATS, LARD, VACUUM COOKED MEATS
(Delicious Fresh Sausage Made Daily)

21ST AND BREMEN AVENUE

St. Louis 7, MISSOURI

VESTAL

4963 MANCHESTER AVE.



Incorporated

ST. LOUIS 10, MISSOURI

ON FLOOR MAINTENANCE PRODUCTS

Is your assurance that the
finest material known for
preserving and beautifying
all types of floors is
being used.

VESTAL INCORPORATED

4963 MANCHESTER

ST. LOUIS, MO.

STOVES
HARDWARE
BOTTLED GAS
PAINTS AND OILS

THE BRUNS MACHINE CO.
222-224 NORTH MAIN STREET
ST. CHARLES, MO.

FARM SUPPLIES
WATER SYSTEMS
WASHING MACHINES
ELECTRIC APPLIANCES

**BANNER NEWS
COMPANY**

ST. CHARLES, MO.

PRINTERS

PUBLISHERS

KISTER STUDIO

508 JEFFERSON STREET
ST. CHARLES

VOGT BROS. POULTRY FARM

CONDITIONED POULTRY OF ALL KINDS

GALLAHER AND LINDENWOOD AVENUES
ST. CHARLES, MISSOURI

Branches: UNIVERSITY CITY, MO., and NORMANDY, MO.

H. J. ROTHER

JOHN WETTER

HACKMANN LUMBER COMPANY

LUMBER — PAINTS — HARDWARE

PHONE 806

106 N. MAIN STREET

ST. CHARLES, MO.

RECHTERN CLEANING CO.

216 NORTH 2ND STREET

ST. CHARLES, MO.

MISSOURI COAL AND APPLIANCE COMPANY

G. E. RADIO AND T.V.

G. E. HOME APPLIANCES

FURNITURE

GREEN MARKED COAL

PHONE 440

420 N. MAIN

ST. CHARLES

AHMANN'S NEWS STAND

CIGARS and TOBACCO

NEWS, BOOKS, STATIONERY, SPORTING GOODS

ST. CHARLES, MO.

223 N. MAIN

EDMUND C. BURKE, Plumber and Heating Contractor

STOKERS AND OIL BURNERS

PHONE 162

ST. CHARLES, MO.

The Record Bar

Sheet Music

Denning Radio

Repair our Specially

112 N. MAIN

80

PHONES

1100

RAUCH LUMBER & GROCER CO.

GENERAL OFFICE

ST. CHARLES, MISSOURI

RETAIL YARDS

ST. CHARLES — KIRKWOOD — WASHINGTON
MARTHASVILLE—ROBERTSON—MOSCOW MILLS

Wholesale Grocer

ST. CHARLES, MISSOURI

“YOU ARE ALWAYS WELCOME AT A RAUCH LUMBER YARD”

BUSE'S FLOWER SHOP

400 CLAY

ARTISTRY IN FLOWERS

PHONE 148

WE TELEGRAPH FLOWERS

GAS

SERVES YOU BETTER

THROUGH MODERN GAS APPLIANCES

ST. CHARLES GAS CORPORATION

212 NORTH MAIN STREET

YOUR PATRONAGE
DESERVES OUR CONSTANT
EFFORT TO SERVE YOU BETTER

GRADE "A"
DAIRY PRODUCTS



**ST. CHARLES DAIRY
COMPANY**

RAUCH LUMBER & GROCER CO.

GENERAL OFFICE

ST. CHARLES, MISSOURI

RETAIL YARDS

ST. CHARLES — KIRKWOOD — WASHINGTON
MARTHASVILLE—ROBERTSON—MOSCOW MILLS

Wholesale Grocer

ST. CHARLES, MISSOURI

“YOU ARE ALWAYS WELCOME AT A RAUCH LUMBER YARD”

BUSE'S FLOWER SHOP

400 CLAY

ARTISTRY IN FLOWERS

PHONE 148

WE TELEGRAPH FLOWERS

GAS

SERVES YOU BETTER

THROUGH MODERN GAS APPLIANCES

ST. CHARLES GAS CORPORATION

212 NORTH MAIN STREET

FIRST NATIONAL BANK

of ST. CHARLES, MO.

CHARLES J. DAUDT	<i>President</i>
JOSEPH A. BOTTANI	<i>Vice-President</i>
LEE I. WHITE	<i>Cashier</i>
W. C. BORGELT	<i>Assistant Cashier</i>
PAUL H. KNOBLAUCH	<i>Assistant Cashier</i>
RUSSELL KANSTEINER	<i>Assistant Cashier</i>
GLENNON DEBRECHT	<i>Assistant Cashier</i>
CLARICE POWERS	<i>Assistant Cashier</i>

CAPITAL \$250,000.00

SURPLUS \$250,000.00

DIRECTORS

JOSEPH A. BOTTANI
CHARLES J. DAUDT
HENRY J. ROTHER

PERCY G. SCHAEFER
DR. AUGUST WESTERFIELD
LOUIS WILKE

LEE I. WHITE

ESTABLISHED IN

1863

MEMBER FEDERAL RESERVE SYSTEM

Under the Supervision of the United States Government

MEMBER FEDERAL DEPOSIT INSURANCE CORPORATION

BRAUFMAN'S

Congratulations Seniors

You've done a fine job. Your record at Lindenwood—whether academic, musical or social—will be an achievement to look back on with great pride.

We are pleased . . . if we have helped in any way to make your stay here pleasant. We hope to see you again.

HUNING'S

ALLEN FOODS
INC.

•
*Finer Foods for Hotels and
Institutions*

•
PHONE: MAIN 3575
1141-51 SOUTH SEVENTH STREET
SAINT LOUIS 4, MISSOURI

**KONCEN MEAT
COMPANY**

•
MEAT PURVEYORS

•
6208 EASTON AVENUE
SAINT LOUIS 14, MISSOURI

BOTTANI PRINTERY

F. N. BOTTANI
Proprietor

ESTABLISHED 1919

COMMERCIAL PRINTING

120 N. SECOND STREET

ST. CHARLES, MISSOURI

SALES

ROYAL — VICTOR

SERVICE

MISSOURI TYPEWRITER EXCHANGE

RENTALS AND REBUILDING

FRANK D. HAGAN, *Manager*

WENTZVILLE, MO.

WHEN IN BUSINESS

A Good Service To

REMEMBER

WILMES LINEN SERVICE

JE5312

4350 FINNEY AVE.

St. Louis, Mo.

ENJOY LIFE . . . EAT OUT MORE OFTEN

J. F. CONRAD GROCER CO.

ST. LOUIS, MO.



CALENDA PRODUCE

Fruit and Produce

Wholesale

PHONE CHESTNUT 7088

2125 St. Louis Ave. St. Louis 7, Mo.

PARKVIEW GARDENS

As Near to Lindenwood as Your Telephone

1925 RANDOLPH

We Telegraph Flowers

PHONE 214

COMPLIMENTS OF

TRUMP CLEANERS

200 N. KINGSHIGHWAY

1 BLOCK NORTH OF CAMPUS

PHONE 2140

COTTAGE BAKERY

"Party Cakes a Specialty"

211 NORTH SECOND STREET

ST. CHARLES, MO.

COMPLIMENTS

of

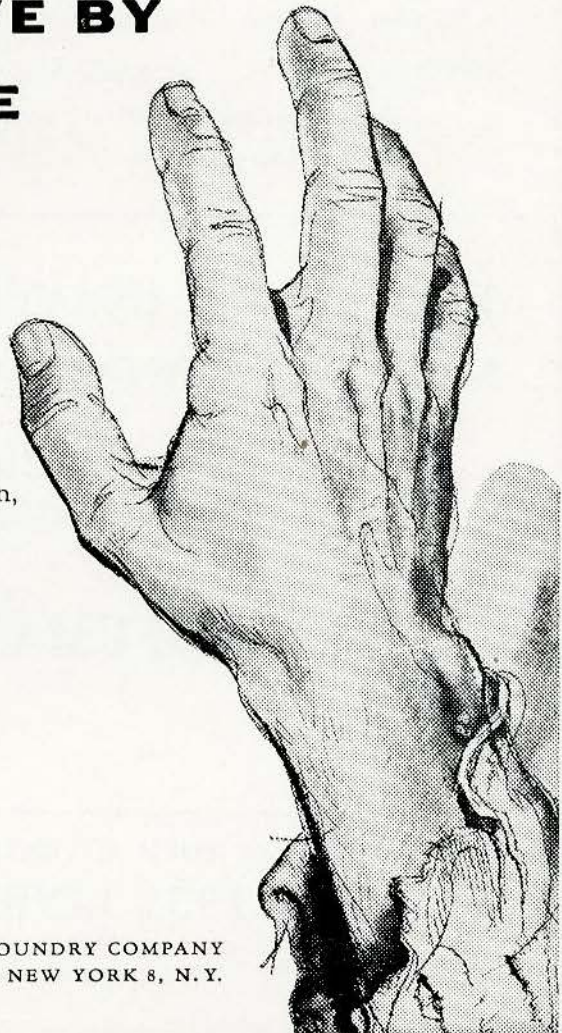
CROTTY BROTHERS, Inc.





MAN CANNOT LIVE BY BREAD ALONE

Through the Centuries fear-ridden leaders have imposed their wills on defenseless, hungry and desperate peoples. History proves that such suppression inevitably results in bloody revolt. It happened in France. It happened in Italy. It happened in Russia and will again. This great historical lesson, recognized by the writers of the American Constitution, should be constantly in the hearts and minds of every American. Our best defense lies in the vigorous protection of the freedoms we so often take for granted. It is to this defense that we, as Americans, dedicate our worldly goods...our hearts...our very lives.



AMERICAN CAR AND FOUNDRY COMPANY
30 CHURCH STREET NEW YORK 8, N. Y.



COMPLIMENTS
OF
**J. C. PENNEY
COMPANY**

Engineers of TERMITE CONTROL
PEST-CONTROL SERVICE
RAT STOPPAGE

ROSE EXTERMINATOR COMPANY

A National Institution—Established 1860

6748 Olive St. Rd. St. Louis, Mo.

Telephone Delmar 3900

G. L. CLEM, *Manager*

CONGRATULATIONS



ATLAS JEWELERS

1954 LINDEN LEAVES . . .

NEW LINDENWOOD VIEWBOOK . . .

BOTH ARE THE PRODUCTS OF
A FINE PRINTING SERVICE—

VON HOFFMANN PRESS, Inc.

ST. LOUIS

JEFFERSON CITY

PATRONIZE YOUR ADVERTISERS

1954 LINDEN LEAVES

Editor—MARY NELL VANBIBBER

Advertising Manager—BEVERLY HARRINGTON



