

Lindenwood University

Digital Commons@Lindenwood University

Yearbooks

Lindenwood University Archives

1955

1954-1955 Linden Leaves

Lindenwood College

Follow this and additional works at: <https://digitalcommons.lindenwood.edu/yearbooks>

Recommended Citation

Lindenwood College, "1954-1955 Linden Leaves" (1955). *Yearbooks*. 37.
<https://digitalcommons.lindenwood.edu/yearbooks/37>

This Book is brought to you for free and open access by the Lindenwood University Archives at Digital Commons@Lindenwood University. It has been accepted for inclusion in Yearbooks by an authorized administrator of Digital Commons@Lindenwood University. For more information, please contact phuffman@lindenwood.edu.

LINDEN LEAVES

LINDEN
LEAVES

Linden

Linden Leaves

LINDEN

LINDEN LEAVES

1955



1915



Linden Leaves

1955

Board

<i>Editor-in-Chief</i>	JANE EDWARDS
<i>Business Manager</i>	JENNELLE TODSEN
<i>Literary Editor</i>	BARBARA SHUTTLEWORTH
<i>Art Editor</i>	VIRGINIA LEE WOODMAN
<i>Organization Manager</i>	SUZANNE ANDERSON
<i>Advertising Manager</i>	DOLORES KISS

Annual Publication of the Students of
LINDENWOOD COLLEGE, ST. CHARLES, MISSOURI

Engraving by CENTRAL ENGRAVING COMPANY
St. Louis, Missouri

Printing and Binding by VON HOFFMANN PRESS, INC.
Jefferson City, Missouri

Covers by BECKETT COMPANY
St. Louis, Missouri

Photography by HERB WEITMAN and ALTA QUAST

There is a Certain Comparison in the Life of a Lindenwood Student and in a Symphony.

We find in our classes and our instructors, the intellectual stimulation necessary to start us off on our ways of thinking. They help us determine our thought direction or the "Theme."

We can follow this throughout our college years and after for the rest of our lives, or we can supplement and vary this to produce themes of our own making. This is our choice.

Through organizations and activities, we develop that which we have received in our classes. Sometimes the tone may be light and gay, while other times it may be heavier and more serious. It is through these activities that we find how many aspects of our lives are really affected by the theme that has been accepted by us in the beginning.

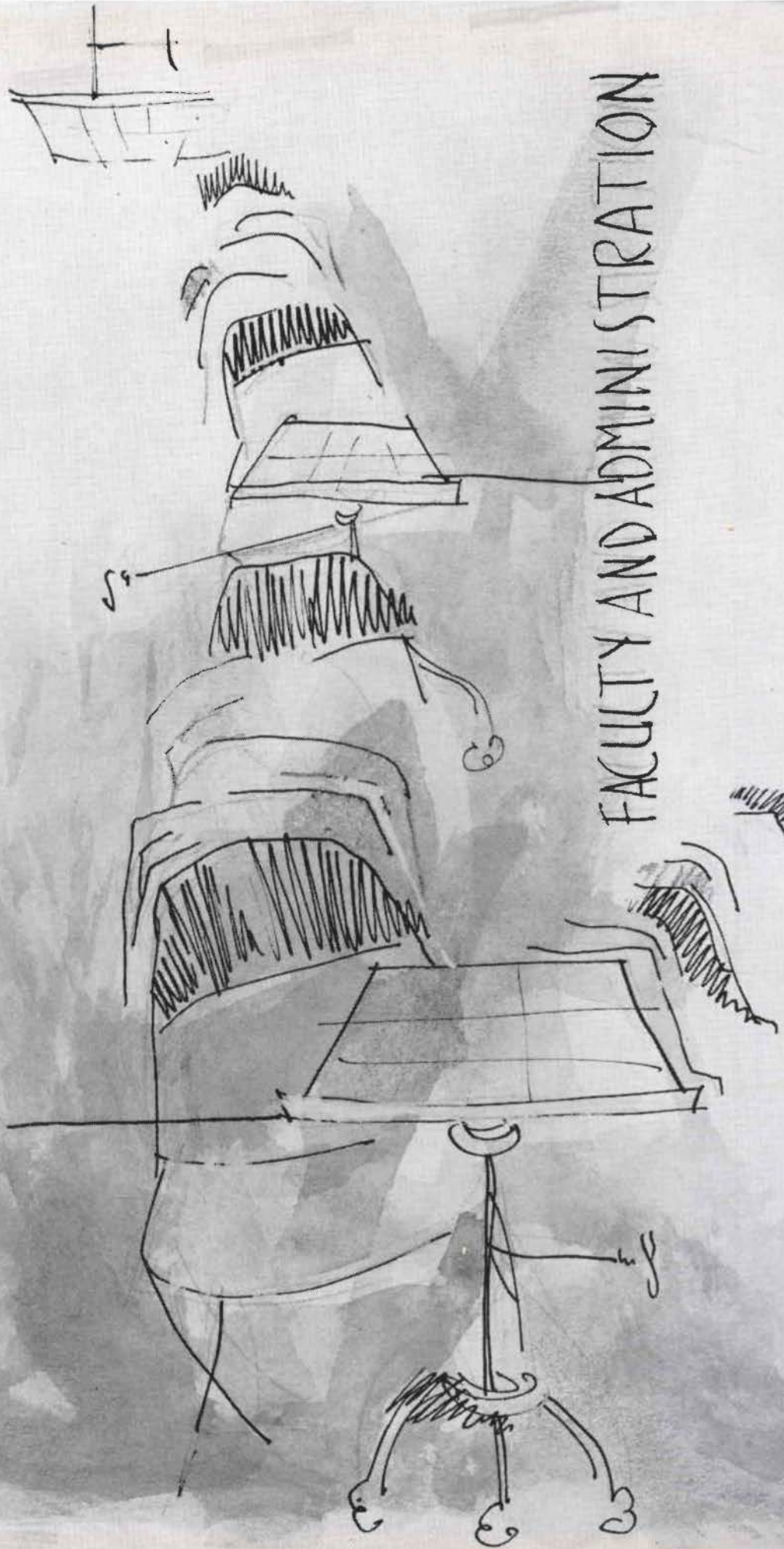
The pomp and splendor of a processional, the intricate, smooth, flowing, intellectual passage, the light, carefree, laughing songs, the full swelling majesty of a hymn, beautiful in themselves, are more beautiful when blended together by the desire to learn. This is our symphony then—our "Song of Lindenwood."



Dedication to Dr. John Thomas

With strength
Of gentleness
He walks the way of quiet
Peace that lies in harmony
of soul.

FACULTY AND ADMINISTRATION



AT FIRST
WE HEAR THE THEME;
THE PATTERN OF THE WHOLE
ARISES AND IS RECOGNIZED
AS OURS.



Administration



FRANC L. McCLUER, Ph.D.
President of the College

A SALUTE to the Class of 1955! The best testimony to the worth of a college is found in the intellectual competence and character of its graduates. We are proud of you. May it bring you strength to remember that "you all belong to Lindenwood and Lindenwood belongs to you." May gladness and joy be your lot even as you bring gladness and joy to others.

F. L. McCLUER

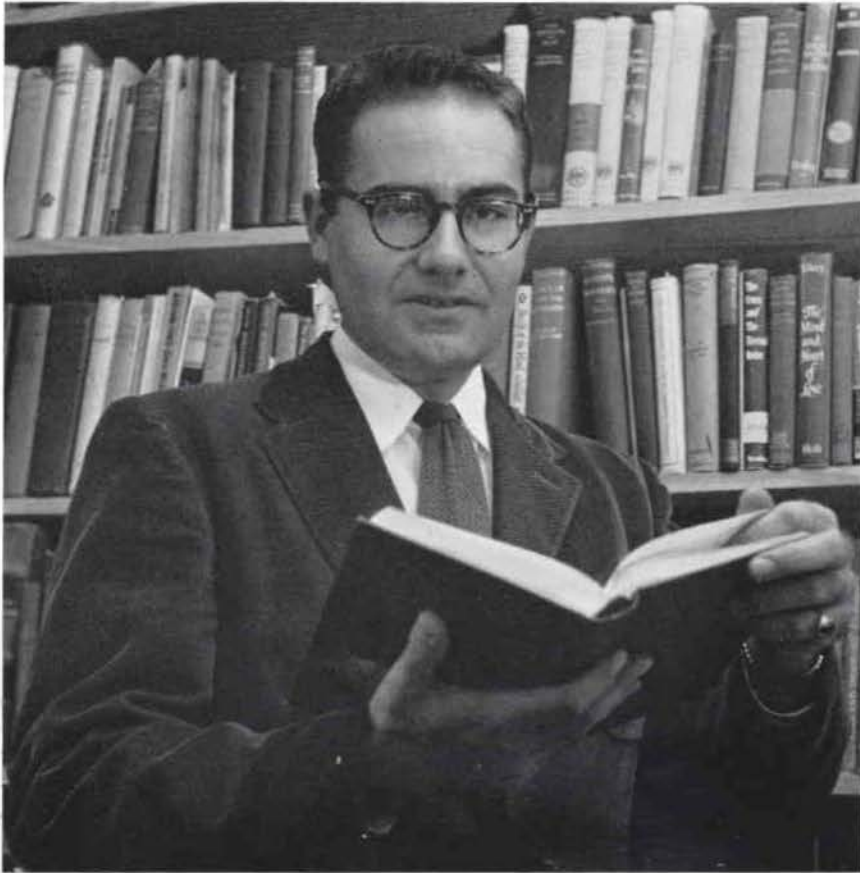
Administration

GREETINGS to each member of the Class of 1955. As you enter the next phase of your life, do so with courage and with humility. Cherish the worthwhile from your days here at Lindenwood; move into each new experience with knowledge and wisdom, with an open mind and heart. And remember always, to keep your horizons as wide as the world is wide.

PAULENA NICKELL
Dean of the College



PAULENA NICKELL, Ph.D.
Dean of the College



“... I'm a Stranger in Paradise.”

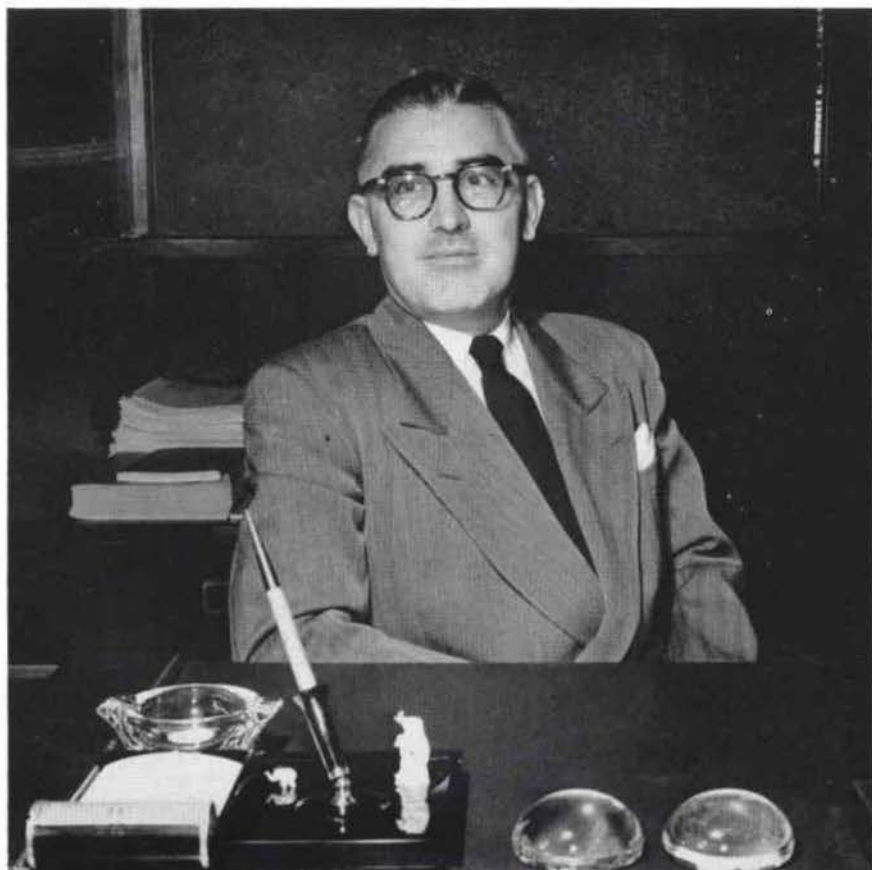
THEODORE A. GILL, PH.D.
Dean of Chapel



Administration

MARY YONKER—*Secretary to the President*
JUDITH DAMHORST—*Secretary to the Dean of the College*
JEAN BARKLAGE—*Secretary to the Registrar*
BETTYE WANN—*Secretary to the Director of Public Relations*

“The Best Things in
Life Are Free.”



ROBERT C. COLSON
Business Manager



HATTIE KOLB—*Bookkeeper*
CORAYE—*Chief Accountant*
AGNES ZEISLER—*Secretary to Business Manager*

Administration



“The Happy
Wanderer”

MARY F. LICHLITER
Director Student Guidance and Placement



RUTH OLSEN—*Social Director*
LIV UDSTAD—*Secretary to Director of Guidance*

Administration

“Thank You for Calling.”



WILLIAM FLETCHER MCMURRY
Director of Admissions



BETTIE B. WIMBERLY—*Secretary to the Director of Admissions*
CARRIE M. CHARLES—*In Office of Director of Admissions*
LILLIAN SIEDHOFF—*Secretary to the Director of Admissions*

Administration

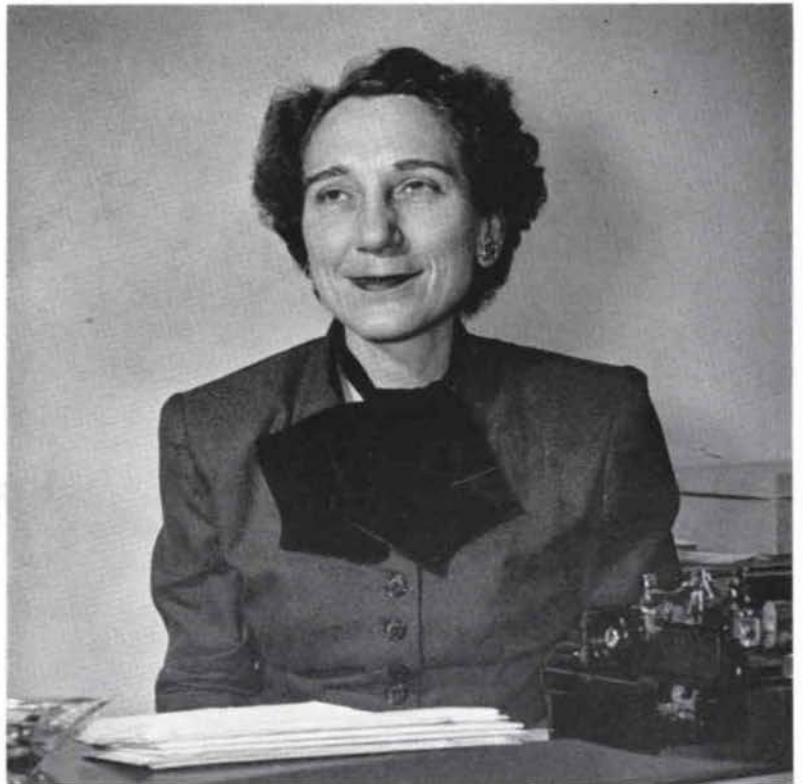


"All the Things You
Are"

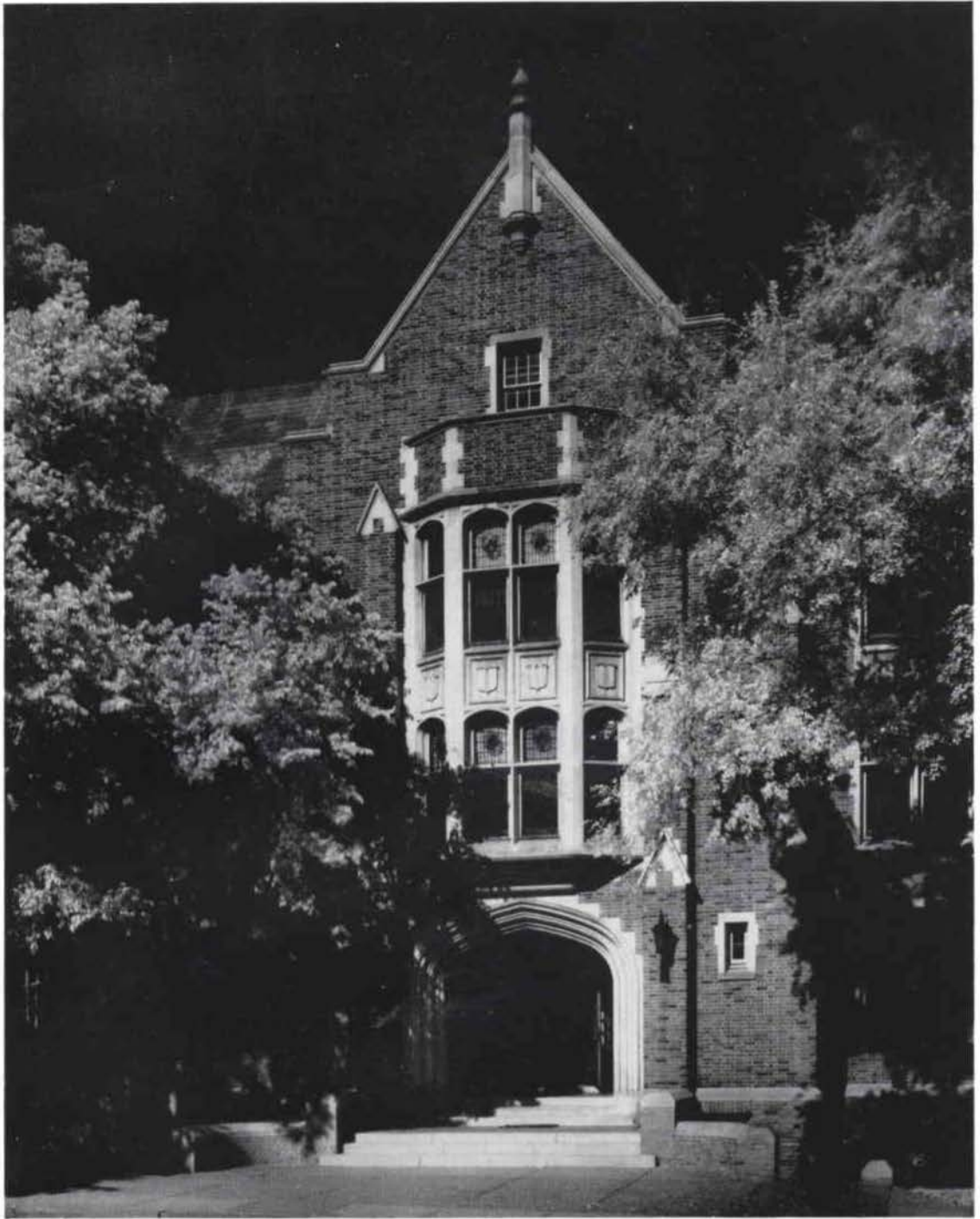
LULU CLAYTON BEALE
Registrar

"It's Been a Long,
Long Time."

Administration



MARY BRYANT
Alumnae Secretary and Director of Public Relations



ROEMER HALL

This building is dedicated
to the cause for which
Lindenwood College
was founded,
"The Christian Education
of Young Women."



WILLIAM ENGRAM—*"Crazy, Man, Crazy!"*
JOHN MOORE—*"Tomatoes Are Cheaper, Potatoes
Are Cheaper"*
MARIAN FROELICH—*"Heaven Can Wait"*

HOMER CLEVINGER—*"The Donkey Serenade"*
DOROTHY WILLIAMS—*"As Time Goes By"*



Art

HARRY D. HENDREN—*"Oh, They
Had to Carry Harry to the
Ferry"*
MILDRED FISCHER—*"Deep Pur-
ple"*
ARTHUR KANAK—*"The Old Mas-
ter Painter from the Far Away
Hills"*

Faculty

Music



ALLEGRA SWINGEN—"*Swingen Down the Lane*"
VIRGINIA L. HOUSE—"*This Old House*"
GERTRUDE ISIDOR—"*I'll String Along With You*"
JOHN THOMAS—"*With a Song in My Heart*"

ROBERT A. CRUCE—"*Alexander's Ragtime Band*"
WAYNE H. BALCH—"*Organ Grinder's Tune*"
ISABELLE McCLUNG—"*Zing, Zing, Zing a Little Zong*"
MILTON REHG—"*Sing, You Sinners, Sing*"



Faculty

Biology



MARION DAWSON—*"Tiptoe Through the Tulips"*
MARY TALBOT—*"Poor Butterfly"*
WALTER GRUNDHAUSER—*"Little Man, You've
Had a Busy Day"*

Physical Science

CAROLYN S. GRAY—*"I Don't Want to Set the
World on Fire"*
MARY E. LEAR—*"Young at Heart"*



Mathematics



LOUISE BEASLEY—*"I've Tried Every Angle"*

Faculty

Journalism

MARY BRYANT

Classical Languages, Literature

SIEGMUND A. E. BETZ, ALICE PARKER

Philosophy—Religion

THEODORE A. GILL—*"Heaven Was Never Like This"*

C. EUGENE CONOVER—*"Talk to the Man Upstairs"*



English

ELIZABETH DAWSON—*"Ain't Necessarily So"*

ALICE PARKER—*"It's a Woman's World"*

DOROTHY ELY—*"Bubbles, Bangles, and Beads"*

AGNES SIBLEY—*"Across the Sea a Voice is Calling Me"*

SIEGMUND A. E. BETZ—*"In My Merry Oldsmobile"*



Faculty

Speech



JULIET MCCRORY—*"Tell Me a Story"*

ROBERT DOUGLAS HUME—*"Life Upon the Wicked Stage Ain't Nothing for a Girl"*

MARTHA MAY BOYER—*"Accent-u-ate the Positive"*

Library

HORTENSE F. EGGMANN, MIL-
DRED KOHLSTEDT—*"It's in
the Book"*



Faculty

Secretarial Science

Modern Language



GRETA LABSON—*"Sincerely"*



HUGO BAUER—*"Hugo Your Way, and I'll Go Mine"*

HENRY TURK—*"Put On Your Old Gray Eonnel"*

MARY TERHUNE—*"South America, Take It Away"*

Home Economics

IRENE VAN BIBBER—*"Shake, Rattle, and Roll"*

MARGARET LINDSAY—*"Don't Needle Me"*

SOPHIE PAYNE ALSTON—*"Georgia On My Mind"*



Faculty

Education

BREMEN VAN BIBBER—*“So You Say I’ve
Got a Lot to Learn . . .”*



Physical Education

MARGUERITE VER KRUZEN—*“Body and
Soul”*

DOROTHY ROSS—*“Straighten Up and Fly
Right”*

GWAZINA ONA AMONAS—*“I Get a Kick Out
of You”*

Faculty

CAROLINE ANDERSON, R.N.; E. J. CANTY, M.D.;
LOLA BREITENSTEIN, R.N.

Health Center

"Oh, Bury Me Not . . ."



Post Office Staff

*"I'm Gonna Sit Right Down and Write
Myself a Letter"*



RAE SHORT, AMY M. WAGNER

Buildings, Grounds



CHARLES H. BUSHNELL

"There'll Be Some Changes Made"

"Carry Me Back to Old Virginny"

Food Service Staff



JULIA KEITHLY, CARL HOUSE



MARGARET BUSHDIECKER, EDNA BROOKS, SALLY DRILLER

Tea Room Staff

"Cigarettes, NO Whisky, and Wild, Wild Women"

Sibley Hall



HOUSE STAFF

BETH GLEBE, *President*
GRETE REHG
JANE BBADY
CAROLYN OGLESBY



KATHRYN HENDREN
Head Resident



LUCILLE VICK
Head Resident

MRS. EVALYN CROSBY, *Head Resident,*
Second Semester

HOUSE STAFF

SUZANNE ANDERSON, *President*
FERN PALMER
BETTY TOWNSEND
CAROL WIDEMAN
JEANIE RULE
JANICE GORDON
BARBARA GIVENS
CHARLOTTE SEEHORN

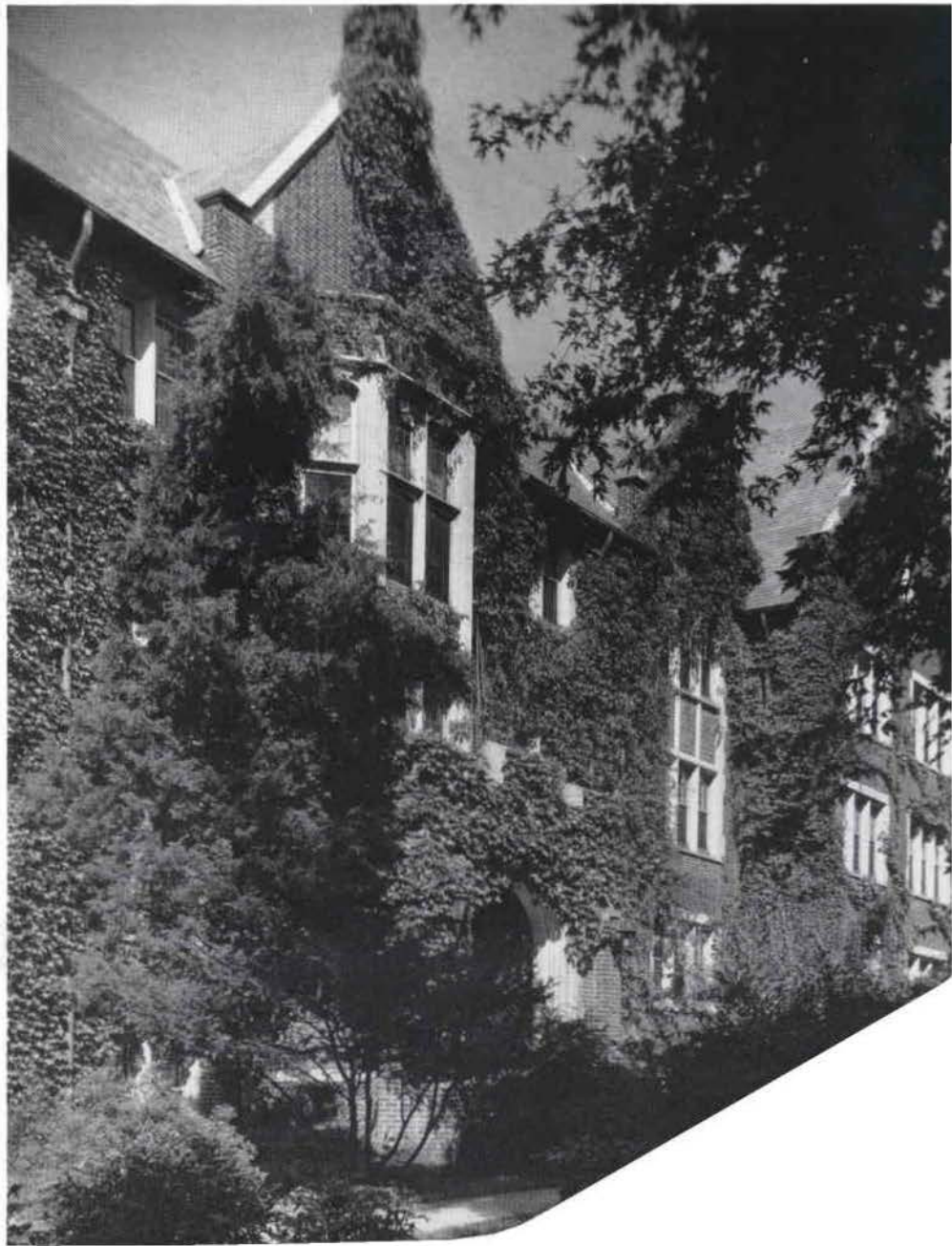
Cobbs Hall



HELEN M. CALVERT
Head Resident

HOUSE STAFF

CAROL KELLOGG, *President*
MARY LEE LYLE
MARIAN DARNNE
JOANN FORNEY
KAY ELLIOTT
BEVERLY RANDALL
SHARMION SIMPSON
DOROTHY NEBLETT



Niccolls Hall

HOUSE STAFF
ALICE PROUTY, *President*
ELAINE LUNT
DARLA EHLERT
JANE DAVIS



AUGUSTA GADDY
Head Resident





HOUSE STAFF

RUTH MEAD HAMBICK, *President*

CAROL FITZROY

MARGARET BITTMAN

JOANN HOUSER

ANN ZOTOS

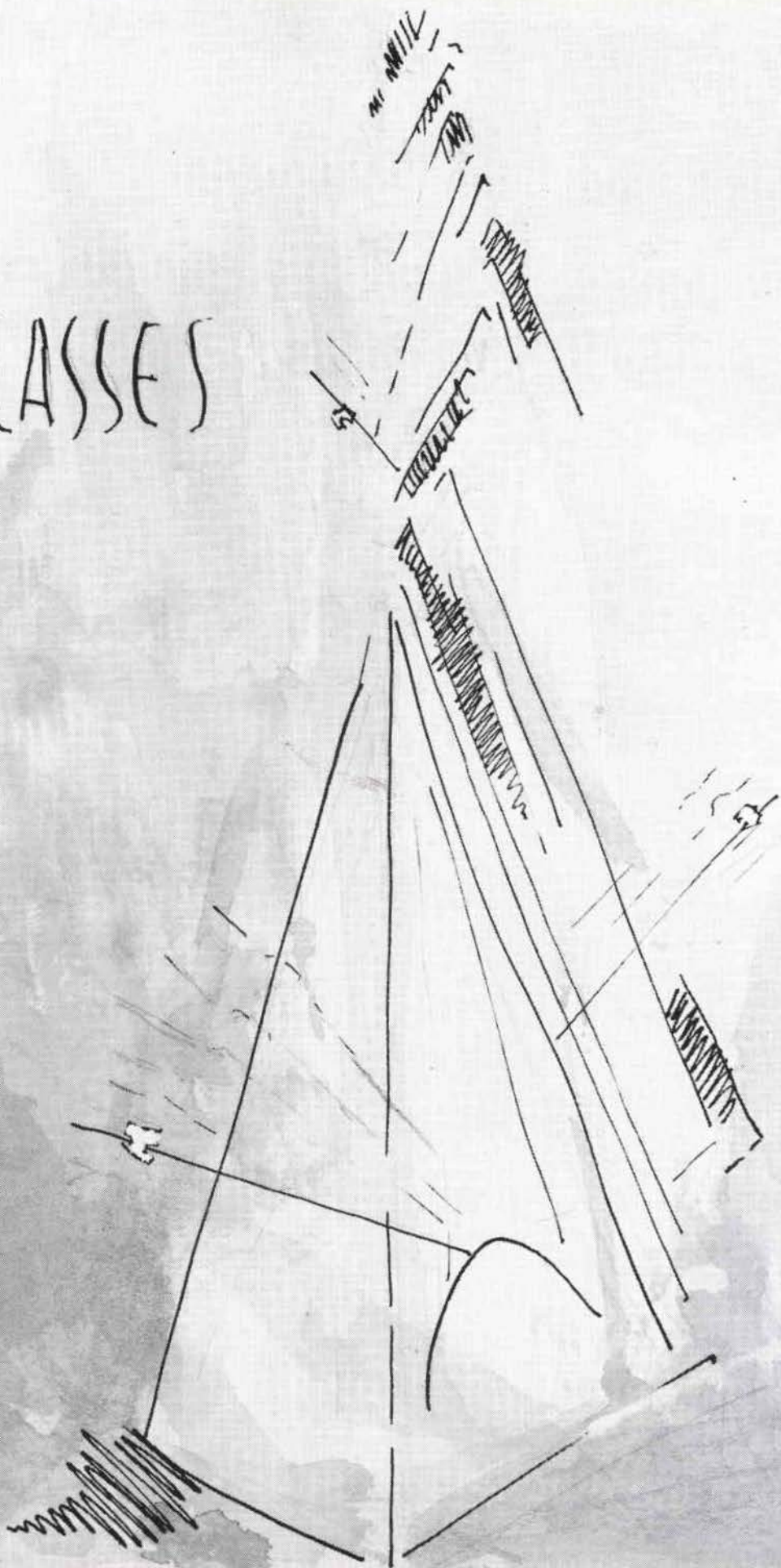
JULIE RASMUSSEN

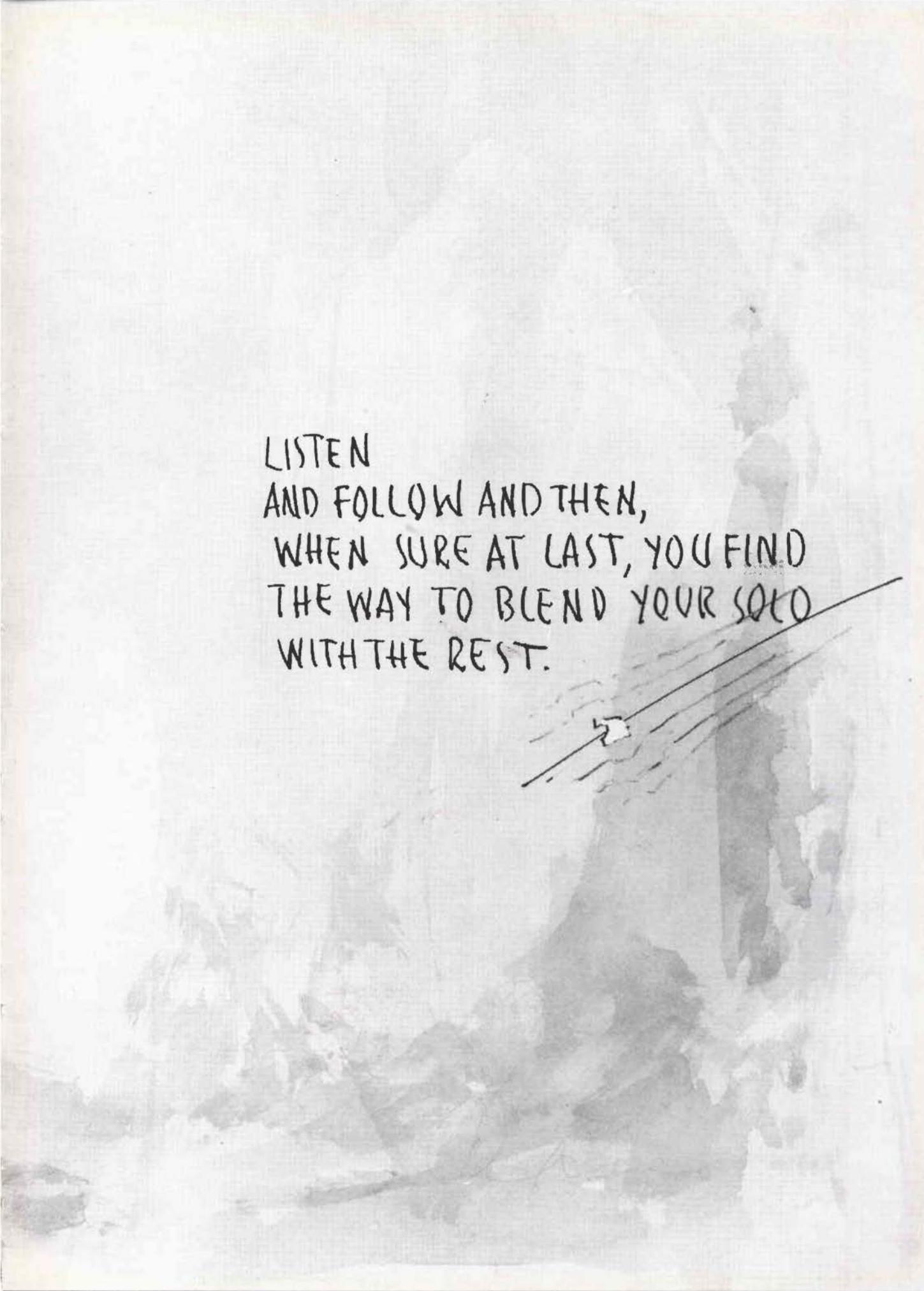
Butler Hall



RUTH OLSEN
Head Resident

CLASSES





LISTEN
AND FOLLOW AND THEN,
WHEN SURE AT LAST, YOU FIND
THE WAY TO BLEND YOUR SOLO
WITH THE REST.

JUDITH ELAINE ANDERSON; *B.A., Art*; Liberty, Missouri

Cobbs House Staff, '51-'52; Dean's Honor Roll, '51-'53; Beta Chi, '52-'53, '54-'55; Choir, '51-'52; Encore Club, '52-'53, '54-'55; Kappa Pi, '52-'53, '54-'55; KCLC, '51-'52; League of Women Voters, '51-'52; Press Club, '51-'52; Young Republicans, '51-'52; Harvest Court, '51; Valentine Queen, '53; May Queen, '55; Choralaires, '54-'55; University of Missouri, '53-'54.

SUZANNE ANDERSON; *B.S., Elementary Education*; Malden, Missouri

Cobbs Hall House Staff, '52-'55, President, '54-'55; Dean's Honor Roll, '52-'54; S. C. A. Junior Cabinet, '51-'52; Athletic Association, '51-'54, Vice-President, '53-'54; Future Teachers of America, '52-'55; League of Women Voters, '51-'53; Press Club, '54-'55; Young Democrats, '51-'55; Linden Leaves Staff, Organization Manager, '51-'55; Washington Semester, '53; Linden Scroll, '55.

PEGGY BARBER; *B.M., Voice*; Haleyville, Alabama

Student Christian Association, '51-'54, Junior Cabinet, '51-'52, Music Director, Senior Cabinet, '52-'54, Vice-President, '53-'54, Chairman of Religious Emphasis Week, '53-'54; Choir, '51-'55, Vice-President, '52-'54, President, '54-'55, Student Director, '51-'55; Choralaires, '53-'54; International Relations Club, '51-'53; League of Women Voters, '51-'54; Modern Language Club, '53-'54; Young Democrats, '51-'55, President, '53-'55; Delta Theta, '51-'52, Vice-President.



JENNY LOU BARTON; *B.A., Art*; Van Nuys, California

President's Scholarship, '54; Dean's Honor Roll, '51-'52, '53-'55; Alpha Epsilon Rho, Honorary Member, '54-'55; Beta Chi, '51-'52; Encore Club, '51-'52, '53-'55; Future Teachers of America, '53-'55; International Relations Club, '51-'52, '54-'55; Kappa Pi, '53-'55; KCLC, '53-'55; League of Women Voters, '51-'52, '54-'55; Press Club, '53-'55; Young Republicans, '51-'52; Senior Gift Committee, '54-'55; Senior Class Vice-President, '54-'55.

NURAN BAYDAN; *B.A., Psychology*; Eskishehir, Turkey

Sibley House Staff, '54; Dean's Honor Roll, '52-'53, '54; Athletic Association, '53-'55; Delta Nu, '54, Treasurer, '54; International Relations Club, '52-'54, Vice-President, '53-'54; Modern Language Club, '52-'54; Poetry Society, '53-'54, '54.

DORIS BEAUMAR; *B.A., Speech*; Leroy, Illinois

Student Council, Secretary-Treasurer, '54-'55; President's Scholarship, '51-'54; Dean's Honor Roll, '51-'55; Alpha Epsilon Rho, '52-'55, Secretary-Treasurer, '54-'55; Alpha Psi Omega, '54-'55; Alpha Lambda Delta, '51-'53; Alpha Sigma Tau, '53-'55; Athletic Association, '51-'55, Intramural Basketball Chairman, '51; Choir, '51-'53; Choralaires, '53-'54; Griffin, Assistant Editor, '52-'53; Linden Bark, '52-'54; Orchestra, '51-'52; International Relations Club, '53-'54; KCLC, '51-'55, Continuity Director, '53-'54, Program Director, '53-'54; Station Manager, '54-'55, Director of Special Programs, '54-'55; League of Women Voters, '51-'55; Modern Language Club, '51-'55, Treasurer, '52-'53, President, '53-'54; Pi Alpha Mu, '52-'55, President, '53-'54; Press Club, '52-'55, President, '53-'54, Producer of Gridiron, '55; Young Republicans, '52-'55; Student Director of Lindenwood Film, '55; Play Productions, '51-'55.

Seniors



MARJORIE BURCH; *B.S., Home Economics*; St. Charles, Missouri
Lindenwood, '53-'55; Dean's Honor Roll, '54; Colhecon, '54; Future Teachers of America, '54.

MILDRED GLORIA BURSEY; *B.A., Speech*; Grand Rapids, Michigan
Chapel Committee, '51-'52; Dean's Honor Roll, '51-'55; Alpha Epsilon Rho, '52-'55, Vice-President, '53-'54; Alpha Psi Omega, '53-'55, President, '54-'55; Alpha Sigma Tau, Associate Member, '53-'54, Member, '54-'55; International Relations Club, '51-'53; KCLC, '51-'55, Production Director, Program Director, Station Manager; League of Women Voters, '51-'53; Modern Language Club, '51-'53; Pi Alpha Mu, '53-'55, Secretarial Treasurer, '54-'55; Press Club, '51-'55, Vice-President, '52-'53, Secretary-Treasurer, '54-'55; Linden Bark, '52-'55, Reporter, '52-'54, Editor, '54-'55; Play Productions; Washington Semester, '53-'54; Linden Scroll, '55.

ASTRID CASTRO; *B.A., History and Government*; Ponce, Puerto Rico
Dean's Honor Roll, '51-'55; Alpha Sigma Tau, Associate Member, '53-'55, Member, '51-'53; International Relations Club, '51-'55; KCLC, '51-'53; League of Women Voters, '51-'55; Modern Language Club, '51-'54, Spanish Vice-President, '52-'53; Press Club, '51-'53, President, '52-'53; Young Democrats, '51-'55.



PEGGY, CHIQUI, DR. McCLUER, JUDY, DORIS, NURAN, MRS. BIRCI, GLORIA, JENNY, SUSIE

Seniors

ZILPHA CLARK CURTIN; *B.S., Physical Education*; Cincinnati, Ohio

Junior Class Secretary, '53-'54; Student Council Representative, '52-'53; Irwin House Staff, '52-'53, Cobbs House Staff, '53-'54; Dean's Honor Roll, '53-'55; Athletic Association, '51-'55, Hockey Chairman, '51-'52, Treasurer, '53-'54, Vice-President, '54-'55; Hockey, Volleyball, Basketball Teams, '51-'55; Delta Nu, '53-'55, Vice-President, '54-'55; Future Teachers of America, '52-'53; International Relations Club, '51-'53; League of Women Voters, '51-'55, Treasurer, '51-'52, President, '52-'53; Young Republicans, '51-'55.

DEANE CAROL DETTMANN; *B.A., Biology*; Belvidere, Illinois

Senior Class President, '54-'55; Student Christian Association, Fellowship Chairman (W.U.S.), '53-'54, Missouri District Co-Chairman YMCA-YWCA, '54-'55; Dean's Honor Roll, '51-'53; Beta Chi, Honorary Member, '54-'55; Choir, '53; Pi Alpha Delta, '51-'55, Vice-President, '53-'54; Triangle Club, '52-'55, Secretary, '54-'55; Annual Staff, Literary Editor, '53-'54.

ROSEMARY DYSART; *B.M.E., Voice—Music*; Webster Groves, Missouri

Sophomore Class President, '52-'53; Student Christian Association Cabinet, '51, '53, '54; President's Scholarship, '53-'54; Dean's Honor Roll, '51-'55; Alpha Sigma Tau, '54-'55, Vice-President, '54-'55; Athletic Association, '53-'55; Choir, '51-'53; Future Teachers of America, '52-'54; KCLC, '52-'53; League of Women Voters, '51-'52; Choralaires, '53-'54; Mu Phi Epsilon, '51-'54, President, '53; Young Republicans, '51-'52; Harvest Court, '51; May Court, '54; Linden Scroll, '55.



JANE LEWIS EDWARDS; *B.S., Office Management*; Crossville, Tennessee

Linden Scroll, '55; Cobbs House Staff, '53-'54; Dean's Honor Roll, '51-'55; Alpha Sigma Tau, Associate Member, '53-'55; Athletic Association, '51-'53; Choir, '52-'53, '54-'55; Colhecon, '51-'53; Encore Club, '51-'55; League of Women Voters, '51-'52; Press Club, '54-'55; Linden Leaves Staff, '52-'55, Assistant Business Manager, '52-'53, Business Manager, '53-'54, Editor-in-Chief, '54-'55; Student Christian Association, Cabinet, Social Responsibilities Chairman, '53-'55; Estes Conference YMCA-YWCA Co-Chairman, '54-'55.

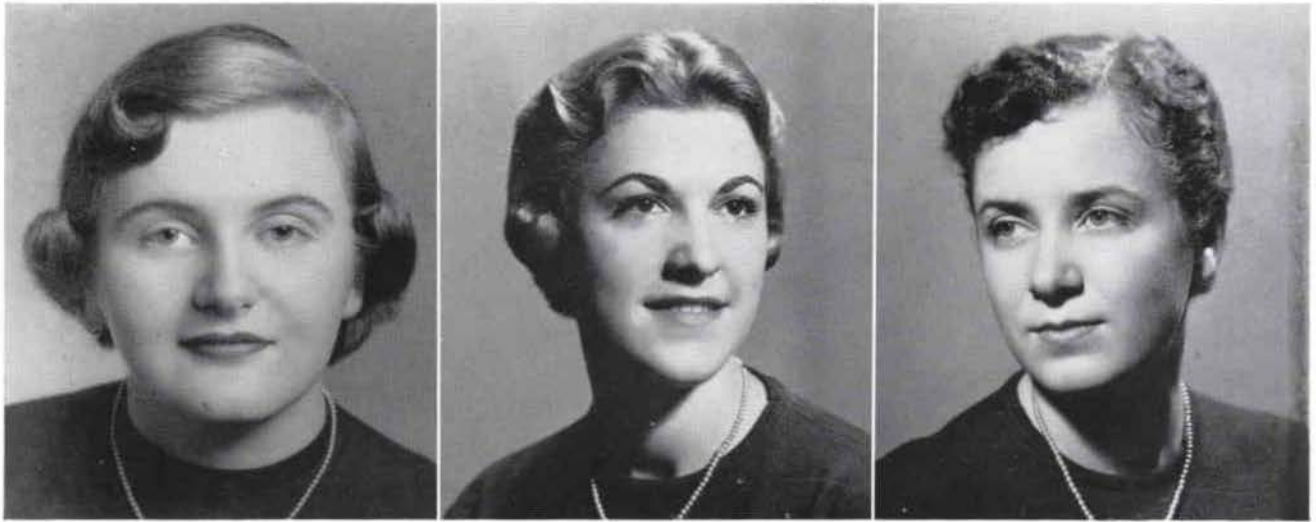
ROSALYN WISE FIELDS; *B.A., Sociology*; New Castle, Indiana

Student Council, Senior Representative, '54-'55; Social Council, '54-'55; Delta Nu, '53-'55; League of Women Voters, '51-'55, President, '53-'54; Modern Language Club, '51-'53; Press Club, '51-'53; Young Republicans, '51-'55; Washington Semester, '53.

ELIZABETH FINLOW; *B.S., Home Economics*; Sandback, Cheshire, England

Lindenwood, '54-'55; Colhecon, '54-'55; International Relations Club, '54-'55; Canterbury Club, '54-'55.

Seniors



ELIZABETH ANNE GLEBE; *B.A., Biology*; Lawrenceville, Illinois

Student Council Representative, '53-'54; Sibley Hall House Staff, '53-'54, Sibley Hall President, '55; Dean's Honor Roll, '52, '55; Delta Nu, '54-'55; International Relations Club, '51-'53; Triangle Club, '53-'55; Washington Semester, '54.

JANICE GORDON; *B.A., Speech*; Edwardsville, Illinois

Cobbs House Staff, '51-'55; Social Council, '51-'55; Alpha Epsilon Rho, '53-'55, Vice-President, '54-'55; KCLC, '52-'55, Sales Manager, '53-'54, Continuity Director, '54; Co-Program Director, '55; League of Women Voters, '54-'55; Orchesis, '51-'55, President, '54-'55; Press Club, '53-'55, President, '54-'55.

RILEY GRAVES; *B.A., Psychology*; Corinth, Mississippi

Niccolls House Staff, '54; Social Council, '54-'55, Co-Social Chairman, Cobbs Hall, '54-'55; Choir, '53-'54; Delta Nu, '53-'55, Treasurer, '54-'55; Encore Club, '53-'55; League of Women Voters, '53-'54; Young Republicans, '53-'54.



RONNY, JANIE, ROSIE, JAN, ZEKE, RILEY, LIZBETH, DEE DEE

Seniors

KATHRYN ANN HALE; B.A., Speech; Oklahoma City, Oklahoma

Student Council, '54-'55; Cobbs House Staff, '54-'55; Alpha Epsilon Rho, '52-'55, President, '54-'55; International Relations Club, '52-'55; KCLC, '52-'55, Chief Announcer, '52-'53, Production Director, '54-'55, Co-Program Director, '55; League of Women Voters, '54-'55; Press Club, '52-'55, Treasurer, '53-'54; Young Democrats, '52-'55; Linden Bark Staff, '53-'54; Editor of Squawker, '54-'55.

RUTH MEAD HAMRICK; B.S., Elementary Education; Kansas City, Missouri

Butler Hall President, '54-'55; Choir, '54-'55; Future Teachers of America, '53-'55, President, '54-'55; International Relations Club, '53-'55; League of Women Voters, '54-'55; Orchesis, '52-'55, Secretary-Treasurer, '54-'55; May Court, '55; Senior Gift Committee, '54-'55.

PATRICIA JEAN JANAK; B.A., History and Government; Crystal Lake, Illinois

University of Wisconsin, '51-'52; Delta Nu, '53-'55; League of Women Voters, '52-'55; Pi Alpha Delta, '54-'55; Young Republicans, '52-'55, Secretary-Treasurer, '54-'55; Senior Gift Committee, '54-'55.



DEANE ELLEN KEETON; B.A., English; Kansas City, Missouri

Student Council, '51-'53, '54-'55, Vice-President, '54-'55; Dean's Honor Roll, '51-'55; Alpha Psi Omega, '52-'54; Alpha Sigma Tau, '53-'55; Alpha Lambda Delta, President, '52-'53; International Relations Club, '52-'53; Modern Language Club, '51-'53; Orchesis, '52-'53; Pi Alpha Mu, '52-'54; Poetry Society, '52-'55, President, '54-'55; May Court, '53.

SUSAN ANNE KENNEDY; B.A., Chemistry and Biology; Newport, Tennessee

Junior Class Vice-President, '53-'54; Student Council, '54-'55, Freshman Counselor, '54-'55; Judiciary Board, '52-'53; Nicolls Hall House Staff, '52-'53; President's Scholarship, '51-'54; Dean's Honor Roll, '51-'55; Alpha Lambda Delta, '51-'53; Alpha Sigma Tau, '53-'55, President, '54-'55; Choir, '52-'53; Orchestra, '51-'52; League of Women Voters, '51-'53; KCLC, '54-'55; Modern Language Club, '51-'53, German Vice-President, '52-'53; Triangle Club, '52-'55, Secretary, '53-'54; Young Democrats, '51-'52; Linden Scroll, '55.

DOLORES KISS; B.S., Elementary Education; Chicago, Illinois

Student Christian Association, Sibley Dorm Chaplain, '53-'54, Senior Cabinet, Program Chairman, '54-'55; Sibley Hall House Staff, '53-'54; Dean's Honor Roll, '54-'55; Choir, '52-'54; Future Teachers of America, '52-'55, Secretary, '53-'54, Treasurer, Missouri F.T.A., '53-'54; League of Women Voters, '53-'55, Secretary, '54-'55; Press Club, '54-'55; Young Republicans, '52-'55; Annual Staff, Advertising Manager, '54-'55; Linden Scroll, '55.

Seniors



ELEANOR MAUZÉ; *B.S., Elementary Education; San Antonio, Texas*

Student Christian Association, Freshman Cabinet President, '51-'52, Senior Cabinet Secretary, '52-'53, Senior Cabinet President, '54-'55; Athletic Association, '54; Choir, '52; Encore Club, '51-'53; Future Teachers of America, '52-'55; International Relations Club, Secretary, '52-'53; KCLC, '51-'52; League of Women Voters, '51-'54, Secretary, '52-'53; Young Democrats, '51-'55, Secretary, '52-'53; Westminster Shorter Catechism College Scholarship, '51; Freshman Council, '51; May Court, '52, '54; Linden Scroll, '55.

PATSY WILKERSON MEISEL; *B.A., Speech; Joplin, Missouri*

Cobbs House Staff, '52-'53; Dean's Honor Roll, '53-'55; Alpha Psi Omega, Vice-President, '54-'55; Day Students' Organization, '54-'55; Future Teachers of America, President, '53-'54; Pi Alpha Mu, Secretary, '53-'54; Young Republicans, '51-'55; Linden Leaves, Staff Member, '53-'54; Play Productions.

MAXINE MENKE; *B.S., Home Economics; Bancroft, Iowa*

Junior S. C. A. Cabinet, Treasurer, '51-'52; Colhecon, '51-'55, Treasurer, '52-'53, Vice-President, '54-'55; KCLC, '52-'53; League of Women Voters, '52-'53; Press Club, '52-'53; Young Democrats, '52-'53, '54-'55; May Court, '54-'55.



RUTHIE, MAX, PATT, ELLIE, SUSAN, DEANE, MRS. VICK, PAT, KATHY, DEE

Seniors

MARY LU MERRELL; *B.A., Art*; Glen Ellyn, Illinois

Student Christian Association, Publicity Chairman, '54-'55; Dean's Honor Roll, '51, '53-'54; Alpha Epsilon Rho, Honorary Member, '54-'55; Intramurals, '52-'54; Choir, '52-'53; Kappa Pi, '51-'55, President, '53-'54; KCLC, '51-'55, Music Director, '53-'55; KETC, Children's Program, Advisor, '55; Pi Alpha Delta, '51-'55, President, '52-'54; Pi Alpha Mu, '52-'55, Vice-President, '54-'55; Press Club, '51-'55, Secretary, '52-'53; Young Democrats, '51-'52; Play Productions; Linden Scroll, '55, Secretary, '55.

MAHLYN MILLS; *B.A., Economics*; Danville; Illinois

President, Junior Class, '53-'54; Beta Chi, '52-'55, Secretary-Treasurer, '52-'53; League of Women Voters, '53; Modern Language Club, '53; Young Republicans, '53; House Staff, '54.

NANCY THERESE MOE; *B.S., Physical Education*; Madison, Wisconsin

University of Wisconsin, '51-'52; Senior Class Secretary, '54-'55; Nicolls Hall House Staff, '52-'53; Athletic Association, '52-'55; Choir, '52-'53; Team Sports, '52-'55; Delta Nu, '54-'55; Future Teachers of America, '52-'55; International Relations Club, '52-'54; KCLC, '54-'55; League of Women Voters, '52-'55; Terrapin, '52-'53; Young Republicans, '52-'55, Secretary, '53-'54; May Court, '54.



BETTY MOORE; *B.S., Elementary Education*; Kirkwood, Missouri

Cobbs House Staff, '52-'53; Encore Club, '52-'54; Future Teachers of America, '51-'55, Vice-President, '54-'55; International Relations Club, '52-'53; KCLC, '52; League of Women Voters, '51-'54; Young Democrats, '51-'55; Washington Semester, '53.

TOSHIKO MORIKAWA; *B.A., English*; Urawa, Japan

Lindenwood, '54-'55; International Relations Club, Vice-President, '54-'55; Press Club, '54-'55.

DOROTHY HELEN NEBLETT; *B.A., Art*; Norfolk, Virginia

Judiciary Board, '51-'52; Student Christian Association, Publicity Chairman of Junior Cabinet, '51-'52, Publicity Chairman of Senior Cabinet, '52-'53; Dean's Honor Roll, '51-'55; Alpha Lambda Delta, '51-'53, Senior Sponsor, '53-'54; Alpha Sigma Tau, '53-'55, Treasurer, '54-'55; Griffin, Art Editor, '52-'53, Editor, '53-'54, Art Editor, '54-'55; International Relations Club, '51-'55, President '53-'54; Kappa Pi, '51-'55, Vice-President, '52-'53, President, '54-'55; Modern Language Club, '51-'53; Poetry Society, '52-'55; Linden Scroll, '55, President, '55.



SUZANNE RUTH NORTON; *B.S., Physical Education*; Otter Lake, New York

Sophomore Vice-President, '52-'53; Freshman Council, '51; Irwin Hall House Staff, '51-'52, Butler Hall House Staff, '52-'53; Athletic Association, '51-'55, Butler Intramural Chairman, '52-'53, Athletic Teams, '51-'55; Beta Chi, '51-'55, Vice-President, '52-'54, President, '54-'55, Riding Team; Future Teachers of America, '53-'55; International Relations Club, '51-'55; KCLC, '51-'52; League of Women Voters, '51-'55; Press Club, '51-'55; Young Republicans, '51-'55, President, '54-'55.

CARLE SAMUEL; *B.M.E., Music Education*; Papillion, Nebraska

Dean's Honor Roll, '52-'55; Presser Music Foundation Scholarship, '52-'55; Choir, '51-'52; Future Teachers of America, '52-'55; International Relations Club, '52-'54; Mu Phi Epsilon, '53-'55, President, '54-'55; Delta Theta, '52.

CHARLOTTE SEEHORN; *B.A., Psychology*; Newport, Tennessee

Honor Board, Chairman, '54-'55; Cobbs Hall House Staff, '53; Dean's Honor Roll, '52, '53, '54, '55; Delta Nu, '53-'55, President, '54-'55; Modern Language Club, '51-'53, Secretary, '52-'53; Triangle Club, '53-'55, Vice-President, '53-'54; Young Democrats, '51-'52.



Seniors

YANK, CHIP, MIMI, BETTY, MARILYN, CARLE, DOT, TOSH, LU

ELIZABETH JEAN SEVERSON; *B.A., Art; Madison, Wisconsin*

Student Council, '51-'55, Secretary-Treasurer, '53-'54, President, '54-'55; Honor Board, '54-'55; Ayres House Staff, '51-'52, Nicolls House Staff, '52-'53; President's Scholarship, '53-'54; Dean's Honor Roll, '51-'55; Alpha Sigma Tau, '53-'55; Beta Chi, '52-'55; Griffin, Business Manager, '52-'53; Kappa Pi, '52-'55; League of Women Voters, '52-'53; Modern Language Club, '52-'53; Pi Alpha Delta, '55; Poetry Society, '51-'55; Press Club, '51-'52; Young Republicans, '51-'53; Washington Semester, '53; Linden Scroll, '55.

BARBARA LOU SHUTTLEWORTH; *B.A., Biology; Jennings, Missouri*

Student Council, Junior Class Representative, '53-'54; Nicolls House Staff, '52-'53; Alpha Lambda Delta, '51-'53; Alpha Sigma Tau, '53-'55; KCLC, '51, '54; Pi Alpha Mu, '54, '54-'55, President, '54-'55; Poetry Society, '55; Freshman Writing Contest, Third Prize, '52; Triangle, '53-'55; Annual Staff, '53-'55, Literary Editor, '54-'55.

ESTHER M. SMITH; *B.A., English; Pittsburgh, Pennsylvania*

Lindenwood, '53-'55; Dean's Honor Roll, '53-'55; Day Student's Organization, '53-'55; Pi Alpha Delta, '53-'55; Treasurer.



MARY ANN THIELECKE; *B.A., English and History and Government; Little Rock, Arkansas*

President's Scholarship, '52-'54; Dean's Honor Roll, '51-'55; Alpha Lambda Delta, '51-'53, Treasurer, '52-'53; Alpha Sigma Tau, '53-'55; Colhecon, '53; Modern Language Club, '52; Pi Alpha Mu, '52-'55, Vice-President, '53-'54; Poetry Society, '54-'55.

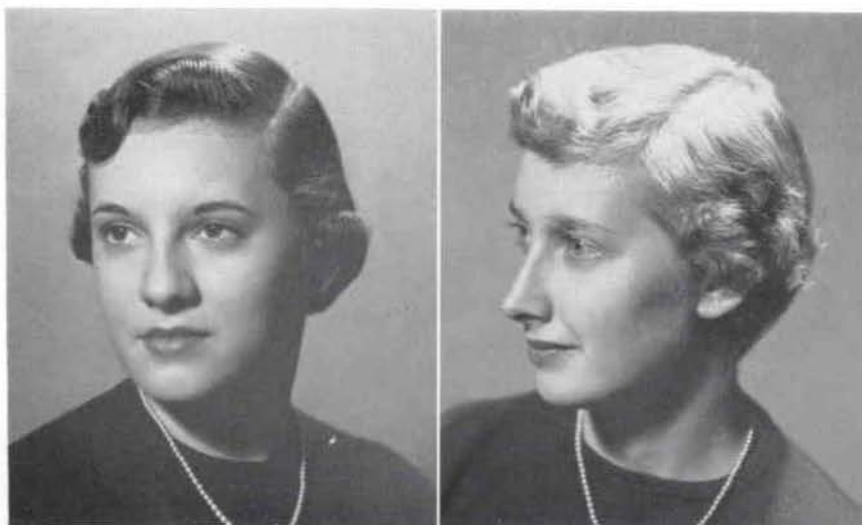
LINDA WALL; *B.S., Elementary Education; Owosso, Michigan*

Michigan State College, '51-'53; Butler House Staff, '53; Future Teachers of America, '53-'55; KCLC, '54; Young Republicans, '53-'55.

MADELEINE WALTER; *B.A., Philosophy; Strasbourg, France*

Lindenwood, '54-'55; Senior Class Treasurer, '54-'55; International Relations Club, '54-'55; Modern Language Club, '54-'55.

Seniors



CAROL WIDEMAN; *B.S., Elementary Education; Perrysburg, Ohio*

Cobbs Hall House Staff, '54-'55; Future Teachers of America, '51-'55, Vice-President, '53-'54, Treasurer, '54-'55; KCLC, '54-'55; League of Women Voters, '52-'55; Young Republicans, '51-'55.

CAROL WOLTER; *B.S., Physical Education; St. Charles, Missouri*

Dean's Honor Roll, '52-'55; Freshman Council, '51; Athletic Association, '51-'55, Treasurer, '52-'53, Intramural Chairman, '53-'54, President, '54-'55, Hockey, Volleyball, Basketball, Softball Teams, '51-'55; President of Missouri Athletic Federation of College Women, '54-'55; Day Student's Organization, '51-'55; Future Teachers of America, '52-'55; Terrapin, '52-'55; Triangle Club, '52-'55; Young Republicans, '52-'53.



LIN, CAROL, MARY ANN, SHUTTLECOCK, SETSY B., MADELEINE, O. B.

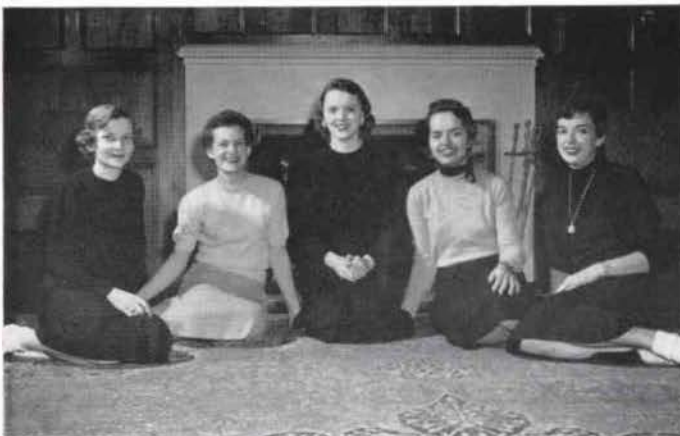
Seniors



First row: MARILYN MITCHELL, BETTY TOWNSEND, JANET LEWIS, JEANIE RULE

Second row: BEVERLY HARRINGTON, GEORGIA HAHN, CAROLYN STUART, LOWELL SHARPE, MARA CHRISTENSEN

Third row: MARGARET BITTMAN, ANNE ASHCRAFT, NANCY BARKWELL, KATHY KOLOCOTRONIS, VIRGINIA WOODMAN



Junior

CLASS OFFICERS

MARGARET BITTMAN, *Treasurer*; LOWELL SHARPE, *Vice-President*; ANN CARLISLE, *President*; NANCY ALVIS, *Student Council Representative*; JOANNE HOUSER, *Secretary*.

Sponsors: IRENE VAN BIBBER
HARRY HENDREN



First row: SHIRLEY HOLCOMB, BEVERLY RANDALL, LIZ SCHNURR
Second row: MARY LOU THAYER, PHYLLIS MEADOWS, MARIAN MARSHALL
Third row: JOANNE HOUSER, CAROL FITZROY, JENNELLE TODSEN
Fourth row: PATRICIA MILLER, DONNA DRURY, FERN PALMER, ANN CARLISLE

Class

WASHINGTON SEMESTER STUDENTS

NANCY MCDANIEL; ELIZABETH GLEBE, *Senior*;
 JEAN GRAY, MARY ANN ARRINGTON, JUDY
 GLOVER, PENNY CREIGHTON.



Sophomores

First row: MARGIE TERRELL, President; CHLOE BURTON, Student Council Representative; WILLA GLEESON, Secretary

Second row: TILLIE MICHELETTO, Vice-President; JULIE RASMUSSEN, Treasurer.

Sponsors: DR. HOMER CLEVINGER, MR. HENRY TURK

SHIRLEY LAUE, GAIL LANGWORTHY, SALLY LEPLER, BONNIE KNOCK, SUSAN LONGSTRETH



ANN SAWYER, SHARON SMYTHE, PATRICIA SULLINS, CAROL STILLWELL, JULIA SWANSON

First row: BARBARA BEHRING, ANN ALBRITTON
Second row: NANCY AULT, PATTI PUCKETT, SANDRA BARTUNEK, ANNE ARTHURS

Sophomores

MARY MARTIN, KATHLEEN MCGILVARY, GAIL GIVENS,
DOROTHY MILLER, ANN McMULLIN

CAROL MOORHEAD, POLLY WILSON, SONDRA FAUPEL,
BARBARA GIVENS, CAROLE LINHART



First row: SANCY HAMILTON, NANCY GRAVES, JANE
GRAHAM
Second row: BARBARA GREENWOOD, BETTY HARLAND

BARBARA CARTER, JANE BRADY, EVA ORNDORFF, JANE
BOWMAN, JOANNE BOND, HELEN CALLISON

Sophomores

First row: CAROL BATJEN, MARIAN HEALEY

Second row: CAROLYN MORE, MARCIA MITTLESTADT,
SUNNY OBERT, JUDITH MISSEY



ROBERTA REINBOLD, NANCY ROOD, CONNIE RICHARDS,
ALICE PROUTY, JANE PEEBLES



First row: CYNTHIA COATSWORTH, ANN CLINE, MARY
LILLIAN COOK

Second row: MARIAM FERRIN, ELEANOR DAY



UTE RUDOLPH, ELLEN STOVER, NORMA THOMPSON, ANN
TURNER

Sophomores

CAROLYN SMITH, JULIE KARSTEN, MARCIA HEINZELMAN,
GLORIA HORNADAY, EVELYN ITALIANO



First row: VIRGINIA MORGAN, KATHLEEN GERBOLD,
SALLY FORD

Second row: MARELLA GORE, KAREN GOODRICH



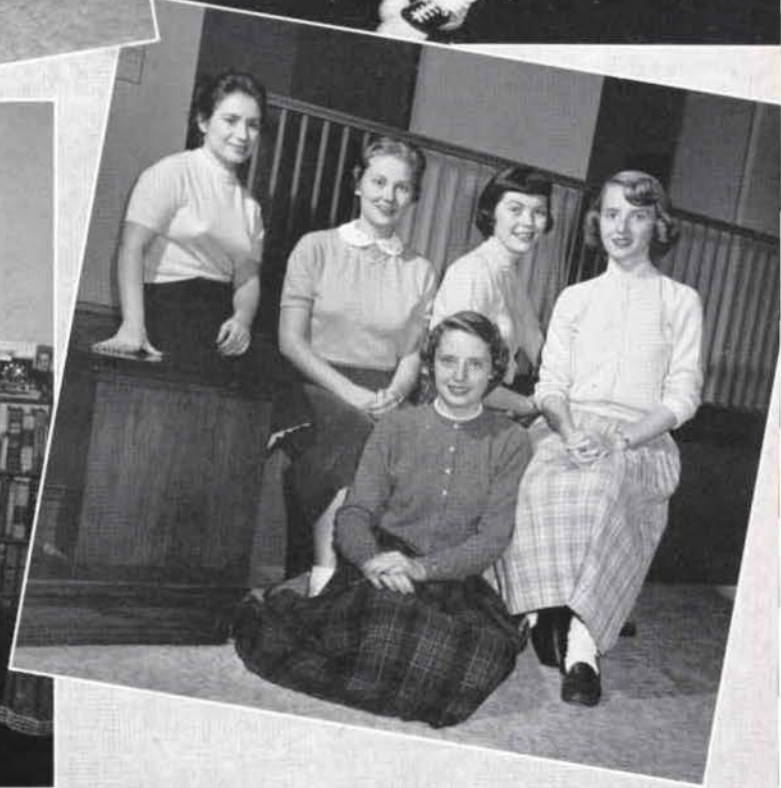
First row: GWEN RYTER, JANIS RICE

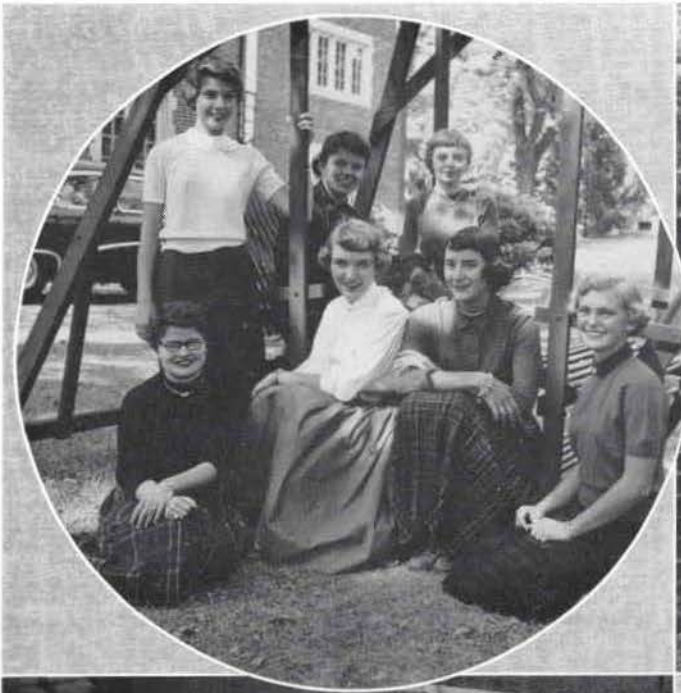
Second row: JUDY SMITH, PHYLLIS STEINMETZ, JUNE
SCHMIDT



First row: JACQUELYN KEEN

Second row: ANN ZOTOS, CAROL KELLOGG, CAROL LEE
KNIGHT, MARIAN KASPER





Front row: SANDRA YOUNG, MARY LEE LYLE, HESTER JAMES, BARBARA SHARPE

Second row: SYLVIA LINK, JOAN LeCLAIRE, BARBARA LEE

Sponsors: DR. MARION DAWSON, MR. WILLIAM ENGRAM

Front row: SUSAN WILLEY, MARGARET ELLEN SCHAEFER

Second row: SANDRA TAYLOR, SYDNEY SCHMOYER, BETTY VAUGHN, ANN STEWART, JEAN ANN SMITH, JULIA ANN SPICKELMIER

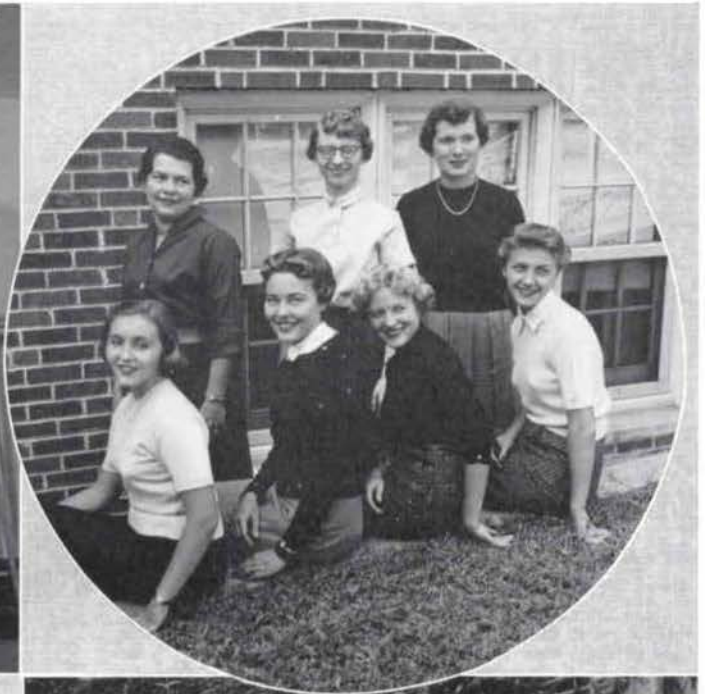
Front row: MELINDA RICHARDSON, DOROTHY NATH SHEILA MUSGROVE

Second row: SARA ANN NASH, MYRNA SIMPSON, SHARMIO SIMPSON, SYDNEY McFARLAND, CAROLINE SMITH

Front row: DIANE GREENWAY, DIANA WATSON, JACQUELINE BURTON, PATRICIA LONG

Second row: MARION DARDNNE; SALLY COX, *Treasurer.*

Freshmen



NANCY HULSE, KAREN LEWIS, MARY ANN CARR, KATHERINE ANN BURGESS

Front row: ELIZABETH DEVLIN, MARILYN HAGAN, MARCIA LOU GOODWIN

Second row: SYDNEY FINKS, *President*; KATHRYN ELLIOTT, *Vice-President*; ELLEN DEVLIN, DARLA LEE EHLERT

Front row: ROSEMARY CLARK, JOAN BROECKELMANN, ANN CLEVINGER, LYNDA CLARDY

Second row: MARILYN PERRY, JAYNE MILLER, PAULA JEAN BOEKEMEIER

Front row: RUBY LEE EDWARDS, RUTH ANN CHARLES

Second row: SALLY LESSEG, SONDRRA BEAUCHAMP, HEATHER ARMOUR, JO ANN CLEMENT, RAMAH JOHNS, LOIS JEAN HEATH

Freshmen



Front row: PEGGY ACHEPOHL, LINDA MELTZER, JANE DAVIS, MOLLIE CLINE

Second row: BONNYE GRIFFIN, MARTHA FAXON, PATSY ANN BAILEY

JO ANNA RUSSELL, JUDITH MOBERLY, MARGARET ELIZABETH MILLER, MARGARET KEISER, SUE POTTER, SUNNY VAN EATON, MADELEINE MEYER

Front row: CAROL GARDNER, BARBARA ERDMANN, KAY-MARIE IVY, MARIA LOUISE CHERNER

Second row: CAROLYN BURTON, *Student Council*; MIMI HANSEN, CAROL CHANDEYSSON, MARILYN MERMIS

Front row: MARIAN BORRESEN, MARIA VITERI, NINA JONES, NORA ORDONEZ

Second row: JOAN HAGLE, JANE ELLEN BENSON, PHOEBE ERMELING

Freshmen



Front row: ROBERTA PARIS, BARBARA PARKER
 Second row: SUSAN LAWRENCE, BARBARA KOELLER,
 SUSAN KLUGH, CAROLYN OGLESBY, JACQUELYN
 OGLESBY, MARTY MILLETT

Front row: SHEILA MEIER, PATRICIA PATTERSON, SYLVIA
 LECOUNT, MARTHA LEE KRUISE
 Second row: NANCY REED, DOROTHY NEBLETT, NAN
 NORDYKE, JACQUELINE SELLERS

Front row: SYLVIA DEVAN, GLENDA GRAMMER, SHIRLEY
 DUNAWAY, NANCY FARBBER
 Second row: PATRICIA BREMER, ANN DOCKENDORF, JANET
 SUE BURROWS, ANN ENGLAND

Front row: GAIL BOOTH, MARTHA ROSENBERGER, BAR-
 BARA HOLLABAUGH, ELIZABETH JOHNSON
 Second row: MABLEYN ALDRIDGE, COLLEEN MOSS,
 ELAINE LUNT, SUSAN CARR

Freshmen



Front row: SUE NICHOLS, RONIE GREENE, CAROLYN ANTHONY, GAY FRENCH

Second row: NANCY WALKER, VIRGINIA DAKIN, HELEN COCHRAN, DOLORES LOVELL

CAROLE LEE JACKSON, BARBARA FERGUSON, MARGARET LUCINDA ALLEN, ANNE DUFF, PEGGY FRENZ, CAROL ANN ALLEN, LYNNE SCOTT

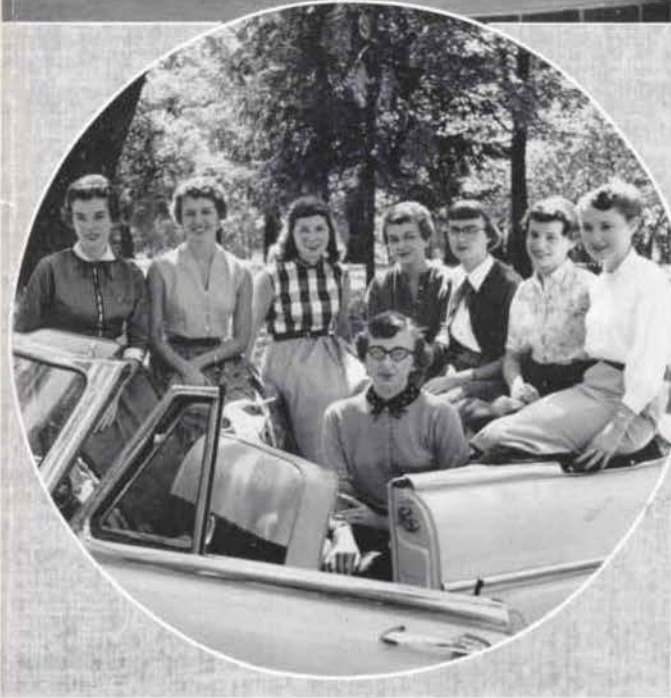
Front row: CONSTANCE GIBSON, NANCY BOWSER

Second row: CONSTANCE CLARK, ANNETTE CHURCH, AUBREY BISHOP, JOAN BETH CORNS

Front row: BETTINA NEMEC, SHIRLEY NOLAND

Second row: MARILYN MOORE, MARLENE KUHLMAN, MARSHA MADDEN, MARILYN TAINTER, BETTY SCHREY, MARY ANN NOWLIN

Freshmen



JUANITA JOHNSON; ROSEANN KNAUE, *Student Council*;
CAROL PUNT, SHIRLEY MARSHALL, NANCY ROBERTS;
JUNE HECKMILLER, ANN VINSON

NANCY WILLIAMS, PATRICIA WILLIAMS, REBECCA YAN-
DELL, BARBARA JEAN WOLFF, BEVERLY WOOD, NANCY
WRIGHT, ANNE WOLF, LUGENE WILLIAMS

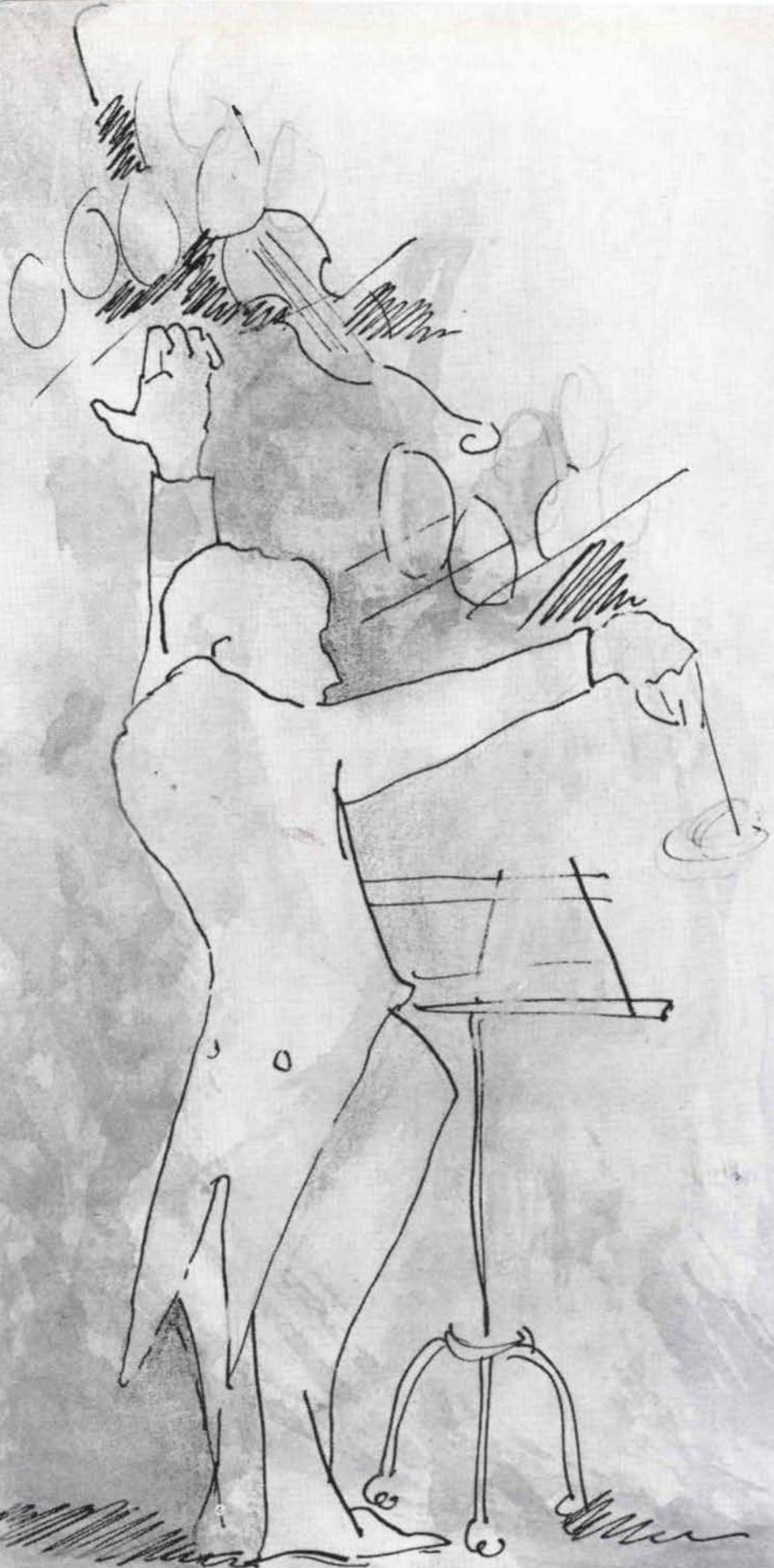
Front row: PAULA CHAFFIN

Front row: GRETE REHG, ABBY VINKEMULDER, MARCIA
MOSS

Second row: ANNE DAVIDSON, YOLANDA BREEDEN, JOYCE
PLESHA, SUSAN SPIEGEL, ANN GATCHELL, JOANNE
FORNEY, *Secretary*; MARY ANN EVANS

Second row: DONIA RHYSBURGER, MADELEINE WALTER,
JUDITH ANN REED, LINDA LEE MCPIKE, ELIZABETH
MATHEWS

Freshmen



OUR SONG

IS GAY AND BRIGHT;

IT RIPPLES, DANCES, RINGS—

STRUCK SHARP AND LIGHT IT SETTLES NOW
AND BLENDS.



ORGANIZATIONS

Student Council, Honor Board

... the governing group of the student body ... legislate on all matters pertaining to social regulations ... development of students to a better fitness for mature and responsible role in adult life.

"... citizenship should begin in the local community"—Terman

Student Christian Association

... organized to aid the individual student in realizing a growing knowledge and understanding of God.

"Truth is as impossible to be soiled by any outward touch as the sunbeam"—Unknown



First row: C. Seehorn, *Chairman, Honor Board*; E. Severson, *President, Student Council*; D. Beaumar, *Secretary-Treasurer, Student Council*; S. Kennedy, *Freshman Counselor*.

Second row: K. Hale, J. Smith, N. Alvis, R. Fields, P. Steinmetz, S. Holcomb.

Third row: C. Burton, Chloe Burton, B. Harrington, E. Mathews, R. Knauer, B. Sharpe, P. Puckett, C. Richards, P. Williams.

Not pictured: D. Keeton, *Vice-President, Student Council*.

First row: C. Richards, *Secretary*; E. Mauzé, *President*; C. Kellogg, *Treasurer*.

Second row: D. Dettmann, M. Merrell, N. Alvis, A. Carlisle, G. Ryter, J. Edwards.

Third row: C. Ratjen, M. Cook, B. Carter, S. Holcomb.

Not pictured: R. Dysart, *Vice-President*.

Sponsors: Dr. Eugene Conover, Miss Juliet McCrory, Mr. Douglas Hume.

Alpha Sigma Tau

Social Council

... scholastic society for upperclassmen ... encourages and recognizes high scholastic attainment.

"Knowledge is the eye of desire and can become the pilot of the soul"—Durant

... helps plan and coordinate the social activities on campus in accordance with the wishes of the students.

"What revels are at hand?"—Shakespeare



First row: G. Bursey, R. Dysart, *Vice-President:* S. Kennedy, *President:* D. Neblett, *Secretary-Treasurer:* D. Beaumar.
Second row: J. Houser, A. Castro, M. Thielecke, B. Randall, J. Edwards.
Not pictured: Betsy Severson.
Sponsor: Dr. Eugene Conover.

First row: M. Terrell, C. Ratjen, C. Moss, N. Barkwell, R. Fields, Riley Graves.
Second row: J. Gordon, M. Thayer, N. Farber, S. Lesseg, A. Clevenger, N. Thompson, B. Hollabaugh.
Sponsor: Miss Ruth Olsen.

Pi Alpha Mu

. . . honors distinguished achievement in the study of English . . . encourages creative writing . . . fosters devotion to literature.

"Words are tools which automatically carve concepts out of experiences"—Julian S. Huxley

Kappa Pi

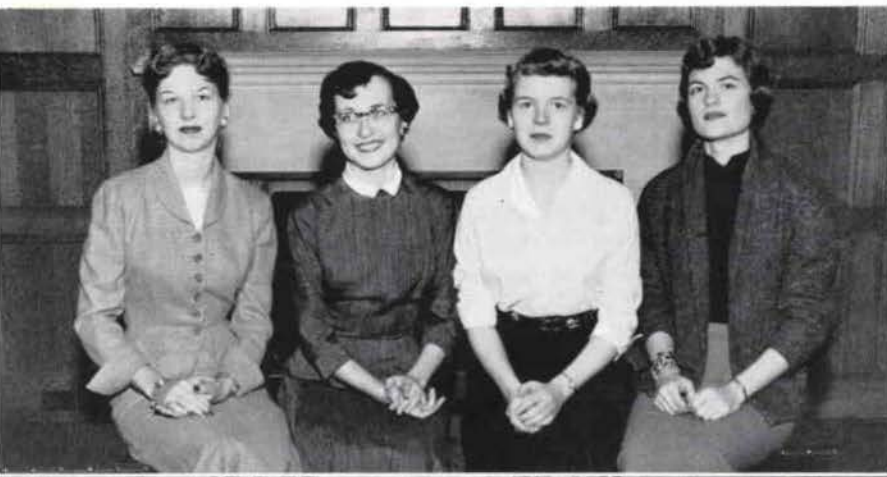
. . . to uphold the highest ideals of a liberal education . . . to provide an opportunity for informal study and entertainment . . . to raise the standards of artistic work among the students.

"Art is Art. It is not water color sketches or practicing on a piano. It is a life to be lived."—Leon Benthline

Triangle Club

. . . a common ground of understanding for those interested in science and mathematics . . . opportunities for extending knowledge in those fields.

. . . Science produces such exaltation—and humbling of the human spirit."—Bruce Bliven



Top Picture

G. Bursey, *Secretary-Treasurer*; B. Shuttleworth, *President*; M. Merrell, *Vice-President*; D. Beaumar.

Sponsor: Dr. Betz.

Middle Picture

First row: M. Merrell, J. Barton; D. Neblett, *President*; V. Woodman, *Vice-President*; J. Rasmussen.

Second row: J. Anderson, K. Kolocotronis, A. Albritton, G. Hahn, J. Brady, J. Bowman, H. Callison.

Sponsor: Mr. Harry Hendren.

Bottom Picture

First row: D. Dettmann, *Secretary*; J. Houser, *Vice-President*; B. Harrington, *President*; C. FitzRoy, *Treasurer*.

Second row: R. Reinhold, S. Kennedy, C. Stillwell, B. Carter, S. Laue, C. Seehorn, M. Mitchell.

Sponsor: Miss Louise Beasley.

Modern Language Club

. . . encourages interest in the modern languages and the cultures which they represent . . . recognizes students who show proficiency in these languages.

"Each language embalms a historic tradition."—
A. N. Whitehead

First row: K. Kolocotronis, *Spanish Vice-President*; G. Ryter, *Secretary*; M. Kasper, *President*; M. Terrell, *French Vice-President*; B. Harrington, *German Vice-President*.
Second row: C. Stillwell, J. Graham, M. Ferrin, W. Gleeson, D. Beaumar, E. Day.
Not pictured: D. Miller, *Treasurer*.
Sponsor: Dr. Mary Terhune.



First row: A. Ashcraft; B. Carter, *Secretary*; D. Keeton, *President*; D. Neblett.
Second row: P. Long, R. Charles, G. Langworthy, S. Nichols, C. Richards, H. James, K. Ivy, N. Baydan.
Not pictured: P. Steinmetz, *Vice-President*.
Sponsor: Dr. Elizabeth Dawson.



First row: M. Kasper, *Treasurer*; J. Graham, *President*; A. Sawyer, *Vice-President*; W. Gleeson, *Secretary*.
Second row: C. Ratjen, C. Burton, G. Ryter, C. Richards, P. Steinmetz.
Sponsor: Dr. Elizabeth Dawson.

Alpha Lambda Delta

. . . national freshmen women's scholastic society . . . encourages and recognizes outstanding under-class students of high scholastic standing.

"Beholding the bright countenance of truth in the quiet and still air of delightful studies."—Milton

Day Students

. . . facilitate assumption of responsibilities in matters of student life . . . discuss problems concerning the general welfare of the students.

"Ye that live at home at ease"—Martin Parker

First row: M. Tainter, K. Ivy, P. Boekemeier, J. Broeckelmann, N. Wright.
Second row: B. Harrington, C. Moorhead, N. Jones, L. Heath, R. Charles, A. Bishop, R. Edwards.
Third row: P. Ermeling, A. Clevenger, P. Achelpohl.



Alpha Epsilon Rho

. . . national honorary radio and television fraternity . . . encourages and recognizes outstanding radio and television students.

" . . . words, like so many nimble and airy servitors, trip about . . ."—Milton



G. Bursey, *President*; P. Meisel, *Vice-President*.
Sponsors: Miss Juliet McCrory, Mr. Douglas Hume.

Alpha Psi Omega

. . . national honorary dramatics society . . . rewards outstanding students in college dramatics productions . . . stimulates inspiration to improve in dramatic work.

"Then to the well-trod stage anon."—Milton

First row: G. Bursey; J. Gordon, *Vice-President*; K. Hale, *President*; D. Beaumar, *Secretary-Treasurer*.
Second row: J. Barton, M. Bittman, C. Burton, M. Merrell, N. Rood, A. Ashcraft, P. Puckett.
Sponsor: Miss Margaret Boyer.





First row: M. Tainter; C. Coatsworth, *Treasurer*; J. Lewis, *Secretary*; M. Menke, *Vice-President*; D. Drury, *President*; P. Wilson; G. Hornaday.

Second row: A. Cline, J. Brady, M. Thayer, B. Givens, E. Stover, N. Graves, B. Harland, S. Nash, S. LeCount, A. Davidson,

Third row: B. Townsend, Mrs. M. Burch, E. Finlow, A. Albritton, J. Swanson, M. Martin, M. Rosenberger, P. Meadows, J. Houser, B. Hollabaugh.

Fourth row: C. FitzRoy, J. Sellers, A. Prouty, S. Faupel, S. Hamilton, M. Meyer, J. Forney, B. Parker, G. Booth, P. Achelpohl, L. Scott.

Sponsor: Miss Margaret Lindsay.

First row: D. Dettmann; C. Richards, *President*; S. Ford; B. Harrington.

Second row: P. Janak, S. Lefler, M. Merrell, B. Harland, M. Martin, C. Smith, S. Beauchamp.

Sponsor: Dr. S. E. Betz.



Colhecon

. . . to stimulate interest in Home Economics . . . extension of classroom work . . . style show . . . toys for Markham . . . informative demonstrations.

"It is meat and drink and cloth to us."—Unknown

Pi Alpha Delta

. . . to further interest in the study of the classics and the lives of the Greeks and Romans . . . honors achievement in classical studies.

"Gay gilded scenes and shining prospects rise, poetic fields encompass me around . . ."—Addison

KCLC

. . . Lindenwood's student-operated campus radio station . . . designed for entertainment and practical training.

"Nation shall speak peace unto nation"—BBC
Motto

First row: D. Beaumar, Station Manager; G. Burse, Program Director; C. Burton, Chief Announcer; J. Barton, Publicity Director; M. Bittman, Advertising Manager; P. Puckett, Chief Engineer; K. Hale, Production Director; M. Mervell, Music Director; A. Ashcraft, Promotion and Public Relations Director; J. Gordon, Continuity Director.

Second row: M. Martin, C. Ratjen, M. Cook, N. Rood, J. Schmidt, N. Nordyke.



*First row: C. Knight, N. Hulse, S. DeVan, G. Grammer, B. Erdmann, B. Miller, H. Armour, S. Potter, L. Wall, J. Karsten,
Second row: J. Bond, R. Charles, A. Zotos, B. Harland, B. Greenwood, D. Kiss, P. Long, C. Wideman, N. Moe, N. Ault, M. Mermis, D. Lovell.*

Future Teachers of America

. . . foster interest in the teaching profession . . .
impart a love for the high standards and ideals
of education.

"Teaching is the art of creating and using intelligence for the improvement of human living."—
Mecklejohn

Top Picture

First row: B. Moore, *Vice-President;* R. Hamrick, *President;* J. Lewis, *Secretary;* C. Wideman, *Treasurer.*

Second row: L. Wall, P. Meadows, C. FitzRoy, M. Mitchell, S. Anderson.

Third row: P. Miller, S. Norton, D. Drury, J. Barton, D. Kiss, J. Rule, B. Randall, N. Moe, S. Holcomb, C. Samuel.

Bottom Picture

First row: T. Micheletto, S. Dunaway, R. Knauer, A. McMullen.

Second row: C. Burton, M. Rosenberger, A. Sawyer, S. Smythe, J. Karsten, A. Zotos, N. Hulse.

Third row: C. Knight, J. Graham, A. Cline, C. Stillwell, N. Ault, M. Millett, A. England, C. Gardner, J. Moberly, D. Natho.

Fourth row: C. Gibson, J. Bond, S. Faupel, C. Smith, M. Mittelstadt, B. Schrey.

Sponsor: Mr. Bremen Van Bibber.





Top Picture

First row: A. Carlisle; C. Seehorn, *President*; Z. Curtin, *Vice-President*; R. Graves,
Second row: R. Fields, P. Janak, E. Glebe, N. Alvis.

Bottom Picture

Front row: E. Orndorff; B. Nemeč, *Secretary*; B. Townsend, *President*; M. Terrell, *Vice-President*; E. Day, *Treasurer*; J. Edwards.
Second row: M. Moss, J. Bond, A. Wolf, N. Graves, W. Gleeson, S. LeCount, L. Schmurr, B. Givens.
Third row: K. Kolocotronis, H. Callison, J. Todsén, D. Natho, S. Klugh, C. Clark, K. Elliott, J. Russell, S. Simpson, J. Bowman, A. Sawyer, M. Perry, A. Bishop, N. Jones.
Fourth row: S. Cox, A. Clive, N. Alvis, P. Puckett, S. Longstreth, B. Carter, C. More, J. Broeckelmann, P. Ermeling, M. Tainter.
Sponsor: Mrs. Mary Bryant.

Delta Nu

. . . organized to further an interest in psychology . . . for psychology majors and minors who have maintained a high scholastic record.

"Normalcy is so unusual as to be interesting."—
 Dr. David H. Fink

Encore Club

. . . to keep fresh the traditions and memories of the Lindenwood of our mothers . . .

"They repeat the form of their progenitors."—
 Lucretius

Choralaires

. . . a small select musical group under the leadership of Mr. Wayne Balch . . . strive for variety in program . . . perform at various functions on and off campus.

"In notes of linked sweetness . . ."—Milton

Choir

. . . to provide the opportunity for participation in group singing . . . participation in weekly vesper services . . . presentation of concerts.

"So full-melodious sounds on every side that the harp of Orpheus was not more charming."—Milton



L. Schnurr; A. Stewart; M. Marshall; J. Anderson; C. Ratjen, *Accompanist*; C. Knight; D. Ehlert; K. Gerhold; R. Dysart; M. Kasper.

First row: P. Long; C. Jackson; R. Charles; L. Allen; K. Lewis; B. Harrington; M. Marshall; P. Barber, *President*; A. Carlisle, *Secretary*; A. Sawyer; M. Perry; C. Moorhead; J. Rice.

Second row: S. Young, M. Keiser, C. Punt, C. Smith, J. Clement, V. Dakin, S. Musgrove, P. Bremer, B. Carter, A. Stewart, B. Koeller, R. Hamrick, G. Booth, N. Hulse, S. Longstreth.

Third row: B. Harrington, M. Goodwin, S. VanEaton, J. Sellers, S. Lefler, C. Clark, N. Williams, A. England, J. Davis, S. Marshall, G. Rehg, R. Yandell, M. Lyle, R. Knauer, C. Allen, E. Lunt, D. Rhynsburger.

Fourth row: T. Micheletto; M. Gore; J. Miller; M. Dardne; Y. Breeden; S. Holcomb, *Treasurer*; P. Boekemeier; H. Armour; B. Erdmann; B. Hollabaugh; J. Burrows; B. Knock; D. Ehlert; C. Burton; E. Devlin; M. Aldridge; C. Gibson.

Sponsor: Mr. Milton Rehg.





C. Samuel, A. Stewart, R. Dysart, J. Plesha, G. Rehg, N. Nordyke, A. Dockendorf, M. Simpson, B. Miller, P. Frentz, J. Spickelmier, E. Lunt, A. Gatchell.

Sponsor: Mr. Robert Cruce.

Instrumental Association

. . . small instrumental ensemble . . . present a wide variety of music selections from classic period through contemporary American composers . . . Mr. Robert Cruce, director.

"Such sweet compulsion doth in music lie."—Milton

Mu Phi Epsilon

. . . national professional music sorority . . . membership based on scholarship, musicianship, character, and faculty approval.

"Who shall silence all the airs and madrigals that whisper softness in chambers."—Milton

First row: V. Morgan, *Secretary;* C. Samuel, *President;* B. Randall; A. Sawyer, *Treasurer.*

Second row: R. Dysart, S. Parnas, T. Micheletto.

Sponsor: Miss Gertrude Isidor.



Athletic Association

... the stimulation of good sportsmanship and friendship through the interest and participation in individual and group sports.

"The deep objective of games is really to train one's reflex of purpose."—John R. Tunis

First row: E. Devlin; N. Ault, *Social Co-Chairman:* J. Keen, *Secretary:* J. Todsén, *Intramural Chairman:* C. Wolter, *President:* Z. Curtin, *Vice-President:* C. Burton, *Treasurer:* R. Dysart, *Publicity:* K. Goodrich, *Social Co-Chairman.*

Second row: J. Moberly, B. Parker, M. Ferrin, E. Day, J. Rice, G. French, S. Laue, N. Walker, R. Gerhold, M. Hansen, A. Vinkemulder, B. Sharpe.

Third row: S. Nash, P. Achepohl, F. Palmer, J. Peebles, C. Linhart, E. Orndorff, L. Sharpe, M. Madden, M. Perry, N. Bowser, N. Moe, M. Tainter, M. Bittman, S. Norton, J. Houser.

Sponsor: Marguerite Ver Kruzen.



Terrapin

. . . promote interest in swimming . . .
practice of swimming techniques . . . em-
phasis on form and synchronized swim-
ming.

"Now in the water and now out."—Cow-
per

First row: M. Hansen; S. Willey, S. Laue; M.
Heinzelman, M. Martin; L. Schnurr. *Presi-
dent;* A. Albritten; C. Burton.

Second row: D. Natho; J. Rasmussen; J.
Moberly, *Vice-President;* P. Frentz; S. Cox;
K. Elliott; S. Faupel; G. French; C. Wolter.

Not pictured: P. Creighton, *Secretary.*

Sponsor: Mrs. Grazina Amonas.



Orchesis

. . . to extend members' experience in
the dance . . . to exercise constructive
leadership in interesting others in dance
as an art.

*"That her steps are of light, that her home
is in the air."*—Thomas Moore

First row: J. Karsten, N. Walker, P. Wilson,
K. Elliott.

Second row: S. Lawrence; M. Cook, *Secretary-
Treasurer.*

Third row: C. Linhart; J. Gordon, *President;*
M. Marshall.

Not pictured: R. Hamrick, *Secretary-Treasurer.*
Sponsor: Mrs. Grazina Amonas.



Beta Chi

. . . promotes interest in equitation on
campus . . . improvement of techniques
necessary for fine horsemanship.

*"and witch the world with noble horse-
manship."*—Shakespeare

First row: M. Bittman; M. Heinzelman, *Secre-
tary;* S. Norton, *President;* F. Palmer,
Sponsor; J. Keen, *Vice-President;* B. Wood.

Second row: A. Burgess, S. Obert, M. Mills,
S. Lesseg, M. Perry, C. Chandeysson, S.
Taylor, B. Johnson, M. Tainter, C. Gibson,
K. Goodrich, S. Cox.



Young Republicans

. . . interest others in the Republican party . . .
 year round program of information about party
 activities . . . inspire others to good citizenship.
"All free governments are party governments."—
 Garfield .

Young Democrats

. . . creating and furthering interest in the Dem-
 ocratic ideals and principles of government . . .
 the great importance of young women in poli-
 tics.
*"I believe without parties, government is impossi-
 ble."*—Disraeli

First row: A. Ashcraft; D. Beaumar; B. Givens; N. Moe; P. Janak, *Secretary*; S. Norton, *President*; P. Puckett, *Vice-President*;
 P. Wilson, G. Hornaday.

Second row: B. Greenwood, N. Rood, J. Bond, J. Meierhoff, S. Laue, N. Ault, N. Walker, C. Richards, B. Harland, A. Zotos, G. Ryter,
 J. Rice, S. LeCount.

Third row: B. Schrey, E. Italiano, P. Miller, J. Todsén, C. Smith, M. Thayer, N. Graves, S. Smythe, M. Meyer, M. Martin, D. Lovell,
 S. Leller, M. Hagen, B. Knock, P. Steinmetz, J. Reed.

Fourth row: S. Faupel, C. FitzRoy, R. Fields, L. Schnurr, J. Karsten, C. Smith, C. Coatsworth, E. Stover, E. Orndorff, A. Carlisle,
 M. Bittman, S. Obert, B. Randall.

Sponsor: Dr. S. Betz.

First row: S. Anderson; A. Castro; P. Barber, *President*; D. Drury; K. McGilvary.

Second row: M. Menke, H. Cochran, S. Dunaway, S. Nichols, A. Sawyer, W. Gleeson, A. Arthurs, J. Smith, D. Rhynsburger.

Third row: J. Houser, B. Moore, M. Gore, M. Rosenberger, P. Long, A. Albritton, J. Brady, C. More, A. Prouty, P. Meadows,
 K. Hale, S. Holcomb, A. Turner.

Sponsor: Dr. Homer Clevenger.





Top Picture

First row: C. Coatsworth; M. Gore; A. Ashcraft; S. Nichols, *Treasurer:* W. Gleeson, *President:* G. Ryter, *Vice-President:* K. McGilvary; G. Hornaday.
Second row: S. Obert, J. Houser, J. Todsens, P. Miller, D. Drury, N. Walker, H. Cochran, A. Davidson, B. Harland, B. Randall, D. Rhynsburger, M. Terrell.
Third row: T. Micheletto, A. Zotos, N. Moe, S. Lefler, N. Ault, M. Martin, M. Mittelstadt, A. Arthurs, J. Smith, S. Laue, R. Charles, B. Givens.
Fourth row: M. Kasper, C. Burton, J. Meierhoff, B. Greenwood, N. Rood, P. Meadows, M. Thayer, C. Smith, J. Bond, J. Karsten, J. Rice, S. Smythe, A. Sawyer, J. Brady, A. Clevenger, E. Orndorff, E. Stover, K. Hale, A. Castro, M. Bittman, M. Hagen, E. Day, B. Knock, B. Parker, S. Holcomb, K. Ivy.
Fifth row: C. Batjen, R. Fields, S. Dunaway, C. More, D. Beaumar, P. Puckett, J. Graham, C. Smith, P. Long, M. Rosenberger, C. Richards, S. Norton, A. Turner.
Not pictured: D. Kiss, *Secretary.*
Sponsor: Dr. Homer Clevenger.

Bottom Picture

Front row: A. Davidson, B. Randall, T. Morikawa, J. Todsens, N. Orndorff, S. Lefler, S. Laue, A. McMullin, N. Ault, P. Wilson.
Second row: M. Evans, C. FitzRoy, D. Drury, C. Stillwell, N. Baydan, W. Gleeson, M. Middlestadt, B. Harland, A. Arthurs, Y. Breedan, P. Long.
Third row: J. Swanson, M. Rosenberger, P. Steinmetz, J. Houser, S. LeCount, P. Miller, M. Martin, E. Finlow, C. Smith, G. Ryter, J. Smith, R. Reinbold, D. Lovell, N. Moe, L. Allen, L. Scott.
Fourth row: P. Sullins, J. Sellers, T. Micheletto, S. Dunaway, A. Albritton, M. Viteri, J. Brady, A. Zotos, B. Lee, J. LeClaire, C. More, S. Norton.
Sponsor: Dr. Dorothy Williams.

League of Women Voters

... for those who take a vital interest in the rights and responsibilities of citizenship ... active participation in working of student government.

"A weapon that executes a freeman's will—the ballot box."—Pierpont

International Relations Club

... to encourage understanding and knowledge of the affairs of the nations of the world.

"Nationalism is an infantile disease. It is the measles of mankind."—Einstein



V. Woodman, *Art Editor*; J. Todsén, *Business Manager*; B. Shuttleworth, *Literary Editor*; J. Edwards, *Editor-in-Chief*; D. Kiss, *Advertising Manager*; S. Anderson, *Organization Manager*.

Linden Leaves Board and Staff



B. Townsend, A. Clevenger, J. Rasmussen, K. McGilvary.

Sponsors: Miss Dorothy Ely, Mrs. Greta Larson, Mr. Arthur Kanak.

. . . to present a chronicle of the year's activities . . . to gather and record today's occurrences that will be the memories of tomorrow.

"In leaves, write our whole history."—Young

Linden Bark

. . . presents all the daily occurrences of busy campus life . . . practical work in the field of journalism . . .

"But I'll report it."—Shakespeare

First row: M. Bittman, G. Bursey, J. Gordon, J. Rasmussen.

Second row: S. Anderson, N. Walker, W. Gleeson, B. Schrey, M. Mermis.

Sponsor: Mrs. Mary Bryant.



Griffin

. . . student-organized and edited literary magazine . . . recognizes outstanding student work in creative writing.

"What I am I write. What I write is me. It is not art. It is not life. It is myself."
—Jules Renard

E. Devlin; J. Graham, *Editor:* W. Gleeson.

Not pictured: J. Gray, C. Richards.

Sponsor: Dr. Agnes Sibley.



Press Club

. . . to proclaim devotion to the ideals of a free press and free dissemination of news, ideas, and responsible opinions.

"When found make a note of."—Dickens

First row: D. Beaumar; A. Ashcraft; M. Bittman, *Vice-President;* J. Gordon, *President;* G. Bursey, *Secretary-Treasurer;* E. Italiano.

Second row: B. Miller, J. Rasmussen, M. Cook, M. Merrell, A. Castro, S. Anderson, R. Charles.

Third row: M. Mermis, J. Schmidt, B. Erdmann, B. Schrey, P. Long, J. Todsén, N. Ault, M. Martin, T. Morikawa, M. Terrell, L. Schnurr, K. Hale, S. Norton, P. Steinmetz.

Fourth row: A. Duff, S. Finks, S. Potter, C. Ratjen, N. Walker, H. Armour, W. Gleeson, N. Rood, P. Puckett, C. Burton.

Sponsor: Mrs. Mary Bryant.





Top row: G. Bursey, S. Anderson, R. Dysart, B. Severson.

Middle row: M. Merrell, *Secretary*; D. Neblett, *President*; E. Mauze.

Bottom row: J. Edwards, D. Kiss, D. Beaumar, S. Kennedy.

Advisors: Dr. Marion Dawson, Mrs. Bremen Van Bibber, Miss Mary Lichtler, Dr. Franc L. McCluer.

LINDEN SCROLL

Honorary senior society, established at Lindenwood College on March 10, 1955.

Membership in this society is given in recognition of good citizenship, good scholarship, and effective leadership in the college community, of loyalty to Lindenwood College and its fundamental purposes, and of honesty in seeking to know and to respond to great religious and spiritual values.





QUEENS AND COURTS

AT LAST
IT COMES; IT SWELLS
IT SOARS IN MAJESTY—
THE SYMPHONY OF LINDENWOOD
COMPLETE.





Harvest Queen

Yolanda Breeden

Harvest Court



*Front row: BARBARA HOLLABAUGH, NANCY WRIGHT, MARTY MILLETT, NANCY FARBBER.
Second row: CAROL GARDNER; MARCIA GOODWIN, First Maid; YOLANDA BREEDEN, Queen; RAMAH JOHNS, Second Maid;
MARILYN HAGEN.*



Valentine Court

Julie Karsten

FIRST MAID

Ann Albritton

SECOND MAID



Valentine Queen

Marella Gore

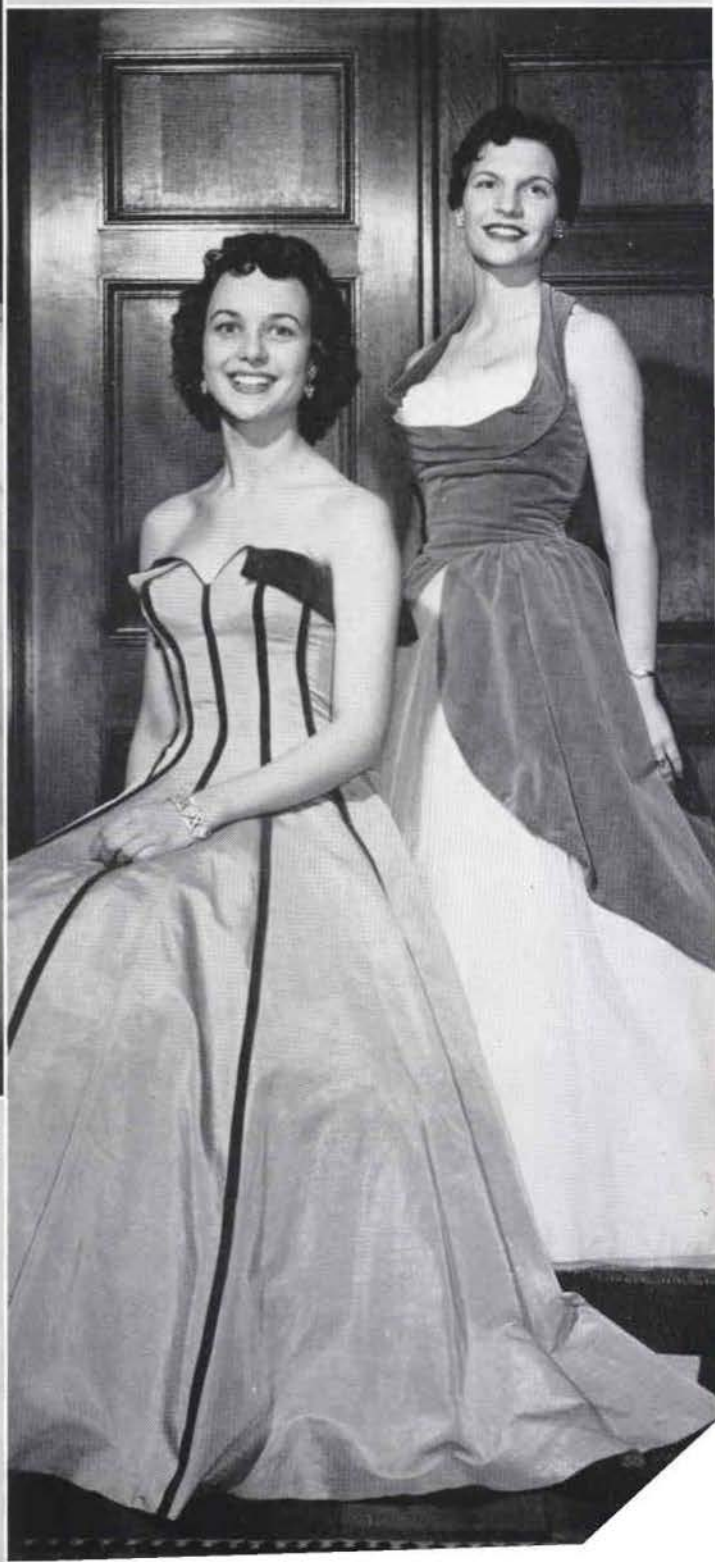


May Court

SOPHOMORE ATTENDANTS

Jillie Micheletto

Chloe Burton



May Court

FRESHMAN ATTENDANTS

Rosemary Clark

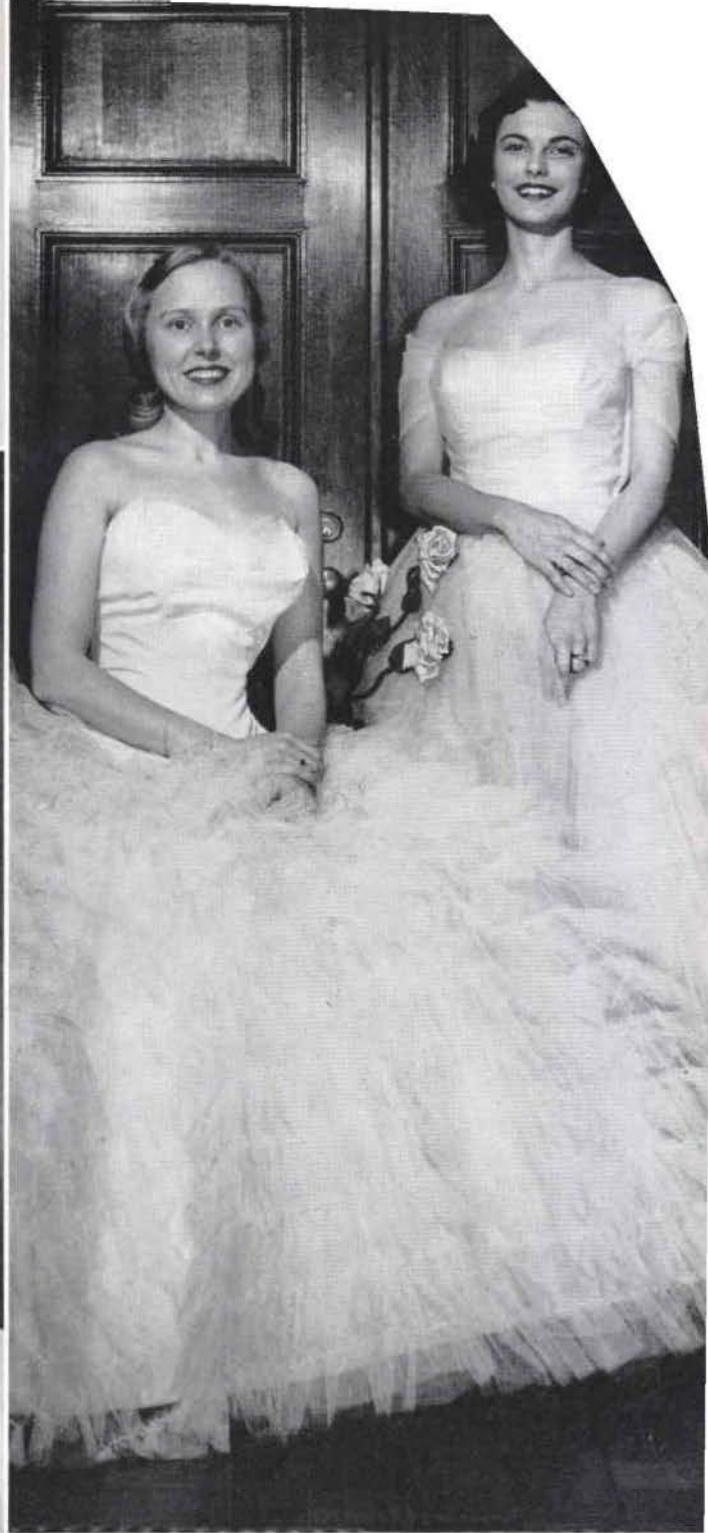
Marlene Kuhlman

May Court

JUNIOR ATTENDANTS

Ann Carlisle

Joanne Houser



May Court

SENIOR ATTENDANTS

Maxine Menke

Ruth Hamrick



May Court

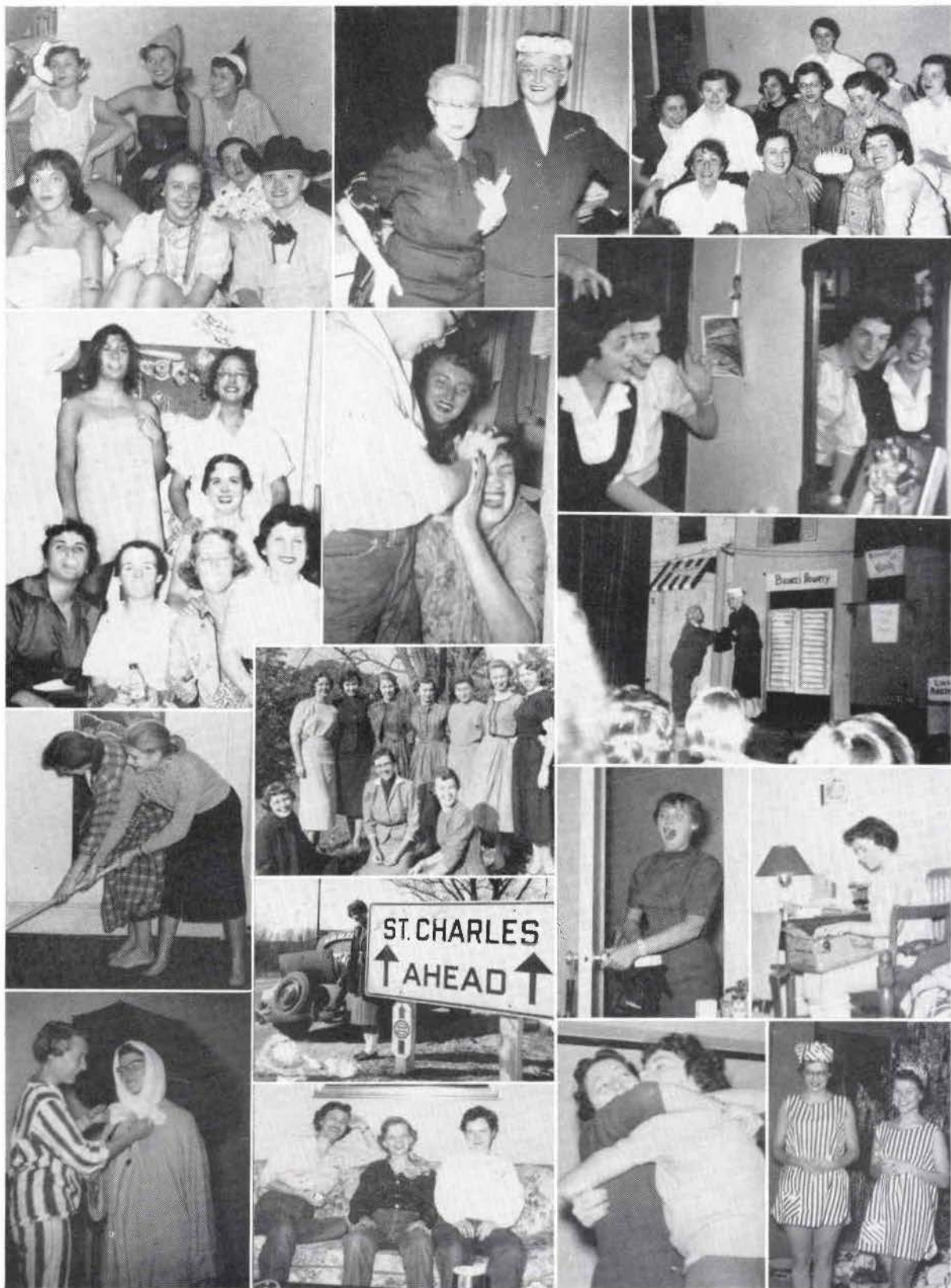
Lisabeth Schnurr

MAID OF HONOR



May Queen

Judith Anderson



Snaps

Student Directory

- Achepohl, Peggy Anne, St. Charles, Mo., 48, 58, 60, 66.
 Albritton, Ann, McMinnville, Tenn., 42, 56, 60, 67, 68, 69, 78.
 Aldridge, Marilyn, Wewoka, Okla., 49, 64.
 Allen, Carole Ann, Houston, Tex., 50, 64.
 Allen, Margaret Lucinda, Gary, Ind., 50, 64, 69.
 Alvis, Nancy, Mexico, Mo., 40, 54, 63.
 Anderson, Judith, Liberty, Mo., 30, 31, 56, 63, 64, 83.
 Anderson, Suzanne, Malden, Mo., 30, 31, 62, 68, 70, 71, 72.
 Anthony, Carolyn, El Dorado, Ark., 50.
 Armour, Heather, Brentwood, Mo., 47, 61, 64, 71.
 Arrington, Maisie, Russellville, Ark., 41.
 Arthurs, Anne, Cotton Plant, Ark., 42, 68, 69.
 Ashcraft, Anne, Nashville, Tenn., 40, 57, 59, 61, 68, 69, 71.
 Ault, Nancy Joan, Hudson, Ohio, 42, 61, 62, 66, 68, 69, 71.
- Bailey, Patsy Ann, Fort Smith, Ark., 48.
 Barber, Peggy, Haleyville, Ala., 30, 31, 64, 68.
 Barkwell, Nancy Ann, Grand Rapids, Mich., 40, 55.
 Barton, Jenny Lou, Van Nuys, Calif., 30, 31, 56, 59, 61, 62, 63.
 Bartunek, Sandra Ann, Knoxville, Iowa, 42.
 Baydan, Nuran, Alsancak, Izmir, Turkey, 30, 31, 57, 69.
 Beauchamp, Sondra Sue, Moberly, Mo., 60.
 Beaumar, Doris, LeRoy, Ill., 30, 31, 54, 55, 56, 57, 59, 61, 68, 69, 71, 72.
 Behring, Barbara Ann, Albert Lea, Minn., 42.
 Benson, Jane Ellen, Ringsted, Iowa, 48.
 Bishop, Audrey Gail, St. Charles, Mo., 50, 58, 63.
 Bittman, Margaret, Perry, Okla., 40, 59, 61, 66, 67, 68, 69, 71.
 Bockemeier, Paula Jean, St. Charles, Mo., 47, 58, 64.
 Bond, Joann, North Little Rock, Ark., 43, 61, 62, 63, 68, 69.
 Booth, Gail, Nashville, Tenn., 49, 60, 64.
 Borresen, Marian Lee, St. Louis, Mo., 48.
 Bowman, Jane Evans, Sikeston, Mo., 43, 56, 63.
 Bowser, Nancy, Tulsa, Okla., 50, 66.
 Brady, Jane, McMinnville, Tenn., 43, 56, 60, 68, 69.
 Breeden, Yolanda, Anderson, Ind., 51, 64, 69, 76, 77.
 Bremer, Patricia Lee, Lawrence, Kans., 49, 64.
 Brian, Chris Ann, Bridgeport, Ill., Second Semester Student
 Broeckelmann, Joan, St. Charles, Mo., 47, 58, 63.
 Burch, Marjorie B., St. Charles, Mo., 31, 60.
 Burgess, Ann, Tulsa, Okla., 47, 67.
 Burrows, Janet Sue, Tulsa, Okla., 49, 64.
 Bursey, Gloria, Grand Rapids, Mich., 31, 55, 56, 59, 61, 71, 72.
 Burton, Carolyn, Oklahoma City, Okla., 48, 54, 62, 61, 66, 69.
 Burton, Jacqueline, Fort Worth, Tex., 46, 63.
 Burton, Chloe, Fort Worth, Tex., 42, 54, 58, 59, 61, 71, 80.
- Callison, Helen, Smithville, Mo., 43, 56, 63.
 Carlisle, Ann, Petersburg, Ind., 40, 41, 54, 63, 64, 68, 81.
 Carr, Mary Ann, Flint, Mich., 47.
 Carr, Susan Harriet, Eldon, Mo., 49.
 Carter, Barbara Ann, McMinnville, Tenn., 43, 54, 56, 57, 63, 64.
 Castro, Astrid, Ponce, Puerto Rico, 31, 55, 68, 69, 71.
 Chaffin, Paula, Moscow, Kans., 51, 63.
 Chandeysson, Carol M., Clayton, Mo., 48, 67.
 Charles, Ruth Ann, St. Charles, Mo., 57, 58, 61, 64, 69, 71.
 Cherner, Maria Louise, Hays, Kans., 48.
 Christensen, Mara Lloyd, Webster Groves, Mo., 40.
 Church, Annette, Troy, Ill., 50.
 Clardy, Lynnda, Dallas, Tex., 47.
 Clark, Constance, Eterville, Mo., 50, 64.
 Clarke, Rosemary, Springfield, Mo., 47, 80.
 Clement, JoAnn, Chickasha, Okla., 47, 64.
 Clevenger, Ann, St. Charles, Mo., 47, 55, 58, 69, 70.
 Cline, Ann Mason, Carrollton, Ky., 44, 60, 62, 63.
- Cline, Mollie Graves, Carrollton, Ky., 48, 63.
 Coatsworth, Cynthia, Mexico, Mo., 41, 60, 68, 69.
 Cochran, Helen Gene, Ardmore, Okla., 50, 68, 69.
 Cook, Mary Lillian, McMinnville, Tenn., 44, 51, 61, 67, 71.
 Corns, Joan Beth, Evansville, Ind., 50.
 Cox, Sally Woods, Morrilton, Ark., 46, 63, 67.
 Creighton, Penny, Nashville, Tenn., 41, 67.
 Curtin, Zilpha, Cincinnati, Ohio, 32, 33, 63, 66.
- Dakin, Virginia, Ashland, Kans., 50, 64.
 Dardune, Marion Golda, Pine Bluff, Ark., 46, 64.
 Davidson, Anna Lee, Little Rock, Ark., 51, 60, 69.
 Davis, Jane Elizabeth, Louisville, Ky., 48, 64.
 Day, Eleanor, Missouri Valley, Iowa, 41, 57, 63, 66, 69.
 Dettmann, Deane, Belvidere, Ill., 32, 33, 54, 56, 60.
 DeVan, Sylvia Jean, Covington, Ky., 49, 61.
 Devlin, Elizabeth, Pine Bluff, Ark., 47, 64, 66.
 Devlin, Ellen, Pine Bluff, Ark., 47, 71.
 Dockendorf, Anne, Plano, Ill., 49, 65.
 Drury, Donna Mae, Gillespie, Ill., 41, 60, 62, 68, 69.
 Duff, Anne, Nashville, Tenn., 50, 71.
 Dunaway, Shirley Dean, Memphis, Tenn., 49, 62, 68, 69.
 Dysart, Rosemary, Webster Groves, Mo., 32, 33, 55, 64, 65, 66, 72.
- Edwards, Jane Lewis, Crossville, Tenn., 32, 33, 54, 55, 63, 70, 72.
 Edwards, Ruby Lee, St. Charles, Mo., 47, 58.
 Ehlert, Darla Lee, St. Joseph, Mo., 47, 64.
 Elliott, Kathryn, Alva, Okla., 47, 63, 67.
 Ellis, Elaine Mae, Wilmette, Ill.
 England, Ann Laree, Fort Smith, Ark., 49, 62, 64.
 Erdmann, Barbara Ann, Omaha, Nebr., 48, 61, 64, 71.
 Ermeling, Phoebe, St. Charles, Mo., 48, 58, 63.
 Evans, Mary Ann, Lawrence, Kans., 51, 69.
- Farber, Nancy Ester, Omaha, Nebr., 49, 55, 77.
 Faupel, Sondra Wensel, Des Moines, Iowa, 43, 60, 62, 67, 68.
 Faxon, Martha Jane, Palmyra, Mo., 48.
 Ferguson, Barbara, Ashland, Ky., 50.
 Ferrin, Miriam Maria, Oklahoma City, Okla., 44, 57, 66.
 Fields, Rosalyn Wise, New Castle, Ind., 32, 33, 54, 55, 63, 68, 69.
 Finlow, Elizabeth Mary, Sandbach, Cheshire, England, 32, 33, 60, 69.
 Finks, Sydney A., Clinton, Mo., 47, 71.
 FitzRoy, Carol Sue, Normandy, Mo., 41, 56, 60, 62, 68, 69.
 Ford, Sally Ann, Kirkwood, Mo., 45, 60.
 Forney, Joanne, Olney, Ill., 51, 60.
 French, Gay Margot, Chicago, Ill., 50.
 Frenz, Peggy Ann, Jeffersonton, Ky., 50, 65, 66, 67.
 Fuller, Jo Anne, Monroe, La., Second Semester Student
- Gardner, Carol, Brentwood, Tenn., 48, 62, 77.
 Gatchell, Mary Ann, Mountain Grove, Mo., 48, 65.
 Gerhold, Kathleen, Columbus, Nebr., 45, 64, 66.
 Gibson, Constance, Ft. Lauderdale, Fla., 50, 62, 64, 67.
 Gilpin, Flora E., Ferguson, Mo.
 Givens, Barbara Dee, Paris, Ill., 43, 60, 63, 68, 69.
 Givens, Gail Dixon, Henderson, Ky., 43.
 Glebe, Beth, Lawrenceville, Ill., 33, 41, 63.
 Gleason, Willa, Wahoo, Nebr., 42, 57, 58, 63, 68, 69, 71.
 Glover, Judy Ann, Park Ridge, Ill., 41.
 Goodrich, Karen, Santa Rita, N. M., 45, 66, 67.
 Goodwin, Marcia Louise, Columbus, Kans., 47, 64, 77.
 Gordon, Janice Kay, Edwardsville, Ill., 33, 55, 59, 61, 67, 71.
 Gore, Marella, Paducah, Ky., 45, 64, 68, 69, 79.
 Graham, Jane Arlyn, Memphis, Tenn., 43, 57, 58, 62, 69, 71.
 Grammer, Glenda, Fort Worth, Tex., 49, 61.
 Graves, Nancy, Corinth, Miss., 43, 60, 63, 68.
 Graves, Riley, Corinth, Miss., 33, 63.
 Gray, Jean, Rockwell City, Iowa, 41.

Student Directory

- Greene, Roxie, El Dorado, Ark., 50.
Greenway, Diane, San Antonio, Tex., 46.
Greenwood, Barbara, Ochelata, Okla., 43, 61, 68, 69.
Griffin, Bonnye L., St. Charles, Mo., 48.
Giulivo, Mary Alia Bruno, St. Charles, Mo.
- Hagen, Marilyn, Houston, Tex., 47, 68, 69, 77.
Hagle, Joan, Oklahoma City, Okla., 48.
Hahn, Georgia Dell, Kirkwood, Mo., 40, 56.
Hale, Kathy, Oklahoma City, Okla., 34, 35, 54, 59, 61, 68, 69, 71.
Hamilton, Nancy Ann, Mattoon, Ill., 43, 60.
Hamrick, Ruth Mead, Kansas City, Mo., 34, 35, 62, 64, 67, 81.
Hansen, Mimi, Minneapolis, Minn., 48, 66, 67.
Harland, Betty, Ironton, Mo., 43, 60, 61, 68, 69.
Harrington, Beverly, St. Charles, Mo., 40, 54, 56, 57, 58, 60, 64.
Healey, Marian Beach, Davenport, Iowa, 44.
Heath, Lois Jean, St. Charles, Mo., 47, 58.
Heckmiller, June, Barrington, Ill., 51.
Heinzelman, Marcia, Webster Groves, Mo., 45, 67.
Holcomb, Shirley, Omaha, Nebr., 41, 54, 62, 64, 68, 69.
Hollabaugh, Barbara, Nashville, Tenn., 49, 60, 64, 77.
Hornaday, Gloria, St. Joseph, Mo., 45, 60, 68, 69.
Houser, Joanne, Paducah, Ky., 40, 41, 55, 56, 60, 68, 69, 81.
Hulse, Nancy Sue, St. Joseph, Mo., 47, 61, 62, 64.
Harlow, Anne, Ardmore, Okla., Second Semester Student
- Italiano, Evelyn, Collinsville, Ill., 45, 63, 68, 71.
Ivy, Kay Marie, Overland, Mo., 48, 57, 58, 69.
- Jackson, Carole Lee, Indianapolis, Ind., 50, 64.
James, Hester, Kansas City, Mo., 46, 57.
Janak, Patricia Jean, Crystal Lake, Ill., 34, 35, 60, 63, 68.
Jenks, Wardea, Ann Arbor, Mich., Second Semester Student
Johns, Ramah, Oklahoma City, Okla., 47, 77.
Johnson, Betsy, Springfield, Ill., 49, 67.
Johnson, Juanita, Rolla, Mo., 51.
Jones, Nina, St. Charles, Mo., 48, 58, 63.
- Karsten, Julie Ann, Wichita, Kans., 45, 61, 62, 67, 68, 78.
Kasper, Marian Louise, Kansas City, Mo., 45, 57, 58, 64, 69.
Keen, Jacqueline Ann, Knightstown, Ind., 45, 66, 67.
Keeton, Deane Ellen, Kansas City, Mo., 34, 35, 57.
Keiser, Margaret, West Alexandria, Ohio, 48, 64.
Keller, Marilyn Fuller, St. Louis, Mo.
Kellogg, Carol, Amarillo, Tex., 45, 54.
Kennedy, Susan Anne, Newport, Tenn., 34, 35, 54, 55, 56, 72.
Kiss, Dolores, Chicago, Ill., 34, 35, 61, 62, 70, 72.
Klugh, Susan, Huntsville, Tex., 49, 63.
Knauer, Roscann, Springfield, Mo., 51, 54, 62, 64.
Knight, Carol Lee, Fort Smith, Ark., 45, 61, 62, 64.
Knock, Bonnie A., Parkersburg, Iowa, 42, 64, 68, 69.
Koeller, Barbara J., Barry, Ill., 49, 64.
Kolocotronis, Kathy, St. Louis, Mo., 40, 56, 57, 63.
Kruse, Martha Lee, Carrollton, Mo., 49.
Kuhlman, Marlene, Hooper, Nebr., 50, 80.
- Langworthy, Gail, Palestine, Ill., 42, 57.
Laue, Shirley Jean, Des Moines, Iowa, 42, 56, 66, 67, 68, 69.
Lawrence, Susan, Tulsa, Okla., 49, 67.
LeClaire, C. Joan, Richmond Heights, Mo., 46, 69.
LeCount, Sylvia, Birmingham, Ala., 49, 60, 63, 68, 69.
Lee, Barbara Gene, St. Louis, Mo., 46, 69.
Lefler, Sally Gene, Glendale, Mo., 42, 60, 64, 68, 69.
Lesseg, Sally Lee, Webster Groves, Mo., 55, 67.
Lewis, Helen Janet, Sikeston, Mo., 40, 62.
Lewis, Karen, St. Charles, Mo., 47, 64.
Linhart, Carole, St. Louis, Mo., 43, 66, 67.
Link, Sylvia Ann, Henderson, Ky., 46.
Long, Patricia, Nashville, Tenn., 46, 57, 61, 64, 68, 69, 71.
- Longstreth, Susan, Wabash, Ind., 42, 63, 64.
Lovell, Dolores Elaine, Beatrice, Nebr., 50, 61, 68, 69.
Lunt, Elaine, Pratt, Kans., 49, 64, 65.
Lyle, Mary Lee, Oskaloosa, Iowa, 46, 64.
- McDaniel, Nancy, Fort Worth, Tex., 41.
McFarland, Sydney, Rolla, Mo., 46.
McGilvary, Kathleen, Edwardsville, Ill., 43, 68, 69, 70.
McMullin, Ann, Sullivan, Ill., 43, 62, 69.
McPike, Linda Lee, Joplin, Mo., 51.
Madden, Marsha, Willow Hill, Ill., 50, 66.
Marshall, Marian, Houston, Tex., 41, 64.
Marshall, Shirley, Houston, Tex., 51, 64.
Martin, Mary, Prescott, Ariz., 43, 60, 61, 67, 68, 69, 71.
Mathews, Elizabeth, Tonkawa, Okla., 51, 54.
Mauz, Eleanor, San Antonio, Tex., 35, 54, 63, 72.
Meadows, Phyllis, Kellerton, Iowa, 41, 60, 62, 68, 69.
Meier, Sheila, Wilmette, Ill., 49.
Meierhoff, Jan, Kansas City, Mo., 68, 69.
Meisel, Patt Wilkerson, St. Charles, Mo., 35, 59.
Meltzer, Linda Kay, Fort Smith, Ark., 48.
Menke, Maxine, Bancroft, Iowa, 35, 60, 68, 81.
Mermis, Marilyn Kay, Hays, Kans., 48, 61, 71.
Merrell, Mary Lu, Glen Ellyn, Ill., 36, 37, 54, 56, 59, 60, 61, 71, 72.
Meyer, Madeleine, St. Louis, Mo., 48, 60, 68.
Micheletto, Tillie, Collinsville, Ill., 42, 62, 64, 65, 69, 80.
Miller, Betty, Jefferson City, Mo., 48, 61, 65, 71.
Miller, Dorothy, Kansas City, Mo., 43.
Miller, Jayne Leigh, Robinson, Ill., 47, 64.
Miller, Patricia Alice, Marshall, Ill., 41, 62, 68, 69.
Millett, Marty, Omaha, Nebr., 49, 62, 77.
Mills, Marilyn, Danville, Ill., 36, 37, 67.
Missy, Judith Ann, Glen Ellyn, Ill., 44.
Mitchell, Marilyn, Mexico, Mo., 40, 50, 62.
Mittelstadt, Marcia, Laurel, Nebr., 44, 62, 69.
Moberly, Judith Ann, Wichita, Kans., 48, 62, 66, 67.
Moe, Nancy, Madison, Wis., 36, 37, 61, 62, 66, 68, 69.
Moore, Betty Carol, Kirkwood, Mo., 36, 37, 62, 68.
Moore, Marilyn, El Dorado, Ark., 50.
Moorhead, Carol Jean, O'Fallon, Mo., 43, 58, 64.
More, Carolyn, Harlan, Iowa, 44, 63, 65, 68, 69.
Morgan, Virginia, Centralia, Ill., 45, 65.
Morikawa, Toshiko, Urawa City, Sanitama Prefecture, Japan, 36, 37, 69, 71.
Moss, Colleen, Fort Worth, Tex., 49, 55.
Moss, Marcia, Paris, Ill., 51, 63.
Musgrove, Sheila, Sterling, Ill., 46, 64.
- Nash, Sara Ann, Nashville, Tenn., 46, 60, 66.
Natho, Dorothy Lynn, Chester, Ill., 46, 62, 63, 67.
Neblett, Dorothy, Canyon, Tex., 49.
Neblett, Dorothy Helen, Norfolk, Va., 36, 37, 55, 56, 57, 72.
Nemec, Bettina, Little Rock, Ark., 50, 63.
Nichols, Sue, Vinita, Okla., 50, 57, 68, 69.
Noland, Shirley, Nashville, Tenn., 50.
Nordyke, Nan, Amarillo, Tex., 49, 61, 65.
Norton, Suzanne, Otter Lake, N. Y., 37, 62, 66, 67, 68, 69, 71.
Nowlin, Mary Ann, Houston, Tex., 50.
- Obert, Sunny, Waterloo, Iowa, 44, 67, 68, 69.
Oglesby, Carolyn Sue, Lincoln, Ill., 49.
Oglesby, Jacquelyn Lee, Lincoln, Ill., 49.
Ordonez, Nora, LaCeiba, Honduras, C. A., 48.
Orndorff, Eva Ann, Mattoon, Ill., 43, 66, 68, 69.
- Palmer, Fern Nadine, Columbia, Mo., 41, 66, 67.
Paris, Roberta Mae, Kokomo, Ind., 49.
Parker, Barbara Ann, St. Joseph, Mo., 49, 60, 66, 69.
Parnas, Shirley, St. Louis, Mo., 65.
Patterson, Patricia, Lincoln, Nebr., 49.
Peebles, Jane, New Orleans, La., 44, 66.
Perry, Marilyn, Lawrence, Kans., 47, 63, 64, 66, 67.
Peterson, Judith Kristin, Wichita, Kans., Second Semester Student

Student Directory

- Plesha, Joyce, McCook, Ill., 51, 65.
Potter, Sue, Springfield, Mo., 48, 61, 71.
Prouty, Alice Lynn, Lubbock, Tex., 44, 60, 68.
Puckett, Patti, Amarillo, Tex., 42, 54, 59, 61, 63, 68, 69, 71.
Punt, Carol Roberta, St. Louis, Mo., 51, 64.
Randall, Beverly Joyce, Cobden, Ill., 41, 55, 62, 65, 68, 69.
Rasmussen, Julia Emilie, Grand Rapids, Mich., 42, 56, 67, 70, 71.
Ratjen, Carol Luise, Park Forest, Ill., 44, 58, 61, 64, 69, 71.
Reed, Judith Ann, Aurora, Ill., 51, 68.
Reed, Nancy, Barrington, Ill., 49.
Rehg, Grete, St. Charles, Mo., 51, 64, 65.
Reinbold, Roberta, Belleville, Ill., 44, 56.
Rhynsburger, Donia, Columbia, Mo., 51, 64, 68, 69.
Rice, Janis, El Paso, Ill., 45, 64, 66, 68, 69.
Richards, Connie, West Plains, Mo., 44, 54, 57, 58, 60, 68, 69.
Richardson, Melinda, El Dorado, Ark., 46.
Roberts, Nancy Maria, Postville, Iowa, 51.
Rood, Nancy Helen, Butte, Mont., 44, 59, 61, 68, 69, 71.
Rosenberger, Martha, Woodlawn, Ill., 49, 60, 62, 68, 69.
Rudolf, Ute, Belleville, Ill., 44.
Rule, Jeanie, Sapulpa, Okla., 40, 62.
Russell, JoAnna, Miami, Okla., 48, 63.
Ryter, Gwendolyn, St. Louis, Mo., 45, 54, 57, 58, 68, 69.
Samuel, Carile, Papillion, Nebr., 37, 62, 65.
Sawyer, Ann Milner, Caruthersville, Mo., 42, 63, 64, 65, 68, 69.
Schaefer, Margaret, Chicago, Ill., 46.
Schmidt, June, Evansville, Ind., 45, 61, 71.
Schmoyer, Sydney, El Reno, Okla., 46.
Schmurr, Lisabeth, Otho, Iowa, 41, 63, 64, 67, 68, 71, 82.
Schrey, Betty Ann, Leavenworth, Kans., 50, 62, 68, 71.
Scott, Lynne, Donelson, Tenn., 50, 60, 69.
Sehorn, Charlotte, Newport, Tenn., 37, 54, 56, 63.
Sellers, Jacqueline, Okolona, Ky., 49, 60, 64, 69.
Severson, Betsy, Madison, Wis., 38, 39, 54, 72.
Sharpe, Barbara, Omaha, Nebr., 46, 54, 66.
Sharpe, Lowell, Omaha, Nebr., 40, 66.
Shuttleworth, Barbara, Jennings, Mo., 38, 39, 56, 70.
Simpson, Myrna Jeanne, Estherville, Iowa, 46, 63, 65.
Simpson, Sharmion, Eufaula, Okla., 46.
Smith, Caroline Ann, Ogden, Iowa, 46, 62, 64, 68, 69.
Smith, Carolyn, Fort Worth, Tex., 45, 60, 68, 69.
Smith, Esther Mehalick, St. Louis, Mo., 38, 39.
Smith, Jean Ann, York, Nebr., 46.
Smith, Judith Elinor, Magnolia, Ark., 45, 54, 63, 68, 69.
Smythe, Sharon, Bartlesville, Okla., 42, 62, 68, 69.
Spickelmier, Ann, Washington, Mo., 46, 65.
Spiegel, Susan, Gary, Ind., 51.
Steinmetz, Phyllis, Hammond, Ind., 45, 54, 58, 68, 69.
Stewart, Ann, Fort Smith, Ark., 46, 64, 65.
Stillwell, Carol, Alton, Ill., 42, 56, 57, 62, 69.
Stover, Ellen Louise, Grand Rapids, Mich., 44, 60, 68, 69.
Stuart, Caroline, St. Louis, Mo., 40.
Sullins, Patricia, Overland, Mo., 42, 69.
Swanson, Julia Marie, Ottumwa, Iowa, 42, 60, 69.
Tainter, Marilyn, St. Charles, Mo., 50, 58, 60, 63, 66, 67.
Taylor, Sandra, Sioux Falls, S. D., 46, 67.
Terrell, Margie, Paducah, Ky., 42, 55, 57, 63, 69, 71.
Thayer, Mary Lou, Wilmette, Ill., 41, 55, 60, 68, 69.
Thielecke, Mary Ann, Little Rock, Ark., 38, 39, 55.
Thompson, Norma Jean, Estancia, N. M., 44, 55.
Todsén, Jennelle, Mexico, Mo., 41, 63, 66, 68, 69, 70.
Townsend, Betty, Sac City, Iowa, 40, 60, 63, 70, 71.
Turner, Anne Marie, Rockwell City, Iowa, 44, 68, 69.
VanEaton, Sunny, Laramie, Wyo., 48, 64.
Vaughan, Betty, Naples, Tex., 46.
Vinkemulder, Abby, Grand Rapids, Mich., 51, 66.
Vinson, Ann, Houston, Tex., 51.
Viteri, Maria G. Zoila, Providence Chimborazo Ecuador, 48.
Walker, Nancy Jo, Wichita, Kans., 50, 66, 67, 68, 69, 71.
Wall, Linda Mae, Owosso, Mich., 38, 39, 61, 62.
Walter, Madeleine, Strasbourg Bous-Rhin France, 38, 39, 57.
Watson, Diana Lee, Kahoka, Mo., 46.
Wideman, Carol, Perrysburg, O., 39, 61, 62.
Willey, Susan, East Grand Rapids, Mich., 46, 67.
Williams, Eugene, Lawton, Okla., 51.
Williams, Nancy Jane, Okmulgee, Okla., 51, 64.
Williams, Patricia, Nashville, Tenn., 51, 54.
Wilson, Polly, Des Moines, Iowa, 43, 60, 68, 69.
Wolf, Anne Dora, Lebanon, Ill., 51, 63.
Wolff, Barbara Jean, Brentwood, Mo., 51.
Wolter, Carol, St. Charles, Mo., 39, 66, 67.
Wood, Beverly Ann, Sullivan, Ill., 51, 67.
Woodman, Virginia Lee, Grand Rapids, Mich., 40, 56, 70.
Wright, Nancy June, St. Charles, Mo., 51, 58, 77.
Yandell, Rebecca Ann, Jackson, Tenn., 51, 64.
Young, Sandra L., Wood River, Ill., 46, 64.
Zotos, Ann, Alfton, Mo., 45, 61, 62, 68, 69.

Linden Leaves Sponsors 1955

The following friends of Lindenwood College have helped make possible the publication of this issue of the LINDEN LEAVES by their financial assistance:

MR. THORLEY ALDERSON
MR. ARTHUR C. BAUE
MISS AIMEE M. L. BECKER
MR. FRED BECKER
DR. E. J. CANTY
MR. ROBERT C. COLSON
DR. RUSSELL CRIDER
MR. H. C. DALLMEYER
MR. MALCOLM DEISENROTH
DR. VERNON E. DUNGAN
MR. HOWARD S. ELLIS
MR. HENRY FUERHOFF
MRS. M. J. GAUSS
MR. CHARLES HAFER
DR. F. L. HARRINGTON
MR. EARL W. HUMPHREY
MISS RUTH N. LORING
MRS. GRETA LARSON
MR. PAUL F. NIEDNER
MR. ROBERT V. NIEDNER
MR. ED J. PUNDMANN
MR. FRANK B. RAUCH, SR.
MR. CHARLES RICHARDS
DR. H. C. RITTER
MR. FRED TAINTER
DR. G. W. TAINTER
MR. LEE I. WHITE



Congratulations to the students of Lindenwood College on this yearbook. Your college hopes that it has served you well during your student days and it is eager to be of further service to you wherever you are in the years ahead.

LINDENWOOD COLLEGE

ST. CHARLES, MISSOURI

A Convenient Place to Shop . . .
THE GOLDEN RULE STORE

MATTINGLY BROS. STORES CO.

205 N. MAIN STREET
ST. CHARLES, MO.

We Specialize in 5c to \$5.00 Merchandise—Dry Goods, Notions,
Drug Sundries, Stationery, Gift Items, Houseware and
Other Staple Merchandise

CLASS OF '55

*Congratulations and
sincere good wishes to
each of you*



THE QUALITY COALS



BELL & ZOLLER COAL COMPANY

RAILWAY EXCHANGE BUILDING, ST. LOUIS 1, MISSOURI • BELL BUILDING, CHICAGO 1, ILLINOIS

ANOTHER BOOK BY

CENTRAL

CENTRAL ENGRAVING COMPANY
114 N. SEVENTH STREET ST. LOUIS 1, MISSOURI

1955 LINDEN LEAVES . . .

The Product of a Fine Printing Service—

VON HOFFMANN PRESS, Inc.

ST. LOUIS

JEFFERSON CITY

**STRAND
THEATRE**

**ON NIGHTS
OFF
CAMPUS**

ST. CHARLES, MO.



VESTAL

4963 MANCHESTER AVE.



Incorporated

ST. LOUIS 10, MISSOURI

**ON FLOOR MAINTENANCE
PRODUCTS**

Is your assurance that the
finest material known for
preserving and beautifying
all types of floors is
being used.

VESTAL INCORPORATED

4963 MANCHESTER

ST. LOUIS, MO.

KREY PACKING COMPANY

Quality Meat Products Since 1882

BEEF — PORK — VEAL — LAMB

SMOKED MEATS, LARD, VACUUM COOKED MEATS

(Delicious Fresh Sausage Made Daily)

21ST AND BREMEN AVENUE

ST. LOUIS 7, MISSOURI

COMPLIMENTS OF

DOHOP Y
HOME OF FAMOUS BRANDS

300 N. MAIN ST. CHARLES, MISSOURI

CALENDA PRODUCE

*Fruit and Produce
Wholesale*

PHONE CHESTNUT 7088

2125 St. Louis Ave. St. Louis 7, Mo.

Engineers of TERMITE CONTROL
PEST-CONTROL SERVICE
RAT STOPPAGE

ROSE EXTERMINATOR COMPANY

A National Institution—Established 1860

6748 Olive St. Rd. St. Louis, Mo.

Telephone Delmar 3900

G. L. CLEM, *Manager*

*Compliments
of
DAILY*

COSMOS-MONITOR

THE BEST OF LUCK
AND SUCCESS FROM

ATLAS JEWELERS

ABLER JEWELERS

ED L. MEYER JEWELERS

WALTER'S JEWEL SHOP

BRAUFMAN'S

Congratulations Seniors

You've done a fine job. Your record at Lindenwood—whether academic, musical or social—will be an achievement to look back on with great pride.

We are pleased . . . if we have helped in any way to make your stay here pleasant. We hope to see you again

HUNING'S

RECHTERN CLEANING CO.

216 NORTH 2ND STREET

ST. CHARLES, MO.

KISTER STUDIO

508 JEFFERSON STREET

ST. CHARLES

VOGT BROS.

POULTRY FARM

GALLAHER AND LINDENWOOD AVES.

ST. CHARLES, MISSOURI

Branch Sales Rooms—

NORMANDY, MISSOURI

UNIVERSITY CITY, MISSOURI

COMPLIMENTS

OF

SHEAR'S

St. Charles' Newest Department Store

305 N. MAIN

CLARK-SPRAGUE PRINTING CO.

1901 LOCUST STREET

ST. LOUIS, MISSOURI

WHEN STOPPING IN ST. CHARLES

STAY AT THE

BUNGALOW COURTS

TELEPHONE

RA 4-0642

1145 CLAY STREET

ST. CHARLES, MO.



COMPLIMENTS
OF

HEDGES & HAFFER

FOR
FINE FLOWERS
AND GIFTS
it's

BUSE'S FLOWER SHOP

400 CLAY STREET
PHONE RA 4-0148

Flowers Telegraphed Anywhere

RAUCH LUMBER & GROCER CO.

GENERAL OFFICE
ST. CHARLES, MISSOURI

RETAIL YARDS
ST. CHARLES — KIRKWOOD — WASHINGTON
MARTHASVILLE—ROBERTSON—MOSCOW MILLS

Wholesale Grocer
ST. CHARLES, MISSOURI

“YOU ARE ALWAYS WELCOME AT A RAUCH LUMBER YARD”

GAS

SERVES YOU BETTER
THROUGH MODERN GAS APPLIANCES

ST. CHARLES GAS CORPORATION

212 NORTH MAIN STREET

FIRST NATIONAL BANK

of ST. CHARLES, MO.

CHARLES J. DAUDT	<i>President</i>
JOSEPH A. BOTTANI	<i>Vice-President</i>
LEE I. WHITE	<i>Cashier</i>
W. C. BORGELT	<i>Assistant Cashier</i>
PAUL H. KNOBLAUCH	<i>Assistant Cashier</i>
RUSSELL KANSTEINER	<i>Assistant Cashier</i>
GLENNON DEBRECHT	<i>Assistant Cashier</i>
CLARICE POWERS	<i>Assistant Cashier</i>

CAPITAL \$250,000.00

SURPLUS \$250,000.00

DIRECTORS

JOSEPH A. BOTTANI
CHARLES J. DAUDT
HENRY J. ROTHER

PERCY G. SCHAEFER
DR. AUGUST WESTERFIELD
LOUIS WILKE

LEE I. WHITE

ESTABLISHED IN

1863

MEMBER FEDERAL RESERVE SYSTEM

Under the Supervision of the United States Government

MEMBER FEDERAL DEPOSIT INSURANCE CORPORATION

DENNING'S

112 N. MAIN

RADIO *and* TV SERVICE

SNYDER'S VOGUE

Quality at no price penalty

ST. CHARLES, MO.

THE BRIDAL SHOP

A complete store devoted exclusively to
Bridal and Formal Wear

COMPLIMENTS

CHESTER B. FRANZ
INC.

VISIT

the completely refurnished and remodeled

ST. CHARLES HOTEL

Coffee Shop — Banquet Room

ST. CHARLES, MO.

PHONE RA. 4-1030

CONGRATULATIONS

from the

ST. CHARLES AUTOMOBILE DEALERS

BEN'S AUTO SALES
BRUCKER MOTOR SALES
PUNDMANN MOTOR CO.
ST. CHARLES MOTOR CO.
TRAVIS SERVICE CO.
WARDLAW MOTOR CO.
WILKE MOTORS, INC.

YOUR PATRONAGE
DESERVES OUR CONSTANT
EFFORT TO SERVE YOU BETTER

GRADE "A"
DAIRY PRODUCTS



**ST. CHARLES DAIRY
COMPANY**

BANNER NEWS COMPANY

ST. CHARLES, MO.

PRINTERS

PUBLISHERS

AHMANN'S NEWS STAND

CIGARS *and* TOBACCO

NEWS, BOOKS, STATIONERY, SPORTING GOODS

ST. CHARLES, Mo.

223 N. MAIN

STOVES
HARDWARE
BOTTLED GAS
PAINTS AND OILS

THE BRUNS MACHINE CO.
222-224 NORTH MAIN STREET
ST. CHARLES, MO.

FARM SUPPLIES
WATER SYSTEMS
WASHING MACHINES
ELECTRIC APPLIANCES

HENRY'S GRILL

*The Hamburger with
an International
Reputation*

1101 N. 2ND STREET
ST. CHARLES MISSOURI

Compliments of

LAWRENCE J. MEISEL COMPANY

Distributors of

LAWN *and* GARDEN SUPPLIES
and EQUIPMENT

4445 BRENTWOOD BLVD.
CLAYTON 5, MISSOURI

YELLOW CAB



401 N. SECOND ST.

ST. CHARLES, MO.

PARKVIEW GARDENS

As Near to Lindenwood as Your Telephone

1925 RANDOLPH

We Telegraph Flowers

PHONE RA 4-1925

ENJOY LIFE . . . EAT OUT MORE OFTEN

J. F. CONRAD GROCER CO.

ST. LOUIS, MO.

H. J. ROTHER

JOHN WETTER

HACKMANN LUMBER COMPANY

LUMBER — PAINTS — HARDWARE

PHONE RA 4-0806

106 N. MAIN STREET

ST. CHARLES, MO.

COMPLIMENTS

of

CROTTY BROTHERS, Inc.



COMPLIMENTS
OF
J. C. PENNEY COMPANY

SHATTINGER MUSIC CO.

HAS WHATEVER YOU WANT IN MUSIC

For free catalog write

Shattinger Music Co.

331 ARCADE BLDG.

PHONE MA2408

ST. LOUIS 1, MO.

EDMUND C. BURKE, Plumber and Heating Contractor

STOKERS AND OIL BURNERS

PHONE 4-0162

ST. CHARLES, MO.

COTTAGE BAKERY

"Party Cakes a Specialty"

211 NORTH SECOND STREET

ST. CHARLES, MO.

COMPLIMENTS OF

The Famous

"For Fashions of Distinction"

311 NORTH MAIN

ST. CHARLES, MO.

MISSOURI COAL AND APPLIANCE CO.

G. E. RADIO AND T.V.

G. E. HOME APPLIANCES

FURNITURE

GREEN MARKED COAL

PHONE RA 4-0440

420 N. MAIN

ST. CHARLES

Your badge is a thing of beauty and should be a joy forever!

The traditions of a century-old school cannot be erased by time, and the beauty of your Lambda Chi Badge is as enduring as the traditions of your school. Your Lambda Chi Badge is wrought entirely of gold and set with only genuine perfectly matched Oriental whole pearls—a badge in keeping with all of the fine things that Lindenwood College stands for.

317 N. 11TH STREET

COLLEGE SHOP

ST. LOUIS, MISSOURI

acf touches everybody ...everywhere

As car builders and lessors to America's railroads and shippers... **ACf** helps to bring coal to the mills, food to the cities and tractors to the farms. As creators of the revolutionary Talgo train... **ACf** helps to bring safer, faster and lower cost passenger service to millions.

As makers of aircraft parts and automotive carburetors, fuel pumps and filters... **ACf** travels all the super highways and the supersonic skyways.

As designers, engineers and manufacturers of hundreds of industrial products, ranging from heavy duty valves to storage tanks for propane gas and miracle fertilizers and bakers' mixing bowls, and from featherweight electronic devices to giant castings... **ACf** is helping America's industry better to serve the nation.

As producers of armored tanks and shells and other weapons... **ACf** serves with our troops in every corner of the world.

As creators of products in the field of nuclear energy... **ACf** is keeping pace with the new ideas that will shape the world of tomorrow.

As a manufacturer of products that touch every field of human activity... as a leader in the products of today and a pioneer in the "miracles" of tomorrow, **ACf** best can serve the interests of its employees, its stockholders, and the nation.

ACf INDUSTRIES, INCORPORATED 30 Church Street, New York 8, N. Y.

