

Lindenwood University

Digital Commons@Lindenwood University

Yearbooks

Lindenwood University Archives

1956

1955-1956 Linden Leaves

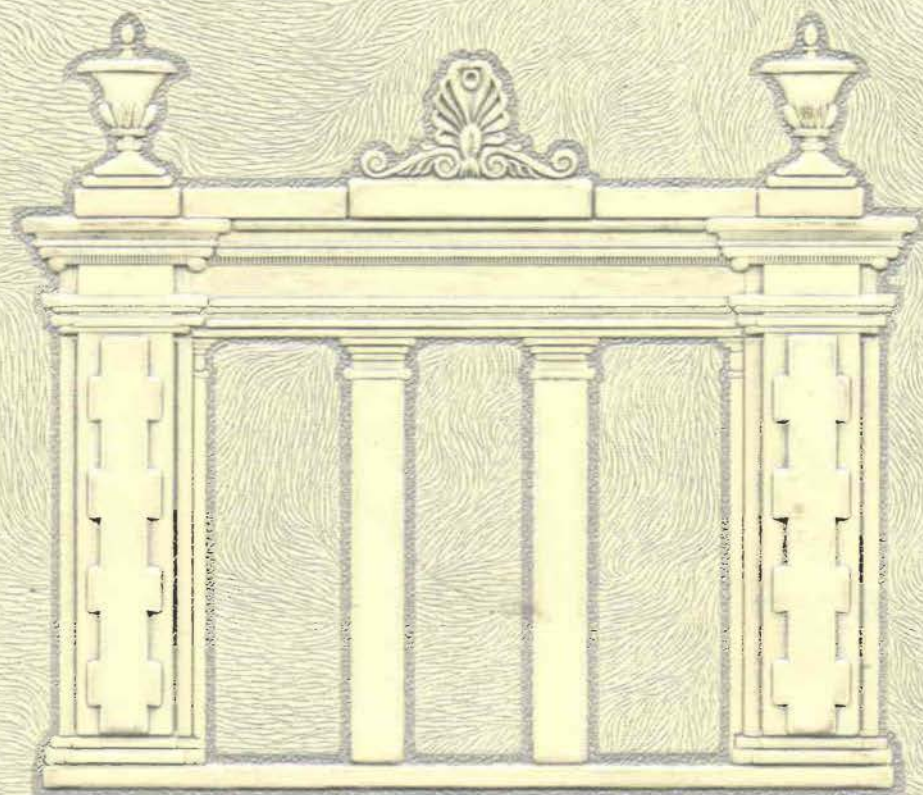
Lindenwood College

Follow this and additional works at: <https://digitalcommons.lindenwood.edu/yearbooks>

Recommended Citation

Lindenwood College, "1955-1956 Linden Leaves" (1956). *Yearbooks*. 38.
<https://digitalcommons.lindenwood.edu/yearbooks/38>

This Book is brought to you for free and open access by the Lindenwood University Archives at Digital Commons@Lindenwood University. It has been accepted for inclusion in Yearbooks by an authorized administrator of Digital Commons@Lindenwood University. For more information, please contact phuffman@lindenwood.edu.



LINDEN LEAVES





Linden Leaves

1956

Board

<i>Editor-in-Chief</i>	BEVERLY HARRINGTON
<i>Business Manager</i>	BARBARA GIVENS
<i>Literary Editor</i>	JANE GRAHAM
<i>Assistant</i>	GLORIA BAGWELL
<i>Art Editor</i>	KATHY KOLOCOTRONIS
<i>Organization Manager</i>	PENNY CREIGHTON
<i>Assistant</i>	CAROL GRIFFEE
<i>Advertising Manager</i>	MARELLA GORE

Annual Publication of the Students of
LINDENWOOD COLLEGE, ST. CHARLES, MISSOURI

Engraving by CENTRAL ENGRAVING COMPANY
St. Louis, Missouri

Printing and Binding by VON HOFFMANN PRESS, INC.
Jefferson City, Missouri

Covers by BECKTOLD COMPANY
St. Louis, Missouri

Photography by HERB WEITMAN, ALTA QUAST,
and ALBERT F. KISTER

A Question as Old as Time— What is this Creature Called Woman?

To be complex is woman's very nature. She must be gay but reserved, conscientious but unpredictable, candid but thoughtful, frivolous but circumspect—and much more.

The variety of life at Lindenwood provides the scaffolding for building the many-faceted woman, prepared to play the myriad roles of life.

Under the teaching and guidance of faculty and administration there unfolds the woman—influenced by the past, molded by the present, directed toward the future—who can meet the intellectual demands of life.

Preparation for her civic and spiritual life of leadership and service comes from her experience in campus activities and organizations.

Color, gaiety, and poise—the personal charm which makes her distinctive in the social world—become enhanced through her diverse associations and experiences.

All that we find here molds a young woman—enlightened, practical, assured, gracious—and dedicates her to the future.



Dedication to Miss Mary Lear

Imparting truth
With a dedicated spirit.

A lesson in living.



FROM EXPERIENCE ACCEPT EXPERIENCE
AND THE INVITATION TO LIFE



FACULTY *and*
ADMINISTRATION

Administration



FRANC L. McCLUER, Ph.D.
President of the College

SINCEREST greetings and best wishes to the students of Lindenwood College. May "the Lord . . . preserve thy going out and thy coming in from this time forth."

F. L. McCLUER

Administration

HEARTY good wishes to each member of the class of 1956. May the years you have spent at Lindenwood, with their friendships and opportunities to become acquainted with great ideas, add beauty and richness to the design you will make of your lives. As the years accumulate and other experiences are at hand to be woven into your life's fabric, may the patterns begun here always prove a true guide and a deep satisfaction.

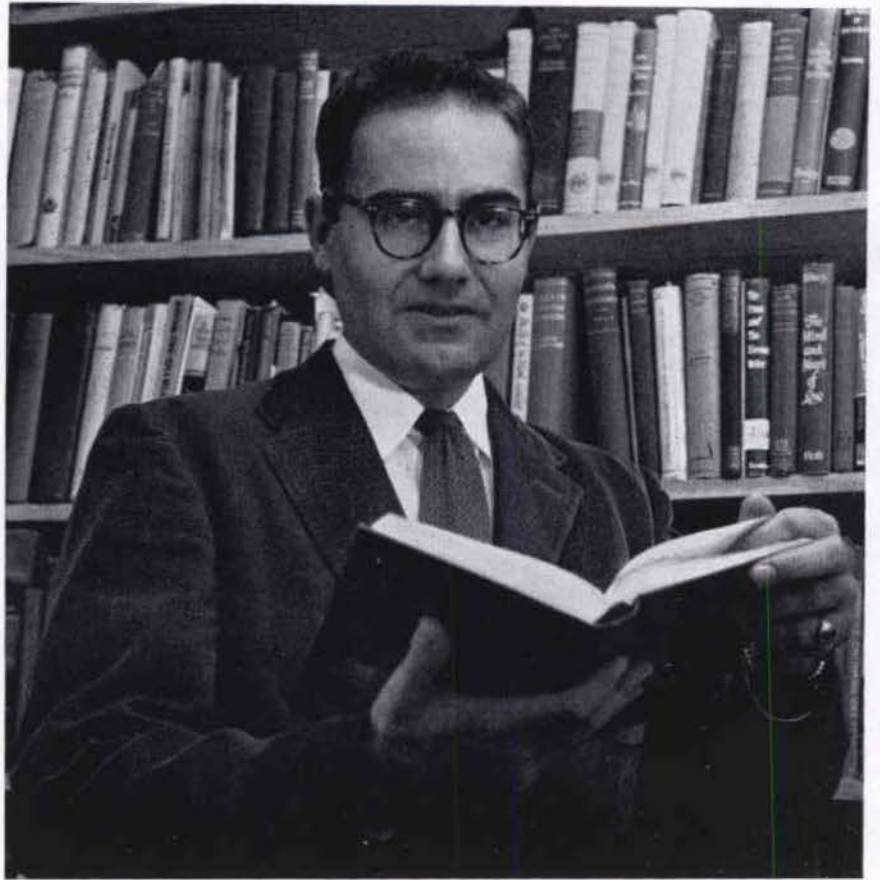
PAULENA NICKELL
Dean of the College



PAULENA NICKELL, PH.D.
Dean of the College

Administration

*They do me wrong
who say I come no more.*
—Malone.



THEODORE A. GILL, PH.D.
Dean of the Chapel



JUDITH DAMHORST—*Secretary to the Dean of the
College*

MARY YONKER—*Secretary to the President*

MELVA EICHORN—*Secretary to the Director of
Public Relations*

Not Pictured—RACHEL SPARKS—*Secretary to the
Supervisor of Plant Operations and Maintenance*

Administration



ROBERT C. COLSON
Business Manager

*I have a single-track
mind.—Wilson.*



AGNES ZEISLER—*Secretary to Business Manager*
HAZEL FULLER—*Bookkeeper*
CORA WAYE—*Clerk*

I shall light a candle of understanding in thine heart, which shall not be put out.

—Apocrypha.



MARY F. LICHLITER

Director Student Guidance and Placement



LIV UDSTAD—*Secretary to Director of Guidance*
JEAN BARKLAGE—*Secretary to the Registrar*

Administration



WILLIAM FLETCHER McMURRY
Director of Admissions

*He . . . Guides through
the boundless sky thy
certain flight . . .*
—Bryant.



BETTIE B. WIMBERLY—*Secretary to the Director of Admissions*
CARRIE M. CHARLES—*In Office of Director of Admissions*
LILLIAN SIEDHOFF—*Secretary to the Director of Admissions*

Administration

Administration

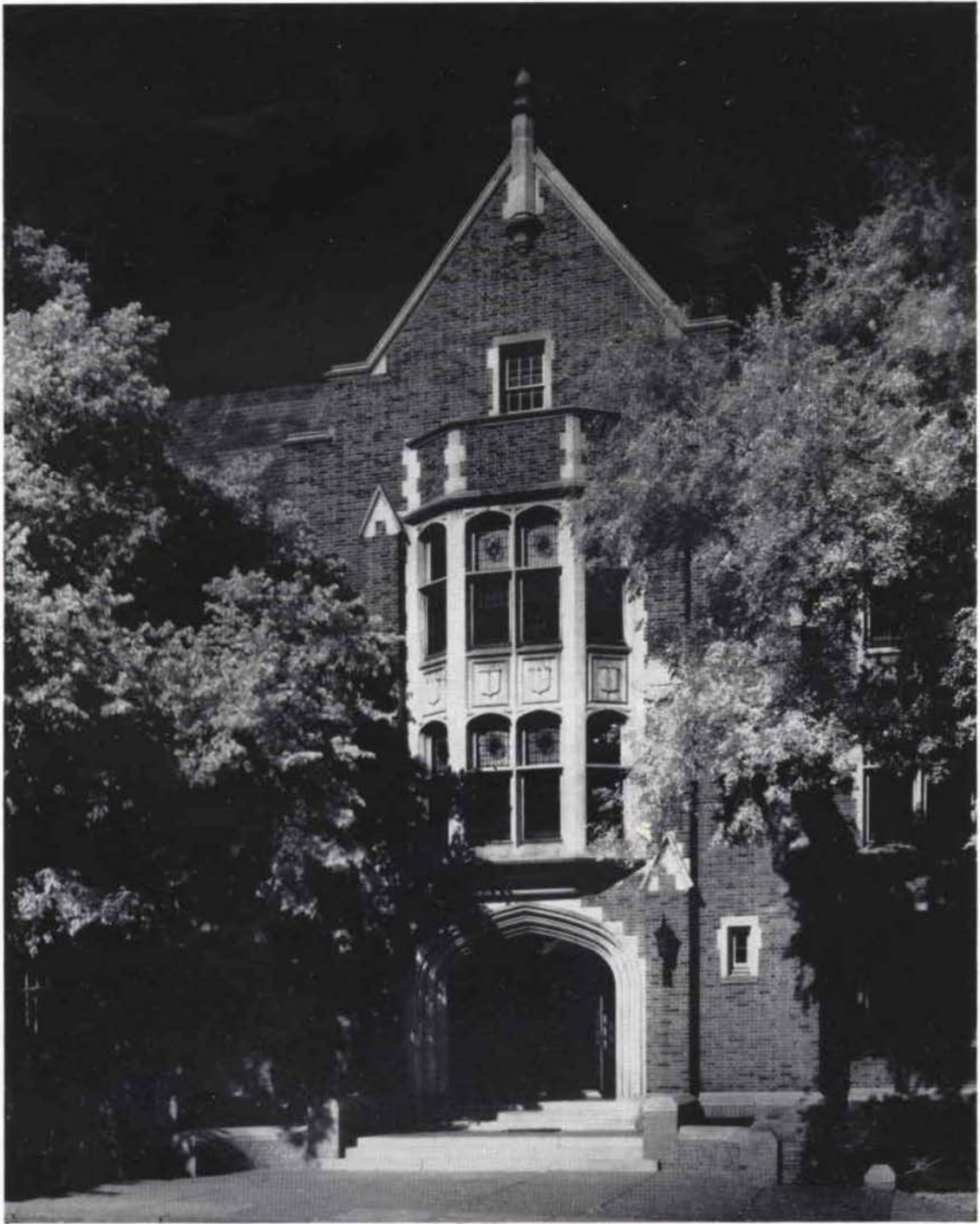
LULU CLAYTON BEALE
Registrar

*Thou wast my guide,
philosopher, and friend.*
—Pope.



MARY BRYANT
Alumnae Secretary and Director of Public Relations

A pen becomes a clarion.—Longfellow.



ROEMER HALL

. . . dedicated to the
cause for which Lin-
denwood College was
founded . . . "The
Christian Education
of Young Women."

Faculty



Art

HARRY D. HENDREN—*The rule of my life is to make business a pleasure, and pleasure my business.*—Butt.

ARTHUR KANAK—*Art is art . . . not water color sketches nor practicing on a piano . . . a life to be lived.*—Berthelini.

ELIZABETH SEVERSON—*She builded better than she knew;
The conscious stone to beauty grew.*—Emerson.

MARION DAWSON—*Merrily, merrily shall I live now
Under the blossom that hangs
on the bough.*
—Shakespeare.

MARY TALBOT—*Go to the ant . . .
consider her ways and be wise.*
—Proverb.

WALTER GRUNDHAUSER — *The
day is cold, and dark, and
dreary.*—Longfellow.



Biology

Faculty

English

SIEGMUND A. E. BETZ—*I am . . . a citizen of the world.*—Socrates.

AGNES SIBLEY—*The consecration, and the Poel's dream.*—Wordsworth.

ALICE PARKER—*I am a part of all that I have met.*—Tennyson.

DOROTHY ELY—*Grammar, which knows how to control even kings.*—Molière.

ELIZABETH DAWSON—*Not what we give, but what we share.*—Lowell.

HENRY TURK—*There's a good time coming, boys!*—Mackay.



Education

BREMEN VAN BIBBEA—*Knowledge comes, but wisdom lingers.*—Tennyson.



History

HOMER CLEVINGER—*A little nonsense now and then Is relished by the best of men.*—Aesop.

JAMES GARDNER—*And gladly would he learn and gladly teach.*—Chaucer.

Sociology-Economics-Psychology



WILLIAM ENGRAM—*The proper study of mankind is Man.*—Pope.

JOHN MOORE—*Knowledge is the only instrument of production that is not subject to diminishing returns.*—Clark.

MARIAN FROELICH—*Advice to those about to marry . . .*—Mayhew.

Home Economics



IRENE VAN BIBBER—*Type of the wise . . . True to the kindred points of Heaven and Home.*—Wordsworth.

MARGARET LINDSAY—*Plying her needle and thread . . .*—Hood.

SOPHIE PAYNE ALSTON—*Where order in variety we see . . .*—Pope.

Faculty

Library

HORTENSE F. EGGMANN, MIL-
DRED KOHLSTEDT—*The true
University these days is a
Collection of Books.*—Carlyle.



Modern Language

Mathematics



LOUISE BEASLEY—*Figures won't lie . . .*—Grosvenor.



MARY TERHUNE— . . . *the sun never sets on Spanish dominions.*
—Smith.

THOMAS DOHERTY—*Good Americans, when they die, go to Paris.*—
Appleton.

HUGO BAUER—*A man's a man for a' that.*—Burns.

Faculty

ALLEGRA SWINGEN—*The listening crowd
admire the lofty sound . . .*—Dryden.

VIRGINIA L. HOUSE—*If music be the food
of love, play on.*—Shakespeare.

GERTRUDE ISIDOR—*. . . for there is music
wherever there is harmony.*—Job.

JOHN THOMAS—*What is lovely never dies,
But passes into other love-
liness.*—Aldrich.



Music



Seated

ROBERT A. CRUCE—*A merry heart maketh
a cheerful countenance.*—Proverbs.

MILTON REHG—*. . . participation is gained
through song.*—Robinson.

Standing

WAYNE H. BALCH—*Whatsoever a man sow-
eth, that shall he also reap.*—Bible.

PEARL WALKER—*The sweetest of all sounds
is that of the voice of the woman we
love.*—Bruyère.



Philosophy-Religion

THEODORE A. GILL—*Though old the thought, and
oft exprest,*

'Tis his at last who says it best.—Lowell.

C. EUGENE CONOVER—*I count life just a stuff
To try the soul's strength
on.—Browning.*

CAROLYN S. GRAY—*Kind hearts are more than
coronets.—Tennyson.*

MARY E. LEAR—*Out of the abundance of the heart
the mouth speaks.*



Physical Science

MARGUERITE VER KRUZEN—*The game is not
worth the candle.—Montaigne.*

DOROTHY ROSS—*My days are swifter than a
a weaver's shuttle.—Job.*

GRAZINA ONA AMONAS—*Come and trip it as ye go,
On the light fantastic toe.
—Milton.*

Physical Education

Faculty

Faculty



Speech

JULIET MCCROBY—*Proper words in proper places.*—Swift.

ROBERT DOUGLAS HUME—*Speak the speech, I pray you . . .*—Shakespeare.

MARTHA MAY BOYER—*Fields and trees teach me nothing, but the people in the city do.*—Socrates.

Secretarial Science

Classical Languages, Literature

SIEGMUND A. E. BETZ

Journalism

MARY BRYANT



MARY A. GILDEHAUS—*Push on . . . keep moving.*—Mortou.

EMMA PUBNELL—*But the one worth while is the one who will smile.*—Wilcox.



MARBLE DAVIS, R.N.; E. J. CANTY, M.D.; SUE LUMPEE, R.N.

Health Center

The preservation of health is a duty.—Spencer.

Buildings, Grounds



CHARLES H. BUSHNELL

Post Office Staff



AMY M. WAGNER, RAE SHORT

Rome was not built in one day.—Heywood.

Who knows what the future holds?—Aton.



Food Service Staff

JULIA KEITHLY, CARL HOUSE

The best-laid schemes o' mice an' men go oft astray.—Burns.

Tea Room Staff



Leisure with dignity.—Cicero.

CLARA KOLKMEIER, EDNA BROOKS, VERNELLE BRUNS

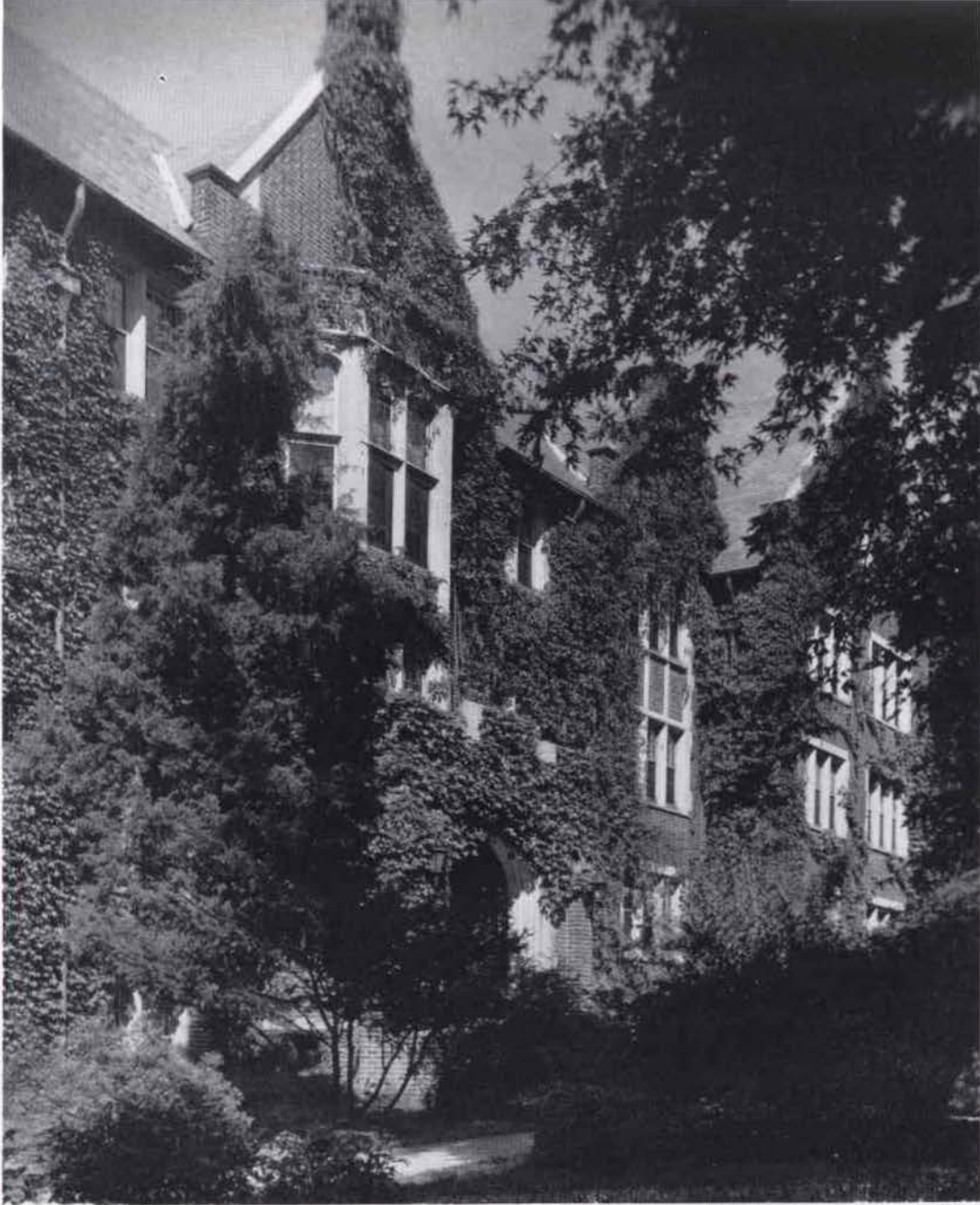


Butler Hall

Erected in honor
of
Colonel James Gay Butler
1915



MARY CAVE
Head Resident



Irwin Hall

In memory of
Reverend Robert Irwin, D.D.
President of Lindenwood College
1880-1893
and
Mrs. Kate Irwin
1927



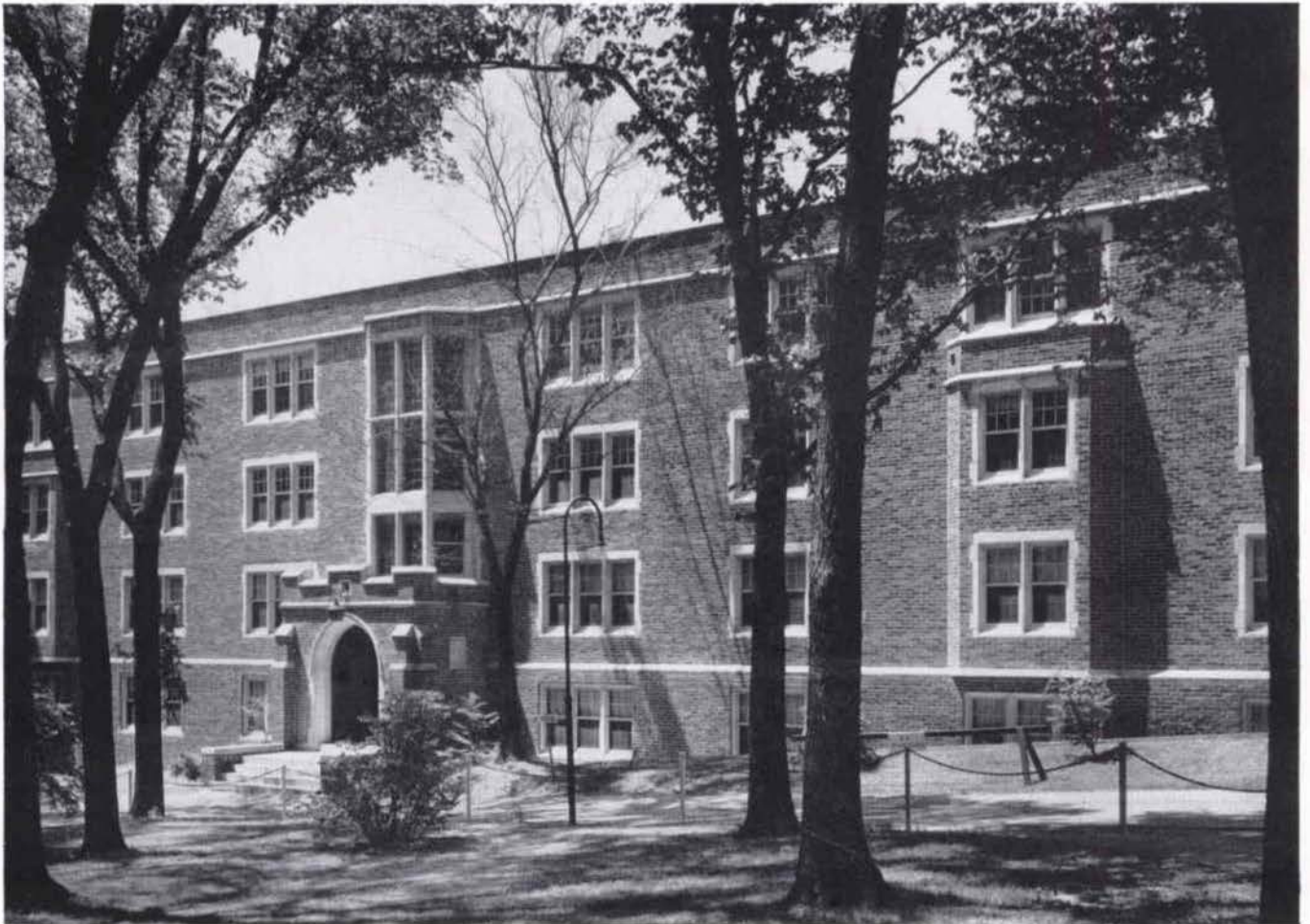
HELEN M. CALVERT
Head Resident

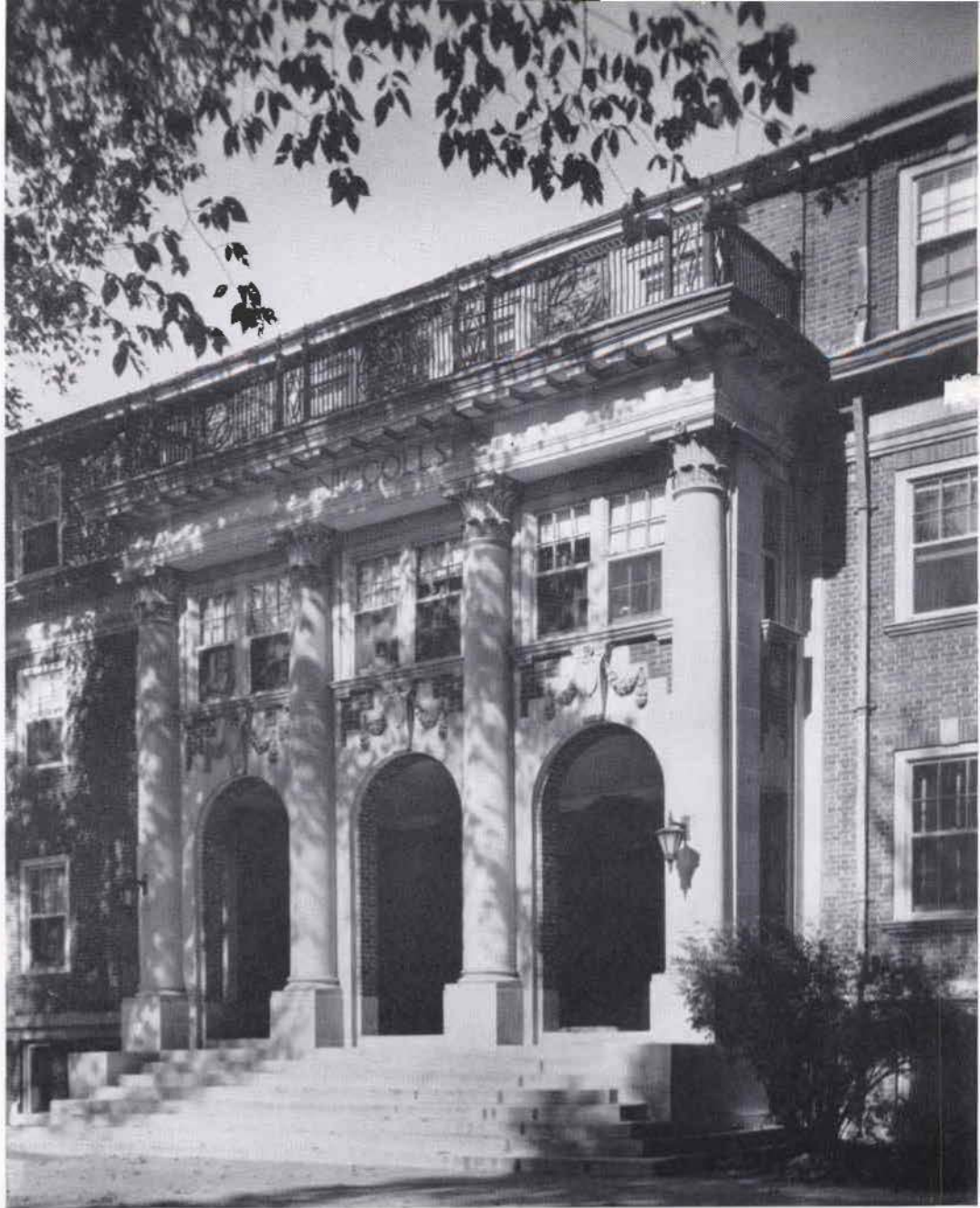
Cobbs Hall

Named in honor
of
Thomas Harper Cobbs
1949



*EVALYN CROSBY
Head Resident*





AUSTA GADDY
Head Resident

Nicolls Hall

Erected in memory
of
Reverend Samuel Jack Nicolls
by his friend
James Gay Butler
1916

Sibley Hall

Erected in honor
of
Major George C. Sibley
and his wife
Mary Easton Sibley
Founders of Lindenwood College
1827



KATHRYN HENDREN
Head Resident





THROUGH COMRADESHIP WITH MANY
BUILD THE STRENGTH TO BECOME ONE

(LASSES)

Seniors



Nancy Alvis

B. A., *Psychology*; Mexico, Missouri

Student Council, '54-'56, Junior Class Representative, '54-'55, Vice-President, '55-'56; Social Council, '55-'56; Student Christian Association, '53-'55, Secretary, '53-'54, Junior Cabinet Advisor, '54-'55, Junior Cabinet, Vice-President, '52-'53; League of Women Voters, '55-'56; Young Republicans, '55-'56; Encore Club, '52-'56; Athletic Teams, '52-'54; Athletic Association '52-'56, Social Chairman, '55-'56; Sophomore Class Vice-President, '53-'54; Cobbs Hall Chaplain, '56.

Mary Ann Arrington

B. A., *Art*; Russellville, Arkansas

Poetry Society, '52-'53; Press Club, '52-'56; Griffen, Assistant Art Editor, '53-'54; Linden Bark, '52-'56, Editor, '55-'56; Kappa Pi, '53-'56, Historian, '56; Young Democrats, '55-'56; Athletic Association, '52-'54, Publicity Chairman, '53-'54; Terrapin, '52-'54; Butler Hall Chaplain, '53-'54; Washington Semester, '54-'55; Linden Scroll, '55-'56.



Margaret Lou Bittman

B. A., *Speech*; Perry, Oklahoma

Student Council, President, '55-'56; Honor Board, '55-'56; Press Club, '53-'56, Vice-President, '54-'55; Linden Bark, '54-'55; KCLC, '52-'56, Head Engineer, '53-'54, Sales Manager, '54-'55; Staff Coordinator, '55-'56; Alpha Epsilon Rho, '52-'56, Acting President, '55; KETC, '55-'56; League of Women Voters, '52-'56; Young Republicans, '52-'56; Athletic Teams, '52-'53; Beta Chi, '52-'56; Athletic Association, '52-'55; Junior Class Vice-President, '54-'55; Sibley Hall Staff, '52; Butler Hall Staff, '55.



BITT, MAISIE, ALVIE

Seniors

Ann Carlisle

B.A., *Psychology*; Petersburg, Indiana

Student Christian Association, '54-'56, Faith Chairman, '54-'55, President, '55-'56; Choralaires, '55-'56; Choir, '52-'55, Secretary, '53-'55; Kappa Pi, '55-'56; League of Women Voters, '54-'56; Young Republicans, '52-'56, Platform Chairman, '55-'56; Encore Club, '55-'56; Intramurals, '54-'56; Delta Nu, '53-'54; Junior Class President, '54-'55; May Court, '55.

Verlee K. Caro

B.S., *Elementary Education*; Wentzville, Missouri

Future Teachers of America, '55-'56; Day Student Association, '55-'56.

Penelope Bates Creighton

B.A., *Human Relations*; Nashville, Tennessee

Student Christian Association, Faith Chairman, '55-'56; Linden Leaves, Organization Manager, '55-'56; Kappa Pi, '52-'53; Young Democrats, '52-'56, Publicity Chairman, '53-'54; Athletic Teams, '52-'53; Athletic Association, '52-'55; Intramurals, '52-'56, Cobbs Hall Chairman, '53-'54; Terrapin, '52-'56, Secretary-Treasurer, '54-'55; Cheerleader, '52-'53; Modern Language Club, '52-'53; Cobbs Hall Staff, '53-'54; Cobbs Hall Chaplain, '53-'54; Play Productions, '53-'54; Washington Semester, '54-'55; Dean's Honorable Mention, '53-'54; May Court, '56; Linden Scroll, Secretary, '55-'56.



PENNY, ANN

Seniors



Eleanor Ann Day

B.S., *Office Management*; Missouri Valley, Iowa

League of Women Voters, '54-'56; Young Republicans, '54-'56; Encore Club, '53-'56, Treasurer, '54-'55; Athletic Teams, '53-'54; Athletic Association, '53-'56, Secretary, '55-'56; Sophomore Class Intramural Chairman, '54-'55; Modern Language Club, '53-'55; Washington Semester, '55-'56; Cobbs Hall Staff, '56; Dean's Honor Roll, '54-'55.



Donna Drury

B.S., *Home Economics*; Gillespie, Illinois

League of Women Voters, '53-'56; Young Democrats, '53-'56; International Relations Club, '53-'56; Future Teachers of America, '52-'56; Colhecon, '52-'56, Treasurer, '52-'53, Secretary, '53-'54, President, '54-'55; Dean's Honorable Mention, '53-'55; Linden Scroll, '55-'56.



Starlin Ann Edwards

B.S., *Home Economics*; Kirkwood, Missouri

KCLC Engineering Staff, '55-'56; Young Democrats, '52-'56; Future Teachers of America, '55-'56; Orchesis, '52-'56; Colhecon, '52-'56, Secretary, '55-'56; Senior Class Treasurer, '55-'56; University of Missouri, '54-'55.



STARLIN, ELLIE, DONNA

Seniors

Carol Sue FitzRoy

B.A., *Chemistry*; Normandy, Missouri

League of Women Voters, '55-'56; Young Republicans, '52-'56; International Relations Club, '52-'55; Future Teachers of America, '52-'56; Triangle Club, '53-'56, Treasurer, '54-'55, President, '55-'56; Modern Language Club, '55; Colhecon, '52-'56, Social Service Chairman, '55-'56; Butler Hall Staff, '54-'55; Dean's Honor Roll, '53; Honorable Mention, '54-'55; President's Scholarship, '55.

Florida Garland

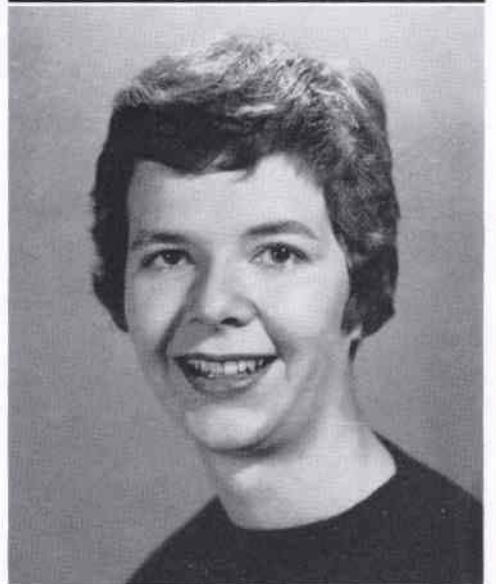
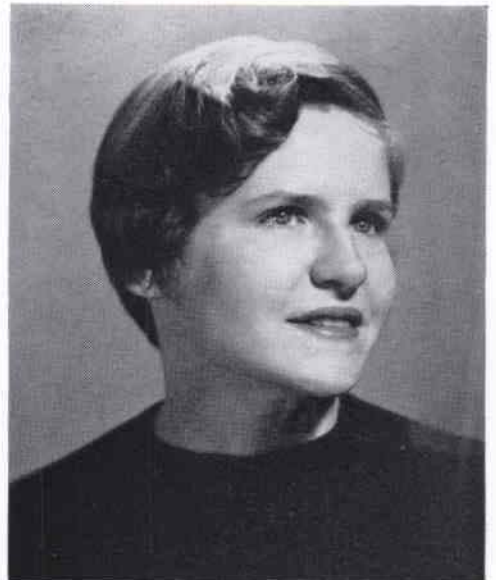
B.A., *Psychology*; Baton Rouge, Louisiana

Choir, '52-'54; Young Democrats, '52-'54, '55-'56; Future Teachers of America, '55-'56; Encore Club, '53-'54; Modern Language Club, '52-'54; Colhecon, '53-'54, '55-'56; Northwestern University, '54-'55.

Judith Ann Glover

B.A., *Art*; Park Ridge, Illinois

Griffin, Art Editor, '55-'56; KCLC, Publicity, '55-'56; Play Productions, '51-'56; Kappa Pi, '52-'56, President, '55-'56; Butler Hall, Secretary, '53-'54; Washington Semester, '54-'55; Dean's Honorable Mention, '52-'54; Honor Roll, '54-'56; Design for Lindenwood Christmas Card, '55.



FLORIDA, JUDY, CAROL

Seniors



Jean E. Gray

B.A., *English*; Rockwell City, Iowa

Alpha Sigma Tau, Associate Member, '54-'56; Poetry Society, '55-'56; Griffin, '54-'56, Editor, '55-'56; Choir, '52-'53; League of Women Voters, '52-'56, President, '55-'56; Young Republicans, '52-'56; Future Teachers of America, '52-'56; Athletic Teams, '52-'56; Intramurals, '52-'56; Athletic Association, '52-'56; Modern Language Club, '52-'54; Pi Alpha Delta, '55-'56; Dean's Honor Roll, '52-'56; President's Scholarship, '53-'54, '55-'56; Washington Semester, '54-'55; Linden Scroll, President '55-'56.

Beverly Alice Harrington

B.A., *Biology*; St. Charles, Missouri

Student Council, '54-'55; Squawker, '54-'55; Poetry Society, '52-'53; Press Club, '55-'56; Linden Leaves, Advertising Manager, '53-'54, Editor, '55-'56; Choir, '52-'56; League of Women Voters, '52-'53; Young Republicans, '52-'53; Triangle Club, '53-'56, President, '54-'55; Modern Language Club, '53-'55, German Vice-President, '54-'55; Pi Alpha Delta, '52-'56, Acting President, '55-'56; Day Students Association, '52-'56, Student Council Representative, '54-'55; Linden Scroll, '55-'56, Acting Chaplain, '55.



Shirley Jean Holcomb

B.M.E., *Music Education*; Omaha, Nebraska

Honor Board, '54-'55; Student Christian Association, '54-'56, Song Leader, '54-'55, Recreation Chairman, '55-'56; Choir, '53-'55, Treasurer, '54-'55; Instrumental Association, '55-'56; Mu Phi Epsilon, Historian, '55-'56; MENC, President, '55-'56; League of Women Voters, '54-'56; Young Democrats, '54-'56; Future Teachers of America, '54-'56; Senior Class Vice-President, '55-'56; Irwin Hall Honor Board Representative, '54-'55; Dean's Honor Roll, '54, Honorable Mention, '55; Iowa State College, '52-'53.



JEAN, SHIRLEY, BEV

Seniors

Nori Hotta

Tokyo, Japan
Special Student.

Frances Joanne Houser

B.A., *Biology*; Paducah, Kentucky

Alpha Sigma Tau, Associate Member, '54-'56; Alpha Lambda Delta, '52-'56, Secretary '53-'54, Junior Counselor, '54-'55, Senior Counselor, '55-'56; League of Women Voters, '55; Young Democrats, '53-'55; International Relations Club, '53-'55; Basketball Team, '53-'55; Athletic Association, '53-'55; Triangle Club, '53-'55, Vice-President, '54-'55; Modern Language Club, '52-'54, Treasurer, '54-'55; Colhecon, '53-'55; Secretary Junior Class, '54-'55; Butler House Staff, '54-'55; Linden Scroll, '55-'56; May Court, '55; Dean's Honor Roll, '52-'56; Barnes Hospital School of Medical Technology, '56.

Katherine Kolocotronis

B.A., *Art*; St. Louis, Missouri

Honor Board, '55; Squawker, Cartoonist, '54-'55; Linden Leaves, Art Editor, '55-'56; Play Productions, '54-'55; Kappa Pi, '53-'56, Social Director, '55-'56; Young Democrats, '52-'55; Encore Club, '53-'55; Orchesis, '52-'54, President, '53-'54; Modern Language Club, Spanish Vice-President, '54-'55; Butler Hall Staff, '54; Dean's Honorable Mention, '53-'55; Harvest Ball Court, '52; Valentine Court, '54; May Queen, '56.



JO. KATHY

Seniors

Erika Krajicek

B.A., *Psychology*; Vienna, Austria

International Relations Club, '55-'56; Modern Language Club, Honorary Member, '55-'56; Vienna University, '54-'55.

Helen Janet Lewis

B.S., *Home Economics*; Sikeston, Missouri

Student Christian Association, Treasurer, '55-'56; Press Club, '55-'56; KCLC, '55-'56; Alpha Epsilon Rho, Honorary Member, '55-'56; Young Democrats, '54-'56; Future Teachers of America, '52-'56, Secretary, '54-'55, Executive Committee Member, Missouri F.T.A., '54-'56; Softball Team, '55; Intramurals, '52-'56; Colhecon, '53-'56, Secretary, '54-'55; Cobbs Hall President, '55-'56; Cobbs Hall Chaplain, '54-'55.

Phyllis Meadows Millen

B.S., *Home Economics*; St. Charles, Missouri

League of Women Voters, '52-'56; Young Democrats, '52-'56; Future Teachers of America, '52-'56, Vice-President, '55-'56; Colhecon, '53-'56, President, '55-'56; Cobbs Hall Chaplain, '55.



ERIKA, PHIL, JAN

Seniors

Patricia Alice Miller

B.S., *Elementary Education*; Marshall, Illinois

Student Council, Cobbs Hall Representative '55-'56; Cobbs Hall Treasurer, '55; League of Women Voters, '53-'55; Young Republicans, '53-'55; International Relations Club, '53-'55; Future Teachers of America, '53-'56; De Pauw University, '52-'53.



Marilyn Jeanne Mitchell

B.A., *Biology, History and Government*; Mexico, Missouri

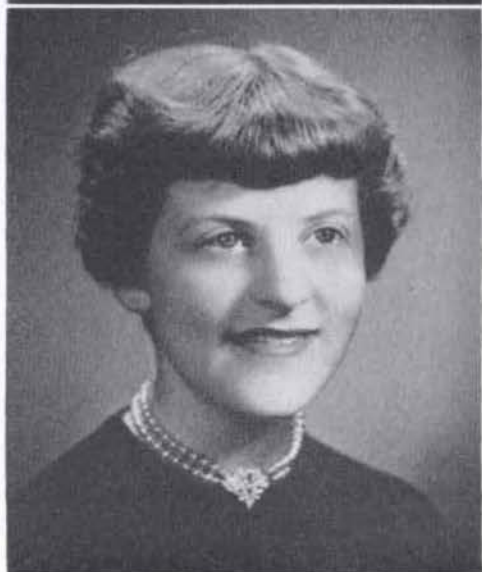
Student Christian Association, Secretary, '55-'56; Young Republicans, '54-'56; Future Teachers of America, '54-'56; Triangle Club, '54-'56; Washington Semester, '55-'56; Irwin Hall President, '53-'54; Linden Scroll, Chaplain, '55-'56.



Shirley Parnas

B.M., *Piano*; St. Louis, Missouri

Choir Accompanist, '52-'54; Mu Phi Epsilon, '52-'56; Secretary, '54-'55, Vice-President, '55-'56; President's Scholarship, '54-'55.



MITCH, SHIRLEY, PATTY

Seniors



Beverly Joyce Randall

B.M.E., *Music Education*; Cobden, Illinois

Student Christian Association, Junior Cabinet Advisor, '55-'56; Alpha Sigma, Tau, '54-'56; Opera, '55; Choralaies, '55-'56; Choir, '52-'55; Instrumental Association, '55-'56; Mu Phi Epsilon, '52-'56, Vice-President, '54-'55, President, '55-'56; MENC, President, '55-'56; League of Women Voters, '54-'56; Young Republicans, '52-'56; International Relations Club, '52-'55; Future Teachers of America, '52-'56; Irwin Hall Vice-President, '54-'55; President's Scholarship, '53-'56; Dean's Honor Roll, '53-'56, Honorable Mention, '52-'53; Linden Scroll, Treasurer, '55-'56.



Jean Carolyn Rule

B.S., *Education*; Sapulpa, Oklahoma

League of Women Voters, '53-'56, Program Chairman, '55-'56; Young Democrats, '52-'56; Future Teachers of America, '54-'56, President '55-'56; Intramurals, '54-'55; Colhecon, '55-'56; Cobbs House Staff, '54-'56; Senior Class Secretary, '55-'56; Dean's Honorable Mention, '55-'56.



Mary Lou Thayer Sanden

B.S., *Home Economics*; Wilmette, Illinois

Social Council, '54-'55; League of Women Voters, '52-'55; Young Republicans, '52-'55; Colhecon, '52-'55.



JEANIE, MARY LOU, BEV

Seniors

Mary Elisabeth Schnurr

B.A., *Human Relations*; Otho, Iowa

Student Council, Freshman Counselor, '55-'56; Freshman Council, President, '52-'53; Press Club, '53-'55; Linden Bark, Business Manager, '53-'54; Choralaires, '54-'56; Choir, '52-'53; League of Women Voters, '53-'56; Young Republicans, '52-'56; Encore Club, '52-'55; Terrapin, '52-'55, President, '53-'55; Colhecon, '52-'53; Freshman Class President, '52-'53; Senior Class President, '55-'56; Cobbs Hall Chaplain, '54-'55; May Court, '52-'53, Maid of Honor, '54-'55; Dean's Honor Roll, '55; Linden Scroll, '55-'56.



Garnet Lowell Sharpe

B.A., *Human Relations*; Omaha, Nebraska

Poetry Society, '54-'56; League of Women Voters, '56; Young Democrats, Platform Committee Chairman, '55-'56; International Relations Club, President, '55-'56; Athletic Teams, '54-'55; Athletic Association, '54-'55; Intramurals, Senior Class Chairman, '55-'56; Junior Class Vice-President, '54-'55; Cobbs Hall Staff, '56; Dean's Honorable Mention, '55; Colorado College, '52-'54.



Patricia Susan Smith

B.S., *Education*; Greenville, Illinois

Young Republicans, '54-'56; International Relations Club, '55-'56; Future Teachers of America, '55-'56; Intramurals, '55-'56; Delta Nu, '54; James Millikin University, '51-'53.



LOWLIE, PATTY, LIZ

Seniors

Marguerite Jones Terrell

B.A., *English*; Paducah, Kentucky

Squawker, '54-'55; Social Council, '54-'55; Freshman Council, '53-'54; Press Club, '54-'55; Linden Bark, '54-'55; KCLC, '54-'55; League of Women Voters, '54-'56, Secretary, '55-'56; Young Democrats, '55-'56; Encore Club, '53-'55, Vice-President, '54-'55; Modern Language Club, '53-'55, French Vice-President, '54-'55; Freshman Class Vice-President, '53-'54; Sophomore Class President, '54-'55; Washington Semester, '55-'56.

Velma Jennelle Todsens

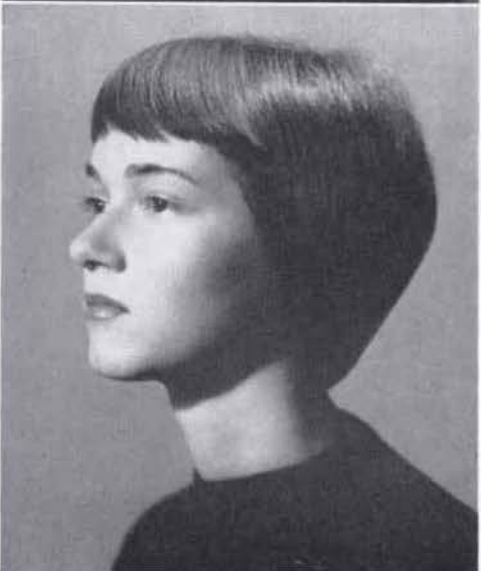
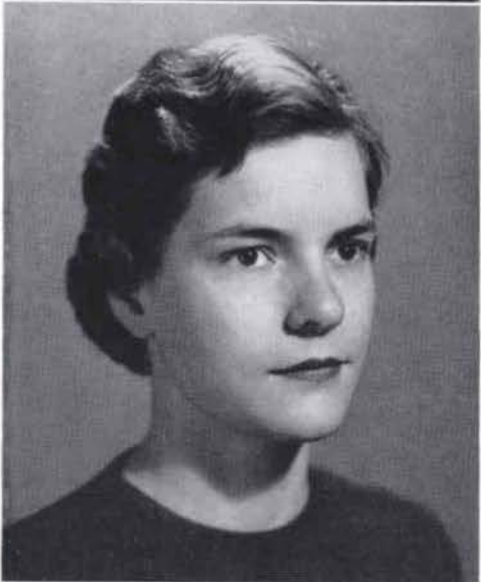
B.S., *Office Management*, Mexico, Missouri

Squawker, '54-'55; Freshman Council, '52-'53; Press Club, '52-'56, Secretary, '53-'54; Linden Leaves, Business Manager, '54-'55; KCLC, '52-'53; League of Women Voters, '52-'56; Young Republicans, '52-'56, Vice-President, '55-'56; International Relations Club, '52-'56, President, '54-'55; Encore Club, '52-'56; Athletic Teams, '52-'56; Athletic Association, '52-'56, Secretary, '53-'54, Intramural Chairman, '54-'55, President, '55-'56; Intramurals, '52-'56, Butler Hall Chairman, '53-'54, Junior Class Chairman, '54-'55; Sophomore Class Secretary, '53-'54; Butler Hall Staff, '52-'55; Cobbs Hall Staff, '56; Commercial Club, '52-'53; Dean's Honorable Mention, '54-'55.

Virginia Lee Woodman

B.A., *Art*; Grand Rapids, Michigan

Student Christian Association, Junior Cabinet, Publicity Chairman, '52-'53, Senior Cabinet, Publicity Chairman, '53-'54; Linden Leaves, Art Editor, '55; Kappa Pi, '52-'56, Secretary '54-'55, Vice-President, '55-'56; League of Women Voters, '52-'53; Young Republicans, '52-'53; Dean's Honorable Mention, '55, Honor Roll, '55-'56; Valentine Queen, '53-'54; May Court, '56.



GINSIE, JACY.

Seniors



DONNA DRURY; PENNY CREIGHTON, *Secretary*; MAISIE ARRINGTON; BEVERLY RANDALL, *Treasurer*; MARILYN MITCHELL, *Chaplain*; JEAN GRAY, *President*; BEVERLY HARRINGTON; LIZ SCHNURR.

Absent: JOANNE HOUSER.

Sponsor: DR. M. DAWSON.

Linden Scroll

. . . Senior honorary society . . . in recognition of loyalty to the fundamental purposes of the college . . . of honesty in seeking to know and respond to the great spiritual values of life . . . of effective leadership, good citizenship, and good scholarship.



Front row: ANN ZOTOS, KYUNG OOK KOH, NANCY AULT, POLLY WILSON, ANN ALBRITTON.

Second row: MARIAN KASPER, ROBERTA REINBOLD, LINDA RIO, JANE GRAHAM, CAROL STILLWELL, ELAINE ELLIS, SANDY BARTUNEK, CYNTHIA COATSWORTH.

Third row: GWEN RYTER, NANCY GRAVES, JULIE SWANSON, ROSEMARIE MARKO, ELLEN POCHERT, JANE ROSENKRANZ, CAROL LEE KNIGHT.



CLASS OFFICERS

Front row: ANN ALBRITTON, *Vice-President;* CYNTHIA COATSWORTH, *President.*

Second row: JANE GRAHAM, *Student Council Representative;* MARELLA GORE, *Treasurer;* GWEN RYTER, *Secretary;* LINDA RIO, *Intramural Chairman.*

Sponsors: DOROTHY ROSS
ROBERT CRUCE

Junior Class



Front row: SALLY LEFLER, ALICE PROUTY, JACQUELYN KEEN.

Second row: MABELLA GOBE, TILLIE MICHELETTO, ANGELIKI VELLOU, JOYCE MARTIN.

Third row: DOROTHY SHIPPEY, BARBARA GIVENS, FERN PALMER, MARY LILLIAN COOK, CAROL RATJEN.

WASHINGTON SEMESTER STUDENTS



First row: S. LEFLER, E. DAY, M. TERRELL, M. MITCHELL.

Second row: M. COOK, C. RATJEN, C. KNIGHT.

Sophomores



First row: NANCY HULSE, ANNE HARLOW,
JUNE HECKMILLER.

Second row: LOIS JEAN HEATH, MARY ANN
GATCHELL, SUNNY VANEATON, ROXIE
GREENE.



JAYNE MILLER, SHARON PATRICIA MURRAY,
DOLORES ELAINE LOVELL, SHIRLEY NO-
LAND, BETTIE NEMEC, NAN NORDYKE.



First row: BEV WOOD, ANN STEWART.

Second row: BETTY SCHBEY, WANDA SPIVEY.

Third row: JULIE SPICKELMIER, SANDRA
TAYLOR.

Sponsors: MISS BETSY SEVERSON, DR. FROE-
LICH.

Sophomores

GRETE REHG, JUDY REED, CAROL PUNT,
JANET MARCIA JONES, NANCY REED,
REBECCA YANDELL.



JOAN BROECKELMANN, *Secretary*; SUE POTTER,
President; CLARIS BRIAN FAHNESTOCK,
Vice-President; JUDY PETERSON, *Intra-*
mural Chairman; BETH DEVLIN, *Treas-*
urer; CAROL GARDNER, *Student Council*
Representative.



LUGENE WILLIAMS, ABBY VINKEMULDER,
ANN VINSON, NANCY WRIGHT.



Sophomores



First row: SHELLEY BROOKS, GAIL BOOTH, VIRGINIA CHRISTMAN.

Second row: NANCY BOWSER, HEATHER ARMOUR, CAROLE ANN ALLEN, AUDREY BISHOP.



First row: SHIRLEY DUNAWAY, RUTH ANN CHARLES.

Second row: ANN CLEVINGER, SYDNEY FINKS, JO ANN CLEMENT, MARIA CHERNER.



First row: CAROLYN ANTHONY, DOROTHY NATHO, BETTY MILLER.

Second row: SUSAN MARCY, MADELEINE MEYER, MARTY MILLETT, MARSHA MADDEN.

Sophomores

First row: BARBARA KOELLER, DORIS LANGENECKERT, HESTER JAMES, WARDEA JENKS.

Second row: CAROLE JACKSON, JUANITA JOHNSON, MARGARET ELAINE KEISER.



First row: SUSAN LAWRENCE, ELAINE LUNT, SYLVIA LINK.

Second row: BARBARA LEE, JOAN LECLAIRE, SHEILA MEIER.



MARY ANNE CARR, ELLEN DEVLIN, SALLY COX, MARTHA JANE FAXON, SYLVIA DEVAN, JANE DAVIS, ANN BURGESS.





Freshmen

SANDRA ALBERTSON, JO ANN HOLMBERG, JANET HEPBURN, DIANE STANLEY, *Vice-President*; EMILY HEATHER, JEAN HASKELL, CAROLINE HARKINS, BETSY HENDERSHOT, SALLY HEDRICK.

SARA STEIN, SHARON HOWARD, NANCY JOHNS, SHIRLEY HOLUB, LYNDA HORNE, ANN HOLUB, SHARON HOSS, ALICE HOLMAN, MARY HOOVER.

MARYON DAVIES, BETTY HENDRIX, JENNY ALCOTT, FRANCES PICKENS, MARY GREEN, GEORGIA GARRETT, SUELLEN PURDUE, *Secretary*; DANA HAGLUND, JESSICA COLEMAN.

KAY WETHERS, YVONNE RANDOLPH, MARY MILAM SMITH, PATSY MEACHAM, YVONNE SECHLER, ADA MCDANIEL, MARY ROUSSALIS, NORMA MONDAY, PEGGY MEACHAM.

Freshmen

Front row: ANN LEFLOBE, HELEN MCINTOSH, CATHERINE ZOTOS, MARTHA LEONARD.

Second row: SANDY WILLIAMS, HELEN LITTLE, BETTIE TEASLEY, GENE STEVENSON, SANDY LEIGHTON.

CAROLYN SONICHSEN, *Student Council:* CAROLYN MORRIS, MARY MCKNIGHT, ANN WOLFF, SYLVIA NELSON, SALLY SLYFIELD, JANIS KELLY, KAY WESTWOOD, MATTIE SUE WINTERS.

Seated: RUTH CURFMAN, PAT WILBORN, JANE COOPER, MARY RUTH DOBIE.

Standing: BONNIE BURKHALTER, DIANE HOLLOWAY, LYNN WOOTEN, VIRGINIA SHADE, MARY RANKIN.

Front row: SANDRA GORDON, MARTHA BRADBURY, CAROLINE BRYAN, JO BURCHFIELD.

Second row: NANCY CHANEY, KATHERINE MORE, BARBARA MYRICK, LYNNE ATKINS, KAY BROMLEY.





Freshmen

Front row: LINDA SHUMATE, STEPHANE FANTLE, SUSAN HUDSON, MARTHA HARD.

Second row: MARTHA LANE HALL, LINDA SPEARS, JOHANNA CLEVINGER, SANDY FARNER, CAROLYN GUTZLEH.

Front row: ANN ELLEFSON, REBECCA ROBERTS.

Second row: MARVA LABONTE, VIRGINIA ELTING, JANICE DILLARD, SHIRLEY SMITH, JUDY LAWING.

Third row: SARA KLOFFENSTEIN, LOIS MAYER.

Front row: JOANNE JACKSON, PATSY PRICE, *President*.

Second row: JANE JAMES, VIRGINIA PETERSEN, CAROL PECHAR, AHNAWAKE WILSON, CINDY SINKOVETZ, DRU PEMBERTON, JULIE ORR, *Treasurer*.

Front row: JANET PHILLIPS, BEVERLY RATH, CAROLYN ROBBINS.

Second row: KAY PROVINCE, PATSEY PETTEY, GAIL CUNNINGHAM, PAM POULOS, STEPHANE SIEVERS.

Freshmen

Front row: JO ANN ENGLISH, CAROLYN FORTE.

Second row: FAITH ELDER, ANN HAMILTON, MARY COX,
FEROL FINCH, KAY BUMGARNER, ANN EMMERT,
NANCY DIVINIA.

GAYE WADDELL, GLORIA BAGWELL, ELIZABETH BOHN,
JUDY NEFF, KATHRYN WERNER, JO NAN NELSON,
MARJORIE ANDERSON, WANDA BEARD, GAY NICHOLS.

Front row: MARTHA DENSLOW, KAYE DUNCAN, DONNA
EASTERLY.

Second row: CAROL COLTER, SHIRLEY HILL, MARTHA
HELEN DISHAROON, MARGUERITE COLVILLE.

Third row: MARY DILLARD, MARTHA DILLARD.

Front row: LILLIAN RICCA, PAT SPRINGER, CONNIE SUT-
TON, SUE MILNES.

Second row: BARBARA WILKINSON, BARBARA NALL, MARY
ELLEN WALL, JANE WILSON, SUZANNE NICHOLS,
MARTHA THORNTON.





Freshmen

Front row: JANET WARRICK, KAREN GASTON.

Second row: BEVERLY GRZYB, SUE McPARLAND, JANIE HALK, BETTY HEGNER.

Third row: JERI GRIFFITH, BETTY HAGEMANN, ANN HORSTMANN.

Front row: SUSAN JEWELL, JANET JACKSON, JUDY JEWELL, JOYCE HUBER.

Second row: SUSAN FREEGARD, JANET JOHNSON, ANABEL MOJONNIER, CAROL JOHNSON, BETTY LAYTON.

Front row: ANNE BLACKBURN, BETTY THOMPSON, KAY KAISER, MARY ANN SMITH.

Second row: SUE SMITH, LIZ BUTLER, CORNELIA CHILDS, CAROLAN BEEBE, JANICE NELSON.

Front row: PATSY FERGUSON, MARY GOODNICK, ANN FELDMAN, CARLENE NEWELL, LIZ FREDERICKSON.

Second row: KAY FRYFOGLE, CAROL GRIFFEE, ROSEMARY GAFFNEY, DIANE FLOYD.





QUEENS and COURTS

WITH GRACIOUSNESS AND POISE
GOES THE POWER OF CROWN AND SCEPTER



May Court

FRESHMAN ATTENDANTS

Janice Kelly

Nancy Hansen

May Court

SOPHOMORE ATTENDANTS

Gul Atal

Mary Anne Carr





May Court

JUNIOR ATTENDANTS

Alice Prouty

Jane Graham

May Court

SENIOR ATTENDANTS

Virginia Woodman

Penny Creighton





May Court

Mary Lillian Cook

MAID OF HONOR

May Queen

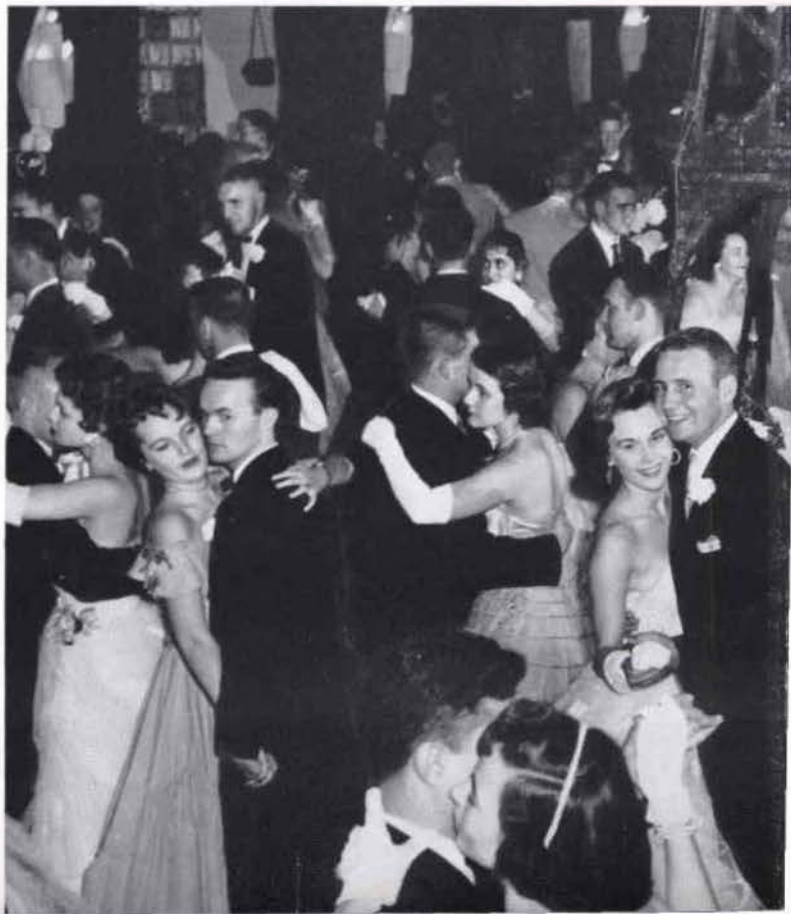
Katherine Kolocotronis





Harvest Queen

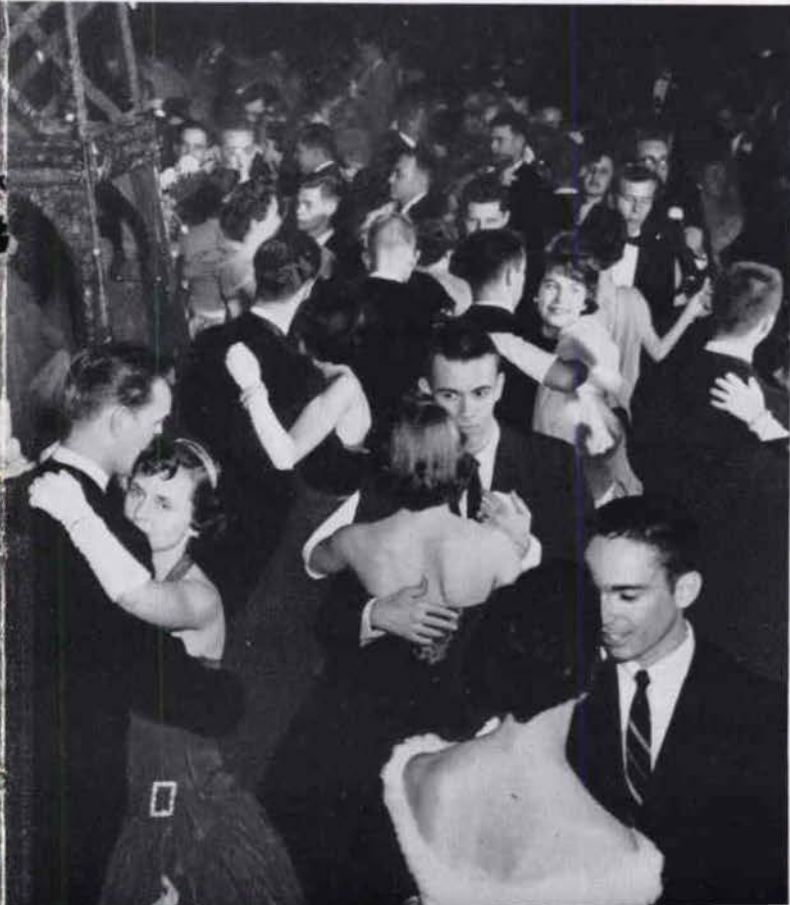
Gloria Bagwell





Seated: R. CAMPBELL, C. DAMME, L. ATKINS.

Standing: G. SALGUERO, J. GRIFFITH, K. WEBNER, D. HAGLUND, *First Maid;* G. BAGWELL, *Queen;* L. MAYER, *Second Maid;* K. BUMGARNER, B. HENDERSHOT, C. NEWELL, B. HAGEMANN.



Harvest Court



Valentine Court

SYLVIA LINK, SHIRLEY NOLAND, *Queen*; ANN CLEVINGER



Shirley Noland

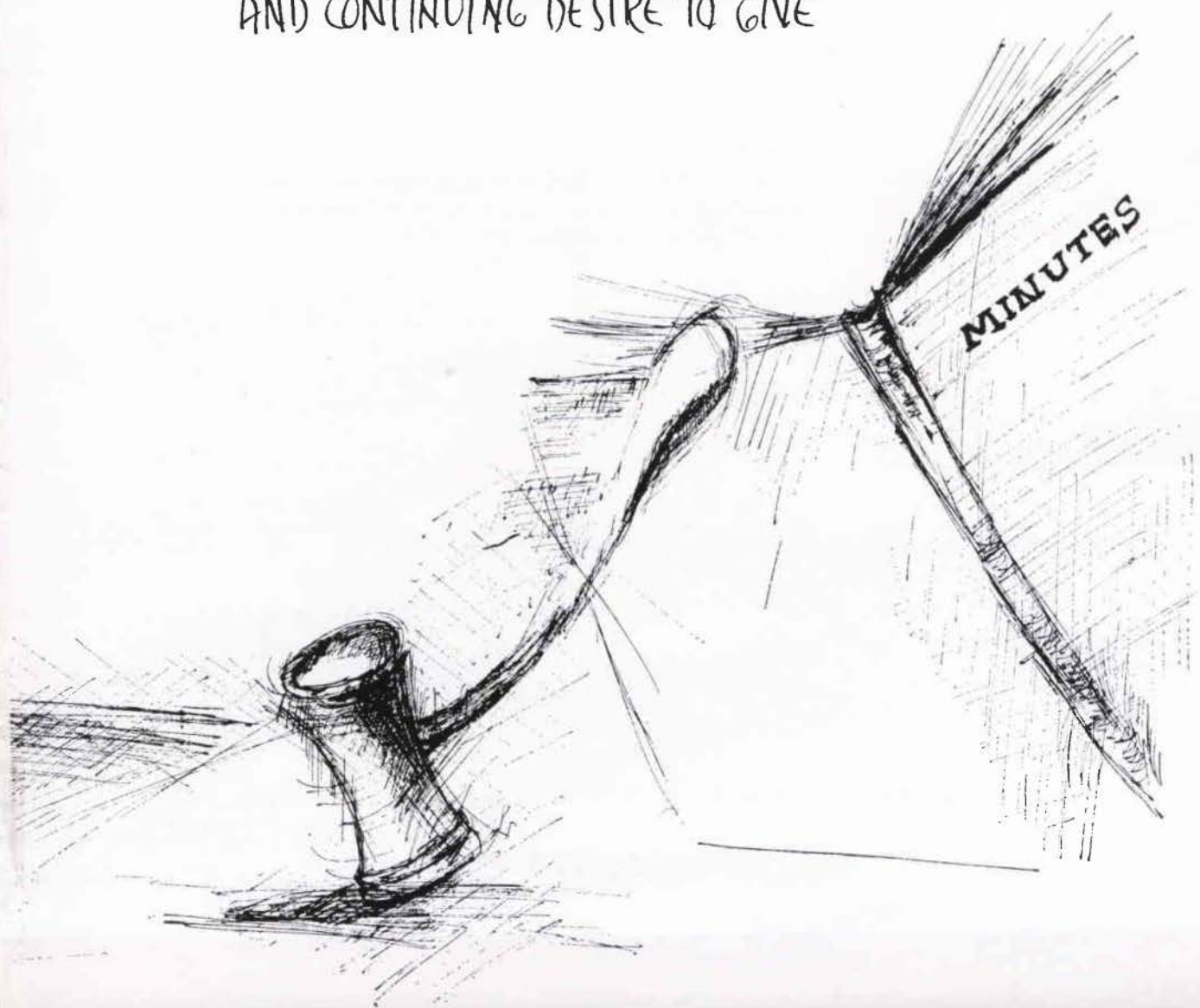


Valentine Queen



ORGANIZATIONS and ACTIVITIES

IN GIVING FIND FULFILLMENT
AND CONTINUING DESIRE TO GIVE





C. GRIFFEE, *Assistant to Organization Editor*,
G. BAGWELL, *Assistant to Literary Editor*.

Linden Leaves Board and Staff

. . . to perpetuate each year's memories for the students . . . a record of friends, teachers, activities, studies, and social activities . . . recorded by students.

KATHY KOLOCOTRONIS, *Art Editor*; JANE GRAHAM, *Literary Editor*; BARBARA GIVENS, *Business Manager*; BEVERLY HARRINGTON, *Editor-in-Chief*; MARELLA GORE, *Advertising Editor*; ARTHUR L. KANAK, *Sponsor*; PENNY CREIGHTON, *Organization Editor*.
Sponsors: MRS. MARY BRYANT, MISS EMMA PURNELL, MR. ARTHUR KANAK.



Linden Bark

. . . to be just and impartial in the conveying of news . . . a truthful voice of the campus.

First row: C. GRIFFEE, Assistant Editor; M. ARRINGTON, Editor; J. HASKELL, A. HAMILTON.

Second row: N. BOWSER, Business Manager; N. CHANEY.

Sponsor: MRS. MARY BRYANT.



Griffin

. . . to keep guard over and perpetuate the treasures of the best literary work of the students . . . as the mythological griffin "kept guard over hidden treasures."

DR. AGNES SIBLEY, Sponsor; A. PROUTY, B. LAYTON, J. GRAY, Editor; J. GLOVER.

Absent: M. CHERNER.



Press Club

. . . to instill the ideals of a free press into those interested in journalism . . . to recognize achievement in the field of journalistic writing.

First row: J. HASKELL, G. BAGWELL, S. PURDUE, S. DeVAN, B. HENDRIX, N. BOWSER, A. HAMILTON, B. MILLER.

Second row: L. SHUMATE, C. JOHNSON, B. HARRINGTON, H. ARMOUR, N. NORBYKE, *President;* M. MARTIN, N. AULT, S. POTTER.

Third row: D. JENKS, J. TODSEN, S. FINKS, M. BITTMAN, J. LEWIS, C. GRIFFEE, N. CHANEY, MARY DILLARD, M. SIMON, D. NATHO.

Sponsor: MRS. MARY BRYANT.



M. E. N. C.

. . . the Music Educators National Conference . . . a department of the National Education Association . . . to encourage interest in Music Education.



Kappa Pi

. . . a national honorary art fraternity . . . to recognize potential and professional ability . . . to encourage higher scholarship . . . to enhance the interest in art through informal study and entertainment.



Alpha Lambda Delta

. . . national scholastic society for freshman women . . . to encourage and honor high scholarship in underclass students . . . to uphold the standards of purity, integrity, and honor.



Top Picture

First row: M. GORE, *Secretary-Treasurer*; S. HOLCOMB, *President*; B. RANDALL, *Vice-President*; T. MICHELETTO.

Second row: A. GATCHELL, J. CLEMENT, E. LUNT.

Absent: D. SHIPPEY.

Sponsor: MR. ROBERT CRUCE.

Middle Picture

First row: N. WRIGHT, J. REED, M. J. FAXON, M. MEYER.

Second row: K. KOLOCOTRONIS, *Social Director*; J. GLOVER, *President*; V. WOODMAN, *Vice-President*.

Third row: N. BOWSER, M. ARRINGTON, *Historian*; A. CARLISLE, J. DAVIS.

Absent: A. ALBRITTON, *Secretary-Treasurer*.

Sponsor: MISS BETSY SEVERSON.

Bottom Picture

C. GARDNER, J. SPICKELMIER, A. GATCHELL, *Secretary*; M. CHERNER, *Vice-President*; A. STEWART, *Treasurer*; H. ARMOUR, *President*.

Sponsor: DR. MARION DAWSON.

Young Democrats

. . . to foster and perpetuate the ideals and principles of the Democratic party . . . to stimulate an active interest in governmental affairs and the ideals of good government.

First row: K. MORE, L. SHARPE, *Platform Chairman*; D. DRURY, J. PETERSON, *Vice-President*; A. ALBRITTON, *Secretary-Treasurer*; A. CLEVINGER, *President*.

Second row: N. CHANEY, E. MORSE, P. CREIGHTON, M. GORE, N. NORDYKE, A. VINSON, M. J. FAXON, G. BAGWELL, S. VAN EATON, M. COLVILLE.

Third row: G. STEVENSON, A. LEFLORE, MARY DILLARD, S. HOLCOMB, L. ATKINS, R. ROBERTS, S. DUNAWAY, K. KAISER, M. TERRELL, B. TEASLEY, J. WILSON.

Sponsor: DR. JOHN MOORE.

First row: A. STEWART, A. HOLUB, E. HORSTMANN, H. JAMES, G. NICHOLLS, G. BOOTH, P. CRANE, J. TODSEN, *Vice-President*; M. MCKNIGHT, *President*; A. ZOTOS, *Secretary*; B. GIVENS, D. PEMBERTON, E. DAY.

Second row: S. PURDUE, S. FINKS, S. NOLAND, C. FORTE, B. RANDALL, C. DAMME, P. PRICE, C. GARDNER, L. SCHNURR, S. TAYLOR, S. BROOKS, H. ARMOUR, J. GRAY, M. BITTMAN, C. KNIGHT, M. COOK, C. RATJEN, A. CARLISLE, *Platform Chairman*; M. CHERNER, M. KASPER, F. FINCH.

Third row: S. SIEVERS, S. FREEGARD, C. CHILDS, M. ROUSSALIS, A. ELLEFSON, M. DISHAROON, G. RYTER, J. GRAHAM, K. WETHERS, A. GATCHELL, C. FITZROY, S. METZ, J. ORR, D. FLOYD, S. LEFLER, M. ANDERSON, J. JAMES, Y. RANDOLPH, SUE SMITH, M. THIELE, L. BOHN, R. MULLIGAN, N. ALVIS, S. GORDON, M. MITCHELL, J. PHILLIPS, C. COATSWORTH, M. WARNER.

Fourth row: M. R. DOBIE, M. THORNTON, J. REED, M. MEYER, C. GRIFFEE, P. FERGUSON, J. KOBEL, K. ZOTOS.

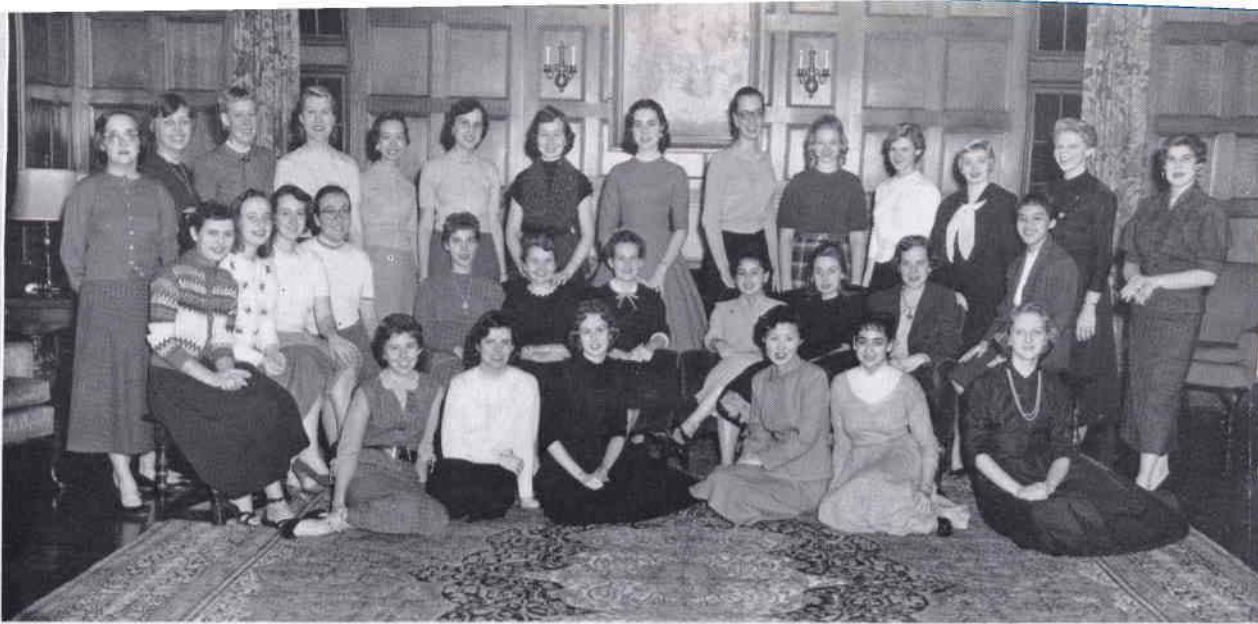
Absent: N. AULT, S. BARTUNEK, P. SMITH.

Sponsor: MISS MARY LICHLITER.

Young Republicans

. . . a vibrantly active and strongly partisan organization . . . to keep informed on party politics . . . to further political education and participation.





First row: B. BURKHALTER, J. LeCLAIRE, A. ALBITTON, K. KOH, G. ATAL, J. COOPER.

Second row: R. REINHOLD, M. THIELE, L. RICCA, A. VELLOU, C. DAMME, M. LaBONTE, *Secretary:* L. SHARPE, *President:* G. SALGUERO, *Vice-President:* P. WILSON, *Treasurer:* C. STILLWELL, L. RIO.

Third row: J. REED, B. SCHREY, E. KRAJICEK, G. NICHOLLS, A. LEFLORE, J. KAYARIAN, S. DUNAWAY, H. ARMOUR, B. NEMEC, B. HAGEMANN, J. TODSEN, B. LEE, J. PETERSON.

Absent: D. STANLEY, K. WETHERS, D. LANGENECKERT, J. NEFF, C. HARRKINS, S. SMITH, J. KOBEL, N. HOTTA, J. SWANSON, P. SMITH, K. WESTWARD, E. HEATHER, S. MARCY, P. SALVADOR, R. MULLICAN, S. LEFLER.

First row: MARTHA DILLARD, C. DAMME, P. POULOS, M. ROUSSALIS, M. HOOVER.

Second row: MARY DILLARD, M. MARTIN, DR. BETZ, B. HARRINGTON, *Acting President:* J. GRAY, C. PUNT.

Sponsor: DR. S. A. E. BETZ.

International Relations Club

. . . to keep alive a sensitivity to and a knowledge of world affairs . . . to promote international understanding.

Pi Alpha Delta

. . . to provide the opportunity for students with achievements in the study of the classics to participate in projects to further and intensify this interest.

Encore Club

. . . modern Lindenwood surrounded by the memories and traditions of years gone by . . . the hostesses, guides, and receptionists of the college.

First row: S. NELSON, J. PETERSON, M. JONES, J. TODSEN.

Second row: M. TERRELL, D. NATHO, *Vice-President*; K. ZOTOS, *Treasurer*; B. NEMEC, *President*; B. GIVENS, E. DAY.

Third row: G. STEVENSON, V. PETERSON, F. JOHNSON, M. WINTERS, V. NATHO, L. SPEARS, J. BROECKELMANN.

Not pictured: J. ORR, *Secretary*.

Sponsor: MRS. MARY BRYANT.

First row: S. PURDUE, S. METZ, P. CRANE, D. PEMBERTON, *Treasurer*; G. NICHOLLS, M. TERRELL, *Secretary*; J. GRAY, *President*; C. KNIGHT, *Vice-President*; S. BROOKS, B. GIVENS, E. DAY, M. COOK.

Second row: A. CLEVINGER, S. FINKS, K. MORF, N. CHANEY, A. LEFLORE, L. MORSE, M. GORE, J. TODSEN, L. SHARPE, D. DRURY, J. PETERSON, M. FAXON, A. CARLISLE, K. ZOTOS, C. COATSWORTH, J. WILSON, S. LEFLER, N. ALVIS, M. KASPER, A. ZOTOS.

Third row: S. GORDON, S. NOLAND, C. CHILDS, M. ROUSSALIS, G. RYTER, J. GRAHAM, C. DAMME, B. RANDALL, S. SIEVERS, L. SCHURR, K. WETHERS, S. HOLCOMB, S. FREEGARD, C. FITZROY, L. ATKINS, M. COLVILLE, J. KOBEL, M. BITTMAN, J. PHILLIPS, R. MULLICAN, M. MCKNIGHT, M. MITCHELL, C. RATEEN, A. ELLEFSON.

Fourth row: M. DOBIE, M. THORNTON, S. TAYLOR, R. ROBERTS, S. DUNAWAY, C. GRIFFEE, M. THEIELE, F. FINCH, P. FERGUSON.

Sponsor: DR. HOMER CLEVINGER

League of Women Voters

. . . a nationally-affiliated campus organization of community conscious women . . . education to the rights and responsibilities of citizenship . . . non-partisan.





First row: G. REHG, N. NORDYKE, B. RANDALL, V. CHRISTMAN, T. CHAPMAN, N. CHANEY, S. WILLIAMS.

Second row: A. STEWART, M. JONES, J. JAMES, A. GATCHELL, E. LUNT, S. SLYFIELD, E. BUTLER, V. NATHO, A. WILSON, C. FORTE, S. HOLCOMB, S. FREGARD.

Third row: B. KOELLER, *Soloist*; ROBERT CRUCE, *Sponsor*; M. GREEN, A. HOLUB.

Instrumental Association

. . . ensemble music at its best . . . interpreted
for enjoyment . . . music from the classical to
the contemporary mode.



Mu Phi Epsilon

. . . a national professional music sorority to
advance musicians in outstanding performances
. . . fellowship . . . stimulation . . . composition
. . . research.

B. RANDALL, *President*; S. PARNAS, *Vice-President*; B. KOELLER, *Secretary*; A. GATCHELL, *Treasurer*; S. HOLCOMB, G. REHG, S. SPICKELMIER, T. MICHELETTO, E. LUNT.

Sponsor: MISS GERTRUDE ISIDOR.

Choir

. . . a sense of harmony in song . . . beauty created through concerted action for vesper services, concerts, and informal entertainment.

Choralaires

. . . awaited with anticipation . . . a small and unique group seeking to present artistic and colorful singing both on and off campus.

First row: P. PETTEY, B. HARRINGTON, R. CHARLES, P. MCGUIRE, D. HOLLOWAY, J. HUBER, J. JACKSON, C. SONICHSEN, S. MARCY, J. MARTIN, C. SUTTON.

Second row: J. CLEMENT, M. LESSLEY, D. FLOYD, C. JACKSON, M. KEISER, P. SPRINGER, R. ROBERTS, M. ROUSSALIS, A. HORSTMANN, A. HOLMAN.

Third row: J. MILLER, T. MICHELETTO, *President;* S. VAN EATON, H. ARMOUR, J. NELSON, A. GATCHELL, P. PRICE, S. NICHOLS, K. DUNCAN, B. HAGEMANN, J. LOYD, M. HARD.

Fourth row: M. E. WALL, W. BEARD, S. NELSON, J. COOPER, G. NICHOLLS, H. LITTLE, M. JONES, E. BUTLER, C. DAMME, G. REHG, K. KAISER, B. DEVLIN, R. GAFFNEY, J. ENGLISH.

Absent: M. GORE.

Sponsor: MILTON REHG.



E. LUNT, Accompanist: B. RANDALL, A. CARLISLE, M. E. WALL, C. SUTTON, M. KASPER, C. PUNT, L. SCHNURR, L. BUTLER, A. STEWART.

Sponsor: MR. WAYNE BALCH.



S. POTTER, Program Director; B. MILLER, Continuity Director; M. MARTIN, Program Director; D. JENKS, Promotion Director; M. BITTMAN, Staff Coordinator; C. PUNT, Promotion Director; J. GLOVER, Art Director; D. NATHO, Music Director; N. NORDYKE, Chief Engineer.

Not pictured: G. REHG, Music Director.

Sponsor: MISS MARTHA BOYER.

KCLC

. . . the campus radio station, directed and operated by the students . . . for extra-curricular enjoyment and practical experience in administration and broadcasting . . . training in the technicalities of television production.

First row: S. PURDUE, S. FANTLE, C. SONICHSEN, C. GRIFFEE, C. JOHNSON, J. HASKELL, K. BROMLEY, R. CAMPBELL.

Second row: MARY DILLARD, L. SHUMATE, B. HAGEMANN, A. HOLUB, J. KOBEL, S. METZ, J. LEWIS, B. HENDRIX, S. EDWARDS, V. NATHO, S. DEVAN.



Future Teachers of America

. . . a professional organization of future educators . . . dedicated to improving the quality of teaching in the schools of the nation.



Upper Picture

First row: J. BROECKELMANN, P. MILLER, D. NATHO, *Treasurer*; J. RULE, *President*; P. MILLEN, *Vice-President*; T. MICHELETTI, *Program Chairman*; B. NEMEC, *State Vice-President*.

Second row: B. RANDALL, A. GATCHELL, S. DUNAWAY, D. LOVELL, N. AULT, B. GIVENS, A. ZOTOS, C. COATSWORTH.

Third row: A. BISHOP, A. CLEVINGER, B. SCHREY, E. POCHERT, D. LANGENECKERT, C. FAHNESTOCK, J. CLEMENT, S. HOLCOMB, C. FITZROY, V. CARO, W. SPIVEY, F. PALMER, J. LEWIS, J. MILLER, C. STILLWELL, D. DRURY.

Lower Picture

First row: A. WOLEF, K. WETHERS, M. DISHAROON, A. LEFLORE, V. PETERSON, B. RATH, J. NELSON, C. FORTE, G. NICHOLLS.

Second row: A. BLACKBURN, M. WARNER, P. WILBORN, J. LOYD, B. BUBKHALTER, B. HAGEMANN, G. BAGWELL, M. THORNTON, K. ZOTOS, M. LABONTE.

Third row: J. KELLY, M. RANKIN, V. CHRISTMAN, P. MIDYETT, S. FARNER, M. MUELLER, V. NATHO, S. NELSON, S. SMITH, K. FRYFOGLE, F. JOHNSON, A. MOJONNIER, C. CHILDS, S. MILNES.

Absent: N. HULSE, *Treasurer*; J. KEEN, J. GRAHAM, P. SMITH.

Sponsors: MISS L. C. BEALE, MR. BREMEN VAN BIBBER.



Top Picture

First row: A. VINSON, J. KEEN, President; B. WOOD, Vice-President; F. PALMER, Sponsor.

Second row: K. PROVINCE, S. TAYLOR, M. RANKIN, S. KLOPFENSTEIN, J. BROECKELMANN, A. HOLUB.

Absent: S. COX, A. BURGESS, Secretary.

Bottom Picture

First row: B. LEE, M. MARTIN.

Second row: K. BUMGARNER, Y. LINSIN, K. ZOTOS, G. BAGWELL, E. HEATHER

Third row: D. HAGLUND, C. SINKOVETZ, M. R. DOBIE, Vice-President.

Fourth row: C. SONICHSEN, M. THORNTON, P. WILSON, President

Fifth row: J. HASKELL, B. YANDELL, B. NEMEC, J. ENGLISH.

Absent: C. ALLEN, M. MILLETT, Secretary-Treasurer.

Sponsor: MRS. GRAZINA AMONAS.

Beta Chi

. . . to encourage better horsemanship, better sportsmanship, and to promote an interest in horses and equitation.

Orchesis

. . . to increase interest in the art of the dance . . . the expression of emotional and mental ideas and feelings through movement.

Athletic Association

. . . to stimulate good fellowship and sports-
manship . . . high physical efficiency . . . greater
participation in and enjoyment of individual and
group sports.

Terrapin

. . . to increase proficiency in aquatic skills . . .
to promote good fellowship in swimming . . .
synchronized beauty.

Top Picture

First row: L. MAYER, A. VINKEMULDER, J. ROSENKRANZ, J. TODSEN, *President*;
M. MADDEN, *Treasurer*; F. PALMER, *Intramural Chairman*; J. KEEN, *Vice-*
President.

Second row: J. PETERSON, K. ZOTOS, M. JONES, MRS. AMONAS, *Sponsor*; MISS
VER KRUZEN, *Sponsor*; MISS ROSS, *Sponsor*; J. JACKSON, K. WETHERS, M.
DAVIES.

Third row: K. PROVINCE, B. PHYOR, V. NATHO, N. BOWSER, J. GRAY, L. BOHN,
F. PICKENS, M. ROUSSALIS.

Absent: E. DAY, N. AULT, N. ALVIS, *Social Chairman*.



Bottom Picture

First row: P. CREIGHTON, A. HAMILTON, M. COLVILLE, D. NATHO, *Secretary-Treasurer*;
K. KAISER, *Vice-President*; A. ALBRITTON, J. KENYON, V. ELTING, *President*.

Second row: MRS. AMONAS, *Sponsor*; P. WILSON.

Alpha Epsilon Rho

. . . national honorary radio and television fraternity — Always Excellent Radio . . . to recognize and stimulate exceptional work in these fields.



Modern Language

. . . to increase interest in the modern languages . . . to enhance the knowledge of the peoples, ideas, and cultures which they serve.



Upper Picture

C. RATJEN, N. NORDYKE, B. MILLER, *Secretary-Treasurer*; M. BUTTMAN, *President*;
S. POTTER, *Vice-President*; M. COOK.

Sponsor: MISS MARTHA BOYER.

Lower Picture

First row: S. NELSON, S. METZ, E. KRAJICEK, G. SALGUERO, G. ATAL, M. COLVILLE.

Second row: M. FAXON, M. CHEBNER, S. FINKS, N. CHANEY, S. VAN EATON, *German Vice-President*; A. ALBRITTON, *Secretary*; B. MILLER, P. WILSON, *President*; H. ARMOUR, *French Vice-President*; C. GARDNER, *Spanish Vice-President*.

Third row: K. KOH, A. VELLOU, M. WALL, N. NORDYKE, A. VINSON, P. SALVADOR, N. DIVINIA, M. WINTERS, M. MCKNIGHT, J. COOPER, C. JOHNSON, J. CLEVENGER, S. FREEGARD, L. RICCA, M. THIELE, J. HEPBURN, F. FINCH, L. SPEARS, J. KOHEL, P. FERGUSON.

Sponsor: DR. MARY TERHUNE.

Colhecon

... to arouse and extend interest in Home Economics ... to help students to realize the values and satisfactions of intelligent good management ...

Upper Picture

First row: J. SWANSON, *Vice-President*; P. MILLEN, *President*; S. EDWARDS, *Secretary*; S. DEVAN, *Treasurer*; J. BURCHFIELD, L. MORSE.

Second row: S. JEWELL, S. PURDUE, S. POTTER, J. HUBER, C. COATSWORTH, M. GORE, J. TEAGARDEN, B. SMITH, J. WILSON, Y. SECHLER, J. RULE, J. LAWING.

Third row: G. STEVENSON, C. PECHAR, S. GORDON, S. SMITH, J. COLEMAN, S. PURDUE, M. COX, M. DOBIE, C. GUTZLER, S. FINKS, F. JOHNSON, B. GIVENS, B. MILLER, A. VINKEMULDER, L. HORNE, C. BRYAN, C. FAHNESTOCK, J. LEWIS, D. PEMBERTON, K. KAISER, B. YANDALL, J. HECKMILLER, S. LEIGHTON.

Absent: W. BULLARD.

Sponsor: MISS SOPHIE PAYNE ALSTON.

Lower Picture

M. KASPER, *Treasurer*; B. HARRINGTON, C. STILLWELL, *Secretary*; G. RYTEK, *Vice-President*; R. REINBOLD, A. VELLOU, C. FITZROY, *President*.

Sponsor: DR. MARY TALBOT.



Triangle

... a deep interest in science and mathematics ... opportunity for improving the future through research and enlightenment.



First row: A. CLEVINGER, *Student Council Representative*; R. CHARLES, *Honor Board Representative*; A. BISHOP, *President*; S. TEUPKER.

Second row: J. BROECKELMANN, C. NEWELL, A. FELDMAN, M. GOODNICK, *Vice-President*; S. HILL, *Treasurer*; S. HOSS.

Third row: V. CARO, A. ROEPER, J. LAWING, W. SPIVEY, P. MIDYETT.

Absent: B. HARRINGTON, D. SHIPPEY.

Social Council

. . . aids in planning and executing social activities both on and off campus, in accordance with the desires of the students.

Day Students

. . . a small and vivacious group . . . active in all campus affairs . . . a presence much needed in the life of the college.

House Presidents

. . . formed into an active council this year . . .
a liaison between administration and dormitories
. . . they discuss and deal with special problems
common to all.



J. ROSENKRANZ, S. FINKS, M. MADDEN, G. REHG,
J. LEWIS.

Student Council, Honor Board

. . . the representative governing body of the
campus, legislating in social matters, and pro-
moting the maturity, integrity, and responsi-
bility so essential to constructive living.

First row: C. SONICHSEN, M. BITTMAN, *Student Council President*; S. VAN EATON, M. KASPER, *Chairman of Honor Board*; N. ALVIS, *Student Council Vice-President*; P. MILLER.

Second row: K. KAISER, C. PECHAR, A. CLEVINGER, J. HECKMILLER, C. GARDNER, J. PETERSON, R. A. CHARLES, J. GRAHAM, F. PALMER, E. DEVLIN, L. SCHNUBB, *Freshman Counselor*; N. DIVINIA, J. CLEVINGER.

Absent: A. EMMART, T. MICHELETTO, *Student Council Secretary-Treasurer*.



Poetry Society



First row: L. SHARPE, J. JOHNSON, C. COLTER, R. CHARLES, J. COOPER.

Second row: J. ORR, R. GAFFNEY, S. NELSON, J. GRAY, E. DEVLIN, *President:* J. LeCLAIRE, *Secretary-Treasurer:* H. JAMES, *Vice-President:* C. GRIFFEE, K. MORF, A. HAMILTON.

Third row: G. WADDELL, J. HEPBURN, J. KAYARIAN, S. SIEVERS, J. CLEVINGER, E. LUNT, J. GRAHAM, M. LEONARD, M. COX, F. FINCH, D. HOLLOWAY, Y. LINSIN, J. NELSON.

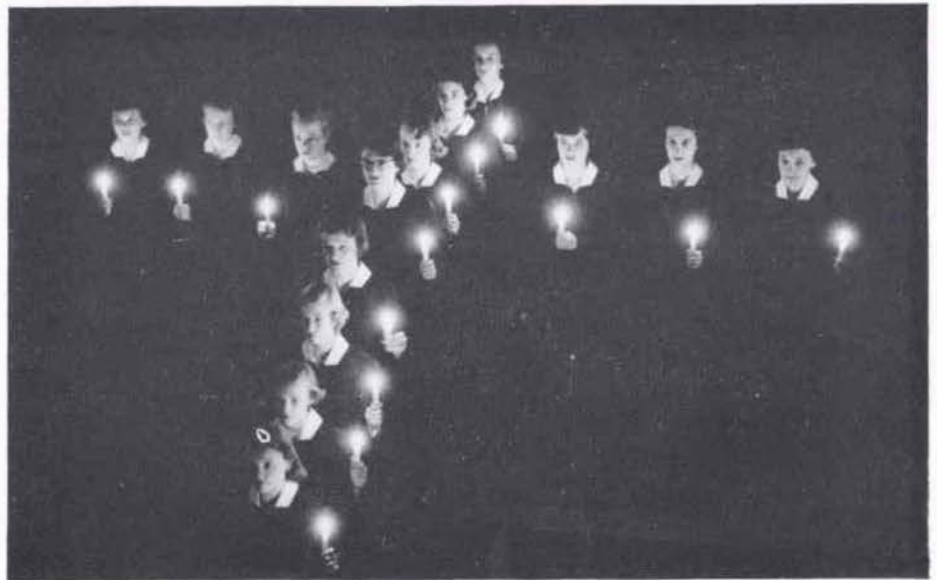
Absent: B. BURKHALTER, S. FREEGARD.

Sponsor: DR. ELIZABETH DAWSON.

. . . to furnish guidance for "budding young poets" on campus through informal discussion of their own work and that of outstanding poets.

Student Christian Association

. . . to aid in bringing the beauty of a full and creative life to each student through growing spiritual consciousness.



Top to bottom: C. RATJEN, S. HOLCOMB, M. KASPER, J. LEWIS, *Treasurer:* B. GIVENS, P. CREIGHTON, M. MEYER, A. CARLISLE, *President.*

Left: G. RYTER, *Vice-President;* S. POTTER, B. KOELLER.

Right: M. MITCHELL, *Secretary;* B. DEVLIN, B. RANDALL.

Sponsors: DR. EUGENE CONOVER, MISS JULIET McCROWY, MR. DOUGLAS HUME, DR. JOHN MOORE.

LC...

A
S
S
H
E
R
E
A
L
L
Y
S













WE MADE IT!
THE ANNUAL STAFF

Student Directory

- Adkins, Martha Magnolia, Hot Springs, Ark., 49
Albertson, Sandra Ann, Arkansas City, Kans., 48
Albritton, Ann, McMinnville, Tenn., 42, 71, 72, 79, 80
Alcott, Genevieve Ann, Tulsa, Okla., 48
Allen, Carole Ann, Houston, Tex., 46
Alvis, Nancy, Mexico, Mo., 30, 71, 73, 82, 83
Anderson, Marjorie, Winterset, Ia., 53, 71
Anthony, Carolyn Beryl, El Dorado, Ark., 46
Armour, Heather, Brentwood, Mo., 46, 69, 70, 72, 75, 80
Arrington, Mary Ann, Russellville, Ark., 30, 41, 69, 70
Atal, Gul, Izmir, Turkey, 57, 72, 80
Atkins, Anita Lynne, Nashville, Tenn., 50, 63, 71, 73
Ault, Nancy Joan, Hudson, O., 42, 69, 77
- Bagwell, Gloria, Memphis, Tenn., 53, 62, 63, 68, 69, 71, 77, 78
Barklage, Marlin J., St. Charles, Mo.
Bartunek, Sandra, Knoxville, Ia., 42
Bates, Beverly Ann, Robins A.F.B., Ga., 49
Beard, Wanda Joy, Mt. Carmel, Ill., 53, 75
Beebe, Carolyn Ruth, Glenview, Ill., 52
Berger, Mary Knox, Nashville, Tenn., 49
Bishop, Audrey Gail, St. Charles, Mo., 46, 77, 82
Bittman, Margaret, Perry, Okla., 30, 69, 71, 73, 76, 80, 83
Blackburn, Anne, Elk City, Okla., 52, 77
Bohn, Elizabeth Ann, Ft. Worth, Tex., 53, 71, 79
Booth, Gail, Nashville, Tenn., 46, 71
Bowser, Nancy, Tulsa, Okla., 46, 69, 70, 79
Bradbury, Martha Ann, Shelbyville, Ky., 50
Broeckelmann, Joan, St. Charles, Mo., 45, 73, 77, 78, 82
Bromley, Kay Dalene, Decatur, Ill., 50, 76
Brooks, Shelley, Webster Groves, Mo., 46, 71, 73
Bruning, Edith Idele, Wright City, Mo.
Bryan, Caroline Mosby, West Point, Miss., 50, 81
Bullard, Wanda Teresa, Cherry Valley, Ark., 49
Bumgarner, Kay Wesley, Wichita, Kans., 53, 63, 78
Burchfield, Jo, Lake Village, Ark., 50, 81
Burgess, Katherine Ann, Tulsa, Okla., 47
Burkhalter, Bonnie Jane, St. Louis, Mo., 50, 72, 77
Butler, Elizabeth, Hampton, Ia., 52, 74, 75
- Campbell, Rose Ida, Bethany, Mo., 49, 63, 76
Carlisle, Ann, Petersburg, Ind., 31, 70, 71, 73, 75, 84
Caro, Verlee, Wentzville, Mo., 31, 77, 82
Carr, Mary Anne, Flint, Mich., 47, 57
Chaney, Nancy Lee, Wewoka, Okla., 50, 69, 71, 73, 74, 80
Chapman, Antoinette, Burlington, Ia., 49, 74
Charles, Ruth Ann, St. Charles, Mo., 46, 75, 82, 83, 84
Cherner, Maria Louise, Hays, Kans., 46, 70, 71, 80
Childs, Cornelia Mason, Lubbock, Tex., 52, 71, 77
Christman, Virginia Ann, Ludington, Mich., 46, 74, 77
Clement, Jo Ann, Chickasha, Okla., 46, 70, 75, 77
Clevenger, Elizabeth Ann, St. Charles, Mo., 46, 64, 71, 73, 82, 83
Clevenger, Johanna Geebah, San Angelo, Tex., 51, 77, 80, 83, 84
Coatsworth, Cynthia Anne, Mexico, Mo., 42, 71, 73, 77, 81
Coleman, Jessica, North Little Rock, Ark., 48, 72, 81
Colter, Carol, Nowata, Okla., 53, 84
Colville, Marguerite Lewis, McMinnville, Tenn., 53, 71, 73, 79, 80
Cook, Mary Lillian, McMinnville, Tenn., 43, 60, 71, 73, 80
Cooper, Jane Elizabeth, Tulsa, Okla., 50, 72, 75, 80, 84
Cox, Mary Elizabeth, Kansas City, Mo., 53, 84
Cox, Sally Woods, Morrilton, Ark., 47, 81
Crane, Peggy Orlean, Ft. Smith, Ark., 49, 71, 73
Creighton, Penelope, Nashville, Tenn., 31, 41, 59, 68, 71, 79, 84
Cunningham, Patricia Gail, El Dorado, Ark., 51
Curfman, Ruth, Maryville, Mo., 50
- Damme, Carolyn Ann, Talmage, Nebr., 49, 63, 71, 72, 73, 75
Davies, Maryon E., Waukesha, Wis., 48, 79
Davis, Jane Elizabeth, Louisville, Ky., 47, 70
Day, Eleanor, Missouri Valley, Ia., 32, 43, 71, 73
DeVan, Sylvia Jean, Covington, Ky., 47, 69, 76, 81, 82
- Denslow, Martha, Kirksville, Mo., 53
Devlin, Dorothea Ellen, Pine Bluff, Ark., 47, 83, 84
Devlin, Mildred Elizabeth, Pine Bluff, Ark., 45, 75, 81
Dillard, Janice Lee, Keokuk, Ia., 51
Dillard, Martha, Osceola, Ark., 53, 72
Dillard, Mary, Osceola, Ark., 53, 69, 71, 72, 76
Disharoon, Martha Helen, Hopkinsville, Ky., 53, 71, 77
Divinia, Nancy Ellen, Wichita, Kans., 53, 80, 83
Dobie, Mary Ruth, El Dorado, Ark., 50, 71, 73, 78, 81
Drury, Donna Mae, Gillespie, Ill., 32, 41, 71, 73, 77
Dunaway, Shirley Dean, Memphis, Tenn., 46, 71, 72, 73, 77
Duncan, Donna Kaye, Tulsa, Okla., 53, 75
- Easterly, Donna, Barrington, Ill., 53
Edwards, Starlin Ann, Kirkwood, Mo., 32, 76, 81
Elder, Faith, Piggott, Ark., 53
Ellefson, Ann Alida, Ft. Smith, Ark., 51, 71, 73
Ellis, Elaine Mae, Winnetka, Ill., 42
Elting, Virginia Ann, Des Moines, Ia., 51, 79
Emmart, Ann Bartlett, Louisville, Ky., 53, 83
English, Jo Ann, St. John, Kansas, 53, 75, 78
- Fahnestock, Claris Brian, Brentwood, Mo., 45, 77, 81
Fantle, Stephanie, Sioux Falls, S. Dak., 51, 76
Farner, Sandra Louise, Harlan, Ia., 51, 77
Faxon, Martha Jane, Palmyra, Mo., 47, 70, 71, 73, 80
Feldman, Ann, St. Charles, Mo., 52, 82
Ferguson, Patsy Ann, Oklahoma City, Okla., 52, 71, 73, 82
Finch, Ferol Ann, Oklahoma City, Okla., 53, 71, 73, 80, 84
Finks, Sydney A., Clinton, Mo., 46, 69, 71, 73, 80, 81, 83
FitzRoy, Carol Sue, Normandy, Mo., 33, 71, 73, 77, 81
Floyd, Diane, Ft. Smith, Ark., 52, 71, 75
Forte, Carolyn Ann, Lake Village, Ark., 53, 71, 74, 77
Frøderickson, Elizabeth Ann, Columbus, Nebr., 52
Freegard, Susan Beth, Arcadia, Mo., 52, 71, 73, 74, 80
Fryfogle, Katherine Ann, Grand Rapids, Mich., 52, 77
- Gaffney, Rosemary Pickering, El Dorado, Ark., 52, 75, 82, 84
Gardner, Carol, Brentwood, Tenn., 45, 70, 71, 80, 83
Garland, Florida, Baton Rouge, La., 33
Garrett, Georgia Ann, North Little Rock, Ark., 48
Gaston, Karen Lynn, Princeton, Ind., 52
Gatchell, Mary Ann, Mountain Grove, Mo., 44, 70, 71, 74, 75, 77
Givens, Barbara Dee, Paris, Ill., 43, 68, 71, 73, 77, 81, 84
Glover, Judy Ann, Park Ridge, Ill., 33, 69, 70, 76
Goodnick, Mary, St. Charles, Mo., 52, 82
Gordon, Sandra Joy, Homewood, Ill., 50, 71, 73, 81
Gore, Marella, Paducah, Ky., 42, 43, 68, 70, 71, 73, 81
Graham, Jane Arlyn, Memphis, Tenn., 42, 58, 68, 71, 73, 83, 84
Graves, Nancy, Corinth, Miss., 42
Gray, Jean Elizabeth, Rockwell City, Ia., 34, 41, 69, 71, 72, 73, 79, 84
Green, Mary Magdalene, North Little Rock, Ark., 48, 74
Greene, Roxie, El Dorado, Ark., 44
Griffee, Carol, Ft. Smith, Ark., 52, 68, 69, 71, 73, 76, 84
Griffith, Jerry Ann, Liberal, Kans., 52, 63
Grzyb, Beverly Ann, Rolla, Mo., 52
Gutzler, Carolyn Suzanne, Centralia, Ill., 51, 81
- Hagemann, Betty Jean, St. Louis, Mo., 52, 63, 72, 75, 76, 77
Haglund, Dana Jean, Wichita, Kans., 48, 63, 78
Halk, Janie Wade, Cherry Valley, Ark., 52
Hall, Martha Layne, Shelbyville, Ky., 51
Hamilton, Margaret Ann, El Dorado, Ark., 53, 69, 79, 84
Hansen, Nancy, Underwood, Ia., 49, 56
Hard, Martha Ruth, Crossville, Ill., 51, 75
Harkins, Caroline Ann, Liberal, Kans., 48
Harlow, Ann, Ardmore, Okla., 44
Harrington, Beverly, St. Charles, Mo., 34, 41, 68, 69, 72, 75, 81
Haskell, Jean, Danville, Ill., 48, 69, 76, 78
Heath, Lois Jean, St. Charles, Mo., 44
Heather, Emily Santaella, Mexico D.F., Mexico, 48, 78
Heckmiller, June Leona, Barrington, Ill., 44, 81, 83

Student Directory—Continued

- Hedrick, Sally Beth, Winfield, Kans., 48
 Hegner, Betty Lee, Barrington, Ill., 52
 Hendershot, Betsy, Louisville, Ky., 48, 63
 Hendrix, Betty, Tulsa, Okla., 48, 69, 76
 Hepburn, Janet Douglas, Indianapolis, Ind., 48, 80, 81
 Hill, Shirley J., St. Charles, Mo., 53, 82
 Holcomb, Shirley Jean, Omaha, Nebr., 34, 70, 71, 73, 74, 77, 84
 Holloway, Diane, El Dorado, Ark., 50, 75, 81
 Holman, Alice, Fayetteville, Tenn., 48, 75
 Holmberg, Jo Ann, Chicago, Ill., 48
 Holub, Joan Ann, Bloomington, Ill., 48, 71, 74, 76, 78
 Holub, Shirley Ann, Oskaloosa, Ia., 48
 Hoover, Mary Margaret, Springfield, Mo., 48
 Horne, Lynda Nell, Star City, Ark., 48, 81
 Horstmann, Ann Elise, St. Louis, Mo., 52, 71, 75
 Hoss, Sharon Lee, St. Charles, Mo., 48, 82
 Hotta, Nori, Tokyo, Japan, 35
 Houser, Frances Joanne, Paducah, Ky., 35
 Howard, Sharon, Carrollton, Ill., 48
 Huber, Joyce Elaine, Ft. Thomas, Ky., 52, 74, 75, 81
 Hudson, Susan, Bartlesville, Okla., 51
 Hulse, Nancy Sue, St. Joseph, Mo., 44
- Jackson, Carole Lee, Indianapolis, Ind., 47, 75
 Jackson, Janet Kay, Beatrice, Nebr., 52, 75
 Jackson, Joanne, Memphis, Tenn., 51, 75, 79
 James, Hester Elizabeth, Independence, Mo., 47, 71, 84
 James, Jane, Ottumwa, Ia., 51, 71, 74
 Jenks, Wardea, Ann Arbor, Mich., 47, 69, 76
 Jewell, Judy, Waukegan, Ill., 52
 Jewell, Susan, Waukegan, Ill., 52, 81
 Johns, Nancy, Joplin, Mo., 48
 Johnson, Carol Myra, Louisville, Ky., 52, 69, 76, 80
 Johnson, Froma Jane, Newkirk, Okla., 49, 73, 77, 81
 Johnson, Janet Sue, Munster, Ind., 52, 81
 Johnson, Juanita, Rolla, Mo., 47
 Jones, Janet Marcia, Springfield, Ill., 45, 73, 74, 75, 79
 Junge, Lorraine, Joplin, Mo., 49
- Kaiser, Kay, Clinton, Okla., 52, 71, 75, 79, 81, 83
 Kasper, Marian Louise, Kansas City, Mo., 42, 71, 73, 75, 81, 83, 84
 Kayarian, Joyce Georgia, St. Louis, Mo., 72, 84
 Keen, Jacqueline Ann, Knightstown, Ind., 43, 78, 79
 Keiser, Margaret Elaine, West Alexandria, O., 47, 75
 Keller, Marilyn, St. Louis, Mo.
 Kellogg, Carol, Amarillo, Tex.
 Kelly, Janice Jo., Elk City, Okla., 50, 56, 77
 Kenyon, Patricia Jill, Grand Rapids, Mich., 49, 79
 Klopfenstein, Sara, Tulsa, Okla., 51, 78
 Knickmeyer, Sharon, Northwoods, Mo.
 Knight, Carol Lee, Ft. Smith, Ark., 42, 43, 71, 73
 Kobel, Margaret Jane, El Dorado, Kans., 49, 71, 73, 76, 80
 Koeller, Barbara, Barry, Ill., 47, 74, 84
 Koh, Kyung Ook, Taegu, Korea, 42, 72, 80
 Kolocotronis, Kathy, St. Louis, Mo., 35, 61, 68, 70
 Krajcek, Erika, Vienna, Austria, 36, 72, 80
- LaBonte, Marva Mae, Warsaw, Ill., 51, 72, 77
 Langeneckert, Doris, Clayton, Mo., 47, 77
 Lawing, Judith Alice, St. Charles, Mo., 51, 81, 82
 Lawrence, Susan, Tulsa, Okla., 47
 Layton, Elizabeth Jesse, Louisville, Ky., 52, 64
 LeClaire, C. Joan, Richmond Heights, Mo., 47, 72, 84
 LeFlore, Keturah Ann, Oklahoma City, Okla., 50, 71, 72, 73, 77
 Lee, Barbara Gene, St. Louis, Mo., 47, 72, 78, 82
 Lefler, Sally Gene, Glendale, Mo., 43, 71, 73
 Leighton, Sandra Jean, West Des Moines, Ia., 50, 81
 Leonard, Martha Grace, Kansas City, Mo., 50, 84
 Lessley, Mary Elizabeth, Kansas City, Mo., 49, 75
 Lewis, Helen Janet, Sikeston, Mo., 36, 69, 76, 77, 81, 83, 84
 Link, Sylvia, Henderson, Ky., 47, 64
 Linsin, Yvonne, Ferguson, Mo., 49, 78, 84
 Little, Helen Arlena, Odessa, Tex., 50, 75
 Lovell, Dolores Elaine, Beatrice, Nebr., 41, 77
 Loyd, Jane, McGehee, Ark., 49, 75, 77
 Lunt, Elaine, Pratt, Kans., 47, 70, 71, 75, 81
- McDaniel, Ada, St. Charles, Mo., 48
 McGinnis, Jacqueline, Portland, Ore., 49
 McGuire, Patricia, Gower, Mo., 49, 75
 McIntosh, Helen Jane, Nashville, Tenn., 50
 McKnight, Mary, Auburn, Nebr., 50, 71, 73, 80
 McParland, Susan, Cudahy, Wis., 52
- Madden, Marsha, Willow Hill, Ill., 46, 79, 83
 Marcy, Susan Ella, Oak Park, Ill., 46, 75
 Marko, Rose-Marie, East Alton, Ill., 42
 Martin, Joyce Whiteley, Chicago, Ill., 43, 69, 75
 Martin, Mary Elizabeth, Prescott, Ariz., 69, 72, 76, 78
 Mayer, Lois Ann, Middletown, Ky., 51, 63, 79
 Meacham, Patsy, Memphis, Tenn., 48
 Meacham, Peggy, Memphis, Tenn., 48
 Meier, Sheila Diane, Wilmette, Ill., 47
 Metz, Sylvia Mae, Houston, Tex., 49, 71, 73, 76, 80
 Meyer, Madeline, St. Louis, Mo., 46, 70, 71, 84
 Micheletto, Tillie Jean, Collinsville, Ill., 43, 70, 71, 75, 77, 83
 Midyett, Patricia, St. Charles, Mo., 77, 82
 Millen, Phyllis Meadows, St. Charles, Mo., 36, 77, 81
 Miller, Jayne Leigh, Robinson, Ill., 44, 75, 77
 Miller, Margaret Elizabeth, Jefferson City, Mo., 46, 69, 76, 80, 81
 Miller, Patricia Alice, Marshall, Ill., 37, 77, 83
 Millett, Marty, Omaha, Nebr., 46
 Milnes, Donna Sue, Paris, Mo., 53, 77
 Mitchell, Marilyn Jean, Mexico, Mo., 37, 41, 43, 71, 73, 84
 Mojonnier, Anabel, Oak Park, Ill., 52, 77
 Monday, Norma, St. Charles, Mo., 48
 Morf, Katherine, Mechanicsburg, Ill., 50, 71, 73, 84
 Morris, Carolyn Marie, Wichita, Kan., 50
 Morse, Elizabeth Mae, Ft. Leonard Wood, Mo., 49, 71, 73, 81
 Mueller, Marilyn Florence, Kirkwood, Mo., 49, 77
 Mullican, Roylea, Cambridge City, Ind., 71, 73
 Murray, Sharon Patricia, Chicago, Ill., 44
 Myrick, Barbara, Dallas, Tex., 50
- Nall, Barbara Gordon, New Orleans, La., 53
 Natho, Dorothy Lynn, Chester, Ill., 46, 69, 73, 76, 77, 79
 Natho, Virginia, Chester, Ill., 49, 73, 74, 76, 77, 79
 Nef, Judith Ellen, New Castle, Ind., 53
 Nelson, Janice Eileen, Bay Village, Ohio, 52, 77
 Nelson, Jo Nan, Osceola, Ark., 53, 75, 84
 Nelson, Sylvia, Ft. Smith, Ark., 50, 73, 75, 77, 80, 81
 Nemece, Bettie A., Little Rock, Ark., 44, 72, 73, 77, 78
 Newell, Carlene Ann, St. Charles, Mo., 52, 63, 82
 Nicholls, Gay, Grand Rapids, Mich., 53, 71, 72, 73, 75, 77
 Nichols, Suzanne, Chicago, Ill., 53, 75
 Noland, Shirley, Nashville, Tenn., 44, 64, 65, 71, 73
 Nurdyke, Nan, Amarillo, Tex., 44, 69, 71, 74, 76, 80
- Orr, Julie, Ft. Smith, Ark., 51, 71, 84
- Palmer, Fern Nadine, Columbia, Mo., 43, 77, 79, 83
 Parker, Sue Alice, Topeka, Kan.
 Parnas, Shirley, St. Louis, Mo., 37, 74
 Pechar, Carol, Salem, Ill., 51, 81, 83
 Pemberton, Drucilla, Oklahoma City, Okla., 51, 71, 73, 81
 Petersen, Virginia, St. Joseph, Mo., 51, 73, 77
 Peterson, Judith Kristin, Wichita, Kan., 45, 71, 72, 73, 79, 83
 Pettey, Patsey Marie, Nashville, Tenn., 51, 75
 Phillips, Janet Flo, Plymouth, Ind., 51, 71, 73
 Phillips, Lorraine Slaughter, St. Charles, Mo.
 Pickens, Laura Frances, Nevada, Mo., 48, 79
 Piper, Judith Ann, Birmingham, Ala.
 Pochert, Ellen Irene, Owosso, Mich., 42, 77
 Potter, Frances Sue, Springfield, Mo., 45, 69, 76, 80, 81, 84
 Poulos, Pamela Ellsworth, Dallas, Tex., 51, 72
 Preston, Margaret, Glencoe, Ill.
 Price, Patsy, Ft. Smith, Ark., 51, 71, 75
 Prouty, Alice Lynn, Lubbock, Tex., 43, 58, 69, 82
 Province, Doris Kay, Nashville, Tenn., 51, 78, 79
 Pryor, Billie Marie, Tusculumbia, Mo., 49, 79
 Punt, Carol Roberta, St. Louis, Mo., 45, 72, 75, 76
 Purdue, Suellen, Kell, Ill., 48, 69, 71, 73, 76, 81

Student Directory—Continued

- Randall, Beverly Joyce, Cobden, Ill., 38, 41, 70, 71, 73, 74, 75, 77, 84
 Randolph, Yvonne, Kimballton, Iowa, 48, 71
 Rankin, Mary Carolyn, Dallas, Tex., 50, 77, 78
 Rath, Beverly, Janesville, Wisc., 51, 77
 Ratjen, Carol Luise, Chicago Heights, Ill., 43, 71, 73, 80, 84
 Reed, Judith Ann, Aurora, Ill., 45, 70, 71, 72
 Reed, Nancy, Chicago, Ill., 45
 Rehg, Grete, St. Charles, Mo., 45, 74, 75, 82, 83
 Reinbold, Roberta Ruth, Belleville, Ill., 42, 72, 81
 Ricca, Lillian, Buenos Aires, Argentina, 53, 72, 80
 Rio, Linda, Dumaguete City, Philippine Islands, 42, 72
 Robbins, Carolyn, Ft. Worth, Tex., 51
 Roberts, Rebecca Lee, Longview, Tex., 51, 71, 73, 75
 Roeper, Alberta C., O'Fallon, Mo., 49, 82
 Roussalis, Mary Steve, Casper, Wyoming, 48, 71, 72, 73, 75, 79
 Rule, Jeanie, Sapulpa, Okla., 38, 77, 81
 Ryter, Gwendolyn, Affton, Mo., 42, 71, 73, 81, 84
- Salvador, Pilar, Quito, Ecuador, 80
 Salguero, Gloria Isch, Quito, Ecuador, 63, 72, 80
 Sanden, Mary Lou Thayer, St. Louis, Mo., 38
 Schnurr, Lisabeth, Otho, Ia., 39, 41, 71, 73, 75, 83
 Schrey, Betty Ann, Leavenworth, Kans., 44, 72, 77
 Schuttenberg, Lillian, St. Charles, Mo., 49
 Sechler, Yvonne, Clara City, Minn., 48, 81
 Shade, Virginia Lee, Hays, Kans., 50
 Sharpe, Lowell, Omaha, Nebr., 39, 71, 72, 73, 84
 Shippey, Dorothy Louise, Brentwood, Mo., 43
 Shumate, Linda Lee, Springfield, Mo., 51, 69, 76
 Sjevvers, Stephane Mae, Blair, Nebr., 51, 71, 73
 Simon, Marlene Ann, St. Louis, Mo., 49, 69
 Sinkovetz, Adeline C., Orlando, Fla., 51, 78
 Slyfield, Sally, Ludington, Mich., 50, 74
 Smith, Betty Jean, Mt. Vernon, Ia., 49, 81
 Smith, Jetta Elizabeth, Wichita, Kans., 49
 Smith, Mary Ann, Hampton, Ia., 52
 Smith, Mary Milam, Clarksville, Tenn., 48
 Smith, Patricia, Greenville, Ill., 39
 Smith, Sandra Sue, Decatur, Ill., 52, 71, 77, 81
 Smith, Shirley Anne, Quincy, Ill., 51
 Sonichsen, Carolyn Gail, Sioux Falls, S. Dak., 50, 75, 76, 78, 83
 Spears, Linda Lee, Indianapolis, Ind., 51, 73, 80
 Spickelmier, Julia Ann, Washington, Mo., 44, 70, 74
 Spivey, Wanda, St. Charles, Mo., 44, 77, 82
 Springer, Patricia Ann, Sheridan, Ark., 53, 75
 Stanley, Diane Kaye, Guatemala City, Guatemala, 48
 Stein, Sara Lynne, Indianapolis, Ind., 48
 Stevenson, Gene, Ashland, Kans., 50, 71, 73, 81
- Stewart, Ann, Ft. Smith, Ark., 44, 70, 71, 74, 75
 Stillwell, Carol, Alton, Ill., 42, 72, 77, 81
 Sutton, Constance Jean, Danville, Ill., 53, 75
 Swansen, Julia Marie, Ottumwa, Ia., 42, 81
- Taylor, Sandra, Sioux Falls, S. Dak., 44, 71, 73, 78
 Teasley, Bettie Gene, Lebanon, Tenn., 50, 71
 Teegarden, Jane Ellen, Glencoe, Ill., 81
 Terrell, Marguerite Jones, Paducah, Ky., 40, 43, 71, 73
 Thiele, Melita Charlotte, Milwaukee, Wis., 49, 71, 72, 73, 80
 Thomas, Elizabeth Ann, Nashville, Tenn., 49
 Thompson, Eudora Elizabeth, Dallas, Tex., 52
 Thornton, Martha Patricia, Oklahoma City, Okla., 53, 71, 73, 77, 78, 82
 Todsén, Jennelle, Mexico, Mo., 40, 69, 71, 72, 73, 79
 Tuepker, Sarah Esther, St. Charles, Mo., 49, 82
- Van Eaton, Sunny, Laramie, Wyo., 44, 71, 75, 80, 83
 Vellou, Angeliki, Thessaloniki, Greece, 43, 72, 80, 81
 Vinkenulder, Abby Jane, Grand Rapids, Mich., 45, 79, 81
 Vinson, Ann, Houston, Tex., 45, 71, 78, 80
- Waddell, Mary Gaye, Osceola, Ark., 53, 84
 Wall, Mary Ellen, Affton, Mo., 53, 75, 80
 Warner, Mary Kathryn, Brighton, Ill., 49, 71, 77
 Warrick, Janet, Meadow Grove, Nebr., 52
 Werner, Kathryn Margaret, Waterloo, Ia., 53, 63
 Westwood, Kay, Elmhurst, Ill., 50
 Wethers, Alice Kay, Lutesville, Mo., 48, 71, 73, 77, 79
 Wilborn, Patricia Gail, Champaign, Ill., 50, 77
 Wilkenson, Barbara Sue, Sapulpa, Okla., 53
 Williams, Lugene, Lawton, Okla., 45
 Williams, Sandra, Iowa City, Ia., 50, 74
 Wilson, Ahnawake, Vinita, Okla., 51, 74
 Wilson, Jane, Cleveland, Okla., 53, 71, 73, 81
 Wilson, Polly, Des Moines, Ia., 42, 72, 78, 79, 80
 Winters, Mattie Sue, Antlers, Okla., 50, 73, 80
 Wolff, Ann, Rosiclare, Ill., 50, 77
 Wood, Beverly Ann, Sullivan, Ill., 44, 78
 Wood, Carolyn Joy, Marietta, Ga.
 Woodman, Virginia Lee, Grand Rapids, Mich., 40, 59, 70
 Wooten, Emily Lynn, Munford, Tenn., 50
 Wright, Nancy June, St. Charles, Mo., 45, 70
- Yandell, Rebecca Anne, Jackson, Tenn., 45, 78, 81
- Zelle, Bonnie, University City, Mo.
 Zotos, Ann, Affton, Mo., 42, 71, 73, 77
 Zotos, Catherine, Affton, Mo., 50, 71, 73, 77, 78
 ZumBahlen, Andrea, Northbrook, Ill.

Linden Leaves Sponsors

1956

The staff wishes to express its appreciation to the following friends of Lindenwood College who have helped in making possible this publication of Linden Leaves:

MR. THORLEY ALDERSON

MR. ARTHUR C. BAUE

MR. FRED C. BECKER

DR. E. J. CANTY

DR. RUSSELL CRIDER

DR. VERNON E. DUNGAN

MR. MOE FISCHBACH

MRS. M. J. GAUSS

DR. F. L. HARRINGTON

DR. N. L. MCKEE

MR. PAUL F. NIEDNER

MR. ROBERT V. NIEDNER

MR. ED. J. PUNDMANN

MR. V. B. RAUCH

DR. H. C. RITTER

DR. CHARLES E. ROBERTS

DR. ROY W. WESTERFELD

MR. LEE I. WHITE



Congratulations to the students of Lindenwood College on this yearbook. Your college hopes that it has served you well during your student days and it is eager to be of further service to you wherever you are in the years ahead.

LINDENWOOD COLLEGE

ST. CHARLES, MISSOURI

BRAUFMAN'S

Congratulations Seniors

You've done a fine job. Your record at Lindenwood—whether academic, musical or social—will be an achievement to look back on with great pride.

We are pleased . . . if we have helped in any way to make your stay here pleasant. We hope to see you again.

HUNING'S

DENNING'S

112 N. MAIN

RADIO *and* TV SERVICE

SNYDER'S VOGUE

Quality at no price penalty

ST. CHARLES, MO.

THE BRIDAL SHOP

A complete store devoted exclusively to
Bridal and Formal Wear

COMPLIMENTS

CHESTER B. FRANZ

INC.

VISIT

the completely refurnished and remodeled

ST. CHARLES HOTEL

Coffee Shop — Banquet Room

ST. CHARLES, MO.

PHONE RA. 4-1030

CONGRATULATIONS

from the

ST. CHARLES AUTOMOBILE DEALERS

BRUCKER MOTOR SALES

BEN'S AUTO SALES

CLAY STREET MOTORS

PHIL COFFEY PONTIAC, INC.

PUNDMAN MOTOR CO.

ST. CHARLES MOTOR CO.

WALTER AFF, INC.

WILKE MOTORS, INC.

FOR
FINE FLOWERS
AND GIFTS

it's

BUSE'S FLOWER SHOP

400 CLAY STREET
PHONE RA 4-0148

Member florists telegraph delivery association

RAUCH LUMBER & GROCER CO.

GENERAL OFFICE
ST. CHARLES, MISSOURI

RETAIL YARDS
ST. CHARLES — KIRKWOOD — WASHINGTON
MARTHASVILLE—ROBERTSON—MOSCOW MILLS

Wholesale Grocer
ST. CHARLES, MISSOURI

“YOU ARE ALWAYS WELCOME AT A RAUCH LUMBER YARD”

GAS

SERVES YOU BETTER
THROUGH MODERN GAS APPLIANCES

ST. CHARLES GAS CORPORATION

212 NORTH MAIN STREET

MONARCH MOTEL

AAA APPROVED

2 Miles West of Lindenwood College on
Highway 40

PHONE RA 4-2785

15 DELUXE UNITS

FOR QUALITY SERVICE

Call

MUNGER LINEN SERVICE

FOREST 7-7561

Tiny Tot Diaper Service

5515 EASTON AVENUE—2727 BRENTWOOD BLVD.

ST. LOUIS, MO.

COMPLIMENTS

OF

OSTMANN MARKET

ST. CHARLES, MISSOURI

139 N. KINGSHIGHWAY

ST. CHARLES, MO.

FREUND BREAD COMPANY

Bakers of

OLDE TYME RYE

DELICATESSEN RYE

CAP SHEAF 100% WHOLE WHEAT

and

TENDER-CRUST PIES

920 So. TAYLOR AVENUE

ST. LOUIS, MO.

FIRST NATIONAL BANK

of ST. CHARLES, MO.

LEE I. WHITE	President
DR. AUGUST WESTERFELD	Vice-President
W. C. BORGELT	Cashier
PAUL H. KNOBLAUCH	Assistant Cashier
RUSSELL KANSTEINER	Assistant Cashier
GLENNON DEBRECHT	Assistant Cashier
CLARICE POWERS	Assistant Cashier

CAPITAL \$250,000.00

SURPLUS \$250,000.00

DIRECTORS

HENRY J. ROTHER

DR. AUGUST WESTERFELD

PERCY G. SCHAEFER

LOUIS WILKE

DR. FRANC L. McCLUER

LEE I. WHITE

WALTER BORGELT

ESTABLISHED IN

1863

MEMBER FEDERAL RESERVE SYSTEM

Under the Supervision of the United States Government

MEMBER FEDERAL DEPOSIT INSURANCE CORPORATION

BANNER NEWS COMPANY

ST. CHARLES, MO.

PRINTERS

PUBLISHERS

BERNARD McMENAMY, CONTRACTOR, INC.

EXCAVATING — GRADING
GENERAL CONSTRUCTION
TIMBER CLEARING

ST. CHARLES, MISSOURI

PHONE RA 4-2490

1914 CLAY

SALES

ROYAL — VICTOR

SERVICE

MISSOURI TYPEWRITER EXCHANGE

Rentals and Rebuilding

FRANK D. HAGAN, *Manager*

WENTZVILLE, MO.

RECHTERN CLEANING CO.

216 NORTH 2ND STREET

ST. CHARLES, MO.

KISTER STUDIO

508 JEFFERSON STREET

ST. CHARLES

BENSINGER'S

FOOD SERVICE EQUIPMENT
AND SUPPLIES

OFFICE FURNITURE

TELEPHONE CHESTNUT 1-4040
1103-11 MARKET BLVD. ST. LOUIS, MO.

COMPLIMENTS
OF

SHEAR'S

St. Charles' Newest Department Store

305 N. MAIN

CLARK-SPRAGUE, INC.

Printers

1901 LOCUST STREET

ST. LOUIS, MISSOURI

WHEN STOPPING IN ST. CHARLES

STAY AT THE

BUNGALOW COURTS

TELEPHONE
RA 4-0642

1145 CLAY STREET
ST. CHARLES, MO.



COMPLIMENTS

OF

HEDGES & HAFFER

KREY PACKING COMPANY

Quality Meat Products Since 1882

BEEF — PORK — VEAL — LAMB

SMOKED MEATS, LARD, VACUUM COOKED MEATS

(Delicious Fresh Sausage Made Daily)

21ST AND BREMEN AVENUE

ST. LOUIS 7, MISSOURI

COMPLIMENTS OF

DOTTY
HOME OF FAMOUS BRANDS

300 N. MAIN ST. CHARLES, MISSOURI

Compliments

of

CHARM BEAUTY SHOP

200 S. KINGSHIGHWAY

PHONE RA 4-1897

ST. CHARLES, MO.

**BROSS BROTHERS
MUSIC STORE**

For Best in Music

208 N. MAIN

ST. CHARLES, MO.

Compliments

of

DAILY

COSMOS-MONITOR

THE BEST OF LUCK
AND SUCCESS FROM

ATLAS JEWELERS
ABLER JEWELERS
ED L. MEYER JEWELERS
WALTER'S JEWEL SHOP

VESTAL

4963 MANCHESTER AVE.



Incorporated

ST. LOUIS 10, MISSOURI

ON FLOOR MAINTENANCE
PRODUCTS

Is your assurance that the
finest material known for
preserving and beautifying
all types of floors is
being used.

VESTAL INCORPORATED

4963 MANCHESTER

ST. LOUIS, MO.

KINDEST THOUGHTS FROM

TONY'S PIZZERIA

Home of

THE FINEST ITALIAN FOODS—SEA FOODS—
STEAKS—AND GENUINE ITALIAN PIZZA

232 SO. MAIN

PHONE RA 4-3096

ST. CHARLES, MO.

1956 Linden Leaves

Engraved by

CENTRAL ENGRAVING CO.

St. Louis, Missouri

Printed and Bound by

VON HOFFMANN PRESS, Inc.

MID-STATE PLANT

Jefferson City, Missouri

YOUR PATRONAGE
DESERVES OUR CONSTANT
EFFORT TO SERVE YOU BETTER

GRADE "A"
DAIRY PRODUCTS



**ST. CHARLES DAIRY
COMPANY**

COMPLIMENTS
OF
J. C. PENNEY COMPANY

SHATTINGER MUSIC CO.

HAS WHATEVER YOU WANT IN MUSIC

For free catalog write

Shattinger Music Co.

331 ARCADE BLDG.

PHONE MA2408

St. Louis 1, Mo.

EDMUND C. BURKE, Plumber and Heating Contractor

STOKERS AND OIL BURNERS

PHONE 4-0162

ST. CHARLES, MO.

ST. CHARLES RADIO AND T. V.

NORGE APPLIANCES

COLUMBIA PHONOGRAPHS

SYLVANIA RADIO AND T. V.

1507 CLAY

ST. CHARLES, MO.

CLASS OF '56

*Congratulations and
sincere good wishes to
each of you*



THE QUALITY COALS



BELL & ZOLLER COAL COMPANY

RAILWAY EXCHANGE BUILDING, ST. LOUIS 1, MISSOURI



BELL BUILDING, CHICAGO 1, ILLINOIS

COMPLIMENTS

of

CROTTY BROTHERS, Inc.



YELLOW CAB



401 N. SECOND STREET

ST. CHARLES, MO.

PARKVIEW GARDENS

As Near to Lindenwood as Your Telephone

1925 RANDOLPH

We Telegraph Flowers

PHONE RA 4-1925

ENJOY LIFE . . . EAT OUT MORE OFTEN

J. F. CONRAD GROCER CO.

ST. LOUIS, MO.

H. J. ROTHER

JOHN WETTER

HACKMANN LUMBER COMPANY

LUMBER — PAINTS — HARDWARE

PHONE RA 4-0806

106 N. MAIN STREET

ST. CHARLES, MO.

STOVES
HARDWARE
BOTTLED GAS
PAINTS AND OILS

THE BRUNS MACHINE CO.

222-224 NORTH MAIN STREET
ST. CHARLES, MO.

FARM SUPPLIES
WATER SYSTEMS
WASHING MACHINES
ELECTRIC APPLIANCES

MISSOURI COAL

FURNITURE AND APPLIANCES

G. E. APPLIANCES GREEN MARKED COAL

PHONE RA 4-0440

420 N. MAIN

ST. CHARLES, MO.

RENWOOD FOOD PRODUCTS COMPANY

Distributors of

QUALITY FROZEN FOODS AND A COMPLETE LINE OF
RETAIL AND INSTITUTIONAL FROZEN FOODS

3745 WEST PINE BLVD.

ST. LOUIS, MO.

COMPLIMENTS OF

DUCHESNE SERVICE STATION

2ND AND CLARK STREET — ST. CHARLES, MO.

PHONE RA 4-3306

PAUL J. BOSCHERT, *Dealer*

COMPLIMENTS OF

The Famous

"For Fashions of Distinction"

311 NORTH MAIN

ST. CHARLES, MO.



West End Realty Company

Competent Service in Real Estate Sales and Financing

1910 WEST CLAY

ST. CHARLES, MISSOURI

PHONE: RA 4-2455

acf touches everybody ...everywhere

As car builders and lessors to America's railroads and shippers... **ACf** helps to bring coal to the mills, food to the cities and tractors to the farms. As creators of the revolutionary Talgo train... **ACf** helps to bring safer, faster and lower cost passenger service to millions.

As makers of aircraft parts and automotive carburetors, fuel pumps and filters... **ACf** travels all the super highways and the supersonic skyways.

As designers, engineers and manufacturers of hundreds of industrial products, ranging from heavy duty valves to storage tanks for propane gas and miracle fertilizers and bakers' mixing bowls, and from featherweight electronic devices to giant castings... **ACf** is helping America's industry better to serve the nation.

As producers of armored tanks and shells and other weapons... **ACf** serves with our troops in every corner of the world.

As creators of products in the field of nuclear energy... **ACf** is keeping pace with the new ideas that will shape the world of tomorrow.

As a manufacturer of products that touch every field of human activity... as a leader in the products of today and a pioneer in the "miracles" of tomorrow, **ACf** best can serve the interests of its employees, its stockholders, and the nation.

acf INDUSTRIES, INCORPORATED 30 Church Street, New York 8, N. Y.

