

Lindenwood University

Digital Commons@Lindenwood University

Yearbooks

Lindenwood University Archives

1958

1957-1958 Linden Leaves

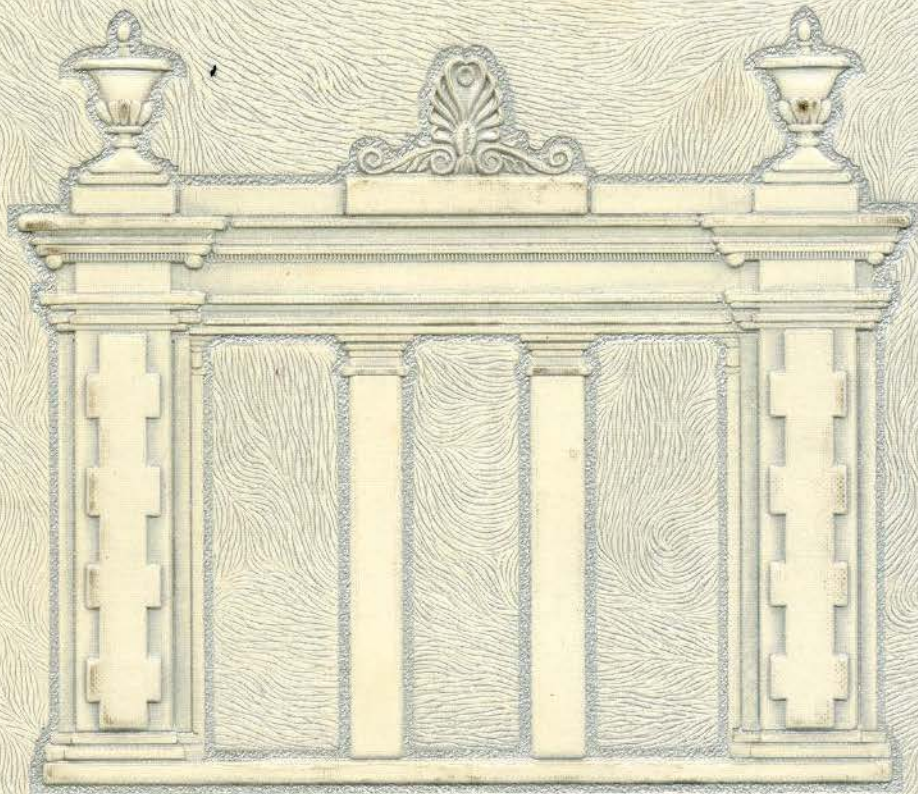
Lindenwood College

Follow this and additional works at: <https://digitalcommons.lindenwood.edu/yearbooks>

Recommended Citation

Lindenwood College, "1957-1958 Linden Leaves" (1958). *Yearbooks*. 40.
<https://digitalcommons.lindenwood.edu/yearbooks/40>

This Book is brought to you for free and open access by the Lindenwood University Archives at Digital Commons@Lindenwood University. It has been accepted for inclusion in Yearbooks by an authorized administrator of Digital Commons@Lindenwood University. For more information, please contact phuffman@lindenwood.edu.



LINDEN LEAVES



Ex Libris
LINDENWOOD COLLEGE

Founded by
MAJOR GEORGE C SIBLEY
and
MARY EASTON SIBLEY

1 8 2 7

The Gift of
LINDEN LEAVES STAFF
1958



378 L
1958

Linden Leaves

1958

Board

<i>Editor-in-Chief</i>	MARIA CHERNER
<i>Assistant Editor</i>	ELLEN DEVLIN
<i>Organization Manager</i>	SUE FREEGARD
<i>Assistant</i>	NANCY BABB
<i>Business Manager</i>	MARY WARNER
<i>Literary Editor</i>	JANET JOHNSON
<i>Art Editor</i>	NANCY BOWSER
<i>Advertising Manager</i>	MARY ANNE CARR
<i>Assistant</i>	LAURIE McLEOD
<i>Advisors</i>	MISS EMMA PURNELL
	MRS. DONALD C. BRYANT
	MRS. M. A. GILDEHAUS
	MISS JUDITH GLOVER



Annual Publication by the Students of
Lindenwood College, St. Charles, Missouri

Printing and Binding by
Taylor Publishing Company, Dallas, Texas

Cover by
Becktold Company, St. Louis, Missouri

Photography by
Gravemann Studio, Alton, Illinois

39398

Becoming Creative

Each Lindenwood girl is creative when she does something new—something which is new to her, even though not new in the world. Through the pursuit of truth and beauty she erects a sculpture of Her Life. The qualities of this life, observable from the outside, are dignity, trust, loyalty, friendliness, and productivity. Inwardly she may experience, in the process of creation, a variety of joys such as love, elation, or conquered fear.

The administration and faculty, through guidance and instruction, inspire creative thinking, which in turn requires discipline. Such personal discipline by the student eventually brings about aesthetic satisfaction.

Students' intellectual and inventive forces are coordinated through organizations, which also build a sense of responsibility.

The personal creation of charm is recognized in Lindenwood's queens and courts.

The central purpose of the Lindenwood girl is the growth of genuine character through both active and potential creativity. The sculpture of Her Life begins to take form at college. And in her generation she will continue to be both a creator and the creation.



Dedication to Miss Mary Lichliter

Luminous unity

In our life's design

Murmurs—mounts—calls,

Thrilling in the harmonies

Of her gracious touches

Of nobly kind

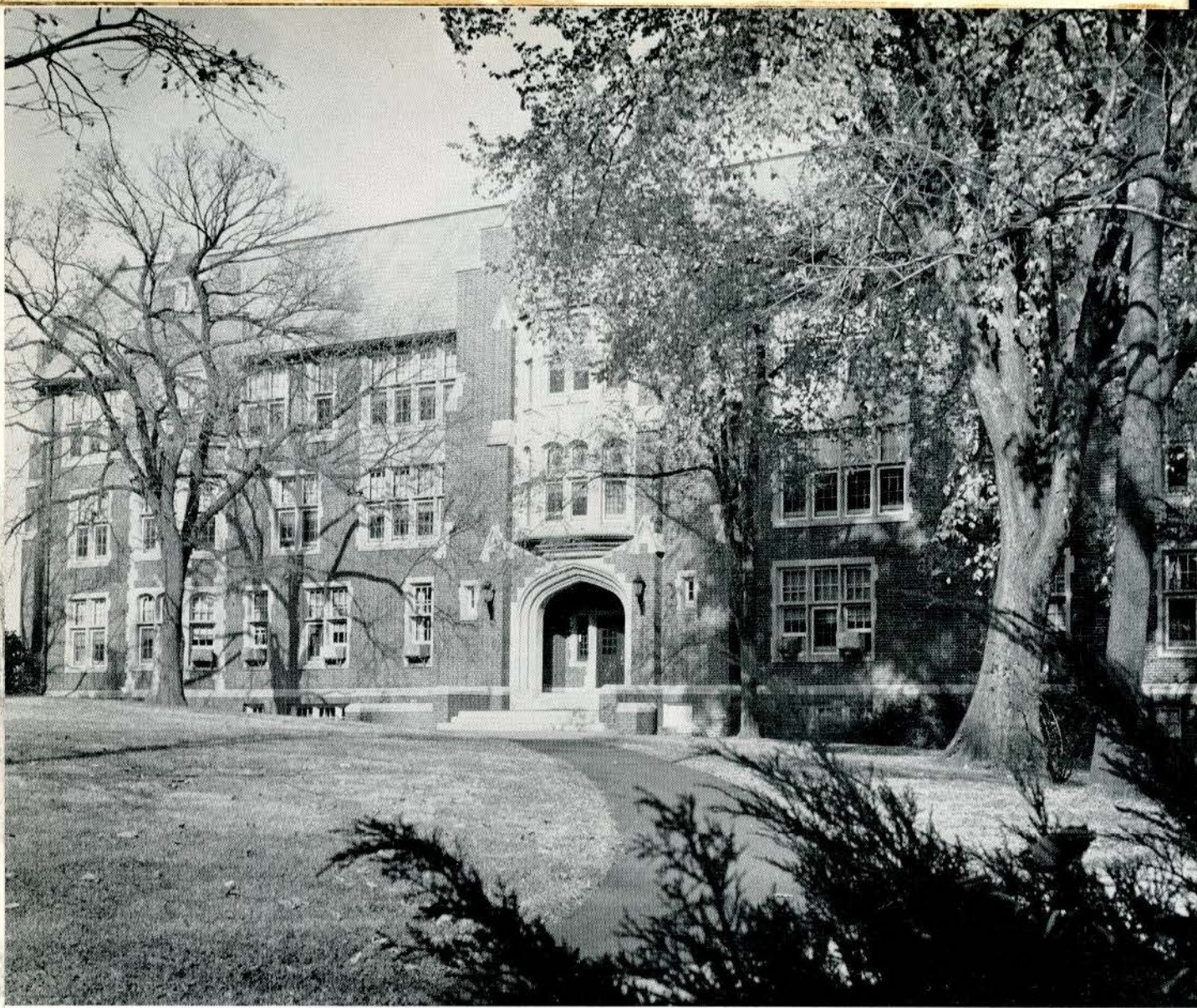
Inspiration.



Sketch by [Signature]
BUILDINGS and CAMPUS

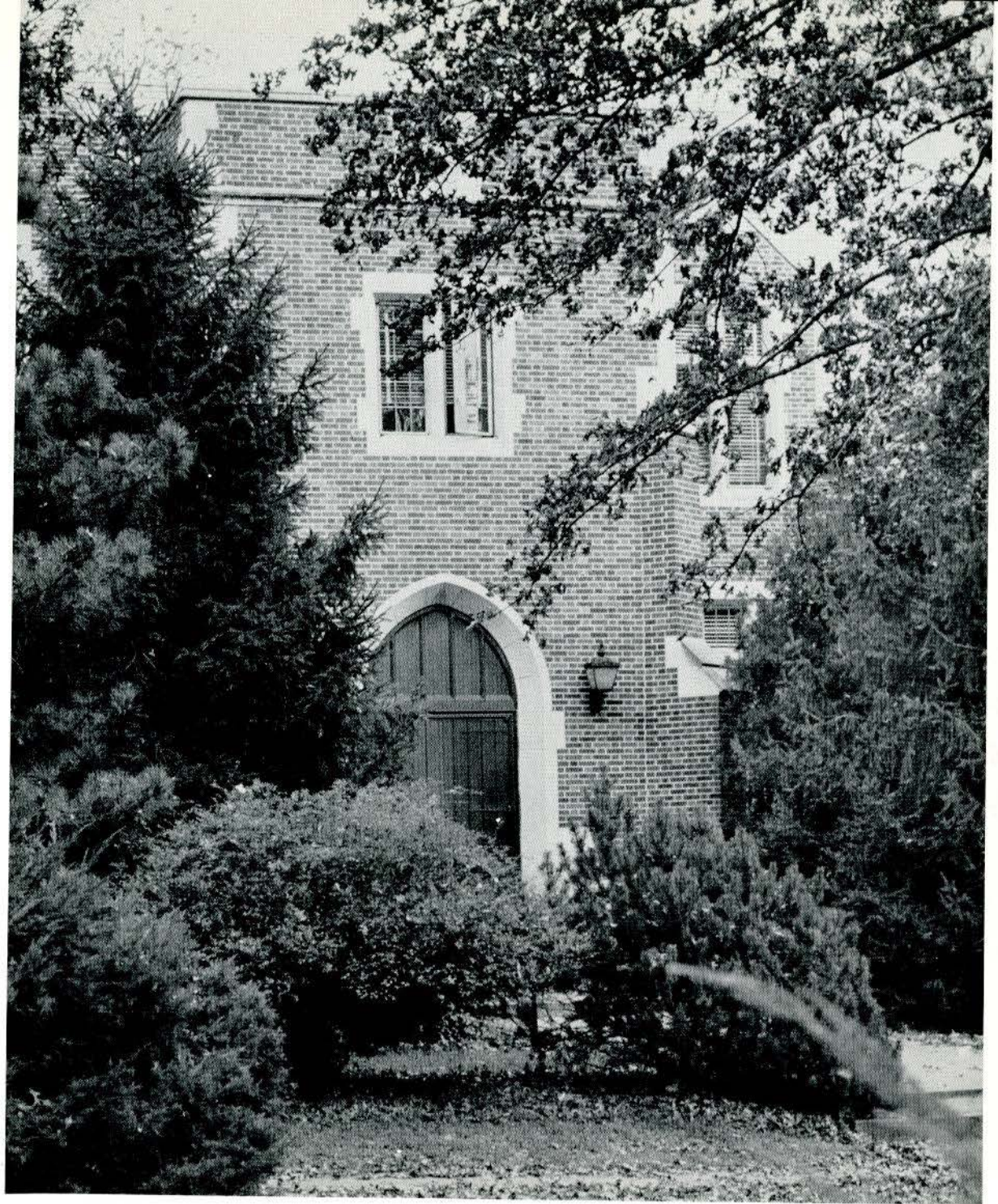
LINDENWOOD
COLLEGE
LIBRARY





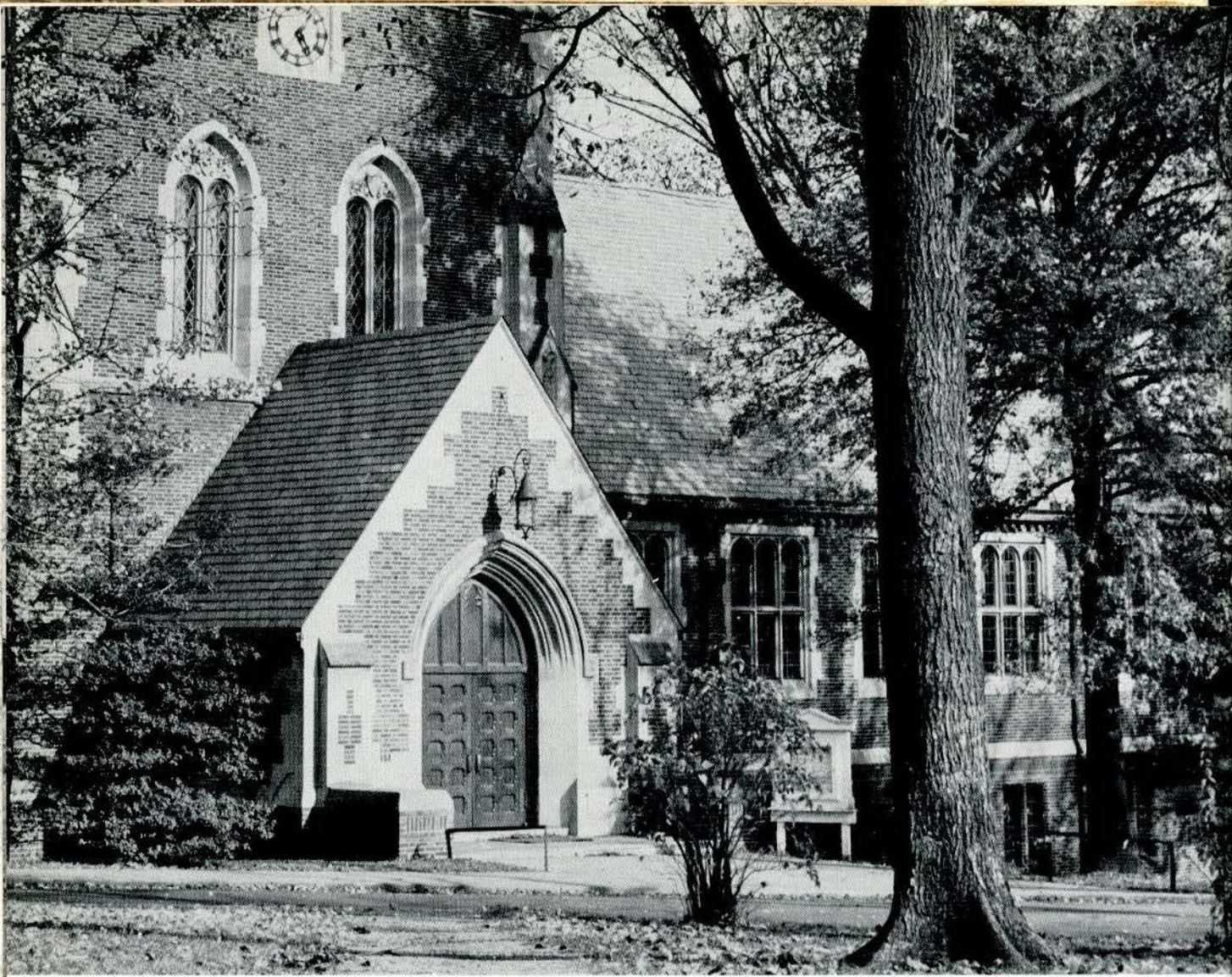
ROEMER HALL

. . . dedicated to the cause for which
Lindenwood College was founded: "The
Christian Education of Young Women."



LILLIE P. ROEMER FINE ARTS BUILDING

*Erected in memory
of
LILLIE P. ROEMER
Dean of Students
for more than twenty-four years
1939*



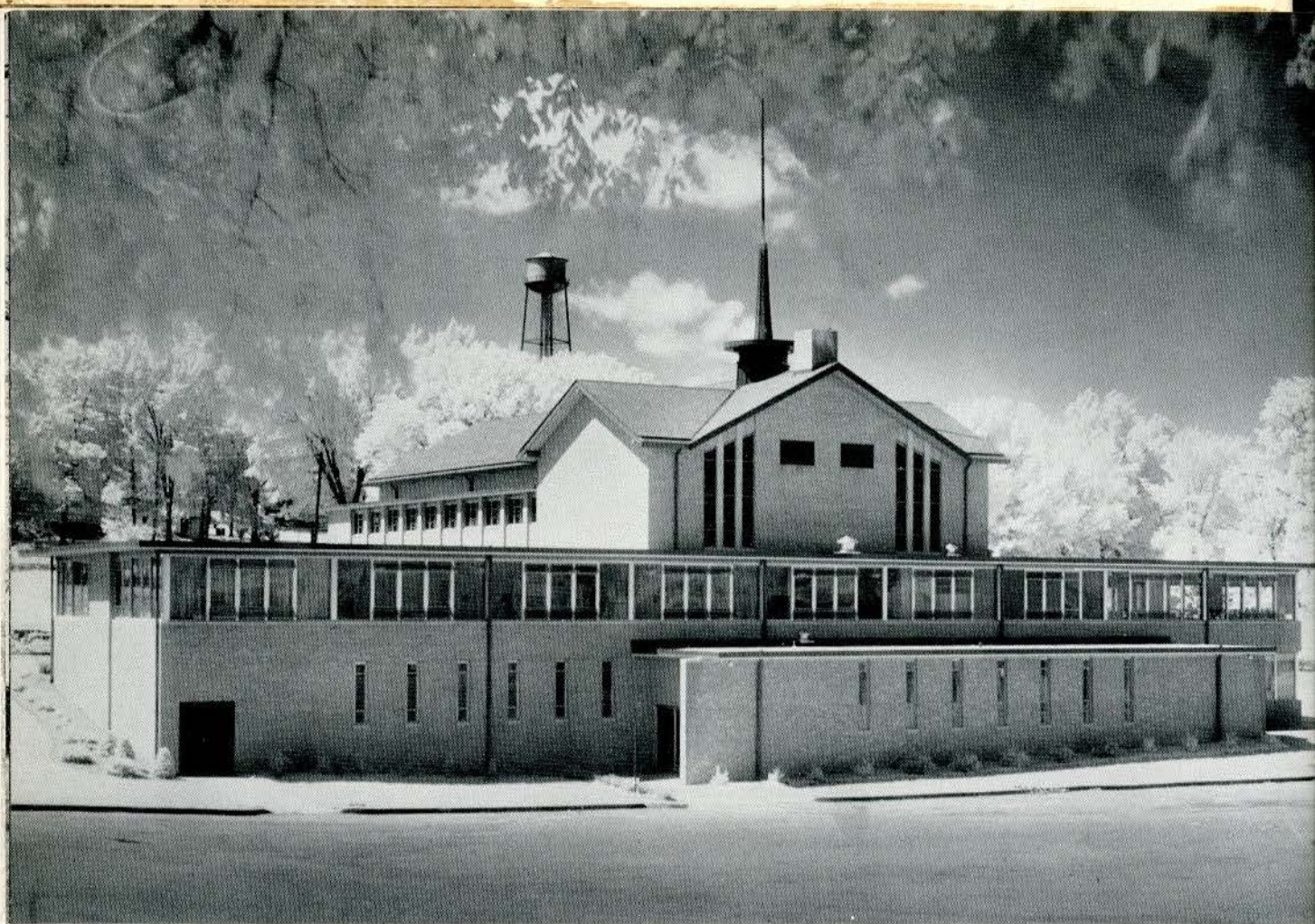
LIBRARY

In memory
of
MARGARET LEGGAT BUTLER



THE PRESIDENT'S HOME

*Picturing the spirit of encouragement,
The light of hospitality,
And the beauty of gracious living.*



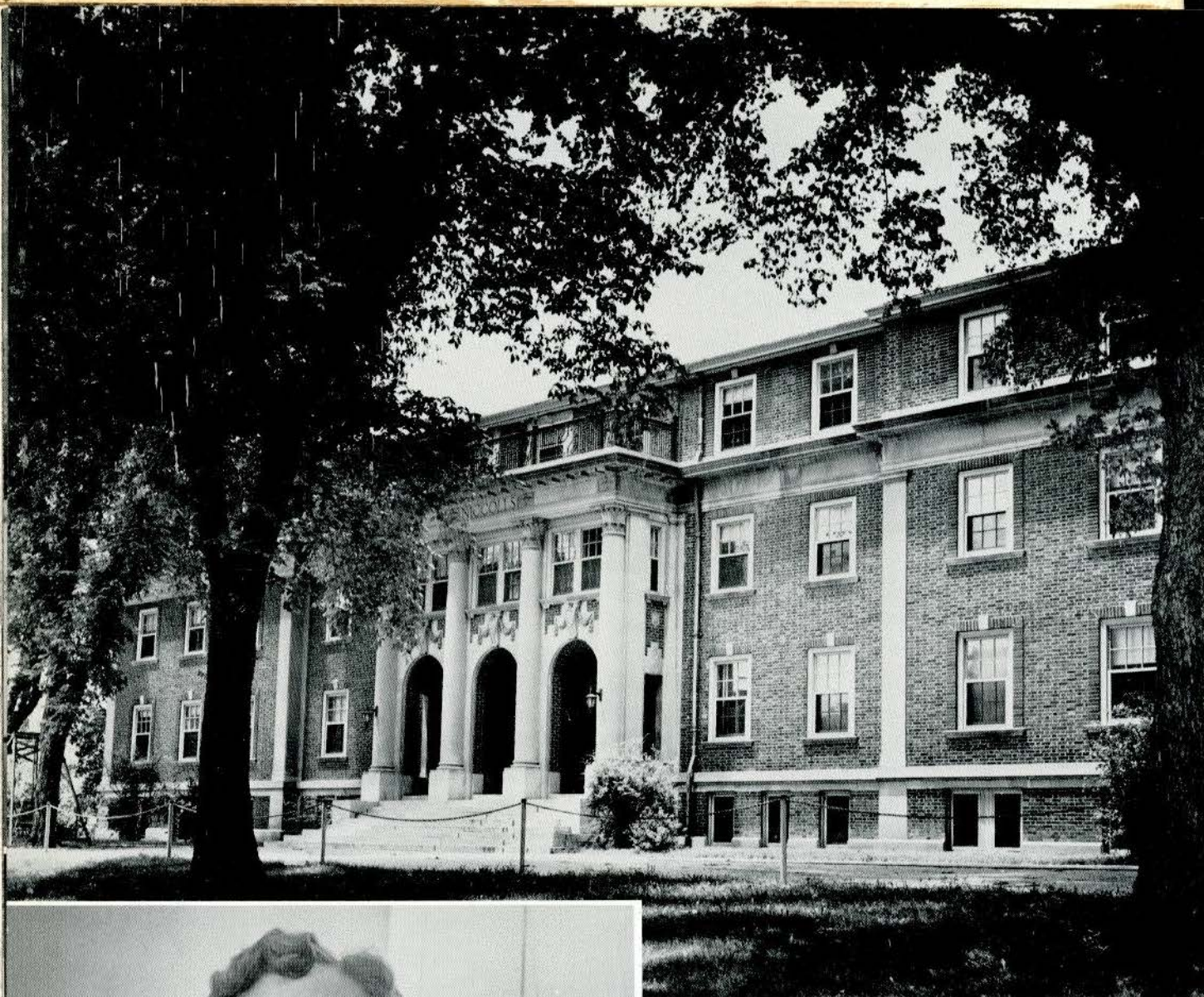


BUTLER WAY

*Straight, simple,
Lovely, and leading
... welcome.*

LINDENWOOD CHAPEL

(Opposite Page)



NICCOLLS HALL

Erected in memory

of

THE REVEREND
SAMUEL JACK NICCOLLS

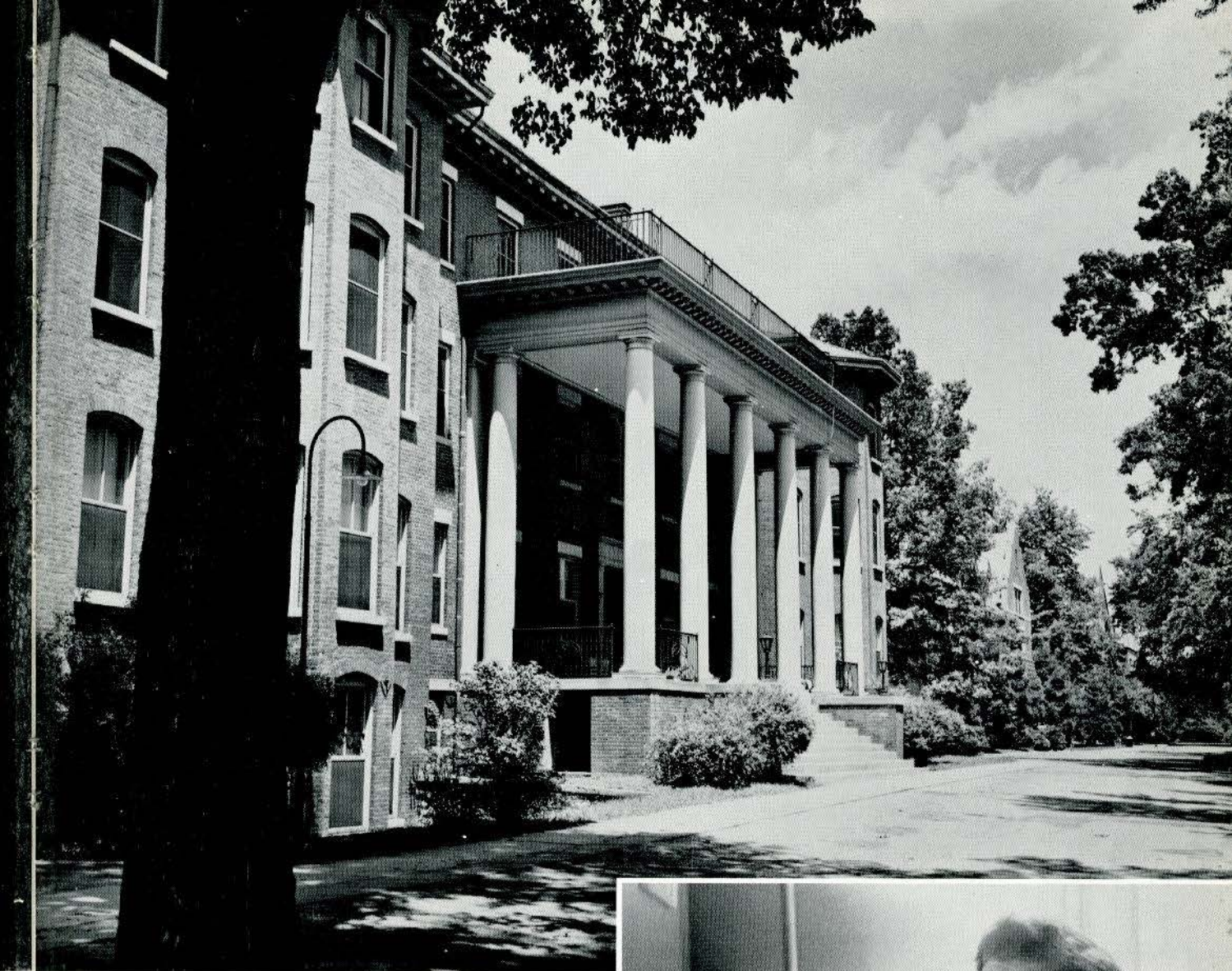
by his friend

James Gay Butler

1916

MRS. EDNA STEGER

Head Resident



SIBLEY HALL

*Erected in honor
of*
MAJOR GEORGE C. SIBLEY
and his wife
MARY EASTON SIBLEY
Founders of Lindenwood College
1827

MRS. KATHRYN HENDREN

Head Resident





IRWIN HALL

In memory of
THE REVEREND
ROBERT IRWIN, D.D.
President of Lindenwood College

1880-1893

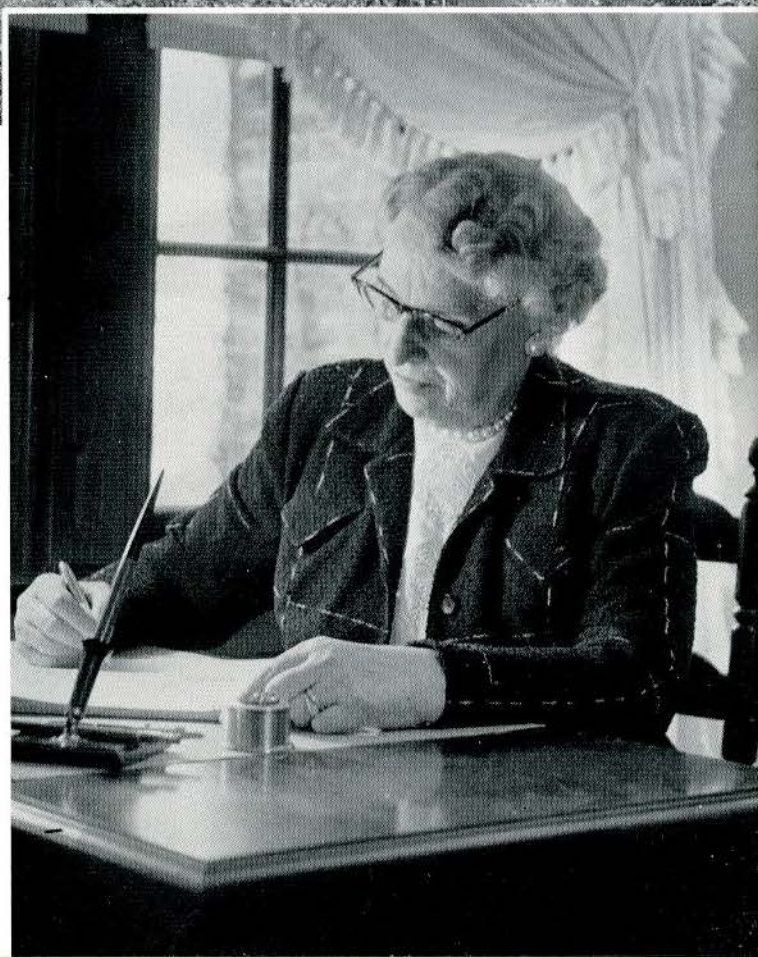
and

MRS. KATE IRWIN

1927

MRS. HELEN M. CALVERT

Head Resident



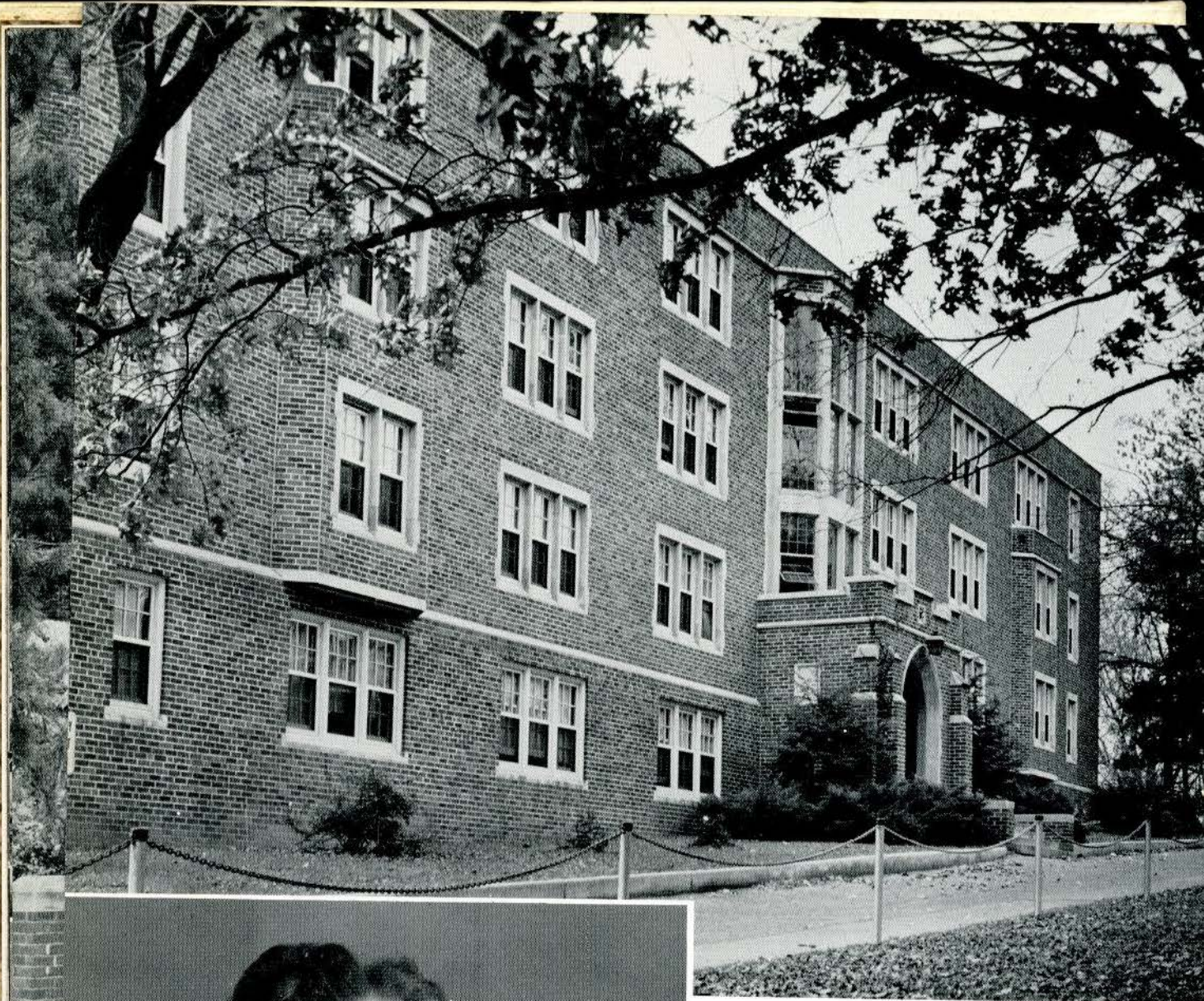


BUTLER HALL

*Erected in honor
of
COLONEL
JAMES GAY BUTLER
1915*

MRS. VERNETA CLARKE

Head Resident



COBBS HALL

*Named in honor
of
THOMAS HARPER COBBS
Member
Board of Directors
Since 1917
1949*

MRS. MARY CAVE

Head Resident





AYRES HALL

In memory

of

GEORGE FREDERIC AYRES, Ph. D.

President

1903-1913

Presented by student friends

1927

MRS. ELIZABETH FOREMAN

Head Resident

(MRS. MARIE BALUKA

Substitute Resident)





HEALTH CENTER



McCLUER HOUSE

Home Management

ADMINISTRATION and FACULTY





Administration



FRANC L. McCLUER, Ph. D.
President of the College

To the Class of 1958:

Congratulations to each of you! May your strength be as your days and may wisdom direct your footsteps, for "Her ways are ways of pleasantness and all her paths are peace."

F. L. McCluer

Administration



PAULENA NICKELL, Ph.D.
Dean of the College

Greetings to members of the class of 1958 . . .

To each of you I say, "Keep your mind ever alert, your sights high, and assume your share of those community responsibilities that call for the attention of intelligent and well-trained men and women. . . ."

Paulena Nickell

Administration

*Those love her best who to
themselves are true,
And what they dare to dream
of, dare to do.*

—J. LOWELL



MARY F. LICHLITER
*Director of Student Guidance
and Placement*



LIV UDSTAD—*Secretary to the Di-
rector of Guidance*

Administration



WILLIAM FLETCHER McMURRY
Director of Admissions

*Go confidently in the direction
of your dreams!*

—THOREAU

LILLIAN SIEDHOFF—*Secretary to
the Director of Admissions*

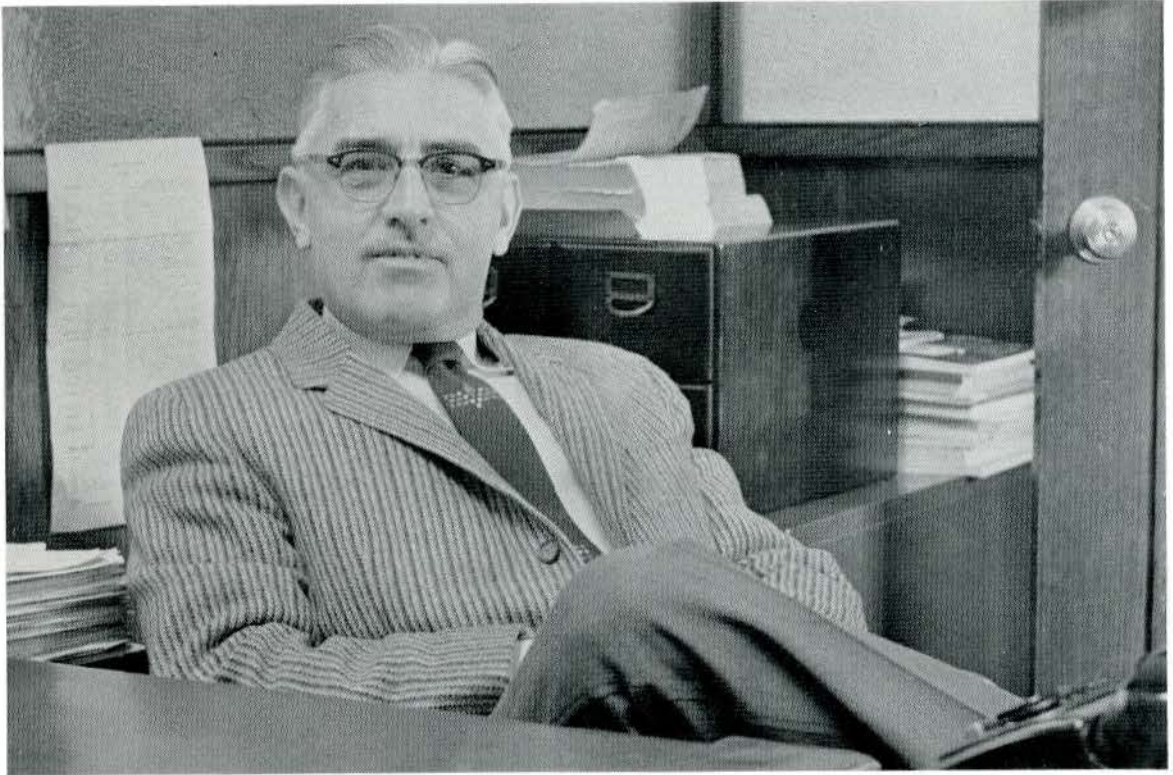
BETTIE B. WIMBERLY—*Assistant
to the Director of Admissions*

Not pictured:

CARRIE MAE CHARLES — *Secre-
tary to the Director of Admissions*



Administration



ROBERT C. COLSON
Business Manager

*The measure of a man's life is in the
well spending of it.*
—PLUTARCH



MARJORIE ABELING—*Cashier*
ALICE M. WISE—*Secretary to the
Business Manager*

Administration



ROBERT L. McLEOD, Jr., D.D.
Dean of the Chapel

Himself
An act of God . . .
His life
A breath of God.

—BAILEY



Administration

MARY BRYANT

*Alumnae Secretary and Director
of Public Relations*

*Accurate thinking is the be-
ginning and fountain of
writing.*

—HORACE



LULA CLAYTON BEALE

Registrar

*Loving and serving . . . onward,
unswerving . . .*

—GOETHE

Administration

MARY YONKER—*Secretary to the President*

IDA LEWANDOWSKI — *Secretary to the Dean*



MARY JANE HILL—*Secretary to the Supervisor of Plant Operation and the Director of Food Service.*

PATRICIA COLLEY — *Secretary to the Registrar*

MELVA EICHHORN — *Secretary to the Director of Public Relations*



Faculty



Art

HARRY D. HENDREN — *Not only is there an art in knowing a thing, but also a certain art in teaching it.*

—CICERO

JUDITH GLOVER—*I paint what I think.*

—E. B. WHITE

ARTHUR L. KANAK—*Art is the expression of man's delight.*

—RUSKIN

Classics

HAZEL M. TOLIVER—*The classic literature is always modern.*

—BULWER-LYTTON



Biology

J. WALTER GRUNDHAUSER —
*To me . . . every cubic inch of
space is a miracle.*
—WHITMAN

MARY TALBOT—*Teach us to walk
the soft earth as relatives to all
that live.*
—SIOUX PRAYER

MARION DAWSON—*Life emits a
fragrance like flowers and sweet-
scented herbs.*
—THOREAU



Education

BREMEN VAN BIBBER — *What
greater or better gift can we offer
the republic than to teach and in-
struct our youth?*
—CICERO

Faculty



English

ALICE PARKER—*Character: a reserved force which acts directly by presence.*

—EMERSON

DOROTHY SCHNEIDER—*The best witness is a written paper.*

—SANDBURG

DOROTHY ELY—*Clear conception leads naturally to clear and correct expression.*

—BOILEAU

AGNES SIBLEY—*The sound must seem an echo to the sense.*

—POPE

ELIZABETH DAWSON — *Blessed with plain reason and sober sense.*

—POPE

History

FRANK ARMSTRONG—*The love of freedom has been the quality of Western man.*

—JEFFERS

HOMER CLEVINGER—*The happy man is he that knows the world.*

—J. HALL



Home Economics

IRENE VAN BIBBER—*It is a home-taught, household melody.*
—WHITTIER

SOPHIE PAYNE ALSTON—*Good order is the foundation of all good things.*
—BURKE

MARGARET LINDSAY—*Fine art is that in which the hand, the head, and the heart . . . go together.*
—RUSKIN



Mathematics

LOUISE BEASLEY — *What would life be without arithmetic, but a scene of horrors.*
—S. SMITH

JEANNE HUESEMANN — *A spirit of inquiry is the great characteristic of the age we live in.*
—POOLE

Faculty



Modern Language

THOMAS DOHERTY—*My thoughts
and wishes bend again toward
France.*

—SHAKESPEARE

OSCAR HENNING—*Always human
when he talked.*

—ROBINSON

MARY TERHUNE—*Languages are
the pedigrees of nations.*

—JOHNSON

Physical Education

GRAZINA AMONAS—*Moved . . .
with the magic of motion and sun-
shine of glance.*

—WHITTIER

BETTY BARBEE—*Health and cheer-
fulness beget each other.*

—ADDISON

DOROTHY ROSS — *The race by
vigor not by vaunts is won.*

—POPE

FERN PALMER—*A sound mind in
a sound body.*

—JUVENAL



Faculty

PATRICIA BENKMAN MARSH —
*Just as my fingers on these keys
make music, so the self-same
sounds on my spirit make a music,
too.*

—STEVENS

OZAN MARSH—*There is no truer
truth obtainable by man than
comes of music.*

—BROWNING

GERTRUDE ISIDOR—*In thee lives
harmony.*

—P. SIDNEY

MILTON REHG—*The mingled notes
came softened.*

—GOLDSMITH

PEARL WALKER—*Who hears mu-
sic feels . . . solitude peopled at
once.*

—BROWNING



Music



WAYNE BALCH—*Walk on a trail of
song . . . and all is beauty.*
—NAVAHO SONG

ALLEGRA SWINGEN — *The gra-
cious tyrannies of her fingertips.*
—WATSON

VIRGINIA HOUSE — *Music is a
thing of the soul.*
—HOLLAND

ROBERT CRUCE—*The style is the
man himself.*
—BUFFON

Faculty



Philosophy

C. EUGENE CONOVER — *Being wise, he is free from perplexity.*
—CONFUCIUS

Religion

ROBERT L. McLEOD, JR.—*The great use of a life is to spend it for something that outlasts it.*
—W. JAMES

MARY JEAN BARTHOLOMEW —
*Good, the more communicated,
more abundant grows.*
—MILTON



Physical Science

LOIS CANNON — *So teach us to number our days that we may apply our hearts unto wisdom.*
—BOOK OF PSALMS

MARY E. LEAR—*A cheerful temper joined with innocence will make . . . knowledge delightful and wit good-natured.*
—ADDISON

CAROLYN S. GRAY—*The main-spring of life is in the heart.*
—AMIEL

*Economics — Psychology
Sociology*

JOHN B. MOORE—*Facts, or what man believes to be facts, are delightful.*

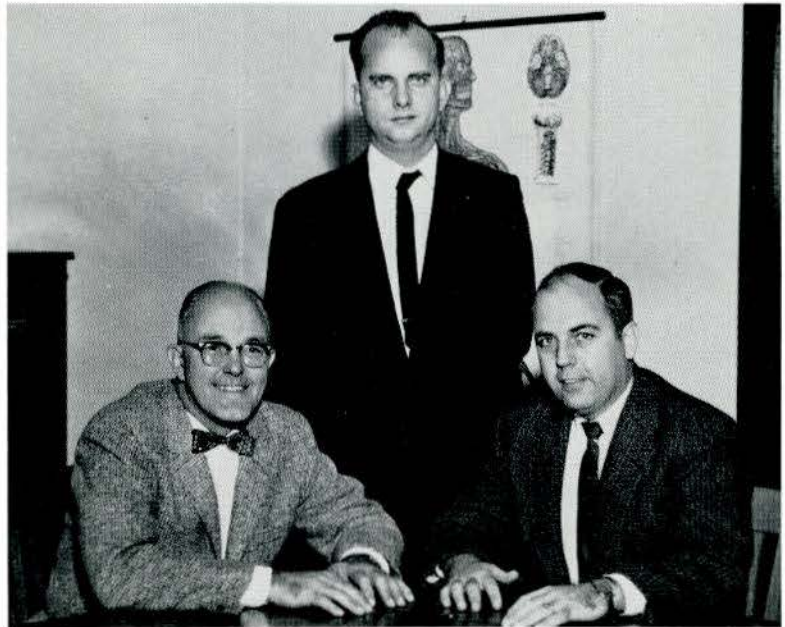
—MARK TWAIN (S. Clemens)

WILLIAM C. ENGRAM—*The proper study of mankind is man.*

—POPE

WALTER M. BEATTIE, JR.—*Kindness is the golden chain by which society is bound together.*

—GOETHE



Office Management

MARY ALICE GILDEHAUS—*Manner, not gold, is woman's best adornment.*

—MENANDER

EMMA PURNELL—*She is possessed of a high degree of . . . charm.*

—SALLUST



Faculty



Speech

MARTHA MAY BOYER—*It is the supreme art of the teacher to awaken joy in creative expression and knowledge.*

—EINSTEIN

JULIET McCRORY—*Her voice was ever soft, gentle, and low, an excellent thing in woman.*

—SHAKESPEARE

ROBERT DOUGLAS HUME—*Action is eloquence.*

—SHAKESPEARE



Library

MILDRED D. KOHLSTEDT,
HORTENSE F. EGGMANN—*It is our duty to live among books.*

—JOHN HENRY NEWMAN

Health Center Staff

RUTH BECKMANN, ANNE LEWIS,
CAROL HOPKINS, ELEANOR
ORTH. *Not pictured: E. J. CANTY,
M.D.—If anything is sacred, the
human body is sacred.*
—WHITMAN



Food Service Staff

AVIS PENNEY, CARL C. HOUSE,
CELESTE DOUROS—*Lips, however
rosy, must be fed.*
—A. B. CHEALES





Buildings, Grounds

CHARLES H. BUSHNELL—*By the work one knows the workman.*
—LA FONTAINE



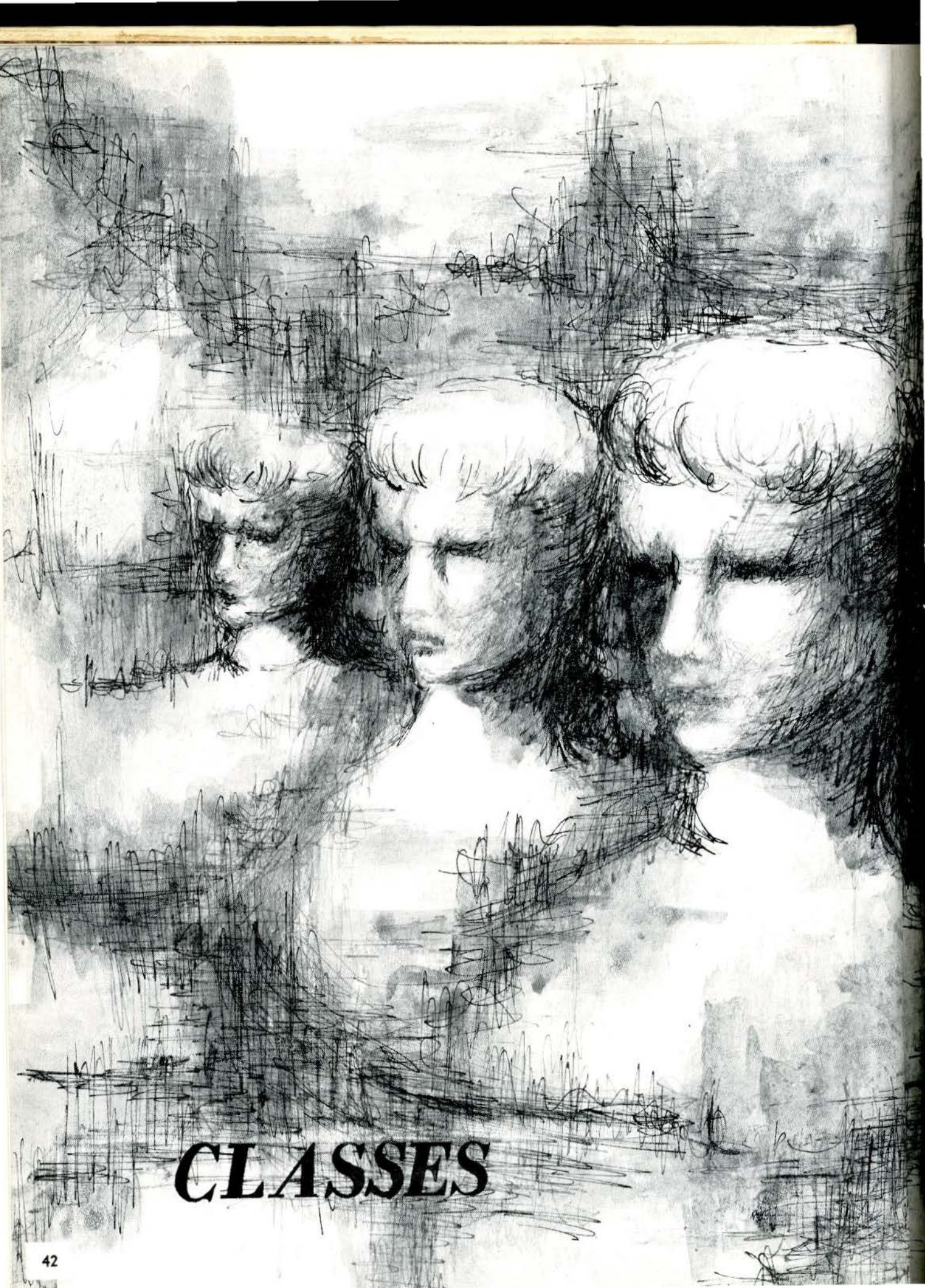
Post Office

Book Store Staff

DOLLY BASS, AMY WAGNER,
RAE SHORT—*Not snow nor rain . . . stays these couriers from the swift completion of their appointed rounds.*

—HERODOTUS





CLASSES



Seniors



CAROLE ANN ALLEN

B.A., Art; Houston, Texas

Choir 54-55; Modern Dance Recitals 55-56; Orchesis 55-56; League of Women Voters 54-56; Young Democrats 55-56; Colhecon 57-58.

HEATHER SANDRA WINDRYM ARMOUR

B.A., French and English; Kirkwood, Missouri

Griffin 57-58; Press Club 54-58, Treasurer 55-56, President 57-58; Alpha Lambda Delta 54-56, President 55-56; Young Republicans 54-56, International Relations Club 54-56; Choir 54-57; KCLC 54-55; Modern Language Club 54-56, French Vice President 55-56; Student Christian Association 54; Washington Semester 56-57; President's Scholarship 54-55; Dean's Honor Roll 54-58; Class Vice President 57-58; League of Women Voters 54-56.

GUL ATAL

B.A., Art and English; Izmir, Turkey

International Relations Club 55-58; Orchesis, Secretary-Treasurer 56-57; Griffin 56-58, Art Editor 56-57; Poetry Society, Secretary-Treasurer 57-58; Kappa Pi, Vice President 57-58; Dean's Honor Roll 55-57; President's Scholarship 56-57; May Court, Sophomore Attendant 55-56.



Gul, Carole, Heather.

Seniors

NANCY KAY BOWSER

B.A., Art; Tulsa, Oklahoma

Linden Leaves, Art Editor 57-58; Linden Bark, Reporter and Business Manager 55-56; Press Club 55-56; Kappa Pi 55-58, Reporter and Social Chairman 56-57, President 57-58; Young Democrats 55-56; League of Women Voters 55-56; Women's Recreational Association 54-56; Modern Language Club 54-55; Cobbs House Staff 57; Dean's Honorable Mention List 54-58; Lindenwood Representative on College Board, *Mademoiselle Magazine*.

YOLANDA LOU BREEDEN

B.A., Psychology; Anderson, Indiana

International Relations 54-55; Choir 54-55, 57; Student Christian Association 54-55; Courtesy Council 57-58; Cobbs House Staff 57; Harvest Queen 54; May Court, Maid of Honor 57; Indiana University 55-57.

JOAN MARGARET BROECKELMANN

B.S., Elementary Education; St. Charles, Missouri

Encore Club 54-56; Colhecon 57-58; Social Council 57-58; Student Council 56-57; Beta Chi 55-58, President 56-58; Freshman Council 54-55; Sophomore Class Secretary 55-56; Day Students' Organization 54-58; Student Education Association 55-58, Vice President 56-57; May Queen 58.



Yolanda, Joan.

Seniors



MARTHA JOANN BURGIN

B.A., Art; Birmingham, Alabama

Kappa Pi, Pledge President 57-58; International Relations, Treasurer 57-58; Student Christian Association, Publicity Chairman 57; Birmingham Southern College 55-56.

MARY ANNE CARR

B.S., Elementary Education; Flint, Michigan

Linden Leaves 56-58, Advertising Manager 57-58; Young Republicans 55-56; Student Education Association 56-58; May Court, Sophomore Attendant 56.

MARIA LOUISE CHERNER

B.A., History; Hays, Kansas

Linden Leaves, Editor 57-58; Griffin, Assistant Editor 55-56; Press Club 58; Alpha Lambda Delta 54-56; Young Republicans 57-58; International Relations 56; Modern Language 54-56; Triangle 55-56; Linden Scroll 57-58; Washington Semester 56-57; Dean's Honor Roll 54-56; Dean's Honorable Mention 57; President's Scholarship 55.



Maria, Joann, Mary Anne.

Seniors

ALYCE FAYE CHEVALIER

B.A., Biology; Tampa Florida

Triangle 56-58, Secretary 57-58; Graceland College 54-56.

ELIZABETH ANN CLEVINGER

B.S., Elementary Education; St. Charles, Missouri

Linden Leaves, Assistant 54-55; Young Democrats 55-57, President 55-56; League of Women Voters 55-58, President 56-57, Vice President 57-58; Student Education Association 55-58; Colhecon 57-58; Social Council 54-55, 57-58; Student Council 57-58; Valentine Court 55-56; Speaker for Democratic Convention 56.

SALLY WOOD COX

B.A., Chemistry and Biology; Morrilton, Arkansas

Freshman Class Treasurer 54-55; Terrapin, President 54-55; Encore 54-57; Triangle, Treasurer 57-58; Young Democrats 56-57; Senior Class Secretary 57-58; Beta Chi 54-56, Treasurer 55.



Ann, Sally, Alyce.

Seniors



MARILYN JOYCE deBEER

B.A., Speech; Alton, Iowa

Alpha Psi Omega 56-58, President 57-58; Student Education Association 56-58, Vice President 57-58; Student Council Representative 57-58; Butler House Staff 56-58; Northwestern College 54-56; Junior College Scholarship; Dean's Honorable Mention 56-57.

DOROTHEA ELLEN DEVLIN

B.A., English; Pine Bluff, Arkansas

Linden Scroll, Chaplain 57-58; Choir 57-58, Vice President 58; Pi Alpha Delta 57-58; Linden Leaves 56-58, Literary Editor 56-57, Assistant Editor 57-58; Poetry Society 54-58, President 55-57; Student Council, Vice President 57-58; Honor Board 55-57, Chairman 56-57; Women's Recreation Association 54-58; Intramurals 54-58; Athletic Teams 54-57; Griffin 54-55; Butler House Staff 55-57; Student Christian Association Junior Cabinet, Vice President 54-55; President's Scholarship 57-58; Dean's Honor Roll 57; Dean's Honorable Mention 56-58; Spahmer Writing Prize 55; Woodrow Wilson Fellowship 58-59.

MILDRED ELIZABETH DEVLIN

B.S., Home Economics; Pine Bluff, Arkansas

Choir 54-57, Treasurer 55-56, President 56-57; Colhecon 56-58; Butler House Staff 55; Cobbs House President 57-58; Student Christian Association, Junior Cabinet 54-55, Social Service Chairman, Treasurer 57-58; Canterbury Club 54-58, President 54-55; Estes Park Conference 57.



Beth, Ellen, Marilyn.

Seniors

MARIVA SARA DORMAN

B.S., Office Management; East St. Louis, Illinois

Student Council 56-57; Young Republicans 56-57; Orchestra 57-58; International Relations Club 56-58; League of Women Voters 57-58; Student Christian Association, Program Chairman 57-58; Cobbs House Staff 56-58; Dean's Honorable Mention 57-58; Belleville Junior College 56.

NEDRA LOUISE DURHAM

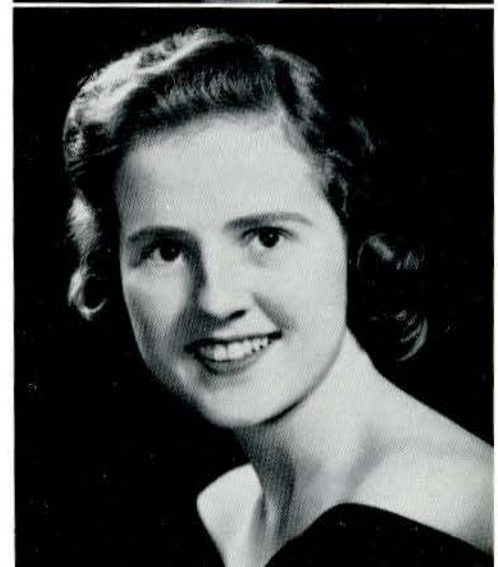
B.A., Speech; Centertown, Missouri

Alpha Epsilon Rho, Secretary 57-58; Baptist Student Union 56-57; Press Club 57-58; KCLC 56-58; International Relations Club 56-57; Choir 56-58; Jefferson City Junior College 54-56.

SYDNEY ANNA FINKS

B.S., Home Economics; Clinton, Missouri

Press Club 54-58; Young Republicans 55-57; League of Women Voters 55-57; KCLC 54-55; Student Education Association 57-58; Colhecon 54-58; Social Council Chairman 57-58; Student Council 57-58; Irwin House President 55-56; Linden Scroll 57-58; Freshman Council Chairman 54; Washington Semester 56; Dean's Honor Roll 55; Dean's Honorable Mention 56-58; Freshman Class President 54-55; Estes Park Conference 57; Welek's First Prize 57.



39398

Mariva, Sydney, Nedra.



Seniors



CAROL GENEVA GARDNER

B.A., History; Brentwood, Tennessee

Alpha Lambda Delta 54-58; Young Republicans 55-58; Student Education Association 54-58; League of Women Voters 56-57; Modern Language Club 54-56, Spanish Vice President 55-56; Student Council 55-58, Secretary-Treasurer 56-57, President 57-58; Honor Board 57-58; House Presidents' Council 57-58; House Staff 55-58; Linden Scroll 57-58; Washington Semester 56-57; Squawker Editor 55-56; President's Scholarship 55-57; Dean's Honor Roll 55-58; Harvest Court 54.

MARY ANN GATCHELL

B.M.E., Cello and Piano; Mountain Grove, Missouri

MENC 55-58; Alpha Lambda Delta 54-58, Secretary 55-56; Orchestra 54-58, President 56-57; Mu Phi Epsilon 55-58, Treasurer 55-56, 57-58, Vice President 56-57; Choir 55-56; Student Education Association 54-58, Program Director 56-57; House Staff 56-57; Alpha Sigma Tau 57-58; Linden Scroll 57-58; American Guild of Organists 57-58; Young Republicans 55-57; President's Scholarship 56-58; Dean's Honor Roll 54-58.

ELIZABETH ANN GEHRS

B.S., Elementary Education; Festus, Missouri

Student Education Association 57-58; William Woods Junior College 54-56; Murray State College 56-57.



Carol, Liz, Ann.

Seniors

OLIVE CONSTANCE GIBSON

B.S., Elementary Education; Fort Lauderdale, Florida

Choir 54, 56-58, Secretary 56-57; Student Education Association 54, 56-58; Colhecon 57-58; Beta Chi 54, 56-58, Treasurer 57-58; Senior Class President 57-58; Florida State University 55-56.

ROXIE CLARA GREENE

B.A., Psychology; El Dorado, Arkansas

Young Republicans 55-56; League of Women Voters 55-56; Choir 55-56; Beta Chi 55-58; KCLC 56-57; Secretary of Senior Class 57-58; Accompanist for Orchestras 55-56.

DONALD L. GRIMES

B.A., History and Government, Speech; Chanute, Kansas

Press Club 56-58; Alpha Epsilon Rho 57-58; Young Republicans, President 57-58; Drama Scholarship 56-58; Oklahoma University 50-51; Chanute Junior College 55-56.



Connie, Don, Roxie.

Seniors



SUSANNE HELEN HILTENBRANDT

B.S., Home Economics; St. Louis, Missouri

Colhecon 56-58, Vice President 56-57; Student Education Association 56-58; Young Republicans 56-57; Cobbs House Staff 57-58; William Woods 54-56.

JAMES WAYNE HODGES

B.A., Speech, Dramatics; Monahans, Texas

Student Education Association 56-58, Treasurer 57-58; Alpha Psi Omega 56-58, Vice President 57-58; Treasurer, Senior Class 57-58; Drama Scholarship; Odessa College 53-56.

NANCY SUE HULSE

B.S., Elementary Education; St. Joseph, Missouri

Young Republicans 54-58; Orchesis 54-56; Student Education Association 54-58, Secretary 56, President 57; Choir 54-55; House Staff 54-55; KCLC 54-55; Dean's Honorable Mention 55-56; Washington Semester 56-57; League of Women Voters 57-58.



Nancy, Jim, Sue.

Seniors



JANET SUE JOHNSON

B.S., Education; Munster, Indiana

Linden Leaves, Literary Editor 57-58; Griffin 57-58; Student Education Association 55-58; Poetry Society 55-58; Dean's Honorable Mention 55-57.

JANET MARCIA JONES

B.A., Sociology; Springfield, Illinois

Women's Recreation Association 55-58, Treasurer 57-58; Choir 55-57; Orchestra 55-57; Colhecon 58; Student Council Representative 57-58; Butler House President 56-57; Butler House Staff 55-57; Canterbury Club 55-57; Sweet Briar College 54-55.

SONDRA ROSE JUPIN

B.S., Home Economics; Centralia, Illinois

Choir 56-57; Colhecon 56-58; Young Republicans 56-57; Social Council 57-58; William Woods College 54-55; University of Illinois 55-56.



Sondra, Janet, Marcia.

Seniors



BARBARA JOSEPHINE KOELLER

B.M., Piano; Barry, Illinois

Orchestra 56-58; Mu Phi Epsilon 55-58, Secretary 56-57, President 57-58; Choralaires, Accompanist 57-58; Choir 54-55; Sibley House Staff 56-57; Sibley House President 57-58; American Guild of Organists 57-58; Linden Scroll, Secretary 57-58; Student Christian Association 55-57, Song Leader 55-56, Junior Advisor 56-57; Dean's Honor Roll 56-57; Dean's Honorable Mention 54-56; Winner, Young Artists' Contest 55.

DORIS EDNA LANGENECKERT

B.S., Elementary Education; Clayton, Missouri

International Relations Club 55-58; Colhecon 56-57; House Staff 56, 58; Courtesy Council 57-58; Student Education Association 55-58, Secretary 57-58; Dean's Honorable Mention; Dean's Honor Roll; Fontbonne College 54-55.

PHYLLIS H. LAYTON

B.S., Business Education; Brentwood, Missouri

Student Education Association 57-58; Day Students' Organization 57-58; Central College 54-57.



Doris, Barbara.

Seniors

CLEO JOAN LeCLAIRE

B.A., Chemistry; Richmond Heights, Missouri

Triangle Club 55-58, Vice President 56-57, President 57-58; Poetry Society 54-58, Secretary-Treasurer 55-57; International Relations Club 54-57, Treasurer 56-57.

BARBARA EUGENIA LEE

B.A., History; St. Louis, Missouri

Orchosis 55-58, Secretary-Treasurer 58; Young Republicans 56-57; International Relations Club 54-58, President 57-58; Social Council 55-56; Collegiate Council for the UN, Delegate 57; House Staff 57; Washington Semester 56-57; Dean's Honorable Mention 56-58.

WANDA BULLARD LESLEY

B.S., Home Economics; Cherry Valley, Arkansas

Colhecon 55-58, Treasurer 56-57; Student Education Association 56-58.



Joan, Barb.

Seniors



LOIS ELAINE LUNT

B.M.E., Piano; Pratt, Kansas

International Relations 54-55; Orchestra 54-58; Mu Phi Epsilon 55-58, Treasurer 56-57, Chaplain 55-58; Choir 54-55; Choralaires, Accompanist 55-57; Student Education Association 56-58; House President, Sibley 56-57; House Staff, Sibley 54-57; Poetry Society 55-57; Linden Scroll 57-58; American Guild of Organists 57-58; Dean's Honorable Mention 54-57; IFYE Exchange Student to Austria 57; Music Educators' National Conference 55-58.

ELIZABETH McCLINTOCK

B.S., Elementary Education; St. Charles, Missouri

Student Education Association 57-58; Day Students' Organization 57-58; Central College 54-57.



MARGARET ELIZABETH MILLER

B.A., Speech; Jefferson City, Missouri

Play Productions 54-58; Squawker 56-57; Press Club 55-58; Orchesis 55-56; Alpha Epsilon Rho 56-58; Linden Scroll, Treasurer 57-58; Dean's Honor Roll 58; KCLC 55-58, Sales, Continuity Director 55-56, Publicity, Program Director 56-57; Student Council Representative 56-57; Freshman Counselor 57-58; Orchestra 54-58; Modern Language Club 54-56; Colhecon 55.



Betty, Elaine.

Seniors

SHIRLEY NOLAND

B.A., English; Nashville, Tennessee

Freshman Council 54; Young Republicans 55-57; Modern Language Club 54-56; League of Women Voters 54-57; Squawker Staff 55-56; KCLC 57-58; Pi Alpha Delta 57-58; Press Club 57-58; Washington Semester 56-57; Valentine Queen 56.

NAN NORDYKE

B.A., Speech; Amarillo, Texas

Press Club 54-58, President 55-56; Alpha Epsilon Rho 55-58, President 57-58; Young Democrats 54-56; Orchestra 54-58; Choir 55-56; KCLC 54-58, Chief Engineer 55, Chief Announcer 56, Sales Director 56-57, Production Director 56-57, Program Director 56-57, KMOX Liaison 57, Station Manager 58; Modern Language Club 55-57; Cobbs House Staff 56-57; Dean's Honor Roll; League of Women Voters 54-56; Alpha Psi Omega 56-58.

JUDITH K. PETERSON

Wichita, Kansas

Women's Recreation Association 55-58, Social Chairman 56-57; Young Democrats 55-58, Vice President 55-56; International Relations Club 55-57; League of Women Voters 55-57; Student Council 55-56; Terrapin 56-57; Intramurals 55-58; Athletic Teams 55-57; Student Christian Association, Publicity Co-Chairman 57-58.



Nan, Judy, Shirley.

Seniors



FRANCES SUE POTTER

B.A., Speech; Springfield, Missouri

Press Club 54-58; Young Republicans 57; International Relations 55-57; KCLC Station Manager 57, Continuity Director 57, Program Director 55-56, 57, Production Director 58; Terrapin 56-58; Alpha Epsilon Rho 55-58, Vice President 55, President 56-57, Delegate to National Convention 56, 57; Student Christian Association, Social Service Chairman 55-56, Vice President 56-57, President 57-58; Colhecon 55; Linden Scroll, Historian 57-58; Freshman Council 54; Washington Semester 56-57; Dean's Honorable Mention 54-55; Dean's Honor Roll 56-58; Sophomore Class President 55-56.

CAROL ROBERTA PUNT

B.A., Speech; St. Louis, Missouri

Linden Bark 56-57; Press Club, Vice President 56-58; Pi Alpha Delta 55-58; Choir 54; Choralaires 55-56; KCLC Public Relations 56, Social Director 57, Sales Director 58; Alpha Epsilon Rho 56-58; House Staff Niccolls 55; Science Fair Scholarship 54-58.



GRETE LUCINDA REHG

B.A., English; St. Charles, Missouri

Choir 54-58, Accompanist 55-58, President 57-58; Orchestra 54-58; Mu Phi Epsilon 55-58, Vice President 57-58; Student Education Association 57-58; Sibley House Staff 54-55; Sibley House President 55-56; Social Council 55-56; KCLC Music Director 55-56; Honor Board Secretary 57-58; Junior Class Vice President 56-57; Dean's Honorable Mention 55; Young Artists' Winner 57.



Grete, Sue, Carol.

Seniors

NANCY MARIA ROBERTS

B.A., Religious Education; Postville, Iowa

Choir 56-58; International Relations Club 56-57; League of Women Voters 56-57; Young Republicans 56-57; Grinnell College 55-56; Luther College 56.

METTA STEVE ROUSSALIS

B.A., Chemistry; Casper, Wyoming

Young Republicans 56-58; International Relations Club 57-58; League of Women Voters 56-58; Modern Language 57-58; MacMurray College 54-56.

JUNE ELOISE SCHMIDT

B.S., Home Economics; Evansville, Indiana

Press Club 54-55; Colhecon 53-55, 57-58; Student Education Association 57-58; International Relations Club 53-54; KCLC 54-55; Indiana University 55-56.



Nancy, June, Metta.

Seniors



JULIA ANN SPICKELMIER

B.A., Psychology; Washington, Missouri

Orchestra 54-55; Mu Phi Epsilon 55-58, Secretary 56-57; Triangle Club 56-58; Alpha Lambda Delta 55-56; Dean's Honor Roll 54-55.

LOIS ANN STEWART

B.A., Biology; Ft. Smith, Arkansas

Alpha Lambda Delta, Junior and Senior Advisor 56-58; Young Republicans 55-56; Orchestra 54-57; Choir 54-55; Choralaires 54-58; Triangle Club 57-58; Honor Board 56-58, Secretary 56-57; Poetry Society 56-58; Student Christian Association, Music Chaplain 57-58; Alpha Sigma Tau 57-58; Linden Scroll, President 57-58; President's Scholarship 55-58; Dean's Honor Roll 54-58.

SANDRA A. TAYLOR

B.A., Psychology; Sioux Falls, South Dakota

Young Republicans 54-58; International Relations Club 55-58; League of Women Voters 54-58; Choir 55-57; KCLC, Engineer and Program Director 56-58; Orchesis 55-57; Colhecon 57-58; Irwin House Staff 54; Cobbs House Staff 55-56; Student Christian Association, Social Service Chairman 57-58; Beta Chi 54-58, Publicity Chairman 55-56, Treasurer 54-55; Estes Conference 57.



Ann, Sandy, Julie.

Seniors

EDWIN D. VAN WOERT

B.A., Speech; Peekskill, New York

Alpha Psi Omega 57-58; Student Education Association 57-58; Tusculum College 54-57.

JANE ANN WINTER

B.S., History; Burlington, Iowa

Student Education Association 57-58; Day Students' Organization 57-58; State University of Iowa 54-57.

CAROLYN JOY WOOD

B.A., English; Marietta, Georgia

Young Democrats, President 55-58; International Relations Club, Social Chairman 56-57, National Conference Delegate 57-58; Pi Alpha Delta 57-58; League of Women Voters 56-57; Student Council 57-58; House President, Butler 56-57; House Staff, Cobbs 57-58; Student Christian Association, Program Chairman 56-57; Class Treasurer 56-57; May Court, Junior Attendant 56-57; Student Education Association 57-58; Queens College 54-55.



Carolyn, Van.

Juniors

Ruth Louise Beckmann
Mary Knox Berger
Harriet Berman

Elizabeth Ann Bohn
Elizabeth Ann Britt
Elizabeth Butler

Antoinette Chapman
Cornelia Mason Childs
Jane Elizabeth Cooper

Mary Elizabeth Cox
Peggy Orlean Crane
Martha Dillard

Mary Dillard, Secretary
Ferol Ann Finch
Diane Floyd



Juniors

Susan Beth Freegard
Katherine Anne Fryfogle
Karen Lyn Gaston



Mary Goodnick
Sandra Joy Gordon
Mary Magdalene Green, Vice President



Betty Jean Hagemann Grundmann
Martha Hard
Marilee Ann Hipple



Sahee Hong
Carol Ann Hopkins
Ann Elise Horstmann



Froma Jane Johnson
Joyce Georgia Kayarian
Marilyn M. Kroepel



Juniors

Martha Jane Latshaw
Elizabeth Layton
Verna Lou Lloyd

Laurie Jane McLeod
Susan McParland
Donna Sue Milnes

Anabel Mojonier
Virginia Natho
Janice Eileen Nelson, Treasurer

Gay Nicholls
Meral Orgun
Julie Orr

Eleanor LeAnn Orth
Carol Pechar
Patsey Marie Pettey



Juniors

Janet Flo Phillips
Judith Patricia Pratt
Patsy Price



Doris Kay Province
Suellen Purdue
Mary Carolyn Rankin



Rebecca Lee Roberts, President
Mary Steve Roussalis
Lettie Lee Russell



Shirley Ann Smith
Sara Lynne Stein
Constance Jean Sutton



Charlotte Elaine Tschannen
Virginia Terry (Mrs. A. W.)
Elizabeth Ann Thomas



Juniors

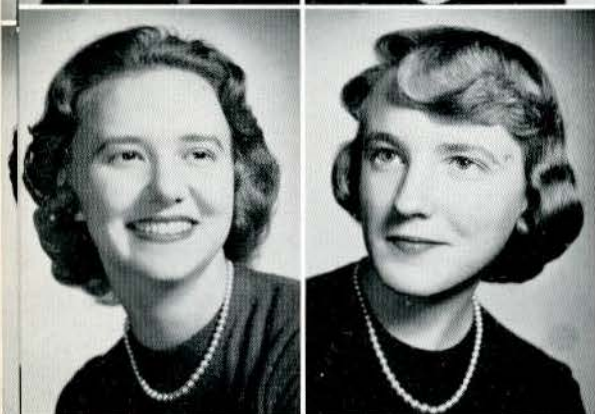
Mary Ellen Wall
Mary Kathryn Warner



Kay Westwood
Elizabeth Ann Weatherwax



Alice Kay Wethers
Sandra Williams



Ahnawake Wilson
Catherine Zotos





Top left: Karen Klabau, Donna Lacy, Sherral Musgrove, Barbara Marr, Ann Harper, Kathryn Hunt.

Bottom left, first row: Nancy Knock, Mary Sue Jordan, Judy Kiger, Judy Hutchens. *Second row:* Kay Kazmaier, Dorothy Langridge.

Top right, first row: Eleanor Mansfield, Emily Hay. *Second row:* Jo Ann Lovins, Karen Prewitt, Sally Miller, Sonja Lee.

Bottom right: Priscilla Richards, Kay Dunham, Mary Sue Bragg, Shirley Lee, Mary McLeod, Sally Brasher.

Sophomores



Top left, first row: Karen Glaser, Sherri Benderoff, Betty Owens. *Second row:* Mary Fitts, Suzanne Alexander, Margaret Bailey.

Bottom left, first row: Sandy Hairston, Kay Fellabaum, Claudine Talbott. *Second row:* Lily Trautwein, Barbara Larson.

Top right: Suzanne Cooper, Linda Cotton, Marjorie Compton, Ila Crews, Carole Cordill, Jane Copeland.

Bottom right, first row: Barbara Flanagan, Sally Hillstrom. *Second row:* Margot DuTeau, Nancy Green, Gayle Haines, Martha Hensley.

Sophomores

Sophomores

Top left, first row: Peggy Newell, Sue Combe, Sondra Kyle, Jean Cochran. *Second row:* Nancy Jackson, Bette Riley.

Bottom left, first row: Caroline Freeburg, Laura Heusinkveld, Margaret Hollenbeck. *Second row:* Pia Thorner, Norma Camp, Nancy Gale.

Top right, first row: C. J. Clark, Connie Boyington, Mary Avery. *Second row:* Mary Lee Boren, Carolyn Bayer, Nancy Tucker, Linda Winegarner.

Bottom right, first row: Connie Milliken, Sharon Poole, Jackie Wolf. *Second row:* Janet Hancock, Sue Hill, Helen Moeller.





Top left, first row: Barbara Foster, Marjorie Ward, Julianne Robinson. *Second row:* Mary Kay Pagel, Martha McInnis, Judy Robinson.

Bottom left: Mary Jane Biggs, Ann Dierking, Patsy Jones, Carol Davidson, Frances Nagel, Kitty Zink.

Top right: Judy Lanman, Jean Conrath, Katie Meyer, Helen Rice, Sarah Loden, Marjorie Davis Dale.

Bottom right: Dorothy Noble, Joan Meyer, Charlyne Grogan, Rhoda Sotiropoulou, Anna Belle Defaugh, Carolyn Dodson.

Sophomores

Sophomores

Top left, first row: Ann Wescoat, Kathleen Perry.
Second row: Edith Shigley, Judith Winburn, Norma Nixon, Barbara Mester.

Bottom left, first row: Katherine Ritchey, Carolyn Kattmann, Cynthia Tyring.
Second row: Janet Walker, Mary Fletcher Cox, Malinda Rodgers.

Top right, first row: Betty Smythe, Barrie Bowen, Marcia Worley.
Second row: Elizabeth Darnall, Marilyn Wilson, Cleta Jones.

Bottom right, first row: Nancy Russell, Nahid Bozorgmehri, Jean Taylor, Diane Nocheff.
Second row: Nancy Rector, Pilar Salvador.



Freshmen



First row, left to right: Sheila Reel, Virginia Orr. Second row: Johanne Repper, Sondra Mitchell, Nancy Hoffman, Patsy Winans. Third row: Lynne Murray, Susan Perry, Ellen Reid, Lee Oglesby, Kathleen Burt, Mary Moehlenkamp.



First row, left to right: Marietta Tinsley, Mary D. Williams. Second row: Sue Spencer, Connie Schafer, Stephanie Harms, Fran Feldmann. Third row: Caroline Stephenson, Mary Lou Reilly, Karen Witt, Barbara Crump, Anne Leedy, Zoe Myers.

Freshmen



First row, left to right: Jackie Hutt, Betsy Kelton, Suzie Holding. Second row: Janet Hinkle, Gay Pauly, Julie Hoyt. Third row: Nancy Lantz, Karen Kivlin, Linda Knight, Wendy Hall, K. C. Horner, Linda Hopke, Sue Kalbfleisch.



First row, left to right: Diana Macurda, Nancy Babb, Rae Barsness. Second row: Miriam Avey, Jo Ann Barnes, Kay Balderson, Margi Bassnett. Third row: Helen Norman, Margaret Ahrens, Jean Allen, Ina Rae Barklage, Sue Allender, Abbie Axmann.

Freshmen



First row, left to right: Suzanne Weddington, Annette Womack, Celia Rueda, Pia Thorner.
Second row: Jacqueline Westerfeld, Mary Sue Terry, Karen Heinlein, Joann Kilpatrick.
Third row: Mary Ann Clark, Carolyn Carroll, Elaine Word, Sandra Adams, Ping Chin.



First row, left to right: Jane Tibbals, Mary Ann Terryberry, Betty Jane Wadlow.
Second row: Judy Rinderer, Nelsy Sanchez, Linda Dameron, Peggy Hite, Ruth Ann Kern.

Freshmen



First row, left to right: Ginny Heilbronner, Diane Goldman, Vivian Hiatt. Second row: Candy Harley, Georgiana Foster, Rosemary Fones, Melinda Green. Third row: Glenda Garrett, Joyce Hackmann, Jane Gadberry, Gail Jones, Sarah Hodges, Etta Jean Farmer.



First row, left to right: Charlotte Kinnard, Pat Lacey, Sharon Ward. Second row: Joy LaVigne, Lorna Lea Lewellen, Sue Lewis, Lynne McCoy. Third row: Gretchen Lent, Nelda Martin, Peggy Sue Limbaugh, Joanne Williams, Nan Vancil, Nancy Kinnett.

Freshmen



First row, left to right: Regina Malczycki, Claire Schlosberg. Second row: Sandra Springsted, Sally Seifert, Peggy Wheeler, Helen Rank. Third row: Wilma Tyau, Joan Rundell, Renee Ryter, Judy Reeves, Marlene Severin, Cynthia Richards.



First row, left to right: Judy Ritter, Sarah Weatherby. Second row: Mary Elizabeth Taylor, Joyce Wilson, Laurelee Vry, June Tavlin. Third row: Judy Sutera, Sondra Swindel, Nancy Calvert, Barbara Teal, Peggy Payne, Jewel Webb.

Freshmen



First row, left to right: Hedy Sue Woog, Billie Gail Long, Conett Carolyn McGregor. Second row: Lynne Bryant, June Nagel, Sue McPherson, Peggy Ann Lorey. Third row: Nancy Ordelheide, Joan McKelvey, Nancy Matlock, Phyllis Ogden, Nell McGee, Jeanne McLain.



First row, left to right: Bobbi Ferguson, Barbara Dale Dunlap, Joy V. Fowler. Second row: Linda Reed Gillespie, Frances Givens, Terry Gadd. Third row: Suzanne Ellis, Jane Ely, Sherol Faulkner, Thalia Watkins, Karen Gardner, Katherine Worth.

Freshmen



First row, left to right: Karen Deeter, Donna Davis, Yhagna Crovella, Betty Brown. *Second row:* Sara Cook, Ruth Chapman, Martha Crane, Mitzi Castleberry. *Third row:* Connie Ellis, Judy Downing, Mary Elizabeth Epton, Rebecca Dye, Margie Faeth, Penny Cox, Lucinda Depping.



First row, left to right: Jane Bost, June Williams, Ann Boswell. *Second row:* Sandra Boyd, Betsy Crockarell, Janice Beaty, Annette Dakin. *Third row:* Alice Bates, Judith Whalen, Brenda Bullion, Linda Bragg, Myril Bruns.

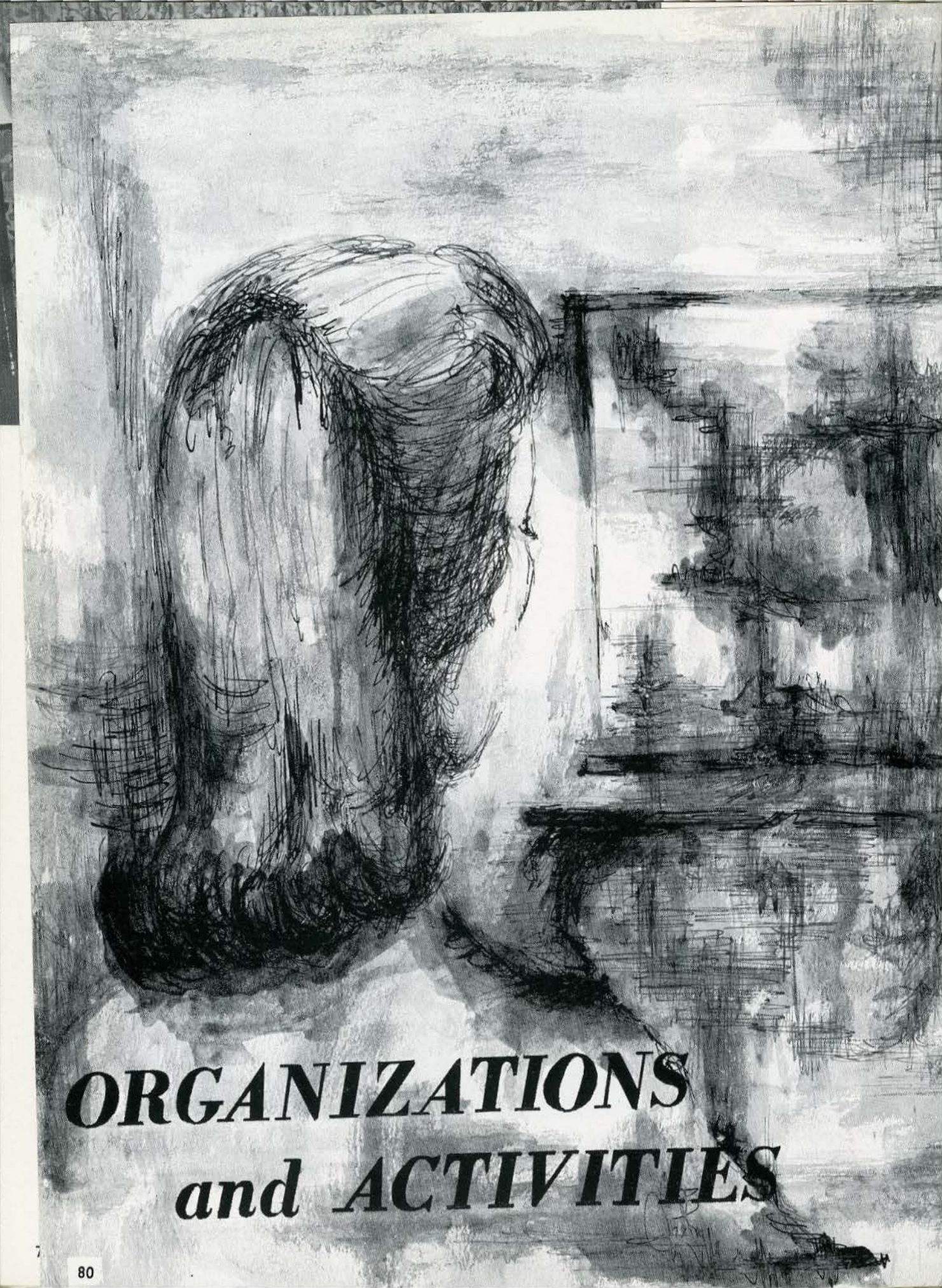
Freshmen



First row, left to right: Jeanette Williams, Patsy Farrell, Elaine Huddleston. Second row: Mitzi McIntosh, Barbara Kasper, Judy Adams, Carolyn Krizer. Third row: Virginia Terry, Janice Seitz, Melba Peyton, Sandy Schmitt, Angela Wilson.



First row, left to right: Jane Adams, Linda Crane, Carolyn Black. Second row: Jane Patterson, Virginia Head, Wanda Wear, Georgia Wood, Ana Maria Anton. Third row: Nicky Wolf, Susanne Esber, Sally Sue Hutchinson, Judy A. Brown, Glee Heiligtag, Joan Bray.



ORGANIZATIONS
and **ACTIVITIES**





CAROL GARDNER
President

Student Council

... the governing body of the campus, legislating in social matters, and promoting the maturity and responsibility so essential to constructive living.



First row, left to right: S. Combe, S. Finks, E. Devlin, Vice President; C. Gardner, President; S. Purdue, Secretary-Treasurer; B. Miller, Freshman Counselor; M. Jones. Second row: C. Schafer, M. Compton, P. Price, E. Butler, H. Woog, M. Dillard, P. Pettey, G. Wood.

Honor Board

. . . student representation, a positive and inter-personal relationship . . . actively supporting the principles of the honor code . . . sincerely encouraging the development of individual integrity.



CORNELIA CHILDS
Chairman



Left to right: C. Gardner, A. Stewart, C. Childs, Chairman; G. Rehg, Secretary; C. Pechar. Advisors: Miss Mary Lichliter, Mr. Walter M. Beattie, Jr.

Kappa Pi

. . . a national honorary art fraternity . . . to recognize potential and professional ability . . . to encourage higher scholarship . . . to enhance the interest in art through informal study and entertainment.



First row, left to right: C. Tyring, D. Shigley, J. Meyer. Second row: M. E. Cox, N. Bowser, President; H. Rice, C. Grogan, K. Meyer, G. Atal, Vice President; J. Kayarian, Secretary-Treasurer; A. B. Defabaugh, S. Loden. Sponsor: Mr. Harry D. Hendren.

Triangle Club

. . . a deep interest in science and mathematics . . . opportunity for improving the future through research and enlightenment.



First row, left to right: M. Davis, K. Province, Vice President; J. LeClaire, President; S. Cox, Treasurer; A. Chevalier, Secretary. Second row: A. Stewart, N. Rector, P. Price, J. Cooper, N. Camp, C. Milliken, R. Roberts. Sponsor: Miss Louise Beasley.

Student Christian Association



SUE POTTER
President

... to aid in bringing the beauty of a full and creative life to each student through growing spiritual consciousness.



Senior Cabinet

First row, left to right: M. E. Wall, E. Bohn, Secretary; S. Potter, President; B. Devlin, Treasurer; C. Childs, Vice President. Second row: N. Camp, A. Stewart, S. Taylor, M. Dorman, P. Pettey, J. Cooper. Third row: J. Burgin, J. Kayarian, M. Kroepel, C. Milliken, M. Dillard. Advisors: Miss Juliet McCrory, Mr. Douglas Hume, Dr. Robert L. McLeod.



Junior Cabinet

First row, left to right: N. Babb, President; C. Ellis, Vice President; S. Harms, Secretary; V. Head. Second row: D. Macurda, J. Tibbals, Treasurer; M. Taylor, J. Repper, S. Hodges, G. Pauly. Advisor: Miss Mary Jean Bartholomew.

House Presidents

. . . an active council . . . a liaison between administration and dormitories
. . . discusses and deals with special problems common to all.



Left to right: Barbara Dale Dunlap, Niccolls; Toni Chapman, Butler; Judy Lanman, Ayres; Beth Devlin, Cobbs; Kay Zotos, Irwin. *Not pictured:* Barbara Koeller, Sibley.
Advisor: Miss Mary Lichliter.

Social Council

. . . aids in planning and executing social activities both on and off campus,
in accordance with the desires of the students.



First row, left to right: L. Cotton, M. Compton, S. Finks, *Chairman*; P. Richards, S. Loden, C. Grogan, J. Phillips, F. Johnson. *Second row:* A. Clevenger, J. Broeckelmann, C. Ellis, R. Ryter.
Advisor: Miss Mary Lichliter.



Alpha Psi Omega

. . . national honorary dramatic fraternity . . . inspiring improvement in dramatic study . . . stimulating the art of drama.

First row, left to right: D. Floyd, Treasurer; J. Orr, Secretary. Second row: B. Miller, F. Finch, N. Nordyke. Not pictured: M. deBeer, President; J. Hodges, Vice President. Sponsors: Mr. Douglas Hume, Miss Juliet McCrory.

Alpha Lambda Delta

. . . national scholastic society for freshman women . . . to encourage and honor high scholarship in underclass students . . . to uphold the standards of purity, integrity, and honor.



First row, left to right: N. Rector, N. Tucker, J. Copeland, Treasurer; M. S. Bragg, President; C. Jones. Second row: A. Stewart, N. Camp, H. Rice, J. Winburn, C. Milliken, Vice President. Not pictured: M. Wilson, Secretary. Advisor: Dr. Marion Dawson.

Alpha Sigma Tau

. . . scholastic society for upperclassmen . . . recognizes and honors continued high achievement.



A. Stewart (left), A. Gatchell.
Sponsor: Dr. Eugene Conover.



First row, left to right: N. Tucker, B. Crump, S. Smith, *President*; C. Pechar, *Vice President*; C. Bayer, *Treasurer*; C. Talbott, B. Marr. Second row: M. Rankin, B. Bowen, M. L. Reilly, S. Hillstrom, H. Moeller, G. Holzer, M. Thiele, L. Hopke, B. Devlin. Third row: P. Payne, J. Bost, S. Faulkner, S. Seifert, C. Stephenson, P. Chin, A. Bates, M. McInnis, C. Kattmann, S. Taylor, J. Broeckelmann, C. Gibson, A. Clevenger, S. Finks, S. Purdue.
Sponsor: Miss Sophie Payne Alston.

Colhecon

. . . to arouse and extend interest in Home Economics . . . to help students to realize the values and satisfactions of intelligent good management.



First row, left to right: J. Westerfeld, J. Watts, B. McClintock, A. Clevenger. Second row: B. Dinkmeyer, P. Newell, President; I. R. Barklage, M. Lewis, M. Peyton, M. Moehlenkamp. Third row: V. Hiatt, C. Baue, J. Broeckelmann, N. Nixon, V. Terry, J. Seitz, J. Hackmann.

Day Students

. . . a small and vivacious group . . . active in all campus affairs . . . a presence much needed in the life of the college.



First row, left to right: G. Lent, J. Walker, M. McLeod, J. Beaty, K. Klabau, Vice President. Second row: N. Calvert, F. Johnson, H. Moeller, Secretary; P. Richards, President; S. Brasher, Treasurer; K. Meyer, K. Zotos. Third row: J. Bost, P. Hollenbeck, L. Hopke, S. Cook, C. Richards, C. Black, N. Wolf, L. Knight, V. Natho, R. Ryter, M. A. Clark, M. Castleberry, J. Orr. Sponsor: Mrs. Donald C. Bryant.

Encore Club

. . . modern Lindenwood surrounded by the memories and traditions of years gone by . . . the hostesses, guides, and receptionists of the college.

Kappa Pi

. . . a national honorary art fraternity . . . to recognize potential and professional ability . . . to encourage higher scholarship . . . to enhance the interest in art through informal study and entertainment.



First row, left to right: C. Tyring, D. Shigley, J. Meyer. Second row: M. E. Cox, N. Bowser, President; H. Rice, C. Grogan, K. Meyer, G. Atal, Vice President; J. Kayarian, Secretary-Treasurer; A. B. Defabaugh, S. Loden. Sponsor: Mr. Harry D. Hendren.

Triangle Club

. . . a deep interest in science and mathematics . . . opportunity for improving the future through research and enlightenment.



First row, left to right: M. Davis, K. Province, Vice President; J. LeClaire, President; S. Cox, Treasurer; A. Chevalier, Secretary. Second row: A. Stewart, N. Rector, P. Price, J. Cooper, N. Camp, C. Milliken, R. Roberts. Sponsor: Miss Louise Beasley.



Left to right: K. Klabau, B. Miller, Vice President; C. Punt, K. Prewitt, N. Nordyke, President; S. Potter, N. Durham, Secretary-Treasurer; S. Hairston. Sponsor: Miss Martha May Boyer.

Alpha Epsilon Rho

. . . national honorary radio and television fraternity—
Always Excellent Radio—to recognize and stimulate exceptional work in these fields.



First row, left to right: B. Miller, C. Milliken, C. Punt, C. J. Clark, N. Nordyke, S. Potter, Manager-Program Director; N. Durham, C. Sutton. Second row: J. Lovins, B. Long, N. Calvert, I. Crews, G. Lent, K. Klabau, G. Pauly, S. Hairston, M. Taylor, K. Prewitt. Sponsor: Miss Martha May Boyer.

KCLC

. . . the campus radio station, directed and operated by the students . . . for extracurricular enjoyment and practical experience in administration and broadcasting . . . training in the technicalities of television production.

Pi Alpha Delta

. . . to provide the opportunity for students with achievements in the study of classics to participate in projects to further and intensify this interest.



Martha Dillard, Mary Roussalis, *Secretary*; Mary Dillard, F. Finch, *President*; C. Punt.
Sponsor: Dr. Hazel M. Toliver.

Poetry Society

. . . to furnish guidance for "budding young poets" through informal discussion of their own work and that of outstanding poets.



First row, left to right: M. Ahrens, E. Butler, E. Bohn, *Secretary*; J. Cooper, *President*; G. Atal, *Treasurer*; R. Chapman, P. Lacey. *Second row*: M. E. Epton, D. Noble, H. Rice, K. Prewitt, M. Taylor, F. Finch, J. Adams, E. Word, P. Thorner, J. Tibbals, S. Freegard, M. Bruns, Jeanette Williams. *Third row*: E. Devlin, A. Stewart, J. Orr, D. Floyd, C. Richards, P. Chin, J. LeClaire, N. Rector, S. Stein, C. Childs, E. Thomas, M. E. Cox, S. Purdue.
Sponsor: Dr. Elizabeth Dawson.

Student Education Association

. . . a professional organization of future educators . . . dedicated to improving the quality of teaching in the schools of the nation.



First row, left to right: G. Nicholls, A. Clevenger, J. Nelson, G. Holzer, S. Reel, C. Gibson, E. Horstmann, E. Word. Second row: P. Roberts, S. Hairston, K. Zotos, A. Womack, S. Benderoff, J. Wolf, M. Terryberry, M. Rankin, P. Pettey, M. E. Wall, Secretary: C. Krizer. Third row: M. Roussalis, M. McLeod, M. Kroepel, D. Floyd, M. Hensley, J. Conrath, J. Broeckelmann, B. Smythe, S. Esber, M. Worley, M. S. Bragg, N. Hulse, President: K. Ritchey, D. Shigley.

Student Education Association



First row, left to right: J. Walker, M. Thiele, K. Glaser, M. K. Pagel. Second row: M. Green, J. Copeland, N. Babb, P. Chin, S. Lee, A. Gatchell, P. Jones. Third row: C. Tying, A. Leedy, K. Deeter, J. Phillips, M. Hard.



First row, left to right: J. Rinderer, R. A. Kern, S. Alexander, L. Hopke, June Williams. Second row: S. Combe, D. Langeneckert, J. Pratt, A. Weatherwax, B. Foster, M. Fitts, B. McClintock, S. Finks, J. E. Robinson, J. Lovins, D. Langridge, R. Fones. Third row: S. Purdue, J. Whalen, G. Rehg, C. Wood, J. Fowler, C. Gardner, M. Latshaw, J. Reeves, M. Warner, A. Harper, C. Boyington. Sponsor: Mr. Bremen Van Bibber.

Choir

. . . a sense of harmony in song . . . beauty created through concerted action
for vesper services, concerts, and informal entertainment.



First row, left to right: C. McGregor, B. Long, C. Schafer, N. Kinnett, S. Hodges, B. Crockarell, C. Harley, S. Spencer, S. Hairston, F. Feldmann. *Second row:* L. Bryant, M. Williams, S. Harms, J. Williams, N. Vancil, Melinda Green, K. Deeter, L. Trautwein, P. Cox, M. Bruns, S. Williams, W. Tyau. *Third row:* P. Lorey, J. Hoyt, C. Hopkins, I. Crews, K. Glaser, M. Fitts, R. Fones, M. Castleberry, L. Hopke, N. Ordelleide, R. Beckmann, M. Hard. *Fourth row:* T. Watkins, C. Richards, D. Davis, N. Matlock, S. Miller, S. Lee, J. Conrath, J. Whalen, N. Roberts, E. Devlin, G. Rehg, C. Tschannen, C. Gibson, Mary Green.
Director: Mr. Milton Rehg.

Mu Phi Epsilon

. . . a national professional
music sorority to advance
musicians in outstanding
performances . . . fellowship
. . . stimulation . . . com-
position . . . research.



Left to right: E. Bohn, A. Gatchell, G. Rehg, E. Butler, M. E. Wall, M. K. Pagel,
M. Green, K. Glaser.
Sponsor: Miss Gertrude Isidor.

Orchestra

. . . ensemble music at its best . . . interpreted for enjoyment . . . music from the classical to the contemporary mode.



First row, left to right: G. Rehg, N. Nordyke, J. Robinson, T. Davis, K. Deeter, A. Gatchell. *Second row:* M. Dorman, R. Chapman, J. Hutchens, N. Ordelleide, J. LaVigne, H. Norman, D. Davis, M. K. Pagel, S. Williams, J. Reeves, A. Wilson, B. Miller. *Third row:* B. Koeller, M. Green, C. Sutton, A. Dakin, E. Butler, P. Lacey, J. Hodges.
Director: Mr. Robert Cruce.



Choralaires

. . . awaited with anticipation . . . a small and unique group seeking to present artistic and colorful singing both on and off campus.

First row, left to right: M. McIntosh, K. Ritchey, S. Hill, S. Brasher. *Second row:* A. Stewart, H. Rice, B. Kasper. *Third row:* M. E. Wall, B. Koeller, E. Butler.
Director: Mr. Wayne Balch.

Modern Language Club

. . . to increase interest in the modern languages . . . to enhance the knowledge of the peoples, ideas, and cultures which they serve.



First row, left to right: J. Beaty, H. Rice, K. Meyer, Vice President; F. Finch, Vice President; L. Heusinkveld, President. Second row: B. Kelton, M. Bruns, B. Owens, N. Russell, K. Ritchey, M. S. Bragg, P. Thorner, C. Jones. Third row: N. Babb, G. Lent, R. Ryter, S. Kalbfleisch, L. Bragg, M. DuTeau, Jeanette Williams.

Modern Language Club



First row, left to right: J. Meyer, S. Brasher, B. Bullion, P. Richards, K. Magie. Second row: L. Cotton, S. Potter, P. Walter, C. Krizer, Y. Crovella, V. Orr, M. S. Terry, J. Lovins, S. Hill, D. Lacy. Third row: L. Crane, N. Calvert, P. Wheeler, G. Pauly, N. Rector, D. Floyd, A. Wilson, P. Winans, W. Hall, V. Head, J. Tibbals.



First row, left to right: C. J. Clark, K. Klabau, M. Hay, B. Larson. Second row: S. Hairston, N. Camp, B. Wadlow, P. Farrell, E. Huddleston, E. Word, M. Worley, C. Harley, S. Hong. Third row: M. Green, C. Richards, J. Tavlin, P. Salvador, M. Thiele, R. Sotiropoulou, M. Bassnett, P. Lacey.
Sponsor: Mr. Oscar Henning.

Women's Recreational Association



. . . to promote and foster an extracurricular program of wholesome recreational activities . . . to encourage good sportsmanship, leadership, and participation in recreational and social activities.

First row, left to right: E. Word, P. Farrell, B. Wadlow, T. Chapman, C. Zotos, S. Smith, M. Severin, N. Rector, M. Avey, E. Huddleston. Second row: P. Walter, P. Newell, Vice President; B. Dinkmeyer, N. Nixon, M. Kroepel, Secretary; M. Rankin, President; M. Jones, Treasurer; J. Walker, K. Province, P. Chin. Third row: B. Kelton, C. Krizer, G. Holzer, J. Meyer, S. Loden, J. Beaty, B. Bowen, L. McLeod, K. Burt, S. Perry, I. R. Barklage, M. Roussalis, H. Woog. Fourth row: M. Tinsley, L. Gillespie, M. Crane, C. Milliken, J. Conrath, K. Ritchey, M. Compton, J. Hancock, F. Finch.
Sponsor: Miss Betty Barbee.

Orchesis

. . . to increase interest in the art of the dance . . . the expression of emotional and mental ideas and feelings through movement.



First row, left to right: B. Lee, Secretary-Treasurer; J. Meyer, President; G. Atal, J. Rundell. Second row: L. Dameron, L. Trautwein, D. Nocheff, P. Nelson.
Sponsor: Mrs. Grazina Amonas.

Beta Chi

. . . to encourage better horsemanship, better sportsmanship, and to promote an interest in horses and equitation.



First row, left to right: L. McLeod, L. Russell, F. Givens, M. Hensley, C. Davidson, Treasurer; M. Crane. Second row: B. Kelton, M. Rankin, J. Beaty, S. Loden, Vice President; J. Lanman, J. Walker. Third row: J. Brown, L. Heusinkveld, K. Burt, S. Perry, S. Taylor, J. Broeckelmann, President; C. Gibson, V. Orr, K. Province, Secretary. Sponsor: Miss Fern Palmer.



Terrapin

. . . to increase proficiency in aquatic skills . . . to promote good fellowship in swimming . . . synchronized beauty.

First row, left to right: S. Alexander, J. McLain, D. Lacy, President; H. Moeller, Secretary-Treasurer; M. Tinsley, Vice President; J. Wolf, J. Hoyt, S. Hutchinson. Second row: L. Gillespie, S. Weatherby, I. R. Barklage, S. Benderoff, N. Lantz, P. Roberts, S. Hill, D. Noble, R. Ryter, A. B. Defabaugh, F. Nagel. Sponsor: Mrs. Grazina Amonas.

Young Republicans

. . . a vibrantly active and strongly partisan organization . . . to keep informed on party politics . . . to further political education and participation.



First row, left to right: P. Walter, C. Tying, J. Walker, B. Wadlow, K. Dunham, P. Farrell, E. Word, G. Nicholls. *Second row:* P. Jones, J. Conrath, D. Langridge, C. Krizer, P. Chin, S. Lee, E. Huddleston, J. Copeland, L. Cotton, H. Moeller, K. Ritchey. *Third row:* L. McLeod, S. Hillstrom, C. Stephenson, A. Bates, M. McInnis, K. Hunt, S. Gordon, S. Taylor, M. Thiele, F. Finch, E. Horstmann.



First row, left to right: M. Kroepel, A. B. Defabaugh, G. Holzer, D. Grimes, *President;* K. Zotos, *Secretary-Treasurer.* *Second row:* R. Sotiropoulou, J. Pratt, M. McLeod, M. Dorman, A. Weatherwax, S. Freegard, J. Lovins, M. Cherner. *Third row:* J. Williams, P. Hollenbeck, M. Bragg, P. Richards, M. Roussalis, Z. Myers, F. Feldmann.
Sponsor: Miss Mary Lichliter.

Young Democrats

... to foster and perpetuate the ideals and principles of the Democratic party ... to stimulate an active interest in governmental affairs and the ideals of good government.



First row, left to right: A. Clevenger, C. Wood, President; S. Brasher. Second row: M. Green, R. Roberts, D. Shigley, M. Compton. Third row: S. Smith, F. Johnson, N. Tucker, C. Gibson, V. Natho, A. Wilson, M. Wilson, C. Jones. Sponsor: Dr. Homer Clevenger.

International Relations Club

... a living, operating force
... encouraging a knowledge of world affairs ...
promotion of international understanding.



First row, left to right: W. Tyau, J. Burgin, Treasurer; B. Lee, President; P. Chin, Secretary; P. Jones. Second row: M. Bruns, P. Thorner, G. Atal, F. Finch, R. Sotiropoulou, M. Dorman, C. Tying, C. Kattmann. Third row: S. Hong, Y. Crovella, J. Walker, M. Thiele, E. Horstmann, M. Kroepel, G. Nicholls, Metta Roussalis, K. Ritchey, D. Langeneckert, P. Salvador, Mary Roussalis. Sponsor: Mr. Frank Armstrong.



First row, left to right: B. Smythe, J. Nelson. Second row: M. Worley, K. Dunham, M. S. Bragg, P. Richards, K. Zotos. Third row: M. McLeod, M. Dillard, A. Wilson, K. Ritchey, M. Compton, D. Shigley, E. Horstmann, M. Dorman.

League of Women Voters

. . . a nationally-affiliated campus organization of community-conscious women . . . education to the rights and responsibilities of citizenship . . . non-partisan.



First row, left to right: S. Gordon, Secretary; M. Roussalis, President; J. Ritter, Treasurer; A. Clevenger, Vice President. Second row: E. Hay, E. Word, B. Wadlow, P. Farrell, F. Finch, E. Huddleston. Third row: G. Nicholls, B. Spence, S. Perry, K. Burt, P. Chin, M. Ward, S. Taylor, B. Larson, C. Krizer, R. Roberts. Sponsor: Dr. Homer Clevenger.



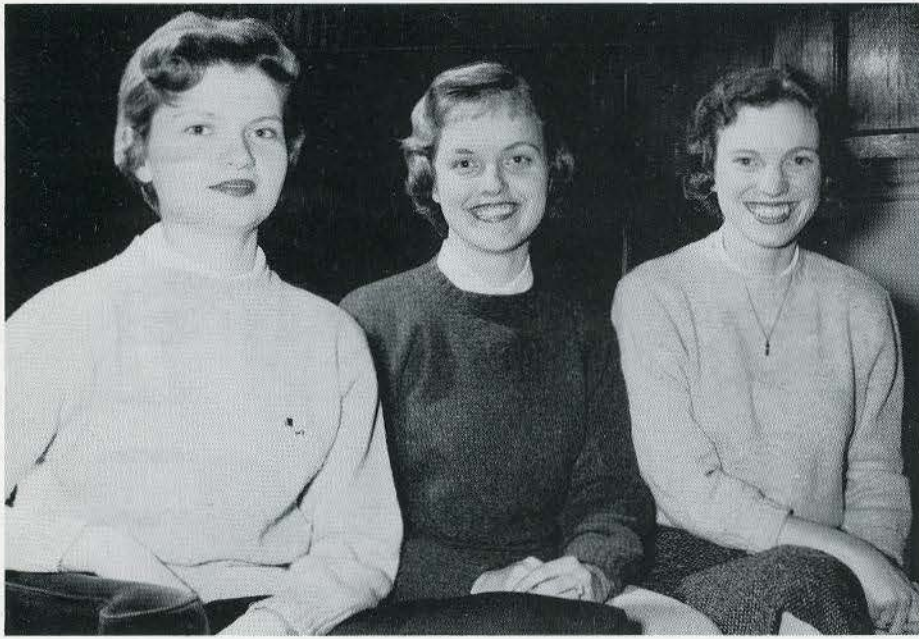
Seated, left to right: M. Kroepel, Business Manager; M. Williams, Assistant Editor; N. Calvert, Picture Editor; B. Spence, Exchange Editor. Standing: B. Layton, Editor; D. Shigley, Feature Editor.

Linden Bark

. . . to be just and impartial in the conveying of news . . . a truthful voice of the campus.



Seated, left to right: J. Ely, L. Crane, J. Sutera, P. Wheeler, B. Darnall, D. Shigley, B. Layton. Standing: M. Kroepel, M. Williams, B. Spence, N. Calvert, M. Terryberry, C. Jones, J. Beaty. Sponsor: Mrs. Donald C. Bryant.



Left to right: C. Cordill, L. Cotton, M. Compton.

Squawker Staff

. . . keeps us up to date on current campus activities and sayings . . . a "suggestion box" of student opinions.



*First row, left to right: C. Ellis, P. Wheeler, N. Durham, N. Nordyke, H. Armour, President; B. Miller, E. Darnall, J. Beaty, S. Potter. Second row: N. Calvert, S. Hairston, B. Spence, B. Ferguson, R. Ryter, K. Prewitt, M. Terryberry, J. Williams, M. Cherner, G. Lent, S. Noland. Third row: C. Punt, Vice President; C. Milliken, C. J. Clark, A. Weatherwax, J. Ely, L. Crane, J. Sutura, J. Orr, S. Stein, M. Kroepel, A. Wilson, E. Thomas, S. Finks, C. Jones, C. Sutton.
Sponsor: Mrs. Donald C. Bryant.*

Press Club

. . . to instill the ideals of a free press into those interested in journalism . . . to recognize achievement in the field of journalistic writing.

Second Semester Students

... ready to participate in the life of their new community . . . enthusiastic members of an integral group.



Griffin

Carolyn Baue (*left*), Ana Maria Anton.

... to keep guard over and perpetuate the treasures of the best literary work of the students . . . as the mythological griffin "kept guard over hidden treasures."



Left to right: Gul Atal, *Art Editor*; Liz Bohn, *Editor-in-Chief*.



First row, left to right: S. Purdue, C. Childs. *Second row:* G. Atal, *Art Editor*; R. Roberts, E. Bohn, *Editor-in-Chief*; H. Armour, E. Thomas.
Sponsor: Dr. Agnes Sibley.



MARIA CHERNER
Editor

Linden Leaves

. . . the summary of a full and busy year
. . . a presentation of the highlights . . .
a chronicle for those in the future . . . a
reminiscence for those who experienced
the recordings . . . an album of pictures
—the autograph of Lindenwood.



Left to right: S. Freegard, Organization Manager; J. Johnson, Literary Editor; L. McLeod, Assistant Advertising Manager; M. Cherner, Editor-in-Chief; E. Devlin, Assistant Editor; M. Warner, Business Manager; N. Bowser, Art Editor; N. Babb, Assistant Organization Manager. Not pictured: M. Carr, Advertising Manager.
Sponsors: Miss Emma Purnell, Mrs. Donald Bryant, Mrs. Mary Alice Gildehaus, Miss Judith Glover.

Linden Scroll

. . . Senior honorary society . . . in recognition of loyalty to the fundamental purposes of the college . . . of honesty in seeking to know and respond to the great spiritual values of life . . . of effective leadership, good citizenship, and good scholarship.



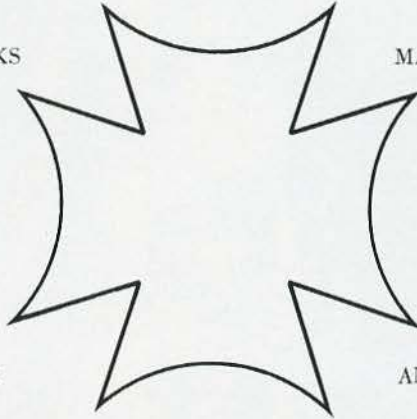
SYDNEY FINKS



MARIA CHERNER



SUE POTTER



ANN GATCHELL



CAROL GARDNER



ELAINE LUNT



ANN STEWART
President



BARBARA KOELLER
Secretary



ELLEN DEVLIN
Chaplain



BETTY MILLER
Treasurer

QUEENS *and* COURTS







1957
Memories
Harvest Queen
LINDENWOOD COLLEGE

*Harvest Queen
Mary D. Williams*

Harvest Ball



First row: Connie Ellis. Second row, left to right: Sarah Weatherby, Lucinda Depping, Glenda Garrett, Sondra Mitchell. Third row: Johanne Repper, Kathleen Horner, Marietta Tinsley, Peggy Limbaugh, First Maid; Mary D. Williams, Queen; Ann Boswell, Second Maid; Diana Macurda, Jeanne McLain, Elaine Word.



*Valentine Queen
Sherral Musgrove*

Valentine Ball



Kitty Zink, *Second Maid*; Sherral Musgrove, *Queen*; Carol Davidson, *First Maid*.

May Court



*May Queen
Joan Broeckelmann*

May Court



*Maid of Honor
Diane Floyd*

May Court



*Freshman Attendants
Cynthia Richards, Claire Schlosberg*

May Court



*Sophomore Attendants
Mary Fletcher Cox, Joan Meyer*

May Court



*Junior Attendants
Julie Orr, Verna Lou Lloyd*

May Court



*Senior Attendants
Carol Gardner, Heather Armour*

Student Directory

- Adams, A. Jane, Birmingham, Mich.
Adams, Judith Kay, Ardmore, Okla., 79, 91
Adams, Sandra Sue, Jefferson City, Mo., 74
Ahrens, Margaret Marie, Centralia, Ill., 73, 91
Alexander, Helen Suzanne, Dallas, Tex., 68, 93, 99
Allen, Carole Ann, Houston, Tex., 44
Allen, Doris Jean, Hamilton, Ill., 73
Allender, Sue Mary, Wausaw, Wis., 73
Anton, Ana Maria, Camaguey, Cuba, 105
Armour, Heather Sandra, Kirkwood, Mo., 44, 104, 105, 119
Armstrong, Frances, Robertson, Mo.
Atal, Gul, Alsancak, Izmir, Turkey, 44, 89, 91, 98, 101, 105
Avery, Mary Carolyn, Jefferson City, Mo., 69
Avey, Miriam Lynette, Marshalltown, Iowa, 73, 98
Axmann, Abigail, Manitowoc, Wis., 73
- Babb, Nancy Kay, Tulsa, Okla., 73, 84, 93, 96, 106
Bailey, Margaret Joy, Ely, Minn., 68
Balderson, Kay, Wamego, Kans., 73
Barklage, Ina Rae, St. Charles, Mo., 73, 88, 98, 99
Barnes, JoAnn, Dallas, Tex., 73
Barsness, Rae Lee, Humboldt, Iowa, 73
Bassnett, Margaret Irene, Downers Grove, Ill., 73, 97
Bates, Alice, Centralia, Ill., 78, 87, 100
Baue, Carolyn Marie, St. Charles, Mo., 88, 105
Bayer, Carolyn Elizabeth, Nashville, Tenn., 69, 87
Beaty, Janice Dorothy, Dallas, Tex., 78, 88, 96, 98, 99, 103, 104
Beckmann, Ruth Louise, Carlyle, Ill., 62, 94
Beebe, Carolyn, Glenview, Ill.
Benderoff, Sherilynn Kaye, Des Moines, Iowa, 68, 92, 99
Berger, Mary Knox, Nashville, Tenn., 62
Berman, Harriet Elaine, Ithaca, Mich., 62
Biggs, Mary Jane, Paducah, Ky., 70
Bishop, Ann, Flint, Mich.
Bittner, Groff S., Altoona, Pa.
Black, Carolyn E., Circleville, Ohio, 88
Bohn, Elizabeth Ann, Ft. Worth, Tex., 62, 84, 91, 94, 105
Boren, Mary Lee, Booneville, Ark., 69
Bost, Jane L., Grand Island, Nebr., 78, 87, 88
Boswell, Ann Leneave, Paducah, Ky., 78, 111
Bowen, Barrie, Park Ridge, Ill., 71, 87, 98
Bowser, Nancy, Tulsa, Okla., 45, 89, 106
Boyd, Sandra Alice, Grand River, Iowa, 78
Boyington, Connie, Joplin, Mo., 69, 93
Bozorgmehri, Nahid, Ahvas, Iran, 71
Bragg, Linda Evelyn, Little Rock, Ark., 78, 96
Bragg, Mary Sue, Oklahoma City, Okla., 67, 86, 92, 96, 100, 102
Brashear, Sandy, Bowie, Tex.
Brasher, Sally M., Lexington, Mo., 67, 88, 95, 97, 101
Bray, Joan, Sand Springs, Okla.
Breedon, Yolanda, Anderson, Ind., 45
Britt, Elizabeth Ann, Ft. Smith, Ark., 62
Broeckelmann, Joan, St. Charles, Mo., 45, 85, 87, 88, 92, 99, 114
Brown, Betty Yvonne, Washington, Ill., 78
Brown, Judy Allen, Little Rock, Ark., 99
Bruning, Edith Idele, Wright City, Mo.
Bruns, Myril Enid, St. Louis, Mo., 78, 91, 94, 96, 101
Bryant, Lynne, Kansas City, Mo., 77, 94
Bullion, Brenda, Fordyce, Ark., 78, 97
Burgin, Martha Joann, Birmingham, Ala., 46, 84, 101
Burt, Kathleen Anne, Coal City, Ill., 72, 98, 99, 102
Butler, Elizabeth, Hampton, Iowa, 62, 82, 91, 94, 95
- Calvert, Nancy Ann, Michigan City, Ind., 76, 88, 90, 97, 103, 104
Camp, Norma Lee, Oklahoma City, Okla., 69, 84, 86, 89, 97
Carr, Mary Anne, Flint, Mich., 46, 106
Carroll, Carolyn Vantreau, Amarillo, Tex., 74
Castleberry, Mitzi, Newport, Ark., 78, 88, 94
Chapman, Antoinette, Cleveland Heights, Ohio, 62, 85, 98
Chapman, Ruth Gordon, Cleveland Heights, Ohio, 78, 91, 95
Cherner, Maria Louise, Hays, Kan., 46, 100, 104, 106, 107
Chevalier, Alyce Faye, Tampa, Fla., 47, 89

- Childs, Cornelia Mason, Lubbock, Tex., 62, 83, 84, 91, 105
- Chin, Young Ping, Forrest City, Ark., 74, 87, 91, 93, 98, 100, 101, 102
- Clark, Cora Jane, New Orleans, La., 69, 90, 97, 104
- Clark, Mary Ann, Warr Acres, Okla., 74, 88
- Clevenger, Elizabeth Ann, St. Charles, Mo., 47, 85, 87, 88, 92, 101, 102
- Cochran, Jean, Dallas, Tex., 69
- Combe, Susanne, Greenville, Ill., 69, 82, 93
- Compton, Marjorie Lee, Little Rock, Ark., 68, 82, 85, 98, 101, 102, 104
- Conrath, Jean Rilliet, University City, Mo., 70, 92, 94, 98, 100
- Cook, Sara Margaret, Camden, Ark., 78, 88
- Cooper, Jane Elizabeth, Tulsa, Okla., 62, 84, 89, 91
- Cooper, Suzanne Madeline, Spring Lake, Mich., 68
- Copeland, Katherine Jane, Ft. Smith, Ark., 68, 86, 93, 100
- Cordill, Carole Hazel, Omaha, Nebr., 68, 104
- Cotton, Linda Kay, Ft. Smith, Ark., 68, 85, 97, 100, 104
- Cox, Mary Elizabeth, Kansas City, Mo., 62, 89, 91
- Cox, Mary Fletcher, Morrilton, Ark., 71, 117
- Cox, Penelope Steele, Manhasset, N. Y., 78, 94
- Cox, Sally Wood, Morrilton, Ark., 47, 89
- Crane, Linda, Nashville, Tenn., 97, 103, 104
- Crane, Martha, Glencoe, Ill., 78, 98, 99
- Crane, Peggy Orlean, Ft. Smith, Ark., 62
- Crews, Ila Verne, Keiser, Ark., 68, 90, 94
- Crockarell, Betsy Neal, Clarksville, Tenn., 78, 94
- Crovella, Yhagna, Quito, Ecuador, S. A., 78, 97, 101
- Crump, Barbara, Tupelo, Miss., 72, 87
- Dakin, Annette, Ashland, Kans., 78, 95
- Dameron, Linda Elizabeth, Cedar Rapids, Iowa, 74, 98
- Darnall, Elizabeth Glenn, Florence, Ala., 71, 103, 104
- Davidson, Carol Lynne, Lexington, Ky., 70, 99, 113
- Davis, Donna Lou, Sapulpa, Okla., 78, 94, 95
- Davis, Marjorie Mae, Longmont, Colo., 70, 89
- Davis, Tarrie Alice, Alton, Ill., 95
- deBeer, Marilyn, Alton, Iowa, 48
- Deeter, Karen, Topeka, Kans., 78, 93, 94, 95
- Defabaugh, Anna Belle, Bartlesville, Okla., 70, 89, 99, 100
- Depping, Lucinda Margaret, O'Fallon, Mo., 78, 111
- Devlin, Dorothea Ellen, Pine Bluff, Ark., 48, 82, 91, 94, 106, 107
- Devlin, Mildred Elizabeth, Pine Bluff, Ark., 48, 84, 85, 87
- Dillard, Martha, Osceola, Ark., 62, 84, 91
- Dillard, Mary, Osceola, Ark., 62, 82, 91
- Dierking, Virginia Ann, Memphis, Mo., 70
- Dinkmeyer, Betty, St. Charles, Mo., 88, 98
- Dodson, Carolyn Sue, Oklahoma City, Okla., 70
- Dorman, Mariva Sara, East St. Louis, Ill., 48, 84, 95, 100, 101, 102
- Downing, Judy Katherine, Oklahoma City, Okla., 78
- Dunham, Kay Marlene, Quincy, Ill., 67, 100, 102
- Dunlap, Barbara Dale, Blytheville, Ark., 77, 85
- Durham, Nedra Louise, Centertown, Mo., 49, 90, 104
- DuTeau, Margot Ann, Lincoln, Nebr., 68, 96
- Dye, Rebecca Berdona, Unionville, Iowa, 78
- Edwards, Kay, Little Rock, Ark.
- Ellis, Connie, Little Rock, Ark., 78, 84, 85, 104, 111
- Ellis, Suzanne, Memphis, Tenn.
- Ely, Carol Jane, Ft. Worth, Tex., 103, 104
- Epton, Mary Elizabeth, Wewoka, Okla., 78
- Esber, Susanne Marie, Indianapolis, Ind., 92
- Faeth, Marjorie Louise, St. Charles, Mo., 78
- Farmer, Etta Jean, Kansas City, Mo., 75
- Farrell, Patricia Lee, Bartlesville, Okla., 79, 97, 98, 100, 102
- Faulkner, Sheral Marie, Keosauqua, Iowa, 87
- Feldmann, Frances Mary, Covington, Ky., 72, 94, 100
- Fellabaum, Kay Alice, Cincinnati, Ohio, 68
- Ferguson, Robinette (Bobbi), Spirit Lake, Iowa, 77, 104
- Finch, Ferol Ann, Oklahoma City, Okla., 62, 86, 91, 96, 98, 100, 101, 102
- Finks, Sydney, Clinton, Mo., 49, 82, 85, 87, 93, 104, 107
- Fitts, Mary Elaine, Topeka, Kans., 68, 93, 94
- Flanagan, Barbara, Ludlow, Ky., 68
- Floyd, Diane, Ft. Smith, Ark., 62, 86, 91, 92, 97, 115

- Fones, Rosemary, Rogers, Ark., 75, 93, 94
- Foster, Barbara Ann, Ft. Mitchell, Ky., 70, 93
- Foster, Georgiana Patricia, Ft. Worth, Tex., 75
- Fowler, Joy Vesta, Ft. Scott, Kans., 77, 93
- Fractman, Susan Jean, Ponca City, Okla.
- Freeburg, F. Caroline, East Peoria, Ill., 69
- Freegard, Susan Beth, Arcadia, Mo., 63, 91, 100, 106
- Fry, Georgia Darlene, Salem, Ill.
- Fryfogle, Katherine Anne, Grand Rapids, Mich., 63
- Gadberry, Jane, El Reno, Okla., 75
- Gadd, Terry Lou, Ft. Dodge, Iowa
- Gale, Nancy, Concordia, Kans., 69
- Gardner, Carol, Brentwood, Tenn., 50, 82, 83, 93, 107, 119
- Gardner, Karen June, Star City, Ark., 77
- Garrett, Glenda Frances, Nashville, Tenn., 75, 111
- Gaston, Karen Lyn, Princeton, Ind., 63
- Gatchell, Mary Ann, Mountain Grove, Mo., 50, 87, 93, 94, 95, 107
- Gehrs, Elizabeth Ann, Festus, Mo., 50
- Gibson, Olive Constance, Ft. Lauderdale, Fla., 51, 87, 92, 94, 99, 101
- Gillespie, Linda Reed, Cairo, Ill., 77, 98, 99
- Givens, Frances Royster, Henderson, Ky., 77, 99
- Glaser, Karen McKee, Wichita, Kans., 68, 93, 94
- Goldman, Diane Carol, Winnetka, Ill., 75
- Goodnick, Mary, St. Charles, Mo., 63
- *Gordon, Sandra Joy, Homewood, Ill., 63, 100, 102
- Graves, Nancy, Corinth, Miss.
- Green, Mary Magdalene, North Little Rock, Ark., 63, 93, 94, 95, 101
- Green, Melinda Volentine, Birmingham, Ala., 75, 94, 97
- Green, Nancy Elizabeth, Quincy, Ill., 68
- Greene, Roxie, El Dorado, Ark., 51
- Grimes, Donald L., Chanute, Kans., 51, 100
- Grogan, M. Charlyne, St. Louis County, Mo., 70, 85, 89
- Grundmann, Betty Jean, St. Louis, Mo., 63
- Gunter, Martha Kent, Alton, Ill.
- Hackmann, Joyce Ann, St. Charles, Mo., 75, 88
- Hagemann, Betty Jean, St. Louis, Mo., 63
- Haines, Gayle, St. Joseph, Mo., 68
- Hairston, Sandra Kaye, Delaware, Okla., 68, 90, 92, 94, 97, 104
- Halk, Jane Wade, Cherry Valley, Ark.
- Hall, Dinah May, Anchorage, Ky.
- Hall, Wendy, Birmingham, Ala., 73, 97
- Hamacher, Laura Louise, Brook, Ind.
- Hancock, Janet Dean, Carmi, Ill., 69, 98
- Hard, Martha, Albion, Ill., 63, 93, 94
- Harley, Candace, Wichita, Kans., 75, 94, 97
- Harms, Stephanie Susan, Vincennes, Ind., 72, 84, 94
- Harper, Edith Ann, Houston, Tex., 67, 93
- Hay, Mary Emily, Wichita, Kans., 67, 97, 102
- Head, Virginia Elizabeth, Birmingham, Ala., 84, 97
- Heilbronner, Virginia Cove, Henderson, Ky., 75
- Heiligtag, Glee Marie, Imperial, Mo.
- Heinlein, Karen Lee, Jefferson City, Mo., 74
- Hensley, Martha Jean, Florence, Ala., 68, 92, 99
- Heusinkveld, Laura Camille, Sibley, Iowa, 69, 96, 99
- Hiatt, Vivian E. (Mrs. Robt.), Florissant, Mo., 75, 88
- Hill, Susan H., Oak Park, Ill., 69, 95, 97, 99
- Hillstrom, Sarah C., East Grand Rapids, Mich., 68, 87, 100
- Hiltbrandt, Susanne Helen, St. Louis, Mo., 52
- Hinkle, Janet Ruth, Bartlesville, Okla., 73
- Hipple, Marilee Ann, Dayton, Ohio, 63
- Hite, Peggy, Anchorage, Ky., 74
- Hodges, James Wayne, Monahans, Tex., 52, 95
- Hodges, Sarah Jarrett, Pikeville, Ky., 75, 84, 94
- Hoffmann, Nancy Jane, Mt. Vernon, Ill., 72
- Holding, Karen Sue, Redmon, Ill., 73
- Holdinghaus, Lynn Beatrice, St. Ann, Mo.
- Hollenbeck, Margaret Jane, Marshall, Ill., 69, 88, 100
- Holzer, N. Gail, Duluth, Minn., 87, 92, 98, 100
- Hong, Sahee, Seoul, Korea, 63, 97, 101
- Hoogestraat, Elizabeth, Decatur, Ill.
- Hopke, Mary Linda, Caruthersville, Mo., 73, 87, 88, 93, 94
- Hopkins, Carol Ann, Skokie, Ill., 63, 94
- Horner, Kathleen C., Plymouth, Ind., 73, 111

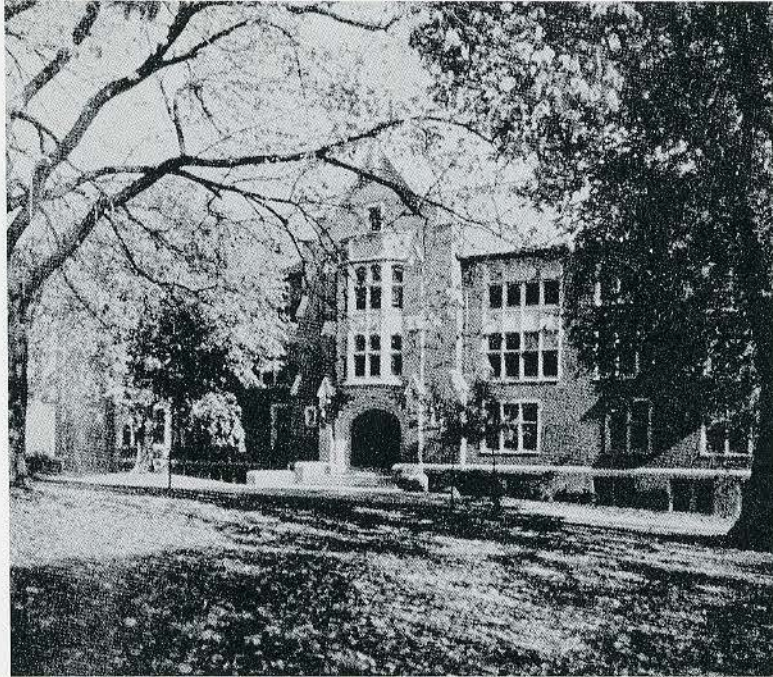
- Horstmann, Ann Elise, St. Louis, Mo., 63, 92, 100, 101, 102
- Hotta, Nori, Yamaguchiken, Japan
- Hoyt, Julia Ann, Kansas City, Kans., 73, 94, 99
- Huddleston, Elaine, Bartlesville, Okla., 79, 97, 98, 100, 102
- Hulse, Nancy Sue, St. Joseph, Mo., 52, 92
- Hunt, Kathryn Julia, Dale, Ill., 67, 100
- Hutchens, Judith, U. City, Mo., 67, 95
- Hutchinson, Sally Sue, Dallas, Tex., 99
- Hutt, Jacqueline Maree, West Peoria, Ill., 73
- Jackson, Nancy C., Lansing, Mich., 69
- Johnson, Froma Jane, Newkirk, Okla., 63, 85, 88, 101
- Johnson, Janet Sue, Munster, Ind., 53, 106
- Jones, Clea Kay, Nashville, Tenn., 71, 86, 96, 101, 103, 104
- Jones, Janet Marcia, Chatham, Ill., 53, 82, 98
- Jones, Margaret Gail, Ft. Smith, Ark., 75
- Jones, Patricia Ann, Paducah, Ky., 70, 93, 100, 101
- Jordan, Mary Sue, Mulberry, Ark., 67
- Jupin, Sondra Rose, Centralia, Ill., 53
- Kalbfleisch, Suzanne Katherine, Nashville, Tenn., 73, 96
- Kasper, Barbara, Kansas City, Mo., 79, 95
- Kattmann, Carolyn, Evansville, Ind., 71, 87, 101
- Kazmaier, Kay Marie, Maumee, Ohio, 67
- Kayarian, Joyce Georgia, St. Louis, Mo., 63, 84, 89
- Kelton, Betsy Jane, Corsicana, Tex., 73, 96, 98, 99
- Kern, Ruth Ann, Kirkwood, Mo., 74, 93
- Kiger, Judith Ann, Muncie, Ind., 67
- Kilpatrick, Joann, Bartlesville, Okla., 74
- Kinnard, Charlotte Louise, Nashville, Tenn., 75
- Kinnett, Nancy, Memphis, Tenn., 75, 94
- Kivlin, Karen, Salem, Ill., 73
- Klabau, Karen Elizabeth, Piedmont, Calif., 67, 88, 90, 97
- Knight, Linda Elizabeth, Ft. Smith, Ark., 73, 88
- Knock, Nancy Lu, Vincennes, Ind., 67
- Koeller, Barbara J., Barry, Ill., 54, 95, 107
- Kondusky, Louise Ann, St. Charles, Mo.
- Krizer, Carolyn Lucile, Bartlesville, Okla., 79, 92, 97, 98, 100, 102
- Kroepel, Marilyn M., Kirkwood, Mo., 63, 84, 92, 98, 100, 101, 103, 104
- Kyle, Sondra Lynn, Murray, Ky., 69
- Lacey, Patricia Ann, Ft. Worth, Tex., 75, 91, 95, 97
- Lacy, Donna, Lawton, Okla., 67, 97, 99
- Lambkin, Janet Ruth, St. Charles, Mo.
- Langeneckert, Doris, Clayton, Mo., 54, 93, 101
- Langridge, Dorothy Jane, Rockford, Mich., 67, 93, 100
- Lanman, Judith, Lexington, Ky., 70, 85, 99
- Lantz, Nancy Sue, Shelbyville, Ill., 73, 99
- Larson, Barbara Lynn, Clarendon Hills, Ill., 68, 97, 102
- Latshaw, Martha Jane, Kansas City, Mo., 64, 93
- LaVigne, Joy Sharon, Northbrook, Ill., 75, 95
- Layton, Elizabeth J., Louisville, Ky., 64, 103
- Layton, Phyllis H., Brentwood, Mo., 54
- LeClaire, C. Joan, Richmond Heights, Mo., 55, 89, 91
- Lee, Barbara Gene, St. Louis, Mo., 55, 98, 101
- Lee, Shirley Jane, Independence, Mo., 67, 93, 94, 100
- Lee, Sonja, Madison, Wis., 67
- Leedy, Anne Bradford, Vincennes, Ind., 72, 93
- Lenington, Drury, Chicago, Ill.
- Lent, Gretchen, Boonville, Mo., 75, 88, 90, 96, 104
- Lesley, Wanda Bullard, St. Charles, Mo., 55
- Lewellen, Lorna Lea, Barrington, Ill., 75
- Lewis, Mary Louise, St. Charles, Mo., 88
- Lewis, Sue Ann, St. Louis, Mo., 75
- Limbaugh, Peggy Sue, Pocahontas, Ark., 75, 111
- Lloyd, Verna Lou, Ft. Smith, Ark., 64, 118
- Loden, Sarah Christine, Wichita Falls, Tex., 70, 85, 89, 98, 99
- Long, Billie Gail, Durant, Okla., 77, 90, 94
- Lorey, Peggy Ann, Shawnee, Kans., 77, 94
- Lovins, Jo Ann, Windsor, Ill., 67, 90, 93, 97, 100
- Lunt, Elaine, Pratt, Kans., 56, 107
- McClintock, F. Elizabeth, St. Charles, Mo., 56, 88, 93
- McCoy, Nina Lynne, Little Rock, Ark., 75
- McGee, Nell, Fayette, Mo., 77
- McGregor, Conett, Bonne Terre, Mo., 77, 94

- McInnis, Martha Carole, Steelville, Mo., 70, 87, 100
- McIntosh, Mitzi Rae, Frederick, Okla., 79, 95
- McKelvey, Joan Ann, Alton, Ill., 77
- McLain, Jeanne, Dallas, Tex., 77, 99, 111
- McLeod, Laurie Jane, Flint, Mich., 64, 98, 99, 100
- McLeod, Mary Margaret, Salem, Mo., 67, 88, 92, 100
- McParland, Susan, Cudahy, Wis., 64
- McPherson, Sue Ann, Homewood, Ill., 77
- Macurda, Diana, Rancho Santa Fe, Calif., 73, 84, 111
- Magie, Kay Kathryn, Albia, Iowa, 97
- Malczycki, Regina, Little Rock, Ark., 76
- Mansfield, Eleanor Marr, Hamilton, Ohio, 67
- Marr, Barbara Ann, Louisville, Ky., 67, 87
- Martin, Nelda Marie, Pattonville, Mo., 75
- Mason, Nancy, Canton, Ill.
- Matlock, Nancy Ann, Pine Bluff, Ark., 77, 94
- Mester, Barbara Ann, Quincy, Ill., 71
- Meyer, Joan Louise, Council Bluffs, Iowa, 89, 97, 98, 117
- Meyer, Katherine, Rockport, Mo., 70, 88, 89, 96
- Miller, Margaret Elizabeth (Betty), Jefferson City, Mo., 56, 82, 86, 90, 95, 104, 107
- Miller, Sally, Pine Bluff, Ark., 67, 94
- Milliken, Connie Lucy, Chattanooga, Tenn., 69, 84, 86, 89, 90, 98, 104
- Milnes, Donna Sue, Paris, Mo., 64
- Mitchell, Sondra Kay, Olney, Ill., 72, 111
- Moehlenkamp, Mary Elinor, St. Charles, Mo., 72, 88
- Moeller, Helen Kay, Ft. Dodge, Iowa, 69, 87, 88, 99, 100
- Mojonnier, Anabel, Oak Park, Ill., 64
- Moulton, Jo Ann, St. Louis, Mo.
- Murray, Lynne Etta, Park Ridge, Ill., 72
- Musgrove, Sherral Anne, Sterling, Ill., 67, 112, 113
- Myers, Zoe Allen, McMinnville, Tenn., 72, 100
- Nagel, Frances Marie, Paducah, Ky., 70, 99
- Nagel, June Edwardeen, Hobart, Ind., 77
- Natho, Virginia, Chester, Ill., 64, 88, 101
- Nelson, Janice Eileen, Bay Village, Ohio, 64, 92, 102
- Nelson, Paula Ann, Webster Groves, Mo., 98
- Nelson, Sylvia Mary, Dousman, Wis.
- Neuling, Geraldine Lorraine, West Alton, Mo.
- Newell, Peggy, St. Charles, Mo., 69, 88, 98
- Nicholls, Virginia Gay, Grand Rapids, Mich., 64, 92, 100, 101, 102
- Nixon, Norma Marie, Ellisville, Mo., 71, 88, 98
- Noble, Dorothy, Winnetka, Ill., 70, 91, 99
- Nocheff, Diane Elena, Granite City, Ill., 71, 98
- Noland, Shirley, Nashville, Tenn., 57, 104
- Nordyke, Nan, Amarillo, Tex., 57, 86, 90, 95, 104
- Norman, Betsy, Wilmette, Ill.
- Norman, Helen Claire, Norman, Okla., 73, 95
- Oesch, Margie Roe, Berkeley, Mo.
- Ogden, Phyllis, Oklahoma City, Okla., 77
- Oglesby, Lucy Lee, Ft. Smith, Ark., 72
- Ordelheide, Nancy, St. Charles, Mo., 77, 94, 95
- Orgun, Meral, Mahmudiye Mah Mersin, Turkey, 64
- Orr, Julie Lynne, Ft. Smith, Ark., 64, 86, 88, 91, 104, 118
- Orr, Virginia Loring, Ames, Iowa, 72, 97, 99
- Orth, Eleanor, Plymouth, Nebr., 64
- Owens, Elizabeth Louise, Troy, Mo., 68, 96
- Pagel, Mary Kay, Wall Lake, Iowa, 70, 93, 94, 95
- Park, Macile Meredith, Oklahoma City, Okla.
- Patterson, Mary Jane, Ft. Smith, Ark.
- Pauly, Frances Gay, Pine Bluff, Ark., 73, 84, 90, 97
- Payne, Peggy Ann, Jasper, Mo., 76, 87
- Pechar, Carol, Salem, Ill., 64, 83, 87
- Perry, Kathleen Lehman, St. Louis, Mo., 71
- Perry, Susan, Ft. Polk, La., 72, 98, 99, 102
- Peterson, Judith Kristin, Wichita, Kans., 57
- Pettey, Patsey Marie, Nashville, Tenn., 64, 82, 84, 92
- Peyton, Melba Jean, St. Charles, Mo., 79, 88
- Phillips, Janet Flo, Plymouth, Ind., 65, 85, 93
- Poole, Sharon, Emporia, Kans., 69
- Potter, Frances Sue, Springfield, Mo., 58, 84, 90, 97, 104, 107
- Pratt, Judith Patricia, Kansas City, Mo., 65, 93, 100
- Prewitt, Karen Ellanor, Indianapolis, Ind., 67, 90, 91, 104
- Price, Patsy, Ft. Smith, Ark., 65, 82, 89

- Privlovsky, Betty Lou, Stuttgart, Ark.
- Province, Doris Kay, Jackson, Tenn., 65, 89, 98, 99
- Punt, Carol Roberta, St. Louis, Mo., 58, 90, 91, 104
- Purdue, Suellen, Kell, Ill., 65, 82, 87, 91, 93, 105
- Ragusa, Ann Elizabeth, Tulsa, Okla.
- Rank, Helen Louise, Humboldt, Iowa, 76
- Rankin, Mary Carolyn, Dallas, Tex., 65, 87, 92, 98
- Rector, Nancy Jane, Little Rock, Ark., 71, 86, 89, 97, 98
- Reel, Sheila Ann, Midland, Tex., 72, 92
- Rehg, Grete, St. Charles, Mo., 58, 83, 93, 94, 95
- Reid, Ellen A., Little Rock, Ark., 72
- Reeves, Judy, Central City, Nebr., 76, 93, 95
- Reilly, Mary Lou, Madison, Ill., 72, 87
- Renne, Sandra, Kansas City, Kans.
- Repper, Johanne, Ft. Worth, Tex., 72, 84, 111
- Rice, Helen Mead, Kansas City, Mo., 70, 86, 89, 91, 95, 96
- Richards, Cynthia, West Plains, Mo., 76, 88, 91, 94, 97, 116
- Richards, Priscilla, West Plains, Mo., 67, 85, 88, 97, 100, 102
- Riley, Bette, Cedar Rapids, Iowa, 69
- Rinderer, Judith Lee, Affton, Mo., 74, 93
- Ritchev, Katherine Cecile, Louisville, Ky., 71, 92, 95, 96, 98, 100, 101
- Ritter, Judith Sue, Olney, Ill., 76, 102
- Roberts, Nancy Maria, Postville, Iowa, 59, 94
- Roberts, Peggy, Dyersburg, Tenn., 92, 99
- Roberts, Rebecca Lee, Longview, Tex., 65, 89, 101, 102, 105
- Robinson, Judith Elaine, Amarillo, Tex., 70, 93, 95
- Robinson, Julianne, Batavia, Ill., 70
- Rodgers, Malinda, Aurora, Ill., 71
- Roussalis, Mary Steve, Casper, Wyo., 65, 91, 92, 98, 101, 102
- Roussalis, Metta Steve, Casper, Wyo., 59, 100, 101
- Rueda, Celia É. Jurado, Cardenas, Matanzas, Cuba, 74
- Rundell, Joan Marie, Rochester, Minn., 76, 98
- Russell, Lettie Lee, Jefferson City, Mo., 65, 99
- Russell, Nancy Kathryn, Ft. Smith, Ark., 71, 96
- Ryter, Renee, St. Louis, Mo., 76, 85, 88, 96, 99, 104
- Salvador, Pilar, Quito, Ecuador, S. A., 71, 97, 101
- Sanchez, Nelsy Ofelia Alvarez, Cardenas, Matanzas, Cuba, 74
- Schafer, Connie Jo, Sterling, Kans., 72, 82, 94
- Schlosberg, Claire, Pine Bluff, Ark., 76, 116
- Schmidt, June, Evansville, Ind., 59
- Schmitt, Sandra Sue, Tampico, Ill., 79
- Seifert, Sally Ann, Crystal City, Mo., 76, 87
- Seitz, Janice Joy, St. Charles, Mo., 79, 88
- Severin, Marlene Faye, Shubert, Nebr., 76, 98
- Shigley, Edith Graham (Dede), Lake Jackson, Tex., 71, 89, 92, 101, 102, 103
- Shippey, Dorothy Louise, Brentwood, Mo.
- Smith, Sandra Sue, Decatur, Ill.
- Smith, Shirley Anne, Quincy, Ill., 65, 87, 98, 101
- Smythe, Betty, Oklahoma City, Okla., 71, 92, 102
- Sotiropoulou, Rhoda, Athens, Greece, 70, 97, 100, 101
- Spence, Aldeth Elaine, Louisville, Ky., 102, 103, 104
- Spencer, Sue, Kansas City, Mo., 72, 94
- Spickelmier, Julia Ann, Washington, Mo., 60
- Springsted, Saundra Mae, St. Joseph, Mo., 76
- Stafford, Kathleen, St. Charles, Mo.
- Stein, Sara Lynne, Indianapolis, Ind., 65, 91, 104
- Stephenson, Caroline, Boone, Iowa, 72, 87, 100
- Stewart, Lois Ann, Ft. Smith, Ark., 60, 83, 84, 86, 87, 89, 91, 95, 107
- Sundland, Claire Jane, Duluth, Minn.
- Sutera, Judith Ann, Marion, Iowa, 76, 103, 104
- Sutton, Constance Jean, Danville, Ill., 65, 90, 95, 104
- Swindel, Sondra Rae, Doniphan, Mo., 76
- Talbott, Claudine, Wichita, Kans., 68, 87
- Tavlin, June Preston, Cincinnati, Ohio, 76, 97
- Taylor, Jean Louise, Detroit, Mich., 71
- Taylor, Mary Elizabeth, Brownwood, Tex., 76, 84, 90, 91
- Taylor, Sandra A., Sioux Falls, S. Dak., 60, 84, 87, 99, 100, 102
- Teal, Barbara, San Francisco, Calif., 76
- Terry, Mary Sue, Ft. Worth, Tex., 74, 97

- Terry, Virginia Lee, St. Charles, Mo., 79, 88
- Terry, Virginia (Mrs. A. W.), St. Charles, Mo., 65
- Terryberry, Mary Ann, Grand Rapids, Mich., 74, 92, 103, 104
- Thiele, Melita Charlotte, Milwaukee, Wis., 87, 93, 97, 100, 101
- Thomas, Elizabeth Ann, Nashville, Tenn., 65, 91, 104, 105
- Thorner, Christina, Stockholm, Sweden, 69, 74, 91, 96, 101
- Tibbals, Jane Owens, Collinsville, Ill., 74, 84, 91, 97
- Tinsley, Marietta Mast, Mexico, Mo., 72, 98, 99, 111
- Trautwein, Lily Ann, St. Louis, Mo., 68, 94, 98
- Trendley, Sharon Fowler, St. Charles, Mo.
- Tschannen, Charlotte Elaine, Litchfield, Ill., 65, 94
- Tucker, Nancy Ann, Crossett, Ark., 69, 86, 87, 101
- Tyau, Wilma Kam Ying, Honolulu, T. H., 76, 94, 101
- Tyring, Cynthia Ware, Evansville, Ind., 71, 89, 93, 100, 101
- Updyke, Janice Estelle, Wellsville, Mo.
- Vancil, Nan, Downers Grove, Ill., 75, 94
- Van Woert, Edwin D., Peekskill, N. Y., 61
- Vry, Laurelee Ann, Lexington, Ky., 76
- Wadlow, Betty Jane, Bartlesville, Okla., 74, 97, 98, 100, 102
- Wall, Mary Ellen, Affton, Mo., 66, 84, 92, 94, 95
- Walker, Janet Lee, Aurora, Ill., 71, 88, 93, 98, 99, 100, 101
- Walter, Peggy Lynn, Elk City, Okla., 97, 98, 100
- Ward, Marjorie Ann, Kansas City, Mo., 70, 102
- Ward, Sharon Elizabeth, Little Rock, Ark., 75
- Warner, Mary Kathryn, Brighton, Ill., 66, 93, 106
- Watkins, Thalia, Monticello, Ark., 77, 94
- Watts, Margaret Jane, St. Charles, Mo., 88
- Wear, Wanda, Nashville, Tenn.
- Weatherby, Sarah, Brownwood, Tex., 76, 99, 111
- Weatherwax, Elizabeth Ann, Jackson, Mich., 66, 93, 100, 104
- Webb, Mary Jewel, Jasper, Mo., 76
- Weddington, Suzanne Jane, Ft. Madison, Iowa, 74
- Weinberger, Marianne, Charles City, Iowa
- Wentker, Ann, St. Charles, Mo.
- Wescoat, Mary Laura Ann, Cape Girardeau, Mo., 71
- Westerfeld, Jacqueline C., St. Charles, Mo., 74, 88
- Westwood, Kay, Elmhurst, Ill., 66
- Wethers, Alice Kay, Arnold, Mo., 66
- Whalen, Judith Ann, Kankakee, Ill., 78, 93, 94
- Wheeler, Peggy, Houston, Tex., 76, 97, 103, 104
- Williams, Jeanette Yvonne, Dallas, Tex., 79, 91, 96, 100
- Williams, Joanne, Tulsa, Okla., 75
- Williams, June Carol, Jackson, Mo., 78, 93, 94, 104
- Williams, Mary Delia, Franklin, Ind., 72, 94, 103, 110, 111
- Williams, Sandra, Iowa City, Iowa, 66, 94, 95
- Wilson, Ahnawake, Vinita, Okla., 66, 95, 97, 101, 104
- Wilson, Angela, Winchester, Ill., 79
- Wilson, Joyce, Oklahoma City, Okla., 76
- Wilson, Marilyn, Miami, Okla., 71, 101
- Winans, Patricia, Cincinnati, Ohio, 72, 97
- Winburn, Judith Anne, Kansas City, Mo., 71, 86
- Winegarner, Linda Jo, Markham, Ill., 69
- Wingren, Sondra, Sioux City, Iowa
- Winter, Jane Ann Havenhill, St. Louis, Mo., 61
- Witt, Karen Rae, Olney, Ill., 72
- Wolf, Jacqueline Jeanne, Oak Park, Ill., 69, 92, 99
- Wolf, Nicolyn Amelia, Lebanon, Ill., 88
- Womack, Annette, Lebanon, Tenn., 74, 92
- Wood, Carolyn Joy, Marietta, Ga., 61, 93, 101
- Wood, Georgia Anne, Independence, Mo., 82
- Woog, Hedy Sue, South St. Paul, Minn., 77, 82, 98
- Word, Elaine Averett, Bartlesville, Okla., 74, 91, 92, 97, 98, 100, 102, 111
- Worley, Mary Marcia, Franklin, Mich., 71, 92, 97, 102
- Worth, Katherine Ann, Louisville, Ky., 77
- Wrobel, Catherine Charlotte, Kansas City, Mo.
- Zink, Kitty Marguerite, Lexington, Ky., 70, 113
- Zotos, Catherine, Affton, Mo., 66, 85, 88, 92, 98, 100, 102





Congratulations to the students of Lindenwood College on this yearbook. Your college hopes that it has served you well during your student days and it is eager to be of further service to you wherever you are in the years ahead.

LINDENWOOD COLLEGE

ST. CHARLES, MISSOURI

FIRST NATIONAL BANK

OF ST. CHARLES, MO.

LEE I. WHITE *President*

DR. AUGUST WESTERFELD *Vice President*

W. C. BORGELT *Cashier*

PAUL H. KNOBLAUCH *First Assistant Cashier*

GLENNON DEBRECHT *Assistant Cashier*

Capital \$300,000.00

Surplus \$300,000.00

Undivided Profits
and Reserves \$450,000.00

DIRECTORS

HENRY J. ROTHER

DR. AUGUST WESTERFELD

PERCY G. SCHAEFER

LOUIS WILKE

DR. FRANC L. McCLUER

LEE I. WHITE

WALTER BORGELT

ESTABLISHED IN

1863

MEMBER FEDERAL RESERVE SYSTEM

Under the Supervision of the United States Government

MEMBER

FEDERAL DEPOSIT INSURANCE CORPORATION

**Photographer for the
1958 Linden Leaves**

**GRAVEMANN
STUDIO**

**"The Area's Leading and Most
Versatile Photographer"**

Reprints of Portraits
Appearing in This Book
May Be Purchased Indefinitely

TELEPHONE

2-2267

911 Milton Rd.

ALTON, ILL.

COMPLIMENTS
OF

CROTTY BROTHERS, INC.



COMPLIMENTS

OF

HEDGES & HAFFER

KREY PACKING COMPANY

Quality Meat Products

Since 1882

Beef — Pork — Veal — Lamb

Fresh Sausage Made Daily

21st and Bremen Avenue

ST. LOUIS 7, MO.

MAin - 1-2408

SHATTINGER MUSIC COMPANY

Music for the Teacher, for Entertainment, and for Use in Worship.

331 Arcade Building

St. Louis 1, Mo.

BRAUFMAN'S

Congratulations, Seniors . . .

You've done a fine job. Your record at Lindenwood — whether academic, musical or social — will be an achievement to look back on with great pride.

We are pleased . . . if we have helped in any way to make your stay here more pleasant.

HUNING'S

BUSE'S FLOWER SHOP

400 Clay Street
Phone RA 4-0148

EDMUND C. BURKE, Plumber and Heating Contractor
Stokers and Oil Burners

PHONE RA4-6262

ST. CHARLES, MO.

COMPLIMENTS
OF

SHEAR'S

St. Charles' Newest Department Store

305 N. MAIN

DENNING'S

112 N. Main
RADIO AND TV SERVICE

RECHTERN CLEANING CO.

216 North 2nd St.
ST. CHARLES, MO.

SNYDER'S VOGUE

Quality at No Price Penalty
ST. CHARLES, MO.

Compliments
of

J. C. PENNEY CO.

BANNER NEWS COMPANY

St. Charles, Mo.

PRINTERS

PUBLISHERS

Compliments of
PARKVIEW GARDENS

Flower Shop and
Greenhouse

RAndolph 4-1925

1925 RANDOLPH

Compliments of
DON'S SERVICE STATION
AND MOE'S GRILL

1130 Clay

ST. CHARLES, MO.

Proprietor
MOE FISCHBACH

Both—One Block East of the College on Clay Street

RAUCH LUMBER & GROCER CO.

General Office
ST. CHARLES, MISSOURI

Retail Yards
St. Charles — Kirkwood — Washington
Marthasville — Robertson — Moscow Mills

Wholesale Grocer
St. Charles, Missouri

"YOU ARE ALWAYS WELCOME
AT A RAUCH LUMBER YARD"

GAS

SERVES YOU BETTER
THROUGH MODERN GAS APPLIANCES

**ST. CHARLES
GAS CORPORATION**

212 North Main Street

Compliments
of
**ARTHUR C. BAUE
FUNERAL HOME**

Stoves

THE BRUNS MACHINE CO.

Farm Supplies

Hardware

Water Systems

Bottled Gas

222-224 North Main Street

Washing Machines

Paints and Oils

ST. CHARLES, MO.

Electric Appliances

HACKMANN LUMBER COMPANY

Lumber — Paints — Hardware

106 N. MAIN STREET

ST. CHARLES, MO.

RENKEN'S SUPER MARKET

701 Clay Street

ST. CHARLES, MISSOURI

Compliments of

COTTAGE BAKERIES

923 North 2nd

ST. CHARLES, MISSOURI

Compliments of

TRUMP CLEANERS

AHMANN'S NEWS STAND

News, Books

Stationery and Tobacco

ST. CHARLES, MO.

223 N. MAIN

Best Wishes
From
OSTMANN MARKET

139 N. KINGSHIGHWAY

ST. CHARLES, MO.

Compliments
of
THE DAILY COSMOS-MONITOR

When Stopping in St. Charles
Stay at the
BUNGALOW COURTS

Telephone
RA 4-2020
1145 Clay Street
ST. CHARLES, MO.

ST. CHARLES HOTEL
Missouri's Finest Small Hotel

COFFEE SHOP

BANQUET ROOM

Compliments of
A FRIEND

SO GOOD POTATO CHIP CO.

2931 Gravois
ST. LOUIS 18, MO.

BENSINGER'S

Food Service Equipment and Supplies
Office Furniture

1007-1009 MARKET BLVD.

ST. LOUIS 1, MO.

MUNGER LINEN SERVICE

5515 Easton, St. Louis 12, Mo.

FO 7-7561

KISTER STUDIO

508 Jefferson Street
ST. CHARLES, MO.

Compliments
of

VESTAL, INCORPORATED

4963 MANCHESTER

ST. LOUIS 10, MO.

The Leading Art Supply House
of the Midwest

Complete Camera Department

BADER'S

1113 LOCUST STREET

ST. LOUIS 1, MO.

Lasco Brand

Lady Pauline

Compliments of
ALLEN FOODS, INC.

ST. LOUIS, MO.

Represented in Your District by

Allen's Pride

MR. JIM JONES

AFCO Brand

Compliments
of
YELLOW CAB

401 North 2nd

ST. CHARLES, MO.

CLARK-SPRAGUE PRINTING CO.

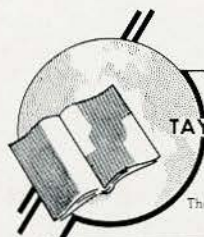
1901 Locust Street
ST. LOUIS 3, MISSOURI

YOUR PATRONAGE
DESERVES OUR CONSTANT
EFFORT TO SERVE YOU BETTER

GRADE "A"
DAIRY PRODUCTS



ST. CHARLES DAIRY
COMPANY



LITHOGRAPHED BY

TAYLOR PUBLISHING CO.

DALLAS • TEXAS

The Best Yearbooks are TAYLOR-MADE





