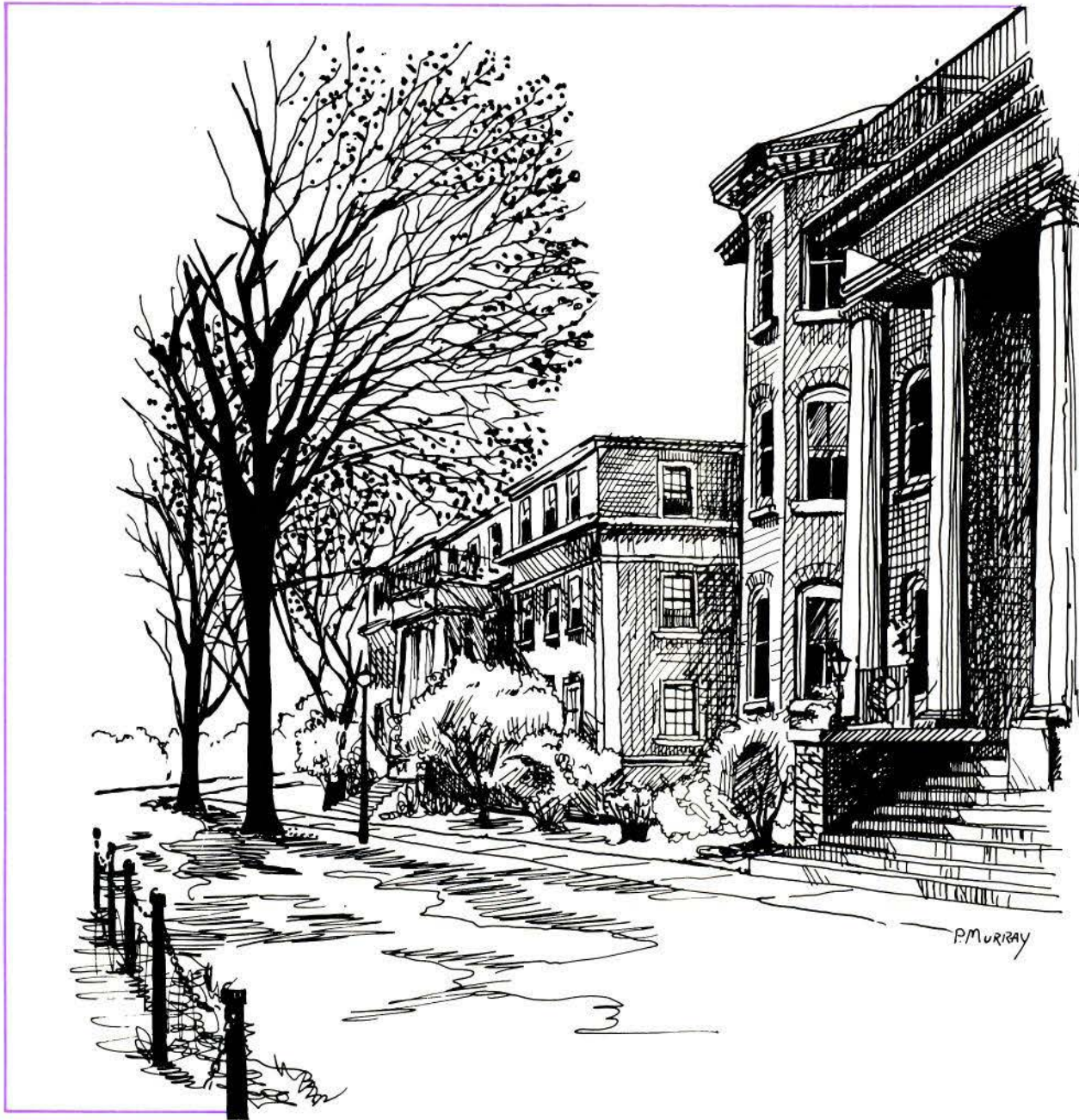


# The State of Your College



The Renaissance Continues  
1985 Annual Report  
Lindenwood College



# The State of Your College

The *State of Your College* is published annually by Lindenwood College, First Capitol & Kingshighway, St. Charles, MO 63301

It is furnished without charge to supporters of the college, including alumni and friends.

Bulk-rate postage paid at St. Charles, MO (permit no. 84).

POSTMASTER:  
Send address changes to:  
Lindenwood College  
Public Relations Office  
First Capitol & Kingshighway  
St. Charles, MO 63301

Editor: RANDY L. WALLICK  
Production: CHRISTINE CORDES  
Layout/Design: PAULA G. MURRAY  
Typesetting: MARCIA GAY

**COVER:** Looking southeasterly past historic Sibley Hall to Niccholls Hall, this scene captures the stately beauty of the Lindenwood College campus. This sketch, as well as others contained in this annual report, was produced by Paula G. Murray, a graphic artist in the college's Printing Center and an undergraduate art student. Standing as the focal point in history and tradition of the college, Sibley was erected in 1857 and is listed in the National Register of Historic Places. Housing the Student Center and related activities as part of expanded student services, Niccolls is named in memory of the Rev. Jack Niccolls, a member of the college's board of directors from 1869-1915.

*A limited number of copies of this booklet are available from the Lindenwood College Public Relations Office, 6 Roemer Hall, St. Charles, MO 63301. We invite your comments and/or suggestions concerning this publication, and we hope you will continue to contribute your ideas and support for Lindenwood College.*

- Alumni support has increased from less than five percent in fiscal 1983 to more than 32 percent this year - an accomplishment virtually unheard of at private colleges and universities in the United States and a feat that places Lindenwood College among top institutions with outstanding levels of alumni support.
- Earlier this year, Lindenwood College recorded its highest spring enrollment in history - 1,847 full and part-time students. Representing a six percent increase from the fall, 1984, enrollment, the record spring enrollment defied national trends that experience a decline in spring enrollment from fall terms.
- Capitalizing upon the record spring enrollment with expanded admissions and marketing pursuits, Lindenwood College secured the highest enrollment in its 158-year history this fall - more than 2,000 students. Representing a 15 percent increase from the fall, 1984, semester, the record enrollment established Lindenwood College as the top institution in the metropolitan area with such an impressive enrollment increase.
- Lindenwood College has increased all levels of fund raising and has secured more in cash and pledges in the past two years than it virtually has in any period of its history. During this year, the college has nearly doubled the number of donors who have pledged their support to the institution.

## Table of Contents

A Letter from the Chairman of the Board of Directors . . . . .	2
The President's Report . . . . .	3
Dean of Faculty's Report . . . . .	4
LCIE/Evening College Report . . . . .	5
College Life Report . . . . .	6
College Administrative Report . . . . .	7
College Admissions Report . . . . .	8
Alumni Activities Report . . . . .	9
Public Relations Report . . . . .	10
Financial Report . . . . .	11
Comparative Condensed Balance Sheet . . . . .	12
Comparative Statement of Operations . . . . .	13
Development and Fund Raising . . . . .	14
Lindenwood Donors by Years . . . . .	15
Lindenwood College Donors . . . . .	16
Board of Directors and Overseers . . . . .	27



---

# Lindenwood College

---

Fall, 1985

Dear Friends of Lindenwood,

Without question the past twelve months have been the most exciting I have experienced while serving at Lindenwood.

1985 has been a milestone year for Lindenwood. As this second annual report describes, Lindenwood is strengthening its position in all areas as part of our continuing Renaissance Campaign.

Lindenwood is truly in the midst of a renaissance by any standard - increased student enrollment and alumni support; enhanced visibility in the academic community and the St. Louis metropolitan area; greater financial stability; and stronger leadership by the college administration.

In order to acquaint you with some of the tremendous strides that this institution has made in the past year, we are publishing our second report. "The State of Your College."

As Lindenwood College moves ahead in its Renaissance Campaign, we need your continuing interest, support and participation. Our future looks brighter than ever, and each of you is the reason for our successful accomplishments and our very optimistic future.

It is an honor to be associated with this historic and dynamic institution. I pledge every effort to continue Lindenwood College's fine traditions and to enhance its academic distinction and leadership as we enter a new phase of our Renaissance Campaign for 1986.

Sincerely,

Robert F. Hyland, Chairman  
Board of Directors

# The President's Report

by JAMES I. SPAINHOWER  
Lindenwood College President

## THE RENAISSANCE CONTINUES.

This is the good news I have to report as I look back on Lindenwood's 158th academic year.

This grand-old college, steeped in tradition, but determined to be responsive to the higher education demands made by today's complex society, continues to graduate students who are well equipped to be productive and responsible. In addition, our graduates have received at least exposure to, and in many cases, extensive orientation in the artistic, cultural and religious aspects of existence that enrich the quality of life.

At the Lindenwood graduation exercises this past Spring, I could not help but be proud of our students and of all who shared in making it possible for a college like Lindenwood to exist. We truly are a college of the Renaissance.

If there is one word that epitomizes what a small liberal arts college is all about, it is probably the word "renaissance." The Renaissance was a time when men plunged ahead by looking back. In art, literature, science, philosophy and religion, the truths of the past became the catalytic substance that was the basis for the eruption of a dynamic new world of beauty and reality. The Renaissance was an age of adventure and curiosity during which men were fascinated with the world about them. An emphasis on the individual and on man's determination to explore the world were characteristics of the Renaissance.

Today's Lindenwood is characterized by that same determination. We are going to continue doing what we've been doing so successfully for so many decades - graduating students who approach the world about them with a style uniquely their own but tempered and molded by the maturing experiences they receive during their Lindenwood years. Here at Lindenwood the Renaissance truly does continue!

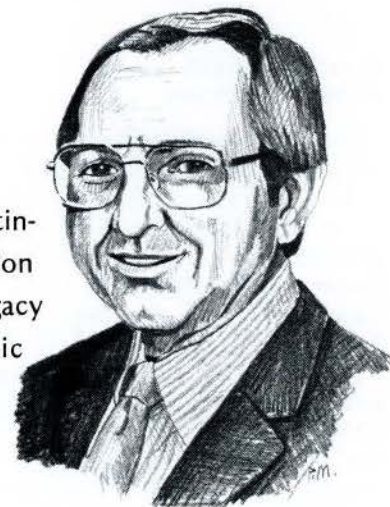
Let me mention several areas, covered in greater depth in the various reports and charts found in this booklet, wherein the 1985-85 Renaissance of Lindenwood is obvious.

## THE RENAISSANCE CERTAINLY CONTINUES IN OUR STEWARDSHIP OF THE LEGACY THAT IS OURS OF A BEAUTIFUL CAMPUS.

During the past year the college's board of directors entered into a contract with Paul Londe & Associates of St. Louis to sell 50 acres of the "farm area" of our campus. The board sold the land only after being assured that the retirement village Mr. Londe is planning for that area complements the college, both architecturally and programmatically. As you will note by the architect's rendering on this page, the tudor English lines of McCluer Hall and the Memorial Arts Building are being duplicated in Lindenwood Village.

Programmatically, the creation by the college of the Institute for Intergenerational Studies with Dean Arlene Taich as the director, permits an academic and collegial connection between the village and the college that should benefit both entities. The program of the village for its senior citizens and the academic pursuits of the college for its varied student

"... Lindenwood continues to be an institution that lives up to its legacy as a quality academic college."



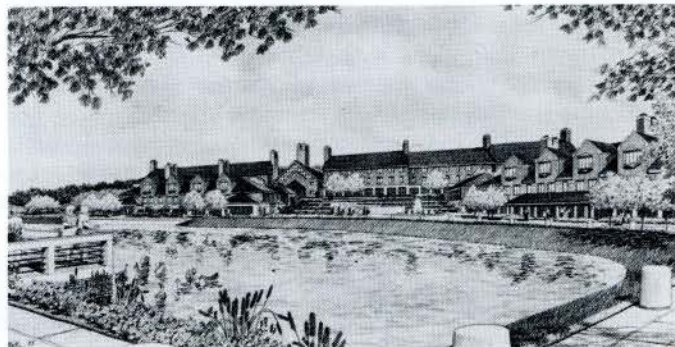
population, will enrich mutually both institutions as, together, they seek to improve the quality of life for persons of all ages.

## THE RENAISSANCE CONTINUES IN THE UNFOLDING OF THE COLLEGE'S ACADEMIC PROGRAM.

We are continuing to emphasize the rebuilding of our residential population. We are convinced that a strong and viable, on-campus residential population, is the necessary core for a solid academic program in all of the college's academic endeavors.

The faculty of the college continues to provide excellent in-depth intellectual leadership. Our faculty rightfully insists that Lindenwood continues to be an institution that lives up to its legacy as a quality academic college. To assist the faculty in implementing these concerns, I have created the Office of Research & Planning. I have instructed its director, Dr. James Swift, who reports directly to me, to give primary attention to ways Lindenwood can help the faculty make our college a stronger academic institution.

No college can achieve high intellectual attainment without quality students. Our Admissions Office, under the direction of Dean Miriam King-Watts, is recruiting students of high intellectual ability. Evidence of success in this laudable effort lies in the fact that this year's entering class is nearly two points above the national average in its average ACT score.



*Continued on Page 25*

# Dean of Faculty's Report

by JAMES F. HOOD  
Acting Dean of Faculty

The day academic program flourished during the past year, and it promises to do so again this coming year.

Last year, we continued the trend begun the year before of increased day-time enrollments. This has had the effect of bringing life and vitality to the curriculum across the board. Students are enrolling more evenly across the course-offering spectrum.

## Two New Programs:

We have one completely-revised and one entirely-new program in operation this academic year. The revised program is the basic business administration curriculum, our most popular offering. The business faculty, under the chairmanship of Dr. Arthur Prell, has rethought the entire program. Its most striking difference is its upper-division orientation.

Students intending to major in business administration are expected to spend the bulk of their first two years in college obtaining a broad, liberal arts base for further study. Except for some courses in accounting and economics, which may be taken in the sophomore year, all business courses are junior-senior level. This has had a favorable impact on enrollments in other departments this fall.

The other program, entirely new, is the Business Communication major, devised by the Communication Department in cooperation with the Business Administration Dept. This new major will prepare students to enter a rapidly-growing field where liberal arts skills may be put to business use in an immediate way. This new program will be available both day and evening.

## New Computer Facilities:

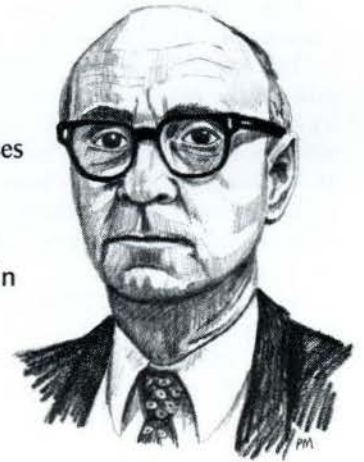
Last year, the Digital VAX 11-750 became available for student use. This fall, it will be joined by a Digital PDP-11 which should go on-line shortly. This computer was obtained through trades with Digital of used computer equipment donated to the college by the Missouri Pacific Railroad. The PDP will be devoted entirely to student applications. It will feature the UNIX operating system, so that Lindenwood computer grads, in either computer science or data-processing, will have been exposed to two major systems, the VMS on the VAX, and the UNIX on the PDP.

Lindenwood promises to have one of the best-equipped student computer programs in the Midwest once the PDP goes operational. Professors Dominic Soda and John Dooley have been responsible, along with Computer Center Director Bob Ferry, for the development of such fine facilities for our computer science students.

## Emeriti:

Two members of the faculty were honored with designation as professors emeritus at the May graduation. Professor Walter Grundhouser of the Biology Department and Professor Howard Barnett of the English Department received this status. Fortunately, both continue to teach at least one course for Lindenwood College.

"Lindenwood promises to have one of the best-equipped student computer programs in the Midwest. . ."



## Curriculum Planning:

The faculty has under way a major study of Lindenwood's general education requirements. This study should be finished for possible recommendations and actions by the faculty in the 1986-87 academic year. This would coincide with the publication of our catalog. Lindenwood, along with hundreds of other colleges and universities, is paying renewed interest to this portion of our curriculum. It is a vital part of the total experience of students at the college. This faculty committee is chaired by Professor Daryl Anderson of the Biology Department.

## Service to Teachers:

This past year, Lindenwood continued to make available its graduate courses and workshops to area teachers at reduced tuition. More than 100 teachers took advantage of these opportunities during the 1985 summer session. Lindenwood offered again this past summer its program on teaching the visually impaired under the sponsorship of the Missouri State Department of Education which provides the bulk of the tuition for teachers taking these courses. It is the only such program in the area and is offered not only in St. Charles but in several other communities whose teachers need such services.

## New TV Facilities:

To keep pace in its growing communications programs, Lindenwood will purchase and install equipment this fall for a television production studio. Professor Amy Hamill has joined the faculty to provide instruction in this area. The equipment will be housed in Young Hall and will expand great opportunities for students in this area of communications.

*Continued on Page 25*

# LCIE/Evening College Report

by ARLENE TAICH  
Dean of Evening College/LCIE

As part of Lindenwood College's Renaissance, The Evening College and the Lindenwood College for Individualized Education (LCIE) have grown and expanded in the past year to meet the varied needs of working adults in the metropolitan area.

Like the population it serves, the Evening College has continued to grow and diversify throughout the year. It's reputation for excellence as a provider of lifelong learning has made Lindenwood College both a popular choice among adults independently seeking further education and as the corporate selection to supply site education.

Through the LCIE, undergraduate and graduate programs are being offered to employees of American Telephone & Telegraph (AT&T). Since January, 1985, Lindenwood has served more than 100 AT&T personnel in six corporate locations in the metropolitan St. Louis area.

Through the Evening College, a renewal was made in the agreement between the college and the General Motors Assembly Division plant at Wentzville. This fall, 122 new students from first and second work shifts are enrolled in eight different courses on site at the Wentzville facility.

We also have begun to offer courses at the national headquarters of United Van Lines in Fenton, MO, and at the regional headquarters for employees of Consolidation Coal Co. of St. Louis.

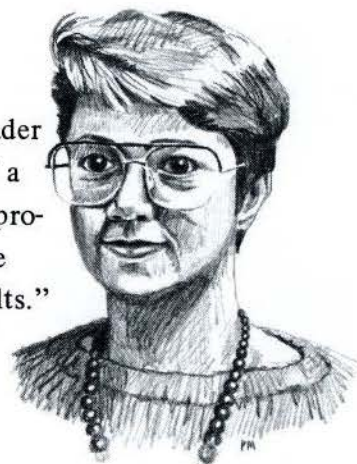
Lindenwood is a leader in the metropolitan St. Louis area in its offering of a wide range of degree programs specifically tailored to meet the needs of working adults. Few other colleges in the nation apply the same concern to the individualized learning needs of each student.

In recognition of our success in written and oral presentation skill development, corporations seek the services of Lindenwood to create workshops to enable their employees to become better communicators. At the national level, Lindenwood College has become well known for its graduate program in valuation sciences. Currently, we are working with the American Society of Appraisers of Washington, D.C., to prepare a series of courses that can serve a national audience of appraisers.

We also are one of the few institutions in the midwest that offers a graduate program in art therapy. With our revised housing policy which enables single and married adult students to live on the St. Charles campus, we expect to see growth in both valuation sciences and art therapy, two areas for which we are a scarce resource.

As our Renaissance continues, we recently announced the establishment of the Lindenwood Institute for Intergenerational Studies. The institute, in connection with the \$80 million Lindenwood Village, will provide an unsurpassed opportunity for research and service, continuing and strengthening Lindenwood College's position as a national leader in lifelong learning.

"Lindenwood is a leader . . . in its offering of a wide range of degree programs . . . to meet the needs of working adults."



Designed as a prototype, the Institute is composed of the Center for Lifelong Learning, the Center for Gerontology & Intergenerational Research and the Center for Community Planning & Service.

Through the Institute for Intergenerational Studies, Lindenwood College programs will be coordinated to serve residents of Lindenwood Village, an innovative community for retirement living that is to be developed on 50 acres of land adjacent to the college's main campus in St. Charles.

As the population of the elderly has increased, the distance between the young and the old also has increased. It is the focus of the Institute for Intergenerational Studies to promote understanding and appreciative relationships among the generations.

Studies on lifespan development, social policy and social change will be conducted through the research center, with an orientation toward explaining the causes and proposing possible resolution of intergenerational conflict.

Results from this research will be available to government agencies, educational institutions and volunteer entities for use in planning community services. In addition, curricula are being designed to provide children and young adults with an understanding and appreciation of the aging process and of the elderly.

Through the Institute, Lindenwood College offers undergraduate and graduate programs in gerontology and in various fields related to the organization and delivery of health and social services to older adults. A full range of lifelong learning options also are available to older adults.

In addition, grants will be proposed to secure national and regional arts and education resources to create on the extended Lindenwood College campus a cultural center for all citizens of St. Charles to enjoy.

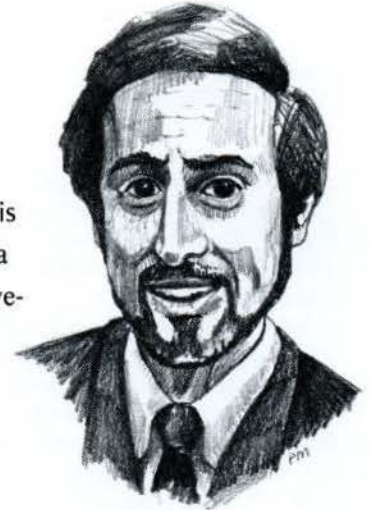
# College Life Report

by ALLEN SCHWAB  
Dean of College Life

Securing and building upon 1983-84 foundation work as part of the Renaissance Campaign was the major challenge last year in the ongoing revitalization of the college's out-of-classroom life. Major accomplishments include:

- The reincarnation of the Lindenwood Student Government (LSG), under its new constitution and representative structure, provided vitally important grass roots energy and leadership. Representative membership changed from seven to thirty-five, with constituent senators mandated from the Evening College, LCIE, commuter and resident students, in addition to at large members.
- The reinstatement of a student activities fee (last present in 1981, and now part of the LSG constitution) had an electric effect. Co-administered with the College Life Office, the fee funds academic, cultural and social programs, while providing operating budgets for virtually all college clubs and organizations. A number of groups, previously dormant, sprang back to life with this new source of funding, with the first college yearbook in six years and a weekly student newspaper, two of the most obvious and beneficial results.
- The new student-faculty-staff judicial board (the college's first J-Board since 1982) began operation in February, illustrating student accountability to the men and women with whom one lives and works, rather than to any single authority figure or office.
- The new residence hall governments - and the \$10/person/term program charge and leadership skills programs to support them - far exceeded expectations, while providing new elected leadership opportunities for many students.
- The growth and success during its first full year of the Society of Families, its leadership in planning Parents' Weekend as a perennial event, and commitment to enhance communication between the college and families of current students, have been prized contributions to our out-of-classroom life.
- The evolution of the Consolidated Advising Program (CAP) has reached new levels of positive campus impact and influence, even as it has emerged as one of our front line sources of improved student retention. With a revitalized peer tutor and advising effort, the new Writing Center and expanded hours, its resources for academic assistance, career planning and personal counseling have come together under Associate Dean Randi Kapp's innovative leadership to form the educational jewel envisioned by the program's 1982 designers.
- The result of a year-long retention study, initiated by the president, has been to produce the college's first short and long-term blueprint for action in this critically important area. With its design phase complete, a committee has expanded its membership to include faculty and students to coordinate community efforts, establish a reliable data base on which to base policy recommendations and provide overall program purpose and direction.

"... the ground work is in place for opening a superb learning achievement for others to follow."



Collaborative efforts with Dean of Faculty James Hood in such diverse areas as new student orientation, registration, curricular reform and professional development, have reinforced the value and wisdom of the president's 1983 initiative to erode outworn divisions between "academic" and "student" affairs, between classroom and out of classroom learning. The emerging sense of student pride and identity, of new financial and organizational independence, has dovetailed with this new partnership in committee work and community problem solving.

As Lindenwood marshals its resources to geographically diversify recruiting of full-time, traditional-age students and as it reintensifies efforts to increase the size of its residential population (in 1984-85, Lindenwood already had the largest residential community in its five-college consortium), the groundwork is in place for opening a superb learning achievement for others to follow.

At a time copied mediocrity is all too often the hallmark of self-styled "reform," the challenge of nurturing a new out of classroom learning model is all the more valued an opportunity. If the Renaissance journey to do so is a long one, we have nonetheless arrived at the end of its beginning.





# College Administrative Report

by JERRY RUFKAHR  
Vice President of Administration

In the first annual report last fall, I outlined each of the departments under my administration, their functions, and some of the changes and goals that were taking place. Since that report, and since I have now been here at Lindenwood nearly two years, numerous accomplishments and alterations have occurred in all areas.

During the past spring, the Post Office was added to my administration. Under the capable supervision of Von Goodson, the Post Office operates under both the auspices of Lindenwood and the federal government. Von operates the Post Office alone during the summer months, and has the aid of work-study students during the school year. Most recently, additional equipment was leased in order to process all college mail more effectively and efficiently.

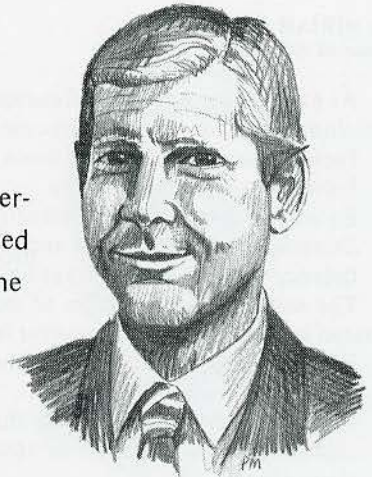
Also during the recent months, I established a new office, the Office of Special Projects, which is operated solely by Wayne Daugherty, former Physical Plant director, who is responsible for the development and initiation of innovative projects and energy grants. This summer the college was awarded a \$102,000 energy grant which will encompass the renovation of our underground steam lines and expansion joints. Concurrently, Wayne is also working on the Cycle VIII energy grant package, as well as looking into the possibilities of innovative financing for temperature and lighting controls and the alternative of gas to wood pellets as fuel for the boiler system. A tremendous amount of time and effort has gone into all of these projects as it appears each of them will save the College additional funds in energy conservation.

Succeeding Wayne is former Assistant Physical plant Director Bruce Elder and Jim Moore was appointed as assistant director. Together, these men have made several personnel changes and have adopted new personnel regulations for their department. While working with a very capable housekeeping staff of 16 persons, the maintenance staff of 12 must service, maintain, remodel and renovate the needs of the 25 buildings and campus grounds.

Some of the major accomplishments of the Physical Plant staff this past year include the remodeling of Niccolls Hall for offices to house the CAP Center, the demolition of the old McCluer House, the building of a gazebo for graduation and other student functions, and the remodeling of Watson Lodge for rental purposes. Other projects included the remodeling of the lower level of Irwin Hall and the third floor of Butler Hall for expanded Admissions Offices. Also, a \$17,000 contract was awarded for roof repairs on six buildings.

With the demolition of the McCluer House and the move of the CAP Center to Niccolls, the Bookstore relocated its office from the "loft" to the south side of the Gables. Storage also is housed in the office section until such time as the Bookstore operation is removed permanently to the lower level of Niccolls Hall. Once the Bookstore has been moved to its new location, the Student Center will be returned to the Gables, its original site. All other auxiliary services, under

"... administrative operations ... have improved significantly during the second year of our Renaissance."



the supervision of Gene Goldstein, continue to function very smoothly. Food service will offer alternate food plans to the resident students this year, with both 14 and 19 meal plans. Also, a straight 10% discount will be offered to staff, faculty, and all commuter students using the cafeteria.



The Security Department, under the leadership of Chief Duane France, continues with round-the-clock, seven day campus protection. New uniforms were purchased this past year, and additional ones will be acquired again this coming year. The men and women of this department do a very fine job of securing buildings, making maintenance and lighting work orders and working on a daily basis with students and visitors.

Conferences and stadium rentals highlighted the summer months as well as the football and soccer season this past fall. The stadium had a successful fall season with high school football and soccer, as well as St. Louis and Washington universities utilizing our artificial turf field for field hockey, soccer and football. Total receipts for stadium rental were almost \$28,000, not counting about \$14,000 made at the concession stand.

Conference rentals for the year totalled in excess of \$207,000, which included lodging, food service and room rentals. Highlighting this year's summer conferences was the P.E.O. Sisterhood with 650 persons participating. Next summer looks very promising since only a few dates remain open. Toni Isenhour recently was appointed to the staff and will be preparing all the conference and stadium rentals, as well as administering the master calendar for all staff, faculty, and student events during the school year.

Should you know of a group or organization wishing to use our facilities, please contact this office.

As mentioned in last year's report, the board of directors approved the Campus Master Plan, a 10-year program de-

*Continued on Page 25*

# College Admissions Report

by MIRIAM KING-WATTS  
Dean of Admissions

As part of the continuing Renaissance, the goals of the Admissions office for the year just completed were to:

- Increase number of new students.
- Increase new student income.
- Enhance quality of new student population.
- Establish systems to track and monitor progress and efficiency in the college marketing and entrance process.

The successful completion of our first goal is demonstrated by the following three-year history:

- In the 1982-83 academic year, the Admissions Office matriculated 764 new students.
- In the 1983-84 academic year, the Admissions Office matriculated 883 new students (a 16% increase over the previous year.)
- In the 1984-85 academic year the Admissions Office has thus far accomplished a 54% increase and matriculated 1,351 new students. The Master of Business Administration, Master of Education, College for Individualized Education undergraduate program and on-site programs have increased more than 100% in new student matriculations.

The successful accomplishments of our second goal includes:

- Increasing application fee income from \$16,965 to \$21,855
- Increasing new student gross first term income from \$1,045,612 to \$1,423,090.

Efforts to enhance the quality of incoming new students included the establishment of the Undergraduate Admission Committee. Early in the fall of 1984, this committee was named and included the Dean of Admissions, Dean of Faculty, and ten faculty representatives from a variety of academic departments. This committee first established minimum criteria for full admission (2.5 minimum high school GPA and 17+ ACT Composite Score or 800+ SAT Composite score) Minimum criteria for conditional admission includes ACT-15-16+/SAT 700+).

The committee also determined the need for longitudinal evaluation of incoming classes and will work closely with the retention committee and office of planning in this endeavor. Through the process of individual evaluation by the Dean of Admissions and the committee, the incoming class of full-time students which matriculated is stronger than incoming classes in previous years. This is demonstrated by a mean high school GPA of 3.07 (up from 2.8 last year) and a mean ACT composite score of 19.93 (compared to 18.6 average in fall, 1984). Transfer students are also of excellent quality which is indicated by a college GPA mean of 3.04 in the residential new student transfer population.

The quality of the incoming class also was enhanced by developing a career focus through major-focused overnights and career days sponsored by admissions and the academic departments through out the year. Faculty also helped admissions develop major-focused direct mail campaigns to target populations. As a result of these efforts increases in the



“... the incoming class of full-time students is stronger than incoming classes in previous years.”

number of new students have been accomplished in new majors in business, education, communication, fashion marketing, psychology, sociology, political science, biology-chemistry-medical technology and fine/applied arts. Faculty also have reported increased interest and freshman enrollment in required liberal arts courses.

Greater geographic distribution was facilitated by alumni and admissions efforts. Several legacies helped increase the number of students from locations other than Missouri. More new students are reported in the residential population from Iowa, Virginia, California, New York, Colorado, Switzerland, Nepal and the United Arab Emirates.

During the 1984-85 year, the admissions office established a computer-user committee within the department which was responsible for the research necessary to further develop our computer system.

As a result of this effort, we are now able to track prospects and applicants through levels of development with greater accuracy and efficiency. The office also has focused on cost accountability issues. Through our research, we have defined populations/activities of greatest yield. This knowledge has been applied to current marketing activities in order to continue our trend toward lower recruiting cost per applicant.

Admissions Office plans and goals for next year as part of the continuing Renaissance include:

- Increase the number of resident students in all populations/programs through the Residential Full-House Program
- Increase new student income.
- Continue to enhance the quality of applicants (academic, leadership, geographic).
- Move from rolling admission procedure to admission deadline procedure.
- Increase efficiency through priority segment methodology.
- Inform the collegiate community routinely of admissions programs, activities and achievements.
- Continue progress on shared responsibility programs with the rest of the college community.

# Alumni Activities Report

BY ESTHER FENNING

Assistant Director of Development for Alumni Activities

Back to Lindenwood was the alumni chorus for 1985! More Lindenwood alumni than ever before supported our alma mater this year with time, talent and gifts as part of the continuance of the college's Renaissance.

For example, a St. Louis alumnus conceived and organized a luncheon for Lindenwood alumni professionals at the St. Louis Media Club, spearheading a new alumni club. Alumni spent entire afternoons sticking labels on our alumni/development mailings. More than 100 local alumni volunteered to call during our annual phone-a-thon. Many volunteered on a weekly basis, and several traveled long distances to call during the day. Alumni sold tickets to a fashion show, hot dogs at an attic sale and the college to prospective students.

The highlight of the second phase of our Renaissance year in alumni/development activity was the success of the annual phone-a-thon, where under the direction of Director of Development, James Thompson, 100 local alumni manned the telephones in the Alumni/Development Complex of the Memorial Arts Building to call alumni across the country. Together with Lindenwood staff, faculty and students, 7,000 alumni were contacted and more than \$190,000 was raised. Those who were called received first-hand information on Lindenwood, records were updated, and friendships were formed.

President Spainhower, his wife, Joanne, and the phone-a-thon staff entertained volunteers at a picnic held on campus recently. Awards and certificates were given to those volunteers who secured the most in pledges. A weekend trip to the Lake of the Ozarks was awarded to Darlene Jemison, assistant manager of the Bookstore, for accruing the most money in pledges.

Many phone-a-thon volunteers were active St. Charles and St. Louis Club members. Membership in all four Lindenwood alumni clubs has increased, and active support of the college has been intensified. In an effort to attract the interest of Lindenwood's professional alumni who work in the St. Louis metropolitan area, Jim Thompson, director of development, and Steve Dieringer ('73) organized a luncheon at the Media Club in downtown St. Louis.

Twenty alumni met to hear President Spainhower speak. The group agreed to meet for lunch in the St. Louis area three or four times yearly and to concentrate on working with Lindenwood in areas such as alumni employment and recruitment.

The St. Charles Alumni Club raised \$3,000 in scholarship money on its second annual "Mrs. Sibley's Attic Sale" held this summer on campus. More than one hundred craft, antique, flea market and food vendors participated in the fundraiser which will benefit the Jack Carney Communications Scholarship Fund.

Various other activities during our continuing Renaissance year were well-attended. A children's fashion show was held at the Spainhower home in September to generate volun-

"More Lindenwood alumni than ever before supported their alma mater this year . . ."



teer interest in the attic sale. More than 50 alumni attended a February potluck dinner to hear Daryl Anderson, Professor of Biology, speak.

During the coming year, the St. Charles club hopes to attract a wider membership among recent graduates and to double profits made on the attic sale. President of the club is Dianne Heidelbaugh.

The St. Louis Alumni Club raised \$1,000 in scholarship money on its second annual fashion show. Kathy Leonard ('72), KSDK-TV reporter, narrated the event which was attended by more than 100 alumni and friends of Lindenwood. The St. Louis club met in November for a tour of the Fox Theatre. The club held its last meeting in May at a breakfast with President and Mrs. Spainhower.

Goals for the 1985-86 year for the St. Louis club include the recruitment of more members and to increase proceeds from the fashion show. President of the club is Gail Bartels Griffin ('70).

The Kansas City Alumni Club awarded two \$1,000 scholarships for 1985-86 to Kansas City area Lindenwood students Candy Myers and Jill Holmstrom. Former Kansas City Mayor Charles Wheeler spoke to members at a spring luncheon. Frances Metzger Weeks and her husband, Bill, hosted a picnic at the Milburn Country Club in August. The Kansas City club will celebrate its diamond Jubilee year this year. President of the club is Susann Riffe ('70).

The Southern California Alumni Club meets monthly and contributes on a regular basis to the Lindenwood Scholarship Fund. President of the club is Betty Butler Fitzpatrick ('37).

Presidents of all alumni clubs serve as members of the Lindenwood Alumni Council, the governing body of the alumni association to which all alumni belong. The 25 members of the council are nominated by the alumni association and the council and voted on by the council. The Alumni council meets at Lindenwood in May, prior to graduation, and in October, prior to reunion.

*Continued on Page 25*

# Public Relations Report

by RANDY L. WALLICK  
Public Relations Director

As part of the continuation of the Renaissance Campaign, Lindenwood's public relation programs and services have been strengthened and expanded to reflect the new stability and direction of the institution.

Through the leadership of President James I. Spainhower and the board of directors, public relations continues to be a priority and an integral part of institutional operations, particularly in the area of admissions, alumni activities, publications, fund raising and development.

In its second year of operation, the Lindenwood Awareness Campaign (LAC) begins to show positive results through more widespread acceptance within various college constituencies. Created to coincide with the Renaissance Campaign, the LAC encompasses development, marketing, advertising, community and media relations, publications and special events.

As explained in other sections of this annual report, such "positive results" are being shown through alumni activities, particularly from such a dramatic increase in support from less than five percent in fiscal 1983 to 32 percent this year; through more widespread recognition within the community of Lindenwood's academic leadership; through more favorable and positive media coverage of college activities and events; through increased funding at virtually all levels of the Renaissance Campaign; and through increased admissions inquiries and enrollment at both the traditional and non-traditional levels.

Obviously, implementation of the LAC and expanded public relations efforts are not the sole reasons for Lindenwood's strides forward in the past year. These "successes" have been a team effort, highlighted by a recommitment to a positive college perception and strong leadership and support from the board, the administration and, perhaps more importantly, from faculty, staff, students and alumni.

Nevertheless, public relations has played an integral part in these accomplishments, and it is helping to mold the "renaissance" of today's Lindenwood College. Highlights of strengthened and expanded public relations efforts in recent months include:

- Reorganization of the college's duplicating and printing facilities under the direction of the Public Relations Office for greater interdepartmental efficiency and operation. Under the supervision of Kris Cordes, a five-year member of the staff administration, the newly-renamed Printing Center has implemented new management procedures and upgraded equipment and supplies for greater cost effectiveness. Scheduled for purchase this year is a computer typesetting system that will expand quality of work produced within the department as well as cut costs in both time and materials.

In addition, for the first time in many years, the Printing Center's staff consists of a layout artist, Paula G. Murray; a typesetter, Marcia Gay; and a skilled pressman, Ralph Loyd - a team that handles virtually all of Lindenwood's internal and external printing and publication needs.



" public relations . . .  
is helping to mold the  
renaissance of today's  
Lindenwood College."

- Modernization and upgrading of public relations through the relocation of the public Relations Office to expanded facilities in Roemer Hall; the installation of computer equipment for greater efficiency, cost effectiveness and expansion capabilities; and the appointment of Ms. Cordes as Administrative Assistant to the Public Relations Director in addition to her supervisory capacities in the Printing Center.

- Continuation of an advertising and marketing program designed to strengthen enrollment and expand perception within the St. Louis area of Lindenwood's academic tradition and innovative educational mission for today and the future. Through print insertions in a number of mass and specialized publications and radio broadcasts on some of St. Louis' top AM and FM stations, a total of nearly 2.8 million has been exposed to Lindenwood messages throughout the year.

Coupled with the 1985-86 advertising program, Lindenwood once again this fall becomes the only academic institution in the area to take part in live Football Cardinal broadcasts on KMOX-AM Radio. The college is co-sponsoring pre-broadcasts for all Cardinal away games this season.

- Creation of several pamphlets and brochures for development and fund-raising purposes, all of which have been targeted to specific college constituencies to explain the Lindenwood "renaissance."

- Implementation of several special and community events to generate more widespread recognition for Lindenwood. Some of these included the donation of \$3,000 in scholarship awards for KETC-TV, the area's only noncommercial station, for use in its community fund-raising auction to benefit its public service programming; co-sponsoring with a computer store and a leading adult-contemporary radio station for a joint promotion designed to increase enrollment and community cooperation; and a live remote broadcast on KY98-FM during last fall's Alumni Reunion Weekend.

*Continued on Page 26*

# Financial Report

by GEORGE W. TILDEN, JR.  
Vice President of Finance

The close of the 1984-85 fiscal year marks our third year that we have been able to maintain budget controls, providing not only a balanced budget but also a surplus larger than was generated from our 1983-84 fiscal year. This indicates effective management of the institution while still being able to maintain the mission of the college and the programs for its student body.

While not completed in this current fiscal year, significant progress has been made in the culmination of the sale of 50 acres of the property. On completion of the sale of this property, we will be in a position to reduce our short-term debt and thus be in a better position to effectively manage cash flow by reducing our rather substantial interest payments.

This year we have moved to more effective use of the college computer system and the Business Office has gained knowledge so that we can proceed in an orderly manner to maintain payroll, inventory of buildings and their contents, and a student billing system.

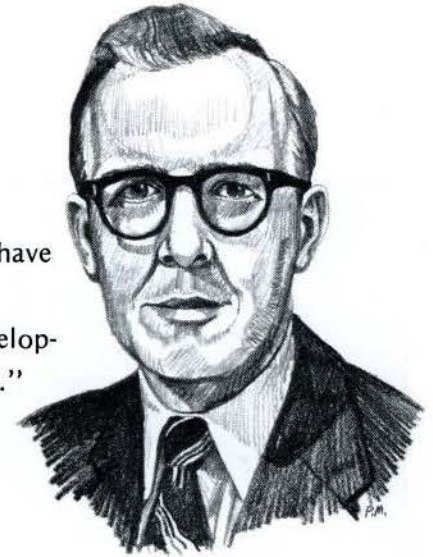
Our budget for fiscal year 1985-86 has been finalized with the expectation that we will again have a surplus for the year, with projected revenues increasing 12.2% and expenditures 9.1% versus the 1984-85 budget.

Enrollment projections for the year are expected to be attained and an optional food plan has been developed for the resident and non-resident students using the campus cafeteria. We have increased tuition and charges for full and part-time students and, as a result of these increases, we're able to grant salary increases to the staff and faculty which, for long-range planning, help to maintain a staff that is not subject to excessive turnover and results in greater efficiency.

While success is often measured in financial terms, an educational institution's success growth is determined by the programs offered and the size of the student body, the professional standards of the faculty, and the ability to gain and keep the support of its alumni, corporate community, friends and charitable foundations. If this is achieved, a growing, healthy financial picture will develop for the college, and we will be able to meet the changing needs of our student population.

Achieving success in this manner will then put the institution in a better position to plan effectively for long range growth. While the faculty and staff are charged by the board with the implementation and delivery of the program it can only become a reality through the excellent support which we have enjoyed from our board of directors and board of overseers.

In summary, our problems have been identified and logical solutions developed and implemented. Solutions to our problems done in this manner give additional assurance for healthy growth and management and the opportunity to plan for the future rather than to react to short-term problems. The accompanying tables show revenue and expenditures for fiscal year 1985-86 including auxiliary income



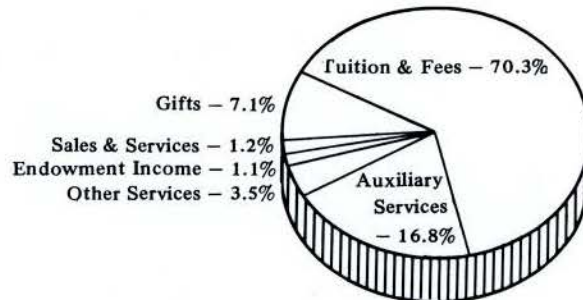
"... our problems have been identified and logical solutions developed and implemented."

and expenses. We develop budgets as management tools and not to deliver a message that because we have budgeted expenditures, that we must expend that amount.

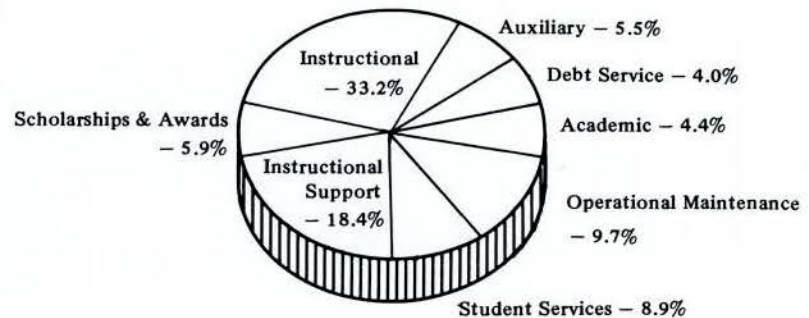
We do not view a budget as a mandate to spend but as a guide for the orderly delivery of the college's mission and the development of our students in furthering their education, growth and maturity. We are proud to be graduating students well prepared to deal with their chosen profession.

## PROJECTED REVENUES OVER EXPENDITURES \$206,000.

### 1985/86 BUDGETED REVENUE \$8,449,000.



### 1985/86 BUDGETED EXPENSE \$8,243,000



# Comparative Condensed Balance Sheet

AS OF JUNE 30, 1985

ASSETS	1984-85	1983-84	LIABILITIES & FUND BALANCES	1984-85	1983-84
<b>CURRENT FUND</b>			<b>LIABILITIES AND FUND BALANCES</b>		
Unrestricted:			Unrestricted:		
Cash	\$ 79,539	\$ 64,315	Notes payable to banks	\$ 1,967,767	\$ 1,767,767
Accounts and notes receivable:			Accounts payable	333,077	433,035
Student accounts	648,273	444,918	Employee compensation	304,960	298,612
Other	107,649	107,876	Credits balances in accounts receivable	93,643	93,421
	755,922	552,794	Accrued interest payable	16,104	46,488
Less allowance for doubtful accounts	125,000	102,000	Advance student fees and conference income	71,966	21,581
	630,922	450,794	Due to other funds	678,199	611,991
Investments at cost, which approximates market	37,700	42,012		3,465,716	3,272,895
Inventories:			Fund balance (deficit)	( 2,582,913)	( 2,565,969)
Bookstore	70,445	72,420	Total unrestricted	882,803	706,926
Operating supplies	42,754	48,207	Restricted:		
	113,199	120,627	Fund balance	155,438	87,916
Prepaid expenses and deposits	21,443	29,178	Total restricted	155,438	87,916
Total unrestricted	882,803	706,926		\$ 1,038,241	\$ 794,842
<b>RESTRICTED:</b>			<b>LOAN FUNDS</b>		
Due from Current Unrestricted funds	155,438	87,916	Due to current fund	\$ —	\$ 8,342
Total restricted	155,438	87,916	Fund balance:		
	\$ 1,038,241	\$ 794,842	National direct student loan fund	1,051,964	1,066,939
<b>LOAN FUNDS</b>				\$ 1,051,964	\$ 1,075,281
Cash	\$ 59,241	\$ 97,755	<i>See notes to financial statements.</i>		
Notes receivable:			<b>ENDOWMENT AND SIMILAR FUNDS</b>		
National direct student loans	1,149,124	1,101,914	Fund balance:		
Less reserve for doubtful loans	157,700	127,700	Endowments:		
	991,424	974,214	Income restricted	\$ 1,704,644	\$ 1,693,553
Other receivables	1,199	3,312	Income unrestricted	539,656	539,837
Due from current fund	100	—	Annuity and life income	45,226	45,226
	\$ 1,051,964	\$ 1,075,281		\$ 2,289,526	\$ 2,278,616
<b>ENDOWMENT AND SIMILAR FUNDS</b>			<b>PLANT FUNDS</b>		
Cash	\$ 13,770	\$ 58,285	Unexpended:		
Investments at cost	1,491,102	1,174,999	Due to current fund	\$ 266,212	\$ 232,723
Real Estate	—	282,500	Fund balance:		
Due from current fund	784,654	762,832	Debt reserve fund	23,983	—
	\$ 2,289,526	\$ 2,278,616	Restricted	40,987	40,987
<b>PLANT FUNDS</b>				64,970	40,987
Unexpended:			Total Unexpended	331,182	273,710
Cash	\$ 39,751	\$ 39,751	Investment in plant:		
Investments	23,983	—	Notes payable	1,074,026	1,089,236
Construction in progress	267,448	233,959	Capitalized lease obligations	10,904	12,516
Total unexpended	331,182	273,710	Bonds payable	692,000	739,000
Investment in plant			Fund balance	10,686,060	10,663,699
Land and land improvements	293,672	293,672	Total investment in plant	12,462,990	12,504,451
Buildings	10,602,558	10,616,326	Total plant funds	12,462,990	12,504,451
Equipment	1,566,760	1,594,453	<b>AGENCY FUND</b>		
Total investment in plant	12,462,990	12,504,451	Deposits held in custody for others	\$ 4,219	\$ 2,308
Total plant funds	\$ 12,794,172	\$ 12,778,161			
<b>AGENCY FUND</b>					
Due from current fund	\$ 4,219	\$ 2,308			

# Comparative Statement of Operations

AS OF JUNE 30, 1985

	1984-85	1983-84
<b>REVENUE</b>		
<u>Educational and General</u>		
Student Tuition and Fees	\$ 5,159,920	\$ 5,007,734
Gifts and Grants	616,231	475,135
Endowment Income	198,154	299,169
Government Grants	360,938	368,750
Other Sources	137,565	264,624
Total Education and General	\$ 6,472,808	\$ 6,415,412
<u>Auxiliary Services</u>		
Residence Halls	\$ 316,305	\$ 316,993
Food Service	553,294	577,562
Bookstore	364,276	363,340
Other	74,173	60,450
Total Auxiliaries	\$ 1,308,048	\$ 1,318,345
Total Revenues	\$ 7,780,856	\$ 7,733,757
<b>EXPENDITURES</b>		
<u>Educational and General</u>		
Instruction & Library	\$ 2,765,782	\$ 2,675,059
Student Services	827,894	724,097
Institutional Support	1,151,250	1,124,667
Physical Plant	699,351	752,565
Scholarships and Awards	901,882	834,069
Debt Service	346,820	299,302
Total Educational and General	\$ 6,692,979	\$ 6,409,759
<u>Auxiliary Services</u>		
Residence Halls	\$ 269,763	\$ 312,457
Food Service	432,360	486,996
Bookstore	309,020	307,900
Other	92,935	94,395
Total Auxiliaries	\$ 1,104,078	\$ 1,201,748
Total Expenditures	\$ 7,797,057	\$ 7,611,507
<u>Mandatory and Non-Mandatory Transfers</u>		
Property, Equipment and Other (Net)	\$ (29,901)	\$ (50,848)
Sale of Property	117,500	-0-
Restricted Funds	67,522	4,995
Debt Retirement & Reserve Fund	(88,342)	(62,055)
Total Expenditures and Transfers	\$ 7,730,278	\$ 7,719,415
Surplus	\$ 50,578	\$ 14,342

# Development and Fund Raising

by JAMES D. THOMPSON  
Director of Development

Because of the dedication of more generous donors than ever before, we have finished another record year in college fundraising. The total giving to a college is an accurate barometer of the acceptance of an institution's mission and a vote on the college's annual performance of that mission. We have almost doubled the number of Lindenwood donors in the last year. A resounding vote has been cast. Lindenwood is on the move! We truly are building a Lindenwood Renaissance!

Our former Vice-President for Development, Ed Watkins, has moved to other duties in order to help the college on an executive part-time basis. His new title will be "Assistant to the President for Special Gifts." He will be visiting many alumni and friends across the country in this new position and will help us launch the building renovation and endowment phase of the Renaissance Campaign. I have been assigned the additional responsibility for the supervision of the entire Development/Alumni efforts of the college. As an Alumnus of the College who is most recently responsible for alumni fundraising, I have seen the great importance in attracting increased numbers of new annual donors. This will continue to be one of the college's and my highest priorities.

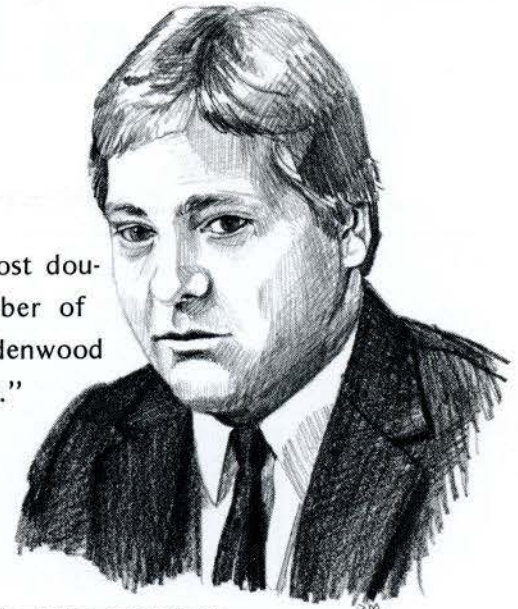
## THE DECISION

In January, 1983, the college, under the vigorous leadership of President James I. Spainhower, made an historic and courageous decision. We were faced with two basic long-range directions. We could become a semi-public, non-selective university. Faced with similar economic pressures, this is an option that many small colleges have recently chosen. We decided on a second option, one which many experts would regard as "fighting the odds." We challenged ourselves to strive relentlessly for the reaffirmation of Lindenwood's tradition-quality and excellence in education for almost 160 years. Reinstating our national prominence requires reconstructing our "legacy" to uphold the highest standards of excellence in education, creating the opportunities for well-rounded leadership, and providing a sound background for responsible citizenship through a liberal arts education. This challenge should include an enrollment balance among all college programs, maintaining all populations so that no single element of the college overrides or takes precedence over another. The personalization and quality of a Lindenwood education is our educational hallmark.

Realizing the accomplishment of these goals will not be an easy task, we have enlisted the support of college alumni and friends across the country. The following priorities have been established for immediate advancement:

- Secure our financial situation.
- Rebuild our residential base to bring it in line with our other student populations.
- Establish a secure and predictable annual base of donors and gift income.

"We have almost doubled the number of donors to Lindenwood in the last year."



- Renovate all existing campus facilities.
- Rebuild the College endowment through planned gifts, wills, and capital donations.

We are extremely grateful to alumni, friends, and corporations for helping us make great strides in these critical areas of financial stability and student scholarship. Their dedicated participation is an integral part of our historic efforts. We are returning the luster of our college's legacy, one which spans over one and one-half centuries of our American heritage.

Our record of achievements include:

### 1. Greater Financial Stability.

We have been operating with a balanced budget for the last three successive years. Our former crushing short-term loans have been reduced by one-half, and we have good reason to believe that in another two years we will be out of any undesirable debt. This first task is being accomplished, and we are getting our financial house in good order.

### 2. Increased Residential Enrollment.

In the most recent complete year, our residential population has risen by almost 96 percent from our "D-Day" (Decision Day) in 1983. Not only has our population increased, but we have substantially improved the academic quality of our incoming students. Our average ACT scores for students are now exceeding the national average, and these scores are above all similar competitive schools in the St. Louis area.

## THE BASE: ANNUAL GIVING

Annual giving is the cornerstone on which so many of our other advancement efforts rest. Three years ago, we did not have an adequate donor base. In 1985, our base has changed dramatically. Thirty-two percent of our alumni

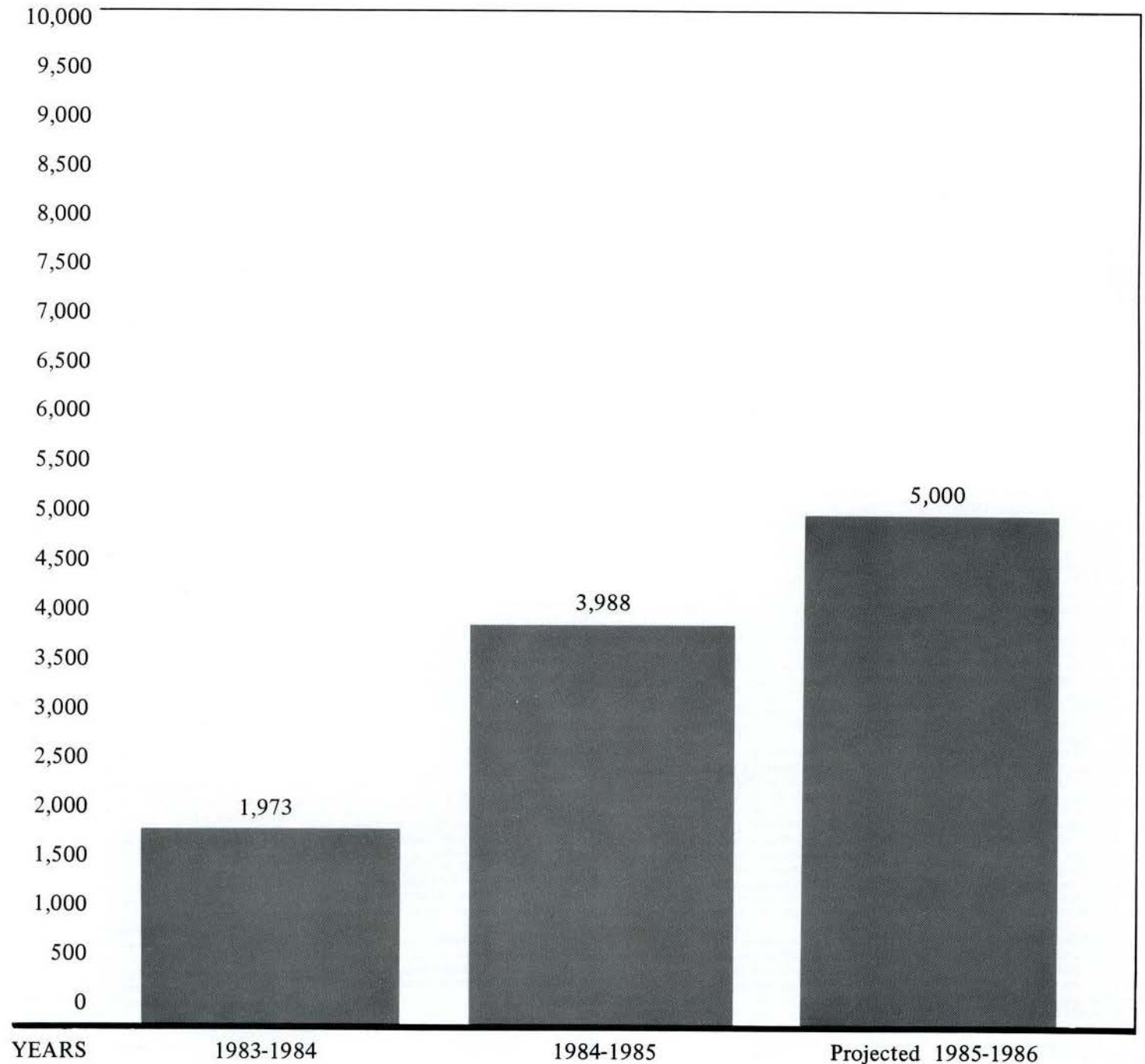
*Continued on Page 26*



# Lindenwood Donors By Years

Help Us Make These Numbers Grow!

NUMBER  
OF  
DONORS



# Lindenwood College Donors

(Gifts received July 1, 1984 - June 30, 1985)

## MAJOR GIFTS \$25,000.00 or More

Mr. Williard Walker  
Allen/Josephine Green Foundation  
Monsanto Fund  
The May Stores Foundation  
Southwestern Bell Foundation

## RENAISSANCE ASSOCIATION \$10,000.00 - \$24,999.99

Mr. John Black  
Mrs. Dorothy Warner ('36)  
Mr. David Wilhelm  
Brown Group, Char Trust  
CBS-KMOX  
May Stores Foundation  
McDonnell Douglas Foundation  
Synods of Mid America  
United Presbyterian Church  
United Van Lines

## SIBLEY ASSOCIATION \$5,000.00 - \$9,999.99

Mr. David Babcock  
Mrs. Jane Crider  
Mr. Arthur Goodall  
Mr. John Hannegan  
Mr. Robert Hyland  
Mrs. Sarah Mayer, ('34)  
Mr. John Tlapak  
Mrs. Horton Watkins  
Clifford W. Gaylord Foundation  
Jordan Charitable Foundation  
Sidney/Sylvia Souers Trust  
St. Charles Kiwanis Club  
St. Charles Alumni Club  
Union Electric Trust

## BOARD ASSOCIATION \$1,200.00 - \$4,999.99

Mrs. Wilhelmina Barton ('29)  
Mrs. Judith Lee Brougham ('60)  
Mr. George Brown  
Mrs. Sara English ('39)  
Mrs. Elaine Fellowes ('43)  
Mrs. Lucette Flanagan ('48)  
Mr. Harvey Friedman  
Miss Marian Greene ('23)  
Mrs. Barbara Hamill ('32)  
Mr. Raymond Harmon  
Mr. Keith Hazelwood  
Mr. Joe Hunt  
Mrs. Jean Johnson ('43)  
Mrs. Evelyn Kaser ('40)  
Mr. Larry Kelley  
Mr. S. Lee Kling  
Mrs. Rosaria Knoblauch ('76)  
Mrs. Tanya Mallory ('69)  
Mrs. Eleanor McClevey ('32)  
Mr. Jefferson Miller  
Mr. I. Millstone  
KCLC - Misc. Donors  
Mr. Ronald Ohmes  
Mrs. Margaret Ohrman ('29)  
Mrs. Nancy Orr ('35)  
Mrs. Virginia Ottofy ('26)  
Mrs. Nancy Peteler ('48)  
Mrs. Jean Phillion ('68)  
Mrs. Elizabeth Rauch ('44)  
Mrs. Eleanor Rupinski ('74)  
Mr. Gary Shaw  
Dr. & Mrs. James I. Spainhower  
Miss Dorothy Trump ('43)  
Mrs. Jeri Westerhold  
Ms. Shirley Wipfler ('77)  
Adele Harper Stine Estate  
American Indian Scholarships, Inc.  
American Social Appraisers  
Bankers Life Co.  
Baue Funeral Home  
Del E. Webb Corporation  
General Motors Corp.  
H & K Investment Co.  
Laclede Gas Charitable Tr.  
Meagher Chev.-Olds.  
Mallory Buick  
Mercantile Trust Co.

Fundmann Motor Co.  
R.G. McKelvey Building Co.  
Sears-Roebuck Foundation  
St. Charles Optimist Club  
St. Charles Rotary Club  
St. Louis Heart Association  
The Morton J. May Foundation

## PRESIDENT'S CLUB \$500.00 - \$1,199.99

Mr. Kenneth Ahmann  
Miss Mary Ambler ('30)  
Mrs. Edith Arnsperger ('21)  
Mrs. Patricia Bailey ('59)  
Mrs. Rosemary Baue ('55)  
Mrs. Mary Jane Bell ('39)  
Mrs. April Bloom ('76)  
Mr. John Bornmann  
Mr. Peter Brown  
Mrs. Barbara Burns ('42)  
Mrs. Mary Ann Carter ('54)  
Ms. Ellen Conant  
Mrs. Christine Conover  
Mrs. Mary Jean Craig ('41)  
Miss Lydia Dodge ('27)  
Miss Ruth Dolan ('19)  
Mrs. Jeanne Donovan  
Ms. Jane Ervin ('82)  
Dr. Robert Fleming  
Mr. Robert Frese  
Mr. Gerald Gayer ('79)  
Mrs. Durine Gore ('38)  
Mrs. Dealva Graham ('43)  
Mrs. Margaret Hallman ('41)  
Dr. Gene Henderson  
Miss Mildred Heye ('40)  
Mrs. Margaret Howell ('34)  
Mrs. Marian Keehn ('47)  
Mrs. Cordelia Stumberg ('40)  
Mrs. Margaret Ketcham ('33)  
Mrs. Helen Kinell ('16)  
Dr. Robert Kingsbury  
Ms. Kathleen Kirk ('81)  
Mrs. Martha Anne Kuenzi ('51)  
Mrs. Katherine Lacy ('28)  
Ms. Sally Landau ('67)  
Mrs. Patsy Lea ('46)  
Mr. & Mrs. James Magee  
Mr. Cannon McMahan  
Mrs. Margaret Morgan ('42)  
Mrs. Martha Muncy ('41)  
Mrs. Ann Pals ('65)  
Ms. Nancy Polette  
Mrs. Doris Potter ('48)  
Mr. Arthur Prell  
Mrs. Nell Reed ('09)  
Mrs. Edna Mary Richardson ('45)  
Mrs. Marie Robb ('38)  
Mr. Randall Robertson ('81)  
Mrs. Jane Scowcroft ('70)  
Dr. James Spainhower  
Mrs. Edith Stevenson ('31)  
Mrs. Cordelia Stumberg ('40)  
Dr. Arlene Taich  
Mrs. Helen Thatcher ('39)  
Mr. & Mrs. James Thompson ('80)  
Dr. Kenneth Thompson  
Miss Susan Trail ('72)  
Mrs. Lillian Trump  
Mr. Ed Watkins  
Mrs. Carin West ('67)  
Mrs. Dorritt White ('13)  
Mr. John Wolf  
Miss Mary Wolfert ('31)  
Mrs. Judith Woolery ('76)  
ACF Foundation Inc.  
Board of Education of St. Louis  
Bridgeton Kiwanis Club  
Bridgeton Optimist Club  
Carter Family Foundation  
Citicorp  
Coca-Cola Bottling Co.  
Dickherber Electric  
Ellis-Rodes-Meers Co.  
Elsberry High School  
Emerson Electric  
Exxon Education Foundation  
Fabick Charitable Trust  
Fleishman Fund  
Hazelwood P.T.A.  
Highland View Baptist Church  
Jefferson Federal Savings  
JSJ Corporation

Kiwanis Club-Charleston  
Krey Distributing Co.  
Lincoln Engineering Tr.  
Lindenwood Club K.C.  
Lindenwood Club S. California  
Maritz Inc.  
McDonnell Douglas Co.  
Meyer Real Estate Co.  
Mobil Foundation, Inc.  
Philip Morris Inc.  
Rax Restaurants  
Reorganized School District 111  
Satellite Technology Service  
St. Louis Alumni Club  
St. Louis Post-Dispatch  
St. Charles City Board of Realtors

## GOLD LINK CLUB \$300.00 - \$499.99

Ms. Wenda Bacon ('72)  
Mr. Howard Barnett  
Mrs. Beverly Baumunk ('40)  
Ms. Opal Beul ('84)  
Mrs. Beryl Blunn ('28)  
Mrs. Marjorie Bottorff ('60)  
Mrs. Dorothy Canty ('37)  
Miss Cornelia Darnall ('49)  
Mrs. Patricia Deisenroth ('48)  
Mrs. E. Mildred Denning ('37)  
Ms. Norma Fields  
Mrs. Jackie Fieseler ('51)  
Mrs. Ruby Finfgeld ('39)  
Mrs. Folsta Gibbons ('49)  
Mrs. Joanne Goudie ('52)  
Miss Mary Belle Grant ('35)  
Mr. Paul Gross ('78)  
Mr. Charles Hafer  
Mr. James Hafer  
Miss Roanne Harless ('69)  
Miss Alice Holtgrewe ('63)  
Mrs. Lenore Horn ('36)  
Mrs. Marietta Hunsche ('34)  
Mrs. Marilyn Johnston ('65)  
Mrs. Helen Rose Jolly ('40)  
Mrs. Mary Keller ('65)  
Mrs. Margaret Kelley ('34)  
Mrs. Susan Keohane ('69)  
Ms. Janet Lewien  
Ms. Jessamine McMullen ('32)  
Ms. Marylen Melgaard ('78)  
Mr. Joseph Miller ('82)  
Mrs. Carol Mueller ('55)  
Mrs. Barbara Olson ('66)  
Mrs. Ann Peterson ('59)  
Mrs. Melinda Powers ('61)  
Miss Virginia Sodemann ('35)  
Mrs. Marie Spencer ('33)  
Mrs. Gladys Stockstrom  
Ms. Maurita Stueck ('43)  
Mrs. Linda Szilvasy ('61)  
Mrs. Linda Thom ('67)  
Mrs. Doran Trail ('43)  
Mr. Eugene Trautman ('82)  
Mrs. Mona Waters ('43)  
Mrs. Doris Watts ('59)  
Mrs. Ann Westcoat Ritter ('60)  
Mr. Melvin Wetter  
Mrs. Mary Wolfe ('42)  
AT&T Foundation  
Claywest House, Inc.  
Continental Telecom Inc.  
Continental Telephone  
Danforth Foundation  
Highland View Baptist Church  
Lindenwood Student Government  
Louise H. Walker Estate  
Mercantile Bank of St. Charles  
Phillips Petroleum Foundation  
St. Paul Fire/Marine Insurance  
St. Charles Gas Company  
St. Charles Journal  
Times-Mirror Company  
Troy Kiwanis Club  
Westlake Scholarship Fund  
Wilshire Investment & Leasing

## FOUNDERS CLUB \$160.00 - \$299.99

Miss Cornelia Achelpohl ('20)  
Mrs. Virginia Austin ('49)  
Mr. Omer Avery

Mr. A. Bardol  
Mrs. Mary Beaman ('37)  
Mrs. Jean Bentley ('39)  
Mrs. Marjety Berryman ('35)  
Mrs. Mary Lou Bilsborough ('27)  
Mr. Stephen Blackhurst  
Mrs. Janet Bornstein ('56)  
Miss Nancy Bowser ('58)  
Mrs. Dorothy Buchanan ('43)  
Miss Margaret Buford ('32)  
Mrs. June Butler ('34)  
Mrs. Josephine Calkin ('31)  
Miss Nancy Calvert ('61)  
Mrs. Mary Alice Carmichael ('42)  
Mrs. Carrie Cates ('13)  
Dr. Henry Clever  
Mrs. A. Elaine Close ('62)  
Miss Mary Collier ('71)  
Mrs. Margaret Corbett ('46)  
Mrs. Anita Crawford ('35)  
Mrs. Betty Cronquist ('44)  
Ms. Janice Czapl  
Mrs. June Dean ('61)  
Ms. Diane Denney  
Mr. Richard Deutsch  
Ms. Ann Dobie ('56)  
Mrs. Dixie Ferry ('43)  
Mr. Phillip Frame  
Mr. Barry Freese ('75)  
Mr. Don Gilbert ('82)  
Miss Talitha Grote ('49)  
Mrs. Marguerite Hall ('34)  
Mrs. Pamela Hanson ('57)  
Ms. Arminta Harness ('49)  
Dr. Anna Harrison ('33)  
Miss Margaret Hatala ('43)  
Ms. Ann Hays ('66)  
Mrs. Pauline Hedgecock ('27)  
Mrs. Marilyn Heilman ('47)  
Mrs. Lucy Jane Henry ('43)  
Mrs. Laura Jo Higgins ('47)  
Mrs. Martha Higgins ('27)  
Mrs. Mary Hillix ('35)  
Mr. James Hood  
Mrs. Margaret Hostetler ('59)  
Ms. Donna Houchins ('59)  
Mrs. Dorothy Jean Heusemann ('43)  
Dr. Ester Johnson  
Mrs. Mary Keith ('66)  
Mr. Eugene Kirk  
Mrs. Betty Klee ('38)  
Mrs. Ann Kroeger ('68)  
Mrs. Joyce Krogman ('65)  
Mrs. Mildred Lange ('53)  
Mrs. Mary Langenfeld ('30)  
Mr. Ronald Lawler ('79)  
Mrs. Carol Leventhal ('75)  
Mrs. Helen Levesque ('49)  
Mr. Hans Levi  
Mrs. Ann Long ('48)  
Ms. Virginia Lupfer ('40)  
Miss Nancy Madden ('41)  
Mrs. Ernestine Magner ('36)  
Mrs. Louis Mc Donough  
Mrs. Virginia McGuire ('27)  
Mrs. Martha Merritt ('36)  
Mrs. Muriel Mersereau ('51)  
Mrs. Josie Mobley ('15)  
Mrs. Margaret Moon ('43)  
Mrs. Ruth Muegg ('65)  
Mrs. Anje Neumann ('54)  
Mrs. Gail Neumann, Ph.D. ('69)  
Mrs. Rosemary Northwall ('65)  
Mrs. Lorraine O'Connor ('31)  
Ms. Verla Olson ('83)  
Ms. Jane Pace ('83)  
Mr. & Mrs. Bill Park  
Mrs. Rosalyn Patterson ('55)  
Mrs. Nancy Pecha ('55)  
Mr. P. Pongspikul ('73)  
Mr. John Powers  
Mrs. Doris Pree ('43)  
Mrs. Irene Ray ('55)  
Mrs. Mary Frances Rea ('25)  
Mr. Richard Rickert  
Mrs. Jane Rogers ('67)  
Mrs. Barbara Rugtiv ('46)  
Mrs. Glenda Schaefer ('68)  
Mr. Alfred Schuetz, M.D.  
Mrs. Mary Scott ('51)  
Mr. Dominic Soda  
Mrs. Betty Solfisburg ('40)  
Mrs. Sylvia Stern ('43)  
Mrs. Carol Stoub ('58)  
Mr. Robert Sullenstrup  
Mrs. Linda Sullivan ('68)

Mrs. Virginia Talley ('39)  
Mrs. Elizabeth Taylor ('32)  
Mrs. Gwendolyn Taylor ('32)  
Mr. & Mrs. William Tayon ('78)  
Ms. Virginia Terry ('59)  
Mrs. Rosemary Thomas ('39)  
Mrs. Christine Todd ('40)  
Mr. James Unger, D.M.D.  
Mr. Gerald Varker ('77)  
Mrs. Dorothy Von Hoffman ('25)  
Mr. & Mrs. Randy L. Wallick  
Mrs. Mildred Weedn ('30)  
Mrs. Albertina Weygandt ('33)  
Mrs. Helen Whalen ('31)  
Mrs. Margaret Wood ('55)  
Mrs. Elizabeth Wright ('62)  
Miss Rose Zanville ('66)  
Mrs. Evelyn Zierenberg ('33)  
Airwick Industries Inc.  
Association for Retarded Children  
Dierbergs Markets, Inc.  
Dun & Bradstreet Corp. Fund  
Fort Zumwalt District R-2  
Frontier Kiwanis Club  
GFWC Missouri Federation of Women  
Gulf Oil Corporation Foundation  
McGraw-Edison Foundation  
MidCon Corp.  
Missouri Research Labs  
R-1 School Association  
Schaefer Insurance Services  
St. Charles Golf Course  
Thro's and Michelle's

**CENTURY CLUB**  
**\$100.00 - \$159.99**

Mr. Alex Aboussie  
Mrs. Helen Alexander ('37)  
Mrs. Marjorie Allison ('44)  
Mrs. Casey Ancker ('49)  
Mr. Joe Ancona  
Ms. Daryl Anderson  
Mrs. Virginia Anderson ('56)  
Mrs. Ruth Andris ('54)  
Mrs. Margaret Armstrong ('36)  
Mrs. Phyllis Aspoas ('41)  
Mrs. LaVonne Ater ('49)  
Mrs. Karlotta Auclair ('64)  
Mrs. Betty Baggett ('36)  
Mr. Thomas Bakewell ('74)  
Mrs. Candace Ballard ('69)  
Mrs. Fern Bittner ('57)  
Mrs. Marjorie Boehme ('43)  
Mr. Tom Boschert  
Mr. Charles Boswell  
Miss Evelyn Bradley ('41)  
Mrs. Genelle Branneky ('48)  
Mr. Glenn Brereton  
Mrs. Mary Bridges ('38)  
Ms. Cheryl Broeder ('78)  
Ms. Sue Brown  
Ms. Lillian Bull  
Mrs. Carole Burke ('60)  
Mrs. Margaret Burke ('50)  
Mrs. Dorothy Burnett ('41)  
Mrs. Carol Caldwell ('57)  
Mrs. Eloise Calvert ('37)  
Mrs. Alice Carr ('64)  
Miss Melba Carty ('68)  
Mrs. Audrey Cary ('29)  
Mrs. Candice Chaffee ('68)  
Mrs. Ruth Chapin ('37)  
Mrs. Marian Childers ('57)  
Mrs. Donald Chivas  
Mrs. Elizabeth Clark ('63)  
Miss Margaretha Clark ('29)  
Mrs. Alice Clarkson ('39)  
Mrs. Jacquelyne Clausonthue ('47)  
Mr. Frank Clayton ('83)  
Mrs. Helen Coldwater ('29)  
Dr. Michael Coleman  
Mrs. Jill Connaghan ('67)  
Mrs. Genola Cox ('51)  
Maj. Stewart Crane  
Mrs. Ethyl Craven ('08)  
Mrs. Lorene Creech ('24)  
Mrs. Adaline Cross ('24)  
Mrs. Doris Crowley ('31)  
Mrs. Linda Cummings ('48)  
Miss Agnes Currie ('29)  
Mrs. Linda Dahlsgaard ('63)  
Mrs. Frances Dale ('33)  
Miss Mary Darmstaetter ('68)  
Mrs. Marcia Davidson ('48)  
Mrs. Leora Davis ('12)  
Mrs. Martha Davis ('33)  
Mrs. Maxine Deardorff ('33)  
Mrs. Mary Debartolo ('82)

Mrs. Mary Jane Denslow ('34)  
Mr. A. Deppe  
Miss Mary Dewey ('35)  
Mr. Steven Dieringer ('73)  
Mrs. Patsy Donosky ('57)  
Mr. Theron Dosch  
Mrs. Mary Drozda ('37)  
Mrs. Helen Dosman ('63)  
Mrs. Rosemary Duffy ('44)  
Mr. James Dustin  
Mrs. Mari Anne Dysart ('62)  
Mrs. Mary Jo Eisenhauer ('42)  
Mrs. Carlene Elmore ('59)  
Mrs. Louis Elrod ('28)  
Mrs. Barbara Faulkner ('28)  
Ms. Esther Fenning ('77)  
Mr. J. Emerson Finney  
Mrs. Eva Fitz ('54)  
Mr. James Fitz  
Mrs. Shirl Fox ('47)  
Mrs. Mina Frailey ('45)  
Mrs. Genevieve Frank ('41)  
Mr. John Frank  
Mrs. Ruth Fredericks ('45)  
Ms. Victoria Frowine  
Mr. Charles Fullerton ('83)  
Mrs. Leah Fulton ('23)  
Mrs. Caroline Funk ('52)  
Mrs. Sandra Gehrman ('59)  
Mrs. Belva Geist ('40)  
Mrs. Cora Lee Gilliland ('54)  
Mr. Thomas Gipson  
Ms. Mary Gismegian ('81)  
Mr. Eugene Goldstein  
Mrs. Peggy Goltermann ('69)  
Mrs. Jill Graff ('69)  
Mrs. Mary Gray ('36)  
Mr. Werner Grunbaum  
Mr. Melvin Hall  
Miss Fern Halliburton ('32)  
Mrs. Dorothy Hannaford ('42)  
Mrs. Dorothy Harnden ('41)  
Mrs. Denzil Hawes-Davis ('61)  
Mrs. Genee Head Schubert ('46)  
Mrs. Pauline Hearme ('41)  
Mr. William Hecht  
Mr. Thomas Hedgecock  
Mr. Wesley Hedges  
Mrs. Elizabeth Heise ('46)  
Mrs. Barbara Henre ('48)  
Mrs. Constance Hill ('46)  
Ms. Corinne Hill ('82)  
Mrs. Dorothy Hill ('25)  
Mrs. Nancy Hill ('48)  
Mrs. Mae Hincke ('26)  
Mrs. Kathryn Hines ('25)  
Mrs. Frances Hirsch ('27)  
Mrs. Beverly Hirsch ('52)  
Mrs. Lillian Hobbs ('24)  
Mr. James Hodges ('58)  
Mrs. Karen Holkamp ('64)  
Mrs. Polly Holtway ('42)  
Mrs. Elizabeth Houchin ('55)  
Mrs. Betty Hough ('41)  
Mrs. Frances Hubbard ('45)  
Mrs. Jane Hubbell ('57)  
Mrs. Frances Hume ('40)  
Mrs. Eloise Huwaldt ('43)  
Miss Mary Jackson ('32)  
Ms. Darlene Jemison  
Mrs. Mary Jenkins ('51)  
Mrs. Lillian Jennings ('33)  
Mrs. Edith Ann Johnston ('46)  
Mrs. Valerie Judkins ('70)  
Mrs. James Kaiser ('76)  
Mr. Jacob Kammerer ('82)  
Mrs. Mary Lou Kelley ('56)  
Mrs. J. Kemp ('24)  
Mrs. Maxine Ketch ('35)  
Mrs. Margaret Kiely ('32)  
Mrs. Pricilla Jane Kinney ('50)  
Mrs. Ann Knichel ('69)  
Mrs. Meredith Kraus ('63)  
Mr. Stuart Krawll  
Mr. Harry Kroeger  
Rev. Robert Kroening  
Mrs. Patricia Kruger ('44)  
Mr. Stanley Kuhlo ('72)  
Mrs. Emma Lucy ('46)  
Ms. Jacquelyn Langston ('80)  
Mrs. Phyllis Layton ('58)  
Mrs. Ellen Lewis ('30)  
Dr. Lena Lewis ('31)  
Ms. Sara Lewis ('61)  
Mrs. YuChen Lin ('54)  
Mrs. Mary Linthicum ('46)  
Mr. Joseph Lipic  
Mrs. Evelyn Lippelmann ('41)  
Mrs. Virginia Luetje ('26)  
Mrs. Lois Lynd ('17)

Mrs. Marie Malone ('43)  
Ms. Charlotte Manges ('74)  
Mrs. Frances Marks ('43)  
Mr. Jack Maxam  
Mrs. Lois May ('52)  
Mrs. Mary McAfee ('78)  
Mrs. Katherine McCombe ('69)  
Mr. Kevin McCool  
Mrs. Helen McCown ('50)  
Mrs. Virginia McGaughey ('39)  
Mrs. Carolyn McMillan ('32)  
Mr. Robert Meier ('76)  
Mrs. Patsy Meisel ('55)  
Mrs. Marilyn Michael ('48)  
Mrs. Arline Miller ('48)  
Mrs. Laura Mitchell ('42)  
Mrs. Nancy Jane Mojonnier ('46)  
Mrs. Georgia Mon ('51)  
Mr. Harold Moore  
Ms. Marilyn Morris  
Mr. Joseph Mosby  
Mrs. A. Grace Moulder ('22)  
Rev. Earl Nance  
Miss Virginia Natho ('59)  
Mrs. Katherine Nelson ('37)  
Mrs. Ethel Neuhooff ('26)  
Mrs. Betsy Nimock ('55)  
Mrs. Marilyn Noonan ('69)  
Mrs. Helen Olson ('36)  
Mrs. Dorothy Ordelheide ('29)  
Mrs. Kathryn Orth ('40)  
Mrs. Katherine Patton ('24)  
Mrs. Mary Pearson ('41)  
Mrs. Joanna Peery ('35)  
Mrs. Eulalia Petersen ('32)  
Mr. Vernon Petrick  
Ms. Jean Poggemeier ('84)  
Mrs. Dorothy Popham ('41)  
Ms. Alva Powers  
Mrs. Virginia Preston ('62)  
Mrs. Judith Pribor ('57)  
Miss Patti Price ('74)  
Miss Wanda Pringle ('37)  
Mrs. Esther Rechter ('25)  
Mrs. Sharon Reimel ('63)  
Mrs. Margaret Richeson ('36)  
Mr. Geoffrey Roach  
Mrs. Joan Robinson ('65)  
Mrs. Lucille Robinson ('34)  
Mrs. Carlyn Romeyn ('64)  
Mr. Walter Roth  
Rab. Alvan Rubin  
Mr. Jerry Ruffkahr  
Mrs. Janet Russell ('53)  
Mrs. Margaret Sample ('48)  
Ms. Barbara Schifeling ('69)  
Miss Susan Schiller ('77)  
Ms. Nancy Schneider ('78)  
Mrs. Elizabeth Schreiber ('29)  
Mrs. Lillian Schuttenberg ('64)  
Mr. Joseph Schweich  
Mrs. Betty Jane Schwendener ('43)  
Mr. Stanford Seidel ('76)  
Mrs. Sue Sharp ('53)  
Mrs. Lillian Shaw ('32)  
Mr. Michael Shelton ('80)  
Mrs. Vicki Shelton ('69)  
Mr. Edward Shields ('82)  
Miss Lucy Shirk ('40)  
Mr. Howard Short  
Mrs. Marilyn Shutz ('52)  
Mr. Louis Siemer  
Mrs. Marjorie Silliman ('33)  
Mrs. Joyce Silver ('52)  
Mrs. Margaret Small ('40)  
Mr. John Spainhower  
Mrs. Doris Spellman ('33)  
Mrs. Betty Sphar ('69)  
Mr. Frank Spinner  
Mrs. Roberta Sprich ('50)  
Mrs. Mary Stark ('49)  
Mr. Robert Steele  
Miss Sara Stein ('59)  
Mr. Anton Stever  
Mrs. Marie Strawbridge ('42)  
Mrs. Sara Street ('35)  
Mrs. Betty Strong ('39)  
Mrs. Sara Stukenbroeker ('41)  
Ms. Arlene Sueoka  
Mrs. Rebecca Summerlin ('59)  
Mr. Charles Sunderman  
Mrs. Martha Sweeney ('77)  
Ms. Mary Talbot  
Mrs. Muriel Tatarsky ('30)  
Ms. Geraldine Thompson ('28)  
Mrs. Marcia Thompson ('64)  
Miss Marian Thompson ('38)  
Mrs. Ann Tolly ('62)  
Mrs. Charlotte Tower ('39)  
Mrs. Elane Tufts ('69)  
Mrs. Lindsey Vanlissingen ('45)

Mrs. Jean Vest ('45)  
Mrs. Vera Vieman ('21)  
Mrs. Janie Wacker ('69)  
Ms. Suzanne Wager-Mulock ('75)  
Mrs. Berniece Wallace ('25)  
Mrs. Norma Wallingford ('27)  
Ms. Claride Walters  
Ms. Vivian Ware ('82)  
Mrs. Elizabeth Warren ('59)  
Mr. Walter Weik ('81)  
Mrs. Virginia Welles ('41)  
Mrs. Judith Werner ('70)  
Mr. Wesley Wertz  
Mrs. Margaret Wesson ('27)  
Mrs. Carol Whitman  
Mrs. Imogene Wilden ('65)  
Mrs. Marjorie Wilkinson ('29)  
Mrs. Helen Williams ('45)  
Mrs. Suzanne Williams ('69)  
Mrs. Evelyn Wingate ('33)  
Miss Deborah Wittner ('67)  
Miss Carol Wolter ('55)  
Mr. James Wong  
Mr. Dennis Wood  
Mrs. Sally Sue Woodson ('50)  
Miss Marjorie Wycoff ('34)  
Mrs. Gwendolyn Yaklich ('57)  
Mrs. Gloria Young ('43)  
1st National Bank of St. Charles  
Arthur Vining Davis Fo.  
Artistic Cleaners  
Borg-Warner Foundation  
Cave Springs Travel Agency  
Cope Plastics  
CPC North America  
First Presbyterian Church  
General Electric Foundation  
Gilliom Manufacturing Co.  
Hood's Standard Service  
J. Eckerd Corp.  
Kwik Kover Mfg.  
Laclede Gas Company  
Mansion House Center  
Missouri Cities Water Company  
Missouri Colleges Fund  
Murtagh-McFarlane Artists  
O'Fallon Auto Supply  
Owen Companies  
Pillsbury Foundation  
Sarachan and Fox  
South-Western Publishing  
St. Andrews Cinema  
Temple Israel  
Texaco Philanthropic Foundation  
Venture Stores

**\$50.00 - \$99.99**

Mrs. Anna Marie Alexander ('37)  
Mrs. Edna Amos ('29)  
Mrs. Barbara Amsler ('49)  
Mrs. Nora Anderson ('50)  
Mrs. Ruth Arft ('42)  
Mrs. Rita Atlas ('49)  
Mr. L. Ayyagari  
Mr. John Bakewell ('73)  
Ms. Joan Bancel ('38)  
Mrs. Sara Barker ('40)  
Mrs. Donna Barksdale ('60)  
Mrs. Louise Barrow ('36)  
Mrs. Janet Barth ('42)  
Mrs. Janet Bassel ('77)  
Miss Judith Bassnett ('70)  
Mr. Jerry Beck ('81)  
Mr. John Becker  
Mrs. Lavone Beebe ('53)  
Mrs. Rosemary Bellis ('46)  
Mrs. Arminta Berry ('48)  
Mrs. Marilyn Berry ('58)  
Mrs. Gloria Berthelsen ('51)  
Mrs. Nita Besse ('49)  
Mr. Warren Bethel  
Miss Betty Bills ('40)  
Mr. Leo Birchler ('80)  
Mrs. Carol Boerding  
Mrs. Ann Boltz ('56)  
Ms. Madonna Booth-Buhr ('77)  
Mrs. Mayme Bost ('40)  
Miss Dorothy Bottani ('36)  
Mrs. Barbara Bower ('47)  
Mr. William Bowers ('77)  
Ms. Carol Braunhausen ('74)  
Mrs. Lois Brewer ('44)  
Mr. Robert Broeg  
Ms. Frances Brueshaber ('75)  
Mr. Ralph Bruns  
Miss Elizabeth Burdick ('32)  
Mr. Phillip Burkemper ('78)  
Mr. James Burt  
Ms. Ann Canale

Mrs. David Capulli ('34)  
 Mrs. Gretel Carpenter ('61)  
 Mrs. Virginia Carson ('39)  
 Mr. Dennis Cavanagh ('77)  
 Mrs. Virginia Chambers ('47)  
 Mr. Robert Chambless  
 Mrs. Elsie Chandler ('68)  
 Mrs. Frances Chapman ('51)  
 Ms. Joan Childress ('80)  
 Ms. Adonica Clark  
 Mrs. Barbara Clark ('63)  
 Mr. Edwin Costello  
 Mrs. Ann Cotrell ('63)  
 Ms. Mary Cox ('75)  
 Mr. Burton Crocker  
 Mrs. Sara Cronan ('68)  
 Mrs. Kathryn Crouch ('38)  
 Mrs. Kathryn Crouse ('40)  
 Mr. Ronald Crouther ('83)  
 Mrs. Vivian Crow ('31)  
 Mr. Edward Curran  
 Mr. William Daniel  
 Mrs. Helen Davis ('40)  
 Mrs. Patti Dawkins ('57)  
 Mrs. Ann Deatherage ('57)  
 Ms. Linda Diamond  
 Mr. Douglas Dillard  
 Mr. Jay Dillingham  
 Mr. John Dooley ('74)  
 Mr. Edward Dowd  
 Mr. Larry Doyle ('84)  
 Mrs. Jean Droste ('49)  
 Mrs. Doris Dunlap ('40)  
 Mr. Kenneth Duvall ('75)  
 Ms. Joan Dykema ('64)  
 Ms. Donna Eckberg  
 Mrs. Dorothy Eirten ('63)  
 Mr. Lawrence Elam  
 Mrs. Karen Ell Atwood ('66)  
 Mrs. Patricia Elliott ('44)  
 Miss Janet Elser ('56)  
 Mrs. Patsy Erwin ('70)  
 Mr. Carl Eschbacher ('72)  
 Mrs. Joanne Estes ('65)  
 Mrs. Katherine Everett ('42)  
 Mr. Glen Everhart  
 Mrs. Mildred Ey ('30)  
 Mrs. Kazimiera Ezvan  
 Mrs. Jane Fagg ('56)  
 Mrs. Helen Fangman ('44)  
 Mrs. Billie Farrell ('44)  
 Mrs. Joan Farris ('50)  
 Mr. Kenneth Fast  
 Mr. James Feeley  
 Mr. William Feldewerth ('80)  
 Mr. Basil Fikaris ('72)  
 Mrs. Marjorie Fincham ('38)  
 Mrs. Constance Finney ('26)  
 Mrs. Shirley Fitzgerald ('60)  
 Mrs. Dorothy Fix ('55)  
 Mrs. Laverne Flachsbarth ('61)  
 Mrs. Mildred Foglesong ('41)  
 Mrs. Amelia Frankum ('64)  
 Mrs. Karen Fry ('61)  
 Mrs. Harriet Gaeckle ('49)  
 Mr. Gregory Gaines  
 Mrs. Jane Gaines ('67)  
 Mrs. Jane Gale ('37)  
 Mrs. Mary Gamble ('28)  
 Mrs. Deloris Gaylord ('57)  
 Mrs. Mary George ('46)  
 Mrs. Norma Gieseman ('46)  
 Mrs. Kay Gill ('67)  
 Mr. Ronald Gilliland ('80)  
 Mr. Ronald Gilliland ('78)  
 Mrs. Mary Ann Ginnow ('48)  
 Mrs. Elaine Glassman ('42)  
 Mrs. Miriam Goldberg ('38)  
 Mrs. Gloria Gouger ('45)  
 Mr. Donald Gregor  
 Mrs. Jean Grigsby ('65)  
 Dr. Willie Mae Grisson ('48)  
 Miss Marjorie Groves ('27)  
 Dr. Jan Gund ('44)  
 Mrs. Jan Gustafson ('63)  
 Mrs. Betsy Hadley ('70)  
 Mrs. Erna Hageman ('33)  
 Mrs. Ginny Hahn ('62)  
 Mr. Timothy Haley  
 Miss Dorothy Hall ('26)  
 Mr. John Hall ('80)  
 Miss Gladys Halliburton ('31)  
 Mrs. Phyllis Ham ('47)  
 Ms. Betty Hammett ('84)  
 Mrs. Mary Ellen Hancock ('34)  
 Mrs. Mary Hanser ('37)  
 Mrs. Nancy Harden ('63)  
 Mrs. Cynthia Eve Harmening ('52)  
 Mrs. Mary Harper ('50)  
 Mr. Jerry Harris ('77)  
 Ms. Margaret Harris ('58)  
 Mr. Wayne Harvey  
 Mrs. Mira Hatley ('68)  
 Mrs. Van Haviland ('69)  
 Mr. Clarence Heckmann  
 Miss Barbara Hedlund ('71)  
 Mr. Eric Henderson  
 Mr. M. Hirsch  
 Mrs. Doris Hirschmann ('44)  
 Mr. Kenneth Hodges  
 Mrs. Gertrude Holm ('38)  
 Mrs. Margaret Horsman ('39)  
 Mrs. Harriet Housel ('32)  
 Mrs. Susan Hruby ('66)  
 Ms. Patricia Hubert ('84)  
 Mrs. Estelle Huff ('40)  
 Mr. Robert Hulett  
 Mrs. Anna Hulme ('40)  
 Mrs. Patricia Hunn ('64)  
 Mr. R. Hunter  
 Mrs. Patricia Hurster ('50)  
 Mr. Kenneth Ingram  
 Mrs. Eleanor Jaeger ('43)  
 Ms. Shayla James  
 Mrs. Lucie Jeffers ('31)  
 Mr. Daniel Jirsa  
 Mrs. Brenda Johnson ('69)  
 Mr. Charles Johnston  
 Mr. John Johnston ('79)  
 Mrs. Martha Jordan ('49)  
 Ms. Mary Jordan ('60)  
 Mrs. Kathrine Kaiser ('29)  
 Ms. Laurie Keeran ('80)  
 Mrs. Margaret Ann Keeser ('54)  
 Mr. Everett Keith  
 Mrs. Margaret Kimbrough ('54)  
 Mrs. Jean Kinnmonth ('50)  
 Mrs. Patricia Kirk ('64)  
 Mrs. Alla Jo Kirkpatrick ('44)  
 Mrs. Candace Kline ('67)  
 Miss Dorothea Knepper ('33)  
 Mr. Harry Knollhoff, Jr.  
 Mrs. Magdalen Ann Koerner ('77)  
 Mrs. June Kottmeier ('41)  
 Mrs. Jarmila Kozak ('83)  
 Ms. Celeste Krug ('42)  
 Mr. Charles Lackner ('73)  
 Mrs. Virginia Lambert ('49)  
 Mrs. Lois Lane ('38)  
 Mrs. Ramona Lane  
 Mr. John LaPointe  
 Mrs. Diana Lassen ('71)  
 Ms. Maryann Lee ('39)  
 Mr. Richard Lee ('83)  
 Mr. Thomas Lenart ('82)  
 Ms. Charlene Levin ('82)  
 Mrs. Blanche Lischer ('35)  
 Mr. Robert Love  
 Ms. Michele Lowrence ('67)  
 Mr. Phillip Lucido ('81)  
 Ms. Rita Luddon ('81)  
 Ms. Karen Lumpe ('82)  
 Mrs. Gaelic Ma ('49)  
 Mrs. Chloe Machado ('35)  
 Mrs. Helen Markham ('37)  
 Mrs. Mary Marquardt ('73)  
 Mrs. Joyce Mason ('63)  
 Mrs. Helen Massey ('33)  
 Mrs. Mary Louise Maughan ('32)  
 Mrs. Elisabeth Maurice ('59)  
 Mrs. Rebecca Mayo ('64)  
 Mrs. Nancy Kay McAdams ('61)  
 Miss Lucy Anne McCluer ('49)  
 Mrs. Allie Mae McColgan ('35)  
 Ms. Martha McCutchan ('82)  
 Mrs. William McEachron ('44)  
 Mr. Andrew McGaffin  
 Mrs. Lynn McHaney ('45)  
 Mrs. Sandra McKenzie ('61)  
 Mrs. Josephine McLernon ('38)  
 Mrs. Eleanor McNichols ('51)  
 Mr. Ted McVay  
 Mr. Richard Meier ('74)  
 Mrs. Carol Meuser ('63)  
 Mrs. Elizabeth Miller ('41)  
 Ms. Theresa Miller ('82)  
 Mrs. Betty Mills ('57)  
 Ms. Ruth Mitchell  
 Ms. Eileen Moccia ('73)  
 Mr. & Mrs. Christopher Morris  
 Mrs. Janet Mueller ('79)  
 Mr. Stanley Mueller  
 Mr. John Muench ('75)  
 Mrs. Lawanda Murfee ('42)  
 Mrs. Amy Murphy ('75)  
 Mrs. Janice Murphy ('59)  
 Mrs. Evelyn Needham ('40)  
 Mrs. Patricia Nelson ('74)  
 Mrs. Elizabeth Newenhuyse ('72)  
 Mrs. Mary Ninker ('59)  
 Mrs. Joanne O'Keefe ('70)  
 Mrs. Evelyn Ochs ('35)  
 Mrs. Frankie Odom ('27)  
 Ms. Nancy Ohlms ('83)  
 Miss Jane Orthel ('68)  
 Mr. James Orthwein  
 Mrs. Helen Ostroff ('45)  
 Miss Ethel Owen ('30)  
 Miss Eugenia Pearson ('29)  
 Mrs. Marianne Pepon ('50)  
 Miss Karen Petering ('72)  
 Mrs. Fanny Peterson ('24)  
 Ms. Peggy Pettit ('71)  
 Miss Ruth Pinnell ('39)  
 Ms. Barbara Placekmeier ('83)  
 Mrs. Dorothy Pokorny ('41)  
 Mr. Ronald Polick ('72)  
 Ms. Mary Polonowski ('67)  
 Mr. Billy Poole  
 Mrs. Helen Posey ('47)  
 Mrs. Lois Posner ('58)  
 Mrs. Virginia Powell ('33)  
 Mr. Larry Pressley ('33)  
 Ms. Jeanine Prickett ('78)  
 Ms. Bertha Prosser  
 Mrs. Maxine Provost ('41)  
 Mr. John Putterbaugh  
 Mrs. Flora Quillian ('42)  
 Mrs. Kathleen Raiche ('60)  
 Ms. Marjorie Rand ('77)  
 Mrs. Sydney Reding ('58)  
 Mrs. Betty Reed ('41)  
 Mr. Lester Reid  
 Mrs. Gloria Richardson ('59)  
 Mrs. Marilyn Rickmeyer ('62)  
 Mrs. Harriette Ritter ('46)  
 Mrs. Suzanne Robbins ('55)  
 Mrs. Dorothy Robertson ('43)  
 Mrs. Jennelle Robertson ('56)  
 Ms. JoAnne Rocklage ('82)  
 Ms. Patricia Roe  
 Mr. Frank Roeder ('82)  
 Mrs. Beverly Anne Rogers ('62)  
 Mr. John Rooker  
 Mr. Frederick Roos  
 Mrs. Mary Elizabeth Rosborough ('36)  
 Mrs. Fannie Rosenthal ('49)  
 Mrs. Katherine Rowe ('40)  
 Mrs. Marguerite Russel ('33)  
 Mrs. Mabel Salfen ('46)  
 Mr. Brian Samuels ('79)  
 Miss Joyce Saunders ('29)  
 Mr. Edward Schaltenbrand ('83)  
 Mrs. Carile Schnabl ('55)  
 Mrs. May Schnatmeier ('68)  
 Mrs. Debbie Schnedler ('71)  
 Mrs. Peggy Schulze ('50)  
 Mr. William Schweinner  
 Mrs. Rosalee Seymour ('80)  
 Mrs. Rebecca Shaw ('69)  
 Dr. Eloise Sherman ('46)  
 Miss Dorothy Shippey ('58)  
 Mr. Wesley Shooks  
 Mrs. Margaret Short ('25)  
 Mrs. A. Siemssem  
 Mr. Ronald Silverman  
 Mrs. Eleanor Simpson ('26)  
 Mrs. Andrew Skroska ('82)  
 Mrs. Phyllis Slagell ('53)  
 Mrs. Nancy Smith ('60)  
 Ms. Sarah Smith ('71)  
 Mrs. Betty Jean Smoot ('48)  
 Mrs. Toni Sythe ('71)  
 Mrs. Charlotte Sodey ('40)  
 Miss Jo Ann Souder ('72)  
 Mrs. Ruth Stagemeier ('73)  
 Mrs. Rebecca Stanard ('68)  
 Mrs. Geraldine Stine ('70)  
 Mr. Kevin Stouffer ('82)  
 Mr. Paul Stratil  
 Mrs. Margaret Strobel ('43)  
 Mrs. Katherine Sutherland ('45)  
 Mrs. Josephine Tarrant ('18)  
 Mr. Edward Tefft III  
 Mrs. Jane Teigen ('57)  
 Mrs. Virginia Terrill ('33)  
 Mrs. Elizabeth Terry ('46)  
 Mrs. Marianne Thiel ('64)  
 Ms. Dede Tignor ('60)  
 Mrs. Jean Tipton ('78)  
 Mrs. Carol Transou ('58)  
 Mrs. Eunice Traver ('29)  
 Mrs. Virginia Trent ('52)  
 Mrs. Jane Trumbo ('29)  
 Mr. Chris Tubbs  
 Mr. Jerald VanNatta  
 Mr. Keith Vaugier  
 Ms. Laura Vonland ('84)  
 Miss Barbara Wade ('49)  
 Mrs. Mary Waggoner ('34)  
 Mr. Michael Waldman  
 Mr. Philip Wander  
 Miss Evelyn Watson ('32)  
 Mrs. Caroline Wehmer ('64)  
 Mrs. Laurel Werner ('67)  
 Mrs. Diane Wessel ('64)  
 Mrs. Alice Westerfeld ('39)  
 Mr. Lee White  
 Mrs. Martha White ('69)  
 Mrs. Prudence White ('65)  
 Mrs. Emma Whittington ('28)  
 Mrs. Virginia Wierda ('47)  
 Mrs. Marguerite Wiley ('26)  
 Mrs. Leonora Wilkinson ('38)  
 Mrs. Mary Elizabeth Willets ('40)  
 Mrs. Janet Williamson ('40)  
 Mr. James Wilson  
 Mr. John Wirtz  
 Mr. Bill Yearout  
 Mr. Charles Yow  
 Ms. Mary Zabolosky ('60)  
 Mr. Roy Zeiger ('79)  
 Mr. Samuel Zibit  
 Mrs. Martha Zimmerman ('58)  
 A.E. Staley Manufacturing  
 Amoco Foundation  
 Atlantic Richfield Foundation  
 Beech Aircraft Foundation  
 Cast & Crew of "Carnival"  
 Center Bank - St. Peters  
 Commerce Bank - St. Charles  
 Fiduciary Trust Company  
 General Mills Foundation  
 Harris Foundation  
 Haynes and Haynes Inc.  
 King Associates  
 Lindenwood Circle K Club  
 Lindenwood College  
 Lindenwood Neighborhood  
 Mrazek Van & Storage  
 Owens-Illinois  
 Ralph M. Parsons Co.  
 Ralston Purina Trust Fund  
 Richardson-Vicks, Inc.  
 Shaklee Corporation  
 St. Charles Foreign Car  
 St. Charles High School  
 St. Charles Yellow Cab  
 St. John United Church  
 VF Corporation  
 Wentzville School District No. 4

**\$1.00 - \$49.99**

Ms. Marjorie Abeling ('42)  
 Mrs. Jane Abernathy ('41)  
 Mrs. Barbara Abston ('60)  
 Mrs. Joy Adam ('63)  
 Ms. Judith Adams ('78)  
 Miss Drusilla Aden ('35)  
 Mrs. Margaret Aden ('43)  
 Mrs. Dorothy Agee ('26)  
 Mrs. Alice Ahrens ('59)  
 Mrs. Barbara Akester  
 Mrs. Elizabeth Akright ('35)  
 Mrs. Ruby Alberts ('46)  
 Ms. Beth Albertson ('80)  
 Mrs. Linda Albright ('64)  
 Mrs. Mildred Albright ('24)  
 Ms. Anastacia Aldridge ('81)  
 Mrs. Florence Allbritton ('29)  
 Mrs. Kathryn Allen ('27)  
 Mrs. Marjorie Allen ('44)  
 Miss Ruth Allen ('39)  
 Mrs. Barbara Allman ('51)  
 Rev. Rudolph Allrich  
 Mr. Robert Alton ('79)  
 Ms. Luisa Ambrosi  
 Mrs. Ann Amey ('64)  
 Mrs. Anita Amsinger ('36)  
 Mrs. Patricia Amstutz ('47)  
 Ms. Marie Andel ('84)  
 Mrs. Jean Andersen ('44)  
 Mrs. Barbara Anderson ('69)  
 Mr. James Anderson  
 Mrs. Jane Anderson ('67)  
 Miss Jean Anderson ('41)  
 Mr. Lyndon Anderson  
 Mrs. Martha Anderson ('43)  
 Mrs. Mildred Anderson ('26)  
 Mrs. Virginia Anderson ('28)  
 Mrs. Nancy Jean Andrews ('49)  
 Mr. Stephen Andrews ('76)  
 Mrs. Martha Anthony ('56)  
 Mr. Joseph Aprile ('82)  
 Mrs. Mary Jo Archibold ('60)  
 Mrs. Jane Ard ('56)  
 Mrs. Barbara Arnold ('74)  
 Mrs. Margaret Arnold ('24)  
 Mrs. Mary Arnold ('41)  
 Mrs. Sue Arnold ('64)  
 Miss Mary Arrington ('56)  
 Mrs. Grace Arsenneau ('44)  
 Miss Joanne Ator ('69)  
 Mrs. Gracia Atterberg ('39)  
 Mrs. Emily Atwood ('42)

Miss Cornelia Austin ('36)  
 Mrs. Madelin Austin ('34)  
 Mr. Nicholas Avellino  
 Mr. Allen Bacher ('80)  
 Ms. Elaine Bachman ('74)  
 Mr. John Back ('71)  
 Mrs. Elizabeth Bacon ('48)  
 Mrs. Margaret Bagby ('28)  
 Mrs. Sharon Baggs ('62)  
 Mrs. Susan Bagwell ('64)  
 Mr. Richard Bahr ('79)  
 Mrs. Martha Baier ('40)  
 Mrs. Jean Bailey ('69)  
 Mr. Kenneth Bailey  
 Mrs. Joan Baker  
 Mr. John Baker  
 Mrs. Katherine Baker  
 Mrs. Mary Baker ('70)  
 Mr. Gino Baldetti  
 Mrs. Elsie Sue Baldwin ('16)  
 Mr. Jack Baldwin  
 Mrs. Constance Balfrey ('54)  
 Mrs. Christine Ballin  
 Mrs. Florence Barboro ('83)  
 Ms. Joyce Barclay  
 Mrs. Dorothy Barklage ('73)  
 Mrs. Mary Lee Barklage ('46)  
 Mrs. Nan Barmueller ('49)  
 Ms. Dorothy Barnett ('44)  
 Mrs. Janet Baron ('74)  
 Mrs. Kathryn Baron ('65)  
 Mrs. Eleanor Barr ('25)  
 Mrs. Helen Barrett ('26)  
 Mrs. Betty Barrows ('66)  
 Mrs. Bonnie Barth ('70)  
 Mr. Stephen Barth ('74)  
 Mrs. Roselise Barthelmeh ('44)  
 Mr. Dan Bartlett  
 Miss Helen Bartlett ('45)  
 Mrs. Aileen Bartmess ('44)  
 Ms. Brenda Bartz ('82)  
 Mrs. Pamela Baskett  
 Ms. Darlene Bates ('84)  
 Mrs. Paula Bates  
 Mrs. Marianna Batt ('46)  
 Miss Anna Baty ('71)  
 Ms. Beverly Baudendistel ('81)  
 Ms. Jill Baue  
 Mrs. Diane Bauer ('68)  
 Mrs. Margie Baum ('42)  
 Mrs. Dorothy Baumann ('60)  
 Ms. Theresa Bax ('82)  
 Mr. David Baygents  
 Ms. Margaret Beal  
 Mr. Vernon Bear ('80)  
 Mrs. Alma Beck  
 Mrs. Mary Beck ('30)  
 Miss Mary Beck ('44)  
 Mrs. Mary Beck ('65)  
 Mr. Victor Beck  
 Mrs. Myra Becker ('23)  
 Mrs. Mary Beebee ('38)  
 Mrs. Kathryn Beeken ('49)  
 Mrs. Nancy Beeler ('59)  
 Mrs. Verna Beeson ('32)  
 Mr. Bernard Beggan  
 Mrs. Margaret Beke ('69)  
 Mrs. Jaquelyn Bekins ('58)  
 Mrs. Caroline Bell ('41)  
 Mrs. Pamela Bell ('68)  
 Miss Wanda Bell ('75)  
 Mr. James Bell Jr.  
 Mrs. Joanne Bellenger ('51)  
 Mrs. Mildred Bellows ('29)  
 Mrs. Enid Benda ('54)  
 Mrs. Marian Bengis ('60)  
 Mrs. Felicia Benner ('63)  
 Mrs. Donna Bennett  
 Mr. William Bensberg  
 Mrs. Helena Bergelin ('29)  
 Mrs. Peggy Berger ('68)  
 Mr. George Bergevin  
 Mr. David Bergman  
 Ms. Sally Berman ('64)  
 Mr. Arlie Bernard  
 Mrs. Jean Bernard ('63)  
 Ms. Leola Bernard  
 Mrs. Joan Berney ('53)  
 Mrs. Harriet Bernstein ('41)  
 Mrs. Evelyn Berry ('30)  
 Miss Nieta Berry ('30)  
 Mrs. Sharon Berryman ('66)  
 Mrs. Cynthia Besant ('64)  
 Mrs. Helen Beste ('32)  
 Mrs. JoEllen Betts  
 Mr. Ted Betz  
 Mr. James Bick Jr.  
 Mrs. Nan Biddle ('59)  
 Miss Patricia Biderman ('67)  
 Mrs. Janice Bierman ('49)  
 Mrs. Jane Biltonen ('59)  
 Mr. Paul Binder ('84)  
 Mrs. Susan Bindsley ('67)  
 Mr. David Bircher  
 Mrs. Adrienne Birge ('38)  
 Mr. David Bishop ('84)  
 Mrs. Joanne Bishop ('51)  
 Miss Betty Black ('67)  
 Mrs. Carol Black ('62)  
 Mrs. Madeline Black ('66)  
 Mrs. Kathryn Blacksher ('63)  
 Mrs. Nancy Blackwell ('69)  
 Mrs. Louise Blackwood ('48)  
 Mr. William Blades  
 Mrs. Kathryn Blair ('31)  
 Ms. Lucia Blakley ('70)  
 Mrs. Carol Blanchard ('57)  
 Mrs. Patricia Blazeovich ('60)  
 Mrs. Linda Bledsoe ('64)  
 Mrs. Mary Blixen ('30)  
 Mrs. Selma Block ('28)  
 Mrs. Carolyn Bloebaum ('63)  
 Mr. Ron Bockenkamp  
 Mr. Harrell Boedeker  
 Ms. Sharon Bogard ('73)  
 Mrs. Mary Boggs ('39)  
 Mrs. Kathryn Bohn ('55)  
 Ms. Bernice Bond ('80)  
 Mr. James Bond ('78)  
 Mr. Rand Bookman  
 Mrs. Rose Boone ('51)  
 Mrs. Sarah Borchardt ('65)  
 Mrs. Susan Borne ('79)  
 Ms. Joyce Boschert  
 Mrs. Harriet Bost ('34)  
 Mrs. Helen Boswell ('32)  
 Mr. Michael Bothe ('81)  
 Mrs. Mary Ann Boutillier ('46)  
 Mrs. Kay Bowden ('60)  
 Mrs. June Bowen ('41)  
 Mr. Keith Bowers  
 Mrs. Loene Bowlin ('62)  
 Mrs. Elizabeth Bowman ('59)  
 Mrs. Margaret Boynton ('33)  
 Ms. Jean Bradfisch ('48)  
 Mrs. Betty Bradley ('45)  
 Mr. J. Stephen Brady ('82)  
 Mr. Philip Brady  
 Mr. Paul Brake  
 Ms. Janet Brakensiek  
 Mr. David Branham ('82)  
 Mrs. Sue Brannock ('37)  
 Mr. Alan Brant  
 Mr. Don Brasher  
 Mr. Charles Bratkowski  
 Mr. William Bredenkoetter ('82)  
 Ms. Lynn Breeze  
 Mrs. Eunice Bremer ('18)  
 Mr. Keith Bridwell  
 Mrs. Virginia Brierley ('37)  
 Mrs. Gloria Brinkmann ('47)  
 Mr. Kermit Brinkmann  
 Mrs. Henry Etta Brinton ('38)  
 Mrs. Linda Bristol ('69)  
 Mrs. Barbara Broadfoot ('70)  
 Mrs. Brenda Broadfoot  
 Mrs. Katherine Brock  
 Mrs. Joanne Brod ('47)  
 Mrs. Peggy Broday ('38)  
 Mr. Jeffrey Bromberg ('82)  
 Mrs. Barbara Brooke ('41)  
 Ms. Gloria Brooks ('78)  
 Mrs. Janet Brooks ('56)  
 Mrs. Barbara Brown ('57)  
 Mr. Gilford Brown  
 Ms. Kell Brown ('84)  
 Mrs. Malcolm Brown ('27)  
 Miss Mildred Brown ('31)  
 Mrs. Nancy Brown ('74)  
 Mr. Steven Brown  
 Mr. William Brown  
 Ms. Catherine Broyles ('53)  
 Mrs. Rosanna Bruere ('40)  
 Mrs. Joan Brumbaum ('58)  
 Mrs. Barbara Brumitt ('52)  
 Mrs. Dorothy Brune ('69)  
 Mrs. Mary Brunson ('36)  
 Mrs. Kathryn Bubalo ('54)  
 Mrs. Helen Buchanan ('60)  
 Mrs. Catherine Buchholz ('27)  
 Mrs. Lynn Buck ('44)  
 Mrs. Ava Buckmaster ('34)  
 Ms. Janet Bueneman ('64)  
 Mrs. Sarah Buffum ('60)  
 Mrs. Nancy Lou Buhler ('62)  
 Mrs. Carol Bulger ('69)  
 Mrs. Charlotte Bunn ('43)  
 Ms. Ruth Ann Bunselmeyer ('84)  
 Mrs. Marreen Buntaine ('74)  
 Mrs. Katherine Burbott ('75)  
 Mrs. Coleen Burford ('72)  
 Mrs. Sue Burgdorf ('56)  
 Mrs. June Burger ('50)  
 Ms. Ellen Burkemper ('80)  
 Mr. Vic Burkemper  
 Miss Louise Burkhardt ('70)  
 Dr. Mary Burkhart ('69)  
 Mrs. Francis Burnett ('30)  
 Mrs. Margaret Burnett ('29)  
 Mrs. Alice Burrows ('29)  
 Mr. Mark Burstein  
 Mrs. Margaret Burtin ('61)  
 Mrs. Reba Burtis ('26)  
 Ms. Leanne Buryn ('80)  
 Mrs. Rita Buse ('84)  
 Mrs. Nancy Bush ('75)  
 Mrs. Ruth Bushmeyer ('36)  
 Mrs. Katherine Bushnell ('48)  
 Mrs. Mary Butler ('35)  
 Mr. Paul Butts ('79)  
 Mrs. Geraldine Byrd ('35)  
 Mrs. Meade Cadot ('69)  
 Mrs. Celia Cain ('45)  
 Mrs. Nanci Calderwood ('60)  
 Miss June Callaway ('29)  
 Mrs. Barbara Callen ('40)  
 Mrs. Ann Callender ('68)  
 Mrs. Phyllis Calvert ('49)  
 Mrs. Leslie Campbell ('40)  
 Mrs. Linda Campbell ('63)  
 Mrs. Marie Campbell ('46)  
 Mrs. Sara Cantrell ('58)  
 Mrs. Mary Anne Caponegro ('71)  
 Mrs. Doris Capps ('70)  
 Mrs. Darcy Capstick ('71)  
 Mr. Anthony Caravello ('77)  
 Mrs. Jean Carfagno ('77)  
 Mr. Peter Carich ('83)  
 Miss Mary Carlin ('59)  
 Mr. Louis Carliner  
 Ms. Shirley Carlson  
 Dr. Ann Carneal ('67)  
 Mr. John Carriaco ('80)  
 Mrs. Joanna Carrigan ('51)  
 Ms. Lillian Carson  
 Mrs. Enola Carter ('21)  
 Mrs. Iola Cassens ('32)  
 Mrs. Margaret Cathcart ('46)  
 Mr. Michael Catlett  
 Mrs. Mary Caudill ('49)  
 Mrs. Camilla Cave ('33)  
 Dr. F. Cerny  
 Mr. James Cervek  
 Mrs. Carolyn Chambers ('55)  
 Mrs. Patricia Chambers ('56)  
 Mrs. Mary Chamblin ('49)  
 Mrs. Kathryn Chapman ('34)  
 Miss Jeanne Chappell ('69)  
 Mrs. Patricia Charron ('58)  
 Mrs. Shirley Chasan ('44)  
 Mrs. Genevieve Chaudhuri ('41)  
 Mrs. Alda Childress ('34)  
 Mrs. Elizabeth Chilson  
 Ms. Jenny Chilton  
 Mrs. Ethel Chimoures ('45)  
 Mrs. Margaret Chott ('64)  
 Mrs. Cynthia Christensen ('55)  
 Mrs. Minnie Christensen ('28)  
 Mr. Scott Christensen ('78)  
 Mrs. Grathen Christian ('53)  
 Mrs. Edith Churney ('45)  
 Mrs. Lalla Claggett ('30)  
 Mrs. Janet Clark ('42)  
 Mrs. Ruth Clark ('34)  
 Mrs. Margaret Clausen ('38)  
 Ms. Hazel Clay ('49)  
 Ms. Paula Clements  
 Mr. David Cleveland ('75)  
 Ms. Roseann Clever ('79)  
 Mrs. Barbara Click ('51)  
 Mrs. Dolores Close ('49)  
 Mrs. Susan Coale ('76)  
 Mr. Delmar Cobble  
 Mrs. Florence Cocayne  
 Mrs. Barbara Cockle ('43)  
 Mrs. Lydia Coffey ('31)  
 Mrs. Dorothy Cohen ('29)  
 Mr. Michael Cohen  
 Mrs. Barbara Cole ('68)  
 Mrs. Dana Cole ('49)  
 Mrs. Doris Cole ('40)  
 Mrs. Katherine Cole ('47)  
 Ms. Rebecca Cole ('81)  
 Mr. Robert Cole ('81)  
 Mr. Christopher Coleman ('76)  
 Mr. Michael Coleman  
 Ms. Barbara Collier ('58)  
 Mrs. Louise Collins ('67)  
 Mrs. Mary Ellen Collins ('69)  
 Ms. Geraldine Colmo ('84)  
 Mrs. Mary Ann Comfort ('48)  
 Ms. Patricia Compton ('58)  
 Mrs. Marcia Connell ('48)  
 Mrs. Dorothy Conner ('37)  
 Mr. Thomas Conry ('82)  
 Mrs. Anna Conway ('25)  
 Mrs. Cheryl Cook ('67)  
 Mrs. Maurine Cook ('18)  
 Mrs. Ruth Cooley ('33)  
 Mrs. Doris Cooper ('16)  
 Mr. Eugene Copeland  
 Mrs. Gretchen Coppin ('78)  
 Mrs. Opal Corbett ('38)  
 Mr. Harlie Cornelius  
 Mrs. Murel Cornetti ('25)  
 Mrs. Adeline Corrigan ('30)  
 Mrs. Donna Cossman ('50)  
 Mrs. Martha Cotton ('58)  
 Mrs. Miriam Cotton ('44)  
 Mrs. Mildred Cottrell ('25)  
 Mrs. Jeannette Cowan ('32)  
 Mr. Bradley Cox ('78)  
 Mrs. Winifred Coyle ('41)  
 Mr. James Cravens ('83)  
 Mrs. Deborah Crawford  
 Mrs. Mary Creel ('24)  
 Ms. Florence Crockett ('83)  
 Ms. Judy Ann Crockett ('81)  
 Mrs. Ann Croft ('57)  
 Mrs. Harriet Crosby ('43)  
 Ms. Alice Crose ('31)  
 Mr. Timothy Croskey  
 Mr. Wade Cross  
 Mr. Richard Crouch  
 Mrs. Willa Crowell ('57)  
 Mr. Michael Crowley  
 Mrs. Susan Cummins ('63)  
 Mrs. Edna Cunningham ('49)  
 Mrs. Margaret Cunningham ('60)  
 Mr. Michael Curran  
 Mr. Harold Currant ('83)  
 Mrs. Janet Marcia Currie ('58)  
 Mrs. Beverly Curry  
 Mrs. Barbara Curtis ('52)  
 Mrs. Frances Custer ('41)  
 Mrs. Louise Daggett ('37)  
 Mrs. Nancy Dale ('69)  
 Ms. Donna Daleo  
 Mr. James Dame ('84)  
 Mrs. Erma Damme ('37)  
 Mrs. Emmy Lou Daniel ('63)  
 Mrs. Sarah Danielson ('63)  
 Mrs. Ida Danke ('29)  
 Mrs. Dorothy Darden ('52)  
 Mr. J. Darden  
 Mrs. Carolyn Davenport ('51)  
 Mrs. Nancy Davenport ('66)  
 Mrs. Judith David ('63)  
 Mrs. Ann Davidson ('52)  
 Miss Barbara Davidson ('26)  
 Mrs. Beatrice Davis ('31)  
 Mr. Carl Davis  
 Mrs. Dorothy Davis  
 Mrs. Elizabeth Davis ('38)  
 Mrs. Ella Davis  
 Mr. James Davis  
 Mr. Joel Davis  
 Mrs. Kathryn Davis ('58)  
 Mrs. Lo Reta Davis  
 Mrs. Sally Davis ('56)  
 Mrs. Viella Davis ('41)  
 Mrs. Bette Dawson ('39)  
 Mrs. Ann Day  
 Mr. Kevin Day ('73)  
 Mrs. Virginia Daywitt ('58)  
 Ms. Charlotte Dean ('57)  
 Mrs. Judith Dean  
 Mrs. Leatha Dean ('20)  
 Mrs. Millicent Dean ('34)  
 Ms. Loretta DeBrecht  
 Ms. Virginia DeBrecht  
 Mrs. Jane Debruyne ('70)  
 Mrs. Dolores Decker ('48)  
 Mrs. Ann Deddens ('59)  
 Mrs. Winston Dees ('62)  
 Mrs. Carmen DeForest ('81)  
 Ms. Wanda Deforest ('81)  
 Mr. Steven Degroote  
 Mr. Arthur Deibel  
 Mrs. Jo Ann Dekinder ('59)  
 Mrs. Mary Dell ('28)  
 Mrs. Martha Delmon ('62)  
 Miss Martha Demmler ('60)  
 Mr. John Dengler  
 Mrs. Helen Denman ('25)  
 Mrs. Phyllis Dennison ('47)  
 Ms. Dorothea Dent  
 Mr. J. DePriest  
 Mrs. Nancy Dering ('63)  
 Mr. Gaines Desloge  
 Mrs. Mary Dew ('53)  
 Mr. Donald Didow  
 Mrs. Doris Dieckgraefe ('58)  
 Mrs. Nell Diel ('36)  
 Mrs. Alta Diers ('47)  
 Mrs. Virginia Dieruf ('67)  
 Mrs. Nancy Dietz ('76)  
 Mrs. Vesta Jane Dippel ('57)  
 Ms. Ethel Ditto

Mrs. Betty Lou Dodge ('42)  
 Mrs. Darrel Dodson  
 Mrs. Dorothy Doerr ('30)  
 Mrs. Lee Doerr  
 Mrs. Harriet Doerrie ('41)  
 Mrs. Karen Doherty  
 Dr. Thomas Doherty  
 Miss Vicki Dohrmann ('70)  
 Mrs. Mary Dold ('68)  
 Mr. John Donald  
 Mr. Paul Donnelly  
 Mrs. Karen Dopke ('56)  
 Mrs. Phoebe Dorn ('47)  
 Mrs. Sandra Dorn ('68)  
 Mrs. Dorothy Dotson ('44)  
 Ms. Paula Dotson ('84)  
 Mrs. Elaine Douglas ('63)  
 Mrs. Betty Jean Douthett ('59)  
 Mrs. Linda Dowling ('66)  
 Mrs. Darla Downer ('58)  
 Mrs. Mary Downing ('24)  
 Mrs. Ann Downs ('56)  
 Mrs. Mary Doyle ('74)  
 Mrs. Ann Drewel ('51)  
 Mrs. Rene Drewes ('75)  
 Ms. Gertrude Duehlmeier ('82)  
 Ms. Dianah Dulany ('82)  
 Mrs. June Dulany ('41)  
 Mrs. Marion DuLany ('36)  
 Mr. Stanley Dultz ('79)  
 Mrs. Alice Duncan ('42)  
 Mrs. Lilyan Duncan ('21)  
 Mrs. Emily Dunham ('30)  
 Ms. Sarah Dunn ('82)  
 Mr. Larry Dunphy  
 Mrs. Jeane Dunton ('43)  
 Mrs. Shirley Dwyer ('40)  
 Mr. James Dwyer Jr.  
 Mrs. Marjorie Easterday ('49)  
 Mrs. Carol Easterling ('46)  
 Mrs. Mary Eaton ('57)  
 Mrs. Ruth Ebeling  
 Mr. Eric Eberhardt  
 Mrs. Marilyn Ebersole ('58)  
 Mrs. Dorothy Ebert  
 Mrs. Patricia Ebert ('51)  
 Ms. Alice Eckert ('82)  
 Mrs. Patricia Eckhardt ('61)  
 Mrs. Betty Jane Eckhart ('40)  
 Mrs. Robert Eckhoff  
 Mrs. Sylvia Eddens  
 Mrs. Polly Edel ('46)  
 Dr. Elizabeth Eden ('40)  
 Mrs. Phyllis Edgar ('38)  
 Mr. Bruce Ediger  
 Mr. Joey Edwards  
 Mrs. Marjorie Edwards ('43)  
 Mrs. Mary Edwards ('47)  
 Mr. Timothy Edwards  
 Mrs. Carolyn Egan ('60)  
 Mrs. Evelyn Egan ('35)  
 Mr. David Eisenbath ('78)  
 Mr. Joel Eissenberg  
 Mr. Charles Eldridge  
 Miss Judith Elkins ('40)  
 Mrs. Jacquelyn Ellingrod ('57)  
 Mrs. Carol Elliott ('23)  
 Ms. Patricia Elliott  
 Mrs. Wyanette Elliott ('63)  
 Mr. Carl Ellis  
 Mrs. Louise Ellis ('66)  
 Mrs. Marian Ellis ('23)  
 Mrs. Jeanne Ellis Benesema ('54)  
 Mr. Henry Elmendorf  
 Mrs. Martha Eltonhead ('56)  
 Mr. Robert Emert  
 Mr. Delmar Emge  
 Mrs. Virginia Emigholz ('36)  
 Mrs. Carlene English ('35)  
 Mrs. Elizabeth Engstrom ('49)  
 Ms. Vicky Enochs ('82)  
 Ms. Mary Erwin  
 Mrs. Constance Essig ('63)  
 Mrs. Lewella Estes ('29)  
 Mrs. Ruth Etchison ('36)  
 Mrs. Frances Eubank ('43)  
 Ms. Robin Evangelista  
 Mrs. Eleanor Evans ('52)  
 Ms. Gaye Evans ('71)  
 Mr. James Evans  
 Mrs. Lois Evans ('77)  
 Ms. Elizabeth Everett ('83)  
 Mrs. Hilda Ewell ('20)  
 Mrs. Marjorie Faber ('42)  
 Mrs. David Fairchild  
 Mr. John Falcetti  
 Mrs. Mercedes Farmer ('13)  
 Ms. Nancy Farmer  
 Mrs. Mary Farrington ('66)  
 Mr. George Fay ('83)  
 Mrs. Janet Fay ('84)  
 Mrs. Doreen Feeny ('66)  
 Mrs. Nancy Feilner ('52)  
 Ms. Joy Feinstein  
 Mr. John Feldmann  
 Mr. Joseph Feldmann ('82)  
 Mr. Orval Feldtman  
 Mrs. Josephine Feller ('72)  
 Mr. Elmer Feltner  
 Mrs. Pam Ferris ('66)  
 Mrs. Meredith Fewins ('69)  
 Mrs. Jo Clea Fezler ('43)  
 Mrs. Catherine Fickes ('68)  
 Mrs. Celsa Figger ('38)  
 Mrs. Mildred Fightmaster ('64)  
 Mrs. Alice Filkins ('36)  
 Mrs. Dorothy Fillingim ('44)  
 Ms. Barbara Finafrock  
 Mrs. Ethlyn Finch ('40)  
 Mrs. Cleo Fink ('58)  
 Mrs. Marjorie Finlay ('49)  
 Mrs. Mary Finney ('57)  
 Mrs. Mardell Finsel ('40)  
 Mrs. Dorothy Fischbach  
 Mrs. Deane Fischer ('55)  
 Mrs. Miriam Fischer ('48)  
 Mrs. Patricia Ann Fish ('70)  
 Mr. Russell Fish ('73)  
 Mrs. Lola Fisher ('39)  
 Mrs. Macile Fisher ('61)  
 Ms. Catherine Fisk ('39)  
 Mrs. Dorothy Fite ('55)  
 Mrs. Deborah Flatley ('67)  
 Dr. Mary Lou Fleari ('75)  
 Mrs. Nancy Fleming  
 Mr. John Flentie  
 Ms. Jane Fletcher ('81)  
 Mrs. Jo Anne Flory ('41)  
 Mrs. Marion Ford ('37)  
 Mr. Ralph Fortus  
 Mrs. Katherine Foster ('27)  
 Mrs. Rose Foster ('28)  
 Mrs. Estelle Fotsch ('43)  
 Mrs. Dorothy Fox ('40)  
 Mrs. Paula Fox ('58)  
 Ms. Charlotte Frailey ('81)  
 Ms. Helene Frankel  
 Mrs. Marci Franklin ('52)  
 Miss France Frazier ('26)  
 Mrs. Carl Frederick ('71)  
 Mr. Flavius Freeman  
 Mrs. Marcia Freeman ('43)  
 Ms. Betty Friauf ('45)  
 Mrs. Peggy Fridley ('60)  
 Mr. Daniel Fridrich ('75)  
 Mrs. Jane Fritson ('49)  
 Miss Wilma Fritz ('44)  
 Mrs. Mary Frost ('50)  
 Mrs. Kathleen Fullenwider ('42)  
 Mrs. Mary Fuller ('36)  
 Mr. Leo Funk  
 Mr. Gerald Furaus ('82)  
 Ms. Joyce Furry  
 Ms. Sandra Gain ('82)  
 Ms. Barbara Gaines ('81)  
 Mrs. Sara Gallagher ('41)  
 Mrs. Julia Gallais ('30)  
 Mrs. Diane Gallant ('79)  
 Mrs. Sondra Rae Galperin ('61)  
 Mrs. Grace Galt ('42)  
 Mrs. Phyllis Gamble ('42)  
 Mr. Stephen Gannon ('73)  
 Mr. Steven Garner ('84)  
 Mrs. Marilyn Garrels ('54)  
 Mr. Howard Garrett  
 Mrs. Genevieve Garst ('44)  
 Mrs. Anna Gay ('75)  
 Mrs. Helen Gay ('45)  
 Mrs. Judith Gaynor ('79)  
 Mrs. Louise Geeslin ('41)  
 Mrs. Karen Gelber ('79)  
 Mrs. Grace Gerfen ('35)  
 Mr. Orville Gerken  
 Ms. Lynette Gerschevske ('77)  
 Mrs. Jean Gershner ('47)  
 Mrs. Dorothy Gerstner ('33)  
 Mrs. Doris Gertmenian ('42)  
 Mr. Randall Getz  
 Miss Laura Geyer ('32)  
 Miss Luella Geyer ('32)  
 Mrs. Rose Gibbins ('43)  
 Mrs. Toni Gibbons ('67)  
 Ms. Barbara Gibson  
 Mrs. Hallie Gibson ('26)  
 Mr. Marc Gibson  
 Mr. Stanley Gibson ('83)  
 Mr. Roger Gibson, Jr.  
 Mrs. Jane Gilbert  
 Mrs. Margaret Gilbert ('49)  
 Mr. Barton Gill ('75)  
 Mrs. Anna Gillenwater ('22)  
 Mrs. Wilma Gillespie ('34)  
 Mrs. Charlotte Gilliom ('68)  
 Mrs. Evelyn Gillmor ('26)  
 Mrs. Miriam Gilmore ('41)  
 Mrs. Susan Gima ('64)  
 Mr. Gordon Gintz  
 Mrs. Mary Giolivo ('63)  
 Mrs. Harriett Giordano ('55)  
 Mrs. Jo Ann Gipe ('49)  
 Mrs. Marcia Ann Giske ('63)  
 Mrs. Janet Gittelman  
 Mrs. Annette Givens ('43)  
 Ms. Barb Givens ('57)  
 Mr. Lawrence Glaser  
 Mrs. Maurine Glazer ('39)  
 Mrs. Martha Glasgow ('35)  
 Ms. Suzanne Glenzy ('79)  
 Mrs. Sharlene Glock ('52)  
 Ms. Angie Gloe  
 Mrs. Jeannine Gobberdiel  
 Mrs. Florentine Goellner  
 Mrs. Caron Goettel  
 Mrs. Debbie Goettel  
 Mrs. Ann Goetz ('62)  
 Mrs. Helen Golden  
 Mr. Joseph Golden  
 Mrs. Lisa Goldworm ('75)  
 Mr. Steven Gomez  
 Mrs. Virginia Good ('30)  
 Mrs. Beverly Goodman ('56)  
 Mr. Leonard Goodman  
 Mr. Gary Goodpaster ('84)  
 Mrs. Pam Goodrich  
 Mrs. Mary Goodrum  
 Mrs. Marguerite Goodson ('49)  
 Mr. Loyd Goolsby ('76)  
 Mr. Clark Gordon ('76)  
 Mrs. Gertie Gordon ('39)  
 Mrs. Joyce Gordon ('53)  
 Mrs. Amelia Gormley ('67)  
 Ms. Pat Grace ('79)  
 Mrs. Patricia Grace ('44)  
 Mrs. Bettye Grady ('64)  
 Mrs. Miriam Graham ('27)  
 Mr. Sheldon Grand  
 Mrs. Jean Kay Grant ('69)  
 Mrs. Audrey Gray  
 Mr. Charles Greco ('78)  
 Mrs. Lana Greeley ('68)  
 Mrs. Evelyn Green ('26)  
 Mrs. Jean Green ('51)  
 Mrs. Myrtle Green ('28)  
 Ms. Ruby Green  
 Miss Janice Greene ('32)  
 Mrs. Virginia Greene ('38)  
 Miss Kay Greer ('77)  
 Mrs. Dolores Gregg ('66)  
 Mrs. Betty Gregory ('38)  
 Ms. Eleanor Gregory ('83)  
 Mrs. Barbara Griesenauer  
 Mr. Edward Griesenauer ('78)  
 Mr. Leo Griesenauer Jr.  
 Mr. Kenneth Griffin  
 Mr. Robert Griggs  
 Mrs. Lucy Grimm ('27)  
 Mrs. Dolores Griner ('49)  
 Mrs. Donna Grissom ('69)  
 Mrs. Georgia Griswold ('49)  
 Mr. Arnold Grobman  
 Mrs. Kathrine Grogan ('64)  
 Mrs. Virginia Groggs ('57)  
 Mrs. Ruth Grossman ('30)  
 Mrs. Dorothy Grotrian ('40)  
 Ms. Toni Grovier ('83)  
 Mr. James Grubbs III  
 Mrs. Jean Gruber ('76)  
 Mrs. Betty Grundmann ('59)  
 Ms. Peggy Grzeskowiak  
 Mrs. Barbara Sue Guibor ('52)  
 Mrs. Sally Gulick ('78)  
 Mrs. Mary Guthrie ('55)  
 Mr. Russ Guthrie  
 Ms. Valerie Guye  
 Mrs. Betty Haas ('44)  
 Mr. Beyan Habtezhghi ('77)  
 Ms. Lois Hachtmeyer  
 Mr. Jack Hackathorn  
 Mr. Herbert Hacker  
 Mrs. Marion Haerberle ('47)  
 Mr. Donald Hagemann ('84)  
 Mr. Robert Haggard  
 Mr. Dennis Hahn ('78)  
 Mr. John Hahn  
 Mrs. Wilda Hahn ('77)  
 Mrs. Susan Hails ('34)  
 Ms. Kristie Hajek  
 Mrs. Rena Hale ('43)  
 Mr. Timothy Haley  
 Miss Beth Hall ('23)  
 Mrs. Clare Hall ('67)  
 Mrs. Lettie Hall ('48)  
 Mrs. Mary Hall ('43)  
 Mr. Melvin Hall  
 Mrs. Janet Hallemeier  
 Mrs. Jean Halsor ('50)  
 Mrs. Eldagene Hametner ('59)  
 Mrs. Frances Hamilton ('68)  
 Ms. Betty Lou Hamline ('82)  
 Mr. Wilburn Hammack  
 Mr. Gary Hammond  
 Mrs. Inah Hammons ('32)  
 Mrs. Beverly Hampton ('47)  
 Mrs. Pally Hampton  
 Mrs. Elizabeth Hamrick ('76)  
 Mrs. Ann Hanawalt ('71)  
 Mrs. Janice Hancock ('55)  
 Mrs. Margaret Hand ('66)  
 Mrs. Patricia Handley ('55)  
 Mrs. Jeannette Hanke ('39)  
 Mrs. Maurine Hannah ('40)  
 Mrs. Harriet Hanne ('25)  
 Ms. April Hansen ('75)  
 Mrs. Gerald Hansen ('46)  
 Mrs. Nina Hanslick ('58)  
 Mrs. Lila Hanson ('72)  
 Mrs. Nancy Hanson ('64)  
 Mrs. Jennifer Harcourt ('74)  
 Mrs. Elizabeth Hardin ('79)  
 Mr. Hord Hardin II  
 Mrs. Allannette Hare ('42)  
 Mr. James Hargrove  
 Mrs. Marilyn Harkins ('58)  
 Mrs. Caroline Harmison ('88)  
 Mrs. Mary Harper ('13)  
 Mrs. Caroline Harrell ('56)  
 Ms. Carol Harrington ('69)  
 Mrs. Barbara Harris ('49)  
 Mrs. Elizabeth Harris ('69)  
 Mrs. Halcyon Harris ('30)  
 Mrs. Marian Harris ('60)  
 Miss Denise Harrold ('72)  
 Miss Margaret Hart ('41)  
 Mrs. Mary Jean Hart ('41)  
 Mrs. Jo Ann Hartwig ('54)  
 Mr. Robert Harvey  
 Mrs. Sylvia Harvey ('44)  
 Miss Athena Hassakis ('49)  
 Mrs. Mary Hauser  
 Mrs. Evelyn Hausmann ('61)  
 Mrs. Irene Hawkins ('32)  
 Mrs. Mercedes Hawkins ('28)  
 Mrs. Lenore Hay ('33)  
 Mr. Vincent Hayes  
 Mrs. Mary Haymes ('34)  
 Mrs. Ruth Ann Haymes ('49)  
 Mr. J. Head  
 Ms. Lorraine Head ('82)  
 Mr. Timothy Hearty  
 Miss Ellen Hecht ('72)  
 Mrs. Maridee Hegstrom ('47)  
 Mrs. Elizabeth Heiligman ('28)  
 Ms. Diane Held ('82)  
 Mr. Don Hellmann  
 Mr. Richard Hellwege  
 Ms. Kristi Helmick ('71)  
 Mrs. Carol Helton ('68)  
 Mrs. Eleanor Heltzel ('41)  
 Mrs. Marjorie Henceroth ('41)  
 Mrs. Chiquita Henderson ('62)  
 Ms. Deborah Henderson  
 Mrs. Ruth Henderson ('34)  
 Mr. Francis Henke  
 Mrs. Marie Henrich  
 Mrs. Anne Henrick ('61)  
 Mrs. Linda Henry ('59)  
 Ms. Audrey Hensiek  
 Mr. Martin Hente ('74)  
 Mrs. Jane Henthorn  
 Ms. Sarah Herm ('67)  
 Mrs. Barbara Hertenstein ('65)  
 Mrs. Sandra Hertz ('56)  
 Mrs. Lesley Herzog ('70)  
 Mrs. Jane Hess ('32)  
 Mr. M. Henry Hess  
 Mrs. Patsy Hester ('51)  
 Mr. Walter Heuer  
 Mrs. Marie Heye ('49)  
 Ms. Mildred Hibbs  
 Mrs. Arnita Hickman ('46)  
 Miss Marjorie Hicks ('66)  
 Mrs. Sarah Hicks ('42)  
 Mr. Carl Hill ('84)  
 Mrs. Jeanne Hill ('42)  
 Mr. Rick Hill  
 Mrs. Jane Hilliard ('42)  
 Mr. Robert Hilliard ('62)  
 Mrs. Louise Hinch ('61)  
 Mrs. Ann Hinrichs ('62)  
 Mr. Jim Hittler  
 Mr. Jim Hobbs ('81)  
 Mr. Thomas Hobbs  
 Mrs. Freda Hocking ('66)  
 Miss Mary Lucille Hodge ('29)  
 Mrs. Judith Hodges ('66)

Ms. Dorothy Hoffman ('82)  
 Mr. Wayne Hoffman  
 Mrs. Marilyn Hoffa ('58)  
 Mr. Douglas Hofstein ('83)  
 Mrs. Bonnie Hogan ('50)  
 Ms. Melba Hogan  
 Mr. Wayne Hogue  
 Mr. Bob Holden  
 Mr. Chris Holden  
 Ms. Charlotte Holder ('31)  
 Mr. George Holets ('79)  
 Ms. Linda Hollenberg  
 Ms. Leah Hollenberger  
 Mr. B. Hollingshead  
 Mrs. Dorothy Hollingsworth ('36)  
 Mrs. Mary Holloway ('42)  
 Mrs. Brenda Hollrah ('68)  
 Mr. Gary Holst ('83)  
 Mrs. Marjorie Holt ('42)  
 Mr. Gene Holzer  
 Mr. Oscar Hood  
 Mr. Timothy Hoog  
 Mr. Kester Hooper  
 Mr. Steven Hoosack ('83)  
 Mrs. Grace Hopper ('32)  
 Mrs. Susan Hoppin ('37)  
 Mrs. Carol Horn ('47)  
 Mrs. Suzanne Horn  
 Mr. Todd Hornbuckle ('82)  
 Mrs. Anita Horner ('56)  
 Mr. Richard Hornick ('83)  
 Mrs. Mary Horsley ('32)  
 Mrs. Eva Horton ('68)  
 Mr. Robert Horton ('82)  
 Mrs. Jane Hosfeld ('30)  
 Ms. Lisa Hoshauer ('84)  
 Miss Lynn Hosmer ('76)  
 Ms. Karen Hotchkiss ('70)  
 Mrs. Frances Houghton ('42)  
 Ms. Diane How  
 Mrs. Alison Howard  
 Mrs. Barbara Howard ('66)  
 Mrs. Louise Howden  
 Mrs. Billye Howell Owen ('50)  
 Mr. James Hoyt  
 Mr. Richard Hrabko  
 Miss Joyce Huber ('59)  
 Mr. Ronald Huber ('81)  
 Mrs. Judith Hudgens ('61)  
 Mr. Dennis Hudson  
 Mrs. Margaret Hudson ('43)  
 Mrs. Vivian Hudson  
 Mrs. Linda Huebner ('69)  
 Mr. Ed Huels  
 Mrs. Barbara Huesemann  
 Ms. Edna Hughes ('81)  
 Mrs. Gloria Hughes ('31)  
 Mrs. Mary Hughes ('51)  
 Mrs. Phyllis Hughes ('35)  
 Mr. Robert Hughes  
 Mrs. Frances Huls ('37)  
 Mrs. Billie Hume  
 Mr. Paul Hunt  
 Mr. Daniel Hunter  
 Miss Anna Hurie ('33)  
 Mrs. Carolyn Hurst ('44)  
 Mrs. Helen Hurst ('22)  
 Mr. Leslie Huster ('84)  
 Mrs. L. Kay Huston ('62)  
 Mrs. Ruth Hutcherson ('39)  
 Mrs. Phyllis Hutchinson ('41)  
 Mrs. Barbara Hyatt ('56)  
 Miss Alberta Iffrig ('73)  
 Miss Mildred Iffrig ('28)  
 Mrs. Ann Imgrund ('81)  
 Mr. Ralph Ince  
 Mrs. Martha Ingels ('55)  
 Mrs. Marilyn Inglett ('52)  
 Mrs. Marguerite Ingram ('59)  
 Mrs. Donna Inman ('41)  
 Mrs. Charlotte Ireby ('39)  
 Ms. Ellen Irons  
 Mrs. Mary Jo Iverson ('58)  
 Mr. C. Jabusch  
 Mrs. Betty Jackel ('52)  
 Mrs. Imogene Jackson ('49)  
 Mr. James Jackson ('84)  
 Mr. John Jackson  
 Mr. Keith Jackson  
 Mrs. Mary Jackson ('61)  
 Mrs. Susan Jan Jackson ('43)  
 Ms. Geraldine Jacobs ('83)  
 Ms. Geraldine Jacobs ('81)  
 Mrs. Mary Jacobus ('29)  
 Miss Anne Jacoby ('67)  
 Ms. Janice Jacoby ('80)  
 Mrs. Agnes James ('32)  
 Mrs. Marilyn Janesky ('55)  
 Miss Hetty Jardine ('70)  
 Miss Betsy Jeffery ('77)  
 Mr. William Jeffries  
 Ms. Kristi Jemison ('79)  
 Mrs. Carolyn Jennett ('51)  
 Ms. Marjorie Jennings  
 Ms. Sandra Jensen  
 Mrs. Yvonne Jensen ('59)  
 Mr. Larry Jepsen  
 Mrs. Billie Jett ('48)  
 Mr. Alfred Jewson  
 Mrs. Barbara Johnson ('36)  
 Mrs. Betty Johnson ('38)  
 Ms. Carolyn Johnson ('65)  
 Mr. Frederick Johnson  
 Mr. James Johnson  
 Mrs. M. Darlene Johnson ('57)  
 Mrs. Mary Johnson ('66)  
 Mrs. Mildred Johnson ('33)  
 Mrs. Patricia Johnson ('56)  
 Mrs. Phyllis Johnson ('42)  
 Mrs. Sharon Johnson ('64)  
 Mrs. Suellen Johnson ('59)  
 Mrs. Susan Johnson ('70)  
 Mr. David Johnston ('78)  
 Mrs. Lynn Johnston ('70)  
 Mr. Wallace Johnston ('75)  
 Mrs. Irene Johnstone ('26)  
 Mrs. Ann Jones ('57)  
 Ms. Carolyn Jones ('65)  
 Mrs. Catherine Jones ('40)  
 Mr. Dennis Jones  
 Mrs. Frances Jones ('60)  
 Mrs. Geraldine Jones ('41)  
 Mrs. Hilda Jones ('31)  
 Mrs. Jane Jones  
 Mrs. Joanne Jones ('56)  
 Ms. Judith Jones ('82)  
 Mrs. Kathryn Jones ('67)  
 Ms. Kimberly Jones ('84)  
 Mrs. Kristi Jones ('63)  
 Mrs. Margaret Jones ('48)  
 Ms. Marie Jones  
 Mrs. Neil Jones ('32)  
 Ms. Thalia Jones ('73)  
 Mr. Tom Jones ('73)  
 Mrs. Yvonne Jones ('51)  
 Mr. Richard Jones Jr.  
 Mrs. Lorraine Jordan ('53)  
 Mrs. Marcharelle Jordan ('45)  
 Mrs. Dorothy Jorss ('39)  
 Mrs. Mildred Joseph ('29)  
 Mrs. Marilyn Judson ('68)  
 Mrs. Janet Jungkuntz ('78)  
 Ms. Stephanie Kadrie  
 Miss Ruth Kahn ('27)  
 Mr. Arthur Kanak  
 Mrs. Dorothy Kane  
 Mrs. Dorothy Kansteiner ('75)  
 Ms. Randi Kapp  
 Mrs. Nan Karcher ('24)  
 Ms. Nancy Karl ('82)  
 Mr. Mark Karnes  
 Ms. Erilyl Karras ('74)  
 Ms. Mary Kash ('65)  
 Ms. Margaret Kauffmann  
 Miss Kay Kazmaier ('60)  
 Mrs. Jennie Keeline ('29)  
 Mr. Justin Keenoy  
 Mrs. Angeliki Keil ('57)  
 Mrs. Mary Keller ('52)  
 Mrs. Eugenia Kellett ('36)  
 Ms. Joyce Kelly ('78)  
 Mrs. Phyllis Kendig ('53)  
 Miss Dorothy Kennedy ('73)  
 Mrs. Jean Kent ('50)  
 Mr. William Keough  
 Mrs. Mary Ann Kern ('40)  
 Mr. Dan Kerpan  
 Mrs. Diana Keyes ('67)  
 Ms. Mary Keyes  
 Mrs. Johanne Kibbie ('61)  
 Mr. Larry Kiel  
 Mrs. Cevilla Kim ('65)  
 Mr. James Kimler  
 Mrs. Legia King ('50)  
 Mrs. Marilyn King ('80)  
 Mrs. Virginia Kinion ('82)  
 Mrs. Martha Kinney ('58)  
 Mrs. Eddie Kinzer ('27)  
 Ms. Eloile Kipp ('55)  
 Mrs. Patty Kirby ('54)  
 Mrs. Gladys Kirkland ('27)  
 Mrs. Shelley Kirkland ('59)  
 Mrs. Dorothy Kirkpatrick ('43)  
 Mrs. Shirley Kirshner ('44)  
 Miss Katherine Kirts ('67)  
 Mrs. Elizabeth Kissick ('49)  
 Mrs. Marianne Klabau ('31)  
 Mr. Michael Klady  
 Mrs. Donna Klaus ('60)  
 Mrs. Fleta Klein ('29)  
 Ms. Terry Kleindienst ('82)  
 Mrs. Geraldine Kleist ('41)  
 Mrs. Josephine Kline ('29)  
 Mrs. Lynn Klingenberg ('61)  
 Mrs. Lucille Klinger ('35)  
 Mr. Tom Klinghammer ('73)  
 Mrs. Wilhelmina Klippel ('29)  
 Ms. Betty Knapp ('83)  
 Mrs. Patricia Kneemueller ('63)  
 Mrs. Ann Knies ('38)  
 Mr. Jan Kniffen ('78)  
 Mrs. Annette Knight ('61)  
 Mr. James Knoblauch ('77)  
 Mrs. Elizabeth Knoch ('50)  
 Miss Katherine Koch ('20)  
 Mr. Mark Koehler  
 Mr. Rick Koelz ('82)  
 Mrs. Barbara Koester ('49)  
 Mr. John Koester ('80)  
 Mrs. Beth Koetting ('69)  
 Mrs. Mary Lee Koewing ('33)  
 Mrs. Mary Kofakis ('59)  
 Mr. Michael Kohring  
 Ms. Audrey Kolker  
 Mrs. Stephanie Kordas ('64)  
 Mrs. Irene Korte ('41)  
 Mrs. Margaret Korty ('41)  
 Mrs. Virginia Kostka ('38)  
 Mr. Frank Kostron  
 Mrs. Bonita Kozak  
 Mr. Roy Kramer  
 Ms. Beverly Krause ('82)  
 Mrs. Ester Kredell ('17)  
 Mrs. Lynda Kreienheder ('78)  
 Mr. George Krieger  
 Mrs. Virginia Krueger ('34)  
 Mr. Jerome Krull  
 Mr. Norman Krumrey ('82)  
 Ms. Donna Kruse ('83)  
 Mrs. Wilma Kryger ('43)  
 Mrs. Jeanne Kuhlman ('69)  
 Mr. G. Kunkle Jr.  
 Mr. Bruce Kunz  
 Mrs. Jonette Kurtz ('72)  
 Mrs. Richard Kutchback  
 Mrs. Kathleen La Rochelle  
 Mrs. Lucy Labarre ('30)  
 Mr. Danny Lacy  
 Ms. Sharon Lacy  
 Mrs. Patricia Laffoon ('68)  
 Mr. Alfred Lall  
 Mrs. Sheryl Lamb ('51)  
 Ms. Jane Landsbaum ('84)  
 Mrs. Marsha Lane ('73)  
 Mrs. Ruth Anne Lang ('55)  
 Mrs. Marian Langer ('76)  
 Mr. John Langston ('81)  
 Mrs. Elizabeth Lankford ('51)  
 Mr. Marc Lara  
 Mrs. Garland Largen ('40)  
 Mrs. Frances Larkin ('49)  
 Mrs. Helen Larson ('26)  
 Mrs. Betty Lash ('35)  
 Mrs. Susan Laskin ('64)  
 Mrs. Donna Latz ('78)  
 Mrs. Carolyn Lauer  
 Mrs. Ilomay Launer ('54)  
 Ms. Ilomay Launer  
 Mrs. Jean Laventhal ('78)  
 Ms. Patricia Lawlor  
 Mrs. Martha Lawrence ('28)  
 Mrs. Ann Lawrie ('68)  
 Mrs. Brenda Leahy ('62)  
 Mrs. Jane Leason ('49)  
 Mrs. Enid Lebid ('52)  
 Mr. Jeffrey Lee  
 Mrs. Karen Lee ('64)  
 Mr. Harold Leece  
 Mr. Jeffery Leeka ('83)  
 Ms. Nancy Leffler  
 Mrs. Janice Lehnhoff  
 Mrs. Cheri Leifert ('76)  
 Mrs. Jean Lengeling ('43)  
 Mr. Joe Leonard  
 Mr. Walter Leonard  
 Mrs. Rose Lerman ('38)  
 Mrs. Lola Levin ('68)  
 Miss Dollie Lewallen ('72)  
 Mr. Gary Lee Lewey ('83)  
 Mrs. Charlyn Lewis ('64)  
 Miss Elizabeth Lewis ('50)  
 Ms. Helen Lewis ('27)  
 Mrs. Irene Lewis ('32)  
 Mr. Fred Leyhe  
 Miss Harriet Liddle ('28)  
 Ms. Sandra Liebman ('77)  
 Mrs. Mary Elizabeth Liehr ('36)  
 Miss Judith Light ('75)  
 Mrs. Dorthea Lind ('33)  
 Mrs. Catherine Lindbloom ('31)  
 Mr. Donald Lindner  
 Ms. Karen Linhardt  
 Mrs. Peggy Linn ('70)  
 Mrs. Sarah Linton ('34)  
 Mrs. Ruth Lipscomb ('35)  
 Mrs. Betty Lipshild ('48)  
 Mrs. Hester Lisby ('58)  
 Mrs. Shirley Little ('52)  
 Mr. William Liwelyn  
 Ms. Debra Locke ('81)  
 Mrs. Lynn Lockwood ('70)  
 Mr. Anthony Looco ('83)  
 Mr. William Loesch ('83)  
 Mrs. Joyce Logan ('57)  
 Mr. William Logan  
 Mrs. Charlotte Lohrman ('65)  
 Mr. James Looby  
 Mrs. Lura Looper  
 Mr. Mark Loren  
 Mrs. Ann Lorimier ('42)  
 Mr. Edward Lovinguth ('75)  
 Mrs. Sandra Lovinguth ('71)  
 Mrs. Kathryn Lowe ('37)  
 Mrs. Anita Lowery  
 Mrs. Patricia Lowrey ('59)  
 Mrs. Harriet Luchtman ('40)  
 Miss Mary Lucke ('30)  
 Mrs. Ruth Lucke ('32)  
 Mr. Robert Ludeman ('84)  
 Mr. Robert Ludeman ('83)  
 Mrs. Elizabeth Ludington ('59)  
 Mrs. Shirley Luerding ('44)  
 Mrs. Shirley Luetkemeyer ('62)  
 Mr. John Lundberg ('76)  
 Mrs. Gertrude Lunning ('49)  
 Mrs. Jo Ann Lupo ('57)  
 Mrs. Marjorie Lutz ('22)  
 Mr. Frank Lydon  
 Mr. James Lynch  
 Miss Mary Lynch ('27)  
 Mrs. Margaret Lynn ('67)  
 Ms. Eilene Lyons ('76)  
 Ms. Shirley Lyons  
 Ms. Alyce Mabrey ('80)  
 Mrs. Nora MacDougall ('68)  
 Mrs. Elizabeth MacGregory ('60)  
 Mrs. Rebecca MacLellan ('67)  
 Mrs. Betty Macleod ('44)  
 Mrs. Nancy Macquaid ('37)  
 Mr. Jerome Madden  
 Miss Marilyn Maddox ('50)  
 Ms. Hettie Magee  
 Mr. Thomas Magrecki Jr.  
 Mrs. Margaret Maki ('60)  
 Mrs. Kathleen Malick ('69)  
 Mrs. Janet Mallinson ('71)  
 Ms. Helen Maloney ('79)  
 Mr. Curtis Maltman  
 Mrs. Betty Mammel ('48)  
 Mr. Charles Manar  
 Mrs. Montelle Mansfield ('46)  
 Mrs. Elizabeth Mapes ('28)  
 Mrs. Deana Marcus ('53)  
 Ms. Doris Margrabe ('82)  
 Mr. Warren Marigny Jr.  
 Ms. Pauline Marko  
 Mrs. Marienne Marshall ('49)  
 Mr. Bill Martin  
 Mrs. Darlene Martin ('62)  
 Mrs. Jill Martin ('62)  
 Mr. M. Martin  
 Mrs. Marian Martin ('49)  
 Miss Marjorie Martin ('39)  
 Ms. Patricia Martin ('82)  
 Ms. Paulette Martin ('83)  
 Mr. Ronald Martin ('83)  
 Mr. Thomas Marty  
 Ms. A. Patricia Marusic ('78)  
 Ms. Joann Massmann  
 Mrs. Anna Louise Masterson ('25)  
 Mrs. Mary Mastio ('50)  
 Mrs. Patricia Matejic ('78)  
 Mrs. Patricia Mathias ('48)  
 Mrs. Beth Matthews ('62)  
 Mrs. Helen Matthews ('25)  
 Mrs. Marjory Matthews ('44)  
 Mrs. Richard Matthews ('72)  
 Mrs. Beth Maupin ('71)  
 Mr. Carl Maxwell  
 Ms. Carol Maxwell ('68)  
 Mrs. Joanne Maxwell ('73)  
 Mrs. Eleanor May ('42)  
 Mr. Michael May ('82)  
 Ms. Helen Mayden ('82)  
 Mr. Kevin Mayden ('81)  
 Ms. Ellen Mayes ('80)  
 Mrs. Sondra McAllister ('57)  
 Mrs. Julia McCausland ('43)  
 Mrs. Juanita McClellan ('54)  
 Mrs. Miriam McClure ('38)  
 Mr. Mike McColl  
 Mrs. Melba McCollum ('47)  
 Ms. Linda McCombs ('82)  
 Mrs. Nita McCombs ('50)  
 Mrs. Rosemary McConkey ('50)  
 Ms. Anne McCormack ('81)  
 Mrs. Margaret McCormick ('68)  
 Mrs. Jane McCoy ('54)  
 Mrs. Janet McCracken ('61)

Mr. Michael McCraw ('84)  
 Mrs. Sue McCullah ('61)  
 Mrs. Anne McCully ('63)  
 Mr. Kevin McCusker M.D.  
 Mrs. Patricia McDonald ('46)  
 Mrs. Vicky McDonald  
 Mrs. Virginia McDonald ('41)  
 Mrs. Kathryn McDowell ('41)  
 Mrs. Pricilla McElhose ('70)  
 Mrs. Pauline McElwee ('35)  
 Mr. Jim McEwen  
 Mrs. Joan McFatridge  
 Ms. Marilyn McGee ('66)  
 Ms. Rita McGee ('53)  
 Mrs. Amelia McGeehan  
 Mr. Craig McGrath ('83)  
 Ms. Margaret McGrath  
 Mrs. Billie McGuire ('49)  
 Mrs. Doris McIntyre ('46)  
 Miss Nellie McIver ('15)  
 Mrs. Kathryn McKay ('44)  
 Mrs. Kathleen McKelvey ('67)  
 Mr. Patrick McKillip  
 Mrs. Alma McKinley ('29)  
 Mrs. Marion McKinley ('36)  
 Mrs. Barbara McKinney ('62)  
 Mrs. Beverly McKinney  
 Mr. Larry McKinney  
 Mrs. Barbara McLaughlin  
 Mrs. Ruby McLean ('50)  
 Mr. Patrick McMackin ('73)  
 Mrs. JoAnne McNair ('44)  
 Miss Ann McNeer ('61)  
 Mrs. Virginia McNeil ('37)  
 Mrs. Martha McNew ('38)  
 Mrs. Sylvia McRoy ('30)  
 Mrs. Carol McSweeney  
 Mrs. Reathel McWhorton ('46)  
 Ms. Michele Medina  
 Mrs. Mildred Meler ('41)  
 Mrs. Cyriлка Mellor ('48)  
 Mrs. Nancy Menchhofer  
 Mrs. Lucinda Menkhus  
 Mr. John Mentzer ('83)  
 Mrs. Glenda Mercer ('25)  
 Ms. Machael Mercer ('75)  
 Mrs. Diane Merritt ('53)  
 Mr. William Merritt  
 Mr. Michael Mertens ('82)  
 Mrs. Betty Merz ('37)  
 Mrs. Ruth Messing ('24)  
 Mr. Walter Metcalfe  
 Mr. Donald Meyer  
 Mrs. Doris Meyer ('37)  
 Mr. John Meyer ('81)  
 Mrs. Mary Meyer ('42)  
 Ms. Myrna Meyer ('83)  
 Ms. Ruth Meyer ('77)  
 Mrs. Anne Meyercord ('62)  
 Mrs. Maxine Meyers ('43)  
 Mr. Robert Mickey  
 Mrs. Marilyn Middlekauff ('60)  
 Mr. Donald Mielke ('82)  
 Ms. Ruth Mihevc ('82)  
 Mr. Eric Miklas  
 Mr. Henry Mikles  
 Mrs. Annette Miller ('35)  
 Mr. Aaron Miller  
 Ms. B. Miller ('78)  
 Mr. Christopher Miller ('79)  
 Mrs. Evelyn Miller ('36)  
 Ms. Irene Miller  
 Mrs. Jane Miller ('42)  
 Ms. Jeranda Miller ('82)  
 Mrs. Roberta Miller ('48)  
 Mrs. Shirlee Miller ('47)  
 Mr. Todd Miller  
 Miss Vola May Miller ('28)  
 Mrs. Barbara Millette ('61)  
 Mrs. Judy Mills ('66)  
 Mr. Tony Mills  
 Mrs. Irma Milster ('44)  
 Mrs. Evelyn Minnick ('49)  
 Mr. Steven Mintz  
 Mrs. Sarah Mirjanich ('51)  
 Mrs. Mary Misener ('37)  
 Mrs. Betty Lee Mitchell ('35)  
 Mrs. Julia Mitchell ('60)  
 Mrs. Kathleen Mitchell ('32)  
 Mrs. Gayle Mizell ('72)  
 Mr. Salvatore Moccio  
 Mr. Robert Moe ('78)  
 Mrs. Gentry Moellenhoff ('69)  
 Mrs. Susan Moellering ('66)  
 Miss Virginia Moerschel ('46)  
 Ms. Sallie Mogerma ('80)  
 Mr. Glenn Moller  
 Mrs. Minota Moncure ('45)  
 Mrs. Janet Monnig ('52)  
 Mrs. Constance Monsour ('49)  
 Mrs. Mary Montague ('71)  
 Mr. James Montgomery

Mrs. Marilyn Montgomery ('66)  
 Mrs. Patricia Montross ('41)  
 Mrs. Cary Moore ('79)  
 Mr. Clifford Moore  
 Miss Dorothy Moore ('45)  
 Mr. Jay Moore  
 Mr. Kenneth Moore  
 Mrs. Sherman Moore ('24)  
 Mrs. Veda Mae Moore ('54)  
 Mr. Neal Moots ('77)  
 Mrs. Cheryl Moran ('70)  
 Mrs. Dorothy Morgan ('48)  
 Mrs. Jane Morgan ('52)  
 Mrs. Nancy Morgan ('75)  
 Mr. George Morris  
 Mrs. Margaret Morton ('57)  
 Mrs. Patsy Moseley ('60)  
 Mrs. Jennie Moulton ('42)  
 Mrs. Margaret Mouser  
 Mrs. Jeanne Mudd ('49)  
 Mr. Joe Mudd  
 Mr. Robert Mudge  
 Mr. Darrell Mueller  
 Miss Karen Mueller ('67)  
 Mrs. Renee Mueller ('61)  
 Ms. Virginia Mueller  
 Ms. Norma Muench ('80)  
 Mrs. Louise Muenstermann ('67)  
 Mrs. Jane Mullen ('50)  
 Mr. William Mullins  
 Mrs. June Multog ('45)  
 Mr. James Mund  
 Mrs. Shirley Munday ('50)  
 Mrs. Carolyn Murphree ('46)  
 Mrs. Carolyn Murphy ('58)  
 Mrs. Rosemary Murray ('34)  
 Mrs. Ruth Murray ('59)  
 Ms. Bernadine Myers  
 Ms. Candace Myers  
 Mr. Coatney Myers  
 Mrs. Edith Myers ('38)  
 Mrs. Alice Myrick  
 Mrs. Dorothy Naideth ('31)  
 Ms. Pamela Nailor ('84)  
 Mr. Louis Nardi ('76)  
 Mrs. Frances Nattinger ('33)  
 Mrs. Pauline Neale ('30)  
 Mrs. Eleanor Neel ('52)  
 Mr. Michael Neff ('84)  
 Mrs. Rose Marie Neher ('55)  
 Mrs. Mary Neidorf ('49)  
 Mrs. Sara Neilson ('38)  
 Mrs. Frances Nelson ('37)  
 Mrs. Patricia Nelson ('84)  
 Mrs. Gladys Netherland ('20)  
 Mrs. Nancy Nettleblad ('52)  
 Mrs. Helmut Netzer ('44)  
 Ms. Martha Neuman ('82)  
 Mr. Kevin Neustaedter  
 Mr. Gene Newell  
 Mrs. Marsa Newland ('50)  
 Mrs. Vera Newlin ('22)  
 Mrs. Mary Ann Nicodemus ('69)  
 Mrs. Ann Niemann ('53)  
 Mrs. Colleen Nies ('47)  
 Mrs. Sherry Nieters  
 Mrs. Walter Niles ('35)  
 Mrs. Mary Jo Niskin ('49)  
 Ms. Joan Nissing  
 Mrs. Martha Nistler ('53)  
 Mrs. Mary Nix ('35)  
 Mrs. Ann Nixon  
 Mrs. Julia Noah ('53)  
 Mrs. Eloyce Noel ('68)  
 Mrs. Cheryl Nofsinger ('65)  
 Mr. Thomas Noftsinger  
 Miss Charlotte Nolan ('50)  
 Ms. Madeena Nolan ('65)  
 Mrs. Darla Nolder ('63)  
 Mrs. Patricia Nolle ('54)  
 Mrs. Julia Noonan ('53)  
 Mrs. Karen Noonan ('61)  
 Ms. Betty Nooner ('50)  
 Mr. Rick Norber  
 Miss Rebecca Nord ('76)  
 Mrs. Dorothy Norden ('42)  
 Mrs. Glendora Nordlie ('44)  
 Mr. Fred Nothstine  
 Mrs. Arametha Novinger ('33)  
 Mr. Saul Nuccitelli  
 Mrs. Margaret Nuckolls ('39)  
 Mrs. Evelyn Nunn ('48)  
 Mrs. Betty Nygren ('49)  
 Ms. Carolyn Nystrom ('80)  
 Mrs. Joan Nystrom ('43)  
 Mrs. Barbara O'Brien ('38)  
 Mrs. Durinda O'Brien ('73)  
 Ms. Kathleen O'Donnell ('74)  
 Mr. Thomas O'Hare  
 Mr. Ronnie Oakley ('81)  
 Mrs. Eileen Oates ('67)  
 Mrs. Virginia Obenschain ('40)

Miss Barbara Obrecht ('77)  
 Mrs. Karen Oelschlaeger ('70)  
 Ms. Elizabeth Ohlendorff  
 Mrs. Jane Ollendorff ('78)  
 Mr. Robert Olliges  
 Mrs. Elaine Olsen ('70)  
 Mrs. Charlotte Olson ('32)  
 Miss Velma Olson ('33)  
 Mrs. Elmer Ordelleide  
 Mr. Gary Orick  
 Ms. Catherine Orr ('30)  
 Mrs. Helen Orr ('62)  
 Mrs. Virginia Ortwein ('37)  
 Mrs. Kinta Osborn ('45)  
 Ms. Marjorie Osiek  
 Ms. Judith Ostendorf ('78)  
 Mrs. Judith Ostermann ('70)  
 Mrs. Lucinda Ostmann ('63)  
 Mrs. Ann Ostrow ('55)  
 Ms. Terrie Otto  
 Mrs. Constance Overesch ('19)  
 Mr. Robert Overkamp  
 Mrs. Rosa Owsley  
 Mrs. Dianne Paca ('62)  
 Mr. Thomas Pacatte  
 Mrs. Leona Palmer ('28)  
 Mrs. Mildred Palmer ('43)  
 Mr. Chester Palumbo ('82)  
 Mrs. Carol Park  
 Mrs. Carol Park ('51)  
 Mrs. Glenda Park ('58)  
 Mrs. Julia Parker ('28)  
 Mrs. Ruth Parker ('40)  
 Mrs. Mary Pat Parrish ('53)  
 Mrs. Evelyn Parson ('44)  
 Mrs. Katherine Parsons ('65)  
 Mrs. Virginia Parzybok ('39)  
 Mrs. Walter Patterson ('56)  
 Mr. Perry Pattiz ('80)  
 Ms. Kay Patty ('78)  
 Mrs. Lynn Pearce ('76)  
 Mrs. Winslow Pearson ('69)  
 Ms. Betsy Peavyhouse ('50)  
 Mrs. Dorothy Pedicord ('55)  
 Ms. Linda Peeler ('78)  
 Ms. Valerie Peimann ('66)  
 Mrs. Elizabeth Pekkala ('66)  
 Ms. Jeanette Pendarvis ('29)  
 Mrs. Diane Penney ('59)  
 Ms. Gail Pennington ('69)  
 Mrs. Sallie Pennybacker ('43)  
 Mrs. JoAnn Perkins ('47)  
 Mrs. Ruth Perkins ('25)  
 Mrs. Dorothy Perrett ('43)  
 Ms. Donna Pessin ('82)  
 Mr. Thomas Peters ('83)  
 Mrs. Helen Petersen ('29)  
 Mrs. Karen Petersen  
 Mr. Ronald Petersimes  
 Mrs. Beulah Peterson ('60)  
 Mr. Charles Peterson  
 Mrs. Helen Petersen ('29)  
 Miss J. Kristin Peterson ('59)  
 Mrs. Mary Peterson ('38)  
 Mr. Leonard Petrosky ('78)  
 Mrs. Gloria Pettijohn ('53)  
 Mrs. Neva Pettit ('35)  
 Maj. William Pettit  
 Mrs. Julie Petty ('45)  
 Mrs. Bernalee Petzold  
 Mrs. Marilyn Pewitt ('68)  
 Ms. Jeanne Pfister ('83)  
 Ms. Charlotte Pflum ('81)  
 Mrs. Ella Phillips ('33)  
 Mr. David Phillips  
 Ms. Mary Piazza ('83)  
 Mrs. Mary Pickering ('48)  
 Ms. Fran Pieper  
 Mrs. Patricia Pignatello  
 Mrs. Wilma Pike  
 Mrs. Mary Pilkerton ('59)  
 Mrs. Joyce Pion  
 Mrs. Caroline Pitman ('43)  
 Mrs. Diane Pittenger ('53)  
 Mrs. Mona Plackmeyer ('53)  
 Mrs. Roselea Podhorsky  
 Mrs. Avanelle Poehler ('29)  
 Mrs. Grace Poertner ('80)  
 Mrs. Annette Polemi ('41)  
 Ms. Georgia Polk  
 Mrs. Mary Polk ('57)  
 Mr. Robert Polkinghorne ('81)  
 Mrs. Shirley Pollard ('45)  
 Mrs. Ellen Pomeroy  
 Mrs. Julianne Pompa ('60)  
 Mrs. Elizabeth Poole ('66)  
 Ms. Kimberly Poole  
 Mrs. Norma Pope ('60)  
 Mrs. Barbara Popp  
 Mrs. Susan Poppen  
 Mrs. Joann Portell  
 Mrs. Bette Porter ('48)

Ms. Joyce Porter ('82)  
 Mr. Robert Porter  
 Mrs. Mary Porzio  
 Mrs. Reba Postels ('46)  
 Mrs. Norma Powell ('41)  
 Ms. Jean Powers ('79)  
 Mrs. Joan Pratte ('50)  
 Ms. Adina Preis ('71)  
 Mrs. Carmen Prelezo ('53)  
 Ms. Allison Preston  
 Mrs. Dorothy Price ('49)  
 Mr. Gary Price  
 Mrs. Vivian Priddy ('50)  
 Mr. Gordon Prinster  
 Ms. Mary Prost ('82)  
 Mr. Carl Pruess  
 Ms. Beth Pullen ('82)  
 Mrs. Catherine Pundmann  
 Mrs. Carol Purdy  
 Mrs. Sandra Purdy  
 Ms. Emma Purnell  
 Mr. Thomas Pursifull  
 Mrs. Helen Purvis ('36)  
 Mrs. M. Puscian  
 Mr. Rich Quensen  
 Mrs. Alice Quenichet ('47)  
 Miss Lucie Quernheim ('44)  
 Ms. Mary Quiller  
 Mrs. Deborah Raber  
 Ms. Pauline Raines ('44)  
 Mrs. Marjorie Ramsey ('43)  
 Mr. Jon Randall ('80)  
 Mr. Joe Randolph ('78)  
 Mrs. Mary Jane Range ('76)  
 Ms. Marjorie Ranney ('50)  
 Mrs. Helen Rapkin ('27)  
 Mrs. Charlotte Rapp ('53)  
 Mrs. Mary Rash ('70)  
 Mrs. Catherine Rattan ('52)  
 Mrs. Marianne Rauch ('50)  
 Mrs. Ann Rauscher ('69)  
 Mrs. Betty Rawlings ('46)  
 Mr. Robert Rawnick  
 Mrs. Eva Ray ('49)  
 Mrs. Janey Ray ('53)  
 Ms. Victoria Ray ('74)  
 Dr. William Ray  
 Mr. Robert Rayfield ('78)  
 Ms. Jill Raymond ('78)  
 Mr. Gary Rckert  
 Ms. Barbara Reading ('81)  
 Mr. Dean Reaka ('77)  
 Mrs. Charles Rechter  
 Mrs. Judith Redden ('67)  
 Mrs. Aliene Reed ('26)  
 Mrs. Mary Reed ('56)  
 Miss Mary Reed ('65)  
 Mrs. Sandra Reeder ('62)  
 Mr. Jerry Reese  
 Mrs. Louise Reese ('20)  
 Mr. Willard Reeves ('78)  
 Mrs. Carole Rehegen ('58)  
 Mr. Milton Rehg  
 Mrs. Betty Reid ('43)  
 Mr. Martin Reider ('80)  
 Mrs. Susan Reitz ('56)  
 Mr. Joseph Renda ('82)  
 Mrs. Karen Rensink ('80)  
 Mrs. Lucille Replogle ('30)  
 Ms. Kathryn Reschetz ('80)  
 Mrs. Margaret Reschetz ('54)  
 Mrs. Jo Ann Reynolds ('47)  
 Mrs. Lee Reynolds ('82)  
 Mr. William Ribelin  
 Mrs. Alma Rice ('40)  
 Gwynne Richards ('68)  
 Mrs. Wanda Richards ('50)  
 Ms. Betty Richardson ('65)  
 Mrs. Elaine Richardson ('69)  
 Miss Eleanor Richardson ('31)  
 Mrs. Jane Richardson ('48)  
 Mrs. Sara Richardson ('36)  
 Mr. Harold Richter  
 Mrs. Dorothy Ricke ('33)  
 Mrs. Dorothy Ricketts ('72)  
 Mrs. Kathryn Ricks ('39)  
 Mrs. Jane Riddle ('39)  
 Ms. Jessie Ridenour ('48)  
 Mrs. Margaret Riedel ('44)  
 Mr. Sherman Riegler ('79)  
 Mrs. Jeanette Rifkin ('41)  
 Mrs. Joyce Riley ('50)  
 Ms. Katherine Rinder ('69)  
 Mrs. Anne Rindo ('49)  
 Miss Johnnie Riner ('31)  
 Mr. John Ringer  
 Mrs. Naoma Risch ('45)  
 Mrs. Norine Rishell ('29)  
 Mrs. Katherine Risk ('49)  
 Mrs. Ella Risser ('32)  
 Mr. Frank Rittenhouse ('74)  
 Miss Elizabeth Ritter ('60)



Mrs. Mary Roach ('51)  
 Mrs. Joanne Robbins ('76)  
 Ms. Helen Roberts ('83)  
 Mrs. Kathleen Roberts ('83)  
 Mrs. Laney Roberts  
 Mrs. Betty Robinson ('47)  
 Mrs. Carmen Robinson ('73)  
 Mr. Ernie Robinson ('83)  
 Mrs. Lorna Robinson ('31)  
 Mrs. Lucile Robinson ('29)  
 Mrs. Virgil Robinson  
 Mr. Cecil Robuck  
 Ms. Arystine Roby  
 Miss Anita Rodarte ('75)  
 Mr. Joseph Roddy  
 Ms. Bonnie Rodenburg ('59)  
 Mrs. Esther Rodermund ('48)  
 Mrs. Erma Rodhouse ('30)  
 Mrs. Frances Rodkey ('27)  
 Mr. Gerald Rogers ('83)  
 Mrs. Lorraine Rogers ('52)  
 Mrs. Helen Rohan ('25)  
 Mrs. Janet Rohner ('70)  
 Mr. James Rollins  
 Ms. Valeria Rollins ('72)  
 Mrs. Florence Roloff ('56)  
 Mrs. Elizabeth Rone ('57)  
 Mrs. Louise Rooke ('45)  
 Mrs. Marilyn Roques ('59)  
 Mrs. Joyce Anne Roslund ('67)  
 Mrs. Barbara Ross ('64)  
 Mrs. Molly Ross ('43)  
 Mrs. Mary Roter ('50)  
 Dr. Paul Rother  
 Mrs. Barbara Rottenberg ('44)  
 Mrs. June Rotz  
 Mr. Wayne Rotz  
 Mrs. Jessie Row ('41)  
 Mrs. Roberta Rowden ('56)  
 Mrs. Thelma Ruddell ('47)  
 Mrs. Avis Ruebbling ('70)  
 Mrs. Joan Ruethain ('50)  
 Ms. Mary-Eileen Rulfkahr ('82)  
 Mrs. Mary Rugaard ('49)  
 Mrs. Mary Sue Rulfs ('38)  
 Mrs. Sarah Rundle ('51)  
 Mrs. Judith Runk  
 Mr. Harold Runkel  
 Mrs. Patricia Rupert ('46)  
 Mrs. Marian Rush ('45)  
 Ms. Barbara Russell ('68)  
 Mrs. Martha Russell ('58)  
 Mrs. Mary Russell ('67)  
 Mrs. Patricia Russell ('49)  
 Mr. Anthony Rutkowski ('83)  
 Miss Tipsuda Rutngamlug ('78)  
 Mr. Daniel Ryan  
 Mrs. Jacqueline Ryan ('48)  
 Mr. Richard Rydberg D.D.S.  
 Mrs. Phyllis Ryding ('43)  
 Mr. John Sable  
 Mr. Larry Sackman ('76)  
 Mr. Ron Saettele ('78)  
 Mrs. Joan Salim ('65)  
 Mr. A. Samons  
 Mrs. June Sandel ('38)  
 Mrs. Lillian Sanders ('35)  
 Mrs. Helen Sandfort ('66)  
 Mr. Anthony Saputo  
 Miss Pauline Saputo ('76)  
 Ms. Nancy Saunders ('84)  
 Mr. J. Saunders Jr.  
 Mrs. Margaret Saxton ('55)  
 Mrs. Ava Schaefer ('38)  
 Ms. Marcia Schaefer ('66)  
 Mrs. Sally Schaefer ('54)  
 Ms. Anne Schafer ('75)  
 Mrs. Helen Schaffer  
 Mrs. Mary Schaller ('44)  
 Ms. Holly Schalter  
 Mr. William Schanda ('83)  
 Mrs. Jacqueline Schapp  
 Mr. Thomas Schapp ('84)  
 Mr. Robert Schapp Jr.  
 Mrs. Cleo Scheer  
 Mr. Wayne Schell  
 Miss Joellen Schertz ('73)  
 Mr. George Schifferdecker  
 Ms. Cynthia Schipper ('82)  
 Mrs. Charlotte Schlitz ('50)  
 Mrs. Lois Schmelzel ('29)  
 Mrs. Kay Schmidt ('69)  
 Mr. Stephen Schmitt ('81)  
 Mrs. Amanda Schnaifer ('54)  
 Mrs. Helen Schnare  
 Mr. Ronnie Schnare  
 Mrs. Ellen Schnatmeier ('64)  
 Mrs. Nancy Schneck ('56)  
 Mrs. Irma Schneider ('35)  
 Mr. Lee Schneider  
 Mrs. Lisa Schneider  
 Mr. Thomas Schneider, M.D.  
 Mrs. Ruth Schoenbaum ('33)  
 Mr. William Schoenhard  
 Miss Sally Schofield ('65)  
 Mrs. Carol Scholle  
 Mrs. Frances Scholle ('32)  
 Ms. Ollig Scholle  
 Mrs. Bobbie Schonaerts ('61)  
 Ms. Lila Schotte ('81)  
 Mrs. Kathleen Schrage ('67)  
 Mrs. Virginia Schramm ('44)  
 Mrs. Virginia Schreiber ('35)  
 Mrs. Betty Schulte  
 Mrs. Lena Schulte  
 Mrs. Shirley Schulte ('63)  
 Mrs. Pamela Schultz ('73)  
 Ms. Laurel Schulz  
 Mrs. Barbara Schumacher ('44)  
 Mrs. Fay Schumacher ('49)  
 Miss Nancy Schuster ('77)  
 Mrs. Drewann Schutte ('64)  
 Mrs. Hortense Schwartz ('35)  
 Mrs. Barbara Schwendeman ('38)  
 Mrs. Filomena Schwering  
 Mr. John Schwering  
 Ms. Karen Schwering  
 Ms. Carolyn Scott  
 Mrs. Donna Scott ('65)  
 Mr. Lavern Scott  
 Mrs. Martha Scott ('41)  
 Mrs. Susie Scruggs ('57)  
 Mr. Raymond Scupin  
 Mrs. Martha Sealy ('51)  
 Ms. Aletta Seehafer ('80)  
 Mrs. Doris Seidel ('56)  
 Mr. Leonard Seidel  
 Ms. Alice Seise Eden ('79)  
 Mrs. Linda Self ('71)  
 Ms. Marjorie Semon ('81)  
 Ms. Henrietta Senecal ('78)  
 Ms. Joan Sepic-Mizis  
 Mr. Joseph Serles ('78)  
 Mrs. Martha Sevck ('17)  
 Mrs. Janet Seyer  
 Mr. William Seymour  
 Miss Kathrun Shaddock ('51)  
 Mrs. Vivian Shanafelt ('30)  
 Ms. Debra Shaneberger ('73)  
 Ms. Susan Shapiro ('81)  
 Mr. Gary Sharpe  
 Mr. Henry Shaw  
 Mrs. Jane Shaw ('44)  
 Mrs. Martha Shaw ('49)  
 Mrs. Sheila Shaw ('31)  
 Mrs. Marjorie Shearer ('41)  
 Mrs. Jennifer Shedden ('68)  
 Ms. Barbara Sheehan ('81)  
 Mr. Myron Sheets  
 Mrs. Althea Sheldon ('39)  
 Mrs. Jean Shellenberg ('38)  
 Mrs. Joyce Shelton  
 Mrs. Louise Shelton  
 Mrs. Elaine Sherer ('46)  
 Mrs. Nancy Sheridan ('65)  
 Mr. Dave Sherman  
 Mrs. Katherine Sherrow ('59)  
 Mrs. Miriam Shield ('45)  
 Mr. William Shields ('83)  
 Mr. Andrew Shifter  
 Mrs. Barrie Shinn ('60)  
 Mrs. Mary Shoquist ('53)  
 Mr. Darrell Shoults ('76)  
 Mrs. Nancy Shultz ('70)  
 Mrs. Shirley Shultz ('43)  
 Ms. Barbara Sido ('82)  
 Mr. Noel Siegfried  
 Ms. Nancy Siemer ('80)  
 Mrs. Laura Silk ('46)  
 Mrs. Carrie Lee Silliman ('44)  
 Mrs. Joy Silver ('46)  
 Miss Maxine Silverman ('69)  
 Mrs. Betty Simandl ('33)  
 Ms. Carol Simpson  
 Mrs. Ellenor Simpson ('34)  
 Mrs. Sarabel Simpson ('37)  
 Mrs. Elizabeth Sims ('66)  
 Mrs. Helen Simm ('71)  
 Mrs. El Skiles  
 Mrs. Genevieve Slade ('49)  
 Mrs. Charlotte Slapper ('53)  
 Ms. Bobbie Slattery ('79)  
 Mrs. Mildred Smart ('41)  
 Mrs. Alicia Smedley ('38)  
 Mrs. Carolyn Smith ('60)  
 Mrs. Coralee Smith ('43)  
 Mrs. Dixie Smith ('75)  
 Mrs. Eloise Smith ('45)  
 Mrs. Esther Smith ('46)  
 Mr. Harry Smith  
 Ms. Mary Smith ('70)  
 Mrs. Melba Smith ('40)  
 Ms. Patricia Smith ('70)  
 Mr. Patrick Smith  
 Mrs. Phyllis Smith ('53)  
 Mrs. Shirley Smith ('56)  
 Mr. Dave Snoke  
 Mrs. Judith Snow ('68)  
 Mr. Jayson Sogg  
 Mrs. Virginia Soller ('37)  
 Mr. Donald Solomon  
 Ms. Lee Sommer ('78)  
 Mrs. Kathleen Sommerfeldt ('65)  
 Mrs. Barbara Sotta ('62)  
 Mr. Steven Sotwick  
 Mr. Charles Spatz ('79)  
 Mrs. Thelma Spatz ('30)  
 Mrs. Janette Spees ('55)  
 Mrs. Ethel Spencer ('27)  
 Ms. Susan Spencer ('76)  
 Mrs. Marguerite Spiker ('29)  
 Mrs. Eunice Spindler ('54)  
 Mrs. Florence Spindler ('42)  
 Mrs. Marcia Spiro ('54)  
 Mr. James Spittler ('81)  
 Mrs. Wanda Spivey ('58)  
 Mrs. Delores Sprecher  
 Mrs. Imogene Springer ('82)  
 Mrs. Ann Stahlschmidt ('67)  
 Mr. H. Standring  
 Mrs. Margaret Starr ('47)  
 Mr. Charles Stavely  
 Mrs. Ruth Steber ('44)  
 Mrs. Therese Stedman ('40)  
 Mrs. Mary Ann Steele ('70)  
 Mr. Marvin Stehr ('78)  
 Mrs. Mary Stehr ('70)  
 Mrs. Kathy Steinberg ('67)  
 Ms. Linda Stenta ('78)  
 Mr. Harold Stenzinger  
 Mr. Robert Stephens  
 Mr. Steuber  
 Mrs. Betty Jean Stevens ('51)  
 Mrs. Nellie Ruth Stevenson ('28)  
 Mr. Ernest Stewart ('72)  
 Mr. Robert Stewart  
 Mrs. Dorothy Stick ('44)  
 Mrs. Vera Stivers ('28)  
 Mrs. Susan Stobaugh ('62)  
 Rev. Paul Stock  
 Mrs. Suzanne Stockman ('55)  
 Mrs. Olive Stoecker ('58)  
 Ms. Doris Stoehner ('83)  
 Rev. Theophil Stoerker  
 Mrs. Ione Stoewer ('34)  
 Mrs. Gayle Stokes ('46)  
 Mr. Larry Stone ('83)  
 Mr. Richard Stout  
 Mr. Donald Strauss ('84)  
 Mrs. John Stringer ('50)  
 Mrs. Barbara Stroberg ('42)  
 Mrs. Mary Ellen Strobl ('59)  
 Mrs. Kathryn Stroder ('71)  
 Mr. Marion Strohman  
 Ms. Janet Strong  
 Mrs. Sally Strong ('69)  
 Mrs. Margaret Struthers ('29)  
 Mrs. Julie Stuenkel ('63)  
 Mrs. Imogene Stumpf ('41)  
 Mrs. Jeanette Suffian ('35)  
 Mrs. Marian Sullivan ('29)  
 Mrs. Sarah Sullivan ('76)  
 Mrs. Emily Summy ('32)  
 Mr. Sheldon Suroff ('82)  
 Mrs. Mary Swanstrom ('44)  
 Mrs. Jeanne Sweeney  
 Ms. Martha Sweeney  
 Terri Sweig ('81)  
 Mrs. Carole Swenson ('60)  
 Mrs. Susa Swenson ('64)  
 Mrs. Irene Swickard ('26)  
 Ms. Allegra Swingen  
 Mrs. Cleta Szoke ('60)  
 Mrs. Helen Taft ('34)  
 Mrs. Mary Jane Take ('43)  
 Miss Claudine Talbott ('60)  
 Mrs. Naomi Tanenbaum ('28)  
 Mr. William Tapia ('79)  
 Mrs. Sara Tarvin ('33)  
 Mrs. Linda Tate ('78)  
 Mrs. Sarah Tatum ('61)  
 Ms. Carol Taylor  
 Mrs. Melba Teeters ('30)  
 Mrs. Kathryn Tegt ('46)  
 Mrs. Carol Teichmann ('57)  
 Ms. Barbara Tempalski ('73)  
 Ms. Sue Templeton ('69)  
 Mrs. Frances Terry ('34)  
 Mrs. Margaret Terry ('36)  
 Ms. Patricia Terry ('82)  
 Ms. Virginia Terry  
 Mrs. Doris Theobald ('40)  
 Mr. Linnie Thigpen ('78)

Mrs. Sally Weathersby ('63)  
 Mrs. Helen Weaver ('75)  
 Ms. Marilyn Webb  
 Dr. Rosemary Webb ('59)  
 Mrs. Evelyn Webber ('31)  
 Mrs. Ann Webblink ('70)  
 Mrs. Carmen Weber  
 Mrs. Margaret Weber ('40)  
 Mr. William Weber  
 Ms. Carole Weeden  
 Mrs. Frances Weeks ('40)  
 Mrs. Virginia Wehrle ('45)  
 Mr. Bruce Weible  
 Mr. Bernard Weinrich  
 Ms. Margaret Weir  
 Mr. William Weir  
 Mr. Gary Weissgerber ('83)  
 Mrs. Marjorie Welch ('59)  
 Mrs. Katherine Wells ('41)  
 Mrs. Emeline Wenger ('32)  
 Mrs. Alice Wenke ('38)  
 Mr. Joseph Wentker  
 Mrs. Betty Wertz  
 Mrs. Marguerite Wesley ('41)  
 Mrs. Ruth Wessler ('56)  
 Mrs. Dorothy West ('73)  
 Mrs. Georgina West ('63)  
 Mrs. Linda Westbrook ('69)  
 Mrs. Mary Jean Weymouth  
 Mrs. Jean Whalen ('51)  
 Mrs. Cecelia Wheeler ('74)  
 Mrs. Elizabeth Wheeler ('66)  
 Mr. John Wheeler  
 Ms. Amy White  
 Mrs. Gwendolyn White ('30)  
 Mrs. Antoinette Whitman ('59)  
 Mrs. Judith Whittington ('59)  
 Mrs. Wanda Wichmann  
 Mrs. Judith Wiedermann ('69)  
 Mrs. Edith Wieland ('29)  
 Ms. Ann Wienstroer ('82)  
 Mrs. Janet Wies ('75)  
 Mrs. Bonnie Wilcox ('59)  
 Mr. Joseph Wildt ('81)  
 Ms. Rebecca Wiley ('83)  
 Ms. Carolee Wilfong  
 Mr. Kevin Wilhelm  
 Ms. Burma Wilkens  
 Mrs. Ann Wilkin ('45)  
 Mr. Wade Wilkin ('78)  
 Mrs. Emily Wilkinson ('38)  
 Mr. Ralph Willey ('79)  
 Ms. Kimberly Willhoite ('82)  
 Mrs. Alice Williams ('45)  
 Mrs. Cary Williams ('27)  
 Mrs. Cynthia Williams ('56)  
 Mrs. Dorothy Jane Williams ('49)  
 Mrs. Elinor Williams ('24)  
 Mrs. Joan Williams ('42)  
 Miss June Williams ('61)  
 Mrs. Lana Williams ('78)  
 Mrs. Patricia Williams ('66)  
 Mr. James Williams III  
 Mrs. Eva Wilson ('35)  
 Mr. H. Paul Wilson  
 Mrs. Jane Wilson ('43)  
 Miss Marilyn Wilson ('60)  
 Ms. Nancy Wilson ('71)  
 Mr. W.C. Wilson  
 Mrs. Mary Wilton ('65)  
 Mr. Hugh Wimper  
 Mr. Fred Winkelman  
 Ms. Janet Winkelmann ('79)  
 Ms. Evelyn Wintergalen  
 Mrs. Joyce Winters ('46)  
 Mrs. Joyce Winters ('49)  
 Ms. Dorothy Winton ('84)  
 Mrs. Martha Ann Wischmeier ('44)  
 Mrs. Kathryn Wise ('33)  
 Mrs. Claris Withrow ('58)  
 Mrs. Hazel Witte ('62)  
 Mrs. Rose Marie Wittl ('51)  
 Ms. Linda Wittmaier ('81)  
 Mrs. Charlotte Woehler ('77)  
 Mrs. Mary Wolf ('44)  
 Mrs. Mary Wolfe ('82)  
 Mrs. Judith Wolff ('75)  
 Mr. Norman Wolff  
 Mrs. Susan Wolff ('79)  
 Mr. David Wolk  
 Mrs. Ann Womelsdorf ('62)  
 Mrs. Bertha Wong ('51)  
 Mrs. Elizabeth Woo ('34)  
 Mr. David Wood  
 Mr. Jack Wood  
 Ms. Janet Woodburn  
 Ms. Hedy Woog ('61)  
 Mrs. Frances Woodridge ('43)  
 Mrs. Marcia Works ('51)  
 Mr. Clyde Wright  
 Mrs. Judith Wright ('63)  
 Ms. Linda Wright

Ms. Linda Wrigley  
 Mrs. Lorraine Wulf ('45)  
 Ms. Sarah Wunderly ('75)  
 Mrs. Virginia Wyman ('71)  
 Mrs. Mabel Wyssmann ('44)  
 Ms. Lillian Yahn ('80)  
 Mrs. Linda Yeager ('63)  
 Mrs. Willetta Yeager ('35)  
 Mrs. Louise Yeakey  
 Ms. Karen Yoon ('65)  
 Mrs. Claudene Young ('46)  
 Mrs. Dorothea Young ('44)  
 Mrs. Zelma Young  
 Mrs. Jane Yount ('42)  
 Mrs. Emille Zasada ('60)  
 Mrs. Marguerite Zehner ('27)  
 Mrs. Rosemary Zekert ('73)  
 Mrs. Agnes Zell ('33)  
 Ms. Suzanne Zeller ('81)  
 Mrs. Jean Zerr ('66)  
 Mrs. Jean Zerr  
 Mr. Edward Zimmer ('73)  
 Mrs. Bobbigene Zimmerman ('65)  
 Mr. Harold Zimmerman  
 Mrs. Marilyn Zimmerman ('73)  
 Mrs. Nedra Zimmerschied ('58)  
 Ms. Wanita Zumbunnen  
 Mrs. Patricia Zvibleman  
 American Broadcasting Co.  
 Bax Engineering  
 Ben Franklin  
 Borgmeyer Advertising Inc.  
 Clorex Foundation  
 Collectibles Just For You  
 Congressional Quarterly  
 Daughters of American Revolution  
 Deluxe Check Printers Fund  
 Dominic's Dial-a-Pizza  
 Domino's Pizza  
 Dow Chemical  
 Dr. Clock's Shoppe  
 Duke Contracting  
 Equitable Life  
 Fairlane Barber Shop  
 Financial Bank Center  
 Gallery Photo  
 Garvens Jewel Mart  
 Gateway Bow Hunters  
 George Davis & Associates, Inc.  
 Happy Shirts  
 HBE Company  
 Heidi's Lounge  
 IBM Corporation  
 K.B. Carpentry  
 Ken's Auto Supply  
 Landmark Bancshares Corp.  
 Leroy F. Sommer C.P.A.  
 Lindenwood Bookstore  
 Louis Landing Gourmet  
 Marccone Appliance Parts  
 McDonnell Douglas Corp.  
 Media Magic Public Relations  
 Merry Go Round Stained Glass  
 Midwestern Safety Equipment  
 Motorola Foundation  
 National Intergroup, Inc.  
 Olin Corporation Trust  
 Onyx Corporation  
 Paradise Candies  
 Pro Tech Service Center  
 PSR Industries  
 Reifsteck, Inc.  
 Rental Center  
 Riverfront Graphics  
 St. Charles Anesthesia Group  
 St. Charles Bowling Lanes  
 The Boeing Company  
 The Bookmark  
 The Incredible Machine  
 Theodore Schneider Estate  
 United Farm Real Estate  
 Vincent P. Ferna and Co.  
 Viviane Woodard Cosmetics  
 Wentzville High School Teachers  
 Wentzville High School

#### MATCHING GIFTS

The 3M Company  
 ACF Foundation  
 A.E. Staley Manufacturing  
 American Broadcasting Co.  
 American Home Products  
 Amoco Foundation  
 AT&T Foundation  
 Atlantic Richfield Foundation  
 The Bankers Life  
 The Boeing Company  
 Borg-Warner Foundation  
 Carolina Power  
 CBS, Inc.

Chevron  
 Chubb & Son, Inc.  
 Clorex Foundation  
 Combustion Engineering  
 Congressional Quarterly  
 Contel  
 CPC International  
 CPC North America  
 Danforth Foundation  
 Del E. Webb Corporation  
 Deluxe Check Printers Foundation  
 Dow Chemical  
 The Dun & Bradstreet Corp. Foundation  
 The El Paso Co. & Subsidiaries  
 Eli Lilly Co.  
 Emerson Electric Company  
 Equitable Life  
 Exxon Education Foundation  
 Fiduciary Trust Company  
 Ford Motor Fund  
 General Electric Foundation  
 General Mills Foundation  
 Gulf Oil Foundation  
 Harris Foundation  
 HBE Company  
 IBM Corporation  
 ITT  
 J. Eckerd Corp.  
 Jefferson Federal Savings  
 JSJ Corporation  
 LaCledé Gas Company  
 The Lummus Co.  
 Mass. Mutual Life Insurance  
 The May Stores Foundation  
 McDonnell Douglas Foundation  
 McGraw-Edison Foundation  
 MidCon Corp.  
 Middle South Services  
 Minnetotat Mining & Mfg. & Found.  
 Mississippi River Transmission Corp.  
 Mobil Foundation Inc.  
 Monsanto Fund  
 Motorola Foundation  
 National Intergroup, Inc.  
 Olin Corporation Trust  
 Owens - Illinois  
 Philip Morris Inc.  
 Phillips Petroleum Foundation  
 Ralph N. Parsons Co.

Ralston Purina Company  
 Reliance Electric  
 Richardson-Vicks, Inc.  
 Shaklee Corporation  
 Shell Western E & F  
 South-Western Publishing  
 Southwestern Bell Telephone Found.  
 St. Paul Fire/Marine Ins.  
 Texaco Philanthropic Foundation  
 Times Mirror Company  
 Trust Company of Georgia  
 Union Electric Company  
 VF Corporation

#### GIFTS-IN-KIND

Mr. Dan Bartlett  
 Mr. William Blades  
 Collectibles Just For You  
 Mr. Joel Davis  
 Domino's Pizza  
 Ben Franklin  
 Gallery Photo  
 Happy Shirts  
 Lindenwood Bookstore  
 Mr. William Loesch  
 Louis Landing Gourmet  
 McDonnell Douglas Corp.  
 Mr. Walter Metcalfe  
 Paradise Candies  
 The Bookmark  
 The Incredible Machine  
 Union Pacific/Missouri Pacific Railroad

#### Note With Donor Listing:

A note of thanks to the tireless work of President James I. Spainhower, Founder of the Lindenwood Renaissance; Ed Watkins, Assistant to the President for Special Gifts; Lynne Landholt, Assistant Director of Development for Annual Giving; Esther Fenning, Assistant Director of Development for Alumni Activities; Phyllis Morris, Staff Assistant to the Director of Development; Leasa Ferry, Accounting Officer; Chris Campbell, Operations Assistant; Jan Lewien, former Assistant to the Vice-President; scores of volunteers led by the college's boards; Board of Directors Chairman Robert F. Hyland; Board of Overseers Chairman, Larry G. Kelly; Alumni Council Chairperson Janet Bornstein ('56); and our student workers at the college. So many individuals endeavor to build our Renaissance, suffice it to say that without their hard work, nothing could be done. You are all special friends!

Jim Thompson  
 Director of Development  
 Class of '80

#### Disclaimer -

These figures include gifts received and processed by the Development/Alumni offices from July 1, 1984, to June 30, 1985 only. Gifts received and processed after these dates will be in the next fiscal year end report.

#### Note -

For a 1985 Alumni listing of the Lindenwood One Thousand, look for the listing in an upcoming issue of the "Linden Word." Remember, it's not too late to join or renew memberships for the 1985 listing due by Jan. 1, 1986.

# The President's Report

*Continued from Page 3*

## THE RENAISSANCE CONTINUES IN THE COLLEGE'S FINANCES.

As our new Vice President of Finance, George Tilden, notes in his report, for the third year, we have balanced expenditures with receipts.

The proceeds from the sale of the farm land will enable us to eliminate almost completely our short-term bank debt. Increased giving by alumni, corporations and other friends of the college has enabled us to increase significantly our scholarship aid to needy and worthy students. Careful scrutiny of expenditure requests and deliberate reduction of staff has enabled the college to grant a modest 5% salary increase to a faculty and staff that for too long have been on the short end of financial rewards for their labors.

## THE RENAISSANCE CONTINUES THROUGH THE ENTIRE LINDENWOOD COMMUNITY OF FRIENDS AND SUPPORTERS.

The increased giving by alumni, the additional students, the support of parents, the enthusiasm of members of both our board of directors and board of overseers, and the dedicated work of our fine faculty (both fulltime and adjunct) and excellent staff are evidence that throughout the Lindenwood constituency there prevails an excellent spirit of cooperation. This bodes well for our future.

To all of you reading these pages, my thanks for what you've done for this fine college in years past. With your strong support, we can keep Lindenwood College front and center among institutions of higher education that really do instill the Renaissance spirit of adventure and curiosity in the lives of all its students.

# Dean of Faculty's Report

*Continued from Page 4*

## Plans for the Future:

The faculty spent two days at the beginning of the year in assessing Lindenwood's position in the recent past, defining areas that need attention, and dreaming about the future. Committees and task forces will carry forward this work into this academic year.

Lindenwood has always been a dynamic, growing academic community. We are studying, as noted, the general education part of our curriculum; we are looking at departmental offerings and majors; we will continue to experiment and dream as part of our renaissance. It is at places like Lindenwood that real change can occur. We are determined that Lindenwood will be in front of the march to the future.

# College Administrative Report

*Continued from Page 7*

signed for the renovation of existing buildings and grounds, as well as the construction of a new field house.

Until such time as funds are secured for major renovations and new construction, the college will continue with re-

pairs to its 25 buildings. The college's aging physical plant is in dire need of extensive renovations.

Overall, the administrative operations of this college have improved significantly during the second year of our Renaissance. Much of this is due to the strong support and leadership I receive from President Spainhower. Hopefully, in the coming months ahead we will continue to make strides in all areas as Lindenwood completes its Renaissance.

# Alumni Activities Report

*Continued from Page 9*

Council members work closely with the alumni activities director on reunion plans. The annual alumni reunion affords alumni across the country the opportunity to return to campus for a weekend each fall. Alumni are introduced to the Lindenwood administration and, through social and academic campus events, meet and visit with faculty, staff and students.

"Lindenwood Cooks," a cookbook consisting of recipes of Lindenwood alumni, staff and faculty was published and went on sale during Reunion Weekend. Proceeds from the cookbook have exceeded \$1,000.

The alumni council gives a merit award each year to two Lindenwood alumni. The Alumni Merit Award for Professional Accomplishment is given to an alumnus who has distinguished his/herself in his/her field. The recipient for 1984-85 was Arminta Harness of California. The Alumni Merit Award for Service to Lindenwood is presented to an alumnus who has given years of outstanding service to the college. The recipient for 1984-85 was Glenda Schaefer of St. Charles.

As part of the future Renaissance, the alumni council hopes to be recognized as an advisory board of the college. Tentative plans include the appointment of a council solicitor who will take the responsibility of reminding each member of his/her duty to contribute to fund-raising campaigns.

The council also hopes to appoint a recruitment chairman who will take the responsibility of recruiting five to 10 students each year. It also is considering the appointment of an academic committee which will work through the college on such projects as a Leisure Learning Program where Lindenwood would offer minicourses to the community or perhaps a "Back to College" weekend in which alumni would stay on campus for workshops and lectures by the Lindenwood faculty.

The council has branched out to the community through participation in a consortium of small area colleges whose alumni directors and association presidents meet several times a year to share ideas and comments regarding alumni concerns. Alumni reunions, alumni student recruitment, the involvement of young and male alumni, and other topics are discussed. The consortium consists of representatives of such institutions as Maryville, Missouri Baptist, Logan Chiropractic, Fontbonne, Lindenwood College Alumni and Webster University. Council president is Janet Lewis Bornstein ('56)

Future Renaissance goals in alumni development relations include more volunteer participation, stronger commitment to regular annual giving and greater alumni involvement in student recruitment.

# Public Relations Report

*Continued from Page 10*

As part of upcoming special events, Lindenwood will host a group of Missouri college students during the Public Relations Society of America's Pro-Am Day this fall. The event will acquaint students with Lindenwood public relations programs as part of an educational/career opportunities program of the association, the nation's leading professional group for public relations practitioners.

- Continuation and expanded circulation of such publications as the LINDEN WORD, a quarterly tabloid disseminated to nearly 30,000 supporters of the college, including more than 10,000 alumni; "The Lindenwood Report," a bimonthly newsletter by President Spainhower that addresses higher education concerns and Lindenwood's commitment to a quality, liberal arts program; and "The Linden Week Communique," a weekly internal newsletter sent to 600 staff and faculty members and, for the first time last fall, all students at the St. Charles campus.

- Implementation of a targeted media campaign to increase public awareness about Lindenwood's educational programs, its community services and, perhaps more importantly, its alumni, faculty, staff and students. The program has resulted in positive media attention, ranging from an increase in local coverage to print and broadcast placement throughout Missouri and even a few "prestigious" publications like THE LOS ANGELES TIMES, KANSAS CITY STAR and NEW YORK TIMES.

All of these activities are designed to strengthen and expand the college's role as an educational leader. Secondary goals are to increase all segments of enrollment, media and community relations, fund raising, academic development and campus expansion, alumni support and public recognition as well as to, quite frankly, make Lindenwood a household word.

The continuation of public relations programs and services as part of the Lindenwood Renaissance Campaign are some of the most ambitious and far-reaching in the college's 158-year history. They are catalysts for coordination among various department and programs, particularly those of admissions, alumni affairs, development and fund raising.

Further information as well as questions, comments or suggestions on any or all aspects of Lindenwood College's public relations activities should be directed to the Public Relations Office, #6 Roemer Hall, Lindenwood College, St. Charles, Missouri 63301.

our important annual Alumni Phone-A-Thon. Alumni support directly transfers into the support of many corporations and foundations. The support of our alumni is like a pebble tossed into a pond, and ripples grow wider until the pond is filled.

Under the leadership of our board of directors, similar advancements are being made in the St. Charles community campaigns, St. Louis corporations and foundations, St. Louis area friends and, of course, personal board contributions.

Lindenwood is truly a school which is progressing rapidly. We are developing the base of annual support necessary to build our Renaissance. In 1984-85 we hit an all time high for \$658,000 from the annual campaign. Our hopes for 1985-86 are even higher.

In 1985-86 we are hoping to show an even greater donor participation in our St. Charles community support drive and the corporations/foundations support which is vital to our continued success. We are optimistic that these friends will respond to our requests for increased levels of giving. We look forward to the continued leadership of our board of director; its chairman, Robert F. Hyland; Renaissance Campaign Committee Co-Chairman, S. Lee Kling; the board's new Fundraising Committee Chairman, Thomas Gossage; St. Charles Campaign Chairman, Henry Elmendorf; Personal Board Gifts Chairman, John C. Hannegan; and our Board of Overseers Chairman, Larry G. Kelly. Without scores of our hard-working volunteers, we could not hope to be successful. From student and alumni callers to members of the college's boards, we are solely dependent on and appreciative of their goodwill and dedicated efforts. We are indebted to them far beyond our ability to convey in words.

The important challenges ahead are broadening our donor base, attracting larger donations, launching our building and endowment campaign, while at the same time strengthening our annual fund base.

## THE FUTURE

We can all be a part of history in the making today. Few times in an individual's life afford the opportunity to say, "Yes, count me in," as one of those hard-working financial supporters. Your positive response makes you part of something of such significance that it will be remembered for generations to come. Both our immediate and long-term tasks are large. Our hopes are great, but our future will be even greater. So, please continue your support of this grand-old college by sharing your resources and dreams, as together we are building a Lindenwood Renaissance!

# Development and Fund Raising

*Continued from Page 14*

made an annual donation to the college. This is a tremendous achievement that provides us with a percentage of alumni support which is higher than almost any school in this region of the country. With much continued efforts, we should finish this coming year at a 40 per cent level of alumni support. The importance of alumni annual giving cannot be overstated. It is a demonstrative record of a college's support by those who know the college best.

Last fiscal year, 2,800 alumni gifts were recorded and more than \$190,000 in cash and pledges were raised from

# Board of Directors

## OFFICERS

ROBERT F. HYLAND  
CHAIRMAN

Regional Vice-President  
CBS Radio, Inc.  
General Manager  
KMOX-AM and KHTR-FM  
St. Louis, MO

WALTER L. METCALFE, JR.  
VICE-CHAIRMAN  
Attorney

Bryan, Cave, McPheeters & McRoberts  
St. Louis, MO

S. LEE KLING  
TREASURER

Chief Executive Officer  
Landmark Bancshares  
St. Louis, MO

JOHN C. HANNEGAN  
SECRETARY

Attorney  
Hannegan, Stokes, Moerschel & Weber, P.C.  
St. Charles, MO.

## MEMBERS

DAVID E. BABCOCK  
Former Chairman

May Department Stores Co.  
St. Louis, MO

PATRICIA PRICE BAILEY  
Commissioner  
Federal Trade Commission  
Washington, D.C.

RICHARD L. BATTRAM  
Vice Chairman  
May Department Stores, Co.  
St. Louis, MO

JANET BORNSTEIN  
Alumna  
Sikeston, MO

JUDITH BROUGHAM  
Alumna  
Kansas City, MO

GEORGE W. BROWN  
Retired Business Executive  
Chesterfield, MO

REV. ROBERT COLLINS  
Minister  
First Presbyterian Church  
Mexico, MO

GARY L. COWGER  
Plant Manager  
B-O-C Group - Lordstown  
Warren, OH

JANE CRIDER  
Civic Leader  
St. Charles, MO

HENRY J. ELMENDORF  
Secretary - Treasurer  
Jim Meagher Motor Co.  
St. Charles, MO

HARVEY A. FRIEDMAN  
President  
Gothic Investment  
St. Louis, MO

ARTHUR S. GOODALL  
Retired Stockbroker  
St. Louis, MO

THOMAS L. GOSSAGE  
Group Vice-President and  
Managing Director  
Monsanto International  
St. Louis, MO

RAYMOND W. HARMON  
President  
Hasco International, Inc.  
St. Charles, MO

JOE H. HUNT  
Executive Vice-President  
Southwestern Bell Telephone Co.  
St. Louis, MO

ROBERT KAPLAN  
President  
Kaplan Real Estate Co.  
St. Charles, MO

LARRY G. KELLEY  
President  
Commerce Bank  
St. Charles, MO

REV. W. DAVIDSON MCDOWELL  
Retired Clergyman  
Swarthmore, PA

ROBERT G. MCKELVEY  
President  
McKelvey Realty Co.  
St. Peters, MO

JEFFERSON L. MILLER  
President  
Outdoors, Inc.  
St. Louis, MO

JAMES M. O'FLYNN  
President  
Regional Commerce & Growth Association  
St. Louis, MO

NELL REED  
Alumna  
Kansas City, MO

GLADYS STOCKSTROM  
Civic and Church Leader  
St. Louis, MO

KENNETH W. THOMPSON  
Professor  
University of Virginia  
Charlottesville, VA

JOHN TLAPEK  
Business Entrepreneur  
El Dorado, AR

RUTH WATKINS  
Civic and Church Leader  
St. Louis, MO

DAVID A. WILHELM  
President  
Forsyth Group  
St. Louis, MO

CLAYTON E. WILHITE  
Chairman - St. Louis  
D'Arcy-MacManus-Masius  
St. Louis, MO

JOHN D. WOLF  
Vice-President and General Manager  
McDonnell Douglas Electronics  
St. Charles, MO

# Board of Overseers

LARRY G. KELLEY  
BOARD CHAIRMAN  
President  
Commerce Bank  
St. Charles, MO

THOMAS F. BAKEWELL  
Alumnus  
Attorney  
Borod & Huggins  
Memphis TN

DAVID C. BAUE  
President  
Baue Funeral Home  
St. Charles, MO

REV. RUDOLPH BEARD  
Senior Minister  
First Presbyterian Church  
Jefferson City, MO

CHARLES W. BOSWELL  
District Manager  
Union Electric  
St. Charles, MO

PETER BROWN  
President  
Four Seasons Lakesites, Inc.  
Lake Ozark, MO

A. ROGER DEPPE  
Superintendent  
St. Charles School District  
St. Charles, MO

JAMES M. FITZ  
General Manager  
St. Charles Gas Co.  
St. Charles, MO

ALFRED FLEISHMAN  
Chairman Emeritus  
Fleishman-Hillard  
St. Louis, MO

TOM E. GLOSIER  
Vice President Acquisition  
Community Investing & Development  
St. Louis, MO

KEITH W. HAZELWOOD  
Attorney and Partner  
Hazelwood, Barklage & Barklage  
St. Charles, MO

WILLIAM G. LEWIS  
Legislative Public Relations Manager  
Continental Telephone of Missouri  
Wentzville, MO

TRACY L. MATHIS  
Attorney  
Hannegan, Stokes, Moerschel & Weber  
St. Charles, MO

WILLIAM O. MULLINS  
Publisher  
St. Charles Journal  
St. Charles, MO

RON W. OHMES  
President  
F.F. Kirchner & Co.  
Bridgeton, MO

CATHERINE O. PUNDMANN  
President  
Pundmann Ford  
St. Charles, MO

BOYLE O. RODES  
Secretary/Treasurer  
Ellis-Rodes-Meers & Co.  
St. Charles, MO

FRANK E. ROEDER, JR.  
Vice-President of Engineering &  
Physical Resources  
Schnuck's  
Earth City, MO

RABBI ALVAN D. RUBIN  
Temple Israel  
St. Louis, MO

WILLIAM B. SCHAEFER  
President  
Schaefer Insurance Services  
St. Charles, MO

GARY N. SHAW  
Vice-President  
E.F. Hutton & Co. Inc.  
St. Charles, MO

E. ROBIN SMITH  
Newscaster  
KMOX-TV  
St. Louis, MO

CORDELIA STUMBERG  
Alumna and Civic Leader  
St. Charles, MO

DOROTHY TRUMP  
Alumna  
St. Louis, MO

MEL G. WETTER  
Mayor  
City of St. Charles  
St. Charles, MO

SHIRLEY WIPFLER  
Alumna and Civic Leader  
St. Charles, MO



# The Renaissance Continues



## 1985 Annual Report

**Lindenwood College**

St. Charles, Missouri 63301

NON-PROFIT  
ORGANIZATION  
U.S. POSTAGE  
PAID  
PERMIT NO.84  
ST. CHARLES, MO