



LINDENWOOD
COLLEGE

1987 ANNUAL REPORT

**A
VISION
FOR
THE
FUTURE**



CONTENTS

FALL 1987

VOL. 4, NO. 1

<i>Lindenwood's Perspective</i>	2
<i>A Vision for Our Next 160 Years</i>	3
<i>Personal Messages from Lindenwood Leaders</i>	4
<i>Sharing the Vision</i>	6
<i>Students Benefit from College Commitment</i>	8
<i>Faculty & Staff Focus on Excellence</i>	12
<i>Friends & Alumni Set Records</i>	14
<i>Volunteers Contribute a Personal Investment</i>	16
<i>Comparative Statement of Operations</i>	18
<i>Comparative Condensed Balance Sheet</i>	19
<i>Progress in Finance</i>	20
<i>Progress in Fund Raising</i>	21
<i>Lindenwood College Donors</i>	22
<i>1987 Memorials and Honorariums</i>	28
<i>Lindenwood Board of Directors</i>	30
<i>Lindenwood Board of Overseers</i>	31
<i>Lindenwood Alumni Association Board</i>	32
<i>Lindenwood College Ambassadors</i>	32

Names listed in this Annual Report for the 1986-87 Lindenwood 1000 Donor Clubs are based on donations received from July 1, 1986, through June 30, 1987. Due to occasional computer or human error, we apologize for any name omission or misspelling. Please send any corrections to the Development Office, Lindenwood College, St. Charles, MO 63301.

Lindenwood College's 1987 Annual Report is a joint project of the Development Office and Public Relations Dept. in cooperation with D'Arcy Masius Benton & Bowles—St. Louis. A limited number of free copies of this book are available upon request by contacting Lindenwood College, First Capitol & Kingshighway, St. Charles, MO 63301-1695. Lindenwood invites your comments and/or suggestions concerning this publication, and it hopes you will continue to contribute your ideas and support to Lindenwood College.



LINDENWOOD COLLEGE'S PERSPECTIVE

W

ith 160 years of proven commitment, Lindenwood College is a liberal arts institution that stresses a challenging value-oriented education with personal attention. This commitment fosters the knowledge, values and skills necessary to achieve in today's complex society.

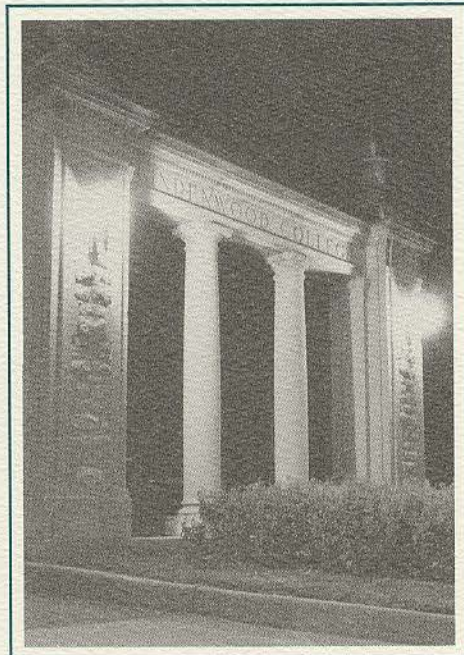
With a dedicated faculty and through an innovative approach to the liberal arts, Lindenwood offers distinctive and flexible programs to nurture the individual needs of its diverse student body.

The college is committed to developing the whole person in a campus environment that fosters a unity of purpose in a diversity of perspectives. It challenges its students to take part in internships and work-service experiences to prepare them for rewarding work and societal work following graduation.

In this intense educational process, the Lindenwood graduate is better prepared to face the challenges of a fast-changing world with the human values so vital to accepting and managing the opportunities and responsibilities of such a world.

**Margaret Hoover
Ketcham '33, alumna:**

"The college was very good to me, and I think that everyone who has attended owes something to Lindenwood."



**A VISION
FOR OUR
NEXT
160 YEARS**



As it celebrates its 160th anniversary this fall, Lindenwood College has a vision for the future—to strengthen itself as an even greater independent institution and become one of the most dynamic liberal arts colleges in the United States.

The college's vision can be focused by its past year of achievements and its eye for continued growth, development and prosperity. Lindenwood's vision is shared by all members of the college community and its constituencies, just as it was by George and Mary Easton Sibley in 1827.

Since the early 19th century, the Sibleys and other Lindenwood leaders have strived to make sure that careful investments in higher education bring rich returns in personal and professional success.

The Sibleys' dream is never more evident than now, as Lindenwood finished recording its most successful support record in history. This has been achieved by a record \$1.66 million in cash and contributions during the 1986-87 fiscal year, by the addition of corporate and civic backing for Lindenwood and, perhaps most importantly, by a record of 45% in alumni support, the highest in Missouri and one of the greatest in the United States.

Lindenwood's vision for the future is shared by those who comprise the college community—its alumni, boards, community, corporations and foundations, faculty, friends, parents, staff and students. Perhaps never before in its 160-year history has there been a more unified and committed effort to see that Lindenwood accomplishes its vision as it eyes the 21st century. Through the continued and expanded efforts of each reader of this annual report, Lindenwood College can accomplish its vision.

The responsibility to the future demands no less than our best efforts. Each of us must become an ambassador for an institution that has proven itself and shown that when students, parents, alumni, friends and supporters join forces, only positive results can transpire at Lindenwood College.



Dear Friends of Lindenwood:

Working together, we have helped Lindenwood College take giant steps forward in the last five years. We have demonstrated our vitality as a college family. Now we must challenge ourselves to realize our full potential.

Many challenges face independent higher education in the remainder of this century. Lindenwood represents the best of this tradition, and must strive to be always at the forefront of American higher education. Our legacy demands this commitment to excellence.

Lindenwood is a unique and special college, where students benefit from individual attention and a caring faculty. Since 1827, investing in human potential has been our highest goal. Your support enables us to achieve that goal.

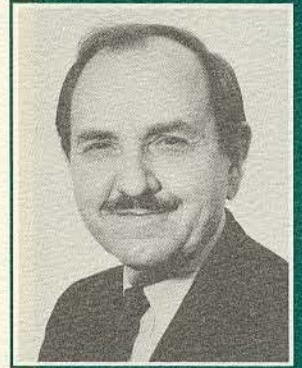
Let us join together in this 160th anniversary year to celebrate our past, promote and advance our present, and successfully meet the challenges of the future.

Sincerely,

Robert Hyland
Chairman
Board of Directors



The President's Message



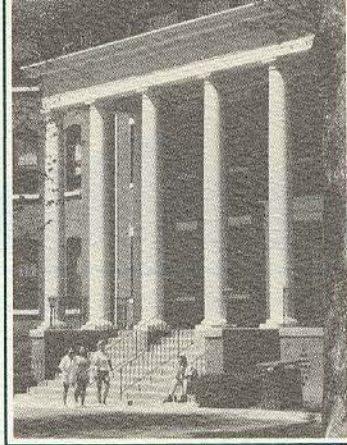
As a donor to Lindenwood College, you are a moral shareholder in the mission of this Grand Old College. For 160 years, Lindenwood has been a beacon of excellence in higher education. Together, as a family, we invest carefully in the students we serve. Our mission continues to be one of nurturing men and women through individual compassion and academic challenge. This is a unique educational philosophy, one which our society has never needed more than today.

In the last few years, together we have done much to advance and to secure this fine college. We face many challenges ahead. In the next few years, we must share Lindenwood's vision with many more donors and many more students.

Our 160th anniversary is a time to reflect with pride and to act with determined zeal. Lindenwood College is a precious heritage, and we must redouble our efforts on its behalf.

Together, we can be 160 years young!

James I. Spainhower
President



It takes a unified and committed effort by Lindenwood constituencies to accomplish and exceed college goals. Thousands of supporters of Lindenwood helped share the vision when the institution established a record in fund raising during the 1986-87 fiscal year.

For the year which closed June 30, 1987, Lindenwood raised \$1.66 million in funding. The total consisted of \$1,013,492 in actual cash contributions, \$350,000 in newly-organized planned gifts such as wills and estates, \$225,000 in newly-pledged gifts for future years, and \$75,000 in gifts-in-kind such as materials, goods or services.

The \$1.01 million in actual cash represents for the first time in Lindenwood's 160 years that the annual fund-raising drive has exceeded \$1 million. Average yearly contributions during previous fiscal years from 1974-84 were \$162,000.

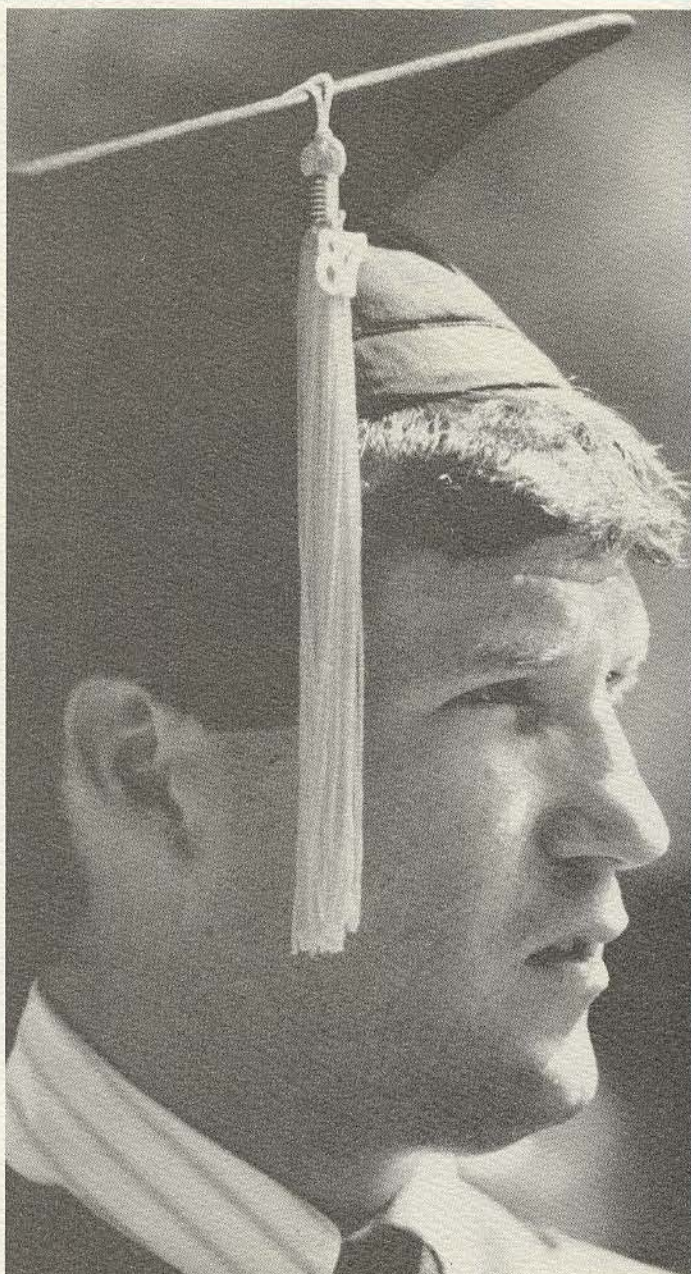
About half of the \$1.01 million was earmarked to scholarship assistance for deserving students attending Lindenwood, while \$215,000 was spent on campus improvements, renovation and restoration. Remaining funds were used to purchase books for Butler Library, for new programs such as expansion of the Performing Arts Dept., and \$65,000 for a power increase for the college's community radio station, KCLC-FM.

Nearly \$300,000 was raised by 45 percent of Lindenwood's 10,000 alumni throughout the United States; \$262,135 from the corporate community in the metropolitan area; \$258,432 from friends of the college, such as members of the boards of directors and overseers, parents and faculty and staff members; \$101,742 from philanthropic organizations such as foundations, churches and trade and professional associations; and \$92,370 from residents and businesses in St. Charles County.

The corporate total represented a \$115,000 increase from the preceding fiscal year, while contributions from philanthropic organizations more than doubled. A personal gift of \$100,000 from one of the college's board members, Raymond W. Harmon of St. Charles, increased the friends category by nearly \$75,000 from the preceding fiscal year.

An independent institution receiving no tax support, Lindenwood closed the historic fiscal year with a commitment and goal to raise another \$1.1 million for its 1987-88 fiscal year which began July 1, 1987.

**Randall & Cynthia Robert-
son '81 & '80, alumni:**
*"We received an excellent
education at Lindenwood,
loved the campus, and felt
that our instructors were
outstanding. Our educations
at this college gave a lot to
our lives, and now it's our
turn to give something back."*



**Students
Benefit
From
College
Commitment**



Lindenwood College's lifelong commitment to its students is evident in fiscal 1986-87 when increased contributions to the college enabled Lindenwood to help more deserving students through increased scholarship assistance.

"The amount of institutional scholarships and financial aid at Lindenwood has more than doubled since the 1983-84 academic year," states Larry Sackman, director of scholarships and financial aid. "The college provided nearly \$700,000 last year, and 77 percent of the students attending Lindenwood receive some form of financial assistance from state, federal, local or college funds.

"To assist students with their financial needs, the college's Office of Scholarships & Financial Aid needs additional funds. New support would help more students receive the benefits of a private, liberal arts education at Lindenwood College," he added.

"Quality and tradition" has been one of Lindenwood's past slogans, and a tradition of quality continues to be made among the student body. American College Testing (ACT) scores for the past year's incoming freshmen were one of the highest in the metropolitan areas and were higher than the national average for beginning students at college and university campuses throughout the United States. ACT scores for freshmen last year averaged 21 as compared to 19.9 in 1985 and to 18.2 for the 1986 national average.

Among the students who benefit from Lindenwood's commitment is **Bonnie N. Carpenter**, a senior from St. Charles who is representative of today's Lindenwood student. Eyeing a career as an astronaut, Carpenter was among 36 students in the United States to participate in the National Aeronautics & Space Administration's 1987 Space Training Program at the John F. Kennedy Space Center in Florida.

Another example of the caliber of Lindenwood students is found in **Jill A. Czapla**, a 1987 alumna who received the Congressional Gold Medal Award during her senior year. The prestigious award, one of a few in the country, was authorized by Congress



to salute outstanding achievement, personal development and leadership. Czapla was recognized for contributing more than 1,200 hours of voluntary service to the community. In 1985, another Lindenwood student, **Victor T. Avellino**, received a similar award.

An increase in financial support allowed Lindenwood to assist students from Catholic, Christian, Lutheran, Jewish and Presbyterian families who wanted to attend the 160-year-old institution. Earlier this year, Lindenwood created separate, matching scholarship programs, designed specifically for religious groups. The funding, which provides scholarships or grants of up to \$2,000 per academic year, was made possible by alumni and friends of the college.

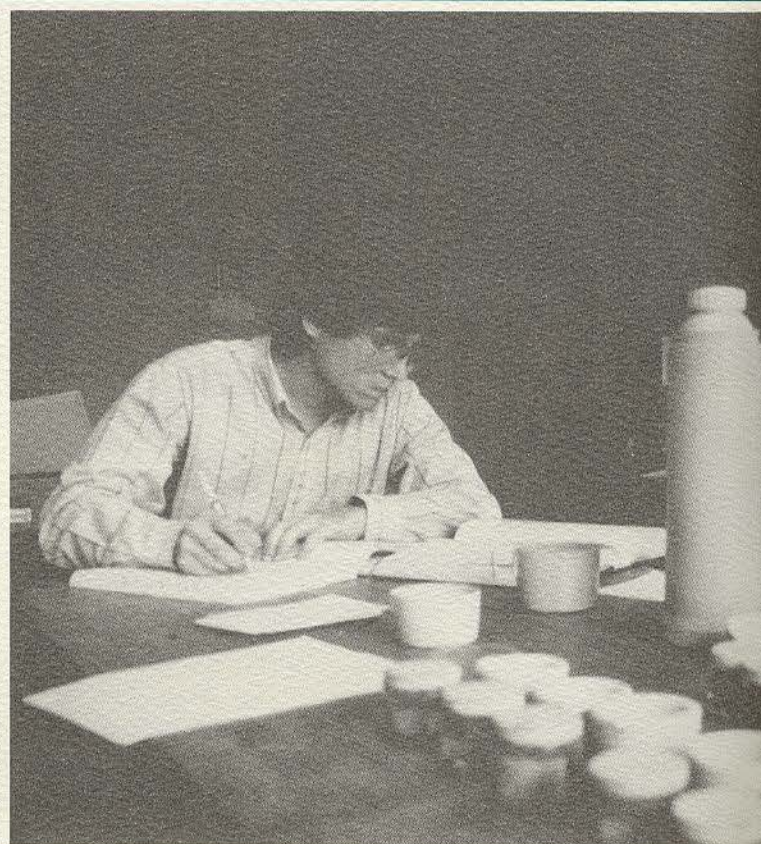
Five coeds at Lindenwood each received \$2,000 scholarship awards from the Monticello College Foundation of Godfrey, IL, in 1986. The five were nominated for the awards based upon their individual records of scholastic ability, leadership potential and involvement in extra-curricular activities. The awards continue the memory of Monticello College, one of the oldest institutions in the country which provided higher education to women from 1835 until its dissolution in 1971.



The spirit of Christmas was evident during the 1986 holidays as nearly 3,000 toys were collected for St. Charles County flood victims by KCLC-FM in conjunction with local community agencies. The toy drive, one of the community's most successful, stemmed from **Linda Meyer** of St. Peters, MO, a 1987 graduate who served as news coordinator for the community radio station. In her position at the station, she experienced first hand the needs of victims of floods that ravaged the county last fall. She suggested the drive, called "Sharing the Spirit," as a way to benefit the community.

The Tea Hole, a name for the popular center of activities in the early to mid-1900s, resurfaced this year in the form of a student center in the midst of campus. Made possible by private contributions and a \$5,400 gift from the Kiwanis Club of St. Charles, the Tea Hole contains a snack bar, lounges, pool and ping-pong tables, pinball and video games as well as a study area, meeting rooms and kitchen facilities. A popular gathering place, it is used by numerous Lindenwood groups and organizations for meetings and community events.

Terri A. Harris, a senior from O'Fallon, MO, majoring in chemistry, was awarded a fellowship in 1986 at Washington University, one of only eight presented in the United States to undergraduate chemistry students.



In 1987 Lindenwood received a \$20,000 gift from the Allen P. and Josephine B. Green Foundation of Mexico, MO, that was used for scholarship assistance to deserving students. The gift raises the Green Foundation's contribution to \$80,000 and marks the fourth year it has supported the college. The philanthropic foundation honors the memory of the Greens, grandparents of Sen. Christopher S. Bond (R-MO) who operated a brick refractory business near Mexico.

Contributions by donors enabled Lindenwood to share the vision with its athletic programs through assistance and support of men's and women's intercollegiate teams. Such support was evident when the college sent the women's soccer team to national championships of the National Association of Intercollegiate Athletics (NAIA). The Lady Lions, with an unofficial 20-2-1 season, finished fourth in the nation in NAIA competition and had their most successful season in Lindenwood history.

The St. Charles (Noon Day) Kiwanis Club created a \$100,000 permanent scholarship endowment trust for students from Lindenwood College and area schools. Considered one of the largest trusts created by a single service club in the Midwest, the trust will provide a minimum number of scholarships each year to dynamic students.



Miss Marian Greene
 '23, alumna:
"I graduated in 1923 and deeply appreciate my years spent at Lindenwood. I believe that the college and President Spainhower are worthy of my support."





Lindenwood's faculty and staff shared the vision this past year for they contributed more than \$20,000 of the record \$1.66 million contributed to the college. Nearly 50% of Lindenwood's employees contributed to the campaign to make it the most successful internal fund-raising effort of recent years. A goal of another \$20,000 is eyed for the 1987-88 faculty and staff drive, which hopes to increase even more the percentage of support from Lindenwood's faculty and staff members.

Jan Garden Castro, an LCIE communications instructor, lectured at Columbia College recently as part of the centennial of the birth of artist Georgia O'Keeffe. Castro is the author of several essays, articles and poems as well as the book, *The Art and Life of Georgia O'Keeffe*, which explores the work of the late, well-known American artist.

Diane Denney, assistant professor of education and director of the Reading Clinic at Lindenwood, received the Distinguished Alumna Award from Harris-Stowe State College in St. Louis. A 1965 Harris-Stowe alumna, she currently is completing a doctorate degree in education.

Paintings by **W. Dean Eckert**, professor and chairman of art, were shown recently in regional juried exhibits in Kansas City, MO, and Evansville, IN. One of his acrylic paintings at the Evansville exhibit was chosen to be displayed in the corporate collection of Bristol-Myers of Hillsdale, NJ.

Faculty and staff members teamed with KSDK-TV's "Bush Leaguers" for a 1986 softball game that raised \$1,500 for Children's Hospital in St. Louis. With strong support from LCIE staff and faculty as well as LCIE students, the event pitted Lindenwood against Mike Bush and television personalities from Channel 5. The \$1,500 was earmarked to cancer research at Children's Hospital.

James F. Hood, professor of history, was appointed as chairman of the St. Charles Bicentennial Commission, a group that planned historic events in the community this year as part of the 200th anniversary of the actual signing of the U.S. Constitution. Hood is a 26-year member of the faculty and administration at Lindenwood.

Moheb M. Nasr, associate professor of chemistry, is the co-author of two articles published in recent issues of the *Journal of Physical Chemistry*, a national professional publication. The articles

were written by Nasr and **Joseph L. Kurz**, professor of chemistry at Washington University in St. Louis, with input from co-workers, and they represent collaboration between the chemistry departments at both schools.

“The Picture Book and Visual Communication” is the title of an article by **Nancy Polette**, assistant professor of education, that appeared in a 1986 issue of a national magazine for school librarians and teachers. The three-page article is adapted from *Picture Books for Gifted Programs*, one of 20 books written by Polette, a nationally-recognized authority on the teaching of gifted children.

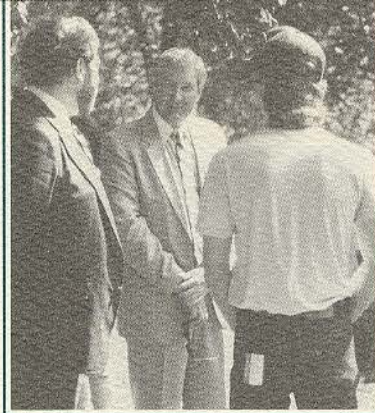
Contributions from the local community helped Lindenwood finance its Annual Christmas Walk, a community event each holiday season that brings several hundred visitors to the festively-decorated campus. A combined event of faculty and staff as well as students, the Christmas Walk features a variety of entertainment and attractions for the entire family each December.

Bill Tietjen, associate professor of biology, is the author of two recent publications, both concerning the *Mallos gregalis*, a social spider of Mexico. Tietjen and **Rao Ayyaggari**, assistant professor of biochemistry, also wrote a paper on the chemical communication in a wolf spider that was published last spring in the *Journal of Chemical Ecology*.

Richard A. Wier, associate professor of political science, has been elected to the board of trustees at Blackburn College in Carlinville, IL. A 19-year veteran of the Lindenwood faculty, Wier is an alumnus of Blackburn.

Increased contributions to the college enabled the Public Relations Dept. to expand its allocations in advertising during the preceding year. A variety of media were utilized to advertise Lindenwood programs and services to both traditional and non-traditional students. Recorded messages appeared on a number of leading radio stations while a number of print insertions were published in leading periodicals, including regional editions of such national magazines as *Time*, *Newsweek*, *Money*, *U.S. News & World Report*, *Sports Illustrated* and *Working Woman*.

During the preceding year, members of the Maintenance Staff continued to expand efforts to upgrade, restore and preserve campus buildings and facilities. With increased financial support, Lindenwood was able to offset several years of deferred maintenance. A few of the major projects included new roofs and repairs for the Fine Arts Building and Butler, McCluer and Niccolls halls; renovation of Ayres Cafeteria; the insulation of underground steam lines; tuckpointing Roemer Hall; the installation of underground water lines for fire protection; sidewalk and step repairs on campus; painting windows and doors of Ayres, Butler and Roemer halls; and completion of a faculty lounge in historic Sibley Hall.



One constituency that shared the college's vision in an unprecedented way was Lindenwood's alumni. Nearly \$300,000 was raised and received from 45% of the college's 10,000 alumni during the 1986-87 fiscal year.

This percentage is a dramatic increase from the 4.5 percent of alumni who supported the college five years ago, and it establishes Lindenwood as having the highest level of alumni support in Missouri and one of the highest in the United States!

In the last 10 days of the fiscal year, more than 500 alumni gifts were received by the college's Development Office, an amount greater than all gifts received from Lindenwood alumni during the entire fiscal year in 1982.

"An outpouring of alumni and other support in the last few weeks of our fund-raising drive is credited with boosting fund raising above \$1 million and in establishing an historic first as we celebrate our 160th anniversary," said James D. Thompson, executive director of development.

Lindenwood alumni continue to set outstanding paces in leadership, as evidenced by a few of the more noteworthy accomplishments during the preceding fiscal year.

Frank Accarrino ('72), director of NBC Network News Technical Services, and his news staff received an impressive collection of Emmy Awards at 1987 annual ceremonies. Accarrino has hosted tours of NBC studios for Lindenwood communications students visiting New York City in recent years. Lindenwood alumni like Accarrino, as well as faculty and students, have an incredible track record of receiving nearly 100 Emmys in the past two years.

Robert D. Alton ('79) of St. Charles, was appointed vice-president of Central Region Telephone Operations at Contel Corp. in St. Louis. A 17-year employee of Contel, Alton holds an M.S. degree from Lindenwood.

Patricia Price Bailey ('59) of Washington, DC, is a member of the Federal Trade Commission who received appointments from former President Jimmy Carter and President Ronald Reagan. A member of the college's board of directors, she recently hosted a reception for Lindenwood alumni in the nation's capital.

Nan Nordyke Buhlinger ('58) of Bartlesville, OK, served as director of the nationally-acclaimed Ok. Mozart International Festival

this year. The festival, now in its third season, was awarded a \$10,000 challenge grant from the Phillips Petroleum Foundation.

Anna Harrison, Ph.D., ('33) recently was elected to chair the American Association for the Advancement of Science. A former president of the American Chemical Society, she has received numerous awards and honors for her contributions in chemistry, including a recent Alumni Merit Award from Lindenwood.

Jan R. Kniffen ('78) recently was promoted to vice-president and treasurer of May Department Stores Co. He is a member of the adjunct faculty at Lindenwood and serves as a member of the college board of directors.

Carol Anne Kellogg Stoub ('58), a leading contractor in the construction industry, was named 1987 Woman Contractor of the Year by the Chicago Builders Association. She is president of Triad Form Erectors in Hinsdale, IL.

Carol Gardner Transou ('58) was recognized in the Feb. 2, 1987, issue of *U.S. News & World Report* for her special Vietnam history class, and was chosen as the 1987 Teacher of the Year in Tennessee. She also was honored in May as the recipient of the 1987 Alumni Merit Award from Lindenwood.

Alumni were aided by a volunteer network of faculty, staff, students and friends to engineer the Alumni Phone-a-Thon during the past fiscal year. The fund-raising event, held February through September, was the backbone of success for raising nearly \$300,000 in contributions.



*Volunteers
Contribute
A Personal
Investment*



Lindenwood College's network of volunteers is a contributing factor to the college's successes in fund raising, development, recruitment and perception as it celebrates 160 years of service. From the alumna who volunteers her time to aid the Phone-a-Thon to the theatre patron who promotes the Performing Arts Department, volunteers are an integral part of Lindenwood's strength.

Contributions can be other than cash, as witnessed by the Loaned Executive Program enacted by the board of directors earlier this year. Modeled after similar programs in state government and by the United Way, the program involves 25 loaned executives from business and industry who currently are working with Lindenwood officials to upgrade and expand various aspects of institutional operations and services. Input from management teams will be part of the college's self-studies and its five-year institutional advancement plan.

One of the most meaningful contributions during the past fiscal year came from **Raymond W. Harmon**, president of Hasco International, Inc., of St. Charles and a member of the Lindenwood College Board of Directors. His \$100,000 personal contribution was a challenge gift to stimulate significant contributions from other college constituencies.

As a means of fostering research, education and publication in all fields of appraisal and valuation, the International Valuation Sciences Institute (IVSI) recently formed at Lindenwood College. Supported by grants and contributions from the American Society of Appraisers, the IVSI is the premier organization of its type designed to upgrade the appraisal profession. Through the IVSI, Lindenwood offers undergraduate and graduate degrees in valuation sciences with individual studies in such areas as real estate, fine arts, antiques, business evaluation, machines and equipment or gems and jewelry.

Lindenwood College's Circle K Club, a service organization sponsored by the Kiwanis Club, received the "Circle K'er of the Year" award in 1987 for outstanding community service. Presented by the Missouri-Arkansas District of Kiwanis International, the award cited the 45-member club for its community involvement.

Alumni volunteers, members of the college's boards of directors and overseers and representatives of the President's Council were among those who helped refurbish classrooms in Roemer Hall during the past year. Volunteers donated money and materials to stain woodwork, plaster and paint walls, refinish desks and chairs and



replace faulty equipment to bring new life into classrooms for the beginning of the fall term.

Lindenwood and the St. Louis Science Center joined forces last November to present a one-act play at the Science Center in Forest Park. Involving Lindenwood faculty and students, the play cited women physicians as part of an exhibition at the Science Center. It was performed without charge to the community.

The Arts & Education Council of Greater St. Louis awarded a \$5,000 grant to the college recently to present a 30-minute play that incorporates the fun of reading and learning. Written by **Suzanne E. Mills** of the Performing Arts faculty, the play was performed for elementary school children throughout the metropolitan area. It was so successful last year that it will once again be staged later this year as a means of stressing the importance of books and reading in the classroom.



**Comparative
Statement
Of
Operations**



AS OF JUNE 30, 1987

	1986-87	1985-86
REVENUES		
Educational and General		
Student Tuition and Fees	\$ 5,847,111	\$5,656,737
Gifts and Grants	809,420	734,240
Endowment Income	179,074	213,265
Government Grants	288,521	338,729
Other Sources	276,892	165,433
	<u>7,401,018</u>	<u>7,108,404</u>
Auxiliary Enterprises	1,227,389	1,210,705
Proceeds from the Sale of Property	300,000	1,680,897
Total Revenues	<u>8,928,407</u>	<u>10,000,006</u>
EXPENDITURES AND MANDATORY TRANSFERS		
Educational and General		
Instruction and Library	2,997,322	2,773,396
Student Services	1,061,613	974,010
Institutional Support	1,544,443	1,438,446
Operation and Maintenance of Plant	619,898	611,027
Interest	178,653	224,010
Student Aid	990,959	926,692
	<u>7,392,888</u>	<u>6,947,581</u>
Mandatory Transfers		
Transfer to Debt Reserve Fund	55,967	70,400
Transfer to Repair and Replacement Reserve Fund	1,100	
Debt Retirement	63,301	55,315
Loan Fund Matching Grant		2,098
Plant Fund Matching	609	6,181
	<u>120,977</u>	<u>133,994</u>
Auxiliary Enterprises Expenditures	<u>1,087,266</u>	<u>1,119,878</u>
TOTAL EXPENDITURES AND MANDATORY TRANSFERS	<u>8,601,131</u>	<u>8,201,453</u>
REVENUES OVER (UNDER) EXPENDITURES AND MANDATORY TRANSFERS	327,267	1,798,553
NON-MANDATORY TRANSFERS AND OTHER CHANGES		
Property and Equipment Additions	(70,743)	(115,977)
Transfer of Endowment Fund Gains		
Restricted Receipts		
Over (Under)		
Transfers to Revenue	(19,324)	(27,698)
	<u>(90,067)</u>	<u>(143,675)</u>
NET INCREASE (DECREASE) IN FUND BALANCES	<u>\$ 237,209</u>	<u>\$ 1,654,878</u>



AS OF JUNE 30, 1987

**Comparative
Condensed
Balance
Sheet**

ASSETS		1986-87	1985-86	LIABILITIES & FUND BALANCES		1986-87	1985-86
CURRENT FUND				LIABILITIES AND FUND BALANCES			
Unrestricted:				Unrestricted:			
Cash		\$ 243,787	\$ 185,111	Notes payable to banks		\$ 982,500	\$ 900,000
Accounts and notes receivable:				Accounts payable		324,894	461,653
Student accounts		650,344	879,831	Employee compensation		241,709	295,839
Other		858,215	869,198	Credits balances in accounts receivable		67,953	122,765
		1,508,559	1,749,029	Accrued interest payable			
Less Allowance for doubtful accounts		50,000	210,000	Advance student fees and conference income		321,857	128,584
		1,458,559	1,539,029	Due to other funds		771,572	867,296
Investments at cost, which approximates market		164,648	3,704			2,710,485	2,776,137
Inventories:				Fund balance (deficit)		(643,804)	(900,337)
Bookstore		96,616	89,228	Total unrestricted		2,066,681	1,875,800
Operating supplies		54,843	40,166				
		151,459	129,394	Restricted:			
Prepaid expenses and deposits		48,228	18,562	Fund balance		108,416	127,740
Total unrestricted		2,066,681	1,875,800	Total restricted		108,416	127,740
						2,175,097	2,003,540
RESTRICTED				LOAN FUNDS			
Due from Current Unrestricted funds		108,416	127,740	Due to current fund		5,350	-0-
Total restricted		108,416	127,740	Fund balance:			
		2,175,097	2,003,540	National direct student loan fund		1,104,122	1,094,388
						1,109,472	1,094,388
LOAN FUNDS				<i>See notes to financial statements.</i>			
Cash		175,981	124,144	ENDOWMENT AND SIMILAR FUNDS			
Notes receivable:				Fund balance:			
National direct student loans		1,089,992	1,126,745	Endowments:			
Less reserve for doubtful loans		157,700	157,700	Income restricted		1,815,518	1,782,939
		932,292	969,045	Income unrestricted		550,611	545,611
Other receivables		1,199	1,199	Annuity and life income		45,300	45,226
Due from current fund						2,411,429	2,373,776
		1,109,472	1,094,388	PLANT FUNDS			
ENDOWMENT AND SIMILAR FUNDS				Unexpended:			
Cash		36,251	18,284	Due to current fund			
Investments at cost		1,715,041	1,617,621	Fund balance:			
Real Estate		-0-	-0-	Debt reserve fund		61,081	49,875
Due from current fund		660,137	737,871	Repair and Replacement reserve fund		1,102	-0-
		2,411,429	2,373,776	Restricted		52,263	88,197
PLANT FUNDS				Total unexpended		114,446	138,072
Unexpended:				Investment in plant:			
Cash		29,662	65,103	Notes payable		1,010,016	1,026,160
Investments		61,081	49,875	Capitalized lease obligations		43,723	57,024
Construction in progress		22,908	22,299	Bonds payable		592,000	642,000
Due from current fund		795	795	Fund balance		11,269,036	11,193,388
Total unexpended		114,446	138,072	Total investment in plant		12,914,775	12,918,572
Investment in plant				Total plant funds		13,029,221	13,056,644
Land and land improvements		299,697	293,697				
Buildings		10,627,904	10,711,856	AGENCY FUND			
Equipment		1,987,174	1,913,019	Due from current fund		\$ 7,575	\$ 890
Total investment in plant		12,914,775	12,918,572	AGENCY FUND			
Total plant funds		13,029,221	13,056,644	Deposits held in custody for others		\$ 7,575	\$ 890

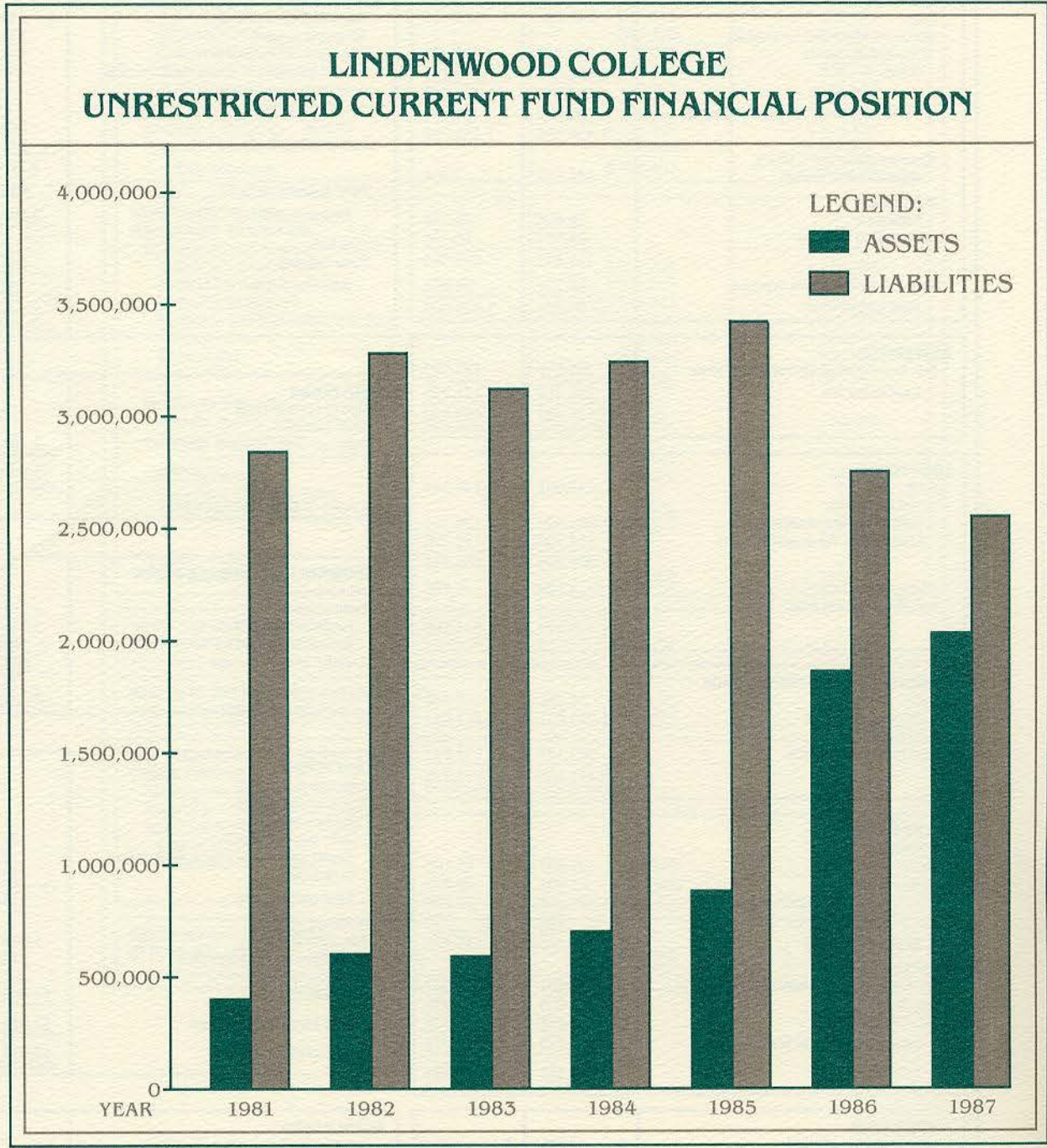
**Progress
In
Finance**

"We were successful in maintaining our momentum during the 1986-87 fiscal year, resulting in Lindenwood College registering its fifth consecutive year with a substantial surplus—\$256,533 for the 1987 fiscal year.

"On Oct. 2, 1987, our note receivable of \$800,000 was collected, and immediately applied to reduce our outstanding notes payable balance to \$160,000."

Kenneth W. Musbach
Vice-President for Finance

**LINDENWOOD COLLEGE
UNRESTRICTED CURRENT FUND FINANCIAL POSITION**



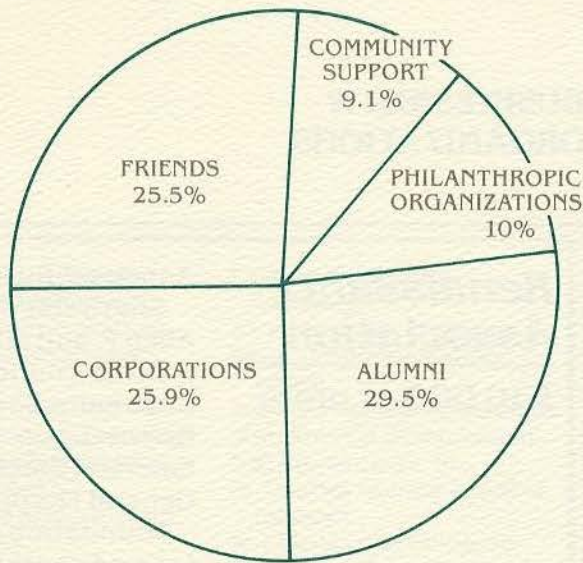
**DOLLAR PERCENTAGES
PROVIDED BY MAJOR
DONOR GROUPS**

FRIENDS includes Board of Directors, parents, faculty/staff and other college friends.

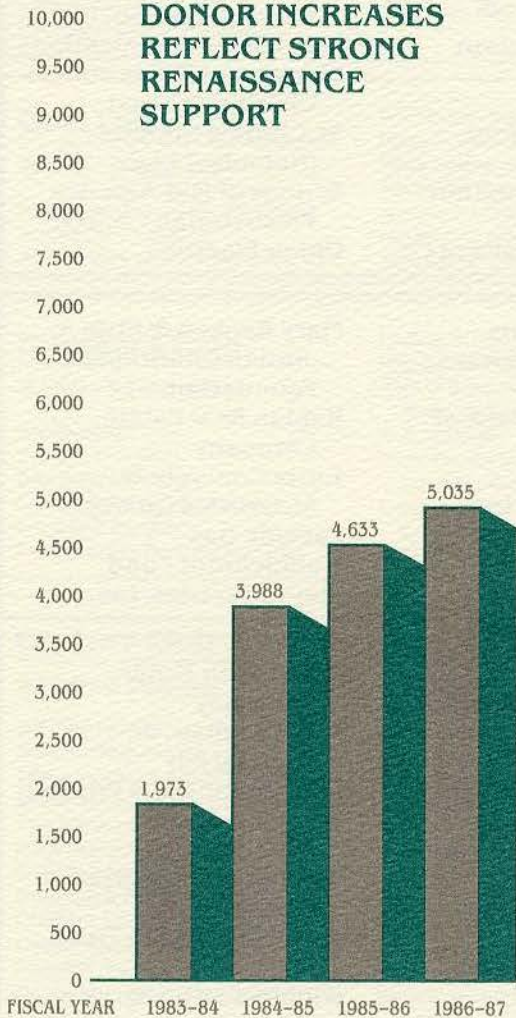
CORPORATIONS includes civic progress corporations and the Lindenwood Business Partnership Campaign.

PHILANTHROPIC ORGANIZATIONS includes churches, foundations and organizations.

COMMUNITY SUPPORT includes Booster, St. Charles Partnership, St. Charles Organizations, The Board of Overseers and Special Events in St. Charles.



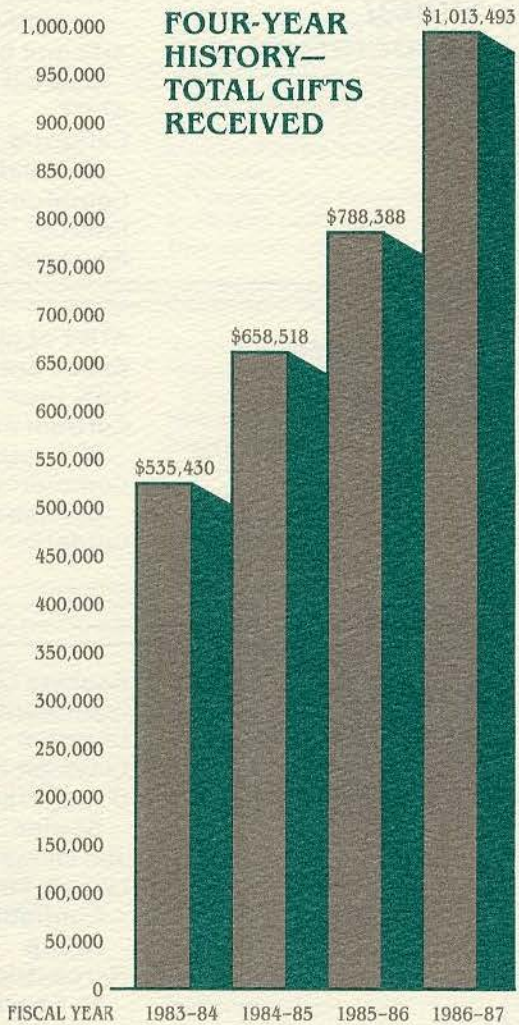
**DONOR INCREASES
REFLECT STRONG
RENAISSANCE
SUPPORT**



DOLLAR AMOUNTS

\$1,500,000

**FOUR-YEAR
HISTORY—
TOTAL GIFTS
RECEIVED**



**BUSINESSES &
ORGANIZATIONS**

***Renaissance
Association***

\$10,000 or more

Anheuser-Busch
Charitable Trust
Allen P. and Josephine
Green Foundation
Boatmen's Bancshares
Brown Group
Emerson Electric
General Motors
Foundation
Latzer-Schott Fund of
the St. Louis Commu-
nity Foundation

May Stores Foundation
McDonnell Douglas
Foundation
Monsanto Fund
Monticello College
Foundation
Norman J. Stupp
Foundation
Southwestern Bell
Foundation

***Sibley
Association***

\$5,000-\$9,999.99

American Society of
Appraisers
Arts and Education
Council
AT&T
Clifford W. Gaylord
Foundation
Compton Foundation
Interco
Keystone Appraisers Co.

Mercantile
Bancorporation, Inc.
MCI Telecommunications
Sidney and Sylvia Souers
Charitable Trust
St. Charles Kiwanis
(Noonday) Club
Synods of Mid-America
Presbyterian Church
Union Electric

***Corporate
Sponsors***

\$2,000-\$4,999.99

AT&T of St. Louis
Baue Funeral Homes
CBS, Inc.
Corroon and Black of
St. Louis
Commerce
Bankshares, Inc.
Contel

Mary Ranken & Ettie A.
Jordan Charitable
Foundation
Kaplan Real Estate
Company
Kurtz Concrete &
St. Charles Quarry
Laclede Gas
Mallinckrodt Fund
Slay Industries, Inc.

***Board of
Associates***

\$1,200-\$1,999.99

Bankers Life
Beaumont Graphics, Ltd.
Chrysler
Claywest House
D'Arcy Masius Benton &
Bowles
Jim Meagher Chevrolet
Lang & Smith
Communications
Group
Mercantile Bank of
St. Charles

Pundmann Motor
Company
R. E. Harshaw, Jr.
Foundation
Scholin Brothers Printing
Sears-Roebuck
Foundation
St. Charles Memorial
Gardens
Two/Ten Charity Trust,
Inc.
Williams Litho Service

BUSINESSES & ORGANIZATIONS



President's Club

\$500-\$1,199.99

ACF Foundation, Inc.
Anonymous Donor
Cahokia Memorial Unit 784
Carter Family Foundation
ConAgra
Deloitte Haskins & Sells
Direct Mail Corporation
Economy Federal Savings
Enterprise Leasing
Fabick Tractor Company
Finnigan Electronics
First State Bank
Fleishman Hillard
Fru-Con Corporation

Grey Eagle Distributors
Hardesty-Johnson Realty
Harry Edison Foundation
Industrial Development
Company
J.C. Penney Company
Krey Distributing Company
KSDK-TV and Multimedia
Incorporated
Lindenwood Athletic Fund
Committee
Maritz
McBride & Sons
Meyer Real Estate Company
Morton Miller Real Estate
Muller-Jordan-Weiss
People's Bank of Bridgeport
Pickett, Ray, and Silver

Pulitzer Publishing
Company
Rauch Lumber Company
Sayers Communication
Group
Schaefer Insurance Services
Simpkins Oil Development
Soil Consultants, Inc.
St. Charles County Board of
Realtors
St. Charles Gas Company
St. Charles Rotary Club
St. Charles Metal Finishing
St. Peters Hospital
Standard Drug Stores
Taylor Morley Simon, Inc.
Thro's and Michelle's
Universal Sewing Supply
Young Sales Corporation

Gold Links Club

\$300-\$499.99

American Scientific Products
Anonymous Donor
Associates of the Fine Arts

Hoffmann Insurance
Mary Frances Dunlop Trust
Midwestern Safety Equipment
Millstone Foundation
Missouri Cities Water Company
Missouri Colleges Fund
Monsanto Company - St. Peters

Optimist Club of Ritenour
Scottish Rite Foundation of
Missouri
St. Charles Brick Company
St. Charles Golf Course
Transamerica Corporation

Founder's Club

\$160-\$299.99

Bankcenter One
Barnes Hospital
Bax Engineering
Centerre Bank - St. Peters
Coldwell Banker
Community Federal Savings

Didion & Sons Foundry
Dierbergs Markets, Inc.
Dun & Bradstreet Corp.
Foundation
E. F. Hutton
First Presbyterian Church -
Bowling Green
Employees of General Motors,
C-P-C Tarrytown Plant
KMOV-TV

Missouri Research Labs
Missouri State Bank & Trust
Company
Mutual Fire Insurance Company
Nooter Corp.
Pio's Inc.
Schmidt Brick and Stone
St. Charles Jaycees
St. Charles Journal
Thompson & Mitchell

Century Club

\$100-\$159.99

3M Foundation
Airwick Industries
The American Association for
the Surgery of Trauma
The Bank of St. Charles County
Batz-Hodgson-Neuwoehner, Inc.
Bob Downes Chrysler
Boonslick Medical Group
Chapter Lr., PEO Sisterhood
Covilli-Sasso Supper Club
Cundiff, Turken & Londoff
David Sherman Foundation

Fee Fee Baptist Church
Goellner Printing, Inc.
Grace Church United - O'Fallon
Hackmann Lumber Company
Interfaith Council of Columbia
J.R. Mentel & Associates, Inc.
Jerry Kelly Heating & Air
Conditioning
Leonard's Metal
Lockwood Group
Love Real Estate Company
Mega Bank of St. Charles
Moog Automotive
Paragon Group
Purler-Cannon-Schulte, Inc.
Rauch Truck Lines, Inc.

St. Charles Anesthesia Group
St. Charles Foreign Car
St. Charles Insurance Agency
St. Charles Mid-Towne IGA
St. Charles Optical
St. Charles Optimist Club
St. Charles Transit Company
State Farm Insurance
Sweeney Corporation
Temple Israel
Thoele Oil Company
Thoma Paving Company
Valle High School
Vista Host
Vitaco of St. Louis
Westover-Graham, Inc.

Lindenwood College Donors

ALUMNI

RENAISSANCE ASSOCIATES

\$10,000 or more

Estate of Miss Aimee
Becker
Estate of Mrs. Ruth
Gladys Campbell
Billings
Miss Marian Greene
Margaret Hoover
Ketcham
Sarah Greer Mayer
Maurita Estes Stueck
Dorothy DuQuoin
Warner

SIBLEY ASSOCIATES

\$5,000-\$9,999.99

Miss Mary Ambler
Durine Riddle Gore
Nancy Kern Peteler

RENAISSANCE PATRONS

\$2,000-\$4,999.99

Patricia Price Bailey
Judith Lee Batton
Brougham
Ms. Florence Crockett
Sara Willis English
Patricia A. Hyland
Ms. Gerry Jacobs
Susan Good Keohane
Eleanor Eldredge
McClevey
Virginia Foristell Ottofy
Janet Lewis Riddle
Ms. Linda Ross
Miss Dorothy Trump
Carin Chapman West

BOARD OF ASSOCIATES

\$1,200-\$1,999.99

Thomas Bakewell
Wilhelmina Steinbeck
Barton
Mary Jane Brittin Bell
Miss Lydia Dodge
Elaine Anderson Fellowes
Lucette Stumberg
Flanagan
Barbara Ringer Hamill
Margaret Ringer Howell
Fritzie Knoblauch
Elizabeth Ann Weatherwax
Peterson
Elizabeth Mudd Rauch
Nell Quinlan Reed
Mr. Randall & Mrs. Cynthia
Robertson
Marian Johnson Sprague
Mr. James & Mrs. Pamela
Thompson
Shirley Wipfler



**Maurita Estes Stueck, '43
alumna and president,
alumni council:**

*"I've participated in the
college's Phone-a-Thons,
and I am thrilled with the
enthusiasm of alumni.
Their gifts are tangible
proof of the enthusiasm
they have for Lindenwood."*

PRESIDENT'S CLUB

\$500-\$1,199.99

Barbara Nall Anderson
Rosemary Dysart Baue
Beverly Mayhall Baumunk
Bonner McFarland Bentley
Mary Lou Bilsborough
Judith Neff Bois
Susan Taylor Brown
Mary Ann Todsen Carter
Genola Bellrose Cox
Doris Force Crowley
June Tavlin Dean
Patricia Lloyd Deisenroth
Mrs. E. Mildred Clarke
Denning
Nancy Prosser Dietz
Miss Ruth Dolan
Ms. Esther Fenning
Dixie Smith Ferry
Jackie Fish Fieseler

Gerald Gayer
Gloria McCarrick Gouger
Elizabeth Burbank Hamrick
Judy Ross Hoefler
Lenore Schierding Horn
Miss Mary Jackson
Mary Jardine Keith
Helen Chesbrough Kinell
Ms. Sally Goldenberg
Landau
Patsy Payne Lea
Mrs. Yu Chen Lin
Lindenwood College
Alumni Club—
Kansas City
Ms. Rita Luddon
Dr. Daniel Maddox
Ruth Magee
Helen Crider Marshall
Virginia Carter McGaughey
Virginia Hoover McGuire
Margaret Keisling Morgan
Carol Wideman Mueller
Martha Denious Muncy
Nancy Montgomery Orr
Anne Hodges Pals
Nancy Mueller Pecha
Doris Banta Pree
Glenda Raef Schaefer
Miss Mary Ann Smith
Miss Virginia Sodemann
Roberta Walters Sprich
Janet Schaefer Strauss
Peggy Lynn Walter Symes
Helen DuHadway Thatcher
Linda Hunt Thom
Joyce Burge Waters
Helen Weber Whalen
Mary Merrill Wolfe
Miss Mary Wolfert
Jeannette Lee Wood
Michael Wood

FOUNDER'S CLUB

\$160-\$299.99

Ms. Jane Knudson Abernathy
Mary Williams Adams
Karen Rasmussen Allredge
Bradley Anderson
Virginia Frye Anderson
Lonnie Baldwin
Constance Gordon Balfrey
Alma Fleck Bergmann
Frances Burgeson Bogen
Miss Nancy Bowser
Miss Evelyn Bradley
Genelle Phillips Braneky
Dorothy Simonsen Buchanan
Miss Margaret Buford
Miss Elizabeth Burdick
Dorothy Rhea Burnett
Josephine Peck Calkin
Miss Nancy Calvert
Mary Alice Lillard Carmichael
Ms. Mary Ann Herlitz Chevoor
Miss Jean L. Christensen
Lalla Vaner Clagett
Helen Diehr Coldwater
Betty Cole-Dukert
Daryl Crawford
Linda Janson Dahlsgaard
Mary Lee Campbell Davis
Ms. Ann Brewster Doble
John Dooley
Nancy Stark Dosman
Mrs. Johnnie Lou Brown Dugger
Ms. Ellen Duehlmeier
Ms. Lynn Bartels Eggering
Loise Ulen Elrod
Ms. Cynthia Essenpreis
Helen Smprez Estes
Constance Levy Finney
Laverne Kieninger Flachsart
Genevieve Horswell Frank
Ruth Neef Fredericks
Barry Freese
Julia Thomson Gallais
Thomas Glosier
Jill Simmons Graff
Margaret Stahl Greer
Paul Gross
Ms. Arminta Harness
Dr. Anna Harrison
Ms. Ann Fieber Hays
Sarah Davis Hedgecock
Miss Barbara Hedlund

GOLD LINKS CLUB

\$300-\$499.99

Dr. Berte Baker
Mary Beaman
Ms. Opal Beul
Mary Lou Blocher Bilsborough
Mrs. Beryl Wade Blunn
Mr. & Mrs. Charles Boswell
Dorothy Emmons Canty
Miss Melba Carty
Ginny Wolf Chivas
Ms. Karen Prewitt Clarke
Frank Clayton
Elaine Ludy Close
Miss Mary Collier
Elizabeth Vance Conrad
Mary Jean DuHadway Craig
Cornelia Darnall
Prudence Porter Drummond
Cora Lee Critchfield Gilliland
Joanne Buck Goudie
Ms. Betty Breck Haas
Ms. Patricia Hannon
Marilyn Mangum Heilman
Doris Weiss Hirschmann
Stephen Hoelscher
Karen McFarlane Holtkamp
David Hoover
L. Audrey McAnulty Jennings
Edith Mullins Johnston
Helen Rose Bruns Jolly
Marian Pendarvis Keehn
Margaret Laughlin Kelly

Constance Fuqua Hill
James Hodges
Ann Hamilton Hostetler
Elizabeth Glebe Houchin
Ms. Donna Milnes Houchins
Margaret Howells Howland
Mary Green Hudwalker
Frances Bradenburg Hume
Marietta Hansen Hunsche
Ann Riker Jaltuch
Jean Graham Johnson
Merilyn Berryman Johnston
Jeanette Hester Jolly
Sara Shomberg Kearns
Mary Ferrell Keller
Miss Jullann Kelley
Betty White Klee
Mr. Jan & Mrs. Janet Kniffen
Ms. Ann Kroeger
Kraig Kurtz
Mary Lais
Janice Blevins Lange
Mary Farthing Langenfeld
Barbara Plackemeier Lash
Ruth Titus Lasswell
Effie Holley Laub
Ms. Maryann Lee
Helen Sherwin Levesque
Gwen Davis Lewis
Janet Bergelin Little
Phillip Lucido
Ms. Virginia Lupfer
Chloe Willson Machado
Miss Nancy Madden
Ernestine Thro Magner
Eleanor Petty May
Lois Deisenroth May
Katherine Pfeifer McCombe
Beth McHaney
Miss Thursa J. Merritt
Muriel Jacobson Mersereau
Miss Mary Miller
Kathleen LaBounty Mitchell
Aline Lindquist Mohr
Nancy Jane Wallace Mojonnier
Georgia Lee Reed Mon
Mary Helen Morrow-Fuhrer
John Muench
Betsy Severson Nimock
Rosemary Kuncel Northwall
Lorraine Robie O'Connor
Miss Yuko Okuda
Rosalyn Fields Patterson
Miss J. Kristin Peterson
Miss Ruth Pinnell
Jean Paulson Plotz
Mary Lou Gillette Powers
Melinda Green Powers
Miss Patti Price
Vivian Brubaker Priddy
Miss Betty Proctor
Irene Kern Ray
Mary Frances Wertz Rea
Judith Prowse Reid
Margaret Meyers Richeson
Joyce Shoemaker Riley
Marie Christensen Robb
Jane Calvert Rogers
Barbara Manbeck Rugt'iv
Larry Sackman
Carol Fitz Roy Saum
Elizabeth Tracy Schreiber
Mary Goodwin Scott
Jane Passage Scowcroft
J. Marquerite Little Shewman
Margorie Sumner Silliman
Margaret Hocker Small
June Spillman
Jeri Herhold Stine
Carol Kellogg Stoub
Sara Crews Street
Joyce Davis Striegel
Cordelia Buck Stumberg
Linda Shaw Sullivan
James Sutterer
Martha Sweeney
Ms. Virginia Terry
Ms. Geraldine Thompson

Christine McDonald Todd
Charlotte Williams Tower
Betty Schoen Trail
Miss Susan Trail
Miss Patricia Trampe
Patricia Mulligan Trenkle
Helen Hook Valnikos
Dorothy McClintock Von Hoffman
Berenice Boyd Wallace
Glenda Gerred Watts
Margaret Wilson Wesson
Camille McFadden Whitney
Miss Deborah Wittner
Martha Skaer Wright
Ms. Lyn Zanville

CENTURY CLUB

\$100 - \$159.99

Margaret Funk Aden
Helen Stants Alexander
Mary Welsh Allen
Miss Ruth Allen
Mrs. Casey Jones Ancker
Mildred Smith Anderson
Nora Jeter Anderson
Robert Anderson
Virginia Levy Anderson
Ruth Weber Andris
Ruth Schrader Arft
Margaret Hollands Armstrong
Phyllis Smith Aspoas
Karlotta Poindexter Auclair
Betty Morgan Baggott
Elsie Sue Porth Baldwin
Candace Buss Ballard
Ms. Joan Spangler Bancel
Mr. Jerry Beck
Lavone Burton Beebe
Marjery Louise Cauthers Berryman
Mary Lou McLeod Bertram
Miss Marie Betzler
Leo Birchler
Susan McReynolds Bonnell
Ms. Carol Braunshausen
Carol Banta Brewer
Mary Hughes Bridges
Peggy Tittle Broday
Kathleen DeCroes Bruce
Frances Pauly Bryant
Margaret Warner Burnett
Ms. Susan Burns



Jane Crider, civic leader and member, board of directors:

"I believe in a small liberal arts college, and this is what Lindenwood is."

Mary Sayer Burrows
Carol Ratjen Caldwell
Eloise Worthington Calvert
Dorothy Canty
Gretel A. Carpenter
Betriex Lee Carse
Audrey Weinberg Cary

Launa Sturgess Casner
Arthur Castile
Dennis Cavanagh
Candice Linden Chaffee
Ruth Harbaugh Chapin
Patricia Williams Charron
Marian Kasper Childers
Dorothy Wood Clark
Miss Margaretha Clark
Alice Neal Clarkson
Jacquelyne Bond Clausonthue
Miss Jane Cooper
Erma Martin Couden
Kate Bemis Cravens
Adaline Ayers Cross
Miss Deborah Crouch
Ronald Crouther
Margaret Howell Cunningham
Miss Agnes Currie
Miss Zilpha Curtin
Miss Mary Darmstaetter
Nancy Lambert Davenport
Ann Cline Deatherage
Mary DeBartolo
Dolores Boomer Decker
Charlotte Johnston DeGolyer
Miss Mary Dewey
Ms. Diane Dicke
Harriet Dalton Doerrie
Bettylee Sleyster Dorsey
Jean Willbrand Droste
Merica Shawver Edwards
Virginia Rohrer Edwards
Mary Jo Shepard Eisenhauer
Dorothy Padden Elch
Carlene Newell Elmore
Ms. Jane Ervin
Patsy Holloway Erwin
Sarah Hall Fandey
Mary Miller Farrington
Barbara Fite Faulkner
Neola Luster Faus
Jo Ann Bland Finley
Miriam Neff Fischer
Anita Reid Fleming
Ms. Jane Fletcher
Marlan Schulzke Ford
Lea Alexander Frailey
Jane Wilson Friday
Margaret Deming Frink
Leah Thompson Fulton
Caroline England Funk
Charlotte Gilliom
Maurine Potlitzer Glazer
Gregory Gobberdiel
De Alva McAlister Graham
Gail Bartels Griffin
Cindy Foote Gross
Miss Talitha Grote
Marilyn Malone Gustafson
Lori Haberman-Wilson
Jean Redpath Hagen
Ginney Vanlice Hahn
Josephine Miles Hall
Ms. Betty Hammett
Cynthia Eve Ricklin Harminging
Ms. Carol Bollinger Harrington
Margaret Miller Harris
Lois Griewank Hartman
Freida Becker Hasek
Denzil Hawes-Davis
Pauline Gray Hearne
Martin Hente
Carol Fisher Hess
Ellen Day Higgins
Ms. Earlene Hill
Nancy Dana Hill
Mae Kane Hincke
Frances Fitzgerald Hlnsch
Beverly Stukenbroecker Hirsch
Polly Pollock Holway
Lenore E. Horn
Frances Watlington Hubbard
Jane Graham Hubbell
Patricia Mayfield Hunn
Joyce Ganssle Hunt
Sue Austin Hutchings
Eloise Hainline Huwaldt

Miss Mildred Iffrig
Keith Jefferson
Mrs. Mel Bemis Jenkins
Joan McCarroll Johnson
Catherine Donnell Jones
Nell Henninger Jones
Susan Drozda Jones
Evelyn Heiser Kaser
Mr. Donald & Mrs. Laurie Keeran
Mary Lou Thayer Kelley
Mrs. J. Page Kemp
Mimi Kemp-Hall
Margaret Lee Hughes Kiely
Jean Shelton Kinmonth
Eddie Loud Kinzer
Miss Dorothea Knepper
June Horstmeyer Kottmeier
Meredith Kasten Kraus
Jonetta Tomcak Kurtz
Miss Elizabeth Kuykendall



Raymond W. Harmon, member, board of directors:

"Lindenwood has played a very important part in my life in many ways. In my opinion, it is not only my obligation, but a real source of satisfaction to help continue to provide the opportunity for private higher education to our young people. I am committed to stretching myself financially to help Lindenwood realize its potential in the private education of all who would seek to improve themselves."

Emma Morgan Lacy
Virginia Beasley Lambert
Kristi Hiekkala Langbein
Marilyn Robison Lantz
Diana Smith Lassen
Barbara Larmer Lawton
Ms. Sara Cook Lewis
Mary Ann Fowler Linneman
Evelyn Richabaugh Lippelmann
Ms. Michele Fitzpatrick Lowrance
Virginia Litzelfelner Luetje
Charlotte Ching Lum
Ms. Karen Lumpe
Betty Lindsay MacConnell
Mary Trimble Maler
Jeanne Swenson Mandell
Frances Olson Marks
Jane Edwards Marlow
Ms. Lori Marshall
Jacolyn Foreman Martin
Helen Streeter Massey
Mary Louise Bowles Maughan
Barbara Clausen Mayginnis
Jean Stephenson Maynard
Claride Woodward Mayo
Marilyn Mays
Nancy Babb McAdams
Joyce Murphey McAfee
Allie Mae Bornman McColgan
Helen Jones McCown
Ms. Jeannie McCutchan

Mrs. William McEachron
Lynn Jackson McHoney
Helen Stewart McInnes
Carolyn Brewer McMillan
Ms. Jessamine Hinds McMullen
Ms. Ruth Ann Meyer
Anne Griggs Midden
Arline Heckman Miller
Elizabeth Anne Field Miller
Roberta Allison Miller
Mr. Yasumichi Mitsui
Sylvia Nelson Moldenhauer
Margaret Grier Moon
Amelia Siler Moore
Miss Nancy Morgan
Ruth Muegge
Esther Moulthrop Muench
Amy Basore Murphy
Janice Nelson Murphy
Edith Mandel Myers
Thomas Nebel
E. Corrine Paulsen Needham
Katherine Morton Nelson
Gail Gross Neumann, Ph.D.
Colleen Rankin Nies
Ms. Ruth Noblitt



Ron W. Ohmes, chairman, board of overseers:
"Lindenwood College offers the St. Charles and the metropolitan St. Louis communities a commitment to quality personalized education. I support the Lindenwood tradition of private liberal arts education, and believe the college deserves our highest respect and support for its continued efforts."

Karen Witt Noonan
Marilyn Bennett Noonan
Helen Thomas Olson
Miss Constance Osgood
Ms. Lindi Fredmeyer Overton
John Pawelczak
Joanna Achelpohl Peery
Eulalia Geiger Petersen
Dorothy Walsh Pokorny
Ronald Polick
Dorothy Hennig Popham
Virginia Keck Powell
Virginia Terry Preston
Judith Smith Pribor
Gary Prindiville
Miss Wanda Pringle
Maxine Cooper Provost
Helen Foster Purvis
Carolyn Ledford Ragans
Ms. Victoria Kern Ray
Esther Barklage Rechten
Sharon Worley Reimel
Miss Alma Reitz
Miss Eileen Reitz
Jo Ann Liebermann Reynolds
Carole Lockhart Roberts
Jennelle Robertson
Joan Langenbach Robinson
Alice Prouty Root
Norma Ione Olson Rundall
Mrs. Tommy Buell Rupinski
Janet Petersen Russell
John Saeger

Margaret Groce Sample
Brian Samuels
Sally Siemssen Schaefer
Ms. Barbara Zeliff Schifeling
Debbie Montgomery Schnedler
Mrs. Bobbie Moore Schonaerts
Sue Puckhaber Sharp
Lillian Smith Shaw
Rebecca Achelpohl Shaw
Sheila Willis Shaw
Miss Dorothy Shippey
Lucyl Shirk
Polly Heninger Shlosman
Marilyn Tweedie Shutz
Joyce Fleet Silver
Eleanor Brown Simpson
Vera Jean Douthat Sink
Jacquelyn Cheney Smith
Ms. Sarah Smith
Lila Robinson Sowell
Doris Oxlez Spellman
Betsy Kelton Stafford
Rebecca Bahn Stanard
Mary Bovaird Stark
Ms. Kathleen Starner
Miss Sara Stein
Sylvia Wright Stern
Marie Smith Strawbridge
Sara Jefferson Stukenbroeker
Mary Jane Jennings Stutz
Sue Moss Sullivan
Linda Markuly Szilvasy
Victoria Smith Tarleton
Jane Rickman Teigen
Virginia Finley Thomas
Miss Marian Thompson
Nancy Lambert Thompson
Loretto Thompson

Thoroughman
Ann Hanna Tolly
Doris Gwin Townsend
Elane Reatherford Tufts
Mrs. Jerre Lewis Van Steenberg
Doris Smithson Van Vlissingen
Gerald Varker
Janice Rollins Vassar
Jean Stewart Vest
Janie Traner Wacker
Norma Sabin Wallingford
Bettye Jean Smith Walls
Ms. Vivian Ware
Mr. Roy & Mrs. Elizabeth Warren
Miss Evelyn Watson
Frances Metzger Weeks
Miss Debra Weiner
Miss Marilyn Weir
Laurel Andersen Werner
Miss Martha White
Prudence Paine White
Imogene Elrod Wilden
Marguerite Hersch Wiley
Kay Dunham Wilkinson
Marjorie Smith Wilkinson
Mary Elizabeth Mangold Willets
Ms. Marilyn Wilson-Hawkins
Miss Betti Wimberly
Miss Carol Wolter
Karen Roschke Woodfield
Virginia Ann Crusa Wyman
Gwendolyn Ryter Yaklich
Gloria Stunkel Young
Miss Roxanna Young
Mrs. Donald Zimmerman

Thomas F. Bakewell '74, alumnus and board of overseers:
"A quality liberal arts education is a precious resource. Lindenwood offers this with a unique blend of traditional values and diversity. My involvement with and gifts to Lindenwood have always paid rich dividends."

GIFTS-IN-KIND

Mark Baue
Boccacio's
Bryan, Cave, McPheeters & McRoberts / Walter Metcalfe, Jr.
Columbus Dental
Janet H. Cordes
D'Arcy Masius Benton and Bowles
Equitable Real Estate
The Forsythe Group / David Wilhelm
Thomas Gossage
Ms. Kathleen Grimm
Holiday Inn-St. Peters
Keeler Morris Printing
Hans Levi
Phyllis Morris
Rick Swantner
Thoele Oil Co.
Thompson & Mitchell / John Hannegan
Jim Tiller
Wetterau Inc.

Matching Gift Companies

1st National Bank of Chicago
The 3M Company
ACF Foundation Inc.
Alcoa Foundation
American Home Products
Amoco Foundation Inc.
Anheuser-Busch Charitable Trust
AT&T Foundation
Atlantic Richfield Foundation
Bankers Life Co.
Beech Aircraft Foundation
B. F. Goodrich
Brunswick Foundation, Inc.
Carolina Power & Light
Caterpillar Foundation
CBS, Inc.
Chemical Testing Inc.
Chubb and Son, Inc.
Citibank, N.A.
Clorox Foundation
Combustion Engineering
Compton Foundation, Inc.
Conoco Inc.
Continental Telecom Inc.
Cooper Industries
CPC North America
Deluxe Check Printers Foundation
Dun & Bradstreet Corp. Foundation
E. F. Hutton & Company Inc.
Eli Lilly & Company
Emerson Electric Company
Equitable Life
Exxon Education Foundation
Fiduciary Trust Company
Ford Motor Company Fund
General Dynamics Corp.
General Electric Foundation
General Mills Foundation
Hallmark Cards Inc.
Harris Foundation
HBE Company
HCA Foundation
Hewlett Packard
IBM Corporation
J. Eckerd Corp.

J.C. Penney Company, Inc.
Joseph E. Seagram & Sons
JSJ Corporation
Laclede Gas Company
Mallinckrodt Fund, Inc.
Martin Marietta Foundation
Massachusetts Mutual Life Insurance

Nancy Kern Peteler '48, alumna:
"I feel strongly about supporting Lindenwood... it offers the type of education that is progressive; yet, it has never lost sight of life's basic principles."

The May Stores Foundation
McDonnell Douglas Foundation
Merrill Lynch
Metropolitan Life Foundation
Middle South Services
Minnesota Mining Foundation
Mobil Foundation, Inc.
Monsanto Fund
Northwestern Bell Foundation
Olin Corporation Trust
People's Bank
Pfizer Inc.
Philip Morris Inc.
Phillips Petroleum Foundation
Procter & Gamble Fund
Ralston Purina Trust Foundation
RCA
Rohm & Haas Company
Ryder System, Inc.
Shaklee Corporation
South-Western Publishing
Southeast Bank, N.A.
Southwestern Bell Telephone Foundation
St. Charles Orthopaedic State Farm Companies Foundation
Texaco Philanthropic Foundation
Time Inc.
Times-Mirror Company
TPF & C, Inc.
Transamerica Corp.
Trust Company of Georgia
TRW Foundation
Union Electric Trust Company
United Technologies
Varian
VF Corporation



Clayton E. Wilhite, member, board of directors:
"Measuring the continuing worth of quality college education is not something we adults do with regularity. Lindenwood alumni should welcome the change—it's a guaranteed emotional high."

FRIENDS

RENAISSANCE ASSOCIATION

\$10,000 or more

Jane A. Crider
Mr. Raymond &
Mrs. Grace Harmon
Mr. & Mrs. Charles G.
Schott, Jr.
Mr. & Mrs. John W.
Tlapek

SIBLEY ASSOCIATION

\$5,000-\$9,999.99

Arthur S. Goodall
Mr. & Mrs. John C.
Hannegan
Mrs. Sidney W. Souers
Dr. & Mrs. James I.
Spainhower
Dr. Kenneth W.
Thompson

RENAISSANCE PATRONS

\$2,000-\$4,999.99

Mr. & Mrs. David E.
Babcock
Mr. & Mrs. Harvey A.
Friedman
Mr. & Mrs. Thomas
Gossage
Mr. & Mrs. Keith W.
Hazelwood
Mr. & Mrs. Robert F.
Hyland
Mr. & Mrs. Robert Kaplan
Mr. & Mrs. Robert
McKelvey
Mr. & Mrs. Jefferson
Miller
Mr. & Mrs. Ronald Ohmes
Mr. & Mrs. J. Paul
Ohrman
George B. Ross
Robert W. Sullentrup
Mrs. Horton Watkins
Mr. & Mrs. Clayton E.
Wilhite
Mr. & Mrs. John D. Wolf



Thomas L. Gossage,
vice-chairman,
board of directors:
*"Many challenges await as
do numerous opportunities
to achieve our Renaissance
goals. The college has a
celebrated history, and
now we have an opportu-
nity to build on its 160-year
history."*

BOARD OF ASSOCIATES

\$1,200-\$1,999.99

Mr. Kenneth R. & Mrs. Mary
Lou Ahmann
Jill Baue
Dr. & Mrs. Robert J. Fleming
Fritzie Knoblauch
Mr. & Mrs. Walter L.
Metcalf, Jr.
Mr. Paul L. & Mrs. Nancy
Polette
Dr. Arthur E. Prell
Henry Rauch
Gary Shaw
Dr. & Mrs. Earl J. Wipfler

PRESIDENT'S CLUB

\$500-\$1,199.99

John Bornmann
Mr. & Mrs. George W. Brown
William R. Cady
Christine C. Conover
Jeanne Donovan
Mr. & Mrs. Henry Elmendorf
Alfred Fleishman
Dr. Gene Henderson
Dr. Esther L. Johnson
Dr. & Mrs. Robert Kingsbury
Dr. & Mrs. Justus P.
Kretzmann
John Latshaw
Paul Londe
Mr. & Mrs. James Magee
Mr. & Mrs. John Nichols
Mr. & Mrs. Bill Park
Mr. Boyle & Mrs. Nancy
Rodes
Jerry Scheidegger
Lillian E. Trump

GOLD LINKS CLUB

\$300-\$499.99

Mr. & Mrs. Raymond E. Botz
Dr. & Mrs. Eugene J. Canty
Jay B. Dillingham

Mark T. Duncan
Carmine V. Ficocelli
Mr. & Mrs. James M. Fitz
Mr. & Mrs. Thomas L. Gipson
William B. Hecht
Robert L. Hulett
Kenneth Ingram
Mr. Daniel N. & Mrs. Marilyn Keck
Mr. & Mrs. Stanley Kolker
Hans Levi
Ms. Mary Martin
Burr W. Miller
I. E. Millstone
Mr. & Mrs. Kenneth W. Musbach
Catherine O. Pundmann
Mr. & Mrs. Jerry Ruffahr
Mr. & Mrs. Randy Wallick
John H. Wehmer
Oliver Wilke

FOUNDER'S CLUB

\$160-\$299.99

Joseph F. Ackerman III
Charles Anderson
Ms. Daryl Anderson
Wayne Balmer
Richard L. Battram
Victor J. Beck
Doug Boschert
Ms. Mary T. Bright
Ms. Sue Brown
Solon Chervitz
Ms. Debra L. Coats
Dr. Michael Conoyer
Michael J. Curry, M.D.
Ms. Janice Czaplá
Mr. & Mrs. A. Roger Deppe
Mr. & Mrs. Bruce Edler
Carol S. Fellows
Ms. Norma Jean Fields
Richard R. Frame / Mississippi
Investment Inc.
Eugene Goldstein
Ms. Louise G. Graham
Mr. Charles & Mrs. Dorothy Hafer
Thomas Hedgecock
Rev. & Mrs. V. Paul Heine
Ms. Darlene Jemison
Theodore A. Kienstra
Dr. Robert King
Eugene J. Kirk
Mr. & Mrs. Charles L. Kopetzky
Rev. Robert W. Kroening
Mr. & Mrs. Richard R. Lance
Ramona Lane
Mr. & Mrs. James C. Maurer
Ms. Shirley McCormick
Ivan A. McKeynolds
Mr. Chris and Mrs. Phyllis Morris
Marilyn Morris
Edwin M. Olschansky
Larry Pressley
Dr. Alfred Schuetz
Joseph H. Schweich
William Sullivan
Mr. & Mrs. James Swift
Mr. Myron & Dr. Arlene V. Taich
Mr. Arthur & Ms. Jean A. Taylor
Mr. & Mrs. Lee White
Jacob H. Wolf, Jr.

CENTURY CLUB

\$100-\$159.99

Melinda J. Adams
Jonathan D. Allen
Robert R. Allen
Mr. & Mrs. Jorge Aquino
Omer H. Avery
Dr. & Mrs. Howard Barnett
Mr. & Mrs. Henry L. Bartels

Rev. & Mrs. Rudolph Beard
Mr. & Mrs. Stephen Blackhurst
William E. Blades
Carol Boerding
Patrick H. Brady
Thomas Brown & Motivational
Concepts
Mr. & Mrs. Gary D. Bubenzer
Ms. Joyce A. Cappon
Dr. & Mrs. Henry W. Clever
Rev. & Mrs. Robert R. Collins
Alwin "Tub" Diefenthaler
Donald F. Dilly
Theron R. Dosch
Vivian K. Downs
Walter R. Dreier
Jean W. Droste
Frederick T. Dyer
David B. Flavan III
Nancy Fleming
Mr. John & Mrs. Mildred Frank
Leland D. Gillette
Sanford Goffstein
Dr. Edith E. Graber
John Grassilli
Werner F. Grunbaum
Mr. & Mrs. James Hafer
Mr. & Mrs. C. R. Hale
Dr. & Mrs. R. E. Hammes
Mr. & Mrs. Frank Harkins
Wesley E. Hedges
M. Henry Hess
Dr. Leopold Hofstatter
George Holtgrewe
Mr. & Mrs. David L. Kirkland
Mrs. Harry W. Kroeger
Mr. & Mrs. Katsumi Kudo
Mr. Kraig Kurtz
John V. Lanternam
Ms. Marilyn Leach
Hettie Magee
Mr. M. J. Mathis
Ms. Tracy L. Mathis
Rev. & Mrs. Robert McGruther
Robert R. Meers
Mr. & Mrs. Donald Meyer
Harold B. Moore
James L. Moore
Ms. Lynn Moore
Mr. & Mrs. David G. Muckerman
Carol Mueller
Rev. Earl E. Nance
Barbara Jean Okun
Dr. & Mrs. Richard O. Olson
Randolph E. Puchta
Ms. Emma Purnell
Vona M. Quackenbush
Mr. & Mrs. Milton Rehg
Richard Rickert
Frank C. Rittenhouse
Dr. & Mrs. Paul H. Rother
Rabbi Alvan D. Rubin
Mr. & Mrs. Wilbert Schmidt, Jr.
Mr. Kathleen Schneider
Mr. & Mrs. Allen Schwab
Mr. & Mrs. Albert L.
Schweitzer, Jr.
Raymond Scupin
Dave Sherman
Doyle W. Shockley
Mr. & Mrs. Joseph Shroba
Mr. & Mrs. Louis H. Siemer
David E. Skiles
Donald J. Smith
Dominic Soda
Frank Spinner
Gladys T. Stockstrom
Ms. Frieda J. Stoerker
Ms. Mary Talbot
Mr. & Mrs. Edward Tokas
Mr. & Mrs. Norbert Wapelhorst
Mr. & Mrs. Richard Ward
Mr. & Mrs. Melvin G. Wetter
Carol Whitman
Byron C. Wiswell
Mr. & Mrs. Richard Yalem
Ms. Toni Yeakey
Ms. Patricia A. Young
Stanley E. Zager



LINDENWOOD COLLEGE
MEMORIALS AND HONORARIUMS
FROM
THE 1987 BOOK OF HONOR

In Memory Of:
Mrs. Eileen Arand

Donor:
Dr. James I. Spainhower

In Memory Of:
David C. Baue

Donors:
Academy of the Sacred Heart—Ms. Jane Stoneking
Dr. & Mrs. Martin Altman
American Association for the Surgery of Trauma
Mr. & Mrs. David K. Barklage
Mrs. Dorothy Barklage
Mr. Kenneth & Mrs. Mary Lae Barklage
Mrs. Sandra Louise Barklage
Baue Bowling Team—Ms. Valyne Meers
Baue Funeral Home
Mr. Henry Baue Family
Mrs. Jill Baue
Mrs. Rosemary Baue
Rev. & Mrs. Donald F. Becker
Verma, Barbara & Laverne Beckirla
Mr. & Mrs. Stephen E. Blackhurst
Mr. & Mrs. Raymond E. Botz
Mr. William R. Cady
Mrs. Ella Cain
Rev. Evangeline Cannon
Dr. & Mrs. Eugene J. Canty
Mr. & Mrs. Albert Carpenter
Claywest House, Inc.—
Mr. Harry Panhorst & Ms. Sue Damrell
Commerce Bank of St. Charles—
Director, Officers and Staff
The Commerce Foundation
Computer Dynamics, Inc.—Mr. Gail Szkodowski
Mrs. Jane A. Crider
Curry, Lenhardt & Company—
Mr. Richard Johnson
Mr. L. M. & Mrs. Martha Dyer
Mr. Roy & Mrs. Naoma Dysart
Mr. David & Mrs. Sandra Ebeling
Mr. & Mrs. Henry J. Elmendorf
Mr. Bob & Mrs. Carlene A. Elmore
Mr. Earl C. & Mrs. Donald J. Estes
Dr. J. H. Evans, Jr. & Mrs. V. Raye Evans
Mr. & Mrs. James M. Fitz
Dr. & Mrs. Robert J. Fleming
Mr. Gene Grasser
Mr. James & Mrs. Barbara Hafer
Dr. & Mrs. R. E. Hammes
Mr. & Mrs. Richard L. Hanson & Lucelle Brown
Mr. Raymond & Mrs. Grace Harmon
Mr. & Mrs. Godfrey Hartnett
Mr. & Mrs. Richard E. Hedley
Rev. & Mrs. Paul V. Heine & The Dr. John Heine Family & The Mrs. Becky Palmer Family
Mr. Jim & Mrs. Carolyn Hollander

International Data Corporation—Mr. Gail Myers
Mr. & Mrs. Robert Jacobs & Mr. Thorley Alderson
Mrs. Helen Rose Jolly
Ms. Kathy Keeser
Dr. & Mrs. Robert Kingsbury
Ms. Karen M. Knoblauch
Ms. Fritzie M. Knoblauch
Mr. & Mrs. Charles L. Kopetzky
Dr. & Mrs. Justus P. Kretzmann
The Robert L. Kulp Family
Mr. Melvin & Mrs. Lois Lane
Mr. Theodore & Mrs. Mary Leistner
Dr. & Mrs. Charles M. Linsenmeyer
Mrs. Esther and Miss Arlene Lonning
Mr. Floyd & Mrs. Judy Mahon
Mr. & Mrs. Donald Meyer
Mr. John & Mrs. Grace Nichols
Mrs. Betsy J. Nimock
Mr. Bob O'Connell & Mrs. Anne Travis
Mr. & Mrs. J. Paul Ohrman
Dr. & Mrs. Richard O. Olson
Mr. Hugh & Mrs. Joanne Orr
Rev. Mike Owens
Paddock Cars, Inc.—Mr. Hazel Hawkins
Pals Financial Group—Mr. Harlan Pals
Paris Cleaners
Mr. Robert & Mrs. Nancy Pecha
Mr. Charles H. Perkins
Dr. & Mrs. William H. Poggemeier
Preston Furniture, Inc.—Mr. Joe Preston
Mr. & Mrs. Ed Pundmann
Mrs. Eleanor W. Randall
Mrs. Esther J. Rechtern
Mr. & Mrs. Boyle O. Rodes, Jr.
Mr. & Mrs. Tony Rufkahr & Family
St. Charles County Board of Realtors—
Mr. Robert Welko
St. Charles Insurance Agency—Mr. Joe Daus
Dr. & Mrs. Robert Schaefer
Ms. Dorothy B. Schone
Mr. & Mrs. Charles Silverberg
Dr. & Mrs. James I. Spainhower
Mr. George & Mrs. Marjorie Springman
Ms. Freida J. Stoerker
Ms. Velma Koetter & Ms. Florence Stonebraker
Mr. Ralph H. Sundermeier
Mr. James D. Thompson
Ms. Thelma L. Thornhill
Thursday Tennis Club—Mrs. Shirley H. Wipfler
Mr. Thomas & Mrs. Donna Towers
Miss Dorothy Trump
Tuesday Morning Tennis Group—
Ms. Martha Chambers
Veterans Committee of St. Charles—
Mr. Richard Feuerstein
Mr. Paul Walters
Ms. Ann Williams
Dr. Earl & Mrs. Shirley H. Wipfler

**LINDENWOOD COLLEGE
MEMORIALS AND HONORARIUMS
FROM
THE 1987 BOOK OF HONOR**



Ms. Mary Yaeger
Mr. & Mrs. Kevin C. Young

**In Memory Of:
James Bryant**

Donors:
Mr. Richard & Mrs. Mildred Denning

**In Memory Of:
Russell J. Crider**

Donor:
Dr. John Bornmann

**In Memory Of:
Karl France**

Donors:
Lindenwood College Staff Friends
Mr. James D. Thompson

**In Memory Of:
Lyle Gilliom**

Donors:
Mrs. Dorothy Barklage
Mr. & Mrs. Stephen E. Blackhurst
Mrs. Jane A. Crider
Mr. Edward & Mrs. Barbara Kirgan
Mr. Richard & Mrs. Bernice Niehoff
Mr. Jim & Mrs. Mary Rash
Mr. & Mrs. Milton Rehg
Ms. Dorothy B. Schone
Dr. James I. Spainhower

**In Memory Of:
Nannie S. Goodall**

Donor:
Mr. Arthur S. Goodall

**In Memory Of:
Jean Elizabeth Hale**

Donors:
Mr. & Mrs. C. R. Hale

**In Memory Of:
Anna Merle Henderson**

Donors:
Ms. Diane Arthur
Dr. James I. Spainhower

**In Memory Of:
Mr. & Mrs. Kopler**

Donor:
Dr. James I. Spainhower

**In Memory Of:
Claude Langley**

Donors:
Dr. & Mrs. James I. Spainhower

**In Memory Of:
Patricia Litz**

Donor:
Mr. S. Lee Kling

**In Memory Of:
Jana Rae Maddox**

Donor:
Dr. Daniel Maddox

**In Memory Of:
Minota Bayliss Moncure**

Donors:
The Jack G. Maize Family
Mr. & Mrs. Fred H. Vogt

**In Memory Of:
Dr. Paulena Nickell**

Donor:
Dr. James I. Spainhower

**In Memory Of:
John M. O'Leary**

Donor:
Dr. James I. Spainhower

**In Memory Of:
Isabel Wood Peters**

Donor:
Miss Dorothea Knepper

**In Memory Of:
Roz Weil Roberts**

Donor:
Mrs. Polly A. Shlosman

**In Memory Of:
Marie McGrate Smith**

Donor:
Mr. Ray L. Smith

**In Memory Of:
Joanne Shroba Wehner**

Donors:
Mrs. Katherine Adams & Mrs. Tori Putnam
Moses
Mrs. Carole Honrath
Mrs. Bertha C. Shroba

**In Memory Of:
Corinne Weller**

Donor:
Mrs. Helen J. Walter

**In Memory Of:
Mary Yonker**

Donors:
Mrs. Rosemary Baue
Mrs. Jane A. Crider
Mrs. Barbara L. Hamill

(This listing is only for gifts received Jan. 1, 1987, through June 30, 1987. An entire calendar-year listing will be prepared at the end of 1987 and displayed permanently in Roemer Hall.)



OFFICERS

ROBERT F. HYLAND

Chairman
Senior Vice President
CBS Radio, Inc., and
General Manager
KMOX-AM and KHTR-FM

WALTER L. METCALFE, JR.

Vice-Chairman
Attorney
Bryan, Cave, McPheeters
& McRoberts

THOMAS L. GOSSAGE

Vice-Chairman
Corporate Group Vice
President
Senior Vice President
Monsanto Chemical
Company

JOHN C. HANNEGAN

Secretary
Attorney
Thompson & Mitchell

S. LEE KLING

Treasurer
Chairman of the Board
Landmark Bancshares
Corp.

HENRY J. ELMENDORF

Assistant Treasurer
Secretary-Treasurer
Jim Meagher Chevrolet-
Oldsmobile

MEMBERS

PATRICIA P. BAILEY

Commissioner
Federal Trade Commission

RICHARD L. BATTRAM

Vice-Chairman
May Department Stores
Company

JUDITH BROUGHAM

Alumna

REV. ROBERT R.

COLLINS
Minister
First Presbyterian Church

GARY L. COWGER

Manufacturing Manager
Cadillac Motor Division

JANE CRIDER

Civic Leader

HARVEY A. FRIEDMAN

President
Gothic Investment

FRANK J. HARKINS

President
MCI Telecom-
munications Corp.

RAYMOND W. HARMON

President
Hasco International, Inc.

ROBERT KAPLAN

President
Kaplan Real Estate

LARRY G. KELLEY

President
Commerce Bank of
St. Charles County, N.A.

ROBERT G. McKELVEY

President
McKelvey Building
Company

JEFFERSON L. MILLER

President
Outdoors, Inc.

JAMES M. O'FLYNN

President
Automobile Club of
Missouri

RON W. OHMES

President
F.F. Kirchner, Inc.

MAURITA STUECK

Alumna

KENNETH W. THOMPSON

Director
Miller Center of Public
Affairs
University of Virginia

JOHN TLAPEK

Business Entrepreneur

DOROTHY WARNER

Board Chairwoman
John Warner Bank

DAVID A. WILHELM

President
The Forsythe Group

CLAYTON E. WILHITE

Chief Executive—
Managing Director
D'Arcy Masius Benton &
Bowles, Inc.

JOHN D. WOLF

Executive Vice-President—
Operations
McDonnell Douglas
Aircraft Co.

LIFE MEMBERS

DAVID E. BABCOCK

**WILHELMINA
STEINBECK BARTON**

GEORGE BROWN

ARTHUR GOODALL

REV. W. DAVIDSON

McDOWELL

NELL QUINLAN REED

GLADYS STOCKSTROM

RUTH WATKINS



OFFICERS

RON W. OHMES

Chairman
President
F.F. Kirchner

THOMAS F. BAKEWELL

Vice-Chairman
Senior Vice President
Daughters of Charity
Health Systems, Inc.

**CATHERINE O.
PUNDMANN**

Secretary
President
Pundmann Ford

MEMBERS

JILL BAUE

Baue Funeral Home and
St. Charles Memorial
Gardens

REV. RUDOLPH BEARD

Minister
First Presbyterian Church

A. ROGER DEPPE

Superintendent
St. Charles School District

JAMES M. FITZ

General Manager
St. Charles Gas Company

KEITH W. HAZELWOOD

Attorney
Hazelwood, Barklage &
Barklage, PC

DAVID L. KIRKLAND

Senior Vice President
Love Real Estate Company

JAN R. KNIFFEN

Vice President & Treasurer
May Department Stores Co.

AUDREY KOLKER

Civic Leader

WILLIAM G. LEWIS

Legislative Public
Relations Manager
Continental Telephone of
Missouri

TRACY L. MATHIS

Attorney
Thompson & Mitchell

WILLIAM O. MULLINS

Publisher
St. Charles Journal

ELIZABETH RAUCH

Alumna

BOYLE O. RODES

Secretary/Treasurer
Ellis-Rodes-Meers & Co.

RABBI ALVAN D. RUBIN

Temple Israel

WILLIAM B. SCHAEFER

President
Heinz-Schaefer Insurance
Services

GARY N. SHAW

Vice President
E. F. Hutton and Company,
Inc.

ROBIN E. SMITH

Television News Reporter
KMOV-TV News 4

JOHN M. STEPHENS

Vice President Marketing
Regional Commerce &
Growth Association

CORDELIA STUMBERG

Alumna

WILLIAM C. SULLIVAN

Vice President and General
Counsel
Southwestern Bell

MEL G. WETTER

Civic Leader

SHIRLEY WIPFLER

Alumna

LIFE MEMBERS

CHARLES BOSWELL

ALFRED FLEISHMAN

DOROTHY TRUMP



OFFICERS

**MAURITA ESTES
STUECK**
President

ERIC STUHLER
Vice President

MS. VIRGINIA TERRY
Secretary

**CYNTHIA SCHIERMEIER
HAHN**
Treasurer

MEMBERS

**HELEN BARTLETT
ELLEN DUEHLMEIER
MS. JINNY GENDER
ROBERT MARUSKA
LYNN JACKSON
McHANEY
JANET LEWIS RIDDLE
CAROLE ANN KELLOGG
STOUB
MARTHA SWEENEY
PAMELA ROESLER
THOMPSON
MS. ABIGAIL TUTTLE
MICHAEL WOOD**

ALUMNI CLUBS OFFICERS

MS. ARMINTA HARNES
President
Southern California

**FRANCES METZGER
WEEKS**
President
Kansas City

NANCY PROSSER DIETZ
President
St. Louis

MS. GERRY JACOBS
President
St. Charles

AMBASSADORS

These extraordinary Lindenwood College volunteers serve as ambassadors on various campaigns and Renaissance efforts throughout the year. On behalf of the college, we commend their outstanding performances in support of Lindenwood. The ambassadors listed are not currently members of one of the Lindenwood College boards.

Mary Lou Ahmann
Jamy Allen
Joe Ancona
Gordon Atkins
Howard Barnett
Dan R. Bishop
Ray Botz
Barbara Broadfoot
Mayor Tom Brown
Charles Bruere
Ms. Penny Myers Bryant
Bernie Buckman
Dennis Cavanagh
Joan Childress
Florence Crockett
Bob Currie
Dr. Michael Curry
Joe Daus
Glenn DeWees
Steve Dieringer
Nancy Dietz
Jean Droste
Carl Emerling, Jr.
Cynthia Essenpreis
Lori Fairchild
Dr. Robert Fleming
Barry Freese
Ray Fricke
Charlotte Gilliom
Bill Green
David Gulick
Geary Hagen
Barbara Hamill
Jim Hodges
Bernice Hugeback
Joe H. Hunt

Robert Jacobs
Darlene Jemison
Dr. Esther Johnson
J.T. Johnston
Ms. Kim Jones
Dr. Robert Kingsbury
Otto Klingler
Fritzie Knoblauch
Ed Layton
Jeffrey Leeka
Stephen E. Littlejohn
Gary Loeffler
Ms. Rita Luddon
Judy Ludwig
Rev. Richard Maddox
James Maurer
Donald Meyer
Ken Mihill
Ms. Nancy Miller
Ms. Rhonda Miller
Ms. Terry Miller
Jeanne Mudd
Ms. Ruth Noblitt
Judy Peters
Ray Pickett
Ed Pundmann
James Rau
Dr. Paul Rother
Larry Sackman
Ron Saettele
Hershel Sams
Sally Schaefer
Jerry Scheidegger
Wilbert Schmidt, Jr.
Ruth Staggemeier
Ms. Jeri Stine
Ms. Carla Stuhler
Robert Sullentrup
Edward Sylvia
Susan Sylvia
C. William Taylor
Jack Taylor
Gienda Terschluse
Roy Thoele
George Tilden
Randy Wallick
Kay Watts
Walter Weik
Norma Wilder
Bud Wilke
Alan Wolfgang
Frank Wollrab
Fred Woody
Richard Yalem
Ruth Zeisler

SPECIAL THANKS

Throughout the year, Lindenwood College has benefited from the continuing contributions of marketing counsel and technical expertise from an internationally-renowned leader in the advertising profession.

In appreciation for assistance with this publication and other projects, Lindenwood dedicates this annual report to D'Arcy Masius Benton & Bowles-St. Louis.

The entire college family salutes the leadership of Clayton E. Wilhite, chief executive/managing director of DMB&B-St. Louis, and the countless others at DMB&B who have assisted and guided Lindenwood College in recent months. DMB&B represents a perfect example of American industry's support and concern for higher education.



DMB&B

