

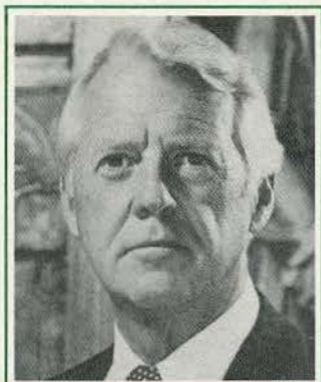
A N N U A L



R E P O R T



**The
Challenge
of Stewardship**



For one hundred sixty years, Lindenwood College has strived to live up to the vision of its founders, Major and Mrs. George Sibley: To challenge and nurture the human spirit, so that it might reach its greatest potential.

As stewards of this vision, we share a great responsibility and challenge. We can only meet this challenge by working together with dedication and a clear sense of our mission.

We have demonstrated our dedication this past year, and this Annual Report bears the good news that the Lindenwood vision and Sibley legacy remain strong.

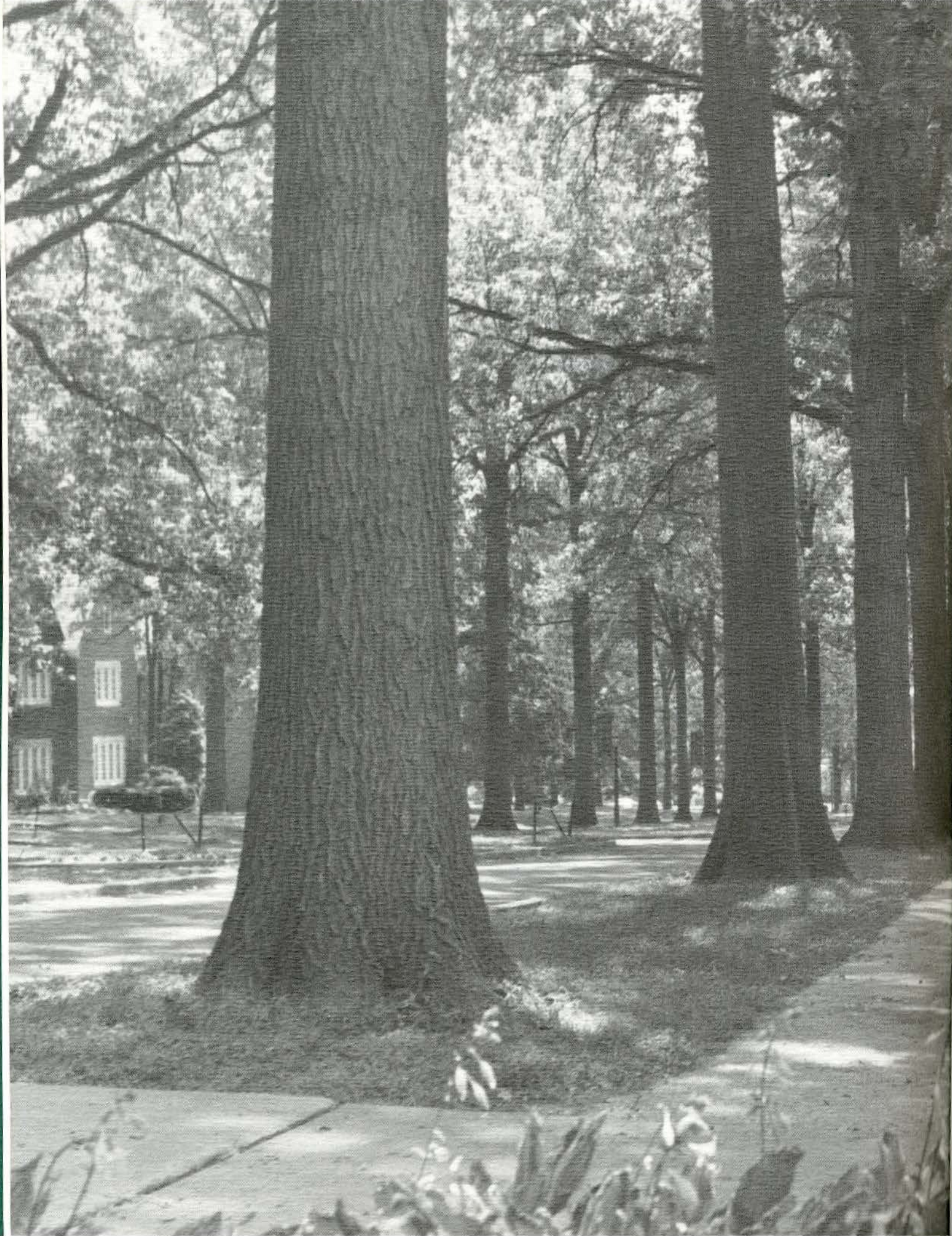
Stewardship is both a privilege and an honor, and so it is with great gratitude that I present to you the following report of our efforts during the past year.

Robert Hyland
Chairman
Board of Directors



LINDENWOOD
COLLEGE







Dear Friends,

F. Scott Fitzgerald once wrote that "America is a willingness of the heart." In many ways, so is Lindenwood College. To take risks, to remain optimistic in a cynical age, to be open to new ideas in a changing society, to believe passionately in the cause of small, private, liberal arts higher education, and to strive to nurture the human spirit in students of all ages, races, creeds and economic status, is the legacy of Lindenwood College.

Preserving that legacy is a great responsibility assumed by the entire Lindenwood community. The challenge for all of us is to live up to that task. The Lindenwood Legacy is a shared stewardship. By your support, you share in the dream begun by the Sibleys over 160 years ago. You help make it possible for their work to continue.

Great and exciting things have happened at Lindenwood this past year. And they happened because of you. So, it is with great appreciation that I invite you to read the 1988 Annual Report, "The Challenge of Stewardship."

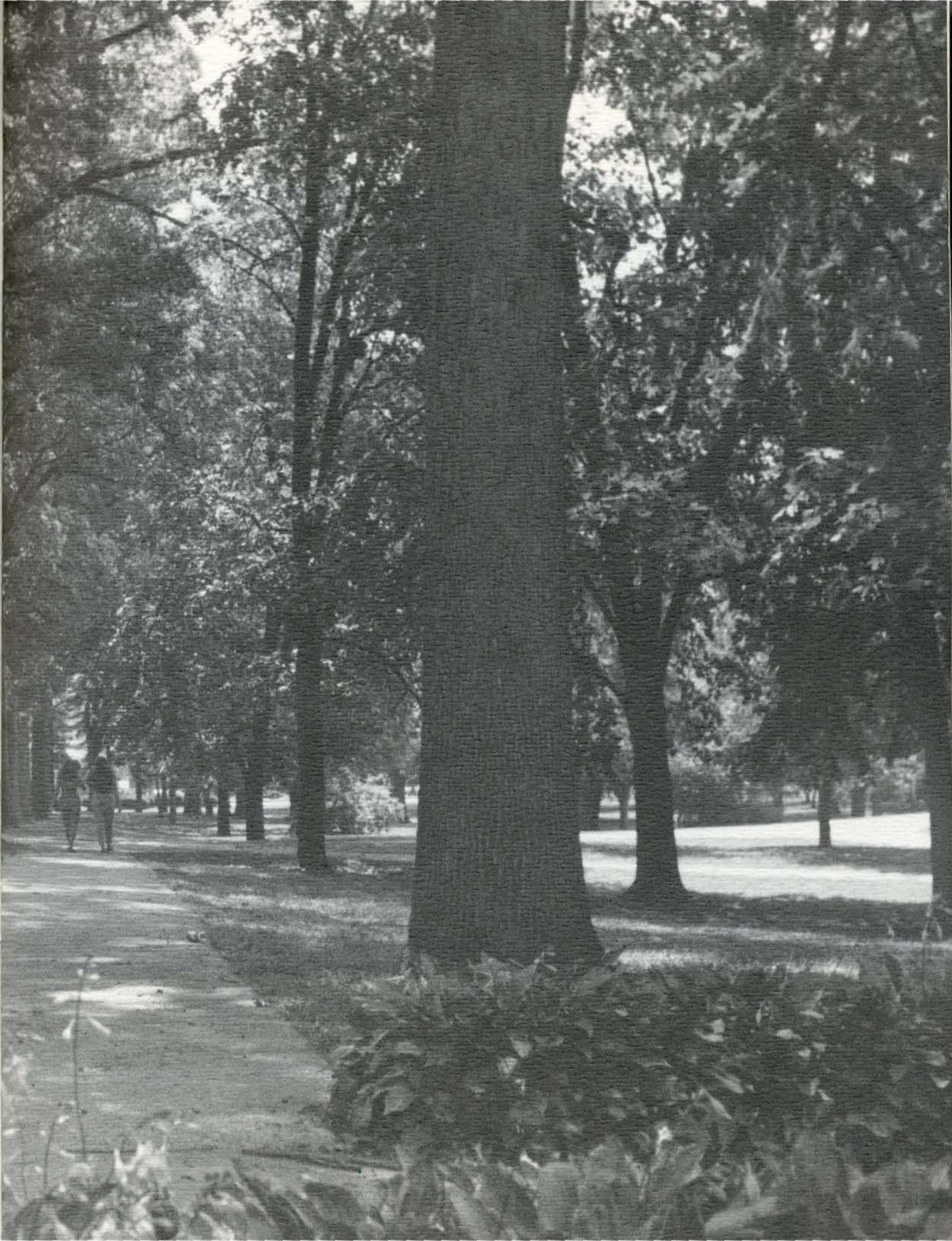
Sincerely,

A handwritten signature in black ink that reads "James I. Spainhower". The signature is written in a cursive style with a large, prominent initial "J".

James I. Spainhower
President, Lindenwood College



LINDENWOOD
COLLEGE

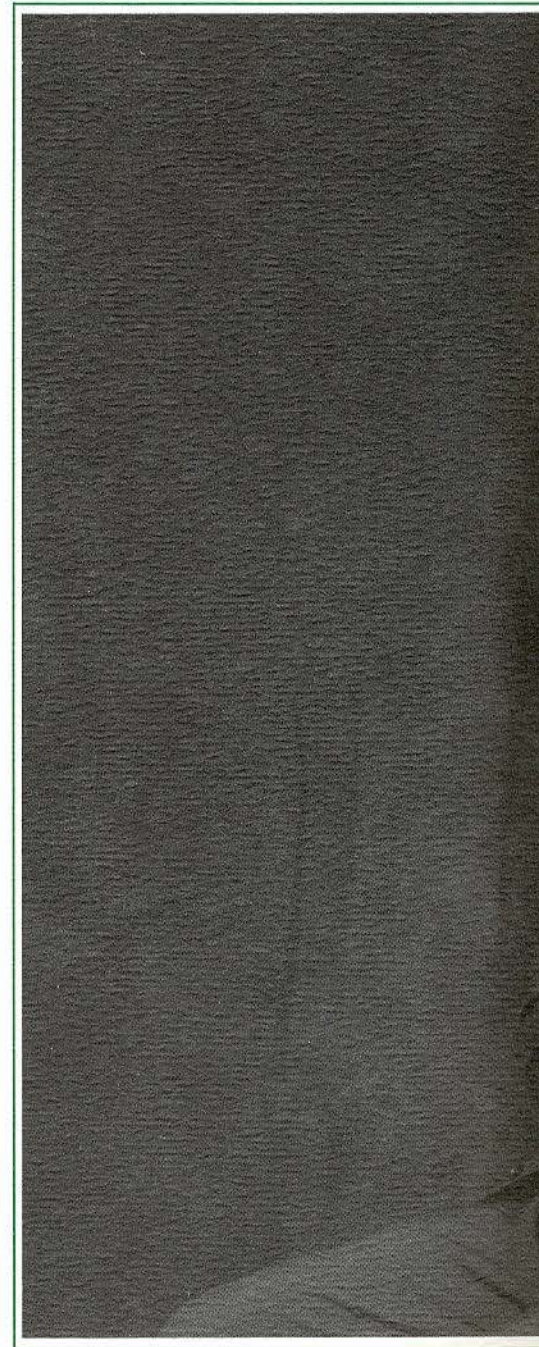


RETROSPECTIVE

The 1987-88 academic year marked Lindenwood's 160th anniversary. When the college was founded, John Quincy Adams was our president and the country was still a young frontier. Meanwhile, the founders of Lindenwood were not only helping to build a nation, but also a college to serve it. They met the challenges of their time with vision, inspiration and hard work.

Today, the college family is meeting the challenges of its time. Rarely has the college been a more active and enlightened community.

We have selected six stories to represent the vitality, excitement and distinctive quality which exemplify Lindenwood today. Lindenwood has been selected as the first college in the Midwest to participate in a unique Soviet-American exchange program. We have also enhanced our students' communications experience with the growth of radio station KCLC. The Butler Society, the Harlen C. Hunter Sports Complex and an army of dedicated community and corporate volunteers are meeting the challenges of college stewardship in the modern age. Together, the friends, alumni and community and organizations which support Lindenwood are an imposing group. The close of our century will demand continued college advancement and together we can meet the Challenge of Stewardship.





*Ron Watermon
President, Lindenwood Student
Government*

*Glen Cerny
General Manager,
KCLC FMIAM*

*Richard Harris
Board of Directors Member*

*Clayton Wilhite
College Development Chairman*

*Dorothy Warner
Board of Directors Member*

*Dr. Harlen Hunter
College Ambassador*

*Dr. James I. Spainhower
President, Lindenwood College*

SOUTHWESTERN BELL: MEETING THE CHALLENGE OF STEWARDSHIP

Over the past 160 years, Lindenwood has established quite a few traditions. But one of the nicest is one of the newest.

The dedication of the annual report has become Lindenwood's way of thanking those special friends who, throughout the year, have demonstrated extraordinary involvement and deep concern for the college. We are proud to dedicate "The Challenge of Stewardship" to the Southwestern Bell Corporation for outstanding support and assistance. Last year's annual report, "A Vision for the Future," was dedicated to another civic-minded corporation, D'Arcy Masius Benton & Bowles—St. Louis.

Lindenwood's relationship with Southwestern Bell spans the decades, and top Southwestern Bell executives have always been involved with the college. Over the past few years the association has begun to grow deeper.

Southwestern Bell's Group President, **Rich Harris**, joined Lindenwood's Board of Directors last winter and immediately jumped into important development projects. The college looks forward to Rich Harris' inspired advancement of the growing Lindenwood/Southwestern Bell relationship.

Southwestern Bell is not only one of the world's leading telecommunications and service companies, it is also an outstanding family of dedicated people. The Southwestern Bell team in the 1987-88 Lindenwood Business Partnership campaign was the largest ever, and was enthusiastically led by team chairman **Paul Roth** (telephone company, executive vice president) and captain **Ken Fenoglio** (district manager).

In addition, Southwestern Bell's Area Manager, **Jim Maurer**, proved to be a volunteer workhorse, heading up KCLC's Advisory Council, assisting with the St. Charles Partnership campaign, and helping in assorted other projects.

We are fortunate to have Southwestern Bell Corporation as a member of our college family. Their support and involvement are a tribute to the concern of the company and as a small sign of our appreciation, Lindenwood College is proud to dedicate "The Challenge of Stewardship" to Southwestern Bell Corporation. They are not only meeting the challenge, they are making it their own.



Rich Harris

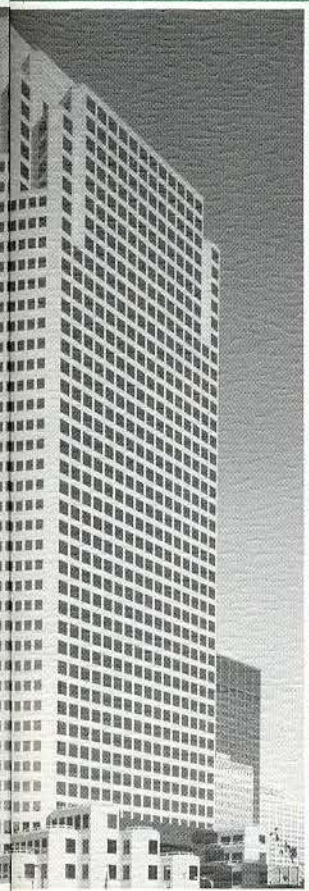
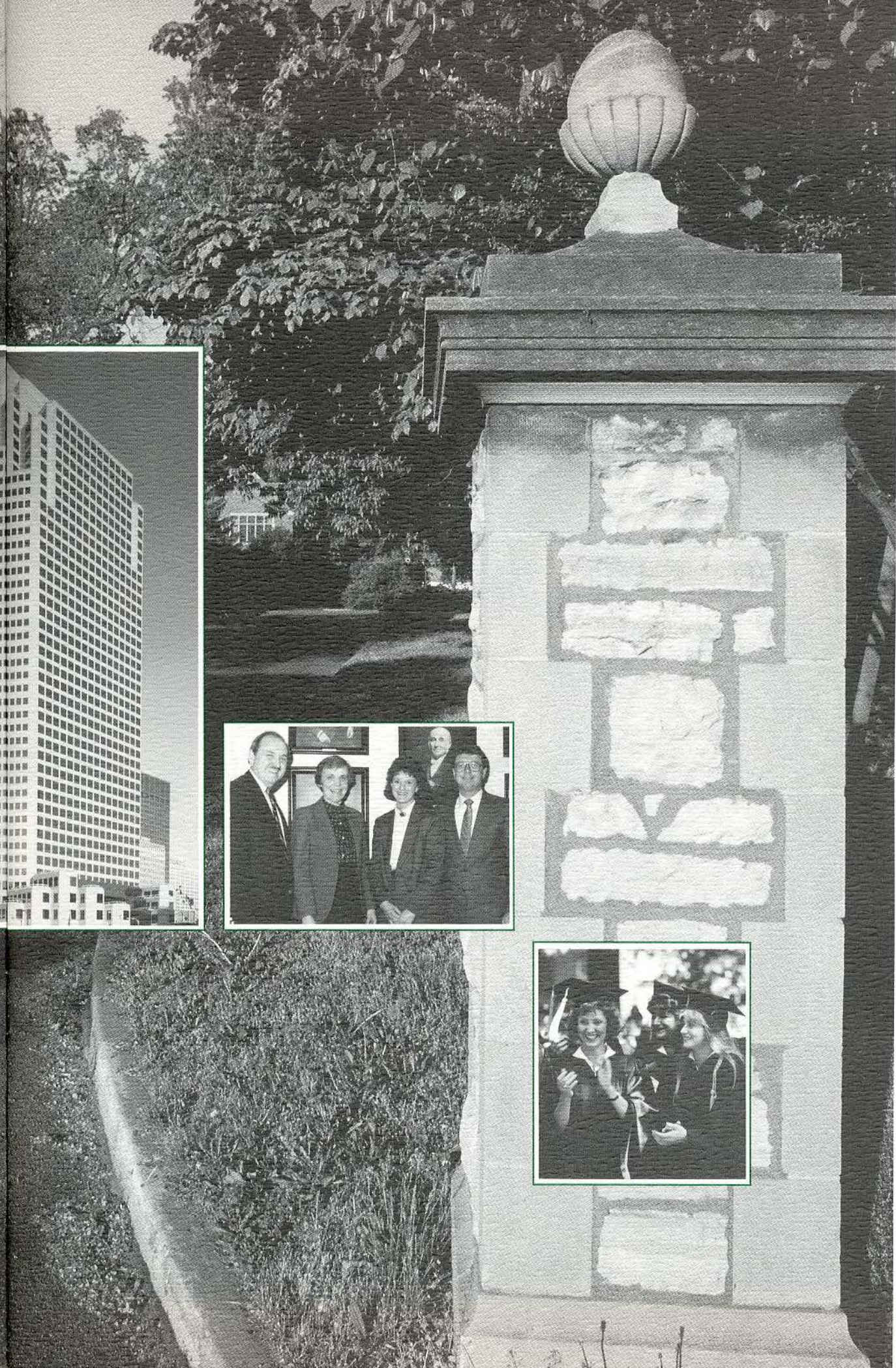
Rich Harris is a sharp executive and quick to accept board responsibilities. He joined the Lindenwood Board of Directors last April. By May he was coordinating the college's request for funding through the philanthropic channels at Southwestern Bell. In June, he presented Dr. Spainhower with the first of three annual checks from Southwestern Bell Foundation for \$50,000 to underwrite the college's efforts in communications and business. He has done research on college recruiting, new student retention, and is coordinating a review into the college's use of telecommunications. That's just the way the SWB Group President is—no-nonsense, results-oriented, and pragmatic.

Rich is also very people-oriented. "He's just one of those people that I immediately enjoyed and respected," was the way Jim Thompson put it. This sense of balance and commitment is probably one of the reasons his career has been so successful.

A graduate of William Jewell College, Rich joined Southwestern Bell in 1962 and quickly advanced through a series of business and regulatory relations positions. Today, as Corporate Group President, he is responsible for a number of vital Southwestern Bell subsidiaries.

Rich is committed to the cause of private, higher education and the benefits of small, liberal arts institutions.







Ron Watermon

For Ron Watermon, the Soviet Student Exchange project is just another opportunity to get involved. "That's one of the things I like most about Lindenwood," he says. "It's small enough that you can work on a lot of things and really make a difference."

Even in high school, Ron was already displaying an ability to get things done. He graduated with highest honors from St. Louis Vianney High School, where he was active in sports, drama, speech, and the school newspaper.

He has been very active at Lindenwood's public radio station KCLC, where he currently serves as News Director. In addition, he works at the St. Charles cable T.V. station as a newswriter for Headline News, and puts in time at the *St. Charles Journal* as a stringer.

In between classwork and putting together the Soviet Student Exchange, KCLC, the *Journal* and Headline News, Ron finds some spare time to work at Famous-Barr. As a matter of fact, he says, "The thing I'm proudest of is the fact that I am paying my way through college. And I've almost made it."

Financially, attending Lindenwood isn't easy for Ron, but it's something he values and is willing to sacrifice to do. And if Ron's past is any indication, when he wants to do something, he usually does it.



GIVING PEACE A CHANCE

"The Russians are coming!" And they're coming to Lindenwood College through Project Peace, a student cultural exchange program.

The historic reciprocal exchange of the Citizen's Exchange Council is the first ever to pair American and Soviet university students from all academic disciplines. Lindenwood was one of just ten colleges chosen to participate and the only college representing the Midwest.

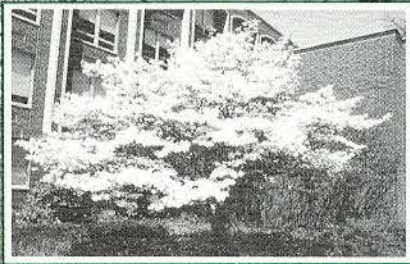
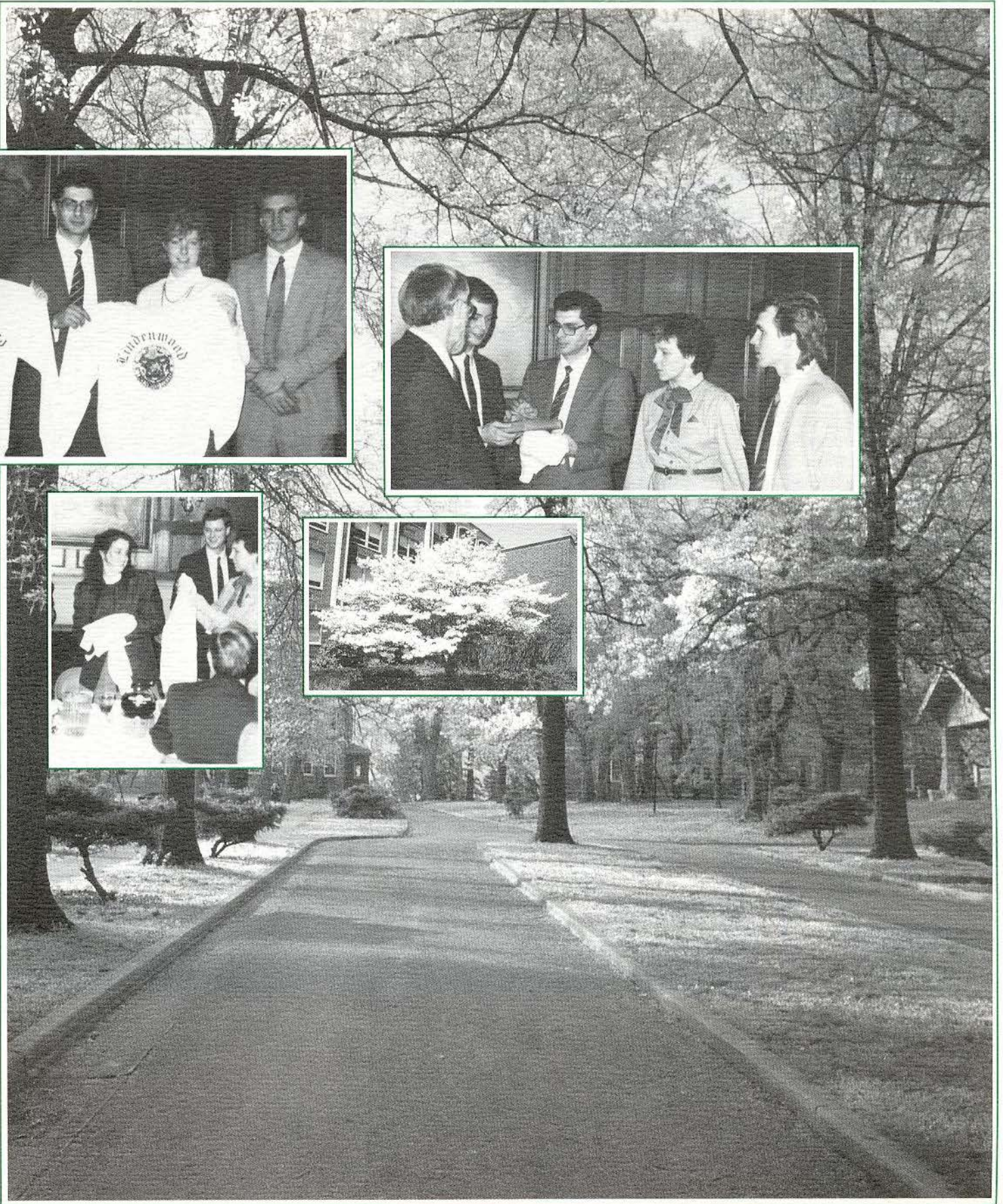
Lindenwood will exchange students with Azerbaijan State University in the Soviet Union. The Soviet students will visit the campus from January 31 to February 7, 1989. Twelve Lindenwood students will visit Moscow and Leningrad as well as Azerbaijan from March 1-12. They'll be accompanied by Faculty Advisor C. Edward Balog and Vice President for Academic Affairs Daniel Keck.

To prepare for the exchange, Lindenwood is adding courses in Russian, a language not previously offered, and has included two relevant books on the "All College Reading List," *Russia—Broken Idols, Solemn Dreams* by David K. Shipler and *The Penguin Book of Russian Short Stories*, edited by David Richards.

While at Lindenwood, the Soviet students will participate in a series of student meetings and roundtable sessions including role-playing and discussion of bilateral conflicts. Before returning home, the group will visit New York City.

Lindenwood has made a three-year commitment to the program and plans on developing exchanges with other countries.





THE HARLEN C. HUNTER SPORTS COMPLEX

"I began to see the great need to establish a sports facility for our youth," said Harlen C. Hunter, whose monumental gift of \$600,000 has provided a completely remodeled outdoor sports complex at Lindenwood. Hunter, a St. Louis county orthopedic surgeon and sports medicine specialist, said he made the donation because he wanted a "first-class" sports facility for St. Charles area athletes.

Hunter's gift is the second largest in Lindenwood's 160-year history. It provides funds for the installation of new artificial turf in the College's soccer/football stadium, new retaining walls and steps, grass turf with irrigation for the sideline areas of the field, and a repainting of the bleachers, press box, and concession stand.

In recognition of this magnificent gift and as an expression of Lindenwood's appreciation of Dr. Hunter's generosity, the Board of Directors voted unanimously to name the new facility the "Harlen C. Hunter Sports Complex."

Created as a practice field for the former Football Cardinals, the stadium also attracted a steady flow of high school athletic events from the St. Louis metro area. But in the last several years, its deteriorating condition made it impossible for some of those programs to continue.

The vastly improved facility will again attract usage by high

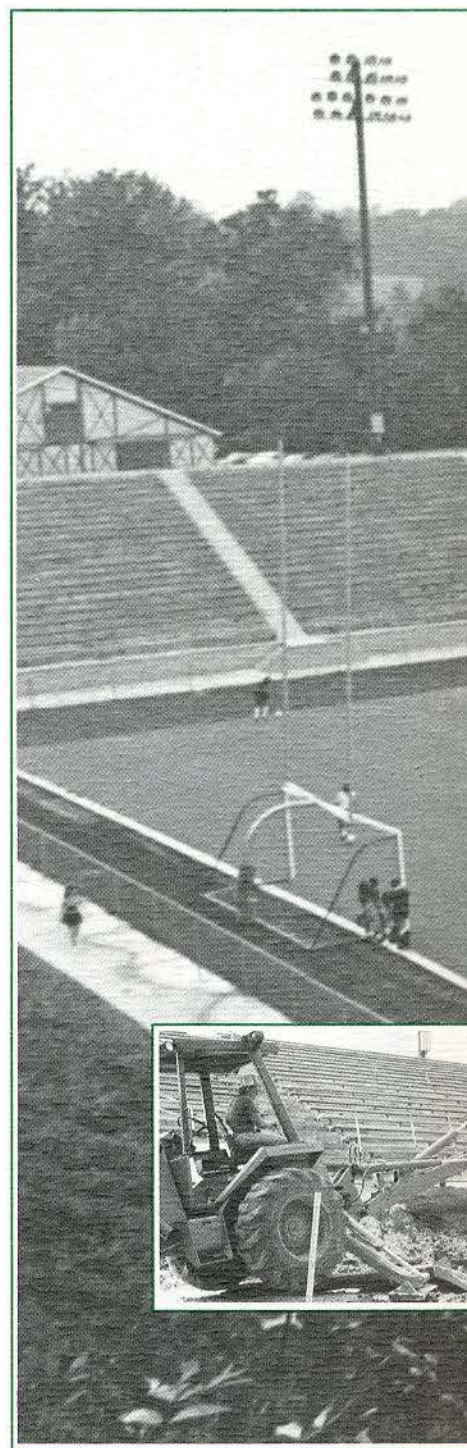
schools and other area organizations. "It may give us the opportunity to host future regional or district soccer play-offs," said Athletic Director Deborah Kehm.

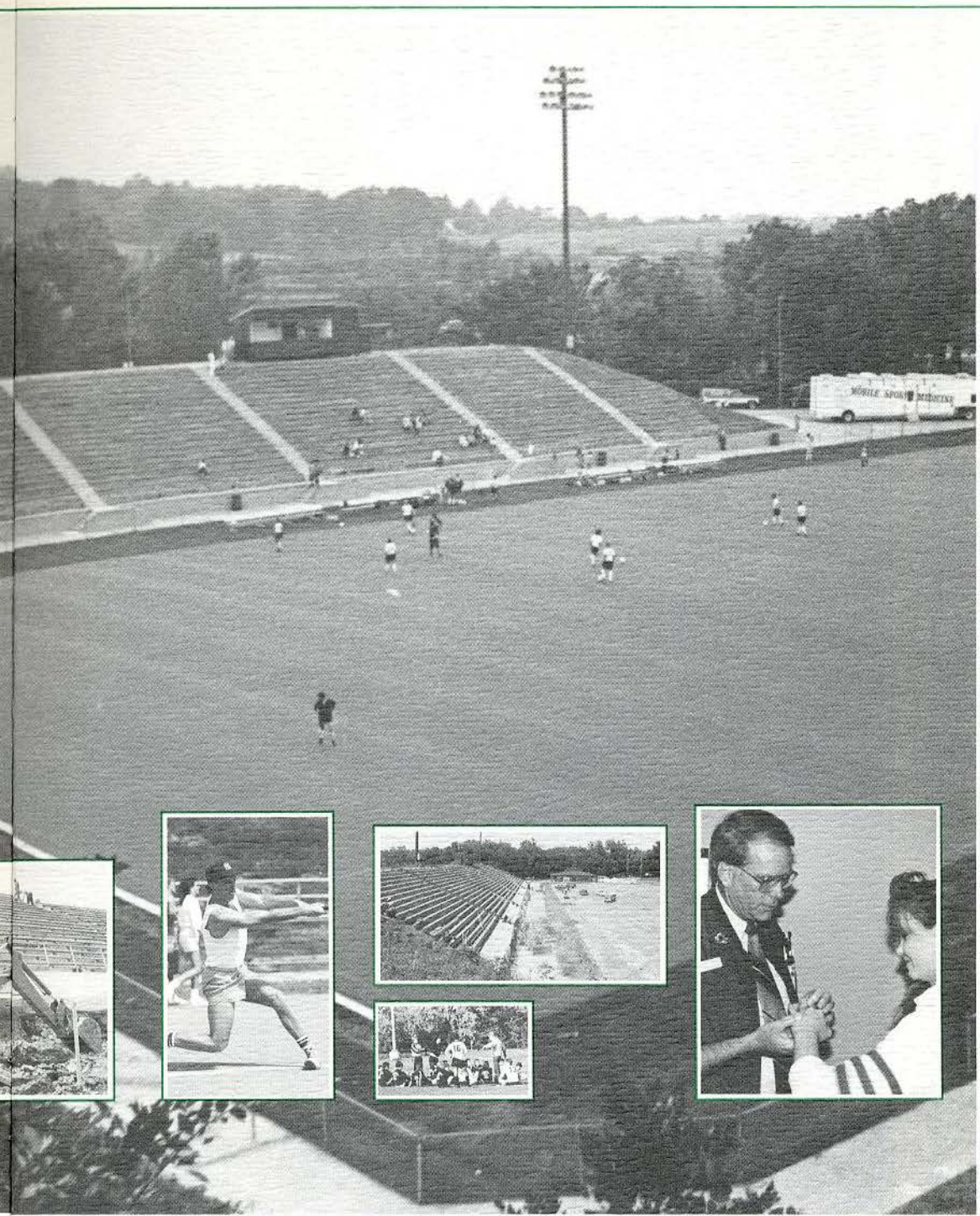
Lindenwood students will benefit from the new complex which will allow for expanded athletic offerings including the reinstatement of the College's softball and baseball programs, as well as extracurricular activities such as football intramurals and field hockey.

"We've trained some excellent athletes here, including two All-Americans, three Academic All-Americans, and a champion women's soccer team," continued Kehm. "These athletes need and deserve a high-quality playing field. And, upgrading our sports facilities and programs should attract a growing number of athletic students."

"I've always been encouraged to pursue my dreams," said Hunter. "I feel that my gift to Lindenwood will enable young athletes to realize some of their own dreams and provide for important social and physical activities even beyond my own lifetime."

Like the nature indicative of many Lindenwood supporters, Dr. Hunter is obviously a person with a caring vision. We are honored to have him in our Lindenwood family.





Dr. Harlen C. Hunter

Dr. Hunter has seen the needs of young people for years and has responded with compassion. A pioneer in sports medicine, there were only 20 sports medicine clinics in the country when Dr. Hunter opened his St. Louis Orthopedic Sports Clinic in 1976. He is now one of the country's leading authorities on sports medicine.

An Iowa native, he received a bachelor's degree from Drake University and attended the College of Osteopathic Medicine and Surgery in Des Moines. He belongs to numerous medical associations and serves on the staff of five area hospitals.

Hunter's latest innovation is a state-of-the-art mobile unit equipped as an acute trauma and rehabilitation center that houses a physician, paramedic, trainer and all the equipment needed to assist with injuries at athletic events.

He resides in Chesterfield with his wife, Jo Ann, and children, Todd and Juliann.





Glen Cerny

Who believes in happy endings anymore? People who meet Glen Cerny do. His return to KCLC last spring brought to full circle a journey that began almost 15 years ago.

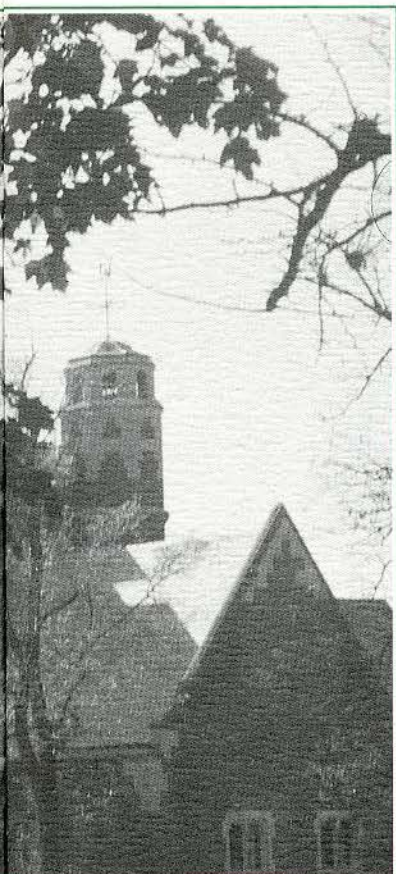
Glen graduated from Lindenwood in 1974 with a degree in communications and a love for radio and television. He co-owned a commercial radio station in Bowling Green, Ohio. He was vice-president, general manager, and operator of WKIQ-FM. He worked for Freelance Broadcasting and Consulting, and also sold time for Buckeye Cablevision in Toledo.

Meanwhile, Jim Wilson, general manager of KCLC and chairman of Lindenwood's communications department, was realizing that two full-time jobs is one job too many. Hence the search for the station's first full-time general manager. And when Glen returned for the first time since graduation, to interview for the job, he knew that he was home. Again.

And now that he's here, he's excited about working with students and making KCLC all it has the potential to become. Isn't that the way it's supposed to be?



KCLC CELEBRATES ITS 40TH

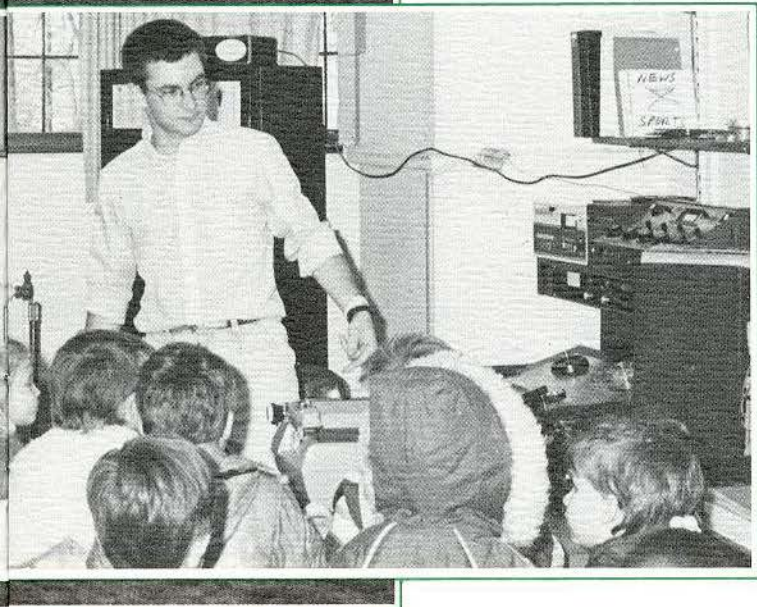


Thomas Wolfe was wrong. You can go home again and Lindenwood grad Glen Cerny, '74, proved it when he returned to become KCLC's first full-time General Manager. Glen had worked in commercial radio and cable television management and sales for almost 15 years.

The addition of Glen Cerny was just one of several steps taken by KCLC toward becoming St. Louis' premiere jazz station. A power boost to 25,500 watts increased the station's coverage area to include the entire St. Louis metropolitan area. That should be a real help to KCLC's audience-building efforts. Last year saw a dramatic growth in audience and that trend should continue.

KCLC also proved that public radio is listener-supported radio, with two successful on-air membership drives, the first in the station's history. Special Events Coordinator Glynelle Wells orchestrated the drives, as well as special events like the Mid-Rivers Mall Grand Opening. KCLC welcomed

numerous concerts like Wynton Marsalis, Maynard Ferguson, and Chick Corea, and presented Bluegrass Guitarist Tony Rice. Glynelle also initiated the station's new program underwriting campaign. Not only was it a busy year, but a very successful year financially for KCLC. Under the leadership of Jim Maurer, the

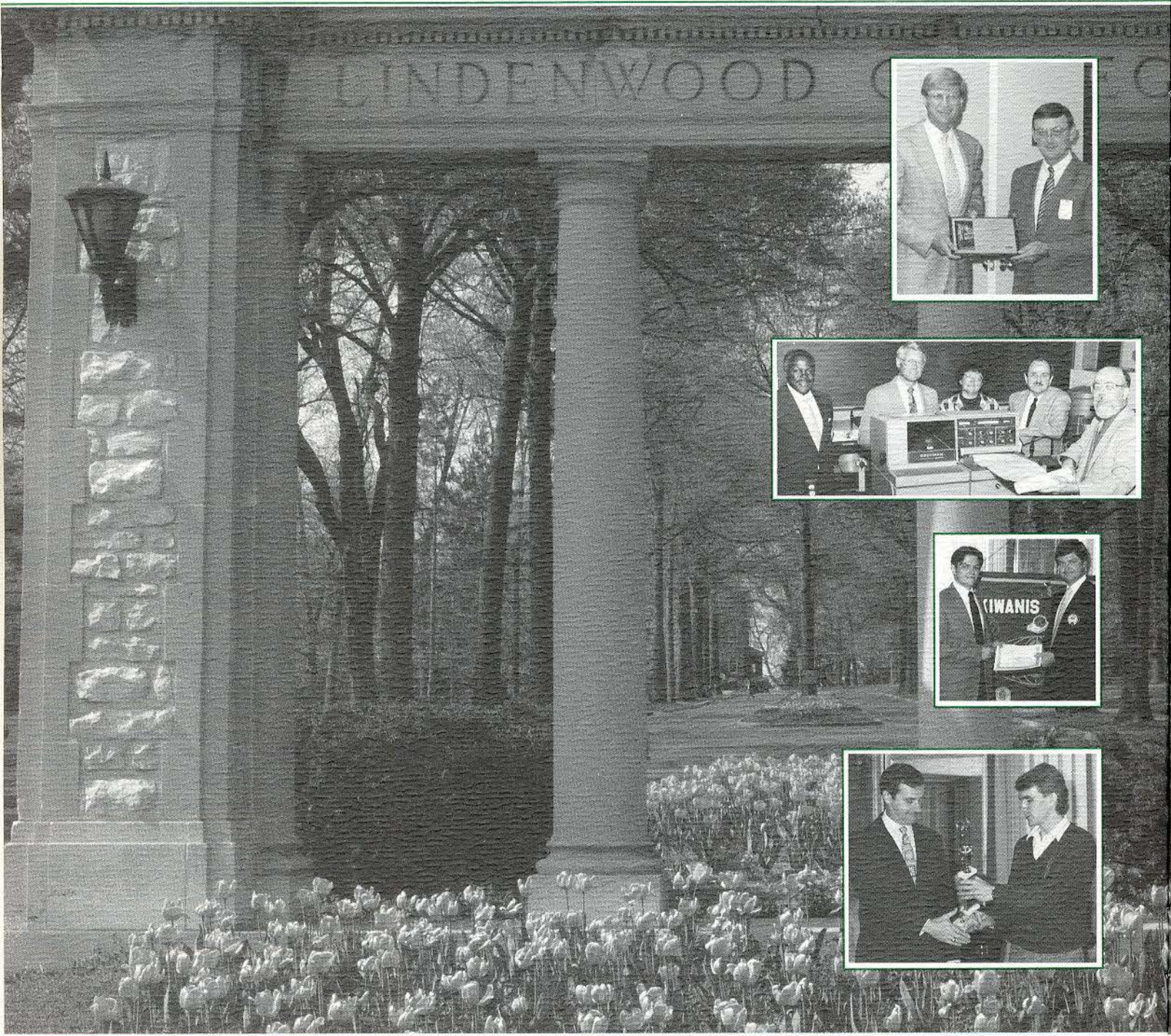


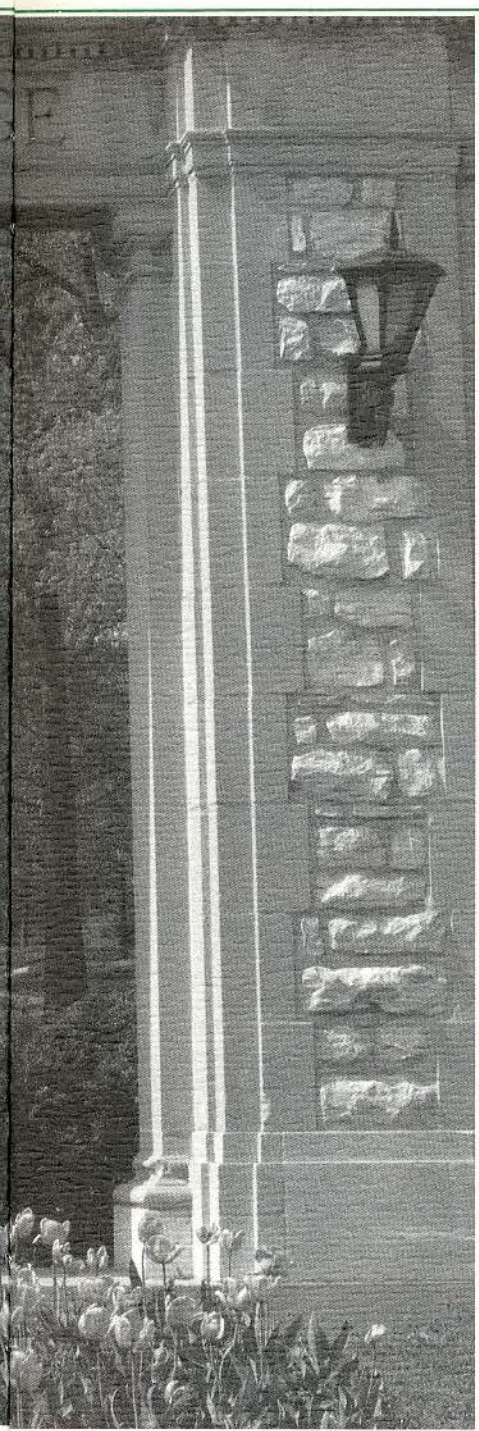
station exceeded all its fundraising goals, raising over \$20,000.

In addition to serving the St. Louis Metro Area listening audience, KCLC also provides a hands-on broadcasting lab for the college. Last year over 40 students worked at the station and more than 80 attended radio production and other broadcasting courses. Interns, such as the "MCI Opportunities" Scholarship recipients, also benefit from working at KCLC. Prior to auditioning for on-air shifts on KCLC-FM, students can work on the school's AM carrier current station that serves as an additional training facility.

Lindenwood's investment in KCLC symbolizes the college's historical stress on communications skills. These skills are essential not only in the communications industry, but in all fields. And these skills are evident in the many Lindenwood grads who have gone on to accomplish great things: Patricia Bailey ('59), member of the Federal Trade Commission; Martha Layne Collins ('59), Kentucky's first woman governor; Martha Muncy ('41), publisher of several Kansas newspapers and magazines; Betty Dukert ('49), executive producer of "Meet the Press"; Frank Accarrino ('73), vice president of operations for NBC News, Sports and Entertainment; and locally known media celebrities Robin Smith and Kathy Leonard.

The history of KCLC has been characterized by steady growth in the academic facility and the on-air product. Last year KCLC proved that public radio is a sound investment. And there should be many happy returns this year as the station celebrates its 40th birthday.





A COMMUNITY THAT CARES

For over a century and a half, Lindenwood has been an important member of the St. Louis/St. Charles community. The commitment and support of local corporations, businesses, and civic organizations has been overwhelming. The incredible loyalty and diversity of that support would not be possible without the dedication and hard work of our volunteer ambassadors. It's these very special friends who turn a college into a family.

Board Chairperson **Robert Hyland** and Development Committee Chairperson **Clayton Wilhite** coordinated and directed the efforts of over 50 corporate volunteers. The Civic Progress and Business Partnership campaigns accounted for almost \$400,000 from area businesses including leadership gifts from Southwestern Bell, Monsanto, Anheuser-Busch, McDonnell Douglas, May Company, Emerson Electric, General Motors, Brown Group and MCI. The Corporate campaign posted a 41% increase.

The Board of Overseers, chaired by **Ron Ohmes**, was instrumental in attracting support from the local St. Charles community. Over \$126,000 was raised from civic organizations, community leaders, members of KCLC and the St. Charles Partnership campaign, chaired by Overseer **Jim Fitz**.

Additional support came from hundreds of local residents attending Lindenwood-sponsored events, such as the Mid-Rivers Mall Opening and the Conners Family Concert. And civic organizations such as the Lions and Kiwanis Clubs supported Lindenwood both financially and through hundreds of volunteer hours.

The growing community support of Lindenwood was reflected in all organizational campaigns (corporate, community and organizations) last year, with a 39% increase in dollars raised. But perhaps more telling is the 59% increase in the number of gifts from the previous year. The message of Lindenwood College is obviously being heard by St. Louis regional businesses and organizations.



Clayton Wilhite

"Excitement. Enthusiasm. Expertise. Those are the qualities that Clayton Wilhite brings to every project he undertakes."

Robert Hyland

Clayton Wilhite is a legend in the making. Wilhite represents volunteerism at its best. He enthusiastically embraces the "Challenge of Stewardship" with a clarity of purpose and the driving dedication for which he has become well known. President Spainhower has said that Clayt, as he is known, "is the father of hope. He literally electrifies those he's around."

Clayt joined the Board of Directors in 1986 and immediately conceptualized, initiated and directed a unique, new corporate drive that targeted medium-sized businesses. It is called the Lindenwood Business Partnership Campaign. He has directed this campaign for the last two years and has posted impressive results, with the 1988 drive being over 200% of its goal.

The "big guy," literally standing at over 6 foot five, has had a stellar career. Whether it's as an end for Michigan in the Rose Bowl, as an executive in President Ford's re-election campaign, or as Chief Executive of DMB&B—St. Louis, Clayt's talents are always evident. He is regularly the recipient of professional awards from the advertising industry. Clayt and his wife, Ann, live in St. Louis and are active in a variety of civic and cultural organizations.



"I will stand by you to the last button on my vest."

Col. James G. Butler

Colonel Butler's pledge is our challenge today.

It's that spirit of commitment and pride that is reflected in each member of THE BUTLER SOCIETY. Named in honor of Colonel James and Margaret Butler, Lindenwood's most generous supporters in the 1900's, this distinguished group of loyal friends have followed in the Butlers' footsteps by committing their resources to promote the precious heritage of Lindenwood and to support its vision for the future. The charter members represent all walks of life and serve in a variety of capacities for the College, including members from the Board of Directors, Board of Overseers, administration and staff. (See listing at right.)

Membership into this major donor club is based on a gift valued at \$25,000 or more. These funds are being used for library and classroom resources, including books and lab equipment; building renovation and upkeep; scholarships, and general operating expenses.

The legacy continues.

Funds from the Butlers' estate led to the construction of nearly half the major buildings on campus, with their total contributions equalling more than 25 million in today's dollars. Their dreams for Lindenwood have been realized, with over 20,000 alumni benefiting from their compassion and personal "mission" to make Lindenwood one of the finest educational institutions in America.

And that tradition is continuing with our new generation of "Butlers" exemplifying the same kind of deep commitment to the past and deep faith in the future.

A Shining Example

Margaret Leggat Butler was said to have "lived in the hope of making the world better and happier through the material wealth with which her family had been blessed." If anyone could

emulate the sincere altruism of Mrs.

Butler, it would be Dorothy DuQuoin

Warner, one of the first charter members of the Butler Society, whose generous donations include funds for scholarships and building renovations, including the recent reopening of the College's indoor swimming pool.

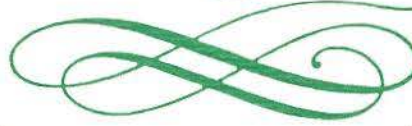
Mrs. Warner attended Lindenwood in 1936 and has since been one of the college's most loyal and charitable supporters. Her latest gift for the Butler pool is a tribute to the depth of her personal commitment and character.

"I felt the availability of a modernized pool for the students of such importance I was compelled to do something about it," said Warner. "This gift reflects my renewed confidence in Lindenwood."

The pool has an interesting history. According to our research, it was built in 1915 as the first natatorium (indoor pool) west of the Mississippi. People came from miles around to marvel at it. Students utilized it for swimming, lifesaving, and water ballet courses, as well as regional swim meets.

Lindenwood students are again enjoying the athletic and social benefits of the Butler pool, thanks to the generosity of Dorothy Warner, a loyal alumna, dear friend, and Charter Member of The Butler Society.

The Butler Society



The Premiere Giving Club



Dorothy Warner

Dorothy DuQuoin Warner has been an active member of the Board of Directors for 14 years, and in 1977 received the Alumni Merit Award for service to Lindenwood. Her contributions of both time and money have been an inspiration to us all.

Mrs. Warner's giving represents a balance between the unrestricted, pressing Annual Fund needs of the College and innovative campus improvements such as the Butler pool and the Dorothy Warner Suite in Sibley Hall used for VIP guests.

A resident of Clinton, Ill., she has also been instrumental in attracting students from that area with the many scholarships she has sponsored. This will inevitably strengthen our Illinois constituency.

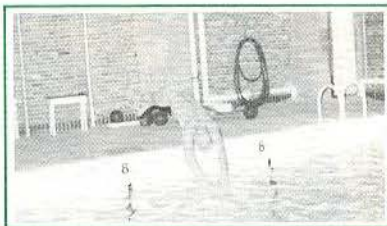
Mrs. Warner attended Lindenwood in 1936 and later trained at the Research Hospital in Kansas City.



CHARTER MEMBERS OF THE LINDENWOOD COLLEGE Butler Society

Dorothy D. Warner
Alumna and Director
Clinton, Illinois

Maurita Estes Stueck
President Alumni
Association
Webster Groves, Missouri



James I. Spainhower
College President
St. Charles, Missouri

James D. Thompson
Alumnus and Lindenwood
Executive Director
St. Charles, Missouri

Robert F. Hyland
Chairman of the Board
of Directors
St. Louis, Missouri

Raymond W. Harmon
Director
St. Charles, Missouri

Thomas F. Bakewell
Alumnus and Chairman of
the Board of Overseers
Kirkwood, Missouri

Marilyn Tweedie Shutz
Alumna
Kansas City, Missouri

Robert C. Maruska
Alumnus and Alumni
Board Member
Florissant, Missouri

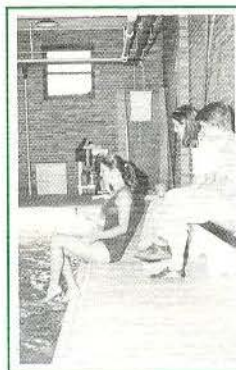
Michael A. Wood
Alumnus and Alumni
Board Member
Florissant, Missouri

Clayton E. Wilhite
Director and College
Development Chairman
Ladue, Missouri

Kenneth W. Thompson
Director
Charlottesville, Virginia

Harlen C. Hunter, D.O.
College Ambassador
and Friend
Chesterfield, Missouri

**John C. Hannegan &
John W. Tlapak**
Directors
St. Charles, Missouri
El Dorado, Arkansas



Dr. Arthur S. Goodall
Life Director
Ladue, Missouri

Janet Lewis Riddle
Alumna and Alumni
Board Member
St. Louis, Missouri

Glenda Raef Schaefer
Alumna
St. Charles, Missouri

Kenton M. Kolker
Alumnus and Staff
Ladue, Missouri

Dennis E. Ottolini
Overseer
St. Charles, Missouri



Susann L. Riffe
Alumna and Alumni
Board Member
Leawood, Kansas

Dr. Dorothy Schneider
Retired Professor
and College Friend
St. Louis, Missouri

John M. Stephens
Alumnus and Overseer
University City, Missouri

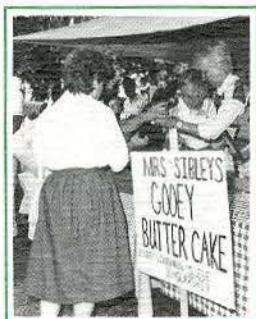
Carol Kellogg Stoub
Alumna and Alumni Board
Western Springs, Illinois

James G. Maurer
Overseer
St. Charles, Missouri

Jan Kniffen
Alumnus and Overseer
St. Charles, Missouri

HIGHLIGHTS OF 1987-1988

'Dark Shadows' frightmaster Jonathan Frid presented a fascinating one-man show hosted by St. Charles alumni to raise funds for the Lindenwood TV Studio. Glenda Schaefer ('68) directed this successful effort.

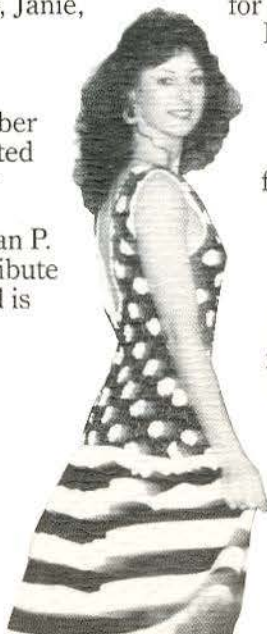


The Fifth Annual Mrs. Sibley's Attic Sale brought record-breaking crowds and \$10,000 for the annual St. Charles Alumni Club scholarship. Special thanks to Gerry Jacobs, president; Anne Pals,

general chairperson; Maisie Keeser, reservations chairperson; Virginia Terry and Irene Hettich, club book booth; Corinne Hill, Jean Zerr, and Sally Schaefer, hospitality; Glenda Schaefer, treasurer/publicity; and Mabel Salfen, club flea market booth.

Charles and Jane Schott contributed funds for the renovation of Latzer Great Hall, a ballroom in Lindenwood's Memorial Arts Building named in honor of Mrs. Schott's mother, the late Cora O. Latzer. They were also instrumental in refurbishing Ayres Dining Hall. Their daughter, Janie, is a former Lindenwood student.

Dorothy Trump ('43), life member of the Board of Overseers, celebrated the college's 160th anniversary by renovating a small dining room in Ayres in honor of her mother, Lillian P. Trump. The "1827 Room" pays tribute to past Lindenwood presidents and is available for special occasions.



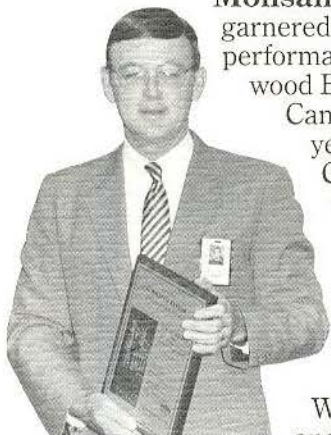
Dell'Arte, the new Lindenwood preparatory conservatory of music, is providing high-quality training for students in dance, dramatics, instrumental music and voice. The new program, directed by Terry Martin, replaces the CASA Lindenwood program.



The International Valuation Sciences Institute (IVSI) is an exciting new degree program that is designed to help appraisers meet tougher government standards. Recognized as the premier program for appraisers in the United States, the Institute also sponsors research, publications, and conferences. An advisory council has been established to develop programs, resources and membership, as well as to raise funds.

The St. Louis Alumni Club's Fifth Annual Fashion Show, held at Chateau de France, raised funds for a \$1,000 Lindenwood scholarship. Organizers included Linda Kraska, Nancy Prosser Dietz, and Jeri Herhold Stine.

HIGHLIGHTS OF 1987-1988



Monsanto volunteers garnered top awards for their performance in the Lindenwood Business Partnership Campaign for the second year in a row. Team Captain *Bill Taylor* was once again the top individual performer. Top team honors went to Monsanto's Bill and Jan Taylor, Otto Klingler, Dick Williams, Ed Bishop and team advisors Tom Gossage and Hal Corbett.

Lindenwood Board member Jane Crider was presented with one of the college's highest honors, the Sibley Medallion of Honor, last April. The award commemorates her outstanding contributions to Lindenwood and the St. Charles community.

Several new scholarship funds were created last year. The "*MCI Opportunities Scholarship*" was initiated by MCI Telecommunications. The first recipient was Keith Pearson of Chicago, Illinois. A second scholarship was awarded to incoming freshman Tamara Jackson.



In May, the St. Charles Lions Club presented "*The Connors in Concert*" to benefit a new scholarship for a visually-impaired or handicapped student. The award will be presented second semester this year.

John Batts received the Motley Scholarship in honor of former Admissions Director Guy C. Motley. The 1987 recipient is Melanie Smith of Griffith, Indiana.



Over 80 students participated in the President's Scholarship Day to award funds to students of highest academic caliber and financial need. *The Talent Scholarship Day* was established to award additional funds to students in areas from performing arts to education.

Lindenwood student Bonnie Carpenter received the prestigious Washington University Scholarship (Harold P. Brown Fellow) for outstanding studies.

The Gannett Foundation has awarded funds to establish three scholarships for needy students living in the listening area of radio stations KSD-FM and KUSA.

Lindenwood College for Individualized Education (LCIE) hosted a birthday party celebrating 13 years of success with adult education in an alternative learning format.

Major funding for new lighting for stage productions in Lindenwood's Jelkyl Theatre has been provided by grants from AT&T, the May Department Stores Company and May Center's Mid-Rivers Mall.

Lindenwood Associate Professor Dr. Wanita Zumbrunnen was selected by the United States Board of Foreign Scholarships for a Fulbright Scholar Award to lecture on American literature in Pakistan.



COMPARATIVE STATEMENT OF OPERATIONS

AS OF JUNE 30, 1988

	1987-88	1986-87
REVENUES		
Educational and General		
Student Tuition and Fees	\$ 5,616,354	\$ 5,847,111
Gifts and Grants	852,477	809,420
Endowment Income	193,038	179,074
Government Grants	269,205	288,521
Other Sources	186,119	276,892
	<u>7,117,193</u>	<u>7,401,018</u>
Auxiliary Enterprises	1,323,339	1,227,389
Proceeds from the Sale of Property		300,000
Total Revenues	<u>8,440,532</u>	<u>8,928,407</u>
EXPENDITURES AND MANDATORY TRANSFERS		
Educational and General		
Instruction and Library	2,995,955	2,997,322
Student Services	1,291,107	1,061,613
Institutional Support	1,566,233	1,544,443
Operation and Maintenance of Plant	691,023	619,898
Interest	129,587	178,653
Student Aid	1,081,094	990,959
	<u>7,754,999</u>	<u>7,392,888</u>
Mandatory Transfers		
Transfer to Debt Reserve Fund	46,808	55,967
Transfer to Repair and Replacement Reserve Fund	1,046	1,100
Debt Retirement	69,622	63,301
Plant Fund Matching		609
	<u>117,476</u>	<u>120,977</u>
Auxiliary Enterprises		
Expenditures	<u>1,223,713</u>	<u>1,087,266</u>
TOTAL EXPENDITURES AND MANDATORY TRANSFERS	<u>9,096,188</u>	<u>8,601,131</u>
REVENUES OVER (UNDER) EXPENDITURES AND MANDATORY TRANSFERS	(655,656)	327,267
NON-MANDATORY TRANSFERS AND OTHER CHANGES		
Property and Equipment Additions		(70,743)
Restricted Receipts		
Over (Under)		
Transfers to Revenue	110,202	(19,324)
	<u>110,202</u>	<u>(90,067)</u>
NET INCREASE (DECREASE) IN FUND BALANCES	<u><u>\$(545,454)</u></u>	<u><u>\$ 237,209</u></u>



COMPARATIVE CONDENSED BALANCE SHEET

AS OF JUNE 30, 1988

ASSETS	1987-88	1986-87
CURRENT FUND		
Unrestricted:		
Cash	\$ 100,658	\$ 243,787
Accounts and notes receivable:		
Student accounts	542,593	650,344
Other	46,374	858,215
	588,967	1,508,559
Less Allowance for doubtful accounts	50,000	50,000
	538,967	1,458,559
Investments at cost, which approximates market	28,084	164,648
Inventories:		
Bookstore	119,909	96,616
Operating supplies	56,299	54,843
	176,208	151,459
Prepaid expenses and deposits	44,358	48,228
Total unrestricted	888,275	2,066,681
RESTRICTED		
Accounts Receivable—Governmental	36,921	
Due from Current Unrestricted funds	181,697	108,416
Total restricted	218,618	108,416
	<u>1,106,893</u>	<u>2,175,097</u>
LOAN FUNDS		
Cash	229,168	175,981
Notes receivable:		
Perkins loans	1,024,363	1,089,992
Less reserve for doubtful loans	157,700	157,700
	866,663	932,292
Other receivables	1,199	1,199
Due from current fund	475	
	<u>1,097,505</u>	<u>1,109,472</u>
ENDOWMENT AND SIMILAR FUNDS		
Cash	19,285	36,251
Investments at cost	1,785,314	1,715,041
Due from current fund	620,595	660,137
	<u>2,425,194</u>	<u>2,411,429</u>
PLANT FUNDS		
Unexpended:		
Cash	91,124	29,662
Investments	61,525	61,081
Construction in progress	22,908	22,908
Due from current fund	795	795
Total unexpended	176,352	114,446
Investment in plant		
Land and land improvements	312,097	299,697
Buildings	10,781,282	10,627,904
Equipment	2,237,253	1,987,174
Total investment in plant	13,330,632	12,914,775
Total plant funds	<u>13,506,984</u>	<u>13,029,221</u>
AGENCY FUND		
Due from current fund	\$ 12,494	\$ 7,575

LIABILITIES & FUND BALANCES	1987-88	1986-87
LIABILITIES AND FUND BALANCES		
Unrestricted:		
Notes payable to banks	\$ 380,000	\$ 982,500
Accounts payable	458,122	324,894
Employee compensation	261,771	241,709
Credits balances in accounts receivable	59,354	67,953
Advance student fees and conference income	481,278	321,857
Due to other funds	547,210	771,572
	2,187,735	2,710,485
Fund balance (deficit)	(1,299,460)	(643,804)
Total unrestricted	888,275	2,066,681
Restricted:		
Fund balance	218,618	108,416
Total restricted	218,618	108,416
	<u>1,106,893</u>	<u>2,175,097</u>
LOAN FUNDS		
Due to current fund	-0-	5,350
Fund balance:		
Perkins loan fund	1,097,505	1,104,122
	<u>1,097,505</u>	<u>1,109,472</u>
<i>See notes to financial statements.</i>		
ENDOWMENT AND SIMILAR FUNDS		
Fund balance:		
Endowments:		
Income restricted	1,835,232	1,815,518
Income unrestricted	550,661	550,611
Annuity and life income	39,301	45,300
	<u>2,425,194</u>	<u>2,411,429</u>
PLANT FUNDS		
Unexpended:		
Due to current fund		
Fund balance:		
Debt reserve fund	61,525	61,081
Repair and Replacement reserve fund	2,205	1,102
Restricted	112,622	52,263
Total unexpended	176,352	114,446
Investment in plant:		
Due to current fund	268,846	
Notes payable	993,384	1,010,016
Capitalized lease obligations	46,097	43,723
Bonds payable	540,000	592,000
Fund balance	11,482,305	11,269,036
Total investment in plant	13,330,632	12,914,775
Total plant funds	<u>13,506,984</u>	<u>13,029,221</u>
AGENCY FUND		
Deposits held in custody for others	\$ 12,494	\$ 7,575

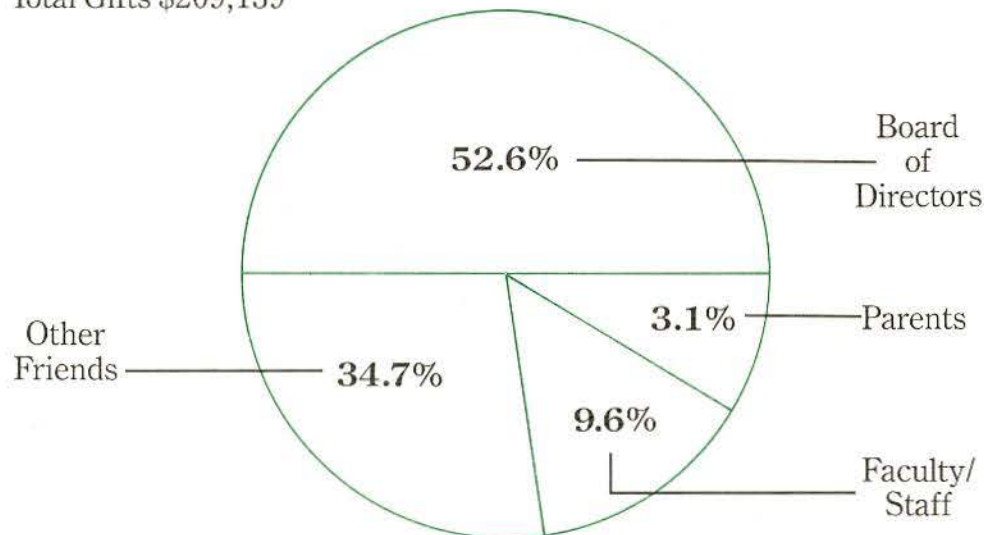
SOURCES OF SUPPORT AND REVENUE

SOURCES OF DONOR SUPPORT

PHILANTHROPIC ORGANIZATIONS includes churches, foundations and organizations	9%
FRIENDS includes Board of Directors, parents, faculty/staff and other college friends	19%
CORPORATIONS includes civic progress corporations and the Lindenwood Business Partnership Campaign	33%
ALUMNI includes the Alumni Board, annual phonathon and direct mail	27%
COMMUNITY SUPPORT includes St. Charles Partnership, St. Charles organizations, the Board of Overseers, KCLC and special events in St. Charles	12%

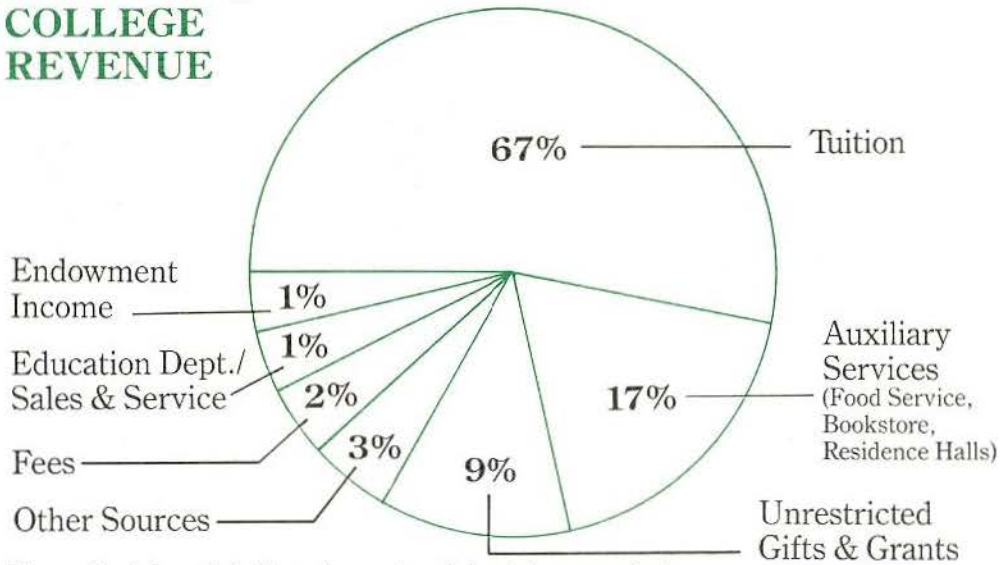
FRIENDS DRIVE

Total Gifts \$209,139



SOURCES OF SUPPORT AND REVENUE

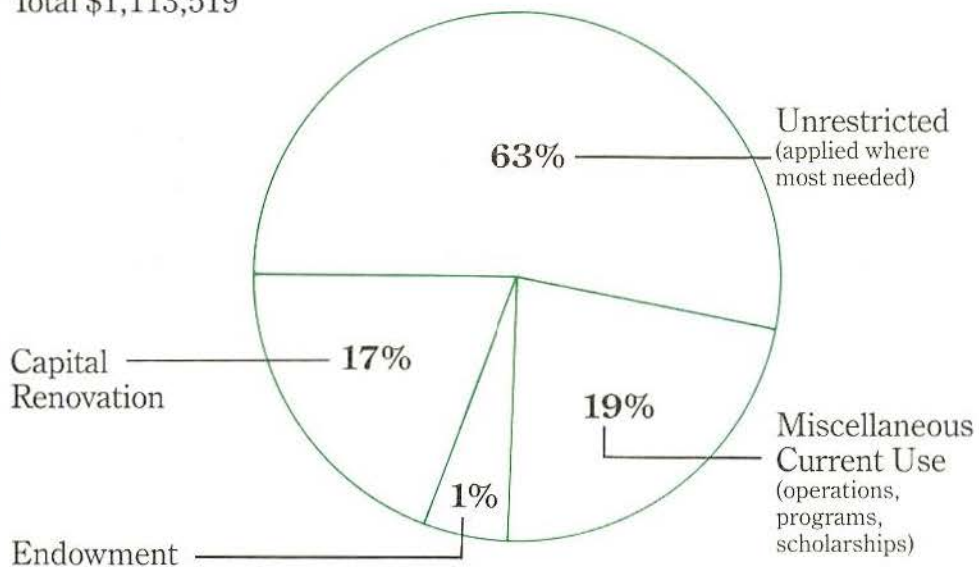
SOURCES OF COLLEGE REVENUE



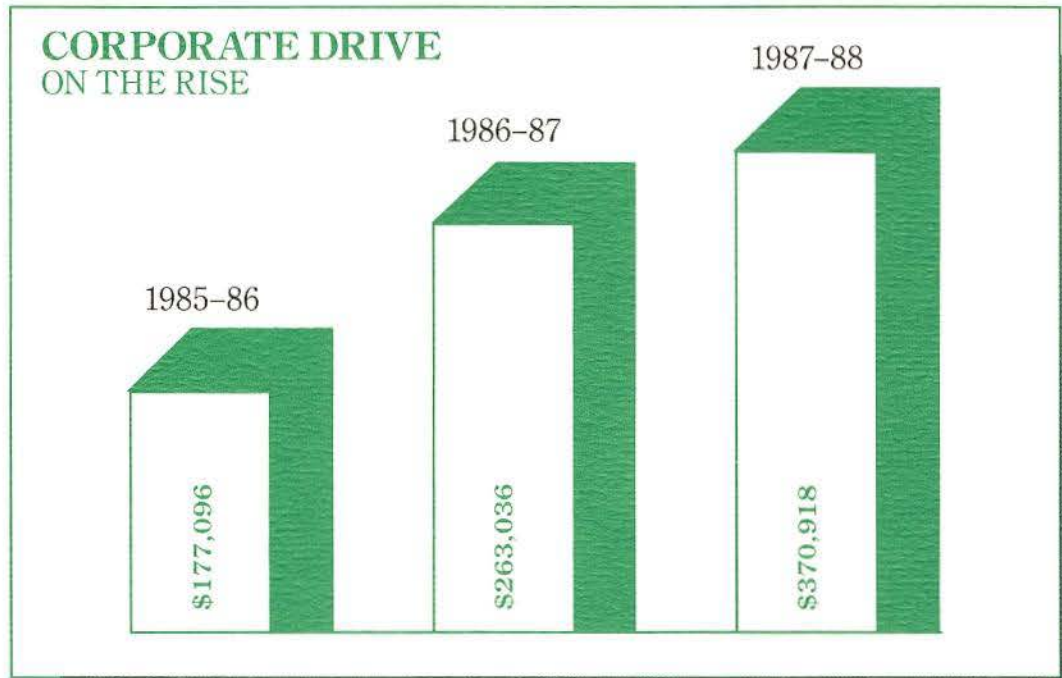
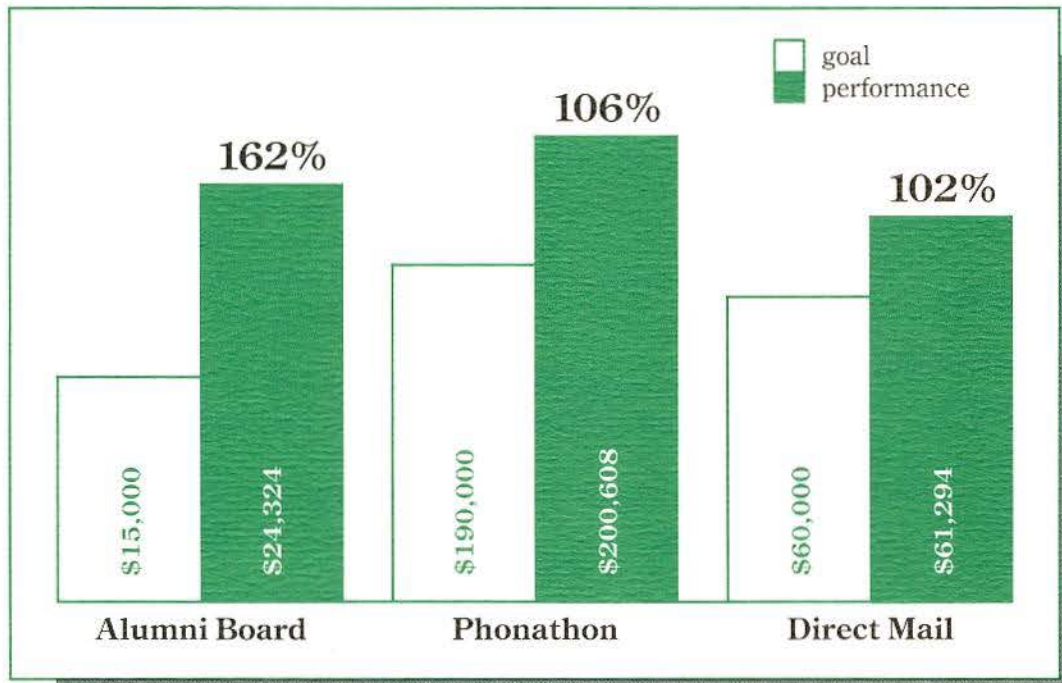
*Does not include capital gifts, endowment, or designated program funds.

GIFT DESIGNATION

Total \$1,113,519



ALUMNI DRIVES THAT EXCEEDED GOALS



SPEAKING OUT FOR LINDENWOOD



"I fully support Lindenwood's mission of quality, personalized liberal arts education. It's important both to the students and the area business community."

+ Ron W. Ohmes
President, F. F. Kirchner

"Lindenwood College has a proud heritage. Even more important, the potential exists for an even greater contribution to the Midwestern higher education scene. With our community's help, I'm confident Lindenwood will achieve that potential."

* Harold Corbett
Senior Vice President
Monsanto Company



Harold Corbett

"Those who have benefited from the private college system should work to insure its preservation for future generations."

* Richard A. Harris
Group President
Southwestern Bell Corporation



"I believe we need the freedom of choice between private and government-sponsored higher education. Whenever the government pays the bill, it will have a loud voice in dictating curriculum. Lindenwood provides a high-quality liberal arts education under the support and control of a caring and committed group of individuals."

* Raymond W. Harmon
Chairman & CEO
Hasco International



"I support the many positive changes that have been made at Lindenwood since President Spainhower took over. The college has been stabilized across the board."

+ Dorothy Trump ('43)
Life Member
Board of Overseers



"My evening college degree provided me with more opportunities in the business world. Now I volunteer my time to keep Lindenwood in the business of education."

Gerry Jacobs ('83)
President, St. Charles Alumni Club



Jim Fitz

"I have always felt that the gift of money—while forever needed—cannot tell the whole story. The most precious gift, always, is the message that Lindenwood College cares. Much is expected of Lindenwood, and much is expected of us."

+ Jim Fitz
General Manager
St. Charles Gas Company

"As president of the Alumni Association, I had the opportunity to meet with many alums either on campus, by phone, or in personal visits across the country. I am impressed with their professional accomplishments, their concerns for home and family, their stature and their commitment. They are enthusiastic about the value of their education at Lindenwood College, be it in 1923, 1963, or 1983. These are but two of the satisfactions I have in serving the college."

Maurita Estes Stueck ('43)
President, Alumni Association



"The challenge of stewardship is consistency. It is good to give to an institution you admire once, but to give consistently is better."

Jinny Gender ('76)

"The challenge of stewardship is to recognize the nature and extent of that obligation. Once that has occurred, the challenge must be answered by each individual as dictated by personal circumstances; for some the answer is time, for some it is energy, for some it is financial, and for many it is a combination."



+ Keith Hazelwood
Partner
Thompson & Mitchell

"Lindenwood College is one of Missouri's greatest assets. I am proud to be a part of Lindenwood's exciting and promising future."

+ Jim Maurer
Area Manager
Southwestern Bell Telephone Company

* Director + Overseers # Alumni Board



"I strongly support the challenge of stewardship at Lindenwood College. Lindenwood is truly at a pivotal turning point in its history. If we continue our excellent growth in giving and support, Lindenwood will be one of the pre-eminent liberal arts colleges in the country."

+ Thomas F. Bakewell ('74)
Senior Vice President
Daughters' of Charity
National Health Systems



Thomas F. Bakewell

ALUMNI

RENAISSANCE ASSOCIATES \$10,000 or more

Maurita Estes Stueck
Dorothy DuQuoin Warner

SIBLEY ASSOCIATES \$5,000-\$9,999.99

Mary Jane Brittin Bell
Ellen Duehlmeier
Marian Greene
Stephen Hoelscher
Nancy Kern Peteler
St. Charles Alumni Club
Dorothy Trump

RENAISSANCE PATRONS \$2,000-\$4,999.99

Wenda Lane Bacon
Thomas F. Bakewell
Judith Lee Batton Brougham
Florence Crockett
Barry Freese
Sara Willis English
Durine Riddle Gore
Gloria McCarrick Gouger
Barbara Ringer Hamill
Geraldine Ann Jacobs
Katherine Lehbrink Johnson
Susan Good Keohane
Estate of Alma Kinkade
Yu Chen Lin
Sarah Greer Mayer
Eleanor Eldredge McClevey
Thursa J. Merritt
Virginia Foristell Ottoy
Elizabeth Mudd Rauch
Janet Lewis Riddle
St. Charles Alumni Club
Glenda Raef Schaefer
Marilyn Tweedie Shutz
Virginia Sodemann
Mary Wolfert

BOARD OF ASSOCIATES \$1,200-\$1,999.99

Patricia Price Bailey
Lydia Dodge
Elaine Anderson Fellowes
Lucette Stumberg Flanagan
Jean Harmon Huesemann
Ruth Magee
Margaret Keisling Morgan
Joanna Achelpohl Peery
Lee & Dennis Phillion
Randall & Cynthia Robertson
St. Louis Alumni Club
Jim & Pam Thompson
Carin Chapman West
Shirley Wipfler
Jeannette Lee Wood
Michael Wood

PRESIDENT CLUB

\$500-\$1,199.99

Mary Williams Adams
Mary Ambler
Ruth Schrader Arft
Mary Lee Nathan Barklage
Mary Beck
April Center Bloom
Susan Taylor Brown
Susan Burns
Carol Ratjen Caldwell
Ann Smith Carr
Mary Ann Todsens Carter
Candice Linden Chaffee
Elaine Ludy Close
Patricia Lloyd Deisenroth
E. Mildred Clarke Denning
Ann Brewster Dobie
Ruth Dolan
Mr. Kelley E. Douglas
Prudence Porter Drummond
Lynn Bartels Eggering
Jackie Fish Fieseler
Catherine Siemer Fisk
Gerald Gayer
Margaret Stahl Greer
Elizabeth Burford Gunn
Dorothy Meyer Hannaford
Sally Sicks Hart
Margaret Ringer Howell
Mel Bemis Jenkins
Jean Graham Johnson
Kansas City Alumni Club
Mary Jardine Keith
Mimi Kemp-Hall
Kathleen Harte Kirk
Yasu Kudo
Jeffery Leeka
Jacolyn Foreman Martin
Robert Maruska
Virginia Hoover McGuire
Clara Lee McSpadden
Martha Denious Muncy
Barbara Brunsman Olson
Anne Hodges Pals
Nancy Mueller Pecha
Ruth Pinnell
Marie Christensen Robb
Linda Louise Ross
Tommy Buell Rupinski
St. Louis Alumni Club
Elizabeth Tracy Schreiber
Mary Goodwin Scott
Jane Henss Skeel
Marian Johnson Sprague
Roberta Walters Sprich
Carol Kellogg Stoub
Marie Smith Strawbridge
Cordelia Buck Stumberg
Martha Sweeney
Virginia Morsey Talley
Linda Hunt Thom
Elizabeth Towns
Susan Trail
Janice Rollins Vassar
Bettye Jean Smith Walls
Glenda Gerred Watts
Helen Weber Whalen
Karen Bacqman Wilbur
Mary Merrill Wolfe
Judith Johnson Woolery
Lyn Zanville

GOLD LINKS CLUB

\$300-\$499.99

Mr. Frank Accarrino &
Ms. Leslie Volz

Sam Acquisto
Dolores Cohn Alberts
Barbara Nall Anderson
Bradley Anderson
Nora Jeter Anderson
Lindenwood Friend
Mary Sawiell Archard
Edith Dockstader Arnsperger
Karlotta Poindexter Auclair
Lonnie Baldwin
Margaret Barton-Korty
Margaret Maurer Bauman
Verl Schaumburg Baumgartner
Loene Zuber Bowlin
Betty Moore Buck
Ruth Baldry Bushmeyer
Mrs. Parks Carpenter
Dennis Cavanagh
Patricia Williams Charron
Mary Ann Herlitz Chevoor
Chrystal Chostner
Lalla Varner Clagett
Mary Collier
Elizabeth Vance Conrad
Jane Cooper
Daryl Crawford
Maxine Namur Deardorff
John Dooley
Rosemary Edminster Duffy
Helen Sempres Estes
Miriam Neff Fischer
Nancy Follis
Evelyn Roberts Frink
Caroline England Funk
Grace Quebbeman Galt
Jinny Gender
Sondra Jupin Gillice
Joanne Buck Goudie
Mary Belle Grant
Paul & Cindy Gross
Mrs. Denzil Hawes-Davis
Cecile Hawkins
Sammie Henry Heavner
Barbara Hedlund
Lucy Jane Hadley Henry
JoAnn C. Hermann
Lenore Schierding Horn
Donna Milnes Houchins
Jane Graham Hubbell
Mary Green Hudwalker
Eleanor Wilcoxson Jaeger
Linda Brown Johnson
Marilyn Berryman Johnston
Helen Rose Bruns Jolly
Sara Shomberg Kearns
Mary Lou Thayer Kelley
Margaret Laughlin Kelly
J. Page Kemp
Lori Westerhold Kirby
Kenton M. Kolker
Ann Kroeger
Esther Kelley Kruchek
Diana Smith Lassen
Ronald Lawler
Barbara Larmer Lawton
Ann Adams Long
Linda Markuly-Szilvasy
Carolyn Brewer McMillan
Helen Studer Mendenhall
Mary Miller
Linda Mize
Sylvia Nelson Moldenhauer
Esther Moulthrop Muench
Lillian Willson Naumann
Marilyn Bennett Noonan
Nancy Montgomery Orr
Constance Osgood
Katharine Tinsman Patton
Doris Banta Pree
Virginia Terry Preston
Judith Prowse Reid
Jo Ann Liebermann Reynolds
Joyce Shoemaker Riley
Ann Ritter

Harriette Hudson Ritter
Janet Petersen Russell
Marian H. Ryan
John Saeger
Ada Sanders
Carol Fitz Roy Saum
David Schenkelberg
Nancy Schneider
Vivian Nicholas Shanafelt
Margaret Hocker Small
Nez Smith
Sandra Caldwell Sorensen
Betty Witthaus Sphar
Eunice Sheley Spindler
John M. Stephens
Sue Moss Sullivan
Helen Duhadway Thatcher
Lawrence Thomas
Rosemary Williams Thomas
Geraldine Thompson
Betty Schoen Trail
Virginia Ratcliff Trent
Elane Reatherford Tufts
Claudia Uccello
Doris Province Watts
Laurel Andersen Werner
Martha White
Imogene Elrod Wilden
Marguerite Hersch Wiley
Kay Dunham Wilkinson
Dorothea Hartig Young
Roxanna Young
Mrs. Donald Zimmerman

FOUNDER'S CLUB

\$160-\$299.99

Joseph F. Ackerman III
Janet Acton
Karen Rasmussen Alldredge
Casey Jones Ancker
Marie Andel-Arends
Virginia Levy Anderson
John Appelbaum
Rosemary Dysart Baue
Gail Slemmer Beke
Dorothy Straight Bentz
Marjery Cauthers Berryman
Helen Culbertson Beste
Marie Betzler
Fern Palmer Bittner
Mr. Charles Boswell
Nancy Bowser
Evelyn Bradley
Linda Brakensiek
Genelle Phillips Braneky
Marie Koch Brundige
Margaret Buford
Nancy Lou Baker Buhler
Marceen Ward Buntaine
Virginia Simpson Burroughs
Mary Sayer Burrows
June Bardbury Butler
Josephine Peck Calkin
Eloise Worthington Calvert
Nancy Calvert
Mary Alice Lillard Carmichael
Audrey Weinberg Cary
Arthur Castile
Glen Cerny
Dorothy Corbin Chapman
Marian Kasper Childers
Elizabeth Jenness Clark
Alice Neal Clarkson
Marcia Ashland Connell
Margaret Chace Corbett
Genola Bellrose Cox
Kate Bemis Cravens
Anita Crites Crawford
Zilpha Curtin
Ella Davidson
June Tavlin Dean
Ruth Kawahara Donohue
Mary Rudy Downing
Johnnie Lou Brown Dugger
Mari Anne Ryan Dysart
Doris Edmiston-Potter

Virginia Farmiloe Edwards
James Ell
Loise Ulen Elrod
Sarah Hall Fandey
Dixie Smith Ferry
Jane Wilson Friday
Dorothy Roeder Gerstner
Folsta Bailey Gibbons
Evelyn Noland Gillmor
Joyce Glauber Gordon
Jill Simmons Graff
Mary Comstock Gray
Cynthia Schiermeier Hahn
Nancy A. Hampton
Elizabeth Burbank Hamrick
Janice Davis Hancock
Arminta Harness
Dr. Anna Harrison
Freida Becker Hasek
Ann Fieber Hays
Sarah Pauline Davis Hedgecock
Dianne Heidelbaugh
Marilyn Mangum Heilman
Elizabeth Stoery Heise
Constance Fuqua Hill
Nancy Dana Hill
Marie Lansing Hillman
Karen Fasoldt Holtkamp
Ann Hamilton Hostetler
Margaret Howells Howland
Frances Bradenburg Hume
Glen Huskey
Eloise Hainline Huwaldt
L. Audrey McAnulty Jennings
Clifford Johnson
Lynn Russell Johnson
Mildred Birckett Johnson
Edith Mullins Johnston
Carolyn Houseworth Jones
Catherine Donnell Jones
Susan Drozda Jones
James Kaiser
Marian Pendarvis Keehn
Mary Ferrell Keller
Margaret Hoover Ketcham
Anne Doherty Khosropour
Mr. Jan Kniffen
Sandra Farner Kolb
Joyce Jurgensen Krogman
Ann Kronlage
Martha Anne Reid Kuenzi
Jonetta Tomcak Kurtz
Mary Lais
Sally Goldenberg Landau
Lois Null Lane
Janice Blevins Lange
Patsy Payne Lea
Mary Hardy Ledwell
Gertrude Wollenberger Leetz
Carol Campbell Leventhal
Helen Sherwin Levesque
Ellen Goode Lewis
Dr. Lena Lewis
Harriet Liddle
Evelyn Richabaugh Lippelmann
Martha Ann White Logan
Michele Fitzpatrick Lowrance
Elizabeth Britt Ludington
Virginia Lupfer
Nancy Madden
Ernestine Thro Magner
Evelyn Helwig Mahlandt
Marguerite Eckles Mann
Helen Keithly Markham
Elizabeth Markus
Helen Crider Marshall
Mary Louise Bowles Maughan
Barbara Clausen Mayginnis
Michael R. McComas
Katherine Pfeifer McCombe
Marjean Creekmore McDonald
Virginia Carter McGaughey
Lynn Jackson McHaney
Christopher & Lisa Miller
Jacqueline Miller
Jeranda Miller
Joseph Miller
Mary Malster Miller
Yasumichi Mitsui
Josie Donaldson Mobley
Georgia-Lee Reed Mon
Margaret Ann Moon
Jane Robertson Morgan
Carol Wideman Mueller
Howard Jon Murray

Charlotte Nolan
Lorraine Robie O'Connor
Karen Diehr Oelschlaeger
Helen Thomas Olson
Dorothy Gehlbach Ordelheide
Marsha Hollander Parker
Roselyn Fields Patterson
Judy W. Pellegrin
Amelia Plowman-Hayden
Mary C. Polonowski
Judith Smith Pribor
Patti Price
Vivian Brubaker Priddy
Helen Foster Purvis
Victoria Kern Ray
Mary Frances Wertz Rea
Edna Mary Jacobson Richardson
Margaret Meyers Richeson
Susann Riffe
Frank Rittenhouse
Suzanne Sachs
Larry Sackman
Martha Schnedler
Betty Jane Waters Schwendener
Mary Kirchherr Shoquist
Harry Siebert
Vera Jean Douthat Sink
Lisa Durzo Sisk
Nancy Gale Smith
Robin E. Smith
Lila Robinson Sowell
Marie Blaske Spencer
June Spillman
Mary Murray Stark
Diane Gridley Starke
Sara Stein
Sylvia Wright Stern
Jeri Herhold Stine
Donald Strauss
Janet Schaefer Strauss
Eric Stuhler
James Sutterer
Peggy Lynn Walter Symes
Virginia Terry
Jane Tough Tew
Christine McDonald Todd
Sally Lakin Towne
Suzanne Wager-Mulock
Mary Burch Waggoner
Norma Sabin Wallingford
Vivian Ware
Nancy Webster
Frances Metzger Weeks
Margaret Wilson Wesson
Eulelia Miller Wheeler
Bettie Wimberly
Evelyn Brougher Wingate
Deborah Wittner
Margaret Gaffney Wolitarsky
Mabel Gernold Wyssmann
Marion Pohlman Yaeger
Lillian McDonald Zinck

CENTURY CLUB \$100-\$159.99

Marcia Pease Adams
Roger Akester
Anna Marie Kistner Alexander
Helen Stants Alexander
Mary Welsh Allen
Sue Anderson
Ruth Weber Andris
Margaret Hollands Armstrong
Phyllis Smith Aspoas
Virginia Frank Austin
Carolyn More Baker
John Bakewell
Dorothy Barklage
Helen Stuckey Barrett
Stephanie Bassman
Sharman Beasley
David Becker
Verna Bredenbeck Beeson
Sandy Swoboda Belfi
Renne Dieckmann Belk
Jean Bentley
Gloria Mangum Berthelsen
Mary Lou McLeod Bertram
M. Jewell Mouser Billen
Mrs. Dale Black
Carolyn Cannon Bloebaum
J. Stephen Brady

Steve A. Brello
Carol Banta Brewer
Susan Bridges
Shirley Broz
Kathleen DeCroes Bruce
Frances Brueshaber
Elizabeth Burdick
Louise Burkhardt
Joan Burnett
Margaret Bassentt Burtin
Katherine Lewis Bushnell
Celia Tucker Cain
Dr. Peter Carich
Dr. Ann Stambaugh Carneal
Barbara Sly Carnes
Gretel A. Carpenter
Joan Childress
Dorothy Wood Clark
Wendy Clark
Roseann Clever
Helen Diehr Coldwater
Vivian Lane Counts
Kathryn Scroggin Crouch
Vivian Smith Crow
Agnes Currie
Linda Janson Dahlsgaard
Nancy Peters Dale
Henrietta McLaughlin Danner
Nancy Lambert Davenport
Marcia Kelly Davidson
Joan DeKruif
Mary DeBartolo
Timothy Delicath
Martha Radford Delmon
Mary Dewey
Edward Dewhurst
Diane Dicke
Nancy Prosser Dietz
Bettylee Sleyster Dorsey
Nancy Stark Dosman
Marjorie Hickman Drozda
Margaret Wiles Duffie
Stanley Dultz
Joan Dykema
Betty Jean Callis Edwards
Merica Shawver Edwards
Dorothy Padden Elich
Carol Gillmor Elliott
Arthur C. Elliot, Jr.
Carlene Newell Elmore
Mrs. Wayne Erickson
John & Jane Ervin
Virginia Evans
Katharene Abrenathy Everett
Mary Chapman Fales
Dona Fant
Billie Freeland Farell
Barbara Fite Faulkner
Neola Luster Faus
Jean Feldmann
Esther Talbot Fenning
Johnsie Fiock Fildes
Constance Levy Finney
Shirley Lee Fitzgerald
Laverne Kienger Flachsbart
Marian Schulzke Ford
Arline Krueel Foster
Carolyn L. Foster
Genevieve Horswell Frank
Ruth Ann Ellsasser Franks
Ruth Neef Fredericks
Jane Merrill Fritson
Sara Phillips Gallagher
Julia Thomson Gallais
Sondra Rae Swindel Galperin
Etta Davenport Georgeson
Mr. Randall Getz
Cora Lee Critchfield Gilliland
Maurine Potlitzer Glazer
Kathleen Belland Glenn
Sharlene Agerter Glock
De Alva McAlister Graham
Dr. Wiollie Mae Viertel Grissom
Mary Burger Gross
Marjorie Groves
Dorothy Hall
Betty Hammett
Pamela Hutchinson Hanson
Jerry Harris
Lois Griewank Hartman
Pauline Gray Hearne
Martin Hente
Ellen Day Higgins
Corinne Hill
Frances Fitzgerald Hinsch
Beverly Stukenbroeker Hirsch

James & Diane Hodges
Bonnie Hoeckelman
Brenda Martin Hollrah
Gertrude Anderson Holm
Julie Holm-Stuenkel
Maude Dorsett Hopper
Elizabeth Glebe Houchin
Michael Hovanec
Susan Fraser Hruby
Marietta Hansen Hunsche
Marvin Hurst
Sue Austin Hutchings
Martha Porter Ingels
Mary Jackson
Sally Jacobsen
Juliet Trotter Jakowski
Ann Riker Jaltuch
Luice Spence Jeffers
Beth Devlin Jett
Roy Joachimstaler
Joan McCarroll Johnson
Cheryl Folbrecht Jones
Kurt Junger
Jean Shelton Kirmonth
Alla Jo Walter Kirkpatrick
Katherine Kirts
Betty White Klee
Susan Buckwell Knoblauch
Stephanie Yunker Kordas
June Horstmeyer Kottmeier
Alice Kovich
Maggie Kracke
Meredith Kasten Kraus
Elizabeth Kuykendall
Emma Morgan Lacy
Kristi Hiekka Langbein
Charlotte Hunt Laroux
Louis Launer
Wendy Lawton
Cheri LaRue Leifert
Thomas Lenart
Emily Knutson Lewis
Mary Ann Fowler Linneman
Janet Bergelin Little
Rosemary Dron Lomax
Virginia Litzelfelner Luetje
Charlotte Ching Lum
Dennis Lustick
Margaret Prinster Lynn
Chloe Willson Machado
Mary Trimble Maier
Stanley Makowski
Kathleen Weaver Malick
Tanya Yeldell Mallory
Jeanne Swenson Mandell
Faro J. Maniaci
Frances Olson Marks
Jane Edwards Marlow
Marianne Bensing Marshall
Joyce Helmers Mason
Carol Schaffner Maxwell
Eleanor Petty May
Lois Deisenroth May
Ellan Mayes
Jean Stephenson Maynard
Claride Woodward Mayo
Rebecca Boen Mayo
Joyce Murphy McAfee
Ruth Ann Kern McClellan
Lucy Anne McCluer
Nicki McClusky
Allie Mae Bornman McColgan
Linda McCombs
Linda Granger McCormick
Mrs. William McEachron
Helen Stewart McInnes
Sandra McKenzie-Schmitt
Jessamine Hinds McMullen
Matilda Hagerdy McPherron
Richard Meier
Norma Meyer
Charlotte Cron Mixson
Robert Moe
Nancy Jane Wallace Mojonier
Judie Montgomery
Margaret Grier Moon
Mary Brinkman Moore
Sylvia Lowe Morse
Jeanne Gross Mudd
Ruth Muegge
John Muench
Janice Nelson Murphy
E. Corrine Paulsen Needham
Martha Neuman
Gail Gross Neumann, Ph.D.
Evelyn Pigg Newcomb

Mary Jo Steele Nietmann
 Mary Warner Ninker
 Ruth Noblitt
 Lucinda Deppin Ostmann
 Lindi Fredmeyer Overton
 Sherry Park
 Naida Treadway Patterson
 Elizabeth Pekkala
 Eulalia Geiger Petersen
 Melva Swofford Peterson
 Susan Piper
 Michael Ploch
 Jean Paulson Plotz
 Prakob Pongspikul
 Dorothy Hennig Popham
 Virginia Keck Powell
 Mary Lou Gillette Powers
 Maxine Cooper Provost
 Carolyn Ledford Ragans
 Marjorie Day Ranney
 Dean Reaka
 Esther Barklage Rechtern
 Alma Reitz
 Margaret Pfoff Reschetz
 Gloria Bagwell Richardson
 Marilyn Moes Rickmeyer
 Mrs. O'Garlan Ricks
 Carole Lockhart Roberts
 Jennelle Robertson
 Ann Robinson
 Jane Calvert Rogers
 Alice Prouty Root
 Mary Eileen Ruffkahr
 Phyllis Gambill Ryding
 Melinda Sachs
 Jeanette Sage
 Sandra Salas
 Margaret Groce Sample
 Pearl Lammers Schaberg
 Sally Siemssen Schaefer
 Anna Schafer
 Constant Schepker
 Herbert Schnyder, Jr.
 Bobbie Moore Schonaerts
 Janet Heaberle Schowe
 Richard Schultz
 Sue Puckhaber Sharp
 Patti Shavelson
 Jeanne Schneider Shaw
 Lillian Smith Shaw
 Rebecca Achelpohl Shaw
 Martin Sherman
 Polly Heninger Shlosman
 Marguerite Tainter Sillmsen
 Marjorie Sumner Sillman
 Joyce Fleet Silver
 Jacquelyn Cheney Smith
 Martha Disharoon Smith
 Mrs. James Snow
 Bylle Synder
 Rev. Liza Spangler
 Doris Oxley Spellman
 Mary Bowaird Stark
 Nelda Gates Steele
 Connie Gibson Stoecker
 Eleanor Hedrich Storey
 Sara Crews Street
 Linda Shaw Sullivan
 Jane Augustine Swift
 Margo Musgrove Tann
 Muriel Weisbaum Tatarsky
 Virginia Finley Thomas
 Lynne Mennemeier Thompson
 Nancy Lambert Thompson
 Wesley Shigley Tignor
 Ann Hanna Tolly
 Patricia Trampe
 Carol Gardner Transou
 Barbara Harrisberger Uptegraft
 Barbara Elsholtz Urquhart
 Helen Hook Vainikos
 Gerald Varker
 Judith Ames Verkest
 Dorothy McClintock Von Hoffman
 Peggy Flint Voss
 Judith Wagner
 Rosalind Mueller Wagner
 Nancy Lu Knock Walters
 Judith Muntz Ward
 Roy & Elizabeth Warren
 Evelyn Watson
 Nancy Graves Webb
 Virginia Gilreath Wehrle
 Marilyn Weir
 Barbara Bond Vander Wende
 Dr. Kermit & Mrs. Alice Westerfeld

Carole Linhart Westerfeld
 Antoinette Chapman Whitman
 Camille McFadden Whitney
 Kathleen Williams
 Marilyn Wilson-Hawkins
 Kathleen Winter
 Mary Wolfe
 Carol Wolter
 Ann Darby Womelsdorf
 Martha Skaer Wright
 Sharon Young

GIFTS-IN-KIND

Michael Bialas
 Bread of Life Bakery
 Judith Lee Brougham
 Bryan, Cave, McPheeters
 & McRoberts
 Buse's Flower Shop
 Connecting Point
 CONTEL
 Joel T. Davis
 The Forsythe Group/David Wilhelm
 Thomas L. Gossage
 GraphCom
 Kathleen Grimm
 Hewlett Packard
 Bill Lewis
 Matthew Bender & Company, Inc.
 McDonnell Douglas Foundation
 Michael's Arts & Crafts
 Missouri Hardwood
 Missouri Progress, Inc.
 Monsanto Fund
 Pickett, Ray and Silver
 John & Kathy Rundel
 Bill & Glenda Schaefer
 Sorkins' Directories, Inc.
 Sweeney Corp.
 William Tao & Associates
 Dr. Kenneth W. Thompson
 Thompson & Mitchell/
 John Hannegan

MATCHING GIFT COMPANIES

ACF Foundation Inc.
 Alcoa Foundation
 American Tobacco Co.
 Amoco Foundation Inc.
 AMR/American Airlines Foundation
 Anheuser-Busch Charitable Trust
 AT&T Foundation
 American Television &
 Communications Corporation
 Atlantic Richfield Foundation
 Baxter American Foundation
 BF Goodrich
 Brunswick Foundation, Inc.
 Burton-Marsteller, Inc.
 Caterpillar Foundation
 CBS, Inc.
 Centerre Trust Company
 Chesebrough-Pond's Inc.
 Chevron U.S.A., Inc.
 Chrysler Motors Corp.
 Ciba-Geigy Corporation
 Citibank
 Compton Foundation
 Conoco Inc.
 Consolidated Natural Gas
 Foundation
 CONTEL
 Corning Glass Works Foundation
 Deloitte Haskins & Sells
 Deluxe Check Printers Fund
 Eli Lilly & Co.
 Emerson Electric
 Ensign-Bickford Foundation, Inc.
 Exxon Education Foundation
 Federal-Mogul Corporation
 Fiduciary Trust Company
 Ford Motor Company Fund
 General Electric Foundation
 General Mills Foundation
 Hallmark Cards Inc.
 Hewlett Packard
 IBM Corporation
 J. Eckerd Corp.

J.C. Penney Co.
 JSJ Corporation
 Laclede Gas Charitable Trust
 Mallinckrodt Fund, Inc.
 Maritz Inc.
 Martin Marietta Foundation
 May Stores Foundation
 McDonnell Douglas Foundation
 Merck Company Foundation
 Merrill Lynch
 Metropolitan Life Foundation
 Mobil Foundation, Inc.
 Monsanto Fund
 Motorola Foundation
 Mutual Benefit Life
 Natural Gas Pipeline Co.
 Northwestern Bell Foundation
 Olin Corporation Trust
 People's Bank
 Pfizer Inc.
 Philip Morris Inc.
 Phillips Petroleum Foundation
 Procter & Gamble Fund
 Ralston Purina Trust Fund
 Rockwell International
 Rohm & Haas Company
 Shell Companies Foundation
 South-Western Publishing
 Southeast Banking Corporation
 Southwestern Bell Foundation
 St. Charles Orthopaedic Surgery
 Associates, Inc.
 Stauffer Chemical Co.
 Texaco Philanthropic
 Foundation, Inc.
 Times Mirror
 TPF&C Inc.
 Trust Company of Georgia
 Foundation
 TRW Foundation
 United Parcel Service Foundation

RENAISSANCE PATRONS

\$2,000-\$4,999

Jill Baue
 Harold & Rosaline Corbett
 Leo & Kay Drey
 Robert A. Edmonds
 John & Mary Lou Hannegan
 Keith & Nancy Hazelwood
 Carrie Heslop
 Joe & Adeanya Hunt
 Robert & Lois Kaplan
 David & Ligaya Kirkland
 Robert & Margaret
 McKelvey
 Paul & Nancy Polette
 John & Lucille Tlappek
 Mr. & Mrs. Willard J.
 Walker
 Clayton & Ann Wilhite
 John & Carol Wolf

BOARD OF ASSOCIATES

\$1,200-\$1,999.99

James & Marie Fitz
 Dr. & Mrs. Robert J. Fleming
 Al Fleishman
 Fritzie Knoblauch
 James & Diane Maurer
 Walter & Cynthia Metcalfe, Jr.
 Catherine O. Pundmann
 Mr. & Mrs. J. Paul Ohrman
 Gary Shaw
 Bill & Glenda Schaefer
 Mr. Myron & Dr. Arlene Taich
 Dr. Earl & Mrs. Shirley Wipfler

PRESIDENT'S CLUB

\$500-\$1,199.99

Kenneth & Mary Lou Ahmann
 John Fox & Ann Arnold
 David & Dorothy Babcock
 Nora Lee Balmer
 Zane E. Barnes
 Carol Boerding
 Raymond & Dorothea Botz
 George & Ruth Brown
 Roger W. Carlson
 Debra L. Coats
 Glen Coleman
 Christine C. Conover
 August & Rowena Doenges
 Henry & Ethel Elmendorf
 Dennis Fitzgerald
 Harvey & Dorismae Friedman
 Dr. Edith E. Graber
 Richard & Joan Harris
 Dr. Gene Henderson
 Trina Hoefling
 Dr. Esther L. Johnson
 Charles Johnston
 Dr. Daniel & Mrs. Marilyn Keck
 Eugene J. Kirk
 Stanley & Audrey Kolker
 Robert E. Kresko
 Dr. Justus P. Kretzmann
 Hans & Valerie Levi
 Mr. & Mrs. Bill G. Lewis
 Lindenwood Friend
 Mr. & Mrs. James Magee
 Burr & Carolyn Miller
 Dennis & Patricia Ottolini



FRIENDS

RENAISSANCE ASSOCIATION

\$10,000 or more

Dr. Arthur S. Goodall
 Raymond & Grace Harmon
 Dr. & Mrs. Harlen C. Hunter
 Mr. & Mrs. David Wilhelm

SIBLEY ASSOCIATION

\$5,000-\$9,999.99

Jane A. Crider
 Malcolm Deisenroth
 Robert & Pat Hyland
 Lindenwood Friends
 Jefferson & Dorothy Miller
 Ron & Janice Ohmes
 Henry & Elizabeth Rauch
 Dr. James I. & Mrs. Joanne
 Spainhower
 Dr. Kenneth W. &
 Dr. Beverly Thompson
 Mrs. Sidney W. Souers

Mr. & Mrs. Bill Park
 Dr. Emma Purnell
 Richard K. Reighard
 Boyle & Joanne Rodes
 Evelyn M. Rust
 Mr. & Mrs. Daniel L. Schlafly
 Dr. Gregorio A. Sicard
 Christopher D. Starkey
 Edward & Mary Tokas
 Ruth Watkins
 Gerald & Nancy Wixson

GOLD LINKS CLUB \$300-\$499.99

Daniel W. Alkofer
 William S. Babcock
 Henry F. Bartels
 Richard & Patricia Battram
 F. Gilbert Bickel
 Glenn Brereton
 John & Sandra Kang Chung
 Rev. & Mrs. Robert R. Collins
 Michael J. Curry, M.D.
 Janice Czaplá
 A. Roger & Audrey Deppe
 Alvin "Tub" Diefenthaler
 Vivian K. Downs
 Jean W. Droste
 Betty Cole Dukert
 Mark T. Duncan
 Tom & Chris Eschen
 Mr. & Mrs. Tsuyoshi Fukuda
 Thomas L. Gipson
 Charles Hafer
 Thomas Hedgecock
 M. Henry Hess
 Jim Hollander
 Larry & Glenda Kelley
 Dr. Robert & Carolyn Kingsbury
 Mr. & Mrs. Charles L. Kopetzky
 Harry W. Kroeger
 Edwin Kurtz
 Mary C. Martin
 Ted McVay
 Pamela N. Mercer
 Chris & Phyllis Morris
 Mr. & Mrs. Kenneth W. Musbach
 Frances M. Natoli
 Ed Pundmann
 Mr. & Mrs. Milton Rehg
 Mr. & Mrs. Toshio Sato
 Wilfred Schmidt
 Dr. Dorothy Schneider
 Donald D. Shook
 John & Thelma Spainhower
 John Stephens
 Dr. Hugo K. T. Stierholz
 Edward & Viola Striker
 Robert P. Stupp
 Robert W. Sullentrup
 Virginia V. Van Rees
 John H. Wehmer
 Susan D. Wise

FOUNDER'S CLUB \$160-\$299

Dr. Daryl Anderson
 L. Rao Ayyaggari
 Charles J. Bay
 Rudy & Becky Beck
 Victor J. Beck
 Groff & Fern Bittner
 Meredith Bollmeier
 Charles J. Boyer
 Vincent T. Brescia
 Mr. & Mrs. Stanley Bresler
 Chuck Brown
 Sue Brown
 Gary & Sandra Bubenzer
 Phillip H. Burke
 William R. Cady
 Gary T. Callier
 Dr. M. Richard & Mrs. Betty Carlin

Dr. & Mrs. Henry W. Clever
 Jerome J. Cochran
 J. Garrett Conner
 Marcia D. Crouch
 Carl Darigo
 Douglas Dillard
 Jeanne Donovan
 Eva B. Dressel
 Mr. & Mrs. Richard Ebersole
 Philip J. Eppard
 Dr. Martin L. Faust
 Carmine V. Ficocelli
 Norma Jean Fields
 The Honorable Flavius B. Freeman
 Nicholas & Nancy George
 Leland D. Gillette
 Mr. & Mrs. Eugene Goldstein
 Richard A. Green
 Mr. & Mrs. C.R. Hale
 Dr. & Mrs. R.E. Hammes
 Frank & Eileen Harkins
 William B. Hecht
 Wesley E. Hedges
 E. Wayne Hogue
 James O. Jackson
 Darlene Jemison
 Donald K. Johnson
 Scott R. Jokerst
 Roger Jung
 Jerry & Alice Kaster
 Michael Kramer
 Rev. Robert W. Kroening
 Vince Kunderman
 Allan & Sue Lampe
 Dr. Mary F. Lichliter
 Lindenwood Friend
 Dr. Charles & Mrs. Virginia Linsenmeyer
 Dr. Carlos Maitz
 John D. Marschalk
 Tracy L. Mathis
 F.H. Mayer
 Mr. & Mrs. Ivan A. McReynolds
 Joseph I. Mendel
 Patricia A. Meyer
 Mr. & Mrs. Yuzo Mizoguchi
 Chiara Moerschel
 Lynn Moore
 Marilyn Morris
 William & Ruth Mullins
 Marylee Nagle
 John & Grace Nichols
 Dr. David Norwine
 Rev. John F. Peoples
 Kent Phelan
 Michael A. Philips
 Wayne A. Poe
 Dr. & Mrs. William H. Poggemeier
 Billy G. Poole
 Charles J. Purcelli
 Vona M. Quackenbush
 C. Lee Richards
 Frank C. Rittenhouse
 M.E. Roberts
 Paul & Gretchen Ross, Jr.
 Jim Rothbarth
 Jerry Rufkahr
 Steven Schmidt
 Roger & Shirley Sellenschutte
 Wesley Shooks
 Rose Siebel
 Elaine S. Small
 Dr. Kenneth B. Smith
 Jayson Sogg
 Gladys Stockstrom
 William C. Sullivan
 James & Wilda Swift
 Knut Tarnowski
 Rex B. Travelstead
 Lillian E. Trump Estate
 Mr. & Mrs. Randy Wallick
 Jerilyn Westerhold
 Melvin & Bee Wetter
 Edward & Rose Marie Wetzell
 Lee & Beatrice White
 Oliver Wilke
 Karl Wilson
 Robert Wood
 Patricia A. Young

CENTURY CLUB \$100-\$159.99

Melinda Adams
 Jonathan D. Allen
 Rev. & Mrs. Rudolph S. Allrich
 Joe Ancona
 Jay L. Arnold
 Omer H. Avery
 Marianne Baer
 Dr. Keim Baird
 Jim Baker
 Richard K. Balducci
 Dana Barhard
 Dr. & Mrs. Howard A. Barnett
 Hon. George Duncan Bauman
 John Becker
 Rosemary Bezayiff
 Chris D. Black
 Stephen & Alma Irene Blackhurst
 Shirley J. Blattner
 Tom Boschert
 Ronald J. Brockmeyer
 Michael S. Buckney
 G.A. Buder
 Robert L. Buettner
 Paul Burrige
 Dr. & Mrs. Eugene J. Cauty
 James L. Carl
 Juanita Carl
 James Carmichael
 Lillian Carson
 Mr. & Mrs. Solon Chervitz
 William V. Cissell
 Kaye Coates
 David Collins
 Robert E. Concannon
 Rick Cornfeld
 Gary & Kay Cowger
 K.A. Cruik
 The Honorable Jay B. Dillingham
 Daniel F. Dobinsky
 Theron R. Dorsch
 Stephen Dulude
 Donna Eckberg
 Bruce Edler
 Howard S. Ellis
 Lisa G. Eng
 Ruth English
 Gary J. Entenman
 James Erlinger
 John & Jane Ervin
 Wes Erwin
 John A. Falcetti
 Dale Fehmel
 Howard G. Finke
 Rich Finley
 Robert W. Fischer
 Robert & Lorna Frahm
 Richard R. Frame
 J.D. Frew
 James J. Friedeman
 Steve Fruit
 David Gardner
 Jacquelyn Gardner
 Gordon Gintz
 Heather L. Glenn
 James Glenn
 Jonathon Gold
 Mr. & Mrs. Herman Griesenbrock
 Marcia Z. Guckes
 David J. Gund
 M. Elvera Hackmann
 James & Marcile Hairston
 Melvin L. Hall
 Hord Hardin
 Martha E. Hasting
 Muriel J. Hawkins
 Katherine G. Heath
 Rev. & Mrs. V. Paul Heine
 John C. Heinsz
 Patrick O. Heisinger
 Harold V. Herweck
 Robert Heuer
 Michael C. Hirsch
 Carol S. Hoffmeyer
 Dr. Leopold Hofstatter
 George Holtgrewe
 J.D. Hood
 Robert L. Hulett
 M.P. Huntington
 Opal I. Jacobs
 Carole L. Jamison

Michael P. Jostedt
 Stephanie Kadrie
 Justin Keenoy
 Deborah M. Kehm
 Rep. Craig Kilby
 Keven King
 Dr. Robert King
 S. Lee & Rosalyn Kling
 Peter A.R. Krewet
 Richard & Janice Lance
 Marilyn Leach
 Ellen C. Lee
 Joe Leonard
 Anita Lowery
 Joseph C. Masterson
 M.J. Mathis
 Barbara F. Matteson
 Robert R. Meers
 Dr. Gary J. Meltz
 Peter T. Menke
 Steven Mintz
 Marion F. Moen
 Rollin J. Moerschel
 James L. Moore
 Harold E. Moss
 Fred C. Mueller
 Alan Oberholtzer
 Beth Oliver
 Joseph R. Ortwerth
 Elaine Palmatier
 Christi D. Parks
 Daniel G. Pelikan
 Vernon Petrik
 Christina L. Podhorsky
 James Podhorsky
 Nancy M. Pool
 Dave Powell
 Karen J. Ratterree
 James Rick
 Richard Rickert
 Dr. Edward Roach
 George Rose
 June K. Rotz
 Rodney & Loree Rowe
 Rabbi Alvan D. & Mrs. Ruth Ann Rubin
 Don F. Rufkahr
 John & Kathy Rundel
 Ken Ryan
 Judith M. Sahn
 Judy Sahn
 Susanne K. Salfen
 Robert S. Saxton
 Wilbert Schmidt
 Kathleen Schneider
 Allen, Phyllis & Jonathan Schwab
 Michal Shalon
 Joseph & Bertha Shroba
 Mr. & Mrs. Louis H. Siemer
 Nancy A. Smith
 Dominic Soda
 Beverly B. Spatz
 Frank K. Spinner
 Charles N. Stavelly
 Allen & Betsy Sterner
 Terry A. Stieve
 Dr. James R. Stookey
 Martin Strussion
 Michael H. Sullivan
 Lisa Summey
 Sigrid M. Suyo
 Thomas L. Szilasi
 Greg Take
 Jean A. Taylor
 Donna Timms
 Joan A. Vernitte
 Marion L. Vinson
 Fred & Lydia Vogt
 John Wallach
 Helen D. Watson
 Gary G. Webbink
 Dorothy Weckl
 Dr. & Mrs. Roy Westerfeld
 John R. Westmann
 Carol Whitman
 James G. Wiehl
 Herman H. Willbrand
 Wendell Williams
 Hairl Wilson
 Eugene H. Wyner
 Toni Yeakey
 Joanne Yost
 Stanley E. Zager
 Chain H. Zimbalist

BUSINESSES & ORGANIZATIONS

*Gifts received from July 1, 1987,
to June 30, 1988.*



RENAISSANCE ASSOCIATION

\$10,000 or more

Allen P. and Josephine Green Foundation
Anheuser-Busch Charitable Trust
Brown Group
Commonwealth Trust
Emerson Electric
The Forsythe Group
General Motors Foundation
The May Department Stores Company
and its Famous-Barr and Venture
Divisions
McDonnell Douglas Foundation
MCI Telecommunications
Mid Rivers Mall (A Subsidiary of May
Company and May Centers)
Monsanto Fund
Monticello College Foundation
Norman J. Stupp Foundation
Southwestern Bell Foundation
Sycamore Tree Trust



SIBLEY ASSOCIATION

\$5,000-\$9,999.99

Arts & Education Council of St. Louis
AT&T Foundation
Boatmen's Bancshares, Inc.
Compton Foundation
Interco
Keystone Appraisers Co.
M B Valuation Services, Inc.
Mobil Foundation, Inc.
Ralston Purina
St. Charles Kiwanis (Noonday) Club
Sidney and Sylvia Souers Charitable Trust
Synod of Mid-America/Presbyterian
Church (U.S.A.)
Union Electric Trust Company



CORPORATE SPONSORS

\$2,000-\$4,999.99

Baue Funeral Homes
CBS, Inc.
Central Bancompany, Inc.
Clifford W. Gaylord Foundation
Commerce Bancshares, Inc.

The Commerce Foundation
CONTEL
Corroon and Black of Missouri Inc.
Gannett Foundation
Gundaker Realtors
HBD Contracting
Jordan Charitable Foundation
Joseph Anthony Beirne Memorial
Foundation
Kerlick, Switzer & Johnson Advertising
Kurtz Concrete
Landmark Bancshares Corp.
Mallinckrodt Fund, Inc.
Maritz, Inc.
Mercantile Bancorporation, Inc.
Parsons Blewett Memorial Fund
Rauch Lumber
St. Charles Quarry
Slay Industries, Inc.
Troy Presbyterian Church



BOARD OF ASSOCIATES

\$1,200-\$1,999.99

D'Arcy Masius Benton & Bowles-St. Louis
Gardner Advertising
Lang & Smith Group
Marine Corps Scholarship Foundation
Pundmann Motor Company
St. Charles Lions Club
Sears Roebuck & Co.
Two/Ten Charity Trust, Inc.



PRESIDENT'S CLUB

\$500-\$1,199.99

Alan Company
American Appraisal Espana
Beaumont Graphics, Ltd.
Calgon Commercial Division & Calgon Vestal
Laboratories
Citizens' Scholarship Foundation of America
Clark Sprague & Wellington
Collins Miller Hutchings
Deloitte Haskins & Sells
Dickherber Electric
Direct Mail Corp. of America
Eastman Advertising, Inc.
Ernst & Whinney
First State Bank
Fort Zumwalt Driver's Fund
Germantown Area Jaycees
Gray & Ritter
Grey Eagle Distributors
Harbour Group Ltd.
Honeywell
Industrial Development Company-St. Charles
Kiwanis Club of Charleston
KPL Gas Service
Krey Distributing Company

BUSINESSES & ORGANIZATIONS

*Gifts received from July 1, 1987,
to June 30, 1988.*

Laclede Gas Company
Mark Twain Bancshares, Inc.
Martin Marietta Foundation
McBride & Sons
Meyer Real Estate Co.
Nashville Fire Fighters Association
Nationwide Advertising Service
Pickett, Ray and Silver
Pulitzer Publishing Company
Rebbe (J. G.) & Associates
St. Charles Rotary Club
St. Charles Metal Finishing
St. Charles Federated Women's Club
Schaefer Insurance Services
Scholin Brothers Printing
Schwartz & Associates
Scottish Rite Foundation of Missouri
Shelter Insurance Foundation
Steelweld Equipment Co.
Thro's and Michelle's
United States Coast Guard
VFW; Orchard Farm Memorial Post
Wednesday Club of Eureka M.F.W.C.
Wetterau Inc.
Williams Companies Foundation, Inc.



GOLD LINKS CLUB

\$300-\$499.99

American Scientific Products
Bank of St. Charles County
Charles W. Frees, Jr., Educational Fund
Dairy Queen
F. F. Kirchner, Inc.
Fort Zumwalt School District R-2
Highland View Baptist Church
Immanuel United Church of Christ
J.C. Penney Company, Inc.
Jerry Kelly Heating & Air Conditioning
KTVI-TV Channel 2 (Times Mirror)
Mercantile Bank of St. Charles County
Mid-Towne IGA
Millstone Foundation
Missouri Cities Water Company
Missouri Colleges Fund
St. Charles Eye Center
St. Charles Gas Company
St. Charles Golf Course
St. Charles Memorial Gardens
St. Charles Transit Company
Soil Consultants, Inc.
Southern Products Co.
Tobey Fine Papers



FOUNDER'S CLUB

\$160-\$299.99

Adamson Advertising
Airwick Industries, Inc.
Bartels & Carstens, Inc.
Booe's Place
Bruce Terminex Service
Bryant Group, Inc.
Centerre Bank-St. Peters
Coldwell Banker
Community Title Co.

The Composing Room, Inc.
D/A Graphics, Incorporated
Didion & Sons Foundry
Family Medical Group
Fee Fee Baptist Church
Finnigan Electronics Inc.
Futura Financial Group
G.B.I. Inc.
Garlich Printing Company
GBS Communications, Inc.
GFWC of Missouri, Inc.
Hackmann Lumber Company
Handley Heating & Cooling
J. R. Mentel & Associates, Inc.
Jefferson Printing Company
Kiwanis Club of Clayton and University City
KMOV-TV Channel 4
Landmark Bank of St. Charles
Mansion House Center
Nooter Corp.
Owen Companies
Pio's Restaurant
Robert R. Thornhill & Associates
St. Charles Insurance Agency
St. Charles Jaycees
St. Charles Journal
St. Charles Anesthesia Group
St. Joseph Health Center
St. Louis Labor Council
Stan Gellman Graphic Design
Schmidt Brick and Stone
Thoele Oil Company
Thoma Paving Company
Valle High School
Valuation Counselors, Inc.
Worldwide Underwriters Insurance Co.



CENTURY CLUB

\$100-\$159.99

Clarion Hotel Corporation
Color Art
Colton/Lester Corporation
Community Federal Savings
Covilli-Sasso Supper Club
Cuckoo's Nest
DNI Properties, Inc.
First United Presbyterian Church
General Motors Corporation-Wentzville
Assembly Center
Hoffmann Insurance Agency
Koetting Associates
Kwik Kover Manufacturing
Lindenwood College Community
Markit Productions, Inc.
Mega Bank of St. Charles
Missouri Area Bluegrass Committee
Moog Automotive
Mr. Steak Restaurants
Mutual Fire Insurance Company
National Auto Supply Company
Noah's Ark Restaurant
Patt Holt Singers, Inc.
Purler-Cannon-Schulte, Inc.
Rauch Truck Lines, Inc.
REJ Investments, Inc.
Rothman Furniture Stores
St. Charles Foreign Car
St. Charles Theatre Guild
St. Nicholas Greek Orthodox Church
U.S. Marine Corps
Want Ads of St. Charles
Witte Brothers Exchange

LINDENWOOD COLLEGE BOARD OF DIRECTORS



EXECUTIVE COMMITTEE

Robert F. Hyland
Chairman
Senior Vice President
CBS Radio, Inc., and
General Manager
KMOX-AM and KHTR-FM

Walter L. Metcalfe, Jr.
Vice Chairman
Senior Partner
Bryan, Cave, McPheeters
& McRoberts

Clayton E. Wilhite
College Development Chairman
Chief Executive/Managing Director
D'Arcy Masius Benton &
Bowles-St. Louis

John C. Hannegan
Secretary
Attorney
Thompson & Mitchell

Henry J. Elmendorf
Treasurer
Secretary-Treasurer
Meagher Chevrolet

Raymond W. Harmon
Assistant Treasurer
President
Hasco International, Inc.

S. Lee Kling
Chairman of the Board
Landmark Bancshares Corp.

David A. Wilhelm
President
The Forsythe Group



MEMBERS

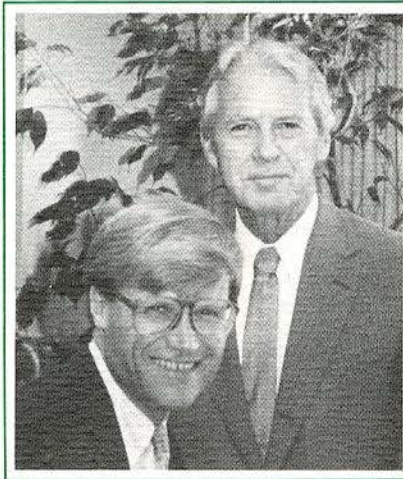
The Honorable Patricia P. Bailey
Commissioner
Federal Trade Commission

Richard L. Battram
Vice Chairman
May Company

Judith Batton Brougham
Alumna

Rev. Robert R. Collins
Minister
First Presbyterian Church of
Mexico, MO

Harold J. Corbett
Senior Vice President
Monsanto Company



Clayton Wilhite
College Development
Chairman

Robert Hyland
Chairman of the
Board of Directors

"Excitement. Enthusiasm. Expertise. Those are the qualities that Clayton Wilhite brings to every project he undertakes. Those are the qualities he brought to our Lindenwood Development Campaign. The results have been outstanding. Words are inadequate to express the deep personal respect I have for his ability and my gratitude for his achievement as Development Chairman."

Robert Hyland

Gary L. Cowger
Manufacturing Manager
Cadillac Motor Division
General Motors

Jane Crider
Civic Leader

Harvey A. Friedman
President
Gothic Investment

Thomas L. Gossage
President
Hercules Specialty Chemical Company

Frank J. Harkins
President
MCI Telecommunications Corporation

Robert Kaplan
President
Kaplan Real Estate

Larry G. Kelley
President and Chief Executive Officer
Commerce Bank of St. Charles
County, N.A.

Richard A. Harris
Group President
Southwestern Bell Corporation

Robert G. McKelvey
President
McKelvey Building Company

Jefferson L. Miller
President
Outdoors, Inc.

James M. O'Flynn
President
Automobile Club of Missouri

Ron W. Ohmes
President
F.F. Kirchner, Inc.

Maurita Estes Stueck
President, Alumni Association

Kenneth W. Thompson
Director
Miller Center of Public Affairs
University of Virginia

John Tlapek
Business Entrepreneur

Dorothy DuQuoin Warner
Board Chairwoman
John Warner Bank

John D. Wolf
Executive Vice President
McDonnell Douglas Aircraft Company



LIFE MEMBERS

David Babcock

Wilhelmina Steinbeck Barton

George Brown

Arthur Goodall

Rev. W. Davidson McDowell

Nell Quinlan Reed

Gladys Stockstrom

Ruth Watkins

LINDENWOOD COLLEGE BOARD OF OVERSEERS



EXECUTIVE COMMITTEE

Ron W. Ohmes

Chairman
President
F.F. Kirchner, Inc.

Keith W. Hazelwood

Immediate Past Chairman
Thompson & Mitchell

Thomas F. Bakewell

Vice Chairman
Senior Vice President
Daughters of Charity Health
Systems, Inc.

Catherine O. Pundmann

Secretary
President
Pundmann Ford

James M. Fitz

Overseers Development Chairman
General Manager
St. Charles Gas Company

Dr. A. Roger Deppe

Superintendent
St. Charles School District

William B. Schaefer

President
Heinz-Schaefer Insurance Company

Shirley Wipfler

Civic Leader



ADVISORY COUNCIL CHAIRPERSONS

Dennis Ottolini

Performing Arts Advisory Council
Chairperson
District Manager
Union Electric

James G. Maurer

KCLC Advisory Council Chairperson
Area Manager
Southwestern Bell Telephone Co.

Corinne Richardson, J.D.

Valuation Sciences Advisory Council
Chairperson



Ron Ohmes
Chairman
Board of Overseers

Jim Fitz
Overseers
Development
Chairman

"Jim Fitz is solid as rock. People in St. Charles County know that when Jim is involved, it's an important, worthwhile project. We are fortunate to have Jim Fitz on our Lindenwood team. When he accepts a challenge the result is success."

Ron Ohmes



MEMBERS

John Fox Arnold

Senior Managing Partner
Lashly, Baer and Hamel

Jill Baue

Owner, Vice President, Secretary
Baue Funeral Homes

Rev. Rudolph Beard

Minister
First Presbyterian Church of
Jefferson City

William J. Green

Principal
Soil Consultants, Inc.

Jan R. Kniffen

Vice President & Treasurer
May Company

Audrey Kolker

Lindenwood Parent

Bill G. Lewis

Legislative Public Relations Manager
CONTEL

Tracy L. Mathis

Attorney
Thompson & Mitchell

Donald C. Morrison

Vice President-Public Affairs
Trans World Airlines, Inc.

William O. Mullins

Publisher
St. Charles Journal

Rayford Pickett

President
Pickett, Ray & Silver

Elizabeth Rauch

Civic Leader

Boyle O. Rodes

Secretary-Treasurer
Ellis-Rodes-Meers & Co.

Rabbi Alvin D. Rubin

Temple Israel

Gary N. Shaw

Senior Vice President
Dean Witter Reynolds

Robin E. Smith

Television News Announcer
KMOV-TV News 4

John M. Stephens

Vice President Marketing
St. Louis Regional Commerce
& Growth Association

Cordelia Stumberg

Civic Leader

William C. Sullivan

Vice President and Associate General
Counsel
Southwestern Bell

Melvin G. Wetter

Civic Leader



LIFE MEMBERS

Charles Boswell

Al Fleishman

Dorothy Trump

LINDENWOOD COLLEGE ALUMNI BOARD



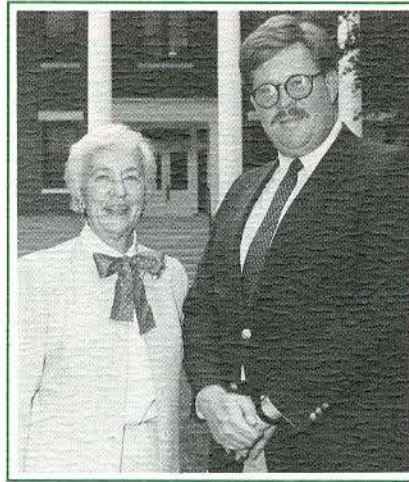
OFFICERS

Maurita Estes Stueck
President

Eric Stuhler
Vice President

Virginia Terry
Secretary

Cynthia Schiermeier Hahn
Treasurer



Ellen Duehlmeier
Barry Freese
Virginia Gender
Arminta Harness
Gerry Jacobs
Robert Maruska
Lynn Jackson McHaney
Judy Peters
Janet Lewis Riddle
Carol Kellogg Stoub
Martha Sweeney
Abigail Tuttle
Fran Metzger Weeks
Michael Wood



MEMBERS

Mary Adams
Celia Angel
Helen Bartlett
Penny Myers Bryant
Margaret Bassnett Burtin
Nancy Prosser Dietz

Maurita Stueck
President,
Lindenwood
Alumni Association

Barry Freese
Alumni
Development
Chairman

"Barry Freese is a young, enthusiastic alumnus and we appreciate his willingness to commit his time and energy to Lindenwood."

Maurita Stueck

LIFE MEMBERS

Wilhelmina Steinbeck Barton
Barbara Ringer Hamill
Nell Quinlan Reed



AMBASSADORS

These extraordinary Lindenwood College volunteers serve as ambassadors on various campaigns and efforts throughout the year. On behalf of the college, we commend their outstanding performances in support of Lindenwood. The Ambassadors are not currently members of one of the Lindenwood College boards.

James Abernathy
Todd Abrams
Sam R. Acquisto
Jamye Allen
Mary Ambler
Joe Ancona
Jamie Anderson
Connie Angle
Jim Baker
Howard Barnett
Edward C. Barnidge, Jr.
Richard Barteau
Rudy Beck
Robert Belden
Chris Biddlecombe
Dan R. Bishop
Colette Blubaugh
James L. Bogle
Tom Brown
Jim Brakensiek
Peter Bruck

Susan Cablish
Dennis Cavanaugh
Louis Chavez
Scott S. Christenson
Barb Clemensen
Herbert D. Condie III
William Crichton
Florence Crockett
Bob Currie
Dr. Michael Curry
Wes Custer
Charles DeReimer
Nancy Dietz
Joe Donovan
Lawrence Doyle
Harold M. Eaton
Cathy Einig
Joe Einspanier
Debbie Elliott
Chris Eschen
David R. Estes
Lori Fairchild
Ken Fenoglio
Ray Fricke
Peggy Fritz
Bob Fulstone
Renee Gilkey
Larry Glynn
James Goggan
Jamye Hallemeier
Irene Hettich
Corinne Hill
Irene Hindman
Jim Hodges
Dr. James Hood
Terri Horn
Bernice Hugeback
Joe H. Hunt

Clarence Jabusch
Gerry Jacobs
Damita Jeffery
Darlene Jemison
Esther Johnson
Rose Kasper
Maisie Keeser
Arlene Kellogg
Gray Kerrick
Therese Kienstra
Ken Kilgore
Otto A. Klingler
Fritzie Knoblauch
Barbara Koenig
Ron Lawler
Ed Layton
Jeffrey Leeka
Joseph A. Leister
Chuck Long
Rita Luddon
Judy Ludwig
Rev. Richard Maddox
Marie Marchetti
Donald McCormick
Pete Mihelich
Ken Mihill
Nancy Miller
Don Moxley
Jeanne Mudd
Marty Neuman
Rose Neyland
John Nichols
Ruth Noblitt
Ed Olschansky
Joanne O'Keefe
Carolyn Oliver
Anne Pals
Ronald J. Parido

James J. Porcarelli
Joyce Porter
Ed Pundmann
James Rau
Joseph Renda
Richard Rickert
Leonard Ries
Paul Roth
Mary Eileen Rufkahr
Ron Saettele
Mabel Salfen
Hershel Sams
Ray Schaberg
Glenda Schaefer
Sally Schaefer
Jerome B. Sexton
Sharon Smith
Jeri Stine
Greg Sullentrup
Martha Sweeney
C. William Taylor
Jack Taylor
Glenda Terschluse
Pamela Thompson
Walt Thompson
Glenn Tintera
Elizabeth Towns
Kay Watts
John Wehmer
Wally Weik
Albert Westover
Norma Wilder
Richard J. Williams
Nancy Wollbrink
Michael Wood
Ruth Zeisler
Jean Zerr

Lindenwood College
is proud to provide its
donors with an opportunity
to honor friends and loved
ones through the memorial
and honorarium programs.



LINDENWOOD
COLLEGE

LINDENWOOD COLLEGE MEMORIALS AND HONORARIUMS FROM 1987-88 BOOK OF HONOR

MEMORIALS

In Memory of:
Mrs. Eileen Arand
Donor:
Dr. James I. Spainhower

In Memory of:
Sam Bader
Donor:
Mr. S. Lee Kling

In Memory of:
David C. Baue
Donors:
Mr. Thomas F. Bakewell
Eric & Janet Dulka
Mr. Ronald Ohmes
Mrs. Catherine O. Pundmann

In Memory of:
Lula Clayton Beale
Donors:
Mrs. Carolyn C. Bloebaum
Miss Jane E. Cooper
Mrs. Eva Emory
Miss Hazel Fuller
Mrs. Barbara L. Hamill
Mrs. Patricia B. Smith
Dr. James I. Spainhower
Mrs. Mary Lou Stehr

In Memory of:
Mr. R. O. "Bud" Bean
Donors:
Mr. Chris & Mrs. Phyllis Morris

In Memory of:
Margaret Berquist
Donors:
The Lindenwood College
Development Office Staff
& Students
Dr. James I. Spainhower

In Memory of:
Martha Boyer
Donors:
Miss Charlotte Nolan
Ms. Mary Talbot

In Memory of:
James Bryant
Donor:
Mrs. Mildred E. Denning

In Memory of:
Wally Buehring
Donor:
Mr. S. Lee Kling

In Memory of:
Patricia B. Burton
Donors:
Mr. Burton & Ms. Helaine
Fendelman
Fine Arts Appraisal Service
Mr. Alan Iannicco
Mr. Howard I. Jensen
Ms. Elizabeth Markus
Mid-Missouri Appraisal Service
Mr. Richard Rickert
Ms. Nancy A. Smith
Mrs. Beverly B. Spatz
Ms. Virginia V. Van Rees

In Memory of:
Francis Calandro
Donor:
Dr. James I. Spainhower

In Memory of:
Cindy Bjerkestrand Carmichael
Donor:
Mr. James D. Thompson

In Memory of:
John W. Craig
Donor:
Mr. & Mrs. John Spainhower

In Memory of:
Myrtle Frances Craig
Donor:
Mr. & Mrs. John Spainhower

In Memory of:
Dr. Thomas William Doherty
Donors:
Mr. & Mrs. Stephen E.
Blackhurst
Mrs. Bonnie Bogden-Roberts
Miss Jane E. Cooper
Mrs. Jane A. Crider
Mrs. Christiane Doherty
Mrs. Anne C. Khosropour
Mrs. Karen J. Smith
Dr. James I. Spainhower
Lloyd & Jeannine Thompson
Mrs. Helen D. Watson

In Memory of:
Terrence Findysz
Donor:
M B Valuation Services Inc.

In Memory of:
Nannie S. Goodall
Donor:
Mr. Arthur S. Goodall

In Memory of:
Carol Gray
Donor:
Dr. James I. Spainhower

In Memory of:
Jean Elizabeth Hale
Donor:
Mr. & Mrs. C. R. Hale

In Memory of:
Dr. Lloyd B. Harmon
Donors:
Mr. Raymond W. Harmon
Ms. Jeanne Harmon Huesemann

In Memory of:
Mr. Leon Howell
Donors:
Mrs. Mary Jo & Mr. Jim
Vaillancourt

In Memory of:
Douglas Hume
Donor:
Miss Charlotte J. Nolan

In Memory of:
Gertrude Isidor
Donor:
Mrs. Rosemary Baue

In Memory of:
Betty Forbes Cameron Johnson
Donor:
Mrs. Carin Chapman West

In Memory of:
Scott Johnson
Donor:
Mr. S. Lee Kling

In Memory of:
Dorothy S. Koderhandt
Donor:
Ms. Carol S. Hoffmeyer

In Memory of:
Mr. & Mrs. Kopler
Donor:
Dr. James I. Spainhower

In Memory of:
Cora Latzer
Donors:
Mrs. Maurita Estes Stueck
Jim & Pam Thompson

In Memory of:
James Magee
Donors:
Mr. & Mrs. James Magee
Ms. Ruth A. Magee

In Memory of:
Hettie Magee
Donors:
Mr. & Mrs. Marion L. Strohman

In Memory of:
Morton Mallory, Sr.
Donor:
Dr. James I. Spainhower

In Memory of:
Harold McDonald
Donors:
Mr. Hans & Mrs. Valerie Levi

In Memory of:
Mr. Roswell Messing
Donor:
Mr. S. Lee Kling

In Memory of:
Bayliss Moncure
Donors:
Mr. & Mrs. Fred H. Vogt

In Memory of:
Robert Mulock
Donors:
Mr. Vincent T. Brescia
Mr. John F. Dooley
Mr. Barry W. Freese
Mr. Stephen L. Hoelscher

In Memory of:
Alice Parker
Donor:
Miss Helen M. Parks

In Memory of:
Mr. & Mrs. H. B. DelosReyes
Donors:
Mr. & Mrs. David L. Kirkland

In Memory of:
Mary Helen St. Clair
Donor:
Miss Jean F. Anderson

In Memory of:
Ervin Schlesinger
Donor:
Hans & Valerie Levi

In Memory of:
Helen Schmidt
Donor:
Mr. Steven Schmidt

In Memory of:
Susie Sellenschuetter
Donor:
Dr. James I. Spainhower

In Memory of:
Mark Shelp
Donor:
Dr. James I. Spainhower

In Memory of:
Rachel Stalnaker
Donor:
Dr. James I. Spainhower

In Memory of:
Mrs. Helen Steanson
Donors:
Lindenwood College Community

In Memory of:
Ethel Thomas
Donors:
Ms. Delena Lacey
Ms. Betty Kirkhart
Ms. Maureen Kuhn
Ms. Carolyn Shelton
Ms. Marty Waddington
Ms. Avis Whitaker
Mr. J. Curtis Whitaker

In Memory of:
Lillian Trump
Donors:
The Lindenwood College Family
Mrs. Catherine O. Pundmann
Dr. James I. Spainhower
Jim & Pam Thompson

In Memory of:
Dave Weil
Donor:
Mrs. Polly A. Shlosman

In Memory of:
Mary Elizabeth Yonker
Donors:
Ms. Diane Dicke
Mr. Howard T. and Mrs. Ruth B.
Heintz

In Memory of:
Gloria Stunkel Young
Donors:
Mrs. Harriet L. Luchtman
Mrs. Marian Spraugue

In Memory of:
Joanne Shroba Wehner
Donors:
Mr. & Mrs. Joseph W. Shroba
Jim & Pam Thompson

In Memory of:
Mr. Edward Zacheis
Donor:
Dr. James I. Spainhower

In Memory of:
Ruth Pointer Zager
Donor:
Mr. Stanley E. Zager

HONORARIUMS

In Honor of:
Sarah Pauline Bloom
Donor:
Mrs. April Center Bloom

In Honor of:
Ligaya Kirkland
Donor:
Mr. David L. Kirkland

In Honor of:
Mrs. Mabel G. Salfen
Donors:
Mrs. Billie S. Douglas
Mrs. Paulette Salfen
Mrs. Susanne K. Salfen

In Honor of:
Jane Schott
Donor:
Mrs. Maurita Estes Stueck

In Honor of:
Dr. Mary Talbot
Donor:
Miss Jane E. Cooper

Gifts received 7/1/87 through 6/30/88



Lindenwood College
proudly commemorates
this year's Annual Report
to a generous and loyal
corporate partner, the
Southwestern Bell
Corporation.



Lindenwood College has been blessed with many friendships for over 160 years. In 1988, one of the College's closest and oldest corporate friends has provided its people, resources and renewed dedication with an unfailing generosity of spirit and loyalty.

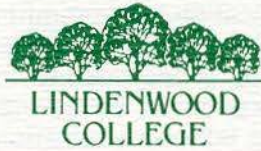
In appreciation of enthusiastic leadership, dedication and commitment, this Annual Report, the "Challenge of Stewardship," is dedicated to Southwestern Bell Corporation, an international leader in the telecommunications and services industry.

Over the years, a number of Southwestern Bell executives have inscribed their names on the Lindenwood scroll of honor in perpetuity. In modern times, *John Black* was an inspired chair of the College's Board of Directors and a loyal supporter. *Joe Hunt*, an influential member of the Board's Executive Committee, has had a major impact in the Renaissance of Lindenwood College. The dynamic *Rich Harris* has now taken the reins of friendship which span the decades.

The entire college family salutes Southwestern Bell's family of dedicated professionals who are committed to meeting the Challenges of Stewardship for the Renaissance of Lindenwood College.



**Southwestern Bell
Corporation**



Names listed in this Annual Report for the 1987-88 Lindenwood 1,000 Donor Clubs are based on donations received from July 1, 1987, through June 30, 1988. Due to occasional computer or human error, we apologize for any name omission or misspelling. Please send any corrections to the Development Office, Lindenwood College, St. Charles, MO 63301.

Lindenwood College's 1988 Annual Report is a project of the College Relations Division in cooperation with D'Arcy Masius Benton & Bowles-St. Louis. A limited number of free copies are available upon request by contacting Jim Thompson, Lindenwood College, First Capitol & Kingshighway, St. Charles, MO 63301. The college invites your comments and suggestions concerning this publication. On behalf of Lindenwood, we hope you will continue to contribute your ideas and support. Thank you!

