

LINDENWOOD  
COLLEGE

FRESHMAN  
HANDBOOK



1956-1957

## IDENTIFICATION

Name .....

Residence Hall .....

Home Address .....

.....

Class .....

If this book is lost, please return it.

It is my Lindenwood guide!

## CONTENTS

	<i>Page</i>
I. WELCOME: Dr. Franc L. McCluer, President . . .	3
II. TRADITIONS AND CUSTOMS	
Traditions and Customs . . . . .	6-8
Songs . . . . .	9-14
III. LINDENWOOD COLLEGE STUDENT ASSOCIATION	
Welcome Freshmen! . . . . .	15
Student Government at Lindenwood . . . . .	16-17
Student Council . . . . .	18
Organizational Chart . . . . .	18
IV. THE HONOR BOARD	
Welcome: Chairman of the Honor Board . . . . .	19
The Honor System: Questions and Answers . . . . .	20-21
V. STUDENT COUNSELING OF FRESHMEN	
Welcome from the Freshman Counselor . . . . .	22
A Word to the Wise: Helpful Hints . . . . .	23-24
VI. STUDENT CHRISTIAN ASSOCIATION	
Welcome from the President . . . . .	25
The S. C. A. . . . .	26
Religious Life and Services . . . . .	27
VII. ACADEMIC AND PERSONNEL SERVICES	
Greetings from the Dean of the College . . . . .	28-29
A Word from the Director of Guidance . . . . .	30
The Health Center . . . . .	31
VIII. STUDENT ACTIVITIES	
Activities and Organizations . . . . .	32-35
Point System . . . . .	36
Eligibility . . . . .	37
Student Activities Budget Committee . . . . .	37
The Social Program . . . . .	37
IX. PLACES YOU WILL WANT TO FIND	
Buildings and places on the campus . . . . .	38-42
St. Charles Churches . . . . .	43
Taxicab Service . . . . .	43
St. Louis: Places of Interest . . . . .	44
St. Louis: Restaurants, Theaters, Stores . . . . .	44-46



PRESIDENT FRANC L. McCLUER  
Lindenwood College

## WELCOME!

To the Lindenwood students a hearty welcome! With the rich tradition of one hundred and twenty-nine years and with excellent equipment and a distinguished teaching staff, your college is ready to serve your best interests. You will take your place in a splendid student body and in a friendly college community.

In recreation and in study, in work and in worship, in strengthening friendships that shall abide, you will find at Lindenwood College the joy of satisfying achievement. With pride in the college and with confidence in you, I express the hope that every day will be a happy and significant one for you.

Mrs. McCluer and I are eager to greet each of you in our home on the campus.

F. L. McCLUER

CLASS OF 1960  
LINDENWOOD  
WELCOMES  
YOU!!

# *Traditions*



*and*

# *Customs*



## Traditions and Customs

Hello! And welcome to Lindenwood. We're glad that you've come and we know that you'll enjoy your stay here. So that we can all get to know you, school tradition calls for several little gatherings during the first weeks of school. There'll be a hot dog barbecue, served by the men on campus, pajama parties in your dorm, a street supper, and a hillside sing. Your new outfits will be the thing for the President's reception, but be sure to bring along jeans just for the street suppers.

When October comes, Lindenwood ladies kick off their heels and settle down to classes, field trips and the college picnics. But don't pack away your formals — the year is just beginning. October brings not only falling leaves to be classified, but also the Student Council dance. Hallowe'en finds all Lindenwood shivering outside Sibley Chapel, awaiting the twelve o'clock haunting of Mrs. Sibley's ghost. After a ghostly concert on the Sibley organ, Mrs. Sibley retires to the graveyard and Lindenwood to the gym where the Student Council party is going on.

November at Lindenwood means hockey games, weekend trips to nearby universities (where male and football interests may be satisfied), and the fall play. The first days of the month are spot-lighted by the Freshman Harvest Court whose queen is crowned before guests at an all campus formal dance. In what seems like only two weeks from the first day of classes, it's Thanksgiving Day and diets are thrown to the winds for Lindenwood's dinner. Shortly after Thanksgiving, the silence of the first snowfall is shattered by the agonized screams of those hit by flying snowballs.

The Christmas season at Lindenwood means more than just shopping trips into St. Louis and dorms lighted by colored lights. Lindenwood girls dress dolls and send them, with other toys, to the Markham Memorial Settlement House in St. Louis. As soon as fingers have recovered from pin-pricks sufficiently to hold a pen, letters go out



with invitations to the Christmas Ball. The Lindenwood family has its Christmas dinner party and there are mid-night dorm parties. On the night of our departure, candle-light carollers of the Sophomore Class send "Silent Night" floating through the snowy night.

It may seem hard for you to leave home again after vacation, but never fear—the new year at Lindenwood brings more fun than finals. Study *is* in order before we begin the new semester, but you'll forget your worries for a while when you're at the A.A. Barn Dance. (Drowning all thoughts of that horrible English exam in cider is a good idea). And then, first thing you know, the week is over and you're laughing at your fears.

February is a busy month at L. C. The post office staff is working overtime in an effort to get that candy in your box by Valentine's Day and the florists' trucks come up the drive all day long with long, red roses for you. There's a Romeo to be chosen for the Linden Bark contest, so be sure to bring the best picture of "that man" back with you in January. Winter clothes are still in vogue for February but somehow, there's a touch of spring in the dresses you'll wear to the Sweetheart Ball. We have a Valentine Queen too—a member of the Sophomore class who'll be crowned with her court at the dance. And right after this, the Sophomores will be moaning softly over tests, but don't worry, they're not for you. February brings Religious Emphasis week too, and Lindenwood, with the help of distinguished speakers, turns to an evaluation of itself and its place as a Christian College.

You'll know when the Ides of March hit . . . the faculty members pale and shake whenever a member of Press Club goes by. It's time for the annual Gridiron Dinner and usually brave professors quail before the prospect of the sadistic student laughter that will ring in their ears at the Gridiron's portrayal of faculty life.

April brings new outfits, Easter, and Spring vacation. Terrapin presents a colorful water pageant and students in clothing design, spurred on by the warm Missouri

Spring, practice modeling their creations for the fashion show. Juniors and Seniors will be modeling too, but it will be the formals they are wearing to the Junior-Senior Prom.

In May we have picnics at the ovens and all go out for a Play Day. Summer tans may be had, medium, rare, or well done on Cobbs sundeck. But leave room for the Juniors and Seniors — they've got to have a good tan to show off their white dresses on Pin Day. And perhaps you'll be willed something by your Senior friends. They're willing away part of their possessions on Will Day, you know. Things will come fast and furiously this month. Parents' weekend, the May Fete, and the Lindenwood Horse Show provide a whirl of fun for the climax of your year. Then, its Baccalaureate with the academic procession and, the next day, weather permitting, the traditional Commencement procession of the Lindenwood Seniors down from Sibley Hall to their graduation on the lawn.

The year is over. You'll hate to leave your friends, but your trunks are packed, and summer will provide many a tale to be told while you're unpacking next fall.

# Lindenwood College Songs

## O LINDENWOOD

O Lindenwood to you we sing  
Our Alma Mater dear.  
For in the years you'll hear our cheers,  
Forgetfulness ne'er fear  
And when we go out in the world,  
Our love for you will be unfurl'd.  
O Lindenwood, we are so true,  
For always we'll love you.

## REMEMBER

*(Senior Class Song)*

Remember the days you've spent here,  
Remember when you're away,  
Remember the friends you've made here  
And don't forget to come back some day;  
Remember the old traditions  
And promise to be true.  
For you all belong to Lindenwood  
And Lindenwood belongs to you!

## LINDENWOOD PEP SONG

Give a cheer to Lindenwood  
And may she ever be  
Great — for those who sing her praises  
Bound by loyalty.  
Rah! L. C.  
Raise the flag of gold and white  
And we will win her fame  
Proud to hail our alma mater  
Lindenwood acclaim.

## FRESHMAN SONG

Hey hi – hey ho,  
Here are the freshmen you should know,  
Let our mirth and gladness,  
Banish all your sadness.

Hey hi – hey ho,  
You'll know us where'er you go!  
And there's no question of whether  
We'll always stand together  
We'll quaff a stein for auld lang syne.

## SENIOR SONG

1957

Raise your voices and sing forever after  
Shout to the rafters in praise of '57  
Friends together, there's nothing we can't weather,  
Merry you will find us wherever we may be.  
Your halls will remind us  
Of joys left behind us  
Still loyal you'll find us  
When we are far away.  
So here's to our college, the ivy halls of knowledge,  
May Lindenwood remember the Class of '57.

Raise your glasses – we'll sing of famous classes  
None to surpass us – in fame renowned are we,  
Fortune has found us, together she has bound us;  
We shall be immortal – go down in history,  
Remember our days here,  
The friendships we hold dear;  
More cherished with each year  
When we are far away  
So here's to our college, the ivy halls of knowledge,  
May Lindenwood remember the Class of '57.

## MELODY, "ILLINOIS' LOYALTY"

We're loyal to you, Lindenwood;  
We're yellow and white, Lindenwood,  
We know you can stand  
'Gainst the best in the land,  
For your standard is grand, Lindenwood,  
Rah! Rah!

Then, on with your work, Lindenwood;  
Not one girl will shirk, Lindenwood.  
Our school is our greatest pleasure;  
On girls, with great endeavor;  
Three cheers for New Lindenwood!  
Cha he! Cha ha! — Che he! ha! ha!  
Lindenwood, Lindenwood, Rah! Rah! Rah!

## LINDENWOOD ALMA MATER SONG

Lindenwood, our Alma Mater  
We will stand by the,  
We will fight and fail you never to eternity.  
We will love you until the end,  
You know that it's you we'll defend  
So, hail, hail, the gang's all here,  
And we're loyal to you L. C. (1)

Always forward  
We'll be on top.  
Always forward  
We will never stop  
Hit 'em high, hit 'em low  
Come on L. C. — let's go —  
(Repeat to 1.)

## LINDENWOOD FOREVER

*(Tune Yankee Doodle)*

For her we'll fight  
For her we'll stand  
For her we will endeavor  
Of all the colleges in the land  
It's Lindenwood forever.

It isn't Wellesley or Bryn Mawr  
It isn't Smith, no never  
Of all the colleges in the land  
It's Lindenwood forever.

## BUTLER DORM SONG

We're a grand old gang,  
And together we'll hang  
From the moment of judgment day,  
From the lone star state,  
To the golden gate,  
New Orleans to old Broadway.  
Still our harps have strings  
And were sprouting our wings,  
Let the other halls all go hang,  
Of all the rest, we are the best,  
Keep your eye on the Butler gang,  
Rah rah rah . . . Which hall is best  
Rah rah rah . . . Which hall is best  
Rah rah rah . . . Which hall is best  
Of all the halls,  
We are the best, Hey,  
We are the best, Hey,  
Girls of Butler Hall.



### NICCOLLS HALL

Stand up and cheer,  
Cheer loud and long for dear old Niccolls.  
For today we'll say  
That Niccolls Hall's above all others.  
The peppy halls now are ringing,  
With laughter, song, and cheer  
We got the girls, rah, rah!  
We got the boys, hah, hah!  
Hurray for Niccolls Hall.

### COBBS HALL

When to Lindenwood we finally came,  
We all knew to live in Cobbs would be our aim.  
Cobbs Hall has the pep, Cobbs Hall has the rep,  
And to fame we'll always make a claim.  
So give a rousing cheer for our great hall  
You all know the Cobbs is far above them all,  
And we'll always be, known to history,  
As the hall that has the mostest on the ball.

### AYRES HALL

Oh I've lived on the earth  
And I've lived in the world  
But I never thought of the gates of pearl  
But when I got there in the dead of night  
Everything there was gold and white.  
St. Peter saw me and he confessed  
I see, my dears, you're one of the best.  
So put up your sails and sail right through  
Cause Mrs. St. Peter lived in Ayres Hall, too!

## IRWIN HALL

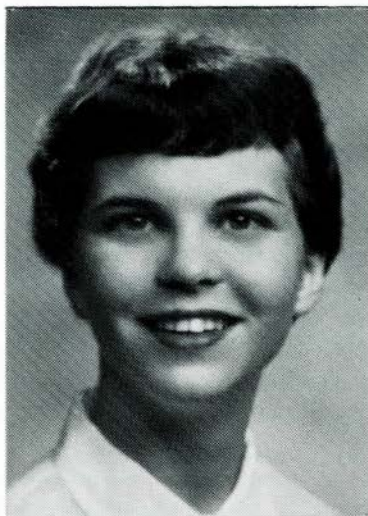
Now every Irwin girl is really neat,  
And just to look at her is quite a treat,  
She's got the style, the smile, that winning way,  
And when you look at her,  
You'll recognize her and you'll say,  
Now there's a girl I'd like to know,  
She's got that good old Irwin pep and go,  
And just to look at her is quite a treat,  
It's hard to beat, an Irwin girl.

## SIBLEY HALL

We are from Sibley  
Sibley are we  
We never lose our pep-ability  
Rah, Rah, Rah  
We do our best  
To help the rest  
We are the Sibley girls.



*Lindenwood College  
Student Association*



To the Class of 1960!

We are looking forward to meeting you and to your becoming an integral part of our campus. One of the most important parts of a college is the student body. We welcome you into sharing the companionships, the responsibilities, and the ideals of Lindenwood's student population. Many of the friendships you will make here will continue even after your college years are completed.

We are also privileged in being able to govern ourselves. The Student Council not only shares officially in guiding campus life, but it also assumes a social function – in that it sponsors a variety of social activities, from impromptu parties to formal dances.

The students of Lindenwood are fortunate in being able to live under the Honor System – which originated in the belief of the students, as well as the faculty and administration, in the personal integrity of the individual. With the help of each one of you we hope to maintain and further the high standards achieved in past years.

We will be expecting you September 9.

GWEN RYTER

*President, Lindenwood College Student Association*

# Lindenwood College Student Association

Student government, and the active participation of every student at Lindenwood in that government, is an integral part of college life. While this Association has a very immediate effect on the campus, the long-range purpose of any student government is to develop in those students who live under it a better fitness for a mature and responsible role in adult life. It was with this purpose in mind that the Student Council was established.

The Student Council of Lindenwood College is composed of representative students who constitute the governing group of the student body. They legislate on all matters pertaining to the social regulations of community life, subject to the approval by the Administrative Committee. The Student Council meets on Monday evening and any member of the student body is welcome to attend.

Each student upon entrance becomes a member of the Lindenwood College Student Association. By virtue of this fact, she accepts both the privilege and the obligation of self government. It is only when each student realizes that she plays a role in the government of her college that this form of self-rule can be representative and effective.

Student participation and cooperation is shown by means of the following:

1. By keeping in touch with her student council representative. It is only through such contact that the members of the Student Council can actively represent the student body.
2. By making use of the suggestion box in Cobbs Lounge.
3. By serving on Student Council committees.
4. By attending Tuesday morning Student Assembly. Students are held responsible for all information given out at that time.
5. By knowing and keeping the regulations of the community.
6. By maintaining the standard of behavior in keeping with the reputation and ideal of the college.
7. By developing attitudes of self-discipline, self-respect and consideration for others.
8. By cooperating to the fullest extent with the duly constituted Hall Officers in the regulating and maintaining student self-government in the dormitories.

The College is a community of friends working together for a common purpose — the all-around education of its members. The student officers, elected by their fellows because they respect and trust them, are always ready to help with any problem. If you need help for yourself or for others, you should seek such aid with confidence in their sincere interest and sympathetic understanding.

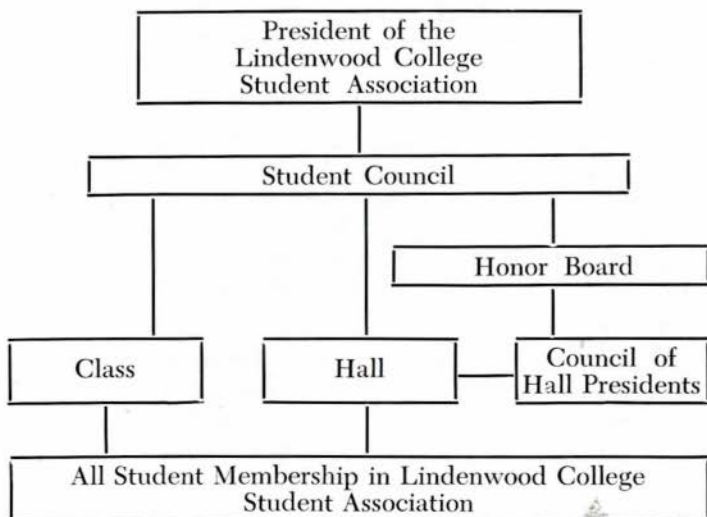
Our Honor System is the codification of the basic questions of honesty. A Lindenwood girl is expected to base her life on truth and to so encourage and help her fellow students. Each girl must feel a responsibility for the welfare of the college community as well as for her own personal conduct.

## MEMBERS OF THE STUDENT COUNCIL

(as elected in May 1956)

<i>President</i> .....	Gwen Ryter
<i>Vice-President</i> .....	Tillie Micheletto
<i>Secretary-Treasurer</i> .....	Carol Gardner
<i>Freshman Counselor</i> .....	Cynthia Coatsworth
<i>Senior Class Representative</i> .....	Carol Ratjen
<i>Junior Class Representative</i> .....	Betty Miller
<i>Sophomore Class Representative</i> .....	Diane Stanley

## ORGANIZATION CHART



## *The Honor Board*



An earnest welcome to all of you!

We here at Lindenwood are sincerely proud of our Honor System: one of the most important principles of our community. We feel we are privileged to have an opportunity to live in honor and faith together, in a liberty which originates in a belief in our own integrity as well as that of others.

As you enter the life of Lindenwood, you take upon yourself the worthy obligation of maintaining our Honor Code. We expect you to live in agreement with it happily and cooperatively, and to aspire, as we do, to sustain its quality — for its effectiveness depends on each individual and her relationships, in truth, with others.

Yours in fellowship,

ELLEN DEVLIN

*Chairman, Honor Board*

## THE HONOR SYSTEM: What is it?

Q. WHAT IS THE PURPOSE OF AN HONOR SYSTEM?

- A. The Honor System, by calling forth the cooperation and support of each individual, should
1. Develop a sense of personal integrity.
  2. Encourage individual and group responsibility.
  3. Create an atmosphere of trust.
  4. Foster cooperation among students, faculty, and administration.

Q. DOES THE ADOPTION OF AN HONOR SYSTEM REDUCE CHEATING IN THE CLASSROOM?

- A. This is not the *primary* purpose behind adopting the Honor System; however, the fact that examinations are not closely proctored and that an atmosphere of trust prevails does promote academic honesty.

Q. UNDER SUCH A SYSTEM WHAT HAPPENS IF A STUDENT IS LATE RETURNING TO CAMPUS?

- A. A student is expected and trusted to sign in correctly. It is not a violation of the Honor Code for a student to return late; however, a student who signs in incorrectly is guilty of false registration and therefore has violated the Honor Code. Unavoidable tardiness will be excused. The House Staff in each dormitory will decide if a tardiness is unavoidable, and the student's word concerning the circumstance will be trusted. Punishments for avoidable latenesses will be handled by the House Staff.

Q. IS THERE ANYONE TO "CHECK ON YOU" TO SEE IF YOU HAVE SIGNED IN CORRECTLY?

- A. No; each student is on her honor to register correctly at all times.



- Q. IS A STUDENT WHO IS AWARE OF A VIOLATION OF THE HONOR CODE GUILTY OF VIOLATING THE HONOR CODE HERSELF IF SHE DOES NOT REPORT THAT STUDENT?
- A. If we are to develop personal integrity and encourage group and individual responsibility, we cannot confine honor to the aspects that we choose or those that will be easy to follow. We are to encourage honesty in our friends. *If a student is aware of another student's violation of the Honor Code, it is her duty to ask the offender to report herself*; if the guilty student refuses, the student aware of the violation should report the violation and the offender to the proper authorities.
- Q. DOES THE HONOR SYSTEM FORBID A STUDENT'S WORKING WITH SOMEONE ON ASSIGNMENTS?
- A. The Honor System does not forbid cooperative study. But such study under the Honor System should involve only the kind of assistance that the instructor of the course would approve. Studying together should be based on *mutual* assistance and should never mean that one student does the real studying and then merely hands information to another. Copying another person's written work to hand in as one's own is a definite and serious violation of the honor code.
- Q. HOW WILL REGULATIONS NOT ENCOMPASSED BY THE HONOR CODE BE HANDLED?
- A. Infractions of such rules will be handled by the House Staffs or the Council of House Presidents.
- Q. IS ATTENDANCE AT CONVOCATION, VESPER, ASSEMBLY, AND CHAPEL A MATTER OF HONOR?
- A. No; but it is an important obligation a student owes to the college community, and attendance will therefore be checked by designated student officers.

## *Student Counseling of Freshmen*



Welcome to college and to Lindenwood!

Your experiences here will be important to you and for that reason they are also important to us. The Student Counseling Program that we have has been set up so that you will become a part of the life at Lindenwood more easily and more quickly.

I'd like to tell you a little bit about Lindenwood but I'm afraid my little would stretch into a lot and I don't have room for that. The amazing thing about college is the speed with which it goes so come prepared to pack a lifetime of friendships into your trunks at graduation.

We're all anxious to meet you and to get to know you. Lindenwood is waiting for you, so see you in September.

CYNTHIA COATSWORTH



## A Word To The Wise:

ONE OF THE FIRST PERSONS YOU WILL MEET ON THE LINDENWOOD CAMPUS WILL BE YOUR STUDENT COUNSELOR. SHE WILL HELP YOU WITH YOUR FIRST EXPERIENCES ON THE CAMPUS, SUCH AS CAMPUS TRADITIONS AND REGULATIONS.

THE FACULTY IS EAGER TO COUNSEL WITH YOU—SO GIVE THEM AN OPPORTUNITY. ALWAYS RESPOND PROMPTLY TO A NOTE FROM A FACULTY MEMBER, OR AN ADMINISTRATIVE OFFICER ASKING TO SEE YOU.

THE LINDENWOOD COLLEGE STUDENT ASSOCIATION EXISTS TO PROMOTE BETTER CITIZENSHIP ON OUR CAMPUS. ACCEPT ITS RESPONSIBILITIES AS WELL AS ITS PRIVILEGES.

WATCH THE BULLETIN BOARDS IN ROEMER HALL AND IN YOUR RESIDENCE HALL. YOU MAY SEE SOMETHING OF INTEREST THERE.

CHEWING GUM IN PUBLIC IS NEVER CONSIDERED GOOD TASTE. WE DO NOT DO IT AT LINDENWOOD.

BE SURE TO RISE WHENEVER A MEMBER OF THE FACULTY OR STAFF ENTERS A ROOM.

A FRIENDLY ATTITUDE AND A WILLINGNESS TO HELP EACH OTHER WILL CREATE A STRONG SCHOOL SPIRIT AND A SENSE OF UNITY ON CAMPUS.

AT LINDENWOOD WE BEGIN AND CLOSE ALL EVENTS ON TIME.

YOUR HEALTH IS IMPORTANT—TAKE CARE OF IT! EAT YOUR MEALS REGULARLY, GET PLENTY OF SLEEP, AND PLAY AS HARD AS YOU WORK.

BEGIN WELL! REMEMBER, POOR WORK THE FIRST WEEK IS APT TO DRAG THROUGH THE YEAR. TRY TO MAKE GOOD GRADES NOT ONLY FOR PERSONAL ADVANTAGES BUT BECAUSE THE HABIT OF DOING THINGS WELL IS A VERY GOOD HABIT.

IT IS MUCH MORE PLEASANT TO LIVE IN A CLEAN ROOM.

IF YOU SMILE, YOU WILL GO FARTHER, YOU NEVER LIKE ANYTHING UNTIL YOU TRY IT.

YOU KEEP YOUR MONEY IN YOUR OWN ROOM AT YOUR OWN RISK! DEPOSIT IT IN THE LINDENWOOD COLLEGE BANK.

WHEN LEAVING THE CAMPUS, "SIGN OUT;" WHEN RETURNING, "SIGN IN." REMEMBER YOU ACTIVELY REPRESENT LINDENWOOD WHEREVER YOU GO AND WHATEVER YOU DO!

## *Student Christian Association*



Your Lindenwood family sends to you its welcome as you join us.

As each of us prepares for this new phase of growth, we should be aware of the general areas in which this year at Lindenwood will broaden our outlooks. I see three principle realms of challenge to be met — social, intellectual, and spiritual.

Spiritually each of us will enter a new phase of witnessing to our Christian faith. The Student Christian Association, of which each of you is a member by being enrolled in Lindenwood, is a part of campus life whose purpose is helping each of us grow into a living relationship with Jesus Christ through worship, study, and recreation. We are all searching together as a group of young Christian women for the real meaning in life, so we welcome you to our fellowship.

Until we meet in the fall, I wish to each of you God-speed in all your preparations for the year to come. I am looking forward to knowing you personally.

Sincerely,

CAROL KELLOGG  
*President S.C.A.*

# Lindenwood College

## Student Christian Association

The Student Christian Association aids the individual student in realizing a full and creative life through a growing knowledge and understanding of God.

Every member of the Lindenwood student body is by fact of her enrollment a member of the Christian Association.

When a student joins the Student Christian Association she joins a dynamic, vital campus fellowship which is affiliated with not only the National and International Y.W.C.A., but also the World's Student Christian Association.

The campus Association sponsors Religion and Life Week, The World University Service Fund, Markham Memorial drives and parties, Association Conferences, and all-school parties. During the first semester Freshman fellowship and all-school fellowship Groups are established, each of which is an integral part of S.C.A.

Located on the campus in a quiet place is a prayer room — not intended as a place of public assembly, but for meditation and prayer. Students are welcome to use this room at any time, and do, as representatives of all faiths will be seen there.

An over-all theme is chosen for S.C.A. each year. When it has been chosen it will be made real through addresses by ministers, missionaries, and laymen; through all school discussions; and through the lives of the individual students in their college experiences.

# Religious Life and Services

Religious education is given an important place at Lindenwood. Although the college is non-sectarian in matters of religion, it is insistent upon the knowledge of the Word of God and Christian training. Addresses are given during the year by ministers, missionaries, and laymen upon topics that will give the students a larger vision of Christian work in the world.

The pastors of St. Charles are given the names of students who express denominational preferences. Each student usually attends the church of her choice every Sunday morning. Some of our students engage in Christian service in the local churches and teach in the Sunday Schools.

## CHAPEL

ALL STUDENTS, RESIDENT OR NON-RESIDENT ATTEND THE REGULAR STUDENT CHAPEL AT WEDNESDAY NOON.

## VESPERS

All students are expected to attend Sunday evening vesper service. The College feels that there is real value in this expression of corporate worship. Outstanding ministers are brought to the college and music for these services is furnished by the college choir.

A combination of three cuts, from either Vespers or Convocations will be permitted per semester if the student feels that she must absent herself for an important reason.

HABITUAL ABSENCE FROM STUDENT ASSEMBLY, CHAPEL CONVOCATIONS AND VESPER SERVICES IS AN INDICATION THAT A STUDENT IS NOT IN HARMONY WITH THE SPIRIT OF THE COLLEGE.



## *Welcome to the Freshmen from Your Dean*

One of the most important facts for each freshman to understand is that your Dean and your professors are your friends. They are your counselors and are *always* ready and eager to help you. Never be timid about talking over with your teachers *any* problem or concern you may have about your lessons.

From time to time you will receive a note from the Dean's Office, from your counselor, or a faculty member asking to see you. Always respond promptly.

You will achieve more and have a happier college life if you start to be prepared for your work from the *first day*. If you start work in the beginning and do not let yourself get behind, you will find your study proceeds more smoothly and your success will be more assured. Our best challenge to you is: "*Get going*" with your *first assignment*!

Your real purpose in being here is your academic program. There are a few regulations connected with the academic procedures with which you should be familiar. Read carefully and try to understand them. If you have questions, do not hesitate to ask for help from your counselor or the Dean.

**REGULATIONS YOU SHOULD KNOW.** For details see your catalog, the section *Academic Regulations*. You are held responsible for knowing about:

### *I. Absence from Final Examination*

A grade of F will be recorded for an absence without adequate reason.

II. *Absence from Class*

1. The *first* absence in excess of the number equal to the credit hours received in the course will be reported to the Attendance Council. You will appear before this council who will review your case and fix the penalty.
2. Absence from a class 24 hours before or 24 hours after a vacation period will receive a severe penalty. See your catalog.

III. Any freshman whose grade point average falls below 1.4 for her final grades for any semester shall be placed on probation. Unless the average is raised to 1.4, or better, the following semester the student is suspended. See your catalog for full discussion of *Probation and Suspension*.

**IMPORTANT!** Do not depend on rumor or hearsay but come to the place for accurate information. You are always welcome.

Best wishes for a happy year at Lindenwood!

PAULENA NICKELL, *Dean*

## *A Word from "Miss L" . . .*

At Lindenwood we have a closely integrated guidance program which begins with the scholastic aptitude tests given during Orientation Week, extends through the Sophomore Testing Program, and leads to job placement upon graduation. Your Faculty Counselor stands in the center of the guidance program and it is to your Counselor that you can turn for help in planning your courses, for suggestions for better study habits, for aid in your adjustment to college life.

Also the door to Room 109 is always open to you. If you feel that you have been put in the wrong course of studies and a change would necessitate a change of counselor, come *at once* to the Guidance Office for such adjustments are easily made. If you want to know more about yourself, ask for an opportunity to take a battery of aptitude tests, or if you simply don't know what you want to do after college, make an appointment with me to talk over job possibilities. Watch our Bulletin Board, use your vocational material, let us help answer some of your questions!

One last word. Don't let *anything* worry you over twenty-four hours. Go to your Head Resident or House President, to your Faculty Counselor, your Student Counselor, to the nurses, and remember that along with these a friendly welcome always awaits you in the Guidance Office.

Mary Lichliter  
Director of Guidance



## *The Health Center Greet's You!*

Health and Happiness to you all in this, your new year at Lindenwood! This greeting may sound "Out of season" to you but after all — health has *no* season. The Health Service Staff wishes to help make this a year 'round time of pleasure in your school work and in your social life by *keeping* you well. We in no way attempt to supplant your family or family physician, but we do hope you may recognize in our concern an extension of their interest in your welfare here.

Drop in on us in the same way you would drop in on your counselor. Won't you consider *your* Health Service part of the personal counseling program of the college and know that we are as interested in *preventing* illness as we are in curing it. The Health Center is a part of Lindenwood and even though you are not actually ill, a welcome always awaits you.

# Activities and Organizations

Going to class and preparing your lessons for the next day is only a part of your college life. Most students participate in one or more extra-curricular activities. There are clubs and organizations, both departmental and honorary, on the campus that meet the demand and the varied interest of the Lindenwood students. You will be sure to find one or more that appeals to you.

## ALL COLLEGE ORGANIZATIONS ARE OPEN TO FRESHMEN

**STUDENT CHRISTIAN ASSOCIATION** — Nationally affiliated. Each student of Lindenwood is a member of S.C.A. and is invited to participate in its activities. In achieving its purpose, the promotion of Christian fellowship, thinking and interests, the Student Christian Association presents many opportunities during the year to learn and to serve.

**LEAGUE OF WOMEN VOTERS** — Nationally affiliated. Open to all students. Parliamentary procedure and governmental processes are made simple through explanations put into practice.

**INTERNATIONAL RELATIONS CLUB** — Nationally affiliated. Open to all students. Through this club, students have an opportunity to learn about other countries and to express their opinions on world affairs. Conferences, on this campus and the campus of nearby colleges, are of great interest to these students.

**ATHLETIC ASSOCIATION** — Local society. Open to all students who can qualify. Its purpose is to promote interest and sportsmanship through a love of sports.

## GENERAL HONOR SOCIETIES

**ALPHA LAMBDA DELTA** — National scholastic honor society, open to freshmen only. They must have a 3.5 average at the end of the first semester or the first year.

ALPHA SIGMA TAU — Lindenwood Scholastic Honor Society. Undergraduate membership shall be limited to members of the junior and senior classes who are candidates for a bachelor's degree. Election to membership shall normally take place in the second semester of the senior year; members of the junior class with outstanding academic records may be elected in the sixth semester of their college course. Students may be elected also at the end of their college course if the grades of the final semester makes them eligible. Transfer students must complete at least four semesters at Lindenwood in order to become eligible. To be eligible for membership the student's load must average 15 hours per semester exclusive of Physical Education with a cumulative grade point average of 3.5 with no grade lower than a C.

LINDEN SCROLL — a senior service honorary society, members of which are chosen in their junior year having completed five-eighths of their college course with a cumulative grade point average of a .4 above the all-school average in recognition of outstanding contribution to the college community and high quality of personal citizenship and loyalty.

## DEPARTMENTAL

ALPHA EPSILON RHO — National honor society. Members are selected from the highest ranking students in the radio classes.

ALPHA PSI OMEGA — A national honor society. Open to students enrolled in Speech and Dramatics classes who have fulfilled its requirements. In cooperation with the drama classes the club helps in the presentation of plays during the year. The club presents one play during the year with an all Psi cast.

FUTURE TEACHERS OF AMERICA — Future Teachers of America, as its name implies, is composed of all students interested in teaching as a profession. It is a nationally affiliated organization and all members keep in touch with N.E.A. and M.S.T.A. through their publications.

**COLHECON** – The Home Economics Club affiliated with the American Home Economics Association. Membership is limited to majors in this field.

**KAPPA PI** – National honor society. Those completing two full year courses in art, with a minimum grade of B and an average of C in other subjects are eligible for membership after completion of a special project.

**MODERN LANGUAGE CLUB** – Local society. Members are required to have a B average in either French, Spanish, or German. The purposes of this organization is to further interest in the modern languages and the cultures which they represent.

**MU PHI EPSILON** – National honor society. Membership is limited to music majors who are elected on the basis of scholarship, ability, character, and faculty approval.

**PI ALPHA DELTA** – Local society. The club invites to membership students interested in the classics. Latin and Greek language, literature, and culture. Membership organized on a pattern based on Roman life.

**TRIANGLE CLUB** – Local society. Membership is limited to science majors and minors with a B average in three science or math courses.

## ACTIVITY CLUBS

**BETA CHI** – Open to those students who qualify by passing certain tests showing proficiency in riding.

**CHORALAIRES** – A small highly select vocal ensemble meeting twice a week for one hour's credit. Registration is by permission of the director after vocal audition. The Choralaires represent the college on numerous occasions each year in concerts both off and on the campus.

**CHOIR** – Open to all students whose voices qualify after having tried out with the director of the choir.

**ENCORE CLUB** – Local society. Members of this club are those students whose relatives have attended Lindenwood. Students proudly announce mother, grandmother, sisters, cousins, and even great-grandmothers.

**INSTRUMENTAL ASSOCIATION** – Open to all interested students with ability to play an instrument. This association presents concerts and other entertainments during the year.

**KCLC** – The campus radio station beamed to all of the buildings on the campus. Any girl interested in this field may participate in the programs of the station whether she takes courses in the department or not.

**ORCHESIS** – This honorary dance organization each year presents a Christmas program and one program during the spring.

**POETRY SOCIETY** – Local society. The purpose of this organization is to encourage the creation and appreciation of poetry at Lindenwood.

**PRESS CLUB** – Local society. Staff members of the Linden Leaves, the Linden Bark, and KCLC compose the quorum when the Press Club meets.

**TERRAPIN** – Local society. The honor of being in Terrapin is given to those who pass a test in swimming skills, skills that are practiced and presented in swimming meets with other schools and in the spring water pageant.



POINT SYSTEM FOR OFFICES HELD  
AT LINDENWOOD COLLEGE

*12 point maximum (NOT accumulative from year to year)*

STUDENT COUNCIL

President .....	12
Vice-President .....	8
Secretary-Treasurer .....	10
Class Representatives ..	7
Hall Representatives ...	7
Chairman of Freshman Counseling .....	3

ANNUAL STAFF

Editor in Chief .....	12
Business Manager .....	11
Advertising Manager ..	11
Other Editors .....	8
Organization Manager .	8
Assistants .....	3

STUDENT CHRISTIAN ASSN.

President .....	12
Vice-President .....	6
Secretary .....	6
Treasurer .....	6
Committee Chairman ..	5
Hall Representative ...	2

ACTIVITY AND  
DEPARTMENTAL CLUBS

President .....	5
Vice-President .....	3
Secretary .....	3
Treasurer .....	3
Other Officers .....	1

ATHLETIC ASSOCIATION

President .....	8
Vice-President .....	7
Secretary .....	5
Treasurer .....	5
Intramural Chairman ..	7
Publicity Chairman ...	5
Social Chairman .....	5
Hall Chairman .....	2

COLLEGE CLASSES

Pres. of Junior & Senior	8
Pres. of Soph. & Fresh. .	5
Vice-President .....	3
Secretary .....	3
Treasurer .....	3
Members of Fresh. Council .....	1

GRIFFIN

Editor in Chief .....	8
Business Manager .....	8
Art Editor .....	5
Assistants .....	5

HALL OFFICERS

President .....	7
Floor Representative ..	3

## ELIGIBILITY FOR ACTIVITIES

1. A student must have had at least a 2.0 average for the previous semester in order to hold an office in classes or organizations.
2. In order to participate in the following activities, students must have at least a 2.0 average for the previous semester: Riding team, Terrapin Pageant, Orchesis recitals, Play Cast (unless connected with a class project), Intercollege athletic teams, out-of-class Radio programs.

## STUDENT ACTIVITIES BUDGET COMMITTEE

The Student Activities Budget Committee is composed of the Business Manager, Chairman, the Director of Guidance and her Assistant, one faculty representative, the President of the Lindenwood College Student Association, the President of the Student Christian Association, the President of the Senior Class, and the Chairman of Student Counselors for Freshmen. This committee considers the budgets of the various clubs and organizations of the college and arranges for the distribution of funds. The \$35.00 student activity fee which is included in student expenses for the year covers admission to the lecture-concert convocations, current expenses of the various clubs and organizations, and the college yearbook, *The Linden Leaves*.

## THE SOCIAL PROGRAM

THE SOCIAL COUNCIL — Gives the students a voice in social planning of Lindenwood. The purpose of the Council is to coordinate and give strength and continuity to the social program. The members of the Social Council works closely with the Social Director in planning the all-college social activities throughout the year and helping bring men students to the campus. All students, however, are welcome to work on week-end party committees in order to give a nice range of ideas, talents and interests.

## Places You Will Want to Find

Soon after your arrival at Lindenwood you will want to find the following places. Each of them will play an important part in "your life at Lindenwood."

**THE BANK** — The college Bank is located on the main floor of Roemer Hall, and is open

### MONDAY THROUGH FRIDAY

<i>Morning</i>	<i>Afternoon</i>
8:30 — 9:30	1:00 — 2:15
10:45 — 11:45	3:45 — 4:45

### SATURDAY MORNING

8:00 — 11:30

Students are urged to deposit their money here to insure its safety. Carrying money about or leaving it in your room often-times leads to carelessness and loss. The college stands responsible only for money placed in its care. The bank is for "depositing" not borrowing. Checks drawn by students on their parents or guardians will not be honored except when written instructions for such privileges from parents or guardians are on file in the bank.

**BOOK STORE** — The College Store is located in the Post Office. Here general supplies of books, stationery, sheet music, ink, pencils, pennants, college jewelry, etc., may be obtained. Regulation gym uniforms, leotards, and tanks suits to be used in the swimming pool, may be purchased here. All students wishing to have garments dry cleaned may leave them at the Book Store.

**POST OFFICE** — The Post Office is located on the ground floor of Roemer Hall. A lock box is assigned for every student. Only the box assigned to you is accessible for your mail. Each girl assumes responsibility for carrying her own keys.



The Post Office is known as Station 3 of the St. Charles Post Office and is conducted under the usual regulations. Packages may be mailed here, stamps bought, etc., as in any Government post office. In each hall are mail boxes for out-going mail, which is collected twice daily.

**EXPRESS OFFICE** — Express packages may be sent from the office of the Supervisor of Plant Operations and Maintenance. His office is on the ground floor of Roemer Hall, and is open from eight in the morning until five in the afternoon. Packages can be wrapped in the room across the hall.

**GUIDANCE OFFICE** — Room 109 — More than once your feet will lead you to this office for help and information. The Social Council will help you meet “dates,” make theatre and concert reservations, answer questions about your social life on and off the campus. The Director of Guidance is there to help with dorm problems, to inform you about careers, and summer work opportunities and to help you analyze yourself through aptitude tests. The Lost and Found Department and student emergency loan fund are also located there.

The **B. KURT STUMBERG HEALTH CENTER** is always open to students. Never wait until you are “sick enough to come,” but bring your apprehensions and questions before you become ill. The college physician is here at 8:00 a.m. and at 5:00 p.m. Registered nurses are available at all times.

**THE TEA ROOM** — The Tea Room is one of the most popular spots on the campus. “Meet you for a coke” is its slogan. You will find it in Cobbs Hall.

The hours for the Tea Room are as follows:

- 8:00 a.m. to 1:00 p.m. — Monday thru Saturday
- 2:00 p.m. to 5:00 p.m. — Monday thru Friday
- 8:00 p.m. to 10:00 p.m. — Monday thru Sunday
- 9:00 a.m. to 10:30 a.m. — Sunday morning
- 2:00 p.m. to 4:30 p.m. — Sunday afternoon

RECREATION ROOMS IN THE RESIDENCE HALLS — You will find the recreation room in your hall on the ground floor. You may use this room anytime you wish — see how much fun it is to cook your dinner there some evening. Dates may be entertained in the recreation rooms.

MARGARET LEGGAT BUTLER LIBRARY — The library building is east of Roemer Hall. It houses 36,000 books, plus 170 periodicals and newspapers.

The loan desk and card catalog index to the book collection are in the lobby. Stacks are open to students, and books are issued for 2 weeks. A fine of 2c a day is charged on overdue books. Reference books and magazines do not circulate.

Books “reserved” for class use are issued at the loan desk, and used in the reading rooms during library hours. They may be withdrawn between 9 and 10 p.m. Monday thru Friday and 3 and 4 p.m. Saturday, and are due at 8 a.m. the following morning with these exceptions: Sat. at 9 a.m., and books taken at 3 p.m. Sat. may be kept until Mon. at 8 a.m. A fine of 10c an hour is charged for late reserve books.

#### LIBRARY HOURS:

##### Monday-Friday

7:50 a.m. to 12:00 m.

1:00 p.m. to 5:30 p.m.

7:00 p.m. to 10:00 p.m.

##### Saturday

9:00 a.m. to 12:00 m.

1:00 p.m. to 4:00 p.m.

##### Sunday

2:00 p.m. to 4:00 p.m.

(Reading Rooms only. No books issued.)

**LIBRARY CLUB ROOM** – The Library Club Room is on the ground floor at the Margaret Leggat Butler Library, just next to Roemer Hall. It is furnished with attractive rugs and colorful furniture; adjoining the Club Room is a kitchenette with electric cooking and refrigerating equipment. The Club Room is used extensively by student groups and faculty members.

You will find the Club Room open from eight in the morning until ten in the evening. Students may go there at anytime during those hours, unless there is a regular club meeting or some other attractions scheduled there on the weekly calendar. You will find a radio to amuse you. Just off the Club Room you will find the S.C.A. Prayer Room for personal meditation and prayer.

**DAY STUDENTS' ROOM** – The Day Students' room is located on the ground floor of Roemer Hall. It is attractively furnished with comfortable chairs. Each girl is provided with a locker for her books and coat.

**COBBS LOUNGE** – Located on the ground floor of Cobbs Hall is a pleasant place to have a chat with that "special" date. If you are a ping pong fan or if you like to listen to the radio stop in. The Tea Room is next door.

**SIBLEY CLUB ROOM** – The Sibley Club Room is located on the ground floor of Sibley Hall. It is furnished with attractive modern furniture. It is used for Club meetings and for other events scheduled on the calendar, as well as for entertaining dates. Here you will find a television set, a piano, and many recordings for your use.

**SWIMMING POOL** – The swimming pool is in Butler Hall, near the gymnasium. Watch for the hours of "open pool," and earn extra points for the Athletic Association.

**GREENHOUSE** – You will find the Greenhouse back of Sibley Hall under the water tower. Visit it now and then – it always has something lovely to offer.

**ROEMER AUDITORIUM** — The auditorium is located on the first floor of Roemer Hall. All convocations, chapels and Vespers are held here, as well as plays, dance recitals and concerts. Freshmen and Sophomores occupy the seats on the main floor; the Juniors and Seniors sit in the balcony.

**SIBLEY CHAPEL** — The entrance to Sibley Chapel is on the east side of Sibley Hall. Piano, organ and voice recitals are held here.

**STABLE** — The stable and riding ring are located back of Ayres Hall. Visitors are always welcome.

**TENNIS COURTS** — Back of Butler Hall can be found the tennis courts, hockey field and an archery range. These are for the use of students at all times.

**GOLF COURSE** — A six hole golf course is located west of Niccolls Hall. It is kept in condition for use as long as weather permits golfing.

**PUBLIC RELATIONS OFFICE** — You will be welcomed in the public relations office, where news releases about the college and about your activities and achievements will be prepared for sending to your home town newspapers. Alumnae records also are kept in that office. It is located on the ground floor of Roemer Hall, next door to the book store.

**THE CHAPLAIN'S OFFICE** — Room 100. The Dean of the Chapel has his office in Room 100 of Roemer Hall. He is in a sense the pastor of the college community. He is eager to become acquainted with the students. The students are invited to drop in to visit with him.

**KCLC** — The Radio Station 600 on your Dial. Located on the terrace level of the Fine Arts Building. There is a two-hour program broadcast every weekday evening.

## ST. CHARLES CHURCHES

- Baptist: Kingshighway Baptist Church  
400 North Kingshighway
- Episcopal: Trinity Episcopal Church  
520 North Benton
- Evangelical: St. John's Evangelical and Reformed  
Church  
405 South Fifth Street
- Lutheran: Immanuel Lutheran Church  
103 South Sixth Street
- Methodist: First Methodist Church  
801 Clay: 10:40 Sundays
- Presbyterian: The St. Charles Presbyterian Church  
548 Jefferson Street
- Roman Catholic: St. Charles Borromeo Church  
415 Decatur Street  
St. Peters Catholic Church  
221 Clay Street
- Christian: Memorial Hall Christian Church  
Blanchette Park

TAXI — CALL RAndolf 4-0133

Two can ride as cheap as one.

45c for 1-2 inclusive, over 2 passengers 10c each. This applies only when there is a central pick-up and the same destination.

Airport rate — \$3.05 for 2 passengers, 50c for each additional.

St. Charles Wabash Station — 75c for 2 passengers, 10c for each additional.



## PLACES OF INTEREST IN ST. LOUIS

Art Museum  
Forest Park Zoo  
Jefferson Memorial  
Jewel Box  
Lindbergh Trophies  
Municipal Auditorium  
Municipal Opera  
New Cathedral  
Old Cathedral  
"Old Man River"  
St. Louis Public Library  
Shaw's Garden  
Soldier's Memorial  
Busch Stadium  
Union Market  
Arena  
Air Terminal  
Winter Gardens Ice  
Skating  
Highland Amusement Park

## INTERESTING PLACES TO EAT IN ST. LOUIS

Sheraton-Jefferson, Statler, Mayfair, Lennox, Melbourne,  
Coronado, Chase, Park Plaza, Forest Park  
Edmunds – Gravois at Compton  
Raleigh House – 8027 Forsyth Avenue  
Medarts – 7036 Clayton Road  
Tea Room – Stix, Baer and Fuller and Westroads  
Scruggs, Vandervoort and Barney – Down-  
town and Clayton  
Famous-Barr Company – Downtown and  
Clayton  
Miss Hulling's Cafeteria – 725 Olive, 1105 Locust  
Town Hall – 6736 Clayton Road

Parkmoor – 6737 Clayton Road, 1728 N. Kingshighway  
La Casa de Los Toros – 4137 Lindell  
Pagliacci's – 4592 Manchester  
Parente's – 6600 Chippewa  
Kreis Restaurant – 539 So. Lindbergh  
Grecian Gardens – 205 South Sixth  
Sea Isle – 627 North Grand  
Schneithorst's – Clayton Road and Lindbergh  
China Doll – 815 Washington  
Le Chateau – Clayton Road  
Ruggeri's – 2300 Edwards  
Colonial Tea Room – 6271 Delmar  
Petit Pigalle – 4209 Lindell  
Bevo Mill – Gravois at Morganford  
Oldani's – 2132 Edwards  
Green Parrott Inn – 1500 W. Big Bend  
Stan Musial & Biggie's – 6435 Chippewa

#### THEATRES

American Theatre – 318 North Grand  
Ambassador – 401 North Seventh  
Empress – 3616 Olive  
Esquire – 6706 Clayton Road  
Fox – 527 North Grand  
Loew's Orpheum – 416 N. Ninth  
Loew's State – 715 Washington Avenue  
Missouri – 626 N. Grand  
Municipal Opera – Forest Park



Pageant Theatre – 5851 Delmar  
Richmond – 1025 Big Bend  
St. Louis Theatre – 718 N. Grand  
Shady Oak – 7630 Forsyth

### SOME PLACES TO SHOP IN ST. LOUIS

Boyd's – 600 Olive Street; Forsyth in Clayton  
Cunningham's – 419 North Sixth  
°Famous-Barr Company – Sixth and Olive; Clayton; North-lands  
Garland's – 410 North Sixth; Clayton  
Greenfield's – Sixth and Locust  
Dorothy Herz Shop – Arcade Building  
Kline's – 608 Washington; Forsyth in Clayton  
Lockhart – Maryland  
Montaldo's – 4914 Maryland  
Peck and Peck – 909 Locust; Forsyth in Clayton  
°Scruggs-Vandervoort and Barney – Ninth and Locust; Clayton  
Sonnenfeld's – 610 Washington  
°Stix, Baer and Fuller – Sixth and Seventh on Washington; Westroads, Clayton  
Swope's – 905 Locust; Clayton

---

°*Department Stores*

# I n d e x

	<i>Page</i>		<i>Page</i>
Academic Absences	28-29	Encore Club	35
Academic Probation	29	Express Office	39
Activity Clubs	34-35	Freshman Counselor	22
Alpha Epsilon Rho	33	Future Teachers of America	33
Alpha Lambda Delta	32	Golf Course	42
Alpha Psi Omega	33	Greenhouse	41
Alpha Sigma Tau	33	Guidance Office	39
Athletic Association	32	Health Center	31
Auditorium	42	Helpful Hints	23-24
Bank	38	Honor Board, Chr.	19
Beta Chi	34	Honor Societies	32-33
Book Store	38	Honor System	20-21
Chapel	27	Instrumental Assn.	35
Chaplain's Office	42	International Relations Club	32
Choir	34	Kappa Pi	34
Chorales	34	KCLC Radio Station	35, 42
Churches	43	League of Women Voters	32
Cobbs Lounge	41	Library	40
Colhecon	34	Library Club Room	41
Customs	6-8	Library Hours	40
Day Student's Room	41	Linden Scroll	33
Dean of the College	28-29	Lindenwood Songs	9-14
Departmental Clubs	33-34	Modern Language Club	34
Director of Guidance	30	Mu Phi Epsilon	34
Dry Cleaning	38	Orchesis	35
Eligibility for Activities	37	Organization Chart	18

# I n d e x

	<i>Page</i>		<i>Page</i>
Pi Alpha Delta .....	34	Social Council .....	37
Places of Interest .....	44	Stables .....	42
Poetry Society .....	35	Stores .....	46
Point System .....	36	Student Activities Budget Committee .....	37
Post Office .....	38-39	Student Council .....	18
Prayer Room .....	41	Student Christian Assn. .	26, 32
President of the College ....	3	Student Gov't Assn. ....	16-17
President, Student Assn. ...	15	Swimming Pool .....	41
President, S.C.A. ....	25	Taxicabs .....	43
Press Club .....	35	Tea Room .....	39
Public Relations' Office ....	42	Tennis Courts .....	42
Recreation Rooms .....	40	Terrapin .....	35
Religious Services .....	27	Theatres .....	45-46
Restaurants .....	44-45	Traditions .....	6-8
Sibley Chapel .....	42	Triangle Club .....	34
Sibley Club Room .....	41	Vespers .....	27