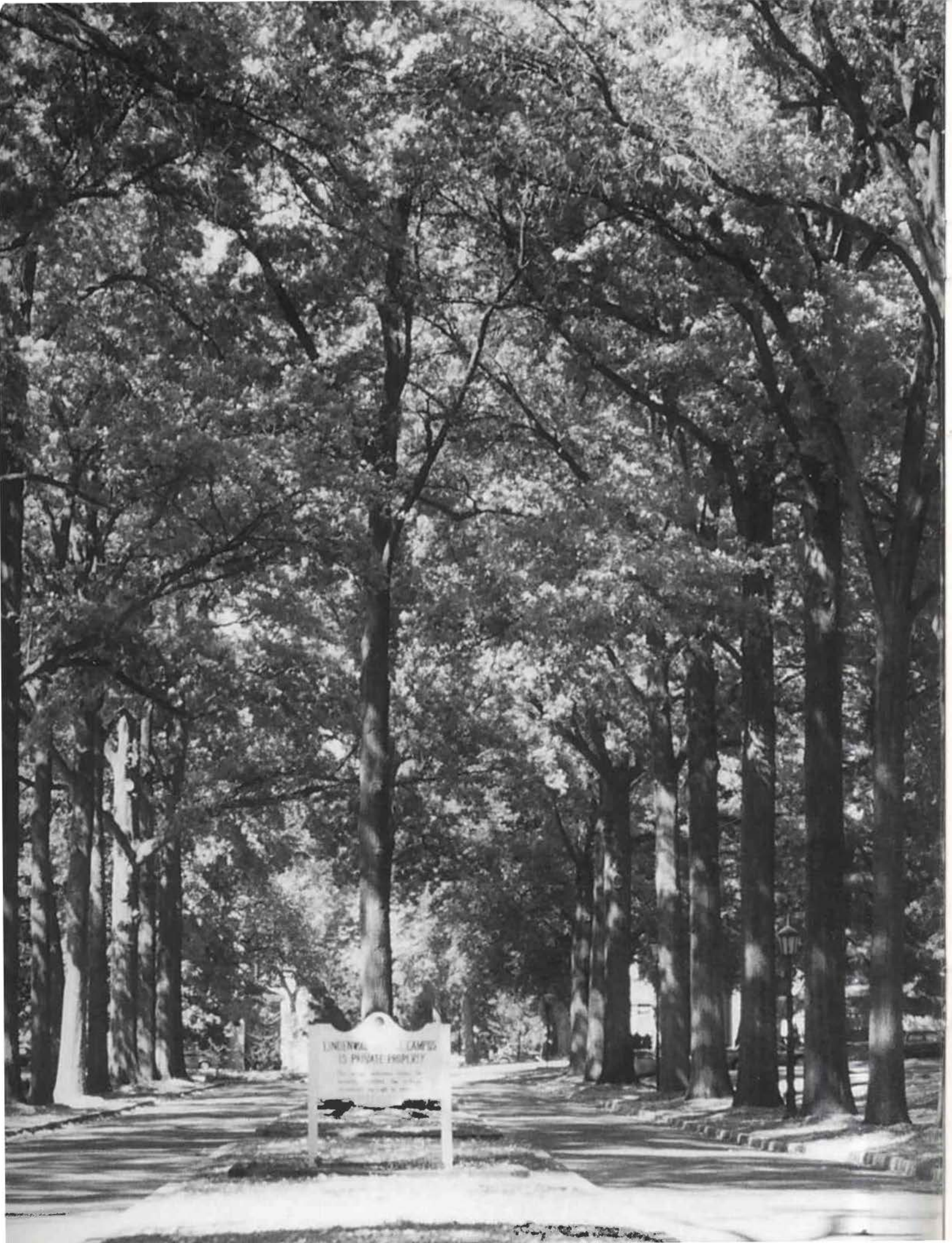


*Lindenwood College
1995 President's Report*





LINDENWALD CAMPUS
IS PRIVATE PROPERTY

Performance

Lindenwood College continues to achieve phenomenal growth during a period when higher education as a whole, is experiencing a decline. The College accomplished this success by:

- Maintaining financial strength and accountability;
- Taking advantage of the growth opportunities in the education marketplace;
- Competing aggressively to recruit the students with the most potential and the desire to succeed;
- Attracting and developing talented professors, who are committed to teaching first and foremost;
- Demonstrating, over and over again, the ability to understand and meet student needs; and
- Remaining committed to the values-centered traditions upon which Lindenwood College was founded: educating the whole person, body, mind and spirit.

Message from the President

Dear Friends,

Lindenwood College has built a leadership position in higher education. The achievements of the 1994-95 academic year are proof in themselves. No other college can match Lindenwood's record of success.

Lindenwood's success during the year did not surprise us in the least. We experienced solid performance, increased productivity, and perhaps most importantly, greater pride in what Lindenwood College is all about. The word is getting out. Lindenwood College is the place to be.

Why? There are three main reasons.

First of all, Lindenwood provides value to everyone who becomes involved with the College, from students to board members to employees to donors. The College offers an educational experience that meets a fundamental need -- educating the whole person, preparing them to be responsible, productive citizens.

Second, the foundation of Lindenwood's strength lies in our ability to grow and adapt to meet changing needs, while remaining true to the original mission of our founders.

And most importantly, *Lindenwood College is successful because our students are successful.*

Lindenwood College stands for something that is needed now more than ever in our world. It stands for good teaching, solid values, responsibility, a strong work ethic, and community leadership.

I am very pleased to share with you this report of another successful year at Lindenwood. I invite you to become even more involved with the College in the months to come. This is an exciting time to be a part of the leader in higher education.

We are all proud of this historic institution. Lindenwood College boasts a rich heritage, an exciting present, and a promising future. Its greatest days are still to come.

Sincerely,




Dennis C. Spellmann
President



Highlights

*Find another college or university in the country that can match
Lindenwood's success!*

<i>Comparison</i>	<i>1989</i>	<i>1995</i>
<i>Student Enrollment</i>	<i>1225</i>	<i>5383</i>
<i>Residential Students</i>	<i>230</i>	<i>1210</i>
<i>Residence Hall Capacity</i>	<i>300</i>	<i>1210</i>
<i>Staff</i>	<i>369</i>	<i>82</i>
<i>Full-time Faculty</i>	<i>40</i>	<i>113</i>
<i>Salary Level</i>	<i>3rd Quartile</i>	<i>1st Quartile</i>
<i>Classroom Utilization</i>	<i>65%</i>	<i>96%</i>
<i>Endowment</i>	<i>\$600,000</i>	<i>\$6.8 million</i>
<i>Placement</i>	<i>?</i>	<i>100%*</i>
<i>Acreage</i>	<i>108 acres</i>	<i>200+ acres</i>
<i>Parking Spaces</i>	<i>350</i>	<i>850</i>
<i>Financial Condition</i>		

* 100% of the students who participated in the TAP placement program.

Education that matters...



Jennifer Siess is presented with a scholarship from Shelter Insurance. Company representatives Jim Kennedy (left) and Jeff Wilson (right) joined Lindenwood President Dennis Spellmann in congratulating Jennifer on her academic and athletic achievements.

strives for success through excellence

Each spring, Lindenwood College celebrates the achievements of its students at the annual Honors Convocation. This year, several hundred students were recognized for academic, civic, and athletic excellence. Awards were presented to individuals, and groups of students were inducted into various honor societies.

Lindenwood students were also recognized for their academic and community achievements with scholarships sponsored by private and community organizations.

Junior communications and psychology major Jennifer Siess received the prestigious A.O. Duer Award from the National Athletic Intercollegiate Association. The national award is presented to the top junior student-athlete in the country, who has excelled in the classroom *and* on the field. Jennifer, who played soccer, was chosen from a field of hundreds of nominees from across the country.

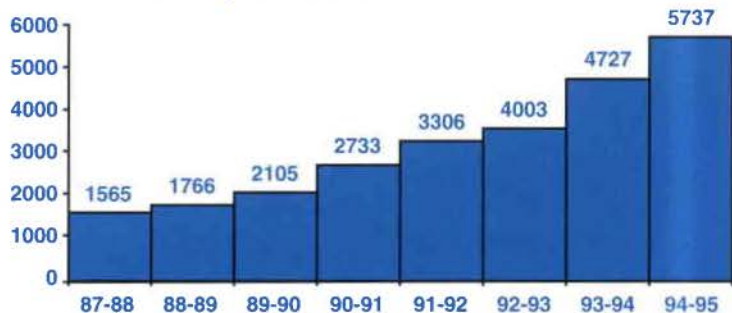
Lindenwood student-athletes were named to the American Midwest Conference All-Conference Academic team, All-Midwest Region Academic team and the Academic All-American team. The College's Athletic Academic Honor Roll honored record numbers of student-athletes both semesters.

Lindenwood College is a place of energy and community spirit, blazing the trail toward new heights in higher education.

The academic year 1994-95 was another record-breaker: in enrollment, in student achievement, in community partnerships.

The secret to Lindenwood's success is simple: *The College is successful because Lindenwood students are successful.* Lindenwood focuses on educating the whole person, emphasizing individual growth intellectually, socially, spiritually and physically. The liberal arts foundation challenges students to think critically, examine, question and evaluate ideas and issues both in and out of the classroom. At Lindenwood, teaching students is the number one priority.

Unduplicated Student Enrollment



The good news story of Lindenwood College is demonstrated in the number of students who flock here year after year.

Lindenwood College charted record numbers in student enrollment for the seventh year in a row. Nearly 5,400 students were enrolled at Lindenwood in undergraduate, graduate and special classes during the 1994-95 academic year.

Residential students numbered over 1,200, filling the campus residence halls and houses to capacity. About half of those students were from St. Charles County, and most were involved in extracurricular activities such as theatre, music, intercollegiate athletics, campus and civic organizations, and volunteer service in the community.

Lindenwood expects to serve more than 6,000 students in the coming 1995-96 academic year.

challenges the mind

Lindenwood College's more than 50 undergraduate and graduate academic programs continue to grow and evolve, to keep pace with workplace demands.

One by-product of this remarkable growth is the increased need for more classroom, laboratory and studio space.

During the 1994-95 academic year, the College purchased a building one block east of the main campus to be used for art studio classes and student artistic activity. The ultimate goal is to create a showplace for student artists and their work. Floor-to-ceiling front windows and a bay door have been installed to make the space more suitable for working artists. The front section of the building is being remodeled into a high visibility gallery and informal classroom/student lounge area.

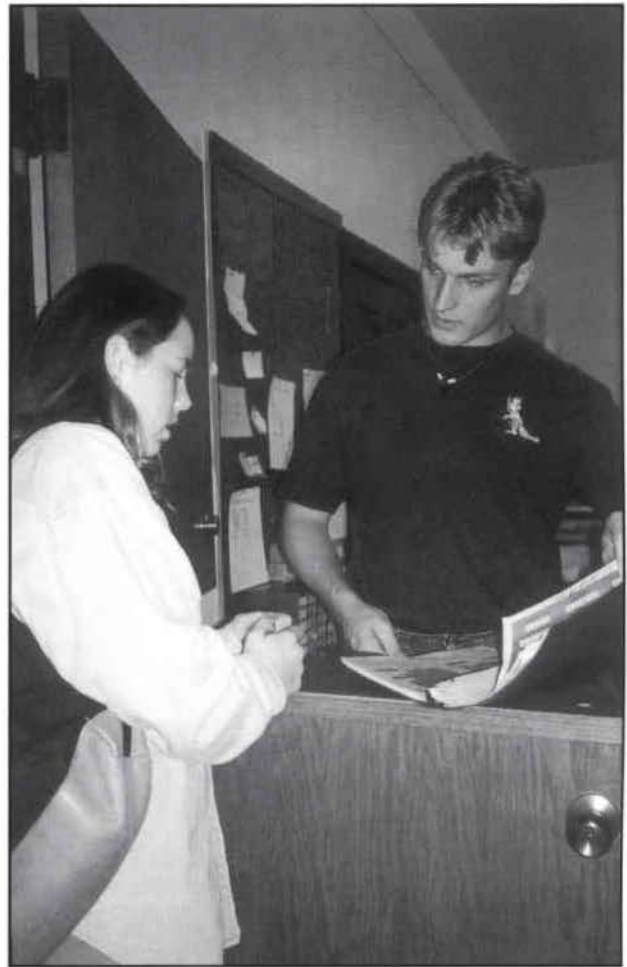
The College continued to expand its computer facilities and create access to the information superhighway by running fiber optic lines into Roemer and Butler Halls. A state-of-the-art Macintosh computer lab was installed in Young Hall, allowing the College to offer more classes in computer graphic design and desktop publishing.

Lindenwood's Science Division has seen steady growth over the past years. A newly constructed psychology teaching laboratory allows students to conduct individual research projects. The lab can accommodate some 20 projects simultaneously.

The newest member of the College's Sciences Division, the Earth Science Program, was created partly in response to the large demand for practical science courses by Lindenwood's teacher education majors. However, science professors were pleasantly surprised to find that the general student body is flocking to these courses in particular, to fill their general education science requirements. A state-of-the-art Earth Science laboratory is currently being constructed. The completed facility will contain modern laboratory tables, rock displays and specimen analysis equipment. The Earth Science option complements the traditional Chemistry and Biology programs.

100% of the students who participated in the TAP Talent Transcript Catalog were placed in a job or graduate school within six months of graduation.

*meets
real
needs*



*has
lasting value*

Lindenwood graduates truly have the edge in today's competitive workplace. The College's newest alumni landed jobs across the country in the corporate and not-for-profit sectors, in theatre and in mass media. Others were accepted into prestigious graduate programs at institutions across the nation.

For the third straight year, 100 percent of the seniors who took part in Lindenwood's Talent Accomplishment Program (TAP) annual Talent Transcript Catalog were placed in a job or graduate school within six months of graduation.

More than 200 juniors and seniors networked with potential employers during the College's 2nd Annual Career Fair, held in the spring. The gymnasium in Butler Hall overflowed as representatives from more than 50 area businesses met with students to discuss career opportunities and trends.

embodies clear thinking

Top Lindenwood undergraduate students were invited to join the College's new Honors Program. Under the leadership of several faculty members the program's main mission is "...to encourage high intellectual achievements by providing academic endeavors that emphasize analytical thought and cross-discipline instruction."

Entering freshmen with an ACT of 28 or higher, who are in the top 5 percent of their high school class and with a cumulative grade point average of 3.5 or higher, and continuing students with a GPA of 3.5 or higher, are eligible to participate in the program. Honors Program activities during the year included a lecture by Missouri Botanical Gardens Director Peter Raven, and an International Night of entertainment and food.

Top Undergraduate Programs

Education
Business
Communications
Psychology
Criminal Justice
Performing Arts

personal success...

Lindenwood's music program and ensembles achieved greater regional recognition during the 1994-95 academic year. *Nuance*, the Lindenwood College saxophone quartet, was the featured entertainment at the opening of the new Four County Mental Health facility in St. Charles County and provided music for the Heart Association fundraising gala. At KSDK-TV's annual Volunteer 5 awards ceremony, the Lindenwood Jazz Ensemble wowed the attendees with their expertise and style, so much so they were invited to perform at next year's festivities.

applies knowledge

More than 70 international students from 13 countries chose Lindenwood College for their American college education. Undergraduate and graduate students represented the following countries: Belgium, Canada, India, Ireland, Kenya, The Netherlands, Norway, Russia, Saudi Arabia, Sweden, Thailand, Taiwan and Turkey.

This is the first time that Lindenwood has taken part in an exchange program with Northern Ireland, with two young men who roomed together during their year at Lindenwood. Most of the international students were active in the College's Intercultural Club, hosting various activities throughout the year, including a partnership with Honors Program members to sponsor International Night. Students cooked up delicious dishes from their home countries and donned traditional dress to entertain and educate the audience of more than 200 Lindenwood students, faculty, staff and board members.

"If we want to be the leader in the 21st Century, we must be a catalyst for change in higher education."

--President Dennis Spellmann

The College's long history of partnership and leadership in the community continues even today. Because of this tradition, Lindenwood remains a vital asset and resource to area businesses, and government and community organizations.

Academic Excellence

Lindenwood College and the School District of the City of St. Charles have entered into a partnership to promote academic excellence throughout high school. The College has developed two programs which provide incentive and reward academic achievement, leadership and character development for students in the St. Charles School District. The *Contract for Academic Success* and the *Academic Excellence Scholarship* represent a long-term commitment by the College and the school district. Currently, Lindenwood is working with a number of other school districts that are interested in setting up similar programs for their students.

Partners in Education

The U.S. Army and Army Reserves invited Lindenwood to join the Army's "Partners in Education" project, as part of its push to encourage enlisted personnel to make higher education a personal priority. Young people who choose to enlist are given the opportunity to take part in the Concurrent Admissions Program, which allows the student to enroll in Lindenwood College at the same time he or she enlists in the Army.

Community Access Partnership (CAP)

A simple conversation involving President Dennis Spellmann and civic leaders has evolved into a unique partnership that will benefit the entire St. Charles community. Lindenwood College, in conjunction with St. Joseph Health Center and the City of St. Charles, was the catalyst for CAP, a group of community leaders, government officials, and education providers. CAP's mission is to redevelop and "clean up" the West Clay/First Capitol Drive area that borders the College. Conceptual plans include a lake and outdoor plaza, a cultural arts center, wellness center, and a community center.

improves the quality of life

Team Effort

Union Electric's Community Services staff joined with Lindenwood faculty to team-teach a class which designed and implemented a social services program that helped single parents. The program spanned six months, involved 20 students, and eventually gained the support of the entire Lindenwood community.

Synergy Center

Lindenwood College continues its relationship with the St. Charles County Economic Development Council's Synergy Center. Undergraduate and graduate business classes, as well as continuing education seminars and workshops are offered on-site at the small business incubator.



Students Network

Nine Lindenwood College students were chosen to be among the first student members of the St. Charles

Chamber of Commerce. These students were chosen because of their outstanding leadership qualities and involvement in both campus and community service. The program was designed to help college students participate in the business community and gain an insight into their prospective careers.

Community Service

Thanks to the Tenth Annual KCLC "Share The Spirit" Toy Drive, approximately 1,000 children received toys for the holidays.

Volunteer 5

Lindenwood College continues its sponsorship of KSDK-TV's Volunteer 5 project. The public service campaign showcases Lindenwood's endorsement of the importance of volunteer community service. A number of Lindenwood students work directly on the project, gaining valuable experience.

impacts the future



The earth moved at Lindenwood College during the spring of 1995.

With the push of a shovel and a throw of the dirt, the College began constructing the first new building on the campus in 26 years.

Work for the \$10 million Lindenwood College Performance Arena, however, began much earlier. The College launched its largest capital campaign drive in history late in 1994. It didn't take long for more than 300 community leaders, alumni, employees and friends of the College to build excitement and support for the new project.

"We have met the Mabee Challenge!"

One hundred and fifty people were on hand to cheer as Lindenwood College President Dennis Spellmann made that announcement in mid-February 1995.

Less than a year before, the J.E. and L.E. Mabee Foundation of Tulsa, Oklahoma, agreed to grant Lindenwood \$1 million toward the construction of the new arena. In return, Lindenwood needed to meet that challenge within a year. Thanks to generous friends, alumni, faculty and staff, the College received the Mabee grant in April of 1995.

All of the College's constituencies have played a very important role in this pivotal project. Hundreds of friends, alumni, faculty and staff, corporations and foundations have pledged their resources. An overwhelming majority of people have chosen to contribute to this campaign while still continuing to give to the College's annual fund.

The Performance Arena, designed by the St. Louis architect firm of Hastings & Chivetta, sparked interest among local contractors as well. The College acted as general contractor, thereby reducing fees, and receiving better bids on most aspects of the construction.

The 3,000 seat arena will be home to the Lindenwood Lions women's and men's basketball, volleyball and wrestling teams, which are now playing at a leased facility in Bridgeton. The

arena is designed with exceptional lines of vision for the viewing of athletic events, and special arrangements have been made to ensure the acoustics enhance concerts and other performances.

Thoroughly modern on the inside, the exterior of the arena was designed to complement Lindenwood College's historic campus. The red brick and pitched roofs reflect the neo-classicist designs of Roemer and Butler Halls, both built in the early part of this century.



The Performance Arena takes shape.

When completed in mid-1996, the Performance Arena will boast the following features:

- A main performance court
- Three basketball/volleyball practice courts
- An auxiliary gymnasium for dance and wrestling practices
- Classrooms, offices, training rooms and equipment rooms.
- Laundry, indoor workout areas, and storage.
- Special acoustical features which allow the use of the performance court for events such as band and choral concerts, lectures, colloquia, student orientations, honors convocations, and commencement ceremonies.
- A large Community Room, which would hold 250 guests, and with amenities for conferences, receptions, board meetings, business expositions, and much more.



Artist's rendering of the Performance Arena Community Room

The unique feature of the Lindenwood College Performance Arena is the Luxury Skybox Pavilion and connecting Community Room. Comfortable seating, first-class decor and a premier vantage point will offer guests a wonderful experience. The Community Room will provide a spacious and beautiful setting for entertaining and will include its own entrance, special food service facilities and private restrooms.

The Performance Arena Take A Seat Campaign has resulted in nearly 200 people and corporations who have chosen to sponsor seats in the Luxury Skybox Pavilion. For a \$5,000 pledge, a brass plate engraved with the sponsor's name is attached to the back of each seat. Sponsors will also receive tickets to various College competitions and concerts held in the Arena, as well as invitations to special events in the Community Room.

*lifts the
spirit*

The Lindenwood Performance Arena is the final phase of the College's plan to establish a comprehensive sports complex for intercollegiate and intramural activities. The arena joins the 5,000-seat, artificial turf Harlen C. Hunter Stadium, an all-weather outdoor track, softball and baseball diamonds, field house and fitness center. It is fitting that the Lions begin play in the new center in the fall of 1996, at the same time Lindenwood College joins the prestigious Heart of America Athletic Conference.

Most importantly, the Performance Arena is more than a center for sports and concerts. It is another way Lindenwood College is fulfilling its mission, to "build a deliberately diverse learning community...in which students with different goals may join together in intellectual, social, spiritual, creative, and physical activities." This is yet another example of how Lindenwood College is forging stronger ties with the community which it serves, not only by offering an entertainment center, but by producing responsible, productive citizens today and in the future.

History and Value



Once again, Sibley Chapel is a showcase for theatrical, dance, instrumental and vocal performances. The chapel, located in Sibley Hall, was totally renovated during 1995, thanks to the support of many Lindenwood alumni and friends.

The Sibley Chapel was originally built during the construction of the north wing of Sibley Hall in 1887, and has been used as a site for church services, musical recitals, and small theatrical performances.

Throughout the years, modifications have been made to the chapel, but this is the first time in its history that a complete renovation has been undertaken. Archival photographs were carefully studied, so the chapel could be restored to its original splendor. Most of the original wrought iron and wood chairs had been sold or given to alumni and friends, but have been donated back to the College for a complete refurbishing.

At the advice of acoustical engineers, the chapel has retained its wooden floor, because wood enhances the sound of music. A replica of the original organ, which was installed in 1915, was custom made for the renovation. The Wicks Company of Highland, Ill., crafted the new organ, which physically resembles the original, but contains state-of-the-art electronic technology on the inside.



The re-opening of Sibley Chapel was celebrated May 19, 1995 in honor of Dorothy DuQuoin Warner ('36), a Lindenwood College alumna, for her generous spirit, commitment to the arts and education to higher learning.

A series of college concerts and theatre productions will be held in the chapel throughout the course of the year. In conjunction with college productions, Lindenwood will invite professional artists and groups to perform in the intimate 160-seat space.

A new organization, the exclusive Sibley Chapel Circle of Friends, has been created to support the chapel and its members are dedicated to the promotion of cultural events in a salon-style setting,

inspires responsibility...

For the sixth straight year, Lindenwood College continues to enjoy unprecedented growth. It is reflected in student enrollment, student placement, expansion of academic programs, and an increase in the size of the campus itself.

This report celebrates the accomplishments of the past year. However, now is the time to look ahead, to the work yet to be done. Student enrollment, both residential and commuter, is growing by leaps and bounds, and with that growth comes the need for bigger, better facilities, more teachers and more advanced technology.

Today, Lindenwood College is anticipating the need for a student center with a larger cafeteria, and two new residence halls. These plans come as the College is nearing completion of the Performance Arena, the first new building project for Lindenwood in a quarter of a century. Once again, the College is looking to all its resources for help in bringing these plans to fruition.

The College is also seeking out new ways to make higher education affordable and accessible, so that more people might benefit from a Lindenwood College education. Scholarships and grants in cooperation with area school districts, organizations, and businesses are steps in that direction.

Lindenwood's entrepreneurial, free enterprise approach to higher education creates opportunities and advantages in higher education that most other colleges can only dream of. This commitment to academic excellence and student success is the Lindenwood College hallmark, rooted in a tradition begun 169 years ago by George and Mary Sibley.



Now that we have celebrated the success of Lindenwood College, it is time to look at new challenges, new adventures. The Lindenwood College star is shining brightly, blazing the way for the future of higher education.

*...so that students not
only achieve
personal success, but
become useful,
enlightened members
of society.*



Comparative Statement of Operations

(Year Ending June 30)

	1993-94	1994-95
REVENUES		
Educational & General		
Student Tuition & Fees	\$19,715,602	21,663,305
Gifts & Grants	710,781	752,972
Endowment Income	165,674	175,901
Government Grants	1,286,133	1,124,767
Other Sources	219,535	517,832
	22,097,725	24,234,777
Auxiliary Enterprises	5,689,047	6,310,500
TOTAL REVENUES	27,786,772	30,545,277
EXPENDITURES & MANDATORY TRANSFERS		
Educational & General		
Instruction & Library	5,291,568	5,586,688
Student Services	1,764,089	1,895,314
Institutional Support	2,062,591	1,986,780
Operation & Maintenance of Plant	1,074,065	1,000,233
Student Aid	10,540,267	11,701,524
	20,732,580	22,170,539
Mandatory Transfers		
Debt Retirement	1,495,263	46,809
Transfer to Student Loan Fund	2,712	7,860
	1,497,975	54,669
Auxiliary Enterprises		
Expenditures	2,186,051	2,207,040
TOTAL EXPENDITURES & MANDATORY TRANSFERS	24,416,606	24,432,248
REVENUES OVER EXPENDITURES & MANDATORY TRANSFERS	3,370,166	6,113,029
NON-MANDATORY TRANSFERS & OTHER CHANGES		
Capital Plant Renovation & Improvements	2,706,697	4,995,280
NET INCREASE IN FUND BALANCES	\$663,469	1,117,749

(Year ending June 30, 1995 with comparative totals for year ending June 30, 1994)

	Current Fund	Loan Fund	Endowment & Similar Funds	Plant Fund	Totals	
					1995	1994
ASSETS						
Cash & cash equivalents	\$ 3,657,723	76,521	33,432	5,863,617	9,631,293	3,880,450
Investments	27,503		2,036,909		2,064,412	2,410,698
Funds held in trust by others			4,468,140		4,468,140	4,169,221
Accounts receivable, less allowance for uncollectibles of \$525,000 & \$600,000	1,787,221				1,787,221	2,099,700
Student loans receivables, less allowance for uncollectibles of \$32,000		1,224,966			1,224,966	1,246,806
Pledges receivable	32,996			607,359	640,355	370,243
Inventories	140,210				140,210	144,088
Prepaid expenses	52,194				52,194	81,243
Property, plant & equipment, less accumulated depreciation of \$13,390,200				14,812,808	14,812,808	11,405,678
TOTAL ASSETS	\$5,697,847	1,301,487	6,538,481	21,283,784	34,821,599	25,835,127
LIABILITIES & FUND BALANCES						
Liabilities:						
Accounts payable & accrued expenses	5,039			31,823	36,862	33,339
Notes payable -- bank				1,491,000	1,491,000	
Notes payable - Dept. of Education				861,999	861,999	882,485
Employee compensation payable	278,321				278,321	283,494
Deferred Revenue	656,886				656,886	695,357
Funds held in custody for others	10,543				10,543	15,173
Other	29,955				29,955	
TOTAL LIABILITIES	980,744			2,384,822	3,365,566	1,909,848
Fund Balances:						
Net investment in plant assets				12,427,986	12,427,986	10,733,314
Permanently restricted			6,538,481		6,538,481	5,858,926
Temporarily restricted		1,301,487		6,470,976	7,772,463	3,733,685
Unrestricted	4,717,103				4,717,103	3,599,354
Total Fund Balances	4,717,103	1,301,487	6,538,481	18,898,962	31,456,033	23,925,279
TOTAL LIABILITIES & FUND BALANCES	\$5,697,847	1,301,487	6,538,481	21,283,784	34,821,599	25,835,127

Balance Sheet

Lindenwood College Board of Directors

Officers

Raymond W. Harmon

Chairman

Chairman and CEO, Hasco International Inc.,
St. Charles, Mo.

Elizabeth M. Rauch

Secretary

Alumna, Community Leader, St. Charles, Mo.

John W. Hammond

Treasurer

President, G.W. Fiberglass Inc., O'Fallon, Mo.

Members At Large

John Fox Arnold

Chairman of the Board, Lashly & Baer, St. Louis, Mo.

Thomas F. Bakewell

Alumnus, Attorney, St. Louis, Mo.

Randy Biggerstaff

Alumnus, Certified Athletic Trainer,
Phoenix Sports Medicine Systems, Inc., Chesterfield, MO

Ben F. Blanton

President, Ben F. Blanton Construction Co., St. Peters, Mo.

Nancy Calvert

Alumna, Director of Marketing Communications,
Shure Brothers Inc., Evanston, Ill.

David G. Cosby

Senior Vice President/St. Charles County Group Manager
Commerce Bank, N.A., St. Peters, Mo.

Arnold Donald

President, Crop Protection, Monsanto Agricultural Group,
St. Louis, Mo.

Henry J. Elmendorf

Community Leader, St. Charles, Mo.

Duane Flowers

President, Bass-Mollett, Incorporated, Greenville, Ill.

Arthur L. Goodall

Community Leader, St. Louis, Mo.

John C. Hannegan

Attorney, Thompson and Mitchell, St. Charles, Mo.

Larry G. Kelley

Executive Director of Community Development,
St. Joseph Health Center and St. Joseph Hospital West,
St. Charles, Mo.

Jan R. Kniffen

Alumnus, Senior Vice President and Treasurer,
The May Department Stores Company
St. Louis, Mo.

Joseph G. Mathews

Broker, Mathews & Associates, Lake St. Louis, Mo.

Robert R. McGruther

Minister, First Presbyterian Church, Caldwell, N.J.

Wayne R. Nathanson

Community Leader, St. Louis, Mo.

Ronald W. Ohmes

President, F.F. Kirchner, Inc., Bridgeton, Mo.

Donald Otto

Director of Employee Relations,
MEMC Electronic Materials Inc., St. Peters, Mo.

Dennis E. Ottolini

Manager, Union Electric, St. Charles, Mo.

Anne Pals

Alumna, Community Leader, St. Charles, Mo.

Jack D. Patten, Jr.

Area Paint Manager, General Motors, Wentzville, Mo.

Douglas D. Pearson

Owner, Pearson Financial, Inc., St. Louis, Mo.

Dale Rollings

Attorney, Rollings, Gerhardt, Borchers, Stuhler,
Carmichael & Gartner, PC, St. Charles, Mo.

Gary N. Shaw

Senior Vice President, Dean Witter Reynolds Inc.
St. Charles, Mo.

Dennis C. Spellmann

President, Lindenwood College, St. Charles, Mo.

Eric O. Stuhler

Alumnus, Attorney, Rollings, Gerhardt, Borchers, Stuhler,
Carmichael & Gartner, PC, St. Charles, Mo.

Frank R. Trulaske

Chairman, True Fitness Technology Inc., O'Fallon, Mo.

Life Members

David E. Babcock

Retired Business Executive, St. Louis, Mo.

Jane Crider

Community Leader, St. Charles, Mo.

Dorothy Warner

Alumna, Community Leader, Gilford, N.H.

The Lindenwood Vision

Education that matters...

...meets real needs;

...has lasting value;

...embodies clear thinking;

...respects history and honor;

...lifts the spirit;

...challenges the mind;

...inspires responsibility;

...applies knowledge to impact the future;

...strives for success through excellence; and

...improves the quality of life...

...so that students not only achieve personal success, but become useful, enlightened members of society.

*Lindenwood
College...*



the Leader in Success.







**LINDENWOOD
COLLEGE**

209 S. Kingshighway
St. Charles, MO 63301-1695

Non-Profit Organization
U.S. Postage Paid
St. Charles, MO
Permit No. 84