

PRIDE

LINDENWOOD UNIVERSITY

Athletic Season Ticket Passes

Choose from Three Options

LU Receives
**Employer of
the Year**

The Leadership Experience

At S-Bar-F Scout Ranch

Faculty, Student and Colloquia

LCIE Profiles

Check In Information 2005 – 2006

Lindenwood University will again offer Early Check-in dates throughout the summer. Early check-in gives students the option to complete all paperwork required for residential living in advance. Then on the official move in day, students go directly to the residence halls, check in with the Resident Directors and move in. The dates are divided alphabetically.

The Early Check-in dates for the 2005-2006 academic year are:

Friday, June 24: A thru I (Done)

Friday, July 29: J thru R

Friday, August 5: S thru Z

Early check in will be held in the Spellmann Center: The Connection, 1st floor. Check in times will be from 9 am to 5 pm. Students are required to bring their Social Security cards, driver's licenses, and the completed forms received in the campus life mailer.

Move-in weekend will be Saturday, August 20 and Sunday August 21. Check-in hours are 9 am until 5 pm. Students should report to the main floor of the Robert Hyland Performance Arena to check in if they did not attend an early check in during the summer. Students who did complete the early check in process should go directly to their residence and check in with their resident director.



Michael Castro
Poet, Translator, LCIE
Faculty and Advisor

Page 5

manestream

Employer of the Year

It's all about access . . .

Try a Grab n' Go!

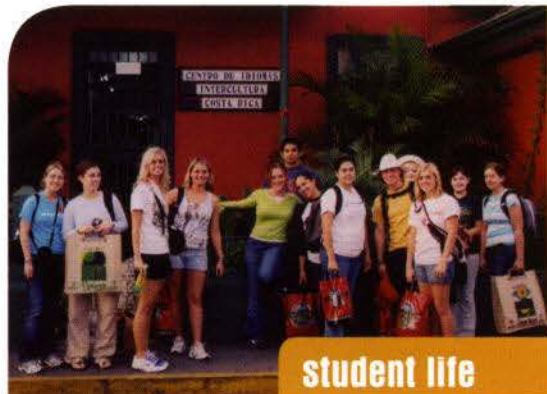
Community Impact

Community Work Service/
America Reads Program

Career Development

Colloquia and Lifelong Learning

Student Wins MWG Scholarship



**Plan Your 2006
J-Term Trip**

Page 6

student life

Economic Policy Lectures

The 2005 Lindy Awards

Spring 2005 into Fall 2006

New Fraternity

THE LEADERSHIP EXPERIENCE

Lindenwood Pavers

Center for Christian Ministry Studies

Athletics Ticket Passes

A Very Good Year

CITY OF SAINT CHARLES

Employer of the Year

Lindenwood University is the outgrowth of a private, philanthropic venture which originated in 1816 when Mary Easton Sibley began teaching her younger sisters and the Indian girls at Fort Osage. Ever since the founding of the college at a site overlooking the Missouri River,

to its move in 1827 to its current location at what was then the Sibley's "Linden Wood" home, LU has been an important contributor to the character and community of St. Charles. On May 18, 2005, the city of St. Charles recognized that contribution, and awarded Lindenwood its Employer of the Year award in service. St. Charles Mayor Patricia York presented the award to Lindenwood President Dennis C. Spellmann.

In accepting the award, Spellmann said that it is really a tribute to all of Lindenwood's faculty and staff, who, everyday, demonstrate Lindenwood's dedication to values, character, and the success of its students.

President Spellmann credits much of the school's success to a hard working, dedicated faculty, the quality of which, he insists, is comparable to any university in the country and capable of leading the way to the success of its students in the 21st century.

Throughout his tenure at Lindenwood, Spellmann has continually emphasized that success, for itself and its students, lies in the university's commitment

to the values, ideals, and citizenship originally set forth by Mary Sibley. Not coincidentally, Lindenwood has emerged from a financial and spiritual low point in the late 1980s, to its current, unprecedented period of growth, at a time when many other private education institutions are floundering.

In 1989 Lindenwood had less than 260 residential students, with only 45 graduating seniors. With a 78.1 acre campus, the college was \$1.6 million in debt. It had \$481,344 in accounts payable with \$111,416 more than 90 days past due. The college needed to borrow \$850,000 just to meet payroll and operating expenses, and was required to secure a \$500,000 irrevocable letter of credit to keep its doors open. It had only \$2 million in endowments.

Today, Lindenwood University has 3,200 residential students with a total student enrollment of nearly 14,000. It has a diverse student population with students from over 60 countries. This May, Lindenwood graduated 2,245 seniors and graduate students. The main campus alone is over 500 acres, plus it has 10 satellite campuses, includ-

ing the Historic Daniel Boone Campus and Boonesfield Village. The university is debt free, and has \$35 million in endowments. Since 1989, six new residence halls have been constructed; a \$5 million renovation of Harlen C. Hunter Sports Stadium will be completed this fall, as will the new Lou Brock Baseball and Softball complex. In August, Lindenwood will break ground on a \$30 million, 132,000 square foot Fine and Performing Arts Center. Future plans include renovating Harmon Hall, constructing new roads and gateways into the university, the creation of pedestrian friendly walkways, and the develop of a Lindenwood Town Centre.

All this construction is a result of student demand. This expansion is an essential ingredient in continuing to deliver a top-notch education that is affordable and accessible. Lindenwood remains committed to the ongoing process of installing state-of-the-art technology in the classrooms, increasing classroom space, further developing existing and additional branch campuses in regional locations, diversifying its academic, multi-disciplinary programs.

IT'S ALL ABOUT ACCESS...

A MESSAGE FROM YOUR LIBRARY DIRECTOR, LIZ MACDONALD

As we become increasingly reliant on technology, there is a common misperception that maybe libraries have lost their value. Now, everyone knows that Butler Library has the best couches on campus for sleeping, but Butler Library has a whole lot more to offer—on and off campus. Whether you need a book, article, or help finding information for a homework assignment or research paper, Butler Library has a resource to support your needs. This is easy enough for an on-campus student—they can just walk into the building and talk with a reference librarian. However, there are many non-traditional students who may not have time to get to Butler Library or be aware of how to take advantage of library resources without going to the physical space. This article is an attempt to let everyone know that Butler Library provides *access* to information, no matter what your status or geographic location.

Let's say for example, you are given a writing assignment that requires you to check out a book. Obviously, this will require a trip to the library at some point. However, you can search the library catalog before you ever get to the library through the Library's website. If you find something in the Butler Library catalog that interests you, make sure to record the call number and bring it to the library. We should have something that will help you, as we have spent over \$400,000 on new books over the last three years.

On the flipside, if you search Lindenwood's catalog and don't find a suitable title, you can search any other academic library catalog in the state of Missouri

from the Butler Library website. If you find what you are looking for in another academic library's catalog, you can order it from your desktop and the book will be delivered to Lindenwood within 2-3 business days. You can even have the book delivered to another library if that is more convenient for you. With your Lindenwood University ID you can even check books out in person from virtually any Missouri college or university.

Let's take a moment and expand on our example. Let's say your instructor requires that you find a research article in addition to a book for your assignment. If you learn to use the electronic resources the library provides, you may not have to make a special trip to the library. However, you will need to know how to navigate the online resources provided by the library, which may require a phone call or email—not a big deal, we love talking to students! Online databases are subject/discipline specific collections of articles (many times full-text) and article citations and may be accessed through the Library website. These databases are available to *all* LU students, on or off campus, but accessing them off campus requires a username and password. If you don't have one, or if yours is not working, **CALL THE LIBRARY**, and they'll set you up. You are entitled to this important academic service. If you have any confusion about this at all, please contact us—again, we love talking to students!

The reason the online databases are password protected is that Lindenwood pays for these resources—to the tune of



over \$100,000 per year. And as much as you may be tempted to use Google when doing your research, always remember, Google is free, and you get what you pay for. Google can be useful, however, when looking for a research article for an assignment, remember these things: using an online database is exponentially more targeted; online databases (in many cases) provide full text; and when using an online database, the origin of the research is clear and readily evident. The library subscribes to 27 online databases (mostly full-text) covering all disciplines. Please use them!

Remember, the library is an *access* point to the information you need to be successful in your studies whether you are an on-campus student, off-campus student, non-traditional, or LCIE student, you have ready access to any information resource you might need. In addition to the resources mentioned above, don't forget the library staff! Call us, email us, or come visit us!!

BUTLER LIBRARY CONTACT INFO:

Elizabeth MacDonald	Director of Library Services	EMacdonald@lindenwood.edu	(636)949-4396
Corrie Christensen	Reference Librarian	CChristensen@lindenwood.edu	(636)949-4881
Carl Hubenschmidt	Reference Librarian	CHubenschmidt@lindenwood.edu	(636)949-4820
Mark McWeeney	Reference Librarian	MMcweeney@lindenwood.edu	(636)949-4820
Candance Virgil	Reference Librarian	CVirgil@lindenwood.edu	(636)949-4194
Lynn Heritage	Circulation Supervisor	LHeritage@lindenwood.edu	(636)949-4820
Reference Desk		library@lindenwood.edu	(636) 949 4144

BUTLER LIBRARY HOURS:

Monday	8 a.m. - 10 p.m.
Tuesday	8 a.m. - 10 p.m.
Wednesday	8 a.m. - 10 p.m.
Thursday	8 a.m. - 10 p.m.
Friday	8 a.m. - 5 p.m.
Saturday	8 a.m. - 4 p.m.
Sunday	2 p.m. - 10 p.m.

Quiet Hours: Basement Level Only: 10 p.m. - Midnight (Sun-Thur)



No Time to Eat? Try a Grab n' Go!

Colleen Carriker

Managing your time wisely is essential to success in college. We can sometimes forget the important things in life like checking in with mom or dad, doing our laundry, or even eating! Sometimes our schedules don't provide us with enough time to enjoy the delicious cuisine prepared for us students by the cafeteria.

Here at Lindenwood University we have the perfect solution to this problem. Grab n' Goes, located in the Lion Mart, which is

in The Loft, give students a chance to still eat a wholesome meal when they are in a hurry or heading to class during cafeteria hours. Students have the choice between five different items. These items may include different types of sandwiches, hot dog, salad, chips, fruit, granola bars, rice krispie treats or a cookie. The meal also includes a drink – milk, juice or soda. In order to receive a Grab n' Go meal, students must have their residential student ID cards

scanned. If students choose to eat a Grab n' Go in place of going to the cafeteria, they cannot eat in the cafeteria until the next meal time. Commuter students are encouraged to check out the Lion Mart, where Grab n' Goes or individual food items may be purchased. Grab n' Goes are available to students Monday thru Friday between the hours of 10:30 a.m. and 2 p.m. Grab n' Go's are perfect for the student who is constantly on the go!

Community Impact

Lindenwood University is committed to the ideal and practice of promoting student involvement in community service to stimulate the development of altruism and a solid work ethic. As a result of that commitment, Community Works Service/America Reads students logged 12,819 hours for the 2004/2005 semester year. This figure doesn't include all the hours LU students spend in internships, observations, practicum, and student teaching.

Community Work Service/ America Reads Program

Lindenwood University residential students may participate in the Community Work Service Segment of their Work & Learn Program during their junior and senior year. This assignment will replace one semester of Work & Learn on campus. The student will work and average of 10 hours per week for 15 weeks, or a total of 150 hours, in the participating community service organization or school district. The student's university account will be credited as though they will be working on campus. In order to participate, you must have completed 55 hours of credit and be of junior or senior standing. (Others may be considered under special circumstances.) Students must be eligible to participate in the regular Work & Learn Program and have done satisfactory work in previous Work & Learn Assignments as well as be in satisfactory academic and social standing.

For more information about getting involved with Community Work Service, stop by Career Services or call 636.949.4806.

Career Development for Continued Success

Colleen Carriker

Lindenwood offers many programs that give assistance to students who wish to have continuing success during their academic career and after they graduate from the university. The Lindenwood University Office of Career Development is one of those services that provide students with opportunities that will benefit their future.

Along with the LIONetwork Placement Catalog, a biannual publication that presents the resumes of Lindenwood graduates to over 700 local and national employers, LU Career Services has partnered with eCampusRecruiter.com, the

leading provider of custom online career center management software, online event management, and recruitment solutions, to bring yet another opportunity to Lindenwood students. The online career center management program, called the "LIONetwork" provides students with services including resume approval or referral, job searches and postings, and interview and event information. Employers may post jobs on the network free of charge.

Other services that the Office of Career Development provide include Senior Countdown Seminars to help prepare

senior-level students for full time job search, credential file service available for education students and alumni, and on-campus recruiting where area employers recruit for full-time and part-time positions on campus during the school year. They also host Career Fairs including a Career Day and Teacher Placement Days for prospective teachers to interview with local school districts.

For more information contact Dana Wehrli, located on the 4th floor of the Spellmann Center or by email at dwehrli@lindenwood.edu.

LCIE (Lindenwood College for Individual Education) Colloquia and Lifelong Learning

COLLOQUIUM singular; **COLLOQUIA** plural. *Noun* 1. an informal meeting for the exchange of views. 2. An academic seminar on a broad field of study. [Latin, conversation; from *colloqui*, meaning to talk together; *com-*, together + *loqui*, to speak]

The Colloquium is a basic element of the LCIE program designed for working adults and their particular learning needs and styles. LCIE's small class size, participatory learning format, accelerated pace, emphasis on communication skills, and applied knowledge model are some of the program's key elements, derived from various studies on adult learners. Adult learning's core precept is that of lifelong learning. The Colloquium stems from this concept. Each quarter, an LCIE student is required to attend an out-of-class learning experience and write a brief description or review of that experience. These can be university sponsored events or other learning opportunities avail-

able in their communities, business, or travels. The idea is to habituate students to participate in learning and growth opportunities that are available to them at all times.

For LCIE purposes, a colloquium is defined as a learning experience outside the classroom, with *instructional content*. Lectures, workshops, and readings by literary artists are typical colloquia experiences. A visit to the art museum does not qualify, but a guided tour there does. Likewise, a workshop required by an employer during normal working hours does not qualify, but an out of town or weekend seminar may. A play, symphony, or art opening by itself does not qualify, unless it is accompanied by a talk or lecture.

Over the course of their LCIE careers, students are encouraged to do a mix of colloquia that deepens their professional and personal interests, exposes them to new areas of thought and

culture, and continues their growth. The hope is that such tapping of learning resources will not cease with graduation, but will continue beyond their matriculation at Lindenwood.

In order to foster a sense of connectedness and the interdisciplinary educational experience promoted by LU, LCIE students are encouraged to apply some of their colloquia to Lindenwood sponsored events such as concerts, theater productions, dance performances, movie/discussion series, lectures, literary readings, and business lectures and workshops. Colloquia can add to a campus wide learning community and further enrich everyone's university experience.

The LCIE program sponsors a colloquium of its own most quarters. Students are welcome to bring family and friends. Bulletin boards near faculty and program administrative offices list these and additional suggestions of events that can be used to fulfill the colloquium requirement.

MFA LCIE Student Wins MWG Scholarship

Craig Schneider, a graduate student in Lindenwood's MFA in Writing Program in LCIE, won this year's Missouri Writers Guild's Student Writing Scholarship Award. The Missouri Writers' Guild is a 90 year old organization with branches throughout the state and members all over the country.

Craig is a single parent of a teenage son. He's recently completed a novel, *Hunters and Gatherers*, and is in the process of marketing it. He learned of the MWG competition from Michael Castro. He submitted a writing bio, and answered a series of email correspondences. "I was quite surprised to learn that I'd been selected," he said. "It was a great honor, and a much needed confidence boost; the publishing process for a first-time novelist is filled with almost daily rejections, and that many 'We're

not interested in you' comments can take their toll on self-belief."

Craig has always written and wanted to be a novelist. But, as with many of the adults in the LCIE program, life seemed to sidetrack his ambitions. After a brief, unsuccessful marriage, Craig found himself the single father of a toddler son who had "developed a bad habit of liking food and clothing." He still wrote ("There is always time to write, if you don't watch TV and you don't sleep much," he says), but he realized that finding a decent job was more immediately important than becoming the next Joseph Heller. "I couldn't figure out how to write like him anyway."

He says that the LCIE program at Lindenwood has been a pleasant surprise. "I had originally planned on returning to Washington University, where I did my undergraduate work. But Lindenwood's

program came well recommended, was substantially less expensive, and offered the kind of flexible schedule I need as a single working parent of a teenage son. Plus, it's close to home. I've met some great instructors here who have broadened my literary horizons, and I look forward to each new cluster as a way to add more tools to my knowledge and skills toolbox. I hope to combine my writing background with what I'm learning here and parlay them into a successful career in commercial fiction, one that will make Lindenwood proud to claim me."

Michael Castro, Director of Communications Programs of LCIE, presented the award and said that "Lindenwood's MFA program has benefited tremendously from this honor, as it has now been brought to the attention of influential literati throughout the state."

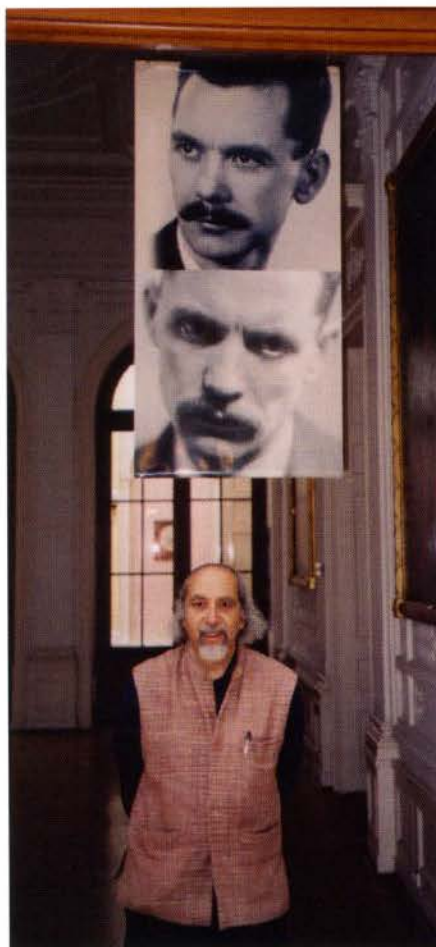
Michael Castro

*Poet, Translator, LCIE
Faculty and Advisor*

Michael Castro, Ph.D., Director of Communications Programs of LCIE, recently returned from Budapest, Hungary, where he participated in the Attila Jozsef Festival. Jozsef, according to Castro, is the most beloved 20th century poet of Hungary, a nation where literary luminaries occupy a far more prominent place in the culture than they do in the United States. This is the 100th anniversary of Jozsef's birth, and there is a year long celebration in progress throughout the nation.

Castro was invited to participate because he co-translated a collection of Jozsef's poems with Hungarian writer Gabor G. Gyukics. The collection will be published this September by Green Integer Books in Los Angeles.

While in Hungary, Castro spoke about his work at a Translator's conference that included scholars and translators from all over the world who were involved in Attila Jozsef's poetry. He also did several poetry readings of his own poetry and of his and Gyukics's translations of Jozsef's work. He read at various locations, including at the National Theatre, the Attila Jozsef Community Center, and at the Raday Konyveshaz – a major Budapest bookstore. Castro even performed his own and Jozsef's poetry with two leading Hungarian musicians as a bonus event that concluded a series called City Lights – American Avant Garde



Art. Excerpts from some of Castro and Gyukics's translations are also featured in a art exhibit by German artist Janet Brooks Gerloff whose images were inspired by the poems of Jozsef.

Castro is the author of *Interpreting the Indian: Twentieth Century Poets and the Native American*, a study of writers influenced by Native American cultures. He has published six books of poetry, translated several works, published numerous individual poems, and participated in many lectures, workshops, readings, performances, and conferences. He has been a Fulbright Scholar in India, and is the co-founder of *River Styx*, a St. Louis based literary organization and magazine. In addition to *We Are Now at the Beginning of Creation: Selected Poems of Attila Jozsef*, a collection of poems by Attila Balogh, *Gypsy Drill*, translated by Castro and Gyukics, is also scheduled for publication this year.



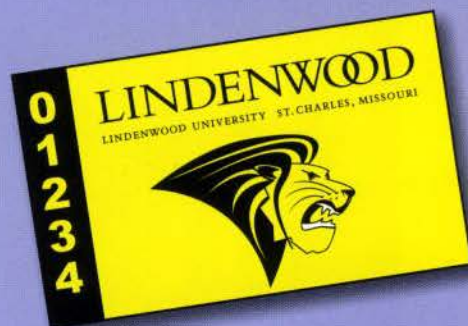
Need Hours?

Be a Part of our Phonathon!

If you are looking for extra work and learn hours, volunteer or service hours—come to the Alumni Office this fall for the annual phonathon, October 3 through 14. Each year students and volunteers call on alumni to contribute to the annual fund. Every dollar raised directly supports student scholarships, academic programs and campus improvements. The Alumni and Development office is located at 120 S. Kingshighway, just across the street from the main campus. For more details, call 636.949.4903.

Stick It!

Except in designated spaces, and for special events, parking in Lindenwood University's campus requires a parking sticker. Stickers are \$2.00 for the entire year, and must be renewed each year. They are available at the bookstore during regular business hours. Have your LU ID and your license plate number handy when applying.



What did you do for J-Term?

Costa Rica

Nancy Cloutier-Davis
Sarah Stehlin

If you answered “paraded with spider monkeys in a cloud forest,” or “studied Latin American History on a beach,” or “hiked with toucans and exotic butterflies,” then you might be one of the adventurous and lucky 13 students that took FLS320 (Field Language Study to A Spanish Speaking Country). The course, coordinated by Nancy Cloutier-Davis, Assistant Professor of Spanish and French, is her annual venture into the heart of a Spanish-speaking country to teach students about life, language, history, politics, and culture of another country the best way possible - by going there. This year’s trip was to Costa Rica.

“My homestay experience was awesome. My house Mother, Cecilia, didn’t speak any English, and I didn’t speak any Spanish, so communication was difficult. But that’s the whole point, isn’t it? The language situation has to be difficult in order to force you to learn,” said Katie Stueck.

The two-week course was split between the towns of Heredia, near the capital city of San Jose, and Samara, a fishing village on the Pacific coast in

the southwest of Costa Rica, which is situated between Nicaragua and Panama in Central America.

“I really liked the variety that traveling to two different towns offered, because the towns were so very different and we were able to experience that first hand,” said Stehlin.

All activities were designed to totally immerse students in Costa Rican culture. Local host families were organized in advance and welcomed us into their households, where we shared meals and other typical daily activities and could practice our Spanish. Meanwhile, every weekday, students (as well as Prof. Cloutier-Davis) attended morning Spanish language classes in small semi-private groups organized by language ability and taught by local Costa Rican teachers.

“I believe it’s better to learn in the country than in an American classroom because in the country you learn from native speakers in your homes in the stores - everywhere. You are immersed and have no choice but to learn the language,” said Katie Nibert.

During our first week, each afternoon and many evenings, Nancy had arranged for us to visit a variety of culturally, socially, economically, or politically important sites, such as a local coffee plantation, museums (including the impressive Museo Nacional in San Jose), and tours of historical architecture.

Traveling from Heredia to the coastal village of Samara, we toured through Monteverde Rain Forest. Tucans, waterfalls, amazing and unique butterfly species, and monkeys greeted us on our way to a “sky-trek”, where we strapped ourselves to wires high in the rain forest canopy and slid from treetop to treetop (James Bond style).

Samara was an entirely different pace of life, exposing us to the slower, more rural lifestyle of the coastal residents. With a new “family” and another week’s worth of Spanish lessons, we soaked up the culture as well as the sun by taking up Salsa dancing lessons, studying while sipping fresh Costa Rican coffee, and participating in a little surfing and snorkeling (in Spanish, of course). The day before we returned to the states, we went on an exotic white water rafting trip through the jungle.

“We rode through freezing cold rapids which was such a rush of adrenaline. Our guide spoke to us in Spanish so we had to translate in order to direct the boat in the right direction without tipping it over,” said Sarah Hunt.

I really enjoyed the entire group that I went with, especially my Prof. Nancy Cloutier Davis...because she set up the trip and seeing it unfold in front of her eyes was awesome. Merely being a part of that was so cool, and we got to do so many amazing things and at the same time learn a lot too.

Guatemala in 2004. Costa Rica in 2005. Where will you be for J-term 2006?



Lindenwood students visiting Costa Rica.

Chicago

J. L. Campbell

Every year, during J-Term or over the summer, Lindenwood faculty members lead educational trips to a variety of locations. Students may earn credit for going on such trips. Small class sizes and an experienced staff make it easy for certain classes to take such trips to further the students' understanding and curiosity. In January 2005, for example, students in Financial Institutions Management, led by Professor Ed Morris, went on a week-long service trip to Chicago, Illinois. The groups traveled to Chicago by train, and stayed at the Drake Hotel. The students saw how certain markets operate and how they had developed over time. The students spent the week traveling to places like the Federal Reserve Bank, the Morning Star (the largest mutual fund advisory in the world) and a number of investment banking firms.



Chicago was chosen as the class's destination specifically because Chicago has the largest futures trading market in the world. The futures market developed in Chicago out of the agricultural markets there. Professor Morris explained how visiting these places allowed all the textbook concepts to be played out in day to day life. In any profession, the market leans toward those with more experience and understanding. The professors at Lindenwood understand this and have taken this challenge to the classroom.

Ecuador and the Amazon

REGISTER SOON
FOR 2006 J-TERM

In January 2006, Lindenwood University is offering Travel Experience (FLS320) to Ecuador! This is a total immersion course, designed to give students the opportunity to experience and learn first hand many aspects of life in a Spanish speaking country. This is real life Spanish and the best way to learn a language and experience the culture.

The first week will be spent in Quito, the capital of Ecuador, where students will encounter a fascinating mix of ancient cultures, indigenous color, and Spanish colonial history. Impressive churches, palaces, museums, and other buildings make Quito a unique city in South America. A typical school day will begin with 4 hours of private, one-on-one language instruction with local, certified instructors. Afternoon activities include trips to historical sites and buildings, museums, and of course, the Equator! Afternoon and weekend excursions to important cultural sites

such as the indigenous villages of Saquisilí and Ambato, and the National Parks of Cotopaxi and Baños also play a prominent part in the agenda.

The cost of the trip, depending on availability and time of booking, will be between \$1,650 and \$1,850. That price includes airfare, transportation, language classes, the home-stay with an Ecuadorian family, most meals, and laundry service, as well as other organized activities, museum trips, and other excursions. The trip will last approximately 2 weeks. First payment of \$650 is due in mid-September, and total payment must be received prior to departure.

The course will accommodate all levels of Spanish speaking proficiency, from complete beginner to expert.

To register or to have any questions answered, contact Nancy Cloutier-Davis, (636) 949-4183; email: ncloutierdavis@lindenwood.edu or Dr. Jann Weitzel, (636) 949-4846; email: jweitzel@lindenwood.edu.

Economic Policy Lectures Headline ISEE Fall Activities

Tucked in the lower level of the Memorial Arts Building, home to the Management Division, is one of Lindenwood University's better kept secrets – the Institute for Study of Economics and the Environment. Beginning its fourth year of operation, ISEE remains true to its mission "to improve student and public understanding of the basic economic concepts that can be used to guide effective and efficient environmental policymaking."

The Institute's most visible program is its *Economic Policy Lecture Series*. Nine of these lectures have been held to date. Students and faculty have filled the Anheuser-Busch Leadership Center each time.

On Thursday September 29, Mr. Joel Schwartz, one of America's foremost experts on air pollution will speak on "How Clean is America's Air?" This one hour lecture will start at 3 p.m. and end promptly at 4 p.m.

Wednesday November 9, Dr. William Poole, President of the Federal Reserve Bank of St. Louis will examine "Why are Economists and Noneconomists so far Apart on Free Trade?" He will raise such provocative questions as, "Why should we be more concerned about job losses from international trade than we are about job losses from domestic competition, or changing technology?" This lecture has a late start at 3:30 p.m. and will conclude by 4:30 p.m.

Kenneth Chilton, Ph.D., Director of ISEE and Associate Professor of Management, also plans to challenge his students in BA383 "Economics and the Environment" to prepare high quality term papers for the honors program. "I plan to publish the best honors paper as a working paper to be distributed by the Institute to a select national academic audience," says Dr. Chilton. Students not enrolled in BA383 may also submit a paper. Contact Dr. Chilton (636-949-4742) to discuss your idea for research on an environmental or natural resource policy issue.



Old and New from the French Program

OLD: LU is proud to have a local chapter of *Pi Delta Phi*, the French National Honor Society, established in 1906 at the University of California at Berkley. The local chapter at Lindenwood University is *Zeta Pi*, established in 1970. Membership requirements are a completion of at least three semesters of college course work, a GPA of 3.0 in French, a ranking in the upper 35% of the class, and at least one semester of upper-division French. Honorary Members are recognized for their strong support of French language and French/Francophone culture. On April 13, 2005 the *Zeta Pi* chapter initiated 8 new members to the Honor Society in a time-honored traditional initiation ceremony.

NEW: The French Department is also very proud of its latest improvement. Students majoring in French now spend a semester living and studying in Caen, France as part of their degree requirements. The implementation of this Study Abroad program greatly strengthens the major and gives LU French majors a strong linguistic advantage over students graduating from other universities, most of whom do not offer—let alone require—such an opportunity. For more on the program, see the feature in the Spring 2005 *Pride*. For further information, contact Dr. Nancy Durbin at ndurbin@lindenwood.edu or (636) 949-4868.



Lindenwood students visiting France: Brandon Joyce, at Versailles; Paola Franco, visiting Saint-Malo; Ericka Jenkins and Sara Schmittgens at EuroDisney.

The 2005 LINDY AWARDS



In April 2005, the Communications Department rolled out the red carpet and handed out the first Lindy Awards to Lindenwood students. Students and faculty participated as hosts, recipients, and TV crew to produce a first class awards show honoring excellence in all aspects of television and video production, such as directing, editing,

acting, writing, and graphic design. Lindenwood also awarded Lindys to talented high school students in directing and production. The hour-long, live event and television show was held in Young Auditorium and was broadcast on LU-TV26, Lindenwood University's Higher Education Channel on Charter Cable.

漢語

For the first time, Lindenwood will be offering classes in elementary Mandarin Chinese this fall. Chinese is spoken by 1.3 billion people. China is expected to be the economic, and thus political, powerhouse of the future. A practical, working knowledge of the language can do nothing but benefit those who possess it.

SPRING 2005 INTO FALL 2006

GETTING CONNECTED

If you want the latest information on the exciting happenings of Lindenwood University, the Student Activities Office can be reached at 636-949-4983 and is located in the Spellmann Center: Lower Level, which is also where Eric Click, Director of Student Activities, can be found. For a complete listing of all events happening at Lindenwood, visit the website at www.lindenwood.edu. The Event Calendar can be accessed at the bottom of the home page. To read about other Student Activities such as Upcoming Events (Weekly Activities List), Lindenwood Student Government Association (LSGA), LU Crew, and Intramurals, click on the Campus Life link, then on Student Activities.

THE LOFT

The Loft, formerly Butler Centre, is up and running for student use. Some of the new and exciting additions include the relocation of the Lion Mart and Grab & Goes, new décor (including couches, tables and chairs), and a loft with wireless internet access. Stop by and see all of the great changes that have been made to better your campus life. Also, many weekly events will be occurring on designated nights.

THE CONNECTION

Simply put, The Connection gives students a place to connect. The Connection, located on the lower level of the Spellmann Center, is an incredibly versatile 8,900 square foot room. The room exemplifies LU pride with black and gold flooring, two 65 inch projection TVs, a concession stand, activity boards, spacious bathrooms, a beautiful patio and assorted tables for study and social activities. In this venue, pertinent University information is available, as well as information concerning St. Charles, St. Louis and Missouri. Hours of operation are listed below.

LU CREW IS COMING FOR YOU

The LU Crew is the newest spirit group around and you cannot help but notice them at home sporting events. They are there to support Lindenwood athletics and distribute spirit items to fans, often times with a giant sling shot. The LU Crew is designed to give members an active role in encouraging Lindenwood's spirit at not only athletic events, but also at special events.

The LU Crew can also be taken as a 1-credit PE course with Eric Click, Director of Student Activities. Classes will be held on Mondays at 4 p.m. in the Spellmann Center: Connection Center. Furthermore, please note that this class has a \$10 lab fee. With this \$10 lab fee, you will receive an official LU Crew T-Shirt, rally towel, and a pair of thunder sticks. Note, students will know which games and events they are assigned based upon their crew. After enrolling, please come by the Student Activities Office ASAP to receive your crew assignment. This will ensure that you have ample time to coordinate your fall 2005 semester schedules and commitments with the class requirements.

In addition, students wishing to join the LU Crew are not required to take the class. If you are unable to enroll in the class due to scheduling conflicts and/or commitments, please come to the Student Activities Office. For a \$10 membership fee, you can still join the LU Crew at a less committed level. If you are interested in joining the LU Crew, contact the Student Activities Office at x4983.

FACILITY HOURS OF OPERATION

*Hours May Be Subject To Change

COMPUTER LAB

8:00 a.m.-12:00 a.m. (M-TR)
 8:00 a.m.-5:00 p.m. (F)
 8:00 a.m.-4:00 p.m. (Sat.)
 4:00 p.m.-12:00 a.m. (Sun.)

FITNESS CENTER

8:00 a.m.-10:00 p.m. (M-F)
 10:00 a.m.-6:00 p.m. (Sat.)
 1:00 p.m.-8:00 p.m. (Sun.)

THE CONNECTION

9:00 a.m.-12:00 a.m. (M-TR)
 9:00 a.m.-8:00 p.m. (F)
 12:00 p.m.-6:00 p.m. (Sat.)
 2:00 p.m.-12:00 a.m. (Sun.)

Excluding Extended Hours for Special Events

BOOKSTORE

8:00 a.m.-6:00 p.m. (M-TR)
 8:00 a.m.-5:00 p.m. (F)

LIBRARY

8:00 a.m.-10:00 p.m. (M-TR)
 8:00 a.m.-5:00 p.m. (F)
 8:00 a.m.-4:00 p.m. (S)
 2:00 p.m.-10:00 p.m. (Sun.)

*Quiet Hours: Basement Level Only:
 10:00 p.m.-12:00 a.m. (Sun.-TR)

THE LOFT

9:00 a.m.-12:00 a.m. (M-F)
 2:00 p.m.-12:00 a.m. (S-Sun.)



SPRING 2005 INTO FALL 2006

WELCOME WEEKS (AUGUST 20-SEPTEMBER 4)

The first week of school is an exciting time for all, including new and returning students, faculty and staff. Welcome Week consists of activities that aim to familiarize new students with Lindenwood's campus and culture and to welcome back our returning students. New Student Orientation, check-in, the Opening Convocation, Welcome Back Dance, Welcome Back Snacks, BBQs, and sporting events are only a few of the many events that take place during Welcome Week.

- August 21 and 22, from 9 a.m.-5 p.m., in the Hyland Performance Arena, Student Check-In will be held.
- Sunday, August 21, at the Hyland Performance Arena, from 3:00-4:30 p.m., New Student Orientation will be held.
- Tuesday, August 23, at the Lindenwood University Cultural Center (LUCC), from 4:00-5:30 p.m., Opening Convocation will be held.
- Tuesday, August 30, in the Quad, from Noon to 4 p.m., Student Club and Organization Day will be held. Come and check out the many student clubs and organizations Lindenwood has to offer.

***These events are mandatory for College Community Living.**

Welcome Back Snacks will be available for all students in the Loft, on August 21 and August 22, from 7 p.m. to 12 a.m.: Cheese platters w/ crackers, fruit platters, veggie platters with ranch, muffins and pastry assortments, coffee with assorted creams and sugars, tea, punch, and lemonade.

HOMECOMING WEEKEND (OCTOBER 14-15)

AND PARENT'S DAY (OCTOBER 15): BE PART OF THE LU TRADITION

Homecoming Weekend is filled with exciting events for students including the annual Dorm Decorating Contest, Banner Contest, pep rally, Homecoming football game and half time show, powder puff football, BBQs, various sporting events and much more.

On October 15, from 9 p.m. to 1 a.m., at the LU Club, the annual Lindenwood Student Government Association (LSGA) Homecoming Celebration will take place. The event includes a DJ, food and beverages. Semi-formal attire is required. Last year, nearly 400 students attended the festivities. Parent's Day gives parents the opportunity to visit campus, tour their son's or daughter's dorm, and take part in many of the Homecoming events.

Directions to the LU Club are available at the Student Activities Office.

ID CARDS

Students can get ID cards Monday through Friday between 8 am and 5 pm, and Saturdays between 9 am and 2 pm, on the third floor of the Spellmann Center next to the Information Station. Students who need replacement IDs must first go to the Business Office located on the ground floor of Roemer Hall, and pay a replacement charge.

STUDENT MAIL

The student mailroom is located on the third floor of the Spellmann Center. Every residential student is assigned a mailbox. A station will be set up for mailbox issue during registration; late registering students can go to the mailroom to find out their mailbox assignment. Mail should be addressed as follows:

Student Name
Lindenwood University
P.O. Box #
209 South Kingshighway
St Charles, MO 63301

WORK AND LEARN

Students who have signed up for the Work and Learn Program need to be aware that they begin work on Monday, August 22, 2005. During registration, notices will be posted about the meetings the majority of work areas will have. It is imperative students attend the meeting for their area; this is when work schedules will be determined and policies explained.

SPRING 2005 INTO FALL 2006

WANTED: RESIDENTIAL DIRECTORS (RDS)

We currently have a number of RD positions available in both mens' and womens' dormitories/housing. Residential Directors (RDs) are Lindenwood University staff who are responsible for working with Lindenwood University Administration in assisting each residential student with his/her personal growth and development socially, intellectually, and culturally while fostering a sense of community in their residential hall/housing.

Minimum Requirements for Application:

- Ability and desire to work well with a diversified population of Lindenwood University students.
- A flexible 40 hour a week time commitment.
- Ability to live on campus in designated residential dorm/housing.
- Bachelor's Degree.

This is an excellent opportunity to gain valuable job experience, while pursuing your academic goals at a leading academic institution (tuition reimbursement is available). For further information concerning this excellent and rewarding job opportunity, please contact Terry Russell, Director of Residential Services, at 636-949-4980 or trussell@lindenwood.edu.

WANTED: STUDENT LEADERS FOR RESIDENTIAL ADVISOR POSITIONS

Residential Advisors (RAs) are responsible to their Residential Directors (RD) for assisting each residential student with his/her personal growth and development socially, intellectually, and culturally while fostering a sense of community in their residential hall/housing.

Minimum Requirements for Application:

1. two semesters of Lindenwood experience .
2. good academic and social standing with the University.
3. 2.5 cumulative G.P.A.

For further information concerning this prestigious work and learn position, please contact Michelle Giessman, Director of Residential Life, at 636-949-4848 or mgiessman@lindenwood.edu.

NEW: STUDENT ACTIVITIES RA POSITION

Positions Still Available for Approved RAs

1 RA per each of the following dorms: Ayres, Blanton, Cobbs, Flowers (Dorm C), Mathews (Dorm D), Calvert Rogers (Dorm E), Rauch Memorial (Dorm F), Guffey, Irwin, Niccolls and Parker

2 RAs each for overall Women's Housing and Men's Housing.

Supervisors: Eric Click, Director of Student Activities, Designated RD

Purpose

This RA will serve as a communicator and facilitator between his or her dorm/housing and the Student Activities Office. All previously stated RA responsibilities in the RA job description will also apply.

Time

This RA will spend an average of about 5 hours per week carrying out his/her responsibilities. Most of these responsibilities can be done simultaneously while on general RA duty.

For further information concerning this RA position, please contact Eric Click, Director of Student Activities, at 636-949-4983 or eclick@lindenwood.edu.

REMINDER: RD/RA TRAINING (MANDATORY)

RD/RA Training will be held from Tuesday, August 16 through Friday, August 19. This is required (mandatory) to either become an RD/RA or to maintain your status as a RD/RA.

On Tuesday, August 16, in the Spellmann Center: The Connection, from 9 a.m. to 12 p.m., RAs will be allowed to

complete the check-in process. RAs will receive both room and board during these training days.

Furthermore, by August 1, RAs will receive further information via mail regarding his or her training. In addition, RAs need to RSVP on his or her attendance status ASAP to the Work and Learn Office at 636-949-4562 or workandlearn@lindenwood.edu.



ΦλΦ

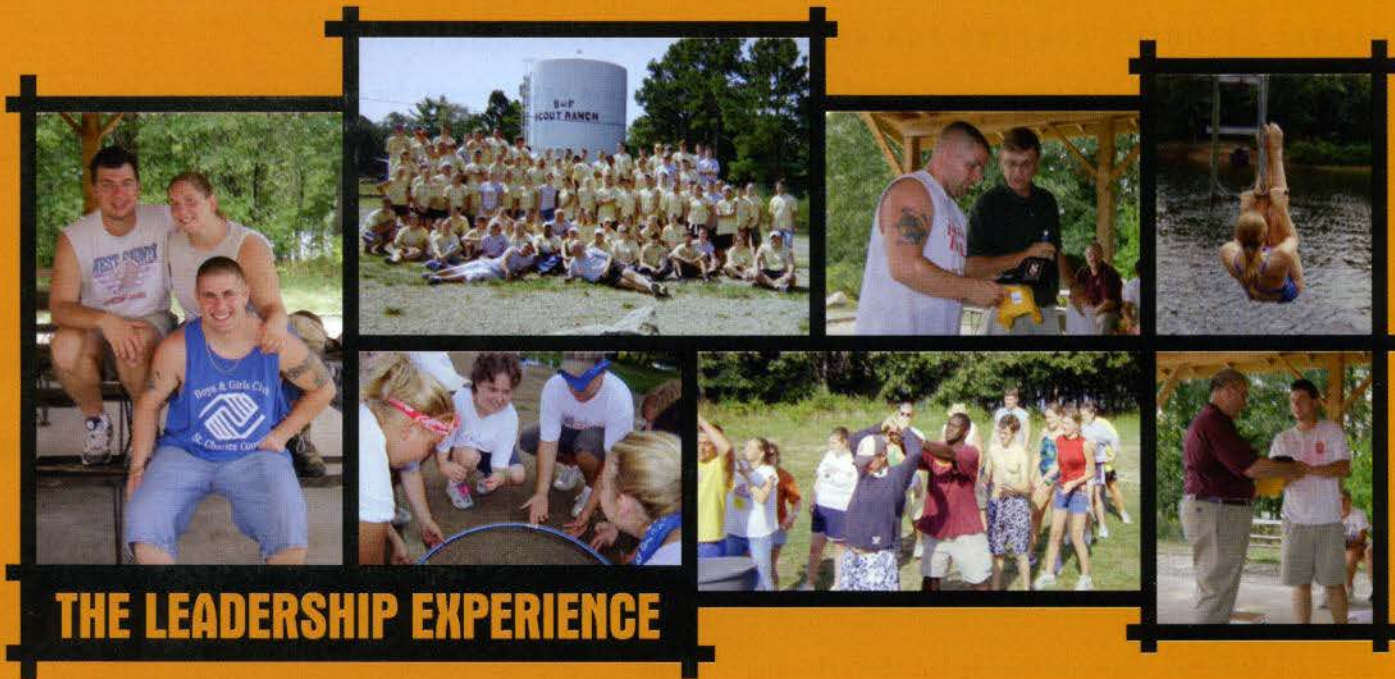
New Fraternity

On April 23, 2005, the National Board of the Phi Lambda Phi National Fraternity granted its organization here at Lindenwood University full rights and privileges as Beta Chapter of Phi Lambda Phi.

Lindenwood University looks forward to a rewarding partnership with the fraternity in seeking the success of its students and the commitment to make a positive impact on the community and the world. Keeping with this commitment, Phi Lambda Phi's mission statements says *The three-fold mission of Phi Lambda Phi is first to attract*

quality minded undergraduate men who will continue the fraternity for life concept which makes our history rich, second to offer an organization where the membership develops and the organization prospers by promoting high standards of scholastic achievement, personal development, citizenship and social responsibility, and third to retain members interest and support in order to grow an active alumni network.

For more information please contact Dan Nieland at 636-949-4174 or dnieland@lindenwood.edu.



THE LEADERSHIP EXPERIENCE

Lindenwood University was recognized this year as having the nation's top American Humanics program. This program is a national alliance of over 70 colleges, universities, and nonprofit organizations. Its mission is to educate, prepare, and certify professionals to strengthen and lead nonprofit organizations. Students are educated to be nonprofit leaders and managers through a curriculum of service learning—learning by doing.

Each summer before school begins, The American Humanics Student Association hosts a four-day, 1 credit

hour "Leadership Experience" at the S-Bar-F Scout Ranch near Farmington, Missouri. Last year nearly 100 students participated in the event.

The "Leadership Experience" allows continuing students, as well as incoming freshmen, the opportunity to participate in an outdoor leadership getaway. Students participate in team-building activities, personal growth opportunities, a variety of outdoor activities and hear guests from the public, private and nonprofit sectors speak on leadership and community. There's also a karaoke night and plenty of free time

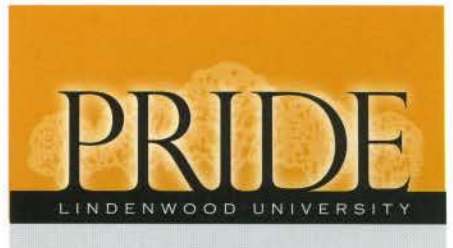
to meet new people and form life-long friendships. The most rewarding part of the Leadership Experience is the opportunity to find hidden strengths and to put those strengths to use as part of a team.

This year's experience will be held Aug.16-19, 2005 (classes begin on Monday Aug. 22!). There is a \$90 lab fee that covers round trip transportation, meals, and lodging. To sign up for the "Leadership Experience" or for more information please contact Professor Jack Beckerle at (636) 949-4572 or jbeckerle@lindenwood.edu.



Lindenwood Pavers

While walking through campus have you ever noticed the bricks on the sidewalks with the various individuals' names on them? Have you ever wondered what those bricks are and how you could get your name on one? Those bricks are called pavers and any graduating student from Lindenwood University may purchase one. Parents, this would be a great gift to your student to show how proud you are of them for earning their college degree. For information on purchasing a paver, please contact Laura Bennett-Smith lbennett-smith@lindenwood.edu.



The *Lindenwood University Pride* is written, designed, and photographed by students and staff. If you are interested in participating in this publication, contact Andy Thomason at 949-4552 or Darren Collier at 949-4187.

WRITING STAFF

Colleen Carriker- Editor/Writer
 J.L. Cambell- Writer
 Brandon McKinney- Editor/Writer

GRAPHICS & PHOTOGRAPHY:

Brain Boerner- Layout Designer
 Pedro Chain- Designer
 E.J. Smith- Photographer
 Matt Mercer- Photographer
 Stephon Johnson- Designer
 Lance Korsun- Designer

Center for Christian Ministry Studies Expands Classes into Area Churches

In its effort to serve the community, promote Christian unity and highlight its ministry training degree program, the CCMS-Discipleship Institute was created to offer exciting, practical courses to area congregations and interested persons.

Ideally suited for local church staff and lay leadership to gain theological and practical skills, students may seek certification in one of six specially-designed concentrations-Theological, Youth Ministry, Discipleship Training, Missions and Social Justice, Worship Ministry, and Biblical Proficiency. Each concentration requires successful completion of five courses. While these CMS courses may be taken as regular academic credit toward a degree, certificate credit is offered at a substantially reduced cost. CCMS-Discipleship Institute certificate courses can be upgraded later to full academic credit at a later time. Classes meet one night a week for 15 weeks, beginning the week of August 22.

A growing number of congregations and area leaders have opened their doors and offered their time. Among them for the fall semester are Dardenne Presbyterian, Faith United Methodist (St. Charles), SunRise U. Methodist (O'Fallon, MO),



Sibley Chapel on the campus of Lindenwood University.

First Baptist Church- Harvester, and several more. Some certificate classes are also offered on the LU campus.

Please contact Dr. Steve House, campus director of CCMS, for full information about CCMS-Discipleship Institute certification, including available classes and locations. Dr. House may be reached at 636-949-4889, or shouse@lindenwood.edu.



Become a Part of LU History

Lindenwood University is offering the opportunity to contribute to LU athletics and the Harlen C. Hunter stadium renovation. For only \$1,000, payable over 4 years, a donor can have his or her name, or business name, included on a plaque to be mounted inside Harlen C. Hunter stadium. In addition to the plaque, for the next 4 years, donors can purchase VIP season tickets at 75 percent the normal cost, and will receive invitations to special "donor" events hosted by Lindenwood at least once



per year. Such a donation is a nice way to honor a loved one, support a current LU student or student-athlete, or advertise a business. Put any name you want on the plaque, and become a permanent, visible part of LU's 178

year history. The gift is also 100 percent tax deductible.

Interested persons should contact Brett Barger, Director of Athletic Management & Marketing, at 636-949-4366, or bbarger@lindenwood.edu.

Athletics Ticket Passes

Lindenwood University offers 3 season ticket options:

OPTION 1

VIP Football Pass **Cost: \$120**

Includes a Reserved seating – with full seat and back – ticket to all 5 LU home football games, plus BBQ available at the VIP section.

OPTION 2

Football Season Pass **Cost: \$32**

Includes admission to all 5 LU home games for the price of 4.

OPTION 3

All Sport Season Pass **Cost: \$150**

Includes admission to every LU home game for any sport, in any stadium, including games performed at CenturyTel Ice Arena in Wentzville.

Interested persons should contact Brett Barger, Director of Athletic Management & Marketing, at 636-949-4366, or bbarger@lindenwood.edu.

A Very Good Year

If this past year is any indication of what's to come, Lindenwood sports fans are in for a very good year indeed. The 2004/2005 year was a banner year for LU sports, with a record number of teams winning a record number of titles. Seven LU sports teams won national championship titles this past year. They included:

Men's Soccer

Men's Indoor Track & Field

Trap & Skeet

Roller Hockey Division 2

Wrestling

Men's Bowling

Roller Hockey Division 1

In addition to those national championship titles, the Lindenwood football team, and both the men's and the women's lacrosse teams had undefeated regular seasons. And for the first time ever, the men's tennis team went to the NAIA national championship tournament, where they finished with national ranking in the top 16.

Congratulations to everyone involved in LU's 38 varsity sports teams.

