

Lindenwood University

Digital Commons@Lindenwood University

Viewbooks

Lindenwood Historic Documents, Booklets,
Miscellaneous

12-1949

1949 Lindenwood College Viewbook

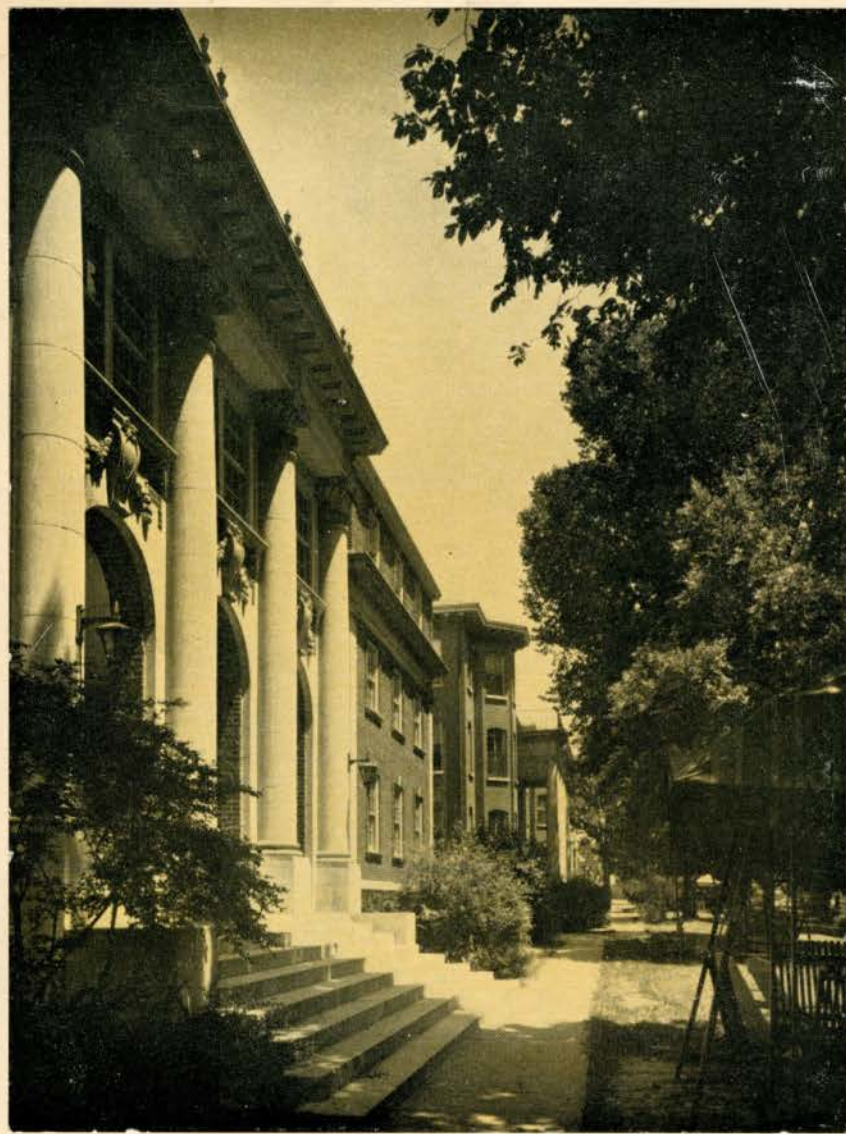
Lindenwood College

Follow this and additional works at: <https://digitalcommons.lindenwood.edu/viewbooks>



Part of the [History Commons](#)

V 123 #3 Dec '49



LINDENWOOD COLLEGE BULLETIN
SAINT CHARLES, MISSOURI

LINDENWOOD COLLEGE BULLETIN

VOL. 123

DECEMBER 1949

No. 3

Published monthly by LINDENWOOD COLLEGE, ST. CHARLES, MISSOURI.

Entered at the St. Charles Post Office as Second Class Matter.



LINDENWOOD COLLEGE *for* WOMEN

FOUNDED 1827

SAINT CHARLES, MISSOURI



DR. FRANC LEWIS McCLUER, President
Friendly

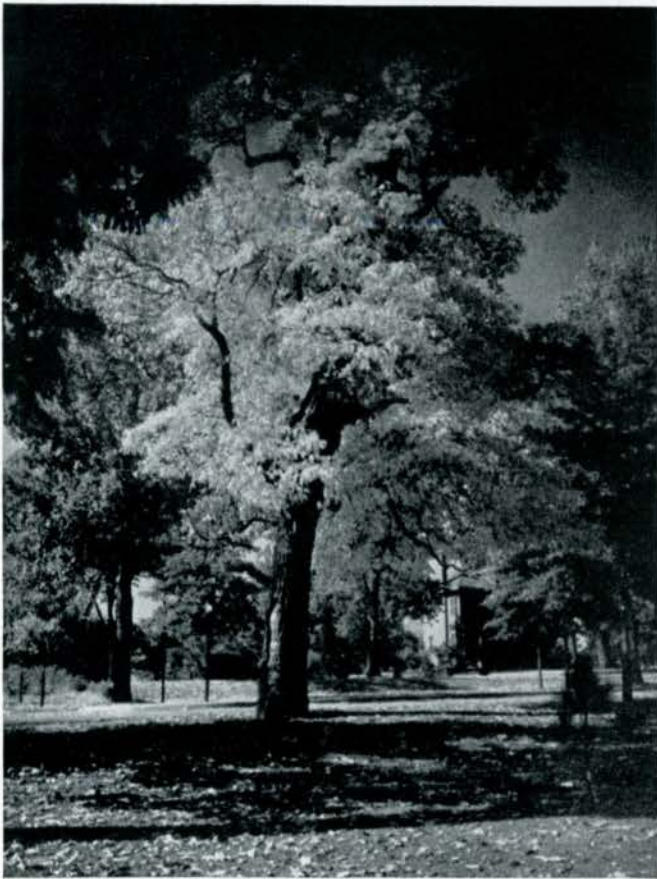


MRS. FRANC McCLUER
Gracious



ROEMER HALL

Administration offices, class rooms, laboratories, Post Office and Book Store.



BENEATH the shadows of beautiful Linden trees for more than a hundred years graceful and gracious maids have come and gone. At Lindenwood lingering memories of a gracious past and perfect confidence in the future awaits you.

These pages will show you the modern buildings and beautiful campus, but the young women who come here are the most wonderful part of Lindenwood.



Still stands stately Sibley Hall.



AYRES HALL

Dormitory, dining room
for all the students.

The beginning of many
happy parties.

BUTLER HALL

is a residence hall, housing the gymnasium and the swimming pool, too. The big college parties are all held in Butler.





Vine clad
Irwin Hall is a dormitory for
eighty young women.

Looking out from the
entrance of Roemer Hall.





Through the Loggia of Niccolls Hall
students have gone in and out for
thirty years.

THE PRESIDENT'S HOME

Students are invited to call.





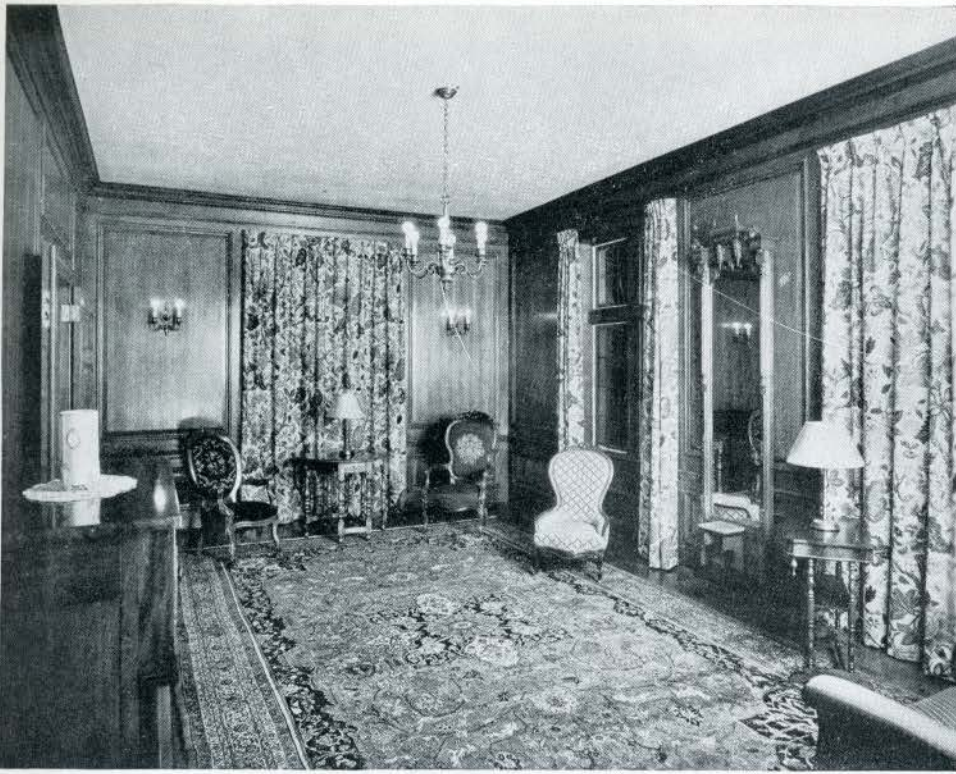
The Margaret Leggat Butler Library where
“the minutes of the previous meetings” are re-
corded, and where we query about the future.

South Study Room of the Library.

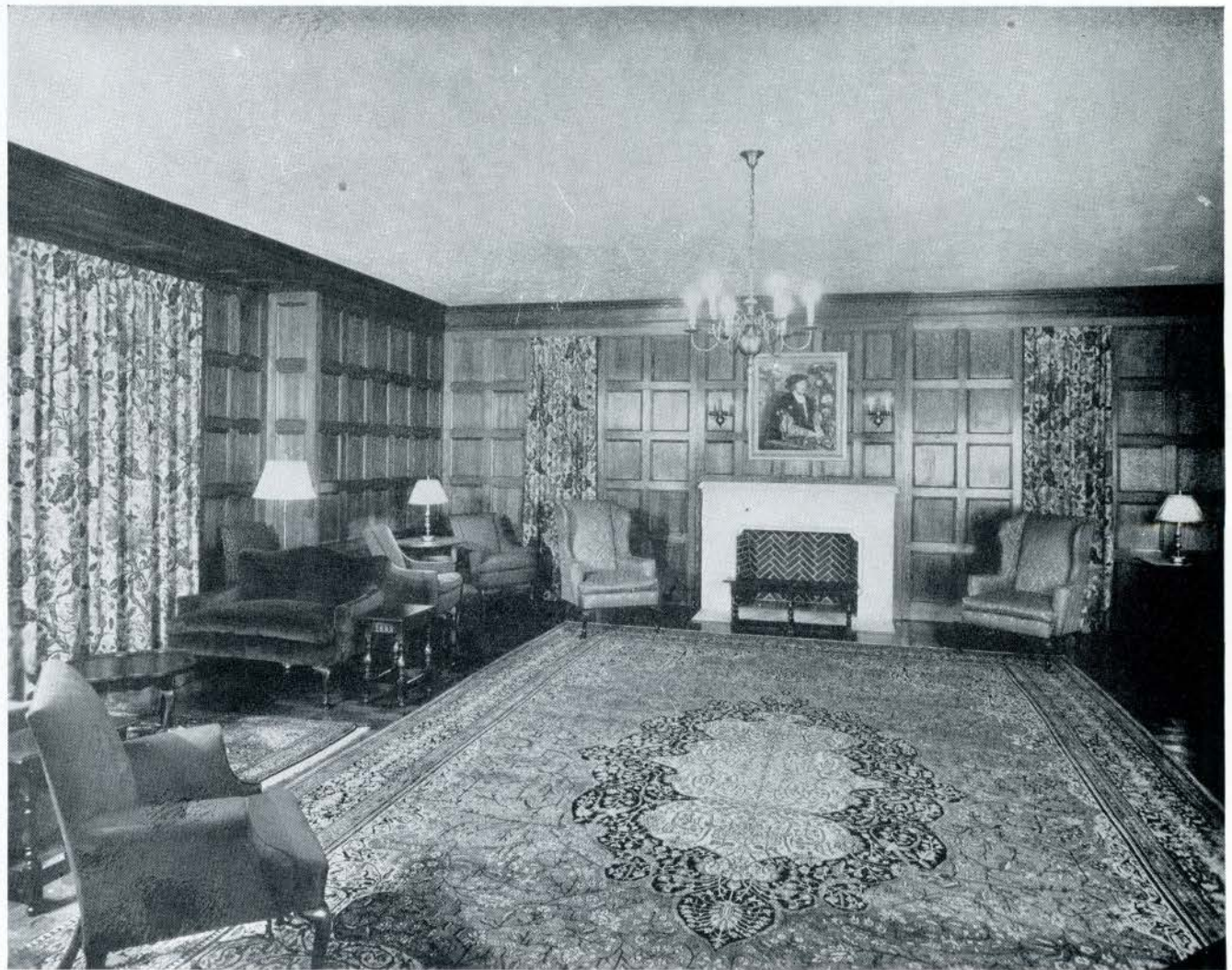


The Lillie P. Roemer Fine Arts Building for Music, Art, Radio.





The Memorial Room set with
furniture of an early period.



The grand reception room.

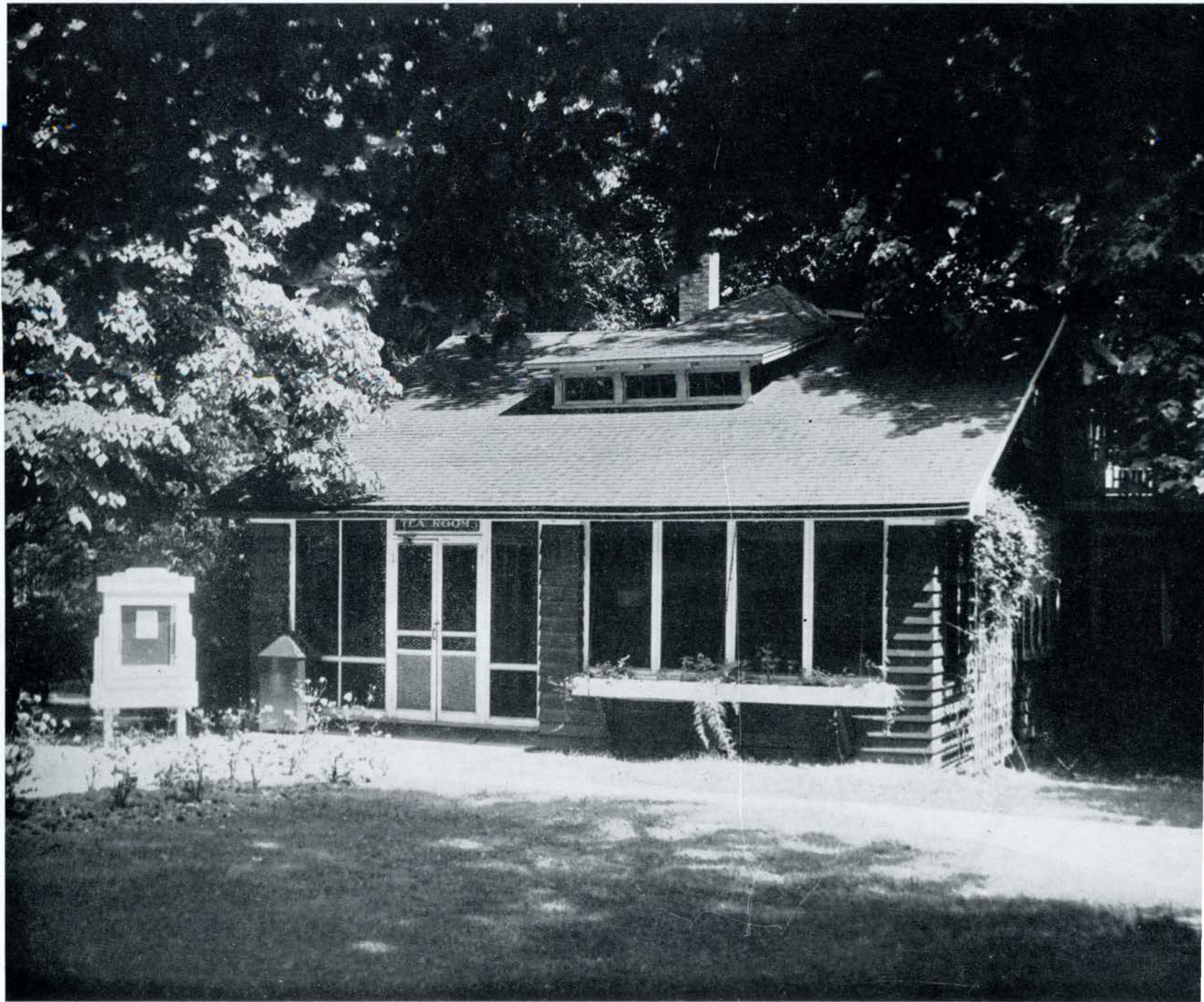
On the way to Roemer
this vista will greet you.





STUDENT HEALTH CENTER

Friendly nurses and doctors are in attendance.



This building to be converted into a Home-management House after the opening of new tea room in Cobbs Hall.



The Gables . . . Includes faculty club room
and home of Chairman of Department of Music.



Lindenwood Women Arrive.



POST OFFICE

Every one expects a letter
every mail and students
share the good news.



An interesting biological study.



It is an accomplishment to learn to live with books and it brings big results.



Chemistry holds many a secret.

Costume design
is inspiring.





Dr. John Thomas, Director of Music, and a pupil.

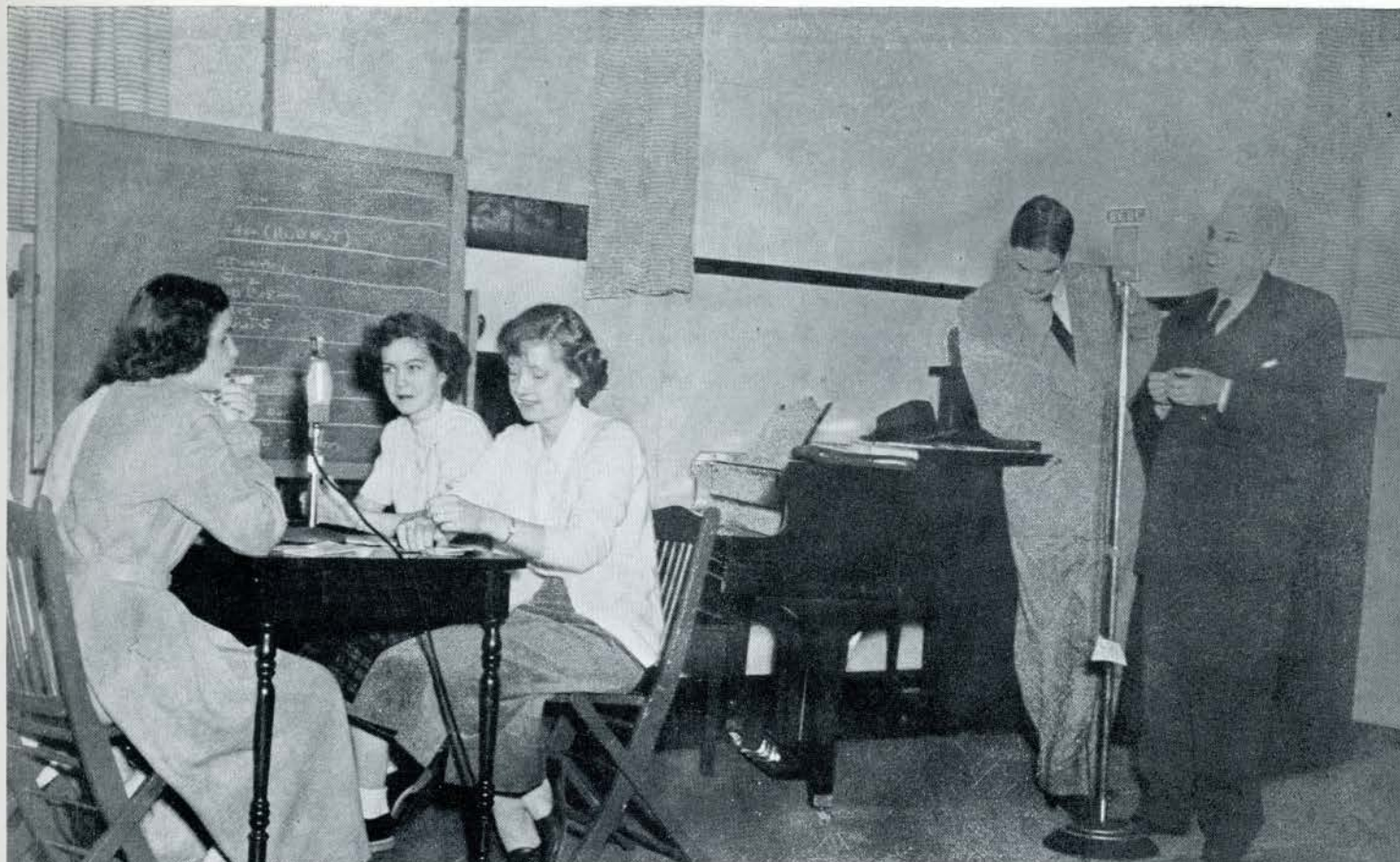


MODERN education has vocational tendencies. Students find fields of interest here for both hands and head.

Art students find sketching
stimulating.



S
n
e
f
g
t
c



Students have Community Life conference and Radio conference with distinguished visitors to take part in the discussions.



Lindenwood students
receive apprentice
training in radio at
Station KMOX in St.
Louis.



Designed, made and modeled
by Mary Ann Mertens.





Food preparation and formal teas all a part of Home Economics.

Madame Helene Lyolene with her class in design.





Learning to make duplicated copies.

Botany Class works in the greenhouse.





The men of the campus
throw a party.





The dining room, a beautiful setting
for much of the life of the campus.



Lindenwood women love a street supper.
Here is one in full swing.

Some of the students from
abroad in native costume.



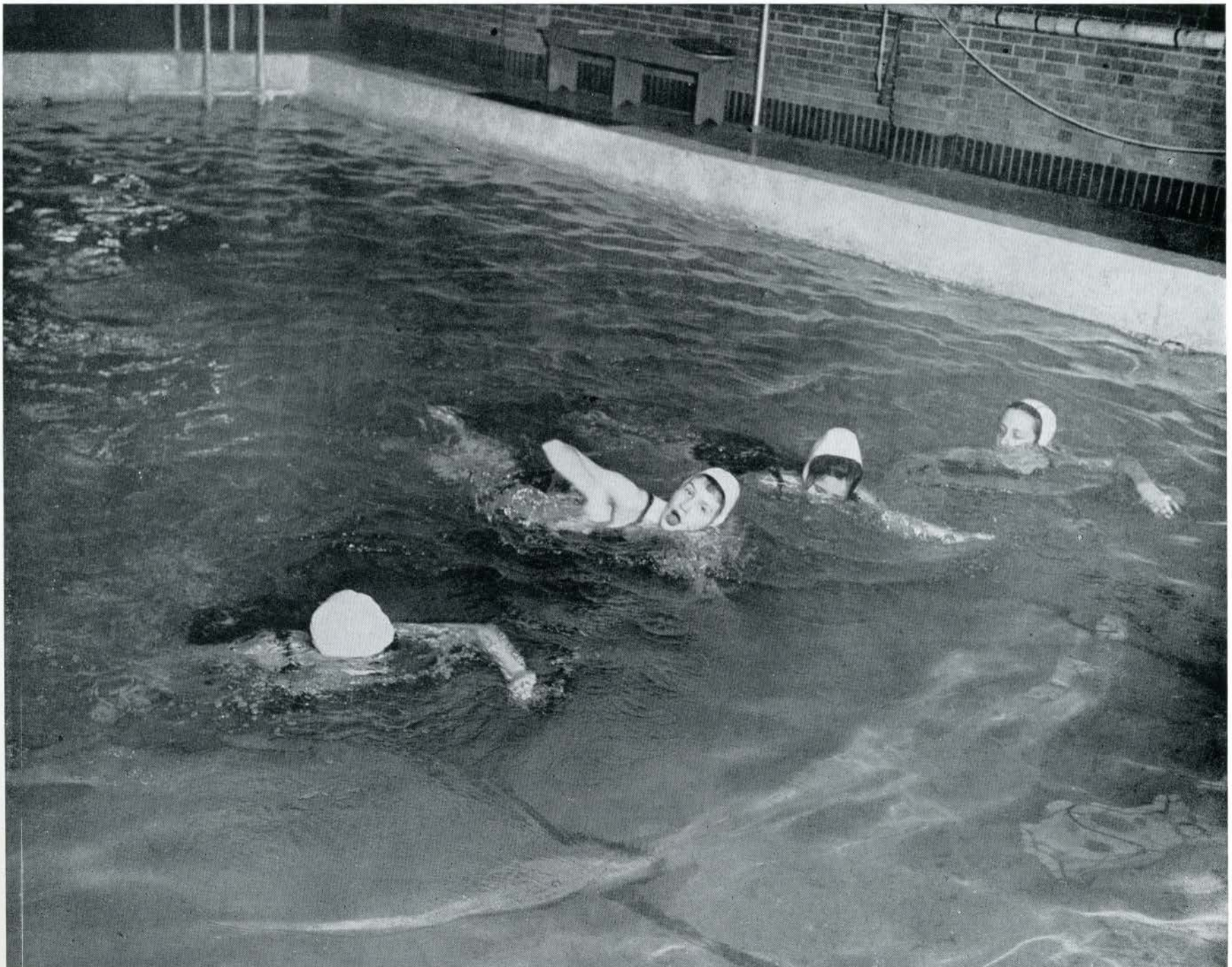
It looks like a hit.

The sixth hole of the golf course.



Most every one swims.

Tea room chat.





Some like the horses best.

Well kept Tarvia courts
allow you to play all year.





Lilies and roses greet you from the front door of Irwin Hall.



All Students have an evening with
President and Mrs. McCluer in the
President's home



May Queen and Court, 1949.

Once a year, the Choir makes
an extended concert tour.





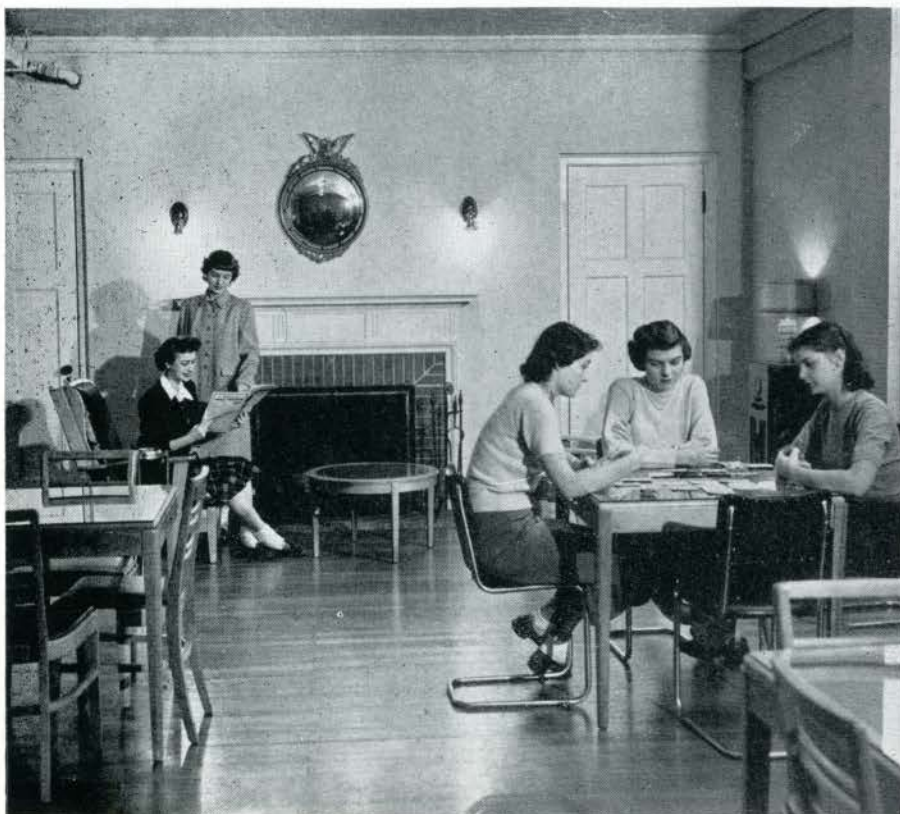
At the Junior Prom,
Chase Hotel, St. Louis.

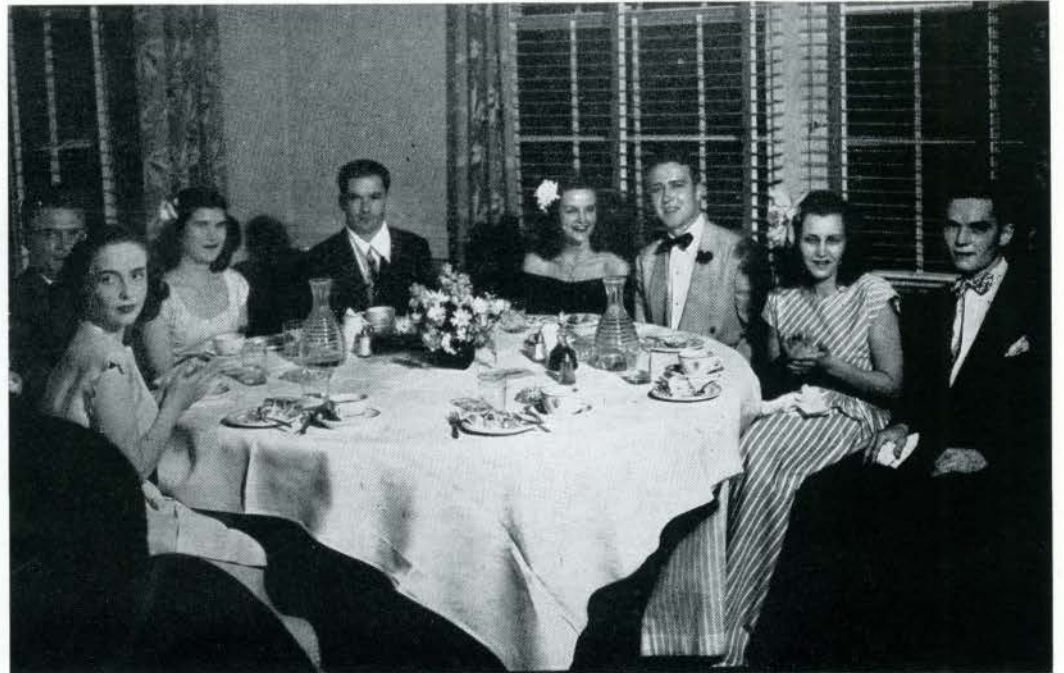
Top: Getting ready for
a dance.

Bottom: In the Sibley
"Rec" room.



In the Irwin "Rec" Room.





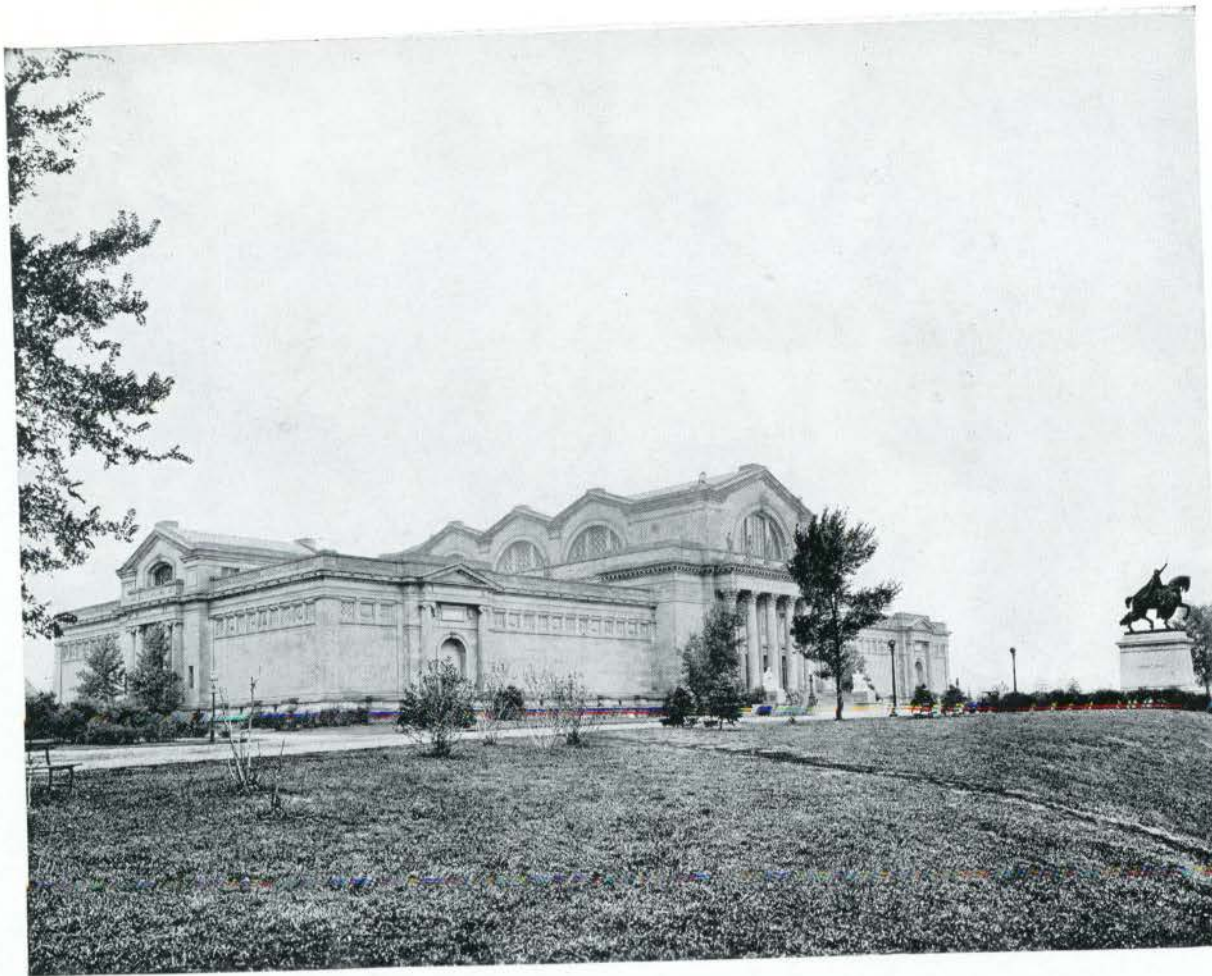
Juniors and Seniors dine and dance.



Westminster fellows come to a dance.



.. and they are
married now.

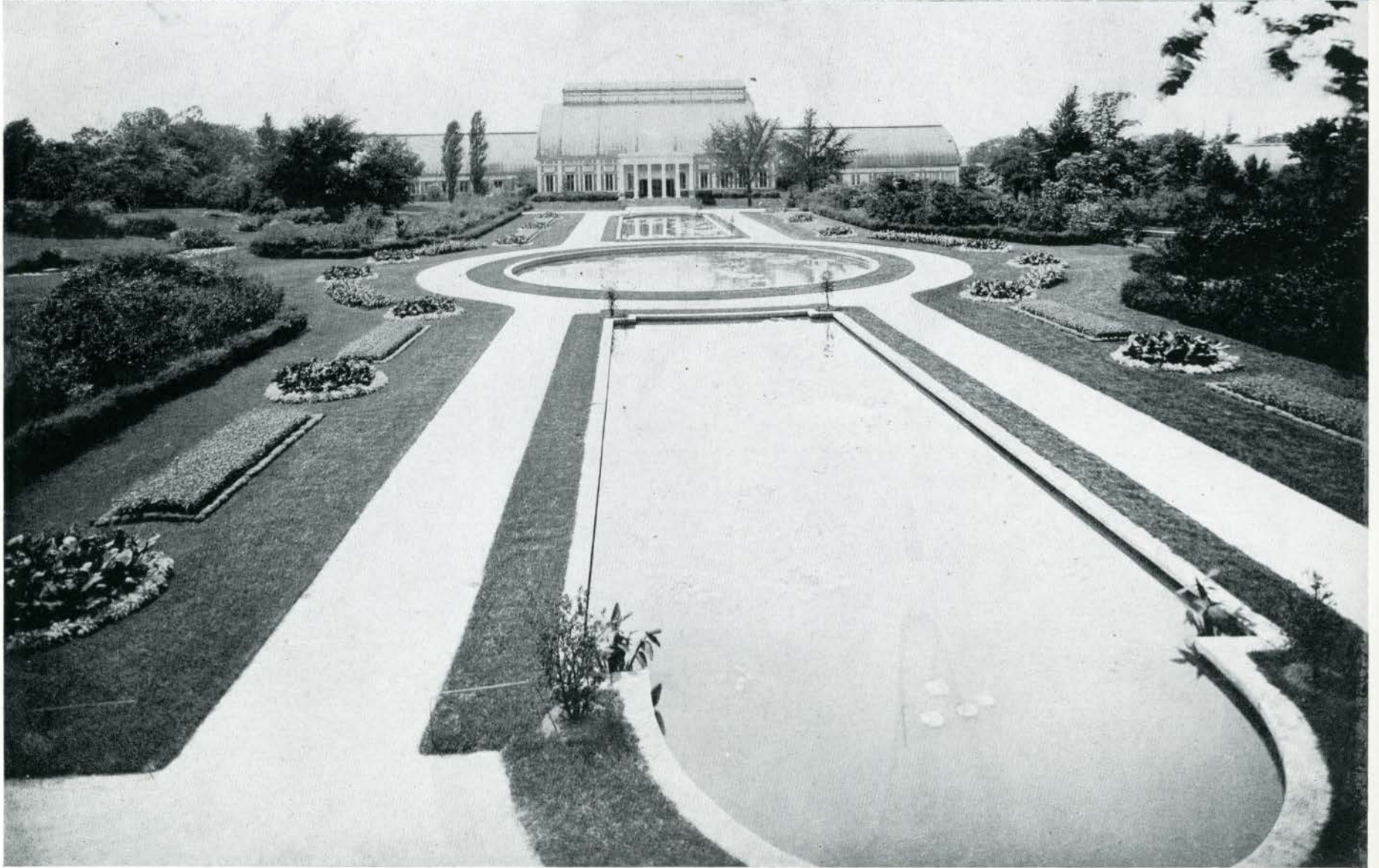


THERE are wonderful things
to hear and see in St. Louis.

Art Museum.



Each year Linden-
wood students have
a holiday on the *Ad-
miral*.



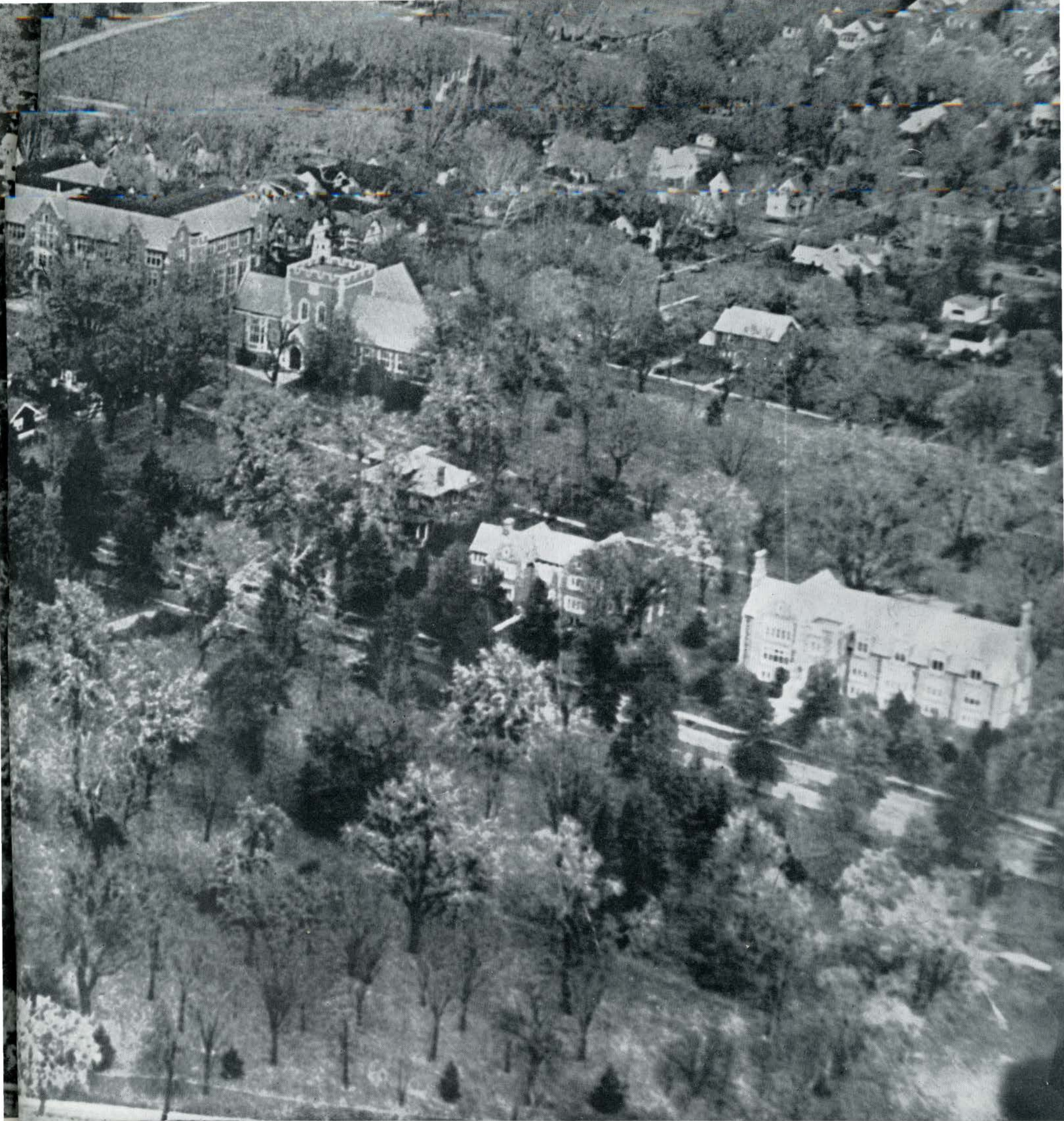
Bear Pits at the Zoo.

Shaw's Garden.

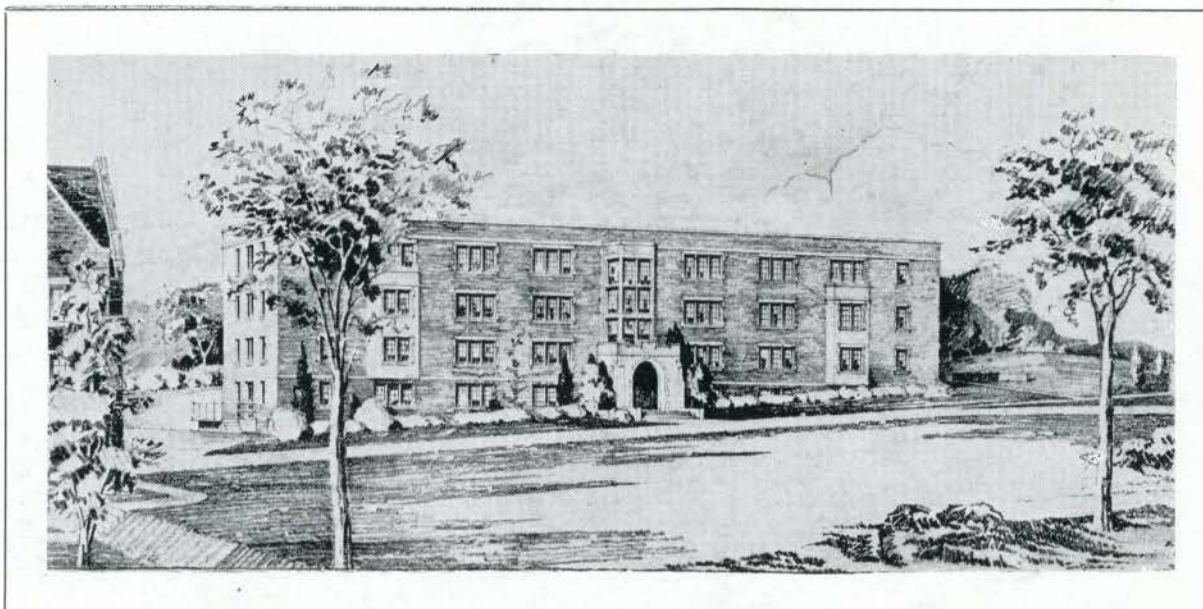


Snow falls at
Lindenwood.





Lindenwood's campus as seen from the air.



IT IS A FAR CRY from the log cabin in which the first Lindenwood students lived to the Thomas Harper Cobbs Hall, the modern dormitory dedicated November 21, 1949. This four story brick dormitory with limestone trimming is 140 feet in length and 40 feet wide, with a projecting wing on the ground and first floors approximately 50 feet by 30 feet. The building is fireproof.

The ground floor provides service rooms and a tea room. The tea room is equipped with a soda fountain and a complete and modern kitchen. Off the tea room is an outdoor terrace on which tables are arranged in the fall and spring. The ground floor also includes a lounge room and a large game room with movable partitions which can be removed to provide a spacious dance floor. The recreation room has walls in flamingo, and draperies in flamingo, turquoise, and white. The room is furnished in bleached ash furniture. At the service end of the building on the ground floor is a modern laundry, a large trunk room, and a kitchen for student use. The building is heated by radiant heating.

On the first floor are the office and quarters of the Head Resident and a parlor 48 feet by 30 feet with large windows. The parlor is a beautiful room. Its walls are plum. The furniture is arranged in five conversational groups. Four Lawson type love seats are Kelly green, lounge chairs in chartreuse, occasional chairs in melon, and armless fireside chairs in purple. There are also two sofas in white and plum chintz and the draperies are white, chartreuse, and plum glazed chintz. There are ten bisque mahogany end tables in the living room. Just off the parlor are six date rooms. Two are in Early American, two in Modern, and two in Directoire.

Student bedrooms are located on the upper three floors. On the second floor above the parlor is a sundeck. The building accommodates seventy-one students in twenty-eight double rooms and fifteen single rooms. All bedrooms are provided with connecting baths.

