



FROM

LAUGHS

TO LEGENDS



TO

BROADWAY

LIVE

AT LINDENWOOD



J. SCHEIDEGGER CENTER FOR THE ARTS | 2014 - 2015 SEASON





THE J. SCHEIDEGGER CENTER
FOR THE ARTS

W V E L O

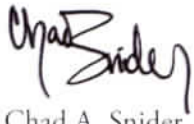
Dear Friends,

The 2014-15 season of arts and entertainment at Lindenwood University features a spectacular line-up and promises to be our best yet.

The Greater St. Louis Metropolitan Area is well known for its entertainment, and we are proud to present even more opportunities for our students and our friends in the community to experience the arts in a unique and powerful way—Live at Lindenwood!

While we enjoy being part of that larger artistic collective, we are also proud of our unique differences. Whether it's that you can find a free parking spot adjacent to the Center just moments after exiting I-70, or that with only 1,200 seats in our main stage theater you can see the action like it's in your own living room, you'd be hard-pressed to find a venue that is more accessible, inviting, and friendly. And our online ticket fees are some of the lowest in the region. We also have new package discounts as well as a new and improved membership program, the *Premier Patron Society*. That's right. You asked, we listened, and we're excited to welcome you back.

Sincerely,



Chad A. Snider
Director of Marketing
Master of Ceremonies
The J. Scheidegger Center for the Arts



WELCOME



JAY LENO

LIVE AT LINDENWOOD

FRIDAY, SEPTEMBER 12, 8:00 PM

WILLIE NELSON & FAMILY

FRIDAY, OCTOBER 10, 8:00 PM



CHRISTMAS WITH *Amy Grant*

SUNDAY, DECEMBER 7, 7:00 PM

Jay Leno. Acclaimed TV late night show host, admired stand-up comedian, best-selling children's book author, much-in-demand corporate speaker, lovable TV and movie voice-over artist, pioneering car builder and mechanic, and philanthropist...it's no wonder that Jay Leno is widely characterized as "the hardest working man in show business."

And after 22 years hosting *The Tonight Show*, Jay is bringing the laughs to St. Charles!

"A large part of Jay's appeal lay in his 'everyman' approach. His comedy bits—like his 'Jaywalking' segments and hilarious headline snafus—weren't biting or caustic, but allowed us to laugh at ourselves, always the best medicine in a harsh world." - New York Post

The Platinum Series
is sponsored in part by:



World Wide Technology, Inc.



Platinum	\$99.50
Orchestra	\$89.50
Parterre	\$79.50
Balcony	\$69.50

Willie Nelson and Family. With a six-decade career and 200-plus albums, this iconic Texan is the creative genius behind the historic recordings of "Crazy," "Red Headed Stranger," and "Stardust."

Willie Nelson has earned every conceivable award as a musician and amassed reputable credentials as an author, actor, and activist.

"A giant Texas flag unfurled behind Willie Nelson and his band of gentle ruffians as he launched heartily into 'Whiskey River,' and all was right with the world." - Columbus Dispatch

Platinum	\$99.50
Orchestra	\$89.50
Parterre	\$79.50
Balcony	\$69.50

Amy Grant. Amy Grant's career spans more than 30 years and stretches from her roots in gospel into her experience as an iconic pop star, songwriter, television personality, and philanthropist. Grant has sold more than 30 million albums, boasting one five-time platinum album, one triple-platinum and one double-platinum album, as well as six platinum and four gold albums. Grant has won six Grammy Awards in multiple categories, beginning with the platinum-selling *Age to Age* in 1982, and 25 GMA Dove Awards. She also has six number-1 hits—including "Baby, Baby" and "Every Heartbeat"—and is one of only two Christian artists to be awarded a star on the legendary Walk of Fame in Hollywood. In 2003, she was inducted into the Gospel Music Hall of Fame.

"Few singers probe issues of the spirit and of the heart with the warmth and intimacy of Amy Grant... With a voice as organic and comforting as a wool sweater, Grant shows maturity by relying on her voice's amber tones and subtle phrasing..." - Associated Press

Platinum	\$79.50
Orchestra	\$69.50
Parterre	\$59.50
Balcony	\$49.50



Platinum Package
10% Off!

Platinum	\$250.65
Orchestra	\$223.65
Parterre	\$196.65
Balcony	\$169.65

DICK FOX'S

GOLDEN BOYS

starring

FRANKIE AVALON

FABIAN

BOBBY RYDELL

SATURDAY, SEPTEMBER 27, 8:00 PM



THE BEACH BOYS

SATURDAY, FEBRUARY 14, 8:00 PM



THE WORLD FAMOUS GLENN MILLER ORCHESTRA

SATURDAY, MAY 23, 7:30 PM
SUNDAY, MAY 24, 3:00 PM



The Golden Boys. Frankie Avalon went from a '50s teen idol to a national and international star. His first song "De De Dinah," became a smash hit, and his recording of "Venus" was one of the biggest selling hits of the era. With a series of performances on Dick Clark's *American Bandstand*, Fabian became one of the top teen idols of the late 1950s, enjoying great success with the hits "Turn Me Loose," "Hound Dog Man," and the million-selling "Tiger" single. Another *American Bandstand* alum was Bobby Rydell, who had million-selling singles with "Volare," "Wild One," and "We Got Love." This show is sure to bring back many a teenage memory!

"In 1985, three former teen idols—all from the same Philadelphia neighborhood—teamed up for a concert titled The Golden Boys, which not only satisfied fans from their teen era by performing their hits, but illustrated that good singing and stage presence never go out of style." - BroadwayWorld.com

The Beach Boys. From humble roots in Hawthorne, Calif., The Beach Boys have become an international sensation. Their famous harmonies and classic songs continue to travel the world bringing "Good Vibrations" everywhere. Now, the 50th Anniversary Tour—The Beach Boys' first major outing with Brian Wilson in more than two decades—finds the group performing music from its earliest surf rock classics to masterpieces like "Wouldn't It Be Nice" and "God Only Knows" from perhaps the most acclaimed album of all-time, *Pet Sounds*, to later hits from the '70s and '80s, such as "Kokomo," to brand new songs recently recorded for *That's Why God Made The Radio*.

"All it takes is two seconds of hearing 'Round round get around / I get around' and you're there—in the sun, on the beach, in the '60s." - NPR Music

The Glenn Miller Orchestra. The legendary Glenn Miller was one of the most successful of all the dance bandleaders back in the Swing era of the 1930s and '40s. A matchless string of hit records, the constant impact of radio broadcasts, and the drawing power at theaters, hotels, and dance pavilions built and sustained the moment of popularity. Glenn disbanded his musical organization in 1942 at the height of its popularity, volunteered for the Army and then organized and led the famous Glenn Miller Army Air Force Band.

Due to the popular demand, the Miller estate authorized the formation of the present Glenn Miller Orchestra in 1956, and it has proven its staying power by still being popular today. Indeed, the Glenn Miller Orchestra today is still the most sought after big-band in the world, just as it was in Glenn's day.

"A band ought to have a sound all of its own. It ought to have a personality."
- Glenn Miller

The Classics Series
is sponsored in part by:

AMERISTAR
CASINO • RESORT • SPA



Platinum	\$79.50
Orchestra	\$69.50
Parterre	\$59.50
Balcony	\$49.50

Platinum	\$79.50
Orchestra	\$69.50
Parterre	\$59.50
Balcony	\$49.50

Platinum	\$49.50
Orchestra	\$39.50
Parterre	\$30.50
Balcony	\$24.50



Classics Package
10% Off!

Platinum	\$187.65
Orchestra	\$160.65
Parterre	\$134.55
Balcony	\$111.15

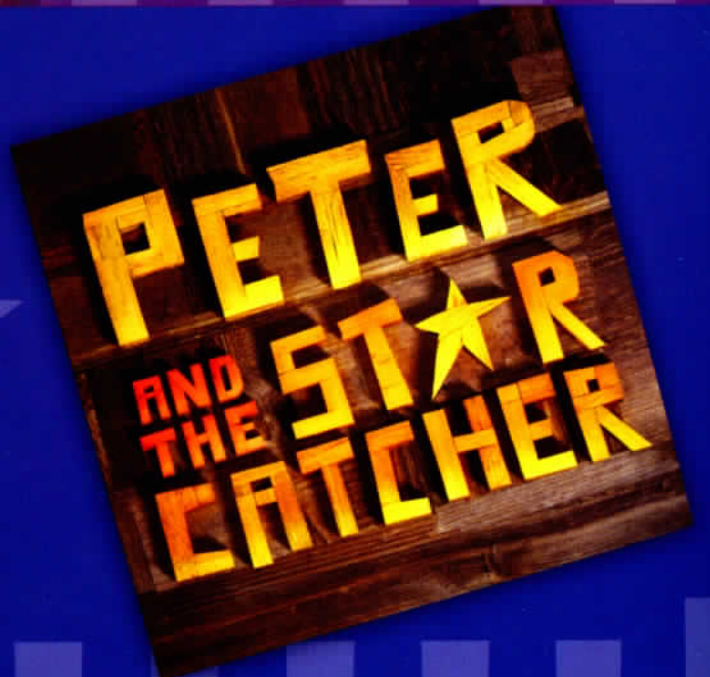
Oklahoma!

THURSDAY, OCTOBER 30, 7:30 PM
FRIDAY, OCTOBER 31, 7:30 PM
SATURDAY, NOVEMBER 1, 7:30 PM



An Evening with
**BERNADETTE
PETERS**

SATURDAY, FEBRUARY 7, 8:00 PM



SATURDAY, MAY 2, 3:00 PM
SATURDAY, MAY 2, 8:00 PM

Oklahoma! Rodgers & Hammerstein's first collaboration remains, in many ways, their most innovative, having set the standards and established the rules of musical theatre still being followed today. Set in a Western Indian territory just after the turn of the century, the high-spirited rivalry between the local farmers and cowboys provides the colorful background against which Curly, a handsome cowboy, and Laurey, a winsome farm girl, play out their love story. Although the road to true love never runs smooth, with these two headstrong romantics holding the reins, love's journey is as bumpy as a surrey ride down a country road. That they will succeed in making a new life together we have no doubt, and that this new life will begin in a brand-new state provides the ultimate climax to the triumphant *Oklahoma!*

"From the first notes of 'Oh, What a Beautiful Mornin', it is clear why Oklahoma! remains such a popular musical." - Herald Tribune

The Broadway Series
is sponsored in part by:



Platinum	\$18.00
Orchestra	\$15.00
Parterre	\$12.00
Balcony	\$10.00

Bernadette Peters. Throughout her illustrious career, Tony Award-winning actress Bernadette Peters has dazzled audiences and critics with her performances on stage and television, in concert, and on recordings.

Peters recently starred on Broadway in the critically acclaimed production of *Follies* after a highly successful run at the Kennedy Center. Prior to that, she starred in the Tony Award-winning masterpiece *A Little Night Music* opposite Elaine Stritch. This year, Bernadette received her third Tony.

While Peters is best known for her work in the theatre, her career doesn't end at the footlights. She boasts an impressive list of television credits including her recent guest appearance on NBC's hit series *SMASH*.

"Bernadette Peters is a revelation!" - New York Times

Platinum	\$79.50
Orchestra	\$69.50
Parterre	\$59.50
Balcony	\$49.50

Peter & the Starcatcher. The most magical evening of madcap fun is now on tour! The winner of five Tony Awards®, this swashbuckling prequel to *Peter Pan* will have you hooked from the moment you let your imagination take flight. *Peter and the Starcatcher* is the innovative and imaginative play based on the best-selling novel by Dave Barry and Ridley Pearson. A company of a dozen actors play more than a hundred unforgettable characters, all on a journey to answer the century-old question: How did Peter Pan become The Boy Who Never Grew Up? This epic origin story of popular culture's most enduring and beloved character proves that your imagination is the most captivating place in the world.

"The most exhilarating storytelling on Broadway in decades!"
- New York Times

Platinum	\$59.50
Orchestra	\$49.50
Parterre	\$39.50
Balcony	\$29.50

Broadway Package
10% Off!

Platinum	\$141.30
Orchestra	\$120.60
Parterre	\$99.90
Balcony	\$80.10



THE NATIONAL
Acrobats
OF CHINA

SATURDAY, DECEMBER 13, 2:00 PM
SATURDAY, DECEMBER 13, 8:00 PM



Home for the Holidays with
The Erin Bode Group

featuring the Children's Choir
of St. Charles School District

SATURDAY, DECEMBER 19, 8:00 PM



The Russian
National Ballet Theatre

Cinderella

SATURDAY, JANUARY 24, 8:00 PM

The National Acrobats of China. The entire family is sure to enjoy this colorful, acrobatic adventure!

Direct from Beijing, The National Acrobats of the People's Republic of China was founded in 1951 and has been one of the most acclaimed acrobatic troupes in China. Over several generations, the company has developed many unique acrobatic acts like "Global Motorcycling," "Kicking Bowls to Heads on High Unicycles," "Russian Bars in Chinese Traditional Style," "Chinese Poles in Shaolin Style," "Diving through Moving Hoops," "Aerial Bungee Tumbings," and "Aerial Tissue Flowers," etc. These acts (and many others) have been enjoyed and praised by Chinese and foreign audiences for decades.

"The night was filled with spectacular stunts ... Contortionists bent and flexed their bodies in ways that seemed to defy the human anatomy, acrobats made leaps and tumbles that made one question the laws of physics, and many of the acrobats laughed in the face of gravity." - The Anchor

Erin Bode. If you joined us in January 2014 for the Erin Bode event to raise funds for our arts endowment, you'll know Erin's voice is one of the best talents in the St. Louis area. And in December, she'll be joined by The Erin Bode Group, children from the St. Charles School District, and an orchestra for a magical evening of holiday music.

The Erin Bode Group has performed nationwide, including in Washington, D.C, Philadelphia, and New York City. They have played three European tours, as well as a stint at the Cotton Club in Tokyo, Japan.

"If you don't know Erin Bode yet...then good news. It's going to be a wonderful Christmas." - BBC London

Cinderella. The unforgettable tale of *Cinderella* takes the stage in this full-length ballet in three acts. With music by Sergei Prokofiev and choreography by Rostislav Zakharov, this is ballet in its finest form.

The Russian National Ballet Theatre was founded in Moscow during the transitional period of Perestroika in the late 1980s, when many of the great dancers and choreographers of the Soviet Union's ballet institutions were exercising their new-found creative freedom by starting new, vibrant companies dedicated not only to the timeless tradition of classical Russian ballet but to invigorate this tradition as the Russians began to accept new developments in the dance from around the world.

"The Russian National Ballet Theatre, directed by Elena Radchenko, is a cut above many of its rivals." - Washington Post

The Artistic Series
is sponsored in part by:

CENTENE
Charitable Foundation



Platinum	\$59.50
Orchestra	\$49.50
Parterre	\$39.50
Balcony	\$29.50

Platinum	\$42.50
Orchestra	\$38.50
Parterre	\$32.50
Balcony	\$24.50

Platinum	\$59.50
Orchestra	\$49.50
Parterre	\$39.50
Balcony	\$29.50



Artistic Package
10% Off!

Platinum	\$145.35
Orchestra	\$123.75
Parterre	\$100.35
Balcony	\$75.15



The Nights Before Christmas.

Friday, December 5, 8:00 PM

Saturday, December 6, 3:00 PM

*\$10, Tickets Required, All proceeds benefit LU Arts Endowment
Available Starting September 21*

Featuring the Lindenwood University Department of Music, this holiday concert will truly put you in the mood for Christmas!

From choral and orchestral, to combined ensemble pieces, there's no better way to spend time with the family!



The National Symphony of Mexico.

Monday, March 2, 8:00 PM

*Free to the Public, Tickets Required
Available Starting September 21*

On August 27, 1971, at the initiative of Maestro Enrique Batiz and the State Government of Mexico, the Orquesta Sinfónica del Estado de México was founded by that entity, which aims to promote music as a means of union and identification among Mexicans. Based in the city of Toluca, the orchestra was characterized from the outset by its efforts to bring its message to all corners of the Republic.



The St. Louis Philharmonic Orchestra. Featuring the Choirs of Lindenwood University

Friday, March 6, 8:00 PM

*Free to the Public, Tickets Required
Available Starting February 2*

Founded in 1860, the St. Louis Philharmonic Orchestra continues to serve the St. Louis Metro Area as a vital and viable cultural institution. This historical orchestra is composed of approximately 90 talented and dedicated musicians who have successfully auditioned for positions in the orchestra.



Join our membership program and become a part of the magic here at
Lindenwood University's J. Scheidegger Center for the Arts.

Your tax-deductible annual gift will help us continue providing outstanding
entertainment to the community and includes quite a few perks!



To make your annual membership purchase,
please visit the Box Office or join online at LUBoxOffice.com

THE PREMIER PATRON SOCIETY

Level	Annual Amount	Benefits
Fan	\$100	<ul style="list-style-type: none"> • Recognition in each Main Stage Season Show Program
Supporter	\$250	<p><i>Fan level benefit and</i></p> <ul style="list-style-type: none"> • 2 drink & snack tickets • 20 percent discount on academic performances
Chorus	\$500	<p><i>All benefits at Supporter level and</i></p> <ul style="list-style-type: none"> • Complimentary valet for touring Main Stage Season performances • Virtual Concierge: <i>Can't remember the time of an upcoming performance? Not to worry! You'll receive an email from our Master of Ceremonies detailing the upcoming performance and any special items of note.</i> • Dual Membership in LU LindenGrove Society: <i>At the Chorus level, you'll also receive an annual membership in Lindenwood's LindenGrove Society, which includes a reception with our President, listing in Lindenwood's Annual Report, and more!</i> • Complimentary ticket exchange for one performance • Open rehearsal invitations to select academic performances
Lead	\$1,000	<p><i>All benefits at Chorus level and</i></p> <ul style="list-style-type: none"> • Invitation to private "meet & greets" with touring artists <i>*as available</i> • Complimentary refreshments before each touring Main Stage Season performance • Private theater entrance • Private tour of the J. Scheidegger Center by our Master of Ceremonies for you and three guests • Recognition on lobby display monitors • Subscribe a Friend: <i>Have a spouse or friend who regularly joins you for our performances? Add a second membership for 50 percent off!</i> • Skip the Line: <i>Purchase single tickets at the Box Office and avoid online service fees during the online pre-sale period before single seats open to the general public!</i>
Director	\$2,500	<p><i>All benefits at Lead level and</i></p> <ul style="list-style-type: none"> • One complimentary use of J. Scheidegger Center reception space prior to a Main Stage Season performance <i>*pending availability</i>
Producer's Club	\$5,000	<p><i>All benefits at Director level and</i></p> <ul style="list-style-type: none"> • Be a producer! Ready to see your name in lights? Join our Producer's Club and you'll receive all benefits at the Director level and billing as an Honorary Associate Producer on your show of choice!



T O T A L

The Campaign for the
Arts Endowment at
Lindenwood University

Artistry

LINDENWOOD
UNIVERSITY

FOCUSING ON THE ARTS

Far more than just a slogan, total artistry is who we are—art and design, dance, music, and theatre professionals working to produce scores of traditional and cutting-edge performances and exhibitions in a diverse, supportive, and challenging environment. And through artistic collaborations—such as music, dance, and theatre students working to produce Broadway musicals, or music and digital media students working to bring classic silent films to life—we are also a community of artists and creativity. According to Sarah Chauvin, a senior dance major, “Collaborating with the other arts allows me to connect with other people, gaining new insights into what they do and increasing their appreciation of what I do.”

INVESTING IN THE ARTS

By establishing a \$3 million endowment for the arts, the Board of Directors of Lindenwood University is leading an effort to continue innovative arts education and cultural development in the community. To date, \$1 million remains to be raised.

The campaign for the Arts Endowment will help fund

- student scholarships
- master classes by internationally renowned artists
- honors awards
- Lindenwood’s unprecedented professional series, which gives students opportunities to learn from their professional equivalents while providing cultural enrichment to the surrounding community

OPPORTUNITIES TO GIVE

- Scholarships
- Named Programs
- Expanded Academic Programs
- Professorships
- Master Classes/Artists-in-Residence
- Honors Awards

Named Endowment Opportunities Include

- Professorships in Art and Design, Dance, Music, and Theatre
- The Professor Harry Hendren Endowed Scholarship
- The Art History Honors Award
- The Interdisciplinary Total Artistry Series
- The Annual Production of *A Christmas Carol*
- The Annual Student Fashion Show
- The Annual Fall and Spring Music Series
- The Annual Dance Concert Series
- The Annual LU Student Juried Art Exhibition
- Study Abroad Programs in Art and Design, Dance, Music, and Theatre



Art Exhibits

JACOB STANLEY EXHIBITION

August 21 - September 28
 The Boyle Family Gallery
 Opening Reception | August 28 | 4:00-7:00 PM

KELLY HIDER AND NICK DEFORD EXHIBITION

October 2 - November 2
 The Boyle Family Gallery
 Opening Reception | October 2 | 4:00-7:00 PM

HOLLY BREWER MA EXHIBITION

November 6 - November 16
 The Boyle Family Gallery
 Opening Reception | November 9 | 2:00-4:00 PM

DYLAN LAMBERT BFA EXHIBITION

November 20 - November 30
 2nd Floor; J. Scheidegger Gallery
 Opening Reception | November 20 | 7:00-9:00 PM

YOUNG ARTISTS AND THEIR TEACHERS 2014

November 23 - December 7
 The Boyle Family Gallery
 Opening Reception | November 23 | 12:00-2:00 PM

Fashion Shows

SPRING FASHION SHOW

May 1 | 7:00 PM (General Show)
 May 2 | 7:00 PM (VIP Show)

Experience the art and intricacy of fashion in a New York-style runway show. The show features designs by select upper level students showcasing a variety of landmark fashions ranging from ready-to-wear to avant-garde. The collections of these aspiring designers hit the runway blending complexity and innovation. This is a night you don't want to miss.

The May 2 VIP event is the culmination of a year of intense design in the Fashion Program and features an exclusive showcase of garments judged for awards by industry professionals. This event includes a 6:00 p.m. reception for those with VIP tickets.

May 1 | \$20 | General Admission
 May 2 | \$35 | VIP Seating & Reception
 \$25 | General Admission

The Emerson Black Box Theater

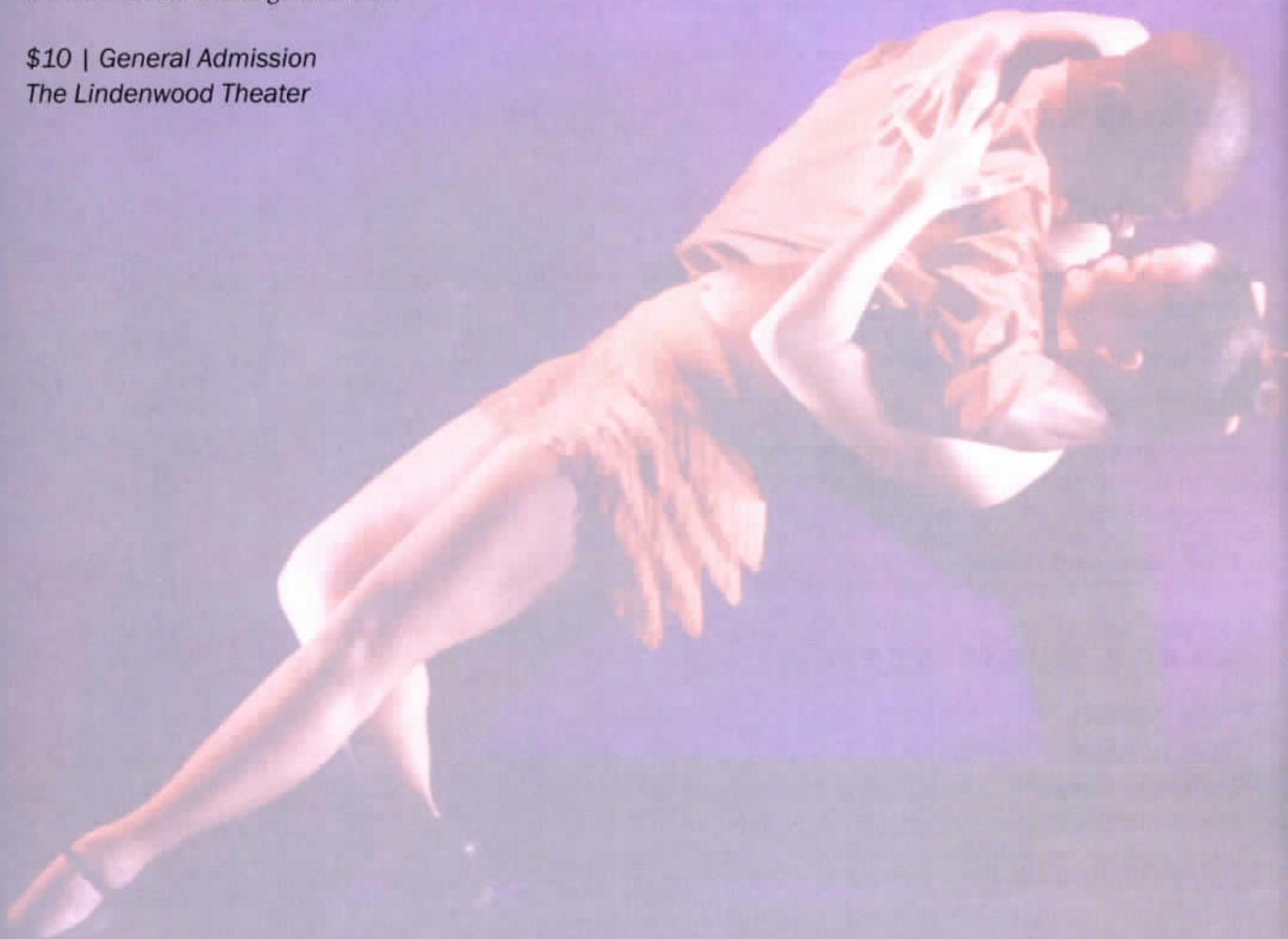
FALL DANCE CONCERT

November 20-22 | 7:30 PM

Don't miss the first dance concert of the season when the Lindenwood University Dance Department presents its annual fall production on the main stage of the J. Scheidegger Center for the Arts.

In the tradition of seasons past, the fall concert will feature new works by faculty, selected students, and guest artists.

*\$10 | General Admission
The Lindenwood Theater*



WINTER DANCE CONCERT

February 5-7 | 7:30 PM

Within the unique and intimate environs of a black box theater, student and faculty choreographers present innovative and unique works developed and adapted all from the mind of the individual artist.

*FREE | General Admission
The Emerson Black Box Theater
Tickets Required*

SPRING DANCE CONCERT

April 23-25 | 7:30 PM

The Dance Concert series concludes with an entertaining arrangement of pieces that highlight the talent and artistry of our Lindenwood dance community.

The Spring Dance Concert will feature several senior thesis projects along with new choreographic works from faculty, guest artists, and the Lindenwood University Dance Ensemble.

*\$10 | General Admission
The Lindenwood Theater*

The Lindenwood Music Series showcases our instrumental and vocal ensembles throughout the entire academic year. These concerts offer a diverse variety of musical styles and genres, including traditional and contemporary classics.

Highlights of the 2014-2015 season include

- increased chamber music concerts (brass, percussion, strings, woodwinds);
- choral, orchestral, and band music of the masters;
- the annual Student Conductors Concert, featuring upper-level students conducting ensembles of their peers—a milestone for our music education majors; and
- *Voices Only*—Lindenwood’s premier a cappella ensemble!

FALL CHAMBER SERIES

String Ensemble & Flute Ensemble November 5 | 7:30 PM
Percussion Ensemble & Brass Ensemble November 7 | 7:30 PM

The Emerson Black Box Theater

DECEMBER JAZZ CONCERT

Jazz Band Concert December 2 | 7:30 PM

The Lindenwood Theater

MARCH MUSIC SERIES

Choir Concert March 9 | 7:30 PM
Band Concert March 11 | 7:30 PM
Orchestra Concert March 12 | 7:30 PM
Jazz Band Concert March 14 | 7:30 PM

The Lindenwood Theater

SPECIAL EVENT

Jazz Festival Concert April 11 | 7:30 PM

The Lindenwood Theater

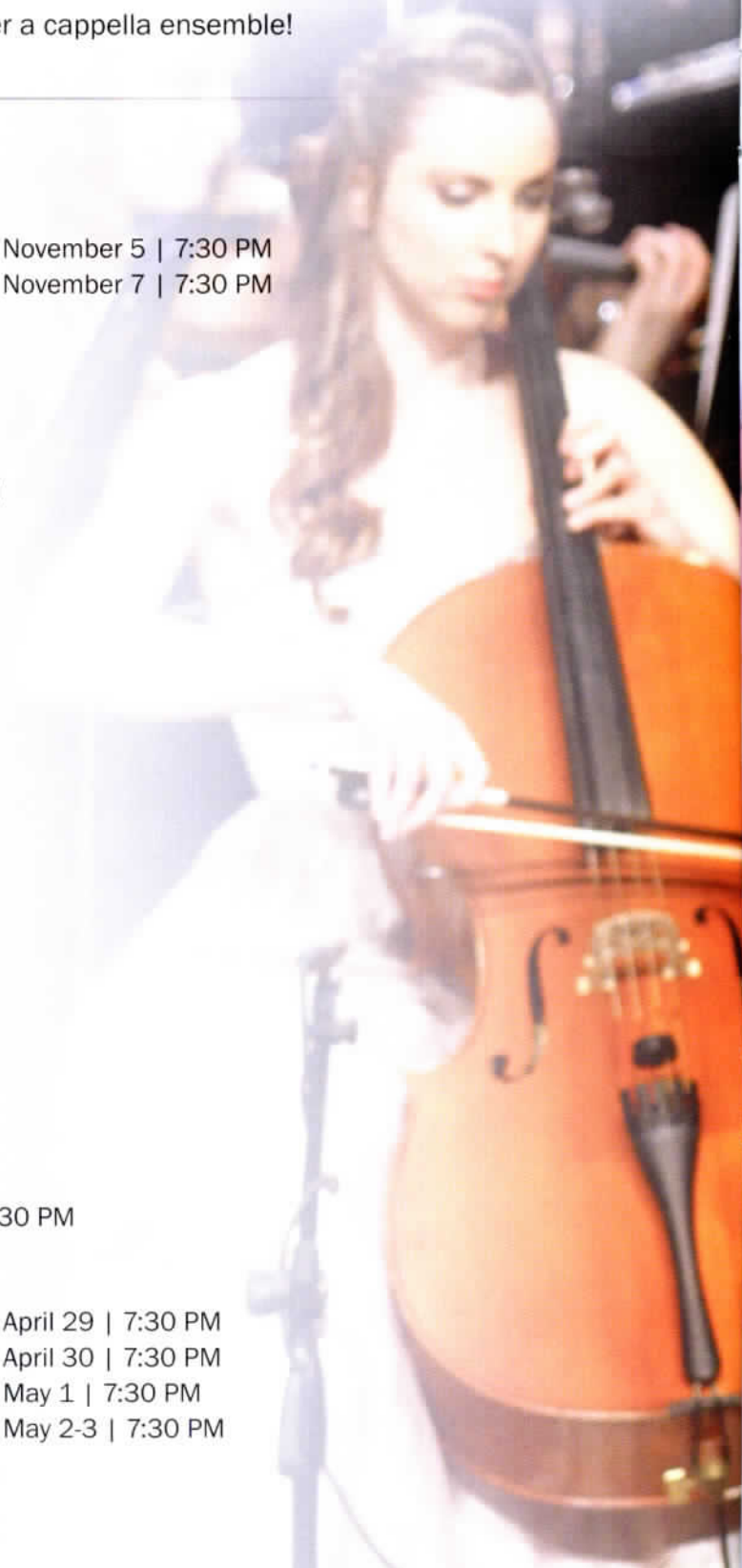
SPRING MUSIC SERIES

Student Conductors’ Concert April 28 | 7:30 PM

The Lindenwood Theater

String Ensemble & Flute Ensemble April 29 | 7:30 PM
Wind Ensemble April 30 | 7:30 PM
Percussion Ensemble & Brass Ensemble May 1 | 7:30 PM
Voices Only (*Tickets Required*) May 2-3 | 7:30 PM

The Emerson Black Box Theater



HEAVEN CAN WAIT

By Harry Segall

October 10-12 | 7:30 PM

October 16-18 | 7:30 PM

Mr. Jordan is checking passengers who are to depart in an airplane for the Hereafter. The routine is interrupted by the arrival of Joe Pendleton, an attractive prizefighter, who refuses to admit he is dead, and it is revealed that Joe is not scheduled to arrive for another 60 years! But Joe can't return to Earth because his manager had his body cremated! The search is on as Heaven attempts to locate a permanent body for Joe, who in the meantime is sent to earth in an interim body, falls in love, and is forced to deal with a murderous couple. Can he keep his new true love?

Can he stay alive long enough for Heaven to find a new body? For now, Heaven Can Wait!

\$10 | General Admission | The Emerson Black Box Theater

A CHRISTMAS CAROL

By Charles Dickens

December 2-5 | 7:30 PM

December 6-7 | 2:00 PM & 7:30 PM

The old miser Ebenezer Scrooge is rather stuck in his ways and certainly never expected to be visited by the ghost of his old friend Jacob Marley, who sends him on a haunting journey with the Ghosts of Christmas Past, Present, and Future to view his life and the possibilities that lay ahead if he remains on the course he's traveling.

Don't miss the Cratchit Family (including Tiny Tim!) and the rest of your favorite Dickens characters as they once again show us the true meaning of Christmas.

\$10 | General Admission | The Emerson Black Box Theater

A NEW BRAIN

Music and Lyrics by William Finn

Book by William Finn & James Lapine

February 27-28 | 7:30 PM

March 5-7 | 7:30 PM

By the Tony-award winning authors of *Falsettos*, here is an energetic, sardonic, often comical musical about a composer during a medical emergency. Gordon collapses into his lunch and awakes in the hospital surrounded by his maritime-enthusiast lover, his mother, a co-worker, the doctor, and the nurses. Reluctantly, he had been composing a song for a children's television show that features a frog - Mr. Bungee - and the specter of this large green character, and the unfinished work haunts him throughout his medical ordeal. This is the music and story of a man reflecting on his life, relationships, and work when confronted with the fact that this could be the end. Did he let life pass him by, or is there still time to live it?

\$15 | General Admission | The Emerson Black Box Theater

PERICLES, PRINCE OF TYRE

By William Shakespeare

April 17-18 | 7:30 PM

April 23-25 | 7:30 PM

This action-packed production is a tempest-tossed hero's quest—a magical mystery tour spanning decades and continents, culminating in one of the most joyous reunions in the Shakespearean canon. Featuring pirates, goddesses, jousting knights, and a lost princess, *Pericles, Prince of Tyre* is a theatrical journey you don't want to miss!

\$10 | General Admission | The Emerson Black Box Theater



SEASON AT A GLANCE

The Lindenwood Theater Main Stage Season

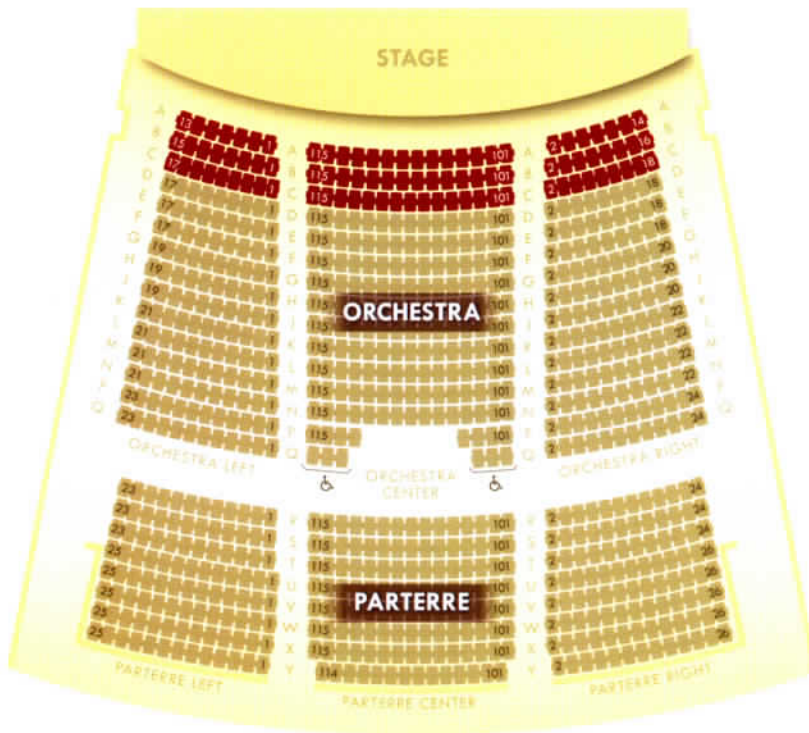
■ Jay Leno: Live at Lindenwood	Fri., Sept. 12	8:00 PM	99.50 89.50 79.50 69.50
■ Dick Fox's Golden Boys	Sat., Sept. 27	8:00 PM	79.50 69.50 59.50 49.50
■ Willie Nelson & Family	Fri., Oct. 10	8:00 PM	99.50 89.50 79.50 69.50
■ <i>Oklahoma!</i>	Oct. 31 - Nov. 1	7:30 PM	18.00 15.00 12.00 10.00
■ Christmas with Amy Grant	Sun., Dec. 7	7:00 PM	79.50 69.50 59.50 49.50
■ The National Acrobats of China	Sat., Dec. 13	2:00 PM 8:00 PM	59.50 49.50 39.50 29.50
■ <i>The Nights Before Christmas</i>	Fri., Dec. 5 Sat., Dec. 6	8:00 PM 3:00 PM	10.00, Ticketed Event
■ <i>Home for the Holidays</i> with The Erin Bode Group	Sat., Dec. 19	8:00 PM	42.50 38.50 32.50 24.50
■ The Russian National Ballet: <i>Cinderella</i>	Sat., Jan. 24	8:00 PM	79.50 69.50 59.50 49.50
■ An Evening with Bernadette Peters	Sat., Feb. 7	8:00 PM	79.50 69.50 59.50 49.50
■ The Beach Boys	Sat., Feb. 14	8:00 PM	79.50 69.50 59.50 49.50
■ The National Symphony of Mexico	Mon., Mar. 2	8:00 PM	Free, Ticketed Event
■ The St. Louis Philharmonic Orchestra	Fri., Mar. 6	8:00 PM	Free, Ticketed Event
■ Peter & The Starcatcher	Sat., May 2	3:00 PM 8:00 PM	59.50 49.50 39.50 29.50
■ The Glenn Miller Orchestra	Sat., May 23 Sun., May 24	7:30 PM 3:00 PM	49.50 39.50 30.50 24.50

University Productions

<i>Heaven Can Wait</i>	Oct. 10-12, 16-18	7:30 PM	10.00, General Admission
Fall Chamber Music Series	Nov. 5, 7	7:30 PM	Free, Non-Ticketed
Fall Dance Concert	Nov. 20-22	7:30 PM	10.00, General Admission
December Jazz Concert	Dec. 2	7:30 PM	Free, Non-Ticketed
A Christmas Carol	Dec. 2-5 Dec. 6-7	7:30 PM 2:00 & 7:30 PM	10.00, General Admission
Winter Dance Concert	Feb. 5-7	7:30 PM	Free, Ticketed Event
A New Brain	Feb. 27-28, 5-7	7:30 PM	15.00, General Admission
March Music Series	Mar. 9, 11-12, 14	7:30 PM	Free, Non-Ticketed
Jazz Festival Concert	April 11	7:30 PM	Free, Non-Ticketed
Pericles, Prince of Tyre	April 17-18, 23-25	7:30 PM	10.00, General Admission
Spring Dance Concert	April 23-25	7:30 PM	10.00, General Admission
Spring Music Series	April 28-30, May 1-3	7:30 PM	Free, Ticket Requirements Vary
Spring Fashion Show	May 1-2	7:00 PM	35.00 25.00 20.00

■ Platinum Series ■ Classics Series ■ Broadway Series ■ Artistic Series ■ Family Concert Series

Orchestra Platinum Orchestra Parterre

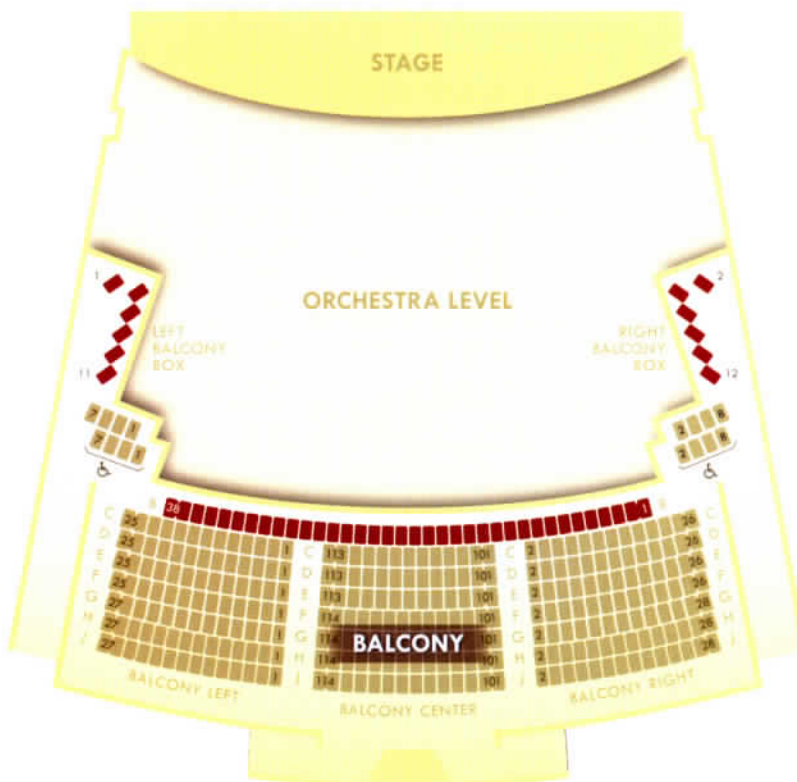


Assistive listening devices are available free of charge at The Box Office. *Credit card or license may be held until return of device.

Wheelchair-accessible seating is available in the Orchestra and Balcony sections.

Free well-lit, fully wheelchair accessible parking is just steps away from each entrance.

Balcony Platinum Box Seating Balcony



Valet parking and coat check are available for each touring Main Stage Season production. *A nominal fee may apply for non-members. Coat check may be unavailable during warmer weather.

Limited Box Seating is available. *Box Seating is not wheelchair-accessible.

PRIOR TO ENTERING THE THEATER...

Box Office Information

The Box Office will open two hours prior to all ticketed performances and remain open for 15 minutes following the performance. The Will Call window is the far-left window of the Box Office.

No refunds are permitted. Exchanges may only be done within the performance run of the same production at the discretion of the management.

Acceptable forms of payment include cash, personal check (with proper identification), gift card, MasterCard, Visa, Discover, and American Express.

Online Services

Tickets may be purchased 24 hours a day, 7 days a week, online by visiting www.LUBoxOffice.com. A non-refundable service fee may apply. No refunds or exchanges.

Theater Attire

Proper theater attire is required for all performances. Individuals (including children) wearing shorts, torn jeans, collarless shirts, sports sandals, and other inappropriate attire will not be permitted entrance into the theater.

Special Services

Assistive Listening Devices are available at the Box Office free of charge. A driver's license or credit card will be held in the Box Office until the device is returned. Accessible Seating is available in the Orchestra and Balcony sections of the Lindenwood Theater. The Boyle Family Gallery and all Emerson Black Box Theater productions are fully accessible.

Accessible parking is located on the east and west sides of the J. Scheidegger Center for the Arts. An elevator is located on the left side of the Grand Lobby.

All restrooms within the J. Scheidegger Center for the Arts are fully accessible.

Smoking Policy

Smoking is not permitted anywhere in the J. Scheidegger Center for the Arts, including the Grand Lobby.

Restrooms

Restrooms are located on the left and right sides of the Grand Lobby on the Orchestra Level. Additional restrooms are located on the left side of the Grand Lobby's upper level. A Family restroom is located on the right side of the Grand Lobby on the Orchestra level.

Concessions

Concessions are offered for most performances that take place in the Lindenwood Theater. Neither food nor drink is permitted into any theater space within the J. Scheidegger Center for the Arts. Please bear in mind when making your food and drink purchases that most intermissions are 15 minutes in length.

Facility Tours

We are proud to offer tours of the J. Scheidegger Center for the Arts on the first and third Saturdays of the month by appointment only. Please call the Box Office at (636) 949-4433 to make an appointment.

WHILE INSIDE THE THEATER...

Seating

All patrons (including children) are required to have their own tickets for ticketed events and to occupy the seats indicated on their tickets. Please do not rest your legs or feet on the seat or rails in front of you. For the safety of others, please keep all personal belongings under your seat and out of the aisles.

Small Children

Children 5 years old and older are welcome to attend performances in the Lindenwood Theater. Select performances within the Emerson Black Box Theater do permit children under the age of 5 years. Please contact the Box Office to inquire as to which performances this exception applies. For the continued enjoyment of your fellow patrons, we ask that crying children and those that cannot remain in their assigned seats be escorted from the theater by their parents until they are able to quietly return to their seats.

Late Arrivals

As a courtesy to fellow theater patrons and the performers, late arrivals will be seated at the discretion of the house management at an appropriate point in the performance.

Cameras, Cell Phones, and All Manner of Recording Devices

The use of cameras, cell phones, or sound recording equipment of any kind is strictly prohibited. Should an usher notice your use of one of these devices, you may be asked to exit the theater.

Cell Phone Policy | Noise Policy

Please silence your cell phones, pagers, PDAs, and any other noise-making devices prior to the beginning of any performance. Please refrain from texting, emailing, or conversing with those around you during the performance. If an usher notices your cellphone use or you are being disruptive, you may be asked to exit the theater.

In Case of Emergency

Should an emergency arise during a performance in any theater within the J. Scheidegger Center for the Arts, please calmly make your way to the green exit sign closest to your seat, which indicates the shortest route out of the theater. Should you need to be contacted during a performance, please leave your telephone number and seat numbers with a Box Office associate prior to entering the theater.

The Box Office

Phone: (636) 949-4433

Email: scheidegger@lindenwood.edu
groupsales@lindenwood.edu

Address: Lindenwood's J. Scheidegger Center for the Arts
 2300 West Clay Street
 Saint Charles, MO 63301

Hours: Monday - Friday: 9:00 AM - 5:00 PM
 Saturday: 9:00 AM - 12:00 PM (July 21-Sept. 30)



Find us on
Facebook

www.facebook.com/LindenwoodCenter

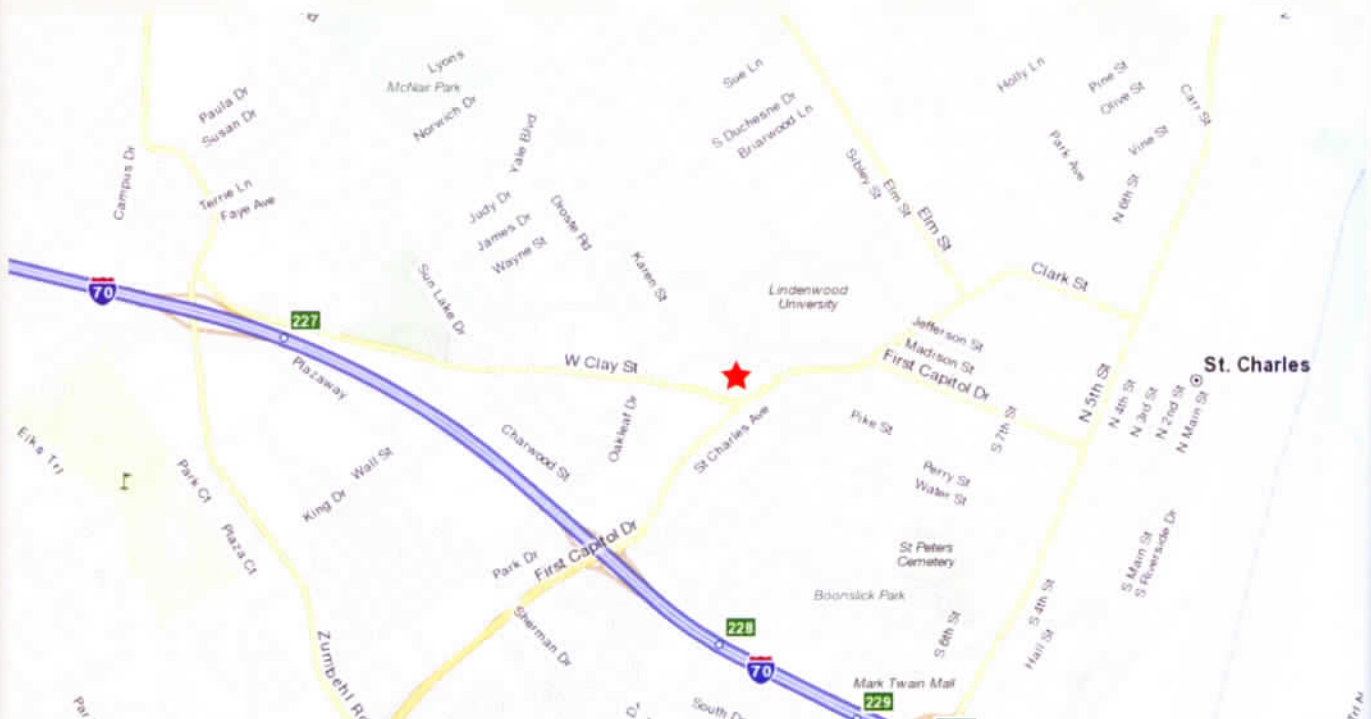
Directions & Maps

From Interstate 70/270 Interchange:

Take Interstate 70 west across the Blanchette Bridge (Missouri River). Take Exit 228 and turn right onto First Capitol Drive. Turn left onto West Clay. Entrance will be on your right.

From Interstate 64 in Chesterfield:

Travel west across the Daniel Boone Bridge (Missouri River). Exit at Highway 94. Turn right. Follow Highway 94 north and cross I-70. Turn left onto West Clay. Entrance will be on your right.





YOUR TICKET TO THE STARS!



Values-Centered Liberal Arts Education - Preparing Students For Life