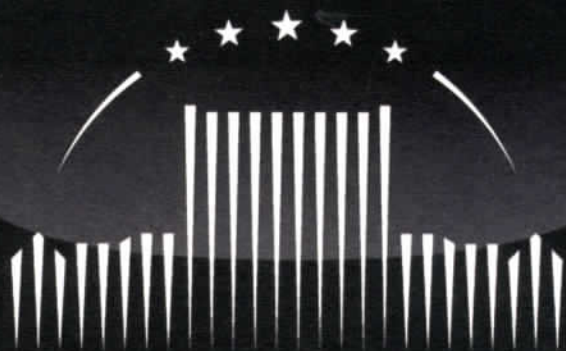


LINDENWOOD



J. SCHEIDEGGER
CENTER FOR THE ARTS

2012 - 2013 SEASON

WELCOME

Dear Friends,

I would like to warmly invite you to preview our most ambitious season yet at Lindenwood University's J. Scheidegger Center for the Arts. Once again we look forward to your total enjoyment of an immersive evening of legendary shows, musicals, dance concerts, and art. From the moment you step inside the elegant terrazzo foyer and you chose either a Broadway tour or classic American musical in the quiet grandeur of the Bezemes Family Theater, or be closer to the action in the unparalleled intimacy of the Emerson Black Box Theater, we have planned performances to stir the imagination, touch the spirit and enrich your life with a cavalcade of dazzling visuals and sounds.

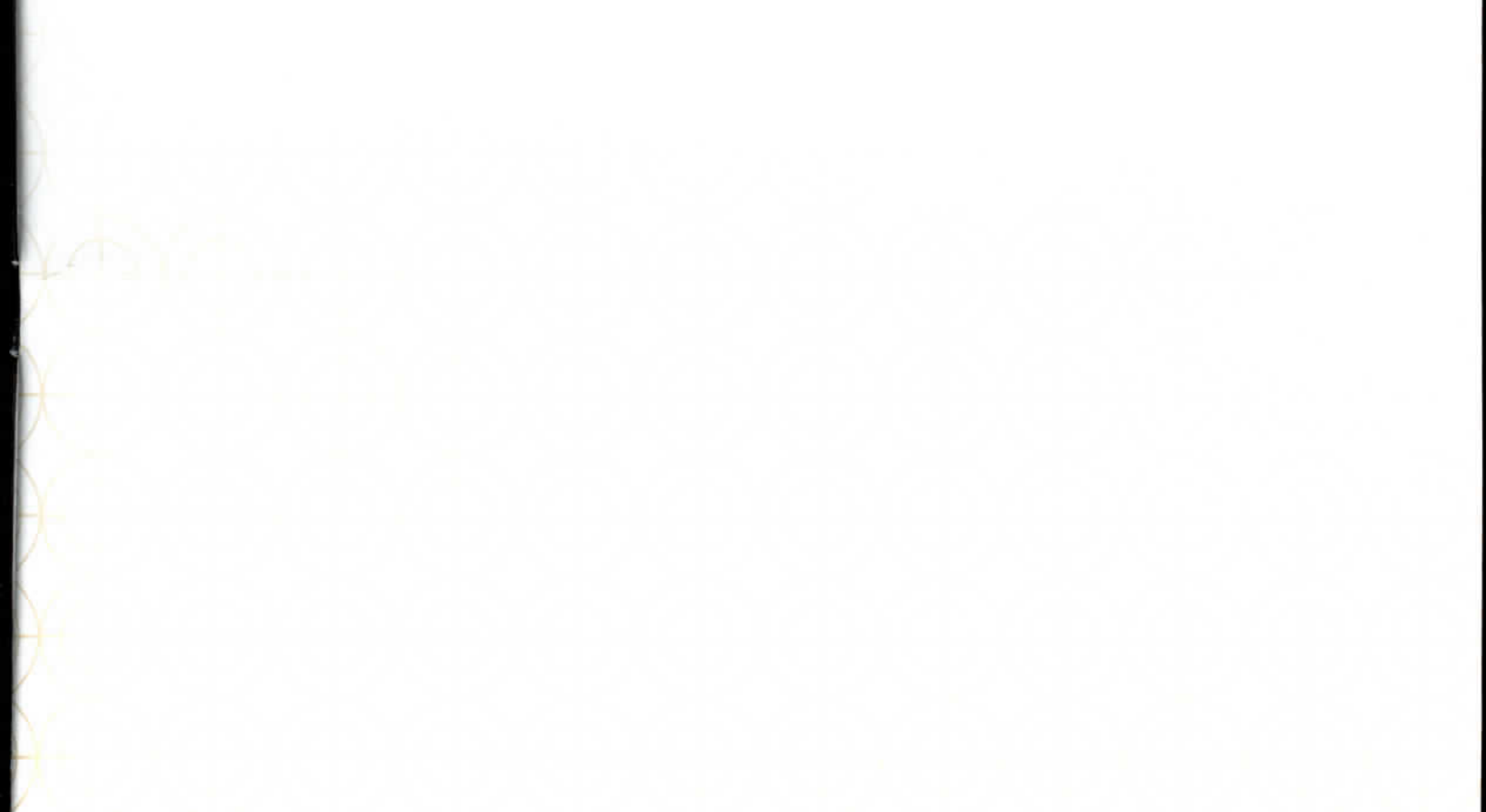
Your yearly support of our season helps transform our talented actors, singers, musicians, technicians, and designers as they formulate their career paths, and brings to fruition the many hours of perfecting their art for presentation to the world beyond Lindenwood. You are part of their crowning achievements, completing the cycle of bringing joy to a live audience. Your attendance is truly transformative and is the final threshold of success for the tireless student artists at Lindenwood.

I welcome you again to a lovely and convenient evening out, to sample in luxury the best the entertainment world has to offer, and look forward to seeing you as often as possible in the Midwest's premier venue. Be prepared to be amazed and delighted!

Peter Bezemes
Executive Director
Lindenwood's J. Scheidegger Center for the Arts

THE BEZEMES FAMILY THEATER

MAIN STAGE SEASON 2012 -2013

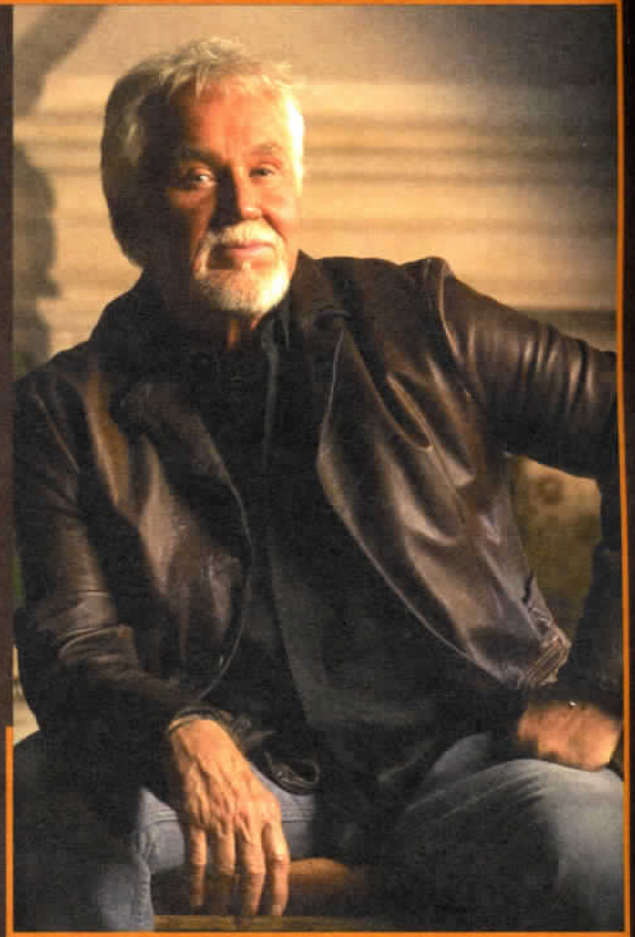


AN EVENING WITH KENNY ROGERS

September 8, 2012 | 8:00 PM

Known for instantly identifiable sweetly raspy vocals and an extraordinary ability to vividly inhabit each song he performs, Rogers has sold more than 120 million records worldwide and recorded more than 65 albums during his storied 52 years in show business. His long list of timeless classics includes an impressive 24 number-1 hits, including "The Gambler," "Lady," "Lucille," "She Believes in Me," "Islands in the Stream," and "We've Got Tonight." Two of Rogers' albums, *The Gambler* and *Kenny*, are featured in the About.com poll of "The 200 Most Influential Country Albums Ever," and his *Greatest Hits* album has sold over 24 million copies worldwide to date. He is the RIAA's eighth best selling male artist of all time with 1 Diamond album, 19 Platinum albums and 31 Gold albums.

Rogers has received hundreds of awards for his music and charity work, including three Grammys, 11 People's Choice Awards, 18 American Music Awards, eight Academy of Country Music awards and five Country Music Association awards.



"Rogers has to be one of the warmest and congenial entertainers to ever hit the stage. He makes people feel like they're known him all their lives."

– The Prince George Citizen

Platinum | \$58.50
Orchestra | \$51.50
Parterre | \$44.50
Balcony | \$38.50

NEIL SEDAKA: IN CONCERT

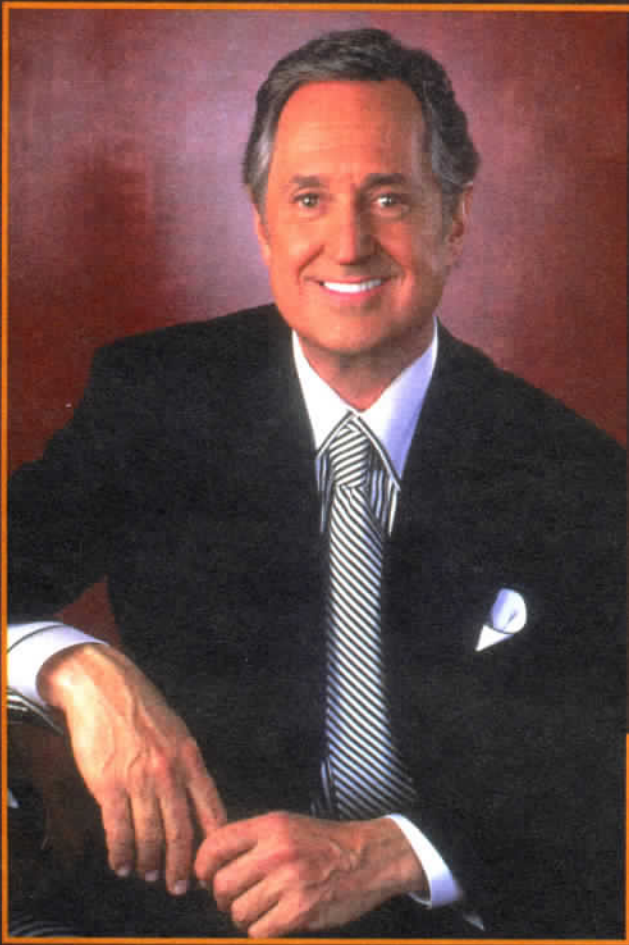
September 15, 2012 | 8:00 PM

The history of rock n' roll would be incomplete without the innumerable contributions of Neil Sedaka. For over 50 years, Sedaka has written, performed, produced, and inspired countless songs, and his canon of compositions will continue to stand the test of time.

In addition to writing songs for such artists as Frank Sinatra ("The Hungry Years"), Elvis Presley ("Solitaire"), Tom Jones ("Puppet Man"), The Monkees ("When Love Comes Knocking At Your Door"), The Fifth Dimension ("Workin' on a Groovy Thing"), and Captain and Tennille ("Love Will Keep Us Together"), Sedaka also recorded chart toppers of his own, including "The Diary," "Oh! Carol," "Stairway to Heaven," "Calendar Girl," "Little Devil," "Happy Birthday Sweet Sixteen," "Next Door To An Angel," and "Breaking Up Is Hard To Do," songs that have become a part of peoples' lives and can instantly take listeners back to special moments.

Acknowledged as a musical genius, Sedaka's undiminished soundscape has remained relevant across decades and genres, and his numerous honors include a Grammy (and five nominations), a star on the Hollywood Walk of Fame, inductions into the Hit Parade Hall of Fame and Songwriters Hall of Fame, the National Academy of Popular Music Sammy Cahn Lifetime Achievement Award, BMI Awards and a Brooklyn street name.

With a career spanning six decades, a rare feat in the entertainment world, Neil Sedaka never ceases to amaze, and he shows no signs of slowing down.



"There's something to be said for sheer, unadulterated entertainment when it's performed as impeccably and professionally as Neil Sedaka does it."

– The Jerusalem Post

"Retirement isn't in Sedaka's future."

– The Washington Post

Platinum | \$58.50

Orchestra | \$51.50

Parterre | \$44.50

Balcony | \$38.50

DAVID CASSIDY: IN CONCERT

September 28, 2012 | 8:00 PM

David Cassidy has managed to stay at the top of his game for over four decades, with a unique ability to re-invent himself and adapt to numerous genres from concerts to theater, television to Las Vegas, and even actor/singer to producer/writer/director with a demographic that crosses three generations. Cassidy rose to stardom in *The Partridge Family* and became the biggest TV and performing phenomenon in history by the time he was 20. With hits such as "I Woke Up in Love This Morning," "I Think I Love You," "I Can Feel Your Heart Beat," "I'll Meet You Halfway," "Could It Be Forever," and "Cherish," David Cassidy is a powerhouse of talent.

From television to recording and record-breaking concert tours, from Broadway and London's West End to Las Vegas production shows, he has made his mark and been lauded with nominations and awards in each arena. In addition to the superstardom he has enjoyed as a singer, songwriter and producer, Cassidy still thinks of himself as an actor. His credits, from the phenomenal success of *The Partridge Family* also include the telefilm *A Chance to Live* and the highest rated *Police Story* in its seven-year history, which earned him an Emmy nomination as Best Dramatic Actor.

Never one to rest on his laurels, he went to Broadway where he starred in the original production of *Joseph and the Amazing Technicolor Dreamcoat*. London beckoned, and he starred next at the prestigious West End in *Time* with Sir Laurence Olivier. In 1994, he once again broke box office records in the stunning and highly lauded production of *Blood Brothers* on Broadway, working for the first time with his brother Shaun.

With over 25 million records sold and 18 records reaching Gold and Platinum status, he has certainly proven that it is talent, creativity, and tenacity that keep people coming to shows, turning on the television, and buying his recordings.



"One of the world's biggest teen heart-throbs, TV star and million-selling recording artist."

— BEAT Magazine

Platinum | \$43.50

Orchestra | \$39.50

Parterre | \$33.50

Balcony | \$25.50



ARRIVAL FROM SWEDEN: THE MUSIC OF ABBA

October 6, 2012 | 8:00 PM

ARRIVAL From Sweden was founded by Vicky Zetterberg in 1995 in Gothenburg, Sweden. ARRIVAL From Sweden very soon became one of the world's most popular and best selling ABBA performance bands. Since the start in 1995, the band has toured in more than 40 countries and has appeared in several TV and radio shows all over the world.

ARRIVAL From Sweden: The Music of Abba has sold out arenas and venues all over the world since its creation and is the premier ABBA performance group. Hits like "Dancing Queen," "Mamma Mia," "Does Your Mother Know," and many more are delivered with such accuracy that it's hard to believe that it's not the original ABBA on stage.

ARRIVAL From Sweden works with designer Owe Sandström who designed and also owns all of the original ABBA staging clothes. ARRIVAL From Sweden is the only band worldwide that has the exclusive rights to make exact copies of the design-protected staging clothes.

Millions of people all around the world celebrate this show as the best ABBA performance show in the world.

"You could have sworn you were hearing the original songs being sung by the original group!"
– **The Bermuda Sun**

"The playing was 100 percent perfection. The costumes were exact. They looked and sounded like ABBA at their very best!"
– **Progsheet Live Events**

Platinum		\$42.50
Orchestra		\$38.50
Parterre		\$32.50
Balcony		\$24.50



THE NATIONAL CIRCUS OF THE PEOPLE'S REPUBLIC OF CHINA: CIRQUE CHINOIS

October 13, 2012 | 8:00 PM

Direct from Beijing, the National Circus of the People's Republic of China is a treat for the entire family, with jaw-dropping feats of contortion, juggling, flying and balance in its new program, "Cirque Chinois." The circus was founded in 1953, making it one of the longest running and most distinguished circus troupes in China.

The National Circus of the People's Republic of China is especially acclaimed in China because of the unique acts in its program, such as Great Teeterboard, Grand Flying Trapeze, Group Contortion, Straw Hats Juggling, Girls' Balance With Bowls, and many other outstanding acts.

Many of the artists in the troupe have won international awards, including Ms. Li Liping, the first Golden Clown winner from China at the renowned Monte Carlo International Circus Festival, and Madame Xia Juhua, the "Chinese Ulanowa" of the circus world and chairwoman of the International Chinese Circus Society since the early 1980s. The company has won over 20 gold and silver medals and various other awards at international circus festivals including the Monte Carlo International Circus Festival, Cirque de Demain, Wuqiao International Circus Festival, Wuhan International Circus Festival, and the China National Acrobatic Competition.

Platinum		\$38.50
Orchestra		\$32.50
Parterre		\$28.50
Balcony		\$24.50

ROY CLARK: IN CONCERT

October 20, 2012 | 8:00 PM



A recent inductee into the Country Music Hall of Fame, internationally renowned instrumentalist and performer Roy Clark continues to perform the hits that made him famous and a household name.

Accompanied by Roy's Toys (his band of many years), he treats audiences to such hits of his as "Yesterday, When I Was Young," "Somewhere Between Love and Tomorrow," "If I Had it to Do All Over Again," and many others.

Roy Clark is a Virginia-born, multi-award-winning virtuoso, actor, vocalist, and philanthropist. He has headlined some of the world's most prestigious venues, including Carnegie Hall, Madison Square Garden, the Grand Palace in Brussels, and the Rossiya Theatre in Moscow. He has been decorated as the Entertainer of the Year and Comedy Act of the Year by the Academy of Country Music, as well as the Best Country Guitarist by *Guitar Magazine* and received a Grammy Award for his instrumental version of "Alabama Jubilee."

Roy became a Grand Ole Opry member in 1987. He was a favorite recurring actor on the classic television sitcom *The Beverly Hillbillies*, which spawned several acting roles on television and in movies. Roy was the first country music artist to guest host Johnny Carson's *Tonight Show*, and he also hosted the incomparable *Hee Haw* show for over two decades.

"It's easy to see why Clark has transcended the generations to still be the figure that he is."
— *Hybrid Magazine*

Platinum		\$47.50
Orchestra		\$41.50
Parterre		\$35.50
Balcony		\$29.50



SHREK: THE MUSICAL THE NATIONAL TOUR

November 9, 2012 | 8:00 PM

Shrek: The Musical, based on the Oscar-winning DreamWorks film that started it all, brings the hilarious story of everyone's favorite ogre to life on stage.

In a faraway kingdom turned upside down, things get ugly when an unseemly ogre—not a handsome prince—shows up to rescue a feisty princess. Throw in a donkey who won't shut up, a villain with a SHORT temper, a cookie with an attitude, and over a dozen other fairy tale misfits, and you've got the kind of mess that calls for a real hero. Luckily, there's one on hand, and his name is Shrek.

Featuring a terrific score of 19 all-new songs, big laughs, great dancing, and breathtaking scenery, *Shrek: The Musical* is part romance, part twisted fairy tale and all irreverent fun for everyone.

"Far, far and away the funniest new musical on Broadway!"
— WWOR-TV

"The show captivates, enthralls, and amuses beyond all expectations."
— Naples News

Platinum		\$49.50
Orchestra		\$44.50
Parterre		\$38.50
Balcony		\$32.50



A CHRISTMAS CAROL

BASED ON THE NOVELLA BY CHARLES DICKENS

November 29-30, 2012 | 7:30 PM

December 1, 2012 | 7:30 PM

December 2, 2012 | 2:00 PM

Bring the entire family out to enjoy the magic and mystery as we celebrate the season with the classic tale, *A Christmas Carol!*

The old miser Ebenezer Scrooge is rather stuck in his ways and certainly never expected to be visited by the ghost of his old friend Jacob Marley, who sends him on a haunting journey with the Ghosts of Christmas Past, Present, and Future to view his life and the possibilities that lay ahead if he remains on the course he's traveling.

Don't miss the Cratchit Family (including Tiny Tim!) and the rest of your favorite Dickens characters as they once again show us the true meaning of Christmas.

Charles Dickens' classic has been a holiday tradition at Lindenwood University for over three decades. Many first-year Fine and Performing Arts students have made their performing debut in the annual production of *A Christmas Carol*, and moved into more intensive roles in the production throughout their matriculation at Lindenwood.

Platinum | \$18

Orchestra | \$15

Parterre | \$12

Balcony | \$10



TONY ORLANDO'S GREAT AMERICAN CHRISTMAS

December 14, 2012 | 8:00 PM — *Sold Out!*

December 15, 2012 | 2:00 PM — *Sold Out!*

December 15, 2012 | 8:00 PM

No entertainer can move and excite an audience like Tony Orlando. One of America's most endearing and enduring stars, Tony and America recently celebrated the 30th anniversary of his recording of "Tie a Yellow Ribbon 'Round the Ole Oak Tree."

Tony brings to the stage a warmth and an exhilarating energy that electrifies audiences everywhere. From million-selling records (five number one hits), a popular television variety series, movies, and Broadway (Barnum and Smokey Joe's Cafe), Tony Orlando has conquered every facet of show business.

With such hits as "Candida," "Knock Three Times," and "Gypsy Rose," Orlando remains one of America's best loved personalities. He has been a recipient of three American Music Awards and a People's Choice Award. For outstanding achievements in the entertainment industry, Tony was awarded a star on the Hollywood Walk of Fame in 1990.

Spending an evening this holiday season with Tony Orlando should be at the top of your wish list, as it will be an experience you won't soon forget!

*"It's the greatest Christmas show I have seen in a long, long time."
— Bobby Vinton*

*"It's the best Christmas show I've ever seen. After seeing it, I dropped any idea of having my own. If you get a chance to see the show, don't miss it!"
— Mickey Gilley*

Platinum | \$43.50

Orchestra | \$39.50

Parterre | \$33.50

Balcony | \$25.50



CHRISTMAS TRADITIONS WITH THE LENNON SISTERS

December 16, 2012 | 2:00 PM

The anticipation of Christmas continues to build as the Lennon Sisters bring a touch of nostalgia to St. Charles this winter season with their holiday show, Christmas Traditions. Joining The Lennon Sisters will be their granddaughters, Lia, Jenna, and Ana.

The Lennon Sisters are an American institution. Glamorous, yet unpretentious. Sophisticated, yet down-to-earth. Famous, yet approachable. No wonder America remains fascinated by The Lennon Sisters. America fell in love with them as the girls next door. For 13 years on *The Lawrence Welk Show*, the Lennon Sisters—Dianne, Peggy, Kathy and Janet—charmed the nation with their sweet-voiced harmonies. The combination of their extraordinary natural vocal talents, hard-working professionalism, striking looks, unassuming personalities, and strong family values has earned them a place in the homes of millions of fans nationwide. That's why, as youngsters, they were dubbed "America's Sweethearts of Song"—and America still adores them today.

Now, the Lennon Sisters—Kathy, Janet and Mimi—continue to perform their distinctive harmonies for special concerts across the United States, and this year they are proud to be appearing at The Bezaemes Family Theater for their Christmas Show in St. Charles, Mo.

"Their instant stardom has lasted 55 years."

"The Lennon Sisters are American Legends."

Platinum		\$43.50
Orchestra		\$39.50
Parterre		\$33.50
Balcony		\$25.50

AN EVENING WITH MARY WILSON OF THE SUPREMES

January 26, 2013 | 8:00 PM

It was a vision of musical stardom as a teen in Detroit that inspired Mary Wilson, along with Diana Ross and Florence Ballard, to found one of the most successful female singing groups in recording history – The Supremes. Since then, Wilson has gone on to be a part of dozens of hit records, has written a best-selling autobiography, performed on stage and screen, lectured and toured the world, and continues to be revered as a singer who set the standard for females in the recording industry.

Motown founder Berry Gordy put the girls in touch with his top writing and producing team, Holland-Dozier-Holland, and four decades and 40 albums later, what once started as a dream has exceeded Wilson's wildest imagination. With an unprecedented 12 number-one hits, including "Where Did Our Love Go," "Baby Love," "Stop, In The Name Of Love," and "Back in My Arms Again," The Supremes set the precedent for super-group success.

The Los Angeles Times said, "Mary Wilson remains strikingly attractive and a vibrant singer of much style and authority; Wilson may have been a backup singer with the Supremes but is in truth a lead singer with a star quality..."

With a successful solo career – and new CD out later this year – an equally successful literary career and her tireless humanitarian efforts, Wilson's future couldn't look brighter. She is living proof that dreams really do come true!

Platinum | \$40.50
Orchestra | \$36.50
Parterre | \$30.50
Balcony | \$22.50



"Wilson is non-stop excitement, expressing every emotion an entertainer could possibly deliver. She's vibrant, touching, heartwarming, and soulful."
– **Rossmoor News**

BOBBY VINTON: IN CONCERT

February 16, 2013 | 8:00 PM



A multi-talented musician, singer and actor, Bobby Vinton has sold more than 75 million albums during his career.

Vinton's name has been synonymous with superstardom and a true survivor, and he continues to enjoy success as a top-rated performer. Today, Bobby is one of few stars who is capable of headlining in Atlantic City and Las Vegas in addition to playing dates around the world. He has established himself as one of America's top concert performers and versatile entertainers.

The hit songs Bobby has given us over the years have become classics. His impressive list of hits includes renowned love songs such as "Roses Are Red," "Blue Velvet," "Mr. Lonely," and many more. His songs are recognized as standards throughout the world, and his music has retained its vitality and relevance through our changing times.

Over the past several years, Bobby has been honored by over 100 national organizations and more than a dozen mayors across the United States for his unique contributions to the ethnic communities and was even invited to Poland as a guest of the government. As a tribute to his talents and community services the Hollywood Chamber of Commerce bestowed the ultimate honor upon Vinton—a bronze star on the world famous Hollywood Walk of Fame on Hollywood Boulevard.

"Bobby Vinton is the all-time most successful love singer of the 'rock-era'. Starting with his first hit release 'Roses Are Red' in 1962, over the next ten years he had more number-1 records than any other solo male artist."

— Billboard Magazine

"Nothing like it. He's dynamite!"
CTNow.com

Platinum		\$49.50
Orchestra		\$44.50
Parterre		\$38.50
Balcony		\$32.50



THE CHINA NATIONAL SYMPHONY

February 27, 2013 | 8:00 PM

The China National Symphony Orchestra is one of the most outstanding professional symphony orchestras in China, and once you experience its performances of Guan's "First Movement of the Earth Requiem," Tchaikowski's "Piano Concerto No. 1," and Beethoven's "Symphony No. 7," there will be no doubt in your mind as to just why they've achieved the title of China's national symphony.

Originally founded as the Central Philharmonic Orchestra of China in 1956, the orchestra was restructured and renamed in 1996. Leading the CNSO into the future are Director Guan Xia (Composer), Laureate Conductor Muhai Tang, Principal Resident Conductor Li Xincao, and Principal Guest Conductor En Shao.

Throughout its history, the China National Symphony Orchestra has collaborated with many world-famous artists in order to bring excellence to its audiences, including famous conductors such as Ormandy, Dutoit, Masur, Slatkin, Rozhdestvensky, Schwarz, and Peress. Other well-known guest artists have included composer and conductor Krzystof Enderecki; instrumentalists Oistrakh, Menuhin, Stern, Mutter, Maisky, Choliang and Lindemann; and vocalists, Giacomini and Jones.

"The China National Symphony Orchestra is a solid, energetic, and meticulously drilled ensemble."
– **The Washington Post**

"The intonation and range of dynamics were excellent. The orchestra is world class."
– **Maestro Maurice Peress**

Platinum | \$48.50
Orchestra | \$42.50
Parterre | \$36.50
Balcony | \$28.50



Guys AND DOLLS

TIME TO GET LUCKY!

GUYS & DOLLS

MUSIC AND LYRICS BY FRANK LOESSER
BOOK BY JO SWERLING AND ABE BURROWS

March 14-16, 2013 | 7:30 PM

March 17, 2013 | 2:00 PM

Based off of the short stories by Damon Runyon, *Guys and Dolls* portrays the hustle and bustle of a whimsical New York City. The story explores the city's underworld of gambling and the colorful characters that inhabit it, as well as the "Do Gooders" who try to save these poor souls from their evil ways.

Nathan Detroit is the lovable leader who runs the illegal crap games. He is eager to organize a wild evening of gambling and mischief when he hears that the notorious Sky Masterson is in town. The sinfully handsome Masterson is the king of dice and charisma. The story quickly takes off when Sky bets Detroit that he can get any gal. Detroit accepts and cleverly chooses Sarah Brown, the conventional and conservative leader of the Save-A-Soul Mission, to be Sky's date.

Is love really possible between the independent high rolling gambler and the motivated good girl who wishes to save all sinners? Arguably the "most perfect musical comedy ever written," *Guys and Dolls* will take the audience from the heart of Times Square to the sewers of New York.

"This is why Broadway was born!"
— *Newsweek*

"It's the perfect musical comedy."
— *Daily News*

Platinum		\$18
Orchestra		\$15
Parterre		\$12
Balcony		\$10



SHA NA NA: IN CONCERT

April 6, 2013 | 8:00 PM

SHA NA NA brings their rock and roll celebration to town in a dynamic, crowd-pleasing show that includes highlights of their journey from Woodstock, the movie *Grease*, The SHA NA NA TV show and their world-wide concert touring. In an interactive show where the audience sings along, dances along, and participates in a "Greaser Olympics," a good time is had by all ages.

SHA NA NA may not have invented rock nostalgia, but the group has successfully – very successfully – celebrated the music and the memories for the past four decades. And through it all – flower power, hard rock, metal music, disco, hip hop, rap and more – SHA NA NA remains true to the original concept: rock and roll is here to stay!

When Jocko, Screamin' Scott, Donny, Paulie, Gene, Michael, and Tim hit the stage, you'll be transported back into some of your favorite memories while creating new ones you'll be talking about for years to come.

So all you teen angels and party dolls: twist, stroll, and hand jive to the classics as performed by the crowned princes of doo-wop and rock and roll, SHA NA NA.

"SHA NA NA does a fantastic job helping to keep the past era's sounds and memories alive. It appears they have built a solid foundation in preserving the past and exposing it to generations old and new alike."

– RockShowCritique.com

Platinum		\$40.50
Orchestra		\$36.50
Parterre		\$30.50
Balcony		\$22.50



THE RUSSIAN NATIONAL BALLET PRESENTS: DON QUIXOTE

April 27, 2013 | 8:00 PM

A full-length ballet in three acts with music by Leon Minkus and choreography by Marius Petipa, the Russian National Ballet's presentation of *Don Quixote* is not to be missed. The ballet is based on the epic novel by Miguel de Cervantes; you'll be mesmerized by the vibrant production and spirited choreography.

The Russian National Ballet Theatre was founded in Moscow during the transitional period of Perestroika in the late 1980s, when many of the great dancers and choreographers of the Soviet Union's ballet institutions were exercising their new-found creative freedom by starting new, vibrant companies dedicated not only to the timeless tradition of classical Russian Ballet but to invigorating this tradition as the Russians began to accept new developments in the dance from around the world.

"The Russian National Ballet Theatre, directed by Elena Radchenko, is a cut above many of its rivals."

– The Washington Post

Platinum		\$54.50
Orchestra		\$46.50
Parterre		\$38.50
Balcony		\$26.50



MUSIC & MEMORIES: AN EVENING WITH PAT BOONE

May 11, 2013 | 8:00 PM

In this funny and often touching autobiographical one-man show, entertainment icon Pat Boone sings the hits and tells the stories of his 50-plus years in show business. From the early days of competing with Elvis for the number one spot on the pop music charts to his film and television career to an inside glimpse of his family life, Pat shows why he's still one of the all-time greats.

*"There's no denying the extraordinary success of Pat Boone."
– LA Splash Magazine*

Platinum \$43.50 | Orchestra \$39.50 | Parterre \$33.50 | Balcony \$25.50



THE OSMOND BROTHERS: IN CONCERT

TBA

The Osmond Brothers have been performing in front of world-wide audiences for almost 50 years. They have practically lived on a stage, thrilling many millions of people with their brand of entertainment!

The Osmonds perform all styles of music from barbershop, pop, rock, and country. Their close harmonies cannot be matched by any other group. They have sold over 80 million albums and have 47 gold and platinum records to their credit. They have broken records for sell-out performances once held by the Beatles and Elvis and have won numerous awards, including the People's Choice Award, Best Vocal Group and Best Show in Branson, Missouri, and a star on the Hollywood Walk of Fame. Featuring Jimmy, Merrill, and Jay, this is a performance you won't want to miss!

"There is something about the Osmond sound that is classic. It has never been reproduced. It has never changed. It's like the entire Osmond generation has a certain musical gene that is completely unique to them."

– The Deseret News

Platinum \$44.50 | Orchestra \$38.50 | Parterre \$32.50 | Balcony \$26.50

FAMILY CONCERT SERIES



THE ST. LOUIS PHILHARMONIC ORCHESTRA FEATURING THE LINDENWOOD CHOIRS

March 1, 2013 | 8:00 PM

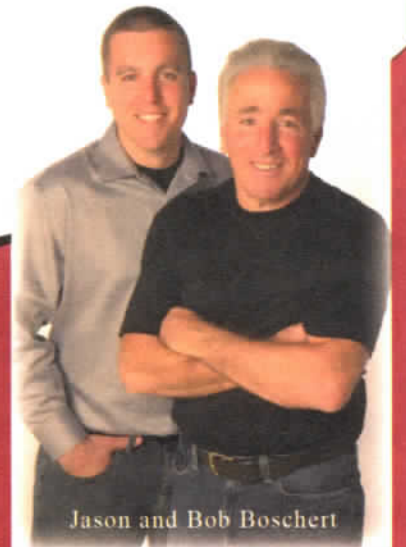
Founded in 1860, the St. Louis Philharmonic Orchestra continues to serve the St. Louis Metro Area as a vital and viable cultural institution. This historical orchestra is composed of approximately 90 talented and dedicated musicians who have successfully auditioned for positions in the orchestra. Unique in the country, the St. Louis Philharmonic Orchestra is an all-volunteer, self-governing, self-sustaining not-for-profit organization. Its mission dictates that it provide musical opportunities of participation to gifted young people and that its classical season of four concerts is open to the public without charge in an effort to engage and encourage recreation and education, as well as attendance and support within the community. Soloists include the choirs of Lindenwood University; Richard Hirschl, cellist; and Lawrence Neuman, violist.

Free, Assigned Seating | Tickets available November 15, 2012



Call BOSCHERT AND SON HOMES for all your home improvement needs!

ROOFING
DECKS
WINDOWS & DOORS
KITCHEN & BATH



Jason and Bob Boschert

CALL NOW: (636) 949-5550
Quality Remodeling Services for Greater St. Charles
www.boschertandson.com

UNIVERSITY THEATRE PRODUCTIONS

THE SHAPE OF THINGS

BY NEIL LABUTE

September 20-22, 2012 | 7:30 PM

September 23, 2012 | 2:00 PM

In a contemporary retelling of the fall of man, Adam is once again seduced—this time by a beautiful and sophisticated art student, rightfully named Eve(lyn). It is a true match of beauty and the geek as Evelyn and Adam embark on a tumultuous relationship which changes Adam for the better. Or does it? LaBute baits the question of art imitating life or vice-versa? At what point does creation become manipulation and the artist becomes an assassin?

\$10, General Admission | The Emerson Black Box Theater

A MAN OF NO IMPORTANCE

MUSIC BY STEPHEN FLAHERTY, LYRICS BY LYNN AHRENS, BOOK BY TERRENCE McNALLY

October 12-13, 2012 | 7:30 PM

October 18-20, 2012 | 7:30 PM

"I regard the theatre as the greatest of all art forms, the most immediate way in which a human being can share with another the sense of what it is to be a human being." — Oscar Wilde

Set amidst the hazy streets of 1964 Dublin comes a tale of Alfie Byrne, a lonely romantic, hopelessly infatuated with a love for the theatre and all things Oscar Wilde. Through a twist on the classic play-within-a-play set-up, Alfie's misfit acting troupe weaves the story of a man who is challenged to face his fears as he takes a stand against the prejudices in his world. This play is a passionate journey of self-discovery, human compassion, and the everlasting bond of true friendship, beautifully brought to light through the life of a man of no importance.

\$15, General Admission | The Emerson Black Box Theater

A VIEW FROM THE BRIDGE

BY ARTHUR MILLER

February 7-9, 2013 | 7:30 PM

During the post war and McCarthy 1950s in the shadows below the Brooklyn Bridge we watch an admirable dock worker, Eddie Carbone, take in two of his wife's relatives, illegal immigrants from Italy. They move in among Eddie's forsaken wife and his teenage niece, whom he has raised and whom he loves, he thinks, as a daughter. When his niece falls for one of the immigrants, a monstrous change creeps up on Eddie as he struggles to keep his family and his world intact. Not even the wise and compassionate neighborhood lawyer can persuade Eddie to let the girl go. Eddie can't keep from revealing himself and betraying his neighborhood, his culture, and his family as he fulfills his pitiful destiny. Judgment, respect, sexual dynamics, hopes, and fears are at the core of this intensely absorbing drama, a tragedy in the traditional form and a modern classic.

\$10, General Admission | The Emerson Black Box Theater

THE IMPORTANCE OF BEING EARNEST

BY OSCAR WILDE

April 18-19, 2013 | 7:30 PM

April 20, 2013 | 2:00 PM

"I do not approve of anything that tampers with natural ignorance. Ignorance is like a delicate exotic fruit; touch it and the bloom is gone."

Jack and Algernon, two dashing young men-about-town, lead double lives with the help of "Mr. Bunbury" and "Earnest." Jack's imaginary brother, Earnest, provides an excuse to frolic in town while Algernon's imaginary friend, Bunbury, allows him to take adventures in the country. However, their deceptions eventually cross paths when both men pretend their name is Earnest in order to impress their lady loves, Gwendolyn and Cecily, as well as Gwendolyn's formidable mother, Lady Bracknell. This timeless tale is one of the funniest comedies in the English language from the brilliant Oscar Wilde!

Platinum \$18 | Orchestra \$15 | Parterre \$12 | Balcony \$10

The Bezemes Family Theater

UNIVERSITY MUSIC CONCERTS



FALL MUSIC SERIES

Choir Concert | Nov. 6, 2012 | 7:30 PM
The Bezemes Family Theater

Jazz Concert | Nov. 7, 2012 | 7:30 PM
The Bezemes Family Theater

Band Concert | Nov. 8, 2012 | 7:30 PM
The Bezemes Family Theater

Chamber Concert | Nov. 29, 2012 | 7:30 PM
The Emerson Black Box Theater

Percussion Concert | Nov. 30, 2012 | 7:30 PM
The Emerson Black Box Theater

FEATURED MUSIC SERIES

The Lindenwood University Film Series, in association with the Department of Music, presents: **Nosferatu***
October 30, 2012 | 7:30 PM
The Bezemes Family Theater

The Lindenwood University Department of Music presents: **Let It Snow***
December 5, 2012 | 7:30 PM
The Bezemes Family Theater

MARCH MUSIC SERIES

Band Concert | March 19, 2013 | 7:30 PM
The Bezemes Family Theater

Choir Concert | March 20, 2013 | 7:30 PM
The Bezemes Family Theater

Orchestra Concert | March 21, 2013 | 7:30 PM
The Bezemes Family Theater

Jazz Concert | March 22, 2013 | 7:30 PM
The Bezemes Family Theater

SPRING MUSIC SERIES

Opera Workshop Scenes | April 18, 20, 2013 | 7:30 PM
The Emerson Black Box Theater

Chamber Concert | April 25, 2013 | 7:30 PM
The Emerson Black Box Theater

Student Conductors Concert | May 7, 2013 | 7:30 PM
The Bezemes Family Theater

Voices Only Concert* | May 8, 10, 2013 | 7:30 PM
The Emerson Black Box Theater

All University Concert Series are Free, General Admission | *Free, Ticketed Event

UNIVERSITY DANCE CONCERTS

FALL DANCE CONCERT

October 25 – 27, 2012 | 7:30 PM

The Bezemes Family Theater

Don't miss the first dance concert of the season when the Lindenwood University Dance Department presents its annual fall production on the stage of the stunning Bezemes Family Theater.

The Fall Dance Concert will feature choreography by students and faculty—including new adjunct-faculty members Kari Ann Davis and Rainy Demerson—as well as guest artists Redd Williams and Michael Mizerany.

\$10, General Admission

STUDENT DANCE CONCERT

February 14-16, 2013 | 7:30 PM

February 17, 2013 | 2:00 PM

The Emerson Black Box Theater

Experience dance in perhaps its rawest form when undergraduate students present new works in the intimate environment of the Emerson Black Box Theater.

The students create their own choreography, costumes, and set design, providing an intensely cohesive presentation developed and adapted all from the mind of the individual students.

Ticketed Event | Free, General Admission

SPRING DANCE CONCERT

May 2-4, 2013 | 7:30 PM

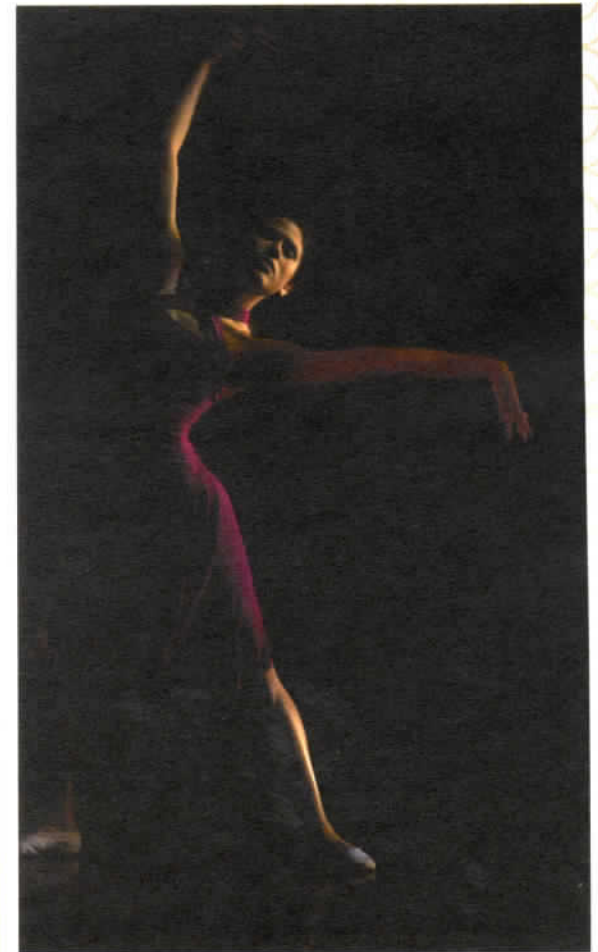
May 5, 2013 | 2:00 PM

The Bezemes Family Theater

The Dance Concert series concludes with an entertaining arrangement of pieces that highlight the talent and artistry of our Lindenwood dance community.

The Spring Dance Concert will feature several senior thesis projects along with new choreographic works from faculty, graduate students, and the Lindenwood University Dance Ensemble. In addition, Lindenwood University students will perform "Runaway" (2008), choreographed by Larry Keigwin, originally commissioned by The Dance Division of The Julliard School, and restaged by KEIGWIN + COMPANY dancer Kile Hotchkiss.

\$10, General Admission





TOPOGRAPHIA

Shibori rusted silk, found jacquard woven textile-cotton, wool roving for trapunto, silk and rayon threads, commercial wool blend felt back, free motion machine stitching

48" high x 51" wide
c2011 (photo by Andrew Dobson)

Contemporary Fiber Arts showcases the most innovative work being done currently in the fibers discipline in the Midwest. Fiber art is traditionally defined as artwork that utilizes fibrous material from vegetables such as cotton, hemp, and jute; animals such as silk, wool, and catgut; as well as wood, metal, and synthetics as media.

One of the featured artists is Patricia Vivod.

"I grew up on a farm, so it is partly in homage to my father and partly in humor that I refer to my process as reverse farming. "Harvested" materials (tea and tree leaves, sometimes wild berries, fermented juices, etc.) paired with rusted iron objects (often old farm implements) make possible a wide variety of virtually permanent color marks on silk through direct contact printing. Since 2007, I have also adapted shibori pole wrapping techniques to broaden the scope of my landscapes and farm stories which develop organically—outdoors, as where in real farming, the season, temperature, humidity and timing affect the outcome."

Contemporary Fiber Arts

Aug. 23 – Sept. 30

Opening Reception August 30, Thursday
Boyle Family Gallery, 4-7:00 P.M.

Greg Edmondson

Oct. 4 – Nov. 11

Opening Reception October 4, Thursday
Boyle Family Gallery, 4-7:00 P.M.

Young Artists and Their Teachers 2012

Nov. 18 – Dec. 9

Opening Reception November 18, Sunday
Boyle Family Gallery, 12-2:00 P.M.

Doug Gaubatz Photographs

Jan. 24 – Feb. 24

Opening Reception January 31, Thursday
Boyle Family Gallery, 4 – 7:00 P.M.

Posters from the Wells Fargo Collection

Feb. 28 – Mar. 31

Opening Reception February 21, Thursday
Boyle Family Gallery, 4 – 7:00 P.M.

LU Juried Student Exhibition

Apr. 14 – Apr. 28

Opening Reception April 14, Sunday
Boyle Family Gallery, noon – 2:00 P.M.

UNIVERSITY FASHION SHOWS

SPRING FASHION SHOW

May 3, 2013 | 8:00 PM
\$20, General Admission

May 4, 2013 | 8:00 PM (VIP)
\$35, VIP Seating & Reception
\$25, General Admission

The Emerson Black Box Theater

Experience the art and intricacy of fashion in a New York-style runway show. The show features designs by select upper level students showcasing a variety of landmark fashions ranging from casual to avant-garde. This show also features individual garment categories such as cocktail chic and couture gowns. The collections of these aspiring designers hit the runway blending complexity and innovation. This is a night you don't want to miss.

The May 4 VIP event is the culmination of a year of intense design in the fashion department and features an exclusive showcase of garments judged for prizes by industry professionals. This event includes a 7:00 p.m. reception for those with VIP tickets.



COPELAND COSMETIC SURGERY

Giving beauty and confidence a face...
yours.

Free Cosmetic Consultations*

Face Lift	Brow Lift	Eyelid Surgery
Liposuction	Botox	Rhinoplasty
Breast Augmentation	Scar Revision	Breast Lift
Breast Reconstruction	Breast Reduction	Hand Surgery
Abdominoplasty	Fat Grafting	Filler
Ear Surgery	Labioplasty	Laser Skin Resurfacing



#2 Richmond Center Ct.
St. Peters, MO 63376
(636) 397-2001



**Free consultation applies to cosmetic services only.
Any consultations for medical reasons are not free.*

www.copelandcosmeticsurgery.com

SPEAKER SERIES



PAMELA MEYER

HOW TO SPOT A LIAR: CRACKING THE CODES OF HUMAN DECEPTION

October 9 | 7:00 PM

The Bezemes Family Theater

Pamela Meyer holds an MBA from Harvard and an MA in public policy from Claremont Graduate School and is a certified fraud examiner. She has extensive training in the use of visual clues and psychology to detect deception and has been featured in *Bloomberg*, the *Wall Street Journal*, the *New York Times*, and *Forbes*. Meyer's mission is to help people become more accurate at finding the truth. The lie-detection skills Meyer has mastered reveals the deception epidemic plaguing our society.

Free, Assigned Seating | Tickets available September 10, 2012



LEE DANIELS

PRECIOUS MONSTERS: MY EXPERIENCES AND HOW THEY HAVE SHAPED MY FILMS

November 13 | 7:00 PM

The Bezemes Family Theater

Lee Daniels' background is filled with bold stories as real and gritty as the narratives from the films he creates. After selling his health care business and giving up screenwriting, he began managing actors such as Loretta Divine, Michael Shannon, Natasha Kinsky, and Aishwarya Rai. Daniels turned to producing as a natural result of trying to find and create great material for his clients; the organic leap to directing came soon after.

Daniels' directorial debut came with *Shadowboxer*, and he produced *Monster's Ball*, *The Woodsman*, *Tennessee*, *The Paperboy*, and *Precious*, which received two Academy Awards in 2010.

Free, Assigned Seating | Tickets available September 10, 2012



ALAN SCHWARZ

HEAD GAMES: GETTING FOOTBALL AND THE PUBLIC TO UNDERSTAND THE DANGERS OF SPORTS RELATED CONCUSSIONS

February 20, 2013 | 10:00 AM

The Bezemes Family Theater

Alan Schwarz (born July 3, 1968) is a Pulitzer Prize-nominated reporter at the *The New York Times* best known for writing more than 100 articles that exposed the seriousness of concussions among football players of all ages. His investigative and profile pieces are generally credited with revolutionizing the respect and protocol for head injuries in almost every major youth and professional sport.

Free, General Admission

SEASON TICKETS

For the 2012-2013 Season, we are proud to offer season tickets in all seating sections to the following Bezemes Family Theater Main Stage Season performances:

- AN EVENING WITH KENNY ROGERS -
- NEIL SEDAKA: IN CONCERT -
- DAVID CASSIDY: IN CONCERT -
- ARRIVAL FROM SWEDEN: THE MUSIC OF ABBA -
- THE NATIONAL CIRCUS OF THE PEOPLE'S REPUBLIC OF CHINA: CIRQUE CHINOIS -
- ROY CLARK: IN CONCERT -
- SHREK THE MUSICAL: THE NATIONAL TOUR -
- TONY ORLANDO'S GREAT AMERICAN CHRISTMAS -
- CHRISTMAS TRADITIONS WITH THE LENNON SISTERS -
- AN EVENING WITH MARY WILSON OF THE SUPREMES -
- BOBBY VINTON: IN CONCERT -
- THE CHINA NATIONAL SYMPHONY -
- SHA NA NA: IN CONCERT -
- THE RUSSIAN NATIONAL BALLET: DON QUIXOTE -
- MUSIC & MEMORIES: AN EVENING WITH PAT BOONE -
- THE OSMOND BROTHERS: IN CONCERT -

PLATINUM SEASON TICKET	\$599.00 Per Ticket*
	<i>A savings of over \$145.00!</i>
ORCHESTRA SEASON TICKET	\$539.00 Per Ticket*
	<i>A savings of over \$120.00!</i>
PARTERRE SEASON TICKET	\$459.00 Per Ticket*
	<i>A savings of over \$105.00!</i>
BALCONY SEASON TICKET	\$369.00 Per Ticket*
	<i>A savings of over \$80.00!</i>

With each purchase of a season ticket, you will receive one complimentary ticket to both *A Christmas Carol* and *Guys & Dolls* as our gift to you, an additional \$20-36 savings!

Please call The Box Office at (636) 949-4433 for additional information or to order your season ticket.

*Not available via Telecharge.

PERFORMANCE INFORMATION

THE BEZEMES FAMILY THEATER MAIN STAGE SEASON

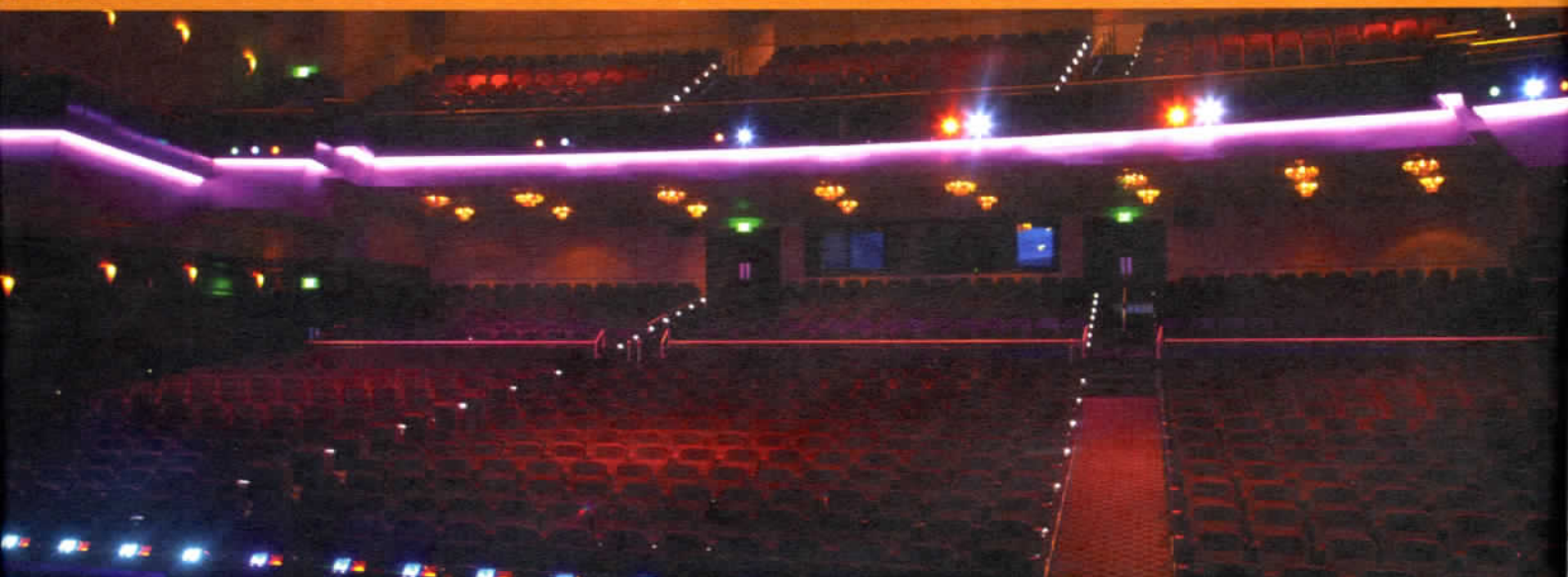
PERFORMANCE	DATE	TIME	PRICE
An Evening with Kenny Rogers	Sep. 8, 2012	8:00 PM	38.50 44.50 51.50 58.50
Neil Sedaka: In Concert	Sep. 15, 2012	8:00 PM	38.50 44.50 51.50 58.50
David Cassidy: In Concert	Sep. 28, 2012	8:00 PM	25.50 33.50 39.50 43.50
ARRIVAL From Sweden: The Music of ABBA	Oct. 6, 2012	8:00 PM	24.50 32.50 38.50 42.50
The National Circus of the People's Republic of China: Cirque Chinois	Oct. 13, 2012	8:00 PM	24.50 28.50 32.50 38.50
Roy Clark: In Concert	Oct. 20, 2012	8:00 PM	29.50 35.50 41.50 47.50
Shrek: The Musical: The National Tour	Nov. 9, 2012	8:00 PM	32.50 38.50 44.50 49.50
A Christmas Carol	Nov. 29-30, 2012 Dec. 1, 2012 Dec. 2, 2012	7:30 PM 7:30 PM 2:00 PM	10.00 12.00 15.00 18.00
Tony Orlando's Great American Christmas	Dec. 14-15, 2012	8:00 PM	25.50 33.50 39.50 43.50
Christmas Traditions with The Lennon Sisters	Dec. 16, 2012	8:00 PM	25.50 33.50 39.50 43.50
An Evening with Mary Wilson of the Supremes	January 26, 2012	8:00 PM	22.50 30.50 36.50 40.50
Bobby Vinton: In Concert	Feb. 16, 2013	8:00 PM	32.50 38.50 44.50 49.50
The China National Symphony	Feb. 27, 2013	8:00 PM	28.50 36.50 42.50 48.50
Guy & Dolls	March 14-16, 2013 March 17, 2013	7:30 PM 2:00 PM	10.00 12.00 15.00 18.00
SHA NA NA: In Concert	Apr. 6, 2013	8:00 PM	22.50 30.50 36.50 40.50
The Russian National Ballet: Don Quixote	Apr. 27, 2013	8:00 PM	26.50 38.50 46.50 54.50
Music & Memories: An Evening with Pat Boone	May 11, 2013	8:00 PM	25.50 33.50 39.50 43.50
The Osmond Brothers: In Concert	TBA	TBA	26.50 32.50 38.50 44.50

UNIVERSITY PRODUCTIONS

The Shape of Things	Sep. 20-22, 2012 Sep 23, 2012	7:30 PM 2:00 PM	10.00, General Admission
A Man of No Importance	Oct. 12-13, 2012 Oct. 18-20, 2012	7:30 PM 7:30 PM	15.00, General Admission
Fall Dance Concert	Oct. 25-27, 2012	7:30 PM	10.00, General Admission
Fall Music Series	Nov. 6-8, 2012 Nov. 29-30, 2012	7:30 PM 7:30 PM	Free, General Admission
Lindenwood University Department of Music presents: <i>Let It Snow</i>	Dec. 5, 2012	7:30 PM	Free, Ticketed Event
A View From The Bridge	Feb. 7-9, 2013	7:30 PM	10.00, General Admission
March Music Series	March 19-22, 2013	7:30 PM	Free, General Admission
The Importance of Being Earnest	Apr. 18-19, 2013 Apr. 20, 2013	7:30 PM 2:00 PM	10.00 12.00 15.00 18.00
Spring Music Series	Apr. 18, 20, 25, 2013 May 7, 8, 10, 2013	7:30 PM	Varies
Spring Dance Concert	May 2-4, 2013 May 5, 2013	7:30 PM 2:00 PM	10.00, General Admission
Spring Fashion Show	May 3, 2013 May 4, 2013	8:00 PM 8:00 PM	20.00, General Admission 35.00, VIP 25.00, General Admission



The Beremes Family Theater



THE BEZEMES FAMILY THEATER

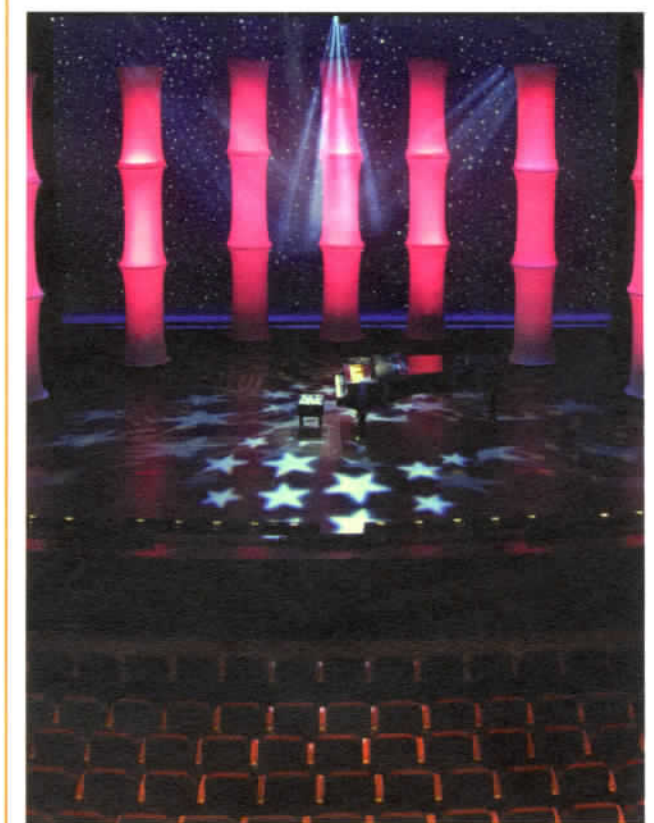
The Bezemes Family Theater is a 1,200-seat Broadway-style theater. Elegant and intimate in its design, the theater has one of the largest and most sophisticated stages in the region. Viewing is pleasant from any vantage point, allowing our patrons excellent visibility, superior sound quality, and comfortable seating. The Lindenwood Main Stage readily accommodates large-scale national and Broadway tours, as well as concerts, world-class dance, celebrity appearances, and Lindenwood University productions.



We invite you to join us for unparalleled experiences in the arts and entertainment. The J. Scheidegger Center for the Arts is easily accessible from anywhere in the region. Just minutes from the St. Louis International Airport and less than one quarter mile from Interstate 70, the J. Scheidegger Center for the Arts is in a safe park-like setting on the campus of Lindenwood University. We're easy to find, and ample free parking surrounds this architecturally significant and beautiful facility.

The Bezemes Family Theater has featured over 70 professional and university productions in just four short seasons. Some of these fantastic productions include:

- | | |
|--|--|
| Liza Minnelli | <i>The Russian National Ballet</i> |
| BJ Thomas | <i>Legally Blonde: The National Tour</i> |
| Roger Williams | <i>Annie: The National Tour</i> |
| Debby Boone | <i>CATS: The National Tour</i> |
| <i>The Wizard of Oz</i> | <i>Grease: The National Tour</i> |
| Hal Holbrook | <i>Movin' Out: The National Tour</i> |
| Marvin Hamlisch | <i>Jesus Christ Superstar: The National Tour</i> |
| The Osmond Brothers | <i>The Drowsy Chaperone: The National Tour</i> |
| <i>Steel Magnolias</i> | Glen Campbell |
| <i>Scrooge: The Musical</i> | Rich Little |
| Three Dog Night | Ed Asner |
| Bobby Goldsboro | The Lennon Sisters |
| Ray Stevens | The Glenn Miller Orchestra |
| Freda Payne | The Lettermen |
| <i>A Christmas Carol</i> | Debbie Reynolds |
| <i>Bye Bye Birdie: The National Tour</i> | |



THE EMERSON BLACK BOX THEATER

SOUTH ENTRANCE

TH ENTRANCE

THE EMERSON BLACK BOX THEATER

The Emerson Black Box Theater is a flexible space designed to put the audience close to the action. While the size of the audience can be adjusted to suit the production's requirements, one thing that never changes is the intimate relationship between the audience and the performers. The Emerson Black Box Theater can be configured for theater in the round, as a traditional theater, or for anything in between.

Generally seating between 150 and 250 audience members, The Emerson Black Box Theater provides for intimate gatherings in music, dance, drama and experimental theater. Located at the west end of The Grand Lobby, The Emerson Black Box Theater is a short distance from The Boyle Family Gallery and The Bezemes Family Theater.

The Emerson Black Box Theater has featured many works. Some of these fantastic productions include:

A Midsummer Night's Dream

You're a Good Man, Charlie Brown: The Musical

The Diviners

One Flew Over The Cuckoo's Nest

Of Mice and Men

She Stoops to Conquer

The annual Student Dance Concert

Biloxi Blues

Comic Potential

Harvey

Proof

and several chamber and choral concerts





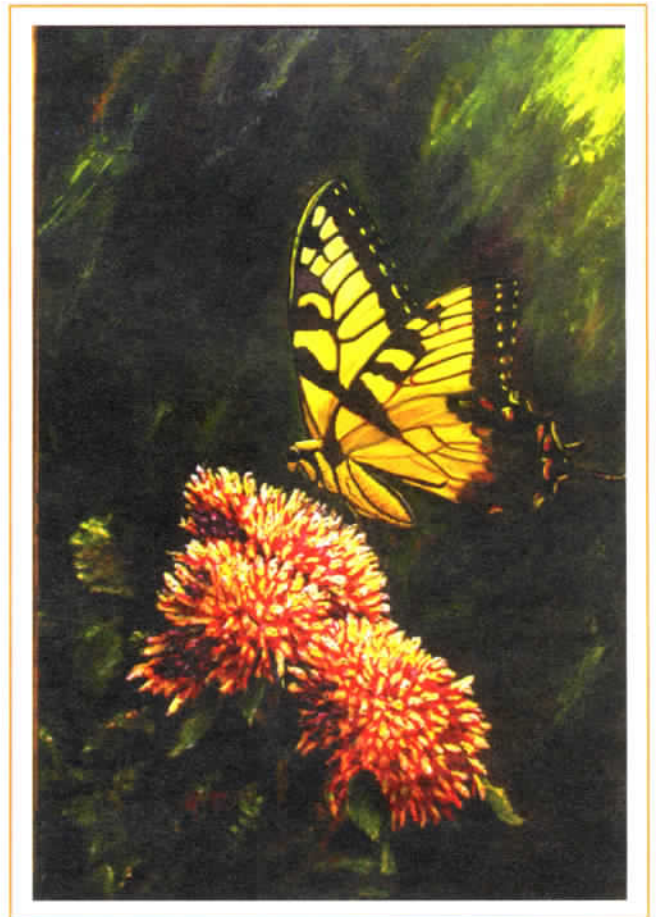
THE BOYLE FAMILY GALLERY

The Boyle Family Gallery is a beautiful, spacious art gallery designed to display a variety of artistic works ranging from fine paintings to sculpture. This state-of-the-art gallery will delight all who visit with works of art from local, national, and international artists.

Located at the west end of The Grand Lobby, The Boyle Family Gallery a short distance from The Emerson Black Box Theater, and The Bezemes Family Theater.

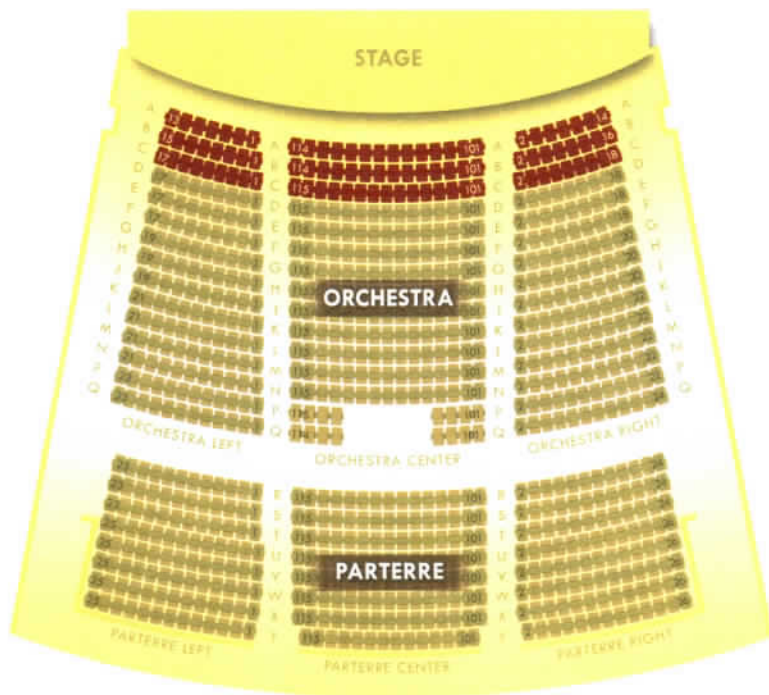
Featured artists that have hosted exhibits in The Boyle Family Gallery include Bob Allen, Bobby Goldsboro, Michael Bollenbach, and Ed Boccia.

Talented artist and famous performer Bobby Goldsboro featured a series of oil paintings in The Boyle Family Gallery during February and March of 2011. The self-taught artist began by traveling throughout his home state of Florida, bringing to life the serene hammocks and prairies of the ever-changing landscape. His exhibit was extremely well received and his wife and he made a very generous donation to The J. Scheidegger Center for the Arts following the exhibit to show support for our students and mission.



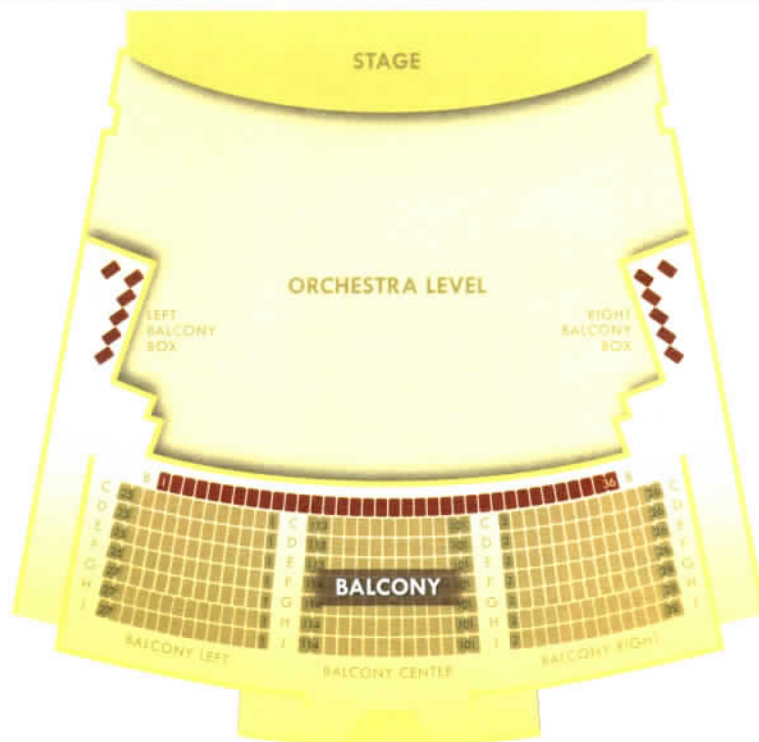
SEATING CHART

PARTERRE AND ORCHESTRA



PLATINUM SEATING IN RED

BALCONY



PLATINUM SEATING IN RED

- Assistive listening devices are available free of charge at The Box Office. *Credit card or license may be held until return of device.
- Wheelchair-accessible seating is available in the Orchestra and Balcony sections.
- Free well-lit, fully wheelchair accessible parking is just steps away from each entrance.
- Valet parking and coat check are available for each Main Stage Season production. *A nominal fee may apply for non-members. Coat check may be unavailable during warmer weather.
- Limited Box Seating is available. *Box Seating is not wheelchair-accessible.

THEATER ETIQUETTE & INFORMATION

PRIOR TO ENTERING THE THEATER...

BOX OFFICE INFORMATION

The Box Office will open two hours prior to all ticketed performances and remain open for fifteen minutes following the performance.

The Will Call window is the far-left window of The Box Office. No refunds are permitted. Exchanges may only be done within the performance run of the same production at the discretion of the management.

Acceptable forms of payment include cash, personal check (with proper identification), gift card, MasterCard, Visa, Discover, and American Express.

TELECHARGE

Tickets may be purchased 24 hours a day, 7 days a week, online by visiting www.telecharge.com or by calling (800) 447-7400. A non-refundable service fee may apply. No refunds or exchanges.

THEATER ATTIRE

Proper theater attire is required for all performances. Individuals (including children) wearing shorts, torn jeans, collarless shirts, sports sandals, and other inappropriate attire will not be permitted entrance into the theater.

SPECIAL SERVICES

Assistive Listening Devices are available at The Box Office free of charge. A driver's license or credit card will be held in The Box Office until the device is returned.

Accessible Seating is available in the Orchestra and Balcony sections of The Bezemes Family Theater. The Boyle Family Gallery and all Emerson Black Box Theater productions are fully accessible.

Accessible parking is located on the east and west sides of The J. Scheidegger Center for the Arts.

The elevator is located on the left side of The Grand Lobby.

All restrooms within the J. Scheidegger Center for the Arts are fully accessible.

SMOKING POLICY

Smoking is not permitted anywhere in the J. Scheidegger Center for the Arts, including The Grand Lobby.

RESTROOMS

Restrooms are located on the left and right side of The Grand Lobby on the Orchestra Level. Additional restrooms are located on the left side of The Grand Lobby's upper level. A Family restroom is located on the right side of The Grand Lobby on the Orchestra level.

CONCESSIONS

Concessions are offered for most performances that take place in The Bezemes Family Theater. Neither food nor drink is permitted into any theater space within The J. Scheidegger Center for the Arts. Please bear in mind that most intermissions are 15 minutes in length when making your food and drink purchases.

FACILITY TOURS

We are proud to offer tours of The J. Scheidegger Center for the Arts on the first and third Saturdays of the month by appointment only. Please call The Box Office at (636) 949-4433 to make an appointment.

WHILE INSIDE THE THEATER...

SEATING

All patrons (including children) are required to have their own tickets for ticketed events and to occupy the seats indicated on their tickets. Please do not rest your legs or feet on the seat or rails in front of you. For the safety of others, please keep all personal belongings under your seat and out of the aisles.

SMALL CHILDREN

Children 5 years old and older are welcome to attend performances in The Bezemes Family Theater. Select performances within The Emerson Black Box Theater do permit children under the age of 5 years. Please contact The Box Office to inquire as to which performances this exception applies. For the continued enjoyment of your fellow patrons, we ask that crying children and those that cannot remain in their assigned seats be escorted from the theater by their parents until they are able to quietly return to their seats.

LATE ARRIVALS

As a courtesy to fellow theater patrons and the performers, late arrivals will be seated at the discretion of the house management at an appropriate point in the performance.

CAMERAS, CELL PHONES, AND ALL MANNER OF RECORDING DEVICES

The use of cameras, cell phones, or sound recording equipment of any kind is strictly prohibited. Should an usher notice your use of one of these devices, you may be asked to exit the theater.

CELL PHONE POLICY | NOISE POLICY

Please silence your cell phones, pagers, PDA, and any other noise-making devices prior to the beginning of any performance. Please refrain from texting, emailing, or conversing with those around you during the performance. If an usher notices your cellphone use or you are being disruptive, you may be asked to exit the theater.

IN CASE OF EMERGENCY

Should an emergency arise during a performance in any theater within The J. Scheidegger Center for the Arts, please calmly make your way to the green exit sign closest to your seat, which indicates the shortest route out of the theater. Should you need to be contacted during a performance, please leave your telephone number and seat numbers with a Box Office associate prior to entering the theater.

HONORED DONORS OF THE J. SCHEIDEGGER CENTER FOR THE ARTS

James E. Abernathy	James D. Evans	Kende's Printing	David G. Riazzi
Frank Accarrino	James B. Favier	Mark A. Kern	Dorothy Ricketts
Mary L. Adams	Miriam L. Fischer	Laclede Gas Charitable Trust	Marilyn D. Rickmeyer
Ameren	Lucette A. Flanagan	Nancy E. LeDoux	Ann Ritter
Barbara J. Anderson	Lea Frailey	Cortney M. Lenk	William J. Ruhlman
Ruth Andris	GE Foundation	Janet F. Lewien	Patricia Rupert
Barbara T. Armstrong	Mary A. Gismegian	Rita M. Ludwig	Margaret G. Sample
Sue E. Arnold	Michael J. Glavin	Eilene M. Lyons	Margaret C. Saxton
AT&T	Bobby Goldsboro	Nancy S. Madden	Glenda D. Schaefer
Jean M. Atwood	Margaret Greer	Marie D. Mahaffy	Jerry Scheidegger
Susan A. Badgett	Willie M. Grissom	Linda Mandeville	Drewanna Schutte
Thomas F. Bakewell	Talitha Grote	Darren Marhanka	Teri Seiler
Joan S. Bancel	Jean Ann Redpath Hagen	Jacolyn Martin	Jennifer C. Shedden
Roselise H. Barthelmeh	Carlton R. Hale	Jill E. Martin	Randall R. Simons
Julie Beard Johnson	Randy Halsey	McBride & Son Management Co.	Judith A. Snow
Ben Hur Construction	John Hammond	Lucy Anne McCluer	Roberta L. Sprich
Peter W. Bezemes	Cynthia E. Harmening	Peggy L. McCord	Amber N. Sralla
William H. Blackburn	Lynn Harmon	Edward Morris	Barbara A. Stenhouse
Carolyn C. Bloebaum	Hastings & Chivetta Architects, Inc.	Jean Morrissey	Tom Stephens
Richard A. Boyle	Amelia Hayden	Carla Mueller	Emma Lue L. Strahle
Barbara A. Broadfoot	Betty J. Haygood	Douglas M. Mueller	Eric O. Stuhler
Janet L. Brooks	Freda A. Hays	Julie M. Mueller	Sara E. Stukenbroeker
Marla Brown	Maridee Hegstrom	Jason P. Murphy	Cordelia Stumberg
Thomas E. Bruening	George Heidelbaugh	Annette Najjar	Patrick S. Sullivan
Colleen M. Burford	Hollis C. Heyn	Deborah L. Nicolai	Rick Sullivan
Marleta M. Callahan	Richard A. Hollander	Mary W. Ninker	Ellen M. Tennant
CenturyTel	Gretchen V. Hoppe	Joyce Norman	Rodney Thomas
Charter Communications	Donna S. Houchins ('59)	Ronald W. Ohmes	Andrew J. Thomason
Tony Chivetta	Stephen House	Betty T. Osiek	Richard A. Thornton
Maddelene C. Collins	Mary M. Hudwalker	Joe Parisi	Jill M. Vaughn
Phillip Colombatto	Patricia L. Hunn	Glenda Park	Dean L. Vazis
J. M. Conoyer	Francis Huss	Marsha H. Parker	Judith A. Verkest
Mark A. Cosenza	James E. Issler	Marilyn Patterson	Diana L. Walter
Mary K. Delaney	J.E. and L.E. Mabee Foundation, Inc.	Donald W. Paule	Ralph C. Wiedner
Roger A. Deppe	Debra L. Johnson (fac)	Pfoodman	William T. Kemper Foundation,
Jan R. Dineen	Jordan Charitable Foundation	Jean P. Plotz	Commerce Bank Trustee
Ann B. Dobie	David Kandel	Ruamjerd Pongcharoenkiat	Willis R. Woolrich
Richard Duree	Mary E. Kantz	Pundmann Motor Co.	Sharon L. Wootton
Sara Margaret English ('39)	Nicholas Karakas	Sydney A. Reding	Rose Lyn Zanville
Enterprise Holdings Foundation	Leona N. Kavan	Jean Ann Redpath Hagen	Terry M. Zwick
Michael A. Eschbach	Mary C. Keller	Vitilas Reid	



PREMIER PATRON MEMBERSHIP - \$125.00

Don't miss the chance to be part of our Premier Patron Membership program!

Support the arts and our students while receiving these benefits:

- Complimentary valet service and coat check for all Main Stage Season productions.
- Recognition on the Annual Membership display for the 2012-2013 Season.
- 20 percent discount on all Lindenwood University student productions.
- Exclusive invitations to private Premier Patron receptions with celebrity and VIP guests.
- The Premier Patron Membership card is honored at many local businesses for special events and discounts.
- A portion of your membership fee may be tax-deductible.

Please contact The Box Office at (636) 949-4433 for details.

For Corporate sponsorship opportunities, please contact the Director of Marketing at (636) 949-4512.

PREMIER PATRON MEMBERS 2011-2012 SEASON

Ms. Charlise Floyd
Mr. Duane Flowers
Mrs. Linda Flowers
Dr. Francis Huss
Mrs. Elizabeth Huss

Dr. Jann Weitzel
Mrs. Alice Sinak
Dr. & Mrs. James V. Guida
Mr. Peter W. Bezemes
Dianne & George Garrison

Ms. Helen Wilson
Ms. Donna Hafer
Mr. Jerry Scheidegger
Steve & Kaki Lang
Lang Insurance Service
Mrs. Patricia McReynolds

PREMIER PATRON BUSINESSES INCLUDE

AMPLE STORAGE

10% Discount on a 6-month or Greater Lease
2960 Elm Point Industrial Drive
St. Charles, MO 63301 | 636-946-5599
www.amplestorage.biz

ANTIQUES & OAK

10% Discount on any Purchase of \$25.00 or More
319 North Main Street
St. Charles, MO 63301
636-946-1898

CHEEBURGER CHEEBURGER

10% Discount on Total Dine-in Only
2012 Chesterfield Mall
Chesterfield, MO 63017 | 636-532-3210
www.cheeburger.com

FINISHING TOUCHES

10% Discount on Total
825 South Main Street
St. Charles, MO 63301
636-947-6330

GRAPPA GRILL

10% Discount on Total
1644 Country Club Plaza
St. Charles, MO 63303 | 636-940-5400
www.grappagrill.com

JOHNNY MAC'S SPORTING GOODS

10% Discount on Regular-Priced Stock Merchandise
(Valid at 5 Metro Locations; Restrictions Apply)
10100 Watson Road
St. Louis, MO 63127
314-966-5444
www.johnnymacs.com

KREKELER JEWELERS, INC.

20% Discount on all In-Stock Merchandise
2938 Hwy K
O'Fallon, MO 63368 | 636-978-7870
www.krekerler.com

MEINEKE

10% Discount on all Services or Repairs
2315 West Clay
St. Charles, MO 63301 | 636-940-7294
www.meineke.com

MICHELLE'S CLOTHING CO.

10% Discount on Total
229 North Main Street
St. Charles, MO 63301
636-724-0132

THE MOTHER-IN-LAW HOUSE

10% Discount on Total
500 South Main Street
St. Charles, MO 63301 | 636-946-9444
www.motherinlawhouse.com

OCEAN SPIRIT PHOTOGRAPHY

10% Discount on any Order of \$100.00 or More
780 Waylon Way
Wentzville, MO 63385
314-954-3845
www.oceanspiritphoto.com

PUNDMANN QUICK LANE

\$5 Discount on an Oil Change
10% Discount on Parts & Labor
1200 South Duchesne
St. Charles, MO 63301
636-949-9995

CONTACT INFORMATION

THE BOX OFFICE:

Phone: (636) 949-4433

Email: scheidegger@lindenwood.edu
groupsales@lindenwood.edu

Address: Lindenwood's J. Scheidegger Center for the Arts
2300 West Clay Street
Saint Charles, MO 63301

Hours: Monday - Friday: 10:00 AM - 6:00 PM
Saturday: 10:00 AM - 2:00 PM



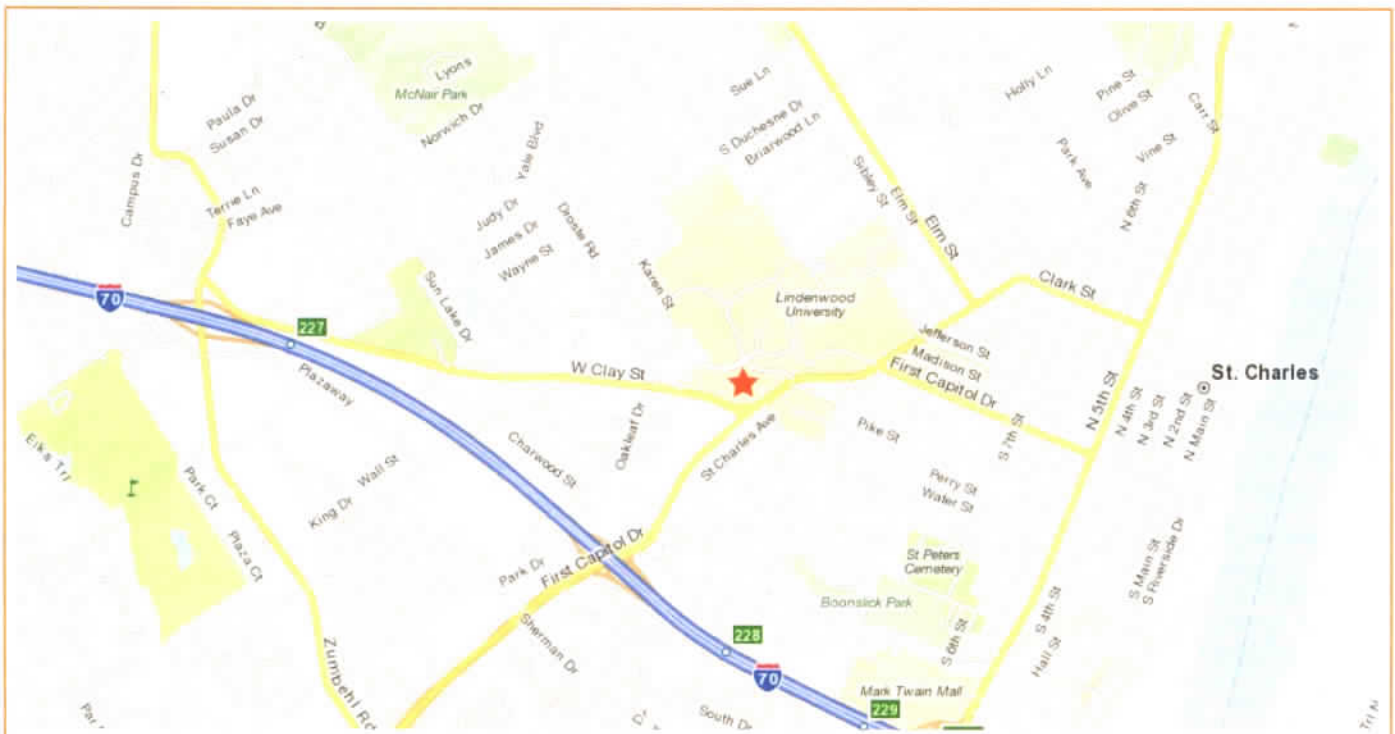
DIRECTIONS & MAPS

From Interstate 70/270 Interchange:

Take Interstate 70 west across the Blanchette Bridge (Missouri River). Take Exit 228 and turn right onto First Capitol Drive. Turn left onto West Clay. Entrance will be on your right.

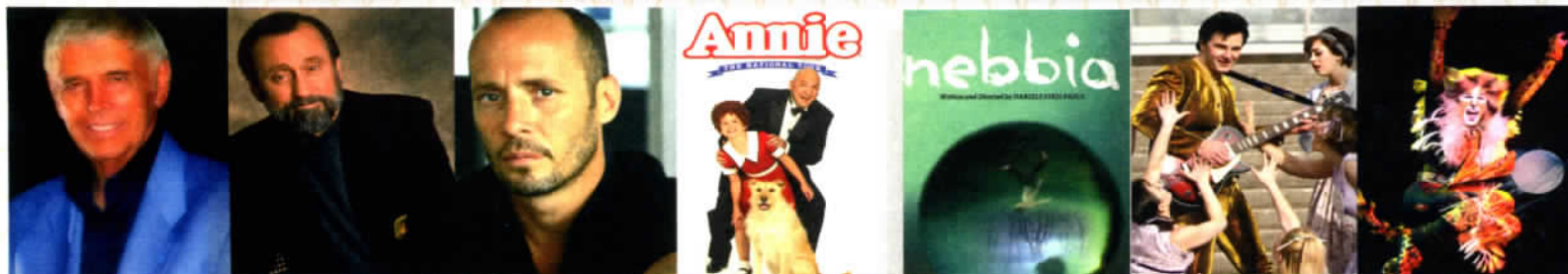
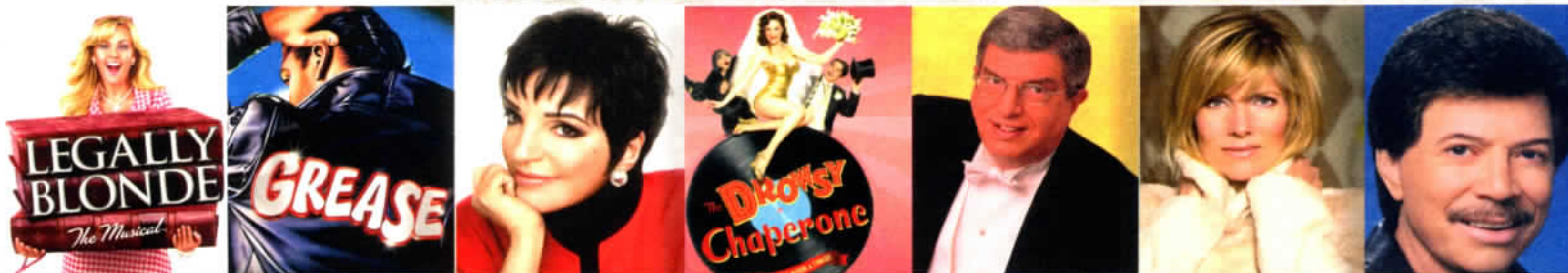
From Interstate 64 in Chesterfield:

Travel west across the Daniel Boone Bridge (Missouri River). Exit at Highway 94. Turn right. Follow Highway 94 north and cross I-70. Turn left onto West Clay. Entrance will be on your right.





A LOOK BACK



THEATER THE WAY IT'S MEANT TO BE SEEN...



Values-Centered Liberal Arts Education - Preparing Students For Life