

LINDENWOOD

LINDENWOOD
UNIVERSITY



PRESIDENT'S
REPORT
2006



LETTER FROM THE PRESIDENT



President Spellmann

Dear Friends,

What a pleasure it is to send you this President's Report! With your support and dedication to this University, we have had one of the best years in our storied history. I want to thank each of you for not only believing in today's Lindenwood but also demonstrating your commitment to her mission through your gifts, service, patronage, and loyalty.

It is a joy to reflect on and celebrate the wonderful success this University has experienced since the 2005 President's Report. Our Fiscal 2006 student headcount topped 14,000 and included a diversity of exceptional talent from this region, 45 states, and 78 countries. What's more, we graduated more than 2,900 students this past year, which exceeded any previous graduation tally by more than 600.

Students continue to choose Lindenwood as their alma mater because our academic programs excel in quality and innovation. We have added a first-class program in journalism to complement our highly-rated curriculum and have submitted a request to the Higher Learning Commission to begin offering a doctoral program in Education. We are proud to be a comprehensive University with a teaching mission.

We have launched a record number of projects that will keep our campus facilities leading the way in higher education – with initiatives such as the 135,000 square-foot Fine and Performing Arts Center, a new greenhouse for science classes in Young Hall, and the addition of 10 more high-tech classrooms. While all of these exciting developments were afoot, Lindenwood's endowment quietly climbed to more than \$50 million, with gifts coming in at an all-time high for a one-year period. We were understandably proud to receive a third \$1 million matching grant from the Mabee Foundation for the new arts center.

Our campus community will not rest on its laurels. Lindenwood's financial position is strong—we remain debt-free. We have a comprehensive strategic plan, and we carry it out. Our guiding motto for this exciting era is "Create the future!" We mean that, and I challenge you to stay involved in whatever way best suits you: You can make a multi-year pledge, consider various naming opportunities, set up a planned gift, or endow a scholarship in honor of someone you love. Let's continue to create the future together!

Again, thank you for being a part of the success of Lindenwood University.

Sincerely,

A handwritten signature in black ink that reads "Dennis C. Spellmann". The signature is written in a cursive, flowing style.

Dennis C. Spellmann
President



IT'S ALL IN THE PLANNING

The success of Lindenwood University is largely due to fiscal responsibility, remaining debt-free, a willingness to change and a commitment to strategic planning. Lindenwood updates and advances its strategic plan each year, using input from an entire network of operations including satellite campuses.

Academic divisions and office staff meet with the president at mid-year to exchange ideas and refine the blueprint. The Board of Directors' Strategic Planning Committee oversees the process and presents the annual planning document to the Board for review each July.

This year's Strategic Planning Update is 82 pages long and contains a treasure of exciting prospects. Here is a sample of highlights:

- Lindenwood's student census will soon climb to 15,000 and to more than 17,000 over the next five years.
- LU is becoming the national education and training center for the premier Human Service agencies, such as the YMCA and the Boys Scouts.
- We have just started and will vigorously build a first-rate Journalism program.
- We have requested approval from our accrediting association to offer the Doctor of Education.
- We continue to progress toward specialized accreditation from the Council on Social Work Education.

And It's All About Our Mission!

Everything that Lindenwood is and does flows from its mission statement. Working in consultation with alumni, faculty, and staff, our Board of Directors' Mission and Purpose Committee revised Lindenwood's mission statement in 1999 to better express our traditional values in the context of today's global community. This year the committee and the Lindenwood community have been developing a seminal document, *The Lindenwood Way*, that identifies how our University distinguishes itself from most other institutions of higher education:

• *The Teaching University:* We view the student as the reason for higher education, and we seek to develop the whole student.

• *Faculty Role:* At Lindenwood the faculty members are student-focused teachers, mentors and participants in the management process, contributing to the long-term success of the University.

• *Student Role:* Our students prepare for careers but also for life by growing in character and learning the art of critical thinking. They become wiser, not just older!

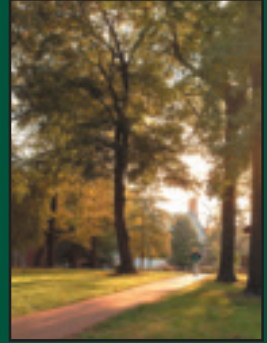
• *Curriculum:* Lindenwood students encounter a cohesive curriculum that flows from our mission but is directed at their educational and professional needs, a curriculum built on a foundation of strong general education requirements. Exceptional collegiality enables us to develop innovative programs by combining components from several of departments.

• *Management:* Following a mission-guided entrepreneurial path, the Lindenwood Board and administration manage by results and personal accountability – and nothing less. We strongly believe in merit-based compensation, the virtue of cost-effectiveness, and investing in the future. Our Board fully accepts the trusteeship of the University, and our administration makes all decisions in the interest of the student.

• *Pioneering Frontier University:* Reflecting the creed of our founders, Mary and George Sibley, we hold that higher education should be used to build a better democracy by emphasizing timeless American frontier values. We prize and defend our freedom to pursue our unique mission.

"We accept nothing but the best from our students."

-President Spellmann



Despite new construction at Lindenwood, there remains a serenity that gives the campus a distinct appeal



LU students pause in front of the new gates at the athletic stadium

HIGHLIGHTS



Students gather outside the Spellmann Center after early check-in



LU students (from left) Jamie Marten, Jennifer Lupia, Erin Craig, John McCarver and Robyn Johnson with Professor Martin Ma, who teaches Mandarin Chinese (second from right)

Student Enrollment

Resident Students

Staff

Full-time Faculty

Salary Level

Classroom Utility

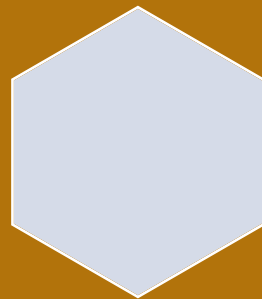
Endowment

Placement

Acreage

Parking Spaces

Financial Condition



1989

1,225

230

369

40

3rd quartile

65%

\$600,000

?

109

350

2006

14,018

3,400

138

237

1st quartile

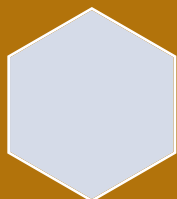
95%

\$53 million

98 percent

500

2,950



NEWS ITEMS

LU Invests \$1.5 Million in Technology

State-of-the-art technology is a priority at Lindenwood University--and the administration has committed \$1.5 million in 2006 to various technology projects on the main campus and throughout the Lindenwood network.

Nearly half that investment is on the main campus, where the University has expanded the number of high-tech classrooms from 50 to 65. Ten new high-tech rooms are being added to Roemer Hall, three to Young Hall, one to the Memorial Arts Building and one to Harmon Hall.

Other main campus technology improvements include an investment in communications and arts with the addition of digital editing, digital photography, multimedia, web design and video editing equipment.

Lindenwood's satellite campus sites have seen numerous improvements as well. Ten portable high-tech classrooms have been incorporated into the Westport campus, which will be Lindenwood's first completely wireless campus by the end of summer 2006. Wireless is in the plans for the Belleville campus, and discussions are under way about wireless capability in Florissant.

President Receives Community Impact Award

Lindenwood University President Dennis Spellmann received the prestigious 2006 Community Impact Award at the St. Charles County Economic Development Council Annual Report to the Region.

Longtime Lindenwood friend Harlan Pals introduced the president and presented the award, which was given to honor Lindenwood and President Spellmann for their economic and cultural impact on St. Charles County.

"Dr. Spellmann has played a phenomenal role in the growth and development and superb quality of life we enjoy in St. Charles County," said EDC President Greg Prestemon.

"This award is well deserved on many levels and we are honored by our organization's longtime association with Dr. Spellmann and Lindenwood University."

Among President Spellmann's numerous accomplishments mentioned were the dramatic increase in enrollment over the past decade, the University's huge economic impact on the region, Lindenwood's recent \$125 million investment in St. Charles, and the \$32 million Fine and Performing Arts Center, which is currently under construction.

"I am honored to receive this award for Lindenwood," said Spellmann. "The University is a growing, thriving part of this wonderful county."



Harlan Pals and President Spellmann

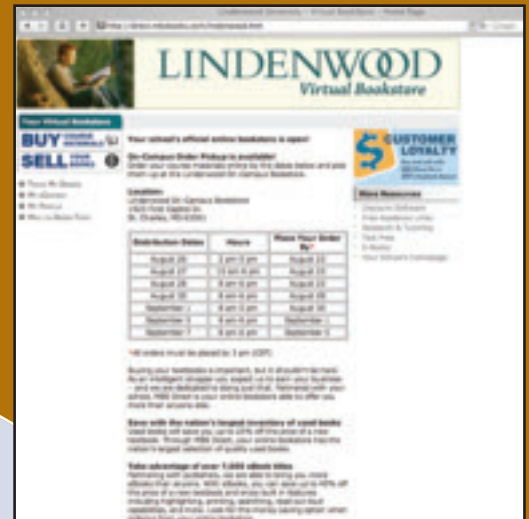
Bookstore Goes 'Virtual'

Lindenwood University's Virtual Bookstore is now open for business.

LU has contracted with MBS Direct to provide students with improved customer service and access to money-saving new and used books. MBS Direct maintains a current list of courses and the books/materials for those courses. Students

access the Virtual Bookstore by calling an 800 number or by going online. They shop for books by course--no need for author, title, or ISBN information.

Students pay by credit card, and orders are processed within 24 hours and are either delivered to campus for distribution or shipped directly to a student's off-campus address. The Virtual Bookstore can be accessed 24 hours a day, 365 days a year, and will inform students of the availability of used books and optional materials and will allow the student to determine the best method for shipping.



Go to the Lindenwood home page and click on the "Order Textbooks" link

NEWS ITEMS

BOONE HOME TO GET \$3 MILLION VISITORS' RESEARCH CENTER

Final planning is under way for a \$3 million visitors' center at Lindenwood's Daniel Boone Home. The 10,000 square foot center will be a two-story structure built into a hillside. It will also be a destination for tourists, and a valuable resource for students and researchers nationwide.

Lindenwood acquired the Boone Home in 1997. Expansion there has been steady, with the Boone Home, Boonesfield Village and adjacent properties today totaling more than 1,000 acres. The Boone Campus is the site for the Center for the Study of American Culture and Values, where students can study the core principles of American culture and apply them to the challenges of the 21st century.

Even construction materials for the center will have historic underpinnings—stone from a historic stagecoach station at Foristell, MO will be incorporated into the visitors' center lower external walls. Construction should begin in the spring of 2007 and is expected to take a year.

The visitors' center will feature a Boone museum, a 100-seat theatre and an expanded gift shop as well as a greenhouse on the upper level. The lower level will be dedicated to academics and historic research. Many valuable Boone manuscripts will be available for scholars who wish to conduct research. The lower level will be temperature and humidity controlled to protect the documents and artifacts. The Price-Loyles Collection of five generations of Boone descendants will be one of the larger collections housed on the lower level.



The Boone Home

UNIVERSITY EXPANDING SATELLITE NETWORK

During the past four years, Lindenwood University has seen significant growth in the number of students served at satellite locations. Among our adult/graduate student population, more than half the credit hours earned are now provided at locations other than the main campus. This trend is expected to continue, as opportunities are found to serve a broader geographical region.

To address the changing nature of the marketplace, President Dennis Spellmann has directed an effort to pull together the University's adult/graduate business programs under a structure that will respond more effectively to student and employer needs. This will involve more thorough integration of extended site location activities into the University structure, as well as the development of new growth opportunities.

The restructured programs network will be organized around six regions--St. Charles; Westplex (Wentzville/O'Fallon/Lincoln County campuses); West St. Louis County (Westport campus); North St. Louis County (Florissant campus); South St. Louis County (St. Anthony's campus); Illinois (Belleville campus).

Additional sites are being planned for Mid-Missouri, Southwest Missouri, and Southwestern Illinois.



Florissant Campus



Lindenwood's Belleville Campus

NEWS ITEMS

AGREEMENT LETS LU STUDENTS ATTEND POLICE ACADEMY

Lindenwood has signed an agreement with the St. Louis County and Municipal Police Academy opening the door for criminal justice students to attend the academy as part of their coursework.

The program, which begins in January, will be open to about 30 students in the final semester of their senior year. Those who go to the academy will earn 15 credit hours there instead of taking courses at the campus in St. Charles. "Students get college credit, and instant job training in a field that is desperate for recruits," said criminal justice professor Joe Steenbergen.

Academy graduates are certified to work as police officers in Missouri. Academy director Ken Gregory said 85 to 90 percent of graduates are hired as officers immediately after graduating.

MATHEWS HALL DEDICATION

Changes at Lindenwood have been evident all across the sprawling 500-acre campus. Chief among those changes is a series of six new residence halls where a mobile home park once stood. In August, the last of those six halls was dedicated.

Mathews Hall was officially unveiled to the Lindenwood community as a crowd of family, friends and Lindenwood faithful helped LU Board Member Joe Mathews, his wife, Gwen, celebrate.

Mathews Hall follows Guffey Hall, Calvert Rogers Hall, Rauch Memorial Hall, Flowers Hall and Blanton Hall. The six buildings were the first new residence halls constructed at Lindenwood since Parker Hall in 1966. Each of the six are built of red brick and house around 180 students. Built well enough to last the next 179 years, each of the halls feature a student lounge and laundry facilities. Each is wired for high speed Internet and cable television and was designed by Hastings and Chivetta, Inc.

COMMENCEMENT ANOTHER RECORD-BREAKING DAY

A record number of graduates--more than 2,900--received their diplomas during graduate and undergraduate commencement ceremonies May 19-20, 2006, at Lindenwood University's Robert F. Hyland Performance Arena.

Festivities began Friday evening with a traditional baccalaureate service and graduate student commencement. Pastor David Blunt of Church on the Rock in St. Peters, MO gave the baccalaureate address and was presented an honorary doctorate by President Dennis Spellmann. Also on Friday evening, St. Charles, MO Mayor, Patti York, received the Alumni Merit Award for Professional Accomplishment.

The undergraduate commencement ceremony was held Saturday morning. The commencement address was delivered by Robert Wildrick, president and CEO of Joseph A. Bank Clothiers. He, too, received an honorary doctorate. Student speakers Saturday morning were Haley Schumacher for the traditional undergraduates and Celeste Zink for the adult student population.



Provost Jim Evans greets a student



Happy graduates watch intently



Bagpipers recess after commencement



LU Provost Jim Evans, left, with Board Member Dale Rollings, Gwen Mathews and Joe Mathews at the Mathews Hall dedication



Robert Wildrick, President & CEO of Joseph A. Bank Clothiers

PROGRAMS

Communications Converging at Lindenwood

"Convergence" is the best word to describe the academic offerings in Lindenwood's Communication Division. Traditional broadcasting, newspaper, advertising, and public relations jobs are changing rapidly. People who are looking for careers in communications will be expected to have skills in all these areas, as well as expertise in the emerging multimedia and e-commerce industries. The lines that once divided these disciplines are disappearing.

Degrees in multimedia, advertising and media, and professional writing have been added over the past four years. Last year, the University took a major step by adding journalism to the Communications curriculum. Successful novelist and broadcaster, Julie Beard, serves as program manager. She is in the process of setting up Lindenwood's first journalism lab.

Since 1948, LU's radio station has served as a learning laboratory for thousands of students. Today as 89.1 FM, The Wood, it continues to do so in its digital studios in the Spellmann Center.

Last year's infusion of state-of-the-art remote video equipment gave students the tools to produce programs for LUTV-26, Lindenwood's cable television station. Future employers will be impressed by the quality of the work in LU graduates' portfolios. Award-winning producer, Peter Carlos, was named general manager of the television station this summer.

Computers in the multimedia lab in the Spellmann Center have been upgraded this year. Students working on editing video, producing elaborate publications, designing intriguing web pages, or generating computer art now have dual-processor computers that will not bog down under the weight of complicated projects. New Lindenwood professor, Dr. Deborah Hanson, is now directing the multimedia program. There is no field where convergence is more evident, and Dr. Hanson's years of experience in video and web design will be invaluable to our students.



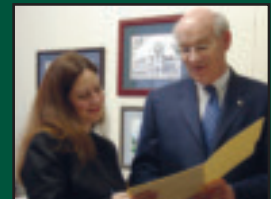
From left Ed Voss, Director of Operations for LU-TV26, Brandon McKinney, graduate student in Communications, and Assistant Professor in Communications, Peter Carlos

Education Department Experiencing Growth; Submits Proposal to Offer Doctorate

Fiscal year 2005-2006 marked the 12th consecutive year Lindenwood University's teacher education division experienced double digit growth. The largest growth areas of specialization are in counseling and graduate education.

Lindenwood has submitted a proposal to the Higher Learning Commission to initiate a Doctor of Education in Educational Leadership. The degree, if approved, will include two lines of emphasis: Administration and Instructional Leadership. Four additional full-time faculty members have been added to handle the additional enrollment in the education area.

The education division has signed a \$250,000 professional development contract with the Francis Howell School District in St. Charles County. Under terms of the agreement, Lindenwood academic officials are strategically involved with promoting opportunities for educators to discover best practices as related to the academic achievements in the Francis Howell School District. This is a national model for K-12 and higher education working together to improve student learning.



New faculty member Dr. Cynthia Bice discusses LU's doctoral proposal with Education Division Dean Rick Boyle

PROGRAM IMPROVEMENTS

Library Usage Triples

Butler Library prides itself on the service it provides to Lindenwood students. While the library provides all of the traditional services associated with an academic library, the staff has worked to develop services that reflect the changing environment of information resource delivery. Thanks to a recent \$1 million commitment to purchases of hard copy and electronic resources, the students of Lindenwood University have unparalleled access to information resources. Overall usage has nearly tripled in the last three years.

Access to books for students expands far beyond the walls of Butler Library. Lindenwood University provides access through its membership to a statewide academic library consortium (MOBIUS). MOBIUS gives enrolled students physical and electronic access to virtually every academic library collection in the state of Missouri.

Other research materials are made available to students through Butler Library's website. The library subscribes to over 50 online databases, a large number of which provide full-text access to research materials.

Moreover, great strides have been made in the Butler Library building to enhance students' access to information. They include the installment of closed caption televisions that will provide news feeds, as well as campus news, in order that students always have ready access to the most up to date information.



Usage at Butler Library has tripled in recent years

Young Hall to Boast Remodeled Greenhouse

Older alumni and Lindenwood friends will remember that the College greenhouse was once located at the rear of Sibley Hall. When Young Science Hall was built in 1965, the architect included a new greenhouse – a larger, more modern structure than the one behind Sibley, which was razed.

When Young Hall was completed, the greenhouse was an integral part of the facility. It contained five large planting benches in the “working” portion of the space and a display area for large in-ground plantings. In the winter, the space was warmed by a system of hot water pipes running under the benches.

Over the past 35 years, the greenhouse has been in active use for classes and student projects. Many hours of student and faculty labor have gone into maintaining and improving its plantings. Time began to take its toll on the facility, particularly on the climate control system, and an overhaul of the greenhouse became a necessity. A \$140,000 remodeling process began this summer.

When the remodeling project is complete, the greenhouse will have all new benches, lighting and glass windowpanes. New computer-controlled heating and cooling systems will provide reliable year-round temperatures, enhancing class work, plant propagation, and maintenance of important reference species.

The renovation will benefit LU's expanded environmental science program. Several new faculty members have been added in environmental science over the past two years.



Renovations are under way at the Lindenwood University greenhouse

'Create the Future' Success Now Visible With Arts Building Construction Progress

Lindenwood University is literally Creating the Future in public view! Construction of the University's \$32 million Fine and Performing Arts Center is well under way and steaming toward completion in late 2007 or early 2008.

The 135,000 square foot center is the cornerstone of Lindenwood's \$136.5 million capital campaign called "Create the Future...People, Programs and Facilities". The University has already reached the midway point of the capital campaign and is ahead of financial goals set for the ambitious six-year program.

The new Fine and Performing Arts Center will feature a 1,200-seat auditorium for theater, music, dance, lectures and other events. The structure will feature a main gallery to showcase student art and professional exhibits and double as a reception area for events scheduled in the main auditorium.

While entertainment will be the primary function of the center, the building will provide a world-class hands-on learning environment for future educators, scholars and technicians. There will be large and medium-sized classrooms, a 150-seat black box theater, music practice rooms, a fashion design studio, a production design studio, a high-tech video suite, a vocal music hall, and an instrumental music hall.

Construction workers reached their highest structural point in August 2006--some 105-feet above the ground--as they worked on the walls for the auditorium. Over the next six months, passers-by will see more structural steel, additional concrete walls and vast areas of brickwork.

LU Receives \$1 Million Mabee Challenge Grant

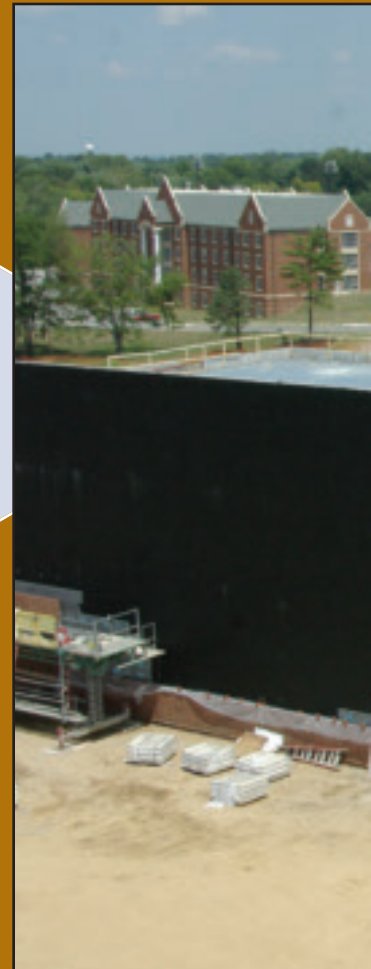
Lindenwood University officials were celebrating in early summer when a \$1 million check arrived from the J.E. and L.E. Mabee Foundation of Tulsa, OK. It was the third such grant Lindenwood has received from the foundation over the past decade. President Dennis Spellmann called the accomplishment "absolutely unprecedented."

"With the help of our board of directors, alumni, faculty and staff and with great support from the corporate community, we met the terms of the Mabee Foundation challenge," said Lindenwood President Dennis Spellmann. "Receiving a third Mabee Foundation Grant is quite an accomplishment. A lot of people at Lindenwood worked very hard to make that happen." University officials worked for more than a year to raise \$3 million in order to earn the grant.

The money will go toward construction of Lindenwood's \$32 million Fine and Performing Arts Center, which is expected to be completed in late 2007 or early 2008. The 135,000-square-foot building is rising from the ground near the intersection of First Capitol Drive and West Clay.

The University received its first \$1 million Mabee Foundation grant for construction of the Hyland Performance Arena, an 86,000 square foot athletic facility that seats 3,000. Construction was complete on that building in 1997. A second Mabee Grant was received for construction of the 112,000 square foot Spellmann Campus Center, which opened in 2002.

The Mabee Foundation was created to aid Christian organizations, institutions of higher education, hospitals and general charitable organizations. The Mabees were natives of Missouri who left a portion of their estate to the foundation.



FUTURE GENERATIONS AT LINDENWOOD

\$12 Million Facelift Planned for Harmon Hall

With the move of the Fine and Performing Arts division to its new building in late 2007 or early 2008, Harmon Hall will become the home of the Division of Management, as well as Lindenwood's award-winning Lindenwood College of Individualized Education (LCIE) program for adult evening students.

President Dennis Spellmann said the University's growth in recent years has taxed classroom space, and the need for additional space is particularly great in the Division of Management.

The firm of Hastings and Chivetta has been hired as architects for a \$12 million renovation and expansion of Harmon Hall. The building will double in size to more than 100,000 square feet.

Preliminary specifications for the new space at Harmon Hall include the addition of 15 new classrooms, 10 breakout rooms, three computer labs, a large lecture hall, offices and restrooms.

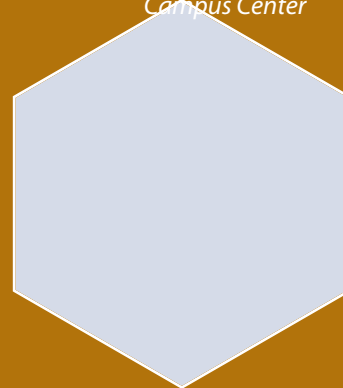
The first phase of three in the construction process is expected to begin in 2007, and all three phases should take approximately a year each according to Spellmann. The renovation will include converting the building to Lindenwood's traditional red brick and gabled roof motif.



An artist's rendering of the new Harmon Hall



An elevated view of the Fine and Performing Arts Building construction, looking north. In the background are Guffey, Calvert Rogers, Rauch Memorial and Blanton residence halls, and in the center rear is the Spellmann Campus Center



STUDENT SUCCESS

The success of our students and graduates is what makes Lindenwood proud. Ninety-eight percent of all graduates either get professional jobs or go to graduate school within six months of commencement. Following are just a few of those success stories:

LAUREN BRADLEY is aquatic coordinator with the YMCA of Greater St. Louis; **KATRINA BROWN** is a criminal investigator with the circuit attorney's office in St. Louis; **MEGAN CHRISTIE** is an assistant designer with Lori Coulter Swimwear; **CHRIS DeMILLE** is a post-close mortgage auditor with Citicorp;

MELISSA DREHER is a rehabilitation technician with Preferred Family Healthcare; **JESSICA FRIEDHOFF** is a client audit specialist with Express Scripts; **SHELLEY FUESS** is in graduate school at Lindenwood University; **JOELLA HARRIS** is an operations specialist with Edward Jones;

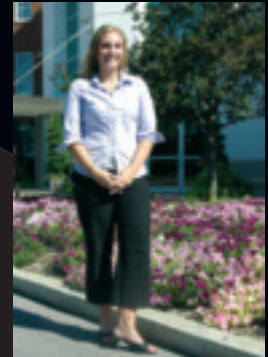
STEVE HERMACH is a secondary music instructor in the Windsor School District; **MATT HEGENHOFF** is director of marketing for Steak Out; **MEGAN HOULIHAN** is festival coordinator with the City of O'Fallon; **PAUL LEE** is in graduate school at University of Northern Iowa;

SAMANTHA MacLEAN is a family and community liaison with Youth In Need/Head Start; **CASSANDRA MARTIN** is a sales coordinator with the St. Louis Blues; **BRIAN OULETTE** is a youth specialist with the Montgomery City Youth Center; **NICK ORSO** is business development manager with Software Plus;

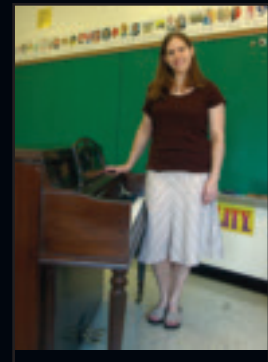
VANCE PATRICK is a psychiatric therapist with SSM DePaul Health Center; **JENNIFER RHODES** is a first grade teacher in the Lincoln County R-3 School District; **SAMAKI ROBINSON** is a customer care representative with United Healthcare; **ZACH SMITHEY** is employed by the Munny Opera as a scenic painter;

AMANDA STUHLER is a music teacher at St. Joseph's School; **KELLY SULLIVAN** is a sales representative with GFI Digital; **MARY THOMAS** is property manager with the East St. Louis Housing Authority; **ALISON ZAGARRI** is program director at The Little Gym.

VOCAL SPECTRUM, the 2004 collegiate champion barbershop quartet from Lindenwood University, won the gold medal this year in the senior division of the International Barbershop Competition in Indianapolis. Members are **ERIC DALBEY, TIM WAURICK, JONNY MORONI** and **CHRIS HALLAM**.



*Megan Houlihan
outside O'Fallon City
Hall*



*Amanda Stuhler in
her classroom at St.
Joseph's School*



*Vocal Spectrum from
left are Tim Waurick,
Eric Dalbey, Chris
Hallam and Jonny
Moroni*

SPORTS

New Complex Named After Baseball Legend

A crowd of over 1,000 helped dedicate Lindenwood's new Lou Brock Sports Complex in April. The \$1.5 million renovation includes new fan seating at both the baseball and softball fields, new dugouts, bullpens, fencing, a concession stand, press box and lights to accommodate nighttime competition. The baseball field is roughly in the same place as the old field, and the softball field was completely rebuilt about 250 yards west of the old field.

Brock, the St. Louis Cardinals' legend and a member of Major League Baseball's Hall of Fame, threw out the first pitch for Lindenwood's baseball game with Missouri Baptist and the Lady Lions' softball game with Mid America Nazarene. Players from all participating schools stood along the baselines to shake Brock's hand.

In his remarks, Brock thanked LU President Dennis Spellmann for naming the complex in his honor. He told the crowd, "I wish I had had such a great place to play when I was in college." Brock's wife, the Rev. Jackie Brock, is a member of the University Board of Directors. Lou and Jackie are very active at Lindenwood.

Sports Teams Garner Four National Titles

National championships have become the standard of achievement for athletic teams at Lindenwood over the past decade. Four Lion programs added to the growing number of elite banners hanging in the Performance Arena this past spring.

The LU ice hockey program produced its first national championship on the women's side in March when Coach Vince O'Mara's team won a dramatic overtime championship match against Robert Morris to take the crown.

The 2006 American Collegiate Hockey Association (ACHA) Women's National Tournament was held in St. Charles and the Lady Lions received a boost from a large and boisterous home crowd.

The second week in April was huge for another pair of Lion athletic programs as the Lion roller hockey and shooting teams both recorded repeat national championships.

Coach Joe Steenbergen's powerhouse shooting squad was dominant again at the Intercollegiate National Championship in clay target sports, winning the title for the third year in a row and finishing ahead of Texas A&M and Mizzou.

Two separate LU men's roller hockey teams also captured national titles, in Division 1 and Division 2 competition.

The United States Bowling Congress (USBC) Intercollegiate Bowling Championships were held April 29. The LU women's team came away with the national championship.

LU 2nd in National Cup Competition

In keeping with the overall atmosphere of excellence and achievement at Lindenwood, LU athletic programs in the 2005-2006 school year continued to shine at the national level.

The U.S. Sports Academy Director's Cup awards are presented annually to the top intercollegiate athletic programs in the nation, at both the NCAA and NAIA levels. For the second consecutive year, Lindenwood notched a second-place finish in the final NAIA rankings.

Presented each summer by the National Association of Collegiate Directors of Athletics (NACDA), the United States Sports Academy, and USA Today, the Director's Cup standings have been a familiar home to Lindenwood University over the past decade. Lion athletes and coaches brought home first place hardware in 2002 and 2004, and have placed in the top four nationally eight consecutive times.



Lou Brock greets LU baseball players

LU BOOSTS REGIONAL ECONOMY

Lindenwood University is an integral part of the regional economy, with its annual impact on St. Louis and the surrounding area growing to \$288 million in 2006-2007. The University is the fastest-growing four-year college or university in Missouri and one of the largest employers in St. Charles County, with more than 700 employees and nearly 3,400 students participating in the Work and Learn Program.

The largest benefit the community receives from Lindenwood is through the University's bold expansion plan. Lindenwood's new construction is generating and/or keeping hundreds of jobs in St. Charles. In the past decade, Lindenwood has built a new state-of-the-art athletic facility, six new residence halls, and a 112,000 square foot campus center. In addition, LU spent \$1.5 million renovating the Lou Brock Sports Complex and \$5.5 million refurbishing its beautiful athletic stadium.

LU invests millions in St. Charles as it renovates and maintains its historic campus. Next year, construction will be complete on a \$32 million Fine and Performing Arts venue that will be a destination for the entire region. Not long after that, residents will see the beginnings of a new shopping center across from campus, with many shops and an anchor grocery store. The center will have a sizable impact on the area's employment and will generate tax dollars for the local economy for years to come.

There are nearly 3,500 students living on Lindenwood's campus, spending more than \$70 million in the local economy. In addition, LU's theatre and athletic events impact local tourism. The University's 38 sports host nearly 200 home events annually, which translates into room-nights for local hotels and crowded lobbies at the restaurants. Lindenwood's theatre program is drawing crowds from the across region each year.

But the tourism impact isn't limited to just athletics and performing arts. Each year thousands of people descend on St. Charles for the LU commencement. And the same goes for move-in weekend in August and Homecoming in the fall.

All this economic benefit to the region comes without any tax support--your tax bill doesn't fund Lindenwood University. People from all over the region are discovering that Lindenwood is one of the best values around--equal or less expensive than the cost of tax-supported universities.



Home athletic events have a strong positive impact on the local economy



Construction on Lindenwood's Fine and Performing Arts Center is employing several hundred people

PERFORMANCE RATIOS

Return on net assets ratio.....13%

This is a change in net assets to total new assets. This ratio furnishes a broad measure of the change in an institution's total wealth over a year. It is well into the top quarter of performance among 300 peer institutions, according to audited financial statements by KPMG, LLP.

Net income ratio..... 37%

This is a change in unrestricted net assets to total unrestricted income. It, too, is well into the top quarter of performance among 300 independent institutions.

Cash income ratio..... 41%

This is net cash provided by operating activities to total activities to total unrestricted income, excluding gains. Once again, Lindenwood University ranks in the top quarter of performance among 300 independent institutions.

Operating income ratio..... 163%

This is an operating income to educational and general expenses. It is practically off the charts in comparison to others.

Viability ratio..... 76.2%

This is expendable net assets to long-term debt.

Default ratio..... 1.9%



Lindenwood University remains one of America's best-managed institutions

Our educational loan default rate is among the lowest of all institutions of higher education in the U.S.

Lindenwood leads the nation in viability and success and continues to set new marks in areas of fiscal responsibility

FINANCIAL ACTIVITIES STATEMENT

	2006*	2005
Revenues, gains and other support		
Student tuition and fees	\$83,656,778	\$71,298,451
Auxiliary—room and board	19,399,336	16,441,220
Institutional scholarship allowance	-30,177,647	-25,050,199
<i>Net Student tuition and fees</i>	72,878,467	62,689,472
Auxiliary—other	4,346,612	4,593,063
Contributions	3,221,976	2,292,247
Real estate contribution	---	2,032,625
Investment income	2,796,189	1,916,432
Net gain on investments	312,192	1,785,455
Federal grants	604,431	594,072
Change in value of split-interest agreements	195,519	303,749
Contractual services	212,500	0
Other	228,833	261,558
<i>Total revenue, gains and other support</i>	84,796,719	76,468,673
Expenses		
Instructional and library	22,115,006	19,329,108
Student services	11,297,923	9,668,460
Institutional support	5,970,924	5,846,600
Auxiliary—room and board	9,379,019	7,426,616
Auxiliary—other	5,047,813	3,988,993
<i>Total expenses</i>	53,810,685	46,259,777
Increase in net assets	30,986,034	30,208,896
Net assets		
Beginning of year	227,269,771	197,060,875
End of year	<u>\$258,255,805</u>	<u>\$227,269,771</u>

*unaudited actual

FINANCIAL POSITION STATEMENT

	2006*	2005
Assets		
Cash and cash equivalents	\$418,247	\$395,676
Inventories	737,902	580,298
Prepaid Expenses	477,767	600,214
Contributions receivable, net	1,073,254	903,372
Contractual services receivable, net	1,408,860	1,465,629
Accounts receivable, less allowance for uncollectibles of \$1,358,000 and \$1,039,623 in 2006 and 2005 respectively	3,012,434	1,806,082
Student loans receivable, less allowance for uncollectibles of \$374,451 and \$430,983 in 2006 and 2005, respectively	1,146,776	583,093
Accrued interest and other receivables	1,016,621	841,019
Property, plant, and equipment, less accumulated depreciation of \$38,487,328 and \$33,285,075 in 2006 and 2005 respectively	174,723,194	165,900,708
Collections	554,000	554,000
Funds held in trust by others	4,618,829	4,123,520
Long-term investments	<u>75,025,784</u>	<u>55,026,495</u>
Total assets	\$264,213,668	\$232,780,106
Liabilities and Net Assets		
Liabilities:		
Accounts payable and accrued expenses	\$1,699,362	\$1,242,568
Retainage and other construction payables	561,448	991,540
Deferred revenue	1,866,889	1,715,980
Funds held in custody for others	143,667	67,272
Obligations under split-interest agreements	91,189	94,328
Refundable U.S. government student loans	952,890	745,342
Payable to life estate annuitants	642,418	653,305
Total liabilities	5,957,863	5,510,335
Net Assets:		
Unrestricted	243,773,274	213,408,928
Temporarily restricted	3,386,516	3,630,203
Permanently restricted	<u>11,096,015</u>	<u>10,230,640</u>
Total net assets	<u>258,255,805</u>	<u>227,269,771</u>
Total liabilities and net assets	\$264,213,668	\$232,780,106

*unaudited actual

BOARD OF DIRECTORS

Officers

JIM J. SHOEMAKE

Chairman
Attorney, Guilfoil Petzell & Shoemake, L.L.C., St. Louis, MO

BEN F. BLANTON

Vice Chairman
President, Ben F. Blanton Construction Co., St. Peters, MO

JOHN W. HAMMOND

Treasurer
Community Leader, Chesterfield, MO

ELIZABETH M. RAUCH

Secretary
Alumna, Community Leader, St. Charles, MO

Members At Large

KEVIN BRAY

Manager, St. Charles Group, Commerce Bank, N.A., St. Peters, MO

JACKIE BROCK

Community Leader, St. Charles, MO

NANCY CALVERT

Alumna, Communications Consultant, Naperville, IL

J. MICHAEL CONOYER

Physician, Midwest ENT Centre, P.C., St. Peters, MO

DAVID G. COSBY

Vice President, United Missouri Bank, St. Charles, MO

L.B. ECKELKAMP

Board Chairman and CEO, Bank of Washington, Washington, MO

MARK ECKERT

Mayor, City of Belleville, Belleville, IL

HENRY J. ELMENDORF

Community Leader, St. Charles, MO

DUANE FLOWERS

President, Bass-Mollett, Inc., Greenville, IL

JONATHAN FORD

Community Leader, Creve Coeur, MO

GRACE HARMON

Community Leader, St. Charles, MO

THOMAS R. HUGHES

President, T.R. Hughes Inc., St. Charles, MO

CORTNEY HUPPER

Alumna, Sales Associate, Crouse Real Estate, Troy, MO

ELIZABETH HUSS

Community Leader, St. Charles, MO

JAMES ISSLER

President & C.E.O., H.H. Brown Shoe Co., Inc., Greenwich, CT

MARK KERN

Board Chairman, St. Clair County, Belleville, IL

JAN R. KNIFFEN

Alumnus, CEO, J. Rogers Kniffen Worldwide Enterprises,
St. Charles, MO

JOSEPH G. MATHEWS

Broker, Mathews & Associates, Lake Saint Louis, MO

DOUG MUELLER

Partner, MPP&W, P.C., St. Louis, MO

RONALD W. OHMES

Community Leader, Roach, MO

DONALD PAULE

President & Principal, Paule, Camazine & Blumenthal,
St. Louis, MO

RUAMJERD PONGCHAROENKIAT

President & CEO, RJ Group, Thailand

HERB ROACH

Vice President, Human Resources & Administration, Best
Manufacturing Group, LLC, Highland, IL

JANE CALVERT ROGERS

Alumna, Consultant, The Preston/Rogers Associates,
Medfield, MA

DALE ROLLINGS

Attorney, Rollings, Shaw & Associates, St. Charles, MO

JERRY SCHEIDEGGER

Board Chairman, Corporate Group, Inc.,
St. Charles, MO

WILLIAM C. SCHOENHARD

Executive Vice President & COO, SSM Health Care, St. Louis, MO

GARY N. SHAW

Director of Investments, Wachovia Securities LLC, St. Charles, MO

RANDALL SIMONS

Senior Vice President & CFO, The Boeing Co. Integrated
Defense Systems, St. Louis, MO

DENNIS C. SPELLMANN

President, Lindenwood University, St. Charles, MO

PATRICK S. SULLIVAN

Executive Vice President, Home Builders
Association of Greater St. Louis, St. Louis, MO

RICK SULLIVAN

Chairman, McBride and Son, Inc., Chesterfield, MO

FRANK R. TRULASKE

Chairman, True Fitness, O'Fallon, MO

Life Members

LARRY G. KELLEY

Community Leader, West Melbourne, FL

DOROTHY WARNER

Alumna, Gilford, NH

ALUMNI BOARD

Officers

CORTNEY HUPPER ('99), President
MARK MCCOLL ('85) First Vice President
MARIE D. MAHAFFY ('63), Second Vice President
DR. DOROTHY RICKETTS ('72), Secretary

Members

CAROLYN CANNON BLOEBAUM ('63)
BARBARA BROADFOOT ('70, '87)
NANCY CALVERT ('61)
NICOLE CHAPMAN ('03)
MICHELLE CLEVE ('98, '02)
MARY GREEN HUDWALKER ('59)
RANDY KARRAKER ('84)

MARY ELLEN KANTZ ('77, '91)
JAN KNIFFEN ('78)
BETSY LIGHT LEDOUX ('63 & '91)
BRIAN MUNDY ('98)
DR. BETTY OSIEK ('62)
MARY ANN MESSER OELKLAUS ('65)
ELIZABETH MUDD RAUCH ('44)
JANE CALVERT ROGERS ('67)
GLENDA RAEF SCHAEFER ('68 & '90)
HEATHER SHEPHERD ('03)
ERIC STUHLER ('78)
DOROTHY DUQUOIN WARNER ('36)

BOARD OF OVERSEERS

Executive Committee

BOB MCKELVEY
ED PUNDMANN
SUE SPELLMANN
RANDY WEBER

Staff Support

CHARLSIE FLOYD

Members at Large

ELAINE ALLRICH
LISA BAUE
BRIAN BREDENSTEINER
BILL BROWN
JUDY FORSTMANN BROWN
TOM BRUENING
CHARLES BRUERE
SALLY BUTLER
STEVE BUTLER
WILLIAM CHARNISKY
RICH CHRISMER

REVEREND ROY CHRISTELL

BARBARA CLARK
DON COLLIER
MARIE COVILLI
CHRISTY CRUMP
BERNARD J. DUBRAY
STEVE EHLMANN
JIM FITZ
WILLIAM GREEN
CHARLES GROSS
TED HOUSE
MARY HUDWALKER
ANN HUESEMANN
MARY ELLEN KANTZ
EDIE KIRK
DON KISSELL
CHRISTOPHER LISSNER
BILL LUETKENHAUS
LYNN MORRELL

JEANNE MUDD
WILLIAM S. MULLINS
PATRICK NASI
CINDY OSTMANN
DAN PELIKAN
PENNY PITMAN
JAMES RAU
KEVIN RIGGS
SUSAN RUDOLPH
CARL SANDSTEDT
TERI SEILER
DEB SMITH
JOHN F. SMITH
DAVID STRAUTZ
PAUL STUART
NANCY STUENKEL
SCOTT TATE
JIM TRENARY
KARL WILSON

Lindenwood Mission Statement

Lindenwood University offers values-centered programs leading to the development of the whole person – an educated, responsible citizen of a global community.

Lindenwood is committed to

- providing an integrative liberal arts curriculum,
- offering professional and pre-professional degree programs,
- focusing on the talents, interests, and future of the student,
- supporting academic freedom and the unrestricted search for truth,
- affording cultural enrichment to the surrounding community,
- promoting ethical lifestyles,
- developing adaptive thinking and problem-solving skills,
- furthering lifelong learning.

Lindenwood is an independent, public-serving liberal arts university that has a historical relationship with the Presbyterian Church and is firmly rooted in Judeo-Christian values. These values include belief in an ordered, purposeful universe, the dignity of work, the worth and integrity of the individual, the obligations and privileges of citizenship, and the primacy of the truth.

Lindenwood University

209 South Kingshighway
Saint Charles, Missouri 63301
636.949.2000
www.lindenwood.edu