



**VOLUNTEERS** — Club President Diane Heidelbaugh and Dr. James Hood telephone Lindenwood alumni.

## Alumni Give \$140,000

Lindenwood College's recent Renaissance Alumni Phone-a-Thon has resulted in cash and contributions totalling \$140,000 from more than 40 percent of the 5,500 alumni contacted throughout the United States.

"As a result of the strong support alumni have shown, Lindenwood will exceed its \$100,000 goal in alumni contributions as part of the Renaissance Campaign and will establish the groundwork for sizeable contributions from corporations and foundations," said Edward D. Watkins, vice-president for institutional development.

Although donations and cash still are being received and tabulated from the phone-a-thon which ended June 29, the college

expects to receive \$140,000 from the two-month effort, including a record \$100,000 in cash.

Monies received thus far this year represent a significant increase from the \$60,000 raised from alumni contributions for the 12-month period in 1983.

Even more significant is the fact alumni giving has increased from 4.8 percent to 25 percent this year, according to Lindenwood President James I. Spainhower.

According to James D. Thompson, major funds coordinator for the Renaissance Campaign who aided in the alumni phone-a-thon, "One of the ways you judge the health of an institution is its percentage of alumni giving, and the tremendous response shown

by alumni in recent months has given Lindenwood new and greater prospects for future donations from charitable organizations, corporations, firms and foundations."

"All major firms and foundations look at an institution's record of support from its alumni," Thompson said, "and our 20 percent increase in alumni giving this year shows that our alumni are financially backing Lindenwood College and the future direction of the institution."

The 25 percent alumni giving record also is an increase over the national average of 18 percent for private colleges and universities throughout the United States.

Continued on page 9

## \$1.03 Million In 18 Months Renaissance Campaign Is Succeeding!

Cash and contributions from alumni, the St. Charles community and faculty, staff and board members have been combined with substantial gifts from major St. Louis firms and foundations to enable Lindenwood College to

raise nearly \$1.03 million in the past 18 months.

"The credibility of our fund-raising and development programs and the faith in the leadership and direction of this institution have been established with this record amount," said Edward D. Watkins, vice-president for institutional development.

The \$1.03 million generated since January, 1983, "is very impressive" when compared to the fact that an average of \$162,000 raised in annual receipts during the preceding 10 years or about \$1.62 million from 1972-82, Watkins said.

Watkins along with President James I. Spainhower, who took over reigns of the 157-year-old college in January, 1983, have directed fund-raising efforts that consisted of a \$700,000 goal between January, 1983, and July, 1984, and the announcement of a \$10 million major funds drive from 1984-87.

Funding received during the past six months combined with what was raised in 1983 have enabled Lindenwood College to meet its \$700,000 cash goal and to lay the groundwork for the college's three-year campaign to raise \$10 million.

Broken down, the \$1.026 million consists of \$223,000 in endowed scholarships and \$803,000 in cash and pledges, including \$140,000 from alumni throughout the country, \$75,000 from the St. Charles community and \$75,000 from the Lindenwood College Board of Directors and faculty and staff members.

Included in the total amount are 1984 installments from a \$250,000 grant from the Monsanto Fund in St. Louis, \$100,000

grants each from Southwestern Bell Telephone Co. and the May Department Stores Co. in St. Louis; and a \$20,000 gift from the Allen P. and Josephine B. Green Foundation of Mexico, MO.

The \$250,000 gift is one of the largest ever received from the Monsanto Fund, which has a lengthy record of support for

### Covenant Approved

A covenant has been adopted by Lindenwood College and the Presbyterian Church, U.S.A., which reestablishes the institution's ties with the church.

"This is not a legal document per se," said President James I. Spainhower, "and it does not commit the college, but merely reaffirms our ties with the Presbyterian Church and what we have been doing for a number of years."

Taking a year to complete, the covenant was approved by the college's board of directors in May and by the Synod of Mid-America during a June 29 meeting in Warrensburg, MO.

the St. Charles-based institution. One member of the college's board of directors is Thomas L. Gossage, group vice-president and managing director of Monsanto International.

In announcing the Monsanto grant to Lindenwood College, William F. Symes, Ph.D., president of the Monsanto Fund, said the grant is unrestricted although the \$10 million major funds drive at Lindenwood was recognized in determining the amount of the grant.

"It's essential that these schools receive encouragement and financial support because they help maintain one of St. Louis' great strengths - diversity of educational opportunity," Symes said. Lindenwood and five other colleges and universities in the metropolitan area received Monsanto gifts.

Much of the credit for the \$100,000 gift goes to David E. Babcock, also a member of the college's board of directors and former board chairman of the May Department Stores Co.

Credit for the \$100,000 gift from Southwestern Bell goes to Joe H. Hunt, executive vice-president of

Continued on page 9

### inside

The renewed support alumni throughout the country are showing for Lindenwood College is the subject of this issue's "President's Message" by James I. Spainhower. See page 2.

The college has adopted a new symbol for greater community recognition and educational awareness as part of its current Renaissance Campaign ... page 3.

The Lindenwood Admissions Office reports that more diversified students with higher GPAs are enrolling for the fall semester ... page 3.

More than a half-million dollars has been earmarked from the college's operating budget for scholarship awards this year to deserving students ... page 4.

Photographic highlights of Lindenwood's annual spring commencement appear on page 5 of this issue.

A unique insurance gift to Lindenwood College from a 1984 graduate could produce more than \$142,000 for the institution in the coming years .... page 6 in "Alumni News."

Lost touch with your best friend during your college years at Lindenwood? Check the "Class Notes" section on page 7.

The Sacred Music Institute has been formed on the Lindenwood campus as a means of improving the quality of religious music in the metro St. Louis area. See page 8 for details on this unique program that has received strong support from area religious organizations.

**Lindenwood College**  
St. Charles, MO 63301  
Address Correction Requested

Non Profit Org.  
U.S. Postage  
PAID  
Permit No. 84  
St. Charles, Mo.



# president's message

by JAMES I. SPAINHOWER

*"The heart has its own memory." - Albert Camus, recipient of the 1957 Nobel Prize for Literature.*

*"American higher education is clearly renewing itself for the new conditions that the American people face, creating an academic structure that will keep the nation vigorously competitive. But, renewal is expensive. Americans in all walks of life must see higher education as the one investment we absolutely must make if we are to have a bright future." - from the 1984 Statement of the Association Council for Policy Analysis & Research of the American Council on Education.*

A bullet through the brain or a bullet through the heart is likely, in either case, to bring instantaneous death. Deprived of either heart or mind, life is gone. With both functioning well, the days of our lives move on in steady pursuit of their ultimate destiny.

If we are afforded the privilege, when we arrive at the terminal point of our conscious existence, to look back on our days, we'll probably discover that our best moments and our most worthy deeds were the result of a union between heart and mind. When memories so precious that the heart retains them become the impetus that causes us to respond to needs that the mind applauds as being both worthy and wise, that is a moment to recall!

These past few months literally hundreds of Lindenwood alumni experienced such moments! They forged fond memories of this college with a logical awareness of their need to provide financial support for American higher education. Through their generous gifts, alumni are demonstrating not only their love for this institution that plays such a large part in their own collegiate memories, but also their desire to help Lindenwood fulfill splendidly and adequately its role in higher education today and in the years ahead.

In the college's current fiscal year, which ended June 30, 25 percent of the college's known living alumni contributed \$140,000 to Lindenwood College. This compares very favorably to about \$60,000 raised during the previous fiscal year from less than five percent of our alumni. This significant 20 percent increase in the number of alumni giving represents an \$80,000 increase in total cash and contributions!

The national average for alumni giving among private colleges and universities is 18 percent - we have exceeded this average by seven percentage points!

And, we'll do better yet because Lindenwood hearts do remember and Lindenwood minds do think about America's continuing need for strong private colleges. Although our alumni and Lindenwood's total constituency remember with genuine fondness the Lindenwood of yesterday, their minds tell them that the college must respond to the changing world.

But the college's alumni and other friends have a right to expect that Lindenwood's historic commitment to academic quality, Judeo-Christian values, and an educational experience that produces graduates prepared to cope with today's world will not be forsaken.

We are trying to uphold these principles. In so doing we are finding that many of the "changes" the college is undergoing these days are not so much new ventures as they are a return to principles and practices that have been characteristic of this college for most of its nearly 160 years of existence. Small classes, peer tutoring (one student helping another), faculty tutors for all freshmen, career advising, an expanded on-campus student work program, an extensive system of off-campus internships, a sizeable increase in the residential population of the college, a collegiate residential experience built around life in the residence halls of Parker, McCluer, Irwin, Parker and Sibley this fall, with Ayres scheduled to be in use within two more years, the calling of a college chaplain, the strengthening of Lindenwood's fraternal and historic ties with the Presbyterian Church and the expansion of responsibility for the governance of the college by enlarging the board of directors and board of overseers - none of these important endeavors which have come about in recent years are new to Lindenwood. But, they are needed. The heart said "yes" and so did the mind, so we have before our eyes the reincarnation of what was yesterday in the garments of today.

To all who are sharing in the efforts of Lindenwood today - and especially to our generous alumni - those of us who bear day to day responsibility for "your" college, say "thanks for your confidence." We'll try to merit your continued trust, as we strive to meet the academic and other collegiate needs of Lindenwood students in the 80's.

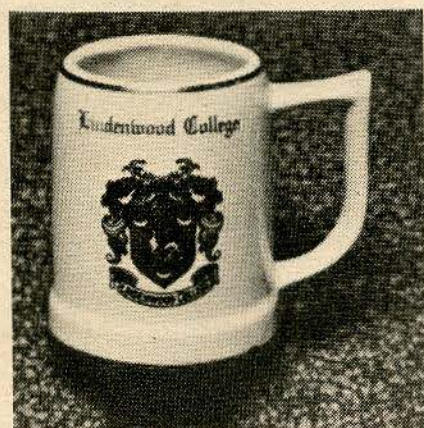
## A Sale Just For You at the Lindenwood Bookstore

**STICK PIN** - A beautiful stick pin containing the Lindenwood College logo, available in either gold or silver plate. **\$7.50**

**TIE TACK** - A beautiful wardrobe accessory, this gold-plated tie tack contains the Lindenwood crest in a 11/16" seal. **\$7.95**

**SWEATSHIRTS** - 50% Creslan and 50% cotton hooded sweatshirts with Raglan sleeves and pouch pocket. Available in white and colors. **\$19.95**

**T-SHIRTS** - Scripted with either Parker, McCluer or Irwin Hall, these T-shirts are 50% polyester and 50% cotton. Available in red, black or gold. **\$8.75**



**SWEATERS** - 50% Creslan and 50% Rayon mitred V-neck sweaters with ribbed cuff and waistband. Embroidered with "Lindenwood." Available in white and colors. **\$20.95**

**COFFEE MUG** - Coffee tastes better in a Lindenwood mug! A beautiful mug imprinted with the Lindenwood College logo. **\$7.95**

Call or write the Lindenwood College Bookstore (314/946-6912) for the items you want to order. Shipments can be made through United Parcel Service (4-6 weeks delivery).

**LINDENWOOD BOOKSTORE,  
ST. CHARLES, MO 63301**

## the linden word vol. 1, #4 summer '84

A Quarterly Publication  
of  
Lindenwood College  
St. Charles, MO

President: JAMES I. SPAINHOWER  
Board Chairman: ROBERT F. HYLAND  
Editor: RANDY L. WALLICK  
Alumni: ESTHER FENNING

Written and prepared by Lindenwood College's Public Relations Office. Views and opinions appearing in this publication are not necessarily endorsed by the Lindenwood College Board of Directors.

Address all communications, letters, subscription requests and changes of address (including both a mailing label from the current issue along with the new address and proper zip code) to the Public Relations Office, Lindenwood College, First Capitol & Kingshighway, St. Charles, MO 63301.



## 'Renaissance Leadership' Lindenwood Adopts New Symbol

Lindenwood College has adopted a new identifying symbol or logo for greater community recognition as part of its three-year Renaissance Campaign to raise \$10 million in major funds.

Designed by a Louisville, KY, commercial art firm, the logo joins the college crest as the official symbols of the St. Charles-based institution.

Containing the theme, "Renaissance Leadership for Today," the logo contains a graphic design of a tree which could be depicted as a Linden tree. The college was founded 157 years ago by Maj. George and Mary Sibley amidst acreage of Linden trees in rural St. Charles, thus signifying its name, Lindenwood College.

Four star-like points rise from the tree design, symbolic of man's eternal pursuits in knowledge, said Randy L. Wallick, public relations director for the college who aided in

the design of the new logo.

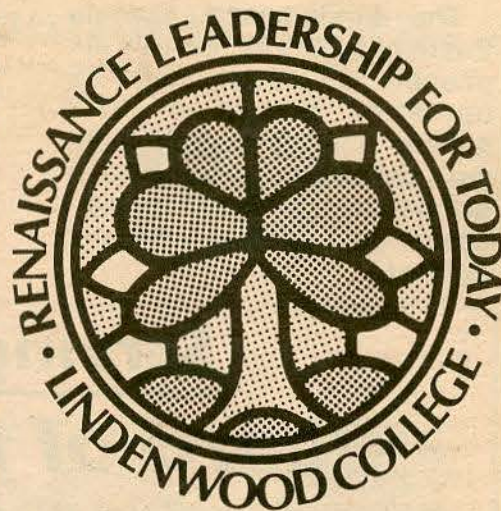
"Many view the college's new logo as a design similar to stained glass," Wallick said. "Ironically, although stained glass emerged prior to the Renaissance in the 1300-1500s, it received renewed and widespread recognition as an art form during this period of history. Today, many experts feel that stained glass works from the Renaissance are some of the best examples of this art form," Wallick added.

According to college President James I. Spainhower, "If there is one word that epitomizes what a small liberal arts college is all about, it is probably the word 'renaissance.' This was a period of time when men plunged ahead by looking back. The classics of Greece and Rome received renewed attention. In art, literature, science, philosophy and

religion, the truths of the past became the catalytic substance that was the basis for the eruption of a dynamic new world of beauty and reality.

"An emphasis on the individual and on man's determination to explore the world were characteristics of the Renaissance," Spainhower said. "It is fitting, therefore, that Lindenwood's three-year campaign to raise \$10 million should adopt the theme, 'Renaissance Leadership for Today.' For, that is what we are about at this historic college - we, too, plunge into the future on the basis of a noble past."

More than \$500,000 in cash and contributions have been pledged to the major funds drive since it was launched earlier this year. The campaign is designed to raise by 1987 \$8 million for facilities development and campus expansion; \$1.4 million for student development, including \$1 million for leadership scholarships to deserving students; and \$500,000 for community development, including programs in basic skill development, value orientation and work-service preparation.



The \$8 million in facilities development includes the construction of a multipurpose \$5 million Renaissance Center, an athletic and theatre complex that will have widespread benefits for the St. Charles area community, and \$3 million for major renovation and repair of facilities on the historic 142-acre campus.

The college's new logo is being incorporated into the majority of printed and visual materials utilized in marketing, advertising, communications, public relations and recruiting efforts of the institution.

## New Applications Indicate Better Students for Fall

Applications from traditional-age students for the fall semester at Lindenwood indicate there will be a more diversified freshman class in which students have higher grade-point averages (GPAs) and entrance test scores that are above the national average, according to Miriam King-Watts, dean of admissions.

The average GPA for the 250 students who already have applied for the fall term is 3.1 (B) out of 4.0, an increase from the 2.80 GPA recorded for freshmen students in 1983, she said.

"Even more significant is the fact the average American College Test (ACT) score for the fall class is 21, as compared to a national average of 18.3, meaning that Lindenwood's 1984 freshman class is well above the national average," Ms. King-Watts said.

One of the country's main criteria for entrance to col-

leges and universities, the ACT is a composite exam in mathematics, English, science and social studies for high school graduates.

Of the 250 students who have applied for the fall term, 15.5 percent have selected business as their major field of study. Majors listed in preference include 12.5 percent in performing arts, 12 percent in mass communications, 8.5 percent in education, seven percent in natural science, 6.5 percent in fashion marketing, six percent in biology and chemistry, 3.2 percent in engineering and three percent each in music and psychology. Of those applying, 18.5 percent are undecided about a major field of study.

"These percentages show that beginning Lindenwood students have a more diversified array of majors than students in previous freshmen classes. These figures are typical of national trends that show a greater emphasis on critical thinking and liberal arts backgrounds like those found at Lindenwood College," Ms. King-Watts said.

Eyeing a total enrollment of about 2,000 students this fall, Lindenwood anticipates a freshman class of about 230 students and a total daytime enrollment of 500, representing about a 14 percent increase from the 431 daytime students enrolled in the fall, 1983.

## Newsletter Introduced

More than 1,200 selected educators, lawmakers and civic and business leaders in the metropolitan St. Louis area are receiving the "Lindenwood Report," a monthly newsletter written by Lindenwood College President James I. Spainhower, Ph.D.

Addressing current issues relating to higher education, the two-page newsletter was launched in January as part of the Renaissance Major Funds Campaign to provide increased communications to Lindenwood constituencies. It is coordinated by the college's Public Relations Office and printed by the Publications Dept.

"The Lindenwood Report" utilizes a unique editorial format of "reports" and "reflections." With attribution given to an individual or periodical, the "report" section provides information on a current concept or news event relating to higher education. The follow-up is the "reflection" which explains what Lindenwood College is doing to address the issue or to substantiate its commitment to a quality-oriented, liberal arts education.

In a recent issue, Spainhower cited John Naisbitt's book, *Megatrends*,

in which it said, "By one estimate, 75 percent of all jobs by 1985 will involve computers in some way - and people who don't know how to use them will be at a disadvantage."

In his "reflection," the president wrote, "Lindenwood College recognizes ... that no education is complete that does not encourage students to achieve computer literacy.

"That is why," he continued, "we have purchased and installed a new 'state-of-the-art' Digital Vax Computer. In the fall, two new full-time professors - one in computer science and the other in data processing - will join our faculty. A computer science major, to complement our two-year associate program in data processing, has been approved by the faculty.

"And," he continued, "plans are being formulated to provide wide access for both faculty and students to computer hardware and software. Lindenwood College is providing a Renaissance education that is computer prone!" Spainhower said.

Since it was launched six months ago, the "Lindenwood Report" has received many favorable comments from its readership.

## Snafu?

Let Lindenwood College know if there is an error on your mailing address label or if you're receiving more than one copy of the quarterly publication.

Send your correct address along with the computer-printed mailing label to the "Linden Word," c/o the Public Relations Office, Lindenwood College, First Capitol and Kingshighway, St. Charles, MO 63301.



## In Scholarships

# \$553,500 Awarded to Students

The Lindenwood College Board of Directors recently approved a fiscal 1984-85 operating budget of \$7.7 million that includes more than \$553,000 to be awarded in scholarships to deserving high school graduates and transfer students.

Broken down, the \$553,500 represents \$123,500 from endowed scholarships to Lindenwood and \$430,000 in direct financial support from the college, which will be generated from tuition and other revenue.

The total amount to be awarded in scholarships is one

of the largest in the college's history, and it represents a significant increase from the \$271,000 in scholarships awarded in fiscal 1983-84. Available scholarship funding is in addition to nearly \$1.5 million in financial aid assistance that will be granted in the upcoming fiscal year, said Miriam King-Watts, dean of admissions.

Lindenwood College, which has frozen tuition and room-and-board costs for the fourth year in a row, offers a variety of academic, athletic and leadership scholarships that could total \$4,800 annually to many students, such as those with a 3.0 (B) grade-point average (GPA), she said.

"Since private institutions like Lindenwood traditionally offer greater financial aid packages and scholarship assistance, when students compare the cost to state universities or community colleges they will find that tuition often is less expensive," Ms. King-Watts said.

Basically, Lindenwood College offers three types of academic scholarships:

- The Presidential Scholarship, with a value of \$1,300 per year, is available to students with a 3.5 GPA.

- The Overseers Scholarship, named for the Lindenwood College Board of Overseers, is valued at \$800 per year and is available to those with a 3.0 GPA.

- And, the Lindenwood Scholarship, valued at \$500, is available to students with a 2.75 GPA or better.

In addition to academic scholarships, for those who want to participate in soccer or basketball programs, \$2,000 annually is available to a student with at least a 2.4 GPA who has received a recommendation from his or her high school coach.

As a means of strengthening the college's residential population, \$1,000 Leadership Scholarships are available to students who want to live on campus and who have 2.5 GPAs or better.

"We are placing a greater emphasis on scholastic abilities, rather than academic scholarships, and are providing students with more diversified types of scholarships," Ms. King-Watts said.

New this year is the Departmental Scholarship, valued at \$500, that is awarded to students with a 3.0 GPA who have received recommendations by faculty members in various instructional departments on campus, she added.

Lindenwood hopes to increase the amount of scholarship awards to deserving students in upcoming years. The Renaissance Campaign, the college's current major funds drive to raise \$10 million by 1987, includes \$1 million to be awarded in leadership scholarships to recent high school graduates and college transfer students.

Further information on the availability of scholarships and financial aid, as well as details on contributing to the college's scholarship program, can be obtained by contacting the Admissions Office or the Office of Development at (314) 946-6912.

## Local News for Students

Individual media releases on student scholarship recipients are being prepared and disseminated to newspapers throughout the country as part of expanded marketing efforts of Lindenwood's Admissions and Public Relations offices.

"We've found that newspapers in rural areas, particularly in Missouri and Illinois, are publishing our press releases in their entirety often with an accompanying photo of the student," said Randy L. Wallick, public relations director.

"The publicity generated by this coverage not only cites the student and his or her academic and leadership accomplishments, but also credits Lindenwood College with its current efforts to expand and increase the amount of scholarships it offers to deserving students," he said.

"From the response we've received from students and their parents and from the feedback we've gathered from smaller daily and weekly newspapers, this expanded public relations effort is benefiting Lindenwood's community profile and is aiding in recruiting efforts of the Admissions Office staff," Wallick said.

## Serving You

### Board of Directors

*(Editor's Note: As a part of increased communications by Lindenwood College, this issue of the LINDEN WORD premieres a new column to acquaint its readership with the outstanding individuals who comprise the Lindenwood College Board of Directors and the institution's Board of Overseers. A board member will be selected at random and featured in upcoming issues of the quarterly publication. This issue portrays Kenneth W. Thompson, Ph.D., of Charlottesville, VA, a newly-elected member of the board of directors.)*

Kenneth W. Thompson, Ph.D., of Charlottesville, VA, a former executive vice-president of the Rockefeller Foundation, is one of the newest members of the 28-member Lindenwood College Board of Directors.

Currently, he is the director of the White Burkett Miller Center of Public Affairs and professor of international relations and religious studies at the University of Virginia.

Beginning a 21-year affiliation with the Rockefeller Foundation in 1953 as a consultant in international relations, Thompson served as associate director and director for social sciences and, from 1961-74, as executive vice-president of the New York City-based philanthropic foundation.

A 1943 graduate of Augustana College in Sioux Falls, SD, Thompson holds a master's and a doctoral degree, majoring in political science and international rela-

tions, including the University of Chicago. He has honorary degrees from several institutions, including the University of Notre Dame, Nebraska Wesleyan University and the University of Denver. He is the recipient of the Annual Medal from the University of Chicago and the Scarsdale Bowl Award for 1972, a presentation by the City of Scarsdale, NY, to an individual who has contributed immensely to the community.

Beginning a lengthy and distinguished career in education in 1948 as a lecturer at the University of Chicago, Thompson has served on the faculties at Northwestern University, the University of Chicago and the University of Virginia.

An international affairs advisor to several United States presidents, Thompson has served as director of the Institute for the Study of World Affairs, the Ethics & Foreign Policy Project of the Council on Religion & International Affairs and the Twelve Donor Agency Review of Higher Education in Africa, Asia and Latin America.

Thompson has written extensively and is the author or coauthor of nearly 100 articles, chapters, volumes and books on such topics as American and foreign policy, ethics and moral issues, higher education concerns, political science issues, cultural exchange, history, religion and American and international diplomacy.

A fellow in the American Academy of Arts & Sciences, he has served on the United Nations Association of the U.S.A., the International Studies Association and the International Political Science Association.

Married, he and his wife, Beverly C., have four children. One son, James D., is a 1984 graduate of Lindenwood College and serves as major funds coordinator at the St. Charles-based institution.

The 28-member board of directors oversees the management and operation of the 157-year-old college.



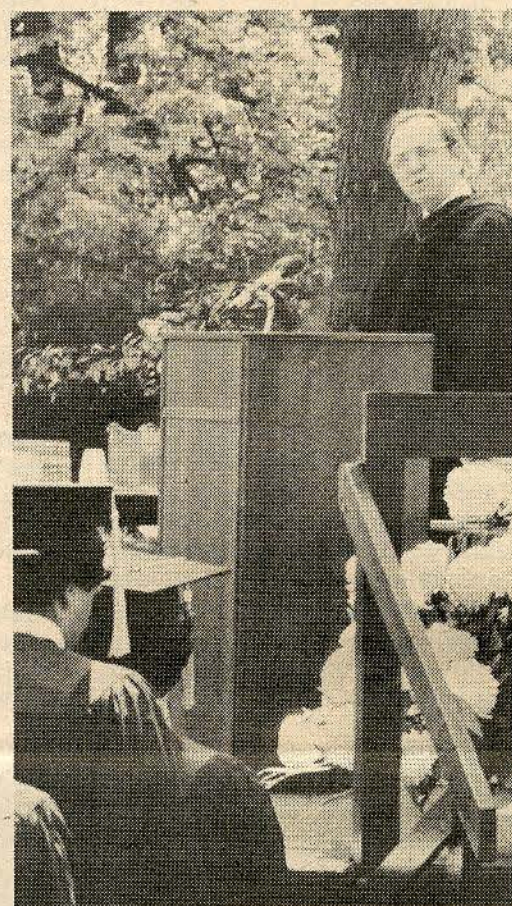
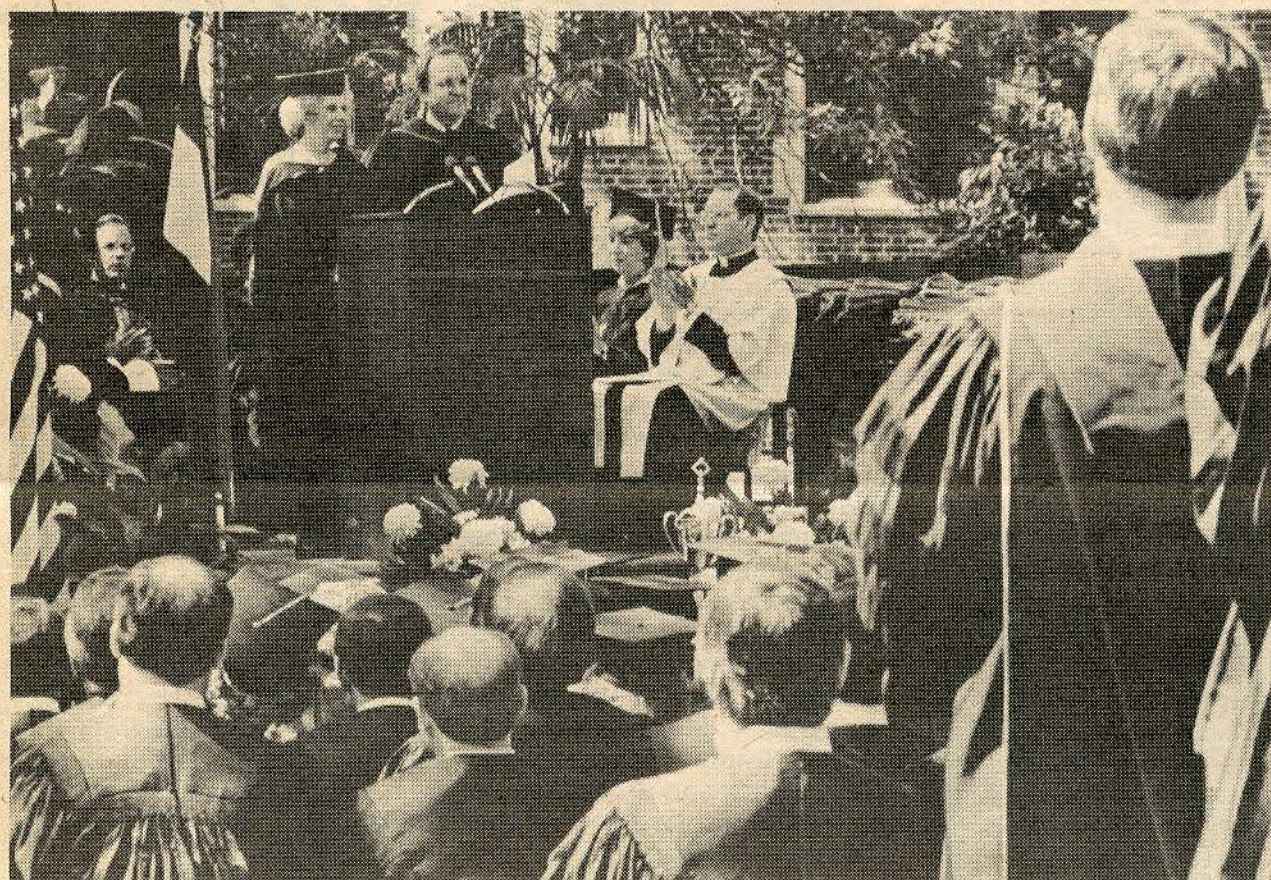
THOMPSON

**1984  
Alumni Reunion  
Weekend  
October 5-7  
St. Charles  
Campus**

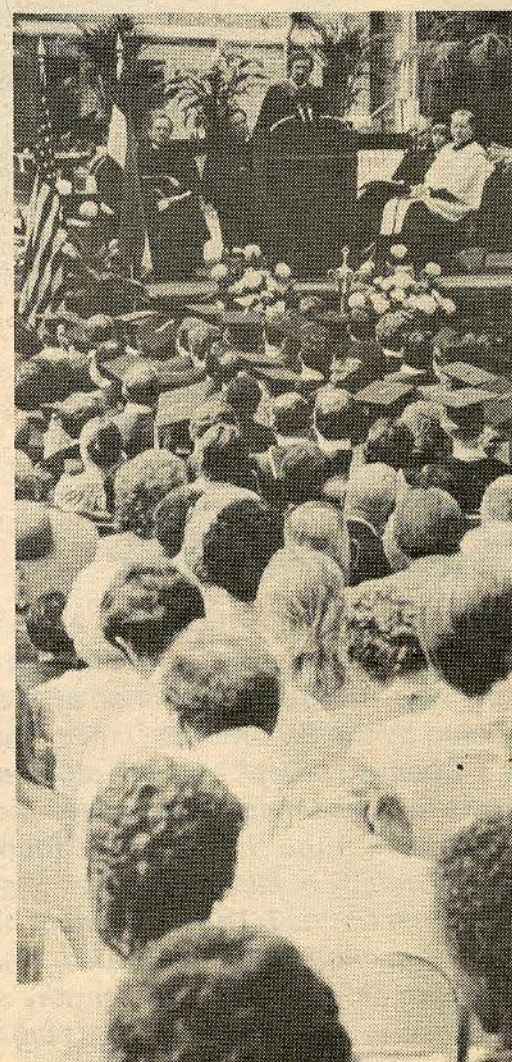




## Commencement '84



Photos by Randy L. Wallick





# alumni news

## By 1984 Lindenwood Alumnus College Gift Could Produce \$142,000

A unique insurance gift to Lindenwood by a new alumnus, James D. Thompson of St. Charles, could produce more than \$142,000 for the institution in the early 21st century.

Thompson, who graduated in May with an undergraduate degree in business administration, has purchased a \$25,000 whole life insurance policy, naming Lindenwood College as the irrevocable beneficiary.

The concept is called insurance gifting, a plan offered by most life insurance carriers throughout the country. It is designed for individuals who cannot afford major gifts but who want to provide substantial contributions to charitable organizations and private institutions later in their life or upon the event of their death.

Thompson's gift provides that Lindenwood College will receive \$142,013 upon the event of his death at age 65 or a cash value of nearly \$83,000. There are several combinations of cash values and death benefits based upon the longevity of the insured.

The yearly cost to Thompson, who serves as major funds coor-

inator at Lindenwood, is \$348 for the duration that the policy is in effect.

"My desire is to pay the yearly premiums until I die," he said, "but I could stop making payments after eight years and Lindenwood would receive nearly \$50,000 in cash when I reach 65 years of age."

Thompson, who is 26 years of age, said the total amount of premiums paid during the next 39 years until he reaches 65 years of age would be about \$13,200. The entire cost of the premiums are tax deductible.

With the gift to Lindenwood, Thompson placed two restrictions upon the insurance policy. He requested that a portion of the proceeds from the policy be used in a restricted endowment fund for the establishment of the James D. Thompson Leadership Award, a scholarship for deserving students in their senior year at Lindenwood.

He also requested the creation of the Pamela R. Thompson School of Equine Studies, an equestrian program similar to what Lindenwood had until 1979 when it was eliminated due to

budgetary cutbacks. The program would honor Thompson's wife, a 1981 alumna.

"It was a short-sighted mistake to remove the horsemanship program from the campus," he said. "This program gave Lindenwood a large part of its identity, and I would like the funds utilized to reestablish a first-class Equine Science Program similar to what the college had a few years ago," Thompson said.

If an equestrian program could not be reinstated, remaining

funds would be utilized for an endowed scholarship for female students who have been active in college events and organizations. The scholarship would be created in the name of his wife.

"This gift is an expression of faith in the leadership and direction Lindenwood College is taking," Thompson said. "It is something that I have wanted to do for some time, and I am glad to have the opportunity to provide this to Lindenwood."

Continued on page 9

## club news

**LITTLE ROCK** - A group of Little Rock alumnae met recently at the residence of Joyce Martin Logan to discuss the formation of a Little Rock alumni club. Esther Fenning, alumni coordinator, and Ruth Mitchell, admissions counselor, were present at the session.

Plans are being made for a Little Rock alumni luncheon in September. Those interested in attending should contact Joyce Martin Logan at (501) 227-4438, or write to her at 1 Tam O'Shanter, Little Rock AR 72207.

**KANSAS CITY** - The Kansas City Alumni Club met for a luncheon recently at Victory Hills Country Club. A featured speaker was Nancy Polette, assistant professor of education at Lindenwood, who discussed "The Power of the Written Word." The author of several books, she is a nationally-recognized authority on gifted education.

Newly-installed officers at the luncheon were Susann Riffe, president; Glenda Gerred Watts, first vice-president of membership; Judy Juergens Dodge and Betty Hughes Bridges, vice presidents; Frances Metzger Weeks, recording secretary; Mary Williams Adams, corresponding secretary; Vivian Smith Crow, publicity secretary; Jane Merrill Fritson, treasurer; and Shannon Atha Johnson, historian.

Alumni interested in the Kansas City Alumni Club are invited to contact Mrs. Watts at (913) 383-1849.

**ST. CHARLES** - The St. Charles Alumni Club elected new officers recently at a meeting held at Sally Siemssen Schaefer's residence - Diane Heidelbaugh, president; Jerry Jacobs, vice-president; Anne Hodges Pals, secretary; and Mary Gisi, treasurer.

Club plans for the 1984-85 year include a children's fashion show and tea this September; a potluck dinner, meeting and speaker presentation in February, 1985; and the annual fundraising event, "Mrs. Sibley's Attic Sale," on June 8, 1985. Volunteers are needed for all events.

Alumni interested in club activities or in joining the club should contact Mrs. Pals at (314) 946-3666, or the Lindenwood College Alumni Office, (314) 946-6912.

**ST. LOUIS** - The St. Louis Club entertained 1984 Lindenwood College graduates at an outdoor cookout May 9 on campus.

The St. Louis Club held its first fashion show and luncheon recently at Schneithorst's Hofamberg Inn in St. Louis. Lindenwood faculty, staff and alumnae modeled for the show which was sponsored by Boyd's of St. Louis. Nearly 160 alumni and friends attended the event, which raised money for two \$500 scholarships for Lindenwood students.

Alumni interested in joining the club are urged to contact Joanne O'Keefe, club president, at (314) 869-3057, or the Lindenwood College Alumni Office.

**SOUTHERN CALIFORNIA** - The Southern California Alumni Club meets monthly and is planning a fall gathering featuring President James I. Spainhower. Those interested in club events and the fall meeting with Dr. Spainhower are asked to contact Betty Butler Fitzpatrick, club president, at (714) 586-3188, or write to her at 32710 San Amadeo, Laguna Hills, CA 92653.



**DISTINGUISHED ALUMNA** - Anna J. Harrison, Ph.D., professor emeritus of chemistry at Mount Holyoke College in South Hadley, MA, was the guest of honor at a recent luncheon on campus hosted by the St. Charles - Lindenwood College Alumni Club and the Chemistry Dept. A 1933 alumna, Dr. Harrison has nearly 50 years of academic experience, including a visiting professor position with the U.S. Naval Academy and research positions at the University of Missouri, Cambridge University and the National Research Council. The recipient of numerous awards and honors, she was cited by Lindenwood College for her research and teaching as well as for her lengthy support of the institution. Dr. Harrison is shown addressing students and faculty during brief remarks following the luncheon.



# class notes

## Marriages

- 1972 **Ann Riker** to **Robert Jaltuch**, April 17, 1984.  
 1976 **April Center** to **Ted Bloom**, Aug. 11, 1983.  
 1980 **Paula Schmidt** to **Lt. George A. Hildebrand, II**, Dec. 17, 1983.  
 1983 **Arnold Lewis** to **Patricia Eck**, April 24, 1984.

## Births

- 1968 A son, **Richard Sullivan**, to **Victoria Jacobs Gray**, Aug. 16, 1983.  
 A son, **Jonothan Ray**, to **Brenda Martin Hollrah**, Nov. 3, 1983.  
 1969 A daughter, **Cynthia Ann**, to **Gail Philbrick Minke**, April 11, 1984.  
 1971 A daughter, **Lori**, to **Dorothy Altman Byrd**, Dec. 4, 1983.  
 1973 A daughter, **April Elaine**, to **Linda Fitzgerald Grooms**, Dec. 6, 1983.  
 1975 A daughter, **Sarah Kate**, to **Cynthia Springer-Malesky**, Feb. 6, 1983.  
 1978 A daughter, **Lauren Elizabeth**, to **Bill Barta**, April 22, 1984.  
 1981 A son, **Christopher William**, to **Ann Kronlage Card**, Feb. 4, 1984.  
 1982 A daughter, **Jamie Lynn**, to **James Schiro**, July 31, 1983.

## Deaths

- 1907 **Minnie Sweeney** of **Pittsburg, KS**, June 6, 1983.  
 1908 **Mary Statler White** of **Marissa, IL**, Dec. 29, 1983.  
**Aimee M.L. Becker** of **St. Charles**, May 25, 1984.  
 1909 **Gladys Myers Metzger** of **Kansas City, KS**, May 2, 1984.  
 1914 **Myrl Edes Edelen** of **Santa Clara, CA**, Aug. 28, 1983.  
 1917 **Carolyn Smith Quayle** of **Sacramento, CA**, June 11, 1982.  
 1918 **Bernadine Weber Heid** of **Carmel, CA**, April 4, 1984.  
 1919 **Dorothy Donaldson Bennett** of **St. Petersburg, FL**, Jan. 20, 1984.  
 1920 **Thelma Poundstone Richardson** of **Joplin, MO**, May 24, 1982.  
 1925 **Elaine Myers Rader** of **Wichita, KS**, Oct. 13, 1982.  
 1928 **Helen Roper Stark** of **Worthington, OH**, Oct. 5, 1983.  
 1929 **Mary Alice Lange Jones** of **Leavenworth, KS**, Jan. 9, 1984.  
 1931 **Lucile Kelly Wyrens** of **Omaha, NB**, July 23, 1983.  
 1934 **Helen Teter Zebold** of **El Dorado, KS**, April 27, 1983.  
 1941 **Mary Helen St. Clair** of **St. Louis**, Dec. 25, 1983.  
**Dorothy Snell Vickerstaff** of **Birmingham, AL**, Nov. 29, 1983.  
 1943 **Rita Stiefel Kaufman** of **Evanston, IL**, Oct. 16, 1983.  
 1946 **Elizabeth Franke Dassler** of **Ballwin, MO**, March, 1983.  
 1948 **Jeane Sebastian Anderson** of **Fulton, MO**, Nov. 20, 1983.  
 1959 **Ferol Finch Lawler** of **Dallas**, June 14, 1983.  
 1969 **Eileen Lonergran Baron** of **Simsbury, CT**, Dec. 3, 1983.

## Notes

- 1928 **Rose Parmelee Foster** of **Rolla, MO**, is being honored as one of the founders of the **Presbyterian Manor Retirement Home**. The facility is celebrating its 10th anniversary this year.  
 1931 **Marjorie Hammer Sullivan** of **Mishawaka, IN**, has retired from teaching. She has two children and two grandchildren. She would like to hear from alumni in the northern Indiana and southern Michigan areas.  
**Dr. Lena Lewis South** of **Euclid, OH**, traveled to **Egypt** recently to attend the **International Clinical Chemistry Conference** in **Cairo**. Dr. Lewis said she also experienced "the beautiful Nile River."  
 1933 **Harriette Gannaway Kern** of **Mt. Vernon, IL**, and her husband, **Mac**, celebrated their 50th wedding anniversary on April 18. The couple has a son, **Paul**, and two grandchildren.  
 1938 **Elizabeth White Winter Klee** of **Marissa, IL**, reports the death of her husband, **William**, on April 30.  
 1941 **Martha (Betty) Denious Muncy** of **Dodge City, KS**, publisher of the **Dodge City Globe** and president of **Dodge City Broadcasting Co.**, has been named 1984

Woman of Achievement by the **Kansas City Press Women**.

- 1948 **Irma McCormac Rahtjen** of **Independence, MO**, completed her Ph.D. in counseling psychology at the **University of Missouri-Kansas City** and is working for **Catholic Charities** and in private practice as a counselor.  
 1951 **Linda Cotton Jennings** of **Santa Ana, CA**, spent last summer with her husband and children in **London, England**, where he was on temporary assignment. She is president of the local chapter of the **American Association of University Women**.  
**Martha Kunz Reid** and her husband recently visited **Gunlog Gustafson Sekunde** at her home in **Stockholm, Sweden**. Gunlog was a student at **Lindenwood** in 1950-51.  
 1961 **Sara Cook Lewis** of **Conroe, TX**, is working for a retail drug firm located just north of **Houston**, and would like to hear from **Conroe area alumni**. Sara's oldest daughter married last year, and her youngest "is a beautiful blonde cheerleader with the **Conroe Tigers**," she reports.  
 1962 **Martha Skaer Wright** of **Frontenac, MO**, holds the position of **Group Leader** for **Monsanto Agricultural Research**, directing research biologists in the area of **soybean transformation and regeneration**.  
 1965 **Barbara Anderson Bragg** of **Kansas City, MO**, is working part-time as a **legal secretary**. Her two sons are in the sixth and eighth grades.  
**Merilyn Berryman Johnston** of **Dunwoody, GA**, reports that her husband, **Fred**, has been promoted to **colonel** in the **U.S. Army**. The couple has four children.  
 1968 **Victoria Jacobs Gray** of **Lebanon, KY**, reports the birth of her son (see "Births") and says that the **Gray's** recent move to **Lebanon** "was a good one."  
**Victor Kemper** of **Overland, MO**, recently received a Ph.D. in **English** from **Miami University** and states he "would appreciate hearing about job opportunities."  
 1969 **Maria Cowan Hanks** of **Shawnee, OK**, has two children - **Heather**, 10, and **Nathan**, 6 - and reports that her husband operates a **drilling company**.  
 1970 **Judy Bassnett** of **Albion, MI**, serves as **associate dean** for **residential life** at **Albion College**.  
 1971 **Dorothy Altman** of **Phoenix, AZ**, is a **broadcast technician** for **KTSP-TV**. She is married to **R. Lawrence Byrd**, a quality test pilot with **Sperry Flight Systems**. The couple has two children - **Andrew**, 3, and **Lori**, five months.  
 1972 **Ann Riker Jultuch** of **Crestwood, IL**, is a consultant for **Analysts International Corp.**, **Schaumburg, IL**.  
**Leslie Volz Accarrino** of **Upper Montclair, NJ**, is the owner of **Erin's Garden**, a specialty shop that sells hand-made **English smocking clothing** for children to shops in **New Jersey** and **Oklahoma**. She recently completed an intensive course in **grantsmanship** from the **Junior League of Montclair-Newark**. She is married to **Frank Accarrino** ('73) and has three sons - **Jonathan**, 9; **Matthew**, 6; and **Erin**, 3.  
 1973 **Frank Accarrino** of **Upper Montclair, NJ**, serves as **manager of engineering operations** for **NBC's "Today" Show**. He was in **St. Louis** during the **July 4 holiday** to oversee engineering operations for the show's **July 2 live broadcast** of the **Veiled Prophet Fair** from the **Gateway Arch** in **St. Louis**.  
 1974 **Ann Dohoney** of **Shawnee, KS**, is a **wildlife artist** who has traveled to many **wildlife refuges**, including several in **East Africa**, to photograph and study animals. She has exhibited her work at many art shows.  
 1975 **Cynthia Springer Malesky** of **Geneva, OH**, is a **quality control inspector** at an **Ohio nuclear power plant**.  
**Mary Cox** of **Atlanta, GA**, is **assistant news director** for **WSB-TV** in **Atlanta**.  
**Janet Frank** of **University City, MO**, is a **manager** with **Discovery Toys, Inc.**, and is looking for others to join the firm. She also has a **free-lance love-letter service**.  
**Nancy Tunison** of **Cincinnati, OH**, married **Michael Morgan** last month in **Cincinnati**. The couple plans to attend **Louisiana State University** in **Baton Rouge** where **Nancy** will begin her **Master's of Library Science** degree and **Michael** will begin his **Ph.D. in education**.

Continued on page 11



# Improving Religious Music Is The Goal

With a goal of upgrading the quality of religious music among all religious organizations in the greater metropolitan area, the Sacred Music Institute (SMI) has been created by Lindenwood College.

With initial support from major religious organizations, the SMI is designed to assume a leadership role in sacred music with functions in three specific areas, according to Armand W. Kitto, Ph.D., newly-appointed director of the institute.

First, the SMI will provide choral and organ competency training where local organists and choral directors can study towards completion of a 16-week certificate program designed to improve basic skills in sacred music.

Choral music instruction will include courses in musicianship, the study and preparation of music, conducting skills, group vocal techniques, musical leadership of congregation and special groups, clergy-musician relationships, material selection and service planning.

Keyboard classes will cover basic organ technique and registration, effective service playing, suitable organ literature for worship services, improvisation, transposition and harmonization and conducting the choir from the console, Kitto said.

Keyboard instruction will be given by Ansley D. Fleming, Ph.D., an instructor in piano and music theory at the St. Louis Conservatory & School for the Arts (CASA).

Second, the SMI will establish a resource center at Lindenwood College designed to assist participating congregations in the selection of appropriate repertoire.

Third, the SMI will provide consultation services where the director and other staff members will be available for on-site consultation with individual congregations interested in improving the effectiveness of their sacred music offerings.

The SMI has received initial support from such religious organizations as the United Methodist Church, the Episcopal Diocese of Missouri, the United Church of Christ, the Disciples of Christ and the Presbyterian Church, U.S.A.

Religious organizations may become sponsors by committing themselves to the goals of the institute, Kitto said. An institutional council, composed of members of individual denominations, will be established to monitor the educational programs of the SMI, to act as liaison with various metropolitan religious organizations and to offer guidance to the direction of the SMI as it carries out its mission, he added.

Anticipating a fall enrollment of 30 students, the SMI will be housed in Sibley Hall on the Lindenwood College campus. Classes in both choral-vocal instruction and keyboard will take place in weekly two-hour sessions during the 16-week semester. A monthly Saturday class for the combined choral-vocal and keyboard groups will treat mutual concerns of all students.



**TO UPGRADE RELIGIOUS MUSIC** — Lindenwood President James I. Spainhower, left, Robert E. Peffers, chairman of the Performing Arts Dept., and Armand W. Kitto, SMI director, look over enrollment projections for the SMI's opening term this fall. Designed to upgrade the quality of religious music, the SMI has received initial support from major religious organizations in the area.

"As new concepts and skills are introduced and expanded in the classes, each participant will have the opportunity to perform in class and to receive assistance from the instructor," Kitto said. "As many

of these enrolled in the program will be practicing church musicians, they will be encouraged to work on materials which they will be using in their own churches in addition to materials recommended by the instructor."

A well-known music educator, Kitto continues to serve as director CASA Lindenwood, the facility on the Lindenwood campus operated by the St. Louis Conservatory & School for the Arts (CASA).

With a doctorate degree in performance practice - choral music from Washington University, Kitto has served on the music faculties at the University of Evansville (IN), St. Mary's College in Notre Dame, IN, and Western Carolina University in Cullowhee, NC. He also is a former minister of music at Brownson Presbyterian Church in Southern Pines, NC, who serves as choirmaster at the Episcopal Church of the Good Shepherd in St. Louis County.

Further information on the SMI can be obtained by contacting Kitto or Charnan Kenst at the college's Department of Performing Arts, 946-6912, extension #218.

## A Gift of Real Estate?

Have you taken a look at your real estate holdings lately and wondered how you could increase your income from them during this period of recession?

Do you have some land you have been trying to sell but can't—or, at least, not without considerable monetary loss to you?

Are you looking for a way to make money while helping the Lindenwood College?

We have just the help you need. Lindenwood can now accept gifts of real estate.

We can help you realize additional income through an outright gift from you or through a "life estate contract".

We want to help you market your real estate and to make it profitable. May we hear from you?

Edward D. Watkins  
Vice-President for  
Institutional  
Development

clip & mail

To: Edward D. Watkins/The Lindenwood College  
First Capitol & Kingshighway/St. Charles, MO 63301 / (314) 946-6912

☐ Please tell me more about real estate gifts.

Name \_\_\_\_\_

Address \_\_\_\_\_

City \_\_\_\_\_

State \_\_\_\_\_

Zip \_\_\_\_\_



# Renaissance Campaign Is Succeeding!

Continued from page 1

the firm and a member of the Lindenwood College Board of Directors.

Under the leadership of Spainhower, Lindenwood's fund-raising drives have been developed in stages, Watkins said. "First, we went to our own board members and faculty and staff, asking them to contribute as a means of showing faith to the community and others in their commitment to Lindenwood College and its future direction," he said.

"After successfully raising

\$75,000 internally, we went to the St. Charles community," Watkins said, "and were favorably greeted by gifts of \$75,000 in cash and contributions, a record amount to an institution that has had more than 10 years of ineffective fund raising."

"We next went to our alumni, and have increased alumni giving from 4.8 percent in 1982 to 25 percent this year, contributing a record \$140,000 including more than \$100,000 in actual cash that already has been received by the college.

"These accomplishments

have established the credibility and groundwork for major gifts from corporations and foundations, such as the Monsanto Fund, Southwestern Bell and May Department Stores," Watkins added.

Although the major funds drive, called the Renaissance Campaign, was announced in January, actual fund-raising efforts began in early March.

The Renaissance Campaign is designed to raise \$8 million for facilities development and campus expansion; \$1.4 million for student development, including

\$1 million for scholarship awards to deserving students; and \$500,000 for community development, including programs in basic skill development, value orientation and work-service preparation.

The \$8 million in facilities development includes the construction of the Renaissance Center, a \$5 million, multi-purpose athletics, performing arts and community complex, and \$3 million for major renovations and repairs of buildings on the 157-year-old campus.

The most ambitious fund-raising drives in Lindenwood College's history, the Renaissance Campaign is cochaired by Robert F. Hyland, chairman of the college's board of directors and regional vice-president of CBS Radio, Inc., in St. Louis, and S. Lee Kling, a member of the board and chief executive officer of Landmark Bancshares.

Stating they were confident Lindenwood can meet its three-year goal to secure \$10 million in cash and contributions, both have been instrumental in helping to raise a portion of the \$1.026 million received since January, 1983.

"The support that has been shown in the first few stages of this fund-raising campaign is very encouraging to the future of Lindenwood College," Hyland said.

## Insurance Gift To College

Continued from page 6

Using a 35-year-old female as another example, a lesser policy, such as a \$10,000 whole life one, would cost about \$200 annually in premiums.

If annual dividends were deposited into the policy, it would provide nearly \$8,200 in total cash at age 65 or nearly \$14,000 in death benefit if the woman died at age 65, both of which would be made payable to Lindenwood. These amounts are based on the assumption the woman could stop paying the annual \$200 cost after 10 years, allowing the policy to continue without payments between ages 45 and 65.

For the 10-year period, between ages 35-45, the woman could deduct \$2,000 in taxes if the college owned the policy and if payments on the premium were made payable to Lindenwood each year.

Thus, 10 years of payments would cost the woman \$2,000, an amount that could be tax deducted by the insured, and, at age 65, would provide Lindenwood College with nearly \$8,200 in actual cash or nearly \$14,000 in the event of the woman's death at age 65.

Most major insurance carriers

in the country offer various forms of whole life policies as well as other forms of insurance gifting. One firm, Equitable Life Assurance Society, the nation's third largest carrier, also offers its Life Account, an adjustable whole life policy that can be utilized as an investment or savings account in addition to an insurance policy.

According to Allen R. Funk, a representative of the firm's office in Clayton, MO, the Equitable Life Account has been on the market for a little more than a year and has proven to be one of the company's most popular forms of life insurance.

The Life Account offers added benefits to both the insured and to Lindenwood College.

Using a 35-year-old male as an example, a \$25,000 Life Account would cost the insured \$417 per year in premiums, all of which is tax deductible. When the individual reaches 48 years of age, the account would be paid and would be worth nearly \$10,400 in actual cash, based upon a current interest rate of 10.5 percent, or \$25,313 in the event the man died at age 48.

At age 65, the account would have a cash value of \$50,400 or a

death benefit of nearly \$80,000. During the length of the policy, Lindenwood could use the cash value as collateral or could borrow against it for loan needs.

Funk urges those interested in insurance gifting to review their current life insurance policies and then talk with their agents regarding possible ways to aid Lindenwood College as well as to help in tax deductions.

Specific information on insurance gifting programs can be obtained by contacting Lindenwood's Development Office at (314) 946-6912, or calls may be directed to Funk at the Equitable Life Assurance Society office in Clayton, (314) 889-0507.

## Alumni Gifts Set Record

Continued from page 1

"From those we have talked to, it is obvious that alumni, many of whom have not supported the college financially in the past, are pleased with the progress Lindenwood has made in recent months under the leadership of the president and the board of directors," Watkins said.

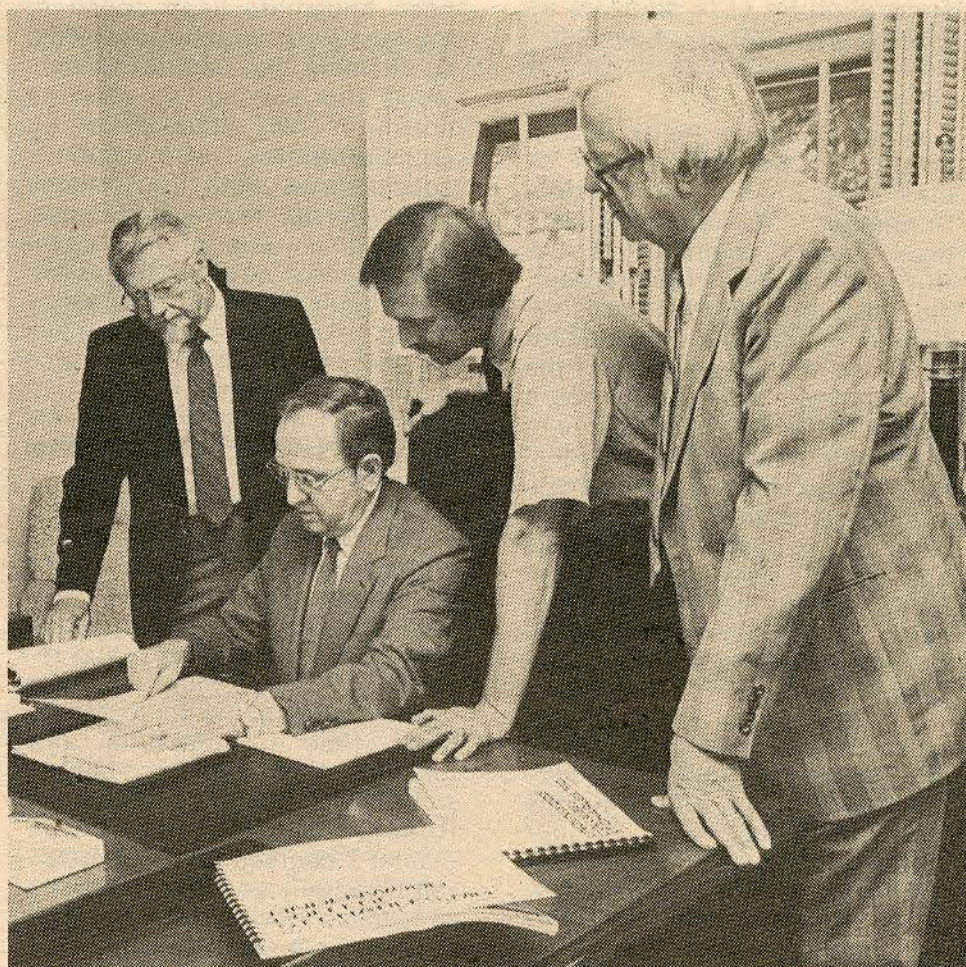
Thompson also credited the phone-a-thon's success to volunteer efforts of faculty and staff along with the area alumni and Lindenwood students. Nearly 100 different people manned day and evening shifts to telephone 5,500 alumni throughout the country. In addition, volunteers also updated the college's listing of more than 9,000 alumni names, addresses and telephone numbers prior to the start of the phone-a-thon.

About one out of every two alumni who were contacted contributed cash or contributions to the college. Contributions ranged from \$1 to \$5,000.

Among volunteers with significant records of accomplishments during the Renaissance Alumni Phone-a-thon are Darlene Jemison of the campus Book Store; James F. Hood, Ph.D., dean of the Evening College and acting dean of faculty; Carol Simpson of the Conferences and Public Relations office; Thompson's wife, Pamela R., a 1979 alumna; Diane Heidelbaugh, president of the St. Charles-Lindenwood Alumni Club; and Sherry Tayon of St. Charles, a 1979 alumna.

In addition to volunteer efforts, about 25 St. Charles area merchants donated gifts and certificates for the phone-a-thon, which were awarded to those with high records of cash and contributions from Lindenwood alumni.

"The college is extremely grateful to the many volunteers and contributors who have made the phone-a-thon an unprecedented success," said Watkins.



**AN EYE ON DEVELOPMENT** — President James I. Spainhower, seated, and St. Charles members of the college's board of directors, from left, Raymond W. Harmon, Gary L. Cowger and Henry J. Elmendorf, look over Lindenwood's master development plan. Recently approved by the board, the plan includes \$8 million in facilities development consisting of construction of a \$5 million Renaissance Center and \$3 million for major renovation of historic buildings on the 142-acre campus. Funding for the development is earmarked from the college's Renaissance Campaign, a multi-faceted effort to raise \$10 million by 1987. (Photo courtesy of Roy Sykes, ST. CHARLES JOURNAL)



# people & places



MORRIS

RUFKAHR

**Marilyn A. Morris**, director of day admissions, has been appointed athletic director, replacing **John Nichols**, associate professor of math, who has been serving as interim director. A 1976 graduate of Northeast Missouri State University with a major in physical education, she has been a member of the Admissions Office staff since 1980. In her expanded position, she will work closely with the National Association of Intercollegiate Athletics and supervise coordination of the men's and women's soccer and basketball teams, the women's softball team and the men's basketball program.

**Pat Beck**, former LCIE admissions secretary and narrative transcript typist, has been appointed LCIE Student Services Coordinator. Her new duties include the supervision of the registration and transcript preparation for LCIE students as well as organization of weekend workshops and assignment of classes.

**Arthur E. Prell, Ph.D.**, of St. Louis, former professor of marketing at Southern Illinois University - Edwardsville, has been named chairman of the Business Administration Dept. and director of the Babcock Center for the Study of Modern Business. A 1948 graduate of the University of Redlands, he has a master's degree from Washington University and a doctoral degree from the University of Minnesota. With 25 years of experience in teaching, he has operated his own marketing and management consulting firm since 1973, and has held several business and government positions.

**Randi Kapp** has been named acting Director of the Consolidated Advising Program and associate dean of College Life. A 1967 graduate of St. Louis University, she is enrolled in the LCIE and expects to graduate this year with a master's degree in counseling psychology. Prior to joining Lindenwood, she served at Washington University where she provided counseling for students in areas of career development and personal growth and in designing and presenting programs on career exploration and decision making. She is a member of the St. Louis Psychoanalytic Institute, the American Association of Marriage & Family Therapists and the Missouri Mental Health Counselors Association.

**Jerry A. Rufkahr** of St. Charles, former director of the St. Charles County Government Office of Employment & Training Programs, has been appointed Vice-President of Administration. A 1973 graduate of the University of Missouri-St. Louis, he will be responsible for managing Lindenwood's conferences and meetings, capital improvements, the physical plant, security and all auxiliary operations, including food services, the book store and stadium. In the newly-expanded position, he replaces **Sydney G. Parrish**, former director of conferences and special events who has relocated to Arlington, VA.

**Richard Rickert, Ph.D.**, associate professor of philosophy and faculty advisor for the LCIE, has been elected president of the Lindenwood chapter of the American Association of University Professors (AAUP). Other officers include **Judith W. McMahon, Ph.D.**, assistant professor of psychology, vice-president; **Rebecca Glenn**, assistant professor and LCIE faculty advisor, secretary; and **Hans Levi**, assistant professor of photography, treasurer.

**Joseph J. Olwig**, of Florissant, MO, head coach of the Busch Men's Senior Soccer Club, has been appointed head coach of the men's soccer team, replacing **C. C. Lowry** who has left Lindenwood after serving five years as coach. A 1982 graduate of St. Louis University, Olwig began his soccer career with the Catholic Youth Council teams in St. Louis, played four years in high school and earned a soccer scholarship at St. Louis University. Drafted by the St. Louis Steamers, Olwig has six years of coaching experience as was a member of the U.S. Junior Olympics and the All-Midwest National Sports Festival teams in 1979.

**Ann Canale, Ph.D.**, assistant professor of English, has been appointed chairman of the English Dept. She replaces **Howard A. Barnett, Ph.D.**, who requested to be relieved of the chairmanship so he could devote more time to teaching and research. A member of the faculty since 1981, she is a graduate of Rosary College and holds master's degrees from John Carroll University and the University of Massachusetts and a doctoral degree from the University of Massachusetts.

Lindenwood College has been included in a slide presentation of Presbyterian educational institutions that will be shown at the Presbyterian Church, U.S.A., meeting of the General Assembly Council, October 7-9. The college joins other affiliated institutions throughout the country that will be highlighted during the three-day meeting of the council. A location for the annual meeting has yet to be determined.

Lindenwood has received a \$300 gift from the St. Charles Noon Day Optimist Club that will be used for equipment and operational costs for the men's baseball team. A formal presentation was made recently by club President **Hugh Orr** of St. Charles. Accepting the gift on behalf of Coach Mark Hahn and Lindenwood College were **James D. Thompson**, a major funds coordinator for the college, and **Thomas F. Schapp** of Creve Coeur, MO, a senior who graduated in May and who played positions as pitcher and third baseman on the team.

**John A. Bornmann, Ph.D.**, professor of chemistry and department chairman, is the coauthor of a paper which appeared in a recent issue of the *Journal of Polymer Science*. The article, written by Dr. Bornmann and Clarence J. Wolf, Ph.D., and entitled "Reaction of Nitric Acid with a Solid Epoxy Resin," described the work done by Dr. Bornmann last summer at McDonnell Douglas Research Laboratories in St. Louis. The research was supported partially by a grant from the National Science Foundation.

The Lindenwood College Board of Directors granted the title of professor emeritus of music to **Allegra Swingen**. Joining the Lindenwood faculty in 1946, she had the longest tenure of any faculty member, and retired this spring after nearly four decades of outstanding service to the college.

**Edith E. Graber, Ph.D.**, of St. Louis, associate professor and chairman of the Sociology Dept. at Lindenwood College, is among 12 educators chosen to attend "Anthropological Approaches to the Law," an eight-week seminar being held now through August 17 at Dartmouth College in Hanover, NH. The summer seminar is funded by the National Endowment for the Humanities and is one of several being held at college and university campuses. They are designed for scholars at both public and private institutions who do not have access to major research facilities.

**Bob Benben**, coach of the men's basketball team, scored another victory recently when he coached the Missouri team to a 93-92 victory against the Illinois team in the annual McDonald's All-Star Classic. Held at the University of Missouri-St. Louis campus, the event pitted the best high school seniors in Missouri against their counterparts from Illinois. Endorsed by the National College Athletic Association, the game raised more than \$2,000 that will be used to benefit the Cardinal Glennon Memorial Hospital for Children in St. Louis.

**Linda White**, head coach of the women's softball team, has been named assistant athletic director. A 1966 graduate of Northeast Missouri State University, she has been a member of the athletic staff since 1982. She also serves as head resident of Cobbs Hall.



**A DEMOCRATIC DISCUSSION** - Missouri Sen. Harriet Woods confers with John Nichols, associate professor of math and St. Charles County Auditor, during her recent visit to the Lindenwood campus as part of the Alice Parker Lecture series, sponsored by the Lindenwood chapter of the American Association of University Professors (AAUP). Currently vying for lieutenant governor, Sen. Woods is a former member of the University City (MO) Council who was elected first to the Senate in 1976. A former newspaper reporter and television reporter, she has a distinguished career in government that has brought her statewide recognition. The lecture series is named for the English professor at Lindenwood who died in 1961 and who is credited with the founding of the first AAUP chapter at the college.



## 'Attic Sale' Proceeds To Benefit Students

Lindenwood students will benefit from the nearly \$1,000 that was raised at "Mrs. Sibley's Attic Sale," a fund-raising event sponsored this spring by the St. Charles-Lindenwood Alumni Club.

Proceeds from the event, held at the St. Charles campus, will be used for student scholarship awards and for the partial renovation of the college's gymnasium in Butler Hall, according to Mrs. Glenda Schaefer of St. Charles, immediate past president of the club and one of the organizers of the event.

Several hundred area residents attended the six-hour sale in which nearly 50 antique dealers, arts-and-crafts exhibitors and tailgate vendors displayed and sold a variety of merchandise at several campus locations.

The fund-raising event, the first of its type sponsored by the alumni club, was named

for Mary Easton Sibley, co-founder of the 157-year-old institution.

### Merit Award

Gerald A. Gayer of Cupertino, CA, received this year's Alumni Merit Award, an annual presentation given to an individual who has demonstrated distinguished service to a career, the community or the college, at spring commencement.

A 1960 graduate of Washington University, he received an MBA degree from Lindenwood in 1979. Gayer is Manager of Quality Assurance for Monsanto Electronics Materials Co. in Palo Alto, CA.

He was chosen for his service to the college, particularly for volunteer work and as a former secretary to the Alumni Council from 1980-83.



## class notes

Continued from page 7

- 1976 **Jean Moore Carfagno** of Los Angeles is a therapist with the Adolescent Chemical Abuse Unit at Doctors' Hospital in Lakewood, CA. She also is national director of Mortar Board and senior honorary director of chapters in California, Hawaii and Nevada.
- April Center Bloom** of Columbus, OH, is studying law at Ohio State University.
- 1980 **Paula Schmidt Hildebrand** of St. Louis is a management programmer/analyst for Granite City Steel. She received a master's degree in applied mathematics with an emphasis in operation research and statistics from Southern Illinois University this spring.
- 1981 **Nancy Black** of St. Charles teaches English and contemporary literature at St. Charles West High School. She has written her second book, *Science Fiction - Reading, Writing and Understanding*, published by Book Lure, Inc.
- 1982 **Brian O'Leary** of New York City is a systems engineer and designs new billing systems for AT&T.
- James Schiro, Jr.**, of Florissant, MO, is a corporate accountant with Maritz, Inc., a St. Louis motivational development firm.
- 1983 **Arnold Lewis** of Atchison, KS, is assistant director of development for Benedictine College.
- Denise Bergrowicz** of St. Charles was the first woman to finish the third Olympiad Memorial Marathon, a 26-mile event recently held in St. Louis.

## Lindenwood College Alumni Council

<b>PRESIDENT</b>	<b>Jeanine Webster</b> (Butts '72) 9900 S. A1A, Apt. #1306 Jensen Beach, FL 33457
<b>VICE-PRESIDENT</b>	<b>Janet Bornstein</b> (Lewis '56) 810-D W. Wakefield Sikeston, MO 63801
<b>SECRETARY</b>	<b>Miriam King-Watts</b> ('66) 516 N. Seventh St. St. Charles, MO 63301
<b>TREASURER</b>	<b>Thomas Bakewell</b> ('74) 329 Leonora Memphis, TN 38117
<b>COUNCIL-AT-LARGE</b>	<b>Jan Kniffen</b> ('78) 12 Green Number One Dr. St. Charles, MO 63301 <b>Karen Simmons</b> ('81) 4727 Kensington Place St. Louis, MO 63108 <b>Eric Stuhler</b> ('78) 3208 Fox Hill Rd. St. Charles, MO 63301 <b>Mrs. Tommy Rupinski</b> (Buell '74) 43 Fifth Ave., Apt. 5-W New York, NY 10003 <b>Mrs. Maurita Stueck</b> (Estes '43) 73 Webster Woods St. Louis, MO 63119 <b>Michael Wood</b> ('83) 2530 Dresden St. Louis, MO 63033 <b>Suzanne Glenzy</b> ('79) 3600 Tremont Florissant, MO 63033 <b>Mr. J.R. Hundley</b> ('81) 1338 Chambers Rd. Delwood, MO 63135 <b>Maggie Kracke</b> ('81) 933 Concordia Lane Clayton, MO 63105 <b>Mrs. Nell Jones</b> (Henninger '32) 11301 E. 55th Terrace Raytown, MO 64133

<b>ADVISORY BOARD</b>	<b>Don Gilbert</b> ('82) 614 Spring Meadows Dr. Ballwin, MO 63011 <b>Nancy Dietz</b> (Prosser '76) 12784 Willowick Creve Coeur, MO 63141 <b>Carla Stuhler</b> ('82) 3106 Persimmon Dr. St. Charles, MO 63301
<b>BOARD OF DIRECTORS</b>	<b>Mrs. Dorothy Warner</b> (DuQuoin '36) Route 5, Box 288 Laconia, NH 03246 <b>Mrs. Judith Brougham</b> (Batton '60) 4204 Clark Kansas City, MO 64111
<b>BOARD-LIFE MEMBERS</b>	<b>Mrs. K.K. Barton</b> (Dyke Steinbeck '29) 4618 Warwick, Apt. 8-F Kansas City, MO 64112 <b>Mrs. Barbara Hamill</b> (Ringer '32) 6456 Brandywine Lane Oklahoma City, OK 73116 <b>Mrs. Nell A. Reed</b> (Quinlan '09) 3049 Wornull Rd. Kansas City, MO 64112
<b>CLUB PRESIDENTS</b>	
<b>Southern California</b>	<b>Betty Fitzpatrick</b> (Butler '37) 32710 San Amadeo Laguna Hills, CA 92653 <b>Mrs. Diane Heidelbaugh</b> ('82) 42 Dauphine Lake St. Louis, MO 63367 <b>Mrs. Joanne O'Keefe</b> (Kleberger '70) 9500 Yorktown Dr. St. Louis, MO 63137 <b>Susann Riffe</b> ('70) 8805 W. 76th St. Overland Park, KS 66204
<b>St. Charles</b>	
<b>St. Louis</b>	
<b>Kansas City</b>	



# LCIE Opens Gerontology Institute

The Lindenwood College for Individualized Education (LCIE) announces the opening of the Lindenwood Gerontology Institute, a facility that offers course work leading to undergraduate and graduate degrees in gerontology.

The LCIE also has approved a program that offers graduate certification in gerontology, according to Arlene Taich, Ph.D., director of the institute and dean of the LCIE.

"With instruction to be provided by practitioners and researchers in the field of aging in addition to LCIE faculty members, the Gerontology In-

stitute will offer practicum placements and residencies in a variety of settings in the metropolitan area that provide services to the elderly," she said.

Lindenwood also will offer additional degree programs in related fields such as health administration, counseling psychology, art therapy, holistic health and volunteer management.

"Noncredit and continuing education unit (CEU) offerings also will be available upon request as well as agency in-service training programs," Taich said.

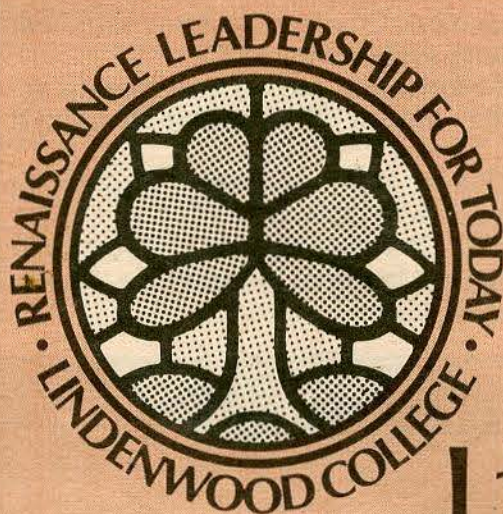
A 1966 graduate of Ohio State University, Taich has master's and doctoral degrees from St. Louis University (SLU) as well as a certificate in gerontology from SLU's Institute of Applied Gerontology. Prior to joining the Lindenwood faculty in 1980, she served as a behavioral scientist at SLU's Dept. of Community Medicine and as a consultant to the School of Medicine at the University of Missouri - Columbia.

The Gerontology Institute is located within the LCIE, which has provided full-time studies for working adults for nearly a

decade. In addition to the main campus in St. Charles, the LCIE offers gerontology studies at satellite branches in Clayton and west St. Louis County.

In addition to educational instruction at the three locations, the Lindenwood Gerontology Institute eventually will offer consulting services, community programs to provide information for and about the elderly and hostel on campus, Taich said.

Tuition, scholarships and financial aid assistance are available to qualified applicants. For further information on gerontology offerings and the newly-formed institute, contact Taich at the LCIE, (314) 946-6912, extension #384.



You may know  
a student who will  
qualify for a

## Lindenwood College Leadership Scholarship \$4,000 value

A student may qualify if he/she has maintained an above average academic record (minimum 2.5 cumulative G.P.A. on a 4.0 scale) and acceptable test scores and has established a record of achievement through participation and leadership in school activities and/or service to community or church.

Leadership Scholarships are awarded to students who: meet the admissions criteria of Lindenwood College; can benefit from Lindenwood's academic programs; will be a resident on campus; and will contribute four hours a week in service to the college as a student ambassador or in other positions.

A scholarship has a maximum value of \$1,000 per year and is renewable for students who continue to qualify. Candidates also may qualify for other institutional scholarships, state and/or federal financial assistance.

### NOMINATION

I wish to nominate: NAME \_\_\_\_\_  
 ADDRESS \_\_\_\_\_  
 CITY \_\_\_\_\_ STATE \_\_\_\_\_ ZIP CODE \_\_\_\_\_  
 TELEPHONE NUMBER \_\_\_\_\_ DATE OF HIGH SCHOOL GRADUATION \_\_\_\_\_  
 HIGH SCHOOL/COLLEGE \_\_\_\_\_ ACADEMIC AREA OF INTEREST \_\_\_\_\_

Nominator: SIGNATURE \_\_\_\_\_  
 NAME \_\_\_\_\_  
 ADDRESS \_\_\_\_\_  
 CITY \_\_\_\_\_ STATE \_\_\_\_\_ ZIP CODE \_\_\_\_\_  
 EMPLOYER \_\_\_\_\_

Mail to: Admissions Office, Lindenwood College, St. Charles, Missouri 63301

## GM Workers on Campus

Nearly 200 employees of General Motors Corp. underwent two-week sessions of intensified training this summer at the Lindenwood campus.

The two-week sessions included lectures, group discussions and practical exercises in intergroup relations, small group development, motivation, teaching and presenting skills, conflict resolution, stress management, creative problem solving and team development. The sessions at Lindenwood were followed by a one-week training course at the General Motors Assembly Division in Wentzville. Campus training was coordinated by GM personnel.

Most of the 200 workers taking part in the summer program were from the GM Assembly Division Plant in Willow Run, MI.

Similar to programs conducted last summer and fall at Lindenwood, the summer sessions were part of a cooperative agreement made last year between GM and Lindenwood that provides academic credit and instruction at Wentzville.

The joint agreement is designed to increase the skills of GM workers by providing nearly 20 hours of instruction by GM personnel and Lindenwood faculty members. The college provides academic credit for training courses offered by GM in such areas as group dynamics, conflict management and social science statistics.

Lindenwood supplements the GM training by offering instruction in human behavior management, communications, business stimulation and data processing/computer science.