

# LINDENWOOD UNIVERSITY

**New Academic  
Appointments  
2015-16**

LINDENWOOD

LIKE NO OTHER

# Mission Statement

Lindenwood University offers values-centered programs leading to the development of the whole person – an educated, responsible citizen of a global community.

## **Lindenwood is committed to**

- providing an integrative liberal arts curriculum,
- offering professional and pre-professional degree programs,
- focusing on the talents, interests, and future of the student,
- supporting academic freedom and the unrestricted search for truth,
- affording cultural enrichment to the surrounding community,
- promoting ethical lifestyles,
- developing adaptive thinking and problem-solving skills,
- furthering lifelong learning.

Lindenwood is an independent, public-serving liberal arts University that has a historical relationship with the Presbyterian Church and is firmly rooted in Judeo-Christian values. These values include belief in an ordered, purposeful universe, the dignity of work, the worth and integrity of the individual, the obligations and privileges of citizenship, and the primacy of the truth.

## Letter from the Vice President for Human Resources



This is an exciting time at Lindenwood University. In June, we welcomed our new president, Dr. Michael D. Shonrock, whose leadership is exemplified by a culture of adaptability and mutual respect. We have also welcomed 25 new full-time faculty members, whose individual qualifications are detailed in the pages of this book.

Our new faculty are dispersed across Lindenwood's campuses in St. Charles, Mo., and Belleville, Ill., and in our School of Accelerated Degree Programs. Upon reading about them, you will undoubtedly find them to be people of impeccable academic and professional credentials. Upon meeting and working with them, you will be impressed by their integrity, ethics, and professionalism as well, befitting Lindenwood's students-first tradition of academic excellence.

Sincerely,

A handwritten signature in black ink that reads "Deb Ayres". The signature is fluid and cursive, with a long, sweeping underline that extends to the right.

Deb Ayres, EdD

Vice President for Human Resources



## School of Accelerated Degree Programs

Communications and MFA Programs  
Belleville Campus

---

### **Mary M. Anderson**

MFA in writing  
University of Missouri—St. Louis

Mary M. Anderson is an educator and writer with a background in fiction, poetry, and Native American studies. She currently teaches communications in the School of Accelerated Degree Programs at Lindenwood University-Belleville and fiction and poetry in the MFA Program at Lindenwood. In the past, she also taught Native American cross-cultural studies and lived in the Pacific Northwest in 2012 while researching Native American tribes for six months on a personal sabbatical. Her work is published in *Ploughshares*, and *River Styx* and other literary journals. She has taught over 1,300 Lindenwood students since 2007 and is the general education faculty advisor and assistant professor in the School of Accelerated Degree Programs for the 2015-16 school year. She teaches communications in Belleville and Collinsville and in the MFA Program Online.



## School of Accelerated Degree Programs

Department of Economics and Finance  
St. Charles Campus

---

### **Gregory P. Aubuchon**

JD  
Vanderbilt University

Gregory Aubuchon is the program director for undergraduate economics and finance at Lindenwood University's School of Accelerated Degree Programs in St. Charles, Mo. Aubuchon earned his Juris Doctor from Vanderbilt University and his Master of Arts degree in economics from the University of Missouri-St. Louis. Aubuchon previously served as the director of the Labor and Education Market Analysis (LEMA), where he worked with various state and regional agencies, including the Missouri Gaming Commission. Aubuchon co-authored the Gaming Commission's statewide market impact study preceding the 2008 general election, a project in which he was the principal investigator. This study was used as a basis for the fiscal note supporting Proposition A. Aubuchon maintains a presence in the national community of forensic economists and has represented various regional and Arizona-based law firms as an economic expert in wrongful death and personal injury lawsuits. As a member of the American Academy of Economic and Financial Experts, he stays abreast of current developments in this ever-evolving profession. Personal interests include musical composition and recording.



## School of Accelerated Degree Programs

Marketing Program  
St. Charles Campus

---

### **Mazen Badra**

DMgt, global leadership emphasis  
Colorado Technical University

Mazen S. Badra, DMgt, is the marketing program director in the School of Accelerated Degree Programs. Badra earned his doctorate in management with a global leadership emphasis from Colorado Technical University, a Master of Business Administration from Amberton University with a focus on marketing, and a bachelor's degree in business and economics from Birzeit University in the Holy Land.



## School of Sciences

Department of Psychology  
St. Charles Campus

---

### **Sara L. Bagley**

PhD in experimental psychology  
Saint Louis University

Sara Bagley holds a Bachelor of Arts in psychology and mathematics from Westminster College and a Master of Science and Doctor of Philosophy in experimental psychology (cognitive neuroscience) from the Saint Louis University. She comes from Loras College, where she developed a neuroscience program, taught psychology and neuroscience courses, had a small research studies group with undergraduate students, and served on the IRB. She has taught courses in introductory psychology, research design and statistics, behavioral neuroscience, sensation and perception, and traumatic brain injuries. Her research experiences revolve around understanding the connections between stress (as measured by physiological changes in the body) and cognition (recently memory and time perception). Her professional accomplishments include obtaining a 2014-15 Psi Chi Faculty Advisor Grant and multiple publications in peer-review journals. For the 2015-16 academic year, Bagley's focus is teaching courses at Lindenwood in her area of expertise, advising, and volunteering at the Alzheimer's Association.



## School of Accelerated Degree Programs

Department of Accounting  
St. Charles Campus

---

### David Buenger

MBA  
Webster University

David Buenger has begun his new position with the School of Accelerated Degree Programs as the assistant professor and program director of accounting. Buenger holds a Bachelor of Science in accounting from Truman State University and a Master of Business Administration from Webster University and is currently working on a doctorate degree at Northcentral University. Buenger is a licensed certified public accountant in the state of Missouri and has earned the professional designations of certified management accountant and is certified in financial management from the Institute of Management Accountants. Buenger brings to the classroom more than 25 years of practical work experience and more than 10 years of teaching experience, most recently with Lindenwood University in the Robert W. Plaster School of Business & Entrepreneurship.



## Division of Business & Entrepreneurship

Department of Sport Management  
Belleville Campus

---

### Ted Burden

PhD in Sport Management  
University of Texas at Austin

Prior to starting his PhD, Burden was a high school varsity coach at various high schools throughout Texas. He has coached youth (interscholastic/community) sports for over 25 years. Burden earned his M.Ed. in education administration and his B.S. in composite social sciences at Texas A&M University–Commerce. Burden’s primary research interests include alternative after-school physical activity programs for U.S. secondary schools and business and entrepreneurship in sport. As a member of the North American Society of Sport Management and Committee on Sport Management Accreditation, Burden stays active in the effort to bring comprehensive and sustainable physical activity and sport to all school children. In addition to his publications in the *Journal for the Study of Sport and Athletes in Education (JSSAE)*, and *Cunningham’s Psychology of Sport and Physical Activity* (textbook for Texas A&M University), Burden has presented at AAHPRED, NASSM and the USOC National Coaching Conference. His expertise in coaching, coach training, and sport and physical activity program design is supported by his research, publications, and presentations.



## School of Humanities

Department of English  
St. Charles Campus

---

### Jill Hamilton Clements

PhD in English  
University of Illinois at Urbana-Champaign

A native of northern Missouri, Dr. Jill H. Clements received her PhD in English

from the University of Illinois with a focus on Old English and medieval literature. She completed her undergraduate work in English at Truman State University (Phi Beta Kappa) and holds a master's degree in medieval studies from the Medieval Institute of Western Michigan University. Clements' research interests include Old English language and literature, death and material culture, memory studies, and Anglo-Saxon law. Her recent work has been published in *Gesta* and in *Anglo-Saxon England*, and she has essays forthcoming in various scholarly publications. Her current book project, *Writing the Dead in Anglo-Saxon England*, examines the interplay of bodies and texts in Anglo-Saxon commemorative genres and in religious and heroic poetry. Clements has taught a range of undergraduate literature and language courses, including Gender in Medieval Epic, Monsters and Monstrosity in Medieval and Modern Literature, and the History of the English Language.



## School of Accelerated Degree Programs

Department of Management  
St. Charles Campus

---

### Robert Cote

PhD in organizational behavior and management  
Capella University

Robert Cote is assistant professor and program director for undergraduate and graduate management in the School of Accelerated Degree Programs. He has a Bachelor in Business Administration in accounting from Western Michigan University, a Master of Business Administration from Baker College, and a doctorate in organizational behavior and management from Capella University. He has worked in the pharmaceutical industry for over 20 years in various management and leadership roles. In addition, he has been teaching undergraduate and graduate courses in leadership, management and administrative theory, organizational behavior, personnel management and labor relations, and business management capstone. Utilizing his teaching and business experience, he will focus on helping students develop critical thinking and problem-solving skills in the management program. As an advisor, he will be proactive in helping students plan and coordinate all aspects of their program of study through degree completion. As a program SME, he will participate in professional development activities while continually developing his skills in the management and leadership discipline focus area.



## School of Accelerated Degree Programs

Department of Information Technology  
Belleville Campus

---

### **James Daniels Jr.**

MBA, emphasis in technology management  
University of Phoenix

James Daniels Jr. holds a Bachelor of Science in industrial technology from Western Illinois University and a Master of Business Administration with emphasis in technology management from University of Phoenix. Daniels has worked in the technology field for over 20 years in various leadership roles such as director of technology services for several companies. Daniels' technology education experience has been predominantly with undergraduate information technology students. He has taught courses in introduction to technology, new technology integration, and project management process. Utilizing his teaching and IT management experience, he plans to enhance program planning while improving the management information systems and information technology graduation and retention rates. For the 2015-16 academic year, Daniels is also focusing on improving student recruitment, advising, and teaching courses that will improve the overall student experience within the Information Technology Program.



## Division of Health and Fitness Sciences

Department of Athletic Training  
Belleville Campus

---

### **William Dill**

MS in recreation and sport sciences,  
emphasis in athletic training  
Ohio University

William Dill holds a Bachelor of Science in athletic training from McKendree University and a Master of Science from Ohio University in recreation and sport sciences with an emphasis in athletic training and is working toward an EdD in instructional leadership at Lindenwood University. Dill's athletic training education experience includes teaching within CAATE accredited programs at the undergraduate level as well as supervising clinical field experience. Dill's professional accomplishments include serving on the Illinois Athletic Trainers Association Board of Directors as the Region 4 representative, committee chair of the NAIA Athletic Trainers Association Professional Education and Research Committee, and committee member for the NAIA Council for Student-Athletes. In the 2015-16 academic year, he is focusing on supporting the educational needs of the students in the athletic training program, advising, and teaching courses within the academic program.





## **Division of Natural Sciences and Mathematics**

Department of Biology  
Belleville Campus

---

### **James Enyart**

DC  
Logan College of Chiropractic

James (“Jay”) Enyart is an educator with a strong clinical background. He holds a Bachelor of Science in psychology and a Master of Science in kinesiology from Southern Illinois University Edwardsville, as well as a Doctor of Chiropractic degree from Logan College of Chiropractic. He has private practice experience, as he owned and operated his own chiropractic practice in Belleville, Ill., for approximately seven years as a licensed chiropractic physician. He has taught courses in introductory biology, nutrition, and anatomy and physiology for Lindenwood University-Belleville and St. Louis Community College. At Lindenwood University-Belleville, he is teaching courses in anatomy and physiology, nutrition, and exercise science. In addition to teaching, he is looking forward to supervising students in clinical-based internship opportunities.



## **Robert W. Plaster School of Business & Entrepreneurship**

Department of Finance  
St. Charles Campus

---

### **Javeria Farooqi**

PhD in business administration  
University of Texas Pan-American

Javeria Farooqi earned her Bachelor of Arts degree in journalism in 2007 and her Master of Business Administration in 2010 from the University of Texas Pan-American. In August of 2014, she received her PhD in business administration with a concentration in finance from the University of Texas Pan-American. Farooqi has been the recipient of numerous honors and awards, including UTPA Excellence, International Women’s Board, and VIP Star Scholarships. She was also a recipient of Texas Business Hall of Fame Scholarship. She is a member of Beta Gamma Sigma and Phi Kappa Phi honor societies. She has presented her research at several national and international conferences, and her research has been published in numerous major academic journals. Farooqi’s research interest includes international diversification, Islamic finance, style investing, and mutual funds. She teaches general finance courses at the undergraduate and graduate levels. She is also looking forward to continuing her research in collaboration with faculty and students.



## School of Accelerated Degree Programs

Department of Gerontology  
St. Charles Campus

---

### **Tina Grosso**

MA in gerontology  
Lindenwood University

Tina Grosso holds a Bachelor of Science in psychology and a Master of Arts in gerontology from Lindenwood. She is set to defend her doctoral dissertation on aging with developmental disabilities this spring. Grosso has served as an adjunct instructor and instructor of gerontology at Lindenwood for the past five years, while also working as an executive assistant in the president's office. Grosso is a volunteer for the Alzheimer's Association and actively serves on several academic and community outreach committees. Grosso teaches numerous graduate and undergraduate courses in gerontology. Her professional accomplishments include a current appointment as the faculty advisor for Lambda Upsilon, Lindenwood's Sigma Phi Omega Chapter, the national academic honor and professional society in gerontology. For the 2015-16 academic year, Grosso's focus is supporting the successful launch of Lindenwood's new online graduate gerontology program and teaching courses in global aging and emerging issues in gerontology.



## School of Education

Department of Special Education  
St. Charles Campus

---

### **Kelly Hantak**

MA in elementary education  
University of Missouri–St. Louis

Kelly Hantak has been involved in the fields of early childhood and early childhood special education for over 20 years as a preschool teacher, special education teacher, early interventionist, and coordinator. She taught courses in the Child Care and Early Education Department at St. Charles Community College for seven years prior to joining Lindenwood University as an adjunct instructor and advisor in 2012. She co-authored and published the article "Theory to Practice Model: Collaborative Partnerships between University and Early Intervention Programs to Prepare Graduate Students to Follow the Early Intervention Teaming Model" with Dr. Rebecca Panagos and received the 2013-2014 Nancy Polette Early Childhood Education Award from Lindenwood University. Hantak is in the Instructional Leadership doctoral program with an emphasis in andragogy at Lindenwood. She serves on the National Governing Board for the National Association for the Education of Young Children as well as several committees at the national, state, and local levels.



## School of Accelerated Degree Programs

Department of Information Technology  
St. Charles Campus

---

### **Jaime R. Inman**

MAT  
Webster University

Jaime R. Inman has been an educator for almost 10 years, teaching technology to grades K-12 in public and private education settings. Inman has extensive experience in teaching various computer programming language classes. Inman has served as an adjunct instructor at the University of Missouri—St. Louis, teaching in the ACP program in computer information systems. In addition, she also has worked as a technology coordinator and webmaster for a private school and completed her Bachelor of Science degree in business administration with minors in accounting and marketing from Maryville University. Inman holds teaching certificates in early childhood and business education and is working on her doctorate at the University of Missouri—St. Louis, an EdD in curriculum and instruction. She holds a master's degree in curriculum and instruction from the University of Missouri—St. Louis, as well as a Master of Arts in Teaching from Webster University in educational technology. Inman will serve as program director/instructor of undergraduate information technology for the School of Accelerated Degree Programs.



## School of Communications

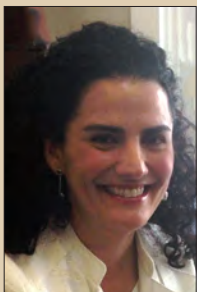
St. Charles Campus

---

### **Justin Kussman**

MA in media communications  
Webster University

Justin Kussman's design experience began in the late '90s with the creation of print materials such as business cards, post cards, flyers, and brochures and quickly evolved into more diverse media, such as web design/coding, video production/editing, and digital effects work. After 10 years in the design field, a former instructor asked Kussman to bring his knowledge to future generations of designers at the college level. He quickly adapted to teaching design and continues to do so because he loves helping others learn new skills in web design and digital media creation.



## School of Sciences

Department of Earth Sciences  
St. Charles Campus

---

### Ana Londono

PhD in geology  
University of Cincinnati

After earning her geological engineering degree in her native Colombia, Ana Londono worked for the Colombian Geological Survey in field mapping in the northwest region of the country. She later pursued master's and doctoral degrees in geology at University of Cincinnati focused on natural hazards and geomorphology in drylands. After earning her doctorate degree in 2008, she joined the faculty at Saint Louis University, where she taught courses in geology and environmental sciences. She is a geomorphologist, and her research interests focus on the modification of natural landscapes by human intervention; she specifically looks at the modifications made by pre-Columbian cultures, Inca and Wari, to the steep hills in Peru and how those have influenced soil erosion on desert lands. In addition, she is interested in paleoclimate in coastal South America and natural hazards such as flooding and earthquakes in the Midwest. Her refereed publications appear in numerous prestigious journals such as *Palaeogeography*, *Palaeoclimatology*, *Palaeoecology*, and the *Journal of Hydrology*.



## School of Sport, Recreation, and Exercise Science

Department of Exercise Science  
St. Charles Campus

---

### Jonathan Mike

PhD in exercise science  
University of New Mexico

Jonathan Mike, PhD, CSCS\*D, NSCA-CPT\*D, USAW, earned his PhD in exercise science at the University of New Mexico (Albuquerque). He received his bachelor's and master's degrees in exercise science from Western Kentucky University in Bowling Green, Ky., while also serving as a strength and conditioning assistant there. He worked for the University of Louisville as a strength coach and has been a frequent contributor to, and guest host of, several websites and radio shows. He is a member of the National Strength and Conditioning Association (NSCA) Certification Exam Developing Committee (NSCA-CPT) and Job Analysis Committee and is a member of the Personal Trainers Special Interest Group. He has spoken at numerous NSCA state, regional, and national conferences, has published numerous peer-reviewed manuscripts and has authored and co-authored multiple book chapters, magazine articles, and web articles in sports nutrition and strength training and conditioning.



## Division of Humanities

Department of English  
Belleville Campus

---

### Megan Peabody

PhD in American literature and interdisciplinary  
19th-century studies  
University of Nebraska—Lincoln

Megan Peabody holds a BA in English from Western Michigan University, an MA in British and American literature from Northern Illinois University, and a PhD in American literature and interdisciplinary 19th-century studies from the University of Nebraska-Lincoln. She has designed and taught many undergraduate rhetoric/composition and literature courses and also has experience in course development and assessment, writing tutoring, and teaching mentorship. Peabody’s research interests focus on African-American and women writers, and in particular on texts that test the boundaries of conventional maternity in the late-19th and early-20th centuries. She brings this spirit of boundary-testing into the writing classroom by supporting inquiry-based methods of reading and writing, incorporating interdisciplinary genre work, and integrating student-driven research. Her literature courses often encourage historical inquiry and analysis, an approach enhanced by her completion of a doctoral-level collateral field in history.



## School of Accelerated Degree Programs

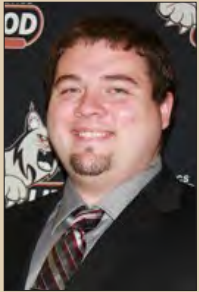
Department of Criminal Justice  
St. Charles Campus

---

### Saint Rice

MS in criminal justice administration  
Lindenwood University

Saint Rice holds a Bachelor of Arts in communication and Master of Science in criminal justice administration from Lindenwood University. He is completing a Doctor of Education in higher education leadership at Maryville University. Rice’s research focuses on the experiences, struggles, and strengths of adult African American male students entering higher education from disadvantaged backgrounds. Rice had a 19-year career with the Missouri Department of Corrections, during which he served as corrections officer, case manager, probation officer, supervisor, staff training officer, unit manager, and administrator. Rice has collaborated, trained, or partnered with many areas within the criminal justice field. In addition, Rice has worked as an adjunct instructor for the last seven years in criminal justice and general education. Rice is a member of Phi Beta Sigma Fraternity, Inc., as well as several national and local higher education organizations.



## Division of Sciences

Department of Athletic Training  
Belleville Campus

---

### Stephen Slone

MS in kinesiology  
University of Central Arkansas

Stephen Slone obtained a Master of Science in kinesiology from the University of Central Arkansas and a Bachelor of Science in athletic training from Lindenwood University's St. Charles campus. He has worked with collegiate athletes ranging from NCAA Division 1 to NAIA and USCAA over the past six years and has been an adjunct instructor within Lindenwood's Athletic Training Program for the past three years. Most recently, Slone's primary role with the staff has been providing coverage of men's lacrosse and basketball while mentoring graduate assistant athletic trainers.



## School of Sciences

Department of Anthropology  
and Sociology  
St. Charles Campus

---

### Suzanne Stoelting

PhD in sociology  
Southern Illinois University Carbondale

Suzanne Stoelting holds a Bachelor of Arts, a Master of Arts, and Doctor of Philosophy in sociology, all from Southern Illinois University in Carbondale. Before coming to Lindenwood, she was an associate professor of sociology at Fontbonne University. Stoelting has taught a wide range of undergraduate sociology courses and has coordinated sociology internships and undergraduate research. Her areas of expertise include sport sociology, gender, and sexuality, and her current research focuses on gay, lesbian, bisexual, and transgender suicide. Stoelting also has administrative experience, which, combined with her teaching experience, has provided her deeper insight on best pedagogical and retention practices in higher education. She was the recipient of the Excellence in Teaching Award in 2010, was a Phi Kappa Phi Inductee in 2010, and is an honorary member of Alpha Lambda Delta and Omicron Delta Kappa. Stoelting's focus is on teaching sociology courses, recruiting students to the sociology major, advising, and coordinating undergraduate research and internship opportunities for sociology majors.



## Division of Sciences

Department of Chemistry  
Belleville Campus

---

### Meghan Stouffer

PhD in chemistry  
Washington University in St. Louis

Meghan Stouffer holds a Bachelor of Science in chemistry from Gettysburg College and a Doctor of Philosophy in chemistry from Washington University in St. Louis. Stouffer's education experience has been with undergraduate chemistry and pre-med students, including University College at Washington University. She primarily taught organic laboratory courses, as well as organic intensive programs. Stouffer was the recipient of the Washington University Teaching Award as well as the Howard Hughes Medical Institute Undergraduate Science Education Award, which focuses on the development of guided inquiry teaching techniques. At Lindenwood, she teaches a variety of chemistry courses, including general chemistry and analytical chemistry. She is looking forward to helping grow the Chemistry Department at Lindenwood University-Belleville.



## Division of Social and Behavioral Sciences

Department of Criminal Justice  
Belleville Campus

---

### Thomas L. Trice

DMgt in leadership and organizational change  
Webster University

Dr. Thomas L. Trice, Jr., holds a Bachelor of Science in administration of justice and pre-law from Southern Illinois University at Carbondale, where he also received the Distinguished Alumni Award. He has master's degrees in human resource and development and leadership management and a Doctorate of Management with a focus in psychology and sociology, all from Webster University. Trice has more than 20 years of experience in local, county, state, and federal law enforcement. Trice retired with the rank of captain and has received numerous commendations for his public service, including being named Illinois Top Law Enforcement Officer of the Year. He has been awarded the Excellence in Teaching Award for his teaching methodologies. His academic focus, related to the psychology of leadership, will positively impact students' perceptions relative to the future of criminal justice. His professional accomplishments include being a nationally certified and licensed polygraph examiner and a long-term member of the American Association of Police Polygraphists.



## School of Communications

Department of Journalism  
St. Charles Campus

---

### Susan Weich

MFA in writing  
Lindenwood University

Susan Weich recently retired after 28 years with the *St. Louis Post-Dispatch*, where she worked various jobs, including courts and crime beat reporter for St. Charles, Warren, and Lincoln counties; community columnist; and letters editor for the editorial page. She was nominated twice for the Pulitzer Prize—once for a series of personal essays about her battle with breast cancer and the other for an investigative series that highlighted questionable spending practices by St. Louis-area fire protection districts. This spring, she was covering the protests in Ferguson, Mo., when two police officers were shot just feet away and retold the tale on CNN. Weich's daughter, Rachel, is a senior at Lindenwood and a member of the University's D1 women's ice hockey team. In her spare time, Weich enjoys cooking, reading crime novels, and hula dancing.



## School of Sciences

Department of Biology  
St. Charles Campus

---

### Megan Woltz

PhD in entomology and ecology  
Michigan State University

Megan Woltz has a BSc in environmental science from North Carolina State University and a dual-major PhD in entomology and ecology from Michigan State University. She also earned a Certification in Teaching College Science from MSU. Woltz is especially interested in increasing student engagement in the classroom and has developed active learning exercises for undergraduate and graduate classes. She was also part of the development team for an award-winning massive open online course on foundations of science. Woltz enjoys working one-on-one with undergraduates. As a graduate student, she mentored four undergraduates in independent research projects, resulting in five student presentations and two peer-reviewed publications with undergraduate first-authors. Woltz is primarily interested in understanding how habitats at local and landscape scales can be managed to increase ecosystem services. In particular, she is excited to work with Lindenwood students to investigate how the management of community gardens in St. Louis and characteristics of the surrounding urban landscapes influence pollination and pest control services.



LINDENWOOD

LIKE NO OTHER