

linden word

FALL SCHEDULE ENCLOSED

vol. 2, no. 2

spring '85

With Alumni Support

College Eyes Another Record Year!

Initial results from the first phase of Lindenwood College's recent Alumni Phone-a-Thon indicate the institution could be on its way to setting another record year for alumni fund-raising efforts.

According to James Thompson, major funds coordinator at the college, the recent four-week phone-a-thon generated nearly \$70,000 in cash and contributions, a drastic increase from the \$28,000 raised during a similar alumni event a year ago.

Last year, the Alumni Phone-a-Thon raised about \$100,000 which combined with another \$67,000 to create \$167,000 in cash and contributions from Lindenwood alumni - the highest one-year amount of alumni giving in the college's 158-year history.

Based upon initial results from the first phase of the phone-a-thon, Lindenwood expects to generate \$60-70,000 from the second phase, April 23 through May 30, which would surpass last year's record

amount of about \$100,000, Thompson said.

Nearly 150 volunteers spent an estimated 1,000 man-hours during the first phase, telephoning more than 2,600 alumni in the southern portion of the United States. Volunteers, consisting of area alumni, faculty, staff and students, hope to reach another 2,500 alumni in northern states during the second phase. Lindenwood has about 10,000 alumni throughout the United States.

Thompson said contributions to the college ranged from \$1 to \$2,000, with the median gift being \$30. "A total of 650 alumni said they would give, but didn't specify a dollar amount," Thompson said, "meaning our total amount in cash and contributions from the first phase should increase in coming weeks."

One of the most significant aspects of the phone-a-thon's first

Continued on page 9

Master Development Plan Approved

by RANDY L. WALLICK

The Lindenwood College Board of Directors has approved the institution's first master development plan, calling for \$8 million in new campus facilities construction and physical plant renovation of historic buildings on the 142-acre campus.

Prepared by P. John Hoener Associates, Inc., a St. Louis-based architectural and engineering consultant firm, the master development plan calls for better utilization of campus facilities and space for projected increases in future enrollment at Lindenwood College.

The board's approval of the master development plan is related directly to the college's Renaissance Campaign to secure \$10 million in cash and contributions. Various phases of the master development plan will be implemented only when adequate funding has been received, said President James I. Spainhower.

Eighty percent of the \$10 million goal will be earmarked for new campus facilities and renovation as part of the master development plan.

The \$8 million in facilities development includes the construction of a \$5 million athletic and theatre complex to be named the Renaissance Center. The remaining \$3 million will be earmarked for major renovation and repair of facilities on campus.

The Renaissance Center is one of the final phases of development in the master development plan, and it will be started only when

renovation and repair projects are completed, Spainhower said.

Tentatively slated to be built on the northeast corner of the campus between the tennis courts and Founder's Cemetery, the Renaissance Center will include a theatre complex designed for both college and community utilization, a gymnasium and a swimming pool. Outside, there will be parking facilities, practice fields and courts for volleyball, handball and tennis.

The new theatre complex will be located near the Fine Arts Bldg. to

allow related functions in both buildings to work together.

Long-range development plans could include the creation of the Communications Center within the Renaissance Center to provide radio and television facilities and training for both the Performing Arts and Communications departments.

Included in the facilities renovation plans are major restorations to Butler and Ayres halls; the rewiring of historic Sibley Hall, the oldest

Continued on page 12

Rep. Gephardt to keynote commencement



Gephardt

Congressman Richard A. Gephardt (D-MO) will deliver the keynote address at Lindenwood College's Spring Commencement, scheduled at 10 a.m. May 18 at the St. Charles campus.

Rep. Gephardt will be awarded an Honorary Doctor of Laws degree at commencement, to be

Continued on Page 10

College Sets Record in Enrollment

Lindenwood College's total enrollment for the current semester is 1,868 students, the highest spring headcount in the 158-year history of the institution.

In announcing the record spring enrollment earlier this year, President James I. Spainhower said the total represented a 6.7 percent increase from the 1,743 students enrolled for the fall, 1984, semester.

"We are extremely pleased with our spring enrollment," the president said, "since, traditionally, colleges and universities throughout the country experience a six to 10 percent decline in spring enrollment from the fall term."

Spainhower attributed the record enrollment to increases in Lindenwood College's Master in Business Administration (MBA) programs both on and off campus and to the recent program between the institution and American Telephone & Telegraph (AT&T) Information Systems.

As reported in the last issue of the *Linden Word*, the AT&T program this spring enables the Lindenwood College for In-

dividualized Education (LCIE) to offer instruction at both the undergraduate and graduate levels to AT&T employees at on-site locations throughout the metropolitan St. Louis area.

Currently, more than 70 students are enrolled in the program, which offers an undergraduate degree in business administration and an MBA degree at the graduate level.

More students are enrolled at MBA programs this spring at both the main campus in St. Charles and at off-campus locations in Clayton, downtown St. Louis and west St. Louis County, Spainhower said.

Lindenwood College
St. Charles, MO 63301

Non Profit Org.
U.S. Postage
PAID
Permit No. 84
St. Charles, Mo.

Address Correction Requested

president's message

by JAMES I. SPAINHOWER

These days there is no lack of advice for colleges and universities.

Three national studies that were released recently picked away at various aspects of higher education. Their observations are augmented by internal voices of concern within nearly every college community. The Administration in Washington, DC, under the joint leadership of President Ronald Reagan and the new Secretary of Education, William Bennett, is getting its licks in.

I suppose higher education deserves much of the wood-shed treatment it is receiving. However, what is really helpful is advice that suggests ways of improving colleges and universities. This observation leads me to suggest my personal theory as to how we can improve higher education - *make it more personal, more individualized.*

In a recent interview in a national news magazine, Secretary Bennett contends that some colleges are worth what they cost

while others are not. He observes correctly that academic quality can even vary within an institution from department to department. I would carry his contention further - academic quality varies depending upon who the professor is in any given class.

Here at Lindenwood, throughout our long history, we have been blessed with some magnificent instructors. As I visit with our alumni from throughout the United States, I am impressed

with the strong words of commendation I hear for:

- The quality of academic instruction they received during their years at Lindenwood,

And, the personal attention each student received from faculty, staff and the administration.

We have been doing a lot of talking about "returning to Lindenwood's traditions" in recent issues of the *Linden Word*.

I'm happy to report that through the years, for the most part, your college has maintained the reality of its reputation for excellent classroom instruction and individualized attention for each student.

Of course, there have been exceptions. No college is fortunate enough never to have a loser as a professor. No professor is so uniformly good that he or she never has a poor lecture or a less than stimulating semester. No college can be certain that in every instance a student gets the personal attention he or she needs. But, in the main, students at Lindenwood have received and continue to receive today, top-notch academic instruction and truly individualized attention.

You read a lot about the high cost of private college education. It is higher than public college education but the individualized attention a student receives in a college like Lindenwood makes it worth the difference. One thing to remember is that not all private colleges are alike and they don't all cost the same. Total costs for a full-time resident student at Lindenwood is about \$7,800. This includes tuition, board, room and an allowance for books.

I hope that many of you reading these words will encourage your sons and daughters, grandsons and granddaughters, neighbors and friends to consider pursuing a college education at Lindenwood.

We're only a small college beneath some Linden trees, but we know we have been and continue to be a good small college. And, as Daniel Webster once said of another small college, "There are those who love her!"

Small colleges can help you make it big.

Just ask Ronald Reagan, president of the United States, Eureka College; Phillip Caldwell, chief executive officer, Ford Motor Co., Muskingum College; Paul Newman, actor, Kenyon College; Gov. Martha Layne Collins of Kentucky, Lindenwood College; or Lesley Stahl, CBS News White House correspondent, Wheaton College.

Some of the nation's most successful people went to small colleges like Lindenwood - places where size, faculty and curriculum combine to provide them with individualized education, skills and confidence to make them leaders.

A small college can help you make it big, too! To learn more about the advantages of small, independent colleges like Lindenwood, contact the Admissions Office at (314) 946-6912, extension #213.

the linden word

vol. 2, no. 2, spring '85

A Quarterly Publication of
Lindenwood College

President: JAMES I. SPAINHOWER
Board Chairman: ROBERT F. HYLAND
Editor: RANDY L. WALLICK
Alumni: ESTHER FENNING

Written and prepared by Lindenwood College's Public Relations Office. Views and opinions appearing in this publication are not necessarily endorsed by the Lindenwood College Board of Directors.

Address all communications, letters, subscription requests and changes of address (including both a mailing label from the current issue along with the new address and proper zip code) to the Public Relations Office, Lindenwood College, First Capitol & Kingshighway, St. Charles, MO 63301.

Kiwanis Club Establishes Scholarship

The Kiwanis Club of St. Charles (Noon Day) will provide an honor scholarship, valued at nearly \$2,500 annually, to be awarded each spring to an outstanding student at Lindenwood College.

Called the St. Charles Kiwanis Renaissance Medal of Honor, the award will be matched financially by the college, enabling the student to receive full tuition for one year.

"This scholarship will be given to a student, one of our best, who exemplifies the highest academic and community standards," said James D. Thompson, major funds coordinator for the college. "The award will honor the close cooperation between the college and the Kiwanis Club as evidenced by the recent formation of the Circle K Club on campus," he added.

With a membership of nearly 25, the Circle K Club is a coeducational campus organization hosted by the Kiwanis Club. As the first international organization on the Lindenwood campus, the club provides service to the campus and community and enables members to learn about business careers.

The student chosen for the Renaissance Medal of Honor must have a grade-point average of 3.7 or more (out of 4.0) and be active in campus and community events, such as the student newspaper or yearbook, church or campus and community organizations such as the Circle K Club, Thompson said.

The scholarship award along with a certificate of recognition for the student will be presented at Lindenwood's spring Honors Day, was held recently on campus. The scholarship is for the following academic year.

With the formation of the Renaissance Medal of Honor, a joint committee has been formed to select the outstanding recipient of the Kiwanis Club and college award. Committee members will consist of three Kiwanis Club representatives along with William B. Schaefer, immediate past president of the club and founder of the Lindenwood Circle K Club; James F. Hood, Ph.D., acting dean of faculty; Larry Sackman, director of

financial aid at Lindenwood; and Thompson, who serves as advisor to the Circle K.

Schaefer said the award would not be possible without a supportive relationship between Lindenwood and the Kiwanis Club. "This close relationship and cooperative effort were made possible following the arrival of the college's current president, James I. Spainhower.

"Speaking for all members of

the Kiwanis Club, we feel fortunate to be able to provide financial assistance in the form of scholarships, and we wish Lindenwood much continued success with its excellent academic pursuits," Schaefer added.

Further information on the St. Charles Kiwanis Renaissance Medal of Honor can be obtained by contacting Thompson at the Lindenwood Development Office, (314) 946-6912, extension #320.

KCLC Aids in Association Series

Lindenwood College's community radio station, KCLC-FM, is one of 20 in the metropolitan area airing a six-month-long series produced by the St. Louis Heart Association (SLHA).

The series of 60-second segments of heart health education information features the voice of Robert R. Lynn, a well-known St. Louis media personality and announcer and a member of the SLHA St. Charles County Unit's Public Information Committee.

The series, which airs on KCLC at 7:33 a.m. Monday through Friday, is offered through the 20 stations' public affairs as well as commercial programming, according to Jim Wilson, KCLC general manager who created the series with the help of SLHA committee members. A member of the Lindenwood communications faculty, he also is Public Information Committee chairman of the St. Charles County Unit and a member of the SLHA Public Relations Committee.

Wilson has recorded a number of interviews with health professionals and residents for material for the six-month-long series,

which premiered on KCLC earlier this month.

The messages serve as reminders to fight becoming victimized by cardiovascular disease. The 60-second spots cover such preventive measures as weight control, regular exercise, not smoking and having blood pressure checked.

The series, called "Heartbeat," also tells of the importance of being able to save a life by knowing basic life-support techniques, such as cardiopulmonary resuscitation (CPR), Wilson said.

Many of the minute-long programs include comments from those who are knowledgeable about various topics. The interviews are with a broad range of experts, including a person whose

life was saved by the use of CPR, a boy who received a human transplanted heart two years ago and from well-known medical and health care practitioners.

Further information on the series can be obtained from the St. Charles Unit of the heart association, 946-5060, or from Wilson at Lindenwood College, 946-6912.

KCLC, 89.1 Mhz on the FM dial, is a 1,500-watt community service station of Lindenwood College. It broadcasts educational, cultural and public service programs as well as award-winning bluegrass, jazz and religious music. Operated primarily by broadcast students and volunteers, KCLC reaches an estimated audience of nearly 50,000 listeners in Missouri and Illinois.

Lindenwood To Publish First Alumni Directory

Lindenwood College alumni throughout the United States who have lost contacts with classmates and fellow graduates soon will benefit from an alumni directory the college plans to publish next year.

Lindenwood has entered into an agreement with the Bernard C. Harris Publishing Co. of White Plains, NY, to publish the institution's first complete alumni directory.

One of the country's leading publishers of such listings, the Harris Co. will research and compile all information. It will also finance the operation through the sale of directories to alumni. Estimated cost for the directory has yet to be determined.

"Although Lindenwood College will not benefit financially from directory sales, we will derive substantial benefit from the completely-updated alumni records," said James D. Thompson, major funds coordinator at the St. Charles-based institution.

The directory will be divided into four sections. The first part will contain interesting photos and information about the 158-year-old college, and will be followed by an

alphabetical section with individual listings on each alumni.

Entries will include the name, class year and degree received as well as professional information such as job title, firm name, address and telephone number in addition to home address and phone. The third section will list alumni by class, while the final index will list alumni geographically by city, state and foreign country. Lindenwood has more than 10,000 alumni throughout the United States.

According to Harris Co. officials, updated information will be obtained through questionnaires sent to all alumni this summer and followed up by telephone verification in December. Publication of the directories is slated for spring, 1986.

Each alumni of Lindenwood College will be given the opportunity to order the directory when their information is verified by telephone. Sales will be restricted to only college alumni.

Further information on the alumni directories can be obtained by contacting the college's Alumni Activities Office or Thompson at (314) 946-6912, extension #320.



A SWING INTO THE PAST — As funding becomes available, Lindenwood is restoring and returning swings to campus that were common attractions to many students of yesteryear. The 10-foot swings, which cost about \$950 to construct, can be named in a donor's honor to those who want to contribute. Here, Laurie Roscow, left, a senior from Lake St. Louis, MO, who graduates in May, and Connie R. Scrivner, a sophomore from St. Charles, enjoy a few minutes on the nostalgic swings. The return of the swings was prompted by President James I. Spainhower who received a request for a blueprint on their construction from a campus visitor. The college has restored two swings, and it hopes to have another six erected at key places on campus within the near future.



Photos by Senior Sam Reading

NEARLY \$200,000 SINCE 1983 — More than \$45,000 was raised recently from the St. Charles community during the "Celebration of New Beginnings" banquet that honored Woody Widenhofer, new head coach of the University of Missouri-Columbia Football Tigers, and Lindenwood President James I. Spainhower. Attracting nearly 250 persons, the event was sponsored by the St. Charles Lindenwood Board of Associates, a group of civic and business leaders that has pledged its support to the college. Above left, Widenhofer addresses the crowd following a scrimmage at the Lindenwood Stadium featuring the Tigers. Above center, Robert F. Hyland, regional vice-president of CBS, Inc., and chairman of the college's board of directors, listens to Henry J. Elmendorf, a member of the board and one of the cosponsors of the banquet, speak to the audience. Hyland arranged for members of the Football Cardinals and Big Red Line to take part. Cosponsor with Elmendorf was Charles Boswell, a St. Charles board member. Above, former Football Cardinals offensive lineman Dan Dierdorf expresses gratitude to the community for its support. Dierdorf served as master of ceremonies. The \$45,000, which will be used for scholarship awards to St. Charles County students, combines with \$150,000 that has been raised locally since Spainhower became president

College Support from St. Charles

College 'Shines' at Conference in Chicago

by FEL'ESHA A. TOWNES

An intense document presented at a joint conference by the American Council on Education and the Council for the Advancement of Experimental Learning is the basis for a research project being conducted by two Lindenwood College administrators.

Representing the institution at the March conference in Chicago

were Arlene Taich, Ph.D., dean of the Evening College and the Lindenwood College for Individualized Education (LCIE), and Rebecca Glenn, Ph.D., LCIE program coordinator.

Together, they studied and analyzed the research document compiled for institutions with adult education programs, like Lindenwood College.

According to Taich, the evaluation concerned such issues as registration and counseling programs, scholarships, service availability and educational processes to assist adult students.

"When you go to these types of conferences, you find that we are the stars of the adult education programs," she said, adding that Lindenwood has pioneered adult education for the past 10 years.

The conference, entitled "The Commission on Higher Education & the Adult Learner," reinforced the college's positive attitude about the Evening College and LCIE programs.

"You'll have to admit that we've had lots of practice, and the success of our programs is evident because at present the college has 75 percent of its population involved in adult education programs at the main campus and satellite campuses as well as on-site facilities," Taich said.

Lindenwood offers the largest variety of adult programs available for undergraduate and graduate degrees in the metropolitan area, she said.

Taich said she hopes to implement the program through the selection of a team of researchers on campus to examine the LCIE program and to use the conference document as a study means for the probe.

Taich said the LCIE administration might discover that the program is sufficient as is and that no major changes need to be incorporated, or it might try to further improve what has been referred to as a "model program."

Last year, recognition was given to the LCIE program by the North Central Association of Colleges & Schools (NCACS), the official accrediting body for colleges and

universities in the United States.

In a 34-page accrediting report issued in 1984 by the NCACS evaluation team, the association said "...the work in LCIE can serve as a model for this kind of alternative education program for other institutions of higher education."

(Fel'esha A. Townes is a junior from St. Louis majoring in broadcast communications and minoring in public relations. She served the spring semester as one of three intern students in the college's Public Relations Office.)

Scholarships To KETC-TV

As a way of showing support for public television, Lindenwood donated two scholarships valued at \$2,500 to KETC-TV for use in the St. Louis station's community auction this spring.

To be awarded to the highest bidder during the fund-raising event, the scholarships are for this fall or next spring, and they can be used for either undergraduate or graduate studies at the main campus or satellite branches in St. Louis and St. Charles counties.

Lindenwood will receive on-air promotions for its gift from Channel 9, which has an estimated weekly audience of 1.2 million in Missouri and Illinois. KETC-TV is a community-owned, non-commercial station serving a 70-mile radius in the metro St. Louis area.

Last year, Lindenwood became the first institution in the area to show its support for the auction through the donations of two scholarships valued at up to \$2,000.

What's Cookin' at Lindenwood?

A cookbook, 'Lindenwood Cooks,' featuring favorite recipes from Lindenwood College faculty, staff and alumni members, is being offered by the Lindenwood Alumni Activities Office. The spiral-bound paperback is published by the Lindenwood Alumni Activities Association and offers more than 120 culinary delights and helpful cooking hints.

To order your cookbook, complete the form below, enclose \$8 (includes postage and handling) and mail to:

Lindenwood Alumni Activities Office
Lindenwood College
St. Charles, MO 63301

Personal checks are welcome and should be made payable to 'Lindenwood Alumni Activities.' All proceeds go to Lindenwood College for student scholarships.

Yes, I would like to order _____ 'Lindenwood Cooks' cookbook(s). Enclosed is my check or money order for \$_____.

Name: _____

Address: _____

City: _____ State: _____ Zip: _____



Howard Barnett

Two Decades of Service to Lindenwood

by MARY A. GRAVEMAN

Twenty years of loyal service to Lindenwood College has earned Dr. Howard Barnett his outstanding reputation as an asset to the college and the St. Charles community.

Barnett plans to retire this year. His future plans include teaching on a part-time basis at the college. He also plans to remain active in community and national organizations as well as continue to write and compose music.

Barnett was born in Dallas, TX. He has moved with his family to New York, Connecticut and Indiana. In Indiana he received his early education.

His major interest was in music. He studied voice and piano as well

as English at a conservatory in Indiana. His education was interrupted by his entrance into the Navy during World War II. During his four years in the Navy, he was stationed in Alaska and California.

After serving in the Navy, he returned to Indiana to continue his education. He had been away from his disciplined study of music and began to explore other career opportunities. Barnett said, "I felt that I still loved music. But I had the feeling that I really wasn't going to have a career. Music in those days didn't have opportunities it has today, at least I didn't see them."

"Being in the Midwest I was kind of shut off from where the real action took place. If I had been in

another setting I might have realized the other opportunities. If there hadn't been the war, I might have been a musician. I certainly wanted to. But English appealed to me."

He continued his education at Indiana University studying English. He received his bachelor's degree in English with two minors in History and French. He went on to receive his master's of arts in English. He moved on to other universities, accepting teaching positions while working on his doctorate. After completing his dissertation on the theatrical situation in England as the setting for Browning's apprenticeship, he received his doctorate.

Barnett continued to teach at various universities in West Virginia, Illinois, Maryland and Indiana before coming to Lindenwood. He was invited to join the faculty of the college, and because he liked the emphasis the college put on a liberal arts education, decided to accept the offer. He joined the faculty as Alice Parker Professor of English. He was interested in classical rhetoric, linguistics and literary criticism. He taught English classes as well as served on the administrative staff at the college.

Barnett has seen the college go through many changes. Although he thinks the diversity of the changing curriculum offered at the college is good, he also thinks that it has diminished the important emphasis placed on a liberal arts education over the years. He sees the future of the college as promising with the increased alumni support and the return to an emphasis on a strong liberal arts education.

"I think one of the things that a college does is provide the continuity of a culture." Speaking of Lindenwood he said, "It's a good school. I think its strength is the closeness of students and faculty. In that respect it's unusual. Other schools don't have this. In that kind of relationship, faculty as well as students grow." He thinks the immediate feedback provided from this closeness helps the instructor

to determine if the students are learning. He likes the concern the instructors at the college show for their students.

Not only has he shown concern for the college and its students, he also has shown concern for the society in which he lives. He is an active member of several organizations including the St. Charles Historical Society and the Association of Religious and Intellectual Life. He has been active in doing research work in the field of linguistics, and writing book reviews for papers and articles for magazines as well as a syndicated column, which appeared in *The Globe-Democrat*. He said the column was "designed to make people aware of the fact that the work in humanities is related to current issues."

Barnett also has a busy home life. He lives in St. Charles with his wife, Barbara, who teaches English at Hardin Junior High School. He has a daughter, Victoria, who lives in Germany with her husband and her son, Jakob. His son, Gregory, is married and writes for the *St. Charles Journal*.

After retirement, he plans to continue teaching at the college on a part-time basis. He also wishes to remain active in the various organizations in which he is a member. He wants to spend more time researching, writing and composing music. He has already written two volumes of poetry and would like to continue writing and work more with composing music, which has remained a strong interest for him. He said that he has "a lot of writing to do."

"I like St. Louis. It has the right mix. It has the culture, music and the theatre I always wanted to be with and hear and they're accessible. I'm happy in St. Louis," Barnett said.

(Mary A. Graveman is a senior from St. Charles who will graduate this spring with an undergraduate degree, majoring in English and minoring in music. She earned academic credit this semester as an intern in the college's Public Relations Office.)

College Helps Junior Miss

by MARY A. GRAVEMAN

Lindenwood College offered a total of \$25,000 in scholarship money to attract the energetic, ambitious, academically-inclined students participating in the 1985 Junior Miss Program in St. Charles.

Snafu?

Let Lindenwood College know if there is an error on your mailing address label or if you're receiving more than one copy of the quarterly publication.

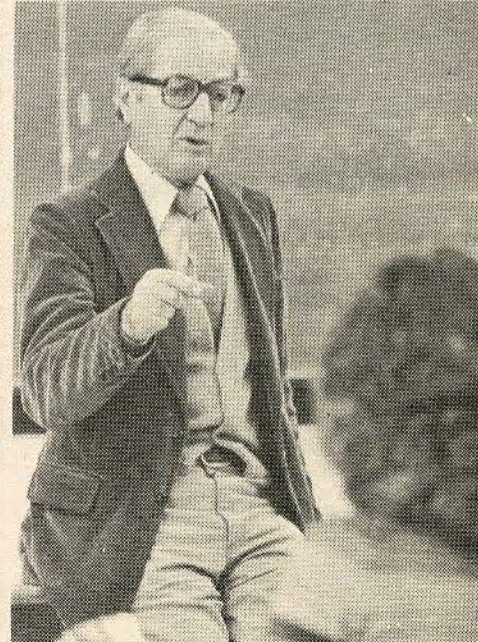
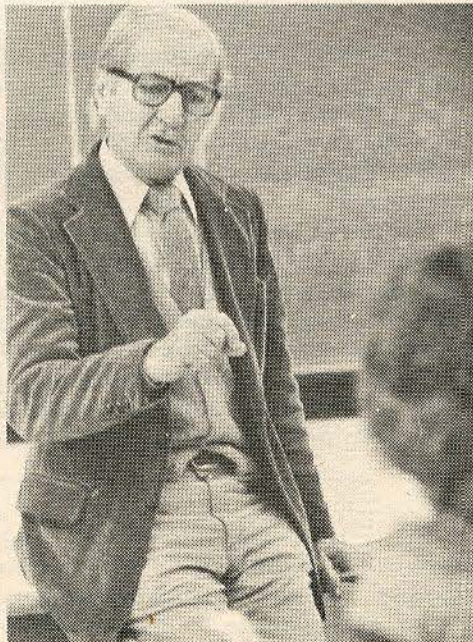
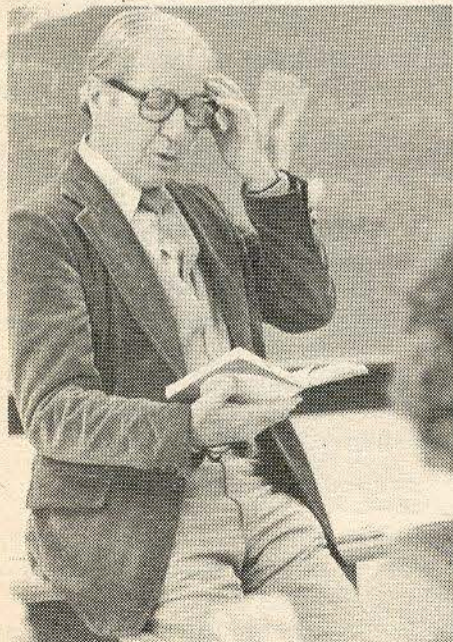
Send your correct address along with the computer-printed mailing label to the "Linden Word," c/o the Public Relations Office, Lindenwood College, First Capitol and Kingshighway, St. Charles, MO 63301.

Lindenwood has made many contributions to this program in past years including use of the campus facilities and participation in the program by students as well as faculty and staff members. Participants have used the Admissions Office for the judges interviews, the cafeteria for informational meetings and the gym for production rehearsals. Those from the college participating in the program included Marilyn Morris, chairman; Kathy Brockgreitens, chairman; Allan Shiller, master of ceremonies; Awilda Campbell, judge; Miriam King-Watts, judge; and Carol Richie, choreographer.

The objective of the Junior Miss Program is to highlight the constructive accomplishments and potential of high school senior girls and to reward these with scholarships. The program encourages development of and devotion to effective application of intellect and talent. It emphasizes the overall development of the individual, stressing character, personality, intelligence, creativity, ability in human relations, physical well-being and perception.

Judging standards are based on lasting values, the qualities and characteristics of the individual.

Spring
Commencement
10 a.m.
May 18, 1985



Dr. Howard Barnett at one of the things he does best - teaching.

Photos by Randy L. Wallick

alumni news

Five Considered for Alumni Awards

Five individuals are being considered for the 1985 Alumni Merit Awards, an annual presentation of Lindenwood College's Alumni Council.

For the first time this year, the council will present two merit awards during the spring commencement - one for outstanding support of Lindenwood College and the other for outstanding professional achievement.

Both will be awarded during special ceremonies at the spring commencement, scheduled May 18 at 10 a.m. at the St. Charles campus.

Vying for the service to Lindenwood award are Glenda Raef Schaefer of St. Charles, a 1968 alumna, and Eric Stuhler, also of St. Charles, a 1978 alumnus.

Being considered for the professional achievement award are Armenta J. Harness of Manhattan Beach, CA, a member of the 1949 class; Dennis Cavanaugh of St. Peters, MO, an alumnus with a bachelor's degree awarded in 1977 and a MBA received in 1979; and Jean Thiery Viotor of Nashville, IN, a member of the 1955 class.

The college's Alumni Council is considering the five nominees, and will make its selections known later this month.

Schaefer, who holds a bachelor's degree in math, served as president, vice-president and treasurer of the St. Charles Lindenwood Alumni Club. An active supporter of the college for 17 years, she organized the first "Mrs. Sibley's Attic Sale" last summer as a fund-raising event to secure scholarship awards for Lindenwood students, and she has served on the Alumni Council.

Active in community affairs, she is the founder of the St. Charles Humane Society and serves as its director. She writes a weekly column for the society, entitled "For Pet's Sake," that is published in the *St. Charles Journal*, and she is the publisher of a story-coloring book for children, titled "Lewis and Clark's Great Adventure."

A St. Charles attorney, Stuhler serves on the college's adjunct faculty and was reelected recently to the Alumni Council. During his last term on the council, he rewrote the alumni constitution, and he has served on the Mission Statement Committee appointed by President James I. Spainhower in 1983.

Stuhler is a member of the St. Charles Parks and Recreation Board, where he worked for the passage of a recent bond issue that will expand the upgrade the

community's parks system. He also is the author of the book, *The Land Use Awakening*.

A retired colonel, Harness was the first woman engineer to join the U.S. Air Force. During her 24 years in military service, she served as a photographic and weather reconnaissance project engineer, as a deputy chief of engineering and as chief of program control for the target vehicle portion of the Gemini Manned Space Program.

Harness is credited with a number of "firsts" during her lengthy career in the Air Force. She was the first woman to receive the speciality rating of staff department engineer, and she was the

first female to be awarded both the Senior and Master Missileman badges. In 1972, she became the first to serve as chairwoman for All Engineers Week in Los Angeles, where she coordinated the activities of 30 engineering societies representing 30,000 members.

Cavanaugh is a business professional who serves as senior vice-president and chief financial officer of May Centers, Inc., of St. Louis. In this position, he controls all financial accounting and investment activities for \$1 billion worth of real estate investments throughout the world.

Continued on Page 8

club news

ST. CHARLES — The St. Charles Lindenwood Club is busy planning the second annual "Mrs. Sibley's Attic Sale" to be held on the center campus at Lindenwood June 8 from 10 a.m. to 4 p.m.

Anne Pals, chairperson of this year's sale, invites area alumni and friends to participate in the annual fund-raising event. The St. Charles Club invites craft, antique and flea market vendors to reserve space before June 1. A 12' by 12' antique space will cost \$25 and 12' craft and flea market spaces are \$15.

For information on membership in the St. Charles club or on the attic sale, contact Anne Pals at 946-3666 or Esther Fenning at the Lindenwood Alumni Affairs Office.

ST. LOUIS — Kathy Leonard ('72) a news reporter for KSDK-TV, St. Louis, narrated the second annual fashion show at Schneithorst's Hof-famberg Inn in Ladue. More than 100 alumni, friends, students, faculty and staff of Lindenwood attended the show which featured fashions by Golde's. Alumni, staff, and students modeled for the fashion show which netted \$500 in scholarship money.

The last meeting of the year for the St. Louis Club will be held on May 4 following a breakfast with President and Mrs. James I. Spainhower at Ayres Dining Hall at 10 a.m.

Local alumni interested in reservations for the breakfast/meeting are asked to contact club president, Joanne O'Keefe at 869-3057, or Esther Fenning at the Alumni Affairs Office.

Recent graduates met at a social/business luncheon at the Media Club in downtown St. Louis recently. Steve Dieringer ('73) hosted the luncheon and President James Spainhower spoke to the 15 alumni who attended. Plans were made to meet regularly for lunch in the downtown St. Louis area. Alumni interested in this activity can call Esther Fenning at the Alumni Affairs Office.

KANSAS CITY — The Kansas City Club is planning a luncheon April 27 at the Executive Inn, I-435 and Front Streets in Kansas City. Speaker for the luncheon will be Jean Fields, chairman of the Lindenwood Communications Department. She has taught English and communications at Lindenwood since the 1960s and will be speaking on "Lost Women of History."

Tentative activities for the coming year include a train tour of the Kansas City Zoo, a card night and a fashion show to benefit the club's scholarship fund and to celebrate the Kansas City Club's Diamond Jubilee year. Members also are discussing the possibility of renting a bus or van to come to the October 18 reunion en masse.

For information about membership in the Kansas City Club or about the April 27 luncheon, contact membership chairman Glenda Gerrad Watts at (913) 383-1849 or Esther Fenning at the Alumni Affairs Office.

SOUTHERN CALIFORNIA — The Southern California Club presented President Spainhower a check in the amount of \$500 towards a Lindenwood scholarship during his recent visit to California.

A meeting of the Southern California Club was held April 20 at the home of Betty Butler Fitzpatrick in Laguna Hills. For more information on club membership, contact Mrs. Fitzpatrick at (714) 586-3188.

'Attic Sale' Set June 8 as Scholarship Source

Children's books are being sought by the St. Charles Lindenwood Alumni Club for "Mrs. Sibley's Attic Sale," an arts and crafts, antique and flea market event scheduled June 8 at the main campus in St. Charles.

The club will have a book booth, offering new and used children's books at reduced prices. Proceeds from the sale will be earmarked for student scholarship awards at Lindenwood.

For local donations, books can be delivered to the college's Alumni Affairs Office in Room 206 of the Memorial Arts Bldg. between 8:30 a.m. and 5 p.m. daily. Or, they can be picked up by contacting Alumni Club cochairpersons of the sale, Virginia Terry at (314) 723-2233 or Irene Hettich at (314) 946-0049.

The second annual "Mrs. Sibley's Attic Sale" is a fund-raising event of the alumni organization. Proceeds from space rentals for vendors and food and beverage sales also will be used for scholarship awards to deserving students at Lindenwood.

The event is named in honor of Mary Easton Sibley, cofounder of the 158-year-old liberal arts institution.

Vending spaces still are available for the sale, which will run from 10 a.m. to 4 p.m.

Costs for spaces are \$25 to antique dealers for a 12x12-foot area; \$15 to arts-and-crafts vendors for a similar size area; and \$15 to those who want to sell tailgate items.

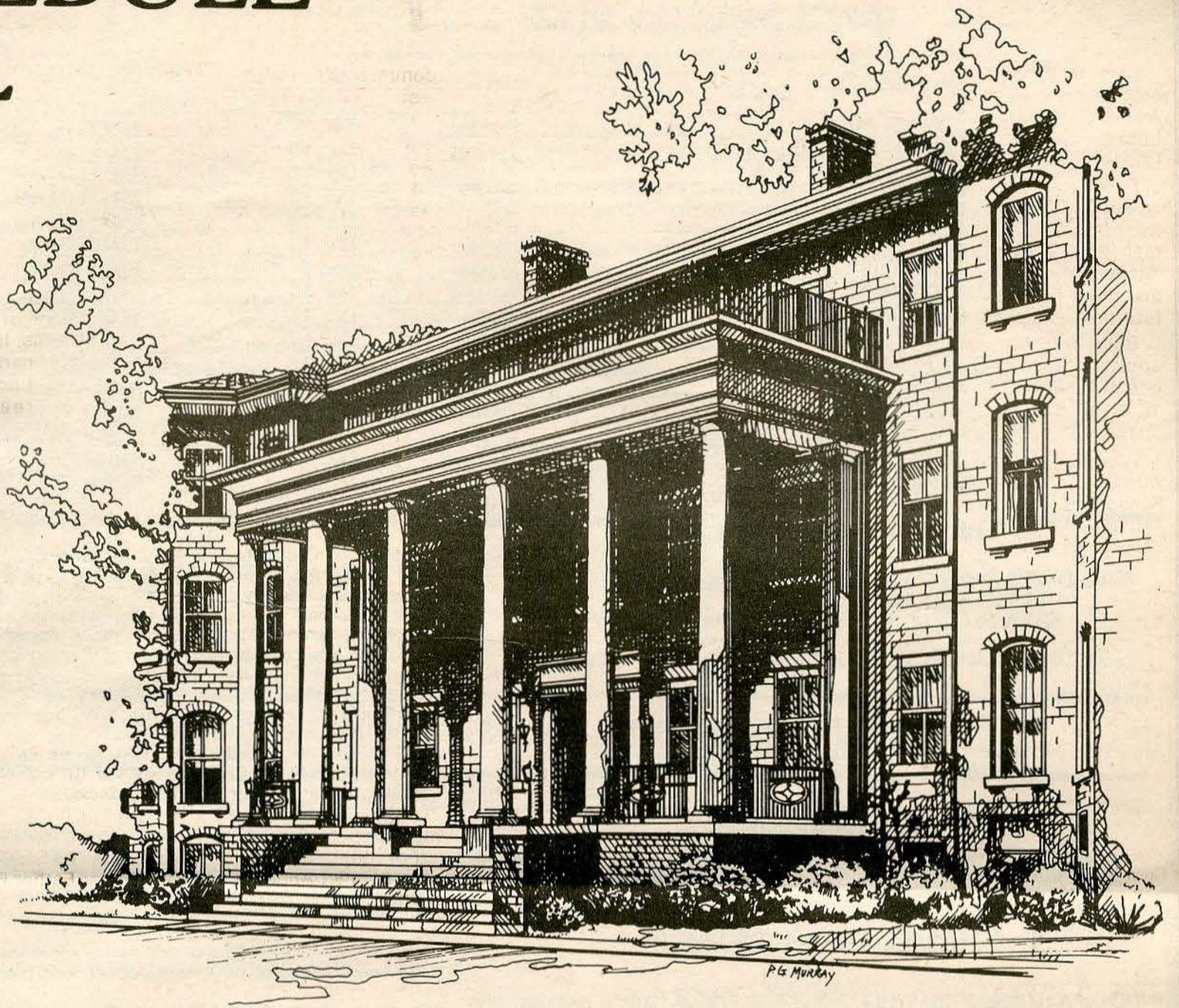
Antiques will be on sale in Butler Gymnasium while all other items will be on display outdoors.

Prospective vendors are urged to contact Lindenwood College as soon as possible, said Mrs. Anne Pals of St. Charles, an alumna and chairman of the fund-raising event. Last year, more than 50 vendors took part in the sale.

For further information and reservation procedures for "Mrs. Sibley's Attic Sale," contact Mrs. Pals at (314) 946-3666, or contact Esther Fenning at the college's Alumni Affairs Office, (314) 946-6912, extension #317.

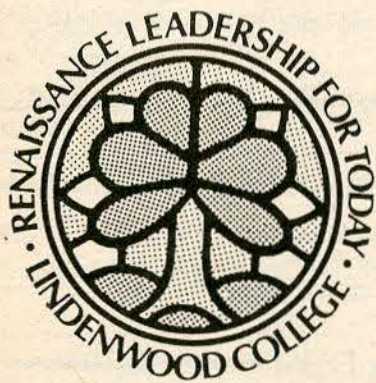
**1985
Alumni Reunion
Weekend
October 18-20
St. Charles
Campus**

CLASS SCHEDULE FALL 1985



LINDENWOOD COLLEGE

ST. CHARLES, MISSOURI 63301



Lindenwood College
Final Examination Schedule - Fall 1985

DECEMBER 9-14

SPECIAL NOTES

- (1) If your class meets during a combination of hours not listed, the instructor may schedule the examination during the time period closest to the actual course meeting.
- (2) All examinations will be held in the classrooms in which they presently meet.

Questions should be directed to the Office of the Registrar, 113 Roemer Hall, Extension 304.

If your class begins:

Your Final Examination is scheduled for:

8:00-9:00 AM; M, W, F	Monday	Dec. 9	9:00-11:00 AM
8:00-9:30 AM; T, Th	Tuesday	Dec. 10	9:00-11:00 AM
9:10-10:10 AM; M, W, F	Wednesday	Dec. 11	9:00-11:00 AM
9:45-11:15 AM; T, Th	Thursday	Dec. 12	9:00-11:00 AM
10:20-11:20 AM; M, W, F	Friday	Dec. 13	9:00-11:00 AM
11:30-12:30 PM; M, W, F	Friday	Dec. 13	1:00-3:00 PM
1:30-2:30 PM; M, W, F	Monday	Dec. 9	1:00-3:00 PM
1:30-3:00 PM; T, Th	Tuesday	Dec. 10	1:00-3:00 PM
2:40-3:40 PM; M, W, F	Wednesday	Dec. 11	1:00-3:00 PM
3:15-4:45 PM; T, Th	Thursday	Dec. 12	1:00-3:00 PM
3:50-4:50 PM; M, W, F	Wednesday	Dec. 11	4:00-6:00 PM
Monday Evening	Monday	Dec. 9	Regular Class Time
Tuesday Evening	Tuesday	Dec. 10	Regular Class Time
Wednesday Evening	Wednesday	Dec. 11	Regular Class Time
Thursday Evening	Thursday	Dec. 12	Regular Class Time
Saturday Morning	Saturday	Dec. 14	Regular Class Time

Tuition & Fees - Fall 1985

FULL-TIME STUDENTS (ENROLLED FOR 12-18 SEMESTER HOURS)
 TOTAL TUITION \$2,475
 OVER 18 CREDITS \$110/CREDIT

PART-TIME STUDENTS (ENROLLED IN FEWER THAN 12 SEMESTER HOURS)

UNDERGRADUATE

DAY = \$145 PER SEMESTER HOUR
 EVENING = \$125 PER SEMESTER HOUR

GRADUATE

ALL GRADUATE COURSES = \$160 PER SEMESTER HOUR

COURSE CHANGE (DROP/ADD)

\$15

(NOTE: A STUDENT MAY FILE ADD/DROP FORMS TWICE BEFORE THE START OF A TERM WITHOUT CHARGE. SUBSEQUENT ADD/DROP FORMS INCUR A \$15 FEE.)

TRANSCRIPT OF RECORD

\$2.00 (DAY, EVENING, GRADUATE)
 \$3.50 (LCIE)

STUDENT TEACHING FEE

\$150

DELINQUENT ACCOUNTS

Students must meet all financial obligations to the college in order to qualify for continued enrollment.

This means that each student must, each semester, pay all money due to the college, including tuition, fees, traffic fines, library fines and any other financial obligations.

Students with delinquent accounts can expect the following:

1. Registration for a succeeding semester will not be allowed.
2. Grade reports will be held.
3. A transcript will not be issued.
4. The student will not be permitted to graduate.

Early Entry Program

Lindenwood College offers high school students of exceptional academic ability the opportunity to enroll in college courses while in their junior or senior year of high school. Such a student is allowed to register for courses that are not offered at his/her high school or are not offered there at a level consonant with the students ability. The student may enroll in a maximum of two courses per semester. High schools are encouraged to grant high school credit for college courses successfully completed.

Lindenwood College complies with the provisions of the Family Education Rights and Privacy Act of 1974. This Act assures students attending a post-secondary educational institution that they will have the right to inspect and review certain of their educational records, and by following the guidelines provided by the college, to correct inaccurate or misleading data through formal or informal hearings. It protects rights and privacy by limiting transfer of these records without their consent, except in specific circumstances. Students also have the right to file complaints with the Family Educational Rights and Privacy Office, Department of Health, Education, and Welfare, 330 Independence Ave., S.W., Washington, D.C. 20201.

The campus of Lindenwood College is private property. Lindenwood College reserves the right to restrict or prohibit access to the campus or its buildings or other facilities to individuals or groups at its discretion.

Lindenwood College does not discriminate in education or employment on the basis of sex, race, color, age, religion, national origin, or handicap. This policy is consistent with relevant governmental statutes and regulations, including those pursuant to Title IX of the federal Educational Amendments of 1972 and Section 504 of the federal Rehabilitation Act of 1973.

Inquiries regarding compliance with these Federal statutes and regulations should be addressed to the Dean of Faculty, Lindenwood College, (314) 946-6912.

Students with special needs based upon physical or learning disabilities are requested to notify the Dean of Faculty in advance of registration.

Registration Procedures For Fall 1985

Early-registration offers an opportunity to plan your schedule in advance, make the necessary work arrangements and avoid the possible long lines and closed classes that may develop at general registration.

You should meet with your faculty advisor to plan your schedule accordingly. A \$100 deposit must be paid on the day you early-register.

1. Early-registration and advisement for currently enrolled day students will be held beginning April 8. Bring registration forms to the computer center April 18, 9 a.m. to 4 p.m.
2. Students who early-register are required to pay their fall semester tuition and fees by 4:00 P.M., Aug. 9, 1985.
3. Day students who early-register but are late in making their tuition and fee payments will lose their reserved class places and must register during the general registration period.
4. Day students who do not early-register will have to register for classes at general registration, Sept. 3, 1985.
5. Evening students may register continuously through September 4 with tuition payment due no later than September 4.
6. Students who withdraw by June 1, 1985, will receive their \$100 deposit back.

NOTE: You are not considered officially registered for the semester unless all tuition and fees are paid in full or the necessary arrangements are made with the business and financial aid offices.

Student Course Load

Undergraduate students carrying less than 12 credit hours of course work are considered part-time students. Students carrying 12 or more credit hours are considered full-time students.

Those students who wish to enroll for more than 18 credit hours must have the approval of their academic advisor and the dean of faculty and will be assessed additional tuition charges. (See tuition and fees.)

Lindenwood College

Withdrawal Procedure

Students who have been properly registered in courses but desire to withdraw from any or all courses must:

- 1. Complete a withdrawal form in person through the registrar's office; requests are not accepted by telephone.
2. Secure the instructor's and advisor's signature.
3. Complete an exit interview with a member of the dean of student's office, if withdrawing from all courses.
4. Obtain the necessary signature of a member of the business office staff.

A student will have to the end of the fourth week of the regular semester to withdraw from an individual class or classes with a letter grade of "W".

The official last date to withdraw will be announced by the registrar each term.

Failure to withdraw by the indicated deadline of a given term will result in receipt of the grade earned in a course. When a student withdraws, any refund resulting from a guaranteed student loan will be returned to the original lender and not to the student.

Refund Policy

The following policy is in effect for day, evening, graduate, and the Lindenwood College of Individualized Education students. Refunds will be calculated as follows:

- A. Prior to the student's first day of scheduled instruction following enrollment in any class 100%
B. During the student's first week of scheduled instruction following enrollment 75%
C. During the student's second week of scheduled instruction following enrollment 50%
D. During the student's third week of scheduled instruction following enrollment 25%
E. After the student's third week of scheduled instruction following enrollment No Refund

Fall Calendar, 1985

Table with two columns listing dates and events. Left column: September 1-18 (Residence Halls Open, New Student Orientation, Registration, Classes Begin, Fall LCIE Trimester Begins, Last Day to Register, Last Day to Withdraw, Fall MBA Quarter Begins, Mid-Term Grades Due). Right column: November 18-22 (Registration for Spring Semester), November 27 (Residence Halls Close), November 28-29 (Thanksgiving Recess), December 1-7 (Residence Halls Open, Last Class Days, LCIE Fall Trimester Ends), December 9-14 (Final Examinations), December 14 (Residence Halls Close), December 20 (Fall MBA Quarter Ends).

Lindenwood College Schedule Of Classes

Art

Table of Art classes including Day Courses (ART 106-385) and Evening Courses (ART 181-217) with details on course numbers, descriptions, times, and instructors.

Business Fashion Merchandising

Table of Business Fashion Merchandising classes including Day Courses (BFM 171-272) and Evening Courses (BFM 275-273) with details on course numbers, descriptions, times, and instructors.

Evening Courses

Table of Evening Courses (EDU 110-341) with details on course numbers, descriptions, times, and instructors.

Graduate Education

Table of Graduate Education classes including Day Courses (EDU 522-526) and Evening Courses (EDU 505-600) with details on course numbers, descriptions, times, and instructors.

Special Education

Table of Special Education classes including Day Courses (SED 203) and Evening Courses (SED 324-353) with details on course numbers, descriptions, times, and instructors.

Business Administration

Table of Business Administration classes including Day Courses (BA 200-432) and Evening Courses (BA 200-452) with details on course numbers, descriptions, times, and instructors.

Chemistry

Table of Chemistry classes including Day Courses (CM 151-351) and Evening Courses (CM 351) with details on course numbers, descriptions, times, and instructors.

Computer Sciences

Table of Computer Sciences classes including Day Courses (CSC 101-407) and Evening Course (CSC 101) with details on course numbers, descriptions, times, and instructors.

Education

Table of Education classes including Day Courses (EDU 246-411) and Evening Course (EDU 411) with details on course numbers, descriptions, times, and instructors.

Graduate Special Education

Table of Graduate Special Education classes including Evening Courses (SED 528-553) with details on course numbers, descriptions, times, and instructors.

English

Table of English classes including Day Courses (ENG 101-354) and Evening Courses (ENG 101-211) with details on course numbers, descriptions, times, and instructors.

English As A Second Language

Table of English As A Second Language class (ESL 343) with details on course number, description, times, and instructor.

Foreign Languages

Day Courses

Table of foreign language courses including Elementary French, Intermediate French, French Conv & Comp, Elementary German, Intermediate German, German Conv & Comp, Elementary Spanish, Intermediate Spanish, Spanish Conv & Comp, and Span Amer Cult & Civ.

Evening Course

Evening course for Elementary Spanish/Conv-Civ.

History

Day Courses

Table of history courses including Human Community, US to 1865, The Westward Movement, History of Asia I, Thought & Culture, and Medieval Europe.

Evening Course

Evening course for Human Community.

Humanities

Day Course

Day course for Intro to Humanities.

Evening Course

Evening course for Intro to Humanities.

Mass Communications

Day Courses

Table of mass communication courses including Intro to Mass Comm, Basic Reporting, Radio Production, Writing For Elec Med, Video Production, Broadcast Operations, Mass Comm Law, and Internship.

Evening Courses

Table of evening mass communication courses including Basic Reporting, App Mass Comm/Radio, App Mass Comm/TV, and App Mass Comm/Public.

Mathematics

Day Courses

Table of mathematics courses including Concepts of Math, College Algebra, Basic Statistics, Intro to Computing, Calculus I, Calculus III, and Linear Algebra.

Evening Courses

Table of evening mathematics courses including Concepts of Math, Basic Statistics, Intro to Computing, and Calculus I.

Performing Arts

Music

Day Courses

Table of music courses including Music Practicum, Private Piano, Private Voice, Private Instrument, Inst Tech Percussion, Chamber Ensemble, Orchestra, Piano Class I, Theor Founda of Mus, Voice Class I, Intro to Music Lit, Adv Study/Mus Theory, and Private Piano/Instrument.

Evening College

Evening college course for Choir.

Theatre

Day Courses

Table of theatre courses including Perf Arts Hist I, Theatre Practicum, Acting I, Stage Movement, Intro To Tech Thtr I, Beginning Dance, Acting Studio I, Audition Studio, Acting Studio III, Script Analysis, Scene Design I, Stage Management, Stage Make-up, Spec Stud/Thtr Hist, Survey Of Dr Lit, Intermediate Dance, Independent Study, Directing II, Dance Studio, Acting Studio I, Acting Studio III, Design Studio I, and Design Studio IV.

Graduate Theatre

Day Courses

Table of graduate theatre courses including Theatre Practicum, Grad Acting Studio I, Grad Audition Studio, Grad Acting Stu III, Performance Practicum, Directing Studio I, Directing Studio III, Survey Of Dr Lit, Internship, Independent Study, and Thesis.

Religion & Philosophy

Day Courses

Table of religion and philosophy courses including Gt Thinkers in Hist and Philosophy Of Law.

Evening Courses

Table of evening religion and philosophy courses including Logic and Lit & Rel of Bible.

Physics

Day Courses

Day course for General Physics I.

Political Science

Table of political science courses including Comparative Politics, Politics Of Dev Area, and 20th Cent Pol Ideol.

Evening Course

Evening course for American Government.

Psychology

Day Courses

Table of psychology courses including Prin Of Psychology, Abnormal Psychology, and Psych Of Motivation.

Evening Courses

Table of evening psychology courses including Prin Of Psychology and Psychological Test.

Science

Day Course

Day course for Scientific Term.

Speech Communications

Day Courses

Table of speech communication courses including Fund Of Speech, Voice & Diction, Bus & Prof Speaking, Oral Interpretation, and Interviewing.

Evening Course

Evening course for Interpersonal Comm.

Sociology/Anthropology

Day Courses

Table of sociology and anthropology courses including Human Origins, Multinatl/Econ Dev, Basic Con In Soc, Major Institutions, and Social Thought/Theor.

Evening Course

Evening course for Basic Con In Soc.

Social Science

Evening Course

Evening course for Soc Sci Statistics.

LINDENWOOD AT DEACONESS HOSPITAL DEACONESS HOSPITAL SCHOOL OF NURSING FALL SEMESTER SEPTEMBER 3-DECEMBER 21, 1985

Biology

Table of biology courses including Nutrition, Human Anat & Phys I, Human Anat & Phys I Lab, Human Anat & Phys I Lab, Human Anat & Phys I Lab, Human Anat & Phys I Lab, Human Anat & Phys I Lab, and Human Anat & Phys I Lab.

Chemistry

Table of chemistry courses including Introductory Chem, Introductory Chem Lab, Introductory Chem Lab, Introductory Chem Lab, Introductory Chem Lab, Introductory Chem Lab, Introductory Chem Lab, and Pharmacology.

English

Table of English courses including English Comp I and English Comp I.

Humanities

Humanity course for Intro to Humanities.

Mathematics

Mathematics course for Basic Statistics.

Psychology

Psychology course for Prin Of Psychology.

Sociology

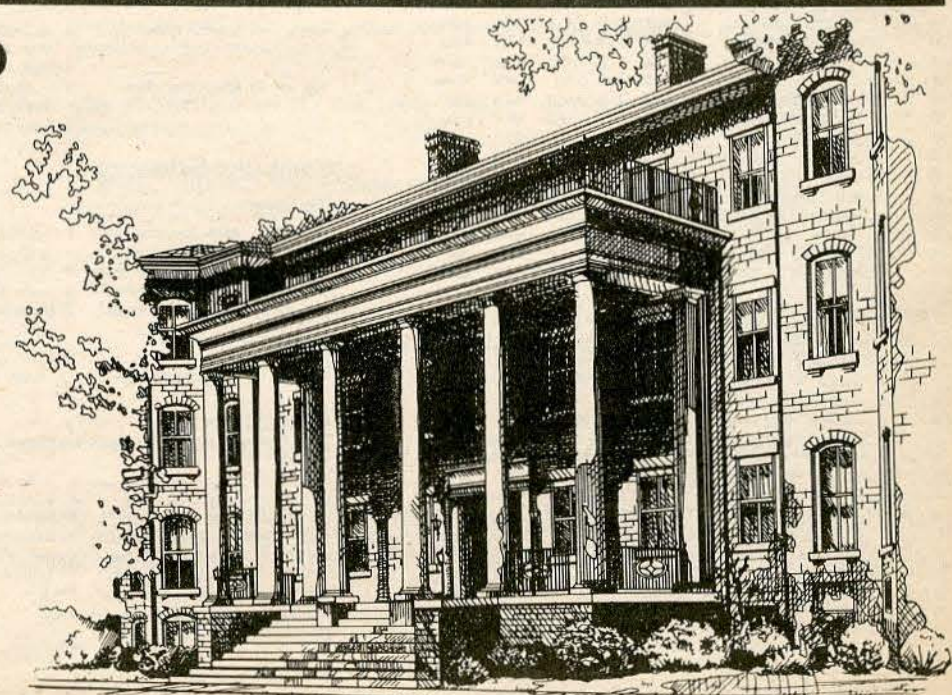
Sociology course for Basic Concepts in Soc.

Speech

Table of speech courses including Intro to Comm and Intro to Comm.

LINDENWOOD COLLEGE

ST. CHARLES, MISSOURI 63301



class notes

Marriages

- 1954 **BETTY GREEN SCHRICKRAM** of Ponca City, OK, to Bob Morse, June 18, 1985.
DEDE SHIGLEY GREEN of Kennesaw, GA, to Wesley Tignor, September 4, 1983.
 1975 **CAROL CAMPBELL VAILLANCOURT** of Stoneham, MA, to Eric Leventhal.
 1982 **STEPHANIE COPEK** of Maryland Heights, MO, to Nick Bassman, February 22, 1985.

Births

- 1971 **JEAN ANN REDPATH HAGEN**, a daughter, Marie Redpath, July 4, 1985.
 1977 **JANET RUPERT BASSEL**, a daughter, Katherine Ann, February 7, 1985.

Deaths

- 1911 **EDA SALVETER NESSLER** of Texas City, TX.
 1917 **RUBY MILLER WALKER** of Joplin, MO, Jan. 24, 1985.
 1920 **MARJORIE ROSS UPTON** of Tahlequah, OK, Jan. 26, 1985.
 1921 **MARY HARRIMAN BALL** of Fairfax, VA, Dec. 14, 1983.
 1924 **HELEN EVANS McHENRY** of Carpinteria, CA, Jan. 2, 1985.
MARGUERITE MITCHENER McMAHAN of Oklahoma City, OK, Sept. 18, 1984.
 1925 **GRACE MASON EYNON** of Denver, CO, Feb. 5, 1985.
 1926 **MERCEDES HICKS HEFFRON** of Ada, MO, 1975.
 1927 **CHARLOTTE MEYER** of Moscow Mills, MO, May, 1984.
 1928 **VIRGINIA OTT JONES** of Leawood, KS, Nov. 24, 1984.
FLORENCE RUDOWSKY SHULLER of McAlester, OK, Jan. 21, 1985.
MARY CRAWLEY WILSON of Springfield, MO, Feb. 24, 1985.
 1929 **NADINE FARIS HOWTON** of East Prairie, MO, Feb. 1, 1985.
ANNE PLETT WOLF of Midland, MI.
 1930 **MARY McDONALD BROWNE** of Garland, TX, Dec. 18, 1984.
ABIGAIL HOLMES HARRIS of St. Louis, Dec. 21, 1982.
HAZEL HOUCHIN JOURDAN of Blue Mound, IL.
 1931 **KATHRYN MARIE WILLIAMS** of Forest Park, IL, Aug. 24, 1984.
 1932 **ISABEL ACHELPOHL MARTIN** of Troy, MI.
 1933 **BESSIE SMITH MIKLES** of Guthrie OK, Oct. 7, 1985.
 1935 **MARION TOBIN MILLER** of Springfield, MO, Aug. 12, 1984.
 1936 **LARRAINE HENRY DIETERICHS** of Alexandria, VA, November, 1984.
 1938 **MARGARET DOWNS BROWN** of Eagle Rock, CA, Sept. 22, 1984.
MARY BAPTIST BROWNING of Ada, OK, Dec. 15, 1984.
 1939 **ROYE LANGDON DAVIDSON** of Kennett, MO, 1984.
 1944 **BETTY PECK LOWE** of Northbrook, IL, May, 1979.
 1946 **JEAN NOBLE** of Wichita Falls, TX.
 1949 **PATRICIA STULL BLADES** of Huntsville, AL.
DONNA JARGO HARRIS of Greenville, MI, Nov. 20, 1984.
JANET LEDNICK SCHAPIRO of Crystal City, MO.
 1956 **PEGGY KNUPP ELAM** of Eureka, MO.
 STAFF: **FERN ELLEN STAGGS** of Rolla, MO, Dec. 7, 1984. Instructor of Home Economics 1942-1945.

Notes

- 1927 **SARAH PAULINE DAVIS HEDGECOCK** of Mason City, IA, was honored recently by the Mason City branch of the American Association of University Women. A grant of \$500 was presented in her name to the national association.
 1929 **MARY ELIZABETH SAWIELL ARCHARD** of Washington, DC, writes that after 27 years with the Department of Labor, she has returned to work for a consulting firm. "Just can't keep an old fire horse from the fire," she said.
MARJORIE SMITH WILKINSON of Irving, TX, is a 76-year-old grandmother of 12. She is interested in recruiting students for Lindenwood from Irving schools.
ABIGAIL HOLMES HARRIS of St. Louis, who died in December, 1982, was associated with libraries for more than 40 years. She left a large sum of money in her will to the St. Louis County Library. A library spokesman said "the library experienced great growth and expansion during her years of service."
 1943 **JOYCE BURGE WATERS** of Claremont, CA, writes that her daughter, Diane, was married a year ago and resides in Claremont. Her son, George, graduated magna cum laude from Chapman College in 1983.

1954 **BETTY GREEN SCHICKRAM MORSE** of Ponca City, OK, is married to a disc jockey at an FM station in Ponca City. She works at several part-time jobs, enjoys her children and grandchildren, and reports she is constantly learning new skills and living life "to the fullest."

1957 **RUTH ANN CHARLES FINCK** of Mexico, MO, was elected president of the Randolph County Council of Social Agencies at its recent meeting.

1960 **JUDITH BATTON BROUGHAM** of Kansas City, MO, traveled to Russia in January with a group of American university professors. She visited **ANNIKA SKOTT** ('60) in Sweden before returning. She is secretary - treasurer of the Welsh Harp Society of North America, Inc.

DEDE SHIGLEY TIGNOR of Kennesaw, GA, is the reunion contact person for the 1985 reunion, scheduled October 18-20. She would like to have classmates write to her at her new address - 1233 Settlement Lane, Kennesaw, GA 30144, or call her at (404) 426-0466.

1964 **KAREN FASOLDT HOLTKAMP** of Cleveland Heights, OH, operates a concert management of 25 of the world's finest organists, plus doing American and Canadian tours for the choirs of King's and St. John's colleges in Cambridge; Westminster Abbey, Winchester Cathedral and St. Thomas Church in New York City. She recently volunteered to represent Lindenwood at college nights in the Cleveland area.

1970 **LESLEY HERZOG** of Nathrop, CA, placed 32nd in the recent NASTAR ski slalom event.

JEAN ANN REDPATH HAGEN of St. Louis, has retired from a career as a computer analyst to become a mother and housewife. She will continue singing with the St. Louis Symphony Orchestra and Cosmopolitan Singers. She reports her new daughter, Maria, is a real "firecracker."

PAM STEPHENSON JOHNSON recently relocated to 3502 Wilkinson Woods Dr., Sarasota, FL 33581, and would like to hear from alumni in the area or alumni visiting Florida. "My husband, Jack, is commuting to St. Louis where he is a captain for Ozark Airlines. My son, Giffe, is in the second grade, and unlike his mother, is an excellent student," she reports.

BOB YUNA of Lutherville, MD, has been named Director of News at WBAL-TV in Baltimore.

1973 **DANIEL MADDOX, M.D.**, of Rochester, MN, recently was appointed to the staff of the Mayo Clinic in Rochester.

1974 **CHARLES GEER** of Granite City, IL, writes that he is still at WGNUM in St. Louis. He married the former Angela Jones and reports "finally a new little Charlie or Angie is due."

1979 **RICHARD ELLIS** of Conrad, NC, recently joined the faculty of Barber-Scotia College as a business instructor.

DOUGLAS G. WILEY of St. Charles has been promoted to vice-president of human resources at Motor Transportation Co.

1980 **RANDY GITTLEMAN** of Houston, TX, is a disc jockey with KNUC Radio in Houston.

GREG ZINR of St. Louis is a sales coordination manager for the St. Louis Steamers.

1981 **LINDA WILLIAMS** of St. Louis, a producer for KSDK-TV in St. Louis, received two Emmy nominations for the station's "Supermoms" and "Kennedy Anniversary" broadcast.

1983 **DENISE BEGROWICZ** of St. Charles won the Overland Trail Road Race and the Missouri K.I.D.S. Run, the latter of which she set a new course record.

PAMELA LARAMIE of St. Louis, has a new position in the buying office at Fashion Gal in St. Louis.

JON MARK RANDALL of St. Peters, MO, recently was named technical director at Contel Service Corporation's regional training center in St. Charles.

1984 **STEPHANIE CHURCH** of Florissant, MO, recently appeared as the leading actress in the Theatre Guild of Webster Groves' production of "Tom Jones." She also has performed with the Mainstage Repertory Co. at Tan-Tar-A Resort in Lake Ozark, MO, and at the Southern Illinois University theatre at Carbondale.

JUDITH ALLEN RETSEMA of Jefferson City, MO, has received a master's degree in theology from Eden Theological Seminary.

Gift Helps To Offset Tuition Costs

by TAUNIA L. ALLEN

With rising tuition costs and cutbacks in financial aid, the cost of a college education increases each year, presenting a major problem for students in financial need at college and university campuses throughout the country.

However, for Lisa Olliges of St. Louis, these are no longer concerns at Lindenwood College.

Olliges is the first recipient of the Ketcham Endowment Scholarship at the St. Charles-based institution.

The Ketcham Endowment Scholarship was established in 1983 as a gift from Lloyd and Margaret (nee Hoover) Ketcham of

State Show Cites LC

Lindenwood College is among sites throughout the state that will be featured in "The Community of Missouri," a multi-image slide presentation being produced by the Missouri Division of Community & Economic Development in Jefferson City, MO.

The slide show will highlight the state's industries, communities, resources, people, recreational and cultural activities and educational institutions like the 158-year-old college.

The presentation will be made to top corporate executives as a means of encouraging them to consider Missouri's economic assets and business development.

"The Community of Missouri" will premiere this spring when Missouri Gov. John Ashcroft hosts the Governor's Economic Development Conference in Jefferson City.

Independence, MO, to celebrate Mrs. Ketcham's 50th anniversary year of graduation from Lindenwood College.

Awarded each fall, the \$1,000 annual scholarship is presented to women in their junior or senior year who are in financial need and of high scholastic ability.

Olliges is a junior at Lindenwood, pursuing an undergraduate degree in mass communications and performing arts. She transferred from Culver Stockton College in Canton, MO.

When she began her college education following graduation from high school, Olliges wanted to attend Lindenwood but found she could not afford it.

However, with the assistance from the Lindenwood College Admissions Office and the Ketcham Endowment Scholarship, she was able to transfer in the fall of 1983 and begin her degree pursuit at Lindenwood.

Olliges is described as "a hard worker" by fellow students and faculty, and she has demonstrated her extra-curricular abilities during her sophomore and junior years at the St. Charles campus.

She has been a member of the Lindenwood College Dance Squad for the past two years, and she also is an active participant of the Lindenwood Student Government, the college's newly-formed Yearbook Committee and several other campus organizations.

The St. Louis junior said she feels honored to be the recipient of the Ketcham Endowment Scholarship during the past two years and that she has a positive outlook towards her career goals.

"I feel proud to be a student at Lindenwood College," she said.

"The scholarship is a wonderful gift and, because of this award, I will be able to achieve my career goals," she added.

Further information on the Ketcham Endowment Scholarship and other forms of financial assistance at Lindenwood can be obtained from the college's Financial Aid or Admission offices, (314) 946-6912.

(Taunia L. Allen is a senior from Florissant, MO, who will graduate this spring with an undergraduate degree, majoring in communications and minoring in fashion marketing. She served the spring semester as an intern in the college's Public Relations Office.)

College Receives Awards

The Lindenwood College chapter of Alpha Epsilon Rho - the National Broadcasting Society, received two national awards at the organization's annual convention held recently in Nashville, TN.

According to Stacy Prell, a sophomore from St. Louis and chapter president, the college received the "Rookie Chapter of the Year Award," which recognizes outstanding achievements and enthusiasm during the chapter's first year of organization.

"The chapter also received an award from the Tourette Syndrome Association for organizing the best public awareness campaign for the disease," she said. "Alpha Epsilon Tho Rho has been committed to building public awareness for the association, and is among 70 national chapters that are active in this commitment," Prell added.

Lindenwood's chapter was reactivated last fall under the supervision of Leah Hollenberger, operations coordinator for Lindenwood College's community radio station, KCLC-FM.

Representing the college at the recent Nashville national meeting were Prell, a communications major, and Larry J. Fernandez, a junior from St. Louis majoring in broadcast communications.

Nominees

Continued from Page 6

A certified public accountant since 1979, Cavanaugh is a member of the American Institute of CPAs and the National Association of Real Estate Companies. At age 38, he has been referred to as one of the "best and brightest" of St. Louis businessmen.

A wildlife artist, Vietor has received more than 50 awards for her realistic watercolors. Since she began exhibiting in 1969, she has won the Jury Designated Purchase Award in the Watercolor USA National Watercolor Competition in 1971 and 1974; the Museum Purchase Award in 1975; and a first-place in watercolor at the "500" exhibition in 1976.

Yearbook Discount

Want to see how Lindenwood College looks since you've graduated?

Then, order a copy of its 1984-85 yearbook, **LINDEN LEAVES**, and save money in doing so!

Lindenwood alumni throughout the country can order copies of the yearbook at the special student price of \$20 per copy.

Scheduled for publication and distribution this spring, the yearbook will include a special alumni section that will contain photographic highlights of campus events and activities during the past 10 years.

For further information on the **LINDEN LEAVES**, as well as ordering procedures, contact James Thompson, major funds coordinator for the college, at (314) 946-6912, extension #320.

President Visits Twin Cities

President James I. Spainhower utilized an invitation to speak at a national meeting to visit with alumnae in the Minneapolis-St. Paul area this spring.

The president spoke on "Sense and Money" at the annual meeting of the National Association of Lutheran High Schools, which attracted 200 high school educators from throughout the United States. The presentation addressed why it is imperative to have a private segment of education and how to raise funds for such a segment.

After the March 1 address, Spainhower traveled to Edina, MN, to the residence of Peggy Johnson, a Lindenwood alumna of the class of '63, who hosted a reception that was attended by alumnae in Minnesota.

Among those attending the gathering were Nancy Collins of St. Paul, a member of the class of '70; Dottie Eirten of Coon Rapids, MN, a member of the class of '63; Beverly Myers of St. Paul, a member of the class of '71; John Haight of Anoka, MN, a member of the class of '61; Marcia Giske of Edina, a member of the class of '63; Barbara Henre of Bloomington, MN, a member of the class of '48; Virginia Hahn of Minneapolis, a member of the class of '62; and Margaret J. Maki of Roseville, MN, a member of the class of '60.

Spainhower reported a strong support for Lindenwood College activities from alumnae in the metropolitan Twin Cities area of Minnesota.



SWEEPSTAKES WINNER — Leah Hollenberger, left, KCLC operations coordinator, and Jim Wilson, right, KCLC general manager, look on as Mike Clark, second from left, vice-president of Midwest Express Travel in St. Charles, presents Bruce Conley with the winning prize in KCLC's "More Power To You" Sweepstakes. Conley, owner of the Music Box in St. Charles, received an all expense-paid trip for two to the Bahamas, provided by Midwest Express Travel in cooperation with Travel Leisure Concepts in St. Charles. The sweepstakes is part of KCLC's way of thanking merchants who took part in the "More Power To You" fund-raising project for Lindenwood College's community radio station.

Campus Facilities Attract Variety of Clubs

by RANDY L. WALLICK

Lindenwood College's instructional facilities, meeting and conference rooms and residential accommodations attract thousands of visitors each year as a variety of conferences, meetings and community events are scheduled on campus.

The college offers a variety of services and accommodations to community groups, religious organizations, businesses and trade and professional associations through its Conference Office, under the direction of Jerry Rufkahr, vice-president of administration, and Carol Simpson, secretary to the vice-president.

In addition to space accommodations, the college's range of services varies from housing individuals or groups of up to 400 persons to food services ranging from coffee and donuts to elaborate banquets.

Under the direction of Sue Brown, director of Food Services, food and beverage services are a large aspect of college operations. Meals can be served either cafeteria-style or by waiters in air-conditioned, spacious dining rooms. Private rooms for special occasions or banquets can be arranged with adequate notice.

The college's unique location in historic St. Charles and in the metropolitan St. Louis area minutes from one of the busiest airports in the country appeal to numerous organizations and groups on an annual basis.

Many of those who utilize Lindenwood facilities want the "best of both worlds," and they can find it at the 142-acre campus. In historic St. Charles, on the bluffs of the Missouri River, visitors can discover the restored business district from the early 1800s, featuring quaint restaurants, antique shops and art galleries along gas-lite cobblestone streets.

And, within a short distance, is metropolitan St. Louis, the "Gateway to the West," featuring unique cultural, entertainment, recreational and sports opportunities to visitors at Lindenwood College.

On campus, the Cobbs Conference Center, an air-conditioned year-round facility, can accommodate up to 100 persons overnight, and can provide well-designed meeting rooms in the same facility. During summer months, the number of overnight accommodations at Cobbs can be expanded greatly.

In addition to the Cobbs Center, Lindenwood has three theatres, each with enclosed projection booths, that can seat up to 100, 300 or 400 persons.

The Lindenwood Lodge provides overnight accommodations for single and double occupancy at modest prices, which include complimentary continental breakfast in the campus cafeteria.

On campus, it's not all work for those attending meetings, community events and conferences at

Lindenwood. Leisure facilities include recreational rooms, a gymnasium, tennis courts, swimming pool and stadium facilities.

Among the diversity of groups and organizations utilizing Lindenwood facilities in upcoming months are St. Charles Presbyterian Church and the Lutheran Church-Missouri Synod, which have retreats scheduled in May that will attract 150 visitors to campus.

Also in May, the stadium will provide facilities for the spring graduation of Francis Howell High School in St. Charles. In June, nearly 500 people attending meetings of the Missouri State Chapter of PEO Sisterhood and the Junior Achievement of Mississippi Valley will converge on the 142-acre campus.

For the first time this year, the Pat McBride Soccer Camps, an annual summer event in St. Charles, has expanded its program to offer five one-week soccer training camps for boys from seven to 18

years of age. The events, under the direction of McBride, former head coach of the Kansas City Comets and two-time Major Indoor Soccer League (MISL), attract hundreds of youngsters from throughout Missouri and Illinois.

Other summer events include a meeting of the American Association of Immunologists, sponsored by the Jewish Hospital of St. Louis that will attract 100 individuals; the annual Badgerette Pom Pon conference that will attract 100 cheerleaders and students of pom pon squads; and the Vinson School of the Porcelain Arts, which also will attract 100 people.

Antique auto and street rod enthusiasts from throughout the country will visit Lindenwood in August when the Roaring '30s Auto Club sponsors its 13th annual national meeting. Last summer, more than 1,200 auto enthusiasts visited the campus during the three-day meet, one of the largest car shows in the metro area.

Coed Receives Award for Accomplishment

Connie R. Scrivner of St. Charles, a sophomore at Lindenwood, is the first recipient of the Sophie Wagner Urman Award for Individual Accomplishment, a \$250 annual cash scholarship presented to an outstanding female student.

The award is named in the memory of Mrs. Urman, who died in 1983 at the age of 93. It was established by three of her grandchildren - Lyn Zanville and her husband, Dr. Larry R. Laufer, both of Dallas, TX; Dr. Holly K. Zanville of Eugene, OR, a Lindenwood College alumna; and Mrs. Harry W. Zanville of Waterloo, IA.

A 1983 graduate of Francis Howell High School in St. Charles, Scrivner is majoring in communications at Lindenwood with a career goal in broadcast journalism.

Active in the college and community, she is or has been a representative of the Lindenwood Women's Ensemble, the college's Religious Life Council, the Student Ambassadors and Alpha Lambda Delta Honorary Society. She was the finalist in the 1983 St. Charles Junior Miss Pageant.

Active with student recruiting at area high schools, she also serves as captain of the Lindenwood Cheerleaders, and helped to form a new Christian, student organization, Successful Living. The group attempts to make Lindenwood student life more rewarding through a variety of religious, communicative and extra-curricular ways.

The Sophie Wagner Urman Award will be presented each fall to a female resident at Lindenwood "who possesses qualities of being a success in life as a human being," according to Lyn Zanville.

"Mrs. Urman ... was beloved by her family, friends and neighbors," she said. "She saw the good in everyone, and was very open with

her praise. She encouraged her children, grandchildren and great-grandchildren in the area of individual accomplishment. Upon her death, my sister, brother and I as well as my husband, wanted to continue her efforts in her name, with other young people in awarding their 'individual accomplishment,'" she added.

Lindenwood students as well as those planning upon attending the 158-year-old liberal arts institution can find out more about the Sophie Wagner Urman Award for Individual Accomplishment by contacting the college's Development Office or Office of Financial Aid at 946-6912.



RECIPIENT — Connie R. Scrivner receives from Larry Sackman, financial aid director, the first Sophie Wagner Urman Award, an annual presentation for individual accomplishment that will be made to an outstanding coed at the St. Charles-based institution.

Alumni Support Grows

Continued from Page 1

phase is that 44 percent of those contacted contributed, an increase from 20 percent a year ago.

In addition to achieving the original goal of \$100,000 in cash and contributions from both phases of the Alumni Phone-a-Thon, Lindenwood wants to increase its total level of alumni giving from 25 percent last year to 30 percent this year, Thompson said.

"This would be a great accomplishment," he said, "particularly due to the fact last year's 25-percent record was an increase from about five percent during the preceding year. An increase from five percent to 30 percent in less than two years is almost unheard of at private colleges and universities today," he added.

The fund-raising goal of \$100,000 from alumni this year is part of a multifaceted campaign to secure \$10 million in cash and contributions within the next few years, the largest undertaking in Lindenwood College history.

The \$100,000 alumni goal combines with gifts from the Lindenwood College Board of Directors, faculty and staff, the college's board of overseers, the St. Charles community, the metropolitan St. Louis area and major corporations and foundations, all designed to help the institution achieve its \$10 million fund-raising goal.

According to Thompson, "One of the ways you can judge the health of an institution is by its percentage of alumni giving. The

response shown by alumni in recent months has given Lindenwood new and greater prospects for future donations from charitable organizations, corporations, firms and foundations.

"All major firms and foundations look at an institution's record of alumni support," Thompson contributed, "and our increase to 25 percent last year and a possibility of 30 percent this year dramatically prove our alumni are financially supporting the college and the future direction of Lindenwood."

Commenting on the college's alumni support and fund-raising accomplishments, board President Robert F. Hyland, regional vice-president of CBS, Inc., said, "Based upon an active leadership role by our board of directors, the presidency of James I. Spainhower and the success of our fund-raising drives, we are very optimistic that \$10 million can be secured from private and corporate sources in the next few years to meet Lindenwood's needs for capital expenditures and student development."

The fund-raising effort, called the Renaissance Campaign, is designed to bring financial stability to the college to enable it to meet campus expansion, community needs and student development in the future.

Volunteer efforts combined with alumni support are credited to the successful fund-raising drive.

Commencement To Honor Gephardt

Continued from Page 1

conferred by James I. Spainhower, Ph.D., president of Lindenwood College, and James F. Hood, Ph.D., acting dean of faculty.

The congressman was elected to the House of Representatives in 1977 to represent Missouri's Third District, which includes Jefferson County and parts of St. Louis County and St. Louis City. Since

then, he has worked closely with the House Democratic leadership, especially in the area of economic policy.

He currently serves on the House Ways & Means Committee and its Social Security and Trade subcommittees, and is chairman of the House Democratic Caucus Steering & Policy Committee.

Within the Ways & Means Com-

mittee, Rep. Gephardt has taken a special interest in health policy as well as Social Security, and is the author of a comprehensive reform proposal to make the health care marketplace more competitive.

The cosponsor of a major tax simplification plan known as the Fair Tax, Rep. Gephardt was among Democrats who wrote "Rebuilding the Road to Opportunity: Turning Point for America's Economy," which in 1982 was endorsed subsequently by the House Democratic Caucus.

A native of St. Louis, the congressman graduated from Northwestern University with a bachelor's degree in speech and from the University of Michigan Law School with a doctor of jurisprudence degree.

A former Democratic commit-

teeman and alderman from the 14th Ward in St. Louis, he served six years, from 1965-71, as a captain in the Missouri Air National Guard.

Prior to his election to Congress, he also was a partner with the law firm of Thompson & Mitchell in St. Louis. Married, he and his wife, Jane, have two children.

Lindenwood College's spring commencement will be held in front of Sibley Hall. In case of inclement weather, it will take place at the Lindenwood College Chapel of St. Charles Presbyterian Church.

The Rev. William G. Shoop, minister of Webster Groves Christian Church, will be the speaker for the college's annual baccalaureate, which is scheduled at 7:30 p.m. May 17 at the Lindenwood College Chapel.

Serving You

Board of Directors

John D. Wolf of Manchester, MO, vice-president and general manager of McDonnell Douglas Electronics Co. in St. Charles, has been elected as a member of the Lindenwood College Board of Directors.

Active in volunteer and community activities, he is a member of St. Joseph Health Center Development Council in St. Charles, and has served as president of the American Cancer Society West County Board of Directors, the Manchester School Parent Teachers Association and the Glen Tail Local Homeowners Association. He also has served as chairman for the Missouri Jaycees' "Walk for Mankind" and "Punt, Pass and Kick" projects.

A native of Norman, OK, Wolf has undergraduate and master's degrees in electrical engineering

from the University of Missouri - Rolla.

Wolf joined McDonnell Douglas Corp. following graduation in 1967. He has served in a variety of capacities with the firm since, including Laser Communications Manager, Vice-President for Program Management and Executive Vice-President. He was named to his present position last year.

Wolf is a member of the Institute of Electrical & Electronic Engineers, the American Institute of Aeronautics and Astronautics and the Electronic Industries Association.

Married, Wolf and his wife, Carol Louise, have two sons - Stephen J., 16, and Scott W., 14.

The board of directors oversees the management and operation of the 158-year-old liberal arts institu-



Hazelwood



Wolf

Board of Overseers

Keith W. Hazelwood, an attorney and partner at Hazelwood, Barklage & Barklage, P.C., in St. Charles, has been appointed to the Lindenwood College Board of Overseers.

The 30-member board is an advisory body to the college's board of directors. Members, several of whom have voting rights on the board of directors, serve for three-year terms.

Hazelwood is a 1967 graduate of Dartmouth College in New Hampshire and a 1970 graduate of Washington University School of Law.

Active in the community, he is a past president and senator of the St. Charles Jaycees; a member of the St. Peters Rotary Club; and a

board member and chairman of the Legislative Affairs committees of both the St. Charles and St. Peters chambers of commerce.

Hazelwood also has been active with the board of advisors to the Lindenwood College Performing Arts Department, and he serves on the YMCA Board of Directors, as an attorney for the Missouri Federation of Young Republicans and as a member of the Political Action Committee of the Home Builders Association.

Married, he and his wife, Nancy Ann, have two sons - Royce "Rocky" W., 5, and Robert S., 2.

Hazelwood will attend his first meeting as a member of the board of overseers when it meets May 13 at the St. Charles campus.

Chaplain Named

The Rev. George R. Wilcox of Denver, CO, has been named chaplain at Lindenwood College and assistant pastor of St. Charles Presbyterian Church.

In the newly-created college position, Wilcox will serve primarily as a counselor to Lindenwood students, faculty and staff. He also will serve as chairman of the Religious Life Council, a group comprised of community and college members which plans religious-oriented programs throughout the year.

A 1984 graduate of Princeton Theological Seminary, Wilcox holds a master's degree in divinity and a bachelor's degree in religion from Wittenberg University in Ohio. As a seminary student, he served as chaplain to the Merwick Rehabilitation Center in Princeton, NJ, an intermediate care facility for the elderly.

Prior to his position at the center, Wilcox completed interships at the First Presbyterian Church in Mt. Clemens, MI, and at Wallingford Presbyterian church in Wallingford, PA. In 1981, he worked as an assistant chaplain at the Geisinger Medical Center in Danville, PA, and, in 1980, was an orderly at Porter Memorial Hospital in Denver.

In conjunction with his educational pursuits, Wilcox served as a group leader at Youth Triennium at Purdue University and as a missionary volunteer in southeast Alaska.

In his new role, Wilcox hopes to serve as a link among Lindenwood College and St. Charles and surrounding communities. "I'm excited to be a part of the college and I hope to strengthen ties between Lindenwood and the community," he said.

Wilcox also emphasized he will be receptive to all Lindenwood students and staff, regardless of their faith or religious background. "I want to celebrate the diversity of faiths and people on the Lindenwood campus," he said, "and I will be available for counseling, support and to offer educational opportunities."

As assistant pastor at St. Charles Presbyterian church, he



The Rev. Wilcox

will work closely with the Rev. Robert R. McGruther, pastor of the church and a member of the Lindenwood College Board of Overseers. His duties will include working with the youth ministry, church deacons and new members as well as liaison with area churches and synagogues.

Wilcox has filled a position at Lindenwood College that has not been occupied for more than a decade. At the college, he will work closely with President James I. Spainhower, an ordained minister of the Christian Church for nearly 35 years, and Allen M. Schwab, dean of the College Life to whom Wilcox will report.

"The Rev. Wilcox will be extraordinarily valuable as a counselor, ombudsman and resource person," Schwab said, "and his personal effectiveness and involvement on campus are very much needed and important to the college."

1985
Alumni Reunion
Weekend
October 18-20
St. Charles
Campus

President James I. Spainhower has been appointed to the board of directors of the St. Joseph Health Center in St. Charles. The appointment is for a three-year term.

Arthur Prell, Ph.D., chairman of the college's Business Administration Dept. and director of the Babcock Center for the Study of Modern Business, recently took part in discussion sessions at the American Marketing Association's fifth annual Academy for Health Services Marketing Symposium, held at the Las Vegas Hilton Hotel.

Jerry A. Rufkahr, vice-president of administration, is among 12 St. Charles residents cited by the St. Charles Jaycees and Jaycee Women for outstanding community service. Honored recently, Rufkahr was given a special recognition award for his support of the St. Charles Jaycees chapter. He joined Lindenwood a year ago.

Michael Castro, Ph.D., faculty advisor for LCIE communication and general education programs, was a featured speaker on the Ethnic Literature Panel of the Modern Language Association's annual national convention, held recently in Washington, DC. He addressed the subject, "Native American Influences on Modern Poetry."

Marilyn A. Morris, athletic director and newly-appointed Assistant Dean of College Life, has been elected to the Missouri Junior Miss State Executive Board. She will represent St. Charles and other local programs of the state board for the statewide pageant. In her new position as assistant dean, effective July 1, she will be in charge of College Life programs and residences on campus.

Tammy L. Edmundson, a St. Charles sophomore majoring in communications, is the author of "A Country Store," a feature that appeared in a recent issue of *Missouri Life*, a statewide magazine with a circulation of 30,000. The article is about a Seaton, MO, resident who operates one of the last old-style country stores in Missouri.

Kenneth J. Bayer of Chesterfield, MO, an instructor in the Evening College for the MBA course, "Communications, Management and Policy," has been named 1985 "Business Advertising Professional of the Year" by the St. Louis Chapter of the Business & Professional Advertising Association (BPAA). A member of the BPAA since 1939, Bayer was cited for his 48 years in business advertising. He is a senior consultant with Lang & Smith Communications Group and is president of Ken Bayer Communications.

people & places

Robert W. King, associate professor of business and economics, recently appeared on KSDK-TV's "Briefing Session." The half-hour program probed the possibilities and ramifications of President Ronald Reagan's proposed cutbacks in the federal budget.

Mrs. Russell J. Crider of St. Charles, a member of the Lindenwood College Board of Directors, has received the "Outstanding Citizen of the Year" award from St. Charles for outstanding community service. A member of the board since 1976, Mrs. Crider is a civic and business leader well-known in the community for her volunteer work. A year ago, she was reelected to a three-year term on the board.

Patricia Glaser Silversmith, former development director at Lindenwood, has been appointed by President Ronald Reagan to the National Council on Vocational Education, a 17-member advisory group formed to instigate better vocational education programs. A 1952 graduate of Washington University, she holds a master's degree in business, awarded in 1984 from Lindenwood. She is vice-chairwoman of the Missouri Republican Party's Finance Committee and is on the board of the Jewish Employment & Vocational Service of the Jewish Federation of St. Louis. Silversmith also is a former board member of the Radiq Information Service for the Blind & Handicapped at the Shrine of Our Lady of the Snows near Belleville, IL.

Sally A. Spears, former administrative assistant to the Director of Admissions at Washington University in St. Louis, has been appointed Registrar. A 1968 graduate of Western Michigan University, she holds an M.Ed. in higher education administration from the University of Massachusetts. She has held positions at Cardinal Newman College in St. Louis; Broward Community College in Hollywood, FL; Greenfield Community College in Greenfield, MA; and at the University of Massachusetts in Amherst, MA, prior to Washington University and her new position at Lindenwood.

Lindenwood accepted the resignation of Lawrence Elam, vice-president for finance, who left the college recently to accept a financial officer's position with an organization involved in the promotion of international higher education. He had been a member of the administrative staff since 1981. The vacancy is expected to be filled shortly.

Resignations also were accepted from Jane Pace, secretary to President James I. Spainhower, and from Darlene Eaton, who served as registrar. Pace resigned to relocate in Dallas, TX, while Eaton left to pursue consultant work. Marlene Niederhelm, secretary to the Vice-President of Finance, has submitted her resignation, and Michelle Medina of the Business Office has been appointed to Niederhelm's position.

Filling the position left by Pace is Judy A. Shanahan of St. Louis. A 1973 graduate of Sanford Brown Business College, she has been employed for the past five years as manager for a Hinsdale, IL, psychiatrist's office. Prior to this, she served in bookkeeping, payroll and personnel positions with Brandons Restaurant in Lombard, IL, and for the Jewish Hospital of St. Louis.

Diane M. Scott of St. Peters, MO, has joined the Printing Center as a clerk/typist. A 1970 graduate of St. Charles Senior High School, she is a cosmetologist and a graduate of St. Charles Beauty College.

Newly-elected members of the Lindenwood College Circle K Club are Abby Tuttle, a junior from Gray Summit, MO, president; Denise Hackenworth, a senior from Wentzville, MO, vice-president; Carrie Fisher, a sophomore from St. Joseph, MI, secretary; Stacy Cirar, a sophomore from St. Ann, MO, treasurer; and Dana Condellire, a sophomore from Fenton, MO, and Doug Hoggatt, a freshman from St. Peters, MO, board-at-large members.

Led by 'Fast Eddie'

Community Campaign To Save Cardinals

by RANDY L. WALLICK

At Lindenwood College, he's known as Ed Watkins, vice-president of institutional development.

But, to sports enthusiasts in the metropolitan St. Louis area and supporters of the Football Cardinals, he's the man from St. Charles known as "Fast Eddie."

It was "Fast Eddie" who singularly launched the "Keep the Birds in Their Nest" campaign that mustered community-wide support for keeping the Football Cardinals in St. Louis.

For those unknowledgeable about the controversy or those who avoid print and broadcast media, the possible relocation of St. Louis' National Football League (NFL) franchise has been the talk of the town for several months.

Prior to this month, Cardinals owner Bill Bidwell and the St. Louis media have been playing a cat-and-mouse game concerning the possible location of the team to a city with larger stadium seating, particularly Phoenix, AZ. Phoenix civic and community leaders have been wooing the Cardinals, offering the team larger stadium facilities and tax incentives.

Until a recent announcement that the Cardinals would remain in St. Louis for the 1985 season, "mum" had been the word from Bidwell and Cardinal officials, other than an occasional leak in the press about the team's unhappiness with Busch Stadium, which has the second-lowest seating capacity among NFL-franchise teams.

It is Watkins who is credited with leading the campaign to keep the St. Louis Football Cardinals in Busch Stadium, the "Keep the Birds in Their Nest" campaign that resulted in a rally at Kiel Auditorium in downtown St. Louis which attracted nearly 2,000 football fans and supporters.

At his own expense, Watkins placed display ads in St. Louis' daily newspapers, urging a unified campaign to save the team.

The ads prompted numerous calls to Watkins from those who wanted to support the "Keep the Birds in Their Nest" campaign either through participation at the rally or through financial backing.

The overwhelming support shown for Watkins' efforts led to the Kiel Auditorium rally which attracted nearly 2,000 fans one Sunday afternoon, including the cheerleading Big Red Line, members of the Football Cardinals and the Bob Kuban Brass which performs at Cardinal home games.

Decked in a red t-shirt with "Fast Eddie" monogrammed across the back, Watkins took microphone in hand and rallied the crowd to a 90-minute extravaganza that was featured later in the day on all St. Louis media.

Although the controversy surrounding the relocation of the Cardinals has been stalled for this playing season, Watkins' efforts demonstrated that St. Louis doesn't want to lose its NFL team, and the community can show its support to Bidwell or other powers that be that the Football Cardinals belong "in their nest" in Busch Stadium.



OPTIMIST CLUB GIFT — The St. Charles Optimist Club (Noon Day) recently presented the college with a \$2,500 scholarship that will be matched by Lindenwood, providing \$5,000 to a deserving St. Charles student. Hugh C. Orr, right, past president, made the presentation to President James I. Spainhower recently as Richard Krill, left, president-elect, and Mrs. Loraine Riley look on. The gift was made in memory of Dr. Vernon Dungan of St. Charles, a well-known Optimist Club member and Mrs. Riley's late husband.

Master Development Plan Approved

Continued from page 1

facility on campus and one that is listed in the National Registry of Historic Buildings; new roofs on Butler Library, Butler Hall and Roemer Hall; and major additions, air conditioning and renovation of administrative offices and classrooms in Roemer Hall.

Spainhower said that before any work can begin on the master development plan, \$500,000 needs to be raised to address the immediate repair needs of the institution. "Many of these repair and renovation needs are energy-related and could save Lindenwood considerable amounts in its annual operating budget," the president added.

Initially, \$500,000 will be spent for campus renovation. This figure includes \$225,000 for roofing repairs - the campus' most serious problem at present; \$92,000 for tuckpointing, \$53,000 for gutter and downspout needs, \$45,000 for improvements to the electrical wiring of Sibley Hall, \$75,000 for remodeling and lighting improvements to Jelkyl Theatre in Roemer Hall, and \$10,000 to begin the repair of plumbing in Sibley.

As indicated, the bulk of this funding will be earmarked for badly-needed roofing repairs to campus buildings - \$54,000 for Roemer Hall, \$25,000 for Butler Hall, \$6,000 for Ayres Hall, \$36,000 for Butler Library, \$38,000 for the Young Hall of Science and \$10,000 for the entrance roof of Sibley Hall.

Once funding is obtained and these immediate needs are met, other phases can begin as part of the master development plan, Spainhower said.

The \$10 million Renaissance Campaign, which includes the \$8 million master development plan, is the most ambitious in the college's history.

The \$10 million major funds campaign is a multifaceted one that involves not only the board of directors but Lindenwood College alumni throughout the country as well as major businesses, corporations and foundations in the greater metropolitan area.

The campaign is designed to bring financial stability to the 158-year-old institution and pro-

vide it with working revenues to meet campus expansion, community needs and student demands in the future, Spainhower added.

Club Sets Two-State Record

With 40 members, the Lindenwood Circle K Club has the largest membership of coeducational campus organizations in the Missouri-Arkansas District of Kiwanis International, according to James Thompson, college advisor to the newly-formed club.

Sponsored by the Kiwanis Club of St. Charles (Noon Day), the Circle K Club was chartered last fall as the college's chapter of the world's largest college service organization. Circle K International is comprised of more than 12,000 members in service clubs on 800 college and university campuses throughout the United States, Canada, Jamaica, the Bahamas and Mexico.

Thompson, who serves as major funds coordinator at Lindenwood, said the purposes of the club, which meets weekly, are to provide service to the campus and community as well as to learn about business careers.

"As the first international organization on campus, the club will have a high degree of visibility within the community," he said.

Lindenwood's Circle K Club is a member of the Missouri-Arkansas District of Kiwanis International, the two-state area that encompasses Kiwanis and Circle K clubs.

Newly-elected members of the Lindenwood chapter include Abby Tuttle, a junior from Gray Summit, MO, president; Denise Hackenworth, a senior from Wentzville, vice-president; Carrie Fisher, a sophomore from St. Joseph, MI, secretary; Stacy Cirar, a sophomore from St. Ann, treasurer; and Dana Condellire, a sophomore from Fenton, and Doug Hoggatt, a freshman from St. Peters, board-at-large members.

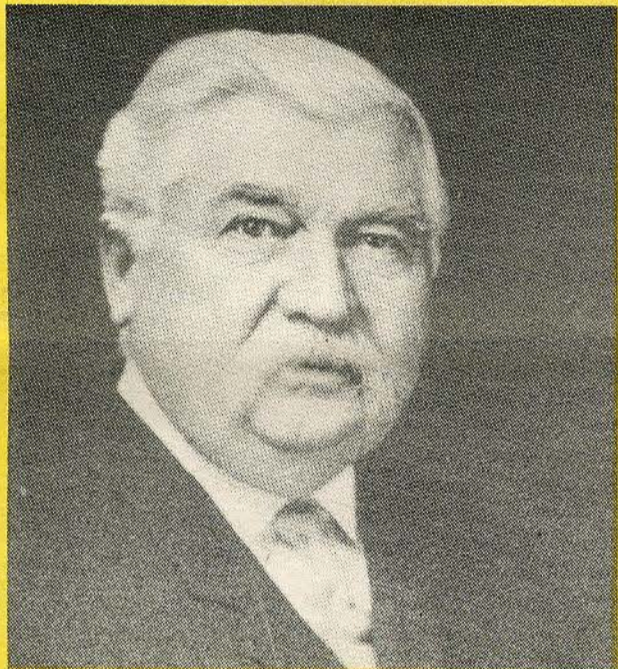
Historical Booklet

Nearly 12,000 copies of a 16-page booklet, "A Historical Perspective of Lindenwood College," were mailed recently to alumni throughout the United States.

Designed as a marketing and fund-raising tool, the booklet gives a brief glimpse into the history of the 158-year-old college from the Sibley Years to the current Renaissance Campaign.

With historical information researched by Ed Watkins, vice-president for institutional development, in the Lindenwood College Archives, the booklet was a joint effort of the Development and Public Relations offices and the Printing Center.

We're Looking for Another Col. James G. Butler



"We need this generation's Col. Butler—a person of vision who would like the satisfaction of having a major influence upon our Renaissance Campaign..."

**James I. Spainhower,
President**

Col. James Gay Butler, a St. Louis industrialist, served on the college's board of directors and is one of the greatest benefactors of Lindenwood College.

During the 1930s and 1940s, Lindenwood College was able to build what many referred to as the "Wellesley of the West" primarily through the generosity of Col. James G. and Margaret Butler. The gifts from the Butler family totaled nearly \$4 million, a sum which is equivalent to more than \$25 million in today's economy.

During the Butlers' lifetime, Ayres, Butler and Niccolls halls were built. Funds from the interest from the Butler estate led to the construction of Roemer and Irwin halls, Butler Memorial Library, the Gables and Eastlick Residence.

We needed Col. James G. and Margaret Butler then. Certainly, we could use them now.

Since we started looking for another Col. Butler, we have raised more than \$1 million and concluded the college's first successful fund drive in its 158-year history. In addition to increasing annual alumni giving from five to 25 percent this year, Lindenwood has increased all levels of its support - from faculty and staff to the board of directors and overseers, the St. Charles area community, the metropolitan area and corporations and foundations.

But, we still have much to do - and we need to find new sources of support to do it. We're determined to keep a balanced budget and not to shift funds from our academic and student scholarship programs to special projects, such as badly-needed building renovations and for the expansion of new facilities.

We need this generation's Col. Butler - a person of vision who would like the satisfaction of having a major influence upon our Renaissance Campaign and upon the future development of this historic college as well as to the generations of students who will graduate to serve a society that needs them.

Are you that kind of person - a man or woman willing to make a major and significant investment in Lindenwood College? If so, please call or visit our beautiful and historic campus.

James I. Spainhower, President

Lindenwood College