

Lindenwood University

Digital Commons@Lindenwood University

---

Viewbooks

Lindenwood Historic Documents, Booklets,  
Miscellaneous

---

9-1963

## 1963-1964 Lindenwood College Viewbook

Lindenwood College

Follow this and additional works at: <https://digitalcommons.lindenwood.edu/viewbooks>



Part of the [History Commons](#)

---

### Recommended Citation

Lindenwood College, "1963-1964 Lindenwood College Viewbook" (1963). *Viewbooks*. 30.  
<https://digitalcommons.lindenwood.edu/viewbooks/30>

This Book is brought to you for free and open access by the Lindenwood Historic Documents, Booklets, Miscellaneous at Digital Commons@Lindenwood University. It has been accepted for inclusion in Viewbooks by an authorized administrator of Digital Commons@Lindenwood University. For more information, please contact [phuffman@lindenwood.edu](mailto:phuffman@lindenwood.edu).

1962?

63/64 mag

Lindenwood...



Lindenwood College, one of the oldest educational institutions in the Middle West, has been in continuous operation since 1827, when it was opened as a "school for young ladies" in the home of Major and Mrs. George Sibley.

It is now a well-established and well-equipped four year college for women offering the degrees of Bachelor of Arts, Bachelor of Science, Bachelor of Music, and Bachelor of Music Education.

The members of the Board of Directors of the College are elected by the Synod of Missouri of the United Presbyterian Church in the U.S.A.

As a church-related college, Lindenwod is loyal to its charter obligation not to provide teaching from a sectarian viewpoint. It does, however, emphasize the study of religion as a part of our culture and it is proud of its commitment to the Christian faith. The college community should be a place where inquiry is free, where commitment is clear



*Sibley Hall,  
one of seven  
dormitories*



*Missouri congressman keynoting student political convention*

and unafraid, and where students will find in library, classroom, and community life unmistakable standards of excellence. This college seeks to provide this excellence in preparing young women for citizenship, for occupational competence in some areas, and for homemaking.

The College is located in St. Charles, Missouri, twenty miles west of downtown St. Louis. The nearness of St. Charles to St. Louis makes available to Lindenwood students the cultural advantages of a great city. Chartered buses take them to the art museum, Shaw's Botanical Garden, the St. Louis Zoo, and to concerts, lectures, plays and operas.

### **ACADEMIC STANDING**

Lindenwood College is accredited as a four-year, Bachelor's degree-granting institution by the North Central Association of Colleges and Secondary Schools. It is accredited by the National Council for Accreditation of Teacher Edu-



*Senator Margaret Chase Smith talking with students and President McCluer*

cation for the preparation of elementary and secondary school teachers. Its Department of Music is a corporate member of the National Association of Schools of Music, and its Departments of Education and of Home Economics are accredited by the Missouri State Department of Education. The program for the preparation of Certified Church Educators is approved by the Joint Committee of Nine of the United Presbyterian Church in the U.S.A.

The College is a corporate member of the Association of American Colleges, the American Council on Education, the American Association of University Women, the Missouri College Union, and the Presbyterian College Union.

## **THE ACADEMIC PROGRAM**

### **The Liberal Arts**

The responsibilities women must assume in our society and the influence which they exert in all areas of human life challenge us to provide them with a liberal education



of the highest order. A recent study of graduates of Lindenwood College during the last ten years revealed the fact that 25% of the respondents had continued their study in graduate school. Art, biology, chemistry, English literature, political science, psychology, sociology, and speech and drama were the fields most frequently chosen for graduate study.

Students at Lindenwood may prepare for graduate study looking toward professional work in various fields, such as:

- Medicine and auxiliary fields
- Law and government
- College teaching
- Youth and group work agencies
- Guidance and personnel work
- Social service
- Religious education



*The College's  
pre-school  
laboratory,  
providing  
facilities for  
observing child  
development*



## VOCATIONAL PREPARATION

In addition to providing a general liberal education and preparation for graduate study, Lindenwood students find, within the frame-work of a liberal education, an opportunity to prepare themselves for economic independence with the completion of their undergraduate program. To this end a number of departments offer training in the vocations most frequently engaged in by women: secretarial work, office management, and the teaching of business in high school; professional education for teaching in elementary or secondary schools; home economics training for teaching or for positions in the business world in foods and nutrition or clothing and textiles, as well as training in home management; physical education, camp counseling, teaching, and recreational supervision; radio; religious education; art; and music. The



great need for competent teachers in public schools has led the faculty to develop an effective program for the preparation of teachers. Approximately one-third of the graduates in recent years have entered the teaching profession.

### **OPPORTUNITIES FOR INDEPENDENT STUDY**

The College recognizes that the purposes of education may frequently be more effectively achieved if the student is encouraged to assume a greater share of the responsibility for her own education. To this end, three plans for independent study have been provided.

The College also makes use of several opportunities for off-campus study on the part of its students. The Washington Semester Program offers students an opportunity for study in the field of public affairs in Washington, D.C. A Junior Year Abroad may be arranged for, and qualified students in the Psychology Department may take a semester's work in child development at the Merrill-Palmer Institute of Human Development in Detroit, Michigan.





## COURSE OFFERINGS

The course offerings at Lindenwood College are organized on a divisional basis. The departments of instruction are grouped within the divisions as follows:

### I. The Division of the Humanities

Art	Music
Classics	Philosophy
English	Religion
Modern Language	Speech

### II. The Division of the Natural Sciences and Mathematics

Biology	Mathematics
Chemistry	Physics

### III. The Division of the Social Sciences

Economics	Psychology
History	Sociology
Political Science	

### IV. The Division of Professional Education

Education	Office Management
Home Economics	Physical Education



## FACULTY AND STUDENTS

The faculty of fifty-five men and women is distinguished as a teaching staff, and several are widely known as research scholars. The ratio of one teacher to ten students gives the faculty members opportunity for careful attention to the needs and potentialities of each student. And this personal contact with each student is a significant help in effective instruction, for teaching is communication, and one can communicate best with those whom he knows. Because the student is not anonymous, she is helped in all aspects of college life.



## THE COUNSELING PROGRAM

The educational philosophy of the counseling program is that all of the needs of the individual student must be studied and integrated during the four years of the college experience. The office of the Dean of Students coordinates the program and maintains the cumulative records for each student beginning with her admission to college and extending through job placement subsequent to graduation. All matters relating to health, citizenship, scholastic aptitude and achievement tests, student activities and counselor evaluations are a part of the permanent file, the interpretation of which may be made available to the student herself, her parents, or faculty.

Each student is assigned a faculty counselor who assists her in planning a well-rounded program to meet her needs. During her sophomore year at the time of her formal dec-

*President and Mrs. McCluer meeting students informally*





laration of a major field, she is reassigned to a member of the faculty in her major department. Whereas the primary responsibility of the faculty counselor is academic advising, his concern is with the total life of the student.

A selected group of upperclass students serve as student counselors to five freshmen throughout their first year in college. The purpose of this program is to help in the interpretation of life at Lindenwood and to aid the student in making the necessary adjustments in the areas of social and personal relationships.

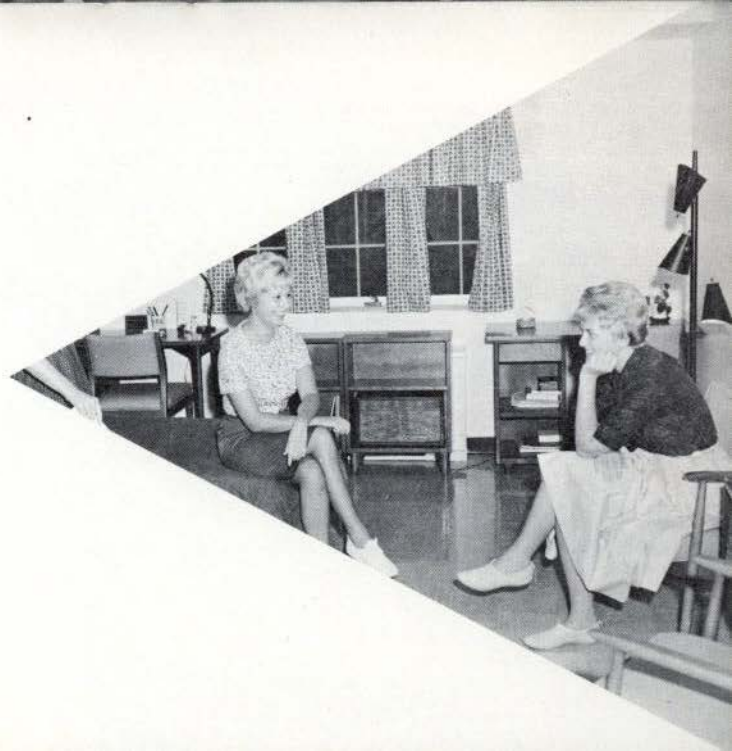
Inasmuch as most students are interested in the choice of an occupation, the Dean of Students provides vocational interest tests and a complete file of occupational material, giving special consideration to those who need guidance toward occupational choice.



## ADMISSION TO THE COLLEGE

The College is interested in placing its program before superior students and in providing them with meaningful opportunities. It is not, however, seeking to limit attendance to the upper ten percent of secondary school graduates. The faculty is concerned with the tasks of motivation as well as with the techniques of instruction. Year after year, many of our students are inspired by their teachers. Yet it should be said that a serious interest in obtaining a college education is one qualification for admission. This college should be chosen by the entering student primarily as a place to study. One sincerely interested in attaining a good college education will find this a congenial community.

A secondary school record which indicates the capacity to do the work at Lindenwood and satisfactory scores on the Scholastic Aptitude Test of the College Entrance



Examination Board are required of all freshman applicants. Early admission may be granted on the basis of six semesters' work and satisfactory scores on the Scholastic Aptitude Test taken in May of the student's junior year. Such admission is contingent on successful completion of her high school work.

Applicants for admission receive a definite answer promptly after all necessary supporting information has been provided.

### **EXPENSES**

The basic overall charge for the college year is \$2,235.00. This includes board, room, tuition, and activity fee. An additional charge of \$80.00 is made for each occupant of a room with connecting bath, except in McCluer Hall, an air-conditioned dormitory, where the additional charge is \$100.00.





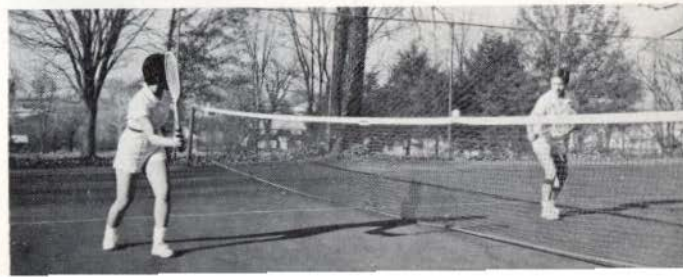
Students who graduate in the upper two per cent of their high school graduating classes are admitted as "Honor Scholars". Students in need of financial assistance may apply for competitive examination scholarships and grants-in-aid, the amounts of which are based on financial need. Applicants for competitive examination scholarships and grants-in-aid must file a confidential financial statement with the College Scholarship Service at Princeton, N.J. Self-help opportunities are also available. Approximately one-third of the current student body are employed on the campus.

### **CAMPUS LIFE**

The government of the student body is the responsibility of the students under an honor system of which the Lindenwood community is proud. The governing body is the Student Council, composed of representatives of residence halls and classes and the officers of the student body.



*Blue ribbon winner in  
side saddle equitation  
class, Parents'  
Weekend Horse Show*



A social director in the office of the Dean of Students assists students in planning parties and dances with men from colleges and universities in the area. She also serves as campus agent for theatre and concert tickets and arranges for transportation into St. Louis.

The gymnasium, athletic fields, tennis courts, indoor swimming pool, and golf course are available for recreational purposes. Each student may become a participating member of one or more of many clubs and organizations of varying interests.

The Student Christian Association is a voluntary association of students, affiliated with the National YWCA. This association works with administrative officers of the College in planning the annual Religion-in-Life Week and it sponsors the annual drive for the World University Fund.

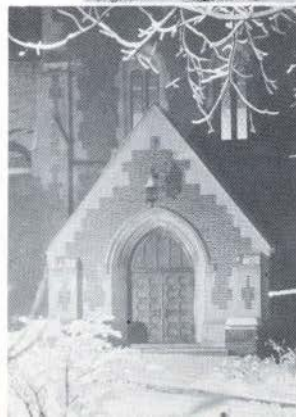


## THE CAMPUS

A beautiful 140 acre campus is situated in the western part of the city of St. Charles. The twenty-one buildings on the campus are well spaced. Included among these buildings are Roemer Hall, the main academic building, the Margaret Leggat Butler Library, the Lillie P. Roemer Fine Arts Building, the Ida Belle McCluer Home Management House, the B. Kurt Stumberg Health Center, and seven student residences. The riding ring and stables, golf course, tennis courts, archery range and hockey field are conveniently located on the back campus.



*McCluer Hall,  
newest dormitory*



*Margaret Leggat  
Butler Memorial Library*



## THE STUDENT BODY

One of the great assets of Lindenwood College is the character of the student body. Some 600 students are enrolled from thirty-five states and seven foreign countries. They constitute a friendly, democratic community in which scholastic achievement is highly respected.

Prospective students are invited to visit the campus. Write Mr. Glenn G. Thomas, Director of Admissions at Lindenwood College, for an appointment, or for additional information about the College.





... You'll remember Lindenwood