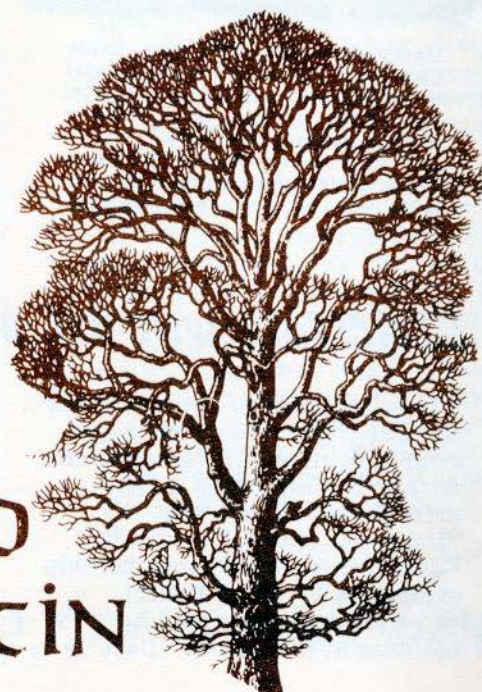
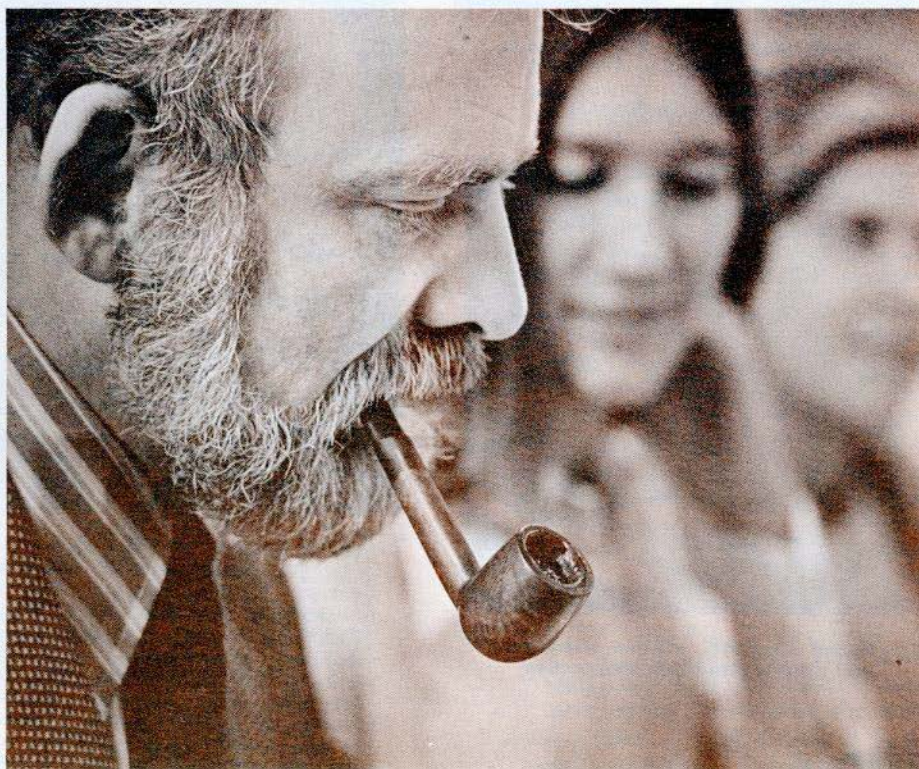


*'Men without values are very
dangerous . . .'*



THE LINDENWOOD
COLLEGES BULLETIN

'Men with frozen values are also very dangerous indeed' - - John Anthony Brown

"Men without values are very dangerous indeed. Men with frozen values are also very dangerous indeed."

At the opening session of the 1971-72 Lindenwood Common Course, President John Anthony Brown spoke on the history and philosophy of the course and expressed delight over the selection of this year's theme, "Values in Contemporary Society." He urged students to examine their own values and to "reach conclusions on the basis of a kind of judgment and commitment which is worthy of the mind which the human animal possesses."

Examining the dilemma of value definition in any generation, Brown told students: "One sees members of your generation sitting on the streets and living in communes, wandering the roadways, smoking pot, and criticizing society while members of my generation very frequently, desperately try to find what the value system is that leads to this kind of alienation and rejection. Sometimes our conclusion about youth is that there are no values except the value of rejection or alienation."

"But many of my generation are also without values," the President continued. "One sees them sitting on the street, in front of the little drugstore in Winthrop, Maine, as I saw last summer, hoping that the sun would be bright and the day warm, not reading, not even talking, just looking as the cars pass and the people come and go. But there was a country club nearby and on that golf course there were some people without values too. Indeed, both



In spirited exchange with students is Dr. W. Dean Eckert, director of the Lindenwood Common Course which focuses this year on "Values in Contemporary Society."



President John Anthony Brown with students outside Butler Library. The President emphasized examination of personal values in his opening address to the Common.

members of my generation and of yours have something very much in common. Those in each generation who are essentially without values deeply believe themselves to be possessors of values. Some of your colleagues believe that it is enough to bring down a system which they dislike. Some of my generation believe it is enough to defend the system which they like. Neither is enough. To take time to enter deliberately and consciously, with the eagerness of the young and the intensity of the scholar, into a deep examination of the values in today's society is to do something truly worthwhile at the beginning of a college career."

Dr. W. Dean Eckert, director of the Common, pointed out that in exploration of this year's theme students have "probed beneath the surface in an effort not only to define the nature of the problems, but also to uncover the conflicts in value systems which are central to comprehending the issues we face in today's society.

"The hope for a tolerable and meaningful existence in the future is dependent upon an understanding of the character of these conflicts and the will to work together to resolve issues and problems so that the human spirit may be renewed."

COVER PHOTO: Dr. W. Dean Eckert, associate professor of art and director of the Lindenwood Common Course, holds the B.A., B.F.A. and M.A. degrees from Ohio State University and the Ph.D. from the University of Iowa. His special field of research is art history, and he is an exhibiting artist in regional and national shows.

Japanese Woodblock Print Exhibit

At an exhibition preview of Japanese Woodblock Prints displayed in November in the gallery of the new Fine Arts Building, two Lindenwood students from Tokyo demonstrated techniques and traditional Japanese cultural ceremonies relating to the prints. Miss Midori Matsuzawa (right) explained the inscriptions on the prints and Miss Harumi Nagata performed a Japanese tea ceremony.

The exhibit showed 50 Oriental art works, from the 18th through 20th centuries, circulated by the Missouri Council on the Arts, and an additional 25 from the private collection of the same donor who wishes to remain anonymous.

Honor Scholarships for Freshmen

A number of honor scholarships are now available to young men and women of senior standing and high achievement who wish to enroll at Lindenwood as freshmen during the 1972-73 academic year.

The scholarships are valued at \$500 each year over a four-year period or a total of \$2000, pending satisfactory performance.

Applicants may receive further information on the scholarships through their high school counselors or by writing The Office of Admissions, The Lindenwood Colleges, St. Charles, Mo. 63301.



More power to KCLC-FM

Pending final approval by the Federal Communications Commission, Lindenwood's community radio station, KCLC-FM, will increase its power from 10 watts to an effective radiated power of 3000 watts, allowing it to serve metropolitan St. Louis and other areas within a 50-mile radius of St. Charles. The station's potential listening audience will rise from the current 250,000 to two and a half million.

The expansion will extend the station's coverage across the Mississippi River eastward past Edwardsville, Ill., south beyond Festus and Crystal City, in Jefferson County, Mo., and, with St. Charles as a center, beyond O'Fallon, Mo. on the west and Portage des Sioux, Mo. on the north.

"We are extending our emphasis into areas west of us," Prof. Martha May Boyer, faculty adviser to KCLC, said, "our primary emphasis being on St. Charles and St. Charles County. We shall be concerned with the needs of people moving into St. Charles County, one of the leading centers in the country in population growth. KCLC-FM is the only station which provides local programming."

The increase in power is facilitated by the addition of a new 1500-watt transmitter and corresponding antenna. Both are located atop Young Hall of Science, providing 1500 watts vertical and 1500 watts horizontal power. The station will broadcast on a new frequency of 89.1 megacycles. Since October 1968, when KCLC-FM went on the air, it has operated at 89.9 megacycles.

The power boost takes Lindenwood's FM station one step further in its plan to qualify for public broadcasting funds, according to Prof. Boyer. "Increased funds will enable KCLC-FM to provide for more comprehensive programming for the community it serves," she said. "We'd like to have funds for live coverage of community events and the production of programs showcasing Lindenwood's academic program."

KCLC-FM is student managed and operated, most of its staff members being Communication Arts majors emphasizing broadcasting. However, students in other fields audition and participate. The current staff numbers 30.

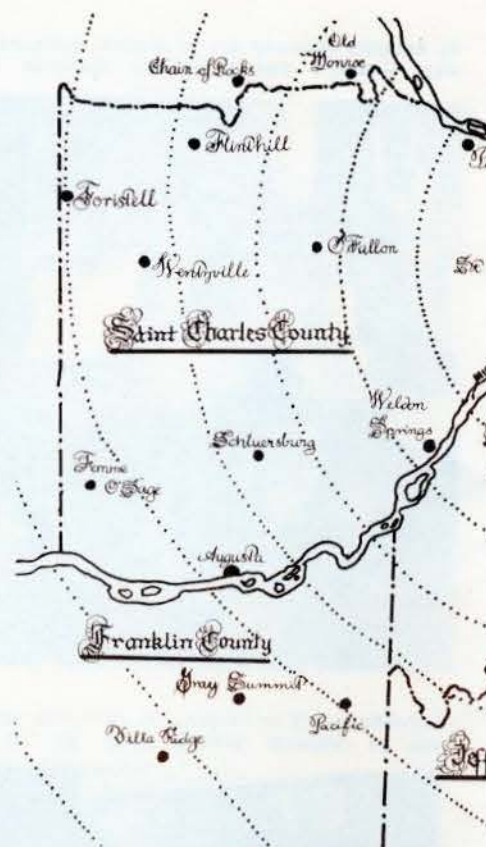
The station broadcasts 99 hours

a week: 15 hours a day, Monday through Friday, and 12 hours on both Saturday and Sunday. Broadcast hours have almost tripled since 1968 when the station was on the air five hours a day, 35 hours a week.

The weekday format includes "The Morning Show" from 7 to 10 a.m.; contemporary music and hourly news and weather from noon to 6 p.m.; "The KCLC Evening News," 6-6:30 p.m., a survey of global, national and local news plus sports and weather (the station has Associated Press wire service and a 24-hour weather line to Lambert-St. Louis Airport); "Community Profile" at 7 p.m., featuring local and national personalities in the news; tapes from the National Educational Radio Network and special evening programs such as live broadcasts of at-home football and basketball games between the two local high schools, St. Charles and Duchesne. Sign-off is at midnight. Included in the weekend format are classical music and BBC presentations from 3 p.m. to midnight on Sunday.

The station is a member of National Educational Radio, the Association of Public Broadcast Education and the National Association of Educational Broadcasters. It has received public service awards from the American Cancer Society and Radio Free Europe, and an award from the Fathers Club of Lindenwood College for contributions to campus life.

Some of KCLC-FM's recent graduates and their present station affiliations are: Wendy Davis, WMAL-TV, Washington, D.C.; Michael Donovan, WBBM News Radio, Chicago; James Fairchild, KGRV, St. Louis; Linda Haddock, KLAK, Denver; Steve Hirsch, KIRL, St. Charles; Mary Ratliff, KUDL, Kansas City, Mo.; and Sharon Serre, first woman disc jockey for Station WDXD, Chattanooga, Tenn.



Map showing approximate range of increased coverage for KCLC-FM. Jeffrey Kleiman, sophomore, Lindenwood College.

Among Danforth Visiting Lecturers on the Lindenwood campus during the fall semester was Kenneth Adam, former president of the British Broadcasting Corporation Television Network, shown outside McCluer Hall with his wife Ruth. Adam spoke to classes, met informally with students and delivered a public lecture, "The Media and Government: Friends or Foes?"



Under auspices of the Lindenwood Colleges Lectures and Concerts Series, Sander Vanocur, former anchorman for NBC-TV's "First Tuesday," visited the campus in October. He delivered a public lecture and afterwards met informally with students in the lounge of McCluer Hall. Vanocur is now a senior correspondent for the newly formed National Public Affairs Center for Television.



Marty Ackmann, left, and Ernie Stewart team up to present special in-depth local news and features. Fall term events they covered were addresses by Ralph Nader and FCC Commissioner Nicholas Johnson, and the controversial St. Louis run of the rock musical "Hair."



Prof. Martha May Boyer, KCLC faculty adviser



Glen Cerny, sports director



Kathy Leonard, station manager, and Walter Franklin, disc jockey

Professors win art awards

Two associate professors in the Art Department received major awards in recent art competitions. Arthur L. Kanak won a \$100 prize for his oil painting, "Dardenne Marsh," in the St. Louis Artists Guild's membership exhibition. W. Dean Eckert received the third award in painting at the Quincey (Ill.)

Regional Exhibit for his painting, "Exquisite Cadaver." Eckert's was one of the 63 works chosen for exhibition from 200 entries.

Another member of the department, Associate Professor John Wehmer, had a one-man showing of his works at Fontbonne College during November

THE LINDENWOOD COLLEGES BULLETIN

THE LINDENWOOD COLLEGES BULLETIN, of which this newsletter comprises four issues each year, is published monthly except June by Lindenwood College, St. Charles, Mo. 63301. Second Class Postage Paid. VOLUME 145 No. 3 December 1971 Editor, M. P. Cronin



Radio coverage of KCLC-FM drawn by College II.



Professor Elizabeth Dawson, deceased

Professor Emeritus Elizabeth Dawson, who taught at Lindenwood for 40 years until her retirement in 1967, died Oct. 7 in St. Charles.

In a memorial service conducted by the Lindenwood faculty in Sibley Chapel on campus, Dean Howard Barnett eulogized Dr. Dawson's "fine intellect, energy, warmth, and devotion to her profession and to the ideals which elevate mere diligence to achievement."

A memorial poem written by Professor of English Agnes Sibley and read by her at the service spoke of Dr. Dawson's questioning mind, candor, lucidity, and gentleness.

Other participants were James H. Feely, chairman of the English Department; Chaplain Robert H. Betts; Dr. C. Eugene Conover, professor emeritus of philosophy and religion; and Dr. William Doherty, professor of modern languages.

Dr. Dawson, a native of Evanston, Ill., received the B.A. from Cornell College, the M.A. from Columbia University and the Ph.D. from the State University of Iowa. She joined the Lindenwood faculty in 1927 and served as chairman of the English Department from 1959 to 1965.



The St. Louis Brass Quintet, the only chamber music group in the metropolitan St. Louis area, performed at Lindenwood last month. Shown above in St. Louis's Powell Symphony Hall are, from left, John MacEnulty, Carl Schiebler, Mel Jernigan, Bob Ceccarini and Susan Slaughter. All but Ceccarini are members of the St. Louis Symphony Orchestra. Seven other members of the orchestra are part time faculty in Lindenwood's Department of Music, offering individual instruction to students, coaching chamber music ensembles and performing in faculty recitals.

Alumna performs with U.N. Orchestra

An alumna who is a member of the Albuquerque Symphony Orchestra and who praises Lindenwood for giving her "the most progressive year in the study of music and my instrument, the double bass," was selected recently to perform with the United Nations World Symphony Orchestra.

Betty Ann Suber Whiton (left) who attended the College during 1962-63, played in the three concerts the World Symphony gave beginning October 22: one at New York's Lincoln Center for the Performing Arts; one at Orlando, Fla.; and the third at the new John F. Kennedy Center for The Performing Arts in Washington, D. C.

Mrs. Whiton was selected for the honor after the Albuquerque Symphony was invited to send a contra-bass musician to the World Symphony representing orchestras in 34 states, the District of Columbia and 60 nations. A nine year veteran of the Albuquerque symphony, Mrs. Whiton plays first chair in its contra-bass section.

Reflecting on her training at Lindenwood, the distinguished alumna wrote, "I am especially thankful for the excellent instruction I received at Lindenwood, especially the opportunity to study with Henry Loew, St. Louis Symphony principal bass. The head of the Music Department, Dr. Little, made all the arrangements and the administration was wonderfully cooperative and understanding with such an unusual student and her unusual major - Double Bass."

Mrs. Whiton now teaches double bass and low string pedagogy classes at the University of New Mexico and instructs bass for the Albuquerque Symphony Orchestra.

She is married to Kenneth Whiton, a junior executive with New Mexico Tank and Culvert Co. who also plays with the Albuquerque Symphony Orchestra in the percussion section. They are parents of a 15-month-old-son, James -- who may carry on the Lindenwood tradition. "I am a second generation Lindenwooder," Mrs. Whiton said. "My mother, Mrs. Robert E. Suber (Dorothy Virginia Blue) also attended the College in 1937-38. I do hope some day to send a third generation to my alma mater."

Symphony artists teach at Lindenwood

On-campus instruction in musical instruments is given to Lindenwood students by musicians from the St. Louis Symphony Orchestra who also are part time faculty in the Department of Music. These distinguished artist-teachers are: Jacob Berg, flutist; Richard Brewer, cellist; Robert L. Coleman, clarinetist; Frederyck Sadowski, violinist; Kenneth W. Schultz, hornist; Robert Wisneskey, bassoonist; and Richard Woodhams, oboist.

Berg, Woodhams, Coleman, Schultz and Wisneskey comprise the Lindenwood Faculty Woodwind Quintet which performed in concert last year and will present another public program this spring.

Who's Who

Ten Lindenwood students have been selected for inclusion in the 1971-72 edition of *Who's Who Among Students in American Universities and Colleges*.

They are: Karen Bachman, St. Joseph, Mo.; Mary Ann Buschmeyer, St. Charles, Mo.; Jeanine Butts, Freehold, N.J.; Basil "Bill" Fikaris, Jersey City, N.J.; Janet Francois, New Orleans, La.; Jerry Kritz, Louisiana, Mo.; Dollie Lewallen, Kansas City, Mo.; Aline Lindquist, Indianapolis, Ind.; Geraldine Robinson, St. Louis, Mo.; and David Siddall, Hyannis, Mass.

The students were chosen for the national recognition on the basis of scholarship, participation and leadership in academic and extra-curricular activities, citizenship, and service to the College. Members of a faculty-administration committee nominated the students for the honor.



Marie Koch Brundige, '49, who in 1965 founded the Linden Leaf Society, a group of alumnae who contribute \$100 or more annually to Lindenwood College, will resume chairmanship of it. She was a member and secretary of the Alumnae Council.

Linnemann scholarship established

The Linnemann Scholarship Fund, to assist young women residents of St. Charles who have completed high school and wish to obtain a college education, has been established in the memory of the late Alice, Hulda, Laura and Kathryn Linnemann by their brother, Robert H. Linnemann, who died Sept. 28, 1970.

Three of the Linnemann sisters were Lindenwood alumnae and the fourth, Laura, received an honorary degree in literature from the College in 1931. Miss Alice Linnemann was an art professor at the College and Kathryn Linnemann founded the St. Charles Public Library.

Mr. Linnemann was a former State Senator and a former State Representative.

Basketball

The remaining schedule of the men's basketball team, the Lindenwood Lions, is as follows:

JANUARY

- 6—Logan College, 7:30 p.m.
(Home games are played in the men's gym of St. St. Charles High School)
- 7—At Missouri Baptist College, 7:30 p.m.
- 12—At St. Louis College of Pharmacy, 8:30 p.m.
- 18—At Linn Technical 7:30 p.m.
- 20—At St. Louis Christian College, 7:30 p.m.
- 24—At East St. Louis Community College, 8 p.m.
- 26—At St. Louis College of Pharmacy, 8:30 p.m.

27—Linn Technical College, 7:30 p.m.

FEBRUARY

- 3—McKendree College, 7:30 p.m.
- 5—At Logan College, 8 p.m.
- 8—At St. Mary's College, 8 p.m.
- 3—McKendree College, 7:30 p.m.
- 5—At Logan College, 8 p.m.
- 8—At St. Mary's College, 8 p.m.
- 10—Sanford Brown College, 8 p.m.
- 17—East St. Louis Community College, 7:30 p.m.
- 24—St. Louis Christian College, 7:30 p.m.
- 28—March 4: Greater St. Louis College Conference Tournament

Art Exhibits

Exhibits scheduled for showing in the gallery of The Lindenwood Colleges new Fine Arts Building during the spring term are:

Student Show	Jan. 7-28	
Nelson Gallery Prints	Feb. 4-28	"Americans From 1930-45." Sponsored by Missouri Council on the Arts.
Mrs. Nicky Bottger	Feb. 4-28	Watercolors. Opening and reception Feb. 6, 2-4 p.m.
Faculty Show	March 1-28	Opening and reception March 12, 7-9 p.m.
Ernest Trova	April 10-28	"Falling Man Manscapes." Sponsored by Missouri Council on the Arts.
18th and 19th Century English Prints	April 10-28	Twenty prints from the collection of Drury College. Sponsored by Missouri Council on the Arts.
Student Show	May 3	Through summer



The Lenore Anthony Borgeson Room in the Memorial Arts Building is now complete. A student aid fund in memory of Mrs. Borgeson, a Lindenwood alumna from Kansas City, Mo., has been initiated by her husband, the Rev. George Borgeson, and will be used to provide special assistance for students in need.