

LINDENWOOD



J. SCHEIDEGGER  
CENTER FOR THE ARTS

SPRING 2011 SEASON



# SPRING 2011 SEASON

The Spring 2011 Season at Lindenwood's J. Scheidegger Center for the Arts is as star-studded as previous seasons!

Join us for fabulous performances by BJ Thomas & Gary Puckett, Bobby Goldsboro, and Debbie Boone, as well as superb productions by The Russian National Ballet and Tango Buenos Aires!

The students of Lindenwood University will delight you with their production of critically-acclaimed *Urinetown: The Musical*.

A highlight of the Spring 2011 Season will be Bobby Goldsboro's Oil Painting Exhibition in The Boyle Family Gallery February 17 – March 13.

We look forward to seeing you often throughout the Spring 2011 Season!

PETER BEZEMES  
Executive Director

THE RUSSIAN NATIONAL BALLET THEATER PRESENTS:

# ROMEO & JULIET

JANUARY 21, 2011 | 8:00 PM



The world's most famous love story returns to the stage in a full-length ballet performed by The Russian National Ballet Theatre. With their families locked in a bitter feud, Romeo and Juliet's fate is doomed. While they will do anything to be together, their families will do anything to keep them apart. This highly dramatic and visually stunning production features more than 50 dancers upholding the grand tradition of Russian ballet in the tragic tale of Shakespeare's *Romeo and Juliet*.

### Acclaim:

"The Russian National Ballet Theatre, directed by Elena Radchenko, is a cut above many of its rivals."

— *Alexandera Tomaloni, Washington Post*

Platinum \$54.50 | Orchestra \$46.50 | Parterre \$38.50 | Balcony \$26.50

## TANGO BUENOS AIRES PRESENTS: FIRE & PASSION

JANUARY 27, 2011 | 8:00 PM



### Acclaim:

"Fast and furious, the dancers' feet and legs flashed and wove in and around each other, or paused to move slowly and seductively, stretching the tension within the dance."

— *Lincoln Journal Star*

"Sometimes playful, sometimes dramatic, and always sensuous, the closely entwined bodies and limbs moved with amazing speed through deftly engineered movements, including frequent dips, deep slides, energetic foot stomps and ballet-like turns."

— *Ruidoso News*

"...repeatedly crafted swirling, fast-paced tapestries of movement, laced with proud postures and sensual couplings."

— *The Washington Post*

Platinum \$54.50 | Orchestra \$46.50 | Parterre \$38.50 | Balcony \$26.50



# BJ THOMAS & GARY PUCKETT

## IN CONCERT

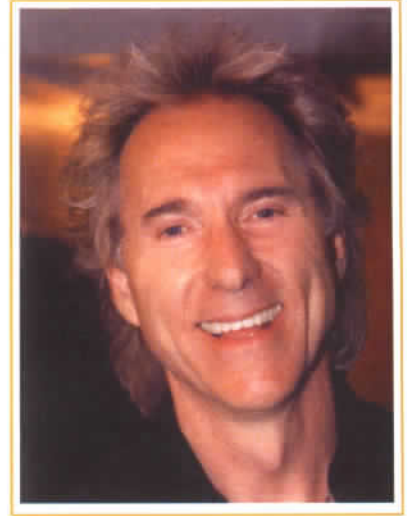
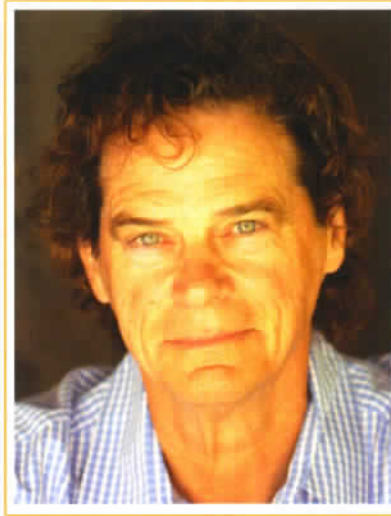
FEBRUARY 12, 2011 | 8:00 PM

With over 70 million records sold, BJ Thomas's vocal versatility is as apparent today as it was when he recorded his first hit in 1967, "I'm So Lonesome I Could Cry."

Since the mid-1960s, BJ Thomas has become one of the most recognized and respected voices of the American musical landscape. He has impacted many areas of popular music with 15 Top-40 pop hits, 10 Top-40 country hits, 5 Grammys, 2 Dove awards and 15 Gold and Platinum records. He is the only artist to successfully move to the top of three music genres not as a crossover and also have crossover success.

BJ appeared on the stage of The Bezemes Family Theater in March 2010 for the taping of the PBS National Television Special *Marvin Hamlisch Presents: The '70s, The Way We Were*.

Gary Puckett and The Union Gap had six consecutive gold records and sold more records in 1968 than any other recording act, including The Beatles. He is one of only a few artists whose first five releases went Gold—not even Elvis accomplished this. Mr. Puckett played a command performance at The White House for Prince Charles and Princess Anne by special invitation of the president. One of Gary's biggest hits includes the fan-favorite, "Young Girl." It was reissued by popular request in England, where it reached number-1 and achieved a Silver Record Award for the second time. He currently resides in Clearwater, Florida, with his wife and family.



Platinum \$54.50 | Orchestra \$46.50 | Parterre \$38.50 | Balcony \$28.50

# BOBBY GOLDSBORO

FEBRUARY 19, 2011 | 8:00 PM

Bobby Goldsboro's career has been a remarkable evolution.

In 1964 Bobby started his solo career by recording the first of a string of 16 Top-40 hits, "See the Funny Little Clown." He hit the *Billboard* charts with 29 consecutive singles. More million-selling hits followed, setting the stage for 1968 and the classic, "Honey," which became the largest-selling record in the world! "Watching Scotty Grow" was 1971's No. 1 Soft Rock and Adult Contemporary hit and his recordings of "Little Green Apples" and "With Pen in Hand" have also become classics.

The 1993 television season saw the hit CBS comedy *Evening Shade* premiere with a new theme song, written and performed by Bobby. The six-time Grammy nominee was also the new musical director of the show, which starred his buddy, Burt Reynolds.

Recently, the energetic dynamo decided to pursue another lifelong passion, oil painting! He has quickly gained a reputation as a world-class artist. Bobby will have a special showing of his original oil paintings in The Boyle Family Gallery for several weeks following his concert performance.

Bobby performed in the PBS Television Special *Marvin Hamlisch Presents: The '70s, The Way We Were*, filmed before a live audience at Lindenwood's J. Scheidegger Center for the Arts in March 2010.



Platinum \$42.50 | Orchestra \$38.50 | Parterre \$32.50 | Balcony \$24.50

# URINETOWN: THE MUSICAL

MARCH 3, 4, 5 & MARCH 10, 11, 12, 2011 | 7:30 PM

One of the most uproariously funny musicals in recent years, *URINETOWN* is a hilarious tale of greed, corruption, love, and revolution in a time when water is worth its weight in gold. In a Gotham-like city, a terrible water shortage, caused by a 20-year drought, has led to a government-enforced ban on private toilets. The citizens must use public amenities, regulated by a single malevolent company that profits by charging admission for one of humanity's most basic needs.



Amid the people, a hero decides he's had enough, and plans a revolution to lead them all to freedom! Inspired by the works of Bertolt Brecht and Kurt Weill, *URINETOWN* is an irreverently humorous satire in which no one is safe from scrutiny. Praised for reinventing the very notion of what a musical could be, *URINETOWN* catapults the "comedic romp" into the new millennium with its outrageous perspective, wickedly modern wit, and sustained ability to produce gales of unbridled laughter.

Platinum \$18 | Orchestra \$15 | Parterre \$12 | Balcony \$10

# DEBBY BOONE: REFLECTIONS OF ROSEMARY

MAY 7, 2011 | 8:00 PM

Debbi Boone earned instant fame in 1977 when the song "You Light Up My Life" became an overnight hit. The tune, which outranked even The Beatles by claiming the number-1 spot on the *Billboard* charts for ten straight weeks, sold in excess of four million copies; the album went double platinum with sales in excess of two million. The song went on to win an Academy Award for Best Song in a Motion Picture, and Debbi received the Grammy Award for Best New Artist of the Year.

*Reflections of Rosemary* is an intimate musical portrait of Debbi's late mother-in-law, the legendary singer Rosemary Clooney (as seen in the classic motion picture *White Christmas* with Bing Crosby and Danny Kaye). The performance is a deeply heartfelt tribute to the unforgettable Rosemary, a woman for whom Debbi had great love and respect.

"I wanted to select songs that would give an insight into Rosemary from a family perspective, and from the more than 30 years that I spent with her," says Boone.

Debbi performed in March 2010 on the stage of The Bezemes Family Theater during the filming of PBS's National Television Special *Marvin Hamlisch Presents: The '70s, The Way We Were*.

Debbi has also appeared in numerous Broadway and nationally touring productions.



Platinum \$42.50 | Orchestra \$38.50 | Parterre \$32.50 | Balcony \$24.50



# UPCOMING

## STUDENT THEATER PRODUCTIONS

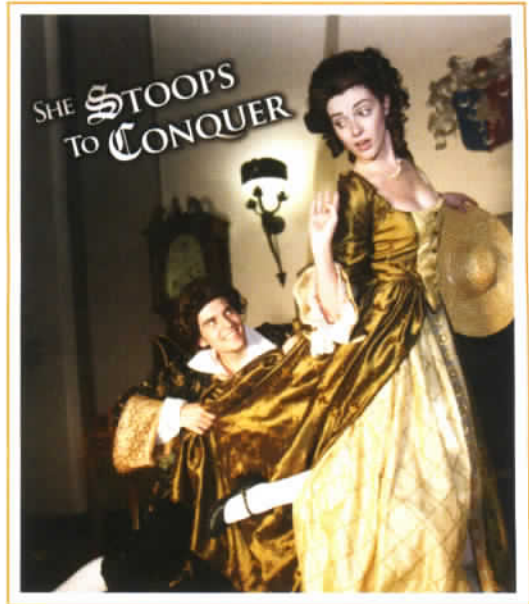
THE EMERSON BLACK BOX | SPRING 2011 SEASON

### SHE STOOPS TO CONQUER

FEBRUARY 3, 4, 5, 2011 | 7:30 PM

Most everyone has been the target of practical jokes, and most have been out on blind dates. Oliver Goldsmith based his 1773 comedy *She Stoops to Conquer* on two such incidents, creating a complicated, convoluted plot based on miscommunication and mistaken identities.

General Admission \$10

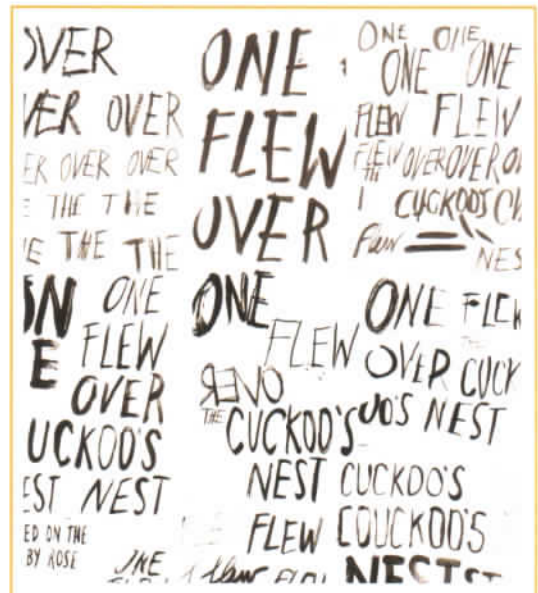


### ONE FLEW OVER THE CUCKOO'S NEST

APRIL 17, 18, 19, 21, 22, 23, 2011 | 7:30 PM

Adapted from the novel by Ken Kesey, the story is set in the 1960s at a dreary mental institution in the Pacific Northwest. "One Flew Over The Cuckoo's Nest" is a story about a charismatic rogue named Randle McMurphy who becomes a patient and finds that the ward is run by a tyrannical nurse. McMurphy befriends the patients, including a rather large deaf and mute Indian, and teaches them how to stand up for themselves. The result is a clash of two indomitable wills and an ending that will make you shudder and stand up and cheer.

General Admission \$10



# UPCOMING STUDENT DANCE PRODUCTIONS

SPRING 2011 SEASON

## STUDENT DANCE CONCERT

February 16, 17, 18, 2011 | 7:30 PM

February 19, 2011 | 2:00 PM

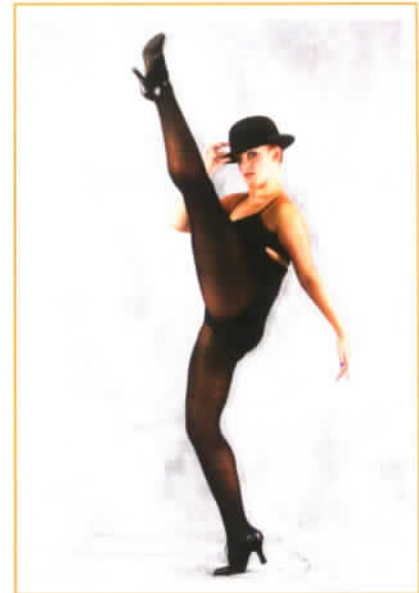
The Emerson Black Box Theater

The Student Dance Concert will feature new works from undergraduate students. Some of the students are first-time choreographers, and others are fulfilling part of their major requirements.

Students not only create the choreography but are also responsible for their own costumes and set design.

---

Free General Admission



## SPRING DANCE CONCERT

April 28, 29, 2011 | 7:30 PM

April 30, 2011 | 2:00 PM

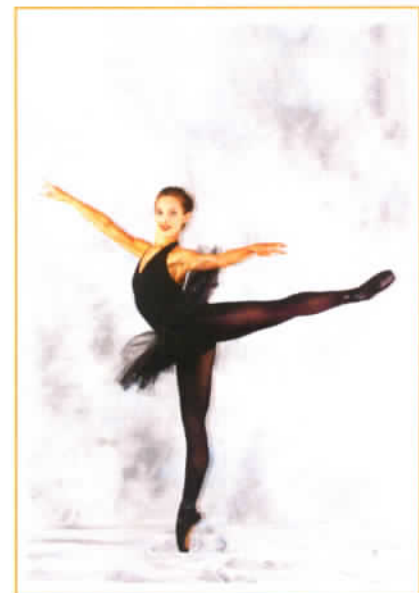
The Bezemes Family Theater

The first half of the Spring Dance Concert will feature new works created by senior dance majors as part of their culminating (Senior Thesis) projects.

The second half of the concert will feature the Lindenwood University Dance Ensemble and will include choreography by faculty, graduate students, and Dance Ensemble members.

---

General Admission \$10



# UPCOMING

## STUDENT MUSIC CONCERTS

SPRING 2011 SEASON

### MARCH SERIES

#### BAND CONCERT

Monday, March 21, 7:30 PM

The Bezemes Family Theater

#### CHORAL CONCERT

Tuesday, March 22, 7:30 PM

The Bezemes Family Theater

#### JAZZ CONCERT

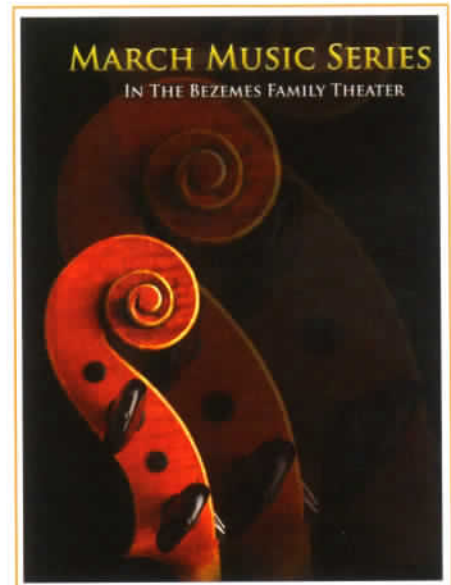
Wednesday, March 23, 7:30 PM

The Bezemes Family Theater

#### ORCHESTRA CONCERT

Thursday, March 24, 7:30 PM

The Bezemes Family Theater



### MAY SERIES

#### STUDENT CONDUCTORS CONCERT

Sunday, May 1, 7:30 PM

The Bezemes Family Theater

#### VOICES ONLY CONCERT

May 3 & 5, 7:30 PM

The Emerson Black Box Theater





# UPCOMING ART GALLERIES

THE BOYLE FAMILY GALLERY | SPRING 2011 SEASON

## BOB ALLEN'S CERAMIC ALL-STARS

January, 13 – February, 13

Opening Reception Thursday, January 13

4:00 PM - 7:00 PM

## BOBBY GOLDSBORO OIL PAINTINGS

February, 20 – March, 13

Opening Reception Sunday, February 20

1:00 PM - 5:00 PM

## MICHAEL BOLLENBACH MFA EXHIBITION

March, 17 – April, 10

Opening Reception Sunday, March 20

2:00 PM - 4:00 PM

## LU JURIED STUDENT EXHIBITION

April, 17 – May, 8

Opening Reception Sunday, April 17

11:00 AM - 1:00 PM

## BOBBY GOLDSBORO OIL PAINTINGS



Ron Rico with a Twist

Entertainer Bobby Goldsboro has performed before over 2 billion people in his illustrious four-decade career. His recordings of "Little Green Apples," "Watching Scotty Grow," and "With Pen in Hand" have become classics and his signature hit, "Honey," was the largest-selling recording in the world in 1968!

Now the multi-talented Goldsboro is focusing on his other love, oil painting! The self-taught artist began by traveling throughout his home state of Florida, bringing to life the serene hammocks and prairies of the ever-changing landscape. He is now branching out in every direction with a diverse portfolio that includes butterflies, horses, ocean scenes, hummingbirds, portraits, and a series of large, colorful flowers. His composition and use of tones and color have quickly gained Goldsboro a reputation as a world-class artist.

Bobby Goldsboro's music has always stirred the emotions. Now his paintings are doing the same.

# THE BEZEMES FAMILY THEATER

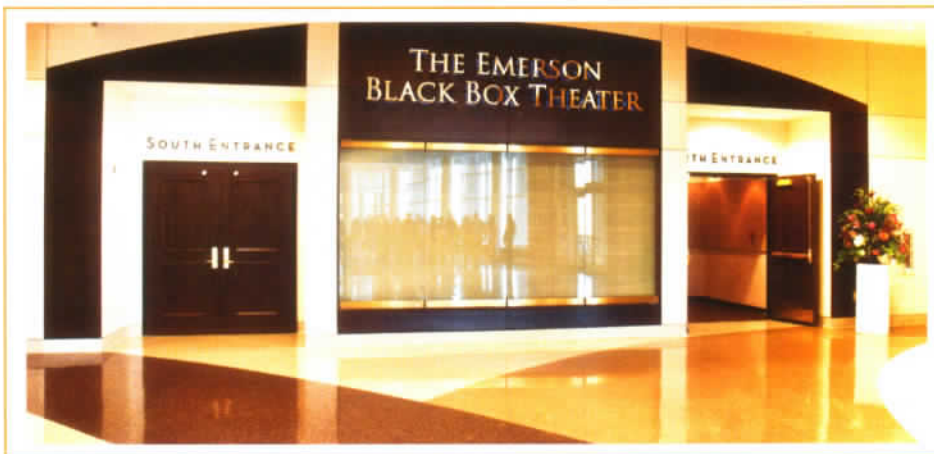


The Bezemes Family Theater is a 1,200-seat Broadway-style theater. Elegant and intimate in its design, the theater has one of the largest and most sophisticated stages in the region. Viewing is pleasant from any vantage point, allowing our patrons excellent visibility, superior sound quality, and comfortable seating. The Lindenwood Main Stage readily accommodates large-scale national and Broadway tours, as well as concerts, world-class dance, celebrity appearances, and Lindenwood University productions.

We invite you to join us for unparalleled experiences in the arts and entertainment. The J. Scheidegger Center for the Arts is easily accessible from anywhere in the region. Just minutes from the St. Louis International Airport, and less than one quarter mile from Interstate 70, the J. Scheidegger Center for the Arts is in a safe, park-like setting on the campus of Lindenwood University. We're easy to find, and ample free parking surrounds this architecturally significant and beautiful facility.



# THE EMERSON BLACK BOX THEATER



The Emerson Black Box Theater is a flexible space designed to put the audience close to the action. While the size of the audience can be adjusted to suit the production's requirements, one thing that never changes is the intimate relationship between the audience and the performers. The Emerson Black Box Theater can be configured for theater in the round, as a traditional theater, or for anything in between.

Generally seating between 150 and 250 audience members, The Emerson Black Box Theater provides for intimate gatherings in music, dance, drama and experimental theater. Located at the west end of The Grand Lobby, The Emerson Black Box Theater is a short distance from The Boyle Family Gallery, and The Bezemes Family Theater.

# THE BOYLE FAMILY GALLERY

The Boyle Family Gallery is a beautiful, spacious art gallery designed to display a variety of artistic works ranging from fine paintings to sculpture. This state-of-the-art gallery will delight all who visit with works of art from local, national, and international artists.

Located at the west end of The Grand Lobby, The Boyle Family Gallery a short distance from The Emerson Black Box Theater, and The Bezemes Family Theater.







# PREMIER PATRON MEMBERSHIP - \$125.00

Don't miss the chance to be part of our Premier Patron Membership program!

Support the Arts and our students while receiving these benefits:

- Complimentary Valet Service and coat check for all Main Stage Season productions.
- Recognition on the Annual Membership display for the 2010-2011 Season.
- 20% Discount on all Lindenwood University student productions.
- Exclusive invitations to private Premier Patron receptions with celebrity and VIP guests.
- The Premier Patron Membership card is honored at many local businesses for special events and discounts.
- A portion of your Membership Fee may be tax-deductible.

Please contact The Box Office at (636) 949-4433 for details.

For Corporate Sponsorship Opportunities, please contact the Director of Marketing at (636) 949-4512.

## PREMIER PATRON BUSINESSES

### AMPLE STORAGE

10% Discount on a 6-month or Greater Lease  
2960 Elm Point Industrial Drive  
St. Charles, MO 63301 | 636-946-5599  
[www.amplestorage.biz](http://www.amplestorage.biz)

### ANTIQUES & OAK

10% Discount on any Purchase of \$25.00 or More  
319 North Main Street  
St. Charles, MO 63301  
636-946-1898

### BELLACINO'S RESTAURANT

10% Discount on Total, Not Valid on Alcohol Sales  
1455 Bass Pro Drive  
St. Charles, MO 63301 | 636-925-2953  
[www.stlbellacinos.com](http://www.stlbellacinos.com)

### CHANDLER HILLS VINEYARDS

10% Discount on any Take-Home Wine Purchase  
596 Defiance Road  
Defiance, MO 63341 | 636-798-2675  
[www.chandlerhillvineyards.com](http://www.chandlerhillvineyards.com)

### CHEEBURGER CHEEBURGER

10% Discount on Total Dine-In Only  
2012 Chesterfield Mall  
Chesterfield, MO 63017 | 636-532-3210  
[www.cheeburger.com](http://www.cheeburger.com)

### FINISHING TOUCHES

10% Discount on Total  
825 South Main Street  
St. Charles, MO 63301  
636-947-6330

### GRAPPA GRILL

10% Discount on Total  
1644 Country Club Plaza  
St. Charles, MO 63303 | 636-940-5400  
[www.grappagrill.com](http://www.grappagrill.com)

### KREKELER JEWELERS, INC.

20% Discount on all In-Stock Merchandise  
2938 Hwy K  
O'Fallon, MO 63368 | 636-978-7870  
[www.krekerler.com](http://www.krekerler.com)

### MEINEKE

10% Discount on all Services or Repairs  
2315 West Clay  
St. Charles, MO 63301 | 636-940-7294  
[www.meineke.com](http://www.meineke.com)

### MICHELLE'S CLOTHING CO.

10% Discount on Total  
229 North Main Street  
St. Charles, MO 63301  
636-724-0132

### MIDAS AUTO SERVICE

10% Discount on Parts  
336 Mid Rivers Mall Drive  
St. Peters, MO 63376  
636-279-1300

### THE MOTHER-IN-LAW HOUSE

10% Discount on Total  
500 South Main Street  
St. Charles, MO 63301 | 636-946-9444  
[www.motherinlawhouse.com](http://www.motherinlawhouse.com)

### OCEAN SPIRIT PHOTOGRAPHY

10% Discount on any Order of \$100.00 or More  
780 Waylor Way  
Wentzville, MO 63385 | 314-954-3845  
[www.oceanspiritphoto.com](http://www.oceanspiritphoto.com)

### PAUL STUART JEWELERS, INC.

10% Discount on all In-Stock Merchandise  
410 Mexico Road  
St. Peters, MO 63326 | 636-928-1883  
[www.paulstuartjewelers.com](http://www.paulstuartjewelers.com)

### PUNDMANN QUICK LANE

\$5 Discount on an Oil Change  
10% Discount on Parts & Labor  
1200 South Duchesne  
St. Charles, MO 63301  
636-949-9995

# TESTIMONIALS



"The television production at Lindenwood's J. Scheidegger Center for the Arts just might have been the smoothest, easiest show I've ever done! I think this was because of the professionalism of everyone involved, including the students. I've never seen a backstage area where everyone knew exactly where to be and when to be there. That's why I'm looking forward to my concert there on February 19, 2011."

*Bobby Goldsboro, Entertainer & Artist*

"The J. Scheidegger Center for the Arts at Lindenwood University in St. Charles, Missouri, is a real gem sitting right here in the middle of our country. The Bezemes Family Theater is a state-of-the-art "everything" that gives the students who study at Lindenwood an amazing opportunity to learn with hands-on experiences using the latest technology. As a performer, the theater is one of those venues you "can't wait to get back to."

*Guy Hovis, longtime singer/star on television's "The Lawrence Welk Show"*

"The Bezemes Family Theater at Lindenwood University is one of the finest facilities we have ever performed in and certainly is the most accommodating! The students are extremely fortunate to have a wonderful place like this to express their talents!"

*Ralna English, longtime singer/star on television's "The Lawrence Welk Show"*

"This place is great! This is the first stop on the tour, and I told the rest of the cast that we are lucky to be here in such a nice facility!"

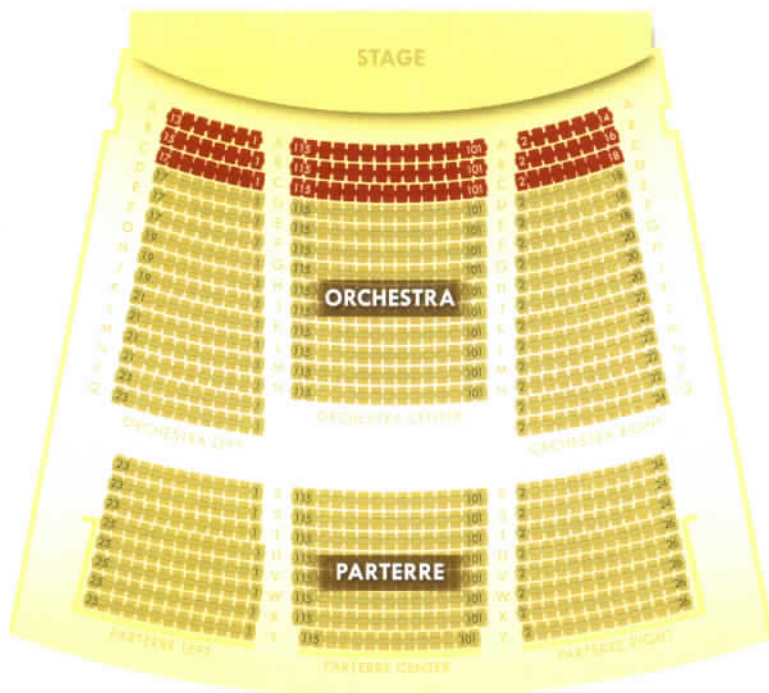
*Eddie Mekka, "Grease: The National Tour" / television's "Laverne & Shirley"*

"This is so much better than going to other theaters around here! The parking is close and free, and you don't have to drive all the way into the city just to get caught in traffic. The seating arrangement is so nice because everywhere you sit is a great spot!"

*Teresita Wilson, Valued Patron*

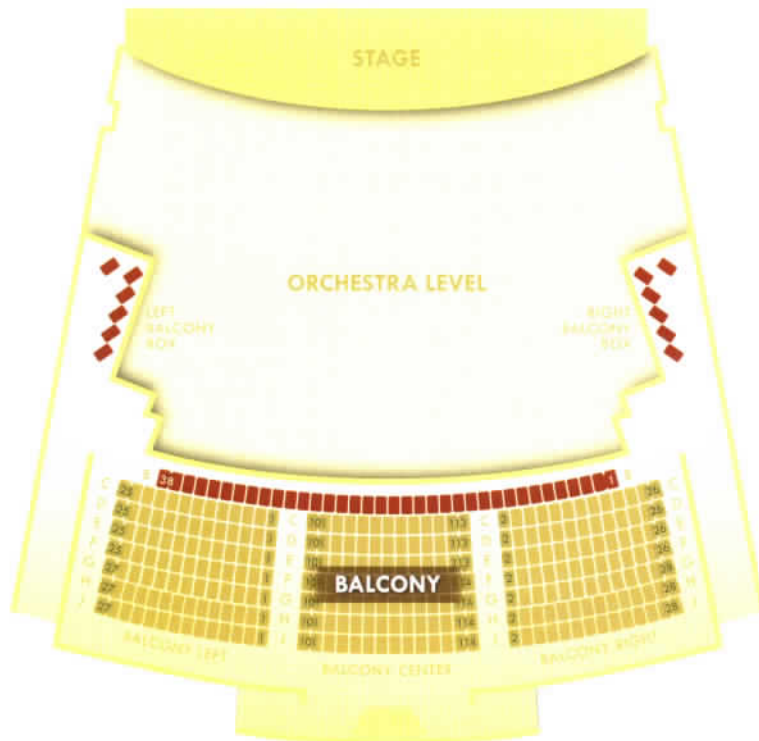
# SEATING CHART

## PARTERRE AND ORCHESTRA





**PLATINUM SEATING IN RED**

## BALCONY



**PLATINUM SEATING IN RED**

- 
 Assistive listening devices are available free of charge at The Box Office. \*Credit card or license may be held until return of device.
- 
 Wheelchair-accessible seating is available in the Orchestra & Balcony sections.
- 
 Free, well-lit, fully wheelchair accessible parking is just steps away from each entrance.
- 
 Valet parking & coat check are available for each Main Stage Season production. \*A nominal fee may apply for non-members.
- 
 Limited Box Seating is available. \*Box Seating is not wheelchair-accessible.



# CONTACT INFORMATION

## THE BOX OFFICE:

**Phone:** (636) 949-4433

**Email:** [Lindenwood@shubertorg.com](mailto:Lindenwood@shubertorg.com)

**Address:** Lindenwood's J. Scheidegger Center for the Arts  
2300 West Clay Street  
Saint Charles, MO 63301

**Hours:** Monday - Friday: 10:00 AM - 6:00 PM  
Saturday: 10:00 AM - 2:00 PM

**Telecharge.com**  
(800) 447-7400

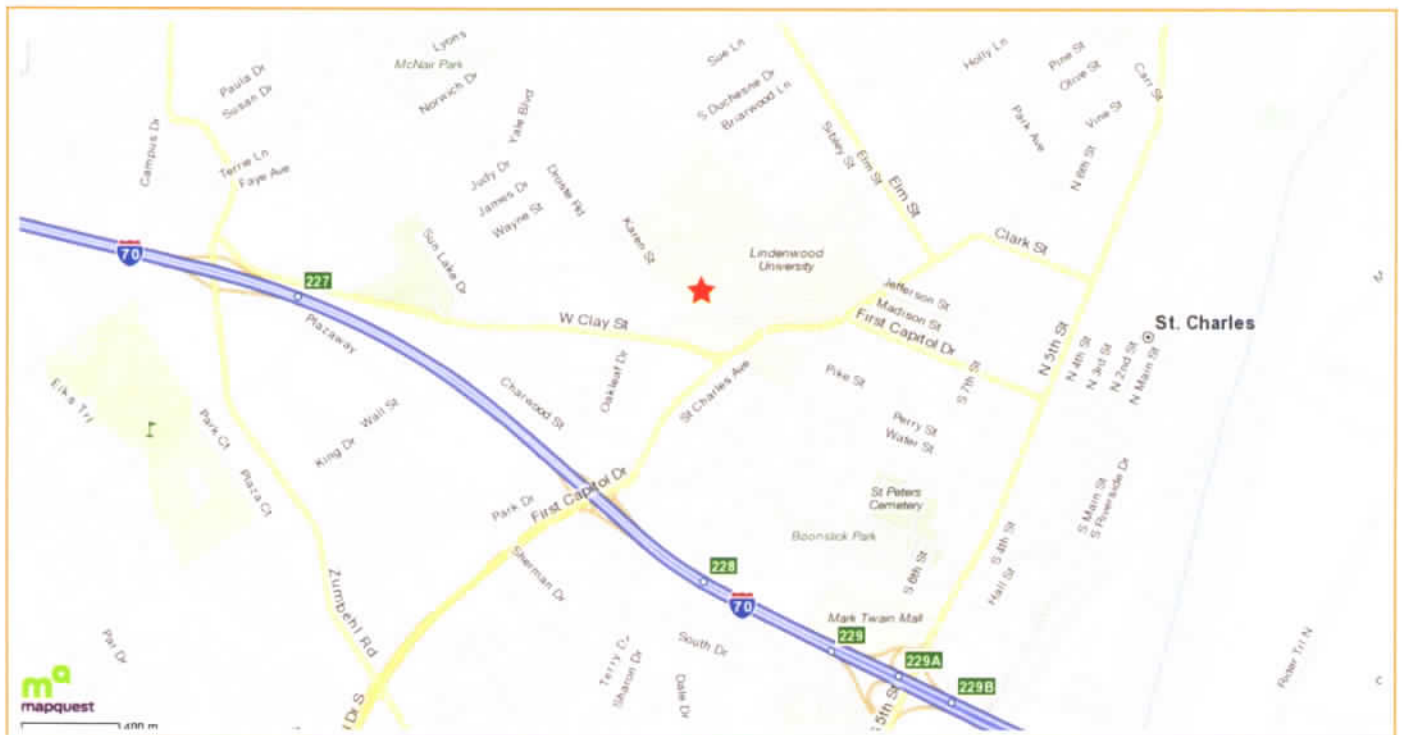
## DIRECTIONS & MAPS

### From Interstate 70/270 Interchange:

Take Interstate 70 W across the Blanchette Bridge (Missouri River). Take Exit 228 and turn right onto First Capitol Drive. Turn left onto West Clay. Entrance will be on your right.

### From Interstate 64 in Chesterfield:

Travel west across the Daniel Boone Bridge (Missouri River). Exit at Highway 94. Turn right. Follow Highway 94 north and cross I-70. Turn left onto West Clay. Entrance will be on your right.



THE STARS ARE MUCH BRIGHTER HERE...  
COME SEE FOR YOURSELF.



Values-Centered Liberal Arts Education - Preparing Students For Life