



Ecumenical scholarships created



ECUMENICAL SCHOLARSHIPS - Looking over information about the new Ecumenical Scholarship Program are, from left, Lindenwood President James I. Spainhower; Dr. John L. Williams of Overland Park, KS, executive of the Presbyterian Church (U.S.A.) Synod of Mid-America; and the Rev. Robert R. McGruther of St. Charles Presbyterian Church. The program, which offers matching scholarships of up to \$2,000 per academic year, is available to students from Catholic, Christian, Lutheran, Jewish and Presbyterian families.

As a means of assisting students from Catholic, Christian, Lutheran, Jewish and Presbyterian families who want to attend Lindenwood, the St. Charles-based institution has created separate, matching scholarship programs designed specifically for religious groups.

In cooperation with various religious organizations and area churches, Lindenwood will provide matching scholarships or grants ranging from \$500 to \$2,000 per academic year for Catholic, Christian, Jewish, Lutheran and Presbyterian youths who attend the college. For every \$1 a congregation provides, the college will match the amount, up to a maximum of \$2,000 per student, for those recommended by the congregation.

In announcing the Ecumenical Scholarship Grant Program, President James I. Spainhower said, "As a former minister, I am convinced that local congregations and their related colleges must work together to assure a value-oriented educational experience for today's youth.

"Unfortunately, too few of the fine young people in religious congregations are enrolling in private, value-oriented liberal arts colleges like Lindenwood,"

Spainhower said. "If we can produce more graduates who are committed to building a society based on the values inherent in the Judeo-Christian faith, I'm convinced tomorrow's world will be better than today's," said Spainhower, an ordained minister of the Christian Church for the past 37 years.

Although it has no legal ties to any religious denomination, Lindenwood College was owned by the Presbyterian Church for more than 100 years until 1967, when it became a completely independent, private liberal arts institution. Houses of worship representing all major faiths are accessible to Lindenwood students. The college's Religious Life Council, chaired by a chaplain, promotes diverse campus religious expression and fellowship.

Continued on page 15

Personal gift from Harmon sets record

As Lindenwood looks forward to its 160th anniversary of educational service this fall, one member of the Lindenwood College Board of Directors has made the upcoming celebration more meaningful with a personal contribution of \$100,000.

Raymond W. Harmon, president of Hasco International, Inc., of St. Charles and a board member since 1985, has given Lindenwood \$100,000 as a challenge gift in the hopes that it will

Continued on page 15

Executives to visit college

A unique program spearheaded by John C. Hannegan of the college's board of directors is providing Lindenwood with management personnel in five key areas of institutional administration.

Modeled after similar programs in Missouri state government and the United Way, the Loaned Executive Program in-

volves 25 executives from business and industry who are working with Lindenwood officials.

Administrative areas that the 25 executives are working with include college-wide management under the direction of President James I. Spainhower; financial management under the supervision of Vice-President of Finance Kenneth W. Musbach; management of the physical plant and auxiliary services under the direction of Jerry Rufhahr, vice-president of administration; development management under the guidance of Director of Development James D. Thompson; and marketing management and research, directed by Vice-President of Academic Affairs Daniel Keck, James W. Swift, director of research and planning, Miriam King-Watts, dean of admissions, Public Relations Director Randy L. Wallick and others.

Divided into teams of five, the group is spending time on campus this semester with key administrators. The teams will report their findings to board of directors Chairman Robert F. Hyland and board members at the group's May 15 meeting. Input from the management teams

also will be a part of Lindenwood self-studies and a five-year institutional advancement plan.

"Specific managerial recommendations for particular areas of the college also will be furnished to the Strategic Planning Committee, which currently is working in key administrative areas," added Spainhower.

In recommending the Loaned Executive Program to the board of directors, Hannegan said it was a three-fold program to assist management of the college. "This program will bring input from major businesses and corporations which Lindenwood cannot afford to purchase. It will evaluate our programs and, hopefully, increase our productivity. It also will show the corporate community our efficiency," said Hannegan, a St. Charles attorney and secretary of the Lindenwood College Board of Directors.

In the area of college-wide management, the five-member team is analyzing the structure of college governance, including the staff and volunteers, such as

Continued on page 15

In this issue

Lindenwood fund-raising may establish a \$1 million record this fiscal year . . . page 2.

Lindenwood president establishes future agenda to accomplish the college's goals . . . page 2.

The National Advisory Board has been formed to aid college promotion on a national level . . . page 3.

Five coeds at Lindenwood are recipients Monticello College Foundation scholarships . . . page 3.

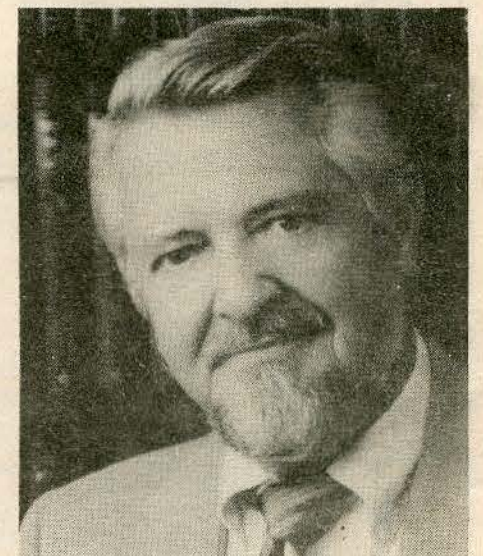
The board of directors appoints Kenneth W. Musbach vice-president of finance at Lindenwood . . . page 7.

Alumni volunteers needed to assist in student recruiting for the Admissions Office . . . page 12.

Maurita E. Stueck, a 1941 alumna, is elected president of the Lindenwood Alumni Council . . . page 13.

Lindenwood College
St. Charles, MO 63301

Non Profit Org.
U.S. Postage
PAID
Permit No. 84
St. Charles, Mo.



Harmon

PRESIDENT'S MESSAGE

by JAMES I. SPAINHOWER,
Lindenwood College President

In the Spring of 1983, a few months after I began my service as President of this historic college, our board of directors adopted a mission statement that, among other things, reaffirmed Lindenwood's commitment to being the best liberal arts college possible. At its last meeting, the board revised that mission statement in direct response to a request from our accrediting body, the North Central Association. The new statement includes specific language, at its suggestion, indicating strong commitment to quality and innovative educational programs for both the traditional and non-traditional student.

For Lindenwood to succeed in the future, we must have strength in both areas. Our traditional-age, largely daytime student population, must be increased numerically while maintaining a student population of high academic potential. At the same time, our varied programs for adult students must continue to be characterized by the sound educational innovation for which Lindenwood has become well known.

In a time when college costs are soaring, Lindenwood can, through careful management of its resources, offer outstanding opportunities for private higher education at a cost below the national average. We must position ourselves to reach the student, traditional or non-traditional, who wants the individualized, value-oriented, academically-strong college experience for which Lindenwood is noted.

To achieve this goal, it is necessary for the following items to be front and center on the college's agenda in the years ahead:

Lindenwood's mission and image must be sharpened. There is a need for a college like Lindenwood that conscientiously delivers educational experiences that are molded to fit the individual needs of its students.

Lindenwood's enrollments must be increased. In many academic program areas, we are operating at far less than optimum for our facilities and educational philosophy. We must recruit more students and improve our retention rates in all areas.

Lindenwood's management must be improved. The board has adopted a Loaned Executive Program that, over the next few months, will bring to the campus 25 executives and middle-management personnel to assist us in evaluating how we are running this college. Under the leadership of board member John C. Hannegan, this program will permit the college's management to receive considerable outside expertise to help it manage our limited resources in the most effective and efficient manner possible.

Lindenwood's facilities must be improved. Solid plans must be laid, both programmatically and architecturally, to insure the development of a campus, buildings and streets that continue to meet our academic needs, and that convey readily the kind of college we are.

Lindenwood's fund raising must be improved. We've done a good job in recent years of increasing gifts to the college. The percentage of alumni contributions has increased from five percent in 1982 to 42 percent this year.



Spainhower

Board member Ray W. Hammon's magnificent gift of \$100,000, and board members Robert F. Hyland and David A. Wilhelm's gift of architectural services point out what is possible when the challenge of what Lindenwood College can become captures individual financial commitment. To inspire others to join in this growing financial support of this grand old college is worthy of the united commitment of all who want to see Lindenwood march forward.

I look forward to working with our entire college constituency in pursuit of these objectives. The preservation, improvement and expansion of the kind of education students receive at a small college like Lindenwood is essential to the maintenance of a healthy society. Let us approach what we do in behalf of Lindenwood, full of confidence that ours is a worthy labor.

COLLEGE NEWS

Goal of \$1 million foreseen

As Lindenwood eyes its 160th anniversary this fall, college officials believe the institution may reach \$1 million for the first time in its fiscal-year history and make the celebration even more significant.

In January this year, the college was 83 percent ahead of its contributions record as compared to a year ago when it

generated \$788,000 during the 1985-86 fiscal year.

Under the direction of Thomas L. Gossage, development chairman of the Lindenwood College Board of Directors, various fund-raising campaigns have raised more than \$554,000 in cash and contributions thus far this year. This compares to \$303,214 raised during the same period last year.

Gossage, senior vice-president of Monsanto Chemical Co., was appointed by board Chairman Robert F. Hyland to direct overall development efforts for Lindenwood College.

ALUMNI SUPPORT

As witnessed in past years of fund raising, one of the most successful aspects of this year's campaign is alumni support. At the end of the 1985-86 fiscal year last June, \$276,782 had been received from alumni. Lindenwood hopes for similar results during this year's alumni fund-raising drive, which is coordinated by newly-elected Alumni Council President Maurita Stueck and Dorothy DuQuoin Warner and Patricia Price Bailey of the college's board of directors.

With 42 percent of the college's 10,000 alumni contributing to the fund-raising campaign, Lindenwood has the highest percentage of annual alumni contributions in Missouri and one of the highest in the Midwest. According to James D. Thompson, development director, reaching a 45 percent level of alumni support by June 30 would "establish Lindenwood College with one of the highest alumni support levels in the United States."

"Alumni continue to be a strong base of support," Thompson said, "posting a 67 percent increase in total dollar contributions over last year's receipts to date. Alumni support is always the first step to college fund raising, and it is the heart of Lindenwood efforts," he added.

Volunteers currently are contacting alumni throughout the United States as Lindenwood begins its Alumni Phone-a-

Thon. Conducted in two phases now through mid-May, the phone-a-thon is one of the most important aspects of alumni giving, Thompson said. Last year, almost 200 volunteers spent more than 50 nights telephoning alumni; about 60 percent of the estimated 10,000 alumni were contacted in 1986, raising nearly \$140,000 in cash and contributions for Lindenwood.

CORPORATE SUPPORT

In addition to alumni support, more than \$230,000 has been raised this year from major corporations in the metropolitan area. This record has been established by substantial gifts from leading members of Civic Progress.

Civic Progress is an influential group of some of the country's top businesses and corporations based in the metropolitan St. Louis area. Increases in support for Lindenwood by members of Civic Progress have provided the college with broader financial support as well as greater recognition of Lindenwood within the business community.

A new fund-raising drive, the Lindenwood Business Partnership Campaign, was initiated this year under the direction of Clayton E. Wilhite, St. Louis chairman of D'Arcy, Masius, Benton & Bowles, Inc., and a member of the Lindenwood College Board of Directors. Through a network of volunteers, more than 400 small and medium-size businesses contributed \$65,000 to the college thus far this fiscal year.

NEW AREAS OF SUPPORT

Wilhite coordinated the efforts of seven team captains and 50 corporate volunteers who contacted businesses throughout the metropolitan St. Louis area. "These contacts ranged from 'Fortune 500' companies to privately-held or family-owned businesses," Thompson said, "and these efforts resulted in 45 new donations from firms

Continued on page 14



PEP TALK - Thomas L. Gossage, development chairman of the Lindenwood College Board of Overseers, addresses volunteers during a recent luncheon meeting, informing them that Lindenwood may reach \$1 million to celebrate its 160th anniversary later this year.

the linden word



ROBERT F. HYLAND,
Chairman, Board of Directors
KEITH W. HAZELWOOD,
Chairman, Board of Overseers
JAMES I. SPAINHOWER,
Lindenwood President
RANDY L. WALLICK,
Editor & PR Director
MAURITA E. STUECK ('41),
President, Alumni Council
ESTHER TALBOT FENNING ('77),
Alumni Affairs Director
PAULA G. MURRAY,
Graphic Artist
CHRISTINE CORDES,
Production Assistant

Written and produced by the Lindenwood College Public Relations Office, the linden word is published quarterly and disseminated free of charge to nearly 30,000 alumni, friends and supporters of the college.

Views and opinions appearing in this publication are not endorsed necessarily by the Lindenwood College Board of Directors or the Lindenwood Board of Overseers.

Address all communications, letters, subscription requests and changes of address (include both the mailing label from the current issue along with the new address and proper zip code) to: Public Relations Office, Lindenwood College, First Capitol Drive and Kingshighway, St. Charles, MO 63301.

Coeds receive Monticello awards

Five coeds at Lindenwood each are the recipients of \$2,000 scholarship awards from the Monticello College Foundation in Godfrey, IL.

Students are Jennifer J. Appel, a freshman from Overland, MO; Heather L. Glenn, a freshman from Florissant, MO; Myra L. Rogers, a senior from Kirkwood, MO; Karen L. Ulrich, a freshman from Maryland Heights, MO; and Kristen S. Wixson, a freshman from Lee's Summit, MO.

One of the oldest colleges in the country, Monticello was founded in 1835 and provided higher education for women until its dissolution in 1971. The Monticello Scholars Program was established by the Monticello Foundation to continue the memory of the former Godfrey, IL-based institution and to recognize outstanding female scholars.

The five coeds were nominated for the Monticello College Foundation awards based upon their individual records of scholastic ability, leadership potential and involvement in extra-curricular activities.

A 1986 graduate of Ritenour Senior High School, Appel maintained a 3.76 grade-point average (GPA) out of 4.00

in high school. Majoring in education at Lindenwood, she is the daughter of Mr. and Mrs. George Appel of Overland.

A 1986 graduate of Hazelwood East High School, Glenn maintained a 3.75 GPA in high school. The daughter of Mr. and Mrs. James W. Glenn of Florissant, she has a double major of French and education at Lindenwood.

Rogers plans to graduate in May with an undergraduate degree, majoring in business administration and psychology. Maintaining a 3.75 GPA at Lindenwood, she has attended William Woods College in Fulton, MO, and St. Louis Community College at Meramec prior to transferring to Lindenwood. This semester she serves as a temporary adjunct instructor in the Business Administration Dept.

A 1986 graduate of Pattonville High School, Ulrich maintained a 3.84 GPA in high school. Majoring in biology at Lindenwood, she is the daughter of Mrs. Janet Ulrich of Maryland Heights.

A 1986 graduate of Blue Springs (MO) High School, Wixson maintained a perfect 4.0 in high school, including pre-college classes in English and American history at the University of Missouri-Kansas City. The daughter of Mr. and Mrs. Gerald Wixson of Lee's Summit, she majors in biomedical engineering at



MONTICELLO RECIPIENTS - Daniel Keck, vice-president of academic affairs, chats with scholarship winners, from left, freshman Kristen L. Wixson, freshman Karen L. Ulrich, senior Myra L. Rogers and freshman Jennifer J. Appel. The four coeds, along with freshman Heather L. Glenn, each received a \$2,000 scholarship from the Monticello Foundation of Godfrey, IL. The students were cited for individual records of scholastic ability, leadership and extra-curricular involvement.

Lindenwood College.

A private liberal arts institution, Lindenwood was founded in 1827. Cur-

rently, it serves nearly 2,000 students in more than 55 associate, undergraduate and graduate programs.

National Advisory Board formed

The Lindenwood College Board of Directors has approved the formation of the National Advisory Board, an organization of well-known individuals who would assist in the promotion of the college on a national level.

The board will be chaired by Kenneth W. Thompson, Ph.D., a member of the board of directors and director of the prestigious American presidential think tank, the White Burkett Miller Center of Public Affairs at the University of Virginia in Charlottesville, VA.

As chairman, Thompson has been charged with developing the bylaws, goals and charter membership of the National Advisory Board. He and other board members currently are considering several outstanding individuals, including some distinguished Lindenwood alumni who hold prestigious national positions in state and national govern-

ments, the communications industry, science and the corporate structure. Members of the National Advisory Board are expected to be named shortly.

According to college officials, members of the National Advisory Board "would serve as goodwill ambassadors and college advisors, helping the board of directors to promote the welfare and national recognition of Lindenwood College.

"Members would represent Lindenwood to influential secondary educators,

churches, national businesses and corporations, and individuals as well as governmental and media organizations on a national scale," officials said.

Like similar national boards found at other colleges and universities, the Lindenwood body would have no legal authority or fiduciary responsibilities, and it would report to the college's statutory governing body, the Lindenwood College Board of Directors.

In establishing the National Advisory Board, board members said the college has association with many nationally and internationally-known citizens. "Many of

these people have had association with the college, and many are familiar with Lindenwood's educational mission.

"Because of distance or commitments, these individuals cannot seriously consider membership on the board of directors. Although many of these people desire to help the college, Lindenwood has no formal way of updating, involving or receiving advice or counsel from these individuals. As such, the formation of the National Advisory Board would be a way of doing this and promoting the college on a national level," board members added.



Thompson

CAMPUS EVENTS

APRIL, 1987

3	Sibley Medallion of Honor Dinner	7:30 p.m., Memorial Arts Bldg.
5-17	"Sabbatical Notations" - Photo Exhibit by Instructor Hans Levi	9 a.m.-9 p.m. Weekdays and 1-4:00 p.m. Weekends, Fine Arts Bldg.
12	"Year of the Professor" Faculty Lectureship featuring Professor Jean Fields	2 p.m., Sibley Hall, followed by a community reception.
8-11 and 16-18	Performing Arts Production of "She Stoops To Conquer"	8 p.m. Jelkyl Theatre (Call 946-2004 for Reservations)
25	Alumni Fashion Show/Luncheon	LaFrance Catering, Frontenac

MAY, 1987

5	Annual Athletics Banquet	6:30 p.m., Ayres Cafeteria
15	Baccalaureate featuring the Rev. Rudolph W. Beard of the First Presbyterian Church, Jefferson City, MO.	7:30 p.m., St. Charles Presbyterian Church, College Chapel
16	Spring Commencement featuring a Keynote Presentation by Kenneth W. Thompson, Ph.D., director of the White Burkett Miller Center of Public Affairs at the University of Virginia.	10 a.m., Main Campus

JUNE, 1987

6	Mrs. Sibley's Attic Sale	10 a.m., Main Campus
---	--------------------------	----------------------

LETTERS TO LINDENWOOD

Dear Editor

My last *Linden Word* arrived amidst Christmas cards, or I would have written sooner.

I especially was interested in the "President's Message" about Mrs. Billings. If I ever knew that her first name was Ruth, I forgot it. I'm afraid many of the Lindenwood alumnae who didn't know her married name might have missed the article, as she was known as Gladys Campbell by all her friends. If I remember correctly, her grandfather, Robert Alexander Campbell, was at one time the lieutenant governor of Missouri.

We became very close friends at Lindenwood; both were home economics majors and were in nearly every class together. She didn't marry until sometime in the 1950s and, until then, had lived all of her life in St. Louis. I spent many happy times at her home both while I was at Lindenwood and later during visits. After she left St. Louis, we kept in touch with notes and cards on birthdays and at Christmas; the last time I heard from her was Christmas, 1980, when she said the arthritis in her hands made it nearly impossible to write.

Gladys had polio when she was 12, and was on crutches until she came to Lindenwood in 1920. She graduated from Soldan High in St. Louis and a business college. At Lindenwood, the gym teacher took an interest in Gladys, and she taught her to swim and dance. She was able to discard her crutches, and she rarely used a cane. For this, she and her parents were deeply grateful. When she received her degree in 1924, Gladys realized she could not be on her feet as much as required to teach, so she enrolled in the Library School in St. Louis. After she graduated, she married and left St. Louis.

She and her family were active in the Kingshighway Presbyterian Church, which later became Trinity Presbyterian Church. She was a wonderful Christian and a caring and loving friend.

When Dr. Franc McCluer came to Lindenwood, she became very close to him and his wife. At that time, she said he had talked to her about endowing a chair at the college, so I was not surprised to know that Lindenwood was the sole beneficiary of her estate.

I can't believe that this June it will be 63 years since I graduated from Lindenwood; I am ever grateful for the training and friendships I made at college. I hope that I have not bored you with this brief sketch about Gladys, but I thought you would like to know something about one that loved and supported Lindenwood in such a fine way; she was a wonderful person!

**Katharine (Tinsman) Patton
Roswell, New Mexico**

Dear Alumni Office:

Thank you so much for all your hard work in making the recent Alumni Reunion Weekend so nice for us all!

I hardly can believe 10 years have gone by so fast. What a treat it was to visit old friends that I haven't seen since graduation, such as Sue Porter Schneider from South Dakota, Darby Dregallo from Massachusetts, and Libby Burbank, Lynn Jeffry and Jan Dineen, all of whom were back to campus for the first time I believe.

We talked about a lot of people who we would love to hear from - where are Lu Ann Maywald, Susanne Groom, John DePasquale and Bob VanDusen?

For everyone who didn't make the event last fall, you missed a great party! Don't wait another 10 years to visit. Alumni have a reunion every year, so plan on attending this fall and see how great Lindenwood College looks.

We miss you!

**Virginia Gender ('76)
Kirkwood, Missouri**

Dear Editor:

I happened to note the letter from Judith Brougham of Kansas City in a recent issue of the *Linden Word* (Autumn '86 issue).

Judith has hit the nail on the head. I am a "one year" former student and, to me, that year of my life probably is the most important in the almost 70 that I have lived. I met my husband of 47 years at Lindenwood College. And, I had always wanted to go to a woman's college for a year, so my dream was fulfilled. Our daughter, Patricia Kirk, attended Lindenwood for two years, and she feels much the same as I.

We think Dr. Spainhower is doing a terrific job in leading our college through a tough period for educational institutions.

Thanks for a good alumni publication.
**Sara Wilson Barker ('40)
Arvada, CO**

Dear Editor:

I regret to have to advise you that my wife, Phyllis Austin, an alumna of Lindenwood College, is deceased.

Before we were married in 1940, she was Phyllis McFarland. She was from Butler, MO, and attended Lindenwood for two years — 1929 and 1930. Phyllis transferred to the University of Missouri at Columbia and graduated from its School of Journalism in 1932. Phyllis had many pleasant memories of Lindenwood. She died here in Lakeland last September.

**Jackson K. Austin
Lakeland, FL**

(Editor's Note: The following letter was written by Eric Simms, a non-traditional student from Desloge-Bonne Terre, MO, who is a member of the President's Task Force To Improve Residential Life on campus. Simms, a junior majoring in secondary education, asks that this be published as an open letter to Lindenwood alumni. The subject of his address has importance to all supporters of Lindenwood College in addition to its loyal alumni.)

Dear Editor:

The opening of the new student center, "The Tea Hole", has proved to be a very good addition to our campus. It is drawing more students than the old center, and there is a better social atmosphere which promotes a stronger sense of community among students who live in all of the campus housing.

A large number of students at Lindenwood believe the next milestone this college should pass in its search for the improvement of student life is an on-campus physical fitness - weight training recreational sports facility. Such centers are integral parts of the majority of college and university campuses.

I agree such a facility would have far-reaching and long-lasting effects among all the students and faculty of this campus whether they are residential, commuter, young or old, man or woman, child or adult.

It seems the decline of physical fitness started in the post-World War II environment of the 1950's. The economy was on the rise, general affluence prevailed for the first time since the Depression. Kids began watching television for hours at a time, and most of them lived in urban or suburban rather than rural communities. The "teenager" became recognized as a distinct social phenomenon.

President Eisenhower, alarmed by the deteriorating physical fitness of the

country's youth, created the President's Council on Physical Fitness. If young people lived sedentary lifestyles back then, think what has happened since. Now there are cable TV, video games and computers. The fast-food diet is an everyday way of life.

According to the *Los Angeles Times*, a study was made by the Institute for Social Research at the University of Michigan. About 20,000 boys and girls, ages 6-17, participated in nine exercises to test basic athletic skills. The study revealed:

- 40% of boys could do no more than one pull-up; one of four could not do any.
- 70% of girls could do no more than one pull-up; 55% could do none.
- 50% of the girls and 30% of the boys could not run a mile in 10 minutes.
- Girls 14-17 performed worse on the average compared to girls tested 10 years earlier.
- Girls did not improve with age in upper body strength; an average six year old scored as well as a 17 year old.

One reason for this decline of fitness and health is the lack of adequate physical education in today's schools. Many junior high and high schools no longer make physical education compulsory. When this happens, the percentage of students who do enroll is less than one third. Most often what Physical Education classes there are are taught by teachers who are not well trained or who completely lack physical education credentials.

The sad state of physical education in this country is a major cause of the poor physical condition of our children. But there is another reason: In spite of the well publicized activities of a few adults, the majority of parents are not in shape and do not teach their children how to eat well and take care of their bodies, and in general, set poor examples for their children to follow.

Studies have shown that kids learn to read earlier and more competently when they have parents who read, read to them and endorse the whole idea of reading. The only way we can create a situation in which parents care about and take steps to improve the fitness level of their children is to teach the current generation how to take care of their bodies so that they will pass these ideals on to their own children.

Certain trends in our society are not going to reverse. Increasing amounts of time will be spent at the computer. Fewer of us will earn a living on the end of a shovel. We are not going to stop watching TV and fast-food is not going to go away.

It's clear kids do better in class when they are physically fit. They're more alert, have a stronger immunity to sickness and disease, they go to school, and are better able to deal with stress.

Taking all this in consideration and realizing that fitness clubs are fast becoming the social center of the 1980's, it would seem short-sighted for Lindenwood College to have dropped its physical fitness program in 1983 and make no plan of supplying any type of fitness facility for students. Southeastern Missouri University at Cape Girardeau has recognized such a need on its campus and has completed construction on its new "Show Me" Center. We are in desperate need of a physical fitness center at our college, one that would supply everyone with a physical fitness circuit, weight building, and recreational sports.

**Eric Simms,
Desloge-Bonne Terre, MO**

Behind the scenes...

As you scan inside pages of this issue of the *Linden Word*, you may notice several articles with Melissa M. Callis' byline.

A senior majoring in mass communications at Lindenwood, Callis is serving an internship this spring in the Lindenwood College Public Relations Dept. Earning six hours of academic credit, she is involved in a variety of tasks that provide "hands-on" experiences in

community and media relations, advertising, marketing and publications, including news and feature writing for this issue of the *Linden Word*.

Callis, who will graduate in May with a Bachelor of Science degree, is the daughter of Mr. and Mrs. Lance Callis of Granite City, IL. Listed on the "Dean's List" during her junior and senior years at Lindenwood and in *Who's Who among Students at American Colleges and Universities*, she is a member of Alpha Epsilon Rho, the national broadcasting organization.

Callis has been a photographic model for *Model Management* and the *Talent Source* in St. Louis and, last summer, took part in an internship at *St. Louis Magazine* where she was involved in editorial, advertising and circulation functions.

Under the direction of Randy Wallick, public relations director, Callis' internship is one of several educational opportunities implemented recently as part of expanded services of the college's Public Relations Dept.

"My internship in the Public Relations Dept. has given me the chance to sharpen both my writing and interviewing skills one last time before graduation. I've also met a lot of people who will be beneficial when I enter the job market!" Callis said.



Callis

PEOPLE

"The Picture Book and Visual Communications" is the title of an article by **NANCY POLETTE**, assistant professor of education, which appeared in a recent issue of *Media Activities Monthly*, a national magazine for school librarians and teachers. The three-page article is adapted from *Picture Books for Gifted Programs*, one of 20 books written by Polette, a nationally-recognized authority on the teaching of gifted children.

DEBORAH JOHNSON, a sophomore at Lindenwood, is one of 12 coeds in the United States to be named to the National Association of Intercollegiate Athletics (NAIA) All-America Women's Soccer Team.

Johnson is a fullback on the women's soccer team, the Lady Lions, which had its most successful season in college history, finishing fourth in the nation in NAIA competition. The team is coached by **DEBORAH KEHM**, a math instructor at Ritenour High School in St. Louis.

MICHAEL CASTRO, LCIE associate professor and faculty advisor, was featured in a recent edition of *West End World*, a weekly newspaper serving the Central West End of St. Louis. The article focused on *River Styx*, a regional arts organization that sponsors *Duff's Poetry Series*, an ongoing series held at *Duff's* in the Central West End that features works by local and internationally-acclaimed poets, artists, writers and musicians. Castro directs the series and is a founder of the *River Styx* organization, an umbrella organization that provides the corporate status for grant eligibility.

"The *Duff's* series has been a way to both highlight fine local artists as well as bring good people in," Castro said. "It also has served as a means of establishing *Duff's* and the Central West End as a place where the arts live and where artists meet," added Castro, a seven-year member of the LCIE faculty.

PATRICIA Z. YOUNG, a staff nurse at St. Joseph Health Center in St. Charles, has been named Director of the college Campus Health Center. A member of the St. Joseph staff since 1969, she also is a counselor on the intensive and intermediate psychiatric units.

Young is a 1963 graduate of St. John's School of Nursing in St. Louis, and she has completed various health courses and workshops at the University of Missouri, Emory University, the University of Pennsylvania and St. Louis University.

Lindenwood students and staff needing medical care are offered referral services at the Campus Health Center, where Young is on duty during the school week. Facilities and services of St. Joseph Health Center also are available at all times to students and staff.

MARCIA ZARAZA GUCKES of University City, MO, former news producer for KTVI-TV in St. Louis, has been appointed as an instructor in the Communications Dept. and as Executive News Director of Lindenwood's community radio station, KCLC-FM. A former instructor at St. Louis Community College at Florissant Valley, Guckes also will direct the college's video facility in Young Hall and serve as faculty advisor to the student publication, the *Linden World*.

A 1973 graduate of Missouri Valley College, she holds a graduate degree in journalism from the University of Missouri-Columbia. Guckes has been employed as public affairs director for KWAX-FM in Eugene, OR, as education projects coordinator for the Missouri Dept. of Conservation and as a reporter for the St. Louis Post-Dispatch, News Democrat in Belleville, IL, the Suburban News Bureau of St. Louis and the Daily Journal in New Ulm, MN.

KAREN S. BYNUM, a former kindergarten teacher in Lancaster, OH, and a substitute teacher in St. Charles and Francis Howell School districts, has been hired as kinder-

garten teacher at the Campus School. A 1972 graduate of Ohio University in Athens, OH, she has undertaken graduate work and has experience in early childhood education.

In Lancaster, Bynum taught kindergarten, reading readiness and first-grade programs and served as a teacher workshop consultant in areas of reading and math. A former director of the National Child Care Center in St. Peters, MO, she is a member of the National Association for the Education of Young Children and the Child Day Care Association.

MOHEB M. NASR, associate professor of chemistry, is the co-author of two articles published in a recent issue of the *Journal of Physical Chemistry*, a national professional publication.

The articles are entitled "Kinetic Nitrogen Isotope Effects on Methyl Transfer to Amines" and "Equilibrium Nitrogen Isotope Effects on the Basicity of Amines." They were written by Nasr and **JOSEPH L. KURZ**, professor of chemistry at Washington University in St. Louis along with input from co-workers.

According to Nasr, the publications are a result of a collaboration between the chemistry departments at both schools concerning isotope effects. Playing a key part in this collaboration was **TERRI A. HARRIS**, a senior majoring in chemistry who was awarded a fellowship last summer at Washington University, one of only eight presented in the United States to undergraduate chemistry students.

"The Selling of St. Louis" was the subject addressed recently by **JOHN M. STEPHENS**, vice-president of marketing for the St. Louis Regional Commerce & Growth Association (RCGA) and a member of the college's board of overseers. As part of the St. Louis Metropolitan Noonday Luncheon series, the presentation concerned the \$1.2 mil-

lion national advertising campaign designed to attract more business and jobs to metro St. Louis, which Stephens serves as executive director of as part of his role with the RCGA. Stephens is an alumnus of Lindenwood with a degree in communications and business.

The **REV. GEORGE R. WILCOX**, campus chaplain at Lindenwood, has been installed as associate pastor of St. Charles Presbyterian Church. A member of Lindenwood for the past two years, the Rev. Wilcox is a 1984 graduate of Princeton Theological Seminary, and he holds a master's degree in divinity and an undergraduate degree in religion from Wittenberg University in Ohio. Former assistant pastor of St. Charles Presbyterian Church, he serves as interdenominational counselor to Lindenwood students, faculty and staff, as chairman of the college's Religious Life Council.

BILL TIETJEN, associate professor of biology, is the author of two recent publications, both concerning the *Mallos gregalis*, a social spider of Mexico. The first publication by J. Arachnol, looks at the effects of colony size on web structure and behavior while the second, published by Stanford University Press, is a review of the social behavior of spiders.

Tietjen and **RAO AYYAGGARI**, assistant professor of biochemistry, wrote a paper that will be published this spring in the *Journal of Chemical Ecology*. Concerning chemical communication in a wolf spider, the paper represents both the first analysis of the chemistry of a spider pheromone (a chemical "perfume" used for communicating) and a demonstration of a male-produced pheromone. Both Lindenwood professors also are working on two other articles, both about the social species.

Continued on page 15

We're Looking for Another Col. James G. Butler



"We need this generation's Col. Butler—a person of vision who would like the satisfaction of having a major influence upon our Renaissance Campaign..."

**James I. Spainhower
President**

During the 1930s and 1940s, Lindenwood College was able to build what many referred to as the "Wellesley of the West" primarily through the generosity of Col. James G. and Margaret Butler. The gifts from the Butler family totaled nearly \$4 million, a sum which is equivalent to more than \$25 million in today's economy.

During the Butler's lifetime, Ayres, Butler and Nicolls halls were built. Funds from the interest from the Butler estate led to the construction of Roemer and Irwin halls, Butler Memorial Library, the Gables and Eastlick Residence.

We needed Col. James G. Butler and Margaret Butler then. Certainly, we could use them now.

Since we began looking for another Col. Butler, we have raised nearly \$3 million as part of the college's most successful fund-raising drive in its 160-year history. In addition to increasing alumni support from less than five percent in 1983 to more than 40 percent this year, the college has increased all levels of support - from faculty and staff to the board of directors and overseers, the St. Charles community, businesses in the metro area and corporations and foundations.

But, we still have much to do - and we need to find new sources of support to do it. We're determined to keep a balanced budget and not to shift funds from our academic and student scholarship programs to special projects, such as badly-needed building renovations and for the expansion of new facilities.

We need this generation's Col. Butler - a person of vision who would like the satisfaction of having a major influence upon our Renaissance Campaign and upon the future development of this historic college as well as to the generations of students who will graduate to serve a society that needs them.

Are you that kind of person - a man or woman willing to make a major and significant investment in Lindenwood College? If so, please call or visit our beautiful and historic campus.

James I. Spainhower, President



HOSPITAL GIFT - Lindenwood teamed with KSDK-TV's "Bush Leaguers" for a recent celebrity softball game that raised \$1,550 for Children's Hospital in St. Louis. Taking part in the check presentation are, from left, Arlene Talch, dean of the Evening College/LCIE; Virginia Trent, a Lindenwood alumna and director of community relations for Washington University Medical Center's Children's Hospital; Carolyn Knight, an LCIE student; and Mindy Osthoff, a patient at Children's Hospital. LCIE faculty members and students, including Talch, Knight and Peter V. Carlos of the LCIE communications faculty, were instrumental in arranging for the "Bush Leaguers" to visit St. Charles for the celebrity game. Proceeds from concession sales and sponsorships were earmarked to cancer research at Children's Hospital.

Kudos for Art Dept.

Art students at Lindenwood and members of its Art Dept. recently received local recognition and awards for several works exhibited recently.

At the recent 21st Annual Juried Show at the St. Charles Artists Guild, a first-place award in the watercolor and pastels category went to John H. Wehmer, professor of art and a 27-year member of the faculty. Second and fourth-place awards in the same category were received by Nancy Follis, a 1986 graduate with a Master of Arts degree, and Alice W. Tomek, a freshman, respectively. Mary Spangler, a graduate student, had a pastel drawing selected for inclusion at the November show.

An acrylic painting by W. Dean Eckert, professor of art and department chairman, was selected for inclusion in an exhibit of St. Louis area artists held recently at the Kansas City Artists Coalition Gallery in Kansas City.

Alyce Schermerhorn, a ceramics instructor, received recognition for her work in porcelain with a photographic reproduction of one of her works in the November, 1986 issue of *Ceramics*, a national magazine.

Another faculty member, Grant Hargate, adjunct instructor of painting and drawing, was one of seven artists presented in a recent showing at the Design Center of St. Louis.

Unique play combines reading and learning

by MELISSA CALLIS

"New Twist," a 30-minute play that incorporates the fun of reading and learning, is being performed for elementary school children in St. Charles and St. Louis counties by the Lindenwood College Performing Arts Dept.

The unique project, combining the talents of the college's Education and Performing Arts departments, is funded in part by a \$5,000 grant from the Arts and Education Council of Greater St. Louis. Cost for "New Twist" include director's fees, printing, stage props, royalties and performer's fees.

According to Bryan Reeder, administrative assistant in the Performing Arts Dept., the Arts and Education Council's grant is important to both performing arts students at Lindenwood and the community because "it is a way to use theatre as an entertaining, educational tool.

"The play conveys the importance of reading in a fun way," said Reeder, a 1984 Lindenwood alumnus who holds a graduate fine arts degree in directing.

"New Twist" was written and directed by Suzanne E. Mills, a visiting professor of acting this year at Lindenwood. Describing "New Twist" as "a silly and fast-paced children's show," she explains that "it deals with convincing the character, 'Twist,' the importance of reading through various songs and dances."

A 1976 graduate of the State University of New York, Mills holds a Master's of Fine Arts degree from Indiana University. Prior to joining the performing arts faculty as a visiting professor in 1985, she was an actress at the Little Theatre on the Square in Sullivan, IN.

Lindenwood students taking part in "New Twist" include Lisa Albert, a senior from Chesterfield, MO; Paul Gatrell, a senior from Florissant, MO; Joe Golden, a senior from Manchester, MO; Jodi Lombardo, a sophomore from St. Charles; and Joni Shoemaker, a junior from Monett, MO.

The play is being performed at elementary schools throughout St. Charles County as well as those in Creve Coeur, Ferguson, Florissant, Jennings, Kirk-

wood, Overland, St. Ann and Webster Groves in St. Louis County and at several in the City of St. Louis.

Reeder said the performing arts staff has worked closely with the Education Dept. for the funding of the play and for the distribution of study materials that are used to accompany school performances.

According to Nancy Polette, assistant professor of education, the play's idea originated in discussions with Springboard to Learning, a multiethnic, cultural enrichment program for elementary school children in the metro area. A consultant to Springboard for Learning, Polette is the author of 20 books, many of which deal with the importance of books and reading in the classroom.

Students inducted

Eight students at Lindenwood recently were inducted in the college chapter of Alpha Lambda Delta, the national scholastic honor society.

They are Bonnie Carpenter of St. Charles, a junior majoring in math and mechanical engineering; Diane R. Dreyer of Wright City, MO, and elementary education certificate student; JoAnn Hermann of St. Paul, MO, a senior majoring in psychology; Bryce S. Lane of Harvester, MO, a sophomore majoring in art; Martha Launer of St. Charles, a junior majoring in business; Beverly Pentsil of Cairo, IL, a sophomore majoring in business; Vivek S.J.B. Rana of Nepal; and Scott D. Schneider of St. Charles, a junior majoring in computer science and business.

With a membership of more than 240,000 at 206 chapters throughout the United States, Alpha Lambda Delta has recognized superior academic performance among college and university students since its inception at the University of Illinois in 1924.

The Lindenwood College chapter is advised by Edith Graber, associate professor and chairperson of the Sociology Dept.

KCLC-FM Radio drive collects a flood of toys

The spirit of Christmas was evident during the recent holidays as nearly 3,000 toys were collected for St. Charles County flood victims by the college's community radio station, KCLC-FM.

Area listeners responded to the station's "Share the Spirit of Christmas Toy Drive," that was conducted by KCLC-FM in conjunction with local community agencies.

One of the radio station's most successful community events, the idea for the toy drive stemmed from Linda Meyer, a 24-year-old senior from St. Peters, MO, who is news coordinator for KCLC-FM.

In her position at the station, Meyer experienced first-hand the needs of victims of floods last fall that ravished much of the county.

"KCLC devoted extensive news coverage to the floods," she said, "and we knew the bleak Christmas many children

would have faced because their homes and possessions were lost. The children would have suffered the most, and would have been the ones to hear why Santa Claus brought so much less this year when they deserved so much more," said Meyer, a mother of two.

"It was really pulling at me to see all the hurt and not to be able to do anything except to say these people are having problems," said the broadcast communications major who plans to graduate in May.

At a KCLC staff meeting last fall, Meyer suggested the toy drive as a community project. "KCLC is a community radio station, and it wants to aid residents of the community," she said. "Sharing the spirit is all about people helping people, and the 'Share the Spirit of Christmas Toy Drive' is a way we can help the community," she added.

Assisted by students and volunteers,

Meyers organized the toy drive with collection sites at fire departments in Cottleville, St. Peters and O'Fallon and at St. Joseph Health Center in St. Charles. Collection barrels also were placed at KCLC studios and at other locations on the Lindenwood Campus.

Volunteers also collected toys at Lindenwood's annual Christmas Walk, a free community event held several weeks before Christmas. The college's Performing Arts Dept. also responded, offering ticket discounts for its production of "A Christmas Carol" to those who donated new toys or ones in good condition.

Area churches and schools also were contacted, asking for their support in KCLC's "Share the Spirit of Christmas Toy Drive."

With heavy on-air announcements by KCLC and media attention coordinated

by the college, the toy drive gained widespread attention, including that of Mitzi Morris, owner of Korner Kloset II in downtown St. Charles and founder of a local shelter program for the homeless.

Morris aided in distribution of nearly 3,000 toys, all of which were delivered before Christmas. From records at Korner Kloset, Morris mailed more than 120 letters to flood victims in need of toys for Christmas.

"We had a much greater response than I thought," Meyer said. "With the Marine Corps' Toys for Tots program also going on, I thought we would get a few items, but I never dreamed this would be the response.

"It's been an experience," she said, "but seeing the community really pull together has really made Christmas special for me."

Tea Hole recentered

by MELISSA CALLIS

Will relocation rejuvenate the Lindenwood Student Center?

"Lindenwood did what students requested, and it's on their shoulders to use it," said Jerry Rufkahr, vice-president of administration who supervised the recent relocation of the Student Center from Niccolls Hall to the Bookstore.

If usage during the first few weeks of the spring semester is an indication, then the Student Center is being well received by students and campus organizations. During day and evening hours, it is a hub of activity for those who want to relax or study.

Rufkahr said the total cost of relocation and improvement was financed by a \$5,400 contribution from the Kiwanis Club of St. Charles, made in recognition of the Lindenwood Circle K Club. Of the total cost, about \$3,000 was used for new carpeting and tile, while the rest was earmarked for paint, decorations and labor.

He said the idea for relocating the Student Center, which has been renamed the Tea Hole, to its original site was suggested by students and faculty members.

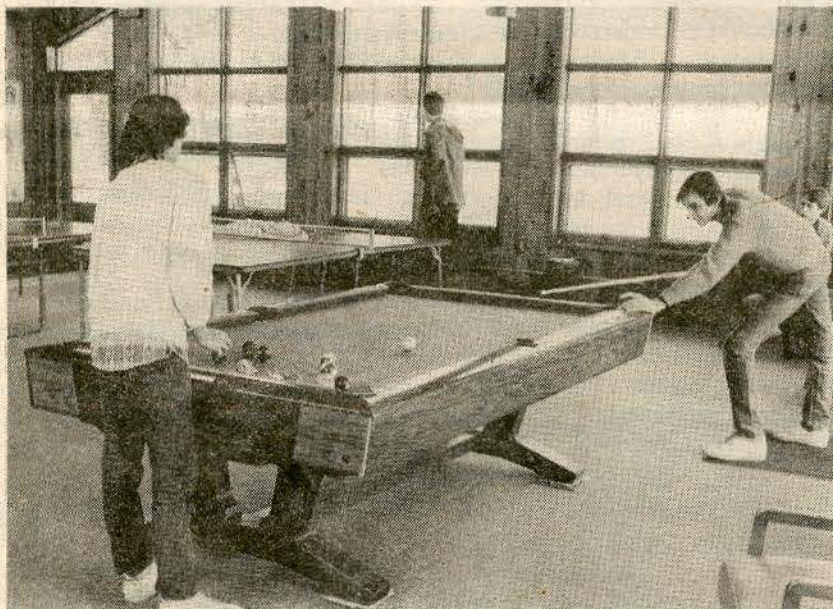
The relocation and renovation of the Student Center are among several plans for strengthening the college's full-time, residential population.

The evolution of the Student Center goes back to the 1900s when two campus buildings, the Gables and the Faculty House, were constructed as a sorority house for women.

Construction began in 1977 to connect these two structures as a center for student activities. The project, which cost \$80,000 in construction was completed in the fall of 1978. However, in the summer of 1980, because of the need for additional space, the campus Bookstore took over the Student Center and, later, the facility was moved to the first floor of Niccolls.

The new Tea Hole, a name for a popular center of activities in the early and mid-1900s, contains all the services found in Niccolls - a snack bar, lounges, pool and ping-pong tables and pinball machines - as well as a study area, meeting rooms and kitchen facilities. The facility is open from 7 a.m. to midnight Monday through Saturday and from noon to 11 p.m. on Sunday.

Student and faculty members have expressed hope that the recent relocation will prompt more commuter students, such as those enrolled in the Evening College, Saturday Campus and LCIE, to utilize facilities and services at the Tea Hole.



Photos by BRYCE LANE and RANDY L. WALLICK

A HUB OF STUDENT ACTIVITY — As a means of improving residential student life on the Lindenwood campus, the Student Center has been relocated to the center of campus and renamed the Tea Hole. The architectural-impressive wooden structure, shown in the upper left photo, houses a snack bar, lounges, pool tables, study areas, meeting rooms, a game room, ping-pong tables and kitchen facilities. The relocation of the facility from Niccolls Hall and its renovation were financed by a donation from the Kiwanis Club of St. Charles. Named for a popular center of student activity in the mid-1900s, the Tea Hole offers a peaceful environment for study, relaxation or recreation, as shown in the photo above left. To celebrate its opening this semester, the Tea Hole was the site for a student party, as shown in the photo above right. With refreshments furnished by the Coca-Cola Bottling Co. of St. Louis and Domino's Pizza of St. Charles, the party attracted hundreds of Lindenwood students as well as faculty and staff members. If the grand-opening party and useage during the first few weeks of the semester are indicators, the Tea Hole once again is the hub of student activity at Lindenwood.

Musbach named v-p of finance

Kenneth W. Musbach of Kirkwood, MO, former controller at Lindenwood, has been appointed Vice-President of Finance by the college board of directors.

Selected from a field of 40 candidates who sought the nationally-advertised position, Musbach received a unanimous recommendation from a three-member committee which reviewed all applicants. Committee members were Vice-President of Academic Affairs Daniel Keck, Vice-President of Administration Jerry Rufkahr and Henry J. Elmendorf, chairman of the board of directors' Finance committee.

Musbach replaces George W. Tilden, Jr., who resigned last fall to accept a position as Pension Trust Officer with Center Trust Co.

A graduate of the University of Missouri-Columbia with a degree in business administration, Musbach served as business manager at Eden Theological Seminary in Webster Groves, MO, prior to joining Lindenwood as controller five years ago.

Previously, he was president of Musbach Chevrolet, Inc., in Olney, IL, and a market research analyst and assistant to the district manager of Standard Oil Co.

(Indiana) in St. Louis.

"The financial stability of Lindenwood College is my primary concern," Musbach said, "and I feel I can make a significant contribution towards that goal as Vice-President of Finance."

In the position, Musbach is responsible for the fiscal management of the college's annual budget of nearly \$9 million and an endowment of \$2.3 million.

He serves as a member of the college's Executive Council and is responsible for the supervision of 14 people who comprise the Business Office staff.



Musbach

ALUMNI COUNCIL NEWS

by MAURITA STUECK,
Alumni Council President

It is my special privilege as your newly-elected president of the Lindenwood College Alumni Council to pen a message for our alumni. As I reflect on 1986, I want to tell you that we can cheer for our accomplishments!

For instance, alumni raised \$278,000 in 1986, representing the 45 per cent of us who gave to Lindenwood. This is up from a mere five per cent a few years ago. Four or five local St. Charles alumni "pushed up their sleeves," climbed ladders, renovated and refurbished Roemer 223. Maybe this was one of your classrooms! Not only did their efforts result in a bright, cheery room, but their challenge has inspired student groups and faculty teams to do likewise.

The Alumni Council has promoted several projects to raise funds for special activities at the college. The "Lindenwood Cooks" book has generated more than \$1,000. The new Lindenwood canvas tote bags, launched at last fall's reunion are off to a good start! Use the blank form in this issue of the *Linden word* to order one or both of these useful articles. We will ship more promptly than any mail order in the country! Think of the publicity you will generate by carrying a Lindenwood College tote!

Fund-raising efforts of the four Lindenwood Alumni Clubs have resulted in more than \$5,000 in scholarship money for students. Money for scholarships is a vital part of the recruitment effort in this time of high tuition costs.

While sharing my thoughts with you, I want to toss a bouquet of gratitude to Jan Lewis Riddle ('56) who served as president of the Alumni Council for two years. Jan shared generously her time and talent, giving strong leadership in her quiet but firm way. I wish each of you could have returned to the campus last October to hear first-hand reports from President Spainhower, Jan and alumni council members.

I sense a spirit of excitement and enthusiasm when I am on campus. Lindenwood is promoting the kind of events that can only be found on a small, caring

campus - a tour of four well-known cathedrals and churches in the metropolitan area, planned by the Religious Life Council - a voluntary "notable book" discussion group of faculty and students - installation of a gazebo by the class of 1985 for outdoor functions under the linden trees - and a president with a warm heart greeting students by name. Alumni are responsible for preservation and stewardship of this kind of education.

Mr. Robert Hyland, chairman of the board of directors, has said, "We are working toward a shared vision." Alumni of Lindenwood are a big part of the "we" of whom he speaks. Ask yourself what YOU do, YOU who are spread across these United States, YOU who cannot be on campus to paint a room? Let me suggest several important challenges!

First of all, when Lindenwood publications arrive at your home, READ them with interest to learn about contemporary Lindenwood. The college is a dynamic ever-changing institution.

Secondly, be a public relations ambassador for the college. To interest prospective students is of vital importance to Lindenwood. Forty per cent of students come to campus on the recommendation of alumni. Residential students give life to a campus and make it a viable, exciting community. You will be hearing more about the EXCEL (Excellence x Caring = Lindenwood), a newly designed network to open channels for alumni to help admissions. Throughout the country, alumni will be able to help recruit students through visits with high school counselors, prospective students, high school "College Nights" and other designated ways.

A third way to help is to order a cookbook or tote bag!

And, last, but no means least, be a part of the Renaissance at Lindenwood. Each of us has a responsibility to afford opportunities to future students, just as we had. As part of this stewardship, make a gift--and even a "second-mile" gift to Lindenwood in 1987!

I look forward to sharing more about

your council's activities in future issues. Meanwhile, let me encourage you to share any suggestions you have of ways we can better communicate with one another. We are a many faceted group. Send me your ideas on activities we can undertake that would appeal to each constituency--residential alumni, evening college and graduate alumni, LCIE alumni, etc. We want you ALL back for Reunion Weekend (October 16-18). Write to me at 73 Webster Woods, Webster Groves, MO 63119.

From under the Linden trees--
Maurita Estes Stueck ('43)

P.S. If you are interested in reading one of the books for discussion to which I referred in my message, I suggest the national bestseller, *Habits of the Heart* by Robert N. Bellah, et al. *Newsweek* said: "...easily the richest and most readable study of American society since



Stueck

David Riesman's 'fifties classic, *The Lonely Crowd*."

ALUMNI CLUBS

ST. CHARLES

ST. CHARLES CLUB - Alumni members have selected June 6 as the date for the fourth annual "Mrs. Sibley's Attic Sale," scheduled from 10 a.m. to 4 p.m. on the Lindenwood campus.

An arts and crafts, antique and flea-market event, the sale is the club's annual fund-raising event. Proceeds from the rental of booths are used for scholarship awards to deserving Lindenwood students. Last year, \$6,000 was raised from the sale and contributed to Lindenwood for scholarship awards.

Booth rental fees are \$25 for antique dealers and \$15 for those who sell arts and crafts, flea-market items and food.

To volunteer to help with the June 6 sale, or to rent space, contact Anne Pals ('65), chairperson, at 946-3666, or the Lindenwood College Alumni Office at 946-6912, extension #317.

KANSAS CITY

KANSAS CITY CLUB - Club members held their annual Christmas Luncheon on December 13 at the Alameda Plaza Rooftop. Among those attending were President James I. Spainhower and his wife, Joanne.

Upcoming events include a February 26 luncheon, beginning at 12:30 p.m. at the home of Jane Merrill Fritson ('49); a March 26 dessert, beginning at 7:30 p.m. at the home of Judith Neff Bois ('59); and the Spring Luncheon on May 2 at Victory Hills Country Club, hosted by Judith Batton Brougham ('60). A fund-raising golf tournament and a Metropolitan Noonday Luncheon also are being planned in March.

SOUTHERN CAL

SOUTHERN CALIFORNIA CLUB - Club members held their annual Christmas party on December 13 at the home of club President Armita Harness ('49). For further information on upcoming meetings, or for membership details, contact Harness at (213) 379-9353.

NOONDAY GROUP

ST. LOUIS NOONDAY GROUP - Members heard John M. Stephens, vice-president of marketing for the St. Louis Regional Commerce & Growth Association, speak on "The Selling of St. Louis" at their January 29 luncheon.

Meeting for luncheon several times a year, the group is a networking one between Lindenwood College and alumni who work in the St. Louis metro area. For information on upcoming meetings and membership, contact Mike Wood at 921-5225, or the Lindenwood College Alumni Office.

ST. LOUIS

ST. LOUIS CLUB - Members raised \$1,500 for scholarship awards for fashion marketing students from their fashion show last year. This year's event will be held April 25 at La France Catering in Frontenac. A social hour begins at 11:30, followed by lunch and the fashion show at 1:30 p.m.

This year's fourth annual event will be narrated by Lynn Moore, director of the college's Fashion Marketing Dept. With an array of contemporary fashions, models will consist of Lindenwood alumnae, emeriti and students.

Tickets are priced at \$15 each. For ticket information or further details on the Alumni Fashion Show & Luncheon, contact Nancy Prosser Dietz ('76) at 878-3721 or the Lindenwood College Alumni Office at 946-6912, extension #317.



ALUMNI COUNCIL - Newly-elected officers of the Lindenwood Alumni Council posed during a recent visit to the Lindenwood campus. From the left, they are Virginia Wilson Terry ('59) of St. Charles, secretary; Eric Stuhler of St. Charles ('78), vice-president; Maurita E. Stueck of Webster Groves, MO, president; and Cindy Schiermeier Hahn ('85) of St. Charles, treasurer.

ALUMNI CLASS NOTES

BIRTHS

'69

Ginny Wolf Chivas of Bolingbrook, IL, a son, Alexander, Aug. 26, 1986.

'70

Mary Lou Durbin Stehr of Omaha, NB, a son, Robert Douglas, June 11, 1986.

'72

Patricia Edgley Steinhoff of St. Charles, a daughter, Jennifer Jeanne, Aug. 2, 1985, and a son, Bryce Kenneth, Dec. 12, 1986.

'74

Jennifer Vacek Harcourt of Coconut Creek, FL, a daughter, Jessica Marie, Nov. 25, 1986.

'77

Terry Killian of Lexington, KY, a son, Michael Taylor, Sept. 23, 1986.

'86

Kathleen Beckham-Braiser of St. Ann, MO, a son, Jared Daniel, Dec. 8, 1986.

NEWS NOTES

'30

Margaret Mitchell Elser of Newton, KS, reported the death of her daughter, Janet ('56), who was a children's librarian in Hawaii for 20 years and a member of the Symphony Chorus in Honolulu.

Jeanette Puthoff Goodenow of Wall Lake, IA, wrote to President Jim Spainhower, saying how proud she and her family "are of the college's accomplishments."

'31

Margert Hammer Sullivan of Mishawaka, IN, is a retired teacher who reports that she has three grandsons - Philip Winchell, 12, Christopher Winchell, 5, and Richard Sullivan, one month.

'32

Fern Halliburton of Kansas City inadvertently was listed in the "Lost Alumni" article in the last issue of the *Linden Word*. Our apologies!

'36

Dorothy DuQuoin Warner of Clinton, IL, a member of the college's board of directors, was excited to report the birth of her grandson, Jonah.

'41

Margaret Barton Korty of Riverdale, MD, reports the death of her husband, Vernon, on Aug. 29, 1986.

'44

LaWanda Foulston Guthrie of Yuma, AZ, and Augusta, KS, is the author of *His Strange Ways*, published by Ashley Books, Inc. Called "a true religious

and dramatic love story" by critics, the book mentions Lindenwood. Anyone interested in the book can write to Guthrie at 3401 Orango Dr., Yuma, AZ 85365.

'54

Suzanne Wessel Hazelton of Palm Harbor, FL, is president of the Alumnae Club of Kappa Alpha Theta in Clearwater, FL.

'57

Cynthia Coatsworth Gilman of Chadron, NE, teaches first grade in Chadron. Her husband is retired from the U.S. Forest Service. She keeps in touch with Mary Marella Gore Robinson, her roommate at Lindenwood. Gilman also communicates with Marian Kasper Childers who, along with her husband, Dr. Victor Childers, were traveling through the Suez Canal in mid-December.

'58

Barbara Koeller Kramer of Bunker Hill, IL, works full time as education director for Haplan Music Co. She is divorced and has two grown daughters, Rachel and Claire.

Beverly A. Wood Sewell of Farmington, UT, is a homemaker who retired after 19 years of teaching. Her husband, Bob, is employed with Goodyear Tire & Rubber Co. in a position that relocated the family recently, its 13th move in Utah!

'59

Judith Neff Bois of Kansas City, MO, recently addressed the national convention of the National Trust for Historic Preservation in Kansas City. She took part in a panel discussion, entitled "Creating Awareness in the Next Generation."

'60

Mary Pagel Whetstine of Dearborn Heights, MI, is an elementary music and art teacher in the Garden City Public School District. She has a son, Thomas, a daughter, Molly, and one grandson, Thomas Downey.

Kay Cape Marshall Marik of New Hope, PA, was widowed in 1977 and, in 1983, married Jaromir Marik, president of Doylestown Hospital. She became a registered nurse in 1980 and currently is employed as a medical/surgical nurse at the hospital.

'61

Judy Adams Gabel of Jacksonville, FL, looks back fondly on her years at Lindenwood and thanks the college for "a good beginning." The Gabels have two daughters, age 17 and 19.

Ann Betticher McNeer of Winter Haven, FL, is a professor of humanities and psychology at Polk Community College. She and **Judy Guthrie Ludwig** ('61) recently attended the Scottish Highland games.

Julie Hoyt Pasley of Lake Quivera, KS, reports that her husband, John, is president of En-Comm Engineering in Mission, KS, where she serves as chief accountant. Her son, Jeff, works for the *New Republic* in Washington, and her daughter, Jennifer, is a senior at Drake University.

'67

Patricia Cravens Wichser of Woodstock, VA, is rebuilding her sheep farm following the recent death of her husband, Bob, in a Shenandoah Valley flood. A recent article in the *Washington Post* cited the Wichsers, former high-level congressional aides, for their will and determination in building their sheep farm.

'68

Lee Phillion of St. Charles, a member of the adjunct business faculty at Lindenwood, recently addressed the Monsanto Professional Women's Network Conference in St. Louis. She is managing partner of Management Communication Consultants in St. Charles following 12 years with Monsanto in which she served in various human resource management and communications roles.

'69

Ginny Wolf Chivas of Bolingbrook, IL, married Don Chivas in 1981. A product manager with AT&T, she recently returned to work after a six-month maternity leave following the birth of a son, Alexander.

'71

Karen McKinley of Kingston, PA, has been named Director of Marketing for First Hospital Wyoming Valley, a 90-bed private psychiatric facility. She and her daughter, Megan, 5, live in the Wilkes-Barre area.

Diane Beeson of Madrid, Spain, teaches business English at Citicorp and Santelana Publishing Co., where she also serves as a translator. She is the co-author of seven workbooks used in Spanish schools.

'72

Marian Taylor Ryan of St. Louis reports she married Ronald Ryan in Vienna, Austria, in 1982. They have a daughter, Kathleen ("Katie"), who was born in April, 1985. Ryan has worked for Maritz Corp. for 11 years.

'75

Brad Anderson of Milwaukee has been named general manager of Suburban Milwaukee Cable Television System.

'76

Deborah Spitzmiller Gann of Stillwater, OK, married Kenneth Gann in December, 1983. Living on 10 acres of land in the country, they have four dogs, three cats and "Emily", the goat. Gann reports she recently became a grandmother.

'77

Terry Killian of Lexington, KY, finished his residency training in psychiatry last year and recently joined the University of Kentucky Dept. of Psychiatry.

'80

Thomas Nebel of Middleton, OH, district sales manager for Hewlett-Packard, and his wife, Sue, finally call Ohio home

after residing four years in the "Buckeye State." In his spare time, he "attempts to retain his youth" by refereeing basketball games, while Sue serves as the chauffeur for their three children - Matt, 13, Livi, 10, and Beth, 6.

Niall Cones of San Francisco is doing graduate work at San Francisco State, is involved in theatre and performing arts in the Bay area, and finds time to work at a local bookstore.

'81

Steven Eck of Florissant, MO, recently was promoted to Administrative Manager of the K-Lite Division of KSH, Inc., a plastics manufacturer.

'83

Penny Myers Bryant of St. Louis married Greg "Bear" Bryant in 1984. The Bryants along with **Robert Wylie** ('84) and **David Todd Burchyett** ('81) started a corporate video production company last year, with Penny serving as vice-president of marketing.

'84

Lola L. Lucas of University City, MO, recently joined the Metropolitan Re-Employment Project where she assists unemployed workers to find new jobs. She also is associated with PMG, Inc., a Denver-based outplacement firm, and she continues her own consulting business, Careers Unlimited, where she works with individuals, groups and corporations on career development issues.

DEATHS

'18

Frances Conklin Bailey of Los Angeles, Aug. 10, 1986.

'21

Frances Embry Bradfield of Armonk, NY, June 4, 1986.

'27

Dorothee Meyer Wiley of Plattsmouth, NB, July 4, 1986.

'36

Elizabeth (Betty) Hoover Patton of Springfield, IL, Oct. 1, 1986.

'37

Virginia Wilkerson McNeil of Sedalia, MO, Nov. 6, 1986.

'42

Dorothy Ann Graham Morris of Cedar Rapids, IA, 1974.

'43

Kathryn Anderson Corl of Maumee, OH, Oct. 13, 1986.

'44

Donna Miller Brown of Naperville, IL, Sept. 11, 1986.

'55

Beverly Flo Lampert Scheerer of Mesa, AZ.

'56

Janet Elser of Newton, KS, May 27, 1985.

CAMPUS NEWS

For Presbyterian Church

Slide presentation features coed

A 19-year-old Lindenwood coed from Granite City, IL, will be featured in a slide presentation, "Lift Up Your Hearts," being produced this year by the Synod of Mid-America for the Presbyterian Church (USA).



Bodnam

Elizabeth Bodnam, a sophomore with a double major in English and communications, was selected to be part of the presentation that focuses on outstanding students who are recipients of Presbyterian scholarships. The slide show will be shown at the national meeting of the Presbyterian Church as well as at regional and local church functions.

Bodnam is the recipient of a \$1,400 annual scholarship from the Presbyterian Church (USA). She also receives Lindenwood awards for high scholastic achievement, leadership potential and involvement in extra-curricular activities.

"I'm thrilled to have been selected," she said. "These scholarships mean a lot to me. Without this assistance, I wouldn't have the opportunity to attend Lindenwood," she said.

"Lindenwood has provided me with opportunities. It has enabled me to become a better, more mature person, and the education I'm receiving is invaluable," Bodnam said. "With additional funding, I hope more students will have opportunities like I have at Lindenwood."

Bodnam is a 1985 honors graduate of

Granite City High School who maintained a 4.6 (A) grade-point average (GPA) out of 5.0 while being active in high school and extracurricular activities. At Lindenwood, she maintains a 3.43 GPA (B+) on a 4.0 scale.

In high school, she was active in the Girls' Varsity Athletic Club, Science Club, Pep Club, Foreign Language Club and Drama Club, where she participated in a number of high school plays. She was a junior varsity cheerleader, member of the Pom Poms, secretary of the National Honor Society and treasurer of the Speech & Theatre Club.

At Lindenwood, she carries a full academic load in addition to being a member of the Cheerleading Squad, a newly-elected member of the Alpha Epsilon Rho broadcasting society and a representative of the Lindenwood Student Government and McCluer Hall.

A member of the First Presbyterian Church of Granite City, she attends St. Charles Presbyterian Church at Lindenwood. Recently, she volunteered several afternoons to aid the church's efforts at

providing food and clothing to victims of recent Missouri floods.

In 1985, she was among 30 young women selected from more than 500 who auditioned for Steam Heat, the cheerleading squad of the St. Louis Soccer Steamers. As a member of the group, she participated in numerous promotional, community and charity events last summer. Last year, Bodnam also was Illinois DeMolay State Sweetheart.

Following graduation, Bodnam plans a career in news broadcasting, hoping to work for one of the major television networks. Her career goal stems from her involvement this semester at the college's community radio station, KCLC-FM, where she does a variety of broadcasting activities for academic credit and practical experience.

Bodnam's selection was arranged by the college's Public Relations Dept., which works closely with the Synod of Mid-America to arrange publicity on many of the outstanding Presbyterian students attending Lindenwood College.

YOU ARE INVITED TO THE ST. LOUIS LINDENWOOD ALUMNI CLUB'S

Fourth Annual Fashion Show/Luncheon

In cooperation with the Lindenwood Fashion Marketing Students



TIME: SATURDAY, April 25, 1987
11:15 a.m. (Cash bar-Social Hour)
12:30 p.m. (Lunch)
1:30 p.m. (Fashion Show)

PLACE: La France Catering
10405 Clayton Rd. (Frontenac)
St. Louis, Missouri 63131

NARRATOR: Lynn Moore
Director, Fashion Marketing Department
Lindenwood College

MODELS: Alumnae, Faculty, Emeriti and Students Lindenwood College

TICKETS: \$15 per person. Bring a friend or 2 or 3
(Proceeds toward a scholarship for a Fashion Marketing Student)

FOR TICKET INFORMATION:
Nancy Prosser Dietz ('76)
878-3721 or
The Lindenwood Alumni Office
(314)946-6912 ext. 317

Library featured in collector's series

Lindenwood College is offering limited-edition collector's plates that depict one of the institution's most well-known facilities, Butler Memorial Library.

The second in a series of commemorative plates, the Butler reproduction is a 10 by 7/8-inch plate cast in a deep blue design on fine white porcelain with 23-karat gold trim.

With only 150 copies being produced for the college, each plate contains a limited-edition numbering along with a special dedication to Col. James G. and Margaret Leggat Butler, major benefactors of Lindenwood College.

Called investors' artwork, the plates were produced by World Wide Art Studios, which has made quality gifts for many distinguished people, including President and Mrs. Ronald Reagan. The plates are priced at \$100 each.

Named for Margaret Leggat Butler, Butler Memorial Library has been a center for liberal arts students at Lindenwood since it was built in 1940. A Tudor Gothic structure, the library combines traditional beauty with modern facilities. Its large, oak-beamed Cardy Reading Room with picturesque fireplace has provided thousands of Lindenwood stu-

dents with an inviting place to relax and study.

Open to the community as well as the campus, the library has nearly 130,000 volumes, including more than 30,000 government documents and 700 periodicals. The spacious facility contains carrels, seminar rooms and study and listening areas located amidst open stacks of periodicals and books.

Butler Library's memberships in the St. Louis Regional Library Network, the St. Charles County Library District, the Higher Education Center of St. Louis and the Online Computer Library Cen-

ter facilitate the borrowing and sharing of materials from virtually all types of libraries, regionally and nationally.

According to James D. Thompson, director of Lindenwood development, it is befitting that the second in a series of commemorative porcelain plates honor the Butlers and Butler Memorial Library.

"During the 1930s and '40s, Lindenwood was able to build what many referred to as the 'Wellesley of the West,' primarily through the generosity of the Butlers," he said. "Gifts from the Butler family totaled nearly \$4 million, a sum which is equivalent to more than \$28 million in today's economy."

During the lifetime of Butler, one of the area's leading philanthropists and president of the Lindenwood College Board of Trustees, Ayres, Butler and Nicolls halls were constructed on the St. Charles campus. Funds from the interest of the Butlers' estates led to the construction of Roemer and Irwin halls, the Gables, Eastlick Residence and 47 years ago, Butler Memorial Library.

Reservations for the commemorative plates should be made immediately, since more than half of the 150 copies already have been purchased. No more will be commissioned once the supply is exhausted, Thompson said.

The first series, which sold out in less than two months last year, depicted historic Sibley Hall and the college's founders Maj. George C. and Mary Easton Sibley.

Reservations and further information on the Butler Library plates should be directed to the Lindenwood College Development Office at 314-946-6912.

College to host 'Wagon Train '87'

by MELISSA CALLIS

Lindenwood is making way for a caravan of boys, horses, mules and covered wagons as the St. Charles-based institution helps Boys Town of Missouri, Inc., sponsor "Wagon Train '87" this spring.

"Wagon Train '87" is a 150-mile stress challenge experience that will take nearly 100 boys on a historic journey from St. James, MO, to Chesterfield, MO, in St. Louis County in a way pioneering forefathers traveled.

The boys will make the eight-day trip by horseback and will camp out each night with their counselors and teachers, said Stephen T. Mooney, director of development for Boys Town.

The caravan will leave St. James on April 15 and travel through Missouri, making frequent stops along the journey to meet with civic leaders and to visit educational and historic places. A ceremony at Chesterfield Mall will welcome

the caravan on April 22, ending the 150-mile journey.

The 100-acre Lindenwood College campus was chosen as one of seven campsites because of its accessibility and its convenience for handling the boys, the 150 mules and horses and all the equipment, Mooney said. Other campsites along the route are in Cuba, Sullivan, St. Clair, Washington, Defiance and Wentzville, MO.

Boys Town of Missouri is a non-profit organization that is supported mainly by private contributions. Its goal is to treat emotionally-disturbed boys through rehabilitation and therapy.

Although the organization accepts any boy between the ages of nine and 15 it feels will benefit from its services, most of the boys are obtained from juvenile courts and through the Missouri Division of Family Services.

UCC eyes parcel adjacent to campus

A 40-acre parcel of land adjacent to the Lindenwood campus is one of several in the metropolitan area being considered for the national headquarters of the United Church of Christ.

A church relocation committee has recommended the 1.7 million-member denomination move its national headquarters from New York City to St. Louis in 1989. A national convention of the UCC will vote on the committee's recommendation in June.

One of the country's most liberal Protestant groups, the UCC has strong historical ties with Missouri, and it is affiliated with Deaconess Hospital and Eden Theological Seminary in St. Louis.

The parcel being eyed by UCC officials is located on the northeast section of campus between the college and the 50-acre site for Lindenwood Village, an \$80 million retirement community to be constructed in several phases during the next decade.

Currently, the land is leased for farm usage by the college and is not a part of master development plans for the institution, according to President James I. Spainhower.

The land is the same parcel that was considered earlier this year as the possible site for the national headquarters of the Presbyterian Church (U.S.A.).

"Wagon Train '87" marks the fourth year of this wilderness event. "The trail ride is an outgrowth of a one-day adventure," Mooney said. "The concept goes back 15 years to Boys Town's 'School in the Wilderness,' a one-day trail ride," he added.

Previous caravans included a "March to the Arch" to the Gateway Arch on the St. Louis riverfront and a "March to Clayton," the county seat in St. Louis County. Boys Town also retraced the old "Trail of Tears," to which Mooney said he knows why all the Indians died — "saddle sores."

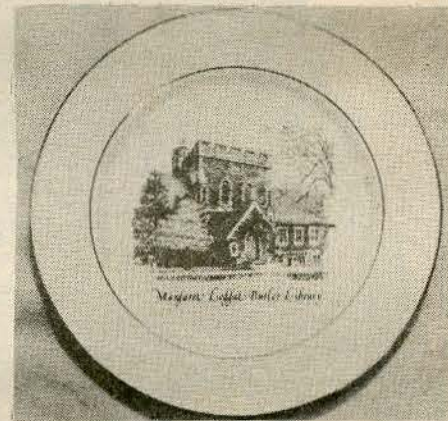
CBS sportscaster Jack Buck will again be this year's Wagon Master of the spring caravan, and he invites those interested in helping the Boys Club of Missouri to become a Trail Boss in the organization's "Buckaroo Club."

Interested persons can participate in "Wagon Train '87" by sponsoring one or more boys for \$1 per mile. Persons also may form teams or groups for sponsorships. The individual or team that raises the most money for Boys Town will be able to participate in "Wagon Train '87" for one day of the eight-day journey.

Further information can be obtained by contacting Mooney at Boys Club's St. Louis office, 314-291-0920.



A TOTE FOR \$10* — Purchase a Lindenwood tote bag and support the Alumni Association, which will donate proceeds for scholarships and facilities renovation. As shown by senior Melissa Callis, the attractive bags are off-white in color, contain the inscription "Lindenwood College" and feature a drawing of the front gates. Priced at \$10 at the Bookstore (*or \$11.75 shipped), tote bags are available by sending a check, payable to the Lindenwood Alumni Association, to the Alumni Office, Lindenwood College, St. Charles, MO 63301.



CAREER DAYS — Suzanne A. Sakahara, assistant professor of English and communications, talks with prospective high school students during Communications Day, one of several Career Days held this semester on campus. Coordinated by the Admissions Office and various departments, Career Days attracted thousands of students who were interested in education and careers in such professions as communications, business, education, fine arts, science, performing arts and humanities. Day-long activities featured workshops and discussions by faculty, alumni and professionals; campus tours; and classroom visits.

Admissions program attracts alumni

Nearly 100 alumni throughout the country are contacting prospective students, visiting high schools, attending college fairs, providing newspapers with student news and planning events for alumni and students.

This active group of volunteers is part of the Excel Program, a student recruiting program developed by the Lindenwood Admissions Office. Excel utilizes alumni to supplement the admissions staff for recruiting outstanding students in key geographic areas of the country.

"We have enthusiastic alumni who are expressing their support for their alma mater by working hard to publicize the college in their local area and in talk-

ing to prospective students about their Lindenwood experiences," said Miriam King-Watts, dean of admissions.

Those taking part in the recruitment program are asked to identify prospective students in local areas, such as supplying the Admissions Office with names of honor students listed in local newspapers or by contacting students whose names have been furnished by the Admissions Office.

"One of the very best resources we have in the recruitment process is the local contact made with prospective students," King-Watts said. "Because the Admissions Office has a goal to increase geographic diversity of the Lindenwood

student population, these 100 alumni are providing a vital supplement to outreach efforts of the admissions staff," she added.

While Excel volunteers help by making local contacts outside the area, area alumni are being asked to assist the college in other ways. A new facet of the Excel Program, the Alumni Advocate Program, uses area volunteers to talk to prospective students and their parents and to provide a personalized tour of campus and to answer any questions prospects may have.

"The Lindenwood visit allows students to see the campus, giving them a realistic view of college. Alumni advo-

cates have a unique feeling for Lindenwood, and they can pass this feeling onto prospective students," she said.

Area alumni interested in becoming Excel recruiters, or in finding out more about the program and ways in which they can participate, are invited to call the Lindenwood College Admissions Office at (314) 946-6912, extension #213.

Vendors sought

The Lindenwood College St. Charles Alumni Club is taking reservations for vendor space for "Mrs. Sibley's Attic Sale," an arts and crafts, antique and flea-market sale to be held June 6 on the St. Charles campus.

A fund-raising project of Lindenwood alumni in the St. Charles area, the fourth annual sale will be held from 10 a.m. to 4 p.m. Rain-out date is the following Saturday, June 13.

Proceeds from the rental of booths will be earmarked for scholarship awards to deserving Lindenwood students, according to Anne Pals, a Lindenwood alumna and chairperson of the attic sale.

Last year, more than 100 exhibitors took part in the six-hour sale, attracting more than 600 visitors to the Lindenwood campus. The St. Charles Alumni Club raised more than \$6,000 for scholarship awards from the 1986 event.

The cost for vendor spaces is \$25 for antique dealers and \$15 for crafts, flea market and food booths. All booths will be on display outdoors from 10 a.m. to 4 p.m. June 6. All items for the sale will be displayed near the front gates of the college off Kingshighway.

Prospective vendors are urged to apply for space as soon as possible, Pals said. They can do so by contacting Esther Fenning at the Lindenwood College Alumni Affairs Office, 314-946-6912. Alumni volunteers are also needed for the June 6th event.

The fund-raising event is named in honor of Mary Easton Sibley, co-founder of the 160-year-old liberal arts college.

Auto discounts for graduates

Recent Lindenwood graduates in the St. Charles area and students who'll receive degrees at Spring Commencement are eligible for special privileges when they purchase General Motors vehicles from a St. Charles auto dealer.

The General Motors College Graduate Program offers graduates a minimum down payment of five percent or less, pre-approved credit, a \$250 discount coupon or a 90-day deferral in payment, and the lowest interest rates that General Motors offers.

The program is available at Jim Meagher Motors, Inc., in St. Charles, a dealership for new and used Chevrolet and Oldsmobile models.

Further information on the GM College Graduate Program can be obtained by contacting Patsy Carter at Meagher Motors, 314-946-6300.

Mrs. Sibley's Attic Sale

LINDENWOOD COLLEGE ST. CHARLES, MISSOURI

Date: SATURDAY, JUNE 6
(Rain Date - June 13)

Time: 10:00 a.m. - 4:00 p.m.

Place: CENTER CAMPUS
"Beneath Mrs. Sibley's Linden Trees"

ANTIQUES

MUSIC, CRAFTS

FLEA MARKET ITEMS

FUN AND BARGAINS

FOOD



SPACE COST

Antique	\$25.00
Flea Market	\$15.00
Craft	\$15.00
Food	\$15.00

All profits are yours!

For Information on Antique, Craft or Flea Market Space Reservation
Call the Lindenwood Alumni Office
946-6912 Ext. 317

1941 alumna to direct council

Maurita E. Stueck of Webster Groves, MO, has been elected president of the Lindenwood Alumni Council, an organization that coordinates alumni activities in key parts of the country through a network of volunteers.

An alumna who attended Lindenwood from 1939-41, Stueck holds an A.B. degree from Washington University in St. Louis, and serves as an instructor and guide at the Missouri Botanical Garden in St. Louis.

"Presently, my special focus is on the development of new guides at the Missouri Botanical Garden, an interest that was sparked by Dr. Marion D. Rechtern in my years at Lindenwood," she said. (A 34-year member of the Lindenwood faculty, Rechtern was professor emeritus of biological science who died last year at the age of 81.)

Active in the alumni council for many years, she also serves on the board of directors of Epworth Children's Home, the Maria Center and Springboard for Learning in St. Louis. She has served on the St. Louis Council of Girl Scouts' Board of Directors and has been active with the Conference on Education and the Women's Society of the St. Louis Symphony as well as the American Association of University Women.

Married, Stueck and her husband, Cornelius, have a son and three daughters.

As president of the Lindenwood Alumni Council, Stueck also will serve as an ex officio member of the institution's board of directors.

The alumni council coordinates chapter activities in key parts of the country, including southern California, St. Louis and Kansas City, MO, in addition to a large constituency of alumni in St. Charles. Smaller groups of Lindenwood alumni are found in major parts of the country, and frequently they host luncheons, meetings and activities to foster liaison among the council, alumni and the college.

The council also sponsors the Annual Alumni Reunion Weekend each fall at Lindenwood, the presentation of the Alumni Merit Awards for outstanding or distinguished service to the college, profession or community during Spring Commencement and institutional programs like student recruiting and fund raising.

Numbering more than 10,000, Lindenwood alumni are a vital part of the institution's development, expansion and educational thrust as witnessed by the fact that nearly 50 percent of all alumni annually support the college.

Alumni like Stueck are represented on the college's board of directors, board of overseers, committees, faculty and administration, and they participate in virtually all major decisions affecting Lindenwood College.

Annual reports

A limited number of copies of Lindenwood's 1986 annual report, "The Renaissance of a Great American College," are available without charge from the Lindenwood College Public Relations Office.

The 36-page report provides information on the 1985-86 fiscal year and lists donors who have contributed nearly \$790,000 cash and pledges to the college during the 12-month period.

Nearly 8,000 annual reports were mailed recently to all supporters of Lindenwood.

Request for copies of the annual report should be directed to the Lindenwood College Public Relations Office, First Capitol and Kingshighway, St. Charles, MO 63301. Copies will be sent without charge as long as supplies last.

Coeds enter national competition

Two Lindenwood coeds - Jennifer Grabowski and Wilma Henrichsen, both of St. Charles - are among nearly 1,000 coeds throughout the country competing in *Glamour* magazine's "1987 Top Ten College Women Contest," a national event to select 10 outstanding female students at colleges and universities across the country.

Grabowski, a sophomore, majors in corporate and industrial communications and minors in fashion marketing. Henrichsen, who plans to graduate in May, majors in mass communications.

A panel of magazine editors will select winning students this spring on the basis of individual scholastic achievement and involvement in extracurricular activities on campus or in the community. Winners will be featured in the August, 1987, issue of *Glamour* as well as receive national media attention and an expenses-paid trip to New York City to meet with professionals in their individual fields of interest or career pursuits.

Competition by Grabowski and Henrichsen marks the fifth straight year Lindenwood College has been represented in the national competition.

Women's board is organized

The Lindenwood Women's Board, a volunteer organization on campus, has been formed with a two-fold purpose of planning and sponsoring programs of interest to men and women at college and of channeling relevant information to female faculty, staff and students as well as alumnae.

The board meets monthly during the lunch hour in Young Hall Lounge, and sessions are open to all interested members of the college community.

Recent meetings have included a presentation, "I'm Not a Feminist but . . .," by Edith Graber, chairperson of the Sociology Dept., and Carolyn Scott of the LCIE faculty; a discussion about women in business, oriented to LCIE students

and coordinated by Karen Johnson of the LCIE Office; and a presentation led by N. Jean Fields, associate professor of English and communications, on the recently-released "Commission on Pornography Report."

Upcoming meetings this spring will include a discussion on issues of women and silence as referred to in the book, *Silences*, by Tillie Olsen. The session will be coordinated by Jean Taylor, an instructor and professional librarian. A meeting that will focus on real-life discrimination cases, coordinated by Marilyn Kay of the Admissions Office, also is slated.

Members of the Lindenwood Women's Board include Jan Czaplá, assistant

professor and head librarian; Fields; Graber; Darlene Jemison, assistant manager of the Bookstore; Johnson; Ellen Irons of the Admissions Office staff; Esther Fenning, alumni affairs director; Phyllis Morris of the Development Office; Christine Cordes, graphic arts director; Taylor; and Miriam King-Watts, dean of admissions.

Area alumni and community residents who would like to find out more about the newly-formed organization, as well as times and dates of future meetings, should contact King-Watts at the Admissions Office, 314-946-6912, extension #213.

Board member's gift could start major campaign

Continued from page 1
stimulate significant donations from other college constituencies.

Harmon's gift is an unrestricted gift, and it is the largest single donation in recent history.

"A great deal has been accomplished by Dr. Jim Spainhower and the present administration at Lindenwood in areas of fiscal stability," Harmon said. "And, at the same time, we have a dedicated professional staff of educators who continue the excellent academic standards of the college."

"I cannot think of a more worthwhile cause than to help this private, liberal arts college, which is not subsidized by taxpayers' dollars, to continue its long history of not only educating our young people, but also providing an extensive curriculum for those of us who seek continued educational growth as we develop our professional careers," Harmon added.

In response to Harmon's challenge gift, the board of directors is considering the possibility that the \$100,000 contribution could be the cornerstone of a major renovation or capital funds drive at Lindenwood.

The gift could be the beginning of a

major effort by the college "to bring its aging facilities into first-class condition," said Thomas L. Gossage, development chairman of the board of directors.

"Harmon and other board members realize that until Lindenwood succeeds in providing adequate student service and physical education facilities, the goal of rebuilding a strong, residential, undergraduate college is hampered greatly."

Before embarking upon a major renovation or capital funds drive, the board has retained the well-known architectural and engineering firm, Hellmuth, Obata & Kassabaum, Inc., (HOK) of St. Louis, to review the campus master plan for facilities. HOK's retention has been provided without cost to Lindenwood through the generosity of two board members-Chairman Robert F. Hyland, regional vice-president of CBS Radio, Inc., and general manager of KMOX-AM Radio, and Facilities Committee Chairman David A. Wilhelm, president of the Forsyth Group of St. Louis.

Representatives from HOK currently are meeting with Lindenwood officials to assist them in development of an updated for master plan the college. An internationally-renowned firm, HOK has received numerous awards and honors

for its architecture, design and planning. A few of these include St. Louis Union Station, the Dallas-Fort Worth Airport, the Gallerina shopping complex in Houston, Levi Strauss & Co. corporate headquarters in San Francisco, King Khaled International Airport in Saudi Arabia, the Flagship Center in Miami, the Mobil Oil Corp. Division Headquarters in Fairfax, VA, the Metropolitan Savings Bank in New York City, the Xerox Research Center in Palo Alto, CA, Ralston Purina Co. in St. Louis, the McDonnell Planetarium in St. Louis and facilities at Washington University of St. Louis.

"My wife, Grace, and I consider it to be a privilege to be part of the current effort to upgrade facilities at Lindenwood," Harmon said, "and we strongly encourage others to become a part of guaranteeing the future of this great institution."

Harmon is the brother of Jeanne Huesemann of St. Charles, professor emeritus of mathematics who retired last May after 29 years of service on the Lindenwood faculty-the longest tenure of any Lindenwood employee.

Check your mailing label on page 1. If your address is incorrect, or if you're receiving more than one copy, contact the Public Relations Office, Lindenwood College, St. Charles, MO 63301, for a correction.

IVSI to promote valuation sciences



COLLEGE DONATION - Cataloging some of the 3,500 volumes recently donated to Lindenwood College are, from left, Patricia C. Soucy, associate director of the International Valuation Sciences Institute (IVSI); Richard Rickert, director of IVSI and the college's Valuation Sciences Program; Patricia Burton, an IVSI advisor; and Janice Czapl, head librarian at Butler Memorial Library, where the volumes will be housed.

Appraiser's gift begins IVSI campus library

A Washington, DC, appraiser has donated nearly 3,500 volumes on art, antiques and appraisal to the library resources of the newly-formed International Valuation Sciences Institute (IVSI) at the Lindenwood campus in St. Charles.

The recent gift from Charles E. Johnson of Washington, DC, a senior member of the American Society of Appraisers (ASA), includes major works on fine and decorative arts, furniture, ceramics, glass, silver and other metals, and price lists. Especially significant are large numbers of auction catalogs, such as *Sotheby's*, and a complete bound collection of

\$1 million

Continued from page 2

which have not had contact with Lindenwood in past years.

"In addition to reaching new donors, we've established a rapport with these 45 businesses to acquaint them with Lindenwood. Wilhite and corps of dedicated corporate ambassadors are to be congratulated for a job well done," Thompson added.

The second Annual St. Charles County Partnership Campaign, a local community support drive currently is \$10,000 ahead of schedule, primarily due to the efforts of the Lindenwood College Board of Overseers and the leadership of one of its members, Gary Shaw, campaign chairman and senior vice-president of E.F. Hutton & Co., Inc., of St. Charles.

"In September, Lindenwood will begin celebrating its 160th year of national service," Thompson said. "A fitting tribute would certainly be for us to start this anniversary by just having finished a \$1 million record in college fund raising."

Antiques magazine, dating from 1922.

Housed at Butler Memorial Library, the donation expands the library's resources in the arts, antiques and appraisal fields as well as starting the library of the IVSI, the organization formed at Lindenwood to sponsor research, publication and education in appraisal and valuation sciences.

Johnson is well-known in his field in the nation's capital. His appraisal clients include the White House, the State Department, the U.S. Supreme Court, the Folger Shakespeare Library, the Smithsonian Institution and many other well-known institutions and private collectors in the District of Columbia, Maryland and Virginia.

According to Patricia C. Soucy, associate director of the IVSI and a core faculty member in valuation sciences at Lindenwood, Johnson was responsible for donating or placing a large number of antiques and furniture in the White House while he was a member of the National Security Council. Soucy, an ASA member who chairs the association's Valuation Sciences Committee, was instrumental in facilitating Johnson's donation.

An honors graduate of Antioch College who holds a graduate degree from Syracuse University, Johnson donated the 3,500 volumes from his personal library.

"Mr. Johnson's generous donation is a landmark in developing our appraisal resources, especially in antiques," said IVSI Director Richard Rickert. "Students and researchers will have access to a growing collection of materials for identifying and valuing arts and antiques," added Rickert, director of Lindenwood's Valuation Sciences Program.

The International Valuation Sciences Institute (IVSI) has been established at Lindenwood to promote research, publication and higher education in all fields of valuation and appraisal.

"Through the institute, appraisers and appraisal societies can support the development of research, publication and higher education for the appraisal profession," said Richard Rickert, Ph.D., director of the IVSI and Lindenwood's Valuation Sciences Program.

"The IVSI, through its existing degree programs and its support of research and publication, will have an increasing impact on the scope and quality of appraisal throughout the intercontinental United States," he said. "The institute will work with all appraisal organizations to promote such research, publication and degree programs," he added.

In conjunction with the American Society of Appraisers (ASA), Rickert and other Lindenwood Valuation Sciences faculty members have formed the IVSI. Other faculty members playing a key role in the IVSI's formation include Patricia Soucy, a senior member of the ASA who specializes in antiques and decorative art and who will serve as associate director of the institute, and Kenneth Voss, an adjunct faculty member in real estate appraisal with the IVSI.

The Washington, DC-based ASA has awarded a support grant of \$10,000, and its educational foundation has allocated \$5,000 in scholarships for the IVSI. It also has expended several thousand dollars for planning the IVSI's programs. An ASA member from Washington, DC, has donated 3,500 volumes on art, antiques and appraisal to expand the IVSI library on Lindenwood's campus. Major acquisitions are being made in other appraisal areas.

Ambassadors play key role in student recruitments

Visits to the Lindenwood campus are an important part of student recruitment, ranking fourth behind the size of the college, the quality of its educational programs and Lindenwood's convenient location in the metro area.

According to Miriam King-Watts, dean of admissions, the beauty and friendliness found at Lindenwood during a personal visit are two of the most important factors why students choose Lindenwood.

As a means of capitalizing upon this important aspect of student recruiting, a Student Ambassador Program involves Lindenwood students with prospective high school or college transfer students. Under the direction of Philip J. Hechler, a senior communications major from Troy, MO, and a student worker in the Admissions Office, the program pairs prospective students with current students to give them "a first-hand impression" of Lindenwood.

"Student ambassadors are on a peer level with prospective students," King-Watts said, "and are able to give prospective students an idea of what attending Lindenwood is like. They are a special group of students that have been trained to represent the college and to make a prospective student's first impression of Lindenwood a favorable one," she said.

The institute will sponsor research and publications by appraisal educators and students, especially those involved in valuation sciences programs.

In May, the institute will offer a two-week valuation sciences program designed specifically for appraisers in real estate, personal property, fine arts, gems and jewelry, business valuation, machinery and equipment. The program will enable applicants from throughout the country to earn credit towards undergraduate or graduate degrees in valuation sciences.

The only one like it in the United States, "the program at Lindenwood has been selected by the ASA to provide appraisers with the degrees, concepts and methods of appraisal, plus the regulatory, legal and ethical information to upgrade and expand the profession," Rickert said.

The newly-formed institute invites membership support from individuals and corporations. It also invites appraisal educators and students to submit papers for publication review.

The formation of the IVSI expands Lindenwood's Valuation Sciences degree programs, which were established in 1979. "The IVSI supports efforts for continuing education and appraisal designations, but it does not offer its own designations," Rickert said.

"Already, the IVSI enjoys the full support the ASA and its educational efforts, and it is working with members of other appraisal organizations to upgrade higher education in appraisal," he said.

Further information on the newly-formed institute can be obtained by contacting Rickert at Lindenwood College, Box 646, St. Charles, MO 63301, or by telephoning 314-946-6912, ext. #227.

"Student ambassadors do a good job, and we are proud to have them represent Lindenwood in such a positive way," she added.

If you know of a prospective student who would like to find out more about the advantages of a Lindenwood education, and who would like to have a student ambassador give the student a personal tour of campus, contact the Lindenwood Admissions Office at 314-946-6912, extension #213.

**Lindenwood College
SPRING
COMMENCEMENT
May 16 - 10 a.m.
Main Campus**

Dr. Kenneth W. Thompson, Speaker

**BACCALAUREATE
May 15 - 7:30 p.m.
St. Charles
Presbyterian Church**

Rev. Rudolph W. Beard, Speaker

CAMPUS NEWS

College offered executive expertise

Continued from page 1

the board of directors and Lindenwood Alumni Council; internal and external administrative communications; and utilization of the president's time.

In the area of financial management, the team is reviewing accounting procedures and computer software, operations of the Computer Center, cash management and investment, endowments, personnel policies and insurance.

Working with Rufkahr and other officials, the management team is reviewing maintenance and housekeeping, the Student Center, campus Bookstore, Security Office, the stadium, Food Service and inventory and appraisal.

In the development area, the team is studying fund-raising programs and goals, record keeping and acknowledgments of gifts, grant programs, deferred giving, communications and publica-

tions, computer utilization, building fund campaigns and staff personnel and job assignments.

In marketing management and research, key areas being reviewed include Admissions Office marketing plans, public relations, internal and external communications and publications, media relations, advertising, the college's Printing Center and market research.

"Much of what the college is doing administratively," Spainhower said, "probably is what ought to be done, but there are undoubtedly a number of areas wherein managerial procedures could be reviewed to the benefit of Lindenwood. The college is at a point of history where a long look ahead is essential for its orderly development," the president added.

The 25 loaned executives were appointed by Hyland based upon recommendations by a special committee headed by Hannegan. Members of the committee include Richard Grisham, president of St. Anthony's Medical Center in St. Louis County; Spainhower; two members of the board of directors - Thomas L. Gossage, senior vice-president of Monsanto Chemical Co. in St. Louis, and John D. Wolf, executive vice-president of operations for McDonnell Douglas Aircraft Co. in St. Louis; Keck; and a member of the Lindenwood College Board of Overseers - Jan R. Kniffen, vice-president and treasurer of the May Department Stores Co. in St. Louis.

Specific recommendations and findings from the 25 loaned executives will be reported in an upcoming issue of the *Linden Word*.



Hannegan

PEOPLE

Continued from page 5

EDWARD PUNDMANN, JR., of St. Charles, one of the team captains for the college's St. Charles Partnership Campaign, has received the "Citizen of the Year Award" from the St. Charles Chamber of Commerce. Pundmann, general manager of Pundmann Ford in St. Charles, was cited for his community and civic involvement. As a team captain, he contacted businesses and individuals in St. Charles as part of Lindenwood's efforts to raise \$90,000 from the St. Charles community.

THOMAS E. GLOSIER of St. Charles, a member of the Lindenwood College Board of Overseers, has been elected to the board of directors at Mark Twain Bank in Harvester, MO. President of Glosier Real Estate Developers in St. Charles, Glosier is chairman of the St. Charles County Road Board and a member of the Industrial Development Authority.

MARY C. MARTIN of O'Fallon, MO, a former auditor with Ernst & Whinney (E&W) in St. Louis, has been named controller in the college's Business Office. She is a 1984 magna cum laude graduate of the University of Missouri-St. Louis with a B.S. degree in accounting. At E&W, she was responsible for supervising audits, reviewing Security & Exchange Commission filings and preparing financial statements. She replaces **KEN MUSBACH** who recently was promoted to Vice-President of Finance at Lindenwood.

"New Ways Sought To Finance Education" is the title of an article featuring an interview with **LARRY SACKMAN**, director of financial aid, that appeared in a recent issue of *American Credit Union*, a national financial news tabloid for credit unions around the country. The illustrated article discussed ways to finance a college education, such as some of the alternative ones available at Lindenwood College.

CHRISTINE CORDES has been promoted to Director of Graphic Arts, a position that closely matches her primary responsibility as supervisor of the college Printing Center and for all art and typography utilized by Lindenwood. A member of the administrative staff for nearly seven years, she has served as an administrative assistant in the Public Relations Dept. since 1984 in addition to her role in the Printing Center.

The Lindenwood women's soccer team, the Lady Lions, is among the top 20 teams in the National Association of Intercollegiate Athletics/Sports Information Directors Association (NAIA/SIDA) All-Sports Competition. Established in 1969, the program measures the success of an institution's overall athletics by the accumulation of points in post-season competition on the district, area and national levels. Under the direction of **COACH DEBORAH KEHM**, the Lady Lions gathered 25 out of 50 points in the NAIA/SIDA competition. With its most impressive season record in college history, the women's soccer team finished fourth in the nation in NAIA competition last fall.

"It's Lindenwood for Quality and Commitment to Excellence" is the title of an illustrated article that appeared in a recent issue of *Class Magazine*, a monthly tabloid circulated to more than 25,000 high school students throughout the metropolitan area in St. Louis and St. Charles counties. Written by **DAVE SCHMITT**, editor of the newspaper and a former Lindenwood student, the article was arranged by Public Relations Director **RANDY L. WALLICK**.

WILLIAM C. SULLIVAN of Kirkwood, MO, associate general counsel for Southwestern Bell Telephone Co. and a member of the firm's top-ranking management team, has been elected to the Lindenwood College Board of Overseers.

by MELISSA CALLIS

Michael F. Kohring, a Lindenwood senior from St. Louis, is employed this semester at Hasco International, Inc., in St. Charles as a bilingual customer services operator, a position he received through assistance from the CAP Center on campus.

Hasco International is a firm specializing in photographing newborn infants at hospitals in the metropolitan area as well as across the country and at locations in France, Japan and Puerto Rico. Its president is Raymond W. Harmon, a member of the Lindenwood College Board of Directors.

Kohring found out about the recent

KEITH W. HAZELWOOD of St. Charles, chairman of the Lindenwood College Board of Overseers, has been appointed to the board of trustees at St. Peters Hospital. An attorney and partner of Hazelwood, Barklage & Barklage, P.C., in St. Charles, he has practiced law in St. Charles since 1974, and is the owner of Martin Abstract & Title Co.

ALAN SHILLER of St. Charles, assistant professor of speech in the Communications Dept., recently discussed "Communications Dynamics" when he addressed the St. Peters Jaycees. The presentation was similar to others Shiller has made to numerous groups and organizations throughout the area, including the Missouri and St. Charles Jaycees organizations. A seven-year member of the Lindenwood faculty, he holds an undergraduate degree from Emerson College and an M.A. degree from Purdue University.

JO ELLEN HETZLER of St. Charles has joined the Admissions Office as an administrative assistant to the Dean of Admissions. In the newly-created position, she will be responsible for coordinating campus events for prospective students such as this semester's Career Days. Hetzler has attended Lon Morris College in Jacksonville, TX, and Craven Community College in New Bern, NC, and she graduated in 1986 from the University of Maryland Asian Division in Okinawa, Japan, with an associate degree in business management.

job opening at Hasco International at the CAP Center in Niccolls Hall, where he saw a posted advertisement.

Lindenwood's CAP Center houses the Consolidated Advising Program, a comprehensive array of services and resources for students, alumni, faculty and staff, including job placement, career planning and placement, academic assistance, peer tutoring and personal counseling.

Kohring feels the CAP Center is a good place to go for students who are seeking employment because it is a source where area employers, such as Hasco International, leave contacts for part and full-time job openings.

Affluent in Spanish, Kohring deals

Church

Continued from page 1

Spainhower said the program was created to attract more quality students and to offset their tuition cost to attend Lindenwood. "Private, church-related colleges like Lindenwood are more expensive to attend since they receive no tax support. Consequently, many deserving students from religious families cannot attend Lindenwood College without financial assistance," Spainhower said.

Students eligible for the scholarship and grant programs must be recommended by a minister, priest or rabbi from their appropriate congregation. To qualify, a student must reside on campus, be active in campus religious life, agree to enroll in at least six academic hours of courses in religion within four years, and contribute at least two hours of service per week either on or off campus under the direction of Rev. George R. Wilcox, campus chaplain.

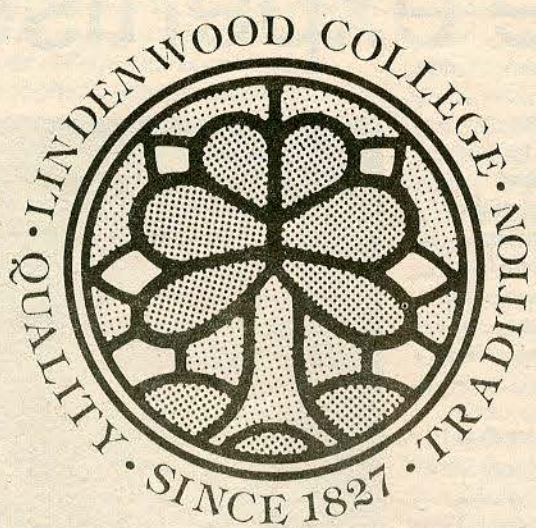
Lindenwood is working with the Presbyterian Church's Synod of Mid-America, local Jewish and Roman Catholic leaders, and representatives of area churches to promote the scholarship and grant programs. Further information on the scholarship programs for students, parents and congregations can be obtained by contacting the Admissions Office, Lindenwood College, St. Charles, MO 63301, or 314-946-6912, extension #213.

Lindenwood opportunity at work

with Hasco International's Spanish-speaking clients. His duties involve handling incoming mail and telephone calls, translating photo orders and "and problems that deal with Spanish-speaking customers," he states.

The Lindenwood senior said he "likes the contact with Spanish people because it improves my Spanish." He receives numerous calls from Spanish-speaking customers from throughout the country, particularly from those in California, New York and Wisconsin.

Kohring, who is in his seventh year of studying Spanish, is majoring in education at Lindenwood. He would like to teach high-school Spanish, and eventually, move on to instruction at the college level.



Lindenwood College's Saturday Campus - a new program for those who do not want to spend an entire weekend obtaining a degree, for those who cannot devote time to day or evening classes or those whose family or job responsibilities prevent them from attending classes full time.

The Saturday Campus is designed for people who want to begin or complete an undergraduate or graduate degree either full or part-time every two out of three Saturdays. It's for people who want to better themselves for career advancement or a job change or for residents who want to become better informed about significant developments in the metro area.

It offers a variety of additional services right on campus - complete services such as child care, library and bookstore facilities, food service, career and employment planning and personal counseling. The program runs for 14-week sessions, on Saturday mornings and/or afternoons at Lindenwood's main campus in historic St. Charles. A variety of classes are offered by distinguished faculty members, visiting scholars and business and community leaders.

Find out why the Lindenwood Saturday Campus is a New Degree of Service just for you. Call our Admissions Office at **946-6912, extension #213**, and say you want to spend Saturdays with us.

Lindenwood's Saturday Campus

Lindenwood College, St. Charles, MO, 946-6912
Off-campus locations in Downtown St. Louis, Clayton and West Port.