



In this issue

2 President James I. Spainhower devotes his message this month to the importance that planned giving has upon an institution, citing a recent bequest that has benefited Lindenwood tremendously.

3 For the second year, a Lindenwood student has received the Gold Medal Award, a congressional citation to outstanding Americans for community service, leadership and personal development.

3 Lindenwood has raised \$788,000 during the preceding fiscal year, which represents a 112 percent performance on its fund-raising goal and which sets a record for the first time in 25 years.

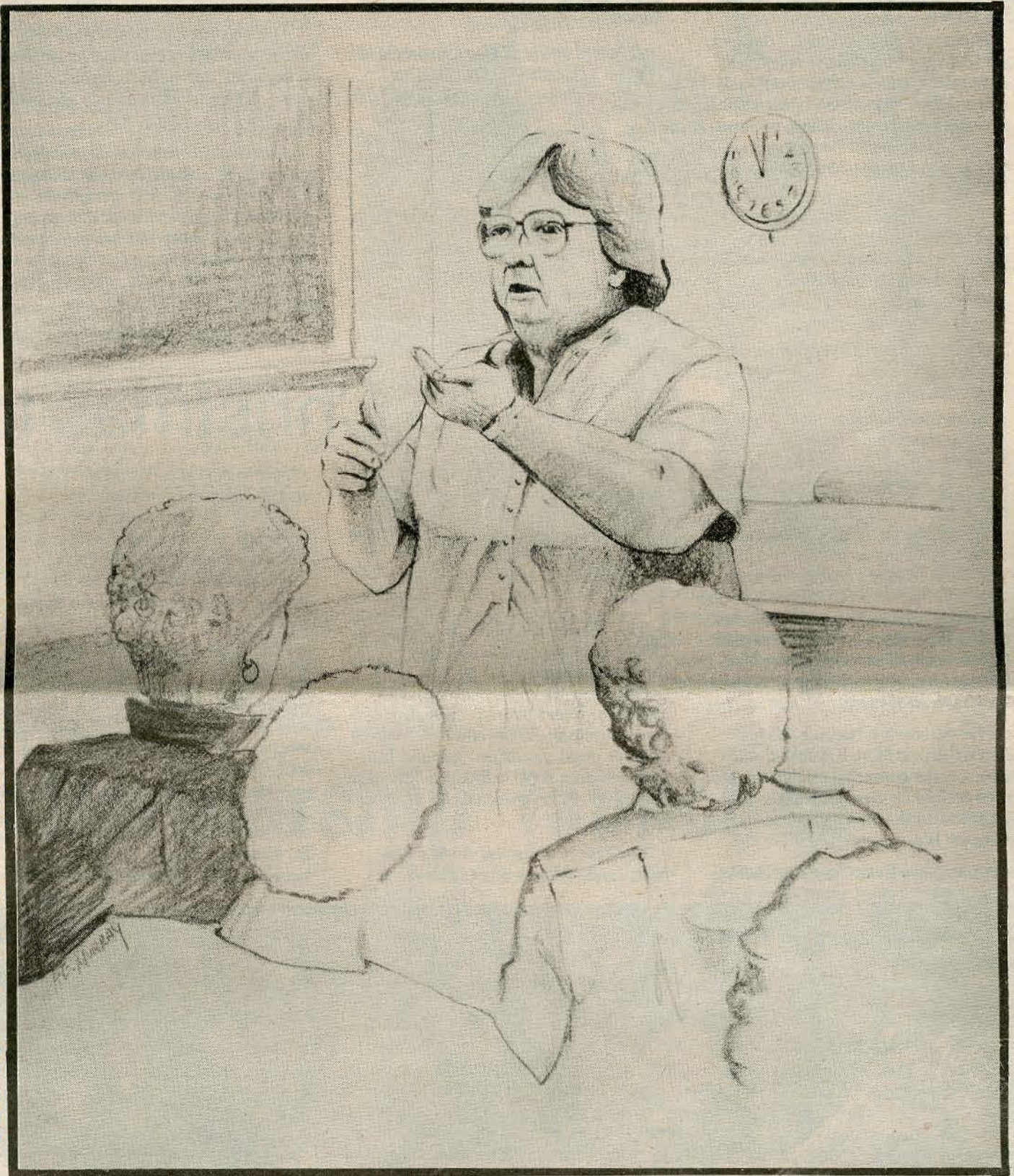
6 Lindenwood seeks nominations of outstanding high school students for the Guy C. Motley Award, the college's most prestigious residential scholarship worth nearly \$31,000 during the next four years.

8 Admissions and Alumni offices have joined forces to implement a new program to recruit outstanding high school students from 10 regional geographic areas throughout the United States.

10 For the first time in the college's history, Lindenwood will advertise in regional issues of such magazines as Money, Newsweek, Sports Illustrated, Time and U.S. News & World Report in December.

12 A change of leadership takes place on the Lindenwood Board of Overseers, while the college's board of directors becomes more diversified with the addition of a new business and civic leader.

15 Twenty-three Lindenwood students are included in the 1987 edition of a national directory that lists biographical information on some of the country's outstanding college and university students.



Drawing by Paula G. Murray

NOMINATED BY HER PEERS - As part of Lindenwood's observance of the "Year of the Professor," Norma Jean Fields, associate professor of English and communication arts, has been chosen to present the Faculty Lectureship next spring. Nominated by alumni, student and peers at Lindenwood, she has chosen "Humanities in the Age of Information" as the title of the community presentation, slated April 12, 1987, at Sibley Hall Chapel. Her selection for the lectureship reestablishes a popular faculty event during Lindenwood's year-long focus on the important role faculty members like Fields play in quality liberal arts education. See page 5 for more details about the "Year of the Professor" observance and Field's 21-year tenure at Lindenwood.



Lindenwood College
St. Charles, MO 63301

Non Profit Org.
U.S. Postage
PAID
Permit No. 84
St. Charles, Mo.

101507
Miss Mary Ambler
929 Robert Place
St. Louis MO 63122

91

president's message

by JAMES I. SPAINHOWER,
Lindenwood College President

"BILLINGS, Mrs. Cornelius A. (Ruth G. Campbell): 24; r 2515 Plum Ave., Sarasota, FL 33580."

That's all I know about her. Page 12 of our Lindenwood College Alumni Directory.

But, there must be more, I thought, for I had just hung up the telephone after talking with a banker from Baltimore, MD. The purpose of his call was to tell me that a Mrs. Billings of Sarasota, FL, had made the college the sole beneficiary of a Unitrust worth \$30,000.

To the banker's knowledge, Mrs. Billings had no living heirs, and he could provide no additional information other than to advise me that a check would be sent to Lindenwood College within a few days.

Research here at the college and among some classmates of Mrs. Billings fills in the picture.

Ruth Campbell was a well-liked Lindenwood student. In later years, she became active in our Alumni Association and, at one time, served as its president.

About two years ago, following a series of mailings to alumni and friends about the college's willingness to provide information on Unitrusts, wills and other instruments to convey deferred gifts to the college, our Development Office received an inquiry from Mrs. Billings for additional information, which was sent to her.

Her gift came subsequent to her death this past May. It is visible evidence of the commitment that this woman had for Lindenwood and of her gratitude for the time she spent on campus. We are grateful for her gift.

Alumni, like Ruth Campbell Billings

of the Class of '24, make it possible for private colleges like Lindenwood to continue to provide a highly-personalized college experience for those who come to study beneath the lindens.

A recent article in *The Chronicle of Higher Education* points out that "planned giving," like the \$30,000 gift Mrs. Billings "planned" for her alma mater, constitutes "the fastest growing form of individual giving to higher education."

Such gifts frequently are made while the donor is living. Sometimes, gifts can be made which actually provide for the remainder of the donor's life an annual amount - such as a gift of appreciated real estate or stocks. As the *Chronicle* article points out, "Planned

gifts range from simple bequests to annuities, life-income trusts, insurance policies, pooled-income funds . . . and other financial instruments designed to fit individual needs and desires."

The new tax law, which eliminates many tax shelters that were available previously, will make planned giving an even more important source of funds for colleges like Lindenwood.

That is why I am so encouraged by the planned gift of Ruth Campbell Billings of the Class of '24. Her generosity provides tangible evidence that among our 10,000 alumni, there is an increasing number willing to help this Great American College plan for its future by planning gifts for Lindenwood.

If the college can help you plan your



Spainhower

personal giving to Lindenwood, please write or call me. I'll be happy to visit with you and share with you both the needs of the college and the ways you can plan your giving to help Lindenwood meet its needs and for you to meet your need to give, as well as your need to reap the financial benefits of planned giving.

KCLC's Christmas toy drive

Extensive coverage of recent flooding in St. Charles County by Lindenwood College's community radio station has prompted KCLC-FM Radio to sponsor a toy drive throughout the county for flood victims.

The "Share the Spirit of Christmas Drive" is being conducted now through December 23 by KCLC in conjunction with local community agencies. The station is appealing to the community to donate new toys or ones in good condition. Several hundred children from families involved in recent floods will receive the toys on Christmas Eve.

The idea for the toy drive came from Linda Meyer of St. Peters, a

senior majoring in broadcast communications at Lindenwood.

"KCLC devoted extensive news coverage to the floods," Meyer said, "and we know the bleak Christmas many children face because their homes and possessions have been lost.

"KCLC is a community radio station, and it wants to aid residents of the community. The 'Share the Spirit of Christmas Toy Drive' is a way we can help the community," said Meyer, who serves as news coordinator at KCLC-FM Radio.

Meyer is being assisted by students and volunteers to get the drive under way this week at several locations in St. Charles County. Toy collection bins have been placed at the Cot-

leville Fire Station at Motherland Rd. and Highway N, at St. Joseph Health Center in St. Charles, at fire stations in St. Peters at 511 Willot and at 1111 Main St. in Old Town and at the O'Fallon Fire Station on Highway 79. Collection barrels also are located at KCLC studios in the Memorial Arts Bldg. and at Roemer Hall on the Lindenwood campus.

Meyers also said the radio station is appealing to area churches and schools, asking for groups to take part in the "Share the Spirit of Christmas Toy Drive."

For further information on the community toy drive, contact Meyer at KCLC-FM Radio, 946-6912, extension 263.



Photo by Bryce Lane

FOURTH IN THE NATION - The Lindenwood women's soccer team, the Lady Lions, had its most successful season this fall, prompting the national fourth-place finish in the National Association of Intercollegiate Athletics (NAIA) Final Four Soccer Tournament. Coached for the fourth year by Deborah Kehm, the Lady Lions had an impressive 18-1-1 season record to capture a berth in the NAIA national playoffs.

the linden word



ROBERT F. HYLAND,
Chairman, Board of Directors

KEITH W. HAZELWOOD,
Chairman, Board of Overseers

JAMES I. SPAINHOWER,
Lindenwood President

RANDY L. WALLICK,
Editor & PR Director

ESTHER TALBOT FENNING ('77)
Alumni Affairs Director

PAULA G. MURRAY,
Graphic Artist

CHRISTINE CORDES,
Production Assistant

Written and produced by the Lindenwood College Public Relations Office, *the linden word* is published quarterly and disseminated to nearly 30,000 alumni, friends and supporters of the college.

Views and opinions appearing in this publication are not endorsed necessarily by the Lindenwood College Board of Directors or the Lindenwood Board of Overseers.

Address all communications, letters, subscription requests and changes of address (include both the mailing label from the current issue along with the new address and proper zip code) to: Public Relations Office: Lindenwood College, First Capitol Drive and Kingshighway, St. Charles, MO 63301.

For outstanding service

Coed receives congressional honor

Jill A. Czapla of Bridgeton, MO, a senior at Lindenwood College, is one of seven Missouri students to receive the Congressional Gold Medal Award for outstanding community service, personal development and leadership.

Czapla recently received the prestigious award from Rep. Robert A. Young (D-MO) during a special ceremony at Marriott's Pavilion Hotel in downtown St. Louis. Representing the 2nd Congressional District, Young aided in the nomination of Czapla for the award.

The medals, which were authorized by Congress to salute outstanding achievement, are by law to be bestowed by the congressmen in whose districts the medalists reside.

Initiated in 1979, the awards symbolize the nation's recognition of the initiative, achievement and service of young Americans. They are based on voluntary service to others and to the community; on the development of personal interests, social and employment skills; and on the improvement of personal health, fitness and leadership skills.

To be eligible for the gold medal, students must complete at least 800 activity hours in these areas, half of which are in voluntary public service. Among the seven gold medal recipients in Missouri, Czapla accumulated the most in activity hours with a total of 1,232.

Nominated by James D. Thompson, advisor to the Lindenwood Circle K Club, Czapla accumulated about half of this record amount through her involvement in the Circle K Club, the coeducational campus organization hosted by the Kiwanis Club of St. Charles.

Currently serving as president of Circle K, Czapla was involved in many club

projects and activities that provided community service to residents of the community, including American Red Cross blood drives, the U.S.A. for Africa fund-raising event and the Campus Out-Reach Program.

Planning to pursue graduate work after she graduates in May, 1987, Czapla is majoring in sociology and anthropology at Lindenwood as well as English. A graduate of St. Joseph's Academy, she is a member of the college's Griffin Society, the Innerhall Government and Linden Scroll Honor Society. Listed in the 1984 edition of *Who's Who Among American College & University Students*, she has been active in Lindenwood Student Government and Alpha Lambda Delta, the freshman honorary society.

Czapla is the daughter of Mr. and Mrs. Frank Czapla. Her mother, Jan, is assistant professor and head librarian at Butler Memorial Library on the St. Charles campus.

Although the awards have been in existence since 1979, Missouri's congressional districts have participated in the national honors only since 1985, and Lindenwood College has been represented both years. Among last year's recipients of the Congressional Gold Medal awards was Victor T. Avellino, a 1985 Lindenwood graduate currently enrolled at the St. Louis University School of Law.

The Congressional Gold Medal Award, along with the Congressional Medal of Honor for military service or valor in the armed forces, are the only citations given by Congress to outstanding Americans, such as Czapla and Avellino.



CONGRESSIONAL AWARD RECIPIENT - For the second year in a row, a Lindenwood student has received the Congressional Gold Medal Award for outstanding community service, personal development and leadership. This year's recipient is Jill A. Czapla, a senior from Bridgeton, MO, who is shown with U.S. Rep. Robert A. Young during recent award ceremonies. Czapla was nominated for the congressional award for her voluntary service in the community, primarily through her involvement in Lindenwood's Circle K Club.

'Business Partnership' launched

Lindenwood has launched the Business Partnership Campaign, a major fund-raising drive to reach 450 businesses and corporations in the metro area and to raise \$250,000 from this year's corporate fund-raising efforts.

The campaign is the first broad corporate outreach program of its type ever conducted by a private institution like Lindenwood College. It is being directed by Clayton E. Wilhite, St. Louis chairman of D'Arcy, Masius, Benton & Bowles, Inc., and a member of the Lindenwood College Board of Directors.

Designed to broaden fund-raising efforts for Lindenwood, the Business Partnership Campaign is modeled after similar corporate campaigns utilized by such successful organizations as

the United Way, YMCA and Junior Achievement.

Wilhite will coordinate the efforts of four team captains, four co-captains and 50 volunteers who will contact potential business and corporate donors through mid-December. Volunteers in the Business Partnership Campaign consist of Lindenwood College alumni and friends as well as business, civic and community leaders.

"Our 450 prospects range from 'Fortune 500' companies to privately-owned businesses," said James D. Thompson, director of development at the St. Charles-based institution. "Most have had little contact with Lindenwood, so in addition to reaching potential donors, we want to establish a rapport

with these firms to acquaint them with Lindenwood."

Wilhite and Thomas Gossage, senior vice-president of Monsanto Chemical Co., will join team captains to launch the Business Partnership Campaign in late September during a dinner meeting at the main campus. Gossage is a member of the college's board of directors who was appointed by Chairman Robert F. Hyland, regional vice-president of CBS Radio, Inc., to direct overall development efforts for the college, including its Renaissance Campaign for fund raising.

Team captains include Gossage as well as Jan Kniffen, vice-president and treasurer of May Department Stores, Inc., and a member of the Lindenwood College Board of Overseers; Ken Mihill, chief administrative officer for D'Arcy, Masius, Benton & Bowles and the parent of a Lindenwood students; and Robert Kaplan, president of Kaplan Real Estate in St. Charles, a member of the college's board of directors.

The four team captains will be assisted by co-captains Steve Dieringer, assistant staff treasury manager of Southwestern Corp., and a member of the Lindenwood Alumni Council; Steve Generi, plans specialist for McDonnell Aircraft Co. and a Lindenwood Alumnus; Jeff Leeka, a staff specialist for Southwestern Bell and a Lindenwood alumnus; Lee Pflueger, manager of employee involvement for McDonnell Douglas Astronautics and a Lindenwood alumna; and Lindenwood College President James I. Spainhower.

The Business Partnership Campaign is one of six major fund-raising drives as part of the college's Renaissance Campaign to secure \$10 million in pledges and contributions.

Record set in funding

Lindenwood has finished its 1985-86 fiscal year with a record \$788,000 in cash and contributions, representing a 112 percent performance on its fund-raising goal of \$700,000 established by the institution a year ago.

The \$788,000 also represents an increase from the \$658,000 raised during the 1984-85 fiscal year, and is the first time in 25 years that the college has exceeded such an ambitious goal, said James D. Thompson, director of development.

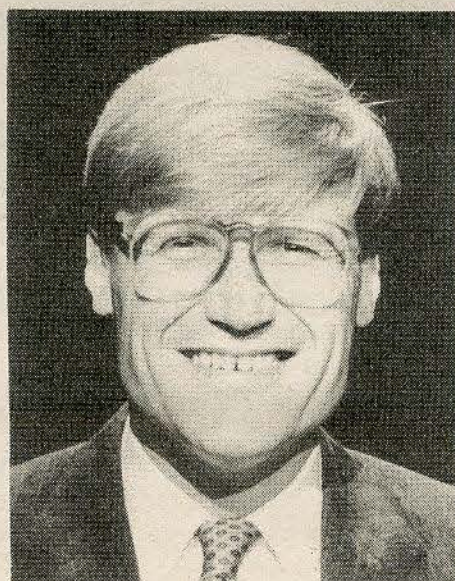
College officials credited the record year to increased giving by alumni throughout the United States and from contributions by corporations and foundations in the metro area.

More than \$200,000 of the total amount was raised from alumni contributions, representing a 42 percent level of alumni support. Three years ago, less than five percent of the college's 10,000 alumni supported the institution through gifts and pledges.

"The dramatic increase in alumni contributions provides Lindenwood with



Gossage



Wilhite

Greeting cards equal profit

by RANDY L. WALLICK

What began a few months ago as "thumbthing" of a favor for a Lindenwood student and a few friends has expanded into a greeting card business that soon may have national distribution in card and specialty shops throughout the country.

Thumbthing Unique is a greeting card business formed by Jim Herries, a Lindenwood sophomore from Florissant, and his fiancée, Teri Pinter, a freshman at St. Louis Community College at Florissant Valley. A friend, Dave Lawrence, a sophomore majoring in technical illustration at Florissant Valley, and Pinter's mother, Kathy, are two others involved in the firm.

Each member has a specific role - Teri Pinter's thumb print appears in red ink on all cards, which are cut to size by Herries and folded by Lawrence. Kathy Pinter writes the messages on the cards, aided often by her daughter, a mass communications major.

The idea for the thumb print stems from Teri. She illustrated a story in grade school using her thumbprint. "One thing led to another," she explains, "and pretty soon we were all thinking about the thumb print as a basis for the greeting card company."

Thumbthing Unique produces handmade greeting cards, playing upon the word "thumb" for "some". A Christmas card, for example, reads "Greetings - Hope Your Christmas Is Thumbthing Special!"

The company began as a means of satisfying the needs of a few friends. "We were sitting around one evening," Herries explains, "and someone had the idea we should form a company and

make greeting cards. We kicked the idea around and then decided to pool \$12 among us to get things started."

The modest investment was earmarked for a ream of card-stock paper and a red-ink stamp pad. A paper cutter was secured along with a few felt pens.

Sporadic distribution to friends of the four produced orders for cards, resulting in the \$12 initial investment being paid back within a week. In just a few months, the demand for Thumbthing Unique cards found the four founders dividing a profit of \$220, "not bad for such a small investment," Herries adds. Herries, Pinter and Lawrence estimate they are making about \$3 each per hour, earmarking most of their earnings to their college education.

Since its inception, Thumbthing Unique sold nearly 1,000 greeting cards.

"The key to our success is that each card is handmade," states Herries, a sophomore majoring in mass communications at Lindenwood. "We are specialized and can tailor a card or personalize it to or for an individual."

Today, the group produces about 30 varieties of greeting cards which are distributed at four outlets - the Lindenwood College Bookstore at the main campus in St. Charles, Missouri Peddlers at Laclede's Landing in downtown St. Louis, Footprints at Village Square in Hazelwood and at the Trading Post in Terre du Lac, MO.

One night each week at the Pinter residence in Florissant, the four get together for a few hours to produce the greeting cards. "We're able to produce about 50 an hour," Herries said.

"We are fussy, though," explains his fiancée as she holds up a stack of



THUMB HIGH SALES HOPES - Jim Herries, a Lindenwood sophomore, and his fiancée, Teri Pinter, are eyeing national distribution of Thumbthing Unique, a greeting card company specializing in handmade cards.

rejected cards, ones she feels contain minor flaws or are not good enough for distribution to the public.

Eyeing expansion of Thumbthing Unique, the group has copyrighted the cards and has made contacts with firms for national distribution of its greeting cards. In addition, the four have set a personal goal of expanding to 30 outlets within a year.

"Most of our distribution thus far has been by word of mouth, but we have made some contacts with several

stores," Herries said. "We've had success, and most of the stores are increasing their orders on a regular basis."

In addition, the group has purchased booth space at three recent arts and crafts shows in Florissant as a means of getting its product known.

"I don't think we're a threat to Hallmark Cards, but we are trying to become known as a means of selling more cards," said Herries, the son of Mr. and Mrs. Donald Herries of Florissant.

We're Looking for Another Col. James G. Butler



"We need this generation's Col. Butler—a person of vision who would like the satisfaction of having a major influence upon our Renaissance Campaign..."

**James I. Spainhower
President**

During the 1930s and 1940s, Lindenwood College was able to build what many referred to as the "Wellesley of the West" primarily through the generosity of Col. James G. and Margaret Butler. The gifts from the Butler family totaled nearly \$4 million, a sum which is equivalent to more than \$25 million in today's economy.

During the Butler's lifetime, Ayres, Butler and Niccolls halls were built. Funds from the interest from the Butler estate led to the construction of Roemer and Irwin halls, Butler Memorial Library, the Gables and Eastlick Residence.

We needed Col. James G. Butler and Margaret Butler then. Certainly, we could use them now.

Since we began looking for another Col. Butler, we have raised nearly \$3 million as part of the college's most successful fund-raising drive in its 160-year history. In addition to increasing alumni support from less than five percent in 1983 to more than 40 percent this year, the college has increased all levels of support - from faculty and staff to the board of directors and overseers, the St. Charles community, businesses in the metro area and corporations and foundations.

But, we still have much to do - and we need to find new sources of support to do it. We're determined to keep a balanced budget and not to shift funds from our academic and student scholarship programs to special projects, such as badly-needed building renovations and for the expansion of new facilities.

We need this generation's Col. Butler - a person of vision who would like the satisfaction of having a major influence upon our Renaissance Campaign and upon the future development of this historic college as well as to the generations of students who will graduate to serve a society that needs them.

Are you that kind of person - a man or woman willing to make a major and significant investment in Lindenwood College? If so, please call or visit our beautiful and historic campus.

James I. Spainhower, President

'Year of the Professor'

Communications instructor cited

N. Jean Fields of St. Charles, associate professor of communications and English at Lindenwood College, has been selected to present the 1987 Faculty Lectureship at Lindenwood.

Her selection reestablishes a popular faculty event that was discontinued in the 1970s. Lindenwood has reestablished the lectureship as part of its year-long recognition of the "Year of the Professor" which focuses on faculty members and the important role they play in liberal arts education.

A member of the Lindenwood faculty since 1965, Fields has chosen "Humanities in the Age of Information" as the title of her lecture. Open to the community without charge, the lecture will take place April 12, 1987, at Sibley Hall Chapel.

Her selection "exemplifies the high quality of the teaching profession that Lindenwood College continues to foster," said Raymond W. Harmon of the college's board of directors who co-chaired a 12-member committee that

planned the "Year of the Professor" observance.

She was nominated for the honor by alumni, students and peers at Lindenwood. She will receive a \$1,000 cash stipend from the college and will be honored at a special reception at Sibley Hall following the lecture. The reception is also open to the public.

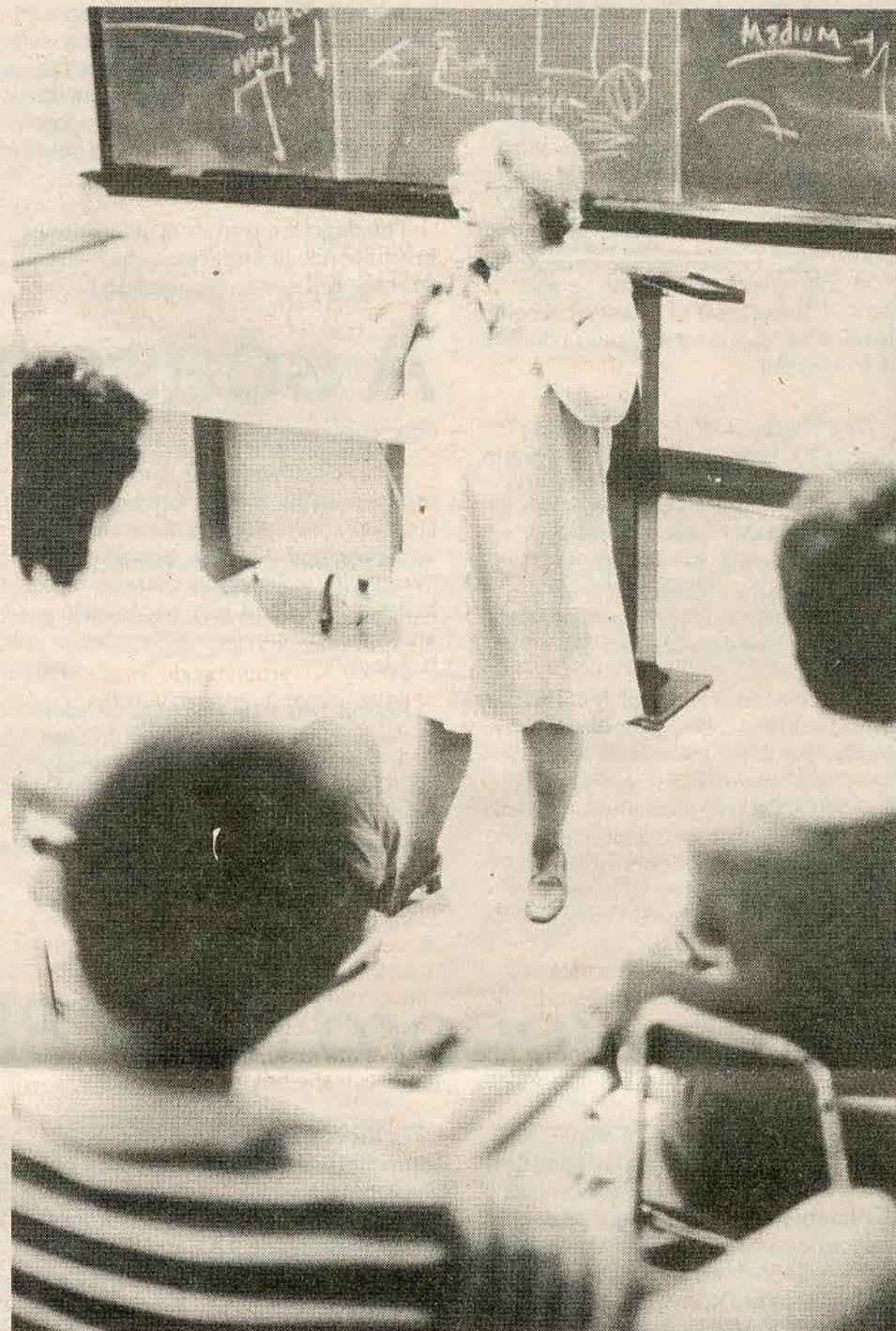
A popular instructor who has left her talent upon hundreds of English and communications majors at Lindenwood, Fields is a frequent lecturer in the community. She is an authority on Rebecca Boone, and has done extensive historical research in Kentucky and Missouri on the life of Daniel Boone's wife. Much of her work has been published professionally by the Missouri Historical Society and the National Association of Catholic Historians as well as historical societies in St. Charles, Troy and Wentzville.

She is a magna cum laude graduate of the University of Charleston and holds a master's degree in English from Ohio State University. She has completed postgraduate work at the University of California at Los Angeles, the American Film Institute and Bowling Green University.

Fields, who assisted in organizing Lindenwood's Mass Communications Dept. in 1969, serves as a faculty advisor in communications for the Lindenwood College for Individualized Education and as an advisor to the GRIFFIN, the college's literacy publication. She also has served as a corporate trainer for on-site courses in business communications at American Telephone & Telegraph, General Motors and McDonald's Restaurants.

Active in her community, she serves as a volunteer for the American Red Cross, American Cancer Society and St. Charles Historical Society. She is a member of Women in Communications, the Modern Language Association and AERho, the national broadcasting society.

As a means of encouraging faculty development, Lindenwood will publish Field's lecture in its entirety, distributing it to the college community as well as nearly 10,000 alumni throughout the country and others involved in higher education.



NEARLY 22 YEARS OF COMMITMENT - N. Jean Fields, associate professor of English and communications, is captured on film doing one of the things she does best-teaching. Fields, a member of the faculty since 1965, has been selected to present the 1987 Faculty Lectureship as part of Lindenwood's recognition of the "Year of the Professor," a campus-wide effort to recognize faculty members and the important role they play at a private, liberal arts institution like Lindenwood.

Season gifts

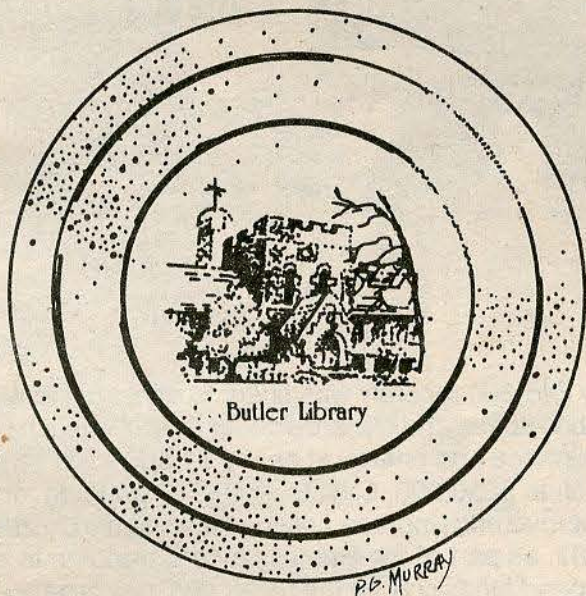
As part of its holiday gifts to the community, Lindenwood presents the fourth Annual Christmas Walk December 7, theatrical performances of "A Christmas Carol" December 4-7 and the Madrigal Holiday Feasts December 5-6 and 12-13.

Becoming a tradition each holiday, the Christmas Walk will be held from 4-7:30 p.m. Featuring entertainment for the entire family, the event includes performances by Bob Kramer's Marionettes, the Lindenwood Brass Quintet, St. Charles Emanuel Lutheran Church's Bell Ringers and the Madrigal Singers.

On a festively-decorated campus, there'll also be a visit from Santa Claus, storytelling and holiday refreshments. Admission is free, and parking is provided in campus lots.

Continued on page 6

Butler Library Brightens the Season



Reserve your limited edition, fine porcelain plate of the Margaret Leggat Butler Library today.

Since 1940, Butler Library serves to guide liberal arts majors through Lindenwood's tradition and quality in education.

This 10-1/4 inch 23-karat gold trimmed plate cast in deep blue is the second edition of this commemorative series. Only 150 numbered copies will be issued by World Wide Art Studios.

Reserve your beautiful Butler Library plate on the enclosed order form today, and support the 159-year legacy of Lindenwood College.

Call the college's Development Office at (314) 946-6912 for details.

College seeks outstanding nominees

Friends of Lindenwood are being asked to nominate outstanding high school seniors who can compete for the Guy C. Motley Residential Scholarship, an award worth nearly \$31,000 during the next four years.

As a means of strengthening residential enrollment, the 159-year-old college is offering the scholarship for fall, 1987, covering full tuition as well as room-and-board costs. Competition is by nomination only, and the award will be presented on the basis of academic record, leadership, character and personal achievement.

The Motley Scholarship is among nearly 200 residential awards, ranging in value from \$2,000 to \$20,000 during the next four years, that will be offered for the fall, 1987, semester. Motley is a former director of admissions, vice-president of the college and chairman of an administrative committee that presided over college operations in the 1940s.

Lindenwood President James I. Spainhower said the college was offering the Motley award for the second year in a row "as a means of strengthening our residential student population." He said that "because of increased annual giving, Lindenwood has been able to increase its amount of direct support for scholarship assistance."

In the past few years, the St. Charles-based liberal arts college has recorded high levels of financial support from internal and external constituencies, much of which has been earmarked to scholarship programs for deserving students. During the past fiscal year, more than \$600,000 was awarded in scholarships.

The direct support for scholarships is in addition to financial aid, which last year totalled nearly \$1.5 million for the

college's 2,000 students. The Motley scholarship is the most lucrative ever offered by the college.

Nominations for the Motley scholarship can be made by interested persons, such as alumni, high school teachers and guidance counselors, clergy, community residents and friends of the college.

Nominations must be received by Jan. 15, 1987, and students must complete the college's application process within 30 days of nomination or no later than Feb. 9, 1987.

All nominees not receiving the Motley Scholarship will be considered automatically for the nearly 200 other residential scholarships.

Those who want to nominate outstanding students or who want to receive further information on the Guy C. Motley Scholarship should contact either the Admissions Office or the Financial Aid Office at Lindenwood College, St. Charles, MO 63301, 946-6912.

A season of entertainment

Continued from page 5

"The Christmas Walk and holiday productions by the Performing Arts Dept. are our gifts to the community," said President James I. Spainhower. "We invite residents to share in our holiday spirit, and visit our historic and beautiful campus during the holidays."

After a two-year absence, Charles Dickens' classic, "A Christmas Carol," returns to Jelkyl Theatre. This year's production is an adaptation from Dickens' novel, and it will be an all-new version to area audiences.

Presented by the Performing Arts Dept., performances will be staged

December 4-6 at 8 p.m. and December 6-7 at 2 p.m. Tickets, priced at \$5-\$6 are available at the Box Office in Roemer Hall.

Because of the popularity of this holiday tradition at Lindenwood, reservations are suggested. For further information on "A Christmas Carol" and reservation procedures, contact the Lindenwood College Box Office at 946-2004 between noon and 5 p.m., Monday through Friday.

Under the direction of Kristana Weiler, director of choral music, the annual Elizabethan holiday feasts known as the Madrigal Dinners will be presented December 5-6 and 12-13 at

7 p.m. in the ballroom of the Memorial Arts Bldg.

Each night will feature a sumptuous dinner in an Elizabethan setting with entertainment by the 14-member Lindenwood Chamber Singers, who will present a mixture of popular and classical holiday music spanning several centuries.

Tickets for the Madrigal Feasts are priced at \$22.50 each, including food, drink and entertainment. Reservations are required, and they can be obtained by contacting the Box Office from noon to 5:30 p.m. Monday-Saturday.

Record of \$788,000 is raised

Continued from page 3

one of the highest levels of alumni support of private colleges and universities in the United States," Thompson said.

Alumni support is affecting other gifts, particularly from corporations and foundations, Thompson said. "One of the best ways to judge the financial health of an institution is to look at its level of internal support, such as from alumni. Corporations and foundations look to this before deciding to give to an institution," he said.

Thompson credited much of the college's success in fund-raising to the efforts of Thomas L. Gossage, senior vice-president of Monsanto Chemical Co. who serves as development chairman of the Lindenwood College Board of Directors.

"The mission of Lindenwood College is vital to our country, and we are quite pleased with the progress of our annual fund-raising drives," Gossage said.

The bulk of the \$788,000 will be earmarked to scholarship funding at Lindenwood and to major renovation and restoration of campus buildings and facilities. The college recently announced a \$250,000 capital funds goal in addition to its ongoing annual campaigns to secure \$700,000 in cash and pledges for general operational support and scholarship assistance.

For the current fiscal year, which began July 1, there will be 25 separate drives during the next 12 months to raise \$1 million before the close of the 1986-87 fiscal year on June 30, 1987.

The various campaigns and fund-raising drives are divided into six key groups. Gossage and Joe H. Hunt, executive vice-president of Southwestern Bell Corporation will coordinate the Civic Progress Group, while General Corporate Giving Group will be directed by Clayton E. Wilhite, chairman of D'Arcy Masius Benton & Bowles, Inc., of St. Louis.

For the current year, the Alumni Campaign will be headed by board of directors members Patricia P. Bailey, a member of the Federal Trade Commission of Washington, DC, and Dorothy Warner, board chairman of the John Warner Bank of Clinton, IL.

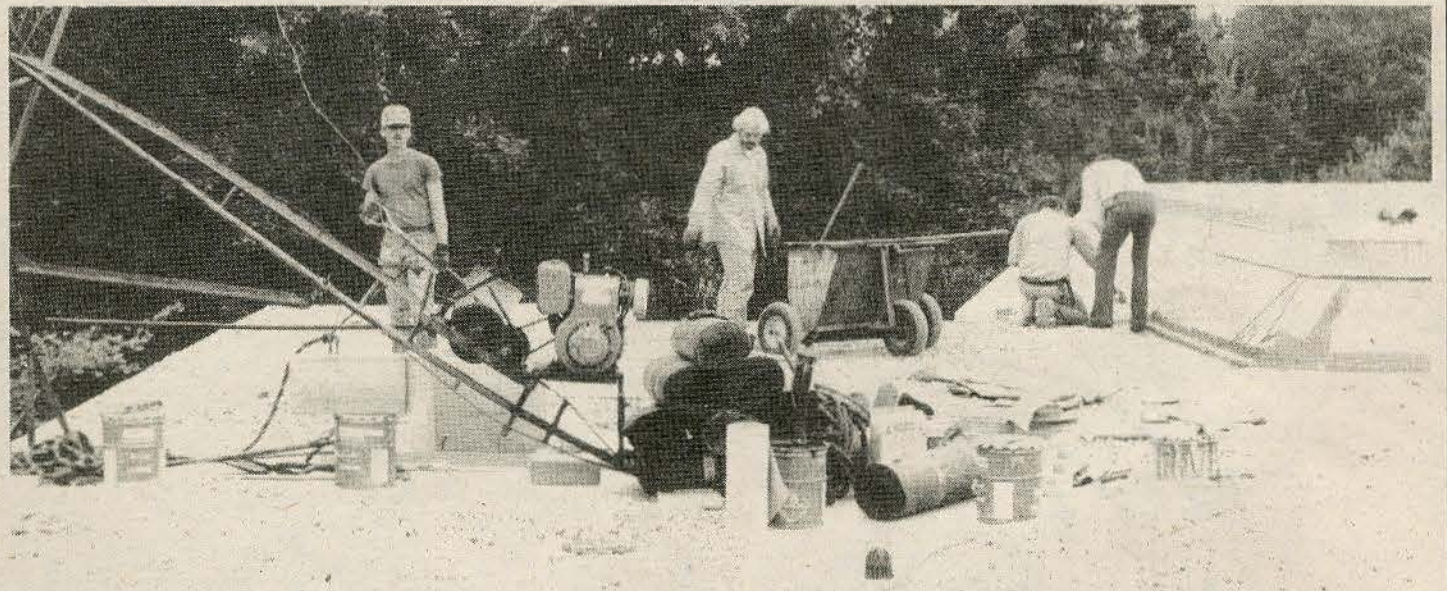
The St. Charles campaign is being directed by William G. Lewis, legislative public relations manager of Continental Telephone of Missouri, Wentzville, and member of the college's board of overseers. The Friends Campaign is being

coordinated by John C. Hannegan of Hannegan Stokes, St. Charles, a member of the college's board of directors. The final campaign, the Philanthropic Organizations Group, is being headed by the Rev. Robert R. Collins of the First Presbyterian Church of Mexico, MO, a member of the board of directors.

The annual fund-raising drives are part of the Renaissance Campaign, a multi-faceted program to raise \$10 million in contributions and cash for

Lindenwood College. Launched in 1984, the campaign has secured more than \$3 million for facilities development, scholarship assistance, campus expansion and institutional support. Current campaigns of \$700,000 and \$250,000 for capital funds are part of the \$10 million Renaissance Campaign.

Year-end figures show the college finished its fiscal operations with a balanced budget for the fourth straight year.



NO MORE WATER-DAMAGED ARTWORK - Nearly \$45,000 recently was spent to construct a new roof on the Fine Arts Building, which contains modern studios, laboratories and classrooms for the college's Performing Arts Dept. The new roof will lead to cost savings in maintenance and energy at nearly \$1,500 each year. With funds borrowed for the roof repair, the project is part of a \$250,000 Capital Funds Campaign announced by Lindenwood. The campaign is designed to further improve and upgrade college facilities and historic structures on the 100-acre campus. Running through June, 1987, as part of the Renaissance Campaign to generate \$10 million in cash and contributions, the campaign will expend funds only for the repair and maintenance of buildings, grounds and facilities. Key projects tuckpointing, sidewalk and step maintenance, gutter repair, construction of a new steam tunnel, painting residence rooms and classrooms, refurbishing Jelkyl Theatre, construction of a new photo darkroom, and resurfacing tennis courts.

letters to lindenwood

Dear Lindenwood:

In May I graduated magna cum laude from Lindenwood. It was a very wonderful day — the culmination of many hard-working years.

The purpose of this communication is to congratulate the college on the fine LCIE program it has for working adults, and to profile one outstanding instructor, Carolyn Scott.

To simply know Carolyn is a learning experience; to have her as a teacher is mind broadening. I was fortunate to have her as my faculty advisor for two years, and as an instructor. She exudes boundless energy; her knowledge seems limitless and her enthusiasm for teaching is unsurpassed.

Carolyn demanded the best and gave the best to her students. Her lectures and class sessions were stimulating and well organized. I wish that every Lindenwood student would have the opportunity to benefit from her teaching experience.

**Stephanie A. Nowak
Millstadt, IL**

Dear Editor:

As a former Lindenwood student in 1954-57, I enjoy keeping in touch by reading the *Linden Word*.

While at the college, I was a member of the Young Democrats. Currently, I am running for the state senate seat in Michigan's 16th District. After teaching in Michigan schools for the past 23 years, I feel that serving as a state senator would offer a new challenge — one which I would enjoy.

**Martha Kinney
Pleasant Ridge, MI**

Dear Lindenwood:

I recently visited Lindenwood as part of the Book Lures Program for educators featuring Nancy Polette of the Education Dept.

You have one fine campus. Although I was only on campus for 24 hours, I had

the opportunity to roam and enjoy the beauty and serenity which thrives. Cobbs Hall is comfortable and homey; Young Hall is deluxe without being extravagant; and the food at Ayres is tasty and plentiful. Surrounding all of these facilities are buildings which stand in proud humility, obviously serving long and well. Yes, I was impressed!

Also, I am sure you realize the quality that Nancy Polette demonstrates, and her association with Lindenwood can only serve to enhance the image of the college. Not only is the content of her Book Lures Program high, but the kind, professional manner she displays is very impressive. Surely, Lindenwood benefits from this association immensely.

**David R. Collins,
Author, teacher and lecturer
Moline, IL**

Dear Editor:

It was with interest that I read an article in the previous issue of the *Linden Word* about the ginkgo trees on campus.

I have a wonderful large ginkgo tree in my yard, and I can tell you exactly when the leaves fall. They drop like a pavement of gold around the tree after the first killing frost, and this usually between November 15-20 in our area.

My years at Lindenwood are memorable, and it must be more interesting since the college now is coeducational.

**Constance Levy Finney ('26)
Herrin, IL**

Dear Editor:

Many times I have heard alumni say, "I only went to Lindenwood for a year." I always have felt this concept of lack of association need to be challenged.

The reason? Some of our most active alumni have attended the college one year. These include a former board of directors member, a past president of the Alumni Council, annual donors, active

alumni club members and even a recipient of the Alumni Merit Award!

The excuse, "I only went to Lindenwood for a year," must be a blanket reason for other feelings.

Alumni are defined as anyone who attended or graduated from an institution. And, they are not restricted by the length of attendance.

I invite alumni to examine their feelings about Lindenwood, to test your interest by comparing the quality of education Lindenwood offers, and to build upon your loyalty by becoming aware of the unique opportunity for the fulfilling college experience Lindenwood offers its students.

Perhaps your trip abroad or to other parts of the country will help demonstrate a quality comparison of Lindenwood with other institutions?

Lindenwood has remained a private institution or 160 years. Its board of directors include the cream of St. Louis' area business and civic leaders. The college is administered by an honest and able president and an outstanding staff. The faculty is of the highest quality.

Lindenwood is unique among colleges. You can help maintain this private institution with support through an annual gift to Lindenwood, even if you "only went to Lindenwood for a year."

**Judith Brougham
Kansas City, MO**

Dear Editor:

For those of us who were elementary education majors, we remember horticulture with Dr. Marion Rechtern. We worked in the Campus Greenhouse, put out bedding plants and walked the Lindenwood neighborhood where we identified various trees and shrubs. We finished the course with a compete landscape design and, after 20 years, I still remember much of what she taught us.

Although in her later years she was bothered with health problems, Dr. Rechtern remained loyal to the Lindenwood community, attending plays, luncheons, lectures and alumni events.

I would like to call upon my fellow alumni to contribute to the Dr. Marion Rechtern Memorial Fund so that in her memory the fall bulbs will get planted and the spring bedding flowers will be put out.

**Susan Good Keohane ('69)
Creve Coeur, MO**

In memoriam Marion Rechtern

Services were held September 2 at St. Charles Borromeo Catholic Church for Marion D. Rechtern, professor emeritus of biological science at Lindenwood, who died August 27 at the age of 81.

A well-known professor to thousands of students, Mrs. Rechtern began her lengthy career at Lindenwood as a biology professor in 1936, retiring in 1970 when she was named professor emeritus. She was the first married female professor in the college's history.

For many years she served as faculty advisor to Alpha Lambda Delta, the honorary freshman society, and to the Linden Scroll, the college's honorary society for female seniors.

A graduate of the University of Wisconsin with a degree in botany, she held a Master of Science degree from Northwestern University and a doctorate degree from Cornell University.

Mrs. Rechtern is survived by two nieces, Elizabeth Rechtern and Elizabeth Rauch, both of St. Charles, and a nephew, Gordon Mudd, also of St. Charles.

The family has requested that memorials be made in Mrs. Rechtern's memory to the St. Joseph Health Center in St. Charles or the St. Joseph Carmelite Home in St. Charles.

Paulena Nickell

A memorial service was held at the First Christian Church in Fulton, MO, for Paulena Nickell, former dean of faculty at Lindenwood, who died June 24 in Long Beach, CA, at the age of 91.

A native of Fulton, she served as dean of faculty from 1952-60.

A 1923 graduate of the University of Minnesota, she held an M.A. degree in economics from Columbia University in New York City and a doctorate degree in economics from the University of Minnesota. At the time of her retirement in 1960, she received an honorary doctor of law degree from Lindenwood College.

She was the coauthor of a college textbook, *Management in Family Living*, which has been republished several times.

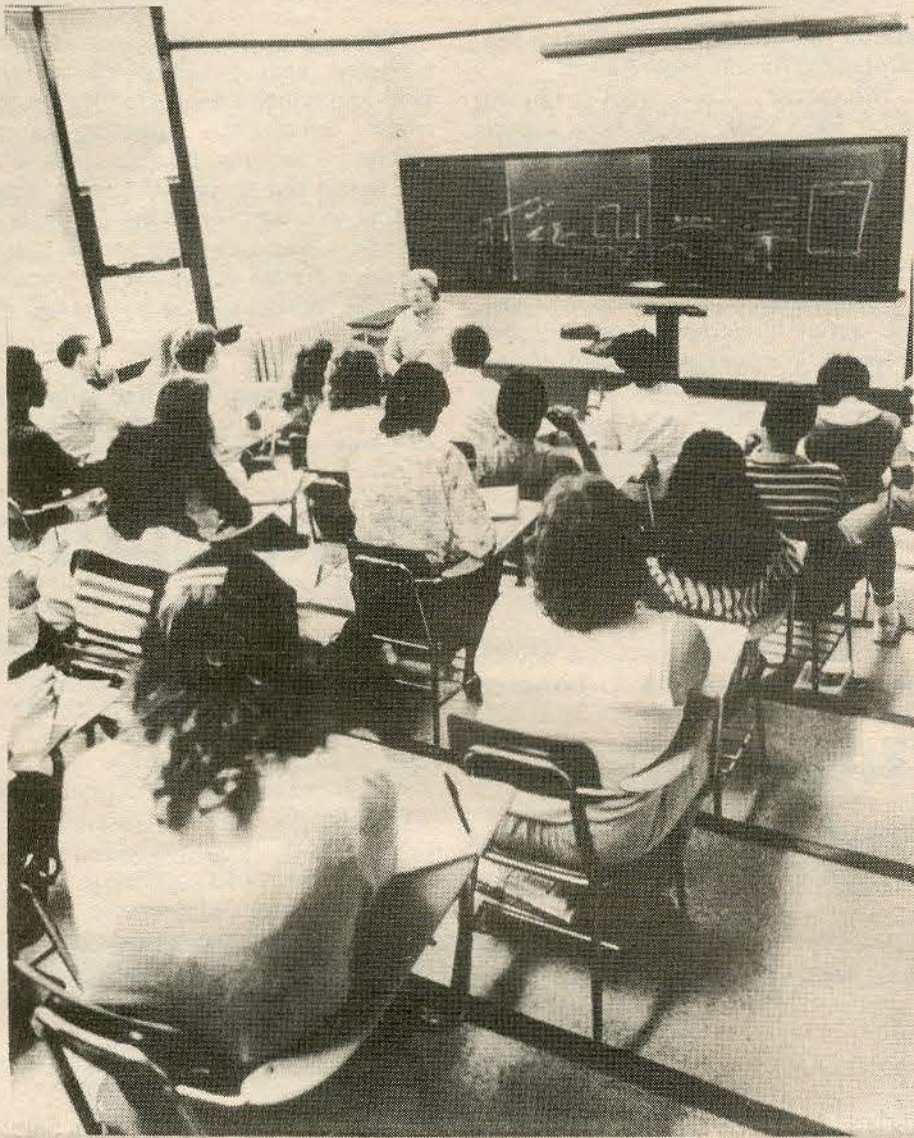
She is survived by a sister, Dixie Nickell of Van Nuys, CA; two nieces, Mrs. Frank Kimball of Anaheim, CA, and Mrs. Laura Nickell Hewes of New York City; and two nephews, J. T. Nickell of Calabassas Park, CA, and H. Kennedy Nickell, Jr., of Detroit.

Memorial gifts in Dr. Nickell's name may be made to the Kingdom of Callaway County Historical Society or the First Christian Church, both in Fulton, MO, 65251.



A LINE DRIVE FOR CHILDREN - Lindenwood College teamed with KSDK-TV's "Bush Leaguers" for a celebrity softball game this fall to benefit Children's Hospital in St. Louis. The game featured Channel 5 sports personality Mike Bush and other television celebrities in a battle against Lindenwood students, faculty and staff. A battle it was, as Lindenwood lost the game but, with KSDK, raised nearly \$1,600 from concession sales and sponsorships for Children's Hospital. LCIE faculty members and students were influential in arranging for the "Bush Leaguers" to visit St. Charles as a community event for the celebrity game to benefit children.

alumni news



FRESH AND CLEAN FOR FALL - Students and faculty had a surprise when they returned to campus this fall and found Room 223 of Roemer Hall had been remodeled. The restoration of the room, one of several planned, was arranged by the Alumni Council. Alumni volunteers, led by Eric Stuhler, a St. Charles attorney and 1978 alumnus, refurbished Room 223 during the summer. Alumni are planning similar projects at Roemer Hall, the structure built in 1921 and named in memory of John L. Roemer, college president from 1914-40. Alumni Council members donated paint and materials for the summer project.

Help Lindenwood locate its 'lost' alumni

As a means of updating college records alumni files, the *Linden Word* once again is publishing the names of alumni whose whereabouts are unknown.

Keeping track of the thousands of Lindenwood alumni who move each year is an endless task, so the college would appreciate any information you may have on the following individuals.

Since class years ending with "2" and "7" will be honored at the 1987 Alumni Reunion, we've published the names of the missing alumni from those years. If you know a recent address of any of the following individuals, please contact the Alumni Office at Lindenwood College,

First Capitol and Kingshighway, St. Charles, MO 63301, or telephone (314) 946-6912.

Names in parentheses indicate the maiden name while at Lindenwood.

From the class of 1912, Lota E. Fetty (Lankford) and Elizabeth Klossner (Christy).

From the class of 1917, Ruth M. Burriss (Sponeman), Ruby A. Gray-Beech, Bessie D. Jensen (Harvey), Laura Nixon (Hipolite), Elizabeth Rutherford (Jenkins), Cecile A. Sheldon (Roetzel) and Helen Whitten (Somerville).

From the class of 1922, A. Grace Moulder (Weissgerber).

From the class of 1927, Esther J. Bateman (Johnson), Margaret Brown (Freudenstein),

Recruiting drive begins with help from alumni

Lindenwood Admissions and Alumni offices have joined forces to develop a new recruitment program, "Excellence x Caring = Lindenwood," that is being implemented nationally.

The program is designed to utilize alumni to supplement the staff of the Admissions Office for recruiting outstanding high school students in 10 regional geographic areas throughout the country.

According to Miriam King-Watts, dean of admissions, interested alumni will be trained to help identify outstanding students in their local areas and to introduce them to the benefits of Lindenwood College.

Each of the 10 geographic areas will be supervised by a regional manager and staffed by a committee of volunteer alumni. "This will give prospective students and their parents a local representative of the college to answer their questions and provide them with personal attention," King-Watts said. "Within each region, alumni volunteers will be trained to provide supplemental services for the Admissions Office," she added.

More than 2,000 Lindenwood alumni from the classes of 1970 to 1985 already have been contacted for the project.

Those taking part in the recruitment program will be asked to identify prospective students in their respective areas, such as supplying the Admissions Office with names of honor students listed in local newspapers or contacting prospective students whose names have been supplied by admissions personnel.

"Alumni volunteers will create an awareness of Lindenwood by visiting high schools, attending local college fairs, maintaining information on Lindenwood in local high school libraries and by host-

ing receptions for prospective students to introduce them to the college. Applicants also will be interviewed to help with the admissions process," King-Watts said.

Following the admissions process, alumni once again will be called upon to assist in such ways as congratulating students on their acceptance to Lindenwood and hosting going-away parties for Lindenwood-bound students.

"We believe alumni are Lindenwood's best advertisements," King-Watts said, "and that they can do the best job of promoting the college to prospective students in their local areas."

"As the link between the college and the prospective student, alumni perform a vital service to both," she said. "Students will benefit by increased personal attention for which the college is so famous, and Lindenwood will benefit by receiving higher-quality prospects and applicants."

The joint recruitment program is modeled after similar ones at other private colleges which have proven successful. It gets under way this fall with more than 100 alumni volunteers. If successful, Lindenwood plans to expand the program as a means of developing a more geographically-diverse student population that will represent all areas of the country.

Alumni interested in finding out more about "Excellence x Caring = Lindenwood," or those who would like to assist their alma mater in this new program are invited to contact the Admissions Office. Inquiries should be directed to either Miriam King-Watts or Marilyn Kay, in care of the Admissions Office, Lindenwood College, St. Charles, MO 63301, or telephone 314-946-6912, extension #213.

Nominations sought

Nominations are being sought for the 1987 Alumni Merit Awards, annual presentations by the college's Alumni Council which cite outstanding Lindenwood alumni.

As in the past years, two merit awards will be presented next year — one for distinguished service to the community or profession and the other for outstanding service to Lindenwood.

Recipients of the 1986 awards were Robin E. Smith, a 1975 alumna who is news reporter for KMOV-TV News 4 in St. Louis and a member of the Lindenwood College Board of Overseers, and

Charles W. Boswell, a 1978 alumnus who is a marketing consultant for McBride & Sons Companies in St. Charles and also a member of the board of overseers.

The deadline for submitting nominations is March 1, 1987. Nominees will be highlighted in an upcoming issue of this tabloid, and recipients will be honored at the 1987 Spring Commencement, scheduled at 10 a.m. May 16 on campus.

For submitting names or for further information on the 1987 Alumni Merit Awards, contact Esther Fenning at the college's Alumni Office, 314-946-6912.

Margaret E. Cook (Trask), Emma Louise Duncan (Lewis), May Rose Funk (Aderhold), Frances Gregg (Bates), Violet H. Martin (Herrin), Carolyn Meyer, Virginia W. Norton (Symns), Lucille Reynolds, Dorothy Mae Wilkin (Rumph) and Ella M. Williams (Blake).

From the class of 1932, Marjorie S. Adrian (Taylor), Roberta Brown (Manning), Grace E. Chamberlain (Green), Florence S. Cushman (Hook), Virginia Ditzler (Green), Evalyn Gill (Pierpont), Fern Halliburton, Lois Howard (McKeehan), Margaret MacCreedy (Ohohundro), Hardy Cori Martin (Albright), Elizabeth Mueller (Brown), Stella Mary Russell (Grant), Elizabeth Schmidt (Jeffrey), Crystal Sukey (McCulloh), Laura Tabor (Hauck), Gwendolyn Taylor (Lienhart), and Dorothy Turner.

From the class of 1937, Sarah Jane Arnold (Bloom) Mary Chapman (Spaulding), Dorothy Famer (Copp), Betty Lee Hall (Hilbing), Corlyn Howard (Hoffman), Nancy Macquaid (Platt), Helen Reed (Sims), Marion Reeder, and Elizabeth Waller (Bowen).

From the class of 1942, Sarah Jane Ash (Murphy), Ruth Barnes (Shartel), Dorothy Mae Bouch (Hardy), Katherine Cheney (Brummet), Claire Cox (Branit), Marie Egner (Sherwin), Lois Fields (Brown), Helen Gerard (Goldthwaite), Alvina Guggenbuehler (Hale), Mary Hailey (Waters), Harriet Heck, Jeanne Hughes (McElroy), Phyllis Johnson (Whitaker), Betty Kincaid (Bullock), Ardella Fay Lamb (Bullard), Lena Little (Carter), Evelyn Locker (Wright), Donna McClure (Brown) Dorothy Ann Morris (Graham), Kitty Morris (Traylor), Rosemary Mullane (Troth), Maxine Polski (Courtney), Frances Rebman (Langenbacher), Peggy Rothermel (Bender),

Dorothy Siebert (Owen), Jane Skeel (Henss), and Evelyn Summers (Wahlgren).

From the class of 1947, Jan Baltz (Miller), Louise Birenbaum, Patsy Jean Blevins (Stickler), Carolyn Chandler (Harris), Anna Louise Davisson (Lynn), Jeanne Fisher (Sturmer), Joanne Francies (Hulson), Carolyn Garbordt (Jones), Carolyn Geissler (Shanks), Camilla Griffin (Calene), Doris Williams (Leach), Joanne Heitzberg (Settle), Martha Ray Hill, Patricia Hobart, Elizabeth Hodgson (McGraw), Paddy Hoffman (Tuttle), Gerry Kendall (Hastings), Ruth Kirkpatrick (Stevenson), Jeanne Meek (Swenson), Ann Harrie Meltzer (Flesman), Marie Mount, Patricia Murray (Sharick), Catherine Sue Nilleanson (Hunter), Elizabeth Owen (Knight), Ann Peavyhouse (Jeffries), Shirley Saltzman (Friedman), Suzanne Sandahl (Long), and Jo Lea Werner (Horton).

From the class of 1952, Joline Argast (Bressie), Margery Barker, Shirley Blank (Fleissner), Jackie Block (Boomis), Doris Brown (Webber), Janet Campbell, Kiki Costello (Kotsiopoulos), Shirley Donnelly (Toben), Virginia Hain (Reece), Ramona Hamilton (Johnson), Marilyn Hirsch, Sally Hronek, Dixie Lou Ingmire (Williams), Marianne Kahn (Mohl), Clara Landess (Miller), Louise Martin (Blaul), Jo Anne McConnell (Davis), Mary Michel (Day), Sylvia Pickell (Tullar), Glyna Shoemaker-Smith, Ruth Snyder (Geisert), Helen Thrapsimus (Mavrick), Betty Jean Wenino (Klein), Beverly Werner (Monahan), and Marguerite Willia (Tallen).

From the class of 1957, Anne Brannin (Vieaux), Dorothy Carroll (Miller), Patricia Clark (Poulos), Sally Lefler, Rose Manley

continued on page 12

class notes

BIRTHS

- 1968 SONDRRA MORRIS GARTON of Kansas City, a son, Jason Mason Matthew, June 4, 1986
- 1972 ELIZABETH CODY NEWENHUYSE of Wheaton, IL, a daughter, Amanda, November 30, 1984
- 1975 AMY HAAKE ARGYROS of Plano, TX, a daughter, Caitlin Olivia, June 9, 1985
NANCY TUNISON MORGAN of Baton Rouge, LA, a son, Patrick Winfield, April 4, 1986
SUSAN BUTARD GORDON and ROBERT GORDON ('74), a son, Jeffrey, August 30, 1984, and identical twin sons, Gregory and Kyle, March 19, 1986
- 1976 JUDY JOHNSON WOOLERY of Sedalia, MO, a son, Daniel, May 16, 1986
- 1978 JEAN KNUDSON TIPTON, a daughter, Meredith Liesl-Marie, November 8, 1985
- 1980 CYNTHIA WESTERFELD ROBERTSON and RANDALL ROBERTSON ('81) of Altamonte Springs, FL, a daughter, Suzanne, October 10, 1986
- 1981 STEVEN ECK of Florissant, MO, a son, Anthony, December 22, 1985
- 1982 REBECCA RAINWATER BEVIS of Plano, TX, a son, Christopher, August, 1986
- 1985 CATHY MUDD of Middleton, MO, a daughter, Emilee Beth, January 5, 1986

MARRIAGES

- 1968 JUDITH GRANT to Michael Manzo, March, 1982
- 1972 AMANDA FREDERICKSON to Robert Highsaw, November 22, 1981
- 1975 SUSAN BUTAUD to ROBERT GORDON ('74), June 12, 1985
JUDITH FRIEDMAN to Joe Cecil, November, 1985
NANCY ESKRIDGE to Mac Harris, September 21, 1985
JEAN TIPTON to Scott Knudson, July 12, 1983
- 1980 CYNTHIA WESTERFELD to RANDALL ROBERTSON ('81), July, 1985
- 1981 ROBIN SANDLER to STEVE ROODMAN ('81), July, 1985
STEVE ECK to Susan Basye, July, 1981
- 1982 RENE LEONE STRUTMAN to Richard H. Waltke, Jr., September 28, 1984
- 1983 BARBARA PLACKEMEIER to Bob Lash, June 7, 1986

NEWS NOTES

- 1916 GRACE LAUMAN HUSE of Alhambra, CA, resides at the "beautiful California P.E.O. home" along with another Lindenwood alumna, GLADYS CARNHAN CRANDALL ('24).
- 1928 EVELYN CHERRY MERTENS of Sacramento, CA, is retired from the State Library of California, and reports she has one son who is a communications officer for the State of California.
- 1931 MARJORIE HAMMER SULLIVAN of Mish, IN, is a retired school teacher with two married children.
- 1932 MARY JACKSON of Maryville, MO, is a retired college professor who recently had a revised edition of her book on Spanish correspondence published by the National Textbook Co. Last October, she was elected to the board of the Missouri Committee for the Humanities, and currently serves on its executive committee.
- 1935 MAJORIE STEELE KING of St. Louis has three daughters and seven grandchildren, one of whom married last spring and another of whom is studying in Florence, Italy. She and her husband keep busy with their family and with golf.
- 1939 GWENDOLYN PAYNE HART of Charleston, SC, is a retired educator who recently moved to Charleston and is looking forward to the cultural, historical and recreational life of the area, where her two daughters and five grandchildren reside. She retired in 1980 as assistant principal of a high school in the Smokey Mountains region of South Carolina. She reports her 90-year-old mother lives with her.
- 1941 MARGARET BARTON KORTY of Hyattsville, MD, reports that her husband, Vernon, died August 19, 1986.
- 1942 MARJORIE MILLS TUCKER of Frederick, MD, reports that she retired after 11 years as an administrative secretary at Children's Hospital National Medical Center in Washington, DC. Her son, Larry, is a geographical engineer in Sullivan, MO, and her daughter, Julaine, is a police officer in Frederick, MD. Her two granddaughters are college students in Missouri.
- 1943 MABEL BUHRER STRINGHAM of Vacaville, CA, spent 30 years as an elementary school teacher, speech therapist and English as a second language instructor.
ADELAIDE CARAKER PAGE of Cairo, IL, has been a widow since 1975. She sells Avon products, does volunteer work with the United Methodist Church and enjoys her four grandchildren.
- 1945 BARBARA BASTRON AFFOLTER of Temecula, FL, is assistant principal of a high school in the Rowland Unified School District. She and her husband raise Egyptian Arabian horses and live on a small ranch that was designed to breed and raise the show horses.
- 1949 GLORIA McCARRICK GOUGER of San Antonio, TX, is board chairman of the Goucher Operating Co.
- 1953 YVONNE KIRKLAND STARK of Vermillion, SD, is an attorney who has practiced in St. Louis and Aspen, CO. She has been living in South Dakota for the past 20 years with her husband. She spends much of her spare time painting, and exhibits regularly in art shows and galleries. Last summer, she took part in a program at Christ Church at Oxford University in England.

PATRICIA ANNE THOMAS HENDRICKSON of Auburn, CA, is active in junior ski racing. She serves as president of the board of the Far West Ski Competition, the national governing body for the sport of skiing in the United States.

- 1954 CORY CRITCHFIELD GILLILLAND of Falls Church, VA, is Numismatics Curator of the Smithsonian Institute, and reports she loves the job and all of its challenges.
SUZANNE WESSEL HAZELTON of Ann Arbor, FL, serves as vice-president of the Clearwater, FL, alumni club of Kappa Alpha Theta.
- 1955 ZILPHA CURTIN of Cincinnati, OH, is director of the Volunteer Services Dept. of Daniel Drake Memorial Hospital.
JUDITH ANDERSON BARNES, also of Cincinnati, attended her 30th class reunion at Lindenwood last fall. She enjoyed the "good memories she shared with former classmates at ROSEMARY DYSART BAUE's ('55) home in Kirkwood." She studies painting and travels, and reports she has two sons in college, one of whom is with CBS-TV.
- 1957 MARVA LA BONTE WEINY of Upland, CA, has taught in elementary schools in the Ontario-Montclair district for 26 years, and plans upon teaching another nine.
- 1958 MARTHA SKAER WRIGHT of St. Louis is a senior research group leader with Monsanto Co. in St. Louis. Recently, she served as a loaned executive for the 1986 campaign of the United Way.
- 1966 REBECCA STEGALL RANEY of Sallisaw, OK, moved back to Sallisaw after a 25-year absence. She has taught special education in California, Florida, Oklahoma and Texas.
MARLENE KIEWIT OPLOTNIK of Kansas City works for the State of Missouri Division of Family Services. She has two daughters, Shelley, 12, and Allison, 8.
- 1967 LINDA ARMOUR FINCH of Midland, TX, works as a geological technician. "With a few more credits, I can call myself a geologist," she said.
AMY DICKGIESSER GORMLEY of Albuquerque, NM, will participate in the Albuquerque Fine Arts Association's Autumn Show at the Fairgrounds Exhibition Hall in Albuquerque, the Lubbock Merit Invitational Award Three-Women Show & Sale this fall and, in January, at the Two-Women in Pastel Show & Sale in Puerto Vallarta, Mexico.
- 1968 LOURDES TRIANA of Princeton, NJ, would like to hear from BARBARA ARMSTRONG DUPASQUIER.
E. BERTITA TRABERT GRAEBNER of Menlo Park, CA, has a daughter, Sarah Louise, 3.

Continued on page 14

News/note

We need news about you! And, we depend on you to send us information whether you've changed jobs, received honors, published an article, had a baby, been married, recently retired or received an advanced degree. Please clip and return this note, and your news will appear in an upcoming issue of the *Linden Word*.

Name _____

Maiden Name (if different while at Lindenwood) _____

Lindenwood degree, year _____

Home address _____

Phone () _____

Occupation _____

Business Address _____

Phone () _____

News:

(Please provide complete information. E.g., if you've been married or had a baby, provide us with the date, your spouse's name and the baby's name.)

RETURN TO: Alumni Office
The Lindenwood College
First Capitol & Kingshighway
St. Charles, MO 63301

Advertising reaches new audience

For the first time in the history of the college, Lindenwood will advertise in regional editions of eight national magazines in December.

The full-page insertion, entitled "Lindenwood — a Great American College for Ages," is reproduced on this page of the *Linden Word*.

It will appear in such well-known magazines as *Dun's Business Month*, *Money*, *Nation's Business*, *Newsweek*, *Sports Illustrated*, *Time*, *U.S. News & World Report* and *Working Woman*. The ad will be staggered in magazines with a weekly frequency, such as *Time* and *Newsweek*, during December, and it will appear in the monthly publications, such as *Money* and *Sports Illustrated*.

The print advertisement will be circulated to nearly 200,000 subscribers of the eight magazines in a two-state area, including metropolitan St. Louis and outlying areas of several counties in both Missouri and Illinois.

New audit figures scheduled for release

in December are expected to show that the eight magazines have a combined readership of more than one million.

According to Randy L. Wallick, public relations director, audience composition indicates nearly 30 percent of the readers have occupations in the professional or managerial classifications, while 50 percent of the readers have annual household incomes exceeding \$35,000. The median age for a large percentage of these readers is 25-34, he added.

"Audience composition closely matches the college's thrust for non-traditional students," Wallick said, "such as those who would be interested in the LCIE, the Evening College, MBA programs off campus or Lindenwood's new Saturday Campus."

Although the print advertisement is general in editorial content, it stresses many of the selling points of Lindenwood — quality education programs, accessibility and convenience of locations, affordability through scholarship pro-

grams and financial aid assistance, Lindenwood's commitment to personalized and individual attention and variety and specialization, such as offering one of the largest number of graduate programs for working adults in the metro area.

In addition to the magazine advertisements, Lindenwood will air several 60-second spots on the St. Louis area leading AM radio station, KMOX, during December.

The commercials will coincide with "A Great American College for All Ages" and will promote such areas as the Evening College, MBA degree, LCIE offerings and Saturday Campus.

The commercials will air during the KMOX "Bruce Bradley Show" on weekday mornings, and will feature live announcements for Lindenwood College, aired by Bradley. His popular show has a listening audience estimated at nearly 200,000 each weekday morning.

The advertising campaigns are part of expanded efforts of the college this year

to boost enrollment and to publicize the quality and traditional aspects of a Lindenwood College education.

If successful, the regional magazine campaign may be expanded next year to coincide with recruiting efforts by Admissions Office counselors in key parts of the country where there is a strong network of Lindenwood alumni and in potential areas where quality students have expressed an interest in attending what has been called a "Great American College."

Lindenwood and ASA join forces

Lindenwood and a professional organization have joined forces to offer an appraisal degree program designed to upgrade the education, training and professionalism for nearly 300,000 people in the United States who are involved in appraisals.

With the support of the American Society Appraisers (ASA) of Washington, DC, Lindenwood will offer a two-week valuation sciences program in May, 1987, at the St. Charles campus.

The program is designed specifically for those involved in appraisal of real estate, personal property, fine arts, antiques, gems and jewelry, businesses, machinery and equipment. The two-week session will enable applicants to earn credits toward undergraduate or graduate degrees in valuation sciences.

The only one like it in the world, the new program has been designed to provide the principles, methods and degrees to meet increasing federal, state and public demands for more reliable appraisals, said Richard Rickert, Ph.D., an honorary ASA member and director of the Lindenwood Valuation Sciences Program.

Of the estimated 300,000 persons who do appraisals in the United States, only about 10 percent are certified by professional organizations such as the ASA for educational and ethical regulation.

To be offered in an intensive format beginning May 4-16, 1987, at the Lindenwood College campus near St. Louis, MO, the program will be supplemented with reports, research and writing to complete credits in valuation sciences.

The joint program will enable most appraisers from anywhere in the world to earn degrees in their respective fields with no more than four annual terms of study.

The major topics in the program will consist of the theory and foundations of appraisal; focused studies for appraisers of real estate, business and personal property, etc.; a term of study in investment analysis and strategy for the income approach; and a final study of advanced appraisal report writing techniques and thesis research. These terms of study will be offered in annual two-week formats, beginning next spring.

Scholarship funds for the May, 1987, program will be available through the ASA Education Foundation, Rickert said. Undergraduate credit can be earned for prior appraisal study and certification.

The Lindenwood College program is advised, supported and taught by senior members of the Washington, DC-based ASA. It was established in 1979 at the request of the ASA.

For further information, contact the Lindenwood College Admissions Office, First Capitol and Kingshighway, St. Charles, MO 63301, or telephone 314-946-6912, extension #213.

A Great American College for All Ages



Quality and Tradition Since 1827 -

Lindenwood is one of the oldest colleges in the country with a 160-year record of quality education. Its outstanding alumni, dedicated faculty, value-oriented curriculum, individual attention and picturesque campus are proof of Lindenwood's commitment to excellence.

Accessibility and Convenience -

Lindenwood offers nearly 60 programs for undergraduate and graduate degrees at its main campus in St. Charles and at sites in downtown St. Louis, Clayton and West Port. Full or part-time instruction is available during days, evenings and Saturdays. An accelerated program also is available for adult students.

Affordability and Assistance -

Lindenwood makes higher education affordable. It offers nearly \$750,000 in direct support through scholarships in addition to nearly \$1.5 million in financial aid. Lindenwood also has convenient payment plans.

Personalized and Individual Attention -

At Lindenwood, you're a person not a number. Its small-class ratio provides you with opportunity to excel. You're on a first-name basis with faculty members, some of whom may become your best friends!

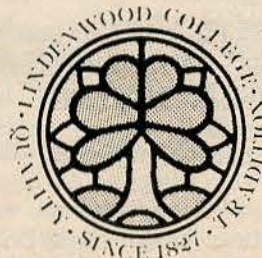
Variety and Specialization -

Lindenwood offers one of the largest number of graduate programs for the working adult. It has a liberal transfer policy, numerous internships and life experience credits. It provides you with the skills and knowledge you can use immediately.

Find out why Lindenwood has been called "the Great American College." Explore the opportunities at Lindenwood before you begin, continue or complete your college degree. Call our Admissions Office at 946-6912, or better yet, stop by and see for yourself!

Lindenwood College

St. Charles, Missouri • 946-6912



An alumnus who cares

by RANDYL WALLICK

"We Volunteer Because We Care" is the motto painted upon all 18 pieces of equipment of the Osage Beach Fire Protection District in one of the Midwest's recreational meccas, Missouri's Lake of the Ozarks.

The motto typifies the philosophy of the 30 men who comprise the 70-square-mile fire protection district, volunteers Jeffrey R. Zumwalt, a Lindenwood alumnus.

Zumwalt serves as a battalion captain, averaging 15-20 hours per week in a district that serves residents, businesses and vacationers in Miller and Camden counties, a growing area that contains



PRECISION - Zumwalt and his wife, Diane, work on a stained glass piece at the artist's studio in Linn Creek, MO.

hundreds of millions of dollars in residential and recreational development.

"It's an area that has a population of less than 5,000 during the off-season and more than 50,000 during summer months. It's also an area that contains thousands of condominium, resorts and recreational retreats, many of which are inaccessible except by hilly, gravel roads or by water."

Zumwalt is one of the few who can operate the fire protection district's most elaborate piece of equipment, a Grumman Aerial Cat, a 95-foot aerial ladder truck. The only one like it in Missouri and one of 44 in existence in the United States, the 10-wheel, 68,000-pound truck cost more than \$405,000 when purchased earlier this year.

"And it doesn't even have air conditioning," Zumwalt chuckles. "You would have thought that if we spend more than \$400,000 for a truck, we could have afforded another \$500 for air, huh?"

Called a true ladder and platform truck, the vehicle has been used only four times this year, "but if it saves just one life at a condominium fire, the cost will have been worth it," Zumwalt states. "It's just a matter of time before this truck pays for itself."

Zumwalt serves as aerial operations officer when the truck is dispatched, and he is responsible for the safety of those operating the monstrous truck as well as those on the ground. "This is the type of equipment that literally can kill a person, so there is no margin for error," he admits.

"You wouldn't think a small, volunteer fire district like this one could afford this type of equipment," he said. "But, because of the tremendous value of real estate in the area, we received strong support for a recent tax levy used to finance the truck."

"Residents and developers have shown their support due to the need. Although construction today recognizes safety concerns, many of the earlier real estate dwellings lack fire walls and many were constructed without the benefit of building codes. In addition, the location of many dwellings makes it extremely difficult to get fire equipment to and from them."

Although the fire protection district averaged about 250 fires last year, it exceeded the number by mid-1986.

To be state-certified later this year as a fire fighter at the University of Missouri in Columbia, Zumwalt has attended several colleges and universities in addition to Lindenwood, including Culver-Stockton College, the University of Missouri-St. Louis and St. Louis Community College at Florissant Valley.

Service to the community is a part of Zumwalt's life. "It's something I enjoy doing. You've got to give more than you take, and this is the way I can give," he states.

No sooner than Zumwalt says this, he sees an ambulance at a gas station on Highway 54. Pulling his four-wheel Subaru into the service station, he offers his assistance, ending up directing traffic at the congested scene as the ambulance departs for nearby Osage Beach Hospital.

"You get a lot of practice directing traffic around here," he laughs, wiping the moisture from his brow as a steady drizzle covers the Lake of the Ozarks, ruining the plans of many a boater.

When he is not chasing fires, serving as the district's photographer, overseeing operation of the Grumman Aerial Cat, practicing fire drills or directing traffic, Zumwalt can be found in his art studio, Linn Creek Art Glass, which is located away from the well-beaten tourist haven on a gravel road in Linn Creek, a community of a few hundred nestled between Camdenton and Osage Beach.

An artist who attended Lindenwood in 1970-71, Zumwalt specializes in commissioned work and in preserving stained glass through restoration. Known throughout the state, his work has been commissioned by such clients as the well-known Lodge of the Four Seasons and the Anheuser-Busch Executive Retreat in Lake Ozark, the Burton Duenke Construction Co. in St. Louis and former Lindenwood Board of Overseers member Peter Brown and his wife, Susan, of Four Seasons, U.S.A. in Lake of the Ozarks.



Zumwalt

Ironically, although he majored in art at Lindenwood, his career in stained glass stems from self-study which he began after college. Often aided by his wife, Diane, Zumwalt's art can be called a "diverse style," ranging from traditional forms to contemporary works, much of which utilizes hand-blown glass from Germany.

He has displayed his creations at several shows and exhibits, including Lindenwood College during its recent Alumni Reunion Weekend in October. In an exhibit in 1979 at Lindenwood, Zumwalt's work prompted *Glass Magazine* to label one of his stained glass pieces "as the most successful of the new work (which) was an outstanding creation . . ."

Working on one of five stained glass windows for a Jefferson City church at the time of the interview, Zumwalt said that if more studios could be encouraged to do restoration work, a lot of stained glass could be saved.

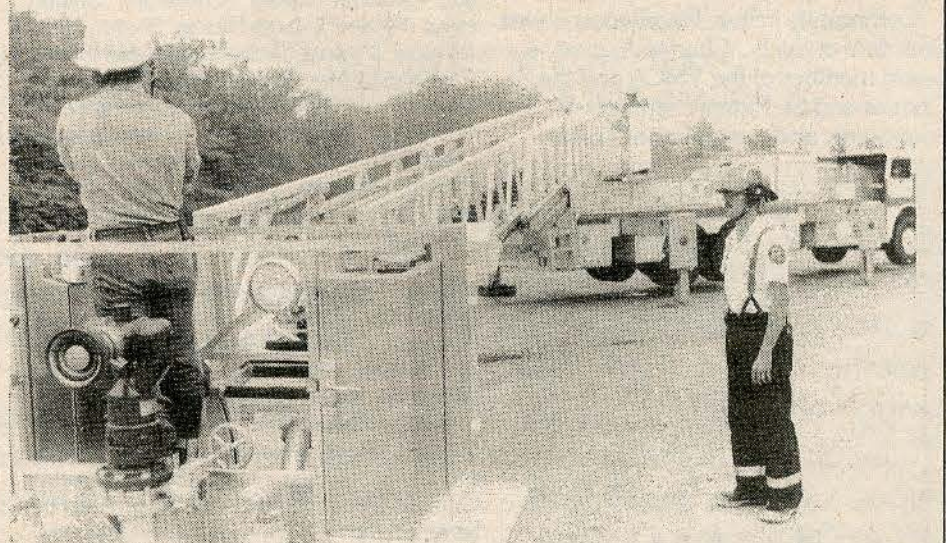
"Stained glass has been a lost craft for many centuries. Advances in the late 19th century and a better knowledge of the craft rather than of the restoration process have prompted a return to stained glass as a true art form," Zumwalt said.

"Art has got to be fun, and stained glass is fun for me," he admits. "Many artists take their work too seriously. After all, stained glass is like a calligraphy or line drawing style of art - every color change is outlined by a black line. It does, however, have many qualities not found in other art, qualities like the property of transmitted light which affects color change."

Jeff Zumwalt, an artist, a volunteer and a person who cares, is an example of one of Lindenwood's outstanding alumni.



A LONG WAY DOWN - Zumwalt, aerial operations officer and battalion captain for the Osage Beach Fire Protection District, climbs the 95-foot aerial ladder truck.



TEN WHEELS OF AUTOMATION - One of a few who can operate the Grumman Aerial Cat, Zumwalt is responsible for the safety of firefighters using the aerial ladder truck as well as people on the ground.



Harkin

College leaders

Two individuals whose commitment to Lindenwood is obvious through their association on the college's governing boards are Francis J. Harkins of the board of directors and Keith W. Hazelwood of the board of overseers.

Harkins, president of the Southwest Division of MCI Telecommunications Corp. in St. Louis, begins his first term this year as a board director.

Hazelwood, an attorney and partner with Hazelwood, Barklage & Barklage in St. Charles, begins his third year as newly-elected chairman of the Lindenwood College Board of Overseers.

Joining MCI in 1962, Harkins was a former senior vice-president of administration at the firm's corporate headquarters in Washington, DC, and an executive vice-president of MCI's subsidiary, Western Union International, where he was in charge of special assignments for MCI's president and board of directors.

He was appointed to his present position in January, 1985. The Southwest Division provides long-distance telephone service to residential and commercial customers in the five-state area of Arkansas, Kansas, Missouri, Oklahoma and Texas.

A graduate of Georgetown University, Harkins holds a law degree from St. John's University.

In addition to his involvement on the Lindenwood College Board of Directors, he is a member of the St. Louis University Board of Trustees, the Missouri Athletic Club, the St. Louis Club and Old Warson Country Club.

Married, Harkins and his wife, Eileen, are residents of the Central West End in St. Louis and have three sons.

As chairman of the board of overseers, Hazelwood also serves as an ex officio member of the board of directors.

He is a 1967 graduate of Dartmouth College and a 1970 graduate of Washington University School of Law.

Community active, Hazelwood is past president of the St. Charles Jaycees; a board member of the YMCA and the St. Charles and St. Peters chambers of commerce; and a member of Trinity

Episcopal Church, the Home Builders Association and the St. Peters Rotary Club. He also serves as an attorney for the Missouri Federation of Young Republicans and the St. Charles County Young Republicans.

Married, Hazelwood and his wife, Nancy, are St. Charles residents and have two sons.

Replacing Larry G. Kelley, president of Commerce Bank of St. Charles County, as chairman, Hazelwood has outlined several goals for the 30-member board during the current fiscal year.

Among these are the coordination and implementation of the St. Charles Community Support Drive to raise \$120,000 in contributions, individual member participation in student recruitment and retention, the implementation of a community speaker's bureau for faculty members and campus renovation projects.

Comprised primarily of local civic and business leaders, the board of overseers works in conjunction with the board of directors, the 28-member body that oversees the management and operation of Lindenwood College.

people & places

ROBERT F. HYLAND, regional vice-president of CBS Radio, Inc., and chairman of the college's board of directors, recently received the Right Arm of St. Louis Award from the St. Louis Regional Commerce & Growth Association. He was cited for outstanding contributions to the metro area during the group's 13th annual meeting.

PATRICIA SOUCY was appointed to the Core Faculty for Valuation Sciences, an extension of her role as LCIE adjunct professor. A senior member of the American Society of Appraisers who chairs the national organization's Valuation Sciences Committee, she is a Lindenwood graduate who teaches valuation theory and principles, personal property appraisal and material culture.

"Renewal of American Management" was the title of a presentation by **JOHN D. WOLF**, executive vice-president of operations for McDonnell Douglas Corporation and a member of the Lindenwood College Board of Directors, during a recent meeting of the Lindenwood St. Louis Metro Noon-Day Alumni Club.

KRISTANA J. WEILER, former instructor of music at Coe College in Cedar Rapids, IA, has been named instructor of music at Lindenwood. A 1982 graduate of COE College, she holds a master's degree in music, awarded two years ago from the University of Missouri-Kansas City. A member of the American Choral Directors Association, Weiler has vocal and choral experience as well as theatrical expertise, having served as conductor or music director in a number of performances. She also is director of the Women's Ensemble and Chamber Singers.

CLAYTON E. WILHITE, chief executive of the St. Louis office of the advertising agency D'Arcy, Masius, Benton & Bowles, Inc., and a member of the college's board of directors, has been elected to a three-year term on the Arts & Education Council of St. Louis.

KIMBERLY S. POOLE, a 1986 graduate with a B.S. degree in communications, has joined Lindenwood as a typesetter in the Printing Center. During college, she was listed on the Dean's List, was active at KCLC Radio and completed an internship with the *Country Tribune* newspaper in O'Fallon, MO. Poole plans to pursue graduate studies at Lindenwood.

YASUKATSU KUDD, a 1986 Lindenwood graduate with a B.A. degree, has been named Accounting Officer in the college's Development Office. A native of Nara, Japan, he is pursuing an M.B.A. degree at Lindenwood.

PHYLLIS A. MORRIS of the college's Development Office has been promoted to Assistant Director of Development. A member of the administrative staff since 1984, she is a 1977 graduate of McKendree College in Lebanon, IL, who is pursuing a graduate degree in mass media in the LCIE.

DEBORAH A. KEHM, coach of the women's soccer team for the past four seasons, has been named Athletic Director at Lindenwood. A mathematics instructor at Ritenour High school in St. Louis for 14 years, she is a 1973 graduate of Southwest Missouri State University with a graduate degree in education from the University of Missouri-St. Louis. Currently, she is pursuing an MBA degree at Lindenwood. In the new position, Kehm will implement and oversee the intercollegiate athletic program which consists of men's and women's soccer and basketball.

Lindenwood alumni are sought

Continued from page 8

(Marko), Evelyn Ann Neese (Wood), Janis Phares (Rice), Eleanor Poertner (Leftwich), Mirian Powell (Ferrin), Dorothy Reed, Sandra Roberts, Mary Robinson (Gore), Shirley Ann Smith (Nolta), Anne Cable Todd (Young), and Ellen Louise Wehner (Stover).

From the class of 1962, Judith Albert (Hal), Martha Booth, Mary Brookhart (McCue), Mary Brown (Paterson), Gerre Gale Byrd (Engard), Sharon Caudle (Strauss), Linda Cole (Jones), Linda Conley (Lowry), Elizabeth Crane, Laurel Douglass (Sheehan), Linda Duffy (Hoyt), M. Imedle Parmer (Harra), Barbara Francis, Mary Gage (Powell), Deborah Hatley (Compton), Sharon Hays (Niedner), Janet Hicklin, Sharon Hicks (Brizius), Virginia Hudson Michaela Huesing (McKittrick), Mary Margaret Hull (Wamecke), Cherie Ingersoll (Churchman), Donna Kelley (Thomas), Barbara Low, Margaret Mann (Thiebes), Adel Miller (Harrison), Linda Rucker, Barbara Salyer, Sharon Smith, Barbara Stenhouse (Maddox), Linda Veazey, and Mary Zook.

From the class of 1967, Vicky Anthes (Malurker), Karen Aubrey, Jana Bagwell (Warren), Julie Barto, Marlene Bohrer, Sandra Bouch (Reynolds), Judith Carnahan (Wyckoff), Karen Church, Jeri Cusma (Gulbransen), Jane Dill, Dorothy Dohoney, Michele Eigen (Heidt), Michael Fridley (Lovelace), Nancy Gibbs (Roth), Cynthia Graham, Deborah Grahm (Dunlap), Ann Hillebrandt (Smith), Pamela Hines (Herrick), Sandra Hollman (Haines), Karen Lee Jones (Bissonnette), Catherine Karlson, Kathy Kirby, Susan Jean Kirk (Dukes), Martha Sue Laird (Hestand), Patricia Lash (Jenkins),

Nancy Lisk, Martha Ann Logan (White), Marilyn McCall, Margaret McIntosh, Judith Milliken (Columbo), Donna Jean Milner, Betty Perry (Hable), Barbara Phelps, Ann Quarterman, Joan Quintana (Gaynor), Sally Rowland, Toni Short (Mendelsohn), Royce Ann Sisson (Heffner), Margo Taññ (Musgrove), Jean Tarr (Evans), Elizabeth Ann Thomas (Smith), Lyn Thomas, Kathryn Tromly, Mary Villegas (middleton), Nancy Wilkinson (Martin), Judith Wood, and Danna Young (Lell).

From the class of 1972, Patricia Bailey, Mrs. Larry Brizendine (Hansman), Franceline Brown, Christin Carlson, Janet Dittmer (Brown), Evelyn Feola, Basil Fikaris, Rosalin Flax, Janet Francois, Catherine Gilliam (Baxter), Michael Halloran, Linda Ruth Harris (Williams), Claudia Klein, Sandy Krabbe, Jerry Kritz, Linda Sue McCormick (Grim), Ivia Suzanne Payne, Edith Rao (Wong), Gary Robinson, Jane Robinson (Cornish), Shirley Roper, Patricia Sanders, Susan Shroeder, Rachaneetorn Singhaphan, Virginia Sivia, Christy Jo Stevens, Cynthia Ann Story (Weir), Claudia Tappen, Marian Taylor, Deborah Thomsen (Fitzpatrick), Daniel White, Lynn White, Rebecca Widmar (Earney), Karen Wilbur (Bacqman), and Constance Zimmer (Herber).

From the class of 1977, Nancy Babbitt, Pamela Bailey, Kim Eileen Bostic (Dregallo), Daniel Bretch, Rick Champagne, Robyn Champagne (Muncy), Lucille Cox, Morton Davis, Mary Katherine Delaney, Donald Durham, Linda Carol Eastes, Bernice Fields, Michael Frossard, Daniel Fulmer, Thomas Gilmore, Vickey Gobberdiel, Laura Harris, Judith Haworth, William Hearts, Constance Higgs (Tedder), Neal Higgs, Carolyn Hooker,

Agatha Howard, Sandi Janson, R. Wesley Jensen, Kathy Sue Jones, Karen Keen, Sheryl Kelce, David Kelsey, Sandra Louise Knapp, John Korenak, Mona Lavine, Erika Leal, Kenneth Lewis, John Mahton, Frances Ann Mathis, Al McCoy, John McCray, Myrna Meador, Luanne Mullin (Maywald), Donna Marie Neumann, John Newbold, Frank Oberle, Joshua Odedele, Al Patterson, Arlene Pearlman, Denise Perkins, William Ed Price, Florence Raines, Christine Rinehart, John Robertson, Diane Schierding (Grau), Nina Scholey, Margaret Schultz, Urban Sommer, Christine Sterios, Mary Stevenson (McCormick), Roy Eugene Stock, Janice Rose Strang, Gina Telocci, Tina Tessina, Lucy Theiler, Paul Trauth, Douglas Urban, Thoi Van Nguyen, Laurie Warner, Delilah Watkins, Susan Welker (Hueseman), Linda White, Roger Wilhem, and Donald Williams.

From the class of 1982, Lila Abdullah, Maha Al Najami, Adnan Jaw AlSayegh, Nasr Sal Al Wohaibi, Linda Anas Aldridge, Dean Allen, William Arthur, Deborah Lynn Baker, Melahue Boles, Heman Brito, Jeffrey Bromberg, Lubie Brown, Glenn L. Chatman, Daniel J. Claudy, Linda Cooper, Dianah Dulany, Rehana Fareed, Robert Freihofer, Sandra Gaines, Frank Gallagher, Kathleen Gentry, Deborah Heppermann (Payne), Cynthia Hiatt (Haag), Joseph Infante, Janice Jacoby, Barbara J. Joplin, Melvin Lester, Susan Relyea, Andrew Richardson, Rena Roberts, Lecora Robinson, Jann Roth, Elizabeth Rutledge, Terri Schwerdtfeger, John Selby, Ellen J. Sherman, Ali Shirdast, Isaac Sims, Margaret Smith, Keith Stettes, Yvette M. Sweeney, Eugene Trautman, Marion Trigg, Carolyn Truby, Mitchell Weltman, Wilma Whitely and Al Zamora de Muller.

Check your mailing label on page 1. If your address is incorrect, or if you're receiving more than one copy, contact the Public Relations Office, Lindenwood College, St. Charles, MO 63301, for a correction.

Arizona bound

"American Indian Education in the Southwest" is the title of a course offered by Lindenwood, Jan. 2-9, 1987, which will explore problems of American Indian education today.

Students will travel to Arizona to visit such places as the Heard Museum and its display of Indian art and cultural artifacts, to Navajo and Hopi Indian reservations, to the Havasupai Reservation in the Grand Canyon, to the Gila River Reservation, to the Papago Reservation near Tuscon, to the San Carlos Reservation and to Arizona State University for lectures by well-known specialists on southwest native American cultures.

According to Raymond Scupin, Ph.D., associate professor of anthropology and sociology at Lindenwood College and the coordinator of the trip, the course is open to any student but it should have particular appeal to those majoring in social sciences, communications and/or education.

"During the course, we will be doing research on native American education by visiting Indian schools, interviewing teachers, students and tribal leaders," Scupin said.

Cost of the seven-day trip is about \$500, including air fare and accommodations. Further information and reservation procedures can be obtained by contacting Scupin at the Lindenwood College Anthropology/Sociology Dept. at 314-946-6912, extension #248.

Joint play at Center

Lindenwood College and the St. Louis Science Center have joined forces to present "Send Us a Lady Physician" a one-woman play that will be presented twice on Saturdays from 1-3 p.m., November 8 through December 13 at the Science Center in Forest Park.

The original play was written by Marsha Parker of St. Charles, a Lindenwood performing arts graduate student, and Bryan Reeder of St. Charles, a Lindenwood MFA graduate. Reeder, an administrative assistant in the college's Performing Arts Dept., also serves as director of the play.

Performed in conjunction with an exhibit of the same name at the Science Center, the play features Lisa Albert of Chesterfield, a senior majoring in performing arts at Lindenwood, as the various women physicians. The exhibit runs November 1 through January 4, 1987.

There is no charge for the Saturday performances, which will be held in the setting of the exhibit at the Science Center.

ACTs up

"Quality and tradition" is the motto of Lindenwood College, and a tradition of quality continues to be made among the college's student body.

Even more important than Lindenwood's past achievements in record-breaking enrollment is the attraction of better qualified students to the 160-year-old campus.

American College Testing (ACT) scores for current freshmen are one of the highest in the metropolitan St. Louis area. ACT scores also represent a significant increase above the national average for beginning students at college and university campuses.

ACT scores for freshman averaged 21 this fall as compared to 19.9 in 1985 and 18.2 for the national average.



MOISTEN THOSE TASTE BUDS - New and returning students line up outside Ayres Hall for an outdoor barbeque this fall that was sponsored by the college's board of overseers. Board members hosted the event during their first session of the academic year as a means of meeting students as well as faculty and staff. Overseers mingled informally with Lindenwood students to gain a better insight into possible programs and services they plan to take part in during the academic year. Well-received by the college and community, the "Welcome Roundup B-B-Q" may be an annual event by the Lindenwood College Board of Overseers.

CAMPUS EVENTS

NOVEMBER, 1986:

22-23	Dickens' "A Christmas Carol"	2 p.m., Jelkyl Theatre
23	Concert with Lindenwood Women's Ensemble	4 p.m., Sibley Hall Chapel
24	Men's Basketball, Columbia College	7:30 p.m., St. Charles High
26	Women's Basketball, Florissant Valley	6:30 p.m., St. Charles High

DECEMBER, 1986:

3	Women's Basketball, Fontbonne College	5:30 p.m., St. Charles High
4-5	Dickens' "A Christmas Carol"	8 p.m., Jelkyl Theatre
5-6	Madrigals' Elizabethan Feasts	7 p.m., Memorial Arts Bldg.
6-7	Dickens' "A Christmas Carol"	2 p.m., Jelkyl Theatre
6	Men's Basketball, Central Methodist	7:30 p.m., St. Charles High
7	Annual Christmas Walk	4-7:30 p.m., College Campus
12	Women's Basketball, Maryville College	5:30 p.m., St. Charles High
12-13	Madrigals' Elizabethan Feasts	7 p.m., Memorial Arts Bldg.
13	Men's Basketball, Principia College	3 p.m., St. Charles High

JANUARY, 1987:

10	Women's Basketball, Millsaps College	7:30 p.m., St. Charles West
14	Women's Basketball, MacMurray College	6:30 p.m., St. Charles High
16	Women's Basketball, Park College	7:30 p.m., St. Charles High
17	Men's Basketball, Missouri Baptist	7:30 p.m., St. Charles High
26	Men's Basketball, St. Louis Christian	7:30 p.m., St. Charles High
27	Women's Basketball, Harris-Stowe College	6:03 p.m., St. Charles High
28	Men's Basketball, Park College	7:30 p.m., St. Charles High
31	Men's Basketball, Harris-Stowe College	3 p.m., St. Charles High

class notes

NEWS NOTES

Continued from page 9

- DORIS HILLIS LINDLEY of Alta, IA, graduated from William Penn College in Oskaloosa, IA, in 1981. She substitute teaches, and is waiting for a full-time position. She and her husband, "Whitey," who is in full-time ministry with the United Methodist Church, were transferred to northwest Iowa last June. She wants to hear from BECKY STANARD.
- LINDA PENDLEY HANKINS of Dunnsville, KY, reports that since 1973, she has lived in Russell County with her husband, Jim, and their four cats. The Hankins enjoy country living and boating on Lake Cumberland. She says her job as a county extension agent in home economics continues to be interesting and rewarding. She would like to hear from '68 classmates.
- NANCY HERRIOTT GIGLEY of Chillicothe, OH, has been busy raising four children - Chris, 15, Gretchen, 12, Meredith, 10, and Andrew, 6. Her husband, David, is an assistant professor at Ohio University in Chillicothe.
- CATHERINE BOTHE HALFERTY of Unionville, MO, teaches remedial reading and home economics, and has two children, Jennifer, 14, and Randy, 8.
- CAROL BOLLINGER HARRINGTON of Woodbridge, VA, would love to hear from friends. She writes that she and her husband, Tom, who works for the Pentagon, enjoy living in the Washington, DC, area. A son, Matthew, 8, "loves history," so the Harringtons are taking advantage of their new location.
- 1970 JUDITH BASSNETT of Tucson, AZ, recently moved from Michigan and will be attending the University of Arizona College of Law for the next three years. She hopes to return to higher education administration as a dean of students or vice-president after law school.
- PATRICIA CLAPP of Columbus, OH, is a substance abuse coordinator and institution women's coordinator for the State of Ohio's Dept. of Rehabilitation & Corrections. She recently had a one-person showing of her sculpture and drawings at Amethyst Gallery in Columbus.
- 1972 DARLEIN FERRIS DUNCAN of Vienna, MO, is a school librarian for grades kindergarten through 12.
- ELIZABETH JCODY NEWENHUYSE of Wheaton, IL, recently was named associate editor of Partnership, a national magazine for Christian women. She and her husband, Fritz, a minister and writer, report their "joy is our daughter, Amanda, born November 30, 1984.
- JUDITH KIRK WAGNER of Sylmar, CA, received an M.A. from Lutheran School of Theology in Chicago in June.
- NELDA GATES STEEL of St. Charles and her husband, Richard, have three children - Wesley, 9, Abby, 7, and Alison, 4. She recently received an M.Ed. from the University of Missouri-St. Louis.
- 1973 LINDA FITZGERALD GROOMS of Wentzville, MO, is a sales representative and recruiting coordinator for TAD Technical Service Corp., where she works with many large firms, including McDonnell Douglas Aircraft, Calgon, McDonnell Douglas Electronics, Anheuser-Busch, Ralson Purina and General Motors. She writes that she "is loving it all, and that she recently hired a Lindenwood student for a part-time position with Calgon."
- RINDY BELSHE O'BRIEN of Arlington, VA, is the chief lobbyist on appropriations bills for the Wilderness Society, a 51-year-old national organization involved with public land issues. A former radio and television producer and reporter, she spent 13 years working for former U.S. Sen. Thomas Eagleton (D-MO). She and her husband, Frank, have a son, Corey, 4.
- 1974 KIM HARTLEY of Big Rapids, MI, writes that she "is still at home with the kids, Asa, 5, and Dana, 16 months. Her husband, JEFF KLEIMAN ('74), has a new faculty position at Ferris State College in Big Rapids.
- 1975 NANCY TUNISON MORGAN of Baton Rouge, LA, received a master's degree in library science last year from Louisiana State University.
- JANET FRANK of St. Louis is a travel agent for Let's Travel in St. Louis
- SUSAN BUTAUD GORDON and ROBERT E. GORDON of Albuquerque, NM, have been busy making additions to their family (see "Births"). She "is busy enjoying motherhood and watching the brood learn and grow." He husband is an M.D., specializing in interventional radiology at Presbyterian Hospital in Albuquerque, who recently was appointed head of computer tomography at the hospital.
- JON PETERSON of Avenel, NJ, works for the Metropolitan Museum of Art in New York City, and writes, "I'm married, going bald and enjoying life."
- AMY HAAKE ARGYROS of Plano, TX, is married to Alexander Argyros, a former Lindenwood professor who is an associate professor at the University of Texas in Dallas. She has a daughter, Caitlin Olivia, and is self employed.
- JUDITH FRIEDMAN of Takoma Park, MD, is an assistant general counsel for the Federal Home Loan Bank Board of Directors.
- NANCY ESKRIDGE HARRIS of Wickenburg, AZ, writes that her husband, Mac, is director of the Desert Caballeros Western Museum and that she serves as public relations director. Her husband is a widower with two daughters, Alison, 7, and Erin, 12.
- 1976 NAOMI FERENCZ FARLEY of East Meadow, NY, has a son, Bobby, 3. Her husband, Bob, is an attorney. "I'm a full-time mom and part-time radio disc jockey. I also do voice-overs for radio and television commercials," she writes.
- 1977 MARY COVA DeSUZA of Arnold, MO, has two children, Michael Joseph, 4, and Jennifer Ann, 1.
- TERRY KILLIAN of Lexington, KY, finished her residency training in psychiatry in May, and joined the faculty at the University of Kentucky Dept. of Psychiatry.
- 1978 MARTHA MICHAEL OLIVER of Miami has two sons, ages 3 and 1.
- JEAN KNUSTON TIPTON of Cortez, CO, is a retired teacher who operates Mesa Verde Pottery with her husband, Scott. Stating both enjoy native American Indians of the Navajo and Ute tribes, she writes, "The Indians have the opportunity to continue their traditions of pottery making, rug weaving, basketry and silverwork through marketing." She adds that her daughter, Meredith Liesl-Marie, "already is following her mother's footsteps and is 'up on the horses.'"
- 1979 MARY KAY KILEY SPENCER of Georgetown, MA, sold her pottery business in North Windham, CT, to work for Georgetown Pottery. "I'm doing production pottery with a well-established potter business," she said, "and I'm having a blast living on one of Maine's coastal islands."
- JANE HENRY RAZAG of Texarkana, AR, reports that her husband ABDUL R. RAZAG ('77), became an American citizen last year, and that "we are very proud of him."
- 1980 PATRICIA McNAMARA TURNURE of Florissant, MO, began her seventh year teaching biology at Incarnate Word Academy, where she also serves as a faculty representative on the board of trustees and as chairperson of the Math/Science Dept. She and her husband, Bob, were married in 1984.
- CYNTHIA WESTERFELD ROBERTSON of Altamonte Springs, FL, and her husband, RANDY ROBERTSON ('81), had their first child in October (see "Births"). She teaches piano and voice in her home after teaching chorus for five years in Missouri public schools. Her husband is an electronics engineer with Martin Marietta Aerospace.
- KAREN FRITZ WOODLIFF of Wickenburg, AZ, writes that she married Gerald Woodliff in June, 1981, had a son, Paul, in August, 1982, and moved to Wickenburg in March, 1983. She is teaching third and fourth grades at Aquila Elementary School.
- 1981 BARBARA GALLIHER of St. Louis recently entered the Daughters of Charity and began working toward a master's degree in pastoral studies at Loyola University in New Orleans.
- ROBIN ROODMAN of St. Charles is a teacher who married STEVE ROODMAN ('81) in July, 1985.
- JEANNINE MARIE ENG of Chicago received an M.S. degree in recreational administration from Indiana University in 1983. Currently, she is a recreation coordinator for emotionally-disturbed children and adolescents.
- 1982 THOMAS LENART of Cookeville, TN, has a new job as market development manager for Tutco, Inc.
- PATRICIA SMITH-HILL GORDON of Orlando, FL, is a social worker for the State of Florida.
- 1983 JAN WALLACE RADCLIFF of Honolulu, HI, became assistant director of nursing last December for a 232-bed long-term health care facility, the largest on the island of Oahu. She, her husband, who's in the Navy stationed at Pearl Harbor, and their children are on a four-year tour of Hawaii.
- FLORENCE A. BARBORO of St. Louis has received four awards from the *World of Poetry*. Her most recent was the Golden Poet Award, the highest honor that can be bestowed upon a poet by the magazine's board of directors.
- 1984 KIM JONES of St. Louis currently serves as an on-air personality for WESL-AM Radio, a station with a Christian music format. She recently was promoted as music director for the station.
- JOHN LINKOWSKI of Orlando, FL, thanks Lindenwood "for a quality education that has contributed to the achievement of my goals, primarily the long-awaited one of working and living in Florida."
- 1985 THOMAS DIEHL of Ballwin, MO, is program director for Community Counseling Service, Inc., in St. Louis.
- SHARON PRICE of St. Peters, MO, recently served as associate producer of a television documentary on Leonard Slatkin, conductor of the St. Louis Symphony Orchestra.
- PAM YOUNG BECK of Austin, TX, reports she is "loving it in Austin," where she has started a business, Divine Designs, where she is putting her B.F.A. to work designing fun wear and wearable art.
- MARY METCALF HENNENFENT of Cameron, MO, teaches biology, physiology and anatomy at J. C. Penney High School in nearby Hamilton, MO.
- VIOLET HORVATH of St. Louis is an administrative assistant for the Theatre Project Company of St. Louis. She recently moved into the Shaw Neighborhood, where she is "closer to Busch Stadium since I'm a big baseball fan!"
- 1986 MARGARET KAUFMAN of St. Charles has been named administrator of the historic Chatillon-DeMenil House in south St. Louis.

DEATHS

- 1909 CLARA DAVIS THOMPSON of Dahnart, TX, August 2, 1986
- 1912 REBECCA HOULT DAWSON of Greenwich, CT, July 18, 1986
- 1918 ELEDITH ELLIOT MARSHAL of St. Petersburg, FL
- 1923 ALMA MURPHY DeLEAL of St. Charles, July 7, 1986
- 1924 FLORENCE HANNA BURTON of Princeton, WV, September 7, 1985
- LORENE ROWLAND MANSON of Dallas
- 1925 CONSTANCE MURRAY WRIGHT of La Jolla, CA, November 25, 1985
- 1926 IRENE HOUGHTON NELSON
- 1928 MIRIAM CLARK SCHROEDER of Cincinnati, OH, December 21, 1985
- ANITA RUDOWSKI SHULLER of McAlester, OH, January 21, 1985
- 1929 TERESA NEUBEISER BAHE of Los Angeles, April 7, 1986
- MARY LUCILLE HODGE of Lee's Summit, MO, August, 1986
- 1931 ESTELLE BRADFORD of Los Angeles, August 4, 1985
- 1932 TERLE SEILING GOVE of Springfield, MO, March 10, 1986
- ANNA LOUISE KELLEY SCHWEGLER of Russellville, AR, July 10, 1986
- 1934 MILDRED SHERMAN of San Diego, CA, February 16, 1985
- 1936 MARTHA PERRY HINES of Seattle, May, 1986
- 1944 JANE WILSON SHIRLEY of Sapulpa, OK, March 19, 1986
- 1948 JEANE SEBASTIAN ANDERSON of Fulton, MO, November 19, 1983
- 1949 CORINNE WELLER of Mattoon, IL, March 13, 1985
- 1951 JEANNE DuMOND O'CONNOR
- 1953 MARY ANN GOODALL DEW of St. Louis, May 11, 1985
- 1956 REBECCA YANDELL ALMETER of Palo Alto, CA, December 17, 1985
- JOANNE ENLOE DRAKE of Glen Ellyn, IL, September 1, 1986
- 1978 JOANNE SHROBA-WEHNER of Maryland Heights, MO, July 1986
- LESLIE CAPLAN of Northbrook, IL, September, 1985

'Who's Who' selects Lindenwood students

The names of 23 Lindenwood students will be included in the 1987 edition of *Who's Who among Students in American Colleges and Universities*, a national directory listing biographical information on some of the country's outstanding students.

Students were nominated based upon their individual records of academic achievement, service to the community, leadership in extracurricular events and activities, and potential for continued success. They join an elite group of students selected from more than 1,400 institutions of higher learning throughout the United States and several foreign countries.

Students include Salin Al-Battashi of Muscat, Oman, a senior majoring in political science; Joseph V. Arnold of Belleville, IL, a junior majoring in communications; Melissa M. Callis of Granite City, IL, a senior majoring in communications; Steve L. Crouch of Troy, MO, a senior majoring in business administration; Delana D. Hauser of St. Charles, a senior majoring in fashion marketing; Philip J. Hechler of Troy, a senior majoring in communications; Wilma C. Henrichsen of Bowling Green, MO, a junior majoring in communications; Bonnie E. Hoesli of Florissant, a junior majoring in elementary education; Terri S. Kennison of Hazelwood, MO, an education major; Carole L. Knight of St. Charles, a junior majoring in communications; Christa L. Kracke of Hazelwood, a senior majoring in communications; Patricia C. Leitsch of St. Peters, MO, a senior majoring in education.

Robin M. McCune of Frankford, MO, a junior majoring in political science; Audrey A. Meyer of St. Charles, a senior majoring in psychology; Linda L. Meyer of St. Peters, a senior majoring in communications; Kathleen L. O'Neal of

St. Charles, an elementary education major; Eric Reinsfelder of Chesterfield, MO, a senior majoring in business administration; Carolyn J. Richards of Potosi, MO, a psychology major; Myra Rogers of Kirkwood, MO, a senior majoring in business administration; Sandra A. Rossi of St. Peters, a senior majoring in international relations; Lori K. Tucker of St. Charles, a senior majoring in elementary education; Glynelle L. Wells of St. Charles, a senior majoring in communications; and Brenda F. Zurosky of St. Charles, a senior majoring in mathematics.

Outstanding students have been honored in the Tuscaloosa, AL-based annual directory since it was first published in 1934.

Greece trip is planned for credit

Three weeks of travel and study in Greece are planned December 28 through Jan. 18, 1987, by Lindenwood. Three semester hours of credit in English or humanities can be obtained.

Open to both students and area residents, the trip will study the arts and myths of ancient Greece in their living contexts as well as through later historical perspectives, including those of such selected English writers as Byron, Keats and Joyce, said James H. Feely, associate professor of English and trip leader.

The class will tour Greece, including Crete and other islands, and stay in Heraklion, Corinth, Nauplion, Sparta, Olympia, Athens and Delphi.

To obtain credit, students must register for the course, "Classicism and Its English Romantic Tradition", and satisfactorily complete the study, which includes assigned reading, seminar sessions and journal entries, Feely said.

"Other people interested are invited to accompany the class. They may share in learning experiences as they wish and they may join and leave the tour at their convenience," he added.

Cost of the trip from St. Louis, including all travel, lodging with private toilet and bath based on double occupancy, continental breakfast and dinner, is \$1,750 for those taking the course, and \$1,800 for others.

Reservation procedures and further information can be obtained by contacting Feely at the Lindenwood College English Dept., 314-946-6912, extension #331, or at his residence, 314-947-7939.

Annual reports

A limited number of copies of Lindenwood's 1986 annual report, "The Renaissance of a Great American College," are available without charge from the Lindenwood College Public Relations Office.

The 36-page report provides information on the 1985-86 fiscal year and lists donors who have contributed nearly \$790,000 cash and pledges to the college during the 12-month period.

Nearly 8,000 annual reports were mailed recently to all supporters of Lindenwood.

Request for copies of the annual report should be directed to the Lindenwood College Public Relations Office, First Capitol and Kingshighway, St. Charles, MO 63301. Copies will be sent without charge as long as supplies last.



Photo by Linda Schroeder

FOR BETTER SOUND - Students aided in the installation of a satellite dish on the roof of Young Hall for the college's community radio station, KCLC-FM. Designed to pick up satellite signals, the dish is apart of KCLC's switch to the ABC Entertainment Network. The change provides better sound quality and increased news programming for listeners as well as cost savings for the college.

KMOX airs joke

The sense of humor of KMOX-AM Radio personality Bruce Bradley is well known in St. Louis, causing him to be labeled as "the resident wit" of the CBS station by *St. Louis Post-Dispatch* columnist Jerry Berger.

Bradley visited Lindenwood College recently to meet with President James I. Spainhower; James W. Swift, director of the college's Office of Research & Planning; Public Relations Director Randy L. Wallick; and Ellen Irons of the Admissions Office.

The purpose of the session was to provide Bradley with background material on the Lindenwood College Saturday Campus which began this fall. KMOX-AM aired several 60-second commercials on the Saturday Campus earlier this year which featured live announcements by Bradley during his popular weekday morning show.

The day before the meeting, Anne Pals of St. Charles, a Lindenwood alumna and a friend of Bradley, called Spainhower. She joked that Bradley had received a \$3 parking ticket during his first visit to the college in June to attend "Mrs. Sibley's Attic Sale," a fund-raising project of the St. Charles Lindenwood Alumni Club.

Since Bradley had not paid the \$3 ticket, Pals suggested the college might want to play a joke on "KMOX's resident wit," and Spainhower, trusting that Bradley has a sense of humor, arranged the following during his meeting with college officials.

In the midst of the meeting when Swift was explaining the Saturday Campus, Judy Shanahan, the president's secretary, interrupted the session to report the Chief of Campus Security was present with an immediate need to see Bradley.

Bradley was taken by surprise as Chief Duane France walked into the session holding what is referred to as "Jaws," a front wheel metal clamp that is attached to a vehicle to make it immovable for those with outstanding parking tickets.

Although "Jaws" is seldom used except for repeat offenders who have accumulated numerous parking violations, France told Bradley that he must accompany him at once to the Business

Office to pay the \$6 fine (tickets double in payment if not paid within 72 hours) or face a \$25 removal fee for "Jaws" which France said he planned to attach to Bradley's car immediately.

With France deserving an Academy Award for his performance, Bradley sat for nearly a minute, completely aghast in believing the interruption was completely serious and that he was in jeopardy for the neglect of his parking ticket. His facial astonishment was broken when laughter arose from Spainhower and others who knew about the prearranged joke.

"I like to be taken in and, obviously, I just was," Bradley said afterward. "I think I aged at least 30 years at seeing that thing ("Jaws") and believing this was for real. I must find a way to get even with Anne," he added.

Bradley parked in a "Visitor" parking space during this campus visit, perhaps realizing afterward that parking and violations are taken seriously at Lindenwood College.

His \$6 ticket? It's still outstanding, but college officials agree the lack of payment was well worth the reaction from the KMOX-AM personality at the college's practical joke.

A tote for a ten

You can support the Alumni Association by purchasing a tote bag for \$10 (plus \$1.75 for shipping). The attractive bags are off-white in color, contain the inscription "Lindenwood College - St. Charles, MO" and feature a drawing of the front gates.

Proceeds will be used for scholarship assistance and facilities renovation. They also will be used for alumni activities such as sponsoring the baccalaureate reception for seniors next May.

Tote bags are available at the Bookstore. Prepaid orders can be sent to the Campus Bookstore, Lindenwood College, St. Charles, MO 63301. For further details, call (314) 946-6912, extension #393.

May '86 graduate statistics

A recent report compiled by the Lindenwood Registrar's Office for the U.S. Office of Education provides interesting insight into the 381 students who received undergraduate and graduate degrees at this year's Spring Commencement.

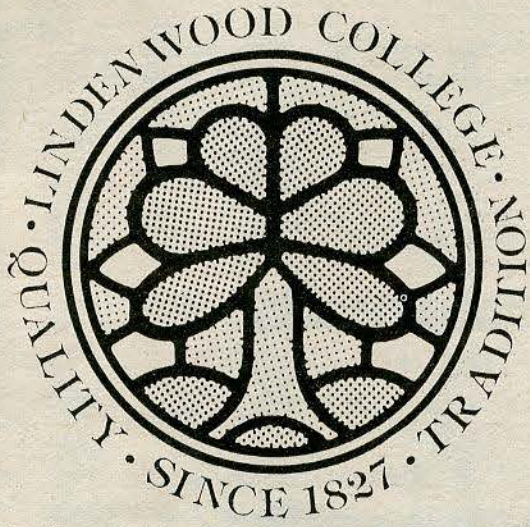
Of the total degrees conferred, 195 were bachelor's degrees, 179 were master's and seven were associate degrees.

Lindenwood awarded 118 bachelor's degrees to women for a 60 percent total and 77 to men for a 40 percent total. At the graduate level, however, the percentages were reversed with 72 to women for 40 percent and 107 to men for 60 percent. Of the associate degrees granted, five went to women and two to men.

According to Registrar Sally Sears, degrees in business account for more than two-thirds of the total awarded at Lindenwood College.

Master in Business Administration (MBA) degrees represent 37 percent of the total degrees granted, and 80 percent of all graduate degrees. Other high categories in addition to undergraduate degrees in business and MBAs, include communications at seven percent, education at six percent and visual and performing arts at 5.7 percent.

For an ethnic breakdown of graduates, of the 381 degrees awarded, 85 percent went to Caucasians and 15 percent to non-whites, Sears said.



Lindenwood College's Saturday Campus - a new program for those who do not want to spend an entire weekend obtaining a degree, for those who cannot devote time to day or evening classes or those whose family or job responsibilities prevent them from attending classes full time.

The Saturday Campus is designed for people who want to begin or complete an undergraduate or graduate degree either full or part-time every two out of three Saturdays. It's for people who want to better themselves for career advancement or a job change or for residents who want to become better informed about significant developments in the metro area.

It offers a variety of additional services right on campus - complete services such as child care, library and bookstore facilities, food service, career and employment planning and personal counseling. The program runs for 14-week sessions, on Saturday mornings and/or afternoons at Lindenwood's main campus in historic St. Charles. A variety of classes are offered by distinguished faculty members, visiting scholars and business and community leaders.

Find out why the Lindenwood Saturday Campus is a New Degree of Service just for you. Call our Admissions Office at **946-6912**, extension #213, and say you want to spend Saturdays with us this January.

Lindenwood's Saturday Campus- A New Degree of Service

Lindenwood College, St. Charles, MO, 946-6912
Off-campus locations in Downtown St. Louis, Clayton and West Port.