

V. 146 #4
Jan 73

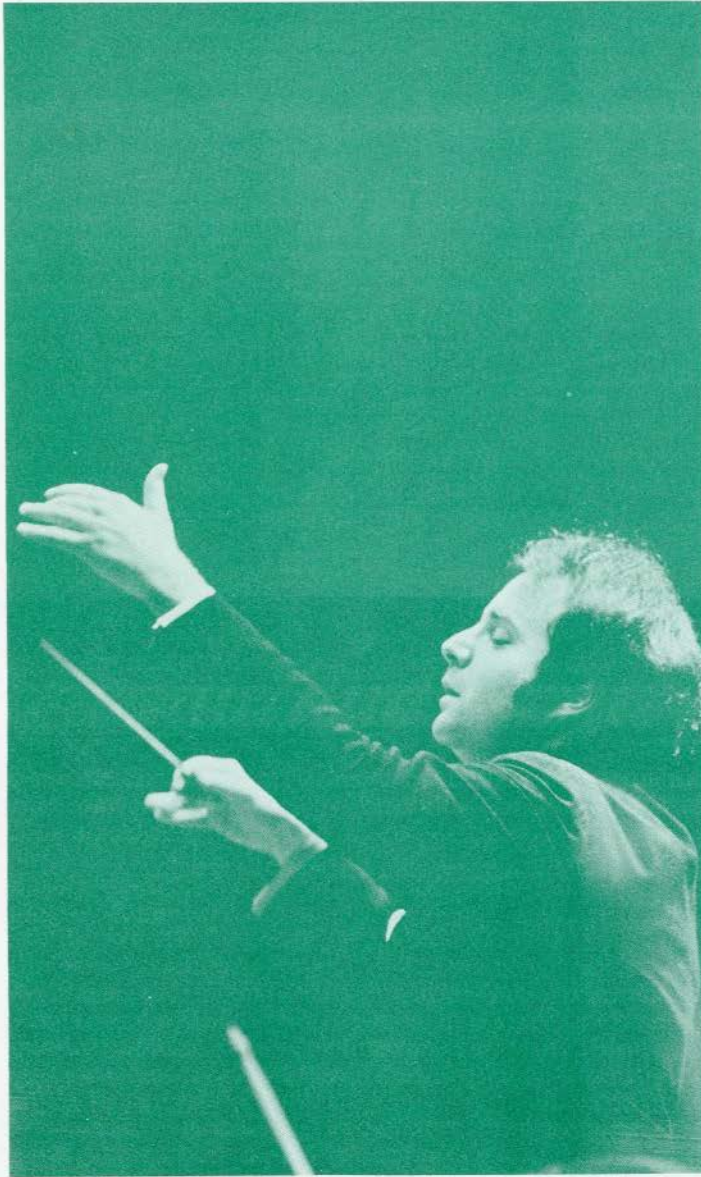
SECOND CLASS POSTAGE PAID ST. CHARLES, MO. 63301



Faculty Woodwind Quintet

THE LINDENWOOD COLLEGES BULLETIN





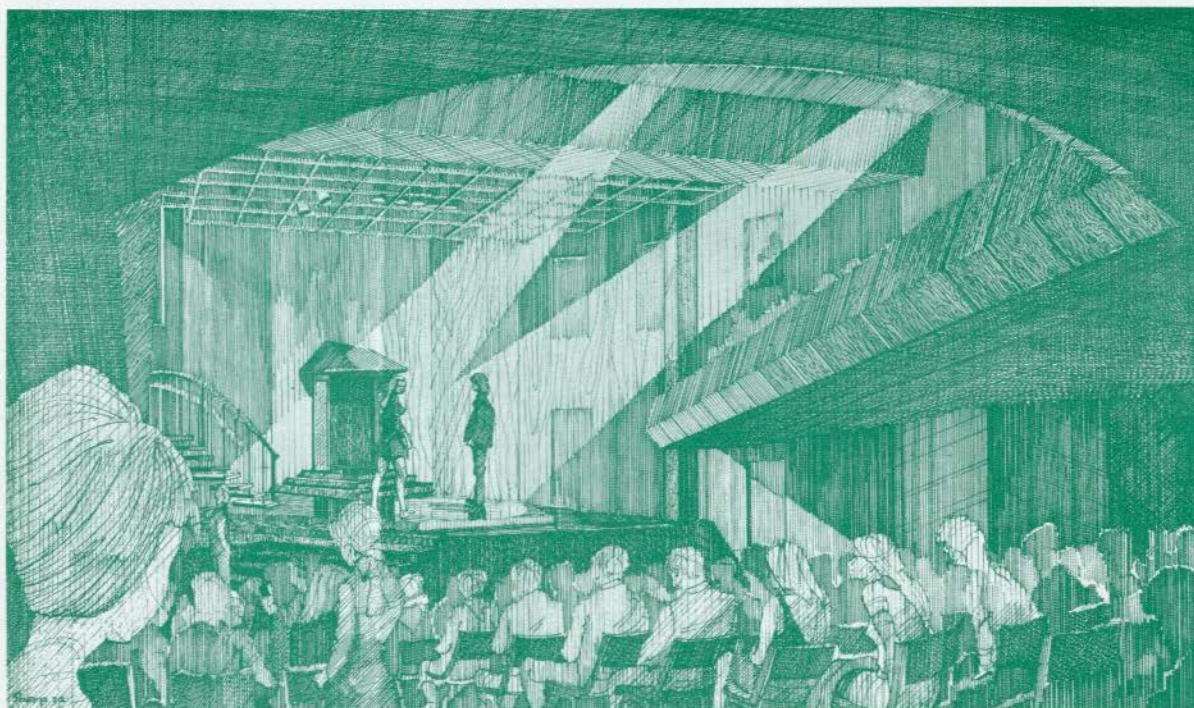
*Slatkin to join
faculty quintet in
February performance*

Leonard Slatkin, left, associate conductor of the St. Louis Symphony Orchestra, will perform as assisting pianist with the Lindenwood Quintet (cover photo) in a concert of French and Italian music at 8 p.m. on Feb. 11 in the college chapel. Admission is free.

The quintet consists of members of the St. Louis Symphony Orchestra, who also teach at Lindenwood. They are Jacob Berg, flute; Robert L. Coleman, clarinet; Kenneth Schultz, horn; Robert Wisneskey, bassoon; and Richard Woodhams, oboe.

The quintet alone will play Cambini's Quintet in B-flat. With Mr. Slatkin they will perform Sextet by Poulenc and Divertissement by Roussel.

The five woodwind artists, plus two string instrumentalists, Frederyck Sadowski and Richard Brewer, have been part-time members of the Lindenwood faculty since September 1970. They offer individual instruction to Lindenwood students and coach music ensembles, in addition to performing in faculty recitals.



New auditorium under construction

The sounds of construction echo through Roemer's hallways as work progresses on a new performing arts center for the colleges. The remodeling of the 50-year-old auditorium in Roemer Hall into a flexible new center for theater, music and dance is being made possible by a major gift from a donor whose name is to be announced at the dedication of the new facility in late spring.

The back wall of the auditorium behind the stage is being pushed out toward Watson Street and the windows on each side of the hall are being sealed with large stone-like panels. The new interior is being completely rewired for

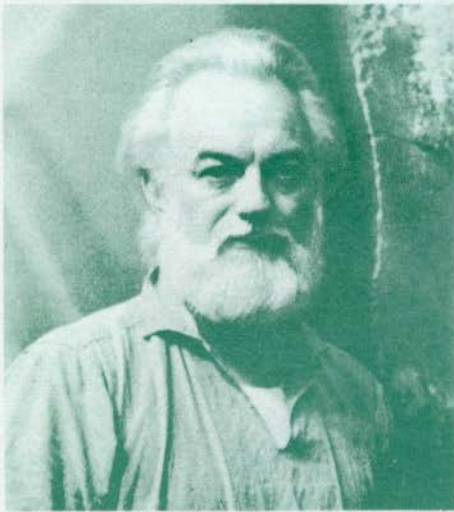
modern stage lighting and air conditioned for year-round use.

The narrow old wooden seats are being replaced with somewhat wider upholstered seats to accommodate contemporary sized people.

Patterned after the Stratford Theater in Ontario and the Tyrone Guthrie Theater in Minneapolis, the auditorium will feature a multi-level performing platform in place of the traditional stage with its arches and curtains. A student-faculty committee worked with theater consultant John Ahart, a director at the University of Illinois Krannert Center, in planning Lindenwood's new

center. Architects for the project are Manske-Dieckmann and the general contractor is Robert R. Wright, Inc.

Additional gifts to help meet a major rise in construction costs since the project was first envisioned are currently being solicited by a committee headed by Dr. Russell J. Crider of St. Charles and President John Anthony Brown. The committee is also interested in raising enough money to open the direct entrance to Roemer Hall from Watson Street. Donors interested in participating in the completion of this project should contact Dr. Crider or the College to learn more about named gift opportunities.



An exhibition of paintings by Missouri-born artist Paul Jenkins will be presented Feb. 7 through March 4 in Lindenwood's Fine Arts Building. At an invitation-only convocation on Sunday, Feb. 11, the College will confer upon Mr. Jenkins the honorary degree of Doctor of Humanities.

News briefs

The Lindenwood Colleges have entered a period of long-range planning during which DR. HOWARD A. BARNETT, Vice-President and Dean of the Faculty, has been assigned the additional responsibility for development and fund raising in coordination with academic and college planning.

The College's Margaret Leggat Butler Library has received the following gifts: a subscription to *The National Geographic Magazine*, from the Harry Rowatt Brown Trust, and a bound set of *The Congressional Record* from 1873 to the present, from the St. Louis Public Library. The library has again received a Christmas gift of six books on the American Southwest from Mrs. Helen Calder Matthews, an alumna living in Phoenix, Ariz., whose father, Dr. R.S. Calder, formerly taught at Lindenwood.

Student Center finds temporary home in Cobbs Hall

A Student Center coordinating personal and vocational counseling, inter-cultural programs and student activities is now located in Cobbs Hall. Director of the Center is Miss Janice Jackson, who is also director of Inter-Cultural Programs.

Counselors Charlotte Hoffner and Robert H. Betts, who is also Lindenwood's chaplain, offer individual and group counseling, while Michael Halloran, a 1972 graduate, coordinates social and athletic activities ranging from chess tournaments to ski trips. Secretarial service is provided by Mrs. Anne Kesselman who, from material received from all campus sources, issues a semi-weekly newsletter and a monthly calendar. The Center also provides an extensive library of college and trade school catalogs, as well as occupational information on careers.

Since the Center opened last September, its services have been utilized by a majority of Lindenwood students, according to Mrs. Hoffner, who is available three days a week for counseling and the administration of psychological, aptitude, interest, and achievement tests. Chaplain Betts, in addition to counseling at the Center, coordinates the religious program of the College which offers community related service opportunities to students. Miss Jackson advises Lindenwood's black students and oversees all functions of the Center, in addition to directing Inter-Cultural Programs. The broad purpose of the Inter-Cultural Office is to aid the College in its general mission of achieving



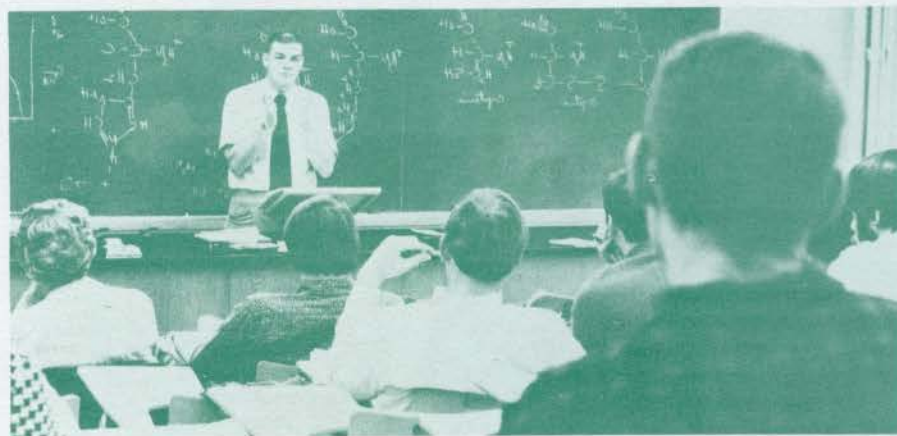
1873 to the present, from the St. Louis Public Library. The library has again received a Christmas gift of six books on the American Southwest from Mrs. Helen Calder Matthews, an alumna living in Phoenix, Ariz., whose father, Dr. R.S. Calder, formerly taught at Lindenwood.

Lindenwood was one of four St. Louis area colleges that sponsored a St. Louis College Night on Dec. 14 at the National Press Club in Washington, D.C. Guests at the dinner and program were high school guidance counselors from Washington, D.C., Maryland and Virginia. Members of the admissions staff who represented Lindenwood were MRS. NANCY McCLANAHAN, director of admissions, and MISS SUSAN SCHROEDER, assistant director.

GROFF S. BITTNER, assistant professor of music, was one of three pianists selected to perform in the Silver Anniversary Concert of the Artist Presentation Society of St. Louis.

The concert, held Nov. 12, featured artists who won awards from the Society since it was founded in 1947. Bittner was a 1965 winner.

A music critic for the St. Louis Globe-Democrat wrote that Mr. Bittner "turned in a performance of great refinement and sensitivity."



Thirty biology teachers from junior and senior high schools in Missouri are receiving in-service training on Saturday mornings this year from faculty in the Biology Department in an institute funded by a \$7000 grant from the National Science Foundation. Instructing the teachers, above, is Dr. Patrick F. Delaney, director of the Institute, who is also chairman of the Biology Department and dean of the men's college. Two other faculty members teaching in the program, which will conclude May 12, are Dr. Daryl Anderson and Vincent T. Brescia, both assistant professors of biology.

religious program of the College which offers community related service opportunities to students. Miss Jackson advises Lindenwood's black students and oversees all functions of the Center, in addition to directing Inter-Cultural Programs. The broad purpose of the Inter-Cultural Office is to aid the College in its general mission of achieving cultural and ethnic interaction in every area of campus life.

The offices are open daily from 8:30 a.m. to 5 p.m. The terrace level of Cobbs Hall, which houses the Garden Room and the Tea Hole, is open days and evenings all week.

Cobbs Hall also serves as a conference center, providing overnight accommodations for numerous educational conferences throughout the academic year as well as during the summer months.



Evening college offer

Two new Evening College degrees in business, the associate in science and the bachelor of science, were approved by the College in December and are now in effect.

The associate in business requires 22 night courses and offers specializations in 11 areas: accounting, data processing, business administration, finance, management of marketing, advertising, credit, personnel, sales, office management, and

emporary



National Merit Scholarship winner, Miss Lynne A. Jeffrey, selected from the nation's outstanding high school seniors to enroll at Lindenwood last fall, pursues developmental biology studies, above, with Prof. Vincent Brescia in a laboratory in Young Hall of Science.

A graduate of Hazelwood High School in St. Louis County, Miss Jeffrey chose to attend Lindenwood because "it is academically sound, offers excellent advanced work in biology and provides unusual faculty-to-student attention." Lynne is secretary of the Freshman Cabinet and active in sports and music activities while preparing academically for a career in marine biology.

Freshmen return at above-average rate

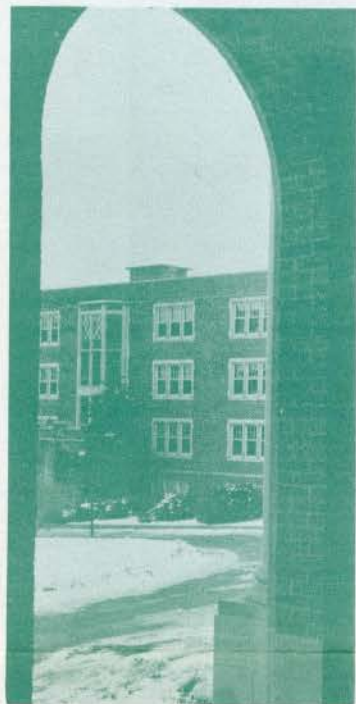
Announcement of an above-average retention of last year's freshmen accompanied the news last fall that Lindenwood's enrollment had increased to 797, up 144 students over September 1971.

Committees review Lindenwood program, seek to map plans for future

Two committees established by President John Anthony Brown are making an intensive review of the program of The Lindenwood Colleges and seeking to develop a basis for long-range planning by early spring. The work of the two groups, which are "The Ideal Strategic Model Committee" and "The Existing Model Committee," is being coordinated by Dr. Howard A. Barnett, Vice President and Dean of the Faculty. In outlining the committees' functions Dean Barnett stressed, "In this period of transition in higher education, when private liberal arts colleges are under unusual pressures, it is important for Lindenwood to look carefully at its present situation and make the kind of plans for the future which will give it vitality."

The Ideal Strategic Model Committee is composed of two students, Ann deMarras and Pat McMackin; two Board members, Mrs. Mary Hall and Walter Metcalfe; a member of the St. Charles community, Roland Pundmann; six faculty members, James Feely, Harry Hendren, Daryl Anderson, John Bartholomew, John Nichols, and Richard Wier; and three administrators, Patrick Delaney, Doris Crozier, and Howard Barnett. This committee is under the chairmanship of John Nichols and has as its task the construction of an ideal model of what The Lindenwood Colleges should be during the next ten or twenty years.

The work of this committee



Services of Student Center in Cobbs Hall (building visible through arch, above) include formal and informal counseling; organization of pool, bridge, and chess matches, co-ed volleyball games, bowling leagues and group trips to cultural, sports and entertainment events; arrangement for tickets for personal travel, concerts, and college or professional soccer, hockey, baseball or football; and mini-bus tours and transportation to St. Charles and St. Louis areas.



business degrees

professional secretarial.

The bachelor of science in business requires 36 courses, which may be taken either during the day or evening, and the program offers seven emphases: accounting, data processing, management, finance, marketing, office management, and professional secretarial.

Both degrees may be completed entirely at night, although the B.S. in business is available also through day program.

up 144 students over September 1971.

According to Registrar Lula Clayton Beale, 68% of last year's entering freshmen who were eligible to return, enrolled in September 1972. When that class entered the College, Admissions Office statistics revealed that 42% had ranked in the top quarter of their graduating class. The students had come from 110 secondary schools around the nation and abroad.

Lindenwood is not only holding its students but attracting a significant number of transfers from other institutions. Of the 85 who transferred in the fall of 1972 (a 30% increase over 1971's total), 20 came as freshmen, 28 as sophomores, 26 as juniors and six as seniors. Five college graduates enrolled to work for teacher certification. The 85 transferred from colleges and universities in 38 states and the District of Columbia, and nine foreign countries.

Lindenwood hosts security conference

The third annual conference of the Missouri Association of College and University Security Directors was hosted by The Lindenwood Colleges Jan. 12 and 13, with meetings held at nearby Howard Johnson Motor Lodge. Among those who addressed the organization of approximately 50 directors of security, were these Lindenwood administrators: President John Anthony Brown, Vice President B. Richard Berg, Deans Doris Crozier and Patrick F. Delaney, Miss Janice Jackson, Director of the Student Center, and Chief of Security Erwin J. Gibson, the conference's host.

years.

The work of this committee, after the first stage of its deliberations are completed, will go to the Existing Model Committee. This committee is a research committee and has the task of defining the actual model which now exists for the College. Their work will partly be a matter of developing data concerning the College and its surroundings and the current situation in higher education. Their task will be to examine the ideal model in the light of realities, identifying gaps between the real and the ideal, and helping to point out ways in which goals can be achieved.

After the work of the two committees has been presented in progress to the Boards of the two colleges for review and recommendations, it will be brought back to the faculty for discussion and perhaps adoption as a planning model for the future, Dean Barnett said.

The Existing Model Committee is composed of five members of the faculty. Drs. Esther Johnson, Hazel Toliver and Norman King are elected members of the committee, and Dr. John Bornmann and Thomas Smith are appointed members. Dr. John Moore, Chairman of the Economics Department and Assistant Vice President for Finance, and Mr. Robert Palank, Director of the Computer Center, are *ex officio* members carrying out the research and organizing it into representative data.

THE LINDENWOOD COLLEGES BULLETIN

THE LINDENWOOD COLLEGES BULLETIN, of which this newsletter comprises four issues each year, is published monthly except June by Lindenwood College, St. Charles, Mo. 63301.
VOLUME 146 No. 4 January, 1973

Editor, M. P. Cronin
Designer, B. R. Berg

da Vinci exhibit inspires student project



Model of Leonardo's "flying machine," above, suspended from ceiling in upper level gallery of Lindenwood's Fine Arts Building, left. This award-winning 28,000 square foot building houses programs in art history, painting, drawing, sculpture, dance, and related activities.



A recent Lindenwood - IBM exhibition of models of Leonardo da Vinci's inventions included the "flying machine," which helped inspire Kurt Ricketts, above, to pursue what he calls "the ultimate experience" of floating off ground in his hangglider. Ricketts, a junior and art major from St. Charles, designed and built the 20 ft. wide - 16 ft. long glider which has polyethylene wings fastened onto a bamboo framework. He stores the glider, which he calls "Kurt's Kite," in a lower level studio of the Fine Arts Building between lift-offs on sloping back campus.

Models of inventions by Leonardo da Vinci were displayed Nov. 17 - Dec. 13 in the Fine Arts Building.

The exhibit, provided by International Business Machines Corporation, included 19 models built according to da Vinci's scientific and technical drawings. Painted red, yellow, blue and green, the models were displayed with panels of explanatory material and sketches reproduced from Leonardo's notebooks. Other panels presented some of his observations on music, architecture, philosophy, anatomy, botany, cosmology, optics, astronomy, flight, sculpture, mathematics, city planning and perspective.

The models included a helicopter, parachute, a military tank, a paddle wheel ship, a scaling ladder (similar to that employed today in fire-fighting apparatus), a two level bridge and a rotating bridge.